

1 **Full Title:** Ability of Caprini and Padua Risk-Assessment Models to Predict Venous Thromboembolism in a  
2 Nationwide Study

3  
4 **Author Names:**

5 Hilary Hayssen, MD<sup>1,2</sup>, Shalini Sahoo, MA<sup>1,2</sup>, Phuong Nguyen, PhD<sup>3</sup>, Minerva Mayorga-Carlin, MPH<sup>1,2</sup>, Tariq  
6 Siddiqui, MS<sup>2</sup>, Brian Englum, MD<sup>1</sup>, Julia F Slejko PhD<sup>4</sup>, C. Daniel Mullins PhD<sup>4</sup>, Yelena Yesha, PhD<sup>3</sup>, John D  
7 Sorkin, MD, PhD<sup>5,6</sup>, Brajesh K Lal, MD<sup>1,2</sup>

8  
9 **Affiliations:**

0 <sup>1</sup> Department of Surgery, University of Maryland, Baltimore, MD  
1 <sup>2</sup> Surgery Service, VA Medical Center, Baltimore, MD  
2 <sup>3</sup> Department of Computer Science, University of Miami, FL  
3 <sup>4</sup> Department of Health Services Research, Univ of Maryland, MD  
4 <sup>5</sup> Department of Medicine, University of Maryland School of Medicine, Baltimore, MD  
5 <sup>6</sup> Geriatric Research, Education, and Clinical Center, VA Medical Center, Baltimore, MD

6  
7 **Short title:** Caprini and Padua VTE RAMs in a Nationwide Study

8  
9 **Corresponding author and post-publication corresponding author:**

0 Brajesh K Lal MD  
1 Department of Surgery, University of Maryland  
2 22 South Greene Street  
3 Baltimore, MD 21201  
4 Phone: 410 328 5840  
5 Email: [blal@som.umaryland.edu](mailto:blal@som.umaryland.edu)

6  
7 **Word count:**

8 Abstract: 349  
9 Manuscript word count: 3,893  
0 Total word count (including title page, abstract, references, tables, figures, figure legends, and supplementary  
1 material): 7,496  
2  
3

## 1 ABSTRACT

2 **Background:** Venous thromboembolism (VTE) is a preventable complication of hospitalization. Risk-  
3 stratification is the cornerstone of prevention. The Caprini and Padua are the most commonly used risk-  
4 assessment models to quantify VTE risk. Both models perform well in select, high-risk cohorts. While VTE  
5 risk-stratification is recommended for all hospital admissions, few studies have evaluated the models in a large,  
6 unselected cohort of patients.

7 **Methods:** We analyzed consecutive first hospital admissions of 1,252,460 unique surgical and non-surgical  
8 patients to 1,298 VA facilities nationwide between January 2016 and December 2021. Caprini and Padua scores  
9 were generated using the VA's national data repository. We first assessed the ability of the two RAMs to  
0 predict VTE within 90 days of admission. In secondary analyses, we evaluated prediction at 30 and 60 days, in  
1 surgical versus non-surgical patients, after excluding patients with upper extremity DVT, in patients  
2 hospitalized  $\geq 72$  hours, after including all-cause mortality in the composite outcome, and after accounting for  
3 prophylaxis in the predictive model. We used area under the receiver-operating characteristic curves (AUC) as  
4 the metric of prediction.

5 **Results:** A total of 330,388 (26.4%) surgical and 922,072 (73.6%) non-surgical consecutively hospitalized  
6 patients (total  $n=1,252,460$ ) were analyzed. Caprini scores ranged from 0-28 (median, interquartile range: 4, 3-  
7 6); Padua scores ranged from 0-13 (1, 1-3). The RAMs showed good calibration and higher scores were  
8 associated with higher VTE rates. VTE developed in 35,557 patients (2.8%) within 90 days of admission. The  
9 ability of both models to predict 90-day VTE was low (AUCs: Caprini 0.56 [95% CI 0.56-0.56], Padua 0.59  
0 [0.58-0.59]). Prediction remained low for surgical (Caprini 0.54 [0.53-0.54], Padua 0.56 [0.56-0.57]) and non-  
1 surgical patients (Caprini 0.59 [0.58-0.59], Padua 0.59 [0.59-0.60]). There was no clinically meaningful change  
2 in predictive performance in patients admitted for  $\geq 72$  hours, after excluding upper extremity DVT from the  
3 outcome, after including all-cause mortality in the outcome, or after accounting for ongoing VTE prophylaxis.

4 **Conclusions:** Caprini and Padua risk-assessment model scores have low ability to predict VTE events in a  
5 cohort of unselected consecutive hospitalizations. Improved VTE risk-assessment models must be developed  
6 before they can be applied to a general hospital population.

## 1 INTRODUCTION

2 Venous thromboembolism (VTE), encompassing deep vein thrombosis (DVT) and pulmonary embolism  
3 (PE), is a potentially preventable sequela of hospitalization. Over 900,000 VTE events, associated with over  
4 100,000 deaths, and an attendant economic burden of \$2-10 billion are reported each year in the United States  
5 (US).<sup>1,2</sup> Summarizing evidence-based guidelines, the US Surgeon General emphasized “the need to screen  
6 hospitalized patients for risk of DVT/PE and to provide appropriate prophylaxis to those at risk.”<sup>3</sup> The Joint  
7 Commission on the Accreditation of Healthcare Organizations, the Agency for Healthcare Research and  
8 Quality, and the Centers for Disease Control and Prevention have each identified risk-assessment and risk-  
9 stratification as the keys to improving VTE prevention in all general hospitalized patients.<sup>4</sup>

0 At least 23 VTE risk-assessment models (RAMs) have been developed to quantify a patient’s risk for  
1 VTE by summing the weights assigned to selected clinical risk-factors.<sup>5</sup> By mapping ranges of scores into  
2 ordered groups, the RAMs attempt to accomplish risk-stratification. The models are designed to be  
3 implemented in all hospital admissions, not just high-risk patient groups. The Caprini and Padua RAMs are the  
4 most widely used RAMs in hospitals. Risk-factors and weights in both RAMs were selected based on clinical  
5 expertise and information from published literature.<sup>6</sup> The Caprini RAM has been evaluated in high-risk  
6 subgroups of surgical patients<sup>7,8</sup> and the Padua RAM in acutely ill medical patients.<sup>9 10,11</sup> While both RAMs  
7 have been tested primarily in high-risk subsets, guidelines suggest using the Caprini RAM in all hospitalized  
8 surgical patients<sup>8,12</sup> and the Padua RAM in all hospitalized non-surgical patients.<sup>10,11</sup>

9 Increased awareness about the clinical and cost implications of hospital-associated VTE, and the push to  
0 implement risk-stratification by healthcare organizations, has led to an increasing use of the Caprini and Padua  
1 RAMs for all hospital admissions. However, neither RAM has been well-studied in a large, unselected cohort of  
2 mixed non-surgical and surgical patients.<sup>6,13</sup>

3 We evaluated the predictive ability of the Caprini and Padua RAMs for 90-day VTE in patients  
4 hospitalized at Veterans Affairs (VA) health care facilities nationwide over a 6-year period. In secondary  
5 analyses, we assessed predictive performance in subgroups of surgical and non-surgical patients, in patients

1 admitted for  $\geq 72$  hours, after including all-cause mortality in the outcome, after excluding upper extremity DVT  
2 from the outcome, and after accounting for prophylaxis in the predictive model.

## 4 METHODS

5 **Study Design and Participants:** We performed a retrospective analysis of the first hospital admission  
6 of patients to any VA facility nationwide from January 1, 2016, through December 1, 2021. We followed  
7 STROBE (Strengthening the Reporting of Observational Studies in Epidemiology) guidelines for cohort studies  
8 in writing this report.<sup>14</sup> Patients with a VTE within 90 days before admission or those admitted with a diagnosis  
9 of VTE were excluded. Patients who underwent a surgical procedure (planned or unplanned) during  
0 hospitalization, regardless of the admitting service, were defined as surgical patients. Non-surgical patients were  
1 those who did not undergo a surgical procedure during hospitalization. The protocol was approved by the  
2 Institutional Review Board of the University of Maryland and the Baltimore VA Research and Development  
3 Committee.

4 **Data Source:** Data were obtained from the Veterans Affairs Informatics and Computing Infrastructure  
5 (VINCI), a comprehensive, patient-level database of the approximately 9 million patients receiving care at  
6 1,298 VA healthcare facilities nationwide.<sup>15,16</sup> VINCI contains all data entered into the VA's common  
7 electronic medical record from in- and out-patient encounters.

8 **Outcome and variables:** Our main outcome, VTE, was defined as a new International Classification of  
9 Diseases (ICD-10) code diagnostic for PE, DVT, or both DVT and PE (**Table S1**). The Caprini RAM computes  
0 a composite score based on the sum of weighted scores of 34 risk-factors.<sup>8</sup> The Padua RAM computes a  
1 composite score based on 11 risk-factors.<sup>9</sup> We computed both scores for each patient using information from  
2 their medical record. The risk factors were extracted from various sources: ICD-10 diagnostic and procedural  
3 codes, Current Procedural Terminology (CPT) codes, demographic data, clinical and nursing orders, laboratory  
4 data, medications, prosthetics consultations, and operating room data. Extracted data included date and time  
5 stamps that permitted calculation of length of surgery, duration of bedrest, or date of VTE diagnosis, for  
6 example. If there were no admission height or weight measurements, we imputed the body mass index (BMI)

1 using the average of heights and weights obtained within the year before and after admission, after which BMI  
2 was available in 96% of patients.

3 We categorized patients as receiving pharmacologic VTE prophylaxis based on medication orders for  
4 unfractionated heparin, low molecular weight heparins, direct-acting oral anticoagulants, or warfarin as well as  
5 CPT codes for inferior vena cava filter placement. We determined if patients received mechanical prophylaxis  
6 based on physician orders for intermittent or sequential compression devices.

7

## 8 **Statistical Methods**

9 We compared demographic and clinical features of our cohort and of the risk-factors included in the  
0 Caprini and Padua RAMs for those with and without VTE, using Person's  $\chi^2$  analysis for categorical variables  
1 and Student's t-test for continuous variables. We used histograms to describe the distribution of RAM scores in  
2 patients who did and did not develop VTE, and to describe the relationship between RAM scores and VTE.  
3 Logistic regressions in which outcome (yes versus no) was predicted by the Caprini or Padua scores, were used  
4 to determine the ability of the two RAMs to predict outcomes of interest and in subsets of interest. Predictive  
5 ability was quantified by measuring the area under the receiver-operating characteristic curves (AUC) obtained  
6 from the logistic regressions. The AUCs of different models were compared using Delong-Delong tests.<sup>17</sup>  
7 Analyses were performed using R version 4.0.1 (R Core Team, Vienna, Austria) and SAS software version 9.4  
8 (SAS Institute Inc., Cary, North Carolina, USA).

9 We first evaluated the ability of each RAM to predict VTE in the entire cohort at various time intervals,  
0 including 0-30, 31-60, 61-90, and 0-90 days (i.e., four logistic regressions for each RAM). These models  
1 adjusted only for the patients' RAM score. To maximize the number of VTE events included, all subsequent  
2 secondary analyses examined outcomes at a single follow-up interval of 0-90 days (our baseline models).

3 In a series of secondary analyses, we evaluated whether each RAM had better predictive ability (AUC)  
4 in various sub-populations of the cohort, or for different outcomes of interest. We first evaluated the prediction  
5 of 90-day VTE for each RAM in subgroups of the overall cohort: 1) surgical patients, 2) non-surgical patients,  
6 and 3) patients admitted for  $\geq 72$  hours, as a surrogate for increased immobility. Next, we evaluated the

1 prediction of 90-day outcome of 4) VTE excluding upper extremity DVTs (because upper extremity DVTs have  
2 lower morbidity and mortality) and 5) after including all-cause mortality into the composite outcome (i.e., VTE  
3 and/or mortality) since acute PE may remain undetected as a cause of sudden death. Finally, we examined  
4 prediction of 90-day VTE by the two RAMs in 6) a subgroup of patients who received VTE prophylaxis  
5 (mechanical and/or pharmacologic), 7) a subgroup of patients who did not received VTE prophylaxis, and 8) in  
6 the entire cohort after adjusting for any prophylaxis received because prophylaxis may alter the predictive  
7 ability of RAMs (prophylaxis is not accounted for in the Caprini or Padua RAMs)

## 9 RESULTS

0 **Participants:** A total of 1,282,014 patients were hospitalized from January 1, 2016, to December 1,  
1 2021. We excluded 21,974 patients admitted with a diagnosis of VTE and 7,580 patients with a VTE within 90  
2 days before admission. Our study population included 1,252,460 patients, of whom 26.4% (n=330,388) were  
3 surgical and 73.6% (n= 922,072) were non-surgical patients (**Table 1**). The overall population was older (mean  
4 age 65.9 years), predominantly male (93.0%), a substantial minority were non-white (29.8%), and almost 41%  
5 received no VTE prophylaxis.

6 **Outcome data:** Within 90 days after admission, 35,557 patients (2.8%) developed a VTE, of which  
7 15,056 (42%) were PEs with or without concurrent DVT, and 20,501 were DVTs alone (58%). The median  
8 time (interquartile range, IQR) to VTE occurrence was 11 days (4-35). Although most VTEs developed within  
9 the first 30 days of admission, 28% developed 31-90 days later (17% at days 31-60, 11% at days 61-90, **Table**  
0 **2**).

1 **Descriptive data (Table 1):** Patients who suffered a VTE (VTE group) were on average older than  
2 those who did not suffer a VTE (non-VTE group; 68.1 vs. 65.8 years,  $p<0.001$ ). Although the difference was  
3 not clinically important, the VTE group had a lower BMI than the non-VTE group (29.2 vs. 29.3 kg/m<sup>2</sup>,  
4  $p=0.018$ ). The fraction who were male was slightly higher in the VTE group than in the non-VTE group (95.2%  
5 vs. 92.9%,  $p<0.001$ ). The fraction who were black was higher in the VTE group than in the non-VTE group  
6 (24.3% vs. 20.8% respectively,  $p<0.001$ ).

1 Fourteen of the 34 risk-factors in the Caprini RAM were associated with an increased risk of VTE  
2 (varicose veins, recent major surgery, swollen legs, heart attack, congestive heart failure, serious infection, lung  
3 disease, age 61-74 years, cancer, central venous catheter, age  $\geq 75$  years, bedrest  $\geq 72$  hours, history of VTE,  
4 history of clotting disorder, broken hip, pelvis, or leg, and spinal cord injury resulting in paralysis, **Table 3**).  
5 Nine of the 11 risk-factors in the Padua RAM were associated with an increased risk of VTE (infection or  
6 rheumatologic disorder, heart attack and/or stroke, heart and/or respiratory failure, age  $\geq 70$  years, recent trauma  
7 and/or surgery, thrombophilia, bedrest  $\geq 3$  days, previous VTE, and active cancer, **Table 3**). Some risk-factors in  
8 the Caprini RAM (age 41-60 years, planned minor surgery, inflammatory bowel disease, BMI  $> 25$  kg/m<sup>2</sup>,  
9 hormone therapy, planned major surgery, and elective arthroplasty) and in the Padua RAM (hormonal treatment,  
0 and BMI  $> 30$  kg/m<sup>2</sup>) were associated with a reduced risk of VTE.

1 Both Caprini and Padua demonstrated good calibration. The Caprini scores of the cohort ranged from 0-  
2 28 (median, IQR: 4, 3-6, **Figure 1**) with an increasing VTE rate as the score increased, a trend that held until a  
3 score of 15 (**Figure 2**). Padua scores ranged from 0-13 (median, IQR: 1, 1-3, **Figure 1**) and an increasing score  
4 was also associated with an increasing VTE rate (**Figure 2**).

5 **Main results:** The AUC for predicting VTE at 0-90 days in the entire cohort by the Caprini RAM was  
6 0.56 (95% CI 0.56-0.56, **Table 2**). The AUCs for 0-30 and 61-90 day outcomes were no different than for 0-90  
7 days, and for 31-60 day outcome was slightly better than for 0-90 days though the difference was not clinically  
8 important (absolute difference in AUC, 0.02, **Table 2**).

9 The AUC for predicting VTE at 0-90 days in the entire cohort by the Padua RAM was 0.59 (95% CI,  
0 0.58-0.59), and was higher than that for the Caprini RAM ( $p < 0.001$ ) though the difference was of limited  
1 clinical importance (absolute difference in AUC, 0.03, **Table 2**). The AUCs for 0-30, 31-60 and 61-90 day  
2 outcomes were no different from that for 0-90 days (**Table 2**).

3 **Secondary results (Table 4): Prediction by type of patient examined.** In subgroup analyses, the Caprini  
4 and Padua RAMs predicted VTE at 0-90 days better in **1**) non-surgical patients (Caprini AUC 0.59 [95% CI  
5 0.58-0.59], Padua AUC 0.59 [0.59, 0.60]) and worse in **2**) surgical patients (Caprini AUC 0.54 [95% CI 0.53-  
6 0.54], Padua AUC 0.56 [0.56, 0.57]), compared to VTE prediction in the entire cohort ( $< 0.001$  for all four

1 comparisons). Consistent with these findings, prediction in non-surgical patients was better than in surgical  
2 patients, though the difference was of limited clinical importance (absolute difference in AUC=0.05,  $p<0.001$ ,  
3 **Figure 3**). The same was observed for the Padua RAM (absolute difference in AUC=0.03,  $p<0.001$ , **Figure 3**).  
4 Both RAMs performed slightly worse among **3**) patients hospitalized for  $\geq 72$  hours versus all patients (Caprini  
5  $p<0.001$ , Padua  $p<0.001$ ).

6 Prediction by type of outcome examined. The AUCs for prediction of **4**) VTE excluding upper extremity  
7 DVTs by the Caprini or Padua RAMs were similar to the AUCs for all VTEs (Caprini  $p=0.12$ , Padua  $p=0.57$ ).  
8 Both RAMs were slightly better at predicting the **5**) composite outcome of VTE and/or all-cause mortality,  
9 versus VTE alone (Caprini  $p<0.001$ , Padua  $p<0.001$ ) although the differences were of limited clinical  
0 importance (absolute difference of AUCs, Caprini 0.02, Padua 0.01).

1 Prediction by prophylaxis status. A total of 740,632 (59%) patients received VTE prophylaxis (either  
2 mechanical or pharmacologic) and 511,828 (41%) did not; 3.4% of those who received prophylaxis developed a  
3 VTE while 2.1% of those who did not receive prophylaxis developed a VTE ( $p<0.001$ ). **6**) In subgroup  
4 analyses, for **6**) patients who received VTE prophylaxis, the ability to predict VTE at 0-90 days for both RAMs  
5 was worse than for the entire cohort (AUCs: Caprini RAM 0.55 [95% CI 0.54-0.55] and Padua RAM 0.58 [95%  
6 CI 0.57-0.58],  $p<0.001$  vs. respective AUCs for prediction in entire cohort). **7**) For patients who did not receive  
7 VTE prophylaxis, the ability to predict VTE at 0-90 days for both RAMs was better than for the entire cohort  
8 (AUCs: Caprini RAM 0.58 [95% CI 0.57-0.58],  $p<0.001$  and Padua RAM 0.59 [95% CI 0.59-0.60],  $p=0.02$  vs.  
9 respective AUCs for prediction in entire cohort). In an additional analysis, **8**) including prophylaxis as an  
0 exposure variable in the models for each RAM improved prediction of VTE at 0-90 days compared to our base  
1 models (AUCs: Caprini RAM 0.59 [95% CI 0.58-0.59] and Padua RAM 0.61 [95% CI, 0.60-0.61],  $p<0.001$  vs.  
2 respective AUCs in unadjusted models, **Table 5**). The differences were of limited clinical importance (absolute  
3 differences in AUC, Caprini RAM 0.03; Padua RAM 0.02).

## 5 **DISCUSSION**



1 The incidence of VTE within 0-90 days after hospitalization in this nationwide cohort of 1,252,460  
2 unselected consecutive surgical and non-surgical patients was 2.8%. Approximately 28% of VTE events  
3 occurred between 31 and 90 days after admission, highlighting the importance of tracking events beyond the  
4 traditional focus on 30 days. The ability of the Caprini (AUC 0.56) or Padua (AUC 0.59) risk-assessment  
5 models to predict VTE was of limited help in stratifying VTE risk. The performance of both RAMs was better  
6 in non-surgical compared to surgical patients, though the improvements were not large enough to be clinically  
7 important. The RAMs did not demonstrate clinically important improvements in performance when only  
8 patients admitted for  $\geq 72$  hours were examined, after excluding upper-extremity DVT from the outcome, after  
9 including all-cause mortality into the composite outcome, or after accounting for VTE prophylaxis received.  
0 The results do not justify widespread use among general hospital admissions without improvements in the  
1 models and further rigorous validation.

2 Our results confirm that hospital admission confers a risk for VTE. In our study, 2.8% of patients  
3 developed a VTE within 0-90 days of hospitalization. Of these, 42% had a PE, an important cause of VTE-  
4 related mortality. In addition, with several million patients being hospitalized each year, many patients are at  
5 risk for long-term sequelae of VTE such as post-thrombotic syndrome and post-PE syndrome. These iatrogenic  
6 complications can be reduced by prophylactic measures. However, mechanical prophylaxis (e.g., compression)  
7 may not be tolerated or feasible, and pharmacoprophylaxis may increase the risk for bleeding. These risks must  
8 be weighed against the risk for VTE, therefore reliably stratifying VTE risk is a prerequisite to appropriate  
9 prophylaxis.

0 The assessment of predictive performance for the Caprini and Padua RAMs has shown mixed results to  
1 date. They are among the most widely used tools to assess VTE risk. The Caprini RAM has been evaluated in  
2 over 200 studies worldwide though most have had small sample sizes (<10,000 patients) with few VTE events  
3 (<100).<sup>18</sup> The Padua RAM has been evaluated primarily in medical patients with similarly small cohorts.<sup>19,20</sup>  
4 The best performance (AUCs) for the RAMs were obtained in studies with modest numbers of high-risk  
5 patients, often fewer than 1,000.<sup>21-23</sup> The two RAMs have also been compared previously<sup>5,20,23-27</sup>, with the  
6 Caprini RAM showing better prediction for mortality,<sup>20</sup> and a higher AUC to predict VTE (0.77 vs. 0.62 for

1 Padua RAM,  $p < 0.05$ ).<sup>24</sup> Conversely, an analysis of acutely ill medical patients reported low predictive abilities  
2 from both, the Caprini (AUC=0.60) and Padua (AUC=0.64) RAMs.<sup>27</sup> In our larger, nationwide, mixed surgical  
3 and non-surgical cohort, with a large number of VTE events ( $n=35,557$ ), both RAMs had limited predictive  
4 ability for VTE. This may explain why there is limited information on whether broad clinical implementation of  
5 the RAMs reduces VTE rates, even though the tools have been available for several years.<sup>28</sup> A large 43-hospital  
6 Michigan Hospital Medicine Safety Consortium instituted systematic VTE risk-assessment in their hospitalized  
7 patients using primarily the Caprini RAM. Even though risk-assessment and the use of prophylaxis increased,  
8 VTE rates were not reduced.<sup>29</sup>

9 Most VTE events occurred within 0-30 days, though one-quarter occurred between days 31 and 90 post-  
0 admission (**Table 2**). This could still underestimate the true incidence since PE is often overlooked as a cause of  
1 death when it occurs remote from a hospitalization. When we included all-cause mortality into our composite  
2 outcome, prediction by both RAMs improved. While the improvement was not large, the increase suggests that  
3 some of the deaths occurred in individuals with risk-factors for VTE and could have occurred from a PE.  
4 Although we found that hospitalization increased the risk for VTE up to 90 days post-admission, further studies  
5 must assess whether risk extends even beyond 90 days, and compare VTE incidence in age-, sex- and risk  
6 factor-matched non-hospitalized patients to define the true additional risk for VTE conferred by hospitalization.

7 Both RAMs showed good calibration with increasing Caprini RAM scores up to a score of 15 being  
8 associated with increased VTE rates, at which point the small number of patients and events (and resulting  
9 larger confidence intervals) likely contributed to a less linear association (**Figure 2**). Grant et al. also reported  
0 increasing VTE rates up to Caprini scores of 7, after which the rate stayed elevated but without a consistent  
1 rise.<sup>30</sup> Higher Padua scores also demonstrated an increase in VTE rates, consistent with prior reports.<sup>20</sup>

2 There may be several reasons why the association between RAM scores and VTE events did not  
3 translate into better discrimination and prediction of VTE events. Not all risk-factors in the RAMs had a strong  
4 relationship to VTE (**Table 3**). In fact, surprisingly, some risk-factors were protective. One explanation may be  
5 that both RAMs were empirically derived.<sup>26</sup> The Caprini RAM was developed using data from only 538  
6 surgical patients, the Padua RAM from only 1,180 non-surgical patients.<sup>7,9</sup> The prevalence of 13 of the 34 risk-

1 factors in the Caprini RAM were no different between those with versus without VTE, and 5 factors had a  
2 higher prevalence in the no-VTE versus VTE group. Future versions of the RAM must reconsider including  
3 them in the model.

4 Obesity is known to have a 2 to 3 fold higher risk for VTE.<sup>31–33</sup> We found that obesity was not  
5 associated with development of a VTE (**Table 3**). This finding could be related to our study population, older,  
6 mostly male, and with many comorbidities, reducing the overall effect of obesity in our cohort. Exogenous  
7 hormone use, particularly estrogen, is a known risk factor with a 1.5 to 3 fold higher risk of VTE.<sup>31,34</sup> In our  
8 study, hormone use was more prevalent in the non-VTE group. This is likely a function of the low overall  
9 prevalence of hormone use in our population; only 1% of the cohort (n=11,793 patients) had recent (within 30  
0 days) exogenous hormone use, likely due to the small percentage of females (5%).

1 The Caprini RAM has been tested (and is possibly used) more often in surgical patients, while the Padua  
2 RAM has been tested (and possibly used) more often in non-surgical patients. When we assessed for potential  
3 differential performance of the RAMs by patient sub-type, we found that both RAMs performed slightly better  
4 in non-surgical (AUCs: Caprini RAM 0.59, Padua RAM 0.60) compared to surgical patients (**Table 4**). The  
5 differences were not clinically important. It is possible that some risk-factors potentially relevant to VTE risk in  
6 surgical patients are not included in the RAMs (e.g., duration of surgery, type of anesthesia, or organ system  
7 being operated on). Since we included all patients that underwent a procedure during hospitalization, regardless  
8 of the service they were admitted to, it is unlikely that surgeries were missed in the analysis. The findings argue  
9 for an evaluation of a more exhaustive set of risk-factors for inclusion in the RAMs in order to improve  
0 performance.

1 There is no widely used RAM that includes prophylaxis information (that may reduce the risk of VTE),  
2 in its calculation of VTE risk.<sup>6</sup> Studies evaluating the predictive ability of the RAMs have not routinely  
3 accounted for ongoing prophylaxis either.<sup>23–25</sup> We found an improvement in predictive ability of both RAMs  
4 when we included information on ongoing prophylaxis into our model (AUCs: Caprini RAM 0.59, Padua RAM  
5 0.61), and when we tested only those patients that did not receive prophylaxis (AUCs: Caprini RAM 0.58,  
6 Padua RAM 0.59, **Table 4**). Though the improvements were not enough to make them clinically useful, they

1 suggest the importance of incorporating prophylaxis information into any future model, and into future  
2 validation studies. We also found that VTE prophylaxis was associated with a higher risk of VTE. This finding  
3 was also noted in a study of 14,660 hospitalized medical patients, where 57% of patients who developed a VTE  
4 had received prophylaxis, compared to 46% of those that had not ( $p < 0.001$ ).<sup>27</sup> This counterintuitive finding may  
5 reflect the fact that clinicians, either by calculation of a RAM score, or by clinical intuition, identify patients at  
6 high risk for VTE and are more likely to prescribe prophylaxis for these patients. If true, it suggests that the  
7 prescribed prophylaxis is not as effective (i.e., appropriate prophylaxis in the appropriate patient) as needed in  
8 high risk VTE patients to allow VTE prophylaxis to overcome possible bias by indication.

## 9 0 **Limitations**

1 This is the largest evaluation of VTE RAMs using a nationwide unselected population of general  
2 hospital admissions. However, our retrospective study design with reliance on administrative data to define  
3 scores of several risk-factors means that Caprini and Padua RAM scores could be under- or over-estimated  
4 given inaccurate clinical information. Relying on the VA as the data source decreases the generalizability to  
5 female patients and non-VA hospitals. To note though, despite the low fraction of women in our cohort, it is the  
6 largest cohort (total number,  $N=88,079$ ) of women studied for VTE risk-stratification. There is a possibility that  
7 clinical data pertaining to event rates from care obtained at non-VA facilities subsequent to hospital discharge  
8 may have been missed. However, this would result in underestimating the outcome measure and unlikely to bias  
9 our results. Furthermore, the vast majority of Veterans would have returned to VA care and subsequent notes  
0 would reflect any events that would have been treated at a non-VA facility. Given the granularity of the VINCI  
1 database, we were able to evaluate multiple follow-up periods, different outcomes, and perform several  
2 secondary analyses. However, we were not able to include family history in computing the Caprini score as  
3 these data were available for only a small fraction of patients. We were missing BMI data on 4% of patients.  
4 While we had data on if mechanical prophylaxis was ordered for patients, we could not confirm patient  
5 adherence to the therapy. Possible confounding by indication exists, particularly in the analysis of prediction of  
6 VTE in patients receiving and not receiving prophylaxis.

1

## 2 **CONCLUSIONS**

3           The current versions of the Caprini and Padua RAMs have low predictive ability for VTE among  
4 general hospital admissions, for both surgical and non-surgical patients. Implementing and ensuring compliance  
5 for widespread VTE risk-assessment and risk-stratification using standardized risk-assessment models across  
6 large healthcare systems is effort- and resource- intensive. Currently available models must be rigorously  
7 assessed and modified before they are ready for universal adoption.

1 **Sources of Funding:**

2 HH: American Venous Forum (JF2021), T32 (AG000262)

3 BL: VA Merit Award (RX000995)

4 JDS: Baltimore VA GRECC (Geriatric Research, Education and Clinical Center), and NIH NIA

5 (P30AG028747)

6

7 **Disclosures:**

8 Hilary Hayssen, MD, none

9 Shalini Sahoo, MA, none

0 Phuong Nguyen, PhD, none

1 Minerva Mayorga-Carlin, MPH, none

2 Tariq Siddiqui, MS, none

3 Brian Englum, MD, none

4 Julia F Slejko, PhD, none

5 C. Daniel Mullins, PhD, has served as a consultant to Bayer, Incyte, Merck, Pfizer and Takeda during the last  
6 three years

7 Yelena Yesha, PhD, none

8 John D Sorkin, MD, PhD, none

9 Brajesh K Lal, MD, none

0

## 1 REFERENCES

- 2 1. Beckman MG, Hooper WC, Critchley SE, Ortel TL. Venous Thromboembolism. *Am J Prev Med*.  
3 2010;38(4):S495-S501. doi:10.1016/j.amepre.2009.12.017
- 4 2. CDC. Impact of Blood Clots on the United States | CDC. Centers for Disease Control and Prevention.  
5 Published October 19, 2018. Accessed December 17, 2021. [https://www.cdc.gov/ncbddd/dvt/infographic-](https://www.cdc.gov/ncbddd/dvt/infographic-impact.html)  
6 [impact.html](https://www.cdc.gov/ncbddd/dvt/infographic-impact.html)
- 7 3. Office of the Surgeon General, National Heart Lung and Blood Institute. The Surgeon General's Call to  
8 Action to Prevent Deep Vein Thrombosis and Pulmonary Embolism. Published online 2008.
- 9 4. Woller S. CDC, Joint Commission Engage in VTE Prevention Research. The Joint Commission. Published  
0 August 19, 2021. Accessed August 10, 2022. [https://www.jointcommission.org/resources/news-and-](https://www.jointcommission.org/resources/news-and-multimedia/blogs/improvement-insights/2021/08/cdc-and-joint-commission-engage-in-vte-prevention-research/)  
1 [multimedia/blogs/improvement-insights/2021/08/cdc-and-joint-commission-engage-in-vte-prevention-](https://www.jointcommission.org/resources/news-and-multimedia/blogs/improvement-insights/2021/08/cdc-and-joint-commission-engage-in-vte-prevention-research/)  
2 [research/](https://www.jointcommission.org/resources/news-and-multimedia/blogs/improvement-insights/2021/08/cdc-and-joint-commission-engage-in-vte-prevention-research/)
- 3 5. Pandor A, Tonkins M, Goodacre S, et al. Risk assessment models for venous thromboembolism in  
4 hospitalised adult patients: a systematic review. *BMJ Open*. 2021;11(7):e045672. doi:10.1136/bmjopen-  
5 2020-045672
- 6 6. Darzi AJ, Repp AB, Spencer FA, et al. Risk-assessment models for VTE and bleeding in hospitalized  
7 medical patients: An overview of systematic reviews. *Blood Adv*. 2020;4(19):4929-4944.  
8 doi:10.1182/BLOODADVANCES.2020002482
- 9 7. Caprini JA, Arcelus JI, Hasty JH, Tamhane AC, Fabrega F. Clinical assessment of venous thromboembolic  
0 risk in surgical patients. *Semin Thromb Hemost*. 1991;17(3):304-312.
- 1 8. Cronin M, Dengler N, Krauss ES, et al. Completion of the Updated Caprini Risk Assessment Model (2013  
2 Version). *Clin Appl Thromb*. 2019;25:107602961983805. doi:10.1177/1076029619838052

- 1 9. Barbar S, Noventa F, Rossetto V, et al. A risk assessment model for the identification of hospitalized  
2 medical patients at risk for venous thromboembolism: the Padua Prediction Score: Padua Prediction Score.  
3 *J Thromb Haemost.* 2010;8(11):2450-2457. doi:10.1111/j.1538-7836.2010.04044.x
- 4 10. Gerotziafas GT, Papageorgiou L, Salta S, Nikolopoulou K, Elalamy I. Updated clinical models for VTE  
5 prediction in hospitalized medical patients. *Thromb Res.* 2018;164:S62-S69.  
6 doi:10.1016/j.thromres.2018.02.004
- 7 11. Kahn SR, Lim W, Dunn AS, et al. Prevention of VTE in Nonsurgical Patients. *Chest.* 2012;141(2):e195S-  
8 e226S. doi:10.1378/chest.11-2296
- 9 12. Gould MK, Garcia DA, Wren SM, et al. Prevention of VTE in nonorthopedic surgical patients.  
0 Antithrombotic therapy and prevention of thrombosis, 9th ed: American College of Chest Physicians  
1 evidence-based clinical practice guidelines. *Chest.* 2012;141(2 SUPPL.):e227S-e277S.  
2 doi:10.1378/chest.11-2297
- 3 13. Chamoun N, Matta S, Aderian SS, et al. A Prospective Observational Cohort of Clinical Outcomes in  
4 Medical Inpatients prescribed Pharmacological Thromboprophylaxis Using Different Clinical Risk  
5 Assessment Models(COMPT RAMs). *Sci Rep.* 2019;9(1):18366. doi:10.1038/s41598-019-54842-3
- 6 14. von Elm E, Altman DG, Egger M, et al. Strengthening the Reporting of Observational Studies in  
7 Epidemiology (STROBE) statement: guidelines for reporting observational studies. *BMJ.*  
8 2007;335(7624):806-808. doi:10.1136/bmj.39335.541782.AD
- 9 15. Veterans Affairs Health Administration. Providing Health Care for Veterans. *US Dep Veterans Aff.*  
0 Published online 2020. <https://www.va.gov/health/>
- 1 16. U.S. Department of Veterans Affairs. VA Informatics and Computing Infrastructure (VINCI) homepage.  
2 2018. [https://www.hsr.d.research.va.gov/for\\_researchers/vinci/](https://www.hsr.d.research.va.gov/for_researchers/vinci/)



- 1 17. DeLong ER, DeLong DM, Clarke-Pearson DL. Comparing the Areas under Two or More Correlated  
2 Receiver Operating Characteristic Curves: A Nonparametric Approach. *Biometrics*. 1988;44(3):837-845.  
3 doi:10.2307/2531595
- 4 18. Hayssen H, Cires-Drouet R, Englum B, et al. Systematic review of venous thromboembolism risk  
5 categories derived from Caprini score. *J Vasc Surg Venous Lymphat Disord*. 2022;10(6):1401-1409.e7.  
6 doi:10.1016/j.jvsv.2022.05.003
- 7 19. Nendaz M, Spirk D, Kucher N, et al. Multicentre validation of the Geneva Risk Score for hospitalised  
8 medical patients at risk of venous thromboembolism. Explicit ASsessment of Thromboembolic RIsk and  
9 Prophylaxis for Medical PATients in SwitzERland (ESTIMATE). *Thromb Haemost*. 2014;111(3):531-538.  
0 doi:10.1160/TH13-05-0427
- 1 20. Zhou H, Hu Y, Li X, et al. Assessment of the Risk of Venous Thromboembolism in Medical Inpatients  
2 using the Padua Prediction Score and Caprini Risk Assessment Model. *J Atheroscler Thromb*.  
3 2018;25(11):1091-1104. doi:10.5551/jat.43653
- 4 21. Lobastov K, Barinov V, Schastlivtsev I, Laberko L, Rodoman G, Boyarintsev V. Validation of the Caprini  
5 risk assessment model for venous thromboembolism in high-risk surgical patients in the background of  
6 standard prophylaxis. *J Vasc Surg Venous Lymphat Disord*. 2016;4(2):153-160.  
7 doi:10.1016/j.jvsv.2015.09.004
- 8 22. Shang MM, Yan R, Wang XL, Gong WP, Guo ZQ. Comparison of 2013 and 2009 versions of Caprini risk  
9 assessment models for predicting VTE in Chinese cancer patients: a retrospective study. *J Thromb*  
0 *Thrombolysis*. 2020;50(2):446-451. doi:10.1007/s11239-020-02038-2
- 1 23. Tian B, Li H, Cui S, Song C, Li T, Hu B. A novel risk assessment model for venous thromboembolism  
2 after major thoracic surgery: a Chinese single-center study. *J Thorac Dis*. 2019;11(5):1903-1910.  
3 doi:10.21037/jtd.2019.05.11

- 1 24. Chen X, Pan L, Deng H, et al. Risk Assessment in Chinese Hospitalized Patients Comparing the Padua and  
2 Caprini Scoring Algorithms. *Clin Appl Thromb*. 2018;24(9\_suppl):127S-135S.  
3 doi:10.1177/1076029618797465
- 4 25. Liu X, Liu C, Chen X, Wu W, Lu G. Comparison between Caprini and Padua risk assessment models for  
5 hospitalized medical patients at risk for venous thromboembolism: a retrospective study. *Interact*  
6 *Cardiovasc Thorac Surg*. 2016;23(4):538-543. doi:10.1093/icvts/ivw158
- 7 26. Stuck AK, Spirk D, Schaudt J, Kucher N. Risk assessment models for venous thromboembolism in acutely  
8 ill medical patients: A systematic review. *Thromb Haemost*. 2017;117(4):801-808. doi:10.1160/TH16-08-  
9 0631
- 0 27. Moumneh T, Riou J, Douillet D, et al. Validation of risk assessment models predicting venous  
1 thromboembolism in acutely ill medical inpatients: A cohort study. *J Thromb Haemost*. 2020;18(6):1398-  
2 1407. doi:10.1111/jth.14796
- 3 28. Bullock-Palmer RP, Weiss S, Hyman C. Innovative approaches to increase deep vein thrombosis  
4 prophylaxis rate resulting in a decrease in hospital-acquired deep vein thrombosis at a tertiary-care  
5 teaching hospital. *J Hosp Med*. 2008;3(2):148-155. doi:10.1002/jhm.291
- 6 29. Flanders SA, Greene MT, Grant P, et al. Hospital performance for pharmacologic venous  
7 thromboembolism prophylaxis and rate of venous thromboembolism : a cohort study. *JAMA Intern Med*.  
8 2014;174(10):1577-1584. doi:10.1001/jamainternmed.2014.3384
- 9 30. Grant PJ, Greene MT, Chopra V, Bernstein SJ, Hofer TP, Flanders SA. Assessing the Caprini Score for  
0 Risk Assessment of Venous Thromboembolism in Hospitalized Medical Patients. *Am J Med*.  
1 2016;129(5):528-535. doi:10.1016/j.amjmed.2015.10.027
- 2 31. Cushman M. *Epidemiology and Risk Factors for Venous Thrombosis*. <http://www.nhlbisupport.com/bmi>

- 1 32. Abdollahi M, Cushman M, Rosendaal FR. Obesity: risk of venous thrombosis and the interaction with  
2 coagulation factor levels and oral contraceptive use. *Thromb Haemost.* 2003;89(3):493-498.
- 3 33. Stein PD, Beemath A, Olson RE. Obesity as a risk factor in venous thromboembolism. *Am J Med.*  
4 2005;118(9):978-980. doi:10.1016/j.amjmed.2005.03.012
- 5 34. Crous-Bou M, Harrington LB, Kabrhel C. Environmental and Genetic Risk Factors Associated with  
6 Venous Thromboembolism. *Semin Thromb Hemost.* 2016;42(8):808-820. doi:10.1055/s-0036-1592333
- 7
- 8

Table 1: Clinical characteristics of study cohort

<b>Variables</b>	<b>All N=1,252,460</b>	<b>VTE Group N=35,557 (2.8%)</b>	<b>Non-VTE Group N=1,216,903 (97.2%)</b>	<b>P-value*</b>
Age, years, mean (SD)	65.9 (13.8)	68.1 (12.0)	65.8 (13.8)	<0.001
Sex, N (%)				<0.001
Male	1,164,380 (93.0)	33,846 (95.2)	1,130,534 (92.9)	
Female	88,079 (7.0)	1,711 (4.8)	86,368 (7.1)	
Race, N (%)				<0.001
White	891,379 (71.2)	24,112 (67.8)	867,267 (71.3)	
Black	261,905 (20.9)	8,656 (24.3)	253,249 (20.8)	
All others	82,256 (6.6)	2,250 (6.3)	82,170 (6.7)	
Body Mass Index, kg/m <sup>2</sup> , mean (SD)	29.3 (6.8)	29.2 (7.1)	29.3 (6.7)	0.018
Hospital Length of Stay, days, mean (SD)	4.1 (11.3)	8.7 (23.5)	3.9 (10.7)	<0.001
Patient classification, N (%)				<0.001
Surgical	330,388 (26.4)	8,064 (22.7)	322,324 (26.5)	
Non-Surgical	922,072 (73.6)	27,493 (77.3)	894,579 (73.5)	
Prophylaxis Type, N (%)				
Prophylaxis (mechanical and/or pharmacologic)	740,632 (59.1)	24,899 (70.0)	715,733 (58.8)	<0.001
None	511,828 (40.9)	10,658 (30.0)	501,170 (41.2)	

\* *P-values computed with Pearson Chi-Square test*

*Abbreviations: SD, standard deviation; VTE venous thromboembolism*

Table 2: Distribution of VTE events and area under the receiver operating characteristic curves (AUC) for Caprini and Padua scores to predict a VTE after 1,252,460 unique consecutive unselected surgical and non-surgical hospital admissions nationwide.

Time from hospital admission	VTE type, N			Total VTE events N (%)	Caprini RAM		Padua RAM	
	PE only	PE & DVT	DVT only		AUC (95% CI)	p-value *	AUC (95% CI)	p-value *
0-30 days	8,093	3,144	14,371	25,608 (72)	0.56 (0.55, 0.56)	0.07	0.58 (0.58, 0.59)	0.58
31-60 days	1,709	620	3,622	5,951 (17)	0.58 (0.57, 0.58)	<0.001	0.59 (0.58, 0.60)	0.15
61-90 days	1,138	352	2,508	3,998 (11)	0.56 (0.55, 0.57)	0.47	0.58 (0.57, 0.59)	0.69
0-90 days	10,940	4,116	20,501	35,557 (100)	0.56 (0.56, 0.56)	<b>1.00 (ref)</b>	0.59 (0.58, 0.59)	<b>1.00 (ref)</b>

\* 0-30, 31-60, 61-90 day AUCs are compared to the 0-90 day AUCs (reference group) within each risk assessment model. Comparisons were made within each RAM using the Delong-Delong test.

Abbreviations: VTE, venous thromboembolism; RAM, risk assessment model; PE, pulmonary embolism; DVT, deep vein thrombosis; CI, confidence interval

Table 3: Distribution of Caprini <sup>a</sup> and Padua <sup>b</sup> risk-factors at admission

Risk factor	Caprini Points	Padua Points	VTE % n=35,557	No VTE % n=1,216,903	p-value <sup>c</sup>
Age 41-60 years old	1	-	18.9	22.8	<0.001
Planned minor surgery	1	-	1.3	2.7	<0.001
Varicose veins	1	-	0.4	0.2	<0.001
Recent major surgery	1	-	0.9	0.7	<0.001
Inflammatory bowel disease	1	-	3.3	3.7	<0.001
Swollen legs	1	-	1.2	0.6	<0.001
BMI $\geq 25$ kg/m <sup>2</sup>	1	-	68.4	70.7	<0.001
Heart attack	1	-	4.0	2.9	<0.001
Congestive heart failure	1	-	12.9	10.1	<0.001
Serious infection	1	-	22.3	15.5	<0.001
Lung disease	1	-	16.8	16.2	0.0015
Bed rest <72 hours	1	-	1.3	1.4	0.823
Hormone therapy	1	1	0.5	1.0	<0.001
Pregnancy	1	-	0.0	0.0	0.803
History of stillbirth	1	-	0.0	0.0	0.530
Age 61-74 years old	2	-	52.5	48.0	<0.001
Cancer	2	-	34.7	27.7	<0.001
Planned major surgery	2	-	14.3	20.4	<0.001
Leg cast or mold	2	-	0.03	0.04	0.764
Central venous catheter	2	-	2.3	1.1	<0.001
Age $\geq 75$ years old	3	-	25.8	22.9	<0.001
Bed rest $\geq 72$ hours	3	3	1.4	0.6	<0.001
History of VTE	3	3	7.4	1.5	<0.001
Family history of VTE <sup>d</sup>	3	-	-	-	-
History of clotting disorder	3	-	1.7	0.6	<0.001
Elective arthroplasty	5	-	3.5	3.9	<0.001
Broken hip, pelvis, or leg	5	-	1.6	1.1	<0.001
Serious trauma	5	-	0.0	0.0	<0.001
Spinal cord injury	5	-	0.2	0.1	0.0010
Stroke	5	-	4.1	4.1	0.937
BMI $\geq 30$ kg/m <sup>2</sup>	-	1	38.7	39.5	0.0020

Infection or rheumatologic disorder	-	1	25.7	21.1	<0.001
Heart attack and/or stroke	-	1	6.4	5.7	<0.001
Heart and/or respiratory failure	-	1	16.8	11.5	<0.001
Age $\geq 70$	-	1	46.6	41.2	<0.001
Recent trauma and/or surgery	-	2	0.9	0.7	<0.001
Thrombophilia	-	3	1.6	0.4	<0.001
Active cancer	-	3	28.4	21.1	<0.001

<sup>a</sup> The most recent version of the risk assessment model was used (2013).<sup>8</sup>

<sup>b</sup> The most recent version of the risk assessment model was used (2010).<sup>9</sup>

<sup>c</sup> P-values computed with Pearson Chi-Square test

<sup>d</sup> Unable to extract this information from the medical record; the item was dropped from the computation of the Caprini score

Abbreviations: OR, Odds ratio; VTE, venous thromboembolism; BMI, body mass index; CI, confidence interval

1 Table 4. Secondary analyses of the Caprini and Padua risk assessment models for venous thromboembolism outcomes within 0-90  
 2 days of hospital admission.  
 3

Characteristic Examined	Model #	Analytic approach	Patients analyzed (N)	Events (N)	Caprini RAM		Padua RAM	
					AUC (95% CI)	P-value <sup>a</sup>	AUC (95% CI)	P-value <sup>a</sup>
Predictive ability for VTE in entire cohort (serves as reference for subsequent analyses)	0	Full cohort analysis for all bleeding events	1,252,460	35,557	0.56 (0.56, 0.56)	1.00 (ref)	0.59 (0.58, 0.59)	1.00 (ref)
Predictive ability for VTE by type of patient	1	Subgroup analysis of non-surgical patients	922,072	27,493	0.59 (0.58, 0.59)	<0.001	0.59 (0.59, 0.60)	<0.001
	2	Subgroup analysis of surgical patients	330,388	8,064	0.54 (0.53, 0.54)	<0.001	0.56 (0.56, 0.57)	<0.001
	3	Subgroup analysis of patients admitted for ≥72 hours	442,644	21,280	0.53 (0.52, 0.53)	<0.001	0.56 (0.56, 0.57)	<0.001
Predictive ability for different outcomes in entire cohort	4	Full cohort analysis for excluding upper extremity DVTs	1,252,460	31,602	0.56 (0.56, 0.57)	0.12	0.59 (0.58, 0.59)	0.57
	5	Full cohort analysis for VTE and/or all-cause mortality	1,252,460	107,684	0.58 (0.58, 0.58)	<0.001	0.60 (0.60, 0.60)	<0.001
Predictive ability for VTE by prophylaxis status	6	Subgroup analysis of patients receiving VTE prophylaxis	740,632	24,899	0.55 (0.54, 0.55)	<0.001	0.58 (0.57, 0.58)	<0.001
	7	Subgroup analysis of patients not receiving VTE prophylaxis	511,828	10,658	0.58 (0.57, 0.58)	<0.001	0.59 (0.59, 0.60)	0.02
	8	Full cohort analysis adjusted for prophylaxis status	1,252,460	35,557	0.59 (0.58, 0.59)	<0.001	0.61 (0.60, 0.61)	<0.001

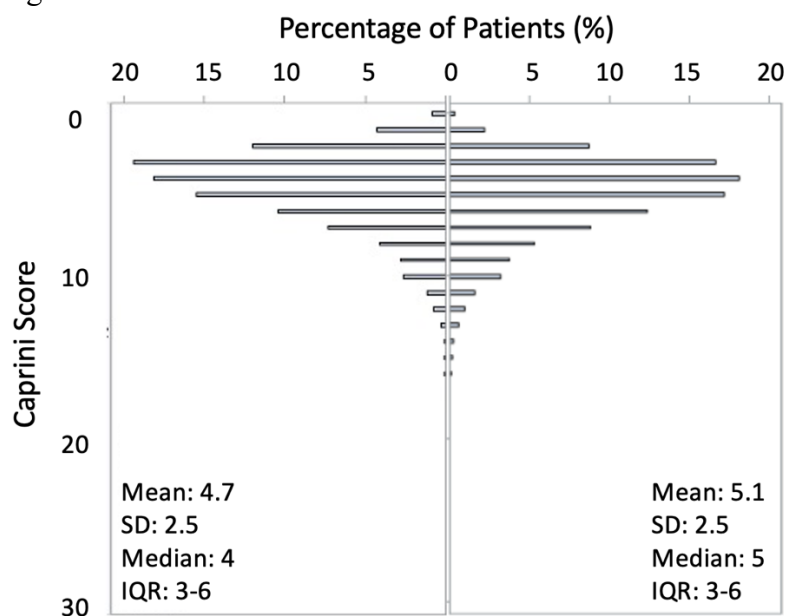
4  
 5 <sup>a</sup> The AUC of models 1 through 8 were compared to baseline model 0. Comparisons were made within each RAM using the Delong-Delong test.  
 6

7 Abbreviations: RAM, risk assessment model; AUC, area under the receiver operating characteristic curve; CI, confidence interval; DVT, deep vein thrombosis



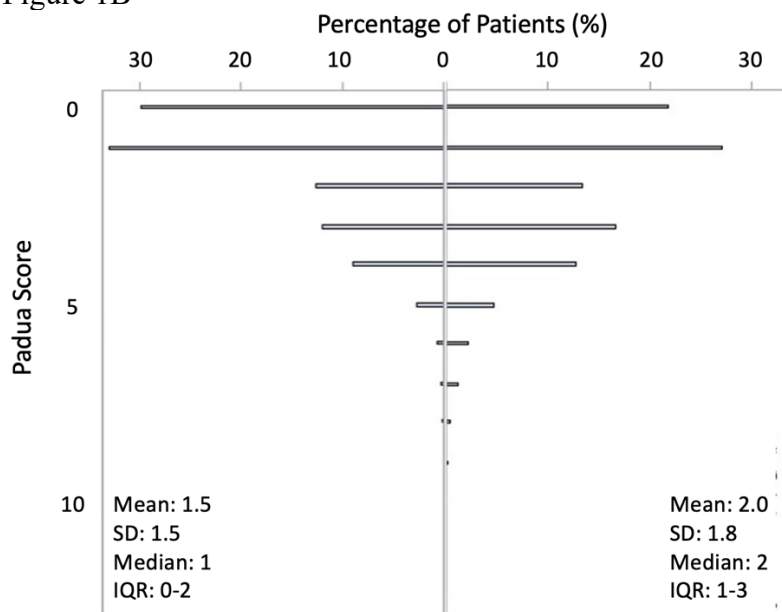
1 Figure 1. Distribution of (A) Caprini scores and (B) Padua scores at the time of admission from  
2 the first admission of 1,252,460 consecutively hospitalized surgical and non-surgical patients.  
3 Patient who did not develop a VTE event within 90-days of hospital admission on the **left** and  
4 patients that developed a VTE event within 90-days of hospital admission on the **right**.  
5 *Abbreviations: VTE, venous thromboembolism; SD, standard deviation; IQR, inter-quartile*  
6 *range.*

7  
8 Figure 1A



9  
10

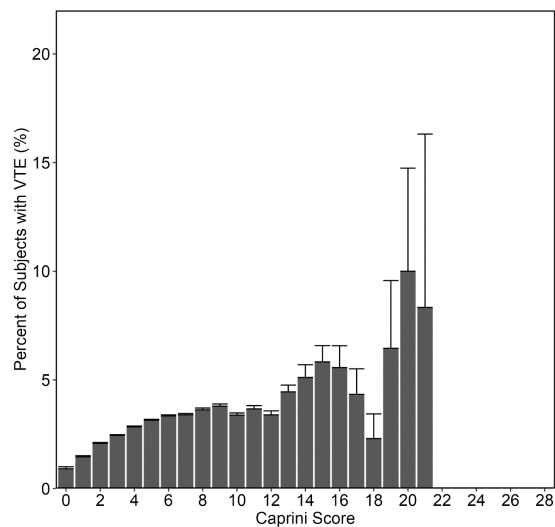
11 Figure 1B



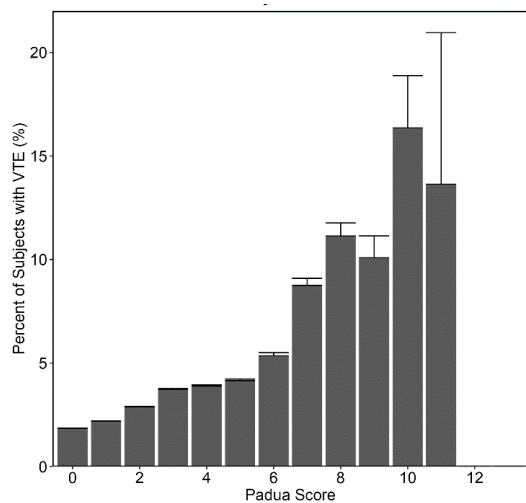
12  
13  
14

1 Figure 2. Distribution of VTE rates by risk assessment model score in 1,252,460 consecutively  
2 hospitalized surgical and non-surgical patients at the time of their admission. A) Caprini score,  
3 B) Padua score. *Abbreviations: VTE, venous thromboembolism; The Error bar represents the*  
4 *upper bar of 95% confidence interval*

6 Figure 2A. Distribution of VTE rate by Caprini score

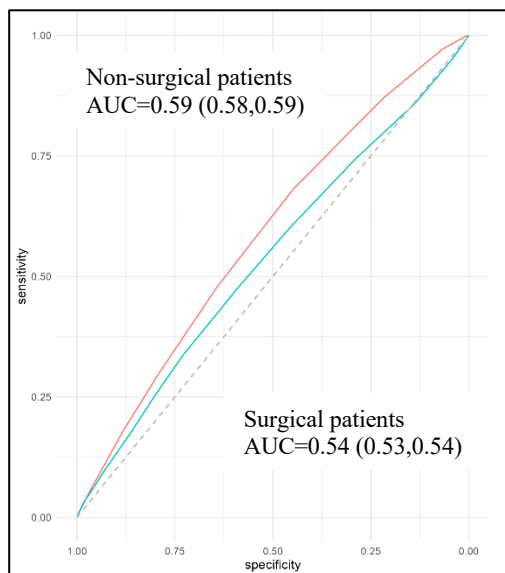


23 Figure 2B. Distribution of VTE rate by Padua score

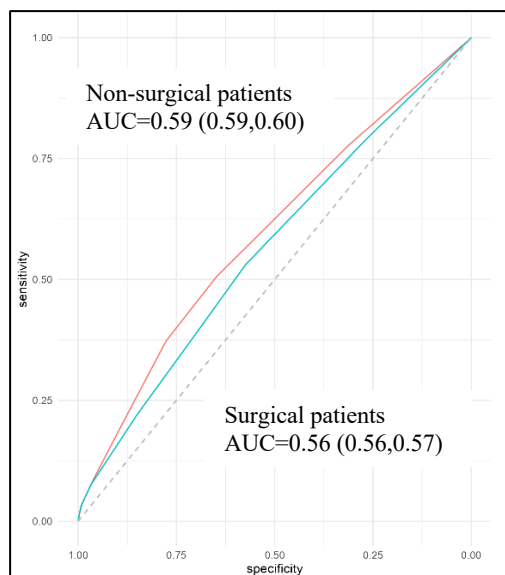


1 Figure 3: Receiver operating characteristic (ROC) curves demonstrating the ability of the A)  
2 Caprini and B) Padua risk assessment models to predict a venous thromboembolism (VTE) event  
3 within 0-90 days of hospital admission. Each graph demonstrates the ROC curve for surgical  
4 (blue) and non-surgical (red) patients computed separately. *Abbreviations: AUC, area under the*  
5 *curve, the confidence intervals are provided within brackets)*  
6

7 Figure 3A. Caprini RAM and AUC for surgical versus non-surgical patients ( $p < 0.001$ ).  
8



23  
24  
25 Figure 3B. Padua RAM and AUC for surgical versus non-surgical patients ( $p < 0.001$ ).  
26



1 Table S1: List of ICD-10 Codes for Diagnosis of Venous Thromboembolism  
2

ICD 10 Code	Description
I2601	Septic pulmonary embolism with acute cor pulmonale
I2602	Saddle embolus of pulmonary artery with acute cor pulmonale
I2609	Other pulmonary embolism with acute cor pulmonale
I2690	Septic pulmonary embolism without acute cor pulmonale
I2692	Saddle embolus of pulmonary artery without acute cor pulmonale
I2693	Single subsegmental pulmonary embolism without acute cor pulmonale
I2694	Multiple subsegmental pulmonary emboli without acute cor pulmonale
I2699	Other pulmonary embolism without acute cor pulmonale
I81	Portal vein thrombosis
I820	Budd-Chiari syndrome
I82210	Acute embolism and thrombosis of superior vena cava
I82220	Acute embolism and thrombosis of inferior vena cava
I82290	Acute embolism and thrombosis of other thoracic veins
I823	Embolism and thrombosis of renal vein
I82401	Acute embolism and thrombosis of unspecified deep veins of right lower extremity
I82402	Acute embolism and thrombosis of unspecified deep veins of left lower extremity
I82403	Acute embolism and thrombosis of unspecified deep veins of lower extremity, bilateral
I82409	Acute embolism and thrombosis of unspecified deep veins of unspecified lower extremity
I82411	Acute embolism and thrombosis of right femoral vein
I82412	Acute embolism and thrombosis of left femoral vein
I82413	Acute embolism and thrombosis of femoral vein, bilateral
I82419	Acute embolism and thrombosis of unspecified femoral vein
I82421	Acute embolism and thrombosis of right iliac vein
I82422	Acute embolism and thrombosis of left iliac vein
I82423	Acute embolism and thrombosis of iliac vein, bilateral
I82429	Acute embolism and thrombosis of unspecified iliac vein
I82431	Acute embolism and thrombosis of right popliteal vein
I82432	Acute embolism and thrombosis of left popliteal vein
I82433	Acute embolism and thrombosis of popliteal vein, bilateral
I82439	Acute embolism and thrombosis of unspecified popliteal vein
I82441	Acute embolism and thrombosis of right tibial vein
I82442	Acute embolism and thrombosis of left tibial vein
I82443	Acute embolism and thrombosis of tibial vein, bilateral
I82449	Acute embolism and thrombosis of unspecified tibial vein
I82451	Acute embolism and thrombosis of right peroneal vein
I82452	Acute embolism and thrombosis of left peroneal vein
I82453	Acute embolism and thrombosis of peroneal vein, bilateral
I82459	Acute embolism and thrombosis of unspecified peroneal vein
I82461	Acute embolism and thrombosis of right calf muscular vein
I82462	Acute embolism and thrombosis of left calf muscular vein
I82463	Acute embolism and thrombosis of calf muscular vein, bilateral
I82469	Acute embolism and thrombosis of unspecified calf muscular vein
I82491	Acute embolism and thrombosis of other specified deep vein of right lower extremity
I82492	Acute embolism and thrombosis of other specified deep vein of left lower extremity
I82493	Acute embolism and thrombosis of other specified deep vein of lower extremity, bilateral

I82499	Acute embolism and thrombosis of other specified deep vein of unspecified lower extremity
I824Y1	Acute embolism and thrombosis of unspecified deep veins of right proximal lower extremity
I824Y2	Acute embolism and thrombosis of unspecified deep veins of left proximal lower extremity
I824Y3	Acute embolism and thrombosis of unspecified deep veins of proximal lower extremity, bilateral
I824Y9	Acute embolism and thrombosis of unspecified deep veins of unspecified proximal lower extremity
I824Z1	Acute embolism and thrombosis of unspecified deep veins of right distal lower extremity
I824Z2	Acute embolism and thrombosis of unspecified deep veins of left distal lower extremity
I824Z3	Acute embolism and thrombosis of unspecified deep veins of distal lower extremity, bilateral
I824Z9	Acute embolism and thrombosis of unspecified deep veins of unspecified distal lower extremity
I82601	Acute embolism and thrombosis of unspecified veins of right upper extremity
I82602	Acute embolism and thrombosis of unspecified veins of left upper extremity
I82603	Acute embolism and thrombosis of unspecified veins of upper extremity, bilateral
I82609	Acute embolism and thrombosis of unspecified veins of unspecified upper extremity
I82621	Acute embolism and thrombosis of deep veins of right upper extremity
I82622	Acute embolism and thrombosis of deep veins of left upper extremity
I82623	Acute embolism and thrombosis of deep veins of upper extremity, bilateral
I82629	Acute embolism and thrombosis of deep veins of unspecified upper extremity
I82A11	Acute embolism and thrombosis of right axillary vein
I82A12	Acute embolism and thrombosis of left axillary vein
I82A13	Acute embolism and thrombosis of axillary vein, bilateral
I82A19	Acute embolism and thrombosis of unspecified axillary vein
I82B11	Acute embolism and thrombosis of right subclavian vein
I82B12	Acute embolism and thrombosis of left subclavian vein
I82B13	Acute embolism and thrombosis of subclavian vein, bilateral
I82B19	Acute embolism and thrombosis of unspecified subclavian vein
I82C11	Acute embolism and thrombosis of right internal jugular vein
I82C12	Acute embolism and thrombosis of left internal jugular vein
I82C13	Acute embolism and thrombosis of internal jugular vein, bilateral
I82C19	Acute embolism and thrombosis of unspecified internal jugular vein
I82890	Acute embolism and thrombosis of other specified veins
I8290	Acute embolism and thrombosis of unspecified vein