

## **Sex-and-gender differences in cardiovascular risk factors and their correlates among adults in Freetown, Sierra Leone: A population-based health-screening survey.**

### **Corresponding Author:**

James Baligeh Walter Russell MD, FCPS, FWACP, FESC, COR  
Associate Professor of Internal Medicine and Consultant Cardiologist  
Chief Physician and Head: Department of Internal Medicine  
College of Medicine and Allied Health Sciences  
University of Sierra Leone  
james.russell@usl.edu.sl, jamesbwrussell@gmail.com

### **Co-Authors:**

Theresa Ruba Koroma<sup>1</sup>, Santigie Sesay<sup>2</sup>, Sallieu K Samura<sup>3</sup>, Sulaiman Lakoh<sup>1</sup>, Ansu Bockarie<sup>4</sup>, Onomeh Thomas Abiri<sup>5</sup>, Joseph Sam Kanu<sup>5</sup>, Lambert Tetteh Appiah, Joshua Coker<sup>1</sup>, Abdul Jalloh<sup>1</sup>, Victor Conteh<sup>1</sup>, Sorie Conteh<sup>1</sup>, Mohamed Smith<sup>1</sup>, Durodami. R. Lisk<sup>1</sup>

### **Authors and affiliations:**

<sup>1</sup>Department of Internal Medicine, Faculty of Clinical Sciences, College of Medicine & Allied Health Sciences, University of Sierra Leone, Freetown, Sierra Leone  
james.russell@usl.edu.sl, jamesbwrussell@gmail.com

<sup>1</sup>Department of Internal Medicine, Faculty of Clinical Sciences, College of Medicine & Allied Health Sciences, University of Sierra Leone, Freetown, Sierra Leone  
trkoroma90@gmail.com

<sup>2</sup>Directorate of Non-Communicable Disease & Mental Health, Ministry of Health & Sanitation, Freetown.  
sanniesay@gmail.com

<sup>3</sup>Department of Mathematics and Statistics, Fourah Bay College, University of Sierra Leone, Freetown, Sierra Leone.  
ssallieu@yahoo.com

<sup>1</sup>Department of Internal Medicine, Faculty of Clinical Sciences, College of Medicine & Allied Health Sciences, University of Sierra Leone, Freetown, Sierra Leone  
lakoh2009@gmail.com

<sup>4</sup>Department of Internal Medicine, School of Medical Sciences, University of Cape Coast, Ghana.  
abockarie@ucc.edu.gh

<sup>5</sup>Department of Pharmacology and Therapeutics, Faculty of Basic Medical Sciences, College of Medicine and Allied Health Sciences, University of Sierra Leone, Freetown, Sierra Leone  
berylonome@gmail.com

<sup>5</sup>Department of Pharmacology and Therapeutics, Faculty of Basic Medical Sciences, College of Medicine and Allied Health Sciences, University of Sierra Leone, Freetown, Sierra Leone

samjokanu@yahoo.com

<sup>1</sup>Department of Internal Medicine, Faculty of Clinical Sciences, College of Medicine & Allied Health Sciences, University of Sierra Leone, Freetown, Sierra Leone  
joshuacoker001@yahoo.com

<sup>1</sup>Department of Internal Medicine, Faculty of Clinical Sciences, College of Medicine & Allied Health Sciences, University of Sierra Leone, Freetown, Sierra Leone  
abdulpjalloh@yahoo.co.uk

<sup>1</sup>Department of Internal Medicine, Faculty of Clinical Sciences, College of Medicine & Allied Health Sciences, University of Sierra Leone, Freetown, Sierra Leone  
vicyandi@gmail.com

<sup>1</sup>Department of Internal Medicine, Faculty of Clinical Sciences, College of Medicine & Allied Health Sciences, University of Sierra Leone, Freetown, Sierra Leone  
bigbrosocont@gmail.com

<sup>1</sup>Department of Internal Medicine, Faculty of Clinical Sciences, College of Medicine & Allied Health Sciences, University of Sierra Leone, Freetown, Sierra Leone  
mohamed85smith@gmail.com

<sup>6</sup>Department of Medicine, Choithrams Memorial Hospital, Freetown, Sierra Leone  
zenu2@btinternet.com

<sup>1</sup>Department of Internal Medicine, Faculty of Clinical Sciences, College of Medicine & Allied Health Sciences, University of Sierra Leone, Freetown, Sierra Leone  
durodamil@yahoo.co.uk

## ABSTRACT

**Objectives:** to evaluate the association of sex-and-gender-specific cardiovascular disease risk factors, their prevalence, and correlates among adults in Sierra Leone.

**Study design:** This community-based cross-sectional study used a stratified multistage random sampling.

**Methods:** the survey was conducted in eight (8) selected randomized sub-zonal communities across the western urban area in Sierra Leone, with an included sampling of 2394 adults. The WHO stepwise approach for non-communicable diseases was utilized. Multivariable logistic regression was done to determine associations between demographic characteristics and cardiovascular risk factors.

**Results:** The prevalence of hypertension (33.4% vs 37.4%,  $p=0.068$ ), diabetes mellitus (7.4% vs 9.2%,  $p=0.101$ ), overweight (32.3% vs 34.2%,  $p=0.323$ ) and obesity (9.9% vs 10.2%,  $p=0.818$ ) were higher among males in comparison to females. Body Mass Index (BMI) ( $25.0 \pm 5.0$  vs  $24.6 \pm 4.4$ ,  $p = 0.029$ ), waist circumference (WC) ( $93.6 \pm 4.5$  vs  $80.0 \pm 5.0$ ,  $p < 0.001$ ), triglyceride ( $1.7 \pm 0.35$  vs  $1.6 \pm 0.32$ ,  $p=0.013$ ), total cholesterol ( $5.1 \pm 0.77$  vs  $4.9 \pm 0.66$ ,  $p < 0.001$ ) and low HDL-C ( $1.28 \pm 0.29$  vs  $1.3 \pm 0.24$ ,  $p = 0.016$ ) were significantly higher among females as compared to males. The odds of having dyslipidemia [OR = 1.339; 95% C.I: (1.101-1.629),  $p=0.003$ ] and consuming alcohol [OR = 1.229; 95% C.I: (1.026-1.472),  $p=0.025$ ] were higher among females. Women had 1.8 times greater odds [AOR=1.849; 95% C.I: (0.713 - 1.010),  $p=0.030$ ] of being hypertensive, 1.4 times greater odds [AOR=1.441; 95% C.I: (1.176 - 1.765),  $p=<0.001$ ] of being dyslipidemic and 1.2 times greater odds [AOR = 1.225, 95% C.I: (1.0123-1.481),  $p=0.037$ ] of consuming alcohol compared to men. BMI, WC, and raised blood sugar had a strong correlation among women than men.

**Conclusion:** Being female was associated with a high prevalence of cardiovascular health risks in Sierra Leone. This study emphasizes the importance of reducing the CVD burden among females through policies related to public health education and screening strategies.

**Keywords:** Sex-and-gender differences, Male, Female, Cardiovascular risk factors, Sierra Leone

## 1. Background

Over the past decades, public health research in cardiovascular medicine was primarily focused on men, with “sex and gender” differences in the risk factors of cardiovascular diseases being grossly underestimated. [1,2]. Recently, enormous efforts through scientific researchers and Women’s Health Initiatives have improved our understanding not only of the concept of “sex and gender” differences in cardiovascular disease CVD but also of the recognition of heart disease in women [3,4,5]. Hence, the “one size fits all for men approach” may not hold.

Sex is a “biological variable” that is genetically determined. In contrast, gender is a “multifactorial social concept” that is linked to customs, religions, traditions, public beliefs, and individual behaviours that exists within a historical and social setting” [6]. The differences in sex hormones and chromosomes between males and females are the biological factors that may protect a female against hypertension until menopause, but thereafter, gender

differences in hypertension remained negligible [7]. Behavioural factors contributing to the difference between males and females include body mass index (BMI), smoking, alcohol consumption, unhealthy diet intake and low physical activities. While smoking is more common in men, it is reported to have more deleterious consequences on females than males because of gender differences in nicotine metabolism. However, the gender difference in smoking has significantly narrowed in recent decades. [8]. Studies have shown that the risk of developing ischemic heart disease or stroke is 25% higher among female smokers than male smokers [9,10]. Unlike men, women are more likely to eat healthy diets but are less physically active than men. [5].

In Africa, there is a dearth of data on “sex and gender-related” differences for most cardiovascular risk factors. [11,12]. Despite the increasing burden of cardiovascular disease in sub-Saharan Africa (SSA), the relationship between sex/gender and CVD is unknown. In this research area, studies from West Africa are limited, and there are no published studies from Sierra Leone. We, therefore, aimed to assess sex-and-gender differences in the prevalence of cardiovascular risk factors and their correlates among adults in Freetown, Sierra Leone, using identifiable cardiovascular risk factors from the Ecobank (Sierra Leone) study database. Our findings will provide information to assist future research, potential prevention, and therapeutic intervention against non-communicable diseases (NCDs).

## **2. METHODS**

### *Ethical approval and registration*

The Sierra Leone Ethics and Scientific Review Committee approved the research protocol, questionnaire, and consent form. The protocol of this study was registered under Research Registry with the unique identification number researchregistry8201 and is available at <https://www.researchregistry.com/browse-the-registry#home/>. Serial-coded numbers were assigned to the case records to maintain anonymity, and all data extracted was handled with strict confidentiality. This study was written according to the STROBE (Strengthening the Reporting of Observational Studies in Epidemiology) statement guidelines [13].

### **2.1. Study design, setting and cohort group.**

A population-based cross-sectional study was conducted between October 2019 and October 2021 among adults in West Area Urban, Freetown, Sierra Leone. Ecobank Sierra Leone

Limited funded this screening and awareness programme for NCD. Freetown, Sierra Leone's capital, has a dense heterogenous population of an estimated 1.5 million inhabitants [22]. It was selected as the study site because it serves as the primary business centre in the country, and its demographic distribution is represented by all ethnic groups, with Krio and English being the primary spoken language.

## **2.2. Sample size, recruitment, and selection**

This study used the “Ecobank health screening and awareness programme” data for NCD in Freetown, Sierra Leone. A stratified random sampling strategy was used to recruit adult Sierra Leonean participants aged  $\geq 20$ . The first stage in the sampling was to select all official electoral constituencies (Central I, II, East I, II, III, & West I, II, III) in Western Area - Urban, and then followed by subdividing each constituent region into subzones using the 2015 census data [14]. Upon selecting a sub-zonal community from an official electorate by simple random sampling, the potential line-listed participants were further selected at their community health centre by simple random sampling methods. Pregnant/lactating mothers, participants with mental illness/dementia and persons unwilling to grant consent were excluded from the study. The sample size of this study was calculated by the Leslie Kich formula, using the clinical estimated prevalence of 22% for hypertension in Sierra Leone, with a 5% precision and 95% Confidence Interval [15, 16]. By minimizing bias and allowing attrition of non-response and non-availability of data, the study was oversampled by 20%. Using a design effect of the eight sub-zonal communities, the adjusted estimated sample size was 2531.

Eligible participants from each selected sub-zonal community were invited to the National Victoria park in Freetown for participation in the “awareness and screening campaign for non-communicable disease”. Medical students, doctors and nurses were trained on the campaign's conduct, including data collection. At the health screening venue (Victoria Park), consented and enrolled participants who had completed their screening questionnaires and anthropometric measurements were referred to an accredited reference laboratory for blood sample collection. (Flow chart during the campaign is shown in Fig:1)

## **2.3. Data Collection and Measurements**

### **Demographic and Behavioural Characteristic Data**

Three categories of data collection were done using the WHO stepwise approach for NCD. Socio-demographic and behavioural characteristics information were collected using a pre-tested face-to-face interview questionnaire. Socio-demographics collected were age, sex, gender, educational level, religion, marital status, and medical history (family history of hypertension and diabetes mellitus). At the same time, behavioural characteristics, including fruit and vegetable consumption, smoking status, alcohol consumption and physical activity, were collected under supervision. Physical activity was assessed and classified into "Low", "Moderate", and "Vigorous" by using the WHO physical activity form [17]. Data on alcohol consumption was based on the WHO step survey tool [18]. A participant who smoked more than 100 sticks of cigarettes in their lifetime and, or still smoking at the time of the interview, was referred a smoker, while an ex-smoker is someone who had stopped smoking at least 28 days before the interview [19]. Translators assisted participants who could not understand English during data collection.

#### **2.4. Anthropometric measurements and biochemical analyses**

The systolic blood pressure (SBP) and diastolic blood pressure (DBP) of each participant were recorded on the right arm while in the sitting position by using an electronic blood pressure monitor (OMRON M3). After at least 3-5 minutes of rest, two consecutive measurements were recorded, and the mean was taken as the final BP reading. Hypertension was defined as an average SBP of 140 mm Hg or higher, or DBP of 90 mm Hg or greater or a participant reporting current use of antihypertensive medication [20]. Body weight, height, and waist circumference were measured with light clothes and bare feet. Weight was measured to the nearest 0.1 kilograms, while Height was measured by a stadiometer closest to 0.01 meter. The body mass index (BMI) was calculated as a ratio of the weight in kilograms and the square of the height in metres. BMI-based body habitus (in  $\text{kg/m}^2$ ) was classified as underweight (BMI <18.5), normal weight (BMI=18.5–24.9), overweight (BMI=25.0–29.9) and obese (BMI  $\geq$ 30) [21].

A tape measure recorded waist circumference (WC) at the approximate centre between the lower margin of the last palpable rib and the top of the iliac crest. Abdominal obesity was defined as a waist circumference > 88 cm for women and 102 cm for men [22].

#### **2.5. Clinical biochemistry measurements**

Participants' blood samples were collected from the median cubital vein between 8:00 and 10:00 AM after overnight fasting for 8 to 10 hours. These samples were processed within 4

hours of collection per manufacturers' instructional protocols, using Beckman Coulter: AU480 Chemistry System. Glucose, total cholesterol, triglycerides, high-density lipoprotein (HDL-C) and low-density lipoprotein (LDL-C) were analysed.

Diabetes mellitus was defined as a fasting blood glucose (FBG) level of 7.0 mmol/L or greater, HbA1c  $\geq$  6.5%, or using insulin or an oral hypoglycaemic agent. Pre-diabetes was defined as FPG between 6.1mmol/l (110 mg/ dL) and 6.9 mmol/l (124.9 mg/dL) [23].

Dyslipidaemia was defined as TG  $\geq$  1.70 mmol/L (150 mg/dL), TC  $\geq$  6.22 mmol/L (240 mg/dL), LDL  $\geq$  3.3mmol/L (130 mg/dL), HDL  $<$ 1.04 mmol/L (40 mg/dL) or the use of lipid-lowering medications, was considered as abnormally high. [24].

## **2.6. Statistical Analysis**

Data analysis was done using IBM SPSS Statistical 2.6 and STATA 17 software. Baseline characteristics, cardiometabolic risk factors and target organ damage characteristics were analyzed by sex and zones. Categorical variables were expressed as numbers and percentages, and the Pearson chi-square ( $X^2$ ) test was used to assess the difference. Continuous variables were expressed as mean  $\pm$  SD and compared using a one-way analysis of variance (ANOVA). Median and IQR were used when necessary. Multivariable logistic regression was done to determine associations between demographic characteristics and cardiovascular risk factors. A two-tailed p-value of  $\leq$  0.05 was considered statistically significant.

## **3. RESULTS**

Of the 2531 participants that met the eligibility criteria, only 2394 individuals were recruited into the study, and the response rate was 94.6%. Fifty-four individuals could not attend the “Ecobank - cardiovascular health screening campaign” day at the National Victoria Park, while 76 participants could not complete laboratory and cardiovascular screening. There was an equal representation from the eight sub-zonal communities without significant differences in population distribution (p=0.950).

### **3.1. Socio-demographic and behavioral profile of the study sample**

Descriptive socio-demographic characteristics of participants for the population are summarized in Table 1. The mean age of the study participants was  $41.9 \pm 12.3$  years with an age range of 20 to 75 years. The mean age of females ( $42.06 \pm 12$  years) was not statistically different from that of males ( $41.76 \pm 12.6$  years). The results showed low earning income (0 -

500 Leones) in the majority (38.4%) of the participants, with no significant differences between women and men (54.8% of women vs 41.6% of men,  $p = 0.052$ ). More females, compared to men, attained primary and secondary education, but more men were likely to graduate from tertiary institutions. These differences between men and women in achieving education were insignificant ( $p = 0.095$ ). Most of the study participants were unemployed (38.8%), with a statistical difference among self-employed female participants. [men (45.4%) vs (54.6%),  $p < 0.001$ ]. Even though the study suggested women were significantly more likely to consume alcohol ( $p = 0.014$ ), daily alcohol intake was significant among men ( $p = 0.046$ ).

Compared with their male counterparts, low daily physical activity was significantly higher in women ( $p = 0.002$ ). Fruit intake of 8.9% was very low among the participants, without a significant difference among gender ( $p = 0.592$ ). There was no gender difference in the smoking rate in the study population ( $p = 0.797$ ).

### **3.2. Gender Differences in Risk Factors for Cardiovascular Diseases**

Gender differences in cardiovascular risk factors in males and females are summarized in table 2. Women had significantly higher mean BMI, waist circumference, total cholesterol, triglyceride and low HDL-C. On the contrary, age, weight, height, systolic blood pressure, diastolic pressure, LDL-C, FBS and HBA1C were not significantly different by gender.

The prevalence of cardiovascular risk factors by gender is represented in Table 3. The prevalence of hypertension and diabetes mellitus was 35.3% and 8.3%, respectively. Overweight (33.2%), obesity (10%), alcohol consumption (37.9%), abnormal waist circumference (21.4%) and lack of physical activity (37.4%) were common. Among women, the prevalence of higher waist circumference, elevated total cholesterol, high triglyceride, and low physical activities were significantly greater than in men.

Using the univariate and multivariate logistic regression for gender and cardiovascular risk factors, the crude and adjusted odds ratios were summarized in Table 4. The odds of being overweight, obesity, smoking, having hypertension, diabetes, physical inactivity, and fruit/vegetable consumption were not statistically significant by gender. However, after adjusting for hypertension, dyslipidemia and alcohol, women had 1.8 times greater odds of



being hypertensive, 1.4 times greater odds of being dyslipidemic and 1.2 times greater odds of consuming alcohol than men.

### **3.3. Correlates of CVD Risk Factors**

The correlates of CVD risk factors are represented in Figure 2. Among women, body mass index, waist circumference and FBS were significantly correlated with CVD risk factors.

## **4. Discussion**

Sex and gender disparities in cardiovascular risk factors are relevant not only to developed countries but to low- and middle-income countries (LMIC) countries where the disease burden is increasing. There are limited scientific reports from SSA despite several health screening campaigns on cardiovascular diseases conducted in this region. This health screening and awareness campaign provided the largest representative data on sex and gender disparity for NCD among adults in Sierra Leone. This is the first report describing sex-gender differences in the prevalence of cardiovascular risk in an adult population in West Africa.

In this study, we reported a high prevalence of cardiovascular disease risk factors: hypertension (35.3%), diabetes mellitus (8.3%), Overweight (33.2%), Obesity (10.0%), abdominal obesity (21.4%), dyslipidaemia (21.4%), low physical inactivity (37.4%), smoking (8.3%) and alcohol consumption (37.9%). The study also documented gender disparity in several CVD risk factors, mainly increased BMI and abdominal obesity, as well as raised total cholesterol, triglyceride, and low HDL. The high prevalence of excess body weight among women in our study is comparable to other findings from Cameroon, Kenya, and Tanzania [11,25-27].

In Africa, it is widely accepted that the increasing number of overweight/obesity in women in an urban setting is attributed to socio-cultural influences, like the gender-specific pattern of work, sedentary lifestyle, and physical attractiveness of being fat among women. [28, 29]. Contrary to our study, a high prevalence of obesity among men compared to women has been reported in Mexico and China [30, 31].

The high prevalence of hypertension among men in our study is consistent with findings reported by Sandberg et al and Njelekela et al but in contrast with the results documented by Dev et al. [7,27,32]. The variation in gender disparity in hypertension among reported studies could be attributed to differences in the study designs, socio-demographic characters, and

lifestyle patterns of the study participants. Since two-thirds of our study participants in the cohort were below the age of 50 years, the high prevalence of hypertension among men could be attributable to the biological factor (oestrogen) that protect female against hypertension until menopause. Even though BMI, abdominal obesity and WHtR were significantly raised among women, the risk of hypertension was lower among women in our study. Similar findings have been reported in the Tanzanian study by Njelekela et al. [27].

The association between hypertension and increased BMI is well established in urban settings in SSA and is partly associated with increased cardiac output and arterial resistance [33,34]. An increased body weight of 10kg may result in a 3.0 mmHg higher systolic blood pressure and a 2.3 mmHg higher diastolic blood pressure [35]. For our obese female participants in this study, it would be assumed that a greater degree of adiposity must be achieved to attain a significant rise in blood pressure. Nonetheless, the increased prevalence of obesity in this young female population is worrying as it is associated with an increased risk of cardiovascular risk. We observed significant gender-specific differences in cardiovascular disease risk factors among women for TC, triglyceride and low HDL. Our findings are consistent with reports from other African studies [36,37]. The gender disparity of this lipid profiling of CVD risk factors could be attributed to the increased adiposity documented among females.

The prevalence of type 2 diabetes mellitus is reported to be trending on the increase in Sierra Leone – 2.4% in 1997, 3.5% in 2009, 6.2% in 2017, and 5.5% in 2020 [46,47,48]. Our study has documented the highest prevalence (8.3%) of diabetes mellitus in Sierra Leone, with a high prevalence of diabetes mellitus in females (9.2%) than in males (7.5%). It is the first study in Sierra Leone to measure HBA1c in the screening for diabetes, and its combination with FBS could have accounted for the high prevalence of diabetes mellitus among adults in an urban setting.

There are genuine concerns among researchers that fasting blood sugar alone, widely used in most population base surveys, may not capture all cases of undiagnosed diabetes in Africans, especially in the early stages of the disease. The high prevalence of diabetes mellitus among females in this study is consistent with the findings from a meta-analysis on the prevalence of diabetes mellitus in SSA, which reported a higher prevalence of diabetes among women in Southern African countries than men from the same region but the lower prevalence among

women from Eastern, Central Africa, and West Africa countries than men of corresponding settings [38]. The high prevalence of DM among females in the SSA population is associated with the high prevalence of overweight/obesity.

The rate of smoking varies significantly throughout the world, with the prevalence rate of the female-to-male ratio directly related to the economic development of the country [39]. The women-to-men smoking prevalence ratio in high-income countries is  $\approx 0.8$ , while in low and-middle income countries, the ratio is  $<0.1$  [36,39]. Smoking rates differ considerably worldwide, and the ratio of women-to-men smoking prevalence rates is strongly related to a country's level of economic development.[40]. In Africa, the prevalence of smoking is on the increase [36]. Despite the low smoking rate in this study, a surprisingly higher prevalence rate of women smokers (9.2%) than their male counterparts (7.5%) was noted, with the women-to-men ratio documented as  $\approx 0.8$ . Our study is similar to reports from the Pacific Island state of Nauru, Denmark and Sweden [41]. While there is variance in smoking prevalence across Africa, the gender disparity of smoking documented in our study is an important risk factor for cardiovascular diseases. It, therefore, warrants more national policies on prevention and cessation programs in Sierra Leone.

Our study documented a high prevalence of physical inactivity among the study participants, with a significant sex-gender disparity of high physical inactivity among females than males. Consistent with existing literature, physical inactivity is relatively uncommon among African females [12,42]. Socio-cultural factors in SSA limit women's outdoor activities, which explains the high prevalence of inactivity among females. Limited physical activities are a cardiovascular risk factor associated with deleterious health outcomes.

In the logistic regression analysis, we detected higher odds of dyslipidemia and alcohol consumption among women than men. In contrast, the multivariate analysis observed adjusted odds for hypertension, dyslipidemia, and alcohol for women than men. The odds of gender-specific cardiovascular risks were further evaluated in this study. Our findings observed a stronger correlation between BMI, WC, and raised blood sugar among women than men. In our study, we found gender differences to be consistent with other reported studies despite socio-cultural differences. [2,11,26,32,43].

This study underscores the burden of cardiovascular risk factor (CVRF) among adults and its sex-and-gender disparity for females in Sierra Leone. It further demystifies the misconception that females are less predisposed to cardiovascular diseases. Our findings have significant policy implications in guiding health promotion initiatives and lifestyle interventions, as female-specific cardiovascular risk factors may influence the impact and outcome of cardiovascular diseases.

## **5. Strengths and limitations**

Our study has several strengths. First, the sample size is large, and the findings are representative. Second, we used accurate laboratory parameters and investigative tools (HBA1c), and trained clinicians collected data. Third, we used a structured data collection proforma (WHO Stepwise tool) that was pretested and validated before use. Finally, we adhered to ‘STROBE’ (Strengthening the Reporting of Observational Studies in Epidemiology) guidelines for reporting the study findings. The study's limitations are as follows: Firstly, inference cannot be drawn from the causal relationships of the variable as the study is cross-sectional in design. Secondly, the generalizability of the study findings to Sierra Leone and other urban African settings is limited, as it represented adults residing in an urban setting. Despite these limitations, our study highlights important information regarding the prevalence and correlates of gender-specific CVD risk factors among adults in an urban African setting.

## **6. Implications and conclusions**

The sex-and-gender disparity in cardiovascular diseases is of concern in Africa for the prevention, diagnosis, treatment and treatment of CVD. This study gives convincing evidence of the high prevalence of cardiovascular risks in Sierra Leone, especially among women, as the rate of obesity, diabetes and hypertension are rising steadily. The sex-and-gender disparity is mainly due to innate genes and environmental influences. Therefore, public health screening strategies, health education and promotion related to gender differences in cardiovascular diseases will help better prevent cardiovascular events, which may reduce the burden of CVD in Sierra Leone. Moreover, gender-related variables remain to be defined and added to current risk assessment in future studies.

**Data sharing statement:** Data-set and statistical code can be shared on reasonable request to the corresponding author @jamesbwrussell@gmail.com, james.russell@usl.edu.sl

## **ACKNOWLEDGMENTS**

**The ECOBANK (SL) Study group:** Dr Jattu Rahman-Sesay, Dr. Tejan Mansaray, Dr. Jajuah, Dr. Mac-Jajuah, Dr. Mohamed Samura, Dr Abdul Karim Bah, Dr Evelyn Hawa Kamara, Dr Chernor Abubakarr Barrie, Paul Thoronka, Dr. Osman Kanneh, Dr. Alieu Kanu, Dr. Vidal Dupigny, Dr. Scholastica Nduisi, Dr. Omar Bah.

We thank all Ministry of Health and Sanitation nurses for serving as data collectors: Zainab Kargbo, Fatmata Koroma, Abigail Pratt, Claudia Campbell, Angel Jones, Lovetta Davies, Fatmata Bangura, Albert Rogers, Abibatu Jones, Alie Momoh and Gillian Jones. We are also grateful for the technical laboratory assistance provided by the Ecomed Advance Medical Laboratory and the Prime Care Medical Clinic staff, who supported the cardiac screening of the participants. We wish to thank all the participants enrolled in this study.

## **Author's Contributions**

JBW Russell conceptualized, designed the overall study and formal analysis, and wrote – the original draft manuscript. S Sesay conceptualized and designed the overall research, TR Koroma, data curation, formal analysis writing and writing – original draft manuscript. SK Samura, data curation, and formal statistical analysis. A Bockarie, I.F. Kamara, LA Tetteh, Sorie Conteh, S Lakoh, OT Abiri, J.M Coker, DR Lisk, reviewing and editing. V Conteh, M Smith, project administration and community recruitment of participants. All authors were responsible for a critical review of the manuscript, for important intellectual content, and provided approval of the final draft.

## **Informed Consent**

The IRB cleared the informed consent, and every participant signed the informed consent before recruitment.

**Conflict-of-interest statement:** All the authors report no relevant conflicts of interest for this article.

## **Financial disclosures**

Ecobank Sierra Leone Limited funded this research. J.B.W. Russell served as a consultant on this study. The views expressed in this publication represent those of the author(s). The

fundors had no role in the study design, data collection, analysis, interpretation, or report writing. The corresponding author had full access to all the data in the study and had final responsibility for the decision to submit for publication.

### **Conflict of Interest**

All authors declare no conflict of interest.

### **Abbreviations**

BMI – Body Mass Index

CMD – Cardiometabolic Disease

CMRF – Cardiometabolic risk factors

CVD – cardiovascular disease

CVDRF – cardiovascular disease risk factors

DBP – diastolic blood pressure

LDL-C – Low-density lipoprotein cholesterol

LMIC - low-and middle-income countries

LVH – left ventricular hypertrophy.

LVMI – Left ventricular mass index.

NCD – Non-communicable disease

HDL-C – High-density lipoprotein cholesterol

SSA – Sub-Sahara African

SBP – systolic blood pressure

SLE – Leones currency

TG – triglyceride

TOD – target organ damage

WC – waist circumference

WHO – World Health Organization

## References:

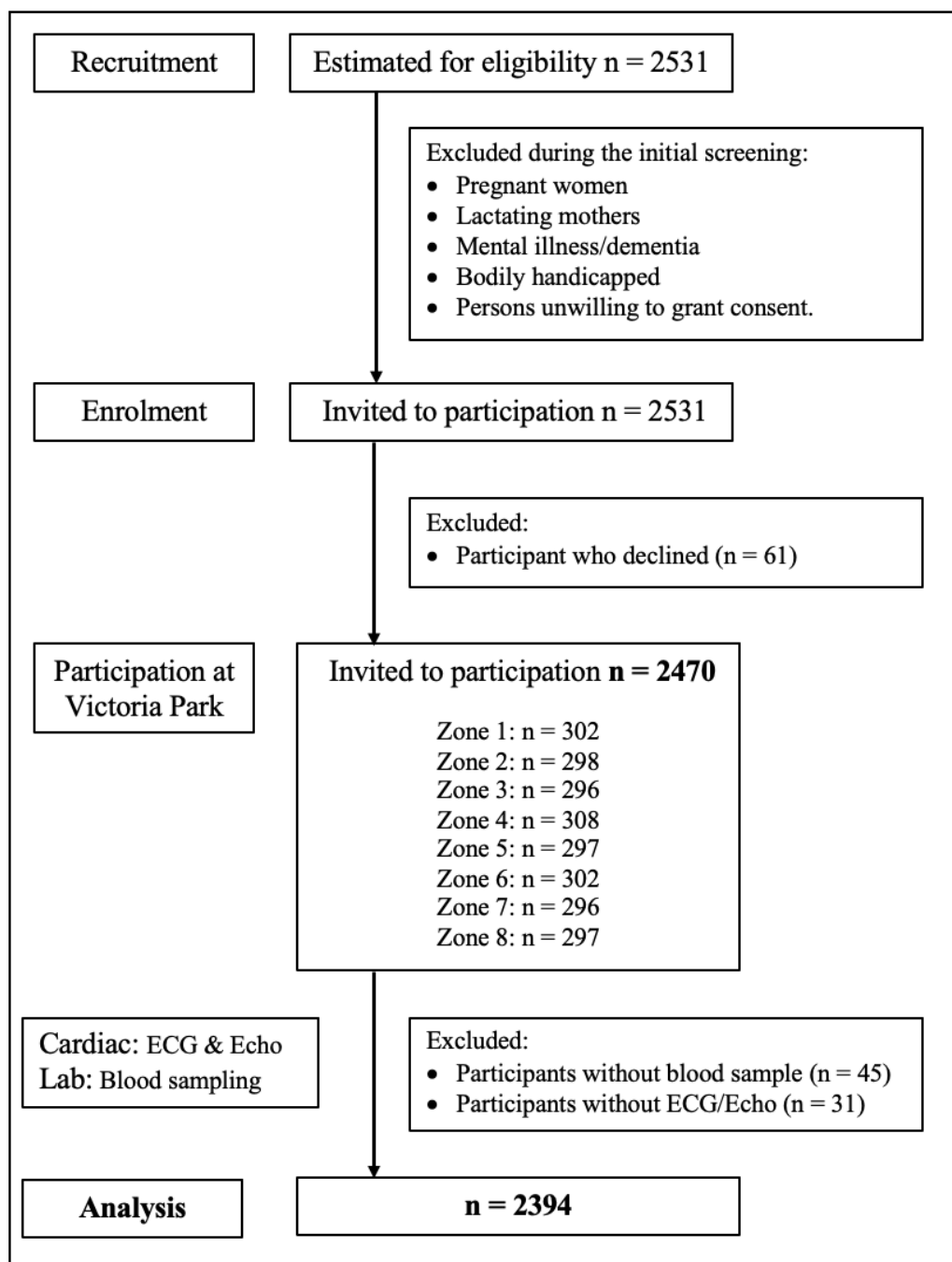
1. C. Melloni, J.S. Berger, T.Y. Wang et al. Representation of women in randomized clinical trials of cardiovascular disease prevention *Circ. Cardiovasc. Qual. Outcomes*, 3 (2010), pp. 135-142
2. Mosca, Lori, Elizabeth Barrett-Connor, and Nanette Kass Wenger. "Sex/gender differences in cardiovascular disease prevention: what a difference a decade makes." *Circulation* 124.19 (2011): 2145-2154.
3. Chester RC, Kling JM, Manson JE. What the Women's Health Initiative has taught us about menopausal hormone therapy. *Clin Cardiol.* 2018;41:247–252.
4. E.N. Hamulyak, A.J. Brockmeier, J.D. Killas, S. Ananiadou, S. Middeldorp, A.M. Leroi. Women's health in The BMJ: a data science history. *BMJ Open*, 10 (2020),
5. Mauvais-Jarvis F, Bairey Merz N, Barnes PJ, et al. Sex and gender: modifiers of health, disease, and medicine. *Lancet.* 2020;396:565–582.
6. Clayton JA, Gaugh MD. Sex as a biological variable in cardiovascular diseases: JACC focus seminar1/7. *J Am Coll Cardiol.* 2022;79:1388–1397.
7. Sandberg K, Ji H. Sex differences in primary hypertension. *Biology of Sex Differences.* 2012; 3(1):1–21.
8. Regensteiner JG, Libby AM, Huxley R, Clayton JA. Integrating sex and gender considerations in research: educating the scientific workforce. *Lancet Diabetes Endocrinol.* 2019;7:248–250.
9. RR Huxley, M Woodward. Cigarette smoking as a risk factor for coronary heart disease in women compared with men: a systematic review and meta-analysis of prospective cohort studies. *Lancet*, 378 (2011), pp. 1297-1305
10. Halimi J-M, Giraudeau B, Cacès E, Nivet H, Tichet J. The risk of hypertension in men: direct and indirect effects of chronic smoking. *J Hypertens.* 2002; 20(2):187–193.
11. Marina A Njelekela, Rose Mpembeni, Alfa Muhihi et al. Gender-related differences in the prevalence of cardiovascular disease risk factors and their correlates in urban Tanzania. *Comparative Study BMC Cardiovasc Disord.* 2009 Jul 17; 9:30.
12. Sobngwi E, Mbanya J, Unwin N, Aspray T, Albert K: Physical activity and its relationship with obesity, hypertension and diabetes in urban and rural Cameroon. *Int J Obes Relat Metab Disord* 2001, 26:1009-1016.

13. von Elm E, Altman DG, Egger M, Pocock SJ, Gøtzsche PC, Vandenbroucke JP; STROBE Initiative. The Strengthening the Reporting of Observational Studies in Epidemiology (STROBE) statement: guidelines for reporting observational studies. *J Clin Epidemiol*. 2008 Apr;61(4):344-9.
14. Statistics Sierra Leone. 2015 population and housing census, 2015. Available: [https://www.statistics.sl/images/StatisticsSL/Documents/final-results-2015\\_population\\_and\\_housing\\_census.Pdf](https://www.statistics.sl/images/StatisticsSL/Documents/final-results-2015_population_and_housing_census.Pdf). Pdf. 2015.
15. Kish L. Survey sampling. IX + 643 S., 31 Abb., 56 Tab., Preis 83 S. New York, London: John Wiley & Sons, Inc, 1965.
16. Geraedts TJM, Boateng D, Lindenberg KC, van Delft D, Mathéron HM, Mönnink GLE, et al. Evaluating the cascade of care for hypertension in Sierra Leone. *Trop Med Int Health*. 2021;26(11):1470-80.
17. WHO. What is moderate-intensity and Vigorous-intensity physical activity? Available: [https://www.who.int/dietphysicalactivity/physical\\_activity\\_intensity/en/](https://www.who.int/dietphysicalactivity/physical_activity_intensity/en/) [Accessed 16<sup>th</sup> August 2019]. 2019
18. Riley L, Guthold R, Cowan M, Savin S, Bhatti L, Armstrong T, et al. The world health organization STEPwise approach to noncommunicable disease risk-factor surveillance: Methods, challenges, and opportunities. *Am J Public Health*. 2016;106(1):74–8.
19. St Claire S, Fayokun R, Commar A, Schotte K, Prasad VM. The World Health Organization's World No Tobacco Day 2020 Campaign Exposes Tobacco and Related Industry Tactics to Manipulate Children and Young People and Hook a New Generation of Users. *J Adolesc Health*. 2020 Sep;67(3):334-337. doi: 10.1016/j.jadohealth.2020.06.026. Epub 2020 Jul 15. PMID: 32682598; PMCID: PMC7456773.
20. Hernandez-Vila E. A review of the JNC 8 Blood Pressure Guideline. *Tex Heart Inst J*. 2015;42(3):226-8.
21. WHO. Body mass index.BMI, 2018. Available: <http://www.euro.who.int/en/health-topics/disease-prevention/nutrition/a-healthy-lifestyle/body-mass-index-bmi> [Accessed 19 Dec 2018]. 2018.



22. Okosun IS, Choi S, Dent MM, Jobin T, Dever GE. Abdominal obesity defined as a larger than expected waist girth is associated with racial/ethnic differences in risk of hypertension. *J Hum Hypertens*. 2001;15(5):307-12.
23. Diagnosis and classification of diabetes mellitus. *Diabetes Care*. 2011;34 Suppl 1(Suppl 1):S62-9.
24. Executive Summary of The Third Report of The National Cholesterol Education Program (NCEP) Expert Panel on Detection, Evaluation, And Treatment of High Blood Cholesterol In Adults (Adult Treatment Panel III). *Jama*. 2001;285(19):2486-97.
25. Sobngwi E, Mbanya J, Unwin N, Aspray T, Albert K: Physical activity and its relationship with obesity, hypertension and diabetes in urban and rural Cameroon. *Int J Obes Relat Metab Disord* 2001, 26:1009-1016.
26. Christensen DL, Eis J, Hansen AW, Larsson MW, Mwaniki DL, Kilonzo B, Tetens I, Boit MK, Kaduka L, Borch-Johnsen K, et al.: Obesity and regional fat distribution in Kenyan populations: impact of ethnicity and urbanization. *Ann Hum Biol* 2008, 35(2):232-249.
27. Njelekela M, Negishi H, Nara Y, Tomohiro M, Kuga S, Noguchi T, Kanda T, Yamori M, Mashalla Y, Jian Liu L, et al.: Cardiovascular risk factors in Tanzania: a revisit. *Acta Trop* 2001, 79(3):231-239.
28. Siervo M, Grey P, Nyan OA, Prentice AM: A pilot study on body image, attractiveness and body size in Gambians living in an urban community. *Eat Weight Disord* 2006, 11(2):100-109.
29. Walker AR, Adam F, Walker BF: World pandemic of obesity: the situation in Southern African populations. *Public Health* 2001, 115(6):368-372.
30. Meaney, E., A. Lara-Esqueda, G.M. Ceballos-Reyes, J. Asbun and A. Vela et al., 2007. Cardiovascular risk factors in the urban Mexican population: The FRIMEX study. *Public Health*, 121: 378-384. DOI: 10.1016/j.puhe.2006.11.008
31. Wu, D.M., L. Pai, N.F. Chu, P.K. Sung and M.S. Lee et al., 2011. Prevalence and clustering of cardiovascular risk factors among healthy adults in a Chinese population: The MJ health screening center study in Taiwan. *Int. J. Obesity*, 25: 1189-1195.
32. Dev R, Favour-Ofili D, Raparelli V, Behlouli H, Azizi Z, Kublickiene K, KautzkyWiller A, Herrero MT, Pilote L, Norris CM. Sex and Gender Influence on

- Cardiovascular Health in Sub Saharan Africa: Findings from Ghana, Gambia, Mali, Guinea, and Botswana. *Global Heart*. 2022; 17(1): 63.
33. Unwin NC: Rural and urban differences in diabetes prevalence in Tanzania: the role of obesity, physical inactivity and urban living. *Trans R Soc Trop Med Hyg* 2000, 94(6):637-644.
  34. Vorster HH: The emergence of cardiovascular disease during urbanization of Africans. *Public Health Nutr* 2002, 5(1A):239-243
  35. Kotsis V, Stabouli S, Papakatsika S, Rizos Z, Parati G. Mechanisms of obesity-induced hypertension. *Hypertension Research*. 2010; 33(5): 386–393.
  36. Keates AK, Mocumbi AO, Ntsekhe M, Sliwa K, Stewart S. Cardiovascular disease in Africa: epidemiological profile and challenges. *Nature Reviews Cardiology*. 2017; 14(5): 273–293.
  37. Ikem I, Sumpio BE. Cardiovascular disease: the new epidemic in sub-Saharan Africa. *Vascular*. 2011; 19(6): 301–307.
  38. Hilawe EH, Yatsuya H, Kawaguchi L, Aoyama A. Differences by sex in the prevalence of diabetes mellitus, impaired fasting glycaemia and impaired glucose tolerance in sub-Saharan Africa: a systematic review and meta-analysis. *Bull World Health Organ*. 2013 Sep 1;91(9):671-682D.
  39. Hitchman SC, Fong GT. Gender empowerment and female-to-male smoking prevalence ratios. *Bull World Health Organ*. 2011;89:195–202.
  40. Spence JD, Pilote L. Importance of sex and gender in atherosclerosis and cardiovascular disease. *Atherosclerosis*. 2015;241:208–210.
  41. St Claire S, Fayokun R, Commar A, Schotte K, Prasad VM. The World Health Organization's World No Tobacco Day 2020 Campaign Exposes Tobacco and Related Industry Tactics to Manipulate Children and Young People and Hook a New Generation of Users. *J Adolesc Health*. 2020 Sep;67(3):334-337.
  42. Neethling I, Lambert E V, Cois A, et al. Estimating the changing burden of disease attributable to low levels of physical activity in South Africa for 2000, 2006 and 2012. *S Afr Med J*. 2022 Sep 30;112(8b):639-648.
  43. Westerman S, Wenger NK. Women and heart disease, the underrecognized burden: sex differences, biases, and unmet clinical and research challenges. *Clin Sci*. 2016;130:551–563.



**Figure 1:** Steps involved during recruitment of participants and final analysis of data.

**Table 1: Gender differences in socio-demographic characteristics of participants**

Characteristics	Total n(%)	Female n(%)	Male n(%)	P-value( $\chi^2$ )
<b>Basic characteristics</b>				
No.	2394	1250	1144	
<b>Age, by group</b>				
20-29	447(18.7)	255(57.0)	192(43.0)	<0.001(28.9)
30-39	703(29.4)	383(54.5)	320(45.5)	
40-49	684(28.6)	359(52.5)	325(47.5)	
50-59	356(14.9)	141(39.6)	215(60.4)	
>60	204(8.5)	112(54.9)	92(45.1)	
<b>INCOME (Currency = Leone)</b>				
0-500	920(38.4)	504(54.8)	416(45.2)	0.052(7.715)
500-1000	666(27.8)	319(47.9)	347(52.1)	
1100-2000	490(20.5)	256(52.2)	234(46.2)	
>2000	318(13.3)	171(53.8)	147(46.2)	
<b>Education level</b>				
None	618(25.8)	318(51.5)	300(48.5)	0.095(6.361)
Primary	479(20.0)	273(57.0)	206(43.0)	
Secondary	835(34.9)	432(51.7)	403(48.3)	
Tertiary	462(19.3)	227(49.1)	235(50.9)	
<b>Marital status</b>				
single	955(39.9)	504(52.8)	451(47.2)	0.699(1.428)
Married	737(30.8)	372(50.5)	365(49.5)	
Separated/Divorce	586(24.5)	310(52.9)	276(47.1)	
Widow	115(4.8)	63(54.8)	52(45.2)	
<b>Occupation</b>				
Employed	500(20.9)	302(60.4)	198(39.6)	<0.001(27.6)
Self-employed	531(22.2)	241(45.4)	290(54.6)	
Unemployed	930(38.8)	466(50.1)	464(49.9)	
Retired	167(7.0)	96(57.5)	71(42.5)	
Student	264(11.0)	145(54.9)	119(45.1)	
<b>BLOOD PRESSURE (mmHg)</b>				
Normal	1061(44.3)	510(48.1)	551(51.9)	0.002(15.15)
Pre-hypertension	489(20.4)	278(56.9)	211(43.1)	
Hypertension stage 1	644(26.9)	360(55.9)	284(44.1)	
Hypertension stage 2	200(8.4)	102(51.0)	98(49.0)	
<b>FRUITS/VEGETABLE</b>				
<3 serving	2182(91.1)	1143(52.4)	1039(47.6)	0.592(0.28)
>3 serving	212(8.9)	107(50.5)	105(49.5)	
<b>Alcohol</b>				
Never	1486(62.1)	783(52.7)	703(47.3)	0.014(8.14)
Current	652(27.2)	316(48.5)	336(51.5)	
Previous	256(10.7)	151(59.0)	105(41.0)	
<b>Alcohol intake</b>				
Daily	345(14.4)	151(43.8)	194(56.2)	0.046(6.14)
Weekly	285(11.9)	150(52.6)	135(47.4)	
Monthly	134(5.6)	57(42.5)	77(57.5)	
<b>Smoking</b>				
Never	2073(86.6)	1088(52.5)	985(47.5)	0.797(0.45)
Current	198(8.3)	100(50.5)	98(49.5)	
Ex-smoker	123(5.1)	62(50.4)	61(49.6)	
<b>Daily physical activity</b>				
Low	895(37.4)	481(53.7)	414(46.3)	0.002(12.38)
Moderate	939(39.2)	515(54.8)	424(45.2)	
Vigorous	511(21.3)	233(45.6)	278(54.4)	

Table 1 Continued

Characteristics	Total n(%)	Female n(%)	Male n(%)	P-value( $\chi^2$ )
<b>Measures of adiposity</b>				
<b>BMI (kg/m<sup>2</sup>)</b>				
Underweight	38(1.6)	21(55.3)	17(44.7)	0.066(7.2)
Normal	1502(62.7)	794(52.9)	708(47.1)	
Overweight	612(25.6)	329(53.8)	283(46.2)	
Obese	240(10.0)	106(44.2)	134(55.8)	
<b>Waist circumference (<math>\geq 94</math>cm men, <math>\geq 80</math>cm women)</b>				
Normal	1882(78.6)	870(46.2)	1012(53.8)	<b>0.003(8.569)</b>
Abnormal	512(21.4)	274(53.5)	238(46.5)	
<b>WHtR risk</b>				
Normal ( $\leq 0.5$ )	1050(43.9)	36(3.4)	1014(96.6)	<b>&lt;0.001(1786.73)</b>
Increased risk (0.51- 0.59)	1276(53.3)	1146(89.8)	130(10.2)	
High risk ( $>0.6$ )	68(2.8)	68(100)	0(0.0)	
<b>WHR (<math>\geq 0.90</math> men, <math>\geq 0.85</math> women)</b>				
Low	763(31.9)	753(98.7)	10(1.3)	0.210(3.12)
Moderate	273(11.4)	271(99.3)	2(0.7)	
High	207(8.6)	207(100)	0(0.0)	
<b>Laboratory</b>				
<b>Lipids</b>				
<b>Total Cholesterol (TC) (<math>\geq 6.2</math>mmol/l)</b>				
Normal	2163(90.4)	1171(54.1)	992(45.9)	<b>&lt;0.001(32.25)</b>
High	231(9.6)	79(34.2)	152(65.8)	
<b>LDL-C (<math>\geq 3.3</math>mmol/l)</b>				
Normal	2077(86.8)	1083(52.1)	994(47.9)	0.858(0.03)
High	317(13.2)	167(52.7)	150(47.3)	
<b>HDL-C (<math>\leq 1.04</math>mmol/l)</b>				
Normal	2129(88.9)	1142(53.6)	987(46.4)	<b>&lt;0.00115.68)</b>
High	317(13.2)	108(40.8)	157(59.2)	
<b>TRIGLYCERIDE (<math>\geq 1.7</math>mmol/l)</b>				
Normal	1862(77.8)	1011(54.3)	851(45.7)	<b>&lt;0.001(14.58)</b>
High	530(22.1)	238(44.9)	292(55.1)	
<b>DIABETES (mmol/l)</b>				
Normal ( $>6$ mmol/l)	2084(87.1)	1080(51.8)	1004(48.2)	0.234(2.9)
Pre-diabetes (6.0 – 6.9mmol/l)	103(4.3)	51(49.5)	52(50.5)	
Diabetes ( $>7.0$ mmol/l)	199(8.3)	115(57.8)	84(42.2)	

Table 2: Gender differences in cardiovascular risk factors in mean

Characteristics	Total (2394)	Female (1144)	Male (1250)	p-value
	N $\pm$ SD	Mean $\pm$ SD	Mean $\pm$ SD	
Age	41.9 $\pm$ 12.3	42.06 $\pm$ 12.0	41.76 $\pm$ 12.6	0.550
Weight	74.3 $\pm$ 14.9	74.8 $\pm$ 15.6	73.8 $\pm$ 14.2	0.78
Height	1.7 $\pm$ 0.05	1.7 $\pm$ 0.05	1.7 $\pm$ 0.05	0.302
BMI	24.8 $\pm$ 4.7	25.0 $\pm$ 5.0	24.6 $\pm$ 4.4	<b>0.029</b>
WC	87.1 $\pm$ 8.3	93.6 $\pm$ 4.5	80.0 $\pm$ 5.0	<b>&lt; 0.001</b>
SBP	127.8 $\pm$ 23.3	127.5 $\pm$ 23.4	128.1 $\pm$ 23.2	0.516
DBP	85.7 $\pm$ 11.3	85.4 $\pm$ 11.6	86.0 $\pm$ 11.0	0.188
Triglyceride	1.65 $\pm$ 0.34	1.7 $\pm$ 0.35	1.6 $\pm$ 0.32	<b>0.013</b>

Total Cholesterol	5.0±0.72	5.1±0.77	4.9±0.66	< <b>0.001</b>
Low HDL-C	1.3±0.27	1.28±0.29	1.3±0.24	<b>0.016</b>
LDL-C	3.0±0.66	2.98±0.66	3.0±0.65	0.315
FBS	5.1±1.6	5.0±1.61	5.2±1.66	0.080
HBA1C	5.2±1.03	5.2±0.96	5.2±1.09	0.964

**Table 3: Prevalence of cardiovascular risk factors according to sex.**

Characteristics	Total n(%)	Female n(%)	Male n(%)	p-value
Overweight	796(33.2)	369(32.3)	427(34.2)	0.323
Obese	240(10.0)	113(9.9)	127(10.2)	0.818
Abnormal waist circumference	512(21.4)	274(24.0)	238(19.0)	<b>0.003</b>
Hypertension	844(35.3)	382(33.4)	462(37.4)	0.068
Alcohol intake	908(37.9)	467(37.4)	441(38.5)	0.025
Hx of smoking	195(8.3)	103(9.2)	92(7.5)	0.139
Diabetes	199(8.3)	84(7.4)	115(9.2)	0.101
High Cholesterol	231(9.6)	152(13.3)	79(6.3)	< <b>0.001</b>
High LDL-C	317(13.2)	150(13.1)	167(13.4)	0.858
High Triglyceride	530(22.2)	292(25.5)	238(19.1)	< <b>0.001</b>
Low daily physical activity	895(37.4)	481(40.1)	414(39.0)	<b>0.002</b>

**Table 4: Univariate and Multivariate logistic regression of gender and cardiovascular risk factors**

Variables	Univariate OR		Multivariate OR	
	COR 95% CI	p-value	AOR 95%CI	p-value
<b>Overweight</b>				
No	Ref.		Ref.	
Yes	0.918(0.774 - 1.088)	0.323	1.018(0.831 - 1.246 )	0.079
<b>Obese</b>				
No	Ref.		Ref.	
Yes	0.968(0.741 - 1.266)	0.818	0.941(0.686 - 1.290)	0.526
<b>Smoking</b>				
Never	Ref.		Ref.	
Yes	1.248(0.930 - 1.673)	0.802	1.269(0.940 - 1.712)	0.158
<b>Hypertension</b>				
No	Ref.		Ref.	
Yes	0.855(0.723 - 1.012)	0.068	1.849(0.713 - 1.010)	<b>0.030</b>
<b>Dyslipidemia</b>				
No	Ref.		Ref.	
Yes	1.339(1.101 - 1.629)	<b>0.003</b>	1.441(1.176 - 1.765)	< <b>0.001</b>
<b>Diabetes Mellitus</b>				
No	Ref.		Ref.	

Yes	0.782(0.583 - 1.049)	0.101	0.826(0.611 - 1.117)	0.135
<b>ALCOHOL</b>				
No	Ref.		Ref.	
Yes	1.229(1.026 - 1.472)	<b>0.025</b>	1.225(1.0123 - 1.481)	<b>0.037</b>
<b>Physical activity</b>				
No	Ref.		Ref.	
Yes	1.090(0.927 - 1.289)	0.310	1.090(0.919 - 1.293)	0.323
<b>Fruits/Vegetable intake</b>				
<3 servings	Ref.		Ref.	
>3 servings	1.079(0.814 - 1.431)	0.595	1.063(0.795 - 1.421)	0.682

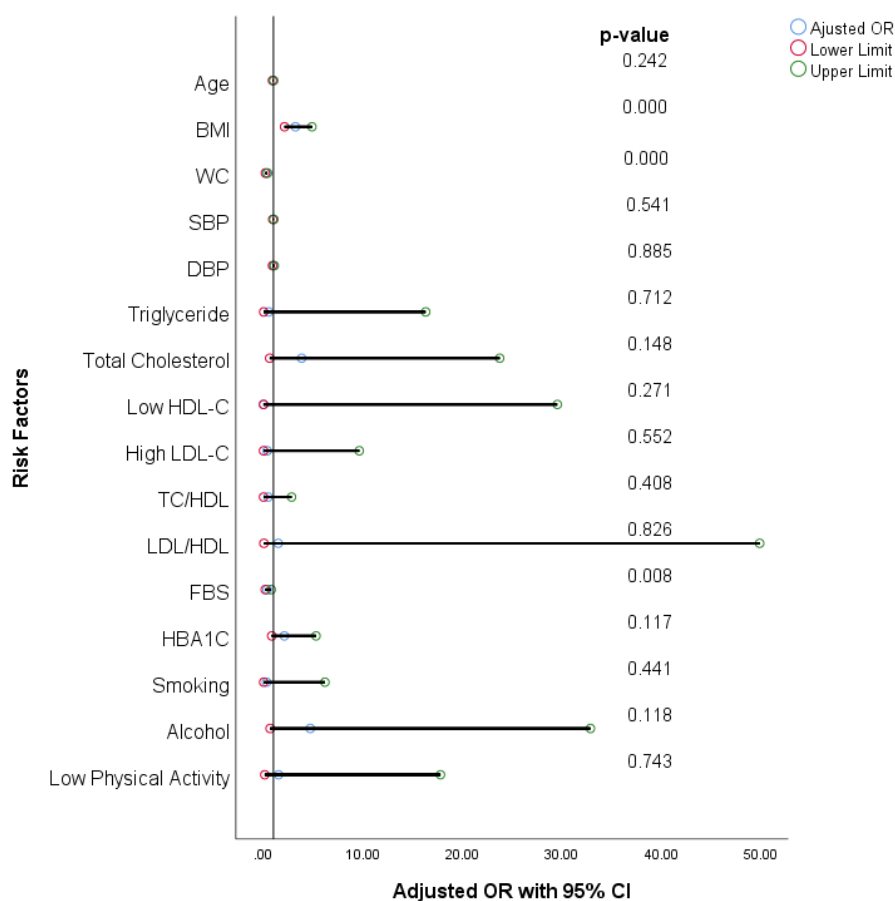


Figure 2: Correlates of cardiovascular risk factors among participants