

1 **Title page**

2 **Title:** Impact of COVID-19 and effects of booster vaccination with BNT162b2 on six-month
3 long COVID symptoms, quality of life, work productivity and activity impairment during
4 Omicron

5
6 **Authors:** Manuela Di Fusco^{1*}, Xiaowu Sun², Mary M. Moran³, Henriette Coetzer², Joann M.
7 Zamparo⁴, Mary B. Alvarez⁵, Laura Puzniak³, Ying P. Tabak², Joseph C. Cappelleri⁶

8
9 **Affiliations:**

10 ¹ Pfizer Inc, Health Economics and Outcomes Research, New York, NY, USA

11 ² CVS Health, Woonsocket, RI, USA

12 ³ Pfizer Inc, MDSCA Vaccines, Collegeville, PA, USA

13 ⁴ Pfizer Inc, Groton, CT, USA

14 ⁴ Pfizer Inc, Field Medical Outcomes and Analytics, New York, NY, USA

15 ⁶ Pfizer Inc, Statistical Research and Data Science Center, Groton, CT, USA

16

17 ***Corresponding author:** Manuela Di Fusco

18 Health Economics and Outcomes Research

19 Pfizer, Inc., New York, NY, USA

20 **Manuela.difusco@pfizer.com**

21 Abstract

22 **Background:** Longitudinal estimates of long COVID burden during Omicron remain limited.

23 This study characterized long-term impacts of COVID-19 and booster vaccination on symptoms,
24 Health-Related Quality of Life (HRQoL), and Work Productivity Activity Impairment (WPAI).

25
26 **Methods:** Outpatients with ≥ 1 self-reported symptom and positive SARS-CoV-2 test at CVS
27 Health United States test sites were recruited between 01/31-04/30/2022. Symptoms, EQ-5D and
28 WPAI were collected via online surveys until 6 months following infection. Both observed and
29 model-based estimates were analyzed. Effect sizes based on Cohen's d quantified the magnitude
30 of outcome changes over time, within and between vaccination groups. Mixed models for
31 repeated measures were conducted for multivariable analyses, adjusting for covariates. Logistic
32 regression assessed odds ratio (OR) of long COVID between vaccination groups.

33
34 **Results:** At long COVID start (Week 4), 328 participants included 87 (27%) Boosted with
35 BNT162b2, 86 (26%) with a BNT162b2 primary series (Primed), and 155 (47%) Unvaccinated.
36 Mean age was 42.0 years, 73.8% were female, 26.5% had ≥ 1 comorbidity, 36.9% prior infection,
37 and 39.6% reported ≥ 3 symptoms (mean: 3.1 symptoms). At Month 6, among 260 participants,
38 Boosted reported a mean of 1.1 symptoms versus 3.4 and 2.8 in Unvaccinated and Primed,
39 respectively ($p < 0.001$). Boosted had reduced risks of ≥ 3 symptoms versus Unvaccinated
40 (observed: OR 0.22, 95% CI, 0.10-0.47, $p < 0.001$; model-based: OR: 0.36, 95% CI, 0.15-0.87,
41 $p = 0.019$) and Primed (observed: OR 0.29, 95% CI, 0.13-0.67, $p = 0.003$; model-based: OR 0.59,
42 95% CI, 0.21-1.65, $p = 0.459$). Results were consistent using ≥ 2 symptoms. Regarding HRQoL,
43 among those with long COVID, Boosted had higher EQ-5D Utility Index (UI) than

44 Unvaccinated (observed: 0.922 versus 0.731, $p=0.014$; model-based: 0.910 versus 0.758, p -
45 value=0.038) and Primed (0.922 versus 0.648, $p=0.014$; model-based: 0.910 versus 0.708, p -
46 value=0.008). Observed and model-based estimates for EQ-VAS and UI among Boosted were
47 comparable with pre-COVID since Month 3. Subjects vaccinated generally reported better WPAI
48 scores.

49
50 **Conclusions:** Long COVID negatively impacted HRQoL and WPAI. The BNT162b2 booster
51 could have a beneficial effect in reducing the risk and burden of long COVID. Boosted
52 participants reported fewer and less durable symptoms, which contributed to improve HRQoL
53 and maintain WPAI levels. Limitations included self-reported data and small sample size for
54 WPAI.

55
56 **Keywords:** COVID-19; SARS-CoV-2; COVID-19 symptoms; Long COVID; BNT162b2;
57 Booster vaccine; HRQoL; WPAI.

58

59 Background

60 Long COVID is a broad array of complications of SARS-CoV-2 infection [1]. There is no single
61 definition of long-COVID presently and prevalence estimates vary widely across studies and
62 variants [1]. In the US, the Centers for Disease Control and Prevention (CDC) define long
63 COVID as a multitude of symptoms and conditions persisting or emerging beyond four weeks
64 after infection, and not explained by an alternative diagnosis [1]. Long COVID is found more
65 often in people who had severe COVID-19 illness, but anyone who was infected can experience
66 it [2]. While most individuals with long COVID are mildly affected and recover shortly after
67 infection, some can suffer from persistent symptoms that can affect the Health-Related Quality
68 of Life (HRQoL) and impact daily social and professional activities [3].
69 Multiple studies assessed whether vaccinated individuals are associated with a lower risk of long
70 COVID, several of them show that long COVID is less likely to occur following breakthrough
71 infection in vaccinated compared with unvaccinated individuals [4-7]. However, numerous
72 studies were conducted in selected populations that may affect generalizability [4, 5, 7, 8],
73 assessed a mix of COVID-19 vaccines, and the certainty of evidence was considered low when
74 pooling studies [6, 8]. Moreover, there is limited data on the long-term effects of COVID-19 and
75 the potential benefits of COVID-19 vaccination on symptoms, well-being, and ability to return to
76 work.
77 We aimed to address these gaps using a prospective longitudinal study design assessing long
78 COVID prevalence and levels of HRQoL and WPAI through 6 months following infection, and
79 among groups defined by COVID-19 vaccination status. Our study focused on BNT162b2, the
80 most used COVID-19 vaccine in the US [1].

81 Methods

82 Study design and cohorts

83 The study design was previously described [9] (clinicaltrials.gov NCT05160636). Briefly, this
84 was a nationwide prospective survey-based patient-reported outcomes (PRO) study targeting
85 adults ≥ 18 years old with a positive reverse transcription–polymerase chain reaction (RT-PCR)
86 test result and self-reporting at least one symptom suggestive of acute SARS-CoV-2 infection at
87 time of testing [9]. The source population consisted of adults testing for SARS-CoV-2 at one of
88 ~5,000 CVS Health test sites across the US. Recruitment of consenting participants was carried
89 out between 01/31/2022 and 04/30/2022, with follow-up occurring through October 30, 2022.
90 Interim results for the acute phase (up to 4 weeks after infection) were previously presented [9].
91 This analysis presents the final results, focusing on long-term outcomes until month 6.
92 At enrollment, we categorized the participants based on their COVID-19 vaccination history.
93 Immunocompetent participants were considered fully vaccinated with BNT162b2 if they self-
94 reported receipt of 2 doses of BNT162b2 ≥ 14 days prior to SARS-CoV-2 testing. They were
95 considered partially vaccinated if reporting receipt of only one of the two primary series dose,
96 and boosted if reporting receipt of at least one dose after the primary series. Participants self-
97 reporting an immunocompromising condition and receipt of 3 doses were considered fully
98 vaccinated; if reporting 4 doses, they were considered boosted. Participants were considered
99 unvaccinated if they did not report any COVID-19 vaccine dose prior to testing. The study
100 population was classified in three mutually exclusive cohorts: (1) the “Primed” cohort of subjects
101 who received primary series, (2) the “Boosted” cohort of subjects with at least one dose after
102 primary series, and (3) the “Unvaccinated” cohort of subject with no evidence of vaccination.
103 Heterologous schedules were excluded (Supplemental Figure 1). To confirm vaccination status,

104 participants' subsequent responses to vaccination date questions were compared with their index
105 responses (at time of registering for testing); if responses did not match, the information was
106 queried and adjudicated, and the latest information was used.

107 Baseline characteristics and symptoms

108 Baseline characteristics were obtained via the CVS Health pre-test screening questionnaire.
109 These included self-reported demographics, comorbidities, COVID-19 vaccination history,
110 social determinants of health including the Social Vulnerability Index (SVI), work and/or
111 residency in a high-risk or healthcare setting, and symptoms [10]. The list of COVID-19
112 symptoms came from the CDC's definition [11].

113 Long COVID Symptoms

114 The presence of long COVID symptoms was assessed via a questionnaire including 20
115 symptoms based on the 2021 CDC list [1]. The questionnaire was administered at week 4, month
116 3 and 6 after enrollment. Week 4 was considered the start of long COVID, in alignment with
117 CDC [1]. The list of symptoms included general symptoms (tiredness or fatigue, symptoms that
118 get worse after physical or mental activities, fever, general pain/discomfort), respiratory and
119 cardiac symptoms (difficulty breathing or shortness of breath, cough, chest or stomach pain, fast-
120 beating or pounding heart (also known as heart palpitations)), neurological symptoms (change in
121 smell or taste, headache, dizziness on standing (lightheadedness), difficulty thinking or
122 concentrating ("brain fog"), pins-and-needles feeling, sleep problems, mood changes, memory
123 loss), and other symptoms (diarrhea, joint or muscle pain, rash, changes in period cycles).
124 (Supplemental Figure 2).
125 Studies describing the prevalence of long COVID in the general population testing positive for
126 COVID-19 have used different thresholds for duration and intensity of symptoms [12-14].

127 Interim data from the CDC-funded INSPIRE Registry reported long COVID among subjects
128 who were symptomatic at time of testing using a cutoff of ≥ 3 symptoms at 3 months post
129 infection, with follow-up surveys scheduled every three months until 18 months post-enrollment
130 [15, 16]. Considering the similarities in the total number of symptoms assessed (~ 20), eligibility
131 criteria and study design, this study used a similar cut-off of ≥ 3 symptoms, assessed 3- and 6-
132 months following infection

133 Health-Related Quality of Life

134 We used EQ-5D-5L to assess HRQoL [17]. Completion of the questionnaire was requested at
135 enrollment, at month 1, 3 and 6 [9]. Five dimensions of EQ-5D-5L at each time point were
136 converted into the Utility Index (UI) using the US-based weights by Pickard et al [18]. UI and
137 visual analogue scale (VAS) scores were compared among cohorts and across assessment times
138 [17].

139 Work Productivity and Activity Impairment

140 To measure impairments in both paid work and unpaid work, we used the Work Productivity and
141 Activity Impairment General Health V2.0 (WPAI:GH) measure [19, 20]. Participants were asked
142 to complete the survey seven days after their RT-PCR test, at month 1, 3 and 6. Only employed
143 subjects were included for work productivity analyses. The WPAI results were compared across
144 cohorts and assessment times.

145 Statistical methods

146 The statistical methods were previously described [9]. Descriptive statistics were used to analyze
147 participant characteristics at baseline. Continuous variables were described using means and
148 standard deviations. Categorical variables were summarized with frequency and percentages. For
149 continuous variables, t-tests were used to test difference in means. Between-group differences in

150 categorical variables were tested by using chi-square statistics. When expected cell frequency
151 count was less than 5, Fisher's exact tests were used for 2-by-2 tables and Freeman-Halton tests
152 for r-by-c tables [21, 22]. Analysis of variance (ANOVA) was used to test differences in means.
153 Tukey's studentized range test was adopted for post ANOVA pairwise comparisons of means
154 between study cohorts [21, 23]. P values were all two-sided. Logistic regression model [20] was
155 used to assess the odds ratio of long COVID symptoms between study cohorts.
156 Mixed models for repeated measures (MMRM) were used to estimate the magnitude of COVID-
157 19 impact on HRQoL and WPAI over time [24]. Assessment time was fitted as a categorical
158 covariate and a repeated effect (repeated by subject). Least squares mean (LS mean) and
159 standard errors of PRO scores for each time point of assessment were calculated. Per guidelines,
160 no adjustment was made for missing data when scoring the EQ-5D-5L UI and WPAI [17, 20]. .
161 All available data were included in the analysis. Tukey's adjustment was conducted for the
162 comparisons of least-square means between study cohorts at each time point.
163 Cohen's d, or a variation of it, was calculated to assess the difference in pre-COVID scores
164 among Boosted, Primed and Unvaccinated, the magnitude of score change from baseline at
165 Week 4, Month 3 and 6 within each cohort, as well as the differences between cohorts [25, 26].
166 Specifically, within-cohort effect size (ES) was calculated as mean change from baseline to
167 follow-up, divided by the standard deviation of change scores from baseline to follow-up [9].
168 Between-cohort ES was calculated as the difference in mean score between cohorts, divided by
169 the pooled standard deviation of scores, or the difference in mean changes from baseline between
170 cohorts, divided by the pooled standard deviation of change scores [9]. Values of 0.2, 0.5, and
171 0.8 standard deviation (SD) units were taken represent "small," "medium," and "large" effect
172 sizes, respectively [9, 25]. All analyses were conducted with SAS Version 9.4 (SAS Institute,

173 Cary, NC). The study followed the Strengthening the Reporting of Observational Studies in
174 Epidemiology (STROBE) reporting guideline [27].

175 Results

176 Study population

177 Table 1 describes the characteristics of the 328 participants at baseline (i.e., four weeks after
178 infection). There were 87 (27%) Boosted, 86 (26%) Primed, and 155 (47%) Unvaccinated. There
179 were no subjects partially vaccinated. At Month 6, 21% (68/328) of participants dropped off.
180 Mean time from last dose of BNT162b2 to testing positive was 2.3 (standard deviation, SD: 1.9)
181 months and 6.9 (SD: 3.0) months for Boosted and Primed, respectively. The population was 42.0
182 years old on average, 73.8% were female, 26.5% reported ≥ 1 comorbidity and 36.9% were
183 previously infected.

184 The three groups generally looked similar in terms of age, gender, race, prior infection, number
185 of comorbidities and risk levels in workplace and household settings. Boosted participants were
186 associated with less social vulnerability, with a mean SVI of 0.36 compared with 0.44 in Primed
187 and 0.47 in Unvaccinated ($p < 0.001$). Primed and Unvaccinated looked similar in terms of SVI,
188 comorbidities, and acute COVID-19 symptoms. Boosted reported fewer acute COVID-19
189 symptoms, with a mean of 4.7 acute symptoms compared with 5.7 in Primed and 5.6 in
190 Unvaccinated ($p = 0.009$). Systemic symptoms (fever, chills and muscle or body aches) and
191 congestion/ runny nose among Boosted were significantly lower than Primed and Unvaccinated.

192

193 Long COVID-19 risk and symptoms

194 *Time trends through Month 6*

195 Prevalence rates of long COVID-19 by assessment time and vaccination status are presented in
196 Table 2 and Supplemental Figure 3. Overall, 39.6%, 37.3% and 35.0% experienced ≥ 3
197 symptoms at Week 4, Month 3 and 6, respectively. The most prevalent symptom was
198 consistently reported to be “Fatigue or Tiredness”, experienced by 41.2%, 37.3% and 38.8% at
199 Week 4, Month 3 and 6, respectively.

200 Figure 1 illustrates time trends of prevalence rates of long COVID symptoms by vaccination
201 status. Across all time points, the Boosted line appeared below and separated from the ones of
202 Unvaccinated and Primed when using the base case definition of long COVID with a cut-off of
203 ≥ 3 symptoms (Figure 1a), as well as when using a cutoff of ≥ 2 symptoms (Figure 1b). Figures
204 1c-1f show the prevalence rates of long COVID by body system: across all time points and
205 symptom type, the Boosted line appeared below and separated from the ones of Unvaccinated
206 and Primed. Among Boosted, declines were visible at Month 6 in Respiratory and Cardiac
207 Symptoms, General Symptoms, and Neurologic Symptoms.

208

209 From Week 4 to Month 6, noticeable improvements were observed among Boosted in several
210 symptoms, such as Tiredness or Fatigue (32.2% to 22.4%), Cough (24.1% to 0.0%), Difficulty
211 thinking or concentrating (19.5% to 7.5%), Difficulty breathing or shortness of breath (14.9% to
212 4.5%), Sleep problems (16.1% to 4.5%), and Symptoms that get worse after physical or mental
213 activities (9.2% to 1.5%). Supplemental Figures 4 and 5 illustrate, respectively, time trends of
214 the mean numbers of symptoms by vaccination status, and the proportions of participants
215 reporting no symptoms over time: the Boosted lines were consistently separated from the ones of
216 Unvaccinated and Primed.

217

218 *Week 4*

219 At long COVID start, participants reported a mean of 3.1 symptoms. Boosted reported fewer
220 symptoms: on average, 2.0 symptoms, significantly lower than 3.1 in Primed and 3.7 in
221 Unvaccinated ($p=0.002$). The prevalence of long COVID (≥ 3 symptoms) was 29.9%, 41.9%, and
222 43.9% among Boosted, Primed and Unvaccinated, respectively, being directionally lower in
223 Boosted ($p=0.091$). Relative to Unvaccinated, all symptoms' prevalence rates were numerically
224 lower in Boosted, and numerically lower or similar relative to Primed. Several symptoms were
225 significantly lower: symptoms worsening after physical or mental activities (8.5%), General
226 pain/discomfort (5.8%), Change in smell or taste (5.8%), Headache (11.5%), Memory loss
227 (4.6%), and Diarrhea (3.5%) (Table 2).

228

229 *Month 3*

230 At Month 3, the prevalence of long-COVID was 23.3%, 41.6%, and 42.3% among Boosted,
231 Primed and Unvaccinated, respectively, being lowest in Boosted ($p=0.016$). Study participants
232 reported a mean of 2.7 symptoms. Subjects Boosted reported on average 1.4 symptoms,
233 significantly lower than 2.8 in Primed and 3.3 in Unvaccinated ($p=0.001$). (Table 2) All
234 symptoms' prevalence rates were numerically lower in Boosted compared to Unvaccinated and
235 Primed. Significantly lower rates were reported for Boosted for General pain/discomfort (4.1%),
236 Headache (8.2%), Dizziness on standing (lightheadedness) (4.1%), Difficulty thinking or
237 concentrating (15.1%), Sleep problems (11.0%), Mood changes (2.7%), and Memory loss (0.0%)
238 (Table 2).

239

240 *Month 6*

241 At the end of the study period, the prevalence of long-COVID was 14.9%, 37.5%, and 44.6%
242 among Boosted, Primary and Unvaccinated, respectively, being lowest among Boosted
243 ($p < 0.001$). Odds Ratios (OR) calculated based on observed data showed that pre-COVID booster
244 vaccination was associated with a reduced risk of long COVID (expressed as ≥ 3 symptoms)
245 versus Unvaccinated (OR=0.22, 95% CI: 0.10-0.47, $p < 0.001$) and Primed (OR=0.29, 95% CI:
246 0.12-0.67, $p = 0.003$). Those Primed were associated with a non-significant reduction in the odds
247 of long COVID against Unvaccinated (OR=0.74, 95% CI: 0.41-1.35, $p = 0.332$). The logistic
248 regression model provided a similar result of reduced odds of long COVID for Boosted versus
249 Unvaccinated (OR=0.36, 95% CI: 0.15-0.87, $p = 0.019$), and a non-significant reduction in the
250 odds of long COVID against Primed (OR=0.59, 95% CI: 0.21-1.65, $p = 0.459$). Similarly, a non-
251 significant reduction in the odds of long COVID was estimated for Primed versus Unvaccinated
252 (OR=0.60, 95% CI: 0.27-1.34, $p = 0.296$). Results were consistent when using an alternative
253 definition of long COVID as ≥ 2 symptoms (Table 3).

254 Study participants reported a mean of 2.7 symptoms at 6 months. The average number of
255 symptoms was 1.1 in Boosted, significantly lower than 2.8 in Primed and 3.4 in Unvaccinated
256 ($p < 0.001$) (Table 2). All symptoms' prevalence rates were numerically lower or similar in
257 Boosted compared with Unvaccinated and Primed. Significantly lower rates were reported in
258 Boosted for Tiredness or Fatigue (22.4%), Symptoms that get worse after physical or mental
259 activities, (1.5%), General pain/discomfort (3.0%), Difficulty breathing or shortness of breath
260 (4.5%), Cough (0.0%), Fast-beating or pounding heart (4.5%), Headache (7.5%), Difficulty
261 thinking or concentrating (7.5%), Sleep problems (4.5%), Mood changes (4.5%), Memory loss
262 (3.0%) (Table 2).

263

264 **EQ-5D-5L**

265 The study participants with long COVID (≥ 3 symptoms at Week 4, N=130) reported a pre-
266 COVID mean EQ-VAS and Utility Index (UI) scores of, respectively, 84.9 and 0.879 (Table 4).

267 Such values were not significantly different by vaccination status.

268 At Week 4, the observed (Table 4) and model-based (Table 5) EQ-VAS scores were lower than
269 pre-COVID, regardless of vaccination status (not significantly for Primed according to the
270 model-based estimates). The observed EQ-VAS scores for the entire long COVID population
271 were numerically similar between Week 4 (74.2) and Month 6 (74.5), and, by the end of the
272 study period, they did not return to pre-COVID levels. The observed EQ-VAS scores in
273 Unvaccinated and Primed were still significantly lower than pre-COVID at Month 3 and 6; only
274 Boosted reported EQ-VAS levels not different than pre-COVID at Month 3 ($p=0.266$) and
275 Month 6 ($p=0.121$). The model-based EQ-VAS scores were numerically lower at Month 3 and 6
276 regardless of vaccination status, while not significantly different from pre-COVID, except for
277 Primed at Month 6 (Table 5).

278 Both observed (Table 4) and model-based (Table 5) UI scores were lower than pre-COVID for
279 Unvaccinated and Primed for Month 3 and 6 while not different among Boosted. Consistently,
280 the model-based UI scores of Boosted were not different from pre-COVID at Month 3, 6 and
281 since Week 4, too (Table 5).

282 The observed UIs values for the entire long-COVID population were numerically similar
283 between Week 4 (0.74), Month 3 (0.74) and 6 (0.73) and did not return to pre-COVID levels.
284 Such effect was driven by the detrimental effect of COVID-19 reported by Unvaccinated and
285 Primed. At Week 4, the mean UI change from pre-COVID in Boosted was significantly lower

286 than in Unvaccinated based on observed data and numerically lower according to model-based
287 estimates.

288 The mean changes in UIs from pre-COVID in Boosted were significantly lower versus
289 Unvaccinated at Month 3 and 6 based on both observed and model estimates, with medium-to-
290 high effect sizes. The mean changes from pre-COVID in UIs reported by Boosted were
291 significantly lower than Primed at Month 3 and 6 based on both observed and model estimates,
292 with medium-to-high effect sizes.

293 The impact of COVID-19 on the HRQoL was detrimental for participants with long COVID, but
294 significantly less so for Boosted, the group with the highest UI and EQ-VAS scores during the 6-
295 month study period.

296

297 **WPAI**

298 The WPAI analyses had a smaller eligible population and were impacted by small sample size.

299 A total of 85 long COVID study participants (66%) reported being currently employed at Week
300 4 and were eligible to complete the work productivity questions. Of those, 42 (49%)

301 Unvaccinated, 26 (31%) Primed and 17 (20%) Boosted.

302 Participants reported a pre-COVID mean Work Productivity (WP) loss of 15.1% (Table 4). Such
303 values were not significantly different by vaccination status. At Week 4, the observed WP loss
304 increased substantially to 31.7%. The observed WP loss scores for the entire long-COVID
305 population were numerically similar between Week 4 (31.7%), Month 3 (26.1%) and Month 6
306 (33.9%), and did not return to pre-COVID levels. Such effect was driven by the detrimental
307 effect of COVID-19 reported by Unvaccinated. At Week 4, both observed and model-based WP
308 scores were significantly lower than pre-COVID for the Unvaccinated. At Month 3 and 6, the

309 observed and model-based mean change in WP levels were not significantly different than pre-
310 COVID for Boosted and Primed (non-significant for model-based estimated for Boosted at
311 Month 6), suggesting a return to pre-COVID levels for these vaccinated groups only.
312 The long COVID study participants (N=130) reported a pre-COVID mean Activity Impairment
313 (AI) of 21.3% (Table 4). Such values were not significantly different by vaccination status. At
314 Week 4, the observed AI increased substantially to 38.1%. The observed AI scores for the entire
315 long-COVID population were numerically similar between Week 4 (38.1%), Month 3 (31.7%)
316 and Month 6 (37.5%), and did not return to pre-COVID levels. Such effect was driven by the
317 detrimental effect of COVID-19 reported by Unvaccinated, who reported the highest AI across
318 all time points. At Week 4, the mean change from pre-COVID was significantly lower than
319 Unvaccinated for Boosted and Primed based on both the observed and model-based estimates. At
320 Month 3 and Month 6, all groups were still highly impacted; subjects Boosted reported the
321 lowest AI levels.
322

323 Discussion

324 In this national observational study conducted among US symptomatic outpatients with a
325 documented SARS-CoV-2 infection, long COVID had a detrimental effect on well-being, work
326 productivity and activity levels. Long COVID symptoms were found persistent over 6 months in
327 over a third of the study cohort, resulting in prolonged limitation of activities and work
328 productivity. Compared with Primed and Unvaccinated, subjects Boosted with BNT162b2 prior
329 to a breakthrough infection were associated with significantly lower likelihood of long COVID
330 onset, fewer symptoms, and faster improvement over time. Positive trends in the outcomes
331 assessed were observed for Primed versus Unvaccinated, although generally not statistically
332 significant, most likely due to the relatively long mean time since last dose for Primed. The
333 prevalence of enduring symptoms after a mild COVID infection in this study was generally
334 consistent with published literature[1-5, 8]. The protective association was consistent based on
335 observed and model-based analyses and using alternative definitions of long COVID. These
336 findings support growing research and consensus that prior COVID-19 vaccination may have a
337 protective effect against long COVID [4-8].

338 This study has several strengths compared with prior research. From a novelty perspective, this
339 study is one of a limited number assessing diverse PROs associated with long COVID in a
340 nationwide real-world source population. As such, it contributes a holistic picture of the long-
341 term humanistic outcomes of COVID-19, assessed directly from a patient's perspective. From an
342 internal validity perspective, the study enrolled patients within days from testing positive and
343 prospectively collected survey-based data, potentially reducing recall bias risks. Moreover, the
344 study leveraged widely used validated PRO instruments (EQ-5D-5L, WPAI) and a questionnaire
345 capturing a comprehensive symptoms list aligned to CDC research on long COVID [1]. With

346 asymptomatic infections excluded by design, our estimates can be interpreted exclusively as
347 related to symptomatic disease, potentially reducing the risk of overestimating the prevalence of
348 long COVID among symptomatic. Further, both observed and model-based analyses yielded
349 consistent results, and our findings were robust using alternative case definitions. Finally, with
350 all study activities carried out virtually, this study piloted an innovative approach to agile and
351 digitally enabled research during a pandemic.

352 The study is subject to several limitations. As previously described [9], all data collected was
353 self-reported, subject to missingness, errors, recall bias, social desirability bias and selection bias
354 associated with survey drop-off. Out of 328 participants, 21% dropped off at Month 6, possibly
355 due to response fatigue and/or survey burden. Such drop-off rate should be interpreted in the
356 context of participants being asked not to skip surveys. Such a strict requirement allowed for a
357 clean assessment of changes in outcomes prevalence over time, but at the cost of attrition. Other
358 limitations included the female over-representation, the relatively healthy status of the source
359 population, and the fact that the study focused on adults only [9]. Further, the long COVID
360 definitions used were based on presence of symptoms, with no assessment of severity of
361 symptoms. Despite adjusting for several covariates, risk of residual confounding remains.
362 Finally, these findings may not be generalizable to prior or future variants, other countries, time
363 periods and populations that were excluded.

364 Booster vaccination with BNT162b2 has been shown to be safe and effective at reducing the risk
365 of infection and potentially protective against long COVID [6, 8]; this study shows its potential
366 beneficial effect in preventing long COVID and attenuating its burden. These outcomes can
367 inform estimation of quality-adjusted life years and indirect costs. While this study contributes to

368 addressing knowledge gaps related to long COVID, the characterization of long COVID
369 continues to evolve [28-30]. Future studies could corroborate these findings with different data
370 collection methods and designs, considering a non-COVID comparator, longer follow-up times,
371 use of COVID-19 specific validated instruments, as well as if these protective effects may
372 minimize impact on other individuals and households.

373 Conclusions

374 Long COVID had a detrimental effect on well-being, work productivity and activity levels.
375 Booster vaccination with BNT162b2 generally offered the highest level of protection against
376 long COVID. The booster was associated with less symptomatic infection and faster
377 improvement, with boosted subjects experiencing the lowest number of symptoms over time.
378 This, in turn, contributed to improved HRQoL and maintained productivity and activities. These
379 findings support current recommendations for broad use of BNT162b2.

380

381 Abbreviations

382 ANOVA: Analysis of variance; CDC: Centers for Disease Control and Prevention; CI:
383 confidence interval; ES: effect size; SD: standard deviation; SVI: social vulnerability index; UI:
384 utility index; VAS: visual analogue scale; WPAI: work productivity and impairment.

385

386 **Declarations**

387 **Ethics approval and consent to participate**

388 This study was approved by the Sterling IRB, Protocol #C4591034. Participation in the study
389 was voluntary and anonymous. Consent was obtained electronically via the CVS Health E-
390 Consent platform. Participants were informed of their right to refuse or withdraw from the study
391 at any time. Participants were compensated for their time.

392 **Consent for publication**

393 All authors have given their approval for this manuscript version to be published.

394 **Availability of data and materials**

395 Aggregated data that support the findings of this study are available upon reasonable request
396 from the corresponding author MDF, subject to review. These data are not publicly available due
397 to them containing information that could compromise research participant privacy/consent.

398 **Competing interests**

399 MDF, MMM, JMZ, LP, MBA and JCC are employees of Pfizer and may hold stock or stock
400 options of Pfizer. XS and HC are employees of CVS Health and may hold stock of CVS health.
401 YPT was employee of CVS Health when current study was conducted.

402 **Funding**

403 This study was sponsored by Pfizer Inc.

404 **Author contributions**

405 All named authors meet the International Committee of Medical Journal Editors (ICMJE) criteria
406 for authorship for this article. XS: Conceptualization, Methodology, Data curation, Formal
407 analysis, Writing - original draft. MDF and YP: Investigation, Project administration,

408 Conceptualization, Writing - Review & editing. MMM, HC, LP, MBA, and JMZ:

409 Conceptualization, Writing - Review & editing. JCC: Conceptualization, Methodology, Formal
410 analysis, Writing - Review & editing.

411 Acknowledgements

412 The authors acknowledge Nancy Gifford (Pfizer employee), Joseph Ferenchick, Shiyu Lin and
413 Shawn Edmonds (CVS Health employees) for specific contributions to this research project.

414 Editorial support was provided by Laura Anatale-Tardiff and Leena Samuel at CVS Health and
415 was funded by Pfizer.

416 References

- 417 1. Centers for Disease Control and Prevention. Long COVID or Post-COVID Conditions.
418 <https://www.cdc.gov/coronavirus/2019-ncov/long-term-effects/index.html> Accessed August 15,
419 2022.
- 420 2. Ledford H (2022) How common is long COVID? Why studies give different answers. *Nature*.
421 606(7916):852-3.
- 422 3. Robertson M, Qasmieh S, Kulkarni S, Teasdale CA, Jones HE, McNairy M, Borrell LN, Nash D
423 (2022) The epidemiology of long COVID in US adults two years after the start of the US SARS-
424 CoV-2 pandemic. medRxiv.
- 425 4. Azzolini E, Levi R, Sarti R, Pozzi C, Mollura M, Mantovani A, Rescigno M (2022) Association
426 between BNT162b2 vaccination and long COVID after infections not requiring hospitalization in
427 health care workers. *Jama*. 328(7):676-8.
- 428 5. Al-Aly Z, Bowe B, Xie Y (2022) Long COVID after breakthrough SARS-CoV-2 infection.
429 *Nature Medicine*. 1-7.
- 430 6. Notarte KI, Catahay JA, Velasco JV, Pastrana A, Ver AT, Pangilinan FC, Peligro PJ, Casimiro
431 M, Guerrero JJ, Gellaco MML (2022) Impact of COVID-19 vaccination on the risk of developing
432 long-COVID and on existing long-COVID symptoms: A systematic review. *EClinicalMedicine*.
433 53:101624.
- 434 7. Ioannou GN, Baraff A, Fox A, Shahoumian T, Hickok A, O'Hare AM, Bohnert AS, Boyko EJ,
435 Maciejewski ML, Bowling CB (2022) Rates and Factors Associated With Documentation of
436 Diagnostic Codes for Long COVID in the National Veterans Affairs Health Care System. *JAMA*
437 *Netw Open*. 5(7):e2224359. 10.1001/jamanetworkopen.2022.24359.
- 438 8. Byambasuren O, Stehlik P, Clark J (2023) Effect of covid-19 vaccination on long covid:
439 systematic review. *BMJ Med*. 2:e000385.
- 440 9. Di Fusco M, Sun X, Moran MM, Coetzer H, Zamparo JM, Puzniak L, Alvarez MB, Tabak YP,
441 Cappelleri JC (2022) Impact of COVID-19 and effects of BNT162b2 on patient-reported
442 outcomes: quality of life, symptoms, and work productivity among US adult outpatients. *Journal*
443 *of Patient-Reported Outcomes*. 6.
- 444 10. CDC/ATSDR Social Vulnerability Index.
445 <https://www.atsdr.cdc.gov/placeandhealth/svi/index.html> Accessed May 24, 2021.

- 446 11. Centers for Disease Control and Prevention. Updates - Symptoms of COVID-19.
447 <https://www.cdc.gov/coronavirus/2019-ncov/symptoms-testing/symptoms.html> Accessed August
448 1 2021.
- 449 12. Landry M, Bornstein S, Nagaraj N, Sardon Jr GA, Castel A, Vyas A, McDonnell K, Agneshwar
450 M, Wilkinson A, Goldman L (2023) Postacute Sequelae of SARS-CoV-2 in University Setting.
451 *Emerging Infectious Diseases*. 29(3).
- 452 13. Perlis RH, Santillana M, Ognyanova K, Safarpour A, Trujillo KL, Simonson MD, Green J,
453 Quintana A, Druckman J, Baum MA (2022) Prevalence and correlates of long COVID symptoms
454 among US adults. *JAMA network open*. 5(10):e2238804-e.
- 455 14. O'Mahoney LL, Routen A, Gillies C, Ekezie W, Welford A, Zhang A, Karamchandani U, Simms-
456 Williams N, Cassambai S, Ardavani A (2023) The prevalence and long-term health effects of
457 Long Covid among hospitalised and non-hospitalised populations: A systematic review and meta-
458 analysis. *EClinicalMedicine*. 55:101762.
- 459 15. Gottlieb M, Wang R, Yu H, Spatz ES, Montoy JC, Rodriguez R, Chang AM, Elmore JG,
460 Hannikainen PA, Hill M (2023) Severe Fatigue and Persistent Symptoms at Three Months
461 Following SARS-CoV-2 Infections During the Pre-Delta, Delta, and Omicron Time Periods: A
462 Multicenter Prospective Cohort Study. *Clinical Infectious Diseases*.ciad045.
- 463 16. Spatz ES, Gottlieb M, Wisk LE, Anderson J, Chang AM, Gentile NL, Hill MJ, Huebinger RM,
464 Idris AH, Kinsman J (2022) Three-Month Symptom Profiles Among Symptomatic Adults With
465 Positive and Negative Severe Acute Respiratory Syndrome Coronavirus 2 (SARS-CoV-2) Tests:
466 A Prospective Cohort Study From the INSPIRE Group. *Clinical Infectious Diseases*.ciac966.
- 467 17. EuroQol Research Foundation. (2019) EQ-5D-5L User Guide, Version 3.0.
468 <https://euroqol.org/publications/user-guides> Accessed August 5, 2021.
- 469 18. Pickard AS, Law EH, Jiang R, Pullenayegum E, Shaw JW, Xie F, Oppe M, Boye KS, Chapman
470 RH, Gong CL, Balch A, Busschbach JJV (2019) United States Valuation of EQ-5D-5L Health
471 States Using an International Protocol. *Value Health*. 22(8):931-41. 10.1016/j.jval.2019.02.009.
- 472 19. Reilly MC, Zbrozek AS, Dukes EM (1993) The validity and reproducibility of a work
473 productivity and activity impairment instrument. *Pharmacoeconomics*. 4(5):353-65.
- 474 20. Reilly Associates. (2002) WPAI Scoring. http://www.reillyassociates.net/WPAI_Scoring.html
475 Accessed August 5, 2021.
- 476 21. Rosner B (2015) *Fundamentals of biostatistics*. Eighth ed. Cengage learning, Boston, MA
- 477 22. Freeman G, Halton JH (1951) Note on an exact treatment of contingency, goodness of fit and
478 other problems of significance. *Biometrika*. 38(1/2):141-9.
- 479 23. Tukey J (1953) Multiple comparisons. *Journal of the American Statistical Association*.
480 48(263):624-5.
- 481 24. Fitzmaurice GM, Laird NM, Ware JH (2012) *Applied longitudinal analysis*. John Wiley & Sons,
482 Hoboken, NJ
- 483 25. Cohen J (1988) *Statistical power analysis for the behavioral sciences*. 2nd ed. Lawrence Erlbaum
484 Assoc, Hillsdale, NJ.
- 485 26. McLeod LD, Cappelleri JC, Hays RD (2016) Best (but oft-forgotten) practices: expressing and
486 interpreting associations and effect sizes in clinical outcome assessments. *The American journal*
487 *of clinical nutrition*. 103(3):685-93. Erratum: 2017; 105:241. 2016
488 <https://doi.org/10.3945/ajcn.115.120378>. Erratum: 2017 <https://doi.org/10.3945/ajcn.116.148593>.
- 489 27. STROBE Statement—Checklist of items that should be included in reports of cohort studies.
490 <https://www.strobe-statement.org/download/strobe-checklist-cohort-studies-pdf> Accessed August
491 5, 2022.
- 492 28. Global Burden of Disease Long COVID Collaborators (2022) Estimated Global Proportions of
493 Individuals With Persistent Fatigue, Cognitive, and Respiratory Symptom Clusters Following
494 Symptomatic COVID-19 in 2020 and 2021. *JAMA*. 328(16):1604-15. 10.1001/jama.2022.18931.

- 495 29. Lubell J. (2022) Long COVID: Over 200 symptoms, and a search for guidance. <https://www.ama->
496 [assn.org/delivering-care/public-health/long-covid-over-200-symptoms-and-search-guidance](https://www.ama-assn.org/delivering-care/public-health/long-covid-over-200-symptoms-and-search-guidance)
497 Accessed December 27, 2022.
- 498 30. World Health Organization. A clinical case definition of post COVID-19 condition by a Delphi
499 consensus, 6 October 2021. <https://www.who.int/publications/i/item/WHO-2019-nCoV->
500 [Post_COVID-19_condition-Clinical_case_definition-2021.1](https://www.who.int/publications/i/item/WHO-2019-nCoV-Post_COVID-19_condition-Clinical_case_definition-2021.1) Accessed December 27, 2022.
501
- 502

503	List of Tables	
504	Table 1 Baseline Demographic and Clinical Characteristics of Study Participants at Week 4	24
505	Table 2. Summary of Post-COVID-19 Symptoms at 1-, 3- and 6-month follow-up.....	27
506	Table 3. Long COVID Symptoms at Month 6 by Vaccination Status: Observed and Model-based	
507	Estimates.....	30
508	Table 4. Summary of Observed EQ-5D-5L and WPAI scores by assessment time and vaccination	
509	status in long COVID subjects.....	31
510	Table 5. Least-Square Mean Estimates and 95% CI of EQ-5D-5L and WPAI-GH scores in long	
511	COVID subjects.....	34
512		
513	List of Figures	
514	Figure 1. Trajectory of prevalence of long COVID over time, by vaccination status and type....	37
515		
516	List of Supplemental Figures	
517	Supplemental Figure 1 Study Flow Chart	38
518	Supplemental Figure 2 Questionnaire on long COVID symptoms.....	39
519	Supplemental Figure 3 Prevalence of long COVID symptoms by vaccination status	40
520	Supplemental Figure 4 Number of symptoms over time by vaccination status	42
521	Supplemental Figure 5 Absence of long COVID symptoms by vaccination status	43
522		
523		

524 Table 1 Baseline Demographic and Clinical Characteristics of Study Participants at Week 4

	All	Boosted	Primed	Unvaccinated	P value ^a
Total, n (%)	328	87 (26.5)	86 (26.2)	155 (47.3)	
Age, years					
Mean, SD	42.0 (14.5)	44.3 (17.0)	41.7 (14.2)	40.9 (13.0)	0.200
18-29	73 (22.3%)	18 (20.7%)	23 (26.7%)	32 (20.6%)	0.110
30-49	160 (48.8%)	40 (46.0%)	34 (39.5%)	86 (55.5%)	
50-64	67 (20.4%)	17 (19.5%)	23 (26.7%)	27 (17.4%)	
≥65	28 (8.5%)	12 (13.8%)	6 (7.0%)	10 (6.5%)	
Gender					0.165
Female	242 (73.8%)	58 (66.7%)	68 (79.1%)	116 (74.8%)	
Male	86 (26.2%)	29 (33.3%)	18 (20.9%)	39 (25.2%)	
Race / Ethnicity					0.104
White or Caucasian (not Hispanic or Latino)	234 (71.3%)	63 (72.4%)	65 (75.6%)	106 (68.4%)	
Black or African American	13 (4.0%)	2 (2.3%)	2 (2.3%)	9 (5.8%)	
Hispanic	44 (13.4%)	9 (10.3%)	16 (18.6%)	19 (12.3%)	
Asian	16 (4.9%)	7 (8.1%)	2 (2.3%)	7 (4.5%)	
Patient Refused	9 (2.7%)	4 (4.6%)	0 (0.0%)	5 (3.2%)	
Other	12 (3.7%)	2 (2.3%)	1 (1.2%)	9 (5.8%)	
CMS Geographic Region (n, %)					0.009
Region 1: ME, NH, VT, MA, CT, RI	15 (4.6%)	4 (4.6%)	4 (4.7%)	7 (4.5%)	
Region 2: NY, NJ, PR, VI	9 (2.7%)	4 (4.6%)	2 (2.3%)	3 (1.9%)	
Region 3: PA, DE, MD, DC, WV, VA	31 (9.5%)	11 (12.6%)	8 (9.3%)	12 (7.7%)	
Region 4: KY, TN, NC, SC, GA, MS, AL, FL	116 (35.4%)	29 (33.3%)	26 (30.2%)	61 (39.4%)	
Region 5: MN, WI, IL, MI, IN, OH	47 (14.3%)	10 (11.5%)	17 (19.8%)	20 (12.9%)	
Region 6: NM, OK, AR, TX, LA	59 (18.0%)	19 (21.8%)	21 (24.4%)	19 (12.3%)	
Region 7: NE, IA, KS, MO	16 (4.9%)	3 (3.5%)	6 (7.0%)	7 (4.5%)	
Region 8: MT, ND, SD, WY, UT, CO	1 (0.3%)	1 (1.2%)	0 (0.0%)	0 (0.0%)	
Region 9: CA, NV, AZ, GU	33 (10.1%)	5 (5.8%)	2 (2.3%)	26 (16.8%)	
Region 10: AK, WA, OR, ID	1 (0.3%)	1 (1.2%)	0 (0.0%)	0 (0.0%)	
US Geographic Region					0.012
Northeast	41 (12.5%)	11 (12.6%)	11 (12.8%)	19 (12.3%)	
South	188 (57.3%)	56 (64.4%)	50 (58.1%)	82 (52.9%)	
Midwest	63 (19.2%)	13 (14.9%)	23 (26.7%)	27 (17.4%)	
West	36 (11.0%)	7 (8.1%)	2 (2.3%)	27 (17.4%)	
Previously Tested Positive	121 (36.9%)	32 (36.8%)	28 (32.6%)	61 (39.4%)	0.578

	All	Boosted	Primed	Unvaccinated	P value ^a
Work in healthcare	37 (11.3%)	9 (10.3%)	13 (15.1%)	15 (9.7%)	0.419
Work in high-risk setting	33 (10.1%)	8 (9.2%)	14 (16.3%)	11 (7.1%)	0.072
Live in high-risk setting	16 (4.9%)	3 (3.5%)	6 (7.0%)	7 (4.5%)	0.537
Social vulnerability index, Mean (SD) ^b	0.43 (0.22)	0.36 (0.20)	0.44 (0.22)	0.47 (0.21)	<0.001
Self-Reported Comorbidity					
Number of comorbidities, Mean (SD)	0.35 (0.65)	0.39 (0.62)	0.41 (0.77)	0.30 (0.59)	0.363
Asthma or Chronic Lung Disease	30 (9.2%)	11 (12.6%)	7 (8.1%)	12 (7.7%)	0.416
Cirrhosis of the liver	1 (0.3%)	0 (0.0%)	1 (1.2%)	0 (0.0%)	0.264
Immunocompromised Conditions or Weakened Immune System ^c	16 (4.9%)	0 (0.0%)	10 (11.6%)	6 (3.9%)	0.001
Diabetes	11 (3.4%)	4 (4.6%)	3 (3.5%)	4 (2.6%)	0.674
Heart Conditions or Hypertension	41 (12.5%)	14 (16.1%)	9 (10.5%)	18 (11.6%)	0.481
Overweight or obesity	16 (4.9%)	5 (5.8%)	5 (5.8%)	6 (3.9%)	0.725
At least 1 comorbidity	87 (26.5%)	28 (32.2%)	24 (27.9%)	35 (22.6%)	0.253
Index day ^d acute COVID-19 symptoms					
Number of acute COVID-19 symptoms, Mean (SD)	5.4 (2.6)	4.7 (2.5)	5.7 (2.5)	5.6 (2.6)	0.009
Systemic symptoms					
Fever	127 (38.7%)	22 (25.3%)	35 (40.7%)	70 (45.2%)	0.009
Chills	165 (50.3%)	27 (31.0%)	48 (55.8%)	90 (58.1%)	<0.001
Muscle or Body Aches	183 (55.8%)	36 (41.4%)	52 (60.5%)	95 (61.3%)	0.007
Headache	224 (68.3%)	51 (58.6%)	62 (72.1%)	111 (71.6%)	0.077
Fatigue	204 (62.2%)	48 (55.2%)	56 (65.1%)	100 (64.5%)	0.288
Respiratory symptoms					
Shortness of Breath or Difficulty Breathing	42 (12.8%)	6 (6.9%)	13 (15.1%)	23 (14.8%)	0.157
Cough	243 (74.1%)	65 (74.7%)	63 (73.3%)	115 (74.2%)	0.976
Sore Throat	187 (57.0%)	53 (60.9%)	50 (58.1%)	84 (54.2%)	0.580
New/Recent Loss of Taste or Smell	35 (10.7%)	7 (8.1%)	13 (15.1%)	15 (9.7%)	0.276
Congestion or Runny Nose	247 (75.3%)	69 (79.3%)	72 (83.7%)	106 (68.4%)	0.018
GI symptoms					
Nausea or Vomiting	42 (12.8%)	7 (8.1%)	11 (12.8%)	24 (15.5%)	0.251
Diarrhea	69 (21.0%)	14 (16.1%)	15 (17.4%)	40 (25.8%)	0.131

525 SD: Standard Deviation

526 ^a P value refers to the comparison among Boosted, Primary and Unvaccinated.

527 ^b SVI ranges from 0 to 1. A community with higher value is more socially vulnerable
528 ^c Immunocompromised conditions includes compromised immune system (such as from
529 immuno-compromising drugs, solid organ or blood stem cell transplant, HIV, or other
530 conditions), conditions that result in a weakened immune system, including cancer treatment,
531 and kidney failure or end stage renal disease
532 ^d COVID-19 test nasal swab day
533
534

535 Table 2. Summary of Post-COVID-19 Symptoms at 1-, 3- and 6-month follow-up

	All	Boosted	Primed	Unvaccinated	P value
Month 1					
n	328	87	86	155	.
Mean (SD)	3.1 (3.6)	2.0 (2.3)	3.1 (3.5)	3.7 (4.1)	0.002
≥3 symptoms	130 (39.6%)	26 (29.9%)	36 (41.9%)	68 (43.9%)	0.091
General symptoms					
≥1 symptom	154 (47.0%)	35 (40.2%)	44 (51.2%)	75 (48.4%)	0.314
Tiredness or fatigue	135 (41.2%)	28 (32.2%)	42 (48.8%)	65 (41.9%)	0.081
Symptoms that get worse after physical or mental activities	50 (15.2%)	8 (9.2%)	10 (11.6%)	32 (20.6%)	0.033
Fever	1 (0.3%)	0 (0.0%)	0 (0.0%)	1 (0.7%)	1.000
General pain/discomfort	50 (15.2%)	5 (5.8%)	15 (17.4%)	30 (19.4%)	0.015
Respiratory and cardiac					
≥1 symptom	142 (43.3%)	34 (39.1%)	34 (39.5%)	74 (47.7%)	0.305
Difficulty breathing or shortness of breath	58 (17.7%)	13 (14.9%)	13 (15.1%)	32 (20.6%)	0.412
Cough	86 (26.2%)	21 (24.1%)	19 (22.1%)	46 (29.7%)	0.385
Chest or stomach pain	32 (9.8%)	4 (4.6%)	10 (11.6%)	18 (11.6%)	0.162
Fast-beating or pounding heart (also known as heart palpitations)	38 (11.6%)	6 (6.9%)	11 (12.8%)	21 (13.5%)	0.276
Neurologic					
≥1 symptom	161 (49.1%)	38 (43.7%)	45 (52.3%)	78 (50.3%)	0.479
Change in smell or taste	51 (15.5%)	5 (5.8%)	14 (16.3%)	32 (20.6%)	0.009
Headache	67 (20.4%)	10 (11.5%)	18 (20.9%)	39 (25.2%)	0.040
Dizziness on standing (lightheadedness)	45 (13.7%)	7 (8.1%)	13 (15.1%)	25 (16.1%)	0.195
Difficulty thinking or concentrating (sometimes referred to as “brain fog”)	86 (26.2%)	17 (19.5%)	26 (30.2%)	43 (27.7%)	0.234
Pins-and-needles feeling	24 (7.3%)	3 (3.5%)	7 (8.1%)	14 (9.0%)	0.263
Sleep problems	81 (24.7%)	14 (16.1%)	21 (24.4%)	46 (29.7%)	0.063
Mood changes	36 (11.0%)	6 (6.9%)	7 (8.1%)	23 (14.8%)	0.102
Memory loss	38 (11.6%)	4 (4.6%)	7 (8.1%)	27 (17.4%)	0.006
Other					
≥1 symptom	106 (32.3%)	19 (21.8%)	28 (32.6%)	59 (38.1%)	0.035
Diarrhea	23 (7.0%)	3 (3.5%)	3 (3.5%)	17 (11.0%)	0.036
Joint or muscle pain	66 (20.1%)	10 (11.5%)	18 (20.9%)	38 (24.5%)	0.052
Rash	11 (3.4%)	2 (2.3%)	1 (1.2%)	8 (5.2%)	0.229
Changes in period cycles	28 (11.6%)	4 (6.9%)	8 (11.8%)	16 (13.8%)	0.447
Month 3					
n	292	73	77	142	

	All	Boosted	Primed	Unvaccinated	P value
Mean (SD)	2.7 (3.5)	1.4 (1.9)	2.8 (3.5)	3.3 (4.0)	0.001
≥3 symptoms	109 (37.3%)	17 (23.3%)	32 (41.6%)	60 (42.3%)	0.016
General symptoms					
≥1 symptom	121 (41.4%)	24 (32.9%)	32 (41.6%)	65 (45.8%)	0.192
Tiredness or fatigue	108 (37.0%)	21 (28.8%)	31 (40.3%)	56 (39.4%)	0.242
Symptoms that get worse after physical or mental activities	36 (12.3%)	5 (6.9%)	11 (14.3%)	20 (14.1%)	0.259
Fever	1 (0.3%)	0 (0.0%)	0 (0.0%)	1 (0.7%)	1.000
General pain/discomfort	43 (14.7%)	3 (4.1%)	12 (15.6%)	28 (19.7%)	0.005
Respiratory and cardiac					
≥1 symptom	83 (28.4%)	15 (20.5%)	23 (29.9%)	45 (31.7%)	0.218
Difficulty breathing or shortness of breath	42 (14.4%)	5 (6.9%)	15 (19.5%)	22 (15.5%)	0.077
Cough	38 (13.0%)	8 (11.0%)	9 (11.7%)	21 (14.8%)	0.675
Chest or stomach pain	17 (5.8%)	2 (2.7%)	5 (6.5%)	10 (7.0%)	0.470
Fast-beating or pounding heart (also known as heart palpitations)	29 (9.9%)	3 (4.1%)	9 (11.7%)	17 (12.0%)	0.149
Neurologic					
≥1 symptom	140 (47.9%)	26 (35.6%)	39 (50.6%)	75 (52.8%)	0.049
Change in smell or taste	35 (12.0%)	5 (6.9%)	9 (11.7%)	21 (14.8%)	0.236
Headache	51 (17.5%)	6 (8.2%)	14 (18.2%)	31 (21.8%)	0.044
Dizziness on standing (lightheadedness)	43 (14.7%)	3 (4.1%)	14 (18.2%)	26 (18.3%)	0.006
Difficulty thinking or concentrating (sometimes referred to as “brain fog”)	70 (24.0%)	11 (15.1%)	15 (19.5%)	44 (31.0%)	0.020
Pins-and-needles feeling	28 (9.6%)	4 (5.5%)	9 (11.7%)	15 (10.6%)	0.377
Sleep problems	63 (21.6%)	8 (11.0%)	17 (22.1%)	38 (26.8%)	0.028
Mood changes	31 (10.6%)	2 (2.7%)	6 (7.8%)	23 (16.2%)	0.005
Memory loss	35 (12.0%)	0 (0.0%)	9 (11.7%)	26 (18.3%)	<0.001
Other					
≥1 symptom	88 (30.1%)	16 (21.9%)	25 (32.5%)	47 (33.1%)	0.209
Diarrhea	18 (6.2%)	2 (2.7%)	5 (6.5%)	11 (7.8%)	0.419
Joint or muscle pain	53 (18.2%)	7 (9.6%)	15 (19.5%)	31 (21.8%)	0.083
Rash	9 (3.1%)	4 (5.5%)	0 (0.0%)	5 (3.5%)	0.091
Changes in period cycles	36 (16.7%)	5 (10.4%)	13 (22.0%)	18 (16.7%)	0.278
Month 6					
n	260	67	72	121	.
Mean (SD)	2.7 (3.7)	1.1 (1.8)	2.8 (3.6)	3.4 (4.2)	<0.001
≥3 symptoms	91 (35.0%)	10 (14.9%)	27 (37.5%)	54 (44.6%)	<0.001
General symptoms					

	All	Boosted	Primed	Unvaccinated	P value
≥1 symptom	112 (43.1%)	16 (23.9%)	34 (47.2%)	62 (51.2%)	0.001
Tiredness or fatigue	101 (38.8%)	15 (22.4%)	32 (44.4%)	54 (44.6%)	0.006
Symptoms that get worse after physical or mental activities	28 (10.8%)	1 (1.5%)	8 (11.1%)	19 (15.7%)	0.005
Fever	3 (1.2%)	0 (0.0%)	1 (1.4%)	2 (1.7%)	0.798
General pain/discomfort	36 (13.8%)	2 (3.0%)	10 (13.9%)	24 (19.8%)	0.003
Respiratory and cardiac					
≥1 symptom	68 (26.2%)	4 (6.0%)	18 (25.0%)	46 (38.0%)	<0.001
Difficulty breathing or shortness of breath	32 (12.3%)	3 (4.5%)	7 (9.7%)	22 (18.2%)	0.017
Cough	32 (12.3%)	0 (0.0%)	9 (12.5%)	23 (19.0%)	<0.001
Chest or stomach pain	17 (6.5%)	1 (1.5%)	4 (5.6%)	12 (9.9%)	0.073
Fast-beating or pounding heart (also known as heart palpitations)	29 (11.2%)	3 (4.5%)	7 (9.7%)	19 (15.7%)	0.057
Neurologic					
≥1 symptom	121 (46.5%)	21 (31.3%)	34 (47.2%)	66 (54.5%)	0.009
Change in smell or taste	27 (10.4%)	4 (6.0%)	8 (11.1%)	15 (12.4%)	0.398
Headache	50 (19.2%)	5 (7.5%)	16 (22.2%)	29 (24.0%)	0.017
Dizziness on standing (lightheadedness)	38 (14.6%)	7 (10.4%)	7 (9.7%)	24 (19.8%)	0.084
Difficulty thinking or concentrating (sometimes referred to as “brain fog”)	58 (22.3%)	5 (7.5%)	19 (26.4%)	34 (28.1%)	0.003
Pins-and-needles feeling	27 (10.4%)	3 (4.5%)	8 (11.1%)	16 (13.2%)	0.153
Sleep problems	52 (20.0%)	3 (4.5%)	16 (22.2%)	33 (27.3%)	<0.001
Mood changes	32 (12.3%)	3 (4.5%)	9 (12.5%)	20 (16.5%)	0.043
Memory loss	37 (14.2%)	2 (3.0%)	12 (16.7%)	23 (19.0%)	0.004
Other					
≥1 symptom	76 (29.2%)	14 (20.9%)	23 (31.9%)	39 (32.2%)	0.220
Diarrhea	14 (5.4%)	1 (1.5%)	3 (4.2%)	10 (8.3%)	0.147
Joint or muscle pain	38 (14.6%)	6 (9.0%)	12 (16.7%)	20 (16.5%)	0.314
Rash	5 (1.9%)	1 (1.5%)	0 (0.0%)	4 (3.3%)	0.323
Changes in period cycles	32 (16.8%)	8 (18.6%)	11 (20.0%)	13 (14.0%)	0.596

536

537 Table 3. Long COVID Symptoms at Month 6 by Vaccination Status: Observed and Model-based Estimates

	Descriptive statistics	Observed		Logistic Regression	
		Odds Ratio (95% CI)	P value	Odds Ratio (95% CI)	P value
Base Case: ≥ 3 symptoms					
Boosted vs Unvaccinated	10 (14.9%) vs 54 (44.6%)	0.22 (0.10, 0.47)	<0.001	0.36 (0.15, 0.87)	0.019
Primed vs. Unvaccinated	27 (37.5%) vs 54 (44.6%)	0.74 (0.41, 1.35)	0.332	0.60 (0.27, 1.34)	0.296
Boosted vs Primed	10 (14.9%) vs 27 (37.5%)	0.29 (0.13, 0.67)	0.003	0.59 (0.21, 1.65)	0.459
Sensitivity: ≥ 2 symptoms					
Boosted vs Unvaccinated	14 (20.9%) vs 66 (54.5%)	0.22 (0.11, 0.44)	<0.001	0.30 (0.13, 0.70)	0.003
Primed vs. Unvaccinated	35 (48.6%) vs 66 (54.5%)	0.79 (0.44, 1.41)	0.425	0.64 (0.30, 1.39)	0.370
Boosted vs Primed	14 (20.9%) vs 35 (48.6%)	0.28 (0.13, 0.59)	0.001	0.46 (0.18, 1.20)	0.140

538 Note for logistic regression model: the logistic regression model for number of post-COVID ≥ 3 versus < 3 used GEE estimation with
539 unstructured correlation matrix. Covariates were variables for time, vaccination status and interaction of time by vaccination status, as
540 well as covariates of participant pre-COVID-19 symptom onset score, sociodemographic characteristics (age, sex, regions, social
541 vulnerability, race/ethnicity, high risk occupations), previously tested positive for COVID-19, severity of acute illness (number of
542 symptoms reported on index date), and immunocompromised status.

543

544 Table 4. Summary of Observed EQ-5D-5L and WPAI scores by assessment time and vaccination status in long COVID subjects

		Score		Change from pre-COVID-19			Relative to Unvaccinated			Relative to Primed		
		N	Mean (SD)	Mean (SD)	P value	ES	Mean (SD)	P value	ES	Mean (SD)	P value	ES
EQ-VAS												
Pre-COVID-19	All	130	84.9 (12.2)									
	Boosted	26	84.6 (13.5)				-1.1 (12.1)	0.692	-0.09	0.8 (12.9)	0.804	0.06
	Primed	36	83.8 (12.5)				-1.9 (11.9)	0.431	-0.16			
	Unvaccinated	68	85.7 (11.6)									
Week 4	All	123	74.2 (16.2)	-10.9 (15.6)	<0.001	-0.67						
	Boosted	26	74.4 (18.1)	-10.2 (16.4)	0.004	-0.62	1.2 (16.8)	0.751	0.07	-1.6 (16.4)	0.713	-0.10
	Primed	33	76.0 (15.0)	-7.7 (11.8)	0.001	-0.65	2.8 (15.8)	0.406	0.18			
	Unvaccinated	64	73.1 (16.2)	-12.9 (16.8)	<0.001	-0.77						
Month 3	All	108	76.4 (16.0)	-9.0 (15.2)	<0.001	-0.56						
	Boosted	17	80.9 (10.4)	-3.8 (13.6)	0.266	-0.28	5.4 (16.1)	0.223	0.34	5.2 (14.4)	0.233	0.36
	Primed	32	75.7 (16.1)	-9.7 (10.2)	<0.001	-0.95	0.2 (16.9)	0.955	0.01			
	Unvaccinated	59	75.5 (17.3)	-10.1 (17.7)	<0.001	-0.57						
Month 6	All	89	74.5 (17.2)	-10.0 (16.6)	<0.001	-0.58						
	Boosted	10	80.4 (11.4)	-6.3 (11.5)	0.121	-0.55	5.5 (15.8)	0.319	0.35	8.8 (18.1)	0.200	0.48
	Primed	27	71.6 (20.0)	-11.2 (17.4)	0.003	-0.64	-3.3 (17.7)	0.439	-0.18			
	Unvaccinated	52	74.9 (16.5)	-10.0 (17.2)	<0.001	-0.58						
EQ-5D-5L UI												
Pre-COVID-19	All	130	0.879 (0.144)									
	Boosted	26	0.910 (0.109)				0.038 (0.117)	0.163	0.32	0.039 (0.167)	0.369	0.23
	Primed	36	0.871 (0.199)				-0.001 (0.152)	0.975	-0.01			
	Unvaccinated	68	0.872 (0.120)									
Week 4	All	130	0.744 (0.196)	-0.135 (0.160)	<0.001	-0.69						
	Boosted	26	0.827 (0.122)	-0.083 (0.126)	0.003	-0.66	0.081 (0.162)	0.032	0.50	0.036 (0.139)	0.319	0.26
	Primed	36	0.752 (0.198)	-0.119 (0.148)	<0.001	-0.80	0.045 (0.165)	0.188	0.27			
	Unvaccinated	68	0.708 (0.209)	-0.164 (0.173)	<0.001	-0.95						

		Score		Change from pre-COVID-19			Relative to Unvaccinated			Relative to Primed		
		N	Mean (SD)	Mean (SD)	P value	ES	Mean (SD)	P value	ES	Mean (SD)	P value	ES
Month 3	All	109	0.742 (0.236)	-0.153 (0.188)	<0.001	-0.65						
	Boosted	17	0.877 (0.114)	-0.029 (0.114)	0.311	-0.25	0.153 (0.177)	0.002	0.86	0.136 (0.168)	0.010	0.81
	Primed	32	0.725 (0.275)	-0.165 (0.190)	<0.001	-0.87	0.017 (0.191)	0.685	0.09			
	Unvaccinated	60	0.713 (0.230)	-0.182 (0.191)	<0.001	-0.95						
Month 6	All	91	0.727 (0.242)	-0.156 (0.213)	<0.001	-0.64						
	Boosted	10	0.922 (0.031)	0.001 (0.092)	0.973	0.01	0.156 (0.179)	0.014	0.87	0.218 (0.228)	0.014	0.96
	Primed	27	0.648 (0.273)	-0.217 (0.259)	<0.001	-0.84	-0.062 (0.215)	0.225	-0.29			
	Unvaccinated	54	0.731 (0.229)	-0.155 (0.190)	<0.001	-0.82						
Work Productivity Loss												
Pre-COVID-19	All	91	15.1 (24.7)									
	Boosted	19	6.6 (11.0)				-10.5 (22.4)	0.092	-0.47	-11.2 (23.5)	0.117	-0.48
	Primed	27	17.9 (29.2)				0.8 (27.0)	0.907	0.03			
	Unvaccinated	45	17.1 (25.6)									
Week 4	All	85	31.7 (25.4)	15.1 (32.8)	<0.001	0.59						
	Boosted	17	26.8 (24.1)	19.4 (26.9)	0.010	0.72	-12.6 (25.1)	0.087	-0.50	4.3 (23.3)	0.562	0.18
	Primed	26	22.5 (22.8)	2.7 (30.1)	0.649	0.09	-16.8 (24.5)	0.008	-0.69			
	Unvaccinated	42	39.3 (25.5)	20.5 (35.4)	0.001	0.58						
Month 3	All	74	26.1 (26.6)	13.3 (35.2)	0.002	0.50						
	Boosted	11	18.2 (23.1)	11.2 (25.0)	0.170	0.45	-12.1 (25.6)	0.173	-0.47	-4.9 (26.8)	0.616	-0.18
	Primed	25	23.1 (28.2)	11.7 (40.1)	0.157	0.29	-7.2 (27.0)	0.305	-0.27			
	Unvaccinated	38	30.3 (26.2)	14.8 (35.5)	0.014	0.42						
Month 6	All	60	33.9 (26.2)	19.9 (38.0)	<0.001	0.76						
	Boosted	6	43.1 (29.8)	31.4 (29.1)	0.057	1.08	6.5 (26.6)	0.587	0.24	15.8 (26.2)	0.203	0.60
	Primed	22	27.4 (25.3)	11.5 (41.3)	0.205	0.28	-9.3 (25.7)	0.199	-0.36			
	Unvaccinated	32	36.6 (26.1)	22.5 (37.7)	0.002	0.60						
Activity Impairment												
Pre-COVID-19	All	130	21.3 (29.3)									
	Boosted	26	14.2 (22.5)				-8.9 (28.3)	0.179	-0.31	-8.8 (28.2)	0.229	-0.31

		Score		Change from pre-COVID-19			Relative to Unvaccinated			Relative to Primed		
		N	Mean (SD)	Mean (SD)	P value	ES	Mean (SD)	P value	ES	Mean (SD)	P value	ES
	Primed	36	23.1 (31.7)				0.0 (30.7)	0.996	0.00			
	Unvaccinated	68	23.1 (30.2)									
Week 4	All	130	38.1 (25.7)	16.8 (35.6)	<0.001	0.65						
	Boosted	26	31.2 (19.7)	16.9 (20.9)	<0.001	0.81	-15.2 (24.4)	0.008	-0.62	3.7 (22.3)	0.528	0.16
	Primed	36	27.5 (24.1)	4.4 (34.9)	0.451	0.13	-18.8 (25.3)	<0.001	-0.74			
	Unvaccinated	68	46.3 (26.0)	23.2 (39.0)	<0.001	0.60						
Month 3	All	109	31.7 (28.3)	12.9 (36.6)	<0.001	0.46						
	Boosted	17	28.2 (24.6)	14.1 (26.5)	0.044	0.53	-4.3 (27.8)	0.579	-0.15	-4.0 (28.5)	0.646	-0.14
	Primed	32	32.2 (30.4)	14.7 (37.6)	0.035	0.39	-0.3 (29.2)	0.961	-0.01			
	Unvaccinated	60	32.5 (28.6)	11.7 (38.9)	0.024	0.30						
Month 6	All	91	37.5 (27.5)	17.4 (39.2)	<0.001	0.63						
	Boosted	10	31.0 (24.2)	27.0 (25.4)	0.010	1.06	-9.6 (27.5)	0.316	-0.35	-2.7 (26.8)	0.787	-0.10
	Primed	27	33.7 (27.6)	13.3 (37.0)	0.073	0.36	-6.9 (27.9)	0.299	-0.25			
	Unvaccinated	54	40.6 (28.0)	17.6 (42.4)	0.004	0.41						

545

546

547

548

549

550 Table 5. Least-Square Mean Estimates and 95% CI of EQ-5D-5L and WPAI-GH scores in long COVID subjects

		Score	Change from pre-COVID			Compared to Unvaccinated			Compared to Primed		
		LSE (95% CI)	LSE (95% CI)	P value	ES	LSE (95% CI)	P value	ES	LSE (95% CI)	P value	ES
EQ-5D-5L: Utility Index											
Pre-COVID (Observed), Mean (SD)	Boosted	0.910 (0.109)									
	Primed	0.871 (0.199)									
	Unvaccinated	0.872 (0.120)									
Week 4	Boosted	0.830 (0.748, 0.912)	-0.056 (-0.138, 0.027)	0.183	-0.44	0.076 (-0.012, 0.164)	0.108	0.47	0.028 (-0.069, 0.125)	0.772	0.20
	Primed	0.802 (0.722, 0.881)	-0.084 (-0.163, -0.004)	0.039	-0.57	0.048 (-0.032, 0.127)	0.337	0.29			
	Unvaccinated	0.754 (0.689, 0.820)	-0.131 (-0.197, -0.066)	<0.001	-0.76						
Month 3	Boosted	0.910 (0.808, 1.011)	0.024 (-0.078, 0.125)	0.644	0.21	0.161 (0.046, 0.275)	0.003	0.91	0.137 (0.011, 0.263)	0.030	0.81
	Primed	0.773 (0.687, 0.859)	-0.113 (-0.199, -0.027)	0.011	-0.59	0.024 (-0.070, 0.118)	0.818	0.13			
	Unvaccinated	0.749 (0.678, 0.819)	-0.137 (-0.207, -0.067)	<0.001	-0.72						
Month 6	Boosted	0.910 (0.790, 1.030)	0.024 (-0.096, 0.144)	0.688	0.27	0.152 (0.007, 0.298)	0.038	0.85	0.202 (0.045, 0.359)	0.008	0.89
	Primed	0.708 (0.617, 0.800)	-0.178 (-0.269, -0.086)	<0.001	-0.69	-0.050 (-0.153, 0.054)	0.497	-0.23			
	Unvaccinated	0.758 (0.685, 0.831)	-0.128 (-0.201, -0.055)	0.001	-0.67						
EQ-5D-5L: VAS											
Pre-COVID (Observed), Mean (SD)	Boosted	84.6 (13.5)									
	Primed	83.8 (12.5)									
	Unvaccinated	85.7 (11.6)									
Week 4	Boosted	77.3 (70.2, 84.3)	-7.8 (-14.9, -0.7)	0.032	-0.43	-0.2 (-8.0, 7.6)	0.998	-0.01	-3.4 (-12.1, 5.3)	0.618	-0.21
	Primed	80.7 (73.8, 87.6)	-4.3 (-11.3, 2.7)	0.218	-0.29	3.2 (-4.0, 10.5)	0.544	0.20			

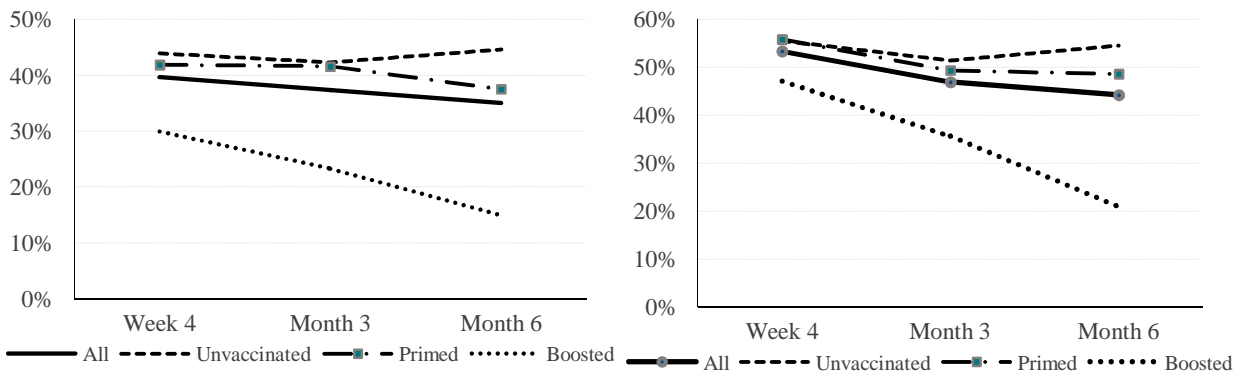
			2.6)								
	Unvaccinated	77.5 (71.8, 83.1)	-7.6 (-13.2, -2.0)	0.008	-0.47						
Month 3	Boosted	82.6 (74.5, 90.6)	-2.5 (-10.5, 5.6)	0.545	-0.24	2.3 (-6.5, 11.1)	0.806	0.14	3.6 (-6.2, 13.3)	0.663	0.25
	Primed	79.0 (72.1, 85.9)	-6.0 (-13.0, 0.9)	0.087	-0.38	-1.2 (-8.5, 6.0)	0.914	-0.07			
	Unvaccinated	80.2 (74.5, 86.0)	-4.8 (-10.5, 0.9)	0.099	-0.28						
Month 6	Boosted	82.3 (72.3, 92.2)	-2.8 (-12.7, 7.2)	0.584	-0.24	2.7 (-9.6, 14.9)	0.865	0.17	4.8 (-8.3, 17.9)	0.658	0.27
	Primed	77.4 (69.8, 85.1)	-7.6 (-15.2, 0.0)	0.051	-0.38	-2.2 (-10.8, 6.4)	0.820	-0.12			
	Unvaccinated	79.6 (73.6, 85.7)	-5.4 (-11.5, 0.6)	0.079	-0.33						
WPAI: Work Productivity Loss											
Pre-COVID (Observed), Mean (SD)	Boosted	6.6 (11.0)									
	Primed	17.9 (29.2)									
	Unvaccinated	17.1 (25.6)									
Week 4	Boosted	25.5 (9.4, 41.7)	11.8 (-4.3, 28.0)	0.149	0.49	-8.2 (-25.0, 8.7)	0.484	-0.32	4.2 (-14.1, 22.48)	0.849	0.18
	Primed	21.4 (6.6, 36.2)	7.7 (-7.1, 22.5)	0.306	0.34	-12.3 (-28.0, 3.3)	0.151	-0.50			
	Unvaccinated	33.7 (20.9, 46.5)	20.0 (7.2, 32.8)	0.003	0.78						
Month 3	Boosted	10.1 (0, 30.8)	-3.6 (-24.4, 17.1)	0.728	-0.16	-18.5 (-41.0, 4.0)	0.129	-0.72	-12.8 (-37.4, 11.9)	0.437	-0.48
	Primed	22.8 (7.0, 38.7)	9.1 (-6.7, 25.0)	0.257	0.32	-5.7 (-23.4, 12.1)	0.725	-0.21			
	Unvaccinated	28.5 (14.1, 43.0)	14.8 (0.3, 29.3)	0.045	0.57						
Month 6	Boosted	42.6 (18.2, 67.0)	28.9 (4.5, 53.3)	0.021	0.97	7.89 (-21.3, 37.1)	0.796	0.30	15.9 (-15.1, 47.0)	0.442	0.61
	Primed	26.7 (9.7, 43.6)	12.9 (-4.0, 29.8)	0.132	0.51	-8.1 (-28.0, 11.9)	0.604	-0.31			

	Unvaccinated	34.7 (20.1, 49.3)	21.0 (6.4, 35.6)	0.005	0.81						
WPAI: Activity Impairment											
Pre-COVID (Observed), Mean (SD)	Boosted	14.2 (22.5)									
	Primed	23.1 (31.7)									
	Unvaccinated	23.1 (30.2)									
Week 4	Boosted	25.7 (14.1, 37.4)	5.6 (-6.1, 17.3)	0.346	0.28	-13.0 (-26.1, 0.1)	0.053	-0.53	6.9 (-7.4, 21.3)	0.489	0.31
	Primed	18.8 (7.7, 30.0)	-1.3 (-12.5, 9.8)	0.813	-0.06	-19.9 (-31.6, -8.2)	<0.001	-0.79			
	Unvaccinated	38.7 (29.5, 47.9)	18.6 (9.3, 27.8)	<0.001	0.71						
Month 3	Boosted	17.8 (2.0, 33.6)	-2.3 (-18.1, 13.4)	0.770	-0.10	-7.1 (-25.6, 11.4)	0.635	-0.26	-5.4 (-25.8, 14.9)	0.802	-0.19
	Primed	23.3 (10.5, 36.0)	3.1 (-9.7, 15.9)	0.632	0.10	-1.7 (-16.6, 13.2)	0.963	-0.06			
	Unvaccinated	24.9 (14.6, 35.3)	4.8 (-5.6, 15.1)	0.365	0.17						
Month 6	Boosted	29.8 (11.2, 48.4)	9.6 (-9.0, 28.3)	0.308	0.40	-4.6 (-27.9, 18.6)	0.885	-0.17	5.3 (-19.6, 30.2)	0.870	0.20
	Primed	24.5 (11.1, 37.9)	4.4 (-9.0, 17.7)	0.521	0.16	-9.9 (-25.7, 5.9)	0.301	-0.36			
	Unvaccinated	34.4 (24.0, 44.9)	14.3 (3.8, 24.7)	0.008	0.51						

551 Note: Mixed models for repeated measurements with unstructured correlation matrix include variables for time, vaccination status and
552 interaction of time by vaccination status, as well as covariates of participant pre-COVID-19 symptom onset score, sociodemographic
553 characteristics (age, sex, regions, social vulnerability, race/ethnicity, high risk occupations), previously tested positive for COVID-19,
554 severity of acute illness (number of symptoms reported on index date), and immunocompromised status.

555

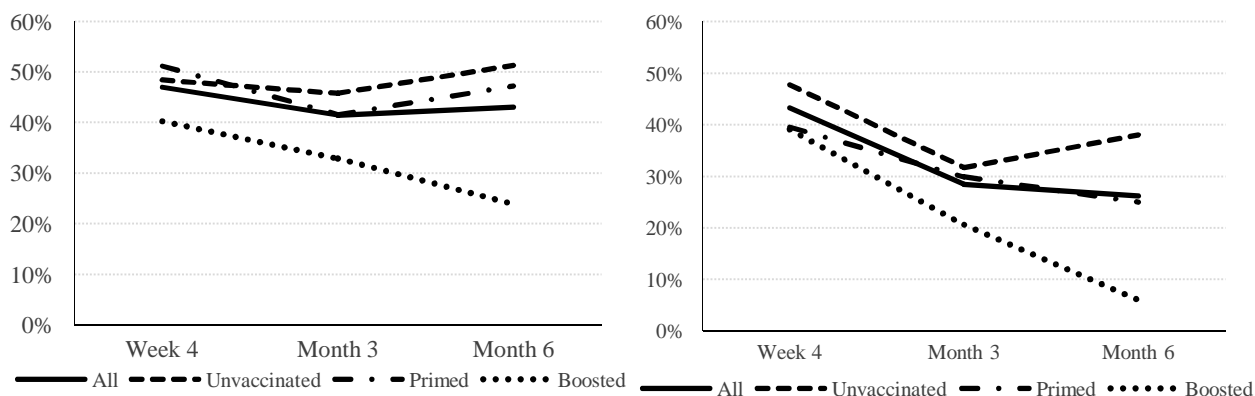
556 Figure 1. Trajectory of prevalence of long COVID over time, by vaccination status and type



557 — All — Unvaccinated — Primed Boosted — All — Unvaccinated — Primed Boosted

558 (a) ≥ 3 symptoms

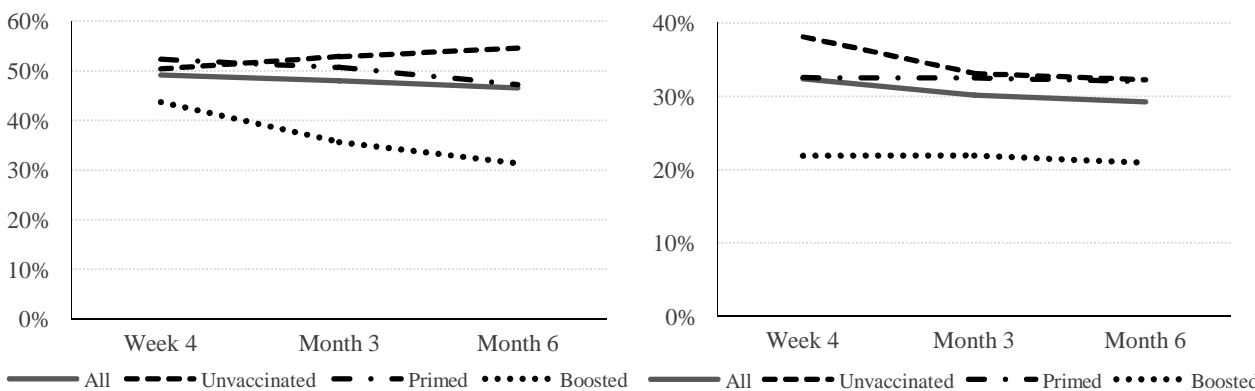
(b) ≥ 2 symptoms



559 — All — Unvaccinated — Primed Boosted — All — Unvaccinated — Primed Boosted

560 (c) ≥ 1 General Symptoms

(d) ≥ 1 Respiratory and Cardiac Symptoms



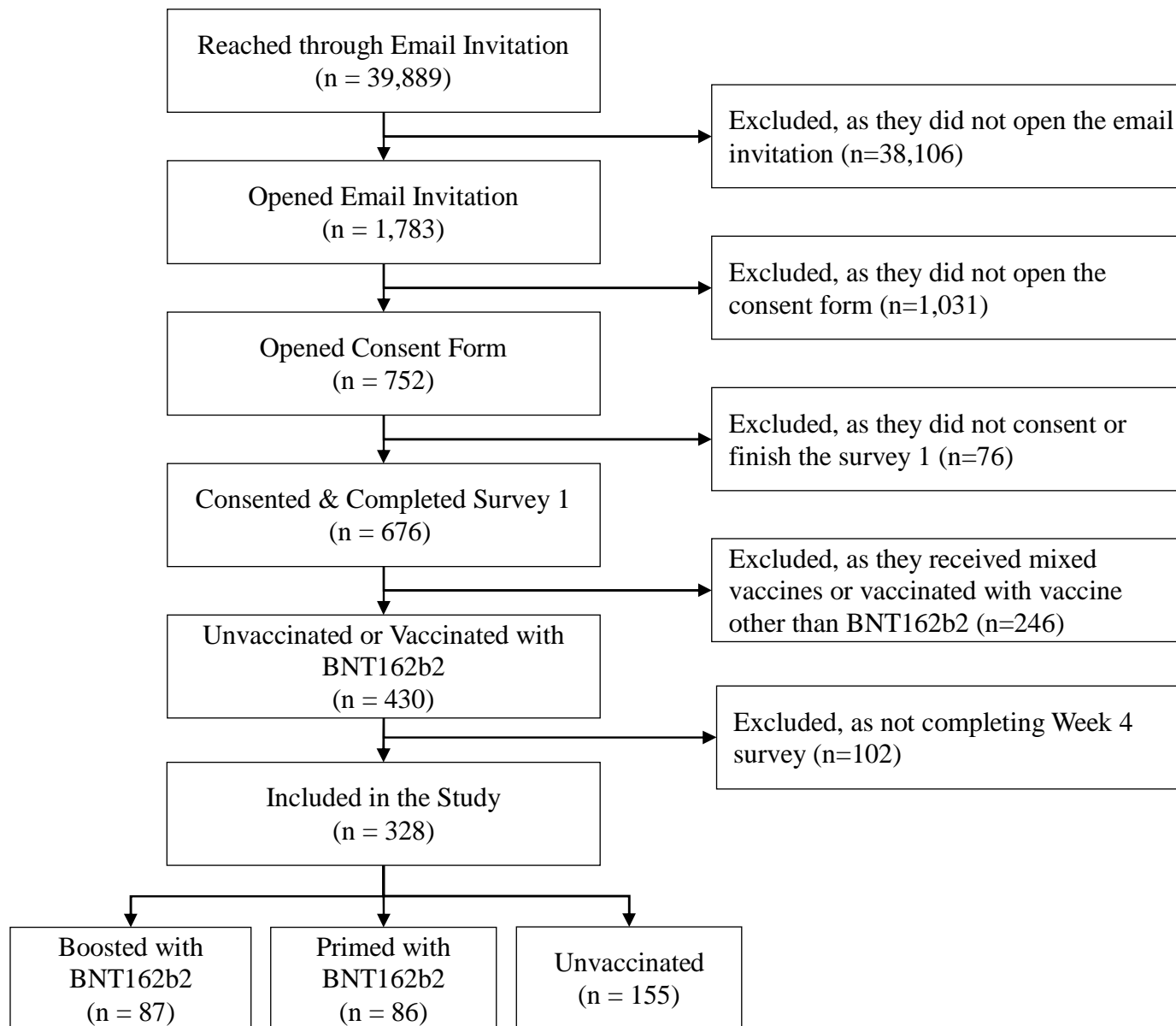
561 — All — Unvaccinated — Primed Boosted — All — Unvaccinated — Primed Boosted

562 (e) ≥ 1 Neurologic Symptoms

563 (f) ≥ 1 Other Symptoms
564 (diarrhea, joint or muscle pain, rash, changes in periods)

565 Supplemental Material

566 Supplemental Figure 1 Study Flow Chart



567

568

569 Supplemental Figure 2 Questionnaire on long COVID symptoms

Do you experience the following **Ongoing COVID-related symptoms or NEW symptoms TODAY that you did not have before your participation in this survey study?** (Check all that apply)

General symptoms

- Tiredness or fatigue
- Symptoms that get worse after physical or mental activities
- Fever
- General pain/discomfort

Respiratory and Cardiac

- Difficulty breathing or shortness of breath
- Cough
- Chest or stomach pain
- Fast-beating or pounding heart (also known as heart palpitations)

Neurologic

- Change in smell or taste
- Headache
- Dizziness on standing (lightheadedness)
- Difficulty thinking or concentrating (sometimes referred to as “brain fog”)
- Pins-and-needles feeling
- Sleep problems
- Mood changes
- Memory loss

Other

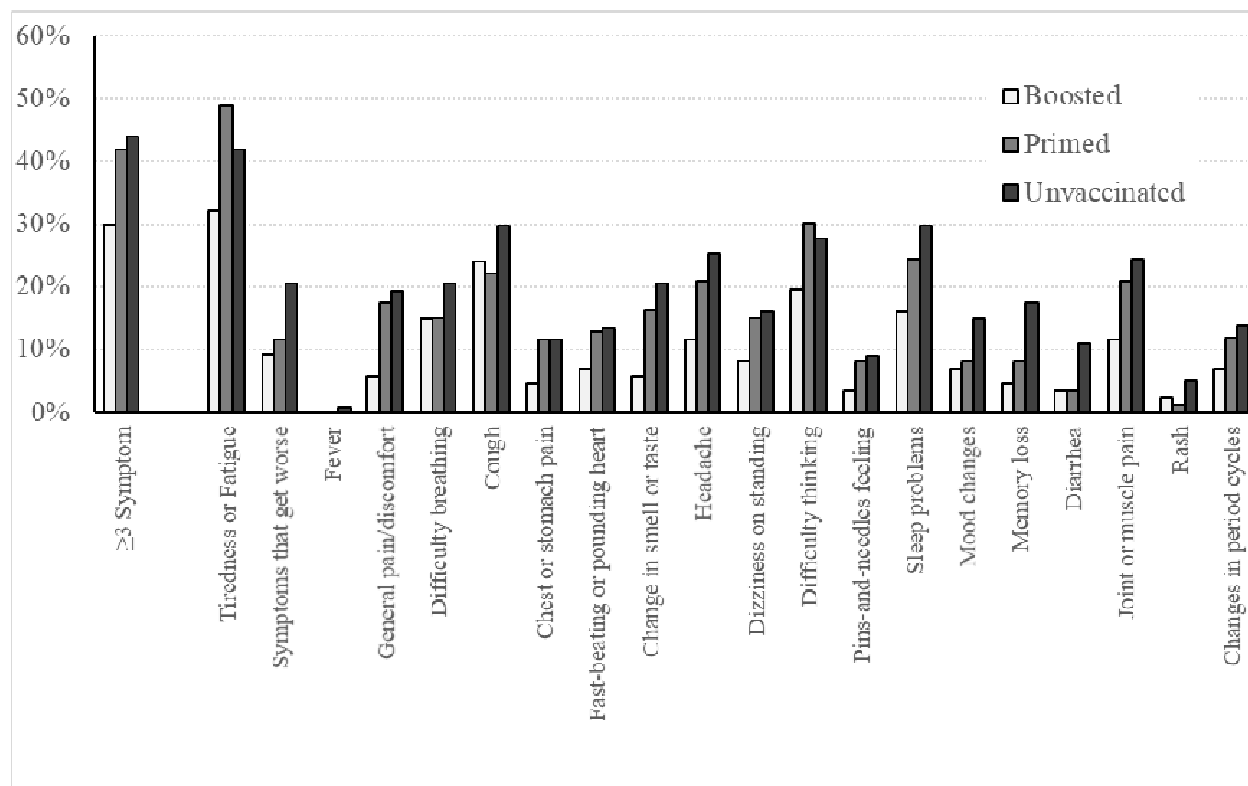
- Diarrhea
- Joint or muscle pain
- Rash
- Changes in period cycles (women)

570

571 Source: Centers for Disease Control and Prevention. Long COVID or Post-COVID Conditions.
572 <https://www.cdc.gov/coronavirus/2019-ncov/long-term-effects/index.html> Accessed August 15,
573 2022.

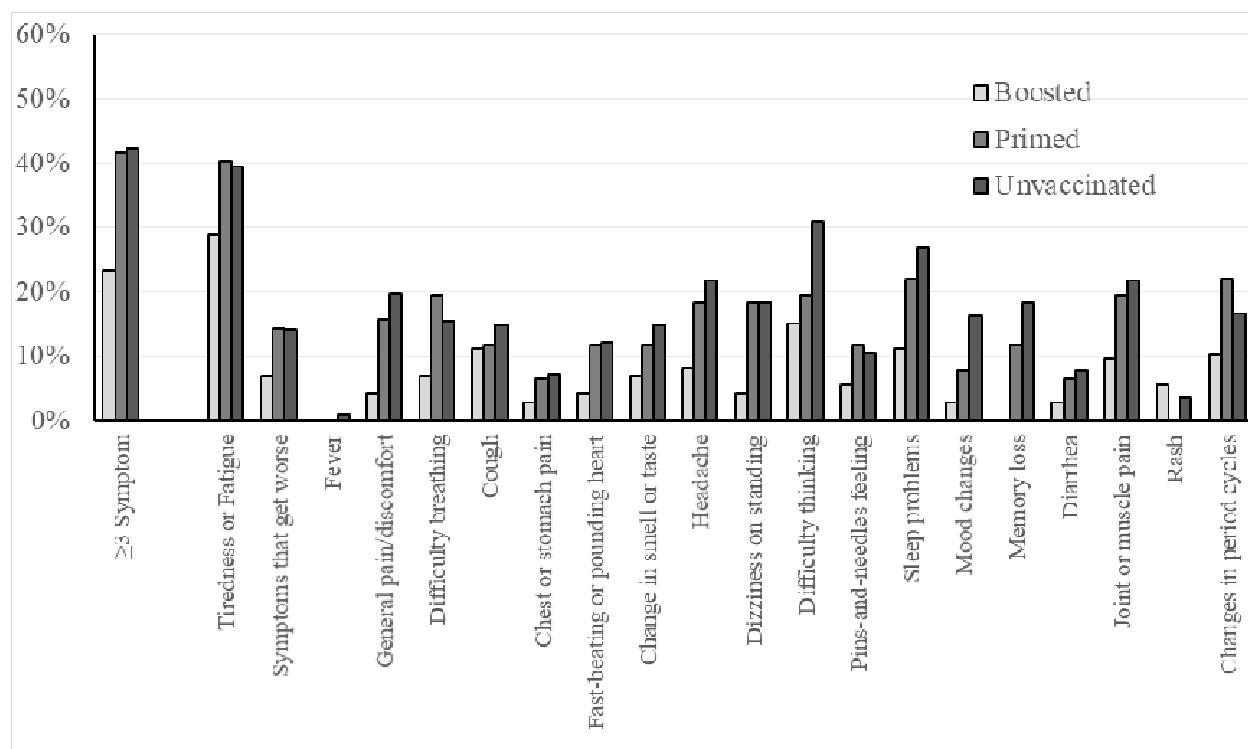
574

575 Supplemental Figure 3 Prevalence of long COVID symptoms by vaccination status



(a) Week 4

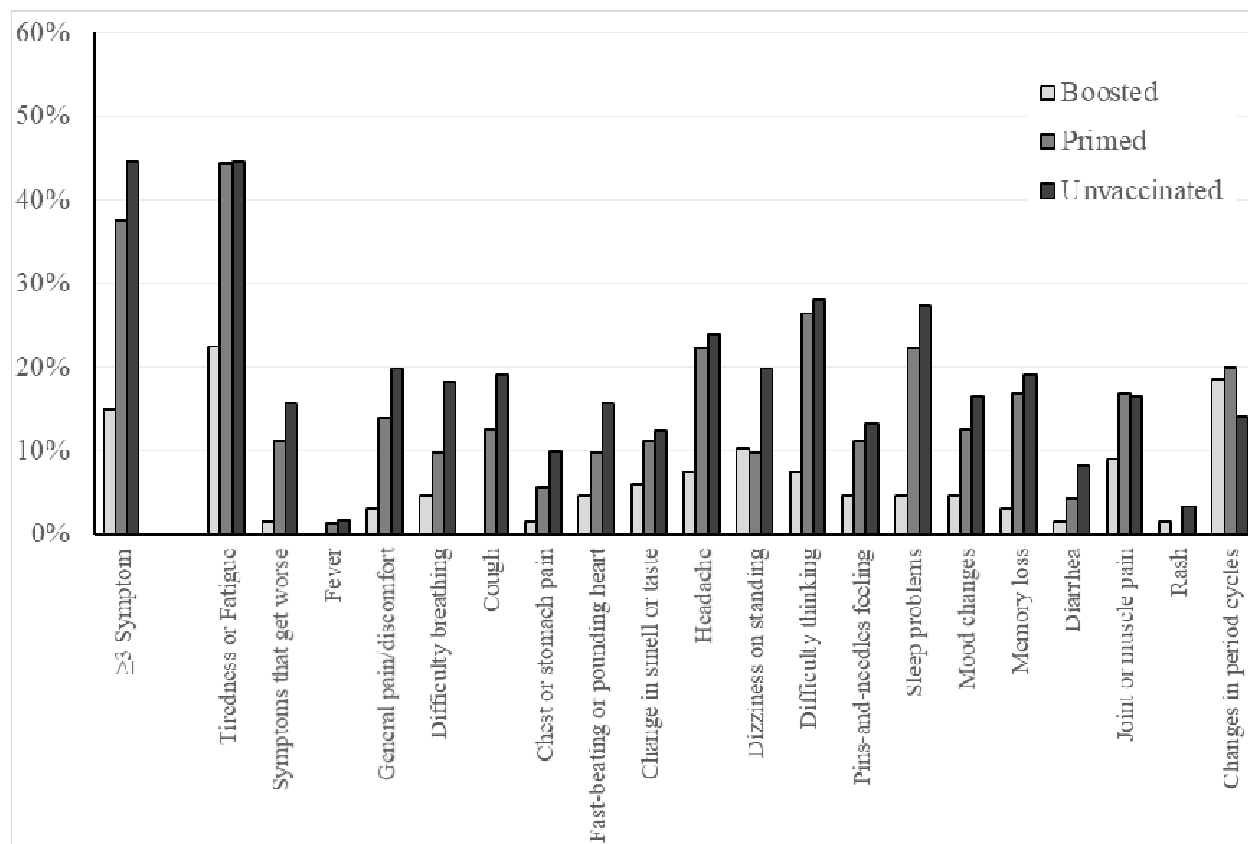
576
577
578



(b) Month 3

579
580

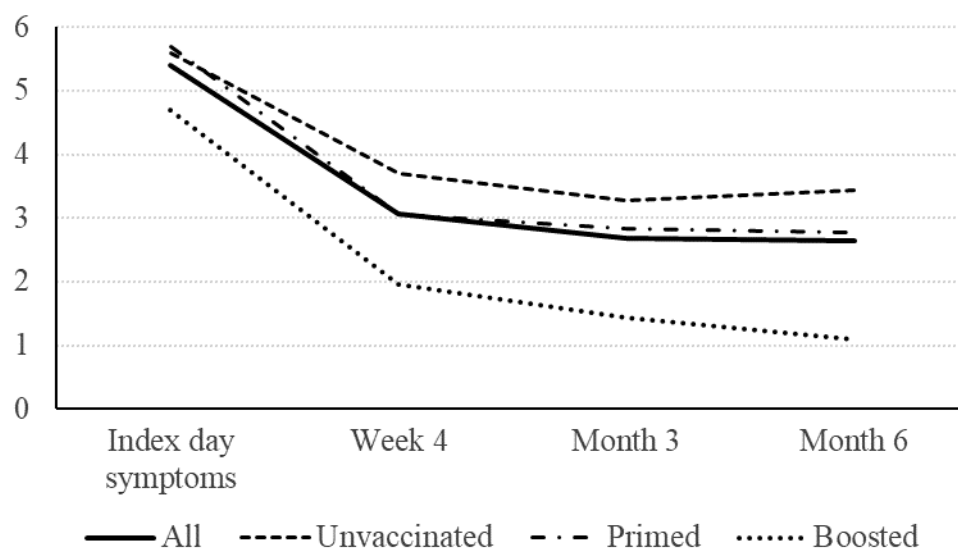
581



(c) Month 6

582
583
584
585
586
587

588 Supplemental Figure 4 Number of symptoms over time by vaccination status



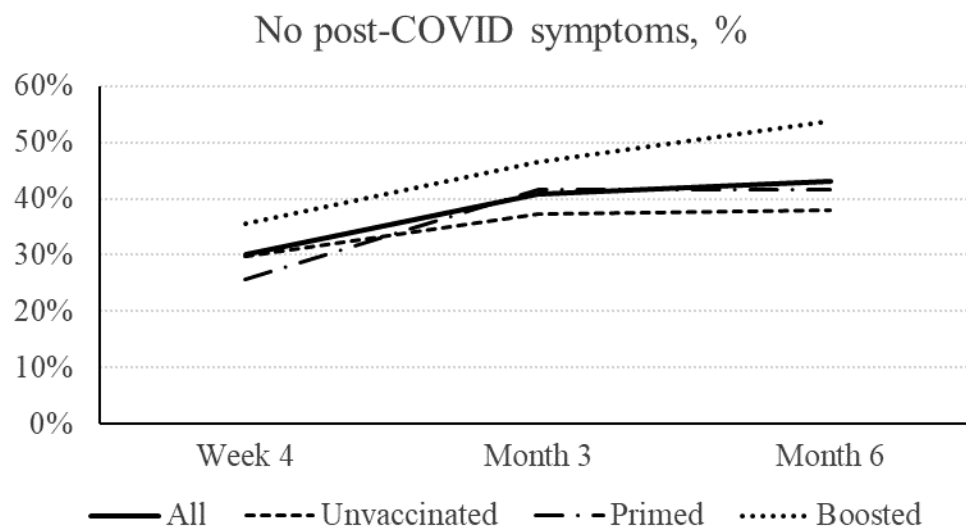
589

590 Note: data collection at Index Day was based on 12 acute respiratory infection symptoms. At

591 Week 4, Month 3 and Month 6, data collection was based on 20 long COVID symptoms.

592

593 Supplemental Figure 5 Absence of long COVID symptoms by vaccination status
594



595
596