

Association of radiological severity with inflammatory biomarkers for prognostic prediction in patients with COVID-19

Radiology department, IBN TOFAIL HOSPITAL, Marrakech, Morocco

Y.ZOUINE, M.BENZALIM, S.ALJ

Background: Covid – 19 caused by SARS-CoV2 has become a pandemic. It has a rapid disease progression and causes severe and fatal complications. Associating radiological severity with effective biomarkers like CRP, leucocytes, lymphocytes, D – Dimer, would be helpful in screening, categorizing patient, preventing serious complications. **Aims and Objectives:** The aim of the study was to investigate association between levels of inflammatory biomarkers and correlate it with HRCT chest finding to identify patients at risk of fatal complications. **Materials and Methods:** It was a retrospective monocentric observational study undertaken at Ibn Tofail hospital COVID-19 dedicated center. 177 Patients >18 year of age who were admitted from september 1, 2020 up to november 30,2020 with laboratory confirmed diagnosis of Covid – 19 were included in the study. Data was collected on demography, disease severity, laboratory measurements, radiology imaging retrospectively from records of patients. The disease severity was classified into light, mild to severe and critic based on CT Severity scoring. HRCT Chest and inflammatory biomarkers were sent in every patient at the time of admission and the outcome was recorded. **Results:** There were 116 male patients, 61 female patients in our study. Average age of patients having severe lung involvement is 61.9years, whereas Average age of patients having non-severe lung involvement is 56.8 years and showed significant association with severity of lung involvement (p value : 0.017). Severity of lung involvement according to HRCT chest findings was greater in patients with both raised values of CRP (<0.001), D – Dimer (P value 0.032) and low values of lymphocytes (P value : 0.001) . Capillary oxygen SATURATION was also found to be significantly associated with radiological severity among covid-19 patients. Compared with CRP, leukocytes, lymphocytes, and D-Dimeres levels, the CT severity score had higher sensitivity, specificity, and overall accuracy in predicting severe, critical cases, and short-term mortality. **Conclusion:** the severity of Covid – 19 disease is correlated with radiological severity and inflammatory markers thereby it will help in immediate categorization of patients into different risk groups following diagnosis, to ensure optimal resource allocation.

INTRODUCTION

The World Health Organisation (WHO) announced that COVID-19 was a pandemic on 12 March 2020 (1). To date, 667,815,009 cases have been reported worldwide, including 6,729,542 deaths, and the daily death toll continues to rise as new variants and mutants emerge. (2).

CT was reported to have high sensitivity in patients infected by SARS-CoV-2, so it is largely used to help patient management [3] categorization of patients, helps in their clinical management, and prevention of serious complications. The degree of involvement on chest computed tomography (CT) is the most visual parameter that may reflect the severity of inflammation [4].

Biomarkers commonly evaluated to assess severity of Covid – 19 diseases are D – Dimer, CRP, IL6 and LDH.

the D-dimer level may be associated with the severity of inflammation rather than directly related to the hypercoagulable state in patients with SARS-COV-2 pneumonia. [5]

CRP in severe Covid – 19 patients increased significantly at the initial stage, and is a signal of lung deterioration and progression.[6]

In this study, we examined the relationship between levels of inflammatory markers and CT severity score in patients with SARS-COV-2 pneumonia to prove whether or not there is a correlation between them, and thus to assess the role of CT versus biomarkers as a prognostic value for COVID-19 disease severity and short-term clinical outcome.

MATERIALS AND METHODS

It was a retrospective monocentric observational study undertaken at ibn Tofail hospital COVID-19 dedicated center. 177 Patients >18 year of age who were admitted from september 1, 2020 up to november 30, 2020 with laboratory confirmed diagnosis of Covid – 19 were included in the study. Data was collected on demography, disease severity, laboratory measurements, radiology imaging retrospectively from records of patients. The disease severity was classified into light, mild to severe and critic based on CT Severity scoring. HRCT Chest and inflammatory biomarkers were sent in patients at the time of admission and the outcome was recorded

The severity of the disease was classified according to the French Society of Radiology classification which proposed a harmonisation of the estimation of the total lung extension, qualified as mild between 0-25%, moderate between 25-50%, severe between 50-75% and critical beyond 75%.

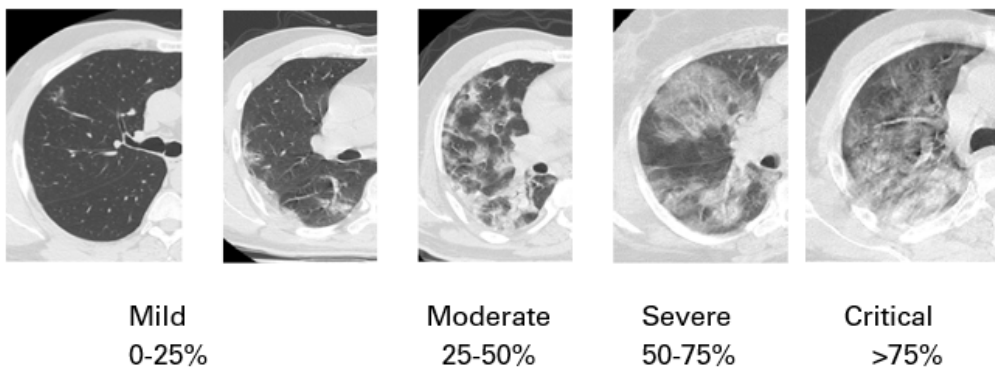


Figure 1: Chest CT scan demonstrating the extent of the Covid-19 lesions

The biomarkers included in our study were the following:

BIOMARKERS	REFERENCE VALUES
Leukocytes	4000-10000 elm
Lymphocytes	1500-4000 elm
CRP	<6 mg/L
D-Dimères	<500 ug/L

Table 1: Reference values for inflammatory biomarkers

Statistical analysis was performed using SPSS software version 27. Descriptive analysis consisted of :

-Calculating frequencies for qualitative variables, -Using measures of central tendency (means) and dispersion (standard deviation) for quantitative variables. The t-test was used to compare means of quantitative data between 2 groups to determine whether there is a statistically significant difference between the means. For comparing means between more than 2 groups, the one-way analysis of variance (ANOVA) was used to determine whether there are any statistically significant differences between the means. Bivariate analysis was conducted to determine whether there is any relationship between 2 qualitative variables using chi-squared (χ^2) test. The level of significance was set to 0.05 for the study.

To study the specificity and sensitivity of CT versus biomarkers, we used the ROC curve, which allowed us to specify the area under the curve of each element, called "AUC". The AUC of the curve of the biomarker studied must be greater than or equal to 0.5 in order for it to perform well. The ROC curves also allow the detection of the best CT threshold value and biomarkers for the detection of severe cases.

RESULTS

There were 116 male patients, 61 female patients in our study.

Average age of patients having severe to critic lung involvement is 61.9, whereas Average age of patients having light to mild lung involvement is 56.8 (on comparison of means, p value 0.017). A significant association between age and severity of lung involvement was found

We showed that there was a significant reverse relationship between CT severity score and capillary oxygen saturation (p value <0.001)

Out of 177 patients that we have included in our study, 28 patients with severe to critical lung involvement had raised D –Dimer. (p value=0.032)

In our study, there were 146 patients with raised CRP, out of which 78 were having severe lung involvement and 68 had light to mild lung involvement. In contrast, there were 31

patients with normal CRP levels, of which 10 had severe lung involvement and 21 had non-severe lung involvement. There was significant association between levels of CRP and severity of lung involvement (p value $p < 0.001$)

There were 136 patients with lymphopenia, out of which 71 were having severe lung involvement and 65 had non-severe lung involvement. In contrast, there were 41 patients with normal lymphocytes levels, of which 9 had severe lung involvement and 32 had non-severe lung involvement. There is significant association between levels of lymphopenia and severity of lung involvement (p value = 0.001)

Out of 177 patients that we have included in our study, 49 patients had isolated raised creatinine. It showed weak association with severe lung involvement ($p = 0.207$).

In our study, the calculated AUCs were as follows: age 0.663, saturation 0.797, leukocytes 0.572, lymphocytes 0.682, DD 0.651, CRP 0.746. Biomarkers with AUC < or equal to 0.5 were excluded from the next step (Creatinine).

ROC curve analysis showed that the area under the curve (AUC) was significantly elevated using CT severity score cut-off $\geq 50\%$, CRP cut-off ≥ 95 mg/L, leukocyte cut-off ≥ 11210 cells/mm^3 and DD cut-off ≥ 700 $\mu\text{g}/\text{L}$ for severe COVID-19 cases, with a sensitivity, specificity of 85% 58%, compared with 75% 55% for CRP, 85% 55%, compared with 62% 55% for leukocytes and 80% 48% compared with 70% 40% for DD respectively.

DISCUSSION:

Lung computed tomography (CT) scan is an important method in the diagnosis of pulmonary abnormalities, which also has a very valuable role in screening the patients suspected of infections as well as diagnosis and clinical classifications of these patients.[7]

The most common patterns of this infection are bilateral and multilobar ground-glass opacities.[8,9] It has also been shown that the peripheral and lower lobes of the lung are mostly affected. Further studies also showed other radiological patterns, such as crazy paving pattern, airway change, and reverse halo sign for patients infected with COVID-19.[10,11]

Some studies have also emphasized the relationship between CT scan findings and the clinical condition of patients explaining the possible role of lung CT scan in determining the severity and spread of the disease[12]

The aim of our study is to assess the severity of Covid – 19 disease based on its correlation with level of biomarker and radiological severity

CRP is a non-specific acute-phase protein induced by IL-6 in liver and sensitive biomarker of inflammation, infection, and tissue damage.¹⁸ Studies showed that it increased significantly in severe Covid – 19 patients at the initial stage, which is a signal of lung deterioration and disease progression as in Prakhar and al study that demonstrated a significant association between levels of CRP and severity of lung involvement ($p=0.0346$, RR of 2.02, Odds Ratio of 2.37).¹¹ Our study agrees and confirms that CRP levels can be an indicator for severe disease and progressive inflammation.^[13,14]

Several studies also demonstrated that a higher level of D-dimer was associated with in-hospital mortality^[15,16]

The most suggested mechanism was that the hypercoagulable state, which could be reflected by an elevated D-dimer level, might lead to thrombotic events, resulting in poor outcomes. However, the coagulopathy was thought to result from local and systemic inflammation caused by the coronavirus. Also, D-dimer is known as a biomarker of inflammation ^[17]. Therefore, LAN WANG and al proposed the hypothesis that the D-dimer level may be associated with the severity of inflammation rather than directly related to the hypercoagulable state in patients with SARS-COV-2 pneumonia. And showed that Patients with D-dimer level > 0.7 mg/L had significantly higher CT score (12.0 [$P < 0.001$]) and higher incidence of reticulation and/or traction bronchiectasis on chest CT images (83.3% vs. 46.2%, $P = 0.002$) than patients with D-dimer level ≤ 0.7 mg/L . The natural logarithm of the D-dimer level was significantly associated with the CT score ($rS = 0.586$, $P < 0.001$) ^[5]

Lymphopenia was reported in various types of virus-infected diseases, such as SARS ^[18, 19, 20], MERS ^[21, 22] and respiratory syncytial virus ^[23]. A previous study reported that lymphopenia in SARS may be due to enhanced vascular sequestration associated with increased soluble vascular cell adhesion molecule-1 levels ^[24]

In our study lymphopenia was a good predictor of severe lung involvement which agrees with the study of Jiheng Liu and al that showed the correlation of Lymphopenia with severity grades of pneumonia ($P < 0.001$) .Lymphopenia was associated with a prolonged duration of hospitalization (17.0 days vs. 14.0 days, $P = 0.002$).^[25]

CONCLUSION:

Older age (>61 years), elevated D-dimer, CRP and low lymphocyte count are significantly correlated with severe lung injury and are risk factors for poor prognosis in patients with COVID-19. CT severity scoring has high accuracy and significant predictive power compared to other biomarkers. In particular, it has higher sensitivity, specificity and accuracy than CRP, WBC, lymphocytes and D-dimer. Our study revealed that CT scoring is a powerful means to determine the risk of death from COVID-19 disease in patients and to triage the need for hospitalisation. It is also useful for prioritising medical resources to make better decisions for the best clinical outcomes.

FIGURES AND TABLES :

	n	Mean Sao2	Standard deviation	F	p
Light	39	95.0513	3.23589	29.436	<0.001
Mild	46	92.2609	4.28659		
Severe	62	88.1452	6.50560		
Critical	26	82.9615	7.53913		

Table 2 : Comparison of capillary blood saturation between patients who have light, mild, severe and critical lung involvement

			Evolution		P
			Poor prognosis	Good prognosis	
Extension	Light to mild	N	9	77	0.033
		%	10.5%	89.5%	
	Severe to critical	N	69	20	
		%	77.5%	22.5%	

Table 3 : Association of prognosis and lung involvement

	Extension	N	Mean	Standard deviation	p
Age	Light to mild	86	56.85	16.123	0.017
	Severe to critical	89	61.91	11.163	
Sao2	Light to mild	85	93.54	4.067	p<0.001
	Severe to critical	88	86.61	7.188	
Leucocytes	Light to mild	67	9244.18	3585.765	0.13
	Severe to critical	77	11670.13	12610.690	
CRP	Light to mild	68	87.46	72.483	p<0.001
	Severe to critical	78	161.08	120.679	
Lymphocytes	Light to mild	65	1351.8480	669.07303	0.001
	Severe to critical	71	998.6338	589.55429	
CREAT	Light to mild	62	8.44	3.159	0.216
	Severe to critical	66	9.81	8.133	
TP	Light to mild	18	28.389	3.5721	0.88
	Severe to critical	39	28.274	2.0953	
DD	Light to mild	34	1479.368	1386.6173	0.032
	Severe to critical	28	5757.036	9932.4269	

Table 4: Comparison of Age, capillary blood saturation and biological findings between patients who have light to mild, and severe to critical lung involvement

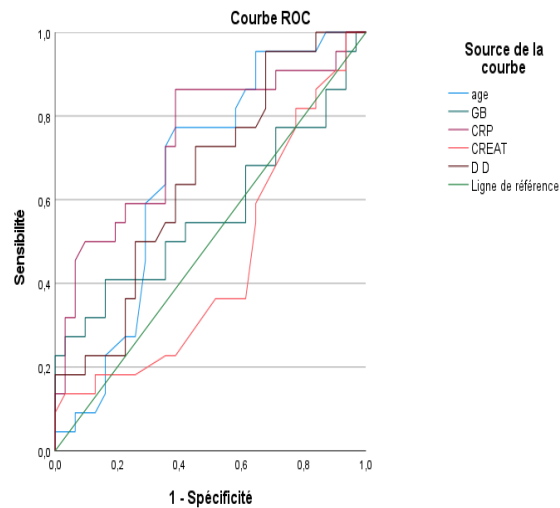
	Sao2	N	Mean	Standard deviation	p
Age	<90	63	62.94	11.961	0.012
	>=90	112	57.38	14.830	
Leucocytes	<90	49	10749.80	5095.902	0.843
	>=90	94	10412.87	11313.677	
CRP	<90	52	179.65	125.432	<0.001
	>=90	93	97.96	83.360	
Lymphocytes	<90	44	980.0682	651.04801	0.23
	>=90	90	1253.6680	641.13675	
CREAT	<90	43	9.52	5.159	0.706
	>=90	83	9.07	6.799	
TP	<90	17	28.453	2.2584	0.792
	>=90	40	28.250	2.7819	
DD	<90	26	6136.923	10217.6589	0.029

	>=90	35	1465.300	1379.6588	
--	------	----	----------	-----------	--

Table 5 : Comparison of Age, and biological findings with capillary blood saturation

	Evolution	n	Mean	Standard deviation	<i>p</i>
Sao2	Good prognosis	31	83.9355	8.38226	<0.001
	Bad prognosis	144	91.2014	5.77138	

Table 6 : Association of prognosis and capillary blood saturation



Les segments diagonaux sont générés par les liens.

Figure 2 : ROC curve

AREA UNDER THE CURVE

Test result variables	Area	standard error	asymptotic sig.	95% asymptotic confidence interval	
				lower boundary	higher boundary
Age	.663	.075	.045	.515	.810
Leukocytes	.572	.085	.376	.405	.739
CRP	.746	.071	.002	.606	.886
Creatinine	.447	.082	.516	.286	.608
DD	.651	.076	.063	.503	.799

Table 7: Areas under the curve of the variables

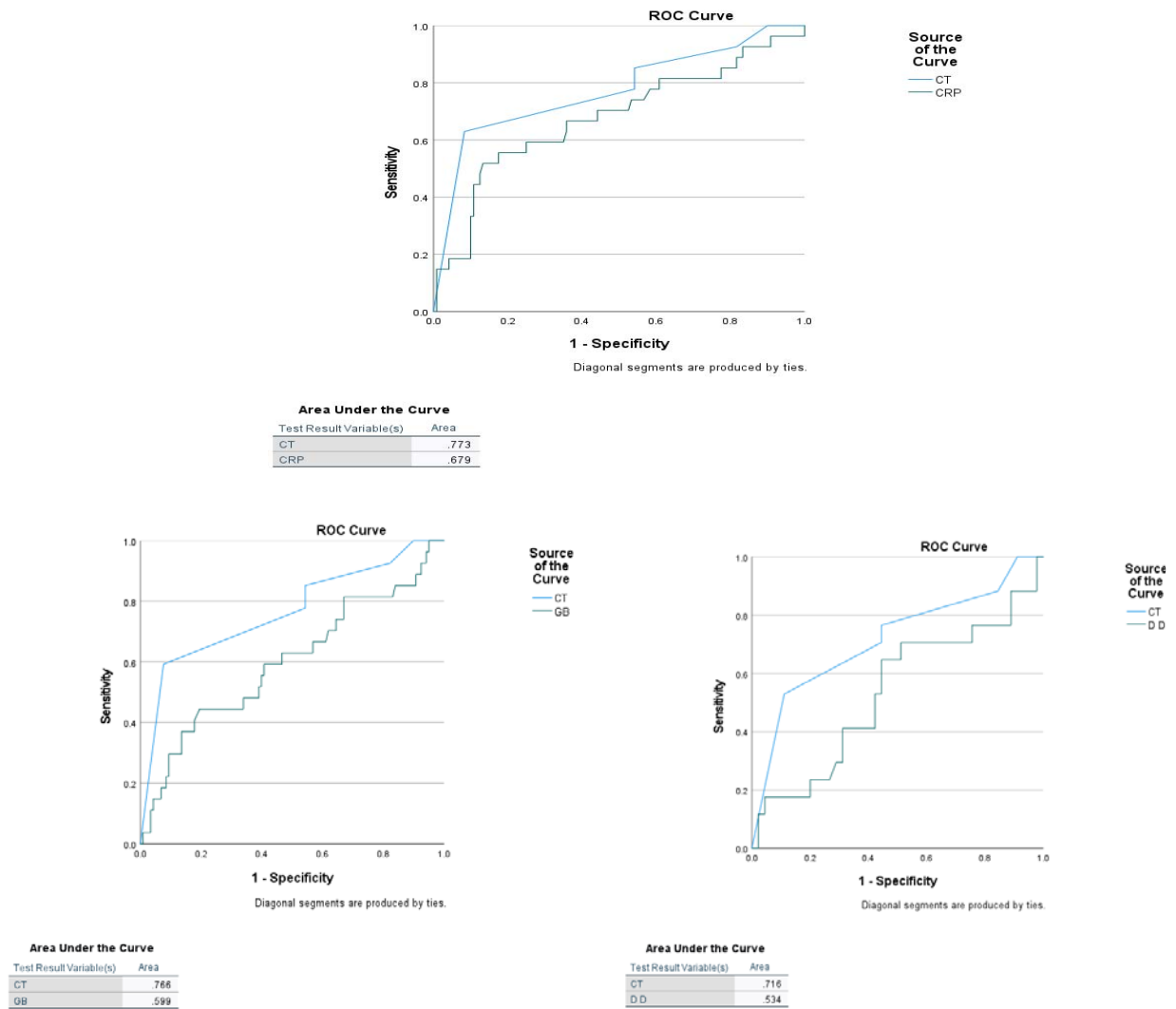


Figure 3 : ROC curve using CT extension and CRP, leukocytes and DD levels

REFERENCES

1. Li Q, Guan X, Wu P, et al. Early Transmission Dynamics in Wuhan, China, of Novel Coronavirus-Infected Pneumonia. *N Engl J Med.* 2020;382(13):1199-1207.
2. Allocution liminaire du Directeur général de l'OMS lors du point presse sur la COVID-19 - 11 mars 2020 [Internet]. [cité 10 juin 2021]. Disponible sur: <https://www.who.int/fr/director-general/speeches/detail/who-directorgeneral-sopening-remarks-at-the-media-briefing-on-covid-19---11-march-2020> Ai T, Yang Z, Hou H, Zhan C, Chen C, Lv W, Tao Q, Sun Z, Xia L (2020) (2020). Correlation of chest CT and RT-PCR testing for coronavirus disease 2019 (COVID-19) in China: a report of 1014 Cases. *Radiology.* 296(2):E32–E40.
3. Scherer, P. M. & Chen, D. L. Imaging pulmonary inflammation. *J. Nucl. Med.* 57, 1764–1770. <https://doi.org/10.2967/jnumed.115.157438> (2016).
4. Wang, L., Yang, L., Bai, L. et al. Association between D-dimer level and chest CT severity score in patients with SARS-COV-2 pneumonia. *Sci Rep* 11, 11636 (2021).
5. Tan C, Huang Y, Shi F, Tan K, Ma QT and Chen Y. C Reactive protein correlates with computed tomographic findings and predicts severe Covid – 19 early. Wiley Periodicals, Inc. *J Med Virol.* 2020; 92:856-862.
6. Li W, Cui H, Li K, Fang Y, Li S. Chest computed tomography in children with COVID-19 respiratory infection. *Pediatr Radiol.* 2020;;50((6):):796—799
7. Salehi S, Abedi A, Balakrishnan S, Gholamrezanezhad A. Coronavirus disease 2019 (COVID-19): a systematic review of imaging findings in 919 patients. *AJR Am J Roentgenol.* 2020;;215((1):):87—93
8. Wang W, Gao R, Zheng Y, Jiang L. COVID-19 with spontaneous pneumothorax, pneumomediastinum and subcutaneous emphysema. *J Travel Med.* 2020;;27((5):):taaa062.. doi: 10.1093/jtm/taaa062.
9. Ye Z, Zhang Y, Wang Y, Huang Z, Song B. Chest CT manifestations of new coronavirus disease 2019 (COVID-19): a pictorial review. *Eur Radiol.* 2020;;30((8):):4381—4389.. doi: 10.1007/s00330-020-06801-0.
10. Ali TF, Tawab MA, ElHariri MA. CT chest of COVID-19 patients: what should a radiologist know? *Egypt J Radiol Nucl Med.* 2020;;51((1):):1—6..
11. Aalinezhad M, Alikhani F, Akbari P, Rezaei MH, Soleimani S, Hakamifard A. Relationship between CT Severity Score and Capillary Blood Oxygen Saturation in Patients with COVID-19 Infection. *Indian J Crit Care Med.* 2021 Mar;25(3):279-283.
12. Soraya GV and Ulhaq ZS. Crucial laboratory parameters in Covid–19 diagnosis and prognosis. *Med Clin (Barc).* 2020; 155(4): 143–151.
13. Gupta, Prakhar & Halani, Ankitkumar & Samuel, Tasha & Singh, Devendra. (2021). Association of inflammatory biomarkers with radiological severity for COVID-19

- patient risk stratification: An Indian perspective. *Asian Journal of Medical Sciences*. 12. 1-7. 10.3126/ajms.v12i4.33483.
14. Zhang, L. et al. D-dimer levels on admission to predict in-hospital mortality in patients with Covid-19. *J. Thromb. Haemost.* 18,1324–1329.
 15. Cummings, M. J. et al. Epidemiology, clinical course, and outcomes of critically ill adults with COVID-19 in New York City: A prospective cohort study. medRxiv
 16. Agapakis, D. I. et al. Coagulation and inflammation biomarkers may help predict the severity of community-acquired pneumonia *Respirology* 15, 796–803.
 17. He Z, Zhao C, Dong Q, Zhuang H, Song S, Peng G, et al. Effects of severe acute respiratory syndrome (SARS) coronavirus infection on peripheral blood lymphocytes and their subsets. *International journal of infectious diseases: IJID: official publication of the International Society for Infectious Diseases*. 2005;9:323–30. 10.1016/j.ijid.2004.07.014
 18. Booth CM, Matukas LM, Tomlinson GA. clinical features and short-term outcomes of 144 patients with SARS in the Greater Toronto Area. *Jama*. 2003;289(21):2801–9.
 19. Liu C, Huang L, Lai C, Chen H, Chen T, Fung C, et al. Clinical characteristics, management and prognostic factors in patients with probable severe acute respiratory syndrome (SARS) in a SARS center in Taiwan. *J Chin Med Assoc*. 2005;68(3)
 20. Yang YM, Hsu CY, Lai CC, Yen MF, Wikramaratna PS, Chen HH, et al. Impact of Comorbidity on Fatality Rate of Patients with Middle East Respiratory Syndrome. *Sci Rep*. 2017;7(1):11307
 21. Arabi YM, Arifi AA, Balkhy HH, Najm H, Aldawood AS, Ghabashi A, et al. clinical course and outcomes of critically ill patients with Middle East respiratory syndrome coronavirus infection. *Ann Intern Med*. 2014;160:389–97
 22. O'Donnell DR, Carrington D. Peripheral blood lymphopenia and neutrophilia in children with severe respiratory syncytial virus disease. *Pediatr Pulmonol*. 2002;34:128–30.
 23. Chen RF, Chang JC, Yeh WT, Lee CH, Liu JW, Eng HL, et al. Role of vascular cell adhesion molecules and leukocyte apoptosis in the lymphopenia and thrombocytopenia of patients with severe acute respiratory syndrome (SARS). *Microbes and infection*. 2006;8:122–7.
 24. Liu J, Li H, Luo M, et al. Lymphopenia predicted illness severity and recovery in patients with COVID-19: A single-center, retrospective study. *PLoS One*. 2020;15(11):e0241659.