

1 **Title: Neural signatures of risk-taking adaptations across health, bipolar disorder, and**
2 **lithium treatment**

3

4 Dr Jacqueline Scholl^{1,2*}, Dr Priyanka Panchal³, Dr Natalie Nelissen⁴, Dr Lauren Z Atkinson^{3,2}, Dr
5 Nils Kolling⁵, Dr Kate EA Saunders^{3,6}, Prof John Geddes^{3,6}, Prof Matthew FS Rushworth⁷, Prof
6 Anna C Nobre², Prof Paul J Harrison^{3,6}, Prof Catherine J Harmer³

7

8 ¹Université Claude Bernard Lyon 1, CNRS, Inserm, Lyon Neuroscience Research Centre U1028
9 UMR 5292, PsyR2 team, Centre Hospitalier Le Vinatier, Bron, France

10 ²Oxford Centre for Human Brain Activity (OHBA), Wellcome Centre for Integrative
11 Neuroimaging (WIN), Department of Psychiatry, University of Oxford, Oxford, United
12 Kingdom

13 ³Department of Psychiatry, University of Oxford, Oxford, United Kingdom

14 ⁴DWP Digital, Leeds, United Kingdom

15 ⁵Université Claude Bernard Lyon 1, Inserm, Stem Cell and Brain Research Institute U1208,
16 Bron, France

17 ⁶Oxford Health NHS Foundation Trust, Warneford Hospital, Oxford, United Kingdom

18 ⁷Department of Experimental Psychology, Wellcome Centre for Integrative Neuroimaging
19 (WIN), University of Oxford, Oxford, United Kingdom

20 *Corresponding author, additional contact information: Jacqueline.scholl@inserm.fr,
21 0033663543810

22

23

24 **Key points**

25 **Question:** Do bipolar disorder and lithium treatment change adaptation of risk-taking over
26 time?

27 **Findings:** Across an observational study and a randomized controlled trial, we found that
28 while participants modulate their risk taking in a gambling task over time, this was reduced
29 as a function of risk for bipolar disorder. Neurally, this was accompanied by changes in reward
30 memory traces in medial frontal pole.

31 **Meaning:** The results show that bipolar disorder is linked to a reduction in adaptation of risk-
32 taking to the environment, suggesting a possible computational mechanism and treatment
33 target.

34

35

36

37

38

39

40

41

42

43

44

45

46

47

NOTE: This preprint reports new research that has not been certified by peer review and should not be used to guide clinical practice.

48 **Abstract**

49 Cognitive and neural mechanisms underlying bipolar disorder (BD) and its treatment are still
50 poorly understood. Here we examined the role of adaptations in risk-taking using a reward-
51 guided decision-making task.

52 We recruited volunteers with high (n=40) scores on the Mood Disorder Questionnaire, MDQ,
53 suspected of high risk for bipolar disorder and those with low-risk scores (n=37). We also
54 recruited patients diagnosed with BD who were assigned (randomized, double-blind) to six
55 weeks of lithium (n=19) or placebo (n=16) after a two-week baseline period (n=22 for fMRI).
56 Participants completed mood ratings daily over 50 (MDQ study) or 42 (BD study) days, as well
57 as a risky decision-making task and functional magnetic resonance imaging. The task
58 measured adaptation of risk taking to past outcomes (increased risk aversion after a previous
59 win vs. loss, 'outcome history').

60 While the low MDQ group was risk averse after a win, this was less evident in the high MDQ
61 group and least so in the patients with BD. During fMRI, 'outcome history' was linked to
62 medial frontal pole activation at the time of the decision and this activation was reduced in
63 the high risk MDQ vs. the low risk MDQ group. While lithium did not reverse the pattern of
64 BD in the task, nor changed clinical symptoms of mania or depression, it changed reward
65 processing in the dorsolateral prefrontal cortex.

66 Participants' modulation of risk-taking in response to reward outcomes was reduced as a
67 function of risk for BD and diagnosed BD. These results provide a model for how reward may
68 prime escalation of risk-related behaviours in bipolar disorder and how mood stabilising
69 treatments may work.

70
71
72
73
74
75
76
77
78
79
80
81
82
83
84
85
86
87
88
89
90
91
92
93

94 Introduction

95

96 Bipolar disorder (BD) is typically characterized by episodes of depression or mania, lasting
97 weeks and months. Lithium is the most effective mood stabiliser for management of BD,
98 reducing the frequency of both manic and depressive episodes (1). While fluctuating mood
99 episodes have traditionally be seen as lasting weeks or months, more recent work has shown
100 that, in fact, patients with BD show large day-to-day fluctuations in mood even when
101 symptoms are in the non-clinical range (2) and that this is affected by lithium treatment (3).
102 Understanding the processes underpinning bipolar disorder may help us develop and assess
103 more effective treatment approaches.

104

105 From a computational psychiatry perspective, two causes for mood fluctuations in bipolar
106 disorder could be considered. First, mood fluctuations could be the result of either increased
107 and prolonged responses to valanced outcomes. Recent work from the field of reinforcement
108 learning has suggested that destabilizing positive feedback cycles between mood and
109 perceptions of rewards may contribute to BD (4–7): In people with subclinical symptoms of
110 BD, positive or negative surprises were found to affect the neural and behavioural responses
111 to reward and punishments. In particular, symptoms were associated with an increase in
112 reward value after a positive surprise. This kind of reward sensitivity has been linked to later
113 changes in mood, suggesting a route by which escalation of reward responses may translate
114 into clinical symptoms (4). Second, mood fluctuations could be the result of reduced
115 behaviours that stabilize mood. Using momentary ecological monitoring has revealed that in
116 the healthy state, when mood fluctuates, people self-report using strategies to re-establish
117 mood homeostasis such as engaging with aversive activities when they are in a good mood
118 (8). This strategy is reduced in people with depression or low mood (9). However, it is yet
119 unclear whether regulating behaviour is also reduced in BD. In the lab, adaptations of
120 behaviour to past outcomes have been studied in the field of decision-making, revealing
121 temporal interdependencies. For example, people show ‘biases’ such as ‘loss chasing’ (10)
122 (taking more risks to try and recover losses). Here, we used a lab-based task that allowed us
123 to test the impact of BD and its’ treatment on both putative processes.

124

125 Optimal decision making involves interplay between frontostriatal systems, which play a role
126 in motivation, reward value and its regulation. The ventral striatum and the ventromedial
127 prefrontal cortex (vmPFC) are implicated in reward anticipation as well as its hedonic impact
128 (11,12). vmPFC is further implicated in the evaluation of options (13), including tracking of
129 past reward outcomes (14). We would therefore expect that if bipolar disorder affects the
130 adaptation of behaviour to past outcomes, these signals in the vmPFC should be changed. By
131 contrast, activity in the dorsolateral PFC is associated with regulation of behaviour towards
132 reward, including self-regulation of reward craving (15,16). Previous work has linked bipolar
133 disorder to increased reward related striatal signalling, coupled with altered patterns of
134 ventromedial and dorsolateral PFC engagement (17) and interaction (18), while a meta-
135 analysis (19) has highlighted a role for orbitofrontal cortex abutting dlPFC.

136

137 Here, we have built on these findings to test whether a gradient across a bipolar disorder
138 spectrum (i.e. from low risk to diagnosed bipolar disorder), was linked to changed behavioural
139 adaptation (risk taking) from trial to trial in response to reward/loss outcomes. For this, we
140 recruited 40 volunteers with high scores on the mood disorder questionnaire (MDQ (20)), at

141 suspected high risk for bipolar disorder, 37 volunteers with low scores, and 35 treatment
142 seeking patients with diagnosed BD (n=22 for fMRI). To assess whether behaviour and
143 naturally occurring daily-life mood fluctuations were related, participants completed up to 50
144 longitudinal testing sessions at home. To understand the neural mechanisms of risk
145 adaptation behaviour, we measured brain activity with fMRI. To test the causal effect of a
146 commonly prescribed mood-stabilizing drug, lithium, 19 patients were randomly assigned to
147 receive six weeks of lithium treatment (dose titrated individually to plasma levels of 0.6-1
148 mmol/L) and 16 to placebo treatment in a double-blind design.

149 We hypothesized that BD and risk for BD would be associated with reduced adaption of risk
150 taking behaviour (i.e. choice being less connected to previous experience of a win or a loss),
151 which would be associated with changes in vmPFC and dlPFC signalling of previous win/loss
152 experiences during fMRI. We also hypothesized that these behavioural and neuroimaging
153 differences would be normalised following six weeks of lithium vs placebo treatment in BD.

154

155

156

157

158

159

160

161

162

163

164

165

166

167

168

169

170

171

172 METHODS

173 Participants

174 Participants were recruited in two separate studies (see below). The non-interventional study
175 was approved by the local ethics committee (MSD-IDREC-C2-2014-023) and the
176 interventional study by the National Research Ethics Service Committee South Central –
177 Oxford A (15/SC/0109) and the Oxford Health NHS Foundation Trust. Participants gave
178 informed consent and were reimbursed for taking part in the study.

179

180 **Volunteers at suspected high vs low risk of bipolar disorder:** Participants were recruited
181 through local advertisement and from pools of previous participants. In an online pre-
182 screening session, participants completed the Mood Disorders Questionnaire (MDQ (20)), a
183 self-report screening instrument to identify risk for bipolar disorder. Participants were only
184 invited for a full screening session if they scored either <5 points ('low MDQ' group, n=37
185 included, at presumed low risk for bipolar disorder); or ≥ 7 ('high MDQ' group, n=40 included).
186 The screening verified that several of these symptoms measured with the MDQ happened
187 during the same period of time. Structured clinical interviews with the SCID revealed that 5
188 of this group met criteria for bipolar disorder, despite not having received a formal diagnosis
189 or seeking treatment. See supplementary method [1A] for detailed exclusion criteria.

190

191 **Patients with BD:** Participants were recruited through the BD Research Clinic (Oxford). All
192 participants met criteria for BD-I (n=7), BD-II (n=27) or BD not otherwise specified (BD-NOS,
193 n=1), based on structured clinical interview. All participants were outside major mood
194 episodes requiring immediate treatment. Full exclusion criteria are provided in the
195 supplementary materials [1B]. Participants were assigned to placebo (n=16) or lithium (n=19),
196 in a randomised double-blind design, see below.

197

198 Study design

199 **Volunteers.** We measured participants' mood and behaviour in a cognitive task longitudinally
200 five times a week over ten weeks. Brain activity during the same task was measured during
201 an MRI scan. The data here were part of a larger study (supplementary method [1B]).

202

203 **Patients with BD.** This study was a randomised, 6-week, double-blind, placebo-controlled trial
204 (21). See supplementary method [1B] for full information. All participants underwent a two-
205 week pre-randomization phase ('baseline') during which they completed the cognitive task
206 and mood ratings daily at home. Due to logistic challenges, for some participants this phase
207 lasted longer than two weeks. For the next phase (6 weeks), participants were pseudo-
208 randomly assigned to receive either lithium (starting dose of 400mg and then titrated to
209 plasma levels of 0.6-1 mmol/L) or placebo in a double-blind design. Only 22 participants were
210 fMRI compatible. Participants were invited to complete online weekly assessments of
211 depression symptoms with the Quick Inventory of Depressive Symptomatology (QIDS, (22))
212 and symptoms of Mania with the Altman Self Rating Mania Scale (23).

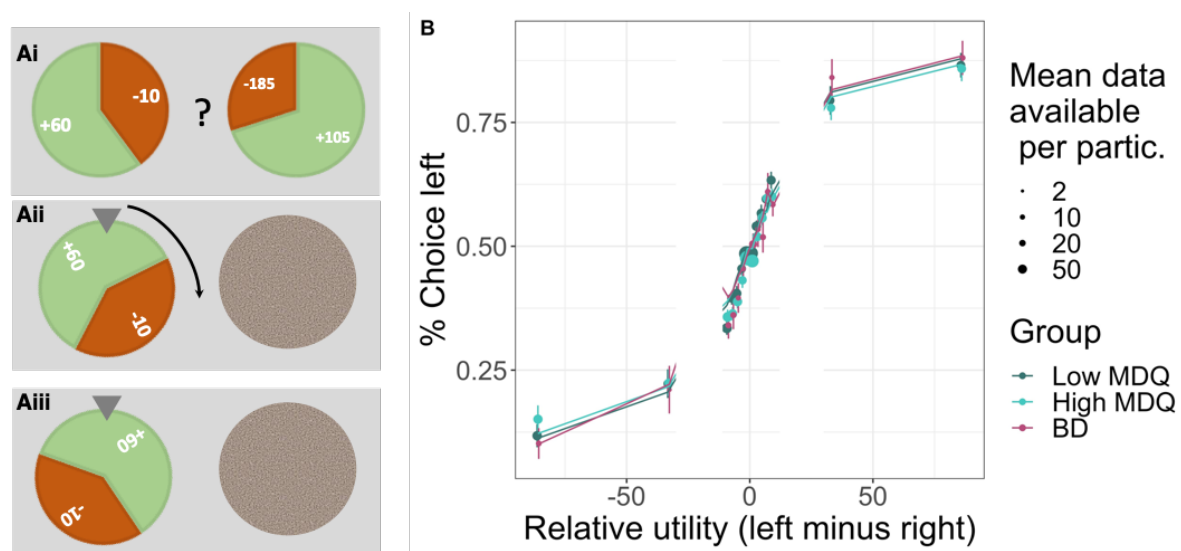
213

214 Throughout, we performed two types of group comparisons. First, we compared across risk
215 of BD (i.e. group as ordered factor (24) in regressions, Low MDQ \leq High MDQ \leq patients with
216 BD), subsequently referred to as 'bipolar disorder gradient'. Ordered factors in regression

217 imply a relationship of order between the groups, this does not have to be a linear
218 relationship (i.e. the difference low MDQ to high MDQ can be larger or smaller [but of same
219 sign] than the difference high MDQ to patients with BD). MDQ was not measured in the
220 patient group. As this involved data from the BD group before assignment to lithium or
221 placebo, all participants were included. Significant results were post-hoc followed up
222 comparisons of the individual groups (t-tests). Second, we tested for the effects of lithium
223 treatment as drug (lithium/placebo) x time point (pre, i.e. baseline/post) interactions.
224

225 'Wheel of fortune' task

226 **Trial structure.** On each trial of the task, participants were given two options shown side-by-
227 side. In the at-home version, these were wheels of fortune (Figure 1A). In the fMRI version,
228 they were instead presented as bars. Each option had three attributes: probability of winning
229 vs. losing (size of green vs. red area), magnitude of possible gain (number on green area, 10
230 to 200), and magnitude of possible loss (number on red area, also 10 to 200). After
231 participants chose one option, the wheel of fortune started spinning and then randomly
232 landed on either win or loss. Finally, participants were shown their updated total score. The
233 experiment was designed so that most choices were difficult, i.e., the options were very
234 similar in expected value, i.e. relative utility (reward magnitude * probability; 90% of choices
235 were not more than 20 points apart; 76% not more than 5 points apart, Figure 1B, Figure S1).
236
237



238 **Figure 1. Task design and longitudinal behaviour.** A) On each trial, participants chose
239 between two gambles ('wheel of fortune') that differed in their probability of winning or
240 losing points and in the number of points that could be won or lost. Once participants had
241 chosen an option, the alternative was hidden, and the chosen wheel started spinning until
242 finally landing on the win or loss. B) Participants' choices (left vs. right option) were guided
243 by the relative utilities (reward utility – i.e., probability * magnitude – minus loss utility): the
244 higher the utility of the left option, the more it was chosen. The computational model (lines)
245 captured behaviour (dots with error bars) well. Data were combined across all testing
246 sessions (up to 50) per participant (20 trials per session). Error bars show the standard error
247 of the mean, and the size of the dots indicates the number of data points available.
248

249
250
251
252
253
254
255
256
257
258
259
260
261

Timings and number of trials. Each day, participants rated their positive and negative mood using the Positive and Negative Affect Schedule – Short Form, PANAS-SF (25). They also gave an overall rating of their mood ('How are you feeling', referred to here as 'happiness VAS') using a slider ranging from 'very unhappy' (red sad face drawing) to 'very happy' (green smiley face). They then played 20 trials of the task. After the task, they repeated the happiness VAS.

In the fMRI scanner, participants played 100 trials. All timings were jittered. From the onset of options until participants could make a choice: 1-2 sec; delay between participants' response and outcomes shown: 2.7 to 7.7 sec; duration of outcome shown: 1-3 sec; duration of total score shown: 1-9 sec; ITI: 1-9 sec.

262 **Behaviour**

263 Behavioural data were analysed in R (26) (version 4.0.2) and Matlab. R-packages: Stan (27) ,
264 BRMS (28,29), dplyr (30), ggpubr (31), sjPlot (32), compareGroups (33), emmeans (34), ggsci
265 (35).

266 **Group comparisons**

267 To compare groups, instead of a standard ANOVA procedure which tests for any differences
268 between groups, we tested for a systematic effect, i.e. bipolar disorder gradient (group as
269 ordered factor (24), Low MDQ ≤ High MDQ ≤ patients with BD) in linear regressions, also
270 controlling for age and gender. Models used the BRMS toolbox interface for Stan
271 (supplementary methods 2). For this and all subsequent analyses, we used Bayesian Credible
272 Intervals (36) to establish significance by the 95% CI not including zero.
273
274

275 **Computational models**

276 **Decision making.** We used a computational model to capture participants' choices. The
277 model first computed the overall expected ('utility') of each option, then made a choice (left
278 or right option) depending on which option had the better utility, but also allowing for some
279 random choice behaviour (37,38).

280
281 First, the model compared the options' utilities as displayed at the time of choice on the
282 current trial, i.e., probability (prob) x magnitude (mag). We allowed for individual differences
283 in sensitivity to the loss vs. reward utility (λ). We also included in the model a measure of
284 adaptations of risk taking (i.e. loss vs win sensitivity) to past outcomes ('outcome history').
285 Specifically, a parameter (γ) changed the weighting of the loss utility on the current trial
286 depending on whether the previous trial's outcome was a win or a loss (i.e., $\gamma > 0$ means
287 increased sensitivity to losses after a win on the previous trial).

$$290 \quad Utility_{left} = Prob * Mag_{rew} - \left(\lambda + \gamma * PrevOut_{\frac{win}{loss}} \right) * (1 - Prob) * Mag_{loss}$$

291

292 To decide which option to choose, the model compared the utilities of the left and right
293 options taking into account each participant's 'randomness' (inverse temperature (β), higher
294 numbers indicating higher choice consistency):

295
296

$$297 \quad p(\text{Choice}_{\text{left}}) = \frac{1}{1 + e^{\beta * (\text{Utility}_{\text{right}} - \text{Utility}_{\text{left}})}}$$

298

299 To allow fitting of individual sessions (20 trials), a Bayesian approach was implemented that
300 allowed specifying priors for each parameter (supplementary methods [2C]). The model was
301 validated using simulations and model comparisons (Table S1-3 and supplementary methods
302 [2A-B]).

303

304

305 **Group differences.**

306 To assess group differences, we entered the session-wise parameters into hierarchical
307 regressions (using BRMS). This allowed us to take into account that parameters might change
308 over days of testing, as well as individual differences in the means and variability (standard
309 deviation) across sessions. For example:

310

311 Mean: $\text{invTemp}(\beta) \sim 1 + \text{day} + \text{group} + \text{Age} + \text{Gender} + (1 + \text{day} \mid \text{ID}),$

312

313 And error term: $\text{sigma} \sim 1 + \text{group} + \text{Age} + \text{Gender} + (1 \mid \text{ID})$

314 The effect of lithium (vs. placebo) was tested analogously:

315 Mean: $\text{invTemp}(\beta) \sim 1 + \text{day} + \text{group} * \text{pre}, \text{ i.e. baseline/post} + \text{Age} + \text{Gender} +$
316 $\text{number_days_baseline} + (1 + \text{day} \mid \text{ID})$

317

318 These models were used for group comparisons of mean parameters (supplementary
319 methods 2C+D). Variabilities of parameters over days were not compared as model validation
320 (Table S1) suggested poor recovery. Mood data (positive and negative PANAS, happiness VAS)
321 were analysed using similar regressions (supplementary methods 2D) to assess group
322 differences in mood (mean or variability) or the relationship between task outcomes and
323 changes in happiness VAS.

324

325 **Model-free analyses of behaviour**

326 To test that participants could perform the task, i.e., that their choices were sensitive to
327 expected value, we binned their choices (% left vs. right option) according to the overall utility
328 difference between the two options (i.e., left vs. right reward utility minus loss utility,
329 $\text{utility} = \text{probability} * \text{magnitude}$).

330

331 To test sensitivity to risk of losses, as has been previously reported to be affected in BD
332 (39,40), we refined the binning of choices (as above) by further splitting the data according
333 to win and loss utility (i.e. $\text{probability} * \text{magnitude}$).

334

335 We next analysed behaviour for adaptations of risk taking to past outcomes by considering how
336 participants change their behaviour – here risk-taking (avoidance of potential losses) – based
337 on win/loss outcomes on previous trials ('outcome history' effect). For this, we computed

338 how their choices differed after a win or loss on the previous trial (difference % choosing
339 option with lower potential loss [loss utility] after win minus after a loss). We focused on the
340 most extreme (lowest/highest) loss utility bins from the analyses above ('taking loss utility
341 more into account') as adaptation to past trial outcomes by taking loss more into account (i.e.
342 a multiplicative effect) should most strongly affect choices the more dissimilar the loss utilities
343 of the two options.
344

345 **MRI acquisition**

346 Data from all 77 high and low MDQ volunteers and 13 patients with BD were collected on a
347 3T Siemens Magnetom Trio. Data from 9 patients with BD were collected at a different site
348 using a Siemens Magnetom PRISMA. Group comparisons include scanner as a control
349 regressor. Scan protocols were carried out following (14), supplementary methods [3A].
350
351

352 **FMRI analysis – whole-brain**

353 **General approach.** Data were pre-processed using FSL ((41), supplementary methods [3B]).
354 Statistical analysis was performed at two levels, event-related GLM for each participant,
355 followed by group-level mixed-effect model using FSL's FLAME 1 (42,43) with outlier de-
356 weighting. Whole-brain images are all cluster-corrected ($p < 0.05$ two-tailed, FWE), voxel
357 inclusion threshold: $z < 2.3$.
358

359 **Regression designs.** At the time of the decision, we looked for neural activity correlating with
360 the utility (reward, loss) of the choice. At the time of the outcome of the gamble, we looked
361 for neural activity related to the processing of the outcome (win/loss as continuous
362 regressor). Decision and outcome-related activity could be dissociated due to jitter used in
363 the experimental timing (14). As a key measure of interest, we looked at whether there was
364 a history effect at the time of the choice (i.e., previous trial's gamble win/loss outcome
365 (14,44), analogous to the behavioural analyses). Full design information: supplementary
366 methods [3C], Figure S2.
367

368 **Group-level comparisons.** We compared the low vs high MDQ groups ($n=77$) in whole-brain
369 analyses. As only 22 patients with BD were available, these group comparisons were first
370 performed in regions of interest (ROIs) derived from comparisons of the high/low MDQ
371 groups. As exploratory analyses, BD groups were also compared at the whole-brain level.
372

373 **ROI analyses.** Mean brain activations (z -stats) were extracted for each participant. These
374 were used to illustrate group differences and also to perform independent statistical tests
375 (e.g., ROIs of clusters defined based on group differences of high vs. low MDQ could be used
376 to test group differences between lithium and placebo). For this, non-hierarchical Bayesian
377 regressions were used, also controlling for age and gender. Brain activations for the outcome
378 history effect were correlated with the corresponding behavioural measures. For this, effects
379 of age, gender and group (and for the patients with BD: number of days in the baseline phase
380 pre-randomization, i.e. before the MRI scan) were first removed using regressions from both
381 neural and behavioural measures.

382

383

384 **RESULTS**

385 We recruited four groups of participants in two separate studies (Table 1). In the group of
386 patients with BD, based on self-report scores (Altman self-report scale, quick inventory of
387 depressive symptomatology), in the phase before the assignment to placebo or lithium, 30%
388 scored in the mania range and 53% scored at least moderate symptoms of depression (Table
389 1). Similar numbers persisted throughout treatment with lithium vs. placebo (Table 1, Figure
390 S3). Participants with BD took several medications at study inclusion (Table 2).

	Low MDQ	High MDQ	Bipolar lith	Bipolar pla	ANOVA all 4 groups (p-value)	Low vs high MDQ (p-value)	BD lith vs. pla (p-value)
	N=37	N=40	N=19	N=16			
Age	25.0 (6.61)	25.0 (7.06)	28.8 (9.81)	35.1 (13.8)	<0.001	0.974	0.137
Gender:					0.819	0.998	1
F	24 (64.9%)	27 (67.5%)	11 (57.9%)	9 (56.2%)			
M	13 (35.1%)	13 (32.5%)	8 (42.1%)	7 (43.8%)			
Diagnosis:					<0.001	0.119	0.527
BDI	0 (0.00%)	0 (0.00%)	3 (15.8%)	4 (25.0%)			
BDII	0 (0.00%)	3 (7.50%)	16 (84.2%)	11 (68.8%)			
BD NOS	0 (0.00%)	2 (5.00%)	0 (0.00%)	1 (6.25%)			
None	37 (100%)	35 (87.5%)	0 (0.00%)	0 (0.00%)			
Additional diagnosis:						0.018	
Depression	0 (0.00%)	4 (10.0%)	NA	NA			
Depression & Past alcohol dependence	0 (0.00%)	1 (2.50%)	NA	NA			
Depression & Past panic disorder	0 (0.00%)	1 (2.50%)	NA	NA			
Depression & PTSD	0 (0.00%)	2 (5.00%)	NA	NA			
None	37 (100%)	31 (77.5%)	NA	NA			
Past alcohol dependence	0 (0.00%)	1 (2.50%)	NA	NA			
MDQ	1.11 (1.31)	9.32 (1.67)	NA	NA		<0.001	
Altman Mania (pre):					0.001	0.24	1
Mania	0 (0.00%)	3 (8.11%)	5 (27.8%)	5 (31.2%)			
None	37 (100%)	34 (91.9%)	13 (72.2%)	11 (68.8%)			
QIDS Depression (pre):					<0.001	<0.001	0.043
None	36 (97.3%)	18 (48.6%)	4 (22.2%)	1 (6.25%)			
Mild	1 (2.70%)	17 (45.9%)	5 (27.8%)	6 (37.5%)			
Moderate	0 (0.00%)	2 (5.41%)	8 (44.4%)	4 (25.0%)			
Severe	0 (0.00%)	0 (0.00%)	0 (0.00%)	5 (31.2%)			
Very severe	0 (0.00%)	0 (0.00%)	1 (5.56%)	0 (0.00%)			
Altman Mania (post):							1
Mania	0 (.%)	0 (.%)	4 (22.2%)	3 (20.0%)			
None	0 (.%)	0 (.%)	14 (77.8%)	12 (80.0%)			
QIDS Depression (post):							0.731
None	0 (.%)	0 (.%)	4 (22.2%)	1 (6.67%)			
Mild	0 (.%)	0 (.%)	7 (38.9%)	8 (53.3%)			
Moderate	0 (.%)	0 (.%)	4 (22.2%)	4 (26.7%)			
Severe	0 (.%)	0 (.%)	3 (16.7%)	2 (13.3%)			
Handedness:						0.757	
Right	32 (86.5%)	32 (80.0%)	NA	NA			
Ambidext	0 (0.00%)	1 (2.50%)	NA	NA			
Left	5 (13.5%)	7 (17.5%)	NA	NA			
# Behav. days	46.7 (3.63)	44.9 (6.61)	NA	NA		0.146	
# Behav. days (pre)	NA	NA	11.8 (6.72)	12.4 (5.04)			0.771
# Behav. days (post)	NA	NA	24.5 (7.85)	28.5 (9.32)			0.182
Has longitudinal data: Yes	37 (100%)	38 (95.0%)	19 (100%)	16 (100%)	0.762	0.494	1
Has fMRI data: Yes	37 (100%)	40 (100%)	13 (68.4%)	9 (56.2%)	<0.001	1	0.696
Day time difference (h) between longitudinal session	3.55 (1.19)	3.68 (1.16)	2.60 (1.25)	2.71 (1.39)	0.002	0.62	0.806
Most common longitudinal session time of day:					0.61	0.552	1
Afternoon	9 (24.3%)	12 (31.6%)	3 (15.8%)	2 (12.5%)			
Evening	24 (64.9%)	19 (50.0%)	14 (73.7%)	13 (81.2%)			
Morning	4 (10.8%)	6 (15.8%)	2 (10.5%)	1 (6.25%)			
Night	0 (0.00%)	1 (2.63%)	0 (0.00%)	0 (0.00%)			

392 **Table 1.** Participant demographics. Statistical tests are two-tailed p-values and refer to
 393 comparisons between the two groups of participants with low or high MDQ scores ('Low vs.
 394 high MDQ') and between the two groups of patients with BD randomized to lithium or placebo
 395 ('Lith vs. pla'). Values are the mean and standard error of the mean. Abbreviations: '# Behav.
 396 Days' – number of days of behavioural data available (20 trials per day), '# Behav. Days (pre)'
 397 – number of days in the baseline phase for the patients with BD, '# PANAS days' – number of
 398 days with mood scores (PANAS, positive affect negative affect scale, short form) available.
 399 'MDQ' – Mood disorder questionnaire. 'Has longitudinal data: Yes' – percentage of
 400 participants from whom longitudinal data (i.e., sessions at home) were available. Diagnoses:
 401 'BD-I' – bipolar I disorder; 'BD-II' – bipolar II disorder; 'BDNOS' – bipolar disorder not otherwise
 402 specified; 'PTSD' – post traumatic stress disorder. For the patients with BD, comorbid disorders
 403 were not measured. Note that in the low and high MDQ groups, diagnoses were only based
 404 on SCID, not on a full clinical examination. Participants completed weekly self-report scales of
 405 symptoms of mania (Altman) and depression (QIDS) at baseline (pre) and post assignment to
 406 lithium or placebo. The average scores pre (baseline) and post lithium were here categorized
 407 according to standard cut-offs (Altman: <6 for no mania, QIDS: 1-5: no depression, 6-10: mild
 408 depression, 11-15: moderate depression, 16-20: severe depression, 21-27: very severe
 409 depression). In short, lithium vs. placebo did not affect ratings of mania and depression, in line
 410 with the groups recruited here being outside major mood episodes requiring immediate
 411 treatment (see figure S3 for time course of ratings).
 412
 413

	Bipolar lith	Bipolar pla
# Participants	N=19	N=16
Medication:		
None	5 (8.93%)	3 (9.68%)
Atypical antipsychotic	16 (28.6%)	6 (19.4%)
Benzodiazepine	2 (3.57%)	1 (3.23%)
Beta blocker	1 (1.79%)	0 (0.00%)
Mood stabilizer	5 (9.80%)	3 (10.7%)
NA and DA reuptake inhibitor	1 (1.79%)	0 (0.00%)
Nonbenzodiazepine	1 (1.79%)	1 (3.23%)
Sedative	1 (1.79%)	0 (0.00%)
SNRI	1 (1.79%)	0 (0.00%)
SSRI	20 (35.7%)	12 (38.7%)
Tetracyclic antidepressant	2 (3.57%)	2 (6.45%)
Tricyclic antidepressant	0 (0.00%)	3 (9.68%)
Typical antipsychotic	1 (1.79%)	0 (0.00%)

414
 415 **Table 2.** Medication in patients with BD. At baseline, most patients were on stable doses of
 416 different medications, categorized here as: atypical antipsychotics (quetiapine, olanzapine,
 417 aripiprazole, risperidone, amisulpiride), benzodiazepine (clonazepam, lorazepam, diazepam),
 418 beta blocker (propranolol), mood stabilizer (valproate, lamotrigine), noradrenaline (NA) and
 419 dopamine (DA) reuptake inhibitor (bupropion), nonbenzodiazepine (zopiclone), sedative
 420 (promethazine), serotonin and noradrenaline reuptake inhibitor (SNRI, venlafaxine), SSRI
 421 (selective serotonin reuptake inhibitor (sertraline, citalopram, fluoxetine), tetracyclic

422 antidepressant (mirtazapine), tricyclic antidepressant (dosulepin, lofepramine, amitriptyline),
423 typical antipsychotic (stelazine, haloperidol).

424
425
426

427 **General performance**

428 Participants completed longitudinal daily behavioural test sessions at home, consisting of 20
429 trials of a gambling task and mood self-reports. In the task (Figure 1A), participants needed
430 to choose repeatedly between two gambles (wheels of fortune), considering the probabilities
431 of winning or losing points and the number of points that could be won or lost. Participants
432 in all groups performed the task well (Figure 1B), selecting options with higher values more
433 frequently.

434

435 **Risk taking (avoidance of potential losses)**

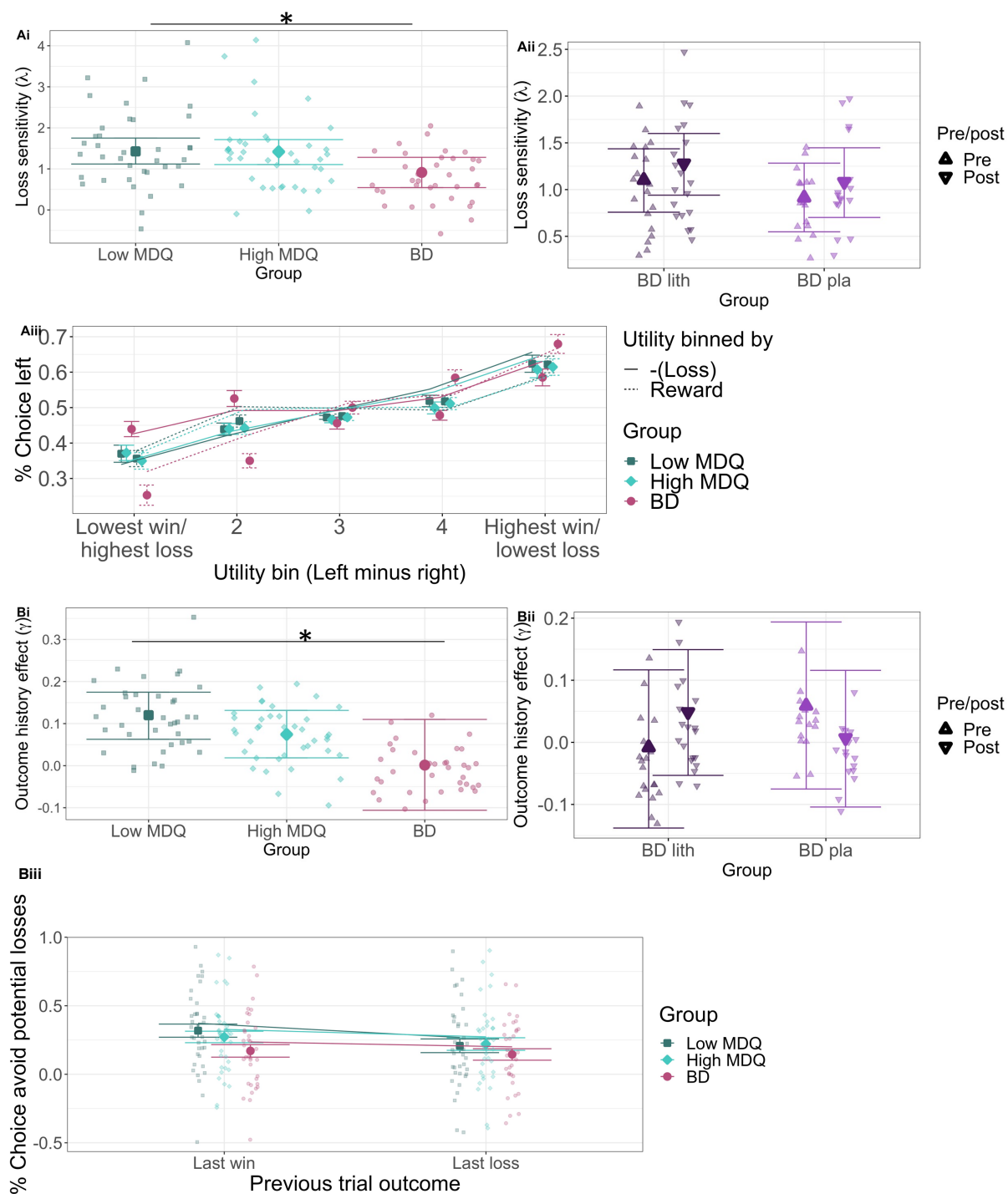
436 To test whether sensitivity to (i.e. avoidance of) potential losses vs. wins when gambling was
437 reduced with a bipolar disorder gradient (low MDQ \leq high MDQ \leq patients with BD), we built
438 a stochastic decision-making model that described participants' choices as being based on the
439 reward and loss utilities of the two options while allowing for individual differences in how
440 people made decisions (see table S2 for model comparisons; model accuracy: 71%). The
441 model captured participants' sensitivity to losses (vs. wins) as a parameter (λ). We found that
442 the higher the bipolar disorder gradient, the lower the sensitivity to losses vs wins (Figure 2Ai,
443 Table S4A, mean = -0.27, 95%CI = [-0.49; -0.05]). This was driven mainly by a step change
444 decrease in the group of patients with BD compared to the low/high MDQ groups, rather than
445 a continuous linear relationship (table S4A for group comparison and continuous measure of
446 mania symptoms across all groups). Lithium vs. placebo did not affect this (Figure 2Aii, table
447 S4B). To illustrate the effect in a model-free way, we plotted the sensitivity of choices to the
448 win or loss dimensions (i.e., steepness of the curve, Figure 2Aiii). This revealed that the
449 difference between groups (group*win/loss dimension* utility bin: mean=0.33, 95% CI =
450 [0.06; 0.61]) is driven by both an increased sensitivity to wins (group*utility bin: mean 0.24,
451 95% CI = [0.08; 3.99]) and a decreased sensitivity to losses (group* utility bin: mean = -0.15,
452 95% CI = [-0.30; -0.01]) with the bipolar disorder gradient. Alternative computational models
453 in Table S5.

454 **Outcome history effects**

455 We next analysed how participants adapted their risk taking across trials based on win or loss
456 outcomes in the previous trial ('outcome history effect'). In the computational model,
457 outcome history effects were captured as a parameter (γ) that described to what extent
458 participants were more sensitive to (i.e. avoidant of) potential losses after a win on the
459 previous trial. We found that the bipolar disorder gradient reduced outcome history effects
460 (Figure 2Bi, Table S4A+S5 mean=-0.05, 95% CI=[-0.11; -0.0003], showing also a continuous
461 effect with mania symptoms across all groups, table S4A). This was not affected by lithium
462 (Figure 2Bii, Table S4B+S5). We can unpack this effect in the data without a model (Figure
463 2Biii) by focusing on the most extreme loss utility bins (if the loss utility difference is small, it
464 will not affect choices if it is taken slightly more or less into account). If people show no
465 outcome history effect, their choices should not change depending on the last trial's outcome.
466 However, the low MDQ group in fact takes the loss dimension more into account after a

467 previous trial win vs. loss (i.e. less likely to pick options with high potential loss and more likely
 468 to pick options with low potential loss). This effect decreases with the bipolar disorder
 469 gradient (group*last loss/win: mean=0.02, 95% CI = [0.0008; 0.04]).

470
 471
 472
 473
 474
 475



476

477 **Figure 2. Group differences in longitudinal behaviour and mood.** A) Loss sensitivity. Ai)
478 Decreased loss sensitivity (λ , avoidance of potential losses) with bipolar disorder gradient,
479 particularly for patients with BD. Aii) Lithium (vs. placebo) did not affect loss sensitivity (group
480 [lithium/placebo] * time [pre, i.e. baseline/post] interaction). Aiii) Illustration of sensitivity of
481 choices to loss/reward utility – as utility increases for the left compared to the right option,
482 participants are more likely to choose the left option. For low/ high MDQ participants, this
483 increase in choice probability is similar for the reward or loss dimension. In contrast, patients
484 with BD show decreased sensitivity to losses vs. rewards (the loss curve is shallower. B)
485 Outcome history (i.e. adaptation of risk taking to past outcomes; avoidance of potential losses
486 after a win [rather than loss] on the previous trial). Bi) The outcome-history model parameter
487 (γ) differed between the groups, with low MDQ participants showing the most and the
488 patients with BD showed the least outcome history effects. Bii) Lithium (vs. placebo) did not
489 affect outcome history effects. Biii) After a win vs. a loss on the previous trial ('last win'/ 'last
490 loss'), low MDQ participants avoided losses more, while this was reduced with the MDQ
491 gradient, so that patients with BD did not adapt their choices to past trial outcomes. A full list
492 of comparisons of parameters for the groups is shown in Tables S4 (longitudinal data) and
493 Table S6 (fMRI session data). Relationships between parameters measured longitudinally over
494 weeks or in the lab during the fMRI session are shown in Table S7. ii) and iii) show conditional
495 effects from regression models, roughly equivalent to means, controlling for regressors of no
496 interest. Lines in Aiii and Biii show the choices predicted by the model. Participant numbers:
497 low MDQ: 37, high MDQ:40, BD lithium: 19, BD placebo: 16.
498

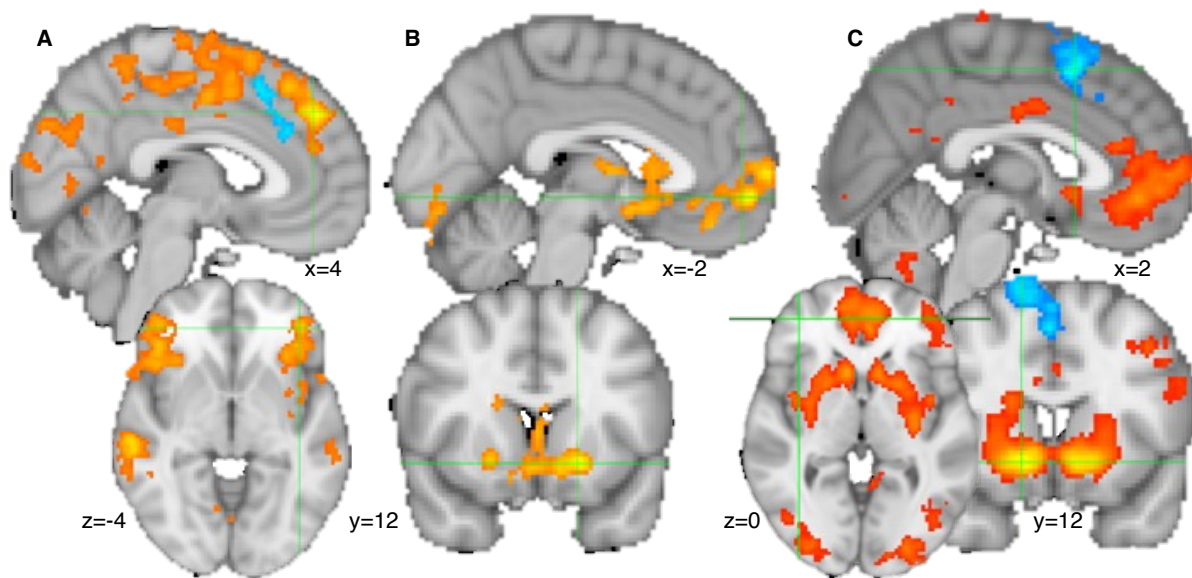
499 **Mood**

500 Finally, an advantage of the behavioural data being collected at home was that we could
501 relate daily mood ratings to task-based behaviour. As reported previously (3,45) and similar
502 to other studies (2,46,47) groups differed in their instability (standard deviation) of mood:
503 The low MDQ group showed the lowest and the patients with BD the highest mood instability
504 (positive PANAS: mean= 0.22, 95%CI = [0.11; 0.33]; negative PANAS: mean=0.64, 95%CI =
505 [0.45; 0.83], Table S8A, Figure S4A). Lithium did not affect instability when using our measure
506 of standard deviation here (Table S8B, Figure S4B), though note that using a measure of
507 Bayesian volatility, lithium has been found to increase volatility of positive mood (3). Across
508 all groups, happiness VAS at the end of each session, compared to before was increased by
509 overall (summed across the whole session) reward and decreased by loss outcomes (mean =
510 0.42, 95%CI = [0.31; 0.52]), similar to previous reports (48,49). However, this did not differ by
511 bipolar disorder gradient (mean =-0.06, 95% CI = [-0.15, 0.03], table S8C). While mood
512 instability differed between the groups, the impact on behaviour was distinct, with mood
513 instability affecting the choice noisiness (the more unstable the mood, the more random the
514 choices), without clearly affecting either loss sensitivity or outcome history effects (Figure
515 S4C). The relationship between mood (PANAS) on the day of testing (rather than an overall
516 measure of instability) and behaviour was not robust (table S8D). An exploratory analysis
517 found that in the BD group, positive mood (PANAS) before the session led to reduced choice
518 noisiness (figure S4C, stats on the regression interaction term BD gradient x PANAS predicting
519 choice noisiness: mean: 0.18, 95%CI: [0.01; 0.35]).

520
521

522 Neural results

523 Neural data were available for 77 volunteers and 22 patients. Across volunteers, brain
524 activations to reward and loss utility during decisions (Figure 3A) and at the receipt of
525 outcomes (Figure 3C) activated brain evaluation networks, including ventromedial prefrontal
526 cortex (vmPFC), ventral striatum, dorsal anterior cingulate cortex (dACC), insula (Table S9).
527 Next, we tested whether, related to the outcome history effect, there was brain activity when
528 participants made a choice that correlated with the previous trial's outcome. Indeed, we
529 found that activity in a network including the ventral striatum, vmPFC and medial frontal pole
530 (FPM) related to the outcome of the previous trial, i.e. increased activity the more positive
531 (and less negative) the previous trial's outcome (Figure 3B, Table S9).
532



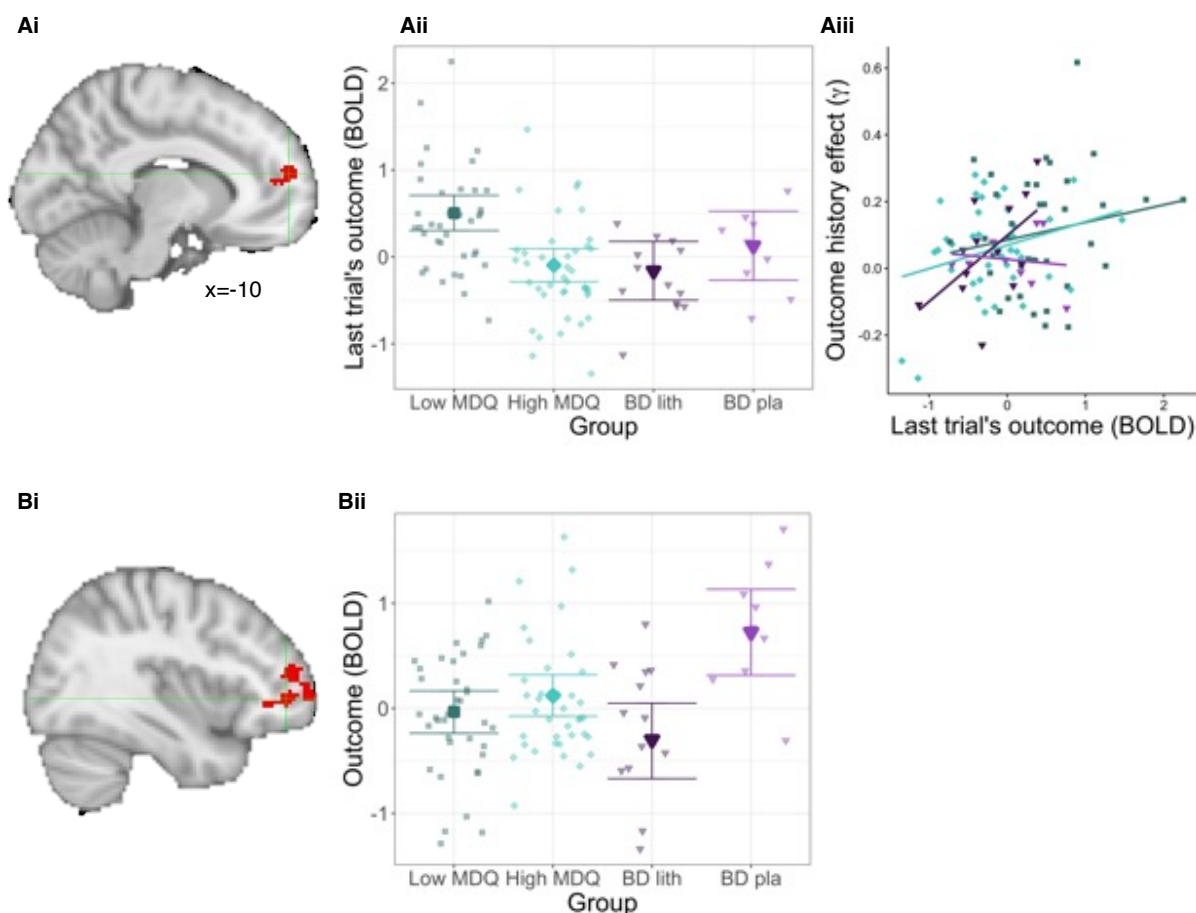
533 **Figure 3. Neural activity during gambling.** A) At the time of the decision a wide network of
534 areas activated with relative (chosen minus unchosen) reward utility (orange), while loss
535 relative utility activated the anterior cingulate cortex (blue). B) At the time of the decision, the
536 last trial's outcome (points won or lost) activated areas including vmPFC and ventral striatum
537 (orange). C) At the time of the outcome (win or loss received), the outcome (points won or
538 lost) activated areas including vmPFC, FPM, and ventral striatum (red/orange) and
539 deactivated the pre-supplementary area. All results are cluster-corrected at $p < 0.05$, two-
540 tailed, with inclusion cut-off $z > 2.3$. See Table S9 for the full list of results. Data were combined
541 across both volunteer groups (low and high MDQ). Participant numbers: low MDQ: 37, high
542 MDQ: 40.
543

544
545
546

547 Next, we compared the low and high MDQ groups. Activity for the previous trial's outcome
548 was higher for the low MDQ vs high MDQ group in FPM (Figure 4Ai-ii, Table S10, $p = 0.038$,
549 whole-brain cluster corrected). In other words, while all participants showed activity in
550 vmPFC/FPM, in low MDQ participants the cluster extended further into FPM. Moreover, there
551 was a correlation between the neural signal for the previous trial's outcome and the
552 behavioural outcome history effect: the stronger the activity for the last trial's outcome in
553 this area, the stronger the behavioural outcome history effect (Figure 4Aiii, $r = 0.24$, $p = 0.017$,
554 partial correlation after correction for control variables and group; without correction: $r = 0.28$,

555 p=0.005; test performed as robust regression, controlling for outliers: 95% Bayesian CI = [0.03;
556 1.52]). Lithium vs. placebo participants' activity did not differ in this area (mean=0.64, 95% CI
557 = [-0.23; 1.44]).

558
559



560
561 **Figure 4. Group differences in brain signals** A) Differences between the low and high MDQ
562 groups for the outcome history effects. Ai) Activation with last trial's outcome at the time of
563 the current trial's decision differed between the low and high MDQ groups in the medial
564 frontal pole (FPM; $x=-10, y=56, z=16$; $p=0.038, n=77$, cluster-corrected, Table S10A. In the low
565 MDQ group, the activation with the last trial's outcome that is found across both groups
566 (Figure 3B) extends further dorsally. Aii) This group difference was driven by the low MDQ
567 group showing stronger activation than the high MDQ group in FPM (Figure shows conditional
568 effects from regression model, roughly equivalent to means, controlling for regressors of no
569 interest). There was no significant difference between activations comparing lithium and
570 placebo groups ($-0.30, 95\%CI: [-0.73; 0.17]$). Aiii) This FPM activity correlated with the
571 longitudinally measured outcome history parameter. Related whole-brain results shown in
572 Figure S5. Colours match those of groups in B. B) Exploratory whole-brain group differences in
573 the patients with BD for gamble outcome signal (lithium vs. placebo). Bi) Outcome related
574 activity differed between the placebo and the lithium participants in an area including
575 dorsolateral prefrontal cortex and lateral frontal pole (whole-brain cluster-corrected, Table
576 S10B). This effect is illustrated in Bii). Participant numbers: low MDQ: 37, high MDQ:40, BD
577 lithium: 13, BD placebo: 9.

578
579

580 As exploratory analyses (due to low sample sizes in BD groups for the MRI scan), we next
581 compared lithium vs. placebo treatment at the whole-brain level. We found that patients
582 receiving placebo had stronger activity related to the outcome of gambles in an area spanning
583 dorsolateral prefrontal cortex (dlPFC, area 46) and lateral frontal pole (Figure 4B, Table S10B,
584 $p=0.009$). We also tested whether the gamble outcome activation related to the behavioural
585 outcome history effect, finding that interestingly it did (Figure S5), in an mFP area overlapping
586 with the area of group differences identified above, though not in the dlPFC area of group
587 differences between lithium and placebo (Figure 4A).

588
589

590 **DISCUSSION**

591 We designed a study to test the computational and neural correlates of adaptations of risk-
592 taking to gains and losses in bipolar disorder (BD), in risk of bipolar disorder and treatment
593 with lithium. We included participants along a gradient of bipolar disorder ranging from
594 volunteers with low risk of BD (low MDQ group), to volunteers with high risk of BD, to patients
595 with diagnosed BD. In the patients, we tested the effect of lithium treatment in a placebo-
596 controlled double-blind design. We measured how much participants adapted their risk-
597 taking following reward outcomes in a risky decision-making task ('outcome history effects').
598 We measured behaviour both longitudinally over up to 50 days and during a brain imaging
599 (fMRI) session. We found that the low MDQ group showed an 'outcome history effect'.
600 Specifically, after a win on a trial, they were more risk averse (avoiding potential losses). This
601 was reduced across the bipolar disorder gradient (lowest risk aversion adaptation in patients
602 with BD). Neurally, outcome history was related to the representation of past information in
603 a large network including ventromedial prefrontal cortex (vmPFC) and medial frontal pole
604 (FPM). In low MDQ volunteers, this brain signal extended further dorsally into FPM compared
605 to the high MDQ scorers and this was correlated with risk adaption behaviour.

606

607 Decreased loss sensitivity and reward hypersensitivity have been suggested as central to BD
608 (39,40) (50,51) and may drive risky or impulsive decision making. Our findings of decreased
609 sensitivity to potential losses (vs wins) with BD gradient are in agreement with this. This effect
610 showed a step change between the volunteer and the patient groups, rather than a
611 continuous effect across the gradient. Then, we went further looking at adaptation of risk
612 taking to past outcomes. We found that volunteers with presumed low risk of bipolar disorder
613 (low MDQ) showed sequential dependencies between their choices and previous trials'
614 outcomes, avoiding potential losses after a win on the previous trial ('outcome history
615 effect'), as similarly recently reported in a go/no go decision-making task (52) . This was not
616 strictly rational in our task since outcomes for gambles across trials were independent (10).
617 However, this kind of behaviour observed in the lab may be functionally appropriate in more
618 naturalistic environments (38,53–55) and thus reflect prior beliefs participants have about
619 reward distributions (e.g. non-independence between trials). For example, in natural
620 environments, which are experienced continually rather than in discrete trials and in which
621 different types of rewards (e.g. food, water) need to be accumulated or a homeostatic
622 setpoint needs to be reached, it would make sense to adapt behaviour according to previous
623 outcomes (56–60). The influence of past losses (vs wins) was lower in the high vs low MDQ
624 group and lowest in patients with BD (i.e. the pattern showed a continuous gradient, also
625 captured as a linear relationship to mania scores across all groups, rather than a step change

626 from volunteers to patients). Reduced homeostatic behaviour of this kind could lead to
627 unstable moods since in the healthy population mood has been found to be regulated
628 through behaviour (8). Relatedly, in patients with BD, purposefully regulating behaviour
629 during the prodromal periods has been shown to reduce the risk of relapse (61). However, in
630 our study, links between ratings of mood and behaviour were weak and so this suggestion
631 remains speculative. Future studies could measure mood over longer timescales, more
632 frequently than done here and using a more naturalistic task. We also note that our findings
633 diverge from previous findings (4) of a stronger impact of previous rewards (and associated
634 emotions) on the perception of outcomes in a study including a participant sample not
635 specifically selected for BD diagnosis or risk of bipolar disorder, but completing the
636 Hypomanic Personality scale (62) after the task.

637
638 We focused on whole-brain analyses for the low/high MDQ volunteer sample due to the
639 larger sample size compared to the patient study. Decision-making and the processing of
640 outcomes produced a typical pattern of activation (63–66) in areas including dorsal anterior
641 cingulate cortex, striatum and vmPFC. However, there were no group differences in any of
642 these signals, matching our behavioural results of an absence of differences in general ability
643 to make decisions or sensitivity to rewards vs. losses per se in the low vs. high MDQ groups.
644 We next looked for brain activity related to the modulation of risk taking with ‘outcome
645 history’. We found that at the time when people made decisions, there was activity
646 representing the last trial’s outcome in an area spanning vmPFC to FPM. This is similar to
647 previous findings in a learning context of between-trial activities (14,44,67). This gamble
648 outcome activation was related to the behavioural outcome history effect across participants.
649 This signal extended more dorsally into FPM in low MDQ volunteers. Furthermore, the
650 stronger this signal, the stronger the modulation of risk taking by outcome history. As such
651 the influence of outcomes on decision making may be a feature of risk for bipolar disorder
652 which involves the FPM. This adds to previous work linking BD to changes in reward related
653 signals in ventral striatum and OFC (19,68) and changes in connectivity between striatum and
654 PFC (17,18). In this region, lithium did not affect brain activity, suggesting that its mechanism
655 of action may not involve direct modulation of vmPFC value weighting.

656
657 In an exploratory analysis, we compared the brain activity of patients with BD randomised to
658 lithium or placebo. Patients given placebo showed larger outcome-related activity in
659 dorsolateral prefrontal cortex. Yet at the same time, lithium did not change behaviour. dlPFC
660 signalling has largely been associated with regulation of mood and reward-related behaviour.
661 Previous work in bipolar disorder has showed altered patterns of both vmPFC and dlPFC
662 activity. In particular, Mason et al. (17) reported that while controls activated dlPFC more to
663 rewards of high probability, patients with bipolar disorder showed greater dlPFC to low
664 probability (more risky) rewards. As such, our preliminary findings suggest that lithium may
665 modulate a key component of frontostriatal circuitry important for effective decision making.
666 Previous work in healthy volunteers also reported an effect of lithium on reward related
667 signals in the ventral striatum which wasn’t detected in the current study(69).

668
669 The current work has a number of limitations. Our sample size was low for the comparison
670 between lithium and placebo fMRI responses, which may have affected our statistical power
671 for key comparisons. It is also relevant that we saw no effect of lithium on the clinical
672 questionnaires included in this study. However, this is consistent with the characteristics of

673 the sample recruited here, where current symptoms were largely residual (i.e. outside of an
674 acute episode). Furthermore, lithium is largely used for relapse prevention rather than acute
675 treatment of mania or depression (70) which could not be tested in the short timescale of the
676 current investigation. Data across a large number of tasks and measures were also completed
677 as part of these studies, and analysis is still ongoing. These complete results may shed light
678 on the overall effects of bipolar disorder risk and treatment on different facets of mood and
679 cognition. While we pre-registered our lithium trial (2014-002699-98), we did not pre-register
680 our specific hypotheses for this part of the analysis. While we found an expected value signal
681 (chosen minus unchosen value) in a typical 'negative value' network including the dACC, we
682 did not find a 'positive value' signal in a typically expected area like the vmPFC. This is unlikely
683 to be due to signal drop out as vmPFC showed activation with reward outcome and an
684 outcome history signal at the time of choice. This result is reminiscent of our previous findings
685 (14), where it was interpreted as possibly due to the integration of an aversive dimensions
686 (there: effort) with reward, rather than only integrating two positive dimensions (e.g. reward
687 probability and reward magnitude). Similarly, here, participants were faced with a negative
688 dimension, i.e. monetary loss.

689
690 Our results highlight the importance of considering rewarded decision-making and related
691 neural activity to understand symptoms of bipolar disorder and the stabilising effects of
692 lithium.

693
694
695
696
697
698
699
700
701
702
703
704
705
706
707
708
709
710
711
712
713
714
715
716
717
718
719

720 **Contributions:**

721 JS: Conceptualization, software, formal analysis, writing, original draft, reviewing and editing

722 PP: Investigation, writing, reviewing and editing

723 NN: Conceptualization, investigation, reviewing

724 NK: Conceptualization, reviewing and editing

725 LZA: Investigation, writing, reviewing and editing.

726 MFSR: Conceptualization, design, reviewing and editing.

727 ACN: Funding acquisition, conceptualization, supervision, design, reviewing and editing.

728 PJH: Funding acquisition, Conceptualisation, recruitment, reviewing and editing

729 JG: Funding acquisition, conceptualisation, design, supervision, reviewing and editing

730 KS: Investigation, project administration, reviewing and editing

731 CJH: Funding acquisition, conceptualization, design, supervision, reviewing and editing

732

733

734

735 **Financial disclosure**

736 The study was funded by a Wellcome Trust Strategic Award (CONBRIO: Collaborative Oxford

737 Network for Bipolar Research to Improve Outcomes, reference No. 102,616/Z). JRG, CJH, PJH

738 and KEAS are supported by the Oxford Health NIHR Biomedical Research Centre. MFSR is

739 funded by the Wellcome Trust (221794/Z/20/Z). The Wellcome Centre for Integrative

740 Neuroimaging is supported by core funding from the Wellcome Trust (203139/Z/16/Z). JS has

741 been funded by the Institut National de la Santé et de la Recherche Médicale, the

742 Biotechnology and Biological Sciences Research Council (BB/V004999/1, Discovery

743 Fellowship) and Medical Research Council (MR/N014448/1, Skills Development Fellowship).

744 The views expressed are those of the authors and not necessarily those of the NHS, the NIHR,

745 or the Department of Health and Social Care.

746

747 JS, PP, NN, LZA, NK, JG, MFSR report no biomedical financial interests or potential conflicts

748 of interest. CJH has received consultancy payments from P1vital, Lundbeck, Compass

749 Pathways, IESO, Zogenix (now UCB). PJH reports receiving an honorarium for editorial work

750 for Biological Psychiatry and Biological Psychiatry Global Open Science. ACN was non-

751 executive director at the Oxford Health Foundation Trust during a period overlapping with

752 the study. KEAS has received consultancy payment from Yale University.

753

754

755

756 **Code and data availability:** Code and anonymized (behaviour, selected demographics, brain

757 activity from regions of interest) or group level (whole-brain fMRI) data will be available on

758 osf.io upon publication. Access for reviewers (link to be replaced with public one upon

759 publication):

760 https://osf.io/yhcbf/?view_only=0a6fce5cc7e74e9c88c542b6aa7d8680

761

762

763

764

765

766

767
768
769

770 **References**

- 771 1. Kessing LV, Bauer M, Nolen WA, Severus E, Goodwin GM, Geddes J (2018): Effectiveness
772 of maintenance therapy of lithium vs other mood stabilizers in monotherapy and in
773 combinations: a systematic review of evidence from observational studies. *Bipolar*
774 *Disord* 20: 419–431.
- 775 2. Bonsall MB, Wallace-Hadrill SMA, Geddes JR, Goodwin GM, Holmes EA (2012): Nonlinear
776 time-series approaches in characterizing mood stability and mood instability in
777 bipolar disorder. *Proc R Soc B Biol Sci* 279: 916–924.
- 778 3. Pulcu E, Saunders KEA, Harmer CJ, Harrison PJ, Goodwin GM, Geddes JR, Browning M
779 (2022): Using a generative model of affect to characterize affective variability and its
780 response to treatment in bipolar disorder. *Proc Natl Acad Sci* 119: e2202983119.
- 781 4. Eldar E, Niv Y (2015): Interaction between emotional state and learning underlies mood
782 instability. *Nat Commun* 6: 6149.
- 783 5. Eldar E, Rutledge RB, Dolan RJ, Niv Y (2016): Mood as representation of momentum.
784 *Trends Cogn Sci* 20: 15–24.
- 785 6. Mason L, Eldar E, Rutledge RB (2017): Mood instability and reward dysregulation—a
786 neurocomputational model of bipolar disorder. *JAMA Psychiatry* 74: 1275–1276.
- 787 7. Moningga H, Mason L (2024): Misperceiving Momentum: Computational Mechanisms of
788 Biased Striatal Reward Prediction Errors in Bipolar Disorder. *Biol Psychiatry Glob*
789 *Open Sci* 4: 100330.
- 790 8. Taquet M, Quoidbach J, Montjoye Y-A de, Desseilles M, Gross JJ (2016): Hedonism and
791 the choice of everyday activities. *Proc Natl Acad Sci* 113: 9769–9773.

- 792 9. Taquet M, Quoidbach J, Gross JJ, Saunders KEA, Goodwin GM (2020): Mood Homeostasis,
793 Low Mood, and History of Depression in 2 Large Population Samples. *JAMA*
794 *Psychiatry*. <https://doi.org/10.1001/jamapsychiatry.2020.0588>
- 795 10. Zhang K, Clark L (2020): Loss-chasing in gambling behaviour: neurocognitive and
796 behavioural economic perspectives. *Curr Opin Behav Sci* 31: 1–7.
- 797 11. Diekhof EK, Kaps L, Falkai P, Gruber O (2012): The role of the human ventral striatum
798 and the medial orbitofrontal cortex in the representation of reward magnitude – An
799 activation likelihood estimation meta-analysis of neuroimaging studies of passive
800 reward expectancy and outcome processing. *Neuropsychologia* 50: 1252–1266.
- 801 12. Sescousse G, Caldú X, Segura B, Dreher J-C (2013): Processing of primary and secondary
802 rewards: A quantitative meta-analysis and review of human functional neuroimaging
803 studies. *Neurosci Biobehav Rev* 37: 681–696.
- 804 13. Lopez-Gamundi P, Yao Y-W, Chong TT-J, Heekeren HR, Mas-Herrero E, Marco-Pallarés J
805 (2021): The neural basis of effort valuation: A meta-analysis of functional magnetic
806 resonance imaging studies. *Neurosci Biobehav Rev* 131: 1275–1287.
- 807 14. Scholl J, Kolling N, Nelissen N, Wittmann MK, Harmer CJ, Rushworth MF (2015): The
808 good, the bad, and the irrelevant: neural mechanisms of learning real and
809 hypothetical rewards and effort. *J Neurosci* 35: 11233–11251.
- 810 15. Brandl F, Le Houcq Corbi Z, Mulej Bratec S, Sorg C (2019): Cognitive reward control
811 recruits medial and lateral frontal cortices, which are also involved in cognitive
812 emotion regulation: A coordinate-based meta-analysis of fMRI studies. *NeuroImage*
813 200: 659–673.

- 814 16. Koban L, Lee S, Schelski DS, Simon M-C, Lerman C, Weber B, *et al.* (2023): An fMRI-Based
815 Brain Marker of Individual Differences in Delay Discounting. *J Neurosci* 43: 1600–
816 1613.
- 817 17. Mason L, O’Sullivan N, Montaldi D, Bentall RP, El-Deredy W (2014): Decision-making and
818 trait impulsivity in bipolar disorder are associated with reduced prefrontal regulation
819 of striatal reward valuation. *Brain* 137: 2346–2355.
- 820 18. Whittaker JR, Foley SF, Ackling E, Murphy K, Caseras X (2018): The functional
821 connectivity between the nucleus accumbens and the ventromedial prefrontal
822 cortex as an endophenotype for bipolar disorder. *Biol Psychiatry* 84: 803–809.
- 823 19. Mesbah R, Koenders MA, van der Wee NJ, Giltay EJ, van Hemert AM, de Leeuw M
824 (2023): Association between the fronto-limbic network and cognitive and emotional
825 functioning in individuals with bipolar disorder: a systematic review and meta-
826 analysis. *JAMA Psychiatry*. Retrieved April 19, 2024, from
827 <https://jamanetwork.com/journals/jamapsychiatry/article-abstract/2802944>
- 828 20. Hirschfeld RM, Williams JB, Spitzer RL, Calabrese JR, Flynn L, Keck Jr PE, *et al.* (2000):
829 Development and validation of a screening instrument for bipolar spectrum
830 disorder: the Mood Disorder Questionnaire. *Am J Psychiatry* 157: 1873–1875.
- 831 21. Saunders KEA, Cipriani A, Rendell J, Attenburrow M-J, Nelissen N, Bilderbeck AC, *et al.*
832 (2016): Oxford Lithium Trial (OxLith) of the early affective, cognitive, neural and
833 biochemical effects of lithium carbonate in bipolar disorder: study protocol for a
834 randomised controlled trial. *Trials* 17: 116.
- 835 22. Rush AJ, Trivedi MH, Ibrahim HM, Carmody TJ, Arnow B, Klein DN, *et al.* (2003): The 16-
836 Item Quick Inventory of Depressive Symptomatology (QIDS), clinician rating (QIDS-C),

- 837 and self-report (QIDS-SR): a psychometric evaluation in patients with chronic major
838 depression. *Biol Psychiatry* 54: 573–583.
- 839 23. Altman EG, Hedeker D, Peterson JL, Davis JM (1997): The Altman self-rating mania scale.
840 *Biol Psychiatry* 42: 948–955.
- 841 24. Bürkner P-C, Charpentier E (2018): Monotonic effects: A principled approach for
842 including ordinal predictors in regression models.
- 843 25. Watson D, Clark LA, Tellegen A (1988): Development and validation of brief measures of
844 positive and negative affect: the PANAS scales. *J Pers Soc Psychol* 54: 1063.
- 845 26. R Core Team (2020): *R: A Language and Environment for Statistical Computing*. Vienna,
846 Austria: R Foundation for Statistical Computing. Retrieved from [https://www.R-](https://www.R-project.org/)
847 [project.org/](https://www.R-project.org/)
- 848 27. Carpenter B, Gelman A, Hoffman MD, Lee D, Goodrich B, Betancourt M, *et al.* (2017):
849 Stan : A Probabilistic Programming Language. *J Stat Softw* 76.
850 <https://doi.org/10.18637/jss.v076.i01>
- 851 28. Bürkner P-C (2017): Advanced Bayesian multilevel modeling with the R package brms.
852 *ArXiv Prepr ArXiv170511123*.
- 853 29. Bürkner P-C (2017): brms: An R package for Bayesian multilevel models using Stan. *J Stat*
854 *Softw* 80: 1–28.
- 855 30. Wickham H, François R, Henry L, Müller K (2021): *Dplyr: A Grammar of Data*
856 *Manipulation*. Retrieved from <https://CRAN.R-project.org/package=dplyr>
- 857 31. Kassambara A (n.d.): ggpubr: ‘ggplot2’ Based Publication Ready Plots (2018). *R Package*
858 *Version 02*.
- 859 32. Lüdtke D, Bartel A, Schwemmer C (2019): Package ‘sjPlot.’

- 860 33. Subirana I, Sanz H, Vila J (2014): Building bivariate tables: the compareGroups package
861 for R. *J Stat Softw* 57: 1–16.
- 862 34. Lenth RV (2021): *Emmeans: Estimated Marginal Means, Aka Least-Squares Means*.
863 Retrieved from <https://CRAN.R-project.org/package=emmeans>
- 864 35. Xiao N (2018): *Ggsci: Scientific Journal and Sci-Fi Themed Color Palettes for “Ggplot2.”*
865 Retrieved from <https://CRAN.R-project.org/package=ggsci>
- 866 36. Morey RD, Hoekstra R, Rouder JN, Wagenmakers E-J (2016): Continued
867 misinterpretation of confidence intervals: response to Miller and Ulrich. *Psychon Bull*
868 *Rev* 23: 131–140.
- 869 37. Nassar MR, Frank MJ (2016): Taming the beast: extracting generalizable knowledge from
870 computational models of cognition. *Curr Opin Behav Sci* 11: 49–54.
- 871 38. Scholl J, Klein-Flügge M (2018): Understanding psychiatric disorder by capturing
872 ecologically relevant features of learning and decision-making. *Behav Brain Res* 355:
873 56–75.
- 874 39. Reinharth J, Braga R, Serper M (2017): Characterization of Risk-Taking in Adults With
875 Bipolar Spectrum Disorders. *J Nerv Ment Dis* 205: 580.
- 876 40. Lasagna CA, Pleskac TJ, Burton CZ, McInnis MG, Taylor SF, Tso IF (2022): Mathematical
877 Modeling of Risk-Taking in Bipolar Disorder: Evidence of Reduced Behavioral
878 Consistency, With Altered Loss Aversion Specific to Those With History of Substance
879 Use Disorder [no. 1]. *Comput Psychiatry* 6: 96–116.
- 880 41. Jenkinson M, Beckmann CF, Behrens TEJ, Woolrich MW, Smith SM (2012): FSL.
881 *NeuroImage* 62: 782–790.
- 882 42. Beckmann CF, Jenkinson M, Smith SM (2003): General multilevel linear modeling for
883 group analysis in FMRI. *Neuroimage* 20: 1052–1063.

- 884 43. Woolrich MW, Behrens TE, Beckmann CF, Jenkinson M, Smith SM (2004): Multilevel
885 linear modelling for fMRI group analysis using Bayesian inference. *Neuroimage* 21:
886 1732–1747.
- 887 44. Chau BKH, Sallet J, Papageorgiou GK, Noonan MP, Bell AH, Walton ME, Rushworth MFS
888 (2015): Contrasting Roles for Orbitofrontal Cortex and Amygdala in Credit
889 Assignment and Learning in Macaques. *Neuron* 87: 1106–1118.
- 890 45. Panchal, P, Nelissen, N, McGowen, N, Atkinson, LZ, Saunders, KEA, Harrison, PJ, *et al.* (in
891 submission): Identifying mood instability and circadian rest-activity patterns using
892 digital remote monitoring and actigraphy in participants at risk for bipolar disorder.
- 893 46. Holmes EA, Bonsall MB, Hales SA, Mitchell H, Renner F, Blackwell SE, *et al.* (2016):
894 Applications of time-series analysis to mood fluctuations in bipolar disorder to
895 promote treatment innovation: a case series [no. 1]. *Transl Psychiatry* 6: e720–e720.
- 896 47. Tsanas A, Saunders KEA, Bilderbeck AC, Palmius N, Osipov M, Clifford GD, *et al.* (2016):
897 Daily longitudinal self-monitoring of mood variability in bipolar disorder and
898 borderline personality disorder. *J Affect Disord* 205: 225–233.
- 899 48. Rutledge RB, Skandali N, Dayan P, Dolan RJ (2014): A computational and neural model of
900 momentary subjective well-being. *Proc Natl Acad Sci* 111: 12252–12257.
- 901 49. Vinckier F, Rigoux L, Oudiette D, Pessiglione M (2018): Neuro-computational account of
902 how mood fluctuations arise and affect decision making [no. 1]. *Nat Commun* 9:
903 1708.
- 904 50. Alloy LB, Nusslock R, Boland EM (2015): The development and course of bipolar
905 spectrum disorders: An integrated reward and circadian rhythm dysregulation
906 model. *Annu Rev Clin Psychol* 11: 213–250.

- 907 51. Whitton AE, Treadway MT, Pizzagalli DA (2015): Reward processing dysfunction in major
908 depression, bipolar disorder and schizophrenia. *Curr Opin Psychiatry* 28: 7–12.
- 909 52. Neville V, Dayan P, Gilchrist ID, Paul ES, Mendl M (2021): Dissecting the links between
910 reward and loss, decision-making, and self-reported affect using a computational
911 approach. *PLOS Comput Biol* 17: e1008555.
- 912 53. Hayden BY (2018): Economic choice: the foraging perspective. *Curr Opin Behav Sci* 24: 1–
913 6.
- 914 54. Lieder F, Griffiths TL (2020): Resource-rational analysis: Understanding human cognition
915 as the optimal use of limited computational resources. *Behav Brain Sci* 43.
- 916 55. Oaksford M, Chater N (2020): New Paradigms in the Psychology of Reasoning. *Annu Rev*
917 *Psychol* 71: 305–330.
- 918 56. Kolling N, Wittmann M, Rushworth MFS (2014): Multiple Neural Mechanisms of Decision
919 Making and Their Competition under Changing Risk Pressure. *Neuron* 81: 1190–
920 1202.
- 921 57. O’Reilly RC, Hazy TE, Mollick J, Mackie P, Herd S (2014): Goal-driven cognition in the
922 brain: a computational framework. *ArXiv Prepr ArXiv14047591*.
- 923 58. Korn CW, Bach DR (2015): Maintaining homeostasis by decision-making. *PLoS Comput*
924 *Biol* 11: e1004301.
- 925 59. Juechems K, Summerfield C (2019): Where Does Value Come From? *Trends Cogn Sci* 23:
926 836–850.
- 927 60. Juechems K, Balaguer J, Castañón SH, Ruz M, O’Reilly JX, Summerfield C (2019): A
928 network for computing value equilibrium in the human medial prefrontal cortex.
929 *Neuron* 101: 977–987.

- 930 61. Lam D, Wong G, Sham P (2001): Prodromes, coping strategies and course of illness in
931 bipolar affective disorder—a naturalistic study. *Psychol Med* 31: 1397–1402.
- 932 62. Eckblad M, Chapman LJ (1986): Development and validation of a scale for hypomanic
933 personality. *J Abnorm Psychol* 95: 214.
- 934 63. Liu X, Hairston J, Schrier M, Fan J (2011): Common and distinct networks underlying
935 reward valence and processing stages: A meta-analysis of functional neuroimaging
936 studies. *Neurosci Biobehav Rev* 35: 1219–1236.
- 937 64. Rushworth MF, Kolling N, Sallet J, Mars RB (2012): Valuation and decision-making in
938 frontal cortex: one or many serial or parallel systems? *Curr Opin Neurobiol* 22: 946–
939 955.
- 940 65. Sescousse G, Caldú X, Segura B, Dreher J-C (2013): Processing of primary and secondary
941 rewards: A quantitative meta-analysis and review of human functional neuroimaging
942 studies. *Neurosci Biobehav Rev* 37: 681–696.
- 943 66. Jauhar S, Fortea L, Solanes A, Albajes-Eizagirre A, McKenna PJ, Radua J (2021): Brain
944 activations associated with anticipation and delivery of monetary reward: A
945 systematic review and meta-analysis of fMRI studies. *PLOS ONE* 16: e0255292.
- 946 67. Fischer AG, Bourgeois-Gironde S, Ullsperger M (2017): Short-term reward experience
947 biases inference despite dissociable neural correlates. *Nat Commun* 8: 1690.
- 948 68. Nusslock R, Young CB, Damme KSF (2014): Elevated reward-related neural activation as a
949 unique biological marker of bipolar disorder: Assessment and treatment
950 implications. *Behav Res Ther* 62: 74–87.
- 951 69. Volman I, Pringle A, Verhagen L, Browning M, Cowen PJ, Harmer CJ (2021): Lithium
952 modulates striatal reward anticipation and prediction error coding in healthy

Supplements for Neural signatures of risk-taking adaptations across health, bipolar disorder, and lithium treatment

Jacqueline Scholl, Priyanka Panchal, Natalie Nelissen, Lauren Z Atkinson, Nils Kolling, Kate EA Saunders, John Geddes, Matthew FS Rushworth, Anna C Nobre, Paul J Harrison, Catherine J Harmer

	$t.\beta_mean$	$t.\lambda_mean$	$t.\gamma_mean$	$t.\beta_sd$	$t.\lambda_sd$	$t.\gamma_sd$	$f.\beta_mean$	$f.\lambda_mean$	$f.\gamma_mean$	$f.\beta_sd$	$f.\lambda_sd$	$f.\gamma_sd$
$t.\beta_mean$		0.018	-0.095	0.150**	0.024	-0.077	0.875***	-0.129**	-0.088	-0.213***	0.204***	0.008
$t.\lambda_mean$	0.018		0.064	-0.000	-0.055	0.024	-0.307***	0.962***	0.060	0.318***	0.427***	0.592***
$t.\gamma_mean$	-0.095	0.064		-0.045	-0.045	-0.042	-0.103*	0.061	0.911***	0.063	-0.045	0.059
$t.\beta_sd$	0.150**	-0.000	-0.045		-0.078	-0.026	0.107*	-0.023	-0.055	0.178***	-0.037	-0.011
$t.\lambda_sd$	0.024	-0.055	-0.045	-0.078		-0.003	0.078	-0.041	-0.055	0.047	0.641***	-0.099*
$t.\gamma_sd$	-0.077	0.024	-0.042	-0.026	-0.003		-0.083	0.039	-0.004	-0.027	-0.027	0.428***
$f.\beta_mean$	0.875***	-0.307***	-0.103*	0.107*	0.078	-0.083		-0.423***	-0.094	-0.232***	0.057	-0.212***
$f.\lambda_mean$	-0.129**	0.962***	0.061	-0.023	-0.041	0.039	-0.423***		0.055	0.379***	0.393***	0.575***
$f.\gamma_mean$	-0.088	0.060	0.911***	-0.055	-0.055	-0.004	-0.094	0.055		0.090	-0.064	0.069
$f.\beta_sd$	-0.213***	0.318***	0.063	0.178***	0.047	-0.027	-0.232***	0.379***	0.090		0.198***	0.177***
$f.\lambda_sd$	0.204***	0.427***	-0.045	-0.037	0.641***	-0.027	0.057	0.393***	-0.064	0.198***		0.216***
$f.\gamma_sd$	0.008	0.592***	0.059	-0.011	-0.099*	0.428***	-0.212***	0.575***	0.069	0.177***	0.216***	

Computed correlation used pearson-method with listwise-deletion.

Table S1. Parameter recovery, longitudinal data (related to main text methods ‘Computational models’). Parametric (Pearson) correlations between ground-truth (‘t.’) and fitted (‘f.’) parameters. We simulated 400 participants with mean (‘_mean’) and standard (‘_sd’) from which choices for individual sessions of 20 trials were then generated (see supplementary methods [2A]). Simulated participants provided 47-50 sessions of data (50%-100% range of participants). Parameters: inverse temperature (β), sensitivity to loss utility (λ) and change in loss sensitivity after prev. trial win vs. loss (γ). Results show that recovery for mean parameters was very good (correlations between true and corresponding fitted, all >0.68). However, recovery for standard deviations was poor (e.g. γ_sd : $r=0.24$). Given this, we decided not to analyse group differences in standard deviations. Neither did we therefore attempt more complex models of variations of parameters across time, such as a volatility model (1).

Model type	inv. temp	variance	skew	outcome hist	reward dist.	loss dist.	loss weight	AIC
M3	x	x	x	x				0
M3	x	x	x					99
M3	x	x	x					133
M3	x	x	x					215
M2	x			x ¹	x	x		3972
M2	x				x	x		4052
M2	x			x ²	x	x		4131
M3	x		x					5029
M2	x				x ³	x ³		6126
M1	x			x			x	6869
M1	x						x	6875
M2	x					x		6972
M2	x				x			7127
M3	x	x						7412
M1/2/3	x							11431

Table S2. Model comparison with Akaiishi Information Criterion (AIC) (related to main text methods ‘Computational models’). We compared three types of models. M1 (model used in main manuscript): decision variables as weighted combination of reward and loss (methods in main text); M2: decision variable containing exponential scaling of reward and loss magnitudes (supplementary methods [2B]); M3: weighted combination expected value, variance and skew (supplementary methods [2B]). Each of these models was run with different parameters being included or excluded (‘x’ in the table indicates inclusion) – parameter abbreviations: inv. temp = inverse temperature; outcome hist = outcome history; reward dist.= exponential distortion of reward magnitude; loss dist. = exponential distortion of loss magnitude. Annotations: ¹Model of type M2, with outcome history included as linear weighing of the loss expected value; ²Model of type M2, with outcome history included in the exponential weighing; ³Model of type M2, with a shared parameter for exponential distorting of reward and loss magnitudes. AIC values are shown relative to the best fitting model, higher numbers indicate worse fit. Importantly, for all types of models, there is a model including outcome history that provides the best fit. While the model presented in the paper (M1) showed not the best fit to the data, it was retained it for ease of meaning of parameters (e.g. sensitivity to potential losses vs. sensitivity to skew) and analogy to previous decision making studies. Potentially, in the present study, the reason that a model with variance and skew provides a better fit is because total expected value of the two options was often very similar (Figure S1). However, we note, that the key behavioural findings of the paper, i.e. decrease in the outcome history effect with mood elevation gradient and decrease in loss aversion in BP are also captured in the both models M2 and M3, see Table S5. Though note that for the outcome history effect in M3, the 95%CI for the effect just about included zero [-0.0006;0.06], while the difference between the BD and low MDQ and high MDQ groups was significant). Parameter recovery for M2 and M3 type models in Table S3.

M3	t.invTemp	t.var weight	t.skew weight	t.outcome history	f.invTemp	f.var weight	f.skew weight	f.outcome history
t.invTemp		-0.058	-0.109*	-0.08	0.867***	-0.081	-0.145**	-0.131**
t.var weight	-0.058		0.027	0.026	-0.069	0.978***	0.01	0.049
t.skew weight	-0.109*	0.027		0.067	-0.196***	0.015	0.977***	0.106*
t.outcome history	-0.08	0.026	0.067		-0.082	0.017	0.058	0.907***
f.invTemp	0.867***	-0.069	-0.196***	-0.082		-0.081	-0.220***	-0.114*
f.var weight	-0.081	0.978***	0.015	0.017	-0.081		0.001	0.041
f.skew weight	-0.145**	0.01	0.977***	0.058	-0.220***	0.001		0.098
f.outcome history	-0.131**	0.049	0.106*	0.907***	-0.114*	0.041	0.098	
M2	t.invTemp	t.loss mag dist	t.rew mag dist	t.outcome history	f.invTemp	f.loss mag dist	f.rew mag dist	f.outcome history
t.invTemp		0.075	-0.046	-0.052	0.901***	0.099*	-0.091	0.006
t.loss mag dist	0.075		-0.029	-0.023	0.074	0.820***	0.112*	-0.009
t.rew mag dist	-0.046	-0.029		0.06	-0.057	0.312***	0.905***	0.082
t.outcome history	-0.052	-0.023	0.06		-0.06	0.019	0.071	0.914***
f.invTemp	0.901***	0.074	-0.057	-0.06		0.077	-0.135**	0.011
f.loss mag dist	0.099*	0.820***	0.312***	0.019	0.077		0.423***	0.046
f.rew mag dist	-0.091	0.112*	0.905***	0.071	-0.135**	0.423***		0.09
f.outcome history	0.006	-0.009	0.082	0.914***	0.011	0.046	0.09	

Table S3. Parameter recovery for alternative models (M2, M3, see Table S2 and supplementary methods [2B], related to main text methods ‘Computational models’). Shown are only the parameter recovery results for participant-wise means, the standard deviations showed equally bad recovery as for M1 (Table S1).

A) Low MDQ, High MDQ, Bipolar disorder (BD) groups (baseline)			
Group	Choice consist. (β)	Loss sensitivity (λ)	Outcome history effect (γ)
3 group gradient	-0.154 [-0.5698 0.2498]	-0.269 [-0.4868 -0.0519]	-0.053 [-0.1104 -3e-04]
High vs low MDQ	-0.42 [-1.15 0.36]	-0.01 [-0.41 0.39]	-0.05 [-0.11 0.03]
BD vs high MDQ	0.14 [-0.62 0.9]	-0.5 [-0.93 -0.08]	-0.07 [-0.19 0.05]
BD vs low MDQ	-0.3 [-1 0.52]	-0.52 [-0.94 -0.08]	-0.12 [-0.24 0]
BD	5.84 [5.24 6.49]	0.89 [0.56 1.23]	0 [-0.11 0.1]
High MDQ	5.71 [5.13 6.29]	1.4 [1.12 1.69]	0.07 [0.02 0.12]
Low MDQ	6.13 [5.55 6.71]	1.41 [1.13 1.72]	0.11 [0.06 0.16]
Day	-0.555 [-0.763 -0.339]	-0.239 [-0.329 -0.155]	-0.03 [-0.062 0.002]
Mania	-0.208 [-0.4911 0.0728]	-0.087 [-0.2375 0.0625]	-0.039 [-0.072 -0.0056]
B) BD groups, pre/post * lithium/placebo			
Group	Choice consist. (β)	Loss sensitivity (λ)	Outcome history effect (γ)
Lith/pla x pre/post	0.193 [-0.9163 1.2654]	-0.01 [-0.5146 0.4884]	-0.11 [-0.2983 0.0797]
Lith pre vs post	0.36 [-0.49 1.2]	-0.18 [-0.53 0.16]	-0.06 [-0.19 0.08]
Pla pre vs post	0.17 [-0.78 1.09]	-0.17 [-0.54 0.21]	0.05 [-0.09 0.2]
Lith vs pla (pre)	0.76 [-0.42 1.83]	0.19 [-0.25 0.61]	-0.07 [-0.23 0.1]
Lith vs pla (post)	0.55 [-0.6 1.73]	0.2 [-0.22 0.62]	0.04 [-0.08 0.17]
Lith (pre)	6.36 [5.43 7.29]	1.09 [0.8 1.39]	-0.03 [-0.15 0.09]
Placebo (pre)	5.61 [4.61 6.6]	0.9 [0.58 1.23]	0.04 [-0.08 0.17]
Lith (post)	6 [5.19 6.88]	1.26 [0.97 1.55]	0.03 [-0.06 0.11]
Placebo (post)	5.44 [4.5 6.35]	1.06 [0.76 1.38]	-0.01 [-0.1 0.09]

Table S4. Computational modelling results (related to Figure 2). Computational model parameters for the longitudinal data. A) Comparison of the three groups (mood elevation gradient, ordered factors across low MDQ, high MDQ, patients with BD, at baseline, i.e. pre-randomization to lithium or placebo). The groups differed in their loss sensitivity (patients with BD being least sensitive to losses) and outcome history effects (patients with BD being least sensitive to past trial outcomes). How participants performed the task changed over time (effect of 'Day'), in particular they became more random (lower inverse temperature) and less sensitive to potential losses (loss sensitivity). When repeating the analyses, but omitting the 5 participants from the high MDQ group that were given a BD diagnosis (Table 1) during the intake interview, results remained broadly the same. For loss sensitivity, we find the same results as before (-0.26; 95% CI: [-0.48; -0.03]). For the outcome history effect, the group effect is not quite significant anymore, but numerically very close to the previous finding (-0.05; 95%CI: [-0.11; 0.0006]). When repeating the analyses and including as additional regressor for each session the time (days) since the previous session, we found numerically very similar results (Loss sensitivity: -0.25; 95%CI: [-0.47;-0.03]; outcome history: -0.0586, 95%CI: [-0.105; 0.0026]). Repeating the analyses and replacing group assignment by the Altman Mania score ('Mania', continuous measure, available for all but one participant in the BD group [later assigned to lithium] and 3 in the high MDQ group), outcome history remains significant, while loss sensitivity is no longer significant (though trend in the same direction as considering group). B) Comparison for the effect of lithium vs. placebo in hierarchical models (Main text Methods, section 'Model fitting', term of interest is the interaction drug (lithium/placebo) * time (pre/post)). No significant group differences were found. Values are means and 95% Bayesian Credible Intervals; for comparisons between groups, significance is defined as 95% intervals not including zero. All estimates were obtained from hierarchical regression models (Main text Methods, section 'Model fitting').

A) M3: Expected value, variance, skew				
Ai) M3: Low MDQ, High MDQ, Bipolar disorder (BD, baseline) groups				
Group	Choice consist. (β)	Var Weight	Skew Weight	Outcome history effect
3 group gradient	-0.114 [-0.4411 0.2132]	0.108 [0.0072 0.2066]	0.047 [-0.0497 0.145]	0.027 [-6e-04 0.0556]
High vs low MDQ	0.05 [-0.53 0.62]	0.01 [-0.17 0.19]	0.04 [-0.13 0.22]	0.01 [-0.03 0.04]
BD vs high MDQ	-0.26 [-0.82 0.42]	0.21 [0.02 0.42]	0.06 [-0.13 0.27]	0.06 [0 0.11]
BD vs low MDQ	-0.21 [-0.81 0.42]	0.22 [0.02 0.42]	0.1 [-0.09 0.31]	0.06 [0.01 0.12]
BD	2.62 [2.12 3.13]	0.23 [0.07 0.38]	0.1 [-0.05 0.26]	0.01 [-0.04 0.06]
High MDQ	2.87 [2.43 3.33]	0.02 [-0.12 0.14]	0.04 [-0.08 0.17]	-0.04 [-0.07 -0.02]
Low MDQ	2.83 [2.36 3.27]	0.01 [-0.12 0.14]	0 [-0.14 0.13]	-0.05 [-0.08 -0.02]
Day	-0.133 [-0.297 0.033]	0.047 [0.015 0.08]	0.108 [0.07 0.147]	0.014 [-0.001 0.029]
Aii) M3: BD groups, pre/post * lithium/placebo				
Group	Choice consist. (β)	Var Weight	Skew Weight	Outcome history effect
Lith/pla x pre/post	-0.273 [-1.1636 0.6362]	0.152 [-0.0605 0.364]	-0.217 [-0.4738 0.0465]	-0.006 [-0.1042 0.0895]
Lith pre vs post	-0.28 [-0.96 0.4]	0.16 [0.02 0.32]	-0.04 [-0.22 0.14]	0.02 [-0.05 0.09]
Pla pre vs post	-0.01 [-0.72 0.7]	0.01 [-0.14 0.18]	0.18 [-0.03 0.37]	0.02 [-0.05 0.1]
Lith vs pla (pre)	0.61 [-0.23 1.5]	0.09 [-0.12 0.3]	-0.11 [-0.39 0.16]	0 [-0.09 0.08]
Lith vs pla (post)	0.89 [-0.03 1.81]	-0.06 [-0.25 0.12]	0.1 [-0.2 0.43]	0 [-0.06 0.06]
Lith (pre)	2.83 [2.14 3.49]	0.24 [0.1 0.39]	-0.03 [-0.22 0.16]	0.01 [-0.05 0.07]
Placebo (pre)	2.22 [1.53 2.92]	0.15 [-0.01 0.3]	0.09 [-0.11 0.28]	0.02 [-0.05 0.08]
Lith (post)	3.11 [2.45 3.77]	0.08 [-0.05 0.2]	0.01 [-0.19 0.22]	-0.01 [-0.05 0.03]
Placebo (post)	2.22 [1.54 2.93]	0.14 [0 0.27]	-0.09 [-0.32 0.14]	-0.01 [-0.05 0.04]
B) M2: exponential distortions of magnitudes				
Bi) M2: Low MDQ, High MDQ, BD (baseline) groups				
Group	Choice consist. (β)	Rew mag dist	Loss mag dist	Outcome history effect
3 group gradient	-0.362 [-0.8268 0.1023]	0.046 [-0.0291 0.1216]	-0.078 [-0.1551 -1e-04]	0.023 [3e-04 0.0532]
High vs low MDQ	-0.12 [-1 0.76]	0.04 [-0.1 0.17]	0 [-0.13 0.13]	0.02 [0 0.04]
BD vs high MDQ	-0.48 [-1.3 0.43]	0.06 [-0.1 0.21]	-0.16 [-0.32 -0.02]	0.03 [-0.04 0.1]
BD vs low MDQ	-0.6 [-1.48 0.25]	0.1 [-0.06 0.26]	-0.16 [-0.31 -0.01]	0.05 [-0.02 0.12]
BD	7.12 [6.4 7.9]	1.34 [1.22 1.47]	1.32 [1.2 1.44]	0.04 [-0.03 0.1]
High MDQ	7.6 [6.91 8.34]	1.29 [1.19 1.39]	1.49 [1.39 1.58]	0.01 [-0.01 0.03]
Low MDQ	7.73 [7.01 8.47]	1.25 [1.15 1.34]	1.48 [1.39 1.57]	-0.01 [-0.03 0.01]
Day	-0.668 [-0.928 -0.409]	0.056 [0.027 0.085]	0.029 [-0.002 0.06]	0.012 [0.001 0.023]
Bii) M2: BD groups, pre/post * lithium/placebo				
Group	Choice consist. (β)	Rew mag dist	Loss mag dist	Outcome history effect
Lith/pla x pre/post	-0.073 [-1.2749 1.123]	-0.085 [-0.2576 0.0919]	-0.202 [-0.4042 3e-04]	0.054 [-0.1137 0.2272]
Lith pre vs post	-0.16 [-1.05 0.74]	0.01 [-0.11 0.12]	-0.07 [-0.21 0.08]	-0.01 [-0.12 0.11]
Pla pre vs post	-0.09 [-1.15 0.99]	0.09 [-0.03 0.23]	0.13 [-0.02 0.29]	-0.06 [-0.2 0.07]
Lith vs pla (pre)	0.83 [-0.4 2.01]	-0.02 [-0.18 0.15]	-0.09 [-0.36 0.2]	0.04 [-0.11 0.18]
Lith vs pla (post)	0.9 [-0.5 2.29]	0.07 [-0.13 0.27]	0.11 [-0.14 0.35]	-0.02 [-0.13 0.09]
Lith (pre)	7.55 [6.52 8.57]	1.29 [1.17 1.4]	1.26 [1.07 1.46]	0.02 [-0.08 0.12]
Placebo (pre)	6.71 [5.62 7.8]	1.3 [1.18 1.42]	1.36 [1.16 1.56]	-0.02 [-0.12 0.1]
Lith (post)	7.71 [6.64 8.76]	1.28 [1.15 1.42]	1.33 [1.17 1.5]	0.03 [-0.04 0.09]
Placebo (post)	6.81 [5.63 7.94]	1.21 [1.06 1.35]	1.22 [1.05 1.4]	0.05 [-0.04 0.12]

Table S5. Group comparisons for alternative models (M2, M3, see Table S2 and supplementary methods [2B]). A) In M3, instead of considering reward and loss expected values/ utility separately, we consider total expected value, variance and skew. Now, the previous (M1) decreased loss risk aversion with BD expressed

itself as increased preference for options with higher variance (see Figure S1 for relationship – high correlation- between risk of loss and variance). The mood elevation gradient is again linked to decreased adaptation across trials, here captured as decreased preference to options with high variance after win on previous trial (in M1: decreased avoidance of risk of losing). B) In M2, the model has parameters for the (exponential) distortion of reward magnitudes and loss magnitudes. Outcome history effects are captured as linear weighting of the loss expected value. Again, group differences captured are conceptually very similar to M1. As we could not fit a model (due to low trial numbers per session) including both the linear and exponential effects of loss sensitivity, future studies will need to be done to describe the specific shape of the increased loss sensitivity more precisely. Values are means and 95% Bayesian Credible Intervals; for comparisons between groups, significance is defined as 95% intervals not including zero.

Group	Choice consist. (β)	Loss sensitivity (λ)	Outcome history effect (γ)
Lith (post)	8.8 [7.08 10.52]	1.48 [0.92 2.03]	-0.07 [-0.31 0.17]
Pla (post)	6.58 [4.55 8.48]	1.58 [0.95 2.29]	-0.01 [-0.27 0.27]
High MDQ	7.06 [6.08 8.08]	1.76 [1.38 2.07]	0.13 [-0.02 0.27]
Low MDQ	7.34 [6.28 8.34]	1.73 [1.38 2.09]	0.12 [-0.03 0.25]
4 Group diff (post)	-0.002 [-0.74 0.67]	-0.059 [-0.278 0.157]	-0.051 [-0.141 0.039]
Lith vs pla (post)	2.23 [-0.3 4.95]	-0.1 [-0.96 0.75]	-0.06 [-0.42 0.28]
High vs low MDQ	-0.28 [-1.61 1.21]	0.03 [-0.46 0.53]	0.02 [-0.17 0.21]

Table S6. fMRI session computational parameters (related to Figure 2). Values are reported separately for each of the four groups (Bipolar participants on lithium ('Bip Lith'), bipolar participants on placebo ('Bip Pla'), healthy volunteers with low or high mood instability ('Low MDQ', 'High MDQ') as means and 95% Bayesian Credible Intervals (intervals not including zero are significant).

All estimates were obtained from linear regression models allowing correcting for age and gender. Group differences were computed across all four groups ('4 group diff'). Group differences are also reported separately comparing high and low mood instability participants ('High vs. low MDQ') and lithium vs. placebo participants ('Lith vs pla'). There were no significant group differences.

	β_{mean}	λ_{mean}	γ_{mean}	β_{fmri}	λ_{fmri}	γ_{fmri}
β_{mean}		-0.043	0.147	0.394***	-0.249*	-0.067
λ_{mean}	-0.043		0.101	-0.180	0.426***	0.178
γ_{mean}	0.147	0.101		-0.047	-0.034	-0.058
β_{fmri}	0.394***	-0.180	-0.047		-0.525***	-0.076
λ_{fmri}	-0.249*	0.426***	-0.034	-0.525***		0.193
γ_{fmri}	-0.067	0.178	-0.058	-0.076	0.193	

Computed correlation used pearson-method with listwise-deletion.

Table S7. Correlations between parameters from longitudinal and FMRI data (related to Figure 2). For all but one parameter, computational parameters derived from longitudinal measurements and those obtained during the FMRI scan correlate significantly. Only for the outcome history effect parameter (γ) are the correlations not significant. Correlations were computed using Pearson correlations across combined data from all four participant groups.

A) Low MDQ, High MDQ, Bipolar disorder (BD) groups (baseline)				
Group	Positive PANAS (mean)	Negative PANAS (mean)	Positive PANAS (sd)	Negative PANAS (sd)
3 group gradient	0.15 [-0.6434 0.9624]	2.61 [1.9555 3.2551]	0.221 [0.1118 0.3321]	0.642 [0.4558 0.8305]
High - low MDQ	0.16 [-1.29 1.67]	1.26 [-0.02 2.47]	0.35 [0.15 0.56]	0.73 [0.41 1.06]
BD - high MDQ	0.04 [-1.22 1.38]	2.1 [0.9 3.25]	0.1 [-0.12 0.34]	0.6 [0.23 0.95]
BD - low MDQ	0.2 [-1.11 1.52]	3.36 [2.18 4.45]	0.45 [0.22 0.68]	1.33 [0.94 1.71]
BD	6.76 [5.63 7.86]	4.94 [3.97 5.87]	1.15 [0.97 1.33]	1.13 [0.84 1.41]
High MDQ	6.73 [5.75 7.75]	2.83 [2.03 3.73]	1.05 [0.9 1.19]	0.53 [0.3 0.75]
Low MDQ	6.56 [5.41 7.69]	1.57 [0.73 2.53]	0.7 [0.56 0.86]	-0.2 [-0.43 0.05]
Day	-0.296 [-0.56 -0.049]	-0.007 [-0.139 0.119]	NA	NA
B) BD groups, pre/post * lithium/placebo				
Group	Positive PANAS (mean)	Negative PANAS (mean)	Positive PANAS (sd)	Negative PANAS (sd)
Lith/pla x pre/post	-0.274 [-1.5488 1.019]	0.264 [-0.8541 1.3526]	0.013 [-0.4098 0.4187]	-0.086 [-0.4867 0.3164]
Lith pre vs post	1.01 [-0.03 2.08]	0.86 [-0.01 1.72]	0.22 [-0.06 0.51]	0.1 [-0.19 0.36]
Pla pre vs post	1.3 [0.12 2.58]	0.58 [-0.41 1.59]	0.2 [-0.11 0.5]	0.18 [-0.12 0.46]
Lith vs pla (pre)	0.2 [-1.61 1.86]	-0.35 [-2 1.31]	0.06 [-0.43 0.49]	-0.2 [-0.65 0.25]
Lith vs pla (post)	0.49 [-1.59 2.51]	-0.62 [-2.47 1.27]	0.04 [-0.36 0.47]	-0.11 [-0.57 0.32]
Lith (pre)	7.92 [5.98 9.87]	6.19 [4.41 8.04]	1.17 [0.84 1.48]	0.88 [0.54 1.18]
Placebo (pre)	7.72 [5.78 9.7]	6.55 [4.62 8.35]	1.11 [0.77 1.45]	1.08 [0.75 1.39]
Lith (post)	6.89 [4.98 8.9]	5.33 [3.57 7.3]	0.95 [0.66 1.23]	0.78 [0.46 1.07]
Placebo (post)	6.43 [4.48 8.6]	5.97 [4.09 8.02]	0.91 [0.59 1.19]	0.89 [0.58 1.21]
C) Group differences in impact of gambling outcomes on mood				
Regressor	Total gain	Total loss	Total gain minus loss	
Outcome->Mood change	0.843 [0.6303 1.0599]	0.942 [0.7177 1.1755]	1.026 [0.7737 1.286]	
3 group gradient	0.12 [-0.0254 0.2764]	0.188 [0.0291 0.3525]	0.133 [-0.0037 0.2764]	
3 group gradient x outcome	-0.083 [-0.2753 0.0951]	-0.146 [-0.3453 0.0576]	-0.123 [-0.3475 0.0926]	
D) Impact of mood before the task on task behaviour				
Regressor	Choice consist. (β)	Loss sensitivity (λ)	Outcome history (γ)	
totalPANAS (not ctr gr)	0.034 [-0.0835 0.1533]	0.007 [-0.0488 0.061]	-0.01 [-0.0396 0.0187]	
totalPANAS (ctr gr)	0.03 [-0.0856 0.1478]	0 [-0.0548 0.053]	-0.017 [-0.0484 0.014]	
totalPANAS (ctr interact)	-0.093 [-0.2803 0.086]	-0.007 [-0.0973 0.0834]	-0.022 [-0.0708 0.0239]	
totalPANAS x 3gr gradient	0.157 [-0.0078 0.3185]	0.005 [-0.0666 0.0772]	0.005 [-0.0355 0.0438]	
3 group gradient (ctr totalPANAS interact)	-0.095 [-0.5057 0.3175]	-0.268 [-0.4829 -0.0452]	-0.059 [-0.1189 -0.0041]	
posPANAS (not ctr gr)	0.03 [-0.0933 0.158]	-0.015 [-0.0719 0.0419]	0 [-0.0299 0.0306]	
posPANAS (ctr gr)	0.009 [-0.0289 0.0491]	-0.009 [-0.0466 0.0287]	0.002 [-0.0367 0.0407]	
posPANAS (ctr interact)	-0.093 [-0.2756 0.0794]	-0.017 [-0.1056 0.0673]	-0.001 [-0.047 0.0439]	
posPANAS x 3gr gradient	0.177 [0.0059 0.3461]	0.002 [-0.0732 0.0782]	0.001 [-0.0417 0.0412]	
3 group gradient (ctr posPANAS interact)	-0.166 [-0.5529 0.2334]	-0.265 [-0.4898 -0.038]	-0.056 [-0.1126 -0.0032]	
negPANAS (not ctr gr)	-0.031 [-0.1628 0.0978]	-0.037 [-0.0992 0.0274]	0.019 [-0.0122 0.0505]	
negPANAS (ctr gr)	-0.007 [-0.0487 0.0359]	-0.014 [-0.0576 0.0298]	0.045 [0.0025 0.0872]	
negPANAS (ctr interact)	0.036 [-0.2153 0.2919]	-0.012 [-0.1293 0.1091]	0.071 [0.0039 0.1487]	
negPANAS x 3gr gradient	-0.053 [-0.2339 0.1254]	-0.008 [-0.0952 0.0775]	-0.027 [-0.0747 0.0178]	
3 group gradient (ctr negPANAS interact)	-0.114 [-0.5185 0.3209]	-0.232 [-0.4619 0.0057]	-0.071 [-0.1345 -0.0138]	

Table S8. Group difference for mood (PANAS) mean and standard deviations and impact of task outcomes on momentary mood (VAS). A) Comparison of the three groups (mood elevation gradient, ordered factors across low MDQ, high MDQ, patients with BD [i.e. pre randomization to lithium or placebo]). The groups differed in variability (standard deviation (log scale) for positive and negative PANAS with patients with BD

showing the highest variability. Groups also differed in the mean values for negative PANAS. B) Comparison for the effect of lithium vs. placebo in hierarchical models (Main text Methods, section ‘Model fitting’, term of interest is the interaction drug (lithium/placebo) * time (pre i.e. baseline /post)). No significant group differences were found. C) In a regression predicting changes in mood rated on a visual analogue scale (VAS) post completing the daily task vs. pre, there was an overall effect that the higher the total reward, and the lower the total loss (i.e. more positive number), the more mood improves. However, this impact of task outcomes on mood was not affected by the mood elevation gradient (‘3 Group x outcome’). Values are means and 95% Bayesian Credible Intervals; significance is defined as 95% intervals not including zero. All estimates were obtained from hierarchical regression models (Main text Methods, section ‘Model fitting’). D) In separate regressions, we assessed the impact of mood behaviour the daily tasks on behaviour. Mood was measured as positive or negative PANAS or as the total PANAS (positive minus negative PANAS). The regressions were of the same form as throughout the paper (e.g. S4), additionally including mood and/or an interaction between mood and BD gradient. For completeness, we report the results here for regressions only including mood, not BD gradient (‘not ctr gr’), controlling BD gradient in addition to mood (‘ctr gr’), controlling for an interaction between mood and BD gradient (‘ctr interact’). We report also the interactions between mood and BD gradient (‘x 3gr gradient’) and the result for BD gradient, controlling interactions with mood (‘ctr mood interact’). We find (figure S4C for illustration) that in the BD group, choice consistency is higher (i.e. less choice noisiness) when positive PANAS is higher. While there appears to be an impact of negative PANAS on outcome history, this only emerges when including the BD gradient as a regressor, making it difficult to interpret (one could speculate that a ‘masking’ effect is present because neg PANAS and group have the opposite impact on outcome history and neg PANAS differs between the groups).

Low and high MDQ groups combined	x	y	z	max z-score	p-value (2-tailed)	# voxels
Reward utility (chosen - unchosen) at choice						
<i>Activation</i>						
Precuneus, primary motor area (M1), caudal cingulate zone (CCZ), supplementary motor area (SMA), posterior rostral cingulate zone (RCZp) [2]	-12	-44	50	4.22	2.08E-13	3106
Area 9/46 and 45a and 47m and 47o and IFS [2,3,4]	48	8	44	4.85	6.16E-13	2961
Temporal lobve (right)	60	-28	-2	4.47	4.86E-11	2401
Temporoparietal junction (TPJa) [1] (left)	-48	-44	18	3.93	2.90E-10	2184
Spanning precuneus and intracalcarine cortex	-18	-62	12	3.94	4.20E-09	1867
Area 47m and 47o (left) [2]	-40	42	-4	4.02	1.19E-07	1472
Superior parietal lobe (SPLA) [1] (left)	-32	-40	54	3.82	1.58E-04	812
Area 8a [3] (left)	-46	4	42	4.03	4.28E-04	728
Area 8m [2]	4	44	38	5.11	8.64E-03	493
Loss utility (chosen - unchosen) at choice						
<i>Activation</i>						
Rostral cingulate zone (RCZa) [2]	12	28	26	3.26	2.06E-02	431
Last trial's win/loss magnitude (signed) at choice						
<i>Activation</i>						
Ventral striatum (bilateral) and ventromedial prefrontal cortex (14m and 11m) and medial frontal pole (Fpm) [2]	-18	12	-8	4.37	4.52E-13	3084
Occipital cortex	-16	-84	-2	3.7	1.72E-02	454
Win/loss magnitude (signed) at outcome						
<i>Activation</i>						
Ventral striatum and vmPFC (14m) [2]	14	12	-8	8.88	1.88E-30	9977
Inferior parietal lobe (IPLA) [1], left	-58	-18	26	4.65	2.80E-08	1708
Area 8m [2], left	-16	38	42	5	3.58E-07	1442
Primary motor area (M1) [2], right	20	-28	72	4.06	4.76E-07	1409
Occipital lobe, left	30	-88	-6	4.94	3.10E-06	1208
Precuneus, bilateral	-16	-52	12	4.58	9.78E-06	1093
Occipital lobe, right	-28	-92	4	4.72	2.56E-04	792
Temporal lobe, left	-56	-38	-12	4.09	3.22E-04	772
Inferior parietal lobe (IPLA, IPLD, IPLC) [1], left	-42	-66	40	5.47	8.48E-04	690
Cerebellum (right)	42	-70	-38	3.57	3.32E-02	408
<i>Deactivation</i>						
Pre supplementary motor area (pre-SMA) [2]	2	16	52	4.72	0.00033	770

Table S9. General task brain (de)activations (related to Figure 3). Data across the low and high mood instability (MDQ) groups was combined to identify general brain (de)activations during the task. Coordinates are reported in MNI space. Significance was determined using cluster-based thresholding (methods section “fMRI analysis – whole-brain”), with inclusion threshold: $z=2.3$ and significance $p<0.05$ two-tailed. The maximum z-value of the cluster, the p-value and number of voxels are given for each cluster. Anatomical labels are based on: [1] (2) [2] (3), [3] (4), [4] (5), [5] (6).

A Low vs high MDQ groups	x	y	z	max z-score	p-value (2-tailed)	# voxels
Last trial's win/loss magnitude (signed) at choice						
<i>Low > high MDQ</i>						
Medial frontal pole (FPm), area 9m [2]	-10	56	16	3.52	0.0378	398
B Bipolar lithium vs. placebo groups - exploratory						
Win/loss magnitude (signed) at outcome						
<i>Placebo > Lithium</i>						
Dorsolateral prefrontal cortex (Area 46 [5]) and lateral frontal pole [2], Inferior frontal sulcus (IFS), (right)	38	48	0	3.49	0.00898	503

Table S10. Whole-brain group comparisons (related to Figure 4). A) Comparisons of the low vs high mood elevation volunteers. Repeating the group comparisons in the ROI, but excluding participants from the high MDQ group who had a BD diagnosis (n=5), results were still significant: estimate = 1.00, 95%CI=[0.6; 1.39]. B) Comparisons of the patients with BD assigned to placebo or lithium. All cluster-based thresholded, inclusion threshold: z=2.3, significance p<0.05 two-tailed. The maximum z-value of the cluster, the p-value and number of voxels are given for each cluster. Anatomical labels are based on: [1] (2)) [2] (3), [3] (4), [4] (5), [5] (6).

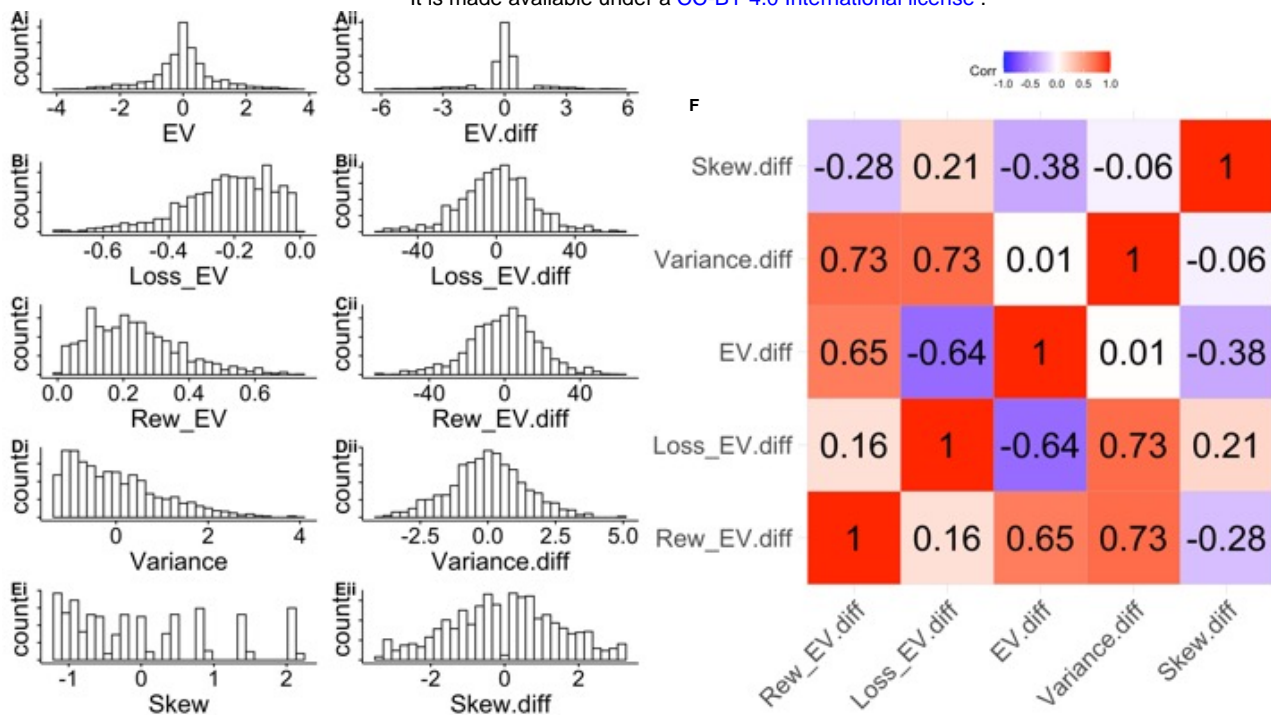


Figure S1. Illustration of task schedule (related to Figure 1). A)-E) Distributions for total expected value or 'utility' (EV, i.e. for each option: probability*reward magnitude + (1-probability)*loss magnitude, assuming loss magnitude is coded as negative number), loss expected value ((1-probability)*loss magnitude), reward expected value (probability*reward magnitude), variance and skew across all trials of the experiment (see supplementary methods [2B]). i) shows the distribution of these values across all options and ii) the distribution of left minus right ('diff') options. F) Correlation between the task properties. Of note, as expected, variance and total expected value are highly correlated with both reward and loss expected value differences.

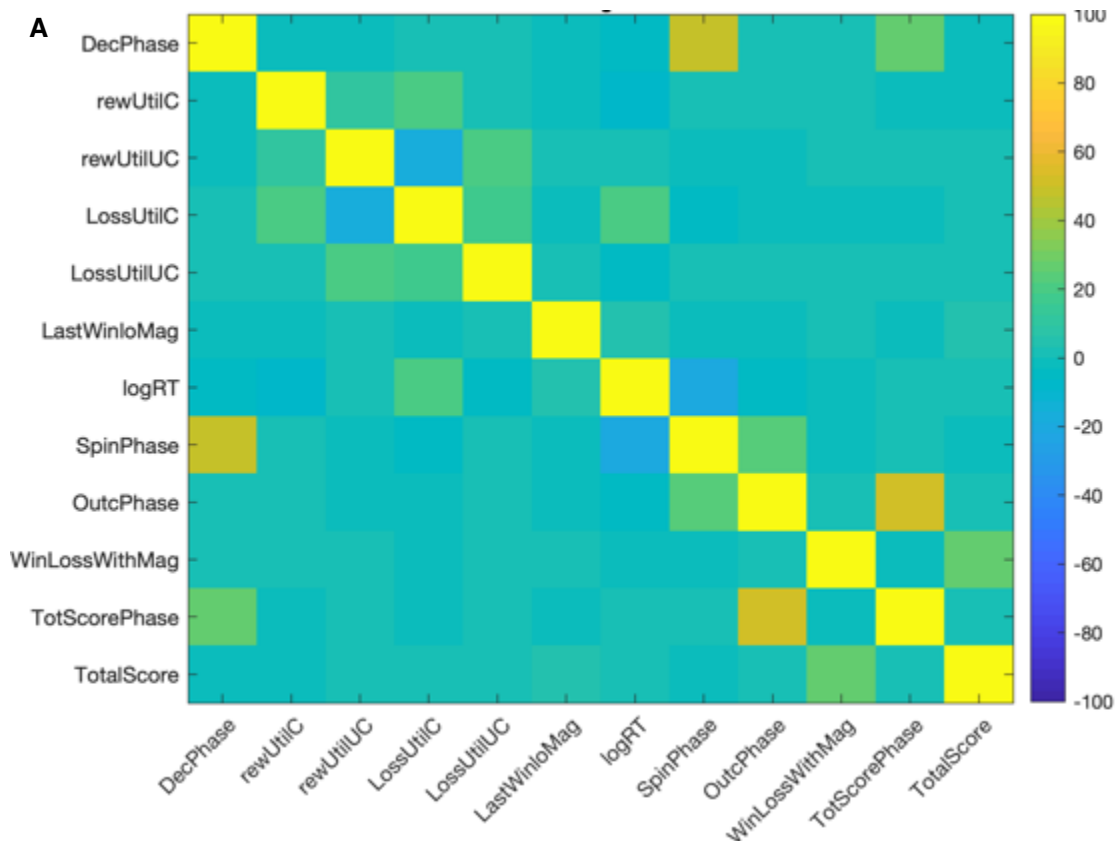


Figure S2. FMRI designs. Correlations of the haemodynamically convolved regressors for FMRI design 1 (A) and design 2 (B). No value regressors exceeded correlations of $r > 0.5$ with any other regressors or confounds. Abbreviations: chosen reward utility (rewUtilC), unchosen reward utility (rewUtilUC), chosen loss utility (lossUtilC), last trial's outcome, i.e. points won or lost, e.g. +10 or -20 (LastWinLoMag), current trial's outcome (WinLossWithMag), relative reward utility (rewUtilCmUC), interaction between last trial's outcome and the current trial's loss utility (LastWinLoMagxLossUtilCmUC).

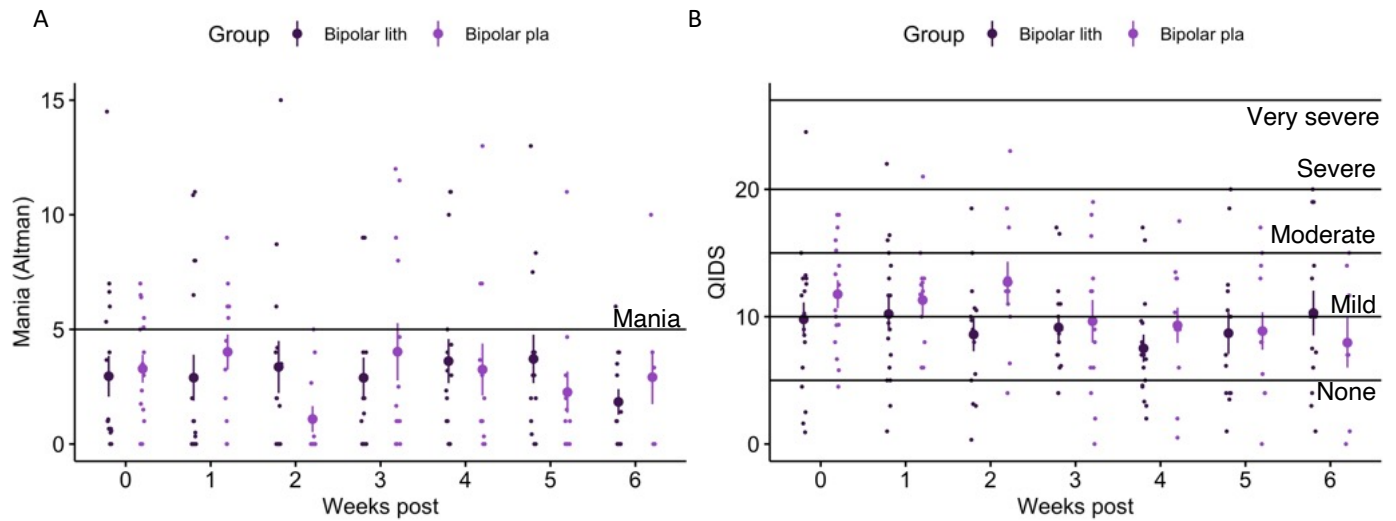


Figure S3. Mania (Altman Self Rating Mania Scale, A) and depression (Quick Inventory of Depressive Symptomatology, B) over the course of the study in patients with BD. Week zero is the average value of all weeks pre randomization (i.e. baseline) to lithium (black) vs. placebo. (purple) Horizontal lines show standard cut-offs. There were no significant differences between the groups (result of a regression predicting Altman or QIDS based on group, time and group*time, controlling for age and gender: group*time interaction: Altman 0.018, 95% CI [-0.10; 0.14]; QIDS: 0.05, 95% CI: [-0.1; 0.2]; main effect of group: Altman -0.70, 95% CI [-3.5; 2.0]; QIDS: -0.09, 95% CI: [-0.10; 0.02]; main effect of time: Altman: -0.01, 95% CI [-0.10; 0.07]; QIDS: -0.09, 95% CI: [-0.19; 0.02]).

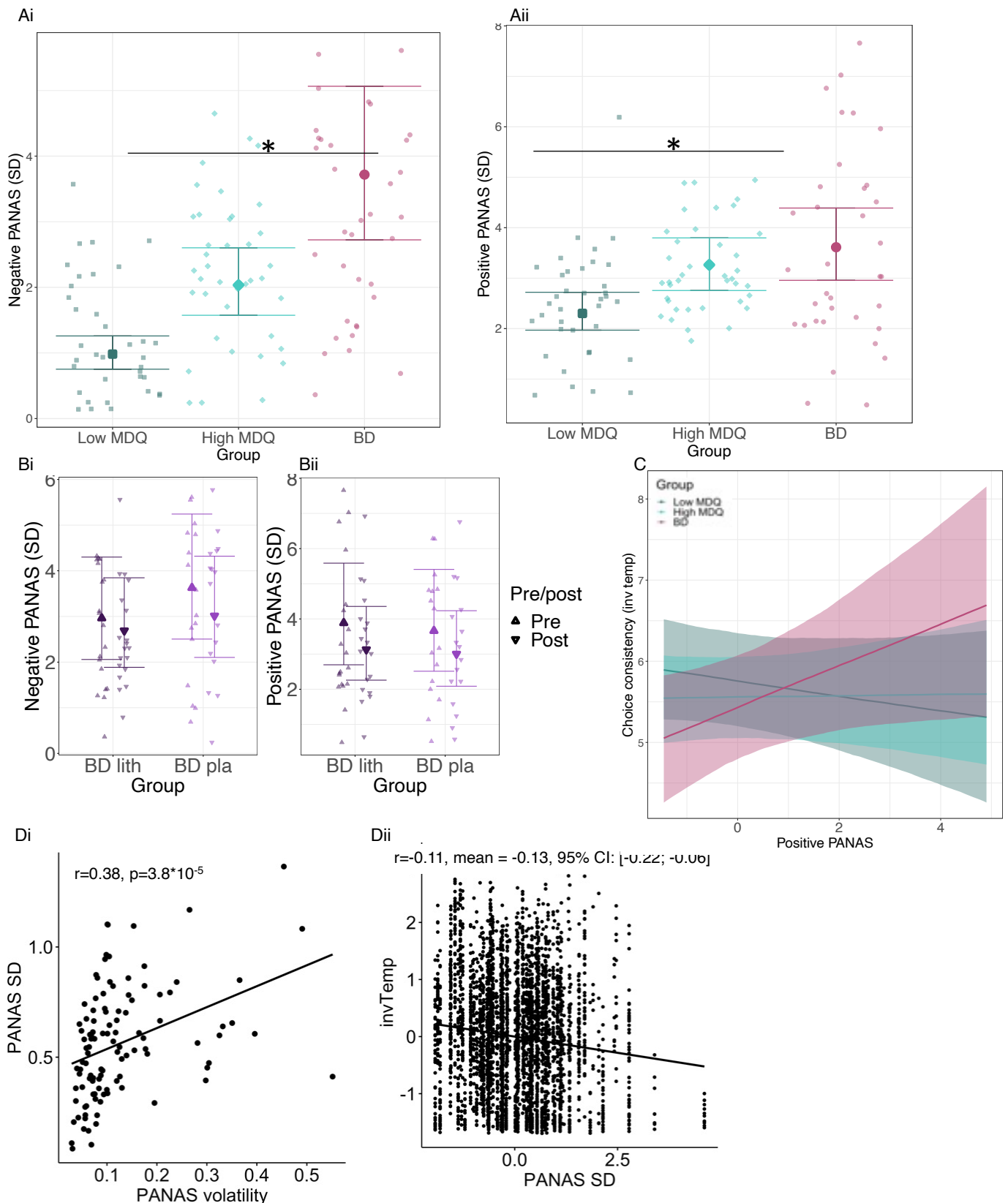


Figure S4. Mood (PANAS) variability (standard deviation). A and B as previously reported in Panchal et al. (7), shown here for ease of accessibility together with results relating mood to behaviour. A) BD gradient (ordered factor with low MDQ < high MDQ < patients with BD pre assignment to placebo or lithium) is linked to increased variability (standard deviation) for both positive and negative mood (PANAS). B) In contrast, lithium (as interaction term drug (lithium/placebo) * time (pre/post)) does not affect variability of mood. See Table S8 for statistical values. C) Linking daily ratings of positive PANAS to inverse temperature (choice consistency) revealed an interaction with group (see Table S8). D) We adapted a more comprehensive model of mood variation from Pulcu et al. (1) (see supplementary methods [4] Bayesian mood instability models), fitting both mood variability and the links of mood variability to behaviour. Di) In the model, we captured

separately the noisiness of mood ratings (PANAS SD, standard deviation) and the change in the average underlying moods (PANAS volatility). Dii) The groups differed in both measures of mood instability. Group was not included in the models. To test how predictive mood instability was for group, we trained regression models for out-of-sample leave-one-out predictions (see supplementary methods [4]). We found that for a model trained to predict low vs high MDQ group, % correct classification prediction was 72% (chance: 46%). When training to predict the three groups, classification was 61% correct (either when trained on all participants or omitting those that had a diagnosis of BD in the high MDQ group; chance: 32% correct). For the high MDQ participants with a BD diagnoses, 0% were misclassified as BD. Diii) The higher the mood variability (PANAS SD), the less consistent participants' choices (i.e. lower inverse Temperature), mean = -0.07, 95%CI [-0.15; -0.002]. We illustrate here the data across all measurements, but statistics were done in the full model taking the hierarchical structure of the data (i.e. several days per participant) into account. For other parameters, no consistent results emerged (i.e. changing the modelling approach slightly to capture mood instability and its link to behaviour in separate models meant that some results disappeared that were significant in the full model, suggesting that they were at least less reliable).

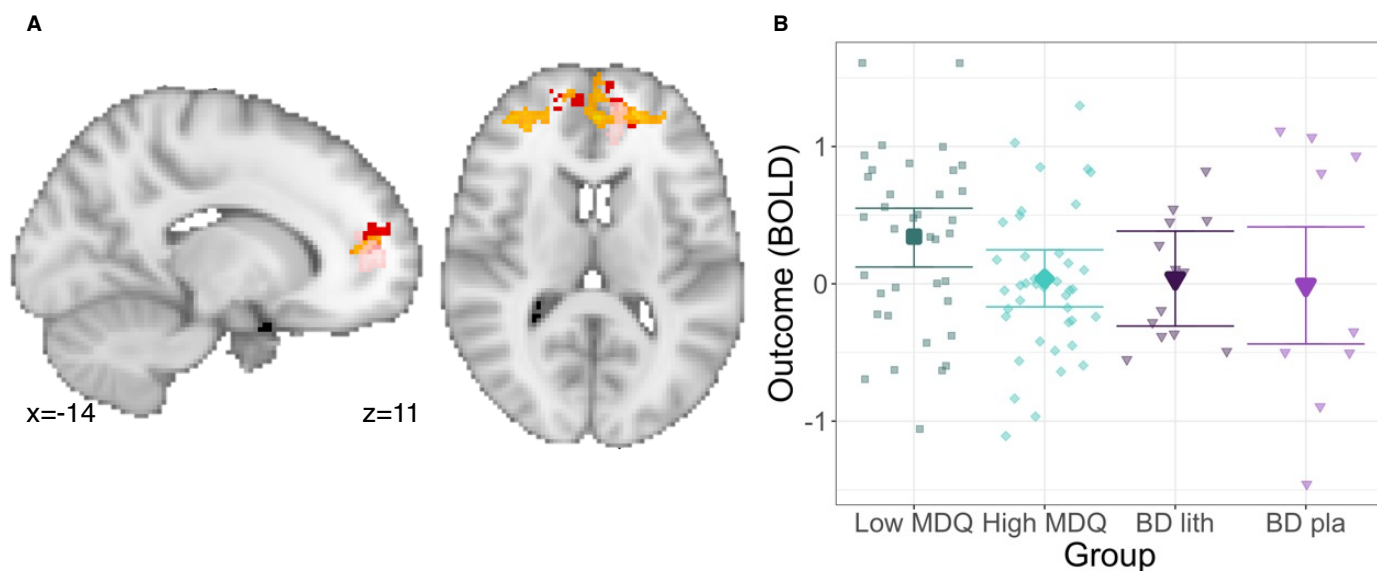


Figure S5. Whole-brain individual difference analyses. A) To complement Figure 4Aiii, we repeated the analyses whole brain, linking individual differences in the behaviour (at home) for the outcome history effect to neural signals for the last trial's outcome at choice (orange) and for the reward/loss outcome signal (pink). Significant ($p < 0.05$) whole-brain clusters overlapped with the area of the group difference in the last trial's outcome signal at choice between the high and low MDQ groups (red, see Figure 4Ai). In particular, the result for the current trial outcome is noteworthy as that activation did not show any group differences. Together, this highlights a role for this medial frontal polar area in the outcome history effects. B) Despite the absence of whole-brain corrected differences between the high and low MDQ group for the outcome reward/loss activations, we also tested for group differences in the region of group differences for the last trial's outcome at the time of the choice (Figure 4A, red activation in A). We found that in fact, the low MDQ group shows a greater outcome-related activation than the high MDQ group (mean = 0.5, 95% Bayesian CI: [0.06; 0.93]). There were no differences between the BD lithium and BD placebo groups (mean = -0.1, 95% CI: [-0.92; 0.76]). Participant numbers: $n=99$ (all available participants across the four groups).

Supplementary methods

[1] Additional participant information

[1A] Exclusion criteria

Healthy volunteers with low and high mood instability. Common inclusion criteria across both groups were: over 18 years old, no current medication (other than contraceptive pill), no use of antidepressants, antipsychotics, lithium or anticonvulsant medication in the last 6 weeks, no contraindication to MRI or MEG. Participants were recruited based on their scores of mood instability (MDQ). The questionnaire includes first questions describing symptoms of bipolar and second a question about whether the different symptoms occurred at the same time. Participants were included in the low MDQ group if their number of reported symptoms was 5 or less. Participants were included in the high MDQ group if they reported 7 or more symptoms and report that they have happened at the same time. Additionally, in the low mood instability group, we excluded participants with a current or past diagnosis of an axis 1 psychiatric disorder (assessed using DSM-IV interview) or a first degree relative with bipolar disorder. In the high mood instability group, we excluded participants with a current or past diagnosis of an axis 1 psychiatric disorder other than bipolar disorder I or II, major depression or anxiety disorders.

Participants diagnosed with bipolar disorder. Inclusion criteria: over 18 years old, meeting criteria for BDI, BDII or BDNOS as assessed using the Structured Clinical Interview for DSM-V Axis I Disorders (SCID-I), clinically significant mood instability (established through interview), not currently suicidal (currently suicidal assessed as a score of ≥ 4 on the C-SSRS (Columbia Suicide Severity Rating Scale Score (8))), no contraindications to lithium (assessed through pre-treatment tests including renal, cardiac, thyroid and parathyroid functions), not currently taking any psychotropic drugs that could not be withdrawn, not requiring acute treatment so that placebo would be inappropriate, participation in a previous research trial in the past 12 weeks. Participants with contraindications to MRI scanner were included in the behavioural part of the study.

All participants. When inspecting the PANAS daily mood ratings, we noticed that for some participants on some days, every single response (to all positive and negative items was zero). This suggests a technical problem. We set the data from these days to zero. There were 25 participants (across all groups) for who this happened for more than 10% of measurements. Because of using hierarchical models, we could include most participants for all analyses. Specifically, we could include all participants that did not have a standard deviation of zero for the mood measures (this excluded 1 participant for the analyses for negative PANAS , 0 for positive PANAS and 2 for the analyses of changes in mood before and after the task).

[1B] Larger study – full information

Volunteers:

The data presented here was part of larger study (CONBRIO, Collaborative Oxford Network for Bipolar Research to Improve Outcomes: The cognitive neuroscience of mood instability; Cognition and Mood Evolution across Time (COMET) – MSD-IDREC-C2-2014-023). Participants who expressed interested in the study were given an electronic version of the information sheet and the Mood Disorder Questionnaire (MDQ). If they scored in either the 'low MDQ' or the 'high MDQ' category they were invited for a first study visit.

During the first study visit, inclusion and exclusion criteria were checked. Participants were also screened for psychiatric disorders using the Structured Clinical Interview for DSM Disorders (SCID) (9). Participants completed several questionnaires, including Barratt Impulsiveness Scale (10), Sleep Condition Indicator (11), Maclean Screening Instrument (12), Affective Lability Scale (13), Affect Intensity Measure (14). Participants were set up with and instructed how to use devices to measure their activity (GeneActiv watch and FitBit) over the ten weeks study period. They were given an iPad mini and trained on four cognitive tasks: ‘wheel of fortune’ – risky decision making (presented here), ‘guess the gap’ – performance learning, ‘fractals’ – stimulus-outcome learning, ‘whack-a-t’ – implicit spatial learning.

Over a period of ten weeks, they were asked to complete these tasks five times a week and to wear the GeneActiv and FitBit devices as much as possible. They were also asked to complete clinical questionnaires (Quick Inventory of Depressive Symptomatology (15), Altman self-rating mania scale (16), Generalized Anxiety Disorder-7 (17), EuroQoL-5 [health-related quality of life] (18)) on the True Colours mood monitoring system (19) once a week. They were also asked to stay within the recommended daily alcohol intake levels throughout.

In the beginning of the ten-week period (weeks one or two) and in the end (weeks nine and ten), participants attended an MRI scan and a MEG scan. Due to MEG scanner downtime, only 24 participants received the MEG scan. During both MRI scans, resting state and structural data was obtained. At the first scan, additional the ‘wheel of fortune’ was measured. At the second MRI scan, ‘fractals’ and ‘guess the gap’ was measured, as well as diffusion tensor imaging and fluid-attenuated inversion recovery.

Participants diagnosed with bipolar disorder:

Participants first took part in a screening visit in which inclusion criteria were checked and informed consent was taken. Using the SCID-I, a diagnosis check was done. In addition, demographic and clinical information was obtained, including duration of illness, previous use of psychotropic medicines, family history of mood disorders, presence of comorbid borderline personality disorder and attention deficit hyperactivity disorder and current suicidal ideation, concomitant medication and substance use and a physical examination. If blood samples have not been taken as part of routine monitoring, they were taken at this visit. Two sets of samples were taken, one was sent to the pathology lab for analysis and the other was retained as replacement for samples lost/damaged in transit and for storage for future research. Tests included urea and electrolytes, full blood count, fasting blood glucose, glycosylated haemoglobin (HbA1c), blood lipid profile, LFTs, T4, T3, TSH, thyroid antibodies, PTH, vitamin D, eGFR, Cystatin C and NGAL and inflammatory markers CRP and IL-6. A sample was taken to measure calcium level using the InSight™ Electrolyte Analyser located in the NIHR-CRF. Weight/BMI, pulse and blood pressure were also recorded, and an ECG was performed. Participants were given an iPad mini and trained on the same cognitive tasks as the healthy volunteers described above. They were also set up with the True Colours system to rate weekly mood and on Mood Zoom (20) to rate daily mood. Participants were also given activity monitors. They were also given saliva swabs.

Before being randomised to lithium or placebo, all participants completed two weeks of daily cognitive tasks, mood and activity measurements at home (though some participants completed up to 30 days due to logistic challenges). Then, they were randomised and performed six weeks of cognitive tasks, mood and activity measurements.

In the beginning of the six weeks period (week one or two), they completed an MRI and a MEG scan using the same scans as described for the healthy volunteers.

Randomisation: The first 10 participants were fully randomly assigned to avoid predictability, while for subsequent participants, an algorithm was used to minimize differences in age (<25 or >25 years) and gender

between the two groups. In the lithium group, participants were titrated to doses producing plasma levels of 0.6-1 mmol/L (see supplementary methods 1C for dosing details).

[1C] Lithium dosing information

In the lithium group, participants were prescribed an initial dose of 400g/day, unless there was a clinical indication to start at a lower dose. During this phase, participants attended brief assessments at 4-days, 8-days and between 2 and 3 weeks post-randomisation to review lithium levels by a psychiatrist (if lithium level ≤ 0.3 mmol/L, dose increased to 800mg/day; if lithium level between 0.4 to 0.5 mmol/L, dose increased to 600mg/day; if lithium level 0.6 -1.0mmol/L, continued current dose; if lithium level ≥ 1.0 mmol/L, decrease dose by 200mg/day or 400mg/day as found appropriate by psychiatrist), receive additional supplies of lithium/ placebo as needed and were asked about adverse events. Participants took part in one neuroimaging session in week 3 or 4. During the trial, participants were asked to complete the cognitive tasks daily.

[2] Computational modelling, additional information

[2A] Decision making model validation

We validated our computational models using simulations (21,22). We simulated 400 participants with parameter values (mean and standard deviations) drawn from a uniform distribution in the 95% range of the parameters for real individual participants. For each participant, we simulated 47-50 sessions (uniform distribution). Parameters for single sessions were drawn from normal distributions of simulated participants' means, standard deviations and linear effects of days. Simulated data was then fitted using same approaches as above. To speed up fitting of data, variational Bayesian approximation (23) was used unless control indices (pareto smoothed importance sampling, khat >0.7 (24)) suggested unsuccessful fitting even after increasing number of samples and decreasing tolerance, in which case sampling was used. When fitting the models, initially, 4 chains, with each 15,000 iterations were drawn and the target acceptance rate (adapt_delta, (25)) was set to 0.85. Whether models had been fit appropriately was checked using a criterion of R-hat (measure of mixing of chains) < 1.1 and absence of divergent samples. If these were not fulfilled, number of iterations were increased by 50% and adapt_delta was increased towards 1 (by 50% of distance from 1). This was repeated until all models converged.

To validate the model, we then checked the correlations between true and fitted values for mean and standard deviation of parameters across individual subjects (table S1).

[2B] Alternative decision-making models and model comparison

In addition to the models in the main text (section Computational models – decision making), we also considered two other classes of models (see table S2 for full list). First models that incorporated probability and magnitude distortions according to prospect theory (26) (class 'M2'):

$$Utility_{left} = Prob_{adj} * Mag_{rew}^{\delta r} - \lambda * (1 - Prob_{adj}) * Mag_{loss}^{\delta l}$$

Where

$$Prob_{adj} = \frac{Prob^{\epsilon}}{(Prob^{\epsilon} + (1 - Prob)^{\epsilon})^{\frac{1}{\epsilon}}}$$

Here, ϵ is the probability distortion; δr is the distortion of the reward magnitudes; δl is the distortion of the loss magnitudes and λ is the weighting of the loss (scaled mag * scaled prob).

We also fitted further versions of this model, leaving out the probability distortion, the loss scale or the magnitude distortions.

Of note, due to there only being 20 trials available per session, not all of these models could be fitted. Specifically models that contained probability distortion could not be fitted and models with a loss weight in addition to exponential scaling of loss could not be fitted.

In these models, the outcome history effect was initially included in the exponential of the loss magnitude:

$$Mag_{loss}^{(\gamma + \gamma * PrevOutc_{win}) / Toss}$$

However, we noted that, potentially due to the difficulty of estimating parameters that are used as an exponent, parameter recovery for the outcome history effect in this model was not very good. Therefore, we also included the outcome history parameter as a linear weight of the exponentially distorted magnitudes.

The second set of models allowed participants to differ in their relative weighting of expected value, variance and skew (27) (class 'M3'):

$$Utility_{left} = ExpectedValue + \alpha * Variance + \chi * Skew$$

Where:

$$ExpectedValue (EV) = Prob * Mag_{rew} - (1 - Prob) * Mag_{loss}$$

(given that Mag_{loss} is a positive number).

$$Variance = Prob * (Mag_{rew} - EV)^2 + (1 - Prob) * (-Mag_{loss} - EV)^2$$

$$Skew = \frac{Prob * (Mag_{rew} - EV)^3 + (1 - Prob) * (-Mag_{loss} - EV)^3}{Var_2^3}$$

Again, we fitted this model also without the weighing for skew or without the weighing for variance. In this model, outcome history was captured as impacting the weighing of variance or skew or both.

To compare models, we used the Akaike Information Criterion (AIC) (28), which combines the log likelihood with the number of model parameters to avoid selection of over-parameterized models. Models were fit across all sessions from each participant, including for each parameter (other than outcome history effects, see table S5) a linear effect of day:

$$Parameter_t = Parameter_{t0} + day_effect * current_day$$

AIC values were summed across participants. Participants for whom not all models could be fit were omitted ($n=2$).

[2C] Bayesian models – additional information for standard settings

Regression models were computed with the BRMS toolbox (29) which uses the Bayesian programming language Stan (30). The key advantages of the Bayesian approach are: priors can be defined to ease fitting, particularly when little data is available (as here only 20 trials per session); models can be hierarchical and account for individual differences in each parameter (i.e. taking into account data consistent of within and between subject measurements, e.g. several data points per person and several subjects); variability in measurements across people can be taken into account.

Linear non-hierarchical regression

All regression estimates (parameters) were given flat priors for all parameters and 5000 iterations for each of four chains were drawn (target acceptance rate, $adapt_delta = 0.9$). Model fit was checked using criterion of $Rhat < 1.1$ and the absence of divergent samples (25). If models did not converge, iterations and $adapt_delta$ were increased step-wise, up to a max of 25312 iterations and $adapt_delta = 0.991$. If fitting was then still not successful (only the case for Prospect Theory models, class M2, listed in [2B] above), the sessions were left out from model comparisons.

Linear hierarchical regressions

To ease fitting (31), all regression estimates were given weakly informative priors, normal(0,5). 6,000 iterations for each of 4 chains were drawn (target acceptance rate, adapt_delta = 0.9). Model fit was checked as above for non-hierarchical models. Significance follows the standard definition of the Bayesian 95% Credible Interval not including zero. To compare individual groups, the same model was fitted with group as an unordered factor and posthoc tests were then done using the emmeans package (32) (again using 95% Credible Intervals to define significance). Results of regressions are illustrated as conditional effects, i.e. all other variables are set to their mean. We computed mean parameters for individual participants to relate to neural activity.

Computational decision-making models – prior settings

For each parameter weakly informative priors were specified for models for the longitudinal or the FMRI data for each session (longitudinal) or person (FMRI): inverse temperature (β): cauchy(5,3), weighting of the loss utility (λ): cauchy(-1,1), the impact of the previous trial's win/loss on the weighting of the loss utility (γ); group level standard deviations: inverse temperature (β): cauchy(0,3), all other parameters: cauchy(0, 1).

When fitting the decision-making models, number of iterations and adapt_delta were increased until fit indices suggested appropriate fit, as described above.

FMRI

Computational models were fitted as for the longitudinal data, i.e. first separately for each individual participant before then comparing the computational model parameters across groups using non-hierarchical models (as one FMRI session per person).

[2D] Regressions relating mood, task outcomes and behaviour

We used hierarchical regression models to test for group differences in the impact of task outcomes on mood:

Mean: Happiness (post minus pre) $\sim 1 + \text{Task outcomes} * \text{group} + \text{Task outcomes} + \text{group} + \text{day} + \text{Age} + \text{Gender} + (1 + \text{day} + \text{outcome} | \text{ID})$

And error term: $\sigma \sim 1 + \text{group} + \text{age} + \text{gender} + (1 | \text{ID})$

Where outcome was either the total wins in the daily task, the total losses or the total wins minus losses. Group was coded as monotonic factor.

In addition to the happiness VAS that was measured before and after the task, we also measured mood using a more detailed questionnaire (PANAS-SF) before the task. We used this to replicate previous findings (1,20,33,34) of mood instability related to bipolar disorder (with hierarchical models):

Mean: PANAS $\sim 1 + \text{day} + \text{group} + \text{age} + \text{gender} + (1 + \text{day} | \text{ID})$

Error term: $\sigma \sim 1 + \text{group} + \text{age} + \text{gender} + (1 | \text{ID})$

Where PANAS was either the positive or the negative PANAS score.

[3] MRI scan

[3A] MRI acquisition sequences

Scan protocols were similar across both sites and differences are highlighted. T1-weighted structural images were acquired with the settings TR=3 sec, TE=4.71 msec (4.65ms for second site [some bipolar patients]), TI (inversion time) = 1.1 sec, 1x1x1 mm voxel size, 256x176x224 mm grid, flip angle = 8°, phase-encoding direction = R-L, GRAPPA (Generalized autocalibrating partially parallel acquisition) = 2. Functional images were acquired using a Deichmann echo-planar imaging (EPI) sequence with TR=3 s, TE=30 ms, 3x3x3 mm voxel size, 87° flip angle, 30° slice angle and z-shimming to reduce signal distortions as well as dropout in

medial orbitofrontal areas (35). A fieldmap with dual echo-time images (TE1 = 5.19 ms, TE2 = 7.65 ms, whole brain coverage, voxel size 3.5 × 3.5 × 3.5 mm) was obtained for each subject to allow for corrections in geometric distortions induced in the functional images.

[3B] FMRI preprocessing

We used FSL (36) version 6.00 for standard image preprocessing and analysis (suppl. Methods [4B]). We used FSL's BET (37) on the high-resolution structural MRI images and fieldmaps images to separate brain matter from nonbrain matter. We used the structural images to register functional images in MNI space using nonlinear registration as implemented in FNIRT (38). Functional images were corrected for motion using FSL's MCFLIRT (39), corrected for geometric distortions using FSL's FUGUE (FMRIB's Utility for Geometrically Unwarping EPIs) and spatially smoothed with a Gaussian kernel of 5mm full-width half-maximum. Finally, images were then high-pass filtered with a 3 dB cutoff of 100s.

[3C] FMRI analysis

Data were pre-whitened before analysis (40). The fMRI design was as follows (see Figure S2 for design correlation matrix): We included four boxcar regressors capturing the different phases of each trial: the decision phase (aligned to the onset of the decision phase and lasting until participants could make a choice), the spinning phase (aligned to when the indicator on the chosen wheel of fortune started moving and lasting until it stopped), the outcome phase (the time the outcome was shown to participants and lasting until it disappeared from the screen) and the total score phase (aligned to when the screen with the total score was shown and lasting until it disappeared). Here the decision and the outcome phase are the main phases of interest, the others are included as control regressors. We also included parametric boxcar regressors aligned to same onsets as the phases described above, but with duration one second. All regressors were z-score normalized within each participant. In the decision phase, we included separate regressors for the reward and loss utilities (i.e. probability x magnitude) of the chosen minus the unchosen options, a regressor for last trial's outcome (win/loss, including the magnitude therefore, e.g. +10 or -20), as well as participants' log-transformed reaction time as a control regressor. In the outcome phase, we included a regressor indicating the current trial's outcome (win/loss, including the magnitude thereof). As control regressor we also included the total score phase with total scores as parametric value. All regressors were convolved with a double-gamma hemodynamic response function.

[4] Bayesian mood instability models

Pulcu et al. (1) proposed a model of mood variations that captures simultaneously variability in mood ratings and drifts (volatility) in the mean mood ratings. We adapted this model here (simplifying due to less data being available than in Pulcu et al., that neither volatility nor standard deviations changed over time and fit to both positive and negative PANAS simultaneously). The same model also captured relationships between PANAS standard deviation and behaviour. The key equations of the model included:

$$\text{PANAS}_{\text{ratings}[t]} \sim \text{normal}(\text{PANAS}_t, \text{PANAS}_{\text{sd}})$$

$$\text{PANAS}_t \sim \text{normal}(\text{PANAS}_{t-1}, \text{PANAS}_{\text{volatility}})$$

Where volatility and standard deviation of PANAS ratings were shared across positive and negative PANAS. In contrast, PANAS values (PANAS_t above) were captured separately for positive and negative PANAS.

$$\text{Behaviour} \sim \text{normal}(b_0 + b_{\text{PANAS}_{\text{sd}}} * \text{PANAS}_{\text{sd}} + b_{\text{testing_day}} * \text{testing_day}, \text{behaviour}_{\text{sd}})$$

The model was fit to data from all participants who had at least 5 data points available for all measurements and standard deviations of both positive and negative PANAS above 0 (i.e. who did not always report exactly the same mood). Models were fitted as hierarchical models (mixed effects models), with group level parameters (mean and standard deviations) fitted for PANAS_{sd}, PANAS_{volatility}, b_{testing_day} and behaviour_{sd}. Parameters for individual participants were then drawn from the thus defined normal distributions. PANAS_t for positive and negative PANAS was fitted as one parameter per person per day (with the temporal order constraints as described in the regressions above). All parameters were given priors normal(0,1), for constraint parameters (i.e. standard deviations and volatility), log transformations were used.

To test how predictive mood instability was of group membership, we first fitted a simpler model of only the PANAS scores, excluding the behaviour, separately for each person. We then used the PANAS_{sd} and PANAS_{volatility} to predict group membership in a leave-one-out cross-validation procedure, each time fitting a model of the form:

$$\text{Group} \sim 1 + \text{PANAS}_{\text{sd}} + \text{PANAS}_{\text{volatility}}$$

The model was fit to training data (i.e. all participants apart from one) and used to predict the test data (the left out participant). We trained models separately predicting low vs. high MDQ and predicting all three groups.

References

1. Pulcu E, Saunders KEA, Harmer CJ, Harrison PJ, Goodwin GM, Geddes JR, Browning M (2022): Using a generative model of affect to characterize affective variability and its response to treatment in bipolar disorder. *Proceedings of the National Academy of Sciences* 119: e2202983119.
2. Mars RB, Jbabdi S, Sallet J, O'Reilly JX, Croxson PL, Olivier E, *et al.* (2011): Diffusion-weighted imaging tractography-based parcellation of the human parietal cortex and comparison with human and macaque resting-state functional connectivity. *Journal of Neuroscience* 31: 4087–4100.
3. Neubert F-X, Mars RB, Sallet J, Rushworth MFS (2015): Connectivity reveals relationship of brain areas for reward-guided learning and decision making in human and monkey frontal cortex. *PNAS* 112: E2695–E2704.
4. Sallet J, Mars RB, Noonan MP, Neubert F-X, Jbabdi S, O'Reilly JX, *et al.* (2013): The Organization of Dorsal Frontal Cortex in Humans and Macaques. *J Neurosci* 33: 12255–12274.
5. Diedrichsen J, Balsters JH, Flavell J, Cussans E, Ramnani N (2009): A probabilistic MR atlas of the human cerebellum. *NeuroImage* 46: 39–46.

6. Neubert F-X, Mars RB, Thomas AG, Sallet J, Rushworth MF (2014): Comparison of human ventral frontal cortex areas for cognitive control and language with areas in monkey frontal cortex. *Neuron* 81: 700–713.
7. Panchal, P, Nelissen, N, McGowen, N, Atkinson, LZ, Saunders, KEA, Harrison, PJ, *et al.* (in submission): Identifying mood instability and circadian rest-activity patterns using digital remote monitoring and actigraphy in participants at risk for bipolar disorder.
8. Nilsson ME, Suryawanshi S, Gassmann-Mayer C, Dubrava S, McSorley P, Jiang K (2013): Columbia–suicide severity rating scale scoring and data analysis guide. *CSSRS Scoring Version 2*: 1–13.
9. First MB (2014): Structured clinical interview for the DSM (SCID). *The encyclopedia of clinical psychology* 1–6.
10. Patton JH, Stanford MS, Barratt ES (1995): Factor structure of the Barratt impulsiveness scale. *Journal of clinical psychology* 51: 768–774.
11. Espie CA, Kyle SD, Hames P, Gardani M, Fleming L, Cape J (2014): The Sleep Condition Indicator: a clinical screening tool to evaluate insomnia disorder. *BMJ open* 4: e004183.
12. Zanarini MC, Vujanovic AA, Parachini EA, Boulanger JL, Frankenburg FR, Hennen J (2003): A screening measure for BPD: The McLean screening instrument for borderline personality disorder (MSI-BPD). *Journal of personality disorders* 17: 568–573.
13. Oliver MN, Simons JS (2004): The affective lability scales: Development of a short-form measure. *Personality and individual differences* 37: 1279–1288.
14. LARSEN RJ (1984): *Theory and Measurement of Affect Intensity as an Individual Difference Characteristic (Temperament, Emotion, Arousal)*. University of Illinois at Urbana-Champaign.
15. Rush AJ, Trivedi MH, Ibrahim HM, Carmody TJ, Arnow B, Klein DN, *et al.* (2003): The 16-Item Quick Inventory of Depressive Symptomatology (QIDS), clinician rating (QIDS-C), and self-report (QIDS-SR): a psychometric evaluation in patients with chronic major depression. *Biological psychiatry* 54: 573–583.

16. Altman EG, Hedeker D, Peterson JL, Davis JM (1997): The Altman self-rating mania scale. *Biological psychiatry* 42: 948–955.
17. Spitzer RL, Kroenke K, Williams JB, Löwe B (2006): A brief measure for assessing generalized anxiety disorder: the GAD-7. *Archives of internal medicine* 166: 1092–1097.
18. Group TE (1990): EuroQol-a new facility for the measurement of health-related quality of life. *Health policy* 16: 199–208.
19. Goodday SM, Atkinson L, Goodwin G, Saunders K, South M, Mackay C, *et al.* (2020): The True Colours Remote Symptom Monitoring System: A Decade of Evolution. *Journal of Medical Internet Research* 22: e15188.
20. Tsanas A, Saunders KEA, Bilderbeck AC, Palmius N, Osipov M, Clifford GD, *et al.* (2016): Daily longitudinal self-monitoring of mood variability in bipolar disorder and borderline personality disorder. *Journal of affective disorders* 205: 225–233.
21. Kolling N, Scholl J, Chekroud A, Trier HA, Rushworth MF (2018): Prospection, perseverance, and insight in sequential behavior. *Neuron* 99: 1069–1082.
22. Scholl J, Trier HA, Rushworth MF, Kolling N (2022): The effect of apathy and compulsivity on planning and stopping in sequential decision-making. *PLoS biology* 20: e3001566.
23. Kucukelbir A, Ranganath R, Gelman A, Blei DM (2015): Automatic variational inference in Stan. *arXiv preprint arXiv:150603431*.
24. Yao Y, Vehtari A, Simpson D, Gelman A (2018): Yes, but did it work?: Evaluating variational inference. *International Conference on Machine Learning* 5581–5590.
25. Gelman A, Vehtari A, Simpson D, Margossian CC, Carpenter B, Yao Y, *et al.* (2020): Bayesian workflow. *arXiv preprint arXiv:201101808*.
26. Nilsson H, Rieskamp J, Wagenmakers E-J (2011): Hierarchical Bayesian parameter estimation for cumulative prospect theory. *Journal of Mathematical Psychology* 55: 84–93.
27. Symmonds M, Wright ND, Bach DR, Dolan RJ (2011): Deconstructing risk: Separable encoding of variance and skewness in the brain. *Neuroimage* 58: 1139–1149.

28. Vrieze SI (2012): Model selection and psychological theory: A discussion of the differences between the Akaike information criterion (AIC) and the Bayesian information criterion (BIC). *Psychological Methods* 17: 228–243.
29. Bürkner P-C (2017): brms: An R package for Bayesian multilevel models using Stan. *Journal of Statistical Software* 80: 1–28.
30. Carpenter B, Gelman A, Hoffman MD, Lee D, Goodrich B, Betancourt M, *et al.* (2017): Stan : A Probabilistic Programming Language. *Journal of Statistical Software* 76.
<https://doi.org/10.18637/jss.v076.i01>
31. Michael Betancourt (2017): How the shape of a weakly informative prior affects inferences. Retrieved from https://mc-stan.org/users/documentation/case-studies/weakly_informative_shapes.html
32. Lenth RV (2021): *Emmeans: Estimated Marginal Means, Aka Least-Squares Means*. Retrieved from <https://CRAN.R-project.org/package=emmeans>
33. Bonsall MB, Wallace-Hadrill SMA, Geddes JR, Goodwin GM, Holmes EA (2012): Nonlinear time-series approaches in characterizing mood stability and mood instability in bipolar disorder. *Proceedings of the Royal Society B: Biological Sciences* 279: 916–924.
34. Holmes EA, Bonsall MB, Hales SA, Mitchell H, Renner F, Blackwell SE, *et al.* (2016): Applications of time-series analysis to mood fluctuations in bipolar disorder to promote treatment innovation: a case series [no. 1]. *Transl Psychiatry* 6: e720–e720.
35. Deichmann R, Gottfried JA, Hutton C, Turner R (2003): Optimized EPI for fMRI studies of the orbitofrontal cortex. *NeuroImage* 19: 430–441.
36. Smith SM, Jenkinson M, Woolrich MW, Beckmann CF, Behrens TE, Johansen-Berg H, *et al.* (2004): Advances in functional and structural MR image analysis and implementation as FSL. *Neuroimage* 23: S208–S219.
37. Smith SM (2002): Fast robust automated brain extraction. *Human brain mapping* 17: 143–155.
38. Andersson JL, Jenkinson M, Smith S (2007): Non-linear registration aka Spatial normalisation FMRIB Technical Report TR07JA2. *FMRIB Analysis Group of the University of Oxford*.

39. Jenkinson M, Bannister P, Brady M, Smith S (2002): Improved optimization for the robust and accurate linear registration and motion correction of brain images. *Neuroimage* 17: 825–841.
40. Woolrich MW, Ripley BD, Brady M, Smith SM (2001): Temporal autocorrelation in univariate linear modeling of FMRI data. *Neuroimage* 14: 1370–1386.

953 volunteers. *Neuropsychopharmacol Off Publ Am Coll Neuropsychopharmacol* 46:
954 386–393.

955 70. Grunze H, Vieta E, Goodwin GM, Bowden C, Licht RW, Azorin J-M, *et al.* (2018): The
956 World Federation of Societies of Biological Psychiatry (WFSBP) Guidelines for the
957 Biological Treatment of Bipolar Disorders: Acute and long-term treatment of mixed
958 states in bipolar disorder. *World J Biol Psychiatry* 19: 2–58.

959
960