

1 **Title:** Importation of Alpha and Delta variants during the SARS-CoV-2 epidemic in Switzerland:
2 phylogenetic analysis and intervention scenarios

3

4 **Authors:** Martina L Reichmuth^{1*+}, Emma B Hodcroft^{1,2,3+}, Christian L Althaus^{1,3}

5 **Affiliation:** ¹ Institute of Social and Preventive Medicine, University of Bern, Bern,
6 Switzerland; ² Swiss Institute of Bioinformatics, Basel, Switzerland; ³ Multidisciplinary Center
7 for Infectious Diseases, University of Bern, Bern, Switzerland

8 **Correspondence:** *martina.reichmuth@unibe.ch

9 ⁺These two authors contributed equally to this work

10

11

12 **Abstract**

13 The SARS-CoV-2 pandemic has led to the emergence of various variants of concern (VoCs) that are
14 associated with increased transmissibility, immune evasion, or differences in disease severity. The
15 emergence of VoCs fueled interest in understanding the potential impact of travel restrictions and
16 surveillance strategies to prevent or delay the early spread of VoCs. We performed phylogenetic
17 analyses and mathematical modeling to study the importation and spread of the VoCs Alpha and Delta
18 in Switzerland in 2020 and 2021. Using a phylogenetic approach, we estimated 383-1,038 imports of
19 Alpha and 455-1,347 imports of Delta into Switzerland. We then used the results from the phylogenetic
20 analysis to parameterize a dynamic transmission that accurately described the subsequent spread of
21 Alpha and Delta. We modeled different counterfactual intervention scenarios to quantify the potential
22 impact of border closures and surveillance of travelers on the spread of Alpha and Delta. We found that
23 implementing border closures after the announcement of VoCs would have been of limited impact to
24 mitigate the spread of VoCs. In contrast, increased surveillance of travelers could prove to be an
25 effective measure for delaying the spread of VoCs in situations where their severity remains unclear.
26 Our study shows how phylogenetic analysis in combination with dynamic transmission models can be
27 used to estimate the number of imported SARS-CoV-2 variants and the potential impact of different
28 intervention scenarios to inform the public health response during the pandemic.

29 Introduction

30 Since 2019, the severe acute respiratory syndrome coronavirus type 2 (SARS-CoV-2) has been
31 spreading continuously, which has driven its evolution. Variants of concern (VoCs) have emerged which
32 are associated with increased transmissibility, immune escape, changes in disease severity, or a
33 combination thereof (1). Alpha and Delta emerged in late 2020 and mid 2021, and their transmission
34 dynamics were influenced by importations, the heterogeneous landscape of naturally acquired and
35 vaccine-elicited immunity and non-pharmaceutical interventions (NPIs) such as surveillance of travelers
36 and travel restrictions. It was previously shown that the resumption of travel after lockdowns in summer
37 2020 led to the importation of a new SARS-CoV-2 variant that fuelled epidemics in countries with low-
38 incidence (2,3). In winter 2020/2021, Swiss authorities tightened travel restrictions again for travelers
39 from the United Kingdom (UK) (4), which were followed by overall stricter measures in Switzerland once
40 concerns about the newly detected Alpha variant were communicated. To date, however, the impact of
41 such travel restrictions and surveillance strategies to prevent or delay the introduction of VoCs are not
42 well understood.

43
44 Global genomic surveillance is vital to capture the transmission dynamics of different SARS-CoV-2
45 variants around the world. Genomic and epidemiological data allow characterization and quantification
46 of the spread of VoCs (5–9). At the end of 2020, sequencing efforts helped to characterize the first VoC,
47 Alpha, that was initially detected in the UK, showing a 37%-100% increase in transmissibility over
48 previously circulating variants (5,7–11). In early 2021, Alpha was continuously displaced by another
49 VoC, Delta, which likely emerged in India (12). For Delta, studies have estimated an increased
50 transmissibility compared to previously circulating variants, which were predominantly Alpha in Europe
51 and North America, Beta in South Africa, and Gamma in South America, between 40% and 167% (8,9).
52 VoCs emerge in one place and spread to different countries through travel. Therefore, quantifying the
53 impact of travel and imported SARS-CoV-2 cases can help guide pandemic responses, particularly prior
54 to wide-spread vaccination. Routinely obtained surveillance data can provide valuable information
55 about the place of exposure, but can be biased (13). Leveraging the wealth of genomic data offers the
56 opportunity to integrate an additional level of information to inform the impact of travel and importation
57 events. To try to prevent or slow the import of VoCs, some countries have introduced travel restrictions
58 such as vaccination certificates, testing, or travel bans. Although travel restrictions have not prevented

59 the global spread of VoCs, they could potentially mitigate the early spread and lessen the impact of new
60 VoCs on hospitalizations and deaths until there is an improved understanding of new VoCs to then
61 intervene appropriately.

62

63 Mathematical modeling studies and phylogenetic analyses are central to understand the transmission
64 dynamics and evolution of infectious diseases and to inform public health decision making (14). For
65 example, the early description of the emergence of Alpha was based on mathematical and statistical
66 modeling approaches and critically influenced the early response against the variant (10). Phylodynamic
67 analyses have been used to study the evolution of infectious pathogens in intra- and inter-host systems
68 (15,16). For example, BEAST (17) can be combined with compartmental transmission models to infer
69 epidemiological parameters such as the basic reproduction number R_0 (18,19). Inter-host
70 epidemiological dynamics has also been used to study the importation of infectious pathogens such as
71 Zika virus, dengue virus or SARS-CoV-2 (6,20–27). Integrating phylogenetic analyses with dynamic
72 transmission models also has the potential to provide comprehensive inferences and projections of the
73 SARS-CoV-2 pandemic.

74

75 In this study, we used a step-wise approach of phylogenetic analyses in combination with a dynamic
76 SARS-CoV-2 transmission model to study the spread of VoCs in Switzerland. First, we reconstructed
77 phylogenies of the Alpha and Delta variants to estimate the number of imported cases into Switzerland.
78 Second, we modeled the importation and spread of Alpha and Delta in Switzerland. Finally, we
79 simulated the impact of three counterfactual scenarios to mitigate the spread of Alpha and Delta.

80 **Methods**

81 **Data**

82 We used publicly available data from the Swiss Federal Office of Public Health (FOPH), CoV-Spectrum,
83 and the Federal Statistical Office (FSO) on daily laboratory-confirmed SARS-CoV-2 cases, daily
84 estimates of the effective reproduction number (R_e), genomic metadata, and the population size (28–
85 33). We accessed sequencing data via GISAID (34) on 15 February 2022, to ensure the considered
86 sequences encompass the introduction periods of Alpha and Delta into Switzerland. We used a
87 combination of code from [CoVariants.org](https://covid19.org/) and in-house scripts to select all Alpha (Nextstrain clade 20I)
88 and Delta (Nextstrain clades 21A, 21I, and 21J) sequences sampled in Switzerland prior to 31 March
89 2021 and 31 July 2021, respectively, which are the dates when the proportion of each VoC was over
90 90% among all sequenced cases in Switzerland. We then ran the selected sequences through the
91 Nextstrain ncov pipeline (35), as modified for [CoVariants.org](https://covid19.org/), to generate ‘focal’ phylogenies. These
92 focal trees contained all Alpha or Delta sequences from Switzerland which pass quality control criteria,
93 alongside up to 10,000 global sequences that were most genetically similar to this set, and around 200
94 random samples, distributed across time, to provide genetic background. All global and background
95 sequences were also sampled prior to 31 March 2021 and 31 July 2021, respectively. The final set of
96 sequences that we used for the analysis can be seen on GISAID under EPI_SET_221003xn.

97

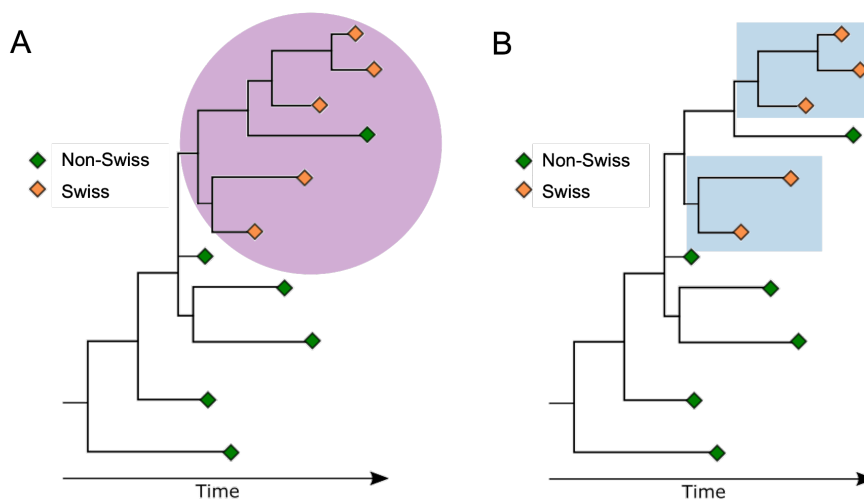
98 **Phylogenetic analysis**

99 To estimate the number of imports of VoCs into Switzerland, we collapsed phylogenetic trees into
100 clusters. As previously described in Hodcroft et al. (24), we collapsed subtrees that contain only
101 sequences from a single country into the parental node recursively. We inferred an import whenever a
102 node without Swiss sequences led to a node with Swiss sequences. We used two approaches to
103 estimate the number of imports, referred to as the liberal and conservative phylogenetic approach,
104 which infer upper and lower bounds on the number of imports. When Swiss and non-Swiss sequences
105 intermix within a subtree, the conservative approach counted this as only one import, with further non-
106 Swiss sequences assumed to originate from parallel evolution outside of Switzerland or exports from
107 Switzerland (Fig 1A). In the liberal approach, we treated each subsequent cluster of Swiss sequences
108 within the mixed sub-tree as a separate importation to Switzerland (Fig 1B).

109

110 If the sequence density was low, the liberal approach would likely overestimate imports, as further
111 exports could be considered imports. In contrast, the conservative approach considered only the earliest
112 clusters with a Swiss sequence as imports, which means that further potential imports were strictly
113 excluded. We chose the date of the earliest sequence of a cluster as the import date and shifted the
114 date backwards by seven days to account for the delay from infection to case reporting. All code used
115 to identify the selected sequences, to analyze the resulting phylogenies, to estimate the number of
116 imports, and for the phylogenetic builds can be found on GitHub: [github.com/emmahodcroft/Intros-CH-](https://github.com/emmahodcroft/Intros-CH-AlphaDelta)
117 [AlphaDelta](https://github.com/emmahodcroft/Intros-CH-AlphaDelta).

118



119

120 **Fig 1:** Illustrative example of the conservative and liberal approach to estimate the importation of SARS-
121 CoV-2 variants of concern (VoC) to Switzerland. A: In the conservative approach, subtrees with mixed
122 Swiss and non-Swiss sequences are considered as one importation. Non-Swiss sequences are
123 assumed to be exports from Switzerland or to originate from parallel evolution outside of Switzerland.
124 In this example, there would be one import into Switzerland. B: In the liberal approach, each subsequent
125 subtree of only Swiss sequences is considered as a separate importation event. In this example, there
126 would be two imports to Switzerland.

127

128 ***Transmission model***

129 *Deterministic model*

130 We used a deterministic, population-based transmission model for SARS-CoV-2 in Switzerland that
131 was described by the following set of ordinary differential equations (ODEs) (Fig 2):

132

133 $dS/dt = -\beta_t S I_1 - (1 + \kappa)\beta_t S I_2 - \omega,$

134 $dE_1/dt = \beta_t S I_1 - \sigma E_1,$

135 $dE_2/dt = (1 + \kappa)\beta_t S I_2 - \sigma E_2 + \omega,$

136 $dI_1/dt = \sigma E_1 - \gamma I_1,$

137 $dI_2/dt = \sigma E_2 - \gamma I_2,$

138 $dC_1/dt = \varepsilon \gamma I_1 - \zeta C_1,$

139 $dC_2/dt = \varepsilon \gamma I_2 - \zeta C_2,$

140 $dR_1/dt = (1 - \varepsilon)\gamma I_1 + \zeta C_1,$

141 $dR_2/dt = (1 - \varepsilon)\gamma I_2 + \zeta C_2,$

142

143 where susceptible individuals S can get infected by individuals that either carry the pre-circulating
144 variant (I_1) or the imported VoC (I_2) at rates β_t and $(1 + \kappa)\beta_t$, respectively. κ denotes the increased
145 transmissibility of the imported VoC. We estimated κ using a logistic growth model for the proportion of
146 the variant among all sequences (Sup Fig 1). We expressed the time-dependent transmission rate as
147 a function of the effective reproduction number R_e :

148

149
$$\beta_t = \frac{R_e S}{(1+p\kappa)\gamma},$$

150

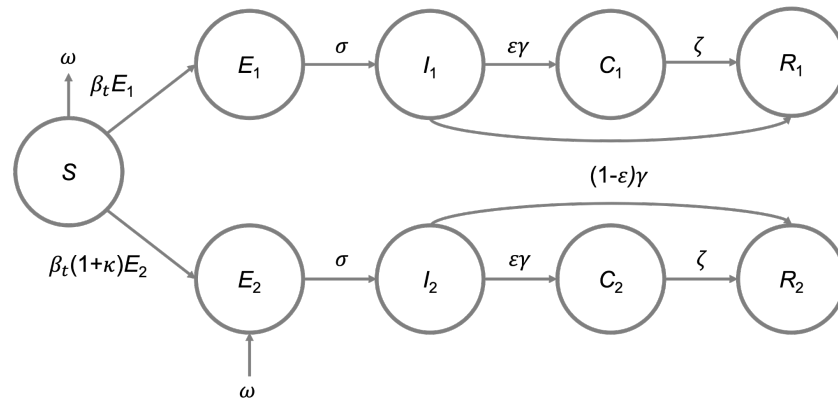
151 where $p = E_2/(E_1 + E_2)$ corresponds to the proportion of the imported VoC. Exposed individuals E_1 and
152 E_2 move through an incubation period at rate σ before they become infectious individuals I_1 and I_2 for
153 $1/\gamma$ days. A fraction ε of infected infectious individuals get tested at rate ζ . ω corresponds to the rate of
154 importation of VoCs based on the phylogenetic analysis.

155

156

157

158



159

160 **Fig 2:** Scheme of the SARS-CoV-2 transmission model. The model includes individuals that were
 161 susceptible (S), exposed to the pre-circulating variant (E_1) or the imported VoC (E_2), infected with the
 162 pre-circulating variant (I_1) or the imported VoC (I_2), tested (C_1 C_2), recovered from infection (R_1 R_2). ω
 163 denotes the importation of VoC as derived from the phylogenetic analysis.

164

165 We simulated the importation of Alpha and Delta to Switzerland during the period from 1 October 2020
 166 to 1 May 2021 and 1 February 2021 to 1 September. We designated variants as either ‘Alpha’, ‘Delta’
 167 or ‘other variants’ and the mathematical modeling analyses started on 1 October 2020 for Alpha and 1
 168 February 2021 for Delta and ended on 1 May and 1 September, respectively. The initial state variables
 169 and the model parameters were informed by the literature, demography, estimates, and assumptions
 170 (Table 1). The initial number of recovered individuals infected with all previously circulating variants was
 171 informed by the Corona Immunitas study and set to 15% and 25% of the overall population for 1 October
 172 2020 and 1 February 2021, respectively (36). The initial number of exposed and infectious individuals
 173 infected with previously circulating variants were based on the number of laboratory-confirmed SARS-
 174 CoV-2 cases, the ascertainment rate, and the infectious period. The initial number of exposed and
 175 infectious individuals infected with the respective VoCs was set to zero. All other state variables, unless
 176 otherwise specified, were set to zero. Model simulations were performed in R (version 4.0.3) and code
 177 files are available on the following GitHub repository: github.com/ISPMBern/voc_imports_ch.

178

179 **Table 1. Parameter values of the SARS-CoV-2 transmission model.**

180 Abbreviations: FOPH, Federal Office of Public Health; VoC, variant of concern.

181

Model parameter	Description	Value	Source
N	Population size	8,644,780	Swiss FOPH (28)
R_e	Effective reproduction number	Fig 3B	Huisman et al. (29)
β_t	Transmission rate of previously circulating variant	$\frac{R_e S}{(1+p\kappa)\gamma}$	Based on R_e , where $p = E_2/(E_1 + E_2)$ corresponds to the proportion of the imported VoC
κ	Increased transmissibility of VoC	Alpha: 41% Delta: 56%	Estimated from genomic data (37)
$1/\sigma$	Incubation period	2.6 days	Based on a generation time of 5.2 days (Ganyani et al. (31))
$1/\gamma$	Infectious period	2.6 days	Based on a generation time of 5.2 days (Ganyani et al. (31))
$1/\zeta$	Testing delay	2 days	Assumption
ω	Rate of importation of VoCs	Fig 3A and 3B	Based on the phylogenetic analysis
ε	Ascertainment rate	50%	Informed by Stringhini et al. (38,39)

182

183 *Counterfactual scenarios*

184 We evaluated the potential impact of different intervention strategies to mitigate the spread of VoCs in
185 Switzerland in various counterfactual scenarios:

186 a) Existing border closure: We assumed that borders were already closed at the time of the first
187 estimated import. We then simulated the opening of borders 1 to 100 days after the first
188 estimated import and introduced imports as estimated from that date forward.

189 b) Implemented border closure: We assumed that borders were closed on the day of the
190 international warning about the VoCs. For Alpha and Delta, we stopped imports for 1 to 60 days
191 after 16 December 2020 (40) 24 May 2021 (41).

192 c) Increased surveillance of travelers: We assumed improved surveillance, quarantine, and
193 isolation of travelers. We reduced the number of imports by 1-99% by sampling from the
194 estimated number of imports.

195 We calculated the time to dominance (>50%) of the VoC and compared it to the time to dominance as
196 observed in Switzerland. Counterfactual scenarios that did not reach dominance within the predefined
197 period were excluded from the analysis.

198

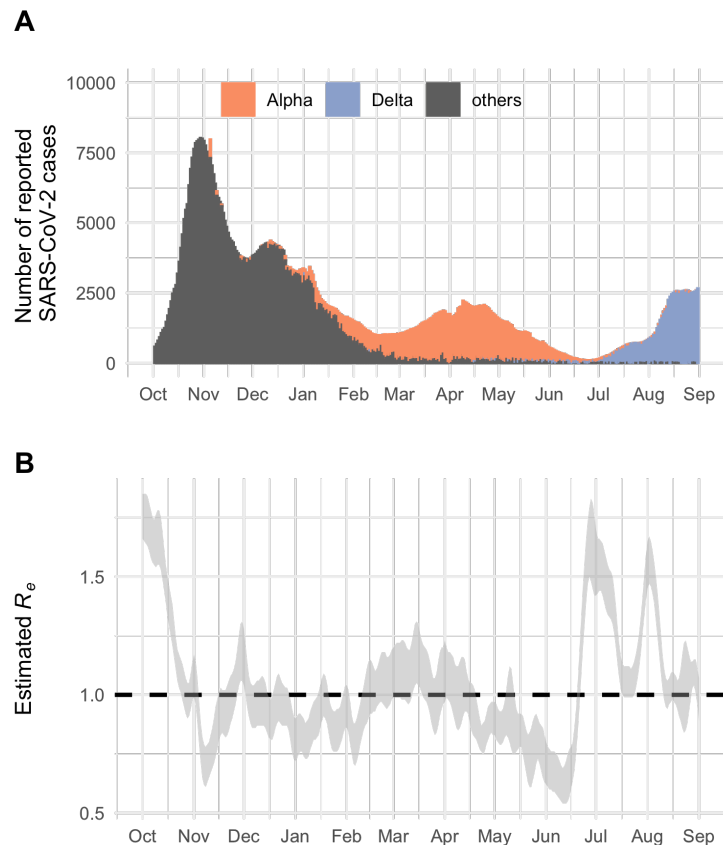
199 *Stochastic model*

200 We used a generic branching process model to investigate the impact of stochastic effects during the
201 early growth phase of variants. The model accounts for superspreading of SARS-CoV-2 and simulates
202 epidemic trajectories with 1, 10, and 100 seeds, which can be interpreted as imports. The branching
203 process was based on a negative binomial distribution to describe the number of secondary cases, with
204 a mean corresponding to R_e and overdispersion parameter k (13,42,43). The generation time was
205 sampled from the gamma distribution with a mean of 5.2 days and a standard deviation of 1.72 days
206 (31). For R_e of the variant, we randomly drew 10^4 values from a uniform distribution between 1.05 to
207 1.15. For each seeding scenario, we simulated 10^4 epidemic trajectories.

208

209 **Results**

210 In autumn 2020, the effective reproduction number R_e of SARS-CoV-2 increased substantially which
211 led to a rapid exponential increase in laboratory-confirmed cases in Switzerland (Fig 3A and 3B). In the
212 following weeks and months, cantonal and federal authorities strengthened control measures that led
213 to a reduction of R_e (Sup Fig 2A). On 16 December 2020, researchers in the UK announced a newly
214 discovered SARS-CoV-2 variant with a potentially increased transmissibility (Alpha). In response to
215 these findings, the Swiss federal authorities introduced travel restrictions to travelers from the UK (4)
216 and increased sequencing coverage of SARS-CoV-2 (Sup Fig 2B and 2C). Nevertheless, Alpha then
217 replaced the previously circulating variants during a period of high incidence from January to March
218 2021, pushing R_e above 1 again. Based on genomic sequencing, we estimated that Alpha reached
219 dominance (>50%) in Switzerland on 5 February 2021. In May 2021, Delta was identified as a new VoC.
220 Subsequent growth of Delta in June and July 2021 led to an increase of laboratory-confirmed SARS-
221 CoV-2 cases during summer 2021. We estimated that Delta reached dominance in Switzerland on 27
222 June 2021.



223

224 **Fig 3:** SARS-CoV-2 epidemic in Switzerland from October 2020 to September 2021. A: Number of
225 laboratory-confirmed SARS-CoV-2 cases per day. B: Effective reproduction (R_e) number of SARS-CoV-
226 2 in Switzerland.

227

228 We estimated the number of Alpha and Delta importations to Switzerland using two phylogenetic
229 approaches. The Alpha tree contained 7,988 Swiss Alpha sequences, 9,901 non-Swiss Alpha
230 sequences, and 162 background sequences. The Delta tree contained 5,210 Swiss Delta sequences,
231 9,973 non-Swiss Delta sequences, and 147 background sequences. Using the liberal approach, we
232 found 1,038 and 1,347 imports of Alpha and Delta into Switzerland, respectively (Fig 4A and 4B; Sup
233 Table 1). With the conservative approach we found 383 and 455 imports of Alpha and Delta into
234 Switzerland, respectively.

235

236 We then introduced these estimated imports in the deterministic SARS-CoV-2 transmission model,
237 which resulted in 593,418 and 592,768 simulated reported cases from 1 October to 1 May with the
238 liberal and conservative approach, respectively, compared to 606,575 cases reported by the FOPH (Fig

239 4C; Sup Table 1). For 1 February to 1 September, we simulated 288,397 and 271,702 SARS-CoV-2
240 cases with the liberal and conservative approach, respectively, compared to 260,933 cases reported
241 by the FOPH (Fig 4D; Sup Table 1).

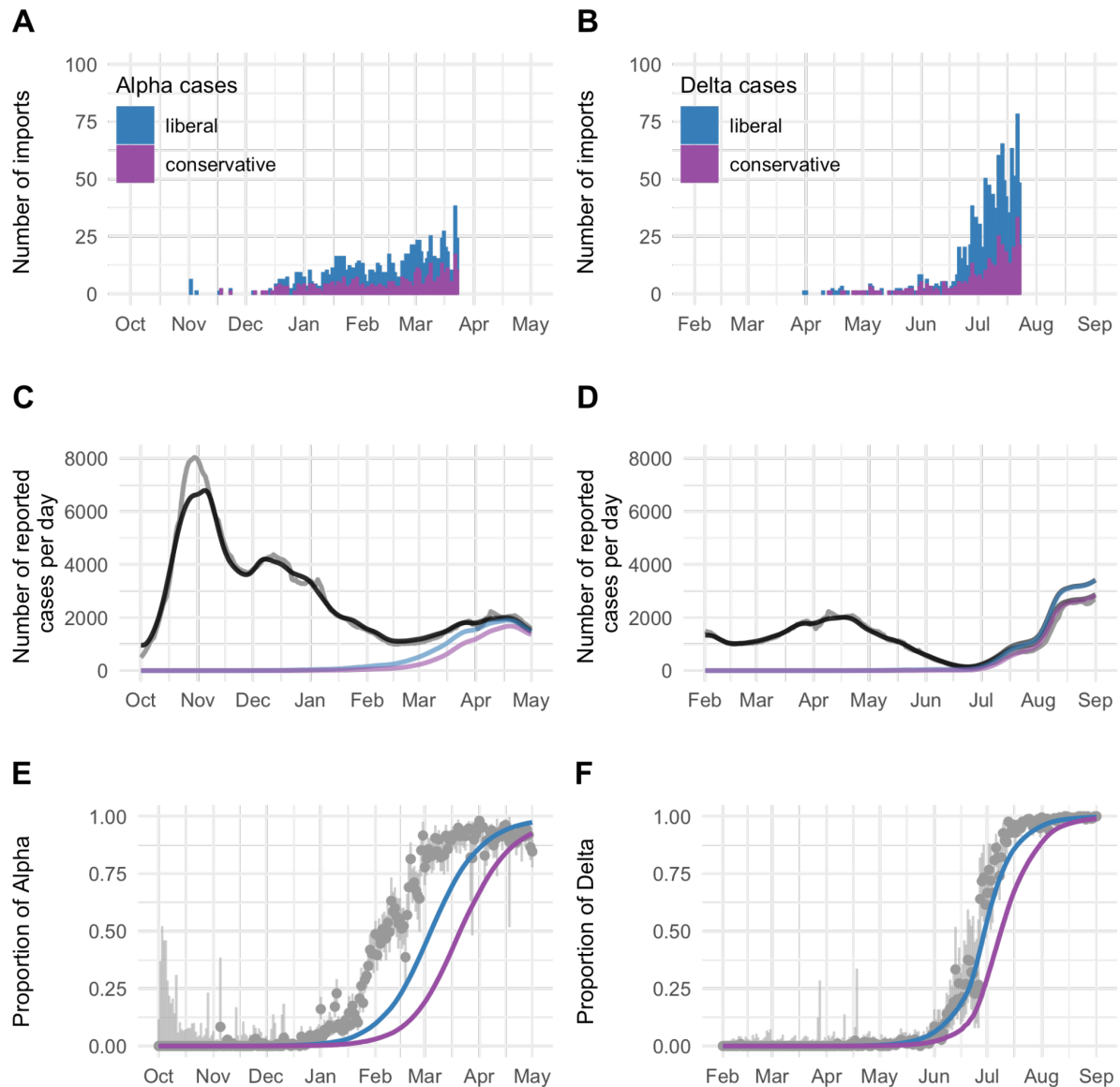
242

243 To better understand the dynamics of VoCs replacing previously circulating variants, we estimated the
244 time VoCs reached dominance. With the liberal approach, Alpha reached 50% of all infections on 5
245 March 2021 and Delta reached 50% on 30 June 2021 (Fig 4E and 4F). With the conservative approach,
246 dominance was reached somewhat later, namely on 22 March 2021 and 9 July 2021, respectively.
247 Compared to genomic monitoring data, the model lagged 28 to 45 days behind for Alpha and 3 to 12
248 days behind for Delta, respectively. This suggests that either the liberal approach better approximates
249 the true number of imported cases that resulted in subsequent transmission chains, that certain events
250 during the early phase of importation accelerated the growth of VoCs, or both. Stochastic simulations
251 of imported variants highlight that the expected variation in the early growth phase can shift the epidemic
252 trajectories by several weeks (Sup Fig 3ABC).

253

254

255



256

257

258 **Fig 4: Dynamics of Alpha and Delta importation to Switzerland.** A, B: Number of imports estimated

259 with the phylogenetic analysis. C, D: Number of laboratory-confirmed SARS-CoV-2 cases per day

260 (gray). The black lines show the overall simulated number of reported cases. The blue and purple line

261 show the simulated number of VoC cases. E, F: Proportion of reported Alpha and Delta among all

262 SARS-CoV-2 infections. Gray: Genomic surveillance data. Blue: Liberal approach. Purple:

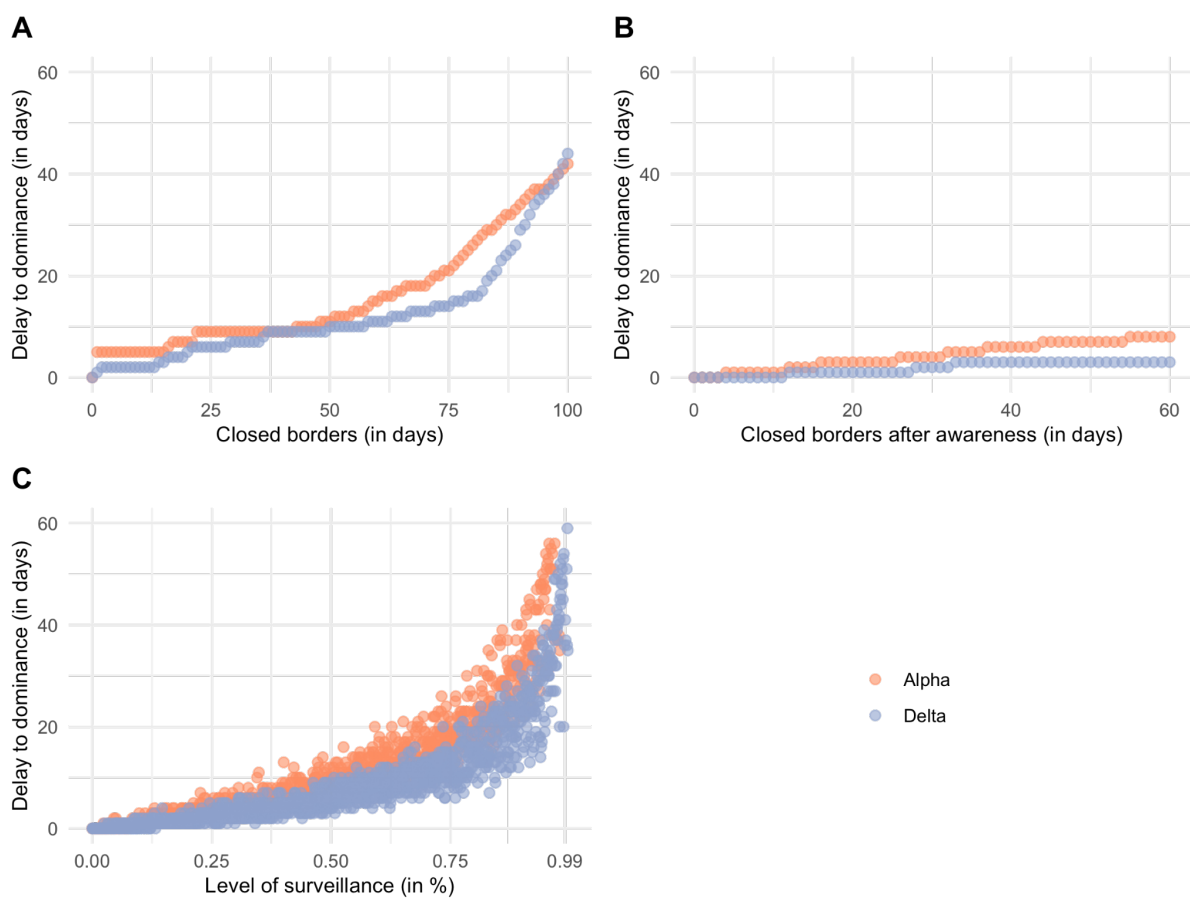
263 Conservative approach.

264

265 We investigated different counterfactual scenarios to assess the impact of border closures and

266 increased surveillance of travelers on the early spread of VoCs. Existing border closures at the time of

267 the first estimated import could delay the time to dominance from a few days to several weeks (Fig 5A).
268 Longer border closures result in increasing returns, e.g., doubling the time of closed borders from 50 to
269 100 days increases the time to dominance roughly 4-fold. Complete border closure for 100 days delayed
270 the time to dominance by around 40 days. The effect of closed borders is substantially reduced when
271 implemented after the international warning (Fig 5B). Increased surveillance of travelers that reduces
272 the number of imported VoCs that result in a subsequent transmission chain by 25%, 50%, and 75%
273 would delay the time to dominance of Alpha for 4, 10, and 19 days (95% compatibility interval (CI): 2-6,
274 7-14, and 13-28 days) and of Delta for 3, 6, and 14 days (95% CI: 2-5, 5-10, and 8-18 days) (Fig 5C).
275



276
277 **Fig 5:** Counterfactual scenarios for mitigating the spread of VoCs in Switzerland. A: Existing border
278 closure. B: Implemented border closure after warning about VoC. C: Increased surveillance of travelers.
279
280
281

282 **Discussion:**

283 We used a combination of phylogenetic analysis and dynamic transmission modeling to estimate the
284 number of imported VoCs and simulate the impact of counterfactual intervention scenarios in
285 Switzerland. In the phylogenetic analysis, we found that single importation events happened early and
286 at least several hundred Alpha (383-1,038) and Delta (455-1,347) cases were introduced into the Swiss
287 SARS-CoV-2 epidemic during the study period. The integration of these importation events into a
288 transmission model accurately described the subsequent spread of VoCs. We estimated a 41% and
289 56% increased transmissibility of Alpha and Delta compared to previously circulating variants, which is
290 in the range of previously reported estimates (5,7–11). Applying our transmission model using
291 counterfactual intervention scenarios showed that only very strict or existing control measures would
292 substantially delay the time to dominance of VoCs. In contrast, implementing border closures after
293 international warnings delayed the time to dominance of VoCs by a few days only. Increased
294 surveillance of travelers - which is less disruptive than border closures - could prove effective for
295 delaying the spread of VoCs in situations where their severity remains unclear. These findings have
296 important implications for informing intervention strategies in the case of newly emerging SARS-CoV-2
297 VoCs and future pandemic preparedness.

298
299 The major strength of our study is the combination of phylogenetic analyses with a dynamic
300 transmission model. This not only allowed us to estimate the number of imports but also to investigate
301 counterfactual intervention scenarios. During the study period, SARS-CoV-2 sequencing coverage in
302 Switzerland was relatively high with an average of 14% of reported cases being sequenced. Our
303 phylogenetic approach to estimate imported variants is standardizable and thus applicable to other
304 countries with similar genomic surveillance and other emerging pathogens.

305
306 Our study also has a number of limitations. First, we used a deterministic transmission model for our
307 main analysis and ignored the potential effects of stochasticity during the importation and early growth
308 phase of VoCs. In the model, we assumed that all imported VoCs enter a deterministic growth trajectory.
309 In contrast, some imported VoCs might not result in continuous transmission chains and go extinct even
310 with $R_e > 1$. We showed that stochastic effects during importation and the early growth phase can cause
311 a variation in the time to dominance of several weeks. With the phylogenetic analysis we found

312 sufficiently large transmission clusters and imports of VoCs that were successfully established in the
313 local population. Second, we fixed the generation time for Alpha, Delta, and earlier circulating variants
314 to 5.2 days. There is some evidence that the generation time of Delta is somewhat shorter (44), but we
315 do not expect this to affect our results substantially. Third, we did not consider the importation of other
316 variants that could compete with the new VoCs. Since the new VoCs were characterized by an
317 increased transmissibility, we do not expect this assumption to substantially affect the dynamics of the
318 new VoCs replacing previously circulating variants. Fourth, we did not consider co-infection with
319 different variants (45). As we focus our analysis on the spread of VoCs and not on their evolution, we
320 do not expect this to affect our results substantially. Fifth, we assumed a constant ascertainment of
321 SARS-CoV-2 infections of 50%, which was informed by seroprevalence studies (38,39). During the
322 study period, test positivity varied and ascertainment might have fluctuated as well. Thus, our
323 transmission model cannot precisely describe the overall number of infections, which was not the
324 objective of our study. In addition, the high variation in genomic sequencing among different countries
325 can influence the estimated number of imports from the phylogenetic analysis. Finally, the phylogenetic
326 analysis has intrinsic limitations due to the limited sequencing coverage, and interpretation during
327 outbreaks requires caution (2,46). This is specifically true for Alpha, as sequencing in Switzerland was
328 scaled up considerably during 2021. There is currently no gold standard for estimating imports. In our
329 analysis, we only considered one importation event per cluster, which could lead to an underestimation
330 of imports. To address this issue, we used two approaches to estimate lower and upper bounds on the
331 number of imports. The liberal approach considered any cluster containing Swiss sequences as an
332 importation event. If the sequencing coverage was low, the liberal approach would thus overestimate
333 imports and exports could cause Swiss sequences to be falsely classified as imports. In contrast, the
334 conservative approach considered only the earliest clusters with Swiss sequence as imports, which
335 means that further potential imports were strictly excluded.

336

337 For monitoring the transmission dynamics of SARS-CoV-2, it is important to differentiate between
338 locally-acquired and imported infections, particularly in situations when the local incidence of infections
339 is low (13). Based on routine surveillance data from FOPH, we previously extrapolated a total of 6,211
340 and 37,061 imported cases in Switzerland during summer 2020 and 2021, respectively. Using genomic
341 data to estimate the number of imports might have the advantage of being less prone to the bias in

342 routine surveillance data. Other studies estimated the number of imported infections during the early
343 phase of the SARS-CoV-2 pandemic. For example, 13 and 101 introductions were estimated to South
344 Africa over two and eight months (27,47), 120 introductions were estimated in Boston over three months
345 (23), and more than 1,000 introductions were estimated to the UK over three months (6). During summer
346 2020, we estimated 34 to 291 introductions of the SARS-CoV-2 variant EU1 to Switzerland over four
347 months (3).

348
349 Global genomic surveillance is essential to monitor the emergence and spread of VoCs. As of February
350 2023, more than 14 million SARS-CoV-2 sequences have been submitted to GISAID (34). This effort
351 facilitated the early identification of several VoCs, such as Omicron in November 2021 (47). Early
352 detection of variants with substantial immune evasion or altered severity can inform policy makers to
353 adjust control measures, vaccination programs, and health systems. For example, several countries
354 imposed controversial travel bans for visitors from South Africa to prevent importation of Omicron (48).
355 In our analysis, we found that complete border closures following warnings of VoCs have limited impact
356 and delay their spread by a couple of days only. Hence, travel bans and any time they may buy for
357 certain interventions, such as increasing the uptake of booster vaccines, have to be carefully balanced
358 against the societal and economic costs that accompany them. Similar to our findings, McCrone et al.
359 reported that control measures that had just been introduced in response to warnings about Delta were
360 late, as introductions have already occurred to other countries (25). In addition to studying importation
361 and exportation events of VoCs, it is important to better understand the spread of VoCs in the local
362 context. Variations in naturally-acquired and vaccine elicited levels of immunity, local control measures,
363 mobility, and behavior can strongly influence the local spread of VoCs. Taking these factors into account
364 will be critical to inform country-specific strategies to respond to the emergence of new VoCs.

365
366 Integrating phylogenetic analyses with dynamic transmission models can provide critical insights into
367 the importation and early spread of SARS-CoV-2 VoCs, and how they are impacted by different
368 intervention scenarios. In this study, we showed that border closures would have had a limited impact
369 on the spread of Alpha and Delta in Switzerland. In contrast, increased surveillance of travelers can
370 potentially delay the spread of VoCs by several weeks, which can buy time for health systems to prepare
371 for new epidemic waves.

372 **Competing interests of the authors**

373 All authors declare no competing interests.

374

375 **Data and code availability**

376 The data is openly shared by the Swiss Federal Office of Public Health (FOPH) and GISAID. Our code
377 is openly accessible in the following repositories: github.com/ISPMBern/voc_imports_ch for the
378 transmission modeling and github.com/emmahodcroft/Intros-CH-AlphaDelta for the phylogenetic
379 analyses.

380

381 **Acknowledgements**

382 We thank all the labs that performed SARS-CoV-2 sequencing and all institutions that made the
383 sequencing effort possible.

384

385 **Author contributions**

386 MR, EH, and CA conceived and designed the study. EH estimated the imports using a phylogenetic
387 analysis. MR performed mathematical modeling and wrote the first draft of the manuscript. All authors
388 contributed to the interpretation of the results, and writing of the manuscript, and approved the final
389 version. We gratefully acknowledge all data contributors, i.e. the authors and their originating
390 laboratories responsible for obtaining the specimens, and their submitting laboratories for generating
391 the genetic sequence and metadata and sharing via the GISAID initiative.

392

393 **Funding**

394 MR and CA were supported by the European Union's Horizon 2020 research and innovation program
395 - project EpiPose (No 101003688). CA and EH received funding from the Swiss National Science
396 Foundation (No 196046).

397

398 **References**

- 399 1. World Health Organization (WHO). Tracking SARS-CoV-2 variants [Internet]. 2022 [cited 2022
400 Sep 29]. Available from: <https://www.who.int/activities/tracking-SARS-CoV-2-variants>
- 401 2. Lemey P, Hong SL, Hill V, Baele G, Poletto C, Colizza V, et al. Accommodating individual travel
402 history and unsampled diversity in Bayesian phylogeographic inference of SARS-CoV-2. *Nat*
403 *Commun.* 2020 Dec;11(1):5110.
- 404 3. Hodcroft EB, Zuber M, Nadeau S, Crawford KHD, Bloom JD, Velesler D, et al. Emergence and
405 spread of a SARS-CoV-2 variant through Europe in the summer of 2020. 2020 Oct 28 [cited 2021
406 Mar 5]; Available from: <http://medrxiv.org/lookup/doi/10.1101/2020.10.25.20219063>
- 407 4. The Federal Council. Coronavirus [Internet]. Press releases. [cited 2021 Oct 11]. Available from:
408 [https://www.admin.ch/gov/en/start/documentation/media-](https://www.admin.ch/gov/en/start/documentation/media-releases.html?dyn_startDate=01.01.2015&dyn_organization=1)
409 [releases.html?dyn_startDate=01.01.2015&dyn_organization=1](https://www.admin.ch/gov/en/start/documentation/media-releases.html?dyn_startDate=01.01.2015&dyn_organization=1)
- 410 5. Volz E, Mishra S, Chand M, Barrett JC, Johnson R, Geidelberg L, et al. Assessing transmissibility
411 of SARS-CoV-2 lineage B.1.1.7 in England. *Nature.* 2021 May 13;593(7858):266–9.
- 412 6. du Plessis L, McCrone JT, Zarebski AE, Hill V, Ruis C, Gutierrez B, et al. Establishment and
413 lineage dynamics of the SARS-CoV-2 epidemic in the UK. *Science.* 2021 Feb 12;371(6530):708–
414 12.
- 415 7. Chen C, Nadeau SA, Topolsky I, Manceau M, Huisman JS, Jablonski KP, et al. Quantification of
416 the spread of SARS-CoV-2 variant B.1.1.7 in Switzerland. *Epidemics.* 2021 Dec;37:100480.
- 417 8. Earnest R, Uddin R, Matluk N, Renzette N, Turbett SE, Siddle KJ, et al. Comparative
418 transmissibility of SARS-CoV-2 variants Delta and Alpha in New England, USA. *Cell Rep Med.*
419 2022 Apr;3(4):100583.
- 420 9. Campbell F, Archer B, Laurenson-Schafer H, Jinnai Y, Konings F, Batra N, et al. Increased
421 transmissibility and global spread of SARS-CoV-2 variants of concern as at June 2021.
422 *Eurosurveillance* [Internet]. 2021 Jun 17 [cited 2022 Jul 27];26(24). Available from:
423 <https://www.eurosurveillance.org/content/10.2807/1560-7917.ES.2021.26.24.2100509>
- 424 10. Davies NG, Abbott S, Barnard RC, Jarvis CI, Kucharski AJ, Munday JD, et al. Estimated
425 transmissibility and impact of SARS-CoV-2 lineage B.1.1.7 in England. *Science.* 2021 Apr
426 9;372(6538):eabg3055.
- 427 11. Althaus CL, Baggio S, Reichmuth ML, Hodcroft EB, Riou J, Neher RA, et al. A tale of two

- 428 variants: Spread of SARS-CoV-2 variants Alpha in Geneva, Switzerland, and Beta in South
429 Africa. 2021 Jun 15 [cited 2021 Sep 15]; Available from:
430 <http://medrxiv.org/lookup/doi/10.1101/2021.06.10.21258468>
- 431 12. Vaidyanathan G. Coronavirus variants are spreading in India — what scientists know so far.
432 *Nature*. 2021 May 20;593(7859):321–2.
 - 433 13. Reichmuth ML, Hodcroft EB, Riou J, Neher RA, Hens N, Althaus CL. Impact of cross-border-
434 associated cases on the SARS-CoV-2 epidemic in Switzerland during summer 2020 and 2021.
435 *Epidemics*. 2022 Dec;41:100654.
 - 436 14. Grassly NC, Fraser C. Mathematical models of infectious disease transmission. *Nat Rev*
437 *Microbiol*. 2008 Jun;6(6):477–87.
 - 438 15. Grenfell BT, Pybus OG, Gog JR, Wood JLN, Daly JM, Mumford JA, et al. Unifying the
439 Epidemiological and Evolutionary Dynamics of Pathogens. *Science*. 2004 Jan 16;303(5656):327–
440 32.
 - 441 16. Volz EM, Koelle K, Bedford T. Viral Phylodynamics. Wodak S, editor. *PLoS Comput Biol*. 2013
442 Mar 21;9(3):e1002947.
 - 443 17. Drummond AJ, Rambaut A. BEAST: Bayesian evolutionary analysis by sampling trees. *BMC Evol*
444 *Biol*. 2007;7(1):214.
 - 445 18. Stadler T, Kouyos R, von Wyl V, Yerly S, Böni J, Bürgisser P, et al. Estimating the Basic
446 Reproductive Number from Viral Sequence Data. *Mol Biol Evol*. 2012 Jan 1;29(1):347–57.
 - 447 19. Volz EM, Romero-Severson E, Leitner T. Phylodynamic Inference across Epidemic Scales. *Mol*
448 *Biol Evol*. 2017 May;34(5):1276–88.
 - 449 20. Sun J, Wu D, Ke C. Molecular phylogenetic analyses of imported Zika virus genomes in China.
450 *The Lancet*. 2017 Dec;390:S36.
 - 451 21. Ito M, Yamada K, Takasaki T, Pandey B, Nerome R, Tajima S, et al. Phylogenetic Analysis of
452 Dengue Viruses Isolated From Imported Dengue Patients: Possible Aid for Determining the
453 Countries Where Infections Occurred. *J Travel Med*. 2007 Jul 1;14(4):233–44.
 - 454 22. Alm E, Broberg EK, Connor T, Hodcroft EB, Komissarov AB, Maurer-Stroh S, et al. Geographical
455 and temporal distribution of SARS-CoV-2 clades in the WHO European Region, January to June
456 2020. *Eurosurveillance* [Internet]. 2020 Aug 13 [cited 2022 May 9];25(32). Available from:
457 <https://www.eurosurveillance.org/content/10.2807/1560-7917.ES.2020.25.32.2001410>
 - 458 23. Lemieux JE, Siddle KJ, Shaw BM, Loreth C, Schaffner SF, Gladden-Young A, et al. Phylogenetic
459 analysis of SARS-CoV-2 in Boston highlights the impact of superspreading events. *Science*. 2021
460 Feb 5;371(6529):eabe3261.
 - 461 24. Hodcroft EB, Zuber M, Nadeau S, Vaughan TG, Crawford KHD, Althaus CL, et al. Spread of a
462 SARS-CoV-2 variant through Europe in the summer of 2020. *Nature* [Internet]. 2021 Jun 7 [cited
463 2021 Jun 7]; Available from: <http://www.nature.com/articles/s41586-021-03677-y>
 - 464 25. McCrone JT, Hill V, Bajaj S, Pena RE, Lambert BC, Inward R, et al. Context-specific emergence
465 and growth of the SARS-CoV-2 Delta variant. *Nature* [Internet]. 2022 Aug 11 [cited 2022 Aug 12];
466 Available from: <https://www.nature.com/articles/s41586-022-05200-3>
 - 467 26. Tayoun AA, Loney T, Khansaheb H, Ramaswamy S, Harilal D, Deesi ZO, et al. Multiple early
468 introductions of SARS-CoV-2 into a global travel hub in the Middle East. *Sci Rep*. 2020
469 Dec;10(1):17720.
 - 470 27. Tegally H, Wilkinson E, Lessells RJ, Giandhari J, Pillay S, Msomi N, et al. Sixteen novel lineages
471 of SARS-CoV-2 in South Africa. *Nat Med*. 2021 Mar;27(3):440–6.
 - 472 28. Swiss Federal Office Public Health (FOPH). COVID-19 Switzerland Dashboard [Internet]. [cited
473 2021 Sep 14]. Available from: <https://www.covid19.admin.ch/>
 - 474 29. Huisman JS, Scire J, Angst DC, Li J, Neher RA, Maathuis MH, et al. Estimation and worldwide
475 monitoring of the effective reproductive number of SARS-CoV-2. *eLife*. 2022 Aug 8;11:e71345.
 - 476 30. Stringhini S, Wisniak A, Piumatti G, Azman AS, Lauer SA, Baysson H, et al. Seroprevalence of
477 anti-SARS-CoV-2 IgG antibodies in Geneva, Switzerland (SEROCoV-POP): a population-based
478 study. *The Lancet*. 2020 Aug;396(10247):313–9.
 - 479 31. Ganyani T, Kremer C, Chen D, Torneri A, Faes C, Wallinga J, et al. Estimating the generation
480 interval for coronavirus disease (COVID-19) based on symptom onset data, March 2020.
481 *Eurosurveillance* [Internet]. 2020 Apr 30 [cited 2021 Feb 18];25(17). Available from:
482 <https://www.eurosurveillance.org/content/10.2807/1560-7917.ES.2020.25.17.2000257>
 - 483 32. Chen C, Nadeau S, Yared M, Voinov P, Xie N, Roemer C, et al. CoV-Spectrum: analysis of
484 globally shared SARS-CoV-2 data to identify and characterize new variants. Alkan C, editor.
485 *Bioinformatics*. 2022 Mar 4;38(6):1735–7.
 - 486 33. Federal Statistical Office. Key population figures, 1950-2021 [Internet]. 2022 [cited 2023 Feb 15].
487 Available from:

- 488 <https://www.bfs.admin.ch/bfs/en/home/statistics/population.assetdetail.23328853.html>
489 34. Elbe S, Buckland-Merrett G. Data, disease and diplomacy: GISAID's innovative contribution to
490 global health: Data, Disease and Diplomacy. *Glob Chall*. 2017 Jan;1(1):33–46.
491 35. Nextstrain build for novel coronavirus SARS-CoV-2 [Internet]. [cited 2022 Sep 28]. Available from:
492 <https://github.com/nextstrain/ncov>
493 36. Corona Immunitas. 2022 [cited 2022 Aug 15]. Available from: [https://www.corona-](https://www.corona-immunitas.ch/en/news/seroprevalence-in-the-swiss-population-after-the-5th-test-phase/)
494 [immunitas.ch/en/news/seroprevalence-in-the-swiss-population-after-the-5th-test-phase/](https://www.corona-immunitas.ch/en/news/seroprevalence-in-the-swiss-population-after-the-5th-test-phase/)
495 38. Stringhini S, Zaballa ME, Perez-Saez J, Pullen N, de Mestral C, Picazio A, et al. Seroprevalence
496 of anti-SARS-CoV-2 antibodies after the second pandemic peak. *Lancet Infect Dis*. 2021
497 May;21(5):600–1.
498 39. Stringhini S, Zaballa ME, Pullen N, Perez-Saez J, de Mestral C, Loizeau AJ, et al.
499 Seroprevalence of anti-SARS-CoV-2 antibodies 6 months into the vaccination campaign in
500 Geneva, Switzerland, 1 June to 7 July 2021. *Eurosurveillance* [Internet]. 2021 Oct 28 [cited 2022
501 Apr 20];26(43). Available from: [https://www.eurosurveillance.org/content/10.2807/1560-](https://www.eurosurveillance.org/content/10.2807/1560-7917.ES.2021.26.43.2100830)
502 [7917.ES.2021.26.43.2100830](https://www.eurosurveillance.org/content/10.2807/1560-7917.ES.2021.26.43.2100830)
503 40. Wise J. Covid-19: New coronavirus variant is identified in UK. *BMJ*. 2020 Dec 16;m4857.
504 41. European Centre for Disease Prevention and Control (ECDC). Threat Assessment Brief:
505 Emergence of SARS-CoV-2 B.1.617 variants in India and situation in the EU/EEA [Internet]. 2021
506 [cited 2022 Jul 15]. Available from: [https://www.ecdc.europa.eu/en/publications-data/threat-](https://www.ecdc.europa.eu/en/publications-data/threat-assessment-emergence-sars-cov-2-b1617-variants)
507 [assessment-emergence-sars-cov-2-b1617-variants](https://www.ecdc.europa.eu/en/publications-data/threat-assessment-emergence-sars-cov-2-b1617-variants)
508 42. Althaus CL. Ebola superspreading. *Lancet Infect Dis*. 2015 May;15(5):507–8.
509 43. Riou J, Althaus CL. Pattern of early human-to-human transmission of Wuhan 2019 novel
510 coronavirus (2019-nCoV), December 2019 to January 2020. *Eurosurveillance* [Internet]. 2020 Jan
511 30 [cited 2021 Apr 30];25(4). Available from:
512 <https://www.eurosurveillance.org/content/10.2807/1560-7917.ES.2020.25.4.2000058>
513 44. Hart WS, Miller E, Andrews NJ, Waight P, Maini PK, Funk S, et al. Generation time of the alpha
514 and delta SARS-CoV-2 variants: an epidemiological analysis. *Lancet Infect Dis*. 2022
515 May;22(5):603–10.
516 45. Rockett RJ, Draper J, Gall M, Sim EM, Arnott A, Agius JE, et al. Co-infection with SARS-CoV-2
517 Omicron and Delta variants revealed by genomic surveillance. *Nat Commun*. 2022 May
518 18;13(1):2745.
519 46. Villabona-Arenas ChJ, Hanage WP, Tully DC. Phylogenetic interpretation during outbreaks
520 requires caution. *Nat Microbiol*. 2020 Jul;5(7):876–7.
521 47. Viana R, Moyo S, Amoako DG, Tegally H, Scheepers C, Althaus CL, et al. Rapid epidemic
522 expansion of the SARS-CoV-2 Omicron variant in southern Africa. *Nature*. 2022 Mar
523 24;603(7902):679–86.
524 48. Mallapaty S. Omicron-variant border bans ignore the evidence, say scientists. *Nature*. 2021 Dec
525 9;600(7888):199–199.
526