

1 Increased Influenza Severity in Children in the Wake of SARS- 2 CoV-2

3
4 **Gregory Hoy¹; Hannah E. Maier¹; Guillermina Kuan^{2,3}; Nery Sánchez²; Roger López^{2,4}; Alyssa Meyers¹;**
5 **Miguel Plazaola²; Sergio Ojeda²; Angel Balmaseda^{2,4}; Aubree Gordon¹**

6 ¹Department of Epidemiology, School of Public Health, University of Michigan, Ann Arbor, Michigan,
7 USA; ²Sustainable Sciences Institute, Managua, Nicaragua; ³Centro de Salud Sócrates Flores Vivas,
8 Ministry of Health, Managua, Nicaragua; ⁴Laboratorio Nacional de Virología, Centro Nacional de
9 Diagnóstico y Referencia, Ministry of Health, Managua, Nicaragua

10
11 Correspondence: Aubree Gordon, PhD, 5622 SPH I, School of Public Health, 1415 Washington Heights,
12 Ann Arbor, MI, USA 48109-2029 e: gordonal@umich.edu t:(734) 763-35890

13
14 Alternative contact: Gregory Hoy, 1415 Washington Heights, Ann Arbor, MI, USA 48109-2029, e:
15 ghoy@umich.edu, t: (254) 537-2120

16
17 Keywords: influenza, pediatrics, influenza severity, SARS-CoV-2, global health

44 **Abstract**

45 The SARS-CoV-2 pandemic and subsequent interruption of influenza circulation has lowered
46 population immunity to influenza, especially among children with few pre-pandemic exposures. We
47 compared the incidence and severity of influenza A/H3N2 and influenza B/Victoria between 2022 and
48 two pre-pandemic seasons and found an increased frequency of severe influenza in 2022.

49

50 In the two years following the emergence of SARS-CoV-2, global circulation of influenza was low
51 [1]. This gap in influenza circulation, along with decreased uptake of influenza vaccination, has lowered
52 population immunity to influenza, which could lead to increased severity of influenza epidemics [2,3].
53 Children experience symptomatic influenza infections more frequently than adults and bear a
54 disproportionate portion of the burden of influenza[4,5]. In addition, children have fewer total lifetime
55 influenza exposures and are normally exposed to influenza in the first few years of life, so they may be
56 at even greater risk of severe influenza during rebound seasons due to fewer prior exposures and
57 changes in the age patterns of first influenza exposure[6].

58 In 2022, influenza began to re-circulate in much of the world with sporadic seasonality, limited
59 antigenic diversity of circulating strains, and the absence of B/Yamagata circulation globally [2,7].
60 However, the severity of influenza in children in 2022 has not been compared to prior seasons, and the
61 clinical impact of waning influenza immunity during the gap in influenza circulation has not been
62 described. Using data from a prospective cohort study of children in Managua, Nicaragua, we describe
63 the incidence and severity of influenza in 2022 and examine whether the incidence and severity of
64 symptomatic influenza infections is greater in 2022 compared to several pre-pandemic seasons.

65 **Methods**

66 The Nicaraguan Pediatric Influenza Cohort Study (NPICS) is a prospective pediatric cohort study
67 based in Managua, Nicaragua that enrolls healthy children aged 0-14 [8]. If enrolled children become ill,
68 they are examined by study physicians and tested for influenza if they have pneumonia or severe
69 respiratory disease, or if they meet age-based symptom criteria (Supplemental Table 1). Combined
70 nasal/oropharyngeal samples were obtained and tested for influenza using real-time reverse-
71 transcription polymerase chain reaction (RT-PCR) using validated CDC protocols[9]. If positive for
72 influenza, subtype or lineage was obtained following CDC protocols [10].

73 Both influenza A/H3N2 and B/Victoria circulated in the NPICS in 2022; thus, the two most recent
74 pre-2020 A/H3N2 seasons (2017-2018, 2019-2020) and B/Victoria seasons (2017-2018, 2018-2019) were
75 selected for comparison[11]. Clinical symptom and diagnosis data were obtained from health center
76 visits up to 10 days before and 30 days after the date of influenza RT-PCR positivity. Severe infection was
77 defined as an influenza infection associated with hospitalization or clinically diagnosed pneumonia.
78 Frequencies of symptoms and severe cases were compared using χ^2 or Fisher exact tests. Analyses were
79 performed using SAS 9.4 and R version 4.2.2. This study was approved by the institutional review boards
80 at the Nicaraguan Ministry of Health and the University of Michigan.

81 **Results**

82 *A/H3N2*

83 A total of 330 A/H3N2 cases occurred in NPICS in the 2017-2018 and 2019-2020 influenza
84 seasons, and 198 A/H3N2 cases occurred in the 2022 influenza season (Figure 1a). No A/H3N2 infections
85 were detected in the cohort between February 2020 and January 2022. Children infected with A/H3N2
86 in 2022 were older on average than those infected with A/H3N2 in the pre-2020 seasons, with an
87 average age of infection in the 2022 season of 6.5 years, compared to 5.2 years for the pre-2020 seasons
88 ($p = 0.008$, Figure 1b). The incidence of A/H3N2 per 100 person-years was significantly higher in 2022,
89 with incidence estimates of 9.15 (7.83-10.69) in 2017-2018, 11.1 (9.61-12.76) in 2019-2020, and 15.8

90 (14.00-17.83) in 2022. When stratified by age, incidence in 2022 was higher in children aged 10-14, with
91 no difference in incidence in children aged 0-4 (Figure 1c). Vaccination rates in the cohort were low
92 overall, and children were more likely to have been vaccinated for influenza in 2022 compared to pre-
93 2020 seasons; 19 (9.6%) children were vaccinated in the 6 months prior to infection in 2022, compared
94 to 15 (4.5%) children in the pre-2022 seasons ($p = 0.023$). The symptomatic presentation of 2022 cases
95 was similar to pre-2020 cases, with no differences in the frequency of subjective fever, cough,
96 gastrointestinal (GI) symptoms, or Influenza-like-illness (ILI); however, objective fever, sore throat and
97 headache were less frequently reported in 2022 cases than pre-2020 cases (Supplemental Table 2).
98 Children aged 0-14 were nearly 3 times more likely to experience a severe case of A/H3N2 in 2022
99 compared to the pre-2020 seasons. Of the 198 cases in 2022, 7 (3.5%) of them were severe; of the 330
100 cases in the pre-2020 seasons, 4 (1.2%) of them were severe ($p = 0.111$) (Figure 1d, Supplemental Table
101 3). Influenza cases were significantly more severe in children aged 0-4 in 2022; 6 of 87 (6.9%) cases were
102 severe in 2022, compared to 3 of 189 (1.6%) cases in the pre-2020 seasons ($p = 0.030$; Figure 1d).

103 *B/Victoria*

104 A total of 156 B/Victoria cases occurred in NPICS in the 2017-2018 and 2018-2019 seasons, and
105 80 cases occurred in the 2022 influenza season (Figure 1a). Only three infections were detected in the
106 cohort between February 2020 and July 2022. There was no difference in the age distribution of
107 B/Victoria cases in 2022 compared to pre-2020 seasons; the average age of infection in the 2022 season
108 was 5.7 years, compared to 6.2 years in the pre-2020 seasons ($p = 0.275$, Figure 1b). The incidence of
109 B/Victoria per 100 person-years was 7.29 (6.13-8.69) for 2017-2018, 2.48 (1.84-3.35) for 2018-2019, and
110 6.15 (5.07-7.47) for 2022 (Figure 1c). Influenza B/Victoria cases in 2022 were also more likely to have
111 been vaccinated for influenza in the 6 months prior to infection (18.8% vs. 0.6%, $p < 0.001$). Compared
112 to pre-2020 cases, 2022 cases had a higher frequency of many signs and symptoms, including objective
113 fever, cough, and headache (Supplemental Table 4). Influenza B/Victoria cases were not more severe
114 than cases in the pre-2020 ($p = 0.447$; Figure 1d, Supplemental Table 5).

115 **Discussion**

116 Low circulation of influenza during the first two years of the SARS-CoV-2 pandemic was
117 predicted to increase the incidence and clinical severity of influenza infections during rebound influenza
118 epidemics due to decreased population immunity. We found that children infected with A/H3N2 in 2022
119 were a year older, on average than children infected with A/H3N2 in the pre-2020 seasons, possibly
120 representing a delay in the timing of the first few lifetime influenza infections. Though this age pattern is
121 unlikely to become entrenched without another multi-year gap in influenza circulation, it suggests that
122 immunologic age as a function of exposure history may matter more than biologic age for the risk of
123 influenza infections in young children.

124 Older children normally have some degree of immunity to influenza that is continually boosted
125 by repeated childhood infections and seasonal circulation; we hypothesized that this immunity waned
126 while influenza was not circulating and predicted we would see increased symptomatic influenza
127 incidence in older children once influenza returned. We found an increase in A/H3N2 incidence in
128 children aged 10-14, but not in children aged 0-4. The similar rate of influenza infection in young
129 children between seasons suggests that the overall force of infection was likely similar, and the increase
130 observed in older children supports the notion that waning influenza immunity due to SARS-CoV-2 may

131 have increased either the underlying susceptibility to infection and/or the proportion of infections that
132 were symptomatic and therefore detected.

133 In addition to an increase in susceptibility to symptomatic influenza infection in older children,
134 we also observed higher severity of influenza cases. Children in the cohort in 2022 were about three
135 times more likely to experience a severe infection. Children under 4 years of age showed a significant
136 increase in the proportion of severe A/H3N2 infections in 2022. This increased severity may be partially
137 attributable to waning immunity in these children due to decreased influenza circulation during 2020
138 and 2021, as well as other factors, such as decreased passive immunity in the first 6 months of life due
139 to decreased maternal influenza infection and vaccination during periods of low influenza circulation.
140 Influenza A/H3N2 infections were also less likely to experience symptoms related to a strong immune
141 response to infection such as objective fever, sore throat, and headache, which also supports the notion
142 of lower pre-existing immunity in children in 2022[12].

143 Unlike with A/H3N2, the age distribution and incidence of B/Victoria cases in 2022 was not
144 significantly different than the pre-2020 seasons, likely because 2-year gaps in influenza B circulation
145 occur commonly in our setting [11]. Severe B/Victoria was more likely to occur in 2022 than in the pre-
146 2020 B/Victoria seasons; however, one limitation of our study is that the small sample limits the
147 statistical power of these comparisons.

148 **Conclusion**

149 Using data from one of the largest and longest-running prospective pediatric cohorts of
150 influenza, we found that 2022 A/H3N2 infections had higher incidence in older children, and 2022
151 infections were 3-4 times as likely to be severe compared to pre-2020 A/H3N2 infections. This increased
152 severity may represent waning influenza immunity in children due to the SARS-CoV-2 pandemic.

153

154 **FUNDING**

155 This work was supported by the National Institute for Allergy and Infectious Disease [U01 AI088654 and
156 U01 AI144616; and contract numbers HHSN272201400006C and 75N93021C00016 to A.G.]. Aubree
157 Gordon is supported by the Biosciences Initiative at the University of Michigan through a Mid-career
158 Biosciences Faculty Achievement Award (MBioFAR). The funding agencies had no role in the design and
159 conduct of the study, collection, management, analysis or interpretation of the data; preparation,
160 review, or approval of the manuscript; or decision to submit the manuscript for publication.

161 **POTENTIAL CONFLICTS OF INTEREST**

162 A.G. serves on a scientific advisory board for Janssen Pharmaceuticals. G.H., H.M., G.K., N.S., R.L., A.M.,
163 M.P., S.O., and A.B. report no conflicts of interest.

164 **ACKNOWLEDGEMENTS**

165 We thank the study participants and the many dedicated study personnel in Nicaragua at the Centro
166 Nacional de Diagnóstico y Referencia and the Sócrates Flores Vivas Health Center.

167

168

169 **References**

- 170 1. Olsen SJ. Decreased Influenza Activity During the COVID-19 Pandemic — United States, Australia,
171 Chile, and South Africa, 2020. *MMWR Morb Mortal Wkly Rep* **2020**; 69. Available at:
172 <https://www.cdc.gov/mmwr/volumes/69/wr/mm6937a6.htm>. Accessed 9 February 2023.
- 173 2. Lee SS, Viboud C, Petersen E. Understanding the rebound of influenza in the post COVID-19
174 pandemic period holds important clues for epidemiology and control. *Int J Infect Dis* **2022**;
175 122:1002–1004.
- 176 3. Lee K, Jalal H, Raviotta JM, et al. Estimating the Impact of Low Influenza Activity in 2020 on
177 Population Immunity and Future Influenza Seasons in the United States. *Open Forum Infect Dis*
178 **2022**; 9:ofab607.
- 179 4. Hoy G, Kuan G, López R, et al. The Spectrum of Influenza in Children. *Clin Infect Dis* **2023**; 76:e1012–
180 e1020.
- 181 5. Gordon A, Reingold A. The Burden of Influenza: a Complex Problem. *Curr Epidemiol Rep* **2018**; 5:1–
182 9.
- 183 6. Sauerbrei A, Langenhan T, Brandstädt A, et al. Prevalence of antibodies against influenza A and B
184 viruses in children in Germany, 2008 to 2010. *Eurosurveillance* **2014**; 19:20687.
- 185 7. Dhanasekaran V, Sullivan S, Edwards KM, et al. Human seasonal influenza under COVID-19 and the
186 potential consequences of influenza lineage elimination. *Nat Commun* **2022**; 13:1721.
- 187 8. Gordon A, Kuan G, Aviles W, et al. The Nicaraguan pediatric influenza cohort study: design,
188 methods, use of technology, and compliance. *BMC Infect Dis* **2015**; 15:504.
- 189 9. World Health Organization. WHO manual on animal influenza diagnosis and surveillance. 2002;
190 Available at: https://apps.who.int/iris/bitstream/handle/10665/68026/WHO_CDS?sequence=1.
- 191 10. World Health Organization. WHO | CDC protocol of realtime RTPCR for influenza A(H1N1). 2009;
192 Available at:
193 [https://www.who.int/csr/resources/publications/swineflu/CDCRealtimeRTPCR_SwineH1Assay-](https://www.who.int/csr/resources/publications/swineflu/CDCRealtimeRTPCR_SwineH1Assay-2009_20090430.pdf)
194 [2009_20090430.pdf](https://www.who.int/csr/resources/publications/swineflu/CDCRealtimeRTPCR_SwineH1Assay-2009_20090430.pdf).
- 195 11. Maier HE, Kuan G, Gresh L, et al. The Nicaraguan Pediatric Influenza Cohort Study, 2011–2019:
196 Influenza Incidence, Seasonality, and Transmission. *Clin Infect Dis* **2023**; 76:e1094–e1103.
- 197 12. Eccles R. Understanding the symptoms of the common cold and influenza. *Lancet Infect Dis* **2005**;
198 5:718–725.

199
200
201
202
203
204
205
206
207
208
209
210
211
212
213

214

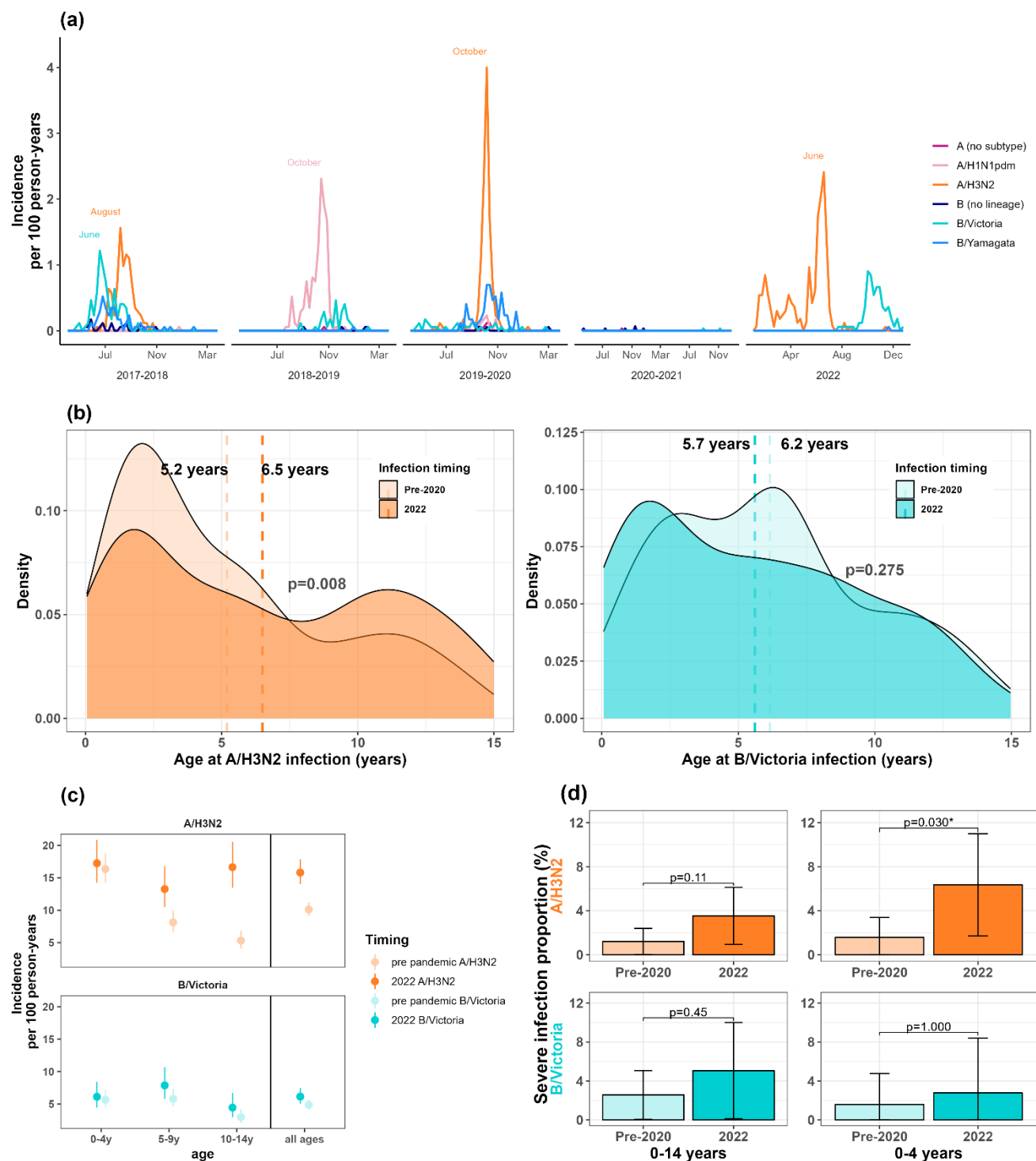


Figure 1. (a) Influenza incidence rate in the Nicaraguan Pediatric Influenza Cohort Study, by season. (b) Age distribution of A/H3N2 and B/Victoria cases, pre-2020 vs. 2022 (Wilcoxon Rank Sum Test). (c) Comparison of influenza incidence rate pre-2020 vs. 2022, by age. (d) Frequency of severe influenza infection, pre-2020 vs. 2022 (Fisher's Exact Test).

215 **Figure Legends**

216

217 **Figure 1.** (a) Influenza incidence rate in the Nicaraguan Pediatric Influenza Cohort Study, by season. (b)
218 Age distribution of A/H3N2 and B/Victoria cases, pre-2020 vs. 2022 (Wilcoxon Rank Sum Test). (c)
219 Comparison of influenza incidence rate pre-2020 vs. 2022, by age. (d) Frequency of severe influenza
220 infection, pre-2020 vs. 2022 (Fisher's Exact Test).

221