

1 **Disease-specific plasma protein profiles in patients with fever after traveling to**
2 **tropical areas**

3

4 Christopher Sundling^{1,2,3*}, Victor Yman^{1,4}, Zaynab Mousavian^{1,2,3}, Sina Angenendt¹,
5 Fariba Foroogh¹, Ellen von Horn¹, Maximilian Julius Lautenbach^{1,2,3}, Johan
6 Grunewald^{3,5}, Anna Färnert^{1,2,3}, Klara Sondén¹

7

8 ¹ Division of Infectious Diseases, Department of Medicine Solna, Karolinska Institutet,
9 Stockholm, Sweden

10 ² Department of Infectious Diseases, Karolinska University Hospital, Stockholm
11 Sweden

12 ³ Center for Molecular Medicine, Karolinska Institutet, Stockholm, Sweden

13 ⁴ Department of Infectious Diseases, Stockholm South Hospital, Stockholm, Sweden

14 ⁵ Respiratory Medicine Unit, Department of Medicine, Solna, Karolinska Institutet and
15 Karolinska University Hospital Solna, Stockholm, Sweden

16

17 **Running title:** Plasma proteins associated with disease etiology

18

19 **Corresponding author:** Christopher Sundling, christopher.sundling@ki.se or Klara
20 Sondén, klara.sonden@ki.se

21

22

23 **Key words:** Cytokines, fever, travel medicine, dengue, malaria, influenza,
24 pneumonia, gastroenteritis, diagnostics

25

26 **Abstract**

27 **Objectives**

28 Fever is common among individuals seeking healthcare after traveling to tropical
29 regions. Despite the association with potentially severe disease, the etiology is often
30 not determined. Cytokines are soluble mediators dynamically regulated in the
31 response to infection. Measuring cytokines in the blood can therefore be informative
32 to understanding the host-response to infection and can potentially indicate the type
33 of pathogen that causes the disease.

34

35 **Method**

36 In this study, we measured 49 host-response proteins in the plasma of 124 patients
37 with fever after travel to tropical or subtropical regions. The patients had confirmed
38 diagnosis of either malaria, dengue fever, influenza, bacterial respiratory tract
39 infection, or bacterial gastroenteritis, representing the most common disease
40 etiologies. We used multivariate and machine learning methods to assess host-
41 response protein profiles between the different disease groups and healthy control
42 subjects with the aim of identifying disease-associated protein signatures.

43

44 **Results**

45 The host-response varied between disease groups and different combinations of
46 proteins contributed to distinguishing infected patients from healthy controls, and
47 from each other. Malaria displayed the most unique protein signature, indicating a
48 strong immunoregulatory response with high levels of IL10, sTNFRI and II, and
49 sCD25 but low levels of sCD40L. In contrast, bacterial gastroenteritis had high levels
50 of sCD40L, APRIL, and IFN- γ , while dengue was the only infection with elevated
51 IFN α 2.

52

53 **Conclusions**

54 These results suggest that characterization of the inflammatory profile of individuals
55 with fever can help to identify disease-specific host responses, which in turn can be
56 used to guide future research on diagnostic strategies and adjuvant treatment.

57

58

59 **Author summary**

60 Upon infection with a pathogen, the host's immune system will sense the
61 infection and initiate an immune response. Depending on the type of pathogen and
62 the cells that sense it, the resulting immune response will be different. Fever is a
63 common symptom of infection and it is often difficult to identify the specific pathogen
64 responsible for the disease. In this study, we aimed to characterise and compare
65 circulating inflammation-associated proteins elicited in response to the most common
66 pathogens leading to fever after travel to tropical or subtropical areas. The pathogens
67 included viruses, bacteria, and parasites. Based on the protein signatures, we could
68 observe both disease-general patterns (upregulated in all disease groups) and
69 disease-specific patterns (associated with specific diseases). Malaria displayed the
70 most unique signature and was associated with the upregulation of several
71 immunoregulatory proteins. Possibly in response to a pro-inflammatory response.
72 Dengue fever was also associated with a mix of pro- and anti-inflammatory proteins,
73 while bacterial gastroenteritis had a mainly pro-inflammatory profile. Comparing the
74 protein profiles between diseases indicated unique patterns that could potentially be
75 further developed for clinical use.

76

77 **Introduction**

78 Fever is a common symptom of individuals seeking healthcare after returning
79 from travel to tropical areas (1). In a previous study in Sweden, most of these cases
80 were shown to be due to gastroenteritis, malaria, influenza, and dengue virus, but
81 >40% remained with unknown etiology even after healthcare contact (2). Upon
82 further serological analysis of those with unknown etiology, approximately 9% were
83 found to have a likely influenza virus infection, 4% dengue virus infection, and
84 another 4% with Rickettsial infection (2). This highlights the difficulties in travel
85 medicine as the number of pathogens that need to be considered is numerous, and
86 patients with various diagnoses often present with overlapping clinical symptoms (3–
87 6). Moreover, clinical markers such as C-reactive protein (CRP) and white blood cell
88 total and differential counts often provide limited guidance. Pathogens that can give
89 rise to severe disease are important to detect at an early stage, while at the same
90 time, unnecessary antibiotic usage should be avoided (7). Learning more about how
91 immune responses differ between infections with similar clinical presentations could
92 potentially be informative in developing biomarker signatures for disease
93 identification and for a better understanding of host-pathogen interaction and
94 protective immunity.

95 During infection, a wide range of inflammatory proteins are up- or
96 downregulated in the host's response to the pathogen. Depending on the infecting
97 pathogen, different types of immune responses are important for efficient control (8).
98 These inflammatory responses tend to be short-lived and self-regulatory as the
99 pathogen is controlled. However, in some instances, the inflammatory response
100 becomes dysregulated leading to severe disease manifestations (9–11). Measuring
101 inflammatory proteins in the blood can therefore help to understand the host
102 inflammatory response to infection and predict disease severity (12–17) or disease
103 etiology (18). Different infections may induce overlapping inflammatory protein
104 profiles and studying a single infection in isolation will make it difficult to understand
105 the pathogen-specificity of the responses and limit the possibility to discern how
106 patterns differ between infections. Recently developed experimental and
107 bioinformatics methods allow for comprehensive analysis of cytokine profiles useful
108 for mapping immunological events as well as for identification of clinically relevant
109 markers of disease and its severity (18–22).

110 This study provides a comprehensive mapping of inflammatory proteins in the
111 plasma of individuals with a known etiology of infection who presented with fever
112 after travel to tropical or sub-tropical areas. By comparing the inflammatory profile
113 between the different disease groups, we could identify patterns associated with the
114 respective etiologies. These patterns provide insights regarding the pathogen
115 specificity of the host inflammatory response to infection and could potentially be
116 further explored as biomarkers for clinical practice in the future.

117

118 **Methods**

119 **Study inclusion**

120 Patients with a history of travel were invited to participate when seeking care at
121 the Emergency Department at Karolinska University Hospital, Stockholm, Sweden.
122 Inclusion criteria were: i) Travel within the past 2 months to a tropical (defined as
123 between latitude 0° - $\pm 23.5^{\circ}$) or sub-tropical area (defined as between latitude $\pm 23.5^{\circ}$ -
124 $\pm 40^{\circ}$), ii) age ≥ 18 years, and iii) documented body temperature $>38^{\circ}\text{C}$ at the hospital
125 or self-reported fever within the previous 2 days. Blood samples for serum and EDTA
126 plasma isolation were collected from all individuals and aliquots were frozen at -80°C
127 for later analysis. Demographic and clinical data, including microbiological diagnosis
128 after routine clinical investigation, were extracted from medical records and a
129 questionnaire filled in by patients. Five groups of diagnoses were selected for further
130 study: 1) Malaria caused by *Plasmodium falciparum* as defined by microscopy and
131 qPCR, 2) Dengue diagnosed by a positive result in qPCR for dengue virus, 3)
132 Gastroenteritis with fecal culture positive for enteropathogenic bacteria, 4) Influenza
133 diagnosed by positive qPCR for influenza virus in the nasopharyngeal swab, and 5)
134 Bacterial respiratory tract bacterial infections defined as nasopharyngeal culture
135 positive together with chest x-ray with infiltrate or sputum culture positive for a
136 respiratory pathogen together with signs or symptoms indicative of bronchitis or
137 pneumonia. In addition, 13 healthy adult individuals without a current history of travel
138 were sampled as controls. The study was approved by the Swedish Ethical Review
139 Authority (2016/2512-31/2 with amendment 2021-04087). Study participants were
140 provided with written and oral information and written consent was obtained.

141 In addition to the study inclusion for all tropical fevers, patients with
142 symptomatic malaria had since 2011 been included in a prospective malaria

143 immunology cohort previously investigated for longitudinal parasite persistence (23),
144 cellular aging dynamics (24), parasite-specific antibodies (25,26), B cell responses
145 (27), and immunoregulatory cellular and antibody interplay (19). These individuals
146 were enrolled at the Karolinska University Hospital after confirmed microscopy for *P.*
147 *falciparum* and providing informed consent. The study was approved by the
148 Stockholm regional ethical committee (2006/893-31/4 with amendments 2018/2354-
149 32 and 2019-03436).

150

151 **Multiplex cytokine measurements**

152 Plasma aliquots were thawed at room temperature (RT) and cytokines and
153 chemokines were measured using the LEGENDplex™ pre-defined 13-plex panels
154 according to the manufacturer's instructions with some modifications. The panels
155 used were; cytokine panel 2, inflammation panel 2, proinflammatory chemokine
156 panel, and the B cell panel (all from Biolegend), measuring 49 unique inflammatory
157 markers in total (**Supplementary Table 1**).

158 Briefly, 12.5 µl plasma was mixed with 12.5 µl multiplex beads and diluted to 75
159 µl and incubated for 2h at RT in a plate shaker (700 rpm). The beads were then
160 washed and incubated with 12.5 µl biotin-conjugated marker-specific antibodies
161 diluted to 25 µl with phosphate buffered saline (PBS) for 45 min at RT in a plate
162 shaker (700 rpm). 12.5 µl PE-conjugated streptavidin was then diluted with PBS to 25
163 µl and added to each well without washing and incubated for 30 min at RT in a plate
164 shaker (700 rpm). The beads were then washed twice, and the fluorescent signal
165 was measured on a BD 4-laser Fortessa using the 488 nm laser (forward scatter vs
166 side scatter) to separate beads based on size and granularity and the 640 nm laser
167 (780/60 filter) to separate beads based on cytokine specificity. The 561 nm laser
168 (582/16) filter was then used to detect the amount of marker signal, translating to the
169 amount of cytokine. The median fluorescent signals were then exported, and the
170 concentration of each marker was determined for each sample based on interpolation
171 from sigmoidal dose-response curves established for each cytokine based on the
172 standards included with the kits. All concentrations below the lower limit of detection
173 (LOD) or above the upper LOD of the assays (as determined by the included
174 standard curve) were assigned a concentration corresponding to the lower and upper
175 LODs, respectively.

176

177 **Statistical analysis and machine learning**

178 **Differential abundance analysis**

179 Data management and statistical analysis were performed using R version
180 4.3.1. Data visualization was performed using ggplot2 (28). All data on cytokine
181 levels were log-transformed prior to analysis. Spearman's rank correlation was used
182 to construct correlation networks of cytokine levels within each disease group. For
183 the graphical display of correlation networks, only correlations with absolute values of
184 Spearman's $\rho > 0.7$ were included. Mann-Whitney-U tests were applied to evaluate
185 differences in the median cytokine levels between the different types of infections or
186 healthy controls. All p-values were adjusted for false discovery rate (FDR) (29). FDR-
187 adjusted P -values < 0.05 were considered significant.

188

189 **Discriminant analysis of principal components**

190 Discriminant analysis of principal components (DAPC) was used to examine the
191 multidimensional cytokine data (49 proteins) for specific cytokine profiles/signatures
192 associated with each infection type (30). DAPC is a dimensionality reduction method
193 that identifies the vectors (linear discriminants) in multidimensional space which
194 provides maximum discrimination of groups while minimizing variation within groups.
195 DAPC first transforms the data into uncorrelated variables using principal component
196 analysis and then performs a discriminant analysis on the retained principal
197 components (PCs). Prior to DAPC analysis, all log-transformed values of cytokine
198 levels were scaled and centered by dividing by the median absolute deviation and by
199 subtracting the median, respectively.

200

201 **Feature selection and ROC analysis**

202 The Boruta feature selection algorithm (31) based on binary classification was
203 applied to identify only plasma proteins that contribute significant information for
204 identifying each type of infections from the others and healthy controls. For each
205 infection type, random forest classifiers were then fitted to all the down selected
206 cytokines identified by the Boruta algorithm and the predictive performance was
207 evaluated using receiver operating characteristic (ROC) analysis with 5-fold cross-
208 validation. All data was divided into five parts and in each run, four parts of data were
209 used for model training and the remaining one was used for testing. To further reduce

210 the risk of over-fitting of the classification algorithms, a repeated k-fold cross-
211 validation with 10 repeats and 10 folds was applied for parameter tuning within the
212 model training process. Finally, all ROC plots obtained from five different runs of the
213 model were aggregated into one ROC plot to show the average performance of the
214 model. An imbalanced dataset can result in biased learning algorithms due to
215 differences in the number of individuals in each class. This bias can lead to overly
216 optimistic ROC results that may not be realistic. To address this issue, we also used
217 precision-recall curves to provide a more accurate representation of each model's
218 performance.
219

220 Results

221 Clinical characteristics

222 In total, 124 patients with self-reported fever seeking healthcare at the
223 Karolinska University Hospital after travel to tropical or subtropical areas were
224 included in the study. A total of 17 patients had dengue fever, 26 had gastroenteritis,
225 26 had influenza, 49 had malaria, and 6 had bacterial respiratory tract infections. In
226 addition, 14 volunteers were included as healthy controls (**Table 1**). Patients with *P.*
227 *falciparum* malaria were admitted to the hospital per routine (93.6% of patients) for
228 treatment and observation. Hospital admission was lower in the other groups, with
229 dengue (35.3%), gastroenteritis (38.5%), influenza (19.2%), and respiratory tract
230 infection (66.7%). Among patients with nasal swabs positive for Influenza, 12
231 patients had Influenza A and 14 had Influenza B by qPCR. Fecal cultures in the
232 group with clinical gastroenteritis revealed growth of either *Salmonella spp.* (n=12) or
233 *Campylobacter spp.* (n=14).

234 There was no significant difference in axillary temperature between the
235 infections. They did however differ significantly in leukocyte and platelet counts and
236 levels of C-reactive protein (**Supplementary Figure 1**). Patients with dengue and
237 malaria had significantly lower leukocyte counts compared to bacterial gastroenteritis
238 while dengue also had significantly lower counts compared to influenza and bacterial
239 respiratory tract infection. Platelet counts were significantly lower in the malaria group
240 compared to all other infections. CRP was significantly elevated in all infections
241 except dengue fever which remained close to the reference values. There was no
242 significant difference in CRP values between bacterial gastroenteritis, influenza, and
243 bacterial respiratory tract infection, while malaria was significantly higher than
244 influenza (**Supplementary Figure 1**).

245

246 **Table 1.** Clinical characteristics of patients included in the study (n=124)

	Dengue n=17	Bacterial gastroenteritis n=26	Influenza n=26	Malaria n=49	Bacterial respiratory tract infection n=6	Healthy controls N=14
Age, median (IQR)	37 (33- 50)	36 (28-46)	37 (31- 55)	38 (30- 44)	57 (39-68)	30 (26- 34)
Female sex, n (%)	6 (35.3)	12 (46.2)	15 (57.7)	9 (18.4)	4 (66.7)	10 (71.4%)
Admitted to hospital, n (%)	6 (35.3)	10 (38.5)	5 (19.2)	46 (93.9)	4 (66.7)	NA
Leukocytes ^T ,	3.1 (2-	8.8 (4.2-18.9)	5.5 (3-20)	5 (1.9-	8.9 (6.9-	ND

($\times 10^9/L$), median (range)	7.4)			35)	11.3)	
Platelets [§] , ($\times 10^9/L$), median (range)	157 (58-346)	205 (131-549)	194 (106-442)	85 (12-210)	233 (188-367)	ND
C-reactive protein [‡] , (mg/L), median (range)	4 (1-62)	39 (0-274)	29 (2-277)	92 (6-294)	65 (33-223)	ND
Microbiological findings	Dengue virus qPCR positive n=17	Feces culture positive for Salmonella species: n=12, Campylobacter: n=14	Influenza qPCR nasal swab positive for Influenza A: n=12, Influenza B: n=14	Blood smear and qPCR positive for <i>P. falciparum</i> n=49. Mean parasitemia 1.7% (range 0.01-17)	Culture positive for <i>Hemophilus influenzae</i> Sputum n=4 Nasopharyngeal swab n=2	NA

247 [†]Normal range for leucocyte count 3.8–8.8 $\times 10^9/L$

248 [§]Normal range for platelet count 150-400 $\times 10^9/L$

249 [‡]Normal range for C-reactive protein 0–3 mg/L

250 N/A – Not applicable

251 ND – Not done

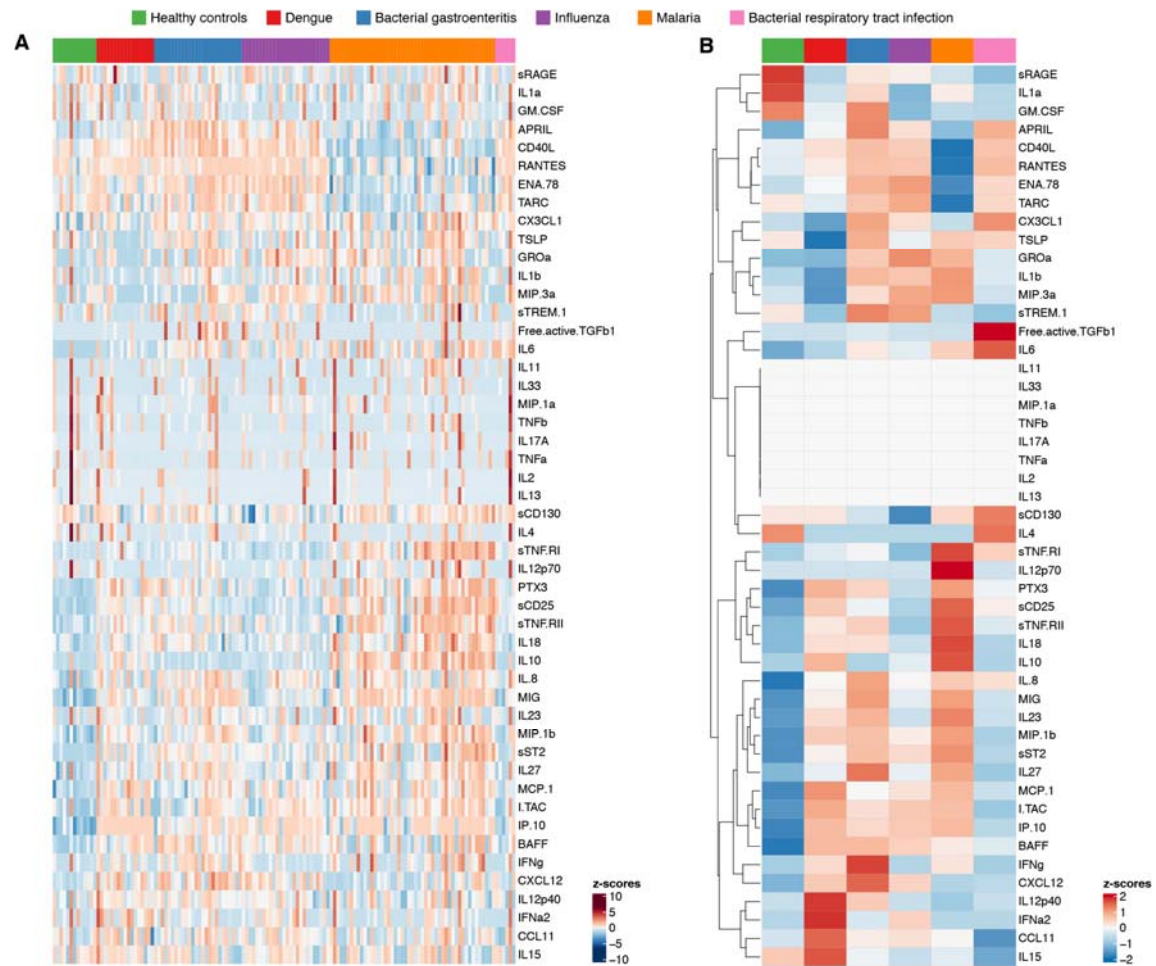
252

253 Different types of infection display unique profiles of inflammatory markers

254 We measured the levels of 52 inflammatory proteins in the plasma from the
 255 study participants and healthy controls using four separate 13-plex suspension bead
 256 assays. Two proteins were overlapping between assays, IL12p70 and sCD40L, and
 257 had an assay correlation with a Pearson $r=0.66$ and $r=0.82$ and both $p<0.0001$,
 258 respectively. One protein (PAI-1) was not quantifiable in all donors and since we
 259 could not determine the cause and did not want to introduce potential bias, the PAI-1
 260 data was excluded, leading to a dataset including 49 unique proteins (**Figure 1**).
 261 There was a substantial variation in the levels of the proteins among individual
 262 donors (**Figure 1A**), however, several disease-specific patterns could be observed
 263 (**Figure 1B**). For many of the measured cytokines, levels were highly positively
 264 correlated across infections (**Supplementary Figure 2**) as well as within specific
 265 infections (**Supplementary Figure 3**).

266

It is made available under a [CC-BY-NC 4.0 International license](https://creativecommons.org/licenses/by-nc/4.0/).



267

268

269

270

271

272

273

274

275

276

277

278

279

280

281

282

283

284

Figure 1. Levels of inflammatory proteins in plasma in different types of infections. (A) Heatmap of normalized individual cytokine levels. Each column represents an individual and each row represents a cytokine. Columns are ordered based on disease etiology and rows are ordered using hierarchical clustering based on euclidean distance. (B) Heatmap of normalized group-wise median cytokine levels. Each column represents a disease etiology group while each row represents a cytokine.

We next compared the levels of the 49 inflammatory markers between each group and healthy controls using Mann-Whitney-U tests, corrected for multiple testing, to assess if different disease etiologies were associated with up- or downregulation of specific proteins (Figure 2A). Out of the 49 proteins, 29 were significantly up- or downregulated between the different infections or healthy controls (Figure 2A). Compared to healthy controls, dengue patients had a significant increase in 14 out of the 49 measured proteins ($\log_{2}FC > 1$ and $FDR\ p\text{-value} < 0.05$), while bacterial gastroenteritis led to a significant increase in 18 proteins, and bacterial respiratory tract infection of 3 proteins. Influenza had a significant increase of 12

285 proteins and the reduction of 1 protein whereas malaria led to significantly increased
286 levels of 17 proteins and reduced levels of 3 proteins. A set of proteins, including
287 BAFF, IL6, IP10 (CXCL10), ITAC (CXCL11), MCP1 (CCL2), MIG (CXCL9), MIP1 β ,
288 PTX3, sCD25, and sST2 were increased in most infections, potentially indicating
289 quite general markers of febrile illness. There were, however, considerable
290 differences in levels between the groups for some of the markers, such as IP10,
291 where all individuals with dengue had levels above the limit of detection for the
292 assay, and sCD25, which was higher in especially malaria (**Figure 2B**).

293 Some proteins were primarily associated with specific pathogens, such as IFN γ
294 and APRIL which were significantly increased in bacterial gastroenteritis, and IFN α 2
295 which was upregulated in dengue compared with bacterial gastroenteritis, malaria,
296 and healthy controls. IL10 levels were significantly elevated in influenza, dengue, and
297 malaria, with progressively higher levels, while changes to IL18, CD40L, sTNFR1, and
298 TARC were largely specific for malaria. GMCSF levels were slightly lower in influenza
299 compared to healthy controls only (**Figure 2A**). In total, 20 out of the 49 proteins did
300 not differ significantly in any comparison between the different diseases and healthy
301 controls (**Supplementary Figure 4**).

It is made available under a [CC-BY-NC 4.0 International license](https://creativecommons.org/licenses/by-nc/4.0/).

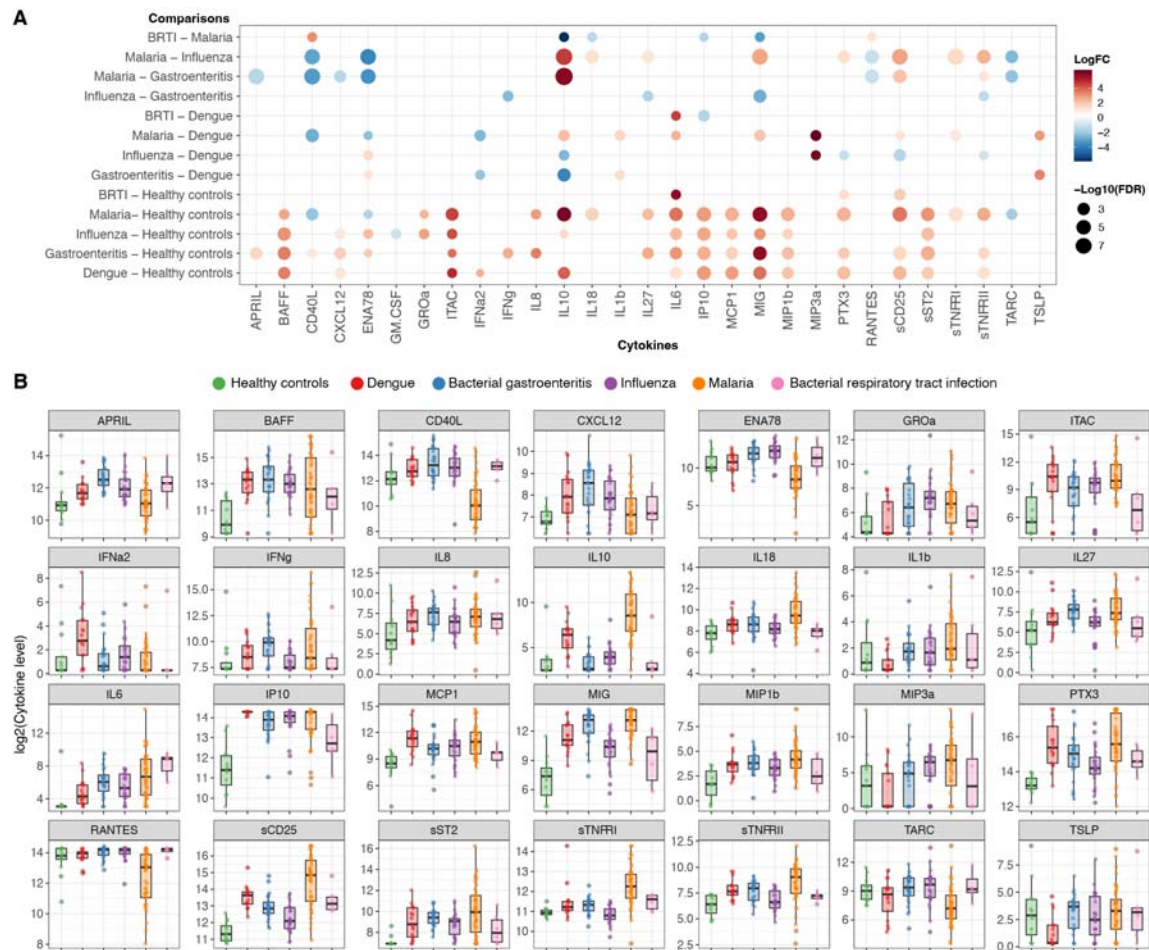


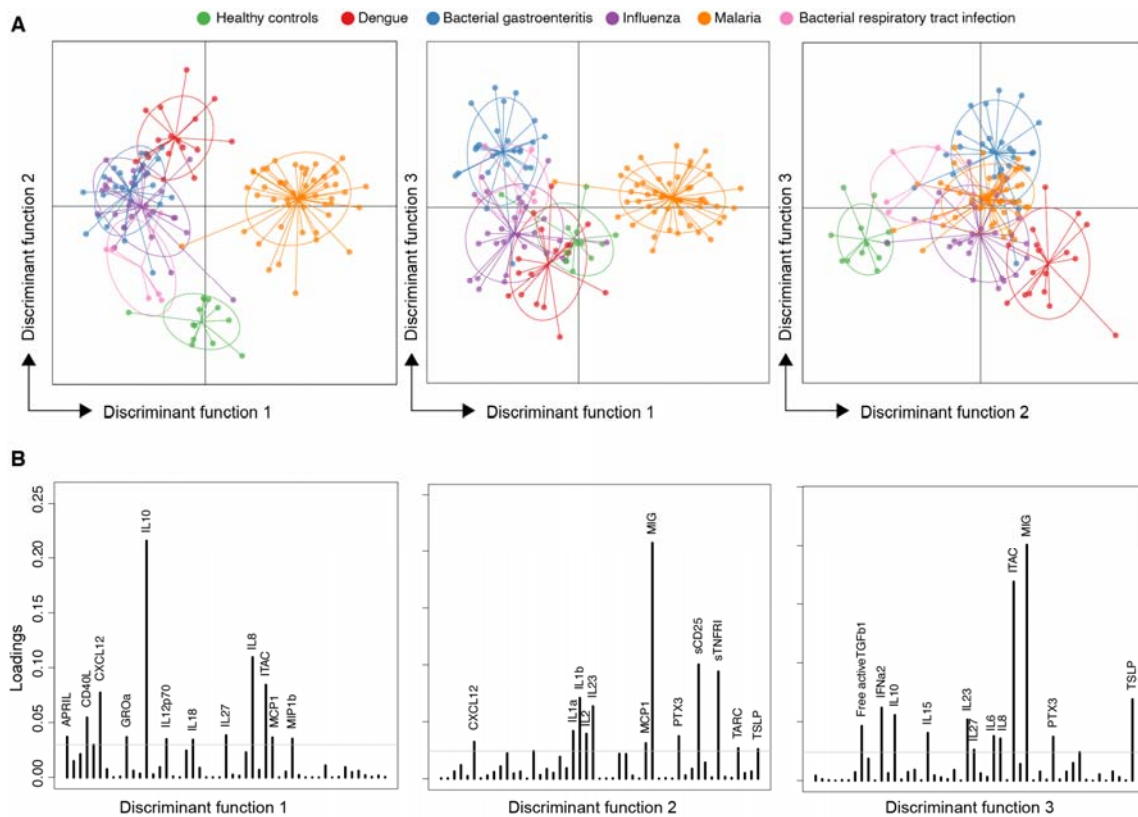
Figure 2. Comparison of inflammatory proteins between disease groups. (A) Log-transformed levels (pg/mL) of inflammation-associated proteins were compared between all groups and significant differences, as determined by the FDR-adjusted Mann-Whitney tests, are shown as dots where the size of the dot indicates the *p*-value and the color indicates a positive (red) or negative (blue) fold-change between the compared groups. BRTI refers to bacterial respiratory tract infection. (B) Log-transformed cytokine levels are shown for individual donors in each group. Box plots indicate median and interquartile range.

Immune signatures associated with different infectious diseases

The inflammatory response to infection is complex and is likely affected by the type of pathogen, its virulence, and the anatomical location of the infection. To be able to assess the complexity of the inflammatory response and examine if different diseases were associated with different inflammatory patterns, we used discriminant analysis of principal components (DAPC) (Figure 3 and Supplementary Figures 5 and 6). This type of analysis enables us to focus on between-group variability while minimizing within-group variability to identify key markers that segregate the groups

321 included in the analysis (30). The optimal number of PCs to retain for discriminant
322 analysis was determined by cross-validation to be 26. Given the small number of
323 different infections (i.e. clusters) in the data ($k = 6$) all discriminant functions ($k-1$)
324 were retained regardless of their eigenvalue, as they could easily be examined
325 graphically. Data for the first three discriminant functions which explains most of the
326 variation between different infections are presented below in Figure 3, while the full
327 data for all five discriminant functions are presented in Supplementary Figure 5.

328 Discriminant function 1 (DF1) provided clear segregation between malaria and
329 the other diseases (**Figure 3A**). Differences in DF1 were largely driven by IL10 levels
330 but also influenced by several other proteins, especially IL6, CXCL12, CD40L,
331 sCD25, and sRAGE (**Figure 3B**). DF2 was instead important for segregating the
332 infected groups from the healthy controls and somewhat from each other. This was
333 largely driven by MIG, but also further influenced by sCD130, IFN α 2, CCL11, and
334 IL2. DF3 provided a weaker separation primarily of bacterial gastroenteritis from
335 dengue. This was associated with e.g., IFN α 2, as described before, but also TSLP,
336 IL6, MIG, and IL10.



337

338

339

Figure 3. Analysis of marker profiles by discriminant analysis of principal components (DAPC). (A) DAPC scatter plots show the separation of groups based

340 *on discriminant functions 1-3. (B) Proteins associated with separation (loading plots)*
341 *for each discriminant function. Loading cut-off set to 0.03. Additional data for*
342 *discriminant functions 4 and 5 are presented in Supplementary Figure 5.*

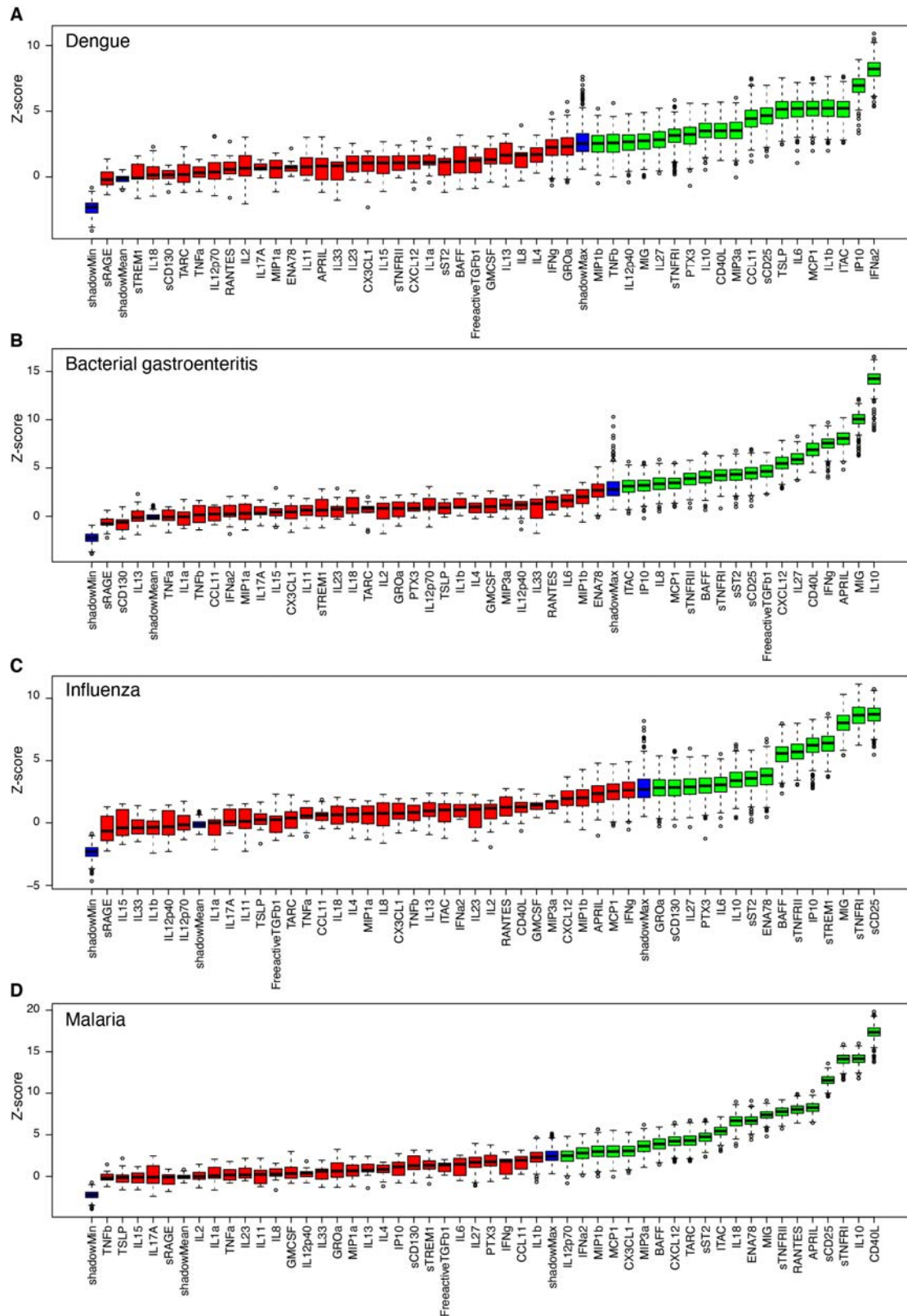
343

344 **Selection of proteins indicating different etiologies**

345 To further assess if we could identify an inflammatory signature associated with
346 each type of infection, we used the Boruta feature selection algorithm to identify
347 proteins that contributed significant information for the accurate classification of each
348 disease (**Figure 4**). Since there were only six bacterial respiratory tract infections in
349 the dataset, we did not try to identify a specific signature for this group, although the
350 samples were retained in the dataset when classifying the other groups. For the four
351 remaining diseases, the algorithm identified different numbers of cytokines that
352 provided significant information for classification, indicated by the green color (**Figure**
353 **4**). We identified 19, 17, 15, and 21 cytokines for dengue, bacterial gastroenteritis,
354 influenza, and malaria, respectively (**Figure 4**). Several cytokines were selected as
355 important for the classification of more than one pathogen (**Supplementary Figure**
356 **7**), such as IL10, MIG, sCD25, and sTNFRI which were selected for all four diseases
357 (**Supplementary Figure 7**).

358

It is made available under a [CC-BY-NC 4.0 International license](https://creativecommons.org/licenses/by-nc/4.0/).



359
360
361
362

Figure 4. Selecting signatures for detecting individuals infected by each pathogen using the Boruta feature selection algorithm. (A-D) Variable importance plots from the Boruta feature selection algorithm fitted jointly to data for

363 *all proteins in detecting dengue, bacterial gastroenteritis, influenza, and P. falciparum*
364 *malaria, respectively. Proteins are ordered from left to right by their importance for*
365 *classification. The importance measure is defined as the Z-score of the mean*
366 *decrease in accuracy (normalized permutation importance). Blue boxes correspond*
367 *to the minimal, average, and maximum Z-scores of shadow features. Red boxes*
368 *indicate variables not contributing significantly to accurate classification. Green boxes*
369 *indicate the proteins contributing significantly to the accurate identification of each*
370 *infection type.*

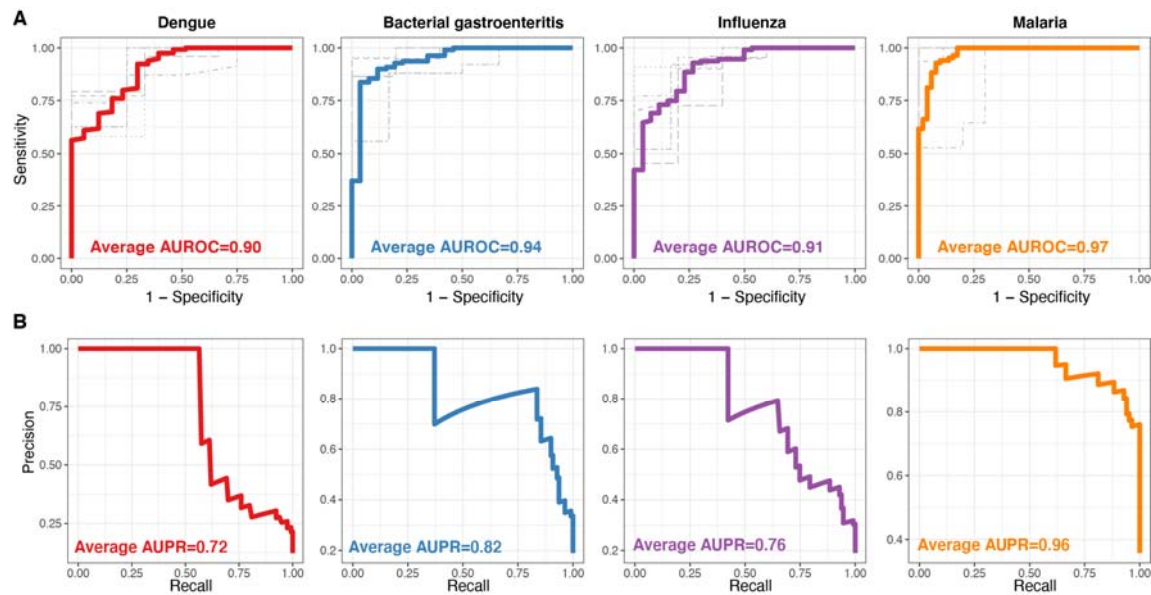
371

372 **Performance analysis of the classification of different disease etiologies**

373 Following the Boruta feature selection algorithm, binary random forest classifiers
374 were fitted separately to the data for the proteins selected for each infection (from all
375 individuals) in order to evaluate whether they were informative in identifying
376 individuals with a specific infection type. The best cross-validated classifier
377 performance, as determined by the aggregated classifier area-under-curve (AUC),
378 was observed for malaria, followed by bacterial gastroenteritis, influenza, and then
379 dengue (**Figure 5A**). In malaria, we observed an aggregated cross-validated AUC of
380 0.97 for a combination of 21 cytokines, while for bacterial gastroenteritis, an
381 aggregated AUC of 0.94 was seen for a set of 15 cytokines. For influenza and
382 dengue, aggregated AUCs of 0.91 and 0.90 were observed from combinations of 17
383 and 19 proteins, respectively. Overall, all classifiers showed good performance
384 (sensitivity > 0.87 and specificity > 0.72) for detecting each particular infection type
385 using the selected signature.

386 In our binary classification problem, the goal was to distinguish a specific
387 infection (i.e. the case class) from the other infections and healthy controls (i.e. the
388 control class). In each case, the number of individuals in the control class was
389 greater than the case class, resulting in an imbalanced dataset. To address this issue
390 and report a more accurate model performance, we calculated precision-recall curves
391 (**Figure 5B**). In malaria, the dataset imbalance was very low, resulting in a low bias
392 and a good model performance in terms of both AUC and area under the precision-
393 recall curve (AUPR) (with a sensitivity and precision of 0.9). However, for bacterial
394 gastroenteritis and influenza, with a moderate dataset imbalance, the highest
395 sensitivity and precision were 0.8 and 0.7, respectively. For dengue, we observe the
396 lowest sensitivity and precision, of approximately 0.6, mainly due to a larger class
397 imbalance in the data set (**Figure 5B**).

398 To further examine to what extent the immune signatures identified above, and
399 the performance of the random forest classifiers, were influenced by differences in
400 inflammatory protein levels between a given infection and healthy controls we
401 repeated the feature selection and classification analysis after first excluding the data
402 for healthy controls. The disease-specific immune signatures as well as the order of
403 importance of different proteins identified in the absence of data for healthy controls
404 differed slightly compared to the original analysis (**Supplementary Figure 8A**).
405 However, the classification performance was largely comparable except for malaria
406 where it was somewhat reduced (**Supplementary Figures 8B**).



407
408 **Figure 5. Evaluating performance in identifying individuals infected by each**
409 **pathogen based on a combination of protein responses.** Individual panels display
410 (A) cross-validated receiver operating characteristic (ROC) curves and (B)
411 aggregated precision-recall (PR) curves for the identification of dengue (red),
412 bacterial gastroenteritis (blue), influenza (purple), and malaria (orange). Random
413 forest classifiers fitted to data on selected proteins that were identified using feature
414 selection for each pathogen. Gray curves in (A) correspond to the ROC curves
415 obtained from the 5-fold cross-validation method and the aggregation of all five ROC
416 curves for the classification of each pathogen is shown with a colored thick ROC
417 curve. The area under the ROC/PR curve (AUC) shows the performance of the
418 classifier. An AUROC/AUPR of 0.5 indicates a classifier that performs no better than
419 random, and an AUROC/AUPR of 1 indicates a perfect classifier.

420
421

422 **Discussion**

423 Fever is one of the most common symptoms in patients presenting in an
424 emergency setting, especially following travel to tropical- and subtropical regions
425 (32). However, fever is a non-specific symptom associated with many different
426 conditions, some potentially dangerous (6). Despite this, a large proportion of
427 patients seeking care after travel are discharged without identification of the
428 etiological agent causing the disease (2). This could be due to the lack of awareness
429 and/or specific tests for rare pathogens, or difficulty in selecting the accurate test to
430 perform.

431 Cytokines are immune mediators temporarily produced at high levels during
432 infection, where they provide important functions, such as directly inhibiting pathogen
433 dissemination, stimulating or dampening immune activation, and controlling cellular
434 migration, among other functions (33). The response is generated as a reaction to
435 pathogen-specific patterns and via antigen-specific recognition, potentially making it
436 specific for a given pathogen (34,35). This makes it possible to better understand
437 how the immune system responds to a given infection and potentially predict the type
438 of pathogen based on the inflammatory markers that are increased during the
439 infection. With a broad approach of including viral, parasitic, and bacterial infections
440 in febrile patients we show that many cytokines are up- or downregulated compared
441 to healthy controls and further differ between the infections, making us able to identify
442 disease-specific inflammatory profiles.

443 We used three complementary approaches to assess the disease-specific
444 inflammatory protein profiles; i) A univariate differential abundance analysis, where
445 protein levels for each individual protein is compared across disease groups; ii)
446 DAPC, an approach that combines both unsupervised and supervised dimensionality
447 reduction techniques, i.e. a principal components analysis (PCA) which reduces
448 dimensionality without considering class labels and a discriminant analysis (DA) that
449 works to maximize the variance between the predefined disease groups, effectively
450 finding the combination of features that best separates these classes, and iii)
451 Random forest classification, a supervised machine learning method, which
452 combines multiple decision trees to predict disease group membership for each given
453 sample, that was used to distinguish each disease from the others. Although the
454 three methods answer fundamentally different questions about the data, they all

455 highlighted a similar set of key proteins that can characterize the main differences in
456 the host inflammatory response towards the different diseases.

457 Using Boruta feature selection, four proteins (IL10, MIG, sCD25, and sTNFRI)
458 were identified to contribute significantly to stratifying between the four infections
459 included in the analysis, indicating a varied expression in different diseases. These
460 proteins were also highly selected by DAPC for DF1 and DF2. IL10 was among the
461 top three features selected for patients with *P. falciparum* malaria where IL10 was
462 markedly upregulated (also to some extent in dengue virus infection) and for patients
463 with enteric bacterial infection where it remained at baseline levels similar to healthy
464 controls. The increased level of IL10 in patients with malaria is in line with several
465 previous reports (36–38). However, by comparing IL10-levels in malaria with other
466 infections in this study, it becomes clear that the levels reached during acute *P.*
467 *falciparum* malaria are very high and appear to be a relatively specific hallmark of the
468 disease. In addition to IL10, patients with *P. falciparum* malaria also had especially
469 high levels of sCD25 and sTNFRI. Both these proteins are soluble receptors with
470 sCD25 corresponding to the IL2 receptor and sTNFRI corresponding to the soluble
471 tumor necrosis factor receptor 1 or CD120a, which binds TNF- α . It has been
472 suggested that sCD25 is a marker of T cell activation (39) and has been shown to be
473 increased during different infections, inflammatory diseases, and cancer (40–42). Its
474 purpose remains relatively unclear, but it has been suggested to sequester IL2 and
475 thereby inhibit excessive T cell activation while simultaneously skewing towards the
476 survival of CD25^{high} regulatory T cells (43). sTNFRI is expressed by most cells while
477 sTNFRII is mainly induced in a subset of cells during inflammatory responses. Both
478 receptors are elevated in blood during malaria and correlate with parasitemia in both
479 symptomatic and non-symptomatic infections (44,45) and with the clinical stage and
480 progression of HIV and sepsis (46). sTNFRI is suggested to bind and deactivate
481 excessive TNF to reduce overall inflammation (45). CD40L is another membrane-
482 derived protein belonging to the tumor necrosis factor superfamily. It can have both
483 immunostimulatory and immunoinhibitory effects and soluble CD40L has been
484 associated with the induction of regulatory T cells and immunosuppression in HIV
485 and cancer (47,48). One of the main sources of both membrane-bound and soluble
486 CD40L is platelets (49). In this study, soluble CD40L was somewhat elevated in
487 enteric bacteria compared to healthy controls, but the main difference was a relatively
488 specific and significant reduction in plasma during *P. falciparum* malaria. A potential

489 reason for this strong reduction in soluble CD40L could be thrombocytopenia, as
490 observed in the current study and previous studies of malaria (50,51). Taken
491 together, the high levels of IL10, sCD25, sTNFR1 and II, and low levels of soluble
492 CD40L suggest that there is a greatly expanded regulatory or immunosuppressive
493 response generated during acute malaria, perhaps as a counter-effect to the strong
494 immunostimulation coming from high levels of parasites in the blood (52). However,
495 consequently, it has also been proposed that the strong inflammatory and anti-
496 inflammatory response could affect the long-lived adaptive B- and T-cell
497 compartment and reduce the generation of protective immunity (53–55). Although it is
498 difficult to determine the exact effect of this combined response, it is clear that
499 repeated malaria episodes lead to reduced activation of innate immune responses
500 (56–58). This could be an effect of innate training (59,60) or cellular dysregulation
501 (57,61), but could also be influenced by adaptive responses affecting innate
502 activation (19,62,63).

503 MIG, also called CXCL9, was elevated in all groups compared to healthy
504 controls, potentially working as a general marker of infection. However, the levels
505 were also different between the infections with enteric bacteria and *P. falciparum*
506 malaria having significantly higher levels than both viral and bacterial respiratory tract
507 infections. MIG is induced by IFN- γ and mainly mediates lymphocyte recruitment via
508 binding to its receptor CXCR3 (64). MIG is often also co-expressed with IP10 (also
509 called CXCL10), which was among the top three features selected for dengue virus
510 infection. Like MIG, IP10 was also elevated in all infections, but more so in the
511 dengue group. Since the IFN- γ levels were not higher in dengue compared with
512 enteric bacteria or *P. falciparum* malaria, the increased IP10 levels could come from
513 induction via direct sensing by pattern-recognition receptors (65). In support of this,
514 the level of type I IFN (IFN α 2) was elevated in dengue virus infection, but not in the
515 other groups.

516 A universal marker or combination of markers that could identify specific
517 pathogens would be highly valuable. Clinically available markers, especially the most
518 widely used CRP, WBC, and differential count, can provide some indication of
519 whether acute fever is due to a bacterial or viral infection but they remain relatively
520 unspecific (66–70). In this study, based on 49 markers, we did not observe
521 signatures that were unique to viral or bacterial infections as a group. However, since
522 profiles enriched in several highly important pathogens were identified, these

523 combinations of markers could be further analyzed to improve our understanding of
524 disease-specific immune responses and potentially the identification of disease
525 etiologies.

526 A strength of this study is that we have explored immune responses in the
527 plasma of individuals with similar symptoms but due to a variety of different
528 microbiological etiologies, contrasting with many studies where only one pathogen
529 and fewer cytokines are studied (71–73). Furthermore, travelers provide a unique
530 opportunity to study host responses following limited exposure and in the absence of
531 re-exposure, in contrast to studies in areas endemic to the disease. The study
532 population was also healthy in general with a median age of 37 years, and therefore
533 with little impact from other chronic diseases or medication, which is often prevalent
534 in patients at the hospital level of care. Conversely, the study also has several
535 limitations. The groups are relatively small for each disease and unbalanced in the
536 number of study participants. They are also not perfectly matched in age or gender. It
537 is therefore important to note that the study primarily has an observational
538 exploratory aim, rather than identifying clinical signatures translating to patient
539 stratification.

540 In conclusion, our results show that the mapping of plasma protein profiles in
541 febrile patients can identify biomarker combinations that indicate different etiologies.
542 Additionally, we identified cytokines that were uniquely high or low between the
543 infection, indicating different biological functions in the host's response to infection.
544 Future studies, with larger and more balanced groups with independent training and
545 testing sets, will be important to narrow down the disease signatures to key proteins
546 that could be further developed for clinical tests.

547

548 **Acknowledgments**

549 We would like to thank all patients and healthy control individuals who
550 participated in the study. We would also like to express our gratitude to clinicians,
551 nurses and medical students for assisting us with study inclusion. This study was
552 supported by funding from the Magnus Bergvall Foundation (2018-02656), Tore
553 Nilsson Foundation (2018-00608), Swedish Society of Medicine (SLS-934363), Åke
554 Wiberg Foundation (M18-0076), the Swedish Heart-Lung Foundation (20220566)
555 and the Swedish Research Council (2019-01940 and 2021-03706) to CS and grants

556 from Tornspiran foundation to KS and ALF-grants from Region Stockholm to AF.
557 Work with JG was supported by grants from the Swedish Heart-Lung Foundation
558 (20190478), the Swedish Research Council (2019-01034), the Regional Agreement
559 on Medical Training and Clinical Research between Stockholm County Council, and
560 the Karolinska Institutet (20180120).

561

562 **Conflict of interest statement**

563 The authors declare that there are no conflicting financial interests.

564

565 **Data availability statement**

566 The data will be available upon reasonable request to the corresponding author.

567

568 **Code availability statement**

569 All R code for reproducing the analysis are publicly available online at
570 https://github.com/SundlingLab/TF_Cytokines_Study.

571

572 **References**

- 573 1. Herbing KH, Alberer M, Berens-Riha N, Schunk M, Bretzel G, von Sonnenburg F, et
574 al. Spectrum of imported infectious diseases: A comparative prevalence study of
575 16,817 German travelers and 977 immigrants from the tropics and subtropics.
576 *American Journal of Tropical Medicine and Hygiene*. 2016 Apr 1;94(4):757–66.
- 577 2. Askling HH, Lesko B, Vene S, Berndtson A, Björkman P, Bläckberg J, et al. Serologic
578 analysis of returned travelers with fever, Sweden. *Emerg Infect Dis*. 2009
579 Nov;15(11):1805–8.
- 580 3. Mattar S, Tique V, Miranda J, Montes E, Garzon D. Undifferentiated tropical febrile
581 illness in Cordoba, Colombia: Not everything is dengue. *J Infect Public Health*. 2017
582 Sep 1;10(5):507–12.
- 583 4. Manock SR, Jacobsen KH, de Bravo NB, Russell KL, Negrete M, Olson JG, et al.
584 Etiology of acute undifferentiated febrile illness in the Amazon basin of Ecuador.
585 *American Journal of Tropical Medicine and Hygiene*. 2009;81(1):146–51.
- 586 5. Jensenius M, Fournier PE, Vene S, Hoel T, Hasle G, Henriksen AZ, et al. African Tick
587 Bite Fever in Travelers to Rural Sub-Equatorial Africa. *Clinical Infectious Diseases*
588 [Internet]. 2003 Jun 1 [cited 2023 Feb 9];36(11):1411–7. Available from:
589 <https://academic.oup.com/cid/article/36/11/1411/304449>
- 590 6. Jensenius M, Han P v., Schlagenhauf P, Schwartz E, Parola P, Castelli F, et al. Acute
591 and Potentially Life-Threatening Tropical Diseases in Western Travelers—A
592 GeoSentinel Multicenter Study, 1996–2011. *Am J Trop Med Hyg* [Internet]. 2013 Feb
593 6 [cited 2022 May 23];88(2):397–404. Available from:
594 <https://www.ajtmh.org/view/journals/tpmd/88/2/article-p397.xml>

- 595 7. Llor C, Bjerrum L. Antimicrobial resistance: risk associated with antibiotic overuse and
596 initiatives to reduce the problem. *Ther Adv Drug Saf* [Internet]. 2014 [cited 2023 Mar
597 7];5(6):229. Available from: [/pmc/articles/PMC4232501/](https://pubmed.ncbi.nlm.nih.gov/24232501/)
- 598 8. Verhoef J, Snippe H. Immune response in human pathology: infections caused by
599 bacteria, viruses, fungi, and parasites. *Principles of Immunopharmacology* [Internet].
600 2005 [cited 2023 Feb 16];105–15. Available from:
601 https://link.springer.com/chapter/10.1007/3-7643-7408-X_7
- 602 9. Qin C, Zhou L, Hu Z, Zhang S, Yang S, Tao Y, et al. Dysregulation of immune
603 response in patients with coronavirus 2019 (COVID-19) in Wuhan, China. *Clinical*
604 *Infectious Diseases* [Internet]. 2020 Jul 28 [cited 2021 Aug 2];71(15):762–8. Available
605 from: <https://academic.oup.com/cid/article/71/15/762/5803306>
- 606 10. van der Poll T, van de Veerdonk FL, Scicluna BP, Netea MG. The immunopathology
607 of sepsis and potential therapeutic targets. *Nature Reviews Immunology* 2017 17:7
608 [Internet]. 2017 Apr 24 [cited 2022 May 23];17(7):407–20. Available from:
609 <https://www.nature.com/articles/nri.2017.36>
- 610 11. Chaplin DD. Overview of the immune response. *Journal of Allergy and Clinical*
611 *Immunology* [Internet]. 2010 Feb 1 [cited 2023 Feb 17];125(2):S3–23. Available from:
612 <http://www.jacionline.org/article/S0091674909028371/fulltext>
- 613 12. del Valle DM, Kim-Schulze S, Huang HH, Beckmann ND, Nirenberg S, Wang B, et al.
614 An inflammatory cytokine signature predicts COVID-19 severity and survival. *Nat*
615 *Med*. 2020 Oct 1;26(10):1636–43.
- 616 13. Lucas C, Wong P, Klein J, Castro TBR, Silva J, Sundaram M, et al. Longitudinal
617 analyses reveal immunological misfiring in severe COVID-19. *Nature*. 2020 Aug
618 20;584(7821):463–9.
- 619 14. Bozza FA, Cruz OG, Zagne SM, Azeredo EL, Nogueira RM, Assis EF, et al. Multiplex
620 cytokine profile from dengue patients: MIP-1beta and IFN-gamma as predictive factors
621 for severity. *BMC Infect Dis* [Internet]. 2008 Jun 25 [cited 2021 Aug 2];8(1):1–11.
622 Available from: [https://bmcinfectdis.biomedcentral.com/articles/10.1186/1471-2334-8-](https://bmcinfectdis.biomedcentral.com/articles/10.1186/1471-2334-8-86)
623 [86](https://bmcinfectdis.biomedcentral.com/articles/10.1186/1471-2334-8-86)
- 624 15. Kumar Y, Liang C, Bo Z, Rajapakse JC, Ooi EE, Tannenbaum SR. Serum Proteome
625 and Cytokine Analysis in a Longitudinal Cohort of Adults with Primary Dengue
626 Infection Reveals Predictive Markers of DHF. *PLoS Negl Trop Dis* [Internet]. 2012
627 Nov [cited 2021 Aug 2];6(11):e1887. Available from:
628 <https://journals.plos.org/plosntds/article?id=10.1371/journal.pntd.0001887>
- 629 16. Jadhav M, Nayak M, Kumar S, Venkatesh A, Patel SK, Kumar V, et al. Clinical
630 Proteomics and Cytokine Profiling for Dengue Fever Disease Severity Biomarkers.
631 *OMICS* [Internet]. 2017 Nov 1 [cited 2021 Aug 2];21(11):647–57. Available from:
632 <https://www.liebertpub.com/doi/abs/10.1089/omi.2017.0135>
- 633 17. Mousavian Z, Folkesson E, Fröberg G, Foroogh F, Correia-Neves M, Bruchfeld J, et al.
634 A protein signature associated with active tuberculosis identified by plasma profiling
635 and network-based analysis. *iScience* [Internet]. 2022 Dec 22 [cited 2023 Jan
636 3];25(12):105652. Available from:
637 <http://www.cell.com/article/S2589004222019241/fulltext>
- 638 18. Kam Y, Ahmed MY, Amrun SN, Lee B, Refaie T, Elgizouli K, et al. Systematic
639 analysis of disease-specific immunological signatures in patients with febrile illness
640 from Saudi Arabia. *Clin Transl Immunology* [Internet]. 2020 Jan 22 [cited 2020 Aug
641 25];9(8). Available from: <https://onlinelibrary.wiley.com/doi/abs/10.1002/cti2.1163>
- 642 19. Lautenbach MJ, Yman V, Silva CS, Kadri N, Broumou I, Chan S, et al. Systems
643 analysis shows a role of cytophilic antibodies in shaping innate tolerance to malaria.

- 644 Cell Rep [Internet]. 2022 Apr 19 [cited 2022 Apr 20];39(3):110709. Available from:
645 <http://www.cell.com/article/S2211124722004703/fulltext>
- 646 20. Suhre K, Sarwath H, Engelke R, Sohail MU, Cho SJ, Whalen W, et al. Identification of
647 Robust Protein Associations With COVID-19 Disease Based on Five Clinical Studies.
648 Front Immunol. 2022 Jan 25;12:5935.
- 649 21. D’Onofrio V, Heylen D, Pusparum M, Grondman I, Vanwalleghem J, Meersman A, et
650 al. A prospective observational cohort study to identify inflammatory biomarkers for
651 the diagnosis and prognosis of patients with sepsis. J Intensive Care [Internet]. 2022
652 Dec 1 [cited 2023 Feb 2];10(1):1–13. Available from:
653 <https://jintensivecare.biomedcentral.com/articles/10.1186/s40560-022-00602-x>
- 654 22. Garishah FM, Boahen CK, Vadaq N, Pramudo SG, Tunjungputri RN, Riswari SF, et al.
655 Longitudinal proteomic profiling of the inflammatory response in dengue patients.
656 PLoS Negl Trop Dis [Internet]. 2023 Jan 1 [cited 2023 Feb 2];17(1):e0011041.
657 Available from:
658 <https://journals.plos.org/plosntds/article?id=10.1371/journal.pntd.0011041>
- 659 23. Vafa Homann M, Emami SN, Yman V, Stenström C, Sondén K, Ramström H, et al.
660 Detection of Malaria Parasites After Treatment in Travelers: A 12-months Longitudinal
661 Study and Statistical Modelling Analysis. EBioMedicine [Internet]. 2017 Nov 1 [cited
662 2018 Sep 28];25:66–72. Available from:
663 <https://www.sciencedirect.com/science/article/pii/S235239641730395X?via%3Dihub>
- 664 24. Asghar M, Yman V, Homann MV, Sondén K, Hammar U, Hasselquist D, et al.
665 Cellular aging dynamics after acute malaria infection: A 12-month longitudinal study.
666 Aging Cell [Internet]. 2018;17(1). Available from:
667 <https://www.ncbi.nlm.nih.gov/pubmed/29143441>
- 668 25. Yman V, White MT, Asghar M, Sundling C, Sondén K, Draper SJ, et al. Antibody
669 responses to merozoite antigens after natural Plasmodium falciparum infection:
670 Kinetics and longevity in absence of re-exposure. BMC Med [Internet]. 2019 Dec
671 30;17(1):22. Available from:
672 <https://bmcmmedicine.biomedcentral.com/articles/10.1186/s12916-019-1255-3>
- 673 26. Yman V, Tuju J, White MT, Kamuyu G, Mwai K, Kibinge N, et al. Distinct kinetics of
674 antibodies to 111 Plasmodium falciparum proteins identifies markers of recent malaria
675 exposure. Nat Commun [Internet]. 2022 Jan 17 [cited 2022 Apr 24];13(1):1–15.
676 Available from: <https://www.nature.com/articles/s41467-021-27863-8>
- 677 27. Sundling C, Rönnberg C, Yman V, Asghar M, Jahnmatz P, Lakshmikanth T, et al. B
678 cell profiling in malaria reveals expansion and remodeling of CD11c+ B cell subsets.
679 JCI Insight [Internet]. 2019 May 2;4(9):e126492. Available from:
680 <https://insight.jci.org/articles/view/126492>
- 681 28. Hadley Wickham. ggplot2: Elegant Graphics for Data Analysis [Internet]. New York:
682 Springer-Verlag; 2016 [cited 2023 Sep 11]. Available from: <http://ggplot2.org>
- 683 29. Benjamini Y, Hochberg Y. Controlling the False Discovery Rate: A Practical and
684 Powerful Approach to Multiple Testing. Journal of the Royal Statistical Society: Series
685 B (Methodological) [Internet]. 1995 Jan 1 [cited 2022 May 23];57(1):289–300.
686 Available from: [https://onlinelibrary.wiley.com/doi/full/10.1111/j.2517-](https://onlinelibrary.wiley.com/doi/full/10.1111/j.2517-6161.1995.tb02031.x)
687 [6161.1995.tb02031.x](https://onlinelibrary.wiley.com/doi/full/10.1111/j.2517-6161.1995.tb02031.x)
- 688 30. Jombart T, Devillard S, Balloux F. Discriminant analysis of principal components: A
689 new method for the analysis of genetically structured populations. BMC Genet
690 [Internet]. 2010 Oct 15 [cited 2019 Jun 4];11(1):94. Available from:
691 <http://bmcgenet.biomedcentral.com/articles/10.1186/1471-2156-11-94>

- 692 31. Kursa MB, Rudnicki WR. Feature selection with the boruta package. *J Stat Softw*
693 [Internet]. 2010 Sep 16 [cited 2021 Feb 24];36(11):1–13. Available from:
694 <https://www.jstatsoft.org/index.php/jss/article/view/v036i11/v36i11.pdf>
- 695 32. Leder K, Torresi J, Brownstein JS, Wilson ME, Keystone JS, Barnett E, et al. Travel-
696 associated Illness Trends and Clusters, 2000–2010. *Emerg Infect Dis* [Internet]. 2013
697 Jul [cited 2022 May 23];19(7):1049. Available from: [/pmc/articles/PMC3713975/](https://pubmed.ncbi.nlm.nih.gov/23713975/)
- 698 33. Altan-Bonnet G, Mukherjee R. Cytokine-mediated communication: a quantitative
699 appraisal of immune complexity. *Nat Rev Immunol* [Internet]. 2019 Apr 15 [cited 2019
700 Mar 28];19(4):205–17. Available from: [http://www.nature.com/articles/s41577-019-](http://www.nature.com/articles/s41577-019-0131-x)
701 0131-x
- 702 34. Akira S, Uematsu S, Takeuchi O. Pathogen recognition and innate immunity. *Cell*.
703 2006;124:783–801.
- 704 35. Takeuchi O, Akira S. Pattern Recognition Receptors and Inflammation. *Cell* [Internet].
705 2010 Mar 19 [cited 2023 Feb 9];140(6):805–20. Available from:
706 <http://www.cell.com/article/S0092867410000231/fulltext>
- 707 36. Jagannathan P, Eccles-James I, Bowen K, Nankya F, Auma A, Wamala S, et al.
708 IFN γ /IL-10 Co-producing Cells Dominate the CD4 Response to Malaria in Highly
709 Exposed Children. Langhorne J, editor. *PLoS Pathog* [Internet]. 2014 Jan 9 [cited 2018
710 Sep 12];10(1):e1003864. Available from:
711 <http://dx.plos.org/10.1371/journal.ppat.1003864>
- 712 37. Boyle MJ, Jagannathan P, Bowen K, McIntyre TI, Vance HM, Farrington LA, et al.
713 The development of Plasmodium falciparum-Specific IL10 CD4 T cells and protection
714 from malaria in children in an area of high malaria transmission. *Front Immunol*
715 [Internet]. 2017 Oct 19 [cited 2018 Sep 30];8(OCT):1329. Available from:
716 <http://journal.frontiersin.org/article/10.3389/fimmu.2017.01329/full>
- 717 38. Peyron F, Burdin N, Ringwald P, Vuillez JP, Rousset F, Banchereau J. High levels of
718 circulating IL-10 in human malaria. *Clin Exp Immunol* [Internet]. 1994 Jun 28 [cited
719 2018 Sep 12];95(2):300–3. Available from: [http://doi.wiley.com/10.1111/j.1365-](http://doi.wiley.com/10.1111/j.1365-2249.1994.tb06527.x)
720 2249.1994.tb06527.x
- 721 39. Rubin LA, Kurman CC, Fritz ME, Biddison WE, Boutin B, Yarchoan R, et al. Soluble
722 interleukin 2 receptors are released from activated human lymphoid cells in vitro. *The*
723 *Journal of Immunology* [Internet]. 1985 Nov 1 [cited 2023 Feb 17];135(5):3172–7.
724 Available from: [https://journals.aai.org/jimmunol/article/135/5/3172/19021/Soluble-](https://journals.aai.org/jimmunol/article/135/5/3172/19021/Soluble-interleukin-2-receptors-are-released-from)
725 [interleukin-2-receptors-are-released-from](https://journals.aai.org/jimmunol/article/135/5/3172/19021/Soluble-interleukin-2-receptors-are-released-from)
- 726 40. Wimmer T, Mattes R, Stemmler HJ, Hauck F, Schulze-Koops H, Stecher SS, et al.
727 sCD25 as an independent adverse prognostic factor in adult HLH patients: results of a
728 multicenter retrospective study. *Blood Adv* [Internet]. 2022 Aug 16 [cited 2023 Feb
729 17]; Available from:
730 [https://ashpublications.org/bloodadvances/article/doi/10.1182/bloodadvances.20220079](https://ashpublications.org/bloodadvances/article/doi/10.1182/bloodadvances.2022007953/486252/sCD25-as-an-independent-adverse-prognostic-factor)
731 [53/486252/sCD25-as-an-independent-adverse-prognostic-factor](https://ashpublications.org/bloodadvances/article/doi/10.1182/bloodadvances.2022007953/486252/sCD25-as-an-independent-adverse-prognostic-factor)
- 732 41. Xie M, Yunis J, Yao Y, Shi J, Yang Y, Zhou P, et al. High levels of soluble CD25 in
733 COVID-19 severity suggest a divergence between anti-viral and pro-inflammatory T-
734 cell responses. *Clin Transl Immunology* [Internet]. 2021 Jan 1 [cited 2023 Feb
735 17];10(2):e1251. Available from:
736 <https://onlinelibrary.wiley.com/doi/full/10.1002/cti2.1251>
- 737 42. Cabrera R, Ararat M, Cao M, Xu Y, Wasserfall C, Atkinson MA, et al. Hepatocellular
738 carcinoma immunopathogenesis: Clinical evidence for global T cell defects and an
739 immunomodulatory role for soluble CD25 (sCD25). *Dig Dis Sci* [Internet]. 2010 Feb
740 28 [cited 2023 Feb 17];55(2):484–95. Available from:
741 <https://link.springer.com/article/10.1007/s10620-009-0955-5>

- 742 43. Nickle RA, DeOca KB, Garcia BL, Mannie MD. Soluble CD25 imposes a low-zone
743 IL-2 signaling environment that favors competitive outgrowth of antigen-experienced
744 CD25high regulatory and memory T cells. *Cell Immunol*. 2023 Feb 1;384:104664.
- 745 44. Thévenon AD, Zhou JA, Megnekou R, Ako S, Leke RGF, Taylor DW. Elevated Levels
746 of Soluble Tumor Necrosis Factor Receptors 1 and 2 Correlate with Plasmodium
747 falciparum Parasitemia in Pregnant Women: Potential Markers for Malaria-Associated
748 Inflammation. *J Immunol [Internet]*. 2010 Dec 12 [cited 2023 Feb 17];185(11):7115.
749 Available from: [/pmc/articles/PMC2988086/](https://pubmed.ncbi.nlm.nih.gov/1326587/)
- 750 45. Kern P, Hemmer CJ, Gallati H, Neifer S, Kreamsner P, Dietrich M, et al. Soluble tumor
751 necrosis factor receptors correlate with parasitemia and disease severity in human
752 malaria. *J Infect Dis [Internet]*. 1992 [cited 2023 Feb 17];166(4):930–4. Available
753 from: <https://pubmed.ncbi.nlm.nih.gov/1326587/>
- 754 46. Diez-Ruiz A, Tilz GP, Zangerle R, Baier-Bitterlich G, Wachter H, Fuchs D. Soluble
755 receptors for tumour necrosis factor in clinical laboratory diagnosis. *Eur J Haematol*
756 [Internet]. 1995 Jan 1 [cited 2023 Feb 17];54(1):1–8. Available from:
757 <https://onlinelibrary.wiley.com/doi/full/10.1111/j.1600-0609.1995.tb01618.x>
- 758 47. Jenabian MA, Patel M, Kema I, Vyboh K, Kanagaratham C, Radzioch D, et al. Soluble
759 CD40-ligand (sCD40L, sCD154) plays an immunosuppressive role via regulatory T
760 cell expansion in HIV infection. *Clin Exp Immunol [Internet]*. 2014 [cited 2023 Feb
761 17];178(1):102. Available from: [/pmc/articles/PMC4360200/](https://pubmed.ncbi.nlm.nih.gov/22932804/)
- 762 48. Huang J, Jochems C, Talaie T, Anderson A, Jales A, Tsang KY, et al. Elevated serum
763 soluble CD40 ligand in cancer patients may play an immunosuppressive role. *Blood*
764 [Internet]. 2012 Oct 11 [cited 2023 Feb 17];120(15):3030–8. Available from:
765 <https://pubmed.ncbi.nlm.nih.gov/22932804/>
- 766 49. Cognasse F, Duchez AC, Audoux E, Ebermeyer T, Arthaud CA, Prier A, et al. Platelets
767 as Key Factors in Inflammation: Focus on CD40L/CD40. *Front Immunol*. 2022 Feb
768 3;13:250.
- 769 50. Moulin F, Lesage F, Legros AH, Maroga C, Moussavou A, Guyon P, et al.
770 Thrombocytopenia and Plasmodium falciparum malaria in children with different
771 exposures. *Arch Dis Child [Internet]*. 2003 Jun 1 [cited 2023 Feb 17];88(6):540–1.
772 Available from: <https://adc.bmj.com/content/88/6/540>
- 773 51. Eriksson B, Hellgren U, Rombo L. Changes in erythrocyte sedimentation rate, C-
774 reactive protein and hematological parameters in patients with acute malaria. *Scand J*
775 *Infect Dis*. 1989;21(4):434–41.
- 776 52. Popa GL, Popa MI. Recent Advances in Understanding the Inflammatory Response in
777 Malaria: A Review of the Dual Role of Cytokines. *J Immunol Res [Internet]*. 2021
778 [cited 2023 Feb 18];2021. Available from: [/pmc/articles/PMC8592744/](https://pubmed.ncbi.nlm.nih.gov/26743747/)
- 779 53. Kumar R, Ng S, Engwerda C. The Role of IL-10 in Malaria: A Double Edged Sword.
780 *Front Immunol [Internet]*. 2019 Feb 12 [cited 2019 Feb 22];10:229. Available from:
781 <https://www.frontiersin.org/article/10.3389/fimmu.2019.00229/full>
- 782 54. Ly A, Hansen DS. Development of B cell memory in malaria. Vol. 10, *Frontiers in*
783 *Immunology*. Frontiers Media S.A.; 2019.
- 784 55. Ryg-Cornejo V, Ly A, Hansen DS. Immunological processes underlying the slow
785 acquisition of humoral immunity to malaria. *Parasitology [Internet]*. 2016;143(2):199–
786 207. Available from: <https://www.ncbi.nlm.nih.gov/pubmed/26743747>
- 787 56. Portugal S, Moebius J, Skinner J, Doumbo S, Doumbo D, Kone Y, et al. Exposure-
788 Dependent Control of Malaria-Induced Inflammation in Children. Kazura JW, editor.
789 *PLoS Pathog [Internet]*. 2014 Apr 17 [cited 2018 Nov 29];10(4):e1004079. Available
790 from: <https://dx.plos.org/10.1371/journal.ppat.1004079>

- 791 57. Jagannathan P, Kim CC, Greenhouse B, Nankya F, Bowen K, Eccles-James I, et al.
792 Loss and dysfunction of Vdelta2(+) gammadelta T cells are associated with clinical
793 tolerance to malaria. *Sci Transl Med* [Internet]. 2014;6(251):251ra117. Available from:
794 <https://www.ncbi.nlm.nih.gov/pubmed/25163477>
- 795 58. Jagannathan P, Lutwama F, Boyle MJ, Nankya F, Farrington LA, McIntyre TI, et al.
796 Vδ2+ T cell response to malaria correlates with protection from infection but is
797 attenuated with repeated exposure. *Sci Rep* [Internet]. 2017 Dec 13 [cited 2018 Nov
798 27];7(1):11487. Available from: <http://www.nature.com/articles/s41598-017-10624-3>
- 799 59. Guha R, Mathioudaki A, Doumbo S, Doumtabe D, Skinner J, Arora G, et al.
800 *Plasmodium falciparum* malaria drives epigenetic reprogramming of human monocytes
801 toward a regulatory phenotype. Kazura JW, editor. *PLoS Pathog* [Internet]. 2021 Apr 6
802 [cited 2021 Apr 9];17(4):e1009430. Available from:
803 <https://dx.plos.org/10.1371/journal.ppat.1009430>
- 804 60. Nahrendorf W, Ivens A, Spence PJ. Inducible mechanisms of disease tolerance provide
805 an alternative strategy of acquired immunity to malaria. *Elife*. 2021 Mar 1;10.
- 806 61. Dobbs KR, Embury P, Vulule J, Odada PS, Rosa BA, Mitreva M, et al. Monocyte
807 dysregulation and systemic inflammation during pediatric *falciparum* malaria. *JCI*
808 *Insight* [Internet]. 2017 Sep 21 [cited 2018 Dec 5];2(18). Available from:
809 <https://insight.jci.org/articles/view/95352>
- 810 62. Weiss GE, Traore B, Kayentao K, Ongoiba A, Doumbo S, Doumtabe D, et al. The
811 *plasmodium falciparum*-specific human memory b cell compartment expands gradually
812 with repeated malaria infections. *PLoS Pathog* [Internet]. 2010/05/27. 2010;6(5):1–13.
813 Available from: <http://www.ncbi.nlm.nih.gov/pubmed/20502681>
- 814 63. Crabtree JN, Caffrey DR, Silva L de S, Kurt-Jones EA, Dobbs K, Dent A, et al.
815 Lymphocyte crosstalk is required for monocyte-intrinsic trained immunity to
816 *Plasmodium falciparum*. *J Clin Invest* [Internet]. 2022 Jun 1 [cited 2022 Jun
817 17];132(11). Available from: <https://www.jci.org/articles/view/139298>
- 818 64. Metzemaekers M, Vanheule V, Janssens R, Struyf S, Proost P. Overview of the
819 mechanisms that may contribute to the non-redundant activities of interferon-inducible
820 CXC chemokine receptor 3 ligands. *Front Immunol*. 2018 Jan 15;8(JAN):1970.
- 821 65. Elemam NM, Talaat IM, Maghazachi AA. CXCL10 Chemokine: A Critical Player in
822 RNA and DNA Viral Infections. *Viruses* [Internet]. 2022 Nov 3 [cited 2023 Feb
823 17];14(11). Available from: <https://pubmed.ncbi.nlm.nih.gov/36366543/>
- 824 66. Tian F, Li H, Wang L, Li B, Aibibula M, Zhao H, et al. The diagnostic value of serum
825 C-reactive protein, procalcitonin, interleukin-6 and lactate dehydrogenase in patients
826 with severe acute pancreatitis. *Clin Chim Acta* [Internet]. 2020 Nov 1 [cited 2023 Feb
827 19];510:665–70. Available from: <https://pubmed.ncbi.nlm.nih.gov/32828732/>
- 828 67. Pope JE, Choy EH. C-reactive protein and implications in rheumatoid arthritis and
829 associated comorbidities. *Semin Arthritis Rheum* [Internet]. 2021 Feb 1 [cited 2023
830 Feb 19];51(1):219–29. Available from: <https://pubmed.ncbi.nlm.nih.gov/33385862/>
- 831 68. Watson J, Salisbury C, Banks J, Whiting P, Hamilton W. Predictive value of
832 inflammatory markers for cancer diagnosis in primary care: a prospective cohort study
833 using electronic health records. *Br J Cancer* [Internet]. 2019 May 28 [cited 2023 Feb
834 19];120(11):1045–51. Available from: <https://pubmed.ncbi.nlm.nih.gov/31015558/>
- 835 69. Gautam S, Cohen AJ, Stahl Y, Valda Toro P, Young GM, Datta R, et al. Severe
836 respiratory viral infection induces procalcitonin in the absence of bacterial pneumonia.
837 *Thorax* [Internet]. 2020 Nov 1 [cited 2023 Feb 19];75(11):974–81. Available from:
838 <https://thorax.bmj.com/content/75/11/974>
- 839 70. Russo A, Venditti M, Ceccarelli G, Mastroianni CM, d’Ettorre G. Procalcitonin in
840 daily clinical practice: an evergreen tool also during a pandemic. *Intern Emerg Med*

- 841 [Internet]. 2021 Apr 1 [cited 2023 Feb 19];16(3):541–3. Available from:
842 <https://link.springer.com/article/10.1007/s11739-021-02659-2>
- 843 71. Rathakrishnan A, Wang SM, Hu Y, Khan AM, Ponnampalavanar S, Lum LCS, et al.
844 Cytokine Expression Profile of Dengue Patients at Different Phases of Illness. PLoS
845 One [Internet]. 2012 Dec 20 [cited 2022 May 23];7(12):e52215. Available from:
846 <https://journals.plos.org/plosone/article?id=10.1371/journal.pone.0052215>
- 847 72. He Y, Feng Z, Wang W, Chen Y, Cheng J, Meng J, et al. Global cytokine/chemokine
848 profile identifies potential progression prediction indicators in hand-foot-and-mouth
849 disease patients with Enterovirus A71 infections. Cytokine. 2019 Nov 1;123:154765.
- 850 73. Barros JB de S, da Silva PAN, Koga R de CR, Gonzalez-Dias P, Filho JRC, Nagib
851 PRA, et al. Acute Zika virus infection in an endemic area shows modest
852 proinflammatory systemic immunoactivation and cytokine-symptom associations.
853 Front Immunol [Internet]. 2018 May 3 [cited 2022 May 23];9(MAY):3. Available
854 from: [/pmc/articles/PMC5943559/](https://pmc/articles/PMC5943559/)
855