

1 **Impact and cost-effectiveness of measles vaccination through microarray patches in 70 low- and middle-**
2 **income countries: a modelling study**

3 Han Fu^{1, 2*}, Kaja Abbas^{1, 2, 3}, Stefano Malvoti⁴, Christopher Gregory⁵, Melissa Ko⁴, Jean-Pierre Amorij⁶, Mark
4 Jit^{1, 2, 7}

5 ¹Department of Infectious Disease Epidemiology, London School of Hygiene & Tropical Medicine, London,
6 United Kingdom

7 ²Centre for Mathematical Modelling of Infectious Diseases, London School of Hygiene & Tropical Medicine,
8 London, United Kingdom

9 ³Public Health Foundation of India, New Delhi, India

10 ⁴MMGH Consulting GmbH, Zurich, Switzerland

11 ⁵Immunization Unit, Programme Division, United Nations Children's Fund (UNICEF), New York, United States

12 ⁶Supply Division, Vaccine Centre, UNICEF, Copenhagen, Denmark

13 ⁷School of Public Health, University of Hong Kong, Hong Kong, SAR, China

14

15 *Corresponding author

16 E-mail: Han.Fu@lshtm.ac.uk (HF)

17 Address: Keppel Street, London, WC1E 7HT, United Kingdom

18

19 **Abstract**

20 *Background*

21 Microarray patches are a promising technology being developed to reduce barriers to vaccine delivery based
22 on needles and syringes. To address the evidence gap on the public health value of applying this potential
23 technology to immunisation programmes, we evaluated the health impact on measles burden and resulting
24 cost-effectiveness of introducing measles-rubella microarray patches (MR-MAPs) in 70 low- and middle-
25 income countries (LMICs).

26 *Methods*

27 We used an age-structured dynamic model of measles transmission and vaccination to project measles cases,
28 deaths, and disability-adjusted life years during 2030–2040. Compared to the baseline scenarios with
29 continuing current needle-based immunisation practice, we evaluated the introduction of MR-MAPs under
30 different assumptions on measles vaccine coverage projections and MR-MAP introduction strategies. Costs
31 were calculated based on the ingredients approach, including direct cost of measles treatment, vaccine
32 procurement, and vaccine delivery. Model-based burden and cost estimates were derived for individual
33 countries and country income groups. We compared the incremental cost-effectiveness ratios of introducing
34 MR-MAPs to health opportunity costs.

35 *Results*

36 MR-MAPs introduction could prevent 27%–37% of measles burden between 2030–2040 in 70 LMICs. The
37 largest health impact could be achieved under lower coverage projection and accelerated introduction
38 strategy, with 39 million measles cases averted. Cost of measles treatment is a key driver of the net cost of
39 introduction. In LMICs with a relatively higher income, introducing MR-MAPs could be a cost-saving
40 intervention due to reduction in measles treatment costs. Compared to country-specific health opportunity
41 costs, introducing MR-MAPs would be cost-effective in 16–81% of LMICs, depending on the MR-MAPs
42 procurement price and vaccine coverage projections.

43 *Conclusions*

44 Introducing MR-MAPs in LMICs can be a cost-effective strategy to revitalise measles immunisation

45 programmes with stagnant uptake and reach under-vaccinated children. Sustainable introduction and
46 uptake of MR-MAPs has the potential to improve vaccine equity within and between countries and
47 accelerate progress towards measles elimination.

48 Introduction

49 As one of the essential childhood immunisations, measles-containing vaccines (MCV) has been
50 recommended by the World Health Organization (WHO) Expanded Programme on Immunisation since
51 1974.¹ The implementation of measles vaccination has brought substantial health benefits, with an
52 estimated 33 million deaths averted between 2000–2019.² Maintaining high coverage (>95%) with two
53 doses of MCV is also recognised as a core strategy for measles elimination.³ However, the uptake of the first
54 dose of MCV was stagnant at 85% globally over 2011–2019, while measles outbreaks continued to occur,
55 and measles remained a major public health burden in settings with low MCV coverage. The COVID-19
56 pandemic posed further challenges to national immunisation programmes, as seen in a 5% drop in the global
57 coverage of first-dose MCV from 2019 to 2021.^{4,5} The coverage of the second MCV dose has steadily
58 increased and reached 72% in 2020, but its progress varies across countries and has stagnated in the last few
59 years.⁵

60 Currently, MCVs are delivered via needles and syringes (N&Ss). The traditional N&S presentation requires
61 reconstitution before administration, and reconstituted doses that are not used within six hours are
62 discarded. The delivery of N&S vaccines relies on trained healthcare workers for administration and
63 demands a comprehensive and well-functioning cold chain system for storage and transportation.

64 Addressing barriers to effective vaccine delivery associated with N&S vaccines could reduce global measles
65 burden and accelerate progress in measles elimination.

66 Microarray patches (MAPs), a device containing hundreds to thousands of micro-projections that deliver a
67 vaccine dose into the dermis, has product characteristics that could address the barriers to vaccination
68 presented by N&Ss. MAPs have demonstrated stability under higher temperatures for several vaccines,
69 which reduces cold chain demand and potentially makes it easier to deliver vaccines to hard-to-reach areas.⁶

70 ⁷ In the absence of needles, injection applicators, and reconstitution devices, MAPs could be operated by
71 minimally trained staff or self-administered, which may expand the workforce to reach zero-dose children
72 and under-immunised population.⁸ MAPs are also broadly applicable in routine immunisation (RI)

73 programmes and supplementary immunisation activities (SIAs). In low- and middle-income countries (LMICs),

74 implementing MAP technology may transform the current delivery of measles and rubella vaccines in
75 immunisation programmes and better reach under-served populations in remote rural or conflict-affected
76 areas.⁹⁻¹¹ In May 2020, the Vaccine Innovation Prioritisation Strategy, a three-year collaboration between
77 Gavi, the Vaccine Alliance, WHO, Bill & Melinda Gates Foundation, United Nations Children’s Fund (UNICEF)
78 and PATH to develop a single integrated framework to evaluate, prioritise, and drive forwards vaccine
79 product innovations, selected MAPs as one of three technologies for prioritisation for development and
80 implementation.⁸

81 As measles and rubella vaccines are jointly administered in most settings, a bivalent measles-rubella MAP
82 (MR-MAP) is considered to have significantly broader use than a monovalent measles MAP.⁹ MR-MAPs
83 demonstrated both immunogenicity and safety in preclinical studies in infant rhesus macaques and provided
84 effective protection against wild-type measles challenge.¹² Ongoing Phase I/II trials of MR-MAPs are
85 conducted in The Gambia¹³ and Australia.¹⁴ Despite the early stage of clinical development, economic
86 evaluation for MR-MAPs prior to phase III trials helps to determine the public health impact and economic
87 case for further investment in development, as well as identify sources of uncertainties around potential
88 impact and cost-effectiveness to inform directions of data collection in the future.¹⁵ Furthermore, early-
89 stage economic evaluation can assess key determinants of cost-effectiveness and provide feedback on the
90 MR-MAP product profile.¹⁶

91 In 2021, UNICEF commissioned MMGH Consulting GmbH in partnership with London School of Hygiene and
92 Tropical Medicine and Global Health Visions to conduct an initial Full Value of Vaccine Assessment for MR-
93 MAPs, to improve the assessment, decision-making, and communication concerning MR-MAP development,
94 procurement, and implementation particularly for the use in LMICs. Placing end-users and stakeholders at
95 the centre, the Assessment aims to facilitate discussion and coordination between different perspectives
96 and address various impacts on health, economics, and society.¹⁷ Analyses to understand the comprehensive
97 value of MR-MAPs, including the total system costs, commercial business case, and needs for market
98 incentives, are available in the report for the (initial) Full Value of Vaccines Assessment of MR-MAPs (*DOI will
99 be added once officially released.*). As part of the value assessment framework for MR-MAPs, this analysis

100 focused on the health impact and cost-effectiveness of introducing MR-MAPs in LMICs, where more than

101 90% of global measles cases occur.⁵

102 **Methods**

103 *Study setting*

104 We included 70 LMICs in this global analysis of measles burden and vaccination, including 20 low-income
105 countries, 35 lower-middle-income countries, and 15 upper-middle-income countries based on the World
106 Bank income classification for the 2022 fiscal year.¹⁸ We included all LMICs apart from those having been
107 verified for measles elimination and then kept their status until at least 2019 and those LMICs having $\geq 95\%$
108 coverage with two doses of MCV and reporting ≤ 5 annual measles cases during 2017–2019. Additionally, we
109 excluded countries that were projected to achieve a low level of measles burden in our analysis (see
110 ‘Coverage Forecasts’ section), defined as ≤ 5 annual cases over 2027–2029 and thus for which introducing
111 MR-MAPs after 2030 would be expected to have only marginal benefit in burden reduction (Albania,
112 Botswana, Cape Verde, Djibouti, Eritrea, Fiji, Georgia, Guinea, Guinea-Bissau, Jordan, Kazakhstan, Kuwait,
113 Kyrgyzstan, Malaysia, Morocco, Mauritius, Rwanda, South Sudan, Thailand, Tonga, and Vanuatu). The full list
114 of countries included in the analysis can be found in table A in online supplemental file S1.

115 *Epidemiological model*

116 We assessed the epidemiological impact of MR-MAPs introduction on measles burden in each country using
117 Dynamic Measles Immunisation Calculation Engine (DynaMICE), for which a list of key parameters are
118 included in table B in online supplemental file S1 and a detailed description and application has been
119 published.¹⁹ DynaMICE is an age-structured compartmental model of measles transmission with states for
120 people who are susceptible, infectious, recovered, protected by maternal antibodies, and protected by
121 immunisation. Measles transmission between age groups is simulated using country-specific social contact
122 matrices²⁰ with a basic reproduction number of 15.9 based on a systematic review.²¹ Case-fatality risks of
123 measles are varied across countries and are relatively higher for children under 5 years old based on a recent
124 review of available data.²²

125 DynaMICE takes into account MCV coverage, efficacy, age at vaccination, and vaccination history of targeted
126 populations. In the model, RI programmes provide the first (MCV1) and second (MCV2) doses of measles
127 vaccines to children aged 9 months and 16.5 months, respectively. SIAs are regularly scheduled for a

128 population of a selected age range to enhance MCV coverage. We assumed SIA doses are delivered to
129 children regardless of their vaccination history, except for up to 7.7% of children who are unreachable under
130 current vaccination activities.²³ In the model, the efficacy of the first MCV dose increases linearly with the
131 age of vaccine administration²⁴ and receiving two MCV doses provides 98% efficacy.²⁵ Vaccine protection
132 was assumed to be all-or-nothing, i.e., to offer complete protection to a proportion of the vaccinated
133 individuals and no protection to the rest.

134 *Coverage projection*

135 Aligning with the approach used in Global Market Study for MCVs,²⁶ Ko et al. projected global demand for
136 MCV doses over 2030–2040 and developed use cases of MR-MAPs in needle-based immunisation
137 programmes at the country level.²⁷ The forecasts were adapted to coverage inputs and delivery components
138 for the scenarios we evaluated in this cost-effectiveness analysis of introducing MR-MAPs.

139 To capture uncertainty in the future uptake of measles vaccination, especially given that countries are
140 rebuilding health services disrupted by the COVID-19 pandemic, ‘higher’ and ‘lower’ coverage projections for
141 MCV coverage were considered (table 1). Under the ‘higher’ coverage projection, current RI coverage for
142 MCV1 and MCV2 is projected to increase by 0.5–3% per year and capped at 95% or a higher level seen in the
143 country-specific historical coverage; SIAs will take place every 2–5 years with a 95% coverage of children
144 aged 9–59 months and will discontinue when MCV2 coverage exceeds 90% over 3 consecutive years. The
145 growth rate of RI coverage and frequency of SIAs depend on country immunisation programmes. Under the
146 ‘lower’ coverage projection, where a less optimistic perspective is applied to the future programme
147 expansion, projected RI coverage will remain constant at the 2019 level, and SIAs will reach only 85% of
148 children.

149 *MR-MAPs introduction*

150 We modelled the effect of MR-MAPs introduction in partially replacing N&S doses in existing immunisation
151 programmes (components A, B, and C in table 1) and reaching additional underserved populations for
152 measles vaccination (components D, E, and F). Following the assumptions in the demand forecast analysis,²⁷
153 the replacement of N&S doses with MR-MAP doses depends on the different MR-MAPs use cases and on

154 country-specific groupings reflective of the characteristics of their measles and rubella immunisation
155 programmes (table A in online supplemental file S1). In countries where measles-mumps-rubella (MMR)
156 vaccines are widely adopted in their existing immunisation programmes, no MR-MAP doses are anticipated
157 to be used, as implementing separate monovalent mumps vaccines with MR-MAPs is less programmatically
158 feasible. In countries which only partially offer or do not use MMR vaccines, 30% or 80% of the total MCV
159 doses will be replaced with MR-MAPs. In addition, with improved product characteristics, MR-MAPs are
160 assumed to reach extra populations living in hard-to-reach areas and children with missed opportunities for
161 vaccination, with a coverage of 20% through RI activities (delivery components D & E) and 10% through one-
162 off campaigns (component F) in the targeted populations. The hard-to-reach populations include those in
163 urban slums, security compromised, humanitarian settings, and remote/rural areas, while 2% of children
164 under 2 years old were assumed to experience missed opportunities for measles vaccination.²⁷

165 Two introduction strategies for MR-MAPs across countries were evaluated according to multiple factors,
166 such as vaccine introduction history, disease burden, and funding for immunisation programmes.²⁷ Under
167 ‘sequential’ introduction, countries introduce MR-MAPs sequentially over the years between 2030–2040;
168 those with higher measles and rubella burden and better operational and financial states for new vaccine
169 introductions will adopt MR-MAPs in earlier years. Alternatively, ‘accelerated’ introduction allows countries
170 with the greatest need, based on their MCV1 coverage and disease burden only, to be prioritised for MR-
171 MAPs introduction. In figure 1, we present coverage forecasts under the sequential and accelerated
172 strategies for MR-MAPs introduction, higher and lower coverage projection assumptions, and different
173 delivery components (table 1) in the Democratic Republic of the Congo. The coverage forecasts for all 70
174 LMICs are included in online supplemental file S2.

175 *Economic costs*

176 We took a health provider perspective and ingredients approach in estimating the costs under different MR-
177 MAPs scenarios. Table 1 shows unit costs of measles vaccine and treatment by country income level, with all
178 values inflated to 2020 United States Dollar (USD) using country-specific Gross Domestic Product deflators.²⁸

179 ²⁹ For each scenario, the total cost (treatment cost and vaccination cost) at year t in country i is denoted as:

$$180 \quad tc_{i,t} = c_i^{tx} \times m_{i,t} + \sum_p \left((c_{i,p,RI}^{vac} + c_{i,t,RI}^{del}) \times d_{i,t,p,RI} + (c_{i,p,SIA}^{vac} + c_{i,SIA}^{del}) \times d_{i,t,p,SIA} \right).$$

181 c_i^{tx} represents the treatment cost for each measles case, extrapolated from data for countries at the same
182 income level in the literature.³⁰⁻³² p indicates different vaccine types characterised by dose presentation, vial
183 size, and valent type. $c_{i,p,RI}^{vac}$ and $c_{i,p,SIA}^{vac}$ represent the vaccine procurement prices per dose delivered through
184 RI and SIA, with an adjustment of wastage rates specific to the vaccine types. The procurement prices for
185 N&S vaccines were obtained from the Market Information for Access Vaccine Purchase Database over
186 2016–2020.³³ Taking the average price of MR N&S vaccines as the baseline, we estimated a potential range
187 of prices for MR-MAPs by country income group and eligibility to receive Gavi funds. The lower MR-MAP
188 price reflected the increased manufacturing cost per dose for a single-dose vial compared to a multiple-dose
189 vial, using the price data of hepatitis B vaccines as a proxy. The difference in the cost for a pre-filled syringe
190 compared to a single-dose vial is considered in estimating the upper MR-MAP price, based on the price
191 information from pneumococcal conjugate vaccines (see Text A in online supplemental file S1 for details).
192 $c_{i,t,RI}^{del}$ and $c_{i,SIA}^{del}$ represent the vaccine delivery costs per dose for RI and SIA by income level. The marginal
193 cost of delivering one routine MCV1 or MCV2 dose was assumed to increase with country-specific coverage
194 forecasts, as higher coverage levels require extra resources for unvaccinated children having the least access
195 to immunisation services.³⁰ Finally, we multiplied these unit costs by the corresponding DynaMICE model
196 estimates of $m_{i,t}$ (the number of measles cases) and $d_{i,t,p,RI}$ and $d_{i,t,p,SIA}$ (the numbers of doses
197 administered through RI and SIAs).

198 *Cost-effectiveness*

199 Using DynaMICE, we estimated cases, deaths, disability-adjusted life years (DALYs), and economic costs
200 under the sequential and accelerated MR-MAPs introduction and the baseline scenario without MR-MAPs.
201 All the health and cost impact estimates were obtained at the country level and also aggregated by the
202 World Bank income level.¹⁸ For each country and income group, we calculated the incremental cost-
203 effectiveness ratio (ICER) by dividing the total incremental costs by the total averted DALYs over 2030–2040
204 between the MR-MAPs introduction scenarios and the baseline scenario. In the main analysis, a discounting
205 rate of 3% was applied equally for costs and health outcomes. We also evaluated the ICERs under differential

206 discounting, where only cost estimates were discounted at 3%, and health outcomes were not discounted,
207 as recommended in the WHO guidelines for economic evaluation of immunisation programmes.³⁴ Since
208 GDP-based thresholds are no longer recommended by WHO,³⁵ we instead used the cost-effectiveness
209 thresholds estimated based on empirical data on the opportunity costs of healthcare expenditure^{36 37} to
210 determine the cost-effectiveness of introducing MR-MAPs at the country level. As for the income-level ICERs,
211 the thresholds were derived from population-weighted health opportunity costs in countries of the
212 corresponding income groups (figure A in online supplemental file S1). In addition, we calculated the
213 maximum MR-MAP procurement price that each country or income setting could afford to pay for the MR-
214 MAPs introduction while ensuring the introduction is cost-effective (compared with country-specific
215 thresholds based on health opportunity costs). This price calculation was conducted with the assumption
216 that the health gains during 2030–2040 from preventing measles illness, vaccine wastage rates, and all the
217 other types of costs are held fixed under equal discounting.

218

219 **Results**

220 *Health impact of MR-MAPs introduction*

221 Introduction of MR-MAPs would result in measles burden reductions across all country income levels and
222 assumptions about coverage projections (figure 2). Under the higher coverage projection, 21.3 million cases,
223 197 thousand deaths, and 12.4 million DALYs due to measles are projected to occur over 2030–2040 across
224 all the study countries if MR-MAPs are not available. Sequential introduction of MR-MAPs will result in 14.4
225 million measles cases, 145 thousand deaths, and 9.01 million DALYs, as accelerated introduction will result in
226 13.9 million measles cases, 139 thousand deaths, and 8.69 million DALYs. Countries in the lower-middle-
227 income group contribute most to the global burden. The scale of the cumulative burden under the lower
228 coverage projection is larger than the higher coverage projection, while the relative burden trends between
229 different introduction strategies are similar. Under the lower coverage projection, there are estimated 106
230 million measles cases, 1.15 million deaths, and 74.0 million DALYs if MR-MAPs are not available, and 67.1
231 million measles cases, 750 thousand deaths, and 47.7 million DALYs with accelerated MR-MAPs introduction.
232 Table 3 shows how MR-MAPs introduction will reduce the total measles burden in 70 LMICs over 2030–2040
233 by 27%–37%. At the global level, the relative health impact of introducing MR-MAPs is similar between the
234 ‘higher’ and ‘lower’ coverage projection assumptions. However, the absolute impact varies, with 6.96–7.45
235 million and 31.3–38.6 million measles cases being averted by MR-MAP introduction under the higher and
236 lower coverage projection assumptions, respectively. Overall, the accelerated introduction of MR-MAPs in
237 key countries is projected to be more effective in reducing measles burden than the sequential introduction,
238 since those countries with higher burden are more likely to benefit from the early introduction of MR-MAPs.
239 For individual countries, introducing MR-MAPs will result in reduction of health burden over 2030–2040,
240 although some variation remains within the same income-group level. We further analysed the exceptional
241 countries and scenarios showing increased health burden following the MR-MAPs introduction and found
242 health benefits of MR-MAPs introduction with an extended assessment period. This suggested that a longer
243 time horizon would be needed to observe the complete health impacts of introducing MR-MAPs.

244 *Economic cost of MR-MAPs introduction*

245 Figure 3 illustrates the breakdown of incremental costs following MR-MAPs introduction, compared to the
246 baseline scenario without MR-MAPs. The introduction of MR-MAPs will reduce costs for the existing
247 immunisation service based on N&S vaccines, which will be partly replaced with MR-MAP doses. However,
248 the reduction will not exceed the increase in costs of purchasing and delivering MR-MAPs, since introducing
249 MR-MAPs will deliver extra doses to children experiencing missed opportunities for vaccination and living in
250 hard-to-reach areas (delivery components D&F in table 1). Savings from treating measles-associated illness
251 after the MR-MAPs introduction were seen in all country income groups but relatively small compared to
252 other cost types in the low-income setting. Overall, Introducing MR-MAPs will be cost-saving in the lower-
253 middle-income and upper-middle-income settings provided at a lower MR-MAP procurement price under
254 the lower coverage projection assumption (table C in online supplemental file S1) due to avoiding the high
255 costs in these countries associated with measles treatment. In the low-income setting, the total incremental
256 costs will increase across all the scenarios for evaluation. Unlike the MR-MAP price, the introduction
257 strategies had little implications in the scale and direction of incremental costs. At the country level, the
258 incremental costs following the introduction of MR-MAPs show a large variation within the same income
259 group, as a result of country heterogeneities in dose demand, measles burden, and vaccine procurement
260 costs.

261 *Cost-effectiveness of MR-MAPs introduction*

262 Figure 4 shows the income-group level ICERs of introducing MR-MAPs by different assumptions for
263 discounting, coverage projection, introduction strategy, and MR-MAP price. The ICERs lie between
264 10.6–1850 USD in the low-income group, -108–1100 USD in the lower-middle-income group, and -134–1210
265 USD in the upper-middle-income group. Negative ICER values corresponding to settings where it is cost-
266 saving to introduce MR-MAPs, are mostly seen in the upper-middle-income group with a lower MR-MAP
267 price. In the lower-middle-income group, introducing MR-MAPs would be cost-effective under the lower
268 coverage projection. Under the higher coverage projection, it would not be cost-effective with an upper MR-
269 MAP price using equal discounting but cost-effective using differential discounting. In the low-income group,

270 introducing MR-MAPs would only be cost-effective under the lower coverage projection, regardless of the
271 set price for MR-MAPs. Assumptions about the introduction strategy resulted in smaller variations in the
272 ICER estimates among low-income, lower-middle-income, and upper-middle-income country groups.
273 Evaluating at the country level, we found similarity to the income-level analysis in factors that affect the
274 cost-effectiveness of introducing MR-MAPs. MR-MAPs introduction would be less likely to be cost-effective
275 in countries with a lower income, despite wide variation within each income group (figure B in online
276 supplemental file S1). With a 3% discount rate for both health and cost impacts, the introduction of MR-
277 MAPs over 2030–2040 is considered cost-effective in 26–81% and 16–61% of analysed countries under a
278 lower and upper price of MR-MAPs, respectively (table 4). Alternatively, when applying differential
279 discounting rates, MR-MAPs introduction would be cost-effective in 30–81% and 19–71% of countries under
280 a lower and higher assumed price, respectively (table D in online supplemental file S1). The assumptions
281 about coverage projection had the greatest influence on the cost-effectiveness of the MR-MAPs introduction.
282 Meanwhile, the procurement cost for MR-MAPs was influential on its cost-effectiveness in lower-middle-
283 income countries. Introducing MR-MAPs will be most cost-effective when provided through accelerated
284 introduction with a lower MR-MAP price.
285 The maximum per MR-MAP dose procurement prices (2020 USD) that ensure the cost-effectiveness of
286 introducing MR-MAPs increase with the income-group level (table 5). The price thresholds for MR-MAPs are
287 consistently higher compared to the corresponding prices for N&S vaccines (table 2). Under the lower
288 coverage projection, the maximum MR-MAP prices are higher because of larger health benefits and savings
289 from averting measles burden. In the low-income and lower-middle-income settings, the price thresholds for
290 MR-MAPs were lower under the accelerated introduction strategy than the sequential strategy. While the
291 accelerated introduction will bring greater health benefits, per-dose vaccine delivery cost will also increase
292 with higher coverage, resulting in overall reduction in cost-effectiveness, particularly several years after the
293 MR-MAPs introduction. As seen in the model-based health and cost impact estimates, the threshold prices
294 across countries also result in great variability. In some countries, introducing MR-MAPs was found not to be
295 cost-effective even if the procurement of MR-MAPs is zero price. These countries mostly have high measles

296 vaccine coverage forecasts and only contributed to a small proportion (8%) of the total measles burden in
297 the 70 LMICs between 2030 and 2040. Moreover, our price threshold analysis did not consider the potential
298 reduction in delivery costs for MR-MAPs, which could improve the cost-effectiveness of the MR-MAPs
299 introduction.

300 Discussion

301 Our modelling analysis suggests that the introduction of MR-MAPs will bring substantial health benefits over
302 2030–2040 and is likely to be cost-effective in 16–81% of LMICs, depending on the assumptions used. The
303 strategy of accelerating MR-MAPs introduction in high-burden countries generates the largest burden
304 reduction compared to sequential introduction globally, despite requiring delayed introduction in lower-
305 burden countries. Assumptions about the underlying MCV coverage growth in the future have a great
306 influence on the magnitude of health impacts from introducing MR-MAPs, where the lower coverage
307 projection resulted in larger numbers of averted cases, deaths, and DALYs. Additionally, among the different
308 types of costs, the cost for treating measles illness has a key role in the total expenditure and savings on
309 treatment costs would surpass the incremental costs for the MR-MAPs introduction, especially in countries
310 with a higher income. For each country, the cost-effectiveness of introducing MR-MAPs will largely depend
311 on the procurement price of a MR-MAP dose.

312 To our knowledge, our study is the first cost-effectiveness assessment at a global scale on the potential
313 impact of the MR-MAP introduction. A previous study by Adhikari et al. found that replacing traditional N&Ss
314 with MAPs for measles immunisation is cost-effective in a hypothetical population, due to cost reductions in
315 cold chains, personnel, injection equipment, and needle disposal.³⁸ However, the detailed cost changes
316 following the introduction of MR-MAPs would need more empirical research and data to estimate.
317 Additionally, Adhikari et al. assumed no changes in the total administered doses,³⁸ while we focused on the
318 possible integration of MR-MAPs into existing immunisation programmes, with partial penetration of the
319 N&S market and additional vaccine delivery to the populations living in hard-to-reach areas and experiencing
320 missed opportunities of vaccination. We considered both the cost and health aspects of MR-MAPs and
321 included the health benefits of reaching previously under-immunised populations.

322 Assumptions about future coverage projections exert the greatest influence on the health impact of MR-
323 MAPs among the assumptions examined in this study. The wide range between the lower and higher
324 coverage projection assumptions aims to reflect the multiple sources of uncertainties around the future
325 progress of national immunisation programmes and measles elimination efforts. The pessimistic lower

326 coverage projection scenario may not capture worst-case situations such as those caused by funding
327 instability, emerging diseases, natural disasters, and political conflicts. Such situations could cause MCV
328 coverage not just to stagnate, but to drop below what has been achieved historically, as seen in the global
329 coverage estimate that reduced from 84% in 2020 to 81% in 2021 following the COVID-19 pandemic.⁵ The
330 role of MR-MAPs could be even more critical in measles immunisation when the future performance of
331 immunisation programmes cannot meet the historical levels of coverage. In addition, our analysis shows a
332 potentially substantial impact on measles burden reduction with a 10–20% increase in coverage from
333 providing MR-MAPs to populations living in hard-to-reach areas and experiencing missed opportunities for
334 vaccination. With further reach to these under-immunised populations, MR-MAPs would realise even
335 greater benefits in reducing measles burden.

336 To estimate the incremental cost of MR-MAPs introduction, we varied vaccine procurement costs, delivery
337 costs, and measles treatment costs by country income level. However, we assumed that delivery costs were
338 the same for N&Ss and MR-MAPs, which may underestimate the potential of MR-MAPs to save costs from
339 health personnel capacity and cold chain equipment.³⁸ On the other hand, integration of MR-MAPs into
340 existing immunisation programmes will require structural changes in staffing and operation. There are
341 uncertainties in estimating the delivery costs of MR-MAPs. Collecting the cost data, even at an early stage of
342 vaccine development and licensure, will be useful in informing the investment case of future introduction.

343 Indirect costs were not systematically included in this study. Patient costs for travel and waiting time during
344 vaccination visits were included in a few original data sources, but productivity costs around the treatment
345 of measles-associated illness were not considered.³⁰ From a societal perspective, including productivity loss
346 would make the introduction of MR-MAPs more cost-effective. Although MR-MAPs introduction was not
347 considered cost-effective in some upper-middle-income settings from the perspective of measles burden
348 reduction, their ability to reach under-immunised populations may still drive the introduction in order to
349 reach regional measles elimination goals earlier. Furthermore, the impact of an earlier national/regional
350 measles elimination, with the respective savings including reduced future demand for measles vaccines, was
351 not considered in the cost-effectiveness analysis and may further increase the cost-effectiveness of MR-

352 MAPs introduction.

353 There are other limitations in the cost-effectiveness analysis. First, we estimated the health burden following

354 MR-MAPs introduction based on country-level data and models, but some of the largest disparities in

355 vaccine coverage exist at the subnational level such as in remote rural areas or border regions.³⁹ We did not

356 investigate whether subnational targeting of MR-MAPs may achieve most of the coverage improvements at

357 reduced cost. Second, we assessed the health and economic benefits of measles burden reduction following

358 the introduction of MR-MAPs but excluded the concurrent reduction of rubella burden. Taking into account

359 the impact on rubella burden will make the introduction of MR-MAPs more cost-effective. Nonetheless, the

360 additional benefits may not be substantial compared to the reduction in measles burden since rubella is less

361 transmissible and typically less severe than measles. Third, measles control measures apart from vaccination,

362 such as contact tracing, self-quarantine, and post-exposure prophylaxis, were not included in the

363 epidemiological modelling. This may affect both the cost and burden estimates, particularly in countries

364 close to elimination.⁴⁰ However, their effect may be more limited in the high-burden countries that we

365 examined. Finally, cost-effectiveness thresholds based on health opportunity costs may be useful in

366 reflecting the value for money from a fixed budget perspective, but the methodology for this estimation has

367 not yet been maturely developed, and only few countries have adopted these thresholds explicitly in

368 decision-making for health policies.⁴¹ Other context-specific considerations may also be decisive factors in

369 the funding and implementation of MR-MAPs, and WHO recommends against basing health investment

370 decisions purely on comparison to a cost-effectiveness threshold.^{35 42 43}

371 This early-phase cost-effectiveness analysis was conducted from the perspective of the funder, e.g. the

372 country or pooled procurement donors such as Gavi. The examination of the return to the manufacturer on

373 the investment needed for research and development before MR-MAPs enter the market, and the net

374 present value of MR-MAPs are concurrently developed in the initial Full Value of Vaccines Assessment of

375 MR-MAPs and will be reported (*DOI to be added once it is officially released.*). Our analysis of the cost-

376 effectiveness, including the calculated price thresholds for MR-MAPs, may inform vaccine investment

377 entities such as the Vaccine Innovation Prioritisation Strategy about strategies to increase manufacturers'

378 incentives to develop and market MR-MAPs, in order to achieve the projected health impact. While MR-
379 MAPs are still in the early stage of clinical development, this analysis can provide initial but comprehensive
380 evidence that policy makers can apply to understand the potential cost-effectiveness of MR-MAPs at the
381 global and/or national level and consider the implementation of MR-MAPs in their longer-term measles
382 vaccination strategies.

383 In conclusion, this study has shown that there are substantial health benefits from introducing MR-MAPs in
384 LMICs, particularly if countries bearing greater measles burden can be prioritised, as evaluated in the
385 scenario with accelerated introduction. In addition to the reduction in measles burden, MR-MAPs
386 introduction would accelerate progress towards measles elimination through more effectively and equitably
387 reaching underserved populations of children with missed opportunities for vaccination or living in hard-to-
388 reach areas. Introducing MR-MAPs is also cost-effective in most LMICs, while external funding from donors
389 could support the MR-MAPs introduction in countries where it is not cost-effective under fixed domestic
390 budgets. Although several assumed features of MR-MAPs are still highly uncertain, this early-stage
391 evaluation can help inform key data gaps in assessing the cost-effectiveness of MR-MAPs, including future
392 MCV coverage assumptions, MR-MAP ability to reach zero-dose and under-immunised children,
393 procurement prices, and country-specific costs for measles treatment and vaccine delivery. Addressing these
394 data gaps will facilitate evidence generation for decision-making on MR-MAPs introductions in LMICs.

395 **Data availability statement**

396 Relevant datasets and computer codes of this analysis are available from the corresponding author on
397 reasonable request and will be made public in the GitHub repository once the manuscript is accepted for
398 journal publication.

399

400 **Ethics statements**

401 *Patient consent for publication*

402 Not applicable

403 *Ethics approval*

404 Not applicable

405

406 **Acknowledgements**

407 We thank Simon Procter at London School of Hygiene and Tropical Medicine, Jessica Ochalek at York
408 University, and Adam Soble, Thomas Cherian, and Carsten Mantel at MMGH Consulting GmbH for helpful
409 discussions. We acknowledge the feedback from members of the External Advisory Group of the initial Full
410 Vaccine Value Assessment (iFVVA) for MR-MAPs and the WHO Immunization and Vaccine-related
411 Implementation Research Advisory Committee.

412 References

- 413 1. Keja K, Chan C, Hayden G, et al. Expanded programme on immunization. *World Health Stat Q*
414 1988;41(2):59-63. [published Online First: 1988/01/01]
- 415 2. Li X, Mukandavire C, Cucunuba ZM, et al. Estimating the health impact of vaccination against ten
416 pathogens in 98 low-income and middle-income countries from 2000 to 2030: a modelling study.
417 *Lancet* 2021;397(10272):398-408. doi: 10.1016/S0140-6736(20)32657-X [published Online First:
418 2021/02/01]
- 419 3. World Health Organization. Measles vaccines: WHO position paper - April 2017. *Weekly Epidemiological*
420 *Record* 2017;92(17):205-27. [published Online First: 2017/05/02]
- 421 4. Causey K, Fullman N, Sorensen RJD, et al. Estimating global and regional disruptions to routine childhood
422 vaccine coverage during the COVID-19 pandemic in 2020: a modelling study. *Lancet* 2021 doi:
423 10.1016/S0140-6736(21)01337-4 [published Online First: 2021/07/18]
- 424 5. World Health Organization. Immunization data portal, 2021.
- 425 6. Forster AH, Witham K, Depelsenaire ACI, et al. Safety, tolerability, and immunogenicity of influenza
426 vaccination with a high-density microarray patch: Results from a randomized, controlled phase I
427 clinical trial. *PLoS Med* 2020;17(3):e1003024. doi: 10.1371/journal.pmed.1003024 [published Online
428 First: 2020/03/18]
- 429 7. The Vaccine Innovation Prioritisation Strategy. VIPS phase 2 technical note: Microarray patches, 2020.
- 430 8. Gavi, the Vaccine Alliance. Vaccine microarray patches (MAPs): public summary of the VIPS Alliance Action
431 Plan. 2021
- 432 9. Richardson LC, Moss WJ. Measles and rubella microarray array patches to increase vaccination coverage
433 and achieve measles and rubella elimination in Africa. *Pan Afr Med J* 2020;35(Suppl 1):3. doi:
434 10.11604/pamj.supp.2020.35.1.19753 [published Online First: 2020/05/07]
- 435 10. Hasso-Agopsowicz M, Crowcroft N, Biellik R, et al. Accelerating the Development of Measles and Rubella
436 Microarray Patches to Eliminate Measles and Rubella: Recent Progress, Remaining Challenges. *Front*
437 *Public Health* 2022;10:809675. doi: 10.3389/fpubh.2022.809675 [published Online First: 2022/03/22]
- 438 11. Peyraud N, Zehrunig D, Jarrahian C, et al. Potential use of microarray patches for vaccine delivery in low-
439 and middle- income countries. *Vaccine* 2019;37(32):4427-34. doi: 10.1016/j.vaccine.2019.03.035
440 [published Online First: 2019/07/03]
- 441 12. Joyce JC, Carroll TD, Collins ML, et al. A Microneedle Patch for Measles and Rubella Vaccination Is
442 Immunogenic and Protective in Infant Rhesus Macaques. *J Infect Dis* 2018;218(1):124-32. doi:
443 10.1093/infdis/jiy139 [published Online First: 2018/04/28]
- 444 13. Measles and Rubella Vaccine Microneedle Patch Phase 1-2 Age De-escalation Trial 2020 [Available from:
445 <https://ClinicalTrials.gov/show/NCT04394689> accessed 1 May 2022.
- 446 14. Vaxxas Pty Ltd. First-in-human study to investigate the skin tolerability of micro-projection array patches
447 coated with live attenuated measles and rubella vaccine in healthy adult volunteers:
448 <https://anzctr.org.au/Trial/Registration/TrialReview.aspx?ACTRN=12621000820808>, 2021.
- 449 15. Newall AT, Beutels P, Tuffaha HW, et al. How can early stage economic evaluation help guide research
450 for future vaccines? *Vaccine* 2022;40(2):175-77. doi: 10.1016/j.vaccine.2021.11.017 [published
451 Online First: 2021/12/07]
- 452 16. World Health Organization, United Nations Children's Fund. Measles-rubella microarray patch (MR-MAP)
453 target product profile. Switzerland, 2019.
- 454 17. Hutubessy RCW, Lauer JA, Giersing B, et al. The Full Value of Vaccine Assessments (FVVA): A Framework
455 to Assess and Communicate the Value of Vaccines for Investment and Introduction Decision Making.
456 *SSRN* 2021 doi: <https://dx.doi.org/10.2139/ssrn.3841999> [published Online First: May 7]
- 457 18. The World Bank. World Bank Country and Lending Groups.
- 458 19. Fu H, Abbas K, Klepac P, et al. Effect of evidence updates on key determinants of measles vaccination
459 impact: a DynaMICE modelling study in ten high-burden countries. *BMC Med* 2021;19(1):281. doi:
460 10.1186/s12916-021-02157-4 [published Online First: 2021/11/18]
- 461 20. Prem K, van Zandvoort K, Klepac P, et al. Projecting contact matrices in 177 geographical regions: an
462 update and comparison with empirical data for the COVID-19 era. *Plos Comput Bio*

- 463 2021;17(7):e1009098. doi: 10.1371/journal.pcbi.1009098 [published Online First: 2021/07/26]
- 464 21. Guerra FM, Bolotin S, Lim G, et al. The basic reproduction number (R0) of measles: a systematic review.
465 *Lancet Infect Dis* 2017;17(12):e420-e28. doi: 10.1016/S1473-3099(17)30307-9 [published Online
466 First: 2017/08/02]
- 467 22. Portnoy A, Jit M, Ferrari M, et al. Estimates of case-fatality ratios of measles in low-income and middle-
468 income countries: a systematic review and modelling analysis. *Lancet Glob Health* 2019;7(4):e472-
469 e81. doi: 10.1016/S2214-109X(18)30537-0 [published Online First: 2019/02/25]
- 470 23. Cata-Preta BO, Santos TM, Mengistu T, et al. Zero-dose children and the immunisation cascade:
471 Understanding immunisation pathways in low and middle-income countries. *Vaccine*
472 2021;39(32):4564-70. doi: 10.1016/j.vaccine.2021.02.072 [published Online First: 2021/03/22]
- 473 24. Hughes SL, Bolotin S, Khan S, et al. The effect of time since measles vaccination and age at first dose on
474 measles vaccine effectiveness - A systematic review. *Vaccine* 2020;38(3):460-69. doi:
475 10.1016/j.vaccine.2019.10.090 [published Online First: 2019/11/17]
- 476 25. Sudfeld CR, Navar AM, Halsey NA. Effectiveness of measles vaccination and vitamin A treatment. *Int J*
477 *Epidemiol* 2010;39 Suppl 1:i48-55. doi: 10.1093/ije/dyq021 [published Online First: 2010/04/02]
- 478 26. World Health Organization. Global market study: measles-containing vaccines (MCV), 2020.
- 479 27. Ko M, Malvoti S, Cherian T, et al. Estimating the future global dose demand for Measles-Rubella
480 microarray patches. *medRxiv* 2022:2022.08.11.22278665. doi: 10.1101/2022.08.11.22278665
- 481 28. The World Bank. GDP deflator (base year varies by country). 1960-2020.
- 482 29. Turner HC, Lauer JA, Tran BX, et al. Adjusting for Inflation and Currency Changes Within Health Economic
483 Studies. *Value Health* 2019;22(9):1026-32. doi: 10.1016/j.jval.2019.03.021 [published Online First:
484 2019/06/14]
- 485 30. Levin A, Burgess C, Garrison LP, Jr., et al. Global eradication of measles: an epidemiologic and economic
486 evaluation. *J Infect Dis* 2011;204 Suppl 1:S98-106. doi: 10.1093/infdis/jir096 [published Online First:
487 2011/06/17]
- 488 31. Hyle EP, Fields NF, Fiebelkorn AP, et al. The Clinical Impact and Cost-effectiveness of Measles-Mumps-
489 Rubella Vaccination to Prevent Measles Importations Among International Travelers From the
490 United States. *Clin Infect Dis* 2019;69(2):306-15. doi: 10.1093/cid/ciy861 [published Online First:
491 2018/10/13]
- 492 32. Njau J, Janta D, Stanescu A, et al. Assessment of Economic Burden of Concurrent Measles and Rubella
493 Outbreaks, Romania, 2011-2012. *Emerging infectious diseases* 2019;25(6):1101-09. doi:
494 10.3201/eid2506.180339 [published Online First: 2019/05/21]
- 495 33. World Health Organization. MI4A Vaccine Purchase Database.
- 496 34. World Health Organization. WHO guide for standardization of economic evaluations of immunization
497 programmes. 2nd ed. Geneva, 2019.
- 498 35. Bertram MY, Lauer JA, De Joncheere K, et al. Cost-effectiveness thresholds: pros and cons. *Bulletin of the*
499 *World Health Organization* 2016;94(12):925-30. doi: 10.2471/BLT.15.164418 [published Online First:
500 2016/12/21]
- 501 36. Lomas J, Claxton K, Ochalek J. Accounting for country- and time-specific values in the economic
502 evaluation of health-related projects relevant to low- and middle-income countries. *Health Policy*
503 *Plan* 2022;37(1):45-54. doi: 10.1093/heapol/czab104 [published Online First: 2021/08/20]
- 504 37. Ochalek J, Lomas J. Reflecting the Health Opportunity Costs of Funding Decisions Within Value
505 Frameworks: Initial Estimates and the Need for Further Research. *Clin Ther* 2020;42(1):44-59 e2. doi:
506 10.1016/j.clinthera.2019.12.002 [published Online First: 2020/01/21]
- 507 38. Adhikari BB, Goodson JL, Chu SY, et al. Assessing the Potential Cost-Effectiveness of Microneedle Patches
508 in Childhood Measles Vaccination Programs: The Case for Further Research and Development. *Drugs*
509 *R D* 2016;16(4):327-38. doi: 10.1007/s40268-016-0144-x [published Online First: 2016/10/04]
- 510 39. Local Burden of Disease Vaccine Coverage C. Mapping routine measles vaccination in low- and middle-
511 income countries. *Nature* 2020 doi: 10.1038/s41586-020-03043-4 [published Online First:
512 2020/12/18]
- 513 40. Enanoria WT, Liu F, Zipprich J, et al. The Effect of Contact Investigations and Public Health Interventions

- 514 in the Control and Prevention of Measles Transmission: A Simulation Study. *PloS one*
515 2016;11(12):e0167160. doi: 10.1371/journal.pone.0167160 [published Online First: 2016/12/13]
516 41. Thokala P, Ochalek J, Leech AA, et al. Cost-Effectiveness Thresholds: the Past, the Present and the Future.
517 *Pharmacoeconomics* 2018;36(5):509-22. doi: 10.1007/s40273-017-0606-1 [published Online First:
518 2018/02/11]
- 519 42. World Health Organization. WHO Evidence Considerations for Vaccine Policy Development (ECVP):
520 generic framework for vaccines/monoclonal antibodies in development. In: Immunization VaB, ed.,
521 2022.
- 522 43. Kochhar S, Barreira D, Beattie P, et al. Building the concept for WHO Evidence Considerations for Vaccine
523 Policy (ECVP): Tuberculosis vaccines intended for adults and adolescents as a test case. *Vaccine*
524 2022;40(12):1681-90. doi: 10.1016/j.vaccine.2021.10.062 [published Online First: 2022/02/16]
- 525

526 **Tables**

527 **Table 1. Assumptions for coverage forecasts and delivery components of measles vaccines**

528 Measles vaccine delivery is modelled through six components (A to F) with different age and vaccination
 529 status of target populations, coverage projection assumptions, delivery approaches (RI or campaign), and
 530 dose presentations (N&S or MR-MAP). Details of the parameters and data sources used in shaping these
 531 assumptions are included in the demand forecast analysis by Ko et al.²⁷. Introducing MR-MAPs was assumed
 532 to partially replace doses in the existing needle-based immunisation programmes with MR-MAPs
 533 (components A, B, and C) and provide additional MR-MAP doses to children with MOV or living in HTR areas
 534 (components D, E, and F). The level of replacement with MR-MAPs (market penetration) depends on the size
 535 of the different use cases for MR-MAPs and the characteristics of the measles and rubella programmes
 536 (inclusive of the use of MMR N&S vaccines) in each country. Abbreviations: HTR-hard-to-reach, MCV1-the
 537 first routine dose of measles-containing vaccine, MCV2-the second routine dose of measles-containing
 538 vaccine, MMR-measles-mumps-rubella, MOV-missed opportunities for vaccination, MR-MAP-measles-
 539 rubella microarray patch, N&S-needle and syringe, RI-routine immunisation, SIA-supplementary
 540 immunisation activity.

| Delivery components and target population | Coverage projection of target population | | Effect of MR-MAPs |
|--|---|--|---|
| | 'Higher' coverage | 'Lower' coverage | |
| A: MCV1 for children aged 9 months old, RI B: MCV2 for children aged 16.5 months old, RI | Annual growth depending on the overall coverage level: – 3% per year for <70% – 1% per year for 70–85% – 0.5% per year for >85% – capped at 95% or a higher level shown in the past programme | Stagnant coverage estimates at the 2019 level | Replace a country-specific proportion of N&S doses: – 0% for major MMR use in their immunisation programmes – 30% for partial MMR use – 80% for no MMR use |
| C: SIA coverage for children aged 9–59 months old, campaign | Frequency depending on MCV2 coverage: – every 2 years for <60% – every 3 years for 60–80% – every 4–5 years for >80% – discontinuation for >90% over 3 consecutive years Fixed coverage: 95% | Frequency is the same as under the 'higher' coverage projection assumptions. Fixed coverage of 85% | |
| D: MCV1 for children aged 1–2 years old with MOV or living in HTR areas, RI E: MCV2 for children aged 1–2 years old with MOV or living in HTR areas, RI | Fixed coverage: 20% of children experiencing MOV or living in HTR areas | | Reach additional populations that were assumed not being reached with the N&S vaccines |
| F: One-time catch-up SIA for population aged 2–15 years old with MOV or living in HTR areas, campaign | Fixed coverage: 10% of children experiencing MOV or living in HTR areas | | |

541 **Table 2. Unit costs (2020 USD) for measles vaccination and treatment by income level of countries**

542 Unit costs per vaccine dose or per measles case are listed by income level and other factors specific to the type of costs. N&S vaccine procurement prices
 543 were extracted from the Market Information for Access Vaccine Purchase Database³³ by taking the median prices over 2016–2020, while MR-MAP prices
 544 were estimated using the N&S prices plus potential increases in manufacturing costs (text A in online supplemental file S1). Wastage rates were specified by
 545 dose package and delivery approaches (RI or SIA) and applied to adjust vaccine price, as: *procurement price / (1 - wastage rate)*. Vaccine delivery costs are
 546 dependent on delivery approaches;³⁰ for RI, marginal delivery cost increases with baseline coverage since more resources are required to reach the
 547 underserved populations. Costs for treating measles-related illness were extracted from countries with available data through a literature review (text B in
 548 online supplemental file S1). Abbreviations: MAPs-microarray patches, MI4A-Market Information for Access, MMR-measles-mumps-rubella, MR-measles-
 549 rubella, N&S-needle and syringe, RI-routine immunisation, USD-United States dollar.

| Cost type (per dose or per case) | Low income | Lower middle income | Upper middle income | Source and notes |
|---|---|--|---|---|
| N&S wastage-adjusted price, RI | <u>Gavi-eligible countries, MR:</u> 0.73/(1-0.15) = 0.86 (5-dose vial) 0.66/(1-0.4) = 1.10 (10-dose vial) | <u>Gavi, MR:</u> 0.82/(1-0.15) = 0.96 (5-dose vial) 0.66/(1-0.4) = 1.10 (10-dose vial) | <u>MR:</u> 2.37/(1-0.01) = 2.39 (1-dose vial) 0.69/(1-0.15) = 0.81 (5-dose vial)* 0.69/(1-0.4) = 1.15 (10-dose vial) | MI4A ³³ 1-dose vial: 1% wastage 2-dose vial: 1% wastage 5-dose vial: 15% wastage 10-dose vial: 40% wastage |
| | | <u>Non-Gavi, MR:</u> 0.87/(1-0.15) = 1.02 (5-dose vial) 0.70/(1-0.4) = 1.17 (10-dose vial) | <u>MMR:</u> 4.00/(1-0.01) = 4.04 (1-dose vial)* 4.00/(1-0.01) = 4.04 (2-dose vial) 1.50/(1-0.15) = 1.76 (5-dose vial)* 1.50/(1-0.4) = 2.50 (10-dose vial) | *Prices from vials with a higher dose were used to ensure the inverse relationship between vial doses and costs. |
| N&S wastage-adjusted price, campaign | <u>Gavi, MR:</u> 0.73/(1-0.1) = 0.81 (5-dose vial) 0.66/(1-0.1) = 0.73 (10-dose vial) | <u>Gavi, MR:</u> 0.82/(1-0.1) = 0.91 (5-dose vial) 0.66/(1-0.1) = 0.73 (10-dose vial) | <u>MR:</u> 2.37/(1-0.01) = 2.39 (1-dose vial) 0.69/(1-0.1) = 0.77 (5-dose vial)* 0.69/(1-0.1) = 0.77 (10-dose vial) | MI4A ³³ 1-dose vial: 1% wastage 2-dose vial: 1% wastage 5-dose vial: 10% wastage 10-dose vial: 10% wastage |
| | | <u>Non-Gavi, MR:</u> 0.87/(1-0.1) = 0.97 (5-dose vial) 0.70/(1-0.1) = 0.78 (10-dose vial) | <u>MMR:</u> 4.00/(1-0.01) = 4.04 (1-dose vial)* 4.00/(1-0.01) = 4.04 (2-dose vial) 1.50/(1-0.1) = 1.67 (5-dose vial)* 1.50/(1-0.1) = 1.67 (10-dose vial) | *Prices from vials with a higher dose were used to ensure the inverse relationship between vial doses and costs. |

| | | | | |
|---|---|--|--|--|
| MR-MAP wastage-adjusted price, RI and campaign | 1.29/(1-0.01) = 1.30 (lower) 2.92/(1-0.01) = 2.95 (upper) | <u>Gavi:</u> 1.29/(1-0.01) = 1.30 (lower) 2.92/(1-0.01) = 2.95 (upper) | 2.63/(1-0.01) = 2.66 (lower) 5.20/(1-0.01) = 5.25 (upper) | 1-dose vial: 1% wastage See text A in online supplemental file S1 |
| | | <u>Non-Gavi:</u> 1.48/(1-0.01) = 1.49 (lower) 3.36/(1-0.01) = 3.39 (upper) | | |
| Vaccine delivery cost, RI | 2.02 plus 0.071 and 0.148 per 1% coverage increase for baseline coverage <80% and >=80% | 5.11 plus 0.177 and 0.272 per 1% coverage increase for baseline coverage <80% and >=80% | 6.45 | Levin et al. ³⁰ Baseline coverage is set as 2020 projected coverage. |
| Vaccine delivery cost, campaign | 0.91 | 1.89 | 1.97 | Levin et al. ³⁰ |
| Measles treatment cost | 10.9 | 120 | 235 | See text B in online supplemental file S1 |

550

551

552

Table 3. Averted measles burden (in thousands) following the introduction of MR-MAPs

553

Numbers represent the absolute cases, deaths, and DALYs averted in thousands. Percentages in the brackets show the relative burden reduction compared to the scenarios without MR-MAPs. Abbreviations: DALY-disability-adjusted life year, MR-MAP-measles-rubella microarray patch.

554

| Projection assumption | Higher coverage | | | | | | Lower coverage | | | | | |
|----------------------------|-------------------------------|-------------------------------|-------------------------------|-------------------------------|-------------------------------|-------------------------------|--------------------------------|------------------------------|--------------------------------|--------------------------------|------------------------------|--------------------------------|
| | Sequential | | | Accelerated | | | Sequential | | | Accelerated | | |
| Introduction strategy | Cases | Deaths | DALYs | Cases | Deaths | DALYs | Cases | Deaths | DALYs | Cases | Deaths | DALYs |
| Low income | 1076 (20.4%) | 11.4 (22.6%) | 742 (22.2%) | 1116 (21.1%) | 11.3 (22.5%) | 739 (22.1%) | 13004 (36.7%) | 164 (38.3%) | 11075 (38.6%) | 14465 (40.8%) | 176 (41.2%) | 11851 (41.3%) |
| Lower middle income | 5000 (34.2%) | 38.1 (27.0%) | 2494 (28.6%) | 5452 (37.3%) | 43.4 (30.8%) | 2815 (32.3%) | 16905 (26.5%) | 218 (31.9%) | 13612 (31.7%) | 23063 (36.2%) | 220 (32.1%) | 14014 (32.7%) |
| Upper middle income | 887 (61.9%) | 2.85 (50.7%) | 185 (50.7%) | 884 (61.7%) | 2.83 (50.4%) | 184 (50.4%) | 1350 (20.8%) | 7.70 (21.7%) | 517 (21.9%) | 1094 (16.9%) | 5.88 (16.6%) | 395 (16.8%) |
| Total | 6963 (32.7%) | 52.3 (26.6%) | 3420 (27.5%) | 7452 (35.0%) | 57.6 (29.2%) | 3737 (30.1%) | 31259 (29.6%) | 390 (34.0%) | 25204 (34.1%) | 38623 (36.5%) | 402 (35.0%) | 26260 (35.5%) |

555

556 **Table 4. Number of countries where introducing MR-MAPs is cost-effective**

557 Introducing MR-MAPs is considered to be cost-effective if the country-specific ICER is below the country-
 558 specific threshold, under a 3% annual discount rate on both cost and health benefits. Abbreviations: ICER-
 559 incremental cost-effectiveness ratio, MR-MAP-measles-rubella microarray patch.

| Projection assumption | Higher coverage | | | | Lower coverage | | | |
|-----------------------|-----------------|--------------|--------------|--------------|----------------|--------------|--------------|--------------|
| | Sequential | | Accelerated | | Sequential | | Accelerated | |
| MR-MAP price | Lower | Upper | Lower | Upper | Lower | Upper | Lower | Upper |
| Low income | 3/20 | 0/20 | 3/20 | 0/20 | 17/20 | 9/20 | 18/20 | 10/20 |
| Lower middle income | 10/35 | 6/35 | 9/35 | 5/35 | 25/35 | 20/35 | 28/35 | 22/35 |
| Upper middle income | 5/15 | 5/15 | 7/15 | 6/15 | 11/15 | 11/15 | 11/15 | 11/15 |
| Total | 18/70 | 11/70 | 19/70 | 11/70 | 53/70 | 40/70 | 57/70 | 43/70 |

560

561

562 **Table 5. Wastage-adjusted MR-MAP price thresholds (2020 USD) for introducing MR-MAPs to be**
 563 **cost-effective**

564 Numbers represent the wastage-adjusted price thresholds for introducing MR-MAP to be cost-effective at
 565 the income-group and the country level by different coverage projection assumptions and introduction
 566 strategies. At the country level, the ranges of price thresholds are presented, with *n* in the brackets denoting
 567 the number of countries except for those where introducing MR-MAPs will not be cost-effective even if the
 568 procurement of MR-MAPs is at zero cost. The price thresholds were calculated while the health burden
 569 estimates, vaccine wastage rates, and other cost inputs were assumed fixed. If an MR-MAP dose is provided
 570 at a procurement price above the threshold, it implies that introducing MR-MAPs would not be cost-
 571 effective. Abbreviation: MR-MAP-measles-rubella microarray patch.

| Projection assumption | Higher coverage | | Lower coverage | |
|----------------------------|---------------------|---------------------|---------------------|---------------------|
| | Sequential | Accelerated | Sequential | Accelerated |
| Low income | | | | |
| Income-group level | 0.764 | | 0.709 | |
| Country level | 0.123–2.32 (n = 19) | 0.041–2.51 (n = 19) | 0.397–18.1 (n = 19) | 0.586–18.1 (n = 19) |
| Lower middle income | | | | |
| Income-group level | 2.67 | | 2.17 | |
| Country level | 0.012–37.9 (n = 25) | 0.051–40.7 (n = 27) | 0.086–39.6 (n = 31) | 0.572–72.0 (n = 29) |
| Upper middle income | | | | |
| Income-group level | 23.9 | | 27.4 | |
| Country level | 0.658–353 (n = 10) | 0.635–389 (n = 9) | 0.586–3310 (n = 12) | 0.579–1730 (n = 12) |

572

573 **Figure captions**

574 **Figure 1. Coverage forecasts of measles vaccination by delivery components in the Democratic**
575 **Republic of the Congo**

576 Annual measles vaccine coverage forecasts through delivery components A-F (Table 1) are presented for the
577 Democratic Republic of the Congo over 2020-2040. Circles with different colours show the coverage by
578 scenarios, and vertical dashed lines represent the introduction years under the sequential (green) and
579 accelerated (red) introduction. For components A-C, coverage forecasts for the existing immunisation
580 programmes (blue) are the same regardless of MR-MAPs introduction but different for higher (darker
581 colours) and lower (lighter colours) coverage projection assumptions. These coverage forecasts refer to the
582 proportions of the total population in the corresponding age groups. For components D-F, the coverage
583 forecasts refer to the proportions of children experiencing MOV or living in HTR areas that receive additional
584 MR-MAP doses, and fixed coverage is assumed. Abbreviations: HTR-hard-to-reach, MCV1-the first routine
585 dose of measles-containing vaccine, MCV2-the second routine dose of measles-containing vaccine, MOV-
586 missed opportunities for vaccination, MR-MAP-measles-rubella microarray patch.

587

588 **Figure 2. Cumulative measles burden (in millions) by coverage projections and income levels**

589 Bars represent the total estimated measles cases, deaths, and DALYs in millions over 2030-2040 by income
590 levels, with darker and lighter colours showing the results under higher and lower coverage assumptions,
591 respectively. Abbreviations: DALY-disability-adjusted life year, MAP-microarray patch, MR-measles-rubella.

592

593 **Figure 3. Breakdown of incremental costs following MR-MAPs introduction**

594 The upper and lower panels show the incremental costs under higher and lower coverage projection
595 assumptions, respectively. For each horizontal bar, incremental costs of measles treatment, vaccine
596 procurement, and vaccine delivery are stacked and denoted in different colours. Hollow circles represent
597 overall incremental costs. The vertical line is set at zero; to its left, negative values (purple and yellow bars)
598 indicate savings following the MR-MAPs introduction, while to its right, positive values (green bars) indicate
599 increased costs. Abbreviations: DALY-disability-adjusted life year, MR-MAP-measles-rubella microarray patch.

600

601 **Figure 4. Incremental cost-effectiveness ratios of introducing MR-MAPs**

602 Income-group level ICERs of introducing MR-MAPs are presented by discounting approaches. Equal
603 discounting applies a 3% rate to both costs and health outcomes (averted DALYs), while differential
604 discounting applies a 3% rate only to costs and no discounting of health outcomes. Circles and triangles
605 denote the ICERs with a lower and upper MR-MAP price, respectively. Colours represent the sequential
606 (green) and accelerated (red) introduction strategies and assumptions of higher (darker) and lower (lighter)
607 coverage projections. Horizontal dashed lines indicate the cost-effectiveness thresholds at the income-group
608 level; for scenarios with an ICER below the lines, it would be cost-effective to introduce MR-MAPs.
609 Abbreviations: DALY-disability-adjusted life years, ICER-incremental cost-effectiveness ratio, MR-MAP-
610 measles-rubella microarray patch.

611

612 **Funding**

613 This work is part of the initial Full Vaccine Value Assessment (iFVVA) for MR-MAPs, which is funded by
614 UNICEF and Al Waleed Philanthropies (grant number 43317323). HF, KA, and MJ from the London School of
615 Hygiene & Tropical Medicine receive funding support from the Bill and Melinda Gates Foundation via the
616 Vaccine Impact Modelling Consortium (grant number INV-009125). The authors alone are responsible for the
617 views expressed in the article and they do not necessarily represent the views, decisions or policies of the
618 funders and the institutions with which they are affiliated. The funders had no role in the study design, data
619 collection and analysis, decision to publish, or preparation of the manuscript.

620

621 **Competing interests**

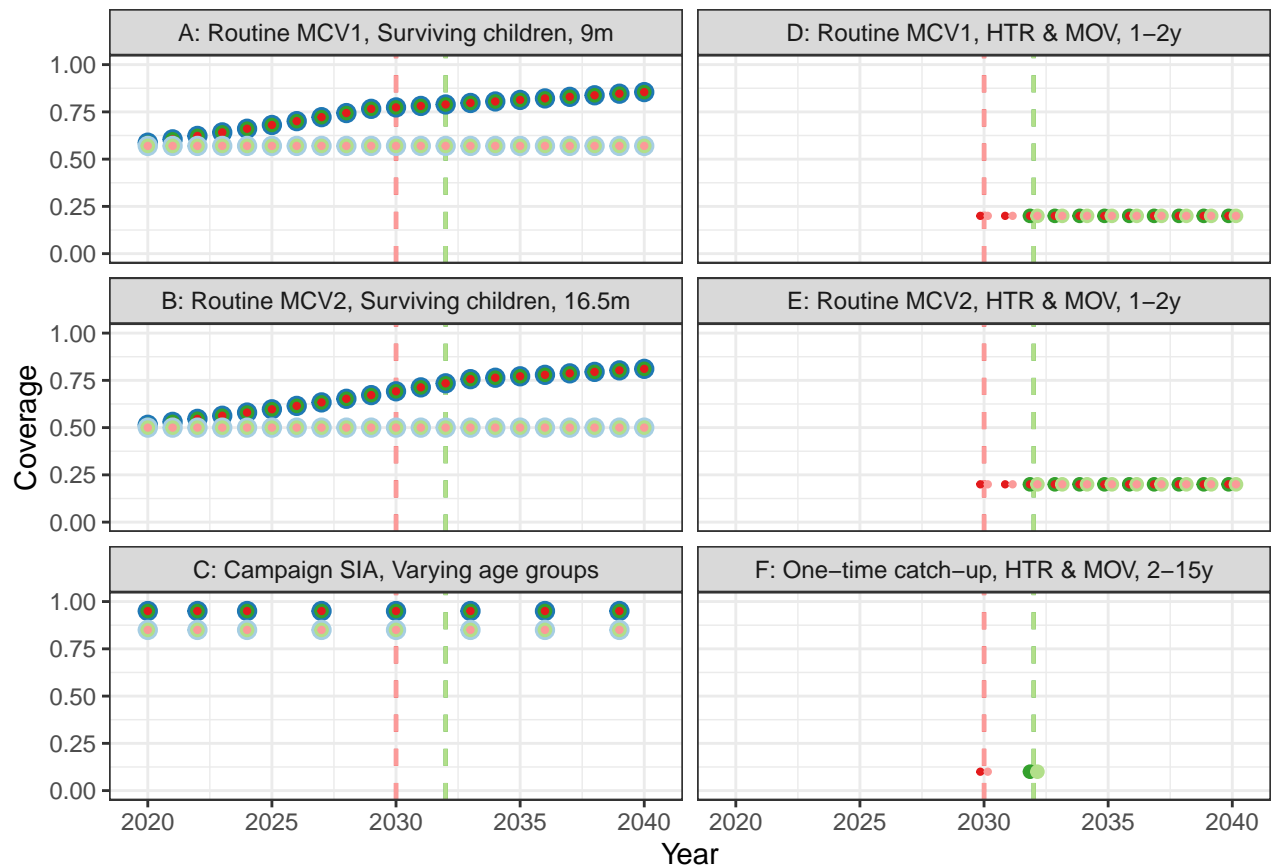
622 None declared.

623

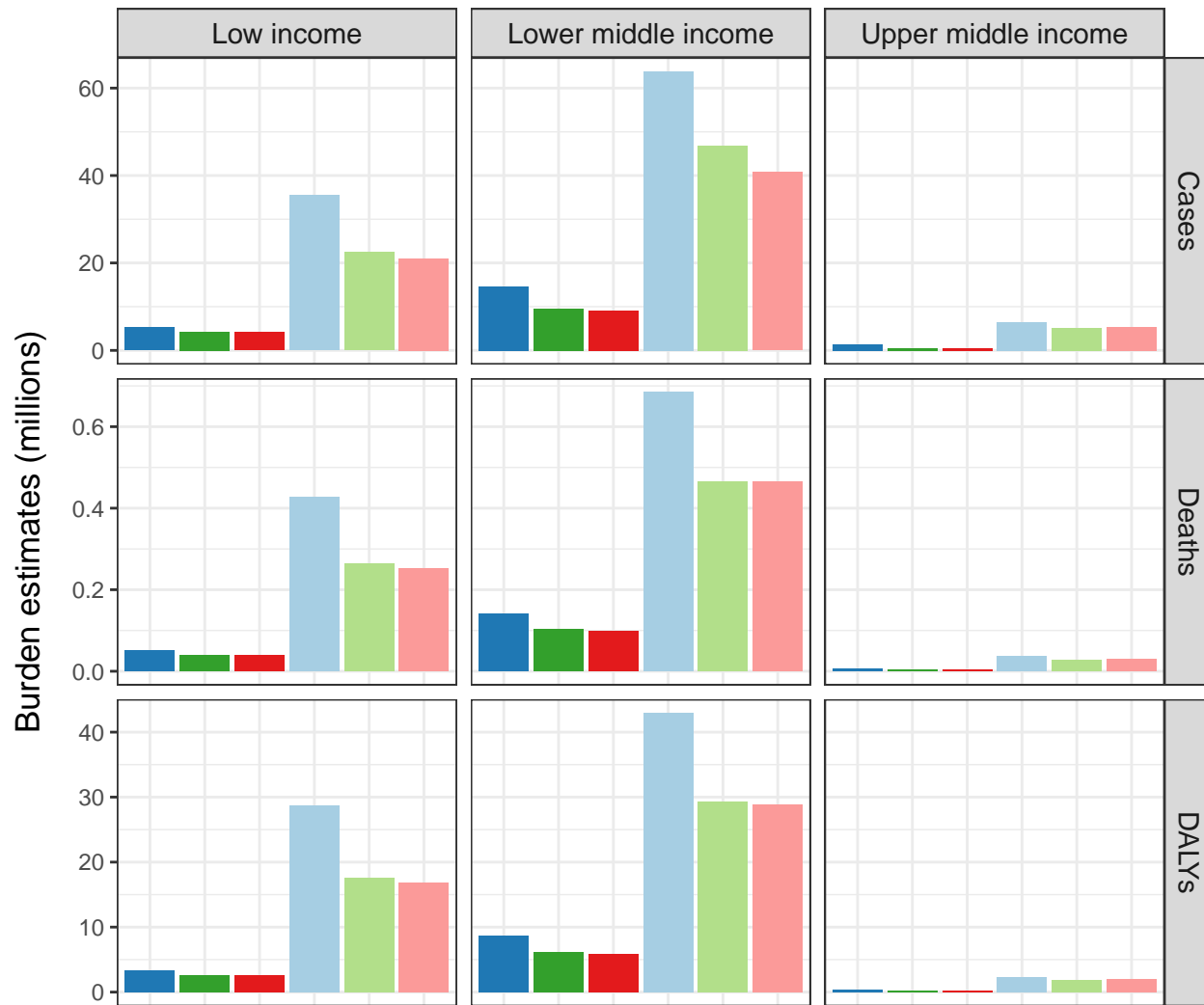
624 **Supplementary Files**

625 **Online supplemental file S1. Supplementary methods and results.** Text A. Estimating the theoretical price
626 ranges for MR-MAPs. Text B. Cost of treating a measles case. Table A. List of 70 countries and related inputs
627 included in the study. Table B. DynaMICE model parameters. Table C. Incremental cost (in million USD) of
628 introducing MR-MAPs by income groups, coverage assumptions, and the MR-MAP prices. Table D. Number
629 of countries where introducing MR-MAPs is cost-effective under differential discounting. Figure A. Health
630 opportunity costs in 70 low- and middle-income countries. Figure B. Net health benefits of introducing MR-
631 MAPs in 70 countries under the equal discounting assumption.

632 **Online supplemental file S2. Coverage forecasts and delivery components in 70 countries.**



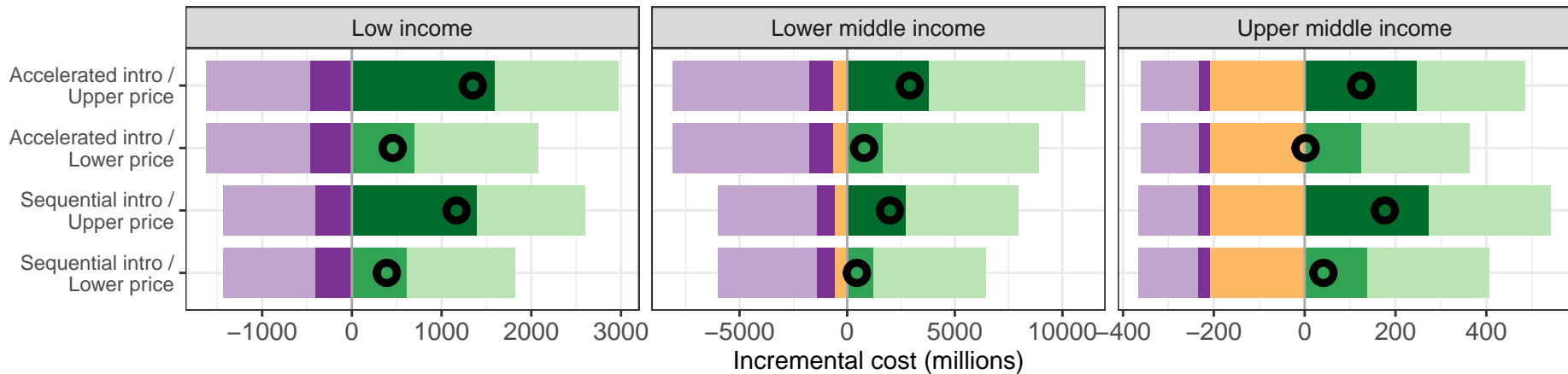
- Scenario**
- Without MR-MAPs (higher cov)
 - Without MR-MAPs (lower cov)
 - Sequential MR-MAPs intro (higher cov)
 - Sequential MR-MAPs intro (lower cov)
 - Accelerated MR-MAPs intro (higher cov)
 - Accelerated MR-MAPs intro (lower cov)



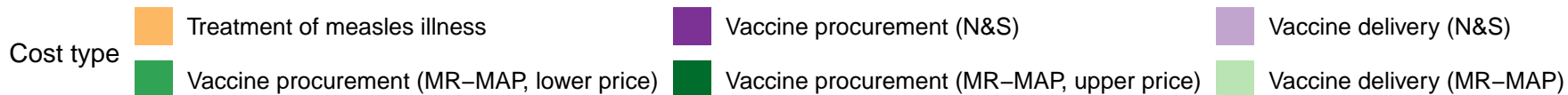
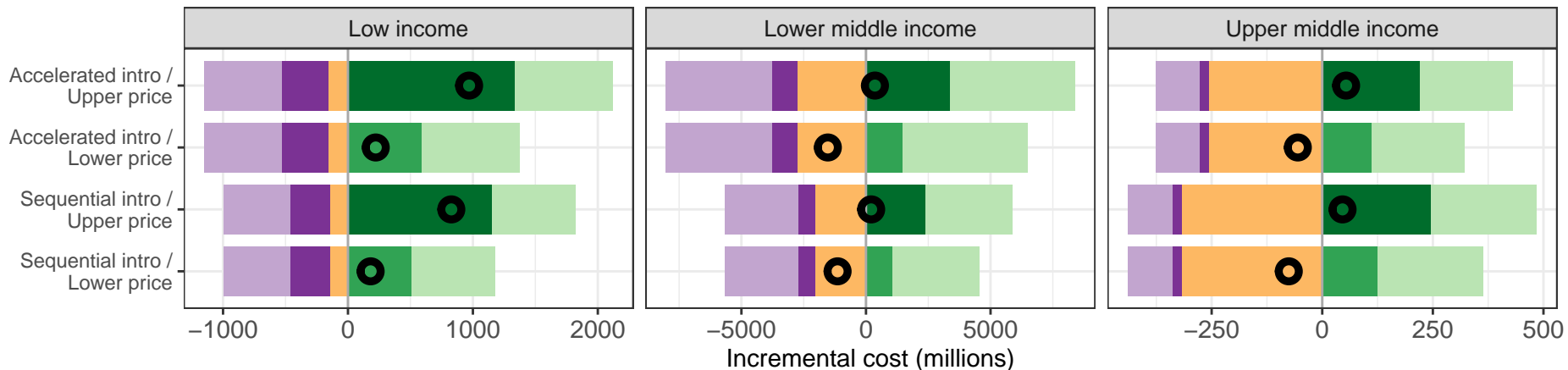
Scenarios

- Without MR-MAPs (higher cov)
- Sequential MR-MAPs intro (higher cov)
- Accelerated MR-MAPs intro (higher cov)
- Without MR-MAPs (lower cov)
- Sequential MR-MAPs intro (lower cov)
- Accelerated MR-MAPs intro (lower cov)

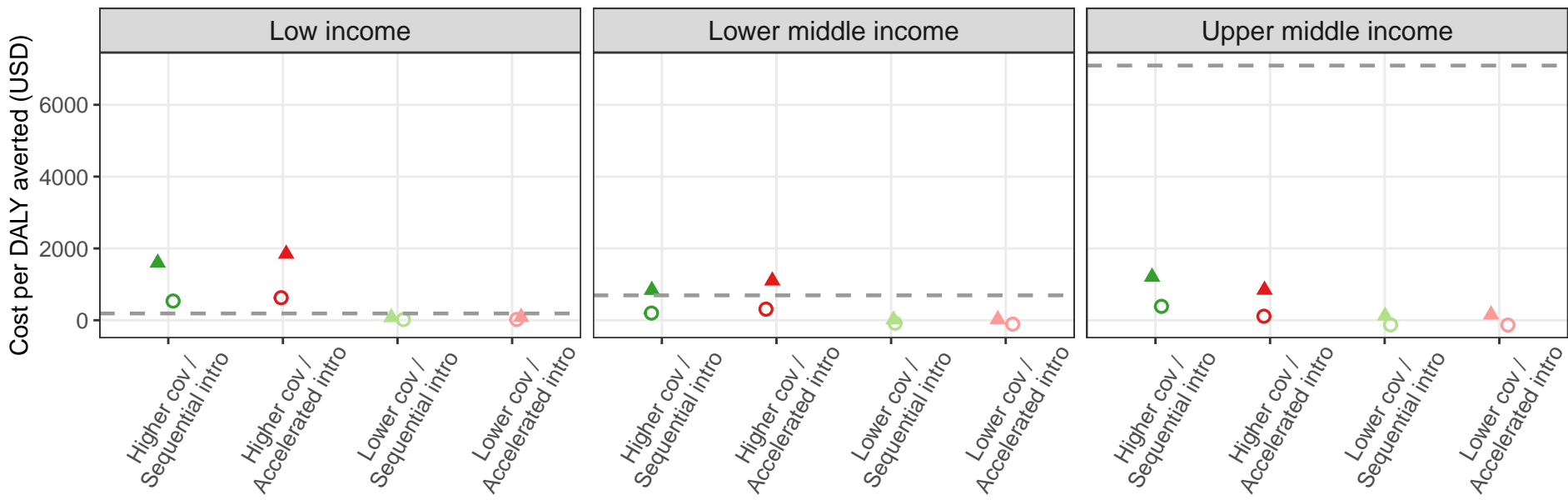
Higher coverage projection



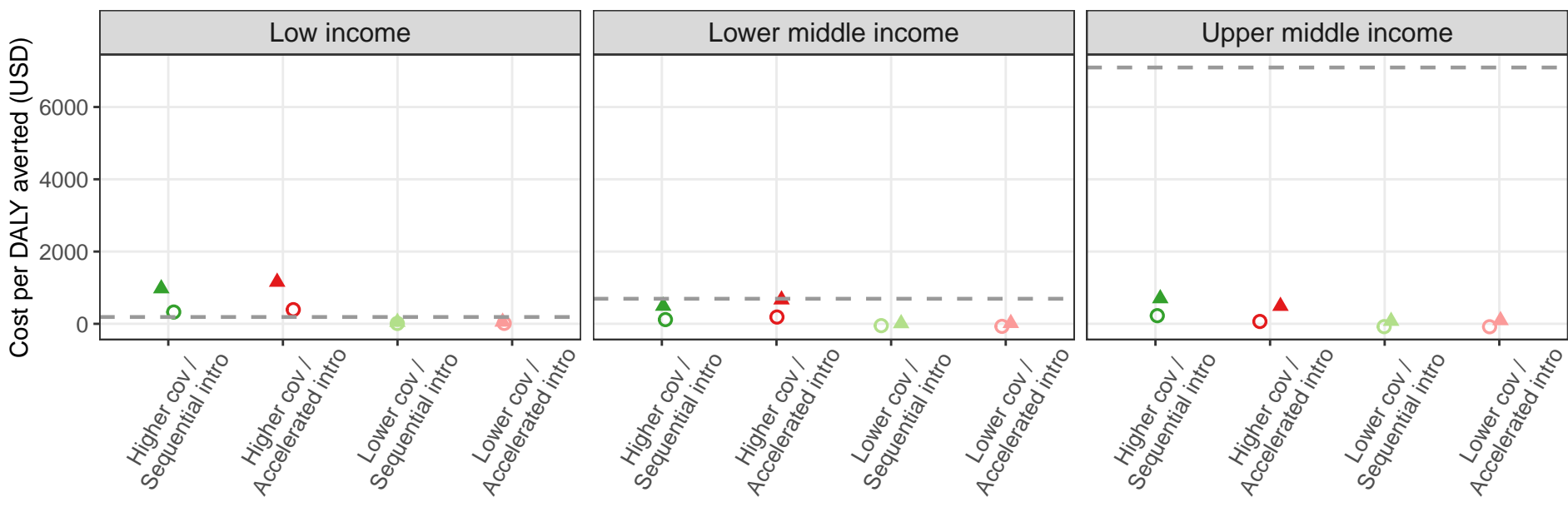
Lower coverage projection



Equal discounting



Differential discounting



MR-MAP price ○ Lower price ▲ Upper price