

## **Influence of socioeconomic status on the presence of obstructive coronary artery disease and cardiovascular outcomes in patients undergoing invasive coronary angiography**

Jaehoon Chung<sup>1</sup>, Hack-Lyoung Kim<sup>2\*</sup>, Hyun Sung Joh<sup>2</sup>, Woo-Hyun Lim<sup>2</sup>, Jae-Bin Seo<sup>2</sup>, Sang-Hyun Kim<sup>2</sup>, Joo-Hee Zo<sup>2</sup>, Myung-A Kim<sup>2</sup>

<sup>1</sup>Division of Cardiology, Department of Internal Medicine, National Medical Center, Seoul, Republic of Korea

<sup>2</sup>Division of Cardiology, Department of Internal Medicine, Boramae Medical Center, Seoul National University College of Medicine, Seoul, Republic of Korea

**Running title:** Influence of SES on CAD extent and CV outcomes

### **Correspondence to:**

Hack-Lyoung Kim, MD, PhD,

Division of Cardiology, Department of Internal Medicine, Boramae Medical Center, Seoul

National University College of Medicine, 5 Boramae-ro, Dongjak-gu, Seoul 07061, Republic of

Korea. E-mail: [khl2876@gmail.com](mailto:khl2876@gmail.com)

Total word count; 5197

## **Abstract**

### *Background*

Although it has been documented that low socioeconomic status (SES) is associated with increased risk of mortality and cardiovascular disease (CVD), this issue has not been addressed in patients at high CVD risk. This study was performed to investigate the association of the patient's SES with the presence of obstructive coronary artery disease (CAD) and long-term cardiovascular outcomes who undergo invasive coronary angiography (ICA).

### *Methods*

A total of 9,530 patients who underwent ICA for the evaluation and treatment of CAD (66.0±12.3 years and 60.2% male) were retrospectively reviewed. The patients were divided into two groups according to the health insurance type: those with low SES who had the Medical aid program (Medical aid beneficiary [MAB] group; n=1,436) and those with high SES who had the National Health Insurance program (National Health Insurance beneficiary [NHIB] group; n=8,094). The primary outcome was a composite of cardiac death, acute myocardial infarction, coronary revascularization, and ischemic stroke.

### *Results*

Of the study patients, 1,436 (15.1%) were in the MAB group. The prevalence of cardiovascular risk factors was higher in the MAB group compared to the NHIB group. However, the prevalence of obstructive CAD was similar between the two groups (62.8% vs. 64.2%;  $P=0.306$ ). During a median follow-up period of 3.5 years (interquartile range, 1.0 to 5.9 years), the

incidence of the composite cardiovascular event was significantly higher in the MAB group than in the NHIB group (20.2% vs. 16.2%,  $P<0.001$ ). In multivariable Cox regression analysis, compared to the NHIB group, the MAB group was independently associated with worse clinical outcomes even after controlling for potential confounders (adjusted odds ratio, 1.28; 95% confidence interval, 1.07 to 1.54;  $P=0.006$ ).

### *Conclusions*

Although CAD prevalence was similar, MABs showed an increased risk of composite cardiovascular events than NHIBs in Korean adults undergoing ICA. This provides additional evidence for the association between low SES and an increased risk of CVD, even in high-risk subjects.

**Keywords:** cardiovascular disease; coronary angiography; coronary artery disease; medical aid beneficiary; national health insurance beneficiary; socioeconomic status.

## Clinical perspective

What is new?

- This study provided evidence for a relationship between low socioeconomic status and increased cardiovascular disease risk in a high-risk population.

What are the clinical implications?

- Subjects with low socioeconomic status are more likely to develop cardiovascular disease and to have a higher frequency of related risk factors, so cardiovascular disease tests and treatments should be performed more aggressively.
- Appropriate risk stratification of low socioeconomic status patients with traditional risk factors for cardiovascular disease is important for identifying high-risk patients.

## **Introduction**

Cardiovascular disease (CVD) remains the leading cause of death worldwide and a huge contributor to economic burden despite advancement of many excellent diagnoses and treatments. The prevalence of CVD continues to be high due to increasing life span in aging society, and the socio-economic costs are also continuously increasing.<sup>1,2</sup> Many previous studies have identified traditional risk factors for CVD such as hypertension, dyslipidemia, diabetes, a family history of premature coronary artery disease (CAD), and smoking.<sup>3</sup> Recent studies have shown that socioeconomic status (SES) is also a factor related to CVD.<sup>4-6</sup> Although numerous studies on the relationship between SES and CVD have been conducted in the general population,<sup>4-6</sup> studies on the association between SES and cardiovascular outcomes in high-risk patients are scarce. Cardiovascular events are more likely to occur in high-risk patients, so it is very important to identify their risk factors. Therefore, the purpose of this study was to investigate whether there is a difference in the presence and extent of coronary artery stenosis in invasive coronary angiography (ICA) according to SES in patients at high CVD risk. Since CAD severity is closely related to the occurrence of future cardiovascular events, we also intended to compare the prognosis according to SES.

## **Methods**

### *Study subjects*

Between May 2008 and May 2020, consecutive patients aged 20 to 90 years with suspected CAD who underwent ICA were retrospectively analyzed. There was no clinical limitation in enrollment except for patients diagnosed with cancer within the last five years. Finally, a total of

9,530 patients were analyzed in this study. This study was conducted in accordance with the Declaration of Helsinki, and the study protocol was approved by the Institutional Review Board (IRB) of Boramae Medical Center (Seoul, Korea) (IRB number, 10-2021-43). Obtaining written informed consent was waived by the IRB due to routine nature of information collected and retrospective nature of study design.

### *Data collection*

The patient's height and body weight were measured at the time of admission. Body mass index (BMI) was calculated as weight in kilograms divided by the square of height in meters ( $\text{kg}/\text{m}^2$ ). History of cardiovascular risk factors, including, hypertension, diabetes mellitus, dyslipidemia, and current cigarette smoking status, was obtained. Previous clinical medical history, including myocardial infarction, coronary revascularization, heart failure, and stroke, was also assessed. Venous blood samples were obtained after overnight fasting for more than 12 hours and the following laboratory data were measured: hemoglobin, glycated hemoglobin (HbA1c), C-reactive protein, creatinine, total cholesterol, low-density lipoprotein (LDL) cholesterol, high-density lipoprotein (HDL) cholesterol, and triglyceride. Estimated glomerular filtration rate (eGFR) was calculated using the Modification of Diet in Renal Disease (MDRD) study equation. Transthoracic echocardiography was performed during hospitalization and left ventricular ejection fraction (LVEF) was measured with biplane method of disks (modified Simpson's rule) according to the current practice guideline.<sup>7</sup> Information on current cardiovascular medications, including aspirin, clopidogrel, statins, angiotensin-converting enzyme inhibitors, angiotensin receptor blockers, beta-blockers, and calcium channel blockers, was also obtained.

### *ICA and percutaneous coronary intervention*

When performing ICA, the access site was determined at the operator's discretion, regardless of either trans-radial or trans-femoral ICA. Obstructive CAD was defined as  $\geq 50\%$  stenosis in major coronary arteries or their branches with  $> 2$  mm diameter on ICA, and the extent of CAD based on the number of affected coronary arteries. Percutaneous coronary intervention (PCI) was performed according to current procedural guidelines.<sup>8-11</sup>

### *SES*

The healthcare system in Korea is largely divided into national health insurance (NHI) and medical aid (MA), with private medical insurance serving as a supplementary function. NHI is a public health insurance program run by the Ministry of Health and Welfare that requires citizens with sufficient income to pay contributions to insure themselves and their dependents. The MA system is a public assistance system that the state guarantees for medical problems (disease, injury, childbirth, *etc.*) of low-income people who do not have the ability to sustain life or have difficulties in living. Medical aid beneficiaries (MABs) are households with less than 40% of the standard median income, households incapacitated to work, homeless people, facility recipients, victims of loss, and defectors from North Korea.<sup>12, 13</sup> Eligible amounts of household income for MAB are shown in [Supplementary Table S1](#). In a previous study, compared to NHIB, MAB had lower income, lower education level, less participation in public pension, and lower private health insurance coverage.<sup>14</sup> In this study, the patients were divided into two groups according to the health insurance type: those with low SES who had the MA program (MAB group; n=1,436)

and those with high SES who had the NHI program (NHIB group; n=8,094).

### *Clinical events*

The primary outcome was a major adverse cardiac and cerebral event (MACCE) which is a composite of cardiac death, non-fatal myocardial infarction, coronary revascularization, and non-fatal ischemic stroke during clinical follow-up. All deaths were considered to be related to cardiac causes unless a clear non-cardiac cause was identified. Myocardial infarction was defined as rise in cardiac troponin with at least one value above the 99th percentile upper reference limit and with at least one of the following: (1) symptoms of ischemia, (2) new or presumed new significant ST-segment–T wave changes or new left bundle branch block, (3) development of pathological Q waves in the electrocardiogram, or (4) imaging evidence of new loss of viable myocardium or new regional wall motion abnormality.<sup>15, 16</sup> Coronary revascularization was defined as revascularization with PCI or coronary artery bypass grafting. Ischemic stroke was defined as an episode of neurological dysfunction caused by focal cerebral infarction based on objective evidence of cerebral ischemic injury in a defined vascular distribution.<sup>17</sup>

### *Statistical analysis*

The results are expressed as the mean  $\pm$  standard deviation (SD) for continuous variables and as percentage for categorical variables. Between the two groups, continuous variables were compared using Student's *t*-test and categorical variables were compared using Pearson's chi-square test. The study endpoints were demonstrated using the Kaplan-Meier survival curve and



compared using the log-rank test. Multivariable Cox proportional hazards models were used to determine whether medical insurance status was independently associated with clinical outcomes. Age, sex, BMI, hypertension, diabetes mellitus, smoking status, presence of obstructive CAD, LVEF, and the use of concomitant medications including antiplatelets, renin-angiotensin system blockers, beta-blockers, and statins, were included as covariates in the multivariable models. To determine whether the effect of medical insurance status differs depending on the presence or absence of CAD, clinical outcomes were also analyzed depending on the presence or absence of CAD. Global chi-square values were calculated to clarify incremental prognostic value of insurance type in combination with other risk factors for predicting future MACCE. All analyses were 2-tailed, and clinical significance was defined as  $P < 0.05$ . Statistical analyses were performed with the statistical package SPSS version 23.0 (IBM Co., Armonk, NY, USA).

## Results

### *Baseline characteristics and ICA-associated findings*

The mean age of study subjects was  $66.0 \pm 12.3$  years, and 5,731 (60.2%) were male. The baseline clinical characteristics of the study subjects according to the health insurance type are shown in **Table 1**. Of the study patients, 1,436 (15.1%) were MABs. The MAB group was older ( $67.4 \pm 11.7$  vs.  $65.7 \pm 12.3$  years;  $P < 0.001$ ) and had less male portion (57.2% vs. 60.8%;  $P = 0.012$ ) than the NHIB group. The MAB group had more cardiovascular risk factors, including hypertension, diabetes, and cigarette smoking, compared to the NHIB group ( $P < 0.05$  for each). Heart failure history was also more frequent in the MAB group than in the NHIB group. The diagnosis of acute myocardial infarction was more frequent in the NHIB group than in the MAB

group. For major laboratory findings, hemoglobin and eGFR were lower, and glycated hemoglobin and C-reactive protein were higher in the MAB group than in the NHIB group. Mean LVEF was lower in the MAB group compared to the NHIB group. Among cardiovascular medications, statins were more frequently prescribed in the NHIB group, and angiotensin-converting enzyme inhibitors and beta-blockers were in the MAB group.

The ICA findings according to insurance status are shown in **Table 2**. Of the total study subjects, 6,100 (64.0%) had obstructive CAD. Overall, the prevalence and extent of obstructive CAD were not different between the two groups. The prevalence of left main disease and three-vessel disease was also similar between the two groups. The MAB group received PCI less frequently than the NHIB group (40.0% vs. 43.9%;  $P=0.006$ ). The PCI results were similar between the two groups.

### *Clinical events*

The incidence of clinical events during the follow-up are shown in **Table 3**. During the median follow-up period of 3.5 years (interquartile range, 1.0 to 5.9 years), there were 1,598 (16.8%) MACCE. The incidence rate of MACCE was significantly higher in the MAB group than in the NHIB (20.2% vs. 16.2%,  $P<0.001$ ), which was also confirmed in Kaplan-Meier survival curves (log-rank  $P<0.001$ ) (**Figure 1**). In each component of MACCE, the incidence rates of cardiac death, myocardial infarction, ischemic stroke were not different between the two groups, but the rate of revascularization was significantly higher in the MAB group than in the NHIB group (10.8% vs. 6.9%,  $P<0.001$ ). In the multivariable Cox regression analysis, medical insurance status was independently associated with the occurrence of MACCE during the follow-up period

even after adjustment for multiple confounding factors (MAB vs. NHIB groups: hazard ratio [HR], 1.28; 95% confidence interval [CI], 1.07 to 1.54;  $P=0.006$ ) (**Table 4**). Additionally, insurance status, age, diabetes mellitus, current smoking, reduced LVEF, and presence of obstructive CAD were associated with the occurrence of MACCE. To determine whether the effect of medical insurance status differs depending on the presence or absence of CAD, clinical events were also analyzed depending on the presence or absence of CAD. The incidence rate of MACCE was significantly higher in the MAB group than in the NHIB group, regardless of the presence or absence of CAD at baseline (log rank  $P=0.017$  in patients without CAD, log rank  $P<0.001$  in those with CAD) (**Figure 2**). In subgroups with (MAB vs. NHIB groups: HR, 1.24; 95% CI, 1.02 to 1.52;  $P=0.035$ ) and without (MAB vs. NHIB groups: HR, 1.52; 95% CI, 1.01 to 2.29;  $P=0.047$ ) CAD at baseline, medical insurance status was independently associated with the occurrence of MACCE during the follow-up period (**Table 5**). The global chi-square values of Cox regression analyses were compared to evaluate the incremental prognostic value of insurance status when it was added to age, sex, and traditional clinical factors including diabetes mellitus, hypertension, dyslipidemia, and smoking status. Addition of traditional clinical risk factors to age and sex had incremental prognostic value for predicting MACCE (global chi-square value, from 137.6 to 278.6;  $P<0.001$ ). Addition of SES to combined use of age, sex, and traditional clinical factor results further increased the predictive power for MACCE (global chi-square value, from 278.6 to 285.5;  $P=0.008$ ) (**Figure 3**).

## Discussion

The main finding of this study is that MABs had worse clinical outcomes than NHIBs in patients

who underwent ICA. Although MABs were older and had more cardiovascular risk factors than NHIBs, the prevalence and extent of CAD were similar between the two groups. This study provided additional evidence for a relationship between low SES and increased CVD risk in a high-risk population.

Many previous studies have reported that low SES is associated with an increased risk of developing CVD and death. In previous study of Atherosclerosis Risk in Communities (ARIC) cohort consisting of the general population aged 45 to 64 years in four US communities and Finnish population-based cardiovascular risk factor monitoring cohorts (FINRISK), low income was significantly associated with increased risk of cardiac events and sudden cardiac death.<sup>18</sup> In another study using ARIC data from more than 15,000 adults, low SES (low education and/or low income) was associated with older age, higher blood pressure, higher total cholesterol, more cigarette smoking, and more frequent use of antihypertensive medications. Thus, subjects with low SES had a higher Framingham risk score than those with high SES. In that study, low SES was associated with an increased coronary heart disease risk, independent of baseline Framingham risk score and time-dependent variables.<sup>19</sup> In an interesting computer simulation study of US adults (35 to 64 years) using data from the 2011- 2016 US National Health and Nutrition Examination Survey, both men and women in the low-SES group had double the rates of myocardial infarctions and cardiac deaths per 10,000 person-years compared to those in the high-SES group. The higher burden of traditional CAD risk factors in adults with low SES accounted for only 40% of these excess events. The remaining 60% of these events were attributed to other factors related to low SES.<sup>20</sup> In contrast to previous studies conducted in the general population, we studied the role of SES in high-risk patients with suspected CAD. In our

study, similar to previous studies with the general population, low SES was associated with an increased risk of CVD in high-risk patients who underwent ICA for suspected CAD even after adjusting for baseline risk factors. Also, low SES was associated with an increased cardiovascular risk in both patients with and without obstructive CAD. The results of this study suggest that SES may be one of the significant risk factors for CVD, irrespective of baseline cardiovascular risk.

The exact mechanism by which SES acts as a risk factor for CVD is unclear, but there have been some studies that can infer the mechanism. According to a study with Korean National Health and Nutrition Examination Survey (KNHANES), low SES was associated with an increased risk of metabolic syndrome and its component in the Korean adult population.<sup>21</sup> Similarly, MABs had more cardiovascular risk factors, such as hypertension, diabetes, and smoking, in our study. In the Minnesota heart survey study, education level was inversely related to blood pressure, cigarette smoking, and BMI. In addition, a higher education level was associated with an increased time spent in leisure physical activities and health knowledge.<sup>22</sup> Lack of education can lead to risky decisions about health behaviors such as smoking and alcohol consumption. This suggest that SES is associated with modifiable behavioral risk factors. However, modifiable behavioral risk factors alone cannot explain the association between SES and CVD risk. The association between low SES and CVD risk is reinforced by an additional independent effect of SES. Another study suggested that low parental SES or low SES in childhood is associated with the onset of early CVD, independent of traditional risk factors. In a longitudinal cohort study of 1,337 medical students at Johns Hopkins School of Medicine, lower SES in childhood was associated with a higher risk of early coronary heart disease in adulthood

among men with high adulthood SES.<sup>23</sup> As another factor, chronic psychosocial stress associated with low SES promotes atherosclerosis and CAD events. In the Whitehall II study with British civil servants, psychosocial work characteristics, and social support was associated with CAD incidence.<sup>24</sup> A systematic review of prospective cohort studies found that social isolation and lack of social support were associated with a two- to three-fold increased risk of cardiac mortality and morbidity.<sup>25</sup> In other study conducted in Denmark with more than 1,660,000 subjects, job strain was associated with a higher risk of developing CHD.<sup>26</sup> In addition to individual SES, socioeconomic characteristics of neighborhoods are associated with CVD risk factors, adverse events, and mortality. In the analysis using data from the Atherosclerosis Risk in Communities Study, living in disadvantaged areas is associated with an increased incidence of CHD after controlling for individual income, education, and occupation.<sup>27</sup> Collectively, low SES increases behavioral and psychosocial risks, and these disparities also occur as a result of poor health during childhood and early life, parental risk, and surrounding environments.

The poor prognosis of CVD in MABs is probably explained by the above reasons. This study did not enroll all MABs or NHIBs. However, in patients with suspected CAD who underwent ICA, baseline CAD status could be similar. Moreover, baseline underlying risk factors, such as hypertension, diabetes, and cigarette smoking, were more frequent in the MAB group than in the NHIB group. Although these risk factors were statistically adjusted, there may be a strong possibility that the control status of the patient's risk factors and the duration of these risk factors would act as unadjusted factors. Besides this, interactions between behavioral and psychosocial risk, disparities during childhood, parental risk, and surrounding environments could lead worse CVD outcomes.

### *Clinical implications*

Subjects with low SES are more likely to develop CVD and to have a higher frequency of related risk factors, so CVD tests and treatments should be performed more aggressively. However, approaches only to clinical risk factors paradoxically increase the disparity as groups with higher SES are more likely to receive interventions in a healthcare setting. Therefore, appropriate risk stratification of low-SES patients with traditional risk factors for CVD is important for identifying high-risk patients. Although clear criteria on SES have not yet been established, SES should be considered a CVD risk factor. Furthermore, as modifiable behavioral factors and childhood disparities could influence future CVD outcomes, it is necessary to ensure proper health care and health education in childhood and to resolve social inequality caused by low SES.

### *Study limitations*

This study has several limitations. First, as this study is a single-center study in Korea, it is difficult to generalize our results to other races and populations. Secondly, as this study is of retrospective design, there is a possibility that clinical event information may be inaccurate. Thirdly, even within the same MAB or NHIB groups, educational level, income, and social position can vary widely among individuals. Finally, changes in cardiovascular risk factors and medications were not investigated during the follow-up period.

### *Conclusions*

Although CAD prevalence was similar, MABs showed an increased risk of composite

cardiovascular events than NHIBs in Korean adults undergoing ICA. This provides additional evidence for the association between low SES and an increased risk of CVD even in populations at high risk. Cardiologists need an elaborate long-term strategy to reduce cardiovascular risk factors in low-SES patients.

### **Source of Funding**

None.

### **Disclosures**

The authors declare that the research was conducted in the absence of any commercial or financial relationships that could be construed as a potential conflict of interest.



## References

1. Timmis A, Vardas P, Townsend N, Torbica A, Katus H, De Smedt D, Gale CP, Maggioni AP, Petersen SE, Huculeci R, Kazakiewicz D, de Benito Rubio V, Ignatiuk B, Raisinghani S, Pawlak A, Karagiannidis E, Treskes R, Gaita D, Beltrame JF, McConnachie A, Bardinet I, Graham I, Flather M, Elliott P, Mossialos EA, Weidinger F, Achenbach S, Atlas Writing Group ESoC. European society of cardiology: Cardiovascular disease statistics 2021. *Eur Heart J*. 2022;43:716-799
2. Virani SS, Alonso A, Aparicio HJ, Benjamin EJ, Bittencourt MS, Callaway CW, Carson AP, Chamberlain AM, Cheng S, Delling FN, Elkind MSV, Evenson KR, Ferguson JF, Gupta DK, Khan SS, Kissela BM, Knutson KL, Lee CD, Lewis TT, Liu J, Loop MS, Lutsey PL, Ma J, Mackey J, Martin SS, Matchar DB, Mussolino ME, Navaneethan SD, Perak AM, Roth GA, Samad Z, Satou GM, Schroeder EB, Shah SH, Shay CM, Stokes A, VanWagner LB, Wang NY, Tsao CW, American Heart Association Council on E, Prevention Statistics C, Stroke Statistics S. Heart disease and stroke statistics-2021 update: A report from the american heart association. *Circulation*. 2021;143:e254-e743
3. Goff DC, Jr., Lloyd-Jones DM, Bennett G, Coady S, D'Agostino RB, Gibbons R, Greenland P, Lackland DT, Levy D, O'Donnell CJ, Robinson JG, Schwartz JS, Shero ST, Smith SC, Jr., Sorlie P, Stone NJ, Wilson PW, Jordan HS, Nevo L, Wnek J, Anderson JL, Halperin JL, Albert NM, Bozkurt B, Brindis RG, Curtis LH, DeMets D, Hochman JS, Kovacs RJ, Ohman EM, Pressler SJ, Sellke FW, Shen WK, Smith SC, Jr., Tomaselli GF, American College of Cardiology/American Heart Association Task Force on Practice G. 2013 acc/aha guideline on the assessment of cardiovascular risk: A report of the american

college of cardiology/american heart association task force on practice guidelines.

*Circulation*. 2014;129:S49-73

4. Avendano M, Kunst AE, Huisman M, Lenthe FV, Bopp M, Regidor E, Glickman M, Costa G, Spadea T, Deboosere P, Borrell C, Valkonen T, Gisser R, Borgan JK, Gadeyne S, Mackenbach JP. Socioeconomic status and ischaemic heart disease mortality in 10 western european populations during the 1990s. *Heart*. 2006;92:461-467
5. Shishehbor MH, Litaker D, Pothier CE, Lauer MS. Association of socioeconomic status with functional capacity, heart rate recovery, and all-cause mortality. *JAMA*. 2006;295:784-792
6. Stringhini S, Carmeli C, Jokela M, Avendano M, Muennig P, Guida F, Ricceri F, d'Errico A, Barros H, Bochud M, Chadeau-Hyam M, Clavel-Chapelon F, Costa G, Delpierre C, Fraga S, Goldberg M, Giles GG, Krogh V, Kelly-Irving M, Layte R, Lasserre AM, Marmot MG, Preisig M, Shipley MJ, Vollenweider P, Zins M, Kawachi I, Steptoe A, Mackenbach JP, Vineis P, Kivimaki M, consortium L. Socioeconomic status and the 25 x 25 risk factors as determinants of premature mortality: A multicohort study and meta-analysis of 1.7 million men and women. *Lancet*. 2017;389:1229-1237
7. Lang RM, Badano LP, Mor-Avi V, Afilalo J, Armstrong A, Ernande L, Flachskampf FA, Foster E, Goldstein SA, Kuznetsova T, Lancellotti P, Muraru D, Picard MH, Rietzschel ER, Rudski L, Spencer KT, Tsang W, Voigt JU. Recommendations for cardiac chamber quantification by echocardiography in adults: An update from the american society of echocardiography and the european association of cardiovascular imaging. *J Am Soc Echocardiogr*. 2015;28:1-39 e14

8. Authors/Task Force m, Windecker S, Kolh P, Alfonso F, Collet JP, Cremer J, Falk V, Filippatos G, Hamm C, Head SJ, Juni P, Kappetein AP, Kastrati A, Knuuti J, Landmesser U, Laufer G, Neumann FJ, Richter DJ, Schauerte P, Sousa Uva M, Stefanini GG, Taggart DP, Torracca L, Valgimigli M, Wijns W, Witkowski A. 2014 esc/eacts guidelines on myocardial revascularization: The task force on myocardial revascularization of the european society of cardiology (esc) and the european association for cardio-thoracic surgery (eacts)developed with the special contribution of the european association of percutaneous cardiovascular interventions (eapci). *Eur Heart J.* 2014;35:2541-2619
9. Fihn SD, Gardin JM, Abrams J, Berra K, Blankenship JC, Dallas AP, Douglas PS, Foody JM, Gerber TC, Hinderliter AL, King SB, 3rd, Kligfield PD, Krumholz HM, Kwong RY, Lim MJ, Linderbaum JA, Mack MJ, Munger MA, Prager RL, Sabik JF, Shaw LJ, Sikkema JD, Smith CR, Jr., Smith SC, Jr., Spertus JA, Williams SV, Anderson JL, American College of Cardiology Foundation/American Heart Association Task F. 2012 accf/aha/acp/aats/pcna/scai/sts guideline for the diagnosis and management of patients with stable ischemic heart disease: A report of the american college of cardiology foundation/american heart association task force on practice guidelines, and the american college of physicians, american association for thoracic surgery, preventive cardiovascular nurses association, society for cardiovascular angiography and interventions, and society of thoracic surgeons. *Circulation.* 2012;126:e354-471
10. Neumann FJ, Sousa-Uva M, Ahlsson A, Alfonso F, Banning AP, Benedetto U, Byrne RA, Collet JP, Falk V, Head SJ, Juni P, Kastrati A, Koller A, Kristensen SD, Niebauer J, Richter DJ, Seferovic PM, Sibbing D, Stefanini GG, Windecker S, Yadav R, Zembala

- MO. 2018 esc/eacts guidelines on myocardial revascularization. *EuroIntervention*. 2019;14:1435-1534
11. Patel MR, Calhoon JH, Dehmer GJ, Grantham JA, Maddox TM, Maron DJ, Smith PK. Acc/aats/aha/ase/asnc/scai/scct/sts 2017 appropriate use criteria for coronary revascularization in patients with stable ischemic heart disease: A report of the american college of cardiology appropriate use criteria task force, american association for thoracic surgery, american heart association, american society of echocardiography, american society of nuclear cardiology, society for cardiovascular angiography and interventions, society of cardiovascular computed tomography, and society of thoracic surgeons. *J Am Coll Cardiol*. 2017;69:2212-2241
  12. Song YJ. The south korean health care system. *Jmaj*. 2009;52:206-209
  13. Health insurance review & assessment service, healthcare system in korea.2022
  14. Kong NY, Kim DH. Factors influencing health care use by health insurance subscribers and medical aid beneficiaries: A study based on data from the korea welfare panel study database. *BMC Public Health*. 2020;20:1133
  15. Thygesen K, Alpert JS, Jaffe AS, Chaitman BR, Bax JJ, Morrow DA, White HD, Executive Group on behalf of the Joint European Society of Cardiology /American College of Cardiology /American Heart Association /World Heart Federation Task Force for the Universal Definition of Myocardial I. Fourth universal definition of myocardial infarction (2018). *J Am Coll Cardiol*. 2018;72:2231-2264
  16. Thygesen K, Alpert JS, Jaffe AS, Simoons ML, Chaitman BR, White HD, Task Force for the Universal Definition of Myocardial I. Third universal definition of myocardial

- infarction. *Nat Rev Cardiol.* 2012;9:620-633
17. Sacco RL, Kasner SE, Broderick JP, Caplan LR, Connors JJ, Culebras A, Elkind MS, George MG, Hamdan AD, Higashida RT, Hoh BL, Janis LS, Kase CS, Kleindorfer DO, Lee JM, Moseley ME, Peterson ED, Turan TN, Valderrama AL, Vinters HV, American Heart Association Stroke Council CoCS, Anesthesia, Council on Cardiovascular R, Intervention, Council on C, Stroke N, Council on E, Prevention, Council on Peripheral Vascular D, Council on Nutrition PA, Metabolism. An updated definition of stroke for the 21st century: A statement for healthcare professionals from the american heart association/american stroke association. *Stroke.* 2013;44:2064-2089
  18. Kucharska-Newton AM, Harald K, Rosamond WD, Rose KM, Rea TD, Salomaa V. Socioeconomic indicators and the risk of acute coronary heart disease events: Comparison of population-based data from the united states and finland. *Ann Epidemiol.* 2011;21:572-579
  19. Franks P, Winters PC, Tancredi DJ, Fiscella KA. Do changes in traditional coronary heart disease risk factors over time explain the association between socio-economic status and coronary heart disease? *BMC Cardiovasc Disord.* 2011;11:28
  20. Hamad R, Penko J, Kazi DS, Coxson P, Guzman D, Wei PC, Mason A, Wang EA, Goldman L, Fiscella K, Bibbins-Domingo K. Association of low socioeconomic status with premature coronary heart disease in us adults. *JAMA Cardiol.* 2020;5:899-908
  21. Chung J, Choi H-M, Jung J-H, Kong MG. Association between socioeconomic status and metabolic syndrome in korean adults: Data from the korean national health and nutrition examination survey. *Cardiometab Syndr J.* 2021;1:168-179

22. Luepker RV, Rosamond WD, Murphy R, Sprafka JM, Folsom AR, McGovern PG, Blackburn H. Socioeconomic status and coronary heart disease risk factor trends. The minnesota heart survey. *Circulation*. 1993;88:2172-2179
23. Kittleson MM, Meoni LA, Wang NY, Chu AY, Ford DE, Klag MJ. Association of childhood socioeconomic status with subsequent coronary heart disease in physicians. *Arch Intern Med*. 2006;166:2356-2361
24. Marmot MG, Bosma H, Hemingway H, Brunner E, Stansfeld S. Contribution of job control and other risk factors to social variations in coronary heart disease incidence. *Lancet*. 1997;350:235-239
25. Mookadam F, Arthur HM. Social support and its relationship to morbidity and mortality after acute myocardial infarction: Systematic overview. *Arch Intern Med*. 2004;164:1514-1518
26. Rugulies R, Framke E, Sorensen JK, Svane-Petersen AC, Alexanderson K, Bonde JP, Farrants K, Flachs EM, Magnusson Hanson LL, Nyberg ST, Kivimaki M, Madsen IE. Persistent and changing job strain and risk of coronary heart disease. A population-based cohort study of 1.6 million employees in denmark. *Scand J Work Environ Health*. 2020;46:498-507
27. Diez Roux AV, Merkin SS, Arnett D, Chambless L, Massing M, Nieto FJ, Sorlie P, Szklo M, Tyroler HA, Watson RL. Neighborhood of residence and incidence of coronary heart disease. *N Engl J Med*. 2001;345:99-106

## **Figure legends**

### **Figure 1. The incidence of MACCE according to the health insurance type**

MACCE, major adverse cardiac and cerebral event; MAB, medical aid beneficiary; NHIB, national health insurance beneficiary.

### **Figure 2. The incidence of MACCE in subjects with or without obstructive coronary artery disease according to the health insurance type**

(a) Subjects without obstructive coronary artery disease, (b) subjects with obstructive coronary artery disease

MACCE, major adverse cardiac and cerebral event; MAB, medical aid beneficiary; NHIB, national health insurance beneficiary.

### **Figure 3. Prognostic value of clinical risk factors and health insurance type for MACCE**

MACCE, major adverse cardiac and cerebral event.

**Table 1. Baseline characteristics of study subjects**

Characteristic	MAB (n=1,436)	NHIB (n=8,094)	P value
Age, years	67.4 ± 11.7	65.7 ± 12.3	< 0.001
Male	822 (57.2)	4,918 (60.8)	0.012
Body mass index, kg/m <sup>2</sup>	24.2 ± 4.3	24.5 ± 3.6	0.045
Cardiovascular risk factors			
Hypertension	937 (65.3)	4,797 (59.3)	< 0.001
Diabetes mellitus	564 (39.3)	2,540 (31.4)	< 0.001
Dyslipidemia	750 (52.2)	4,478 (55.3)	0.030
Cigarette smoking	444 (30.9)	1,947 (24.1)	< 0.001
Obesity (body mass index ≥ 25 kg/m <sup>2</sup> )	535 (39.7)	3,234 (42.2)	0.087
Medical history			
Myocardial infarction	81 (5.6)	392 (4.8)	0.200
Coronary revascularization	112 (7.8)	519 (6.4)	0.051
Heart failure	109 (7.6)	448 (5.5)	0.002
Stroke	133 (9.3)	656 (8.1)	0.143
Clinical diagnosis			
Acute myocardial infarction	261 (18.1)	1,760 (21.7)	0.002
Major laboratory findings			
Hemoglobin, g/dL	12.4 ± 2.0	13.0 ± 1.9	< 0.001
Glycated hemoglobin, %	6.8 ± 1.7	6.5 ± 1.3	< 0.001
C-reactive protein, mg/dL	1.9 ± 4.8	1.5 ± 4.0	0.015
Estimated GFR, mL/min/1.73m <sup>2</sup>	69.7 ± 33.8	76.5 ± 28.3	< 0.001
Total cholesterol, mg/dL	159 ± 44	162 ± 43	0.012
LDL cholesterol, mg/dL	93.7 ± 37.4	94.6 ± 37.0	0.747
HDL cholesterol, mg/dL	43.4 ± 14.3	43.3 ± 12.4	0.850
Triglyceride, mg/dL	125 ± 79	123 ± 72	0.461
Left ventricular ejection fraction, %	58.2 ± 14.6	60.4 ± 13.3	< 0.001
Cardiovascular medications			



Aspirin	1,231 (85.7)	6,840 (84.5)	0.238
Clopidogrel	1,124 (78.3)	6,204 (76.6)	0.179
Statins	713 (49.7)	4,250 (52.5)	0.046
Angiotensin-converting enzyme inhibitors	163 (11.4)	754 (9.3)	0.016
Angiotensin receptor blockers	404 (28.1)	2,114 (26.1)	0.110
Beta-blockers	498 (34.7)	2,521 (31.1)	0.008
Calcium channel blockers	492 (34.3)	2,546 (31.5)	0.035

Numbers are expressed as mean  $\pm$  standard deviation or n (%). MAB, medical aid

beneficiaries; NHIB, National Health Insurance beneficiaries; GFR, glomerular filtration rate;

HDL, high-density lipoprotein; LDL, low-density lipoprotein.

**Table 2. ICA associated findings**

<b>Characteristic</b>	<b>MAB (n=1,436)</b>	<b>NHIB (n=8,094)</b>	<b>P value</b>
Obstructive CAD	902 (62.8)	5,198 (64.2)	0.306
CAD extent			0.045
Insignificant	534 (37.2)	2,896 (35.8)	
One-vessel disease	253 (17.6)	1,616 (20.0)	
Two-vessel disease	251 (17.5)	1,530 (18.9)	
Three-vessel disease	398 (27.7)	2,052 (25.4)	
Left main disease	94 (6.5)	550 (6.8)	0.729
Three-vessel disease	398 (27.7)	2,052 (25.4)	0.059
Percutaneous coronary intervention	574 (40.0)	3,553 (43.9)	0.006
Procedure results			0.551
Successful	535 (93.2)	3,287 (92.5)	
Suboptimal	13 (2.3)	110 (3.1)	
Failed	26 (4.5)	156 (4.4)	

Numbers are expressed as n (%). ICA, invasive coronary angiography; MAB, medical aid beneficiaries; NHIB, National Health Insurance beneficiaries; CAD, coronary artery disease.

**Table 3. Clinical events**

<b>Clinical event</b>	<b>MAB (n=1,436)</b>	<b>NHIB (n=8,094)</b>	<b>P value</b>
MACCE	290 (20.2)	1,308 (16.2)	< 0.001
Cardiac death	87 (6.1)	478 (5.9)	0.821
Myocardial infarction	24 (1.7)	134 (1.7)	0.966
Coronary revascularization	155 (10.8)	560 (6.9)	< 0.001
Ischemic stroke	46 (3.2)	203 (2.5)	0.128

Numbers are expressed as n (%). MACCE, major adverse cardiac and cerebrovascular event;

MAB, medical aid beneficiaries; NHIB, National Health Insurance beneficiaries.

**Table 4. Clinical factors associated with composite major cardiac and cerebrovascular events**

Variable	HR	95% CI	P value
MAB (vs. NHIB)	1.28	1.07 to 1.54	0.006
Age $\geq$ 65 years	1.59	1.35 to 1.86	< 0.001
Female sex	0.93	0.80 to 1.08	0.346
BMI $\geq$ 25 kg/m <sup>2</sup>	0.97	0.84 to 1.11	0.624
Diabetes mellitus	1.49	1.30 to 1.71	< 0.001
Hypertension	1.07	0.91 to 1.25	0.400
Current smoking	1.26	1.06 to 1.49	0.008
LVEF < 50%	1.62	1.37 to 1.92	< 0.001
Obstructive CAD	3.13	2.58 to 3.79	< 0.001
Antiplatelets	0.92	0.72 to 1.19	0.543
Statins	0.90	0.78 to 1.04	0.162
Beta-blockers	1.03	0.90 to 1.18	0.686
RAS blockers	1.09	0.94 to 1.26	0.244

HR, hazard ratio; CI, confidence interval; MAB, medical aid beneficiaries; NHIB, National Health Insurance beneficiaries; BMI, body mass index; LVEF, left ventricular ejection fraction; CAD, coronary artery disease; RAS, renin angiotensin system.

**Table 5. Clinical factors associated with composite major cardiac and cerebrovascular events according to presence of obstructive CAD**

Variable	Without CAD (n=3,430)			With CAD (n=6,100)		
	HR	95% CI	P value	HR	95% CI	P value
MAB (vs. NHIB)	1.52	1.01 to 2.29	0.047	1.24	1.02 to 1.52	0.035
Age ≥ 65 years	2.22	1.52 to 3.26	< 0.001	1.47	1.23 to 1.75	< 0.001
Female sex	1.04	0.71 to 1.52	0.829	0.93	0.79 to 1.10	0.380
BMI ≥ 25 kg/m <sup>2</sup>	0.79	0.55 to 1.14	0.213	1.00	0.86 to 1.17	0.963
Diabetes mellitus	1.55	1.07 to 2.26	0.022	1.50	1.29 to 1.74	< 0.001
Hypertension	1.16	0.79 to 1.72	0.449	1.05	0.89 to 1.25	0.550
Current smoking	1.57	1.00 to 2.47	0.050	1.21	1.01 to 1.46	0.037
LVEF < 50%	2.41	1.60 to 3.63	< 0.001	1.55	1.29 to 1.86	< 0.001
Antiplatelets	0.51	0.35 to 0.74	< 0.001	1.45	1.00 to 2.11	0.052
Statins	0.70	0.49 to 1.01	0.053	0.93	0.80 to 1.10	0.398
Beta-blockers	0.78	0.53 to 1.14	0.199	1.06	0.91 to 1.23	0.447
RAS blockers	1.25	0.86 to 1.83	0.243	1.05	0.90 to 1.22	0.568

CAD, coronary artery disease; HR, hazard ratio; CI, confidence interval; MAB, medical aid beneficiaries; NHIB, National Health Insurance beneficiaries; BMI, body mass index; LVEF, left ventricular ejection fraction; RAS, renin angiotensin system.

Fig 1

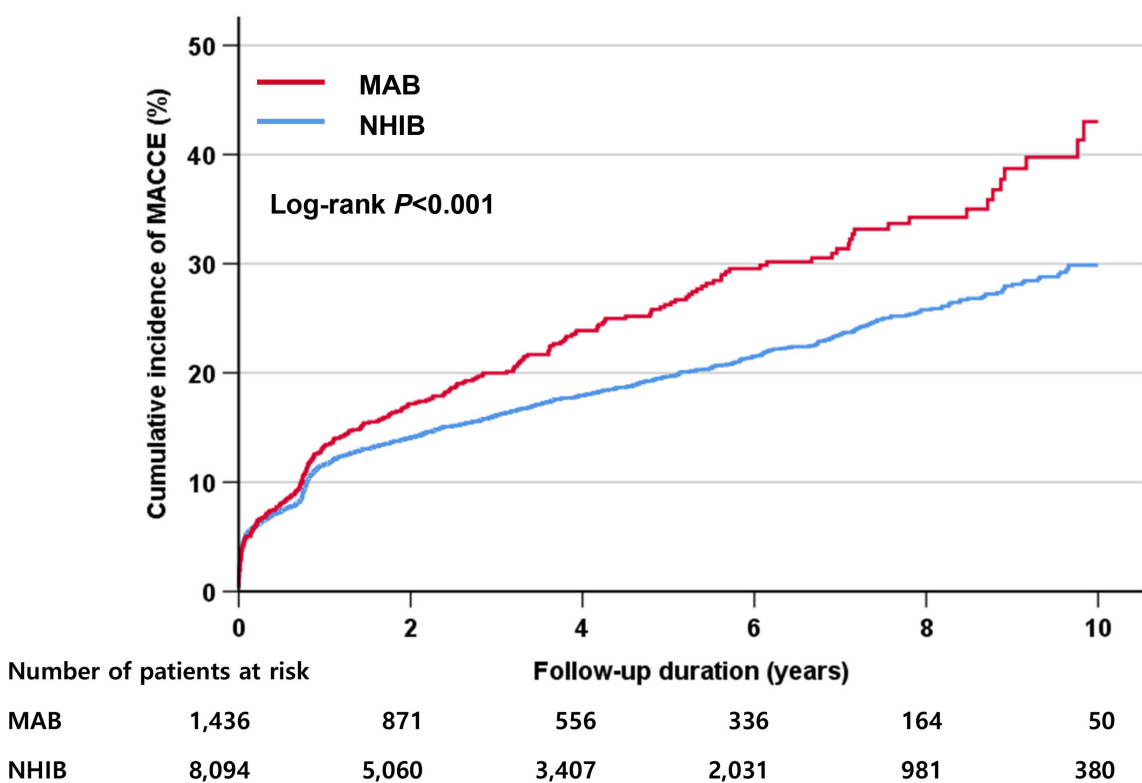


Fig 2 (a)

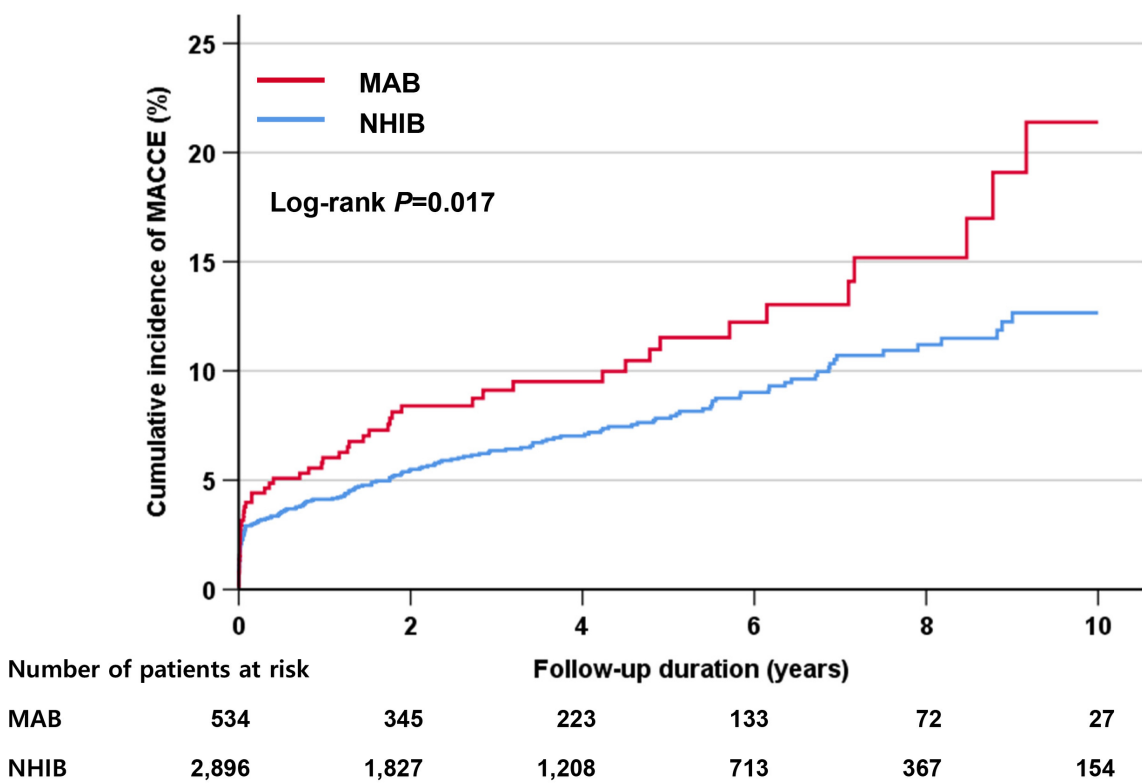


Fig 2 (b)

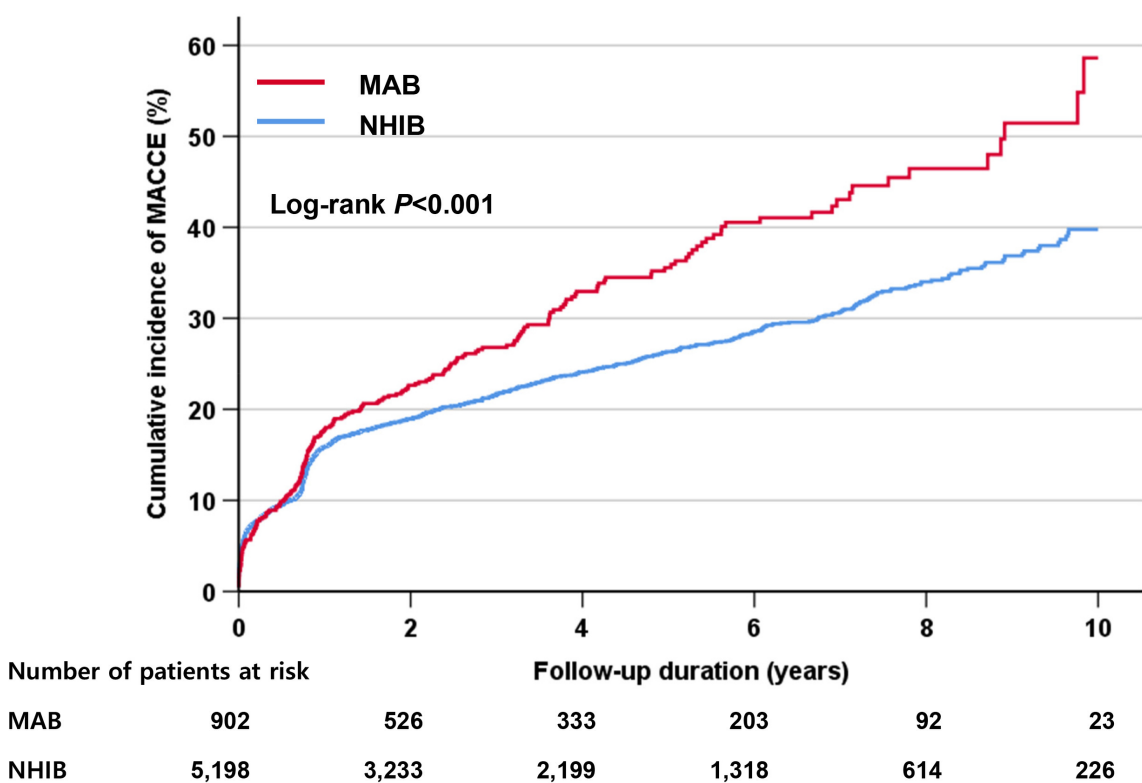




Fig 3

