

# 1 Dosing of convalescent plasma and hyperimmune anti-SARS-CoV-2 2 immunoglobulins: a phase I/II dose finding study

3  
4 Sammy Huygens<sup>1,\*</sup>, Tim Preijers<sup>2,6\*</sup>, Francis H. Swaneveld<sup>3</sup>, Ilona Kleine Budde<sup>4</sup>, Corine H.  
5 GeurtsvanKessel<sup>5</sup>, Birgit C.P. Koch<sup>2,6\*</sup>, Bart J.A. Rijnders<sup>1\*</sup>  
6 \*Both are shared first and last authors

## 8 Affiliations:

9 <sup>1</sup> Department of Internal Medicine, Section of Infectious Diseases and Department of Medical Microbiology and  
10 Infectious Diseases, Erasmus MC, University Medical Center, Rotterdam, The Netherlands;

11 <sup>2</sup> Department of Hospital Pharmacy, Erasmus MC, Erasmus University Medical Center Rotterdam, Rotterdam,  
12 the Netherlands;

13 <sup>3</sup> Unit of Transfusion Medicine, Sanquin Blood Supply Foundation, 1066 CX Amsterdam, The Netherlands;

14 <sup>4</sup> Clinical Operations, Prothya Biosolutions, 1066 CX Amsterdam, The Netherlands;

15 <sup>5</sup> Department of Viroscience, Erasmus MC, WHO Collaborating Centre for Arbovirus and Viral Hemorrhagic Fever  
16 Reference and Research, Rotterdam, Netherlands.

17 <sup>6</sup> Rotterdam Clinical Pharmacometrics group, Rotterdam, The Netherlands.

## 20 Corresponding author:

21 Prof.dr. Bart J.A. Rijnders  
22 Dr. Molewaterplein 40 3015 GD, Rotterdam  
23 The Netherlands  
24 E-mail: [b.rijnders@erasmusmc.nl](mailto:b.rijnders@erasmusmc.nl)  
25 Tel: +31 10 703 35 10

## 28 Conflict of Interest statement:

29 SH, TP, FS, IKB, CG, BK, and BR have no conflict of interest to report.

## 32 Funding information:

33 This trial was funded by ZonMw under grant number 10430062010002

## 36 Keywords:

37 COVID-19, immunoglobulins, convalescent plasma, population PK, dose selection

## 40 ORCID:

41 Sammy Huygens: 0000-0002-9418-8256  
42 Tim Preijers: 0000-0001-6953-0358  
43 Francis Swaneveld: -  
44 Ilona Kleine Budde: -  
45 Corine Geurtsvankessel: 0000-0002-7678-314X  
46 Birgit Koch: 0000-0002-1202-3643  
47 Bart Rijnders: 0000-0003-3343-9610

## 50 Meta-data:

51 Words: (max. 4.000) – 3826 words  
52 Abstract: (max. 250) – 248 words  
53 References: (max. 50) – 41 references  
54 Figures/tables: (max. 7 total) – 3 tables/3 figures

56 **Abstract**

57 **Background:** During the COVID-19 pandemic, trials on convalescent plasma (ConvP) were  
58 performed without preceding dose-finding studies. This study aimed to assess potential protective  
59 dosing regimens by constructing a population pharmacokinetic (popPK) model describing neutralizing  
60 antibody (Nab) titers following the administration of ConvP or hyperimmune globulins(COVlg).

61 **Methods:** Immunocompromised patients, testing negative for anti-SARS-CoV-2 spike antibodies  
62 despite vaccination received a range of anti-SARS-CoV-2 antibodies in the form of COVlg or ConvP  
63 infusion. The popPK analysis was performed using NONMEM v7.4. Monte Carlo simulations were  
64 performed to assess potential COVlg and ConvP dosing regimens for prevention of COVID-19.

65 **Results:** 44 patients were enrolled, and data from 42 were used for constructing the popPK model. A  
66 two-compartment elimination model with mixed residual error best described the Nab-titers after  
67 administration. Inter individual variation was associated to CL (44.3%), V1 (27.3%), and V2 (29.2%).  
68 Lean body weight and type of treatment (ConvP/COVlg) were associated with V1 and V2,  
69 respectively. Median elimination half-life was 20 days (interquartile-range: 17–25 days). Simulations  
70 demonstrated that even monthly infusions of 600ml of the ConvP or COVlg used in this trial would not  
71 achieve potentially protective serum antibody levels for >90% of the time. However, as a result of  
72 hybrid immunity and/or repeated vaccination plasma donors with extremely high Nab-titers are now  
73 readily available, and a >90% target attainment should be possible.

74 **Conclusion:** The results of this study may inform future intervention studies on the prophylactic and  
75 therapeutic use of antiviral antibodies in the form of ConvP or COVlg.

76

## 77 Introduction

78 Since the start of the pandemic, COVID-19 has taken millions of lives.(1) Effective vaccines can now  
79 prevent severe COVID-19 disease, hospitalization and mortality.(2-4) Unfortunately, a heterogeneous  
80 group of patients (e.g. those with solid organ transplant, hematological malignancies, or with anti-  
81 CD20 therapy) still have a poor or completely absent humoral immune response after primary  
82 vaccination as well as boosters.(5) They continue to be at risk for a prolonged and/or severe COVID-  
83 19 disease.(6)

84 By mid-2021, several monoclonal virus neutralizing antibodies (mAbs) had become available as a  
85 treatment in parts of the world and can also be used as pre- or post-exposure prophylaxis.(7, 8) MAbs  
86 target one specific epitope in the spike protein. Unfortunately, subsequent SARS-CoV-2 variants  
87 accumulated mutations in these epitopes which resulted in loss of activity against these variants.(9,  
88 10)

89 In contrast to mAbs, polyclonal antibodies (pAbs) may be less susceptible to changes in the spike  
90 protein.(11, 12) Both convalescent plasma (ConvP) and hyperimmune globulins (COVIg) are forms of  
91 pAbs. ConvP is plasma from donors who have recovered from or were vaccinated against SARS-  
92 CoV-2.(13) COVIg is an intravenous immunoglobulin product produced from pooled plasma from  
93 more than 1000 donors and included ConvP donations.(14) The main advantage of ConvP is that it  
94 can be collected very early on in a pandemic, but its antiviral activity varies between each donor. In  
95 contrast, it takes several months to produce a first batch of COVIg, but it is more polyclonal than  
96 ConvP, the antibody content is constant in each vial of a batch, and ABO blood group matching is not  
97 required.

98 An unprecedented number of trials on the efficacy of ConvP and a few as well on COVIg as a  
99 treatment for COVID-19 were completed during the first 24 months into the pandemic.(15, 16) The  
100 results of these trials have been contradictory. As with mAbs, most evidence in favor of ConvP has  
101 been generated in patients very early after symptom onset and in the context of  
102 immunodeficiency.(17, 18) More importantly, several animal studies and a recent meta-analysis on  
103 outpatient ConvP therapy showed that a high enough SARS-CoV-2 spike antibody titer is essential to  
104 observe a therapeutic benefit.(16, 19, 20) MAbs as well as pAbs may also be used to prevent SARS-  
105 CoV-2-virus infections in immunocompromised patients who lack an endogenous antibody response

106 after vaccination. However, dosing regimens of ConvP or COVIg that result in a potentially protective  
107 neutralizing antibody (Nab) titer for a minimum duration of e.g. 28 days are unknown because proper  
108 dose-finding studies with ConvP and COVIg remain unavailable.

109 This study aimed to establish a population pharmacokinetic (PK) model that is able to predict Nab-  
110 titers obtained after infusion of SARS-CoV-2 antibodies using ConvP or COVIg and can be applied to  
111 assess potential protective dosing regimens.

112

113 **Methods**

114 Study design

115 A single-center, open label, phase I/II prospective non-randomized trial (Trial NL9379) was conducted  
116 at the Erasmus Medical Center (Rotterdam, the Netherlands). The protocol was approved by the  
117 Dutch competent authority (CCMO) and the institutional review board (METC) at Erasmus MC.  
118 Written informed consent was obtained from all patients.

119 Based on the availability of ConvP and later of COVIg, the inclusion of a total of 104 patients was  
120 planned across groups of different doses and products. In figure S1, the study design is presented in  
121 detail. Treatment allocation (ConvP/COVIg) was open-label. These study arms were further divided  
122 into different volumes and concentrations. The batches with high Nab-titers were tested first. Patients  
123 in the ConvP group were allocated to a predefined volume and Nab-titer based on ABO compatibility.  
124 Patients included in the COVIg arm could participate a second time in a ConvP arm of the study at the  
125 time they had become SARS-CoV-2 spike antibody negative.

126

127 Study products

128 ConvP was provided by the Dutch bloodbank (Sanquin Blood Supply). Donors met the standard  
129 plasma donor criteria, had a history of symptomatic COVID-19, and had recovered for at least 14  
130 days. COVIg was manufactured by Prothya Biosolutions and provided by the Dutch Ministry of Health,  
131 Welfare and Sport. These particular batches were derived from pooled plasma from at least 1000  
132 donors, including ConvP donations. Both products were produced while the ancestral variant (Wuhan-  
133 1) type was dominant in the Netherlands and, therefore, the Nab-titer against this strain was  
134 measured. The methods of the Nab-titer measurement are described in the supplementary methods  
135 (S2). Antibody treatment was administered intravenously. Since ConvP was collected before anti-  
136 SARS-CoV-2 vaccines had become available, plasma with very high Nab-titers was rare and the  
137 majority of the ConvP from these non-vaccinated donors had a Nab-titer ranging between 270 and  
138 500 IUmL<sup>-1</sup>. In this study, ConvP with a Nab-titer of 500 and 910 IUmL<sup>-1</sup> was used and is referred to  
139 as intermediate-titer and high-titer ConvP, respectively. By pooling regular plasma with ConvP,  
140 Prothya was able to produce two batches of COVIg with an increased Nab-titer of 270 and 910 IUmL<sup>-1</sup>.  
141 These products will be referred to as low-titer and high-titer COVIg, respectively. The Nab-titer,

142 given in IU $\text{mL}^{-1}$ , is a unit of antibody neutralization of the ancestral SARS-CoV-2 variant, as described  
143 by Nguyen et al. It facilitates the comparison of Nab-titers between a broad range of in-house virus  
144 neutralization tests.(21)

145 Because IgG titers correlated well with neutralization assays of the ancestral virus, titers of IgG  
146 antibodies against the spike protein measured with the LIAISON<sup>®</sup> SARS-CoV-2 TrimericS IgG assay  
147 (DiaSorin) were used.(21). The LIAISON<sup>®</sup> SARS-CoV-2 TrimericS IgG assay comprised a  
148 chemiluminescence immunoassay (CLIA) determining the anti-trimeric spike protein-specific IgG  
149 antibodies. Results of the CLIA are reported in binding affinity units/mL (BAU $\text{mL}^{-1}$ ), which is the  
150 preferred unit for binding capacity by the WHO.(22-24) CLIA was performed on 11 of the 13  
151 administered ConvP units from which median binding capacities were 3230 BAU $\text{mL}^{-1}$  and 3070  
152 BAU $\text{mL}^{-1}$  for the intermediate and high Nab-titer, respectively. CLIA was performed ten times on the  
153 high Nab-titer COVig batch (910 IU $\text{mL}^{-1}$ ), from which a median of 3985 BAU $\text{mL}^{-1}$  was obtained. For a  
154 rough estimate of the Nab-titer in IU $\text{mL}^{-1}$ , the result of the LIAISON<sup>®</sup> SARS-CoV-2 TrimericS IgG  
155 assay can be divided by 4.

156

### 157 Patient selection

158 Patients were at least 18 years old and did not have anti-SARS-CoV-2 antibodies at baseline. First,  
159 patients who had received B-cell depleting therapy were included but after the start of the vaccination  
160 campaign, all patients lacking anti-SARS-CoV-2 antibodies at least two weeks after full vaccination  
161 (two mRNA vaccines, two adenovirus vector vaccines (ChAdOx1-S), or one adenovirus vector  
162 vaccine (Ad26.COV2.S)) could participate in the study as well. Patients were screened with a point-of-  
163 care antibody test (Roche SARS-CoV-2 Rapid Antibody Test<sup>®</sup>). Negative test results were verified by  
164 the DiaSorin CLIA test and were deemed negative if Nab-titers were <33.8 BAU $\text{mL}^{-1}$  according to the  
165 manufacturer's instructions.(23) Patients had no symptoms of SARS-CoV-2 infection and tested  
166 negative with a qPCR test at the time of screening for the study.

167

168 *Clinical and biochemical monitoring*

169 SARS-CoV-2 spike antibody measurement was performed using CLIA at baseline and, subsequently,  
170 after 24 and 48 hours and after 1, 2, 4, 6, 8, 12, 18, and 24 weeks or until the Nab-titer had become  
171 negative ( $<33.8 \text{ BAU mL}^{-1}$ ) again. Blood sampling was also halted if the patient received another anti-  
172 SARS-CoV-2 vaccination during follow-up or had a breakthrough infection.

173

174 *Primary endpoints*

175 *Population pharmacokinetic analysis*

176 To perform a population PK analysis, the measured Nab-titers versus time curves from ConvP and  
177 COVIg were described using non-linear mixed-effect modeling with NONMEM v7.4 (ICON  
178 Development Solutions, Ellicott City, MD, USA), which was guided using PsN v4.9.0. Pirana v2.9.9  
179 was used for model management and R v4.2.1 (R Core Team, 2020) with Xpose v4.5.3 were used for  
180 graphical model diagnostics.(25-27) For obtaining the model parameters, first-order conditional  
181 estimation (FOCE) was applied with epsilon-eta interaction.

182

183 *Model development*

184 Model development commenced with evaluating the most parsimonious compartment model to  
185 describe the Nab-titer versus time data with initial parameter values obtained from the literature.(28,  
186 29) For constructing the statistical model, the residual unexplained variability (RUV) was evaluated  
187 using an additional, proportional, or mixed (additive and proportional) error model. Moreover, inter-  
188 individual variability (IIV) was evaluated for each parameter separately using a log-normal distribution.  
189 Inter-occasion variability (IOV) was not estimated, as only data from one dosing event was collected.  
190 Model building was conducted using a stepwise approach, as the addition of parameters to the model  
191 was evaluated one by one.

192

193 *Covariate analysis*

194 In the covariate analysis, the patient and treatment characteristics were used to explain the obtained  
195 IIV for the model PK parameters. Selection of the covariate relationships was based on biological and

196 clinical plausibility. For evaluating the dichotomous covariate relationships, the following model was  
197 applied:

$$\theta_{TV,i} = \theta_{pop} * \theta_{COV}^{COV}$$

198 in which  $\theta_{TV,i}$  is the typical value for the individual patient  $i$ ,  $\theta_{pop}$  is the population PK parameter value,  
199  $\theta_{cov}$  the parameter describing the covariate effect and  $COV$  is the covariate value being 1 if present  
200 and 0 otherwise. For the continuous covariate relationships, the following relationships (linear, power,  
201 and exponential) were applied:

$$\theta_{TV} = \theta_{Pop} * (1 + \theta_{cov} * (COV - COV_{med}))$$

$$\theta_{TV} = \theta_{Pop} * \left( \frac{COV}{COV_{med}} \right)^{\theta_{cov}}$$

$$\theta_{TV} = \theta_{Pop} * e^{(\theta_{cov} * (COV - COV_{med}))}$$

202 in which  $COV_{med}$  is the median for the covariate value. Before applying a covariate model, the  
203 plausibility of that relationship was first evaluated using graphical exploration. The covariate model  
204 was constructed using a standard forward inclusion ( $p=0.05$ ,  $df=1$ ) and backward elimination ( $p=0.01$ ,  
205  $df=1$ ) procedure.

206

### 207 *Model evaluation*

208 The ability of the model to predict the Nab-titer measurements was described using an objective  
209 function value (OFV). As the OFV is  $\chi_2$  distributed, the difference between the OFVs (dOFV) from two  
210 hierarchical models was used for model selection and dOFV values of 3.84 and 6.64 indicated a  
211 significant difference of  $p<0.05$  and  $p<0.01$  for one degree of freedom, respectively.

212 Model evaluation and selection were also based on graphical exploration using goodness-of-fit (GOF)  
213 plots, and prediction-corrected visual predictive checks (pcVPCs). Furthermore, the robustness of the  
214 parameter estimation from the final model was evaluated by non-parametric bootstrap analysis with  
215 2000 replications.

216



217 *Dosing regimen simulation*

218 To verify which dosing regimen would result in predefined Nab-titer targets, Monte Carlo simulations  
219 of different dosing regimens were conducted using the final model. For the covariate relationships of  
220 the final model, values were taken randomly from the study cohort. Dosing regimens were rounded to  
221 the nearest practical volume.

222

223 *Secondary endpoints*

224 To evaluate the protective effect of ConvP and COVlg, patients were instructed to undergo PCR  
225 testing when they would become symptomatic in order to detect potential breakthrough SARS-CoV-2  
226 infections. If possible, the viral strain was sequenced for patients admitted to the hospital. For  
227 investigating the safety of ConvP and COVlg, serious adverse events (SAE) were assessed.

228

## 229 **Results**

### 230 Patient population and follow-up

231 Patients were screened for eligibility between April 2021 and April 2022. The study was terminated  
232 prematurely due to the emergence of the Omicron variant (B.1.1.529) which became the dominant  
233 variant in early 2022 in the Netherlands.(30) Indeed, as the ConvP and COVIg available for the study  
234 had a much lower Nab-titer against this B1.1.529 variant, we did not expect any further potential  
235 benefit from study participation for the individual patient.

236 In total, 60 patients were screened and 44 were enrolled in the study (Figure 1). Patients were  
237 allocated to the intermediate and high Nab-titer groups first. One patient in the COVIg group was  
238 excluded from further analysis since the confirmatory anti-SARS-CoV-2 antibody test turned out  
239 positive at baseline before dose administration. In addition, one patient from the ConvP group was  
240 excluded since this patient accidentally received plasma without SARS-CoV-2 neutralizing antibodies.  
241 Demographics and baseline characteristics were similar for both treatment groups (Table 1 and Table  
242 S3).

243 In total, 86% of the patients (36/42) could be followed until SARS-COV-2 spike antibodies had  
244 become negative again. Antibody measurement was halted in three patients because of a  
245 breakthrough infection, and in one patient due to an antibody response after an additional booster  
246 vaccination during follow-up. In one patient, antibodies remained present after 24 weeks. However,  
247 the concentration of antibodies on this last study visit was nearly negative (35.8 BAU $\text{mL}^{-1}$ ).

248

### 249 Population PK analysis

250 Data from 42 patients were used for constructing of the population PK model. The Nab-titers obtained  
251 after dose administration were most adequately described using a two-compartment model with a  
252 mixed residual error model and IIV associated with CL, V1, and V2 (Table 2). The latter model was,  
253 subsequently, used for the covariate analysis. In the covariate analysis, lean body weight allowed to  
254 explain 6.5% of the estimated IIV for V1 using a power relationship most adequately. Moreover, a  
255 dichotomous covariate relationship distinguishing between the administration of ConvP or COVIg  
256 allowed explaining 15.3% of the IIV estimated for V2. Using the latter covariate relationship, the value

257 for V2 was increased by a factor of 1.99 when ConvP was administered. This reduced the population  
258 PK parameter value of the base model estimated for V2 from 2700 mL to 1640 mL.

259 In the group receiving high Nab-titer COVlg, anti-SARS-CoV-2 antibodies were measurable for a  
260 median duration of 41 (27 – 56) and 56 (52 – 84) days after 150 or 300 mL, respectively. Antibodies  
261 remained detectable for a longer time in patients who received ConvP than those who received  
262 COVlg independent of the administered volume and Nab-titer (Table 2). However, the median  
263 elimination half-life of ConvP and COVlg was comparable with 18.6 days and 20.3 days, respectively  
264 (Table S4). As expected, the peak Nab-titer was highest in the group that received 600mL ConvP with  
265 a Nab-titer of 500 IUmL<sup>-1</sup>. Duration of seropositivity for anti-SARS-CoV-2 antibodies and peak  
266 antibody concentration are presented in Table 2.

267

#### 268 Model evaluation

269 In Figure 2, the goodness-of-fit (GOF) plots for the final model are shown in which the adequacy of  
270 the model predictions is demonstrated. Both the individual and population predictions of the  
271 neutralizing antibody levels were symmetrically distributed around the line of identity (y=x), showing  
272 that accurate predictions of the Nab-titers from ConvP and COVlg were obtained using the final  
273 model. Moreover, the prediction-corrected visual predictive check (pcVPC) (Figure 3A) showed the  
274 accuracy of the final model as all quantiles from the measured Nab-titers (solid lines) were within their  
275 respective prediction intervals (shaded areas). However, when presented on the logarithmic scale the  
276 latest measured Nab-titers were slightly above the simulated Nab-titers (Figure 3B). The latter was  
277 due to the lowest amount of measured Nab-titers being present for that time period.

278 The bootstrap analysis showed that the model parameters were adequately estimated, as all median  
279 parameter estimates from the bootstrap were similar to that of the final model.

280

#### 281 Dosing regimens simulations

282 Figure 4 depicts the Monte Carlo simulations evaluating the optimal dosing regimen of ConvP and  
283 COVlg. When dosing with 600mL of ConvP every 56 days (8 weeks), none of the simulated plasma  
284 Nab-titers achieved the 90% probability target attainment (PTA) for the 300 BAUmL<sup>-1</sup> threshold.  
285 However, reducing the dosing interval to 28 days and using ConvP with a Nab-titer of at least 12,000

286 BAU $\text{mL}^{-1}$  led to a 90% or higher PTA. For the lowest target of 100 BAU $\text{mL}^{-1}$ , the 90% PTA could be  
287 achieved with longer dosing intervals as long as ConvP or COVIg with an extremely high Nab-titer  
288 can be used (e.g. dosing every 8 weeks with 32,000 BAU $\text{mL}^{-1}$  or more).

289

#### 290 Secondary endpoint

##### 291 *Breakthrough infections*

292 Three patients had a breakthrough COVID-19 infection at a time when infused anti-spike antibodies  
293 were detectable. Two of them had received ConvP and one COVIg (Table 3). These breakthrough  
294 infections occurred with the most recently measured Nab-titer preceding the infection being 74.5  
295 BAU $\text{mL}^{-1}$ , 51.2 BAU $\text{mL}^{-1}$  and 68.6 BAU $\text{mL}^{-1}$ . These antibody titers were measured 31, 27, and two  
296 days before the first day of symptoms respectively. One of these patients required hospitalization.  
297 This patient was previously treated with anti-CD20 agents and was infected with the Delta (AY.9.2)  
298 variant. Treatment with casirivimab/imdevimab and dexamethasone was applied due to hypoxemia  
299 requiring supplemental oxygen. After five days, the patient was discharged. The two other patients  
300 were infected in the first trimester of 2022 at the time when Omicron BA.1 and BA.2 were the  
301 dominant strains in the Netherlands. These patients made a full recovery without hospital admission.

302

##### 303 *Serious adverse events*

304 The administration of ConvP and COVIg was deemed safe. A SAE was reported in two patients  
305 (Table 3). However, these SAEs were unrelated to the studied products and were reported as an  
306 episode of hospitalization. The first patient was hospitalized due to COVID-19, and the second patient  
307 was due to a community-acquired pneumonia. Both patients recovered completely.

308

## 309 Discussion

310 In this study, a population PK model predicting the Nab-titers after ConvP and COVlg administration  
311 was constructed. The adequacy of the model predictions was demonstrated using GOF plots and a  
312 pcVPC. Furthermore, a bootstrap analysis showed the robustness of the parameter estimates from  
313 the final model. Lean body weight was associated with V1. Concerning V2, its value increased  
314 approximately two times with administration of ConvP as compared with COVlg. Finally, Monte Carlo  
315 simulations showed that monthly dosing of ConvP with very high-titer ConvP (12,000 BAU $\text{mL}^{-1}$ ) could  
316 attain the 90% PTA for the 300 BAU $\text{mL}^{-1}$  target. To our knowledge, this is the first population PK  
317 model predicting Nab-titer after the administration of ConvP or COVlg.

318 In general, the elimination half-life of intravenous immunoglobulins ranges from 7 to 21 days.  
319 However, less is known about the elimination half-life of IgG subgroups targeting a specific antigen  
320 such as the spike protein of SARS-CoV-2.(28, 31) Before this trial, only a few studies have been  
321 performed evaluating the pharmacokinetic and pharmacodynamic characteristics of these pAbs. In a  
322 hamster model very high-titer COVlg (pseudovirus virus neutralization 50% titer: 1/1240) had a  
323 median elimination half-life of 124 hours.(32) In children, Gordon et al. investigated the PK of high-  
324 titer ConvP (Nab-titer of 1/320 anti-spike IgG, Euro-Immun) and found an elimination half-life for anti-  
325 SARS-CoV-2 IgG of 15 days whereas the median elimination half-life of pAbs in our population  
326 ranged between 18.6 and 20.6 days.(29)

327 A two-compartment model described the measured Nab-titers most adequately. In contrast to our  
328 model, Gordon et al. did not find body weight associated with clearance of the antibodies.(29) During  
329 the first elimination phase, a rapid decline in Nab-titers was observed in the first days after dose  
330 administration. During the distribution phase, IgG leaves the blood vasculature into lymph and  
331 extracellular compartments and slowly diffuses back into the blood circulation.(28) This rapid decline  
332 in Nab-titer may pose a problem for attaining higher Nab-titers for a long period and, thus,  
333 compromising the use in a prophylactic setting.(33) Adjustment of the Fc-receptor in antibodies is a  
334 strategy performed in mAbs and can prolong the elimination half-life of these antibodies.(31)  
335 Unfortunately, this is not possible in donor-based pAbs. Aside from this rapid decline, dose dilution in  
336 the systemic circulation is another factor that brings the need for very high-titer therapy.(33) In this  
337 study, the peak antibody measured 1 hour after administration in the blood of participants was 11

338 times lower than the titer in the ConvP or COVIg unit but with a broad IQR of 5 to 20 times. This was  
339 also observed by Shoham et al.(34) Although elimination half-life of pAbs is long, both the rapid  
340 decline in titer and dose dilution are factors that should be taken into account during the practical  
341 application of pAb-based prophylaxis in high-risk patients.

342 In this study, patients who were likely to or had been proven to lack an endogenous anti-SARS-CoV-2  
343 antibody production as a result of B-cell depleting or B -and T-cell suppressive therapies were  
344 recruited. In this way, the efficacy of ConvP and COVIg in this patient group could be investigated.  
345 However, as the study had to be discontinued prematurely and only three patients had a  
346 breakthrough infection during follow-up, no definite conclusions about the titers needed for protection  
347 can be drawn. Furthermore, all 3 breakthrough infections occurred at a time when non-ancestral  
348 variants were circulating to which the study products had reduced activity.

349 Since the start of the pandemic, many clinical studies on the efficacy of ConvP and to a lesser extend  
350 also COVIg as a treatment for SARS-CoV-2 infected patients have been performed. The results of  
351 these studies were mostly disappointing because in hospitalized non-immunocompromised patients  
352 no clear beneficial effect was observed.(13, 16, 35-37) However, most of these trials were performed  
353 with plasma from convalescent and non-vaccinated donors. Therefore, donors with extremely high  
354 Nab-titers were rare. We previously summarized the available evidence on optimal dosing of ConvP  
355 and concluded that patients were underdosed in almost all of these trials.(19) Furthermore, it has  
356 become clear that antibody-based therapy works best when given in the first days after symptom  
357 onset. Indeed, in a recent meta-analysis of the 6 double-blind randomized trials on ConvP performed  
358 in outpatients with <8 days of symptoms, a significant reduction in hospital admission was only  
359 observed when the intervention was given in the first 5 days of symptoms and when plasma with the  
360 highest antibody titers was used.(17)

361 To explore the clinical application of the prophylactic use of ConvP and COVIg, a PTA was estimated  
362 with a Monte Carlo simulation using 4 antibody titer targets ranging from 100 to 300 BAU $\text{mL}^{-1}$ . These  
363 titers were deemed relevant, as Feng et al. showed that a titer of 264 BAU $\text{mL}^{-1}$  was associated with  
364 80% vaccine efficacy whereas Goldblatt et al. and Dimeglio et al. reported 150 BAU $\text{mL}^{-1}$  as sufficient  
365 for offering protection.(38-40) However, protection against infection does not only come from humoral  
366 immunity which may implicate that in patients with a B and T-cell deficiency higher titers may be

367 required. Also, subsequent variants of concern are often much more resilient to vaccine-induced  
368 antibodies and higher titers are necessary to offer protection.(41) Dimeglio et al. showed that  
369 achieving titers over 20.000 BAU $\text{mL}^{-1}$  are necessary to achieve at least 80% of protection against  
370 Omicron infections.(42) In the current simulation, a PTA of 300 BAU $\text{mL}^{-1}$  was achieved by  
371 administering ConvP or COVIg with at least 12,000 BAU $\text{mL}^{-1}$  every 4 weeks.

372 This study has its limitations. In SARS-CoV-2 uninfected patients, the final model can be used to  
373 predict Nab-titers over time after an infusion of ConvP or COVIg. However, in patients infected with  
374 COVID-19, exogenous antibodies probably have a shorter half-life due to the direct antibody-antigen  
375 binding.(32) Also, with every new variant that occurs, the correlation of a SARS-CoV2 spike antibody  
376 titer (in BAU $\text{mL}^{-1}$ ) with in vitro neutralization of this new variant should be evaluated again. This  
377 means that for new variants, much higher targets (e.g. 10.000 rather than 300 BAU $\text{mL}^{-1}$ ) may be  
378 necessary to result in any relevant protection. Fortunately, many plasma donors now have acquired  
379 immunity from a combination of infection, vaccination and booster vaccination. Therefore, donors with  
380 extremely high Nab-titers are readily identifiable. Unfortunately, due to the rapidly evolving variant  
381 landscape of SARS-CoV-2 and the vaccination uptake, the study was discontinued prematurely and  
382 only three breakthrough infections were detected. Therefore, a protective titer could not be estimated.

383 In conclusion, this is the first dose-finding study in which a population PK model describing Nab-titers  
384 after ConvP and COVIg administration was constructed. Lean body weight and the type of pAbs  
385 allowed to explain a part of the IIV for V1 and V2, respectively. This population PK model may be a  
386 valuable tool for designing trials during future viral pandemics at the time when application of ConvP  
387 or COVIg is considered as a prophylactic or therapeutic intervention.

388

389 **Study highlights (145/150 words)**

390

391 **What is the current knowledge on the topic?**

392 Although the pharmacokinetics of immunoglobulins have been elucidated, less is known about the  
393 pharmacokinetics of target-specific polyclonal antibodies.

394

395 **What question did this study address?**

396 As the most optimal dosing regimens for convalescent plasma and hyperimmune globulins containing  
397 anti-SARS-CoV-2 antibodies are unknown, a population pharmacokinetic analysis was performed.

398

399 **What does this study add to our knowledge?**

400 In this study, the population pharmacokinetic model of convalescent plasma and hyperimmune  
401 globulins containing anti-SARS-CoV-2 antibodies is established for the first time. This way we were  
402 able to show that very high-titer agents are needed to achieve an optimal dosing regimen for these  
403 products.

404

405 **How might this change clinical pharmacology or translational science?**

406 The population PK model can be applied for designing trials during future pandemics if application of  
407 polyclonal antibody therapy is considered as prevention against or treatment of viral infections.

408



409 **Acknowledgements**

410 We thank all volunteers that participated in the trial as well as all plasma donors.

411

412

413 **Author contributions**

414 BR, BK, SH, and TP designed the research. Research was performed by SH and supervised by BR.

415 SH and TP analyzed the data and TP constructed the population PK model. The manuscript was

416 written by SH and TP, the manuscript was reviewed by BR, BK, FS, IKB, and CG. BR did the overall

417 supervision of the project.

418

## 419 References

- 420 1. Mathieu E. RH, Rodés-Guirao L., Appel C., Giattino C., Hasell J., Macdonald B., Dattani S.,  
421 Beltekian D., Ortiz-Ospina E., Roser M. Coronavirus (COVID-19) Deaths: Our World in Data; 2022  
422 [updated 30/11/2022; cited 2022 30/11/2022]. Available from: [https://ourworldindata.org/covid-](https://ourworldindata.org/covid-deaths)  
423 [deaths](https://ourworldindata.org/covid-deaths).
- 424 2. Moreira ED, Kitchin N, Xu X, Dychter SS, Lockhart S, Gurtman A, et al. Safety and Efficacy of a  
425 Third Dose of BNT162b2 Covid-19 Vaccine. *New England Journal of Medicine*. 2022;386(20):1910-21.  
426 doi: 10.1056/NEJMoa2200674. PubMed PMID: 35320659.
- 427 3. Polack FP, Thomas SJ, Kitchin N, Absalon J, Gurtman A, Lockhart S, et al. Safety and Efficacy  
428 of the BNT162b2 mRNA Covid-19 Vaccine. *New England Journal of Medicine*. 2020;383(27):2603-15.  
429 doi: 10.1056/NEJMoa2034577. PubMed PMID: 33301246.
- 430 4. Tenforde MW, Self WH, Adams K, Gaglani M, Ginde AA, McNeal T, et al. Association  
431 Between mRNA Vaccination and COVID-19 Hospitalization and Disease Severity. *Jama*.  
432 2021;326(20):2043-54. PubMed PMID: 34734975.
- 433 5. Boyarsky BJ, Werbel WA, Avery RK, Tobian AAR, Massie AB, Segev DL, et al. Antibody  
434 Response to 2-Dose SARS-CoV-2 mRNA Vaccine Series in Solid Organ Transplant Recipients. *Jama*.  
435 2021;325(21):2204-6. doi: 10.1001/jama.2021.7489.
- 436 6. Belsky JA, Tullius BP, Lamb MG, Sayegh R, Stanek JR, Auletta JJ. COVID-19 in  
437 immunocompromised patients: A systematic review of cancer, hematopoietic cell and solid organ  
438 transplant patients. *J Infect*. 2021;82(3):329-38. PubMed PMID: 33549624.
- 439 7. Levin MJ, Ustianowski A, De Wit S, Launay O, Avila M, Templeton A, et al. Intramuscular  
440 AZD7442 (Tixagevimab–Cilgavimab) for Prevention of Covid-19. *New England Journal of Medicine*.  
441 2022;386(23):2188-200. doi: 10.1056/NEJMoa2116620. PubMed PMID: 35443106.
- 442 8. Herman GA, O'Brien MP, Forleo-Neto E, Sarkar N, Isa F, Hou P, et al. Efficacy and safety of a  
443 single dose of casirivimab and imdevimab for the prevention of COVID-19 over an 8-month period: a  
444 randomised, double-blind, placebo-controlled trial. *Lancet Infect Dis*. 2022;22(10):1444-54. PubMed  
445 PMID: 35803290.
- 446 9. Yamasoba D, Kosugi Y, Kimura I, Fujita S, Uriu K, Ito J, et al. Sensitivity of novel SARS-CoV-2  
447 Omicron subvariants, BA.2.11, BA.2.12.1, BA.4 and BA.5 to therapeutic monoclonal antibodies.  
448 bioRxiv. 2022:2022.05.03.490409. doi: 10.1101/2022.05.03.490409.
- 449 10. VanBlargan LA, Errico JM, Halfmann PJ, Zost SJ, Crowe JE, Purcell LA, et al. An infectious  
450 SARS-CoV-2 B.1.1.529 Omicron virus escapes neutralization by therapeutic monoclonal antibodies.  
451 *Nature Medicine*. 2022;28(3):490-5. doi: 10.1038/s41591-021-01678-y.
- 452 11. Focosi D, Tuccori M, Franchini M. The Road towards Polyclonal Anti-SARS-CoV-2  
453 Immunoglobulins (Hyperimmune Serum) for Passive Immunization in COVID-19. *Life (Basel)*.  
454 2021;11(2). PubMed PMID: 33671893.
- 455 12. Alape-Girón A, Moreira-Soto A, Arguedas M, Brenes H, Buján W, Corrales-Aguilar E, et al.  
456 Heterologous Hyperimmune Polyclonal Antibodies Against SARS-CoV-2: A Broad Coverage,  
457 Affordable, and Scalable Potential Immunotherapy for COVID-19. *Frontiers in Medicine*. 2021;8. doi:  
458 10.3389/fmed.2021.743325.
- 459 13. RECOVERY Collaborative Group. Convalescent plasma in patients admitted to hospital with  
460 COVID-19 (RECOVERY): a randomised controlled, open-label, platform trial. *The Lancet*.  
461 2021;397(10289):2049-59. doi: [https://doi.org/10.1016/S0140-6736\(21\)00897-7](https://doi.org/10.1016/S0140-6736(21)00897-7).
- 462 14. Huygens S, Hofsink Q, Nijhof IS, Goorhuis A, Kater AP, te Boekhorst PAW, et al.  
463 Hyperimmune globulin for severely immunocompromised patients hospitalized with COVID-19: a  
464 randomized, controlled trial. *The Journal of Infectious Diseases*. 2022. doi: 10.1093/infdis/jiac334.
- 465 15. Piechotta V, Iannizzi C, Chai KL, Valk SJ, Kimber C, Dorando E, et al. Convalescent plasma or  
466 hyperimmune immunoglobulin for people with COVID-19: a living systematic review. *Cochrane*  
467 *Database of Systematic Reviews*. 2021(5). doi: 10.1002/14651858.CD013600.pub4. PubMed PMID:  
468 CD013600.

- 469 16. Jorda A, Kussmann M, Kolenchery N, Siller-Matula JM, Zeitlinger M, Jilma B, et al.  
470 Convalescent Plasma Treatment in Patients with Covid-19: A Systematic Review and Meta-Analysis.  
471 *Frontiers in Immunology*. 2022;13. doi: 10.3389/fimmu.2022.817829.
- 472 17. Levine AC, Fukuta Y, Huaman MA, Ou J, Meisenberg BR, Patel B, et al. COVID-19  
473 Convalescent Plasma Outpatient Therapy to Prevent Outpatient Hospitalization: A Meta-analysis of  
474 Individual Participant Data From Five Randomized Trials. *Clinical Infectious Diseases*. 2023. doi:  
475 10.1093/cid/ciad088.
- 476 18. Senefeld JW, Franchini M, Mengoli C, Cruciani M, Zani M, Gorman EK, et al. COVID-19  
477 Convalescent Plasma for the Treatment of Immunocompromised Patients: A Systematic Review and  
478 Meta-analysis. *JAMA Network Open*. 2023;6(1):e2250647-e. doi:  
479 10.1001/jamanetworkopen.2022.50647.
- 480 19. Rijnders BJA, Huygens S, Mitjà O. Evidence-based dosing of convalescent plasma for COVID-  
481 19 in future trials. *Clinical Microbiology and Infection*. 2022;28(5):667-71. doi:  
482 <https://doi.org/10.1016/j.cmi.2022.01.026>.
- 483 20. Levine AC, Fukuta Y, Huaman MA, Ou J, Meisenberg BR, Patel B, et al. COVID-19  
484 Convalescent Plasma Outpatient Therapy to Prevent Outpatient Hospitalization: A Meta-analysis of  
485 Individual Participant Data From Five Randomized Trials. *medRxiv*. 2022:2022.12.16.22283585. doi:  
486 10.1101/2022.12.16.22283585.
- 487 21. Nguyen D, Simmonds P, Steenhuis M, Wouters E, Desmecht D, Garigliany M, et al. SARS-CoV-  
488 2 neutralising antibody testing in Europe: towards harmonisation of neutralising antibody titres for  
489 better use of convalescent plasma and comparability of trial data. *Eurosurveillance*.  
490 2021;26(27):2100568. doi: <https://doi.org/10.2807/1560-7917.ES.2021.26.27.2100568>.
- 491 22. Infantino M, Pieri M, Nuccetelli M, Grossi V, Lari B, Tomassetti F, et al. The WHO  
492 International Standard for COVID-19 serological tests: towards harmonization of anti-spike assays.  
493 *Int Immunopharmacol*. 2021;100:108095. PubMed PMID: 34619529.
- 494 23. DiaSorin. Liaison SARS-CoV-2 TrimericS IgG assay: A quantitative assay for immune status  
495 monitoring with an accurate correlation of neutralizing IgG antibodies. Saluggia, Italy: 2021.
- 496 24. Kristiansen PA, Page M, Bernasconi V, Mattiuzzo G, Dull P, Makar K, et al. WHO International  
497 Standard for anti-SARS-CoV-2 immunoglobulin. *Lancet*. 2021;397(10282):1347-8. PubMed PMID:  
498 33770519.
- 499 25. Bauer RJ. NONMEM Tutorial Part I: Description of Commands and Options, with Simple  
500 Examples of Population Analysis. *CPT Pharmacometrics Syst Pharmacol*. 2019;8(8):525-37. PubMed  
501 PMID: 31056834.
- 502 26. Keizer RJ, Karlsson MO, Hooker A. Modeling and Simulation Workbench for NONMEM:  
503 Tutorial on Pirana, PsN, and Xpose. *CPT Pharmacometrics Syst Pharmacol*. 2013;2(6):e50. PubMed  
504 PMID: 23836189.
- 505 27. Lindbom L, Pihlgren P, Jonsson EN. PsN-Toolkit--a collection of computer intensive statistical  
506 methods for non-linear mixed effect modeling using NONMEM. *Comput Methods Programs Biomed*.  
507 2005;79(3):241-57. PubMed PMID: 16023764.
- 508 28. Barahona Afonso AF, João CM. The Production Processes and Biological Effects of  
509 Intravenous Immunoglobulin. *Biomolecules*. 2016;6(1):15. PubMed PMID: 27005671.
- 510 29. Gordon O, Brosnan MK, Yoon S, Jung D, Littlefield K, Ganesan A, et al. Pharmacokinetics of  
511 high-titer anti-SARS-CoV-2 human convalescent plasma in high-risk children. *JCI Insight*. 2022;7(2).  
512 PubMed PMID: 34855624.
- 513 30. Variants of the coronavirus SARS-CoV-2: National Institute for Public Health and the  
514 Environment; 2022 [updated 07/22/2022; cited 2022 07/25/2022]. Available from:  
515 <https://www.rivm.nl/en/coronavirus-covid-19/virus/variants>.
- 516 31. Kang TH, Jung ST. Boosting therapeutic potency of antibodies by taming Fc domain  
517 functions. *Exp Mol Med*. 2019;51(11):1-9. PubMed PMID: 31735912.
- 518 32. Stauff CB, Tegenge M, Khurana S, Lee Y, Selvaraj P, Golding H, et al. Pharmacokinetics and  
519 Efficacy of Human Hyperimmune Intravenous Immunoglobulin Treatment of Severe Acute

- 520 Respiratory Syndrome Coronavirus 2 Infection in Adult Syrian Hamsters. *Clinical Infectious Diseases*.  
521 2021;75(1):e459-e65. doi: 10.1093/cid/ciab854.
- 522 33. Marconato M, Abela IA, Hauser A, Schwarzmüller M, Katzensteiner R, Braun DL, et al.  
523 Antibodies from convalescent plasma promote SARS-CoV-2 clearance in individuals with and without  
524 endogenous antibody response. *The Journal of Clinical Investigation*. 2022;132(12). doi:  
525 10.1172/jci158190.
- 526 34. Shoham S, Bloch EM, Casadevall A, Hanley D, Lau B, Gebo K, et al. Transfusing Convalescent  
527 Plasma as Post-Exposure Prophylaxis Against Severe Acute Respiratory Syndrome Coronavirus 2  
528 (SARS-CoV-2) Infection: A Double-Blinded, Phase 2 Randomized, Controlled Trial. *Clinical Infectious  
529 Diseases*. 2022. doi: 10.1093/cid/ciac372.
- 530 35. Polizzotto MN, Nordwall J, Babiker AG, Phillips A, Vock DM, Eriobu N, et al. Hyperimmune  
531 immunoglobulin for hospitalised patients with COVID-19 (ITAC): a double-blind, placebo-controlled,  
532 phase 3, randomised trial. *The Lancet*. 2022;399(10324):530-40. doi: [https://doi.org/10.1016/S0140-  
533 6736\(22\)00101-5](https://doi.org/10.1016/S0140-6736(22)00101-5).
- 534 36. Libster R, Perez Marc G, Wappner D, Coviello S, Bianchi A, Braem V, et al. Early High-Titer  
535 Plasma Therapy to Prevent Severe Covid-19 in Older Adults. *N Engl J Med*. 2021;384(7):610-8. Epub  
536 2021/01/07. doi: 10.1056/NEJMoa2033700. PubMed PMID: 33406353; PubMed Central PMCID:  
537 7793608.
- 538 37. Sullivan DJ, Gebo KA, Shoham S, Bloch EM, Lau B, Shenoy AG, et al. Early Outpatient  
539 Treatment for Covid-19 with Convalescent Plasma. *New England Journal of Medicine*.  
540 2022;386(18):1700-11. doi: 10.1056/NEJMoa2119657.
- 541 38. Feng S, Phillips DJ, White T, Sayal H, Aley PK, Bibi S, et al. Correlates of protection against  
542 symptomatic and asymptomatic SARS-CoV-2 infection. *Nature Medicine*. 2021;27(11):2032-40. doi:  
543 10.1038/s41591-021-01540-1.
- 544 39. Dimeglio C, Herin F, Martin-Blondel G, Miedougé M, Izopet J. Antibody titers and protection  
545 against a SARS-CoV-2 infection. *J Infect*. 2022;84(2):248-88. PubMed PMID: 34560135.
- 546 40. Goldblatt D, Alter G, Crotty S, Plotkin SA. Correlates of protection against SARS-CoV-2  
547 infection and COVID-19 disease. *Immunological Reviews*. 2022;310(1):6-26. doi:  
548 <https://doi.org/10.1111/imr.13091>.
- 549 41. Cromer D, Steain M, Reynaldi A, Schlub TE, Wheatley AK, Juno JA, et al. Neutralising  
550 antibody titres as predictors of protection against SARS-CoV-2 variants and the impact of boosting: a  
551 meta-analysis. *The Lancet Microbe*. 2022;3(1):e52-e61. doi: 10.1016/s2666-5247(21)00267-6.
- 552 42. Dimeglio C, Miguères M, Bouzid N, Chapuy-Regaud S, Gernigon C, Da-Silva I, et al. Antibody  
553 Titers and Protection against Omicron (BA.1 and BA.2) SARS-CoV-2 Infection. *Vaccines (Basel)*.  
554 2022;10(9). PubMed PMID: 36146626.
- 555  
556

557 **Figure legends**

558 **Figure 1. CONSORT flow diagram: patient enrollment and allocation of treatment.** For each of  
559 the eight treatment cohorts (P1 to P4 and C1 to C4), the neutralizing antibody titers and the  
560 administered volume are depicted. N depicts the number of patients assigned to the corresponding  
561 treatment cohort.

562 Abbreviations: CLIA = chemiluminescent immuno-assay; ConvP = convalescent plasma; COVIg =  
563 hyperimmune globulins containing anti-SARS-CoV-2 antibodies.

564

565 **Figure 2. Goodness-of-fit plot from the final model.**

566 (A) Population predicted versus measured neutralizing antibody levels as quantified using binding  
567 antibody units per milliliter (BAUmL<sup>-1</sup>). (B) Individual predicted versus measured neutralizing antibody  
568 levels. (C) Conditional weighted residuals (CWRES) versus population predicted neutralizing antibody  
569 levels. (D) CWRES versus time after dose administration. In Figure A and B, the blue line depicts the  
570 locally weighted smoothing (LOESS) line, whereas in Figure C and D the red lines are the linear  
571 regression line.

572

573 **Figure 3. Prediction-corrected Visual Predictive Check from the final model.**

574 A) pcVPC with the measured and simulated neutralizing antibody (Nab) titers on a linear scale (B) )  
575 pcVPC with the observed and simulated neutralizing antibody (Nab) titers on a logarithmic scale.  
576 Black dots represent the measured neutralizing antibody levels for all patients. Solid grey line  
577 represents the median and the dashed grey lines represent the 2.5th and 97.5th quantiles for the  
578 measured neutralizing antibody levels. Red and blue-shaded areas show the 95% confidence  
579 intervals for the simulated neutralizing antibody titers of the individual patients, as obtained by 2000  
580 Monte Carlo simulations using the final model.

581

582 **Figure 4. Probability of target attainment of simulated dosing regimens for ConvP and COVIg.**

583 For obtaining prediction for the neutralizing antibody levels, Monte Carlo simulations (n=2000) were  
584 applied using the final model. Each row of figures depicts the probability of the target attainment  
585 (PTA, %) for different target levels in BAUmL<sup>-1</sup> in the serum of the recipient, as displayed in the facet

586 header. The dashed line depicts 90% PTA, which was considered as the cut-off for having a  
587 protective effect. The volume of ConvP was set at 600 mL and for COVIg of 300 mL.  
588

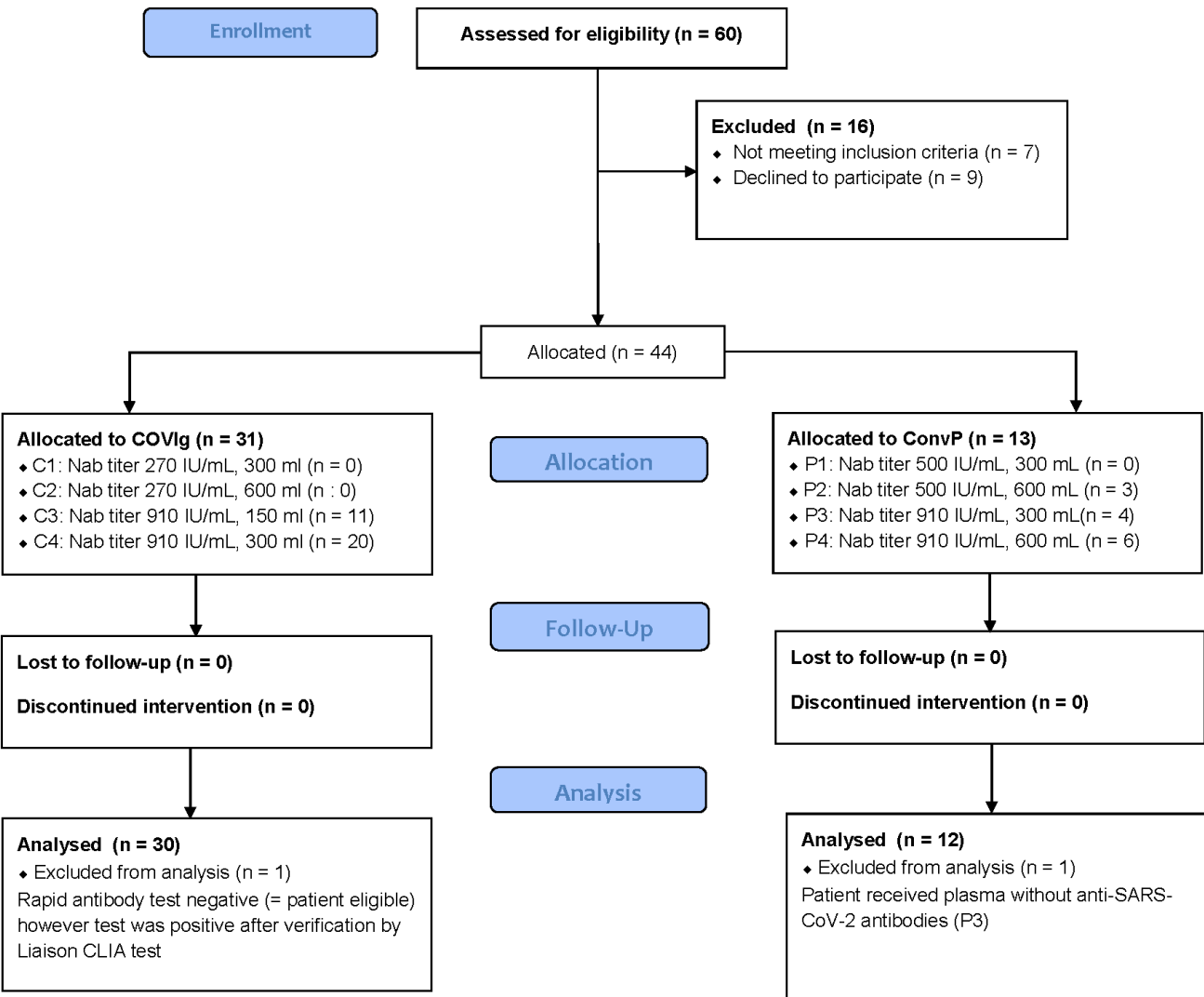
589 **Supplementary information titles**

590 **Supplementary figure S1: Trial design**

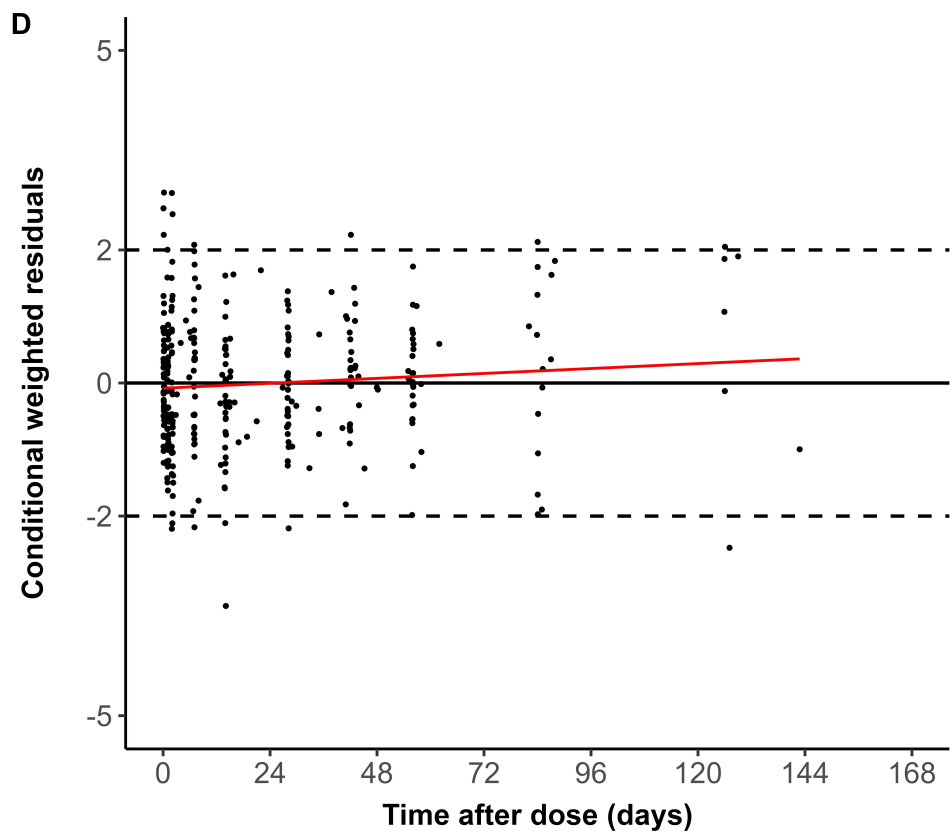
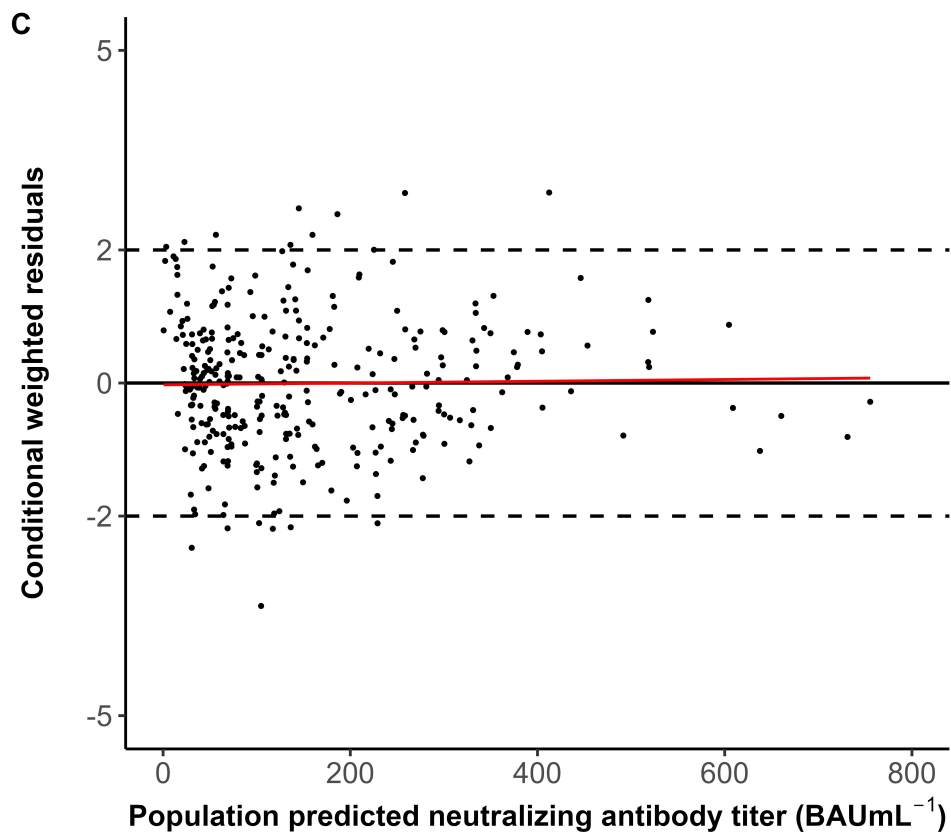
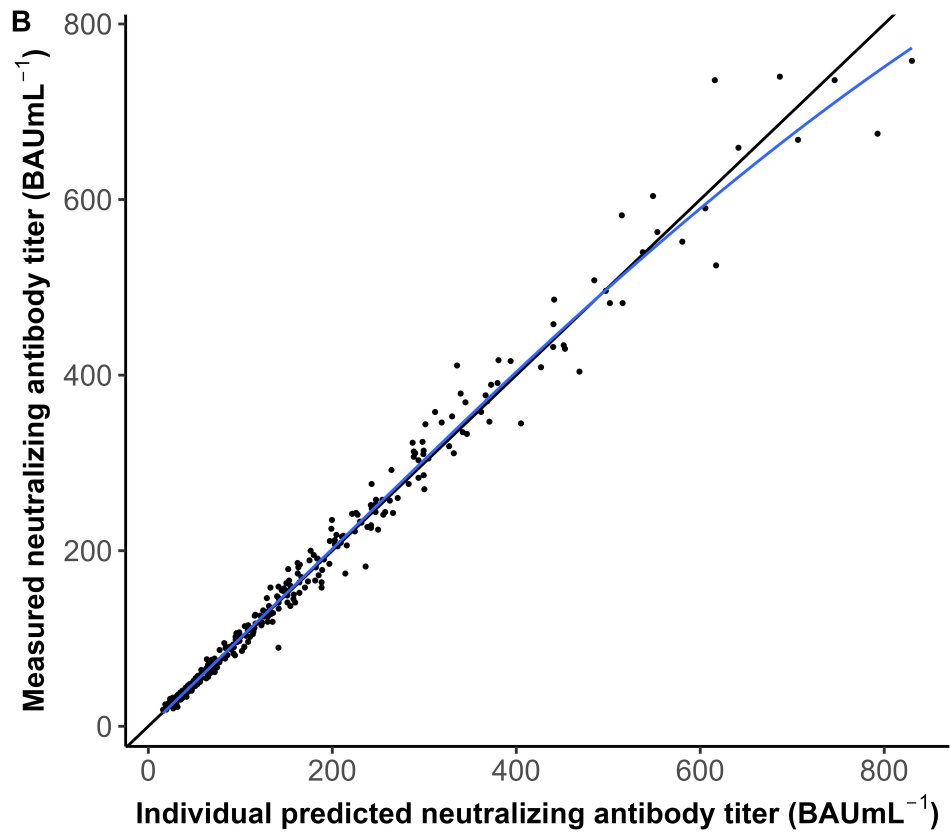
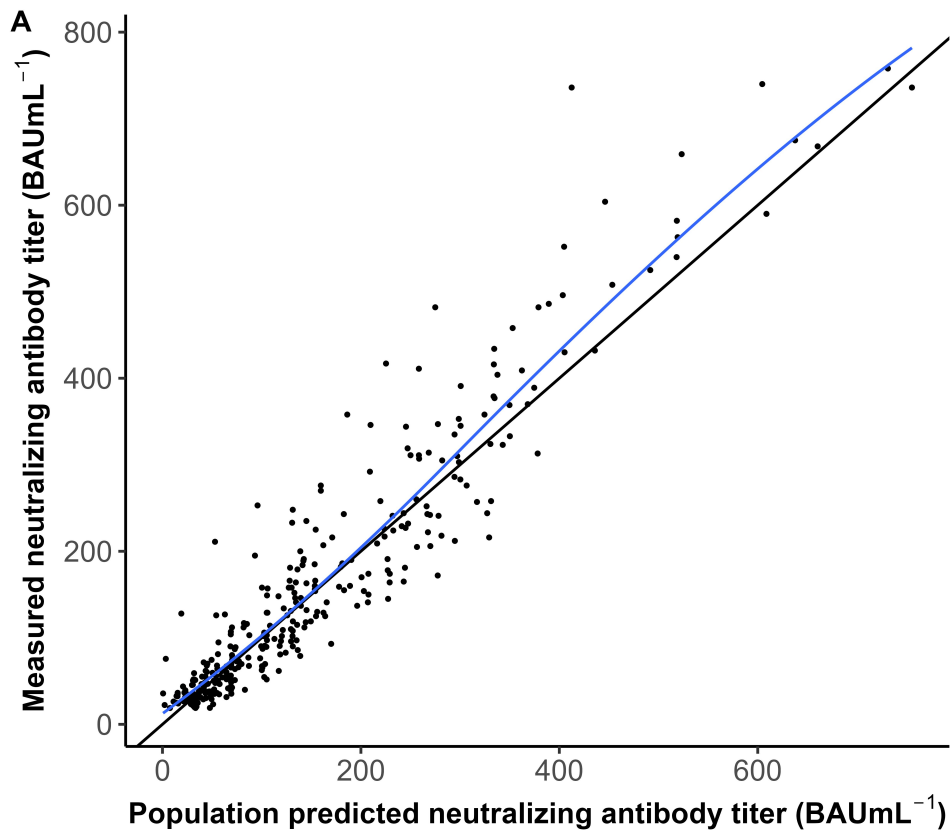
591 **Supplementary methods S2: Neutralizing antibody measurement**

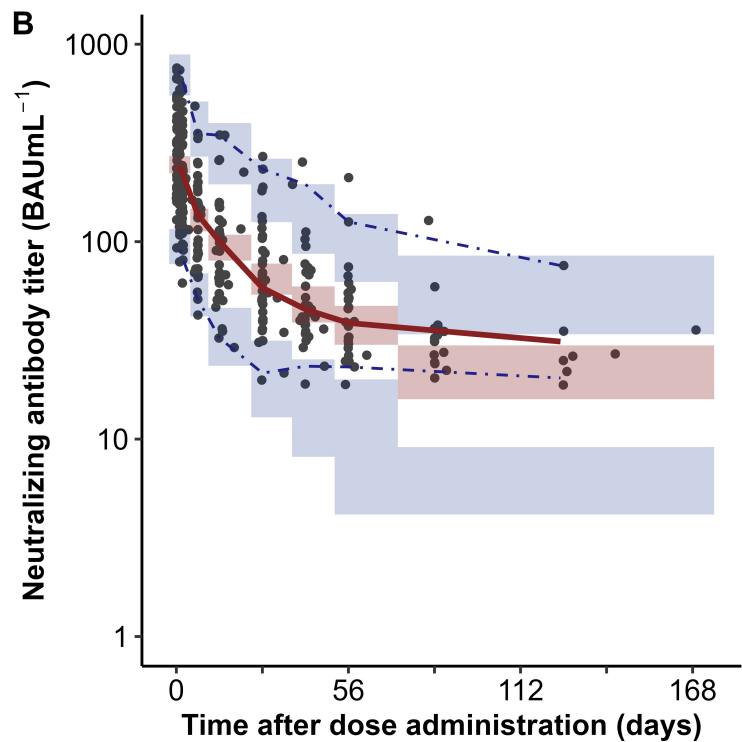
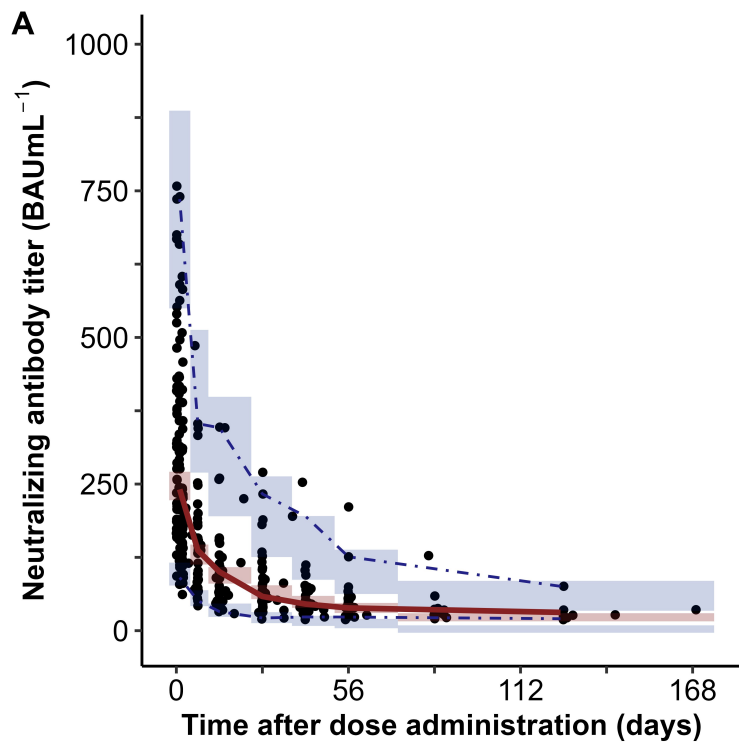
592 **Supplementary table S3: Baseline characteristics per subgroup**

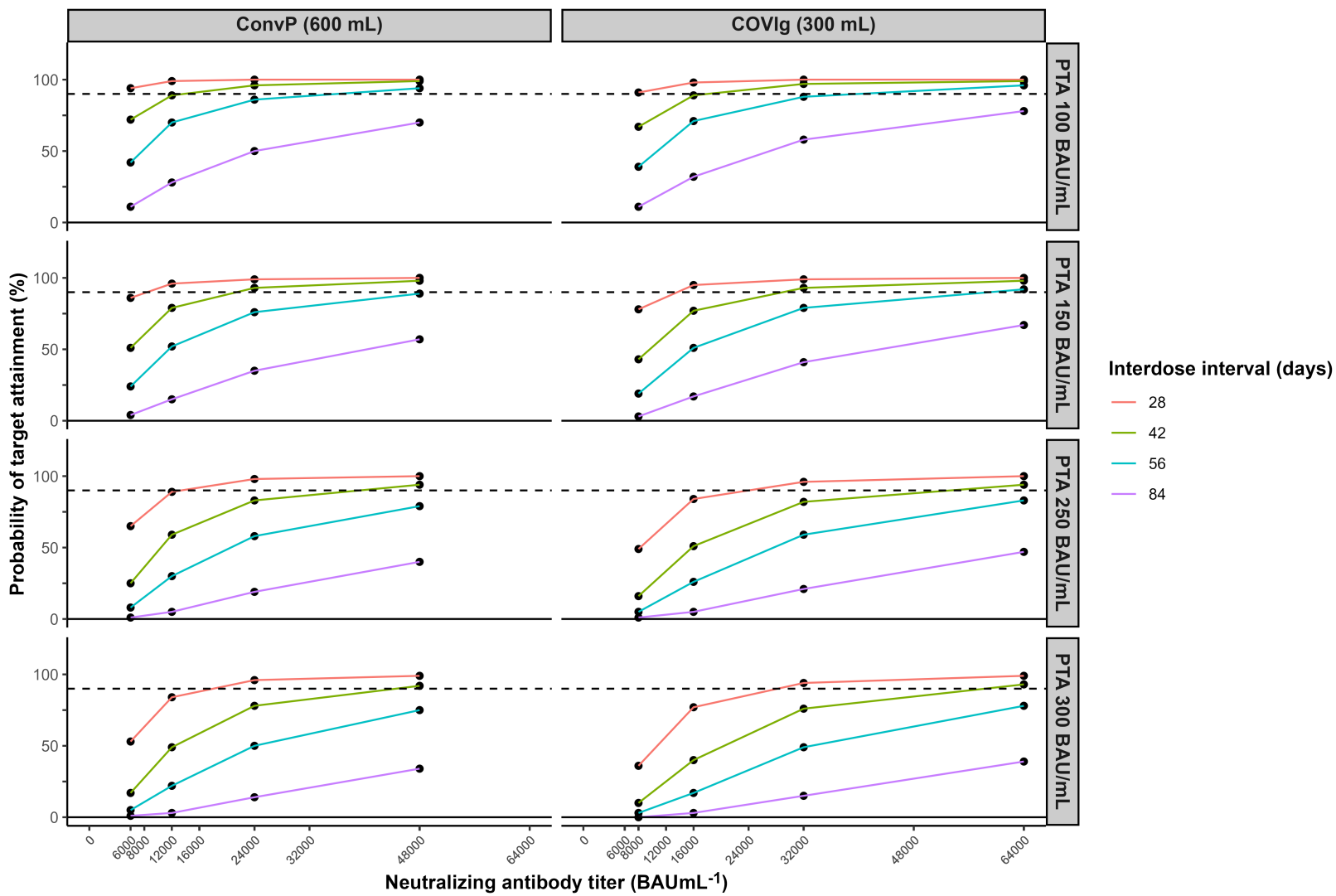
593 **Supplementary table S4. Terminal elimination half-life and AUC for ConvP and COVig.**











**Table 1. Demographics and baseline characteristics of the total patient population and treatment groups**

Baseline characteristics	Total n = 42	ConvP n = 12	COVig n = 30
Age (yr) – median (IQR)	61 (51 – 64)	60 (46 – 64)	62 (51 – 64)
Male gender – no. (%)	22 (52.4)	5 (41.7)	17 (56.7)
Ethnicity – no. (%)			
- Caucasian	37 (88.1)	10 (83.3)	27 (90)
- African	2 (4.8)	1 (8.3)	1 (3.3)
- Asian	2 (4.8)	1 (8.3)	1 (3.3)
BMI (kgm <sup>2</sup> ) – median (IQR)	30	26 (23 – 32)	28 (23 - 31)
Body weight (kg) – median (IQR)	82	81 (68 – 88)	84 (73 - 97)
Body length (cm) – median (IQR)	178 (167 – 183)	178 ( 164 – 183)	178 (168 - 184)
Cause for immunocompromised state – no. (%)			
- Rituximab	26 (61.9)	8 (66.7)	18 (60.0)
- SOTx	7 (16.7)	1 (8.3)	6 (20.0)
- Ocrelizumab	4 (9.5)	2 (16.7)	2 (6.7)
- HSCT	2 (4.8)	-	2 (6.7)
- CVID	1 (2.4)	1 (8.3)	-
- Other reasons	2 (4.8)	-	2 (6.7)
Vaccination status – no. (%)			
- Full vaccination <sup>a</sup>	38 (90.5)	10 (83.3)	28 (93.3)
- Third vaccination <sup>b</sup>	8 (18.1)	4 (33.3)	4 (13.3)
Laboratory findings - median (IQR)			
- Hematocrite (%)	42.5 (38 – 45)	41.5 (37.3 – 45)	43 (40 – 45)
- Leukocytes (μL <sup>-1</sup> )	5550 (4275 – 8450)	4450 (3850 – 6800)	6300 (4450 – 8650)
- Lymphocytes (μL <sup>-1</sup> )	1045 (768 - 1253)	1000 (788 – 1225)	1085 (768 – 1313)
- B-lymphocytes (μL <sup>-1</sup> )	0 (0 – 40)	0 (0 – 0)	0 (0 – 75)
- T-lymphocytes (μL <sup>-1</sup> )	790 (595 – 1225)	730 (660 – 1170)	810 (560 – 1230)
- CD4+ cells (μL <sup>-1</sup> )	530 (355 – 715)	530 (330 – 710)	510 (358 – 723)
- CD8+ cells(μL <sup>-1</sup> )	250 (155 – 485)	220 (160 – 470)	300 (148 – 563)
- NK cells (μL <sup>-1</sup> )	190 (95 – 275)	260 (80 – 290)	175 (98 – 263)

Abbreviations: ConvP = convalescent plasma; COVIG = hyperimmune anti-SARS-Cov-2 globulins; CVID = common variable immune deficiency; HSCT = hematopoietic stem cell transplant; IQR = interquartile range; NK = natural killer; SOTx = solid organ transplant

<sup>a</sup> Two mRNA vaccines, two vaccines by AstraZeneca or one Johnson & Johnson.

<sup>b</sup> Second vaccination (mRNA) in case of vaccination with Johnson & Johnson.

<sup>c</sup> Mann-Whitney U test was performed for continuous variables. Chi-square test was performed for categorical variables.

<sup>d</sup> Fisher's exact test was performed since low amount of observations in at least one cell.

**Table 2. Estimated population PK parameters for the structural model, final model, and bootstrap analysis**

	Base model			Final model			Bootstrap analysis	
	Estimate	RSE (%)	Shr. (%)	Estimate	RSE (%)	Shr. (%)	Estimate	95% CI
<b>Structural model</b>								
Clearance (CL; mLh <sup>-1</sup> )	9.14	6.7		9.1	6.6		9.2	[8.0 - 10.4]
Volume of central compartment (V1; mL)	3340	5		3790	4.9		3799	[3428 - 4197]
Inter-compartmental clearance (Q; mLh <sup>-1</sup> )	27.5	12.3		27.0	12.9		27.5	[22.0 - 34.7]
Volume of peripheral compartment (V2; mL)	2700	8.2		1640	15.4		1672	[1198 - 2250]
<b>Inter-individual variability (%CV)</b>								
IIV on CL	46.1	8.6	0.1	44.3	8.5	0.4	45.8	[37.3 – 54.5]
IIV on V1	33.8	11.1	0.9	27.3	13	2.3	26.9	[20.2 – 34.1]
IIV on V2	44.7	15.6	11.5	29.2	19.6	17	29.6	[17.5 – 43.0]
<b>Residual variability</b>								
Additive residual error (BAUmL <sup>-1</sup> )	3.82	12		3.75	10.9		3.75	[2.685 - 4.515]
Proportional residual error (%CV)	9.53	8		9.68	7.9		9.39	[7.9 – 10.9]
<b>Covariate relationships</b>								
V1 – Lean body weight	-			0.538	26.4		0.546	[0.260 - 0.860]
V2 – If using COVlg	-			1.99	16.1		1.96	[1.39 – 2.76]
<b>Model characteristics</b>								
Objective function value	2227.7			2194.0			2172.8	[1993.0 - 2341.9]
Condition number (<1000)	90.1			220.2				

RSE indicates relative standard error; Shr., shrinkage; CI, confidence interval as obtained using the 2.5<sup>th</sup> and 97.5<sup>th</sup> percentiles from the non-parametric distributions; CV, coefficient of variation; BAU, binding antibody units.

$$\begin{aligned}
 CL_i \text{ (mLh}^{-1}\text{)} &= 9.1 \times e^{\eta_{CL,i}} \\
 V1_i \text{ (mL)} &= 3790 \times \left(\frac{LBW}{70}\right)^{0.538} \times e^{\eta_{V1,i}} \\
 Q_i \text{ (mLh}^{-1}\text{)} &= 27.0 \\
 V2_i \text{ (mL)} &= 1640 \times 1.99^{COVlg} \times e^{\eta_{V2,i}}
 \end{aligned}$$

in which the  $\eta_i$  represents the random effect for an individual patient associated to a PK parameter. The covariate value CONVP associated to the PK parameter V2 was 1 in the case ConvP and 0 in the case COVlg was administered. The bootstrap analysis was conducted using 2000 replicated datasets.

**Table 3. Outcome per subgroup**

	<b>P2 (N = 3)</b>	<b>P3 (N = 3)</b>	<b>P4 (N = 6)</b>	<b>C3 (N = 11)</b>	<b>C4 (N = 19)</b>
Time to seronegativity (days) – median (min – max) <sup>a</sup>	116 (88 – 143)	71 (56 – 85)	84 (58 – 127)	41 (14 – 129)	56 (28 – 126) <sup>c</sup>
Peak antibody concentration (BAUmL <sup>-1</sup> ) – median (min – max) <sup>b</sup>	675 (235 – 736)	409 (174 – 525)	511 (313 – 758)	170 (93 – 276)	369 (212 – 736)
Breakthrough infection – no.	1	-	1	-	1
SAEs reported – no.	-	-	-	1	1

IQR = interquartile range; SAEs = serious adverse events.

<sup>a</sup> 36 patients were followed until antibodies were negative. P2: one missing – patient had a breakthrough infection, C4: one missing - patient had a breakthrough infection.

<sup>b</sup> Measured one hour after infusion.

<sup>c</sup> C4: two missing due to logistical issues.