

Severe cognitive decline in long-term care is related to gut microbiome production of metabolites involved in neurotransmission, immunomodulation, and autophagy

Andrew P. Shoubridge^{1,2}, Lucy Carpenter^{1,2}, Erin Flynn¹, Lito E. Papanicolas^{1,2,3}, Josephine Collins¹, David Gordon^{3,4}, David J. Lynn^{2,5}, Craig Whitehead^{6,7}, Lex E.X. Leong³, Monica Cations^{7,8}, David P. De Souza⁹, Vinod K. Narayana⁹, Jocelyn M. Choo^{1,2}, Steve L. Wesselingh^{1,2,7}, Maria Crotty^{6,7}, Maria C. Inacio^{7,10}, Kerry Ivey^{1,11}, Steven L. Taylor^{1,2#}, Geraint B. Rogers^{1,2#*}

¹ Microbiome and Host Health Program, South Australian Health and Medical Research Institute, Adelaide, SA, Australia.

² Infection and Immunity, Flinders Health and Medical Research Institute, College of Medicine and Public Health, Flinders University, Bedford Park, SA, Australia.

³ SA Pathology, Adelaide, SA, Australia.

⁴ Department of Microbiology and Infectious Diseases, Flinders Medical Centre, Bedford Park, SA, Australia.

⁵ Computational & Systems Biology Program, South Australian Health and Medical Research Institute, Adelaide, SA, Australia.

⁶ Department of Rehabilitation, Aged and Palliative Care, Flinders Medical Centre, Flinders University, Bedford Park, SA, Australia.

⁷ Registry of Senior Australians, South Australian Health and Medical Research Institute, Adelaide, SA, Australia.

⁸ College of Education, Psychology and Social Work, Flinders University, Bedford Park, SA, Australia

⁹ Bio21 Institute and Department of Biochemistry and Molecular Biology, University of Melbourne, Parkville, VIC, Australia.

NOTE: This preprint reports new research that has not been certified by peer review and should not be used to guide clinical practice.

27 ¹⁰ Allied Health and Human Performance, University of South Australia, Adelaide, SA,
28 Australia.

29 ¹¹ Department of Nutrition, Harvard University T.H. Chan School of Public Health, Boston,
30 MA, USA.

31

32 # These authors share senior authorship.

33 * Correspondence:

34 Professor Geraint B. Rogers

35 Director, Microbiome & Host Health, South Australian Health and Medical Research

36 Institute, North Terrace, Adelaide, SA 5001, Australia.

37 geraint.rogers@sahmri.com

38 +61 (0)403 558251

Summary

Ageing-associated cognitive decline affects more than half of those in long-term residential aged care. Emerging evidence suggests that gut microbiome-host interactions influence the effects of modifiable risk factors. We investigated the relationship between gut microbiome characteristics and severity of cognitive impairment (CI) in 159 residents of long-term aged care. Severe CI was associated with a significantly increased abundance of proinflammatory bacterial species, including *Methanobrevibacter smithii* and *Alistipes finegoldii*, and decreased relative abundance of beneficial bacterial clades. Severe CI was associated with increased microbial capacity for methanogenesis, and reduced capacity for synthesis of short-chain fatty acids, neurotransmitters glutamate and gamma-aminobutyric acid, and amino acids required for neuro-protective lysosomal activity. These relationships were independent of age, sex, antibiotic exposure, and diet. Our findings implicate multiple gut microbiome-brain pathways in ageing-associated cognitive decline, including inflammation, neurotransmission, and autophagy, and highlight the potential to predict and prevent cognitive decline through microbiome-targeted strategies.

Keywords

Aged care, microbiome, cognitive impairment, microbiome-gut-brain axis.

Introduction

Progressive loss of cognitive function is a common feature of ageing and is not limited to those with dementia (Albert et al., 1995; Comijs et al., 2004; Harada et al., 2013; Verdi et al., 2018). Contributory pathologies, often occurring in combination, include ischaemic or haemorrhagic infarcts within the brain (characteristic of vascular dementia) (Henon et al., 2001; Ye et al., 2015), the accumulation of amyloid plaques and neurofibrillary tangles (characteristic of Alzheimer's disease) (Bussian et al., 2018; Luo et al., 2020), and the development of abnormal collections of alpha-synuclein protein within diseased brain neurons (characteristic of Lewy body dementia) (Lin et al., 2017; Mattila et al., 2000). While these pathophysiological processes are increasingly well-characterised, the factors that contribute to them and their relationship to external risk exposures remain poorly understood.

In addition to genetic factors (Koistinaho et al., 2004; Lin et al., 2018; Liu et al., 2017; Parcon et al., 2018; Shi et al., 2017; Ulrich et al., 2018), modifiable risk factors associated with dementia have been identified. Modifiable risk factors include exposures (smoking, excessive alcohol consumption, physical inactivity, air pollution, diet); health conditions (hypertension, obesity, depression, diabetes, traumatic brain injury, hearing impairment), and social factors (less education, and low social contact) (Livingston et al., 2020). Together, these modifiable risk factors are estimated to account for 40% of dementia incidence (Livingston et al., 2020). Identifying how such factors influence the pathophysiology of ageing-associated cognitive impairment (CI) is essential to the development of effective prevention and treatment.

The gut microbiome influences neurophysiology, central nervous system, and cognitive function through discrete bidirectional pathways, collectively termed the microbiome-gut-brain axis (Cryan et al., 2019; Rogers et al., 2016; Sharon et al., 2016; Shoubridge et al., 2022).

These pathways include the microbial synthesis of neurotransmitters, such as gamma-aminobutyric acid (GABA), noradrenaline, dopamine and serotonin (Valles-Colomer et al., 2019; Yano et al., 2015), the modulation of systemic immunity (Correa-Oliveira et al., 2016; Dalile et al., 2019), and metabolism of essential amino acids, such as tyramine and tryptophan (Lai et al., 2021; Marx et al., 2021). They also involve production of immune and metabolically active metabolites, such as short-chain fatty acids (SCFAs) and 4-ethylphenylsulfate, and activation of nerve growth factor, glial-derived neurotrophic factor, and brain-derived neurotrophic factor secretion (Bonfili et al., 2021; Soto et al., 2018). Such microbial traits have the potential to contribute substantially to the development of neurological diseases, including Alzheimer's (Kim et al., 2020; Vogt et al., 2017), Huntington's (Bjorkqvist et al., 2008; Du et al., 2020; Wasser et al., 2020), and Parkinson's diseases (Sampson et al., 2016; Sun et al., 2018).

Ageing-associated gut microbiome characteristics (Claesson et al., 2011; Meyer et al., 2022) are linked to progressive frailty and cognitive decline (Komanduri et al., 2021; Manderino et al., 2017; Meyer et al., 2022; Verdi et al., 2018). External exposures that disrupt the microbiome, such as antibiotics, can further contribute to altered neurological homeostasis and poorer cognitive outcomes (Desbonnet et al., 2015; Frohlich et al., 2016; Lynn et al., 2021). In contrast, dietary interventions that alter the composition of the gut microbiome in a beneficial manner can result in improvements in cognitive function (Ghosh et al., 2020). Such findings suggest that the relationship between the gut microbiome and host neurophysiology may provide a basis to predict and/or prevent the onset and progression of ageing-associated cognitive decline. Potential causality in these relationships is suggested by studies that have successfully recapitulated impairment of memory and synaptic plasticity following faecal microbiota transplant from aged mice to younger mice (D'Amato et al., 2020).

107

108 Our aim was to explore whether the severity of CI experienced by residents of long-term aged
109 care facilities (sometimes referred to as nursing homes, care homes, or residential aged care
110 facilities) is associated with characteristics of the gut microbiome, and if so, whether such
111 relationships might provide mechanistic insight into CI pathogenesis.

Materials and Methods

Study design, cohort and data collection

The Generating evidence on Resistant bacteria in the Aged Care Environment (GRACE) study (www.gracestudy.com.au) was a cohort study supported by the Australian Medical Research Future Fund (Grant No. GNT1152268). Ethical approval for the study was obtained from the Southern Adelaide Clinical Human Research Ethics Committee (HREC/18/SAC/244). The GRACE study investigated the carriage and transfer of resistant bacteria in long-term aged care facilities and was conducted between 2018 and 2020. GRACE enrolled 279 residents in five long-term aged care facilities in metropolitan South Australia. Anonymised participant data, including assessments of cognition and behaviour, were collected via an entry into care funding assessment (Aged Care Funding Instrument [ACFI]), in addition to medications prescribed via the Pharmaceutical Benefits Scheme (PBS) (Carpenter, 2021).

Assessment of cognitive impairment

The *Cognitive Skills* component of the ACFI was used as a basis for assessment of cognitive impairment. This cognitive skills component assesses a person's cognitive abilities in everyday activities, including memory, self-care, and orientation (AIHW, 2002; Department of Health and Ageing, 2016), as defined via the Psychogeriatric Assessment Scales – Cognitive Impairment Scales (PAS-CIS) method (Jorm et al., 1995). Where individuals were unable to undertake the PAS-CIS test, for example, non-English speaking, sensory impairment, or severe cognitive impairment beyond the scope of the instrument, the ACFI cognitive skills assessment was based on a clinical report by a registered health professional (Department of Health and Ageing, 2016). The ACFI cognitive skills component utilised the PAS-CIS and/or clinical reports to rate an individual's level of cognitive impairment as none or minimal (PAS-CIS = 0-3), mild (4-9), moderate (10-15), or severe (16-21).

Cognitive impairment cohort

GRACE participants were categorised according to their cognitive skills rating, as defined in the ACFI. Participants were excluded if: 1) their cognitive skills assessment was not completed or missing, 2) the date of stool collection was not known, 3) the date of the cognitive assessment was not known, 4) the participant was diagnosed with a developmental or intellectual disability, or 5) the period between cognitive skills assessment and stool sample collection was not known or was deemed an outlier (>1462 days as determined using the ROUT method of regression and outlier removal (Motulsky & Brown, 2006)). A total of 45 participants were excluded (detailed in **Supplementary Fig. 1**). Participants with dementia and a missing PAS-CIS rating were imputed the median PAS-CIS value from their cognitive skills assessment group. Mental and behavioural diagnoses of dementia, depression, and delirium were ascertained from the ACFI, where a documented diagnosis from a medical practitioner was provided.

Faecal collection, DNA extraction, metagenomic sequencing and bioinformatics

Stool was collected and stored using Norgen Stool Nucleic Acid Collection and Preservation Tubes (Norgen Biotek, ON, Canada) and microbial DNA extracted using the PowerLyzer PowerSoil DNA Isolation Kit (Qiagen, Hilden, Germany) as described previously (Carpenter, 2021). Indexed, paired-end DNA libraries were prepared using the Nextera XT DNA Library Prep Kit (Illumina, CA, USA), as per manufacturer's instructions. Samples were sequenced at a depth of 5 Gb on an Illumina Novaseq platform with 150bp paired-end reads. Forward and reverse sequences were quality-filtered using Trimmomatic (v0.39) and human reads were removed with Bowtie (v2.3.5.1) against the NCBI human reference genome release GRCh38 (Bolger et al., 2014; Langmead & Salzberg, 2012). Taxonomic relative abundance was assigned using MetaPhlAn (v3.0) (Beghini et al., 2021), while microbial metabolic pathway

abundance was assigned using HUMAnN (v3.0) against the MetaCyc database (Beghini et al., 2021). Sequence data has been entered into the European Nucleotide Archive (ENA) at EMBL-EBI under accession number PRJEB51408.

Microbiome characterisation

The taxonomic relative abundance at the species level was used to generate alpha diversity (within-group) and beta diversity (between-group) measures. Alpha diversity measures included Pielou's evenness (J' : a score between 0-1 where scores are influenced more by the evenness of abundant species), the Shannon-Wiener diversity (H'): a score of the number and equal representation of different types of species (Peet, 1974), and species richness (d : total number of unique species identified per participant), and were generated using the 'vegan' R package (Oksanen, 2022).

The Bray-Curtis index was calculated to compare microbiome similarity between groups (beta diversity), using square-root transformed species relative abundance data (PRIMER 6 (v6.1.16)). For sensitivity analysis, weighted and unweighted UniFrac distance matrices (Lozupone & Knight, 2005) were calculated using the "calculate_unifrac" MetaPhlAn R script (Beghini et al., 2021). Non-metric multidimensional scaling (nMDS) plots for all beta diversity measures were generated using the 'vegan' package in R and visualised using 'ggplot2'.

Microbial functional profiling

The functional capacity of the gut microbiota was defined by the genetically encoded functional traits detected within the metagenome. These MetaCyc pathways from HUMAnN were filtered to only analyse those present in >30% of participants. Two functional profiling analyses were performed: an untargeted analysis of all filtered pathways (n=400), and a targeted analysis

based on pathways with a hypothesised functional role in cognitive impairment (n=70). These included pathways involved in neurotransmitter biosynthesis (n=2), SCFA production (n=25), and amino acid biosynthesis (n=43).

Metabolite profiling

As a confirmatory analysis of microbial functional capacity, the metabolomic profile of a randomly selected subgroup of individuals (n=35; n=11-12/group) was established. Stool metabolite analysis was performed on an Agilent 1200 series high-performance liquid chromatography system (Agilent Technologies) (methods modified from (Gubert et al., 2022; Kong et al., 2021) and detailed in **Supplementary Text 1**). Briefly, metabolite extraction and analysis were performed separately for SCFAs and polar metabolites. SCFAs analysis was performed using an Agilent 6490 series triple quadrupole mass spectrometer (Agilent Technologies) while polar metabolites (a screen for 165 low molecular weight metabolites, e.g. amino acids) were analysed using an Agilent 6545 series quadrupole time-of-flight mass spectrometer (Agilent Technologies). Resultant data matrices were imported to the web-based platform MetaboAnalyst (v5.0) for quality control checks. SCFA data were normalised to internal standards, and polar metabolite data were log-transformed and median-normalised.

Covariates

Covariates were: days since cognitive assessment (below or equal/above the median), age (low, medium or high tertile), sex (male or female), medication history (Pharmaceutical Benefits Scheme (PBS) data available or unavailable), medications that affect gastrointestinal health and are prevalent in aged care facilities: antibiotic use (yes or no); proton pump inhibitor use (yes or no); opioid use (yes or no); laxative use (yes or no), meal texture at time of cognitive assessment (regular or soft/smooth), and liquid texture at time of cognitive assessment

(normal/thin or thick). Medication use was defined as two or more supplies to a resident within 90 days prior to stool collection.

Statistical analysis

Both unadjusted and multivariate regression models were applied in all analyses. Multivariate adjusted models accounted for time between cognitive assessment and stool collection, age, sex, antibiotics, proton pump inhibitors, opioids, laxatives, meal texture, and liquid texture (as detailed above).

Beta diversity analysis was performed using permutational multivariate analyses of variance (PERMANOVA) on Bray-Curtis, weighted, and unweighted UniFrac distance matrices in an unrestricted permutation of raw data. Only the Bray-Curtis metric was assessed with the multivariate-adjusted model. PERMANOVA analyses were performed using PRIMER 6, with 9999 permutations.

Within-individual microbiome variables included alpha diversity, phyla-level relative abundance (only those detected in >30% of participants), species-level relative abundance (only those detected in >30% of participants), metabolic pathway abundance (only those detected in >30% of participants), and metabolite intensities. All within-individual variables were converted to groups consisting of: zero values, tertile 1, tertile 2, and tertile 3. Ordinal logistic regression was performed to assess the effect of CI on microbiome variables using the ‘MASS’ function in R. The odds ratios and 95% confidence intervals for the coefficients of the regression models were calculated and tested for statistical significance ($p < 0.05$) as CI severity increased, using the PAS-CIS score of cognitive impairment as the predictor variable. False Discovery Rate (FDR) multiple hypothesis testing was conducted with the Benjamini and

237 Hochberg method across all profiles using the ‘p.adjust’ function in R, at a significant threshold
238 of 0.05. Correlations between microbial functional capacity and detected metabolites were
239 calculated by two-tailed Spearman correlations and tested for statistical significance ($p < 0.05$).

Results

The study group of 159 participants did not differ from the original GRACE cohort in any of the assessed characteristics (**Supplementary Table 1**). CI was classified as mild in 46 individuals (28.9%) with a median PAS-CIS score of 6.6 (IQR=5.0-8.0), moderate in 58 (36.5%; PAS-CIS median=11.0; IQR=11.0-12.8), and severe in 55 (34.6%; PAS-CIS median=18.0; IQR=17.0-18.8) (**Table 1; Supplementary Fig. 2A**). The median time from assessment of cognitive skills to the subsequent collection of stool samples was 437 days (IQR: 185-741). Participant age, sex ratio, time since cognitive assessment, and use of antibiotics, opioids, and laxatives, did not differ significantly between CI severity categories ($p>0.05$; **Supplementary Fig. 2B-F**). However, the number of days that an individual had been residing in long-term aged care was significantly higher for those in the severe CI group (median=939 days; IQR=219-854) compared to the mild CI group (median=500 days; IQR=130-627; $p<0.05$). Proton pump inhibitor usage was significantly lower in the severe CI group ($p<0.05$). Within the severe CI group, 53/55 (96.4%) had a concurrent diagnosis of dementia, 33/58 (56.9%) of moderate CI had a dementia diagnosis, and 4/46 (8.7%) of those with mild CI.

Gut microbiome characteristics differ by CI severity

Gut microbiome characterisation of long-term aged care residents with CI was determined by metagenomic sequencing of collected stool samples (**Fig. 1A**). A total of 11 bacterial phyla were detected across the 159 stool samples, consisting of 186 genera (586 species). The composition and distribution of taxa was broadly similar with previous studies of aged populations (Claesson et al., 2011; Jackson et al., 2016), with high representation of *Eggerthella lenta*, *Escherichia coli*, *Faecalibacterium prausnitzii*, and *Clostridium* species (**Fig. 1B**), and genera within the Bacteroidota (formerly Bacteroides) and Bacillota (Firmicutes) phyla (**Fig. 1C**).

265

Demographic	Mild (n=46)	Moderate (n=58)	Severe (n=55)	Total (n=159)
Age (years): Median (IQR)	87.5 (81.3;93.6)	90.3 (83.7;95.0)	87.9 (82.0;93.0)	88.7(82.1; 93.5)
Sex: n (%)				
Female	27 (58.7)	42 (72.4)	40 (72.7)	109 (68.6)
Male	19 (41.3)	16 (27.6)	15 (27.3)	50 (31.4)
PAS-CIS: Median (IQR)	6.6 (5.0;8.0)	11.0 (11.0;12.8)	18.0 (17.0;18.8)	10.8 (7.0;18.0)
Time between CI assessment and stool collection (days): Median (IQR)	345.5 (148.5;654.5)	421.5 (182.3;734.3)	487.0 (252.0;909.0)	437.0 (185.0;741.0)
Time since entry to facility (days): Median (IQR)	500 (253.0;947.5)	704 (299.0;983.0)	962 (502.0;1198.0)	681 (360.0;1015.0)
Dementia diagnosis: % (n) [#]	8.7 (4)	56.9 (33)	96.4 (53)	56.6 (90)
Memory Support Unit[^]: n (%)	0 (0.0)	4 (6.9)	19 (34.5)	23 (14.5)
Meal texture: n (%)				
Regular	38 (82.6)	44 (75.9)	30 (54.5)	112 (70.4)
Soft/smooth	8 (17.4)	14 (24.1)	25 (45.5)	47 (29.6)
Liquid texture: n (%)				
Normal/thin	42 (91.3)	54 (93.1)	49 (89.1)	145 (91.2)
Thick	4 (8.7)	4 (6.9)	6 (10.9)	14 (8.8)
Antibiotics (at least 2 supplied[*]): n (%)	10 (21.7)	7 (12.1)	5 (9.1)	22 (13.8)
Proton pump inhibitors (at least 2 supplied[*]): n (%)	23 (50.0)	23 (39.7)	12 (21.8)	58 (36.5)
Opioids (at least 2 supplied[*]): n (%)	8 (17.4)	12 (20.7)	14 (25.5)	34 (21.4)
Laxatives (at least 2 supplied[*]): n (%)	6 (13.0)	6 (10.3)	9 (16.4)	21 (13.2)

266

267 **Table 1.** Study Cohort Characteristics by Severity of Cognitive Impairment.

268 [#]Extracted from Aged Care Funding Instrument data.

269 [^]Memory support units (also known as dementia units/wards, memory care, or special care
270 units) are secure areas within long-term care facilities specially designed to accommodate
271 residents with dementia.

272 ^{*}Medication use defined as two or more supplies of the same medication within 90 days prior
273 to stool collection.

274

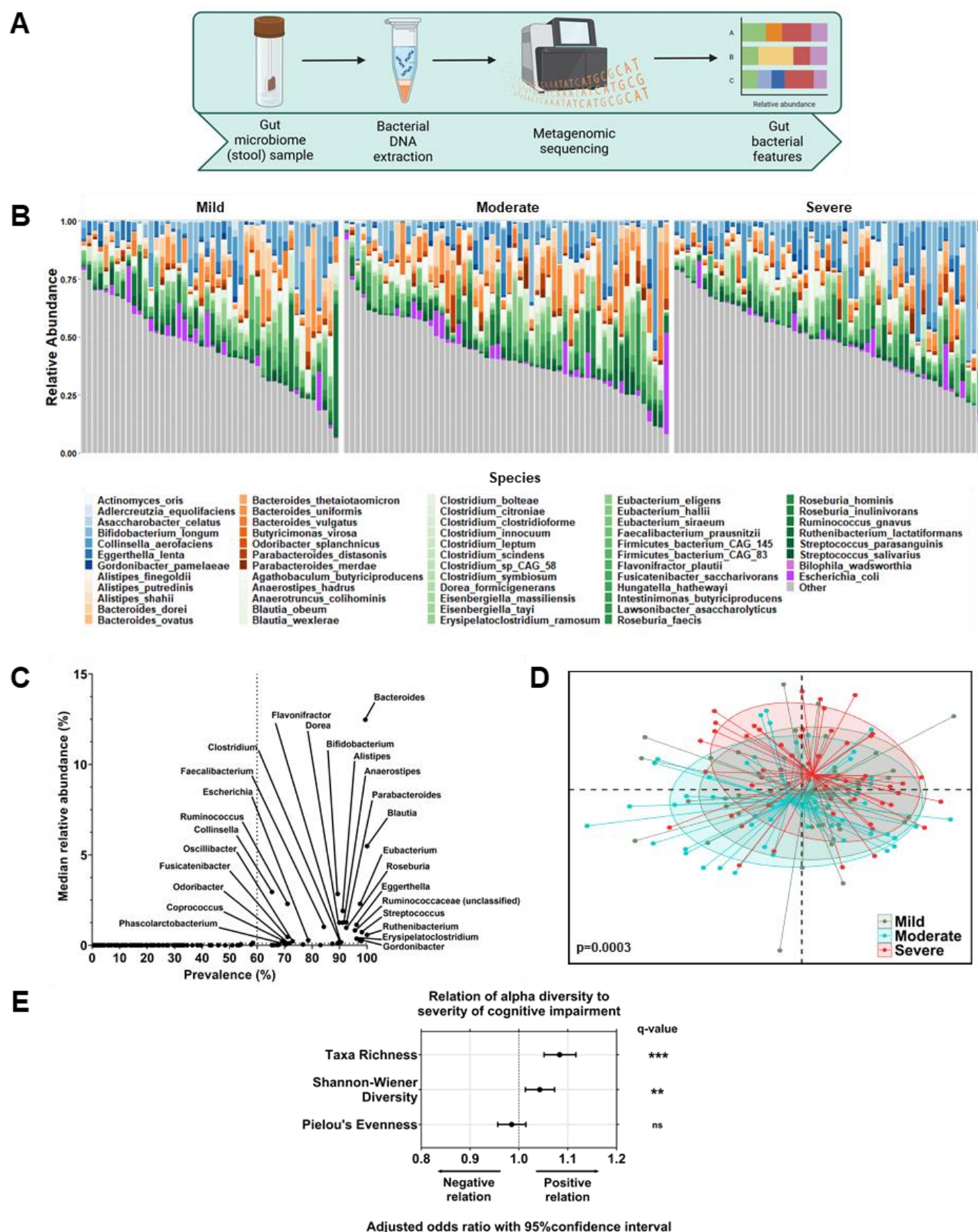


Figure 1. Gut microbiome of residents of long-term aged care facilities stratified by cognitive impairment (CI). **A)** Characterisation of the gut microbiome of long-term aged care residents with cognitive impairment determined by metagenomic sequencing of collected stool samples. **B)** Taxa bar plot of core species grouped by cognitive impairment severity (present in >60% of participants). Species coloured by phyla: Actinomycetota = blues; Bacteroidota = oranges; Bacillota = greens; Pseudomonadota = purples; non-core species (other) = grey. **C)** The frequency of genera detected and their median relative abundances, labelled with core genera. **D)** Non-metric multidimensional scaling plot of Bray-Curtis similarity matrix, grouped by CI severity (mild, n=46; moderate, n=58; severe, n=55), showing significant divergence between CI groups following multivariate analysis ($p(\text{perm})=0.0003$). **E)** Odds ratio and 95% confidence interval of effect of CI severity on microbiome diversity (taxa richness, Shannon-Wiener diversity, and Pielou's evenness), following multivariate analysis. Multivariate analysis adjusted for time since CI assessment, age, sex, antibiotic use, proton pump inhibitor use, opioid use, laxative use, recorded medical history, meal texture, and liquid texture. ns=not significant; ** $q<0.01$; *** $q<0.001$ for adjusted p-values following FDR correction.

Following adjustment for time since cognitive assessment, age, sex, medication use, and diet, the faecal microbiota composition differed significantly between mild, moderate, and severe CI ($p(\text{perm})=0.0003$; $R^2=2.21\%$; **Fig. 1D**; **Table 2**). This difference was greatest between severe CI and mild CI ($p(\text{perm})=0.0023$), and severe CI and moderate CI ($p(\text{perm})=0.0003$), and consistent with the unadjusted model (**Table 2**). Repeated analysis using weighted and unweighted UniFrac dissimilarity did not identify significant intergroup differences, apart from between mild and moderate CI groups using weighted UniFrac dissimilarity (unadjusted $p(\text{perm})=0.037$; **Supplementary Fig. 4**).

Analysis of microbiota diversity identified a positive association between CI severity and taxa richness (odds ratio (OR): 1.08 [95% confidence interval 1.05, 1.12], $q<0.001$) and Shannon-Wiener diversity (OR: 1.043 [1.013, 1.073], $q<0.05$; **Fig. 1E**). However, there was no association between CI severity and Pielou's evenness (OR: 0.985 [0.957, 1.014], $q>0.05$; **Fig. 1E**).

To assess whether specific taxa differed with CI, phylum-level and species-level relative abundances were assessed. Of the seven phyla present in at least 30% of participants, five differed significantly with CI (**Fig. 2**). Pseudomonadota (Proteobacteria) (OR: 0.937 [0.909, 0.965], $q<0.001$) and Bacillota (OR: 0.943 [0.915, 0.971], $q<0.001$) were lower with increasing CI severity (**Fig. 2**). In contrast, Euryarchaeota (OR: 1.097 [1.065, 1.131], $q<0.001$), Actinomycetota (Actinobacteria) (OR: 1.066 [1.035, 1.099], $q<0.001$), and Synergistota (Synergistetes) (OR: 1.043 [1.008, 1.079], $q<0.05$) were higher with increasing CI severity (**Fig. 2**).

	Unadjusted Model			Multivariate-adjusted Model ^a		
Main Test	Pseudo- <i>F</i> Ratio	<i>R</i> ²	p(perm) [^]	Pseudo- <i>F</i> Ratio	<i>R</i> ²	p(perm) [^]
Cognitive Impairment*	1.9646	0.0246	0.0002	1.815	0.0221	0.0003
Pairwise Test	<i>t</i>		p(perm) [^]	<i>t</i>		p(perm) [^]
Mild v Moderate	1.0596		0.2583	1.1135		0.1478
Mild v Severe	1.4474		0.0017	1.4228		0.0023
Moderate v Severe	1.6304		0.0002	1.5265		0.0003

316

317 **Table 2.** Permutational ANOVA of the gut microbiome by severity of cognitive impairment.

318 ^aTime since cognitive impairment assessment + age + sex+ antibiotic use + proton pump
319 inhibitor use + opioid use + laxative use + recorded medication history + meal texture + liquid
320 texture.

321 [^]Permutation p-value generated with a PERMANOVA.

322 *Degrees of freedom = 2.

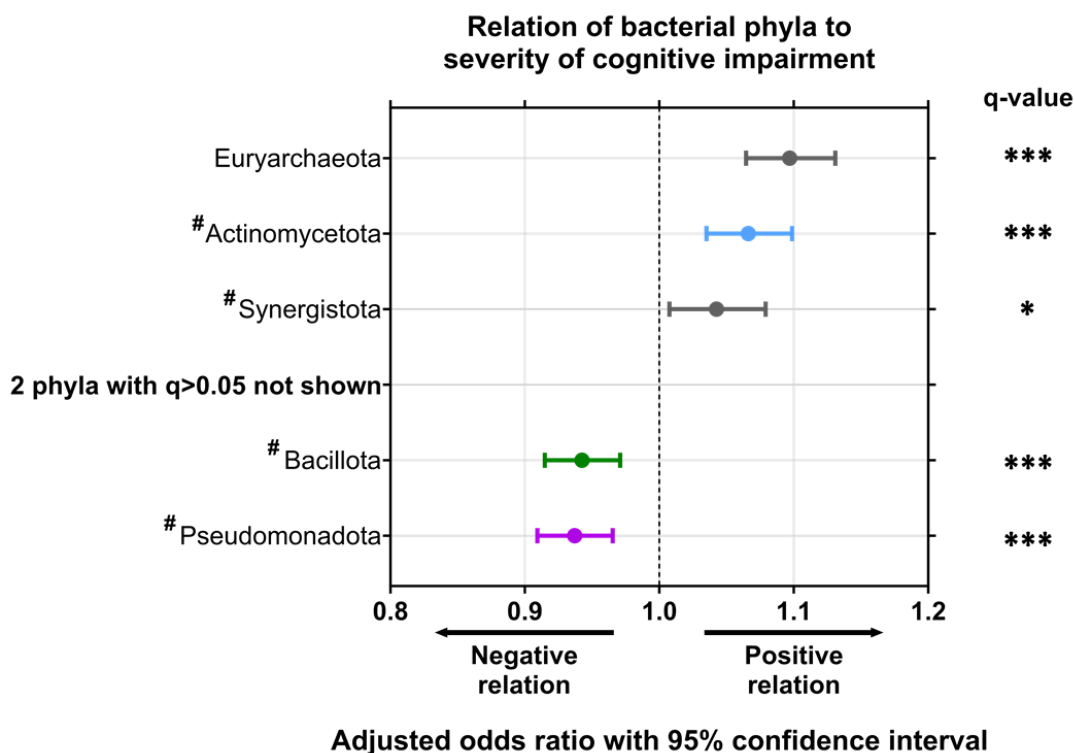


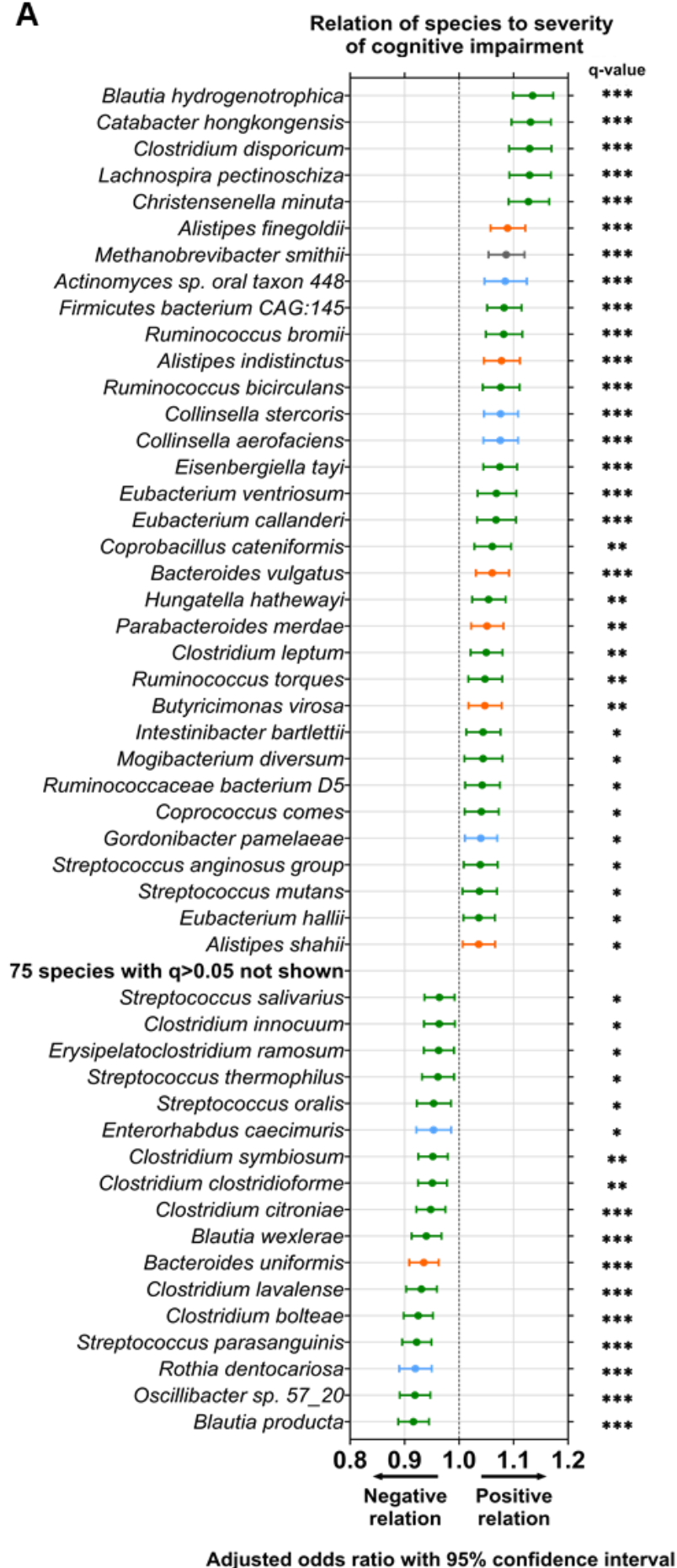
Figure 2. Phyla-level differences in the gut microbiome of residents of long-term aged care by cognitive impairment. Odds ratio and 95% confidence interval of effect of cognitive impairment severity on phyla relative abundance. Colours indicate bacterial phyla: blue = Actinomycetota; green = Bacillota; purple = Pseudomonadota; grey = non-core species. Performed by multivariate analysis, adjusting for time since cognitive impairment assessment, age, sex, antibiotic use, proton pump inhibitor use, opioid use, laxative use, recorded medical history, meal texture, and liquid texture. #Denotes phyla with recently amended names: Actinomycetota (Actinobacteria), Synergistota (Synergistetes), Bacillota (Firmicutes), and Pseudomonadota (Proteobacteria). * $q < 0.05$; *** $q < 0.001$ for adjusted p-values following FDR correction.

Bacterial species that were detected in at least 60% of participants, and with a relative abundance of at least 0.1%, were denoted as “core” taxa (**Supplementary Table 2**). Of the 586 microbial species identified across the entire cohort, 30 were identified as core in mild CI (**Supplementary Fig. 5A**), 31 in moderate CI (**Supplementary Fig. 5B**), and 29 in severe CI (**Supplementary Fig. 5C**).

Comparison of species relative abundances identified 50 species that differed significantly with CI severity (**Fig. 3A**). Notably, *Blautia hydrogentrophica* (OR: 1.135 [1.099, 1.173]), *Catabacter hongkongensis* (OR: 1.131 [1.096, 1.168]), and *Alistipes finegoldii* (OR: 1.089 [1.058, 1.121]), had the strongest positive association with CI severity (all $q < 0.001$, **Fig. 3A**). Further, *Collinsella aerofaciens* and *Methanobrevibacter smithii* were not only positively associated with CI severity ($q < 0.001$, **Fig. 3A**), they were also core species in severe CI, but not mild or moderate (**Fig. 3B, Supplementary Table 2, Supplementary Fig. 5**). In contrast, *Bacteroides uniformis* (OR: 0.935 [0.908, 0.962]), *Blautia producta* (OR: 0.916 [0.888, 0.945]) and *Blautia wexlerae* (OR: 0.940 [0.913, 0.968]) were among those with the strongest inverse association with CI severity (all $q < 0.001$, **Fig. 3A**). *Faecalibacterium prausnitzii*, a species previously associated with health outcomes in ageing (Jackson et al., 2016), was also found to trend lower in this cohort with increasing CI severity, but this did not achieve statistical significance (OR: 0.986 [0.958, 1.014], $q = 0.421$, **Fig. 3A**; $p > 0.05$, **Fig. 3B**).

353

A



B

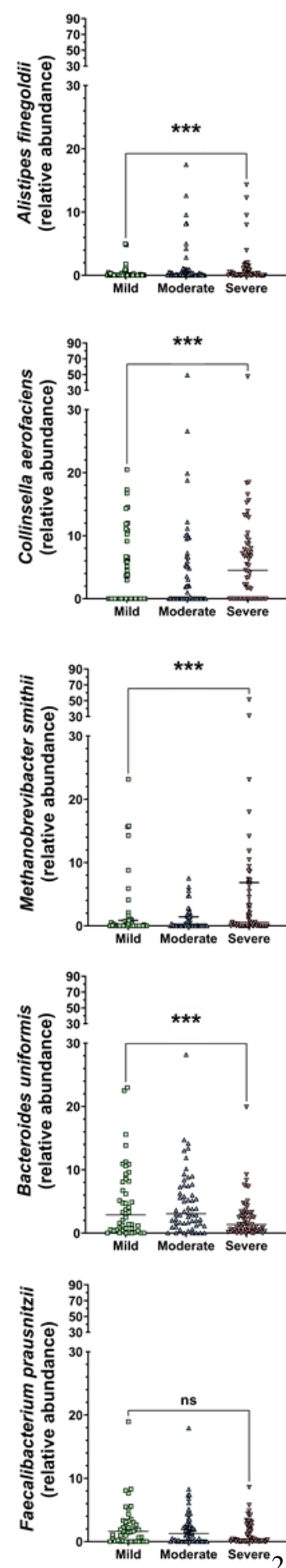


Figure 3. Species-level differences in the gut microbiome of residents of long-term aged care by cognitive impairment. **A)** Odds ratio and 95% confidence interval of effect of cognitive impairment severity on species relative abundance. Colours indicate bacterial phyla: blue = Actinomycetota; orange = Bacteroidota; green = Bacillota = green; grey = other. Performed by multivariate analysis, adjusting for time since cognitive impairment assessment, age, sex, antibiotic use, proton pump inhibitor use, opioid use, laxative use, recorded medical history, meal texture, and liquid texture. **B)** The relative abundance of bacterial species associated with cognitive impairment severity and aging: *Alistipes finegoldii*, *Collinsella aerofaciens*, *Methanobrevibacter smithii*, *Bacteroides uniformis*, and *Faecalibacterium prausnitzii*. ns=not significant; * $q < 0.05$; ** $q < 0.01$; *** $q < 0.001$ for adjusted p-values following FDR correction. Mild, n=46; moderate, n=58; severe, n=55.

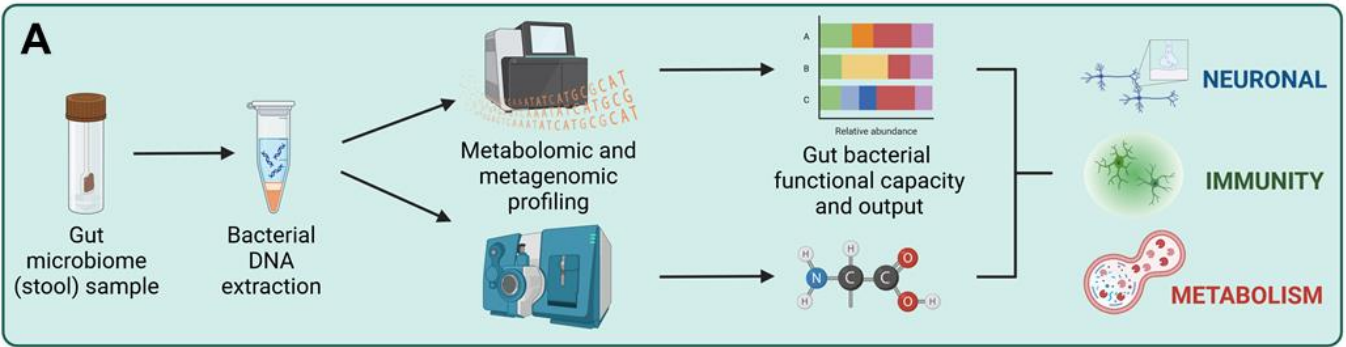
The functional capacity and output of the gut microbiota differs with CI severity

Differences in the functional capacity of the gut microbiota were identified with increasing CI severity. Four hundred MetaCyc pathways were detected in >30% of participants, of which, 70 were selected based on their potential influence on CI, including via mechanisms relating to neurotransmission, immunity, and metabolism. Metabolomic analysis of a subgroup of individuals (n=35; n=11-12/group) confirmed these findings (**Fig. 4A**). A total of 165 polar metabolites were detected in stool samples from these participants, including 33 metabolites classed as amino acids, peptides, and analogues, 50 classed as lipids and lipid-like molecules, 18 classed as carbohydrates, and 64 classed within other categories (**Supplementary Fig. 6A**), in addition to nine SCFAs (**Supplementary Fig. 6B**). Pathways inversely associated with CI severity included PWY-5505, a pathway essential to the production of the primary excitatory neurotransmitter glutamate (OR: 0.922 [0.895, 0.949], $q < 0.001$), and GLUDEG-I-PWY, a pathway essential to the production of the primary inhibitory neurotransmitter GABA (OR: 0.962 [0.934, 0.990], $q < 0.05$, **Fig. 4B**). The metabolite and excitatory neurotransmitter glutamate was present at lower levels in individuals with severe CI (**Fig. 4C**). Similarly, pathways related to the production of immunomodulatory SCFAs, including acetate (P461-PWY; OR: 0.877 [0.850, 0.904], $q < 0.001$), propionate (P108-PWY; OR: 0.939 [0.913, 0.966], $q < 0.001$), and butyrate (PWY-5022; OR: 0.935 [0.908, 0.962], $q < 0.001$, **Fig. 4D**) were also lower in relative abundance as CI severity increased. The decrease in immune functional capacity corresponded with depleted levels of immunomodulating SCFA metabolites in individuals with severe CI, including for butyrate ($q < 0.01$), propionate ($q < 0.01$), and acetate ($q < 0.05$, **Fig. 4E**; **Supplementary Fig. 7**). Functional pathways related to the biosynthesis of amino acids that regulate key metabolic processes, such as autophagy, included L-arginine (PWY-5154; OR: 0.911 [0.884, 0.938], $q < 0.001$), L-lysine, L-threonine, and L-methionine (P4-PWY; OR: 0.905 [0.878, 0.932], $q < 0.001$), and were among the most depleted at higher

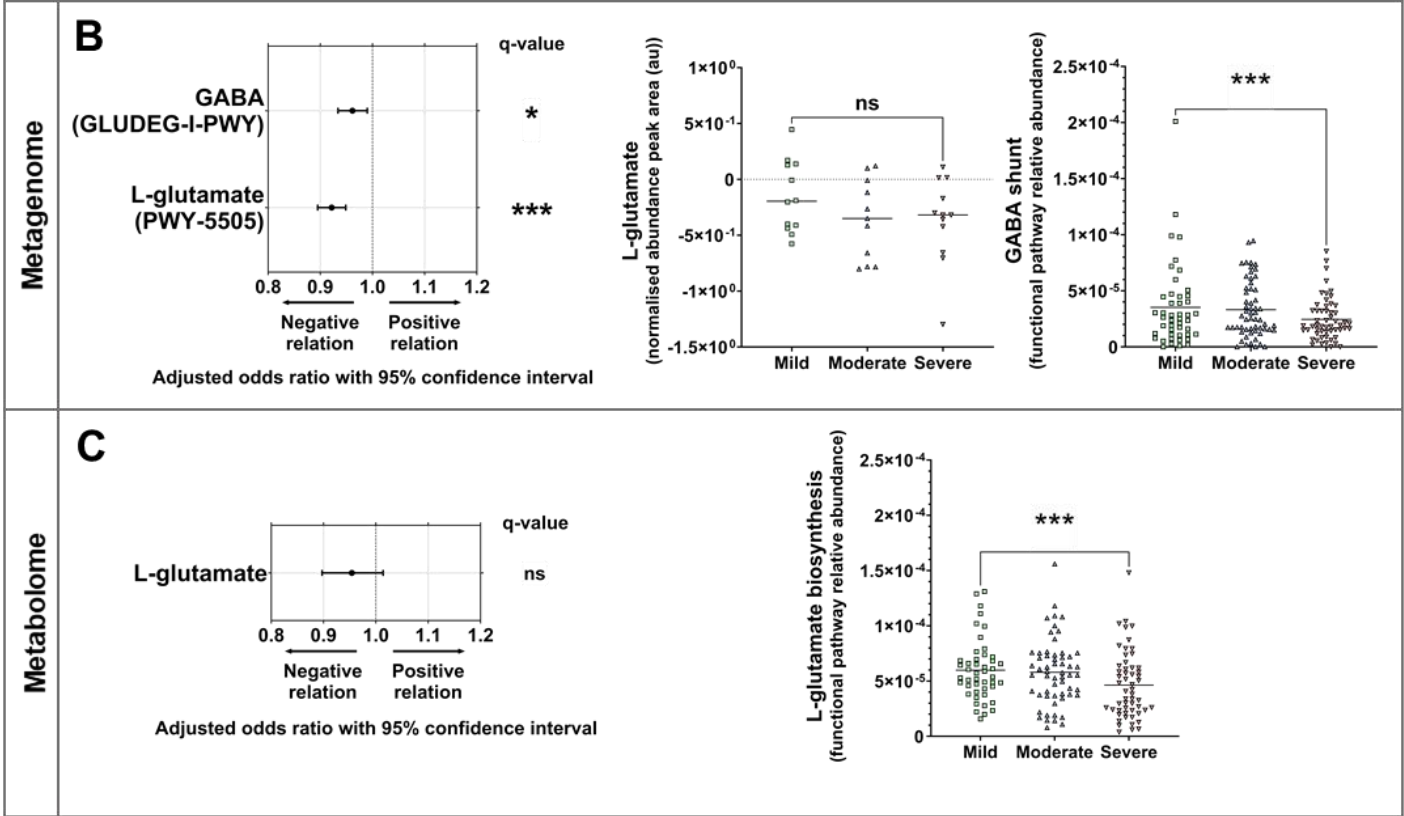
CI severity (**Fig. 4F**). Production of amino acid polar metabolites also decreased with increasing CI severity (**Fig. 4G; Supplementary Fig. 7**).

Further exploratory analysis across all functional pathways (n=400) identified 271 statistically significantly altered pathways, with multiple pathways related to methanogenesis among those of greatest significance and higher relative abundance ($p < 0.01$, **Fig. 4F**; $q < 0.001$, **Supplementary Table 3**). The relative abundances of metagenomic pathways and the levels of associated metabolites were also positively correlated (**Supplementary Fig. 8**).

398



Neurotransmission



399

400

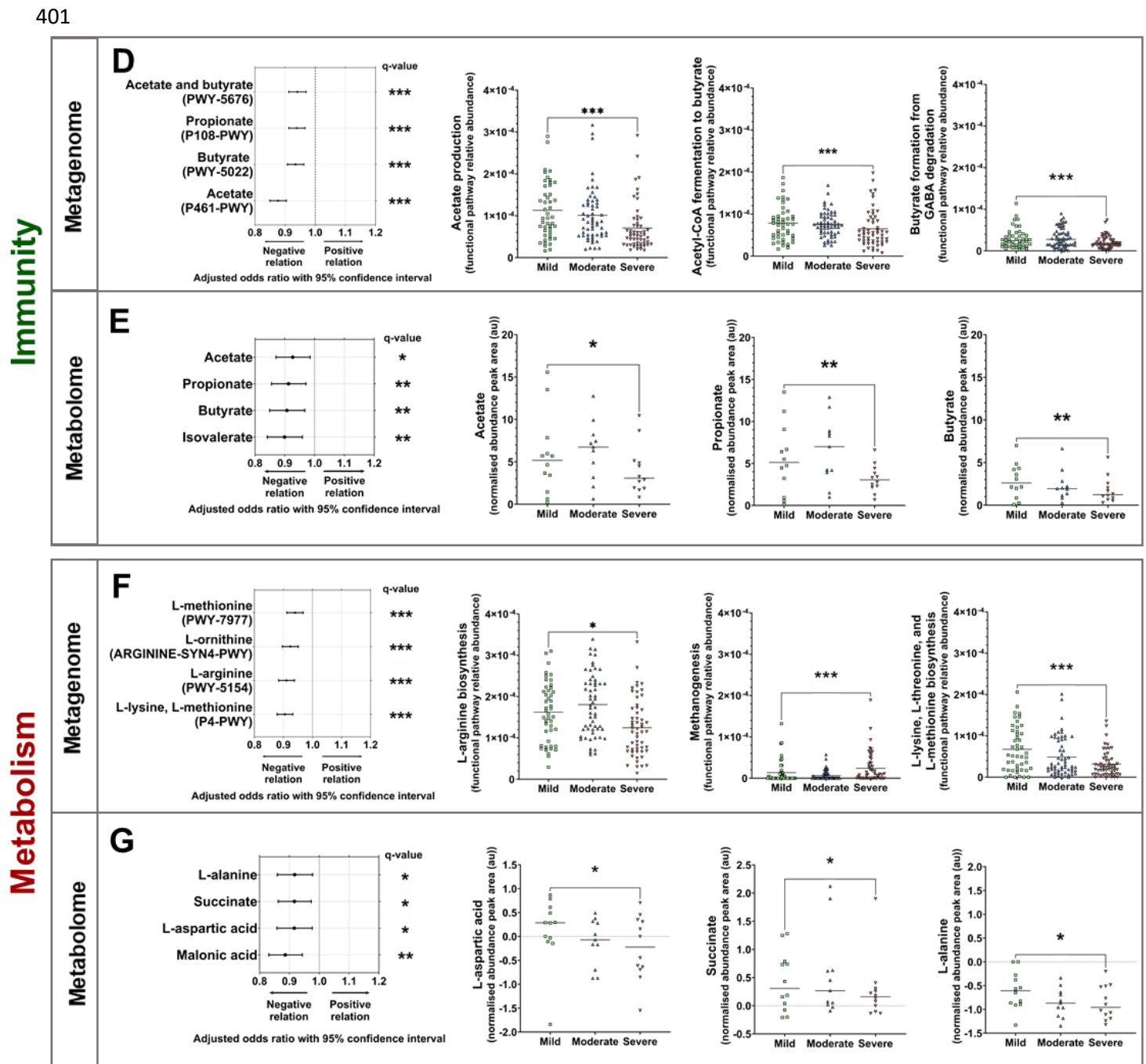


Figure 4. Specific functional differences relating to neurotransmission, immunity, and metabolism in the gut microbiome of residents of long-term aged care by cognitive impairment. A) Metagenomic and metabolomic profiling of microbiome functional capacity and output for long-term aged care residents with cognitive impairment in relation to neuronal communication (B-C), immunity (D-E), and metabolism (F-G). Odds ratio and 95% confidence interval of effect of cognitive impairment severity on functional pathway relative

409 abundance and metabolite normalised abundance. Performed by multivariate analysis,
 410 adjusting for time since cognitive impairment assessment, age, sex, antibiotic use, proton pump
 411 inhibitor use, opioid use, laxative use, recorded medical history, meal texture, and liquid
 412 texture. The abundance of key pathways and metabolites grouped by cognitive impairment
 413 severity involved in neurotransmission, immunomodulation, and metabolism are shown.
 414 ns=not significant; * $q < 0.05$; ** $q < 0.01$; *** $q < 0.001$ for adjusted p-values following FDR
 415 correction. Pathways: mild, $n=46$; moderate, $n=58$; severe, $n=55$. Metabolites: mild, $n=12$;
 416 moderate, $n=11$; severe, $n=12$.

Discussion

We report significant associations between characteristics of the faecal microbiome and the severity of CI in residents of long-term aged care facilities. Microbiome CI severity-associated traits were identified even after adjustment for age, sex, prior medication exposure, and diet. Individuals with more severe CI exhibited a greater representation of the Actinomycetota phylum and *Methanobrevibacter smithii*, and a lower prevalence of *Bacteroides uniformis*, a reduced capacity for synthesis of SCFAs, neurotransmitters (glutamate and GABA), and amino acids that are essential for autophagy, and an increased capacity for methanogenesis. These findings identify microbial factors potentially influencing ageing-associated cognitive decline, and present opportunities for prediction and treatment of CI.

Changes in intestinal microbiology can influence neuroplastic changes in the brain via a range of mechanisms (Cryan et al., 2019; Rogers et al., 2016; Sharon et al., 2016; Shoubridge et al., 2022). Many of these pathways relate to the production of specific factors by the gut microbiota, including the biosynthesis of immunomodulatory metabolites and neurotransmitters (Correa-Oliveira et al., 2016; Erny et al., 2015), amino acid metabolism (Bellono et al., 2017; Ye et al., 2021), and the release of pro-inflammatory cytokines (Arentsen et al., 2017; Erny et al., 2015; Kim et al., 2013).

We assessed the potential influence of the gut microbiome of participants to neurophysiology through two complementary strategies. The first was the analysis of the metagenome, representing the functional capacity of microbes within the gut to produce particular metabolites. The second was a confirmatory analysis of the faecal metabolome, representing the output of the combined metabolic activity of the gut microbiota. Each of these processes identified factors that were significantly associated with CI severity, and notably, positive

correlations between metabolite levels and the prevalence of genes involved in their biosynthesis was widespread.

A lower capacity for microbial biosynthesis of the neurotransmitters, glutamate and GABA, was evident in those with more severe CI. Levels of both factors have been associated with CI previously (Gueli & Taibi, 2013; Jimenez-Jimenez et al., 1998; Lin et al., 2019; Lin et al., 2017; Murley et al., 2020). The gut microbiome mediates neurological homeostasis via multiple key pathways, including through metabolism and production of neurotransmitters, such as glutamate, GABA, dopamine, and serotonin. These neurotransmitters can then directly innervate intestinal neural pathways or circulate peripherally to the brain (Kaelberer et al., 2018; Shoubridge et al., 2022; Strandwitz, 2018).

Severe CI was also associated with reduced capacity for bacterial biosynthesis of the SCFAs butyrate, acetate, and propionate. SCFA production is known to be important for normal cognitive function and in preventing neuroinflammation (Arnoldussen et al., 2017; Byrne et al., 2016; Erny et al., 2015). Previous studies have identified an association between a reduced capacity for SCFA biosynthesis and the development of a chronic and systemic inflammatory state, commonly referred to as “inflammaging”, involving increased circulation of IL-6, TNF- α , and C-reactive protein (Franceschi & Campisi, 2014; Franceschi et al., 2018; Frasca & Blomberg, 2016). Inflammaging, particularly in the brain, is associated with decreased neuronal arborisation, numbers of neurons and synapses, and overall brain cortical volume (Stephenson et al., 2018) and has been implicated in the acceleration of dementia onset (Grande et al., 2021; Sankowski et al., 2015), and the rate of neurological deterioration (Eikelenboom et al., 2012; Giunta et al., 2008).

In contrast to a decreased capacity for SCFA synthesis, we observed a greater capacity for methanogenesis with increasing CI severity. This relationship was apparent from the representation of methanogenic pathways within the metagenome, and from the increased relative abundance of species, such as *Methanobrevibacter smithii*, in those with severe CI. Increasing capacity for methanogenesis within the gut microbiome has been reported previously in two cohorts of centenarians (Li et al., 2022; Wu et al., 2019), as well as in rodent models of ageing (Maczulak et al., 1989). While the clinical consequences of increased methane production in the gut are poorly understood, high levels are associated with functional constipation (Chatterjee et al., 2007), diverticulosis (Weaver et al., 1986), and colon cancer (Haines et al., 1977).

The gut microbiome in participants with more severe CI was found to be depleted in its capacity to synthesise amino acids, particularly L-arginine. The availability of arginine is critical to the regulation of autophagy (Poillet-Perez et al., 2018), the cellular process that involves the recycling of nutrients from macromolecules in response to nutrient deficiency (Mizushima, 2004) and the removal of damaged material from the cellular environment (Lazarou et al., 2015). Genetic polymorphisms in genes involved in the regulation of autophagy have been linked to a number of neurodegenerative diseases, including Alzheimer's, Parkinson's, Huntington's, and Lewy body diseases, frontotemporal dementia, and amyotrophic lateral sclerosis (Fujikake et al., 2018; Gan et al., 2018; Gao et al., 2018; Nixon, 2013; Tsuang et al., 2012). The conversion of arginine to putrescine, spermidine, and spermine by intestinal microbes promotes autophagy (Eisenberg et al., 2009; Oliphant & Allen-Vercoe, 2019; Pugin et al., 2017) and the significant reduction in arginine biosynthesis capacity is consistent with the contribution of suppressed autophagy to the development and progression of age-related disease. Severe CI was also associated with a reduced capacity for microbial production of the

essential amino acids, L-valine and L-lysine. Impaired L-valine production has been linked with declining neurological health previously (Baranyi et al., 2016), and diet supplementation with L-lysine and L-valine has been shown to improve cognitive and psychological function in older adults (Suzuki et al., 2020).

Microbial functions, such as those associated with CI severity, can often be performed by many different members of the gut microbiota. This phenomenon is referred to as functional redundancy and can result in relationships between individual microbial species and host measures of disease being less strong than those based on conserved microbial functional traits. Despite this, we observed a number of discrete bacterial taxa that were significantly associated with CI. In particular, *Methanobrevibacter smithii* and *Alistipes finegoldii* were more prevalent in those with severe CI, while *Bacteroides uniformis* was less highly represented. As above, *Methanobrevibacter smithii* is associated with higher methane production (Ghoshal et al., 2016) and has been identified as an inflammatory and cardiometabolic biomarker (Fu et al., 2020). Whilst the precise mechanisms of *Alistipes* species in health and disease are still unclear (Parker et al., 2020), clinical studies of inflammatory diseases have shown *Alistipes finegoldii* triggers intestinal inflammation and decreases SCFA-producing bacteria, potentially playing a pathogenic role in chronic diseases (Kim et al., 2018; Parker et al., 2020; Rodriguez-Palacios et al., 2019).

We also observed severe CI to be associated with a lower prevalence of bacterial taxa that are considered broadly beneficial. These included *Bacteroides uniformis*, which is associated with reduced risk of colorectal cancer (Wang et al., 2012) and inflammatory bowel disease (Takahashi et al., 2016), and *Blautia* species, which have the potential to inhibit the growth of pathogenic bacteria in the intestine and reduce inflammation (Hosomi et al., 2022; Liu et al.,

2021). Taxa that have been previously associated with aspects of cognition, such as *Collinsella aerofaciens* (Ghosh et al., 2020), were more prevalent in those with severe CI. However, other bacterial taxa associated with aspects of ageing, frailty, and cognitive decline in previous studies, including *Faecalibacterium prausnitzii* (Jackson et al., 2016), *Eubacterium rectale* (Ghosh et al., 2020; van Soest et al., 2020), and *Escherichia coli* (Barrientos et al., 2009; d'Avila et al., 2018; Hoogland et al., 2018) were not associated with CI severity in our cohort.

In addition to the relative abundance of different bacterial species, analysis of the broad structure of the gut microbiota can also be informative. We assessed three different alpha diversity measures, Shannon-Wiener diversity, Pielou's evenness, and species richness, that together provide an overview of microbiota structure. While evenness, which represents the relative differences in the abundance of various species in the community, was not associated significantly with CI severity, Shannon-Wiener diversity and species richness were both higher in severe CI. Studies of the gut microbiota in ageing have previously reported reduced diversity in older age. For example, Verdi and colleagues identified significantly lower faecal microbiota diversity to be associated with longer reaction times (in cognitive assessments) in an independently living aged cohort (Verdi et al., 2018). Similarly, Wasser and colleagues reported reduced alpha diversity in those with Huntington's disease (Wasser et al., 2020), while two other studies have reported no significant relationship between CI severity and alpha diversity (Komanduri et al., 2021; Stadlbauer et al., 2020). In our analysis, where age was adjusted for, a contrary effect was observed, consistent with an association between CI and specific microbiome changes that is separate to wider microbial shifts that are typical in later life.

Our study strengths and limitations include the use of entry into long term care facility assessment tools (‘ACFI’) for CI ascertainment. While it has been employed by the Australian Commonwealth Government as a basis for care funding for all residents of long term care facilities across Australia since 2008, is completed by trained assessors, and includes the PAS-CIS (a validated and consistently applied tool of CI in aged care), there are limitations to this tool. For example, people may not be comprehensively assessed for CI if they have a sensory/speech impairment, are non-English speaking, or have severe CI beyond the scope of the instrument, which can include a concurrent diagnosis of dementia or mental disorder (AIHW, 2002; Department of Health and Ageing, 2016). The ACFI is also designed for funding purposes, not clinical care or epidemiological surveillance, which likely results in underreporting of these chronic health conditions (Lind et al., 2020).

CI was measured on average 16 months prior to stool collection. There was no clinically significant difference in mean time from assessment to stool collection between severity groups, and the period of time between assessment and sample collection could not be reduced further without substantial reduction in the cohort size. However, changes in cognition between assessment and stool sample collection could confound the relationships that we report. Future studies arising from our findings would benefit from a briefer and more consistent interval between CI and microbiome assessment, and/or longitudinal analysis of associations.

Our study had other limitations that should be considered. First, we were able to relate changes in intestinal microbiology to cognitive function, but not to specific aspects of host neurological pathophysiology. Second, the relationships identified between taxonomic and functional features of the intestinal microbiome and CI are associative and whether they contribute directly to the development and progression of CI remains to be established. Third, the

possibility that CI severity drives alterations in microbiome composition, mediated by factors such as dementia medications, changes in food preparation for those with dysphagia, and isolation to locked wards for residents with severe behavioural care needs, cannot be excluded based on the current analysis. Indeed, changes in behaviour associated with psychiatric conditions in other contexts, particularly those relating to diet, have been shown to contribute to disease-specific gut microbiome markers (Larroya et al., 2021).

While our analysis involved participants from five facilities in metropolitan South Australia, the findings are likely to be representative of a wider phenomenon. Alignment of the GRACE cohort to the comprehensive Registry of Senior Australians (ROSA) (Carpenter et al., 2023), a cohort that includes over 2.8 million Australians (including those in long-term aged care) supported the representative nature of our study cohort (Carpenter et al., 2023).

Conclusions

We report age-, sex-, antibiotic-, and diet-independent microbial markers of severe CI. Our analysis implicates multiple gut microbiome-brain pathways in ageing-associated cognitive decline, including those involved in inflammation, neurotransmission, and autophagy. These findings raise the possibility of identifying cognitive decline and slowing its rate of progression via microbiome-targeted therapeutic interventions.

DECLARATIONS

Ethics approval and consent to participate

Ethical approval for the study was obtained from the Southern Adelaide Clinical Human Research Ethics Committee (HREC/18/SAC/244). Participants provided written informed

consent themselves or where third-party consent was required, a legal guardian or family member with power of attorney provided consent on their behalf.

Consent for publication

Not applicable.

Data availability statement

The GRACE study data are available upon reasonable request. GRACE study data described in this article are available to all interested researchers through collaboration. Please contact GBR (geraint.rogers@sahmri.com). The metagenomic data for this study have been deposited in the European Nucleotide Archive (ENA) at EMBL-EBI under accession number PRJEB51408 (<https://www.ebi.ac.uk/ena/browser/view/PRJEB51408>). The metabolomic data for this study is available at the NIH Common Fund's National Metabolomics Data Repository (NMDR) website, the Metabolomics Workbench, <https://www.metabolomicsworkbench.org> (Sud et al., 2016), where it has been assigned Project ID PR001631. The metabolomic data can also be accessed directly via its Project DOI: <http://dx.doi.org/10.21228/M8W43G>. Regarding the sharing of linked data from ROSA, due to data custodian restrictions, individual ROSA data cannot be made publicly available to other researchers.

Declaration of interests

The authors declare that they have no competing interests, nor any financial or personal relationships with other people or organisations that could bias this study.

Funding

This research was supported by an Australian Medical Research Future Fund (MRFF) grant from the Australian Department of Health (GNT1152268). The Australian Department of Health reviewed the study proposal, but did not play a role in study design, data collection, analysis, interpretation, or manuscript writing. GBR is supported by a National Health and Medical Research Council (NHMRC) Senior Research Fellowship (GNT1155179) and a Matthew Flinders Professorial Fellowship. MCI is supported by The Hospital Research Foundation Mid-Career Fellowship (MCF-27-2019) and NHMRC Investigator Grant (GNT119378). DJL is supported by an EMBL Australia Group Leader Award. SLT is supported by an NHMRC Emerging Leadership grant (GNT2008625).

Authors' contributions

APS, LC, EF, LEP, MaC, MCI, KI, SLT, and GBR conceived and designed the study. APS, LC, EF, and JC acquired the clinical samples and clinical data. APS and LC acquired the metagenomic data. APS, DPDS and VKN acquired the metabolomic data. APS, LC, EF, JMC, KI, SLT, GBR analysed and interpreted the data. APS, LC, KI, SLT, and GBR drafted the manuscript. All authors provided intellectual input to the manuscript and critically revised the manuscript. All authors have read and approved the final version of the manuscript.

Acknowledgments

This project used NCRIS-enabled Metabolomics Australia infrastructure at the University of Melbourne funded through BioPlatforms Australia. This project used the Metabolomics Workbench/National Metabolomics Data Repository (NMDR) supported by the NIH (U2C-DK119886) and Common Fund Data Ecosystem (CFDE) (3OT2OD030544).

References

- Australian Institute of Health and Welfare (AIHW). (2002). *Aged care assessment program data dictionary*. Canberra, Australia.
- Albert, M. S., Jones, K., Savage, C. R., Berkman, L., Seeman, T., Blazer, D., & Rowe, J. W. (1995). Predictors of cognitive change in older persons: MacArthur studies of successful aging. *Psychol Aging*, 10(4), 578-589. <https://doi.org/10.1037//0882-7974.10.4.578>
- Arentsen, T., Qian, Y., Gkotzis, S., Femenia, T., Wang, T., Udekwu, K., Forssberg, H., & Diaz Heijtz, R. (2017). The bacterial peptidoglycan-sensing molecule Pglyrp2 modulates brain development and behavior. *Mol Psychiatry*, 22(2), 257-266. <https://doi.org/10.1038/mp.2016.182>
- Arnoldussen, I. A. C., Wiesmann, M., Pelgrim, C. E., Wielemaker, E. M., van Duyvenvoorde, W., Amaral-Santos, P. L., Verschuren, L., Keijser, B. J. F., Heerschap, A., Kleemann, R., Wielinga, P. Y., & Kiliaan, A. J. (2017). Butyrate restores HFD-induced adaptations in brain function and metabolism in mid-adult obese mice. *Int J Obes (Lond)*, 41(6), 935-944. <https://doi.org/10.1038/ijo.2017.52>
- Baranyi, A., Amouzadeh-Ghadikolai, O., von Lewinski, D., Rothenhausler, H. B., Theokas, S., Robier, C., Mangge, H., Reicht, G., Hlade, P., & Meinitzer, A. (2016). Branched-Chain Amino Acids as New Biomarkers of Major Depression - A Novel Neurobiology of Mood Disorder. *PLoS One*, 11(8), e0160542. <https://doi.org/10.1371/journal.pone.0160542>
- Barrientos, R. M., Watkins, L. R., Rudy, J. W., & Maier, S. F. (2009). Characterization of the sickness response in young and aging rats following E. coli infection. *Brain Behav Immun*, 23(4), 450-454. <https://doi.org/10.1016/j.bbi.2009.01.016>
- Beghini, F., McIver, L. J., Blanco-Miguez, A., Dubois, L., Asnicar, F., Maharjan, S., Mailyan, A., Manghi, P., Scholz, M., Thomas, A. M., Valles-Colomer, M., Weingart, G., Zhang, Y., Zolfo, M., Huttenhower, C., Franzosa, E. A., & Segata, N. (2021). Integrating taxonomic, functional, and strain-level profiling of diverse microbial communities with bioBakery 3. *Elife*, 10. <https://doi.org/10.7554/eLife.65088>
- Bellono, N. W., Bayrer, J. R., Leitch, D. B., Castro, J., Zhang, C., O'Donnell, T. A., Brierley, S. M., Ingraham, H. A., & Julius, D. (2017). Enterochromaffin Cells Are Gut Chemosensors that Couple to Sensory Neural Pathways. *Cell*, 170(1), 185-198 e116. <https://doi.org/10.1016/j.cell.2017.05.034>
- Bjorkqvist, M., Wild, E. J., Thiele, J., Silvestroni, A., Andre, R., Lahiri, N., Raibon, E., Lee, R. V., Benn, C. L., Soulet, D., Magnusson, A., Woodman, B., Landles, C., Pouladi, M. A., Hayden, M. R., Khalili-Shirazi, A., Lowdell, M. W., Brundin, P., Bates, G. P., Leavitt, B. R., Moller, T., & Tabrizi, S. J. (2008). A novel pathogenic pathway of immune activation detectable before clinical onset in Huntington's disease. *J Exp Med*, 205(8), 1869-1877. <https://doi.org/10.1084/jem.20080178>
- Bolger, A. M., Lohse, M., & Usadel, B. (2014). Trimmomatic: a flexible trimmer for Illumina sequence data. *Bioinformatics*, 30(15), 2114-2120. <https://doi.org/10.1093/bioinformatics/btu170>
- Bonfili, L., Cecarini, V., Gogoi, O., Gong, C., Cuccioloni, M., Angeletti, M., Rossi, G., & Eleuteri, A. M. (2021). Microbiota modulation as preventative and therapeutic approach in Alzheimer's disease. *FEBS J*, 288(9), 2836-2855. <https://doi.org/10.1111/febs.15571>
- Bussian, T. J., Aziz, A., Meyer, C. F., Swenson, B. L., van Deursen, J. M., & Baker, D. J. (2018). Clearance of senescent glial cells prevents tau-dependent pathology and

- cognitive decline. *Nature*, 562(7728), 578-582. <https://doi.org/10.1038/s41586-018-0543-y>
- Byrne, C. S., Chambers, E. S., Alhabeeb, H., Chhina, N., Morrison, D. J., Preston, T., Tedford, C., Fitzpatrick, J., Irani, C., Busza, A., Garcia-Perez, I., Fountana, S., Holmes, E., Goldstone, A. P., & Frost, G. S. (2016). Increased colonic propionate reduces anticipatory reward responses in the human striatum to high-energy foods. *Am J Clin Nutr*, 104(1), 5-14. <https://doi.org/10.3945/ajcn.115.126706>
- Carpenter, L., Shoubridge, A. P., Flynn, E., Lang, C., Taylor, S. L., Papanicolas, L. E., Collins, J., Gordon, D., Lynn, D. J., Crotty, M., Whitehead, C., Leong, L. E. X., Wesselingh, S. L., Ivey, K., Inacio, M. C., & Rogers, G. B. (2023). Cohort profile: GRACE - a residential aged care cohort examining factors influencing antimicrobial resistance carriage. *BMC Geriatr*, 23(1), 521. <https://doi.org/10.1186/s12877-023-04215-3>
- Carpenter, L., Shoubridge, A., Flynn, E., Taylor, S. Ivey, K., Rogers, G. on behalf of the GRACE Investigative Study Team. (2021). *Generating evidence on Resistant Bacteria in the Aged Care Environment (GRACE) 2021 Report*. SAHMRI. <https://www.gracestudy.com.au/post/grace-study-stage-2-report>
- Chatterjee, S., Park, S., Low, K., Kong, Y., & Pimentel, M. (2007). The degree of breath methane production in IBS correlates with the severity of constipation. *Am J Gastroenterol*, 102(4), 837-841. <https://doi.org/10.1111/j.1572-0241.2007.01072.x>
- Claesson, M. J., Cusack, S., O'Sullivan, O., Greene-Diniz, R., de Weerd, H., Flannery, E., Marchesi, J. R., Falush, D., Dinan, T., Fitzgerald, G., Stanton, C., van Sinderen, D., O'Connor, M., Harnedy, N., O'Connor, K., Henry, C., O'Mahony, D., Fitzgerald, A. P., Shanahan, F., Twomey, C., Hill, C., Ross, R. P., & O'Toole, P. W. (2011). Composition, variability, and temporal stability of the intestinal microbiota of the elderly. *Proc Natl Acad Sci U S A*, 108 Suppl 1, 4586-4591. <https://doi.org/10.1073/pnas.1000097107>
- Comijs, H. C., Dik, M. G., Deeg, D. J., & Jonker, C. (2004). The course of cognitive decline in older persons: results from the longitudinal aging study amsterdam. *Dement Geriatr Cogn Disord*, 17(3), 136-142. <https://doi.org/10.1159/000076346>
- Correa-Oliveira, R., Fachi, J. L., Vieira, A., Sato, F. T., & Vinolo, M. A. (2016). Regulation of immune cell function by short-chain fatty acids. *Clin Transl Immunology*, 5(4), e73. <https://doi.org/10.1038/cti.2016.17>
- Cryan, J. F., O'Riordan, K. J., Cowan, C. S. M., Sandhu, K. V., Bastiaanssen, T. F. S., Boehme, M., Codagnone, M. G., Cusotto, S., Fulling, C., Golubeva, A. V., Guzzetta, K. E., Jaggar, M., Long-Smith, C. M., Lyte, J. M., Martin, J. A., Molinero-Perez, A., Moloney, G., Morelli, E., Morillas, E., O'Connor, R., Cruz-Pereira, J. S., Peterson, V. L., Rea, K., Ritz, N. L., Sherwin, E., Spichak, S., Teichman, E. M., van de Wouw, M., Ventura-Silva, A. P., Wallace-Fitzsimons, S. E., Hyland, N., Clarke, G., & Dinan, T. G. (2019). The Microbiota-Gut-Brain Axis. *Physiol Rev*, 99(4), 1877-2013. <https://doi.org/10.1152/physrev.00018.2018>
- D'Amato, A., Di Cesare Mannelli, L., Lucarini, E., Man, A. L., Le Gall, G., Branca, J. J. V., Ghelardini, C., Amedei, A., Bertelli, E., Regoli, M., Pacini, A., Luciani, G., Gallina, P., Altera, A., Narbad, A., Gulisano, M., Hoyles, L., Vauzour, D., & Nicoletti, C. (2020). Faecal microbiota transplant from aged donor mice affects spatial learning and memory via modulating hippocampal synaptic plasticity- and neurotransmission-related proteins in young recipients. *Microbiome*, 8(1), 140. <https://doi.org/10.1186/s40168-020-00914-w>
- d'Avila, J. C., Siqueira, L. D., Mazeraud, A., Azevedo, E. P., Foguel, D., Castro-Faria-Neto, H. C., Sharshar, T., Chretien, F., & Bozza, F. A. (2018). Age-related cognitive impairment is associated with long-term neuroinflammation and oxidative stress in a

mouse model of episodic systemic inflammation. *J Neuroinflammation*, 15(1), 28. <https://doi.org/10.1186/s12974-018-1059-y>

Dalile, B., Van Oudenhove, L., Vervliet, B., & Verbeke, K. (2019). The role of short-chain fatty acids in microbiota-gut-brain communication. *Nat Rev Gastroenterol Hepatol*, 16(8), 461-478. <https://doi.org/10.1038/s41575-019-0157-3>

Department of Health and Ageing. (2016). *Aged care funding instrument (ACFI) user guide*. Canberra, Australia.

Desbonnet, L., Clarke, G., Traplin, A., O'Sullivan, O., Crispie, F., Moloney, R. D., Cotter, P. D., Dinan, T. G., & Cryan, J. F. (2015). Gut microbiota depletion from early adolescence in mice: Implications for brain and behaviour. *Brain Behav Immun*, 48, 165-173. <https://doi.org/10.1016/j.bbi.2015.04.004>

Du, G., Dong, W., Yang, Q., Yu, X., Ma, J., Gu, W., & Huang, Y. (2020). Altered Gut Microbiota Related to Inflammatory Responses in Patients With Huntington's Disease. *Front Immunol*, 11, 603594. <https://doi.org/10.3389/fimmu.2020.603594>

Eikelenboom, P., Hoozemans, J. J., Veerhuis, R., van Exel, E., Rozemuller, A. J., & van Gool, W. A. (2012). Whether, when and how chronic inflammation increases the risk of developing late-onset Alzheimer's disease. *Alzheimers Res Ther*, 4(3), 15. <https://doi.org/10.1186/alzrt118>

Eisenberg, T., Knauer, H., Schauer, A., Buttner, S., Ruckenstein, C., Carmona-Gutierrez, D., Ring, J., Schroeder, S., Magnes, C., Antonacci, L., Fussi, H., Deszcz, L., Hartl, R., Schraml, E., Criollo, A., Megalou, E., Weiskopf, D., Laun, P., Heeren, G., Breitenbach, M., Grubeck-Loebenstien, B., Herker, E., Fahrenkrog, B., Frohlich, K. U., Sinner, F., Tavernarakis, N., Minois, N., Kroemer, G., & Madeo, F. (2009). Induction of autophagy by spermidine promotes longevity. *Nat Cell Biol*, 11(11), 1305-1314. <https://doi.org/10.1038/ncb1975>

Erny, D., Hrabe de Angelis, A. L., Jaitin, D., Wieghofer, P., Staszewski, O., David, E., Keren-Shaul, H., Mhlahkoiv, T., Jakobshagen, K., Buch, T., Schwierzeck, V., Utermohlen, O., Chun, E., Garrett, W. S., McCoy, K. D., Diefenbach, A., Staeheli, P., Stecher, B., Amit, I., & Prinz, M. (2015). Host microbiota constantly control maturation and function of microglia in the CNS. *Nat Neurosci*, 18(7), 965-977. <https://doi.org/10.1038/nn.4030>

Franceschi, C., & Campisi, J. (2014). Chronic inflammation (inflammaging) and its potential contribution to age-associated diseases. *J Gerontol A Biol Sci Med Sci*, 69 Suppl 1, S4-9. <https://doi.org/10.1093/gerona/glu057>

Franceschi, C., Garagnani, P., Parini, P., Giuliani, C., & Santoro, A. (2018). Inflammaging: a new immune-metabolic viewpoint for age-related diseases. *Nat Rev Endocrinol*, 14(10), 576-590. <https://doi.org/10.1038/s41574-018-0059-4>

Frasca, D., & Blomberg, B. B. (2016). Inflammaging decreases adaptive and innate immune responses in mice and humans. *Biogerontology*, 17(1), 7-19. <https://doi.org/10.1007/s10522-015-9578-8>

Frohlich, E. E., Farzi, A., Mayerhofer, R., Reichmann, F., Jacan, A., Wagner, B., Zinser, E., Bordag, N., Magnes, C., Frohlich, E., Kashofer, K., Gorkiewicz, G., & Holzer, P. (2016). Cognitive impairment by antibiotic-induced gut dysbiosis: Analysis of gut microbiota-brain communication. *Brain Behav Immun*, 56, 140-155. <https://doi.org/10.1016/j.bbi.2016.02.020>

Fu, B. C., Hullar, M. A. J., Randolph, T. W., Franke, A. A., Monroe, K. R., Cheng, I., Wilkens, L. R., Shepherd, J. A., Madeleine, M. M., Le Marchand, L., Lim, U., & Lampe, J. W. (2020). Associations of plasma trimethylamine N-oxide, choline, carnitine, and betaine with inflammatory and cardiometabolic risk biomarkers and the fecal microbiome in the Multiethnic Cohort Adiposity Phenotype Study. *Am J Clin Nutr*, 111(6), 1226-1234. <https://doi.org/10.1093/ajcn/nqaa015>

- 784 Fujikake, N., Shin, M., & Shimizu, S. (2018). Association Between Autophagy and
785 Neurodegenerative Diseases. *Front Neurosci*, 12, 255.
786 <https://doi.org/10.3389/fnins.2018.00255>
- 787 Gan, L., Cookson, M. R., Petrucelli, L., & La Spada, A. R. (2018). Converging pathways in
788 neurodegeneration, from genetics to mechanisms. *Nat Neurosci*, 21(10), 1300-1309.
789 <https://doi.org/10.1038/s41593-018-0237-7>
- 790 Gao, S., Casey, A. E., Sargeant, T. J., & Makinen, V. P. (2018). Genetic variation within
791 endolysosomal system is associated with late-onset Alzheimer's disease. *Brain*, 141(9),
792 2711-2720. <https://doi.org/10.1093/brain/awy197>
- 793 Ghosh, T. S., Rampelli, S., Jeffery, I. B., Santoro, A., Neto, M., Capri, M., Giampieri, E.,
794 Jennings, A., Candela, M., Turroni, S., Zoetendal, E. G., Hermes, G. D. A., Elodie, C.,
795 Meunier, N., Brugere, C. M., Pujos-Guillot, E., Berendsen, A. M., De Groot, L.,
796 Feskens, E. J. M., Kaluza, J., Pietruszka, B., Bielak, M. J., Comte, B., Maijo-Ferre, M.,
797 Nicoletti, C., De Vos, W. M., Fairweather-Tait, S., Cassidy, A., Brigidi, P., Franceschi,
798 C., & O'Toole, P. W. (2020). Mediterranean diet intervention alters the gut microbiome
799 in older people reducing frailty and improving health status: the NU-AGE 1-year
800 dietary intervention across five European countries. *Gut*, 69(7), 1218-1228.
801 <https://doi.org/10.1136/gutjnl-2019-319654>
- 802 Ghoshal, U., Shukla, R., Srivastava, D., & Ghoshal, U. C. (2016). Irritable Bowel Syndrome,
803 Particularly the Constipation-Predominant Form, Involves an Increase in
804 Methanobrevibacter smithii, Which Is Associated with Higher Methane Production.
805 *Gut Liver*, 10(6), 932-938. <https://doi.org/10.5009/gnl15588>
- 806 Giunta, B., Fernandez, F., Nikolic, W. V., Obregon, D., Rrapo, E., Town, T., & Tan, J. (2008).
807 Inflammaging as a prodrome to Alzheimer's disease. *J Neuroinflammation*, 5, 51.
808 <https://doi.org/10.1186/1742-2094-5-51>
- 809 Grande, G., Marengoni, A., Vetrano, D. L., Roso-Llorach, A., Rizzuto, D., Zucchelli, A., Qiu,
810 C., Fratiglioni, L., & Calderon-Larranaga, A. (2021). Multimorbidity burden and
811 dementia risk in older adults: The role of inflammation and genetics. *Alzheimers*
812 *Dement*, 17(5), 768-776. <https://doi.org/10.1002/alz.12237>
- 813 Gubert, C., Choo, J. M., Love, C. J., Kodikara, S., Masson, B. A., Liew, J. J. M., Wang, Y.,
814 Kong, G., Narayana, V. K., Renoir, T., Le Cao, K. A., Rogers, G. B., & Hannan, A. J.
815 (2022). Faecal microbiota transplant ameliorates gut dysbiosis and cognitive deficits in
816 Huntington's disease mice. *Brain Commun*, 4(4), fcac205.
817 <https://doi.org/10.1093/braincomms/fcac205>
- 818 Gueli, M. C., & Taibi, G. (2013). Alzheimer's disease: amino acid levels and brain metabolic
819 status. *Neurol Sci*, 34(9), 1575-1579. <https://doi.org/10.1007/s10072-013-1289-9>
- 820 Haines, A., Metz, G., Dilawari, J., Blendis, L., & Wiggins, H. (1977). Breath-methane in
821 patients with cancer of the large bowel. *Lancet*, 2(8036), 481-483.
822 [https://doi.org/10.1016/s0140-6736\(77\)91605-1](https://doi.org/10.1016/s0140-6736(77)91605-1)
- 823 Harada, C. N., Natelson Love, M. C., & Triebel, K. L. (2013). Normal cognitive aging. *Clin*
824 *Geriatr Med*, 29(4), 737-752. <https://doi.org/10.1016/j.cger.2013.07.002>
- 825 Henon, H., Durieu, I., Guerouaou, D., Lebert, F., Pasquier, F., & Leys, D. (2001). Poststroke
826 dementia: incidence and relationship to prestroke cognitive decline. *Neurology*, 57(7),
827 1216-1222. <https://doi.org/10.1212/wnl.57.7.1216>
- 828 Hoogland, I. C. M., Westhoff, D., Engelen-Lee, J. Y., Melief, J., Valls Seron, M., Houben-
829 Weerts, J., Huitinga, I., van Westerloo, D. J., van der Poll, T., van Gool, W. A., & van
830 de Beek, D. (2018). Microglial Activation After Systemic Stimulation With
831 Lipopolysaccharide and Escherichia coli. *Front Cell Neurosci*, 12, 110.
832 <https://doi.org/10.3389/fncel.2018.00110>

- Hosomi, K., Saito, M., Park, J., Murakami, H., Shibata, N., Ando, M., Nagatake, T., Konishi, K., Ohno, H., Tanisawa, K., Mohsen, A., Chen, Y. A., Kawashima, H., Natsume-Kitatani, Y., Oka, Y., Shimizu, H., Furuta, M., Tojima, Y., Sawane, K., Saika, A., Kondo, S., Yonejima, Y., Takeyama, H., Matsutani, A., Mizuguchi, K., Miyachi, M., & Kunisawa, J. (2022). Oral administration of *Blautia wexlerae* ameliorates obesity and type 2 diabetes via metabolic remodeling of the gut microbiota. *Nat Commun*, 13(1), 4477. <https://doi.org/10.1038/s41467-022-32015-7>
- Jackson, M. A., Jeffery, I. B., Beaumont, M., Bell, J. T., Clark, A. G., Ley, R. E., O'Toole, P. W., Spector, T. D., & Steves, C. J. (2016). Signatures of early frailty in the gut microbiota. *Genome Med*, 8(1), 8. <https://doi.org/10.1186/s13073-016-0262-7>
- Jimenez-Jimenez, F. J., Molina, J. A., Gomez, P., Vargas, C., de Bustos, F., Benito-Leon, J., Tallon-Barranco, A., Orti-Pareja, M., Gasalla, T., & Arenas, J. (1998). Neurotransmitter amino acids in cerebrospinal fluid of patients with Alzheimer's disease. *J Neural Transm (Vienna)*, 105(2-3), 269-277. <https://doi.org/10.1007/s007020050056>
- Jorm, A. F., Mackinnon, A. J., Henderson, A. S., Scott, R., Christensen, H., Korten, A. E., Cullen, J. S., & Mulligan, R. (1995). The Psychogeriatric Assessment Scales: a multi-dimensional alternative to categorical diagnoses of dementia and depression in the elderly. *Psychol Med*, 25(3), 447-460. <https://doi.org/10.1017/s0033291700033377>
- Kaelberer, M. M., Buchanan, K. L., Klein, M. E., Barth, B. B., Montoya, M. M., Shen, X., & Bohorquez, D. V. (2018). A gut-brain neural circuit for nutrient sensory transduction. *Science*, 361(6408). <https://doi.org/10.1126/science.aat5236>
- Kim, M. H., Kang, S. G., Park, J. H., Yanagisawa, M., & Kim, C. H. (2013). Short-chain fatty acids activate GPR41 and GPR43 on intestinal epithelial cells to promote inflammatory responses in mice. *Gastroenterology*, 145(2), 396-406 e391-310. <https://doi.org/10.1053/j.gastro.2013.04.056>
- Kim, M. S., Kim, Y., Choi, H., Kim, W., Park, S., Lee, D., Kim, D. K., Kim, H. J., Choi, H., Hyun, D. W., Lee, J. Y., Choi, E. Y., Lee, D. S., Bae, J. W., & Mook-Jung, I. (2020). Transfer of a healthy microbiota reduces amyloid and tau pathology in an Alzheimer's disease animal model. *Gut*, 69(2), 283-294. <https://doi.org/10.1136/gutjnl-2018-317431>
- Kim, S., Goel, R., Kumar, A., Qi, Y., Lobaton, G., Hosaka, K., Mohammed, M., Handberg, E. M., Richards, E. M., Pepine, C. J., & Raizada, M. K. (2018). Imbalance of gut microbiome and intestinal epithelial barrier dysfunction in patients with high blood pressure. *Clin Sci (Lond)*, 132(6), 701-718. <https://doi.org/10.1042/CS20180087>
- Koistinaho, M., Lin, S., Wu, X., Esterman, M., Koger, D., Hanson, J., Higgs, R., Liu, F., Malkani, S., Bales, K. R., & Paul, S. M. (2004). Apolipoprotein E promotes astrocyte colocalization and degradation of deposited amyloid-beta peptides. *Nat Med*, 10(7), 719-726. <https://doi.org/10.1038/nm1058>
- Komanduri, M., Savage, K., Lea, A., McPhee, G., Nolidin, K., Deleuil, S., Stough, C., & Gondalia, S. (2021). The Relationship between Gut Microbiome and Cognition in Older Australians. *Nutrients*, 14(1). <https://doi.org/10.3390/nu14010064>
- Kong, G., Ellul, S., Narayana, V. K., Kanojia, K., Ha, H. T. T., Li, S., Renoir, T., Cao, K. L., & Hannan, A. J. (2021). An integrated metagenomics and metabolomics approach implicates the microbiota-gut-brain axis in the pathogenesis of Huntington's disease. *Neurobiol Dis*, 148, 105199. <https://doi.org/10.1016/j.nbd.2020.105199>
- Lai, W. T., Zhao, J., Xu, S. X., Deng, W. F., Xu, D., Wang, M. B., He, F. S., Liu, Y. H., Guo, Y. Y., Ye, S. W., Yang, Q. F., Zhang, Y. L., Wang, S., Li, M. Z., Yang, Y. J., Liu, T. B., Tan, Z. M., Xie, X. H., & Rong, H. (2021). Shotgun metagenomics reveals both taxonomic and tryptophan pathway differences of gut microbiota in bipolar disorder

- with current major depressive episode patients. *J Affect Disord*, 278, 311-319.
<https://doi.org/10.1016/j.jad.2020.09.010>
- Langmead, B., & Salzberg, S. L. (2012). Fast gapped-read alignment with Bowtie 2. *Nat Methods*, 9(4), 357-359. <https://doi.org/10.1038/nmeth.1923>
- Larroya, A., Pantoja, J., Codoner-Franch, P., & Cenit, M. C. (2021). Towards Tailored Gut Microbiome-Based and Dietary Interventions for Promoting the Development and Maintenance of a Healthy Brain. *Front Pediatr*, 9, 705859. <https://doi.org/10.3389/fped.2021.705859>
- Lazarou, M., Sliter, D. A., Kane, L. A., Sarraf, S. A., Wang, C., Burman, J. L., Sideris, D. P., Fogel, A. I., & Youle, R. J. (2015). The ubiquitin kinase PINK1 recruits autophagy receptors to induce mitophagy. *Nature*, 524(7565), 309-314. <https://doi.org/10.1038/nature14893>
- Li, C., Luan, Z., Zhao, Y., Chen, J., Yang, Y., Wang, C., Jing, Y., Qi, S., Li, Z., Guo, H., Xu, W., Zhao, B., Wu, C., Wang, S., Yang, Y., & Sun, G. (2022). Deep insights into the gut microbial community of extreme longevity in south Chinese centenarians by ultra-deep metagenomics and large-scale culturomics. *NPJ Biofilms Microbiomes*, 8(1), 28. <https://doi.org/10.1038/s41522-022-00282-3>
- Lin, C. H., Yang, H. T., & Lane, H. Y. (2019). D-glutamate, D-serine, and D-alanine differ in their roles in cognitive decline in patients with Alzheimer's disease or mild cognitive impairment. *Pharmacol Biochem Behav*, 185, 172760. <https://doi.org/10.1016/j.pbb.2019.172760>
- Lin, C. H., Yang, S. Y., Horng, H. E., Yang, C. C., Chieh, J. J., Chen, H. H., Liu, B. H., & Chiu, M. J. (2017). Plasma alpha-synuclein predicts cognitive decline in Parkinson's disease. *J Neurol Neurosurg Psychiatry*, 88(10), 818-824. <https://doi.org/10.1136/jnnp-2016-314857>
- Lin, Y. T., Seo, J., Gao, F., Feldman, H. M., Wen, H. L., Penney, J., Cam, H. P., Gjoneska, E., Raja, W. K., Cheng, J., Rueda, R., Kritskiy, O., Abdurrob, F., Peng, Z., Milo, B., Yu, C. J., Elmsaouri, S., Dey, D., Ko, T., Yankner, B. A., & Tsai, L. H. (2018). APOE4 Causes Widespread Molecular and Cellular Alterations Associated with Alzheimer's Disease Phenotypes in Human iPSC-Derived Brain Cell Types. *Neuron*, 98(6), 1141-1154 e1147. <https://doi.org/10.1016/j.neuron.2018.05.008>
- Lind, K. E., Raban, M. Z., Brett, L., Jorgensen, M. L., Georgiou, A., & Westbrook, J. I. (2020). Measuring the prevalence of 60 health conditions in older Australians in residential aged care with electronic health records: a retrospective dynamic cohort study. *Popul Health Metr*, 18(1), 25. <https://doi.org/10.1186/s12963-020-00234-z>
- Liu, C. C., Zhao, N., Fu, Y., Wang, N., Linares, C., Tsai, C. W., & Bu, G. (2017). ApoE4 Accelerates Early Seeding of Amyloid Pathology. *Neuron*, 96(5), 1024-1032 e1023. <https://doi.org/10.1016/j.neuron.2017.11.013>
- Liu, X., Mao, B., Gu, J., Wu, J., Cui, S., Wang, G., Zhao, J., Zhang, H., & Chen, W. (2021). Blautia-a new functional genus with potential probiotic properties? *Gut Microbes*, 13(1), 1-21. <https://doi.org/10.1080/19490976.2021.1875796>
- Livingston, G., Huntley, J., Sommerlad, A., Ames, D., Ballard, C., Banerjee, S., Brayne, C., Burns, A., Cohen-Mansfield, J., Cooper, C., Costafreda, S. G., Dias, A., Fox, N., Gitlin, L. N., Howard, R., Kales, H. C., Kivimaki, M., Larson, E. B., Ogunniyi, A., Orgeta, V., Ritchie, K., Rockwood, K., Sampson, E. L., Samus, Q., Schneider, L. S., Selbaek, G., Teri, L., & Mukadam, N. (2020). Dementia prevention, intervention, and care: 2020 report of the Lancet Commission. *Lancet*, 396(10248), 413-446. [https://doi.org/10.1016/S0140-6736\(20\)30367-6](https://doi.org/10.1016/S0140-6736(20)30367-6)

- Lozupone, C., & Knight, R. (2005). UniFrac: a new phylogenetic method for comparing microbial communities. *Appl Environ Microbiol*, 71(12), 8228-8235. <https://doi.org/10.1128/AEM.71.12.8228-8235.2005>
- Luo, R., Su, L. Y., Li, G., Yang, J., Liu, Q., Yang, L. X., Zhang, D. F., Zhou, H., Xu, M., Fan, Y., Li, J., & Yao, Y. G. (2020). Activation of PPARA-mediated autophagy reduces Alzheimer disease-like pathology and cognitive decline in a murine model. *Autophagy*, 16(1), 52-69. <https://doi.org/10.1080/15548627.2019.1596488>
- Lynn, M. A., Eden, G., Ryan, F. J., Bensalem, J., Wang, X., Blake, S. J., Choo, J. M., Chern, Y. T., Sribnaia, A., James, J., Benson, S. C., Sandeman, L., Xie, J., Hassiotis, S., Sun, E. W., Martin, A. M., Keller, M. D., Keating, D. J., Sargeant, T. J., Proud, C. G., Wesselingh, S. L., Rogers, G. B., & Lynn, D. J. (2021). The composition of the gut microbiota following early-life antibiotic exposure affects host health and longevity in later life. *Cell Rep*, 36(8), 109564. <https://doi.org/10.1016/j.celrep.2021.109564>
- Maczulak, A. E., Wolin, M. J., & Miller, T. L. (1989). Increase in colonic methanogens and total anaerobes in aging rats. *Appl Environ Microbiol*, 55(10), 2468-2473. <https://doi.org/10.1128/aem.55.10.2468-2473.1989>
- Manderino, L., Carroll, I., Azcarate-Peril, M. A., Rochette, A., Heinberg, L., Peat, C., Steffen, K., Mitchell, J., & Gunstad, J. (2017). Preliminary Evidence for an Association Between the Composition of the Gut Microbiome and Cognitive Function in Neurologically Healthy Older Adults. *J Int Neuropsychol Soc*, 23(8), 700-705. <https://doi.org/10.1017/S1355617717000492>
- Marx, W., McGuinness, A. J., Rocks, T., Ruusunen, A., Cleminson, J., Walker, A. J., Gomes-da-Costa, S., Lane, M., Sanches, M., Diaz, A. P., Tseng, P. T., Lin, P. Y., Berk, M., Clarke, G., O'Neil, A., Jacka, F., Stubbs, B., Carvalho, A. F., Quevedo, J., Soares, J. C., & Fernandes, B. S. (2021). The kynurenine pathway in major depressive disorder, bipolar disorder, and schizophrenia: a meta-analysis of 101 studies. *Mol Psychiatry*, 26(8), 4158-4178. <https://doi.org/10.1038/s41380-020-00951-9>
- Mattila, P. M., Rinne, J. O., Helenius, H., Dickson, D. W., & Roytta, M. (2000). Alpha-synuclein-immunoreactive cortical Lewy bodies are associated with cognitive impairment in Parkinson's disease. *Acta Neuropathol*, 100(3), 285-290. <https://doi.org/10.1007/s004019900168>
- Meyer, K., Lulla, A., Debroy, K., Shikany, J. M., Yaffe, K., Meirelles, O., & Launer, L. J. (2022). Association of the Gut Microbiota With Cognitive Function in Midlife. *JAMA Netw Open*, 5(2), e2143941. <https://doi.org/10.1001/jamanetworkopen.2021.43941>
- Mizushima, N. (2004). Methods for monitoring autophagy. *Int J Biochem Cell Biol*, 36(12), 2491-2502. <https://doi.org/10.1016/j.biocel.2004.02.005>
- Motulsky, H. J., & Brown, R. E. (2006). Detecting outliers when fitting data with nonlinear regression - a new method based on robust nonlinear regression and the false discovery rate. *BMC Bioinformatics*, 7, 123. <https://doi.org/10.1186/1471-2105-7-123>
- Murley, A. G., Rouse, M. A., Jones, P. S., Ye, R., Hezemans, F. H., O'Callaghan, C., Frangou, P., Kourtzi, Z., Rua, C., Carpenter, T. A., Rodgers, C. T., & Rowe, J. B. (2020). GABA and glutamate deficits from frontotemporal lobar degeneration are associated with disinhibition. *Brain*, 143(11), 3449-3462. <https://doi.org/10.1093/brain/awaa305>
- Nixon, R. A. (2013). The role of autophagy in neurodegenerative disease. *Nat Med*, 19(8), 983-997. <https://doi.org/10.1038/nm.3232>
- Oksanen, J., Simpson, G. L., Blanchet, F. G., Kindt, R., Legendre, P., Minchin, P. R., O'Hara, R. B., Solymos, P., Stevens, M. H., Szoecs, E., Wagner, H., Barbour, M., Bedward, M., Bolker, B., Borcard, D., Carvalho, G., Chirico, M., De Caceres, M., Durand, S., Evangelista, H. B. A., FitzJohn, R., Friendly, M., Furneaux, B., Hannigan, G., Hill, M. O., Lahti, L., McGlinn, D., Ouellette, M., Cunha, E. R., Smith, T., Stier, A., Ter Braak,

- 981 C. J. F., and Weedon J. (2022). *vegan: Community Ecology Package*. In R package
982 version 2.6-2. <https://CRAN.R-project.org/package=vegan>
- 983 Oliphant, K., & Allen-Vercoe, E. (2019). Macronutrient metabolism by the human gut
984 microbiome: major fermentation by-products and their impact on host health.
985 *Microbiome*, 7(1), 91. <https://doi.org/10.1186/s40168-019-0704-8>
- 986 Parcon, P. A., Balasubramaniam, M., Ayyadevara, S., Jones, R. A., Liu, L., Shmookler Reis,
987 R. J., Barger, S. W., Mrak, R. E., & Griffin, W. S. T. (2018). Apolipoprotein E4 inhibits
988 autophagy gene products through direct, specific binding to CLEAR motifs. *Alzheimers*
989 *Dement*, 14(2), 230-242. <https://doi.org/10.1016/j.jalz.2017.07.754>
- 990 Parker, B. J., Wearsch, P. A., Veloo, A. C. M., & Rodriguez-Palacios, A. (2020). The Genus
991 Alistipes: Gut Bacteria With Emerging Implications to Inflammation, Cancer, and
992 Mental Health. *Front Immunol*, 11, 906. <https://doi.org/10.3389/fimmu.2020.00906>
- 993 Peet, R. K. (1974). The Measurement of Species Diversity. *Annual Review of Ecology and*
994 *Systematics*, 5(1), 285-307. <https://doi.org/10.1146/annurev.es.05.110174.001441>
- 995 Poillet-Perez, L., Xie, X., Zhan, L., Yang, Y., Sharp, D. W., Hu, Z. S., Su, X., Maganti, A.,
996 Jiang, C., Lu, W., Zheng, H., Bosenberg, M. W., Mehnert, J. M., Guo, J. Y., Lattime,
997 E., Rabinowitz, J. D., & White, E. (2018). Autophagy maintains tumour growth through
998 circulating arginine. *Nature*, 563(7732), 569-573. [https://doi.org/10.1038/s41586-018-](https://doi.org/10.1038/s41586-018-0697-7)
999 [0697-7](https://doi.org/10.1038/s41586-018-0697-7)
- 1000 Pugin, B., Barcik, W., Westermann, P., Heider, A., Wawrzyniak, M., Hellings, P., Akdis, C.
1001 A., & O'Mahony, L. (2017). A wide diversity of bacteria from the human gut produces
1002 and degrades biogenic amines. *Microb Ecol Health Dis*, 28(1), 1353881.
1003 <https://doi.org/10.1080/16512235.2017.1353881>
- 1004 Rodriguez-Palacios, A., Conger, M., Hopperton, A., Ezeji, J. C., Erkkila, H. L., Fiocchi, C., &
1005 Cominelli, F. (2019). 25 IDENTIFICATION OF PATHOGENIC BACTERIA IN
1006 SEVERE CROHN'S DISEASE. *Inflammatory Bowel Diseases*, 25(Supplement_1),
1007 S70-S70. <https://doi.org/10.1093/ibd/izy393.175>
- 1008 Rogers, G. B., Keating, D. J., Young, R. L., Wong, M. L., Licinio, J., & Wesselingh, S. (2016).
1009 From gut dysbiosis to altered brain function and mental illness: mechanisms and
1010 pathways. *Mol Psychiatry*, 21(6), 738-748. <https://doi.org/10.1038/mp.2016.50>
- 1011 Sampson, T. R., Debelius, J. W., Thron, T., Janssen, S., Shastri, G. G., Ilhan, Z. E., Challis, C.,
1012 Schretter, C. E., Rocha, S., Gradinaru, V., Chesselet, M. F., Keshavarzian, A., Shannon,
1013 K. M., Krajmalnik-Brown, R., Wittung-Stafshede, P., Knight, R., & Mazmanian, S. K.
1014 (2016). Gut Microbiota Regulate Motor Deficits and Neuroinflammation in a Model of
1015 Parkinson's Disease. *Cell*, 167(6), 1469-1480 e1412.
1016 <https://doi.org/10.1016/j.cell.2016.11.018>
- 1017 Sankowski, R., Mader, S., & Valdes-Ferrer, S. I. (2015). Systemic inflammation and the brain:
1018 novel roles of genetic, molecular, and environmental cues as drivers of
1019 neurodegeneration. *Front Cell Neurosci*, 9, 28.
1020 <https://doi.org/10.3389/fncel.2015.00028>
- 1021 Sharon, G., Sampson, T. R., Geschwind, D. H., & Mazmanian, S. K. (2016). The Central
1022 Nervous System and the Gut Microbiome. *Cell*, 167(4), 915-932.
1023 <https://doi.org/10.1016/j.cell.2016.10.027>
- 1024 Shi, Y., Yamada, K., Liddelow, S. A., Smith, S. T., Zhao, L., Luo, W., Tsai, R. M., Spina, S.,
1025 Grinberg, L. T., Rojas, J. C., Gallardo, G., Wang, K., Roh, J., Robinson, G., Finn, M.
1026 B., Jiang, H., Sullivan, P. M., Baufeld, C., Wood, M. W., Sutphen, C., McCue, L.,
1027 Xiong, C., Del-Aguila, J. L., Morris, J. C., Cruchaga, C., Alzheimer's Disease
1028 Neuroimaging, I., Fagan, A. M., Miller, B. L., Boxer, A. L., Seeley, W. W., Butovsky,
1029 O., Barres, B. A., Paul, S. M., & Holtzman, D. M. (2017). ApoE4 markedly exacerbates

tau-mediated neurodegeneration in a mouse model of tauopathy. *Nature*, 549(7673), 523-527. <https://doi.org/10.1038/nature24016>

Shoubridge, A. P., Choo, J. M., Martin, A. M., Keating, D. J., Wong, M. L., Licinio, J., & Rogers, G. B. (2022). The gut microbiome and mental health: advances in research and emerging priorities. *Mol Psychiatry*, 27(4), 1908-1919. <https://doi.org/10.1038/s41380-022-01479-w>

Soto, M., Herzog, C., Pacheco, J. A., Fujisaka, S., Bullock, K., Clish, C. B., & Kahn, C. R. (2018). Gut microbiota modulate neurobehavior through changes in brain insulin sensitivity and metabolism. *Mol Psychiatry*, 23(12), 2287-2301. <https://doi.org/10.1038/s41380-018-0086-5>

Stadlbauer, V., Engertsberger, L., Komarova, I., Feldbacher, N., Leber, B., Pichler, G., Fink, N., Scarpatetti, M., Schippinger, W., Schmidt, R., & Horvath, A. (2020). Dysbiosis, gut barrier dysfunction and inflammation in dementia: a pilot study. *BMC Geriatr*, 20(1), 248. <https://doi.org/10.1186/s12877-020-01644-2>

Stephenson, J., Nutma, E., van der Valk, P., & Amor, S. (2018). Inflammation in CNS neurodegenerative diseases. *Immunology*, 154(2), 204-219. <https://doi.org/10.1111/imm.12922>

Strandwitz, P. (2018). Neurotransmitter modulation by the gut microbiota. *Brain Res*, 1693(Pt B), 128-133. <https://doi.org/10.1016/j.brainres.2018.03.015>

Sud, M., Fahy, E., Cotter, D., Azam, K., Vadivelu, I., Burant, C., Edison, A., Fiehn, O., Higashi, R., Nair, K. S., Sumner, S., & Subramaniam, S. (2016). Metabolomics Workbench: An international repository for metabolomics data and metadata, metabolite standards, protocols, tutorials and training, and analysis tools. *Nucleic Acids Res*, 44(D1), D463-470. <https://doi.org/10.1093/nar/gkv1042>

Sun, M. F., Zhu, Y. L., Zhou, Z. L., Jia, X. B., Xu, Y. D., Yang, Q., Cui, C., & Shen, Y. Q. (2018). Neuroprotective effects of fecal microbiota transplantation on MPTP-induced Parkinson's disease mice: Gut microbiota, glial reaction and TLR4/TNF-alpha signaling pathway. *Brain Behav Immun*, 70, 48-60. <https://doi.org/10.1016/j.bbi.2018.02.005>

Suzuki, H., Yamashiro, D., Ogawa, S., Kobayashi, M., Cho, D., Iizuka, A., Tsukamoto-Yasui, M., Takada, M., Isokawa, M., Nagao, K., & Fujiwara, Y. (2020). Intake of Seven Essential Amino Acids Improves Cognitive Function and Psychological and Social Function in Middle-Aged and Older Adults: A Double-Blind, Randomized, Placebo-Controlled Trial. *Front Nutr*, 7, 586166. <https://doi.org/10.3389/fnut.2020.586166>

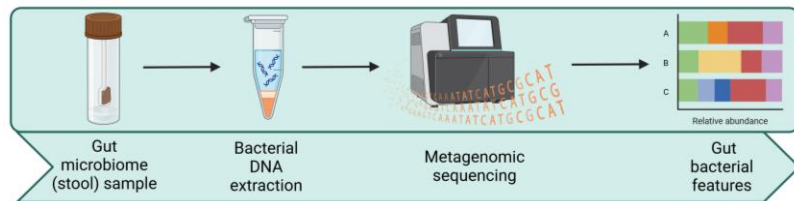
Takahashi, K., Nishida, A., Fujimoto, T., Fujii, M., Shioya, M., Imaeda, H., Inatomi, O., Bamba, S., Sugimoto, M., & Andoh, A. (2016). Reduced Abundance of Butyrate-Producing Bacteria Species in the Fecal Microbial Community in Crohn's Disease. *Digestion*, 93(1), 59-65. <https://doi.org/10.1159/000441768>

Tsuang, D., Leverenz, J. B., Lopez, O. L., Hamilton, R. L., Bennett, D. A., Schneider, J. A., Buchman, A. S., Larson, E. B., Crane, P. K., Kaye, J. A., Kramer, P., Woltjer, R., Kukull, W., Nelson, P. T., Jicha, G. A., Neltner, J. H., Galasko, D., Masliah, E., Trojanowski, J. Q., Schellenberg, G. D., Yearout, D., Huston, H., Fritts-Penniman, A., Mata, I. F., Wan, J. Y., Edwards, K. L., Montine, T. J., & Zabetian, C. P. (2012). GBA mutations increase risk for Lewy body disease with and without Alzheimer disease pathology. *Neurology*, 79(19), 1944-1950. <https://doi.org/10.1212/WNL.0b013e3182735e9a>

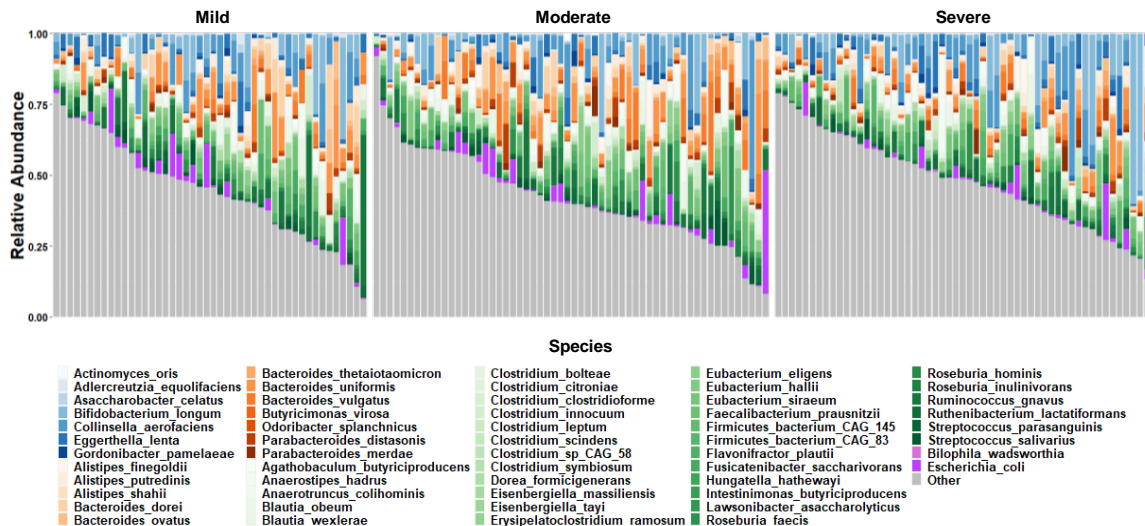
Ulrich, J. D., Ulland, T. K., Mahan, T. E., Nystrom, S., Nilsson, K. P., Song, W. M., Zhou, Y., Reinartz, M., Choi, S., Jiang, H., Stewart, F. R., Anderson, E., Wang, Y., Colonna, M., & Holtzman, D. M. (2018). ApoE facilitates the microglial response to amyloid plaque pathology. *J Exp Med*, 215(4), 1047-1058. <https://doi.org/10.1084/jem.20171265>

- Valles-Colomer, M., Falony, G., Darzi, Y., Tigchelaar, E. F., Wang, J., Tito, R. Y., Schiweck, C., Kurilshikov, A., Joossens, M., Wijmenga, C., Claes, S., Van Oudenhove, L., Zhernakova, A., Vieira-Silva, S., & Raes, J. (2019). The neuroactive potential of the human gut microbiota in quality of life and depression. *Nat Microbiol*, 4(4), 623-632. <https://doi.org/10.1038/s41564-018-0337-x>
- van Soest, A. P. M., Hermes, G. D. A., Berendsen, A. A. M., van de Rest, O., Zoetendal, E. G., Fuentes, S., Santoro, A., Franceschi, C., de Groot, L., & de Vos, W. M. (2020). Associations between Pro- and Anti-Inflammatory Gastro-Intestinal Microbiota, Diet, and Cognitive Functioning in Dutch Healthy Older Adults: The NU-AGE Study. *Nutrients*, 12(11). <https://doi.org/10.3390/nu12113471>
- Verdi, S., Jackson, M. A., Beaumont, M., Bowyer, R. C. E., Bell, J. T., Spector, T. D., & Steves, C. J. (2018). An Investigation Into Physical Frailty as a Link Between the Gut Microbiome and Cognitive Health. *Front Aging Neurosci*, 10, 398. <https://doi.org/10.3389/fnagi.2018.00398>
- Vogt, N. M., Kerby, R. L., Dill-McFarland, K. A., Harding, S. J., Merluzzi, A. P., Johnson, S. C., Carlsson, C. M., Asthana, S., Zetterberg, H., Blennow, K., Bendlin, B. B., & Rey, F. E. (2017). Gut microbiome alterations in Alzheimer's disease. *Sci Rep*, 7(1), 13537. <https://doi.org/10.1038/s41598-017-13601-y>
- Wang, T., Cai, G., Qiu, Y., Fei, N., Zhang, M., Pang, X., Jia, W., Cai, S., & Zhao, L. (2012). Structural segregation of gut microbiota between colorectal cancer patients and healthy volunteers. *ISME J*, 6(2), 320-329. <https://doi.org/10.1038/ismej.2011.109>
- Wasser, C. I., Mercieca, E. C., Kong, G., Hannan, A. J., McKeown, S. J., Glikmann-Johnston, Y., & Stout, J. C. (2020). Gut dysbiosis in Huntington's disease: associations among gut microbiota, cognitive performance and clinical outcomes. *Brain Commun*, 2(2), fcaa110. <https://doi.org/10.1093/braincomms/fcaa110>
- Weaver, G. A., Krause, J. A., Miller, T. L., & Wolin, M. J. (1986). Incidence of methanogenic bacteria in a sigmoidoscopy population: an association of methanogenic bacteria and diverticulosis. *Gut*, 27(6), 698-704. <https://doi.org/10.1136/gut.27.6.698>
- Wu, L., Zeng, T., Zinellu, A., Rubino, S., Kelvin, D. J., & Carru, C. (2019). A Cross-Sectional Study of Compositional and Functional Profiles of Gut Microbiota in Sardinian Centenarians. *mSystems*, 4(4). <https://doi.org/10.1128/mSystems.00325-19>
- Yano, J. M., Yu, K., Donaldson, G. P., Shastri, G. G., Ann, P., Ma, L., Nagler, C. R., Ismagilov, R. F., Mazmanian, S. K., & Hsiao, E. Y. (2015). Indigenous bacteria from the gut microbiota regulate host serotonin biosynthesis. *Cell*, 161(2), 264-276. <https://doi.org/10.1016/j.cell.2015.02.047>
- Ye, B. S., Seo, S. W., Kim, J. H., Kim, G. H., Cho, H., Noh, Y., Kim, H. J., Yoon, C. W., Woo, S. Y., Kim, S. H., Park, H. K., Kim, S. T., Choe, Y. S., Lee, K. H., Kim, J. S., Oh, S. J., Kim, C., Weiner, M., Lee, J. H., & Na, D. L. (2015). Effects of amyloid and vascular markers on cognitive decline in subcortical vascular dementia. *Neurology*, 85(19), 1687-1693. <https://doi.org/10.1212/WNL.0000000000002097>
- Ye, L., Bae, M., Cassilly, C. D., Jabba, S. V., Thorpe, D. W., Martin, A. M., Lu, H. Y., Wang, J., Thompson, J. D., Lickwar, C. R., Poss, K. D., Keating, D. J., Jordt, S. E., Clardy, J., Liddle, R. A., & Rawls, J. F. (2021). Enteroendocrine cells sense bacterial tryptophan catabolites to activate enteric and vagal neuronal pathways. *Cell Host Microbe*, 29(2), 179-196 e179. <https://doi.org/10.1016/j.chom.2020.11.011>

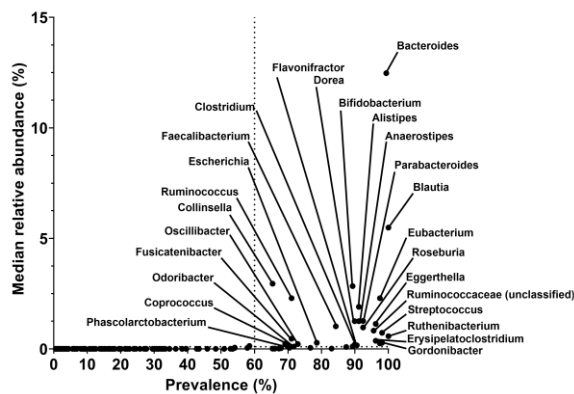
A



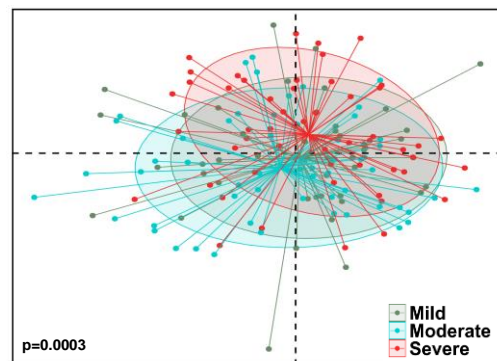
B



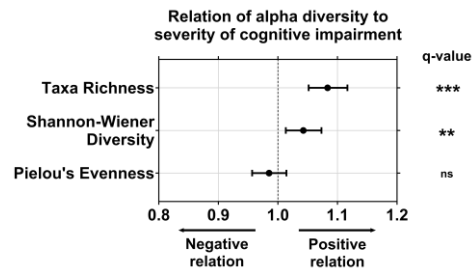
C



D

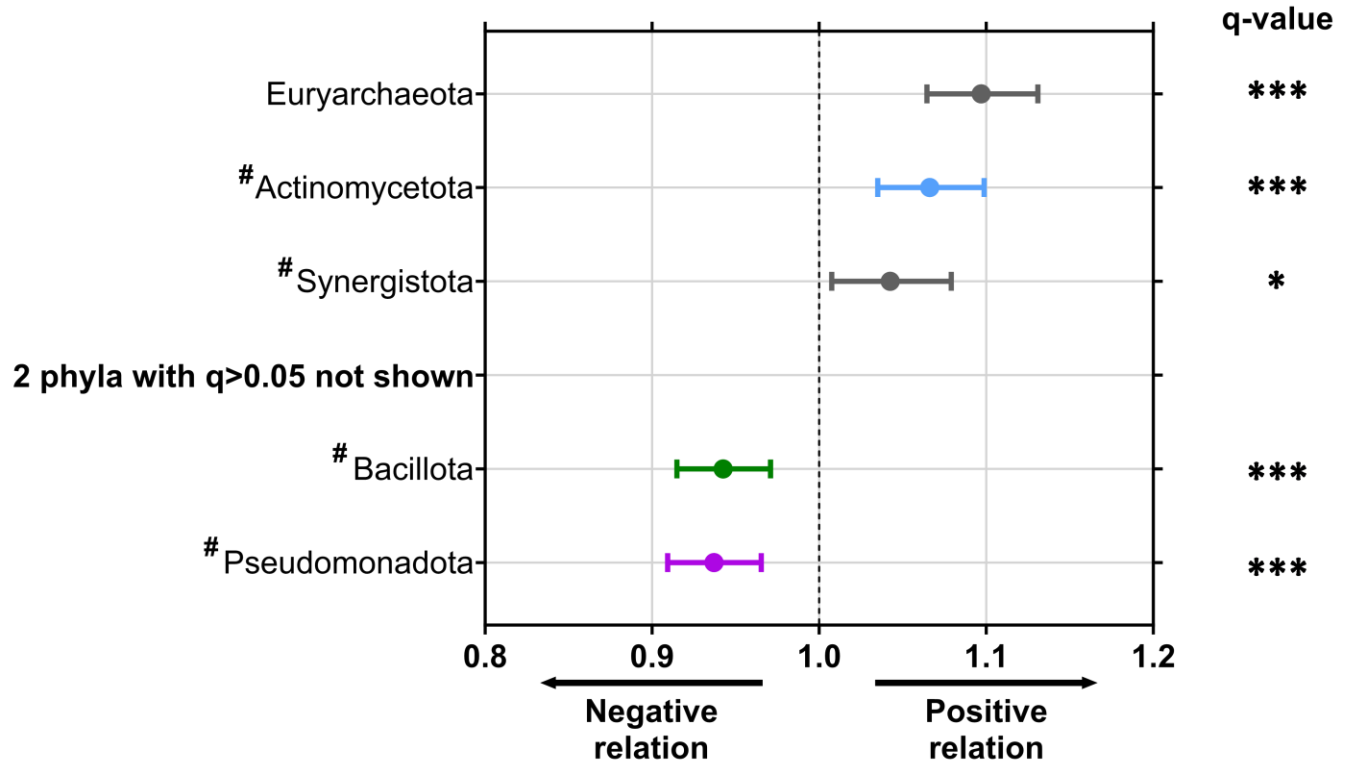


E



Adjusted odds ratio with 95% confidence interval

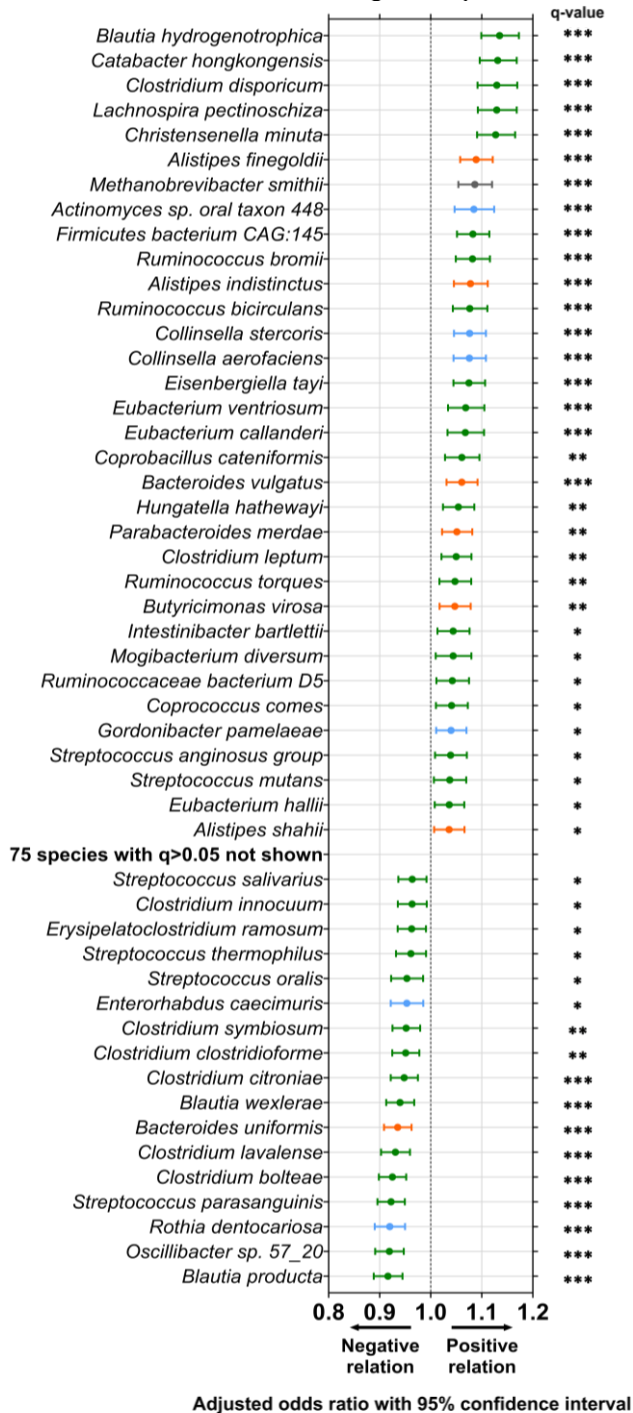
Relation of bacterial phyla to severity of cognitive impairment



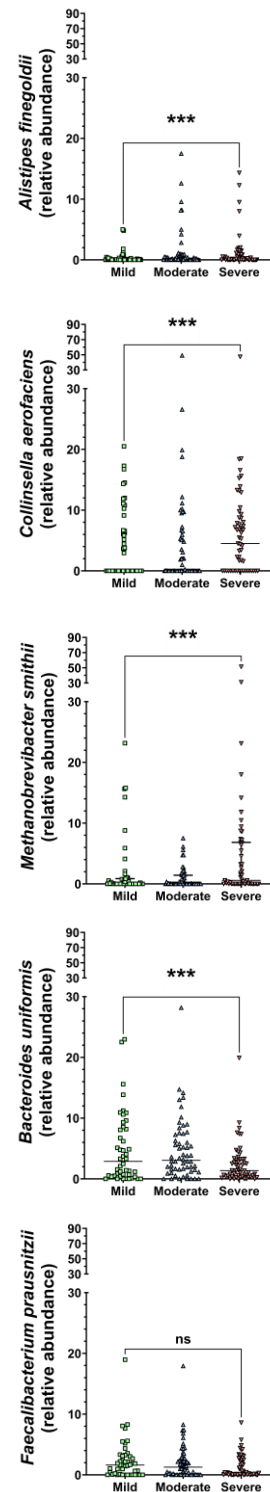
Adjusted odds ratio with 95% confidence interval

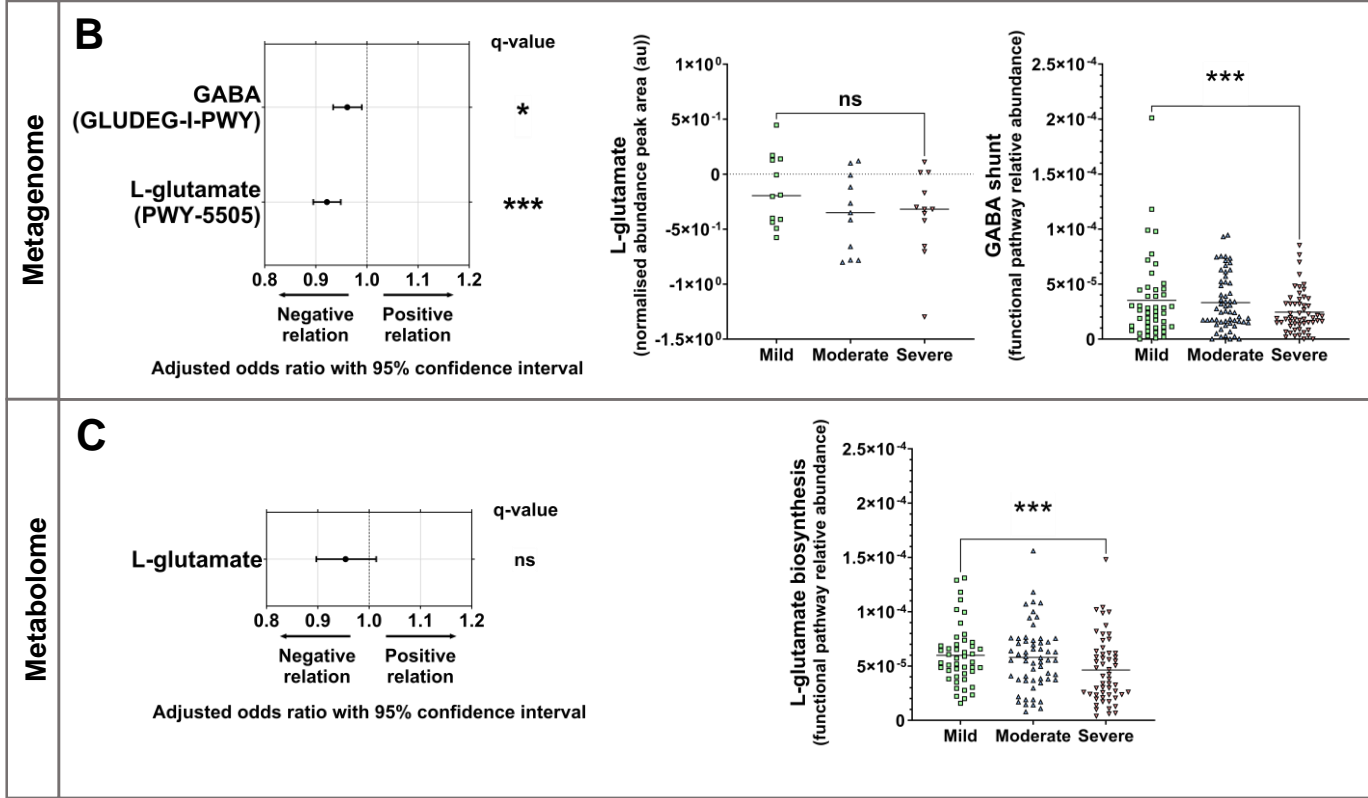
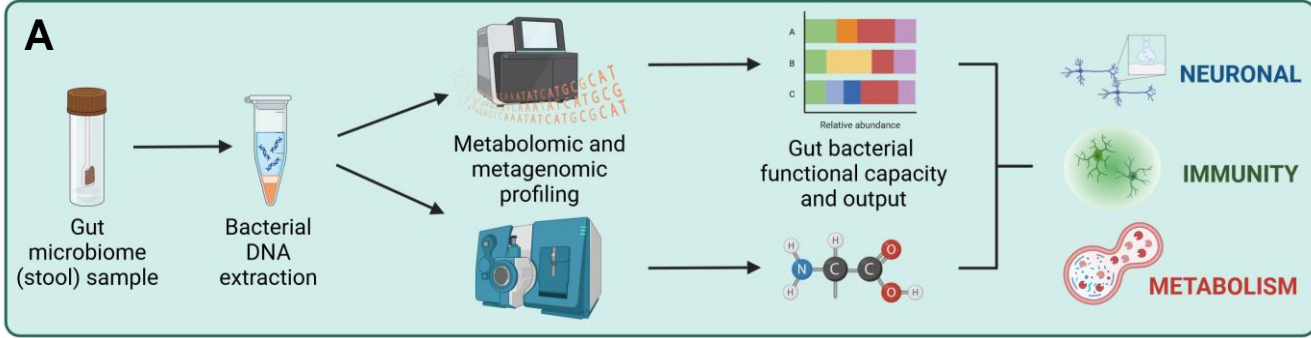
A

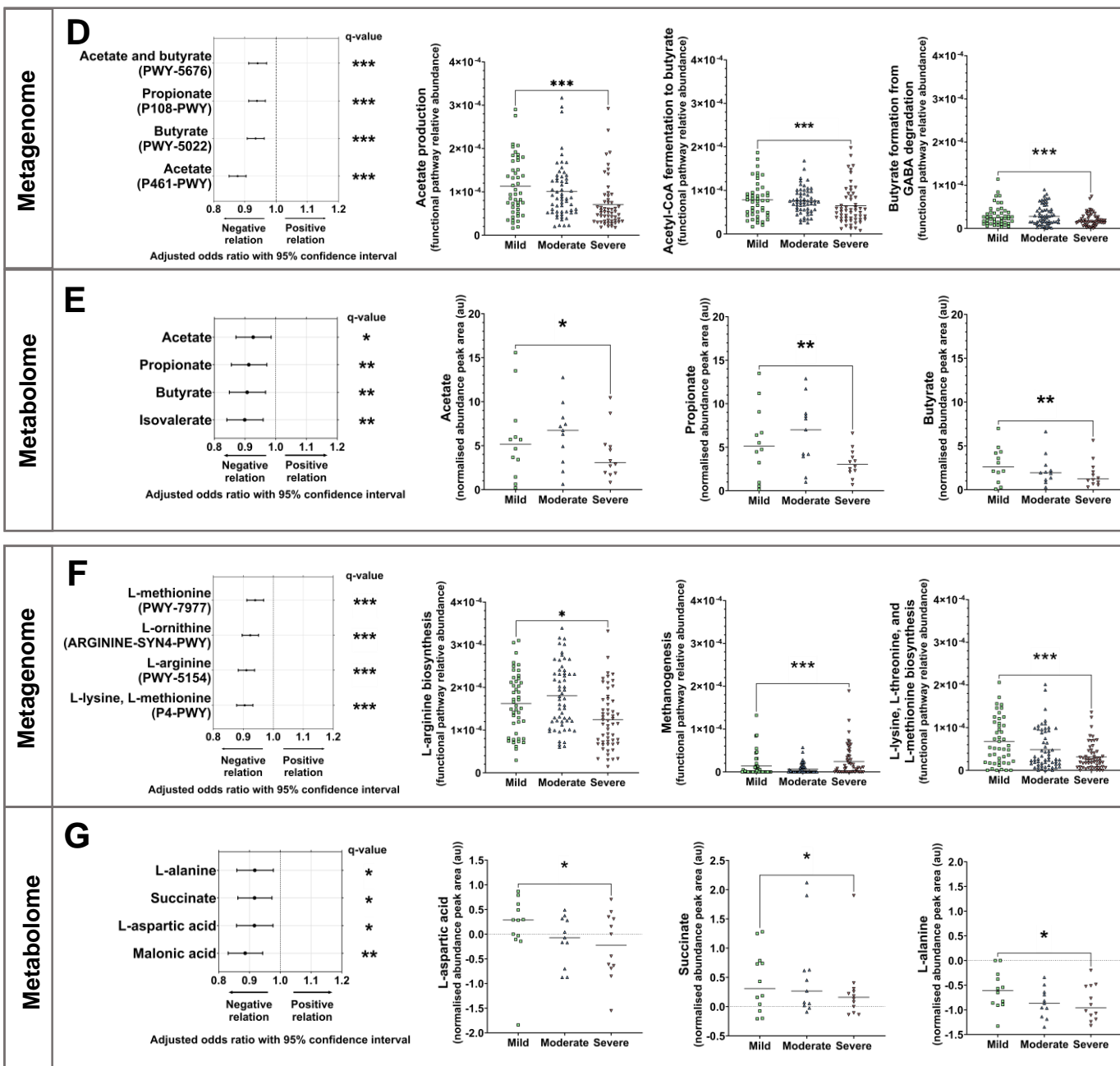
Relation of species to severity of cognitive impairment



B







Figures and Tables

Table 1. Study Cohort Characteristics by Severity of Cognitive Impairment.

[#]Extracted from Aged Care Funding Instrument data.

[^]Memory support units (also known as dementia units/wards, memory care, or special care units) are secure areas within long-term care facilities specially designed to accommodate residents with dementia.

^{*}Medication use defined as two or more supplies of the same medication within 90 days prior to stool collection.

Demographic	Mild (n=46)	Moderate (n=58)	Severe (n=55)	Total (n=159)
Age (years): Median (IQR)	87.5 (81.3;93.6)	90.3 (83.7;95.0)	87.9 (82.0;93.0)	88.7(82.1; 93.5)
Sex: n (%)				
Female	27 (58.7)	42 (72.4)	40 (72.7)	109 (68.6)
Male	19 (41.3)	16 (27.6)	15 (27.3)	50 (31.4)
PAS-CIS: Median (IQR)	6.6 (5.0;8.0)	11.0 (11.0;12.8)	18.0 (17.0;18.8)	10.8 (7.0;18.0)
Time between CI assessment and stool collection (days): Median (IQR)	345.5 (148.5,654.5)	421.5 (182.3,734.3)	487.0 (252.0,909.0)	437.0 (185.0,741.0)
Time since entry to facility (days): Median (IQR)	500 (253.0,947.5)	704 (299.0,983.0)	962 (502.0,1198.0)	681 (360.0,1015.0)
Dementia diagnosis: % (n) [#]	8.7 (4)	56.9 (33)	96.4 (53)	56.6 (90)
Memory Support Unit[^]: n (%)	0 (0.0)	4 (6.9)	19 (34.5)	23 (14.5)
Meal texture: n (%)				
Regular	38 (82.6)	44 (75.9)	30 (54.5)	112 (70.4)
Soft/smooth	8 (17.4)	14 (24.1)	25 (45.5)	47 (29.6)
Liquid texture: n (%)				
Normal/thin	42 (91.3)	54 (93.1)	49 (89.1)	145 (91.2)
Thick	4 (8.7)	4 (6.9)	6 (10.9)	14 (8.8)
Antibiotics (at least 2 supplied[*]): n (%)	10 (21.7)	7 (12.1)	5 (9.1)	22 (13.8)
Proton pump inhibitors (at least 2 supplied[*]): n (%)	23 (50.0)	23 (39.7)	12 (21.8)	58 (36.5)
Opioids (at least 2 supplied[*]): n (%)	8 (17.4)	12 (20.7)	14 (25.5)	34 (21.4)
Laxatives (at least 2 supplied[*]): n (%)	6 (13.0)	6 (10.3)	9 (16.4)	21 (13.2)

Table 2. Permutational ANOVA of the gut microbiome by severity of cognitive impairment.

^aTime since cognitive impairment assessment + age + sex+ antibiotic use + proton pump inhibitor use + opioid use + laxative use + recorded medication history + meal texture + liquid texture.

[^]Permutation p-value generated with a PERMANOVA.

*Degrees of freedom = 2.

	Unadjusted Model			Multivariate-adjusted Model ^a		
Main Test	Pseudo- <i>F</i> Ratio	<i>R</i> ²	p(perm) [^]	Pseudo- <i>F</i> Ratio	<i>R</i> ²	p(perm) [^]
Cognitive Impairment*	1.9646	0.0246	0.0002	1.815	0.0221	0.0003
Pairwise Test	<i>t</i>		p(perm) [^]	<i>t</i>		p(perm) [^]
Mild v Moderate	1.0596		0.2583	1.1135		0.1478
Mild v Severe	1.4474		0.0017	1.4228		0.0023
Moderate v Severe	1.6304		0.0002	1.5265		0.0003