

1 **SARS-CoV-2 viral replication persists in the human lung for several weeks after symptom onset**  
2 **in mechanically ventilated patients with severe COVID-19: a prospective tissue-sampling study**

3 Tomasicchio M<sup>1,2</sup>, Jaumdally S<sup>1,2</sup>, Pooran A<sup>1,2</sup>, Esmail A<sup>1,2</sup>, Wilson L<sup>1,2</sup>, Kotze A<sup>1,2</sup>, Semple L<sup>1,2</sup>,  
4 Meier S<sup>1,2</sup>, Pillay K<sup>5</sup>, Roberts R<sup>5</sup>, Kriel R<sup>5</sup>, Meldau R<sup>1,2</sup>, Oelofse S<sup>1,2</sup>, Mandviwala C<sup>1,2</sup>, Burns J<sup>1,2</sup>,  
5 Londt R<sup>1,2</sup>, Davids M<sup>1,2</sup>, van der Merwe<sup>1,2</sup> C, Roomaney A<sup>1,2</sup>, Kühn L<sup>1,2</sup>, Perumal T<sup>1,2</sup>, Scott A.J<sup>1,2</sup>,  
6 Hale M.J<sup>6</sup>, Baillie V<sup>7</sup>, Mahtab S<sup>7</sup>, Williamson C<sup>8</sup>, Joseph R<sup>8</sup>, Sigal A<sup>9</sup>, Joubert I<sup>10</sup>, Piercy J<sup>10</sup>,  
7 Thomson D<sup>10</sup>, Fredericks DL<sup>10</sup>, Miller MGA<sup>10</sup>, Nunes M.C<sup>7</sup>, Madhi S.A<sup>7</sup>, Dheda K<sup>1,2,3,4</sup>.

8

9 **Affiliations:**

10 <sup>1</sup> Centre for Lung Infection and Immunity, Division of Pulmonology, Department of Medicine,  
11 University of Cape Town and UCT Lung Institute, FCape Town, South Africa.

12 <sup>2</sup> South African MRC Centre for the Study of Antimicrobial Resistance, University of Cape Town,  
13 Cape Town, South Africa.

14 <sup>3</sup> Institute of Infectious Diseases and Molecular Medicine, University of Cape Town, Cape Town,  
15 South Africa.

16 <sup>4</sup> Faculty of Infectious and Tropical Diseases, Department of Immunology and Infection, London  
17 School of Hygiene & Tropical Medicine, London, UK.

18 <sup>5</sup> Division of Anatomical Pathology, Department of Pathology, University of Cape Town, Cape Town,  
19 South Africa

20 <sup>6</sup> Division of Anatomical Pathology, Faculty of Health Sciences, University of the Witwatersrand.

21 <sup>7</sup> South African Medical Research Council, Vaccines and Infectious Diseases Analytics Research  
22 Unit, Faculty of Health Sciences, University of the Witwatersrand, Johannesburg, South Africa;  
23 Department of Science and Technology/National Research Foundation South African Research Chair  
24 Initiative in Vaccine Preventable Diseases, Faculty of Health Sciences, University of the  
25 Witwatersrand, Johannesburg, South Africa.

26 <sup>8</sup> Division of Medical Virology, Institute of Infectious Disease and Molecular Medicine, University of  
27 Cape Town, Cape Town, South Africa.

28 <sup>9</sup> Africa Health Research Institute, Durban, South Africa.

29 <sup>10</sup> Division of Critical Care, Department of Anaesthesia and Perioperative Medicine, University of  
30 Cape Town, South Africa.

31

32 Correspondence: Keertan Dheda, Centre for Lung Infection and Immunity, Division of Pulmonology  
33 and UCT Lung Institute, Dept of Medicine, University of Cape Town, South Africa. E-mail:  
34 keertan.dheda@uct.ac.za

35

36

## 37 **Summary**

38 **Background.** The immunopathogenesis of severe COVID-19 is incompletely understood. Remdesivir  
39 is not recommended in mechanically ventilated (MV) patients. In the upper respiratory tract (URT)  
40 replicating (culturable) SARS-CoV-2 is recoverable for ~ 4 to 8 days after symptom onset, however,  
41 there is paucity of data about the frequency or duration of replicating virus in the lower respiratory  
42 tract (i.e. the human lung).

43 **Methods.** We undertook lung tissue sampling (needle biopsy), shortly after death, in 42 mechanically  
44 ventilated (MV) decedents during the Beta and Delta waves. An independent group of 18 ambulatory  
45 patents served as a comparative control. Lung biopsy cores from decedents underwent viral culture,  
46 histopathological analysis, electron microscopy, transcriptomic profiling, immunohistochemistry and  
47 cell-based flow cytometry of deconstructed tissue.

48 **Findings.** 38% (16/42) of MV decedents had culturable virus in the lung for a median of 15 days  
49 (persisting for up to 4 weeks) after symptom onset compared to  $\leq$  ~5 days in the URT of ambulatory  
50 patients. Lung viral culture positivity was not associated with comorbidities or steroid use. Delta but  
51 not Beta variant lung culture positivity was associated with accelerated death and secondary bacterial  
52 infection ( $p < 0.05$ ). NP culture was negative in 23.1% (6/26) of decedents despite lung culture  
53 positivity. This, hitherto, undescribed bio-phenotype of lung-specific persisting viral replication was  
54 associated with an enhanced transcriptomic pulmonary pro-inflammatory response but concurrent  
55 with viral culture positivity.

56 **Interpretation.** In a sizable subset of patients with acute COVID-19, concurrent, rather than  
57 sequential active viral replication continues to drive a heightened pro-inflammatory response in the  
58 human lung beyond the second week of illness (despite lack of viral replication in the URT) and was  
59 associated with variant-specific increased mortality and morbidity. These findings have potential  
60 implications for the design of interventional strategies and clinical management of patients with  
61 severe COVID-19 disease.

62 **Funding.** South African Medical Research Council.

63

64 **Evidence before this study**

65 Previous investigations to understand SARS-CoV-2 viral shedding (determined by PCR or antigen  
66 testing) have extensively focused on samples from the upper respiratory tract. The widely accepted  
67 view is that acute severe SARS-CoV-2 infection is characterised by a viral replicative phase in the  
68 first week of symptomatic illness followed by a pro-inflammatory immunopathologic phase peaking  
69 in the second and third weeks of illness. However, it remains unclear whether detection of SARS-  
70 CoV-2 beyond 2 weeks after symptom onset in published studies represent active replication  
71 competent virus because it may represent residual genomic or antigenic material in the tissue. Indeed,  
72 active replicating virus using serial culture has been shown to only persist for up to approximately one  
73 week after symptom onset in the upper respiratory tract. We could not find any published studies that  
74 comprehensively interrogated the upper and lower respiratory tract for culturable virus and mapped  
75 out their related clinical determinants and host immunological status. We hypothesised that there is  
76 compartment-specific uncoupling of viral replication in acute severe COVID-19 i.e. replicating virus,  
77 can persist in the lower respiratory tract beyond 10 days from symptoms onset, independent of its  
78 persistence in the upper respiratory tract, and this persistence may be associated with altered  
79 pulmonary immunity, and would have implications for antiviral and immunomodulatory therapy.

80

81 **Added value of this study**

82 We have identified a, hitherto, undescribed bio-phenotype of acute severe COVID-19 characterised  
83 by persisting viral replication in the lung for up to 4 weeks after symptom onset. This phenotype was  
84 associated with variant-specific accelerated death and a higher rate of secondary bacterial infection.  
85 We further found that this phenotype of replicating viral persistence was also associated with an  
86 exaggerated inflammatory response and attenuated T-cell immunity in the lung (based on  
87 histopathological and transcriptomic studies). This challenges the traditional view that viral  
88 replication occurs during the first 5 to 10 days of illness, which is followed by an effector or  
89 hyperinflammatory phase. This is the first study, to our knowledge, to systematically culture virus  
90 from the human lung and map out its related clinical determinants, and which describes the human

91 lung transcriptomic profile of culture-positive versus culture-negative patients with severe COVID-19  
92 disease.

93 **Implications of all the available evidence**

94 The Infectious Disease Society of America (and many other global guidelines) currently recommend  
95 the use of antivirals like remdesivir for only 5 days in hospitalised patients, and do not recommend the  
96 use of antiviral agents in mechanically ventilated patients (conditional recommendation). However,  
97 our data have implications for patient management, and suggest that a subset of patients may likely  
98 benefit from antiviral therapy and possibly extended immunomodulatory therapy. Further clinical  
99 studies are warranted.

100

101 **Introduction.**

102 Coronavirus disease-19 (COVID-19) caused by the Severe Acute Respiratory Syndrome Coronavirus-  
103 2 (SARS-CoV-2) has been the foremost killer globally over the last 3 years. Case fatality risk in  
104 hospitalised patients, and particularly in mechanically ventilated patients, during the Beta and Delta  
105 waves was particularly high (~50%-70%;<sup>1</sup>). Even with the Omicron-related variants, case fatality risk  
106 remains significant in the elderly and immunocompromised persons, and in several countries  
107 including the UK, Italy, France, Brazil, and prominently in China where there is now an unfolding  
108 epidemic of severe COVID-19 disease<sup>2-10</sup>. Better therapeutic interventions are needed. However,  
109 despite considerable research, the pathogenesis of severe COVID-19, relative to viral kinetics,  
110 remains incompletely understood.

111

112 SARS-CoV-2 detection (ascertained through PCR positivity or antigen detection) can persist for  
113 several weeks from symptom onset<sup>11</sup>. Post-mortem studies have shown persistence of SARS-CoV-2  
114 in tissues detected by PCR and immunohistochemistry for up to several weeks after symptom  
115 onset<sup>12,13</sup>. However, detection of SARS-CoV-2 in these studies may not represent replication  
116 competent virus (detectable only by viral culture) but residual genomic or antigenic material in the  
117 tissues. Shedding of replicating virus confirmed through serial viral culture (i.e., *in vitro* replication in  
118 human cell lines) from the upper respiratory tract (URT) has been shown to persist for only ~2 to 8  
119 days after symptom onset<sup>11,14-23</sup>. These findings have been confirmed in human lung challenge studies  
120 with viable pathogen where virus was cultured from the URT until a median of 4 days (and a  
121 maximum of 10 days) from symptom onset<sup>24</sup>. However, hardly anything is known about the  
122 compartment-specific duration of actively replicating virus in the lower respiratory tract (LRT),  
123 particularly in acute severely ill hospitalised patients undergoing mechanical ventilation. We  
124 hypothesised that there is compartment-specific uncoupling of viral replication in severe COVID-19  
125 i.e. replicating virus can persist in the LRT beyond 10 days from symptoms onset, independent of its  
126 persistence in the URT, and this persistence may be associated with an altered pulmonary immunity.

127 **Methods.**

128 **Patients.**

129 The decedents (n=42) were recruited from Chris Hani Baragwanath Academic Hospital,  
130 Johannesburg, South Africa (n=18; Beta group) and Groote Schuur Hospital, Cape Town, South  
131 Africa (n=24; Delta group). Ethical approval was obtained from the Human Research Ethics  
132 Committee (HREC) of the University of Cape Town (HREC approval number 866/2020) and  
133 University of Witwatersrand (HREC approval number M200313). Biosafety approvals were obtained  
134 from the Faculty Biosafety Committee of the University of Cape Town (IBC008-2021).

135

136 **Viral culture.**

137 To establish the *in vitro* viral culture model, a SARS-CoV-2 viral stock was used to infect the human  
138 lung carcinoma cell line, H1299 ACE2, in a BSL3 laboratory and infection was confirmed by light  
139 microscopy (as assessed by cytopathic effects of the virus on the cell line) and confocal microscopy  
140 (Figure S1A and B). Serial dilutions of the viral stock were used to establish the limit of detection of  
141 the PCR assay at  $1 \times 10^1$  copies/ml (Figure S1C). Viral culture was performed on the nasopharyngeal  
142 swab and lung biopsy samples as indicated in the study overview (Figure 1) and detailed in the online  
143 supplement. Viral culture was highly reproducible (see online supplement).

144

145 **Multiplex PCR to detect secondary bacterial infections.**

146 The lung biopsy cores, stored in universal transport medium, were briefly homogenised and 200µl of  
147 the supernatant was applied to the BioFire® FilmArray® Pneumonia panel (Biomérieux, South  
148 Africa). The panel was run using protocol BAL v3.3 according to the manufacturer's instructions,  
149 thus generating RT-PCR readouts for 33 bacterial and viral pathogens. Bronchopneumonia was  
150 defined as histological evidence of a neutrophilic alveolar infiltration together with the detection of  
151 bacterial genomic material in the biopsy cores.

152 **Immunohistochemistry.**

153 Immunohistochemical staining was performed using the Roche Ventana Automated platform  
154 (Ventana XT autostainer) as indicated by the manufacturer. Tissue sections were prepared, stained,  
155 and viewed using standard techniques<sup>25</sup>. Antibodies included anti-CD3 (2GV6), anti-CD4 (SP35),  
156 anti-CD8 (SP57) and anti-CD68 (KP-1) (Roche USA).

157

158 **Haematoxylin & eosin (H&E) staining and transmission electron microscopy (TEM).**

159 H&E staining and TEM were performed according to standard procedures<sup>25</sup>. H&E-stained slides were  
160 viewed using an Olympus BX43 microscope. TEM tissue sections were viewed using a Carl Zeiss  
161 EM109 microscope.

162

163 **SARS-CoV-2 whole genome sequencing.**

164 Total SARS-CoV-2 RNA was extracted from lung biopsy samples and whole genome sequencing was  
165 performed. The generated reads were analysed with the Exatype (<https://exatype.com>) software to  
166 identify minor and major variants. The assembled consensus sequences were analysed using  
167 Nextclade Web (<https://clades.nextstrain.org>) for further quality control and clade assignment.

168

169 **RNAseq.**

170 Total RNA was extracted from lung biopsy samples, sequenced and mapped consecutively to the  
171 human and COVID reference genomes using the Spliced Transcripts Alignment to a Reference  
172 (STAR) software (version 2.7.7a,<sup>26</sup>). A differential expression (DE) analysis was performed on the  
173 generated raw read count file with the edgeR (Version 3.38.4) R package<sup>27</sup>. A gene set enrichment  
174 analysis (GSEA) was performed on the DE results ranked by fold change using the gseGO function,  
175 from the R clusterProfiler (Version 4.0,<sup>28</sup>) package.



176 **Confocal microscopy.**

177 The H1299 ACE2 cells were plated and allowed to adhere to coverslips slides overnight at 37°C. The  
178 next day the cells were stained with or without anti-SARS-CoV-2 S1 spike protein (ThermoFisher,  
179 USA) and the slides were mounted in Mowiol (Calbiochem, USA) containing n-propyl gallate  
180 (Sigma-Aldrich, Germany) as an anti-fading agent. Confocal microscopy was performed with a Zeiss  
181 Axiovert 200M LSM510 Meta NLO Confocal Microscope.

182

183 **Lung tissue digestion and flow cytometry.**

184 Lung biopsy samples were cut into 1 mm by 1 mm pieces and digested using collagenase II according  
185 to the manufacturer's instructions (Ambion, USA). Undigested tissue was removed with a cell strainer  
186 (Becton Dickinson, USA) and cells were collected by centrifugation.

187 Prior to antibody staining, the cells were stained with the fixable viability dye, Zombie (Biolegend,  
188 USA) in PBS. The cells were stained with antibodies against CD3, CD4, CD8, IFN- $\gamma$ , TNF- $\alpha$ , IL-2  
189 and IL1- $\beta$  (Biolegend, USA) then acquired using a LSRII Flow Cytometer (Becton Dickinson, USA)  
190 and analysed using FloJo software (version 10.1; Treestar, USA). Dead cells were excluded from the  
191 scatter plots prior to analysis, and negative gates were set using fluorescence minus one (FMO)  
192 controls. Only the single cellular population was analysed.

193

194 **Statistical analysis.**

195 The Fisher Exact test was employed for categorical variables and for continuous variables, Mann-  
196 Whitney test was used for non-parametrically distributed data (Stata version 17 or GraphPad, Version  
197 9.4.1). A p-value of  $< 0.05$  was considered significant for all statistical analyses. The DE results were  
198 sorted/ranked by fold change and a gene set enrichment analysis (GSEA) for Gene Ontology  
199 (Biological Process) and KEGG pathways was performed using the gseGO and gseKEGG functions

200 respectively, from the clusterProfiler (Version: 4.4.4;<sup>28</sup>) package in R. Pathways with an FDR <0.05  
201 were considered significant.

202

## 203 **Results**

### 204 **Demographics and clinical characteristics of the decedents.**

205 The demographics of patients enrolled in the study are shown in Table S1. The median age of the  
206 patients was 53 years with 48% being males (20/42) and 52% being females (22/42). 40.5% (17/42)  
207 had a secondary bacterial infection and 11% (4/38) had bacterial bronchopneumonia  
208 (microbiologically and histopathological confirmed). The median time from onset of symptoms to  
209 death, ICU admission to death and high flow oxygen admission to death was 17 (IQR; 9-22), 5 (2-12)  
210 and 11 (6-15) days, respectively.

211

212 Figure 1A outlines an overview of the study plan. Ambulatory controls (n=18) were recruited at  
213 diagnosis (baseline; ~5 days from symptom onset), 7 days post diagnosis and 14 days post diagnosis.  
214 Minimally invasive tissue samples (MITS) and nasopharyngeal swabs from decedents (n=42) in the  
215 Beta and Delta waves (Figure 1B) were taken immediately after death. In addition, heart, liver,  
216 kidney, and adipose tissue samples were taken from the Delta variant decedent cohort.

217

### 218 **SARS-CoV-2 replicating persistence in the human lung of mechanically ventilated decedents.**

219 We first ascertained the frequency and duration of replicating virus in lung tissue (which to our  
220 knowledge has not been previously undertaken). Culturable virus was present in 38.1% (16/42; Figure  
221 2A) of mechanically ventilated ICU decedents, at a median of 15 days (and up ~4 weeks) from  
222 symptom onset to sampling/death (Figure 3A). By contrast, in a prospectively recruited control group  
223 of ambulatory patients 5.5% (1/18) and 0% (0/18) had culturable virus, using nasopharyngeal swab

224 samples, at day 12 ( $p=0.012$ ) and 19 ( $p=0.001$ ) after symptom onset, respectively (Figure 2B).  
225 Additionally, SARS-CoV-2 could be detected by PCR in multiple organs in lung culture-positive  
226 decedents in the Delta cohort (biopsies other than the lung were not performed in the Beta cohort)  
227 suggesting widespread multi-organ viral dissemination (Figure 2C). SARS-CoV-2 was also detected  
228 in adipose tissue of culture-positive decedents (hitherto undescribed). Clinical characteristics, such as,  
229 age and comorbidities were similar in the lung culture-positive versus culture-negative groups (Table  
230 S1). We found no association between viral genetic variant and the phenotype of replicating viral  
231 persistence (although this might have been a factor of the limited sample size; Table S5).

232

### 233 **Time to death in the Delta and Beta groups and predictors of lung culture positivity.**

234 Next, we evaluated variant-specific relationships to clinical outcomes. Mechanically ventilated  
235 patients who were SARS-CoV-2 lung culture-positive in the Delta, but not the Beta group, had  
236 accelerated death (i.e. shorter duration from symptom onset to death; Figure 3C versus 3B;  $p=0.004$ ),  
237 and a higher proportion of lung-specific secondary bacterial infection (Figure 3F versus 3E;  $p=0.032$ )  
238 compared to culture-negative decedents. The bacterial species identified from the lung biopsies of  
239 both the Beta and Delta groups included *Streptococcus*, *Staphylococcus*, *Haemophilus*, *Acinetobacter*,  
240 *Proteus* spp, *Escherichia*, *Klebsiella*, *Enterobacter* and *Serratia* (Table S4). Overall, both groups were  
241 infected with one or more bacteria that were sensitive or resistant to  $\beta$ -lactams and/or carbapenems.  
242 Key clinical and demographic characteristics such as differences in co-morbidities (age, obesity,  
243 diabetes, HIV positivity etc) associated as drivers of severe COVID-19 disease and poor prognosis,  
244 could not explain these observations, despite the lower population-level vaccination and pre-existing  
245 COVID-19 exposure rates in the Beta cohort. Steroid usage was similar in the culture-positive and  
246 culture-negative groups (Table S1) and there was no significant ( $p>0.05$ ) association between steroid  
247 use and the presence of secondary bacterial infection in a multivariable analysis.

248

249 Next, we interrogated whether nasopharyngeal PCR characteristics (Ct value), either at admission or  
250 close to death, could identify the phenotype of lung replicating viral persistence. However,  
251 nasopharyngeal Ct neither at admission, nor at the time of death was associated with lung culture  
252 positivity (Figure 3G). This suggests that the kinetics of viral replication was different in the upper  
253 and the lower respiratory tract.

254

### 255 **Lung immunity and histology of the culture-negative versus culture-positive groups.**

256 We then ascertained whether the phenotype of replicating viral persistence was associated with  
257 attenuated or modulated lung immunity in the Delta decedents (transcriptomic and flow cytometric  
258 studies were only carried out in Cape Town, i.e the Delta decedents, due to location-specific  
259 availability of assays and limited Beta group biopsy cores that had been used for unrelated studies).  
260 Immunohistochemical staining indicated that there was significantly less infiltration of CD3+ T-cells,  
261 specifically CD8+ T-cells in the alveoli and interstitium of the SARS-CoV-2 culture-positive  
262 compared with the culture-negative individuals in the Delta decedents (Figure 4A and B;  
263 immunohistochemical staining was not performed in the Beta cohort due to limited sample  
264 availability as outlined above).

265

266 The typical histological features of severe COVID-19 (e.g. diffuse alveolar damage and microvascular  
267 thrombosis) were similar in the SARS-CoV-2 culture-positive and the culture-negative phenotype  
268 suggesting that these events occurred in the early rather than the persistent viral replication phase  
269 (Figure 4C and D). Interestingly, we observed that some features of leucocyte hyperactivation (i.e.,  
270 hemophagocytic syndrome) were more common in the SARS-CoV-2 culture-negative versus the  
271 culture-positive group, potentially in keeping with an aberrant immune response characterised by a  
272 lack of immune regulation, as outlined above (Figure 4C;  $p=0.013$ ).

273

274 The lung-specific transcriptional analysis at individual gene level identified 630 up- and 885  
275 downregulated genes when comparing the culture-positive versus negative-groups. The 630  
276 significantly upregulated genes highlighted pathways that were associated with a proinflammatory  
277 response related to cytokine signalling, neutrophil and monocyte chemotaxis/recruitment, and viral  
278 entry/defence, all of which are implicated in COVID-19-related hypercytokinaemia <sup>29</sup> (Figure 5, S7  
279 and S8, Table S6 and S7A). The 885 downregulated pathways were mostly associated with body  
280 homeostasis (Figure 5A and B). The same comparison after adjustment for multiple testing, identified  
281 a total of 11 up- and 5 down-regulated genes in the culture-positive compared to culture-negative  
282 individuals at (FDR<0.05; specific genes discussed further in the online supplement). There was also  
283 in tandem upregulation of Th1 and Th17 signalling pathways (Table S7B) but to a substantially lesser  
284 extent than that of innate cellular and signalling pathways (IL-1, IL-6 and neutrophil-related). These  
285 features may be consistent with an aberrant immune response including a lack of activation of  
286 regulatory and immune-suppressive pathways. T-cell exhaustion consistent with upregulation of PD-  
287 1, CTLA-4 and LAG (Table S7C) known to be associated with severe COVID-19, was not observed.

288

289 The differential expression (DE) results also revealed a number of SARS-CoV-2 genes were  
290 significantly upregulated (FDR<0.01) in the culture-positive versus the culture-negative group  
291 including *nucleocapsid phosphoprotein* (log<sub>2</sub> FC=8.4) and *ORF3a* (log<sub>2</sub> FC=5.5) while the  
292 *surface/spike glycoprotein* encoding gene had a log<sub>2</sub> FC of 5.3 and an FDR of 0.067 (Table S6). A  
293 visual inspection of the mapped SARS-CoV-2 reads revealed those that mapped to the 5' end of the  
294 genes were spliced with a portion mapping to the 5' leader sequence of the genome. This suggests the  
295 reads originated from sub-genomic mRNA (sgRNA) rather than genomic RNA which is consistent  
296 with the active viral replication observed in the culture-positive group.

297

298 Finally, we evaluated whether any of the differentially expressed genes could act as biomarkers  
299 discriminating between lung culture-positive and negative-individuals. Logistic regression predictive

300 modelling revealed that *GREM1* and *FGFBPI* were associated with a sensitivity and specificity above  
301 90% (further details in the online supplement). Although these are lung-specific biomarkers, this  
302 preliminary analysis in a limited number of samples suggests that in the future, RT-PCR of tracheal  
303 aspirates or blood (if they are concordant with lung findings), could potentially serve as biomarkers to  
304 identify and direct appropriate treatment protocols to culture-positive persons but further investigation  
305 is needed.

306

## 307 **Discussion.**

308 The widely accepted view in severe acute COVID-19 is that resolution of the initial viral replication  
309 phase in the first week after symptom onset is followed by an effector or hyperinflammatory phase in  
310 the second and third week of illness, characterised by diffuse alveolar damage, thrombo-  
311 inflammation, and endotheliopathy<sup>30</sup>. Indeed, the Infectious Disease Society of America (IDSA)  
312 recommends the use of remdesivir for only 5 days in patients with severe illness and not in  
313 mechanically ventilated patients<sup>31</sup>. However, our results, based on post-mortem lung biopsies obtained  
314 using minimally invasive tissue sampling methods (MITS; shortly after death) indicated that, in  
315 contradistinction to the URT where replication often ceases within ~8 days from symptom onset, in  
316 the human lung virus is culturable in ~40% of mechanically ventilated patients until death (median of  
317 15 days and up to 4 weeks after symptom onset; see Figure 1 for the study overview). The culture-  
318 positive group in the Delta cohort had accelerated death and a higher proportion of secondary  
319 bacterial infection in the lung compared to the culture-negative group. Nasopharyngeal SARS-CoV-2  
320 viral load (based on Ct value) neither at admission nor at death, was predictive of lung culture-  
321 positivity. SARS-CoV-2 culture-positivity in the lung of decedents was associated with attenuated  
322 pulmonary T-cell immunity and an exaggerated pro-inflammatory phenotype. Importantly, this was  
323 concurrent with, rather than sequential to the viral replication or viral culture-positive phase.

324 These findings challenge the traditional paradigm of an initial viral replicative phase in the first week  
325 of severe illness sequentially followed by an effector or inflammatory phase<sup>30</sup>. Our data suggest that

326 in ~40% of ventilated patients, viral replication persisted until death (i.e. 3<sup>rd</sup> and 4<sup>th</sup> week of illness  
327 and a median of 15 days after symptom onset) compared to ~2 to ~8 days in the URT as outlined in  
328 several studies including a live virus human challenge study<sup>11,14-24</sup>. One outlier study reported  
329 culturing virus from the URT for up to 3 weeks after symptom onset<sup>32</sup>. However, a large proportion of  
330 patients were immunocompromised, samples at diagnosis and follow-up were combined (skewing the  
331 results), a high proportion of participants were healthcare workers (re-infection may have been a  
332 confounder), and as the authors suggested a limitation was that the Vero cell line used was overtly  
333 permissive to infection compared to the human lung carcinoma cell line, H1299 ACE2, which is a  
334 biologically representative cell line (and one that we used). Another recent study showed that  
335 infectious virus production peaked in the human lung within 2 days, but this model used *ex vivo*  
336 agarose infused devascularised and explanted human lung slices, which are not representative of what  
337 is occurring in freshly harvested human lung<sup>33</sup>. The culture-based findings in the afore-mentioned  
338 studies must be explicitly distinguished from studies that detected residual free viral genomic RNA  
339 (but not replicating virus) embedded in the respiratory tract tissue of patients that had severe disease  
340 for an extended period of time<sup>13,34,35</sup>. Indeed, SARS-CoV-2 RNAs have been detected in patient tissue  
341 many months after recovery from acute infection<sup>36-38</sup>. It was initially suggested that sgRNA (sub-  
342 genomic RNA; small strands of reversely transcribed RNA) could be used as a proxy to infer viral  
343 replication. However, several recent studies have indicated that it has poor predictive value as a proxy  
344 for viral replication<sup>39,40</sup>. Indeed, Stein et al<sup>13</sup> detected sgRNA in multiple post-mortem organ biopsies,  
345 including the brain, several months after symptom onset. Thus, the data presented in this manuscript  
346 is the first to do so conclusively and comprehensively using viral culture from lung tissue (the gold  
347 standard to detect viral replication) beyond two weeks after symptom onset.

348

349 We demonstrated active viral replication in the lungs of acutely ill ventilated patients for up to ~4  
350 weeks after symptom onset. This challenges the current practice of using antivirals like remdesivir for  
351 only 5 days and suggests that a longer duration of treatment may be required in critically ill patients.  
352 Furthermore, remdesivir is not recommended for use by IDSA in mechanically ventilated patients

353 (conditional recommendation) as it felt that such patients (often in the third week of their illness) are  
354 no longer in the viral replicative phase, and published controlled trial data showed no mortality  
355 benefit of remdesivir in such patients<sup>31,41</sup>. However, these studies demonstrated a group effect, and the  
356 analyses did not adjust for disease severity or the time from symptom onset to death in mechanically  
357 ventilated patients<sup>42</sup>. Our data suggest that a significant number of patients may likely benefit from  
358 antivirals during mechanical ventilation. Indeed, several observational studies have found a survival  
359 benefit using remdesivir in mechanically ventilated patients, but this requires further clarification in  
360 appropriate trials<sup>42-44</sup>. In a multivariate analysis we found no association between steroid usage and  
361 lung viral culture positivity - in fact, steroid usage was lower in the viral culture-positive group and  
362 often culture positivity persisted beyond the 10 days of steroid usage.

363

364 The transcriptomic data suggested that, in a significant number of patients, the hyperinflammatory and  
365 viral replication phase occur concurrently in the 3<sup>rd</sup> and 4<sup>th</sup> week of illness, in contradistinction to the  
366 widely held view that these are sequential phases. Antiviral and selective proinflammatory responses  
367 were over-represented in the SARS-CoV-2 culture-positive compared with the culture-negative  
368 decedents, and we did not detect attenuated type 1 interferon responses at the site of disease compared  
369 with other reports<sup>45-49</sup>. Three prior studies (one that enrolled 5 COVID-19 patients) evaluated  
370 transcriptomic lung responses in patients with severe COVID-19 versus healthy controls<sup>45,46,50</sup>. These  
371 first level studies logically attempted to address the significance of transcriptomic changes specific to  
372 COVID-19 by using healthy controls or non-diseased parts of the lung from lung cancer patients.  
373 However, we specifically sought to compare culture-positive versus culture-negative groups (hitherto  
374 not undertaken) to dissect out pathways that facilitate permissiveness to ongoing viral replication.

375

376 There are several limitations to our findings. Firstly, our findings are relevant to acute severe COVID-  
377 19 ARDS/pneumonia requiring mechanical ventilation and may not be applicable to milder forms of  
378 disease seen in hospitalised patients or chronic infection seen in immunocompromised patients.



379 Second, we only studied patients with the Beta and Delta variants. However, Omicron has also been  
380 associated with severe disease in several settings including the surge of severe COVID-19 unfolding  
381 in China. Third, we did not study a control group comprising severe ARDS due to other causes.  
382 However, our express aim was to investigate the presence and duration of viral replication in the LRT  
383 in severe COVID-19 disease. Fourth, the sample size limited our ability to make conclusions about  
384 several aspects. However, the resource intensive and demanding nature of the study limited our ability  
385 to recruit higher numbers of participants. Fifth, there may have been sampling error and variability of  
386 the viral culture assay. However, the reproducibility of the viral culture technique using 6 samples  
387 across 2 separate runs had a low standard error, which was indicative of high reproducibility. Finally,  
388 the transcriptional signature and flow cytometric findings may have been affected by post-death  
389 sampling, but several detailed studies have shown<sup>51</sup> that most protein and RNA species are preserved  
390 and stable for several hours after death. Given that biopsies for the transcriptional studies were taken  
391 ~2 hours after death, we feel they are broadly representative of the picture at the time of death.

392

393 In summary, our data suggest that in COVID-19 disease there is considerable heterogeneity in the  
394 frequency and duration of viral replication in the upper versus the LRT beyond the 2<sup>nd</sup> week of illness,  
395 and that in a significant proportion of seriously ill patients, persisting viral replication occurs  
396 concurrently and may drive an exaggerated proinflammatory response (higher than in culture-negative  
397 persons), rather than sequentially as it is widely believed. These findings have potential implications  
398 for the use of antiviral therapy in seriously ill patients with COVID-19 and suggest that better  
399 biomarkers are needed to identify patient phenotypes and subsets that might benefit from concurrent  
400 anti-inflammatory and antiviral therapy.

401 **Figure legends.**

402

403 **Figure 1. Study overview including SARS-CoV-2 PCR-positive ambulatory controls (A) and**  
404 **mechanically ventilated decedents (B) recruited during the Beta and Delta waves.** Nasopharyngeal (NP)  
405 swabs from ambulatory COVID-19 controls were obtained approximately 5 days after symptom onset  
406 (diagnosis), and then at 12- and 19-days post symptom onset. Minimally invasive tissue samples (MITS) and NP  
407 swabs were retrieved from decedents shortly after death.

408

409 **Figure 2. Active replicating virus was recovered from the lungs of over one third of decedents (16/42). (A)**  
410 **Proportion of lung biopsy samples that were culture-positive. (B) Proportion of serial nasopharyngeal swabs**  
411 **from PCR-positive ambulatory controls compared to lung biopsy samples from culture-positive decedents. (C)**  
412 **PCR positivity of organs of lung culture-positive decedents from the Delta cohort. NP= nasopharyngeal.**

413

414 **Figure 3. The phenotype of replicating viral persistence, compared to the culture-negative participants,**  
415 **was associated with accelerated death and a higher frequency of bacterial bronchopneumonia in the Delta**  
416 **but not the Beta group. (A) The days from symptom onset to death for the culture-negative (-ve; green) and**  
417 **culture-positive (+ve; red) groups for both groups combined, and for the Beta (B) and Delta (C) groups alone.**  
418 **Proportion of samples/participants with a secondary bacterial infection in culture-negative and culture-positive**  
419 **decedents overall i.e. the combined groups (Beta and Delta) (D), Beta group only (E), and Delta group only (F).**  
420 **(G) PCR cycle threshold (Ct) value at the time of death or at admission could not discriminate or predict lung**  
421 **culture status. The nasopharyngeal swab PCR Ct values at admission or death were missing for some**  
422 **participants because they were either diagnostically confirmed by antigen testing or the Ct value was not**  
423 **recorded. Due to the nature of the pandemic and the burden of the disease on the healthcare infrastructure at the**  
424 **time, Ct values at peak periods were not recorded. We have conducted sensitivity and imputation analyses**  
425 **indicating that these missing data points are redundant. The nasopharyngeal swab PCR Ct values at admission**  
426 **or death were missing for some participants because they were either diagnostically confirmed by antigen**  
427 **testing or the Ct value was not recorded. Due to the nature of the pandemic and the burden of the disease on the**

428 healthcare infrastructure at the time, Ct values at peak periods were not recorded. We have conducted sensitivity  
429 and imputation analyses indicating that these missing data points are redundant.

430

431 **Figure 4. A higher proportion of T-cells, macrophages and pneumonocytes infiltrate into the lung of the**  
432 **culture-negative versus culture-positive decedents in the Delta group. (A) More CD3+ and CD8+ T-cells**  
433 **infiltrate into the alveoli and interstitial space of the lung culture-negative versus culture-positive group in the**  
434 **Delta decedents as assessed by immunohistochemistry. (B) Representative images (immunohistochemistry)**  
435 **showing increased T-cell infiltration into interstitial space (blue arrow) in the lung culture-negative versus the**  
436 **culture-positives in the Delta cohort. Histopathology findings (C) and representative images (D) associated with**  
437 **diffuse alveolar damage and microvascular thrombosis in the Delta decedents. The black arrows indicate key**  
438 **histopathological features.**

439

440 **Figure 5. The transcriptomic analysis revealed that the culture-positive group, in comparison to the**  
441 **culture-negative group, had enrichment of activated pathways associated with inflammation, innate**  
442 **immunity, responses to cytokines, and responses to virus/ bacterial stimuli in the Delta descendants. Dot**  
443 **plot illustrating the significantly activated and suppressed pathways along with the gene count and ratio for each**  
444 **pathway (A), enrichment map illustrating the significantly activated and suppressed pathways along with the**  
445 **gene count and ratio for each pathway (B) and cnetplot similarly illustrating the overlap of genes and their fold**  
446 **changes for selected activated pathways (C).**

447

448

449

450

451

452

453 **Contributions**

454 K.D, MT, S.J, A.P, A.E, M.D, M.N and S.M conceived and designed experiments. K.D, A.E, S.O,  
455 L.K, T.P, A.S, I.J, J.P, D.T, D.F, M.M, M.N and S.M arranged medical ethical approval, recruitment  
456 of study participants and collection of study material. MT, SJ. A.P, L.W, A.K, S.M, K.P, R.R, R.K,  
457 R.M, C.M, J.B, R.L, M.D, C vdM, A.R, M.H, V.B, S. M, C.W, and R.J performed the experiments.  
458 M.T, S.J, A.P and M.D set up experimental assays. A.S provided the cell line. K.D, M.T, S.J, A.P,  
459 L.W, A.K, L.S, S.M, K.P, R.R, R.L, M.H, V.B, S.M, R.J, and N.M analysed and interpreted data.  
460 K.D, M.T, L.S, and S.M wrote the manuscript with input from all listed authors.

461

462 **Declaration of interests**

463 The authors have no competing interests.

464

465 **Acknowledgments**

466 The authors would like to thank Arnold-Day C, Crowther M, Fernandes N, and Mitchell L from the  
467 Division of Critical Care, Department of Anaesthesia and Perioperative Medicine, University of Cape  
468 Town, South Africa for identifying and referring potential patients into the study.

469 The study was funded by the Bill & Melinda Gates Foundation (grant number INV-017282) and the  
470 South African Medical Research Council (grant number SHIP NCD 96756) with partial support from  
471 the Department of Science and Technology and National Research Foundation: South African  
472 Research Chair Initiative in Vaccine Preventable Diseases. The KD lab acknowledges funding from  
473 the SA MRC (RFA-EMU-02-2017), EDCTP (TMA-2015SF-1043, TMA-1051-TESAIII, TMA-  
474 CDF2015), UK Medical Research Council (MR/S03563X/1), NIH (CRDF-OISE-16-62105) and the  
475 Wellcome Trust (MR/S027777/1). This work was co-funded by The Wellcome Centre for Infectious  
476 Diseases Research in Africa is supported by core funding from the Wellcome Trust (230135/Z/16/Z)

477 and the European Union's Horizon Europe Research and Innovation Actions (101046041) for  
478 genomic surveillance.

479 The authors would like to thank the families of the deceased who gave us permission to conduct the  
480 study, which may advance our understanding of SARS-CoV-2 pathogenesis to inform future clinical  
481 management of respiratory pathogen pandemics.

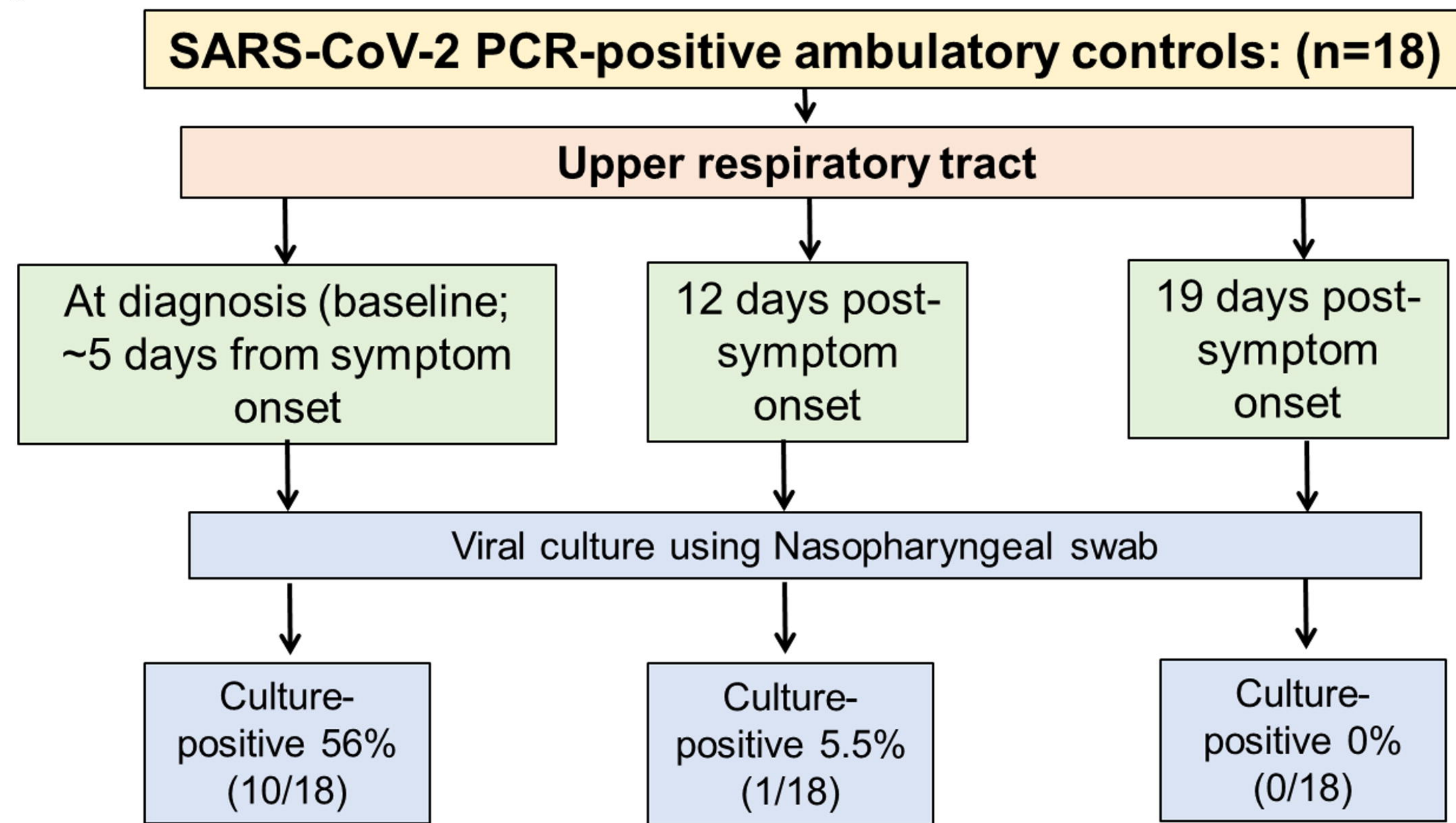
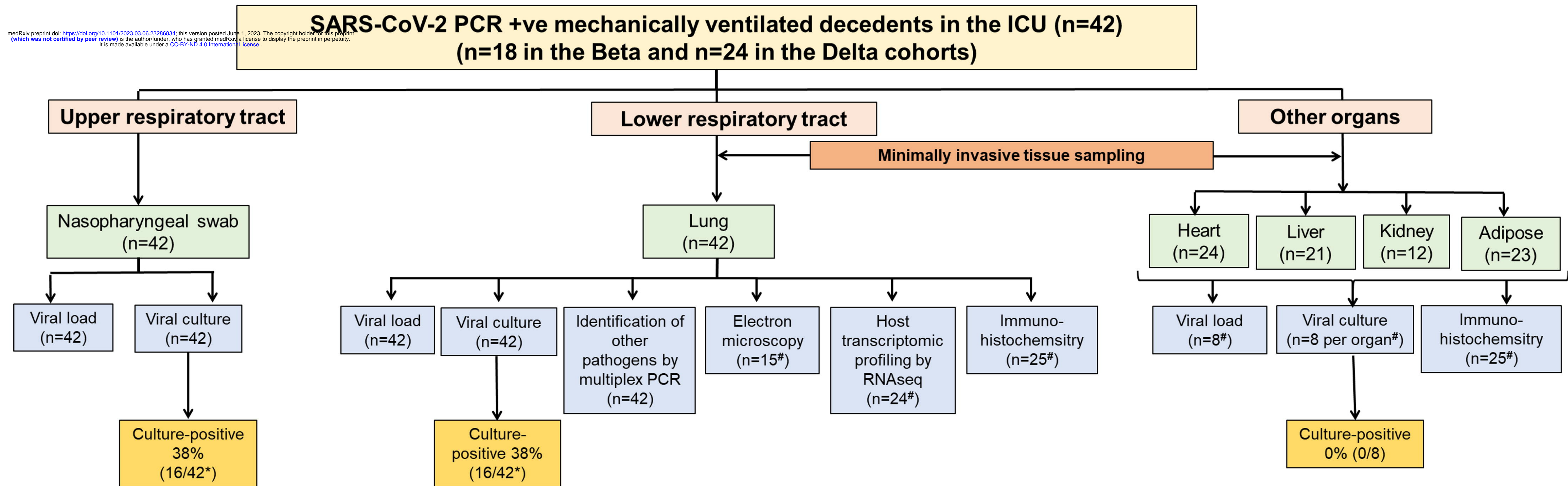
482

## 483 **References.**

- 484 1. Davies MA, Morden E, Rosseau P, et al. Outcomes of laboratory-confirmed SARS-CoV-2 infection  
485 during resurgence driven by Omicron lineages BA.4 and BA.5 compared with previous waves in the Western  
486 Cape Province, South Africa. *Int J Infect Dis* 2022; **127**: 63-8.
- 487 2. Johns Hopkins University Center for Systems Science and Engineering. Accessed on: 18 December  
488 2022. Available at: <https://coronavirus.jhu.edu/map.html> 2022.
- 489 3. Cai J, Deng X, Yang J, et al. Modeling transmission of SARS-CoV-2 Omicron in China. *Nat Med*  
490 2022; **28**(7): 1468-75.
- 491 4. Chen X, Yan X, Sun K, et al. Estimation of disease burden and clinical severity of COVID-19 caused  
492 by Omicron BA.2 in Shanghai, February-June 2022. *Emerg Microbes Infect* 2022; **11**: 2800-7.
- 493 5. Colnago M, Benvenuto GA, Casaca W, Negri RG, Fernandes EG, Cuminato JA. Risk factors  
494 associated with mortality in hospitalized patients with COVID-19 during the Omicron wave in Brazil. *Bioeng*  
495 2022; **9**(10).
- 496 6. Gautret P, Hoang VT, Jimeno MT, et al. The severity of the first 207 infections with the SARS-CoV-2  
497 Omicron BA.2 variant, in Marseille, France, December 2021-February 2022. *J Med Virol* 2022; **94**(8): 3494-7.
- 498 7. Jassat W, Mudara C, Ozougwu L, et al. Difference in mortality among individuals admitted to hospital  
499 with COVID-19 during the first and second waves in South Africa: a cohort study. *Lancet Glob Health* 2021;  
500 **9**(9): e1216-e25.
- 501 8. Maruotti A, Ciccozzi M, Jona-Lasinio G. COVID-19-induced excess mortality in Italy during the  
502 Omicron wave. *IJID Reg* 2022; **4**: 85-7.
- 503 9. Maslo C MA, Laubscher A, Toubkin M, Sitharam L, Feldman C, Richards GA. COVID-19: A  
504 comparative study of severity of patients hospitalized during the first and the second wave in South Africa.  
505 *MedRxiv* 2021; <https://doi.org/10.1101/2021.05.11.21257033>.
- 506 10. Ward IL, Bermingham C, Ayoubkhani D, et al. Risk of covid-19 related deaths for SARS-CoV-2  
507 Omicron (B.1.1.529) compared with Delta (B.1.617.2): retrospective cohort study. *BMJ* 2022; **378**: e070695.
- 508 11. Fontana LM, Villamagna AH, Sikka MK, McGregor JC. Understanding viral shedding of severe acute  
509 respiratory coronavirus virus 2 (SARS-CoV-2): Review of current literature. *Infect Control Hosp Epidemiol*  
510 2021; **42**(6): 659-68.
- 511 12. Ramos-Rincon JM, Herrera-Garcia C, Silva-Ortega S, et al. Pathological findings associated with  
512 SARS-CoV-2 on postmortem core biopsies: correlation with clinical presentation and disease course. *Front Med*  
513 2022; **9**: 874307.
- 514 13. Stein SR, Ramelli SC, Grazioli A, et al. SARS-CoV-2 infection and persistence in the human body and  
515 brain at autopsy. *Nature* 2022; **612**(7941): 758-63.
- 516 14. Basile K, McPhie K, Carter I, et al. Cell-based culture informs infectivity and safe de-isolation  
517 assessments in patients with coronavirus disease 2019. *Clin Infect Dis* 2021; **73**(9): e2952-e9.
- 518 15. Berengua C, Lopez M, Esteban M, et al. Viral culture and immunofluorescence for the detection of  
519 SARS-CoV-2 infectivity in RT-PCR positive respiratory samples. *J Clin Virol* 2022; **152**: 105167.
- 520 16. Bullard J, Dust K, Funk D, et al. Predicting infectious severe acute respiratory syndrome coronavirus 2  
521 from diagnostic samples. *Clin Infect Dis* 2020; **71**(10): 2663-6.
- 522 17. Lan L, Xu D, Ye G, et al. Positive RT-PCR test results in patients recovered from COVID-19. *JAMA*  
523 2020; **323**(15): 1502-3.
- 524 18. Ling Y, Xu SB, Lin YX, et al. Persistence and clearance of viral RNA in 2019 novel coronavirus  
525 disease rehabilitation patients. *Chin Med J* 2020; **133**(9): 1039-43.

- 526 19. Santos Bravo M, Berengua C, Marin P, et al. Viral culture confirmed SARS-CoV-2 subgenomic RNA  
527 value as a good surrogate marker of infectivity. *J Clin Microbiol* 2022; **60**(1): e0160921.
- 528 20. Singanayagam A, Patel M, Charlett A, et al. Duration of infectiousness and correlation with RT-PCR  
529 cycle threshold values in cases of COVID-19, England, January to May 2020. *Euro Surveill* 2020; **25**(32).
- 530 21. van Kampen JJA, van de Vijver D, Fraaij PLA, et al. Duration and key determinants of infectious virus  
531 shedding in hospitalized patients with coronavirus disease-2019 (COVID-19). *Nat Commun* 2021; **12**(1): 267.
- 532 22. Wolfel R, Corman VM, Guggemos W, et al. Virological assessment of hospitalized patients with  
533 COVID-2019. *Nature* 2020; **581**(7809): 465-9.
- 534 23. Young BE, Ong SWX, Ng LFP, et al. Viral dynamics and immune correlates of coronavirus disease  
535 2019 (COVID-19) severity. *Clin Infect Dis* 2021; **73**(9): e2932-e42.
- 536 24. Killingley B, Mann AJ, Kalinova M, et al. Safety, tolerability and viral kinetics during SARS-CoV-2  
537 human challenge in young adults. *Nat Med* 2022; **28**(5): 1031-41.
- 538 25. Suvarna SK, Layton C, Bancroft JD. Banfords theory and practice of histology techniques. *Elsevier*  
539 2019.
- 540 26. Dobin A, Davis CA, Schlesinger F, et al. STAR: ultrafast universal RNA-seq aligner. *Bioinform* 2013;  
541 **29**(1): 15-21.
- 542 27. Howe KL, Achuthan P, Allen J, et al. Ensembl 2021. *Nucleic Acids Res* 2021; **49**(D1): D884-D91.
- 543 28. Wu T, Hu E, Xu S, et al. clusterProfiler 4.0: A universal enrichment tool for interpreting omics data.  
544 *Innov* 2021; **2**(3): 100141.
- 545 29. Ragab D, Salah Eldin H, Taeimah M, Khattab R, Salem R. The COVID-19 cytokine storm; what we  
546 know so far. *Fron Immunol* 2020; **11**: 1446.
- 547 30. Merad M, Blish CA, Sallusto F, Iwasaki A. The immunology and immunopathology of COVID-19.  
548 *Science* 2022; **375**(6585): 1122-7.
- 549 31. Bhimraj A MR, Shumaker AH, Baden L, Cheng VC, Edwards KM, Gallagher JC, Gandhi RT, Muller  
550 WJ, Nakamura MM, O'Horo JC, Shafer RW, Shoham S, Murad MH, Mustafa RA, Sultan S, Falck-Ytte Y.  
551 IDSA Guidelines on the Treatment and Management of Patients with COVID-19. Accessed on: 18 December  
552 2022. Available at: [https://www.idsociety.org/practice-guideline/covid-19-guideline-treatment-and-](https://www.idsociety.org/practice-guideline/covid-19-guideline-treatment-and-management/#Recommendations15-17:Remdesivir)  
553 [management/#Recommendations15-17:Remdesivir](https://www.idsociety.org/practice-guideline/covid-19-guideline-treatment-and-management/#Recommendations15-17:Remdesivir).
- 554 32. Folgueira MD, Luczkowiak J, Lasala F, Perez-Rivilla A, Delgado R. Prolonged SARS-CoV-2 cell  
555 culture replication in respiratory samples from patients with severe COVID-19. *Clin Microbiol Infect* 2021;  
556 **27**(6): 886-91.
- 557 33. Pechous RD, Malaviarachchi PA, Banerjee SK, et al. An ex vivo human precision-cut lung slice  
558 platform provides insight into SARS2 CoV-2 pathogenesis and antiviral drug efficacy. *bioRxiv* 2023;  
559 doi:10.1101/2023.04.18.537373.
- 560 34. Xu Q, Milanez-Almeida P, Martins AJ, et al. Adaptive immune responses to SARS-CoV-2 persist in  
561 the pharyngeal lymphoid tissue of children. *Nat Immunol* 2023; **24**(1): 186-99.
- 562 35. Zollner A, Koch R, Jukic A, et al. Postacute COVID-19 is Characterized by Gut Viral Antigen  
563 Persistence in Inflammatory Bowel Diseases. *Gastroenterol* 2022; **163**(2): 495-506 e8.
- 564 36. Choi B, Choudhary MC, Regan J, et al. Persistence and Evolution of SARS-CoV-2 in an  
565 Immunocompromised Host. *NEJM* 2020; **383**(23): 2291-3.
- 566 37. Griffin I, Woodworth KR, Galang RR, et al. Recurrent SARS-CoV-2 RNA Detection after COVID-19  
567 Illness Onset during Pregnancy. *Emerg Infect Dis* 2022; **28**(4): 873-6.
- 568 38. Rodriguez-Grande C, Alcalá L, Estevez A, et al. Systematic genomic and clinical analysis of severe  
569 acute respiratory syndrome coronavirus 2 reinfections and recurrences involving the same strain. *Emerg Infect*  
570 *Dis* 2022; **28**(1): 85-94.
- 571 39. Alexandersen S, Chamings A, Bhatta TR. SARS-CoV-2 genomic and subgenomic RNAs in diagnostic  
572 samples are not an indicator of active replication. *Nat Commun* 2020; **11**(1): 6059.
- 573 40. Hwang HS, Lo CM, Murphy M, et al. Characterizing SARS-CoV-2 Transcription of Subgenomic and  
574 Genomic RNAs During Early Human Infection Using Multiplexed Droplet Digital Polymerase Chain Reaction.  
575 *J Infect Dis* 2023; **227**(8): 981-92.
- 576 41. Consortium WHOST. Remdesivir and three other drugs for hospitalised patients with COVID-19: final  
577 results of the WHO Solidarity randomised trial and updated meta-analyses. *Lancet* 2022; **399**(10339): 1941-53.
- 578 42. Beigel JH, Tomashek KM, Dodd LE, et al. Remdesivir for the Treatment of Covid-19 - Final Report.  
579 *NEJM* 2020; **383**(19): 1813-26.
- 580 43. Lapadula G, Bernasconi DP, Bellani G, et al. Remdesivir Use in Patients Requiring Mechanical  
581 Ventilation due to COVID-19. *Open Forum Infect Dis* 2020; **7**(11): ofaa481.
- 582 44. Pasquini Z, Montalti R, Temperoni C, et al. Effectiveness of remdesivir in patients with COVID-19  
583 under mechanical ventilation in an Italian ICU. *J Antimicrob Chemother* 2020; **75**(11): 3359-65.
- 584 45. Budhraj A, Basu A, Gheware A, et al. Molecular signature of postmortem lung tissue from COVID-19  
585 patients suggests distinct trajectories driving mortality. *Dis Model Mech* 2022; **15**(5).

- 586 46. Melms JC, Biermann J, Huang H, et al. A molecular single-cell lung atlas of lethal COVID-19. *Nature*  
587 2021; **595**(7865): 114-9.
- 588 47. Tay MZ, Poh CM, Renia L, MacAry PA, Ng LFP. The trinity of COVID-19: immunity, inflammation  
589 and intervention. *Nat Rev Immunol* 2020; **20**(6): 363-74.
- 590 48. van de Veerdonk FL, Giamarellos-Bourboulis E, Pickkers P, et al. A guide to immunotherapy for  
591 COVID-19. *Nat Med* 2022; **28**(1): 39-50.
- 592 49. Wang EY, Mao T, Klein J, et al. Diverse functional autoantibodies in patients with COVID-19. *Nature*  
593 2021; **595**(7866): 283-8.
- 594 50. Wang S, Yao X, Ma S, et al. A single-cell transcriptomic landscape of the lungs of patients with  
595 COVID-19. *Nat Cell Biol* 2021; **23**(12): 1314-28.
- 596 51. Deinhardt-Emmer S, Wittschieber D, Sanft J, et al. Early postmortem mapping of SARS-CoV-2 RNA  
597 in patients with COVID-19 and the correlation with tissue damage. *Elife* 2021; **10**.
- 598

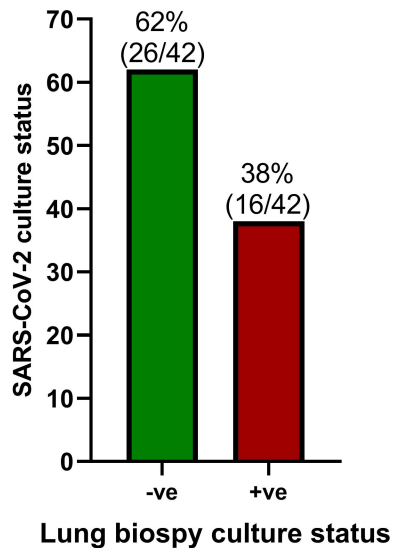
**A****B**

\*The 16 decedents that were nasopharyngeal culture-positive were not the same patients that were lung culture-positive. #Immunohistochemistry, RNAseq, electron microscopy and viral culture of other organs was only performed on the Delta cohort.

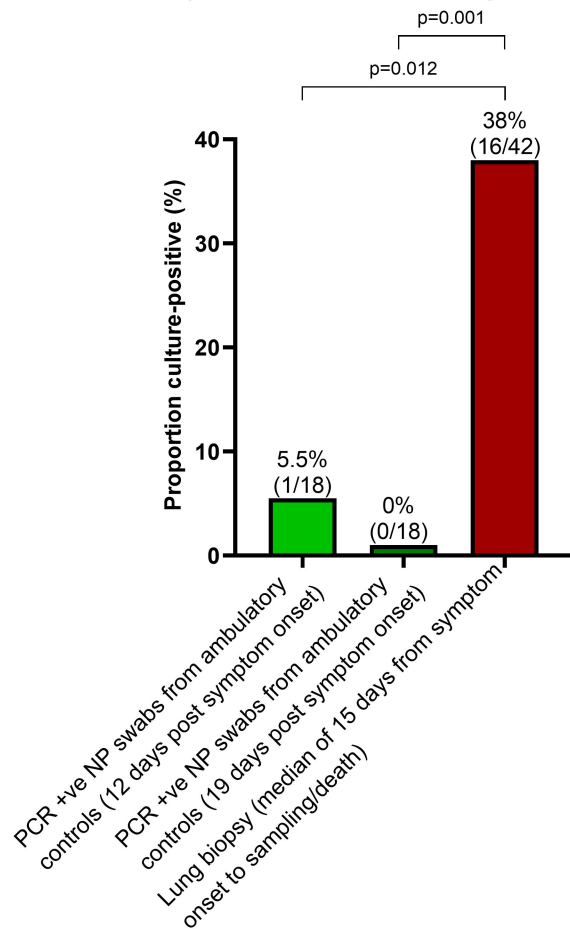


**A**

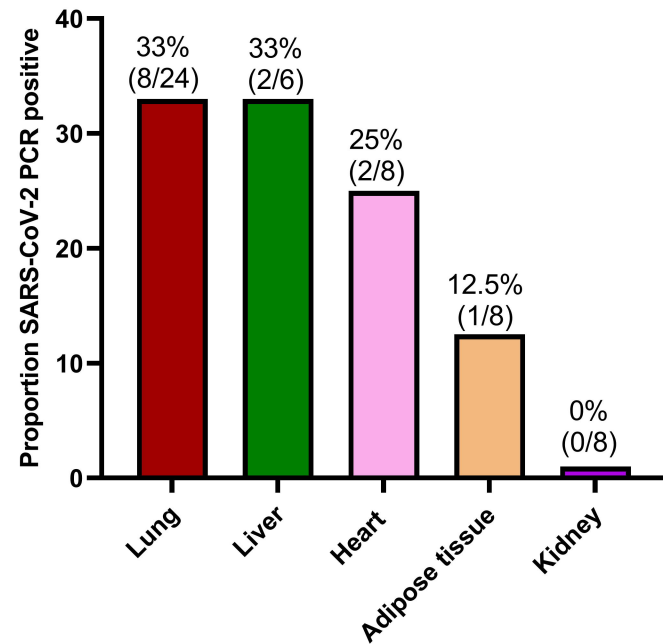
Lung SARS-CoV-2 culture status

**B**

Proportion culture-positive in the upper (ambulatory controls) versus lower respiratory tract (decedents)

**C**

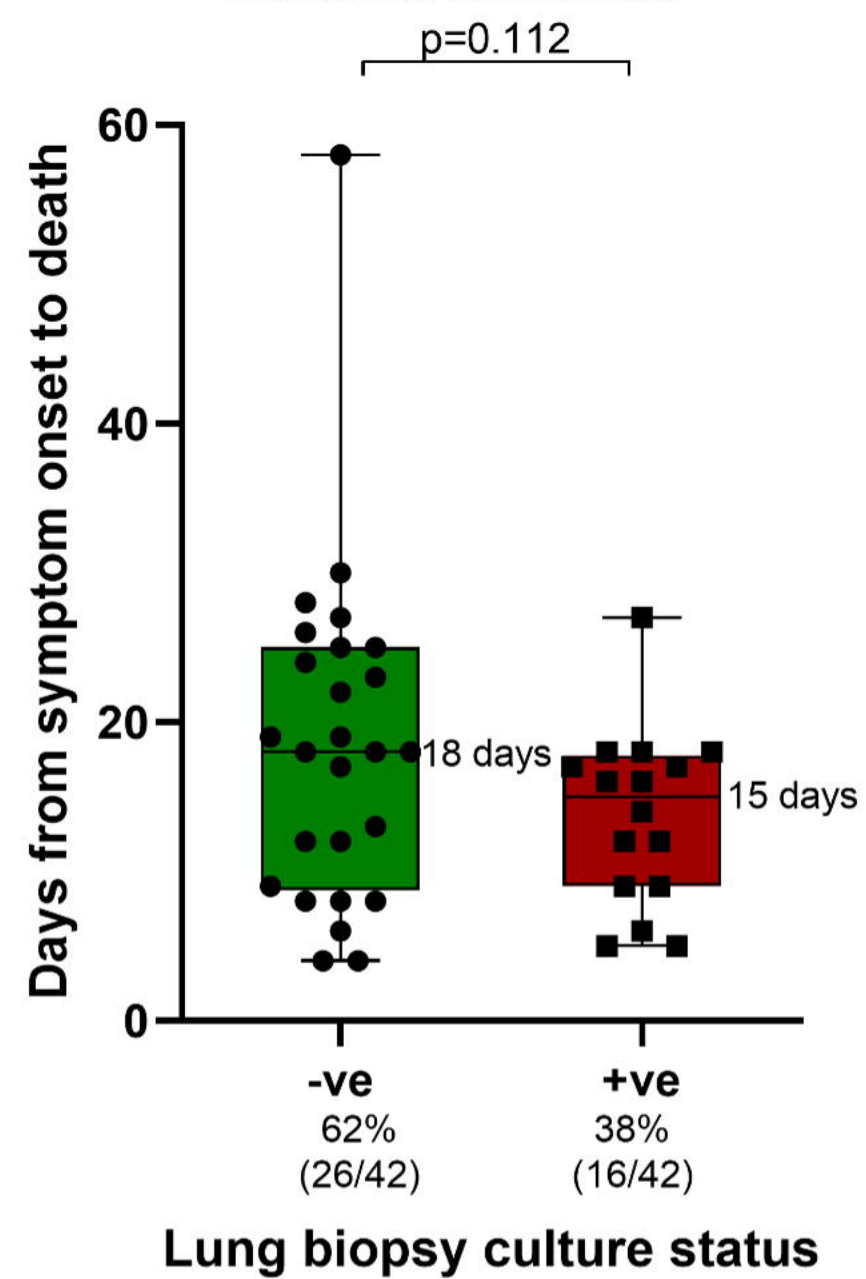
Proportion SARS-CoV-2 PCR positive in the lung versus other organs



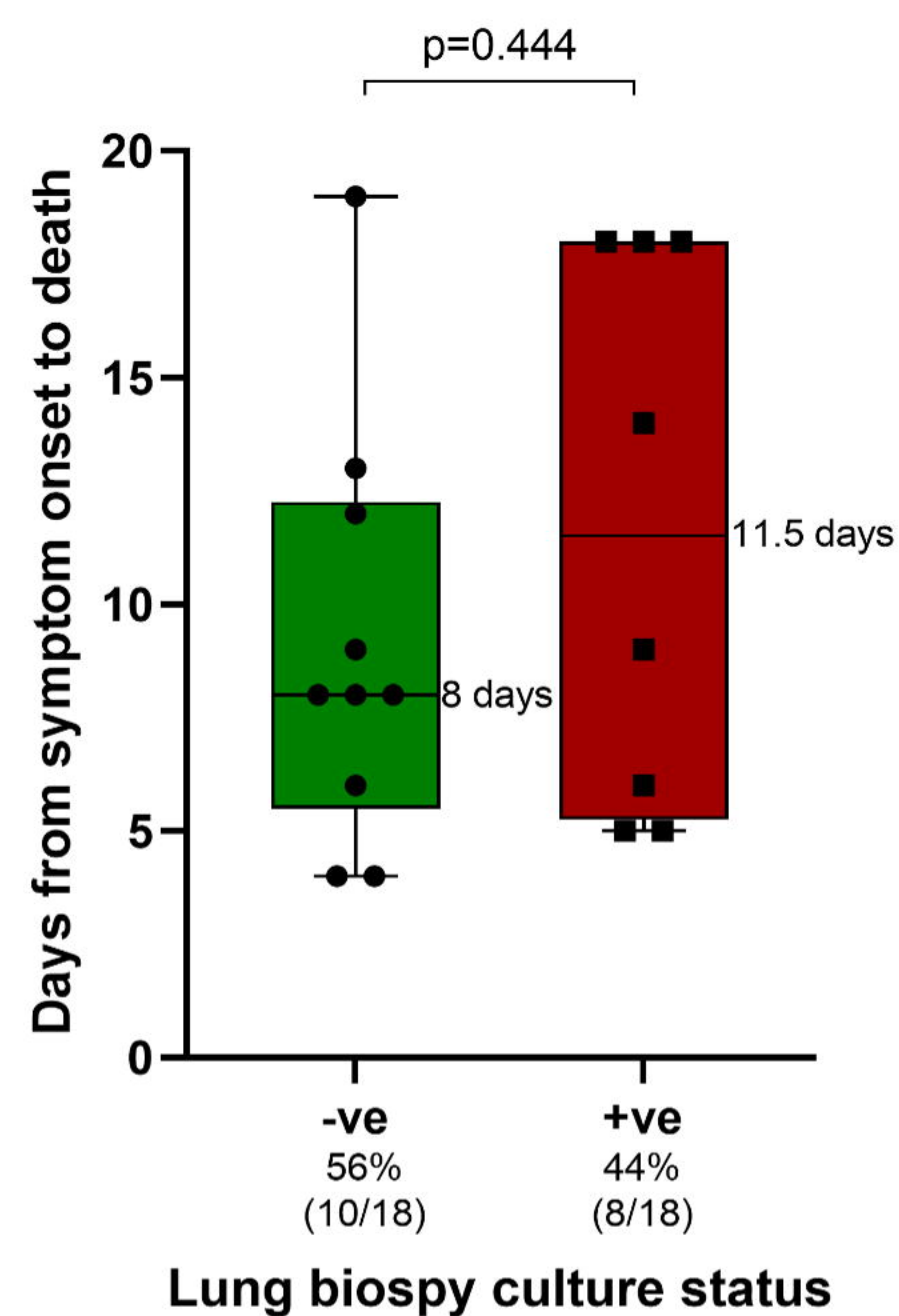
Culture-positivity was defined as at least a 3-fold exponential increase in viral load over time.

**A**

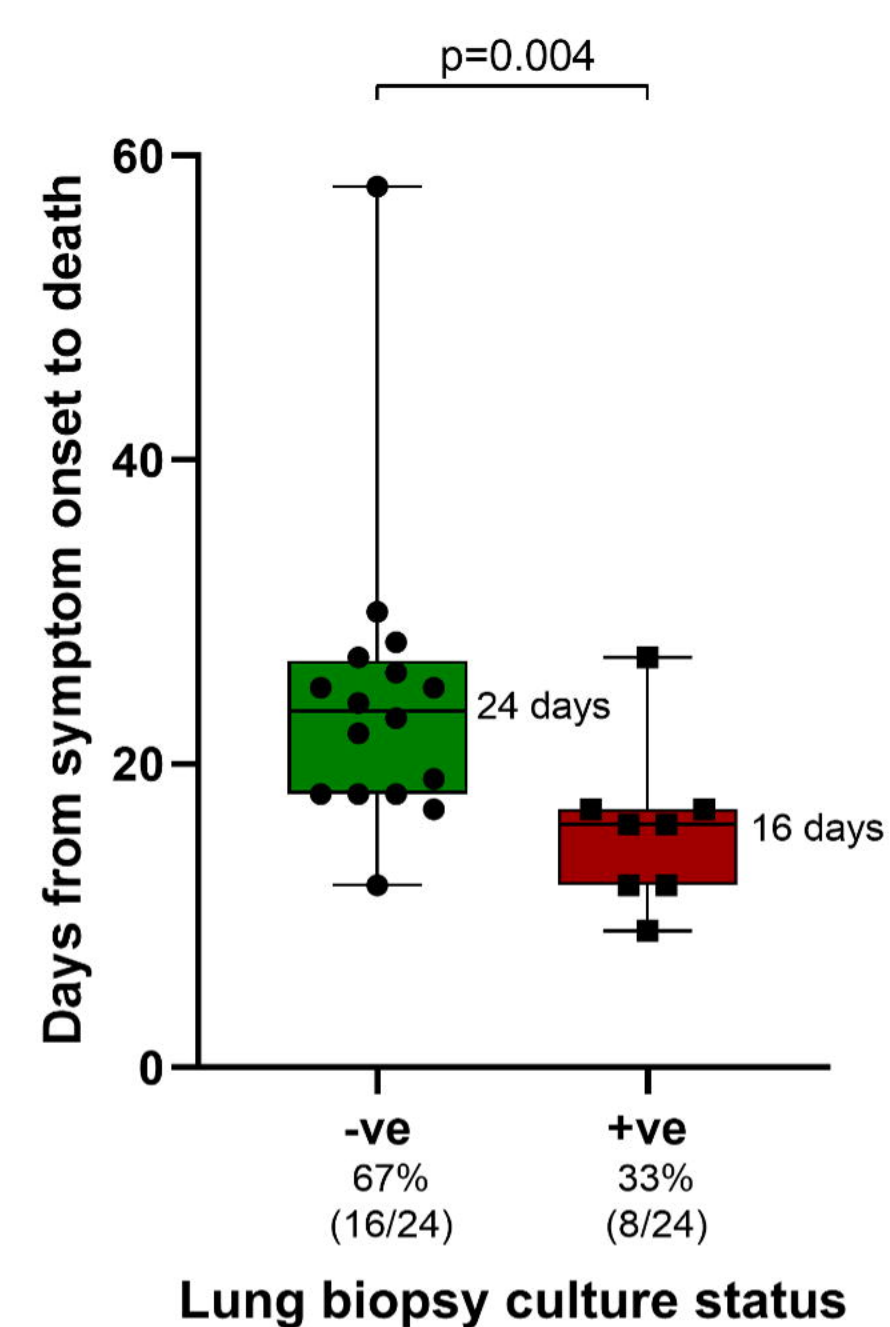
Time to death in the Beta and Delta decedents combined

**B**

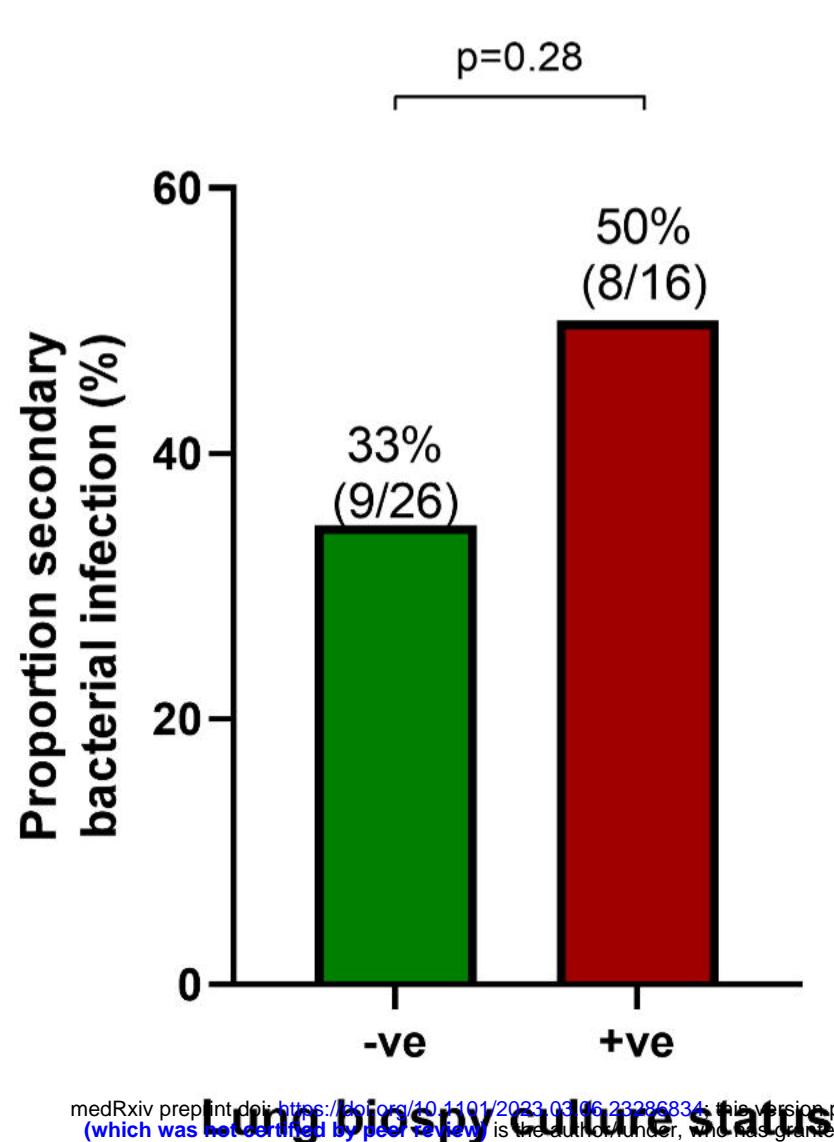
Time to death in the Beta decedents

**C**

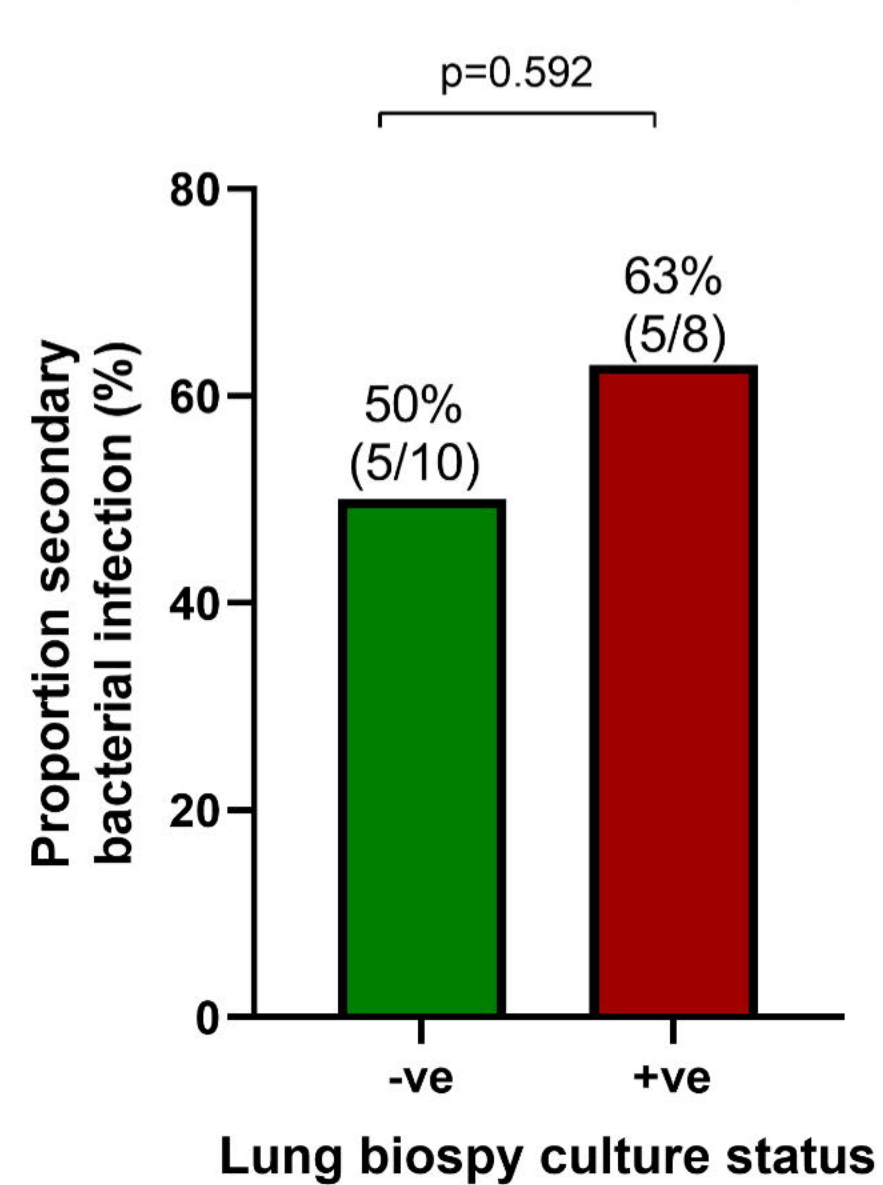
Time to death in the Delta decedents

**D**

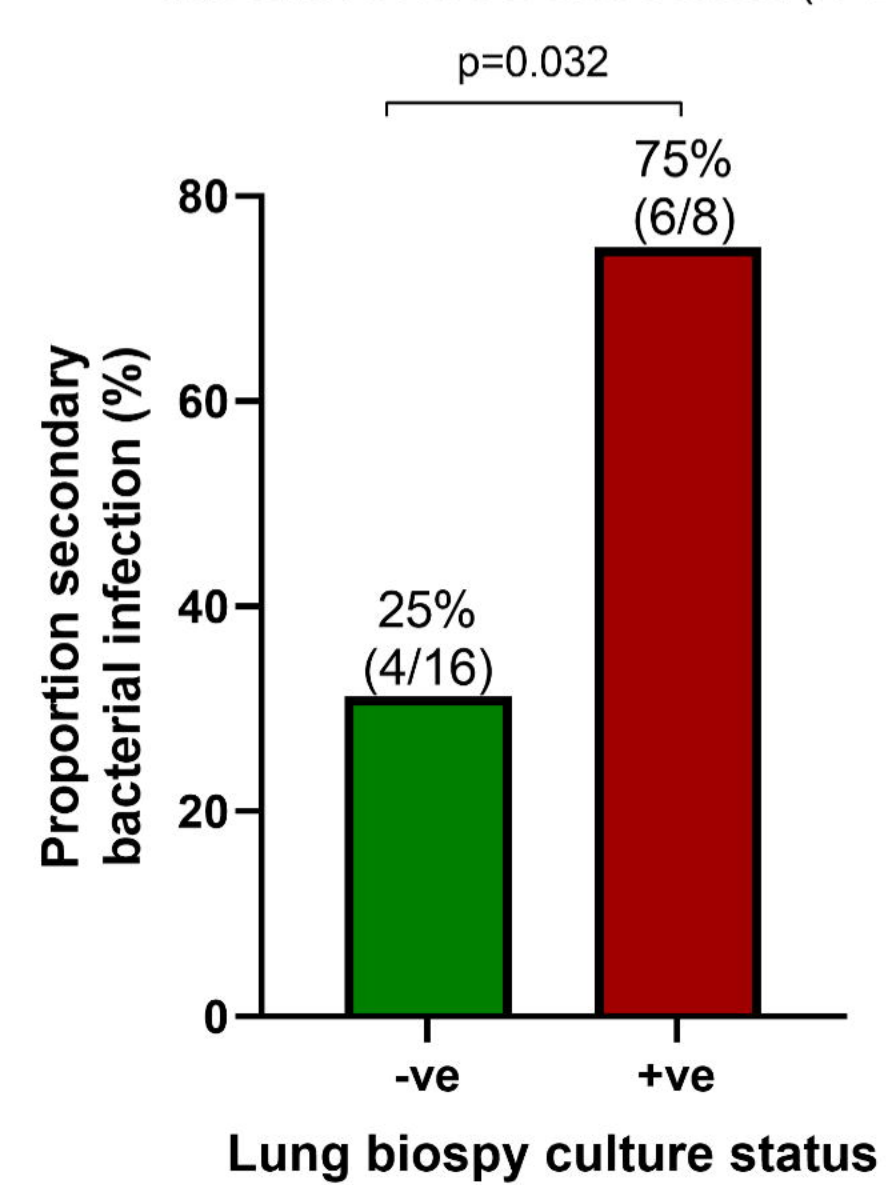
Proportion secondary bacterial infection in the Beta and Delta cohort (n=42)

**E**

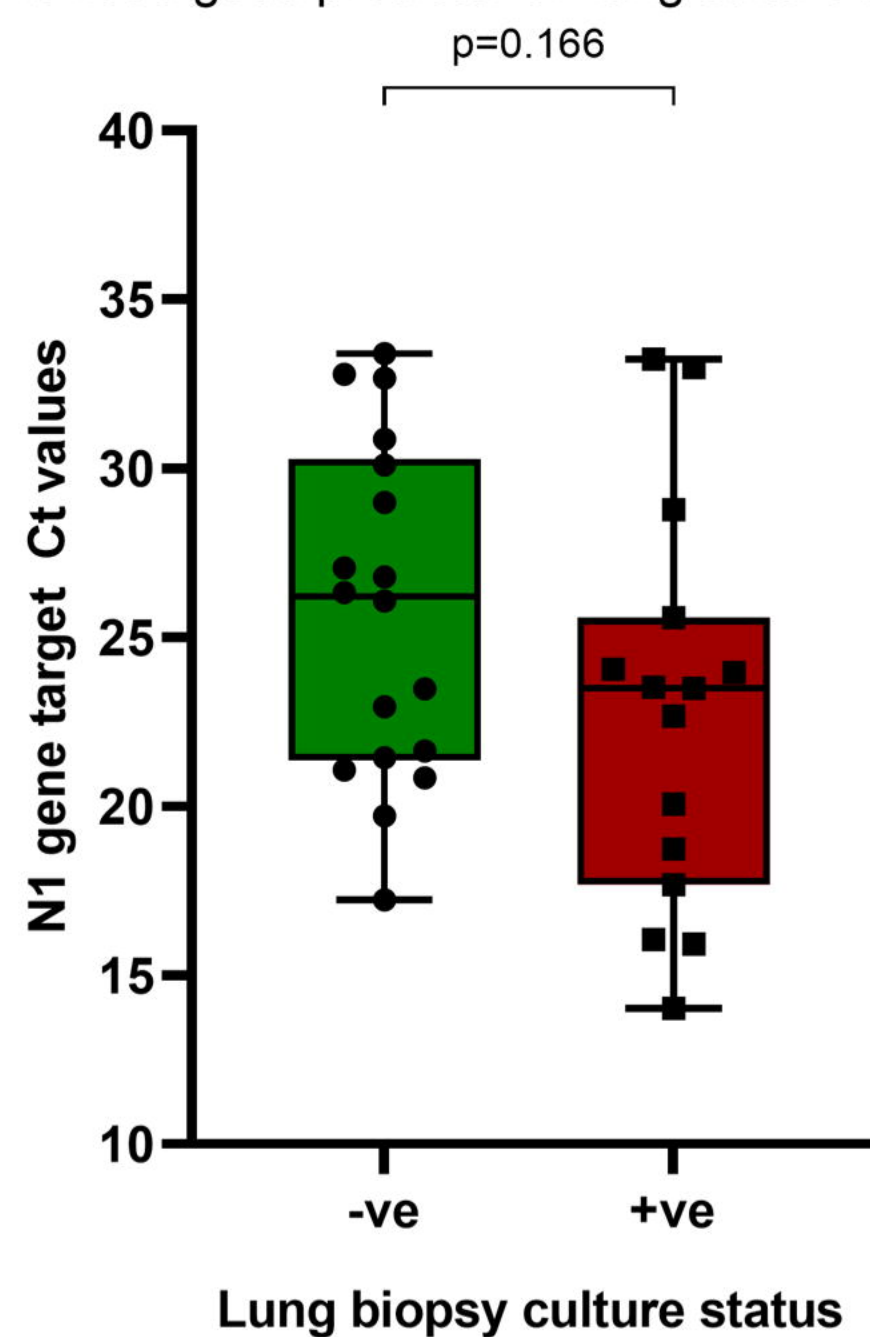
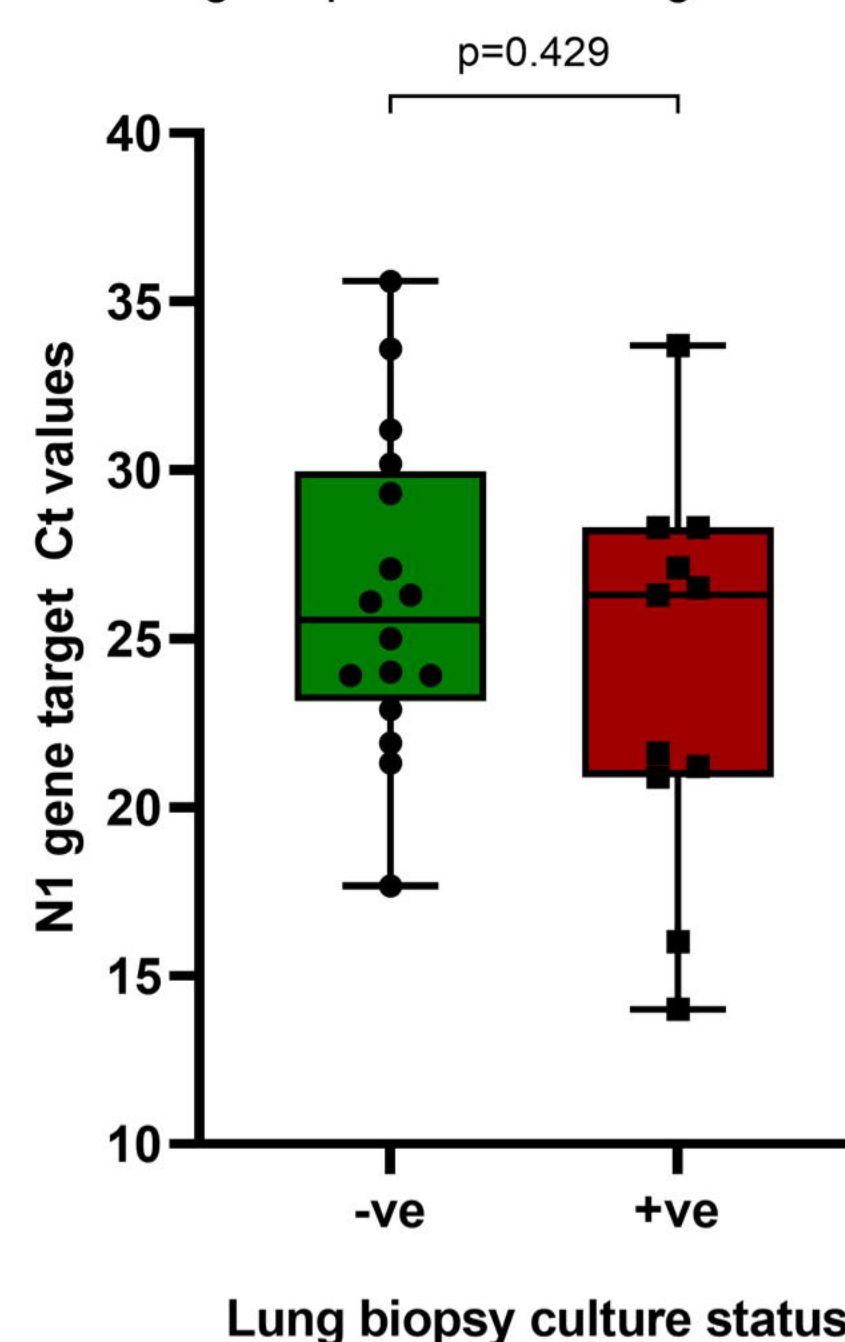
Proportion secondary bacterial infection in the Beta cohort (n=18)

**F**

Proportion secondary bacterial infection in the Delta cohort (n=24)



medRxiv preprint doi: <https://doi.org/10.1101/2023.05.29.23282828>; this version posted June 1, 2023. The copyright holder for this preprint (which was not certified by peer review) is the author/funder, who has granted medRxiv a license to display the preprint in perpetuity. It is made available under a [CC-BY-ND 4.0 International license](https://creativecommons.org/licenses/by-nd/4.0/).

**G**Nasopharyngeal swab PCR Ct value at time of *death* is not a good predictor of lung culture statusNasopharyngeal swab PCR Ct value at time of *admission* is not a good predictor of lung culture status

**A**

A greater proportion of CD3+ T-cells and CD8+ T-cells infiltrate into the alveoli and interstitial space in culture-negative compared to culture-positive individuals in the Delta decedents

Lung culture status			
Frequency of infiltration into the alveoli	-ve (n=11#)	+ve (n=7*)	p value
<b>CD3+</b>			
Medium	55% (6/11)	0% (0/7)	<b>0.038</b>
High	0% (0/11)	0% (0/7)	N/A
<b>CD8+</b>			
Medium	54.5% (6/11)	0% (0/7)	<b>0.038</b>
High	0% (0/11)	0% (0/6)	N/A

CD68 (macrophage marker)

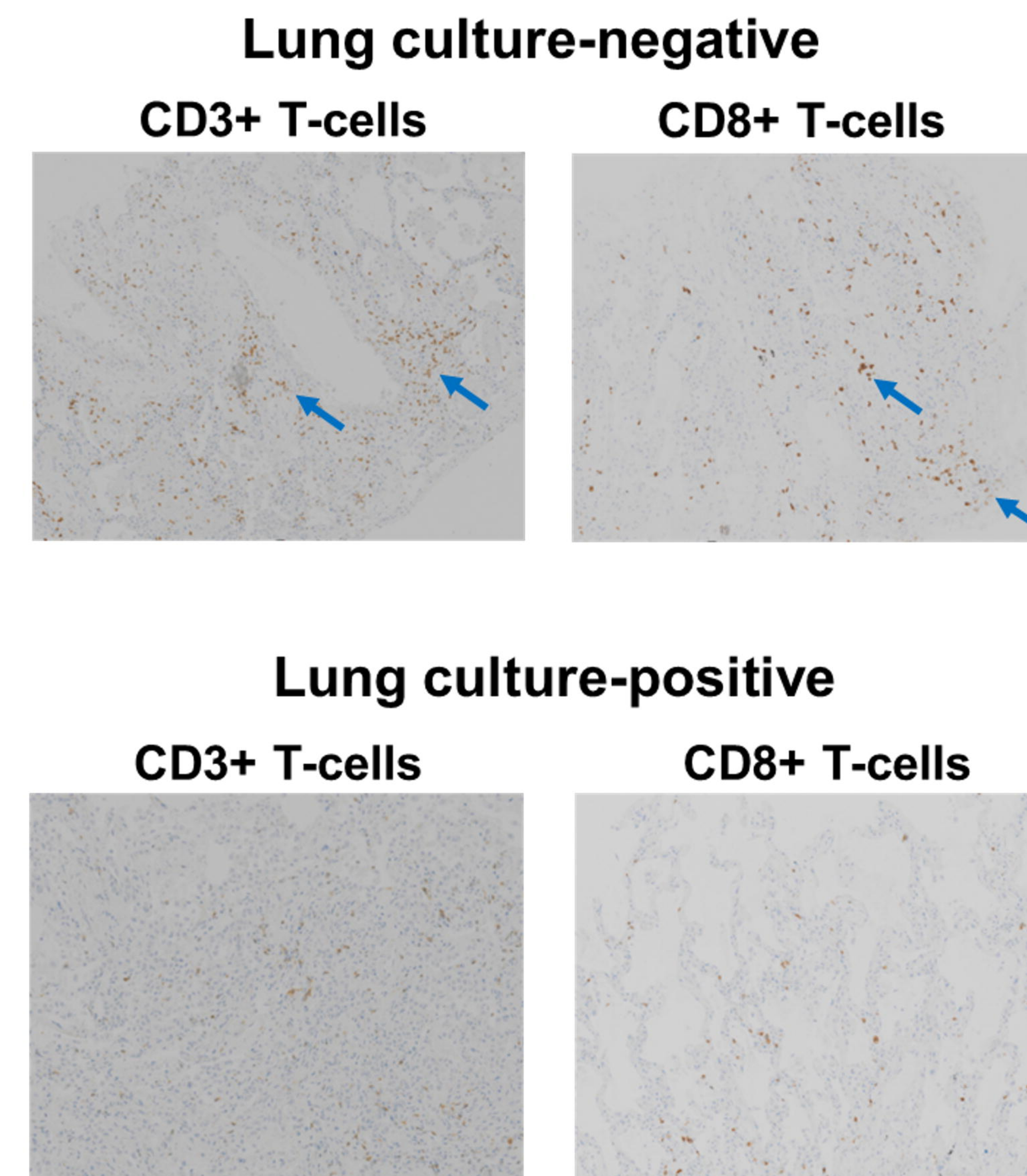
**C**

A greater proportion of type II pneumocytes proliferation and haemophagocytosis was observed in the alveoli of the culture-negative compared to culture-positive individuals in the Delta group

Lung culture status			
Lung histology	-ve (n=20#)	+ve (n=13*)	p-value
Alveolar hyaline membranes	16/20 (80%)	8/13 (61.5%)	0.425
Microvascular thrombosis	6/20 (30%)	5/13 (38.5%)	0.714
Organising hyaline membranes	9/12 (75%)	6/7 (86%)	1
Type II pneumocytes proliferation	20/20 (100%)	10/13 (77%)	0.052
Organising pneumonia	6/20 (30%)	4/13 (31%)	1
Lung haemophagocytosis	14/20 (70%)	3/13 (23%)	<b>0.013</b>

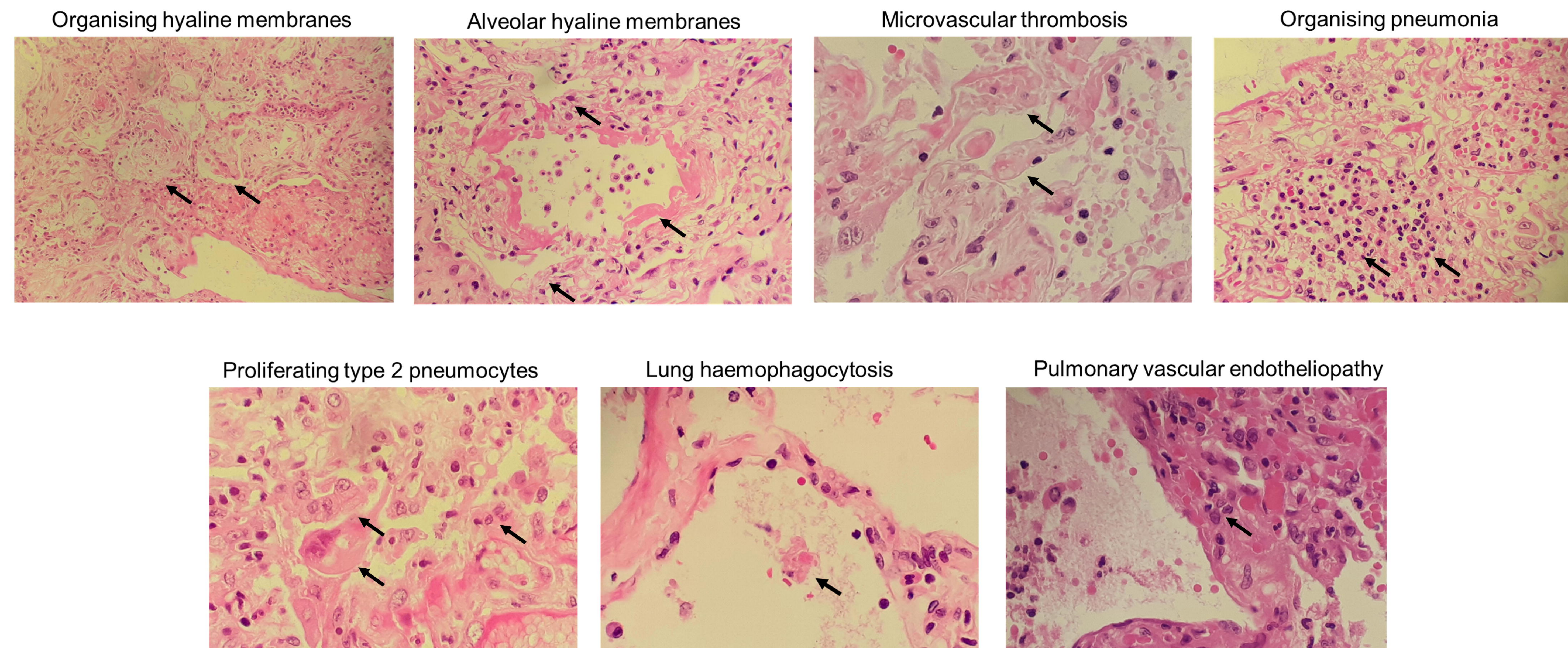
**B**

Representative images showing CD3+ and CD8+ T-cells infiltration into the alveoli and interstitial space of the lung in culture-negative compared to culture-positive individuals in the Delta decedents



**D**

Both culture-positive and culture-negative decedents present with histopathological findings typically associated with SARS-CoV-2 pneumonia



#IHC was not performed on 5 culture-negative samples. \*IHC was not performed on 1 culture-positive sample. \*#Histology was not performed on all the biopsy samples. N/A = not applicable .

The culture-positive, group compared to the culture-negative group, was associated with the enrichment of inflammatory, innate immune and enhanced SARS-CoV-2 entry pathways

