

1 **T-cell activation, senescence, and exhaustion in asymptomatic**
2 **HIV/*Leishmania infantum* co-infection**

3 **Short title: immune response in HIV/*Leishmania* coinfection**

4

5 Carolina de Oliveira Mendes-Aguiar^{1+¶}, Manoella do Monte Alves^{1,2,3+¶}, Amanda de
6 Albuquerque Lopes Machado¹, Glória Regina de Góis Monteiro¹, Iara Marques
7 Medeiros^{1,2}, Jose Wilton Queiroz^{1†}, Iraci Duarte Lima^{1,4}, Richard D. Pearson⁵, Mary E.
8 Wilson⁶, Marshall J. Glesby⁷, Eliana Lúcia Tomaz do Nascimento^{1,2}, Selma Maria
9 Bezerra Jerônimo^{1,8,9*}

10 ¹Institute of Tropical Medicine of Rio Grande do Norte, Federal University of Rio Grande
11 do Norte, Natal, RN, Brazil

12 ²Department of Infectious Disease, Health Science Center, Federal University of Rio
13 Grande do Norte, Natal, RN, Brazil

14 ³Health Graduate Program, Federal University of Rio Grande do Norte, Natal, RN, Brazil

15 ⁴State of Rio Grande do Norte Health Secretariat, Natal, RN, Brazil

16 ⁵Division of Infectious Diseases and International Health, Department of Medicine,
17 University of Virginia, Charlottesville, VA, USA

18 ⁶Departments of Internal Medicine and Microbiology & Immunology, University of Iowa
19 and the Veterans' Affairs Medical Center, Iowa City, IA, USA

20 ⁷Division of Infectious Disease, Weill Cornell Medical College, New York, NY, USA

21 ⁸Institute of Science and Technology of Tropical Diseases, Natal, RN, Brazil

22 ⁹Department of Biochemistry, Federal University of Rio Grande do Norte, Natal, RN,

23 **Brazil** NOTE: This preprint reports new research that has not been certified by peer review and should not be used to guide clinical practice.

24 †COMA and MMA equally contributed to this study.

25 † In memoriam

26 *Corresponding author: Selma Maria Bezerra Jeronimo. Institute of Tropical Medicine of
27 Rio Grande do Norte; Universidade Federal do Rio Grande do Norte. Av Salgado Filho
28 3000. Campus Universitário. Lagoa Nova. Natal, RN, Brazil. CEP: 59090-040.
29 selma.jeronimo@ufrn.br

30 **Key words:** Visceral leishmaniasis, AIDS/VL, HIV, co-infection, T cell activation, T cell
31 exhaustion, T cell senescence.

32 **Abstract**

33 Background: *Leishmania infantum* is an opportunistic parasitic infection. An
34 immunocompromised state increases the risk of converting asymptomatic infection to
35 symptomatic visceral leishmaniasis (VL), which has a ~5% fatality rate even with
36 treatment. HIV coinfection increases the risk of death from VL.

37 Methods: A cross-sectional study was performed between 2014 and 2016 to
38 determine the prevalence of *L. infantum* infection in HIV positive subjects residing in
39 the state of Rio Grande do Norte, Brazil (n=1,372) and of these a subgroup of subjects
40 were followed longitudinally. Subsequent incident cases of VL were ascertained from a
41 public health database through 2018. A subgroup (n=69) of the cross-sectional study
42 subjects was chosen to assess immune status (T cell activation, senescence,
43 exhaustion) and outcome. The data were compared between asymptomatic HIV+/L.
44 *infantum*+ (HIV/Leish), symptomatic visceral leishmaniasis (VL), recovered VL, DTH+
45 (Delayed-Type Hypersensitivity response – Leishmanin skin test), AIDS/VL, HIV+ only
46 (HIV+), and Non-HIV/Non *L. infantum* infection (control subjects).

47 Results: The cross-sectional study showed 24.2% of HIV+ subjects had positive anti-
48 IgG *Leishmania* antibodies. After 3 years, 2.4% (8 of 333) of these HIV/Leish coinfecting
49 subjects developed AIDS/VL, whereas 1.05% (11 of 1,039) of HIV subjects with negative
50 leishmania serology developed AIDS/VL. Poor adherence to antiretroviral therapy
51 (p=0.0008) or prior opportunistic infections (p=0.0007) was associated with
52 development of AIDS/VL. CD4+ (p=0.29) and CD8+ (p=0.38) T cells counts or viral load
53 (p=0.34) were similar between asymptomatic HIV/Leish and HIV subjects. However,
54 activated CD8⁺CD38⁺HLA-DR⁺ T cells were higher in asymptomatic HIV/Leish than HIV
55 group. Likewise, senescent (CD57⁺) or exhausted (PD1⁺) CD8⁺ T cells were higher in
56 asymptomatic HIV/Leish than in AIDS/VL or HIV groups.

57 Conclusion: Although asymptomatic HIV/Leish subjects had normal and similar CD4+
58 and CD8+ T cells counts, their CD8⁺T cells had increased activation, senescence, and
59 exhaustion, which could contribute to risk of developing VL.

60

61 **Author Summary**

62 The frequency of asymptomatic HIV/*Leishmania infantum* (HIV/Leish) infection and the
63 immunological status of subjects with HIV+ residing in the state of Rio Grande do Norte,
64 Brazil, between 2014 and 2016 were studied. A high frequency of asymptomatic
65 HIV/*Leishmania infantum* infection (HIV subjects with positive anti-IgG *Leishmania*
66 antibodies) was found. Asymptomatic HIV/Leish subjects had CD8 T cells with higher
67 markers of activation, senescence and exhaustion than the other groups (HIV-alone,
68 symptomatic VL, Recovered VL, DTH+, AIDS/VL and Controls subjects). Poor
69 adherence to antiretroviral therapy or history of previous opportunistic infection was
70 associated with AIDS/VL. Asymptomatic HIV/Leish had high relative risk of developing
71 AIDS/VL. Thus, subjects with HIV residing in endemic areas for VL should be assessed
72 for their *L. infantum* infection status and advised to closely adhere to ART.

73

74 Introduction

75 Visceral leishmaniasis (VL) is a prevalent disease in many countries, with more
76 than 90% of cases in India, Nepal, Bangladesh, Sudan and Brazil. *Leishmania infantum*
77 is the main etiologic agent of VL in Latin America and Europe [1]. *L. infantum* infection
78 outcomes vary from asymptomatic to severe disease, but asymptomatic infection occurs
79 in most people. In endemic regions of Brazil, a trend to harbor asymptomatic infection
80 rather than VL has increased in parallel with improvement and nutrition, overall
81 vaccination rate for children including measles and sanitary conditions around the
82 household [2–4].

83 The factors determining the conversion from asymptomatic infection to VL are
84 still not totally understood. Recent studies indicate that high antibody titers are more
85 often seen in subjects with symptomatic VL [5,6]. Subsets of T cells from asymptomatic
86 *L. infantum* infected subjects are capable of activation after *Leishmania* stimulation,
87 detected by the marker CD69⁺. The majority of asymptomatic subjects mount Th1-type
88 cellular immune responses with IL-2 and IFN- γ production that is long-lasting if there is
89 no immunosuppression, possibly indicating protective immunity [7]. In contrast,
90 symptomatic VL subjects have unique T cell responses characterized by exhaustion and
91 activation profiles, with decreased IFN- γ production [8].

92 The resurgence of VL in Europe occurred concurrently with the HIV epidemic,
93 first spread through sharing of needles, and but also through the expansion of canine
94 VL in several countries including Portugal, Spain, France and Italy. In Brazil, HIV was
95 initially an infection of urban settings and VL was a disease predominantly in rural areas.
96 However, in the last 30 years VL has become frequent in peri-metropolitan areas of
97 major cities in the Northeast and Southeast regions of the country, and HIV has spread
98 to rural areas. The increased regional overlap of both infections has led to changes in

99 the epidemiology of VL due to co-infection [1,4]. In Rio Grande do Norte, this resulted in
100 an increase in AIDS/VL cases detected after 2010 [3,4].

101 A high risk of VL is observed among people living with HIV [9], and *L. infantum* is
102 an opportunistic pathogen in this population [10]. The impact of VL in people who are
103 immunocompromised by HIV can be devastating, since both diseases suppress the
104 immune system [11]. Asymptomatic co-infection with HIV and *Leishmania* increases the
105 risk of VL development [12], and in Brazil co-infected patients have had more VL
106 relapses and higher rates of death than singly infected persons [1]. Relapses of VL have
107 been associated with falling CD4⁺ T cell counts [9].

108 *Leishmania* infection increases HIV viral load in serum from co-infected people
109 [13]. Consistently, macrophages co-infected with HIV *in vitro* have higher *L. infantum*
110 loads and increased capacity to uptake the mammalian stage, the amastigote [14,15].
111 Chronic HIV infection is known to lead to CD4⁺ T cell depletion and CD8⁺ T cell activation
112 [11]. Cellular immune responses are essential for control of *Leishmania* spp. infection,
113 with contributions of CD4⁺ T cells to the outcome of active disease and CD8⁺ cells
114 contributing to immune protection. It is possible that the low CD4 T cells characterizing
115 HIV infection synergize with the suppressed hematopoietic cell functions due to
116 *Leishmania* spp. infection [16]. Indeed, AIDS/VL co-infected subjects exhibit increased
117 CD8⁺ T cell activation during active VL disease and after remission compared to singly
118 infected persons [17] and the chronic T cell activation phenotype is positively correlated
119 with T cell senescence, accelerating immune cell impairment [16].

120 Our overarching hypothesis is that people living with asymptomatic HIV-
121 *L. infantum* co-infection have higher risk of developing AIDS/VL than individuals with *L.*
122 *infantum* infection alone. The goals of the study were to study the immune T cell
123 activation, senescence and exhaustion in co-infected subjects, comparing AIDS/VL and

124 asymptomatic HIV/Leishmania subjects with recovered VL, DTH+ (Montenegro skin
125 test), AIDS/VL, HIV, and control subjects.

126

127 **Methods**

128 **Study Design and population**

129 A cross-sectional study was performed between July 2014 and January 2016, in
130 which 1,372 HIV individuals residing in Rio Grande do Norte State, Brazil, which is
131 endemic for VL, were tested for *L. infantum* infection by SLA and rK39 antigens using
132 ELISA. A retrospective analysis was performed with data on symptomatic VL cases
133 obtained from the Notifiable Diseases Information System (SINAN). All AIDS/VL
134 reported cases in SINAN database were cross referenced to 1,372 HIV cases evaluated
135 in cross-sectional study. All cases observed between July 2014 and December 2018
136 were analyzed. This was followed by the study of the immunological status of 69
137 subjects infected with HIV and/or Leishmania. The description of groups in the
138 immunologic study is found in Table 1. All subjects included in immunological study had
139 blood samples collected for further serological evaluation and for immunophenotyping,
140 and their clinical data were collected. The subjects were questioned about adherence
141 to ART therapy and previous opportunistic infections.

142 **Table 1** – Subject groups undergoing immunologic testing

Group	Group name	n	Definition
HIV only	HIV	16	HIV subjects on ART, with negative <i>L. infantum</i> serology and no symptoms of VL
Asymptomatic HIV+/ <i>L. infantum</i> +	Asympt HIV/Leish	10	HIV subjects on ART, positive <i>L. infantum</i> serology and no symptoms of VL
AIDS/VL	AIDS/VL	14	AIDS and symptomatic VL*
Symptomatic VL	VL	8	Symptomatic VL* and HIV negative
Recovered VL	Recovered VL	6	Immunocompetent subjects treated for VL who had clinical recovery

DTH+	DTH+	9	Immunocompetent subjects with DTH skin test response to <i>Leishmania</i> antigens with no history of VL
Healthy Control	CS	6	Healthy controls with no history of <i>Leishmania</i> or HIV infections

143 *The VL status was confirmed by either parasitological findings in the bone marrow aspirate or by
144 presence of anti-*Leishmania* antibodies and with clinical findings consistent with the disease.

145 **ELISA serologic test for asymptomatic *Leishmania* case detection**

146 HIV cases were screened for the presence of anti-*Leishmania* IgG antibodies
147 using two *Leishmania infantum* antigens. (1) A soluble lysate of *L. infantum* (SLA) was
148 produced from an isolate from a patient with VL in Natal that was typed in a World Health
149 Organization Reference Laboratory (Elisa Cupolillo, Fiocruz, Rio de Janeiro, Brazil). (2)
150 rK39 antigen for ELISA was kindly provided by Steven G. Reed (Infectious Diseases
151 Research Institute, Seattle, WA). Both ELISA protocols have been previously described
152 [18,19]. The cutoff for a positive reaction was determined as the mean + three standard
153 deviations of the absorbance of negative control sera (minus absorbance in blank wells).
154 Each serum sample was analyzed in duplicate. The results are shown as relative OD
155 (rOD), normalized to the cutoff for each. The rOD was determined as the (mean of
156 sample duplicates) – (mean absorbance in blank wells) / Cut-off. The results were
157 expressed by rOD median/min-max; p value.

158 **Delayed Type Hypersensitivity skin test (DTH) to leishmania antigens**

159 The antigen used for assessment of the DTH skin test was kindly provided by the
160 Centro de Produção e Pesquisa de Imunobiológico/PR (CPPI, Paraná, Brazil). It was
161 prepared from *L. amazonensis*, and it is the only DTH preparation approved for clinical
162 use in Brazil. The DTH was placed and read in accordance with the ballpoint pen
163 technique [20]. Induration greater than 5 mm in diameter was considered positive [21]

164 **Lymphocyte isolation and flow cytometric detection of T cell subsets**

165 Two milliliters of peripheral blood were collected and red blood lysis buffer was
166 added. After red blood cell lysis, white cells were washed by centrifugation in 0.1% PBS-
167 Azide and then labeled with monoclonal antibodies. Activation status (CD38-FITC; BD,
168 clone HIT2/HLA-DR-PE; Ebioscience, clone L243), Senescence (CD57-FITC; BD, clone
169 NK-1) and Exhaustion (PD-1-PERCP; Biolegend, clone NAT105) were analyzed in
170 CD4⁺CD3⁺ and in CD8⁺CD3⁺ T cells by flow cytometry. After antibody incubation, cells
171 were fixed in 1% formol buffer. Thirty thousand events were acquired from each sample
172 using a FACS Canto II flow cytometer (BD, Canto II flow cytometer, Becton Dickinson
173 Bioscience, USA). FlowJo vX software was used for flow cytometry analysis.
174 Lymphocytes were gated in forward scatter and side scatter dot plot graphic. Activation,
175 senescence and Exhaustion markers were evaluated in gated CD4⁺CD3⁺ and in
176 CD8⁺CD3⁺ T lymphocyte subpopulation. Results were expressed as percentage
177 (median; min-max).

178 **Ethical considerations**

179 The protocol and informed consent were reviewed and approved by the Federal
180 University of Rio Grande do Norte Ethical Committee (CEP-UFRN) and by the Brazilian
181 National Ethics Committee (CONEP). The certificate of ethical approval is CAAE
182 12675013.7.0000.5537. Informed consent was obtained, and the consent form was
183 signed by the participant or their legal guardian.

184 **Statistical analysis**

185 Continuous variables are expressed as medians and interquartile ranges. The
186 statistical analyses were performed using GraphPad Prism software (version 8.0, San
187 Diego, CA, USA). Kruskal-Wallis nonparametric ANOVA with multiple comparisons was
188 used to analyze differences between groups. Differences were considered statistically
189 significant when the p value was <0.05. Chi-square test was performed to compare

190 categorical variables. Relative risk was calculated using omni calculator
191 (<https://www.omnicalculator.com/statistics/relative-risk>) with 95% confidence intervals
192 (CI).

193

194 Results

195 1. Leishmania infection in people living with HIV in endemic area of Rio Grande 196 do Norte, Brazil, and visceral leishmaniasis development.

197 People living with HIV (n=1,372) were tested for *L. infantum* infection, using SLA
198 and rK39 anti-IgG ELISA serology. Of those, 333 people with HIV (24.2%, 333/1,372)
199 had positive antibodies to rK39 and/or SLA. High titers of SLA or rK39 were detected in
200 17.2% (236/1,372) or 12.9% (178/1,372) patients, respectively. SLA rOD results
201 correlated with rK39 rDO (r=0.82; p<0.001). Three years after the initial screening, 19
202 (1.38%) subjects developed visceral leishmaniasis (AIDS/VL) and were treated for VL.
203 Among the subjects who developed AIDS/VL, 11 had initially tested negative for
204 Leishmania infection (11 of 1,039; 1.05%) and 8 had tested positive for Leishmania (8
205 of 333; 2.4%) (Chi-square; p=0.033) (Table 2).

206 **Table 2** – Relative risk of HIV subjects to development AIDS/VL

	HIV	HIV/SLA-*	HIV/SLA+* (asymptomatic)	Relative Risk	Chi- square
AIDS/VL outcome	19/1,372 (1.38%)	11/1,039 (1.05%)	8/333 (2.4%)	2.27	0.033

207 *Relative risk – comparison between HIV/SLA- and HIV/SLA+ groups

208 2. Immunologic and virologic assessments comparing HIV and HIV- 209 asymptomatic Leishmania infected group

210 The immunologic and virologic status of a subgroup of asymptomatic HIV/Leish
211 subjects was compared to HIV, AIDS/VL, VL, Recovered VL, DTH+ and CS subjects.
212 Results are shown in Table 3, as median (min-max); and in Tables 4 and 5 as *p values*.
213 Most of the subjects were males as VL (87.5%), AIDS/VL (85%) and asymptomatic
214 HIV/Leish individuals (70%) (Table 3). There was no difference in the age between
215 groups (Kruskal-Wallis p=0.56) (Table 3).

216 **Table 3** – Clinical and laboratory characteristics of patients included in the immunologic
217 study

Groups	Age (Years)	Gender (%male)	CD4 ⁺ T cells count (cells/mm ³)	CD8 ⁺ T cells count (cells/mm ³)	HIV Viral load (Log ₁₀ copies/mL)	rOD anti- IgG SLA	rOD anti- IgG rK39
CS (n=6)	45 (35-52)	3F/3M (50%)	ND	ND	ND	0.15 (0.13-0.7)	0.29 (0.15-0.7)
HIV (n=16)	42 (21-54)	7M/9F (43,7%)	620 (64-1,153)	817 (284-1,992)	UND (UND-3.9)	0.17 (0.14-0.49)	0.33 (0.16-0.61)
Asympt HIV/Leish (n=10)	41 (29-62)	7M/3F (70%)	414 (105-747)	1002 (316-35,462)	UND (UND-4.5)	1.66 (1.01-3.86)	0.96 (0.35-2.97)
AIDS/VL (n=14)	40 (18-53)	12M/2F (85%)	85 (8-161)	737 (218-1,194)	5.3 (UND-7.0)	0.55 (0.13-6.17)	0.59 (0.19-7.91)
VL (n=8)	35 (16-51)	7M/1F (87,5%)	ND	ND	ND	3.93 (1.63- 10.47)	5.79 (1.02-9.47)
Recovered VL (n=9)	28 (15-32)	2F/4M (66.67%)	ND	ND	ND	1.35 (0.44-3.5)	1.5 (0.57- 14.88)
DTH+ (n=6)	36 (15-56)	4M/5F (44.5%)	ND	ND	ND	1.03 (0.66-1.22)	1.7 (1.17-3.6)

218 Results are expressed in Median (min-max); F – female; M – Male; ND – not done; UND –
219 undetectable (<40 viral copies/mL); rOD – relative OD.

220

221 All asympt HIV/Leish individuals (10 of 10) had positive anti-IgG SLA serology,
222 and 5 of 10 individual had positive anti-IgG rK39 serology. Asympt HIV/Leish individuals
223 had higher anti-SLA IgG antibodies and similar levels of anti-rK39 IgG antibodies
224 compared to AIDS/VL (Table 3 and 4). VL patients had higher levels of anti-Leishmania
225 antibodies than AIDS/VL group (SLA and rK39) or DTH+ subjects (SLA). Most AIDS/VL
226 subjects had negative serology to *Leishmania infantum* antigens (SLA: 71.4%/ rK39:
227 78.5%). DTH+ subjects had similar rOD antibodies levels as asympt HIV/Leish
228 individuals or recovered VL subjects (Table 3 and 4).

229 **Table 4** – Comparison of anti-Leishmania antibodies among the groups with respective *p values*

SLA							
p-values	CS	HIV	Asymp HIV/Leish	AIDS/VL	VL	Recovered VL	DTH+
CS		0.56	0.0001	0.03	<0.0001	0.004	0.007
HIV			<0.0001	0.0	NC	NC	NC
Asympt HIV/Leish				0.01	NC	NC	0.19
AIDS/VL					0.0006	NC	NC
VL						0.16	0.02
Recovered VL							0.57
DTH+							
rK39							
p-values	CS	HIV	Asymp HIV/Leish	AIDS/VL	VL	Recovered VL	DTH+
CS		0.75	0.01	0.04	<0.0001	0.003	0.0006
HIV			0.006	0.02	NC	NC	NC
Asympt HIV/Leish				0.45	NC	NC	0.23
AIDS/VL					0.002	NC	NC
VL						0.35	0.31
Recovered VL							0.093
DTH+							

230 NC – not compared

231 HIV groups differed with respect to their HIV viral loads and CD4+ T cell counts,
 232 but not their CD8+ T cell counts (Table 3 and 5). HIV and asympt HIV/Leish individuals
 233 had lower viral loads than individuals with AIDS/VL (Table 3 and 5). At the same time,
 234 CD4+ T counts were higher in HIV and in asympt HIV/Leish individuals than in AIDS/VL
 235 (table 3 and 5). Viral load, and CD4 and CD8 T cell counts did not differ between HIV
 236 and asympt HIV/Leish individuals (Table 3 and 5). HIV viral load correlated negatively
 237 to CD4 T cell counts ($r=-0.53$; $p=0.005$). No differences in CD8+ T cell counts were
 238 observed between the HIV, asympt HIV/Leish and AIDS/VL groups (ANOVA Kruskal-
 239 Wallis $p=0.25$) (table 3).

240 **Table 5** – Comparison of HIV load and CD4 counts

Viral load			
p-values	HIV	Asymp HIV/Leish	AIDS/VL
HIV		0.34	<0.0001
Asympt HIV/Leish			0.004
AIDS/VL			
CD4 counts			

p-values	HIV	Asympt HIV/Leish	AIDS/VL
HIV		0.29	<0.0001
Asympt HIV/Leish			0.003
AIDS/VL			

241 NC – not compared

242

243 ART was used by 81.25% (13/16) of the HIV subjects (Table 6). However, in
 244 *Leishmania* infected groups, the adherence to ART was lower. Sixty percent (6/10) of
 245 asympt HIV/Leish subjects and 7.15% (1/14) of AIDS/VL subjects used ART regularly
 246 (Table 6). Subjects were asked about their history of prior chronic infections with
 247 *Toxoplasma* spp., *Mycobacterium tuberculosis* or *Mycobacterium leprae*. Before
 248 enrollment, 25% (4/16) of HIV subjects had had these chronic infections, 40% (4/10) of
 249 asympt HIV/Leish subjects had had previous chronic infections, and 84% (11/14) of
 250 AIDS/VL cases had had previous infections (Table 6). Chi-square analysis revealed that
 251 both the incorrect use of ART therapy (Fisher Chi-square 0.0008) and a history of
 252 previous chronic infection (Fisher Chi-square 0.0007) were associated with an increased
 253 risk of AIDS/VL outcome (Table 6).

254 **Table 6** – Adherence to ART treatment or previous infection and AIDS/VL outcome
 255 association

	HIV	Asympt HIV/Leish	AIDS/VL	Chi-Square
Adherence to ART	13/16 (81.2%)	6/10 (60%)	1/14 (7.1%)	0.0008
Previous chronic infections*	4/16 (25%)	4/10 (40%)	11/14 (84%)	0.0007

256 *toxoplasmosis, tuberculosis, leprosy

257 **3. Asymptomatic HIV/Leishmania infantum infection increased activation,**
 258 **senescence and exhaustion immunological status in CD8⁺T cells**

259 T cell activation, senescence and exhaustion were examined in HIV-subjects.

260 The results are shown in table 7 and 8, and Figures 1 and 2.

261 **Table 7** – Proportions of subjects with makers of immune activation, senescence or
262 exhaustion in T cell subsets

	CD3 ⁺ CD4 ⁺ T cell			CD3 ⁺ CD8 ⁺ T cell		
	CD38 ⁺ HLA-DR ⁺	CD57 ⁺	PD1 ⁺	CD38 ⁺ HLA-DR ⁺	CD57 ⁺	PD1 ⁺
CS (n=6)	2.0% (0.8-13.7)	12.87% (1.27-37.0)	8.65% (3.9-12.9)	2.42% (0.54-3.58)	39.4% (15.9-60.1)	0.04% (0.0-0.55)
HIV (n=16)	2.52% (0.78-17.7)	4.1% (0.73-52.2)	5.1% (0.18-15.4)	4.19% (2.14-25.1)	39.1% (17.1-69.6)	2.52% (0.01-58.0)
Asympt HIV/Leish (n=10)	6.89% (3.31-15.8)	15.65% (2.6-66.7)	5.37% (1.3-21.4)	24.55% (6.65-50.4)	62.8% (42.6-88.0)	42.6% (15.7-80.1)
AIDS/VL (n=14)	18.89% (0.74-86.2)	10.88% (0.2-40.0)	18.0 (0.4-40.2)	36.85% (14.7-96.9)	54.6% (21.3-72.4)	21.45% (6.2-57.0)
VL (n=8)	14.2% (0.85-31.7)	5.81% (1.2-28.7)	11.7% (0.7-45.9)	54.05% (2.08-65.0)	49.7% (11.1-59.1)	15.15% (4.32-55.7)
Recovered VL (n=9)	2.7% (1.34-7.1)	6.82% (3.0-47.9)	18.95% (5.93-40.1)	5.41% (2.77-12.5)	43.6% (11.2-71.2)	1.55% (0.28-12.2)
DTH+ (n=6)	0.39% (0.02-1.83)	8.3% (0.71-17.6)	4.02% (1.82-30.9)	0.08% (0.0-7.42)	35.1% (12.0-59.6)	0.24% (0.0-1.69)

263 Results were expressed Median (Min-Max)

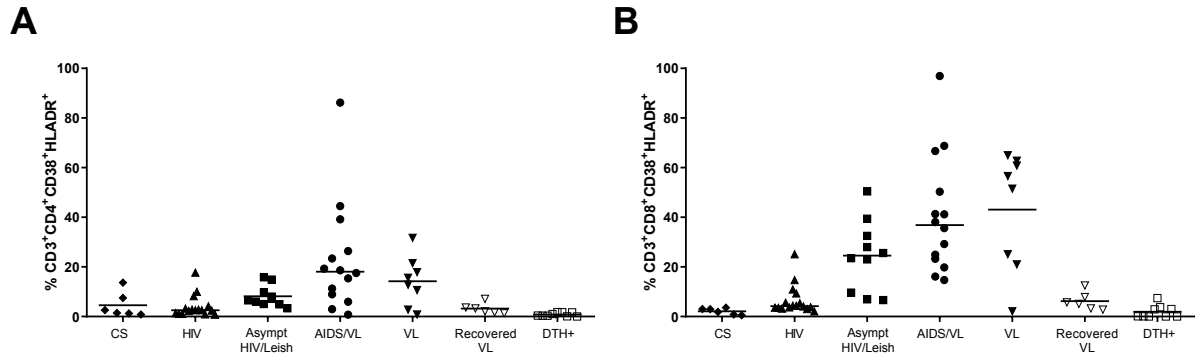
264

265 **Table 8** – Comparison of T cell markers among groups

CD4 ⁺ T cell activation markers (HLA-DR, CD38)							
p-values	CS	HIV	Asympt HIV/Leish	AIDS/VL	VL	Recovered VL	DTH+
CS		0.99	0.11	0.0008	0.05	0.96	0.09
HIV			0.04	0.0004	NC	NC	NC
Asympt HIV/Leish				0.25	NC	NC	0.0002
AIDS/VL					0.57	NC	NC
VL						0.06	<0.0001
Recovered VL							0.08
DTH+							
CD8 ⁺ T cell activation markers (HLA-DR, CD38)							
p-values	CS	HIV	Asympt HIV/Leish	AIDS/VL	VL	Recovered VL	DTH+
CS		0.11	0.0007	<0.0001	0.0001	0.95	0.18
HIV			0.01	0.0001	NC	NC	NC
Asympt HIV/Leish				0.35	NC	NC	0.0001
AIDS/VL					0.84	NC	NC
VL						0.01	<0.0001
Recovered VL							0.13

DTH+							
CD4+ T cell senescence marker (CD57)							
p-values	CS	HIV	Asympt HIV/Leish	AIDS/VL	VL	Recovered VL	DTH+
CS		0.28	0.55	0.71	0.45	0.95	0.38
HIV			0.04	0.05	NC	NC	NC
Asympt HIV/Leish				0.74	NC	NC	0.09
AIDS/VL					0.19	NC	NC
VL						0.49	0.91
Recovered VL							0.41
DTH+							
CD8+ T cell senescence marker (CD57)							
p-values	CS	HIV	Asympt HIV/Leish	AIDS/VL	VL	Recovered VL	DTH+
CS		0.98	0.01	0.23	0.57	0.57	0.88
HIV			0.002	0.11	NC	NC	NC
Asympt HIV/Leish				0.12	NC	NC	0.004
AIDS/VL					0.54	NC	NC
VL						0.96	0.42
Recovered VL							0.43
DTH+							
CD4+ T cell exhaustion marker (PD1)							
p-values	CS	HIV	Asympt HIV/Leish	AIDS/VL	VL	Recovered VL	DTH+
CS		0.31	0.91	0.19	0.41	0.08	0.86
HIV			0.18	0.002	NC	NC	NC
Asympt HIV/Leish				0.16	NC	NC	0.75
AIDS/VL					0.65	NC	NC
VL						0.31	0.27
Recovered VL							0.04
DTH+							
CD8+ T cell exhaustion marker (PD1)							
p-values	CS	HIV	Asympt HIV/Leish	AIDS/VL	VL	Recovered VL	DTH+
CS		0.05	<0.0001	0.0001	0.002	0.16	0.54
HIV			0.003	0.01	NC	NC	NC
Asympt HIV/Leish				0.19	NC	NC	<0.0001
AIDS/VL					0.61	NC	NC
VL						0.12	0.006
Recovered VL							0.35
DTH+							

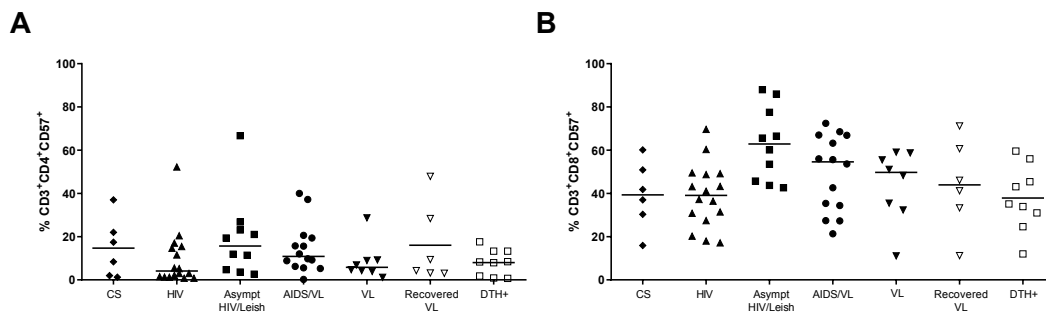
266 NC – not compared



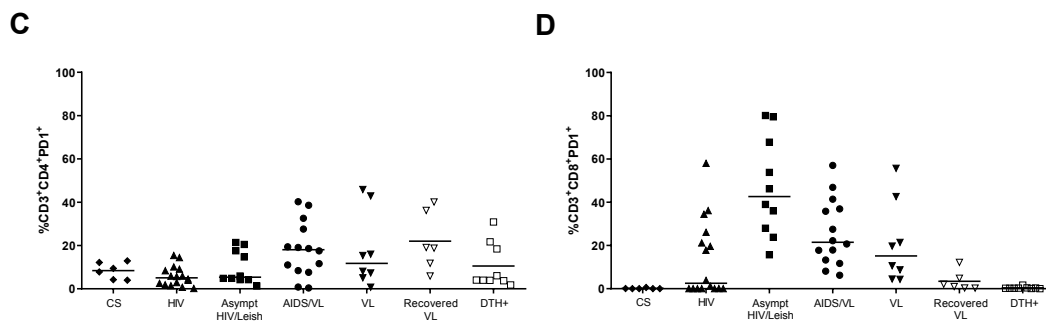
267

268 **Figure 1:** Immune activation CD38⁺HLA-DR⁺ status in CD3⁺CD4⁺ (A) and in CD3⁺CD8⁺
 269 T cells (B). Each point in the graphs represents one individual. Significance: p < 0.05.

Senescence Levels



Exhaustion Levels



270

271 **Figure 2 –** Proportions of cells positive for markers of senescence (CD57⁺) and
 272 exhaustion (PD1⁺) in CD3⁺CD4⁺ (A and C) or in CD3⁺CD8⁺ T cells (B and D). Each point
 273 in the graphs represents one individual. Significance: p > 0.05.

274

275 CD38 is a marker of cell activation. In HIV infection, it predicts HIV progression

276 and correlates with high levels of viral load [1]. High levels of activated T cells were
277 observed in VL, AIDS/VL and asympt HIV/Leish subjects, using CD38⁺ and HLA-DR⁺
278 expression as markers of activation *ex-vivo* (Fig 1 and Table 7 and 8). VL subjects had
279 higher proportions of activated T-cells than DTH⁺. After cure, recovered VL subjects
280 had comparatively lowered proportions of CD8⁺CD38⁺HLA-DR⁺ activated T cells than
281 those with VL (Fig 1 and Table 7 and 8). Similar higher and activation levels were
282 observed between VL and AIDS/VL subjects, in both CD4⁺ and CD8⁺ T cells. VL patients
283 had higher proportions of CD38⁺HLA-DR⁺ T cells than CS. There were no differences
284 between T-cell activation in CS subjects compared to HIV subjects, recovered VL or
285 DTH⁺ subjects. AIDS/VL had higher proportions of activated T cells than HIV or CS (Fig
286 1; Tables 7 and 8). Asympt HIV/Leish subjects had higher proportions of activated CD8⁺
287 T cells than CS subjects (Fig 1; Tables 7 and 8); and also showed higher proportions of
288 activated CD4⁺ T cells than HIV or DTH⁺. Proportions of T cells expressing activation
289 markers did not differ asympt HIV/Leish and AIDS/VL subjects in CD4⁺ or CD8⁺ T cells.
290 However, proportions of CD8⁺ T cells expressing activation markers were higher for
291 asympt HIV/Leish subjects compared to HIV or DTH⁺ (Fig 1; Tables 7 and 8).
292 CD8⁺CD38⁺ T cells seem to play a role in VL and HIV, especially in AIDS/VL and
293 asymptomatic HIV/Leishmania co-infected subjects.

294 CD57 is one of the senescence associated molecules. Senescent cells have
295 shorter-ending telomers, that affect cellular function and proliferation. Cancer, chronic
296 infections, autoimmune disease and aging exhibit high levels of senescent cells [22].
297 Similar percentages of senescent CD4⁺T cells expressing CD57⁺ were observed
298 between most analyzed groups (Fig 2A; Tables 7 and 8). This includes a lack of
299 significant difference between senescence in CD4⁺ and CD8⁺ T cells of asympt
300 HIV/Leish and AIDS/VL subjects. Nonetheless there were significantly lower proportions

301 of senescent CD4⁺T cells in HIV group than asympt HIV/Leish or in AIDS/VL subjects
302 (Fig 2A; Tables 7 and 8). Proportions of senescent CD8⁺T cells were significantly
303 different across the HIV and VL groups (Fig 2A; Tables 7 and 8). Asympt HIV/Leish
304 expressed higher proportions of CD57⁺CD8⁺ T cells than CS, HIV and DTH⁺ groups.
305 Similar levels of senescent TCD8⁺ cells were observed in subjects with AIDS/VL, HIV,
306 asympt, HIV/Leish or VL. Even after cure, recovered VL subjects showed similar levels
307 of senescent CD8 T cells compared to VL patients (Fig 2A; Tables 7 and 8). Thus, more
308 CD4⁺ and CD8⁺ T cells became senescent in persons with Leishmania and HIV co-
309 infection than in asymptomatic HIV/Leish subjects.

310 Chronic T activation, such as occurs in HIV infection or visceral leishmaniasis,
311 leads to cell exhaustion. Exhausted cells are dysfunctional and have reduced responses
312 to antigen. PD-1 (CD279) is mainly associated exhaustion [22]. Proportions of CD4⁺T
313 expressing this marker of exhaustion in AIDS/VL subjects were significantly higher than
314 among HIV subjects (Fig 2B; Tables 7 and 8). Remarkably there were few other
315 significant differences in CD4⁺ T cell exhaustion markers between the groups (Fig 2B;
316 Tables 7 and 8). In contrast to CD4⁺ T cells, the overall proportions of CD8⁺T cells
317 expressing the exhaustion marker differed significantly across the groups (Fig 2B;
318 Tables 7 and 8). Proportions were highest in the asympt HIV/Leish group, which differed
319 from proportions in HIV, DTH⁺ or CS subjects. Levels of CD8⁺ T cell exhaustion were
320 also high in HIV, AIDS/VL and VL subjects. AIDS/VL had similar proportions of
321 exhausted CD8⁺ T compared to VL or asympt HIV/Leish subjects (Fig 2B; Tables 7 and
322 8). However, AIDS/VL had higher proportions than HIV or CS. VL patients had higher
323 senescent CD8⁺T cells than DTH⁺ or CS. After cure of VL (recovered VL), the levels of
324 CD8⁺PD1⁺ T cells were similar to those in CS and DTH⁺ subjects (Fig 2B; Tables 7 and
325 8). CS subjects had lower percentages of senescent CD8⁺T cells than HIV subjects.

326 Thus, CD8⁺T cells of HIV/*L. infantum* subjects seem to be compromised with high

327 senescence and exhaustion levels.

328

329 Discussion

330 The urbanization of *L. infantum* in northeastern Brazil and the spread of HIV have
331 contributed to the likelihood of concurrent infections. Since 2010, an increase in
332 AIDS/VL cases as well as in asymptomatic *L. infantum* infection have been observed in
333 the outskirts of Natal, as shown in this study, and in other Brazilian cities [23,24].

334 Herein we report a high prevalence (24.2%) of *L. infantum* positive serology
335 among HIV-infected residents of Natal. Asymptomatic HIV/Leishmania prevalence
336 reported from other endemic areas for VL has ranged from 3% to 25% [25–27].
337 Differences in the sensitivity and specificity of *Leishmania* detection tests can affect the
338 calculated prevalence of asymptomatic HIV/*Leishmania* co-infection [28]. Sensitive PCR
339 showed high prevalence of asymptomatic HIV/*Leishmania* co-infection in Italy [25]. In
340 our study, rK39 and SLA ELISA were used to screen the HIV+ population. The results
341 in this study are similar to those previously observed from Natal [19]. It is well known
342 that AIDS/VL patients have lower titers of anti-*Leishmania* antibodies than persons with
343 VL alone [29]. Of note, asymptomatic HIV/Leish (HIV subject with no clinical or
344 laboratorial sign of *L. infantum* infection but positive serology) have an increased risk of
345 developing AIDS/VL.

346 Asymptomatic HIV/Leish and AIDS/VL subjects in this study were predominately
347 males. The prevalence of HIV is higher among males than females in the state of Grande
348 do Norte. But VL has also been recognized more often in males [4,30]; while both sexes
349 have been shown to be equally exposed to *L. infantum* infection in the region [31].
350 Sexual hormones seem to play a role in the pathogenesis and progression to VL, once
351 males reach puberty. And higher levels of IL10 and TNF have been observed in male
352 than female mice infected with *Leishmania infantum* [32].

353 The consequence of HIV and *Leishmania infantum* co-infection is an increased
354 likelihood of progression to AIDS/VL,[1]. The negative correlation between CD4 T cells
355 counts and HIV viral load suggests a spectrum among HIV-infected subjects from
356 asymptomatic HIV/Leish to AIDS/VL. In our study persons with asymptomatic HIV/Leish
357 had similar CD4 and CD8 T cells counts and HIV viral loads as HIV subjects. The lack
358 of adherence to ART therapy or a history of prior infectious diseases were associated
359 with an increased risk of progressing to AIDS/VL. Adherence to ART could be
360 maintaining protective Th1 cytokine production by CD4⁺T cells [33].

361 T cell activation is strongly associated with progression to AIDS and death [34].
362 In the present study chronic immune activation was observed in AIDS/VL subjects in
363 comparison to HIV+ or negative subjects. The positive correlation between *Leishmania*
364 infection and higher levels of CD8⁺T activation in HIV-co-infected subjects in comparison
365 to those with HIV alone suggests that *L. infantum* plays a role in CD8⁺T cell activation
366 during co-infections [35].

367 *Leishmania infantum* infection causes several immunological alterations
368 contributing to immune suppression. Both VL and AIDS/VL subjects had higher
369 percentages of *ex vivo* activation. Persons with symptomatic leishmaniasis have
370 previously been shown to have higher percentages of *ex vivo* activation, but it is not
371 *Leishmania* specific, since CD4⁺T and CD8⁺T cells exposed to leishmanial antigen did
372 not express activation molecules [8]. Despite lower *ex vivo* activation observed in DTH+
373 or recovered-VL subjects, these groups mounted specific T cell response after
374 stimulation [8]. It is probably that asymptomatic HIV/Leishmania subjects can mount a
375 specific Th1 response to SLA antigen [36], since asymptomatic HIV/Leish subjects
376 showed similar percentage of activated CD4⁺T when compared to HIV or DTH+
377 individuals, and lower CD4⁺T levels of activation than AIDS/VL subjects.

378 Higher percentages of senescent CD8⁺T(CD3⁺CD8⁺CD57⁺) or exhausted (PD1⁺)
379 CD4⁺ or CD8⁺ T cells were found in AIDS/VL than in HIV or control subjects, illustrating
380 the deleterious impact of dual HIV and *Leishmania* infections, increasing senescence
381 and exhaustion, and consequently, the deterioration of the immune system [1]. In this
382 study, higher percentages of senescence (CD57⁺) and exhaustion (PD1⁺) were
383 observed in the VL and AIDS/VL groups. But senescence was not affected in
384 immunocompetent groups, suggesting that it was caused by HIV. During active VL,
385 more exhausted CD8⁺T cells were observed than in persons who had recovered from
386 VL or DTH+ subjects. Exhausted CD8⁺T cells from active VL patients did not produce
387 IFN- γ in response to specific stimulation; however, this suppression was transitory, since
388 after treatment, CD8⁺T cells recover the capacity of specific response [37].

389 Asymptomatic HIV/Leish co-infected subjects seemed to be controlling both
390 infections. This group did not have any VL symptoms and had similar HIV viral load,
391 CD4 and CD8 T cell counts in comparison to HIV subjects. These similarities in clinical
392 and laboratory findings of asymptomatic HIV/Leish co-infection may be due to properly
393 CD4⁺T cells counts and HIV viral load [25]. But chronic active *Leishmania* infection can
394 stimulate immune activation [17] leading to increase HIV viral load and accelerating
395 progression to AIDS/VL [11,38].

396 The management of asymptomatic HIV/Leishmania co-infected subjects starts
397 with optimizing ART therapy and close follow-up of clinical status, viral load and CD4
398 count. Persons who develop symptoms of VL should be treated with liposomal
399 amphotericin or alternative anti-leishmanial therapy. The role of anti-leishmanial therapy
400 in the asymptomatic co-infected person is uncertain. Further studies are needed to
401 determine its role, particularly in persons with low or falling CD4 counts or uncontrolled
402 viral loads.

403 **Acknowledgment:**

404 We are thankful to the health personnel from Giselda Trigueiro Hospital, Central
405 Laboratory (Laboratório Central de Saúde Pública do Rio Grande do Norte Dr. Almino
406 Fernandes) for helping with the volunteers' recruitment.

407

408 **FINANCIAL SUPPORT**

409 The work was supported in part from a grant from the CNPq (universal 406076/2021-
410 9); National Institutes of Health (NIH). Project number: AI 136032; National Institute of
411 Science and Technology in Tropical Diseases (INCT-DT) – Ministério de Ciência,
412 Tecnologia e Inovação, CNPq. Project Number: 465229/2014-0

413

414

415 **References**

- 416 1. Lindoso JAL, Moreira CHV, Cunha MA, Queiroz IT. Visceral leishmaniasis and
417 HIV coinfection: Current perspectives. *HIV/AIDS - Res Palliat Care*. 2018;10: 193–
418 201. doi:10.2147/HIV.S143929
- 419 2. Lima ID, Queiroz JW, Lacerda HG, Queiroz PVSS, Pontes NN, Barbosa JDAA, et
420 al. *Leishmania infantum* chagasi in Northeastern Brazil: Asymptomatic infection
421 at the urban perimeter. *Am J Trop Med Hyg*. 2012;86: 99–107.
422 doi:10.4269/ajtmh.2012.10-0492
- 423 3. Lima ÁLM, de Lima ID, Coutinho JFV, de Sousa ÚPST, Rodrigues MAG, Wilson
424 ME, et al. Changing epidemiology of visceral leishmaniasis in northeastern Brazil:
425 A 25-year follow-up of an urban outbreak. *Trans R Soc Trop Med Hyg*. 2017;111:
426 440–447. doi:10.1093/trstmh/trx080
- 427 4. Lima ID, Lima ALM, Mendes-Aguiar CO, Coutinho JF V, Wilson ME, Pearson RD,
428 et al. Changing demographics of visceral leishmaniasis in northeast Brazil:
429 Lessons for the future. *PLoS Negl Trop Dis*. 2018;12: e0006164.
430 doi:10.1371/journal.pntd.0006164
- 431 5. Chakravarty J, Hasker E, Kansal S, Singh OP, Malaviya P, Singh APAK, et al.
432 Determinants for progression from asymptomatic infection to symptomatic
433 visceral leishmaniasis: A cohort study. *PLoS Negl Trop Dis*. 2018;13: 1–12.
434 doi:10.1371/journal.pntd.0007216
- 435 6. Hasker E, Malaviya P, Gidwani K, Picado A, Ostyn B, Kansal S, et al. Strong
436 Association between Serological Status and Probability of Progression to Clinical
437 Visceral Leishmaniasis in Prospective Cohort Studies in India and Nepal. *PLoS*
438 *Negl Trop Dis*. 2014;8: 19. doi:10.1371/journal.pntd.0002657
- 439 7. Ibarra-Meneses A V., Mondal D, Alvar J, Moreno J, Carrillo E. Cytokines and
440 chemokines measured in dried SLA-stimulated whole blood spots for
441 asymptomatic *Leishmania infantum* and *Leishmania donovani* infection. *Sci Rep*.
442 2017;7: 1–7. doi:10.1038/s41598-017-17315-z
- 443 8. Rodrigues-Neto JF, Monteiro GR, Keesen TSL, Lacerda HG, Carvalho EM,
444 Jeronimo SMB. CD45RO+ T cells and T cell activation in the long-lasting immunity

- 445 after leishmania infantum infection. *Am J Trop Med Hyg.* 2018;98: 875–882.
446 doi:10.4269/ajtmh.16-0747
- 447 9. Alvar J, Aparicio P, Aseffa A, Den Boer M, Canavate C, Dedet JP, et al. The
448 relationship between leishmaniasis and AIDS: the second 10 years. *Clin Microbiol*
449 *Rev.* 2008;21: 334–59, table of contents. doi:10.1128/CMR.00061-07
- 450 10. Alvar J, Cañavate C, Gutiérrez-Solar B, Jiménez M, Laguna F, López-Vélez R, et
451 al. Leishmania and human immunodeficiency virus coinfection: The first 10 years.
452 *Clin Microbiol Rev.* 1997;10: 298–319. doi:10.1128/cmr.10.2.298
- 453 11. Lindoso JA, Cota GF, da Cruz AM, Goto H, Maia-Elkhoury AN, Romero GA, et al.
454 Visceral leishmaniasis and HIV coinfection in Latin America. *PLoS Negl Trop Dis.*
455 2014;8: e3136. doi:10.1371/journal.pntd.0003136
- 456 12. van Griensven J, Zijlstra EE, Hailu A. Visceral Leishmaniasis and HIV Coinfection:
457 Time for Concerted Action. *PLoS Negl Trop Dis.* 2014;8: 1–2.
458 doi:10.1371/journal.pntd.0003023
- 459 13. Preiser W, Cacopardo B, Nigro L, Braner J, Nunnari A, Doerr W, et al.
460 Immunological findings in HIV/Leishmania coinfection. *Intervirology.* 1996;39:
461 285–288. doi:10.1159/000150531
- 462 14. Zhao C, Thibault S, Messier N, Ouellette M, Papadopoulou B, Tremblay MJ. In
463 primary human monocyte-derived macrophages exposed to Human
464 immunodeficiency virus type 1, does the increased intracellular growth of
465 *Leishmania infantum* rely on its enhanced uptake? *J Gen Virol.* 2006;87: 1295–
466 1302. doi:10.1099/vir.0.81647-0
- 467 15. Barreto-de-Souza V, Pacheco GJ, Silva AR, Castro-Faria-Neto HC, Bozza PT,
468 Saraiva EM, et al. Increased *Leishmania* replication in HIV-1-infected
469 macrophages is mediated by tat protein through cyclooxygenase-2 expression
470 and prostaglandin E2 synthesis. *J Infect Dis.* 2006;194: 846–854.
471 doi:10.1086/506618
- 472 16. Casado JL, Abad-Fernandez M, Moreno S, Perez-Elias MJ, Moreno A, Bernardino
473 JI, et al. Visceral leishmaniasis as an independent cause of high immune
474 activation, T-cell senescence, and lack of immune recovery in virologically

- 475 suppressed HIV-1-coinfected patients. *HIV Med.* 2015;16: 240–248.
476 doi:10.1111/hiv.12206
- 477 17. Santos-Oliveira JR, Regis EG, Giacoia-Gripp CB, Valverde JG, Alexandrino-de-
478 Oliveira P, Lindoso JA, et al. Microbial translocation induces an intense
479 proinflammatory response in patients with visceral leishmaniasis and HIV type 1
480 coinfection. *J Infect Dis.* 2013/03/30. 2013;208: 57–66. doi:10.1093/infdis/jit135
- 481 18. Lima ID, Queiroz JW, Lacerda HG, Queiroz PVS, Pontes NN, Barbosa JDA, et al.
482 *Leishmania infantum chagasi* in Northeastern Brazil: Asymptomatic infection at
483 the urban perimeter. *Am J Trop Med Hyg.* 2012;86: 99–107.
484 doi:10.4269/ajtmh.2012.10-0492
- 485 19. Braz RFS, Nascimento ET, Martins DRA, Wilson ME, Pearson RD, Reed SG, et
486 al. The sensitivity and specificity of *Leishmania chagasi* recombinant K39 antigen
487 in the diagnosis of American visceral leishmaniasis and in differentiating active
488 from subclinical infection. *Am J Trop Med Hyg.* 2002;67: 344–348.
489 doi:10.4269/ajtmh.2002.67.344
- 490 20. Sokal JE. Measurement of Delayed Skin-Test Responses.
491 <http://dx.doi.org/10.1056/NEJM197509042931013>. 1975;293: 501–502.
492 doi:10.1056/NEJM197509042931013
- 493 21. Melo MN, Mayrink W, da Costa CA, Magalhaes PA, Dias M, Williams P, Araujo
494 FG, Coelho MV BS. Standardization of the Montenegro antigen. *Rev Inst Med*
495 *TropSao Paulo.* 1977;19: 161–164. Available: [https://www.imt.usp.br/wp-](https://www.imt.usp.br/wp-content/uploads/revista/vol19/161-164.pdf)
496 [content/uploads/revista/vol19/161-164.pdf](https://www.imt.usp.br/wp-content/uploads/revista/vol19/161-164.pdf)
- 497 22. Crespo J, Sun H, Welling TH, Tian Z, Zou W. T cell anergy, exhaustion,
498 senescence, and stemness in the tumor microenvironment. *Curr Opin Immunol.*
499 2013;25: 214–221. doi:10.1016/j.coi.2012.12.003
- 500 23. Carranza-Tamayo CO, Assis TSM de, Neri ATB, Cupolillo E, Rabello A, Romero
501 GAS. Prevalence of *Leishmania* infection in adult HIV/AIDS patients treated in a
502 tertiary-level care center in Brasilia, Federal District, Brazil. *Trans R Soc Trop Med*
503 *Hyg.* 2009;103: 743–748. doi:10.1016/j.trstmh.2009.01.014
- 504 24. Orsini M, Canela JR, Disch J, Maciel F, Greco D, Toledo A, et al. High frequency

- 505 of asymptomatic *Leishmania* spp. infection among HIV-infected patients living in
506 endemic areas for visceral leishmaniasis in Brazil. *Trans R Soc Trop Med Hyg.*
507 2012;106: 283–288. doi:10.1016/j.trstmh.2012.01.008
- 508 25. Colomba C, Saporito L, Vitale F, Reale S, Vitale G, Casuccio A, et al. Cryptic
509 *Leishmania infantum* infection in Italian HIV infected patients. *BMC Infect Dis.*
510 2009;9. doi:10.1186/1471-2334-9-199
- 511 26. Rezaei Z, Sarkari B, Dehghani M, Layegh Gigloo A, Afrashteh M. High frequency
512 of subclinical *Leishmania* infection among HIV-infected patients living in the
513 endemic areas of visceral leishmaniasis in Fars province, southern Iran. *Parasitol*
514 *Res.* 2018;117: 2591–2595. doi:10.1007/s00436-018-5949-9
- 515 27. Ena J, Pasquau F, Del Mar López-Perezagua M, Martínez-Peinado C, Arjona F.
516 Screening for subclinical leishmania infection in HIV-infected patients living in
517 eastern Spain. *Pathog Glob Health.* 2014;108: 356–361.
518 doi:10.1179/2047773214Y.0000000164
- 519 28. Echchakery M, Nieto J, Boussaa S, El Fajali N, Ortega S, Souhail K, et al.
520 Asymptomatic carriers of *Leishmania infantum* in patients infected with human
521 immunodeficiency virus (HIV) in Morocco. *Parasitol Res.* 2018;117: 1237–1244.
522 doi:10.1007/s00436-018-5805-y
- 523 29. Nascimento ET, Moura MLN, Queiroz JW, Barroso AW, Araujo AF, Rego EF, et
524 al. The emergence of concurrent HIV-1/AIDS and visceral leishmaniasis in
525 Northeast Brazil. *Trans R Soc Trop Med Hyg.* 2011;105: 298–300.
526 doi:10.1016/j.trstmh.2011.01.006
- 527 30. Silva de Lima UR, Vanolli L, Moraes EC, Ithamar JS, Pedrozo e Silva de Azevedo
528 C de M. Visceral leishmaniasis in Northeast Brazil: What is the impact of HIV on
529 this protozoan infection? *PLoS One.* 2019;14: 1–14.
530 doi:10.1371/journal.pone.0225875
- 531 31. Jeronimo SM, Duggal P, Braz RF, Cheng C, Monteiro GR, Nascimento ET, et al.
532 An emerging peri-urban pattern of infection with *Leishmania chagasi*, the
533 protozoan causing visceral leishmaniasis in northeast Brazil. *Scand J Infect Dis.*
534 2004;36: 443–449. Available: <http://www.ncbi.nlm.nih.gov/pubmed/15307565>

- 535 32. Rodriguez NE, Lima ID, Dixit UG, Turcotte EA, Lockard RD, Batra-Sharma H, et
536 al. Epidemiological and experimental evidence for sex-dependent differences in
537 the outcome of *Leishmania infantum* Infection. *Am J Trop Med Hyg.* 2018;98:
538 142–145. doi:10.4269/ajtmh.17-0563
- 539 33. De la Rosa R, Pineda JA, Delgado J, Macías J, Morillas F, Mira JA, et al. Incidence
540 of and risk factors for symptomatic visceral leishmaniasis among human
541 immunodeficiency virus type 1-infected patients from Spain in the era of highly
542 active antiretroviral therapy. *J Clin Microbiol.* 2002;40: 762–767.
543 doi:10.1128/JCM.40.3.762-767.2002
- 544 34. Hunt PW, Martin JN, Sinclair E, Brecht B, Hagos E, Lampiris H, et al. T cell
545 activation is associated with lower CD4+ T cell gains in human immunodeficiency
546 virus-infected patients with sustained viral suppression during antiretroviral
547 therapy. *J Infect Dis.* 2003;187: 1534–1543. doi:10.1086/374786
- 548 35. Santos-Oliveira JR, Giacoia-Gripp CBW, Alexandrino de Oliveira P, Amato VS,
549 Lindoso JATL, Goto H, et al. High levels of T lymphocyte activation in *Leishmania*-
550 HIV-1 co-infected individuals despite low HIV viral load. *BMC Infect Dis.*
551 2010/12/22. 2010;10: 358. doi:10.1186/1471-2334-10-358
- 552 36. Botana L, Ibarra-Meneses AV, Sánchez C, Castro A, Martin JVS, Molina L, et al.
553 Asymptomatic immune responders to *Leishmania* among HIV positive patients.
554 *PLoS Negl Trop Dis.* 2019;13: 1–14. doi:10.1371/journal.pntd.0007461
- 555 37. Gautam S, Kumar R, Singh N, Singh AK, Rai M, Sacks D, et al. CD8 T cell
556 exhaustion in human visceral leishmaniasis. *J Infect Dis.* 2014;209: 290–299.
557 doi:10.1093/infdis/jit401
- 558 38. Okwor I, Uzonna JE. The immunology of *Leishmania*/HIV co-infection. *Immunol*
559 *Res.* 2013;56: 163–171. doi:10.1007/s12026-013-8389-8
- 560