

1 **Prognostic Significance of Different Ventricular Ectopic Burdens During Exercise in**
2 **Asymptomatic UK Biobank Subjects**

3 **Brief title: Prognostics of Ventricular Ectopy During Exercise**

4
5 **Authors:**

6 Stefan van Duijvenboden, PhD^{a,b,c}, Julia Ramírez, PhD^{b,d}, Michele Orini, PhD^{a,e}, Aiden Doherty,
7 PhD^c, Andrew Tinker, MD, PhD^{b,f}, Patricia B. Munroe, PhD^{b,f}, Pier D. Lambiase, FRCP, PhD^{a,e}

8
9 **Word count: 5997**

10
11 **Affiliations**

- 12 a) Institute of Cardiovascular Science, University College London, London, WC1E 6BT, UK
13 b) Clinical Pharmacology and Precision Medicine, William Harvey Research Institute, Barts and
14 The London School of Medicine and Dentistry, Queen Mary University of London, London,
15 EC1M 6BQ, UK
16 c) Nuffield Department of Population Health, University of Oxford, Oxford, UK
17 d) Aragon Institute of Engineering Research, University of Zaragoza, Spain and Centro de
18 Investigación Biomédica en Red – Bioingeniería, Biomateriales y Nanomedicina, Spain
19 e) Barts Heart Centre, St Bartholomew’s Hospital, London, EC1A 7BE, UK
20 f) NIHR Barts Cardiovascular Biomedical Research Unit, Barts and The London School of
21 Medicine and Dentistry, Queen Mary University of London, London, EC1M 6BQ, UK
22

23
24 **Address for correspondence:**

25
26 Professor Pier D. Lambiase
27 Institute of Cardiovascular Science,
28 University College London,
29 London, WC1E 6BT,
30 United Kingdom
31 p.lambiase@ucl.ac.uk
32
33

1 **Abstract**

2 Background and Aims

3 The consequences of exercise-induced premature ventricular contractions (PVCs) in asymptomatic
4 individuals remain unclear. This study aimed to assess the association between PVC burdens during
5 stress testing and major adverse cardiovascular events (MACE; myocardial infarction (MI), life-
6 threatening ventricular arrhythmia (LTVA), and heart failure (HF)), and all-cause mortality.
7 Additional end-points were: MI, LTVA, HF and cardiovascular mortality.

8 Methods

9 A neural network was developed to count PVCs from ECGs recorded during exercise (6 min) and
10 recovery (1 min) in 48,502 asymptomatic participants from UK Biobank. Associations were estimated
11 using multivariable Cox proportional hazard models.

12 Results

13 Mean age was 56.8 (+/-8.2 years); 51.1% were female, and median follow-up was 11.5 years. Low
14 PVC counts during exercise and recovery were both associated with MACE risk, independently
15 from clinical factors: adjusted hazard ratio [HR]: 1.2 (2-4 exercise PVCs, $p = 0.022$) and HR 1.2, (1
16 recovery PVC, $p = 0.031$). Risk increased with increasing PVC count: HR 1.8 (>25 exercise PVCs,
17 $p < 0.001$) and HR 1.5 (≥ 5 recovery PVCs, $p < 0.001$). A similar trend was observed for all-cause
18 mortality, although associations were only significant for higher PVC burdens: HRs: 1.4 (11-25 ex-
19 ercise PVCs, $p = 0.007$) and 1.5 (≥ 5 recovery PVCs, $p < 0.001$). Complex PVCs rhythms were asso-
20 ciated with higher risk compared to PVC count alone. PVCs were also strongly associated with inci-
21 dent HF, LTVA, and cardiovascular mortality, but not MI.

22 Conclusion

23 PVC count during exercise and recovery are both associated with MACE, all-cause mortality, HF,
24 LTVAs and cardiovascular mortality, independent of clinical and exercise stress test factors,

1 indicating a “dose response” between PVC count and risk. Complex PVCs rhythms are associated
2 with higher risk compared to PVC count alone.

3

4 **Keywords:** Electrocardiogram, exercise, ventricular ectopy, major adverse cardiovascular events,
5 mortality

6 **Introduction**

7 Exercise stress testing poses a dynamic physiological stress on the heart that may unmask un-
8 derlying cardiac anomalies not evident at rest and is commonly ordered to guide risk assessment in
9 low or intermediate risk individuals¹. Premature ventricular complexes (PVCs) are commonly ob-
10 served during exercise stress testing (prevalence ~7%)². The prognostic implications of high PVC
11 burden are well-recognised in patients with structural heart disease³⁻⁷, however the implications for
12 asymptomatic individuals remain incompletely understood. As highlighted recently, the increased
13 availability of wearable ECG monitoring devices has significantly improved the identification of
14 asymptomatic subjects with PVCs, emphasising the need to better understand the association between
15 PVCs and cardiovascular risk⁸.

16

17 The prognostic implications of low and intermediate PVC counts are unknown, and little is
18 known about the specific risks carried by different PVCs rhythms (e.g. couplets, triplets, and
19 bigeminy). A very limited number of studies have investigated the prognostic implications of PVCs
20 on exercise in asymptomatic individuals⁸⁻¹⁴. The latest evidence suggests that high-grade PVCs
21 (frequent or complex PVCs) during *recovery after exercise* are associated with a 1.7x increased long-
22 term cardiovascular mortality risk, independent of established clinical risk factors, whereas no
23 significant association was found for PVCs *during* exercise in 5,486 individuals of which 311 died
24 due to cardiovascular disease⁸. However, the quality of the evidence is limited because study cohorts
25 are small, usually not population based, and, as highlighted previously, there is lack of uniformity
26 among definitions used to designate frequent PVCs¹⁵. In addition, little is known about the

1 association of PVCs with other important cardiac outcomes including myocardial infarction, life
2 threatening ventricular arrhythmia (LTVA), and heart failure (HF). We hypothesised that the risk
3 associated with PVCs increases with frequency of PVCs and their pattern.

4

5 Therefore, we investigated exercise induced PVCs in 48,502 asymptomatic individuals without
6 known cardiovascular disease with over 10 years follow-up from the UK Biobank (UKB) study to
7 address the following hypotheses: 1. PVC burden during exercise (N= 1,2-4,5-10,11-25,>25 beats)
8 and recovery (N = 1,2-4,5) determine the clinical adjusted risk for major adverse cardiovascular
9 events (MACE) and all-cause mortality. 2. PVC burden is associated with myocardial infarction,
10 LTVA, and heart failure (HF), and cardiovascular mortality. 3. Levels of risk differ according to the
11 different PVC patterns.

12

13 **Methods**

14 *UK Biobank*

15 The UK Biobank is a large population cohort established between 2006 and 2010, with even
16 numbers of men and women aged 40-69 years on recruitment from 21 assessment centres across
17 England, Wales, and Scotland. The study has extensive baseline and follow-up clinical, biochemical,
18 and outcome measures and approval from the North West Multi-Centre Research Ethics Committee.
19 All participants provided informed consent at the time of enrolment for their data to be linked to the
20 health record systems.

21

22 *Exercise stress test*

23 From the full UK Biobank cohort, 95,154 participants consented to participate in the exercise
24 test between 2009 - 2013. The test used cycle ergometry on a stationary bike (eBike, Firmware v1.7)
25 in conjunction with a single lead (lead I) electrocardiograph device (CAM-USB 6.5, Cardiosoft v6.51,
26 sample rate 500Hz). The exercise protocol consisted of a 15s pre-test resting phase, followed by

1 graded activity (6 min) and a recovery period with hands remaining on the handlebars whilst remain-
2 ing still and silent (1 min, no cool-down period). According to protocol, participants were risk-strat-
3 ified into groups and those who were allowed to exercise were categorized to perform a test at either
4 35% or 50% of the maximum predicted workload depending on their risk profile (<https://biobank.ndph.ox.ac.uk/showcase/ukb/docs/Cardio.pdf>). The predicted absolute maximum workload
5 was calculated according to a formula, which includes age, height, weight, resting heart rate and sex.
6

7

8 *ECG analysis*

9 As we did not had access to a method to detect and count premature ventricular contractions
10 (PVCs), we developed, trained and validated a deep-learning model to detect PVCs from raw single-
11 lead ECG recordings from the exercise cohort in the UK Biobank study. ECGs were first bandpass
12 filtered (0.5 – 45Hz), down sampled to 250Hz and then split in non-overlapping segments of 2048
13 time samples (~8.2s) for computational efficiency. A 1D convolutional neural network (CNN) was
14 trained on the ECG segments to estimate the probabilities for each time sample in the segment that it
15 belonged to (i) a normal (narrow) QRS complex, (ii) a PVC QRS morphology, and (iii) neither of
16 both (Central illustration). The network was implemented using the Keras framework with a Tensor-
17 flow (Google) backend and Python (v3.8.5) ¹⁶. The main architecture was composed of two 1D con-
18 volutional layers connected to a drop out, dense and classification layer. Post processing was applied
19 to re-join segments and to filter the estimated probabilities to improve localisation and classification
20 of QRS complexes in the ECG.

21 The network was trained on 41,025 ECG segments from 723 participants who had at least 1
22 PVC during the exercise test identified following visual inspection of exercise ECGs from 1142 par-
23 ticipants with abnormal RR intervals from data previously derived by our group ¹⁷. The performance
24 algorithm was tested in a dataset of 79,257 ECG segments from 1500 participants that were randomly
25 selected from the remaining ECGs in UK Biobank from participants without cardiovascular disease
26 (Figure 1). All ECGs in training and testing sets were manually reviewed by an expert (SVD) to

1 localise all QRS complexes and to label them as normal beats or PVC. A PVC was defined as a QRS-
2 T complex with QRS duration ≥ 0.12 seconds not preceded by at least 0.12 seconds by a P wave.

3 Importantly, the distribution of PVC count was highly skewed (Supplemental Figure 1) with
4 excessive zero PVC counts in most participants (xx% having 0 PVCs). We therefore evaluated the
5 algorithm's performance to accurately predict 6 pre-defined categories (0, 1, 2-4, 5-10, 11-25, and
6 >25 PVCs), which were chosen based on clinical utility. Satisfactory performance was achieved: in
7 the validation dataset, the overall accuracy was 98.5%, and sensitivity and positive predictive values
8 ranged between 91.4 – 99.0% and 92.6 – 99.8%, respectively, across the PVC count categories (Sup-
9 plemental Table 1). The algorithm was used to analyse all remaining ECGs in our dataset that were
10 not part of training or validation set.

11 To compare our findings with the most recently published work from Refaat et al, we reviewed
12 ECGs with PVCs for high-grade PVCs using the same criteria: frequent (>10 per minute), multifocal,
13 >2 consecutive PVCs in a row (including ventricular tachycardia), or R-on-T type⁸. R-onT and mul-
14 tifocal PVCs were manually confirmed by reviewing all ECGs with short PVC coupling interval
15 (<400 ms) or low correlation among PVC beats (correlation coefficient <0.75).

16

17 *Ascertainment of study endpoints*

18 All UKB participants consented to be followed-up through linkage to their health-related rec-
19 ords and the UK death register¹⁸. Participants with known cardiovascular disease prior to the exercise
20 stress test, identified using either health-recorded or self-reported in the baseline questionnaire, were
21 excluded (codes are provided in Supplemental Table 2). The primary study endpoint was major ad-
22 verse cardiovascular events (MACE), defined as either hospitalisation or death due to myocardial
23 infarction, HF, or LTVA. Cases were identified using relevant International Classification of Diseases
24 10th Revision (ICD10) or Operating procedures (OPSC4) codes in the health-related records or death
25 register (Supplemental Table 3). The secondary endpoint was all-cause mortality. We also performed
26 two additional analyses: 1) to evaluate the associations with myocardial infarction, LTVA, and HF

1 separately, and 2) the association with cardiovascular death. The follow-up period was determined
2 by the first appearance of ICD10 or OPSC4 codes in either health record or death register data. Par-
3 ticipants who did not experience an event were censored at death or the end of the follow-up period
4 (November 12th, 2021).

5 6 *Statistical analysis*

7 Descriptive statistics are presented as mean \pm standard deviation (SD) for continuous variables
8 or frequency (percentage) for categorical variables. Baseline clinical and exercise ECG characteristics
9 were compared between each of the group with more than 1 PVC (1, 2-4, 5-10, 11-25, and >25 PVCs,
10 for exercise, and 1, 2-4, ≥ 5 for recovery) and the group with no PVCs. Bonferroni correction was
11 applied for multiple testing (n=5 for exercise PVCs and n=3 for recovery PVCs). The PVC counts
12 had been pre-selected based on clinical utility. We used Wilcoxon rank-sum tests for continuous var-
13 iables and the chi-square or Fisher exact test for categorical variables, whichever was appropriate.
14 We constructed survival probability curves for MACE and all-cause mortality stratified for PVC
15 count. The association between PVC count and study endpoints was investigated using multivariable-
16 adjusted Cox proportional hazards regression. A minimally adjusted analysis used sex, age, and the
17 number of heart beats during exercise or recovery. In a second model we addressed potential sources
18 of confounding by further adjusting for clinical variables (hypertension, type 2 diabetes, LDL and
19 HDL cholesterol, triglycerides, smoking, body mass index) and (exercise) ECG variables (QTc inter-
20 val, QRS duration, ST-segment depression during exercise of >0.1 mV, and heart rate increase during
21 exercise (for exercise PVCs) or decrease during recovery (for recovery PVCs). Hypertension was
22 defined as systolic blood pressure of ≥ 140 mmHg or diastolic blood pressure of ≥ 90 mmHg measured
23 on the day of assessment¹⁹ or a previous a diagnosis of hypertension (details provided in Supple-
24 mental Table 4). Inspection of Schoenfeld residuals revealed a possible violation of the proportional
25 hazards assumption by sex. To avoid potential bias, we stratified Cox models by sex.

26

1 Missing variables (smoking status (0.4%), low- and high-density lipoprotein (LDL, HDL) cho-
2 lesterol (8.2 and 13.2%, respectively), triglycerides (8.2%), BMI (<0.01%), QRS duration (0.9%),
3 QTc interval (4.6%), ST depression (0.02%)) were imputed using the multiple imputation by chained
4 equations approach, with five imputed datasets and ten iterations²⁰. For each variable we specified a
5 predictive mean matching model, and we used all baseline variables to inform the imputation. Impu-
6 tations were found acceptable by comparison of plots of the distribution of recorded and imputed
7 values for all measurements. Cox regression models were estimated separately for each imputed da-
8 taset and then pooled together to obtain one overall set of estimates. A $P < 0.05$ was considered
9 statistically significant. Statistical analyses were performed in R v4.0.2²¹.

10 *Sensitivity analyses – confounding effects of high PVC burden at rest*

11 We performed sensitivity analyses to investigate whether the observed associations between
12 exercise induced PVCs and MACE and all-cause mortality were independent from high PVC burden
13 at rest. In this analysis, we added a binary covariate to the fully-adjusted cox models, indicating
14 whether the participant had high PVC burden at rest, defined as having ≥ 1 PVC recorded during the
15 available 15s (pre-exercise) resting period.

16 **Results**

17 Following exclusions for reasons highlighted in Figure 1, 48,502 individuals without known
18 cardiovascular disease and with complete ECGs were included in the study. The study population
19 comprised a balanced set of middle-aged men and women (51.1% female, mean age 56.8 (+/- 8.2)
20 years). Table 1 summarizes the number of participants in each PVC count category during exercise
21 (A) and recovery (B). Participants with higher PVC counts were older, more likely to be male, dia-
22 betic, and hypertensive. They were also more likely to show ST-segment depression (>0.1 mV). After
23 a median follow-up period of 11.5 years (IQR: 3.3 months), there were 1960 (4.0%) MACE events
24 (hospitalisation or death) and 2067 (4.3%) participants died from any cause.

25

26 *PVCs during exercise*

1 The incidence of MACE events and all-cause mortality were significantly higher in participants
2 with PVCs during exercise and increased with PVC count. The incidence for MACE for individuals
3 without PVCs was 3.6% compared to 4.6% in the group with 1 PVC ($p = 0.001$). Among participants
4 with PVCs, the incidence further increased to 9.4% (> 25 PVCs) and was significantly higher com-
5 pared to the group with 1 PVC ($p < 0.001$). A similar trend was observed for all-cause mortality: the
6 incidence increased from 3.9% (0 PVCs) to 4.7% (1 PVC, $p = 0.009$). Among participants with PVCs,
7 the incidence increased from 4.7% (1 PVC) to 9.1% (> 25 PVCs, $p < 0.001$). The unadjusted Kaplan-
8 Meier curves showed decreasing survival rates for both MACE and all-cause mortality with increas-
9 ing PVC counts ($p < 0.001$, Figure 2, Supplemental Figure 2)).

10 After adjusting for age, sex, and the number of heartbeats during exercise, all PVC counts were sig-
11 nificantly associated with MACE, except for the lowest PVC count (1 PVC, Figure 3). The risk in-
12 creased with PVC count with HRs ranging from: 1.2 (95% CI: 1.0 – 1.4, $p = 0.022$) for 2-4 PVCs to
13 1.8 (95% CI: 1.4 – 2.3, $p < 0.001$) for >25 PVCs. Regarding all-cause mortality, only the 2 highest
14 PVC counts (11-25 and >25 PVCs) were associated with the endpoint (Supplemental Figure 3). For
15 >25 PVCs, the HR was 1.5 (95% CI: 1.2 – 1.9, $p = 0.002$). After further adjusting using clinical and
16 ECG variables, PVC count remained significantly associated with MACE and all-cause mortality
17 with similar HRs (Figure 3, Supplemental Figure 3). In the same model, myocardial ischemia (ST
18 depression) was not significantly associated with MACE or all-cause mortality (HR: 1.3, (95% CI:
19 0.8-1.9, $p = 0.249$), and HR: 1.4 (95% CI: 1.0-2.1, $p = 0.055$), respectively).

20

21 *PVCs during recovery from exercise*

22 The MACE incidence was significantly higher in the group with PVCs: 3.8% (0 PVCs) vs. 5.4%
23 (1 PVC, $p < 0.001$) and increased with PVC count among participants with PVCs (5.4% (1 PVC) to
24 7.6% (≥ 5 PVCs), $p = 0.026$). A similar trend was observed for all-cause mortality: the incidence
25 increased from 4.0% (0 PVCs) to 5.5% (1 PVC, $p < 0.001$), and among participants with PVCs from
26 5.5% (1 PVC) to 8.5% (≥ 5 PVCs, $p = 0.003$). The Kaplan-Meier curves showed increasing event

1 rates for both MACE and all-cause mortality with increasing PVC counts ($p < 0.001$, Figure 2, Sup-
2 plemental Figure 2)).

3 After adjusting for age, sex, and the number of heartbeats during recovery, PVC count was
4 significantly associated with MACE (adjusted HR ranging from: HR: 1.2 (95% CI: 1.0 – 1.4, $p =$
5 0.031) for 1 PVC to HR: 1.5 (95% CI: 1.2 – 1.9, $p < 0.001$) for ≥ 5 PVCs (Figure 3). Effect sizes were
6 similar for the fully adjusted model (Figure 3). Only the highest PVC-count (≥ 5 PVCs) was associated
7 with all-cause mortality: HR: 1.4 (95% CI: 1.1-1.8, $p = 0.002$, Supplemental Figure 3). After further
8 adjusting using clinical and ECG variables, PVC count remained significantly associated with MACE
9 and all-cause mortality with similar HRs (Figure 3, Supplemental Figure 3).

10

11 *Combining PVCs during exercise and recovery*

12 A majority of the participants with repetitive PVCs during exercise also had PVCs during re-
13 covery: 457 (64%) from all participants with >25 PVCs during exercise had also ≥ 5 PVCs during
14 recovery. This group comprised 52% of the subjects with ≥ 5 PVCs during recovery. After adjusting
15 for clinical risk factors, the combination of >25 PVCs during exercise *and* ≥ 5 PVCs during recovery
16 was associated with both MACE (HR: 1.8, 95% CI: 1.3 – 2.4, $p < 0.001$) and all-cause mortality (HR:
17 1.7, 95% CI: 1.2 – 2.2, $p < 0.001$).

18

19 *Association with additional study endpoints*

20 The number of myocardial infarction, LTVA, and HF events were 1297 (2.7%), 276 (0.6%),
21 and 691 (1.4%), respectively. There were 385 (0.8%) cardiovascular deaths. PVCs during exercise
22 and recovery were both strongly associated with incident LTVAs, HF and cardiovascular mortality,
23 but not with myocardial infarction (Supplemental Tables 5 and 6). The highest risk was observed for
24 the highest PVC counts: For exercise, the fully adjusted HRs of >25 PVCs were: 3.4 (95% CI: 2.0 –
25 5.6, $p < 0.001$), 2.6 (95% CI: 1.9 – 3.7, $p < 0.001$), and 2.4 (95% CI: 1.5-3.8, $p < 0.001$), for LTVA,
26 HF, and cardiovascular mortality, respectively. Similarly, the HRs of ≥ 5 recovery PVCs were: 2.2

1 (95% CI: 1.3-3.8, $p = 0.003$), 2.3 (95% CI: 1.6 – 3.1, $p < 0.001$), and 1.9 (95% CI: 1.1 – 3.1, $p =$
2 0.014) for LTVA, HF, and cardiovascular mortality, respectively.

3

4 *Prognostic value of high-grade & complex PVC rhythms*

5 To compare our data with the recently published work from Refaat et al ⁸, we identified high-
6 grade PVCs in 1655 (3.4%) and 748 (1.5%) participants, during exercise and recovery respectively.
7 Both high grade PVCs and complex ventricular rhythms were associated with MACE independent of
8 clinical risk and ECG factors (HR 1.7 (1.5-2.1), $p < 0.001$; and HR 1.6 (1.2-2.1), $p < 0.001$, for exercise
9 and recovery, respectively, Figure 4). Only high-grade PVCs during exercise were associated with
10 all-cause mortality (HR 1.2, 95% CI: 1.0-1.5, $p = 0.024$), but both markers were associated with
11 cardiovascular mortality (HR 1.9, 95% CI 1.3-2.7, $p < 0.001$, and HR 1.9, 95% CI 1.2- 3.2, $p = 0.016$,
12 Supplemental Table 7). In addition, we also observed that PVC couplets, triplets, and bigeminy were
13 all associated with increased risk for MACE compared to PVC count alone (Figure 4).

14

15 *Sensitivity analysis –high PVC burden at rest*

16 High PVC burden at rest was observed in 1437 (3.0%) participants. The associations between
17 exercise-induced PVCs and MACE and all-cause mortality remained significant with similar effect
18 sizes as the main analysis (Supplemental Table 8 and 9).

19 **Discussion**

20 To our knowledge, this is the largest population-based cohort study to date to investigate the
21 prognostic value of exercise-induced PVCs in asymptomatic individuals without known cardiovas-
22 cular disease. The main important findings are: (1) A very low PVC count (≥ 2 PVC during exercise
23 or ≥ 1 PVC during recovery) was already significantly associated with MACE, independent of clinical
24 risk factors, (2) PVC count during exercise and recovery are *both* associated with MACE, mortality,
25 HF, LTVAs, and cardiovascular death, independent of clinical and exercise stress test factors; (3)
26 there is a dose response relationship between PVC count and risk; and (4) complex PVCs rhythms

1 are associated with higher risk compared to PVC count alone. This has important implications in the
2 assessment of asymptomatic individuals particularly with the advent of wearable ECG technologies
3 worn by otherwise healthy individuals during daily activity and exercise prompting cardiological re-
4 view.

5 Recently, Refaat et al ⁸ investigated the prognostic value of PVC during exercise vs. recovery
6 in 5,486 asymptomatic patients not suspected of having heart disease from the Lipid Research Clinics
7 study. Compared to previous studies, they used a more inclusive definition of “high-grade PVCs”
8 (>10 PVCs over 60-second interval, >2 consecutive PVCs including ventricular tachycardia, R-on-T
9 PVCs, or multiform PVCs). Their data showed that high-grade PVCs during recovery were
10 significantly associated with higher risk of cardiovascular mortality (adjusted HR: 1.7 (1.1-2.6); p =
11 0.02), but no associations were found for high-grade PVCs during exercise. Furthermore, high-grade
12 PVCs (neither during exercise nor recovery) were not associated with all-cause mortality after
13 adjusting for clinical variables. Our data from >48,000 participants of UK Biobank only partially
14 support these findings. We found that high-grade PVCs during *exercise and recovery* were *both*
15 associated with cardiovascular mortality, MACE, and all-cause mortality, using the same definition
16 for high-grade PVCs and included similar clinical and exercise parameters as covariates. It is possible
17 that conflicting differences in baseline characteristics between both populations e.g higher proportion
18 of hyperlipidaemia patients and smokers compared to our cohort could explain these differences.
19 Sensitivity analysis from Refaat et al ⁸ showed no link between PVC risk and hyperlipidemia, but
20 other work investigating PVC load and aortic stiffness did find an association between the number of
21 PVCs in 24h ambulatory monitoring ²². Another important difference between our and Refaat’s work
22 is the exercise protocol. The activity performed by UK Biobank participants in this study was limited
23 to either 35% or 50% of the maximum predicted workload, while subjects in Refaat’s work ⁸ exercised
24 at maximum workload. Plasma catecholamine levels have been linked with exercise intensity ^{23,24}
25 and may mediate PVCs. It is possible that subjects in Refaat’s work have experienced higher
26 catecholaminergic levels by exercising at maximum workload and that their exercise PVCs are more

1 likely to reflect a physiological response to exercise compared to UK Biobank. However, this
2 explanation may not be fully compatible with the “dose-response” observed in this work, which
3 suggests that the risk for MACE and mortality increases with PVC count.

4 To our knowledge, this is the first study to document a “dose-response” association for exercise-
5 induced PVCs in asymptomatic individuals without cardiovascular disease. Uniquely in this study we
6 did not use one cut-off threshold for PVC burden but evaluated the risk for a wide range of PVC
7 counts, during exercise and recovery. Little is known about the risk associated with low and
8 intermediate PVC counts. Two previous studies have investigated the prognostic value of infrequent
9 PVCs: Jouven et al ⁹ observed infrequent PVCs (<10% of all ventricular depolarizations, no
10 consecutive PVCs) in 8.5% and 7.3% of a middle-aged male population during exercise and recovery,
11 respectively. They found that cardiovascular and total mortality rates were higher for infrequent PVCs
12 with respect to subjects without PVCs, however they only performed formal association studies for
13 frequent PVCs ($\geq 10\%$ of all ventricular depolarizations). In the second study, Morshedi-Meibodi et
14 al ¹³ investigated infrequent and frequent PVCs during exercise ($<$ and $\geq 0.22/\text{min}$ of exercise) and
15 found that both type of PVCs were significantly associated with mortality in 2885 participants from
16 the Framingham Offspring Study during 15 years of follow-up (adjusted HR: 1.9 (1.2 – 2.8), and 1.7,
17 (1.2 - 2.5), for infrequent and frequent PVCs, respectively). In our cohort, this cut-off value translates
18 to between 1 and 2 PVCs during exercise. Both 1 and 2-4 PVC counts were not associated with all-
19 cause mortality in this work.

20 *Pathophysiological Rationale*

21 Previous studies in both patients and asymptomatic participants have suggested that PVCs
22 during recovery carry a worse prognosis for (cardiovascular) mortality compared to PVCs during
23 exercise^{6,8}. This has fuelled the hypothesis that the prognostic value of exercise-induced PVCs might
24 be linked to attenuated vagal reactivation during recovery, perhaps by reduced suppression of PVCs.
25 Our data does support this hypothesis but indicates at least equal prognostic value for PVCs *during*
26 exercise. PVCs during exercise may reflect increased norepinephrine levels during exercise in high-

1 risk individuals, for example because they had to produce more effort during exercise compared to
2 their healthier counterparts who may have more cardio-pulmonary reserve and skeletal muscle
3 efficiency. The mechanisms of how PVCs during exercise and recovery are related to cardiovascular
4 events remains to be further explored. The strong associations between PVC count and LTVA and HF
5 implicates the existence of an arrhythmic substrate (i.e. fibrosis or ischemia), which enables re-entry
6 and reduces cardiac function precipitating these events. The development of PVCs during exercise
7 and recovery indicates the presence of this underlying substrate with PVCs arising due to the effects
8 of subclinical ischaemia (reflected by ST depression on exercise) and adrenergic stress causing
9 triggered ectopic activity which could be due to early afterdepositions typically occurring in
10 conditions of catecholamines, tissue injury, altered electrolytes, hypoxia, or acidosis²⁵.

11 Increased PVCs during exercise may also reflect the presence of subclinical pathologic
12 myocardial substrate or ischaemia. Although ST depression, was not associated with MACE nor
13 mortality, it was increased for LVTA and HF. Ischaemia can promote optimal conditions for VAs &
14 impair LV function through multiple mechanisms and it is well recognised to increase myocardial
15 refractoriness to promote wavebreak and polymorphic VT^{26,27}. However, the fact that single lead ST
16 measurements with submaximal exercise could result in underestimation of ischaemia burden is a
17 potential limitation in this study. Previously, using 2 bipolar leads (V5 and V5R) and a *maximal*
18 *exercise* test frequent exercise-induced PVCs and ischemia were *independent predictors* of
19 cardiovascular mortality with similar effect sizes in asymptomatic men⁹. In that dataset, ischemia was
20 only present in 6% of PVC positive patients and 2% of our series, indicating other pathophysiological
21 factors are operative. Combined with the lack of evidence to support an association between PVC
22 count and myocardial infarction, findings seem to suggest that exercise and recovery PVCs are not
23 necessarily related to myocardial ischemia⁹.

24 The relationship between PVCs recorded during rest and exercise remains to be further
25 investigated. Previously, we have shown that high PVC burden at rest was associated with several
26 cardiovascular outcomes²⁸. Results from the sensitivity analyses in the current work seems to suggest

1 that the associations between exercise-induced PVCs and MACE and all-cause mortality were
2 independent from PVC burden at rest before exercise. However, the resting ECGs (recorded pre-
3 exercise) were of very short duration (15s) and therefore likely to have provided very limited
4 sensitivity to detect PVCs as their occurrence is highly variable.

5 *Limitations*

6 Our study benefited from several important advantages including access to the largest and most
7 detailed dataset of PVC data from asymptomatic data without known cardiovascular disease from a
8 population-based cohort, combined with long-term follow-up. Nevertheless, several limitations, apart
9 from the limited sensitivity to detect myocardial ischemia need to be acknowledged. First, there is a
10 “healthy volunteer” selection bias in the UK Biobank with the participants being older and healthier
11 than the general population. Third, the study cohort is predominantly (>90%) of white British ances-
12 try, which may limit the generalisability of our findings in under-represented ethnicities. However,
13 the study is not likely to be flawed by an important co-morbidity burden. Finally, no contemporaneous
14 cardiac imaging data were available in this study (imaging data in UK Biobank were recorded 5-10
15 years after the exercise stress test). This requires future evaluation to investigate the underlying mech-
16 anisms.

17 *Clinical Perspectives*

18 In the recent years there has been a widespread use of wearable cardiac rhythm monitors, many
19 of which are used during exercise. This has enabled detection of PVCs in asymptomatic individuals
20 at larger scale and is expected to result in more consultation requests from concerned patients whose
21 monitors detect PVCs. PVC count during exercise and recovery predicts MACE and all-cause
22 mortality independent of standard CV risk factors. Consequently, clinicians need to be aware of the
23 measurable prognostic significance of these PVCs to optimally assess and manage CV risk in these
24 otherwise asymptomatic individuals to prevent life threatening events.

25 *Conclusions*

1 There is a “dose response” of PVC count during exercise and recovery for the association with
2 MACE and all-cause mortality independent of standard CV risk factors. In addition, complex PVCs
3 have important prognostic significance. This has major implications for risk stratification, population
4 screening and interpretation of wearable ECG rhythm readouts in the general population provoking
5 increased referrals for cardiology review.

6 **Funding**

7 This study was supported by the MRC grant MR/N025083/1. PDL is supported by UCL/UCLH
8 Biomedicine NIHR. AT and PBM and AT acknowledge the NIHR Cardiovascular Biomedical Re-
9 search Centre at Barts and QMUL, UK. JR acknowledges the “María Zambrano” fellowship support
10 from the European Union-NextGenerationEU. AD and SVD also acknowledge support from the Well-
11 come Trust (223100/Z/21/Z).

13 **Conflict of interest**

14 None.

16 **Data availability statement**

17 Anonymised data and materials generated in this work will be returned to UK Biobank and can
18 be accessed upon request.

20 **References**

- 21 1. Fihn SD, Gardin JM, Abrams J, Berra K, Blankenship JC, Dallas AP, Douglas PS, Foody
22 JM, Gerber TC, Hinderliter AL, King SB, Kligfield PD, Krumholz HM, Kwong RYK, Lim
23 MJ, Linderbaum JA, Mack MJ, Munger MA, Prager RL, Sabik JF, Shaw LJ, Sikkema JD,
24 Smith CR, Smith SC, Spertus JA, Williams S v, Anderson JL, American College of Cardiol-
25 ogy Foundation/American Heart Association Task Force. 2012
26 ACCF/AHA/ACP/AATS/PCNA/SCAI/STS guideline for the diagnosis and management of
27 patients with stable ischemic heart disease: a report of the American College of Cardiology
28 Foundation/American Heart Association task force on practice guidelines, and the. *Circula-*
29 *tion* 2012;**126**:e354-471.

- 1 2. Verdile L, Maron BJ, Pelliccia A, Spataro A, Santini M, Biffi A. Clinical significance of exercise-induced ventricular tachyarrhythmias in trained athletes without cardiovascular abnormalities. *Heart Rhythm* 2015;**12**:78–85.
- 2 3. Califf RM, McKinnis RA, McNeer JF, Harrell FE, Lee KL, Pryor DB, Waugh RA, Harris PJ, Rosati RA, Wagner GS. Prognostic value of ventricular arrhythmias associated with treadmill exercise testing in patients studied with cardiac catheterization for suspected ischemic heart disease. *J Am Coll Cardiol* 1983;**2**:1060–1067.
- 3 4. Dewey FE, Kapoor JR, Williams RS, Lipinski MJ, Ashley EA, Hadley D, Myers J, Froelicher VF. Ventricular arrhythmias during clinical treadmill testing and prognosis. *Arch Intern Med* 2008;**168**:225–234.
- 4 5. Udall JA, Ellestad MH. Predictive implications of ventricular premature contractions associated with treadmill stress testing. *Circulation* 1977;**56**:985–989.
- 5 6. Frolkis JP, Pothier CE, Blackstone EH, Lauer MS. Frequent ventricular ectopy after exercise as a predictor of death. *N Engl J Med* 2003;**348**:781–790.
- 6 7. O’Neill JO, Young JB, Pothier CE, Lauer MS. Severe frequent ventricular ectopy after exercise as a predictor of death in patients with heart failure. *J Am Coll Cardiol* 2004;**44**:820–826.
- 7 8. Refaat MM, Gharios C, Moorthy MV, Abdulhai F, Blumenthal RS, Jaffa MA, Mora S. Exercise-Induced Ventricular Ectopy and Cardiovascular Mortality in Asymptomatic Individuals. *J Am Coll Cardiol* 2021;**78**:2267–2277.
- 8 9. Jouven X, Zureik M, Desnos M, Courbon D, Ducimetière P. Long-Term Outcome in Asymptomatic Men with Exercise-Induced Premature Ventricular Depolarizations. *New England Journal of Medicine* 2000;**343**:826–833.
- 9 10. Dzikowicz DJ, Carey MG. Exercise-Induced Premature Ventricular Contractions Are Associated With Myocardial Ischemia Among Asymptomatic Adult Male Firefighters: Implications for Enhanced Risk Stratification. *Biol Res Nurs* 2020;**22**:369–377.
- 10 11. Mora S, Redberg RF, Cui Y, Whiteman MK, Flaws J a, Sharrett AR, Blumenthal RS. Ability of exercise testing to predict cardiovascular and all-cause death in asymptomatic women: a 20-year follow-up of the lipid research clinics prevalence study. *JAMA* 2003;**290**:1600–1607.
- 11 12. Janette Busby M, Shefrin EA, Fleg JL. Prevalence and long-term significance of exercise-induced frequent or repetitive ventricular ectopic beats in apparently healthy volunteers. *J Am Coll Cardiol* 1989;**14**:1659–1665.
- 12 13. Morshedi-Meibodi A, Evans JC, Levy D, Larson MG, Vasan RS. Clinical correlates and prognostic significance of exercise-induced ventricular premature beats in the community: The Framingham heart study. *Circulation* 2004;**109**:2417–2422.
- 13 14. Marine JE, Shetty V, Chow G v, Wright JG, Gerstenblith G, Najjar SS, Lakatta EG, Fleg JL. Prevalence and prognostic significance of exercise-induced nonsustained ventricular tachycardia in asymptomatic volunteers: BLSA (Baltimore Longitudinal Study of Aging). *J Am Coll Cardiol* 2013;**62**:595–600.
- 14 15. Saha SA. Premature Ventricular Complexes During Exercise in Asymptomatic Adults: Do They Deserve a Closer Look? *J Am Coll Cardiol* 2021;**78**:2278–2280.
- 15 16. Rossum G van, Drake FL. *Python 3 Reference Manual*. Scotts Valley, CA: CreateSpace; 2009.
- 16 17. Ramírez J, Duijvenboden S van, Ntalla I, Mifsud B, Warren HR, Tzanis E, Orini M, Tinker A, Lambiase PD, Munroe PB. Thirty loci identified for heart rate response to exercise and recovery implicate autonomic nervous system. *Nat Commun* 2018;**9**:1947.
- 17 18. Bycroft C, Freeman C, Petkova D, Band G, Elliott LT, Sharp K, Motyer A, Vukcevic D, Delaneau O, O’Connell J, Cortes A, Welsh S, Young A, Effingham M, McVean G, Leslie S, Allen N, Donnelly P, Marchini J. The UK Biobank resource with deep phenotyping and genomic data. *Nature* 2018;**562**:203–209.

- 1 19. Jones NR, McCormack T, Constanti M, McManus RJ. Diagnosis and management of hyper-
2 tension in adults: NICE guideline update 2019. *British Journal of General Practice*
3 2020;**70**:90–91.
- 4 20. Buuren S van, Groothuis-Oudshoorn K. mice : Multivariate Imputation by Chained Equa-
5 tions in R. *J Stat Softw* 2011;**45**.
- 6 21. R Core Team. R: A Language and Environment for Statistical Computing
- 7 22. Chen J-Y, Tsai W-C, Lee Y-L, Lee C-H, Tsai L-M, Chao T-H, Li Y-H, Chen J-H, Lin L-J.
8 Association of premature ventricular complexes with central aortic pressure indices and pulse
9 wave velocity. *Am Heart J* 2008;**155**:500.e1-6.
- 10 23. Fleg JL, Tzankoff SP, Lakatta EG. Age-related augmentation of plasma catecholamines dur-
11 ing dynamic exercise in healthy males. *J Appl Physiol (1985)* 1985;**59**:1033–1039.
- 12 24. Dimsdale JE, Hartley LH, Guiney T, Ruskin JN, Greenblatt D. Postexercise peril. Plasma
13 catecholamines and exercise. *JAMA* 1984;**251**:630–632.
- 14 25. Antzelevitch C, Burashnikov A. Overview of Basic Mechanisms of Cardiac Arrhythmia.
15 *Card Electrophysiol Clin* 2011;**3**:23–45.
- 16 26. Sutton PMI, Taggart P, Opthof T, Coronel R, Trimlett R, Pugsley W, Kallis P. Repolarisation
17 and refractoriness during early ischaemia in humans. *Heart*.
- 18 27. Cherry EM, Fenton FH, Gilmour RF. Mechanisms of ventricular arrhythmias: A dynamical
19 systems-based perspective. *American Journal of Physiology - Heart and Circulatory Physiol-*
20 *ogy*.
- 21 28. Orini M, Duijvenboden S van, Young WJ, Ramírez J, Jones AR, Tinker A, Munroe PB,
22 Lambiase PD. Premature atrial and ventricular contractions detected on wearable-format
23 electrocardiograms and prediction of cardiovascular events. *European Heart Journal - Digi-*
24 *tal Health* 2023.

1 **Figure legends**

2 **Figure 1: Study exclusion diagram.** History of cardiovascular (CV) disease was identified using
3 self-reported and hospital episode data (Supplemental Table 1). ECG = electrocardiogram, AF =
4 atrial fibrillation.

5 **Figure 2: Survival Curves of Major Adverse Cardiovascular Events According to Different**
6 **PVC Counts.**

7 **Figure 3: Adjusted Hazard Ratios of Major Adverse Cardiovascular Events According to**
8 **PVC count.** Hazard ratios (HRs) were adjusted for three models: (i) age sex, and no of beats (either
9 during exercise or recovery); and (ii) clinical variables: age, sex, diabetes, hypertension, beta-
10 blocker medication, smoking, LDL and HDL cholesterol, triglycerides, body mass index, QRS
11 duration, QTc interval, ST depression (>0.1 mV), and no. of heartbeats during exercise and heart
12 rate exercise (for exercise PVCs), or no. of heartbeats during recovery and heart rate recovery (for
13 recovery PVCs). The HRs were statistically significant ($p<0.05$) for all PVC counts, except 1 PVC
14 during exercise, and increased with increasing PVC count.

15 **Figure 4: Adjusted Hazard Ratios of Major Adverse Cardiovascular Events According to**
16 **Presence of Different PVC Patterns.** Hazard ratios were adjusted for clinical and exercise test
17 variables and were all statistically significant ($P < 0.05$). Clinical variables: age, sex, diabetes,
18 hypertension, beta-blocker medication, LDL and HDL cholesterol, triglycerides, body mass index,
19 QRS duration, QTc interval, ST depression (>0.1 mV), and exercise ECG variables: ^aTotal number
20 of beats during exercise, and heart rate exercise; ^bTotal number of beats during recovery, and heart
21 rate recovery. HRs were referenced against participants without PVCs during exercise (*a*), recovery
22 (*b*), or both (*a + b*). PVC: premature ventricular complex. HR hazard ratio, CI confidence interval.

23

Table 1A: Baseline Clinical and Stress Test Characteristics During Exercise

	Full Co- hort (N = 48,502)	PVCs during exercise					
		0 (N = 38,472 (79.2%))	1 (N = 4408 (9.1%))	2-4 (N = 2937 (6.1%))	5-10 (N = 1211 (2.5%))	11-25 (N = 739 (1.5%))	>25 (N = 735 (1.5%))
<i>Clinical Variables</i>							
Men, %	48.9	48.3	46.8	51.8**	54.2**	58.7**	58.8**
Age, y	56.8 (8.2)	56.2 (8.2)	58.3 (7.9)**	59.5 (7.5)**	60.6 (7.1)**	60.4 (7.3)**	60.7 (7.3)**
White ancestry, %	92.3	91.9	93.3**	93.7**	94.5**	94.9*	94.6
Type 2 Diabetes, %	4	3.9	3.6	4.6	5.9**	6.0*	6.0*
Hypertension, %	51.1	49.2	53.8**	59.9**	64.8**	64.3**	65.3**
Beta-blocker usage, %	3.5	3.4	4.2*	4.2	3.6	4.9	3.9
Smoking, %	8.2	8.2	8.4	7.8	7	6.6	7.9
LDL cholesterol, mmol/L	3.6 (0.8)	3.6 (0.8)	3.6 (0.9)	3.5 (0.8)**	3.6 (0.8)	3.6 (0.8)	3.5 (0.8)
HDL cholesterol, mmol/L	1.5 (0.4)	1.5 (0.4)	1.5 (0.4)**	1.5 (0.4)**	1.5 (0.4)	1.5 (0.4)	1.4 (0.4)
Triglycerides, mmol/L	1.7 (1.0)	1.7 (1.0)	1.7 (0.9)**	1.7 (0.9)**	1.7 (1.0)	1.7 (0.9)	1.7 (0.9)
Body Mass index	27.3 (4.3)	27.4 (4.3)	27.0 (4.2)**	27.3 (4.4)	27.3 (4.2)	27.6 (4.0)	27.9 (4.3)**
Framingham Risk Score, %	14.1 (10.1)	13.5 (9.7)	15.0 (10.6)**	16.8 (11.4)**	18.2 (11.6)**	18.6 (11.8)**	18.8 (11.5)**
<i>Exercise stress test variables</i>							
Achieved Maximum Workload, Watt	85.4 (23.2)	85.9 (23.3)	83.1 (23.2)**	83.0 (22.6)**	82.0 (22.4)**	85.0 (22.4)	84.2 (22.1)
Heart rate increase during exercise, bpm	42.2 (12.1)	42.4 (12.0)	42.5 (12.8)	41.2 (12.5)**	40.0 (12.4)**	40.9 (12.7)**	40.7 (12.9)**
ST-segment depression >0.1mV, %	1.6	1.1	2.0**	1.6	1.3	1.5	2.7**
QRS duration, ms	81.6 (9.6)	81.3 (9.4)	82.3 (10.4)**	82.9 (10.7)**	82.6 (10.1)**	83.6 (10.8)**	84.3 (10.3)**
QTc interval, ms	396.5 (23.2)	395.7 (22.9)	397.5 (23.4)**	399.7 (24.0)**	400.9 (24.4)**	401.6 (24.5)**	405.0 (29.1)**
Number of QRS complexes during exercise, N	576.3 (62.9)	576.9 (62.7)	573.5 (63.7)*	574.4 (64.7)	571.7 (64.0)	573.3 (61.6)	581.2 (61.0)

Continuous variables are presented as mean (SD); categorical variables are presented as %. HDL = high-density lipoprotein; LDL = low-density lipoprotein; PVC = premature ventricular contractions. Values indicated with * are significantly different from the 0 PVC group after Bonferroni correction for multiple testing (n=5). * Bonferroni corrected P-value < 0.05 (p < 0.05 / 5), ** Bonferroni corrected P-value < 0.01 (p < 0.01 / 5)

1
2 Table 1B: Baseline Clinical and Stress Test Characteristics During Recovery

	Full Cohort (N = 48,502)	PVCs during Recovery			
		0 (N = 43,655 (90.0%))	1 (N = 2563 (5.3%))	2-4 (N = 1397 (2.9%))	≥5 (N = 887 (1.8%))
<i>Clinical Variables</i>					
Men, %	48.9	48.7	49.3	51.6	52
Age, y	56.8 (8.2)	56.5 (8.2)	58.8 (7.8)**	60.1 (7.4)**	60.3 (7.6)**
White ancestry, %	92.3	92.1	94.5**	94.5**	94.7*
Type 2 Diabetes, %	4	3.9	5.2**	5.3*	4.7
Hypertension, %	51.1	50.2	55.5**	62.8**	63.6**
Beta-blocker usage, %	3.5	3.5	3.6	3.6	3.6
Smoking, %	8.2	8.2	8.3	6.7	7.5
LDL cholesterol, mmol/L	3.6 (0.8)	3.6 (0.8)	3.6 (0.8)	3.6 (0.8)	3.6 (0.8)
HDL cholesterol, mmol/L	1.5 (0.4)	1.5 (0.4)	1.5 (0.4)**	1.5 (0.4)*	1.5 (0.4)
Triglycerides, mmol/L	1.7 (1.0)	1.7 (1.0)	1.7 (0.9)	1.7 (1.0)	1.7 (0.9)
Body Mass index	27.3 (4.3)	27.4 (4.3)	27.1 (4.3)**	27.3 (4.2)	27.3 (4.1)
Framingham Risk Score, %	14.1 (10.1)	13.9 (10.0)	16.0 (11.4)**	17.3 (11.6)**	17.5 (10.7)**
<i>Exercise stress test variables</i>					
Achieved Maximum Workload, Watt	85.4 (23.2)	85.6 (23.2)	83.3 (22.8)**	83.0 (22.0)**	82.5 (22.6)**
Heart rate recovery, bpm	29.5 (10.1)	29.7 (10.1)	28.2 (10.4)**	28.5 (10.8)**	26.9 (11.7)**
ST-segment depression >0.1mV, %	1.3	1.2	1.5	1.8	2.6**
QRS duration, ms	81.6 (9.6)	81.4 (9.5)	82.3 (10.4)**	83.4 (10.8)**	83.9 (10.8)**
QTc interval, ms	396.5 (23.2)	396.0 (23.0)	399.0 (23.5)**	402.3 (24.6)**	404.2 (28.2)**
Number of QRS complexes during recovery, N	89.3 (13.1)	89.2 (13.2)	89.7 (13.2)	88.9 (12.7)	90.7 (12.5)**

Continuous variables are presented as mean (SD); categorical variables are presented as %. HDL = high-density lipoprotein; LDL = low-density lipoprotein; PVC = premature ventricular contractions. Values indicated with * are significantly different from the 0 PVC group after Bonferroni correction for multiple testing (n=5). * Bonferroni corrected P-value < 0.05 (p < 0.05 / 5), ** Bonferroni corrected P-value < 0.01 (p < 0.01 / 5)

Figure 1: Study exclusion diagram

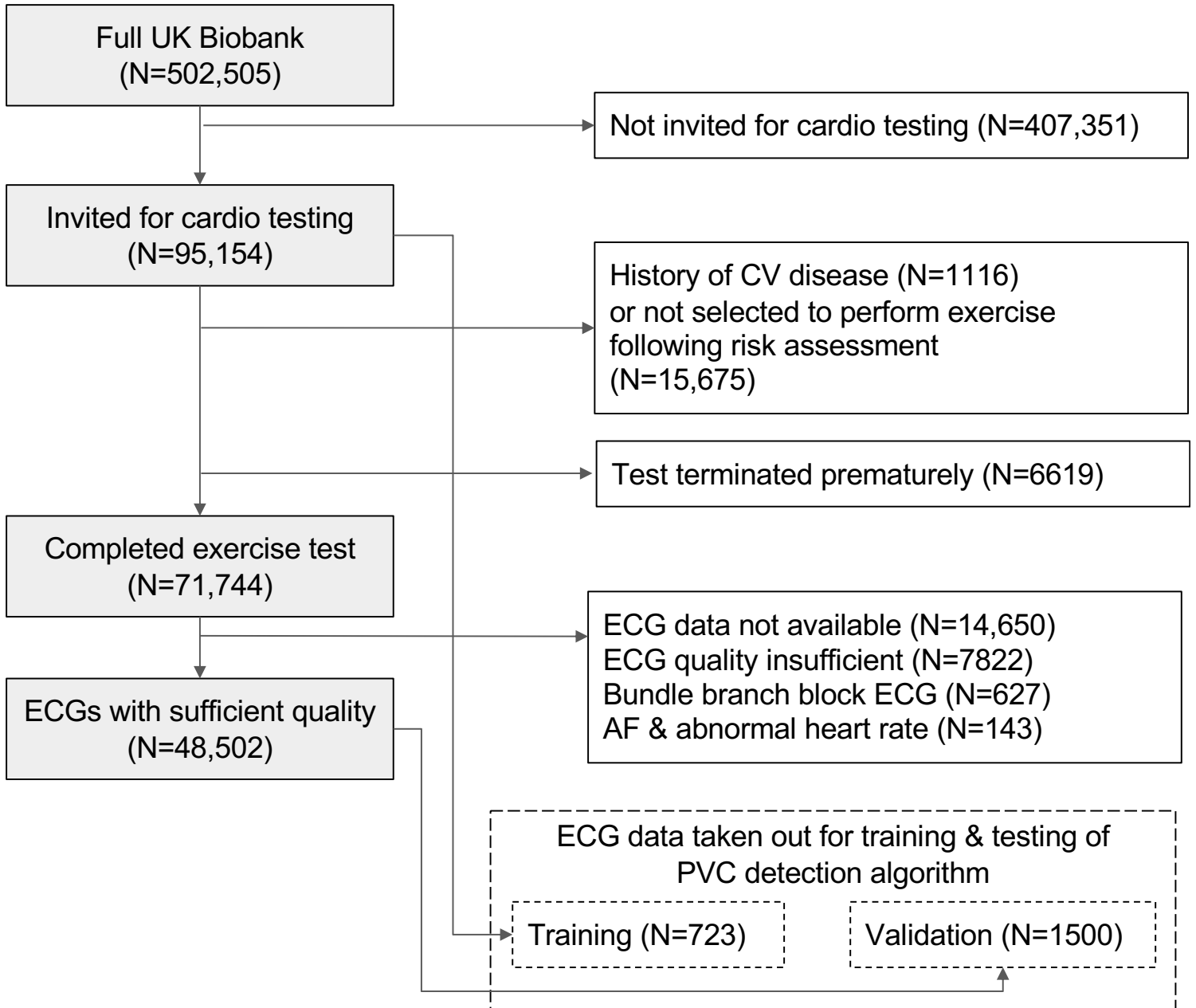
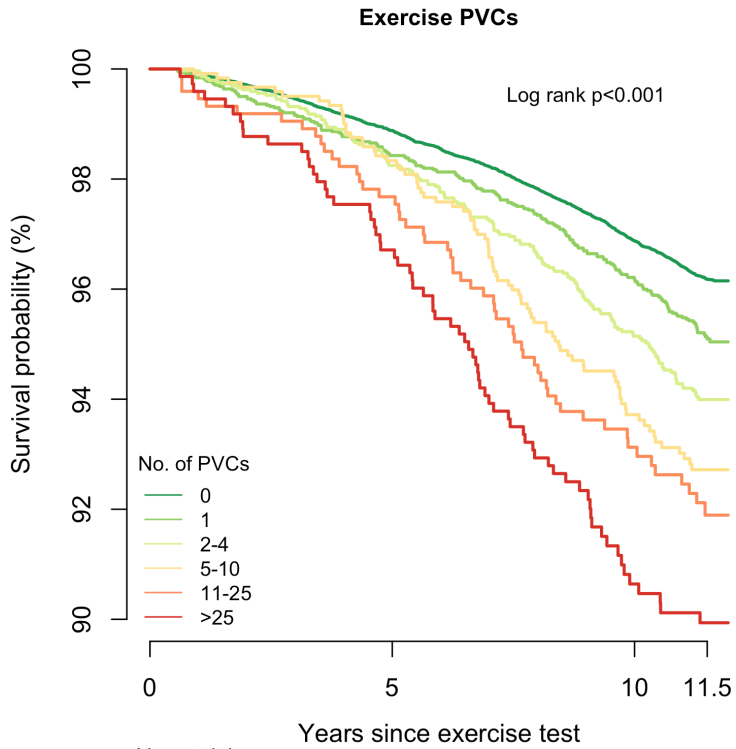
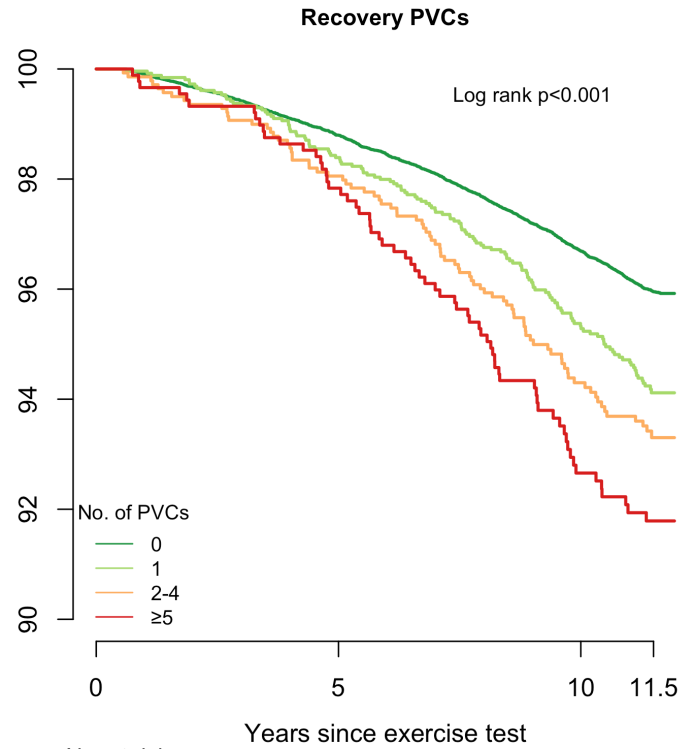


Figure 2: Survival Curves of Major Adverse Cardiovascular Events According to Different PVC Counts



No. at risk	0	5	10	11.5
No PVCs	38472	37674	31734	19823
1 PVC	4408	4290	3559	2221
2-4 PVCs	2937	2833	2321	1462
5-9 PVCs	1211	1177	942	597
10-25 PVCs	739	709	562	351
>25 PVCs	735	698	522	328



No. at risk	0	5	10	11.5
No PVCs	43655	42689	35881	22471
1 PVC	2563	2490	2026	1239
2-4 PVCs	1397	1352	1084	670
≥5 PVCs	887	850	649	402

Figure 3: Adjusted Hazard Ratios of Major Adverse Cardiovascular Events According to PVC count

Major Adverse Cardiovascular Events

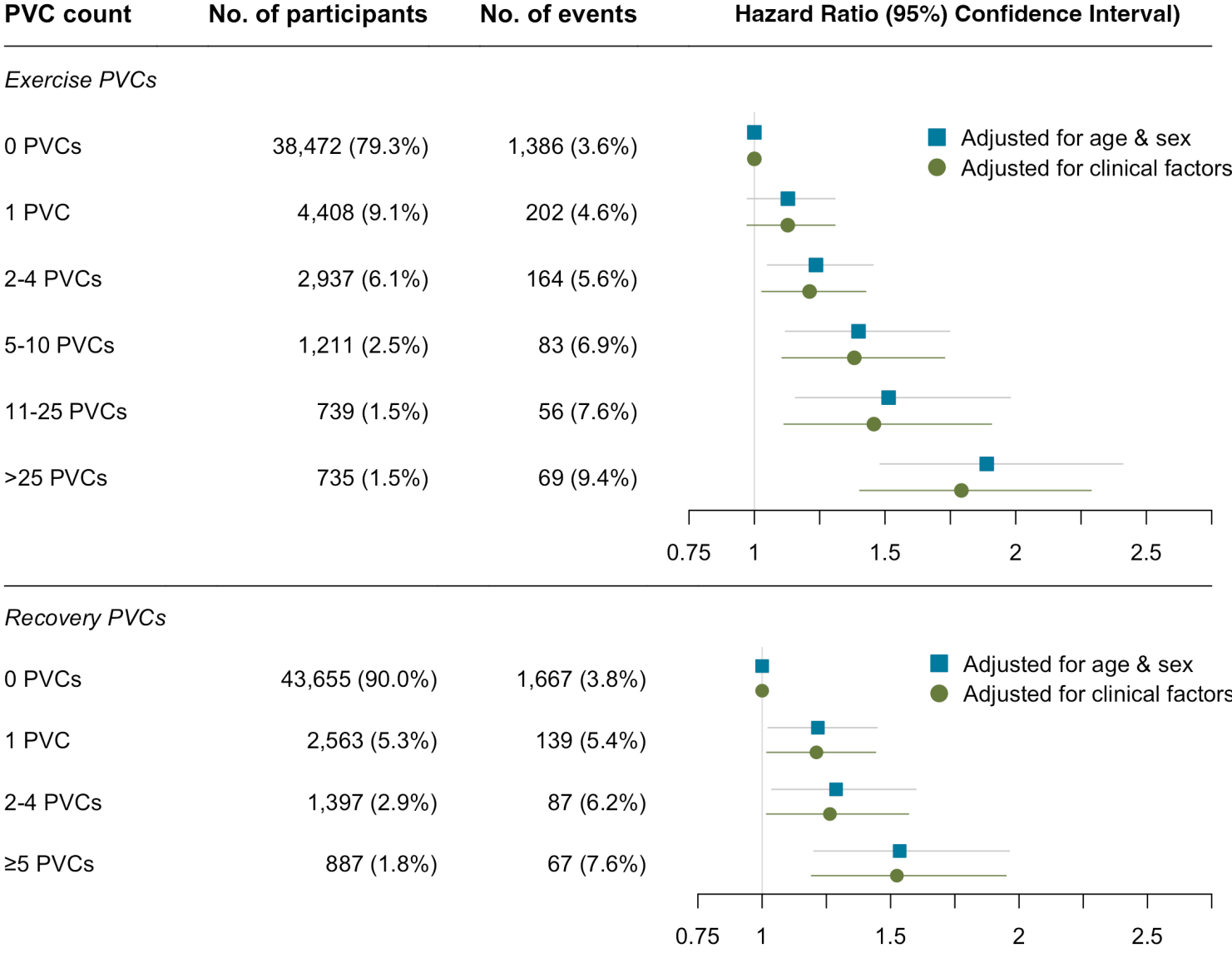


Figure 4: Adjusted Hazard Ratios of Major Adverse Cardiovascular Events According to Presence of Different PVC Patterns

