

Blood lipid density decreases at the early-stage of stomach adenocarcinoma

Om Prakash, Feroz Khan*

Technology Dissemination and Computational Biology Division, CSIR-Central Institute of Medicinal & Aromatic Plants, P.O.-CIMAP, Kukrail Picnic Spot Road, Lucknow-226015 (Uttar Pradesh), India

*Corresponding Author:

Dr. Feroz Khan, Technology Dissemination and Computational Biology Division, CSIR-Central Institute of Medicinal & Aromatic Plants, P.O.-CIMAP, Kukrail Picnic Spot Road, Lucknow-226015 (Uttar Pradesh), INDIA (Email: f.khan@cimap.res.in)

ABSTRACT

Background: Induction of cancer creates many molecular to physiological changes in the human body. Observation of these variations between normal & diseased conditions become the basis of disease diagnosis. Present study analyzed blood lipid profile, relative to changes in genotype, at the early stage of stomach adenocarcinoma.

Materials and Method: Present study was based on establishment of relationship between genotype to phenotype. Genotypic features were collected through RNAseq analysis, which was further mapped with phenotypic expression in the form of blood lipid profile.

Results: To observe the significance difference between phenotypic expressions of normal and cancerous condition, gene signatures from multiple sources of studies were mapped with blood lipid profile including: Total Cholesterol, LDL Cholesterol, HDL Cholesterol, Triglycerides, Non-HDL-C, and TG to HDL ratio. Significance difference found between phenotypic expression of normal and cancerous condition.

Conclusion: Through multi-signature-based population observation, it was found that blood-lipid density decreases at the early-stage of stomach adenocarcinoma. Further, blood-lipid profile can be used for early disease prediction of stomach adenocarcinoma as well as other cancer types.

Keywords: Cancer; Disease; Early; Prediction; Stomach

INTRODUCTION

Stomach adenocarcinoma (STAD) is one of the leading causes of deaths in the world. Lack of early diagnosis is also a major barrier behind this situation. Although, diagnosis through biomarker genes linked with extracellular matrix and platelet-derived growth factor are suggested in early detection of STAD (Tan et.al., 2021). Besides this, CDCA7-regulated inflammatory mechanism (Guo et.al., 2021), angiogenesis-related lncRNAs (Han et.al., 2021), PLXNC1 an immune-related gene (Ni et.al., 2021), and Ferroptosis-related gene etc. are also claimed for early detection of STAD. Different stages of STAD are also available through the prognostic model using the TCGA database. But early diagnosis through pathological blood parameters is not much explored. Various combinations of gene-signatures still remain to explore, which creates an opportunity to reveal aspects for early detection of STAD.

Early prediction of cancer before reaching a life-threatening stage is a challenging problem. Observation of clinicopathological parameters of blood may open a feasible solution to overcome this

problem. Blood lipid is a clinicopathological feature which is used to observe disease status. Lipid profile is known to be useful in detection of multiple cancers (Kok et.al, 2011). Lipid analogs are also known as key regulators of tumorigenesis (Dong et.al., 2020). Such studies motivate the observation of cancer in relation to lipid profile (Xiong et.al., 2021). Impact of chemotherapy can also be seen at the blood lipid profile. Hormonal treatment of cancer also shows impact on the blood lipid level (Bundred et.al., 2005). Therefore, blood profile is observed before chemotherapy (Xu et.al., 2020). Researches are being performed on mortalities caused in cancer in relation to blood lipid level and cancer. Such studies consider variation in blood lipid profile (Yang et.al., 2021). Blood lipid level is also observed along with blood glucose and extent of inflammation, as in case of ovarian cancer (Li et.al., 2019). All these studies indicate abnormalities in blood lipid profiles in association with occurrence of cancer (Halton et.al., 1998). Therefore, blood lipid profile is regularly estimated, if a cancer patient is under endocrine therapies (Engan T, 1996). Other studies like phospholipid level & peroxidation estimation have come to the knowledge for malignant neoplasm (Kotrikadze et.al., 1987). Drug response studies on blood profile are also available for tamoxifen, endoxifen and 4-hydroxyTamoxifen (Siqueira et.al., 2021). In totality, potential correlation exists between blood lipid and cancer (Jin et.al., 2020). Diagnostic values are also considerable in combination of tumor markers and blood lipid (Jiang et.al., 2021). These studies provide a ground for establishing a relationship between genotype (tumor markers) and phenotype (blood lipid profile) for observation of import of variation in blood lipid and the cancer status.

RNA expressions are the smallest observation level in several areas of clinical diagnosis (Dube et.al., 2019), including cancer (Lorenzi et.al., 2019). Various categories of RNA are used in cancer diagnosis (Li et.al., 2021; Ruan et.al., 2020). Due to population discrimination capacity of RNA biomarkers, transcriptome sequencing is used in diagnosis of disorders (Akula et.al., 2021). RNA based studies are also known for hepatocellular carcinoma (Chen et.al., 2018), colorectal cancer (Mamelli et.al., 2021), pathway detection (Wu et.al., 2021), prostate tumor (Xia et.al., 2018), and breast cancer (Liu et.al., 2021) etc. More refined, RNA expression profiles are also used for early diagnosis of disease. Early diagnosis is directly linked with development of biomarker signature (i.e., gene set) with population discrimination capacity (Yang et.al., 2020). Such studies provide clinically relevant ground for accessing RNA expressions as classified genotypic features for early detection of cancer.

Genotype-to-phenotype relation is used also for linking lipid metabolism with cancer related genes (Kale et.al., 2020). Patterns in phenotype features can be traced-out by repeated observations in reference to multiple genotypes from different sources. Use of different sources ensures the random sampling of genotypes. Significant observation in pattern modulation in cancer stage, relative to normal, may suggest a feasible pattern for diagnosis at the level of population discrimination. T-test with significant P-value <0.05 is used for identification of null-hypothesis rejected pattern for disease diagnosis. In the present study, variation in blood lipid profile (as phenotype) was linked with gene signature (as genotype) derived for stomach adenocarcinoma, to predict the possible changes/ status of cancer. Inference from this process can be directly used during early diagnosis of stomach adenocarcinoma.

MATERIALS AND METHOD:

Observation of variation in phenotypic expression, at clinicopathological level, for early detection of cancer, needs a genotypic relationship with phenotypic expression. Blood lipid profile was used as a phenotypic expression; while genotypic expression was gene signatures. The method implemented AI-guided relation between blood lipid-profile (clinicopathological phenotype) and expression of gene signature. Workflow behind the protocol is (Figure 1):

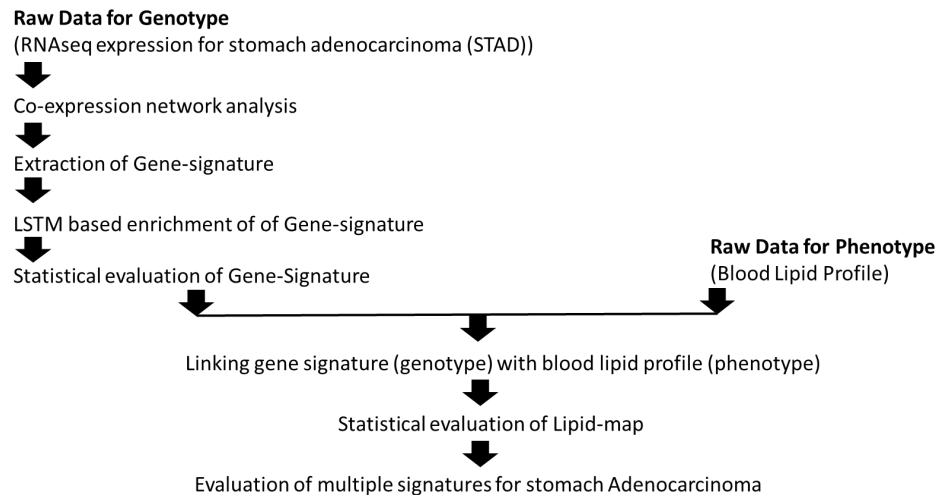


Figure 1. Workflow for assessment of blood lipid density at the early-stage of stomach adenocarcinoma based on blood-lipid profile as clinicopathological feature

Genotype features: Genotype features were gene-sets with capacity to discriminate diseased population from normal. Classified RNA expressions, for stomach adenocarcinoma, collected as transcriptome sequencing output from the population, 408 independent tumor samples and 211 matching normal tissue samples, were available at TCGA database. Details for plasma containing co-expression of differentially expressed genes (pDEGs) accessed from doi.org/10.1038/s41598-021-87037-w. Further enrichment of co-expression processed through simulation of LSTM systems model. Simulation of system model performed through Long-Short-Term-Memory Recurrent Neural Network (LSTM-RNN) model (implemented in R). Stability of system model accessed through Jacobian matrix. Identified gene-signatures evaluated on the ground of population discrimination capacity through survival plot. LogRank p-value < 0.05 considered as threshold for significant gene-signature.

Phenotype features: Prior studies indicated lipid-profile for observation during cancer. Such observations may support in overcoming hurdles before early detection of cancer seeded at molecular level. Clinicopathological parameters used as phenotypic features: Total Cholesterol: 200-239(mg/dL); LDL Cholesterol: 130-159 (mg/dL); HDL Cholesterol: 40-60 (mg/dL); Triglycerides: 150-199 (mg/dL); Non-HDL-C: 130-159 (mg/dL); and TG to HDL ratio: 3.0-3.8 (mg/dL).

AI-guided map for genotype-vs-phenotype: LSTM enriched gene signature (genotype) mapped with lipid-profile (phenotype) of blood. Total 740 data-points used to map lipid-profile with gene-signature.

Since RNA gene expressions were classified, therefore classified gene expression for gene-signature was further used for generating classified mapped lipid-profile dataset. The classified genotypic & phenotypic dataset sets were further used for development of map-model for transformation of blood profile into gene expression. The map-model was developed on the framework of feed-forward backpropagation Artificial Neural Network (FFBP-ANN). Inputs of 06 nodes from lipid-profiles were mapped with outputs of 5 nodes from enriched pDEGs. Therefore, population discrimination capacity was also evaluated for mapped lipid profile. Total 740 (370 (normal) + 370 (cancer)) data-points were used to map lipid-profile with gene-signature. The mapped lipid-data points were evaluated for its discrimination capacity through two class multiple perceptron classification model evaluation. Statistical analysis was performed to evaluate the classification model through ROC plot and AUC calculation.

Assessment of phenotype (blood-lipid-profile) in reference to multiple gene signatures: To find out the possible variation in phenotype (blood-lipid profile) during the early stage of Adenocarcinoma, blood lipid profile was evaluated in reference to multiple gene signatures. The identified inference can be used as a rule.

RESULTS AND DISCUSSION

Gene-signature (genotype features):

Processing of classified RNA expression data, resulted in 62 differentially expressed genes. Out of which, 39 DEGs were found in plasma proteomes. Gene co-expression network analysis resulted in signatures with capacity of discrimination between populations of diseased & non-diseased samples. Only 11 genes (AFF3, APBB1, C5, CHRD, COL4A5, EEF1A2, ZBTB16, IL1RL1, GFRA3, ZNF662, and MAGED4B), out of 39, found to be involved in defining signature. Signature showed population discrimination capacity with p-value of $6E-05$. Furthermore, 11 genes were used for development of LSTM-guided systems models. After simulation, out of 11 genes, only 05 genes (AFF3, APBB1, C5, CHRD, and COL4A5) were found to be involved in successful simulation. The enriched five genes also showed population discrimination with a p-value of 0.0046. It is shown that the most significant impact of gene signature on stomach adenocarcinoma is due to genes involved in extracellular matrix organization. Prior study also showed compliance with present results (Tan et.al., 2021). These 05 genes were further used for establishing relation with blood profile (<https://doi.org/10.1101/2023.02.14.23285899>).

Linking gene-signature with blood lipid profile

Six blood profile parameters (Total Cholesterol: 200-239(mg/dL); LDL Cholesterol: 130-159 (mg/dL); HDL Cholesterol: 40-60 (mg/dL); Triglycerides: 150-199 (mg/dL); Non-HDL-C: 130-159 (mg/dL); and TG to HDL ratio: 3.0-3.8 (mg/dL)) used for phenotypic observation. Expression of gene signature further processed for mapping with profile of blood. The genotype-phenotype map used for development of ANN classification model, including 05 gene-expression and blood lipid-profile. Normal-to-Cancer discrimination capacity of lipid profile evaluated through multi-perceptron ANN classification model. To evaluate performance of mapping lipid-profile, multiple perceptron model architecture of 6-4-2 implemented with learning rate 0.3 and momentum of 0.2 for 500 epochs. Model established with AUC

of 0.999 (Supplementary Table 1, 2 & 3). Ten-fold cross-validation of the model showed accuracy of 99.46%.

Estimation of Possible variation in blood-lipid profile during early stage of Adenocarcinoma:

Since in the case of early detection of cancer; a normal healthy person will be assumed a subject of observation. In that condition, Blood profile will also lie in pathological normal states. So now in that case, how can we detect the possible future coming disease? Can the primary-waves of the disease be detectable? Here, we have to assume that disease-mechanism has already started in the physiology of the body, but phenotypic expressions will come in the near future, which is absent in the present time. Since, genotypic features, for stomach adenocarcinoma, are identified; therefore, genotypic fluctuations can be seen on the frame of pathological parameters, for example Lipid-profile. To know the pattern in phenotypic fluctuation, blood lipid profile was evaluated in reference to multiple gene signatures from prior studies too (Table 1, 2). Phenotypic observations were analyzed through t-test. It was found that there was a significant fall in density of lipid in blood in cancerous conditions than normal. Other prior studies, on lipids in relation to progression of cancer, also showed that there is relation between the variations in level of cholesterol during progression of cancer (Mayengbam, Shyamananda Singh et al. 2021). The possible reason for the fall in cholesterol is that cancer cells consume cholesterol for rapid cell division. Since rapid cell division capacity develops at the early stage of cancer, therefore variation in level of lipid/cholesterol may be an observatory point for early detection of cancer. Since blood sampling is a key part of clinicopathological observation, and it is also linked with supply chain of nutrition for cell division; therefore blood-lipid profile may be a key component for early detection of cancer. Therefore, this result can be considered as a general rule for early detection of cancer (Table 1, 2 & 3).

Table 1. Signatures considered into study

Signature Sl. No.	Gene Signature	Reference
Sig-0	"AFF3", "APBB1", "C5", "CHRD", "COL4A5", "TOP2B", "SMC4"	In-house identified signature
Sig-1	"GSTA2", "POLD3", "GLA", "GGT5", "DCK", "CKMT2", "ASAH1", "OPLAH", "ME1", "ACYP1", "NNMT", "POLR1A", "RDH12"	Front. Oncol., 21 June 2021 Sec. Gastrointestinal Cancers https://doi.org/10.3389/fonc.2021.612952
Sig-2	"ACTA2","AREG","ASCC2","BEST1","BRCA1","CREBBP","DDX5","EP300","ESR1","FAM96A","FHL2","GNL3","HIPK2","HSF1","IGSF9","JUN","MSH6","NCOA6","NCOA6IP","PARP1","PAWR","PCNA","PML","PPP2R5A","RPA1","SMAD3","SMARCA4","TP53","TP63","WRN","WT1","WTAP"	Cheong, JH., Wang, S.C., Park, S. et al. Development and validation of a prognostic and predictive 32-gene signature for gastric cancer. Nat Commun 13, 774 (2022). https://doi.org/10.1038/s41467-022-28437-y
Sig-3	"PURB","SMC1L1","DENND1B","PDCD4"	https://doi.org/10.3892/ol.2018.8577
Sig-4	"ABCE1","ADH1C","ADNP","ALDH6A1","APOC1","APOE","ATP13A3","BAZ1A","BCAR3","CAPRIN1","CBFB","CCT2","CCT6A","CEP55","CHORDC1","COL6A3","CPXM1","CXCL1","CXCL10","ECHDC2","ENC"	https://doi.org/10.1016/j.ebiom.2020.103023

	1", "EPHB4", "ETFDH", "FGFR4", "FHOD1", "GABBR1", "GART", "INHBA", "KAT2A", "KLF4", "LAMC2", "LIMK1", "LRRC41", "MCM2", "MMP14", "NCL", "NOL8", "OSMR", "P4HA1", "PDP1", "PGRMC2", "PNO1", "PRC1", "PRR7", "PTGS1", "SCNN1B", "SLC12A9", "SLC20A1", "SMS", "TCERG1", "TGS1", "TNFAIP2", "TUBB"	
Sig-5	"CD209", "TOP3B", "BCL2", "MCM2", "RAD9A", "IL10", "HLA-DMB", "MCM10", "PTPRC", "FANCM", "ADORA2A", "MS4A1", "FANCG", "CD3G", "DSCR6", "TBX21", "ZWILCH", "IL17A", "FCGR3A"	https://gut.bmj.com/content/71/4/676
Sig-6	"VCAN", "EFNA3", "ADH4", "CLDN9"	Ann Transl Med 2022;10(18):1010 https://dx.doi.org/10.21037/at

Table 2. Phenotypic expressions in blood lipid-profile in relation of gene-signatures for Gastric cancer considered during study

Signature Sl. No.	Phenotypic expressions in blood lipid-profile						
Sig-0	Normal:	214.2378	174.1326	47.65243	270.8775	169.9518	3.69331
	Tumor:	207.9712	170.757	45.91087	227.1245	149.5762	3.34872
Sig-1	Normal :	235.3203	146.494	49.63761	186.109	147.512	4.04113
	Tumor:	221.4865	143.7998	46.73759	187.4013	150.1777	3.914579
Sig-2	signature could not run						
Sig-3	signature could not run						
Sig-4	Normal:	346.6813	169.8594	58.09198	251.5707	241.0234	6.303563
	Tumor:	279.8497	157.0263	50.49587	202.5042	196.4386	4.701655
Sig-5	signature could not run						
Sig-6	Normal:	219.0083	142.7449	57.39752	170.4471	156.4613	3.182708
	Tumor:	215.6043	144.6829	45.25915	172.4644	144.9133	3.213511

Table 3. T-Test: Paired Two Sample for Means for Normal and Tumor lipid profile from different gene signatures

	<i>Normal</i>	<i>Tumor</i>
Mean	144.6847	132.3067

Variance	9393.133	7810.059
Observations	6	6
Pearson Correlation	0.998567	
Hypothesized Mean Difference	0	
df	5	
t Stat	3.070027	
P(T<=t) one-tail	0.013891	
t Critical one-tail	2.015048	
P(T<=t) two-tail	0.027783	
t Critical two-tail	2.570582	

Conclusions

There are many computational approaches to understand the relationship between blood lipid and cancer. The relation between gene signature from population and blood lipid profile has never been tried for early detection of cancer. Therefore, in this article, we performed a computational study for understanding this relation at the early stage of cancer. In this regard, RNA-seq expression, from normal and diseased populations, is processed for stomach adenocarcinoma. We collected phenotype and genotype representation for the early stage of stomach adenocarcinoma, and performed gene-signature identification through co-expression and DEGs analysis. Gene-signature's capacity evaluated for discrimination between healthy and diseased population. Gene-signature expression mapped with blood lipid profile. Finally, variation in blood-lipid profile, during the early stage of adenocarcinoma, was observed for multiple gene-signatures reported in prior studies. Significant fall in density of blood-lipid profile found during the early stage of stomach adenocarcinoma. This inference from the study can be very useful for early detection of stomach adenocarcinoma. Furthermore, more studies can be performed for other cancer types also.

Acknowledgement

Authors are thankful to the Director, CSIR-Central Institute of Medicinal & Aromatic Plants (CIMAP), Lucknow, India for infrastructure & research facilities support. Author OP is thankful to the Indian Council of Medical Research (ICMR), New Delhi, India for financial support through RA fellowship (Award letter no. BMI/11(12)/2020, dated: 04/02/2021). Author OP is also thankful to Prof. Thiol Gross, Helmholtz Institute for Functional Marine Biodiversity (HIFMB) at University of OLDENBURG, Germany and Dr. Amit Singh, Chennai Mathematical Institute (CMI) Chennai, India for fruitful suggestions on evaluation of stability of time series systems model. The CSIR-CIMAP publication number of this manuscript is CIMAP/PUB/ 2023/24.

Conflict of interest

There is no conflict of interest.

References

- Akula N, Marengo S, Johnson K, Feng N, Zhu K, Schulmann A, Corona W, Jiang X, Cross J, England B, Nathan A, Detera-Wadleigh S, Xu Q, Auluck PK, An K, Kramer R, Apud J, Harris BT, Harker Rhodes C, Lipska BK, McMahon FJ. Deep transcriptome sequencing of subgenual anterior cingulate cortex reveals cross-diagnostic and diagnosis-specific RNA expression changes in major psychiatric disorders. *Neuropsychopharmacology*. 2021 Jun;46(7):1364-1372. doi: 10.1038/s41386-020-00949-5. Epub 2021 Feb 8. PMID: 33558674; PMCID: PMC8134494.
- Brakenridge SC, Starostik P, Ghita G, Midic U, Darden D, Fenner B, Wacker J, Efron PA, Liesenfeld O, Sweeney TE, Moldawer LL. A Transcriptomic Severity Metric That Predicts Clinical Outcomes in

Critically Ill Surgical Sepsis Patients. *Crit Care Explor.* 2021 Oct 14;3(10):e0554. doi: 10.1097/CCE.0000000000000554. PMID: 34671746; PMCID: PMC8522866.

- Bundred NJ. The effects of aromatase inhibitors on lipids and thrombosis. *Br J Cancer.* 2005 Aug;93 Suppl 1(Suppl 1):S23-7. doi: 10.1038/sj.bjc.6602692. PMID: 16100522; PMCID: PMC2361692.
- Chen D, Zhang C, Lin J, Song X, Wang H. Screening differential circular RNA expression profiles reveal that hsa_circ_0128298 is a biomarker in the diagnosis and prognosis of hepatocellular carcinoma. *Cancer Manag Res.* 2018 May 18;10:1275-1283. doi: 10.2147/CMAR.S166740. PMID: 29849467; PMCID: PMC5965387.
- Dong Y, Wang H, Shan D, Yu Z. [Research Progress on the Relationship between Blood Lipids and Lung Cancer Risk and Prognosis]. *Zhongguo Fei Ai Za Zhi.* 2020 Sep 20;23(9):824-829. Chinese. doi: 10.3779/j.issn.1009-3419.2020.102.36. Epub 2020 Aug 10. PMID: 32773011; PMCID: PMC7519960.
- Dube U, Del-Aguila JL, Li Z, Budde JP, Jiang S, Hsu S, Ibanez L, Fernandez MV, Farias F, Norton J, Gentsch J, Wang F; Dominantly Inherited Alzheimer Network (DIAN), Salloway S, Masters CL, Lee JH, Graff-Radford NR, Chhatwal JP, Bateman RJ, Morris JC, Karch CM, Harari O, Cruchaga C. An atlas of cortical circular RNA expression in Alzheimer disease brains demonstrates clinical and pathological associations. *Nat Neurosci.* 2019 Nov;22(11):1903-1912. doi: 10.1038/s41593-019-0501-5. Epub 2019 Oct 7. PMID: 31591557; PMCID: PMC6858549.
- Engan T. Magnetic resonance spectroscopy of blood plasma lipoproteins in malignant disease: methodological aspects and clinical relevance. *Anticancer Res.* 1996 May-Jun;16(3B):1461-71. PMID: 8694514.
- Gaffo E, Buratin A, Dal Molin A, Bortoluzzi S. Bioinformatic Analysis of Circular RNA Expression. *Methods Mol Biol.* 2021;2348:343-370. doi: 10.1007/978-1-0716-1581-2_22. PMID: 34160817.
- Guo Y, Zhou K, Zhuang X, Li J, Shen X. CDCA7-regulated inflammatory mechanism through TLR4/NF- κ B signaling pathway in stomach adenocarcinoma. *Biofactors.* 2021 Sep;47(5):865-878. doi: 10.1002/biof.1773. Epub 2021 Aug 2. PMID: 34339079.
- Halton JM, Nazir DJ, McQueen MJ, Barr RD. Blood lipid profiles in children with acute lymphoblastic leukemia. *Cancer.* 1998 Jul 15;83(2):379-84. PMID: 9669823.
- Han C, Zhang C, Wang H, Li K, Zhao L. Angiogenesis-related lncRNAs predict the prognosis signature of stomach adenocarcinoma. *BMC Cancer.* 2021 Dec 7;21(1):1312. doi: 10.1186/s12885-021-08987-y. PMID: 34876056; PMCID: PMC8653638.
- Jiang M, Ding G, Li G. Diagnostic value of combined detection of multiple tumor markers and blood lipid indexes in colorectal cancer and its prediction on adverse reactions of chemotherapy. *J BUON.* 2021 Jul-Aug;26(4):1226-1230. PMID: 34564974.
- Jin W, Shan B, Liu H, Li W, Zhang Q, Zhou S, Hu D, Pan Y. The correlation between blood lipids and clinicopathological features of breast cancer in young females. *Gland Surg.* 2020 Oct;9(5):1443-1449. doi: 10.21037/gs-20-616. PMID: 33224819; PMCID: PMC7667059.
- Kale A, Aldahish A, Shah G. Calcitonin receptor is required for T-antigen-induced prostate carcinogenesis. *Oncotarget.* 2020 Mar 3;11(9):858-874. doi: 10.18632/oncotarget.27495. PMID: 32180899; PMCID: PMC7061735.

- Kok DE, van Roermund JG, Aben KK, den Heijer M, Swinkels DW, Kampman E, Kiemeny LA. Blood lipid levels and prostate cancer risk; a cohort study. *Prostate Cancer Prostatic Dis.* 2011 Dec;14(4):340-5. doi: 10.1038/pcan.2011.30. Epub 2011 Jul 5. PMID: 21727905.
- Kotrikadze NG, Tsartsidze MA, Dzhishkariani OS, Londaridze AM, Lomsadze BA. Izuchenie fosfolipidnogo sostava lipidov krovi pri rake molochnoi zhelezy i tela matki [Phospholipid composition of blood lipids in breast and uterine cancer]. *Eksp Onkol.* 1987;9(2):68-70. Russian. PMID: 3582245.
- Li G, Zhang K, Gong F, Jin H. A study on changes and clinical significance of blood glucose, blood lipid and inflammation in patients with ovarian cancer. *J BUON.* 2019 Nov-Dec;24(6):2322-2326. PMID: 31983101.
- Liu D, Li B, Shi X, Zhang J, Chen AM, Xu J, Wang W, Huang K, Gao J, Zheng Z, Liu D, Wang H, Shi W, Chen L, Xu J. Cross-platform genomic identification and clinical validation of breast cancer diagnostic biomarkers. *Aging (Albany NY).* 2021 Jan 20;13(3):4258-4273. doi: 10.18632/aging.202388. Epub 2021 Jan 20. PMID: 33493140; PMCID: PMC7906147.
- Liu Z, Meng H, Fang M, Guo W. Identification and Potential Mechanisms of a 7-MicroRNA Signature That Predicts Prognosis in Patients with Lower-Grade Glioma. *J Healthc Eng.* 2021 Nov 20;2021:3251891. doi: 10.1155/2021/3251891. PMID: 34845420; PMCID: PMC8627350.
- Lorenzi L, Avila Cobos F, Decock A, Everaert C, Helsmoortel H, Lefever S, Verboom K, Volders PJ, Speleman F, Vandesompele J, Mestdagh P. Long noncoding RNA expression profiling in cancer: Challenges and opportunities. *Genes Chromosomes Cancer.* 2019 Apr;58(4):191-199. doi: 10.1002/gcc.22709. Epub 2019 Jan 20. PMID: 30461116.
- Mamelli RE, Felipe AV, Silva TD, Hinz V, Forones NM. RNAM EXPRESSION AND DNA METHYLATION OF DKK2 GENE IN COLORECTAL CÂNCER. *Arq Gastroenterol.* 2021 Jan-Mar;58(1):55-60. doi: 10.1590/S0004-2803.202100000-10. PMID: 33909798.
- Mayengbam, Shyamananda Singh et al. "Influence of cholesterol on cancer progression and therapy." *Translational oncology* vol. 14,6 (2021): 101043. doi:10.1016/j.tranon.2021.101043
- Ni Z, Huang C, Zhao H, Zhou J, Hu M, Chen Q, Ge B, Huang Q. PLXNC1: A Novel Potential Immune-Related Target for Stomach Adenocarcinoma. *Front Cell Dev Biol.* 2021 Jul 2;9:662707. doi: 10.3389/fcell.2021.662707. PMID: 34277610; PMCID: PMC8283001.
- Ruan GT, Zhu LC, Gong YZ, Liao XW, Wang XK, Liao C, Wang S, Yan L, Xie HL, Zhou X, Li YZ, Gao F. The diagnosis and prognosis values of WNT mRNA expression in colon adenocarcinoma. *J Cell Biochem.* 2020 Jun;121(5-6):3145-3161. doi: 10.1002/jcb.29582. Epub 2019 Dec 30. PMID: 31886580.
- Siqueira MLS, Andrade SMV, Vieira JLF, Monteiro MC. A preliminary study on the association of tamoxifen, endoxifen, and 4-hydroxytamoxifen with blood lipids in patients with breast cancer. *Biomed Pharmacother.* 2021 Oct;142:111972. doi: 10.1016/j.biopha.2021.111972. Epub 2021 Aug 11. PMID: 34391185.
- Tan R, Zhang G, Liu R, Hou J, Dong Z, Deng C, Wan S, Lai X, Cui H. Identification of Early Diagnostic and Prognostic Biomarkers via WGCNA in Stomach Adenocarcinoma. *Front Oncol.* 2021 Jun 18;11:636461. doi: 10.3389/fonc.2021.636461. PMID: 34221961; PMCID: PMC8249817.

- Wang L, Zeng L, Jiang H, Li Z, Liu R. Microarray Profile of Long Noncoding RNA and Messenger RNA Expression in a Model of Alzheimer's Disease. *Life (Basel)*. 2020 May 14;10(5):64. doi: 10.3390/life10050064. PMID: 32423012; PMCID: PMC7281340.
- Wu J, Fang X, Huang H, Huang W, Wang L, Xia X. Construction and topological analysis of an endometriosis-related exosomal circRNA-miRNA-mRNA regulatory network. *Aging (Albany NY)*. 2021 Apr 26;13(9):12607-12630. doi: 10.18632/aging.202937. Epub 2021 Apr 26. PMID: 33901012; PMCID: PMC8148458.
- Xia Q, Ding T, Zhang G, Li Z, Zeng L, Zhu Y, Guo J, Hou J, Zhu T, Zheng J, Wang J. Circular RNA Expression Profiling Identifies Prostate Cancer- Specific circRNAs in Prostate Cancer. *Cell Physiol Biochem*. 2018;50(5):1903-1915. doi: 10.1159/000494870. Epub 2018 Nov 5. PMID: 30396163.
- Xiong Z, Lin Y, Yu Y, Zhou X, Fan J, Rog CJ, Cai K, Wang Z, Chang Z, Wang G, Tao K, Cai M. Exploration of Lipid Metabolism in Gastric Cancer: A Novel Prognostic Genes Expression Profile. *Front Oncol*. 2021 Sep 8;11:712746. doi: 10.3389/fonc.2021.712746. PMID: 34568042; PMCID: PMC8457048.
- Xu L, Dong Q, Long Y, Tang X, Zhang N, Lu K. Dynamic Changes of Blood Lipids in Breast Cancer Patients After (Neo)adjuvant Chemotherapy: A Retrospective Observational Study. *Int J Gen Med*. 2020 Oct 14;13:817-823. doi: 10.2147/IJGM.S273056. PMID: 33116773; PMCID: PMC7569068.
- Yang H, Su H, Hu N, Wang C, Wang L, Giffen C, Goldstein AM, Lee MP, Taylor PR. Integrated analysis of genome-wide miRNAs and targeted gene expression in esophageal squamous cell carcinoma (ESCC) and relation to prognosis. *BMC Cancer*. 2020 May 6;20(1):388. doi: 10.1186/s12885-020-06901-6. PMID: 32375686; PMCID: PMC7201714.
- Yang Y, Gao G, Shi J, Zhang J. Increased Blood Lipid Level is Associated with Cancer-Specific Mortality and All-Cause Mortality in Patients with Colorectal Cancer (=65 Years): A Population-Based Prospective Cohort Study. *Risk Manag Healthc Policy*. 2020 Jul 23;13:855-863. doi: 10.2147/RMHP.S260113. Retraction in: *Risk Manag Healthc Policy*. 2021 Jul 21;14:3057. PMID: 32801961; PMCID: PMC7399450.
- Zheng S, Li J, Hou L, Li J. Identifying RNA Biomarkers for Oesophageal Squamous Cell Carcinoma. *Stud Health Technol Inform*. 2019 Aug 21;264:1084-1088. doi: 10.3233/SHTI190392. PMID: 31438092.

Supplementary Table 1. Statistics showing evaluation through 10-fold cross validation of two-class classification model for evaluation of discrimination capacity of lipid-profile

	TP	FP	Precision	Recall	F-Measure	MCC	ROC area	PRC area	Class
	0.997	0.008	0.992	0.997	0.995	0.989	1	1	T
	0.992	0.003	0.997	0.992	0.995	0.989	1	1	N
Weighted Avg.	0.995	0.005	0.995	0.995	0.995	0.989	1	1	
Correctly Classified Instances	736		99.4595 %						
Incorrectly Classified Instances	4		0.5405 %						
Kappa statistic	0.9892								
Mean absolute error	0.0091								
Root mean squared error	0.0631								
Relative absolute error	1.8151 %								
Root relative squared error	12.6272 %								
Total Number of Instances	740								

Supplementary Table 2. Phenotypic expression related with Normal cell

Sig1	Sig2	Sig3	Sig4	Avg (Normal Signature)
214.2378	235.3203	346.6813	219.0083	253.8119
174.1326	146.494	169.8594	142.7449	158.3077
47.65243	49.63761	58.09198	57.39752	53.19489
270.8775	186.109	251.5707	170.4471	219.7511
169.9518	147.512	241.0234	156.4613	178.7371
3.69331	4.04113	6.303563	3.182708	4.305178

Supplementary Table 3. Phenotypic expression related with Tumor cell

Sig1	Sig2	Sig3	Sig4	Avg (Tumor Signature)
207.9712	221.4865	279.8497	215.6043	231.2279
170.757	143.7998	157.0263	144.6829	154.0665
45.91087	46.73759	50.49587	45.25915	47.10087
227.1245	187.4013	202.5042	172.4644	197.3736
149.5762	150.1777	196.4386	144.9133	160.2765
3.34872	3.914579	4.701655	3.213511	3.794616