

Cerebral blood flow pattern in patients with carotid artery stenosis with low trans-stenotic blood flow

Laleh Zarrinkoob^{1*} MD, PhD, Sanne Myrnäs,^{1*} Anders Wåhlin^{2,3,4} PhD, Anders Eklund^{3,4} PhD and Jan Malm⁵ MD, PhD

Department of Surgical and Perioperative Sciences, Anesthesiology and Intensive Care Medicine Unit¹, Department of Radiation Sciences, Biomedical Engineering² Centre for Biomedical Engineering and Physics,³ Umeå Center for Functional Brain Imaging,⁴ and Department of Clinical Science, Neurosciences,⁵ Umeå University, Umeå, SWEDEN

*These authors have contributed equally to this work

Corresponding author

Laleh Zarrinkoob MD.

Address: Department of Surgical and Perioperative Sciences,
Umeå University, 901 87 Umeå, Sweden.

Telephone: +46 907864594

E-mail: laleh.zarrinkoob@umu.se

Disclosures: No conflict of interest to report.

Running title: Cerebral hemodynamics in carotid artery stenosis

The total word count of the manuscript (including Title Page, Abstract, Text, References, Tables and Figure Legends) 4891 words

1 **ABSTRACT**

2

3 **Background** Compromised cerebral blood flow has been identified as a contributing risk
4 factor for future ischemic events in patients with symptomatic carotid artery disease.
5 Nevertheless, the hemodynamic impact of carotid stenosis is rarely evaluated. The aim of this
6 observational cross-section study was to investigate how a reduced internal carotid artery
7 (ICA) blood flow rate (BFR), rather than stenosis degree, relates to BFR in the cerebral
8 arteries.

9 **Methods** Four-dimensional phase-contrast magnetic resonance imaging (4D-PCMRI) was
10 used to measure cerebral blood flow in 38 patients with symptomatic carotid stenosis ($\geq 50\%$),
11 being considered for carotid endarterectomy. The BFR in the cerebral arteries was compared
12 between two subgroups that were based on the BFR in the symptomatic (ipsilateral) ICA: I.
13 reduced ICA flow (< 160 mL/min) i.e., 2 SD $<$ normal ICA BFR; II. preserved ICA flow (≥ 160
14 mL/min). Furthermore, BFR laterality was defined as a difference in the paired ipsilateral-
15 contralateral arteries within the groups.

16 **Results** The degree of stenosis was not significantly different between the two subgroups
17 (72% vs. 80%; $P=0.09$). In the reduced group compared to the preserved ICA flow group, a
18 reduced BFR was found in the ipsilateral middle cerebral artery (MCA) (108 ± 32 vs. 136 ± 24
19 mL/min; $P < 0.01$) and anterior cerebral artery (A1 segment) (-6 ± 47 vs. 81 ± 27 mL/min;
20 $P < 0.001$), while the BFR was increased in the contralateral A1 segment (152 ± 79 vs. 82 ± 41
21 mL/min; $P < 0.001$). There was also a reversed BFR in the posterior communicating artery and
22 ophthalmic artery on the ipsilateral side in the group with reduced ICA flow. BFR laterality
23 was observed in all paired arteries in the reduced ICA flow group ($P < 0.05$), while there was
24 no laterality in the preserved ICA flow group ($P > 0.05$).

25 **Conclusions** 4D-PCMRI revealed compromised cerebral blood flow in patients with carotid
26 stenosis, not possible to detect by solely analyzing the stenosis degree. In patients with

- 1 reduced ICA flow, collateral recruitment was not sufficient to maintain symmetrical BFR
- 2 distribution to the two hemispheres.
- 3

1 **INTRODUCTION**

2

3 Patients with symptomatic carotid stenosis are at increased risk for subsequent stroke and are
4 therefore considered for preventative revascularization.(1) According to current guidelines,
5 risk stratification of these patients is based on the grade of stenosis, which is regarded to be
6 the greatest risk factor. (2, 3) However, with a relatively high number needed for treatment, a
7 more comprehensive risk stratification is desirable.(2) Trials have also indicated that
8 intervention in appropriately selected asymptomatic patients results in a reduced risk for
9 future stroke.(4-6) This further enhances the need for additional methods of evaluation in
10 order to improve the precision for selecting patients where intervention may be beneficial.

11

12 Hemodynamic compromise has been identified as a contributing risk factor for future
13 ischemic stroke.(7) While thromboembolism is considered the predominant mechanism of
14 infarction due to carotid stenosis, ischemia can also be caused by hypoperfusion.
15 Additionally, the reduced blood flow might result in impaired clearance of emboli
16 (washout).(8-10) The hemodynamic state of the brain in these patients is largely dependent on
17 collateral recruitment, which is mainly obtained through primary collateral routes of the circle
18 of Willis and secondarily obtained through subsidiary collaterals, including the ophthalmic
19 artery and leptomeningeal vessels.(11) Because of collateral recruitment, hypoperfusion does
20 not necessarily correspond to the grade of stenosis. Additionally, signs of impairment, such as
21 secondary collateral pathways and other known compensatory mechanisms, have been
22 independently associated with an increased risk of ischemic events. (7, 12-17) Although much
23 is known about impaired cerebral hemodynamics in patients with carotid stenosis and the
24 associated risk of future stroke, hemodynamic assessment is rarely considered when selecting
25 patients for intervention.(2)

26

1 Four-dimensional phase-contrast magnetic resonance imaging (4D-PCMRI) is a technique
2 that allows measurement of the blood flow rate (BFR) in major cerebral arteries individually,
3 simultaneously and noninvasively.(18) In a previous study using this technique, a correlation
4 was found between stenosis degree and BFR in the internal carotid artery (ICA) but not in the
5 middle cerebral artery (MCA), indicating that intracranial flow is maintained through
6 collaterals.(14) This has also been demonstrated in the past using perfusion techniques.(19)

7
8 We have previously shown, using 4D-PCMRI, that due to collateral recruitment, a laterality in
9 cerebral arterial BFR could not be explained solely by stenosis degree.(20) Therefore, we
10 hypothesized that by determining the ICA BFR rather than the stenosis degree, we might gain
11 a better understanding of cerebral hemodynamics in these patients. At length, this might help
12 further evaluate the potential of an evolving method for hemodynamic assessment that could
13 possibly be integrated into risk stratification of patients with carotid stenosis. The aim of the
14 current study was to evaluate how the BFR in the ICA relates to the BFR in cerebral arteries
15 in patients with carotid artery stenosis.

1 **METHODS**

2

3 **Patients**

4 Within a larger project, at the University of Umeå from 2012-2015, we prospectively
5 recruited consecutive patients being considered for carotid endarterectomy. (21) Patients were
6 eligible if they had a recent ischemic stroke or transient ischemic attack and a corresponding
7 stenosis of at least 50%. The inclusion criteria were modified Rankin Scale (mRS)(22) <3 and
8 Mini Mental State Exam (MMSE)(23) >23 points. The exclusion criteria were severe aphasia,
9 contralateral carotid occlusion, atrial fibrillation, previous ischemic events, or other diseases
10 affecting the central nervous system and contraindications to MRI. A total of 38 patients were
11 recruited with a mean age of 72 years. Twelve patients had bilateral stenosis $\geq 50\%$, the
12 contralateral stenoses were nonsymptomatic. The patient characteristics are shown in Table 1.
13 The participants gave their written consent after receiving oral and written information about
14 the procedures of the study. Approval was obtained by The Ethical Review Board of Umeå
15 University, DNR 2011-440-31 M, and the study was performed in accordance with the
16 guidelines of the Declaration of Helsinki.

17

18 **Grading of stenosis**

19 Thirty-one patients underwent computed tomography angiography (CTA), and stenosis was
20 graded according to the NASCET(24). Seven patients had contraindications to intravenous
21 contrast and were thus examined by carotid Doppler ultrasound. The highest peak velocity in
22 the stenosis was translated to a stenosis grade.(25)

23

24 **MRI examination**

25 Blood flow measurements for the cerebral arteries were obtained with a 3 Tesla MRI scanner
26 (GE Discovery MR 750, Waukesha, WI, USA) using 4D-PCMRI. The median time from

1 symptom onset to MRI examination was 6 days (range 2-60 days). The scanning time was
2 approximately 9 minutes. For each patient, blood flow velocities were obtained for all major
3 cerebral arteries, i.e., 19 locations. The technique has been previously described.(21)

4

5 **Imaging analysis and blood flow assessment**

6 BFR measurements, in milliliters per minute, were calculated in MATLAB (The Mathworks,
7 Natick, MA) using software developed in-house.(26) BFR was calculated by two
8 investigators, LZ and AW. The images were deidentified, and the investigators were blinded
9 to the side and degree of stenosis as well as the age, sex and medical history of the patient.
10 BFR was measured at the locations demonstrated in *Figure 1*. Ophthalmic arteries (OAs),
11 which are not featured, were measured close to their origin from the ICA. Total cerebral
12 blood flow (tCBF) was obtained by adding the BFR of the ICAs and VAs on both sides.
13 Hemisphere blood supply was defined as the sum of the BFR in the MCA, A2 segment of the
14 anterior cerebral artery (ACA2) and P2 segment of the posterior cerebral artery (PCA2) on the
15 corresponding side. Invisible or hypoplastic arteries were set as 0 mL/min blood flow. For the
16 ICA, MCA, A1 segment of the anterior cerebral artery (ACA1), P1 segment of the posterior
17 cerebral artery (PCA1) and PCA2, the mean BFR calculated by the two investigators was
18 used. If there was a difference of 20% or more, the two investigators remeasured the BFR in
19 that artery collectively. For the posterior communicating artery (PCoA), OA and ACA2, the
20 two investigators measured the BFR collectively. Because the ACA2 on the left and right are
21 too close together, measurement of the BFR in those arteries was performed using manual
22 segmentation.

23

24 **Definition of low blood flow rate in the internal carotid artery**

1 To estimate the normal value for ICA blood flow, the PubMed Database was searched to
2 identify trials that measured cerebral blood flow using 2D- or 4D-PCMRI in healthy elderly
3 subjects. After initial screening, four studies were identified that presented values for ICA
4 BFR. One study was excluded because not all groups of included subjects consisted of
5 healthy subjects.(27) One study was excluded because the subjects in the appropriate age
6 category only had a sample size of n=4.(28) Two studies with a total of 118 patients aged 61-
7 80 were considered relevant.(29, 30) A pooled estimate for a normal ICA BFR was calculated
8 to be 238 ± 39 mL/min. The threshold for ICA BFR was set to 160 mL/min, two standard
9 deviations below normal.

10

11 The study population in our study was dichotomized into two subgroups based on the BFR in
12 the ipsilateral ICA to stenosis: ICA reduced flow (n=20) with an ICA BFR <160 mL/min and
13 ICA preserved flow (n=18) with an ICA BFR \geq 160 mL/min. BFR.

14

15 **Statistical analysis**

16 A paired *t* test was used to compare the mean BFR between the ipsilateral (carotid stenosis)
17 side and the contralateral side. The patients were dichotomized into 2 subgroups based on
18 ICA reduced flow and ICA preserved flow. An independent sample *t* test was used to
19 compare the mean BFR between the two subgroups. The flow in an artery was set as 0
20 mL/min if the artery was either invisible or hypoplastic and its blood flow was not
21 measurable. Values are expressed as the mean \pm SD, and the statistical significance threshold
22 was set as $P<0.05$. The data were analyzed using SPSS statistics, version 27 (IBM, Chicago,
23 IL).

1 **RESULTS**

2 **Arterial inflow to the brain**

3 There was no difference in tCBF between the group with reduced ICA flow (n=20) and the
4 group with preserved ICA flow (n=18) (p=0.11) (Table 2). When comparing the contribution
5 to tCBF between the two groups, ipsilateral ICA contributed to 13±12% in the group with
6 reduced ICA flow as opposed to 35±6% in the group with preserved ICA flow (p<0.001).
7 This was compensated in the group with reduced ICA flow by a contribution of the
8 contralateral ICA, which was higher compared to the group with preserved ICA flow
9 (53±13% vs. 37±7%; p<0.001). Correspondingly, the posterior supply collectively explained
10 34±12% and 27±8% of tCBF in the two groups, respectively.

11

12 **Flow in the Circle of Willis**

13 In summary, the difference in collateral circulation between the two groups was most
14 pronounced in the ACA1s, where the BFR was reversed ipsilaterally and increased
15 contralaterally in the group with reduced ICA flow. For the posterior collaterals (PCA1 and
16 PCoA), there was an augmented BFR (reversed in PCoA) toward the ipsilateral side in the
17 group with reduced ICA flow. The OA BFR was also reversed in this group (Table 2). In the
18 group with reduced ICA flow, a laterality was found in all cerebral arteries when comparing
19 the BFR in ipsilateral and contralateral arteries, while there was no BFR laterality in the group
20 with preserved ICA flow (Table 2 and Figure 2).

21

22 **Hemispheric blood supply**

23 Despite evident collateral recruitment in the group with reduced ICA flow, the BFR in the
24 ipsilateral MCA was still significantly lower compared to the contralateral side and compared
25 to the group with preserved ICA flow (Table 2). Notwithstanding the compensatory increase

1 in the ipsilateral PCA2 BFR, the total supply of the hemisphere was still significantly lower
2 than that on the contralateral side (on the ipsilateral (228 ± 53 mL/min vs. 256 ± 65 mL/min;
3 $P < 0.01$). No laterality was evident in the group with preserved ICA flow for individual
4 arteries (Table 2, Figure 2) or for hemispheric blood supply ($P = 0.29$). The laterality in the
5 hemispheric blood supply is illustrated in *Figure 3*.

6

7 **Characteristics and vascular features of the two subgroups**

8 None of the characteristics described in Table 1 differed significantly between the two
9 subgroups. The mean stenosis degree in the symptomatic ICA was 80% in the group with
10 reduced ICA flow and 72% in the group with preserved ICA flow ($P = 0.09$). In the group with
11 reduced ICA flow, 35% had bilateral stenosis, and the mean degree of contralateral ICA
12 stenosis was 46%. In the group with preserved ICA flow, 28% had bilateral stenosis, and the
13 mean degree of contralateral ICA stenosis was 36%.

14

1 **DISCUSSION**

2 Our study has shown that distal cerebral hemodynamics can be markedly different in
3 subgroups of patients with similar stenosis grade but different ICA blood flow. PCMRI can
4 therefore be a tool for hemodynamic assessment that could possibly be integrated into
5 preoperative risk stratification of patients with carotid stenosis.

6

7 **4D-PCMRI and possible clinical applications**

8 4D-PCMRI allows for direct measurement of BFR in the cerebral arteries simultaneously and
9 noninvasively. While perfusion methods are only able to look at the end result, with 4D-
10 PCMRI, one can assess the blood supply to different regions of the hemispheres and study the
11 routes by which the blood supply gets there.

12

13 In patients with carotid artery disease, possible clinical applications of the technique consist
14 of the opportunity to select patients more carefully with a potential benefit by intervention.
15 This might be particularly relevant in patients with asymptomatic stenosis. Signs of
16 hemodynamic impairment along with severe stenosis have been associated with an increased
17 risk of future ischemic stroke, independent of symptomatic presentation.⁽¹²⁾ Furthermore, in
18 a recent cohort of asymptomatic patients, improved hemodynamics following carotid
19 revascularization was associated with improved cognitive function.⁽³²⁾ Some of the patients
20 with reduced ICA flow in this study are likely patients with near-occlusion, a diagnosis that is
21 often overlooked in routine practice and where the recommended treatment differs.⁽³³⁻³⁵⁾
22 Our results indicate that in these patients, the reduced ICA flow affects the flow in more distal
23 cerebral arteries.

24

25

1

2 **Inadequate collateral compensation in patients with abnormally low ICA flow**

3 We have previously investigated how the degree of stenosis relates to the cerebral arterial
4 BFR. We failed to show that severe stenosis ($\geq 70\%$) was associated with reduced flow in the
5 ipsilateral MCA.(20) Previous studies have also demonstrated that the severity of stenosis is
6 not the sole determinant for ICA blood flow as residual lumen and stenosis length are also
7 involved.(14, 36) Furthermore, it is well recognized that the severity of stenosis alone cannot
8 predict the hemodynamic impact of carotid artery disease because of collateral
9 recruitment.(19) With our study, we were able to demonstrate that on a group level, patients
10 with reduced ICA flow are also subject to hemodynamic changes in more distal arteries,
11 independent of the severity of the stenosis. The reduced MCA flow could possibly increase
12 the risk of future ischemic events due to impaired clearance of emboli and vulnerability to
13 hypoxia and fluctuations in blood pressure.(7, 8)

14

15 The finding of reduced blood flow in the ipsilateral MCA in the group with reduced ICA flow
16 suggests that in these patients, collateral flow did not provide sufficient compensation. The
17 detected BFR reduction was inspite of a potentially reduced vascular resistance by the
18 autoregulatory vasodilation. However, the presence and degree of autoregulatory vasodilation
19 were not assessed in the patients in this study.

20

21 Another possible explanation for a reduction in MCA flow is decreased metabolic demand as
22 a result of neuronal injury. Although this was not accounted for in this study, there was no
23 difference between the two subgroups regarding the presence of ischemic lesions on MRI, nor
24 was there a difference in the MCA BFR between the patients with or without ischemic lesions
25 on MRI (*Table 1*). In addition, we have previously shown that a low BFR in the MCA, seen in

1 a subgroup of patients with collateral recruitment before carotid endarterectomy (CEA), was
2 normalized after CEA. This finding pointed toward a hemodynamic disturbance in the MCA
3 territory as the main reason for the low MCA BFR in this group of patients.(37)

4

5 **Collateral recruitment and laterality in hemisphere blood supply**

6 When comparing the two groups, it is evident that in the group with reduced ICA flow,
7 collateral flow is mainly derived from the contralateral ICA through the anterior arteries of
8 the circle of Willis. As previously suggested, it seems that collateral flow via this route
9 supplies the ACA2 territory bilaterally.(21) However, when comparing the ipsilateral and
10 contralateral sides, blood flow in the ipsilateral ACA2 is still decreased, indicating no further
11 compensation via ACA2. In contrast, the augmentation of flow via posterior collaterals
12 toward the ipsilateral side resulted in an increased BFR in ipsilateral PCA2, which might
13 indicate compensation via leptomeningeal collaterals.(38) Additionally, in patients with
14 reduced ICA flow, this collateral recruitment was not sufficient to provide a symmetrical
15 distribution to the two hemispheres. Collateral flow from the contralateral ICA could
16 reasonably be impeded by the presence of a stenosis on that side as well. However, the two
17 subgroups did not differ regarding the presence or degree of contralateral stenosis.

18

19 **Limitations**

20 The limitations of this study are its small sample size and the fact that the included patients
21 were heterogeneous in regard to their ipsilateral and contralateral stenosis. However, the study
22 population consisted of consecutive patients considered for carotid endarterectomy and is
23 therefore representative of routine clinical practice.

24 With 4D-PCMRI, there are some method-specific problems with distorting noise. It is likely
25 that very low flow velocities cannot be distinguished from noise, and the complete absence of

1 flow could not be firmly established. 4D-PCMRI can also be distorted in the region of the
2 orbit, making it more difficult to measure flow in the OA.

3

4 Finally, a limitation of this study is the lack of a control group to determine normal ICA blood
5 flow. By using data from previous trials, however, normal ICA blood flow could be estimated
6 based on a larger population.

7

8 **Conclusion**

9 Reduced ICA flow was associated with reduced BFR in the ipsilateral MCA, irrespective of
10 the stenosis grade. Collateral recruitment was evident: the anterior collaterals supplied the
11 ACAs bilaterally, and there was an augmentation of flow toward the ipsilateral side via the
12 posterior collaterals. However, collateral recruitment was not sufficient to maintain normal
13 blood flow to the MCA territory, nor did it provide a symmetrical distribution to the two
14 hemispheres. Thus,

15 4D-PCMRI revealed compromised cerebral blood flow in patients with carotid stenosis,
16 which was not possible to detect by solely analyzing the stenosis degree. In patients with
17 reduced ICA flow, collateral recruitment was not sufficient to maintain symmetrical BFR
18 distribution to the two hemispheres. It is plausible that, with further study, this technique
19 might be used to improve risk stratification for these patients.

1 **ACKNOWLEDGEMENTS**

2 **Sources of Funding**

3 The following financial support has been conducted for the research, authorship, and
4 publication of this article: the Swedish Research Council, grant numbers 2015–05616; 2017–
5 04949; the County Council of Västerbotten; and the Swedish Heart and Lung Foundation,
6 grant number 20140592.

7

8 **DISCLOSURES**

9 There are no conflicts of interest to report.

10

References

1. H. J. M. Barnett *et al.*, Beneficial effect of carotid endarterectomy in symptomatic patients with high-grade carotid stenosis. *N Engl J Med* **325**, 445-453 (1991).
2. A. R. Naylor *et al.*, Editor's Choice - Management of Atherosclerotic Carotid and Vertebral Artery Disease: 2017 Clinical Practice Guidelines of the European Society for Vascular Surgery (ESVS). *Eur J Vasc Endovasc Surg* **55**, 3-81 (2018).
3. J. F. Meschia *et al.*, Guidelines for the primary prevention of stroke: a statement for healthcare professionals from the American Heart Association/American Stroke Association. *Stroke* **45**, 3754-3832 (2014).
4. Endarterectomy for asymptomatic carotid artery stenosis. Executive Committee for the Asymptomatic Carotid Atherosclerosis Study. *Jama* **273**, 1421-1428 (1995).
5. N. Mohammed, S. S. Anand, Prevention of disabling and fatal strokes by successful carotid endarterectomy in patients without recent neurological symptoms: randomized controlled trial. MRC asymptomatic carotid surgery trial (ACST) collaborative group. *Lancet* 2004; 363: 1491-502. *Vasc Med* **10**, 77-78 (2005).
6. R. W. Hobson, 2nd *et al.*, Efficacy of carotid endarterectomy for asymptomatic carotid stenosis. The Veterans Affairs Cooperative Study Group. *N Engl J Med* **328**, 221-227 (1993).
7. C. J. Klijn, L. J. Kappelle, Haemodynamic stroke: clinical features, prognosis, and management. *Lancet Neurol* **9**, 1008-1017 (2010).
8. L. R. Caplan, M. Hennerici, Impaired clearance of emboli (washout) is an important link between hypoperfusion, embolism, and ischemic stroke. *Arch Neurol* **55**, 1475-1482 (1998).
9. L. R. Caplan, K. S. Wong, S. Gao, M. G. Hennerici, Is hypoperfusion an important cause of strokes? If so, how? *Cerebrovasc Dis* **21**, 145-153 (2006).
10. K. S. Wong *et al.*, Mechanisms of acute cerebral infarctions in patients with middle cerebral artery stenosis: a diffusion-weighted imaging and microemboli monitoring study. *Ann Neurol* **52**, 74-81 (2002).
11. D. S. Liebeskind, Collateral circulation. *Stroke* **34**, 2279-2284 (2003).
12. M. Reinhard *et al.*, Cerebrovascular reactivity predicts stroke in high-grade carotid artery disease. *Neurology* **83**, 1424-1431 (2014).
13. M. D. Ginsberg, The cerebral collateral circulation: Relevance to pathophysiology and treatment of stroke. *Neuropharmacology* **134**, 280-292 (2018).
14. S. F. Shakur *et al.*, Effects of extracranial carotid stenosis on intracranial blood flow. *Stroke* **45**, 3427-3429 (2014).
15. W. J. Powers, Cerebral hemodynamics in ischemic cerebrovascular disease. *Ann Neurol* **29**, 231-240 (1991).
16. A. Gupta *et al.*, Oxygen extraction fraction and stroke risk in patients with carotid stenosis or occlusion: a systematic review and meta-analysis. *AJNR Am J Neuroradiol* **35**, 250-255 (2014).
17. C. P. Derdeyn *et al.*, Variability of cerebral blood volume and oxygen extraction: stages of cerebral haemodynamic impairment revisited. *Brain* **125**, 595-607 (2002).
18. T. Dunås, M. Holmgren, A. Wåhlin, J. Malm, A. Eklund, Accuracy of blood flow assessment in cerebral arteries with 4D flow MRI: Evaluation with three segmentation methods. *J Magn Reson Imaging* **50**, 511-518 (2019).
19. W. J. Powers, G. A. Press, R. L. Grubb, Jr., M. Gado, M. E. Raichle, The effect of hemodynamically significant carotid artery disease on the hemodynamic status of the cerebral circulation. *Ann Intern Med* **106**, 27-34 (1987).

- 1 20. L. Zarrinkoob *et al.*, Blood Flow Lateralization and Collateral Compensatory
2 Mechanisms in Patients With Carotid Artery Stenosis. *Stroke* **50**, 1081-1088 (2019).
- 3 21. L. Zarrinkoob *et al.*, Blood Flow Lateralization and Collateral Compensatory
4 Mechanisms in Patients With Carotid Artery Stenosis. *Stroke* **50**, 1081-1088 (2019).
- 5 22. J. C. van Swieten, P. J. Koudstaal, M. C. Visser, H. J. Schouten, J. van Gijn,
6 Interobserver agreement for the assessment of handicap in stroke patients. *Stroke* **19**,
7 604-607 (1988).
- 8 23. M. F. Folstein, S. E. Folstein, P. R. McHugh, "Mini-mental state". A practical method
9 for grading the cognitive state of patients for the clinician. *J Psychiatr Res* **12**, 189-
10 198 (1975).
- 11 24. North American Symptomatic Carotid Endarterectomy Trial. Methods, patient
12 characteristics, and progress. *Stroke* **22**, 711-720 (1991).
- 13 25. A. S. Jahromi, C. S. Cinà, Y. Liu, C. M. Clase, Sensitivity and specificity of color
14 duplex ultrasound measurement in the estimation of internal carotid artery stenosis: a
15 systematic review and meta-analysis. *J Vasc Surg* **41**, 962-972 (2005).
- 16 26. A. Wåhlin *et al.*, Measuring pulsatile flow in cerebral arteries using 4D phase-contrast
17 MR imaging. *AJNR Am J Neuroradiol* **34**, 1740-1745 (2013).
- 18 27. P. C. Buijs *et al.*, Effect of age on cerebral blood flow: measurement with ungated
19 two-dimensional phase-contrast MR angiography in 250 adults. *Radiology* **209**, 667-
20 674 (1998).
- 21 28. M. Zhao *et al.*, Regional cerebral blood flow using quantitative MR angiography.
22 *AJNR Am J Neuroradiol* **28**, 1470-1473 (2007).
- 23 29. L. Zarrinkoob *et al.*, Blood flow distribution in cerebral arteries. *J Cereb Blood Flow*
24 *Metab* **35**, 648-654 (2015).
- 25 30. S. Amin-Hanjani, X. Du, D. K. Pandey, K. R. Thulborn, F. T. Charbel, Effect of age
26 and vascular anatomy on blood flow in major cerebral vessels. *J Cereb Blood Flow*
27 *Metab* **35**, 312-318 (2015).
- 28 31. C. P. Derdeyn, R. L. Grubb, Jr., W. J. Powers, Cerebral hemodynamic impairment:
29 methods of measurement and association with stroke risk. *Neurology* **53**, 251-259
30 (1999).
- 31 32. J. L. Whooley *et al.*, Carotid Revascularization and Its Effect on Cognitive Function:
32 A Prospective Nonrandomized Multicenter Clinical Study. *J Stroke Cerebrovasc Dis*
33 **29**, 104702 (2020).
- 34 33. E. Johansson, A. J. Fox, Carotid Near-Occlusion: A Comprehensive Review, Part 2--
35 Prognosis and Treatment, Pathophysiology, Confusions, and Areas for Improvement.
36 *AJNR Am J Neuroradiol* **37**, 200-204 (2016).
- 37 34. E. Johansson, T. Gu, R. I. Aviv, A. J. Fox, Carotid near-occlusion is often overlooked
38 when CT angiography is assessed in routine practice. *Eur Radiol* **30**, 2543-2551
39 (2020).
- 40 35. E. Johansson, L. Zarrinkoob, A. Wåhlin, A. Eklund, J. Malm, Diagnosing Carotid
41 Near-Occlusion with Phase-Contrast MRI. *AJNR Am J Neuroradiol* **42**, 927-929
42 (2021).
- 43 36. A. F. Douglas *et al.*, Extracranial carotid plaque length and parent vessel diameter
44 significantly affect baseline ipsilateral intracranial blood flow. *Neurosurgery* **69**, 767-
45 773; discussion 773 (2011).
- 46 37. L. Zarrinkoob, A. Wåhlin, K. Ambarki, A. Eklund, J. Malm, Quantification and
47 mapping of cerebral hemodynamics before and after carotid endarterectomy, using
48 four-dimensional flow magnetic resonance imaging. *J Vasc Surg*, (2021).

- 1 38. S. Ruland *et al.*, Leptomeningeal collateral volume flow assessed by quantitative
2 magnetic resonance angiography in large-vessel cerebrovascular disease. *J*
3 *Neuroimaging* **19**, 27-30 (2009).
4

Table 1. Patient Characteristics

Patient Characteristics (n=38)	
Age, years (range)	72 (58-80)
Sex, M/F	27/11
Hypertension, %	79
Hyperlipidemia, %	55
Diabetes Mellitus, %	24
Previous TIA, %	22
Ever smoker, %	72
BMI, kg/m ² ± SD	27±4
Systolic BP, mmHg ± SD	138±17
Diastolic BP, mmHg ± SD	71±10
NIHSS, (range)	0 (0-6)
mRS, (range)	0 (0-2)
MMSE, points ± SD	27±2
Subacute ischemic lesion on MRI, %	47
Ipsilateral ICA stenosis, mean % ± SD	76±14
Contralateral ICA stenosis, mean % ± SD	41±26
Bilateral stenosis ≥50%, %	31

1 **Table 1.** BMI indicates body mass index; BP, blood pressure; F, female; ICA, internal carotid
2 artery; M male; MMSE, Mini-Mental State Exam; MRI, magnetic resonance imaging; mRS,
3 modified Ranking Scale; NIHSS, National Institutes of Health Stroke Scale; SD, standard
4 deviation; TIA, transient ischemic attack.

Table 2. Mean BFR in cerebral arteries

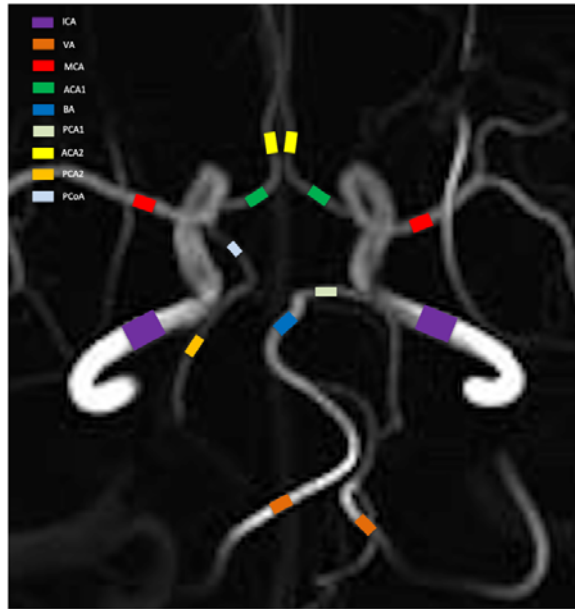
Arteries	ICA reduced flow (≤ 160 mL/min)		ICA preserved flow (> 160 mL/min)		ICA reduced flow/ ICA preserved flow <i>P</i> value
	BFR mean \pm SD (mL/min)	ipsi/contra <i>P</i> value	BFR, mean \pm SD (mL/min)	ipsi/contra <i>P</i> value	
tCBF	543 \pm 116	NA	595 \pm 77	NA	0.11
ICA ipsi	67 \pm 60	<0.001*	208 \pm 34	0.26	<0.001* †
ICA contra	294 \pm 113		224 \pm 51		0.02*
BA	169 \pm 62	NA	142 \pm 51	NA	0.15
ACA1 ipsi	-6 \pm 47	<0.001*	81 \pm 27	0.93	<0.001*
ACA1 contra	152 \pm 79		82 \pm 41		<0.001*
PCA1 ipsi	89 \pm 56	<0.01*	56 \pm 32	0.55	<0.05
PCA1 contra	45 \pm 39		52 \pm 26		0.49
PCoA ipsi	-11 \pm 27	0.04*	2 \pm 29	0.51	0.15
PCoA contra	13 \pm 35		7 \pm 18		0.51
OA ipsi	-7 \pm 14	<0.01*	3 \pm 8	0.14	<0.01*
OA contra	6 \pm 7		5 \pm 6		0.37
MCA ipsi	108 \pm 32	<0.001*	136 \pm 24	0.65	<0.01*
MCA contra	141 \pm 41		138 \pm 29		0.78
ACA2 ipsi	54 \pm 20	0.01*	59 \pm 17	0.57	0.22
ACA2 contra	62 \pm 22		61 \pm 19		0.42
PCA2 ipsi	67 \pm 31	0.04*	56 \pm 15	0.43	0.15
PCA2 contra	53 \pm 23		58 \pm 14		0.47

1

1 **Table 2. Comparison between the two subgroups based on reduced or preserved BFR.**

2 ACA1, A1 segment of the anterior cerebral artery; ACA2, A2 segment of the anterior cerebral
3 artery; BA, basilar artery; BFR, blood flow rate; contra, contralateral; ICA, internal carotid
4 artery; ipsi, ipsilateral; MCA, middle cerebral artery; NA, not applicable; OA, ophthalmic
5 artery; PCA1, P1 segment of the posterior cerebral artery; PCA2, P2 segment of the posterior
6 cerebral artery; PCoA, posterior communicating artery; tCBF, total cerebral blood flow. *
7 indicates $P < 0.05$, † by definition of the subgroups.

1 **Figure 1.**

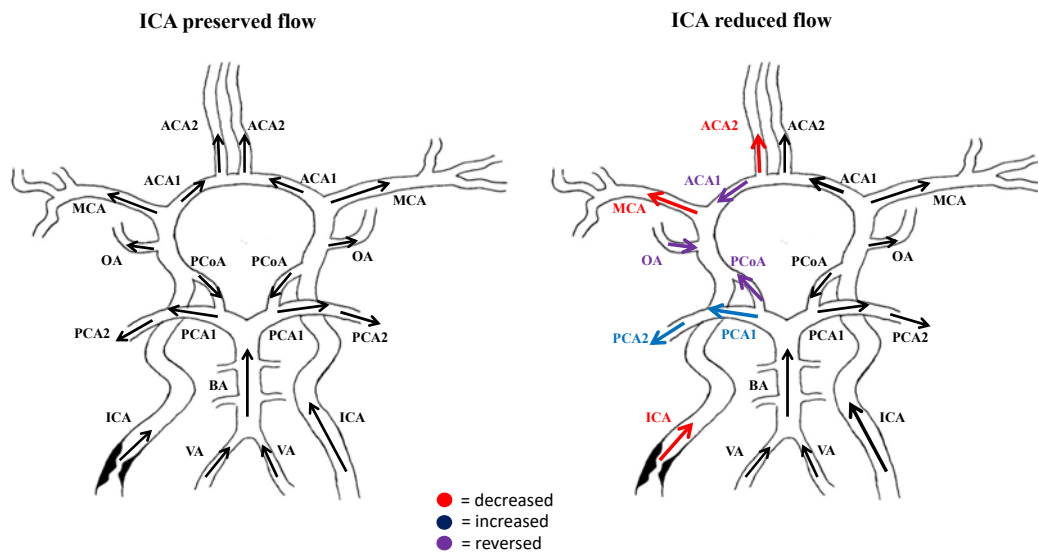


2
3

1
2

3 **Figure 1.** Locations for BFR measurements. ICAs, internal carotid arteries, were measured at
4 the level of the C3-C4 segment: VAs, vertebral arteries, intracranially at the level of the V4
5 segment: BA, basilar artery, below the superior cerebellar artery. MCA, middle cerebral
6 arteries, was measured at the M1 level; A1 segment of anterior communicating artery
7 (ACA1), proximally to the anterior communicating artery and A2 segment (ACA2), distally
8 to the anterior communicating artery: PCAs, posterior cerebral arteries, proximally (PCA1)
9 and distally (PCA2) to the aperture of PCoA, posterior communicating artery.

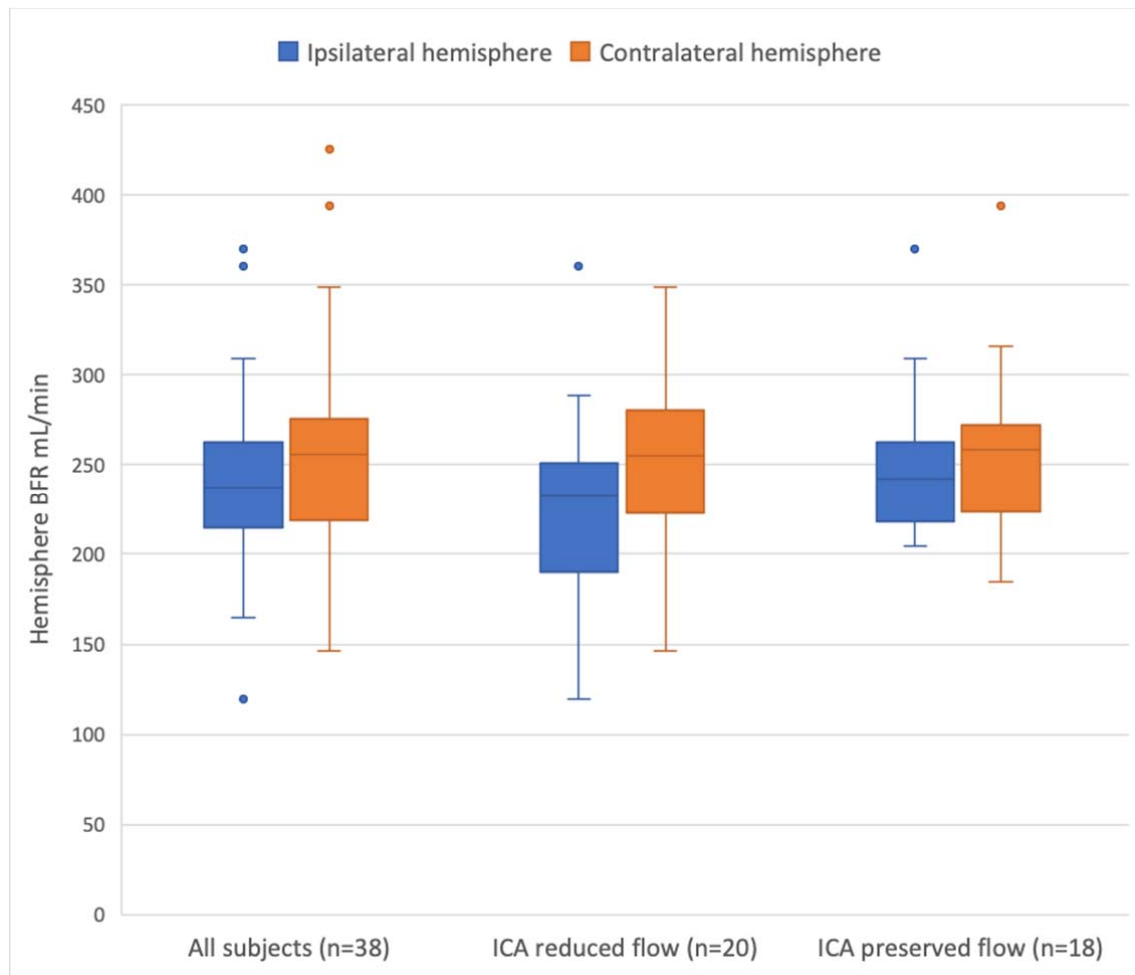
Figure 2.



1

1 **Figure 2.** Comparison between the ipsilateral (left) and contralateral (right) sides in the two
2 subgroups. Red indicates decreased BFR, purple indicates reversed BFR, and blue indicates
3 increased BFR. Abbreviations: ACA1, A1 segment of the anterior cerebral artery; ACA2, A2
4 segment of the anterior cerebral artery; BA, basilar artery; ICA, internal carotid artery; MCA,
5 middle cerebral artery; OA, ophthalmic artery; PCA1, P1 segment of the posterior cerebral
6 artery; PCA2, P2 segment of the posterior cerebral artery; PCoA, posterior communicating
7 artery.

1 **Figure 3.**



1 **Figure 3. Ipsilateral and contralateral hemisphere blood supply**

2 Hemispheric blood supply (ACA2, MCA and PCA2 BFR) in the entire cohort as well as
3 within the two subgroups. A significant difference ($p<0.01$) between ipsilateral and
4 contralateral hemisphere blood supply was seen in patients with reduced ICA flow. BFR
5 indicates blood flow rate; ICA, internal carotid artery.