

# Interobserver Variability in Target Definition for Stereotactic Arrhythmia Radioablation

Martijn H. van der Ree, MD<sup>1</sup>, Phillip S. Cuculich, MD<sup>2</sup>, Marcel van Herk, PhD<sup>3</sup>, Geoffrey D. Hugo, PhD<sup>4</sup>, Jippe C. Balt, MD, PhD<sup>5</sup>, Matthew Bates, MD<sup>6</sup>, Gordon Ho, MD<sup>7</sup>, Etienne Pruvot, MD<sup>8</sup>, Claudia Herrera-Siklody, MD<sup>8</sup>, Wiert F. Hoeksema, MD<sup>1</sup>, Justin Lee, MD<sup>9</sup>, Michael S. Lloyd, MD<sup>10</sup>, Michiel Kemme, MD, PhD<sup>2</sup>, Frederic Sacher, MD, PhD<sup>11</sup>, Romain Tixier, MD<sup>11</sup>, Brian V. Balgobind, MD, PhD<sup>12</sup>, Clifford G. Robinson, MD<sup>4</sup>, Coen R.N. Rasch, MD, PhD<sup>13</sup> and Pieter G. Postema, MD, PhD<sup>1</sup>

- 1) *Amsterdam UMC location University of Amsterdam, Department of Cardiology, Meibergdreef 9, Amsterdam, the Netherlands; Amsterdam Cardiovascular Sciences, Heart Failure and arrhythmias, Amsterdam, the Netherlands*
- 2) *Department of Internal Medicine, Cardiovascular Division, Washington University School of Medicine, St. Louis, Missouri, USA*
- 3) *Department of Radiation Oncology, University of Manchester, Manchester Academic Health Centre, Manchester, UK*
- 4) *Department of Radiation Oncology, Washington University School of Medicine, St. Louis, Missouri, USA*
- 5) *Department of Cardiology, St. Antonius Hospital, Nieuwegein, the Netherlands*
- 6) *Department of Cardiology, South Tees Hospitals NHS Foundation Trust, Middlesbrough, UK.*
- 7) *Department of Medicine, Division of Cardiology Cardiac Electrophysiology, Cardiovascular Institute, University of California San Diego, San Diego, California, USA.*
- 8) *Heart and Vessel Department, Service of Cardiology, Lausanne University Hospital and University of Lausanne, Lausanne, Switzerland.*
- 9) *Department of Immunity, Infection and Cardiovascular Disease, University of Sheffield Sheffield, UK.*
- 10) *Section of Cardiac Electrophysiology, Emory University, Atlanta, Georgia, USA*
- 11) *Cardiac arrhythmia department, IHU LIRYC, Bordeaux University Hospital, Bordeaux, France.*
- 12) *Department of Radiation Oncology, Amsterdam UMC, Amsterdam, the Netherlands*
- 13) *Department of Radiation Oncology, LUMC, Leiden, the Netherlands*

**Words:** 4725

**References:** 24

**Figures and tables:** 5

**Keywords:** cardiac radioablation, stereotactic arrhythmia radiotherapy, stereotactic arrhythmia radioablation, ventricular tachycardia, interobserver variability

**Clinical Trial Registration Information:** not applicable

1 **ABSTRACT**

2 **Background:**

3 Stereotactic arrhythmia radioablation (STAR) is emerging as a potential new therapy for patients  
4 with refractory ventricular tachycardia (VT). The arrhythmogenic substrate (target) is synthesized  
5 from clinical and electro-anatomical information. This study was designed to evaluate the baseline  
6 interobserver variability in target delineation for STAR.

7 **Methods:**

8 Delineation software designed for research purposes was used. The study was split into three  
9 phases. Firstly, electrophysiologists (observers) delineated a well-defined structure in three  
10 patients (spinal canal). Secondly, observers delineated the arrhythmogenic cardiac VT target in  
11 three patients previously treated with STAR based on case descriptions. To evaluate baseline  
12 performance, a basic workflow approach was used, no advanced techniques were allowed (e.g.  
13 image integration). Thirdly, observers delineated three predefined segments from the cardiac 17-  
14 segment model. Interobserver variability was evaluated by assessing volumes, variation in distance  
15 to the median volume as expressed by the root-mean-square of the observer standard deviation  
16 (RMS SD) over the target volume, and the Dice coefficient.

17 **Results**

18 Ten electrophysiologists completed the study. For the first phase (spinal canal delineation),  
19 interobserver variability was low as indicated by low variation in distance to the median volume  
20 (RMS SD range: 0.02-0.02cm) and high Dice coefficients (mean:  $0.97 \pm 0.01$ ). In the second phase  
21 (VT-target delineation), distance to the median volume was large (RMS SD range: 0.52-1.02cm) and  
22 the Dice coefficients low (mean:  $0.40 \pm 0.15$ ). In the third phase (segment delineation), similar  
23 results were observed (RMS SD range: 0.51-1.55cm, Dice coefficient mean:  $0.31 \pm 0.21$ )

24 **Conclusions:**

25 Interobserver variability is high for manual delineation of the VT-target and ventricular segments.  
26 Difficulties in cardiac anatomical orientation on traditional radiation oncology CT scans appear to  
27 be an important driver of variability. This evaluation of the baseline observer variation shows that  
28 there is a need for methods and tools to improve variability and allows for future comparison of  
29 interventions aiming to reduce observer variation.

30

31

32

33

34

## 35 BACKGROUND

36 Ventricular tachycardia (VT) is a life-threatening cardiac arrhythmia that is associated with  
37 increased risk of mortality and morbidity. Implantation of an implantable cardioverter defibrillator  
38 (ICD) reduces mortality, but ICD therapies are accompanied with their own adverse outcomes.<sup>1,2</sup> In  
39 a subset of patients, the current state of the art, namely medication and radiofrequency ablation,  
40 fails. In these therapy-refractory patients, stereotactic arrhythmia radioablation (STAR, =cardiac  
41 radioablation) has been suggested as a bail-out procedure.<sup>3</sup> In STAR, the ventricular arrhythmogenic  
42 substrate is treated by applying ionizing radiation. STAR is associated with a relatively durable  
43 reduction in VT episodes and a mostly mild acute toxicity profile in patients in patients during the  
44 first year.<sup>3-10</sup> Longer term follow-up is currently accumulating.

45 With STAR, the arrhythmogenic substrate is first determined by aggregating clinical and electro-  
46 anatomical information to delineate a target substrate, upon which a 4D-CT scan is acquired for  
47 radiotherapy treatment planning purposes.<sup>11</sup> Variables include a 12-lead electrocardiograms during  
48 VT if present, electroanatomical data from prior VT ablation(s), and cardiac imaging such as  
49 echocardiography, cardiac computed tomography imaging (CT), cardiac magnetic resonance  
50 imaging (CMR), and myocardial perfusion scintigraphy or F18-FDG positron emission tomography. In  
51 contrast to traditional planning for malignant tumors, the pro-arrhythmic substrate is not directly  
52 visualized on the radiotherapy planning 4D-CT scan, which complicates target definition and  
53 delineation. Thus, delineation is based on subjective and collaborative synthesis of the aggregate of  
54 many variables, which is naturally prone to large interobserver variability.<sup>12,13</sup>

55 The interobserver variability for target delineation in malignant tumors has been well quantified  
56 using established methods.<sup>14</sup> Reducing observer variability allows for more standardized treatment,  
57 and, potentially, improved outcomes and reduced toxicity.<sup>15</sup>

58 To standardize and improve STAR treatment, the magnitude of interobserver variation in the  
59 context of STAR should be explored. This study was designed as a baseline study to evaluate and  
60 explore interobserver variation in target delineation for STAR. This baseline study will allow for  
61 future benchmarking of interventions aimed at reducing interobserver variation.

62

63

64

65

66

## 67 **METHODS**

### 68 **Delineation and observers**

69 Observers were required to have experience in the treatment of VT and of refractory VT using  
70 STAR. The observer panel was composed from electrophysiologists from different hospitals in  
71 Europe and the United States and observers were asked to perform contour delineation in three  
72 study phases.

73 To evaluate and explore the baseline interobserver variation in STAR, this study was split into three  
74 phases. Phase one consisted of delineation of a simple and well-defined anatomical structure: the  
75 spinal canal. This phase was used to verify whether the observers were able to delineate a well-  
76 defined structure using the study delineation software. In phase two, observers were asked to  
77 delineate the clinical target volume (CTV, VT-target without any additional uncertainty margins)  
78 for cardiac radioablation in three previously treated patients (see below: “Patients and CT-scans”)  
79 based on case descriptions with clinical and electro-anatomical information (text and images) as is  
80 common practice in STAR. Delineation instructions for the second phase included rules that are  
81 outlined in Table 1. To serve as a baseline study, a basic workflow approach was used and no  
82 advanced techniques such as resampling of the images in cardiology-preferred views and/or auto-  
83 segmentation of scans according to the AHA 17-segmented model or image integration were  
84 allowed.<sup>13,16,17</sup> The third phase consisted of delineation of 3 predefined segments from the 17-  
85 segmented model (1 segment for each patient); basal-anterior (segment 1), mid inferoseptal  
86 (segment 9) and apical lateral (segment 16).<sup>18</sup> This phase allowed exploration of interobserver  
87 variability in delineation of a predefined cardiac structure in conventional oriented scans (oriented  
88 to the body axes as traditionally used in radiation oncology, instead of the cardiac axes as  
89 traditionally used in cardiology). The delineation instructions and case descriptions are provided in  
90 the supplementary material.

### 91 **Patients and CT-scans**

92 Phase 1 of the study included three patients who previously underwent an invasive catheter  
93 ablation for VT in the Amsterdam UMC and had a CT scan of the (Patient A, B and C). To enhance  
94 the visibility and delineation of the spinal canal, slices comprising of only one vertebra were  
95 selected allowing the spinal canal to be completely surrounded by bony structure. For phase 2 and  
96 3 of the study, three patients suffering from therapy-refractory VT from the Washington University  
97 School of Medicine (St. Louis, Missouri, United States of America) previously treated with STAR  
98 were selected by the treating cardiologist (Patient 1, 2 and 3). Prior to STAR treatment, these  
99 patients underwent a 4D-CT scan for radiotherapy treatment planning purposes according to the  
100 local protocol (free breathing, patient in supine position with arms raised above the head in a  
101 forearm support, contrast enhancement when patient characteristics allowed and 1.5mm slice  
102 thickness). To reduce delineation times, slices with odd instance numbers were removed for phase  
103 2 and 3. Outcome in terms of VT burden and safety were not part of this study. The institutional  
104 ethical review boards approved the study and patients gave written informed consent.

## 105 Delineation tools

106 Specific delineation software, previously described in detail and specifically designed for research  
107 purposes, was used.<sup>14</sup> This software includes delineation tools that are included in most commercial  
108 radiotherapy planning systems, but also enables detailed analyses of the delineation process. In the  
109 software, axial slices, and coronal and sagittal reconstruction of the CT scans were available for  
110 delineation. Per study phase, the observers received personal passwords to delineate and edit  
111 contours within the software. Only after completion of a phase, the observers received a new  
112 password for the subsequent phase. Observers were only able to view their own delineations.

## 113 Contour analysis

114 Interobserver variability was evaluated by performing contour analysis. For every case in the three  
115 phases of the study, the delineated volumes were calculated per observer. The median surface of  
116 the delineated contours was computed in 3D, representing the 50% coverage of the contours  
117 (meaning that every voxel inside this median surface is delineated by  $\geq 50\%$  of the observers).<sup>19</sup> The  
118 variation in perpendicular distance from this median volume to each observer's individual contour  
119 was calculated. Distances larger than 20mm were set to 20mm. Then for each median volume point  
120 the standard deviation (SD) was calculated (and visualized) and the overall observer SD was  
121 expressed by the root-mean-square of the values in all points. The generalized Dice coefficient was  
122 calculated, which is a measure for overlap in volumes (Figure 1.).<sup>20</sup> The Dice coefficient is  
123 expressed from 0-1 with 0 indicating no overlap in volumes, whilst a value of 1 indicates complete  
124 overlap. The Dice coefficient was calculated for all combinations of observers and then averaged.  
125 Data are presented as mean $\pm$ standard deviation unless otherwise indicated.

## 126 RESULTS

127 Ten observers from seven tertiary care hospitals completed the study. Table 2 shows the results for  
128 the three phases of the study. From figure 2, delineations from representative cases for each study  
129 phase can be appreciated. In figure 3 the standard deviation is projected on the median surface of  
130 the delineations for representative cases in each phase of the study.

### 131 Phase 1: Spinal canal

132 Low interobserver variation was found for the first phase of the study, the delineation of the spinal  
133 canal. This is indicated by low variation in the volumes (table 2), low variation in distance to the  
134 median volume (RMS SD range 0.02-0.02cm), and very high Dice coefficients (mean: 0.97 $\pm$ 0.01)  
135 (table 2, figure 2A and 3A).

### 136 Phase 2: VT-target

#### 137 *Patient characteristics*

138 Patient characteristics of the 3 test cases for phase 2 included patients of age 54-70 years, all non-  
139 ischemic cardiomyopathy and left ventricular ejection fraction between 20-32%. Treatment  
140 included anti-arrhythmic drugs consisting of both amiodarone and mexiletine and previous catheter  
141 ablations (n $\geq$ 4 per patient). For targeting, 12-lead VT ECGs, noninvasive electrocardiographic

142 imaging (VT-exit site), echocardiography, CMR and nuclear imaging were available in all patients. In  
143 two (67%) patients, no recent electroanatomical maps from invasive catheter ablations were  
144 available and in one (33%) patient the diagnostic cardiac CT-scan was not available.

### 145 *Results*

146 Delineation of the VT-target based on case descriptions without advanced techniques resulted in  
147 high interobserver variability (table 2, figure 2B and 3B). The mean target volume ranged from 23-  
148 35 cm<sup>3</sup> and widely differed per observer (range: 9.9-61.4 cm<sup>3</sup>, table 2), as did the variation in  
149 distance to the median volume (RMS SD range: 0.5-1.02cm, table 2). The mean Dice coefficient for  
150 all three patients was 0.40±0.15 with a range of 0.32-0.47 indicating low volume overlap.

### 151 **Phase 3: Segments**

152 For phase 3, delineations of segments from the 17-segmented model showed equally high  
153 interobserver variation (table 2, figure 2C & 3C) as indicated by differences in delineated volumes  
154 between observers (table 2), large variation in distance to the median volume (RMS SD range: 0.51-  
155 1.55cm) and Dice coefficients below 0.5 (mean: 0.31±0.21)

## 156 **DISCUSSION**

157 In this baseline study, the interobserver variation in target volume delineation for STAR was  
158 explored. Firstly, we observed that cardiologist-electrophysiologists can delineate a well-defined  
159 anatomical structure with low interobserver variability in software specifically designed for this  
160 purpose. Secondly, for delineation of the VT-target using a basic workflow approach, interobserver  
161 variability was high. Lastly, interobserver variability was also high in delineation of predefined  
162 segments from the 17-segmented heart model.<sup>18</sup>

163 Our findings are congruent with previous studies evaluating interobserver variation in delineation of  
164 the VT-target for STAR treatment.<sup>12,13</sup> In these studies the VT-target delineations were compared to  
165 consensus delineations<sup>12</sup> or based on a head-head comparison of two observers.<sup>13</sup> This study adds to  
166 the prior data in its demonstration of interobserver variation in the context of STAR treatment  
167 among an experienced and intercontinental (Europe and America) group of observers basing our  
168 results on median volumes and comparisons for each combination of observers. Noteworthy, when  
169 comparing the different studies, it is important to acknowledge that this study was designed as a  
170 baseline study allowing to evaluate interventions to reduce observer variation in the future.

171 An important aspect of this analysis is our use of a control arm in phase 1, which shows the  
172 generally good agreement among our observer cohort for identifying basic radiologic borders. It  
173 supports the conclusion that variation in subsequent phases cannot be explained by difficulties in  
174 the delineation process itself, but are due to other sources of uncertainty, e.g. including  
175 challenging cardiac anatomic orientation in conventional radiation oncology CT scans oriented to  
176 the long-axis of the body (instead of following cardiac axes).

177 The high interobserver variation for VT-target delineation we observed in phase 2, does not  
178 necessarily mean there is no consensus on the pro-arrhythmic regions. In general, delineations did

179 show overlap (figure 2B). As can be appreciated from figure 3B, there appears to be consensus on  
180 the core of the pro-arrhythmic substrate. Importantly, during conventional ablation  
181 electrophysiologists interact with the substrate, and the effect of applying ablative energy can be  
182 directly observed. This allows for a better understanding of the pathophysiology and the  
183 localization of the VT-substrate underlying the ventricular arrhythmias and probably reduces  
184 variability due to direct feedback. It is important to acknowledge that in this study, observers did  
185 not have an interaction with the substrate and their delineations were merely based on text and  
186 images presented in the case descriptions. Although this is a limitation, such a workflow is also part  
187 of STAR treatment, because delineation is always separately performed and does not include direct  
188 feedback. Moreover, when patients referred for STAR treatment recently underwent a (high-risk)  
189 procedure in another hospital or are not able to undergo a (repeat) invasive catheter ablation due  
190 to limiting patient characteristics (e.g. insufficient access), an off-line aggregation of the electro-  
191 anatomical data (preferably together with the principal operator of the last VT-ablation) will be  
192 performed. The fact that Dice coefficients in phase 3 (predefined segments) was similar as in phase  
193 2 (VT-target) could indicate that the interpretation of electroanatomical information is not the  
194 main driver of the interobserver variation. Instead, difficulties in cardiac anatomical orientation on  
195 traditional radiation oncology CT-scans appears to be an important driver of variability (i.e. no  
196 contrast enhancement and orientations to the long-axis of the body). This is supported by the fact  
197 that in patient 1, in which the CT-scan was not contrast enhanced due to the patient's renal  
198 insufficiency, the variability was particularly high in both phase 2 and 3.

199 Indeed, in the third phase of the study, as mentioned above, we also found high interobserver  
200 variability.<sup>18</sup> This is likely explained by the fact that these segments are defined based on a cardiac  
201 orientation and not on the conventional orientation with planes perpendicular to the long-axis of  
202 the body as used in radiotherapy planning systems. While the 17-segmented model as structured  
203 approach interpretation and delineation of the VT-target has previously been proposed,<sup>16</sup> we here  
204 show that manual delineation in scans not angulated to the cardiac orientation leads to undesirable  
205 results.

## 206 **Potential interventions to reduce interobserver variation**

207 Now that the baseline interobserver variation in the context of STAR is determined, future research  
208 should focus on methods to reduce this variability. Several methods and techniques are already  
209 used in clinics worldwide.<sup>13,16,17,21</sup> Currently, the best strategy to reduce interobserver variation  
210 and improve efficacy and safety needs to be decipher.

### 211 *Reorientation and segmentation*

212 Firstly, cardiologist-electrophysiologists are used to the cardiac orientation in imaging. We  
213 therefore believe that re-orienting and re-sampling the images could ease delineation and reduce  
214 interobserver variation. As previously mentioned, the 17-segmented model could be used to  
215 enhance orientation in cardiac anatomy.<sup>16</sup> Based on our results and previous work, re-orientation

216 and segmentation should be performed in a (semi-)automated manner as this has been shown to be  
217 reproducible.<sup>17</sup>

### 218 *Delineation teams*

219 Currently, STAR treatment is only used in patients with refractory VT. As a result, eligible patients  
220 are highly complex. Peer review of targets has demonstrated to increase contour agreement in  
221 radiation oncology.<sup>22</sup> Potentially, by discussing and delineating cases with cardiologist-  
222 electrophysiologists (or in multi-disciplinary teams) a reduction in interobserver variability could be  
223 achieved as well.

### 224 *Image integration*

225 VT-target delineation is based on results of several electroanatomical modalities. Integrating all the  
226 different modalities into radiotherapy planning systems could result in lower interobserver  
227 variability. However, matching imaging data with electro-anatomical maps from previously  
228 performed catheter ablation will introduce new uncertainties and matching errors. This  
229 notwithstanding, efforts are being undertaken to develop robust methods for image  
230 integration.<sup>21,23,24</sup>

### 231 **Clinical implications**

232 High interobserver variation in STAR treatment is undesirable as this leads to differences in  
233 treatments between centers. It is unknown whether the variation observed results in differences in  
234 treatment plans or clinical outcomes, although this would be conceivable. The interobserver  
235 variation may seem clinically very high. However, when interpreting these results, it is important  
236 to consider that also for the current state-of-the-art treatments, e.g. VT ablation, differences  
237 between operators and hospitals exist (for example, due to experience of the operator, diagnostic  
238 work-up and different ablation techniques and strategies).<sup>1,2</sup> These differences, however, have not  
239 been quantified. In contrast, in radiation oncology there is a long history of great interest in  
240 interobserver variability in target delineation that has led to international harmonization and  
241 standardization. Therefore, we believe our results are not discouraging, but should rather be seen  
242 as a starting point to improve and standardize STAR treatment to improve efficacy and safety.  
243 Given the large observer variation one may wonder why the clinical outcomes of STAR are so good  
244 and it is possible that this is due the nature of the disease: contrary to a tumor it may be that STAR  
245 is effective if part of the substrate is irradiated.

### 246 **CONCLUSION**

247 The interobserver variation in the context of STAR treatment was high for delineation of the VT-  
248 target using a basic workflow approach. Difficulties in cardiac anatomical orientation on traditional  
249 radiation oncology CT scans appear to be an important driver of variability. To standardize STAR  
250 treatment, future studies should focus on interventions aiming to reduce this variability. The  
251 results of this baseline evaluation will allow for future comparisons of such interventions.



252 **ACKNOWLEDGEMENTS**

253 None.

254 **SOURCES OF FUNDING**

255 Dutch Heart Foundation grant 03-003-2021-T061 to Dr. Postema. This project has been supported  
256 by the Foundation “De Drie Lichten” in The Netherlands.

257 **DISCLOSURES**

258 Washington University receives research support from Varian Medical Systems, Siemens  
259 Healthineers, Mevion, and ViewRay. GDH: Consulting for Varian Medical Systems. GH: Equity in  
260 Vektor Medical Inc and consulting for Abbott and Kestra. JL: Consulting for Varian Medical Systems.  
261 CGR: Consulting for Varian Medical Systems.

262

263

264

265

266

267

268

269

270

271

272

273

274

275

276

277

278

## 279 REFERENCES

- 280 1. Al-Khatib SM, Stevenson WG, Ackerman MJ, Bryant WJ, Callans DJ, Curtis AB, Deal BJ,  
281 Dickfeld T, Field ME, Fonarow GC, et al. 2017 AHA/ACC/HRS Guideline for Management of  
282 Patients With Ventricular Arrhythmias and the Prevention of Sudden Cardiac Death: A  
283 Report of the American College of Cardiology/American Heart Association Task Force on  
284 Clinical Practice Guidelines and the Heart Rhythm Society. *Circulation*. 2018;138:e272-  
285 e391. doi: 10.1161/cir.0000000000000549
- 286 2. Zeppenfeld K, Tfelt-Hansen J, de Riva M, Winkel BG, Behr ER, Blom NA, Charron P, Corrado  
287 D, Dagres N, de Chillou C, et al. 2022 ESC Guidelines for the management of patients with  
288 ventricular arrhythmias and the prevention of sudden cardiac death. *Eur Heart J*. 2022. doi:  
289 10.1093/eurheartj/ehac262
- 290 3. van der Ree MH, Blanck O, Limpens J, Lee CH, Balgobind BV, Dieleman EMT, Wilde AAM, Zei  
291 PC, de Groot JR, Slotman BJ, et al. Cardiac radioablation—A systematic review. *Heart*  
292 *Rhythm*. 2020;17:1381-1392. doi: 10.1016/j.hrthm.2020.03.013
- 293 4. Carbucicchio C, Andreini D, Piperno G, Catto V, Conte E, Cattani F, Bonomi A, Rondi E,  
294 Piccolo C, Vigorito S, et al. Stereotactic radioablation for the treatment of ventricular  
295 tachycardia: preliminary data and insights from the STRA-MI-VT phase Ib/II study. *J Interv*  
296 *Card Electrophysiol*. 2021;62:427-439. doi: 10.1007/s10840-021-01060-5
- 297 5. Gianni C, Rivera D, Burkhardt JD, Pollard B, Gardner E, Maguire P, Zei PC, Natale A, Al-  
298 Ahmad A. Stereotactic arrhythmia radioablation for refractory scar-related ventricular  
299 tachycardia. *Heart Rhythm*. 2020;17:1241-1248. doi: 10.1016/j.hrthm.2020.02.036
- 300 6. Ho G, Atwood TF, Bruggeman AR, Moore KL, McVeigh E, Villongco CT, Han FT, Hsu JC,  
301 Hoffmayer KS, Raissi F, et al. Computational ECG mapping and respiratory gating to  
302 optimize stereotactic ablative radiotherapy workflow for refractory ventricular  
303 tachycardia. *Heart Rhythm O2*. 2021;2:511-520. doi: 10.1016/j.hroo.2021.09.001
- 304 7. Lee J, Bates M, Shepherd E, Riley S, Henshaw M, Metherall P, Daniel J, Blower A, Scoones  
305 D, Wilkinson M, et al. Cardiac stereotactic ablative radiotherapy for control of refractory  
306 ventricular tachycardia: initial UK multicentre experience. *Open Heart*. 2021;8. doi:  
307 10.1136/openhrt-2021-001770
- 308 8. Lloyd MS, Wight J, Schneider F, Hoskins M, Attia T, Escott C, Lerakis S, Higgins KA. Clinical  
309 experience of stereotactic body radiation for refractory ventricular tachycardia in advanced  
310 heart failure patients. *Heart Rhythm*. 2020;17:415-422. doi: 10.1016/j.hrthm.2019.09.028
- 311 9. Neuwirth R, Cvek J, Knybel L, Jiravsky O, Molenda L, Kodaj M, Fiala M, Peichl P, Felzl D,  
312 Januška J, et al. Stereotactic radiosurgery for ablation of ventricular tachycardia. *Europace*

- 313 : *European pacing, arrhythmias, and cardiac electrophysiology : journal of the working*  
314 *groups on cardiac pacing, arrhythmias, and cardiac cellular electrophysiology of the*  
315 *European Society of Cardiology*. 2019;21:1088-1095. doi: 10.1093/europace/euz133
- 316 10. van der Ree MH, Dieleman EMT, Visser J, Adam JA, de Bruin-Bon RHA, de Jong RMAJ,  
317 Hoeksema WF, Mosterd A, Balt JC, Planken RN, et al. Direct Clinical Effects of Cardiac  
318 Radioablation in the Treatment of a Patient With Therapy-Refractory Ventricular  
319 Tachycardia Storm. *Advances in Radiation Oncology*. 2022;7. doi:  
320 10.1016/j.adro.2022.100992
- 321 11. Cuculich PS, Schill MR, Kashani R, Mutic S, Lang A, Cooper D, Faddis M, Gleva M, Noheria A,  
322 Smith TW, et al. Noninvasive Cardiac Radiation for Ablation of Ventricular Tachycardia. *The*  
323 *New England Journal of Medicine*. 2017;377:2325-2336. doi: 10.1056/NEJMoa1613773
- 324 12. Boda-Heggemann J, Blanck O, Mehrhof F, Ernst F, Buergy D, Fleckenstein J, Tülümen E,  
325 Krug D, Siebert F-A, Zaman A, et al. Interdisciplinary Clinical Target Volume Generation for  
326 Cardiac Radioablation: Multicenter Benchmarking for the RADIOSURGERY for VENTRICULAR  
327 TACHYCARDIA (RAVENTA) Trial. *International Journal of Radiation Oncology\*Biophysics*.  
328 2021;110:745-756. doi: 10.1016/j.ijrobp.2021.01.028
- 329 13. Abdel-Kafi S, Sramko M, Omara S, de Riva M, Cvek J, Peichl P, Kautzner J, Zeppenfeld K.  
330 Accuracy of electroanatomical mapping-guided cardiac radiotherapy for ventricular  
331 tachycardia: pitfalls and solutions. *Europace*. 2021;23:1989-1997. doi:  
332 10.1093/europace/euab195
- 333 14. Steenbakkens RJ, Duppen JC, Fitton I, Deurloo KE, Zijp L, Uitterhoeve AL, Rodrigus PT,  
334 Kramer GW, Bussink J, De Jaeger K, et al. Observer variation in target volume delineation  
335 of lung cancer related to radiation oncologist-computer interaction: a 'Big Brother'  
336 evaluation. *Radiother Oncol*. 2005;77:182-190. doi: 10.1016/j.radonc.2005.09.017
- 337 15. Vinod SK, Min M, Jameson MG, Holloway LC. A review of interventions to reduce inter-  
338 observer variability in volume delineation in radiation oncology. *J Med Imaging Radiat*  
339 *Oncol*. 2016;60:393-406. doi: 10.1111/1754-9485.12462
- 340 16. Brownstein J, Afzal M, Okabe T, Harfi TT, Tong MS, Thomas E, Hugo G, Cuculich P, Robinson  
341 C, Williams TM. Method and Atlas to Enable Targeting for Cardiac Radioablation Employing  
342 the American Heart Association Segmented Model. *International Journal of Radiation*  
343 *Oncology Biology Physics*. 2021;111:178-185. doi: 10.1016/j.ijrobp.2021.03.051
- 344 17. van der Ree MH, Visser J, Planken RN, Dieleman EMT, Boekholdt SM, Balgobind BV, Postema  
345 PG. Standardizing the Cardiac Radioablation Targeting Workflow: Enabling Semi-Automated

- 346 Angulation and Segmentation of the Heart According to the American Heart Association  
347 Segmented Model. *Adv Radiat Oncol*. 2022;7:100928. doi: 10.1016/j.adro.2022.100928
- 348 18. Cerqueira MD, Weissman NJ, Dilsizian V, Jacobs AK, Kaul S, Laskey WK, Pennell DJ,  
349 Rumberger JA, Ryan T, Verani MS. Standardized Myocardial Segmentation and  
350 Nomenclature for Tomographic Imaging of the Heart. *Circulation*. 2002;105:539-542. doi:  
351 10.1161/hc0402.102975
- 352 19. Deurloo KE, Steenbakkens RJ, Zijp LJ, de Bois JA, Nowak PJ, Rasch CR, van Herk M.  
353 Quantification of shape variation of prostate and seminal vesicles during external beam  
354 radiotherapy. *Int J Radiat Oncol Biol Phys*. 2005;61:228-238. doi:  
355 10.1016/j.ijrobp.2004.09.023
- 356 20. Dice LR. Measures of the Amount of Ecologic Association Between Species. *Ecology*.  
357 1945;26:297-302. doi: 10.2307/1932409
- 358 21. Hohmann S, Henkenberens C, Zormpas C, Christiansen H, Bauersachs J, Duncker D,  
359 Veltmann C. A novel open-source software-based high-precision workflow for target  
360 definition in cardiac radioablation. *J Cardiovasc Electrophysiol*. 2020;31:2689-2695. doi:  
361 10.1111/jce.14660
- 362 22. Mercieca S, Pan S, Belderbos J, Salem A, Tenant S, Aznar MC, Woolf D, Radhakrishna G, van  
363 Herk M. Impact of Peer Review in Reducing Uncertainty in the Definition of the Lung Target  
364 Volume Among Trainee Oncologists. *Clin Oncol (R Coll Radiol)*. 2020;32:363-372. doi:  
365 10.1016/j.clon.2020.01.026
- 366 23. Brett CL, Cook JA, Aboud AA, Karim R, Shinohara ET, Stevenson WG. Novel Workflow for  
367 Conversion of Catheter-Based Electroanatomic Mapping to DICOM Imaging for Noninvasive  
368 Radioablation of Ventricular Tachycardia. *Pract Radiat Oncol*. 2021;11:84-88. doi:  
369 10.1016/j.prro.2020.04.006
- 370 24. Qian PC, Quadros K, Aguilar M, Wei C, Boeck M, Bredfeldt J, Cochet H, Blankstein R, Mak R,  
371 Sauer WH, et al. Substrate Modification Using Stereotactic Radioablation to Treat  
372 Refractory Ventricular Tachycardia in Patients With Ischemic Cardiomyopathy. *JACC Clin*  
373 *Electrophysiol*. 2022;8:49-58. doi: 10.1016/j.jacep.2021.06.016
- 374
- 375
- 376
- 377
- 378

379 TABLES

Table 1. Rules for delineation of the clinical target volume in study phase 2.

Rule	
1	Choose scar or border zone, not healthy tissue
2	Choose only scar or border zone near VT exit sites, not necessarily the entire scar
3	Choose a single larger area, not multiple small areas
4	Goldilocks principle: <ul style="list-style-type: none"> <li>• Delineate too small, and you might miss the VT circuit</li> <li>• Delineate too large, and there is (likely) higher risk for normal tissue injury</li> </ul>

380

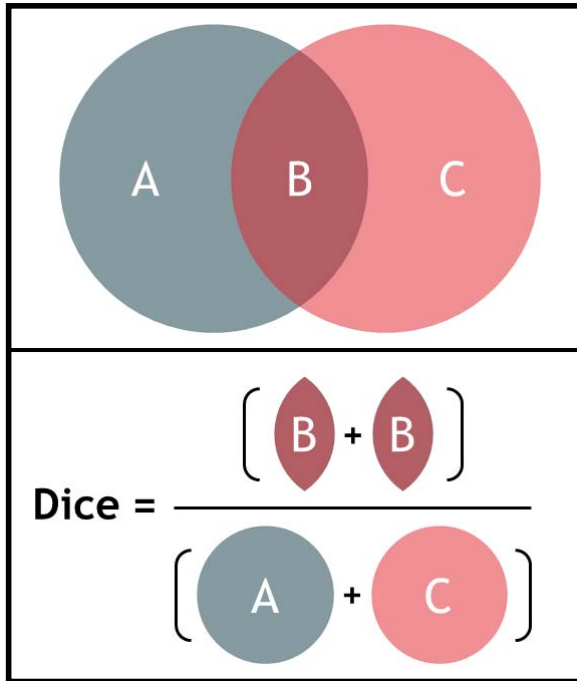
Table 2 - Results of the three study phases

Phase 1: Spinal canal					
	Median structure volume* (cm <sup>3</sup> )	Mean volume (cm <sup>3</sup> )	Range in volume (cm <sup>3</sup> )	RMS SD (cm)	Dice coefficient
Patient A	1.78	1.56±0.03	1.52 - 1.62; 0.1	0.02	0.97±0.01
Patient B	2.97	2.58±0.06	2.47 - 2.67; 0.2	0.02	0.98±0.01
Patient C	2.08	1.79±0.04	1.7 - 1.82; 0.12	0.02	0.97±0.01
Phase 2: VT-target					
	Median structure Volume* (cm <sup>3</sup> )	Mean Volume (cm <sup>3</sup> )	Range in volume (cm <sup>3</sup> )	RMS SD (cm)	Dice coefficient
Patient 1	25.8	34.6±17.4	9.9 - 61.4	1.02	0.32±0.17
Patient 2	23.2	28.2±11.9	11.1 - 56.0	0.53	0.47±0.11
Patient 3	16.9	22.7±7.8	10.8 - 36.7	0.52	0.41±0.11
Phase 3: Segments					
	Median structure Volume *(cm <sup>3</sup> )	Mean Volume (cm <sup>3</sup> )	Range in volume (cm <sup>3</sup> )	RMS SD (cm)	Dice coefficient
Patient 1	6.3	13.5±9.5	6.4 - 35.2	1.55	0.21±0.19
Patient 2	11.1	12.8±4.1	5.4 - 17.3	0.51	0.46±0.14
Patient 3	5.4	9.4±4.7	3.2 - 19.9	0.55	0.25±0.20
<p><i>*The median structure volume represents the 50% coverage of the delineations, meaning that each voxel inside the median structure is delineated by at least 50% of the observers.</i></p> <p><i>RMS SD: root-mean-square of the standard deviation</i></p>					

381

382

383 FIGURES

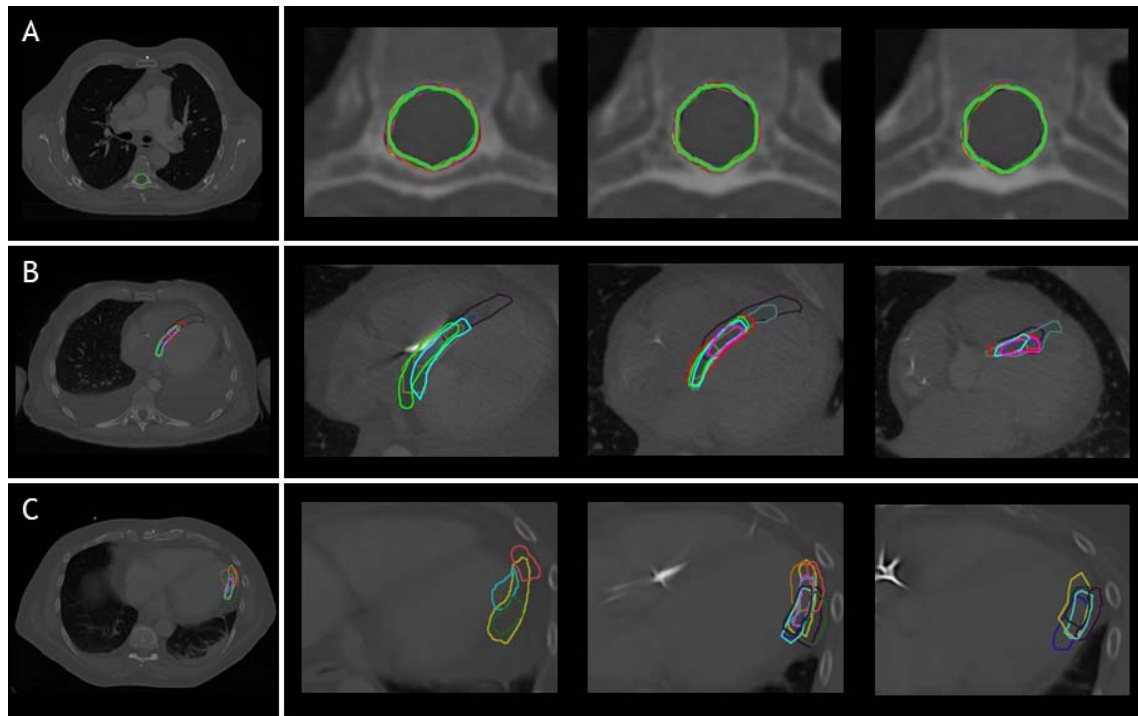


384

385 Figure 1. Illustration of the calculation of the Dice coefficient for two volumes A and C, B  
386 indicating the overlap. The Dice coefficient is calculated by dividing two times the volume of  
387 overlap (B) by the individual volumes (A+C) (formula:  $Dice\ coefficient = \frac{(2B)}{(A+C)}$ ).

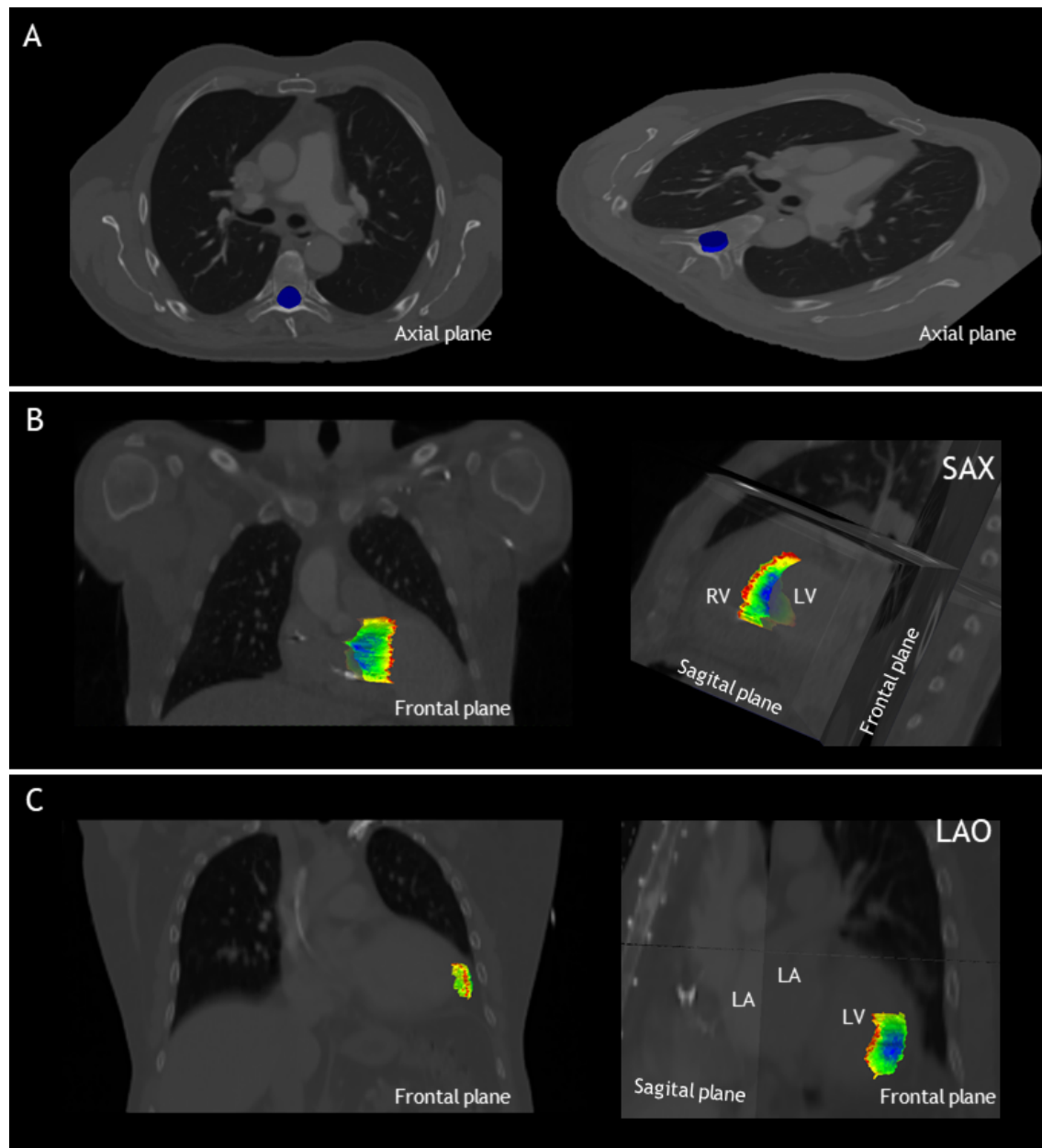
388

389



390

391 Figure 2: delineations in representative cases by the different observers (A) Phase 1: Spinal canal,  
392 patient A (B) Phase 2: VT-target, patient2 (C) Phase 3: Segments, patient 3 (segment 16: apical-  
393 lateral). Each color indicates a different observer.



394

395 Figure 3: The local standard deviation projected on the median structure of the delineations, from  
396 dark blue:  $SD < 0.1$  cm to red  $SD > 1.5$  cm. (A) Results for phase 1, delineation of the spinal canal,  
397 projected on the axial plane for patient A. Note that the standard deviation is below  $< 0.1$ cm for  
398 the entire spinal canal. (B) Results for phase 2 of patient 2, delineation of the VT-target, projected  
399 on the frontal and sagittal planes. (C) Results for phase 3 of patient 3, delineation of the apical-  
400 lateral segment, projected on the frontal and sagittal plane. LA: left atrium, LAO: left anterior  
401 oblique view, LV: left ventricle, RV: right ventricle and SAX: cardiac short-axis view.

402