

1 **Human-specific evolutionary markers linked to foetal neurodevelopment modulate brain surface area**  
2 **in schizophrenia.**

3 Maria Guardiola-Ripoll<sup>1,2,\*</sup>, Carmen Almodóvar-Payá<sup>1,2</sup>, Angelo Arias-Magnasco<sup>1</sup>, Mariona Latorre-Guardia<sup>1</sup>,  
4 Sergi Papiol<sup>2,3,4</sup>, Erick J Canales-Rodríguez<sup>2,5</sup>, María Ángeles García-León<sup>1,2</sup>, Paola Fuentes-Claramonte<sup>1,2</sup>,  
5 Josep Salavert<sup>6</sup>, Josep Tristany<sup>7</sup>, Llanos Torres<sup>8</sup>, Elena Rodríguez-Cano<sup>1,2,9</sup>, Raymond Salvador<sup>1,2</sup>, Edith  
6 Pomarol-Clotet<sup>1,2</sup>, Mar Fatjó-Vilas<sup>1,2,10,\*</sup>

7 \*Corresponding authors: [mguardiola@fidmag.org](mailto:mguardiola@fidmag.org) and [mfatjo-vilas@fidmag.org](mailto:mfatjo-vilas@fidmag.org)

- 8 1. FIDMAG Germanes Hospitalàries Research Foundation, Barcelona, Spain.  
9 2. CIBERSAM (Biomedical Research Network in Mental Health; Instituto de Salud Carlos III), Madrid, Spain.  
10 3. Institute of Psychiatric Phenomics and Genomics (IPPG), University Hospital, LMU Munich, Munich,  
11 Germany.  
12 4. Max Planck Institute of Psychiatry, Munich, Germany.  
13 5. Signal Processing Laboratory 5 (LTS5), École Polytechnique Fédérale de Lausanne (EPFL), Lausanne,  
14 Switzerland.  
15 6. Hospital Sant Rafael, Germanes Hospitalàries, Barcelona, Spain.  
16 7. Hospital Sagrat Cor, Germanes Hospitalàries, Martorell, Spain.  
17 8. Hospital Mare de Déu de la Mercè, Germanes Hospitalàries, Barcelona, Spain.  
18 9. Hospital Benito Menni, Germanes Hospitalàries, Sant Boi de Llobregat, Spain.  
19 10. Departament de Biologia Evolutiva, Ecologia i Ciències Ambientals, Universitat de Barcelona, Barcelona,  
20 Spain.

21  
22

23 Abstract word count: 274

24 Word count: 4875

25 Number of tables: 2

26 Number of figures: 1

27 Supplementary material: supplementary tables (*supplementary table 1*, *supplementary table 2.1*,  
28 *supplementary table 2.2*)

29 **ABSTRACT**

30 Schizophrenia (SZ) is hypothesised to represent a costly trade-off in the evolution of the neurodevelopmental  
31 ontogenetic mechanisms associated with human-specific cognitive capacities. Human Accelerated Regions  
32 (HARs) are evolutionary conserved genomic regions that have accumulated human-specific sequence  
33 changes. These evolutionary markers function as neurodevelopmental transcription enhancers and have  
34 been associated with the brain's cortical expansion and connectivity, the processing of neural information,  
35 and the risk for SZ. We sought to investigate whether HARs' polygenic load influenced neuroanatomical  
36 measures.

37 Our sample consisted of 128 patients with SZ and 115 healthy controls with high-resolution structural T1 MRI  
38 and genome-wide genotyping data. We extracted the cortical thickness (CT) and surface area (SA) for the  
39 34 Desikan-Killiany regions per hemisphere. We calculated four polygenic risk scores (PRS): SZ genetic load  
40 (Global PRS<sub>SZ</sub>), HARs' specific variability (HARs PRS<sub>SZ</sub>), HARs' variability associated with transcriptional  
41 regulatory elements uniquely active in the foetal brain (FB-HARs PRS<sub>SZ</sub>) and in the adult brain (AB-HARs  
42 PRS<sub>SZ</sub>). Through linear regression analyses, we explored whether these four PRSs modulated CT and SA  
43 within diagnostic groups and the PRSs and diagnostic interaction on the cortical measures.

44 Results indicate that FB-HARs PRS<sub>SZ</sub> influenced patients' right SA on the lateral orbitofrontal cortex, the  
45 superior temporal cortex, the pars triangularis and the paracentral lobule and that a higher SZ risk load in  
46 FB-HARs is associated with lower SA values.

47 These findings evidence the involvement of the HARs-foetal gene regulatory activity in SA architecture and  
48 the evolutionary component of this regulation in SZ. These data emphasise the importance of HARs in the  
49 transcriptional regulatory machinery from early neurodevelopment and their role as the bridging point  
50 between the neurodevelopmental and evolutionary hypotheses in SZ.

51 **Key words:** Human Accelerated Regions; Evolution; Schizophrenia; Polygenic Risk Score; MRI; Cortical  
52 Surface Area; Cortical Thickness

## 53 1. INTRODUCTION

54 Schizophrenia (SZ) is a complex neuropsychiatric disorder characterised by symptoms that alter the  
55 perception and behaviour, such as hallucinations and delusions, and affectations of higher-order cognitive  
56 functions. These symptoms intimately relate the disorder with traits that distinguish humans as a species:  
57 abstraction, social cognition, language and thinking (Polimeni & Reiss, 2003). Accordingly, while the  
58 foundations of this multifactorial and complex disorder are not entirely understood, multiple pieces of  
59 evidence straightforwardly point towards a neurodevelopmental and evolutionary origin.

60 On the one hand, the strong genetic background of SZ, with heritability estimates up to 80% and a polygenic  
61 architecture with thousands of genetic variants with additive effects (Hilker et al., 2018; Legge et al., 2021;  
62 Purcell et al., 2009; Sullivan et al., 2003), converge with recent molecular data showing the role of  
63 developmental, neuronal, and synaptic differentiation pathways in the aetiology of the disorder (Gulsuner et  
64 al., 2013; O'dushlaine et al., 2015; Trubetskoy et al., 2022). The neurodevelopment processes and the  
65 neuroplasticity of the human brain are tightly orchestrated and involve gene expression regulatory  
66 mechanisms that are of paramount importance (Davidson, 2006). In line with the neurodevelopmental  
67 hypothesis of SZ, among the different environmental factors associated with an increased risk, prenatal and  
68 early adverse events occurring during crucial periods of brain development have been highlighted from  
69 epidemiological and clinical population-based studies due to their higher prevalence among people who later  
70 develop SZ (Rapoport et al., 2005). Also, the presence of prenatal complications was correlated with a  
71 higher genomic risk for the disorder (Ursini et al., 2018), and the placenta-associated genomic load has been  
72 linked to reduced brain volumes in neonates and poorer cognitive development during the first two years of  
73 life, emphasising the importance of the prenatal period in neurodevelopmental paths of risk (Ursini et al.,  
74 2021). In this line, delayed developmental milestones, considered the reflection of early deviances in  
75 neurodevelopmental trajectories, are associated with the disorder and predict psychotic symptoms in  
76 childhood and adulthood (Cannon et al., 2002; Niemi et al., 2003; Sørensen et al., 2010). Another aspect to  
77 be taken into account, is that prior to the onset of the psychotic symptoms, patients with SZ already present  
78 brain structural differences, such as reduction of grey matter, disrupted white matter integrity, and  
79 widespread cortical thinning (Hajima et al., 2013; Harrison et al., 2003), which latter remain once the  
80 diagnosis is settled (Jauhar et al., 2022; van Erp et al., 2018). Among the neuroanatomical measures used  
81 to characterise brain cortical morphology, cortical thickness (CT) and cortical surface area (SA) are highly  
82 heritable and influenced by largely independent genetic factors related to adult and mid-foetal active  
83 regulatory elements, respectively, but both related to neurodevelopmental genetic control (Grasby et al.,

84 2020; Panizzon et al., 2009; Strike et al., 2019). All this evidence sustains the prevailing hypothesis that SZ  
85 results from environmental and genetic interactions modulating and deviating neurodevelopmental  
86 trajectories during the intrauterine and perinatal periods as well as during childhood and early adolescence  
87 (Birnbaum & Weinberger, 2017; Kahn et al., 2015) that disrupt the ontogenetic plan guiding brain  
88 architecture, brain configuration, and brain functioning.

89 On the other hand, the common prevalence of the disorder (nearly 1% (Charlson et al., 2018; J. McGrath et  
90 al., 2008; Perälä et al., 2007), and the fact that people affected, particularly males, have a reduced rate of  
91 reproduction (fitness) compared with the non-affected population (Haukka et al., 2003; J. J. McGrath et al.,  
92 1999) raise a question on why the genetic variants that increase the likelihood of suffering from SZ have  
93 persisted in the human genome? These, together with the close relationship between several clinical aspects  
94 of the disorder and human-specific cognitive traits (Polimeni & Reiss, 2003), have boosted the  
95 evolutionary view of the disorder. Accordingly, the evolutionary hypothesis of SZ suggests that the disorder  
96 emerged as a costly trade-off in the evolution of the ontogenetic mechanisms guiding human-specific  
97 neurodevelopment and sustaining complex cognitive abilities (Burns, 2004, 2006; Crow, 2000; Wynn &  
98 Coolidge, 2011).

99 While the evolutionary traces of SZ are difficult to follow, comparative genomics may be advantageous. The  
100 study of human-specific genomic changes may lead to a better comprehension of human-specific phenotypic  
101 traits and increased knowledge of what genetic changes contributed to making us human (O'Bleness et al.,  
102 2012). In this sense, Human accelerated regions (HARs) might be helpful. HARs are evolutionary conserved  
103 genomic regions that have experienced significant changes after human and chimpanzee divergence (Bird  
104 et al., 2007; Bush & Lahn, 2008; Gittelman et al., 2015; Lindblad-Toh et al., 2011; Pollard, Salama,  
105 King, et al., 2006; Prabhakar et al., 2006). This accelerated divergence of HARs is suggested to reflect  
106 their role in some human-specific characteristics. Most HARs are intergenic, within introns near protein-  
107 coding genes, transcription factors and DNA binding proteins (Capra et al., 2013; Doan et al., 2016;  
108 Hubisz & Pollard, 2014; Pollard, Salama, Lambert, et al., 2006; Won et al., 2019). All the studies that  
109 intended to characterise HARs' functional role converge in highlighting them as transcription factors binding  
110 sites, transcription factors on their own and participants in the neurodevelopmental gene expression  
111 machinery (Doan et al., 2016; Girsakis et al., 2021; Uebbing et al., 2021; Won et al., 2019).

112 Recently, studies inspecting the expression patterns of HARs-associated genes (HARs-genes) show their  
113 implication in human-specific cortical expansion, brain functional connectivity and the brain's neural

114 information processing. First, in a comparative study exploring the cortical expansion in humans and  
115 chimpanzees, it was described that the expression profiles of HARs-genes correlated with the expansion of  
116 higher-order cognitive networks, such as the frontoparietal and the default mode networks (Wei et al., 2019).  
117 The same study also revealed that the genetic variability in HARs-genes expressed in the brain (HARs-brain  
118 genes) was associated with the DMN functional variation in healthy subjects (Wei et al., 2019). Second,  
119 HARs-brain genes expression patterns have been related to the individual variability in functional  
120 connectivity and to the brain's information processing (Li et al., 2021; Luppi et al., 2022). Remarkably, these  
121 studies report that HARs-brain genes show the highest expression in higher-order cognitive networks, such  
122 as the frontoparietal and the default mode networks; the ones with the greatest functional heterogeneity  
123 across individuals and also the ones with predominant synergistic interactions.

124 The evidence on HARs' contribution to human-specific brain architectural configuration, functioning and  
125 information processing is also accompanied by studies that describe that HARs' genetic variability influences  
126 the risk for SZ. For example, the investigation into the overlap between HARs and SZ GWAS SNPs showed  
127 that SZ's polygenic background was enriched in genes associated with these evolutionary regions (Xu et al.,  
128 2015). In line, subsequent findings also described that SNPs in HARs or in linkage disequilibrium with them  
129 were more likely associated with the disorder (Srinivasan et al., 2017). Notwithstanding, to our knowledge,  
130 HARs modulation of brain measures in SZ has been scarcely explored, and further studies using brain-  
131 based phenotypes to assess their role in the disorder are necessary.

132 Considering the polygenic nature of both cortical structural configuration and SZ's susceptibility, studies  
133 using measures summarising this complex genetic architecture, such as Polygenic Risk Scores (PRSs),  
134 would be helpful to disentangle the genetic roots not only of the disorder but of complex brain traits. The  
135 PRS is a quantitative measure of the genetic burden of a trait based on GWAS data. It can be calculated at a  
136 whole-genome level, but also within subsets of SNPs defined based on their involvement in particular  
137 biological pathways of interest. Therefore, based on the evidence of HARs' role in neurodevelopment, brain  
138 configuration and susceptibility for SZ, we aimed to investigate the modulatory effect HARs' polygenic load  
139 on neuroanatomical measures through a neuroimaging genetics approach in healthy control and patients  
140 with SZ. We generated different PRSs summarising HARs genetic variability, specifically including HARs  
141 SNPs related to active regulatory elements in the foetal and adult brain. We explored whether the PRSs  
142 modulated cortical thickness and surface area differently depending on the health/disease condition.

## 143 2. MATERIAL AND METHODS

### 144 Sample

145 The initial sample consisted of a case-control dataset of 378 individuals, of which 284 passed both the  
146 genetic and neuroimaging quality control (see details in the corresponding *Molecular analyses* and *MRI data*  
147 *acquisition* sections). Patients were recruited from the inpatients and outpatients at the Hospital Benito  
148 Menni, Sant Boi de Llobregat (Barcelona, Spain) and healthy controls were recruited from the same area.  
149 The patients' diagnosis was confirmed according to DSM-IV-TR based on an interview with two psychiatrists.  
150 All participants were of European ancestry, between 18 and 65 years old, right-handed and had an  
151 estimated intelligence quotient (IQ) (premorbid IQ in patients), higher than 70, as assessed using the Word  
152 Accentuation Test (Gomar et al., 2011). All participants met the same exclusion criteria, which included  
153 suffering from major medical illness, conditions affecting cognitive or brain function, neurological conditions,  
154 history of head trauma with loss of consciousness and present or history of drug abuse or dependence.  
155 Additionally, for healthy controls (HC), exclusion criteria also included personal or family history of psychiatric  
156 service contact or treatment.

157 Individuals in both diagnostic groups were matched by age and sex to minimise age and sex differences  
158 between them, and the analyses were conducted in a sample of 115 HC and 128 patients with a SZ  
159 diagnosis (**Table 1**).

160 All subjects signed a written consent after being fully informed about the procedures and implications of the  
161 study, approved by the Germanes Hospitalàries Research Ethics Committee, and performed following its  
162 guidelines and in accord with the Declaration of Helsinki.

163 **Table 1.** Sample characteristics, including demographic and clinical description. All the quantitative variables include  
164 mean and standard deviation (sd). Sex description includes male/female count (% of males). Illness duration is given in  
165 years and Chlorpromazine (CPZ) equivalents in mg/day.

	Healthy Controls	Patients with SZ	
Age	38.44 (11.98)	40.15 (10.96)	t-test=-1.17, p=0.24
Sex	60/55 (52.20%)	82/46 (64.10%)	$\chi^2=3.53$ , p=0.06
Premorbid IQ	103.52 (8.43)	101.05 (9.16)	t-test=2.18, p=0.03
Illness duration <sup>1</sup>	–	17.30 (10.74)	
CPZ equivalents <sup>2</sup>	–	581.28 (573.64)	

166 <sup>1</sup>Illness duration was estimated by subtracting the age at onset to the current age and was available for 122 patients.

167 <sup>2</sup>CPZ equivalent dose data were available for 126 patients.

## 168 **Molecular analyses**

169 Genomic DNA was extracted either from buccal mucosa through cotton swabs using ATP Genomic Mini Kit  
170 Tissue (Teknokroma Analitica, S.A., Sant Cugat del Valles, Spain) or from peripheral blood cells using  
171 Realpure SSS kit (Durviz, S.L.U., Valencia, Spain).

172 A genome-wide genotyping was performed using the Infinium Global Screening Array-24 v1.0 (GSA)  
173 BeadChip (Illumina, Inc., San Diego California, U.S) at the Spanish National Cancer Research Centre, in the  
174 Human Genotyping lab (CeGen-ISCIII), resulting in the genotyping of 730,059 SNPs. After QC, a dataset of  
175 447,035 SNPs with the following characteristics was obtained: Hardy-Weinberg equilibrium in patients and  
176 healthy controls, SNP call rate higher than 98% and minor allele frequency (MAF) higher than 0.005.  
177 Individuals with an SNP missingness higher than 2% were excluded. In addition, through a principal  
178 component analysis (PCA), those individuals found to be related or not of European ancestry were also  
179 excluded. Next, re-phasing and imputation were performed using, respectively, Eagle (Durbin, 2014) and  
180 Minimac4 (Das et al., 2016) and the Haplotype Reference Consortium dataset (HRC version r1.1) (McCarthy  
181 et al., 2016) hosted on the Michigan Imputation Server (Das et al., 2016)  
182 (<https://imputationserver.sph.umich.edu/>). A MAF value of > 1% and an imputation quality of  $R^2 > 0.3$  were  
183 required for the inclusion of the variants into further analyses. Finally, our final SNP dataset included  
184 7,606,397 genetic markers.

185

## 186 **Polygenic Risk Score Estimation**

187 Using SZ GWAS 2022 summary statistics from the European subsample (Trubetskoy et al., 2022) we  
188 estimated four different PRS using PLINK 1.90 software (Chang et al., 2015) based on the PRS-C+T  
189 methodology (Privé et al., 2019), in a similar fashion as several recent GWAS studies (Grasby et al., 2020;  
190 Mullins et al., 2021; Trubetskoy et al., 2022). This method is defined as the sum of allele counts, weighted by  
191 estimated effect sizes obtained from the GWAS, after two filtering steps: LD clumping (based on the  
192 European population from the phase 3 1,000 Genomes reference panel) and p-value thresholding.

193 First, we calculated the whole-genome PRS (**Global PRS<sub>SZ</sub>**). The LD filtering was conducted by including the  
194 most significant SNP from any pair showing an LD  $r^2 > 0.015$  within 1,000kb windows, resulting in a set of  
195 informative linkage-disequilibrium independent markers (98,121 SNPs). Subsequently, for the p-value  
196 thresholding, we considered a range of thirteen p-value thresholds:  $p < 5 \times 10^{-8}$ ,  $p < 5 \times 10^{-7}$ ,  $p < 5 \times 10^{-6}$ ,  $p < 5 \times 10^{-5}$ ,  
197  $p < 5 \times 10^{-4}$ ,  $p < 5 \times 10^{-3}$ ,  $p < 0.05$ ,  $p < 0.1$ ,  $p < 0.2$ ,  $p < 0.3$ ,  $p < 0.4$ ,  $p < 0.5$ ,  $p < 1.0$ . Through logistic regression, we

198 established the best threshold in  $p < 5 \times 10^{-3}$  as the better predictor of the diagnosis status () based on the  
199 Nagelkerke's pseudo  $R^2$  ( $p = 4.75 \times 10^{-12}$ ,  $R^2 = 0.22$ ).

200 Second, we estimated a PRS accounting for HARs genetic variability (**HARs PRS<sub>SZ</sub>**), exclusively including  
201 SNPs within the 3,070 autosomal HARs sequences compiled by Girsakis et al., 2021 (*Supplementary Table*  
202 *1*). Using Bedtools 2.30.0 (Quinlan & Hall, 2010) we selected the genetic markers in our sample within these  
203 HARs sequences. Considering the number of SNPs within the HARs, the PRS estimation was conducted  
204 following the same PRS-C+T methodology but adjusting LD clumping parameters. Following PLINK default  
205 options, we selected the most significant SNPs within 250kb windows and with LD  $r^2 > 0.5$  and the unique p-  
206 value threshold was set at  $p < 1.0$ . The final set of variants was composed of 2,114 SNPs.

207 Third, to assess the effect of HARs SNPs specifically affiliated with foetal brain (FB) or adult brain (AB) gene  
208 regulatory elements, we estimated two additional PRS scores (**FB-HARs PRS<sub>SZ</sub>** and **AB-HARs PRS<sub>SZ</sub>**) with  
209 the same procedure and parameters as for PRS-HARs. Following the methodology used in the latest  
210 ENIGMA human cerebral cortex GWAS by (Grasby et al., 2020), we downloaded ChromHMM chromatin  
211 states (core 15 state model) from the Epigenomics Roadmap (Roadmap Epigenomics Consortium et al.,  
212 2015). We selected two foetal tissues (E081=foetal brain female and E082=foetal brain male) and four adult  
213 tissues (E067=brain angular gyrus, E069=brain cingulate gyrus, E072=brain inferior temporal lobe and  
214 E073=brain dorsolateral prefrontal cortex) and for each tissue, the genomic regions comprising active  
215 regulatory elements (TssA, TssAflnk Enh and EnhG). We combined the foetal (E081 and E082) and adult  
216 (E067, E069, E072 and E073) annotations and selected only those regions non-overlapping between them  
217 as foetal brain-specific and adult brain-specific. With the selected **HARs PRS<sub>SZ</sub>** SNPs, we selected the  
218 genetic variants allocated within these foetal and adult brain-specific regions. The final set of variants  
219 included in the **FB-HARs PRS<sub>SZ</sub>** and **AB-HARs PRS<sub>SZ</sub>** estimations were 112 and 81 SNPs, respectively.

220

## 221 **MRI data acquisition**

222 The MRI neuroimaging data were obtained from two scanners: 58% (70 HC, 72 patients) of the sample was  
223 scanned in a 1.5T GE Sigma scanner (General Electrical Medical Systems, Milwaukee, Wisconsin, USA)  
224 and the other 42% (45 HC, 56 patients) in a 3T Philips Ingenia scanner (Philips Medical Systems, Best, The  
225 Netherlands) at Hospital Sant Joan de Déu (Barcelona, Spain).



226 High-resolution structural-T1 MRI data in the 1.5T scanner was obtained using the following acquisition  
227 parameters: matrix size 512 x 512; 180 contiguous axial slices; voxel resolution 0.47 x 0.47 x 1 mm<sup>3</sup>; echo  
228 time (TE) = 3.93 ms, repetition time (TR) = 2,000 ms; and flip angle = 15°. At the 3T scanner, structural T1-  
229 weighted sequences were acquired as follows: matrix size 320 x 320 x 250; voxel resolution 0.75 x 0.75 x  
230 0.80 mm<sup>3</sup>; TE= 3.80 ms, TR = 8.40 ms; and flip angle = 8°. All images were visually inspected to exclude  
231 those with artefacts and movement.

232

### 233 **Surface-based morphometry**

234 Structural MRI data were processed using the FreeSurfer image analysis suite  
235 (<http://surfer.nmr.mgh.harvard.edu/>). Image pre-processing included removal of non-brain tissue, automated  
236 Talairach transformation, tessellation of the grey and white matter boundaries and surface deformation  
237 (Fischl et al., 2004). Several deformation procedures were performed in the data analysis pipeline, including  
238 surface inflation and registration to a spherical atlas. This method uses both intensity and continuity  
239 information from the entire three-dimensional images in the segmentation and deformation procedures to  
240 produce vertex-wise representations of CT and SA. The CT was defined as the measure of the distance  
241 between the white matter surface and the pial surface, and cortical SA was calculated as the area of the  
242 white matter surface. With FreeSurfer we automatically performed the segmentation of 34 cortical regions of  
243 interest for each hemisphere using the Desikan-Killiany cortical atlas (Desikan et al., 2006). Mean values of  
244 CT and SA were quantified for each individual within these defined regions.

245 All subjects included in this study passed the standardised quality-control protocols from the ENIGMA  
246 consortium (<https://enigma.ini.usc.edu/protocols/imaging-protocols/>) that have previously been applied in  
247 large-scale multi-centre studies (Grasby et al., 2020; Hibar et al., 2018).

248

### 249 **Statistical analyses**

250 Demographic and clinical data were processed and analysed using SPSS (IBM SPSS Statistics, version  
251 29.0, released 2022, IBM Corporation, Armonk, New York, USA).

252 We compared the SZ polygenic load of patients and controls based on the four different PRS estimations  
253 (Global PRS<sub>SZ</sub>, HARs PRS<sub>SZ</sub>, FB-HARs PRS<sub>SZ</sub> and AB-HARs PRS<sub>SZ</sub>) by means of block-wise logistic

254 regressions with the two diagnostic groups with SPSS. For each PRS, two statistical models with  
255 case/control status as outcome were compared, one testing the covariates alone (age, sex and the two first  
256 ancestry-specific principal components as a baseline model), and the other testing the covariates plus the  
257 corresponding PRS (full model). We report the  $R^2$  values as the differences in Nagelkerke's pseudo- $R^2$   
258 between these two nested models as an indicator of explained variance (Smigielski et al., 2021; Smith &  
259 Mckenna, 2013).

260 Next, we examined to which extent different PRSs explain CT and SA measures from the 34 cortical regions.  
261 We applied linear regression models (R software) within diagnostic groups (separately in HC and patients  
262 with SZ) to test the effect of each PRS on CT/SA. In order to assess whether the PRS effect was modulated  
263 by the diagnostic status, we conducted linear models using the whole sample and tested the PRS x  
264 diagnosis interaction. Sex, age, premorbid IQ, intracranial volume, and scanner effect were included in the  
265 statistical models in order to control for their potential effects. In the linear regression within patients with SZ,  
266 the antipsychotic dose was as well included as a covariate (Scherk & Falkai, 2006; van Erp et al., 2018).

267 According to the findings, the SNPs included in the FB-HARs PRS<sub>SZ</sub> were furtherly mapped and functionally  
268 annotated using FUMA (Watanabe et al., 2017) with the *SNP2GENE* and the *GENE2FUNC* tools. The  
269 positional mapping parameters were left as default. The eQTL mapping was conducted in PsychENCODE,  
270 ComminMind and BRAINEAC tissues filtering by PsychiENCODE and brain open chromatin atlas  
271 annotations. The 3D chromatin interaction mapping was conducted with PsychENCODE, adult and foetal  
272 cortex, dorsolateral and hippocampus and neural progenitor cells data filtering by PsychENCODE and brain  
273 open chromatin atlas annotations.

274 The p-values resulting from each one of the before mentioned statistical tests were adjusted by using the  
275 false discovery rate (FDR) method, specifically the Benjamini-Hochberg procedure, to control for multiple  
276 comparisons at level  $q=0.05$ . Accordingly, only those results with a corrected FDR-pval $<0.05$  were  
277 considered statistically significant.

278 The significant results on the cortical regions were plotted using the *ggseg* library in R (Mowinckel & Vidal-  
279 Piñeiro, 2020) and the regressions with the direction of the results were plotted using SPSS (**Figure 1**).

### 280 3. RESULTS

#### 281 PRS comparison between diagnostic groups

282 Diagnostic PRS comparisons revealed differences in the Global PRS<sub>SZ</sub>, with patients presenting higher SZ  
283 genetic load than HC. The HARs-derived PRSs did not show between-groups differences (**Table 2**).

284 **Table 2.** Polygenic risk score (PRS) comparisons between healthy controls (HC) and patients with schizophrenia (SZ).  
285 PRS means and standard deviations (sd) are given for both diagnostic groups for the four estimated PRSs (Global  
286 PRS<sub>SZ</sub>, HARs PRS<sub>SZ</sub>, FB-HARs PRS<sub>SZ</sub>, AB-HARs PRS<sub>SZ</sub>). The logistic regression results include the  $\beta$  and standard  
287 error (se), the logistic regression statistic (Wald, W), the Nagelkerke's pseudo R<sup>2</sup> (R<sup>2</sup>), and the adjusted p-values after  
288 FDR correction (FDR-pval).  
289

	HC mean (sd)	SCZ mean (sd)	$\beta$ (se)	W	R <sup>2</sup>	FDR-pval
<b>Global PRS<sub>SZ</sub></b>	-201.14 (1.23)	-200.10 (1.02)	0.79 (0.14)	32.97	0.20	3.75 x 10 <sup>-8*</sup>
<b>HARs PRS<sub>SZ</sub></b>	-5.45 (0.17)	-5.41 (0.19)	1.32 (0.73)	3.28	0.02	9.33 x 10 <sup>-2</sup>
<b>FB-HARs PRS<sub>SZ</sub></b>	-0.53 (0.05)	-0.52 (0.04)	2.07 (2.96)	0.49	0.003	4.85 x 10 <sup>-1</sup>
<b>AB-HARs PRS<sub>SZ</sub></b>	-0.43 (0.04)	-0.42 (0.04)	7.69 (3.60)	4.55	0.02	6.57 x 10 <sup>-2</sup>

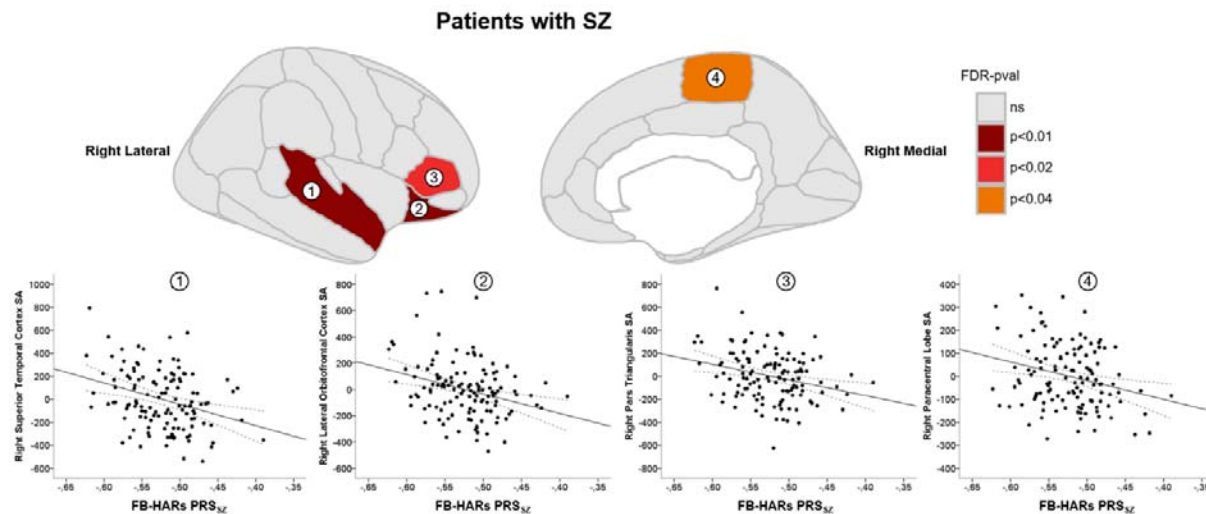
290 \*Significant findings at FDR-pval<0.001.

#### 291 PRS associations with morphometric measures

292 Regarding CT measures, no PRS estimates modulated thickness either within HC or patients with SZ. In the  
293 same line, the PRSs x diagnosis interactions on CT evidenced no significant effects.

294 In contrast, the linear regression analyses revealed that among patients with SZ, the FB-HARs PRS<sub>SZ</sub>  
295 significantly affected SA in different regions in the right brain hemisphere. FB-HARs PRS<sub>SZ</sub> modulated the  
296 patients' SA of the lateral orbitofrontal cortex (Standardised  $\beta$ =-0.234, SE=440.443, adjusted R<sup>2</sup>=0.491,  
297 FDR-pval=0.008), the superior temporal cortex (Standardised  $\beta$  =-0.235, SE=545.898, adjusted R<sup>2</sup>=0.488,  
298 FDR-pval=0.008), the pars triangularis (Standardised  $\beta$ =-0.242, SE=438.928, adjusted R<sup>2</sup>=0.322, FDR-  
299 pval=0.019) and the paracentral lobule (Standardised  $\beta$ =-0.233, SE=282.910, adjusted R<sup>2</sup>=0.264, FDR-  
300 pval=0.030) (**Figure 1**). In these regions, a higher SZ risk load in FB-HARs was associated with lower SA  
301 values. Conversely, no other associations were observed between the other estimated PRSs and SA neither  
302 within HC nor in interaction with diagnosis.

303 The inspection of the genomic context of the SNPs in FB-HARs PRS<sub>SZ</sub>, showed that 54.1% of the SNPs  
304 were in intergenic regions, 26.5% in introns and 16.6% in intronic non-coding RNA. They mapped into 223  
305 genes (2). The subsequent functional annotation results highlighted that these genes were enriched in  
306 several Gene Ontology (GO) categories. The biological process retrieved were neuron differentiation,  
307 neurogenesis, neuron development, and forebrain development, among others. Also, the only cellular  
308 component category enriched was cell junction (*Supplementary Table 3*).



**Figure 1. Brain and scatter plots with significant FB-HARs PRS<sub>SZ</sub> effect on surface area in patients with schizophrenia (SZ).** Brain plots include the lateral and medial sagittal views for the right hemisphere. The coloured regions are the ones with significant FB-HARs PRS<sub>SZ</sub> effect on surface area (SA) after FDR correction (FDR-pval < 0.05). The scatter plots show the relationship between the FB-HARs PRS<sub>SZ</sub> (on the X-axis) and the unstandardised SA residuals (on the Y-axis in cm<sup>2</sup>, estimated regressing out the covariates) and evidence their negative correlation (black solid line and black dashed lines representing mean 95% confidence intervals). Each region is numerically labelled as following: 1) superior temporal cortex; 2) lateral orbitofrontal cortex; 3) pars triangularis; and 4) paracentral lobule.

309

310

#### 311 4. DISCUSSION

312 Through a neuroimaging genetic approach, we have evaluated the SZ's polygenic load of specific human  
313 evolutionary markers, such as HARs, on brain-based phenotypes closely related to the pathophysiology of  
314 the disorder. This is, to the best of our knowledge, the first study assessing the effect of HARs genetic  
315 variability on brain cortical measures in patients with SZ and healthy controls. Our analyses provide evidence  
316 on the modulatory effect of foetal active regulatory HARs on the cortical surface area of different brain  
317 regions in patients with SZ. These findings highlight the importance of human-specific genetic changes,  
318 especially those affecting active regulatory elements specific to foetal neurodevelopment, in the genetic  
319 machinery guiding human brain cortical structure.

320 The comparisons between the different PRS estimates across diagnostic groups show that individuals with a  
321 diagnosis of SZ present higher Global PRS<sub>SZ</sub> than healthy individuals. Thus, the sample of patients presents  
322 a higher polygenic load for SZ. This result aligns with the current view on the value of the PRS<sub>SZ</sub> as a highly  
323 informative genetic vulnerability marker for its consistency across numerous studies, not only in patients' vs  
324 controls comparisons (Calafato et al., 2018; Vassos et al., 2017) but through family approaches, which  
325 evidence the intermediate genetic load that healthy relatives of affected patients have (Smigielski et al.,  
326 2021; van Os et al., 2020).

327 However, in our sample, the analyses indicate no significant differences across diagnostic groups using the  
328 other three HARs-related PRS<sub>SZ</sub>. The direct comparison of our findings with previous studies is difficult  
329 because of the absence of HARs-based PRS studies; nevertheless, some previous studies have explored  
330 the role of specific candidate HARs in SZ through association approaches. In this sense, the haplotypic  
331 variability at the *HAR1A* gene, a novel RNA gene with a presumable neurodevelopmental role that harbours  
332 the HAR with the highest substitution rate in humans as compared to chimpanzees (Pollard, Salama,  
333 Lambert, et al., 2006), was associated with auditory hallucinations in patients with a schizophrenia-spectrum  
334 disorder in a European sample (Tolosa et al., 2008). In line, several candidate HARs-SNPs altering  
335 transcription factor binding sites and presenting methylation marks of active promoters, repressors or  
336 enhancers in the brain were associated with the risk for SZ and modulated cognitive performance in a north-  
337 Indian population (Bhattacharyya et al., 2021, 2022). On the other hand, genome-wide-based studies also  
338 describe that HARs-genes and HARs-brain genes are associated with SZ at the GWAS level (Cheung et al.,  
339 2022; Srinivasan et al., 2017; Wei et al., 2019; Xu et al., 2015). Some of these studies, indeed, went beyond  
340 common variability and showed that rare variants in HARs-genes were also enriched with the disorder (Wei  
341 et al., 2019); suggesting, therefore, that common and rare variants joint analyses can help disentangling the  
342 role of HARs variability on the susceptibility for the disorder and its specific phenotypes.

343 In our investigation on the contribution of HARs polygenic background on cortical neuroanatomical measures  
344 variability, we report a modulatory effect of FB-HARs PRS<sub>SZ</sub> on the SA within patients with SZ. These  
345 findings suggest that the genetic variability in HARs associated with regulatory elements uniquely active in  
346 the foetal brain would specifically influence brain phenotypes in SZ. Results show that as the FB-HARs  
347 PRS<sub>SZ</sub> increases (i.e as more SZ risk variants accumulate in these HARs associated with foetal active  
348 regulatory elements), patients present lower cortical surface area in the lateral orbitofrontal cortex, the  
349 superior temporal cortex, the pars triangularis and the paracentral lobe. First, these findings converge with  
350 data highlighting the importance of the foetal period (and the gene expression circumscribed to it) to  
351 understand the neurodevelopmental trajectories linked to schizophrenia (Ursini et al., 2021). Also, our  
352 findings line up with previous studies reporting widespread smaller surface area, with the largest effect sizes  
353 in the frontal and temporal lobe regions (van Erp et al., 2018). Focusing on the regions significantly  
354 modulated by the SZ genetic load in foetal brain active HARs, we can draw attention to the orbitofrontal  
355 region and the temporal cortex as these are among the regions suffering the largest expansion in the human  
356 cortex in comparison with chimpanzees. Wei et al., 2019 described that areas of the orbital frontal gyrus and  
357 the temporal lobe experienced an x4 and x3 expansion, respectively, and evidenced that the transcription

358 profile of 1711 HARs-genes positively correlated to the pattern of human cortical expansion, meaning that  
359 the highest HARs-gene expression occurs in highly expanded areas of the human cortex.

360 A remarkable finding though is the specificity of significant PRS association with SA, as we were not able to  
361 observe HARs polygenic effect on the CT variability. This could be interpreted considering that the genetic  
362 influences on the two cortical measures and the underlying mechanisms are largely different, and that SA  
363 and CT follow distinct developmental trajectories (Jha et al., 2018; Lyall et al., 2015; Wierenga et al., 2014).  
364 As posited by the radial unit hypothesis, cortical surface area expansion would be driven by the proliferation  
365 of neural progenitor cells, while thickness would be determined by the number of their neurogenic divisions  
366 (Rakic, 1988). In this line, a study described that HARs-genes are highly expressed during prenatal  
367 development, their expression is upregulated during neurogenesis and enriched in cells from the outer radial  
368 glia (Won et al., 2019). Indeed, radial glia is a major class of neural stem cells in the germinal layer that  
369 shows substantial expansion in the primate lineage and among the neurodevelopmental differences between  
370 human and chimpanzees there is the proliferative capacity of neural progenitors during cortical development  
371 (Mora-Bermúdez et al., 2016). Recent data shows that the genetic determinants of SA are predominately  
372 related to gene regulatory activity in neural progenitor cells during foetal development while CT is influenced  
373 by regulatory processes that occur after mid-foetal development (Grasby et al., 2020). Also, common genetic  
374 variants explained a larger part of SA variance ( $\text{SNP-h}^2=34\%$ ,  $\text{SE}=3\%$ ) than of CT variance ( $\text{SNP-h}^2=26\%$ ,  
375  $\text{SE}=2\%$ ) (Grasby et al., 2020). However, our results could also be influenced by the reduced number of  
376 SNPs in our PRS estimates, which could have hampered the capture of the genetic determinants of CT.  
377 Likewise, by using HARs, we are putting the focus on regions highly stable along mammal evolution that  
378 experiences rapid sequence changes in the human lineage since the divergence from our closest relatives  
379 (Girskis et al., 2021), and while SA has enormously increased during the evolution of primates, cortical  
380 thickness has remained relatively constant (Eickhoff et al., 2005). Therefore, other genetic evolutionary  
381 markers could be more suitable for inspecting the evolutionary traces of CT.

382 Relative to the exploratory gene mapping results, it was interesting to find that the SNPs underlying cortical  
383 surface area differences within patients were enriched in biological processes important for nervous system  
384 development. These findings would be in line with previous studies describing that HARs associated genes  
385 mainly participate in biological processes and pathways related to neurodevelopment, neural differentiation  
386 and axonogenesis (Doan et al. 2016).

387 Finally, we should account for some limitations of this study. Regarding our genetic association approach,  
388 the samples could be considered small; nonetheless, the focus of our study was the neuroimaging  
389 association analyses. These analyses have been conducted in a sample of hundreds of individuals,  
390 exceeding, therefore, the median sample size of neuroimaging association studies according to a recent  
391 revision (Marek et al., 2022). In this regard also, we have to point out that our structural images were  
392 obtained from two different scanners, which could represent a source of bias. Notwithstanding, we did not  
393 detect differences in neuroanatomical measures based on the two scanning sites, all the images passed the  
394 standardised quality-control protocols recommended by the ENIGMA consortium, which have been  
395 previously applied in large-scale multi-centre studies, and the scanner site was accounted as a covariate in  
396 the regressions. In terms of the genetic data, we should contemplate that our PRS estimates are pondered  
397 using SZ genetic burden and the use of other GWAS sum stats such as the corresponding to the cortical  
398 phenotypes could derive different effects. The PRS estimation method used in the present study, PRS-C+T,  
399 is the most used, and latest SZ GWAS has been conducted using the same method; however, other PRS  
400 calculation methodologies could be helpful (Ni et al., 2021). Speaking of PRS estimations, our results are  
401 based on a sample of European ancestry and SZ GWAS statistics were derived from the European cohort,  
402 then, although GWAS studies performed non-European samples converge in the same SZ's genes and  
403 pathways (Gulsuner et al., 2020), the extrapolation of our findings to other ethnic groups should be done  
404 cautiously. Finally, data from larger samples should be highly encouraged to compare our results and  
405 replicate thereof. Also, the understanding of the role of HARs in the neurobiological roots of SZ would benefit  
406 from analyses on other brain-based phenotypes such as structural connectivity, white matter microstructure  
407 (Canales-Rodríguez et al., 2014, 2021; van den Heuvel et al., 2019), or MRI protocols related to social  
408 cognition (Fujiwara et al., 2015).

409 In conclusion, our study adds novel evidence on the role of the genetic variability within HARs guiding foetal  
410 neurodevelopment and shaping cortical surface area configuration in patients with SZ. The biological  
411 plausibility of our findings highlights the paramount importance of HARs in the early developmental gene  
412 regulatory machinery led us to think that these regions may contribute to bridging together the  
413 neurodevelopmental and evolutionary hypotheses in schizophrenia.

## 414 REFERENCES

- 415 Bhattacharyya, U., Bhatia, T., Deshpande, S. N., & Thelma, B. K. (2022). Genetic variations in  
416 evolutionary accelerated regions disrupt cognition in schizophrenia. *Psychiatry Research*,  
417 314(April), 114586. <https://doi.org/10.1016/j.psychres.2022.114586>
- 418 Bhattacharyya, U., Deshpande, S. N., Bhatia, T., Thelma, B. K., Doan, R. N., Bae, B. il, Cubelos,  
419 B., Chang, C., Hossain, A. A., Al-Saad, S., Mukaddes, N. M., Oner, O., Al-Saffar, M., Balkhy,  
420 S., Gascon, G. G., Nieto, M., Walsh, C. A., Girsakis, K. M., Stergachis, A. B., ... van den  
421 Heuvel, M. P. (2021). Probing the association between early evolutionary markers and  
422 schizophrenia. *Schizophrenia Bulletin*, 109(1), 1–15.  
423 <https://doi.org/10.1371/journal.pone.0169227>
- 424 Bird, C. P., Stranger, B. E., Liu, M., Thomas, D. J., Ingle, C. E., Beazley, C., Miller, W., Hurles, M.  
425 E., & Dermitzakis, E. T. (2007). Fast-evolving noncoding sequences in the human genome.  
426 *Genome Biology*, 8(6), R118. <https://doi.org/10.1186/gb-2007-8-6-r118>
- 427 Birnbaum, R., & Weinberger, D. R. (2017). Genetic insights into the neurodevelopmental origins of  
428 schizophrenia. *Nature Reviews Neuroscience*, 18(12), 727–740.  
429 <https://doi.org/10.1038/nrn.2017.125>
- 430 Burns, J. K. (2004). An evolutionary theory of schizophrenia: Cortical connectivity,  
431 metarepresentation, and the social brain. *Behavioral and Brain Sciences*, 27(6), 831–855.  
432 <https://doi.org/10.1017/S0140525X04000196>
- 433 Burns, J. K. (2006). Psychosis: A costly by-product of social brain evolution in Homo sapiens. In  
434 *Progress in Neuro-Psychopharmacology and Biological Psychiatry* (Vol. 30, Issue 5, pp. 797–  
435 814). <https://doi.org/10.1016/j.pnpbp.2006.01.006>
- 436 Bush, E. C., & Lahn, B. T. (2008). A genome-wide screen for noncoding elements important in  
437 primate evolution. *BMC Evolutionary Biology*, 8(1), 1–10. [https://doi.org/10.1186/1471-2148-](https://doi.org/10.1186/1471-2148-8-17)  
438 8-17
- 439 Calafato, M. S., Thgesen, J. H., Ranlund, S., Zartaloudi, E., Cahn, W., Crespo-Facorro, B., Diéz-  
440 Revuelta, Á., di Forti, M., Hall, M. H., Iyegbe, C., Jablensky, A., Kahn, R., Kalaydjieva, L.,  
441 Kravariti, E., Lin, K., McDonald, C., McIntosh, A. M., McQuillin, A., Picchioni, M., ... Bramon,  
442 E. (2018). Use of schizophrenia and bipolar disorder polygenic risk scores to identify  
443 psychotic disorders. *British Journal of Psychiatry*, 213(3), 535–541.  
444 <https://doi.org/10.1192/bjp.2018.89>
- 445 Canales-Rodríguez, E. J., Alonso-Lana, S., Verdolini, N., Sarró, S., Fera, I., Montoro, I., Garcia-  
446 Ruiz, B., Jimenez, E., Varo, C., Albacete, A., Argila-Plaza, I., Lluch, A., Bonnin, C. M., Vilella,  
447 E., Vieta, E., Pomarol-Clotet, E., & Salvador, R. (2021). Age- and gender-related differences  
448 in brain tissue microstructure revealed by multi-component T2 relaxometry. *Neurobiology of*  
449 *Aging*, 106, 68–79. <https://doi.org/10.1016/j.neurobiolaging.2021.06.002>
- 450 Canales-Rodríguez, E. J., Pomarol-Clotet, E., Radua, J., Sarró, S., Alonso-Lana, S., del Mar  
451 Bonnin, C., Goikolea, J. M., Maristany, T., García-Álvarez, R., Vieta, E., McKenna, P., &  
452 Salvador, R. (2014). Structural abnormalities in bipolar euthymia: A multicontrast molecular  
453 diffusion imaging study. *Biological Psychiatry*, 76(3), 239–248.  
454 <https://doi.org/10.1016/j.biopsych.2013.09.027>
- 455 Cannon, M., Caspi, A., Moffitt, T. E., Harrington, H., Taylor, A., Murray, R. M., & Poulton, R.  
456 (2002). Evidence for early-childhood, pan-developmental impairment specific to  
457 schizophreniform disorder: Results from a longitudinal birth cohort. *Archives of General*  
458 *Psychiatry*, 59(5), 449–456. <https://doi.org/10.1001/archpsyc.59.5.449>



- 459 Capra, J. A., Erwin, G. D., Mckinsey, G., Rubenstein, J. L. R., & Pollard, K. S. (2013). Many human  
460 accelerated regions are developmental enhancers. *Philosophical Transactions of the Royal*  
461 *Society of London. Series B: Biological Sciences*, 368(1632).  
462 <https://doi.org/10.1098/rstb.2013.0025>
- 463 Chang, C. C., Chow, C. C., Tellier, L. C. A. M., Vattikuti, S., Purcell, S. M., & Lee, J. J. (2015).  
464 Second-generation PLINK: Rising to the challenge of larger and richer datasets. *GigaScience*,  
465 4(1). <https://doi.org/10.1186/s13742-015-0047-8>
- 466 Charlson, F. J., Ferrari, A. J., Santomauro, D. F., Diminic, S., Stockings, E., Scott, J. G., McGrath,  
467 J. J., & Whiteford, H. A. (2018). Global epidemiology and burden of schizophrenia: Findings  
468 from the global burden of disease study 2016. *Schizophrenia Bulletin*, 44(6), 1195–1203.  
469 <https://doi.org/10.1093/schbul/sby058>
- 470 Cheung, J. P., Tubbs, J. D., & Sham, P. C. (2022). Extended gene set analysis of human neuro-  
471 psychiatric traits shows enrichment in brain-expressed human accelerated regions across  
472 development. *Schizophrenia Research*, 246(April), 148–155.  
473 <https://doi.org/10.1016/j.schres.2022.06.023>
- 474 Crow, T. J. (2000). Schizophrenia as the price that Homo sapiens pays for language: a resolution  
475 of the central paradox in the origin of the species. *Schizophrenia Research*, 31, 118–129.  
476 [www.elsevier.com/locate/bres](http://www.elsevier.com/locate/bres)
- 477 Das, S., Forer, L., Schönherr, S., Sidore, C., Locke, A. E., Kwong, A., Vrieze, S. I., Chew, E. Y.,  
478 Levy, S., McGue, M., Schlessinger, D., Stambolian, D., Loh, P. R., Iacono, W. G., Swaroop,  
479 A., Scott, L. J., Cucca, F., Kronenberg, F., Boehnke, M., ... Fuchsberger, C. (2016). Next-  
480 generation genotype imputation service and methods. *Nature Genetics*, 48(10), 1284–1287.  
481 <https://doi.org/10.1038/ng.3656>
- 482 Davidson, E. H. (2006). *The Regulatory Genome. Gene Regulatory Networks in Development and*  
483 *Evolution* (E. H. Davidson, Ed.). Academic Press. [https://doi.org/https://doi.org/10.1016/B978-](https://doi.org/10.1016/B978-012088563-3.50019-0)  
484 [012088563-3.50019-](https://doi.org/10.1016/B978-012088563-3.50019-0)
- 485 Desikan, R. S., Ségonne, F., Fischl, B., Quinn, B. T., Dickerson, B. C., Blacker, D., Buckner, R. L.,  
486 Dale, A. M., Maguire, R. P., Hyman, B. T., Albert, M. S., & Killiany, R. J. (2006). An automated  
487 labeling system for subdividing the human cerebral cortex on MRI scans into gyral based  
488 regions of interest. *NeuroImage*, 31(3), 968–980.  
489 <https://doi.org/10.1016/j.neuroimage.2006.01.021>
- 490 Doan, R. N., Bae, B. il, Cubelos, B., Chang, C., Hossain, A. A., Al-Saad, S., Mukaddes, N. M.,  
491 Oner, O., Al-Saffar, M., Balkhy, S., Gascon, G. G., Nieto, M., & Walsh, C. A. (2016). Mutations  
492 in Human Accelerated Regions Disrupt Cognition and Social Behavior. *Cell*, 167(2), 341-  
493 354.e12. <https://doi.org/10.1016/j.cell.2016.08.071>
- 494 Durbin, R. (2014). Efficient haplotype matching and storage using the positional Burrows-Wheeler  
495 transform (PBWT). *Bioinformatics*, 30(9), 1266–1272.  
496 <https://doi.org/10.1093/bioinformatics/btu014>
- 497 Eickhoff, S., Walters, N. B., Schleicher, A., Kril, J., Egan, G. F., Zilles, K., Watson, J. D. G., &  
498 Amunts, K. (2005). High-resolution MRI reflects myeloarchitecture and cytoarchitecture of  
499 human cerebral cortex. *Human Brain Mapping*, 24(3), 206–215.  
500 <https://doi.org/10.1002/hbm.20082>
- 501 Fischl, B., van der Kouwe, A., Destrieux, C., Halgren, E., Ségonne, F., Salat, D. H., Busa, E.,  
502 Seidman, L. J., Goldstein, J., Kennedy, D., Caviness, V., Makris, N., Rosen, B., & Dale, A. M.  
503 (2004). Automatically Parcellating the Human Cerebral Cortex. *Cerebral Cortex*, 14(1), 11–22.  
504 <https://doi.org/10.1093/cercor/bhg087>

- 505 Fujiwara, H., Yassin, W., & Murai, T. (2015). Neuroimaging studies of social cognition in  
506 schizophrenia. In *Psychiatry and Clinical Neurosciences* (Vol. 69, Issue 5, pp. 259–267).  
507 <https://doi.org/10.1111/pcn.12258>
- 508 Girsakis, K. M., Stergachis, A. B., DeGennaro, E. M., Doan, R. N., Qian, X., Johnson, M. B., Wang,  
509 P. P., Sejourne, G. M., Nagy, M. A., Pollina, E. A., Sousa, A. M. M., Shin, T., Kenny, C. J.,  
510 Scotellaro, J. L., Debo, B. M., Gonzalez, D. M., Rento, L. M., Yeh, R. C., Song, J. H. T., ...  
511 Walsh, C. A. (2021). Rewiring of human neurodevelopmental gene regulatory programs by  
512 human accelerated regions. *Neuron*, *109*(20), 3239–3251.e7.  
513 <https://doi.org/10.1016/j.neuron.2021.08.005>
- 514 Gittelman, R. M., Hun, E., Ay, F., Madeoy, J., Pennacchio, L., Noble, W. S., Hawkins, R. D., &  
515 Akey, J. M. (2015). Comprehensive identification and analysis of human accelerated  
516 regulatory DNA. *Genome Research*, *25*(9), 1245–1255. <https://doi.org/10.1101/gr.192591.115>
- 517 Gomar, J. J., Ortiz-Gil, J., McKenna, P. J., Salvador, R., Sans-Sansa, B., Sarró, S., Guerrero, A., &  
518 Pomarol-Clotet, E. (2011). Validation of the Word Accentuation Test (TAP) as a means of  
519 estimating premorbid IQ in Spanish speakers. *Schizophrenia Research*, *128*(1–3), 175–176.  
520 <https://doi.org/10.1016/j.schres.2010.11.016>
- 521 Grasby, K. L., Jahanshad, N., Painter, J. N., Colodro-Conde, L., Bralten, J., Hibar, D. P., Lind, P.  
522 A., Pizzagalli, F., Ching, C. R. K., McMahon, M. A. B., Shatikhina, N., Zsembik, L. C. P.,  
523 Thomopoulos, S. I., Zhu, A. H., Strike, L. T., Agartz, I., Alhusaini, S., Almeida, M. A. A.,  
524 Alnæs, D., ... Medland, S. E. (2020). The genetic architecture of the human cerebral cortex.  
525 *Science*, *367*, eaay6690. <https://doi.org/10.1126/science.aay6690>
- 526 Gulsuner, S., Stein, D. J., Susser, E. S., Sibeko, G., Pretorius, A., Walsh, T., Majara, L., Mndini, M.  
527 M., Mqulwana, S. G., Ntola, O. A., Casadei, S., Ngqengelele, L. L., Korchina, V., van der  
528 Merwe, C., Malan, M., Fader, K. M., Feng, M., Willoughby, E., Muzny, D., ... McClellan, J. M.  
529 (2020). Genetics of schizophrenia in the South African Xhosa. *Science*, *367*(6477), 569–573.  
530 <https://doi.org/10.1126/science.aay8833>
- 531 Gulsuner, S., Walsh, T., Watts, A. C., Lee, M. K., Thornton, A. M., Casadei, S., Rippey, C., Shahin,  
532 H., Nimgaonkar, V. L., Go, R. C. P., Savage, R. M., Swerdlow, N. R., Gur, R. E., Braff, D. L.,  
533 King, M. C., & McClellan, J. M. (2013). Spatial and temporal mapping of de novo mutations in  
534 schizophrenia to a fetal prefrontal cortical network. *Cell*, *154*(3).  
535 <https://doi.org/10.1016/j.cell.2013.06.049>
- 536 Haijma, S. v., van Haren, N., Cahn, W., Koolschijn, P. C. M. P., Hulshoff Pol, H. E., & Kahn, R. S.  
537 (2013). Brain volumes in schizophrenia: A meta-analysis in over 18 000 subjects.  
538 *Schizophrenia Bulletin*, *39*(5), 1129–1138. <https://doi.org/10.1093/schbul/sbs118>
- 539 Harrison, P. J., Freemantle, N., & Geddes, J. R. (2003). Meta-analysis of brain weight in  
540 schizophrenia. *Schizophrenia Research*, *64*(1), 25–34. [https://doi.org/10.1016/S0920-9964\(02\)00502-9](https://doi.org/10.1016/S0920-9964(02)00502-9)
- 542 Haukka, J., Suvisaari, J., & Lönqvist, J. (2003). Fertility of patients with schizophrenia, their  
543 siblings, and the general population: A cohort study from 1950 to 1959 in Finland. *American*  
544 *Journal of Psychiatry*, *160*(3), 460–463. <https://doi.org/10.1176/appi.ajp.160.3.460>
- 545 Hibar, D. P., Westlye, L. T., Doan, N. T., Jahanshad, N., Cheung, J. W., Ching, C. R. K., Versace,  
546 A., Bilderbeck, A. C., Uhlmann, A., Mwangi, B., Krämer, B., Overs, B., Hartberg, C. B., Abe,  
547 C., Dima, D., Grotegerd, D., Sprooten, E., Ben, E., Jimenez, E., ... Andreassen, O. A. (2018).  
548 Cortical abnormalities in bipolar disorder: An MRI analysis of 6503 individuals from the  
549 ENIGMA Bipolar Disorder Working Group. *Molecular Psychiatry*, *23*(4), 932–942.  
550 <https://doi.org/10.1038/mp.2017.73>

- 551 Hilker, R., Helenius, D., Fagerlund, B., Skytthe, A., Christensen, K., Werge, T. M., Nordentoft, M.,  
552 & Glenthøj, B. (2018). Heritability of Schizophrenia and Schizophrenia Spectrum Based on  
553 the Nationwide Danish Twin Register. *Biological Psychiatry*, 83(6), 492–498.  
554 <https://doi.org/10.1016/j.biopsych.2017.08.017>
- 555 Hubisz, M. J., & Pollard, K. S. (2014). Exploring the genesis and functions of Human Accelerated  
556 Regions sheds light on their role in human evolution. *Current Opinion in Genetics and*  
557 *Development*, 29, 15–21. <https://doi.org/10.1016/j.gde.2014.07.005>
- 558 Jauhar, S., Johnstone, M., & McKenna, P. J. (2022). Schizophrenia. *The Lancet*, 399(10323), 473–  
559 486. [https://doi.org/10.1016/S0140-6736\(21\)01730-X](https://doi.org/10.1016/S0140-6736(21)01730-X)
- 560 Jha, S. C., Xia, K., Schmitt, J. E., Ahn, M., Girault, J. B., Murphy, V. A., Li, G., Wang, L., Shen, D.,  
561 Zou, F., Zhu, H., Styner, M., Knickmeyer, R. C., & Gilmore, J. H. (2018). Genetic influences  
562 on neonatal cortical thickness and surface area. *Human Brain Mapping*, 39(12), 4998–5013.  
563 <https://doi.org/10.1002/hbm.24340>
- 564 Kahn, R. S., Sommer, I. E., Murray, R. M., Meyer-Lindenberg, A., Weinberger, D. R., Cannon, T.  
565 D., O'Donovan, M., Correll, C. U., Kane, J. M., van Os, J., & Insel, T. R. (2015).  
566 Schizophrenia. *Nature Reviews Disease Primers*, 1(November).  
567 <https://doi.org/10.1038/nrdp.2015.67>
- 568 Legge, S. E., Santoro, M. L., Periyasamy, S., Okewole, A., Arsalan, A., & Kowalec, K. (2021).  
569 Genetic architecture of schizophrenia: A review of major advancements. *Psychological*  
570 *Medicine*, 51(13), 2168–2177. <https://doi.org/10.1017/S0033291720005334>
- 571 Li, L., Wei, Y., Zhang, J., Ma, J., Yi, Y., Gu, Y., Li, L. M. W., Lin, Y., & Dai, Z. (2021). Gene  
572 expression associated with individual variability in intrinsic functional connectivity.  
573 *NeuroImage*, 245, 118743. <https://doi.org/10.1016/j.neuroimage.2021.118743>
- 574 Lindblad-Toh, K., Garber, M., Zuk, O., Lin, M. F., Parker, B. J., Washietl, S., Kheradpour, P., Ernst,  
575 J., Jordan, G., Mauceli, E., Ward, L. D., Lowe, C. B., Holloway, A. K., Clamp, M., Gnerre, S.,  
576 Alföldi, J., Beal, K., Chang, J., Clawson, H., ... Sodergren, E. (2011). A high-resolution map of  
577 human evolutionary constraint using 29 mammals. *Nature*, 478(7370), 476–482.  
578 <https://doi.org/10.1038/nature10530>
- 579 Luppi, A. I., Mediano, P. A. M., Rosas, F. E., Holland, N., Fryer, T. D., O'Brien, J. T., Rowe, J. B.,  
580 Menon, D. K., Bor, D., & Stamatakis, E. A. (2022). A synergistic core for human brain  
581 evolution and cognition. *Nature Neuroscience*, 25(6), 771–782.  
582 <https://doi.org/10.1038/s41593-022-01070-0>
- 583 Lyall, A. E., Shi, F., Geng, X., Woolson, S., Li, G., Wang, L., Hamer, R. M., Shen, D., & Gilmore, J.  
584 H. (2015). Dynamic Development of Regional Cortical Thickness and Surface Area in Early  
585 Childhood. *Cerebral Cortex*, 25(8), 2204–2212. <https://doi.org/10.1093/cercor/bhu027>
- 586 Marek, S., Tervo-Clemmens, B., Calabro, F. J., Montez, D. F., Kay, B. P., Hatoum, A. S., Donohue,  
587 M. R., Foran, W., Miller, R. L., Hendrickson, T. J., Malone, S. M., Kandala, S., Feczko, E.,  
588 Miranda-Dominguez, O., Graham, A. M., Earl, E. A., Perrone, A. J., Cordova, M., Doyle, O.,  
589 ... Dosenbach, N. U. F. (2022). Reproducible brain-wide association studies require  
590 thousands of individuals. *Nature*, 603(7902), 654–660. <https://doi.org/10.1038/s41586-022-04492-9>
- 591
- 592 McCarthy, S., Das, S., Kretschmar, W., Delaneau, O., Wood, A. R., Teumer, A., Kang, H. M.,  
593 Fuchsberger, C., Danecek, P., Sharp, K., Luo, Y., Sidore, C., Kwong, A., Timpson, N.,  
594 Koskinen, S., Vrieze, S., Scott, L. J., Zhang, H., Mahajan, A., ... Marchini, J. (2016). A  
595 reference panel of 64,976 haplotypes for genotype imputation. *Nature Genetics*, 48(10),  
596 1279–1283. <https://doi.org/10.1038/ng.3643>

- 597 McGrath, J. J., Hearle, J., Jenner, L., Plant, K., Drummond, A., & Barkla, J. M. (1999). The fertility  
598 and fecundity of patients with psychoses. *Acta Psychiatrica Scandinavica*, *99*(6), 441–446.  
599 <https://doi.org/10.1111/j.1600-0447.1999.tb00990.x>
- 600 McGrath, J., Saha, S., Chant, D., & Welham, J. (2008). Schizophrenia: A concise overview of  
601 incidence, prevalence, and mortality. *Epidemiologic Reviews*, *30*(1), 67–76.  
602 <https://doi.org/10.1093/epirev/mxn001>
- 603 Mora-Bermúdez, F., Badsha, F., Kanton, S., Camp, J. G., Vernet, B., Köhler, K., Voigt, B., Okita,  
604 K., Maricic, T., He, Z., Lachmann, R., Pääbo, S., Treutlein, B., Huttner, W. B., & Musacchio,  
605 A. (2016). Differences and similarities between human and chimpanzee neural progenitors  
606 during cerebral cortex development. *ELife*, *5*(September2016), 1–24.  
607 <https://doi.org/10.7554/eLife.18683>
- 608 Mowinckel, A. M., & Vidal-Piñeiro, D. (2020). Visualization of Brain Statistics With R Packages  
609 ggseg and ggseg3d. *Advances in Methods and Practices in Psychological Science*, *3*(4),  
610 466–483. <https://doi.org/10.1177/2515245920928009>
- 611 Mullins, N., Forstner, A. J., O'Connell, K. S., Coombes, B., Coleman, J. R. I., Qiao, Z., Als, T. D.,  
612 Bigdeli, T. B., Børte, S., Bryois, J., Charney, A. W., Drange, O. K., Gandal, M. J., Hagenaars,  
613 S. P., Ikeda, M., Kamitaki, N., Kim, M., Krebs, K., Panagiotaropoulou, G., ... Andreassen, O.  
614 A. (2021). Genome-wide association study of more than 40,000 bipolar disorder cases  
615 provides new insights into the underlying biology. *Nature Genetics*, *53*(6), 817–829.  
616 <https://doi.org/10.1038/s41588-021-00857-4>
- 617 Ni, G., Zeng, J., Revez, J. A., Wang, Y., Zheng, Z., Ge, T., Restuadi, R., Kiewa, J., Nyholt, D. R.,  
618 Coleman, J. R. I., Smoller, J. W., Ripke, S., Neale, B. M., Corvin, A., Walters, J. T. R., Farh,  
619 K. H., Holmans, P. A., Lee, P., Bulik-Sullivan, B., ... Pedersen, N. L. (2021). A Comparison of  
620 Ten Polygenic Score Methods for Psychiatric Disorders Applied Across Multiple Cohorts.  
621 *Biological Psychiatry*, *90*(9), 611–620. <https://doi.org/10.1016/j.biopsych.2021.04.018>
- 622 Niemi, L. T., Suvisaari, J. M., Tuulio-Henriksson, A., & Lönnqvist, J. K. (2003). Childhood  
623 developmental abnormalities in schizophrenia: Evidence from high-risk studies. *Schizophrenia*  
624 *Research*, *60*(2–3), 239–258. [https://doi.org/10.1016/S0920-9964\(02\)00234-7](https://doi.org/10.1016/S0920-9964(02)00234-7)
- 625 O'Bleness, M., Searles, V. B., Varki, A., Gagneux, P., & Sikela, J. M. (2012). Evolution of genetic  
626 and genomic features unique to the human lineage. *Nature Reviews Genetics*, *13*(12), 853–  
627 866. <https://doi.org/10.1038/nrg3336>
- 628 O'dushlaine, C., Rossin, L., Lee, P. H., Duncan, L., Parikshak, N. N., Newhouse, S., Ripke, S.,  
629 Neale, B. M., Purcell, S. M., Posthuma, D., Nurnberger, J. I., Lee, S. H., Faraone, S. v., Perlis,  
630 R. H., Mowry, B. J., Thapar, A., Goddard, M. E., Witte, J. S., Absher, D., ... Breen, G. (2015).  
631 Psychiatric genome-wide association study analyses implicate neuronal, immune and histone  
632 pathways. *Nature Neuroscience*, *18*(2), 199–209. <https://doi.org/10.1038/nn.3922>
- 633 Panizzon, M. S., Fennema-Notestine, C., Eyler, L. T., Jernigan, T. L., Prom-Wormley, E., Neale,  
634 M., Jacobson, K., Lyons, M. J., Grant, M. D., Franz, C. E., Xian, H., Tsuang, M., Fischl, B.,  
635 Seidman, L., Dale, A., & Kremen, W. S. (2009). Distinct genetic influences on cortical surface  
636 area and cortical thickness. *Cerebral Cortex*, *19*(11), 2728–2735.  
637 <https://doi.org/10.1093/cercor/bhp026>
- 638 Perälä, J., Suvisaari, J., Saarni, S. I., Kuoppasalmi, K., Isometsä, E., Pirkola, S., Partonen, T.,  
639 Tuulio-Henriksson, A., Hintikka, J., Kieseppä, T., Härkänen, T., Koskinen, S., & Lönnqvist, J.  
640 (2007). Lifetime prevalence of psychotic and bipolar I disorders in a general population.  
641 *Archives of General Psychiatry*, *64*(1), 19–28. <https://doi.org/10.1001/archpsyc.64.1.19>

- 642 Polimeni, J., & Reiss, J. (2003). Evolutionary Perspectives on Schizophrenia. *Canadian Journal of*  
643 *Psychiatry*, 48(1), 34–39. <https://doi.org/10.1177/070674370304800916>
- 644 Pollard, K. S., Salama, S. R., King, B., Kern, A. D., Dreszer, T., Katzman, S., Siepel, A., Pedersen,  
645 J. S., Bejerano, G., Baertsch, R., Rosenbloom, K. R., Kent, J., & Haussler, D. (2006). Forces  
646 shaping the fastest evolving regions in the human genome. *PLoS Genetics*, 2(10), 1599–  
647 1611. <https://doi.org/10.1371/journal.pgen.0020168>
- 648 Pollard, K. S., Salama, S. R., Lambert, N., Lambot, M. A., Coppens, S., Pedersen, J. S., Katzman,  
649 S., King, B., Onodera, C., Siepel, A., Kern, A. D., Dehay, C., Igel, H., Ares, M.,  
650 Vanderhaeghen, P., & Haussler, D. (2006). An RNA gene expressed during cortical  
651 development evolved rapidly in humans. *Nature*, 443(7108), 167–172.  
652 <https://doi.org/10.1038/nature05113>
- 653 Prabhakar, S., Noonan, J. P., Pääbo, S., & Rubin, E. M. (2006). Accelerated evolution of  
654 conserved noncoding sequences in humans. *Science*, 314(5800), 786.  
655 <https://doi.org/10.1126/science.1130738>
- 656 Privé, F., Vilhjálmsón, B. J., Aschard, H., & Blum, M. G. B. (2019). Making the Most of Clumping  
657 and Thresholding for Polygenic Scores. *American Journal of Human Genetics*, 105(6), 1213–  
658 1221. <https://doi.org/10.1016/j.ajhg.2019.11.001>
- 659 Purcell, S. M., Wray, N. R., Stone, J. L., Visscher, P. M., O'Donovan, M. C., Sullivan, P. F.,  
660 Ruderfer, D. M., McQuillin, A., Morris, D. W., O'Gushlaine, C. T., Corvin, A., Holmans, P. A.,  
661 O'Gdonovan, M. C., MacGregor, S., Gurling, H., Blackwood, D. H. R., Craddock, N. J., Gill, M.,  
662 Hultman, C. M., ... Sklar, P. (2009). Common polygenic variation contributes to risk of  
663 schizophrenia and bipolar disorder. *Nature*, 460(7256), 748–752.  
664 <https://doi.org/10.1038/nature08185>
- 665 Rakic, P. (1988). Specification of Cerebral Cortical Areas. *Science (New York, N.Y.)*, 241, 170–  
666 176.
- 667 Rapoport, J. L., Addington, A. M., Frangou, S., & Psych, M. R. C. (2005). The neurodevelopmental  
668 model of schizophrenia: Update 2005. *Molecular Psychiatry*, 10(5), 434–449.  
669 <https://doi.org/10.1038/sj.mp.4001642>
- 670 Roadmap Epigenomics Consortium, Kundaje, A., Meuleman, W., Ernst, J., Bilenky, M., Yen, A.,  
671 Heravi-Moussavi, A., Kheradpour, P., Zhang, Z., Wang, J., Ziller, M. J., Amin, V., Whitaker, J.  
672 W., Schultz, M. D., Ward, L. D., Sarkar, A., Quon, G., Sandstrom, R. S., Eaton, M. L., ...  
673 Kellis, M. (2015). Integrative analysis of 111 reference human epigenomes. *Nature*,  
674 518(7539), 317–329. <https://doi.org/10.1038/nature14248>
- 675 Scherk, H., & Falkai, P. (2006). Effects of antipsychotics on brain structure. *Current Opinion in*  
676 *Psychiatry*, 19(2), 145–150. <https://doi.org/10.1097/01.yco.0000214339.06507.d8>
- 677 Smigielski, L., Papiol, S., Theodoridou, A., Heekeren, K., Gerstenberg, M., Wotruba, D., Buechler,  
678 R., Hoffmann, P., Herms, S., Adorjan, K., Anderson-Schmidt, H., Budde, M., Comes, A. L.,  
679 Gade, K., Heilbronner, M., Heilbronner, U., Kalman, J. L., Klöhn-Saghatolislam, F., Reich-  
680 Erkelenz, D., ... Grünblatt, E. (2021). Polygenic risk scores across the extended psychosis  
681 spectrum. *Translational Psychiatry*, 11(1). <https://doi.org/10.1038/s41398-021-01720-0>
- 682 Smith, T. J., & Mckenna, C. M. (2013). A Comparison of Logistic Regression Pseudo R 2 Indices.  
683 *Multiple Linear Regression Viewpoints*, 39(2), 17–26.
- 684 Sørensen, H. J., Mortensen, E. L., Schiffman, J., Reinisch, J. M., Maeda, J., & Mednick, S. A.  
685 (2010). Early developmental milestones and risk of schizophrenia: A 45-year follow-up of the  
686 Copenhagen Perinatal Cohort. *Schizophrenia Research*, 118(1–3), 41–47.  
687 <https://doi.org/10.1016/j.schres.2010.01.029>

- 688 Srinivasan, S., Bettella, F., Hassani, S., Wang, Y., Witoelar, A., Schork, A. J., Thompson, W. K.,  
689 Collier, D. A., Desikan, R. S., Melle, I., Dale, A. M., Djurovic, S., & Andreassen, O. A. (2017).  
690 Probing the association between early evolutionary markers and schizophrenia. *PLoS ONE*,  
691 12(1), 1–15. <https://doi.org/10.1371/journal.pone.0169227>
- 692 Strike, L. T., Hansell, N. K., Couvy-Duchesne, B., Thompson, P. M., de Zubicaray, G. I., McMahon,  
693 K. L., & Wright, M. J. (2019). Genetic complexity of cortical structure: Differences in genetic  
694 and environmental factors influencing cortical surface area and thickness. *Cerebral Cortex*,  
695 29(3), 952–962. <https://doi.org/10.1093/cercor/bhy002>
- 696 Sullivan, P. F., Kendler, K. S., & Neale, M. C. (2003). Schizophrenia as a Complex Trait. *Archives*  
697 *of General Psychiatry*, 60(12), 1187. <https://doi.org/10.1001/archpsyc.60.12.1187>
- 698 Tolosa, A., Sanjuán, J., Leal, C., Costas, J., Moltó, M. D., & de Frutos, R. (2008). Rapid evolving  
699 RNA gene HAR1A and schizophrenia. *Schizophrenia Research*, 99(1–3), 370–372.  
700 <https://doi.org/10.1016/j.schres.2007.10.011>
- 701 Trubetskoy, V., Pardiñas, A., Qi, T., Panagiotaropoulou, G., Awasthi, S., Bigdeli, T., Bryois, J.,  
702 Chen, C., Dennison, C., Hall, L., Lam, M., Watanabe, K., Frei, O., Ge, T., Harwood, J.,  
703 Koopmans, F., Magnusson, S., Richards, A., Sidorenko, J., ... Schizophrenia Working Group  
704 of the Psychiatric Genomics Consortium. (2022). Mapping genomic loci implicates genes and  
705 synaptic biology in schizophrenia. *Nature*, 604(7906), 502–508.  
706 <https://doi.org/10.1038/s41586-022-04434-5>
- 707 Uebbing, S., Gockley, J., Reilly, S. K., Kocher, A. A., Geller, E., Gandotra, N., Scharfe, C., Cotney,  
708 J., & Noonan, J. P. (2021). Massively parallel discovery of human-specific substitutions that  
709 alter enhancer activity. *Proceedings of the National Academy of Sciences of the United States*  
710 *of America*, 118(17), 1–11. <https://doi.org/10.1073/pnas.2102856118>
- 711 Ursini, G., Punzi, G., Chen, Q., Marengo, S., Robinson, J. F., Porcelli, A., Hamilton, E. G., Mitjans,  
712 M., Maddalena, G., Begemann, M., Seidel, J., Yanamori, H., Jaffe, A. E., Berman, K. F.,  
713 Egan, M. F., Straub, R. E., Colantuoni, C., Blasi, G., Hashimoto, R., ... Weinberger, D. R.  
714 (2018). Convergence of placenta biology and genetic risk for schizophrenia article. *Nature*  
715 *Medicine*, 24(6), 792–801. <https://doi.org/10.1038/s41591-018-0021-y>
- 716 Ursini, G., Punzi, G., Langworthy, B. W., Chen, Q., Xia, K., Cornea, E. A., Goldman, B. D., Styner,  
717 M. A., Knickmeyer, R. C., Gilmore, J. H., & Weinberger, D. R. (2021). Placental genomic risk  
718 scores and early neurodevelopmental outcomes. *Proceedings of the National Academy of*  
719 *Sciences of the United States of America*, 118(7), e2019789118.  
720 <https://doi.org/10.1073/pnas.2019789118/-/DCSupplemental>
- 721 van den Heuvel, M. P., Scholtens, L. H., de Lange, S. C., Pijnenburg, R., Cahn, W., van Haren, N.  
722 E. M., Sommer, I. E., Bozzali, M., Koch, K., Boks, M. P., Repple, J., Pievani, M., Li, L.,  
723 Preuss, T. M., & Rilling, J. K. (2019). Evolutionary modifications in human brain connectivity  
724 associated with schizophrenia. *Brain*, 142(12), 3991–4002.  
725 <https://doi.org/10.1093/brain/awz330>
- 726 van Erp, T. G. M., Walton, E., Hibar, D. P., Schmaal, L., Jiang, W., Glahn, D. C., Pearlson, G. D.,  
727 Yao, N., Fukunaga, M., Hashimoto, R., Okada, N., Yamamori, H., Bustillo, J. R., Clark, V. P.,  
728 Agartz, I., Mueller, B. A., Cahn, W., de Zwarte, S. M. C., Hulshoff Pol, H. E., ... Turner, J. A.  
729 (2018). Cortical Brain Abnormalities in 4474 Individuals With Schizophrenia and 5098 Control  
730 Subjects via the Enhancing Neuro Imaging Genetics Through Meta Analysis (ENIGMA)  
731 Consortium. *Biological Psychiatry*, 84(9), 644–654.  
732 <https://doi.org/10.1016/j.biopsych.2018.04.023>
- 733 van Os, J., Pries, L. K., Delespaul, P., Kenis, G., Luykx, J. J., Lin, B. D., Richards, A. L., Akdede,  
734 B., Binbay, T., Altınyazar, V., Yallıncetin, B., Gümüş-Akay, G., Cihan, B., Soygür, H., Ulaş, H.,

- 735 Cankurtaran, E. Ş., Kaymak, S. U., Mihaljevic, M. M., Petrovic, S. A., ... Guloksuz, S. (2020).  
736 Replicated evidence that endophenotypic expression of schizophrenia polygenic risk is  
737 greater in healthy siblings of patients compared to controls, suggesting gene-environment  
738 interaction. *The EUGEI study. Psychological Medicine, 50*(11), 1884–1897.  
739 <https://doi.org/10.1017/S003329171900196X>
- 740 Vassos, E., di Forti, M., Coleman, J., Iyegbe, C., Prata, D., Euesden, J., O'Reilly, P., Curtis, C.,  
741 Kolliakou, A., Patel, H., Newhouse, S., Traylor, M., Ajnakina, O., Mondelli, V., Marques, T. R.,  
742 Gardner-Sood, P., Aitchison, K. J., Powell, J., Atakan, Z., ... Breen, G. (2017). An  
743 Examination of Polygenic Score Risk Prediction in Individuals With First-Episode Psychosis.  
744 *Biological Psychiatry, 81*(6), 470–477. <https://doi.org/10.1016/j.biopsych.2016.06.028>
- 745 Watanabe, K., Taskesen, E., van Bochoven, A., & Posthuma, D. (2017). Functional mapping and  
746 annotation of genetic associations with FUMA. *Nature Communications, 8*(1), 1–10.  
747 <https://doi.org/10.1038/s41467-017-01261-5>
- 748 Wei, Y., de Lange, S. C., Scholtens, L. H., Watanabe, K., Ardesch, D. J., Jansen, P. R., Savage, J.  
749 E., Li, L., Preuss, T. M., Rilling, J. K., Posthuma, D., & van den Heuvel, M. P. (2019). Genetic  
750 mapping and evolutionary analysis of human-expanded cognitive networks. *Nature*  
751 *Communications, 10*(1), 1–11. <https://doi.org/10.1038/s41467-019-12764-8>
- 752 Wierenga, L. M., Langen, M., Oranje, B., & Durston, S. (2014). Unique developmental trajectories  
753 of cortical thickness and surface area. *NeuroImage, 87*, 120–126.  
754 <https://doi.org/10.1016/j.neuroimage.2013.11.010>
- 755 Won, H., Huang, J., Opland, C. K., Hartl, C. L., & Geschwind, D. H. (2019). Human evolved  
756 regulatory elements modulate genes involved in cortical expansion and neurodevelopmental  
757 disease susceptibility. *Nature Communications, 10*(1), 1–11. <https://doi.org/10.1038/s41467-019-10248-3>
- 759 Wynn, T., & Coolidge, F. L. (2011). The Implications of the Working Memory Model for the  
760 Evolution of Modern Cognition. *International Journal of Evolutionary Biology, 2011*, 1–12.  
761 <https://doi.org/10.4061/2011/741357>
- 762 Xu, K., Schadt, E. E., Pollard, K. S., Roussos, P., & Dudley, J. T. (2015). Genomic and network  
763 patterns of schizophrenia genetic variation in human evolutionary accelerated regions.  
764 *Molecular Biology and Evolution, 32*(5), 1148–1160. <https://doi.org/10.1093/molbev/msv031>

765

## 766 **Author contributions**

767 MG-R and MF-V conceived the study. MG-R conducted the DNA extraction and sample normalization for  
768 genotyping. EJC-R, MAG-L and PF-C pre-processed and segmented the MRI images. EP-C, PF-C, JS, JT,  
769 LT and ER-C conducted the recruitment and/or the clinical evaluation. EJC-R, RS and EP-C designed the  
770 MRI protocols. MG-R, CA and AA performed the data curation. MG-R conducted the formal statistical  
771 analyses and graphical representations with the help of CA-P, AA and ML-G. SP and MF-V were implicated  
772 in the revision of the methodology. MG-R and MF-V interpreted the results. MG-R wrote the first draft and the  
773 subsequent drafts of the paper. MF-V supervised the study activity planning and execution. MF-V and EP-C  
774 participated in the funding acquisition. All the authors reviewed and approved the final manuscript.

775 **Funding**

776 This study received project funding from: i) Brain & Behavior Research Foundation (NARSAD Young  
777 Investigator Award) to MF-V (grant ID 26206); ii) Instituto de Salud Carlos III (ISCIII) through the contracts  
778 FI19/0352 to MG-R, CD22/00106 to MAG-L, and CP20/00072 to MF-V (co-funded by European Regional  
779 Development Fund (ERDF)/European Social Fund “Investing in your future”); iii) la “Caixa” Foundation  
780 through the Junior Leader Fellowship contract LCF/BQ/PR22/11920017 to PF-C; iv) the Swiss National  
781 Science Ambizione grant PZ00P2\_185814 to EJC-R; iv) Júlia Gil Pineda Research Fellowship to ER-C; iiv)  
782 the Comissionat per a Universitats i Recerca del DIUE of the Generalitat de Catalunya (Agència de Gestio  
783 d’Ajuts Universitaris i de Recerca (AGAUR, 2021SGR01475). CeGen PRB3 is supported by grant  
784 PT17/0019, of the PE I+D+i 2013-2016, funded by ISCIII and ERDF.

785

786 **Acknowledgements**

787 The authors would like to thank the volunteers participating in the study.

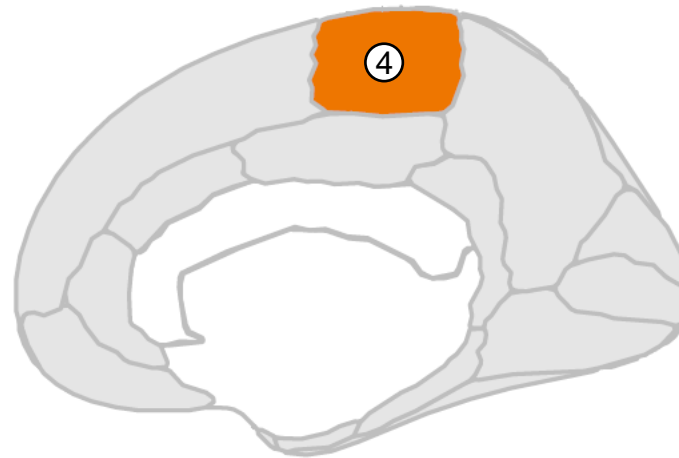
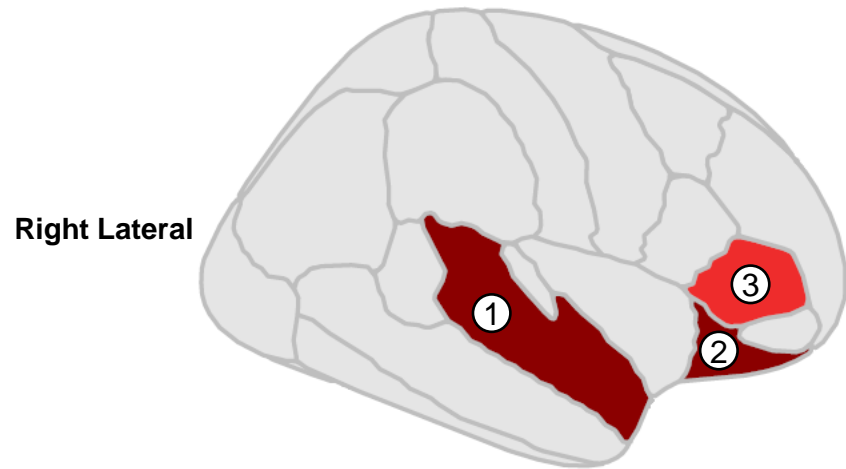
788

789 **Data availability**

790 The data that support the findings of this study are available from the corresponding author upon reasonable  
791 request.



# Patients with SZ



FDR-pval



$p < 0.01$

$p < 0.02$

$p < 0.04$

