

Pilot study of the association between microbiome and the development of adverse posttraumatic neuropsychiatric sequelae after traumatic stress exposure.

Abigail L Zeamer, B.S.¹; Marie-Claire Salive, B.S.²; Xinming An, PhD³; Stacey L House, MD, PhD⁴; Francesca L Beaudoin, MD, PhD^{5,6}; Jennifer S Stevens, PhD⁷; Donglin Zeng, PhD⁸; Thomas C Neylan, MD⁹; Gari D Clifford, DPhil^{10,11}; Sarah D Linnstaedt, PhD^{3,12,13}; Scott L Rauch, MD^{14,15,13}; Alan B Storrow, MD¹⁶; Christopher Lewandowski, MD¹⁷; Paul I Musey, MD, Jr.¹⁸; Phyllis L Hendry, MD¹⁹; Sophia Sheikh, MD¹⁹; Christopher W Jones, MD²⁰; Brittany E Punches, PhD, RN^{21,22}; Robert A Swor, DO²³; Lauren A Hudak, MD, MPH²⁴; Jose L Pascual, MD, PhD^{25,26}; Mark J Seamon, MD^{25,26}; Erica Harris, MD²⁷; Claire Pearson, MD²⁸; David A Peak, MD²⁹; Roland C Merchant, MD, MPH, ScD³⁰; Robert M Domeier, MD³¹; Niels K Rathlev, MD³²; Brian J O'Neil, MD³³; Paulina Sergot, MD³⁴; Leon D Sanchez, MD, MPH^{30,35}; Steven E Bruce, PhD³⁶; Ronald C Kessler, PhD³⁷; Karestan C Koenen, PhD³⁸; Samuel A McLean, MD, MPH³⁹; Vanni Bucci, PhD^{1,40}; John P Haran, MD, PhD^{2,40}

¹Department of Microbiology and Physiologic Systems, University of Massachusetts Chan Medical School, Worcester, MA

¹Department of Emergency Medicine, University of Massachusetts Chan Medical School, Worcester, MA

³Institute for Trauma Recovery, University of North Carolina at Chapel Hill, Chapel Hill, NC

⁴Department of Emergency Medicine, Washington University School of Medicine, St. Louis, MO

⁵Department of Epidemiology, Brown University, Providence, RI

⁶Department of Emergency Medicine, Brown University, Providence, RI

⁷Department of Psychiatry and Behavioral Sciences, Emory University School of Medicine, Atlanta, GA

⁸Department of Biostatistics, Gillings School of Global Public Health, University of North Carolina, Chapel Hill, NC

⁹Departments of Psychiatry and Neurology, University of California San Francisco, San Francisco, CA

¹⁰Department of Biomedical Informatics, Emory University School of Medicine, Atlanta, GA

¹¹Department of Biomedical Engineering, Georgia Institute of Technology and Emory University, Atlanta, GA

¹²The Many Brains Project, Belmont, MA

¹³Department of Psychiatry, Harvard Medical School, Boston, MA

¹⁴Institute for Technology in Psychiatry, McLean Hospital, Belmont, MA

¹⁵Department of Psychiatry, McLean Hospital, Belmont, MA

¹⁶Department of Emergency Medicine, Vanderbilt University Medical Center, Nashville, TN

¹⁷Department of Emergency Medicine, Henry Ford Health System, Detroit, MI

¹⁸Department of Emergency Medicine, Indiana University School of Medicine, Indianapolis, IN

¹⁹Department of Emergency Medicine, University of Florida College of Medicine-Jacksonville, Jacksonville, FL

²⁰Department of Emergency Medicine, Cooper Medical School of Rowan University, Camden, NJ

²¹Department of Emergency Medicine, Ohio State University College of Medicine, Columbus, OH

²²Ohio State University College of Nursing, Columbus, OH

²³Department of Emergency Medicine, Oakland University William Beaumont School of Medicine, Rochester, MI

²⁴Department of Emergency Medicine, Emory University School of Medicine, Atlanta, GA

²⁵Department of Surgery, University of Pennsylvania, Philadelphia, PA

²⁶Perelman School of Medicine, University of Pennsylvania, Philadelphia, PA

²⁷Department of Emergency Medicine, Einstein Medical Center, Philadelphia, PA

²⁸Department of Emergency Medicine, Wayne State University, Ascension St. John Hospital, Detroit, MI

²⁹Department of Emergency Medicine, Massachusetts General Hospital, Boston, MA

³⁰Department of Emergency Medicine, Brigham and Women's Hospital, Boston, MA

³¹Department of Emergency Medicine, Trinity Health-Ann Arbor, Ypsilanti, MI

³²Department of Emergency Medicine, University of Massachusetts Medical School-Baystate, Springfield, MA

³³Department of Emergency Medicine, Wayne State University, Detroit Receiving Hospital, Detroit, MI

³⁴Department of Emergency Medicine, McGovern Medical School at UTHealth, Houston, TX

³⁵Department of Emergency Medicine, Harvard Medical School, Boston, MA

³⁶Department of Psychological Sciences, University of Missouri - St. Louis, St. Louis, MO

³⁷Department of Health Care Policy, Harvard Medical School, Boston, MA

³⁸Department of Epidemiology, Harvard University, Boston, MA

³⁹Department of Emergency Medicine, University of North Carolina at Chapel Hill, Chapel Hill, NC

⁴⁰Program in Microbiome Dynamics, University of Massachusetts Chan Medical School, Worcester, MA

* JPH and VB are co-senior authors and co-corresponding authors with JPH being primary responsible for all the communications

Corresponding Author: John P. Haran, M.D., Ph.D., 55 Lake Avenue North, Department of Emergency Medicine, Worcester, MA 01655; Phone: 508-450-8688; email: john.haran@umassmed.edu; fax: 508-421-1490 AND Vanni Bucci, 55 Lake Avenue North, Department of Microbiology and Physiological Systems, Worcester, MA 01655; Phone: +1-774-455-3854; email: vanni.bucci@umassmed.edu

Short title: Posttrauma outcomes and the microbiome

Keywords: PTSD, microbiome, APNS, depression, trauma, arginine

1 Abstract

2 **Background:** Patients exposed to trauma often experience high rates of adverse post-traumatic
3 neuropsychiatric sequelae (APNS). The biologic mechanisms promoting APNS are currently
4 unknown, but the microbiota-gut-brain axis offers an avenue to understanding mechanisms as
5 well as possibilities for intervention. Microbiome composition at the time of trauma exposure has
6 been poorly examined regarding neuropsychiatric outcomes. We aimed to determine whether
7 baseline the gut microbiomes of trauma-exposed emergency department patients who later
8 develop APNS have dysfunctional gut microbiome profiles and discover potential associated
9 mechanisms.

10 **Methods:** We performed metagenomic analysis on stool samples (n=51) from a subset of
11 adults enrolled in the Advancing Understanding of RecOvery after trauma (AURORA) study.
12 Twelve-week post-trauma outcomes for post-traumatic stress disorder (PTSD) (PTSD checklist
13 for DSM-5), normalized depression scores (PROMIS Depression Short Form 8b) and somatic
14 symptom counts were collected. Generalized linear models were created for each outcome
15 using microbial abundances and relevant demographics. Mixed-effect random forest machine
16 learning models were used to identify associations between APNS outcomes and microbial
17 features and metabolic pathways.

18 **Results:** Microbial species, including *Flavonifactor plautti* and *Ruminococcus gnavus*, which are
19 associated with inflammation and poor health outcomes, were found to be important in
20 predicting worse APNS outcomes. Notably, worse APNS outcomes were highly predicted by
21 decreased L-arginine related pathway genes and increased citrulline and ornithine pathways.

22 **Conclusions:** Pro-inflammatory microbes that are enriched in individuals who develop APNS.
23 More notably, we identified a biological mechanism through which the gut microbiome reduces
24 global arginine bioavailability, which also has been demonstrated in patients with PTSD.

25

26 Introduction

27 Adverse posttraumatic neuropsychiatric sequelae (APNS) such as posttraumatic stress
28 disorder (PTSD), depression, and somatic symptoms are common after traumatic stress
29 exposure (1–6). Contemporary limitations in understanding the pathogenesis of APNS are a
30 barrier to developing effective primary and secondary preventive interventions(1,7). Novel
31 multidisciplinary approaches applying methodologic advances from other areas of neuroscience
32 to the early post-trauma period may advance understanding of APNS pathogenesis.

33 One such area is the study of the microbiome-gut-brain axis. The microbiome-gut-brain
34 axis has been demonstrated to have an important influence on brain function in neuropsychiatric
35 disorders(8–10), and has been hypothesized to play an important role in trauma-related
36 neuropsychiatric disorders(11). Gut microbes affect central nervous system function through the
37 production of metabolites and neurochemicals(10). For example, short-chain fatty acids such as
38 butyrate support gut homeostasis by maintaining gut barrier integrity and inducing anti-
39 inflammatory factors which cross the blood-brain barrier (12,13). In contrast, *Enterobacteriaceae*
40 expansion can augment neuroinflammatory processes through the lipopolysaccharide (LPS)
41 endotoxin-mediated activation of the Toll-like receptor 4 (TLR4) pathway, leading to the
42 production of pro-inflammatory cytokines(14).

43 While specific mechanisms responsible for it remain incompletely understood,
44 dysregulated immunity and elevated inflammation are risk factors for PTSD(15). Given the
45 above known influence of the gut-brain axis on neuroinflammation, these data support the
46 hypothesis that variations in microbiome characteristics could influence APNS pathogenesis.
47 This hypothesis is also supported by several small studies which identified broad phylum-level
48 differences in microbiome characteristics among individuals with PTSD (n=18) as compared to
49 those without PTSD (n=12) (16), and a study in veterans with cirrhosis which found associations
50 between lower microbial diversity and a higher abundance of opportunistic microbes with PTSD
51 symptoms and impaired cognition(17). This hypothesis is also supported by animal studies in
52 which trauma was found to cause alterations in the microbiome and lead to increased local and
53 systemic inflammation(8).

54 In this nested study, we explored the association between the gut microbiome and
55 APNS development in a subsample of individuals recruited from emergency departments (ED)
56 in the immediate aftermath of trauma as part of the AURORA study (n=74) and who also
57 provided stool samples(1). We employed shotgun metagenomic sequencing of stool samples
58 from patients evaluated and discharged from the ED and machine learning (ML) predictive

59 analytics to test the hypothesis that variability in microbiome species and pro- and anti-
60 inflammatory metabolic pathways is associated with APNS outcomes.

61

62 **Methods**

63 **Study Population and Sample Collection**

64 The AURORA study began in September 2017; we started enrollment into this nested
65 study from November 2020 until February 2021. AURORA participants who completed their first
66 outpatient remote assessment and had not received antibiotics within the previous 6 months
67 were approached for enrollment into this nested study. Participants also could not have had any
68 other influences that could cause major microbiome perturbations (e.g., infections, significant
69 dietary changes). Of the 2,097 AURORA participants subjects approached, 106 agreed to
70 participate, and we received stool samples from n=74 of these individuals (69.8%) for this
71 nested study. Stool samples were self-collected at home by participants using OMNIgene•GUT
72 collection kits (DNAgenotek, catalog no. OMR-200) and sent to the study laboratory. As we
73 were recruiting for this study and collecting samples during the initial phases of the COVID-19
74 pandemic, immediate sample collection soon after the traumatic event that was the primary
75 inclusion criterion for AURORA was not possible. All stool samples were self-collected at least
76 five days after the initial ED presentation and up to 182 days. Upon receipt, samples were
77 stored at -80°C until DNA extraction and sequencing were performed. This study was approved
78 by the University of North Carolina's institutional review board (IRB protocol #17-0703) and
79 approved by the UMass Chan Medical School's institutional review board.

80

81 **Outcome Measurements**

82 After receiving written informed consent from eligible patients, study coordinators from
83 each participating ED performed data collection for ED-based assessments, including baseline
84 questionnaires. Follow-up evaluations were internet-based at the two, eight, and twelve-week
85 intervals. We assessed posttraumatic stress symptoms using the Post Traumatic Stress
86 Disorder (PTSD) checklist for DSM-5 (PCL-5)(18–21). Per this instrument's guidelines, a PTSD
87 diagnosis can be made by summing the self-reported responses to the PCL-5. We used total
88 sum of 31 for a positive diagnosis of PTSD(22). A normalized t-score for depression severity
89 and the diagnosis was assessed using the PROMIS Depression Short Form 8b (23). A t-score
90 of 60 is one standard deviation lower than average and was used to designate a depression
91 diagnosis. The Rivermead Post-concussive questionnaire (RPQ) was used to obtain a count of
92 somatic symptoms. The twelve post-traumatic somatic symptoms included in the RPQ are

93 headache, dizziness, nausea, noise sensitivity, fatigue, insomnia, poor concentration, taking
94 longer to think, blurred vision, light sensitivity, double vision, and restlessness (24). For each
95 symptom, a yes/no variable was created. A positive response to a symptom would be counted
96 as YES=1 that it does exist, while a NO=0 indicates that the symptom does not exist. The
97 yes/no responses were summed to provide a simple count of somatic symptoms.

98

99 **Sample Processing and DNA Sequencing**

100 Prior to extraction, stool samples were heat inactivated at 65°C-70°C for 1 hour and
101 stored at -80°C. Approximately 250 mg of resulting sample was extracted using the QIAGEN
102 DNeasy PowerSoil Pro Kits (QIAGEN, catalog no. 47016). Sequencing libraries were prepped
103 using the Nextera XT DNA library prep kit and sequenced on a NextSeq 500 sequencer with
104 2x150 bp paired-end reads. Of the 74 stool samples received, 69 (93.2%) were successfully
105 sequenced. Samples with a percentage of reads identified greater than 0.5%, and complete
106 metadata were used for analysis (n=51).

107 Shotgun metagenomic reads were trimmed and filtered for host contamination using the
108 KneadData pipeline (<https://github.com/biobakery/kneaddata>). The resulting metagenomic data
109 was profiled for microbial abundance and metabolic pathways using the MetaPhlAn3(25) and
110 HUMAnN3 databases and tools(26). The resulting relative microbial species abundance was
111 used for downstream analysis in R.

112

113 **Microbiome Analysis and Statistics**

114 *Linear mixed model-based analysis to determine the relative contribution of the microbiome.*

115 To determine how much of the variability in post-trauma APNS outcomes is explained by
116 the gut microbiome, we first constructed linear mixed models (LMM) using the lme4 R
117 package(27) for each of the three APNS outcomes of interest (PTSD, Depression Scores and
118 Somatic Symptoms) as a function of relevant clinical covariates (sex, age, body mass index,
119 Race/ethnicity)(28), and also of the arcsine square root-transformed abundance (29) of each
120 microbial species independently. Features identified as significant (FDR corrected p-value \leq
121 0.05) were combined and used to fit a global LMM. The contribution of each feature to the
122 regression line fit by the model was determined by running analysis of variance (ANOVA) and
123 examining the total sum of squares for the fixed effects. The resulting sum of squares ratio for
124 each feature was graphed using WebR (<https://github.com/cardiomoon/webR>).

125

126 *Mixed-effect random forest analysis of microbiome permuted importance to outcomes at*
127 *twelve weeks post-trauma.*

128 Microbiome data is non-linear and not normally distributed(30,31). Additionally, such
129 data are characterized by many predictors, which, if combined in the same model (without
130 prefiltering), can prohibit a traditional regression model to converge(32). We have previously
131 demonstrated that tree-based machine learning (ML) approaches such as random forest, which
132 are non-parametric and perform intrinsic feature selection, are very powerful in finding a signal
133 from static and time-resolved microbiome data(33–36). To fully utilize the longitudinal clinical
134 data collected by the AURORA (parent) study for this nested study(1), we assumed, barring
135 perturbation, the gut microbiome is stable over time. Several high-resolution gut microbiome
136 temporal studies have demonstrated that the microbiome is rather stable and displays only
137 small random fluctuations(37–40). We built a mixed-effect random forest (MERF) regression
138 model to predict either PTSD raw score, Depression t-score, or somatic symptoms count at
139 twelve weeks post-trauma. We use either microbial abundance or metabolic pathway
140 abundance and relevant clinical covariates (e.g., BMI, age, sex, and race) as variables in this
141 modeling. The first step of our pipeline split our data into a training and test set. To predict
142 twelve-week post-trauma outcomes, two-week and eight-week post-trauma outcomes were
143 used to train the MERF model. The unseen twelve-week data was used for testing the model.
144 For each APNS outcome, the pipeline was run ten times with ten different random seeds, and
145 model performance, statistics, and outcomes were calculated for each seed. Model
146 performance was evaluated by Root Mean Square Error (RMSE) and correlation of true versus
147 predicted values, which illustrates the model's accuracy and fit for predicting outcome
148 measurements at twelve weeks post-trauma (Supplementary figure 1). Permuted variable
149 importance calculated and used to evaluate models. Plots summarizing results were generated
150 in R using the ggplot2.

151

152 **Results**

153 **Characteristics of Study Subjects**

154 Among 2,097 individuals who were approached in the ED regarding this nested study,
155 106/2,097 (5.1%) agreed to participate, and 74/106 (69.8%) provided a stool sample. Of the
156 stool samples received, 51(68.9%) passed all quality and metadata checks (see methods) and
157 were profiled for microbial abundance and metabolic pathways. From these 51 participants
158 (mean age 52 years; 26 (51%) female) stool samples were received a median of 45 days (range
159 5 to 182 days) after ED visit for trauma evaluation that conferred entry to the AURORA (parent)

160 study (Table 1). The most common types of trauma were motor vehicle collision (55%, n=28),
161 fall from height (n=9, 18%), and other accidental or targeted/involuntary events (9.8%, n=5).
162 Stool samples originated primarily from White (61%, n=31) and Black (25%, n=13) participants.
163 Of the 31 white participants, 29 (94%) were non-Hispanic White. Microbiome diversity measures
164 show that individuals do not stratify based on standard diversity measures.

165

166 **Gut Microbiome Features associated with APNS**

167 Linear mixed effect models and ANOVA adjusting for sociodemographic characteristics were
168 used to assess for associations between microbiome characteristics and APNS symptom
169 severity (As noted above, analyses were accounted for sociodemographic factors because of
170 the known association between socioeconomic status and diet (36)). Gut microbiome
171 characteristics accounted for 48%, 26%, and 44% of the variation in PTSD, depressive, and
172 somatic symptoms after trauma, respectively (Figure 1). The abundance of *Firmicutes*
173 *bacterium CAG:555*, *Bifidobacterium adolescentis*, and the pro-inflammatory *Streptococcus*
174 *infantis* were associated with PTSD symptom severity. The abundance of *B. adolescentis* was
175 associated with depressive symptom severity (Figure 1B). *Ruminococcus gnavus* and
176 *Streptococcus parasanguinus* were associated with somatic symptom severity (Figure 1C).

177

178 **Post-Trauma Neuropsychiatric Outcomes are Predicted by Microbial Abundance**

179 While the above LMM approach is useful to assess total variance accounted for by microbiome
180 characteristics and is common in the field, it has several limitations, including the inability to
181 evaluate microbial abundances in the context of the entire microbiome and the limited ability to
182 account for inter-individual microbiome differences(32). Therefore, we used a complementary
183 machine learning approach to train and test models examining associations between gut
184 microbiome characteristics and posttraumatic outcomes. We have previously used this
185 approach and have determined its optimality for inferring biologically relevant host-microbe
186 interactions from cross-sectional and longitudinal microbiome data (see methods sections for
187 further justification)(33–36,41–43).

188 A Mixed-Effect Random Forest (MERF) regression model was used to identify
189 microbiome features associated with PTSD, depression, and somatic symptom burden at twelve
190 weeks post-trauma. Our findings using this approach confirmed and expanded on findings from
191 the linear mixed-effect models. Bacterial species identified in linear mixed effects modeling,
192 specific species of the *Alistipes*, *Bifidobacterium*, and *Ruminococcus* genera were also found as
193 important predictors by the MERF model (Figure 2). The models also identified more species as

194 contributors to each outcome, with many similar species in the top 15 predictors identified by the
195 three models. *B. adolescentis*, *B. longum*, and *Flavonifractor plautii* were among the top five
196 predictors for all three APNS outcomes (Figure 2). Across our models, both *Bifidobacterium*
197 species and *F. plautii* showed similar trends of increased abundance being informative of higher
198 scores (Supplemental figure 3). *Ruminococcus gnavus* was found to be among the top 15
199 predictors only for PTSD (ranked 7th) and depression (ranked 14th), with increases in abundance
200 correlating with disease outcomes (Figure 2). Decreases in certain species were noted to
201 cluster by individual outcomes for the most part (Figure 2D).

202

203 **Metabolic Pathway Profiling Identifies Novel Gut-Brain-Axis Interface with APNS**

204 **Outcomes**

205 Species abundance, although informative of outcomes, does not directly provide context for the
206 functional roles of associated microbes. By analyzing metabolic pathway abundances encoded
207 in the metagenomic data, we can gain insight into the microbial products, metabolites, and
208 functions that may associate with each outcome of interest, thus shedding light on possible
209 mechanistic links. To this end, we employed the same MERF-based pipeline to examine
210 associations between the abundance of microbially-encoded metabolic pathways and PTSD,
211 depressive, and somatic symptom severity twelve weeks after trauma. The Calvin-Benson-
212 Bassham cycle, a common CO₂ fixation pathway in autotrophic bacteria, was identified as one
213 of the top three predictors of PTSD and depressive symptom severity (i.e., cycle was reduced in
214 samples with higher scores (Figures 3A and 3B)). Amino acid biosynthesis pathways were a
215 leading predictor for all three APNS outcomes, with the L-citrulline biosynthesis pathway
216 identified as one of the top two predictors for all APNS outcomes. The super pathway of
217 arginine and polyamine biosynthesis was identified as the top predictor for the PTSD model and
218 as the third most important pathway for the depression model, correlating negatively with PTSD
219 and depression scores. Furthermore, all three models identified pathways involving arginine,
220 ornithine, and citrulline, three amino acids that are often interconverted (Figure 3). *De novo*
221 biosynthesis of L-ornithine, which can be interconverted from ornithine and urea to arginine and
222 water, was identified by all models and appeared increased in patients with higher scores.
223 Increased abundance of L-citrulline biosynthesis was also associated with higher scores of
224 PTSD, depression, and somatic symptoms count.

225 Given the strength of findings around pathways affecting global arginine levels, we next
226 sought to identify microbes responsible for changes in these pathways. Focusing on ornithine,
227 citrulline, and arginine, we examined the contribution of individual genera to each pathway

228 (Tables 4-6) to PTSD and depression. Somatic symptoms were not further analyzed as the
229 simple count nature of the variable was not appropriate for this analysis. We observed that in
230 individuals with PTSD or depression, *Escherichia* had an increased contribution to all pathways
231 involving arginine and ornithine biosynthesis. However, the contribution of *E. coli* to L-citrulline
232 biosynthesis was decreased in those with PTSD and increased in those with depression. In
233 patients with PTSD or depression, the *Ruminococcus* genus had a decreased contribution to L-
234 arginine biosynthesis via both L-ornithine and the acetyl cycle. *Alistipes*, *Flavonifactor* and
235 *Faecalibacterium* genera contributed more to the L-arginine biosynthesis via ornithine in
236 individuals with diagnosed PTSD or depression.
237

238 Discussion

239 We have demonstrated here that gut microbiome characteristics of trauma survivors
240 were associated with the development of APNS, in this pilot longitudinal study of individuals
241 enrolled in the ED after trauma exposure. Our analysis first suggested that overall inter-
242 individual differences in gut microbiome taxonomy accounts for a substantial fraction (20-48%)
243 of the differences in APNS outcomes. This finding is similar to what is attributable to known
244 APNS outcome-associated clinical and demographic covariates (e.g., sex and
245 race/ethnicity)(44). We leveraged ML modeling to identify specific bacterial species and
246 encoded metabolic pathways with previously established pro- and anti-inflammatory properties
247 that are predictive of APNS development. Our analysis highlights the most prevalent APNS
248 outcome-associated gut microbiome-encoded pathways are those leading to the biosynthesis of
249 arginine, ornithine, and citrulline. These pathways can possibly affect global arginine levels in
250 the body, a biomarker that has been previously associated with PTSD(45). To our knowledge,
251 ours is the first study to longitudinally evaluate the link between the gut microbiome and APNS
252 outcomes while providing mechanistic links along the microbiome-gut-brain axis.

253 Our initial analyses by simple linear mixed-effect models demonstrated the significant
254 contribution of microbiota to APNS outcomes in comparison to clinical covariates and
255 demographic characteristics. The proportion of the gut microbiome accounting for variability in
256 each APNS outcome (26-48%) is of the same order of magnitude as demographic
257 characteristics (10-56%) that are already known to associate with each outcome(44). However,
258 this analysis required transformation of microbiome abundance variables and the use of a two-
259 tiered approach to select outcome-associated features, which is suboptimal. Although common,
260 this approach neither accounts for the inter-personal variation of the microbiome nor evaluates
261 the effect of microbial species together(46).

262 While there is evidence for dramatic changes in the gut microbiome after trauma within
263 72 hours(16), almost no research describing long-term changes in gut microbiota after acute
264 trauma currently exists. One study on PTSD in frontline healthcare workers suggests that long-
265 term gut microbiome dysbiosis induced by stress is sustained for months and predisposes
266 individuals to recurring PTSD(47). Thus, we built our pipeline assuming the microbiome at our
267 sampling point is representative of the patient's microbiome at the longitudinal post-trauma
268 outcome measurement points, which we hypothesize associates with target outcomes of
269 developing APNS in prolonged periods after trauma.

270 ML models such as Mixed-Effect Random Forest (MERF) models are capable of
271 accounting for interpersonal variation, evaluating microbial abundances in the context of the

272 entire microbiome, and, importantly, because no scaling is required, it can be used with different
273 data types (e.g., categorical, numerical, proportion, etc.)(32)Our MERF models identified more
274 species as significant contributors to our outcomes than the linear models and microbes
275 previously associated with neuropsychiatric disorders, specifically *Bifidobacterium*, *Alistipes*,
276 and *Flavonifractor* species. Further, the model identified *F. plauti*, *E. eligens*, *E. ramulus*, *R.*
277 *homins*, *C. sybiosum*, and *Blautia* species which are members of the *Clostridium* Cluster IV and
278 XIVa, two clusters of known beneficial bacteria for inflammatory bowel disease and gut
279 health(56–58). Several of these are short-chain fatty acid producers and have been associated
280 with reduced inflammation in humans (59,60). Additionally, they are known to promote several
281 anti-inflammatory immune signatures, such as regulatory T-cell expansion *in vivo* (61,62).

282 Our models based on species abundance identified *Bifidobacterium* species and
283 *Flavonifractor plautii* as the most important factors for predicting all three APNS outcomes.
284 Specifically, we found higher abundances of *B. adolescentis*, *B. longum*, and *B. bifidum* were
285 associated with higher PTSD and depression scores, which contradicts some literature
286 regarding positive relationships between *Bifidobacterium spp* and neuropsychiatric
287 outcomes(48–50). Contrary to this, many other microbiome-based studies of neuropsychiatric
288 disorders, including major depressive disorder (MDD), schizophrenia, and anxiety, have failed to
289 find similar associations(51–53). Indeed, for MDD, various investigators have found both
290 increased and decreased abundances of *Bifidobacterium spp* to be associated with clinical
291 disease(53–55). Our analysis identifying increased abundances of *Bifidobacterium spp* as being
292 associated with APNS outcomes adds more contradiction to the literature but highlights the
293 importance of looking beyond species abundances in microbiome studies.

294 Alone, species-based associative studies can be confounding and limit clearer
295 investigations into biological mechanisms. We have previously shown that also analyzing
296 microbial metabolic pathways can reveal valuable insight into possible biologic impacts of the
297 gut microbiome on clinical outcomes(34,41). As with our previous work, our combined analysis
298 approach here, leveraging metagenomic sequencing and ML-based pipelines on both species'
299 abundance and metabolic pathways, identified a unique microbially-based mechanism with the
300 biosynthesis of arginine/citrulline/ornithine as highly informative of the development of all three
301 APNS outcomes. This is the first described biologic link in APNS attributable directly to the
302 microbiome-gut-brain axis and microbially produced metabolites.

303 PTSD patients have been shown to have decreased levels of arginine and increased
304 levels of ornithine and citrulline in peripheral blood(45). The ratio of arginine to its two main
305 catabolic products, ornithine, and citrulline, is used as a readout of nitric oxide (NO) capacity

306 and is referred to as the global arginine bioavailability ratio (GABR)(56). Bersani et. al. sought to
307 examine NO production in PTSD patients via the GABR as arginine is the sole nitrogen source
308 of NO synthesis. They found that GABR was negatively correlated with PTSD, which they
309 reasoned was indicative of dysfunctional NO synthase. The directionality observed by Bersani
310 and authors mirrors the directionality of arginine-related metabolic pathways in our analysis.
311 Altered arginine metabolism has also been implicated in other neuropsychiatric disorders, such
312 as schizophrenia and MDD(57,58). The influence of altered arginine metabolism is likely
313 multidimensional and spans multiple mechanisms of action, including through arginine
314 vasopressin or NO(59,60). Identifying microbial sources of these potential mechanisms in
315 specific neuropsychiatric conditions is an important first step towards enabling research on
316 interventions or therapies.

317 In our species trained MERF pipeline, *Flavonifactor plautii*, a flavonoid-degrading
318 bacterium often found in the human gut microbiome, was the only species among the top 5
319 contributors to all three APNS outcomes that affect GABR. This genus contributes to the L-
320 arginine biosynthesis pathway via ornithine in those with PTSD and via acetyl in those with
321 PTSD or depression. From our metabolic pathway models, the contribution of *Ruminococcus*,
322 *Alistipes* and *Flavonifactor* genera to L-arginine biosynthesis via ornithine was identified as
323 increased in individuals with PTSD or depression. Although the contribution of these three
324 species were not ranked as highly as *Bifidobacterium spp* in our species trained MERF model,
325 by analyzing microbial metabolic pathways, we see that their roles in PTSD and depression may
326 be far more significant.

327 Our findings also provide an added layer of contextual insight into seemingly
328 contradictory findings from prior research on this topic. In addition to being increased in Crohn's
329 disease, the *Ruminococcus* genera have been identified as decreased in those with MDD in
330 multiple studies(50,61). Although we find *R. gnavus* abundance increases with depression
331 score, the contribution of the *Ruminococcus* genera to arginine biosynthesis through the acetyl
332 cycle (ARGSYNBSUB-PWY) and via ornithine (ARGSYN-PWY) was lower in those with
333 depression compared to those without, implying species specific effects may also be at work.
334 Likewise, *Alistipes* have been found to be both increased(61) and decreased in patients with
335 MDD(50,62) as compared to healthy controls, suggesting genus-based examination of *Alistipes*
336 may not be sufficient. *A. finegoldii* and *A. indistinctus*, were both identified by our microbial
337 model as informative of PTSD score yet with opposite directions. Furthermore, *A. finegoldii*
338 abundance was positively associated with PTSD scores and specifically had a higher
339 contribution to L-citrulline biosynthesis in those with PTSD or depression. We also found that

340 the *Alistipes* genera contributed more to ornithine-related pathways in those with PTSD and
341 depression. Thus, by combining analyses of species abundance with microbial metabolic
342 pathways, we can better dissect the functional contributions of the microbiota.

343 The emerging role of polyamines in neuropsychiatric disorders opens a door to a better
344 understanding of the complex pathophysiology of these disorders. The ability of microbiota to
345 produce polyamines and known associations between polyamine-producing microbes and
346 neuropsychiatric disorders highlight the importance of the microbiome-gut-brain axis in human
347 health. Our novel finding of the gut microbiome contributing to alterations in GABR pathways in
348 our studied outcomes is the first direct mechanistic link between the gut microbiome and APNS.
349 This result may provide some indirect evidence of a biological link for APNS along the
350 microbiome-gut-brain axis via microbially generated metabolites.

351

352 **Strengths and Limitations**

353 We are the first to delve into the predictiveness of the microbiome to the core
354 components of APNS. Although the sample size of our study was limited, our employment of ML
355 methods and metagenomic profiling enabled us to maximize the utility and richness of data from
356 the samples we had. Furthermore, the AURORA (parent) study ensured a comprehensive,
357 thorough, and standardized system of scoring APNS outcomes. We acknowledge that single
358 time point collections are less ideal for investigating mechanisms driving potentially prolonged
359 and dynamic outcomes. Additionally, we encountered logistical difficulties with recruitment and
360 sample collection due to COVID-19 restrictions. Future work will aim to expand on our
361 preliminary findings with a larger cohort and more sampling time points, including sampling
362 closer to time of trauma. Lastly, although we approached these APNS diagnoses as discrete
363 outcomes, it is well known that there is much overlap between them. Traditional APNS
364 classification evolved from the realms of specific medical specialties and thus are not indexed to
365 specific biological processes or basis(1). This biologic overlap may be responsible for the
366 overlap in some features identified by our modeling. A study with a larger sample size may be
367 able to tease apart the overlap of these outcomes.

368

369 **Conclusions**

370 APNS can have devastating long-term consequences for patients who have already suffered
371 trauma, but APNS may be preventable. Our nested study, using a subset of the AURORA
372 cohort, demonstrated the importance of the microbiome in influencing APNS development.
373 While more work is needed, we are the first to describe a possible biologic link between the gut

374 microbiome and post-trauma outcomes through arginine metabolism and global arginine
375 pathways, which have already been associated with PTSD and other neuropsychiatric
376 disorders. This discovery opens avenues for investigating prevention and treatment strategies
377 through both targeted therapies and microbiome-based interventions. Our findings provide
378 some evidence of a biological link for APNS along the microbiome-gut-brain axis via microbially
379 generated metabolites.

380

381 **Data and code availability**

382 Microbiome sequencing data is deposited in the Short Read Archive (SRA) under accession no.
383 **XXXXXX**. Processed data and code to reproduce the results are available at **XXXXXX**. All data
384 produced in the present study are also available upon reasonable request to the authors.

385 **Acknowledgments**

386 We would like to thank the trauma survivors who participated in the AURORA study and in our
387 microbiome sub-study. Their time and effort during a challenging period of their lives make our
388 efforts to improve recovery for future trauma survivors possible. This work was supported by
389 R01 AG067483-01 to J.H. and by the CDMRP PRMP W81XWH2020013 to V.B. We would also
390 like to thank Dr. Cindy Lai for her assistance with preparing and editing this manuscript.

391
392 The AURORA (parent) study was supported by NIMH under U01MH110925, the US Army
393 MRMC, One Mind, and The Mayday Fund. The content is solely responsibility of the authors
394 and does not necessarily represent the official views of any of the funders. Data and/or research
395 tools used in the preparation of this manuscript were obtained from the National Institute of
396 Mental Health (NIMH) Data Archive (NDA). NDA is a collaborative informatics system created
397 by the National Institutes of Health to provide a national resource to support and accelerate
398 research in mental health. Dataset identifier(s): NIMH Data Archive Digital Object Identifier
399 (DOI) 10.15154/1528593. This manuscript reflects the views of the authors and may not reflect
400 the opinions or views of the NIH or of the Submitters submitting original data to NDA.

401

402 **Disclosures**

403 Dr. Neylan has received research support from NIH, VA, and Rainwater Charitable Foundation,
404 and consulting income from Boehringer Ingelheim and Jazz Pharmaceuticals.

405

406 In the last three years Dr. Clifford has received research funding from the NSF, NIH and LifeBell
407 AI, and unrestricted donations from AliveCor Inc, Amazon Research, the Center for Discovery,
408 the Gates Foundation, Google, the Gordon and Betty Moore Foundation, MathWorks, Microsoft
409 Research, Nextsense Inc, One Mind Foundation, the Rett Research Foundation, and Samsung
410 Research. Dr Clifford has financial interest in AliveCor Inc and Nextsense Inc. He also is the
411 CTO of MindChild Medical and CSO of LifeBell AI and has ownership in both companies. These
412 relationships are unconnected to the current work.

413

414 Dr. Rauch reports grants from NIH during the conduct of the study; personal fees from SOBP
415 (Society of Biological Psychiatry) paid role as secretary, other from Oxford University Press
416 royalties, other from APP (American Psychiatric Publishing Inc.) royalties, other from VA
417 (Veterans Administration) per diem for oversight committee, and other from Community
418 Psychiatry/Mindpath Health paid board service, including equity outside the submitted work;

419 other from National Association of Behavioral Healthcare for paid Board service; other from
420 Springer Publishing royalties; and Leadership roles on Board or Council for SOBP, ADAA
421 (Anxiety and Depression Association of America), and NNDC (National Network of Depression
422 Centers).

423

424 Dr. Sheikh has received funding from the Florida Medical Malpractice Joint Underwriter's
425 Association Dr. Alvin E. Smith Safety of Healthcare Services Grant; Allergan Foundation; the
426 NIH/NIA-funded Jacksonville Aging Studies Center (JAX-ASCENT; R33AG05654); and the
427 Substance Abuse and Mental Health Services Administration (1H79TI083101-01); and the
428 Florida Blue Foundation.

429

430 Dr. Jones has no competing interests related to this work, though he has been an investigator
431 on studies funded by AstraZeneca, Vapotherm, Abbott, and Ophirex.

432

433 Dr. McLean served as a consultant for Walter Reed Army Institute for Research and for Arbor
434 Medical Innovations.

435

436 In the past 3 years, Dr. Kessler was a consultant for Cambridge Health Alliance, Canandaigua
437 VA Medical Center, Holmusk, Partners Healthcare, Inc., RallyPoint Networks, Inc., and Sage
438 Therapeutics. He has stock options in Cerebral Inc., Mirah, PYM, and Roga Sciences.

439

440 Dr. Koenen's research has been supported by the Robert Wood Johnson Foundation, the
441 Kaiser Family Foundation, the Harvard Center on the Developing Child, Stanley Center for
442 Psychiatric Research at the Broad Institute of MIT and Harvard, the National Institutes of Health,
443 One Mind, the Anonymous Foundation, and Cohen Veterans Bioscience. She has been a paid
444 consultant for Baker Hostetler, Discovery Vitality, and the Department of Justice. She has been
445 a paid external reviewer for the Chan Zuckerberg Foundation, the University of Cape Town, and
446 Capita Ireland. She has had paid speaking engagements in the last three years with the
447 American Psychological Association, European Central Bank. Sigmund Freud University –
448 Milan, Cambridge Health Alliance, and Coverys. She receives royalties from Guilford Press and
449 Oxford University Press.

450

451 Dr. Bucci reports funding from the National Institute of Health, the Department of Defense, and
452 the Bill & Melinda Gates Foundation for unrelated work. Dr. Bucci is also supported by a

453 Sponsored Research Agreement from Vedanta Biosciences, Inc, which is unrelated to the
454 present work.

Table 1: Patient Characteristics by APNS outcome category

Patient Characteristics		Overall, N = 51 n (%)	Depression		q-value (adjusted p- value)	PTSD		q-value (adjusted p-value)
			Depression- , N = 35 n (%)	Depression+, N = 16 n (%)		PTSD-, N = 31 n (%)	PTSD+, N = 20 n (%)	
Demographics								
	Age in years (at enrollment)	52 (36, 60)	52 (36, 59)	52 (37, 60)	>0.9	52 (36, 58)	50 (34, 61)	>0.9
	Sex (Female)	26 (51%)	19 (54%)	7 (44%)	>0.9	19 (61%)	7 (35%)	0.7
	BMI	29 (24, 33)	27 (24, 30)	33 (29, 40)	0.11	27 (23, 30)	31 (29, 36)	0.083
	White	31 (61%)	21 (60%)	10 (62%)	>0.9	18 (58%)	13 (65%)	>0.9
	Black	13 (25%)	11 (31%)	2 (12%)	>0.9	9 (29%)	4 (20%)	>0.9
	Asian	1 (2.0%)	1 (2.9%)	0 (0%)	>0.9	1 (3.2%)	0 (0%)	>0.9
	other	6 (12%)	2 (5.7%)	4 (25%)	0.8	3 (9.7%)	3 (15%)	>0.9
	Hispanic	7 (14%)	4 (11%)	3 (19%)	>0.9	4 (13%)	3 (15%)	>0.9
U.S. Geographic Region					>0.9			>0.9
	Midwest Region	10 (20%)	5 (14%)	5 (31%)		5 (16%)	5 (25%)	
	Northeast Region	38 (75%)	27 (77%)	11 (69%)		24 (77%)	14 (70%)	
	Southern Region	3 (5.9%)	3 (8.6%)	0 (0%)		2 (6.5%)	1 (5.0%)	
Trauma Event Type (Broad)					>0.9			>0.9
	Animal-related	1 (2.0%)	1 (2.9%)	0 (0%)		1 (3.2%)	0 (0%)	
	Fall < 10 feet or from unknown height	9 (18%)	7 (20%)	2 (12%)		6 (19%)	3 (15%)	
	Fall >= 10 feet	4 (7.8%)	2 (5.7%)	2 (12%)		2 (6.5%)	2 (10%)	
	Incident causing traumatic stress exposure to many people	1 (2.0%)	1 (2.9%)	0 (0%)		1 (3.2%)	0 (0%)	

	Motor Vehicle Collision	28 (55%)	19 (54%)	9 (56%)		17 (55%)	11 (55%)	
	Non-motorized Collision	3 (5.9%)	2 (5.7%)	1 (6.2%)		2 (6.5%)	1 (5.0%)	
	other	5 (9.8%)	3 (8.6%)	2 (12%)		2 (6.5%)	3 (15%)	
	Self-Reported Perceived Chance of Dying	6.0 (1.0, 8.5)	6.0 (1.0, 8.5)	5.5 (1.8, 8.2)	>0.9	6.0 (0.5, 8.5)	5.5 (1.8, 8.5)	>0.9

457
458
459
460
461

Table 2: Spearman's Correlation of Important Microbes with APNS Outcomes

Predictors	PTSD	Depression	Somatic Symptoms	Notes
<i>Bifidobacterium adolescentis</i>	0.286	0.216	0.0704	<ul style="list-style-type: none"> • Produces GABA in the gut (63) • Induction of Th17 cells in mice(64) • Decreased in Chron's Disease (65) • Lower abundance in children with autism spectrum disorder (66)
<i>Bifidobacterium longum</i>	0.34	0.259	0.251	<ul style="list-style-type: none"> • GABA production <i>in vivo</i> (67) • Anxiolytic effect through the vagus nerve in mice (48) • Lower abundance in children with autism spectrum disorder (66) • Subspecies <i>longum...</i> (68)
<i>Bifidobacterium bifidum</i>	0.185	NA	NA	<ul style="list-style-type: none"> • Th17 inducing profile(69) • Lower abundance in children with autism spectrum disorder (66)
<i>Parabacteroides merdae</i>	0.176	0.226	NA	<ul style="list-style-type: none"> • Indole negative (70) • Rarely associated with infections(71) • Branched-chain amino acid catabolism by <i>P. merdae</i> reduces atherosclerotic lesions (72)
<i>Flavonifractor plautii</i>	0.207	0.177	0.173	<ul style="list-style-type: none"> • In mice, suppresses Th2 immune response (73) • (74) • Genera found to be enriched in those with active major depressive disorder (MDD) (61)
<i>Adlercreutzia equolifaciens</i>	0.0195	NA	NA	<ul style="list-style-type: none"> • Strain specific equol production(75)
<i>Ruminococcus gnavus</i>	0.441	0.335	NA	<ul style="list-style-type: none"> • Increased in Chron's Disease(65) • Depleted genera level in active MDD (61)

Predictors	PTSD	Depression	Somatic Symptoms	Notes
<i>Alistipes finegoldii</i>	0.198	NA	NA	<ul style="list-style-type: none"> • Can hydrolyze tryptophan to indole; Succinic acid producer in vitro with minor acetic and propionic acid; bile-resistant, esculin-negative; catalase-negative; nitrogen-reductase negative (76,77) • Enriched in colorectal cancer (78) • Main cellular fatty acid 13-methyltetradecanoic acid (iso-C15:0) • Genera Increased abundance in active MDD patients compared to healthy controls (61)
<i>Eubacterium eligens</i>	-0.216	NA	-0.14	<ul style="list-style-type: none"> • Decreased in COVID-19 HCW with higher stress scores (47) • Anti-inflammatory related (79)
<i>Firmicutes bacterium CAG 110</i>	-0.182	NA	NA	<ul style="list-style-type: none"> • Identified in livestock(80)
<i>Alistipes indistinctus</i>	-0.0339	NA	NA	<ul style="list-style-type: none"> • Unable to hydrolyze tryptophan to indole; susceptible to bile; catalase-positive; urease and nitrogen reductase-negative; Succinic and acetic acid producer in vitro(77) • Main cellular fatty acid 13-methyltetradecanoic acid (iso-C15:0) • Genera Increased abundance in active MDD patients compared to healthy controls (61)
<i>Bacteroides massiliensis</i>	-0.0271	NA	NA	<ul style="list-style-type: none"> • <i>Phocaeicola massiliensis</i> • Genera increased in health controls vs. active MDD patients (61)
<i>Slackia isoflavoniconvertens</i>	-0.221	NA	NA	<ul style="list-style-type: none"> • Capable of equol production (81)
<i>Desulfovibrio piger</i>	NA	NA	-0.183	<ul style="list-style-type: none"> • Sulfur-reducing bacteria associated with IBD (82)
<i>Blautia wexlerae</i>	NA	NA	0.0584	<ul style="list-style-type: none"> • Inversely correlated with obesity and type 2 diabetes mellitus(83) • Decreased abundance in progressive multiple sclerosis (84)
<i>Intestinimonas butyriciproducens</i>	NA	NA	-0.155	<ul style="list-style-type: none"> • Butyrate production(85)
<i>Bacteroides thetaiotaomicron</i>	NA	NA	-0.172	<ul style="list-style-type: none"> • Genera increased in health controls vs. active MDD patients (61)

Predictors	PTSD	Depression	Somatic Symptoms	Notes
<i>Parabacteroides goldsteinii</i>	NA	NA	-0.155	• Anti-inflammatory and decreased in chronic inflammatory diseases including chronic obstructive pulmonary disease (COPD; negatively associates with severity) (86) and chronic kidney disease (87)
<i>Pseudoflavonifractor sp An184</i>	NA	NA	-0.215	• Positively associated with weight loss (88)
<i>Streptococcus thermophilus</i>	NA	NA	0.0866	
<i>Clostridium symbiosum</i>	NA	0.204	0.163	• Increased abundance in early colorectal cancer (89)
<i>Lactobacillus acidophilus</i>	NA	NA	-0.21	
<i>Bacteroides vulgatus</i>	NA	0.115	NA	• Genera increased in health controls vs. active MDD patients (61)
<i>Anaerostipes hadrus</i>	NA	-0.0635	NA	
<i>Dialister invisus</i>	NA	0.0954	NA	• (74) • Genera increased in health controls vs. active MDD patients (61)
<i>Bacteroides ovatus</i>	NA	0.194	NA	
<i>Bilophila wadsworthia</i>	NA	0.274	NA	
<i>Eubacterium ramulus</i>	NA	-0.096	NA	
<i>Roseburia hominis</i>	NA	0.102	NA	
<i>Lawsonibacter asaccharolyticus</i>	NA	-0.0814	NA	

463
464
465
466
467
468

469
470

Table 3: Spearman's Correlation of Important Metabolic Pathways with Outcomes

Predictors	PTSD	Depression	Somatic Symptoms	Notes
ARG-POLYAMINE-SYN: superpathway of arginine and polyamine biosynthesis	-0.251	-0.229	NA	• Enriched patients with CD in remission (90)
CITRULBIO-PWY: L-citrulline biosynthesis	0.346	0.298	0.261	• Enriched patients with CD in remission (90)
CALVIN-PWY: Calvin Benson Bassham cycle	-0.269	-0.315	NA	• Enriched patients with CD in remission (90)
ARGININE-SYN4-PWY: L-ornithine de novo biosynthesis	0.201	0.165	0.139	
CENTFERM-PWY: pyruvate fermentation to butanoate	-0.322	-0.26	-0.168	
BIOTIN-BIOSYNTHESIS-PWY: biotin biosynthesis I	0.181	0.127	NA	
BRANCHED-CHAIN AA-SYN-PWY: superpathway of branched amino acid biosynthesis	-0.127	-0.00818	NA	
ANAEROFrucAT-PWY: homolactic fermentation	-0.0199	NA	NA	
ASPASN-PWY: superpathway of L-aspartate and L-asparagine biosynthesis	-0.0404	0.0571	0.037	
COA-PWY-1: coenzyme A biosynthesis II	-0.0454	NA	-0.053	
ARGSYNBSUB-PWY: L-arginine biosynthesis II (acetyl cycle)	-0.0768	-0.131	NA	
ARGSYN-PWY: L-arginine biosynthesis I (via L-ornithine)	-0.0579	-0.105	NA	
1CMET2-PWY: N ¹⁰ formyl tetrahydrofolate biosynthesis	NA	-0.0885	NA	• Depleted in UC in remission (90)

Predictors	PTSD	Depression	Somatic Symptoms	Notes
ANAGLYCOLYSIS-PWY: glycolysis III (from glucose)	NA	-0.048	NA	
ARGORNPROST-PWY: arginine, ornithine and proline interconversion	NA	0.0264	NA	

472
473
474
475

Table 4: Microbial genus contribution to arginine-related metabolic pathways stratified by PTSD and depression diagnoses

Pathway	Genus	PTSD Raw Score < 31	PTSD Raw Score ≥ 31	Depression t-score < 60	Depression t-score ≥ 60
ARG-POLYAMINE-SYN: Superpathway of arginine and polyamine biosynthesis	<i>Escherichia</i>	53.64	69.95	42.86	100.00
	<i>Klebsiella</i>	46.36	30.05	57.14	0.00
ARGSYNBSUB-PWY: L- arginine biosynthesis II (acetyl cycle)	<i>Akkermansia</i>	7.72	2.36	7.61	1.20
	<i>Anaerostipes</i>	2.49	0.67	2.29	0.68
	<i>Anaerotignum</i>	0.36	1.14	0.48	1.03
	<i>Bifidobacterium</i>	1.07	1.47	1.01	1.72
	<i>Bilophila</i>	0.52	1.61	0.58	1.75
	<i>Blautia</i>	4.12	4.00	4.46	3.11
	<i>Escherichia</i>	0.97	3.81	1.04	4.37
	<i>Faecalibacterium</i>	33.79	41.04	32.37	46.62
	<i>Flavonifractor</i>	0.79	3.32	1.55	2.06
	<i>Fusicatenibacter</i>	8.76	4.57	8.00	5.40
	<i>Gemmiger</i>	10.68	7.95	10.19	8.46
	<i>Klebsiella</i>	0.96	1.74	1.73	0.00
	<i>Lachnospiraceae unclassified</i>	9.40	8.91	9.14	9.46
	<i>Roseburia</i>	1.42	1.15	1.58	0.68
	<i>Ruminococcaceae unclassified</i>	2.43	1.16	2.55	0.50
<i>Ruminococcus</i>	4.14	3.45	4.09	3.39	

<i>Tyzzarella</i>	0.00	1.40	0.33	0.94
-------------------	------	------	------	------

Table 5: Microbial genus contribution to ornithine-related metabolic pathways stratified by PTSD and depression diagnoses

Pathway	Genus	PTSD Raw Score < 31	PTSD Raw Score ≥ 31	Depression t-score < 60	Depression t-score ≥ 60
ARGININE-SYN4-PWY: L-ornithine <i>de novo</i> biosynthesis	<i>Bacteroides</i>	38.78	29.26	37.40	28.63
	<i>Catenibacterium</i>	13.22	0.14	7.15	4.90
	<i>Escherichia</i>	12.28	25.78	12.20	29.42
	<i>Klebsiella</i>	5.21	4.50	8.41	0.00
	<i>Parabacteroides</i>	28.82	35.58	33.49	31.06
	<i>Paraprevotella</i>	1.68	4.75	1.35	5.99
ARGSYN-PWY: L-arginine biosynthesis I (via L-ornithine)	<i>Alistipes</i>	3.21	16.69	3.92	18.18
	<i>Anaerostipes</i>	2.60	0.38	2.40	0.31
	<i>Bifidobacterium</i>	1.28	1.47	1.21	1.65
	<i>Blautia</i>	3.95	3.29	4.29	2.46
	<i>Escherichia</i>	1.36	3.40	1.45	3.65
	<i>Faecalibacterium</i>	38.95	39.19	37.33	42.50
	<i>Flavonifractor</i>	0.72	2.79	1.56	1.56
	<i>Fusicatenibacter</i>	9.18	3.56	8.30	4.12
	<i>Gemmiger</i>	11.38	7.32	10.89	7.41
	<i>Klebsiella</i>	0.55	0.77	0.96	0.00
	<i>Lachnospiraceae unclassified</i>	9.42	7.48	9.13	7.64
	<i>Roseburia</i>	2.06	1.20	2.30	0.55
	<i>Ruminococcaceae unclassified</i>	2.32	1.02	2.49	0.41
<i>Ruminococcus</i>	4.51	3.05	4.43	2.89	

481

Table 6: Microbial genus contribution to citrulline-related metabolic pathways stratified by PTSD and depression diagnoses

Pathway	Species	PTSD Raw Score < 31	PTSD Raw Score ≥ 31	Depression t-score < 60	Depression t-score ≥ 60
CITRULBIO-PWY: L-citrulline biosynthesis	<i>Alistipes finegoldii</i>	61.07	70.93	54.58	76.92
	<i>Coprococcus catus</i>	2.81	0.00	1.92	0.00
	<i>Escherichia coli</i>	17.97	15.87	15.87	16.77
	<i>Flavonifractor plautii</i>	11.61	11.18	19.29	6.31
	<i>Klebsiella pneumoniae</i>	6.53	2.02	8.34	0.00

482

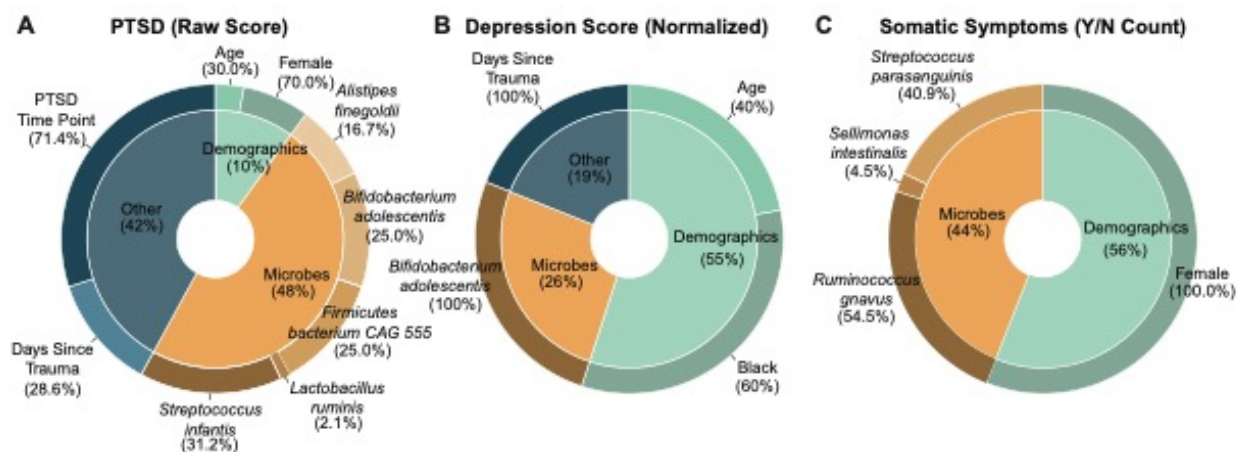
483

484

485

486

Figure Legends and Tables

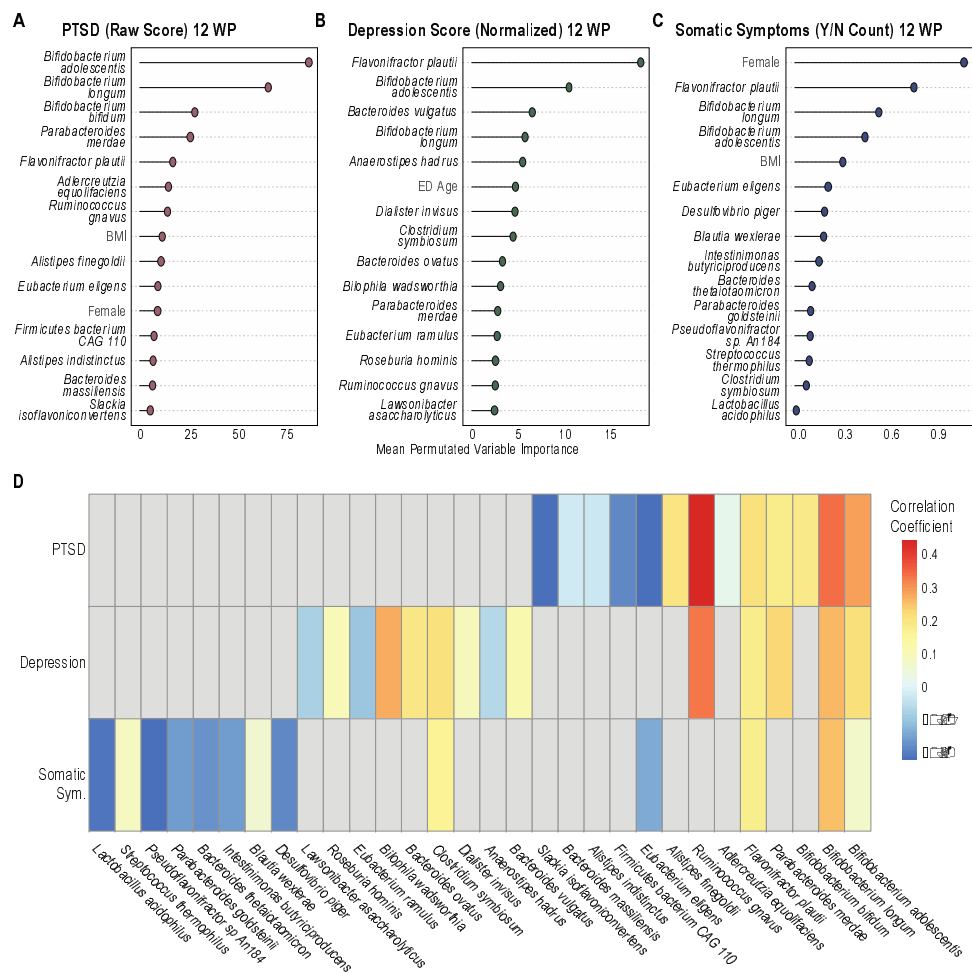


487

488

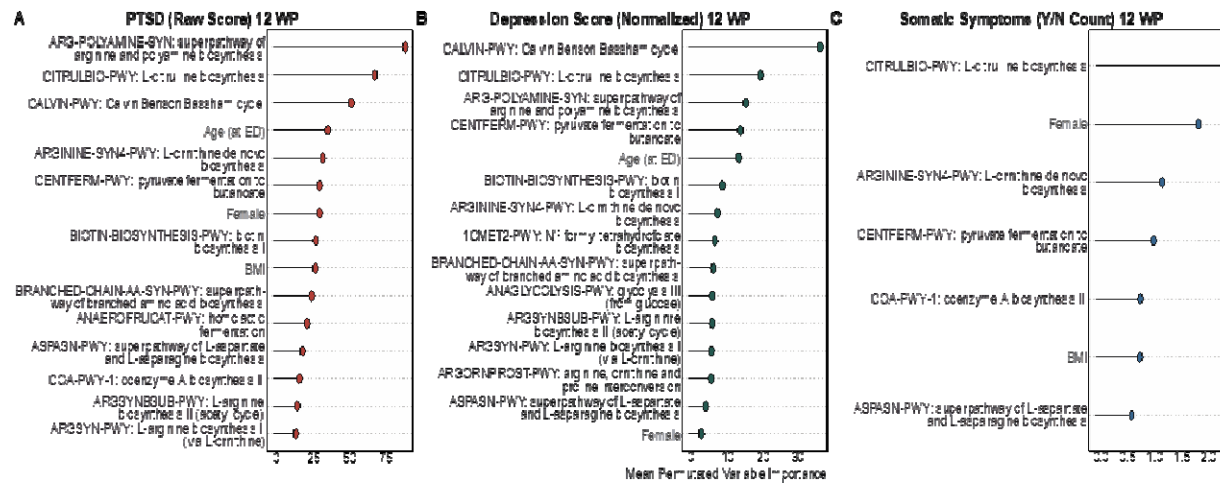
489 **Figure 1.** Contribution of microbiome features significantly associated with neuropsychiatric outcomes. After metagenomic
 490 sequencing, microbial specie abundance were combined with demographics and select clinical variables (other) in linear mixed effect
 491 models for the APNS outcomes at two-, eight-, and twelve weeks post trauma (A) PTSD raw score as determined by the DSM-5

492 PTSD checklist, (B) depression score as determined by the PROMIS Depression Short Form 8b and (C) somatic symptoms count
 493 (Yes/No) based on the Rivermead Post-Concussive Questionnaire. Individual microbial species, demographics, and clinical variables
 494 found as significant are displayed in the outer wheels. PTSD time point reflects the time at which the modeled score was taken
 495 (either two weeks, eight weeks, or twelve weeks). The length of time between trauma exposure and stool sample collection was
 496 included as days since trauma in all models.

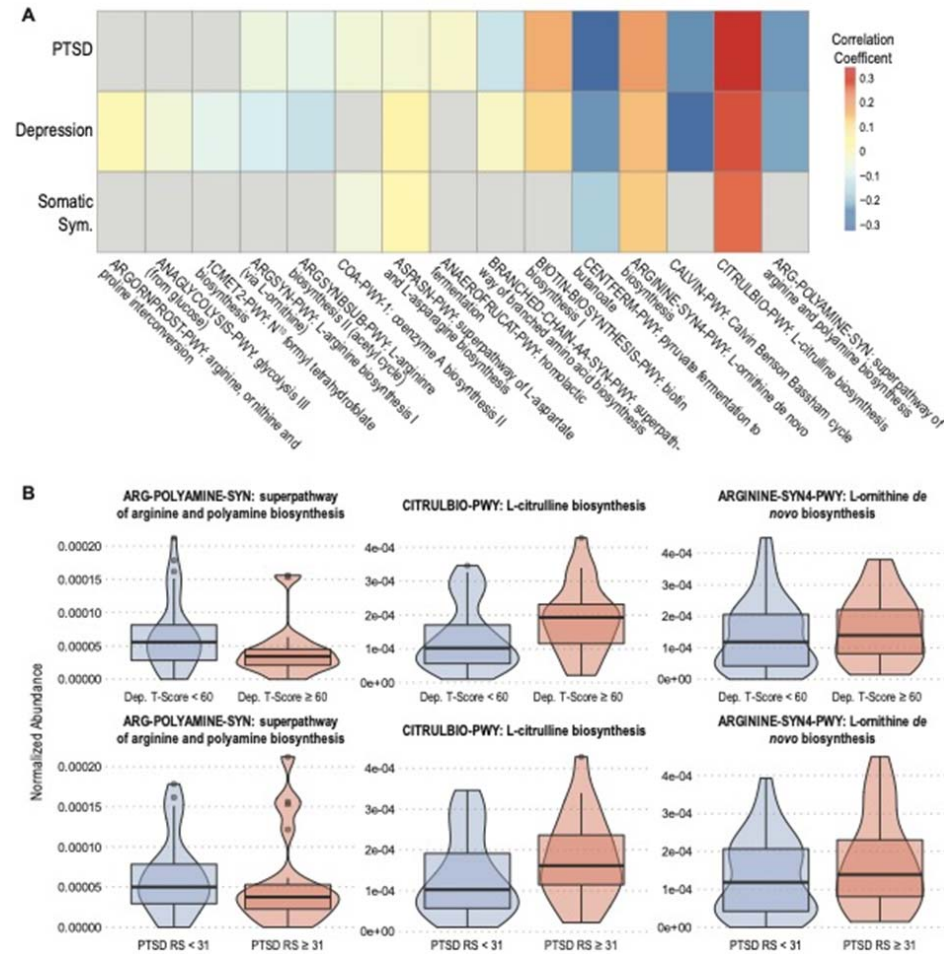


497

498 **Figure 2.** Mixed-Effect Random Forest (MERF) Regression Models Using Microbial Abundance and Clinical Covariates to Predict
 499 Neuropsychiatric Outcomes. MERF models combining microbial abundance data with clinical and demographic features demonstrate
 500 the importance of microbial features in predicting outcomes. Permutated importance analysis of model outcomes shows the top 15
 501 features contributing to predictions of (A) PTSD raw score, (B) depression normalized score, and (C) somatic symptoms count
 502 (yes/no) are mostly microbial species. (D) Heat map showing correlation coefficients of the top 30 contributing species show common
 503 species that contribute to all 3 outcomes (increased abundance) and species which associate with individual outcomes (mostly
 504 decreased abundance).

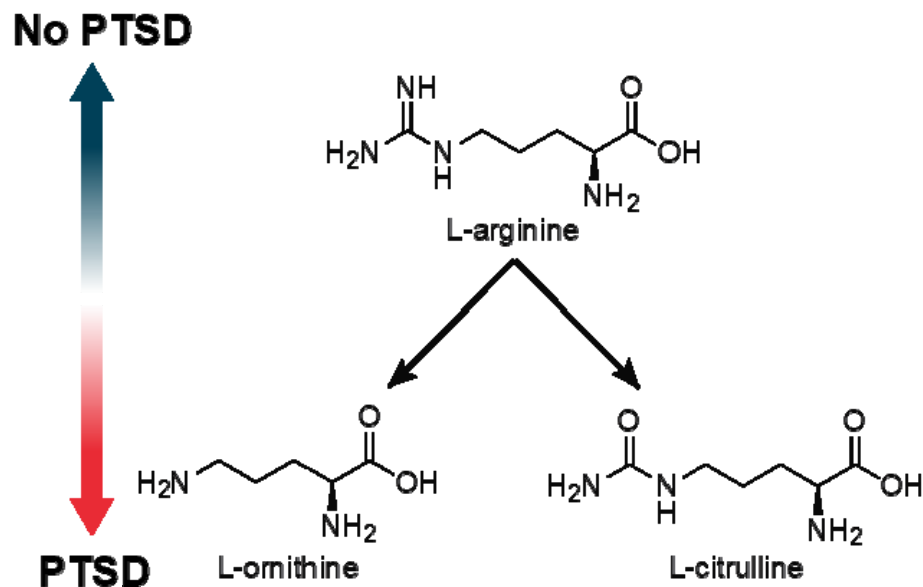


505
 506
 507 **Figure 3.** Mixed-Effect Random Forest (MERF) Regression Models Using Microbial Metabolic Pathways and Clinical Covariates to
 508 Predict Neuropsychiatric Outcomes. MERF models combining microbial metabolic pathway abundance data with clinical and
 509 demographic features demonstrate the importance of microbial pathways in predicting outcomes for (A) PTSD raw score, (B)
 510 depression normalized score, and (C) somatic symptoms count (yes/no). The top 15 features from analysis of permutated
 511 importance on model outcomes are displayed for PTSD and depression. Our model found only 7 significant features for somatic
 512 symptoms.



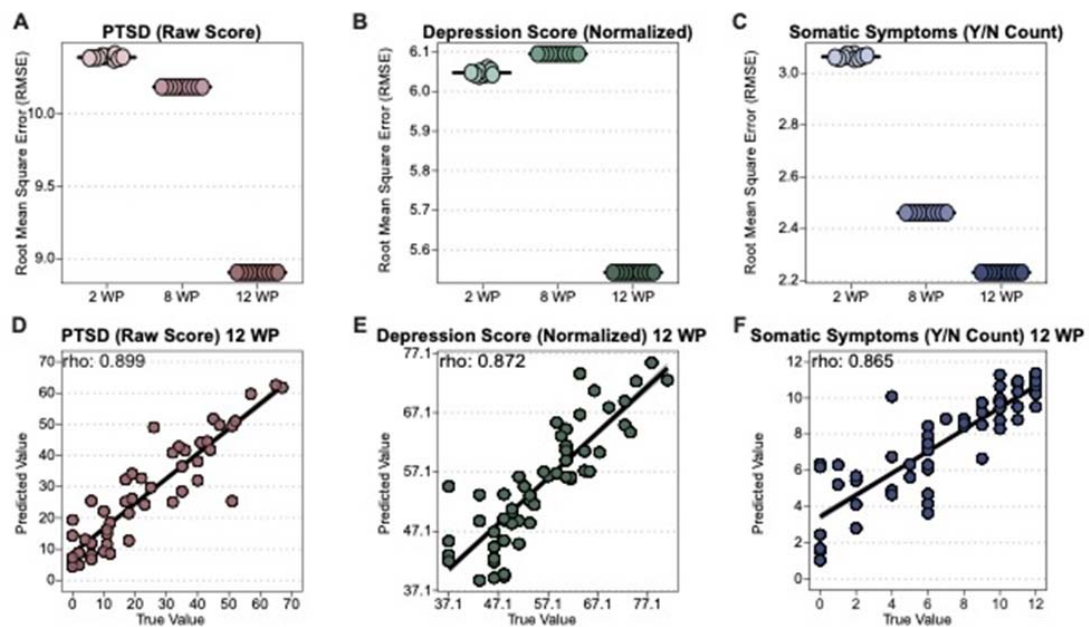
514
515 **Figure 4.** Important metabolic pathways for PTSD and depression involve arginine, citrulline and ornithine. Heat map (A) of
516 correlation coefficients for the top 15 metabolic pathways contributing to PTSD, depression, and somatic symptoms from MERF
517 analysis show significant contributions by amino acid and polyamine biosynthesis pathways. (B) Violin plots showing differences in
518 contributions of arginine, citrulline, and ornithine biosynthesis pathways for depression (top graphs) and PTSD (bottom graphs). Blue

519 violins indicate no diagnosis (PTSD raw score ≤ 31 ; Depression T-Score < 60 indicating none to mild depression) red indicates PTSD
520 or depression diagnosis (PTSD RS > 31 ; Depression T-Score ≥ 60 indicating moderate to severe depression).



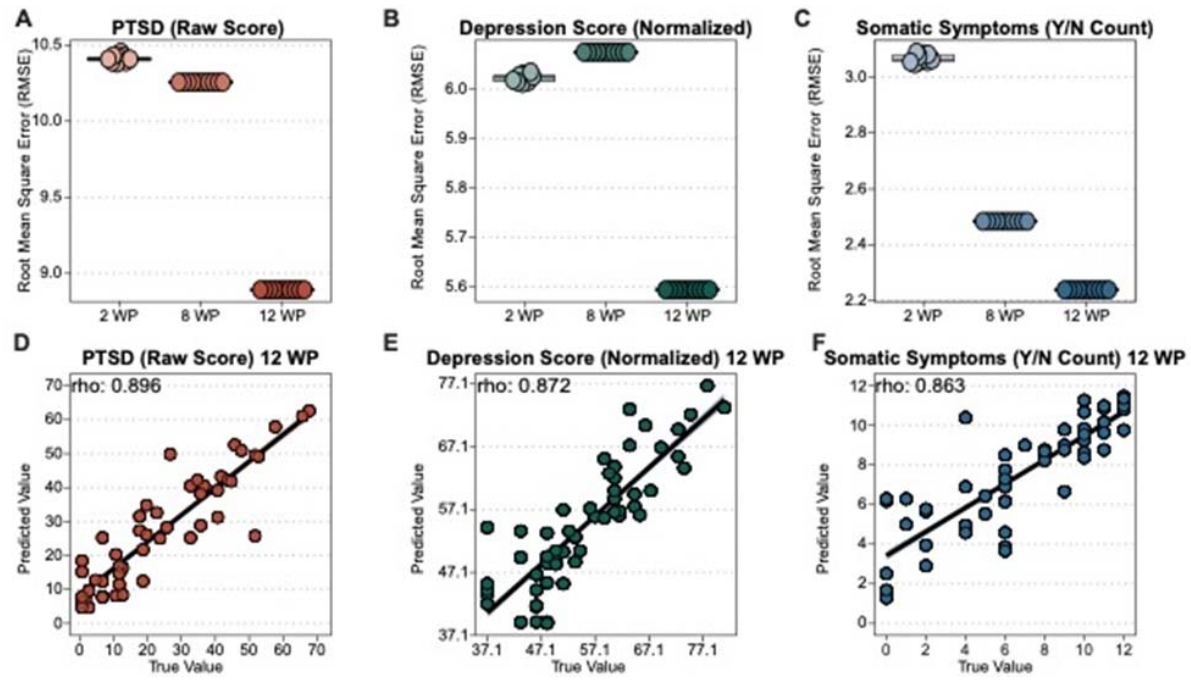
521
522 **Figure 5.** Arginine is converted into citrulline and ornithine commonly in the host and the microbiome. The ratio of arginine to
523 citrulline and ornithine in PTSD patients has previously been found to negatively correlated with PTSD. We find that this negative
524 correlation in the metabolic pathways encoded for in the microbiome of trauma survivors.

525
526 **Supplemental Figures**



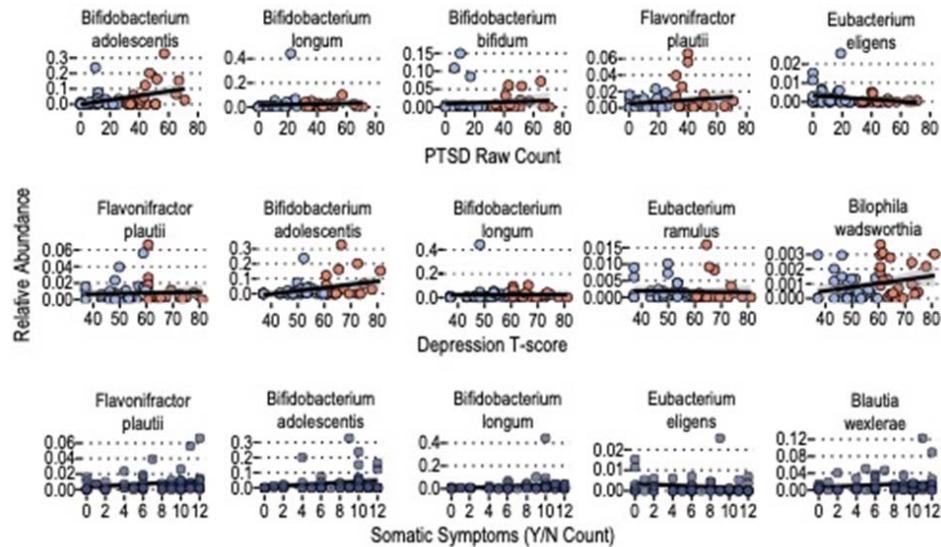
527
528 **Supplemental Figure 1.** RMSE and correlation graphs for MERF models trained with microbial abundance data.
529

530



531

532 **Supplemental Figure 2.** RMSE and correlation graphs for MERF models trained with microbial metabolic pathway data.



533

534

535

Supplemental Figure 3. Relative abundance of MERF identified important microbes across PTSD, depressive symptoms, and somatic symptoms severity.

536 References

- 537
- 538
- 539 1. McLean SA, Ressler K, Koenen KC, Neylan T, Germine L, Jovanovic T, *et al.* (2020): The
540 AURORA Study: a longitudinal, multimodal library of brain biology and function after
541 traumatic stress exposure. *Mol Psychiatr* 25: 283–296.
- 542 2. Roberts AL, Gilman SE, Breslau J, Breslau N, Koenen KC (2011): Race/ethnic differences in
543 exposure to traumatic events, development of post-traumatic stress disorder, and treatment-
544 seeking for post-traumatic stress disorder in the United States. *Psychol Med* 41: 71–83.
- 545 3. Kessler RC (2000): Posttraumatic stress disorder: the burden to the individual and to society. *J*
546 *Clin Psychiatry* 61 Suppl 5: 4–12; discussion 13-4.
- 547 4. Kessler RC, Berglund P, Chiu WT, Demler O, Heeringa S, Hiripi E, *et al.* (2004): The US
548 National Comorbidity Survey Replication (NCS-R): design and field procedures. *Int J*
549 *Method Psych* 13: 69–92.
- 550 5. Santiago PN, Ursano RJ, Gray CL, Pynoos RS, Spiegel D, Lewis-Fernandez R, *et al.* (2013):
551 A Systematic Review of PTSD Prevalence and Trajectories in DSM-5 Defined Trauma
552 Exposed Populations: Intentional and Non-Intentional Traumatic Events. *Plos One* 8: e59236.
- 553 6. Koenen KC, Ratanatharathorn A, Ng L, McLaughlin KA, Bromet EJ, Stein DJ, *et al.* (2017):
554 Posttraumatic stress disorder in the World Mental Health Surveys. *Psychol Med* 47: 2260–
555 2274.
- 556 7. Beaudoin FL, An X, Basu A, Ji Y, Liu M, Kessler RC, *et al.* (2023): Use of serial smartphone-
557 based assessments to characterize diverse neuropsychiatric symptom trajectories in a large
558 trauma survivor cohort. *Transl Psychiatr* 13: 4.
- 559 8. Warner BB (2019): The contribution of the gut microbiome to neurodevelopment and
560 neuropsychiatric disorders. *Pediatr Res* 85: 216–224.
- 561 9. Rogers GB, Keating DJ, Young RL, Wong M-L, Licinio J, Wesselingh S (2016): From gut
562 dysbiosis to altered brain function and mental illness: mechanisms and pathways. *Mol*
563 *Psychiatr* 21: 738–748.
- 564 10. Socała K, Doboszewska U, Szopa A, Serefko A, Włodarczyk M, Zielińska A, *et al.* (2021):
565 The role of microbiota–gut–brain axis in neuropsychiatric and neurological disorders.
566 *Pharmacol Res* 172: 105840.
- 567 11. Malan-Muller S, Valles-Colomer M, Raes J, Lowry CA, Seedat S, Hemmings SMJ (2018):
568 The Gut Microbiome and Mental Health: Implications for Anxiety- and Trauma-Related
569 Disorders. *Omics J Integr Biology* 22: 90–107.

- 570 12. Hoyles L, Snelling T, Umlai U-K, Nicholson JK, Carding SR, Glen RC, McArthur S (2018):
571 Microbiome–host systems interactions: protective effects of propionate upon the blood–brain
572 barrier. *Microbiome* 6: 55.
- 573 13. Silva YP, Bernardi A, Frozza RL (2020): The Role of Short-Chain Fatty Acids From Gut
574 Microbiota in Gut-Brain Communication. *Front Endocrinol* 11: 25.
- 575 14. Xu K, Gao X, Xia G, Chen M, Zeng N, Wang S, *et al.* (2021): Rapid gut dysbiosis induced
576 by stroke exacerbates brain infarction in turn. *Gut* 70: 1486–1494.
- 577 15. Neigh GN, Ali FF (2016): Co-morbidity of PTSD and immune system dysfunction:
578 opportunities for treatment. *Curr Opin Pharmacol* 29: 104–110.
- 579 16. Howard BM, Kornblith LZ, Christie SA, Conroy AS, Nelson MF, Champion EM, *et al.*
580 (2017): Characterizing the gut microbiome in trauma: significant changes in microbial
581 diversity occur early after severe injury. *Trauma Surg Acute Care Open* 2: e000108.
- 582 17. Bajaj JS, Sikaroodi M, Fagan A, Heuman D, Gilles H, Gavis EA, *et al.* (2019): Posttraumatic
583 stress disorder is associated with altered gut microbiota that modulates cognitive performance
584 in veterans with cirrhosis. *Am J Physiol-gastr L* 317: G661–G669.
- 585 18. Stein DJ, McLaughlin KA, Koenen KC, Atwoli L, Friedman MJ, Hill ED, *et al.* (2014):
586 DSM-5 AND ICD-11 DEFINITIONS OF POSTTRAUMATIC STRESS DISORDER:
587 INVESTIGATING “NARROW” AND “BROAD” APPROACHES. *Depress Anxiety* 31:
588 494–505.
- 589 19. F.W. W, B.T. L, T.M. K, P.A. P, B.P. M, P.P. S (2013): The PTSD Checklist for DSM-5
590 (PCL-5). Retrieved September 16, 2022, from
591 <https://www.ptsd.va.gov/professional/assessment/adult-sr/ptsd-checklist.asp>
- 592 20. Blevins CA, Weathers FW, Davis MT, Witte TK, Domino JL (2015): The Posttraumatic
593 Stress Disorder Checklist for DSM-5 (PCL-5): Development and Initial Psychometric
594 Evaluation. *J Trauma Stress* 28: 489–498.
- 595 21. Lang AJ, Stein MB (2005): An abbreviated PTSD checklist for use as a screening instrument
596 in primary care. *Behav Res Ther* 43: 585–594.
- 597 22. Bovin MJ, Marx BP, Weathers FW, Gallagher MW, Rodriguez P, Schnurr PP, Keane TM
598 (2016): Psychometric Properties of the PTSD Checklist for Diagnostic and Statistical Manual
599 of Mental Disorders–Fifth Edition (PCL-5) in Veterans. *Psychol Assessment* 28: 1379–1391.
- 600 23. Amtmann D, Kim J, Chung H, Bamer AM, Askew RL, Wu S, *et al.* (2014): Comparing
601 CESD-10, PHQ-9, and PROMIS Depression Instruments in Individuals With Multiple
602 Sclerosis. *Rehabil Psychol* 59: 220–229.

- 603 24. Auvergne L, Bortsov AV, Ulirsch JC, Peak DA, Jones JS, Swor RA, *et al.* (2016):
604 Association of Epidemiologic Factors and Genetic Variants Influencing Hypothalamic-
605 Pituitary-Adrenocortical Axis Function With Postconcussive Symptoms After Minor Motor
606 Vehicle Collision. *Psychosom Med* 78: 68–78.
- 607 25. Beghini F, McIver LJ, Blanco-Míguez A, Dubois L, Asnicar F, Maharjan S, *et al.* (2021):
608 Integrating taxonomic, functional, and strain-level profiling of diverse microbial communities
609 with bioBakery 3. *Elife* 10: e65088.
- 610 26. Franzosa EA, McIver LJ, Rahnavard G, Thompson LR, Schirmer M, Weingart G, *et al.*
611 (2018): Species-level functional profiling of metagenomes and metatranscriptomes. *Nat*
612 *Methods* 15: 962–968.
- 613 27. Bates D, Mächler M, Bolker B, Walker S (2015): Fitting Linear Mixed-Effects Models Using
614 lme4. *J Stat Softw* 67. <https://doi.org/10.18637/jss.v067.i01>
- 615 28. Nievergelt CM, Maihofer AX, Klengel T, Atkinson EG, Chen C-Y, Choi KW, *et al.* (2019):
616 International meta-analysis of PTSD genome-wide association studies identifies sex- and
617 ancestry-specific genetic risk loci. *Nat Commun* 10: 4558.
- 618 29. Morgan XC, Kabakchiev B, Waldron L, Tyler AD, Tickle TL, Milgrom R, *et al.* (2015):
619 Associations between host gene expression, the mucosal microbiome, and clinical outcome in
620 the pelvic pouch of patients with inflammatory bowel disease. *Genome Biol* 16: 67.
- 621 30. Lahti L, Salojärvi J, Salonen A, Scheffer M, Vos WM de (2014): Tipping elements in the
622 human intestinal ecosystem. *Nat Commun* 5: 4344.
- 623 31. Thompson J, Johansen R, Dunbar J, Munsy B (2019): Machine learning to predict microbial
624 community functions: An analysis of dissolved organic carbon from litter decomposition.
625 *Plos One* 14: e0215502.
- 626 32. Topçuoğlu BD, Lesniak NA, Ruffin MT, Wiens J, Schloss PD (2020): A Framework for
627 Effective Application of Machine Learning to Microbiome-Based Classification Problems.
628 *Mbio* 11: e00434-20.
- 629 33. Haran JP, Bhattarai SK, Foley SE, Dutta P, Ward DV, Bucci V, McCormick BA (2019):
630 Alzheimer’s Disease Microbiome Is Associated with Dysregulation of the Anti-Inflammatory
631 P-Glycoprotein Pathway. *Mbio* 10. <https://doi.org/10.1128/mbio.00632-19>
- 632 34. Haran JP, Bradley E, Zeamer AL, Cincotta L, Salive M-C, Dutta P, *et al.* (2021):
633 Inflammation-type dysbiosis of the oral microbiome associates with the duration of COVID-
634 19 symptoms and long-COVID. *Jci Insight* 6. <https://doi.org/10.1172/jci.insight.152346>
- 635 35. Wipperman MF, Bhattarai SK, Vorkas CK, Maringati VS, Taur Y, Mathurin L, *et al.* (2021):
636 Gastrointestinal microbiota composition predicts peripheral inflammatory state during
637 treatment of human tuberculosis. *Nat Commun* 12: 1141.

- 638 36. Olendzki B, Bucci V, Cawley C, Maserati R, McManus M, Olednzki E, *et al.* (2022): Dietary
639 manipulation of the gut microbiome in inflammatory bowel disease patients: Pilot study. *Gut*
640 *Microbes* 14: 2046244.
- 641 37. Martínez I, Muller CE, Walter J (2013): Long-Term Temporal Analysis of the Human Fecal
642 Microbiota Revealed a Stable Core of Dominant Bacterial Species. *Plos One* 8: e69621.
- 643 38. Caporaso JG, Lauber CL, Costello EK, Berg-Lyons D, Gonzalez A, Stombaugh J, *et al.*
644 (2011): Moving pictures of the human microbiome. *Genome Biol* 12: R50.
- 645 39. David LA, Materna AC, Friedman J, Campos-Baptista MI, Blackburn MC, Perrotta A, *et al.*
646 (2014): Host lifestyle affects human microbiota on daily timescales. *Genome Biol* 15: R89.
- 647 40. Bucci V, Bradde S, Biroli G, Xavier JB (2012): Social Interaction, Noise and Antibiotic-
648 Mediated Switches in the Intestinal Microbiota. *Plos Comput Biol* 8: e1002497.
- 649 41. Bradley ES, Zeamer AL, Bucci V, Cincotta L, Salive M-C, Dutta P, *et al.* (2022):
650 Oropharyngeal microbiome profiled at admission is predictive of the need for respiratory
651 support among COVID-19 patients. *Front Microbiol* 13: 1009440.
- 652 42. Haran JP, Zeamer A, Ward DV, Dutta P, Bucci V, McCormick BA (2021): The Nursing
653 Home Older Adult Gut Microbiome Composition Shows Time-dependent Dysbiosis and is
654 Influenced by Medication Exposures, Age, Environment, and Frailty. *Journals Gerontology*
655 *Ser.* <https://doi.org/10.1093/gerona/glab167>
- 656 43. Bradley ES, Schell B, Ward DV, Bucci V, Zeamer A, Haran JP (2021): The Urinary
657 Microbiome of Older Adults Residing in a Nursing Home Varies With Duration of Residence
658 and Shows Increases in Potential Pathogens. *Journals Gerontology Ser.*
659 <https://doi.org/10.1093/gerona/glab345>
- 660 44. Prince C, Bruhns ME (2017): Evaluation and Treatment of Mild Traumatic Brain Injury: The
661 Role of Neuropsychology. *Brain Sci* 7: 105.
- 662 45. Bersani FS, Wolkowitz OM, Lindqvist D, Yehuda R, Flory J, Bierer LM, *et al.* (2016):
663 Global arginine bioavailability, a marker of nitric oxide synthetic capacity, is decreased in
664 PTSD and correlated with symptom severity and markers of inflammation. *Brain Behav*
665 *Immun* 52: 153–160.
- 666 46. Segata N, Izard J, Waldron L, Gevers D, Miropolsky L, Garrett WS, Huttenhower C (2011):
667 Metagenomic biomarker discovery and explanation. *Genome Biol* 12: R60.
- 668 47. Gao F, Guo R, Ma Q, Li Y, Wang W, Fan Y, *et al.* (2022): Stressful events induce long-term
669 gut microbiota dysbiosis and associated post-traumatic stress symptoms in healthcare workers
670 fighting against COVID-19. *J Affect Disorders* 303: 187–195.

- 671 48. Bercik P, Park AJ, Sinclair D, Khoshdel A, Lu J, Huang X, *et al.* (2011): The anxiolytic
672 effect of *Bifidobacterium longum* NCC3001 involves vagal pathways for gut–brain
673 communication. *Neurogastroenterol Motil* 23: 1132–1139.
- 674 49. Kelly JR, Borre Y, Brien CO, Patterson E, Aidy SE, Deane J, *et al.* (2016): Transferring the
675 blues: Depression-associated gut microbiota induces neurobehavioural changes in the rat. *J*
676 *Psychiatr Res* 82: 109–118.
- 677 50. Liu Y, Zhang L, Wang X, Wang Z, Zhang J, Jiang R, *et al.* (2016): Similar Fecal Microbiota
678 Signatures in Patients With Diarrhea-Predominant Irritable Bowel Syndrome and Patients
679 With Depression. *Clin Gastroenterol H* 14: 1602-1611.e5.
- 680 51. Savignac HM, Tramullas M, Kiely B, Dinan TG, Cryan JF (2015): Bifidobacteria modulate
681 cognitive processes in an anxious mouse strain. *Behav Brain Res* 287: 59–72.
- 682 52. Nikolova VL, Hall MRB, Hall LJ, Cleare AJ, Stone JM, Young AH (2021): Perturbations in
683 Gut Microbiota Composition in Psychiatric Disorders. Retrieved March 24, 2022, from
684 file:///Users/az/Downloads/2022_jamapsychiatry_microbiome_review.pdf
- 685 53. Liu RT, Rowan-Nash AD, Sheehan AE, Walsh RFL, Sanzari CM, Korry BJ, Belenky P
686 (2020): Reductions in anti-inflammatory gut bacteria are associated with depression in a
687 sample of young adults. *Brain Behav Immun* 88: 308–324.
- 688 54. Rong H, Xie X, Zhao J, Lai W, Wang M, Xu D, *et al.* (2019): Similarly in depression,
689 nuances of gut microbiota: Evidences from a shotgun metagenomics sequencing study on
690 major depressive disorder versus bipolar disorder with current major depressive episode
691 patients. *J Psychiatr Res* 113: 90–99.
- 692 55. Lai W, Deng W, Xu S, Zhao J, Xu D, Liu Y, *et al.* (2021): Shotgun metagenomics reveals
693 both taxonomic and tryptophan pathway differences of gut microbiota in major depressive
694 disorder patients. *Psychol Med* 51: 90–101.
- 695 56. Tang WHW, Wang Z, Cho L, Brennan DM, Hazen SL (2009): Diminished Global Arginine
696 Bioavailability and Increased Arginine Catabolism as Metabolic Profile of Increased
697 Cardiovascular Risk. *J Am Coll Cardiol* 53: 2061–2067.
- 698 57. Liu P, Jing Y, Collie ND, Dean B, Bilkey DK, Zhang H (2016): Altered brain arginine
699 metabolism in schizophrenia. *Transl Psychiat* 6: e871–e871.
- 700 58. Ozden A, Angelos H, Feyza A, Elizabeth W, John P (2020): Altered plasma levels of
701 arginine metabolites in depression. *J Psychiatr Res* 120: 21–28.
- 702 59. Viñuela-Berni V, Gómez-González B, Quintanar-Stephano A (2020): Blockade of Arginine
703 Vasopressin receptors prevents blood-brain barrier breakdown in Experimental Autoimmune
704 Encephalomyelitis. *Sci Rep-uk* 10: 467.

- 705 60. Fiori LM, Turecki G (2008): Implication of the polyamine system in mental disorders. *J*
706 *Psychiatry Neurosci Jpn* 33: 102–10.
- 707 61. Jiang H, Ling Z, Zhang Y, Mao H, Ma Z, Yin Y, *et al.* (2015): Altered fecal microbiota
708 composition in patients with major depressive disorder. *Brain Behav Immun* 48: 186–194.
- 709 62. Zheng P, Zeng B, Zhou C, Liu M, Fang Z, Xu X, *et al.* (2016): Gut microbiome remodeling
710 induces depressive-like behaviors through a pathway mediated by the host’s metabolism. *Mol*
711 *Psychiatr* 21: 786–796.
- 712 63. Duranti S, Ruiz L, Lugli GA, Tames H, Milani C, Mancabelli L, *et al.* (2020):
713 Bifidobacterium adolescentis as a key member of the human gut microbiota in the production
714 of GABA. *Sci Rep-uk* 10: 14112.
- 715 64. Tan TG, Sefik E, Geva-Zatorsky N, Kua L, Naskar D, Teng F, *et al.* (2016): Identifying
716 species of symbiont bacteria from the human gut that, alone, can induce intestinal Th17 cells
717 in mice. *Proc National Acad Sci* 113: E8141–E8150.
- 718 65. Joossens M, Huys G, Cnockaert M, Preter VD, Verbeke K, Rutgeerts P, *et al.* (2011):
719 Dysbiosis of the faecal microbiota in patients with Crohn’s disease and their unaffected
720 relatives. *Gut* 60: 631.
- 721 66. Wang L, Christophersen CT, Sorich MJ, Gerber JP, Angley MT, Conlon MA (2011): Low
722 Relative Abundances of the Mucolytic Bacterium Akkermansia muciniphila and
723 Bifidobacterium spp. in Feces of Children with Autism. *Appl Environ Microb* 77: 6718–6721.
- 724 67. Barrett E, Ross RP, O’Toole PW, Fitzgerald GF, Stanton C (2012): γ -Aminobutyric acid
725 production by culturable bacteria from the human intestine. *J Appl Microbiol* 113: 411–417.
- 726 68. Sela DA, Mills DA (2010): Nursing our microbiota: molecular linkages between
727 bifidobacteria and milk oligosaccharides. *Trends Microbiol* 18: 298–307.
- 728 69. López P, González-Rodríguez I, Gueimonde M, Margolles A, Suárez A (2011): Immune
729 Response to Bifidobacterium bifidum Strains Support Treg/Th17 Plasticity. *Plos One* 6:
730 e24776.
- 731 70. Bellali S, Lo CI, Naud S, Fonkou MDM, Armstrong N, Raoult D, *et al.* (2019):
732 Parabacteroides massiliensis sp. nov., a new bacterium isolated from a fresh human stool
733 specimen. *New Microbes New Infect* 32: 100602.
- 734 71. Bartlett A, Padfield D, Lear L, Bendall R, Vos M (2022): A comprehensive list of bacterial
735 pathogens infecting humans. *Microbiology+* 168. <https://doi.org/10.1099/mic.0.001269>
- 736 72. Qiao S, Liu C, Sun L, Wang T, Dai H, Wang K, *et al.* (2022): Gut Parabacteroides merdae
737 protects against cardiovascular damage by enhancing branched-chain amino acid catabolism.
738 *Nat Metabolism* 4: 1271–1286.

- 739 73. Ogita T, Yamamoto Y, Mikami A, Shigemori S, Sato T, Shimosato T (2020): Oral
740 Administration of Flavonifractor plautii Strongly Suppresses Th2 Immune Responses in
741 Mice. *Front Immunol* 11: 379.
- 742 74. Valles-Colomer M, Falony G, Darzi Y, Tigchelaar EF, Wang J, Tito RY, *et al.* (2019): The
743 neuroactive potential of the human gut microbiota in quality of life and depression. *Nat*
744 *Microbiol* 4: 623–632.
- 745 75. Vázquez L, Flórez AB, Rodríguez J, Mayo B (2021): Heterologous expression of equol
746 biosynthesis genes from *Adlercreutzia equolifaciens*. *Fems Microbiol Lett* 368: fnab082.
- 747 76. Hannele J-S (2002): *Wadsworth-KTL Anaerobic Bacteriology Manual*, 6th ed. Belmont, CA:
748 Star Pub.
- 749 77. Parker BJ, Wearsch PA, Veloo ACM, Rodriguez-Palacios A (2020): The Genus *Alistipes*:
750 Gut Bacteria With Emerging Implications to Inflammation, Cancer, and Mental Health. *Front*
751 *Immunol* 11: 906.
- 752 78. Dai Z, Coker OO, Nakatsu G, Wu WKK, Zhao L, Chen Z, *et al.* (2018): Multi-cohort
753 analysis of colorectal cancer metagenome identified altered bacteria across populations and
754 universal bacterial markers. *Microbiome* 6: 70.
- 755 79. Chung WSF, Meijerink M, Zeuner B, Holck J, Louis P, Meyer AS, *et al.* (2017): Prebiotic
756 potential of pectin and pectic oligosaccharides to promote anti-inflammatory commensal
757 bacteria in the human colon. *Fems Microbiol Ecol* 93. <https://doi.org/10.1093/femsec/fix127>
- 758 80. Quan J, Wu Z, Ye Y, Peng L, Wu J, Ruan D, *et al.* (2020): Metagenomic Characterization of
759 Intestinal Regions in Pigs With Contrasting Feed Efficiency. *Front Microbiol* 11: 32.
- 760 81. Schröder C, Matthies A, Engst W, Blaut M, Braune A (2013): Identification and Expression
761 of Genes Involved in the Conversion of Daidzein and Genistein by the Equol-Forming
762 Bacterium *Slackia isoflavoniconvertens*. *Appl Environ Microb* 79: 3494–3502.
- 763 82. Loubinoux J, Bronowicki J, Pereira IAC, Mougénel J, Faou AE (2002): Sulfate-reducing
764 bacteria in human feces and their association with inflammatory bowel diseases. *Fems*
765 *Microbiol Ecol* 40: 107–112.
- 766 83. Hosomi K, Saito M, Park J, Murakami H, Shibata N, Ando M, *et al.* (2022): Oral
767 administration of *Blautia wexlerae* ameliorates obesity and type 2 diabetes via metabolic
768 remodeling of the gut microbiota. *Nat Commun* 13: 4477.
- 769 84. Cox LM, Maghzi AH, Liu S, Tankou SK, Dhang FH, Willocq V, *et al.* (2021): Gut
770 Microbiome in Progressive Multiple Sclerosis. *Ann Neurol* 89: 1195–1211.

- 771 85. Bui TPN, Shetty SA, Lagkouvardos I, Ritari J, Chamlagain B, Douillard FP, *et al.* (2016):
772 Comparative genomics and physiology of the butyrate-producing bacterium *Intestinimonas*
773 *butyriciproducens*. *Env Microbiol Rep* 8: 1024–1037.
- 774 86. Lai H-C, Lin T-L, Chen T-W, Kuo Y-L, Chang C-J, Wu T-R, *et al.* (2022): Gut microbiota
775 modulates COPD pathogenesis: role of anti-inflammatory *Parabacteroides goldsteinii*
776 lipopolysaccharide. *Gut* 71: 309–321.
- 777 87. Wu I-W, Lin C-Y, Chang L-C, Lee C-C, Chiu C-Y, Hsu H-J, *et al.* (2020): Gut Microbiota as
778 Diagnostic Tools for Mirroring Disease Progression and Circulating Nephrotoxin Levels in
779 Chronic Kidney Disease: Discovery and Validation Study. *Int J Biol Sci* 16: 420–434.
- 780 88. Louis S, Tappu R-M, Damms-Machado A, Huson DH, Bischoff SC (2016): Characterization
781 of the Gut Microbial Community of Obese Patients Following a Weight-Loss Intervention
782 Using Whole Metagenome Shotgun Sequencing. *Plos One* 11: e0149564.
- 783 89. Xie Y-H, Gao Q-Y, Cai G-X, Sun X-M, Zou T-H, Chen H-M, *et al.* (2017): Fecal
784 *Clostridium symbiosum* for Noninvasive Detection of Early and Advanced Colorectal
785 Cancer: Test and Validation Studies. *Ebiomedicine* 25: 32–40.
- 786 90. Ananthkrishnan AN, Luo C, Yajnik V, Khalili H, Garber JJ, Stevens BW, *et al.* (2017): Gut
787 Microbiome Function Predicts Response to Anti-integrin Biologic Therapy in Inflammatory
788 Bowel Diseases. *Cell Host Microbe* 21: 603-610.e3.
- 789