

1 **A one health approach for enhancing the integration of *Salmonella enterica* surveillance in**  
2 **Colombia**

3

4 Johan F. Bernal<sup>1\*</sup>, Paula L. Díaz<sup>2</sup>, Blanca M. Perez-Sepulveda<sup>3</sup>, María Fernanda Valencia-Guerrero<sup>1</sup>,  
5 Magdalena Weisner<sup>2</sup>, Viviana Clavijo<sup>4</sup>, Lucy Angeline Montaña<sup>2</sup>, Stefany A. Arevalo<sup>1</sup>, Ingrid Maribel  
6 León<sup>5</sup>, Luis Ricardo Castellanos<sup>6</sup>, Anthony Underwood<sup>7</sup>, Carolina Duarte<sup>2</sup>, Silvia Argimón<sup>7</sup>, Jaime  
7 Moreno<sup>2</sup>, David Aanensen<sup>7</sup>, Pilar Donado-Godoy<sup>1</sup>

8

9 <sup>1</sup>Global Health Research Unit (GHRU)-AMR. Colombian Integrated Program of Antimicrobial Resistance  
10 Surveillance (COIPARS). Corporación Colombiana de Investigación Agropecuaria (AGROSAVIA). C.I  
11 Tibaitata, Cundinamarca, Colombia. <sup>2</sup>Grupo de Microbiología, Instituto Nacional de Salud (INS), Bogotá  
12 DC, Colombia; <sup>3</sup>Institute of Infection, Veterinary & Ecological Sciences (IVES), University of Liverpool,  
13 United Kingdom; <sup>4</sup>Department of Biological Sciences, University of the Andes, Bogotá DC, Colombia;  
14 <sup>5</sup>Department of Veterinary Integrative Biosciences, Texas A&M University, College Station, Texas, USA;  
15 <sup>6</sup>Quadram Institute Bioscience, Norwich, United Kingdom; <sup>7</sup>Global Health Research Unit (GHRU)-AMR,  
16 Big Data Institute, University of Oxford, United Kingdom.

17

18 \*Corresponding Author:

19 Johan F. Bernal Morales

20 Corporación Colombiana de investigación Agropecuaria- AGROSAVIA

21 C.I - Tibaitatá

22 Km 14 vía Mosquera, Cundinamarca

23 Tel: +57 (1) 4227300 ext. 1702

24 E-mail: [jfbernal@agrosavia.co](mailto:jfbernal@agrosavia.co); [johan.bernal.morales@gmail.com](mailto:johan.bernal.morales@gmail.com)

25

26 **Keywords:**

27 Foodborne, Salmonella, WGS, PFGE, Antimicrobial Resistance, Virulence, One health

28

29 **Abbreviation:**

30 Ampicillin (Amp); Chloramphenicol (C); Amoxicillin-clavulanic acid (Amc); Tetracycline (Te);  
31 Streptomycin (Str); Ciprofloxacin (Cip); Levofloxacin (Lvx); Nalidixic acid (Na); Nitrofurantoin (Nit);  
32 Ceftazidime (Czo); Cefotaxime (Ctx); Ceftriaxone (Cro); Cefoxitin (Fox); Tazobactam-piperacillin (Tzp);  
33 Colistin (Col), Instituto Colombiano Agropecuario (ICA).

34

35 **Abstract**

36 Foodborne diseases represent a link between environmental, animal, and human health interfaces from  
37 the One Health perspective. Whole genome sequencing (WGS) is becoming the gold standard in  
38 foodborne surveillance, worldwide. WGS than provides precision data from pathogens allows  
39 laboratories to resolve the genetic relations among all sources from One Health perspective, especially  
40 during outbreak investigations, getting insights into their transmission routes and pathogenicity.  
41 *Salmonella* spp. is the most prevalent foodborne bacteria in Colombia, in 2020, 268 foodborne outbreaks  
42 were reported to National health institute (INS) and 3079 invasive and faecal salmonellosis samples from  
43 81% of the Colombian geographical regions. Several studies in different food sources exhibited an  
44 increase of contamination with *Salmonella*, a public health concern due to the steady development of  
45 antimicrobial resistance associated to specific serovars. However, integration of *Salmonella* spp. data  
46 including food-chain supply and clinical interfaces is very scarce in Colombia. This study carried out a  
47 national comparison of *Salmonella* isolates collected from food-chain supply and clinical sources. Using  
48 an epidemiological and phenotypic approach, we demonstrated the higher resolution of WGS compared  
49 with PFGE, routinely used in *Salmonella* surveillance in Colombia. For example, the resolution of PFGE  
50 allowed the description of two main clusters of food *Salmonella* Enteritidis isolates which were expanded  
51 to eight clades by using WGS. Virulence factors and antimicrobial determinant genes observed in the  
52 foodborne clades should be considered a public health concern in Colombia. WGS is a technology that  
53 provides precise and valid evidence for the establishment of dissemination routes of foodborne high-risk  
54 *Salmonella* clades, but it requires an integrative and continued collaboration between the stakeholders  
55 across the One Health interfaces to promote and support integrated real-time actions in public health.

56

## 57 Introduction

58 Over 1.7 billion cases of childhood diarrhoeal diseases occur globally every year, causing 525.000  
59 deaths in children under 5 years of age (1). Approximately half of these deaths could be linked to  
60 bacterial foodborne illnesses, especially low and middle-income countries (LMICs)(2), where *Salmonella*  
61 is one of the four most critical zoonotic bacteria involved in foodborne diseases associated with food  
62 production systems (3–6). *Salmonella* occurrence has become a significant global public health  
63 concern, due their ability to withstand critical antimicrobials in clinical treatment (7,8).

64 An effective strategy to tackle the spread of foodborne diseases and antimicrobial resistance (AMR) has  
65 been to adopt the One Health (OH) approach of collaboration between members of the food-chain  
66 supply, environmental monitoring and the health sector (9,10). Critical levels of AMR in bacteria isolated  
67 from humans, the food chain and animal production systems negatively impact the public health and  
68 economy at a global level (11–13). There is often a lack of data integration when reports are available  
69 for only certain pathogens and others are kept without public access (14). The OH approach  
70 recommends establishing a comparable and integrated system to promote more assertive monitoring  
71 and measurement strategies (15–17). One strategy for global surveillance of foodborne pathogens and  
72 AMR is based on Whole Genome Sequencing (WGS) which is becoming the gold standard method  
73 (18)(19). WGS has shown a higher sensitivity, specificity and reproducibility in a shorter time for high-  
74 resolution analysis than traditional methods such as pulsed-field gel electrophoresis (PFGE) and  
75 ribotyping (20,21). The Global Action Plan (GAP) on AMR in 2015 proposed WGS as a key tool for the  
76 integrated analysis of pathogens (19)(22), however most national reference laboratories in Colombia  
77 still rely on the use of PFGE for detection of pathogenic bacteria variants.

78

79 Colombia proposed the first integrated program in AMR surveillance in Latin-America, the Colombian  
80 Integrating Program for AMR Surveillance - COIPARS based on AGROSAVIA. The outcomes from  
81 COIPARS showed an estimated prevalence of *Salmonella* in poultry farms (41%) and retail stores (27%),  
82 and high levels of AMR to critical antibiotics such as third generation cephalosporins (39%) and

83 fluoroquinolones (29%) (23,24). Similarly, a molecular comparison between poultry farms and retail  
84 stores in Colombia revealed the common presence of ESBL/AmpC determinant genes across the  
85 interfaces and higher diversity of resistance determinants genes in the food supply chain (25). According  
86 to the Colombian National Public Health Institute (INS), *Salmonella* spp. continues to be one of the most  
87 important causes of foodborne diseases in the country (26). In 2020, 268 foodborne outbreaks and 3079  
88 salmonellosis cases from 81% (n=30) of all Colombian geographical regions were reported, with 11% of  
89 the foodborne illness reports related to poultry products (26). However, the last INS annual report in  
90 2020 showed a reduction of 56% in foodborne outbreaks compared to 2019, this reduction that could be  
91 related to the COVID-19 pandemic response in the country (26,27).

92

93 A OH approach of surveillance using WGS could generate data relevant to the prevalence, genetic  
94 diversity, AMR determinants and mobile genetic elements of pathogens across the food chain and clinical  
95 interfaces, making an impact on technology development in health and food safety (25,28–31). This  
96 study aimed to provide evidence of the domestic benefits of introducing an integrative genomic analysis  
97 (WGS) on *Salmonella* spp. national surveillance. The use of WGS compared to standard PFGE  
98 procedure was demonstrated using retrospective data from food isolates from retail stores and clinical  
99 isolates from health services between 1997-2017 in Colombia.

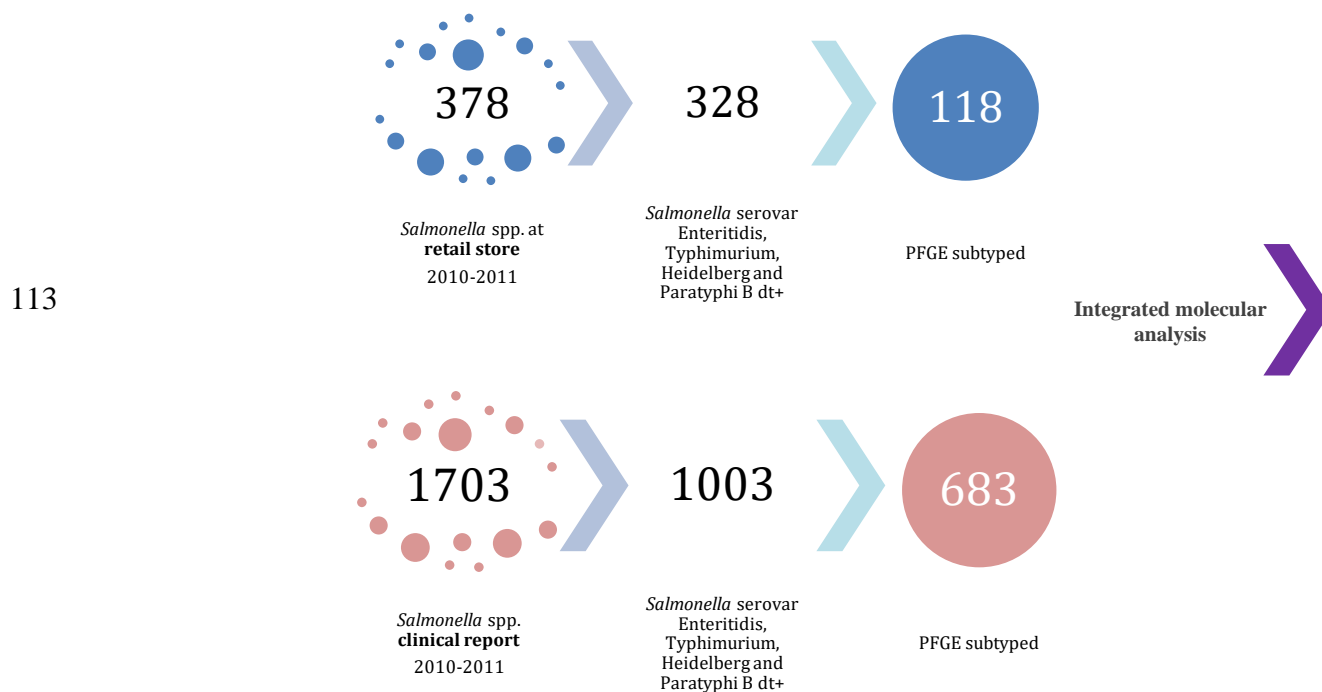
100

## 101 **Materials and methods**

102 *Bacterial isolates.* The first comparison described as integrated molecular analysis included 801 food  
103 and clinical *Salmonella* spp. isolates recovered between 2010-2011. Food isolates (n=118) belonged to  
104 the four most prevalent serovars (*S. Enteritidis*, n=61, *S. Typhimurium*, n=14, *S. Heidelberg*, n=20 and  
105 *S. Paratyphi B dT+*, n=23) recovered from chicken rinse carcasses at retail stores in 11/32 political  
106 divisions (departments) in Colombia were collected between October 2010 to October 2011 by  
107 COIPARS-AGROSAVIA (28). Clinical isolates (n= 683) were recovered as part of the National  
108 Microbiology Reference Laboratory (NMRL) surveillance program between January 2010 and December  
109 2011 in 28/32 departments in Colombia. These clinical isolates were selected as the same serovars

110 identified for food isolates (*S. Enteritidis*, n=263, *S. Typhimurium* n=263, *S. Heidelberg* n=3 and *S.*  
111 *Paratyphi B* dt+ n=1) and were obtained mainly from blood and stool (29).

112



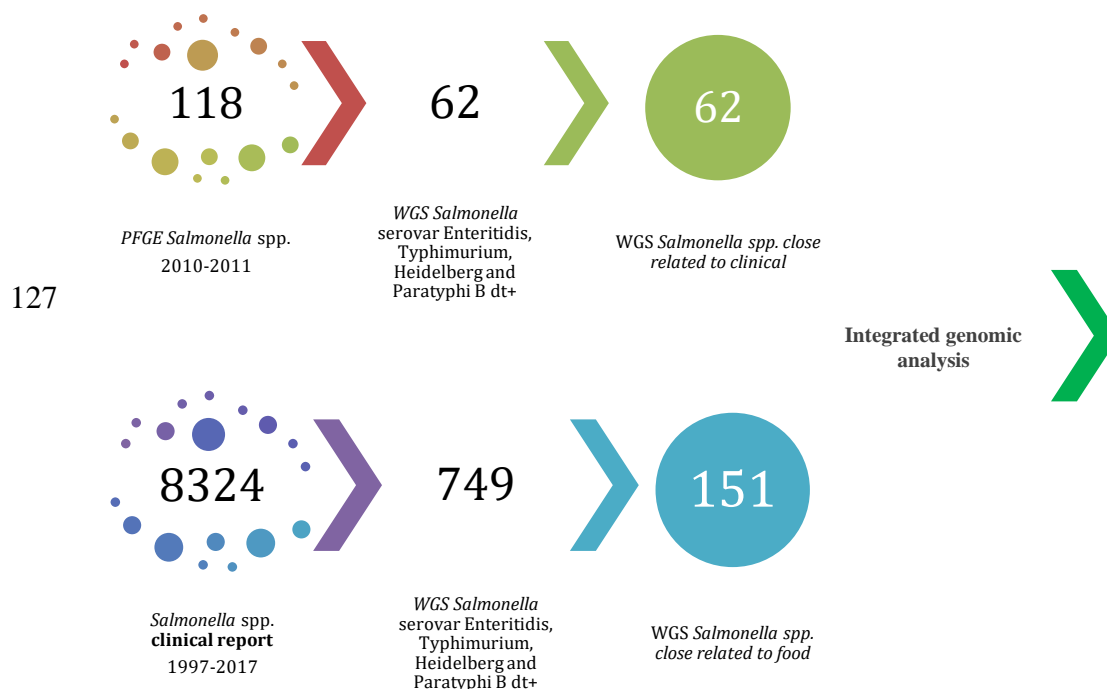
114

Fig 1. Distribution and selection of samples from food and clinical interfaces included in the molecular integrated analysis

115

116 The second comparison described as the integrated genomic analysis, the genome of 811 *Salmonella*  
117 isolates from food (n=62, COIPARS at AGROSAVIA) and clinical (n=749; NMRL surveillance at INS)  
118 were sequenced. The 62 food isolates were selected for sequencing from an initial set of 118 isolates,  
119 based on clonal pattern observed using PFGE (DSI=1.0) with clinical isolates. Clinical isolates were  
120 selected from the NMRL *Salmonella* surveillance program based on the invasive bloodstream infection  
121 outcome report, between 1997-2017. The 151 clinical isolates from all set were selected based on the  
122 SNPs analysis defining a probable genetic relation with food isolates. The median fixation rate defined  
123 in this study for the core genome in *Salmonella* was three SNPs *per* year, therefore probable related  
124 isolates from the clinical surveillance *per* 20 years of surveillance were defined into the ~60 SNPs  
125 distance from a food isolate (32–34).

126



127

128

129

Fig 2. Distribution and selection of samples from food and clinical interfaces included in the genomic integrated analysis

130

131 *Phenotypic characterization.* Food isolates were processed in AGROSAVIA following the procedure  
132 described by Donado-Godoy et al. (2012). Briefly, an aliquot of chicken carcass rinse was enriched in  
133 selective broth, incubated, and the broth plated onto XLT4 agar (Oxoid, UK). Typical *Salmonella* colonies  
134 were confirmed at the genus level, and the antimicrobial testing (AST) was performed by BD Phoenix<sup>TM</sup>  
135 automated microbiological system (Becton Dickinson Diagnostic Systems, Sparks, MD, USA). Data  
136 interpretation was performed using CLSI breakpoints in 2011 (28).

137 All clinical *Salmonella* isolates were identified using standard biochemical testing (Triple Sugar Iron Agar  
138 (TSI), Citrate, Urea, and motility), and Vitek II system (Biomerieux, USA). Antimicrobial susceptibility  
139 testing was performed using the Kirby-Bauer disk diffusion and minimum inhibitory concentrations (MIC)  
140 using the MicroScan autoSCAN-4-System (Beckman Coulter) according to the CLSI standards for the  
141 corresponding year. All clinical isolates were processed at NMRL at INS. Both food and clinical isolates  
142 were serotyped following the Kauffmann-White-Le Minor serological scheme using specific commercial

143 antisera (Difco, United States). Epidemiological and phenotypic data from previous cross-sectional  
144 studies and from the National surveillance were integrated to the metadata.

145

146 *Molecular and genomic characterization.* All 801 isolates were processed as part of PulseNet national  
147 surveillance during 2010-2011 in each institution. All isolates were subtyped following PFGE PulseNet-  
148 CDC *E.coli-Shigella-Salmonella* standard protocol for *XbaI* enzyme (35). *Salmonella* PFGE patterns  
149 were compared using Gel Compare II® (Applied-Maths) software to establish genetic relatedness.  
150 Similarity index (SI) was calculated using the DICE coefficient with 1.5% of tolerance in a position of the  
151 band of the fingerprinting and the unweighted pair group method by arithmetic mean (UPGMA).  
152 *Salmonella* integrated clustering assessment included serovar, PFGE pattern (PP), location and  
153 antimicrobial susceptibility profile. The variables, serovars and PP's were defined as selection measures  
154 for the similarity analysis, and binary values were assigned to other variables: (1) when the isolates  
155 shared the same output and (0) when the isolates did not share the same output. Pearson Similarity  
156 Coefficient (PSC) was calculated using R studio v4.2.0 (36), and a binary similarity score between food  
157 and clinical isolates was determined (37–39).

158 The thermolysates of 811 *Salmonella* isolates were sent to the Earlham Institute (UK) for DNA extraction  
159 and sequencing using the LITE pipeline as part of the 10.000 *Salmonella* Genomes consortium,  
160 described elsewhere (40). The raw data was transferred to the national participants institutions, and the  
161 GHRU bioinformatic pipelines and the computational infrastructure in AGROSAVIA were used for the  
162 analysis of the data as OH approach, as described below.

163

164 *Bioinformatic analysis.* After quality control (QC) using Fastqc (v0.11.8), the raw sequences were  
165 trimmed, polished and assembled, and assemblies' stats were calculated as described in the assembly  
166 GHRU-AMR pipeline. Multi locus sequence typing (MLST) and AMR determinants (acquired genes and  
167 point mutations) were annotated and summarised in human readable tables following GHRU-AMR  
168 pipelines. Plasmids and virulence factors were annotated using ARIBA (v2.14.4) with Plasmidfinder and  
169 VFDB databases, respectively. Variant calling was performed using bcftools (v1.9) by mapping to  
170 reference genomes (*Salmonella* Enteritidis str. 18569 (NZ\_CP011394.1), *Salmonella* Typhimurium str.

171 LT2 (NC\_003197.2) and *Salmonella* Heidelberg str. SL476 (NC\_011083.1)), aligned and filtered for low  
172 quality base (%QUAL<25 || FORMAT/DP<10 || MAX(FORMAT/ADF)<2 || MAX(FORMAT/ADR)<2 ||  
173 MAX(FORMAT/AD)/SUM(FORMAT/DP)<0.9 || MQ<30 || MQ0F>0.1). Phylogenetic inference was  
174 calculated using IQtree (1.6.8) with GTR+G model and 1000 bootstrap replicates. All details of the GHU-  
175 AMR pipelines and parameters used in the analysis are described at [https://www.protocols.io/view/ghru-  
176 genomic-surveillance-of-antimicrobial-resista-bpn6mmhe](https://www.protocols.io/view/ghru-genomic-surveillance-of-antimicrobial-resista-bpn6mmhe). SNPs matrix heatmap was performed using R  
177 studio (v4.2.0) with the library ComplexHeatmap (41). Clade definition was based on the SNPs matrix  
178 generate by the phylogenetic analysis in each serovar using rhierbaps (42) with default settings in R  
179 studio (v4.2.2). Epidemiological, phenotypic and genomic data were integrated in a datasheet (.csv)  
180 using R studio (v4.2.0). All results were uploaded to the Microreact platform and visualized as a public  
181 access dynamic report (43).

182 *Availability of sequence data.* The raw sequencing data generated from this study were deposited at the  
183 EMBL European Nucleotide Archive (ENA) repository under the project accession numbers  
184 PRJEB35182 and PRJEB47910.

185 *Ethical considerations.* The ethics and methodologies committee for research (CETIN/CEIN) of National  
186 health Institute of Colombia waived the ethical approval for this study.

187

## 188 **Results**

189 Evaluation of variables (serovar, PFGE pattern, location, susceptibility profile) showed a correlation  
190 between 41% (48 out of 118) food isolates with clinical isolates between 2010-2011. The Pearson  
191 similarity coefficient (PSC) for all isolates was defined at 0.87 ( $p>0.000$ ), stating a strong correlation  
192 between food and clinical isolates (Table S1). The phylogenetic inference from the 811 *Salmonella* spp.  
193 isolates revealed that all food isolates were genetically related to previously reported clinical isolates  
194 from the national surveillance program between 1997-2017. Phylogenetic inference by serovar of 213  
195 closely related food and clinical isolates (*S. Enteritidis*,  $n= 167$ ; *S. Typhimurium*,  $n= 35$ ; *S. Heidelberg*,  
196  $n=11$ ) provided a better resolution of the genetic relationship between interfaces, defining the high-risk  
197 foodborne clades in each serovar (Table S2). Of all *Salmonella* spp. isolates compared, 25% clustered  
198 into the 12 high-risk foodborne clades described in this study.



199

## 200 ***Salmonella* Enteritidis**

201 *Relatedness analysis.* *Salmonella* Enteritidis isolates from the food interface (n=61) showed eight unique  
202 PFGE patterns (PPs), of which ICA JEG.X01.0001 (n=28) and JEG.X01.0006 (n=27) clustered 90.2%  
203 of isolates with a Dice Similarity Index (DSI) >0.96 (figure 1a). Three food PPs were indistinguishable  
204 from a unique clinical PPs in the PulseNet national database (DSI=1.00; figure 1b). The two most  
205 frequent food (PPs, JEG.X01.0001 - JEG.X01.0006, 55/61; 83%), and clinical PPs (JEG.X01.0001 -  
206 JEG.X01.0038, 230/263; 87%) exhibited clonal relatedness (DSI=1.00; figure 1b), defining Cluster-1  
207 (INS JEG.X01.0001 - ICA JEG.X01.0001) and Cluster-2 (INS JEG.X01.0038 - ICA JEG.X01.0006). An  
208 additional food singleton PP JEG.X01.0008 was found clonally related to clinical PP JEG.X01.0068  
209 (figure 1b). Cluster-1 *S. Enteritidis* food isolates were recovered from Bogotá D.C (92%), Atlántico (4%)  
210 y Arauca (4%). Cluster-1 clinical isolates were collected from several departments (n=14) across the  
211 country, especially from Bogotá D.C (28%) and Atlántico (1%), and non-isolate was collected from  
212 Arauca. All Cluster-2 food isolates were collected from Bogota, whereas clinical isolates were spread to  
213 several departments (n=12), as Bogotá (30%). Integrating the four epidemiological variables (serovar,  
214 PFGE pattern, AST and location) from 61 food and 263 clinical *Salmonella* Enteritidis isolates revealed  
215 a strong correlation between food and clinical isolates with a PSC of 0.86 (p<0.000). This correlation  
216 was explained by the clonal behaviour of 42 food and 54 clinical isolates, all of them pan-susceptible to  
217 tested antimicrobials and recovered from Bogotá, Valle del Cauca and Risaralda during 2010-2011  
218 (Table S1).

219 From WGS data, an initial alignment of single nucleotide variants was generated with 394 sequences  
220 (food (n=45) and clinical (n=349)) mapped to reference (NZ\_CP011394.1). A subset of 167 (42%)  
221 genomes were defined as related isolates, including food (n=45) and clinical (n=122) isolates (figure 1c).  
222 Sequence types from the subset of *S. Enteritidis* isolates were described into the Complex Group (CG)  
223 11 including ST11(99%) and the novel ST 9293 (0.6%) reported for first time in this study (Table S2). A  
224 total of 8 *Salmonella* Enteritidis Clades (SECs) were defined based on SNPs distance and the tree  
225 clustering (figure 1c) and visualized on heatmap (figure 1d). Clades analysis by WGS exhibited more  
226 than four folds more discriminatory resolution in the same population than the previously described clonal

227 PFGE Cluster-1 and Cluster-2 (Table S2). All SEC1 isolates were recovered from Bogotá between 2010-  
228 2012, the majority (8/11) of which were food isolates, including two close zoonotic events (< 2 SNPs)  
229 identified during 2010-2011. SEC2 comprised 18 isolates recovered from seven departments between  
230 2010 and 2016. A close genetic event (<2 SNPs) reported in two departments (Bogotá and Risaralda)  
231 during 2010 was first observed, after which other clinical isolates were reported for years 2012,2014 and  
232 2016 (Table S2). Two sub-groups of isolates were observed in SEC3 (n=34) differentiated by 13 SNPs  
233 of distance, showing food-clinical close genetic events (1-2 SNPs). Clinical isolates were mostly  
234 clustered in sub-group SEC3.1 whereas food isolates clustered in SEC3.2, both isolated between 2009-  
235 2016. SEC4 isolates (n=9) were collected between 2006-2011 in 4 departments, of which a close genetic  
236 event was identified in a multi-department source between 2010-2011. The majority (94%) of SEC5  
237 isolates were from clinical origin, and two food isolates showed relatedness with 6-14 SNPs of distance  
238 with clinical isolates between 1998 and 2016. SEC6 was composed of mostly (96.4%) clinical isolates  
239 collected from nine departments between 2004 to 2015, with one genetically related food isolate (< 6  
240 SNPs). All SEC7 isolates (n=12) were recovered from clinical between 2002-2016 from 7 departments.  
241 SEC7 was resulted a close well-differentiated clade to SEC8 by 28 SNPs of distance with common  
242 ancestry. Finally, SEC8 composed of 21 isolates was recovered from 6 departments between 1999 to  
243 2014. A genetically close event of food isolates with a clinical isolate (4 SNPs) was observed during  
244 2010-2012. Overall, SECs isolates were recovered from 19 departments, across Colombia, between  
245 1998-2016 (figure 1c; Table S2).

246  
247 *Antimicrobial resistance.* All related isolates from the two clusters and the singleton were susceptible to  
248 all antibiotics tested (Table S1). *S. Enteritidis* food isolates (65.3%) non-related to clinical isolates were  
249 resistant to one or more antibiotics that included  $\beta$ -lactams, quinolones, fluoroquinolones, tetracyclines,  
250 sulfamethoxazole/trimethoprim, nitrofurantoin and amoxicillin/clavulanic acid. The Multi-Drug Resistance  
251 (MDR) profile AmcAmpCzoCtxFoxCroNaCipNitTe was found in two food isolates non-related to clinical  
252 isolates from the department of Arauca and the city of Bogotá. Other less complex AMR profiles  
253 AmcAmpSxtTe and AmcAmpCtxNaGen were found in two clinical isolates non-related to food interface  
254 from departments of Antioquia and Nariño. Most *S. Enteritidis* isolates (89%) did not carry AMR-

255 determinant genes, and the clinical-food close related isolates were susceptible to all antimicrobials  
256 tested. Twelve isolates (11%) from different SECs (1-8) carried AMR determinant genes to  
257 aminoglycosides,  $\beta$ -lactams, trimethoprim, sulphonamides, quinolones and tetracycline. Incompatibility  
258 groups IncN\_1 and IncI\_1 were found related to MDR clinical isolates from SECs 3, 5 and 6 (Table S2).  
259

260 *Virulence factors.* Virulence factors described previously in the *Salmonella* genus were found in almost  
261 all isolates (99%) of *S. Enteritidis* encoding partially *Salmonella* pathogenicity island SPI-1 and SPI-2,  
262 including two Type 3 Secretion Systems (T3SS1-T3SS2) with multiple exclusive and translocate  
263 effectors, and one Type 8 Secretion System (T8SS). Additionally, adherence, membrane, flagellar,  
264 chemotaxis kinase operons, and metal homeostasis pathways genes were described for all isolates  
265 (Table 2). Clinical-food close related events exhibited the same virulence repertoire across all SECs.  
266 Other virulence genes related to mobile genetic elements (MGE) such as *ybtE*, *ybtP*, *ybtU*, *fyuA*, *gogB*,  
267 *irp1*, *irp2* and *gtrB* were observed in some isolates from SECs 2, 3 and 7. Also, RND efflux system gene  
268 *acrA* and T3SS effector *sspH1* related to AMR in *Salmonella* spp. were sporadically observed (Table  
269 S2).

270  
271 All results of *Salmonella* Enteritidis could be visualized at the microreact project  
272 ([https://microreact.org/project/hjw5geMmKWAAGKxhA9Y3QX-salmonellaentericaenteritidis-from-the-](https://microreact.org/project/hjw5geMmKWAAGKxhA9Y3QX-salmonellaentericaenteritidis-from-the-national-surveillance-in-colombia-as-one-health-approach)  
273 [national-surveillance-in-colombia-as-one-health-approach](https://microreact.org/project/hjw5geMmKWAAGKxhA9Y3QX-salmonellaentericaenteritidis-from-the-national-surveillance-in-colombia-as-one-health-approach))

274

## 275 ***Salmonella* Typhimurium**

276 *Relatedness analysis.* *Salmonella* Typhimurium isolates from food (n=14) showed nine unique PPs with  
277 DSI values between 0.72-1.0, the most frequent food PPs including JPX.X01.0006, JPX.X01.0008 and  
278 JPX.X01.0009 showed DSI values above 0.76 (figure 2a). Additionally, food PPs JPX.X01.0008 and  
279 JPX.X01.0007 were found related (DSI = 0.86) (figure 2a). Two unique PPs from food interface  
280 JPX.X01.0004 and JPX.X01.0007 (6/14) were indistinguishable from two unique clinical interface PPs  
281 JPX.X01.0197 and JPX.X01.0237 at the PulseNet National database (9/416), respectively (DSI=1.0,

282 figure 2b). The PPs JPX.X01.0008 and JPX.X01.0005 from food origin were included as additional  
283 cluster in the comparison due the close genetic relation with the clinical clonal related PP JPX.X01.0007.  
284 *S. Typhimurium* Cluster – 1 (ICA JPX.X01.0008 – ICA JPX.X01.0005), Cluster -2 (ICA JPX.X01.0007 -  
285 INS JPX.X01.0237) and Cluster -3 (ICA JPX.X01.0004 - INS JPX.X01.0197) were defined. *S.*  
286 *Typhimurium* food and clinical isolates belonging to Cluster 1 were recovered in Antioquia (1/2) and Valle  
287 del Cauca /1/2), to Cluster-2 were recovered in Bogota (4/4) and to Cluster-3 were recovered in Bogotá  
288 D.C (3/12), Antioquia (6/12) y Boyacá (3/12). Other food isolates non-related to clinical interface were  
289 recovered from Bogotá (8/14), Antioquia (2/14), Tolima (1/14) and Valle del Cauca (1/14). Four  
290 epidemiological variables from 14 food and 416 clinical *S. Typhimurium* isolates were compared, defining  
291 PSC in 0.89 ( $p < 0.000$ ). Comparison demonstrated clonal behaviour in 2 food and 4 clinical isolates with  
292 AMR profiles CAMcAmpTeStr and TeStr from Bogotá during 2010-2011 (Table S1).

293 In WGS, the variants calling in *S. Typhimurium* were generated mapping to reference (NC\_003197.2) a  
294 total of 267 pair sequences: Food (n=5) and clinical (n=262). A group of 35 food-clinical isolates (13%)  
295 were selected based on SNPs distance (~60 SNPs) for the latest phylogeny analysis: Food (n=5) and  
296 Clinical (n=30) isolates were recovered between 1999-2016. All sequence types were found belong to  
297 Complex Group 19 including ST's 19 (94%), 7423 (3%) and 7617 (3%), and geographically distributed  
298 in 8 Colombian departments (Table S2; figure 2c). From 35 selected isolates, a total of 3 *Salmonella*  
299 *Typhimurium* Clades (STCs) recovered across the country were labelled as probable foodborne (Table  
300 S2). Phylogenetic inference described a similar clades distribution to previously observed in the PFGE  
301 molecular analysis: STC1 (Cluster -1; ICA JPX.X01.0008), STC2 (Cluster -2; ICA JPX.X01.0007- INS  
302 JPX.X01.0237) and STC3 (Cluster-3; ICA JPX.X01.0004 -INS JPX.X01.0197). Nevertheless, other PPs  
303 were included into the defined clades. STC1 was the most frequent clade (n=14; 40%) recovered from  
304 five departments between 1999-2016 and the majority (11/14) was isolated from clinical. STC1 isolates  
305 exhibited no close genetic events, but three related events ( $< 26$  SNPs) were observed during 2003-  
306 2016 (figure 2c). STC2 was less frequent clade (n=8; 23%) recovered from four departments between  
307 2004 and 2010; One zoonotic event (7-9 SNPs) was detected in 2004 and 2006. At last, STC3 isolates  
308 (n=13; 37%) were recovered from four departments between 2007-2015, a close related event was  
309 established with 10 SNPs of distance, during 2007 and 2010 (Table S2).

310

311 *Antimicrobial resistance.* All food isolates from Cluster -1, -2 and -3 showed resistance to at least one  
312 antibiotic family:  $\beta$ -lactam,  $\beta$ -lactamase inhibitor, streptomycin, chloramphenicol and tetracycline (Table  
313 S1). Multi-drug resistance profile CAmcAmpTeStr / AmcAmpTeStr were found in four isolates from  
314 Bogotá belonging to Cluster-2 (Table S2). Other AMR profiles in Cluster-1 remitted from departments of  
315 Antioquia (50%), Boyacá (25%) and Bogotá (25%) were observed: NaTeStr (5/12), TeStr (6/12) or Te  
316 (1/12) (Table1). Resistance profile TeStr was observed on a unique Cluster-2 clinical isolate from Bogotá,  
317 in contrast, three food isolates from PP JPX.X01.0008 in Huila, were susceptible to all tested antibiotics  
318 (Sup. Table 2). Specific blocks of AMR determinants genes were observed in each STCs. All STC1  
319 isolates were multidrug-resistant including several antibiotics families: aminoglycoside,  $\beta$ -lactam,  
320 trimethoprim, sulphonamides, macrolide, quaternary ammonium, phenicols, colistin, quinolones and  
321 tetracycline. Three different AMR genetic platforms were observed, standing out the presence of colistin  
322 resistance determinant gene mcr-5.1 in food isolates. The presence of plasmid incompatibility groups  
323 colpVC, colRNAI and IncC\_1 was frequently identified in isolates from STC1. Similarly, STC2 isolates  
324 exhibited AMR determinant genes to aminoglycosides,  $\beta$ -lactams, phenicols, quaternary ammonium,  
325 sulphonamides and tetracycline, configured in a common block of AMR genes. All isolates from STC2  
326 carried IncFIIB and IncFII\_S plasmids. Finally, STC3 isolates exhibited blocks of AMR determinants to  
327 aminoglycoside, sulphonamide and tetracycline but five isolates exhibited additional quinolone  
328 resistance. IncQ1 and IncX1 plasmids were identified in all isolates and col156 plasmid was frequently  
329 observed. Co-location of qnrB gene and Col440I incompatibility group was defined conferring resistance  
330 to quinolones in *Salmonella* foodborne isolates from food and clinical interfaces (Table S2).

331

332 *Virulence factors.* *Salmonella*'s major virulence factors were found in all isolates encoding partially  
333 chromosomal *Salmonella* pathogenicity island SPI-1 and SPI-2 including two Type 3 Secretion Systems  
334 (T3SS1-T3SS2) with exclusive and translocate effectors, and one Type 8 Secretion System (T8SS).  
335 Additionally, adherence, membrane, flagellar and chemotaxis kinase operons, and metal homeostasis  
336 pathways genes were described for all isolates. MGE related virulence genes gogB and grvA were  
337 observed in all STCs 2 and 3, and one isolate from STC 1 (Table S2).

338

339 All results of *Salmonella* Typhimurium could be explored at the microreact project  
340 ([https://microreact.org/project/ty7n1isZqUKyu4ehFUvx1W-](https://microreact.org/project/ty7n1isZqUKyu4ehFUvx1W-salmonellaentericatyphimurium-from-the-national-surveillance-in-colombia-as-one-health-approach)  
341 [salmonellaentericatyphimurium-from-the-national-surveillance-in-colombia-as-one-](https://microreact.org/project/ty7n1isZqUKyu4ehFUvx1W-salmonellaentericatyphimurium-from-the-national-surveillance-in-colombia-as-one-health-approach)  
342 [health-approach](https://microreact.org/project/ty7n1isZqUKyu4ehFUvx1W-salmonellaentericatyphimurium-from-the-national-surveillance-in-colombia-as-one-health-approach)).

### 343 ***Salmonella* Heidelberg**

344 *Relatedness analysis.* *Salmonella* Heidelberg isolates from food (n=20) showed ten unique PPs with DSI  
345 values above 0.69, three most frequent PPs in food interface JF6.X01.0010, JF6.X01.0019 and  
346 JF6.X01.0027 (13/20) showed DSI values above 0.87 (figure 3a). Food interface PP JF6.X01.0010  
347 (5/20) was clonally related with a clinical interface PP JF6.X01.0001 (1/3) (DSI=1.0) and close related,  
348 with a band of difference, from PP JF6.X01.0002 (1/3) (DSI=0.97) in the PulseNet National database at  
349 INS (figure 3b). S. Heidelberg Cluster -1 (ICA JF6.X01.0010 - INS JF6.X01.0001 - JF6.X01.0002) was  
350 defined. S. Heidelberg belonging to Cluster -1 were recovered in Bogotá D.C (5/7), Santander (1/7) and  
351 Boyacá (1/7) (Table S1). Other food isolates non-related to clinical interface were recovered from Bogotá  
352 (9/20), Tolima (2/20), Valle del Cauca (1/20), Córdoba (1/20), Cesar (1/20) and Santander (1/20) (S.  
353 Table 3). Four epidemiological variables from 20 food and 3 clinical S. Heidelberg isolates were  
354 compared, defining PSC in 0.73 (p<0.000). Comparison determined clonal relation in 4 food and 1 clinical  
355 isolates that exhibited AMR profiles Te, CipTe, CipLvxTe, FoxCipTe and NaTe from Bogota during 2010-  
356 2011 (Table S1).

357 Genomic comparison based on variants calling in S. Heidelberg was generated mapping to reference  
358 (NC\_011083.1) 20 genomes: food (n=9) and clinical (n=11) isolates. A total of 11 isolates (58%) of  
359 *Salmonella* Heidelberg food-human interfaces were included based on SNPs distance (~60 SNPs)  
360 resulted from the serovar phylogeny analysis: food (n=9) and clinical (n=2) isolates (figure 3c). All  
361 sequence types described for this serovar belong to CG 15 including ST15 (10/11) and ST7412 (1/11).  
362 A single *Salmonella* Heidelberg Clade (SHC1) was described, similarly to PFGE cluster -1 (ICA  
363 JF6.X01.0010 - INS JF6.X01.0001 - JF6.X01.0002), mentioned above. Isolates belong to SHC1 were  
364 recovered between 2009 - 2017 in Bogotá (7/11), Santander (2/11), Antioquia (1/11) and Norte de  
365 Santander (1/11). Two related genetic events were observed in three departments in 2009 and 2017,

366 differentiated by 19 SNPs and 33 SNPs of distance between food and clinical interfaces, respectively  
367 (figure 3c; Table S2).

368

369 *Antimicrobial resistance.* All food isolates showed resistance to at least one antibiotic family: b-lactam,  
370 b-lactamase inhibitor, fluoroquinolone, folate pathway inhibitor, tetracycline, aminoglycosides and  
371 nitrofurantoin. All five isolates belong to Cluster -1 from Bogota and Boyacá showed resistance to at  
372 least one antibiotic family:  $\beta$ -lactam,  $\beta$ -lactamase inhibitor, fluoroquinolone and tetracycline, with AMR  
373 profiles: Te (1/5), CipTe (1/5), CipLvxTe (1/5), FoxCipTe (1/5) and NaTe (1/5) (Table S1). MDR profiles  
374 were observed in two food isolates non-related to clinical interface from Santander and Bogotá:  
375 AmpCtxNaTe and AmcAmpCzCtxFoxCroTzpCipTe. Antimicrobial resistance determinants genes to  
376 aminoglycosides,  $\beta$ -lactams, trimethoprim, fosfomycin, ammonium quaternary, quinolone, streptothricin,  
377 sulphonamides and tetracycline, and some mutations associated with quinolone resistance gyrA(S83F)  
378 and parC(T57S) were observed in SHC1 isolates. Incompatibility groups IncI and IncX were found in all  
379 SHC1 isolates and the other eleven plasmid incompatibility groups were described less frequently (Table  
380 S2).

381

382 *Virulence factors.* Major virulence factors for *Salmonella* were found in almost all SHC1 isolates encoding  
383 partially chromosomal *Salmonella* pathogenicity island SPI-1 and SPI-2 including two Type 3 Secretion  
384 Systems (TTSS1-TTSS2) with exclusive and translocate multiple effectors, and one Type 8 Secretion  
385 System (T8SS). Additionally, adherence, membrane, flagellar and chemotaxis kinase operons, and  
386 metal homeostasis pathways genes were described for all isolates (Table 2; figure 3c). Yersinia High  
387 Pathogenicity Island (HPI) was detected in all isolates belonging to SHC1, including ybt (SXQPA)(UTE),  
388 irp1, irp2 and fyuA. Additionally, grvA, gogB and cdtB genes were observed occasionally in some isolates  
389 from SHC1 (Table S2).

390

391 All results of *Salmonella* Heidelberg could be explored at the microreact project  
392 ([https://microreact.org/project/rwdTW9g5esRp3V6wkodz7w-salmonella-enterica-heidelberg-from-the-](https://microreact.org/project/rwdTW9g5esRp3V6wkodz7w-salmonella-enterica-heidelberg-from-the-national-surveillance-in-colombia-as-one-health-approach)  
393 [national-surveillance-in-colombia-as-one-health-approach](https://microreact.org/project/rwdTW9g5esRp3V6wkodz7w-salmonella-enterica-heidelberg-from-the-national-surveillance-in-colombia-as-one-health-approach)).

394

395 ***Salmonella* Paratyphi B dT+**

396 *Relatedness analysis.* *Salmonella* Paratyphi B dT+ (n=23) from food showed thirteen unique PPs with  
397 DSI values from 0.53, the most frequent PPs were JKX.X01.0009 (3/23), JKX.X01.0013 (4/23) and  
398 JKX.X01.0014 (5/23). Comparison of PPs from human and food interfaces did not reveal any clonal or  
399 close relation. *S. Paratyphi B dT+* isolates were recovered from Bogotá D.C (17/23), Atlántico (3/23),  
400 Caldas (2/23) and Tolima (1/23).

401

402 *Antimicrobial resistance.* All *S. Paratyphi B dT+* isolates recovered from food were MDR to several  
403 antibiotic families: quinolones, tetracycline,  $\beta$ -lactam,  $\beta$ -lactamase inhibitor, fluoroquinolone,  
404 aminoglycoside, folate pathway inhibitor and nitrofurantoin. Two MDR profiles  
405 AmcAmpCzoCazCroCtxXnlFoxNaCipLvxEnrStrNitTeSxt and NaSxtTeStr were observed in Atlántico  
406 and Bogotá, and Valle del Cauca, respectively.

407 There was no similarity between *S. Paratyphi B dT+* isolates from food and clinical interfaces between  
408 2010-2011, therefore, this serovar was excluded from the genomic analysis (Data no showed).

409

410 **Discussion**

411 The retrospective comparison of *Salmonella* spp. from the food and clinical interfaces as proposed in  
412 this study represents the best approximation to integrated genomic analysis of *Salmonella* foodborne in  
413 Colombia from the OH approach. This study adds evidence of the benefits of WGS over PFGE on  
414 *Salmonella* spp. surveillance and outbreak investigations across the different interfaces, following most  
415 certainly the establishment of relatedness in foodborne chains, especially in bacteria with clonal  
416 behaviour as *Salmonella* Enteritidis. Likewise, the early and precise detection of emerging foodborne  
417 risks as the spread of multi-drug resistance and virulence convergency in bacteria pathogens (44).  
418 Furthermore, for the first time in Colombia, we provided evidence of the relatedness of *Salmonella* food  
419 isolates obtained from poultry chain and *Salmonella* isolates which are causing invasive disease for a  
420 prolonged time and geographical space, especially in childhood and elders at the clinical interface.

421



422 Different molecular techniques have been applied to *Salmonella* surveillance and outbreak's  
423 investigations in Colombia and in other world regions (29,45–47). WGS has become the gold standard  
424 procedure for foodborne surveillance in public health laboratories in High-Income Countries, showing  
425 huge advantages and the best resolution on investigations of pathogens (20,48,49). The COVID-19  
426 pandemic provides a unique opportunity to sensitize general audiences, decisions and policymakers  
427 in LMICs about the applicability of WGS on infection disease surveillance and monitoring (50). Recently,  
428 Europe, Asia, Africa and the Americas reported *S. Enteritidis* Complex Group 11 foodborne outbreaks  
429 associated with poultry meat products, confirming prevail global importance of this ancestral type in  
430 human infections. Application of WGS to *Salmonella* Enteritidis most prevalent serovar in Colombia,  
431 allowed us to understand the limitations of current molecular surveillance (PFGE), resolving close  
432 genetic relations across the interfaces in 8 clades, more than third as many clusters as PFGE, and with  
433 greater additional useful pathogenic data. The *S. Enteritidis* clades (SECs) associated with poultry in this  
434 study were more significant than in similar studies, suggesting higher complexity in contamination  
435 sources in Colombia (51–54). Therefore, having a powerful toolbox for the certain assessment of genetic  
436 relations across interfaces can help establishing dissemination routes and supporting real-time  
437 measurements and control actions in public health. Similar study in the PulseNet USA showed that WGS  
438 reduce 34% of the cases misplaced in outbreaks, revealing a higher percentage of confirmed outbreak  
439 cases by WGS clustering (78%) than PFGE clusters (46%)(55). Nevertheless, implementation of  
440 genomics in LMICs has multi-factor challenges, especially high cost, complexity, infrastructure and  
441 scarce trained human resource, which need to be kept in mind for the implementation of genomic  
442 surveillance domestically (40)(56). Other challenges of WGS are the interpretation and communication  
443 of results between different stakeholders, that is not straight-forward as PFGE typing method that have  
444 a stable nomenclature, and the less time on WGS outcome than the traditional PFGE as routine on  
445 laboratories (55)(57). Nonetheless, the bioinformatic versioned pipelines and the easy to share  
446 interactive WGS reports used in this study could help to overcome these challenges in the national  
447 reference laboratories in Colombia and elsewhere.  
448

449 Moreover, three zoonotic high-risk clades identified in this study in *Salmonella* Typhimurium (STCs)  
450 exhibited clonal dissemination, similar to that obtained for PFGE, nevertheless, WGS exhibited the  
451 pooling of other patterns into the clades. Also, diverse virulence factors, AMR determinants to critical  
452 antibiotic families and complex mobile genetic platforms were observed, which confirms the relevance  
453 of this serovar as foodborne and in AMR dissemination in Colombia. *S. Typhimurium* outbreaks are  
454 frequently related to other types of animal food sources such as swine and cattle, more that poultry  
455 (58,59). Due the lower number of *S. Typhimurium* food isolates described in this study, the  
456 dissemination route could be related also to cross-contamination at retail stores with additional sources  
457 as other animal meats, humans, transport and equipment (59). WGS increased the discrimination power  
458 to differentiate the STCs, providing specific biomarkers that could be used for routine molecular tracing  
459 or rapid detection methods of these high-risk clades in LMICs at NMRL surveillance programs and  
460 monitoring (60). Additionally, this is the first report in food of mcr-5.1 gen in Colombia observed in STC-  
461 1 isolates that is associated with resistance to colistin, which is the last resource to control carbapenem  
462 resistance Gram-negative bacteria. Colombia is a Carbapenem resistance endemic country in other  
463 critical pathogens such as *Klebsiella pneumoniae*, *Acinetobacter baumannii* and *Pseudomona*  
464 *aeruginosa*, therefore colistin has been gaining prominence on antimicrobial control and surveillance  
465 (31,61,62).

466

467 WGS also allowed us to observe in the *Salmonella* Heidelberg clade, similar to PFGE discrimination  
468 since 2010, the convergence of complex AMR profiles and virulence factors as yersiniabactin located in  
469 *Yersinia* High Pathogenicity Island (HPI). In 2021, HPI was described for the first time in *Salmonella*  
470 serovar from Heidelberg ST-15 in Brazil. Previously, HPI was described in other *Salmonella* serovars in  
471 clinical and turkey production interfaces by Germany and USA. Similar reports in other species such as  
472 *E. coli* have been related HPI in the increasing virulence and resilience in the host, besides increasing  
473 pathogenicity in poultry production systems (63–65). In Colombia, *S. Heidelberg* has been reported as  
474 the second most prevalent serovar in poultry production, but it is less common in human invasive  
475 infections (28,29). Nevertheless, this serovar should be monitored in the national surveillance due to

476 the observed pathogenic potential and the relevance as an invasive bacteria in other countries (24,66).  
477 Likewise, *S. Paratyphi B dT+* (Java) has been reported as the most prevalent serovar recovered in  
478 Colombia at poultry farms, slaughterhouses and retail stores, but it was scarce in the clinical isolates  
479 included in this study (67). Nonetheless, it should be monitoring as a public health concern in Colombia,  
480 due to the high performance as multi-drug resistance reservoir and the increasing of paratyphoid  
481 infectious reports in the clinical (24).

482

483 Finally, although *Salmonella* from the clinical was defined with the highest complexity of AMR profiles,  
484 suggesting higher selective pressures at clinical and community environments, and *Salmonella* from  
485 poultry origin was found the primary carrier of acquired virulence factors (68–70). The use of WGS  
486 allowed us to expose the dissemination in food of pathogenic bacteria as *Salmonella* and the drug-  
487 resistance and virulence, and their close relation with human invasive disease for 20 years in Colombia.  
488 Other food sources could be involved in human invasive Salmonellosis infections in Colombia, however,  
489 this study provided evidence of foodborne clades associated with the poultry chain. Nevertheless, it is  
490 essential to provide regular WGS data from the poultry and other food chains but from other interfaces  
491 to generate a much more comprehensive analysis of *Salmonella* dissemination and its zoonotic  
492 dynamics in Colombia (71)(72)(73). WGS makes feasible the integration of data from foodborne clades  
493 domestically and globally, allowing institutions to respond more efficiently to health threats as they arise.  
494 Also, increases the opportunities for actionable effective strategies in regulatory institutions to contain  
495 infectious diseases and reducing the risks in food to the population.

496

#### 497 **Biological material**

498 Food strains are preserved in the *Salmonella* collection of the Colombian Integrated Program of  
499 Antimicrobial Resistance Surveillance COIPARS-AGROSAVIA deposited in custody at National  
500 Veterinary Diagnostic Laboratory (LNDV) in National Agriculture Institute (ICA); The clinical strains are  
501 preserved at National Microbiology Reference Laboratory at National Health Institute (INS).

502

503 **Bias**

504 This study had a possible bias, related to 1) The differences between the time range in WGS analysis,  
505 where food isolates included were recovered from two years (2010-2011), and clinical isolates recovered  
506 for a longer term of ten years (1997-2017), 2) Over-representation of clinical isolates compared with food  
507 isolates (~10%), could mask new un-reveal risks of foodborne *Salmonella*. 3) Clinical isolates selection  
508 for WGS was not based on the initial molecular comparison using PFGE.

509

510 *S. Heidelberg* and *S. Paratyphi B dT+* isolates included in this study represent a sample from isolates  
511 collected in food at retail stores in our previously study, this convenience selection was based on  
512 available data from clinical isolates, where historically *Salmonella Heidelberg* and *Paratyphi B dT+*  
513 prevalence was extremely low (4 samples) focusing the initial study on public health concern *Salmonella*  
514 serovars in Colombia.

515

516

517 **Acknowledgments**

518

519 Dr. McAllister Tafur from Andean community for his advice and funding support in the early stages of the  
520 project at ICA laboratory. Dr. Enrique Perez from the Pan-American Health Organization (PAHO) for his  
521 advising, support and global networking, Dr. Walid Alali from the Center of Food Safety, University of  
522 Georgia – USA for his technical and financial support in the earlier studies of retail stores, and Dr. Isabel  
523 Chinen from the Instituto Malbrán- Argentina, regional head from the international foodborne network  
524 PulseNet LA&C for technical support and regional cooperation.

525

526 **Financial support**

527

528 - This research was funded by the National Institute for Health Research (NIHR) (award reference  
529 16\_136\_111) using UK aid from the UK Government to support global health research. Further  
530 funding was provided by Li Ka Shing Foundation (DMA).

531 - The project was part of the 10,000 *Salmonella* Genomes consortium, supported by a Global  
532 Challenges Research Fund (GCRF) data & resources grant BBS/OS/GC/000009D and the

533 BBSRC Core Capability Grant to the Earlham Institute BB/CCG1720/1 and Core Strategic  
534 Programme Grant BBS/E/T/000PR9817.

535 **References**

536

- 537 1. WHO WHO. Diarrhoeal disease [Internet]. Diarrhoeal disease. 2017 [cited 2022 Jan  
538 31]. p. 1. Available from: [https://www.who.int/news-room/fact-sheets/detail/diarrhoeal-](https://www.who.int/news-room/fact-sheets/detail/diarrhoeal-disease)  
539 [disease](https://www.who.int/news-room/fact-sheets/detail/diarrhoeal-disease)
- 540 2. Kirk MD, Pires SM, Black RE, Caipo M, Crump JA, Devleeschauwer B, et al. World  
541 Health Organization Estimates of the Global and Regional Disease Burden of 22  
542 Foodborne Bacterial, Protozoal, and Viral Diseases, 2010: A Data Synthesis. *PLoS Med*  
543 [Internet]. 2015 [cited 2022 Apr 3];12(12). Available from: [/pmc/articles/PMC4668831/](https://pubmed.ncbi.nlm.nih.gov/26000000/)  
544 3. Salmonella and Campylobacter in Chicken Meat - Meeting Report. *Microbiological*  
545 *Risk Assessment Series (MRA) 19* [Internet]. [cited 2022 Jan 31]. Available from:  
546 <https://www.fao.org/documents/card/en/c/1ba49045-e062-501c-a32f-6f6cb15cf631/>  
547 4. CDC. 2015 Surveillance Report - FoodNet. *FoodNet*. 2015;1–26.
- 548 5. ECDC ECFDP and C. Salmonellosis - Annual Epidemiological Report for 2017.  
549 European Centre for Disease Prevention and Control. 2019;(January):8.
- 550 6. The European Union One Health 2018 Zoonoses Report. 2019;
- 551 7. World Health Organization. Antimicrobial resistance - global report on surveillance.  
552 World Health Organization [Internet]. 2014 [cited 2022 Jan 30];61(3):383–94.  
553 Available from: <https://apps.who.int/iris/handle/10665/112642>
- 554 8. Albiger B, Knisely J. Transatlantic Taskforce on Antimicrobial Resistance : Progress  
555 report Recommendations for future collaboration between the US and EU. 2014;(May).
- 556 9. Gerner-Smidt P, Hendrik Havelaar A, Franz E, Jean Struelens M, Besser J,  
557 Concepción-Acevedo J, et al. Whole Genome Sequencing: Bridging One-Health  
558 Surveillance of Foodborne Diseases. *Front Public Health* [Internet]. 2019;7(172):172.  
559 Available from: [https://www.](https://www.frontiersin.org/journal/10.3389/fpubh.2019.00172)
- 560 10. Govindaraj Vaithinathan A, Vanitha A. WHO global priority pathogens list on  
561 antibiotic resistance: an urgent need for action to integrate One Health data. *Perspect*  
562 *Public Health*. 2018;138(2):87–8.
- 563 11. Wielinga PR, Schlundt J. *One Health and Food Safety* [Internet]. Japan: Springer; 2014.  
564 1–10 p. Available from: <http://classics.mit.edu/Hippocrates/airwatpl.mb.txt>.
- 565 12. Iskandar K, Molinier L, Hallit S, Sartelli M, Catena F, Coccolini F, et al. antibiotics  
566 Drivers of Antibiotic Resistance Transmission in Low-and Middle-Income Countries  
567 from a “One Health” Perspective-A Review. *Antibiotics*. 2020:372.
- 568 13. McEwen SA, Collignon PJ. Antimicrobial Resistance: a One Health Perspective.  
569 *Microbiol Spectr*. 2018 Apr 6;6(2).
- 570 14. Pires SM, Desta BN, Mughini-Gras L, Mmbaga BT, Fayemi OE, Salvador EM, et al.  
571 Burden of foodborne diseases: think global, act local. *Curr Opin Food Sci*. 2021 Jun  
572 1;39:152.
- 573 15. On AP. The FAO Action Plan on Antimicrobial Resistance 2021–2025. The FAO  
574 Action Plan on Antimicrobial Resistance 2021–2025. 2021;

- 575 16. World Health Organization. WHO global strategy for containment of antimicrobial  
576 resistance, World Health Organization. WHO Global Strategy for Containment of  
577 Antimicrobial Resistance. 2001;WHO/CDS/CS:1–105.
- 578 17. World Organisation for Animal Health (OIE). OIE Annual Report on the Use of  
579 Antimicrobial Agents Intended for Use in Animals. World Organisation for Animal  
580 Health (OIE). 2018;131.
- 581 18. Nadon C, van Walle I, Gerner-Smidt P, Campos J, Chinen I, Concepcion-Acevedo J, et  
582 al. PulseNet International: Vision for the implementation of whole genome sequencing  
583 (WGS) for global food-borne disease surveillance. Euro Surveill [Internet]. 2017 Jun 8  
584 [cited 2022 Jan 31];22(23). Available from:  
585 <https://pubmed.ncbi.nlm.nih.gov/28662764/>
- 586 19. WHO. GLASS whole-genome sequencing for surveillance of antimicrobial resistanc.  
587 2020. 72 p.
- 588 20. Nadon C, Walle I Van, Gerner-Smidt P, Campos J, Chinen I, Concepcion-Acevedo J, et  
589 al. PulseNet International: Vision for the implementation of whole genome sequencing  
590 (WGS) for global food-borne disease surveillance. Eurosurveillance. 2017 Jun  
591 8;22(23):30544.
- 592 21. Hendriksen RS, Pedersen SK, Leekitcharoenphon P, Malorny B, Borowiak M, Battisti  
593 A, et al. Final report of ENGAGE - Establishing Next Generation sequencing Ability  
594 for Genomic analysis in Europe. EFSA Supporting Publications [Internet]. 2018 Jun 1  
595 [cited 2022 Jan 31];15(6):1431E. Available from:  
596 <https://onlinelibrary.wiley.com/doi/full/10.2903/sp.efsa.2018.EN-1431>
- 597 22. WHO. Global Action Plan on Antimicrobial Resistance. Microbe Magazine.  
598 2015;10(9):354–5.
- 599 23. Van Boeckel TP, Pires J, Silvester R, Zhao C, Song J, Criscuolo NG, et al. Global  
600 trends in antimicrobial resistance in animals in low- and middle-income countries.  
601 Science. 2019 Sep 20;365(6459).
- 602 24. Donado-Godoy P, Castellanos R, León M, Arevalo A, Clavijo V, Bernal J, et al. The  
603 Establishment of the Colombian Integrated Program for Antimicrobial Resistance  
604 Surveillance (COIPARS): A Pilot Project on Poultry Farms, Slaughterhouses and Retail  
605 Market. Zoonoses Public Health [Internet]. 2015 Apr 1 [cited 2022 Feb 21];62 Suppl  
606 1(s1):58–69. Available from: <https://pubmed.ncbi.nlm.nih.gov/25903494/>
- 607 25. Castellanos LR, van der Graaf-Van Bloois L, Donado-Godoy P, León M, Clavijo V,  
608 Arévalo A, et al. Genomic Characterization of Extended-Spectrum Cephalosporin-  
609 Resistant Salmonella enterica in the Colombian Poultry Chain. Front Microbiol  
610 [Internet]. 2018 Oct 26 [cited 2022 Jan 31];9(OCT). Available from:  
611 <https://pubmed.ncbi.nlm.nih.gov/30459720/>
- 612 26. INS. Vigilancia brotes de enfermedades transmitidas por alimentos, Colombia, semana  
613 epidemiológica 04 de 2020. BES Boletín Epidemiológico Semanal. 2020;1–5.
- 614 27. Instituto Nacional de Salud. Semana Epidemiológica 04 2018. Boletín Epidemiológico  
615 Semanal. 2018. 1–26 p.
- 616 28. Donado-Godoy P, Clavijo V, León M, Arevalo A, Castellanos R, Bernal J, et al.  
617 Counts, serovars, and antimicrobial resistance phenotypes of Salmonella on raw  
618 chicken meat at retail in Colombia. J Food Prot. 2014 Feb;77(2):227–35.
- 619 29. Rodríguez EC, Díaz-Guevara P, Moreno J, Bautista A, Montañó L, Realpe ME, et al.  
620 Vigilancia por laboratorio de Salmonella enterica en casos clínicos humanos en  
621 Colombia 2005 a 2011. Enferm Infecc Microbiol Clin. 2017 Aug 1;35(7):417–25.

- 622 30. Donado-Godoy P, Bernal JF, Rodríguez F, Gomez Y, Agarwala R, Landsman D, et al.  
623 Genome Sequences of Multidrug-Resistant *Salmonella enterica* Serovar Paratyphi B  
624 (dT+) and Heidelberg Strains from the Colombian Poultry Chain. *Genome Announc.*  
625 2015;3(5).
- 626 31. Saavedra SY, Diaz L, Wiesner M, Correa A, Alejandra Arévalo S, Reyes J, et al.  
627 Genomic and Molecular Characterization of Clinical Isolates of Enterobacteriaceae  
628 Harboring *mcr-1* in Colombia, 2002 to 2016. *Antimicrob Agents Chemother* [Internet].  
629 2017 Dec 1 [cited 2022 Jan 31];61(12). Available from:  
630 <https://pubmed.ncbi.nlm.nih.gov/28893788/>
- 631 32. Gyomose P, Sørensen G, Litrup E, Olsen JE, Nielsen EM, Research MT, et al.  
632 Investigation of Outbreaks of *Salmonella enterica* Serovar Typhimurium and Its  
633 Monophasic Variants Using Whole-Genome Sequencing, Denmark - Volume 23,  
634 Number 10—October 2017 - *Emerging Infectious Diseases journal - CDC. Emerg*  
635 *Infect Dis* [Internet]. 2017 Oct 1 [cited 2022 Sep 25];23(10):1631–9. Available from:  
636 [https://wwwnc.cdc.gov/eid/article/23/10/16-1248\\_article](https://wwwnc.cdc.gov/eid/article/23/10/16-1248_article)
- 637 33. Pearce ME, Alikhan NF, Dallman TJ, Zhou Z, Grant K, Maiden MCJ. Comparative  
638 analysis of core genome MLST and SNP typing within a European *Salmonella* serovar  
639 Enteritidis outbreak. *Int J Food Microbiol.* 2018 Jun 2;274:1–11.
- 640 34. Pan J, Li W, Ni J, Wu K, Konigsberg I, Rivera CE, et al. Rates of Mutations and  
641 Transcript Errors in the Foodborne Pathogen *Salmonella enterica* subsp. *enterica*. *Mol*  
642 *Biol Evol* [Internet]. 2022 Apr 11 [cited 2022 Sep 25];39(4). Available from:  
643 <https://academic.oup.com/mbe/article/39/4/msac081/6572064>
- 644 35. Ribot EM, Fair MA, Gautom R, Cameron DN, Hunter SB, Swaminathan B, et al.  
645 Standardization of pulsed-field gel electrophoresis protocols for the subtyping of  
646 *Escherichia coli* O157:H7, *Salmonella*, and *Shigella* for PulseNet. *Foodborne Pathog*  
647 *Dis.* 2006 Mar;3(1):59–67.
- 648 36. RStudio Team. RStudio: Integrated Development for R [Internet]. RStudio, PBC,  
649 Boston, MA. 2020 [cited 2023 Jan 9]. Available from: <http://www.rstudio.com/>
- 650 37. Mainali KP, Bewick S, Thielen P, Mehoke T, Breitwieser FP, Paudel S, et al. Statistical  
651 analysis of co-occurrence patterns in microbial presence-absence datasets. 2017;  
652 Available from: <https://doi.org/10.1371/journal.pone.0187132>
- 653 38. Simpson KMJ, Mor SM, Ward MP, Walsh MG. Divergent geography of *Salmonella*  
654 *Wangata* and *Salmonella Typhimurium* epidemiology in New South Wales, Australia.  
655 *One Health.* 2019 Jun 1;7.
- 656 39. Mthembu TP, Zishiri OT, el Zowalaty ME. Detection and Molecular Identification of  
657 *Salmonella* Virulence Genes in Livestock Production Systems in South Africa.  
658 Available from: [www.mdpi.com/journal/pathogens](http://www.mdpi.com/journal/pathogens)
- 659 40. Perez-Sepulveda BM, Heavens D, Pulford C V., Predeus A V., Low R, Webster H, et  
660 al. An accessible, efficient and global approach for the large-scale sequencing of  
661 bacterial genomes. *Genome Biol.* 2021 Dec 1;22(1):1–18.
- 662 41. Gu Z. Complex heatmap visualization. *iMeta.* 2022 Sep;1(3).
- 663 42. Tonkin-Hill G, Lees JA, Bentley SD, Frost SDW, Corander J. RhierBAPs: An R  
664 implementation of the population clustering algorithm hierbaps [version 1; referees: 2  
665 approved]. *Wellcome Open Res.* 2018;3.
- 666 43. Argimón S, Abudahab K, Goater RJE, Fedosejev A, Bhai J, Glasner C, et al.  
667 Microreact: visualizing and sharing data for genomic epidemiology and  
668 phylogeography. *Microb Genom* [Internet]. 2016 Nov 1 [cited 2022 Oct

- 669 24];2(11):e000093. Available from:  
670 <https://www.microbiologyresearch.org/content/journal/mgen/10.1099/mgen.0.000093>
- 671 44. Gardy JL, Loman NJ. Towards a genomics-informed, real-time, global pathogen  
672 surveillance system. *Nat Rev Genet* [Internet]. 2018;19(1):9–20. Available from:  
673 <http://dx.doi.org/10.1038/nrg.2017.88>
- 674 45. Rodríguez-Hernández R, Bernal JF, Cifuentes JF, Fandiño LC, Herrera-Sánchez MP,  
675 Rondón-Barragán I, et al. Prevalence and molecular characterization of salmonella  
676 isolated from broiler farms at the Tolima region—Colombia. *Animals*. 2021;11(4):1–  
677 11.
- 678 46. Wattiau P, Boland C, Bertrand S. Methodologies for *Salmonella enterica* subsp.  
679 *Enterica* Subtyping: Gold Standards and Alternatives. *Appl Environ Microbiol*. 2011  
680 Nov;77(22):7877–85.
- 681 47. Goering R V. Pulsed field gel electrophoresis: a review of application and interpretation  
682 in the molecular epidemiology of infectious disease. *Infect Genet Evol*. 2010  
683 Oct;10(7):866–75.
- 684 48. Timme RE, Rand H, Leon MS, Hoffmann M, Strain E, Allard M, et al. GenomeTrakr  
685 proficiency testing for foodborne pathogen surveillance: An exercise from 2015.  
686 *Microb Genom* [Internet]. 2018 Jul 1 [cited 2021 Jul 26];4(7). Available from:  
687 <https://pubmed.ncbi.nlm.nih.gov/29906258/>
- 688 49. Aanensen DM, Feil EJ, Holden MTG, Dordel J, Yeats CA, Fedosejev A, et al. Whole-  
689 genome sequencing for routine pathogen surveillance in public health: A population  
690 snapshot of invasive *Staphylococcus aureus* in Europe. *mBio*. 2016 May 1;7(3).
- 691 50. Okeke IN, Ihekweazu C. The importance of molecular diagnostics for infectious  
692 diseases in low-resource settings. *Nature Reviews Microbiology* 2021 19:9 [Internet].  
693 2021 Jun 28 [cited 2022 Feb 21];19(9):547–8. Available from:  
694 <https://www.nature.com/articles/s41579-021-00598-5>
- 695 51. Multi-country outbreak of *Salmonella* Enteritidis sequence type (ST)11 infections  
696 linked to poultry products in the EU/EEA and the United Kingdom. *EFSA Supporting*  
697 *Publications*. 2021 Mar 1;18(3):6486E.
- 698 52. Quino W, Caro-Castro J, Mestanza O, Hurtado C V., Zamudio ML, Gavilan RG.  
699 Phylogenetic structure of *Salmonella* Enteritidis provides context for a foodborne  
700 outbreak in Peru. *Scientific Reports* 2020 10:1. 2020 Dec 16;10(1):1–6.
- 701 53. Gu D, Wang Z, Tian Y, Kang X, Meng C, Chen X, et al. Prevalence of *Salmonella*  
702 Isolates and Their Distribution Based on Whole-Genome Sequence in a Chicken  
703 Slaughterhouse in Jiangsu, China. *Front Vet Sci*. 2020 Feb 21;7:29.
- 704 54. Li S, He Y, Mann DA, Deng X. Global spread of *Salmonella* Enteritidis via centralized  
705 sourcing and international trade of poultry breeding stocks.
- 706 55. Rounds JM, Taylor AJ, Eikmeier D, Nichols MM, Lappi V, Wirth SE, et al. Prospective  
707 *Salmonella* Enteritidis surveillance and outbreak detection using whole genome  
708 sequencing, Minnesota 2015–2017. *Epidemiol Infect* [Internet]. 2020 [cited 2022 Oct  
709 24];148:1–8. Available from: [/pmc/articles/PMC7689598/](https://pubmed.ncbi.nlm.nih.gov/34111111/)
- 710 56. Vegyari C, Underwood A, Kekre M, Argimon S, Muddyman D, Abrudan M, et al.  
711 Whole-genome sequencing as part of national and international surveillance  
712 programmes for antimicrobial resistance: A roadmap [Internet]. Vol. 5, *BMJ Global*  
713 *Health*. *BMJ Specialist Journals*; 2020 [cited 2021 Jul 26]. p. e002244. Available from:  
714 <https://gh.bmj.com/content/5/11/e002244>



- 715 57. Keefer AB, Xiaoli L, M'ikanatha NM, Yao K, Hoffmann M, Dudley EG. Retrospective  
716 whole-genome sequencing analysis distinguished PFGE and drug resistance matched  
717 retail meat and clinical *Salmonella* isolates. *bioRxiv*. 2018 Jun 27;356857.
- 718 58. Morningstar-Shaw BR, Mackie TA, Barker DK, Palmer EA. *Salmonella* Serotypes  
719 Isolated from Animals and Related Sources January. National Veterinary Services  
720 Laboratories, USDA. 2016;1–4.
- 721 59. Ehuwa O, Jaiswal AK, Jaiswal S. *Salmonella*, food safety and food handling practices.  
722 *Foods*. 2021;10(5):1–16.
- 723 60. Ricke SC, Feye KM, Chaney WE, Shi Z, Pavlidis H, Yang Y. Developments in Rapid  
724 Detection Methods for the Detection of Foodborne *Campylobacter* in the United States.  
725 *Front Microbiol*. 2018;9(JAN):23.
- 726 61. Saavedra SY, Bernal JF, Montilla-Escudero E, Arévalo SA, Prada DA, Valencia MF, et  
727 al. Complexity of Genomic Epidemiology of Carbapenem-Resistant *Klebsiella*  
728 *pneumoniae* Isolates in Colombia Urges the Reinforcement of Whole Genome  
729 Sequencing-Based Surveillance Programs. *Clin Infect Dis* [Internet]. 2021 Dec 1 [cited  
730 2022 Feb 21];73(Supplement\_4):S290–9. Available from:  
731 <https://pubmed.ncbi.nlm.nih.gov/34850835/>
- 732 62. García-Betancur JC, Appel TM, Esparza G, Gales AC, Levy-Hara G, Cornistein W, et  
733 al. Update on the epidemiology of carbapenemases in Latin America and the Caribbean.  
734 <https://doi.org/10.1080/1478721020201813023>. 2020;19(2):197–213.
- 735 63. Oelschlaeger TA, Zhang D, Schubert S, Carniel E, Rabsch W, Karch H, et al. The high-  
736 pathogenicity island is absent in human pathogens of *Salmonella enterica* subspecies I  
737 but present in isolates of subspecies III and VI. *J Bacteriol*. 2003 Feb;185(3):1107–11.
- 738 64. Petermann SR, Sherwood JS, Logue CM. The *Yersinia* high pathogenicity island is  
739 present in *Salmonella enterica* Subspecies I isolated from turkeys. *Microb Pathog*. 2008  
740 Aug 1;45(2):110–4.
- 741 65. dos Santos AMP, Ferrari RG, Panzenhagen P, Rodrigues GL, Conte-Junior CA.  
742 Virulence genes identification and characterization revealed the presence of the  
743 *Yersinia* High Pathogenicity Island (HPI) in *Salmonella* from Brazil. *Gene*. 2021 Jun  
744 30;787:145646.
- 745 66. Stanaway JD, Parisi A, Sarkar K, Blacker BF, Reiner RC, Hay SI, et al. The global  
746 burden of non-typhoidal salmonella invasive disease: a systematic analysis for the  
747 Global Burden of Disease Study 2017. *Lancet Infect Dis*. 2019 Dec 1;19(12):1312–24.
- 748 67. Ricardo Castellanos L, van der Graaf-Van Bloois L, Donado-Godoy P, Veldman K,  
749 Duarte F, Acuña MT, et al. Antimicrobial resistance in salmonella enterica serovar  
750 paratyphi B variant Java in poultry from Europe and Latin America. *Emerg Infect Dis*.  
751 2020;26(6):1164–73.
- 752 68. Barlow G. Clinical challenges in antimicrobial resistance. *Nature Microbiology* 2018  
753 3:3. 2018 Feb 20;3(3):258–60.
- 754 69. Cai L, Sun J, Yao F, Yuan Y, Zeng M, Zhang Q, et al. Antimicrobial resistance bacteria  
755 and genes detected in hospital sewage provide valuable information in predicting  
756 clinical antimicrobial resistance. *Science of The Total Environment*. 2021 Nov  
757 15;795:148815.
- 758 70. Cheng RA, Eade CR, Wiedmann M. Embracing diversity: Differences in virulence  
759 mechanisms, disease severity, and host adaptations contribute to the success of  
760 nontyphoidal salmonellas a foodborne pathogen. *Front Microbiol*. 2019;10(JUN):1368.

- 761 71. Fajardo-Guerrero M, Rojas-Quintero C, Chamorro-Tobar I, Zambrano C, Sampedro F,  
762 Carrascal-Camacho AK. Exposure assessment of Salmonella spp. in fresh pork meat  
763 from two abattoirs in Colombia. Food Science and Technology International [Internet].  
764 2020 Jan 1 [cited 2022 Feb 21];26(1):21–7. Available from:  
765 <https://journals.sagepub.com/doi/10.1177/1082013219864746>
- 766 72. Calle A, Carrascal AK, Patiño C, Carpio C, Echeverry A, Brashears M. Seasonal effect  
767 on Salmonella, Shiga toxin-producing E. coli O157:H7 and non-O157 in the beef  
768 industry in Colombia, South America. Heliyon [Internet]. 2021 Jul 1 [cited 2022 Feb  
769 21];7(7). Available from: <http://www.cell.com/article/S2405844021016509/fulltext>
- 770 73. Patiño M, Valencia-Guerrero MF, Barbosa-Ángel ES, Martínez-Cordón MJ, Donado-  
771 Godoy P. Evaluation of Chemical and Microbiological Contaminants in Fresh Fruits  
772 and Vegetables from Peasant Markets in Cundinamarca, Colombia. J Food Prot  
773 [Internet]. 2020 Oct 1 [cited 2022 Feb 21];83(10):1726–37. Available from:  
774 [https://meridian.allenpress.com/jfp/article/83/10/1726/444233/Evaluation-of-Chemical-](https://meridian.allenpress.com/jfp/article/83/10/1726/444233/Evaluation-of-Chemical-and-Microbiological)  
775 [and-Microbiological](https://meridian.allenpress.com/jfp/article/83/10/1726/444233/Evaluation-of-Chemical-and-Microbiological)  
776  
777
- 778  
779  
780  
781  
782  
783  
784  
785  
786  
787  
788  
789  
790  
791  
792  
793  
794  
795

796 Table S1. Similarity analysis of *Salmonella* spp. isolates from food and clinical compared by Serovar,  
 797 PFGE profile, Location and Antimicrobial resistance (AMR).

798

Serovar	# Total isolates	PFGE_food_profile	PFGE_clinic_profile	# Total isolates by serovar /PFGE	Location	# Total isolates by serovar/PFGE /location	AMR	# Total isolates by serovar/ PFGE/location/ AMR	# Related isolates food	# Related isolates clinical	Pearson Similarity coefficient (p<0.000)
S. Enteritidis	324	X01.0001	X01.0001	211	Bogota (n=75) Atlantico (n=3) Arauca (n=1) Others (n=132)	75	None /AmpTeNaCip	61	23	38	0.86
		X01.0006	X01.0038	61	Bogota (n=29) Valle del Cauca (n=6). Risaralda (n=2) Arauca (n=1) Others (n=23)	37	None	33	18	15	
		X01.0008	X01.0068	2	Bogota (n=2)	2	None	2	1	1	
S. Typhimurium	430	X01.0007	X01.0197	4	Bogota (n=4)	4	CAmCmpTeStr	4	1	3	0.89
		X01.0004	X01.0237	12	Antioquia (n=6) Bogota (n=3) Boyaca (n=3)	3	TeStr	2	1	1	
S. Heidelberg	23	X01.0010	X01.0001/2	7	Bogota (n=5) Santander (n=1) Boyaca (n=1)	6	CipTe	5	4	1	0.79

\*Antibiotics abbreviation: Ampicillin (Amp); Chloramphenicol (C); Amoxicillin-clavulanic acid (Amc); Tetracycline (Te); Streptomycin (Str); Ciprofloxacin (Cip)

799  
 800  
 801  
 802  
 803  
 804  
 805  
 806  
 807  
 808  
 809  
 810  
 811  
 812  
 813  
 814  
 815  
 816

817

Table S2. Summary of WGS results by serovar, clades, antimicrobial resistance, virulence and MGE.

Serovar	Clade	# isolates	# Depart ments	Range of time (years)	PFGE_Clonal_Group	ATB family	AMR genes / Mutations	Virulence genes	virulence genes related to MGE	Replicon types
S. Enteritidis	SEC-1	11	1	2010-2012	CGE-1 / CGE-2 / Others CGEs	Quinolone	qnrB81 (n=1)	TTSS-SPI-1, TTSS-SPI-2, T3SS1_effect, T3SS2_effect, T3SS1-T3SS2_effect, T8SS, fimCDFHI, bcfABCDEFG, lpfABCDE, misL, ratB, shdA, sinH, mgtB, mgtC_1, sodCI, acrA, rck, steC, slrP, ompA_2, mig-14	-	IncFIB_S=11 IncFII_S=11 Col156=10 IncFII=3
	SEC-2	18	7	2010-2016	CGE-1 /CGE-2	Aminoglycoside, sulfa, tetracycline,	aph_6 (n=1), sul2 (n=1), tetA (n=1)	TTSS-SPI-1, TTSS-SPI-2, T3SS1_effect, T3SS2_effect, T3SS1-T3SS2_effect, T8SS, fimCDFHI, bcfABCDEFG, lpfABCDE, misL, ratB, shdA, sinH, mgtB, mgtC_1, sodCI, acrA, rck, steC, slrP, sspH1, ompA_2, mig-14	irp1, ybtU	IncFIB_S=18 IncFII_S=18 Col156=18 IncFII=3
	SEC-3	34	9	2009-2016	CGE-1 /CGE-2	Aminoglycoside, β-lactam, quinolone,	aac_3_IV, aph4_la, blaCMY, blaLEN, qnrB	TTSS-SPI-1, TTSS-SPI-2, T3SS1_effect, T3SS2_effect, T3SS1-T3SS2_effect, T8SS, fimCDFHI, bcfABCDEFG, lpfABCDE, misL, ratB, shdA, sinH, mgtB, mgtC_1, sodCI, acrA, rck, steC, slrP, ompA_2, mig-14	fyuA, gogB, irp2, ybtE, ybtP	Incl=2 ColRNAI=1 ColpHAD28=2 Col440I=1 IncFII=2
	SEC-4	9	4	2006-2011	CGE-1 /CGE-2	Aminoglycoside, β-lactam, quinolone,	aadA1, blaTEM, qnrB	TTSS-SPI-1, TTSS-SPI-2, T3SS1_effect, T3SS2_effect, T3SS1-T3SS2_effect, T8SS, fimCDFHI, bcfABCDEFG, lpfABCDE, misL, ratB, shdA, sinH, mgtB, mgtC_1, sodCI, acrA, rck, steC, slrP, sspH2, ompA_2, mig-14	-	IncFIB_S=9 IncFII_S=9 Col156=9 IncFII=2
	SEC-5	34	11	1998-2016	CGE-1 / CGE-2 / others CGEs	Aminoglycoside, β-lactam trimethoprim, sulfonamide, tetracycline	aph_3-lb, aph_6_ld, blaTEM, dfrA14, sul2, tetA	TTSS-SPI-1, TTSS-SPI-2, T3SS1_effect, T3SS2_effect, T3SS1-T3SS2_effect, T8SS, fimCDFHI, bcfABCDEFG, lpfABCDE, misL, ratB, shdA, sinH, mgtB, mgtC_1, sodCI, acrA, rck, steC, slrP, sspH2, ompA_2, mig-14	-	IncFIB_S=34 IncFII_S=34 Col156=34 IncFII=7
	SEC-6	28	12	2004-2015	CGE-1 / CGE-2 / others CGEs	Aminoglycoside, β-lactam trimethoprim, quinolone, sulfonamide, tetracycline, fluoroquinolone	aph_3_lb, aph_6_ld, blaTEM, dfrA14, qnrB, sul2, tet_A, gyrAD87N	TTSS-SPI-1, TTSS-SPI-2, T3SS1_effect, T3SS2_effect, T3SS1-T3SS2_effect, T8SS, fimCDFHI, bcfABCDEFG, lpfABCDE, misL, ratB, shdA, sinH, mgtB, mgtC_1, sodCI, acrA, rck, steC, slrP, ompA_2, mig-14	-	IncFIB_S=28 IncFII_S=28 Col156=28 IncFII=6 Incl=2 IncN=1
	SEC-7	12	7	2002-2016	CGE-1 / CGE-2 / others CGEs	Quinolone, tetracycline, fluoroquinolone	qnrB, tetA, gyrAD87Y	TTSS-SPI-1, TTSS-SPI-2, T3SS1_effect, T3SS2_effect, T3SS1-T3SS2_effect, T8SS, fimCDFHI, bcfABCDEFG, lpfABCDE, misL, ratB, shdA, sinH, mgtB, mgtC_1, sodCI, acrA, rck, steC, slrP, sspH1, sspH2, ompA_2, mig-14	gogB	IncFIB_S=12 IncFII_S=12 Col156=12 IncFII=1 IncX1_1=6 ColpHAD28=1 Col440I=1 Incl=1
	SEC-8	21	6	1999-2014	CGE-1 / CGE-2 / others CGEs	Aminoglycoside, β-lactam	aph_6_ld, blaCMY	TTSS-SPI-1, TTSS-SPI-2, T3SS1_effect, T3SS2_effect, T3SS1-T3SS2_effect, T8SS, fimCDFHI, bcfABCDEFG, lpfABCDE, misL, ratB, shdA, sinH, mgtB, mgtC_1, sodCI, acrA, rck, steC, slrP, sspH1, sspH2, ompA_2, mig-14	-	IncFIB_S=21 IncFII_S=21 Col156=20 IncFII=4, ColpVC=1, Incl=1

818

819

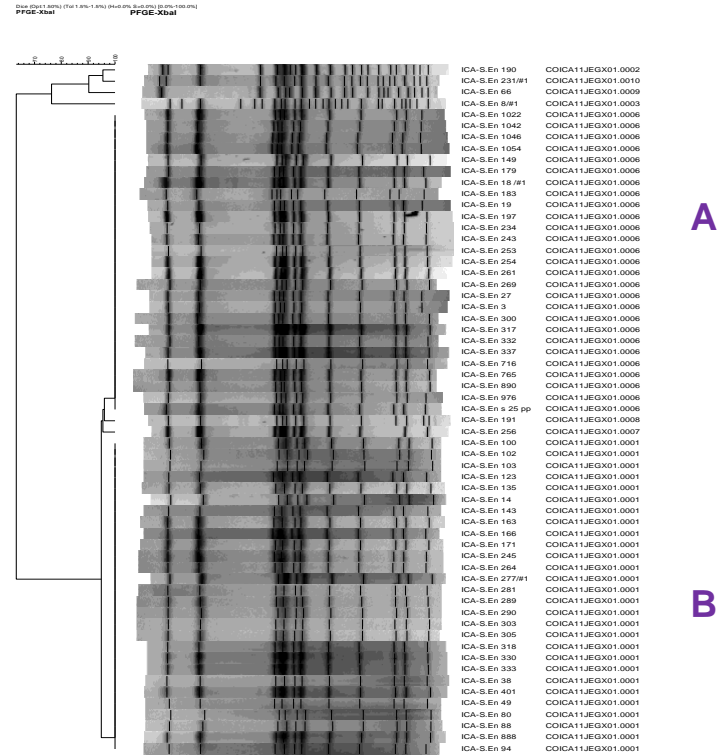
Serovar	Clade	# isolates	# Departments	Range of time (years)	PFGE_Clonal_Group	ATB family	AMR genes / Mutations	Virulence genes	virulence genes related to MGE	Replicon types
S. Typhimurium	STC-1	14	5	1999-2016	CGT-1 / others CGTs	Aminoglycosid e, β-lactam trimethoprim, phenicol, colistin, macrolides, quaternary ammonium, streptothricin, sulfonamide, tetracycline	aadA13, aadA1, aph_3_la, aph_3_lb, aph_6, blaOXA_2, dfr7, floR, mcr-5.1, mph_B, qacEdelta1, qacG2, qnrB19, sat2, sul1, sul2, tetA, tetM	TTSS-SPI-1, TTSS-SPI-2, T3SS1_effect, T3SS2_effect, T3SS1-T3SS2_effect, T8SS, fimCDFHI, bcfABCDEFG, lpfABCDE, misL, ratB, shdA, sinH, mgtB, mgtC_1, sodCl, acrA, entF	gogB, grvA	Col440I=2, colRNAI=10, IncC_1=14, IncFIB=1, IncX1=7, IncX1_1=7, Col_pHAD28=4, ColpVC=14
	STC-2	8	4	2004-2010	CGT-2 / others CGTs	Streptomycin, β-lactams, phenicol, quaternary ammonium, sulfonamide, tetracycline	aadA2, blaCARB_2, floR, qacEdelta1, sul1, tetA; tetG	TTSS-SPI-1, TTSS-SPI-2, T3SS1_effect, T3SS2_effect, T3SS1-T3SS2_effect, T8SS, fimCDFHI, bcfABCDEFG, lpfABCDE, misL, ratB, shdA(f), sinH, mgtB, mgtC_1, sodCl, pefABCD, acrA, rck, entF	gogB, grvA	IncFII, IncFIB, IncFII_S
	STC-3	13	4	2007-2015	CGT-3 / others CGTs	Aminoglycosid e, sulfonamida, tetracycline, quinolone, aminoglycosid e	aac_3_l, aph3_lb, aph6_ld, sul2, tetA, qnrB19	TTSS-SPI-1, TTSS-SPI-2, T3SS1_effect, T3SS2_effect, T3SS1-T3SS2_effect, T8SS, fimCDFHI, bcfABCDEFG, lpfABCDE, misL, ratB, shdA, sinH, mgtB, mgtC_1, sodCl, pefABCD, acrA, mrkCDF, entF	gogB, grvA	Col440I, Col156, IncQ1, IncX1, IncX1_1, Col_pHAD28

820  
821

Serovar	Clade	# isolates	# Departments	Range of time (years)	PFGE_Clonal_Group	ATB family	AMR genes / Mutations	Virulence genes	virulence genes related to MGE	Replicon types
S. Heidelberg	SHC-1	11	4	2009-2017	CGH-1 / CGH-2	Aminoglycosides, $\beta$ -lactams, trimethoprim, fosfomycin, ammonium quaternary, quinolone, streptomycin, sulfonamide, tetracycline	aadA1, aph_3_lb, aph_3_la, aph_6_ld, blaCMY, blaCTX_M(defined variant), blaTEM, dfrA7, fosA7, qacEdelta1, qnrB19, qnrB82, sat2, sul1, sul2, tetA / gyrA(S83F), parC(T57S)	TTSS-SPI-1, TTSS-SPI-2, T3SS1_effector, T3SS2_effector, T3SS1_effector, T3SS2_effector, T8SS, fimCDFHI, bcfABCDEF, G, lpfABCDE, misL, ratB, shdA, sinH, mgtB, mgtC_1, sodCI, slrP(f), sptP(f),	ybtS, ybtX, ybtQ, ybtP, ybtA, irp1(t), irp2, ybtUTE, fyuA, grvA, gogB(t), cdtB	Col156, Col440I, ColRNAI, IncFII_S, IncHI2A, IncI, IncQ1, IncC_1, IncX1, pO111, Col_pHAD28, ColpVC

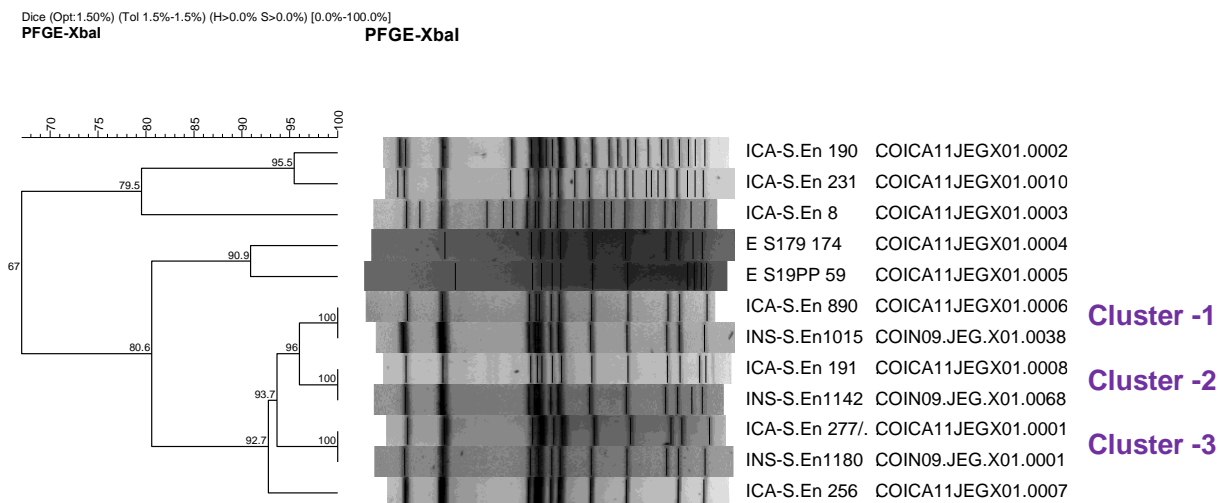
822  
823  
824  
825  
826  
827  
828

Figure 1a. Similarity clustering of *Salmonella* Enteritidis PFGE patterns from food samples using DICE similarity index and clustering by UPGMA. Two clonal clusters were identified in food isolates: A) Isolates with pattern ICA JEG.X01.0006 and B) Isolates with pattern ICA JEG.X01.0001



829  
830  
831  
832

833 Figure 1b. Comparison of related unique *Salmonella* Enteritidis PFGE patterns from clinical (INS) and  
 834 food (ICA), using DICE similarity index and clustering by UPGMA. Three pairs of patterns were found  
 835 clonal (SI%:100) related: Cluster -1 JEG.X01.0006 - JEG.X01.0038, Cluster -2 JEG.X01.0008 -  
 836 JEG.X01.0068 (singleton) and Cluster -3 JEG.X01.0001 - JEG.X01.0001.  
 837



838

839

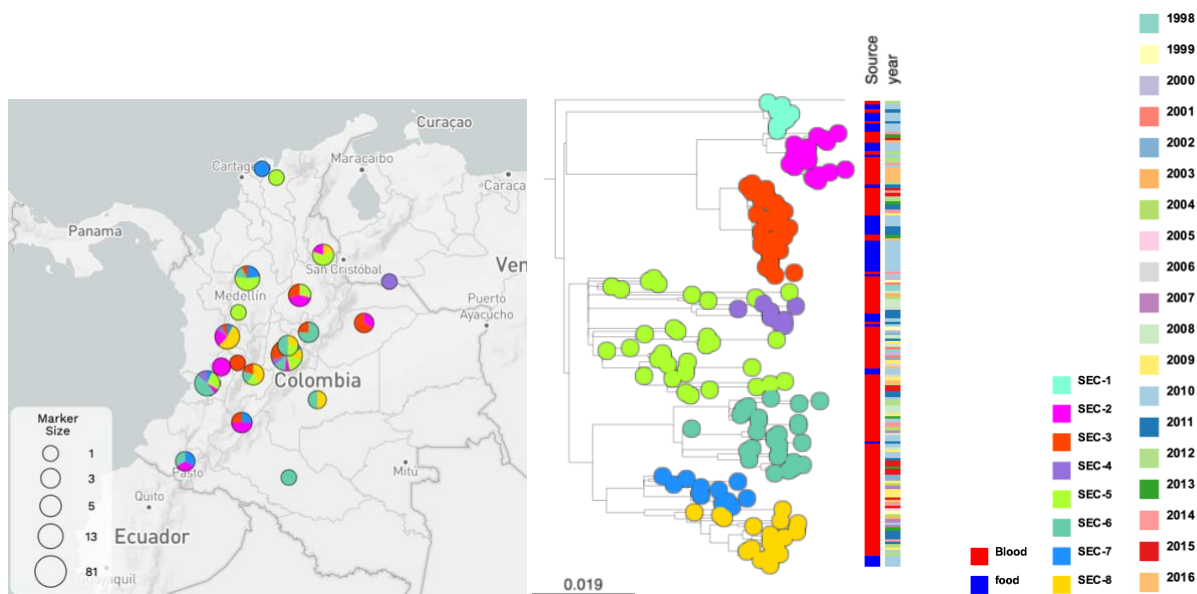
840

841 Figure 1c. Geographic distribution and phylogeny inference by clade of *Salmonella* Enteritidis

842 ([https://microreact.org/project/hjw5geMmKWAAgKxhA9Y3QX-salmonellaentericaenteritidis-from-the-](https://microreact.org/project/hjw5geMmKWAAgKxhA9Y3QX-salmonellaentericaenteritidis-from-the-national-surveillance-in-colombia-as-one-health-approach)

843 [national-surveillance-in-colombia-as-one-health-approach](https://microreact.org/project/hjw5geMmKWAAgKxhA9Y3QX-salmonellaentericaenteritidis-from-the-national-surveillance-in-colombia-as-one-health-approach)).

844

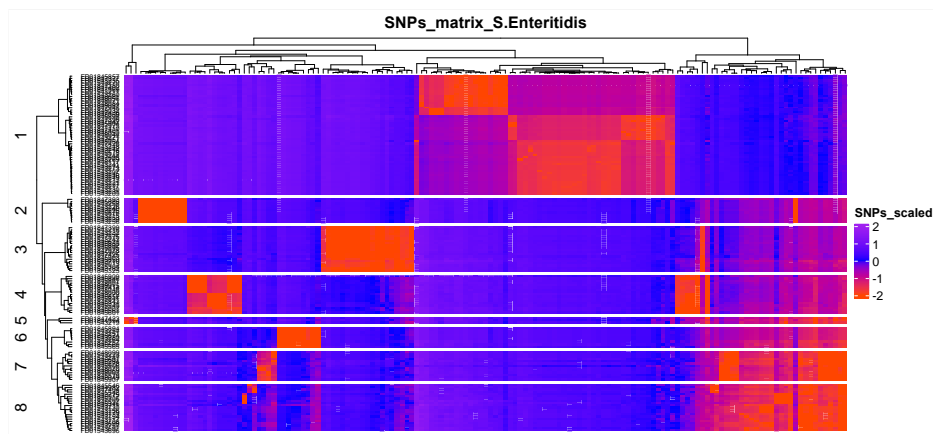


845

846

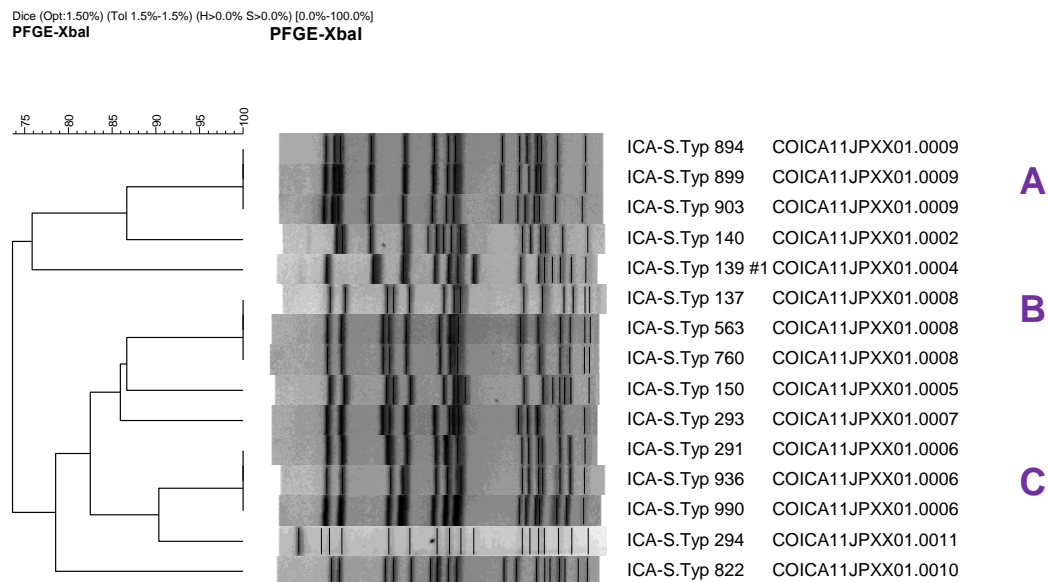
847

848 Figure 1d. SNPs matrix distribution of *Salmonella* Enteritidis clades  
849



850  
851  
852  
853  
854  
855  
856  
857  
858  
859

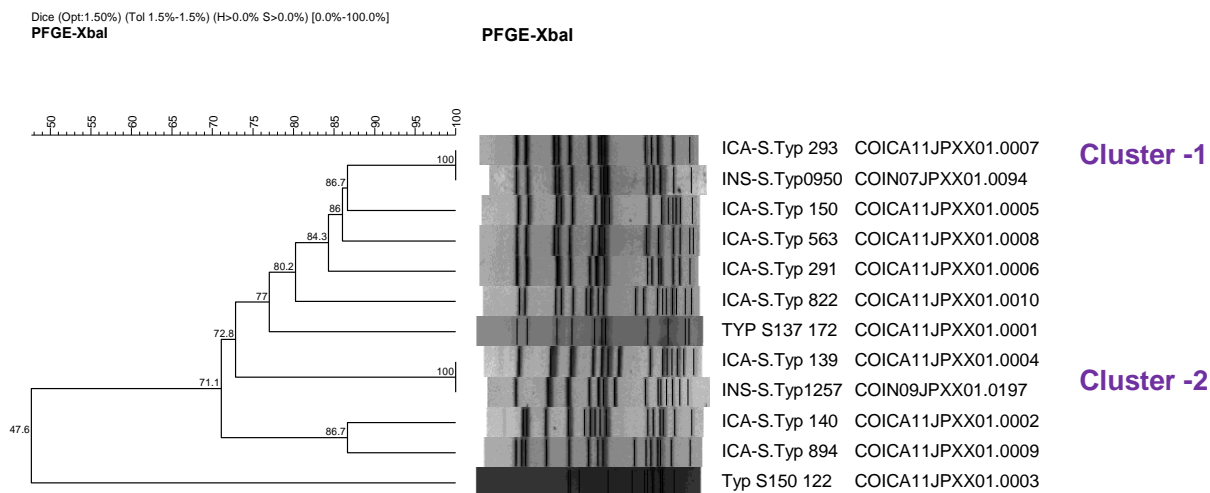
Figure 2a. Similarity clustering of *Salmonella* Typhimurium PFGE patterns from food samples using DICE similarity index and clustering by UPGMA. Three clonal clusters were identified in food isolates: A) Isolates with pattern ICA11.JPX.X01.0009, B) Isolates with pattern ICA11.JPX.X01.0008 and C) Isolates with pattern ICA11.JPX.X01.0006.



860  
861  
862  
863  
864  
865  
866  
867

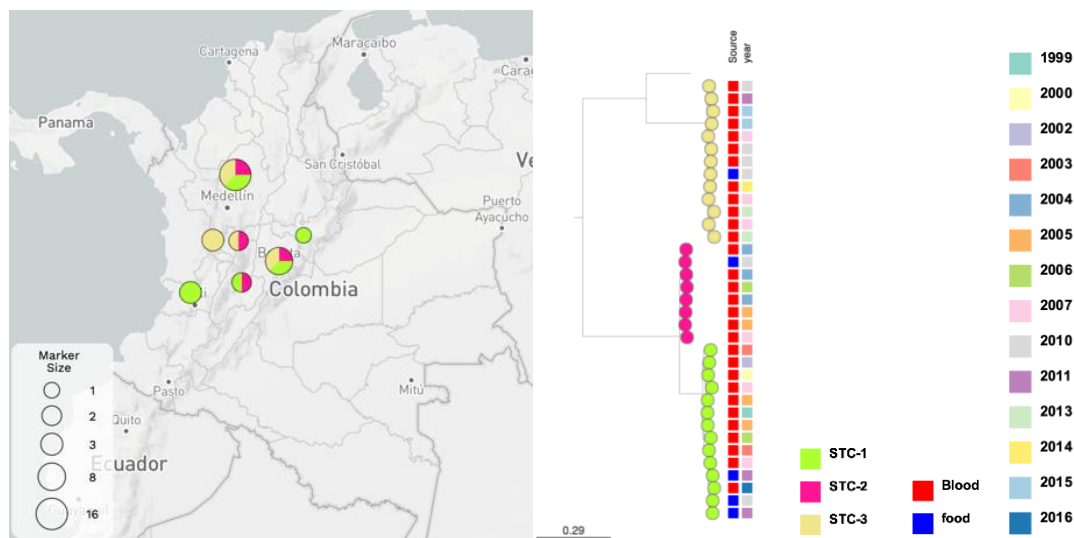


868 Figure 2b. Comparison of unique *Salmonella* Typhimurium PFGE patterns from clinical (INS) and food (ICA) using DICE similarity index and clustering by UPGMA. Two pairs of patterns were found clonal (SI%:100) related: cluster -1 JPX.X01.0007 - JPX.X01.0094 and cluster -2 JPX.X01.0004 - JPX.X01.0197.



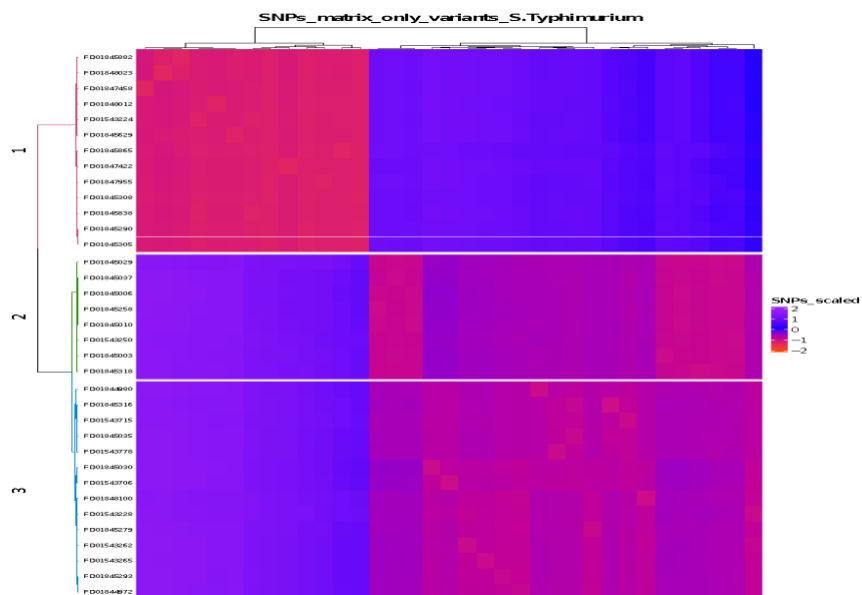
873  
874  
875  
876  
877  
878  
879  
880  
881  
882  
883  
884  
885

Figure 2c. Geographic distribution and phylogeny inference by clade of *Salmonella* Typhimurium samples (<https://microreact.org/project/ty7n1isZqUKyu4ehFUvx1W-salmonellaentericatyphimurium-from-the-national-surveillance-in-colombia-as-one-health-approach>)



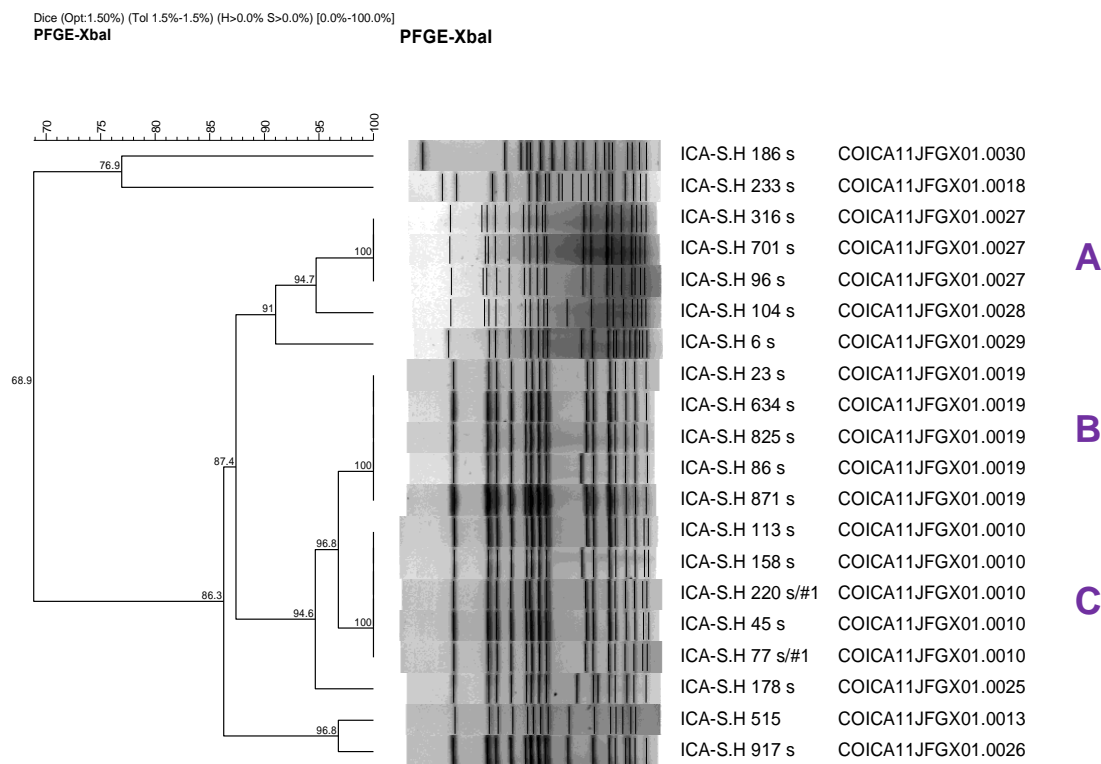
886  
887  
888  
889  
890  
891

892 Figure 2d. Visualization of SNPs matrix distribution of *Salmonella* Typhimurium clades  
893



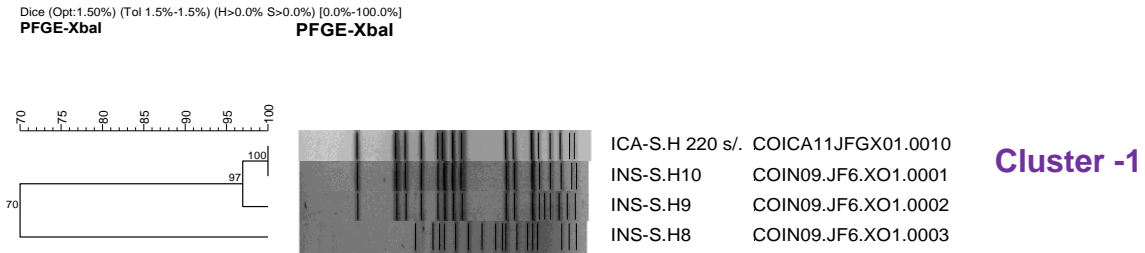
894  
895

896 Figure 3a. Similarity clustering of *Salmonella* Heidelberg PFGE patterns from food samples using DICE  
897 similarity index and clustering by UPGMA. Three clonal clusters were identified in food isolates: A)  
898 Isolates with pattern ICA JFG.X01.0027, B) Isolates with pattern ICA JFG.X01.0019 and C) Isolates with  
899 pattern ICA JFG.X01.0010.  
900  
901



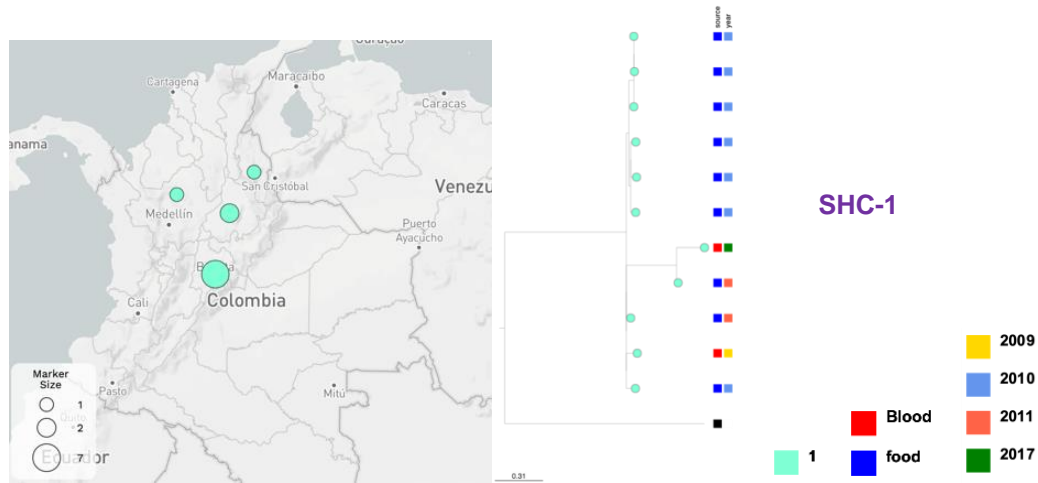
902

903 Figure 3b. Comparison of unique *Salmonella* Heidelberg PFGE patterns from clinical and food using  
 904 DICE similarity index and clustering by UPGMA. One pair of patterns was found clonal (DSI%=100)  
 905 related: Cluster -1 INS JF6.X01.0001 – ICA JFG.X01.0010. Another clinical pattern was found close  
 906 related (DSI%=97) to the clonal cluster: JF6.X01.0002



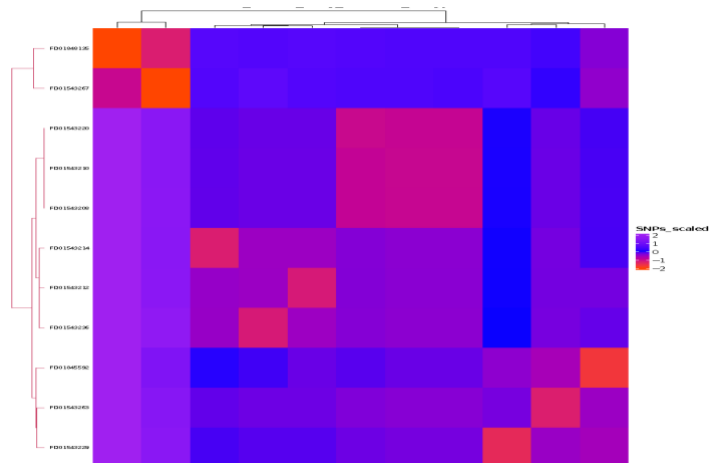
907  
 908

909 Figure 3c. Geographic distribution and phylogeny inference by clade of *Salmonella* Heidelberg  
 910 ([https://microreact.org/project/rwdTW9g5esRp3V6wkodz7w-salmonella-enterica-heidelberg-from-the-](https://microreact.org/project/rwdTW9g5esRp3V6wkodz7w-salmonella-enterica-heidelberg-from-the-national-surveillance-in-colombia-as-one-health-approach)  
 911 [national-surveillance-in-colombia-as-one-health-approach](https://microreact.org/project/rwdTW9g5esRp3V6wkodz7w-salmonella-enterica-heidelberg-from-the-national-surveillance-in-colombia-as-one-health-approach)).



912  
 913  
 914  
 915  
 916

Figure 3d. Visualization of SNPs matrix distribution of *Salmonella* Heidelberg clade



917