

1 **A unique gene expression signature in visceral adipose tissue identifies a high**  
2 **blood pressure group in patients with Cushing's syndrome**

3 Ulrich Stifel<sup>1\*</sup>, Frederick Vogel<sup>2\*</sup>, Giorgio Caratti<sup>1,3</sup>, Martin Reincke<sup>2#</sup>, Jan Tuckermann<sup>1#</sup>

4 <sup>1</sup>Institute of Comparative Molecular Endocrinology (CME), Ulm University, Ulm, Germany

5 <sup>2</sup>Medizinische Klinik und Poliklinik IV, University Hospital, LMU Munich, Munich, Germany

6 <sup>3</sup>Oxford Centre for Diabetes, Endocrinology and Metabolism, University of Oxford, UK

7

8

9

10

11

12

13

14

15

16

17

18

19

20

21

22

23

24

25 \*These authors contributed equally

26 #Corresponding authors:

27 Martin Reincke: martin.reincke@med.uni-muenchen.de

28 Jan Tuckermann: jan.tuckermann@uni-ulm.de

29 **Short title:** Adipose signature and blood pressure in Cushing.

30 **Keywords:** Cushing's syndrome, adipose tissue, hypertension, renin, cortisol, ACTH, adrenal  
31 hyperfunction, Cushing's disease

32 **NOTE:** This preprint reports new research that has not been certified by peer review and should not be used to guide clinical practice.

33 **Abstract**

34 Cushing's syndrome (CS) is a rare disease caused by excess cortisol levels with high cardiovascular  
35 morbidity and mortality. Hypertension is a frequent feature of Cushing's syndrome, promoting  
36 hypercortisolism-associated cardiovascular events. Adipose tissue is a highly plastic tissue with most  
37 of the major cell types strongly affected in their function by the excess cortisol exposure. We  
38 hypothesized that the molecular and cellular changes of visceral adipose tissue (VAT) in response to  
39 cortisol excess can impact on systemic blood pressure levels in patients with CS. We, therefore,  
40 investigated gene expression signatures in VAT from patients with CS collected during curative adrenal  
41 surgery identifying significant alterations. During active CS we observed a strong downregulation of  
42 gene programs associated with immunity and inflammation in the VAT. In addition, we observed an  
43 clustering of the patients based on VAT gene expression profiles into two groups (CS<sup>Low</sup> and CS<sup>High</sup>)  
44 according to blood pressure levels. The two clusters showed significant differences in gene expression  
45 patterns of the renin-angiotensin-aldosterone-system (RAAS). Renin (REN) was the strongest regulated  
46 gene compared to control patients and its expression correlated with increased blood pressure  
47 observed in our patients while systemic renin plasma levels were suppressed indicative of an abnormal  
48 blood pressure and volume status in response to VAT RAAS activation. Here we show for the first time  
49 a relevant contribution of the local RAAS system on systemic blood pressure levels in patients with CS.  
50 Patients from the CS<sup>High</sup> group had still a significant increased blood pressure levels 6 months into  
51 remission, highlighting the importance of local tissue effects on long-term systemic effects observed  
52 in CS.

53

54

## 55 Introduction

56 Endogenous Cushing's syndrome (CS) is a rare disease affecting 1-3 people per million per year [1]. It  
57 is caused by chronic excessive secretion of cortisol by the adrenal glands. Consequently, patients have  
58 increase morbidity and mortality, and this is mainly due to cardiovascular and cerebrovascular events  
59 as well as infectious complications. According to the European Cushing's Registry ERCUSYN, mortality  
60 is highest around the time of diagnosis until 90 days following start of therapy [2]. In Denmark, patients  
61 with active CS had a seven-fold increased risk of venous thromboembolism because of  
62 hypercoagulable state, a six-fold increased risk of heart failure, and a four-to-five-fold risk of stroke,  
63 compared with the background population [3]. A nation-wide cohort study from Sweden  
64 demonstrated similar results, with increased cardiovascular morbidity starting up to 3 years prior  
65 diagnosis, and elevated risks for stroke and myocardial infarction even years after biochemical  
66 remission [4].

67 Up to 85% of patients with CS have hypertension at diagnosis, and 9% may require hospital admission  
68 because of hypertensive crisis [5]. Prevalence of hypertension depends on subtype, duration of  
69 hypercortisolism, age, and co-existing metabolic comorbidities, such as diabetes mellitus, obesity and  
70 other components of the metabolic syndrome [6-8]. Whether a sex-specific difference exists in  
71 hypercortisolism-associated hypertension remains controversial [9, 10]. Interestingly, no correlation  
72 between blood pressure values and cortisol levels was observed [11-13]. However, hypertension has  
73 been reported to be an independent factor associated with increased mortality in CS [14, 15].

74 The pathophysiology of CS-related hypertension is complex and not well understood. The supposed  
75 pathogenetic mechanisms include a broad spectrum of contributing factors, such as mineralocorticoid  
76 receptor activation, vasoactive factors, increased vascular reactivity to vasoconstrictors as well as  
77 activation and/or modulation of the renin-angiotensin system (RAS) [5, 11, 13, 16]. Since  
78 phenotypically the visceral adipose tissue (VAT) is massively increased in CS, and visceral obesity has a  
79 major impact on the clinical phenotype during active CS as well as the persistence of several  
80 comorbidities including hypertension [17-21], we assumed that auto- and paracrine factors of the VAT  
81 may be relevant for systemic blood pressure regulation [22-24]. Therefore, we hypothesize that factors  
82 from VAT, especially components of the RAS, can modulate systemic blood pressure levels in patients  
83 with CS, independent of pharmacological intervention. To prove our hypothesis, we studied VAT from  
84 patients with CS obtained during curative adrenal surgery and investigated the association between  
85 expression of the local RAS in VAT using RNAseq and immunohistochemistry, and the hypertension  
86 phenotype at time of diagnosis as well as following curative surgery.

87

## 88 **Patients and methods**

### 89 **Patients**

90 A total of 17 patients with an unilateral adrenocortical tumor who underwent adrenalectomy at the  
91 Ludwig Maximilians University Munich were included in this study. Of these, 12 patients were  
92 diagnosed with overt adrenal Cushing's syndrome due to cortisol-producing adrenal adenoma (CPA)  
93 and 5 with nonfunctioning adrenal tumor (NFAT) who served as controls. All patients with adrenal CS  
94 had typical signs and symptoms at the time of diagnosis. Diagnosis and subtype differentiation were  
95 based on the criteria recommended by current clinical practice guidelines [1, 25], following standard  
96 operational procedures as reported previously [18, 26]. NFAT was confirmed by at least one normal  
97 biochemical test for endogenous hypercortisolism and the absence of typical hypercortisolism-  
98 associated signs and symptoms. Exclusion criteria were age above 70 or below 18 years, mild  
99 autonomous cortisol secretion, CS due to adrenocortical carcinoma, bilateral adrenal masses,  
100 persistent disease after surgery and adrenostatic therapy prior to surgery. Because of the higher  
101 prevalence of CPAs in women [27, 28], and thus more tissue samples available, only female patients  
102 were included in the study. The number of cases available and tissue samples stored during the  
103 inclusion period determined the sample size of female patients with overt adrenal CS and NFAT.  
104 Periadrenal adipose tissue was separated from the adrenal gland immediately after receipt of the  
105 resectate and stored at -80°C. Because of the limited availability of paraffin-embedded periadrenal  
106 adipose tissue, we took tissues of additional patients for histological analyses differed (CPA n=10, NFAT  
107 n=5).

108 Patients with CS underwent clinical and biochemical assessment at the time of diagnosis before surgery  
109 and again 6 months following adrenalectomy. Successful surgery outcome was confirmed by clinical  
110 and biochemical disease remission including the presence of adrenal insufficiency postoperatively.  
111 During the adrenal insufficiency phase, all patients received standard glucocorticoid replacement  
112 therapy, consisting of 20-25 mg hydrocortisone per day.

113 The study was performed as part of the German Cushing's registry. Patients were diagnosed and  
114 underwent adrenalectomy between 2012 and 2021 at the Munich center of the German Cushing's  
115 registry. The German Cushing's registry (NeoExNet, No. 152-10) was approved by the LMU ethics  
116 committee, and all patients gave written informed consent.

117

### 118 **Blood pressure measurements**

119 Blood pressure measurements were taken during the visits at the time of diagnosis and 6 months after  
120 successful surgery. Blood pressure was measured in a sitting position, using an automatic oscillometric

121 device, after 5 minutes of rest. The mean value of three consecutive measurements was used in the  
122 analysis.

123

#### 124 **Measurement of blood and serum parameters**

125 Venous blood samples were taken after overnight fast at the time of diagnosis. Hormonal laboratory  
126 analyses included serum cortisol, aldosterone and plasma renin concentration, cortisol after overnight  
127 1 mg suppression, urinary free cortisol measurements and late-night salivary cortisol determinations.  
128 All lab tests were performed in the endocrine laboratory, Department of Medicine IV, and in the  
129 Clinical Laboratory Department, University Hospital Munich. Measurements of serum aldosterone and  
130 renin concentrations were made in one run at the end of the inclusion period, reducing analytical  
131 variability. Further biochemical parameters were performed in the Institute of Laboratory Medicine,  
132 University Hospital Munich, using standard methods.

133

#### 134 **RNA-seq**

135 Visceral adipose tissue (VAT)-biopsy from 14 patients with adrenal CS and 5 with NFAT who served as  
136 controls were obtained after adrenalectomy, respectively. VAT was stored at -80°C and total RNA was  
137 isolated following the TRIZOL RNA isolation protocol (Invitrogen). Quality of RNA was analyzed by  
138 capillary electrophoresis on an Agilent System Agilent 2100 was determined. RNA-seq was performed  
139 by Novogen (UK) on an Illumina Novaseq 600. Data quality control was performed on the basis of  
140 Pearson correlation and samples with a low correlation (<0.6) were removed (2 samples). The paired-  
141 end data was aligned to the human genome GRCh38 (hg38) using hisat2 [29]. Differential expression  
142 analysis between the control group and the CS patients, as well as between the two groups of CS  
143 patients were performed using DESeq2 [30]. Differentially expressed genes (DEG) were defined using  
144 a p.value of <0.05 and a log2foldchange of >1 as criteria. Volcano plots for the DEG were generated  
145 using R (3.6.3 and 4.04). Heatmaps were generated using MORPHEUS (Morpheus,  
146 <https://software.broadinstitute.org/morpheus>), and ComplexHeatmap [31]. Data on protein origin  
147 (secreted, membrane bound, intracellular) was obtained from The Human Protein Atlas [32]. Principal  
148 component analysis was performed using the pcaExplorer package [33]. Pathway analysis was  
149 performed using the DEG previously defined with ENRICH [34]. Top 4 hits are shown sorted by p.value  
150 for the Elsevier pathway analysis and the gene ontology biological process analysis. Epigenetic  
151 Landscape In Silico deletion Analysis (LISA) was performed using the top most 500 DEG, sorted by  
152 p.value [35]. Gene set enrichment analysis (GSEA) was performed using the GSEA 4.2.3 version of the  
153 local application [36]. In silico cytometry was performed using the Cibersortx web application [37]. For

154 this purpose, signature matrices were generated using all the available VAT human single cell data of  
155 lean patients from [38] to estimate cell type populations in our bulk RNA-seq approach. Data was  
156 processed using Galaxy Europe [39].

### 157 **Sample Data Availability**

158 Sequencing data was uploaded to the GEO database and is available under GSE218965.

### 159 **Immunohistochemistry**

160 Sections with VAT from CS patients and controls were rehydrated in xylene and an alcohol series.  
161 Subsequently antigen retrieval in citrate-based antigen retrieval solution (Sigma, C999) for 20 minutes  
162 at 100°C was applied. Samples were blocked using a ready-to-use blocking solution (Milipore, 20773)  
163 and incubated with antibody (1:200 Cd68 abcam KP1, 1:100 PDE4D Sigma-Aldrich (SAB4502128))  
164 diluted in blocking solution. Endogenous peroxidases were quenched with 0.03% v/v H<sub>2</sub>O<sub>2</sub> for 20 mins  
165 after which the samples were blocked using avidin/biotin blocking kit (Vector Laboratories SP-2001).  
166 Sections were incubated with anti-rabbit, or anti-mouse biotinylated secondary antibody 1:800 (BA-  
167 1000 or BA-9200 Vector Laboratories) for 2 hours at 4°C. After washing with PBS, samples were  
168 incubated with streptavidin-conjugated horseradish peroxidase (SA-5004 Vector laboratories 1:300 in  
169 PBS 0.1% Tween-20) for 1 hour at 4°C. Color detection on the samples was performed using 3,3'-820  
170 diaminobenzidine (ImmPACT DAB SK-4100, Vector Laboratories) and nuclei with Hematoxylin solution  
171 (H3401 Vector Laboratories). Sections were then dehydrated and mounted using Eukitt (Langenbrinck  
172 04-0001). Images were acquired using 10x magnification on an Olympus BX41 microscope.

173

### 174 **Blood vessel quantification**

175 Blood vessel were counted on whole tissue slides from each patient and the number of blood vessels  
176 was normalized to the whole tissue area.

177

### 178 **Image Analysis**

179 Pictures from IHC were analyzed using ImageJ Fiji software [40]. Quantification was performed as  
180 stained area/total area of the pictures and shown in %.

181

### 182 **Statistical Analysis**

183 Statistics were performed using GraphPad 9 and R (3.6.3 and 4.0.4). Categorical data was analyzed  
184 using Fisher exact test and continuous data was analyzed using Mann-Whitney test or two-way  
185 ANOVA. Correlations were performed using GraphPad with simple linear regression model. P.value of  
186 below 0.05 was consider a significant effect.

187

188 **Results**

189 **Visceral Adipose Tissue transcriptome is altered by active Cushing's syndrome**

190 To clarify specific gene signatures in VAT of patients with Cushing's syndrome we collected VAT from  
191 12 patients with CPA and 5 patients with NFAT. Clinical data are shown in **Table 1**. As expected, patients  
192 with CS had higher blood pressure values compared to controls and an elevated homeostatic model  
193 assessment for insulin resistance index (HOMA-IR). Body mass index (BMI) and serum potassium were  
194 comparable in both groups.

195 Expression profiling by RNAseq identified 1073 genes differentially regulated as shown by the volcano  
196 blot (**Figure 1A**) and the principal component analysis (PCA) (**Figure S1A**). Elsevier Pathway analysis of  
197 these differentially expressed genes (DEG) showed hypertension and colitis as the most regulated  
198 pathways, while gene ontology analysis revealed a differential regulation of protein folding  
199 dependent on chaperons (**Figure 1B**). The top term in the Pathway enrichment was arterial  
200 hypertension, which includes a wide variety of genes of which the differentially expressed ones include  
201 *REN*, *VWF* and *VEGFA* (**Figure 1C**). To investigate the potential regulators of these DEG, we performed  
202 an epigenetic landscape in silico deletion analysis (LISA) [35]. Here we found that the most likely  
203 transcription factors regulating the DEGs were not the suspected cortisol activated transcription  
204 factors GR (*NR3C1*) or MR (*NR3C2*), but rather EGR3, TERC, CTCF, and the ESR1 (estrogen receptor), in  
205 line with previously published data sets (**Figure S1B**) [41].

206 To further dissect the effects of active CS on adipose tissue we performed an *in silico* cytometry  
207 approach (Cibersortx), to estimate the putative changes in cell populations [37]. This approach  
208 revealed different abundance in four cell populations during active CS (**Figure 2A, C, E**). Monocytes are  
209 macrophage precursors from the blood stream and are actively infiltrating tissues, including the VAT  
210 [42]. Cibersortx analysis showed an increase of monocytes in the VAT from CS patients, this was further  
211 supported by IHC for CD68 and macrophage marker which was also increased in the tissue (**Figure 2B**).  
212 Strikingly gene set enrichment analysis (GSEA) from the controls versus the CS patients showed a  
213 decrease in TNFA signaling via NFKB in addition to many inflammation associated genes like *DUSP1*,  
214 *IL6* and *NFKB1* being downregulated and anti-inflammatory genes like *SPHK1* being upregulated.

215 Furthermore, a fraction of the population of adipocyte stem- and precursor cells was downregulated  
216 in patients with active CS, which are defined as adipocyte stem- and precursor cells (hASPC6) (**Figure**  
217 **2C**) [38], paralleled by downregulation in the GSEA for adipogenesis, including markers for adipocyte  
218 function and health, like *ADIPOQ*, *CD36* and *PPARG* (**Figure 2C**). This population of hASPCs was  
219 characterized by a high expression of *PDE4D*, a key marker gene for this cell population [38]. The  
220 expression of *PDE4D* was confirmed in the adipocyte stem- and precursor cell population from the

221 CibersortX analysis (**Figure S2D**) and further by staining for it in the adipose tissue of the patients with  
222 IHC (**Figure 2D**).

223 Finally, we observed an increase in the abundance of endothelial cells and reduction of smooth muscle  
224 cells, suggesting an effect on the local vascular system. This is also confirmed by GSEA, which showed  
225 that the smooth muscle cell function and the local renin-angiotensin-aldosterone system (RAAS) were  
226 decreased (**Figure 2E**). In addition, we also found that the abundance of blood vessels (BV) was strongly  
227 reduced in the adipose tissue from patients with CS compared to NFAT control tissue (**Figure 2E**). This  
228 was also confirmed as many components of the RAAS like *REN*, *AGTR1* and *VWF* were regulated during  
229 CS. These data suggest a wide range of physiological consequences on the adipose tissue during CS,  
230 with major cell populations and important pathways and genes being affected.

231

### 232 **Gene expression reveals a correlation between VAT transcriptome and blood pressure.**

233 Unbiased clustering through PCA of the gene profiles of all samples indicated that the group of CS  
234 patients does not have a homogenous phenotype (**Figure S2A reordered from Figure S1A**). This is  
235 further confirmed by hierarchal clustering of the DEG between CS and NFAT control patients, in which  
236 we observed 3 clearly defined clusters (**Figure 3A**). Cluster 1 represented continuously downregulated  
237 genes and involved a high number of genes encoding secreted proteins, involved in resolution of  
238 inflammation and hypertension. In contrast mRNAs in cluster 2 and 3 were upregulated, but genes in  
239 cluster 3 are only upregulated in a CS subgroup. These subgroups of CS patients showed no difference  
240 in age, body composition, diabetic metabolic state or the severity of hypercortisolism measured by  
241 UFC, LNSC and LDDST (**Figure 3B, Figure S2B**). However, the subgroups of CS patients (Cluster 3 low  
242 and Cluster 3 high expression) were strongly different in their hypertensive phenotype during  
243 glucocorticoid excess. While the first subgroup (Cluster 3 low expressed, now designated as CS<sup>Low</sup>) was  
244 characterized by a non-significant, slightly higher blood pressure compared to the NFAT controls, the  
245 second subgroup (Cluster 3 high expressed, now designated as CS<sup>High</sup>) had significantly higher blood  
246 pressure levels with a pronounced hypertensive phenotype (**Figure 3B, Figure S2B**). This effect was  
247 independent of antihypertensive medication, as the number of patients receiving antihypertensive  
248 drugs was comparable in both subgroups of CS patients (CS<sup>Low</sup>: 4/6, CS<sup>High</sup>: 5/6) (**Figure S2C**).

249 Between the gene signatures assigned to the CS<sup>Low</sup> group and CS<sup>High</sup> group we observed 4883 DEGs.  
250 Pathway analysis revealed a high score of adiponectin synthesis and other adipokines (**Figure S3A, B**).  
251 Similar to the total comparison of controls with CS patients we found by LISA that neither GR (NR3C1)  
252 nor MR (NR3C2) were among the top candidates for potential TF regulating the DEG (**Figure S3C**).  
253 Rather PHF8, MAZ, CDK9 and MYC/MAX were among the relevant regulators.



254 The topmost regulated gene was renin (REN) responsible for the conversion of angiotensinogen to  
255 angiotensin I. The RAAS is known to be altered in CS [13]. This gene was also regulated according to  
256 the previously defined subgroups of patients with CS, although not reaching statistical significance  
257 (**Figure 4A**). Intriguingly the expression of RAAS components in VAT like renin and others was shown  
258 to be a major factor in obesity related blood pressure pathologies [24]. We found that the VAT gene  
259 expression of REN correlated significantly with the systolic blood pressure of all patients included in  
260 the study, with an  $R^2$  of 0.237 (**Figure 4B**). Plasma renin and aldosterone levels were not significantly  
261 different in CS patients compared with control patients, consistent with previous studies investigating  
262 the systemic RAAS in CS, which reported plasma renin and aldosterone concentrations within the  
263 normal or slightly below the normal range [13, 43-46]. Interestingly, plasma renin concentrations were  
264 significantly reduced in the CS<sup>High</sup> versus the CS<sup>Low</sup> subgroup, and the aldosterone to renin ratio  
265 elevated, indicating a systemic endocrine response of the renal juxtaglomerular apparatus to an  
266 abnormal high blood pressure and volume status (**Figure 4C left**). Noteworthy, REN gene expression in  
267 VAT did not correlate with plasma renin concentrations measured in patients with CS (**Figure 4D**).  
268 Aldosterone, aldosterone to renin ratio and serum potassium levels were not different between  
269 subgroups and compared to controls (**Figure 4C right**). Moreover, plasma renin concentrations were  
270 not predictive of high blood pressure levels, as we observed no correlation between plasma renin  
271 levels and blood pressure (**Figure S3E**).

272 Six months following curative surgery, both subgroups showed lower blood pressure values compared  
273 with the time of diagnosis, as expected (**Figure 4F**). Remarkably, there was still a trend towards higher  
274 blood pressure values in patients of CS<sup>High</sup> subgroup compared to CS<sup>Low</sup> ( $p=0.08$ ) after 6 months in  
275 remission (Patients on BP drugs CS<sup>Low</sup>: 1/6, CS<sup>High</sup>: 1/6). This indicates a potential long-lasting effects of  
276 adipose tissue RAS components despite sustained biochemical remission of CS.

277

278 **Discussion**

279 Management of patients with CS and the thereof caused long-term complications are still a major  
280 challenge today [28, 47]. VAT taken as part of the adrenalectomy shows significant alterations in the  
281 transcriptome (**Figure 1**) compared to non-CS patients, as previously reported [41, 48]. Consistent with  
282 previous studies, our study highlights the profound effects of chronic cortisol excess on adipose tissue  
283 gene expression. We discovered a unique gene expression signature in VAT that is associated with a  
284 pronounced hypertensive phenotype in patients with adrenal CS that persisted even despite remission  
285 of hypercortisolism.

286 In subcutaneous adipose tissue the patients with CS disease did show more metabolic alterations in  
287 regard to lipogenesis and glucose oxidation [48], which was not commonly observed in the VAT in our  
288 study. However, we observed some similar effects including an increase in fatty acid synthase (FASN)  
289 and leptin (LEP) in CS patients. This could be due to the fact that the subcutaneous adipose tissue and  
290 visceral fat have strong differences in their metabolic activity, especially regarding lipolysis [49]. Our  
291 analysis indicated that adipocyte stem- and precursor cells were decreased in CS, as well as a strong  
292 regulation of important factors for adipocyte differentiation like adiponectin (ADIPOQ) and  
293 peroxisome proliferator-activated receptor-gamma (PPARG). This suggests an attenuated adipocyte  
294 differentiation and adipogenesis of precursor cells [50]. As patients with CS have a strong change in fat  
295 cell distribution and body weight gain [51], one of the reasons for this might be a changed adipose  
296 tissue identity caused by cortisol excess.

297 It has been proposed that in VAT of patients with CS, the hypercortisolism has strong effects on  
298 inflammatory genes and immune cell infiltration, with studies showing an increased number of  
299 infiltrating macrophages (CD68 positive cells) [52]. We could also observe and increased number of  
300 infiltrating monocytes and macrophages (**Figure 2A**). In contrast to other studies, we did not observe  
301 a low-grade inflammation but rather a suppression of inflammatory and increased expression of anti-  
302 inflammatory markers of macrophages and inflammation. The most common observation for  
303 inflammatory effects in the VAT of CS patients has been an increase in Cd11c (ITGAX) a marker for an  
304 increased proinflammatory state, which we did not observe in our patient cohort [41, 52]. In our study  
305 we did, however, see a strong downregulation of inflammatory cytokines like Il6 (IL6) and Cxcl3 (CXCL3)  
306 as well as a downregulation of the inflammatory NFKB pathway and MAPK pathways. This contrast  
307 could be explained that both studies showing an increase in ITGAX were sex mixed cohorts of patients,  
308 while our study only focuses on female patients.

309 A major challenge in patients with CS is the management of blood pressure [5, 53]. More so it was  
310 intriguing that we saw strong effects on endothelia cells and smooth muscle cell abundance, as well as  
311 important genes for the vascular system like Vegfa (VEGFA) and VWF (VWF). It has already been shown

312 that cortisol excess can lead to an increase of thickness in arteries and therefore modulate systemic  
313 blood pressure and persistent modulation of the vascular system, even after achieving remission of  
314 endogenous cortisol excess [54-57]. While some of these vascular changes revert after the remission  
315 some persists, like the plaque formation [20, 58]. Furthermore, we saw a strong regulation of  
316 components of the RAAS in the VAT. For patients suffering from hypertension caused by obesity it was  
317 shown that local RAAS activity was a major factor in contribution to hypertension, irrespective of  
318 systemic regulation [59, 60]. In obesity, angiotensinogen levels are known to be elevated and VAT-  
319 derived angiotensinogen can enter the circulation, leading to an elevated blood pressure through the  
320 actions of angiotensin II. Here, the local activation of glucocorticoid action in adipose tissue of patients  
321 with obesity is proposed to induce activation of RAS [22]. Recently, a positive correlation between BMI  
322 and plasma angiotensinogen concentrations in patients with CS was observed [13].

323 We could further dissect this effect in correlating the VAT gene expression to patient features and  
324 show that within our group of CS patients the gene expression in VAT was correlated with the severity  
325 of the hypertensive phenotype (**Figure 3**). mRNA expression of Renin (REN) in VAT was strongly  
326 correlated with the systemic blood pressure (**Figure 4**). Interestingly this was independent of the  
327 severity of endogenous glucocorticoid excess.

328 The tissue RAS and the circulating RAS are in a state of constant interaction [22, 61]. Activation and/or  
329 modulation of the RAS is known to be a mechanism of glucocorticoid-induced hypertension in patients  
330 with CS [11, 16]. Despite elevated angiotensinogen (renin substrate) levels observed in CS [62], levels  
331 of renin activity, renin concentration, angiotensin II and aldosterone are reported in the normal or  
332 below the normal range [13, 43-46]. This is interpreted as an overall increased throughput of the RAS  
333 and/or the consequence of increased glucocorticoid-mediated mineralocorticoid receptor stimulation  
334 and thus renin suppression [13, 63]. Moreover, patients with CS showed an increased pressor response  
335 to angiotensin II [64, 65], and there is evidence that glucocorticoids increase angiotensin II type 1  
336 receptor gene expression [66, 67]. Due to the observed generalized upregulation of the RAS in patients  
337 with CS, angiotensin-converting enzyme inhibitors or angiotensin receptor blockers are recommended  
338 as first-line approach for blood pressure control in CS [5].

339 In line with previous studies, our patients with active CS showed no significant difference in plasma  
340 renin and aldosterone concentrations compared to controls (**Figure 4C**). Interestingly, in the CS<sup>High</sup>  
341 subgroup, we observed significantly decreased plasma renin concentrations compared to the the CS<sup>Low</sup>  
342 subgroup. Since aldosterone and potassium levels are normal in both subgroups, showing no  
343 difference (**Figure 4C and S3D**), we assume a relative functional mineralocorticoid excess state in  
344 relation to blood pressure and systemic volume, which induces negative feedback regulation at kidney  
345 level decreasing systemic renin levels. This condition has also been described primarily in patients with

346 ectopic CS [63, 68, 69]. Furthermore, several studies demonstrated that sodium reabsorption and  
347 blood volume expansion through mineralocorticoid receptor activation is insufficient to explain the  
348 development of glucocorticoid-induced hypertension [63, 70-73]. Since we observed a unique VAT  
349 gene expression profile with increased REN expression associated with a hypertensive phenotype and  
350 lower plasma renin levels in a subset of CS patients, we postulate a local overactivity of the RAS in VAT.  
351 This RAS activation, as suggested by others [13, 63], could lead to low plasma renin levels through  
352 increased angiotensin production and aldosterone synthesis, via a hypothesized negative feedback  
353 mechanism to limit excessive angiotensin II production [74].

354 Remarkably, in the study by van der Pas and colleagues [13], plasma concentrations of  
355 angiotensinogen, renin and aldosterone had not changed despite biochemical remission by medical  
356 therapy, indicating long-lasting effects on plasma RAS components that may be responsible for partial  
357 persistence of glucocorticoid-induced hypertension. Despite successful treatment of CS, about one  
358 third of patients have persistent hypertension [12, 20, 64]. As predictive factors for persistent  
359 hypertension, older age, higher BMI at baseline and a longer estimated duration of hypercortisolism  
360 were observed [17]. Of note, the severity of hypercortisolism does not seem to affect the severity of  
361 hypertension or the remission status of hypertension after successful treatment of CS [11-13, 17]. This  
362 is consistent with our observation that CS<sup>High</sup> and CS<sup>Low</sup> subgroup subgroups do not differ in the degree  
363 of hypercortisolism (**Figure 3B and S2B**). In our follow-up visits 6 months after adrenalectomy due to  
364 adrenal CS, a difference in blood pressure was still found between CS subgroups CS<sup>High</sup> and CS<sup>Low</sup>, which  
365 may suggest an association of VAT RAS modulation and the persistence of glucocorticoid-induced  
366 hypertension. This could be either of epigenetic nature, as it has been previously reported that CS  
367 patients also show a changed epigenetic landscape or genetic nature exacerbated by the excess  
368 cortisol [41]. Here it was shown that markers for epigenetic gene activation (H3K27ac) and gene  
369 repression (H3K4me3) were altered during active CS.

370 We propose that local RAAS activity induced by local excess of cortisol, independent from systemic  
371 regulation could alter the systemic blood pressure and contribution to the hypertension observed in  
372 CS patients.

373 A limitation of our study is, that our patients used a variety of antihypertensive drugs, most of which  
374 are known to interfere with plasma concentrations of the RAS. However, plasma RAS components in  
375 patients with CS were not shown to be significantly affected by angiotensin-converting enzyme  
376 inhibitors, angiotensin receptor blockers or  $\beta$ -adrenoceptor blockers [13]. But of course, RAS blockade  
377 or  $\beta$ -adrenoceptor blockers could also have an effects of RAS components in VAT.

378 Why the subgroups of patients with CS determined on the basis of gene expression in VAT form  
379 remains unclear. Differences in local glucocorticoid levels, e.g., due to altered 11 $\beta$  hydroxysteroid

380 dehydrogenase type 1 activity, are possible [63]. 11 $\beta$  hydroxysteroid dehydrogenase type 1 is found  
381 primarily in liver and adipose tissue and appears to have a role in arterial hypertension [63, 69, 75].

382

### 383 **Author Contributions**

384 US, JPT and MR conceptualized the study and planned experiments. US performed bioinformatic  
385 analyses. US and FV performed molecular biology assays. GC provided critical methods and protocols.  
386 JPT and MR supervised the work. US, FV, MR and JPT wrote the manuscript. All authors approved the  
387 manuscript.

### 388 **Declaration of interest:**

389 The authors have nothing to disclose.

### 390 **Acknowledgments**

391 This work was funded by the Deutsche Forschungsgemeinschaft (DFG) within the collaborative  
392 Research Centre 1506 Aging at Interfaces at the Project C05 (*Project Number 450627322*) to J.T. M.R.  
393 received grant support for the German Cushing's Registry CUSTODES by the Else Kröner-Fresenius  
394 Stiftung (2012\_A103 and 2015\_A228), by the Deutsche Forschungsgemeinschaft (DFG, German  
395 Research Foundation, Projektnummer: 314061271-TRR 205) and by the European Research Council  
396 under the European Union Horizon 2020 research and innovation program (grant agreement No.  
397 694913). F.V. is supported by the Deutsche Forschungsgemeinschaft (DFG, German Research  
398 Foundation, project number: 413635475) and the Munich Clinician Scientist Program (MCSP) of the  
399 LMU München.

400

401 **References**

402

- 403 [1] L. K. Nieman *et al.*, "The diagnosis of Cushing's syndrome: an Endocrine Society Clinical  
404 Practice Guideline," *J Clin Endocrinol Metab*, vol. 93, no. 5, pp. 1526-40, May 2008, doi:  
405 10.1210/jc.2008-0125.
- 406 [2] E. Valassi *et al.*, "High mortality within 90 days of diagnosis in patients with Cushing's  
407 syndrome: results from the ERCUSYN registry," *Eur J Endocrinol*, vol. 181, no. 5, pp. 461-472,  
408 Nov 2019, doi: 10.1530/EJE-19-0464.
- 409 [3] O. M. Dekkers *et al.*, "Multisystem morbidity and mortality in Cushing's syndrome: a cohort  
410 study," *J Clin Endocrinol Metab*, vol. 98, no. 6, pp. 2277-84, Jun 2013, doi: 10.1210/jc.2012-  
411 3582.
- 412 [4] E. Papakokkinou *et al.*, "Excess Morbidity Persists in Patients With Cushing's Disease During  
413 Long-term Remission: A Swedish Nationwide Study," *J Clin Endocrinol Metab*, vol. 105, no. 8,  
414 Aug 1 2020, doi: 10.1210/clinem/dgaa291.
- 415 [5] F. Fallo *et al.*, "Diagnosis and management of hypertension in patients with Cushing's  
416 syndrome: a position statement and consensus of the Working Group on Endocrine  
417 Hypertension of the European Society of Hypertension," *J Hypertens*, Aug 9 2022, doi:  
418 10.1097/HJH.0000000000003252.
- 419 [6] E. Valassi *et al.*, "The European Registry on Cushing's syndrome: 2-year experience. Baseline  
420 demographic and clinical characteristics," *Eur J Endocrinol*, vol. 165, no. 3, pp. 383-92, Sep  
421 2011, doi: 10.1530/EJE-11-0272.
- 422 [7] D. Hirsch *et al.*, "Cushing's syndrome: comparison between Cushing's disease and adrenal  
423 Cushing's," *Endocrine*, vol. 62, no. 3, pp. 712-720, Dec 2018, doi: 10.1007/s12020-018-1709-  
424 y.
- 425 [8] F. Gokosmanoglu, A. Guzel, E. K. Kan, and H. Atmaca, "Increased prevalence of obstructive  
426 sleep apnea in patients with Cushing's syndrome compared with weight- and age-matched  
427 controls," *Eur J Endocrinol*, vol. 176, no. 3, pp. 267-272, Mar 2017, doi: 10.1530/EJE-16-0815.
- 428 [9] M. Zilio *et al.*, "Diagnosis and complications of Cushing's disease: gender-related  
429 differences," *Clin Endocrinol (Oxf)*, vol. 80, no. 3, pp. 403-10, Mar 2014, doi:  
430 10.1111/cen.12299.
- 431 [10] F. Pecori Giraldi, M. Moro, F. Cavagnini, and E. Study Group on the Hypothalamo-Pituitary-  
432 Adrenal Axis of the Italian Society of, "Gender-related differences in the presentation and  
433 course of Cushing's disease," *J Clin Endocrinol Metab*, vol. 88, no. 4, pp. 1554-8, Apr 2003,  
434 doi: 10.1210/jc.2002-021518.
- 435 [11] M. Barbot, F. Ceccato, and C. Scaroni, "The Pathophysiology and Treatment of Hypertension  
436 in Patients With Cushing's Syndrome," *Front Endocrinol (Lausanne)*, vol. 10, p. 321, 2019, doi:  
437 10.3389/fendo.2019.00321.
- 438 [12] R. Giordano *et al.*, "Metabolic and cardiovascular outcomes in patients with Cushing's  
439 syndrome of different aetiologies during active disease and 1 year after remission," *Clin  
440 Endocrinol (Oxf)*, vol. 75, no. 3, pp. 354-60, Sep 2011, doi: 10.1111/j.1365-  
441 2265.2011.04055.x.
- 442 [13] R. van der Pas *et al.*, "Cushing's disease and hypertension: in vivo and in vitro study of the  
443 role of the renin-angiotensin-aldosterone system and effects of medical therapy," *Eur J  
444 Endocrinol*, vol. 170, no. 2, pp. 181-91, Feb 2014, doi: 10.1530/EJE-13-0477.
- 445 [14] R. N. Clayton, D. Raskauskiene, R. C. Reulen, and P. W. Jones, "Mortality and morbidity in  
446 Cushing's disease over 50 years in Stoke-on-Trent, UK: audit and meta-analysis of literature,"  
447 *J Clin Endocrinol Metab*, vol. 96, no. 3, pp. 632-42, Mar 2011, doi: 10.1210/jc.2010-1942.
- 448 [15] M. J. Bolland *et al.*, "Mortality and morbidity in Cushing's syndrome in New Zealand," *Clin  
449 Endocrinol (Oxf)*, vol. 75, no. 4, pp. 436-42, Oct 2011, doi: 10.1111/j.1365-  
450 2265.2011.04124.x.

- 451 [16] M. V. Cicala and F. Mantero, "Hypertension in Cushing's syndrome: from pathogenesis to  
452 treatment," *Neuroendocrinology*, vol. 92 Suppl 1, pp. 44-9, 2010, doi: 10.1159/000314315.
- 453 [17] S. Jha, N. Sinaii, R. N. McGlotten, and L. K. Nieman, "Remission of hypertension after surgical  
454 cure of Cushing's syndrome," *Clin Endocrinol (Oxf)*, vol. 92, no. 2, pp. 124-130, Feb 2020, doi:  
455 10.1111/cen.14129.
- 456 [18] F. Vogel *et al.*, "Persisting muscle dysfunction in Cushing's syndrome despite biochemical  
457 remission," *J Clin Endocrinol Metab*, Sep 3 2020, doi: 10.1210/clinem/dgaa625.
- 458 [19] M. H. Scherthaner-Reiter *et al.*, "Factors predicting long-term comorbidities in patients with  
459 Cushing's syndrome in remission," *Endocrine*, vol. 64, no. 1, pp. 157-168, Apr 2019, doi:  
460 10.1007/s12020-018-1819-6.
- 461 [20] A. Colao *et al.*, "Persistence of increased cardiovascular risk in patients with Cushing's disease  
462 after five years of successful cure," *J Clin Endocrinol Metab*, vol. 84, no. 8, pp. 2664-72, Aug  
463 1999, doi: 10.1210/jcem.84.8.5896.
- 464 [21] F. Ferrau and M. Korbonits, "Metabolic Syndrome in Cushing's Syndrome Patients," *Front  
465 Horm Res*, vol. 49, pp. 85-103, 2018, doi: 10.1159/000486002.
- 466 [22] V. Kotsis, S. Stabouli, S. Papakatsika, Z. Rizos, and G. Parati, "Mechanisms of obesity-induced  
467 hypertension," *Hypertens Res*, vol. 33, no. 5, pp. 386-93, May 2010, doi: 10.1038/hr.2010.9.
- 468 [23] M. Boscaro, G. Giacchetti, and V. Ronconi, "Visceral adipose tissue: emerging role of gluco-  
469 and mineralocorticoid hormones in the setting of cardiometabolic alterations," *Ann N Y Acad  
470 Sci*, vol. 1264, pp. 87-102, Aug 2012, doi: 10.1111/j.1749-6632.2012.06597.x.
- 471 [24] L. A. Cassis, S. B. Police, F. Yiannikouris, and S. E. Thatcher, "Local adipose tissue renin-  
472 angiotensin system," *Curr Hypertens Rep*, vol. 10, no. 2, pp. 93-8, Apr 2008, doi:  
473 10.1007/s11906-008-0019-9.
- 474 [25] M. Fassnacht *et al.*, "Management of adrenal incidentalomas: European Society of  
475 Endocrinology Clinical Practice Guideline in collaboration with the European Network for the  
476 Study of Adrenal Tumors," *Eur J Endocrinol*, vol. 175, no. 2, pp. G1-G34, Aug 2016, doi:  
477 10.1530/EJE-16-0467.
- 478 [26] L. T. Braun *et al.*, "Whom should we screen for Cushing's syndrome: The Endocrine Society  
479 Practice Guideline Recommendations 2008 revisited," *J Clin Endocrinol Metab*, Jun 22 2022,  
480 doi: 10.1210/clinem/dgac379.
- 481 [27] A. Prete *et al.*, "Cardiometabolic Disease Burden and Steroid Excretion in Benign Adrenal  
482 Tumors : A Cross-Sectional Multicenter Study," *Ann Intern Med*, Jan 4 2022, doi:  
483 10.7326/M21-1737.
- 484 [28] C. H. Ahn, J. H. Kim, M. Y. Park, and S. W. Kim, "Epidemiology and Comorbidity of Adrenal  
485 Cushing Syndrome: A Nationwide Cohort Study," *J Clin Endocrinol Metab*, vol. 106, no. 3, pp.  
486 e1362-e1372, Mar 8 2021, doi: 10.1210/clinem/dgaa752.
- 487 [29] D. Kim, J. M. Paggi, C. Park, C. Bennett, and S. L. Salzberg, "Graph-based genome alignment  
488 and genotyping with HISAT2 and HISAT-genotype," *Nat Biotechnol*, vol. 37, no. 8, pp. 907-  
489 915, Aug 2019, doi: 10.1038/s41587-019-0201-4.
- 490 [30] M. I. Love, W. Huber, and S. Anders, "Moderated estimation of fold change and dispersion  
491 for RNA-seq data with DESeq2," *Genome Biol*, vol. 15, no. 12, p. 550, 2014, doi:  
492 10.1186/s13059-014-0550-8.
- 493 [31] Z. Gu, R. Eils, and M. Schlesner, "Complex heatmaps reveal patterns and correlations in  
494 multidimensional genomic data," *Bioinformatics*, vol. 32, no. 18, pp. 2847-9, Sep 15 2016,  
495 doi: 10.1093/bioinformatics/btw313.
- 496 [32] M. Uhlen *et al.*, "The human secretome," *Sci Signal*, vol. 12, no. 609, Nov 26 2019, doi:  
497 10.1126/scisignal.aaz0274.
- 498 [33] F. Marini and H. Binder, "pcaExplorer: an R/Bioconductor package for interacting with RNA-  
499 seq principal components," *BMC Bioinformatics*, vol. 20, no. 1, p. 331, Jun 13 2019, doi:  
500 10.1186/s12859-019-2879-1.
- 501 [34] E. Y. Chen *et al.*, "Enrichr: interactive and collaborative HTML5 gene list enrichment analysis  
502 tool," *BMC Bioinformatics*, vol. 14, p. 128, Apr 15 2013, doi: 10.1186/1471-2105-14-128.

- 503 [35] Q. Qin *et al.*, "Lisa: inferring transcriptional regulators through integrative modeling of public  
504 chromatin accessibility and ChIP-seq data," *Genome Biol*, vol. 21, no. 1, p. 32, Feb 7 2020,  
505 doi: 10.1186/s13059-020-1934-6.
- 506 [36] A. Subramanian *et al.*, "Gene set enrichment analysis: a knowledge-based approach for  
507 interpreting genome-wide expression profiles," *Proc Natl Acad Sci U S A*, vol. 102, no. 43, pp.  
508 15545-50, Oct 25 2005, doi: 10.1073/pnas.0506580102.
- 509 [37] A. M. Newman *et al.*, "Determining cell type abundance and expression from bulk tissues  
510 with digital cytometry," *Nat Biotechnol*, vol. 37, no. 7, pp. 773-782, Jul 2019, doi:  
511 10.1038/s41587-019-0114-2.
- 512 [38] M. P. Emont *et al.*, "A single-cell atlas of human and mouse white adipose tissue," *Nature*,  
513 vol. 603, no. 7903, pp. 926-933, Mar 2022, doi: 10.1038/s41586-022-04518-2.
- 514 [39] E. Afgan *et al.*, "The Galaxy platform for accessible, reproducible and collaborative  
515 biomedical analyses: 2018 update," *Nucleic Acids Res*, vol. 46, no. W1, pp. W537-W544, Jul 2  
516 2018, doi: 10.1093/nar/gky379.
- 517 [40] J. Schindelin *et al.*, "Fiji: an open-source platform for biological-image analysis," *Nat*  
518 *Methods*, vol. 9, no. 7, pp. 676-82, Jun 28 2012, doi: 10.1038/nmeth.2019.
- 519 [41] G. Garcia-Eguren *et al.*, "Glucocorticoid-induced fingerprints on visceral adipose tissue  
520 transcriptome and epigenome," *J Clin Endocrinol Metab*, Sep 6 2021, doi:  
521 10.1210/clinem/dgab662.
- 522 [42] L. Boutens and R. Stienstra, "Adipose tissue macrophages: going off track during obesity,"  
523 *Diabetologia*, vol. 59, no. 5, pp. 879-94, May 2016, doi: 10.1007/s00125-016-3904-9.
- 524 [43] F. Mantero, D. Armanini, and M. Boscaro, "Plasma renin activity and urinary aldosterone in  
525 Cushing's syndrome," *Horm Metab Res*, vol. 10, no. 1, pp. 65-71, Jan 1978, doi: 10.1055/s-  
526 0028-1093484.
- 527 [44] A. Ganguly, M. H. Weinberger, and C. E. Grim, "The renin-angiotensin-aldosterone system in  
528 Cushing's syndrome and pheochromocytoma," *Horm Res*, vol. 17, no. 1, pp. 1-10, 1983, doi:  
529 10.1159/000179668.
- 530 [45] C. M. Ritchie *et al.*, "Studies on the pathogenesis of hypertension in Cushing's disease and  
531 acromegaly," *Q J Med*, vol. 76, no. 280, pp. 855-67, Aug 1990. [Online]. Available:  
532 <https://www.ncbi.nlm.nih.gov/pubmed/2217688>.
- 533 [46] T. Saruta, H. Suzuki, M. Handa, Y. Igarashi, K. Kondo, and S. Senba, "Multiple factors  
534 contribute to the pathogenesis of hypertension in Cushing's syndrome," *J Clin Endocrinol*  
535 *Metab*, vol. 62, no. 2, pp. 275-9, Feb 1986, doi: 10.1210/jcem-62-2-275.
- 536 [47] L. T. Braun, F. Vogel, and M. Reincke, "Long-term morbidity and mortality in patients with  
537 Cushing's syndrome," *J Neuroendocrinol*, vol. 34, no. 8, p. e13113, Aug 2022, doi:  
538 10.1111/jne.13113.
- 539 [48] I. Hochberg *et al.*, "Gene expression changes in subcutaneous adipose tissue due to Cushing's  
540 disease," *J Mol Endocrinol*, vol. 55, no. 2, pp. 81-94, Oct 2015, doi: 10.1530/JME-15-0119.
- 541 [49] M. M. Ibrahim, "Subcutaneous and visceral adipose tissue: structural and functional  
542 differences," *Obes Rev*, vol. 11, no. 1, pp. 11-8, Jan 2010, doi: 10.1111/j.1467-  
543 789X.2009.00623.x.
- 544 [50] A. Chawla, E. J. Schwarz, D. D. Dimaculangan, and M. A. Lazar, "Peroxisome proliferator-  
545 activated receptor (PPAR) gamma: adipose-predominant expression and induction early in  
546 adipocyte differentiation," *Endocrinology*, vol. 135, no. 2, pp. 798-800, Aug 1994, doi:  
547 10.1210/endo.135.2.8033830.
- 548 [51] D. Delivanis *et al.*, "Abnormal body composition in patients with adrenal adenomas," *Eur J*  
549 *Endocrinol*, Aug 1 2021, doi: 10.1530/EJE-21-0458.
- 550 [52] I. T. Lee *et al.*, "Active Cushing Disease Is Characterized by Increased Adipose Tissue  
551 Macrophage Presence," *J Clin Endocrinol Metab*, vol. 104, no. 6, pp. 2453-2461, Jun 1 2019,  
552 doi: 10.1210/jc.2018-02552.
- 553 [53] A. Coulden, R. Hamblin, J. Wass, and N. Karavitaki, "Cardiovascular health and mortality in  
554 Cushing's disease," *Pituitary*, Jul 22 2022, doi: 10.1007/s11102-022-01258-4.



- 555 [54] A. Faggiano *et al.*, "Cardiovascular risk factors and common carotid artery caliber and  
556 stiffness in patients with Cushing's disease during active disease and 1 year after disease  
557 remission," *J Clin Endocrinol Metab*, vol. 88, no. 6, pp. 2527-33, Jun 2003, doi:  
558 10.1210/jc.2002-021558.
- 559 [55] A. M. Isidori *et al.*, "The hypertension of Cushing's syndrome: controversies in the  
560 pathophysiology and focus on cardiovascular complications," *J Hypertens*, vol. 33, no. 1, pp.  
561 44-60, Jan 2015, doi: 10.1097/HJH.0000000000000415.
- 562 [56] D. Rizzoni *et al.*, "Hypertrophic remodeling of subcutaneous small resistance arteries in  
563 patients with Cushing's syndrome," *J Clin Endocrinol Metab*, vol. 94, no. 12, pp. 5010-8, Dec  
564 2009, doi: 10.1210/jc.2009-1588.
- 565 [57] C. MacLeod, P. W. F. Hadoke, and M. Nixon, "Glucocorticoids: Fuelling the Fire of  
566 Atherosclerosis or Therapeutic Extinguishers?," *Int J Mol Sci*, vol. 22, no. 14, Jul 16 2021, doi:  
567 10.3390/ijms22147622.
- 568 [58] R. N. Clayton, "Cardiovascular complications of Cushing's syndrome: Impact on morbidity and  
569 mortality," *J Neuroendocrinol*, p. e13175, Jun 8 2022, doi: 10.1111/jne.13175.
- 570 [59] G. Giacchetti *et al.*, "Overexpression of the renin-angiotensin system in human visceral  
571 adipose tissue in normal and overweight subjects," *Am J Hypertens*, vol. 15, no. 5, pp. 381-8,  
572 May 2002, doi: 10.1016/s0895-7061(02)02257-4.
- 573 [60] S. Engeli *et al.*, "Weight loss and the renin-angiotensin-aldosterone system," *Hypertension*,  
574 vol. 45, no. 3, pp. 356-62, Mar 2005, doi: 10.1161/01.HYP.0000154361.47683.d3.
- 575 [61] D. J. Campbell, "Circulating and tissue angiotensin systems," *J Clin Invest*, vol. 79, no. 1, pp. 1-  
576 6, Jan 1987, doi: 10.1172/JCI112768.
- 577 [62] C. Klett *et al.*, "Regulation of hepatic angiotensinogen synthesis and secretion by steroid  
578 hormones," *Endocrinology*, vol. 130, no. 6, pp. 3660-8, Jun 1992, doi:  
579 10.1210/endo.130.6.1597163.
- 580 [63] S. Baid and L. K. Nieman, "Glucocorticoid excess and hypertension," *Curr Hypertens Rep*, vol.  
581 6, no. 6, pp. 493-9, Dec 2004, doi: 10.1007/s11906-004-0046-0.
- 582 [64] M. A. Magiakou, P. Smyrnaki, and G. P. Chrousos, "Hypertension in Cushing's syndrome,"  
583 *Best Pract Res Clin Endocrinol Metab*, vol. 20, no. 3, pp. 467-82, Sep 2006, doi:  
584 10.1016/j.beem.2006.07.006.
- 585 [65] D. A. Scheuer and A. G. Bechtold, "Glucocorticoids potentiate central actions of angiotensin  
586 to increase arterial pressure," *Am J Physiol Regul Integr Comp Physiol*, vol. 280, no. 6, pp.  
587 R1719-26, Jun 2001, doi: 10.1152/ajpregu.2001.280.6.R1719.
- 588 [66] A. Sato, H. Suzuki, M. Murakami, Y. Nakazato, Y. Iwaita, and T. Saruta, "Glucocorticoid  
589 increases angiotensin II type 1 receptor and its gene expression," *Hypertension*, vol. 23, no. 1,  
590 pp. 25-30, Jan 1994, doi: 10.1161/01.hyp.23.1.25.
- 591 [67] H. Shibata, H. Suzuki, T. Maruyama, and T. Saruta, "Gene expression of angiotensin II  
592 receptor in blood cells of Cushing's syndrome," *Hypertension*, vol. 26, no. 6 Pt 1, pp. 1003-10,  
593 Dec 1995, doi: 10.1161/01.hyp.26.6.1003.
- 594 [68] P. M. Stewart, B. R. Walker, G. Holder, D. O'Halloran, and C. H. Shackleton, "11 beta-  
595 Hydroxysteroid dehydrogenase activity in Cushing's syndrome: explaining the  
596 mineralocorticoid excess state of the ectopic adrenocorticotropin syndrome," *J Clin  
597 Endocrinol Metab*, vol. 80, no. 12, pp. 3617-20, Dec 1995, doi: 10.1210/jcem.80.12.8530609.
- 598 [69] M. Quinkler and P. M. Stewart, "Hypertension and the cortisol-cortisone shuttle," *J Clin  
599 Endocrinol Metab*, vol. 88, no. 6, pp. 2384-92, Jun 2003, doi: 10.1210/jc.2003-030138.
- 600 [70] L. K. Nieman *et al.*, "Successful treatment of Cushing's syndrome with the glucocorticoid  
601 antagonist RU 486," *J Clin Endocrinol Metab*, vol. 61, no. 3, pp. 536-40, Sep 1985, doi:  
602 10.1210/jcem-61-3-536.
- 603 [71] G. J. Mangos, J. A. Whitworth, P. M. Williamson, and J. J. Kelly, "Glucocorticoids and the  
604 kidney," *Nephrology (Carlton)*, vol. 8, no. 6, pp. 267-73, Dec 2003, doi: 10.1111/j.1440-  
605 1797.2003.00215.x.

- 606 [72] J. A. Whitworth, D. Gordon, J. Andrews, and B. A. Scoggins, "The hypertensive effect of  
607 synthetic glucocorticoids in man: role of sodium and volume," *J Hypertens*, vol. 7, no. 7, pp.  
608 537-49, Jul 1989, doi: 10.1097/00004872-198907000-00005.
- 609 [73] M. Montrella-Waybill, J. N. Clore, A. C. Schoolwerth, and C. O. Watlington, "Evidence that  
610 high dose cortisol-induced Na<sup>+</sup> retention in man is not mediated by the mineralocorticoid  
611 receptor," *J Clin Endocrinol Metab*, vol. 72, no. 5, pp. 1060-6, May 1991, doi: 10.1210/jcem-  
612 72-5-1060.
- 613 [74] A. H. Danser, F. H. Derkx, H. W. Hense, X. Jeunemaitre, G. A. Riegger, and H. Schunkert,  
614 "Angiotensinogen (M235T) and angiotensin-converting enzyme (I/D) polymorphisms in  
615 association with plasma renin and prorenin levels," *J Hypertens*, vol. 16, no. 12 Pt 2, pp.  
616 1879-83, Dec 1998, doi: 10.1097/00004872-199816121-00005.
- 617 [75] P. Ferrari, E. Lovati, and F. J. Frey, "The role of the 11beta-hydroxysteroid dehydrogenase  
618 type 2 in human hypertension," *J Hypertens*, vol. 18, no. 3, pp. 241-8, Mar 2000, doi:  
619 10.1097/00004872-200018030-00001.

620

621

622 **Table 1**

	Non-functional adenoma (n=5)	Cushing's syndrome (n=12)	Reference	p.value
Age (years)	51 ± 5.4	44.5 ± 2.6		0.2448
Sex (female/male)	(5/0)	(12/0)		1
BMI (kg/m <sup>2</sup> )	27.36 ± 2.7	28.05 ± 2.0		0.9593
WC (cm)	-	93.07 ± 18.4		-
WHR	-	0.8417 ± 0.03	< 0.85	-
Fasting glucose (mg/dl)	106.4 ± 11.6	93.50 ± 2.7	60 - 99	0.3410
HbA1c (%)	5.500 ± 0.2	5.750 ± 0.1		0.3559
HOMA-IR	-	3.769 ± 0.9 (n=11)		-
Diast. BP (mmHG)	83.80 ± 1.9	92.40 ± 2.5		0.0493*
Syst. BP (mmHG)	126.80 ± 5.2	142 ± 3.6		0.0209*
Serum Potassium (mmol/L)	4.420 ± 0.16	4.167 ± 0.09	3.5 - 5.1	0.2015
LNSC (ng/ml)	0.9 ± 0.3 (n=3)	10.78 ± 4.2	≤ 1.5	0.0044**
UFC (µg/24h)	45 ± 0 (n=1)	434.3 ± 108.4	≤ 83.0	-
ACTH basal (pg/ml)	10.60 ± 1.9	2.917 ± 0.4	4 - 50	0,0002***
LDDST (µg/dl)	1.7 ± 0.8 (n=3)	16.94 ± 2.3	≤ 1.8	0.0044**
Cortisol basal	9.380 ± 1.7	17.59 ± 2.3		0.0255*

623

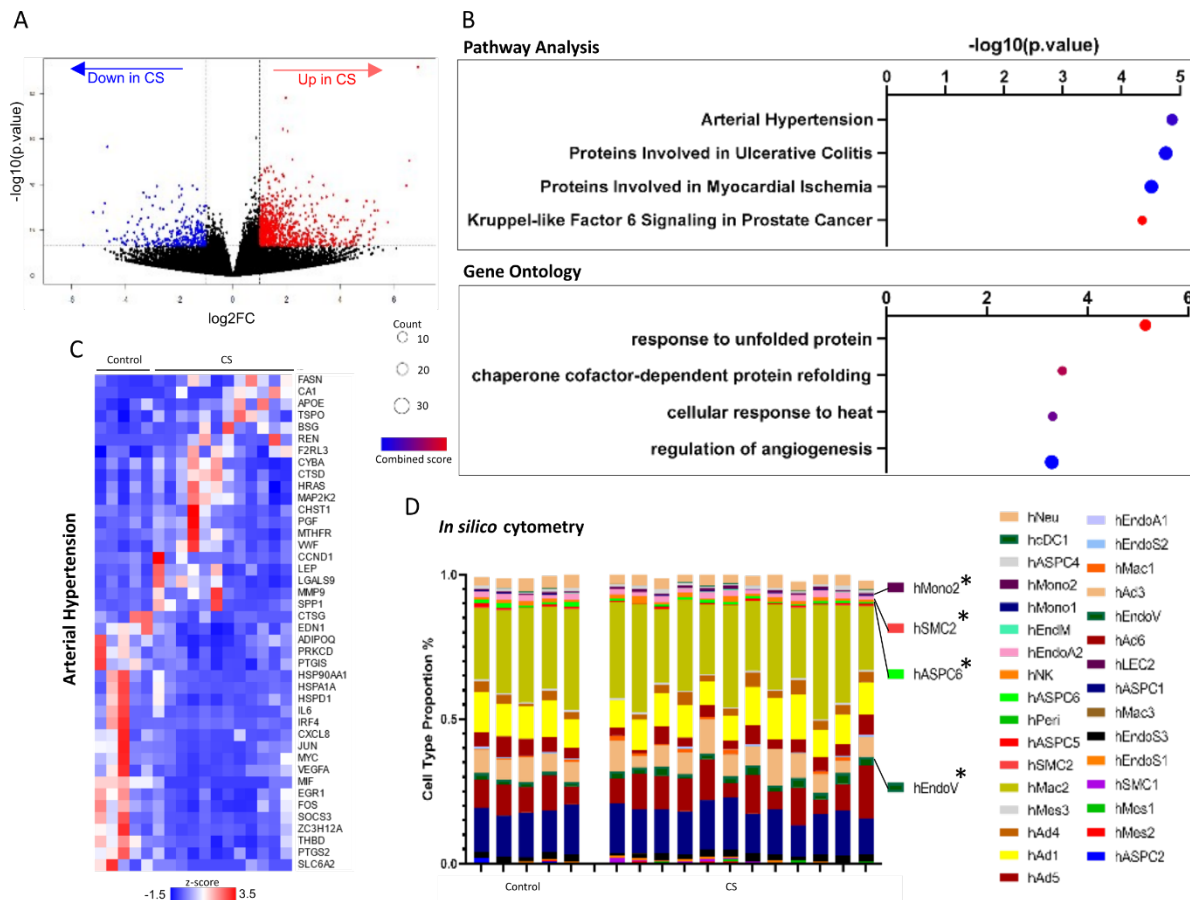
624 **Table 1: Patient characteristics at the time of diagnosis.** Statistical significance was measured using  
625 Mann-Witney U test for continuous data and Fishers exact test for categorical data. Data were  
626 considered significant at p < 0.05\*, p < 0.01\*\*, p < 0.001\*\*\*, p < 0.0001\*\*\*\*. Abbreviations: BMI, Body  
627 mass index; WHR, Waist-to-hip ratio; WC, waist circumference; HbA1c, Hemoglobin A1c; HOMA-IR,  
628 homeostatic model assessment for insulin resistance; BP, blood pressure; LNSC, late night salivary  
629 cortisol; UFC, urinary free cortisol, LDDST, low dose dexamethasone suppression test. Data is shown  
630 as SEM ± standard deviation.

631

632 **Figures and Figure Legends**

633

634 **Figure 1**



635

636 **Figure 1: Transcriptome changes in female human patients during active adrenal Cushing syndrome**

637 **disease in visceral adipose tissue and control patients with non-functional adenomas.** A) Volcano

638 plot from 1073 DEG between female CS patients and matched control patients  $p.value < 0.05$ ,  $\log_2FC$

639  $< 1$ . B) Elsevier Pathway analysis from DEG, top 4 terms shown and Gene Ontology biological process

640 analysis from DEG, top 4 terms shown (response to unfolded protein (GO:0006986), chaperone

641 cofactor-dependent protein refolding (GO:0051085), cellular response to heat (GO:0034605),

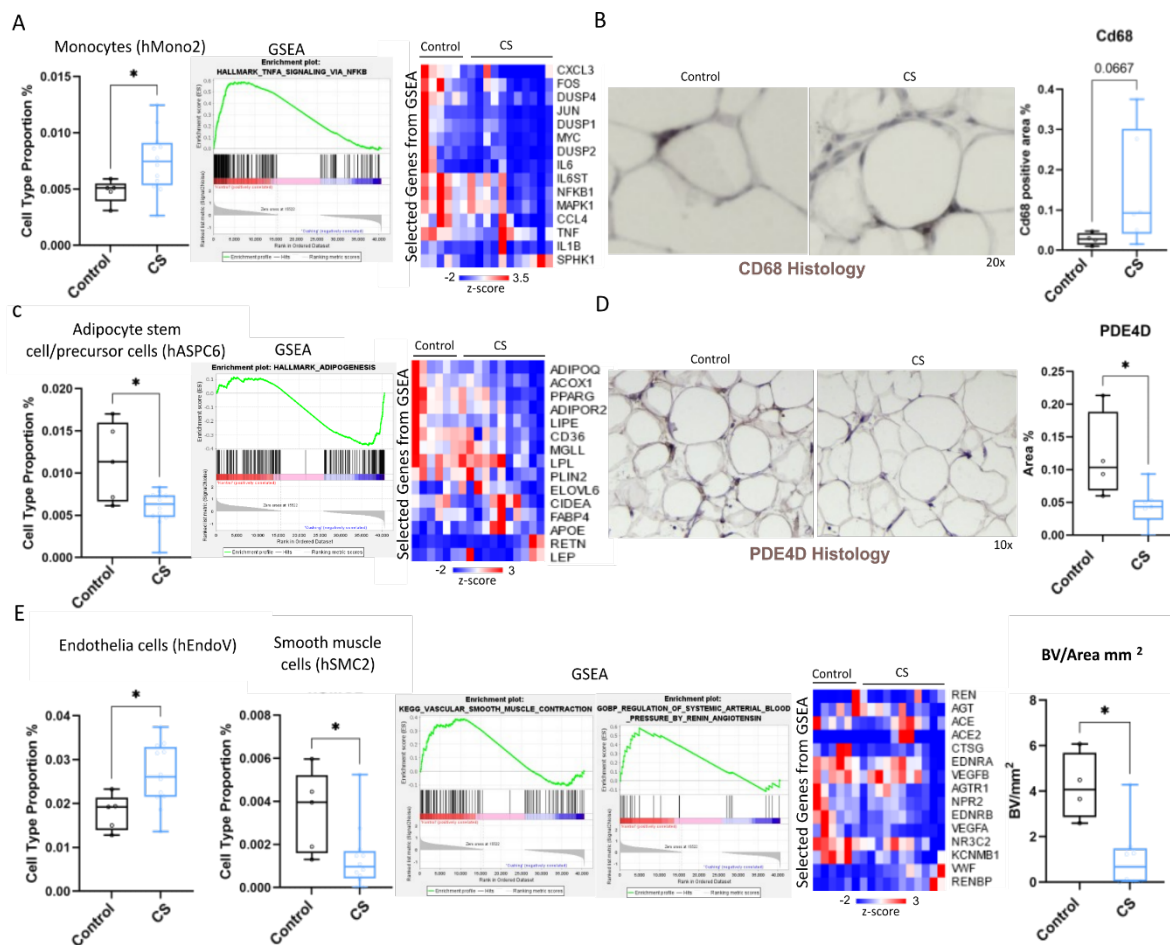
642 regulation of angiogenesis (GO:0045765)). C) Genes of the top changed Pathway Analysis terms shown

643 as heatmap with z-score D) In silico cell type distribution analysis using CibersortX from human patients

644 from Emont *et al* 2022.

645

646 **Figure 2**

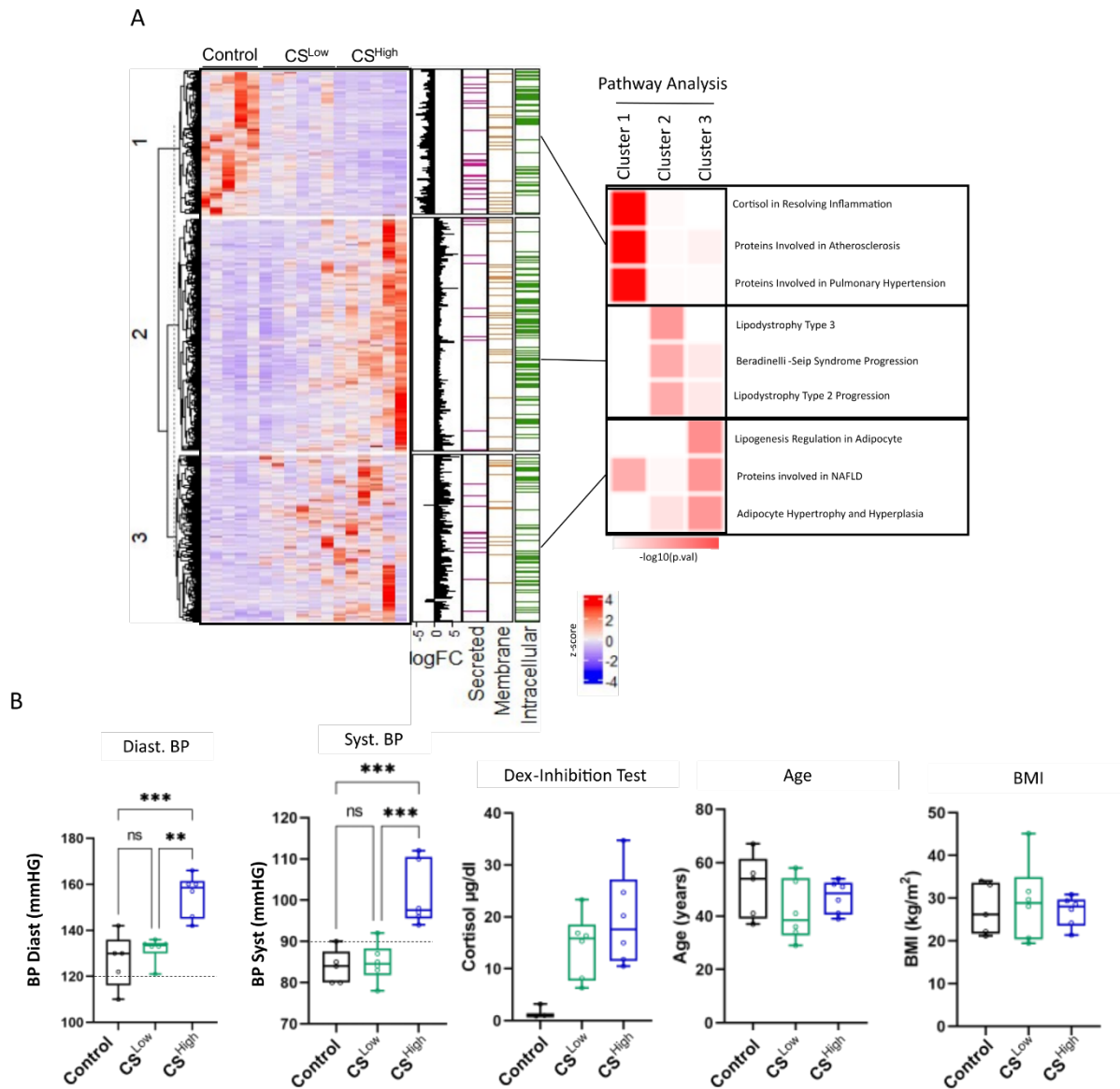


647

648 **Figure 2: In silico analysis together with histology reveals differential cell populations in the VAT of**  
 649 **female patients with CS and with non-functional adenomas as controls.** A) Cell population of  
 650 monocyte sup population 2, with GSEA between CS patients and control patients. Representative  
 651 genes for the GSEA and cell population are shown. B) Histology for CD68 in patients with CS compared  
 652 to control patients (n=4-6). C) Cell population of adipocyte stem cell and precursor population 6, with  
 653 GSEA between CS and control patients. Representative genes for the GSEA and cell population are  
 654 shown. D) Histology for PDE4D in patients with CS compared to control patients. E) Cell populations of  
 655 human endothelia cells and human smooth muscle cells, with GSEA between CS and control patients.  
 656 Representative genes for the GSEA and cell population are shown. Blood vessels / tissue area were  
 657 counted. Statistical significance was measured using student t-test or Mann-Witney test. Data were  
 658 considered significant at  $p < 0.05^*$ ,  $p < 0.01^{**}$ ,  $p < 0.001^{***}$ ,  $p < 0.0001^{****}$ .

659

660 **Figure 3**

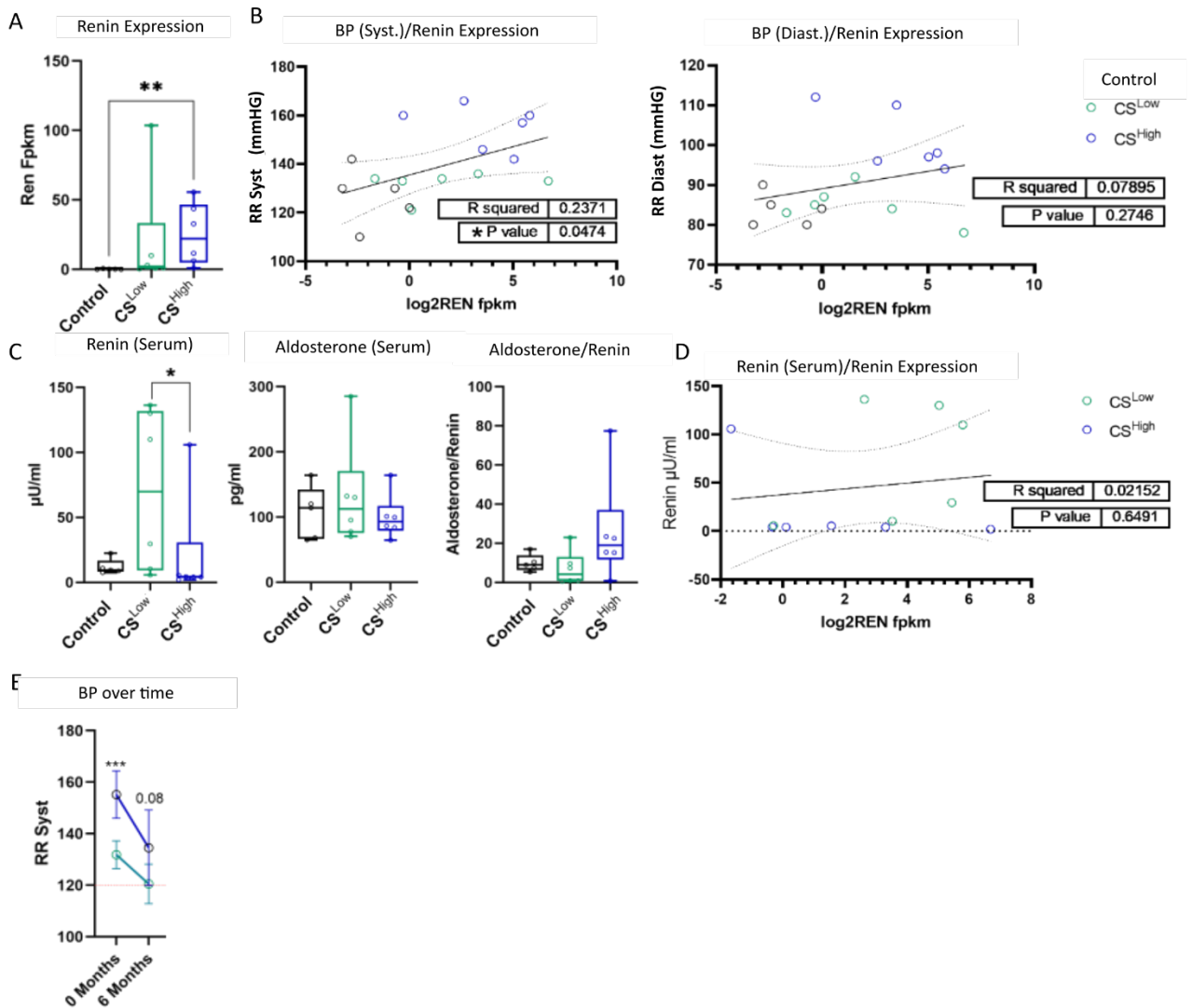


661

662 **Figure 3: Visceral adipose tissue transcriptome of female CS patients reveals blood pressure**  
 663 **heterogeneity. Female patients with non-functional adenomas served as controls** A) Heatmap  
 664 showing the DEG between CS and control patients after hierarchical clustering with Pathway Analysis  
 665 from the 3 identified clusters. B) Patient data shown as boxplots after separation into the 3 groups  
 666 given by the clustering Statistical significance was measured using two-way ANOVA. Data were  
 667 considered significant at  $p < 0.05^*$ ,  $p < 0.01^{**}$ ,  $p < 0.001^{***}$ ,  $p < 0.0001^{****}$ .

668

669 **Figure 4**



670

671 **Figure 4: Renin and other components of the RAAS are regulated in VAT from a subset of female CS**  
 672 **patients and control systemic blood pressure. A)** Renin (REN) gene expression from Fpkms shown. **B)**  
 673 Correlation between systemic systolic and diastolic blood pressure and REN (VAT) gene expression. **C)**  
 674 Renin and aldosterone serum levels. **D)** Correlation between Renin VAT gene expression and Renin  
 675 serum levels. **E)** Blood pressure decrease over time after surgery is shown for 6 months from both  
 676 subgroups of CS patients. Statistical significance was measured using two-way ANOVA or Mann-Witney  
 677 test. Data were considered significant at  $p < 0.05^*$ ,  $p < 0.01^{**}$ ,  $p < 0.001^{***}$ ,  $p < 0.0001^{****}$ .

678