

Dobutamine Stress Echocardiography in Low-Gradient Aortic Stenosis

Nils Sofus Borg Mogensen, MD^{1,2,3}, Mulham Ali, MD^{1,3}, Rasmus Carter-Storch, MD, Ph.D¹, Mohamed-Salah Annabi, MD², Jasmine Grenier-Delaney, MD², Jacob Eifer Møller, MD, Ph.D, DMSci^{1,4}, Kristian Altern Øvrehus MD, PhD¹, Patricia A Pellikka, MD⁵, Philippe Pibarot DVM, PhD², Marie-Annick Clavel DVM, PhD^{2,3}, Jordi Sanchez Dahl MD, PhD, DMSci^{1,3}

¹ **Department of Cardiology**, Odense University Hospital, Odense, Denmark.

² **Institut Universitaire de Cardiologie et de Pneumologie de Québec (Québec Heart and Lung Institute)**, Laval University, Québec, Québec, Canada.

³ **Clinical Institute**, University of Southern Denmark, Odense, Denmark.

⁴ **Department of Cardiology**, Copenhagen University Hospital Rigshospitalet, Copenhagen, Denmark.

⁵ **Department of Cardiovascular Medicine**, Mayo Clinic, Rochester, Minnesota, United States of America.

Corresponding author:

Nils Sofus Borg Mogensen, MD

Nils.Sofus.Borg.Mogensen@rsyd.dk

Nørregade 54, 01 TV, 5000 Odense C

Denmark

Word count: 3.666

28 **Abstract**

29 **Background:** Dobutamine stress echocardiography (DSE) is recommended by guidelines to distinguish
30 between true-severe and pseudo-severe aortic stenosis (AS) in patients with low-gradients and left
31 ventricular ejection fraction (LVEF) <50%. However, DSE has mostly been tested in the setting of LVEF<35%
32 and determination of AS severity has mostly been based on outcome data and surgeon's evaluation. The
33 purpose of this study was to examine the diagnostic accuracy of guideline recommendations for DSE, in
34 patents with low-gradient severe AS with a wide range of LVEF and to examine the interaction between the
35 diagnostic accuracy of DSE and LVEF. Furthermore, we wanted to study the safety and feasibility of DSE in
36 patients with LVEF>50%.

37 **Methods:** Patients with aortic mean gradient <40 mmHg, AVA <1.0 cm², and stroke volume index ≤35
38 mL/m² undergoing DSE and Cardiac Computer Tomography (C-CT) were identified from three prospectively
39 collected patient cohorts, and stratified according to LVEF; LVEF <35%, LVEF 35-50% & LVEF >50%. Severe
40 AS was defined as AVC score ≥2000 AU among men, and ≥1200 AU for women on C-CT.

41 **Results:** Two hundred twenty-one patients were included in the study. Seventy-eight (35%) presented with
42 LVEF <35%, 67 (30%) with LVEF 35-50%, and 76 (34%) with LVEF >50%. DSE was performed without adverse
43 symptoms or significant arrhythmias in 215 (96%) patients and stroke volume increased uniformly with no
44 significant differences between groups (p=0.28).

45 Mean gradient and V_{max} during DSE showed significantly diagnostic heterogeneity between LVEF groups,
46 being most precise when LVEF <35% (both AUC=0.90), albeit with optimal thresholds of 30 mmHg & 377
47 cm/s, and a limited diagnostic yield in patients with LVEF≥35% (AUC=0.67 in LVEF 35-50% and AUC 0.65 in
48 LVEF≥35%). Using guideline thresholds led to a sensitivity and specificity of 49%/84% for all patients with
49 LVEF <50%.

50 **Conclusion:** While DSE is safe and leads to a uniform increase in stroke volume in patients with low
51 gradient AS regardless of baseline LVEF, the association between DSE gradients and AS severity assessed by

52 C-CT demonstrates important heterogeneity depending on LVEF, with highest accuracy in patients with
53 LVEF <35%.

54

55 **Clinical perspective**

56 What is new?

- 57 • Dobutamine stress echocardiography (DSE) is safe in patients with low-gradient AS with LVEF >50%,
58 and leads to similar increase in stroke volume as in patients with LVEF <50%.
- 59 • The diagnostic accuracy of DSE, compared to AVC as the reference for severe AS, depends on LVEF
60 with highest accuracy in patients with LVEF <35%.
- 61 • Suggested reference thresholds for DSE may not be the most accurate for AS severity, when
62 compared to AVC.

63 What are the clinical implications?

- 64 • Based on our study, we suggest that DSE should primarily be used for determining AS severity in
65 patients with LVEF <35%.

66 **Non-standard abbreviations and acronyms:**

67 AS - Aortic Stenosis

68 AUC – Area under curve

69 AVA – Aortic Valve area

70 C-CT – Cardiac computer tomography

71 DSE – Dobutamine stress echocardiography

72 LV – left ventricular

73 LVMi – Left ventricular mass index

74 RWT – Relative wall thickness

75 SVi – Stroke volume indexed

76 Vmax – Aortic valve peak velocity

77 While the diagnosis of severe aortic stenosis (AS) is straightforward when aortic valve area (AVA) is <1.0
78 cm^2 and transvalvular mean gradient is ≥ 40 mmHg,¹ diagnosis may be more challenging when gradients are
79 low. When this occurs in the presence of reduced stroke volume (SV) and left ventricular ejection fraction
80 (LVEF) $<50\%$, guidelines recommend the use of dobutamine stress echocardiography (DSE) to distinguish
81 between true-severe –and pseudo-severe AS.²⁻⁴ However, only few data support a LVEF threshold of 50% as
82 most studies have tested DSE in patients with severely reduced LVEF. Furthermore, evidence suggests that
83 in AS LVEF may even be considered reduced already when less than 60%,^{2, 5} explaining why some, advocate
84 DSE may provide diagnostic information even when LVEF $>50\%$.⁶ However, all these studies are limited by
85 the lack of a clear gold-standard of assessing AS severity,^{7, 8} and have thus largely been based on prognostic
86 data⁹ rather than objective measures for AS severity per se. This poses a potential problem as DSE findings
87 not being blinded for the clinicians, may have influenced decision making, potentially biasing the clinical
88 end-point,¹⁰⁻¹² even more so as even moderate AS may be associated with a poor prognosis when LVEF is
89 reduced.¹³

90 Aortic valve calcification (AVC) assessed by cardiac computer tomography (C-CT) has recently emerged as
91 an additional method of determining AS-severity.³ AVC has been demonstrated to clearly discriminate
92 between moderate and severe AS,¹⁴ and is associated with outcome.¹⁵ Accordingly, ESC and AHA/ACC
93 recommend the use of AVC to diagnose severe AS, in particular among patients with low-gradient AS.^{2, 3}

94 The purpose of this study was to examine the diagnostic accuracy of guideline recommendations for DSE in
95 low-gradient AS, in patents with a wide range of LVEF and to examine if an interaction between the
96 diagnostic accuracy of DSE and LVEF exist. Furthermore, we studied the safety and feasibility of DSE in
97 patients with LVEF $>50\%$.

98

99 **Methods**

100 We identified patients aged ≥ 18 years with low-gradient AS (aortic mean-gradient <40 mmHg and AVA <1.0
101 cm^2) and stroke volume index (SV_i) ≤ 35 mL/m² from two prospectively collected cohorts at Quebec Heart

102 and Lung Institute, Canada^{12, 16} and a prospective cohort collected at Odense University Hospital, Denmark
103 between 2019 and 2022.

104 For this study, we excluded patients with missing DSE or C-CT data or with concomitant moderate or severe
105 valvular heart disease other than AS. Patients were stratified in three subgroups according to LVEF (LVEF
106 <35%, LVEF 35-50% and LVEF >50%) at the baseline evaluation which included a clinical examination,
107 transthoracic echocardiography and DSE.

108 Research was performed in accordance with the Declaration of Helsinki, and informed consent was
109 obtained according to approval by each institutional review board.

110

111 **Echocardiography**

112 Patients underwent a comprehensive transthoracic echocardiographic examination using commercially
113 available ultrasound systems in accordance with the American Society of Echocardiography guidelines^{17, 18}
114 with interpretation performed by experienced cardiologists. Doppler values were calculated as the average
115 of three cardiac cycles for patients with sinus rhythm and five cycles for atrial fibrillation. LV outflow tract
116 diameter was measured in the parasternal long-axis view in early systole from the point of aortic cusp
117 insertion into the interventricular septum to the point of aortic cusp insertion into the intervalvular fibrosis.
118 AVA was estimated by quantitative Doppler ultrasound using the continuity equation. Peak and mean flow
119 velocity across the valve were determined in the window where the highest velocity could be recorded
120 using continuous wave Doppler with the cursor as parallel as possible with the flow across the valve. Peak
121 and mean transvalvular gradients were estimated using the modified Bernoulli equation.¹ LVEF was
122 determined by the Simpson biplane method. LV stroke volume was calculated using pulsed-wave Doppler
123 as the product of the LV outflow area and LV outflow tract time velocity integral and indexed for body
124 surface area (SVi). LV mass index was estimated using the Devereux formula.¹⁹ In men LV mass index >116
125 g/m² and in women, >104 g/m² were considered indicative of LV hypertrophy.²⁰ Relative wall thickness
126 (RWT) was calculated for assessment of LV geometry using the formula $2 \times \text{posterior wall thickness} / \text{LV}$

127 internal diameter in diastole. Increased relative wall thickness was present when this ratio was >0.42 .²¹

128 Normal geometry was present when LV mass index and RWT were normal, concentric remodeling with
129 increased RWT and normal LV mass index, eccentric LV hypertrophy with increased LV mass index and
130 normal RWT, and concentric LV hypertrophy when both were increased.

131 Valvulo-arterial impedance was calculated using the formula (systolic blood pressure + mean aortic valve
132 pressure gradient)/SVi.²² Pulse pressure was measured as the difference between systolic and diastolic
133 blood pressure, and systemic arterial compliance was calculated as SVI/pulse pressure,²² Systemic vascular
134 resistance was calculated as $80 \times (1/3 \times \text{systolic blood pressure} + 2/3 \times \text{diastolic blood pressure}) / \text{cardiac}$
135 output.²²

136

137 **Dobutamine stress echocardiography**

138 A comprehensive DSE was performed in all patients. Dobutamine infusion was initiated at a dose of 5
139 $\mu\text{g}/\text{kg}/\text{min}$ and increased every 3rd min to a maximal dosage of $20\mu\text{g}/\text{kg}/\text{min}$. DSE was terminated early if
140 an adverse event occurred, if the patient became symptomatic during the examination, or if a mean
141 gradient > 40 mmHg was recorded in patients with LVEF $<50\%$. Contractile reserve was defined as an
142 increase in SV_i exceeding 20%. We defined patients as still having a low-flow state if SV_i was ≤ 35 mL/m²
143 despite DSE.

144 Three cardiac cycles were averaged for all measurements in patients with sinus rhythm, and five cardiac
145 cycles were averaged for patients with atrial fibrillation. Echocardiographic measurements of aortic flow
146 and LV were obtained at each stage. During DSE heart rate, systolic and diastolic blood pressure was
147 recorded at each dose increment.

148

149 **Cardiac computer tomography**

150 All patients underwent a non-contrast C-CT with a tube potential at 120 kV. Operators blinded to patient
151 clinical and echocardiographic data performed all MDCT analyses. The aortic valve was visualised in

152 multiple planes, and careful measurement section by section aimed to accurately distinguish contiguous
153 calcium in coronary arteries, mitral valve annulus or aortic wall. AVC score was assessed using the Agatston
154 method, and expressed in arbitrary units. We defined severe AS using the sex-specific thresholds
155 recommended by guidelines, AVC score ≥ 2000 AU in males, and ≥ 1200 AU in females on C-CT.^{2, 3, 23}

156

157 **DSE safety end-points**

158 Patients undergoing DSE were safety monitored for adverse events. Adverse events during DSE were
159 defined as new onset of complex ventricular arrhythmia, a rise in systolic blood pressure ≥ 200 mmHg, a
160 decrease in systolic blood pressure < 80 mmHg, LV outflow tract peak-flow velocity ≥ 2.0 m/sec or systolic
161 anterior motion of the mitral valve.

162

163 **Statistical analysis**

164 Continuous variables were tested for normality with the Shapiro-Wilk test and are expressed as either
165 mean \pm SD or median and interquartile range. Differences in values between groups were tested by 1-way
166 ANOVA. Categorical variables are expressed as number and percentages, and tested by the χ^2 exact test of
167 Fisher exact test when the expected value in any of the cells of a contingency table was below 5.

168 Time between C-CT and DSE, and AVC are presented as median and interquartile range, and differences
169 were tested using the Kruskal-Wallis test because of non-Gaussian distribution for these variables.

170 Correlations were obtained using Spearman rank test. For overall tests, a P value of < 0.05 were considered
171 significant and 2-sided tests were used. Comparison of each method's predictive capability was performed
172 by comparing the C-statistic derived from the area under the receiver operating characteristic curves using
173 the generalized U-statistic as proposed by DeLong et al.²⁴ Statistical analysis was performed with STATA/SE
174 V.17.0 (StataCorp, Texas, USA) software.

175

176

177 **Results**

178 We identified 635 patients with low-gradient AS, and excluded those with missing C-CT data (n=240),
179 missing DSE data (n=178), and AVA>1.0 cm² (n=8) or mean gradient>40 mmHg (n=1) leaving 221 patients
180 (n=150 Quebec Heart Institute, n=71 Odense University Hospital) in this study. Seventy-eight (35%)
181 presented with LVEF <35%, 67(30%) with LVEF 35-50%, and 76(34%) with LVEF >50%. DSE and C-CT were
182 performed within a median timespan of 12 [1; 26] days, with no difference between groups (p=0.17).
183 Patients with LVEF >50% were more likely to be women, had less symptoms, and were less likely to have a
184 pacemaker or ICD-device (Table 1). Severe AS, as evaluated by AVC, was present among 102 (46%) patients
185 with no differences between groups, (55% vs 37% vs 46%, LVEF<35% LVEF 35-50%, LVEF>50% respectively,
186 p = 0.10). Patients with LVEF >50% presented with higher V_{max} (304±45 vs 302±43vs 324±37cm/s, p<0.01)
187 and mean gradient (22±7 vs 23±7 vs 25±6mmHg, p=0.03), despite similar AVA.
188 An inverse relationship was seen between LVEF and left ventricular diameter (r=-0.65, p<0.001) (table 1).
189 Patients with LVEF<35% had higher LVM_i and lower RWT than patients with LVEF>35%. These differences
190 translated to significant differences in geometric patterns with eccentric hypertrophy being the most
191 common pattern among patients with LVEF<35%, and patients with LVEF 35-50%, and normal geometry in
192 patients with LVEF>50% (p<0.001) (Table 1). All patients had SV_i<35 ml/m², but a higher resting SV_i was
193 present in patients with LVEF >50% (26±5vs 26±5 vs 29±4mL/m², p<0.01, Table 1).

194

195 **Dobutamine stress echocardiography**

196 DSE was performed without adverse symptoms in two-hundred-fifteen (97%) patients. However, in six
197 patients DSE was discontinued prematurely due to adverse symptoms (n=1 systolic blood pressure>200
198 mmHg, n=1 angina, n=1 dyspnea=1, n=3 other discomfort) being most common among patients with
199 LVEF>50% (0% vs 2% vs. 9%, p=0.04, LVEF<35%; LVEF 35-50% and LVEF>50% respectively). In contrast no
200 ventricular arrhythmia during DSE were seen in patients with LVEF>50% while 8 patients with LVEF<50% (4
201 in LVEF<35% and 4 in LVEF 35-50%) experienced complex ventricular arrhythmia during DSE (Table 2).

202 During DSE, stroke volume increased uniformly with no between groups differences ($15\pm 12\text{mL}$ vs $13\pm 13\text{mL}$
203 vs $12\pm 12\text{mL}$, $p=0.28$), however more patients with reduced LVEF increased their $SV_i \geq 20\%$ (65% vs 49% vs
204 44% , $p=0.03$). One-hundred-twenty (56%) patients still had $SV_i \leq 35 \text{ mL/m}^2$ at the end of DSE evenly split
205 between LVEF subgroups (Table 3). Stroke volume increased unanimously regardless of a history of
206 coronary artery disease or intracardiac device, beta-blocker therapy or AS severity (Supplemental figure 1).
207 Despite similar systemic vascular resistance and valvulo-arterial impedance during baseline and
208 dobutamine infusion, patients with $LVEF > 35\%$ experienced lower systemic arterial compliance than those
209 with $LVEF < 35\%$ both at baseline and during DSE (0.56 ± 0.21 vs 0.48 ± 0.17 vs $0.50\pm 0.14 \text{ ml/m}^2/\text{mmHg}$, $p=0.02$,
210 $LVEF < 35\%$, $LVEF 35-50\%$, $LVEF > 50\%$ respectively).

211

212 **Classifying severe AS in the entire cohort**

213 Receiver operating characteristic curves for DSE-derived mean gradient, V_{max} and AVA are provided in
214 Figure 2. C-statistics for the mean gradient ($AUC=0.73$) were non-significant higher than V_{max} ($AUC=0.70$)
215 but significantly higher than AVA ($AUC=0.61$) ($p=0.01$, Figure 2), with differences remaining non-significant
216 in a direct comparison between mean gradient and V_{max} after including AVA in both models ($AUC 0.74$ vs
217 0.72 , $p=0.12$).

218 The optimal cut-off points for discriminating between severe and pseudo-severe-AS during DSE was
219 identified from ROC-curves; 34 mmHg , 389 cm/s and 0.9 cm^2 with a sensitivity and specificity of $75\%/64\%$
220 vs $70\%/63\%$ vs $63\%/55\%$ when utilising these thresholds (mean gradient, V_{max} and AVA respectively) (Table
221 4). Applying either of the guideline specific thresholds; mean gradient $> 40\text{mmHg}$, $V_{\text{max}} > 400\text{cm/s}$ or AVA
222 $< 1.0\text{cm}^2$, lead to a sensitivity and specificity of $49\%/78\%$ vs $64\%/66\%$, vs $41\%/78\%$, respectively (Table 4).
223 Combining guideline recommendations for AVA and either mean gradient or V_{max} led to a sensitivity and
224 specificity of $54\%/77\%$ for the entire cohort.

225

226

227 **Classifying severe AS according to LVEF subgroups.**

228 Comparing the ability of DSE variables to predict severe AS demonstrated significant heterogeneity
229 between LVEF subgroups. AVA displayed a rather uniform optimal cut-off between LVEF subgroups (1.0 cm²
230 vs 0.9 cm² vs 0.8 cm², LVEF<35%, LVEF 35-50%, LVEF>50%, respectively) with similar c-statistics (AUC=0.68,
231 vs AUC 0.62 vs 0.54, p=0.36, LVEF<35, LVEF35-50%, LVEF>50% respectively, Figure 3). In contrast, the
232 association of both mean gradient and V_{max} with AS severity was more accurate in the LVEF<35% group
233 (Mean gradient; AUC=0.90 vs 0.67 vs 0.65, p=0.0007, V_{max}; AUC=0.90 vs 0.66 vs 0.60, p=0.0001, Figure 3),
234 with different optimal cut-off points (30 vs 45 vs 37mmHg & 377 vs 430 vs 400cm/s, LVEF<35%, LVEF 35-
235 50%, LVEF>50%, respectively).

236 Using guideline thresholds for both AVA and either mean gradient or V_{max} led to a sensitivity and specificity
237 of 54%/93% vs 41%/78% vs 64%/63%, LVEF<35%, LVEF 35-50%, LVEF>50%, respectively (Figure 4). For all
238 patients with LVEF <50%, the sensitivity and specificity was 49%/84%.

239 Optimal cutoff points were similar between LVEF subgroups, regardless of including center or flow-state
240 during DSE.

241

242 **Discussion:**

243 In this study with prospectively enrolled patients with low-gradient AS undergoing DSE we demonstrate
244 four novel findings. 1) DSE is safe with few patients experiencing dobutamine associated complications in
245 patients with reduced as well as preserved LVEF. 2) DSE leads to a uniform increase in stroke volume in
246 patients with low gradient aortic stenosis regardless of baseline LVEF. 3) The transvalvular mean gradient
247 and transvalvular peak-velocity during DSE outperformed AVA in diagnosing severe AS adjudicated with C-
248 CT aortic valve calcium score. However, mean gradient was associated with a lower sensitivity but higher
249 specificity than V_{max}. Utilizing the guideline recommendations of combining transvalvular gradients with
250 AVA resulted in a specific but non-sensitive discrimination between severe and pseudo-severe AS in
251 patients with LVEF<50%, highlighting that a large proportion of patients with high AVC are labeled as

252 pseudo-severe AS based on DSE findings. This suggests that there is a discrepancy between the guideline
253 recommended thresholds of DSE and CT indices of severe AS. 4) Although AVA during DSE provided
254 modest, but similar information regardless of LVEF, with a rather uniform optimal cut-off of 0.9 cm^2 , both
255 transvalvular mean-gradient and peak-velocity demonstrated important heterogeneity with outstanding
256 discrimination in patients with $\text{LVEF} < 35\%$ while only modest in those with $\text{LVEF} > 35\%$. In addition, the
257 optimal discriminatory threshold was markedly different between LVEF groups with a mean-gradient 30
258 mmHg being the best cut-off in patients with $\text{LVEF} < 35\%$, and 40 mmHg in those with $\text{LVEF} > 35\%$. The later
259 suggests that discrepancies exist between guidelines proposed thresholds for DSE and CT in the assessment
260 of severe AS and reduced LVEF.

261

262 LOW-GRADIENT AS AND DSE IN CURRENT GUIDELINES

263 While for decades it has been accepted that severe AS may occur despite low-gradients, when LVEF is
264 reduced,²⁵ it was not until the seminal paper by Hachicha and colleagues²⁶ that it became clear that this
265 could also be the case when $\text{LVEF} > 50\%$. Regardless of LVEF, low-gradient AS raises the diagnostic
266 conundrum of differentiating between severe- and pseudo-severe AS.

267 Currently, guidelines distinguish between patients according to stroke volume. Patients with low-gradient
268 AS under normal-flow conditions ($\text{SV}_i > 35 \text{ ml/m}^2$) are thought as having moderate AS., while further testing
269 is required in patients with $\text{SV}_i < 35 \text{ ml/m}^2$ to determine AS severity. For patients with $\text{LVEF} < 50\%$, guidelines
270 recommend the use of DSE in order to increase flow and demonstrate high-gradients with a reduced AVA.^{2,}

271 ³ This strategy has been recommended since deFilippi and colleagues suggested it in 1995,²⁷ and Monin et
272 al. in 2 subsequent larger populations tested the possible impact of DSE on outcome.^{10, 11} In the first study
273 including forty-five patients with low-gradient AS and $\text{LVEF} < 30\%$, DSE with a mean dosage of $9 \mu\text{g/kg/min}$
274 lead to an increase in stroke volume, with 71% demonstrating contractile reserve with no adverse events.
275 Despite similar baseline characteristics, patients with contractile reserve experienced better outcome, in

276 particular if undergoing surgery.¹⁰ These findings were corroborated in a subsequent paper with a larger
277 sample size including 136 patients with low-gradient AS patients and LVEF<35%.¹¹
278 In line with these studies, we concordantly demonstrate that ~2/3 of patients with LVEF<35% had
279 contractile reserve, but as a novel finding show a lower rate of contractile reserve among patients with
280 LVEF>35%. Although this could counterintuitively be interpreted as patients with higher baseline LVEF
281 having a poorer ability to increase their contractile state, we speculate this rather reflects differences in LV-
282 geometry, and baseline SV_i between groups. While reduced stroke volume in patients with LVEF<35% is the
283 consequence of poor contractility, patients with LVEF>50% predominantly have a reduced stroke volume
284 due to concentric LV remodeling that leads to small cavities and impeding normal stroke volume despite
285 preserved LVEF.²⁸ Accordingly, the combination of smaller cavities combined with a higher baseline SV_i in
286 patients with LVEF>50% challenges a SV_i increase > 20% as a criterion for contractile reserve. Thusly,
287 caution should be taken when interpreting contractile reserve without regards to LVEF. This may pose a
288 potential problem as guidelines recommend the use of DSE in patients with LVEF<50% while DSE, and
289 contractile reserve, has mainly been studied in patients with LVEF<35%.⁷⁻¹²

290

291 C-CT RECOMMENDATIONS IN CURRENT GUIDELINES

292 A potential limitation of DSE is that AS severity may be challenging to grade when flow does not increase
293 during DSE. In this setting, Cueff and colleagues demonstrated that C-CT derived AVC using a cut-off 1650
294 AU was able to distinguish severe from non-severe AS when LVEF<40%.²⁹ Since, it has been demonstrated
295 that the impact of calcification on AS severity is largely affected by sex, as females demonstrate a steeper
296 association between calcium load and gradient than males and will experience severe AS despite less
297 calcium.³⁰ Accordingly, it has been demonstrated that AVC has different sex-specific thresholds for men and
298 women for the same echocardiographic measurement of AS-severity.^{23,31} Consequently, AVC has been
299 implemented in the current ESC and AHA/ACC guidelines as a tool to differentiate between moderate and
300 severe AS and is recommended in patients with low-gradient AS without contractile reserve on DSE or

301 when LVEF>50%. It is thus interesting that among patients with LVEF<50% and severe AS ascertained by C-
302 CT, 23% were labeled as having pseudo-severe AS when combining DSE gradients and AVA.

303 These discrepancies imply that a diagnosis of severe AS is more likely if we use C-CT assessed AVC rather
304 than DSE data. Thus, patients with LVEF <35% and contractile reserve are less likely to be labeled as severe
305 AS, based solely on DSE response, than patients without contractile reserve where determination of AS-
306 severity relies on AVC.

307 As a consequence, it seems that while current DSE recommended thresholds are rather specific, they are
308 also non-sensitive when compared to C-CT. This naturally raises the question of why the current thresholds
309 have been chosen.

310

311 THRESHOLDS IN CURRENT GUIDELINES

312 While most DSE studies in low-gradient AS have used the same thresholds for AS severity as in normal flow,
313 confirmation of AS severity has solely been based on either patient outcome or surgeons' evaluation during
314 surgery as the indication of AS severity.^{10,11} In these studies, the decision of surgery was not blinded for
315 DSE-response, and as no gold standard for severe AS existed outcome was chosen. The latter may pose a
316 particular problem as it recently has become evident that even moderate AS may have an impact on
317 outcome in patients with LVEF<50%.¹³

318 Indeed, a recent study by Annabi and colleagues intended to identify thresholds of severe AS based with
319 DSE. However, confirmation was only possible in 87 of 186 patients, and only in 25 ascertained by CT.³²

320 Thus, our study is the first to compare the response of DSE with AS severity ascertained by C-CT.

321 Accordingly, it is interesting that while AVA demonstrated a rather uniform cut-off between LVEF-
322 subgroups, both transvalvular mean gradient and transvalvular peak-velocity showed higher accuracy in
323 patients with LVEF <35% with an optimal cut-off points of 30mmHg for transvalvular mean gradient and
324 377 cm/s for transvalvular peak-velocity.

325 These findings are in accordance with a previous paper by Nishimura and colleagues reporting that under
326 DSE, an invasively measured gradient of <30 mmHg correlated with severe AS.³³ In line with this, Annabi et
327 al. found guideline DSE thresholds to have limited value in predicting stenosis severity, and demonstrated
328 that lowering the cut-off point for transvalvular mean gradient to either 35 mmHg or 30 mmHg improved
329 the diagnostic accuracy of DSE.³²

330 A possible explanation to our finding could be that despite dobutamine raising stroke volume in most
331 patients, almost half still experience a low-flow condition after dobutamine infusion suggesting that a lower
332 gradient would be expected than during normal flow. Furthermore, while dobutamine has a positive
333 inotropic effect on the heart stimulating β 1 receptors, the effects on the α receptors may also alter
334 vascular resistance, changing the ventriculo-arterial coupling and eventually lowering the transvalvular
335 gradients.³⁴ Suggestive of this, we demonstrated different systemic arterial compliance between LVEF
336 groups.

337 Finally it is also possible that inconsistencies exist between gradients and AVA as a consequence of
338 discrepancies also described in patients with normal systolic LV function.³⁵

339

340 **Study limitations:**

341 Assessment of AS severity is challenging as severity can be graded based on a wide range of variables with
342 no clear gold standard. In this study, we used C-CT assessed AVC as the reference for adjudication of AS
343 severity. Different concerns can be raised regarding this choice as 1) AVC does not quantify fibrotic
344 tissue, which might play an important role in the development of low-gradient AS,^{14, 30} or in bicuspid valves;
345 2) the current thresholds are derived from patients with concordant AS and have not been validated in low-
346 gradient AS patients, and 3) that reproducibility of AVC may be challenging. However, the Agatston method
347 is a well-established marker of anatomic severity that has demonstrated to correlated with valve severity
348 on explanted valves,³⁰ AS hemodynamic severity measured by Doppler echocardiography,^{29, 36} and clinical
349 outcomes.^{15, 31}

350 Furthermore the reproducibility of AVC has been questioned. In our study, the measurement of AVC was
351 done separately in each institution, but was standardized between centers and demonstrated excellent
352 reproducibility.

353 While echocardiographic measurements were performed by experienced users, newer studies show, that in
354 patients with atrial fibrillation the maximum peak velocity and mean gradient might be a more precise
355 measurement for AS severity instead of an averaged peak velocity or mean gradient, when compared to C-
356 CT.³⁷

357

358 **Conclusion:**

359 The use of DSE is safe and leads to a uniform increase in stroke volume in patients with low gradient AS
360 regardless of baseline LVEF. However, the association between DSE gradients and AS severity assessed by
361 C-CT demonstrates important heterogeneity, with highest accuracy in patients with LVEF<35% but limited
362 diagnostic yield when LVEF≥35%, and with different optimal diagnostic thresholds.

363

364 **Acknowledgements:**

365 OPEN, Open Patient data Explorative Network, Odense University Hospital, Region of Southern Denmark.

366

367 **Sources of funding:**

368 This work was supported by research grants from the Region of Southern Denmark and the University of
369 Southern Denmark.

370

371 **Disclosure:**

372 None.

373 **Figure Legends**

374 **Figure 1: Consort flowchart of patient inclusion.** Consort Flowchart showing the process of inclusion and
375 exclusion of patients.

376 AS: aortic stenosis, AVA: aortic valve area, C-CT: Cardiac Computer tomography, DSE: dobutamine stress
377 echocardiography, LVEF: left ventricular ejection fraction SV_i: stroke volume indexed.

378 **Figure 2: Receiver-Operating Characteristic to identify severe AS in the entire cohort.** Receiver-Operating
379 Characteristic to identify severe aortic stenosis (AS) in the entire cohort of 221 patients with low-gradient
380 AS (mean gradient <40 mmHg and aortic valve area <1.0 cm²) and stroke volume index ≤35 mL/m²
381 according to (A) mean gradient, peak velocity and aortic valve area, (B) Combination of mean gradient +
382 aortic valve area and peak velocity + aortic valve area against computed tomography aortic valve
383 calcification.

384 MG: mean gradient, V_{max}: peak velocity, AVA: aortic valve area, AUC: area under the curve, DSE:
385 Dobutamine Stress Echocardiography.

386 **Figure 3: Receiver-Operating Characteristic to identify severe AS in LVEF subgroups.** Receiver-Operating
387 Characteristic to identify severe aortic stenosis (AS) in LVEF subgroups; LVEF <35%, 35-50% and >50%
388 respectively, according to (A) mean gradient, (B) peak velocity, and (C) aortic valve area against computed
389 tomography aortic valve calcification.

390 LVEF: left ventricular ejection fraction, AUC: area under the curve.

391 **Figure 4: Pseudo-severe and True-severe AS in LVEF subgroups.** Scatterplots for LVEF subgroups; LVEF
392 <35%, 35-50% and >50% respectively. Green represents Pseudo-severe aortic stenosis (AS) and Blue True-
393 severe AS determined by aortic valve calcification. Dashed lines represents guideline cut-offs for mean
394 gradient (40 mmHg) and aortic valve area (>1.0cm²); (A) LVEF <35%, (B) LVEF 35-50%, (C) LVEF >50%. (D)
395 Sensitivity and specificity for severe AS according to guideline cut-offs for DSE for each LVEF subgroups;
396 LVEF <35%, 35-50% and >50% respectively.

- 397 LVEF: left ventricular ejection fraction, DSE: dobutamine stress echocardiography, AVA: aortic valve area,
398 AS: aortic stenosis.

399 **Table 1: Baseline Characteristics**

	LVEF <35% (n=78)	LVEF 35-50% (n=67)	LVEF >50% (n=76)	P-value
Age (years)	77 ±8	76 ±8	76 ±8	0.56
Female sex	11 (14)	25 (37)	35 (46)	<0.001
Body surface area (m ²)	1.9 ±0.2	1.9 ±0.2	1.9 ±0.2	0.28
Heart rate, rest (bpm)	72 ±14	75 ±16	74 ±12	0.64
NYHA class III-IV	46 (65)	26 (46)	15 (24)	<0.001
Renal failure (eGFR <30)	10 (13)	4 (6)	5 (7)	0.24
Diabetes	31 (40)	32 (48)	22 (29)	0.02
Hypertension	63 (81)	48 (72)	57 (75)	0.38
Coronary artery disease	36 (46)	25 (37)	29 (38)	0.65
Never smoking	31 (47)	23 (46)	31 (48)	1.00
Pacemaker or ICD	24 (31)	8 (12)	15 (20)	0.02
Cardiac-CT data				
AVC in males (AU)	2183 [1326;3170]	1634 [1107;2376]	1831 [1441;2661]	0.07
AVC in females (AU)	875 [607;1624]	1088 [632;1989]	1067 [485;1827]	0.82
Severe AS on CT	43 (55)	25 (37)	34 (45)	0.10
Echocardiographic data				
Aortic V _{max} (cm/sec)	304 ±45	302 ±43	324 ±37	<0.001
Aortic Mean Gradient (mmHg)	22.3 ±7.0	23.0 ±7.1	25.1 ±6.1	0.03
Aortic Valve Area (cm ²)	0.76 ±0.13	0.77 ±0.14	0.73 ±0.13	0.23
Dimensionless index	0.20 ±0.04	0.23 ±0.04	0.24 ±0.05	<0.001
LV ejection fraction (%)	26 ±6	41 ±4	60 ±6	<0.001
Stroke Volume (mL)	49.3 ±11.5	49.9 ±10.0	54.3 ±9.3	0.01
Stroke Volume Index (mL/m ²)	25.6 ±5.4	26.2 ±4.9	28.9 ±4.4	<0.001
Interventricular septal thickness (mm)	11.3 ±2.3	11.3 ±2.3	11.8 ±2.5	0.42
LV end-diastolic diameter (mm)	59.5 ±6.7	53.8 ±5.3	48.1 ±7.0	<0.001
Posterior wall Thickness (mm)	9.6 ±1.8	9.8 ±1.5	9.9 ±2.6	0.67
Left ventricular mass index (g/m ²)	139 ±36	120±29	104 ±31	<0.001
Relative wall thickness	0.33 ±0.08	0.37 ±0.07	0.41 ±0.11	<0.001
LV remodeling pattern				
Normal	19 (24)	23 (34)	28 (37)	
Concentric Hypertrophy	21 (27)	12 (18)	15 (20)	
Concentric Remodeling	0 (0)	3 (5)	19 (25)	
Eccentric Hypertrophy	38 (49)	29 (43)	14 (18)	<0.001

400 **Abbreviations:** AS aortic stenosis; AVC Aortic valve calcification; eGFR estimated glomerular filtration rate;
 401 ICD intracardiac defibrillator; LV left ventricular, NYHA: New York Heart Association; V_{max}: peak velocity.

402

403

404 **Table 2: Safety parameters during dobutamine stress echocardiography**

	LVEF <35% (n=78)	LVEF 35-50% (n=67)	LVEF >50% (n=76)	P-value
Max systolic BP during DSE (mmHg)	133 ±27	141 ±21	149 ±23	<0.001
Systolic BP during max DSE dose (mmHg)	130 ±27	134 ±21	142 ±23	0.03
Systolic BP <80mmHg	0 (0)	0 (0)	1 (1)	0.38
Systolic BP >200mmHg	1 (1)	0 (0)	2 (3)	0.40
DSE stopped because of adverse symptoms	0 (.0)	1 (2)	5 (7)	0.03
Chest pain	1 (1)	2 (3)	2 (3)	0.76
Ischemia on ECG	0 (0)	0 (0)	0 (0)	0.99
Newly onset SVT	1 (1)	1 (2)	1 (1)	0.99
Complex ventricular arrhythmia	4 (5)	4 (6)	0 (0)	0.11

405 **Abbreviations:** BP blood pressure; DSE dobutamine stress echocardiography; ECG electrocardiogram; SVT
406 supraventricular tachycardia.

407

408 **Table 3: Dobutamine stress echocardiographic parameters**

	LVEF <35% (n=78)	LVEF 35-50% (n=67)	LVEF >50% (n=76)	P-value
Hemodynamic data				
Systolic BP, rest (mmHg)	123 ±21	129 ±18	137 ±21	<0.001
Diastolic BP, rest (mmHg)	72 ±12	71 ±10	75 ±13	0.08
Systolic BP during max DSE dose (mmHg)	130 ±27	134 ±21	142 ±23	0.03
Diastolic BP during max DSE dose (mmHg)	67 ±14	67 ±13	69 ±12	0.68
BP pressure change (mmHg)	10 ±23	9 ±22	9 ±20	0.97
Max heart rate during DSE (bpm)	93 ±18	103 ±25	103 ±24	0.08
Change in heart rate (bpm)	25 ±20	21 ±15	24 ±19	0.78
Zva, rest (mmHg/mL/m ²)	5.85 ±1.47	6.00 ±1.27	5.76 ±1.17	0.55
Zva, DSE (mmHg/mL/m ²)	5.01 ±1.41	5.48 ±1.45	5.38 ±1.28	0.24
Zva, diff. (mmHg/mL/m ²)	1.12 ±0.95	1.10 ±0.73	0.93 ±0.63	0.39
Systemic Arterial Compliance, rest (Units)	0.56 ±0.21	0.48 ±0.17	0.50 ±0.14	0.02
Systemic Arterial Compliance, DSE (Units)	0.60 ±0.21	0.50 ±0.17	0.51 ±0.18	0.02
Systemic Arterial Compliance, diff. (Units)	0.17 ±0.11	0.12 ±0.12	0.11 ±0.10	0.02
SVR, rest (mmHg/L/min)	1239 ±451	1241 ±395	1221 ±380	0.97
SVR, DSE (mmHg/L/min)	1209 ±562	1269 ±389	1228 ±375	0.85
SVR, diff. (mmHg/L/min)	173 ±177	199 ±164	144 ±131	0.28
Stroke Volume, DSE (mL)	64.6 ±15.5	63.3 ±16.4	65.6 ±15.6	0.68
Low-Flow(<35ml/m ²) despite DSE	42 (58)	41 (62)	37 (49)	0.29
Change in SV (mL)	14.7 ±11.5	13.1 ±12.5	11.5 ±11.8	0.28
Change in SVi >20%	47 (65)	32 (49)	33 (44)	0.03
Aortic V _{max} , DSE (cm/sec)	377 ±55	378 ±58	405 ±47	<0.001
Change in V _{max} (cm/sec)	70 ±35	76 ±39	82 ±33	0.14
Aortic Mean Gradient, DSE (mmHg)	32.7 ±10.1	34.2 ±11.5	38.7 ±9.9	<0.001
Change in Mean Gradient (mmHg)	10.6 ±5.7	11.6 ±6.7	13.7 ±6.5	0.01
Aortic Valve Area, DSE (cm ²)	0.94 ±0.28	0.97 ±0.33	0.91 ±0.21	0.52
Change in AVA (cm ²)	0.19 ±0.23	0.21 ±0.30	0.19 ±0.15	0.86
DSE Dimensionless index	0.24 ±0.05	0.28 ±0.06	0.30 ±0.07	<0.001

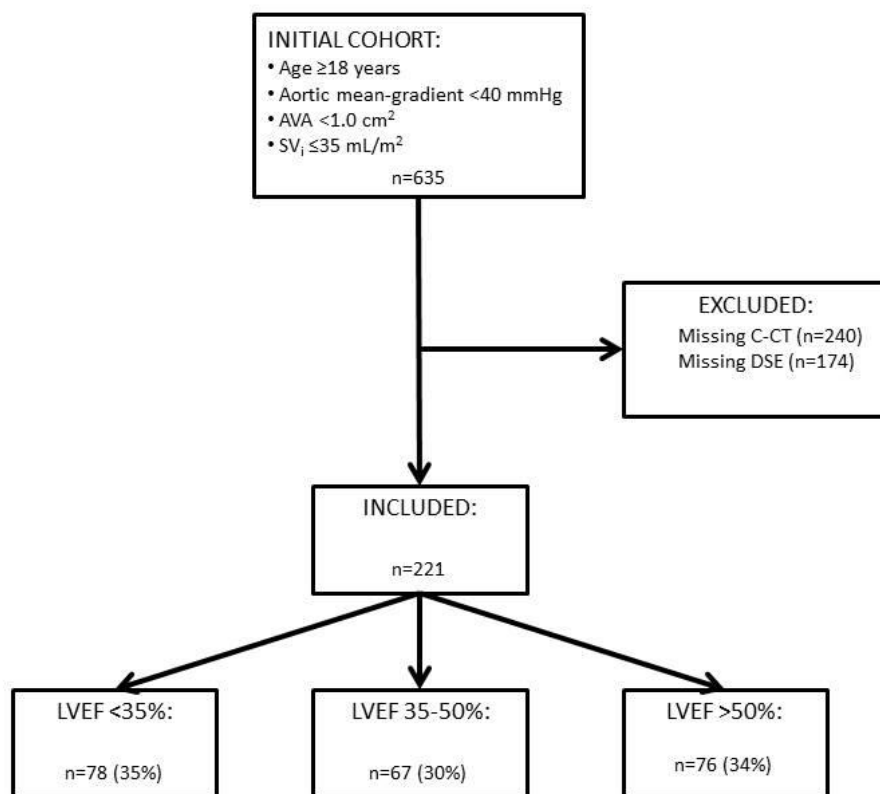
409 **Abbreviations:** AVA aortic valve area BP blood pressure; DSE dobutamine stress echocardiography; SV
410 stroke volume; SV_i stroke volume indexed; SVR Systemic Vascular Resistance; V_{max} peak velocity; Zva
411 Valvulo-arterial Impedance .

412 **Table 4: Diagnostic accuracy of dobutamine stress echocardiography in differentiating severe from**
 413 **pseudo-severe AS**

Optimal cut-off points				Guideline recommendations			
Marker	Sensitivity	Specificity	CC	Marker	Sensitivity	Specificity	CC
MG (≥ 34 mmHg)	75%	64%	69%	MG (≥ 40 mmHg)	49%	78%	65%
V_{max} (≥ 389 cm/s)	70%	63%	66%	V_{max} (≥ 400 cm/s)	64%	66%	65%
AVA (< 0.9 cm ²)	63%	55%	60%	AVA (< 1.0 cm ²)	41%	78%	58%
Combined (for LVEF <50%)	48%	87%	67%	Combined (for LVEF <50%)	50%	67%	67%

414 **Abbreviations:** AVA aortic valve area; CC correct classification; MG mean gradient.

415 **Figure 1**



416

417

418

419

420

421

422

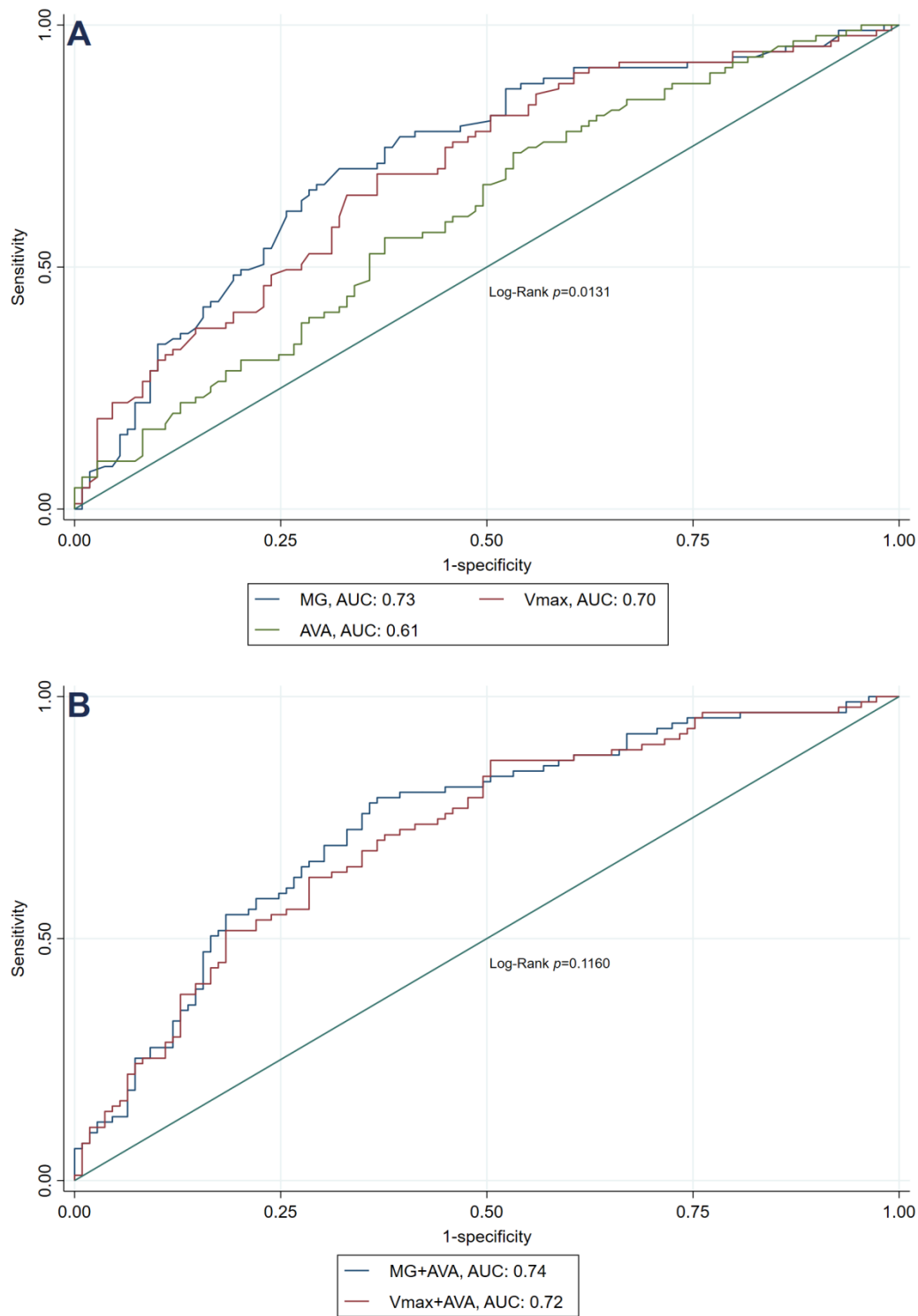
423

424

425

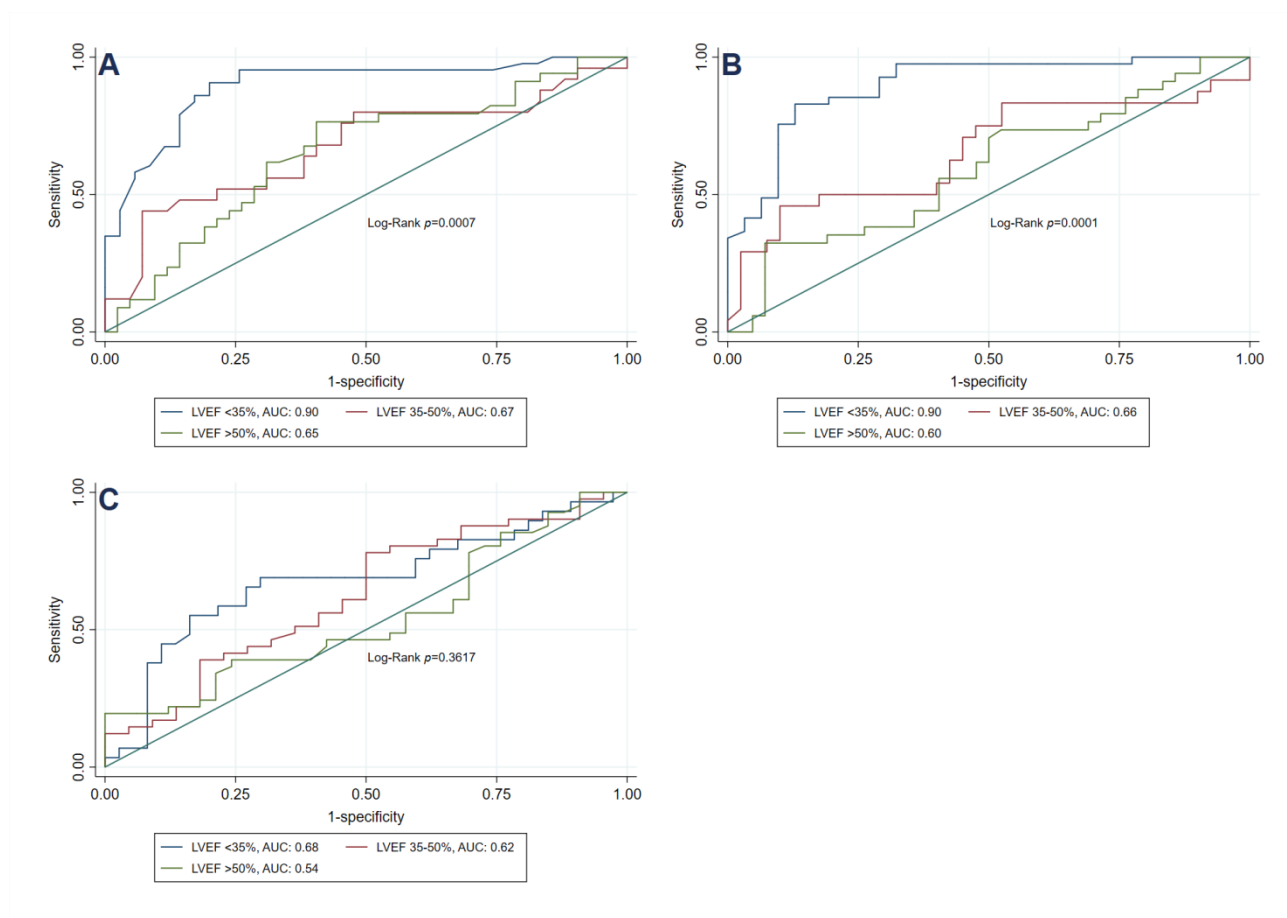
426

427 **Figure 2**



428

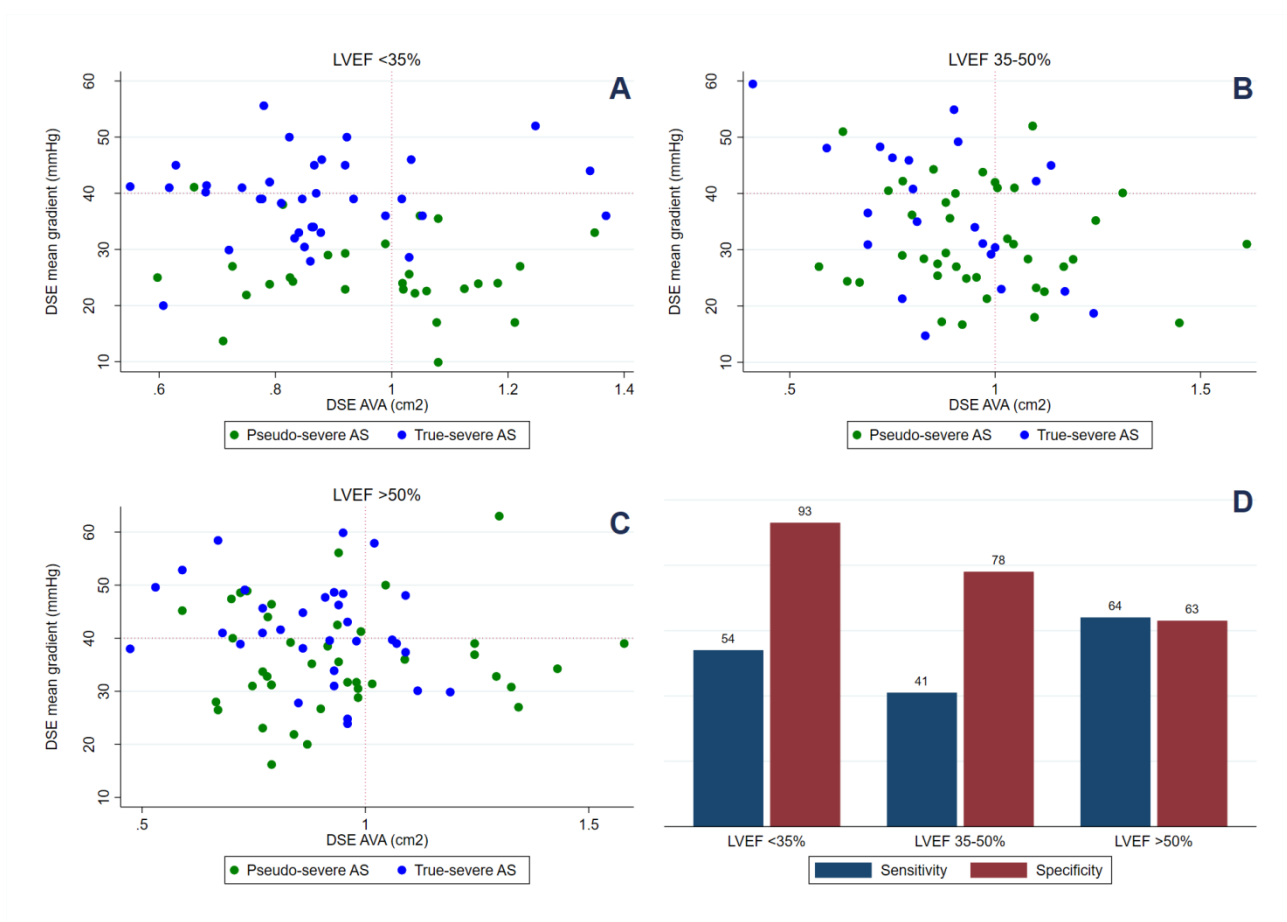
429 **Figure 3**



430

431

432 **Figure 4**

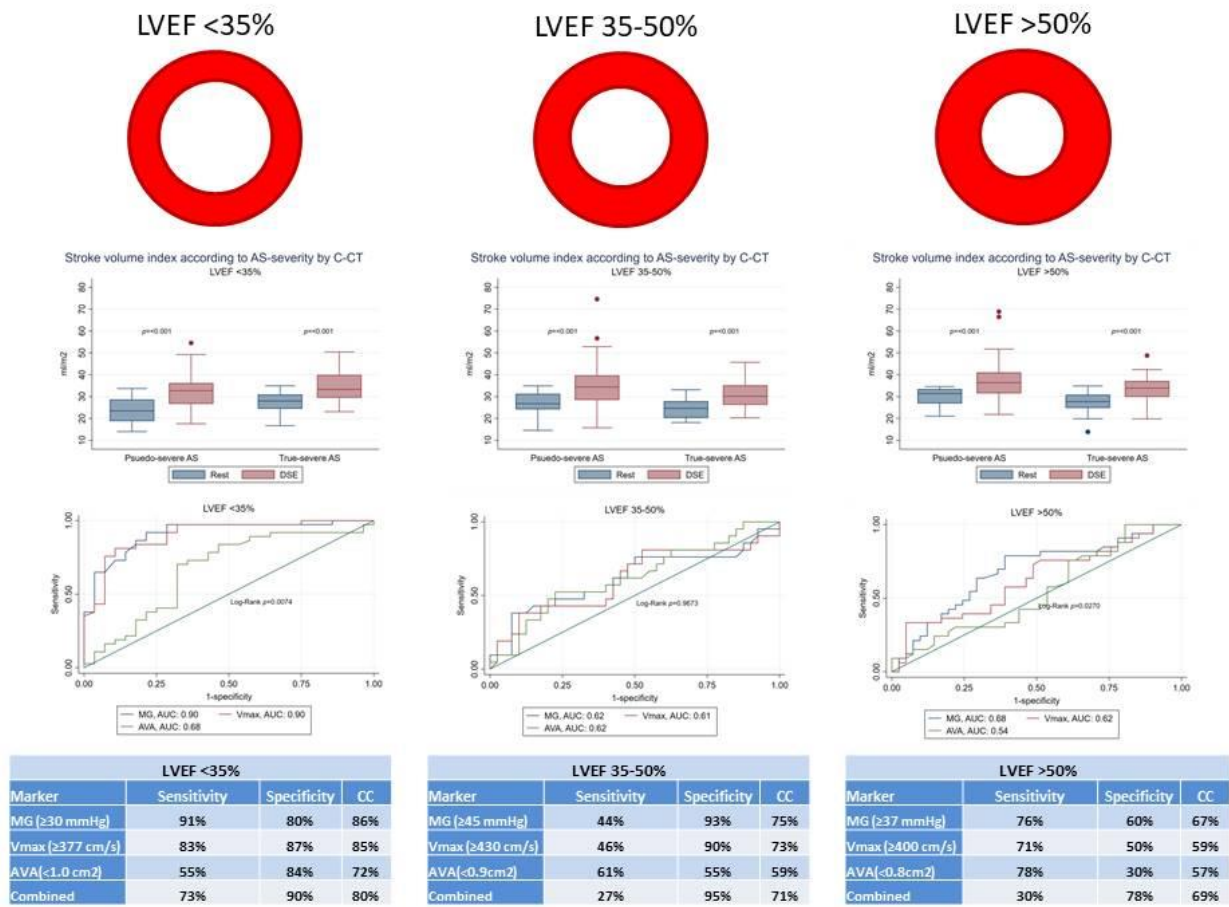


433

434

435

436 Central Illustration



437

- 438 1. Baumgartner H, Hung J, Bermejo J, Chambers JB, Evangelista A, Griffin BP, Iung B, Otto CM,
439 Pellikka PA and Quinones M. Echocardiographic assessment of valve stenosis: EAE/ASE recommendations
440 for clinical practice. *J Am Soc Echocardiogr.* 2009;22:1-23.
- 441 2. Otto CM, Nishimura RA, Bonow RO, Carabello BA, Erwin JP, 3rd, Gentile F, Jneid H, Krieger
442 EV, Mack M, McLeod C, O'Gara PT, Rigolin VH, Sundt TM, 3rd, Thompson A and Toly C. 2020 ACC/AHA
443 Guideline for the Management of Patients With Valvular Heart Disease: Executive Summary: A Report of
444 the American College of Cardiology/American Heart Association Joint Committee on Clinical Practice
445 Guidelines. *Circulation.* 2021;143:e35-e71.
- 446 3. Vahanian A, Beyersdorf F, Praz F, Milojevic M, Baldus S, Bauersachs J, Capodanno D, Conradi
447 L, De Bonis M, De Paulis R, Delgado V, Freemantle N, Gilard M, Haugaa KH, Jeppsson A, Juni P, Pierard L,
448 Prendergast BD, Sadaba JR, Tribouilloy C, Wojakowski W and Group EESD. 2021 ESC/EACTS Guidelines for
449 the management of valvular heart disease. *European heart journal.* 2022;43:561-632.
- 450 4. Lancellotti P, Pellikka PA, Budts W, Chaudhry FA, Donal E, Dulgheru R, Edvardsen T, Garbi M,
451 Ha JW, Kane GC, Kreeger J, Mertens L, Pibarot P, Picano E, Ryan T, Tsutsui JM and Varga A. The Clinical Use
452 of Stress Echocardiography in Non-Ischaemic Heart Disease: Recommendations from the European
453 Association of Cardiovascular Imaging and the American Society of Echocardiography. *J Am Soc*
454 *Echocardiogr.* 2017;30:101-138.
- 455 5. Dahl JS, Eleid MF, Michelena HI, Scott CG, Suri RM, Schaff HV and Pellikka PA. Effect of left
456 ventricular ejection fraction on postoperative outcome in patients with severe aortic stenosis undergoing
457 aortic valve replacement. *Circ Cardiovasc Imaging.* 2015;8.
- 458 6. Clavel MA, Ennezat PV, Marechaux S, Dumesnil JG, Capoulade R, Hachicha Z, Mathieu P,
459 Bellouin A, Bergeron S, Meimoun P, Arsenault M, Le Tourneau T, Pasquet A, Couture C and Pibarot P. Stress
460 echocardiography to assess stenosis severity and predict outcome in patients with paradoxical low-flow,
461 low-gradient aortic stenosis and preserved LVEF. *JACC Cardiovascular imaging.* 2013;6:175-83.

- 462 7. Quere JP, Monin JL, Levy F, Petit H, Baleynaud S, Chauvel C, Pop C, Ohlmann P, Lelguen C,
463 Dehant P, Gueret P and Tribouilloy C. Influence of preoperative left ventricular contractile reserve on
464 postoperative ejection fraction in low-gradient aortic stenosis. *Circulation*. 2006;113:1738-44.
- 465 8. Tribouilloy C, Levy F, Rusinaru D, Gueret P, Petit-Eisenmann H, Baleynaud S, Jobic Y, Adams
466 C, Lelong B, Pasquet A, Chauvel C, Metz D, Quere JP and Monin JL. Outcome after aortic valve replacement
467 for low-flow/low-gradient aortic stenosis without contractile reserve on dobutamine stress
468 echocardiography. *J Am Coll Cardiol*. 2009;53:1865-73.
- 469 9. Clavel MA, Fuchs C, Burwash IG, Mundigler G, Dumesnil JG, Baumgartner H, Bergler-Klein J,
470 Beanlands RS, Mathieu P, Magne J and Pibarot P. Predictors of outcomes in low-flow, low-gradient aortic
471 stenosis: results of the multicenter TOPAS Study. *Circulation*. 2008;118:S234-42.
- 472 10. Monin JL, Monchi M, Gest V, Duval-Moulin AM, Dubois-Rande JL and Gueret P. Aortic
473 stenosis with severe left ventricular dysfunction and low transvalvular pressure gradients: risk stratification
474 by low-dose dobutamine echocardiography. *J Am Coll Cardiol*. 2001;37:2101-7.
- 475 11. Monin JL, Quere JP, Monchi M, Petit H, Baleynaud S, Chauvel C, Pop C, Ohlmann P, Lelguen
476 C, Dehant P, Tribouilloy C and Gueret P. Low-gradient aortic stenosis: operative risk stratification and
477 predictors for long-term outcome: a multicenter study using dobutamine stress hemodynamics. *Circulation*.
478 2003;108:319-24.
- 479 12. Blais C, Burwash IG, Mundigler G, Dumesnil JG, Loho N, Rader F, Baumgartner H, Beanlands
480 RS, Chayer B, Kadem L, Garcia D, Durand LG and Pibarot P. Projected valve area at normal flow rate
481 improves the assessment of stenosis severity in patients with low-flow, low-gradient aortic stenosis: the
482 multicenter TOPAS (Truly or Pseudo-Severe Aortic Stenosis) study. *Circulation*. 2006;113:711-21.
- 483 13. Coisne A, Scotti A, Latib A, Montaigne D, Ho EC, Ludwig S, Modine T, Genereux P, Bax JJ, Leon
484 MB, Bauters C and Granada JF. Impact of Moderate Aortic Stenosis on Long-Term Clinical Outcomes: A
485 Systematic Review and Meta-Analysis. *JACC Cardiovasc Interv*. 2022;15:1664-1674.

- 486 14. Clavel MA, Messika-Zeitoun D, Pibarot P, Aggarwal SR, Malouf J, Araoz PA, Michelena HI,
487 Cueff C, Larose E, Capoulade R, Vahanian A and Enriquez-Sarano M. The complex nature of discordant
488 severe calcified aortic valve disease grading: new insights from combined Doppler echocardiographic and
489 computed tomographic study. *J Am Coll Cardiol*. 2013;62:2329-38.
- 490 15. Clavel MA, Pibarot P, Messika-Zeitoun D, Capoulade R, Malouf J, Aggarwal S, Araoz PA,
491 Michelena HI, Cueff C, Larose E, Miller JD, Vahanian A and Enriquez-Sarano M. Impact of aortic valve
492 calcification, as measured by MDCT, on survival in patients with aortic stenosis: results of an international
493 registry study. *J Am Coll Cardiol*. 2014;64:1202-13.
- 494 16. Bienjonetti-Boudreau D, Fleury MA, Voisine M, Paquin A, Chouinard I, Tailleux M, Duval R,
495 Magnan PO, Beaudoin J, Salaun E and Clavel MA. Impact of sex on the management and outcome of aortic
496 stenosis patients. *Eur Heart J*. 2021;42:2683-2691.
- 497 17. Barreiro CJ, Patel ND, Fitton TP, Williams JA, Bonde PN, Chan V, Alejo DE, Gott VL and
498 Baumgartner WA. Aortic valve replacement and concomitant mitral valve regurgitation in the elderly:
499 impact on survival and functional outcome. *Circulation*. 2005;112:1443-7.
- 500 18. Lang RM, Badano LP, Mor-Avi V, Afzalpoor A, Armstrong A, Ernande L, Flachskampf FA, Foster E,
501 Goldstein SA, Kuznetsova T, Lancellotti P, Muraru D, Picard MH, Rietzschel ER, Rudski L, Spencer KT, Tsang
502 W and Voigt JU. Recommendations for cardiac chamber quantification by echocardiography in adults: an
503 update from the American Society of Echocardiography and the European Association of Cardiovascular
504 Imaging. *European heart journal cardiovascular Imaging*. 2015;16:233-70.
- 505 19. Devereux RB, Casale PN, Kligfield P, Eisenberg RR, Miller D, Campo E and Alonso DR.
506 Performance of primary and derived M-mode echocardiographic measurements for detection of left
507 ventricular hypertrophy in necropsied subjects and in patients with systemic hypertension, mitral
508 regurgitation and dilated cardiomyopathy. *Am J Cardiol*. 1986;57:1388-1393.

- 509 20. Devereux RB, Dahlof B, Levy D and Pfeffer MA. Comparison of enalapril versus nifedipine to
510 decrease left ventricular hypertrophy in systemic hypertension (the PRESERVE trial). *AmJCardiol*.
511 1996;78:61-65.
- 512 21. Ganau A, Devereux RB, Roman MJ, de SG, Pickering TG, Saba PS, Vargiu P, Simongini I and
513 Laragh JH. Patterns of left ventricular hypertrophy and geometric remodeling in essential hypertension.
514 *JAmCollCardiol*. 1992;19:1550-1558.
- 515 22. Briand M, Dumesnil JG, Kadem L, Tongue AG, Rieu R, Garcia D and Pibarot P. Reduced
516 systemic arterial compliance impacts significantly on left ventricular afterload and function in aortic
517 stenosis: implications for diagnosis and treatment. *JAmCollCardiol*. 2005;46:291-298.
- 518 23. Aggarwal SR, Clavel MA, Messika-Zeitoun D, Cuffe C, Malouf J, Araoz PA, Mankad R,
519 Michelena H, Vahanian A and Enriquez-Sarano M. Sex differences in aortic valve calcification measured by
520 multidetector computed tomography in aortic stenosis. *Circ Cardiovasc Imaging*. 2013;6:40-7.
- 521 24. DeLong ER, DeLong DM and Clarke-Pearson DL. Comparing the areas under two or more
522 correlated receiver operating characteristic curves: a nonparametric approach. *Biometrics*. 1988;44:837-
523 845.
- 524 25. Carabello BA, Green LH, Grossman W, Cohn LH, Koster JK and Collins JJ, Jr. Hemodynamic
525 determinants of prognosis of aortic valve replacement in critical aortic stenosis and advanced congestive
526 heart failure. *Circulation*. 1980;62:42-48.
- 527 26. Hachicha Z, Dumesnil JG, Bogaty P and Pibarot P. Paradoxical low-flow, low-gradient severe
528 aortic stenosis despite preserved ejection fraction is associated with higher afterload and reduced survival.
529 *Circulation*. 2007;115:2856-2864.
- 530 27. deFilippi CR, Willett DL, Brickner ME, Appleton CP, Yancy CW, Eichhorn EJ and Grayburn PA.
531 Usefulness of dobutamine echocardiography in distinguishing severe from nonsevere valvular aortic
532 stenosis in patients with depressed left ventricular function and low transvalvular gradients. *Am J Cardiol*.
533 1995;75:191-4.

- 534 28. Dahl JS, Eleid MF, Pislaru SV, Scott CG, Connolly HM and Pellikka PA. Development of
535 paradoxical low-flow, low-gradient severe aortic stenosis. *Heart*. 2015;101:1015-23.
- 536 29. Cueff C, Serfaty JM, Cimadevilla C, Laissy JP, Himbert D, Tubach F, Duval X, lung B, Enriquez-
537 Sarano M, Vahanian A and Messika-Zeitoun D. Measurement of aortic valve calcification using multislice
538 computed tomography: correlation with haemodynamic severity of aortic stenosis and clinical implication
539 for patients with low ejection fraction. *Heart*. 2011;97:721-6.
- 540 30. Simard L, Cote N, Dagenais F, Mathieu P, Couture C, Trahan S, Bosse Y, Mohammadi S, Page
541 S, Joubert P and Clavel MA. Sex-Related Discordance Between Aortic Valve Calcification and Hemodynamic
542 Severity of Aortic Stenosis: Is Valvular Fibrosis the Explanation? *Circ Res*. 2017;120:681-691.
- 543 31. Pawade T, Clavel MA, Tribouilloy C, Dreyfus J, Mathieu T, Tastet L, Renard C, Gun M, Jenkins
544 WSA, Macron L, Sechrist JW, Lacomis JM, Nguyen V, Galian Gay L, Cuellar Calabria H, Ntalas I, Cartlidge
545 TRG, Prendergast B, Rajani R, Evangelista A, Cavalcante JL, Newby DE, Pibarot P, Messika Zeitoun D and
546 Dweck MR. Computed Tomography Aortic Valve Calcium Scoring in Patients With Aortic Stenosis. *Circ*
547 *Cardiovasc Imaging*. 2018;11:e007146.
- 548 32. Annabi MS, Touboul E, Dahou A, Burwash IG, Bergler-Klein J, Enriquez-Sarano M, Orwat S,
549 Baumgartner H, Mascherbauer J, Mundigler G, Cavalcante JL, Larose E, Pibarot P and Clavel MA.
550 Dobutamine Stress Echocardiography for Management of Low-Flow, Low-Gradient Aortic Stenosis. *J Am*
551 *Coll Cardiol*. 2018;71:475-485.
- 552 33. Nishimura RA, Grantham JA, Connolly HM, Schaff HV, Higano ST and Holmes DR, Jr. Low-
553 output, low-gradient aortic stenosis in patients with depressed left ventricular systolic function: the clinical
554 utility of the dobutamine challenge in the catheterization laboratory. *Circulation*. 2002;106:809-13.
- 555 34. Cote N, Simard L, Zenses AS, Tastet L, Shen M, Clisson M and Clavel MA. Impact of Vascular
556 Hemodynamics on Aortic Stenosis Evaluation: New Insights Into the Pathophysiology of Normal Flow-Small
557 Aortic Valve Area-Low Gradient Pattern. *J Am Heart Assoc*. 2017;6.

- 558 35. Minners J, Allgeier M, Gohlke-Baerwolf C, Kienzle RP, Neumann FJ and Jander N.
559 Inconsistencies of echocardiographic criteria for the grading of aortic valve stenosis. *European heart*
560 *journal*. 2008;29:1043-8.
- 561 36. Messika-Zeitoun D, Aubry MC, Detaint D, Bielak LF, Peyser PA, Sheedy PF, Turner ST, Breen
562 JF, Scott C, Tajik AJ and Enriquez-Sarano M. Evaluation and clinical implications of aortic valve calcification
563 measured by electron-beam computed tomography. *Circulation*. 2004;110:356-62.
- 564 37. Alkurashi AK, Pislaru SV, Thaden JJ, Collins JD, Foley TA, Greason KL, Eleid MF, Sandhu GS,
565 Alkhouli MA, Asirvatham SJ, Cha YM, Williamson EE, Crestanello JA, Pellikka PA, Oh JK and Nkomo VT.
566 Doppler Mean Gradient Is Discordant to Aortic Valve Calcium Scores in Patients with Atrial Fibrillation
567 Undergoing Transcatheter Aortic Valve Replacement. *J Am Soc Echocardiogr*. 2022;35:116-123.
- 568