

1 **Impact of Synchronized Left Ventricular Pacing in Cardiac Resynchronization Therapy**

2 Yuichiro Miyazaki ^{1, 2}, Kohei Ishibashi ^{*1}, Nobuhiko Ueda ¹, Satoshi Oka ^{1, 2}, Akinori
3 Wakamiya ¹, Keiko Shimamoto ¹, Kenzaburo Nakajima ¹, Tsukasa Kamakura ¹, Mitsuru Wada ¹,
4 ², Yuko Inoue ¹, Koji Miyamoto ¹, Satoshi Nagase ¹, Takeshi Aiba ¹, Kengo Kusano ^{1, 2}

5

6 ¹ Department of Cardiovascular Medicine, National Cerebral and Cardiovascular Center, Suita,
7 Japan

8 ² Department of Advanced Cardiovascular Medicine, Graduate School of Medical Sciences,
9 Kumamoto University, Kumamoto, Japan

10 **Short title: Synchronized left ventricular pacing in CRT**

11 ***Correspondence:**

12 Kohei Ishibashi, MD, PhD

13 Department of Cardiovascular Medicine, National Cerebral and Cardiovascular Center, 6-1
14 Kishibe-Shimmachi, Suita, Osaka 564-8565, Japan

15 Tel: +81-6-6170-1070

16 Fax: +81-6-6170-1348

17 E-mail: kohei-ishibashi@ncvc.go.jp

18

19 **Word count: 3528**

20 Abstract

21 **Background:** The adaptive cardiac resynchronization therapy (aCRT) algorithm enables
22 synchronized left ventricular pacing (sLVP) to produce fusion with intrinsic right ventricular
23 activation in normal atrioventricular (AV) conduction. Although sLVP presents benefits over
24 biventricular pacing (BVP), the adequate sLVP rate for better clinical outcomes remains
25 unclear. This study aimed to assess the association between sLVP rates and clinical outcomes.

26 **Methods:** Among our cohort of 271 consecutive patients who underwent CRT implantation
27 between April 2016 and August 2021, we evaluated 63 patients who underwent CRT without
28 considerably prolonged AV conduction and applied the aCRT algorithm (48 men, mean age: 64
29 \pm 14 years; median follow-up period: 316 days [interquartile range: 212–809 days]).

30 **Results:** At the 6-month follow-up after CRT implantation, the frequency of CRT responders
31 was 71% ($n = 45$). The sLVP rate was significantly higher in responders than in non-responders
32 (75 ± 30 vs. 47 ± 40 %, $p = 0.003$). Receiver operating characteristics (ROC) curve analysis
33 revealed that the optimal cut-off value during the sLVP rate was 59.4% for prediction of CRT
34 responders (area under the curve, 0.70; sensitivity, 80%; specificity, 61%; positive predictive
35 value, 84%; and negative predictive value, 55%). Kaplan–Meier analysis demonstrated that the
36 higher sLVP group ($sLVP \geq 59.4\%$, $n = 43$) had better prognosis (cardiac death and heart failure
37 hospitalization) than the lower sLVP group ($sLVP < 59.4\%$, $n = 20$) (log-rank $p < 0.001$), and
38 multivariate Cox hazard analysis revealed that a higher sLVP rate was associated with good
39 prognosis ($p < 0.001$).

40 **Conclusion:** sLVP was associated with CRT response, and higher sLVP rate ($\geq 59.4\%$) is
41 important for good prognosis in patients with aCRT.

43 **KEYWORDS**

44 Adaptive CRT, cardiac resynchronization therapy, left ventricular pacing, responder

45

46 **CLINICAL PERSPECTIVE**

47 **What Is New?**

48 ▪ Synchronized left ventricular pacing(sLVP) >59.4% was a significant predictor of cardiac
49 resynchronization therapy(CRT) responders and better clinical outcomes, evidenced by the
50 results of the multivariate analysis.

51 ▪ In this study, which included patients with moderately prolonged PR intervals, high sLVP
52 rates were associated with better clinical outcomes.

53 **What Are the Clinical Implications?**

54 ▪ sLVP rate was associated with the improvement of cardiac function after CRT implantation.
55 ▪ A higher sLVP rate was associated with a lower risk of cardiac death and heart failure
56 hospitalization.

57

58 **LIST OF ABBREVIATIONS**

59 aCRT: Adaptive cardiac resynchronization therapy

60 AV: Atrioventricular

61 BVP: Biventricular pacing

62 ECG: Electrocardiogram

63 HF: Heart failure

64 ICM: Ischaemic cardiomyopathy

- 65 LBBB: Left bundle branch block
- 66 LVEF: Left ventricular ejection fraction
- 67 LVESV: Left ventricular end-systolic volume
- 68 NYHA: New York Heart Association
- 69 ROC: Receiver operating characteristics
- 70 SPECT: Single-photon emission computed tomography
- 71 sLVP: Synchronized left ventricular pacing
- 72 VV: Interventricular

73 1 INTRODUCTION

74 Cardiac resynchronization therapy (CRT) improves cardiac function and clinical outcomes in
 75 patients with symptomatic heart failure accompanied by decreased left ventricular ejection
 76 fraction (LVEF), QRS prolongation, and left bundle branch block (LBBB) (1). However, up to
 77 30% of patients do not see improvements in cardiac function and/or clinical prognosis after
 78 CRT implantation (2). The Adaptive CRT algorithm (aCRT) is a novel pacing algorithm for
 79 CRT that continuously optimises the atrioventricular (AV) and the interventricular (VV)
 80 delays based on heart rate and intrinsic AV conduction (3). In cases whereby the AV interval is
 81 shorter than 220 ms (during atrial sensing) or 270 ms (during atrial pacing), the aCRT
 82 algorithm uses the RV intrinsic conduction, which can provide synchronized left ventricular
 83 pacing (sLVP) to create fusion beat with the intrinsic conduction. In cases where the AV
 84 interval is extremely prolonged, the aCRT pacing provides biventricular pacing (BVP)
 85 without fusion with the intrinsic conduction. The sLVP was reported to have benefits over
 86 BVP regarding the risk of heart failure (HF), hospitalization, cardiac death, or atrial
 87 fibrillation (4,5). However, the adequate sLVP rate for better clinical outcomes remains
 88 unclear. This novel study aimed to assess the appropriate sLVP rate for recovering cardiac
 89 function in the mid-term, and to improve clinical outcomes in the long-term.

91 2 METHODS

92 2.1 Study population

93 This retrospective single-centre study included all consecutive patients who underwent CRT
 94 device implantation featuring the Adaptive CRT algorithm (Medtronic Inc., Minneapolis, MN,
 95 USA) (aCRT) between April 1, 2016, and August 31, 2021. The aCRT pacing mode was
 96 adapted just after the implantation. Patients who applied the pacing algorithm without adopting
 97 sLVP mode were excluded from this analysis. In addition, patients with persistent atrial

fibrillation, AV block, and extremely prolonged PR also were excluded from this analysis, due to difficulty in using sLVP.

100

This study was conducted in accordance with the principles outlined in the Declaration of Helsinki and approved by the ethics committee of our institution (M26-150-10). This is a retrospective study to analyze the anonymous data generated after patients have agreed to treatment; we applied the opt-out method to obtain informed consent.

105

106 **2.2 Study protocol**

The patients enrolled in this study were classified into two groups (CRT responder or non-responder) depending on the response to CRT pacing 6 months after CRT implantation. Next, we determined the required sLVP rate to become a CRT responder using a receiver operating characteristic (ROC) curve analysis. Thereafter, we compared the association between the sLVP rate and clinical prognosis.

112

113 **2.3 Cardiac examinations and definition of responses before and after CRT** 114 **implantation**

Cardiac systolic function was assessed using both echocardiography and single-photon emission computed tomography (SPECT) before and 6 months after CRT device implantation. Electrocardiogram (ECG)-gated myocardial perfusion SPECT imaging with technetium-99m (^{99m}Tc) sestamibi was performed to measure cardiac systolic function and dimensions. All echocardiographic data were measured during three consecutive cardiac cycles. The left ventricular end-systolic volume (LVESV) and LVEF were measured using Simpson's biplane method.

CRT responders were described as patients with an improved LVEF >10% and/or reduced

LVESV >15% 6 months after CRT device implantation compared with baseline. Cardiac death and/or hospitalization for HF were evaluated as clinical outcomes. Cardiac death was defined as HF death, left ventricular assist device implantation, or death from ventricular arrhythmia. HF hospitalization was defined as a sudden or gradual onset of symptoms of New York Heart Association (NYHA) functional class III or IV HF, requiring unplanned hospitalization.

2.4 Statistical analyses

Data were analyzed using JMP software (version 11.2.01, SAS Institute, Cary, NC, USA). Continuous variables are presented as mean \pm standard deviation and were compared using Student's *t*-test. Categorical variables were compared using Fisher's exact test. The cumulative incidence and event-free curves were based on Kaplan–Meier analyses, stratified by study group, and contrasted using the log-rank test. Hazard ratios and odds ratios are reported with their 95% confidence intervals. To identify independent predictors of clinical response, univariable analyses were first performed, and predictors with a significance level <5%, age, and sex were included in the multivariable models. Multivariable analyses were performed using a Cox regression model. *P*-values of <0.05 were considered reflective of statistically significant differences.

3 RESULTS

3.1 Patient characteristics

Among our cohort of 271 consecutive patients who underwent CRT implantation between April 2016 and August 2021, we evaluated 63 patients who underwent CRT without considerably prolonged AV conduction on whom we applied the aCRT algorithm (48 men, mean age: 64 \pm 14 years) (Figure 1). The baseline characteristics of the patients are shown in Table 1. The number of patients with ischaemic cardiomyopathy (ICM) was 17 (27%), and

mean LVEF was $23 \pm 7\%$. Mean PR and QRS time were 192 ± 32 ms and 155 ± 25 ms, respectively, and the number of patients with LBBB was 31 (49%).

3.2 CRT responder and synchronized left ventricular pacing rate

At the 6-month follow-up after CRT implantation, the frequency of CRT responders was 71% ($n = 45$) (Table 1). Patients with LBBB were significantly more frequent than those without. There was no significant difference in the QRS width and rate of ICM. The sLVP rate was significantly higher in responders than in non-responders (75 ± 30 vs. $47 \pm 40\%$, $p = 0.003$). ROC curve analysis revealed that the optimal cut-off value during sLVP rate was 59.4% for the prediction of CRT responders (area under the curve, 0.71; sensitivity, 80%; specificity, 61%; positive predictive value, 84%; and negative predictive value, 55%) (Figure 2). Multivariate analysis showed that sLVP $>59.4\%$ was an independent responder for CRT responder (odds ratio: 4.52, 95% CI: 1.18–18.90, $p = 0.027$) (Table 2).

3.3 Clinical outcome of high sLVP rate

During a median follow-up of 346 days (IQR, 223–760 days), one patient had cardiac death and 13 patients had HF hospitalizations. Five patients died during hospitalization because of HF. Kaplan–Meier analysis demonstrated that the high sLVP group (sLVP $\geq 59.4\%$, $n = 43$) had a better prognosis (cardiac death and HF hospitalization) than the low sLVP group (sLVP $<59.4\%$, $n = 20$) (log-rank $p < 0.001$) (Figure 3), and multivariate Cox hazard analysis revealed that higher sLVP rate was associated with good prognosis (hazard ratio: 0.10, 95% CI: 0.01–0.40, $p = 0.027$, $p < 0.001$) (Table 3).

4 DISCUSSION

Main findings

The main findings of this study are as follows: (1) CRT responders had higher sLVP rates than CRT non-responders, (2) sLVP >59.4% was an excellent predictor of CRT response, and (3) sLVP >59.4% led to fewer cardiac deaths and hospitalizations due to HF.

The mechanism of fusion beat of pacing and intrinsic conduction

Recent CRT devices have the function to automatically adjust the fusion beat of self AV conduction and pacing. This regulatory function seems to lead to further narrowing of the QRS width after the CRT implantation (6). Previous studies have reported that the narrowing of QRS width after the CRT implantation can improve echocardiographic outcomes and long-term mortality (7,8). In addition to the function of adjusting the fusion beat, other studies have reported that sLVP could shorten QRS width compared with BVP (9,10). The sLVP may contribute to improved responder rate and better clinical outcomes by achieving QRS narrowing by creating the fusion beat with the intrinsic waveform and pacing.

The adequate frequency of synchronized left ventricular pacing

Adaptive CRT has an automatic adjustment algorithm for AV and interventricular delays based on frequent AV conduction evaluations. Furthermore, sLVP is often used for normal AV conduction (9). A previous study showed that sLVP provided better clinical outcomes than conventional BVP (4); however, the frequency of sLVP that leads to a better prognosis is not well known. Previous studies have defined the cut-off rate of sLVP to be 80% to predict clinical and echocardiographic parameters (9). Another study reported that an sLVP rate >50% was associated with better clinical outcomes compared with that of <50% (4). However, these rates are not statistically determined values. In this study, sLVP >59.4% was a significant predictor

of CRT responders and better clinical outcomes, evidenced by the results of the multivariate analysis. Using this criterion, we may be able to predict clinical responses, such as cardiac death and HF hospitalization.

The association between synchronized left ventricular pacing and PR interval

A previous study reported that LVP improved LV dp/dt max in patients with a PR interval <200 ms (11). Other studies have also reported the effect of sLVP in patients with a normal PR interval (9,10); however, the significance of sLVP in patients with prolonged PR intervals is unknown. In this study, which included patients with moderately prolonged PR intervals, high sLVP rates were associated with better clinical outcomes. However, the patients with sLVP <59.4% had longer PR intervals than the patients with sLVP >59.4%. The sLVP rate appeared significantly affected by PR interval, especially in patients with prolonged PR intervals. Prolonged PR intervals are considered a significant factor in preventing a high sLVP rate. A previous report showed that RA septal pacing was associated with a shorter AV interval than right appendage pacing (12). The case report demonstrated that the sLVP rate was increased by RA septal pacing in patients with extremely prolonged PR intervals (424 ms). In this study, most patients experienced right appendage pacing. We should consider that the RA pacing lead is positioned at the RA septum in patients with a prolonged PR interval to increase the LPV rate.

5 STUDY LIMITATIONS

This study had some limitations. First, this was a retrospective single-centre study. The results of this study should be further confirmed by prospective and multi-centre studies in the future. Second, the sample size was small, which reduces the statistical strength of our findings. In order to resolve this point, it is necessary to collect cases in a multi-center study. Third, the

current study compared the mixture of sLVP and BVP. To clarify the effect of the sLVP, we have to compare the pure sLVP and the pure BVP.

6 CONCLUSIONS

Our study shows that the sLVP rate is associated with the CRT responder rate. A higher sLVP rate (>59.4 %) is associated with a lower risk of cardiac death and HF hospitalization.

Data Availability: The datasets generated and/or analyzed during the current study are available from the corresponding author upon reasonable request.

Sources of Funding: This research did not receive any specific grants from funding agencies in the public, commercial or not-for-profit sectors.

Disclosures: None.

REFERENCES

1. Abraham WT, Fisher WG, Smith AL, Delurgio DB, Leon AR, Loh E, Kocovic DZ, Packer M, Clavell AL, Hayes DL, et al. Cardiac Resynchronization in Chronic Heart Failure. *New England Journal of Medicine*. 2002;346:1845–1853.
2. Pitzalis MV, Iacoviello M, Romito R, Massari F, Rizzon B, Luzzi G, Guida P, Andriani A, Mastropasqua F, Rizzon P. Cardiac Resynchronization Therapy Tailored by Echocardiographic Evaluation of Ventricular Asynchrony. *Journal of the American College of Cardiology*. 2002;40:1615–1622.
3. Martin DO, Lemke B, Birnie D, Krum H, Lee KL, Aonuma K, Gasparini M, Starling RC, Milasinovic G, Rogers T, et al. Investigation of a Novel Algorithm for Synchronized Left-Ventricular Pacing and Ambulatory Optimization of Cardiac Resynchronization Therapy: Results of the Adaptive CRT Trial. *Heart Rhythm*. 2012;9:1807–1814.
4. Birnie D, Lemke B, Aonuma K, Krum H, Lee KL, Gasparini M, Starling RC, Milasinovic G, Gorcsan J, Houmsse M *et al*. Clinical Outcomes with Synchronized Left Ventricular Pacing: Analysis of the Adaptive CRT Trial. *Heart Rhythm*. 2013;10:1368–1374.
5. Hsu JC, Birnie D, Stadler RW, Cerkenvenik J, Feld GK, Birgersdotter-Green U. Adaptive Cardiac Resynchronization Therapy Is Associated with Decreased Risk of Incident Atrial Fibrillation Compared to Standard Biventricular Pacing: A Real-World Analysis of 37,450 Patients Followed by Remote Monitoring. *Heart Rhythm*. 2019;16:983–989.
6. Thibault B, Ritter P, Bode K, Calò L, Mondésert B, Mangual JO, Badie N, McSpadden LC, Pappone C, Varma N. Dynamic Programming of Atrioventricular Delay Improves Electrical Synchrony in a Multicenter Cardiac Resynchronization

262 Therapy Study. *Heart Rhythm*. 2019;16:1047–1056.

263 7. Jastrzębski M, Baranchuk A, Fijorek K, Kisiel R, Kukla P, Sondej T, Czarnecka D.

264 Cardiac Resynchronization Therapy-Induced Acute Shortening of QRS Duration

265 Predicts Long-Term Mortality Only in Patients with Left Bundle Branch Block.

266 *Europace*. 2019;21:281–289.

267 8. Hsing JM, Selzman KA, Leclercq C, Pires LA, McLaughlin MG, Mcrae SE,

268 Peterson BJ, Zimetbaum PJ. Paced Left Ventricular QRS Width and ECG

269 Parameters Predict Outcomes after Cardiac Resynchronization Therapy:

270 PROSPECT-ECG Substudy. *Circulation. Arrhythmia and Electrophysiology*.

271 2011;4:851–857.

272 9. Burns KV, Gage RM, Curtin AE, Gorcsan III J, Bank AJ. Left Ventricular-Only

273 Pacing in Heart Failure Patients with Normal Atrioventricular Conduction

274 Improves Global Function and Left Ventricular Regional Mechanics Compared

275 with Biventricular Pacing: an Adaptive Cardiac Resynchronisation Therapy

276 Sub-study. *European Journal of Heart Failure*. 2017;29:1335–1343.

277 10. Su Y, Hua W, Shen F, Zou J, Tang B, Chen K, Liang Y, He L, Zhou X, Zhang X, et

278 al. Left Ventricular-Only Fusion Pacing versus Cardiac Resynchronization

279 Therapy in Heart Failure Patients: A Randomized Controlled Trial. *Clinical*

280 *Cardiology*. 2021;44:1225–1232.

281 11. Van Gelder BM, Bracke FA, Meijer A, Pijls NH. The Hemodynamic Effect of

282 Intrinsic Conduction during Left Ventricular Pacing as Compared to Biventricular

283 Pacing. *Journal of the American College of Cardiology*. 2005;46:2305–2310.

284 12. Murata Y, Ishibashi K, Yamagata K, Izumi C, Noguchi T, Kusano K. Impact of

285 Atrial Septal Pacing in Left Ventricular-Only Pacing in Patients with a

286 First-Degree Atrioventricular Block: A Case Series. *HeartRhythm Case Reports*.

TABLES

Table 1. Baseline characteristics between responders and non-responders

| | All patients (<i>n</i> = 63) | Responder (<i>n</i> = 45) | Non-responder (<i>n</i> = 18) | <i>P</i> -Value |
|----------------------|-------------------------------|----------------------------|--------------------------------|------------------|
| Age, years | 64 ± 14 | 65 ± 13 | 63 ± 15 | <i>P</i> = 0.586 |
| Men | 48 (76%) | 34 (76%) | 14 (78%) | <i>P</i> > 0.999 |
| Height, cm | 166 ± 9 | 166 ± 9 | 166 ± 9 | <i>P</i> = 0.984 |
| Body weight, kg | 61 ± 13 | 63 ± 12 | 57 ± 14 | <i>P</i> = 0.093 |
| CRT-D/CRT-P | 56/7 | 38/7 | 18/0 | <i>P</i> = 0.177 |
| Secondary prevention | 10 (16%) | 5 (11%) | 5 (28%) | <i>P</i> = 0.132 |
| NYHA, II/III/IV | 44(70%)/15(24%)/4(6%) | 32(71%)/11(24%)/2(4%) | 12(67%)/4(22%)/2(11%) | <i>P</i> = 0.617 |
| ICM | 17 (27%) | 9 (20%) | 8 (44%) | <i>P</i> = 0.063 |
| HT | 23 (37%) | 19 (42%) | 4 (22%) | <i>P</i> = 0.159 |
| DM | 18 (29%) | 15 (33%) | 3 (17%) | <i>P</i> = |

| | | | | |
|-------------------|---------------|---------------|---------------|--------|
| | | | | 0.230 |
| CKD | 31 (49%) | 21 (47%) | 10 (56%) | $P =$ |
| | | | | 0.585 |
| LVEF, % | 23 ± 7 | 22 ± 7 | 24 ± 8 | $P =$ |
| | | | | 0.386 |
| LVESV, mL | 181 ± 80 | 178 ± 84 | 190 ± 70 | $P =$ |
| | | | | 0.630 |
| PR time, ms | 192 ± 32 | 188 ± 31 | 204 ± 34 | $P =$ |
| | | | | 0.084 |
| QRS time, ms | 155 ± 25 | 159 ± 27 | 146 ± 18 | $P =$ |
| | | | | 0.057 |
| LBBB | 31 (49%) | 27 (60%) | 4 (22%) | $P =$ |
| | | | | 0.011 |
| LV only pacing, % | 67 ± 35 | 75 ± 30 | 47 ± 40 | $P =$ |
| | | | | 0.003 |
| Cre, mg/dL | 1.2 ± 0.6 | 1.2 ± 0.7 | 1.2 ± 0.4 | $P =$ |
| | | | | 0.817 |
| BNP, pg/mL | 401 ± 473 | 352 ± 474 | 525 ± 459 | $P =$ |
| | | | | 0.1913 |

291 Data are presented as the mean \pm standard deviation or number (percentage).

292 Abbreviations: BNP, brain natriuretic peptide; CKD, chronic kidney disease; Cre, creatinine;

293 CRT-D, cardiac resynchronization therapy defibrillator; CRT-P, cardiac resynchronization

294 therapy pacemaker; DM, diabetes mellitus; HT, hypertension; ICM, ischaemic

295 cardiomyopathy; LBBB, left bundle branch block; LVEF, left ventricular ejection fraction;

296 LVESV, left ventricular end-systolic volume; NICM, non-ischaemic cardiomyopathy; NYHA,

297 New York Heart Association.

298

299 **Table 2. Univariate and multivariate analyses for responder**

| | Univariate analysis | | | Multivariate analysis | | |
|----------------------|---------------------|------------|---------|-----------------------|------------|---------|
| | OR | 95% CI | P-value | OR | 95% CI | P-value |
| Age, 1 year increase | 0.98 | 0.94–1.02 | 0.580 | 0.98 | 0.93–1.03 | 0.647 |
| Men | 0.88 | 0.21–3.09 | 0.850 | 0.65 | 0.12–2.92 | 0.589 |
| ICM | 0.31 | 0.09–1.02 | 0.054 | | | |
| HT | 2.55 | 0.77–10.13 | 0.126 | | | |
| DM | 2.50 | 0.68–11.99 | 0.170 | | | |
| CKD | 0.70 | 0.22–2.09 | 0.523 | | | |
| LVEF, 1% increase | 1.03 | 0.95–1.11 | 0.383 | | | |
| LVESV, 1 mL increase | 1.00 | 0.99–1.00 | 0.631 | | | |
| PR, 1 ms increase | 1.01 | 0.99–1.03 | 0.081 | | | |
| QRS, 1 ms increase | 0.97 | 0.95–1.00 | 0.051 | | | |
| LBBB | 5.25 | 1.59–20.91 | 0.005 | 2.81 | 0.68–12.76 | 0.149 |
| sLVP>59.4% | 6.28 | 1.95–21.91 | 0.001 | 4.52 | 1.18–18.90 | 0.027 |

300 Abbreviations: BNP, brain natriuretic peptide; CI, confidence interval; CKD, chronic kidney
301 disease; DM, diabetes mellitus; HT, hypertension; ICM, ischaemic cardiomyopathy; LBBB,
302 left bundle branch block; LVEF, left ventricular ejection fraction; LVESV, left ventricular
303 end-systolic volume; OR, odds ratio; sLVP, synchronized left ventricular pacing.

Table 3. Univariate and multivariate analyses for cardiac death and heart failure hospitalization

| | Univariate analysis | | | Multivariate analysis | | |
|----------------------|---------------------|------------|---------|-----------------------|-------------|---------|
| | HR | 95% CI | P-value | HR | 95% CI | P-value |
| Age, 1 year increase | 0.99 | 0.96–1.04 | 0.972 | 0.95 | 0.90–1.00 | 0.061 |
| Men | 0.68 | 0.22–2.53 | 0.541 | 0.63 | 0.15–2.88 | 0.541 |
| ICM | 2.51 | 0.82–7.32 | 0.102 | | | |
| HT | 0.28 | 0.04–1.03 | 0.055 | | | |
| DM | 1.00 | 0.27–3.04 | 0.999 | | | |
| CKD | 3.72 | 1.23–13.72 | 0.019 | 14.51 | 2.79–108.45 | <0.001 |
| LVEF, 1% increase | 0.97 | 0.89–1.04 | 0.521 | | | |
| LVESV, 1 mL increase | 1.00 | 0.99–1.00 | 0.994 | | | |
| PR, 1 ms increase | 1.01 | 0.99–1.03 | 0.060 | | | |
| QRS, 1 ms increase | 0.98 | 0.96–1.00 | 0.149 | | | |
| LBBB | 0.26 | 0.05–0.84 | 0.023 | 0.41 | 0.08–1.55 | 0.198 |
| sLVP>59.4% | 0.12 | 0.02–0.40 | <0.001 | 0.10 | 0.01–0.40 | <0.001 |

Abbreviations: CI, confidence interval; CKD, chronic kidney disease; DM, diabetes mellitus; HR, hazard ratio; HT, hypertension; ICM, ischaemic cardiomyopathy; LBBB, left bundle branch block; LVEF, left ventricular ejection fraction; LVESV, left ventricular end-systolic volume; sLVP, synchronized left ventricular pacing.

FIGURES

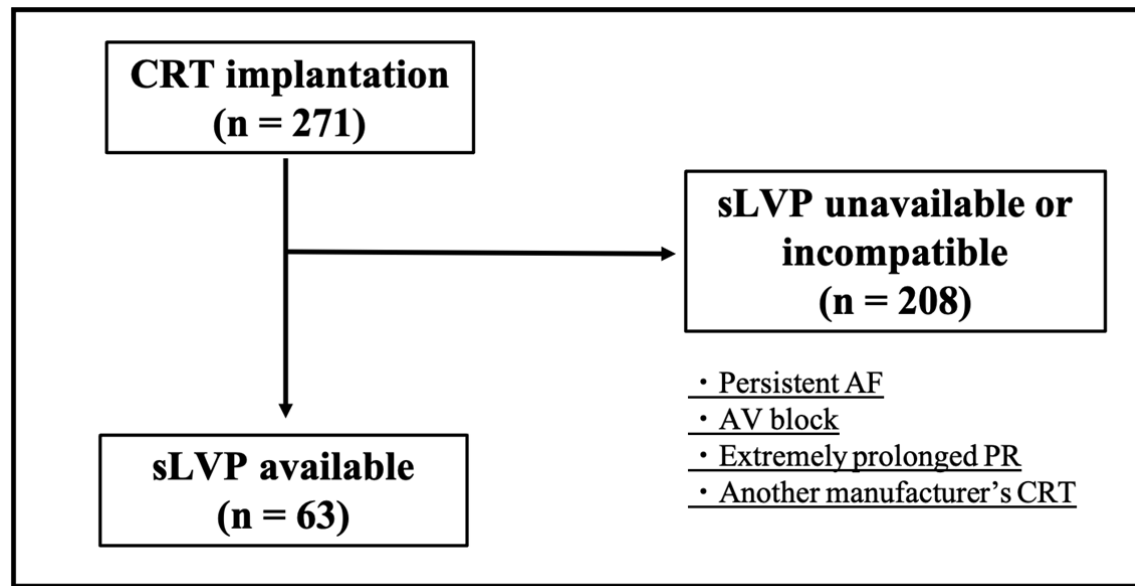
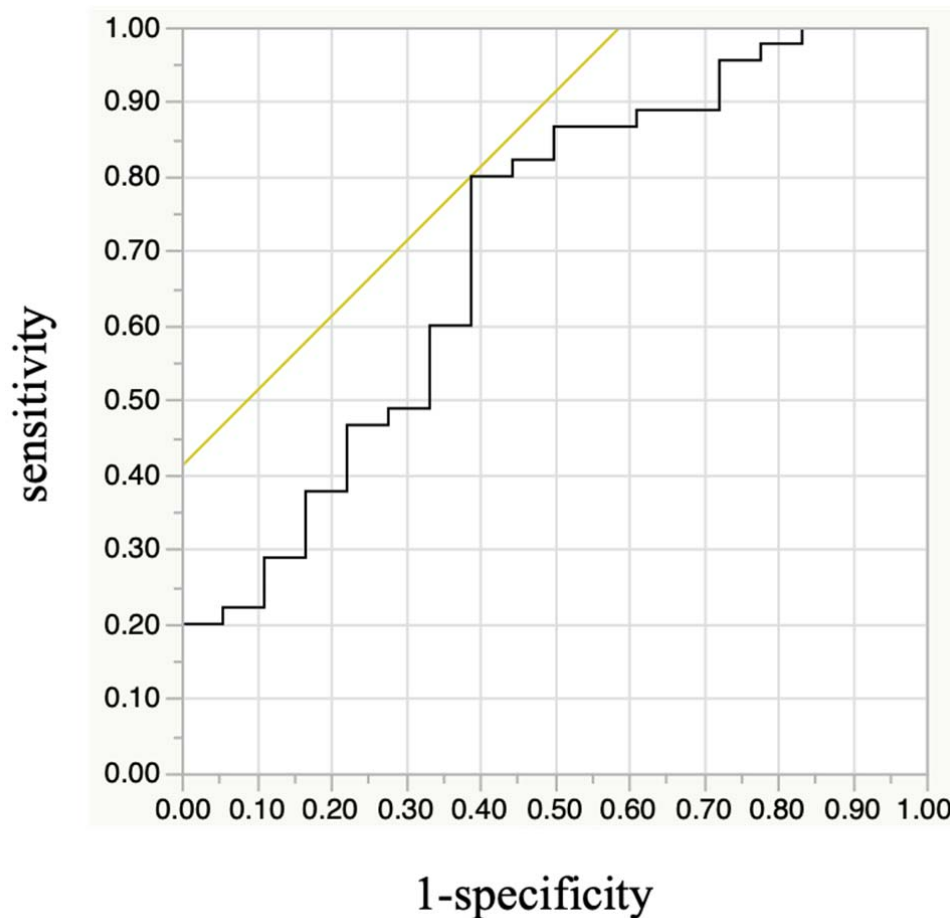


Figure 1. Overview of the study population

Among our cohort of 271 consecutive patients who underwent CRT implantation between April 2016 and August 2021, we evaluated 63 sLVP enabled CRT patients and applied the aCRT algorithm.

Abbreviations: AF, atrial fibrillation; AV, atrioventricular; CRT, cardiac resynchronization therapy; sLVP, synchronized left ventricular pacing.



318

319 **Figure 2. The association between CRT responder and synchronized left ventricular**
 320 **pacing rate**

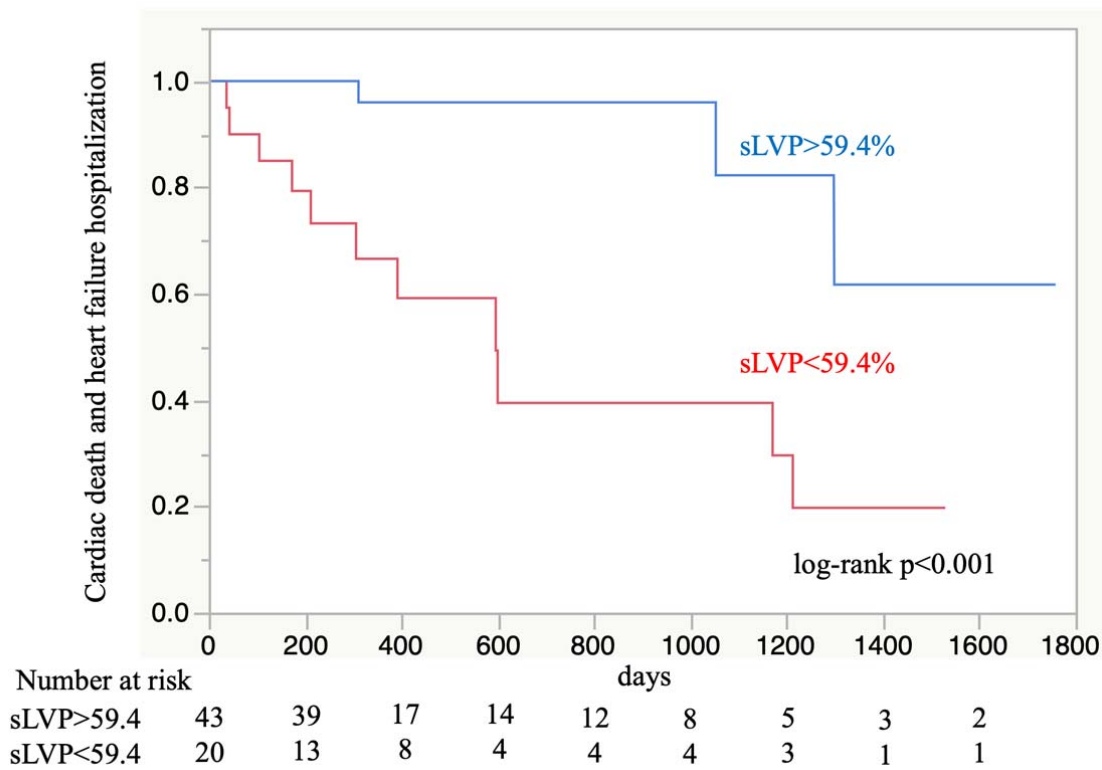
321 Receiver operating characteristic curve analysis revealed that the optimal cut-off value during
 322 sLVP rate was 59.4% for the prediction of CRT responders.

323 Abbreviations: CRT, cardiac resynchronization therapy; sLVP, synchronized left ventricular
 324 pacing

325

326

327



328

329 **Figure 3** Kaplan–Meier analysis. The analysis demonstrates that the higher sLVP group
 330 (sLVP > 59.4%, $n = 43$) had better prognosis (with regard to cardiac death and heart failure
 331 hospitalization) than the lower sLVP group (sLVP < 59.4%, $n = 20$) (log-rank $p < 0.001$).
 332 Abbreviations: sLVP, synchronized left ventricular pacing.