

1 **Title:** Assessment of heterogeneity and disease onset in the Parkinson's Progression Markers Initiative (PPMI)
2 cohort using the α -synuclein seed amplification assay: a cross-sectional study

3 **Authors:**

4 Andrew Siderowf^{a,†}, Luis Concha-Marambio^{b,†}, David-Erick Lafontant^c, Carly M. Farris^b, Yihua Ma^b, Paula A.
5 Urenia^b, Hieu Nguyen^b, Roy N. Alcalay^{d,e}, Lana M. Chahine^f, Tatiana Foroud^g, Douglas Galasko^h, Karl Kiebertzⁱ,
6 Kalpana Merchant^j, Brit Mollenhauer^k, Kathleen L. Poston^l, John Seibyl^m, Tanya Simuni^j, Caroline M. Tanner^{n,o},
7 Daniel Weintraub^{p,q}, Aleksandar Videnovic^r, Seung Ho Choi^c, Ryan Kurth^c, Chelsea Caspell-Garcia^c, Christopher S.
8 Coffey^c, Mark Frasier^s, Luis M. A. Oliveira^s, Samantha J. Hutten⁵, Todd Sherer⁵, Kenneth Marek^m and Claudio
9 Soto^{b,t} on behalf of the Parkinson's Progression Markers Initiative^{††}

10 ^aDepartment of Neurology, Perelman School of Medicine University of Pennsylvania, Philadelphia, PA, USA

11 ^bR&D Unit, Amprion Inc., San Diego, CA, USA.

12 ^cDepartment of Biostatistics, College of Public Health, University of Iowa, Iowa City, Iowa, USA.

13 ^dDepartment of Neurology, Tel Aviv Sourasky Medical Center, Israel

14 ^eDepartment of Neurology, Columbia University Irving Medical Center, NY, USA

15 ^fDepartment of Neurology, University of Pittsburgh, Pittsburgh, PA, USA

16 ^gDepartment of Medical and Molecular Genetics, Indiana University School of Medicine, Indianapolis, IN, USA

17 ^hDepartment of Neurology, University of California, San Diego, California, USA

18 ⁱUniversity of Rochester Medical Center, University of Rochester, Rochester, NY, USA.

19 ^jDepartment of Neurology, Northwestern University Feinberg School of Medicine, Chicago, Illinois, USA

20 ^kDepartment of Neurology, University Medical Center Goettingen, Goettingen, Germany; Paracelsus-Elena Klinik,
21 Kassel and Scientific Employee with an Honorary Contract at German Center for Neurodegenerative Diseases
22 (DZNE), Göttingen, Germany.

23 ^lDepartment of Neurology and Neurological Sciences, Stanford University School of Medicine, Stanford, CA, USA

24 ^mInstitute for Neurodegenerative Disorders, New Haven, Connecticut, USA

25 ⁿDepartment of Neurology, Weill Institute for Neurosciences, University of California San Francisco, San
26 Francisco, California, USA

27 ^oParkinson's Disease Research, Education and Clinical Center, San Francisco Veterans Affairs Medical Center, San
28 Francisco, California, USA

29 ^pDepartment of Psychiatry, Perelman School of Medicine, University of Pennsylvania, Philadelphia, PA, USA

30 ^qParkinson's Disease Research, Education and Clinical Center, Philadelphia Veterans Affairs Medical Center,
31 Philadelphia, Pennsylvania, USA

32 ^rDepartment of Neurology, Neurological Clinical Research Institute, Massachusetts General Hospital, Harvard
33 Medical School, Boston, MA, USA

34 ^sThe Michael J. Fox Foundation for Parkinson's Research, New York, New York, USA

35 ^tDepartment of Neurology, University of Texas McGovern Medical School at Houston, Texas, USA

36 ^{††}Refer to appendix for full list of PPMI investigators

37 [†]These authors contributed equally to this manuscript

38 **Corresponding authors:** Dr. Andrew Siderowf and Dr. Claudio Soto (Claudio.Soto@uth.tmc.edu)

39 **Abstract Word Count: 295**

40 **Word Count: 3,969**

41 **References: 35**

42 **Running title:** α Syn-SAA in Parkinson's Disease

43 **Research in Context**

44 Evidence before the study

45 We searched PubMed with the terms Parkinson's disease (PD), prodromal, Non-manifest carriers, GBA, LRRK2
46 and real-time quaking-induced conversion (RT-QuIC), protein misfolding cyclic amplification (PMCA), and seed
47 amplification assay (SAA) for articles published in English on or before Oct 25, 2022, in any field. This is a large
48 and rapidly growing literature, and a number of studies were identified, including case-series of PD patients with
49 and without genetic variants, individuals with isolated REM sleep behavior disorder (RBD), and a small number
50 of studies of non-manifesting carriers of genetic variants (4) associated with PD.

51

52 Added value of the study

53 To our knowledge, this is the largest report of comparative data from a cohort of PD patients, healthy controls,
54 individuals with clinical syndromes prodromal to PD (hyposmia and RBD), and non-manifest carriers of *LRRK2*
55 *G2019S* and *GBA N370S* mutations. The strengths of our data include a large sample size, robust clinical data set,
56 a high percentage of DAT scans completed, and the ability to compare non-manifest carriers to similar aged
57 healthy controls, which allows for inter-group comparisons and sub-group analysis. The key novel findings in
58 this study include: 1) marked variability in rates of positive α Syn-SAA results particularly among LRRK2 variant
59 carriers depending on olfactory performance and sex; 2) α Syn-SAA positivity in prodromal and NMCs without
60 dopaminergic imaging abnormalities in a substantial number of cases, while the converse is less common,
61 indicating that α Syn-SAA may be a very early indicator of synucleinopathy. We also confirmed the high
62 diagnostic accuracy of α Syn-SAA for sporadic PD vs. HC and that α Syn-SAA is negative in the vast majority of
63 NMC, suggesting that the presence of synuclein aggregates in CSF is not a life-long trait but rather acquired at
64 some point relatively close to disease onset.

65

66 Implications of all available evidence

67 Our results demonstrate that the assay classifies PD patients with high sensitivity and specificity, provides
68 information about molecular heterogeneity, and detects prodromal individuals prior to diagnosis. These findings
69 suggest a crucial role for α Syn-SAA in therapeutic development, both to identify pathologically defined
70 subgroups of PD patients and to establish biomarker-defined at-risk cohorts.

71

72 **Summary**

73 **Background:** Recent research demonstrates that α -synuclein seed amplification assays (α Syn-SAA) accurately
74 differentiate Parkinson's disease (PD) patients from healthy controls (HC). We used the well-characterized,
75 multicenter Parkinson's Progression Markers Initiative (PPMI) cohort to further assess the diagnostic
76 performance of α Syn-SAA and to examine whether the assay identifies heterogeneity among patients and
77 enables early identification in at-risk groups.

78 **Methods:** α Syn-SAA analysis of cerebrospinal fluid (CSF) was performed using previously described methods.
79 We assessed sensitivity and specificity in PD and HC, including subgroups based on genetic and clinical features.
80 We determined the frequency of positive α Syn-SAA results in prodromal participants (REM sleep behavior
81 disorder and hyposmia) and non-manifesting carriers (NMCs) of genetic variants associated with PD and
82 compared α Syn-SAA to clinical measures and other biomarkers.

83 **Findings:** 1,123 participants were included: 545 PD, 163 HCs, 54 participants with scans without evidence of
84 dopaminergic deficit (SWEDDs), 51 prodromal participants, and 310 NMCs. Sensitivity and specificity for PD
85 versus HC were 88% and 96%, respectively. Sensitivity in sporadic PD with the typical olfactory deficit was 99%.
86 The proportion of positive α Syn-SAA was lower in subgroups including LRRK2 PD (68%) and sporadic PD patients
87 without olfactory deficit (78%). Participants with LRRK2 variant and normal olfaction had an even lower α Syn-
88 SAA positivity rate (35%). Among prodromal and at-risk groups, 86% of RBD and hyposmic cases had positive
89 α Syn-SAA. 8% of NMC (either LRRK2 or GBA) were positive.

90 **Interpretation:** This study represents the largest analysis of α Syn-SAA for biochemical diagnosis of PD. Our
91 results demonstrate that the assay classifies PD patients with high sensitivity and specificity, provides
92 information about molecular heterogeneity, and detects prodromal individuals prior to diagnosis. These findings
93 suggest a crucial role for α Syn-SAA in therapeutic development, both to identify pathologically defined
94 subgroups of PD patients and to establish biomarker-defined at-risk cohorts.

95 **Funding:** PPMI – a public-private partnership – is funded by the Michael J. Fox Foundation for Parkinson's
96 Research and funding partners, including: PPMI is supported by a consortium of private and philanthropic
97 partners: Abbvie, AcureX, Aligning Science Across Parkinson's, Amathus Therapeutics, Avid
98 Radiopharmaceuticals, Bial Biotech, Biohaven, Biogen, BioLegend, Bristol-Myers Squibb, Calico Labs, Celgene,
99 Cerevel, Coave, DaCapo Brainscience, 4D Pharma, Denali, Edmond J. Safra Foundation, Eli Lilly, GE Healthcare,
100 Genentech, GlaxoSmithKline, Golub Capital, Insitro, Janssen Neuroscience, Lundbeck, Merck, Meso Scale
101 Discovery, Neurocrine Biosciences, Prevail Therapeutics, Roche, Sanofi Genzyme, Servier, Takeda, Teva, UCB,
102 VanquaBio, Verily, Voyager Therapeutics, and Yumanity.

103

104

105 Introduction

106 Biomarkers for Parkinson's disease (PD) that reflect underlying pathology would improve the accuracy of early
107 diagnosis, clarify subtypes and accelerate clinical trials.¹ The pathological hallmark of PD is the accumulation of
108 misfolded, aggregated α -synuclein (α Syn) in the substantia nigra and other areas of the brain.^{2,3} α Syn
109 aggregates have also been identified in peripheral nervous system tissue.^{4,5} Recently, misfolded-protein
110 amplification techniques, originally developed for the detection of self-propagating PrP^{Sc} in prion diseases,⁶ have
111 been applied to detect α Syn seeds in PD and other synucleinopathies.^{7,8} These assays have been reported under
112 the names real-time quaking-induced conversion (RT-QuIC),⁹ protein misfolding cyclic amplification (PMCA),¹⁰
113 and most recently, the consensus name, seed amplification assay (SAA).^{11,12}

114 Prior studies have shown that α Syn seed amplification assays (α Syn-SAAs) performed on cerebrospinal fluid
115 (CSF) distinguish PD patients from healthy controls (HC) with high sensitivity and specificity.^{12,13} Preliminary
116 studies have also shown α Syn-SAA positive results in a high proportion of patients from at-risk groups, such as
117 patients with isolated rapid eye movement (REM) sleep behavior disorder (RBD).¹⁴ A recent study showed
118 excellent inter-laboratory agreement when samples from the same participants were run on three different
119 assay platforms.¹²

120 While these and other studies have contributed to substantial progress in understanding the potential of α Syn-
121 SAA, large-scale studies confirming and extending these results are needed. In this report, we describe α Syn-SAA
122 results on over 1,100 participants in the Parkinson's Progression Markers Initiative (PPMI) study, including PD
123 patients with and without PD-associated genetic variants, healthy controls (HCs), and patients at risk for PD
124 (either because of prodromal features or NMCs of genetic variants). The goals of this analysis were to determine
125 assay sensitivity and specificity using a large number of samples, to leverage clinical and biomarker data within
126 PPMI to examine clinical and genetic heterogeneity among PD patients based on α Syn-SAA status and to test the
127 ability of α Syn-SAA to detect early signs of PD pathophysiology in at-risk individuals.

128 Methods

129 *Study Design*

130 This study is a cross-sectional analysis using data from the PPMI cohort. PPMI is an international, observational
131 study with the goal of identifying clinical and biological markers of disease heterogeneity and progression in PD.
132 This study is registered with ClinicalTrials.gov, number NCT01141023. Detailed information about inclusion
133 criteria, informed consent, demographic data, and study design can be found at <https://www.ppmi-info.org/>
134 Data was last accessed on 12/15/2022.

136 *Participants*

137 Participants in this study were recruited into one of the four PPMI cohorts, including PD patients, HCs,
138 participants with parkinsonism but with Scans Without Evidence of Dopamine Deficiency (SWEDD), Prodromal
139 individuals (including those with RBD or hyposmia), and NMCs of genetic variants associated with PD between
140 07 July 2010 and 04 July 2019. Diagnosis for each group was made by site investigators who are movement
141 disorders specialists and confirmed by central consensus committee review. α Syn-SAA results were not
142 available to investigators or the consensus committee at the time of diagnosis, and thus were not incorporated
143 in classifying participants.

145 Sporadic PD participants (non-carriers of LRRK2 or GBA variants) were enrolled with the following criteria: within
146 2 years of diagnosis, not treated with PD medications at the time of enrollment, being at Hoehn and Yahr (HY)

147 stage 1–2, had abnormal dopamine transporter (DAT) SPECT, and had two of the following: resting tremor,
148 bradykinesia, rigidity (required to have either resting tremor or bradykinesia); or either asymmetric resting
149 tremor or asymmetric bradykinesia. In addition, PD patients who are carriers of either the LRRK2 G2019S or the
150 GBA N370S variants were included in this study. Inclusion criteria for genetic PD were the same as other PD
151 participants except that genetic participants were not required to have an abnormality on DAT-SPECT, had to be
152 within 7 years of diagnosis, and could be receiving treatment for PD.

153
154 SWEDD participants were enrolled with PD inclusion criteria, with the exception that their initial DAT-SPECT did
155 not show evidence of decreased striatal radio-ligand uptake. HCs were age- and sex-matched healthy persons
156 without known neurologic signs or symptoms.

157
158 Prodromal participants included individuals without a diagnosis of PD, but who had prodromal features
159 associated with risk of PD, including RBD (confirmed by polysomnogram (PSG)) or otherwise unexplained severe
160 hyposmia (defined as at or below the 15th percentile using the University of Pennsylvania Smell Identification
161 Test (UPSIT) (Sensonics, Philadelphia PA) in olfactory performance based on internal population norms.¹⁵
162 Enrollment of RBD and hyposmia participants was stratified to enrich for cases with abnormal DAT-SPECT. NMCs
163 of either the LRRK2 or GBA variant noted above were included without enrichment for DAT deficit. For all
164 participants, cohort assignment was made as described in the study protocol and confirmed by the PPMI clinical
165 consensus review committee.

166
167

168 *Clinical and Pathology Assessments*

169 All PPMI participants received a battery of clinical tests described previously.¹⁶ Assessments included the
170 Movement Disorders Society (MDS) Unified Parkinson's Disease Rating Scale (MDS-UPDRS recorded in the OFF
171 state for treated participants), Montreal Cognitive Assessment (MoCA), rapid eye movement (REM)-sleep
172 behavior disorder questionnaire (RBDSQ), University of Pennsylvania Smell Identification Test (UPSIT), Scales for
173 Outcomes in Parkinson's-Autonomic Dysfunction (SCOPA-AUT) and the 15-item Geriatric Depression Scale
174 (GDS). Post-mortem assessments were performed using previously described methods.^{2,17}

175
176

176 *PPMI biomarker assessments*

177 All participants had biosampling including blood, CSF, and urine. CSF samples were collected, stored, and
178 shipped according to the PPMI protocol. For this study, samples collected at baseline were analyzed by α Syn-
179 SAA (1 sample per participant). In addition to CSF α Syn-SAA assessment, CSF biomarkers included β -Amyloid 1-
180 42 (abeta), total-tau (t-tau), phosphorylated-tau (p-tau), and quantitative total α Syn. These biomarkers were
181 assessed using methods described previously.¹⁸ Plasma neurofilament light chain (NfL),¹⁹ and urine
182 bis(monoacylglycerol) phosphate (BMP) were also assessed. Finally, DAT-SPECT was performed as previously
183 described.²⁰ Visual interpretation of SPECT images was used to assign patients to the PD, healthy and SWEDD
184 cohorts. Quantitative analysis using striatal-specific binding ratios (SBR) corrected for age, and sex were used to
185 compare DAT with clinical and biomarker data.

186
187

187 *α Syn seed amplification assay*

188 The Amprion α Syn-SAA developed by Concha, Soto, and collaborators has been described previously, following a
189 detailed protocol recently published.²¹ Briefly, the 200- μ l reaction mixture included 0.3 mg/mL rec- α syn
190 (Amprion, cat#2020), 0.5 M NaCl (Lonza, cat#51202), 100 mM PIPES-NaOH pH 6.50 (MilliporeSigma, cat#80635),
191 and 20% v/v CSF. Rec- α Syn was expressed with C-terminal His-tag in *E. coli* BL21(DE3) and purified using
192 immobilized metal affinity chromatography (IMAC). All samples were analyzed with a single batch of the
193 substrate. One 3/32" Si₃N₄ bead (Tsubaki Nakashima) was added per well using a house-made bead dispenser.
Beads were blocked with 1% BSA in 100 mM PIPES-NaOH pH 6.50 for 1 h and washed twice with 100mM PIPES-

194 NaOH pH 6.50. Samples were run in 3 technical replicates within 96-well plates, using 3 FLUOstar Omega readers
195 set to 37 °C. Each plate was shaken for 1 min every 29 min, and fluorescence was measured after each cycle for
196 150 h. The F_{\max} (highest raw fluorescence from each well) was used in a probabilistic algorithm to determine
197 whether each of the 3 replicates is positive or negative, and the results of the triplicate are used to determine
198 the assay output for each sample. If all 3 replicates from a given sample were positive, the sample is deemed
199 “positive” α Syn-SAA. If 0–1 replicates are positive, the sample is deemed “negative”. If 2 replicates are positive,
200 the sample is deemed “inconclusive”. A second-level criterion within the algorithm compares the average
201 maximum fluorescence (F_{\max}) of the 3 replicates from inconclusive samples, and samples with highly variable or
202 low F_{\max} were deemed negative. The α Syn-SAA data is available in the PPMI LONI (Laboratory of Neuroimaging)
203 database (Amprion: project#155).

204

205 All α Syn-SAA analyses were performed blinded to participant demographic features and diagnosis. Blinding was
206 protected by shipping samples randomized by cohort using unique specimen IDs.

207

208 *Statistical analysis*

209 SAS 9.4 software was used for statistical analyses and figures. Sensitivity and specificity with 95% Wald
210 confidence intervals were calculated for PD, HC, and SWEDD cohorts and selected subgroups. For total samples
211 fewer than 40, Wilson’s method was used to calculate the 95% confidence intervals for sensitivity and
212 specificity. Descriptive statistics at baseline including median [interquartile range (IQR)] for continuous measures
213 and frequency (percent) for categorical measures were calculated by cohort, subgroup, and α Syn-SAA status for
214 demographics, MDS-UPDRS scores, CSF biomarkers, UPSIT percentile, and DAT SBR. For groups with total
215 samples fewer than 3, IQRs were not provided for continuous outcomes. Similarly, for categorical outcomes,
216 percentages for groups with total samples fewer than 10 were not provided. Separately for each PD subgroup,
217 the two sample Wilcoxon rank sum test was used to test for differences in distribution between α Syn-SAA
218 positive and α Syn-SAA negative participants for age, disease duration, UPSIT percentile, and % expected DAT
219 SBR. Moreover, to measure the association between α Syn-SAA status and sex, HY stage, race, and hyposmic
220 status, chi-square tests or Fisher’s exact tests (when the expected count in a cell is less than 5) were used. In
221 addition, the logistic regression model was applied to determine the relationship between the log odds of a
222 positive α Syn-SAA status compared to a negative status for each MDS-UPDRS score and biomarker characteristic
223 of PD subgroups. We tested models with continuous predictors with evidence of a non-linear fit for quadratic
224 fits and compared linear and quadratic fits using BIC. As BIC did not demonstrate a preference (difference < 2),
225 we opted to present the linear fit for simplicity. Notable odds ratio (OR) estimates and 95% Wald confidence
226 intervals from the model can be found in the text. To account for skewness and the upper limit of detection,
227 each CSF biomarker was dichotomized. To minimize the potential for bias from confounding factors, models
228 involving MDS-UPDRS scores were adjusted for disease duration, while models involving CSF biomarkers were
229 adjusted for age and sex. Due to low sample sizes, statistical analyses were not provided for GBA PD, HC, NMC,
230 and prodromal subgroups.

231

232 *Role of the funding source*

233 Research officers (MF, SH, LO, TS) at the funding institution was involved in the study design, interpretation of
234 results, review, and revision of this manuscript, and decision to submit for publication. The corresponding
235 authors had full access to all the data in the study and take responsibility for the integrity of the data and the
236 accuracy of the data analysis.

237

238

239 **Results**

240 *Participants Characteristics*

241 1,123 participants were included in this analysis, including 545 patients with PD (sporadic = 373, LRRK2 G2019S
242 variant = 123, GBA N370S variant = 49), 163 HCs, 54 SWEDDs, 51 prodromal participants (hyposmia = 18, RBD =
243 33) and 310 NMCs (LRRK2= 159; GBA = 151). Prodromal participants were older and more likely to be male.
244 NMCs were more likely to be female. Other demographic features are shown in Supplementary Table 1.

245

246 The sensitivity of α Syn-SAA for detecting all PD cases, combining sporadic and genetic cases, was 87.7%. The
247 specificity for identifying HCs was 96.3% (Table 1). A small number of cases had inconclusive α Syn-SAA results
248 ($n=10$, 1.39%). Under the conservative assumption that the results for these samples were always incorrect,
249 similar results were still obtained for sensitivity and specificity. α Syn-SAA was positive slightly more often for
250 SWEDD participants than for HCs. This result is in keeping with the literature showing that a small number of
251 individuals with borderline DAT imaging results have progressive parkinsonism.²²

252

253

254 *PD Heterogeneity*

255 The proportion of participants with positive α Syn-SAA varied across subgroups based on genetic and clinical
256 features. Among genetic subgroups with manifest PD, positive α Syn-SAA was highest for GBA PD, followed by
257 sporadic PD, and lower for LRRK2 PD (Table 2). Among clinical features, hyposmia was the most robust predictor
258 of a positive assay ($p<0.0001$). Among all PD patients with hyposmia, the sensitivity of α Syn SAA was 97.1%
259 (379/390) compared to 63.5% (92/146) among all PD patients without olfactory dysfunction. Combining
260 genetic and clinical features, LRRK2 PD participants with normal olfaction were more likely to be α Syn-SAA
261 *negative* (65.3%) than α Syn-SAA *positive* (Figure 1). The likelihood of negative α Syn-SAA results was higher for
262 female than male LRRK2 PD participants (44.8% vs. 21.5%; $p=0.006$). The likelihood of α Syn-SAA negative for
263 female normosmic LRRK2 carriers was 21/24 (87.5%). α Syn-SAA results did not differ for males and females with
264 sporadic PD.

265

266 Other clinical features were significantly associated with α Syn-SAA status, but the magnitude of these
267 associations was modest. The LRRK2 PD group with negative α Syn-SAA results had slightly less severe motor
268 features than the α Syn-SAA positive LRRK2 PD group ($p=0.028$, OR= 1.053 (95% Wald CI: 1.006, 1.103)). There
269 was a small but significant difference for sporadic PD with negative α Syn-SAA having slightly worse non-motor
270 performance (MDS-UPDRS part I) than those with positive α Syn-SAA ($p=0.003$, OR=0.881 (95% Wald CI: 0.810,
271 0.958)). The sporadic PD group with negative α Syn-SAA results had higher MDS-UPDRS part II scores (after
272 adjustment for disease duration) than the α Syn-SAA positive sporadic PD group ($p=0.027$, OR= 0.904 (95% Wald
273 CI: (0.827, 0.989)). There were no significant associations between autonomic function, cognitive test results,
274 depression scores or RBD scores for any groups based on α Syn-SAA status (data not shown). Likewise, there
275 were no apparent associations with other biomarkers (Supplementary Table 2). Total BMP in urine was higher
276 for LRRK2 than sporadic or GBA PD, but there was no difference in BMP levels among LRRK2 carriers based on
277 α Syn-SAA status.

278

279 *Prodromal PD*

280 The majority of RBD and hyposmic individuals had positive α Syn-SAA results including 16 of 18 hyposmics and 28
281 of 33 RBD (Supplementary Table 3). Among these participants, a positive α Syn-SAA result was much more likely
282 in participants with hyposmia. For the 18 prodromal cases recruited based on smell loss, only two had negative
283 α Syn-SAA results, and one of these was actually above the 15th percentile cut-off for olfactory loss (16.5th
284 percentile). For RBD cases, all but one (of 27) α Syn-SAA positive participants were below the 15th percentile
285 while 4 of 5 α Syn-SAA negative individuals were normosmic. There were no other clinical features that were
286 associated with a positive α Syn-SAA in prodromal participants.

287

288 Approximately 30% of the α Syn-SAA positive prodromal cases had DAT-SPECT results above the cut-off of >65%
289 of age and sex expected uptake associated with prodromal PD,²³ supportive of a model in which a positive α Syn-
290 SAA result could precede abnormal DAT imaging (figure 2). A smaller number of RBD cases (3/33) had positive
291 DAT imaging but negative α Syn-SAA results.

292
293 While RBD and hyposmic participants were expected to be close in time to the onset of symptomatic
294 parkinsonism because most had DAT deficit, the LRRK2 and GBA NMC were likely more distant from PD
295 diagnosis and not required to have DAT deficit or any other risk factors. In these NMCs, 8.8% (14/159) of LRRK2
296 and 7.3% (11/151) of GBA NMCs had positive α Syn-SAA results.

297
298 Autopsy data were available for 15 participants, all with a clinical diagnosis of PD in life. 14 participants had
299 typical pathology, including Lewy bodies and Lewy neurites, and were α Syn-SAA positive. The one α Syn-SAA
300 negative case was a normosmic PD patient who also carried the LRRK2 G2019S variant. At autopsy, this patient
301 had nigral cell loss and depigmentation but no Lewy bodies or neurites.

302

303 Discussion

304 This study utilizes the comprehensive clinical and biomarker PPMI dataset to demonstrate that α Syn-SAA
305 informs PD genetic and clinical heterogeneity and identifies at-risk individuals, possibly at a very early stage of
306 degeneration. We confirmed that α Syn-SAA is highly accurate in differentiating PD from HCs, but observed
307 variability among genetic sub-groups, in particular among LRRK2 PD patients. The proportion of cases with
308 positive α Syn-SAA results was highest among patients with sporadic PD with typical olfactory deficit. By
309 contrast, the proportion of α Syn-SAA positive results was lower in those with normal olfaction and in LRRK2
310 variant carriers. We found an α Syn-SAA positive gradient from almost certain in GBA PD to very likely in
311 sporadic PD to only modestly more likely than not in LRRK2 PD. Preserved olfaction was associated with negative
312 α Syn-SAA results across genetic sub-groups, but participants who were both normosmic and LRRK2 variant
313 carriers were even more likely to be α Syn-SAA negative. This was particularly true among females, where only
314 12.5% of female normosmic LRRK2 carriers had a positive α Syn-SAA result.

315 In cases that came to post-mortem examination, all those with positive α Syn-SAA results had typical Lewy
316 pathology, while the one case with negative α Syn-SAA, a LRRK2 carrier with preserved olfaction, had no Lewy
317 pathology. These clinical and pathological data suggest that there may be different pathologies in α Syn-SAA
318 positive and negative LRRK2 PD despite a similar clinical phenotype. Our results showing a lower frequency of
319 α Syn-SAA positivity in PD patients carrying a LRRK2 variant is consistent with a prior study of 15 LRRK2 G2019S
320 PD patients and 16 NMC.²⁴ Interestingly, the proportion of α Syn-SAA negative cases that we found
321 (approximately one third) closely mirrors the frequency of LRRK2 PD cases without Lewy pathology at autopsy
322 reported in the literature.^{25,26} These consistent results indicate that α Syn-SAA is a marker of pathology
323 characterized by α -Syn aggregates rather than a clinical PD phenotype, and enables ante-mortem differentiation
324 of cases with atypical pathology.

325 Along with preserved olfaction, PD patients with a LRRK2 variant and a negative α Syn-SAA result were older,
326 more likely to be female and had slightly less motor impairment. These results are consistent with a modest
327 clinical-pathological correlation within LRRK2 PD, that can be stratified by α Syn-SAA. In addition, the excess of
328 females among LRRK2 carriers who are α Syn-SAA negative may partially account for the observation that the
329 expected male-to-female predominance seen in sporadic PD is not present in LRRK2 carriers.²⁷

330 Regarding prodromal and at-risk individuals, the results of this study confirm that a majority of RBD patients
331 with abnormal PSG and DAT deficit are α Syn-SAA positive. We have extended our assessment to individuals at-
332 risk for PD on the basis of impaired olfaction who also had DAT deficit, and they are equally likely to be α Syn-

333 SAA positive. Of the five (out of 33) RBD cases that were α Syn-SAA negative, three had abnormal DAT imaging,
334 four also had normal olfactory function, possibly explained by the observation that some RBD patients progress
335 to MSA.²⁸ This disorder is associated with a less olfactory impairment than PD.²⁹ Prior studies evaluating the
336 utility of α Syn-SAA in MSA have produced varying results, depending on assay condition, and MSA has been
337 shown to have distinct α Syn-SAA aggregation properties relative to PD.^{10,30} For this study, we used an assay that
338 targeted detection of PD aggregates, and which has a lower sensitivity to detect glial cytoplasmic inclusions
339 (GCIs) in MSA.

340 We observed several prodromal RBD and hyposmic cases with positive α Syn-SAA results but DAT imaging in the
341 normal range. By contrast, no prodromal hyposmic participants had negative α Syn-SAA results and positive DAT
342 imaging. Only those RBD participants potentially explained by MSA had negative α Syn-SAA and DAT binding
343 consistent with PD. Approximately 7-10% of NMCs of either GBA or LRRK2 PD-related variants had positive
344 α Syn-SAA results. This figure is relatively close to the lifetime penetrance of PD among GBA N370S carriers,³¹ but
345 substantially lower than estimates of PD penetrance among LRRK2 G2019S carriers.^{32,33} Taken together, these
346 findings are consistent with a temporal pattern of biomarker abnormalities in which there may be a prolonged
347 period in which abnormalities in α Syn-SAA are present before changes in physiological markers such as DAT-
348 SPECT appear, and that this pattern may be more variable in LRRK2 carriers than GBA carriers. Interestingly,
349 among the GBA NMCs, those few individuals who are α Syn-SAA positive are also more likely to show olfactory
350 dysfunction even in the absence of a DAT deficit. Our results provide biomarker support for a prolonged
351 prodromal period. This concept has been proposed in the literature, lacked supporting evidence from nigral
352 neuropathological findings or dopamine imaging studies.³⁴ Subsequent studies in larger prodromal cohorts are
353 needed to confirm this hypothesis.

354 The results of our study have immediate implications for clinical trial design. For LRRK2 targeted therapies,
355 stratification based on the α Syn-SAA results may be necessary to assess therapeutic benefits. For GBA-targeted
356 therapies it would be reasonable to exclude α Syn-SAA negative participants since GBA PD is overwhelmingly
357 α Syn-SAA positive³⁵ and, thus, a negative result would raise questions about a PD diagnosis. α Syn-SAA could also
358 be combined with other biomarkers, such as markers of Alzheimer's pathology to classify individuals with mixed
359 pathology.³⁰ Similarly, for α Syn targeted therapies, the possibility that α Syn-SAA negative participants will
360 respond differently to treatment should be considered in patient selection and sample size estimates. For
361 planned clinical trials targeting at-risk populations, α Syn-SAA results should be considered for identifying the
362 earliest stages of synucleinopathy and those individuals likely to progress to a clinical disorder with typical Lewy
363 pathology.

364 Our study has several methodological strengths. First, it uses samples from a large and well-characterized cohort
365 consisting of several clinically relevant sub-groups. Participants were comprehensively evaluated with a battery
366 of clinical evaluations of motor and non-motor features and biomarkers, including DAT imaging and fluid
367 biomarkers, permitting interrogation of α Syn-SAA results against these measures. The number of PD participants
368 and concurrent, matched controls and the inclusion of prodromal cohorts in PPMI allowed for sub-group
369 analysis and extension of prior results to new populations. Second, α Syn-SAA analysis was performed in a
370 blinded fashion using a robust, validated assay platform. Third, the participants were diagnosed by expert
371 neurologists based on standardized criteria within the PPMI study.

372 A number of limitations of this study should be acknowledged, First, there was no a priori hypothesis or sample
373 size estimation. Rather, we took advantage of the large and readily available PPMI cohort. Based on the
374 diagnostic performance of the assay in prior studies,⁷ we expect a high power. We feel that this is a reasonable
375 expectation given that this is the largest cohort that has ever been investigated in this manner. Second, the non-
376 parametric Wilcoxon rank sum test was used to compare α Syn-SAA status in PD participants for some outcomes
377 due to the low number of samples in some groups and skewed nature of the data, but additional samples would

378 enable the use of more powerful methods. Third, the analyses presented in this report are all cross-sectional.
379 Since PPMI has clinical and biological samples collected over time, a report on longitudinal data, including motor
380 and non-motor features, will be an important topic for future analysis and may identify other clinical correlates.
381 Fourth, the number of prodromal (hyposmia and RBD) cases with normal DAT imaging is relatively small, which
382 prevents us from drawing definitive conclusions about the temporal ordering of α Syn-SAA abnormalities and
383 those on DAT imaging. Fifth, several unanswered questions remain regarding genetic forms of PD. This cohort
384 consisted of only G2019S LRRK2 carriers and N370S GBA carriers. α Syn-SAA results in patients with other LRRK2
385 or GBA variants, as well as variants in PD-associated genes such as PRKN and PINK1 could not be assessed.
386 Again, longitudinal studies and those in additional PPMI participants focusing on at-risk individuals, who are
387 currently being recruited, may address these issues.

388 In summary, this study extends our understanding of the usefulness of α Syn-SAA for *in vivo* molecular
389 assessment of PD. We show in a large, deeply phenotyped cohort that α Syn-SAA is highly accurate in typical PD,
390 but results vary depending the presence of the LRRK2 G2019S variant as well as clinical features, particularly
391 hyposmia. Within LRRK2 variant carriers, there are also differences in age, gender and motor performance that
392 associate with α Syn-SAA status. Another key finding is that prodromal and NMCs, especially carriers of the GBA
393 N370S variant, have evidence of abnormal α -synuclein aggregation prior to any other detectable clinical or
394 biomarker change, including alterations in DAT imaging. One implication of this result is that the prodromal
395 period in PD may be longer than had been projected previously and may start before there is loss of
396 dopaminergic integrity, at least in some individuals. Taken together, these findings have immediate implications
397 for clinical trial design, both to identify pathologically defined subgroups of PD patients and to establish
398 biomarker-defined at-risk cohorts. Longitudinal research is needed to investigate the prognostic value of α Syn-
399 SAA and whether changes in quantitative measures of α Syn aggregation indicate progressive pathology over
400 time.

401

Table 1: Sensitivity of CSF α Syn-SAA for PD and subgroups and Specificity for HC and SWEDD

	<i>N</i>	<i>Specificity (95% CI)</i>	<i>Sensitivity (95% CI)</i>
HC	163	96.3% (93.4, 99.2)	
HC*	166	94.6% (91.1, 98.0)	
SWEDD	54	90.7% (83.0, 98.5)	
All PD cases	545		87.7% (84.9, 90.5)
All PD cases*	552		86.6% (83.8, 89.4)
Sporadic PD	373		93.3% (90.8, 95.8)
LRRK2 PD	123		67.5% (59.2, 75.8)
GBA PD	49		95.9% (90.4, 100.0)
<i>LRRK2 PD</i>			
Males	65		78.5% (68.5, 88.5)
Females	58		55.2% (42.4, 68.0)
Hyposmics	69		89.9% (82.7, 97.0)
Normosmics	49		34.7% (21.4, 48.0)
Normosmics+Female	24		12.5% (4.3, 31.0)

*Inconclusive participants are included in this calculation and are treated as false negative for PD and false positive for HC.

Table 2: Clinical Characteristics by α Syn-SAA status for Sporadic PD, LRRK2 PD, GBA PD, and HC

Variable	Sporadic PD		LRRK2 PD		GBA PD		HC	
	SAA+ (N = 348)	SAA- (N = 25)	SAA+ (N = 83)	SAA- (N = 40)	SAA+ (N = 47)	SAA- (N = 2)	SAA+ (N = 6)	SAA- (N = 157)
Age (yrs)	62.6 [55.3-68.9]	66.4 [58.4-71.1]	62.0 [55.0-66.5]	69.1 [66.0-72.4]	62.8 [56.3-69.5]	67.8 [N/A]	64.1 [60.1-65.2]	62.0 [54.8-69.2]
Male sex	227 (65%)	16 (64%)	51 (61%)	14 (35%)	27 (57%)	2 (N/A)	5 (N/A)	102 (65%)
Disease duration*	0.4 [0.2-0.7]	0.4 [0.2-0.6]	2.4 [1.3-4.7]	2.4 [1.2-4.4]	3.1 [1.4-5.3]	1.0 [N/A]	N/A	N/A
HY stage (3-5)	0 (0%)	0 (0%)	3 (5%)	3 (9%)	4 (10%)	0 (N/A)	0 (N/A)	0 (0%)
Race (% White)	320 (92%)	24 (96%)	78 (94%)	39 (98%)	45 (96%)	2 (N/A)	6 (N/A)	145 (93%)
MDS-UPDRS I	5 [3-7]	6 [4-12]	7 [4-11]	7 [2-12]	7 [5-11]	4 [N/A]	4 [1-5]	2 [1-4]
MDS-UPDRS II	5 [3-8]	8 [4-12]	7 [4-10]	4 [2-8]	8 [5-12]	8 [N/A]	0 [0-1]	0 [0-0]
MDS-UPDRS III	20 [15-26]	22 [17-27]	24 [15-31]	17 [12-26]	30 [20-39]	25 [N/A]	0 [0-3]	0 [0-2]
Total MDS-UPDRS	31 [23-41]	37 [25-48]	37 [27-55]	32 [21-42]	43 [34-57]	44 [N/A]	6 [1-7]	3 [1-7]
UPSIT percentile	6 [2-14]	63 [27-83]	6 [3-15]	39 [19-70]	3 [1-6]	56 [N/A]	26 [5-47]	74 [44-92]
% Hyposmic ($\leq 15\%$)	274 (79%)	4 (17%)	62 (78%)	7 (18%)	43 (93%)	0 (N/A)	3 (N/A)	11 (7%)
DAT Lowest Putamen SBR	0.31 [0.25-0.38]	0.32 [0.23-0.38]	0.26 [0.22-0.37]	0.38 [0.29-0.47]	0.28 [0.21-0.37]	0.23 [N/A]	1.01 [0.87-1.27]	0.95 [0.81-1.17]

$p < 0.0001$

$p = 0.006$

$p = 0.003$

$p = 0.027$

$p = 0.028$

$p = 0.049$

$p = 0.043$

$p < 0.0001$

$p < 0.0001$

$p < 0.0001$

$p < 0.0001$

$p < 0.0001$

*yrs since diagnosis

Summary statistics: Median [Q1-Q3]; N (%); p-values are shown centered below relevant comparisons

Wilcoxon rank sum tests were used for within group comparisons of α Syn-SAA status for age, disease duration, UPSIT percentile, and % expected DAT.

Chi-square and Fisher's Exact tests were used for within group comparisons of α Syn-SAA status for sex, HY stage, race, and hyposmic status.

Logistic regression models were used for within group comparisons of α Syn-SAA status adjusted for disease duration for MDS-UPDRS scores.

Comparisons for GBA and HC were not performed due to low sample size.

Comparisons for HY were not performed in Sporadic PD and HC due to 0 counts in both SAA- and SAA+ groups.

Table S1 - Demographics and Clinical Features

Variable Mean (SD)	Parkinson's Disease (N=545)	Healthy Control (N=163)	SWEDD (N=54)	Prodromal (N=51)	NMC (N=310)
Age (yrs)	63.4 [56.3-69.1]	62.6 [55.0-69.2]	63.3 [52.4-68.5]	67.7 [65.9-73.2]	61.7 [56.6-66.8]
Male sex	337 (62%)	107 (66%)	32 (59%)	40 (78%)	134 (43%)
Disease duration (yrs since diagnosis)	0.6 [0.3-1.8]	N/A	0.3 [0.2-0.9]	N/A	N/A
HY stage (3-5)	10 (2%)	0 (0%)	1 (2%)	0 (0%)	0 (0%)
Race					
White	508 (93%)	151 (93%)	51 (94%)	48 (96%)	299 (98%)
Non-white	36 (7%)	11 (7%)	3 (6%)	2 (4%)	6 (2%)
American Indian or Alaska Native	1 (0%)	0 (0%)	0 (0%)	0 (0%)	0 (0%)
Asian (including Native Hawaiian OR other Pacific Islander)	9 (2%)	0 (0%)	1 (2%)	0 (0%)	0 (0%)
Black	6 (1%)	8 (5%)	1 (2%)	1 (2%)	0 (0%)
Multiracial	17 (3%)	2 (1%)	0 (0%)	0 (0%)	4 (1%)
Not reported	3 (1%)	1 (1%)	1 (2%)	1 (2%)	2 (1%)
Hispanic or Latino	31 (6%)	3 (2%)	2 (4%)	18 (35%)	15 (5%)
UPSIT percentile	6 [3-17]	74 [40-92]	44 [21-77]	7 [3-11]	51 [29-79]
% Hyposmic (<=15%)	390 (73%)	14 (9%)	10 (19%)	44 (88%)	40 (13%)
DAT Lowest Putamen SBR	0.30 [0.24-0.38]	0.95 [0.81-1.17]	0.95 [0.81-1.13]	0.59 [0.45-0.71]	1.04 [0.88-1.20]
Positive αSyn-SAA	478 (88%)	6 (4%)	5 (9%)	44 (86%)	25 (8%)
% LRRK2+	123 (23%)	0 (0%)	0 (0%)	N/A	159 (51%)
% GBA+	49 (9%)	0 (0%)	0 (0%)	N/A	151 (49%)

Summary statistics: Median [Q1-Q3]; N (%)

Statistical analyses comparing cohorts were not performed.

Table S2: Biomarker characteristics by α Syn-SAA status for Sporadic PD, LRRK2 PD, GBA PD, and HC

Variable	Sporadic PD		LRRK2 PD		GBA PD		HC	
	SAA+ (N = 348)	SAA- (N = 25)	SAA+ (N = 83)	SAA- (N = 40)	SAA+ (N = 47)	SAA- (N = 2)	SAA+ (N = 6)	SAA- (N = 157)
Mean striatum SBR	1.35 [1.14-1.62]	1.26 [1.04-1.84]	1.24 [0.97-1.54]	1.39 [1.06-1.49]	1.16 [0.92-1.56]	0.80 [N/A]	2.45 [2.09-3.16]	2.44 [2.19-2.90]
CSF abeta (< 683)	104 (32%)	8 (35%)	27 (33%)	13 (34%)	23 (50%)	0 (N/A)	0 (N/A)	41 (27%)
CSF tau (< 266)	303 (93%)	22 (92%)	77 (93%)	32 (82%)	44 (96%)	2 (N/A)	5 (N/A)	135 (87%)
CSF αsyn (< 1000)	71 (22%)	3 (13%)	11 (24%)	2 (10%)	4 (50%)	N/A	1 (N/A)	24 (15%)
Serum NfL	11.50 [8.30-15.80]	13.85 [11.60-19.10]	10.70 [8.77-14.95]	18.60 [10.50-30.00]	12.90 [9.58-17.50]	26.70 [N/A]	12.45 [9.14-16.10]	10.30 [7.09-14.80]
Total di-18:1 BMP	3.7 [2.1-6.8]	2.9 [1.8-5.4]	10.9 [7.7-20.7]	15.0 [6.5-29.1]	5.9 [2.4-9.5]	12.9 [N/A]	5.6 [2.7-11.7]	3.5 [1.9-6.4]

Summary statistics: Median [Q1-Q3]; N (%)

Logistic regression models were used for within group comparisons of SAA α Syn-SAA status adjusted for age and sex.

Comparisons for GBA and HC were not performed due to low sample size.

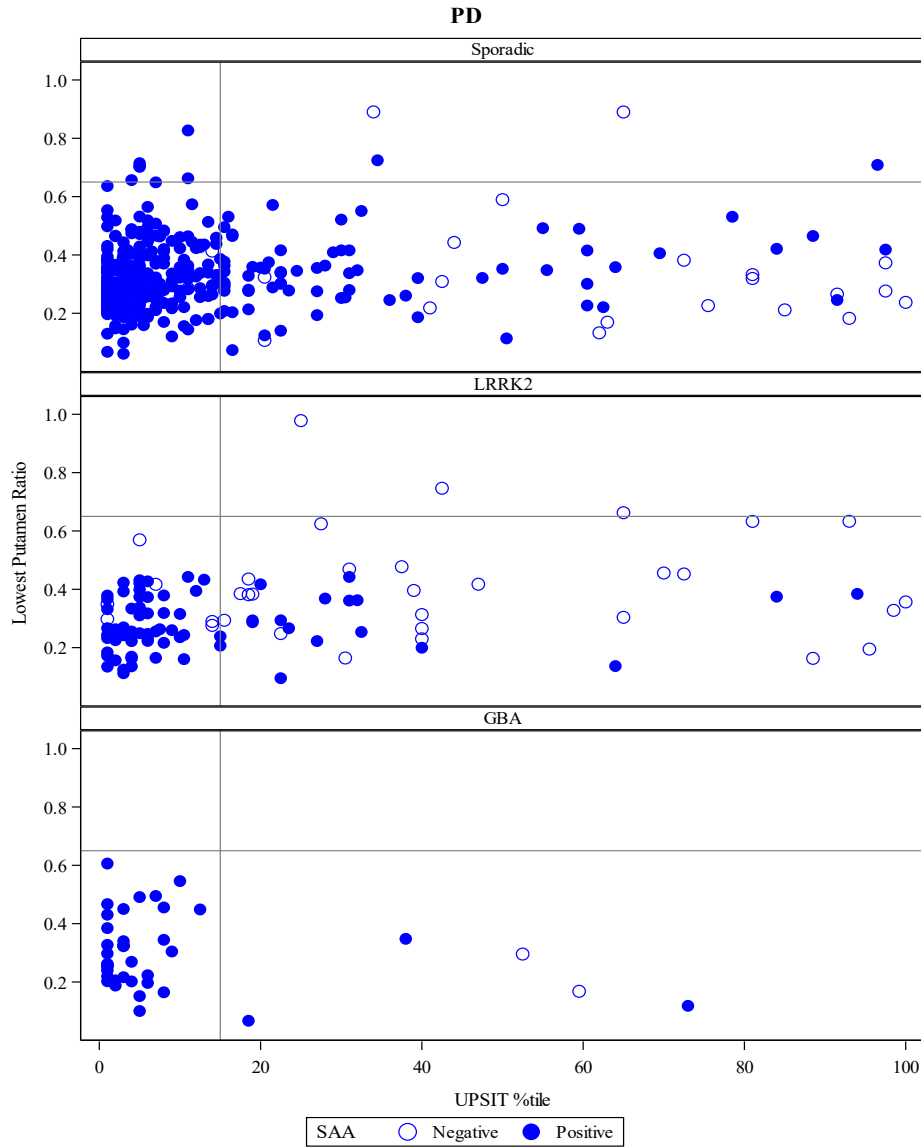
Table S3: Clinical Characteristics for NMC, Hyposmia, and RBD

Variable	LRRK2		GBA		Hyposmia		RBD	
	SAA+ (N = 14)	SAA- (N = 145)	SAA+ (N = 11)	SAA- (N = 140)	SAA+ (N = 16)	SAA- (N = 2)	SAA+ (N = 28)	SAA- (N = 5)
Age (yrs)	63.3 [57.7-76.4]	61.5 [56.0-67.1]	61.1 [60.5-70.8]	62.1 [57.3-66.5]	66.4 [63.4-70.1]	78.2 [N/A]	69.7 [66.3-73.1]	70.8 [62.4-77.0]
Male sex	7 (50%)	59 (41%)	5 (45%)	63 (45%)	10 (63%)	2 (N/A)	23 (82%)	5 (N/A)
Race (% White)	12 (92%)	141 (99%)	11 (100%)	135 (97%)	15 (94%)	2 (N/A)	27 (100%)	4 (N/A)
MDS-UPDRS I	3 [2-6]	4 [2-6]	3 [1-9]	4 [2-7]	4 [2-7]	6 [N/A]	9 [4-11]	6 [4-7]
MDS-UPDRS II	1 [0-2]	0 [0-1]	0 [0-2]	0 [0-1]	2 [0-3]	2 [N/A]	2 [0-5]	1 [1-3]
MDS-UPDRS III	2 [1-4]	2 [0-4]	0 [0-4]	1 [0-4]	1 [0-5]	5 [N/A]	3 [2-6]	5 [3-8]
Total MDS-UPDRS	7 [4-12]	6 [4-12]	3 [2-24]	7 [3-13]	8 [4-17]	13 [N/A]	14 [8-19]	14 [8-18]
UPSIT percentile	17 [7-55]	50 [28-77]	12 [5-79]	57 [32-84]	5 [2-8]	13 [N/A]	7 [3-10]	33 [27-47]
% Hyposmic (<=15%)	6 (43%)	15 (10%)	6 (55%)	13 (9%)	16 (100%)	1 (N/A)	26 (96%)	1 (N/A)
DAT Lowest Putamen SBR	0.83 [0.64-1.06]	0.94 [0.82-1.10]	1.05 [0.92-1.24]	1.13 [0.99-1.28]	0.62 [0.52-0.72]	0.72 [N/A]	0.52 [0.44-0.64]	0.61 [0.45-0.68]

Summary statistics: Median [Q1-Q3]; N (%)

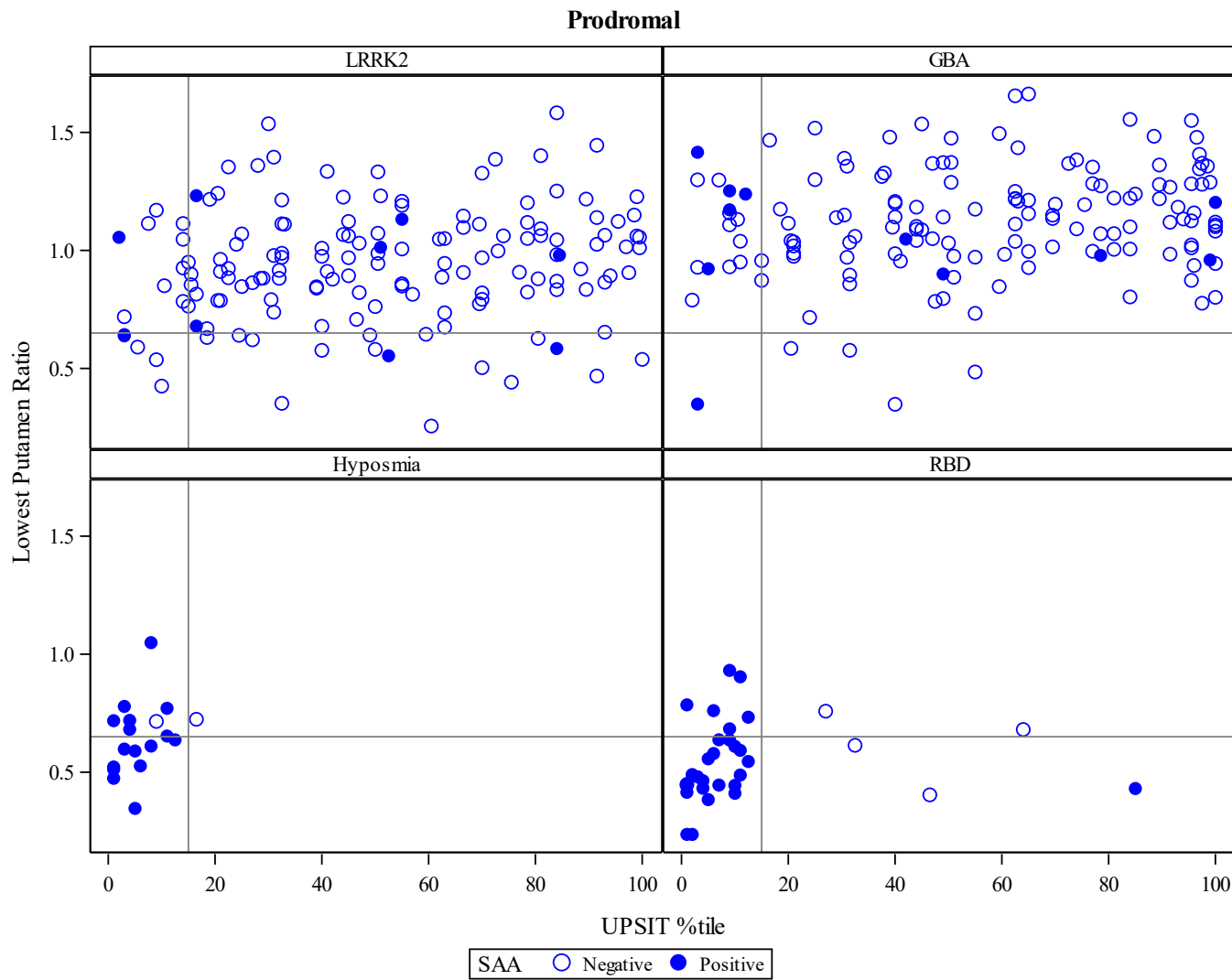
Statistical analyses were not provided due to small numbers in some groups.

Figure 1: Association between DAT binding, olfaction and α Syn-SAA results among cases with manifest PD



The figure demonstrates the relationship between α Syn-SAA status and dopamine transporter imaging measured by the percent of age and sex expected lowest putamen specific binding ratio, a measure of dopamine transporter loss in the most sensitive striatal region¹⁶ and the UPSIT age and sex percentile of normal.¹⁵The horizontal line represents the DAT Lowest Putamen SBR <65% (individual below 65% are in the PD range), and the vertical line represents the age and sex adjusted UPSIT Percentile $\leq 15\%$ cutoff (individuals below 15% are hyposmic).

Figure 2: Association between DAT binding, olfaction and α Syn-SAA results among prodromal and NMC of either LRRK2 or GBA variants.



The figure demonstrates the relationship between α Syn-SAA status and dopamine transporter imaging measured by the percent of age and sex expected lowest putamen specific binding ratio, a measure of dopamine transporter loss in the most sensitive striatal region¹⁶ and the UPSIT age and sex percentile of normal.¹⁵ The horizontal line represents the DAT Lowest Putamen SBR <65% (individual below 65% are in the PD range) , and the vertical line represents the age and sex adjusted UPSIT Percentile <=15% cutoff (individuals below 15% are hyposmic).

References

1. Parnetti L, Gaetani L, Eusebi P, et al. CSF and blood biomarkers for Parkinson's disease. *The Lancet Neurology* 2019; **18**(6): 573-86.
2. Braak H, Del Tredici K, Rüb U, De Vos RA, Steur ENJ, Braak E. Staging of brain pathology related to sporadic Parkinson's disease. *Neurobiology of aging* 2003; **24**(2): 197-211.
3. Spillantini MG, Schmidt ML, Lee VM, Trojanowski JQ, Jakes R, Goedert M. Alpha-synuclein in Lewy bodies. *Nature* 388(6645):839-40, 1997.
4. Beach T, Adler C, Sue L, et al. Multi-organ distribution of phosphorylated alpha-synuclein histopathology in subjects with Lewy body disorders. *Acta Neuropathologica* 2010; **119**(6): 689-702.
5. Donadio V, Incensi A, Leta V, et al. Skin nerve α -synuclein deposits: a biomarker for idiopathic Parkinson disease. *Neurology* 2014; **82**(15): 1362-9.
6. Saborio GP, Permanne B, Soto C. Sensitive detection of pathological prion protein by cyclic amplification of protein misfolding. *Nature* 2001; **411**(6839): 810-3.
7. Shahnawaz M, Tokuda T, Waragai M, et al. Development of a Biochemical Diagnosis of Parkinson Disease by Detection of α -Synuclein Misfolded Aggregates in Cerebrospinal Fluid. *JAMA Neurology* 2017; **74**(2): 163-72.
8. Fairfoul G, McGuire LI, Pal S, et al. Alpha-synuclein RT-QuIC in the CSF of patients with alpha-synucleinopathies. *Annals of Clinical and Translational Neurology* 2016; **3**(10): 812-8.
9. Groveman BR, Orrù CD, Hughson AG, et al. Rapid and ultra-sensitive quantitation of disease-associated α -synuclein seeds in brain and cerebrospinal fluid by α Syn RT-QuIC. *Acta Neuropathologica Communications* 2018; **6**(1): 7.
10. Shahnawaz M, Mukherjee A, Pritzkow S, et al. Discriminating α -synuclein strains in Parkinson's disease and multiple system atrophy. *Nature* 2020; **578**(7794): 273-7.
11. Concha-Marambio L, Farris CM, Holguin B, et al. Seed Amplification Assay to Diagnose Early Parkinson's and Predict Dopaminergic Deficit Progression. *Movement Disorders* 2021; **36**(10): 2444-6.
12. Russo MJ, Orru CD, Concha-Marambio L, et al. High diagnostic performance of independent alpha-synuclein seed amplification assays for detection of early Parkinson's disease. *Acta Neuropathologica Communications* 2021; **9**(1): 179.
13. Rossi M, Candelise N, Baiardi S, et al. Ultrasensitive RT-QuIC assay with high sensitivity and specificity for Lewy body-associated synucleinopathies. *Acta Neuropathol* 2020; **140**(1): 49-62.
14. Iranzo A, Fairfoul G, Ayudhaya ACN, et al. Detection of α -synuclein in CSF by RT-QuIC in patients with isolated rapid-eye-movement sleep behaviour disorder: a longitudinal observational study. *Lancet Neurol* 2021; **20**(3): 203-12.
15. Brumm M, Pierz KA, LaFontant D-E, et al. Updated Percentiles for the University of Pennsylvania Smell Identification Test in Adults 50 Years of Age and Older. *Neurology* 2023; **in press**.
16. Marek K, Chowdhury S, Siderowf A, et al. The Parkinson's progression markers initiative (PPMI) - establishing a PD biomarker cohort. *Ann Clin Transl Neurol* 2018; **5**(12): 1460-77.
17. Montine TJ, Phelps CH, Beach TG, et al. National Institute on Aging–Alzheimer's Association guidelines for the neuropathologic assessment of Alzheimer's disease: a practical approach. *Acta neuropathologica* 2012; **123**(1): 1-11.
18. Irwin DJ, Fedler J, Coffey CS, et al. Evolution of Alzheimer's Disease Cerebrospinal Fluid Biomarkers in Early Parkinson's Disease. *Annals of neurology* 2020; **88**(3): 574-87.
19. Mollenhauer B, Dakna M, Kruse N, et al. Validation of serum neurofilament light chain as a biomarker of Parkinson's disease progression. *Movement Disorders* 2020; **35**(11): 1999-2008.
20. Simuni T, Uribe L, Cho HR, et al. Clinical and dopamine transporter imaging characteristics of non-manifest LRRK2 and GBA mutation carriers in the Parkinson's Progression Markers Initiative (PPMI): a cross-sectional study. *The Lancet Neurology* 2020; **19**(1): 71-80.
21. Concha-Marambio L, Pritzkow S, Shahnawaz M, Farris CM, Soto C. Seed Amplification Assay (SAA) for detection of pathologic α Synuclein aggregates in CSF as biomarker for Parkinson's disease and related synucleinopathies. . *Nature Protocols* 2023.
22. Marek K, Seibyl J, Eberly S, et al. Longitudinal follow-up of SWEDD subjects in the PRECEPT Study. *Neurology* 2014; **82**(20): 1791-7.
23. Jennings D, Siderowf A, Stern M, et al. Conversion to Parkinson disease in the PARS hypoxic and dopamine transporter–deficit prodromal cohort. *JAMA neurology* 2017; **74**(8): 933-40.
24. Garrido A, Fairfoul G, Tolosa ES, Martí MJ, Green A. α -synuclein RT-QuIC in cerebrospinal fluid of LRRK2-linked Parkinson's disease. *Annals of Clinical and Translational Neurology* 2019; **6**(6): 1024-32.

25. Kalia LV, Lang AE, Hazrati LN, et al. Clinical correlations with Lewy body pathology in LRRK2-related Parkinson disease. *JAMA Neurol* 2015; **72**(1): 100-5.
26. Schneider SA, Alcalay RN. Neuropathology of genetic synucleinopathies with parkinsonism: Review of the literature. *Mov Disord* 2017; **32**(11): 1504-23.
27. Chen W, Yan X, Lv H, Liu Y, He Z, Luo X. Gender differences in prevalence of LRRK2-associated Parkinson disease: a meta-analysis of observational studies. *Neuroscience letters* 2020; **715**: 134609.
28. Postuma RB, Iranzo A, Hogg B, et al. Risk factors for neurodegeneration in idiopathic rapid eye movement sleep behavior disorder: A multicenter study. *Annals of Neurology* 2015; **77**(5): 830-9.
29. Müller A, Müngersdorf M, Reichmann H, Strehle G, Hummel T. Olfactory function in Parkinsonian syndromes. *Journal of Clinical Neuroscience* 2002; **9**(5): 521-4.
30. Bellomo G, De Luca CMG, Paoletti FP, Gaetani L, Moda F, Parnetti L. α -Synuclein Seed Amplification Assays for Diagnosing Synucleinopathies. *The Way Forward* 2022; **99**(5): 195-205.
31. Rana HQ, Balwani M, Bier L, Alcalay RN. Age-specific Parkinson disease risk in GBA mutation carriers: information for genetic counseling. *Genet Med* 2013; **15**(2): 146-9.
32. Healy DG, Falchi M, O'Sullivan SS, et al. Phenotype, genotype, and worldwide genetic penetrance of LRRK2-associated Parkinson's disease: a case-control study. *The Lancet Neurology* 2008; **7**(7): 583-90.
33. Marder K, Wang Y, Alcalay RN, et al. Age-specific penetrance of LRRK2 G2019S in the Michael J. Fox Ashkenazi Jewish LRRK2 Consortium. *Neurology* 2015; **85**(1): 89-95.
34. Savica R, Rocca WA, Ahlskog JE. When Does Parkinson Disease Start? *Archives of Neurology* 2010; **67**(7): 798-801.
35. Brockmann K, Quadalti C, Lerche S, et al. Association between CSF alpha-synuclein seeding activity and genetic status in Parkinson's disease and dementia with Lewy bodies. *Acta Neuropathologica Communications* 2021; **9**(1): 175.