

1 Original article

2 **Dengue clinical features and predictors of severity in the**
3 **diabetic patient: a retrospective cohort study on Reunion**
4 **island, 2019**

5

6 Azizah Issop ^a, Antoine Bertolotti ^{b,c}, Yves-Marie Diarra ^{b,d}, Jean-christophe Maïza ^a, Éric
7 Jarlet ^a, Muriel Cogne ^a, Éric Doussiet ^{a,e}, Éric Magny ^f, Olivier Maillard ^b, Epidengue Cohort
8 Investigation Team[¶], Estelle Nobécourt ^{a,b,g}, Patrick Gérardin ^{b,e,*}

9

10 ^a Service d'endocrinologie et diabétologie, Centre Hospitalier Universitaire Réunion, Saint
11 Pierre, La Réunion, France.

12 ^b INSERM, CIC 1410, Centre Hospitalier Universitaire Réunion, Saint-Pierre, La Réunion,
13 France.

14 ^c Service des Maladies Infectieuses, Médecine Interne, Dermatologie, Centre Hospitalier
15 Universitaire Réunion, Saint Pierre, La Réunion, France.

16 ^d UMR PIMIT (CNRS 9192, INSERM U1187, IRD 249, Université de La Réunion), Sainte
17 Clotilde, La Réunion, France.

18 ^e Plateforme de Recherche Clinique et Translationnelle, Centre Hospitalier Universitaire,
19 Réunion, Saint-Pierre, La Réunion, France.

20 ^f Service de Biochimie, Centre Hospitalier Universitaire Réunion, Saint Pierre, La Réunion,
21 France.

22 ^g UMR Diabète Athérombose Thérapies Réunion Océan Indien (DÉTROÏ) (INSERM
23 U1188), Plateforme CYROI, University of La Réunion, Sainte Clotilde, La Réunion, France.

24 * *Corresponding author:*

25 Dr Patrick GÉRARDIN

26 INSERM CIC1410 / Plateforme de Recherche Clinique et Translationnelle –

27 Centre Hospitalier Universitaire Réunion – Groupe Hospitalier Sud Réunion – BP 350 –

28 97448 Saint Pierre Cedex. Réunion island. France.

29 Tel : + 262 2 62 35 94 35 - Mail: patrick.gerardin@chu-reunion.fr

30 Short running head title : **Dengue and severe dengue in the diabetic**

31 Manuscript credits : 4612 words, abstract 250 words, 4 tables (+ 5), 1 figure (+ 2), 42 references.

32 **ABSTRACT**

33

34 Aim: Diabetes mellitus is associated with both the risks of severe dengue and dengue-related
35 deaths, however the factors characterizing dengue in the diabetic patient are ill-recognized.
36 The objective of this hospital-based cohort study was to identify the factors characterizing
37 dengue and those able to predict dengue severity in the diabetic patient.

38

39 Methods: We retrospectively analysed demographic, clinical and biological parameters at
40 admission in the cohort of patients who consulted at the university hospital between January
41 and June 2019 with confirmed dengue. Bivariate and multivariate analyses were conducted.

42

43 Results: Of 936 patients, 184 patients (20%) were diabetic. One hundred and eighty-eight
44 patients (20%) developed severe dengue according to the WHO 2009 definition. Diabetic
45 patients were older and had more comorbidities than non-diabetics. In an age-adjusted logistic
46 regression model, loss of appetite, altered mental status, high neutrophil to platelet ratios
47 (>14.7), low haematocrit ($\leq 38\%$), upper-range serum creatinine ($>100 \mu\text{mol/l}$) and high urea
48 to creatinine ratio (>50) were indicative of dengue in the diabetic patient. In a modified
49 Poisson regression model, four key independent variables were predictive of severe dengue in
50 the diabetic patient: presence of diabetes complications, non-severe bleeding, altered mental
51 status and cough. Among diabetes complications, diabetic retinopathy and neuropathy, but not
52 diabetic nephropathy nor diabetic foot, were predictive of severe dengue.

53

54 Conclusion: At hospital first presentation, dengue in the diabetic patient is characterized by
55 deteriorations in appetite, mental and renal functioning, while severe dengue can be predicted
56 by presence of diabetes complications, dengue-related non-severe haemorrhages, cough, and
57 dengue-related encephalopathy.

58

59 Keywords: Diabetes mellitus, Comorbidities, Dengue, Severe Dengue, Prognosis, Cohort
60 study.

61 **Introduction**

62 Dengue virus (DENV) is the most common arbovirus circulating in the world [1]. In
63 2022, the European Center for Disease Prevention and Control (ECDC), reported from
64 different sources 4,110,465 dengue cases and 4,099 dengue-related deaths worldwide. DENV
65 affects mainly tropical countries of South America, Asia, Africa and Western Pacific [2].
66 However, with the spread of the *Aedes albopictus* vector and the sharp increase in traveller
67 flows, it is no longer limited to the inter-tropical zone and dengue epidemics are also
68 documented in temperate regions [3]. In metropolitan France, where *Aedes albopictus* is
69 established and spreads since 2004, episodes of autochthonous dengue transmission occur
70 since 2010 [4, 5].

71 Reunion island, a French overseas department located in the south-western Indian ocean
72 (SWIO) region, is particularly affected by DENV, which has been circulating under an
73 epidemic mode since 2018. Thus, despite *Ae albopictus* related transmission may be
74 considered as a distinct outlier associated with slow, low intensity outbreaks [6], 18,217
75 autochthonous cases have been notified to the island surveillance system in 2019, of which
76 1,944 occasioned visits to emergency wards and 620 ended in hospitalization [7].

77 The infection results in a wide spectrum of clinical manifestations that range from mild
78 asymptomatic or paucisymptomatic infections, undifferentiated fever, dengue fever (DF) to
79 severe dengue (SD), which is currently designated as severe plasma leakage, severe bleeding
80 and/or severe organ involvement [8].

81 Predicting the occurrence of severe dengue in patients at risk remains a major public
82 health challenge. Overall, diabetes mellitus is known to increase the susceptibility to infection
83 [9] and diabetic patients tend to have a higher risk for infection-related mortality through
84 major cardiovascular events such as myocardial infarction and stroke [10, 11]. In addition,
85 diabetes was reported as a factor that drives the progression from DF to SD [12, 13]. With
86 respect to dengue, diabetes is therefore of paramount importance, and all the more so in
87 Reunion island, which is one of the French region with the highest prevalence of treated
88 diabetes (10% of the adult population, *i.e.*, twice the national average [14]).

89 The primary objective of this retrospective cohort study was twofold and aimed to
90 identify both the factors characterizing dengue and those able to predict severe dengue in the
91 diabetic patient among the subjects presenting at the hospital. The secondary objectives were
92 to distinguish the clinical features of dengue among the subjects presenting with
93 uncomplicated or complicated diabetes or presenting with optimal or suboptimal glycaemic
94 control (glycated haemoglobin, HbA1c <7% or ≥ 7%).

95 **Patients and methods**

96 Setting and population

97 We retrospectively enrolled in the cohort all patients with suspected dengue who
98 consulted at the university hospital between January 1 and June 30, 2019, and decided to
99 restrict the analyses to virologically confirmed cases of dengue.

100 Subjects were suspected of being infected with DENV if they had fever higher than
101 38°C and at least one of the following symptoms: headache, retro-orbital pain, myalgia,
102 arthralgia, rash, or pruritus. Dengue was confirmed if the patient had a positive detection of
103 DENV RNA by reverse transcriptase chain reaction (rt-PCR) and/or a positive detection of
104 non-specific antigen 1 (NS1) by Rapid Diagnostic Test (RDT). The diagnosis of SD was
105 made when the World Health Organization (WHO) 2009 criteria were met. Briefly, SD was
106 diagnosed in presence of: (1) severe plasma leakage leading to shock or respiratory distress,
107 (2) severe bleeding, or (3) severe organ involvement (*e.g.*, high liver enzyme levels AST ALT
108 ≥ 1000 IU/L, impaired consciousness, heart and other severe organ dysfunctions) [8]. The
109 criteria used for defining SD and the criteria used for defining severe organ involvement in
110 SD are detailed in the methodological appendix (S0 Table).

111 We systematically reviewed the medical records of all patients over 15 years admitted
112 to the University Hospital of Reunion island for a clinical suspicion of dengue infection. We
113 analysed in the cohort only the subjects with a confirmed diagnosis of dengue. For each
114 patient with a confirmed dengue, it was verified that the hospital visit was related to the
115 DENV infection. Thus, the patients hospitalized for another cause were ruled out.

116 We retrieved socio-demographic, clinical and biological data for each patient in the
117 EPIDENGUE database, an electronic record based on the cross-referencing of data from the
118 PMSI (*Programme de Médicalisation des Système d'Information*) and the laboratories
119 completed by junior doctors. The biological data were collected at hospital first consultation.

120 Diabetes history was reported if documented and registered in the medical file and/or
121 the patient received an anti-diabetic treatment.

122

123 Statistical analysis

124 For bivariate analysis, quantitative variables were expressed as medians and interquartile
125 ranges (1st - 3rd quartiles). Qualitative variables were expressed as numbers and percentages.
126 Percentages were compared between diabetic patients (DPs) and non-diabetic patients
127 (NDPs), and between severe and non-severe dengue cases using Chi-square and Fisher exact
128 tests, as appropriate. Medians were compared between these groups using non-parametric

129 Brown-Mood tests [15]. Medians that were statistically different were further tested using
130 median and quartile regressions to see whether they differ substantially both in precision and
131 dispersion [16].

132 Subgroup analyses were conducted under the same modalities to assess both the
133 influence of complicated diabetes and of the control of blood sugar on dengue presentation.

134 Multivariate analyses were conducted first to identify the clinical and biological
135 variables associated with diabetes among patients with dengue, second to find predictors of
136 SD in the DP. In the first model, we used a non-conditional logistic regression model for
137 estimating odds ratios (OR) and 95% confidence intervals (95%CI) of the factors
138 independently associated with diabetes among the patients attending the hospital with dengue.

139 In the second model, we used the adapted Poisson regression model for binary outcome
140 with robust variance option [17] for estimating the relative risks (RR) and 95%CI of the
141 predictors of severe dengue in the DPs. In both analyses, we set *a priori* P, the maximum
142 number of candidate variables (parameters) to be selected using the formula:

$$143 \quad P = \exp (0.508 - 0.259 \ln (\square) + 0,544 \ln(\square) + \ln(\text{MAPE})/0.504),$$

144 wherein \square is the proportion of the outcome, n is the population size and MAPE, the mean
145 absolute prediction error [18]. In agreement with this method, we began with full models
146 controlling all variables with *p* values <0.025 in bivariate analyses (with socio-
147 demographic/medical history and clinical data separate; clinical and biological data separate,
148 respectively). Each model was added to the other in an intermediate joined model (clinico-
149 biological, or clinico-anamnestic, respectively) which was submitted to a stepwise backward
150 procedure that aimed at eliminating the less significant variables. Final parsimonious models
151 retained only significant covariates. However, as the prevalence of diabetes increases with
152 age, we forced age in the first final model. The fitness of the different models was evaluated
153 using the Bayesian Information Criterion (BIC). All interaction terms between the covariates
154 included in the final models were tested, likewise the effects of age and sex as potential
155 disease modifiers. Model calibration was evaluated using the Hosmer-Lemeshow goodness-
156 of-fit test (also applied to the corresponding logistic model, when not applicable for Poisson
157 regression models). The discriminative capacity of the models was evaluated by the area
158 under the receiver operating characteristic curve (AUC). Analyses were performed using
159 Stata® (v16.1, StataCorp, College Station, Tx, 2019). For all these, observations with missing
160 data were ruled out and a two-tailed *p* value <0.05 was considered significant.

161

162 Ethical approval

163 This monocentric observational retrospective study was conducted according to the reference
164 methodology MR-004 from *the National Commission of Informatics and Liberties*. In
165 accordance with French regulations, this retrospective study did not require approval from an
166 ethics committee. The ethical character of the study on previously collected data was
167 approved by the Institutional Review Board of the *Centre Hospitalier Universitaire Reunion*.
168 The EPIDENGUE database was registered in the national health data hub (n°
169 F20201021104344). Patients were informed of the study and non-refusal of participation was
170 collected. Data was treated anonymously from patient's medical records.

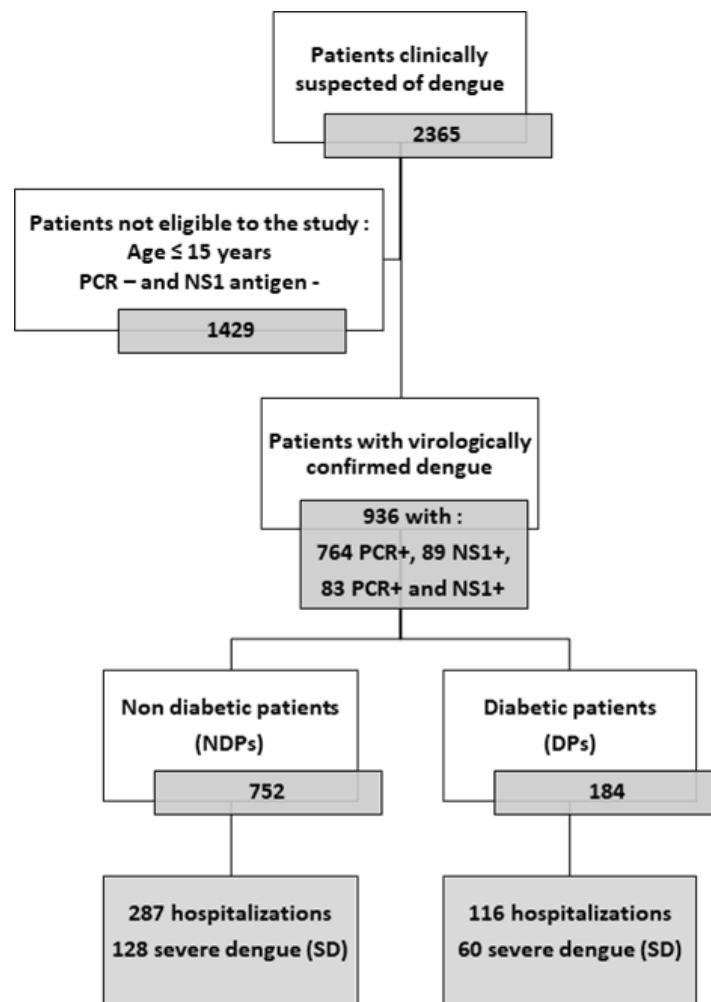
171

172

173 **Results**

174 **Dengue in the diabetic and non-diabetic patients**

175 Between January 1, 2019, and the June 30, 2019, the surveillance system reported more
176 than 42,000 dengue illnesses on Reunion island, of which up to 18,000 were biologically
177 confirmed (>30,000 and >13,000 for the southern region alone, respectively). During this
178 period, the EPIDENGUE database enrolled 2,365 subjects clinically suspected of dengue
179 having presented at the two centres of the teaching hospital among whom this study included
180 936 patients with confirmed DENV infection (**Fig. 1**). Of these 936 patients, 184 were
181 diabetic and 752 non-diabetic. We did not distinguish between type 1 and 2 diabetes, given
182 the small number of patients primarily treated with insulin alone.



183

184 **Figure 1. Study population**

185

186 The most important differences between DPs and NDPs are presented in [Table 1](#), while
187 the full comparison between both populations is displayed in S1 Table.

188 DPs were older than NDPs (median age 70.0 years; Q_1 - Q_3 : 59.4-77.7 versus 45.6 years,
189 Q_1 - Q_3 : 29.7-63.0, $p < 0.001$). The proportion of women was similar in both populations.
190 Comorbidities were more frequent in DPs and ranged between 5.4% for peptic ulcer and
191 70.6% for hypertension ($p < 0.01$ for all comparisons), which resulted in higher Charlson
192 comorbidity index scores among DPs than among NDPs (median score 5; Q_1 - Q_3 : 3-7 vs 0, Q_1 -
193 Q_3 : 0-3, $p < 0.001$) and more common use of related medications (S1 Table).

Table 1. Characteristics at hospital presentation of 936 virologically confirmed cases of dengue among non-diabetic and diabetic patients, Reunion island, January to June 2019.

Variable	Total		Non-diabetic patients (NDPs)		Diabetic patients (DPs)		p value
	n=936	(%)	n=752	(%)	n=184	(%)	
<i>Socio-demographic</i>							
Age (years ; medians, Q ₁ -Q ₃)	51.9 (32.7 - 69.7)		45.6 (29.6 - 63.1)		70.0 (59.4- 77.7)		***< 0.001
Female sex	540	(57.7)	438	(58.2)	102	(55.4)	0.489
<i>Comorbidities</i>							
High blood pressure	294	(31.4)	164	(21.8)	130	(70.6)	< 0.001
Dyslipidaemia	91	(9.7)	33	(4.4)	58	(31.5.)	< 0.001
Chronic kidney disease	68	(7.3)	28	(3.7)	40	(21.7)	< 0.001
Charlson score (medians, Q ₁ -Q ₃)	1	(0 - 3)	0	(0 - 2)	5	(3 - 7)	***< 0.001
<i>Clinical features at presentation</i>							
Days from symptom onset							
≤ 3	602	(68.7)	468	(66.9)	134	(75.7)	0.025
> 3	274	(31.3)	231	(33.1)	43	(24.3)	
Indicators of probable dengue							
Skin rash	148	(15.8)	135	(17.9)	13	(7.1)	< 0.001
Other manifestations							
Muco-cutaneous signs	187	(20.0)	169	(22.5)	18	(9.8)	< 0.001
Cardiorespiratory signs	170	(18.2)	125	(16.6)	45	(24.5)	0.013
Altered mental status	80	(8.6)	44	(5.9)	36	(19.6)	< 0.001
<i>Biology at presentation (medians, Q₁-Q₃)</i>							
ALT (IU/l)	26	(16 - 49)	34	(20 - 71)	40	(20 - 88)	0.310
AST (IU/l)	37	(24 - 72)	36	(24 - 71)	42	(24 - 79)	0.257
C reactive protein (mg/l)	10.8	(4.7 - 23.8)	8.6	(3.9 - 20.7)	18.3	(8.7 - 31.7)	< 0.001
Chlorine (mmol/l)	99	(96 - 101)	100	(97 - 102)	97	(94 - 100)	< 0.001
CPK (IU/l)	127	(80 - 230)	126	(80 - 219)	140	(76 - 275)	0.397
Creatinine (µmol/l)	85	(69 - 106)	81	(67 - 99)	104	(78 - 135)	***<0.001
Fibrinogen (g/l)	3.6	(3.1 - 4.2)	3.5	(3.1 - 4.1)	4.0	(3.5 - 4.5)	< 0.001
Haematocrit (%)	40.0	(36.4 - 43.4)	40.5	(37.1 - 43.8)	37.9	(34.8 - 41.7)	< 0.001
Haemoglobin (g/dl)	13.5	(12.3 - 14.9)	13.7	(12.5 - 15.1)	12.7	(11.6 - 14.2)	< 0.001
Leucocytes (G/l)	4.2	(2.9 - 6.0)	4.0	(2.8 - 5.6)	5.0	(3.5 - 7.5)	< 0.001
Lipase (IU/l)	33.9	(23.3 - 50.5)	32.6	(23.2 - 47.9)	38.5	(24.0 - 58.3)	**0.028
Monocyte to platelet ratio	3.1	(2.0 - 5.0)	2.9	(1.8 - 4.6)	3.8	(2.5 - 6.7)	*0.001
Monocytes (G/l)	0.5	(0.3 - 0.7)	0.5	(0.3 - 0.7)	0.6	(0.4 - 0.8)	< 0.001
Neutrophil to lymphocyte ratio	4.2	(2.2 - 8.7)	3.8	(2.0 - 7.7)	5.5	(2.8 - 10.7)	*0.008
Neutrophil to platelet ratio	19.4	(11.8 - 30.3)	18.2	(11.0 - 28.2)	25.8	(16.5 - 38.7)	< 0.001

Neutrophils (G/l)	2.8 (1.7 - 4.5)	2.6 (1.6 - 4.2)	3.4 (2.1 - 5.4)	*0.002
Platelets (G/l)	154 (107 - 202)	157 (109 - 204)	152 (101 - 195)	0.397
Potassium (mmol/l)	3.9 (3.6 - 4.2)	3.8 (3.6 - 4.1)	4.1 (3.7 - 4.5)	**< 0.001
Sodium (mmol/l)	137 (134 - 139)	137 (135 - 139)	136 (133 - 138)	< 0.001
Troponin (ng/l)	0.1 (0.1 - 0.3)	0.1 (0.1 - 0.3)	0.2 (0.1 - 0.6)	0.019
Urea (mmol/l)	4.6 (3.3 - 6.5)	4.2 (3.0 - 5.8)	6.5 (4.8 - 9.6)	***<0.001
Urea to creatinine ratio	52 (41 - 65)	50 (40 - 63)	60 (49 - 76)	< 0.001

[†]This variable sums the numbers of probable dengue indicators and warning signs. Data are numbers and column percentages, or medians and interquartile ranges (Q1-Q3) when specified. Percentages are compared using chi² or Fisher's Exact test, as appropriate. Medians are compared using a non-parametric Brown-Mood k-sample test and when it was significant, further with median and quartile regressions. * $p < 0.05$, ** $p < 0.01$ and *** $p < 0.001$ for the less significant of both quantile regressions (no * means that at least one quantile regression is not significant).

194

195 DPs reported more frequently fever, fatigue, loss of appetite, and less frequently
 196 myalgia within the days preceding first hospital presentation than NDPs. At first consultation,
 197 they were more febrile, more tachycardic and exhibited higher systolic and mean blood
 198 pressures than NDPs but the differences were not substantial to make sense clinically, as
 199 evidenced by inconsistent quantile regression coefficients.

200 Over the course of the dengue episode, DPs presented earlier to hospital than NDPs
 201 (75.7% vs 66.9%, within 3 days of symptom onset, $p=0.025$). Dengue in the diabetic was
 202 characterized at presentation by more common cardiorespiratory signs and altered mental
 203 status but fewer muco-cutaneous signs.

204 Biologically, DPs had lower haematocrit and haemoglobin levels, but higher leucocyte
 205 counts than NDPs at presentation. However, the differences in white blood cell related
 206 parameters were substantial only for neutrophil count, the neutrophil to lymphocyte ratio
 207 (NLR), and the monocyte to platelet ratio (MPR), which higher values were potential
 208 indicators of dengue in the DP. Other biological parameters substantially associated with
 209 dengue in the DP include higher neutrophil to platelet ratio (NPR), neutrophil to
 210 lymphocyte*platelet ratio (NLPR), lipase, potassium, urea, and creatinine levels, while
 211 international normalized ratio, fibrinogen, sodium, chloride, urea to creatinine ratio, or C-
 212 reactive protein levels exhibited also significant differences in medians but not over the whole
 213 extent of their distributions. Noteworthy, there were no significant differences between the
 214 two groups for platelet counts and liver enzymes levels at presentation.

215 The abovementioned stringent selection procedure of covariates characterizing dengue
 216 in the DP identified four symptoms, three clinical features and four biological parameters, as
 217 potential indicators of dengue in the diabetic at first presentation ([Table 2](#)).

Table 2. Clinical and biological characteristics found at hospital presentation in the diabetic patients with virologically confirmed cases of dengue, Reunion island, January to June 2019

Variables	Bivariate analysis n = 936		Multivariate analysis (2 separate full models) ^{1,2}		Multivariate analysis (Intermediate joined model) ³		Multivariate analysis (Final joined model) ⁴	
	Crude OR	(95% CI)	Adjusted OR	(95% CI)	Adjusted OR	(95% CI)	Age-Adjusted OR	(95% CI)
<i>Symptoms (within 7 days)</i>								
Fever	2.00	(1.20 - 3.33)	2.00	(1.15 - 3.44)	2.56	(1.01 - 6.42)	-	-
Fatigue	1.59	(1.10 - 2.28)	1.10	(0.71 - 1.68)	-	-	-	-
Loss of appetite	1.94	(1.40 - 2.70)	1.92	(1.30 - 2.82)	2.01	(1.32 - 3.06)	1.97	(1.28 - 3.02)
Myalgia	0.68	(0.49 - 0.95)	0.65	(0.45 - 0.93)	0.85	(0.54 - 1.31)	-	-
<i>Clinical features at presentation</i>								
Muco-cutaneous signs	0.37	(0.22 - 0.63)	0.34	(0.20 - 0.58)	0.43	(0.23 - 0.77)	-	-
Altered mental status	3.91	(2.43 - 6.29)	3.10	(1.86 - 5.16)	3.47	(1.92 - 6.25)	2.08	(1.16 - 3.72)
Cardiorespiratory signs	1.62	(1.10 - 2.39)	1.30	(0.87 - 1.95)	-	-	-	-
<i>Biology at presentation</i>								
Haematocrit (%)								
≤ 38	2.02	(1.31 - 3.13)	2.24	(1.39 - 3.59)	2.12	(1.30 - 3.45)	2.00	(1.16 - 3.71)
> 42	0.68	(0.41 - 1.13)	0.64	(0.37 - 1.07)	0.60	(0.34 - 1.05)	0.66	(0.36 - 1.19)
Neutrophil to platelet ratio								
14.8 – 28.1	2.03	(1.24 - 3.31)	2.44	(1.43 - 4.14)	2.58	(1.50 - 4.44)	2.19	(1.27 - 3.76)
> 28.1	3.78	(2.32 - 6.13)	4.46	(2.61 - 7.61)	4.14	(2.38 - 7.19)	3.27	(1.81 - 5.86)
Serum creatinine (µmol/l)								
71-100	1.73	(1.00 - 2.98)	-	-	-	-	1.33	(0.69 - 2.55)
> 100	5.18	(3.05 - 8.78)	-	-	-	-	2.29	(1.17 - 4.48)
Serum urea to creatinine ratio								
46-100	3.16	(1.97 - 5.06)	3.23	(1.96 - 5.29)	2.79	(1.66 - 4.70)	2.02	(1.18 - 3.44)
> 100	8.16	(3.62 - 18.39)	6.64	(2.78 - 15.90)	6.18	(2.53 - 15.11)	3.04	(1.18 - 7.78)

OR: odds ratio. 95%CI: 95% confidence interval.

¹ The full clinical logistic regression model is based on 936 subjects which represents 100% of the observations. Akaike information criterion (AIC): 0.928. Bayesian information criterion (BIC): - 5496. Hosmer-Lemeshow goodness-of-fit : *p* value = 0.762. Area under the receiver operating characteristic curve (AUC) : 0.692 (95%CI: 0.648 -0.734).

² The full biological logistic regression model is based on 723 subjects which represents 77% of the observations. AIC: 0.915. BIC: - 4065. Hosmer-Lemeshow goodness-of-fit : *p* value = 0.405. AUC : 0.752 (95%CI: 0.710 – 0.794).

³ The intermediate clinic-biological logistic regression model is based on 723 subjects which represents 77% of the observations. AIC: 0.868. BIC: - 4077. Hosmer-Lemeshow goodness-of-fit : *p* value = 0.970. AUC : 0.793 (95%CI: 0.753 – 0.833).

⁴ The final clinic-biological logistic regression model is based on 723 subjects which represents 77% of the observations. AIC: 0.821. BIC: - 4111. Hosmer-Lemeshow goodness-of-fit : *p* value = 0.322. AUC : 0.825 (95%CI: 0.789 – 0.861).

218 Pre-existing chronic conditions and their related treatments were deemed indicative of
219 diabetes comorbidities and not eligible to this analysis.

220 The three-step multivariate analysis identified fever, loss of appetite and altered mental
221 status as independent clinical indicators, and low haematocrit ($\leq 38\%$), high NPR ratio (\geq
222 14.8), upper-range creatinine ($\geq 100 \mu\text{mol/l}$) and high serum urea to creatinine (> 45) as
223 independent biological indicators of dengue in the diabetic, whereas myalgia and muco-
224 cutaneous signs were associated with dengue in the NDPs (data not shown).

225 In the pre-final joined model, adjusting for age abrogated the association between
226 muco-cutaneous signs and NDPs (data not shown). The final age-adjusted joined model
227 confirmed six independent indicators of dengue in the diabetic: loss of appetite (adjusted OR
228 1.97, 95%CI 1.28-3.02), altered mental status (aOR 2.02, 95%CI 1.28-3.02), low haematocrit
229 (aOR 2.00, 95%CI 1.16-3.71), high NPR (aOR 2.19 in the intermediate tercile, aOR 3.27 in
230 the upper tercile), upper-range creatinine (aOR 2.02, 95%CI 1.28-3.02) and high serum urea
231 to creatinine ratio (aOR 2.02 in the intermediate tercile, aOR 3.04 in the upper tercile).

232

233 **Dengue in diabetic patients with or without diabetes complications**

234 When compared to uncomplicated diabetes, dengue of the DPs with complicated
235 diabetes occurred in older and highly comorbid subjects (S2 Table). At presentation, it was
236 clinically unremarkable but characterized by higher serum creatinine level and slightly lower
237 haematocrit, haemoglobin, or ALT levels. However, upon hospitalization, it was marked by
238 higher peak C reactive protein and higher odds to evolve towards SD.

239 When compared to NDPs, DPs with diabetes complications exhibited more frequent
240 dehydration, more clinical fluid accumulation and more haemoconcentration. Loss of appetite
241 and altered mental status, indicators of inflammation or renal dysfunction were found in DPs,
242 irrespective of the severity of diabetes.

243 The full abnormalities found given the severity of diabetes are displayed in S1 Fig.

244

245 **Dengue in diabetic patients with optimal or suboptimal glycaemic control**

246 When compared to diabetes with optimal control (HBA1c $<7\%$), dengue of the DP with
247 suboptimal glycaemic control (HBA1c $\geq 7\%$) at presentation (S3 Table) was also clinically
248 unremarkable but biologically characterized by higher MPR, lower sodium and chlorine
249 levels.

250 When compared to NDPs, DPs with suboptimal glycaemic control expressed roughly
251 the same particularities than DPs with clinically complicated diabetes, which showed a fairly
252 overlap between clinical and biological diabetes disease markers.

253 The full abnormalities found given the control of diabetes are displayed in S2 Fig.

254 Taken together, these data suggest that thrombocytopenia (platelet counts < 100 G/l) in
255 the diabetic patient was more likely indicative of an uncomplicated diabetes with suboptimal
256 glycaemic control rather than a complicated diabetes.

257

258 **Predictors of severe dengue in the diabetic patients**

259 The most important differences between DF (hereafter designated as non-severe
260 dengue) and SD in the DPs are presented in [Table 3](#), while the full comparison between both
261 populations is displayed in S4 Table.

262

Table 3. Characteristics at hospital presentation of virologically confirmed cases of non severe and severe dengue cases among diabetic patients, Reunion island, January to June 2019.

Variable	Total		Non severe dengue (DF)		Severe dengue (SD)		p value
	n=184	(%)	n=124	(%)	n=60	(%)	
<i>Socio-demographic</i>							
Age (years ; medians, Q ₁ -Q ₃)	70.0	(59.4 - 77.7)	70.0	(58.6 - 77.3)	69.6	(60.6 - 78.4)	0.875
Female sex	102	(55.4)	68	(54.8)	34	(56.7)	0.815
<i>Comorbidities</i>							
Chronic kidney disease	40	(21.7)	21	(16.9)	19	(31.7)	0.023
Charlson score (medians, Q ₁ -Q ₃)	5	(3 - 7)	4	(3 - 6)	6	(3 - 8)	0.018
<i>Symptoms (within 7 days)</i>							
Backache	34	(18.5)	28	(22.6)	6	(10.0)	0.039
<i>Clinical features at presentation</i>							
Indicators of probable dengue							
Body aches	124	(67.4)	90	(72.6)	34	(56.7)	0.031
Warning signs							
0	116	(63.0)	83	(66.9)	33	(55.0)	0.079
1	52	(28.3)	34	(27.4)	18	(30.0)	
> 1	16	(8.7)	7	(5.7)	9	(15.0)	
Clinical fluid accumulation (n=155)	12	(7.7)	3	(2.9)	9	(17.0)	0.003
Other manifestations							
Dehydration	69	(37.5)	40	(32.3)	29	(48.3)	0.035
Cardiorespiratory signs	45	(24.5)	18	(14.5)	27	(45.0)	< 0.001
Altered mental status	36	(19.6)	18	(14.5)	18	(30.0)	0.013
Non severe bleeding	21	(11.4)	9	(7.3)	12	(20.0)	0.011
Cough	17	(9.2)	7	(5.6)	10	(16.7)	0.016
<i>Biology at presentation (medians, Q₁-Q₃)</i>							
Neutrophil to lymphocyte ratio	5.5	(2.8 - 10.7)	6.5	(3.2 - 10.8)	4.2	(2.5 - 10.2)	0.039
AST (IU/l)	42	(24 - 79)	37	(22 - 70)	46	(31 - 103)	0.070
ALT (IU/l)	26	(16 - 52)	23	(14 - 43)	37	(20 - 66)	0.216
Alkaline phosphatase (IU/l)	73	(55 - 91)	62	(54 - 87)	80	(72 - 106)	0.015
Potassium (mmol/l)	4.1	(3.7 - 4.5)	4.0	(3.7 - 4.3)	4.3	(3.8 - 4.7)	0.008

Data are numbers and column percentages, or medians and interquartile ranges (Q₁-Q₃) when specified. Percentages are compared using χ^2 or Fisher's Exact test, as appropriate. Medians are compared using a non-parametric Brown-Mood k-sample test and when it was significant, further with median and quartile regressions. * $p < 0.05$, ** $p < 0.01$ and *** $p < 0.001$ for the less significant of both quantile regressions (no * means that at least one quantile regression is not significant).

263

264 Age and gender distributions did not differ between DPs with SD and DPs with non-
265 severe dengue.

266 DPs with SD were more frequently affected by chronic kidney disease (CKD, 31.7% *vs*
267 16.9%, $p=0.023$) and higher Charlson comorbidity index scores (median score 6; Q_1 - Q_3 : 3-8
268 *vs* 4, Q_1 - Q_3 : 3-6, $p=0.018$) than DPs with non-severe dengue.

269 Backache was less frequently reported in DPs with SD than in DPs with non-severe
270 dengue. DPs with SD suffered less body aches but experienced more commonly non-severe
271 bleeding, fluid accumulation, dehydration, cardiorespiratory signs (including cough) and
272 altered mental status at presentation.

273 Biologically, DPs with SD exhibited lower median neutrophil to lymphocyte ratios but
274 higher median phosphatase alkaline and potassium levels than DPs with non-severe dengue at
275 presentation. However, these differences were not observed over the whole extent of variable
276 distributions. Other biological parameters were similar between the two groups.

277 The selection procedure of covariates predictive of SD in the DPs identified diabetes
278 complications (*i.e.*, diabetes with retinopathy and/or neuropathy and/or nephropathy and/or
279 diabetic foot), CKD (especially when alleged of non-diabetic origin), untreated hypertension
280 and entrenched-proxy Charlson comorbidity index (*i.e.*, Charlson score subtracted from
281 diabetes-associated points) as potential comorbidities, non-severe bleeding, presence of
282 warning signs, altered mental status or cough as potential early clinical features predictive of
283 severe dengue in the DPs at presentation ([Table 4](#)).

Table 4. Anamnestic and clinical predictors of severe dengue at hospital presentation of a diabetic patient with virologically confirmed dengue (RT-PCR+ or NS1 antigen+), Reunion island, January to June 2019

Variables	Bivariate analysis		Multivariate analysis (2 separate full models) ^{1,2}		Multivariate analysis (1 final joined model) ³	
	Crude RR	(95% CI)	Adjusted RR	(95% CI)	Adjusted RR	(95% CI)
<i>Comorbidities</i>						
Diabetes complications *	1.84	(1.23 - 2.75)	1.74	(1.10 - 2.75)	2.06	(1.39 - 3.05)
Chronic kidney disease of undifferentiated origin	1.67	(1.10 - 2.53)	-	-	-	-
Chronic kidney disease alleged of diabetic origin	1.45	(0.89 - 2.36)	-	-	-	-
Chronic kidney disease alleged of non-diabetic origin	1.74	(1.00 - 3.01)	1.66	(0.82 - 3.36)	-	-
Untreated hypertension	1.85	(1.13 - 3.02)	1.43	(0.84 - 2.41)		
Entrenched-proxy Charlson comorbidity score **	1.09	(1.00 - 1.17)	1.01	(0.90 - 1.13)		
<i>Clinical features at presentation</i>						
Warning signs ***						
1	1.22	(0.75 - 1.95)	1.25	(0.75 - 2.07)	-	-
> 1	1.98	(1.17 - 3.33)	1.57	(0.82 - 3.04)	-	-
Non severe bleeding	1.94	(1.24 - 3.02)	1.65	(0.91 - 2.95)	2.34	(1.49 - 3.67)
Altered mental status	1.76	(1.16 - 2.67)	1.71	(1.15 - 2.54)	1.69	(1.15 - 2.50)
Cough	1.96	(1.23 - 3.12)	1.91	(1.18 - 3.07)	1.95	(1.25 - 3.06)

* Diabetic retinopathy and/or diabetic neuropathy and/or diabetic nephropathy and/or diabetic foot.

**The Charlson comorbidity score was entrenched (or reduced) of the points provided by diabetes and chronic kidney disease to allow the adjustment of the score with these factors without overfitting the model.

*** Abdominal pain or tenderness, persistent vomiting, clinical fluid accumulation, mucosal bleed, lethargy or restlessness, liver enlargement > 2 cm, increase in haematocrit concurrent with rapid decrease in platelet count.

RR: relative risk. 95%CI: 95% confidence interval.

¹ The full anamnestic Poisson regression model is based on 184 subjects which represents 100% of the observations. Akaike information criterion: 1.393. Bayesian information criterion: - 687. Area under the receiver operating characteristic curve (AUC) : 0.636 (95%CI: 0.547 - 0.725).

² The full clinical Poisson regression model is based on 184 subjects which represents 100% of the observations. AIC: 1.386. BIC: - 685. AUC : 0.675 (95%CI: 0.592 - 0.757).

³ The final clinic-anamnestic Poisson regression model is based on 184 subjects which represents 100% of the observations. AIC: 1.343. BIC: - 696. AUC: 0.725 (95%CI: 0.648 - 0.802).

285 The final joined model identified four key independent predictors of severe dengue in
286 the DPs: diabetes complications (adjusted RR 2.06, 95%CI 1.39-3.05), non-severe bleeding
287 (aRR 2.34, 95%CI 1.49-3.67), altered mental status (aRR 1.69, 95%CI 1.15-2.50) and cough.

288 Among diabetes complications, diabetic retinopathy (16.7% vs 7.2%, p=0.049), and
289 neuropathy (16.7% vs 5.5%, p=0.016) but not diabetic nephropathy (25.0% vs 14.5%,
290 p=0.082) nor diabetic foot (3.1% vs 1.6%, p=0.597) were predictive of severe dengue.

291 **Discussion**

292 To the best of our knowledge, this retrospective cohort study is the first that attempted
293 to both characterize dengue and to identify predictors of severe dengue in the diabetic patient.

294

295 **Key findings**

296 The first model identifies six independent indicators of dengue in the DPs, namely loss
297 of appetite, altered mental status, low haematocrit ($\leq 38\%$), high neutrophil to platelet ratio (\geq
298 14.8), upper-range creatinine ($> 100 \mu\text{mol/l}$), and high serum urea to creatinine ratio (> 45).
299 To a lesser extent, this model also showed that muco-cutaneous signs were indicative of
300 dengue in the NDPs, but the association did not resist to age adjustment.

301 The second model proposes four key predictors of SD in the DPs, namely diabetes
302 complications, non-severe bleeding, altered mental status and cough.

303

304 **Strengths and limitations**

305 This study has several strengths. First, the cohort was extracted from the EPIDENGUE
306 database, a quasi-exhaustive register of all dengue cases having consulted at the University
307 hospital in 2019, which allows our study population to be considered as representative of a
308 hospital dengue-infected population in Reunion. Second, the cohort was recruited during a
309 single dengue seasonal epidemic in the hospital setting, which ensures, theoretically, a
310 relative homogeneity in the definition and classification of dengue cases, especially as the
311 Reunionese population was naïve to dengue on the study period. Third, with respect to the
312 topic, the study sample was relatively important, and the selection method of candidate
313 indicators/predictors was rigorous, which allowed the possibility of conclusive multivariate
314 models on both aspects of the analysis. Fourth, the two final multivariate models displayed
315 acceptable metrics both in terms of fitness, calibration, and discrimination, which confers
316 internal validity to the analysis.

317 This study has also some limitations. First, given the retrospective character of this
318 cohort study, the study may be prone to reporting bias (i.e., mainly underreporting of
319 exposure/events), which may have hampered the completeness of the data and be the source
320 of subsequent information or evaluation biases, this depending on whether it is an exposure or
321 an outcome variable which is affected. Second, this hospital-based study might have been also
322 submitted to a potential selection or referral bias, given the only hospital recruitment of
323 dengue cases. However, we believe this do not really stand for most of the DPs, diabetes
324 being recognized as a risk factor of severe infection for most emerging infectious diseases

325 [19-21]. This may have been incentive for the primary care physician to refer the DPs of
326 suspected dengue to the hospital, as suggested by high hospitalization rates including for DPs
327 with uncomplicated diabetes.

328

329 Interpretation

330 Diabetic patients represented 19.6% of the study population. This proportion overlaps
331 more or less the figure expected in the Reunion island adult population, given former
332 estimates of the prevalence of diabetes at 20.1% in the Reunionese aged 30 to 69 [22]. DPs
333 were older and more comorbid than NDPs, which may illustrate the fact that diabetes is an
334 age-related disease that along with aging tends to cluster other chronic conditions. This
335 element might have skewed the DPs towards higher proportions of complicated diabetes as
336 compared to the overall population of diabetics observed on the island. In addition, some DPs
337 may have been referred to the hospital by their primary care physician because they had
338 comorbidities or warning signs, or need to upgrade the antidiabetic medication (*e.g.*, insulin in
339 support to oral treatment).

340 DPs with dengue were more likely to present loss of appetite than NDPs, which could
341 suggest the presence of subclinical exocrine pancreatitis in some patients [23]. Consistent
342 with this, we found among DPs with loss of appetite, higher lipase levels, more common
343 nausea/vomiting, and non-significant trends towards more persistent vomiting or abdominal
344 tenderness than in DPs without anorexia (data not shown). Whether this may be attributable to
345 dengue or diabetes, or both, cannot be assessed from our data.

346 DPs with dengue exhibited more commonly altered mental status (*i.e.*, confusion,
347 behavioural changes, or other cognitive impairments), the major criterion for defining
348 encephalitis [24]. This finding was unrelated to several potential indicators of plasma leakage,
349 endothelial activation or systemic inflammation in stratified analysis (*e.g.*,
350 haemoconcentration, fluid accumulation, NLR, PLR) but coherent with that observed in West
351 Nile flavivirus encephalitis, for which diabetes is a known risk factor [25].

352 DPs with dengue had lower haematocrit than NDPs, which correlated with lower
353 haemoglobin and higher C reactive protein levels and was potentiated by CKD. Together, this
354 finding would better account for inflammatory anaemia due to diabetes (especially if
355 complicated with nephropathy) rather than for a proper effect of dengue [26]. Alternatively,
356 DPs with complicated diabetes exhibited also more haemoconcentration than NDPs, which
357 raises the interest in new biomarkers of fluid accumulation than the haematocrit alone (or the

358 haematocrit plus the rapid platelet count fall) to better assess the plasma leakage in this
359 population.

360 Interestingly, DPs with dengue displayed a higher NPR, a predictor that has been linked
361 to dengue mortality or need for critical care in our setting [27]. To the best of our knowledge,
362 this ratio had not been used previously in dengue neither for diagnosis nor for prognosis
363 purpose. Given it was correlated both to NLPR and NLR (data not shown), we hypothesize
364 that it could be indicative of both systemic inflammation [28] and early platelet-neutrophil
365 interactions aimed at clearing the virus through neutrophil extracellular traps (NETs), this
366 latter mechanism to be triggered by activated platelets in dengue [29] but also well-known to
367 be at work in diabetes through a different pathway [30]. In addition, a high NPR at hospital
368 presentation was later associated with thrombocytopenia and lower platelet nadirs when the
369 full hospital stay was considered (data not shown), which may support shared, or even
370 additive, mechanisms in both diabetic and SD patients in the pathogenesis of
371 thrombocytopenia.

372 Dengue in the DPs was independently associated with both organic and functional
373 components of acute kidney injury, as suggested by higher serum urea to creatinine ratio and
374 higher serum creatinine level than in NDPs. However, subsequent stratified analyses (data not
375 shown) revealed that in DENV-infected DPs with CKD, only the organic component was
376 prevailing, which contrasted with NDPs with CKD for which the two components contributed
377 to DENV-driven deterioration in renal function. Taken together, these data may illustrate the
378 multifactorial mechanism of dengue-related acute kidney injury [31] and the greater
379 sensitivity of the diabetic kidney to DENV infection [32].

380 Finally, this study proposes the presence of diabetes complications as an independent
381 predictor of SD for the DP from a model controlling the other comorbidities, warning signs,
382 and three early predictors of SD. Importantly, the model reveals that diabetes supplants all
383 other comorbidities in the development of SD, especially hypertension and CKD, two other
384 highly prevalent chronic conditions on the island [33, 34]. It also suggests that DPs with
385 complicated diabetes are prone to all three modes of entry into SD, namely severe bleeding,
386 severe plasma leakage with respiratory distress, and severe central nervous system
387 involvement, with non-severe bleeding, cough and altered mental status, as respective
388 harbingers. Consistent with this hypothesis, these harbingers were associated with more
389 severe related organ dysfunctions in subsequent analyses (*e.g.*, cough with acute lung injury,
390 data not shown).

391 Among the mechanisms raised to promote the aggravation of dengue in the DP,
392 apoptosis of leucocytes and endothelial microvascular cells has been proposed from post-
393 mortem findings [35], while more recently, a mouse model unravelled the role of
394 hyperglycaemic stress to facilitate DENV replication through the poly(A)-binding protein
395 PI3K/AKT signalling [36]. Together with the microvascular and macrovascular damages of
396 diabetes complications, this would increase the susceptibility of the DPs to the severe plasma
397 leakage key to SD pathogenesis [37]. In our study, the lack of correlates within the subgroups
398 of complicated diabetes and DPs with known HbA1c levels deters to propose a putative
399 mechanism. Nevertheless, we assume that the higher MPR found in DPs with HbA1c \geq 7%
400 than that observed in DPs with HbA1c $<$ 7% might reflect more intense trafficking of
401 monocytes under monocyte chemoattractant protein-1 secretion induced by activated platelets
402 [35, 38], which might also increase endothelial dysfunction and support more severe plasma
403 leakage in the DP with suboptimal control [39].

404

405 Generalizability

406 Notwithstanding the monocentric nature of this hospital-based study,
407 several results echo observations published in the literature and suggest that some of its
408 findings could be extrapolated, at least to other DENV-2 epidemics in similar contexts.

409 First, we confirm that diabetes outweighs the other comorbidities in promoting the
410 pathogenesis of SD, which is consistent with the meta-analysis by Sangkaew et al. that
411 showed the highest pooled OR for diabetes in the progression from DF to SD in random-
412 effects models controlling prognostic factors [40]. Moreover, our findings support the
413 importance of diabetes control aimed at preventing its vascular complications to avoid SD.
414 Together, these elements corroborate the results of Pang et al. in Singapore and of Lee et al. in
415 Taiwan who have shown, both in populations mainly affected by DENV-2 that only DPs with
416 additional comorbidities, especially hypertension, were at increased risk of severe forms of
417 dengue [13, 39].

418 Second, the study confirms the importance of non-severe bleeding disorders in the DPs
419 as a predictor of SD, which is consistent with studies identifying diabetes as a risk factor for
420 dengue haemorrhagic fever (WHO 1997 classification) [13] or a risk factor for SD (WHO
421 2009 classification) [39]. Surprisingly, we did not find lower admission platelet counts in DPs
422 than in NDPs, which differs from the recent observation by Singh et al. in India [37] and
423 another one in Taiwan. However, on Reunion island, DPs exhibited lower platelet nadir than
424 NDPs upon hospitalization, which may relate the discrepancy between studies to the earlier

425 presentation in the course of illness of DPs (75% within 3 days post-symptom onset). Indeed,
426 platelet nadir during dengue usually occurs within 4-5 days (48 hours of the critical phase)
427 and our observation of a platelet nadir at day 2 in DPs lends to support to this explanation.

428 Third, we identified altered mental status, as a predictor of SD in the DPs, which is
429 consistent with the increased odds of intracranial haemorrhage or cerebral infarction found
430 among Taiwanese patients with dengue and altered consciousness in multivariate analyses
431 controlling potential comorbidities [41]. Interestingly, DPs represented a third of their study
432 sample, and one model adjusted for a Charlson score >4, which matches 60% of DPs and 96%
433 of DPs with complicated diabetes in our study. Beyond the mode of entry into dengue
434 encephalitis, this raises the possibility that our second model may apply to predict severe
435 central nervous involvement, as results of haemorrhagic or thrombotic events, more frequent
436 in the DPs.

437 Fourth, we identified cough as a predictor of SD in the DPs. Although respiratory tract
438 involvement is uncommon in dengue, cough has been reported in approximately 25–50% of
439 DF cases. This result is consistent with the Thai report by Temprasertudee, which identified
440 cough as an independent predictor of SD in a model controlling alanine aminotransferase
441 levels [42].

442 Last, the findings of the study evidences a close relationship between diabetes and renal
443 dysfunction among dengue patients which may support diabetes as risk factor for acute
444 dengue-related kidney injury [32], even though such a study remains to be done in our
445 context.

446

447 Implications

448 For individual health purposes, this study may help patient management through better
449 characterization of dengue and identification of early prognostic factors of SD in the DPs.
450 Indeed, this should encourage emergency physicians during epidemic periods to refine the
451 triage of patients consulting the emergency department and propose more intense monitoring
452 of DPs with diabetes complications to allow earlier hospitalization whenever needed.

453 For public health purposes, this study should motivate more active screening strategies
454 of both conditions among people living in or travelling to dengue endemic countries and
455 emphasize the DPs with complicated diabetes as a candidate for dengue vaccine
456 immunization.

457 For research purposes, this study should help to design future studies aimed at
458 investigating the interactions between diabetes and dengue and the concept of syndemic.

459 There are several arguments for a double negative impact of both affections each on the other
460 and understanding the short-term and long-term consequences of dengue in the DP deserves
461 certainly further studies.

462

463 Conclusion

464 At hospital first presentation, dengue in the diabetic patient is characterized by
465 deteriorations in appetite, mental and renal functioning, while severe dengue can be predicted
466 by diabetes complications, dengue-related non-severe haemorrhages, cough, and dengue-
467 related encephalopathy. Larger prospective studies are needed to confirm these findings and
468 decipher their pathogenic significance.

469 **Funding**

470 This work was supported by the European Regional Development Fund through the
471 RUNDENG project (number 20202640-0022937). The funder had no role in study design, data
472 collection and analysis, decision to publish, or preparation of the manuscript.

473

474 **Data availability statement**

475 All data produced in the present study are available upon reasonable request to the
476 authors.

477

478 **Credit authorship contribution**

479 **Azizah Issop:** Investigation, Interpretation of the data, Original draft writing - review
480 and editing. **Antoine Bertolotti:** Formal analysis, Supervision - review and editing. **Yves-**
481 **Marie Diarra:** Formal analysis, Methodology - review and editing. **Jean-christophe Maïza:**
482 Investigation - review and editing. **Eric Jarlet:** Investigation - review and editing. **Muriel**
483 **Cogne:** Investigation - review and editing. **Eric Doussiet:** Investigation - review and editing.
484 **Eric Magny:** Investigation, Software - review and editing. **Olivier Maillard:** Formal
485 analysis, Project administration - review and editing. **Epidengue Cohort Investigation**
486 **Team:** Jeanne Belot, Mathilde Cadic, Mathys Carras, Romain Chane-Teng, Romane Crouzet,
487 David Hirschinger, Anne-Cecilia Etoa N’Doko, Azizah Issop, Mathilde Legros, Mamitiana
488 Randriamanana, Cédric Rosolen, Nolwenn Sautereau, Investigation – review and editing.
489 **Estelle Nobécourt:** Formal analysis, Supervision, Writing - review and editing. **Patrick**
490 **Gérardin:** Conceptualization, Data curation, Formal analysis, Methodology, Software,
491 Validation, Visualization, Writing – review and editing.

492

493 **Declaration of competing interest**

494 All authors would like to report that are not conflicts of interest in relation to this
495 research. All authors have signed the disclosure form for potential conflicts of interest.

496

497 **Acknowledgments**

498 The authors thank the emergency units of the University Hospital of Reunion and all
499 collaborators of the EPIDENGUE project.

500 References

- 501 1) Du M, Jing W, Liu M, Liu J. The global trends and regional differences in incidence of
502 dengue infection from 1990 to 2019: an analysis from the Global Burden of Diseases of
503 Study. *Infect Dis Ther* 2021; 10: 1625-43. <https://dx.doi/10.1007/s40121-021-00470-2>.
504
- 505 2) European Center for Disease Prevention and Control. Dengue worldwide overview.
506 <https://www.ecdc.europa.eu/en/dengue-monthly>. [Accessed 4 April 2023].
507
- 508 3) Semenza JC, Rocklöv J, Ebi KL. Climate change and cascading risks from infectious
509 disease. *Infect Dis Ther*. 2022; 11:1371-90. <https://dx.doi/10.1007/s40121-022-00647-3>.
510
- 511 4) La Ruche G, Souares Y, Armengaud A, Peloux-Petiot F, Delaunay P, Despres P, et al.
512 First two autochthonous dengue virus infections in metropolitan France, September
513 2010. *Euro Surveill* 2010; 15: 19676. <https://dx.doi/10.2807/ese.15.39.19676-en>.
514
- 515 5) Cochet A, Calba C, Jourdain F, Grard G, Durand GA, Guinard A, et al. Autochthonous
516 dengue in mainland France, 2022: geographical extension and incidence increase. *Euro*
517 *Surveill*. 2022; 27: 2200818. <https://dx.doi/10.2807/1560-7917.ES.2022.27.44.2200818>.
518
- 519 6) Vanwambecke SO, Bennett SN, Kapan DD. Spatially disaggregated disease
520 transmission risk: land use, land cover and risk of dengue transmission on the island of
521 Ohau *Trop Med Int Health* 2011; 16: 174-85. <https://dx.doi/10.1111.j1365-3156.2010.02671.x>
522
523
- 524 7) Santé Publique France. DENGUE. Point épidémiologique hebdomadaire, La Reunion, 7
525 décembre 2021. *Sante publique France-Reunion* 6 pp.
526 [https://www.santepubliquefrance.fr/regions/ocean-indien/documents/bulletin-](https://www.santepubliquefrance.fr/regions/ocean-indien/documents/bulletin-regional/2021/surveillance-de-la-dengue-a-la-reunion.-point-au-7-decembre-2021)
527 [regional/2021/surveillance-de-la-dengue-a-la-reunion.-point-au-7-decembre-2021](https://www.santepubliquefrance.fr/regions/ocean-indien/documents/bulletin-regional/2021/surveillance-de-la-dengue-a-la-reunion.-point-au-7-decembre-2021).
528 [Accessed 4 April 2023].
529
- 530 8) World Health Organization. Dengue guidelines for diagnosis, treatment, prevention and
531 control: new edition. 2009. <https://apps.who.int/iris/handle/10665/44188>. [Accessed 4
532 April 2023].
533
- 534 9) Joshi N, Caputo GM, Weitekamp MR, Karchmer AW. Infections in patients with
535 diabetes mellitus. *N Engl J Med*. 1999; 341: 12.
536 <https://dx.doi/10.1056/NEJM199912163412507>.
537
- 538 10) Bertoni AG, Saydah S, Brancati FL. Diabetes and the risk of infection-related mortality
539 in the U.S. *Diabetes Care*. 2001; 24: 1044-9. <https://dx.doi/10.2337/diacare.24.6.1044>.
540
- 541 11) Shah BR, Hux JE. Quantifying the risk of infectious diseases for people with diabetes.
542 *Diabetes Care*. 2003;26: 510-3. <https://dx.doi/10.2337/diacare.26.2.510>.
543
- 544 12) Htun NSN, Odermatt P, Eze IC, Boillat-Blanco N, D'Acremont V, Probst-Hensch N. Is
545 diabetes a risk factor for a severe clinical presentation of dengue? - Review and meta-
546 analysis. *PLoS Negl Trop Dis*. 2015; 9: e0003741. <https://dx.doi/10.1371/journal.pntd.0003741>.
547
548
- 549 13) Pang J, Salim A, Lee VJ, Hibberd ML, Chia KS, Leo YS, et al. Diabetes with

- 550 hypertension as risk factors for adult dengue hemorrhagic fever in a predominantly
551 dengue serotype 2 epidemic: a case control study. *PLoS Negl Trop Dis*. 2012; 6: e1641.
552 <https://dx.doi.org/10.1371/journal.pntd.0001641>.
553
- 554 14) ORS La Réunion. *ors_chiffres_diabete_reunion_2021.pdf*. 2021. [https://www.ors-](https://www.ors-reunion.fr/IMG/pdf/ors_chiffres_diabete_reunion_2021.pdf)
555 [reunion.fr/IMG/pdf/ors_chiffres_diabete_reunion_2021.pdf](https://www.ors-reunion.fr/IMG/pdf/ors_chiffres_diabete_reunion_2021.pdf).
556
- 557 15) Brown GW, Mood AM. On median tests for linear hypotheses. In: *Proceeding of the*
558 *second Berkeley symposium on mathematical statistics and probability*, University of
559 *California Press ed, Berkeley, 1951: pp 159-66.*
560
- 561 16) Chamberlain G. Quantile regression, censoring, and the structure of wages. In:
562 *Advances in Economics Sixth World Congress*, Cambridge University Press Sims CA
563 *ed, Cambridge 1994: pp 171-209.*
564
- 565 17) Zou G. A modified poisson regression approach to prospective studies with binary data.
566 *Am J Epidemiol* 2004; 159(7): 702-706. <https://dx.doi.org/10.1093/AJE/KWH090>.
567
- 568 18) Riley RD, Ensor J, Snell KIE, Harrell Jr FE, Martin GP, Reitsma JB, et al. Calculating
569 the sample size required for developing a clinical prediction model. *BMJ* 2020;
570 368:m441 <https://dx.doi.org/10.1136/bmj.m441>.
571
- 572 19) Badawi A, Ryoo SG, Vasileva D, Yaghoubi S. Prevalence of comorbidities in
573 Chikungunya : a systematic review and meta-analysis. *Int J Infect Dis*. 2018; 67: 107-
574 13. <https://dx.doi.org/10.1016/j.ijid.2017.12.018> 1201-9.
575
- 576 20) Badawi A, Ryoo SG, Vasileva D, Yaghoubi S. Prevalence of comorbidities in dengue
577 fever and West Nile virus: a systematic review and meta-analysis. *PLoS One* 2018; 13:
578 e0200200. <https://dx.doi.org/10.1371/journal.pone.0200200>.
579
- 580 21) Longmore DK, Miller JE, Bekkering S, Saner C, Mifsud E, Zhu Y et al. Diabetes and
581 overweight/obesity are independent, nonadditive risk factors for in-hospital severity of
582 COVID-19: an international, multicenter, retrospective meta-analysis. *Diabetes Care*
583 2021; 44: 1281-90. <https://dx.doi.org/10.2337/dc20-2676>.
584
- 585 22) Favier F, Jaussent I, Moullec NL, Debussche X, Boyer M-C, Schwager J-C, et al.
586 Prevalence of Type 2 diabetes and central adiposity in La Réunion Island, the REDIA
587 Study. *Diabetes Res Clin Pract*. 2005;67: 234-242.
588 <https://dx.doi.org/10.1016/j.diabres.2004.07.013>.
589
- 590 23) Correa R, Ortega-Loubon C, Zapata-Castro LE, Armien B, Culquichicon C. Dengue
591 with hemorrhagic and acute pancreatitis: case report and review. *Cureus* 2019; 11:
592 e4895. <https://dx.doi.org/10.7759/cureus.4895>.
593
- 594 24) Venkatesan A, Tunkel AR, Bloch KC, Luring AS, Sejvar J, Bitnun A, et al. Case
595 definitions, diagnostic algorithms, and priorities in encephalitis : consensus statement of
596 the International Encephalitis Consortium. *Clin Infect Dis* 2013; 57: 1114-28.
597 <https://dx.doi.org/10.1093/cid/cit458>.
598
- 599 25) Jean CM, Honarmand S, Louie JK, Glaser CA. Risk factors for West Nile virus

- 600 neuroinvasive disease, California, 2005. *Emerg Infect Dis* 2007; 13:1918-20.
601 <https://dx.doi.org/10.3201/eid1312.061265>.
- 602
- 603 26) Mehdi U, Toto RD. Anemia, diabetes, and chronic kidney disease. *Diabetes Care* 2009;
604 32: 1320-6. <https://dx.doi.org/10.2337/dc08-0779>.
- 605
- 606 27) Romane Crouzet. [Facteurs de risque de décès ou de thérapeutique invasive chez les
607 patients suspects de dengue durant l'épidémie à La Réunion en 2019]. In: HAL-
608 Réunion. Archive ouverte de l'Université de La Réunion, ed. Sciences du Vivant [q-bio]
609 Dumas-03831531, v1. 2022, 79 pp. <https://hal.univ-reunion.fr/dumas-03831531v1>
- 610
- 611 28) Osuna-Ramos JF, Reyes-Ruiz JM, Ochoa-Ramírez LA, De Jesús-González LA, Ramos-
612 Payán R, Farfan-Morales CN. The usefulness of peripheral blood cell counts to
613 distinguish COVID-19 from dengue during acute infection. *Trop Med Infect Dis* 2022;
614 7: 20. <https://dx.doi.org/10.3390/tropicalmed7020020>.
- 615
- 616 29) Garisha F, Rother N, Riswari SF, Alisjabaah B, Overheul GJ, van Rij RP, et al.
617 Neutrophil extracellular traps in dengue are mainly generated NOX-independently.
618 *Front Immunol* 2021; 12: 629167. <https://dx.doi.org/10.3389/fimmu.2021.629167>.
- 619
- 620 30) Njeim R, Azar WS, Fares AH, Azar ST, Kfoury Kassouf H, Eid AA. NETosis
621 contributes to the pathogenesis of diabetes and its complications. *J Mol Endocrinol*
622 2020; 65: R65- R76. <https://dx.doi.org/10.1530/JME-20-0128>.
- 623
- 624 31) Gurugama P, Jayarajah U, Wanigasuriya K, Wijewickrama A, Perera J, Seneviratne SL.
625 Renal manifestations of dengue virus infections. *J Clin Virol*. 2018; 101: 1-6.
626 <https://dx.doi.org/10.1016/j.jcv.2018.01.001>.
- 627
- 628 32) Mallhi TH, Khan AH, Adnan AS, Sarriff A, Khan YH, Jummaat F. Incidence,
629 characteristics and risk factors of acute kidney injury among dengue patients: a
630 retrospective analysis. *PLoS One* 2015; 10: e0138465.
631 <https://dx.doi.org/10.1371/journal.pone.0138465>.
- 632
- 633 33) Stengel B, Jaussent I, Guiserix J, Bourgeon B, Papoz L, Favier F. High prevalence of
634 chronic kidney disease in La Réunion island and its association with the metabolic
635 syndrome in the non-diabetic population: La Réunion Diabetes (REDIA) Study.
636 *Diabetes Metab*. 2007; 33: 444–52. <https://dx.doi.org/10.1016/j.diabet.2007.10.002>.
- 637
- 638 34) Cournot M, Lenclume V, Le Moullec N, Debussche X, Doussiet E, Fagot-Campagna A,
639 Favier F. Prevalence, treatment, and control of hypertension in La Réunion: the REDIA
640 population-based cohort study. *Blood Press* 2017; 26: 39-47.
641 <https://dx.doi.org/10.1080/08037051.2016.1182854>.
- 642
- 643 35) Limonta D, Torres G, Capó V, Guzmán MG. Apoptosis, vascular leakage and increased
644 risk of severe dengue in a type 2 diabetes mellitus patient. *Diab Vasc Dis Res*. 2008; 5:
645 213–4. <https://dx.doi.org/10.3132/dvdr.2008.034>.
- 646
- 647 36) Shen TJ, Chen CL, Tsai TT, Jhan MK, Bai CH, Yen YC, et al. Hyperglycemia
648 exacerbates dengue virus infection by facilitating poly(A)-binding protein-mediated
649 viral translation. *JCI Insight* 2022; 7: e142805.

- 650 <https://dx.doi.org/10.1172/jci.insight.142805>.
651
652 37) Singh R, Goyal S, Aggarwal N, Mehta S, Kumari P, Singh V, et al. Study on dengue
653 severity in diabetic and non-diabetic population of tertiary care hospital by assessing
654 inflammatory indicators. *Ann Med Surg (Lond)* 2022; 82: 104710.
655 <https://dx.doi.org/10.1016/j.amsu.2022.104710>.
656
657 38) Gawaz M, Neumann FJ, Dickfeld T, Koch W, Laugwitz KL, Adelsberger H, et al.
658 Activated platelets induce monocyte chemotactic protein-1 secretion and surface
659 expression of intercellular adhesion molecule-1 on endothelial cells. *Circulation* 1998;
660 98: 1164-71. <https://dx.doi.org/10.1161/01.cir.98.12.1164>.
661
662 39) Lee IK, Hsieh C-J, Lee CT, Liu JW. Diabetic patients suffering dengue are at risk for
663 development of dengue shock syndrome/severe dengue: Emphasizing the impacts of co-
664 existing comorbidity(ies) and glycemic control on dengue severity. *J Microbiol*
665 *Immunol Infect.* 2020; 53: 69–78. <https://dx.doi.org/10.1016/j.jmii.2017.12.005>.
666
667 40) Sangkaew S, Ming D, Boonyasiri A, Honeyford K, Kalayanarooj S, Yacoub S, et al.
668 Risk predictors of progression to severe diseases during the febrile phase of dengue: a
669 systematic review and meta-analysis. *Lancet Infect Dis* 2021; 21: 1014-26.
670 [https://dx.doi.org/10.1016/S1473-3099\(20\)30601-0](https://dx.doi.org/10.1016/S1473-3099(20)30601-0).
671
672 41) Chang K, Huang CH, Chen TC, Lin CY, Lu PL, Chen YH. Clinical characteristics and
673 risk factors for intracranial haemorrhage or infarction in patients with dengue. *J*
674 *Microbiol Immunol Infect* 2021; 54: 885-92. <https://dx.doi.org/10.1016/j.jmii.2021.03.009>.
675
676 42) Temprasertudee S, Thanachartwet V, Desakorn V, Keatkla J, Chantratita W,
677 Kiertinuranakul S. A multicenter study of clinical presentations and predictive factors
678 for severe manifestations of dengue in adults. *Jpn J Infect Dis* 2018; 71: 239-43.
679 [tps://dx.doi.org/10.7883/yoken.JJID.2017.457](https://dx.doi.org/10.7883/yoken.JJID.2017.457).

