

1 **Research article: Single Cross-Sectional Analysis; Post-Myocardial Infarction**  
2 **Instrumental & Laboratory changes in Prognosis Behavior**

3 Running title: Current Advances in Cardiopathologies Management

4

5 **Authors' list: Basheer Abdullah Marzoog<sup>1,\*</sup>, Natalia Igorevna Bloshkina<sup>2</sup>, Vera**  
6 **Sergeevna Gromova<sup>3</sup>, Ekaterina Vanichkina<sup>2</sup>, Elena Ivanovna Gorshinina<sup>2</sup>**

7

8 <sup>1</sup> World-Class Research Center «Digital Biodesign and Personalized Healthcare», I.M.  
9 Sechenov First Moscow State Medical University (Sechenov University), 119991 Moscow,  
10 Russia; postal address: Russia, Moscow, 8-2 Trubetskaya street, 119991.

11 <sup>2</sup> National Research Ogarev Mordovia State University. Address: Bolshevitskaya Street, 68,  
12 Saransk, Rep. Mordovia, Russia. Postal address: Russia, Mordovia republic, Saransk,  
13 Bolshevitskaya Street, 31, 430005.

14 <sup>3</sup> Immanuel Kant Baltic Federal University, Russia, Kaliningrad, Alexander Nevsky Street,  
15 14. ORCID 0000-0002-8707-8876

16

17 \*Corresponding author: Basheer Abdullah Marzoog, Ph.D. student at Sechenov First Moscow  
18 State Medical University at the World-Class Research Center "Digital biodesign and  
19 personalized healthcare". (marzug@mail.ru, +79969602820). Address: Russia, Moscow, 8-2  
20 Trubetskaya street, 119991. Postal address: Russia, Moscow, 8-2 Trubetskaya street, 119991.  
21 ORCID: 0000-0001-5507-2413, Scopus ID: 57486338800

22

23 Competing interests: No competing interests regarding the publication.

24

25

26

27

28

29

30

31

32

33

34

35 **Abstract**

36 **Background:** Cardiovascular events remain one of the frequently reported causes of death  
37 globally.

38 **Aims:** Assess the early laboratory and instrumental changes in systemic manner in patients  
39 with myocardial infarction (MI).

40 **Objectives:** Patients with fresh myocardial infarction that has been occurred in less than 30  
41 days before hospitalization in the rehabilitation hospital.

42 **Materials and methods:** A single large-scale retrospective cohort sectional study for patients  
43 with fresh myocardial infarction for the period 2014-2019, data collected from Mordovia  
44 Rehabilitation Hospital. The study involved 154 patients and analysed 76 parameters for each  
45 patient. The t test, Pearson's correlation coefficient, and ROC test have been used. For  
46 statistical analysis used Statistica program.

47 **Results:** The sample included 154 patients with a history of fresh myocardial infarction. Of  
48 154. 51(33.11%) female and 103 (66.88 %) males. Chronic heart failure (CHF), which is seen  
49 in 42 (27.27 %) patients, 101 (65.58 %) did not have CHF and 11 (7.142 %) missing data.  
50 Diabetes mellitus (DM) has been observed in 28 (18.18182 %), 118 (76.62 %) without DM,  
51 Hypertension has been seen in 118 (76.62 %), 28 (18.18 %) did not have hypertension,  
52 chronic kidney disease (CKD) has been seen in 11 (7.14%) patients, 131 (85.064 %) did not  
53 have CKD, Chronic obstructive pulmonary disease (COPD) existed in 14 (9.09 %), 132  
54 (85.71 %) did not have COPD. Post myocardial infarction (MI) CHF has been observed in  
55 108 (70.12987%), 42 (27.27 %) did not have CHF. Post MI arrhythmia seen in 50 (32.47%)  
56 patients, 99 (64.28 %) did not have arrhythmia. Early post MI complication such as aneurysm  
57 has been seen in 12 (7.79 %), 138 (89.61 %) did not have aneurysm, Dressler syndrome;  
58 pericarditis has been seen in 4 (2.59 %) patients, pneumonitis seen in 1 (0.64 %) patient, and  
59 pleuritis have not been seen.

60 **Conclusions:** Systemic manifestations include kidney function impairment or development  
61 of new kidney disease. These changes include an increase in the aorta basement diameter, an  
62 increase in the right ventricle size, a decrease in the level of serum red blood cells, the serum  
63 potassium level, and serum calcium level, with an increase in the serum myoglobin. The high  
64 myoglobin level is associated with the development of chronic heart failure. The higher  
65 creatinine level and or LDH is associated with arrhythmia development. Hypertension is the  
66 predominant concomitant disease in victims of MI. And arrhythmia is most commonly  
67 reported post-MI complication.

68 **Others:** Females are more frequently affected by post-MI urinary tract infection.

69 **Keywords:** Myocardial infarction, Cardiology, Myocardopathies, Myocardocyte,  
70 Angiogenesis & Regeneration

## 71 **Introduction**

72 Myocardial infarction (MI) and associated sequelae remain the most reported cause of  
73 mortality and morbidity worldwide [1]. The development of cardiovascular events is  
74 associated with several modified and non-modified risk factors [2]. Lifestyle changes have a  
75 huge impact on the overall health of the cardiovascular system [3, 4]. Unfortunately,  
76 sedentary lifestyle is seen in majority of myocardial infarction, which is associated with  
77 development of several predisposition factors for cardiovascular events such as  
78 dyslipidaemia, insulin resistance, and central obesity or visceral obesity [5–9]. Collectively,  
79 these early signs of disturbance of cardiovascular homeostasis are ignored to provoke the  
80 progression of dyslipidaemia and insulin resistance to reach enough levels to induce the  
81 emergence of cardiovascular events such as MI [10, 11].

82 Assessment of the early post-MI changes is of huge impact on the further therapy plan and  
83 the prognosis of MI victims. One of the early specific markers of myocardial infarction is the  
84 elevation of cardiac lactate dehydrogenase 1 and troponins, including troponins I and T.  
85 However, systemic changes are rarely assessed in early post-MI patients [12]. The role of  
86 these changes is unclear in determining the prognosis of patients with MI and the potential  
87 risk of developing complications such as renal failure. In the current retrospective analysis,  
88 we covered the potential role of these systemic and the regularly checked cardiac markers in  
89 the prognosis determination and prognosis of the patients [5, 8, 20–23, 9, 13–19].

## 90 **Materials and methods**

91 A retrospective cohort analysis for 154 patients for the period 2014-2019. The data has been  
92 collected from the republican rehabilitation hospital (history of the patients from the other  
93 hospitals are collected in the rehabilitation hospital, that is why we collected the data from  
94 her). All the presented data are after first contact with the patient and shows the peak values  
95 of post MI changes. Consent from patients has been taken for the collection, analysis, and  
96 publication the material and any associated photos or graphs. The missing data have been  
97 treated as absent and removed from the analysis. All measurement units are based on the  
98 local units used in the laboratories. There was no access to the 2020–2022 year data because  
99 of the COVID-19 issues. Pleuritis was not seen in patients and been excluded from the  
100 complications report. The presented t-test results are all statistically significant, and other  
101 results are not statistically significant at  $p < 0.05$ . The level of leukocytes and red blood cell

102 level is always mentioned without  $*10^9$  or  $*10^{12}$ , respectively. We could not assess the risk  
103 hazard for the estimated parameters and the survival rate, limitations of the study.

104 The T test, the Pearson correlation coefficient and ROC analysis have been used using the  
105 Statistica 12 programme (StatSoft, Inc. (2014). STATISTICA (data analysis software  
106 system), version 12. [www.statsoft.com](http://www.statsoft.com)).

## 107 **Results**

108 The sample included 154 patients with a history of fresh myocardial infarction. Of 154, 51  
109 (33.11%) were female and 103 (66.88%) were male. In the sample, 131 (85.064 %) live in  
110 the city, 17 (11.038 %) live in the village, and 5 (3.24 %) live in the town.

111 Majority of the patient had a concomitant disease prior to their myocardial infarction. 132  
112 (85.71 %) had a concomitant disease, 18 (11.68 %) did not have a concomitant disease, and 4  
113 (2.59 %) missing data. Of the concomitant diseases, chronic heart failure (CHF), which is  
114 seen in 42 (27.27 %) patients, 101 (65.58 %) did not have CHF, and 11 (7.14 %) missing  
115 data. Diabetes mellitus (DM) has been observed in 28 (18.18 %), 118 (76.62 %) without DM,  
116 and 8 (5.19 %) missing data. Hypertension has been observed in 118 (76.62 %), 28  
117 (18.18182%) who did not have hypertension, and 8 (5.19 %) missing data. Chronic kidney  
118 disease (CKD) has been observed in 11 (7.14 %) patients, 131 (85.064 %) did not have CKD,  
119 and 12 (7.79 %) were missing data. Chronic obstructive lung disease (COPD) existed in 14  
120 (9.09 %), 132 (85.71 %) did not have COPD and 8 (5.19 %) missing data. A disrupted lipid  
121 profile was present in 21 (13.63 %), 121 (78.57 %) did not have dyslipidaemia and 12 (7.79  
122 %) missing data. Varicose vein is coexisted in 3 (1.94 %), 137 (88.96 %) did not have  
123 varicose vein, and 14 (9.09 %) missing data.

124 In terms of complications after myocardial infarction, 145 (94.15 %) patients had  
125 complication, 5 (3.24 %) did not have complication, and 4 (2.59 %) had missing data. Post-  
126 myocardial infarction (MI) CHF has been observed in 108 (70.12 %), 42 (27.27 %) did not  
127 have CHF, and 4 (2.59 %) missing data. Post MI arrhythmia seen in 50 (32.47 %) patients, 99  
128 (64.28 %) did not have arrhythmia, 5 (3.24 %) missing data. Early post MI complication such  
129 as aneurysm has been seen in 12 (7.79221%), 138 (89.61 %) did not have aneurysm, and 4  
130 (2.59740%) missing data. Late post MI complications including Dressler syndrome including  
131 the pericarditis has been seen in 4 (2.59 %) patients, 146 (94.80 %) did not have pericarditis,  
132 and 4 (2.59 %) missing data. Additional components of Dressler syndrome include  
133 pneumonitis, which is seen in 1 (0.64 %) patient, 148 (96.10 %) did not have pneumonitis,  
134 and 5 (3.24 %) missing data. Whereas, the third component of the Dressler syndrome,  
135 pleuritis, have not been seen, therefore, it has not been reported.

136 Interestingly, 43 (27.92 %) patients had re-infarct, 107 (69.48052 %) were for the first time,  
 137 and 4 (2.59 %) missing data. Evaluation of the activity level of tissue-type plasminogen  
 138 activator (t-PA) through serum level, it was elevated in 7 (4.54 %) patients, 5 (3.24 %) in the  
 139 normal range, and other 142 (92.20 %) did not measure their d-dimer level.

140 The primary descriptive statistics demonstrated in (Table) 1.

141 Table 1: The primary descriptive statistics of the sample. Abbreviations: EF; ejection  
 142 fraction, EDV; end diastolic volume, LV; left ventricle, LA; left atrium, RV; right ventricle,  
 143 RA; right atrium, Hb; hemoglobin, RBC; red blood cell, ESR; erythrocyte sedimentation rate  
 144 of erythrocytes, CKP-MB; creatinine phosphokinase-MB fraction, LDH; lactate  
 145 dehydrogenase, ALT; alanine transaminase, AST; aspartate transaminase, LDL; low density  
 146 lipoprotein, TAG; triacyl glycerides, APTT; activated prothrombin time, PT; prothrombin  
 147 time.

Variable	Descriptive Statistics					
	Valid N	% Valid obs.	Mean	Median	Minimum	Maximum
Hospitalization days	153	99.35	14.53	15.0	0.00	24
Age (years)	152	98.70	61.64	62.5	30.00	86
Body weight (Kg)	31	20.12	82.26	85.000	62.00	112
Height (cm)	31	20.12	170.58	172.00	155.0	185
BMI (Kg/m <sup>2</sup> )	31	20.12	28.56	27.88	21.79	41
HR (beat/mint)	148	96.10	79.82	78.00	53.00	130
SBP (mmHg)	148	96.10	139.57	140.00	60.00	260
DBP (mmHg)	148	96.10	84.05	80.00	40.00	130
Aorta diameter at the Valsalva sinuses (mm)	144	93.50	35.21	35.00	20.00	46
EF (%)	142	92.20	54.55	55.000	25.00	80
EDV (ml)	113	73.37	134.30	129.00	62.00	234
End diastolic LV size (mm)	132	85.71	52.35	51.150	10.00	89
End diastolic LA size (mm)	133	86.36	40.09	40.00	28.00	62
End diastolic RV size (mm)	144	93.50	26.75	26.25	5.00	44

Variable	Descriptive Statistics					
	Valid N	% Valid obs.	Mean	Median	Minimum	Maximum
End diastolic RA size (mm)	130	84.41	35.73	36.00	24.00	49
Hb	143	92.85	137.10	138.0	85.00	170
Leukocytes (/L)	141	91.55	8.82	8.30	2.80	18
RBC (/L)	118	76.62	5.12	4.50	2.60	24
Lymphocytes (%)	130	84.41	25.51	25.50	2.00	54
Thrombocytes (/L)	111	72.07	206.76	200.00	83.00	506
ESR (mm/hr)	138	89.61	19.04	15.50	2.00	60
Urine ketones (mmol/l)	1	0.64	0.50	0.50	0.50	1
Urine proteins (mmol/l)	137	88.96	5.27	0.00	0.00	150
Urine leukocytes (microscopically)	142	92.20	2.64	1.00	0.00	50
Urine epithelial cells (microscopically)	136	88.31	1.86	1.000	0.00	20
Troponin I (ng/ml)	126	81.81	4.74	1.20	0.00	33
Myoglobin (ng/ml)	3	1.94	111.30	71.0	63.00	200
CKP-MB 1 (U/l)	129	83.76	97.01	29.0	6.00	2881
CKP-MB 2 (U/l)	71	46.10	79.26	42.0	6.00	508
LDH 1 (U/l)	108	70.12	652.30	475.5	30.00	3900
LDH 2 (U/l)	56	36.36	21640.80	492.0	97.00	1177
INR (Sec)	125	81.16	1.25	1.00	0.80	18
Total bilirubin (mmol/l)	108	70.12	16.53	17.68	4.42	36
ALT (mmol/l)	140	90.90	42.65	28.00	1.19	361
AST (mmol/l)	140	90.90	55.57	30.00	5.10	423
Total cholesterol (mmol/l)	141	91.55	5.23	5.10	2.40	9
LDL (mmol/l)	138	89.61	23.20	3.24	0.92	2766

Variable	Descriptive Statistics					
	Valid N	% Valid obs.	Mean	Median	Minimum	Maximum
TAG (mmol/l)	140	90.90	3.65	1.56	0.27	138
Na (mmol/l)	122	79.22	139.76	142.75	1.76	151
K (mmol/l)	126	81.81	6.02	4.06	1.00	92
Creatinine (µmol/L)	142	92.20	81.56	84.00	0.00	176
Ca (mmol/l)	115	74.67	1.69	1.18	0.25	38
Urea (mmol/l)	139	90.25	7.79	6.70	2.50	93
Glucose (mmol/l)	135	87.66	6.86	6.10	4.00	19
APTT (Sec)	74	48.05	27.31	25.50	15.00	76
Fibrinogen (ng/ml)	117	75.97	3386.85	3500.00	300.00	7500
PT (Sec)	1	0.64	94.00	94.00	94.00	94

148

149 Males are affected by myocardial infarction earlier than females; the cut-off point for age is  
150 67 years old. (*Figure 1*)

151 In male group the mean age is 59.76 years old and in female group the mean age is 65.46  
152 years old, which is statistically significant difference, t value 3.30,  $p < 0.001$ . Furthermore, the  
153 mean height of the male is 172.57 cm and in female 164.88 cm, which is a statistically  
154 significant difference, t value -3.26,  $p < 0.002$ . On echocardiogram, in male group, the mean  
155 diameter of the aorta is 36.23 mm, in female group, the mean diameter of the aorta is 33.04  
156 mm, which is statistically significant difference, t value -4.24,  $p < 0.00003$ . In male group, the  
157 mean right atrium size on echocardiogram equal to 36.26 mm, in female group equal to 34.56  
158 mm, which is statistically significant difference, t value -2.06,  $p < 0.04$ . The mean hemoglobin  
159 level in men was 140.26 and in women 130.66, which is a statistically significant difference, t  
160 value -3.71,  $p < 0.0002$ . In urine analysis, in male group, mean number of leukocytes in urine  
161 was 1.52 under microscope and in female group was 4.91, which is statistically significant  
162 difference, t value 3.11,  $p < 0.002$ . Furthermore, in urine analysis, the number of epithelial  
163 cells in the male 1.36 under microscope and in the female group 2.91, which is a statistically  
164 significant difference, t value 3.12,  $p < 0.002$ . In the male group, the mean myoglobin level  
165 was 67.00 ng/ml and in the female group 199.90 ng/ml, which is a statistically significant  
166 difference, t value 19.18,  $p < 0.03$ . (*Table 2*)



167 Table 2: Gender role in the numerical variables.

Variable	T-tests; Grouping: Gender							
	Group 1: F		Group 2: M		t-value	df	p	Valid N F
Mean F	Mean M							
Hospitalization days	14,42	14,58	-0,26	151	0,78	50	103	
Age	65,46	59,76	3,30	150	0,001	50	102	
Body weight	83,38	81,87	0,30	29	0,75	8	23	
Height	164,88	172,57	-3,26	29	0,002	8	23	
BMI	31,20	27,48	1,94	29	0,06	9	22	
HR	80,08	79,70	0,13	146	0,89	49	99	
SBP	144,18	137,29	1,39	146	0,16	49	99	
DBP	85,71	83,23	1,10	146	0,27	49	99	
Aorta diameter at Valsalva Sinus	33,04	36,23	-4,24	142	0,00003	46	98	
EF	55,27	54,22	0,62	140	0,53	45	97	
EDV	128,08	137,33	-1,30	111	0,19	37	76	
LV	51,76	52,65	-0,62	130	0,53	44	88	
LA	40,16	40,06	0,09	131	0,92	41	92	
RV	26,20	27,01	-0,98	142	0,32	46	98	
RA	34,56	36,26	-2,06	128	0,040	40	90	
Hb	130,66	140,26	-3,71	141	0,00029	47	96	
Leukocytes	8,40	9,02	-1,16	139	0,24	45	96	
RBC	4,80	5,28	-0,81	116	0,41	40	78	
Lymphocytes	27,62	24,50	1,77	128	0,07	42	88	
Thrombocytes	193,69	213,83	-1,54	109	0,12	39	72	
ESR	21,52	17,88	1,53	136	0,12	44	94	
Urine proteins	4,05	5,85	-0,43	135	0,6	44	93	
leukocytes	4,91	1,52	3,11	140	0,002	47	95	
Epithelial cells	2,91	1,36	3,12	134	0,002	44	92	
Troponin I	3,39	5,34	-1,23	124	0,21	39	87	
Myoglobin	199,90	67,00	19,18	1	0,033	1	2	
CKP-MB	94,57	98,14	-0,06	127	0,94	41	88	
LDH	630,78	661,36	-0,25	106	0,79	32	76	
INR	1,01	1,36	-1,16	123	0,24	39	86	
Total bilirubin	15,96	16,80	-0,61	106	0,53	35	73	
ALT	51,77	38,33	1,59	138	0,11	45	95	
AST	57,66	54,58	0,28	138	0,77	45	95	
Total choles	5,42	5,14	1,138	139	0,25	45	96	
LDL	3,30	3,12	0,90	136	0,36	43	95	
TAG	1,88	1,67	1,24	138	0,21	45	95	
Na	141,81	138,90	0,78	120	0,43	36	86	
K	3,87	6,95	-1,20	124	0,23	38	88	
Creatinine	81,23	81,72	-0,09	140	0,92	45	97	
Ca	1,53	1,76	-0,31	113	0,75	36	79	
Urea	7,15	8,10	-0,54	137	0,58	45	94	
Glucose	7,12	6,74	0,79	133	0,42	43	92	
APTT	25,82	27,94	-0,93	72	0,35	22	52	
Fibrinogen	3490,73	3346,04	0,86	115	0,39	33	84	

168

169 Patients with concomitant diseases have a mean heart rate (HR) equal to 80.82 beats / minute  
 170 and patients without concomitant disease have a mean HR equal to 72.39 beats / minute,  
 171 which is a statistically significant difference, t value 2.05,  $p < 0.04$ . Furthermore, patients with



172 concomitant diseases have a mean diastolic size of the right ventricle is 27.13 mm and  
173 patients without concomitant disease have a mean diastolic size of the right ventricle is 23.85  
174 mm, which is a statistically significant difference, t value 2.79,  $p < 0.005$ . Moreover, patients  
175 with concomitant disease have a mean protein in urine 3.18 mg/l, and the patients without  
176 concomitant disease had a mean level of urine protein 21.25 mg/l, which is statistically  
177 significant difference, t value -3.10,  $p < 0.002$ . Interestingly, patients with concomitant  
178 disease had lower calcium level a mean equal to 1.31 mmol/l and the patients without  
179 concomitant disease had a mean calcium level 3.84 mmol/l, which is statistically significant  
180 difference, t value -2.67,  $p < 0.008$ . (Figure 2)

181 Patients with CHF have a mean thrombocyte level equal to 185.26 / l, while patients without  
182 CHF have a mean thrombocyte level of 216.24 /l, which is a statistically significant  
183 difference, t value - 2.15,  $p < 0.03$ .

184 Mean glucose level in diabetic patients equal to 9.93 mmol/l and in non-diabetic patients  
185 equal to 6.13 mmol/l, which is statistically significant difference, t value -7.97,  $p < 0.0001$ .

186 The coexistence of DM in patients increases the mean diastolic size of the left ventricle 55.60  
187 mm, while, in patients without DM, the mean diastolic size of the left ventricle to equal 51.42  
188 mm, which is a statistically significant difference, t value -2.53,  $p < 0.012$ . The mean  
189 sedimentation rate (ESR) in patients with DM equals 23.60 mm/hr, and equal to 17.43 mm/hr  
190 in non-diabetic patients, which is statistically significant difference, t value -2.22,  $p < 0.027$ .

191 The mean creatinine phosphokinase-MB fraction is dramatically higher in patients with DM  
192 233.36 U/L and lower in non-diabetic patients 66.05 U / L, which is a statistically significant  
193 difference, t value --2.62,  $p < 0.009$ . Diabetic patients experience a high level of triacyl  
194 glyceride (TAG) 2.17 mmol / l, while non-diabetic patients had a lower TAG level of 1.66  
195 mmol/l, which is a statistically significant difference, t value -2.56,  $p < 0.011$ .

196 Hypertensive patients have a low mean level of red blood cells (RBC) level 4.55 /l in  
197 compare to non-hypertensive patients 7.7, which is statistically significant difference, t value  
198 -4.63276,  $p < 0.000010$ . In hypertensive patients, the mean LDH 1 is 608.21 U/l, INR is 1.05,  
199 sodium is 141.70 mmol/l, potassium is 4.04 mmol/l, and calcium is 1.14 mmol/l, whereas, in  
200 non-hypertensive patients, the mean level of LDH 1 is 908.8 U/l, INR is 2.1, sodium is 130.6  
201 mmol/l, potassium is 14.8 mmol/l, calcium is 3.9 mmol/l, which is statistically significant  
202 difference; t value -2.07, -3.04, 2.51, -3.62, -3.19;  $p < 0.04, 0.0028, 0.013, 0.0004, 0.001$ ,  
203 respectively.

204 CKD patients have a high mean troponin I level equal to 22.70 ng / ml compared to non-CKD  
205 patients 3.72 ng/ml, which is a statistically significant difference, t value -6.84,  $p < 0.0001$ .

206 Also, CKD patients have higher mean level of CPK-MB fraction equal to 475.61 U/l in  
207 compare to non-CKD patients equal to 78.38 U/l, which is statistically significant difference,  
208 t value -3.63,  $p < 0.0004$ . The mean creatinine level is higher in patients with CKD at 109.81  
209  $\mu\text{mol/L}$  comparing to non-CKD patients, which is a statistically significant difference, t value  
210 -3.63,  $p < 0.0004$ .

211 Interestingly, patients with COPD have a mean diastolic size of the left ventricle is 48.46  
212 mm, which is less than those of patients 52.73 mm, which is a statistically significant  
213 difference, t value 1.99,  $p < 0.048$ . However, patients with COPD have a mean diastolic size  
214 of the right atrium is 39.55 mm compared to patients 35.41 mm, which is a statistically  
215 significant difference, t value -3.06,  $p < 0.002$ . Furthermore, COPD patients have a mean level  
216 of RBC equal to 145.29 compared to non-COPD patients 136.39, which is a statistically  
217 significant difference, t value -2.11,  $p < 0.03$ .

218 Patients with dyslipidemia have mean troponin I 9.4 ng/ml, whereas, patients without  
219 dyslipidemia have mean troponin I 3.64 ng/ml, which is statistically significant difference, t  
220 value -2.99,  $p < 0.003$ . Additionally, patients with dyslipidaemia have mean total bilirubin  
221 19.3 mmol / l and 15.72 mmol/l in patients without dyslipidaemia, which is a statistically  
222 significant difference, t value -2.12,  $p < 0.03$ . Furthermore, patients with dyslipidaemia have a  
223 mean serum sodium level of 132.3 mmol/l and a mean serum potassium level of 8.4 mmol / l,  
224 while in patients without dyslipidaemia, the mean sodium serum level is 142.24 mmol/l and a  
225 mean serum potassium level of 4.07 mmol/l, which is a statistically significant difference; t  
226 value 2.74, -2.09;  $p < 0.006, 0.03$ .

227 The mean leukocytes level in patients with varicose veins is 12.07 /l, whereas, in patients  
228 without varicose veins, the mean leukocytes level is 8.71 /l, which is statistically significant  
229 difference; t value -1.99,  $p < 0.04$ . The mean RBC level in patients with varicose veins is  
230 9.87 /l, whereas, in patients without varicose veins, the mean RBC level is 4.56 /l, which is  
231 statistically significant difference; t value -6.88,  $p < 0.00$ . The mean level of ESR in patients  
232 with varicose veins is 37.67 mm / h, while, in patients without varicose veins, the mean ESR  
233 level is 18.25 mm / h, which is statistically significant difference; t value -2.64,  $p < 0.009$ .

234 In terms of complications, patients with complications have been hospitalized for 14.65 days,  
235 whereas, patients without complications hospitalized for 11.40 days, which is statistically  
236 significant difference; t value 2.05,  $p < 0.04$ . In patients with complications, the mean aorta  
237 diameter 35.38 mm, whereas, in patients without complications, the mean aorta diameter  
238 29.25 mm, which is statistically significant difference; t value 2.77,  $p < 0.006$ . In patients with  
239 complications, the mean diastolic size is of the right ventricle is 26.89 mm, while, in patients

240 without complications, the mean diastolic size of the right ventricle 21.25mm, which is a  
241 statistically significant difference;  $t$  2.44,  $p < 0.01$ . In patients with complications, the mean  
242 level of RBC 4.87 / l, while in patients without complications, the mean level of RBC 12.40  
243 /l, which is a statistically significant difference;  $t$  value -5.37,  $p < 0.0001$ . In patients with  
244 complications, in the general urine analysis, microscopically, the mean level of urea proteins  
245 4.30, while, in patients without complications, the mean level of urea proteins 50.00, which is  
246 a statistically significant difference;  $t$  -3.61,  $p < 0.0004$ . In patients with complications, the  
247 mean potassium level 5.37 mmol/l and mean calcium level 1.58 mmol/l, whereas, in patients  
248 without complications, the mean potassium level 32.99 mmol/l and mean calcium level is  
249 5.99 mmol/l, which is statistically significant difference;  $t$  value -3.75, -2.05;  $p < 0.0002$ , 0.04,  
250 respectively.

251 Patients with post-MI CHF have mean myoglobin level 199.90 ng/ml, whereas, in patients  
252 without post-MI CHF, the mean myoglobin level 67.00 ng/ml, which is statistically  
253 significant difference;  $t$  value 19.18,  $p < 0.033$ .

254 Patients with a history of previous infarction have creatinine 90.48  $\mu$ mol/l in compare to  
255 patients without reinfarction 78.01  $\mu$ mol/l, which is a statistically significant difference;  $t$   
256 value 2.26,  $p < 0.02$

257 The mean age of patients with arrhythmia is 65.58 years, while the mean age of patients  
258 without arrhythmia is 59.68 years, which is statistically significant difference;  $t$  value 3.32,  $p <$   
259 0.001. The mean height of patients with arrhythmia is 173.67 cm, while the mean height of  
260 patients without arrhythmia is 168.61 cm, which is statistically significant difference;  $t$  value  
261 2.23,  $p < 0.03$ . The mean ejection fraction (EF) of patients with arrhythmia is 50.40 %, while  
262 the mean EF of patients without arrhythmia is 56.43 %, which is statistically significant  
263 difference;  $t$  -3.81,  $p < 0.0002$ . The mean diastolic size of the left atrium of patients with  
264 arrhythmia is 42.14 mm, while the mean diastolic size of the left atrium of patients without  
265 arrhythmia is a 39.12 mm, which is statistically significant difference;  $t$  3.00,  $p < 0.003$ . The  
266 mean diastolic size right atrium of patients with arrhythmia is 37.36 mm, whereas, the mean  
267 diastolic size of the right atrium of patients without arrhythmia is 34.95 mm, which is  
268 statistically significant difference;  $t$  value 2.96,  $p < 0.003$ . The mean CKP-MB of patients  
269 with arrhythmia is 181.82 U / l, while the mean CKP-MB of patients without arrhythmia is  
270 56.68 U/l, which is statistically significant difference;  $t$  2.34,  $p < 0.02$ . The mean serum  
271 lactate dehydrogenase (LDH) level of patients with arrhythmia is 888.37 U/l, whereas, the  
272 mean lactate dehydrogenase level of patients without arrhythmia is a 533.49 U/l, which is  
273 statistically significant difference;  $t$  value 3.16,  $p < 0.002$ . The mean serum level of aspartate

274 transaminase of patients with arrhythmia is 71.53 mmol / l, while the mean lactate  
275 dehydrogenase serum level of patients without arrhythmia is a 47.38 mmol/l, which is  
276 statistically significant difference; t value 2.23, p< 0.026.

277 The mean EF of patients with aneurysm is 43.00 %, whereas, the mean EF of patients without  
278 aneurysm is 55.59 %, which is statistically significant difference; t value 4.57, p< 0.00001.

279 The mean level in patients with aneurysm is 9.70 / l, while the mean leukocyte level of  
280 patients without aneurysm is 2.11 /l, which is statistically significant difference; t -3.83, p<  
281 0.0001. The mean epithelial cell level in general urine analysis in patients with aneurysm is  
282 5.40, whereas, the mean epithelial cell level in patients without aneurysm is 1.58, which is  
283 statistically significant difference; t value -4.41, p< 0.00002.

284 The mean diastolic size of the left atrium of patients with pericarditis is 45.5 mm, while the  
285 mean diastolic size of the left atrium of patients without pericarditis is 39.90 mm, which is  
286 statistically significant difference; t value -2.01, p< 0.04. The mean creatinine level of  
287 patients with pericarditis is 52.5 µmol/L, whereas, the mean creatinine level of patients  
288 without pericarditis is 82.39 µmol/L, which is statistically significant difference; t value 1.98,  
289 p< 0.048.

290 Patients with pneumonitis have mean aorta diameter of 20.00 mm, whereas, the mean aorta  
291 diameter of patients without pneumonitis is 35.32 mm, which is statistically significant  
292 difference; t value 3.55, p< 0.0005. Patients with pneumonitis have mean serum leukocytes  
293 level of 14.80 /l, whereas, the mean serum leukocytes level of patients without pneumonitis is  
294 8.70 /l, which is statistically significant difference; t value -2.11, p< 0.036. Patients with  
295 pneumonitis have a mean ESR level of 48.00 mm / hour, while the mean ESR level of  
296 patients without pneumonitis is an 18.47 mm/he, which is statistically significant difference; t  
297 value -2.36, p< 0.019. Furthermore, patients with pneumonitis have a mean leukocyte level of  
298 22.00, whereas, the mean urine leukocyte level in urine of patients without pneumonitis is a  
299 2.53, which is statistically significant difference; t value -3.15, p< 0.001. The mean CKP-MB  
300 in patients with pneumonitis is 1164.00 U / l, while the mean CKP-MB in patients without  
301 pneumonitis is 89.60 U/l, which is statistically significant difference; t -3.92, p< 0.0001.

302 The mean diameter of the aorta, EF, EDV, troponin I, CKP-MB, and APTT in patients with  
303 elevated troponin T is 28.00 mm, 36.00 %, 62.00 ml, 33.00 ng/ml, 2881.00 U / l, and 49.10 s,  
304 respectively. Whereas, the mean aorta diameter, EF, EDV, troponin I, CKP-MB, APTT in  
305 patients without elevation in troponin T is 35.31 mm, 54.68%, 134.95 ml, 4.51 ng/ml, 75.26  
306 U/l, 27.01 sec, respectively, which is statistically significant difference; t value 2.34, 2.01,  
307 2.07, -3.61, -19.34, -2.55, p< 0.020, 0.045, 0.04, 0.0004, 0.00 0.012, respectively.

308 The mean age of patients with an elevated D-dimer level is 68.14 years, and the mean age of  
309 patients with normal D-dimer level is 56.60 years, which is statistically significant difference;  
310 t value 2.25,  $p < 0.04$ . The mean diastolic size of the right ventricle of patients with elevated  
311 D-dimer level is 25.93 mm, and mean diastolic size of the right ventricle of patients with  
312 normal D-dimer is 29.40 mm, which is statistically significant difference; t value -2.35,  $p <$   
313 0.04.

314 Comparing the dependent variable shows no statistical differences. (*Figure 3*)

315 In terms of correlations, a full table shows the correlation between all the continuous  
316 variables is presented. (*Table 3*)

317 An interesting correlation between the level of LDL and the diameter of the aorta basement  
318 has been observed. (*Figure 4.1, 4.2*) It has been shown that when the diastolic size of the left  
319 ventricle increases, the EF decreases dramatically. (*Figure 4*)

## 320 **Discussion**

321 Post-MI changes include early and late pathophysiological changes, early post-MI  
322 complications include ventricular rupture, aneurism, arrhythmia, sudden cardiac arrest, and  
323 death [24–26]. However, late changes include pericarditis, pneumonitis, pleuritis, and post-  
324 infarction atherosclerosis and dyskinesia [8, 27]. Such manifestations are associated with  
325 some laboratory and instrumental changes. Assessment of these changes helps prevent or  
326 slow down or at least make a prognosis for patients with MI. The low level of thrombocytes  
327 in patients with concomitant CHF returns to the use of antiaggregant and anticoagulants for a  
328 long time.

329 The high level of leukocytes in diabetic patients endorses the hypothesis of a mild chronic  
330 mild inflammatory syndrome in patients with metabolic syndrome [9, 21, 23, 28]. The high  
331 TAG values in diabetic patients are due to lipogenesis from high glucose serum levels and  
332 metabolic disorders associated with chronic lipid peroxidation and biogenesis disorders [28,  
333 29].

334 The dramatic increase in diastolic size in of the right ventricle patients with COPD is an  
335 indicator of the stable stage of pulmonary heart, which is associated with pulmonary  
336 hypertension and blood stagnation in the pulmonary circulation [30, 31]. Typically, these  
337 patients experience coughing and shortness of breath in the background of distress syndrome,  
338 fluid accumulation in pulmonary tissue, and impaired ability of pneumocytes to exchange  
339 gas. As compensation for respiratory hypoxemia, the elevation of the levels of erythropoietin  
340 and the further elevation of erythropoiesis, which is demonstrated in the high level of Hb in  
341 patients with COPD.

342 Leukocytosis is seen in patients with varicose veins and is an indicator of persistent  
343 inflammation with an increase in tissue hypoxia and a further increase in the hypoxia inducer  
344 factor to stimulate erythropoietin production and an additional increase in the RBC level of  
345 red blood cells in patients with varicose veins [32, 33]. This persistent inflammation is  
346 confirmed by the elevation of the ESR level in patients with varicose veins [34–37].

347 Post-MI complications reported in 4/5 of the sample and these complications associated with  
348 some laboratory and instrumental changes. Suggesting that post MI laboratory changes are  
349 not limited to the local myocardial infarction changes to involves systemic manifestations  
350 such as kidney function impairment or development of new kidney disease. These changes  
351 include an increase in the aorta diameter at the basement level, an increase in the right  
352 ventricle wall, a decrease in the level of RBC, the serum potassium level, and serum calcium  
353 level, with an increase in the serum myoglobin. High myoglobin level is associated with the  
354 development of chronic heart failure.

355 Re-infarct worsens the kidney function and induces renal failure [38–41]. Aging is a risk  
356 factor for MI and arrhythmia development. Arrhythmia increases CPK-MB, LDH, AST,  
357 diastolic size of both atriums, and decreases EF. The higher the troponin level, the lower the  
358 EF and the fewer further sequela.

359 An early post-MI aneurysm significantly alters cardiac output and further reduces systemic  
360 systolic blood pressure. These changes are associated with the reduction in the blood flow in  
361 to the renal afferent fibers, which are sensed by the juxtaglomerular apparatus that leads to  
362 activation the renin angiotensin aldosterone system with the anti-diuretic hormone. Therefore,  
363 a reduction in kidney function is observed in patients with MI. Additionally, elevation of  
364 creatinine in aneurysm patients is typical for impaired kidney function particularly filtration  
365 due to hypoperfusion of the glomeruli. The higher creatinine level is associated with  
366 arrhythmia development. Also, the higher LDH is associated with arrhythmia development.

367 Patients with pneumonitis are having a high leukocyte in serum and in the urine, high ESR,  
368 and high CKP-MB fraction. However, these patients experience small diameter of the aorta  
369 basement.

### 370 **Conclusions**

371 The early prognostic value of the instrumental and laboratory changes is complication  
372 dependent. With age, the level of D-dimer and thrombocytes increases. The higher the  
373 troponin level, the lower the EF and the fewer further sequela. Systemic manifestations  
374 include kidney function impairment or development of new kidney disease. These changes  
375 include an increase in the aorta diameter at the basement level, an increase in the right



376 ventricle wall, a decrease in the level of serum red blood cells, the serum potassium level, and  
377 serum calcium level, with an increase in the serum myoglobin. The higher creatinine level is  
378 associated with arrhythmia development. Also, the higher LDH is associated with arrhythmia  
379 development.

#### 380 **List of abbreviations**

381 CHF; chronic heart failure, DM; Diabetes mellitus, CKD; Chronic kidney disease, COPD;  
382 Chronic obstructive pulmonary disease, MI; myocardial infarction, HR; heart rate, ESR;  
383 erythrocytes sedimentation rate, RBC; red blood cells

#### 384 **Declarations**

##### 385 ETHICS APPROVAL AND CONSENT TO PARTICIPATE

386 The study approved by the National Research Mordovia State University<sup>6</sup> Russia, from  
387 “Ethics Committee Requirement N8/2 from 30.06.2022”.

388

##### 389 HUMAN AND ANIMAL RIGHTS

390 No animals were used in this research. All human research procedures followed were in  
391 accordance with the ethical standards of the committee responsible for human  
392 experimentation (institutional and national), and with the Helsinki Declaration of 1975, as  
393 revised in 2013.

394

##### 395 CONSENT FOR PUBLICATION

396 Written informed consent was obtained from the participants for publication of study results  
397 and any accompanying images.

##### 398 AVAILABILITY OF DATA AND MATERIALS

399 Not applicable.

400

##### 401 FUNDING

402 None.

403

##### 404 CONFLICT OF INTEREST

405 The authors declare no conflict of interest, financial or otherwise.

406

##### 407 ACKNOWLEDGEMENTS

408 Declared none.

409



410 AUTHORS' CONTRIBUTIONS

411 MB collected the data from the hospital, inserted them into the excel file, analyzed the  
412 statistical data, wrote the draft, and revised the final version of the paper. NB, VG, and EV  
413 inserted data into the excel file. EG gave me access to the rehabilitation hospital to collect the  
414 data. All authors have read and approved the manuscript.

415

416 **References**

- 417 1. Tsao CW, Aday AW, Almarzooq ZI, Anderson CAM, Arora P, Avery CL, Baker-  
418 Smith CM, Beaton AZ, Boehme AK, Buxton AE, Commodore-Mensah Y, Elkind MS  
419 V, Evenson KR, Eze-Nliam C, Fugar S, Generoso G, Heard DG, Hiremath S, Ho JE et  
420 al (2023) Heart Disease and Stroke Statistics-2023 Update: A Report From the  
421 American Heart Association. *Circulation* 147:e93–e621.  
422 <https://doi.org/10.1161/CIR.0000000000001123>
- 423 2. Yusuf S, Joseph P, Rangarajan S, Islam S, Mentz A, Hystad P, Brauer M, Kutty VR,  
424 Gupta R, Wielgosz A, AlHabib KF, Dans A, Lopez-Jaramillo P, Avezum A, Lanan F,  
425 Oguz A, Kruger IM, Diaz R, Yusoff K et al (2020) Modifiable risk factors,  
426 cardiovascular disease, and mortality in 155 722 individuals from 21 high-income,  
427 middle-income, and low-income countries (PURE): a prospective cohort study. *Lancet*  
428 395:795–808. [https://doi.org/10.1016/S0140-6736\(19\)32008-2](https://doi.org/10.1016/S0140-6736(19)32008-2)
- 429 3. Ward ZJ, Bleich SN, Cradock AL, Barrett JL, Giles CM, Flax C, Long MW,  
430 Gortmaker SL (2019) Projected U.S. State-Level Prevalence of Adult Obesity and  
431 Severe Obesity. *N. Engl. J. Med.* 381:2440–2450.  
432 <https://doi.org/10.1056/NEJM1909301>
- 433 4. Grundy SM (2008) A changing paradigm for prevention of cardiovascular disease:  
434 emergence of the metabolic syndrome as a multiplex risk factor. *Eur. Hear. J. Suppl.*  
435 10:B16–B23. <https://doi.org/10.1093/EURHEARTJ/SUM044>
- 436 5. Abdullah Marzooq B (2022) Adaptive and Compensatory Mechanisms of the  
437 Cardiovascular System and Disease Risk Factors in young males and females. *New*  
438 *Emirates Med. J.* 04: <https://doi.org/10.2174/04666221128110145>
- 439 6. Bays HE, Taub PR, Epstein E, Michos ED, Ferraro RA, Bailey AL, Kelli HM,  
440 Ferdinand KC, Echols MR, Weintraub H, Bostrom J, Johnson HM, Hoppe KK,  
441 Shapiro MD, German CA, Virani SS, Hussain A, Ballantyne CM, Agha AM et al  
442 (2021) Ten things to know about ten cardiovascular disease risk factors. *Am. J. Prev.*  
443 *Cardiol.* 5:100149. <https://doi.org/10.1016/J.AJPC.2021.100149>

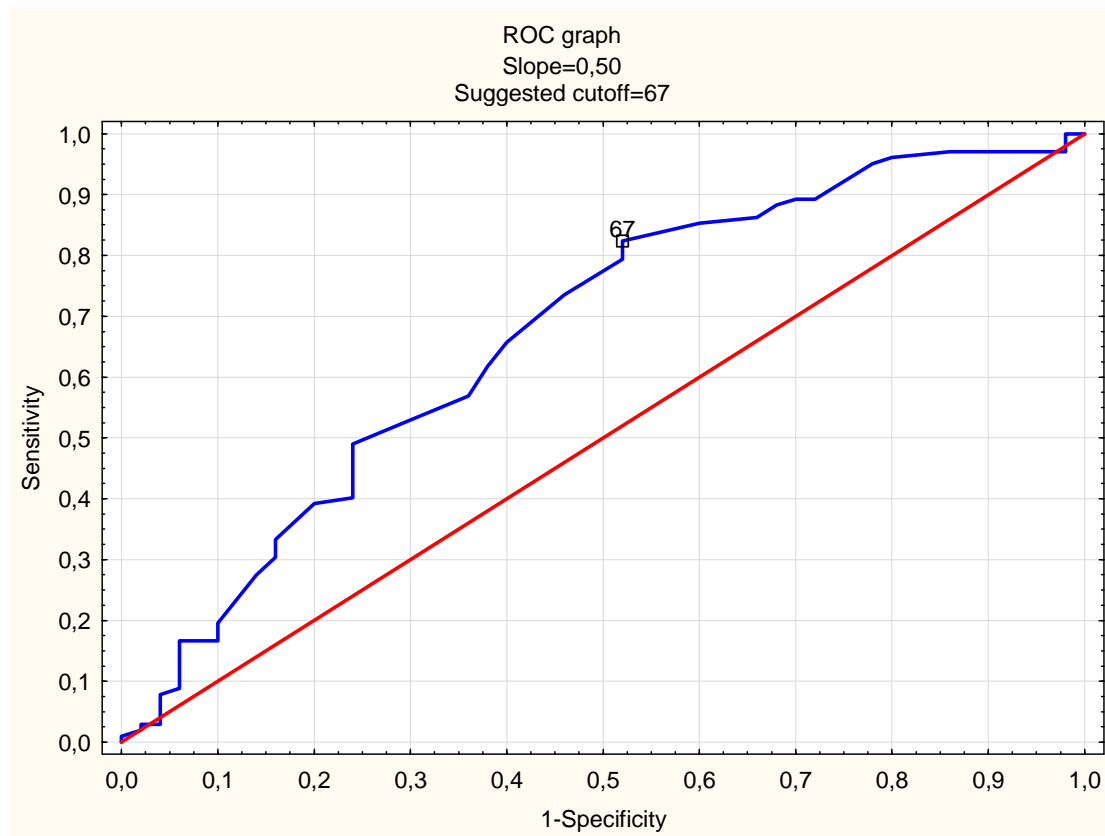
- 444 7. Powell-Wiley TM, Poirier P, Burke LE, Després JP, Gordon-Larsen P, Lavie CJ, Lear  
445 SA, Ndumele CE, Neeland IJ, Sanders P, St-Onge MP (2021) Obesity and  
446 Cardiovascular Disease: A Scientific Statement From the American Heart Association.  
447 *Circulation* 143:e984. <https://doi.org/10.1161/CIR.0000000000000973>
- 448 8. Marzooq BA, Alexandrovich KO, Nikolaevich TM, Vladimirovich KS (2023) Post-  
449 Coronary Artery Bypass Graft Complications; Potential Causes and Risk Factors.  
450 *medRxiv* 2022.12.29.22284005. <https://doi.org/10.1101/2022.12.29.22284005>
- 451 9. Marzooq BA (2023) Tree of life: endothelial cell in norm and disease, the good guy is  
452 a partner in crime! *Anat Cell Biol*. <https://doi.org/10.5115/acb.22.190>
- 453 10. Tian X, Chen S, Wang P, Xu Q, Zhang Y, Luo Y, Wu S, Wang A (2022) Insulin  
454 resistance mediates obesity-related risk of cardiovascular disease: a prospective cohort  
455 study. *Cardiovasc. Diabetol.* 21:289. <https://doi.org/10.1186/s12933-022-01729-9>
- 456 11. Lavie CJ, Ozemek C, Carbone S, Katzmarzyk PT, Blair SN (2019) Sedentary  
457 Behavior, Exercise, and Cardiovascular Health. *Circ. Res.* 124:799–815.  
458 <https://doi.org/10.1161/CIRCRESAHA.118.312669>
- 459 12. Lorber D (2014) Importance of cardiovascular disease risk management in patients  
460 with type 2 diabetes mellitus. *Diabetes, Metab. Syndr. Obes.* 7:169–183.  
461 <https://doi.org/10.2147/DMSO.S61438>
- 462 13. Marzooq BA (2022) Autophagy in endothelial cell dysfunction. *Curr Mol Med*
- 463 14. Marzooq BA (2023) Endothelial cell autophagy in the context of disease development.  
464 *Anat. Cell Biol.* 56:16–24. <https://doi.org/10.5115/acb.22.098>
- 465 15. Marzooq BA (2023) Transcription Factors - the Essence of Heart Regeneration: A  
466 Potential Novel Therapeutic Strategy. *Curr. Mol. Med.* 23:232–238.  
467 <https://doi.org/10.2174/1566524022666220216123650>
- 468 16. Marzooq BA (2023) Autophagy Behavior in Post-myocardial Infarction Injury.  
469 *Cardiovasc. Hematol. Disord. Targets* 23:.  
470 <https://doi.org/10.2174/1871529X23666230503123612>
- 471 17. Marzooq BA (2022) Recent advances in molecular biology of metabolic syndrome  
472 pathophysiology: endothelial dysfunction as a potential therapeutic target. *J. Diabetes*  
473 *Metab. Disord.* 21:1903–1911. <https://doi.org/10.1007/s40200-022-01088-y>
- 474 18. Marzooq BA, Vlasova TI (2021) Membrane lipids under norm and pathology. *Eur. J.*  
475 *Clin. Exp. Med.* 19:59–75. <https://doi.org/10.15584/ejcem.2021.1.9>
- 476 19. Marzooq B (2021) Lipid Behavior in Metabolic Syndrome Pathophysiology. *Curr.*  
477 *Diabetes Rev.* 18:.  
<https://doi.org/10.2174/1573399817666210915101321>

- 478 20. Abdullah Marzoog B (2023) Caveolae's Behavior in Norm and Pathology. *New*  
479 *Emirates Med. J.* 04: <https://doi.org/10.2174/0250688204666230508112229>
- 480 21. Marzoog BA (2023) The Metabolic Syndrome Puzzles; Possible Pathogenesis and  
481 Management. *Curr. Diabetes Rev.* 19:59–66.  
482 <https://doi.org/10.2174/1573399818666220429100411>
- 483 22. Marzoog BA, Vlasova TI (2022) Myocardiocyte autophagy in the context of  
484 myocardiocytes regeneration: a potential novel therapeutic strategy. *Egypt. J. Med.*  
485 *Hum. Genet.* 23:41. <https://doi.org/10.1186/s43042-022-00250-8>
- 486 23. Marzoog BA, Vlasova TI (2022) Beta-cell autophagy under the scope of hypoglycemic  
487 drugs; possible mechanism as a novel therapeutic target. *Obe. Metab.* 18:465–470.  
488 <https://doi.org/10.14341/omet12778>
- 489 24. Damluji AA, Van Diepen S, Katz JN, Menon V, Tamis-Holland JE, Bakitas M, Cohen  
490 MG, Balsam LB, Chikwe J (2021) Mechanical Complications of Acute Myocardial  
491 Infarction: A Scientific Statement From the American Heart Association. *Circulation*  
492 144:E16–E35. <https://doi.org/10.1161/CIR.0000000000000985>
- 493 25. Konstam MA, Kramer DG, Patel AR, Maron MS, Udelson JE (2011) Left ventricular  
494 remodeling in heart failure: Current concepts in clinical significance and assessment.  
495 *JACC Cardiovasc. Imaging* 4:98–108. <https://doi.org/10.1016/J.JCMG.2010.10.008>
- 496 26. Ibanez B, James S, Agewall S, Antunes MJ, Bucciarelli-Ducci C, Bueno H, Caforio  
497 ALP, Crea F, Goudevenos JA, Halvorsen S, Hindricks G, Kastrati A, Lenzen MJ,  
498 Prescott E, Roffi M, Valgimigli M, Varenhorst C, Vranckx P, Widimský P et al (2018)  
499 2017 ESC Guidelines for the management of acute myocardial infarction in patients  
500 presenting with ST-segment elevation. *Eur. Heart J.* 39:119–177.  
501 <https://doi.org/10.1093/EURHEARTJ/EHX393>
- 502 27. Elbadawi A, Elgendy IY, Mahmoud K, Barakat AF, Mentias A, Mohamed AH,  
503 Ogunbayo GO, Megaly M, Saad M, Omer MA, Paniagua D, Abbott JD, Jneid H  
504 (2019) Temporal Trends and Outcomes of Mechanical Complications in Patients With  
505 Acute Myocardial Infarction. *JACC Cardiovasc. Interv.* 12:1825–1836.  
506 <https://doi.org/10.1016/J.JCIN.2019.04.039>
- 507 28. Marzoog B (2022) Lipid Behavior in Metabolic Syndrome Pathophysiology. *Curr.*  
508 *Diabetes Rev.* 18:e150921196497.  
509 <https://doi.org/10.2174/1573399817666210915101321>
- 510 29. Glowinski J, Glowinski S (2002) Generation of reactive oxygen metabolites by the  
511 varicose vein wall. *Eur. J. Vasc. Endovasc. Surg.* 23:550–555.

- 512 <https://doi.org/10.1053/EJVS.2002.1656>
- 513 30. Marzooq BA (2022) Pulmonary Fibrosis; Risk Factors and Molecular Triggers, Insight  
514 for Neo Therapeutic Approach. *Curr. Respir. Med. Rev.* 18:259–266.  
515 <https://doi.org/10.2174/1573398X18666220806124019>
- 516 31. Marzooq BA (2023) Local Lung Fibroblast Autophagy in the Context of Lung Fibrosis  
517 Pathogenesis. *Curr. Respir. Med. Rev.* 19:6–11.  
518 <https://doi.org/10.2174/1573398X19666221130141600>
- 519 32. Poredos P, Spirkoska A, Rucigaj T, Fareed J, Jezovnik MK (2015) Do Blood  
520 Constituents in Varicose Veins Differ From the Systemic Blood Constituents?  
521 <https://doi.org/10.1016/j.ejvs.2015.04.031>
- 522 33. Lattimer CR, Kalodiki E, Geroulakos G, Hoppensteadt D, Fareed J (2016) Are  
523 Inflammatory Biomarkers Increased in Varicose Vein Blood? *Clin. Appl. Thromb.*  
524 22:656–664.  
525 [https://doi.org/10.1177/1076029616645330/ASSET/IMAGES/LARGE/10.1177\\_1076](https://doi.org/10.1177/1076029616645330/ASSET/IMAGES/LARGE/10.1177_1076)  
526 [029616645330-FIG2.JPEG](https://doi.org/10.1177/1076029616645330/ASSET/IMAGES/LARGE/10.1177_1076)
- 527 34. Bontekoe E, Brailovsky Y, Hoppensteadt D, Bontekoe J, Siddiqui F, Newman J, Iqbal  
528 O, Reed T, Fareed J, Darki A (2021) Upregulation of Inflammatory Cytokines in  
529 Pulmonary Embolism Using Biochip-Array Profiling. *Clin. Appl. Thromb.* 27:.  
530 <https://doi.org/10.1177/10760296211013107>
- 531 35. Dzieciuchowicz L, Espinosa G, Páramo JA (2015) Increased levels of  
532 metalloproteinase 10 and hemostatic markers in patients with noncomplicated primary  
533 varicose veins. *Clin. Appl. Thromb.* 21:684–687.  
534 <https://doi.org/10.1177/1076029613517167>
- 535 36. Gwozdziński L, Pieniazek A, Bernasinska-Slomczewska J, Hikisz P, Gwozdziński K  
536 (2021) Alterations in the Plasma and Red Blood Cell Properties in Patients with  
537 Varicose Vein: A Pilot Study. *Cardiol. Res. Pract.* 2021:1–10.  
538 <https://doi.org/10.1155/2021/5569961>
- 539 37. Jezovnik MK, Fareed J, Poredos P (2017) Patients with a History of Idiopathic Deep  
540 Venous Thrombosis Have Long-Term Increased Levels of Inflammatory Markers and  
541 Markers of Endothelial Damage. *Clin. Appl. Thromb.* 23:124–131.  
542 <https://doi.org/10.1177/1076029616670259>
- 543 38. Wang C, Pei YY, Ma YH, Ma XL, Liu ZW, Zhu JH, Li CS (2019) Risk factors for  
544 acute kidney injury in patients with acute myocardial infarction. *Chin. Med. J. (Engl.)*.  
545 132:1660. <https://doi.org/10.1097/CM9.0000000000000293>

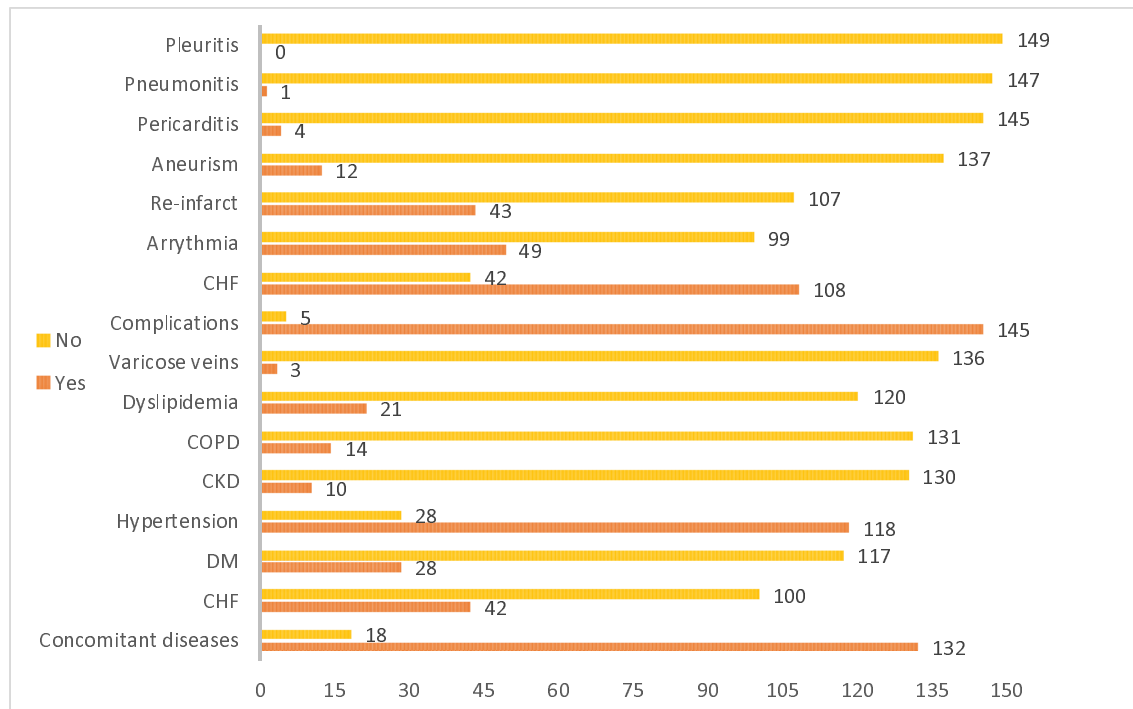
- 546 39. Shacham Y, Leshem-Rubinow E, Steinvil A, Assa E Ben, Keren G, Roth A, Arbel Y  
547 (2014) Renal impairment according to acute kidney injury network criteria among ST  
548 elevation myocardial infarction patients undergoing primary percutaneous  
549 intervention: A retrospective observational study. *Clin. Res. Cardiol.* 103:525–532.  
550 <https://doi.org/10.1007/S00392-014-0680-8>
- 551 40. Tsai TT, Patel UD, Chang TI, Kennedy KF, Masoudi FA, Matheny ME, Kosiborod M,  
552 Amin AP, Messenger JC, Rumsfeld JS, Spertus JA (2014) Contemporary incidence,  
553 predictors, and outcomes of acute kidney injury in patients undergoing percutaneous  
554 coronary interventions: Insights from the NCDR cath-PCI registry. *JACC Cardiovasc.*  
555 *Interv.* 7:1–9. <https://doi.org/10.1016/J.JCIN.2013.06.016>
- 556 41. Maksimczuk J, Galas A, Krzesiński P (2022) What Promotes Acute Kidney Injury in  
557 Patients with Myocardial Infarction and Multivessel Coronary Artery  
558 Disease—Contrast Media, Hydration Status or Something Else? *Nutr.* 2023,  
559 Vol. 15, Page 21 15:21. <https://doi.org/10.3390/NU15010021>
- 560

561 **Figure legend**



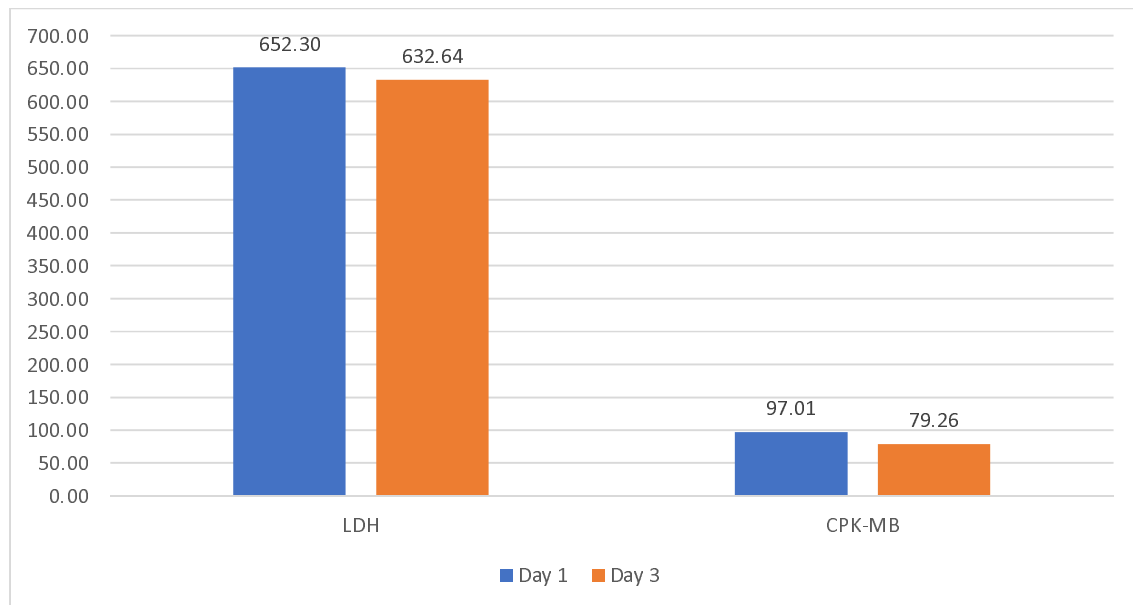
562

563 Figure 1: Cut-off point for the age of the patients divided into male and female. Males are  
564 less than 67 years old. However, the female affected at more than 67 years of age.



565

566 Figure 2: Diagramed presentation of the concomitant and the post MI complications. From  
 567 below complications (CHF, DM, hypertension, CKD, COPD, dyslipidaemia, varicose veins)  
 568 belong to concomitant diseases before the development of MI. Abbreviations: CHF; chronic  
 569 heart failure, COPD; chronic obstructive pulmonary disease, CKD; chronic kidney disease,  
 570 DM; diabetes mellites.

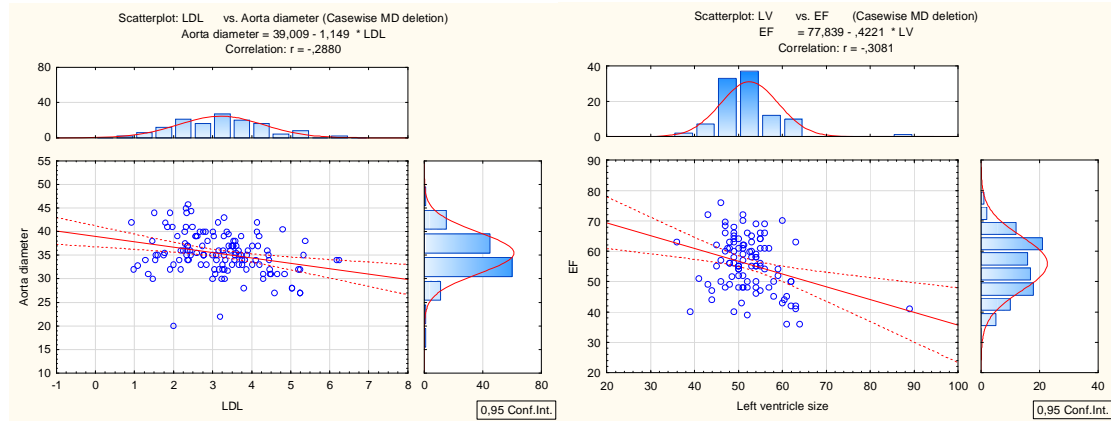


571

572 Figure 3: Graphical presentation of the dynamical changes in the levels of LDH (lactate  
 573 dehydrogenase) and CPK-MB (creatinine phosphokinase-MB fraction). Both LDH and CPK-



574 MB fraction measured by U/L. this analysis conducted between two days for all patients as a  
575 follow up after MI.



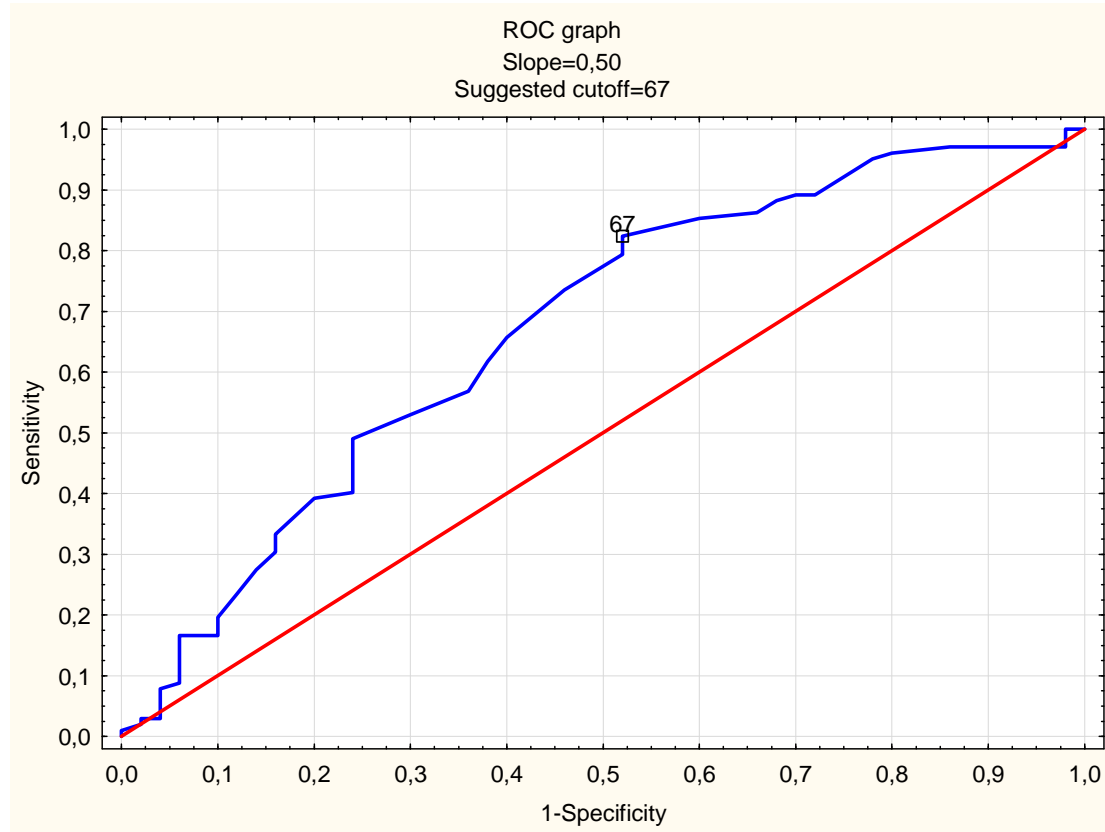
576

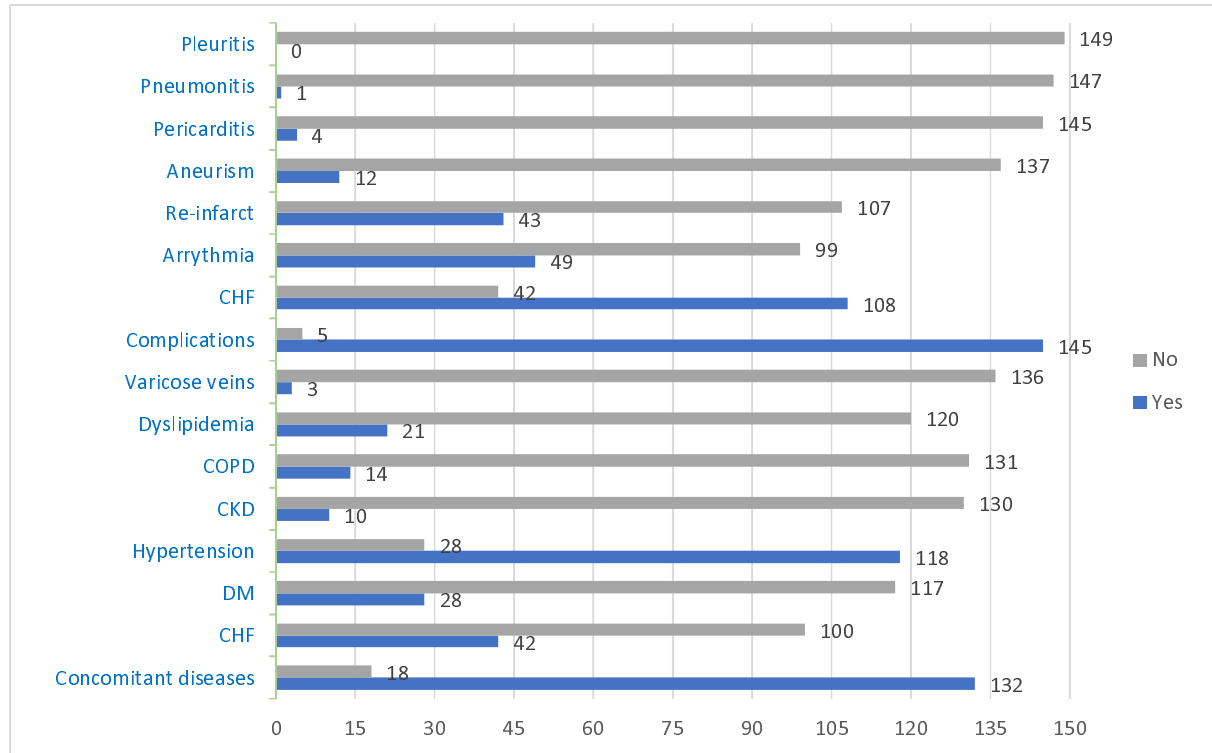
577 Figure 4.1 and 4.2: A direct correlation between LDL level and the aorta diameter.

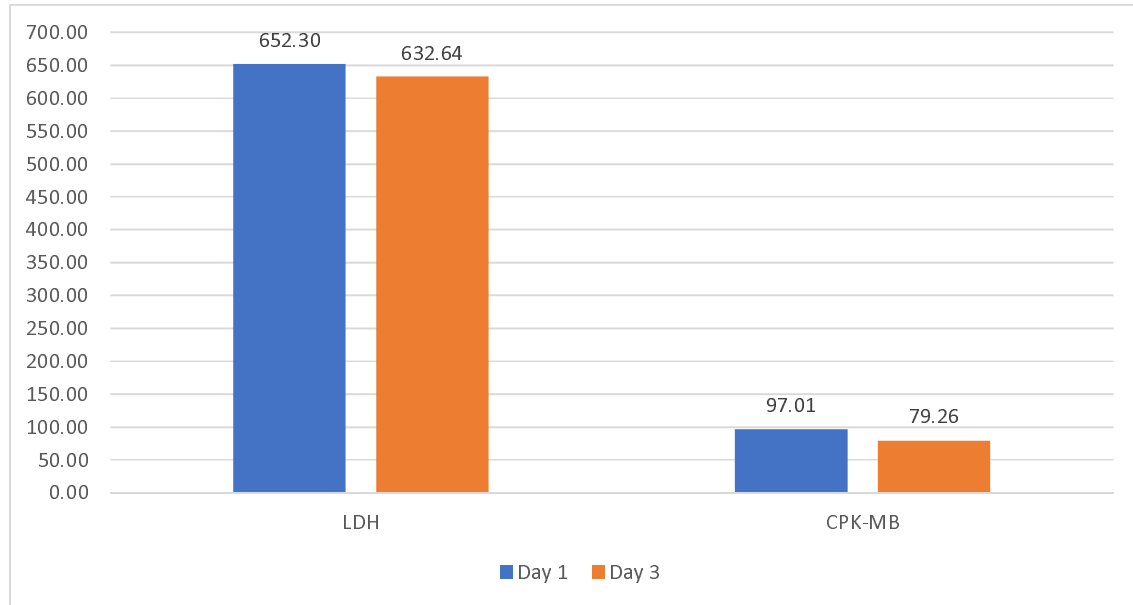
578 Furthermore, an opposite correlation between the left ventricle (LV) diastolic size and the EF.

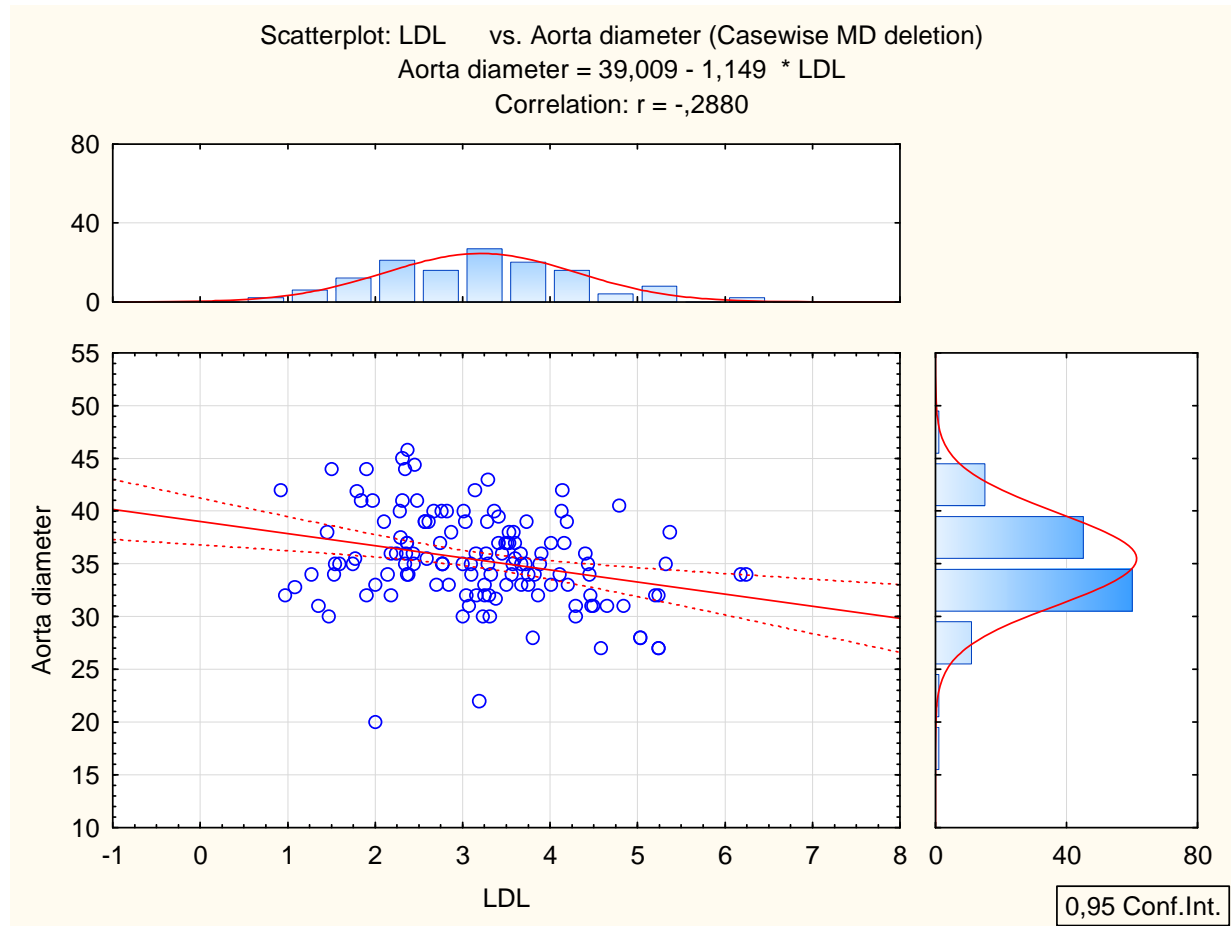
579

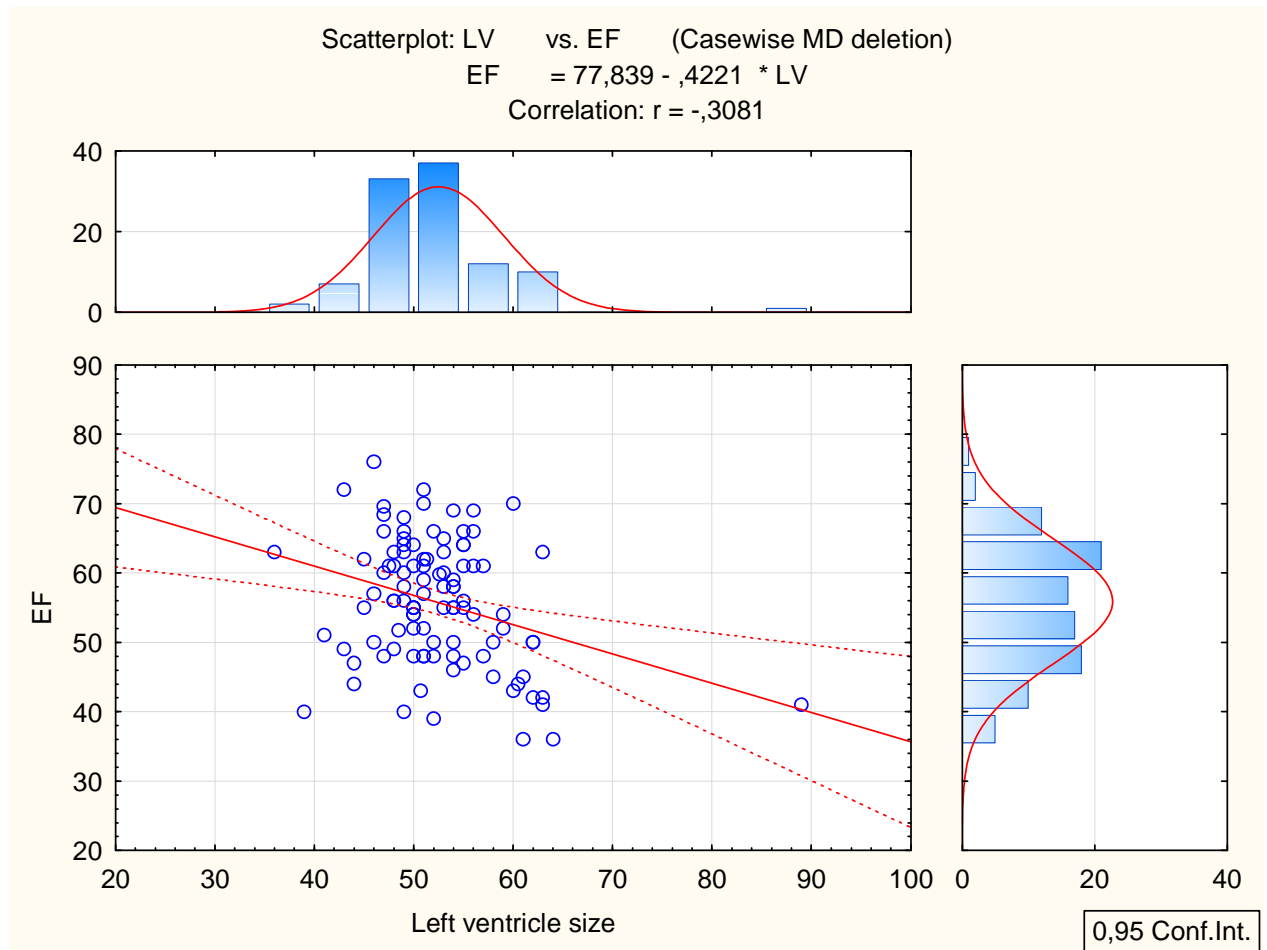
580











Variable	Pearson Rank Order Correlations (Acute MI in Total Post MI 5) MD pairwise deleted Marked correlations are significant at $p < .05000$		
	Date of infarct	Date of hosp.	Date of dischargement
Date of infarct	1,000000	0,998755	0,998662
Date of hosp.	0,998755	1,000000	0,999754
Date of dischargement	0,998662	0,999754	1,000000
Hospitalization days	-0,492819	-0,480996	-0,470104
Age	-0,014406	-0,017981	-0,017534
Body weight	-0,042648	-0,056196	-0,057004
Height	-0,171595	-0,175662	-0,173637
BMI	-0,050015	-0,060710	-0,063937
HR	-0,026789	-0,029367	-0,028830
SBP	0,086786	0,096680	0,094712
DBP	0,050813	0,050794	0,050194
Aorta diameter at the Valsalva sinuses (mm)	-0,029993	-0,022536	-0,025733
EF (%)	0,080422	0,083670	0,083384
EDV (ml)	-0,045009	-0,050675	-0,052638
End diastolic LV size (mm)	-0,001416	-0,023427	-0,022092
End diastolic LA size (mm)	0,123265	0,117261	0,118687
End diastolic RV size (mm)	0,224438	0,209813	0,208153
End diastolic RA size (mm)	0,130204	0,133860	0,135790
Hb	0,037855	0,024145	0,023418
leukocytes	0,142190	0,118443	0,118092
RBC	0,013550	-0,027649	-0,029574
lymphocytes	0,091797	0,095098	0,093676
Thrombocytes	-0,210074	-0,213754	-0,213379
ESR	-0,014440	-0,027477	-0,027431
Ketones			
Urine proteins	0,302814	0,302253	0,305086
leukocytes	-0,344187	-0,325607	-0,325124
epithelial cells	-0,404424	-0,392751	-0,392272
Troponin I	-0,082746	-0,087620	-0,089514
Myoglobin	0,500000	0,500000	0,500000
CKP-MB 1	-0,161461	-0,146670	-0,146545
CKP-MB 2	-0,369494	-0,367680	-0,369441
LDH 1	0,030811	0,026900	0,027219
LDH 2	0,123665	0,119836	0,113804
INR	0,222657	0,210509	0,210587
Total bilirubin	-0,070080	-0,093753	-0,091667
ALT	-0,025792	-0,033286	-0,036998
AST	0,033419	0,045471	0,045172
Total choles	-0,081606	-0,083591	-0,082453
LDL	-0,120629	-0,114472	-0,110837
TAG	0,075539	0,041802	0,040081
Na	0,295534	0,320231	0,323290
K	0,392714	0,347683	0,345315
Creatinine	-0,123623	-0,108991	-0,107730
Ca	0,752734	0,655580	0,652954
Uria	0,173533	0,172153	0,172156



Variable	Pearson Rank Order Correlations (Acute MI in Total Post MI 5) MD pairwise deleted Marked correlations are significant at p <,05000		
	Date of infarct	Date of hosp.	Date of dischargement
Glucose	0,198889	0,197077	0,199063
APTT	-0,219685	-0,213583	-0,214560
Fibrinogen	0,070849	0,061743	0,060104
PT			

Variable	Pearson Rank Order Correlations (Acute MI in Total Post MI 5) MD pairwise deleted Marked correlations are significant at p <,05000			
	Hospitalization days	Age	Body weight	Height
Date of infarct	-0,492819	-0,014406	-0,042648	-0,171595
Date of hosp.	-0,480996	-0,017981	-0,056196	-0,175662
Date of dischargement	-0,470104	-0,017534	-0,057004	-0,173637
Hospitalization days	1,000000	0,092495	-0,239856	0,084892
Age	0,092495	1,000000	-0,056415	0,005208
Body weight	-0,239856	-0,056415	1,000000	-0,178452
Height	0,084892	0,005208	-0,178452	1,000000
BMI	-0,336077	0,029871	0,898731	-0,536541
HR	0,045764	-0,060908	0,438935	-0,249103
SBP	-0,063265	-0,054161	0,136715	-0,045358
DBP	0,004338	-0,110726	0,041841	-0,011282
Aorta diameter at the Valsalva sinuses (mm)	-0,056556	-0,058935	-0,108477	0,305970
EF (%)	-0,041657	-0,145918	-0,120649	-0,248037
EDV (ml)	-0,066685	-0,098928	0,438158	0,294385
End diastolic LV size (mm)	0,021873	-0,076707	0,348287	0,273553
End diastolic LA size (mm)	-0,006042	0,177610	0,177460	0,185164
End diastolic RV size (mm)	-0,087129	0,037892	0,415737	-0,152526
End diastolic RA size (mm)	-0,018941	0,161934	0,180343	0,397011
Hb	-0,162796	-0,157068	0,085367	0,176164
leukocytes	0,078156	-0,021030	-0,100778	-0,041827
RBC	-0,185504	-0,230622	0,050290	0,136868
lymphocytes	-0,187678	-0,150462	-0,124957	-0,175052
Thrombocytes	-0,053971	-0,000641	0,182193	-0,059169
ESR	0,026856	0,200394	-0,132872	-0,297634
Ketones				
Urine proteins	-0,030714	-0,031736	-0,234565	0,200668
leukocytes	0,220460	0,072826	0,111436	-0,010736
epithelial cells	0,251582	0,047546	0,069070	0,060775
Troponin I	0,036854	0,170201	0,307384	0,038983
Myoglobin	-0,500000			
CKP-MB 1	0,062096	0,120242	0,221078	0,154298
CKP-MB 2	-0,060476	0,003794	-0,462185	0,692409
LDH 1	0,075959	0,172099	0,461451	0,083129
LDH 2	-0,351822	-0,035860	-0,342356	0,882919
INR	-0,122041	0,088783	-0,087567	-0,115722
Total bilirubin	0,083439	0,119390	0,142107	0,304978
ALT	-0,149559	0,006031	0,357989	-0,136986

Variable	Pearson Rank Order Correlations (Acute MI in Total Post MI 5) MD pairwise deleted Marked correlations are significant at p <,05000			
	Hospitalization days	Age	Body weight	Height
AST	-0,089148	0,053983	0,255829	0,051121
Total choles	0,135370	<b>0,189818</b>	0,032294	-0,138274
LDL	0,159497	0,103719	0,214156	-0,089237
TAG	-0,018082	-0,089894	0,190830	-0,346317
Na	-0,074054	0,042710	0,099801	-0,086951
K	-0,119386	0,096715	0,262988	<b>-0,486864</b>
Creatinine	0,118681	<b>0,196371</b>	-0,007508	0,035929
Ca	<b>-0,365114</b>	-0,006410	0,283974	-0,338311
Uria	-0,032561	<b>0,189761</b>	0,121533	<b>-0,404216</b>
Glucose	-0,002611	0,166185	<b>0,654202</b>	-0,048985
APTT	0,142006	0,049935	0,003153	-0,204839
Fibrinogen	0,014194	-0,101096	-0,200220	-0,219706
PT				

Variable	Pearson Rank Order Correlations (Acute MI in Total Post MI 5) MD pairwise deleted Marked correlations are significant at p <,05000				
	BMI	HR	SBP	DBP	Aorta diameter
Date of infarct	-0,050015	-0,026789	0,086786	0,050813	-0,029993
Date of hosp.	-0,060710	-0,029367	0,096680	0,050794	-0,022536
Date of dischargement	-0,063937	-0,028830	0,094712	0,050194	-0,025733
Hospitalization days	-0,336077	0,045764	-0,063265	0,004338	-0,056556
Age	0,029871	-0,060908	-0,054161	-0,110726	-0,058935
Body weight	<b>0,898731</b>	<b>0,438935</b>	0,136715	0,041841	-0,108477
Height	<b>-0,536541</b>	-0,249103	-0,045358	-0,011282	0,305970
BMI	1,000000	<b>0,475827</b>	0,233983	0,134203	-0,303926
HR	<b>0,475827</b>	1,000000	<b>0,164042</b>	<b>0,193671</b>	0,056941
SBP	0,233983	<b>0,164042</b>	1,000000	<b>0,837480</b>	0,062520
DBP	0,134203	<b>0,193671</b>	<b>0,837480</b>	1,000000	0,109910
Aorta diameter at the Valsalva sinuses (mm)	-0,303926	0,056941	0,062520	0,109910	1,000000
EF (%)	-0,032926	<b>-0,178774</b>	0,093906	0,042189	0,050386
EDV (ml)	0,321078	0,012821	0,129426	0,181506	0,126137
End diastolic LV size (mm)	0,062654	0,108568	0,078351	<b>0,214669</b>	<b>0,217956</b>
End diastolic LA size (mm)	-0,090691	-0,033390	0,127778	0,117089	<b>0,220792</b>
End diastolic RV size (mm)	0,343756	0,122876	0,107076	<b>0,187414</b>	<b>0,339438</b>
End diastolic RA size (mm)	-0,040683	0,009769	-0,000967	0,056850	<b>0,222980</b>
Hb	0,065826	0,031176	0,017701	0,064565	0,077202
leukocytes	-0,091010	-0,047458	-0,010262	0,043619	-0,101208
RBC	0,131963	-0,109265	0,008063	0,010929	-0,012348
lymphocytes	0,044404	0,126764	-0,023606	0,000627	0,038371
Thrombocytes	0,253130	0,129454	-0,104800	-0,053676	<b>-0,208526</b>
ESR	-0,000494	0,084674	-0,118841	-0,048738	-0,041583
Ketones					
Urine proteins	-0,238145	<b>-0,171914</b>	0,073485	0,051278	-0,084270
leukocytes	0,186406	-0,010679	0,051028	-0,026506	<b>-0,196673</b>
epithelial cells	0,114878	0,018641	0,042596	-0,026188	-0,137258

Variable	Pearson Rank Order Correlations (Acute MI in Total Post MI 5)				
	MD pairwise deleted Marked correlations are significant at p <,05000				
	BMI	HR	SBP	DBP	Aorta diameter
Troponin I	0,335063	-0,054693	<b>-0,195500</b>	<b>-0,180407</b>	-0,105639
Myoglobin		1,000000	1,000000	0,866025	
CKP-MB 1	0,102362	0,072393	-0,149235	-0,148068	-0,134453
CKP-MB 2	-0,543938	0,019912	-0,021319	0,048399	0,081346
LDH 1	0,437790	-0,043696	<b>-0,196905</b>	<b>-0,227802</b>	<b>-0,317959</b>
LDH 2	-0,357143	-0,065697	-0,047346	-0,023404	-0,025929
INR	0,016422	-0,176321	-0,009411	-0,032399	0,012770
Total bilirubin Rubin	0,013691	0,091752	-0,074120	-0,152479	0,105600
ALT	<b>0,462577</b>	<b>0,168135</b>	-0,014180	-0,079591	-0,081878
AST	0,191586	0,058756	-0,161133	-0,161825	0,016592
Total choles	0,167920	0,074696	0,130019	0,103124	<b>-0,272978</b>
LDL	0,287161	-0,019979	0,048523	0,051746	<b>-0,290000</b>
TAG	0,243163	-0,001737	0,159888	<b>0,203202</b>	-0,064514
Na	0,147481	0,017900	0,073128	0,023359	0,012202
K	<b>0,402687</b>	0,055393	0,000735	-0,018963	0,099267
Creatinine	-0,051752	-0,018731	-0,115542	<b>-0,229538</b>	-0,130249
Ca	<b>0,422982</b>	-0,077756	-0,065510	-0,085972	-0,005432
Uria	0,221784	0,076878	-0,020419	-0,078703	-0,032316
Glucose	<b>0,497591</b>	0,077596	-0,030442	-0,022622	0,053932
APTT	0,145463	0,034608	-0,055021	-0,086966	-0,118503
Fibrinogen	-0,051268	-0,068684	0,014181	-0,081389	-0,066697
PT					

Variable	Pearson Rank Order Correlations (Acute MI in Total Post MI 5)					
	MD pairwise deleted Marked correlations are significant at p <,05000					
	EF	EDV	LV	LA	RV	RA
Date of infarct	0,080422	-0,045009	-0,001416	0,123265	<b>0,224438</b>	0,130204
Date of hosp.	0,083670	-0,050675	-0,023427	0,117261	<b>0,209813</b>	0,133860
Date of dischargement	0,083384	-0,052638	-0,022092	0,118687	<b>0,208153</b>	0,135790
Hospitalization days	-0,041657	-0,066685	0,021873	-0,006042	-0,087129	-0,018941
Age	-0,145918	-0,098928	-0,076707	<b>0,177610</b>	0,037892	0,161934
Body weight	-0,120649	0,438158	0,348287	0,177460	<b>0,415737</b>	0,180343
Height	-0,248037	0,294385	0,273553	0,185164	-0,152526	0,397011
BMI	-0,032926	0,321078	0,062654	-0,090691	0,343756	-0,040683
HR	<b>-0,178774</b>	0,012821	0,108568	-0,033390	0,122876	0,009769
SBP	0,093906	0,129426	0,078351	0,127778	0,107076	-0,000967
DBP	0,042189	0,181506	<b>0,214669</b>	0,117089	<b>0,187414</b>	0,056850
Aorta diameter	0,050386	0,126137	<b>0,217956</b>	<b>0,220792</b>	<b>0,339438</b>	<b>0,222980</b>
EF	1,000000	<b>-0,204007</b>	<b>-0,306233</b>	-0,037623	0,037063	0,051806
EDV	<b>-0,204007</b>	1,000000	<b>0,816552</b>	<b>0,427731</b>	<b>0,232208</b>	0,153922
LV	<b>-0,306233</b>	<b>0,816552</b>	1,000000	<b>0,373137</b>	<b>0,198793</b>	<b>0,180908</b>
LA	-0,037623	<b>0,427731</b>	<b>0,373137</b>	1,000000	<b>0,421956</b>	<b>0,553528</b>
RV	0,037063	<b>0,232208</b>	<b>0,198793</b>	<b>0,421956</b>	1,000000	<b>0,222865</b>
RA	0,051806	0,153922	<b>0,180908</b>	<b>0,553528</b>	<b>0,222865</b>	1,000000
Hb	0,022881	0,107920	0,016682	0,074045	0,114354	0,011420
leukocytes	<b>-0,181839</b>	<b>0,209526</b>	0,089332	0,077030	0,139811	-0,037217
RBC	0,070459	0,014637	0,022377	-0,065412	0,136926	-0,022704
lymphocytes	0,019908	-0,086165	-0,038685	-0,084508	-0,061272	-0,150101
Thrombocytes	-0,007202	0,042597	-0,055031	-0,195668	-0,085269	-0,108218
ESR	-0,008205	0,068129	0,064889	-0,004561	-0,030127	0,084620
Ketones						
Urine proteins	0,162382	-0,145296	-0,080618	-0,139515	-0,001364	0,111536

Variable	Pearson Rank Order Correlations (Acute MI in Total Post MI 5)					
	MD pairwise deleted Marked correlations are significant at p <,05000					
	EF	EDV	LV	LA	RV	RA
leukocytes	-0,102500	0,026230	-0,042291	0,040654	-0,106300	-0,140144
epithelial cells	-0,153045	-0,042611	-0,066126	-0,099064	<b>-0,243669</b>	<b>-0,234743</b>
Troponin I	-0,053490	-0,054769	-0,119882	-0,106785	-0,094003	-0,032516
Myoglobin	1,000000			-0,500000		
CKP-MB 1	-0,059120	0,042945	-0,080071	-0,114084	<b>-0,232948</b>	-0,029421
CKP-MB 2	-0,037202	-0,058452	-0,086273	0,007858	-0,009298	0,032700
LDH 1	-0,121081	0,078570	-0,081344	-0,087928	-0,057713	-0,049061
LDH 2	-0,131816	-0,114369	-0,150290	-0,053576	-0,082071	0,011156
INR	-0,041426	0,021536	-0,046075	0,055728	0,098168	0,162673
Total bilirubin Rubin	-0,161993	0,154520	0,007623	0,182757	<b>0,195401</b>	0,054035
ALT	-0,068176	0,069499	0,009479	0,064334	0,083873	0,022768
AST	-0,100612	0,069440	0,068600	-0,049618	0,001424	0,077034
Total choles	0,001418	-0,010848	-0,034502	-0,022993	-0,008355	-0,160652
LDL	-0,003403	-0,023996	-0,070730	-0,008003	0,006907	-0,091096
TAG	0,135686	-0,012581	0,085614	0,071785	0,096231	-0,036389
Na	0,028201	-0,062749	0,045815	0,144556	-0,055881	0,181103
K	0,047078	0,058684	-0,002292	0,117294	<b>0,285462</b>	0,147145
Creatinine	-0,136330	-0,094480	-0,066634	-0,027856	<b>-0,207834</b>	-0,101998
Ca	0,020465	-0,047146	-0,021513	<b>0,265162</b>	0,180772	0,166642
Uria	0,005515	-0,078861	-0,037700	<b>0,189547</b>	<b>0,194250</b>	0,101188
Glucose	-0,146818	0,043452	0,129861	0,175194	<b>0,223505</b>	0,171877
APTT	-0,201638	0,173079	0,040094	-0,129817	-0,000931	-0,139865
Fibrinogen	0,067573	-0,119314	-0,116229	0,006765	-0,007770	-0,072335
PT						

Variable	Pearson Rank Order Correlations (Acute MI in Total Post MI 5)				
	MD pairwise deleted Marked correlations are significant at p <,05000				
	Hb	leukocytes	RBC	lymphocytes	Thrombocytes
Date of infarct	0,037855	0,142190	0,013550	0,091797	<b>-0,210074</b>
Date of hosp.	0,024145	0,118443	-0,027649	0,095098	<b>-0,213754</b>
Date of dischargement	0,023418	0,118092	-0,029574	0,093676	<b>-0,213379</b>
Hospitalization days	-0,162796	0,078156	<b>-0,185504</b>	<b>-0,187678</b>	-0,053971
Age	-0,157068	-0,021030	<b>-0,230622</b>	-0,150462	-0,000641
Body weight	0,085367	-0,100778	0,050290	-0,124957	0,182193
Height	0,176164	-0,041827	0,136868	-0,175052	-0,059169
BMI	0,065826	-0,091010	0,131963	0,044404	0,253130
HR	0,031176	-0,047458	-0,109265	0,126764	0,129454
SBP	0,017701	-0,010262	0,008063	-0,023606	-0,104800
DBP	0,064565	0,043619	0,010929	0,000627	-0,053676
Aorta diameter	0,077202	-0,101208	-0,012348	0,038371	<b>-0,208526</b>
EF	0,022881	<b>-0,181839</b>	0,070459	0,019908	-0,007202
EDV	0,107920	<b>0,209526</b>	0,014637	-0,086165	0,042597
LV	0,016682	0,089332	0,022377	-0,038685	-0,055031
LA	0,074045	0,077030	-0,065412	-0,084508	-0,195668
RV	0,114354	0,139811	0,136926	-0,061272	-0,085269
RA	0,011420	-0,037217	-0,022704	-0,150101	-0,108218
Hb	1,000000	<b>0,268726</b>	<b>0,654935</b>	0,087015	0,058451
leukocytes	<b>0,268726</b>	1,000000	0,109458	<b>-0,407888</b>	<b>0,278365</b>
RBC	<b>0,654935</b>	0,109458	1,000000	0,111199	0,164037
lymphocytes	0,087015	<b>-0,407888</b>	0,111199	1,000000	-0,163473
Thrombocytes	0,058451	<b>0,278365</b>	0,164037	-0,163473	1,000000
ESR	<b>-0,424196</b>	-0,053640	<b>-0,344304</b>	0,087865	0,071924

Variable	Pearson Rank Order Correlations (Acute MI in Total Post MI 5) MD pairwise deleted Marked correlations are significant at p <,05000				
	Hb	leukocytes	RBC	lymphocytes	Thrombocytes
Ketones					
Urine proteins	-0,194071	0,143997	0,042784	-0,208550	-0,053757
leukocytes	-0,141955	0,072283	-0,037207	-0,139760	0,175763
epithelial cells	-0,036518	0,088763	-0,007425	-0,058215	0,092318
Troponin I	0,228199	0,273322	0,188032	-0,034776	0,242812
Myoglobin	-0,500000	1,000000		0,500000	
CKP-MB 1	0,046591	0,118350	-0,082001	0,063300	0,164946
CKP-MB 2	0,116045	0,071282	-0,021656	-0,153597	0,205310
LDH 1	-0,070553	0,252933	0,001593	-0,061029	0,095874
LDH 2	0,254468	0,286870	0,126967	-0,211282	0,349153
INR	0,101077	0,187285	0,052727	-0,213453	0,200752
Total bilirubin Rubin	0,215681	-0,040948	0,089829	0,074228	-0,220295
ALT	0,011558	0,067994	0,073779	-0,006331	0,035331
AST	-0,009187	0,072187	-0,080989	-0,038706	-0,083374
Total choles	0,066861	-0,025760	0,023385	0,111800	-0,011878
LDL	0,114681	-0,024549	0,091089	0,066237	0,051375
TAG	0,157777	0,203652	0,172810	0,157562	-0,017568
Na	0,081063	-0,068359	-0,027294	0,157465	-0,155198
K	0,218370	0,047010	0,187586	0,193137	-0,172012
Creatinine	-0,024685	0,068294	-0,137145	-0,124911	0,183592
Ca	0,194971	0,060749	0,269192	0,198846	-0,046922
Uria	-0,211940	0,037870	-0,139107	-0,165130	-0,004645
Glucose	-0,008374	0,205235	0,090559	-0,125482	-0,062960
APTT	0,102761	0,104666	0,174735	0,011001	0,316938
Fibrinogen	-0,051919	-0,093511	0,020243	0,044111	-0,224921
PT					

Variable	Pearson Rank Order Correlations (Acute MI in Total Post MI 5) MD pairwise deleted Marked correlations are significant at p <,05000				
	ESR	Ketones	Urine proteins	leukocytes	epithelial cells
Date of infarct	-0,014440		0,302814	-0,344187	-0,404424
Date of hosp.	-0,027477		0,302253	-0,325607	-0,392751
Date of dischargement	-0,027431		0,305086	-0,325124	-0,392272
Hospitalization days	0,026856		-0,030714	0,220460	0,251582
Age	0,200394		-0,031736	0,072826	0,047546
Body weight	-0,132872		-0,234565	0,111436	0,069070
Height	-0,297634		0,200668	-0,010736	0,060775
BMI	-0,000494		-0,238145	0,186406	0,114878
HR	0,084674		-0,171914	-0,010679	0,018641
SBP	-0,118841		0,073485	0,051028	0,042596
DBP	-0,048738		0,051278	-0,026506	-0,026188
Aorta diameter	-0,041583		-0,084270	-0,196673	-0,137258
EF	-0,008205		0,162382	-0,102500	-0,153045
EDV	0,068129		-0,145296	0,026230	-0,042611
LV	0,064889		-0,080618	-0,042291	-0,066126
LA	-0,004561		-0,139515	0,040654	-0,099064
RV	-0,030127		-0,001364	-0,106300	-0,243669
RA	0,084620		0,111536	-0,140144	-0,234743
Hb	-0,424196		-0,194071	-0,141955	-0,036518
leukocytes	-0,053640		0,143997	0,072283	0,088763
RBC	-0,344304		0,042784	-0,037207	-0,007425
lymphocytes	0,087865		-0,208550	-0,139760	-0,058215

Variable	Pearson Rank Order Correlations (Acute MI in Total Post MI 5) MD pairwise deleted Marked correlations are significant at p <,05000				
	ESR	Ketones	Urine proteins	leukocytes	epithelial cells
Thrombocytes	0,071924		-0,053757	0,175763	0,092318
ESR	1,000000		-0,031909	-0,021033	-0,089231
Ketones		1,000000			
Urine proteins	-0,031909		1,000000	0,037846	-0,035824
leukocytes	-0,021033		0,037846	1,000000	<b>0,789820</b>
epithelial cells	-0,089231		-0,035824	<b>0,789820</b>	1,000000
Troponin I	-0,039481		0,045506	0,071426	0,106241
Myoglobin	0,500000		0,866025	0,500000	0,500000
CKP-MB 1	0,098663		-0,044192	0,172589	<b>0,239036</b>
CKP-MB 2	0,013043		<b>-0,291265</b>	0,219115	<b>0,329329</b>
LDH 1	0,047350		0,137175	0,128269	0,040671
LDH 2	-0,210693		0,046534	-0,120852	-0,084567
INR	-0,019873		0,145399	-0,010482	-0,113416
Total bilirubin Rubin	-0,048101		0,032055	-0,140302	-0,083612
ALT	0,013972		-0,037007	-0,097826	-0,028856
AST	0,000510		0,091987	-0,132582	-0,041266
Total choles	-0,128001		-0,061160	0,106976	0,121417
LDL	-0,102900		-0,057283	<b>0,212155</b>	<b>0,184569</b>
TAG	0,038587		0,007271	-0,001248	0,020937
Na	-0,101750		-0,070218	-0,177667	-0,162685
K	-0,033521		-0,049361	<b>-0,202077</b>	<b>-0,275099</b>
Creatinine	-0,097531		0,030465	<b>0,177259</b>	0,158177
Ca	-0,090898		0,007566	<b>-0,376993</b>	<b>-0,433478</b>
Uria	0,165846		<b>0,190483</b>	0,099496	0,036004
Glucose	0,021904		0,109950	0,067847	0,160787
APTT	-0,032073		-0,184248	0,223590	<b>0,313909</b>
Fibrinogen	-0,019113		0,032734	0,074379	0,100294
PT					

Variable	Pearson Rank Order Correlations (Acute MI in Total Post MI 5) MD pairwise deleted Marked correlations are significant at p <,05000				
	Troponin I	Myoglobin	CKP-MB 1	CKP-MB 2	LDH 1
Date of infarct	-0,082746	0,50000	-0,161461	<b>-0,369494</b>	0,030811
Date of hosp.	-0,087620	0,50000	-0,146670	<b>-0,367680</b>	0,026900
Date of dischargement	-0,089514	0,50000	-0,146545	<b>-0,369441</b>	0,027219
Hospitalization days	0,036854	-0,50000	0,062096	-0,060476	0,075959
Age	0,170201		0,120242	0,003794	0,172099
Body weight	0,307384		0,221078	-0,462185	0,461451
Height	0,038983		0,154298	<b>0,692409</b>	0,083129
BMI	0,335063		0,102362	-0,543938	0,437790
HR	-0,054693	1,00000	0,072393	0,019912	-0,043696
SBP	<b>-0,195500</b>	1,00000	-0,149235	-0,021319	<b>-0,196905</b>
DBP	<b>-0,180407</b>	0,86603	-0,148068	0,048399	<b>-0,227802</b>
Aorta diameter	-0,105639		-0,134453	0,081346	<b>-0,317959</b>
EF	-0,053490	1,00000	-0,059120	-0,037202	-0,121081
EDV	-0,054769		0,042945	-0,058452	0,078570
LV	-0,119882		-0,080071	-0,086273	-0,081344
LA	-0,106785	-0,50000	-0,114084	0,007858	-0,087928
RV	-0,094003		<b>-0,232948</b>	-0,009298	-0,057713
RA	-0,032516		-0,029421	0,032700	-0,049061
Hb	<b>0,228199</b>	-0,50000	0,046591	0,116045	-0,070553
leukocytes	<b>0,273322</b>	1,00000	0,118350	0,071282	<b>0,252933</b>



Variable	Pearson Rank Order Correlations (Acute MI in Total Post MI 5) MD pairwise deleted Marked correlations are significant at p <,05000				
	Troponin I	Myoglobin	CKP-MB 1	CKP-MB 2	LDH 1
RBC	0,188032		-0,082001	-0,021656	0,001593
lymphocytes	-0,034776	0,50000	0,063300	-0,153597	-0,061029
Thrombocytes	<b>0,242812</b>		0,164946	0,205310	0,095874
ESR	-0,039481	0,50000	0,098663	0,013043	0,047350
Ketones					
Urine proteins	0,045506	0,86603	-0,044192	<b>-0,291265</b>	0,137175
leukocytes	0,071426	0,50000	0,172589	0,219115	0,128269
epithelial cells	0,106241	0,50000	<b>0,239036</b>	<b>0,329329</b>	0,040671
Troponin I	1,000000		<b>0,490390</b>	<b>0,265996</b>	<b>0,374820</b>
Myoglobin		1,00000			
CKP-MB 1	<b>0,490390</b>		1,000000	<b>0,386079</b>	<b>0,576087</b>
CKP-MB 2	<b>0,265996</b>		<b>0,386079</b>	1,000000	0,067851
LDH 1	<b>0,374820</b>		<b>0,576087</b>	0,067851	1,000000
LDH 2	<b>0,319420</b>		0,127235	<b>0,437527</b>	<b>0,314912</b>
INR	<b>0,208372</b>		0,057017	0,000653	0,141873
Total bilirubin	0,166543		0,189142	0,018849	0,112833
ALT	0,130182		0,152500	0,057059	<b>0,200843</b>
AST	0,170510		<b>0,194561</b>	0,053218	<b>0,241813</b>
Total choles	0,124187	0,50000	-0,040978	-0,006981	0,082099
LDL	<b>0,195942</b>	0,50000	0,061061	0,116077	0,097868
TAG	0,075288	0,50000	-0,001916	-0,046766	0,003054
Na	0,073038	-1,00000	-0,145310	-0,202524	0,056657
K	0,111597	0,50000	0,007184	-0,162865	0,162139
Creatinine	<b>0,177284</b>	-1,00000	<b>0,260587</b>	-0,008614	<b>0,226690</b>
Ca	0,002295		<b>-0,255494</b>	<b>-0,448271</b>	-0,032190
Uria	0,077832	0,50000	0,050858	-0,208204	0,114875
Glucose	-0,027007	1,00000	-0,062950	-0,082192	0,112243
APTT	0,126145		<b>0,309909</b>	<b>0,423780</b>	0,087702
Fibrinogen	-0,126763		0,019966	-0,141352	0,038093
PT					

Variable	Pearson Rank Order Correlations (Acute MI in Total Post MI 5) MD pairwise deleted Marked correlations are significant at p <,05000				
	LDH 2	INR	Total bilirubin	ALT	AST
Date of infarct	0,123665	<b>0,222657</b>	-0,070080	-0,025792	0,033419
Date of hosp.	0,119836	<b>0,210509</b>	-0,093753	-0,033286	0,045471
Date of dischargement	0,113804	<b>0,210587</b>	-0,091667	-0,036998	0,045172
Hospitalization days	<b>-0,351822</b>	-0,122041	0,083439	-0,149559	-0,089148
Age	-0,035860	0,088783	0,119390	0,006031	0,053983
Body weight	-0,342356	-0,087567	0,142107	0,357989	0,255829
Height	<b>0,882919</b>	-0,115722	0,304978	-0,136986	0,051121
BMI	-0,357143	0,016422	0,013691	<b>0,462577</b>	0,191586
HR	-0,065697	-0,176321	0,091752	<b>0,168135</b>	0,058756
SBP	-0,047346	-0,009411	-0,074120	-0,014180	-0,161133
DBP	-0,023404	-0,032399	-0,152479	-0,079591	-0,161825
Aorta diameter	-0,025929	0,012770	0,105600	-0,081878	0,016592
EF	-0,131816	-0,041426	-0,161993	-0,068176	-0,100612
EDV	-0,114369	0,021536	0,154520	0,069499	0,069440
LV	-0,150290	-0,046075	0,007623	0,009479	0,068600
LA	-0,053576	0,055728	0,182757	0,064334	-0,049618
RV	-0,082071	0,098168	<b>0,195401</b>	0,083873	0,001424

Variable	Pearson Rank Order Correlations (Acute MI in Total Post MI 5) MD pairwise deleted Marked correlations are significant at p <,05000				
	LDH 2	INR	Total bilirubin	ALT	AST
RA	0,011156	0,162673	0,054035	0,022768	0,077034
Hb	0,254468	0,101077	<b>0,215681</b>	0,011558	-0,009187
leukocytes	<b>0,286870</b>	<b>0,187285</b>	-0,040948	0,067994	0,072187
RBC	0,126967	0,052727	0,089829	0,073779	-0,080989
lymphocytes	-0,211282	<b>-0,213453</b>	0,074228	-0,006331	-0,038706
Thrombocytes	<b>0,349153</b>	<b>0,200752</b>	<b>-0,220295</b>	0,035331	-0,083374
ESR	-0,210693	-0,019873	-0,048101	0,013972	0,000510
Ketones					
Urine proteins	0,046534	0,145399	0,032055	-0,037007	0,091987
leukocytes	-0,120852	-0,010482	-0,140302	-0,097826	-0,132582
epithelial cells	-0,084567	-0,113416	-0,083612	-0,028856	-0,041266
Troponin I	<b>0,319420</b>	<b>0,208372</b>	0,166543	0,130182	0,170510
Myoglobin					
CKP-MB 1	0,127235	0,057017	0,189142	0,152500	<b>0,194561</b>
CKP-MB 2	<b>0,437527</b>	0,000653	0,018849	0,057059	0,053218
LDH 1	<b>0,314912</b>	0,141873	0,112833	<b>0,200843</b>	<b>0,241813</b>
LDH 2	1,000000	<b>0,382124</b>	0,002090	<b>0,286460</b>	<b>0,447358</b>
INR	<b>0,382124</b>	1,000000	0,107299	-0,044216	0,049075
Total bilirubin	0,002090	0,107299	1,000000	0,175968	0,135787
ALT	<b>0,286460</b>	-0,044216	0,175968	1,000000	<b>0,572879</b>
AST	<b>0,447358</b>	0,049075	0,135787	<b>0,572879</b>	1,000000
Total choles	-0,049465	-0,111364	0,135346	0,068525	0,067669
LDL	-0,043774	-0,011290	0,158629	0,020542	0,064199
TAG	-0,033778	-0,095456	-0,039331	0,126804	0,040082
Na	0,126636	0,138965	-0,085883	-0,015813	0,130889
K	-0,091874	0,175417	0,134458	0,035404	0,062157
Creatinine	-0,170041	<b>0,185665</b>	0,069496	-0,021837	0,002576
Ca	-0,065550	<b>0,229418</b>	-0,076928	0,098510	-0,040195
Uria	-0,156195	0,132454	0,048647	<b>0,248900</b>	0,155723
Glucose	0,089111	0,031761	-0,009808	<b>0,246838</b>	0,156518
APTT	0,197419	0,167639	0,073983	0,084182	-0,016993
Fibrinogen	-0,089828	<b>-0,389201</b>	0,105851	-0,003601	-0,044486
PT					

Variable	Pearson Rank Order Correlations (Acute MI in Total Post MI 5) MD pairwise deleted Marked correlations are significant at p <,05000				
	Total choles	LDL	TAG	Na	K
Date of infarct	-0,081606	-0,120629	0,075539	<b>0,29553</b>	<b>0,392714</b>
Date of hosp.	-0,083591	-0,114472	0,041802	<b>0,32023</b>	<b>0,347683</b>
Date of dischargement	-0,082453	-0,110837	0,040081	<b>0,32329</b>	<b>0,345315</b>
Hospitalization days	0,135370	0,159497	-0,018082	-0,07405	-0,119386
Age	<b>0,189818</b>	0,103719	-0,089894	0,04271	0,096715
Body weight	0,032294	0,214156	0,190830	0,09980	0,262988
Height	-0,138274	-0,089237	-0,346317	-0,08695	<b>-0,486864</b>
BMI	0,167920	0,287161	0,243163	0,14748	<b>0,402687</b>
HR	0,074696	-0,019979	-0,001737	0,01790	0,055393
SBP	0,130019	0,048523	0,159888	0,07313	0,000735
DBP	0,103124	0,051746	<b>0,203202</b>	0,02336	-0,018963
Aorta diameter	<b>-0,272978</b>	<b>-0,290000</b>	-0,064514	0,01220	0,099267
EF	0,001418	-0,003403	0,135686	0,02820	0,047078
EDV	-0,010848	-0,023996	-0,012581	-0,06275	0,058684



Variable	Pearson Rank Order Correlations (Acute MI in Total Post MI 5) MD pairwise deleted Marked correlations are significant at p <,05000				
	Total choles	LDL	TAG	Na	K
LV	-0,034502	-0,070730	0,085614	0,04582	-0,002292
LA	-0,022993	-0,008003	0,071785	0,14456	0,117294
RV	-0,008355	0,006907	0,096231	-0,05588	<b>0,285462</b>
RA	-0,160652	-0,091096	-0,036389	0,18110	0,147145
Hb	0,066861	0,114681	0,157777	0,08106	<b>0,218370</b>
leukocytes	-0,025760	-0,024549	<b>0,203652</b>	-0,06836	0,047010
RBC	0,023385	0,091089	0,172810	-0,02729	0,187586
lymphocytes	0,111800	0,066237	0,157562	0,15747	<b>0,193137</b>
Thrombocytes	-0,011878	0,051375	-0,017568	-0,15520	-0,172012
ESR	-0,128001	-0,102900	0,038587	-0,10175	-0,033521
Ketones					
Urine proteins	-0,061160	-0,057283	0,007271	-0,07022	-0,049361
leukocytes	0,106976	<b>0,212155</b>	-0,001248	-0,17767	<b>-0,202077</b>
epithelial cells	0,121417	<b>0,184569</b>	0,020937	-0,16269	<b>-0,275099</b>
Troponin I	0,124187	<b>0,195942</b>	0,075288	0,07304	0,111597
Myoglobin	0,500000	0,500000	0,500000	-1,00000	0,500000
CKP-MB 1	-0,040978	0,061061	-0,001916	-0,14531	0,007184
CKP-MB 2	-0,006981	0,116077	-0,046766	-0,20252	-0,162865
LDH 1	0,082099	0,097868	0,003054	0,05666	0,162139
LDH 2	-0,049465	-0,043774	-0,033778	0,12664	-0,091874
INR	-0,111364	-0,011290	-0,095456	0,13897	0,175417
Total bilirubin	0,135346	0,158629	-0,039331	-0,08588	0,134458
ALT	0,068525	0,020542	0,126804	-0,01581	0,035404
AST	0,067669	0,064199	0,040082	0,13089	0,062157
Total choles	1,000000	<b>0,830689</b>	<b>0,417038</b>	0,09591	-0,006258
LDL	<b>0,830689</b>	1,000000	<b>0,319855</b>	0,06534	-0,075583
TAG	<b>0,417038</b>	<b>0,319855</b>	1,000000	-0,00482	0,096150
Na	0,095906	0,065343	-0,004822	1,00000	<b>0,349223</b>
K	-0,006258	-0,075583	0,096150	<b>0,34922</b>	1,000000
Creatinine	0,083018	0,087098	-0,032333	-0,01335	-0,060077
Ca	-0,108344	-0,126906	0,066131	<b>0,47663</b>	<b>0,575797</b>
Uria	0,046621	0,055896	0,027175	0,09747	0,132856
Glucose	0,048354	0,026693	0,161067	-0,03075	0,004122
APTT	0,110501	0,148558	-0,068772	-0,11314	0,049147
Fibrinogen	0,044268	-0,029297	0,160949	-0,09123	0,017443
PT					

Variable	Pearson Rank Order Correlations (Acute MI in Total Post MI 5) MD pairwise deleted Marked correlations are significant at p <,05000				
	Creatinine	Ca	Uria	Glucose	APTT
Date of infarct	-0,12362	<b>0,752734</b>	<b>0,173533</b>	<b>0,198889</b>	-0,219685
Date of hosp.	-0,10899	<b>0,655580</b>	<b>0,172153</b>	<b>0,197077</b>	-0,213583
Date of dischargement	-0,10773	<b>0,652954</b>	<b>0,172156</b>	<b>0,199063</b>	-0,214560
Hospitalization days	0,11868	<b>-0,365114</b>	-0,032561	-0,002611	0,142006
Age	<b>0,19637</b>	-0,006410	<b>0,189761</b>	0,166185	0,049935
Body weight	-0,00751	0,283974	0,121533	<b>0,654202</b>	0,003153
Height	0,03593	-0,338311	<b>-0,404216</b>	-0,048985	-0,204839
BMI	-0,05175	<b>0,422982</b>	0,221784	<b>0,497591</b>	0,145463
HR	-0,01873	-0,077756	0,076878	0,077596	0,034608
SBP	-0,11554	-0,065510	-0,020419	-0,030442	-0,055021
DBP	<b>-0,22954</b>	-0,085972	-0,078703	-0,022622	-0,086966
Aorta diameter	-0,13025	-0,005432	-0,032316	0,053932	-0,118503

Variable	Pearson Rank Order Correlations (Acute MI in Total Post MI 5) MD pairwise deleted Marked correlations are significant at p <,05000				
	Creatinine	Ca	Uria	Glucose	APTT
EF	-0,13633	0,020465	0,005515	-0,146818	-0,201638
EDV	-0,09448	-0,047146	-0,078861	0,043452	0,173079
LV	-0,06663	-0,021513	-0,037700	0,129861	0,040094
LA	-0,02786	<b>0,265162</b>	<b>0,189547</b>	0,175194	-0,129817
RV	<b>-0,20783</b>	0,180772	<b>0,194250</b>	<b>0,223505</b>	-0,000931
RA	-0,10200	0,166642	0,101188	0,171877	-0,139865
Hb	-0,02468	<b>0,194971</b>	<b>-0,211940</b>	-0,008374	0,102761
leukocytes	0,06829	0,060749	0,037870	<b>0,205235</b>	0,104666
RBC	-0,13715	<b>0,269192</b>	-0,139107	0,090559	0,174735
lymphocytes	-0,12491	<b>0,198846</b>	-0,165130	-0,125482	0,011001
Thrombocytes	0,18359	-0,046922	-0,004645	-0,062960	<b>0,316938</b>
ESR	-0,09753	-0,090898	0,165846	0,021904	-0,032073
Ketones					
Urine proteins	0,03047	0,007566	<b>0,190483</b>	0,109950	-0,184248
leukocytes	<b>0,17726</b>	<b>-0,376993</b>	0,099496	0,067847	0,223590
epithelial cells	0,15818	<b>-0,433478</b>	0,036004	0,160787	<b>0,313909</b>
Troponin I	<b>0,17728</b>	0,002295	0,077832	-0,027007	0,126145
Myoglobin	-1,00000		0,500000	1,000000	
CKP-MB 1	<b>0,26059</b>	<b>-0,255494</b>	0,050858	-0,062950	<b>0,309909</b>
CKP-MB 2	-0,00861	<b>-0,448271</b>	-0,208204	-0,082192	<b>0,423780</b>
LDH 1	<b>0,22669</b>	-0,032190	0,114875	0,112243	0,087702
LDH 2	-0,17004	-0,065550	-0,156195	0,089111	0,197419
INR	<b>0,18567</b>	<b>0,229418</b>	0,132454	0,031761	0,167639
Total bilirubin	0,06950	-0,076928	0,048647	-0,009808	0,073983
ALT	-0,02184	0,098510	<b>0,248900</b>	<b>0,246838</b>	0,084182
AST	0,00258	-0,040195	0,155723	0,156518	-0,016993
Total choles	0,08302	-0,108344	0,046621	0,048354	0,110501
LDL	0,08710	-0,126906	0,055896	0,026693	0,148558
TAG	-0,03233	0,066131	0,027175	0,161067	-0,068772
Na	-0,01335	<b>0,476633</b>	0,097467	-0,030751	-0,113135
K	-0,06008	<b>0,575797</b>	0,132856	0,004122	0,049147
Creatinine	1,00000	-0,021655	<b>0,477372</b>	0,009566	0,130883
Ca	-0,02165	1,000000	<b>0,226440</b>	0,114659	-0,213578
Uria	<b>0,47737</b>	<b>0,226440</b>	1,000000	<b>0,223992</b>	-0,038725
Glucose	0,00957	0,114659	<b>0,223992</b>	1,000000	-0,091630
APTT	0,13088	-0,213578	-0,038725	-0,091630	1,000000
Fibrinogen	-0,03245	-0,074313	0,054461	0,016700	-0,101748
PT					

Variable	Pearson Rank Order Correlations (Acute MI in Total Post MI 5) MD pairwise deleted Marked correlations are significant at p <,05000	
	Fibrinogen	PT
Date of infarct	0,070849	
Date of hosp.	0,061743	
Date of dischargement	0,060104	
Hospitalization days	0,014194	
Age	-0,101096	
Body weight	-0,200220	
Height	-0,219706	

Variable	Pearson Rank Order Correlations (Acute MI in Total Post MI 5) MD pairwise deleted Marked correlations are significant at $p < ,05000$	
	Fibrinogen	PT
BMI	-0,051268	
HR	-0,068684	
SBP	0,014181	
DBP	-0,081389	
Aorta diameter	-0,066697	
EF	0,067573	
EDV	-0,119314	
LV	-0,116229	
LA	0,006765	
RV	-0,007770	
RA	-0,072335	
Hb	-0,051919	
leukocytes	-0,093511	
RBC	0,020243	
lymphocytes	0,044111	
Thrombocytes	<b>-0,224921</b>	
ESR	-0,019113	
Ketones		
Urine proteins	0,032734	
leukocytes	0,074379	
epithelial cells	0,100294	
Troponin I	-0,126763	
Myoglobin		
CKP-MB 1	0,019966	
CKP-MB 2	-0,141352	
LDH 1	0,038093	
LDH 2	-0,089828	
INR	<b>-0,389201</b>	
Total bilirubin	0,105851	
ALT	-0,003601	
AST	-0,044486	
Total choles	0,044268	
LDL	-0,029297	
TAG	0,160949	
Na	-0,091235	
K	0,017443	
Creatinine	-0,032451	
Ca	-0,074313	
Uria	0,054461	
Glucose	0,016700	
APTT	-0,101748	
Fibrinogen	1,000000	
PT		1,000000

Variable	Correlations (Acute MI in Total Post MI 5) Marked correlations are significant at p < ,05000 N=30 (Case wise deletion of missing data)
BMI	Body weight <b>0,895885</b>