

1 **Use of cfDNA and exovesicle-DNA for the molecular diagnosis of chronic Chagas**
2 **disease.**

3 Noelia Lozano^{1, 2}; Mercedes Gomez Samblas^{3*}, Eva Calabuig⁴, María José Giménez
4 Martí², Maria Dolores Gómez Ruiz², José Miguel Sahuquillo Arce², José Miguel Molina
5 Moreno², M. Trelis^{1, 5} y Antonio Osuna^{3*}

6 1.- Area of Parasitology. Department of Pharmacy and Pharmaceutical Technology and
7 Parasitology. University of Valencia. 46010 Valencia, Spain.

8 2.- Servicio de Microbiología y Parasitología Clínica. Hospital Universitario y Politécnico
9 La Fe-IIS La Fe, 46010 Valencia, Spain.

10 3.- Grupo de Bioquímica y Parasitología Molecular (CTS 183), Departamento de
11 Parasitología, Campus de Fuentenueva, Instituto de Biotecnología, Universidad de
12 Granada, 18071 Granada, Spain.

13 4.- Unidad de Enfermedades Infecciosas. Servicio de Medicina Interna. Hospital
14 Universitario y Politécnico La Fe-IIS La Fe. Valencia 46010, Spain.

15 5.- Joint Research Unit on Endocrinology. Nutrition and Clinical Dietetics, University of
16 Valencia-Health Research Institute La Fe, Valencia 46010, Spain.

17 * Authors for correspondence: Antonio Osuna. Email: aosuna@ugr.es and Mercedes
18 Gomez-Samblas. Email: msambla@ugr.es

19
20 key words: *Trypanosoma cruzi*, chronic Chagas disease, PCR diagnosis, plasma
21 exovesicles, cfDNA.

22

23 Abstract

24 Chagas disease is, among others, considered a neglected tropical disease. Given the
25 magnitude of the human movements that have occurred in recent years from Central
26 and South America to other countries, Chagas should now be considered a disease of
27 worldwide distribution, in which the transmission of the parasite is restricted to
28 transplacental transmission or blood or organ donations from infected people.

29 Parasite detection in chronically ill patients is restricted to serological tests that only
30 determine previous contact and not the presence of the parasite, especially in those
31 patients undergoing treatment evaluation or in newborns.

32 In this study, we evaluate the use of nucleic acids from both circulating serum
33 exovesicles and cell-free DNA (cfDNA) from 448 serum samples from immunologically
34 diagnosed chronic chagasic patients, which were re-evaluated by nested PCR on the
35 amplicons resulting from amplification with kDNA-specific primers 121F-122R. Of the
36 total number of samples selected, 50 were used to isolate and purify exovesicles from
37 circulating serum and cell-free DNA (cfDNA).

38 When the nucleic acids thus purified were assayed as a template and amplified with
39 primers 121F-122R and SAT, a percentage positivity of 100% was obtained for all
40 positive samples assayed with the kDNA-specific primers and 96% when SAT primers
41 were used. However, isolation of cfDNA for *T. cruzi* and amplification with SAT primers
42 also showed 100% positivity. Hence, both samples can be used in those cases where it
43 is necessary to demonstrate the active presence of the parasite.

44 INTRODUCTION

45 *Trypanosoma cruzi* is a flagellated protozoan etiologically responsible for American
46 trypanosomiasis or Chagas Disease (CD); a disease considered a zoonosis within the

47 so-called neglected tropical diseases. In addition to humans, CD involves wild or
48 domestic mammals. Hematophagous insects belonging to the Triatominae family
49 (Reduviid) are responsible for CD transmission, acting as invertebrate hosts or vectors.
50 The protozoa multiply in the vector's midgut as epimastigote forms and finally reach the
51 end of the intestine and rectal ampulla giving rise to the infective form or metacyclic
52 trypomastigotes. With insect defecation after biting, these infective forms are deposited
53 on the skin and they will access the mammalian host through the wound or through
54 mucous membranes invading the nucleated cells. Then, they can multiply as amastigote
55 forms. Parasites differentiate into trypomastigotes, which disrupt the host cell, invade
56 intercellular spaces and penetrate neighboring cells or enter the bloodstream,
57 disseminating the infection through the blood. Blood trypomastigote forms will wait to be
58 ingested by a new vector. Non-vectorial human infection can occur by oral, transfusional
59 (1,2), or vertical routes from mother to fetus (3). These last two routes are of
60 epidemiological importance in areas without vectorial transmission.

61 Chagas disease is endemic in a total of 21 countries in the Americas, from the southern
62 United States to Argentina and Chile (4,5), with about 10 million people infected, and an
63 annual incidence of 50,000 to 200,000 infections (5). The disease, considered for many
64 years to be restricted to Meso- and South America, has spread to other parts of the
65 world due to migratory processes. Human-to-human cases have been described in the
66 United States, Canada, European countries, Australia or Japan, areas with varying
67 degrees of migration from endemic areas (6), turning Chagas into a public health
68 problem in European countries such as Spain, Italy or Sweden, among others, where
69 strict control measures have thus been taken in blood banks (7), gynecological services
70 (8) and transplant surgeries (9–11).

71 The course of the disease has two marked phases: acute and chronic. Acute Chagas
72 disease (ACD) occurs within the first eight weeks, immediately after the infection. It
73 usually presents with a high number of parasites circulating in the blood. The chronic
74 phase (CCD), which develops about 3 and 8 weeks after infection, can last for decades
75 with no or mild symptomatology and a very low parasitemia level. It is estimated that
76 only 30% of cases develop pathognomonic symptoms of the disease (12–14). Such
77 symptoms include cardiac and/or gastrointestinal symptoms disorders (15). These
78 chronic patients (CCD) constitute the greatest epidemiological risk for disease
79 transmission in countries where infection by insect vectors does not occur.

80 Diagnostic methods vary from direct test, such as xenodiagnosis including the
81 combination with molecular techniques, (16) to immunological techniques, in which
82 different antigens (native or recombinant) are used (17,18). High variability in the
83 sensitivity and specificity among techniques has been related to, not only to the type of
84 laboratory technique or antigen used, but also to geographical differences in parasite
85 strains, as well as genetic differences between human populations, which may
86 contribute to discrepancies in serological tests (19). This has led to a series of
87 recommendations by the Pan American Health Organization (PAHO) and national
88 guidelines, (20–22) recommending the confirmatory use of two serological tests in
89 parallel, with a sensitivity of at least 98% (23) for a correct diagnosis of the disease.

90 Even so, when serological tests are inconclusive, some guidelines recommend
91 molecular tests, such as PCR, the technique of choice for the confirmatory diagnosis of
92 *T. cruzi* parasitemia (24). WHO recommends PCR as a confirmatory test after screening
93 of blood donors, in the diagnosis of acute or congenital infection, or for therapeutic
94 follow-up after diagnosis of acute infection (23). However, conventional PCR is

95 unsuitable for chronic CD diagnosis due to low parasitemia and parasite DNA blood
96 levels in the chronic phase, together with the different DNA extraction and purification
97 systems, that bring PCR sensitivity to about 50-90%, whereas its specificity stays close
98 to 100% (25). Due to the aforementioned drawbacks and despite its high specificity,
99 PCR is recommended only when serological tests are inconclusive according to the
100 recommendations of expert committees in different countries, such as Brazil, Chile,
101 USA or Spain (20–22).

102 Therefore, in this paper we present different methodologies, different primers, the
103 combination of nested PCR on non-visible PCR amplicons, the use of cell-free
104 circulating DNA (cfDNA), and the extraction of DNA from exovesicles circulating in the
105 serum (EVs-DNA) of chronic patients in order to try to solve diagnostic problems and
106 facilitate the detection of CD in the hospital setting.

107 MATERIAL AND METHODS

108 **Human blood samples**

109 This study was conducted at the Microbiology and Parasitology department of Hospital
110 Universitario y Politécnico La Fe (HUyP-La Fe), Valencia, Spain and at Parasitology
111 department Institute of Biotechnology University of Granada Spain, from 2011 to 2020.
112 CD serologically positive serum samples screened with the LiaisonXL murex
113 chemiluminescence kit and tittered with the Trinity Biotech IFA kit were used. Samples
114 (n 448) included patients with suspected disease or with manifest symptoms. They can
115 be considered representative of the different groups of the population affected by CD,
116 most of whom adults (n 313), mostly born in Bolivia, except for the children born in Spain
117 from chagasic mothers (n 135). Some corresponded to patients who had received
118 treatment for CD and who came for re-evaluation as follow-up, and patients with

119 compromised immunity with post-transplant immunosuppression therapy and one of the
120 patients was HIV seropositive. According to sex, 302 (67.4%) patients were female and
121 146 (32.6%) were male. All of the patients gave written informed consent before starting
122 the study and all protocols were approved on March 4, 2011, the study was expanded to
123 include the use to isolate and purify exovesicles from circulating serum and cell-free
124 DNA (cfDNA) on September 26, 2018, with registration numbers 201102400000408 and
125 672/CEIH/2018 respectively, by the ethical committee of Granada University.

126 **DNA isolation method from peripheral blood.**

127 Peripheral blood samples (5 mL) were collected in Vacutainer vacuum blood tubes with
128 EDTA and then subjected to a specific lysis pretreatment before proceeding to the DNA
129 isolation methods. Pretreatment consisted of mixing 1:1 blood and denaturing lysis
130 buffer (6M guanidine hydrochloride, 10 mM urea, 10 mM TRIS-HCL, 10 mM TRIS-HCL,
131 20% (v/v) Triton X-100; pH was adjusted to 4.4) through brief shaking. The samples
132 were incubated at 70°C for 10 min. Before proceeding to the next steps, the samples
133 were kept for at least 48 h at room temperature.

134 The automated purification protocol of the Maxwell Blood DNA Purification kit (Promega
135 Biotech) was chosen according to the guidelines approved by HUyP-La Fe and was
136 used following the manufacturer's instructions. The initial volume for each of the blood
137 sample was 400 µL of pretreated peripheral blood.

138 **Isolation of circulating cell-free parasite DNA (cfDNA) from serum**

139 For the serum samples, 5 mL of blood were taken in the BD Vacutainer SST II Advance
140 tubes (Reference. 366468). Once vortexed for 5 min, each tube was centrifuged at
141 1,500 x g for 10 min and approximately 2.0 mL of serum were collected to perform the
142 different tests.

143 The samples used for the assay of this protocol were 4 serum pools and two individual
144 serum samples from patients with digestive disorders. Two pools were formed by three
145 patients with cardiac pathology each, and two pools formed by three patients with non-
146 specific symptoms. (Table S1).

147 For the isolation of circulating DNA (cfDNA) of the parasite from the patient's serum, the
148 MagMAX™ cell-free DNA isolation kit (Thermo Fisher Scientific) was used and the
149 manufacturer's instructions were followed. First, the 100 µL serum pools were
150 centrifuged at 1,600 x g 10 min at 4°C. Once the first centrifugation was completed, the
151 supernatant was subjected to a second centrifugation at the same speed and time as
152 the previous one in order to remove any cellular debris in the serum. Next, the proteins
153 contained in the supernatant were digested for 20 min at 60°C with 2 µL of Proteinase k
154 (20 µg/mL). To the digestion product, 150 µL of buffer (30mTris-HCl pH 8.0, 10mM
155 EDTA, 1% SDS) were added together with 5 µL of magnetic bead solution. The resulting
156 volume (255 µL) of the mixture was vortexed intensively for 10 min and then centrifuged
157 at 14,000 x g for 10 s. The resulting pellet was washed twice, first with 500 µL of wash
158 buffer and then with 500 µL of 80% ethanol, and subjected to centrifugation (20 s at
159 1,3000 x g). Finally, the pellet was dried and resuspended in 50 µL Milli-Q water.

160 **DNA isolation from serum exovesicles (EVs-DNA)**

161 To improve the detection of parasite DNA in *T. cruzi* infected patients, DNA was isolated
162 from exovesicles (EVs) present in serum. For this assay, 25 nested PCR negative and
163 25 nested PCR positive samples were selected as described below.

164 Purification of circulating EVs from serum was performed following the methods
165 previously described by Diaz et al. (26) and Retana et al. (27), by a mixed

166 ultracentrifugation-ultrafiltration procedure. For this purpose, 1 mL serum samples were
167 each diluted (1:1) with PBS previously ultrafiltered through 0.22 μm pore filters. The
168 diluted samples were first centrifuged at 3,500 \times g for 10 minutes (4°C) to eliminate
169 contamination by cells or cellular debris from the serum. The pellet obtained was
170 discarded and the supernatant was ultrafiltered through sterile 0.45 μm pore filters
171 (Millipore, USA) in order to remove apoptotic debris and particles remaining in the
172 supernatant from the first centrifugation. It was subsequently ultracentrifuged in
173 microtubes (Hitachi No 1508) at 110,000 \times g for 2 h at 4°C in a Sorwal WX80 centrifuge
174 with fixed-angle rotor (Fiberlite™ F50L-24 \times 1.5). The resulting pellet was washed three
175 times by ultracentrifugation in sterile PBS as described above and evaluated by
176 transmission electron microscopy and NTA nanoparticle tracking analysis, as described
177 in a previous paper (28).

178 For the isolation of DNA from EVs-DNA, the method described by Orrego et al. in 2020
179 was followed. To do so, the sediment containing EVs from serum was treated with a
180 total of 2 units of DNAase I at 37°C for 30 min to remove external DNA from the EVs.
181 After treatment, the enzyme was inactivated with heat at 70°C in a solution containing
182 50 mM EDTA. After removal of free nucleic acids from the EVs suspension, 100 μL of
183 EVs were lysed with 200 μL of lysis buffer (30 mM Tris-HCl pH 8.0, 10 mM EDTA, 1%
184 SDS) supplemented with 20 μL of proteinase K (0.1 mg/mL), shaken by vigorous
185 pipetting and incubated at 56°C for 1 h. Finally, nucleic acid purification and precipitation
186 were performed following the traditional phenol-chloroform method by mixing 320 μL of
187 lysed EVs suspension with 320 μL of phenol-chloroform-isoamyl reagent, 25:24:1 (v/v)
188 (Sigma). The mixture was shaken briefly and centrifuged at 14,000 \times g for 10 min. The
189 aqueous phase was then collected and the DNA was precipitated with 1/10 vol of 3M

190 sodium acetate pH 5 and 2.5 vol of HPLC grade absolute ethanol. The mixture was
191 incubated overnight at -20°C and centrifuged at 15,000 x g for 10 min at 4°C, the
192 supernatant was discarded and the precipitate was washed twice with cold 70% ethanol.
193 Finally, the pellet was dried in a Jouan Thermo speed Vac (RC1010) at 20°C and diluted
194 in 20 µl Milli-Q water.

195 **Transmission electron microscopy**

196 To corroborate by electron microscopy the purification of EVs from serum, the
197 ultracentrifuged button resulting from the purification process described above was fixed
198 for 2h at room temperature in 2.5% glutaraldehyde in cacodylate buffer pH 7.2 and then
199 resuspended in PBS for sample processing by negative staining. For this purpose,
200 approximately 15 µL of the suspension were deposited on nickel 300 mesh grids, coated
201 with a charcoal layer, for 10 min. The grids were then washed twice with ultrapure water
202 for 1 min. The grids were negatively stained with 1% uranyl acetate for 1 min. After
203 staining, the samples were dried on filter paper and observed under a Zeiss Libra 120
204 Plus transmission electron microscope at 120KV at the Centro de Instrumentación
205 Científica (University of Granada facilities).

206 **Detection of *T. cruzi* DNA in biological samples by different PCR strategies**

207 **Genes used in the study**

208 In this work, two specific, conserved and highly repeated genes in the *T. cruzi* genome,
209 widely used in the diagnosis of Chagas disease, were analyzed: the kinetoplast DNA
210 (kDNA) minirepeat regions, which represent the major sequence component of kDNA
211 with about 120,000 copies per parasite (29,30), and the nuclear satellite DNA with 10⁴ to
212 10⁵ copies in the highly conserved parasite genome (31).

213 **PCR strategies**

214 The kDNA minirepeat regions and nested PCR

215 DNA from the 448 serologically positive samples, extracted using the Maxwell Blood
216 DNA Purification Kit automated protocol (Promega Biotech), and the minirepeated
217 region of the kDNA was amplified. The reaction mixture was made up of Go Taq1flexi
218 1X amplification buffer (25 mM dNTPs, 2.5 mM MgCl₂, 1.0 U of Go Taq1(Promega,
219 USA), 10 pmol of specific primers 121F and 122R (Table 1) and 10 µL of template. The
220 final volume was 50 µL according to the methodology described previously (32).
221 Amplification conditions consisted of two cycles, each of 1 min at 98°C and 2 min at
222 64°C, followed by 33 cycles of 1 min at 94°C, and 1 min at 64°C, before a final extension
223 at 72°C for 10 min. In all cases, a DNA sample of *T. cruzi* from the culture as a positive
224 control and a non-template control were used.

225 Table 1. Sequences of primers used in this study.

Name	5'→3' Sequence	T _m (°C)	Type	Type (5'→3')	Product length (bp)
SATF	GCAGTCGGCKGATCGTTTTTCG	60.1	PCR	F	120
SATR	TTCAGRGTGTTTGGTGCCAGTG	58.5	PCR	R	
121F	AAATAATGTACCGGKAGATGCATGA	65	PCR	F	330
122R	GGTTCGATTGGGGTTGGTGTAATATA	66	PCR	R	
T3	TC TTT GGT GTG ATC GTT AC	58	nested PCR	F	150
T4	TAC ATT CTA TTT CTT CTC TG	52	nested PCR	R	

227 In all instances, the amplification result, although not visible on DNA electrophoresis,
228 was subjected to nested PCR amplification. To this end, 2 µL of PCR product were used
229 as template, 0.2 µM concentration of T3 and T4 primers (Table 1), 0.2 mM of each
230 dNTP, 3 mM MgCl₂, 0.5 µL of GoTaq® Flexi DNA Polymerase and the final volume was
231 50 µL. The nested PCR conditions were (1) 94°C 5 min, (2) (94°C 1 min, 48°C 1 min,
232 72°C 1 min) × 35, (3) 72°C 7 min, (4) 12°C indefinite.

233 Amplifications were performed on a GeneAmp PCR System 9700 thermal cycler, AB
234 Applied Biosystems and the nested PCR amplification product was sequenced on a
235 GenomeLab GeXP system. The results obtained from sequencing were aligned using
236 BLAST programs and the identity and coverage of these sequences were studied.

237 **EVs-DNA and cfDNA PCR**

238 Both the EVs-DNA present in the serum and the cfDNA were amplified indistinctly with
239 the primer pair 121F-122R corresponding to the kDNA and with the SATF and SATR
240 primers for the nuclear satellite regions (Table 1) using for these amplifications 0, 5 μ M
241 of the primers, 0.2 mM of each dNTP, 2.5 mM $MgCl_2$, 0.005 μ L DMSO, 0.125 μ L GoTaq
242 Flexi DNA Polymerase enzyme and 2 μ L as DNA template from DNA purification, the
243 final reaction volume was 25 μ L. For the SAT primers, the protocol was (1) 95°C 5 min,
244 (2) (94°C 10 sec, 65°C 10 sec, 72°C 10 sec) \times 40, (3) 72°C 5 min, (4). Samples were
245 kept at 12°C.

246 The final products were visualized on a 2% agarose gel stained with Safe Sybr and
247 developed on a ChemiDoc MP Imaging System (Biorad). Electrophoresis was performed
248 at 100 mV for 30 min.

249 **RESULTS**

250 **Amplification of DNA from peripheral blood**

251 The sera of 448 immunologically positive subjects, as indicated above, came from
252 patients who had visited the different medical services of the Hospital La Fe; 67.4%
253 corresponded to samples from female patients and 146 samples to males (32.6%). The
254 majority (313) of whom were born in American countries, mostly in Bolivia. While 135,
255 namely the youngest, were born in Spain but of Latin American mothers.

256 Figure 1A shows the results of the first PCR with amplicons of 330 bp. Nested PCR
257 (corresponding to the kDNA) gave a positive result for 72 (16%) samples in which the
258 150 bp amplicon was visible in agarose electrophoresis (Figure 1 B). Sequencing results
259 of this amplicon are shown in Figure 1 C. The results of the NCBI BLAST analysis of
260 these sequences verified that the amplicon corresponded to a kDNA region of *T. cruzi*,
261 150 bp with coverage of 93% and an E of 2e-44 and an identity percentage of 97.4%
262 (Figure 1 C).

263 **Figure 1.** A: 2% agarose gel analysis of PCR-amplified products showing a 330 pb with
264 121 and 122 primers. PCR performed with peripheral blood DNA. Line 1, Hipper ladder
265 II, Line 2, positive control, line 3 to 20 samples from 1 to 18 patients consecutively. B:
266 2% agarose gel showing a 150 pb band which belongs to nested PCR performed with
267 T3 and T4 primers. C: Sequence alignment using as reference sequence the kDNA *T.*
268 *cruzi* sequence with accession number DQ835656.

269 Analysis of the 72 samples, in which sample positivity was verified by nested PCR,
270 resulted in 49 patients being female and 23 males. Mean age was 36.6 years (35
271 median) for females and 35.7 years (34 median) for males. Furthermore, positive
272 patients were classified into 4 age ranges as shown in Table S2. Thirty-four (5.6%)
273 women were of childbearing age and 17 of whom were pregnant. Also, *T. cruzi* DNA
274 was detected in the peripheral blood sample in the three children who were between 0 to
275 2 years old.

276 Most of CD patients were born in Bolivia (n 70), one patient was from El Salvador and
277 another one from Ecuador. Table S3 shows the distribution of origin in Bolivia, with
278 Santa Cruz being the most represented region with 44.2% of the patients, followed by

279 Sucre with 12.8%, Cochabamba with 10%, Potosí with 5.7%, La Paz (1.4%), Tarija
280 (1.4%) and unidentified regions 25.2%.

281 Table S1 shows the conditions and age corresponding to the 72 positive nested PCR
282 patients used in the study. Most of whom presented indeterminate symptoms (n 53), two
283 had digestive disorders and nine patients suffered heart conditions. Of the total 72
284 samples, 25 corresponded to patients who had not yet been treated with benznidazole,
285 and it is noteworthy that of the 47 that had been treated only three remained PCR
286 positive for *T. cruzi*.

287 **DNA serum EVs and cfDNA amplification**

288 **Confirmation of circulating serum EVs**

289 TEM visualization of EVs from serums pool isolated by ultracentrifugation is shown in
290 Figure 2A. The mean size of the EVs was 119.92 ± 18.41 nm. NTA analysis (Figure 2 B)
291 revealed the different populations of these EVs in which the majority peak revealed a
292 size of 163 nm. A second population less numerous of EVs with an average size of 231
293 nm was observed. Analysis of the total population of EVs showed a mode size of
294 208 ± 84.8 nm and the mode was 163 nm. Also, few populations of larger size were
295 observed which could be considered aggregates of the EVs purified from the circulating
296 EVs in the serum of the patients studied.

297 **Figure 2.** EVs characterization. A: isolated serum pool EVs observed under TEM. B;
298 NTA showing the EVs populations.

299 **Liquid biopsy**

300 A total of 50 sera selected from the initial 448 serologically positive patients were used
301 for these experiments. Twenty-five of these corresponded to patients who were not
302 positive by nested PCR, while the remaining 25 sera were from patients positive by

303 nested PCR. Serum EV DNA (EVs-DNA) and circulating free cellular DNA (cfDNA) were
304 purified from the selected samples.

305 To perform PCR and as indicated in the Material and methods section, primers 121F-
306 122R and those corresponding to SAT satellite DNA were used indistinctly with the DNA
307 purified by these methods.

308 **PCR analysis using DNA-EVs**

309 The results of parasite EVs-DNA circulating in serum showed that twenty-five patients
310 were positive for primers 121F-122R (Figure 3 A) and all but one (24) were positive for
311 SAT primers (Figure 3 B).

312 **Figure 3.** 2% agarose gel electrophoresis analysis of PCR-amplified products. A: PCR
313 performed with 121 and 122 primers and EVs-DNA. Line M, Hipper ladder II; Line 6, C+,
314 positive control; line 2 to 5 and lines 7 to 11 samples of patients. B: PCR performed with
315 SAT primers and EVs-DNA. Line M, Marker, Line 2, positive control; line 3 to 10
316 samples 1, 8, 10, 12, 13, 14, 15, 16, 19, 21 respectively. C: PCR performed with SAT
317 primers and cfDNA. Line C+, positive control; Line C- non-template control; Line 3 to 5
318 samples 1a, 2a, 3a; line 6 non-template control; line 7 to 9 samples 1b, 2b, 3b.

319 **PCR analysis using cfDNA**

320 Isolated cfDNA was amplified by PCR with SAT primers. Figure 3 C shows six positive
321 samples (Table S1) corresponding to chagasic patients with cardiac, digestive and
322 indeterminate conditions. The same samples were negative when amplified by PCR with
323 primers 121F-122R.

324 **DISCUSSION**

325 In the last decades, the distribution of CD has spread due to human migration for
326 economic reasons from geographical areas of Central and South America, where

327 hematophagous vector transmission is still the case, to non-endemic areas of North
328 America, Europe, Japan or Australia. Spain, Italy and Switzerland are the three
329 European countries (33) with highest levels of Latin American communities, especially
330 Spain, related to their common language as well as historical and cultural links. The
331 health authorities in Spain and Tuscany (Italy), areas with a high level of Latin American
332 migrants have therefore adopted standards and recommendations on hemodonations
333 (34), and transplant donors with regard to the detection of chagasic patients in order to
334 prevent human-to-human transmission of the disease (2,35). Similarly, regulations have
335 been adopted for the screening of pregnant women originating from endemic countries
336 and for which both the mother's and newborn's blood are tested (36,37) in order to
337 establish a treatment, which is well tolerated and effective in this type of patient. All this
338 has prompted the standardization of diagnostic methods for CD in health centers and
339 especially for chronically ill patients, in whom parasitemia levels are practically non-
340 existent.

341 Classical parasitological diagnostic methods, such as visualization of trypomastigote
342 forms in blood smears or thick drop, or even trypomastigote concentration techniques by
343 centrifugation in microhematocrit tubes, have been used to diagnose CD (38) (39). They
344 show high specificity but very low sensitivity, especially in chronic patients. These
345 methods may be applicable in diagnosis when the disease is developed with high
346 parasitemia in the acute phase or after reactivation of circulating parasitemia in
347 immunosuppressed chronic patients (38). Only culture and xenodiagnosis can be used
348 to directly detect *T. cruzi* infections in the chronic phase. But these techniques are not
349 useful in clinical practice, especially in Europe, due to the limitations of insect vector
350 handling and the delay in obtaining results, which limits their usefulness in diagnostic

351 studies and in evaluating treatment efficacy (40,41). Moreover, the evaluation of different
352 techniques shows that in the case of parasitemia, PCR is at least 27 times more
353 sensitive than blood culture (42).

354 The course of the disease is characterized by elevated IgM levels during the initial acute
355 phase of the disease and the appearance of IgGs that persist throughout the disease
356 (43). Thus, immunological diagnostic techniques are the gold standard for the diagnosis
357 of CD in chronic patients, even in asymptomatic cases. The limiting factors in serological
358 studies are the possible cross-reactivity with *Leishmania* spp. or *Trypanosoma rangeli*
359 infections in those geographical areas where the disease was acquired and these
360 trypanosomatids coexist (40,44). Another drawback could be the lack of sensitivity to the
361 different parasite strains that affect humans throughout the Americas. They may present
362 antigenic variability, which requires, if possible, the use of antigens of different
363 geographical origin and different nature (19,45) according to the recommendations of
364 the different committees on CD. Individuals are considered infected when they have a
365 positive result in at least two serological techniques using different antigens. A third
366 technique is required in case of discrepancy of indeterminate immunological results (20–
367 23), or the use of a mixture of antigens that minimize discrepancies (17,46). The other
368 significant case that invalidates immunological techniques is the diagnosis in newborns
369 from infected mothers due to the presence of IgGs from the mother to the fetus by
370 transplacental transfer (42,47–49).

371 In cases that require the detection of the direct presence of the parasite in blood, when
372 doubtful or inconsistent serological results are obtained and when the efficacy of the
373 patient's treatment is evaluated, PCR methods capable of detecting the presence of
374 parasite nucleic acids in blood (50) are needed to determine the unequivocal presence

375 of the parasite. However, this technique, has a number of limitations that can alter the
376 results and that must be considered (51,52) such as the volume of blood processed, the
377 correct handling of the blood (use of the chaotropic agent guanidine, time and treatment
378 of the lysis process), the manual or automatic DNA extraction procedures, the presence
379 and especially the elimination of PCR inhibitors, the primers used, etc. For all of these
380 reasons, the quest for new procedures and methodologies in the extraction of nucleic
381 acids to be applied to minimize false negative results continues.

382 The samples reflect the Latin American population living and working in the area of
383 influence of the Hospital La Fe in Valencia. Data from INE (National Institute of
384 Statistics) for the year 2021 show that 17,847 people born in Bolivia reside in the
385 Valencian Community, 39.1% are male and 60.9% are female.

386 A nested PCR was performed on all the samples, in which the primers T3 and T4
387 designed for this purpose were used and which would amplify a band of 150 bp from the
388 internal zone of the amplicon produced in the first PCR. The use of nested PCR using
389 other genes with the products of the first PCR was already studied by Pereira et al. (53)
390 and Ribeiro et al. (54), who concluded that the sensitivity of a series of 3 nested PCRs
391 using primers specific for conserved regions of the Kinetoplast is able to detect 1
392 parasite per ml of blood, increasing the sensitivity of the PCR by about 10,000 times.
393 Other authors such as Marcon et al., 2002 (26), or Riera et al., 2006 (55) employed
394 nested PCR after conventional PCR using TCZ1 and TCZ2 and internal primers TCZ3
395 and TCZ4 to evidence parasitization in a neonate. Also, Pereira et al., 2016 (53) used
396 nested PCR for the products of a PCR using the TCZ1 and TCZ2 primers previously
397 mentioned to detect CD positivity in a population of elderly people suffering from cardiac

398 problems and in whom the involvement of *T. cruzi* in these pathologies was not
399 suspected.

400 Sixteen percent of the total 448 immunologically positive patients tested positive in
401 nested PCR.

402 The amplicons obtained were visualized by electrophoresis resulting in a band of 150
403 bp. Sequencing of the amplicons showed that they correspond to an internal region of
404 the *T. cruzi* kDNA described by Burgos et al. (56), with a coverage of 93% and a
405 percentage of identity of 97.4%, Figure (1).

406 The treatment of choice usually prescribed for CD-positive patients in Spain consists of
407 5 mg/kg benznidazole (BZ; N-benzyl-2-nitroimidazole acetamide) daily for 60 days. It is
408 noteworthy that, of the 47 selected patients who had been treated, three tested positive
409 post-treatment in nested PCR for *T. cruzi*. It was not ruled out that the treatment was not
410 completed as a consequence of the side effects involved and the consequent
411 interruption by the patient, and in one case the patient stated that he had returned to his
412 country, not ruling out reinfection.

413 We also evaluated whether cfDNA present in the serum of CCD patients could be used
414 as a template for specific PCRs to improve diagnosis in CCD and in neonates where
415 parasitaemia is very low and almost undetectable by other diagnostic procedures. The
416 results of the analysis were 100% positive. This confirms that serum is a good sample to
417 carry out DNA extraction to be used in the PCR detection of *T. cruzi*, which was already
418 determined by Russomando et al. (57) and in the review carried out by Weerakoon et al.
419 (58) where the use of cfDNA in different biological samples in the diagnosis of different
420 parasitoses was encouraged.

421 The results obtained in our cfDNA (nuclear DNA or mitochondrial KDNA) of parasitic
422 origin would come from circulating parasites coming from either lysis or apoptosis of free
423 or intracellular parasitic forms, or transported in elements secreted by the parasitic
424 forms. With these sera we proceeded to the purification of EVs circulating in the serum,
425 and the purification of the EVs from the serums of the patients was evidenced both by
426 electron microscopy and by NTA. The term EVs designates the set of various EVs
427 released by cells and delimited by a lipid bilayer that are released into the extracellular
428 space by prokaryotic and eukaryotic cells (59). EVs constitute cellular mechanisms of
429 cell-to-cell communication over short or long distances between cells acting as
430 endocrine, paracrine, juxtacrine or autocrine signaling (27), through uptake of EVs or
431 receptor-mediated interactions. Evidently, blood is the mechanism of transport and
432 diffusion of these EVs. EVs are classified by their size, biogenesis and composition,
433 exosomes with sizes between 20 to 200 nm, ectosomes between 200 to 1000 nm and
434 apoptotic vesicles of a larger size (60). Exosomes contain functional molecules
435 (including proteins, nucleic acids and lipids) derived from their cells of origin, being
436 present in all biological fluids where they have been sought, urine and saliva and
437 undoubtedly in blood (61–63). Due to the protection of the lipid bilayer, exosomes are
438 relatively stable and proteins and other molecules transported in these small vesicles
439 are protected from degradation. Their composition is quite complex, including a wide
440 variety of lipids, proteins, different populations of RNAs, ssDNA, and metabolites (28).
441 Typically, the internal volume of an exosome ranges from 20 to 90 nm³, suggesting that
442 a prototypical exosome would contain approximately 100 proteins and 10,000
443 nucleotides (64).

444 Two PCRs were performed with the DNA extracted from the serum EVs, one with the
445 primers (121F-122R) and the other PCR with the SATF and SATR primers; with the
446 former, 50% positivity was obtained and with the SATF and SATR primers, 48% of the
447 patients were positive.

448 The presence of parasite EVs in the serum of patients with CD was already described by
449 some of us in 2017 (26) and these EVs appeared circulating in the serum forming
450 immunocomplexes in patients with different Chagas pathologies, which denoted the
451 presence of metabolically active forms of the parasite and capable of actively releasing
452 these EVs.

453 EVs have been employed as liquid biopsy in numerous assays for tumor diagnosis (65–
454 67), however the use of EVs-DNA for the diagnosis of pathogens and especially
455 intracellular pathogens has hardly been addressed so far. Cho et al., 2020 (68) showed
456 that PCR using exosome DNA from isolates of patients affected by tuberculosis shows
457 higher sensitivity than conventional PCR diagnosis using total DNA for PCR. To our
458 knowledge, this is the first study to report the detection of *T. cruzi* DNA from circulating
459 EVs in the serum of patients using two sets of primers, i.e., those that detect kinetoplast
460 DNA minicircles (121F-122R) and those that recognize nuclear DNA with the SATF and
461 SATR primers.

462 From the results of the present work, it is evident that both cfDNA and EVs-DNA from
463 the serum of infected patients constitute useful and effective biological samples to
464 demonstrate, by PCR using conventional primers, the active presence of the parasite, in
465 clinical cases (neonates and studies of the efficacy of treatment) where it is necessary to
466 demonstrate the presence of the parasite.

467 FUNDING AND ACKNOWLEDGMENTS

468 This research was funded by the ERANet program, Research in prevention of congenital
469 Chagas disease: parasitological, placental and immunological markers (ERANet17/HLH-
470 0142 (Cochaco). Instituto Carlos III, Ministerio de Sanidad, Gobierno de España;
471 Fundación Ramón Areces “Interactoma de las exovesículas de *T. cruzi* y de los
472 inmunocomplejos que forman con las células del hospedador: implicaciones en la
473 patología de la enfermedad de Chagas (2019)”. Ministerio de Ciencia y Tecnología of
474 the government of Spain funded the project PGC2018-099424-B-I00 and The financial
475 support given by the proyect A-BIO-350-UGR18 I+D+i Proyect “Programa Operativo
476 FEDER de Andalucía JJAA” 2014-2020.

477 CONFLICTS OF INTEREST

478 The authors declare no conflict of interest.

479 REFERENCES

- 480 1. Moncayo A. Chagas disease: current epidemiological trends after the interruption of
481 vectorial and transfusional transmission in the Southern Cone countries. Mem Inst
482 Oswaldo Cruz. 2003;98(5):577–91.
- 483 2. Pati I, Cruciani M, Masiello F, Barone F, Silvioli G, La Raja M, et al. Chagas Disease
484 and Transfusion Risk in Italy: The Results of a National Survey. Pathogens.
485 2022;11(11):1229.
- 486 3. Kemmerling U, Osuna A, Schijman AG, Truyens C. Congenital Transmission of
487 *Trypanosoma cruzi*: A Review About the Interactions Between the Parasite, the
488 Placenta, the Maternal and the Fetal/Neonatal Immune Responses. Front Microbiol.
489 2019;10:1854.

- 490 4. Coura JR, Dias JC. Epidemiology, control and surveillance of Chagas disease: 100
491 years after its discovery. 2009;104:31–40.
- 492 5. World Health Organization. Regional Office for South-East Asia. (2021). Strategic
493 Framework for the South-East Asia Regional Vaccine Action Plan 2022–2030 as
494 aligned with the global Immunization Agenda 2030. World Health Organization.
495 Regional Office for South-East Asia. <https://apps.who.int/iris/handle/10665/343756>
- 496 6. Tanowitz HB, Weiss LM, Montgomery SP. Chagas Disease Has Now Gone Global.
497 PLoS Negl Trop Dis. 2011 Apr 26;5(4):e1136.
- 498 7. Requena-Méndez A, Albajar-Viñas P, Angheben A, Chiodini P, Gascón J, Muñoz J,
499 et al. Health Policies to Control Chagas Disease Transmission in European
500 Countries. PLoS Negl Trop Dis. 2014 Oct 30;8(10):e3245.
- 501 8. Ramos JM, Milla A, Rodríguez JC, López-Chejade P, Flóres M, Rodríguez JM, et al.
502 Chagas disease in Latin American pregnant immigrants: experience in a non-
503 endemic country. Arch Gynecol Obstet. 2012 Apr 1;285(4):919–923.
- 504 9. Kransdorf EP, Zakowski PC, Kobashigawa JA. Chagas disease in solid organ and
505 heart transplantation. Curr Opin Infect Dis. 2014;27(5):418–424.
- 506 10. Balderramo D, Bonisconti F, Alcaraz A, Giordano E, Sánchez A, Barrabino M, et al.
507 Chagas disease and liver transplantation: Experience in Argentina using real-time
508 quantitative PCR for early detection and treatment. Transpl Infect Dis. 2017 Dec
509 1;19(6):e12782.

- 510 11. Pierrotti LC, Carvalho NB, Amorin JP, Pascual J, Kotton CN, López-Vélez R. Chagas
511 Disease Recommendations for Solid-Organ Transplant Recipients and Donors.
512 Transplantation. 2018;102(2S):S1–7.
- 513 12. Kirchhoff L. Chagas disease. American trypanosomiasis. Infect Dis Clin North Am.
514 1993;7(3):487–502.
- 515 13. Coura JR. Chagas disease: what is known and what is needed - A background
516 article. Mem Inst Oswaldo Cruz. 2007;112(1).
- 517 14. Prata A. Clinical and epidemiological aspects of Chagas disease. Lancet Infect Dis.
518 2001 Sep 1;1(2):92–100.
- 519 15. Messenger LA, Miles MA, Bern C. Between a bug and a hard place: *Trypanosoma*
520 *cruzi* genetic diversity and the clinical outcomes of Chagas disease. Expert Rev Anti
521 Infect Ther. 2015 Aug 3;13(8):995–1029.
- 522 16. Zulantay I, Apt W, Gil LC, Rocha C, Mundaca K, Solari A, et al. The PCR-based
523 detection of *Trypanosoma cruzi* in the faeces of *Triatoma infestans* fed on patients
524 with chronic American trypanosomiasis gives higher sensitivity and a quicker result
525 than routine xenodiagnosis. Ann Trop Med Parasitol. 2007 Dec 1;101(8):673–679.
- 526 17. De Marchi CR., Di Noia JM., Frasc AC., Amato Neto V, Almeida IC., Buscaglia CA.
527 Evaluation of a Recombinant *Trypanosoma cruzi* Mucin-Like Antigen for
528 Serodiagnosis of Chagas' Disease. Clin Vaccine Immunol. 2011 Nov 1;18(11):1850–
529 1855.

- 530 18. Afonso AM, Ebell MH, Tarleton RL. A Systematic Review of High Quality Diagnostic
531 Tests for Chagas Disease. *PLoS Negl Trop Dis*. 2012 Nov 8;6(11):e1881.
- 532 19. Truyens C, Dumonteil E, Alger J, Cafferata ML, Ciganda A, Gibbons L, et al.
533 Geographic Variations in Test Reactivity for the Serological Diagnosis of
534 *Trypanosoma cruzi* Infection. *J Clin Microbiol*. 2021 Nov 18;59(12):e0106221.
- 535 20. Pinto Dias JC, Novaes Ramos AJ, Dias Gontijo E, Shikanai-Yasuda MA, Rodrigues
536 Coura J, Morais Torres R, et al. Brazilian Consensus on Chagas disease. *Rev Soc*
537 *Bras Med Trop*. 2005;38(3):7–29.
- 538 21. Bern C, Montgomery SP, Herwaldt BL, Rassi A, Marin-Neto JA, Dantas RO, et al.
539 Evaluation and Treatment of Chagas Disease in the United States. A Systematic
540 Review. *JAMA*. 2007 Nov 14;298(18):2171–2181.
- 541 22. Apt W, Heitmann I, Jercic MI, Jofré L, Muñoz P, Noemí I, et al. Guías clínicas de la
542 enfermedad de Chagas 2006: Parte V. Diagnóstico de laboratorio. *Rev Chil Infectol*.
543 2008;25:378–383.
- 544 23. World Health Organization (WHO). Control of Chagas disease□: second report of
545 the WHO expert committee. Technical Report 109. Geneva: WHO; 2002.
546 http://whqlibdoc.who.int/trs/WHO_TRS_905.pdf
- 547 24. Murray KO, Saldaña MA, Gunter SM, Manzanero R, Zielinski-Gutierrez E, Herrera C,
548 et al. Diagnosis of Acute Chagas Disease in a Belizean Child with Evidence of a
549 Multiclonal *Trypanosoma cruzi* Infection. *Am J Trop Med Hyg*. 2022 Nov
550 14;107(5):992–995.

- 551 25. Brasil PE, De Castro L, Hasslocher-Moreno AM, Sangenis LH, Braga JU. ELISA
552 versus PCR for diagnosis of chronic Chagas disease: systematic review and meta-
553 analysis. BMC Infect Dis. 2010 Nov 25;10(1):337.
- 554 26. Díaz Lozano IM, De Pablos LM, Longhi SA, Zago MP, Schijman AG, Osuna A.
555 Immune complexes in chronic Chagas disease patients are formed by exovesicles
556 from *Trypanosoma cruzi* carrying the conserved MASP N-terminal region. Sci Rep.
557 2017 Mar 15;7:44451–44451.
- 558 27. Retana Moreira L, Rodríguez Serrano F, Osuna A. Extracellular vesicles of
559 *Trypanosoma cruzi* tissue-culture cell-derived trypomastigotes: Induction of
560 physiological changes in non-parasitized culture cells. PLoS Negl Trop Dis. 2019
561 Feb 21;13(2):e0007163.
- 562 28. Retana Moreira L, Prescilla-Ledezma A, Cornet-Gomez A, Linares F, Jódar-Reyes
563 AB, Fernandez J, et al. Biophysical and Biochemical Comparison of Extracellular
564 Vesicles Produced by Infective and Non-Infective Stages of *Trypanosoma cruzi*. Int J
565 Mol Sci. 2021;22(10).
- 566 29. Degraeve W, Fragoso SP, Britto C, van Heuverswyn H, Kidane GZ, Cardoso MAB, et
567 al. Peculiar sequence organization of kinetoplast DNA minicircles from *Trypanosoma*
568 *cruzi*. Mol Biochem Parasitol. 1988 Jan 1;27(1):63–70.
- 569 30. Vergara C, Muñoz G, Martínez G, Apt W, Zulantay I. Detection of *Trypanosoma cruzi*
570 by PCR in adults with chronic Chagas disease treated with nifurtimox. PLOS ONE.
571 2019 Aug 21;14(8):e0221100.

- 572 31. Duffy T, Bisio M, Altcheh J, Burgos JM, Diez M, Levin MJ, et al. Accurate Real-Time
573 PCR Strategy for Monitoring Bloodstream Parasitic Loads in Chagas Disease
574 Patients. *PLoS Negl Trop Dis*. 2009 Apr 21;3(4):e419.
- 575 32. Ledezma AP, Blandon R, Schijman AG, Benatar A, Saldaña A, Osuna A. Mixed
576 infections by different *Trypanosoma cruzi* discrete typing units among Chagas
577 disease patients in an endemic community in Panama. *PLOS ONE*. 2020 Nov
578 12;15(11):e0241921.
- 579 33. World Health Organization (WHO). Control and prevention of Chagas disease in
580 Europe. Report of a WHO Informal Consultation (jointly organized by WHO
581 headquarters and the WHO Regional Office for Europe) Geneva, Switzerland, 17–18
582 December 2009. Geneva: WHO; 2010. Report No: WHO/HTM/NTD/IDM/2010.1
583 http://www.fac.org.ar/1/comites/chagas/Chagas_WHO_Technical%20Report_16_06
584 [_10.pdf](http://www.fac.org.ar/1/comites/chagas/Chagas_WHO_Technical%20Report_16_06)
- 585 34. Real Decreto 1088/2005, de 16 de septiembre, por el que se establecen los
586 requisitos técnicos y condiciones mínimas de la hemodonación y de los centros y
587 servicios de transfusión. [Royal Decree 1088/2005 of 16 September establishing the
588 minimum technical requisites and conditions for blood donation and for blood
589 transfusion centres and services]. *Boletín Oficial del Estado*. 2005;225:31288–304.
590 Madrid: Ministerio de Sanidad y Consumo; 2005.
591 <http://www.boe.es/boe/dias/2005/09/20/pdfs/A31288-31304.pdf>. Spanish. 35. Abras
592 A, Ballart C, Fernández-Arévalo A, Pinazo MJ, Gascón J, Muñoz C, et al. Worldwide
593 Control and Management of Chagas Disease in a New Era of Globalization: a Close

- 594 Look at Congenital *Trypanosoma cruzi* Infection. Clin Microbiol Rev. 2022 Mar
595 3;35(2):e00152-21.
- 596 36. Autonomous Government of Catalonia. Protocol for screening and diagnosing
597 Chagas disease in pregnant Latin American women and their newborns.
598 Departament de Salut, Generalitat de Catalunya; 2010.
599 http://www.gencat.cat/salut/depsalut/html/en/dir3559/chagasprot_eng.pdf
- 600 37. Consellería de Sanitat de la Generalitat Valenciana. [Control regulation of congenital
601 and perinatal infections in Valencia Community]. Regulación del control de las
602 infecciones congénitas y perinatales en la Comunitat Valenciana. Circular 3/2007,
603 8-1-8/8. 2007. http://www.sp.san.gva.es/DgspPortal/docs/CIRCULAR_3_2007.pdf.
604 Spanish.
- 605 38. Maldonado C, Albano S, Vettorazzi L, Salomone O, Zlocowski JC, Abiega C, et al.
606 Using polymerase chain reaction in early diagnosis of re-activated *Trypanosoma*
607 *cruzi* infection after heart transplantation. J Heart Lung Transplant. 2004 Dec
608 1;23(12):1345–1348.
- 609 39. Feilij H, Muller L, Gonzalez Cappa SM. Direct micromethod for diagnosis of acute
610 and congenital Chagas' disease. J Clin Microbiol. 1983 Aug 1;18(2):327–330.
- 611 40. Gomes YM, Lorena VM, Luquetti AO. Diagnosis of Chagas disease: what has been
612 achieved? What remains to be done with regard to diagnosis and follow up studies?
613 2009;104(1):115–121.

- 614 41. das Neves-Pinto AY, da Costa-Valente V, Coura JR, Aldo-da Silva Valente S,
615 Verissimo-Junqueira AC, Santos LC, et al. Clinical Follow-Up of Responses to
616 Treatment with Benznidazol in Amazon: A Cohort Study of Acute Chagas Disease.
617 PLOS ONE. 2013 May 27;8(5):e64450.
- 618 42. Mora MC, Sanchez-Negrette O, Marco D, Barrio A, Ciaccio M, Segura MA, et al.
619 Early diagnosis of congenital *Trypanosoma cruzi* infection using PCR, hemoculture,
620 and capillary concentration, as compared with delayed serology. J Parasitol. 2005
621 Dec 1;91(6):1468–1473.
- 622 43. Umezawa ES, Shikanai-Yasuda MA, Gruber A, Pereira-Chiocola VL, Zingales B.
623 *Trypanosoma cruzi* defined antigens in the serological evaluation of an outbreak of
624 acute Chagas disease in Brazil (Catolé do Rocha, Paraíba). Mem Inst Oswaldo
625 Cruz. 1996 Feb;91(1):87–93.
- 626 44. Wincker P, Britto C, Pereira JB, Cardoso MA, Oelemann W, Morel CM. Use of a
627 Simplified Polymerase Chain Reaction Procedure to Detect *Trypanosoma cruzi* in
628 Blood Samples from Chronic Chagasic Patients in a Rural Endemic Area. Am J Trop
629 Med Hyg. 1994 Dec 1;51(6):771–777.
- 630 45. Zingales B. *Trypanosoma cruzi* genetic diversity: Something new for something
631 known about Chagas disease manifestations, serodiagnosis and drug sensitivity.
632 Recent Adv Genet Mol Diagn Parasit Protozoa. 2018 Aug 1;184:38–52.
- 633 46. Del-Rei RP, Leony LM, Celedon PAF, Zanchin NIT, Reis MG dos, Gomes Y de M, et
634 al. Detection of anti-*Trypanosoma cruzi* antibodies by chimeric antigens in chronic

- 635 Chagas disease-individuals from endemic South American countries. PLOS ONE.
636 2019 Apr 18;14(4):e0215623.
- 637 47. Blanco SB, Segura EL, Cura EN, Chuit R, Tulian L, Flores I, et al. Congenital
638 transmission of *Trypanosoma cruzi*: an operational outline for detecting and treating
639 infected infants in north-western Argentina. Trop Med Int Health. 2000 Apr;5(4):293–
640 301.
- 641 48. Mallimaci MC, Sosa-Estani S, Russomando G, Sanchez Z, Sijvarger C, Alvarez IM,
642 et al. Early Diagnosis of Congenital *Trypanosoma cruzi* Infection, Using Shed Acute
643 Phase Antigen, in Ushuaia, Tierra del Fuego, Argentina. Am Soc Trop Med Hyg.
644 2010 Jan 1;82(1):55–59.
- 645 49. Piron M, Fisa R, Casamitjana N, López-Chejade P, Puig L, Vergés M, et al.
646 Development of a real-time PCR assay for *Trypanosoma cruzi* detection in blood
647 samples. Acta Trop. 2007 Sep 1;103(3):195–200.
- 648 50. Marcon GEB, Andrade PD, de Albuquerque DM, Wanderley J da S, de Almeida EA,
649 Guariento ME, et al. Use of a nested polymerase chain reaction (N-PCR) to detect
650 *Trypanosoma cruzi* in blood samples from chronic chagasic patients and patients
651 with doubtful serologies. Diagn Microbiol Infect Dis. 2002 May 1;43(1):39–43.
- 652 51. Diez M, Favaloro L, Bertolotti A, Burgos JM, Vigliano C, Lastra MP, et al. Usefulness
653 of PCR Strategies For Early Diagnosis of Chagas' Disease Reactivation and
654 Treatment Follow-Up in Heart Transplantation. Am J Transplant. 2007
655 Jun;7(6):1633–1640.

- 656 52. Junqueira ACV, Chiari E, Whicker P. Comparison of the polymerase chain reaction
657 with two classical parasitological methods for the diagnosis of Chagas disease in an
658 endemic region of north-eastern Brazil. *Trans R Soc Trop Med Hyg.* 1996
659 Mar;90(2):129–132.
- 660 53. Pereira MB, Batista AM, Aguiar C, Marcon GEB, Martins LC, Guariento ME, et al.
661 The detection of *Trypanosoma cruzi* by nested-PCR in elderly patients: relationship
662 to the clinical and epidemiological profile. *Pathog Glob Health.* 2016 Aug
663 17;110(6):228–232.
- 664 54. Ribeiro-Dos-Santos G, Nishiya AS. An improved, PCR-based strategy for the
665 detection of *Trypanosoma cruzi* in human blood samples. *Ann Trop Med Parasitol.*
666 1999 Oct 1;93(7):689–694.
- 667 55. Riera C, Guarro A, Kassab HE, Jorba JM, Castro M, Angrill R, et al. Congenital
668 transmission of *Trypanosoma cruzi* in Europe (Spain): a case report. *Am J Trop Med*
669 *Hyg.* 2006 Dec;75(6):1078–1081.
- 670 56. Burgos JM, Altcheh J, Petrucelli N, Bisio M, Levin MJ, Freilij H, et al. Molecular
671 diagnosis and treatment monitoring of congenital transmission of *Trypanosoma cruzi*
672 to twins of a triplet delivery. *Diagn Microbiol Infect Dis.* 2009 Sep 1;65(1):58–61.
- 673 57. Russomando G, Figueredo A, Almirón M, Sakamoto M, Morita K. Polymerase chain
674 reaction-based detection of *Trypanosoma cruzi* DNA in serum. *J Clin Microbiol.* 1992
675 Nov;30(11):2864–2868.

- 676 58. Weerakoon KG, McManus DP. Cell-Free DNA as a Diagnostic Tool for Human
677 Parasitic Infections. *Trends Parasitol.* 2016 May;32(5):378–391.
- 678 59. Woith E, Fuhrmann G, Melzig MF. Extracellular Vesicles—Connecting Kingdoms. *Int*
679 *J Mol Sci.* 2019;20(22):5695.
- 680 60. Théry C, Witwer KW, Aikawa E, Alcaraz MJ, Anderson JD, Andriantsitohaina R, et
681 al. Minimal information for studies of extracellular vesicles 2018 (MISEV2018): a
682 position statement of the International Society for Extracellular Vesicles and update
683 of the MISEV2014 guidelines. *J Extracell Vesicles.* 2018 Dec 1;7(1):1535750.
- 684 61. Boukouris S, Mathivanan S. Exosomes in bodily fluids are a highly stable resource of
685 disease biomarkers. *PROTEOMICS - Clin Appl.* 2015 Apr;9(3–4):358–367.
- 686 62. Cappello F, Logozzi M, Campanella C, Bavisotto CC, Marcilla A, Properzi F, et al.
687 Exosome levels in human body fluids: A tumor marker by themselves? *Eur J Pharm*
688 *Sci.* 2017 Jan;96:93–98.
- 689 63. Taylor DD, Gercel-Taylor C. The origin, function, and diagnostic potential of RNA
690 within extracellular vesicles present in human biological fluids. *Front Genet.* 2013 Jul
691 30;4:142.
- 692 64. Vlassov AV, Magdaleno S, Setterquist R, Conrad R. Exosomes: Current knowledge
693 of their composition, biological functions, and diagnostic and therapeutic potentials.
694 *Biochim Biophys Acta BBA - Gen Subj.* 2012 Jul;1820(7):940–948.
- 695 65. Inamdar S, Nitiyanandan R, Rege K. Emerging applications of exosomes in cancer
696 therapeutics and diagnostics. *Bioeng Transl Med.* 2017 Mar;2(1):70–80.

697 66. Luo R, Liu M, Yang Q, Cheng H, Yang H, Li M, et al. Emerging Diagnostic Potential
698 of Tumor-derived Exosomes. *J Cancer*. 2021;12(16):5035–5045.

699 67. Wang X, Tian L, Lu J, Ng IOL. Exosomes and cancer - Diagnostic and prognostic
700 biomarkers and therapeutic vehicle. *Oncogenesis*. 2022 Sep 15;11(1):54.

701 68. Cho SM, Shin S, Kim Y, Song W, Hong SG, Jeong SH, et al. A novel approach for
702 tuberculosis diagnosis using exosomal DNA and droplet digital PCR. *Clin Microbiol*
703 *Infect*. 2020 Jul;26(7):942.e1-942.e5.

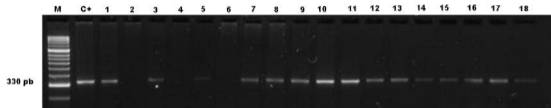
704 SUPPORTING INFORMATION CAPTIONS

705 Table S1. Patients information

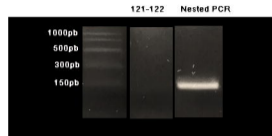
706 Table S2. Patients age ranges

707 Table S3. Distribution of origin in Bolivia in regions

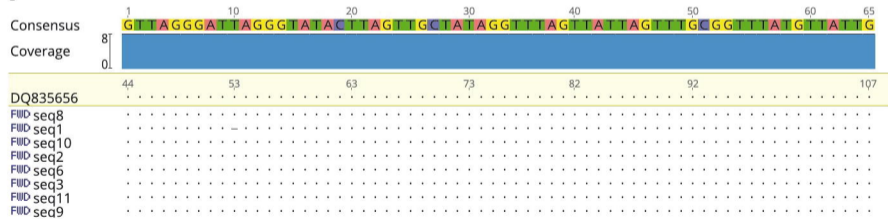
A

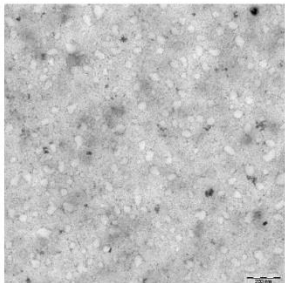


B



C



A**B**