

# Pharmacometric assessment of primaquine induced haemolysis in glucose-6-phosphate dehydrogenase deficiency

Sasithon Pukrittayakamee<sup>a,b</sup>, Podjane Jittamala<sup>a,b</sup>, James A Watson<sup>c,d</sup>, Borimas Hanboonkunupakarn<sup>a,b</sup>, Pawanrat Leungsinsiri<sup>a</sup>, Kittiyod Poovorawan<sup>a,b</sup>, Kesinee Chotivanich<sup>a,b</sup>, Germana Bancone<sup>c,e</sup>, Cindy S Chu<sup>c,e</sup>, Mallika Imwong<sup>f</sup>, Nicholas PJ Day<sup>b,c</sup>, Walter RJ Taylor<sup>b,c\*</sup>, Nicholas J White<sup>b,c\*</sup>

\*For correspondence: bob@tropmedres.ac; nickw@tropmedres.ac

<sup>a</sup> Clinical Therapeutics Unit, Faculty of Tropical Medicine, Mahidol University, Bangkok, 10400, Thailand;

<sup>b</sup> Mahidol Oxford Tropical Medicine Research Unit, Faculty of Tropical Medicine, Mahidol University, Bangkok, 10400, Thailand;

<sup>c</sup> Centre for Tropical Medicine and Global Health, Nuffield Department of Medicine, University of Oxford, New Richards Building, Old Road Campus, Roosevelt Drive, Oxford, OX3 7LG, UK;

<sup>d</sup> Oxford University Clinical Research Unit, Hospital for Tropical Diseases, Ho Chi Minh City, Vietnam;

<sup>e</sup> Shoklo Malaria Research Unit, Mahidol Oxford Tropical Medicine Research Unit, Faculty of Tropical Medicine, Mahidol University, Mae Sot, Thailand;

<sup>f</sup> Department of Molecular Tropical Medicine and Genetics, Faculty of Tropical Medicine, Mahidol University, Bangkok, Thailand.

## Abstract

**Background** Primaquine is the only widely available treatment to prevent relapses of *Plasmodium vivax* malaria, but is underused because of concerns over haemolysis in glucose-6-phosphate dehydrogenase deficient (G6PDd) individuals. G6PDd is common in malaria endemic areas but testing is often not available.

**Methods** We conducted a pharmacometric study to characterise the relationship between primaquine dose and haemolysis in G6PDd. The aim was to explore shorter and safer primaquine radical cure regimens compared to those currently recommended, potentially obviating the need for G6PD testing. Hemizygous G6PDd healthy adult Thai male volunteers were admitted to the Hospital for Tropical Diseases in Bangkok. In Part 1, volunteers were given ascending dose primaquine regimens whereby daily doses were increased from 7.5 mg up to 45 mg over 15 to 20 days. In Part 2, a single primaquine 45 mg dose was given.

**Results** 24 volunteers were enrolled in Part 1, and 16 in Part 2 (13 participated in both studies). In three volunteers the ascending dose regimen was stopped because of primaquine related safety concerns (two had increased levels of transaminases, one haemolysis). Otherwise the ascending regimens were well tolerated with no drug-related serious adverse events. In Part 1, haemoglobin concentrations fell 3.7 g/dL (median; range: 2.1 to 5.9; relative fall of -26% [range: -15 to 40%]). Primaquine doses up to 0.87 mg/kg/day were tolerated subsequently without clinically significant further falls in haemoglobin. In Part 2, the haemoglobin concentrations fell by 1.7 g/dL (median; range -0.9 to 4.1; relative fall of 12% [range: 7 to 30%]). The ascending dose primaquine regimens gave 7 times more drug but resulted in only double the haemoglobin fall.

**Conclusions and Interpretation** In patients with Southeast Asian G6PDd variants full radical cure treatment can be given in under three weeks compared with the current 8 week regimen.

**Funding** MRC (MR/R015252/1); Wellcome (223099/Z/21/Z)

## 1 Background

2 Over the past 70 years primaquine has been the only drug widely available to prevent relapses of  
3 *Plasmodium vivax* and *P. ovale* malaria (radical cure). Primaquine has been given to hundreds of  
4 millions of patients in single doses to prevent *P. falciparum* transmission, in 5 to 14 day courses  
5 for radical cure of vivax and ovale malarias, and during mass treatments [1]. The main adverse  
6 effect of primaquine, and the other 8-aminoquinoline antimalarials, is dose-dependent oxidant  
7 haemolysis in individuals with glucose-6-phosphate dehydrogenase (G6PD) deficiency [2, 3]. As  
8 G6PD deficiency is common in malaria endemic regions, primaquine is underused because reliable  
9 point-of-care testing for G6PD deficiency is usually not available [4] and prescribers are naturally  
10 reluctant to risk causing serious haemolysis. Relapses are a major cause of morbidity. They cause  
11 chronic anaemia [5], and are an important source of *P. vivax* transmission. The underuse of  
12 primaquine contributes to substantial morbidity and failure to control and eliminate vivax malaria  
13 in endemic areas.

14 G6PD deficiency is the most common red blood cell enzyme deficiency of humans [2]. G6PD  
15 deficiency is present mainly in malaria endemic or historically endemic regions [6]. Mutations in  
16 the *G6PD* gene on the X chromosome confer reduced enzyme stability. This results in impaired  
17 erythrocyte defences against oxidant stresses and thereby increases the risk of haemolysis of older  
18 G6PD depleted erythrocytes. More severe G6PD deficiency variants are associated with greater  
19 drug induced haemolysis as a broader erythrocyte age range is G6PD depleted [7]. Their sub-  
20 stantial haemolytic risk means that the standard 7-14 day radical cure primaquine regimens are  
21 contraindicated in G6PD deficiency [8–11].

22 Seminal clinical investigations were conducted over 50 years ago in adults with the African A-  
23 variant of G6PD deficiency. These showed that oxidant haemolysis affected the older erythrocytes,  
24 and suggested a therapeutic strategy of controlled haemolysis which would limit the degree of  
25 anaemia by allowing time for the compensatory erythropoetic response [12, 13]. This was the  
26 underlying rationale for the once weekly primaquine regimen of 0.75 mg base/kg for 8 weeks  
27 currently recommended in patients with G6PD deficiency. However, the safety of this regimen in  
28 more severe G6PD deficiency variants was never established. Over the past fifty years there has  
29 been substantial variation in national policies and practices. Some countries (e.g. Iran, Myanmar),  
30 which did not have G6PD testing in endemic areas, have recommended the once weekly regimen as  
31 standard practice for all vivax malaria cases. Other countries have recommended giving standard  
32 courses of primaquine without testing, although this recommendation is often not followed. A  
33 recent small cohort study of the weekly primaquine regimen in 18 G6PD deficient (17 had the  
34 871G>A [Viangchan] variant) and 57 G6PD normal adult vivax malaria patients in Cambodia  
35 suggested that single 45 mg doses may not be safe in the more severe G6PD deficiency variants  
36 [14]. A quarter of the G6PD deficient patients had a >25% fall in haemoglobin (compared to none  
37 in the G6PD normal group) and one patient required a blood transfusion (haemoglobin fell to 7.5  
38 g/dL) .

39 To develop an alternative shorter and potentially safer approach to primaquine dosing in G6PD  
40 deficiency, we conducted an adaptive pharmacometric study with the goal of characterising the  
41 dose-response relationship for primaquine induced haemolysis in G6PD deficient subjects.

## 42 Methods

### 43 Trial design

44 This was a two part study conducted in Bangkok of primaquine in hemizygote G6PD deficient  
45 male healthy volunteers. Part 1 evaluated ascending doses of primaquine and was adaptive. The  
46 primaquine regimen was titrated based on the observed incremental haemoglobin changes observed  
47 in the previous participants, continuous safety evaluation by the investigators, and a set of guid-  
48 ing pre-specified rules. This iterative adaptive approach accumulated information to refine the  
49 successive regimens. The primary consideration throughout the trial was participant safety. In  
50 Part 2 of the study, after a wash-out period of at least 6 months, a single 45 mg (base equivalent)  
51 primaquine dose was given, and the volunteers were monitored as in Part 1.

## 52 Ethics statement

53 The two parts of this study were approved as separate studies. Both parts were approved by the  
54 Faculty of Tropical Medicine's Ethics Committee (MUTM 2017-036-01 and MUTM 2021-031-02)  
55 and the Oxford Tropical Research Ethics Committee (OxTREC, number 48-16). The study proto-  
56 cols were pre-registered on the Thai Clinical Trial Registry (TCTR, numbers TCTR20170830002  
57 and TCTR20220317004).

## 58 Study site and participants

59 The study took place in the Clinical Therapeutics Unit volunteer ward in the Hospital for Tropical  
60 Diseases, Faculty of Tropical Medicine, Mahidol University, Bangkok, Thailand. The recruitment  
61 and follow up periods were from November 2018 to October 2020 (Part 1) and June to September  
62 2022 (Part 2). This coincided with the COVID-19 pandemic. A COVID-19 mitigation plan was  
63 implemented when local lockdown was lifted.

64 Healthy male volunteers were recruited if they were willing to comply with and complete the  
65 study protocol, had a G6PD enzyme activity <30% of the population median value determined  
66 by a validated quantitative spectrophotometric G6PD assay, a genotype confirmed G6PD variant  
67 (according to a previously published method [15]), and were aged between 18 and 65 years with  
68 a screening haemoglobin concentration >11 g/dL. Detailed exclusion criteria are provided in the  
69 Supplementary Materials.

## 70 Trial procedures

### 71 Enrollment and primaquine dosing

72 The risks and the rationale of the study were explained in detail to potential volunteers, who were  
73 enrolled if they gave fully informed written consent and agreed to the complete study procedures.  
74 It was explained that they could withdraw from the study at any time if they wished. Primaquine  
75 phosphate (Thailand Government Pharmaceutical Organization, Bangkok, Thailand) was provided  
76 as tablets containing either 5 or 15 mg primaquine base equivalent. A tablet cutter was used to  
77 split the tablets (smallest dose increment was 2.5 mg base equivalent). Primaquine was given orally  
78 following a standardised light snack and subjects were observed for the first 4 hours.

79 **Part 1** We recruited in cohorts of five volunteers, with an interval of two weeks between cohorts  
80 to allow sufficient time to analyse the data and determine the next primaquine regimen. The  
81 overall goal was to increase the daily primaquine doses and cause gradual haemolysis which was  
82 offset by concomitant reticulocytosis, steadily reducing the age of the red cell population and  
83 thereby avoiding precipitous symptomatic falls in the haemoglobin concentration [12, 13]. The  
84 cumulative total primaquine dose given needed to be sufficient to provide a radical curative effect  
85 in the treatment of vivax malaria (i.e. between 5 and 7 mg base/kg). Careful monitoring was done  
86 throughout to assess the degree of haemolysis and adjust or stop the dosing as required. The dose  
87 regimens in this exploratory investigation (Part 1) were adapted as follows.

88 The primaquine regimen given to the first five volunteers consisted of four cycles of 5 days  
89 daily primaquine dosing (i.e. total 20 days). The ascending doses were 7.5, 15, 22.5 and 30 mg  
90 base equivalent, respectively. This initial dose regimen was chosen on the basis of a mathematical  
91 model of primaquine induced haemolysis in G6PD deficiency using data from malaria patients who  
92 had received single 45 mg primaquine doses [14, 16]. Subjects proceeded to the next higher dose  
93 cycle if they satisfied several prospectively defined safety criteria (Supplementary Figure S4). In  
94 this first round the total dose was 375 mg base equivalent. The results of the first five volunteers  
95 were reviewed and the dosing regimens adjusted. This iterative process of review and adjustment  
96 continued thereafter. The once daily dosing in each cycle was increased in increments of 2.5 mg  
97 or 7.5 mg (not adjusted for body weight). Once it became clear this rate of dose increase was  
98 generally well tolerated, the number of days per cycle was reduced to 3 or 4 days in subsequent  
99 subjects to test regimens of shorter duration with faster dose escalation. Subjects were reviewed  
100 clinically before each dose increase.

101 **Part 2** In Part 2, a single dose of 45 mg primaquine base equivalent was administered, with  
102 similar careful monitoring in hospital for one week.

### 103 **Monitoring procedures/evaluations**

104 In both studies, volunteers were observed closely. In Part 1, all volunteers were admitted to the  
105 ward for 28 days with a subsequent follow-up visit on day 49. For Part 2, at least 6 months later,  
106 volunteers were re-admitted for 24 hours on day 0, reviewed daily until day 7, and then again on  
107 day 14.

108 At enrollment all volunteers underwent a detailed clinical examination. Thereafter, at each  
109 assessment volunteers were asked how they felt, had their vital signs measured, and two blood  
110 samples were taken for haemoglobin concentration (HemoCue<sup>®</sup>, Ängelholm, Sweden), and the  
111 average of the two was recorded. Blood methaemoglobin (%) was measured at least once daily  
112 using a Masimo Rad 57 oximeter<sup>®</sup>, and urine colour was recorded twice daily. Haemoglobinuria was  
113 assessed visually using a modified Hillmen score [17]. Wright-Giemsa stained and new methylene  
114 blue stained blood films were prepared for red cell morphology, and reticulocyte and Heinz body  
115 counts, respectively. In Part 1 these were done daily from day 0 (day of first primaquine dose)  
116 until day 20, and then on days 22, 24, 26, and 28, and finally on day 49. In Part 2 they were done  
117 at every visit. Other laboratory investigations included a full blood count (CBC) and reticulocyte  
118 count, plasma biochemistry (including LDH and haptoglobin), plasma haemoglobin, and plasma  
119 samples were taken for the measurement of primaquine and carboxyprimaquine concentrations. In  
120 Part 1 these were done at screening and then every 3-5 days (start of each new cycle, i.e. dosing  
121 increment); in Part 2 they were done at screening, days 3, 7 and 14.

122 Haemoglobin electrophoresis and genotyping of the common cytochrome P450 2D6 (CYP2D6)  
123 genotypes found in SE Asia was also performed. Presumptive alpha-thalassaemia (which is very  
124 common in Thailand) was defined as a mean cell volume less than 80 fl or a mean cell haemoglobin  
125 < 27 pg, and HbA2 ≤4.4%. Additional laboratory measurements were taken if unplanned dose  
126 adjustments were necessary, or there was a clinical indication.

### 127 **Safety monitoring and stopping rules for Part 1**

128 The pre-specified rules for adjusting primaquine dose regimens across cohorts in Part 1 are illus-  
129 trated in Supplementary Figure S3, and for increasing primaquine doses for each enrolled subject  
130 are shown in Supplementary Figure S4. The overall aim was to titrate dosing in order to obtain  
131 small daily falls in haemoglobin of between 0.1 and 0.2 g/dL. For a given subject, primaquine  
132 doses were increased only if the haemoglobin concentration was >9 g/dL, was greater than 70%  
133 of baseline, the urine Hillmen score was ≤5, and the subject felt well and had no symptoms of  
134 anaemia.

135 We defined haemolysis which would result in stopping primaquine (study withdrawal), as any  
136 one of the following:

- 137 • >40% fall in haemoglobin from baseline;
- 138 • a haemoglobin below 8 g/dL (irrespective of symptoms);
- 139 • a fall in haemoglobin associated with clinically significant signs of haemolysis: jaundice,  
140 passing dark urine (Hillmen colour ≥6), evidence of acute renal injury (≥2 fold increase in  
141 serum creatinine from baseline), or hyperkalaemia (serum potassium >5.2 mmol/L).

142 Any individual whose laboratory tests met these criteria remained in hospital and was monitored  
143 closely until resolution of signs and symptoms, and haemoglobin concentrations had reached at least  
144 10 g/dL. Blood transfusion was available at any time if needed if volunteers had a symptomatic  
145 fall in haemoglobin to below 8g/dL.

146 An Independent Drug Safety Monitoring Board was established to review the data after each  
147 cohort had completed their follow up and gave feedback before the next cohort was allowed to  
148 proceed. For both studies, adverse events were recorded and graded using the Common Toxicity  
149 Criteria v 5.0 for grading adverse events.

### 150 **Sample size**

151 As this was an exploratory proof-of-concept, adaptive dose optimisation pharmacometric and safety  
152 study in healthy G6PD deficient males, there was no formal sample size calculation. We reasoned  
153 that if the tested primaquine regimens were well tolerated in 20 volunteers (i.e. 4 cohorts), this  
154 would provide preliminary evidence for the safety and the feasibility of this approach. In addition



155 the rich longitudinal data could then be used to develop an intra-host model to design optimal  
156 ascending regimens [16].

## 157 Statistical analysis

158 All data analysis was done in R version 4.2.2. The baseline value for each continuous measure-  
159 ment was defined as the mean of the screening and day 0 measurement (if taken before 1 hour  
160 post first primaquine dose). Haemoglobin was measured using Haemocue® (daily, two samples)  
161 and using a laboratory processed complete blood count (CBC, every 4-5 days). The daily mean  
162 haemoglobin was calculated as the mean of the Haemocue® (itself the mean of the two values) and  
163 the haemoglobin concentration from the CBC (if no CBC was done then just the mean haemocue  
164 value). The baseline haemoglobin was then calculated as the mean of the daily values at screening  
165 and on day 0.

## 166 Data Sharing Statement

167 All analysis code and data are available via an accompanying github repository: [https://github.](https://github.com/jwatowatson/Primaquine-Challenge)  
168 [com/jwatowatson/Primaquine-Challenge](https://github.com/jwatowatson/Primaquine-Challenge).

## 169 Results

### 170 Study population

171 Of 215 potential subjects (either identified through hospital records or screened at the walk-in  
172 clinic for G6PD deficiency), 27 male hemizygote G6PD deficient volunteers were enrolled to the  
173 two sub-studies between November 2018 and August 2022. In subjects who were interested in  
174 participating in the study, there were 2 screening failures (1 unidentified G6PD genotype and 1  
175 elevated AST/ALT), see CONSORT diagrams in Supplementary Figures S1 and S2. The COVID-  
176 19 pandemic interrupted the end of Part 1 and delayed finishing the study by two years, resulting in  
177 a substantially longer interval between test regimens than planned. After the lockdowns, fewer than  
178 anticipated Part 1 participants could be recontacted for Part 2, so three additional volunteers were  
179 recruited. The volunteer baseline summary characteristics are shown in Table 1. All volunteers had  
180 low to unmeasurable G6PD enzyme activity. The most common G6PD deficiency genetic variant  
181 was Viangchan (871G>A,  $n=12$ ), as it is in much of the eastern Greater Mekong subregion. This  
182 was followed by Canton (1376G>T,  $n=5$ ) and Mahidol (487G>A,  $n=4$ ). The majority of subjects  
183 had screening reticulocyte counts over 2%, i.e. above the normal range (17/24 in Part 1 and 5/16  
184 in Part 2). Poor *CYP2D6* metaboliser genotype (homozygous \*10) were identified in 8/27 (30%)  
185 of the volunteers.

### 186 Ascending dose primaquine (Part 1)

187 Of 24 volunteers assigned ascending dose primaquine regimens, 23 were included in the analysis  
188 (Supplementary Figure S1). Volunteer number 18 was withdrawn from the study after 3 days of  
189 receiving 10 mg of primaquine daily because of severe back pain due to a MRI confirmed prolapsed  
190 intervertebral disc that improved with symptomatic treatment. He was not followed up and did  
191 not participate in Part 2; as this was considered unrelated to drug administration and the total  
192 primaquine dose was very low his data were excluded from the primary outcome analysis. There  
193 were no changes in his haemoglobin over the three days of primaquine dosing. The remaining  
194 23 subjects in the primary analysis population received ascending primaquine dose regimens of  
195 between 11 and 20 days duration.

### 196 Safety concerns resulting in study withdrawal

197 There were no serious adverse effects or complications. In three subjects (13%), the ascending dose  
198 primaquine regimen was stopped because of safety concerns; one for excessive haemolysis and two  
199 because of abnormal liver function tests (elevated transaminases). After receiving 11 doses of a  
200 16-day regimen, subject 11 (*G6PD* Union) reached a fractional haemoglobin fall from baseline of  
201 39.5% (8.9 g/dL vs. 14.7 g/dL at baseline), associated with marked fatigue. This decrease met  
202 the stopping rule for study withdrawal (dose limiting toxicity, see supplementary Figure S4). He

	Part 1 - Ascending dose	Part 2 - Single 45 mg dose	Overall
<i>n</i>	24	16	27
Age (years)	32 (18 - 55)	34 (20-58)	32 (18-58)
Weight (kg)	64 (46 - 86)	64 (52-86)	64 (46-86)
<i>G6PD</i> genotype			
Viangchan (871G>A)	12	6	12
Mahidol (487G>A)	4	2	4
Canton (1376G>T)	4	3	5
Aures (143T>C)	1	1	1
Chinese-4 (392G>T) <sup>†</sup>	1	0	1
Orissa (131C>G)	1	1	1
Union (1360C>T)	1	2	2
Kaiping (1388G>A)	0	1	1
<i>G6PD</i> enzyme activity (U/g Hb)	0.15 (0-1.9)		
Haemoglobin (g/dL)	14.3 (11.8 - 15.8)	14.0 (12.3 - 15.9)	
Red cell count (x10 <sup>12</sup> per L)	4.9 (4.2-6.0)	5.1 (3.9-5.9)	
Reticulocyte count (%)	2.4 (1.1-4.0)	2.4 (1.0 - 2.9)	
Platelet count (x1000 per uL)	285 (190-424)	289 (174 - 412)	
Total white blood cell count (x1000 per uL)	6.6 (4.8-9.3)	6.6 (5.2-8.4)	
Blood methaemoglobin (%)	0.5 (0-1.5)	0.7 (0-1.4)	
AST (U/L)	23 (15-60)	21 (14-36)	
ALT (U/L)	26 (10-85)	22 (11-47)	
Plasma creatinine (mg/dL)	0.9 (0.8-1.1)	1.0 (0.7-1.1)	
Total bilirubin (mg/dL)	0.6 (0.3-1.6)	0.7 (0.3-1.3)	
Haptoglobin (g/L)	1.1 (0.5-1.7)	1.1 (0.5-1.7)	
<i>CYP2D6</i> genotypes			
*10/*10	6	4	8
*2/*10	7	4	7
*1/*10	6	4	7
*1/*2	3	3	3
*1/*1	2	1	2
Haemoglobin E trait <sup>‡</sup>	7	4	7
Presumptive alpha-thalassaemia*	5	5	7

Table 1: Baseline characteristics of the healthy male volunteers. For the continuous variables we show the median (range). Of the 27 volunteers, 13 participated in both sub-studies. <sup>†</sup>also known as Quing Yan [18].<sup>‡</sup>haemoglobin typing done by electrophoresis in part 1 only. \*see definition in Methods.

203 developed a substantial reticulocytosis (15%). Over the next five days, his haemoglobin remained  
204 at  $\sim 9$  g/dL (nadir observed haemoglobin was 8.8 g/dL corresponding to a 40% decrease from  
205 baseline) and rose thereafter to 13.0 g/dL (day 28) and 14.9 g/dL by day 49 (Supplementary  
206 Figure S6). The haemoglobinuria Hillmen score peaked at 4 on day 10 and was 3 on day 12,  
207 dropping back to 1 on day 13 (Supplementary Figure S7).

208 Volunteer 7, who was receiving a 20-day regimen, developed an ALT of 207 U/L ( $>5$  times  
209 ULN, grade 3) and AST of 89 U/L ( $>2$  times ULN, grade 1) on day 16 and so primaquine was  
210 stopped (Supplementary Figure S8). There was no further increase in serum bilirubin and he  
211 remained asymptomatic. His haemoglobin was 11 g/dL at the time of withdrawal (baseline: 14.3  
212 g/dL; 23% fall); he was subsequently lost to follow up. Volunteer 14 (16-day regimen) developed  
213 an ALT of 423 U/L ( $>10$  ULN, grade 3) and AST 229 U/L ( $>5$  times ULN, grade 3) on day 11.  
214 His haemoglobin was also 11 g/dL (baseline: 13.9; 21% fall). There was no further increase in  
215 serum bilirubin and he also remained asymptomatic. His ALT and AST then decreased, reaching  
216 87 and 36 U/L by day 28, respectively (Supplementary Figure S7). All investigations for hepatitis  
217 viruses were negative. Inpatient liver ultrasound scans showed fatty liver in both volunteers.

## 218 Dose adjustments

219 In a further three subjects the intended ascending dose regimen was not completed as they had  
220 haemoglobin falls of 30 to 40% relative to baseline (Supplementary Figure S3). Subject 13 (16 day  
221 regimen assigned) did not escalate from 30 mg to 45 mg on day 15 but stayed at 30 mg until day 16  
222 (33 and 34% fall from baseline haemoglobin on day 15 and 16 respectively). Subject 23 was given  
223 an additional day at 30 mg (day 12 as the day 11 haemoglobin gave a 32% fall from baseline), and  
224 subject 24 remained at 22.5 mg from day 7 to day 14 (instead of escalating to 30 and then 45 mg)  
225 as he had a fall in haemoglobin between 30 and 33%.

## 226 Haemolysis

227 The median absolute fall in haemoglobin from baseline was 3.7 g/dL (range: 2.1 to 5.9), corre-  
228 sponding to a median relative decrease of 26% (range: 15 to 40), Figure 1 panels b and d. The  
229 median day of haemoglobin nadir was 16 days after starting primaquine (range: 11 to 20). There  
230 was substantial variation between individuals, including between those with the same G6PD geno-  
231 type. For example, volunteer 15 (Viangchan) received 6.8 mg/kg primaquine over 16 days and  
232 his haemoglobin dropped around 25% (baseline was 13.6 g/dL; nadir of 10.1 g/dL was reached  
233 approximately by day 11); whereas volunteer 20 (also Viangchan) received 5.4 mg/kg over 15 days  
234 (slightly faster escalation using the same doses but he was 12 kg heavier), but his haemoglobin fell  
235 around 40% (baseline was 15.0 g/dL; nadir of 9.2 g/dL was reached by day 15), Supplementary  
236 Figure S5. None of the subjects had a fall of haemoglobin below 8 g/dL and none developed frank  
237 haemoglobinuria (Hillmen  $\geq 6$ ). Peak reticulocytosis occurred at approximately the same time as  
238 the haemoglobin nadir (day 16; range: 11 to 20), with a median peak reticulocyte count of 10.3%  
239 (range: 4.2 to 16.8), Figure 1 panel c.

## 240 Part 2: single high-dose primaquine

241 Following a single 45 mg base equivalent dose of primaquine (mg/kg doses ranged from 0.52 to  
242 0.87), there was a marked fall in haemoglobin concentrations reaching a median observed nadir on  
243 day 6 (range: day 4 to 7). The median total fall from baseline was -1.7 g/dL (range: -0.9 to -4.1),  
244 corresponding to a median relative decrease of -12% (range: -7 to -30%), see Figure 2. The largest  
245 daily falls in haemoglobin following the single dose were on day 3 (median fall in haemoglobin on  
246 day 3 was -0.73 g/dL, Figure 3). The reticulocyte response was characterised by a gradual rise with  
247 most volunteers having their observed peak proportions on day 7 (range day 4 to 14). The largest  
248 fall in haemoglobin, and greatest rise in reticulocyte count occurred in subject 13 who was *G6PD*  
249 Canton (absolute fall of -4.1 g/dL; baseline haemoglobin was 13.6 g/dL, their day 7 haemoglobin  
250 was 9.5 g/dL; relative fall of 30%). This subject did not participate in Part 1 so there are no  
251 ascending dose data with which to compare.

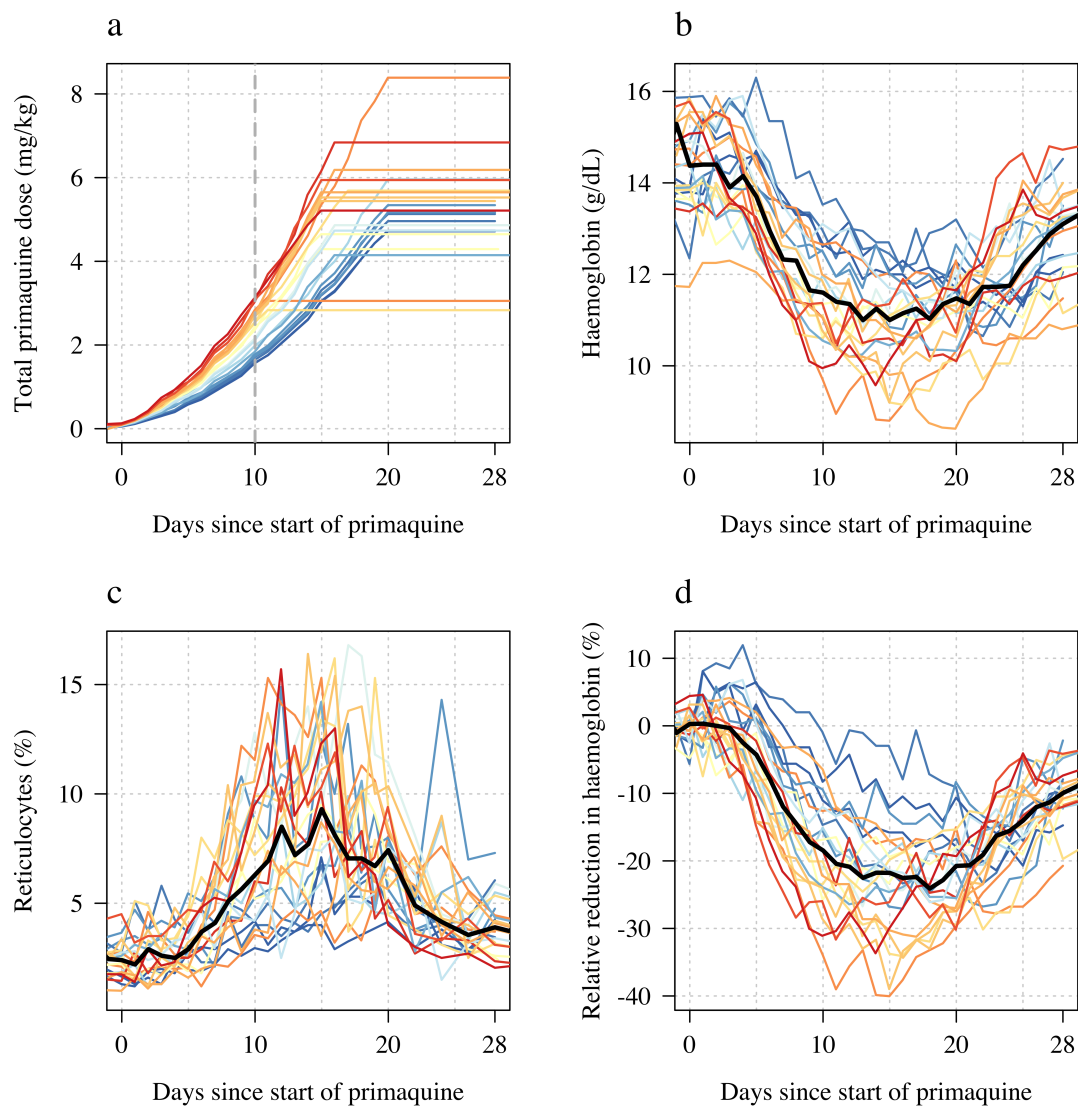


Figure 1: Ascending dose study in 23 male hemizygote G6PD deficient healthy volunteers included in the primary analysis. Colours from blue to red are in order of increasing day 10 total cumulative primaquine dose as shown in panel a (cumulative primaquine doses over time). Panels b & c show the absolute haemoglobin values and reticulocyte counts over time; panel d shows the relative change in haemoglobin over time. The thick black lines in panels b-d show the daily median values.

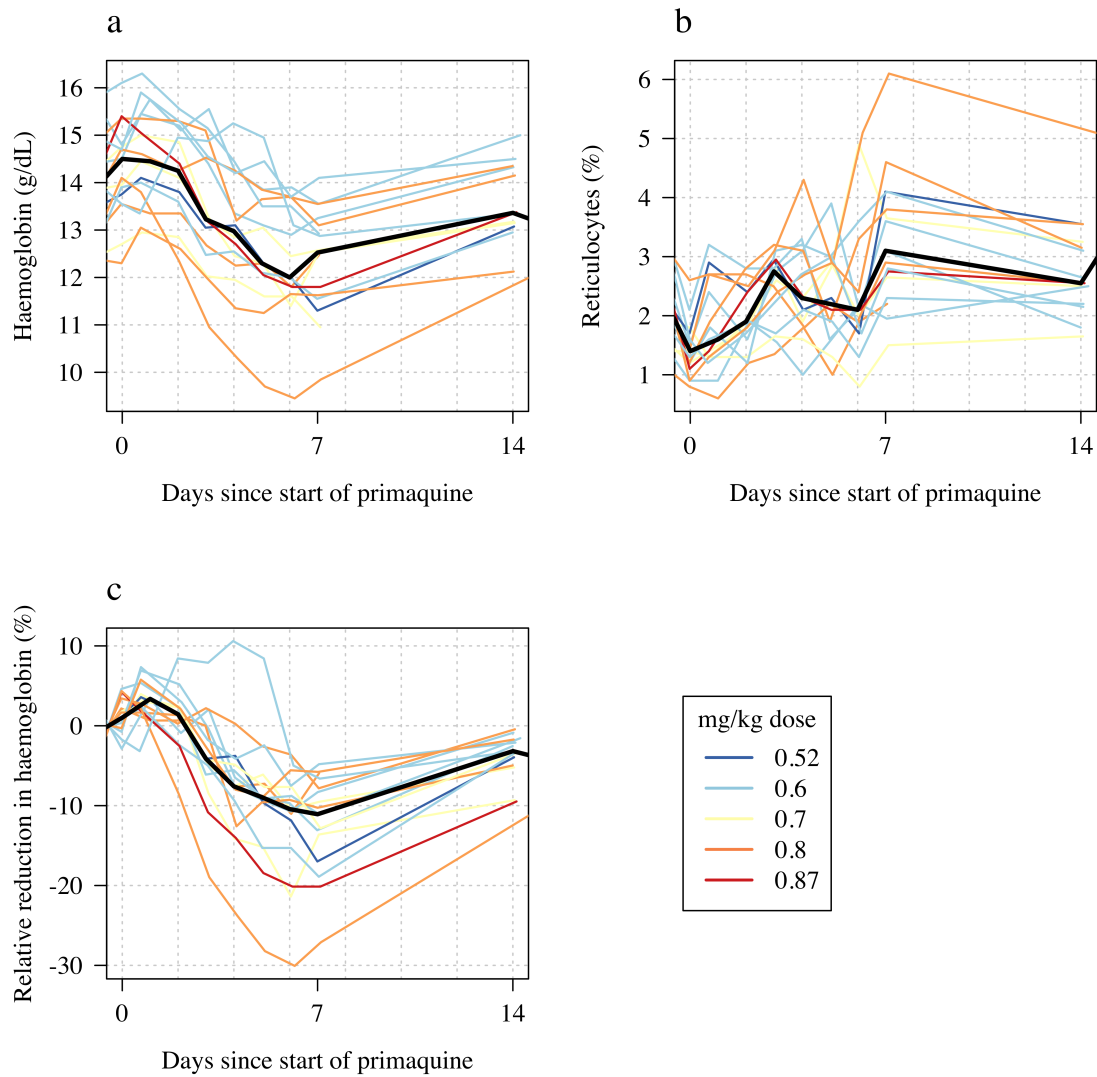


Figure 2: Haemolytic effect of a 45 mg single primaquine dose in 16 male hemizygote G6PD deficient healthy volunteers. Colours from blue to red are in order of increasing mg/kg dose. Panel a: absolute haemoglobin values; panel b: reticulocyte counts; panel c: relative change in haemoglobin from baseline. . The thick black lines in panels a-c show the daily median values.



## 252 Comparison of ascending and single dose primaquine regimens

253 Figure 3 shows the maximum observed absolute and relative falls in haemoglobin as a function of  
254 the total primaquine dose across the two studies. Overall, the median fall in the single dose cohort  
255 was nearly half that of the median fall in the ascending dose group, whereas the median total dose  
256 in the single dose cohort was only 14% of the median total dose in the ascending dose cohort.  
257 Although the subjects receiving a single 45 mg dose had smaller absolute falls in haemoglobin,  
258 they experienced earlier and greater daily falls (bottom panels of Figure 3). The greatest median  
259 falls in haemoglobin in Part 1 were on days 6 and 7 (-0.55 and -0.57 g/dL, respectively), whereas  
260 the median fall on day 3 (day with the largest median fall) in the single dose cohort was -0.73  
261 g/dL. Two subjects receiving the 45 mg single dose had daily haemoglobin falls of nearly 2 g/dL.

## 262 Haemolysis dose-response relationship

263 We summarised each ascending dose regimen in Part 1 by the cumulative dose of primaquine  
264 received by day 10. This summary exposure statistic was chosen following graphical visualisation  
265 of the haemoglobin data, which showed that the most substantial haemolysis had occurred by  
266 day 10 of the study (Figure 1b). In the 23 volunteers, the day 10 cumulative dose varied from 1.7  
267 mg/kg to 3.5 mg/kg, with a median value of 2.6 mg/kg. The day 10 cumulative dose was predictive  
268 of both the maximum absolute fall in haemoglobin with respect to the baseline value (-1.2 g/dL  
269 fall per mg/kg increase [95%CI: -0.5 to -1.8];  $p=0.001$ ,  $r^2 = 0.40$ ), and the maximum relative fall  
270 in haemoglobin with respect to the baseline value (-7.9% fall per mg/kg increase [95%CI: -4.4 to  
271 -11.3];  $p=0.0002$ ;  $r^2 = 0.49$ ), but not of the average daily fall over days 5 to 10 (-0.06 g/dL per day  
272 [95%CI: -0.14 to 0.03]). Figure 4 panels a-c show the dose-response data coloured by G6PD variant.  
273 For Part 2 the mg/kg dose was not associated significantly with either the absolute, relative or the  
274 mean daily falls in haemoglobin, although for all three outcomes the point estimates were in the  
275 expected direction (greater mg/kg dose resulting in larger falls), Figure 2 panels d-f.

276 In an additional exploratory analysis, there was no evidence of substantial differences in haemolysis  
277 between the G6PD variants (although the sample size is very small). There was some evidence  
278 that subjects with higher baseline haemoglobin concentrations had larger relative falls. There was  
279 no evidence for an association between the homozygous \*10 *CYP2D6* genotype and haemolysis  
280 (i.e. no evidence that these subjects haemolysed less than the other subjects) .

## 281 Effect on total bilirubin and LDH

282 The falls in haemoglobin were associated with predictable biochemical changes indicative of haemolysis.  
283 There were rises in plasma concentrations of the intraerythrocytic enzyme LDH and in total  
284 bilirubin reflecting haem metabolism. The more rapid fall in haemoglobin associated with the single  
285 45 mg primaquine dose was associated with larger normalised rises in total bilirubin consistent  
286 with greater haemolysis (Supplementary Figure S12 and Figure 5).

## 287 Liver transaminases, creatinine, haptoglobin, and methaemoglobin

288 In both sub-studies there was no evidence for a relationship between primaquine dose (Part 1:  
289 cumulative day 10 total mg/kg dose; Part 2: single mg/kg dose) and maximum observed fold  
290 change in serum AST, ALT or creatinine, or the maximum observed absolute decrease in plasma  
291 haptoglobin (Supplementary Figures S10 and S11). There were no clinically significant rises in  
292 blood methaemoglobin in any of the study participants (Figure 6 panels a-b). In part 1, the day  
293 10 cumulative dose was negatively associated with the peak observed methaemoglobin (Figure 6  
294 panel c,  $p=0.02$ ); a similar negative trend was also observed in part 2 (Figure 6 panel d;  $p=0.06$ ).  
295 There was no association between having a poor metaboliser *CYP2D6* genotype (\*10 homozygous  
296 versus other genotypes) and peak blood methaemoglobin concentration.

## 297 Discussion

298 Significant haemolysis from radical cure primaquine regimens cannot be avoided in G6PD deficiency,  
299 but it can be attenuated. Ascending dose primaquine regimens in G6PD deficient malaria patients  
300 exploit the same pharmacodynamic principle underling the current once weekly treatment

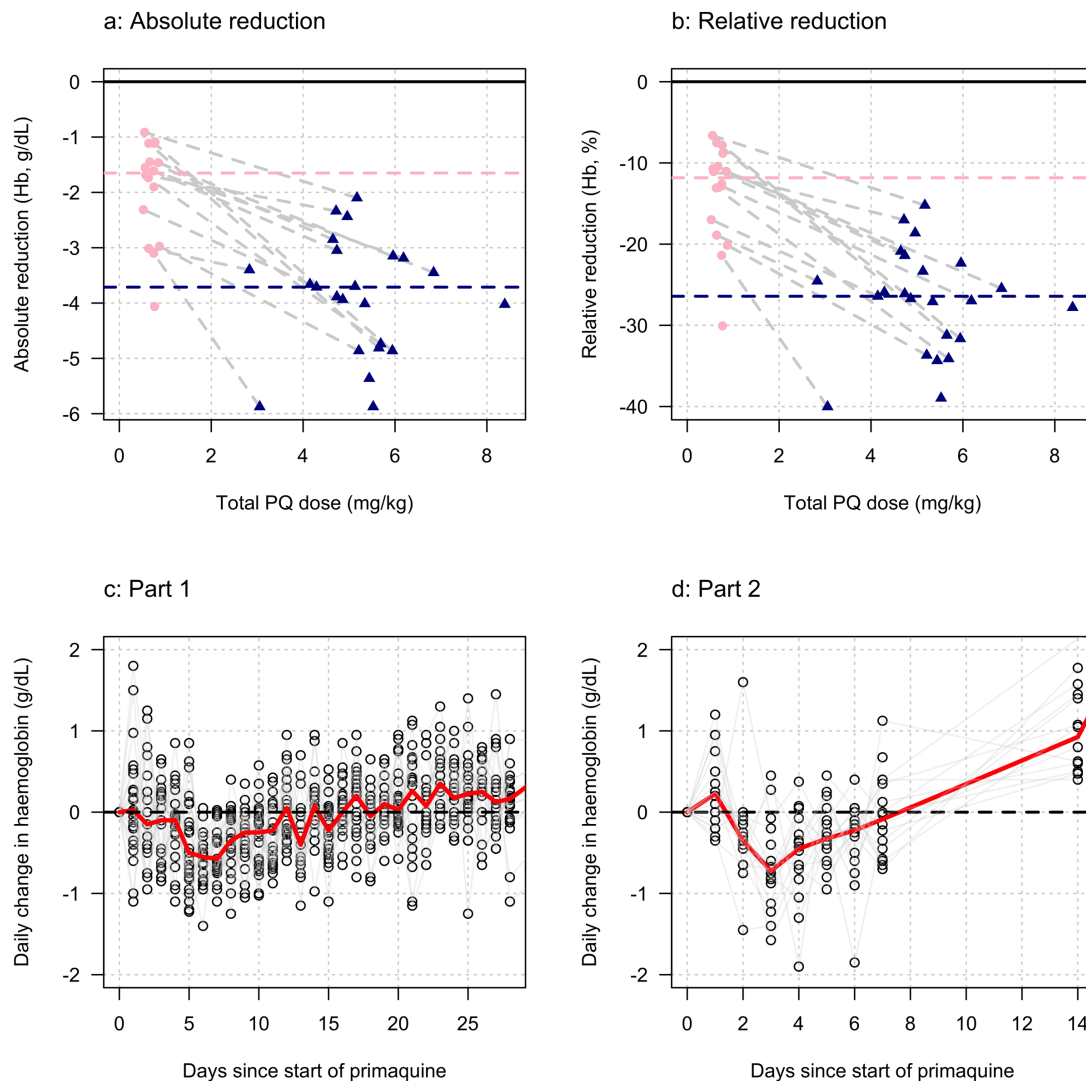


Figure 3: Comparing the haemolytic effect of ascending dose primaquine regimens (dark blue triangles) and single dose 45 mg primaquine (pink circles). The top panels show the relationship between the total cumulative dose of primaquine given to each subject in each study (x-axis) and the absolute fall in haemoglobin (left panel) or the relative fall (right panel). Subjects who participated in both parts are joined by the light grey dashed lines. The horizontal dashed lines show the median falls by sub-study. The bottom panels show the daily observed changes in haemoglobin (left: Part 1; right: Part 2), the red line shows the daily median change.

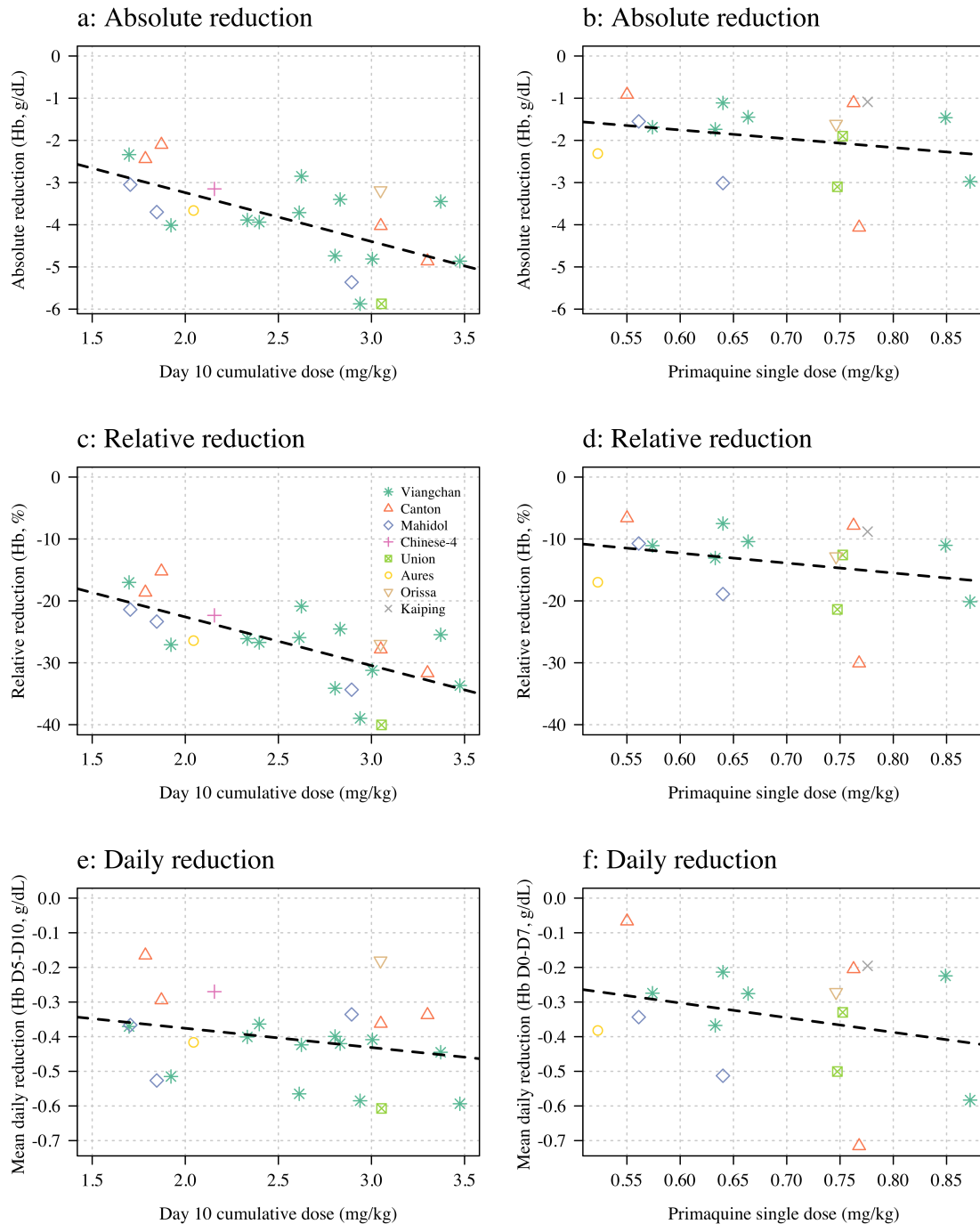


Figure 4: Haemolysis dose-response relationships (left column: Part 1; right column: Part 2). The dose exposure summary in Part 1 is the day 10 cumulative primaquine dose ( $n=23$ ); for Part 2 it is the mg/kg single dose ( $n=16$ ). Hb: haemoglobin.

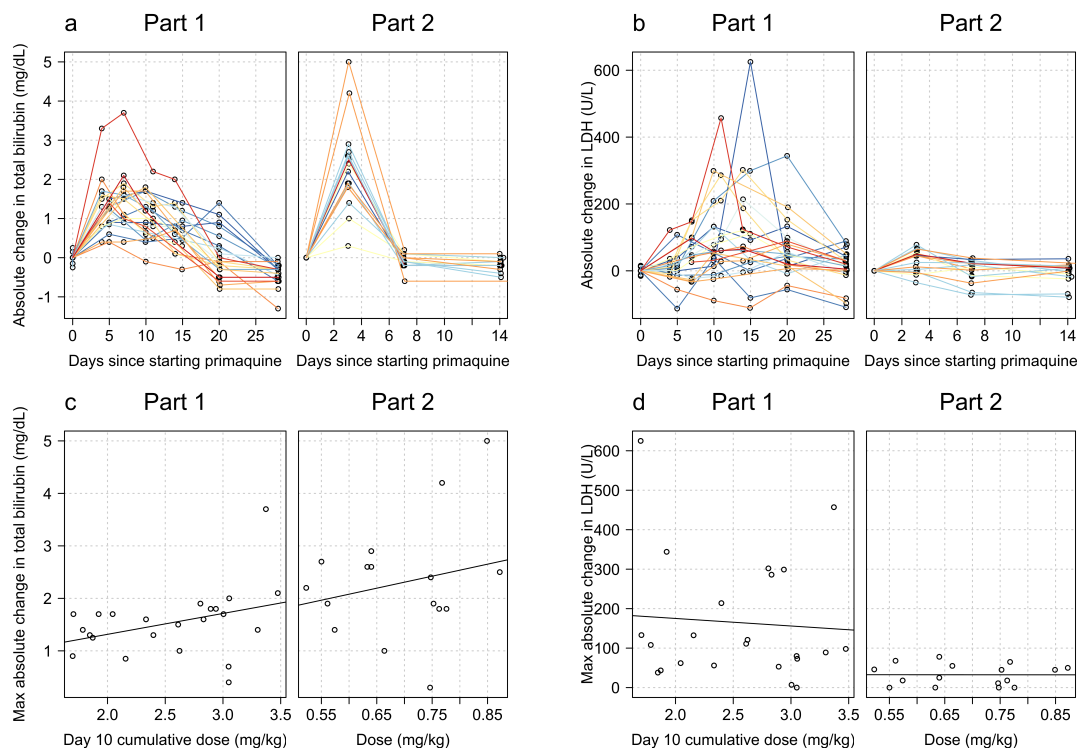


Figure 5: Relationship between primaquine dose (Part 1: day 10 cumulative mg/kg dose; Part 2: mg/kg single dose) and total bilirubin (panels a and c) and LDH (panels b and d). The top row show the normalised data; the bottom row the dose response relationship with the maximum normalised increases.

301 recommendation [12]. They aim to provide controlled haemolysis while allowing for steady recon-  
 302 stitution of the red cell population with increasingly younger, and therefore “oxidant resistant”  
 303 erythrocytes [13]. As G6PD testing is usually unavailable in malaria endemic areas the prescriber  
 304 is faced with the therapeutic dilemma of either not giving the drug, and failing to prevent relapses  
 305 of vivax or ovale malaria with their attendant morbidity, or giving it and causing iatrogenic haemol-  
 306 ysis in G6PD deficient patients. The net result is that radical cure primaquine regimens are often  
 307 not prescribed, even though they would be well tolerated and safe in the G6PD normal majority  
 308 of patients. Primaquine underuse is a major contributor to global vivax malaria morbidity.

309 The currently recommended 8 week radical cure regimen for G6PD deficient patients attenuates  
 310 the fall in haemoglobin, but it still risks significant haemolysis, particularly with the first 0.75  
 311 mg/kg dose. It has not been well evaluated in patients with severe G6PD deficiency variants who  
 312 are at greatest risk, and it requires good adherence for 8 weeks. Failure to complete the eight  
 313 week course, which is likely to be common, therefore incurs all the risk without the full benefit.  
 314 In this study the single 45 mg dose resulted in a median fall in haemoglobin concentration of  
 315 1.7 g/dL, which was nearly half the median fall when using the full ascending dose regimen. In  
 316 comparison, the ascending dose regimens gave a seven times higher total dose. These ascending  
 317 dose primaquine regimens were relatively well tolerated in adult male volunteers with Southeast  
 318 Asian variants of G6PD deficiency. Although these variants are generally regarded as moderate in  
 319 severity, there is wide variation in the phenotype between variants and also between individuals  
 320 with the same genotype. The ascending dose regimens are still associated with a significant risk  
 321 but, in considering the radical cure treatment of vivax malaria, the risks of relapse, often on  
 322 multiple occasions with consequent anaemia, must be balanced against the predictable haemolysis  
 323 that will result from the oxidative effects of the 8-aminoquinoline radical cure regimen [5, 19]. In  
 324 the Southeast Asian region approximately half the vivax malaria cases will be followed by at least  
 325 one relapse if radical curative treatment is not given.

326 In this exploratory study, in which there were cautious stopping rules, 3 out of 23 (13%) of  
 327 the volunteers did not complete the regimen because of drug toxicity; two because of hepatitis (a  
 328 rare adverse effect of primaquine) [3], and the third because of significant haemolysis. Significant

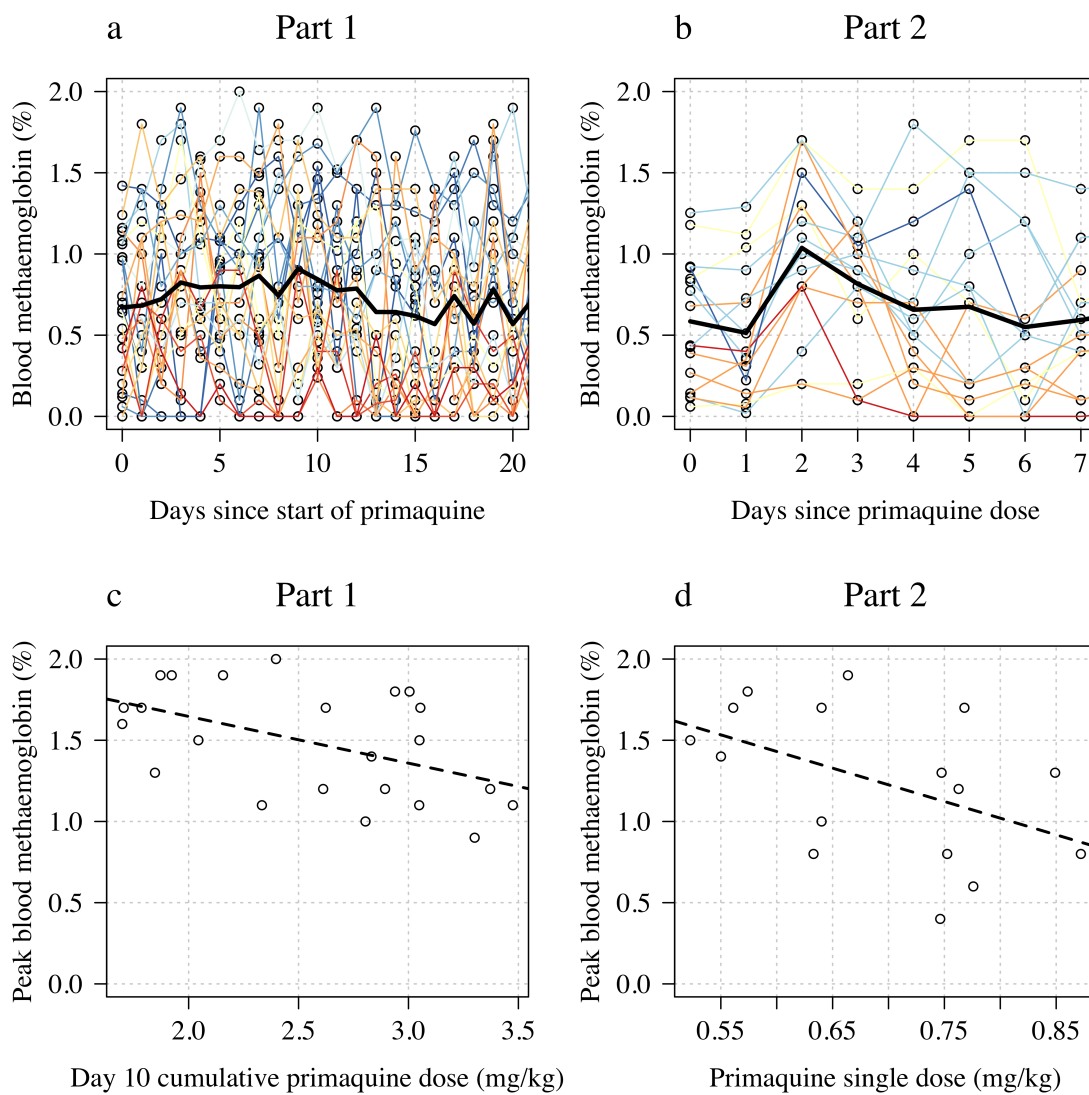


Figure 6: Changes in blood methaemoglobin concentration. Top row: individual data (left: Part 1; right: Part 2) with the daily mean value shown by the thick black line. Bottom row: relationship between dose (left: Part 1 summarised by the day 10 total dose; right: Part 2 summarised by the mg/kg dose) and peak observed blood methaemoglobin (%).



329 falls in haemoglobin were expected by design, but in none of the volunteers did haemoglobin  
330 concentrations fall below 8 g/dL. The extent of haemolysis varied substantially between volunteers,  
331 even within the same genotype. Higher baseline haemoglobin values tended to be followed by  
332 greater falls. Taken together with the high baseline reticulocytosis, this suggests that subjects with  
333 G6PD deficiency have variably shortened red cell survival, and thus variably sized populations of  
334 erythrocytes vulnerable to oxidant haemolysis. One of the important advantages of primaquine  
335 relative to its slowly eliminated analogue tafenoquine is that the treatment can be stopped as  
336 soon as there are signs or symptoms of haemolytic toxicity. Primaquine is eliminated rapidly ( $t_{1/2}$   
337 circa 5 hours). Despite use of primaquine for nearly 70 years and administration of hundreds of  
338 millions of treatments there have been very few reported deaths from haemolytic toxicity [3]. Very  
339 large mass treatments with primaquine have been used in malaria elimination campaigns involving  
340 millions of people in China, Nicaragua, Turkmenistan, Azerbaijan, Tajikistan, Afghanistan and  
341 North Korea [20, 21]. In the latter four countries an interrupted regimen, devised in the USSR,  
342 involved giving four days of primaquine, stopping for three, days and then completing a further  
343 ten days. Subjects with significant haemolysis could stop the drug at any time. Serious toxicity  
344 was very rare, despite high prevalences of G6PD deficiency in some of the regions.

345 In G6PD deficient patients with acute malaria preferential loss of older erythrocytes would  
346 ameliorate the adverse impact of oxidant drugs. On the other hand compensatory reticulocytosis  
347 may be inhibited. These differences are likely to be small as the illness usually resolves within a few  
348 days with effective treatment, while the ascending dose regimen would still be using the lowest dose.  
349 The main limitation of this approach is its complexity. This could be addressed by preparation of  
350 blister packed primaquine allowing easy dose transition. The G6PD deficiency genotypes studied  
351 here are representative of those present in the Southeast Asian region, and can be regarded as  
352 of moderate severity, with the African A- genotype (in which the currently recommended once  
353 weekly dosing regimen was developed) being at the less severe end of the spectrum, and the  
354 common Mediterranean G6PD genotype being at the more severe end. The safety of this regimen  
355 in patients with severe deficiency cannot be predicted based on these data. From a therapeutic  
356 perspective, as G6PD testing is usually not available, the individual patient risk assessment must  
357 take into account several factors including the prevalence of G6PD deficiency and its likely severity,  
358 the sex of the patient, the degree of anaemia, the probability of relapse, patient understanding of  
359 risks, and the likelihood and feasibility of accessing health care if there is severe haemolysis. Some  
360 G6PD deficiency variants protect against symptomatic vivax malaria but whether they affect the  
361 risk of relapse is not known [22].

362 In summary, shorter course ascending dose vivax malaria radical cure regimens in G6PD  
363 deficient subjects offer the prospect of an effective treatment which does not incur prohibitive  
364 haemolytic toxicity.

## 365 Acknowledgements

366 We are very grateful to the volunteers who participated in this study. We thank the staff of  
367 the Clinical Therapeutics unit and the laboratories in the Hospital for Tropical Diseases, Bangkok,  
368 which provided essential monitoring. This study was funded by the MRC “Assessing the tolerability  
369 of a potentially safer radical curative regimen of primaquine in healthy volunteers with glucose 6  
370 phosphate dehydrogenase” (MR/R015252/1). NJW is a Principal Research Fellow funded by the  
371 Wellcome Trust (093956/Z/10/C). JAW is a Sir Henry Dale Fellow funded by the Wellcome Trust  
372 (223253/Z/21/Z).

373 This research was partly funded by Wellcome. A CC BY or equivalent licence is applied to  
374 the author accepted manuscript arising from this submission, in accordance with the grant’s open  
375 access conditions.

## 376 Authorship contributions

377 SP helped plan and oversee the clinical study. PJ, BH, KP and SP recruited the volunteers and took  
378 clinical responsibility. KP and PL helped manage the volunteers and oversaw study procedures.  
379 CC and GB helped with genotyping, manual reticulocyte counts, and study design. BH and PL  
380 supervised the clinical study and measurements. KC oversaw laboratory sample preparations and  
381 storage. BT coordinated the clinical study with PJ and coordinated study administration. NPJD

382 had overall responsibility for the research. JAW designed the analytical approach, managed the  
383 adaptive design and recommended dose adjustments, conducted the analysis, and wrote the first  
384 draft of the paper. NJW conceived the study, advised on dose adjustment and helped interpret  
385 the results. All authors contributed to the interpretation and writing of the manuscript.

## 386 Conflict of Interest Disclosures

387 The authors have no conflicts of interest.

## 388 References

- 389 [1] Elizabeth A Ashley, Judith Recht, and Nicholas J White. Primaquine: the risks and the  
390 benefits. *Malaria Journal*, 13(1):1–7, 2014.
- 391 [2] Lucio Luzzatto, Mwashungi Ally, and Rosario Notaro. Glucose-6-phosphate dehydrogenase  
392 deficiency. *Blood*, 136(11):1225–1240, 2020.
- 393 [3] Judith Recht, Elizabeth Ashley, Nicholas White, World Health Organization, and Mahidol  
394 Oxford Research Unit. *Safety of 8-aminoquinoline antimalarial medicines*. World Health  
395 Organization, 2014.
- 396 [4] Judith Recht, Elizabeth A Ashley, and Nicholas J White. Use of primaquine and glucose-  
397 6-phosphate dehydrogenase deficiency testing: divergent policies and practices in malaria  
398 endemic countries. *PLoS Neglected Tropical Diseases*, 12(4):e0006230, 2018.
- 399 [5] Robert J Commons, Julie A Simpson, Kamala Thriemer, Cindy S Chu, Nicholas M Douglas,  
400 Tesfay Abreha, Sisay G Alemu, Arletta Añez, Nicholas M Anstey, Abraham Aseffa, Ashenafi  
401 Assefa, Ghulam R Awab, J Kevin Baird, Bridget E Barber, Isabelle Borghini-Fuhrer, Umberto  
402 D’Alessandro, Prabin Dahal, André Daher, Peter J de Vries, Annette Erhart, Margarete S M  
403 Gomes, Matthew J Grigg, Jimmie Hwang, Piet A Kager, Tsige Ketema, Wasif A Khan, Marcus  
404 V G Lacerda, Toby Leslie, Benedikt Ley, Kartini Lidia, Wuelton M Monteiro, Dhelio B Pereira,  
405 Giau T Phan, Aung P Phyto, Mark Rowland, Kavitha Saravu, Carol H Sibley, André M  
406 Siqueira, Kasia Stepniewska, Walter R J Taylor, Guy Thwaites, Binh Q Tran, Tran T Hien,  
407 José Luiz F Vieira, Sonam Wangchuk, James Watson, Timothy William, Charles J Woodrow,  
408 Francois Nosten, Philippe J Guerin, Nicholas J White, and Ric N Price. The haematological  
409 consequences of *Plasmodium vivax* malaria after chloroquine treatment with and without  
410 primaquine: a WorldWide Antimalarial Resistance Network systematic review and individual  
411 patient data meta-analysis. *BMC Medicine*, 17(1):151, August 2019.
- 412 [6] Rosalind E Howes, Frédéric B Piel, Anand P Patil, Oscar A Nyangiri, Peter W Gething,  
413 Mewahyu Dewi, Mariana M Hogg, Katherine E Battle, Carmencita D Padilla, J Kevin Baird,  
414 et al. G6PD deficiency prevalence and estimates of affected populations in malaria endemic  
415 countries: a geostatistical model-based map. *PLoS Med*, 9(11):e1001339, 2012.
- 416 [7] S Piomelli, L M Corash, D D Davenport, J Miraglia, and E L Amorosi. In vivo lability of  
417 glucose-6-phosphate dehydrogenase in GdA- and GdMediterranean deficiency. *J. Clin. Invest.*,  
418 47(4):940–948, April 1968.
- 419 [8] World Health Organization. *Guidelines for the treatment of malaria*. World Health Organi-  
420 zation, 3rd ed edition, 2015.
- 421 [9] Jose Diego Brito-Sousa, Thalie C Santos, Sara Avalos, Gustavo Fontecha, Gisely C Melo,  
422 Fernando Val, André M Siqueira, Graça C Alecrim, Quique Bassat, Marcus V G Lac-  
423 erda, and Wuelton M Monteiro. Clinical Spectrum of Primaquine-induced Hemolysis in  
424 Glucose-6-Phosphate Dehydrogenase Deficiency: A 9-Year Hospitalization-based Study From  
425 the Brazilian Amazon. *Clinical Infectious Diseases*, 69(8):1440–1442, February 2019. doi:  
426 10.1093/cid/ciz122. URL <https://doi.org/10.1093/cid/ciz122>.
- 427 [10] Wuelton M. Monteiro, José P. Moura-Neto, Judith Recht, Quique Bassat, and Marcus V. G.  
428 Lacerda. Fatal Primaquine-Induced Hemolysis in a Patient With *Plasmodium vivax* Malaria

- 429 and G6PD A(-) Variant in the Brazilian Amazon. *Clinical Infectious Diseases*, 62(9):1188.1–  
430 1188, 1 2016. doi: 10.1093/cid/ciw039. URL <https://doi.org/10.1093/cid/ciw039>.
- 431 [11] Kay-Keng Khoo. The treatment of malaria in glucose-6-phosphate dehydrogenase deficient  
432 patients in Sabah. *Annals of Tropical Medicine and Parasitology*, 75(6):591–595, December  
433 1981. doi: 10.1080/00034983.1981.11687489. URL [https://doi.org/10.1080/00034983.  
434 1981.11687489](https://doi.org/10.1080/00034983.1981.11687489).
- 435 [12] Alf S Alving, Charles F Johnson, Alvin R Tarlov, George J Brewer, Robert W Kellermeier,  
436 and Paul E Carson. Mitigation of the haemolytic effect of primaquine and enhancement  
437 of its action against exoerythrocytic forms of the Chesson strain of *Plasmodium vivax* by  
438 intermittent regimens of drug administration: a preliminary report. *Bulletin of the World  
439 Health Organization*, 22(6):621, 1960.
- 440 [13] R W Kellermeier, A R Tarlov, G J Brewer, P E Carson, and A S Alving. Hemolytic effect  
441 of therapeutic drugs. clinical considerations of the primaquine-type hemolysis. *JAMA*, 180:  
442 388–394, May 1962.
- 443 [14] Sim Kheng, Sinoun Muth, Walter RJ Taylor, Narann Tops, Khem Kosal, Khon Sothea, Phum  
444 Souy, Saorin Kim, Chuor Meng Char, Chan Vanna, et al. Tolerability and safety of weekly  
445 primaquine against relapse of *Plasmodium vivax* in Cambodians with glucose-6-phosphate  
446 dehydrogenase deficiency. *BMC Medicine*, 13(1):1–10, 2015.
- 447 [15] Germana Bancone, Didier Menard, Nimol Khim, Saorin Kim, Lydie Canier, Chea Nguong,  
448 Koukeo Phommason, Mayfong Mayxay, Sabine Dittrich, Malavanh Vongsouvath, Nadine  
449 Fievet, Jean-Yves Le Hesran, Valerie Briand, Sommay Keomany, Paul N. Newton, Gorn-  
450 pan Gorsawun, Kaelan Tardy, Cindy S. Chu, Orpreeya Rattanapalroj, Le Thanh Dong,  
451 Huynh Hong Quang, Nguyen Tam-Uyen, Nguyen Thuy-Nhien, Tran Tinh Hien, Michael  
452 Kalnoky, and Francois Nosten. Molecular characterization and mapping of glucose-6-  
453 phosphate dehydrogenase (G6PD) mutations in the Greater Mekong Subregion. *Malaria  
454 Journal*, 18(1), January 2019. doi: 10.1186/s12936-019-2652-y. URL [https://doi.org/  
455 10.1186/s12936-019-2652-y](https://doi.org/10.1186/s12936-019-2652-y).
- 456 [16] James Watson, Walter RJ Taylor, Didier Menard, Sim Kheng, and Nicholas J White. Mod-  
457 elling primaquine-induced haemolysis in G6PD deficiency. *eLife*, 6:e23061, 2 2017. ISSN  
458 2050-084X. doi: 10.7554/eLife.23061. URL <https://doi.org/10.7554/eLife.23061>.
- 459 [17] Peter Hillmen, Neal S Young, Jörg Schubert, Robert A Brodsky, Gerard Socié, Petra Muus,  
460 Alexander Röth, Jeffrey Szer, Modupe O Elebute, Ryotaro Nakamura, Paul Browne, An-  
461 tonio M Risitano, Anita Hill, Hubert Schrezenmeier, Chieh-Lin Fu, Jaroslaw Maciejewski,  
462 Scott A Rollins, Christopher F Mojcik, Russell P Rother, and Lucio Luzzatto. The comple-  
463 ment inhibitor eculizumab in paroxysmal nocturnal hemoglobinuria. *New England Journal of  
464 Medicine*, 355(12):1233–1243, September 2006.
- 465 [18] Angelo Minucci, Kamran Moradkhani, Ming Jing Hwang, Cecilia Zuppi, Bruno Giardina,  
466 and Ettore Capoluongo. Glucose-6-phosphate dehydrogenase (G6PD) mutations database:  
467 Review of the “old” and update of the new mutations. *Blood Cells, Molecules, and Diseases*,  
468 48(3):154–165, 2012. ISSN 1079-9796. doi: <https://doi.org/10.1016/j.bcmd.2012.01.001>. URL  
469 <https://www.sciencedirect.com/science/article/pii/S1079979612000022>.
- 470 [19] Robert J Commons, Julie A Simpson, James Watson, Nicholas J White, and Ric N Price.  
471 Estimating the proportion of *Plasmodium vivax* recurrences caused by relapse: A systematic  
472 review and meta-analysis. *Am. J. Trop. Med. Hyg.*, 103(3):1094–1099, 11 2020.
- 473 [20] Michelle S Hsiang, Jimee Hwang, Amy R Tao, Yaobao Liu, Adam Bennett, George Dennis  
474 Shanks, Jun Cao, Stephen Patrick Kachur, Richard G A Feachem, Roly D Gosling, and  
475 Qi Gao. Mass drug administration for the control and elimination of *Plasmodium vivax*  
476 malaria: an ecological study from Jiangsu province, China. *Malaria Journal*, 12(1):383, 11  
477 2013.
- 478 [21] Anatoly Kondrashin, Alla M Baranova, Elizabeth A Ashley, Judith Recht, Nicholas J White,  
479 and Vladimir P Sergiev. Mass primaquine treatment to eliminate vivax malaria: lessons from  
480 the past. *Malar. J.*, 13:51, February 2014.

- 481 [22] Ghulam R Awab, Fahima Aaram, Natsuda Jamornthanyawat, Kanokon Suwannasin, Watcha-  
482 ree Pagornrat, James A Watson, Charles J Woodrow, Arjen M Dondorp, Nicholas Pj Day,  
483 Mallika Imwong, and Nicholas J White. Protective effect of Mediterranean-type glucose-6-  
484 phosphate dehydrogenase deficiency against *Plasmodium vivax* malaria. *Elife*, 10, 2 2021.