

## Title Page

# Heart disease mortality in cancer survivors: A population-based study in Japan

### Authors names and affiliations:

Yasufumi Gon, MD, PhD<sup>1,2</sup>; Ling Zha, MPH<sup>3</sup>; Tsutomu Sasaki, MD, PhD<sup>1</sup>; Toshitaka Morishima, MD, PhD<sup>2</sup>; Yuko Ohno, PhD<sup>4</sup>; Hideki Mochizuki, MD, PhD<sup>1</sup>; Tomotaka Sobue, MD, MPH<sup>3</sup>, and Isao Miyashiro, MD, PhD<sup>2</sup>

### Institutional Information

<sup>1</sup> Department of Neurology, Osaka University Graduate School of Medicine, Suita, Osaka, Japan

<sup>2</sup> Cancer Control Center, Osaka International Cancer Institute, Osaka-shi, Osaka, Japan

<sup>3</sup> Department of Social Medicine, Environmental Medicine and Population Science, Osaka University Graduate School of Medicine, Suita, Osaka, Japan

<sup>4</sup> Department of Mathematical Health Science, Osaka University Graduate School of Medicine, Suita, Osaka, Japan

**Short title:** Heart disease mortality in cancer survivors

### Corresponding author:

Yasufumi Gon, MD, PhD

Department of Neurology, Osaka University Graduate School of Medicine

2-2, Yamadaoka, Suita, Osaka, 565-0871, Japan

[Phone: +81-6-6879-3571](tel:+81-6-6879-3571)

Fax: +81-6-6879-3579

E-mail address: [gon@neuro.med.osaka-u.ac.jp](mailto:gon@neuro.med.osaka-u.ac.jp)

**Word count:** 4,948 words

**Keywords:** cancer, cancer survivors, heart disease, mortality, cohort study

## **Abstract:**

**Background:** The association between cancer survivors and heart disease mortality remains unclear. This study analyzed the risk of fatal heart disease in cancer survivors.

**Methods:** Data from the Osaka Cancer Registry collected between 1985 and 2013 and data from the vital statistics in Japan were retrospectively analyzed. Causes of death were investigated. Standardized mortality ratios (SMRs) were calculated to compare the risk of fatal heart disease between patients with cancer and the general population. Poisson regression models were used to estimate the risk of fatal heart disease in patients with cancer and other cancer subgroups.

**Results:** In total, 688,473 cancer patients were included in the analysis, and 337,117 patients died during the study period. Among them, 10,781 patients died of heart disease, with 5,020 of these patients having ischemic heart disease; 3,602 patients, heart failure; 441 patients, hypertensive disease; and 1,718 patients, other heart diseases. The SMR (95% confidence interval [CI]) for heart disease was 2.85 (2.80–2.91). The SMRs (95% CIs) for ischemic heart disease, heart failure, and hypertensive disease were 3.26 (3.17–3.35); 2.69 (2.60–2.78), and 4.47 (4.07–4.90), respectively. The risk of fatal heart disease increased over time after cancer diagnosis. The multivariable Poisson regression model showed that males were more likely to die of heart disease than females (relative risk, 1.39; 95% CI, 1.34–1.45). Notably, the risk of fatal heart disease among cancer survivors has decreased in recent years.

**Conclusions:** Cancer survivors have a higher risk of fatal heart disease than the general population.

## Abbreviations:

<i>CIs</i>	confidence intervals
<i>ICD</i>	International Classification of Diseases
<i>NANDE</i>	Neoplasms ANd other causes of DEath
<i>OCR</i>	Osaka Cancer Registry
<i>RR</i>	relative risk
<i>SEER</i>	Surveillance, Epidemiology, and End Results
<i>SMRs</i>	standardized mortality ratios

## Introduction

Advances in cancer care have prolonged survival<sup>1</sup>. With population aging, patients with cancer have also become older and more highly comorbid<sup>2,3</sup>. The number of elderly cancer survivors is expected to increase in the coming decades, and thus, the management of comorbidities is becoming a more significant concern.

Patients with cancer are at a high risk of developing heart disease<sup>4</sup>. Cancer and heart disease share common risk factors such as hypertension, diabetes, and smoking<sup>4,5</sup>. Additionally, neuroendocrine factors, oxidative stress, inflammatory cytokines, and impaired immune system have been implicated in the increased risk of heart disease in patients with cancer<sup>4,5</sup>. With respect to mortality, an increased risk of death from heart disease has been reported for breast<sup>6,7</sup>, head and neck<sup>8</sup>, testicular<sup>9</sup>, and hematopoietic malignancies<sup>10</sup>. Zaorsky et al. recently found that heart disease was the most common non-cancer cause of death in patients with cancer<sup>11</sup>. Stoltzfus et al. evaluated the data of approximately 7.5 million cancer patients from the Surveillance, Epidemiology, and End Results (SEER) database and reported a 2.2-fold higher risk of death from heart disease in patients with cancer than in the general population<sup>12</sup>. However, different findings have been reported in literature. A study using the Korean Cancer Registry reported a lower risk of heart disease-related mortality among cancer survivors<sup>13</sup>. Another study using the Tasmanian Cancer Registry demonstrated that the risk of heart disease mortality in patients with cancer was similar to that in the general population<sup>14</sup>.

In an era of increasing numbers of older cancer survivors, clinicians including both oncologists and cardiologists must recognize the significance of the risk of heart disease in patients with cancer. Evidence about the association between cancer and heart disease worldwide needs to be accumulated. However, many of the previous studies have been conducted in Europe

and the United States, and only few studies were from Asia<sup>7-14</sup>. Given that Japan has one of the most aged populations worldwide and that one of two Japanese people is predicted to develop cancer<sup>15</sup>, data on the association between cancer and heart disease mortality will be valuable in advancing research in the field of cardio-oncology.

However, the risk of heart disease-related mortality in patients with cancer remains unclear to date. Thus, this study aimed to evaluate the risk of fatal heart disease after cancer diagnosis. We analyzed the risk of fatal heart disease in patients with cancer compared with the general population and other patients with cancer.

## **Material and Methods**

### **Study design and data source**

This retrospective study was conducted as part of the Neoplasms ANd other causes of DEath (NANDE) study, which investigated the causes of death in patients with cancer<sup>16-18</sup>. Briefly, the NANDE database was created by linking the Osaka Cancer Registry (OCR) with official statistics in Japan. The OCR has been in operation since 1962, covering  $\geq 8,000,000$  residents in Osaka Prefecture, Japan. All patients registered in the OCR are followed for 10 years. The OCR includes data on age at diagnosis, sex, year of diagnosis, cancer type, stage at diagnosis, histology, follow-up period, and death. The OCR contains also information on survival or death status, and official statistics in Japan include the individual causes of death based on the death certificate completed by a doctor. Therefore, we merged the two databases by sex, date of birth, date of death, and municipality of residence data and collected details on the causes of death from official statistics. Thereafter, information of 96.6% of the patients with cancer was collated. The NANDE database contains cancer-related information on age at

diagnosis, sex, years of diagnosis, cancer type, stage at diagnosis, histology, survival time, and cause of death.

## **Patients**

The current study used data of patients diagnosed with cancer between 1985 and 2013 and registered in the NANDE database. This cohort was identical to the population previously analyzed for fatal stroke<sup>18</sup>. The exclusion criteria were as follows: (1) uncertain date of death, (2) uncertain final date of survival confirmation, (3) uncertain date of first cancer diagnosis, (4) uncertain date of second cancer diagnosis, (5) uncertain age at first cancer diagnosis, (6) death certificate notification or death certification only, and (7) simultaneous cancer (i.e., multiple tumors identified at the time of diagnosis) or synchronous cancer (i.e., diagnosed within 2 months of each other). The definition of synchronous tumors varies among studies, ranging from 2 to 6 months between diagnoses<sup>19,20</sup>.

## **Variable definition**

Age at diagnosis was grouped into six categories:  $\leq 39$ , 40–49, 50–59, 60–69, 70–79, and  $\geq 80$  years. Meanwhile, year of diagnosis was classified into three periods: 1985–1995, 1995–2004, and 2005–2013. The stage at diagnosis was classified into seven categories: (i) intraepithelial (abnormal cells were present but have not spread to nearby tissues), (ii) localized (cancer was limited to the organ where it originated, with no sign of spread), (iii) lymph node metastasis (cancer had spread to regional lymph nodes), (iv) infiltration to adjacent organs (cancer had spread to nearby tissues or organs), (v) distant metastasis (cancer had metastasized to distant parts of the body), (vi) unknown (there is insufficient information to determine the stage), and (vii) not available (missing data on the stage). Histology was classified into five categories according to Berg's classification<sup>21</sup>: squamous or basal cell carcinoma, adenocarcinoma, other

carcinoma, hematopoietic tumor, and other histology. The detailed histological groupings are provided in **Supplementary Table S1**.

Diseases were coded based on the International Classification of Diseases (ICD), and cancers were coded according to the International Classification of Diseases, Oncology, and Oncology Third Edition. Details concerning the assignment of codes and number of patients (those included, excluded, and lost to follow-up) are shown in **Supplementary Table S2**. Heart diseases, including ischemic heart disease, heart failure, hypertensive disease, and other heart diseases, were identified using the ICD-9 and ICD-10 codes. In Japan, the causes of death were officially registered based on the ICD-9 codes from 1979 to 1994; thereafter, the ICD-10 codes were used. Details on the assignment of ICD-9 and ICD-10 codes were as follows: heart disease, ICD-9 (390–429) and ICD-10 (I00–I52); ischemic heart disease, ICD-9 (410–414) and ICD-10 (I20–I25); heart failure, ICD-9 (428) and ICD-10 (I50); hypertensive disease, ICD-9 (401–405) and ICD-10 (I10–I15); and other heart diseases, ICD-9 (390–398, 415–429) and ICD-10 (I00–I09, I26–I49, I51–I52).

### **Statistical analysis**

The risk of death from heart disease after cancer diagnosis was analyzed. Heart disease death was defined as heart disease being the cause of death recorded on the death certificate. The observation period was from January 1985 to December 2013. The survival time was measured in days, with a minimum of 1 day and a maximum of 3,652 days. Patients diagnosed with a second cancer during the observation period were censored at the time of the second cancer diagnosis.

To compare the risk of fatal heart disease in patients with cancer to that in the general population, the standardized mortality ratios (SMRs) and their 95% confidence intervals (CIs)



were calculated as the ratio of the observed to the expected number of deaths. The expected number of deaths was computed using annual Japanese sex- and age-specific death rates. These death rates were calculated by dividing the number of deaths by the national population within each 5-year age group and sex category for a calendar year. Information concerning both the national population and the number of deaths, including in patients with and without cancer, is available on the Portal Site of Official Statistics of Japan (<https://www.e-stat.go.jp/en>). The SMRs were calculated for heart disease, ischemic heart disease, heart failure, and hypertensive disease.

To compare the risk of fatal heart disease between patients with cancer and various cancer subgroups, Poisson regression models were used to estimate the relative risk (RR) and 95% CIs. The RRs were adjusted for sex, age at diagnosis, period of diagnosis, stage at diagnosis, and histology.

All statistical analyses were performed using Stata 17/MP (StataCorp, College Station, TX, USA) and R (<https://cran.r-project.org/>) software. All tests were two tailed, and  $P < 0.05$  was considered statistically significant.

## **Results**

### **Patient characteristics**

Among the 1,007,199 cancer patients initially evaluated, 688,473 patients were included in the analysis, with 2,668,126 person-years at risk. The median (interquartile ranges) follow-up duration was 4.12 (0.99–6.54) years after cancer diagnosis. During the study period, 337,117 patients died; among them, 10,781 patients died of heart disease as follows: ischemic heart disease, 5,020 patients; heart failure, 3,602 patients; hypertensive disease, 441 patients; and other

heart diseases, 1,718 patients. The number of deaths due to ischemic heart disease, heart failure, hypertensive disease, and other heart diseases according to cancer type is shown in

### **Supplemental Table S3.**

#### **Comparison of risk of heart disease death between cancer patients and the general population**

Among all patients with cancer, the crude rate of mortality due to heart disease was 404.07 per 100,000-person-years, and the overall SMR for heart disease was 2.85 (95% CI, 2.80–2.91). **Table 1** presents the SMRs for heart disease death in patients with cancer in comparison to those in the general population. Patients who were diagnosed with heart disease at a younger age had a higher SMR for heart disease, and the SMR gradually decreased as the age of diagnosis increased. The SMR was the highest when the diagnostic period was later than 2005. The SMR by stage at diagnosis was highest for intraepithelial disease and lowest for distant metastatic disease in patients with known stages. SMR by histology was higher in all histologies than in the general population.

#### **Comparison of risk of ischemic heart disease, heart failure, and hypertensive disease death between cancer patients and the general population**

**Table 2** describes the SMRs for ischemic heart disease, heart failure, and hypertensive disease. The number of deaths due to ischemic heart disease, heart failure, and hypertensive disease is listed in **Supplemental Table S4**. The crude mortality rates due to ischemic heart disease, heart failure, and hypertensive disease were 188.15, 135.00, and 16.53 per 100,000-person-years, respectively. The SMRs for ischemic heart disease, heart failure, and hypertensive disease were 3.26 (95% CI, 3.17–3.35), 2.69 (95% CI, 2.60–2.78), and 4.47 (95% CI, 4.07–4.90), respectively. The SMRs for ischemic heart disease, heart failure, and hypertensive disease were

higher in females, those diagnosed between 2005 and 2013, and those with intraepithelial diseases than in other subgroups. Regarding age at diagnosis, the SMRs for ischemic heart disease and heart failure were the highest in patients with a younger age at diagnosis. In contrast, the SMR for hypertensive disease was the highest in patients aged 60–69 years at diagnosis. The SMRs varied among the histological types.

### **SMR for heart disease according to cancer site**

**Figure 1** shows the SMRs for heart disease according to cancer site. The details are presented in **Supplemental Table S5**. The SMR was the highest in brain cancer, followed by that in bone, esophageal, uterine, and skin cancers. Meanwhile, the SMR was the lowest in liver cancer, followed by that in gallbladder, pancreatic, lung, and ovarian cancers.

### **Risk of heart disease death according to time after cancer diagnosis**

**Figure 2** shows the SMR trend after cancer diagnosis. The details are presented in **Supplemental Tables S6–S9**. The SMR for heart disease was 3.28 (95% CI, 3.10–3.47) within the first 3 months after cancer diagnosis, declined once, and then gradually increased thereafter. The trend of SMR for ischemic heart disease and heart failure was similar to that of the SMR for overall heart disease. The SMRs for hypertensive disease varied with time after cancer diagnosis; however, in general, the SMRs increased over time. The SMR for hypertensive disease was the lowest within the first year (1.86 [95% CI, 1.19–2.92] and highest in the ninth year (9.63 [95% CI, 6.95–13.36]) after cancer diagnosis.

### **Risk of fatal heart disease by subgroup**

**Table 3** shows the RRs of patients with cancer for fatal heart disease stratified by subgroup. Males were 1.4 times more likely to die from heart disease than females. RRs also gradually increased as the age at diagnosis increased. Meanwhile, RRs gradually decreased as

the period of diagnosis became more recent. Patients with distant metastases had the highest RR among all cancer stages. **Table 4** shows the RRs for ischemic heart disease, heart failure, and hypertension. Males were more likely to die from ischemic heart disease, heart failure, and hypertensive disease than were females. RRs were also higher for patients who were older at diagnosis, while they were lower for those more recently diagnosed with ischemic heart disease, heart failure, and hypertensive disease. When analyzed according to stage at diagnosis, the RR for death from ischemic heart disease and heart failure was the highest for patients with distant metastasis. Meanwhile, for death from hypertensive disease, the RR was the highest for patients with cancer infiltration to adjacent organs. The RRs varied according to histological stage and heart disease.

## Discussion

The risk of heart disease-related mortality in patients with cancer has not been elucidated to date. This study found the following findings. First, cancer survivors have a 2.9 times greater risk of heart disease death than the general population. Second, this risk varied by heart disease type: 3.3 times higher for ischemic heart disease, 2.7 times higher for heart failure, and 4.5 times higher for hypertensive disease. Third, the risk of death from heart disease tended to increase with time after cancer diagnosis. Finally, the risk of fatal heart disease among cancer survivors has decreased in recent years.

There have been studies on the risk of heart disease-related mortality among cancer survivors<sup>6-14</sup>. We found similar associations in the current analysis: patients with cancer had a 2.9 times higher risk of death from heart disease than the general population. The results were similar in the subgroup analysis by sex, age at diagnosis, year of diagnosis, and stage at diagnosis. However, some results were in contrast to previous findings. For example, the SMR of

lung cancer was not as high as that in a previous study<sup>12</sup>. Additionally, while the SMR by stage at diagnosis was the highest in distant metastases and lowest in localized cancers in previous research, opposite findings were noted in our analysis. The SMR was the lowest in distant metastasis and highest in intraepithelial cancer. However, this result was similar to that of our previous study on stroke deaths among cancer survivors<sup>18</sup>. Although the SMRs could not be compared due to the different populations studied, these findings are noteworthy in the context of prognosis and management of heart disease risk in cancer survivors. The factors that influenced these results are unclear, but regional differences and the extent of malignancies are possible contributing factors.

Several mechanisms explain the relationship between cancer and heart disease. Lifestyle factors such as diabetes and smoking are associated with the development of both cancer and heart disease<sup>4,5,22</sup>. Neuroendocrine factors, oxidative stress, inflammatory cytokines, and impaired immune system have been implicated in the increased risk of developing heart disease in cancer patients<sup>4,5</sup>. Cancer-related coagulation abnormalities can cause arterial thromboembolisms, including myocardial infarction<sup>23</sup>. Certain anticancer agents, including anthracyclines<sup>24</sup>, tyrosine kinase inhibitors<sup>25</sup>, and immune checkpoint inhibitors<sup>26,27</sup>, have cardiotoxic adverse effects. Further, late-onset toxicity has been found to be associated with an increased risk of heart disease-related mortality among cancer survivors<sup>28</sup>. An increased risk of cardiovascular events with surgery<sup>29</sup> and radiotherapy<sup>30</sup> has also been reported.

In this study, the risk of ischemic heart disease-related death was 3.3 times greater in patients with cancer than in the general population. Paterson et al. assessed the cardiovascular risk in more than 220,000 patients with cancer. The HR (95% CI) of death from myocardial infarction was 1.01 (0.97–1.05), which did not differ from that in the general population<sup>31</sup>. The

strength of their study is that the median observation period was >10 years, and the analysis was more in depth, adjusting for vascular risk. Our study also analyzed the risk of death from ischemic heart disease using data from more than 500,000 patients with cancer, but it was limited by a median observation period of approximately 4 years and failure to adjust for the vascular risk factors such as hypertension and diabetes mellitus. Cancer patients have been established to have a high risk of ischemic heart disease<sup>32-34</sup>. Further studies are needed to determine whether cancer survivors have an elevated risk of mortality from ischemic heart disease.

The current study found that the risk of fatal heart disease increased over time after cancer diagnosis. Notably, the risk was immediately high after cancer diagnosis. This trend may be due to cancer treatment initiated after diagnosis. Surgery increases the risk of major adverse cardiovascular disease<sup>29</sup>, and a particular type of chemotherapy can cause vascular toxicity<sup>24-27</sup>. Cancer survivors develop a wide range of radiation-related cardiotoxic complications<sup>30</sup>. The subsequent increase in the risk of heart disease mortality over time may be due to a relative increase in cardiac mortality against cancer-related deaths. Collectively, these findings support that cancer treatment may be associated with an increase in the SMR after cancer diagnosis.

When examining the SMR by cancer site, the SMR from fatal heart disease was the highest for brain cancers. One possible explanation for the increased risk of death from heart disease in brain tumors is the brain-heart connection<sup>35</sup>. Damage to the brain parenchyma affects the balance of neuromodulating hormones, triggering arrhythmias and impairing cardiac function<sup>35</sup>. Brain tumors can cause fatal neurogenic cardiac diseases. Reports of an increased risk of cardiovascular mortality in patients with brain tumors would support this hypothesis<sup>36</sup>. However, our analyses may have overestimated the risk of death from heart disease<sup>37</sup>. The causes of death in the NANDE database are collected through official Japanese statistics reports, which

register the cause of death from death certificates. When a brain tumor patient dies suddenly, the cause of death may be listed as heart disease because the cause of death is unknown. There may also be instances in which the cause of death is listed as heart disease in patients with terminal disease.

The strength of this study is that it assessed the risk of heart disease mortality among cancer survivors using a large cancer registry that spanned approximately 30 years. However, this study also has some limitations. First, risks were analyzed without adjustment for confounding variables such as vascular risk factors. Second, advances in cancer treatment apparently influenced prognosis, but information regarding treatment was unavailable. Third, we excluded cases with incomplete information concerning survival days or diagnosis dates, death certificate notification, or death certificate only, as well as cases of simultaneous or synchronous cancers. Approximately 3.4% of patients were lost to follow-up. When comparing cancer types between patients who were included, excluded, and lost to follow-up, the proportions were similar for many cancer types. However, colorectal, breast, uterine, and prostate cancers were more common in the study population. In contrast, liver, gallbladder, pancreatic, and lung cancers were more common in the excluded population and those lost to follow-up. This may have resulted in selection bias. Finally, a follow-up period of 10 years after cancer diagnosis may be inadequate to investigate heart disease-related deaths.

In conclusion, cancer survivors have a high risk of heart disease-related mortality. Thus, clinicians should recognize the risk of fatal heart disease in cancer patients. Careful clinical management, including of both cancer and heart disease, will improve quality of life and thus be beneficial to cancer survivors.

**Acknowledgments:**

None

**Funding Information:**

This work was supported by the Ministry of Health, Labor, and Welfare Sciences Research Grant [grant number:20EA1026].

**Conflict of Interest:**

None

**Data availability**

Data are available on reasonable request to the corresponding author.

**Ethics approval and consent to participate**

Informed consent was waived owing to the retrospective nature of the study. The Institutional Review Board of Osaka University, Suita, Japan, approved the study protocol (approval number: 17315-3).

**Author Contributions:**

Y.G., H.M., T. Sobue and I.M. contributed to the conception and design of the study. Y.G., L.Z., T.M., Y.O., T. Sobue, and I.M. contributed to the data acquisition and analysis. Y.G. and L.Z. contributed to drafting a significant portion of the manuscript or figures. L.Z., T.M., T. Sasaki, Y.O., H.M., T. Sobue, and I.M. revised the manuscript critically for important intellectual content. All the authors approved the final manuscript.



## References:

1. Miller KD, Nogueira L, Devasia T, et al. Cancer treatment and survivorship statistics, 2022. *CA Cancer J Clin.* 2022;72(5):409-436. doi:10.3322/caac.21731
2. Kadambi S, Loh KP, Dunne R, et al. Older adults with cancer and their caregivers - current landscape and future directions for clinical care. *Nat Rev Clin Oncol.* 2020;17(12):742-755. doi:10.1038/s41571-020-0421-z
3. Bluethmann SM, Mariotto AB, Rowland JH. Anticipating the “Silver Tsunami”: Prevalence trajectories and comorbidity burden among older cancer survivors in the United States. *Cancer Epidemiol Biomarkers Prev.* 2016;25(7):1029-1036. doi:10.1158/1055-9965.EPI-16-0133
4. de Boer RA, Meijers WC, van der Meer P, van Veldhuisen DJ. Cancer and heart disease: associations and relations. *Eur J Heart Fail.* 2019;21(12):1515-1525. doi:10.1002/ejhf.1539
5. Meijers WC, de Boer RA. Common risk factors for heart failure and cancer. *Cardiovasc Res.* 2019;115(5):844-853. doi:10.1093/cvr/cvz035
6. Ramin C, Schaeffer ML, Zheng Z, et al. All-cause and cardiovascular disease mortality among breast cancer survivors in CLUE II, a long-standing community-based cohort. *J Natl Cancer Inst.* 2021;113(2):137-145. doi:10.1093/jnci/djaa096
7. Riihimäki M, Thomsen H, Brandt A, Sundquist J, Hemminki H. Death causes in breast cancer patients. *Ann Oncol.* 2012;23(3):604-610. doi:10.1093/annonc/mdr160
8. Baxi SS, Pinheiro LC, Patil SM, et al. Causes of death in long-term survivors of head and neck cancer. *Cancer.* 2014;120(10):1507-1513. doi:10.1002/cncr.28588
9. Fung C, Fossa SD, Milano MT, Sahasrabudhe DM, Peterson DR, Travis LB. Cardiovascular disease mortality after chemotherapy or surgery for testicular nonseminoma: A population-

- based study. *J Clin Oncol*. 2015;33(28):3105-3115. doi:10.1200/JCO.2014.60.3654
10. Howlader N, Mariotto AB, Besson C, et al. Cancer-specific mortality, cure fraction, and noncancer causes of death among diffuse large B-cell lymphoma patients in the immunochemotherapy era. *Cancer*. 2017;123(17):3326-3334. doi:10.1002/cncr.30739
  11. Zaorsky NG, Churilla TM, Egleston BL, et al. Causes of death among cancer patients. *Ann Oncol*. 2017;28(2):400-407. doi:10.1093/annonc/mdw604
  12. Stoltzfus KC, Zhang Y, Sturgeon K, et al. Fatal heart disease among cancer patients. *Nat Commun*. 2020;11(1):2011. Published 2020 Apr 24. doi:10.1038/s41467-020-15639-5
  13. Oh CM, Roh YH, Lim D, et al. Pulmonary tuberculosis is associated with elevated risk of lung cancer in Korea: The nationwide cohort study. *J Cancer*. 2020;11(7):1899-1906. Published 2020 Jan 20. doi:10.7150/jca.37022
  14. Ye Y, Otahal P, Marwick TH, Wills KE, Neil AL, Venn AJ. Cardiovascular and other competing causes of death among patients with cancer from 2006 to 2015: An Australian population-based study. *Cancer*. 2019;125(3):442-452. doi:10.1002/cncr.31806
  15. Cancer Statistics in Japan. Foundation for Promotion of Cancer Research. [https://ganjoho.jp/public/qa\\_links/report/statistics/pdf/cancer\\_statistics\\_2021.pdf](https://ganjoho.jp/public/qa_links/report/statistics/pdf/cancer_statistics_2021.pdf). Accessed December 7, 2022
  16. M. Ohmori, R. Ishihara, T. Morishima, et al. Excessive risk of second-cancer incidence and cancer mortality in patients with esophageal cancer. *J Gastroenterol*. 2021;56(5):434-441. doi:10.1007/s00535-021-01767-2
  17. Kudo H, Morishima T, Fujii M, et al. Do prognoses of patients with second primary cancers differ from those of patients with no prior cancer? A population-based study. *Cancer Epidemiol*. 2022;80:102218. doi:10.1016/j.canep.2022.102218

18. Gon Y, Ling Z, Sasaki T, et al. Stroke mortality in cancer survivors: A population-based study in Japan. *Thromb Res*. doi:10.1016/j.thromres.2023.01.005
19. Vogt A, Schmid S, Heinimann K, et al. Multiple primary tumours: challenges and approaches, a review. *ESMO Open*. 2017;2:e000172. doi:10.1136/esmoopen-2017-000172
20. Odani S, Tabuchi T, Nakata K, et al. Incidence and relative risk of metachronous second primary cancers for 16 cancer sites, Osaka, Japan, 2000-2015: Population-based analysis. *Cancer Med*. 2022 Jan;11(2):507-519. doi:10.1002/cam4.4457
21. Sherman ME, Troester MA, Hoadley KA, Anderson WF. Morphologic and molecular classification of human cancer. In: Thun M, Linet MS, Cerhan JR, Hainman CA, Schottenfeld D, eds. *Cancer epidemiology and prevention*. 4th ed. New York: Oxford University Press; 2017.
22. Koene RJ, Prizment AE, Blaes A, Konety SH. Shared risk factors in cardiovascular disease and cancer. *Circulation*. 2016;133(11):1104-1114. doi:10.1161/CIRCULATIONAHA.115.020406
23. Bick RL. Cancer-associated thrombosis. *N Engl J Med*. 2003;349(2):109-111.
24. Narezkina A, Nasim K. Anthracycline cardiotoxicity. *Circ Heart Fail*. 2019;12(3):e005910. doi:10.1161/CIRCHEARTFAILURE.119.005910
25. Lenihan DJ, Kowey PR. Overview and management of cardiac adverse events associated with tyrosine kinase inhibitors. *Oncologist*. 2013;18(8):900-8. doi:10.1634/theoncologist.2012-0466.
26. Lyon AR, Yousaf N, Battisti NML, Moslehi J, Larkin J. Immune checkpoint inhibitors and cardiovascular toxicity. *Lancet Oncol*. 2018 Sep;19(9):e447-e458. doi:10.1016/S1470-2045(18)30457-1.

27. Ball S, Ghosh RK, Wongsasengsak S, et al. Cardiovascular toxicities of immune checkpoint inhibitors: JACC Review Topic of the Week. *J Am Coll Cardiol* 2019;74(13):1714-1727. doi:10.1016/j.jacc.2019.07.079
28. Bloom MW, Hamo CE, Cardinale D, et al. Cancer therapy-related cardiac dysfunction and heart failure: Part 1: Definitions, pathophysiology, risk factors, and imaging. *Circ Heart Fail*. 2016;9(1):e002661. doi:10.1161/CIRCHEARTFAILURE.115.002661.
29. Smilowitz NR, Gupta N, Ramakrishna H, Guo Y, Berger JS, Bangalore S. Perioperative major adverse cardiovascular and cerebrovascular events associated with noncardiac surgery. *JAMA Cardiol*. 2017;2(2):181-187. doi:10.1001/jamacardio.2016.4792
30. Belzile-Dugas E, Eisenberg MJ. Radiation-induced cardiovascular disease: Review of an underrecognized pathology. *J Am Heart Assoc*. 2021;10(18):e021686. doi:10.1161/JAHA.121.021686.
31. Paterson DI, Wiebe N, Cheung WY, et al. Incident cardiovascular disease among adults with cancer: A population-based cohort study. *JACC CardioOncol*. 2022 Mar 15;4(1):85-94. doi:10.1016/j.jaccao.2022.01.100
32. Darby SC, Ewertz M, McGale P, et al. Risk of ischemic heart disease in women after radiotherapy for breast cancer. *N Engl J Med*. 2013 Mar 14;368(11):987-998. doi:10.1056/NEJMoa1209825
33. Navi BB, Reiner AS, Kamel H, et al. Risk of arterial thromboembolism in patients with cancer. *J Am Coll Cardiol*. 2017;70(8):926-938. doi:10.1016/j.jacc.2017.06.047
34. Mulder FI, Horváth-Puhó E, van Es N, et al. Arterial thromboembolism in cancer patients: A Danish population-based cohort study. *JACC CardioOncol*. 2021;3(2):205-218. doi:10.1016/j.jaccao.2021.02.007

35. Samuels MA. The brain-heart connection. *Circulation*. 2007;116(1):77-84.  
doi:10.1161/CIRCULATIONAHA.106.678995
36. Jin K, Brennan PM, Poon MTC, Sudlow CLM, Figueroa JD. Raised cardiovascular disease mortality after central nervous system tumor diagnosis: analysis of 171,926 patients from UK and USA. *Neurooncol Adv*. 2021;3(1):vdab136. doi:10.1093/noajnl/vdab136
37. Schuppener LM, Olson K, Brooks EG. Death certification: Errors and interventions. *Clin Med Res*. 2020;18(1):21-26. doi:10.3121/cmr.2019.1496

**Table 1. Standardized mortality ratios for heart disease death in patients with cancer compared to the general population**

	Person-years	Heart disease death		Heart disease death rate <sup>†</sup>	SMR (95% CI) <sup>‡</sup>
		Observed	Expected		
All patients	2,668,126	10,781	3,778.19	404.07	2.85 (2.80–2.91)
Sex					
Female	1,327,194	4,122	1386.05	301.24	2.97 (2.89–3.07)
Male	1,340,932	6,659	2,392.14	484.81	2.78 (2.72–2.85)
Age at diagnosis					
≤39	137,302	35	0.55	25.49	64.18 (46.08–89.39)
40–49	235,581	104	5.43	44.15	19.16 (15.81–23.22)
50–59	467,639	412	49.66	88.10	8.30 (7.53–9.14)
60–69	762,290	1,541	260.44	202.15	5.92 (5.63–6.22)
70–79	738,614	3,656	799.31	494.98	4.57 (4.43–4.73)
≥80	326,700	5,033	2,662.80	1,540.56	1.89 (1.84–1.94)
Period of diagnosis					
1985–1994	620,728	3,346	1,359.37	539.04	2.46 (2.38–2.55)
1995–2004	1,026,769	3,775	1,553.37	367.66	2.43 (2.35–2.51)
2005–2013	1,020,628	3,660	865.46	358.60	4.23 (4.09–4.37)
Stage at diagnosis					
Intraepithelial	176,976	383	98.50	216.41	3.89 (3.52–4.30)
Localized	1,447,590	5,678	1,924.87	392.24	2.95 (2.87–3.03)
Lymph node metastasis	388,820	1,403	520.91	360.84	2.69 (2.56–2.84)
Infiltration to adjacent organs	235,055	1,121	406.20	476.91	2.76 (2.60–2.93)
Distant metastasis	154,395	780	350.47	505.20	2.23 (2.08–2.39)
Unknown	219,581	1,194	421.56	543.76	2.83 (2.68–3.00)

N/A	45,710	222	55.69	485.67	3.99 (3.50–4.55)
Histology					
Adenocarcinoma	1,760,219	6,270	2,221.12	356.21	2.82 (2.75–2.89)
Squamous or basal carcinoma	410,921	2,181	714.70	530.76	3.05 (2.93–3.18)
Other carcinomas	207,771	800	384.79	385.04	2.08 (1.94–2.23)
Hematopoietic tumors	111,465	439	132.50	393.85	3.31 (3.02–3.64)
Other histology	177,751	1,091	325.09	613.78	3.36 (3.16–3.56)

CI, confidence interval; N/A, not applicable; SMR, standardized mortality ratio

† Per 100,000 person-years.

‡ SMRs may not equal the number of observed deaths divided by expected deaths because expected deaths are only listed to two decimal places.

**Table 2. Standardized mortality ratios for ischemic heart disease, heart failure, and hypertensive disease in patients with cancer compared to the general population**

	Ischemic heart disease			Heart failure			Hypertensive disease		
	Rate <sup>†</sup>	SMR	(95% CI)	Rate <sup>†</sup>	SMR	(95% CI)	Rate <sup>†</sup>	SMR	(95% CI)
All patients	188.15	3.26	(3.17–3.35)	135.00	2.69	(2.60–2.78)	16.53	4.47	(4.07–4.90)
Sex									
Female	124.47	3.50	(3.33–3.67)	115.85	2.75	(2.53–2.76)	12.00	9.72	(8.41–11.23)
Male	251.17	3.15	(3.05–3.26)	153.85	2.75	(2.62–2.89)	19.17	3.22	(2.85–3.64)
Age at diagnosis									
≤39	6.55	73.26	(38.12–140.79)	13.84	87.67	(55.92–137.45)	0	–	–
40–49	14.86	15.62	(11.21–21.75)	17.83	23.65	(17.48–32.01)	0	–	–
50–59	40.63	7.66	(6.45–8.83)	31.01	10.94	(9.30–12.88)	1.07	4.81	(2.00–11.57)
60–69	104.82	5.70	(5.32–6.11)	57.59	7.16	(6.52–7.86)	6.56	8.58	(6.50–11.31)
70–79	257.51	4.67	(4.46–4.88)	143.78	5.05	(4.75–5.36)	19.90	7.24	(6.16–8.51)
≥80	638.20	2.16	(2.07–2.25)	580.04	1.80	(1.72–1.88)	73.16	3.34	(2.94–3.79)
Period of diagnosis									
1985–1994	199.12	2.23	(2.11–2.36)	248.90	2.94	(2.80–3.09)	20.30	2.85	(2.39–3.39)
1995–2004	189.14	2.98	(2.85–3.11)	97.98	1.96	(1.84–2.09)	16.46	4.76	(4.09–5.53)



2005–2013	180.48	5.51 (5.26–5.77)	102.96	3.48 (3.28–3.70)	14.30	7.66 (6.52–9.01)
Stage at diagnosis						
Intraepithelial	112.44	5.14 (4.47–5.90)	59.33	3.00 (2.48–3.63)	11.31	8.54 (5.51–13.23)
Localized	190.52	3.50 (3.37–3.63)	122.62	2.63 (2.51–2.75)	17.68	5.13 (4.52–5.80)
Lymph node metastasis	163.31	2.96 (2.34–3.20)	129.37	2.72 (2.49–2.97)	13.89	4.01 (3.07–5.23)
Infiltration to adjacent organs	218.67	3.14 (2.88–3.42)	165.07	2.66 (2.40–2.93)	21.70	4.87 (3.70–6.41)
Distant metastasis	224.75	2.39 (2.15–2.65)	185.89	2.31 (2.06–2.60)	13.60	2.13 (1.39–3.26)
Unknown	221.79	2.91 (2.66–3.18)	209.95	2.97 (2.71–3.26)	15.48	2.98 (2.13–4.17)
N/A	175.02	3.60 (2.89–4.48)	181.58	4.17 (3.37–5.17)	10.94	3.78 (1.57–9.08)
Histology						
Adenocarcinoma	169.47	3.31 (3.19–3.43)	112.71	2.52 (2.41–2.64)	15.68	4.84 (4.30–5.44)
Squamous or basal carcinoma	256.01	3.58 (3.37–3.80)	175.95	2.84 (2.64–3.06)	22.88	4.70 (3.84–5.75)
Other carcinomas	190.11	2.37 (2.15–2.62)	124.66	2.03 (1.80–2.29)	13.00	2.78 (1.91–4.06)
Hematopoietic tumors	151.62	3.17 (2.72–3.68)	138.16	3.27 (2.79–3.83)	8.97	3.14 (1.69–5.84)
Other histology	236.85	3.37 (3.06–3.71)	271.17	3.87 (3.54–4.23)	19.13	3.86 (2.76–5.41)

CI, confidence interval; N/A, not applicable; SMR, standardized mortality ratio

† Per 100,000 person-years

**Table 3. Relative risk of heart disease death in patients with cancer**

	RR	95% CI	P-value
<b>Sex</b>			
Female	1.00	–	
Male	1.39	1.34–1.45	<0.001
<b>Age at diagnosis</b>			
≤39	1.00	–	
40–49	2.19	1.51–3.18	<0.001
50–59	4.46	3.19–6.24	<0.001
60–69	10.12	7.30–14.04	<0.001
70–79	25.42	18.36–35.18	<0.001
≥80	79.63	57.56–110.16	<0.001
<b>Period of diagnosis</b>			
1985–1994	1.00	–	
1995–2004	0.60	0.57–0.63	<0.001
2005–2013	0.51	0.48–0.53	<0.001
<b>Stage at diagnosis</b>			
Intraepithelial	1.00	–	
Localized	1.29	1.17–1.43	<0.001
Lymph node metastasis	1.46	1.31–1.63	<0.001
Infiltration to adjacent organs	1.63	1.46–1.82	<0.001
Distant metastasis	1.83	1.62–2.06	<0.001
Unknown	1.64	1.47–1.84	<0.001
N/A	2.82	2.30–3.46	<0.001
<b>Histology</b>			
Adenocarcinoma	1.00	–	
Squamous or basal carcinoma	1.36	1.30–1.43	<0.001
Other carcinomas	1.12	1.05–1.21	0.001
Hematopoietic tumors	0.99	0.87–1.13	0.94
Other histology	1.73	1.63–1.85	<0.001

CI, confidence interval; N/A, not applicable; RR, relative risk

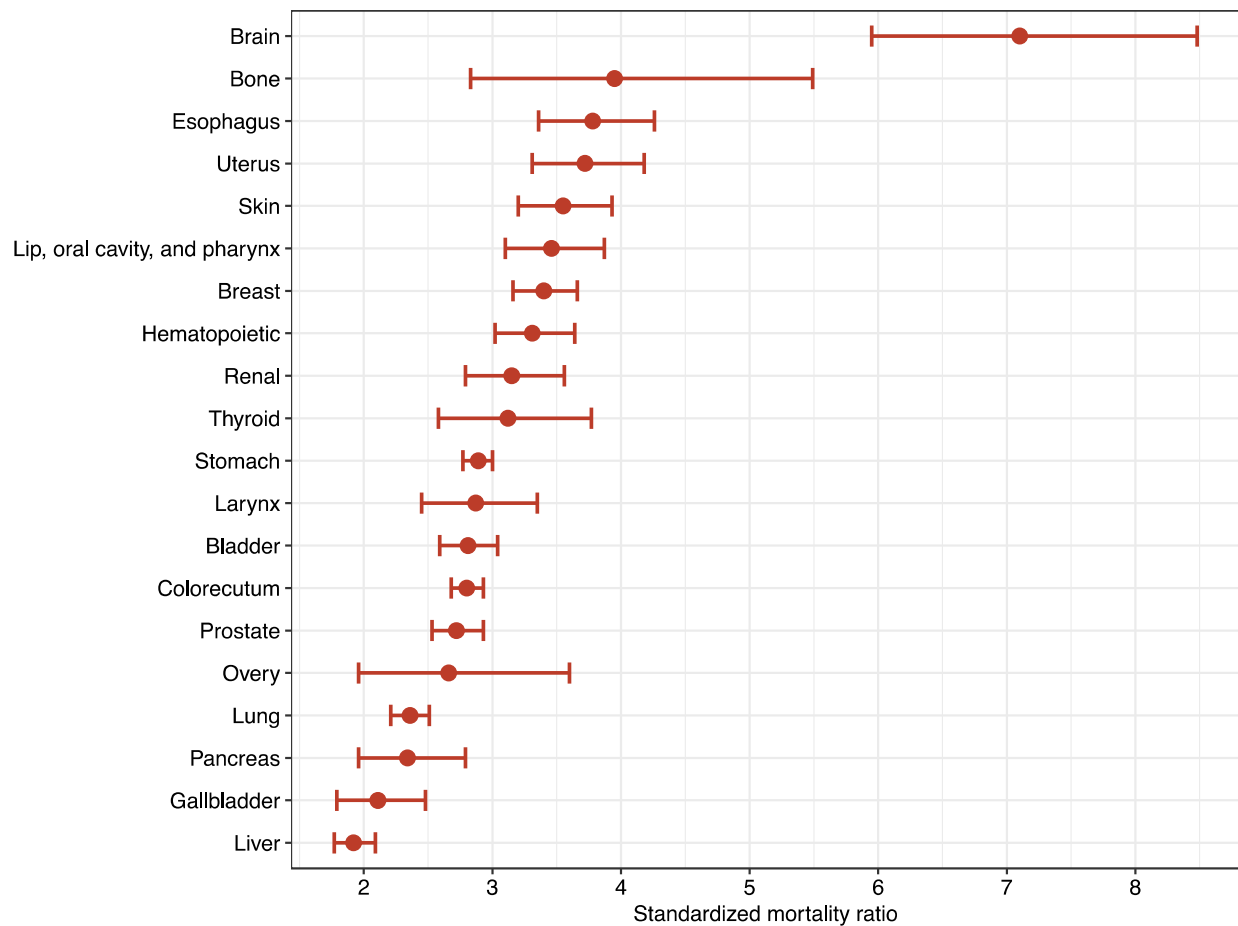
**Table 4. Relative risk of ischemic heart disease, heart failure, and hypertensive disease death in patients with cancer**

	Ischemic heart disease			Heart failure			Hypertensive disease		
	RR	95% CI	<i>P</i> - value	RR	95% CI	<i>P</i> -value	RR	95% CI	<i>P</i> - value
<b>Sex</b>									
Female	1.00	–		1.00	–		1.00	–	
Male	1.71	1.61– 1.82	<0.001	1.19	1.12– 1.28	<0.001	1.20	0.99– 1.45	0.061
<b>Age at diagnosis</b>									
≤39	1.00	–		1.00	–		–	–	
40–49	2.71	1.30– 5.65	0.008	1.72	1.00– 2.96	0.051	–	–	
50–59	6.87	3.51– 13.42	<0.001	3.04	1.88– 4.91	<0.001	1.00	–	
60–69	17.06	8.83– 32.97	<0.001	6.14	3.87– 9.75	<0.001	6.38	2.54– 16.01	<0.001
70–79	42.37	21.97– 81.70	<0.001	16.5 2	10.46 – 26.08	<0.001	20.0 1	8.20– 48.86	<0.001
≥80	109.2 1	56.65– 210.52	<0.001	68.0 0	43.16 – 107.1 3	<0.001	74.8 6	30.83 – 181.7 3	<0.001
<b>Period of diagnosis</b>									
1985–1994	1.00	–		1.00	–		1.00	–	
1995–2004	0.78	0.73– 0.84	<0.001	0.32	0.30– 0.35	<0.001	0.64	0.50– 0.80	<0.001
2005–2013	0.64	0.60– 0.69	<0.001	0.29	0.27– 0.31	<0.001	0.47	0.37– 0.60	<0.001

Stage at diagnosis									
Intraepithelial	1.00	–		1.00	–		1.00	–	
Localized	1.30	1.12– 1.51	<0.001	1.40	1.15– 1.71	0.001	1.14	0.72– 1.81	0.58
Lymph node metastasis	1.39	1.18– 1.64	<0.001	1.76	1.42– 2.18	<0.001	1.09	0.65– 1.84	0.74
Infiltration to adjacent organs	1.50	1.27– 1.77	<0.001	1.94	1.56– 2.42	<0.001	1.45	0.86– 2.44	0.16
Distant metastasis	1.63	1.36– 1.94	<0.001	2.33	1.85– 2.93	<0.001	1.01	0.54– 1.88	0.98
Unknown	1.45	1.22– 1.72	<0.001	2.02	1.62– 2.51	<0.001	0.97	0.55– 1.72	0.92
N/A	2.34	1.68– 3.26	<0.001	3.96	2.74– 5.71	<0.001	1.95	0.54– 7.08	0.31
Histology									
Adenocarcinoma	1.00	–		1.00	–		1.00	–	
Squamous or basal carcinoma	1.40	1.31– 1.51	<0.001	1.43	1.31– 1.56	<0.001	1.31	1.03– 1.66	0.03
Other carcinomas	1.11	1.00– 1.23	0.059	1.22	1.07– 1.39	0.003	0.89	0.60– 1.32	0.56
Hematopoietic tumors	0.91	0.74– 1.12	0.37	1.02	0.81– 1.29	0.88	0.65	0.27– 1.55	0.33
Other histology	1.56	1.40– 1.74	<0.001	2.17	1.95– 2.41	<0.001	1.37	0.95– 1.99	0.09

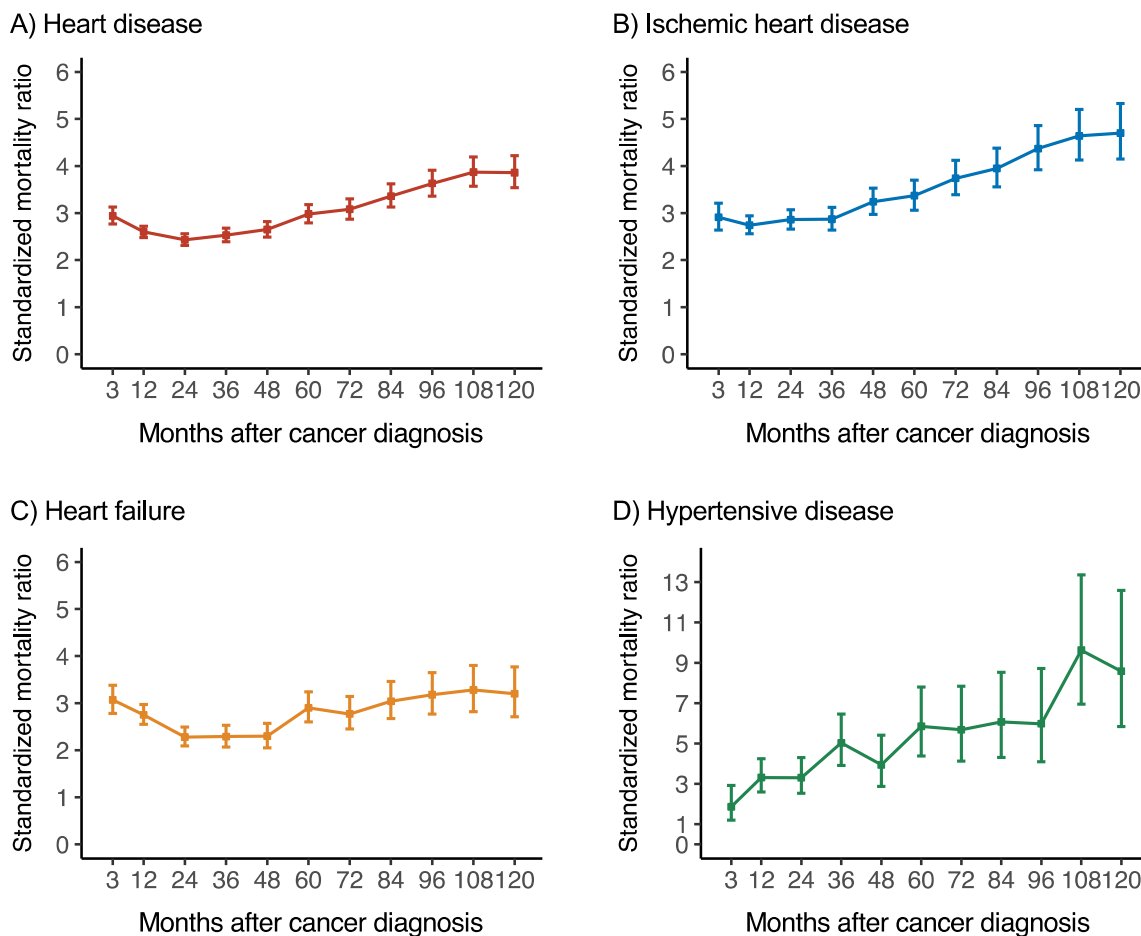
CI, confidence interval; N/A, not applicable; RR, relative risk

**Figure 1. Standardized mortality ratio for heart disease death stratified by cancer site**



The ordinate shows the cancer site, and the abscissa indicates the standardized mortality ratio (SMR) for heart disease-related death. Error bars show the 95% confidence interval. The plots are in the order of increasing SMR. Patients with cancer have a higher SMR for heart disease-related death than the general population.

**Figure 2. Trends in standard mortality ratio according to time after cancer diagnosis**



The ordinate shows the standardized mortality ratio (SMR), and the abscissa indicates the time after cancer diagnosis. Error bars show the 95% confidence interval. (A) The SMR for heart disease tends to be high immediately after diagnosis, declines once, and then increases with time. (B, C) The SMR for ischemic heart disease and heart failure shows a trend similar to that of heart disease. (D) In the analysis of hypertensive disease, SMR varies with time, but they are generally increased over time.