

# Event Rate and Predictors of Post-Acute COVID-19 Sequelae and the Average Time to Diagnosis in General Population

(meta-analysis and meta-regression)

**\*John Muthuka K.,<sup>1,3</sup> Caleb Mutua M.,<sup>1</sup> Japheth Nzioki M.,<sup>2</sup> Rosemary Nabaweesi,<sup>4</sup> Kelly Oluoch J.,<sup>1</sup> Michael Kiptoo K.,<sup>5</sup>**

<sup>1</sup>Kenya Medical Training College, Nairobi, Kenya

<sup>2</sup>Jumeira University, Dubai, United Arabs Emirates

<sup>3</sup>Kenya Medical Research Institute, Nairobi, Kenya

<sup>4</sup>Meharry Medical College, NT, United States

South Eastern Kenya University, Kitui, Kenya

Corresponding Author\*: ([johnmuthuka@gmail.com](mailto:johnmuthuka@gmail.com))

**Background:** Post- COVID-19 sequelae involves a variety of new, returning or ongoing symptoms that people *experience more than four weeks after* getting COVID-19. The aims of this meta-analysis were to assess the prevalence of Post-Acute COVID-19 sequelae and estimate the average time to its diagnosis; and meta-regress for possible moderators.

**Methods:** A standard search strategy was used in PubMed, and then later modified according to each specific database. Search terms included “long COVID-19 or post-acute COVID-19 syndrome/sequelae”. The criteria for inclusion were published clinical articles reporting the long COVID-19, further, the average time to diagnosis of post-acute COVID-19 sequelae among primary infected patients with COVID-19. Random-effects model was used. Rank Correlation and Egger’s tests were used to ascertain publication bias. Sub-group, sensitivity and meta-regression analysis were conducted. A 95% confidence intervals were presented and a p-value < 0.05 was considered statistically significant. Review Manager 5.4 and comprehensive meta-analysis version 4 (CMA V4) were used for the analysis. The trial was PROSPERO registered (CRD42022328509).

**Results:** Prevalence of post-acute COVID-19 sequelae was 42.5% (95% confidence interval (CI) 36 % to 49.3%). The PACS event rates’ range was 25 % at four months and 66 % at two months and mostly, signs and symptoms of PASC were experienced at three (54.3%, P < 0.0001) to six months (57%, P < 0.0001), further increasing at 12 months (57.9%, P= 0.0148). At an average of two months, however with the highest event rate (66%), it was not significantly associated with PACS diagnosis (P=0.08). On meta-regression, comorbidities collectively contributed to 14% of PACS with a non-significant correlation (Q = 7.05, df = 8, p = 0.5313) (R<sup>2</sup>=0.14). A cardiovascular disorder especially hypertension as a stand-alone, showed an event rate of 32% and significantly associated with PACS, 0.322 (95% CI 0.166, 0.532) (P < 0.001). Chronic obstructive pulmonary disorder (COPD) and abnormal basal metabolic index (BMI) had higher event rates of PACS (59.8 % and 55.9 %) respectively, with a non-significant correlation (P > 0.05). With a significant association, hospital re-admission contributed to 17% (Q = 8.70, df = 1, p = 0.0032) (R<sup>2</sup> = 0.17) and the study design 26% (Q = 14.32, df = 3, p = 0.0025) (R<sup>2</sup>=0.26). All the covariates explained at least some of the variance in effect size on PACS at 53% (Q = 38.81, df = 19, p = 0.0047) (R<sup>2</sup> analog = 0.53).

**Conclusion:** The prevalence of PACS in general population was 42.5%, of which cardiovascular disorders were highly linked with it with COPD and abnormal BMI also being possible conditions found in patients with PACS. Hospital re-admission predicted highly, an experience of PACS as well as prospective study design. Clinical and methodological characteristics in a specific study contributed to over 50% of PACS events. The PACS event rates ranged between 25 % at four months and 66 % at two months with most signs and symptoms experienced between three to six months increasing at 12 months.

## Introduction

Post-acute sequelae of COVID-19, also known as “long COVID,” is used to describe the long-term symptoms that might be experienced weeks to months after primary infection with SARS-

CoV-2, the virus that causes COVID-19 <sup>1</sup>. Recent literature suggests that, the syndrome is described by a diverse set of symptoms that persist after a diagnosed COVID-19 infection<sup>2</sup>. This

post-acute infection represents a significant challenge for patients, physicians, and society because the causes, patient profile, and even symptom patterns remain difficult to characterize<sup>3</sup>. It may include memory loss, gastrointestinal (GI) distress, fatigue, anosmia, shortness of breath, and other symptoms. PASC has been associated with acute disease severity<sup>4</sup>, further, it is suspected to be related to autoimmune factors<sup>5</sup>, as well as unresolved viral fragments<sup>6</sup>. Post-COVID conditions are found more often in people who had severe COVID-19 illness, but anyone who has been infected with the virus that causes COVID-19 can experience post-COVID conditions, even people who had mild illness or no symptoms from COVID-19<sup>7</sup>. There is no test to diagnose post-COVID conditions, and people may have a wide variety of symptoms that could come from other health problems. This can make it difficult for healthcare providers to recognize post-COVID conditions. Diagnosis is considered based on health history, including if you had a diagnosis of COVID-19 either by a positive test or by symptoms or exposure, as well as doing a health examination<sup>8-10</sup>. Long COVID may be due to persistent immune disturbances<sup>11</sup>.

Studies of patients who have recovered from SARS-CoV-2 infection but have persistent symptoms have ranged widely in size, quality, and methodology, leading to confusion about the prevalence and types of persistent symptoms<sup>12</sup>. SARS-CoV-2 can produce short/long-term sequelae and reports describing post-acute COVID-19 syndrome (PACS) in the general population are increasing, however limited by lack of proper pooled average time estimation for diagnosis or occurrence. Therefore, this review aimed at assessing the prevalence and factors associated with PACS in our cohort of general population.

## **Methods**

A standard search strategy was used in PubMed, and then later modified according to each specific database to get the best relevant results. These included MEDLINE indexed journals; PubMed Central; NCBI Bookshelf and publishers' Web sites. The language was restricted to English and the search dates were for studies conducted/published between June 2021 and August 2022. The basic search strategy was built based on the research question formulation (i.e., PICO or PICOS)<sup>13</sup>. They were constructed to include free-text terms (e.g., in the title and abstract) and any appropriate subject indexing (e.g., MeSH) expected to retrieve eligible studies, with the help of an expert in the review topic field or an information specialist. The summary of

search terms was; long COVID-19; long COVID-19 syndrome; post-Corona Virus syndrome; Post-acute COVID-19 sequelae; Post-acute COVID-19 syndrome; Post-acute COVID-19 condition. Because the study for this topic would be limited, the outcome term (long COVID-19) in the search term was not be included initially in order to capture more studies. Preferred Reporting Items for Systematic Review and Meta-Analysis (PRISMA) statement.<sup>14</sup> was used. All identified article titles and abstracts were screened independently by two authors (JKM, JMN), with those meeting the inclusion criteria screened further by full text review. On occasions when it was not clear from the abstract if studies were of relevance, the full text of the article was reviewed. Unanimous consensus was met on the inclusion of proposed studies for full text review among the authors (JKM, JMN, KO and CM). Full text studies were further evaluated against the inclusion and exclusion criteria. The reference lists of included studies were reviewed to ensure no other relevant studies were overlooked.

### **Search terms and criteria for inclusion**

Search terms included for PubMed was as follows: (long COVID-19; long COVID-19 syndrome; post-Corona Virus syndrome; Post-acute COVID-19 sequelae; Post-acute COVID-19 syndrome; Post-acute COVID-19 condition) AND (“the study” [Publication Type] OR “study as the topic” [MeSH Terms] OR “study” AND [All Fields]). A search limit for articles published from mid-2020 applied. The criteria for inclusion were published research articles reporting: 1) the rate prevalence of post-acute COVID-19 syndrome (at admission or following admission) in general population 2) the possible associated clinical parameters. Studies were excluded if they were case reports, review articles, conference abstracts, non-clinical studies, or were not available in the English language.

### **Data extraction**

The included studies were evaluated for the authors, year of publication/ the study was conducted, title, where it was conducted, study design (prospective, retrospective or other), age and sex of patients, number of patients, number of post-acute COVID-19 sequelae and the time of diagnosis of post-acute COVID-19 sequelae (on admission or following admission with mean/ average time to diagnosis in months). A post-acute COVID-19 sequelae case was defined as the illness that occurs in people who have a history of probable or confirmed SARS-CoV-2

infection; usually within three months from the onset of COVID-19, with symptoms and effects that last for at least two months.

## **Outcome measures**

The primary objectives were to report the prevalence of post-acute COVID-19 sequelae using the most recent data, post-acute COVID-19 sequelae in PLWH as from mid-2020, the associated event rate of mortality with post-acute COVID-19 sequelae, average time of acquiring/being diagnosed with post-acute COVID-19 sequelae. Secondary objectives included meta-regressing for any possible and predetermined covariates to ascertain of any relationship with post-acute COVID-19 sequelae.

## **Quality assessment**

Using the NIH Quality Assessment Tool for Observational Cohort and Cross-Sectional Studies<sup>15</sup>, all included publications were reviewed independently for potential risk of bias by two authors (JKM, JMN). The assessment tool uses 14 questions to enable allocation of a score to each article (poor, fair, or good). If there was disagreement regarding the scoring of a study, consensus was met after discussion among both assessors.

## **Statistical analysis**

Simple descriptive analysis was performed for the five aims of the review. Heterogeneity among the studies was assessed using the chi-squared test and  $I^2$ , however due to suspected variation among the studies and associated heterogeneity random effects models were used for all meta analyses<sup>16</sup>. Post-acute COVID-19 events rates were estimated using random-effects model, the mortality associated with post-acute COVID-19 sequelae was statistically assessed using random effects models (DerSimonian and Laird)<sup>17</sup>, and event rates (ER) were presented. Publication bias was assessed using Begg and Mazumdar Rank Correlation Test and the Egger's Test of the Intercept and a precision funnel plot was used to ascertain this the publication bias status. To account for any possible heterogeneity ( $I^2$ ), sub-group and sensitivity analysis were conducted and in this, some analysis used fixed-effect model analysis, further to these, meta-regression analysis was run for specific pre-determined covariates. For each outcome variable, 95% confidence intervals (CIs) were presented. A p-value < 0.05 was considered statistically

significant. The meta-analysis and meta-regression was conducted using Review Manager 5.4 (Cochrane Collaboration, Oxford, UK)<sup>18</sup> and comprehensive meta-analysis version 4 (CMA v4).

## Results

There were 2197 articles identified in the initial search of databases and reference lists (*Figure 1*). After initial screening of titles and abstracts 197 articles met the inclusion criteria for review. On full text screening, the number reduced to 57 studies. Further, 14 studies without clinical outcomes were eliminated. A list of the 43 studies <sup>1,4,27–36,19,37–46,20,47–56,21,57–62,22–26</sup> that met the inclusion criteria are illustrated in *Table I*.

**Table 1: *Summer of the studies used in the analysis***

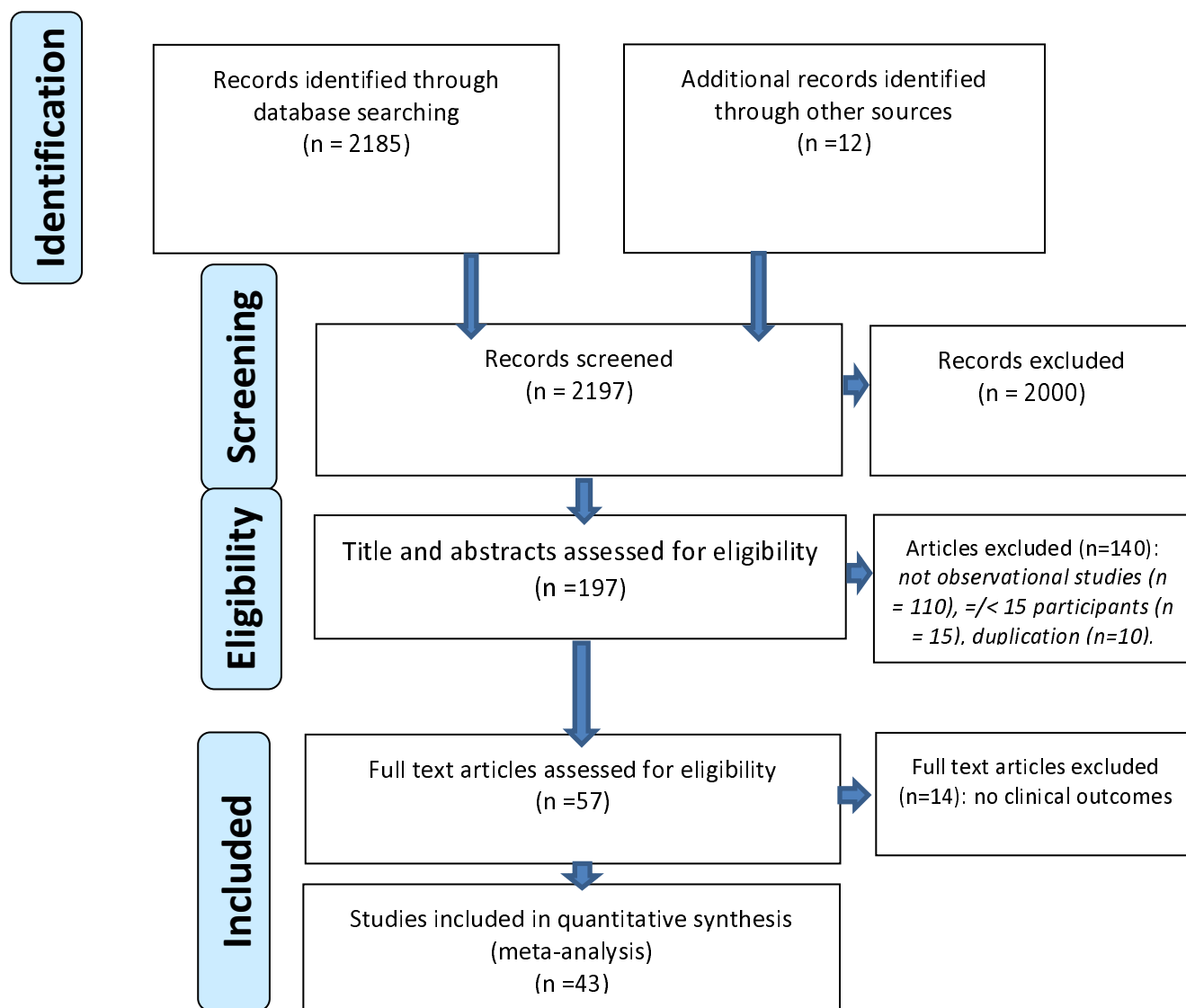
|     | <i>Study/Author</i> | <i>Region</i> | <i>Study Design</i> | <i>Study Setting</i> | <i>Average time to PACS diagnosis (in months)</i> |
|-----|---------------------|---------------|---------------------|----------------------|---|
| 1.  | <sup>62</sup>       | Africa        | Prospective         | Single               | 2   |
| 2.  | <sup>54</sup>       | Europe        | Prospective         | Single               | 3   |
| 3.  | <sup>55</sup>       | Europe        | Retrospective       | Multicenter          | 5   |
| 4.  | <sup>51</sup>       | USA           | Prospective         | Multicenter          | 2   |
| 5.  | <sup>4</sup>        | Europe        | Prospective         | Single               | 6   |
| 6.  | <sup>43</sup>       | Europe        | Prospective         | Multicenter          | 12  |
| 7.  | <sup>1</sup>        | Asia          | Prospective         | Single               | 6   |
| 8.  | <sup>52</sup>       | Europe        | Prospective         | Multicenter          | 12  |
| 9.  | <sup>50</sup>       | Africa        | Prospective         | Single               | 3   |
| 10. | <sup>45</sup>       | Asia          | Retrospective       | Single               | 9   |
| 11. | <sup>30</sup>       | Europe        | Cross sectional     | Single               | 11  |
| 12. | <sup>19</sup>       | Asia          | Retrospective       | Single               | -   |
| 13. | <sup>27</sup>       | USA           | Prospective         | Single               | 4   |
| 14. | <sup>29</sup>       | Europe        | Retrospective       | Multicenter          | 6   |
| 15. | <sup>42</sup>       | USA           | Retrospective       | Multicenter          | 1   |
| 16. | <sup>38</sup>       | Asia          | Prospective         | Multicenter          | 3   |

|     |               |        |                              |             |    |
|-----|---------------|--------|------------------------------|-------------|----|
| 17. | <sup>37</sup> | Asia   | Cross sectional              | Multicenter | 3  |
| 18. | <sup>24</sup> | USA    | Retrospective                | Single      | -  |
| 19. | <sup>28</sup> | USA    | Prospective                  | Single      | 6  |
| 20. | <sup>46</sup> | USA    | Cross sectional              | Single      | -  |
| 21. | <sup>39</sup> | Europe | Retrospective                | Single      | 12 |
| 22. | <sup>36</sup> | Asia   | Prospective                  | Single      | -  |
| 23. | <sup>35</sup> | Europe | Prospective                  | Multicenter | 7  |
| 24. | <sup>40</sup> | Europe | Prospective                  | Multicenter | 3  |
| 25. | <sup>32</sup> | Europe | Prospective                  | Single      | 1  |
| 26. | <sup>33</sup> | Asia   | Prospective                  | Single      | -  |
| 27. | <sup>48</sup> | Africa | Retrospective                | Single      | 5  |
| 28. | <sup>56</sup> | Africa | Retrospective                | Single      | 5  |
| 29. | <sup>60</sup> | Asia   | Prospective                  | Single      | -  |
| 30. | <sup>34</sup> | Europe | Bidirectional<br>prospective | Single      | 6  |
| 31. | <sup>61</sup> | Europe | Cross sectional              | Single      | 7  |
| 32. | <sup>23</sup> | USA    | Retrospective                | Multicenter | 5  |
| 33. | <sup>44</sup> | Europe | Prospective                  | Single      | 4  |
| 34. | <sup>25</sup> | Europe | Retrospective                | Multicenter | 4  |



|     |               |        |                 |             |   |
|-----|---------------|--------|-----------------|-------------|---|
| 35. | <sup>26</sup> | Asia   | Prospective     | Single      | 3 |
| 36. | <sup>57</sup> | Europe | Prospective     | Multicenter | 3 |
| 37. | <sup>22</sup> | USA    | Retrospective   | Single      | - |
| 38. | <sup>58</sup> | USA    | Retrospective   | Multicenter | 6 |
| 39. | <sup>47</sup> | Asia   | Cross sectional | Single      | 4 |
| 40. | <sup>41</sup> | Europe | Prospective     | Single      | 3 |
| 41. | <sup>21</sup> | USA    | Prospective     | Multicenter | - |
| 42. | <sup>59</sup> | Europe | Prospective     | Single      | 3 |
| 43. | <sup>31</sup> | Europe | Retrospective   | Single      | 9 |

*PRISMA flow diagram showing studies identified and included in a systematic meta-analysis of coronavirus disease 2019 Cytokine storm and mortality*

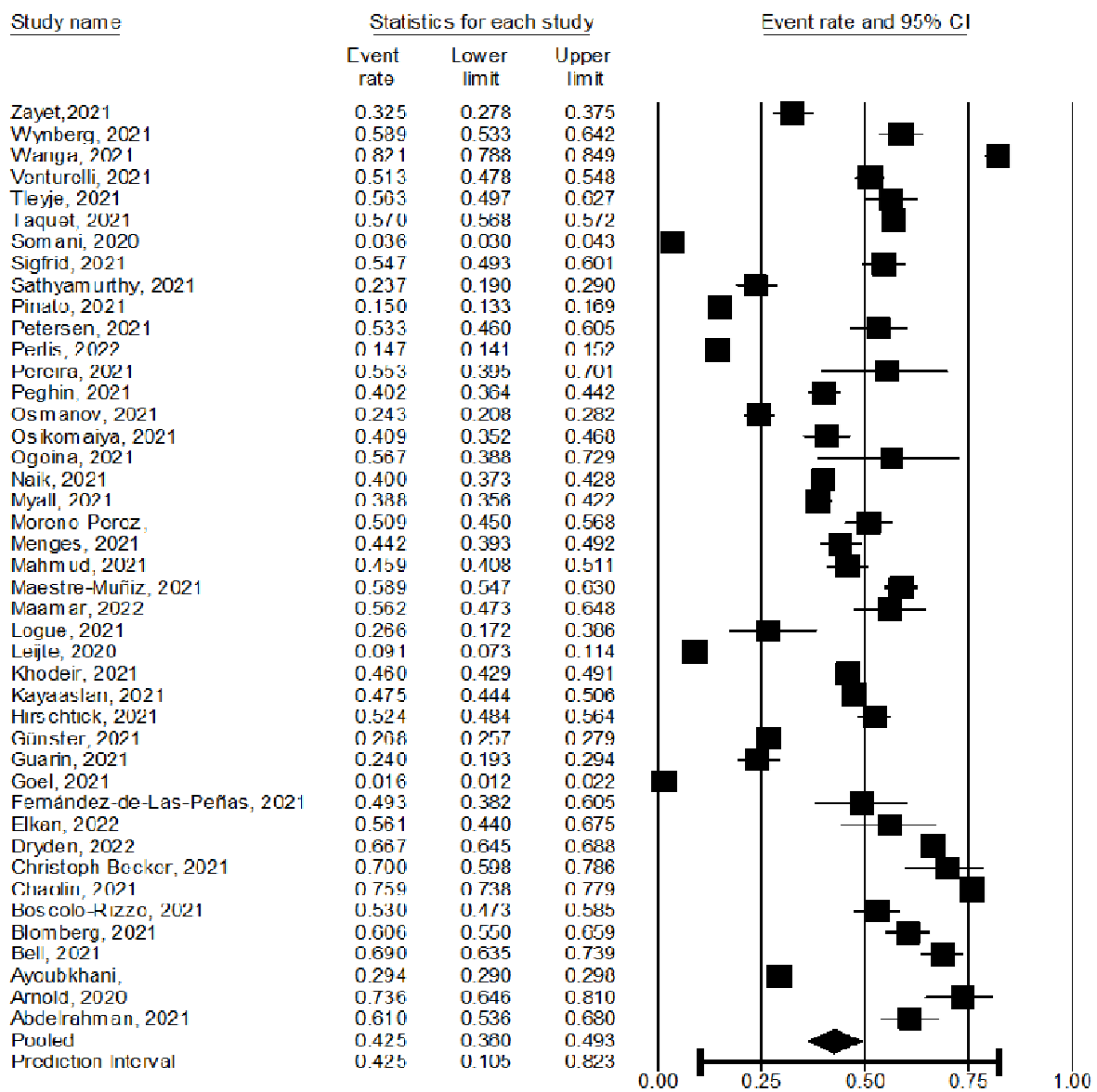


*Figure 1: Preferred Reporting Items for Systematic Review and Meta-Analysis (PRISMA) flow diagram for the studies identified and included in the review.*

## **Prevalence of Post-Acute COVID-19 Sequelae in general population**

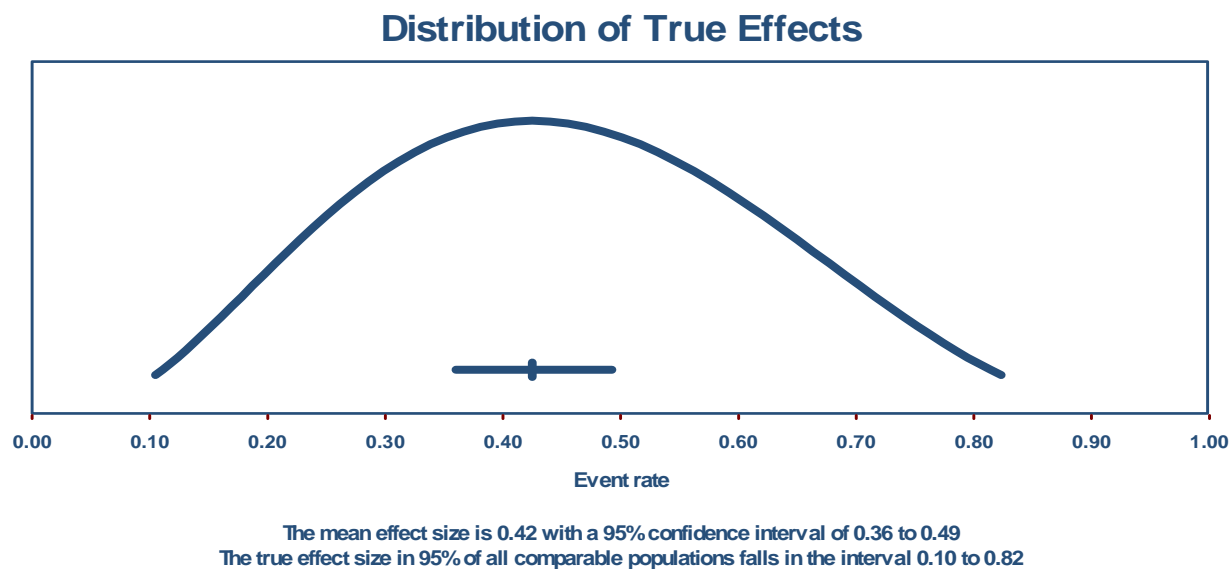
A total of 43 studies <sup>1,4,27-36,19,37-46,20,47-56,21,57-62,22-26</sup> (n= 367236) reported event rates of post-acute COVID-19 Sequelae (n = 183064) in general population. The prevalence of post-acute COVID-19 Sequelae ranged from 1.6% to 82%, with a mean of 42.5% (95% CI 36 % to 49.3%)[ Heterogeneity:  $\tau^2 = 0.81$ ;  $\chi^2 = 24108.789$ ,  $df = 42$  ( $P = 0.030$ );  $I^2 = 100\%$ ] (*Figure 2*). The prediction interval (*Figure 3*) demonstrates the true effects size in 95% of all the comparable populations fell between 0.10 to 0.823 demonstrating that, in some populations, the event rates of PASC is at one extreme as low as 10% and as high as 82%, a fact that would necessitate a meta-regression analysis to account for possible moderators this variation reflects differences in real proportions.

## Prevalence of post-acute COVID-19 sequelae in general population



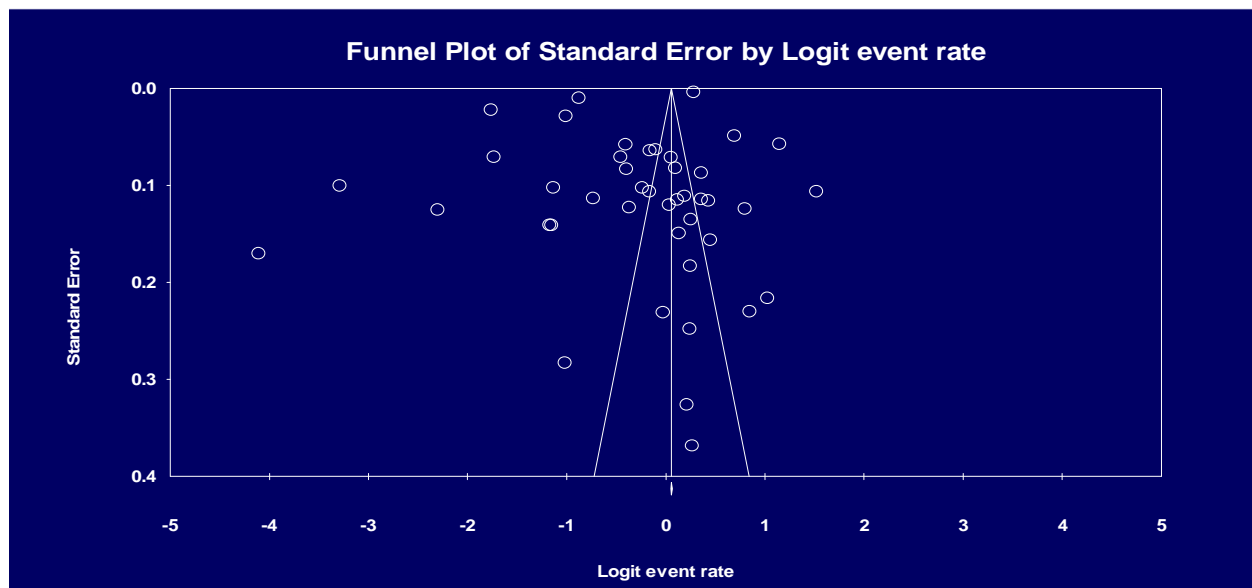
## Meta Analysis

Figure 2: A forest plot on Prevalence of Post-Acute COVID-19 Sequelae in general population



**Figure 3:** The prediction interval demonstrating the true effects size in 95% of all the comparable populations

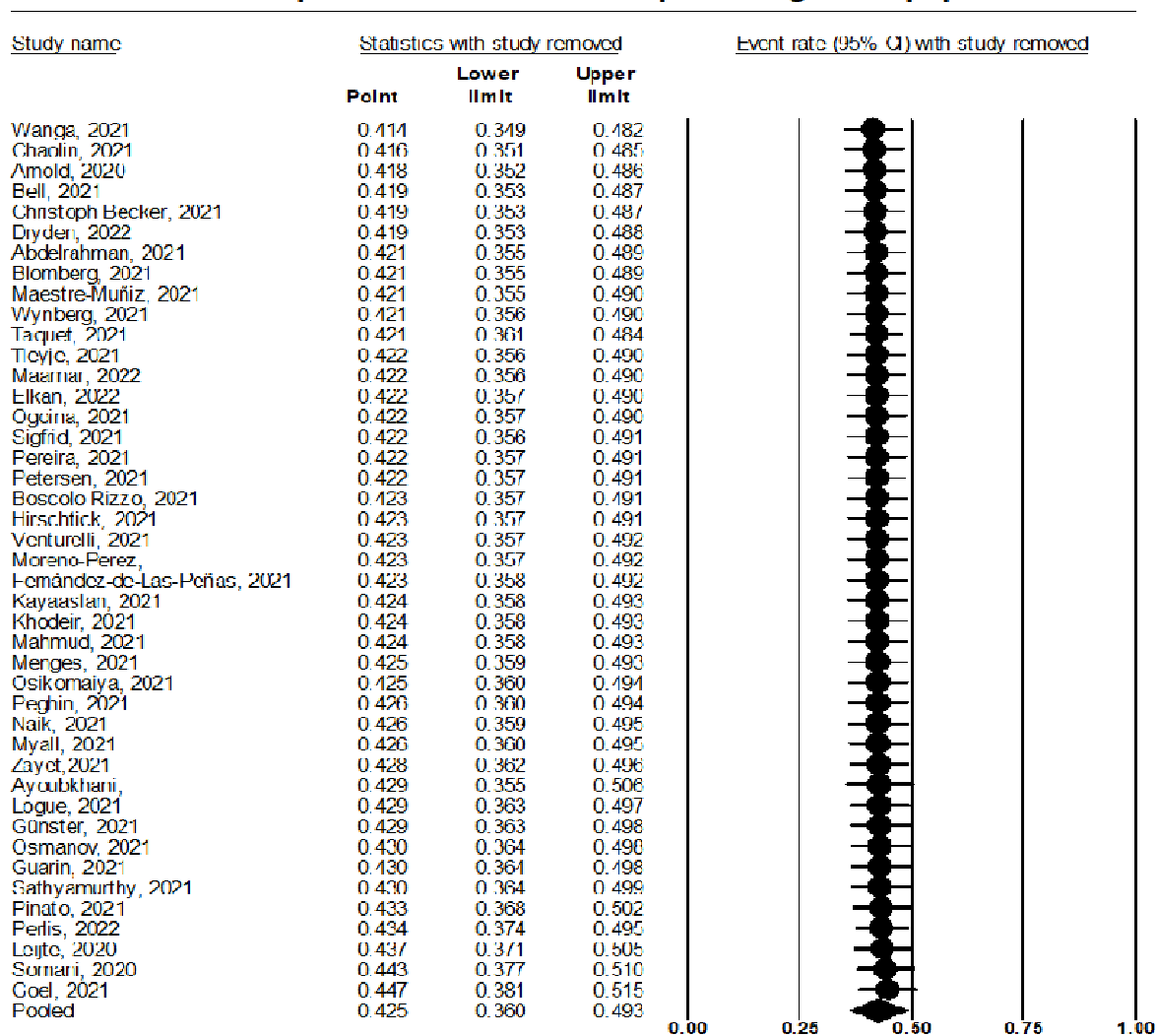
A funnel plot of standard error and the egger's regression intercept test indicated a possible publication bias (intercept = -7.13010, 95% confidence interval (-15.04711, 0.78691), with  $t=1.81881$ ,  $df=41$  and 1-tailed  $P = 0.038$ ) (Figure 4).



**Figure 4:** A funnel plot of standard error for publication bias assessment

Sensitivity analysis was performed to explore the impact of excluding or including studies based on sample size, methodological quality and variance on the heterogeneity obtained ( $I^2 = 100\%$ ). This, by weight allocation for each study using the scale relative to maximum demonstrated that, all contributed between 2% to 3% of the mean event rate and heterogeneity. To further the robustness of this, sensitivity analysis by removing one study with the highest event rate (82%)<sup>21</sup>, the new mean event rate was 41.4% (95% CI 34.9 %, 44.8.2%), a non-significant difference from the original 42.5 %. This showed that, the mean PACS event rate estimation was reliable as all the studies depicted a significant P-value (*Figure 5*).

### Prevalence of post-acute COVID-19 sequelae in general population



### Meta Analysis

**Figure 5:** A sensitivity analysis forest plot on prevalence of post-Acute COVID-19 Sequelae in general population

### **Average time to and association with post-acute COVID-19 sequelae**

Of the 43 studies, thirty-five (35)<sup>1,4,34,35,37-44,23,45,47,48,50-52,54-57,25,58,59,61-66,26-29,31,32</sup>, had demonstrated the times at which either a symptom of PACS was feasible or PACS was diagnosed or some clinical parameters were used to ascertain a case as PACS, while eight<sup>19,21,22,24,33,36,46,60</sup> did not have any estimated time to PACS diagnosis. Using fixed effect model, the PACS event rates' range following sub-group analysis was between 25 % (lowest) at four months<sup>25,27,44,47</sup> and 66 % (highest) at two months<sup>51,62</sup>. Generally, using the point estimates with a fixed effect model, the event rates of PASC was at an average of; one month, 44.6%<sup>32,42</sup>, two months, 66%<sup>51,62</sup>, three months, 54.3%<sup>26,37,38,40,41,50,54,57,59</sup>, four months, 25%<sup>25,27,44,47</sup>, five months, 26%<sup>23,48,55,56</sup>, six months, 56.5%<sup>1,4,28,29,34,58</sup>, seven months, 45.1%<sup>35,61</sup>, nine months, 36.3%<sup>31,45</sup>, eleven months, 49.3%<sup>63</sup> and twelve months, 57.9%<sup>39,43,52</sup>. It was evident that, majorly COVID-19 patients developed signs and symptoms of PASC at three months as shown by nine studies (at 54.3%, P= 0.0000)<sup>26,37,38,40,41,50,54,57,59</sup> to six months as shown by four studies (at 57%, P= 0.000)<sup>4,28,34,58</sup>, further up to 12 months<sup>39,43,52</sup>, PACS tends to increase up to (57.9%, P= 0.0148). At an average of two months, however with the highest event rate (66%) in two studies<sup>51,62</sup>, it was not significantly associated with PACS diagnosis (P=0.08) as indicated in the meta-analysis grid (*Table 2*).

**Table 2: A meta-analysis grid of sub-group analysis on the average time to and association with post-acute COVID-19 sequelae incidence in general population**

| Fixed effect analysis   |                              |                |             |             |                                |        |             |             |
|-------------------------|------------------------------|----------------|-------------|-------------|--------------------------------|--------|-------------|-------------|
| Groups by no. of Months | Effect size and 95% interval |                |             |             | Other heterogeneity statistics |        |             |             |
|                         | Number of Studies            | Point estimate | Lower limit | Upper limit | Q-value                        | df (Q) | P-value     | I-squared   |
| -                       | 8                            | 0.28945855     | 0.27537832  | 0.303957059 | 1731.420816                    | 7      | 0           | 99.59570776 |
| 1                       | 2                            | 0.44501583     | 0.4196708   | 0.471630162 | 25.87689388                    | 1      | 3.64E-07    | 96.13554855 |
| 11                      | 1                            | 0.49333333     | 0.38240733  | 0.604919604 | 2.52E-17                       | 0      | 1           | 0           |
| 12                      | 3                            | 0.579451348    | 0.547397643 | 0.610848802 | 8.550606364                    | 2      | 1.39E-02    | 76.60984596 |
| 2                       | 2                            | 0.660100818    | 0.616126929 | 0.701478209 | 3.068812329                    | 1      | 7.98E-02    | 67.40879874 |
| 3                       | 9                            | 0.54806601     | 0.530061253 | 0.556001565 | 272.5184642                    | 8      | 0           | 97.06441909 |
| 4                       | 4                            | 0.25081574     | 0.231004582 | 0.270390787 | 247.8795235                    | 3      | 0           | 98.78973464 |
| 5                       | 4                            | 0.26504428     | 0.261575036 | 0.268542802 | 1356.458021                    | 3      | 0           | 99.77883577 |
| 6                       | 6                            | 0.564949317    | 0.563112141 | 0.566784711 | 2316.437553                    | 5      | 0           | 99.78415131 |
| 7                       | 2                            | 0.451486852    | 0.404547885 | 0.499305419 | 1.701618204                    | 1      | 0.192076487 | 41.23241056 |
| 9                       | 2                            | 0.362924843    | 0.317570851 | 0.410855409 | 12.7830889                     | 1      | 3.50E-04    | 92.17713403 |
| Total within            |                              |                |             |             | 5976.694848                    | 32     | 0           |             |
| Total between           |                              |                |             |             | 18132.09461                    | 10     | 0           |             |
| Overall                 | 43                           | 0.514446277    | 0.512793646 | 0.516132579 | 24108.78946                    | 42     | 0           | 99.82578968 |

### Sub-group and meta-regression analysis

To account for the substantial unaccounted substantial heterogeneity, it deemed applicable to better understand whether and which study-level factors drove the measures of effect. This meta-regression analysis was on the prevalence of post-acute COVID-19 sequelae in general population and the average time to PACS diagnosis.

On the prevalence of post-Acute COVID-19 sequelae in general population, seventeen studies<sup>4,22,43–46,55,59,60,25–28,31,33,39,42</sup>, detailing a specific leading comorbidity in each study were used for the analysis to determine their association with PACS event rates. On this meta-regression collectively, the comorbidities contributed to 14% of the PACS event rates however, not significant ( $Q = 7.05$ ,  $df = 8$ ,  $p = 0.5313$ ) ( $R^2=0.14$ ) (*Supp. File 1*).

Sub-group analysis on specific comorbidity showed that, a cardiovascular disorder, especially hypertension as per the studies included was significantly associated with post-acute COVID-19 syndrome on contrary to the other conditions depicting that, the proportion of the 14% contributed by the comorbidities was majorly by a patient who had a cardiovascular disease (CVD), majorly hypertension with a stand-alone event rate of 32%, random effects model (0.322 (95% CI 0.166, 0.532) ( $P = 0.000$ );  $I^2 = 99\%$ ). Chronic obstructive pulmonary disorder and



abnormal basal metabolic index had higher event rates (59.8 % and 55.9 %), however not significantly associated with PACS ( $P > 0.05$ ) (Table 3).

**Table 3: Subgroup meta-analysis grid on comorbidities relative to PACS event**

| Groups<br>Group                | Effect size and 95% interval |             |             | Prediction in Prediction interval |             | Other hetero Other heterogeneity statistics |               |
|--------------------------------|------------------------------|-------------|-------------|-----------------------------------|-------------|---|---------------|
|                                | Point estimate               | Lower limit | Upper limit | Lower limit                       | Upper limit | P-value                                     | I-squared     |
| <b>Fixed effect analysis</b>   |                              |             |             |                                   |             |   |               |
| -                              | 0.548541313                  | 0.547743386 | 0.551337947 |                                   |             | 0   | 99.78881744   |
| Abnormal BMI                   | 0.558468219                  | 0.520029766 | 0.598170102 |                                   |             | 0.139267521                                 | 54.25505427   |
| Allergic Conditions            | 0.243243243                  | 0.208218548 | 0.28260706  |                                   |             | 1   | 0             |
| Cancer                         | 0.150289017                  | 0.133987586 | 0.168914595 |                                   |             | 1   | 0             |
| Chronic rhinosinusitis         | 0.324858757                  | 0.278087973 | 0.375405216 |                                   |             | 1   | 0             |
| COPD                           | 0.595296009                  | 0.562008546 | 0.627728426 |                                   |             | 0.637100738                                 | 0             |
| CVD                            | 0.280767802                  | 0.262533567 | 0.299795302 |                                   |             | 0   | 99.15520841   |
| Diabetes                       | 0.294265383                  | 0.290195828 | 0.298368018 |                                   |             | 1   | 0             |
| Hypothyroidism                 | 0.400324149                  | 0.373322562 | 0.427945061 |                                   |             | 1   | 0             |
| Total within                   |                              |             |             |                                   |             |   | 0             |
| Total between                  |                              |             |             |                                   |             |   | 0             |
| Overall                        | 0.514446277                  | 0.512758646 | 0.516132579 |                                   |             |   | 0 99.82578968 |
| <b>Random effects analysis</b> |                              |             |             |                                   |             |   |               |
| -                              | 0.46739156                   | 0.369170412 | 0.568206904 | 9.29E-02                          | 0.88261858  |   |               |
| Abnormal BMI                   | 0.558817678                  | 0.228585829 | 0.844631452 | 8.73E-02                          | 0.948973318 |   |               |
| Allergic Conditions            | 0.243243243                  | 3.9E-02     | 0.715003771 | 1.60E-02                          | 0.864375156 |   |               |
| Cancer                         | 0.150289017                  | 2.23E-02    | 0.578677645 | 8.87E-03                          | 0.77747804  |   |               |
| Chronic rhinosinusitis         | 0.324858757                  | 5.79E-02    | 0.79009453  | 2.37E-02                          | 0.905269402 |   |               |
| COPD                           | 0.597548617                  | 0.257748292 | 0.863919848 | 0.100690644                       | 0.951667211 |   |               |
| CVD                            | 0.322075585                  | 0.18579648  | 0.49726487  | 4.82E-02                          | 0.81671629  |   |               |
| Diabetes                       | 0.294265383                  | 5.12E-02    | 0.763198677 | 2.07E-02                          | 0.891411283 |   |               |
| Hypothyroidism                 | 0.400324149                  | 0.079274327 | 0.838080989 | 0.032724804                       | 0.9294401   |   |               |

Hospital re-admission on the other side contributed to 17% of the post-acute COVID-19 syndrome on meta-regression ( $R^2$  analog = 0.17), and was significantly associated ( $Q = 8.70$ ,  $df = 1$ ,  $p = 0.0032$ ) (*Supp. File 2*). Study design used in a specific study showed that, the coefficient for retrospective study design (Y) was  $-0.6815$ , with a 95% confidence interval of  $-2.5795$  to  $1.2165$ . Studies that used this design had a mean effect size 0.6815 points lower than studies which did not use this design demonstrating that, retrospective study design was probably associated with a smaller effect size on post-acute COVID-19 syndrome. However, there was a significant relationship between the study design and post-acute COVID-19 syndrome ( $Q = 14.32$ ,  $df = 3$ ,  $p = 0.0025$ ) ( $R^2=0.26$ ) (*Supp. File 3*). The study setting whether single site or multiple site did not have any effect on post-COVID-19 syndrome same case for the year a study was conducted.

Collectively, the combined impact of all covariates in the model showed that the model is able to explain at least some of the variance in effect size on post-acute COVID-19 syndrome contributing to 53% of the post-acute COVID-19 syndrome ( $Q = 38.81$ ,  $df = 19$ ,  $p = 0.0047$ ) ( $R^2$  analog = 0.53) (*Supp. File 4*).

## **Discussion**

This review, meta-analysis and meta-regression has demonstrated the prevalence of post-acute COVID-19 sequelae in general population to be 42.5% ranging between 1.6% to 82%, and comorbidities contributed to 14% of the PACS event rates specifically, a cardiovascular disorder mostly hypertension which had a stand-alone event rate of 32%. Chronic obstructive pulmonary disorder and abnormal basal metabolic index had higher event rates (59.8 % and 55.9 %), however not significantly associated with PACS. Seventeen percent (17%) of the post-acute COVID-19 sequelae was found to be due to hospital re-admission. Further, there was a significant relationship between the study design and post-acute COVID-19 syndrome while study setting and year a study was conducted did not have any effect on post-COVID-19 syndrome. Generally, other covariates related to either methodological and clinical characteristics were able to explain at least some of the variance in effect size contributing to 53% of the post-acute COVID-19 syndrome.

The reported prevalence of post-acute COVID -19 sequelae in the current review and meta-analysis of 42.5% after index infection with COVID-19 infection was similar to a study that looked at global estimated pooled PASC prevalence derived from the estimates presented in 29 studies as 43%<sup>67</sup>, and primary studies also showed 44.2% reported persistent symptoms post primary infection with COVID-19 disease<sup>68</sup>, as seen in yet another, 49.2% had 3 or more symptoms of COVID-19 post primary infection<sup>69</sup> and 41% of long COVID-19 with symptoms persisting for more than four weeks<sup>70</sup>. Further, another study, established that, 36.55% of post-acute COVID-19 sequelae occurred between 3 and 6 months and 57.00% had one or more long-COVID feature recorded during the whole 6-month period<sup>58</sup>. Similarly or close to the current findings in this study, another study<sup>71</sup>, established that, among 127 patients who had recovered from COVID-19, 52.0% had persistent symptoms while those with mild COVID-19 recorded 49.5%. Again, conforming to be within the range of post-acute-COVID-19 syndrome in this study (1.6% to 82 %), another study established the prevalence of post-COVID-19 to be 72.6% and 46.2% for hospitalized and non-hospitalized patients, respectively<sup>72</sup>.

On comorbidities commensurate with this current finding, cardiovascular disease (CVD) emerged as a risk factor for the post-acute COVID-19 syndrome, which can affect up to 54% of patients who recover from the acute infection<sup>73</sup>, substantiated further by findings that, presence of certain chronic condition is linked with post-acute COVID-19 sequelae<sup>74</sup>. On the other hand, as found in this study at an event rate of 60 % though not significantly associated with PACS, chronic obstructive pulmonary disorder was found to be among comorbidities associated with long COVID-19 presenting with chronic fatigue (1.68, 1.21 to 2.32)<sup>75</sup>, and again regarding chronic obstructive pulmonary disorder and abnormal basal metabolic index, a study established that, high BMI and previous pulmonary disease could be risk factors for post-acute COVID-19 (long COVID-19) development<sup>76</sup>, further on basal metabolic index, a study concludes that, long COVID is more likely to occur in people with a higher body mass index (BMI)<sup>77</sup>. Like in this study subject to comorbidities generally predicting post-acute COVID-19 sequelae at 14 % ( $R^2=0.14$ ), another study established overall severity of comorbidities as one the strongest risk factors for post-acute COVID-19 sequelae<sup>72</sup>.

Hospital re-admission contributing to over 17 % of post-acute COVID-19 sequelae as per this study, similar findings have shown some consistency where patients (19.9%) who survived COVID-19 hospitalization were readmitted<sup>78</sup>, and another, the readmission rate was 13.3%<sup>79</sup>.

This study reported COVID-19 patients developed signs and symptoms post-acute COVID-19 syndrome at three months (at 54.3%) to six months (at 57%) which tended to increase up to 12 months (57.9%). Similar or close to these findings, another study established that, at 3 months of follow-up, 66.7%) of participants reported new or persistent COVID-19-related symptoms<sup>50</sup> and another that, hospitalized and non-hospitalized patients with confirmed or suspected COVID-19, multiple symptoms are present about 3 months after symptoms onset<sup>80</sup>. A forty-five per cent (45%) of health care workers also reported persistent symptoms at three to four months<sup>81</sup>. As regards post COVID-19 sequelae at six months (6-months), a previous study shows post-acute COVID-19 sequelae prevalence was 50% in adults at 6 months<sup>82</sup>, close to the 54% in the current findings. At 12 months, post-acute COVID-19 sequelae was reported as (50%)  $\geq 1$  PASC symptom, close to 58% as per the current findings. This is further substantiated by the findings in a study that, Persistent symptoms were highly prevalent, especially fatigue, shortness of breath, headache, brain fog/confusion, and altered taste/smell, which persisted beyond 1 year ( 12 months) among 56%<sup>83</sup>. Contrary to the current findings though, some studies have reported a decreasing post-acute COVID-19 sequelae from sixth to twelfth month<sup>1,82</sup>

A limitation of the current review was the defined inclusion criteria for a post-acute COVID-19 sequelae patient, presenting with either one or more suspected signs and symptoms depicting the syndrome. This may have resulted in diverse estimate of the prevalence of post – acute COVID-19 during different times to event which were also estimated on an average basis. However, the majority of studies in the current review included a clearly mentioned post-acute COVID-19 sequelae either as persistent symptoms after primary infection with COVID-19 or a cluster of signs and symptoms post recovery from the index infection with COVID-19. Further, the review focused only on the post-acute COVID-19 sequelae devoid categorizing it as per the time a patient experienced the same. This, was even though not very important as the authors intended to ascertain the prevalence and any association with subject variable, plus, a meta-regression was performed to ensure such differential aspects were taken care of.

## **Author contributions**

**J.K.M:** Designed the study, reviewed and analyzed the data, participated in quality assessment process, Wrote and submitted the manuscript.

**C.M.M:** Reviewed studies and participated in quality assessment process.

**J.N.M:** Reviewed and analyzed the data, Edited the manuscript.

**J.K.O:** Participated in quality assessment process, Edited the manuscript.

**R.M.N:** Reviewed the studies, participated in quality assessment process, Proofread the manuscript

**M.K.K:** Participated in quality assessment, Edited the manuscript.

## **Funding statement**

No benefits in any form have been received or was received from a commercial party related directly or indirectly to the subject of this article.

## **Ethical review statement**

No ethical approval was required for this study.

## Study's Supplementary Files

### Supp. File 1

| Main results for Model 1, Random effects (ML), Z-Distribution, Logit event rate                    |     |             |                |           |           |         |                 |                        |
|--|-----|-------------|----------------|-----------|-----------|---------|-----------------|------------------------|
| Covariate  | Ref | Coefficient | Standard Error | 95% Lower | 95% Upper | Z-value | 1-sided P-value | Set                    |
| Intercept  |     | -0.1309     | 0.1983         | -0.5195   | 0.2577    | -0.66   | 0.2545          |                        |
| Cornobid Predictor: Abnormal BMI   |     | 0.3693      | 0.7387         | -1.0785   | 1.8171    | 0.5     | 0.3086          | Q=7.05, df=8, p=0.5313 |
| Cornobid Predictor: Allergic Conditions  |     | -1.0041     | 1.0244         | -3.0118   | 1.0037    | -0.98   | 0.1635          | Q=7.05, df=8, p=0.5313 |
| Cornobid Predictor: Cancer   |     | -1.6014     | 1.0217         | -3.604    | 0.4011    | -1.57   | 0.0585          | Q=7.05, df=8, p=0.5313 |
| Cornobid Predictor: Chronic rhinosinusitis   |     | -0.6006     | 1.0256         | -2.6107   | 1.4094    | -0.59   | 0.2791          | Q=7.05, df=8, p=0.5313 |
| Cornobid Predictor: COPD   |     | 0.5262      | 0.7378         | -0.9199   | 1.9722    | 0.71    | 0.2379          | Q=7.05, df=8, p=0.5313 |
| Cornobid Predictor: CVD  |     | -0.6139     | 0.4101         | -1.4176   | 0.1898    | -1.5    | 0.0672          | Q=7.05, df=8, p=0.5313 |
| Cornobid Predictor: Diabetes   |     | -0.7439     | 1.0193         | -2.7417   | 1.2539    | -0.73   | 0.2328          | Q=7.05, df=8, p=0.5313 |
| Cornobid Predictor: Hypothyroidism   |     | -0.2732     | 1.0209         | -2.2742   | 1.7277    | -0.27   | 0.3945          | Q=7.05, df=8, p=0.5313 |
| <b>Statistics for Model 1</b>  |     |             |                |           |           |         |                 |                        |
| <b>Test of the model: Simultaneous test that all coefficients (excluding Intercept) are zero</b>   |     |             |                |           |           |         |                 |                        |
| Q = 7.05, df = 8, p = 0.5313   |     |             |                |           |           |         |                 |                        |
| <b>Goodness of fit: Test that unexplained variance is zero</b>                                     |     |             |                |           |           |         |                 |                        |
| Tau <sup>2</sup> = 0.9996, Tau = 0.9998, I <sup>2</sup> = 99.7%, Q = 12669.11, df = 34, p = 0.0000 |     |             |                |           |           |         |                 |                        |
| <b>Comparison of Model 1 with the null model</b>   |     |             |                |           |           |         |                 |                        |
| <b>Total between-study variance (Intercept only)</b>   |     |             |                |           |           |         |                 |                        |
| Tau <sup>2</sup> = 1.1680, Tau = 1.0807, I <sup>2</sup> = 99.8%, Q = 24108.79, df = 42, p = 0.0000 |     |             |                |           |           |         |                 |                        |
| <b>Proportion of total between-study variance explained by Model 1</b>                             |     |             |                |           |           |         |                 |                        |
| R <sup>2</sup> analog = 0.14   |     |             |                |           |           |         |                 |                        |

*Supp. File 2*

| Main results for Model 1, Random effects (ML), Z-Distribution, Logit event rate                    |     |             |                |           |           |         |                 |     |
|--|-----|-------------|----------------|-----------|-----------|---------|-----------------|-----|
| Covariate  | Ref | Coefficient | Standard Error | 95% Lower | 95% Upper | Z-value | 1-sided P-value | Set |
| Intercept  |     | -0.1215     | 0.1633         | -0.4416   | 0.1986    | -0.74   | 0.2285          |     |
| Hospital re-admission: Yes   |     | -1.2871     | 0.4364         | -2.1425   | -0.4317   | -2.95   | 0.0016          |     |
| <b>Statistics for Model 1</b>  |     |             |                |           |           |         |                 |     |
| <b>Test of the model: Simultaneous test that all coefficients (excluding intercept) are zero</b>   |     |             |                |           |           |         |                 |     |
| Q = 8.70, df = 1, p = 0.0032   |     |             |                |           |           |         |                 |     |
| <b>Goodness of fit: Test that unexplained variance is zero</b>                                     |     |             |                |           |           |         |                 |     |
| Tau <sup>2</sup> = 0.9652, Tau = 0.9825, I <sup>2</sup> = 99.6%, Q = 11597.69, df = 41, p = 0.0000 |     |             |                |           |           |         |                 |     |
| <b>Comparison of Model 1 with the null model</b>   |     |             |                |           |           |         |                 |     |
| <b>Total between-study variance (intercept only)</b>   |     |             |                |           |           |         |                 |     |
| Tau <sup>2</sup> = 1.1680, Tau = 1.0807, I <sup>2</sup> = 99.8%, Q = 24108.79, df = 42, p = 0.0000 |     |             |                |           |           |         |                 |     |
| <b>Proportion of total between-study variance explained by Model 1</b>                             |     |             |                |           |           |         |                 |     |
| R <sup>2</sup> analog = 0.17   |     |             |                |           |           |         |                 |     |

*Supp. File 3*

| Main results for Model 1, Random effects (ML), Z-Distribution, Logit event rate                    |             |                |           |           |         |                 |                         |  |
|--|-------------|----------------|-----------|-----------|---------|-----------------|-------------------------|--|
| Covariate  | Coefficient | Standard Error | 95% Lower | 95% Upper | Z-value | 1-sided P-value | Set                     |  |
| Intercept  | -0.3957     | 0.9351         | -2.2284   | 1.437     | -0.42   | 0.3361          |                         |  |
| Study design: Cross sectional  | 0.4985      | 1.0277         | -1.5157   | 2.5128    | 0.49    | 0.3138          | Q=14.32, df=3, p=0.0025 |  |
| Study design: Prospective  | 0.4826      | 0.9554         | -1.39     | 2.3552    | 0.51    | 0.3067          | Q=14.32, df=3, p=0.0025 |  |
| Study design: Retrospective  | -0.6815     | 0.9684         | -2.5795   | 1.2165    | -0.7    | 0.2408          | Q=14.32, df=3, p=0.0025 |  |
| <b>Statistics for Model 1</b>  |             |                |           |           |         |                 |                         |  |
| <b>Test of the model: Simultaneous test that all coefficients (excluding intercept) are zero</b>   |             |                |           |           |         |                 |                         |  |
| Q = 14.32, df = 3, p = 0.0025  |             |                |           |           |         |                 |                         |  |
| <b>Goodness of fit: Test that unexplained variance is zero</b>                                     |             |                |           |           |         |                 |                         |  |
| Tau <sup>2</sup> = 0.8674, Tau = 0.9313, I <sup>2</sup> = 99.8%, Q = 24038.05, df = 39, p = 0.0000 |             |                |           |           |         |                 |                         |  |
| <b>Comparison of Model 1 with the null model</b>   |             |                |           |           |         |                 |                         |  |
| <b>Total between-study variance (intercept only)</b>   |             |                |           |           |         |                 |                         |  |
| Tau <sup>2</sup> = 1.1680, Tau = 1.0807, I <sup>2</sup> = 99.8%, Q = 24108.79, df = 42, p = 0.0000 |             |                |           |           |         |                 |                         |  |
| <b>Proportion of total between-study variance explained by Model 1</b>                             |             |                |           |           |         |                 |                         |  |
| R <sup>2</sup> analog = 0.26   |             |                |           |           |         |                 |                         |  |

*Supp. File 4*

| Main results for Model 1, Random effects (ML), Z-Distribution, Logit event rate                    |     |             |                |           |           |         |                 |                         |
|--|-----|-------------|----------------|-----------|-----------|---------|-----------------|-------------------------|
| Covariate  | Ref | Coefficient | Standard Error | 95% Lower | 95% Upper | Z-value | 1-sided P-value | Set                     |
| Intercept  |     | -0.5798     | 1.6139         | -3.7431   | 2.5834    | -0.36   | 0.3597          |                         |
| Study period /year: 2021   |     | 0.9386      | 0.7882         | -0.6062   | 2.4834    | 1.19    | 0.1169          | Q=2.47, df=2, p=0.2909  |
| Study period /year: 2022   |     | 1.264       | 0.8057         | -0.3152   | 2.8432    | 1.57    | 0.0584          | Q=2.47, df=2, p=0.2909  |
| Hospital re-admission: Yes   |     | 0.3581      | 0.8538         | -1.3153   | 2.0314    | 0.42    | 0.3375          |                         |
| Study setting: Multiple  |     | -0.5188     | 0.6818         | -1.8552   | 0.8176    | -0.76   | 0.2234          | Q=1.05, df=2, p=0.5929  |
| Study setting: Single  |     | -0.4017     | 0.4135         | -1.212    | 0.4087    | -0.97   | 0.1656          | Q=1.05, df=2, p=0.5929  |
| Region: Asia   |     | -0.9255     | 0.6479         | -2.1952   | 0.3443    | -1.43   | 0.0766          | Q=3.02, df=3, p=0.3893  |
| Region: Europe   |     | -0.3528     | 0.7134         | -1.7509   | 1.0454    | -0.49   | 0.3105          | Q=3.02, df=3, p=0.3893  |
| Region: USA  |     | -0.3866     | 0.6648         | -1.6895   | 0.9163    | -0.58   | 0.2804          | Q=3.02, df=3, p=0.3893  |
| Study design: Cross sectional  |     | 0.6467      | 0.9365         | -1.1889   | 2.4823    | 0.69    | 0.2449          | Q=13.19, df=3, p=0.0042 |
| Study design: Prospective  |     | 0.7661      | 0.9158         | -1.0289   | 2.561     | 0.84    | 0.2014          | Q=13.19, df=3, p=0.0042 |
| Study design: Retrospective  |     | -0.8384     | 1.0365         | -2.8699   | 1.1931    | -0.81   | 0.2093          | Q=13.19, df=3, p=0.0042 |
| Cormobid Predictor: Abnormal BMI   |     | -0.6534     | 0.8931         | -2.404    | 1.0971    | -0.73   | 0.2322          | Q=4.98, df=8, p=0.7601  |
| Cormobid Predictor: Allergic Conditions  |     | -0.9326     | 0.8832         | -2.6638   | 0.7985    | -1.06   | 0.1455          | Q=4.98, df=8, p=0.7601  |
| Cormobid Predictor: Cancer   |     | -0.8999     | 0.9659         | -2.7931   | 0.9933    | -0.93   | 0.1758          | Q=4.98, df=8, p=0.7601  |
| Cormobid Predictor: Chronic rhinosinusitis   |     | 0.5026      | 1.0393         | -1.5345   | 2.5397    | 0.48    | 0.3143          | Q=4.98, df=8, p=0.7601  |
| Cormobid Predictor: COPD   |     | 0.629       | 0.7046         | -0.7519   | 2.0099    | 0.89    | 0.186           | Q=4.98, df=8, p=0.7601  |
| Cormobid Predictor: CVD  |     | -0.2631     | 0.4366         | -1.1187   | 0.5926    | -0.6    | 0.2734          | Q=4.98, df=8, p=0.7601  |
| Cormobid Predictor: Diabetes   |     | -0.4004     | 1.2215         | -2.7946   | 1.9938    | -0.33   | 0.3715          | Q=4.98, df=8, p=0.7601  |
| Cormobid Predictor: Hypothyroidism   |     | -0.2018     | 0.8792         | -1.925    | 1.5214    | -0.23   | 0.4092          | Q=4.98, df=8, p=0.7601  |
| Statistics for Model 1   |     |             |                |           |           |         |                 |                         |
| Test of the model: Simultaneous test that all coefficients (excluding intercept) are zero          |     |             |                |           |           |         |                 |                         |
| Q = 38.81, df = 19, p = 0.0047   |     |             |                |           |           |         |                 |                         |
| Goodness of fit: Test that unexplained variance is zero  |     |             |                |           |           |         |                 |                         |
| Tau <sup>2</sup> = 0.6317, Tau = 0.7948, I <sup>2</sup> = 99.0%, Q = 1648.66, df = 16, p = 0.0000  |     |             |                |           |           |         |                 |                         |
| Comparison of Model 1 with the null model  |     |             |                |           |           |         |                 |                         |
| Total between-study variance (intercept only)  |     |             |                |           |           |         |                 |                         |
| Tau <sup>2</sup> = 1.3392, Tau = 1.1573, I <sup>2</sup> = 99.8%, Q = 22555.76, df = 35, p = 0.0000 |     |             |                |           |           |         |                 |                         |
| Proportion of total between-study variance explained by Model 1                                    |     |             |                |           |           |         |                 |                         |
| R <sup>2</sup> analog = 0.53   |     |             |                |           |           |         |                 |                         |



## References

1. Huang C, Huang L, Wang Y, et al. 6-month consequences of COVID-19 in patients discharged from hospital: a cohort study. *Lancet*. 2021;397(10270). doi:10.1016/S0140-6736(20)32656-8
2. Wijeratne T, Crewther S. Post-COVID 19 Neurological Syndrome (PCNS); a novel syndrome with challenges for the global neurology community. *J Neurol Sci*. 2020;419. doi:10.1016/j.jns.2020.117179
3. Rando HM, Bennett TD, Byrd JB, et al. Challenges in defining Long COVID: Striking differences across literature, Electronic Health Records, and patient-reported information. *medRxiv Prepr Serv Heal Sci*. Published online 2021. doi:10.1101/2021.03.20.21253896
4. Blomberg B, Mohn KGI, Brokstad KA, et al. Long COVID in a prospective cohort of home-isolated patients. *Nat Med*. 2021;27(9). doi:10.1038/s41591-021-01433-3
5. Galeotti C, Bayry J. Autoimmune and inflammatory diseases following COVID-19. *Nat Rev Rheumatol*. 2020;16(8). doi:10.1038/s41584-020-0448-7
6. Ramakrishnan RK, Kashour T, Hamid Q, Halwani R, Tleyjeh IM. Unraveling the Mystery Surrounding Post-Acute Sequelae of COVID-19. *Front Immunol*. 2021;12. doi:10.3389/fimmu.2021.686029
7. Vu T, McGill SC. An Overview of Post-COVID-19 Condition (Long COVID). *Can J Heal Technol*. 2021;1(9). doi:10.51731/cjht.2021.160
8. Crook H, Raza S, Nowell J, Young M, Edison P. Long covid - Mechanisms, risk factors, and management. *BMJ*. 2021;374. doi:10.1136/bmj.n1648
9. Mumoli N, Conte G, Evangelista I, Cei M, Mazzone A, Colombo A. Post-COVID or long-COVID: Two different conditions or the same? *J Infect Public Health*. 2021;14(10). doi:10.1016/j.jiph.2021.08.019
10. Kamal M, Abo Omirah M, Hussein A, Saeed H. Assessment and characterisation of post-COVID-19 manifestations. *Int J Clin Pract*. 2021;75(3). doi:10.1111/ijcp.13746
11. Ryan FJ, Hope CM, Masavuli MG, et al. Long-term perturbation of the peripheral immune system months after SARS-CoV-2 infection. *BMC Med*. 2022;20(1). doi:10.1186/s12916-021-02228-6
12. Garg M, Maralakunte M, Garg S, et al. The conundrum of 'long-covid-19': A narrative review. *Int J Gen Med*. 2021;14. doi:10.2147/IJGM.S316708
13. Tawfik GM, Dila KAS, Mohamed MYF, et al. A step by step guide for conducting a systematic review and meta-analysis with simulation data. *Trop Med Health*. 2019;47(1). doi:10.1186/s41182-019-0165-6
14. Page MJ, McKenzie JE, Bossuyt PM, et al. The PRISMA 2020 statement: An updated guideline for reporting systematic reviews. *BMJ*. 2021;372. doi:10.1136/bmj.n71
15. Bagias C, Sukumar N, Weldelessassie Y, Oyebo O, Saravanan P. Quality Assessment Tool for Observational Cohort and Cross-Sectional Studies. *Int J Environ Res Public Health*. 2021;18(4).
16. Schreck N, Piepho HP, Schlather M. Best prediction of the additive genomic variance in

- random-effects models. *Genetics*. 2019;213(2). doi:10.1534/genetics.119.302324
17. Suurmond R, van Rhee H, Hak T. Introduction, comparison, and validation of Meta-Essentials: A free and simple tool for meta-analysis. *Res Synth Methods*. 2017;8(4). doi:10.1002/jrsm.1260
  18. Cochrane. Review Manager (RevMan) [Computer program]. Version 5.4. Copenhagen: The Nordic Cochrane Centre. *Cochrane Collab*. Published online 2020.
  19. Goel N, Goyal N, Kumar R. Clinico-radiological evaluation of post COVID-19 at a tertiary pulmonary care centre in Delhi, India. *Monaldi Arch chest Dis = Arch Monaldi per le Mal del torace*. 2021;91(3). doi:10.4081/monaldi.2021.1682
  20. Huang C, Wang Y, Li X, et al. Clinical features of patients infected with 2019 novel coronavirus in Wuhan, China. *Lancet*. 2020;395(10223). doi:10.1016/S0140-6736(20)30183-5
  21. Wanga V, Chevinsky JR, Dimitrov L V., et al. Long-Term Symptoms Among Adults Tested for SARS-CoV-2 — United States, January 2020–April 2021. *MMWR Recomm Reports*. 2021;70(36). doi:10.15585/mmwr.mm7036a1
  22. Somani SS, Richter F, Fuster V, et al. Characterization of Patients Who Return to Hospital Following Discharge from Hospitalization for COVID-19. *J Gen Intern Med*. 2020;35(10). doi:10.1007/s11606-020-06120-6
  23. Perlis RH, Green J, Santillana M, et al. Persistence of symptoms up to 10 months following acute COVID-19 illness. *medRxiv Prepr Serv Heal Sci*. Published online 2021. doi:10.1101/2021.03.07.21253072
  24. Leijte WT, Wagemaker NMM, van Kraaij TDA, et al. [Mortality and re-admission after hospitalization with COVID-19]. *Ned Tijdschr Geneesk*. 2020;164.
  25. Pinato DJ, Tabernero J, Bower M, et al. Prevalence and impact of COVID-19 sequelae on treatment and survival of patients with cancer who recovered from SARS-CoV-2 infection: evidence from the OnCovid retrospective, multicentre registry study. *Lancet Oncol*. 2021;22(12). doi:10.1016/S1470-2045(21)00573-8
  26. P. S, Madhavan S, Pandurangan V. Prevalence, Pattern and Functional Outcome of Post COVID-19 Syndrome in Older Adults. *Cureus*. Published online 2021. doi:10.7759/cureus.17189
  27. Guarin G, Lo KB, Bhargav R, et al. Factors associated with hospital readmissions among patients with COVID-19: A single-center experience. *J Med Virol*. 2021;93(9). doi:10.1002/jmv.27104
  28. Logue JK, Franko NM, McCulloch DJ, et al. Sequelae in Adults at 6 Months after COVID-19 Infection. *JAMA Netw Open*. 2021;4(2). doi:10.1001/jamanetworkopen.2021.0830
  29. Günster C, Busse R, Spoden M, et al. 6-month mortality and readmissions of hospitalized COVID-19 patients: A nationwide cohort study of 8,679 patients in Germany. *PLoS One*. 2021;16(8 August). doi:10.1371/journal.pone.0255427
  30. Fernández-de-las-Peñas C, Guijarro C, Plaza-Canteli S, Hernández-Barrera V, Torres-Macho J. Prevalence of Post-COVID-19 Cough One Year After SARS-CoV-2 Infection:

- A Multicenter Study. *Lung*. 2021;199(3). doi:10.1007/s00408-021-00450-w
31. Zayet S, Zahra H, Royer PY, et al. Post-COVID-19 syndrome: Nine months after SARS-CoV-2 infection in a cohort of 354 patients: Data from the first wave of COVID-19 in nord franche-comté hospital, France. *Microorganisms*. 2021;9(8). doi:10.3390/microorganisms9081719
  32. Myall KJ, Mukherjee B, Castanheira AM, et al. Persistent post-COVID-19 interstitial lung disease: An observational study of corticosteroid treatment. *Ann Am Thorac Soc*. 2021;18(5). doi:10.1513/AnnalsATS.202008-1002OC
  33. Naik S, Haldar SN, Soneja M, et al. Post COVID-19 sequelae: A prospective observational study from Northern India. *Drug Discov Ther*. 2021;15(5). doi:10.5582/ddt.2021.01093
  34. Peghin M, Palese A, Venturini M, et al. Post-COVID-19 symptoms 6 months after acute infection among hospitalized and non-hospitalized patients. *Clin Microbiol Infect*. 2021;27(10). doi:10.1016/j.cmi.2021.05.033
  35. Menges D, Ballouz T, Anagnostopoulos A, et al. Burden of post-COVID-19 syndrome and implications for healthcare service planning: A population-based cohort study. *PLoS One*. 2021;16(7 July). doi:10.1371/journal.pone.0254523
  36. Mahmud R, Rahman MM, Rassel MA, et al. Post-COVID-19 syndrome among symptomatic COVID-19 patients: A prospective cohort study in a tertiary care center of Bangladesh. *PLoS One*. 2021;16(4 April). doi:10.1371/journal.pone.0249644
  37. Khodeir MM, Shabana HA, Rasheed Z, et al. COVID-19: Post-recovery long-term symptoms among patients in Saudi Arabia. *PLoS One*. 2021;16(12 December). doi:10.1371/journal.pone.0260259
  38. Kayaaslan B, Eser F, Kalem AK, et al. Post-COVID syndrome: A single-center questionnaire study on 1007 participants recovered from COVID-19. *J Med Virol*. 2021;93(12). doi:10.1002/jmv.27198
  39. Maestre-Muñiz MM, Arias Á, Mata-Vázquez E, et al. Long-term outcomes of patients with coronavirus disease 2019 at one year after hospital discharge. *J Clin Med*. 2021;10(13). doi:10.3390/jcm10132945
  40. Moreno-Pérez O, Merino E, Leon-Ramirez JM, et al. Post-acute COVID-19 syndrome. Incidence and risk factors: A Mediterranean cohort study. *J Infect*. 2021;82(3). doi:10.1016/j.jinf.2021.01.004
  41. Venturelli S, Benatti S V., Casati M, et al. Surviving COVID-19 in Bergamo Province: A post-Acute outpatient re-evaluation. *Epidemiol Infect*. Published online 2021. doi:10.1017/S0950268821000145
  42. Hirschtick JL, Titus AR, Slocum E, et al. Population-Based Estimates of Post-acute Sequelae of Severe Acute Respiratory Syndrome Coronavirus 2 (SARS-CoV-2) Infection (PASC) Prevalence and Characteristics. *Clin Infect Dis*. 2021;73(11). doi:10.1093/cid/ciab408
  43. Boscolo-Rizzo P, Guida F, Polesel J, et al. Sequelae in adults at 12 months after mild-to-moderate coronavirus disease 2019 (COVID-19). *Int Forum Allergy Rhinol*. 2021;11(12). doi:10.1002/alr.22832

44. Petersen MS, Kristiansen MF, Hanusson KD, et al. Long COVID in the Faroe Islands: A Longitudinal Study among Nonhospitalized Patients. *Clin Infect Dis.* 2021;73(11). doi:10.1093/cid/ciaa1792
45. Elkan M, Dvir A, Zaidenstein R, et al. Patient-reported outcome measures after hospitalization during the covid-19 pandemic: A survey among covid-19 and non-covid-19 patients. *Int J Gen Med.* 2021;14. doi:10.2147/IJGM.S323316
46. Maamar M, Artime A, Pariente E, et al. Post-COVID-19 syndrome, low-grade inflammation and inflammatory markers: a cross-sectional study. *Curr Med Res Opin.* 2022;38(6). doi:10.1080/03007995.2022.2042991
47. Tleyjeh IM, Saddik B, AlSwaïdan N, et al. Prevalence and predictors of Post-Acute COVID-19 Syndrome (PACS) after hospital discharge: A cohort study with 4 months median follow-up. *PLoS One.* 2021;16(12 December). doi:10.1371/journal.pone.0260568
48. Ogoïna D, James HI, Ogoïnja SZ. Post-discharge symptoms among hospitalized covid-19 patients in Nigeria: A single-center study. *Am J Trop Med Hyg.* 2021;105(3). doi:10.4269/ajtmh.21-0509
49. Lucas C, Wong P, Klein J, et al. Longitudinal analyses reveal immunological misfiring in severe COVID-19. *Nature.* 2020;584(7821). doi:10.1038/s41586-020-2588-y
50. Dryden MTG, Mudara C, Vika C, et al. Post COVID-19 Condition in South Africa: 3-Month Follow-Up after Hospitalisation with SARS-CoV-2. *SSRN Electron J.* Published online 2022. doi:10.2139/ssrn.4007183
51. Bell ML, Catalfamo CJ, Farland L V., et al. Post-acute sequelae of COVID-19 in a non-hospitalized cohort: Results from the Arizona CoVHORT. *PLoS One.* 2021;16(8 August). doi:10.1371/journal.pone.0254347
52. Becker C, Beck K, Zumbrunn S, et al. Long COVID 1 year after hospitalisation for COVID-19: a prospective bicentric cohort study. *Swiss Med Wkly.* 2021;151(41-42). doi:10.4414/SMW.2021.W30091
53. Wang G, Cao K, Liu K, et al. Kynurenic acid, an IDO metabolite, controls TSG-6-mediated immunosuppression of human mesenchymal stem cells. *Cell Death Differ.* 2018;25(7). doi:10.1038/s41418-017-0006-2
54. Arnold DT, Hamilton FW, Milne A, et al. Patient outcomes after hospitalisation with COVID-19 and implications for follow-up: Results from a prospective UK cohort. *Thorax.* 2021;76(4). doi:10.1136/thoraxjnl-2020-216086
55. Ayoubkhani D, Khunti K, Nafilyan V, et al. Post-covid syndrome in individuals admitted to hospital with covid-19: Retrospective cohort study. *BMJ.* 2021;372. doi:10.1136/bmj.n693
56. Osikomaiya B, Erinoso O, Wright KO, et al. 'Long COVID': persistent COVID-19 symptoms in survivors managed in Lagos State, Nigeria. *BMC Infect Dis.* 2021;21(1). doi:10.1186/s12879-020-05716-x
57. Sigfrid L, Drake TM, Pauley E, et al. Long Covid in adults discharged from UK hospitals after Covid-19: A prospective, multicentre cohort study using the ISARIC WHO Clinical Characterisation Protocol. *Lancet Reg Heal - Eur.* 2021;8. doi:10.1016/j.lanep.2021.100186

58. Taquet M, Dercon Q, Luciano S, Geddes JR, Husain M, Harrison PJ. Incidence, co-occurrence, and evolution of long-COVID features: A 6-month retrospective cohort study of 273,618 survivors of COVID-19. *PLoS Med.* 2021;18(9). doi:10.1371/journal.pmed.1003773
59. Wynberg E, van Willigen HDG, Dijkstra M, et al. Evolution of Coronavirus Disease 2019 (COVID-19) Symptoms During the First 12 Months After Illness Onset. *Clin Infect Dis.* 2022;75(1). doi:10.1093/cid/ciab759
60. Osmanov IM, Spiridonova E, Bobkova P, et al. Risk factors for long covid in previously hospitalised children using the ISARIC Global follow-up protocol: A prospective cohort study. *Eur Respir J.* 2022;59(2). doi:10.1183/13993003.01341-2021
61. Pereira C, Harris BHL, Di Giovannantonio M, et al. The Association Between Antibody Response to Severe Acute Respiratory Syndrome Coronavirus 2 Infection and Post-COVID-19 Syndrome in Healthcare Workers. *J Infect Dis.* 2021;223(10). doi:10.1093/infdis/jiab120
62. Abdelrahman MM, Abd-Elrahman NM, Bakheet TM. Persistence of symptoms after improvement of acute COVID19 infection, a longitudinal study. *J Med Virol.* 2021;93(10). doi:10.1002/jmv.27156
63. Fernández-De-las-peñas C, Palacios-Ceña D, Gómez-Mayordomo V, Cuadrado ML, Florencio LL. Defining post-covid symptoms (Post-acute covid, long covid, persistent post-covid): An integrative classification. *Int J Environ Res Public Health.* 2021;18(5). doi:10.3390/ijerph18052621
64. Vinhaes CL, Araujo-Pereira M, Tibúrcio R, et al. Systemic inflammation associated with immune reconstitution inflammatory syndrome in persons living with hiv. *Life.* 2021;11(1). doi:10.3390/life11010065
65. Wang W, Liu X, Wu S, et al. Definition and Risks of Cytokine Release Syndrome in 11 Critically Ill COVID-19 Patients with Pneumonia: Analysis of Disease Characteristics. *J Infect Dis.* 2020;222(9). doi:10.1093/infdis/jiaa387
66. King CG, Guyette RW, Piotrowski C. Online exams and cheating: An empirical analysis of business students' views. *J Educ Online.* 2009;6(1). doi:10.9743/JEO.2009.1.5
67. Chen C, Hauptert SR, Zimmermann L, Shi X, Fritsche LG, Mukherjee B. Global Prevalence of Post-Acute Sequelae of COVID-19 (PASC) or Long COVID: A Meta-Analysis and Systematic Review. *medRxiv.* 2021;2019.
68. Kingery JR, Safford MM, Martin P, et al. Health Status, Persistent Symptoms, and Effort Intolerance One Year After Acute COVID-19 Infection. *J Gen Intern Med.* 2022;37(5). doi:10.1007/s11606-021-07379-z
69. Fortini A, Torrigiani A, Sbaragli S, et al. COVID-19: persistence of symptoms and lung alterations after 3–6 months from hospital discharge. *Infection.* 2021;49(5). doi:10.1007/s15010-021-01638-1
70. ONS. Prevalence of ongoing symptoms following coronavirus (COVID-19) infection in the UK: 2 December 2021. Office for National Statistics.
71. Sugiyama A, Miwata K, Kitahara Y, et al. Long COVID occurrence in COVID-19 survivors. *Sci Rep.* 2022;12(1). doi:10.1038/s41598-022-10051-z



72. Förster C, Colombo MG, Wetzel AJ, Martus P, Joos S. Persisting Symptoms after COVID-19: Prevalence and Risk Factors in a Population-Based Cohort. *Dtsch Arztebl Int.* 2022;119(10). doi:10.3238/arztebl.m2022.0147
73. Groff D, Sun A, Ssentongo AE, et al. Short-term and Long-term Rates of Postacute Sequelae of SARS-CoV-2 Infection: A Systematic Review. *JAMA Netw Open.* 2021;4(10). doi:10.1001/jamanetworkopen.2021.28568
74. Lavery AM, Preston LE, Ko JY, et al. Characteristics of Hospitalized COVID-19 Patients Discharged and Experiencing Same-Hospital Readmission — United States, March–August 2020. *MMWR Morb Mortal Wkly Rep.* 2020;69(45). doi:10.15585/mmwr.mm6945e2
75. Munblit D, Bobkova P, Spiridonova E, et al. Risk factors for long-term consequences of COVID-19 in hospitalised adults in Moscow using the ISARIC Global follow-up protocol: StopCOVID cohort study. *medRxiv.* Published online 2021. doi:10.1101/2021.02.17.21251895
76. Vimercati L, De Maria L, Quarato M, et al. Association between long COVID and overweight/obesity. *J Clin Med.* 2021;10(18). doi:10.3390/jcm10184143
77. Sudre CH, Murray B, Varsavsky T, et al. Attributes and predictors of Long-COVID: analysis of COVID cases and their symptoms collected by the Covid Symptoms Study App. *medRxiv.* Published online 2020.
78. Donnelly JP, Wang XQ, Iwashyna TJ, Prescott HC. Readmission and Death after Initial Hospital Discharge among Patients with COVID-19 in a Large Multihospital System. *JAMA - J Am Med Assoc.* 2021;325(3). doi:10.1001/jama.2020.21465
79. Fukushima EA, Santos CV, Sharma M, Szpunar SM, Saravolatz L, Bhargava A. 36. Clinical Features of and Risk Factors for 30-day Readmission after an Initial Hospitalization with COVID-19. *Open Forum Infect Dis.* 2021;8(Supplement\_1). doi:10.1093/ofid/ofab466.036
80. Goërtz YMJ, Van Herck M, Delbressine JM, et al. Persistent symptoms 3 months after a SARS-CoV-2 infection: the post-COVID-19 syndrome? *ERJ Open Res.* 2020;6(4). doi:10.1183/23120541.00542-2020
81. Gaber TAZK, Ashish A, Unsworth A. Persistent post-covid symptoms in healthcare workers. *Occup Med (Chic Ill).* 2021;71(3). doi:10.1093/occmed/kqab043
82. Pazukhina E, Andreeva M, Spiridonova E, et al. Prevalence and Risk Factors of Post-COVID-19 Condition in Adults and Children at 6 and 12 Months After Hospital Discharge: A Prospective, Cohort Study in Moscow (Stop COVID). *SSRN Electron J.* Published online 2022. doi:10.2139/ssrn.4020142
83. Durstenfeld MS, Sun K, Ma Y, et al. Association of HIV with COVID-19 Outcomes Among Hospitalized Adults. *medRxiv.* Published online 2021.