

1 **Immune response to SARS-CoV-2 mRNA vaccination in multiple sclerosis patients after rituximab**
2 **treatment interruption**

3

4 Remigius Gröning,¹ Andy Dernstedt,¹ Clas Ahlm,¹ Johan Normark,¹⁻³, Peter Sundström,^{1,4} and Mattias
5 NE Forsell¹

6

7 Affiliations:

8 ¹Department of Clinical Microbiology, Umeå University, Umeå, Sweden

9 ²Molecular Infection Medicine Sweden (MIMS), Umeå University, Umeå, Sweden

10 ³Wallenberg Centre for Molecular Medicine (WCMM), Umeå University, Umeå, Sweden

11 ⁴Department of Clinical Sciences, Neurosciences, Umeå University, Umeå, Sweden

12 Corresponding author:

13 Mattias NE Forsell

14 Department Clinical Microbiology, Umeå University

15 Målpunkt R NUS 90187 Umeå

16 mattias.forsell@umu.se

17 +46 90 785 32 08

NOTE: This preprint reports new research that has not been certified by peer review and should not be used to guide clinical practice.

18 Abstract

19 Peripheral B cell depletion via anti-CD20 treatment is a highly effective disease-modifying treatment
20 in multiple sclerosis (MS) patients. A drawback of anti-CD20 treatment is poor immune responses to
21 vaccination. While this can be mitigated by treatment interruption of at least six months prior to
22 vaccination, the timing to resume treatment while maintaining subsequent vaccine responses remains
23 undetermined. We characterized SARS-CoV-2 S-directed antibody and B cell responses throughout
24 three BNT162b2 doses in MS patients, where the first two doses were given during treatment
25 interruption. The last anti-CD20 rituximab infusion was given 1.3 years (median) prior to the first
26 vaccine dose and re-administered four weeks after the second vaccine dose. After two vaccine doses,
27 antibody-mediated responses in SARS-CoV-2-naïve MS patients were comparable to vaccinated
28 healthy controls, albeit with greater variation. We could demonstrate that the response to the second
29 dose of vaccination was predictive of a boost effect after a third dose, even after re-initiation of
30 rituximab. MS patients also exhibited lower frequencies of Decay Accelerating Factor-negative
31 memory B cells, a suggested proxy for germinal centre activity, than healthy individuals. Our findings
32 also offer a first indication on the potential importance of antigenic stimulation of CD27⁺IgD⁻ double
33 negative B cells and the possible long-term impairment of germinal centre activity in rituximab-treated
34 MS patients.

35

36 Introduction

37 Multiple sclerosis (MS) is an autoimmune disease that causes inflammation of the central nervous
38 system¹. Although the underlying cause remains unknown, disease susceptibility is increased through
39 a combination of heritable and environmental factors². Traditional disease modifying treatments
40 (DMT), such as broad immunosuppressive and –modulatory drugs have a positive impact on the
41 relapse rate of MS. However, their effect on disability advancement is limited during progressive MS³.
42 The suspected involvement of B cells in MS pathophysiology was proven in experimental trials using
43 treatments specifically targeting B cells^{1,4}. Rituximab (RTX) is a genetically engineered chimeric
44 monoclonal antibody that depletes CD20⁺ cells, including most B cell subsets except CD20⁻ plasma
45 cells. Accordingly, RTX has been shown to be highly effective to reduce inflammatory brain lesions and
46 clinical relapses for a prolonged period^{4,5}. Therefore, the treatment has been introduced as standard-
47 of-care for MS patients at many hospitals in Sweden and elsewhere⁶. The inhibition of the B cell-
48 dependent adaptive immune system by RTX and other DMTs has also been shown to lead to a higher
49 rate of hospitalization due to COVID-19⁷⁻¹⁰.

50 Due to its B cell-depleting effect, RTX treatment is detrimental for vaccine-induced responses.
51 Treatment interruption is therefore required to mount efficient vaccine-induced responses, as has
52 been shown^{11,12}. In the case of MS patients, non-live COVID-19 vaccines, like the mRNA vaccine
53 BNT162b2, were demonstrated safe and effective¹³. At Umeå University Hospital, MS patients were
54 under RTX treatment interruption prior to the first dose of BNT162b2, then resumed RTX
55 approximately four weeks after the second vaccine dose. Here we studied B cell responses to repeated
56 vaccination with BNT162b2 during RTX treatment interruption, with the goal to identify factors that
57 could predict the efficacy of booster vaccinations after RTX treatment re-initiation.

58

59 Patients and methods

60 **Patient cohort and material**

61 The study was approved by the Swedish Ethics Review Authority (Dnr 2021-00055, including approved
62 amendments) and the Medical Products Agency Sweden. The study was registered at European
63 Clinical Trials Database (EUDRACT Number 2021-000683-30) before the first patient was enrolled in
64 the study. Umeå University, Sweden served as trial sponsor and the Clinical Research Center,
65 University Hospital of Northern Sweden was monitoring the study for regulatory compliance. All
66 individuals were included after informed consent and data were stored in accordance with the EU
67 General Data Protection Regulation. We enrolled 43 MS patients via the Neurological Department at
68 Umeå University Hospital after informed consent, of which 42 had sufficient samples drawn for a
69 longitudinal study (Table 1, Figure 1). All had relapsing-remitting disease and were at present
70 exclusively treated with RTX. Eight out of 43 individuals (19 %) contracted COVID-19 before
71 vaccination. All were vaccinated with Pfizer-BioNTech's BNT162b2 mRNA vaccine half to two-and-a-
72 half years after their last RTX infusion. The control cohort comprised 20 age- and sex-matched healthy
73 controls, that were vaccinated with BNT162b2 (Table 1). For the antibody avidity assay, we studied a
74 different control cohort consisting of 10 individuals, which received three doses of BNT162b2.

75 According to a consensus document by the Swedish MS-association regarding general vaccinations for
76 MS patients on DMTs¹⁴, RTX retreatment was postponed until one month after two BNT162b2 doses,
77 with the first dose given when the B cell count exceeded 20 cells/ μ l and the second subsequently one
78 month after. Thus, RTX treatment resumed before the third vaccine dose.

79 Specific blood sampling numbers and intervals are described in supplemental Method 1 and
80 supplemental Figure 1. Blood was collected in sodium-heparin CPT tubes (BD, 362780) and serum gel
81 tubes (BD, 366566) for the isolation of peripheral blood mononuclear cells (PBMCs) and serum,

82 respectively, according to manufacturer's recommendations. PBMCs were cryopreserved in FBS
83 supplemented with 10% DMSO and stored in liquid nitrogen. Lymphocyte count, flow cytometry B-
84 cell count (CD19⁺ cells), 25(OH)D, and c-reactive protein (CRP) routinely analyzed at the hospital
85 laboratory were retrieved from the last blood sample before the first vaccine dose. The last estimate
86 of MS disability was assessed using Extended Disability Status Scale (EDSS)¹⁵.

87 The study was part of a clinical trial to study immunogenicity of COVID-19 vaccination (EudraCT 2021-
88 000683-30, ClinicalTrials.gov ID NCT04920357). Ethical approval was obtained by the Swedish
89 Ethical Review Authority (Dnr 2021-00055 and subsequent approved amendments).

90 **Production of SARS-CoV-2-S protein and -pseudotyped lentivirus**

91 The 2019-nCoV S protein was produced using the Gibco ExpiCHO Expression System (Thermo Fisher
92 Scientific) and purified as previously described in Byström *et al.*¹⁶.

93 A lentivirus containing the luciferase reporter gene and 2019-nCoV-D614G-S protein was produced
94 with the FuGENE 6 transfection reagent (Promega) according to the manufacturer's protocol. See
95 supplemental Method 2 for a detailed description.

96 **Titration of pseudotyped lentivirus**

97 293T-hACE2.MF cells (provided by Nicole Doria-Rose) were seeded at a density of 5000 cells per well
98 in a 96-well black cell culture plate (Greiner) in Dulbecco's Modified Eagle Medium (DMEM) (Thermo
99 Scientific) + 10 % fetal bovine serum (FBS) + 1000 U/L Penicillin+Streptomycin (D10 medium) and
100 incubated at 37 °C, 5% CO₂. On the next day, the pseudotyped lentivirus was thawed and diluted in a
101 96-well deep plate (Corning) in the following manner. 1:2 dilutions of pseudovirus with Minimum
102 Essential Medium (MEM, Thermo Scientific) + 5 % FBS (MEM5 medium) were prepared in the 11 wells
103 of the first row. The last well contained only MEM5 medium. The dilution plate was incubated for 45
104 min at 37 °C. The medium from the cells prepared on the previous day was removed and 50 µL of
105 pseudovirus dilution was added to the cells in 8 replicates and incubated for 2 h at 37 °C, 5% CO₂.
106 Afterwards, 150 µL of MEM5 medium was added to each well and incubated for 3 days at 37 °C, 5%
107 CO₂.

108 After 3 days, cells were lysed, and luciferase reagent added according to the manufacturer's
109 instructions (Luciferase Assay System, Promega). The luminescence was measured on a Tecan Sunrise
110 microplate reader within 2 minutes of adding the reagent with 1 second integration time. A
111 pseudovirus dilution step for the neutralization assay was selected that yielded 1000-times the
112 luminescence value of the medium-only wells.

113 **Neutralization assay**

114 Neutralization of the authentic SARS-CoV-2 virus was conducted as previously described in Byström *et*
115 *al.*¹⁶. For the neutralization of the pseudotyped lentivirus, serum samples were inactivated for 20 min
116 at 56 °C. 5000 cells of 293T-hACE2.MF per well were seeded in a 96-well black cell culture plate
117 (Greiner) in D10 medium and incubated at 37 °C, 5% CO₂. The next day, for each serum sample an 8-
118 point 3-fold dilution series of the sample was prepared in a V-bottom 96-well plate in MEM5 medium.
119 Then, pseudovirus diluted at half the chosen dilution was added to each serum dilution point at 1:1
120 ratio. Four wells per cell plate contained MEM5 medium, as well as four wells with the chosen
121 pseudovirus dilution. The dilution plate was incubated for 45 min at 37 °C. Afterwards, the medium
122 was removed from the cells and 50 µL of the serum sample-pseudovirus mix was added in duplicates
123 and incubated for 2 h at 37 °C, 5% CO₂. Afterwards, 150 µL of M5 medium was added to each well
124 and incubated for 3 days at 37 °C, 5% CO₂. After 3 days the plates were prepared and measured as
125 described in the previous paragraph.

126 **SARS-CoV-2 spike-specific enzyme-linked immunosorbent assay (ELISA) and avidity assay**

127 The ELISA was conducted as previously described in Byström *et al.*¹⁶, with patient serum samples
128 diluted 1/50 in blocking buffer, and seven additional 5-fold serial dilutions.

129 For the avidity assay, the dilution series was prepared in duplicates. Before the addition of the
130 conjugate antibody, the second replicate of the dilution series was incubated with 1.5 M NaSCN in PBS
131 for 10 min at RT and the plates subsequently washed. The avidity index was determined by the AUC
132 of the NaSCN-treated replicate divided by the AUC of the untreated replicate.

133 **Flow cytometric characterisation of B cells**

134 Isolated Purified SARS-CoV-2 spike protein was tetramerised with Strep-Tactin conjugated to APC and
135 PE (IBA), respectively, for a minimum of 20 minutes at 4°C protected from light. Cryopreserved PBMCs
136 were thawed in a 37°C water bath, washed in sterile PBS supplemented with 2% FBS (PBS+FBS), and
137 transferred to a V-bottom 96-well plate for staining. Unless otherwise specified, all staining steps of
138 the cells were performed at 4°C protected from light. 25nM each of APC and PE conjugated protein
139 were incubated on the PBMCs for 60 mins. Further, cells were stained with Zombie NIR (Biolegend,
140 1:1000) according to manufacturer's instructions. Antibodies targeted towards surface antigens
141 (supplemental Table 1) were diluted in PBS+FBS and incubated for 25 min. Cells were fixed with
142 eBioscience FoxP3/Transcription Factor Staining Buffer Set (Thermo Scientific), according to
143 manufacturer's instructions. Finally, cells were resuspended in sterile PBS+FBS and strained through
144 70µm pre-separation filters (Miltenyi) before acquisition on a BioRad ZE5 flow cytometer. The

145 acquisition speed was 1 μ l/second and sample temperature 4°C during acquisition. FCS files were
146 analysed using FlowJo v10. Total B cells were defined as viable CD19⁺CD20⁺, and memory populations
147 were distinguished by their expression of CD27 and IgD.^{17,18}

148 **Statistical analysis**

149 For the neutralization assay, all values were subtracted by the average value of the medium-only wells
150 and divided by the average of pseudovirus-only wells. The serum dilution required to reduce the
151 pseudovirus infection by 50% (ID50) was determined with GraphPad Prism 9 (GraphPad Software). For
152 the ELISA, all values were subtracted by the average value of the blocking buffer-only wells. Area under
153 the curve (AUC) of the dilution curve was determined with GraphPad Prism 9 (GraphPad Software),
154 with a baseline level of 0.2.

155 A mixed model with Geisser-Greenhouse correction and matched timepoints per individual was used
156 together with Tukey's multiple comparisons test for comparing S-binding IgG and neutralizing
157 antibody levels between separate groups and time points. A Spearman correlation test was used for
158 correlation analysis of multiple serology, clinical, and demographic data. All analysis was done in
159 Graphpad Prism 9 (GraphPad Software). Chosen parameters for Spearman correlation are listed in
160 supplemental Method 3. For the flow cytometry results, comparisons within groups were done by
161 Wilcoxon matched-pairs signed rank test, and comparisons between groups by Mann-Whitney's test,
162 using Graphpad Prism 9 (GraphPad Software).

163

164 **Results**

165 **Higher titers of neutralizing antibodies in COVID-experienced than COVID-naïve MS patients after** 166 **vaccination**

167 Of the 43 study participants in the MS group, we were able to acquire longitudinal samples from 42
168 individuals (Figure 1). Of these, all had been diagnosed with relapsing-remitting MS and been on RTX
169 treatment interruption for a median of 1.3 years prior to BNT162b2 vaccination (Table 1). This allowed
170 for reconstitution of peripheral B cells above 20 cells/ μ L prior to receiving the 1st vaccine dose.
171 Additional demographic and clinical data for the MS patients included in this study are shown in Table
172 1. RTX treatment was resumed for all patients at four weeks after the second dose of BNT162b2. Eight
173 out of 43 individuals (19%) contracted COVID-19 before vaccination but after treatment interruption.
174 Blood sampling of patients in the context to the three vaccine doses is described in detail in
175 supplemental Figure 1.

176 We assessed circulating SARS-CoV-2 binding (Figure 2A,B) and neutralizing (Figure 2C,D) antibody
177 levels to evaluate the response to the BNT162b2 vaccine. We could demonstrate that two doses of
178 BNT162b2 induced similar levels of S-binding antibodies in SARS-CoV-2 naïve patients as in healthy
179 individuals, and that this similarity remained up until eight months after the second dose (Figure 2A).
180 Consistently, two doses of BNT162b2 during treatment interruption induced similar levels of
181 neutralizing antibodies against the SARS-CoV-2 S-pseudotyped or authentic virus in patients and in
182 matched control subjects (Figure 2A, supplemental Figure 2). These data demonstrated that the time
183 of treatment interruption had been sufficient to allow for efficient development of S-binding
184 antibodies after a two-dose regimen of BNT162b2. In contrast, we found that the avidity of elicited S-
185 binding IgG was lower in COVID-naïve patients than in healthy controls at one week (1.9-fold, $p =$
186 0.003), three months (1.6-fold), and eight months (1.8-fold) after two vaccine doses (Figure 2C).

187 Treatment with RTX was resumed for all patients four weeks after the second dose of BNT162b2. A
188 third vaccine dose was given after an additional seven months. In contrast to the strong response in
189 healthy individuals^{17,18}, we found that a third dose in patients was inefficient to significantly boost
190 antibody-mediated responses on a group level (Figure 2B,D). A third dose led to an increase in avidity
191 of circulating S-specific IgG in both control and patient groups, but the patient's IgG were of lower
192 (1.6-fold, $p = 0.001$) avidity than those of the healthy controls (Figure 2E). Finally, patients who had
193 been infected with SARS-CoV2 during RTX treatment interruption, but before vaccination, responded
194 strongly to two doses of BNT162b2 (Figure 2A,C). Since we wanted to study the de-facto vaccine effect,
195 COVID-experienced patients were excluded from further analysis.

196 **A low response to primary vaccination pre-disposes MS patients to low or absent response to a** 197 **consecutive booster dose after continuation of RTX treatment**

198 We noted that the variance of S-binding IgG was greater among patients compared to healthy
199 controls. We therefore divided patients into two groups, low and high responders, based on the levels
200 of circulating anti-S IgG after the third dose of BNT162b2. The median difference in levels of circulating
201 anti-S IgG between the two subgroups was 36-fold ($p = 0.007$) at one week after the third dose. When
202 analysing these individuals retrospectively, we found that the low responder group had consistently
203 lower levels of anti-S IgG in circulation after the second dose of BNT162b2 ($p = 0.04$ for one week after
204 second dose, $p = 0.03$ for three months after second dose, Figure 3A). This was also reflected in lower
205 levels of circulating SARS-CoV-2 neutralizing antibodies throughout all time points, albeit not
206 significantly (Figure 3B). Importantly, we found that the boost effect of the third dose (fold-change)
207 was significantly lower in the low responder group ($p = 0.006$, Figure 3C).

208 **Characterization of vaccine-induced B cells in MS patients after RTX treatment interruption**

209 We performed flow cytometric analysis of the circulating B cell compartment of patients and healthy
210 control subjects to investigate if the low response in certain individuals could be due to differential B
211 cell activation after treatment interruption and two BNT162b2 doses. Consistent with the long interval
212 of RTX treatment interruption, we found a similar frequency of circulating total B cells (CD19⁺) in
213 patients as in healthy controls up until four weeks post two BNT162b2 doses (Figure 4A,B).
214 Accordingly, RTX treatment re-initiation four weeks after the second BNT162b2 dose led to efficient
215 depletion of the peripheral B cell compartment in patients (Figure 4B). We then assessed the
216 distribution of switched memory B cells (CD19⁺CD20⁺CD27⁺IgD⁻), unswitched memory B cells
217 (CD19⁺CD20⁺CD27⁺IgD⁺), naïve B cells (CD19⁺CD20⁺CD27⁻IgD⁺), and double negative (DN) B cells
218 (CD19⁺CD20⁺CD27⁻IgD⁻). The frequencies of these populations in the control group were similar to
219 previously reported findings¹⁹, whereas the MS patients had reconstituted a predominantly naïve
220 repertoire during RTX treatment interruption (Figure 4C).

221 We further dissected the peripheral B cell compartment based on B cell expression of an S-specific B
222 cell receptor (BCR). This was done to determine if prior RTX treatment had an impact on vaccine-
223 induced responses in patients. We found significantly elevated levels of S-specific switched memory B
224 cells in patients one week and one month after the second BNT162b2 dose, as compared to healthy
225 controls at the same timepoints (Figure 4D). A similar difference was noted for S-specific unswitched
226 memory B cells and we could also demonstrate that patients had a higher frequency of antigen-
227 specific DN B cells than healthy controls at four weeks post a second BNT162b2 dose (Figure 4D). We
228 have previously shown that B cells downregulate the complement regulatory protein DAF upon BCR
229 engagement, and that DN B cells in circulation may reflect ongoing B cell responses in lymphoid
230 organs^{19,20}. We found that patients had increased frequencies of DAF⁻ cells in all B cell populations
231 except for switched memory B cells one week after the second dose (Figure 4E). In comparison, the
232 control individuals demonstrated increased levels of DAF⁻ B cells in all populations except DN B cells.

233 **SARS-CoV-2 specific DN B cell levels one month after the second vaccine dose correlate with high** 234 **antibody response and virus neutralization after the third dose**

235 We next did a quantitative correlation analysis of the serological and clinical parameters, as well as
236 frequencies of different B cell populations (Figure 5 and supplemental Figure 4). This was done to
237 better understand if there were parameters that could predict the antibody response magnitude or
238 quality after vaccination of COVID-naïve MS patients on RTX treatment interruption.

239 We found that BMI, but no other demographic factors, had a strong correlation with the fold-increase
240 of S-specific IgG before and after a third vaccine dose (Foldchange 3rd Dose) (Figure 5A). Additionally,
241 we found that levels of circulating anti-S IgG one week after a second dose correlated with the fold-

242 increase after a third vaccine dose after re-initiation of RTX treatment (Figure 5B). Of the clinical
243 parameters, the total B cell count before the first vaccination dose correlated with the neutralization
244 capability after the second and third vaccine doses (Figure 5D,E). Out of all B cell populations, the
245 SARS-CoV-2 spike-protein specific DN B cell frequencies one month after the second vaccine dose
246 displayed the highest correlation with the antibody levels and neutralization capability after the
247 second and third vaccine doses (Figure 5A,C). In summary, these findings add to the observation that
248 circulating anti-S IgG after a second dose of BNT162b2 has predictive value for the boost effect after
249 RTX treatment re-initiation of MS patients.

250

251 Discussion

252 In this study we investigated humoral immune responses to SARS-CoV-2 vaccination in RTX-treated
253 MS patients during interruption and subsequent re-initiation of treatment. We observed that MS
254 patients with previous COVID infection had a strong response to both second and third vaccine doses,
255 comparable to the non-MS control group. These data demonstrate that SARS-CoV-2 infection of MS
256 patients on RTX treatment interruption generates a strong immunological memory that can be re-
257 stimulated by vaccination, similarly to healthy individuals²¹. However, COVID-naïve MS patients
258 displayed high variability in antibody levels after both second and third vaccine doses, showing similar
259 or lower levels as COVID-experienced MS patients and non-MS controls.

260 Through B cell phenotype characterization, we could show that MS patients exhibited a significantly
261 higher naïve B cell population and consequently lower memory (CD27⁺) subsets than the control group
262 before and after SARS-CoV-2 vaccination. These findings coincide with previous reports of B cell
263 reconstitution after RTX treatment, where the B cell populations were limited to immature,
264 transitional, and mature naïve B cells, with low levels of memory subsets^{22,23}. We additionally show
265 that both MS patients and controls developed a robust SARS-CoV-2 S-specific memory B cell
266 population upon vaccination. Although naïve B cell population frequencies were reported to be a
267 general predictor for SARS-CoV-2 vaccine response in immunocompromised individuals²⁴, this
268 parameter alone could not explain the highly variable vaccine response of our COVID-naïve MS
269 patients. Strikingly, SARS-CoV-2⁺ DN B cell frequencies were consistently higher in MS patients than in
270 controls after vaccination. We show that this B cell subset correlates significantly with the antibody
271 and neutralization levels after the second and third vaccine dose. To our knowledge, there has been
272 no report investigating the function of DN B cells in RTX-treated MS patients. This B cell subset is
273 inflated in patients with different chronic inflammatory conditions and after vaccination against
274 influenza and tick-borne encephalitis virus^{25,26}. In addition, DN B cells are shown to transcriptionally

275 cluster with naïve, memory B cells, and plasmablasts, suggesting an extra-follicular maturation
276 pathway²⁶.

277 Germinal centre (GC) B cells express low levels of DAF, a phenomenon that we also observed in
278 circulating B cells during acute Hantavirus infection²⁰. We suppose that the increase of DAF⁻ B cells
279 might reflect a robust GC response, since GC B cells downregulate their DAF expression. Indeed, the
280 complement regulation in GCs has a crucial role in positive B cell selection and therefore antigen-
281 induced antibody production²⁷. Another factor that may be indicative of the GC activity is the avidity
282 of elicited antibodies. Here, we found that MS patients had an overall lower avidity compared to the
283 control group. The lower antibody avidity in MS patients in combination with the decreased expansion
284 of DAF⁻ sw mem B cells might suggest that the B cell affinity maturation in the GC could be impaired
285 as compared to the control group. Previous reports show that GC activity after RTX is negatively
286 affected^{28,29}. To date, however, there are no long-term effect studies on the impact of RTX on GC
287 formation in MS individuals after treatment interruption. Our T cell analysis (supplemental Figure 4)
288 showed a comparable trend in T cell populations between the control and patient groups after
289 vaccination. Consistently, previous vaccination studies indicate the preservation of T cell levels and
290 responses in anti-CD20 treated MS individuals³⁰.

291 In summary, our findings highlight the heterogeneity of humoral immune responses to SARS-CoV-2
292 mRNA vaccination in RTX-treated MS patients and provide factors predictive of the response. The high
293 vaccine response in a fraction of COVID-naïve MS patients hints towards the survival of SARS-CoV-2-
294 specific memory B cells after re-initiation of RTX treatment. This may be due to differential depletion
295 of different B cell populations within secondary lymphoid organs by RTX²⁹. In addition, we show that
296 SARS-CoV-2⁺ DN B cell frequencies one month after the second vaccine dose significantly correlate
297 with a higher antibody response to the second and third vaccine doses. Importantly, S-binding
298 antibody levels after the second vaccine dose could predict efficient immune responses to subsequent
299 vaccine doses during ongoing RTX treatment. Taken together, this could aid the decision to antedate
300 the third vaccine dose by several months while postponing re-initiation of RTX for individuals with
301 poor immune responses to the first two vaccine doses. Lastly, our findings provide possible leads to
302 research crucial aspects of vaccine responses in RTX-treated MS patients. The investigation of DN B
303 cells and their potential extra-follicular maturation could provide deeper insight into alternative
304 antigenic stimulation of B cells in these patients. Furthermore, the possible long-term impairment of
305 GC activity in B-cell depleted MS patients needs further examination to understand and counteract
306 their attenuated vaccine response.

307

308 Acknowledgements

309 The study nurses Anneli Sundström, Carina Olofsson, and Monica Holmgren are acknowledged for
310 assisting in the study procedures. The laboratory technicians Maj Järner, Linnea Wikström for blood
311 sample preparation. The study was supported by grants from Umeå University and Region
312 Västerbotten (RV-969133), Swedish Research Council (Dnr 2020-0625 to M.NE.F. and Dnr 2021-
313 04665), and the SciLifeLab National COVID-19 Research Program (VC-2020-0015) to M.NE.F..

314

315 Authorship contributions

316 R.G.: Designed and performed experiments, conducted analyses, and wrote the manuscript.

317 A.D.: Designed, performed, and analysed flow cytometric experiments, critically read and wrote the
318 manuscript.

319 P.S., M.NE.F., C.A. and J.N.: Planned/conceived and designed the study, reviewed and edited the
320 manuscript. PS: Responsible for recruitment of MS patients. C.A. and J.N. are principal investigators
321 for the clinical trial and supervised sample and data collection.

322

323 Disclosure of conflicts of interest

324 The authors declare no competing financial interests.

325

326 References

- 327 1. Dobson R, Giovannoni G. Multiple sclerosis – a review. *Eur. J. Neurol.* 2019;26(1):27–40.
- 328 2. Ascherio A. Environmental factors in multiple sclerosis. *Expert Rev. Neurother.* 2013;13(12
329 SUPPL.):3–9.
- 330 3. Wolinsky JS, Narayana PA, O'Connor P, et al. Glatiramer acetate in primary progressive
331 multiple sclerosis: Results of a multinational, multicenter, double-blind, placebo-controlled
332 trial. *Ann. Neurol.* 2007;61(1):14–24.
- 333 4. Hauser SL, Waubant E, Arnold DL, et al. B-Cell Depletion with Rituximab in Relapsing–
334 Remitting Multiple Sclerosis. *N. Engl. J. Med.* 2008;358(7):676–688.

- 335 5. Svenningsson A, Frisell T, Burman J, et al. Safety and efficacy of rituximab versus dimethyl
336 fumarate in patients with relapsing-remitting multiple sclerosis or clinically isolated syndrome
337 in Sweden: a rater-blinded, phase 3, randomised controlled trial. *Lancet Neurol.*
338 2022;21(8):693–703.
- 339 6. Sellebjerg F, Blinkenberg M, Sorensen PS. Anti-CD20 Monoclonal Antibodies for Relapsing and
340 Progressive Multiple Sclerosis. *CNS Drugs.* 2020;34(3):269–280.
- 341 7. Smith TE, Madhavan M, Gratch D, et al. Risk of COVID-19 infection and severe disease in MS
342 patients on different disease-modifying therapies. *Mult. Scler. Relat. Disord.* 2022;60:.
- 343 8. Sormani MP, De Rossi N, Schiavetti I, et al. Disease-Modifying Therapies and Coronavirus
344 Disease 2019 Severity in Multiple Sclerosis. *Ann. Neurol.* 2021;89(4):780–789.
- 345 9. Luna G, Alping P, Burman J, et al. Infection Risks Among Patients With Multiple Sclerosis
346 Treated With Fingolimod, Natalizumab, Rituximab, and Injectable Therapies [published
347 correction appears in *JAMA Neurol.* 2021 Sep 7;:null]. *JAMA Neurol.* 2020;77(2):184-191.
- 348 10. Spelman T, Forsberg L, McKay K, Glaser A, Hillert J. Increased rate of hospitalisation for COVID-
349 19 among rituximab-treated multiple sclerosis patients: A study of the Swedish multiple
350 sclerosis registry. *Mult. Scler. J.* 2022;28(7):1051–1059.
- 351 11. Achiron A, Mandel M, Dreyer-Alster S, et al. Humoral immune response in multiple sclerosis
352 patients following PfizerBNT162b2 COVID19 vaccination: Up to 6 months cross-sectional
353 study. *J. Neuroimmunol.* 2021;361:.
- 354 12. Tolf A, Wiberg A, Müller M, et al. Factors Associated With Serological Response to SARS-CoV-
355 2 Vaccination in Patients With Multiple Sclerosis Treated With Rituximab. *JAMA Netw Open.*
356 2022;5(5):e2211497.
- 357 13. Kelly H, Sokola B, Abboud H. Safety and efficacy of COVID-19 vaccines in multiple sclerosis
358 patients. *J. Neuroimmunol.* 2021;356:.
- 359 14. Svenska MS-Sällskapet. Rekommendationer gällande vaccination vid MS.
360 [https://www.mssallskapet.se/wp-content/uploads/2020/02/Rekommendationer-](https://www.mssallskapet.se/wp-content/uploads/2020/02/Rekommendationer-g%C3%A4llande-vaccination-vid-MS-.pdf)
361 [g%C3%A4llande-vaccination-vid-MS-.pdf](https://www.mssallskapet.se/wp-content/uploads/2020/02/Rekommendationer-g%C3%A4llande-vaccination-vid-MS-.pdf).
- 362 15. Kurtzke JF. Rating neurologic impairment in multiple sclerosis: An expanded disability status
363 scale (EDSS). *Neurology.* 1983;33(11):1444–1444.
- 364 16. Byström JW, Vikström L, Rosendal E, et al. Serological assessment of SARS-CoV-2 exposure in
365 northern Sweden by the use of at-home sampling to meet geographical challenges in rural
366 regions. *medRxiv.* 2022;2020.06.02.20120477.

- 367 17. Barda N, Dagan N, Cohen C, et al. Effectiveness of a third dose of the BNT162b2 mRNA COVID-
368 19 vaccine for preventing severe outcomes in Israel: an observational study. *Lancet*.
369 2021;398(10316):2093-2100. doi:10.1016/S0140-6736(21)02249-2
- 370 18. Munro APS, Janani L, Cornelius V, et al. Safety and immunogenicity of seven COVID-19
371 vaccines as a third dose (booster) following two doses of ChAdOx1 nCov-19 or BNT162b2 in
372 the UK (COV-BOOST): a blinded, multicentre, randomised, controlled, phase 2 trial. *Lancet*.
373 2021;398(10318):2258-2276. doi:10.1016/S0140-6736(21)02717-3
- 374 19. Kerkman PF, Dernstedt A, Tadala L, et al. Generation of plasma cells and CD27-IgD⁻ B cells
375 during hantavirus infection is associated with distinct pathological findings. *Clin. Transl.*
376 *Immunol.* 2021;10(7):.
- 377 20. Dernstedt A, Leidig J, Holm A, et al. Regulation of Decay Accelerating Factor Primes Human
378 Germinal Center B Cells for Phagocytosis. *Front. Immunol.* 2021;11:.
- 379 21. Ali H, Alahmad B, Al-Shammari AA, et al. Previous COVID-19 Infection and Antibody Levels
380 After Vaccination. *Front. Public Heal.* 2021;9:.
- 381 22. Roll P, Palanichamy A, Kneitz C, Dorner T, Tony HP. Regeneration of B cell subsets after
382 transient B cell depletion using anti-CD20 antibodies in rheumatoid arthritis. *Arthritis Rheum.*
383 2006;54(8):2377–2386.
- 384 23. Colucci M, Carsetti R, Cascioli S, et al. B cell reconstitution after rituximab treatment in
385 idiopathic nephrotic syndrome. *J. Am. Soc. Nephrol.* 2016;27(6):1811–1822.
- 386 24. Schulz E, Hodl I, Forstner P, et al. CD19+IgD+CD27⁻ Naïve B Cells as Predictors of Humoral
387 Response to COVID 19 mRNA Vaccination in Immunocompromised Patients. *Front. Immunol.*
388 2021;12:.
- 389 25. Jenks SA, Cashman KS, Zumaquero E, et al. Distinct Effector B Cells Induced by Unregulated
390 Toll-like Receptor 7 Contribute to Pathogenic Responses in Systemic Lupus Erythematosus.
391 *Immunity.* 2018;49(4):725-739.e6.
- 392 26. Ruschil C, Gabernet G, Lepennetier G, et al. Specific Induction of Double Negative B Cells
393 During Protective and Pathogenic Immune Responses. *Front. Immunol.*
394 2020;11(December):1–15.
- 395 27. Cumpelik A, Heja D, Hu Y, et al. Dynamic regulation of B cell complement signaling is integral
396 to germinal center responses. *Nat. Immunol.* 2021;22(6):757–768.
- 397 28. Carubbi F, Cipriani P, Marrelli A, et al. Efficacy and safety of rituximab treatment in early
398 primary Sjögren's syndrome: A prospective, multi-center, follow-up study. *Arthritis Res. Ther.*
399 2013;15(5):.

- 400 29. Damato V, Theorell J, Al-Diwani A, et al. Rituximab abrogates aquaporin-4-specific germinal
401 center activity in patients with neuromyelitis optica spectrum disorders. *Proc. Natl. Acad. Sci.*
402 *U. S. A.* 2022;119(24):.
- 403 30. Schwarz T, Otto C, Jones TC, et al. Preserved T cell responses to SARS-CoV-2 in anti-CD20
404 treated multiple sclerosis. *Mult. Scler. J.* 2022;28(7):1041–1050.

405

406 **Table 1.** Clinical characteristics of 43 relapsing-remitting multiple sclerosis cases treated with RTX and
407 20 non-MS control individuals.

Characteristics	All patients (N=43)	Non-MS control group (N=20)
Female n (%)	26 (60)	12 (60)
Age at disease onset	26 (15-47)	
Years of disease duration	9 (1-25)	
Age at enrollment	38 (25–64)	41.5 (20-59)
BMI	25 (19-43)	23.6 (18.7-41.6)
EDSS	1.0 (0-4.0)	
Covid 19 before vaccination n	8	0
Clinical parameters*		
B cell count (cells/ μ l)	123 (1-817)	
Vitamin D level (nmol/l)	85 (54-149)	
Lymphocyte count (10^9 /l)	1.9 (1-3.4)	
CRP (mg/ml)	1.3 (0.6-20)	
Comorbidities	None (n=29), asthma (n=7), hypertension (n=2), hypothyroidism (n=2), diabetes type II (n=1), obesity (n=1), hyperlipidemia (n=1),	None (n=5), allergy (n=1), asthma (n=5), vaso-occlusive crisis (n=2), diabetes type I (n=1), gastritis (n=1), IgA nephritis (n=1), migraine (n=2)

	prolactinoma (n=1), activated protein C resistance (n=1)	
Rituximab treatment		
Number of rituximab infusions before vaccine dose 1	8 (1-11)	
Rituximab total dosage (mg) before vaccine dose 1	5500 (1000-10500)	
Rituximab last infusion dose (mg)	500 (300-1000)	
Years since last rituximab infusion at vaccine dose 1	1.3 (0.52-2.6)	
DMD before rituximab n (%)		
None	19 (44)	
Interferon beta	19 (44)	
Natalizumab	14 (33)	
Dimethyl fumarate	1 (2.3)	
Glatiramer acetate	2 (4.7)	
Fingolimod	3 (7.0)	

408 All figures are median (range) unless stated otherwise. BMI, body mass index; CRP, c-reactive protein;
409 DMD, disease modifying drug; EDSS, Extended Disability Status Scale.

410 *B cell (CD19+) count, vitamin D levels (25[OH]D), lymphocyte count, and CRP from the latest sample
411 preceding rituximab treatment re-initiation.

412

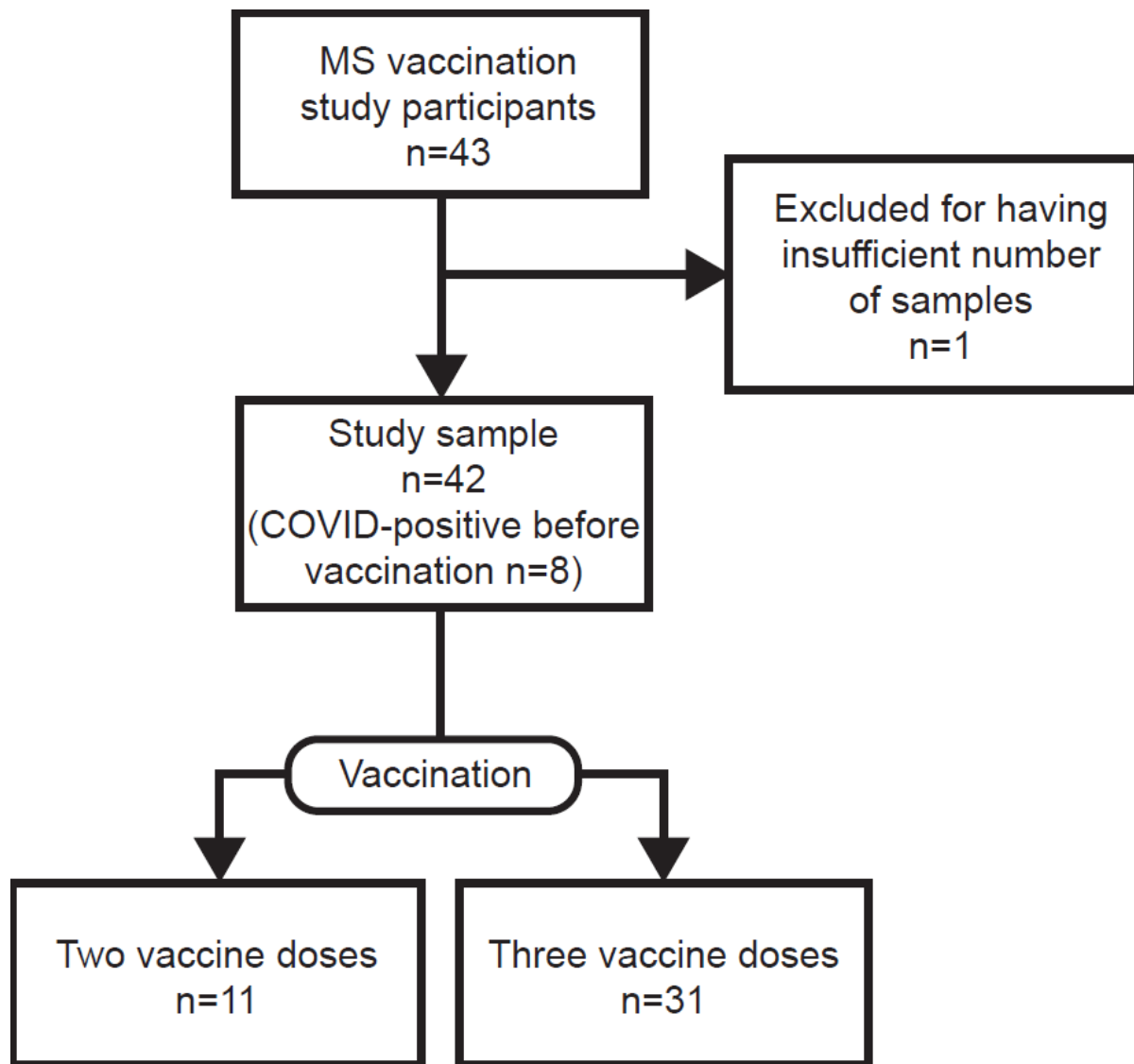
413

414

415

416

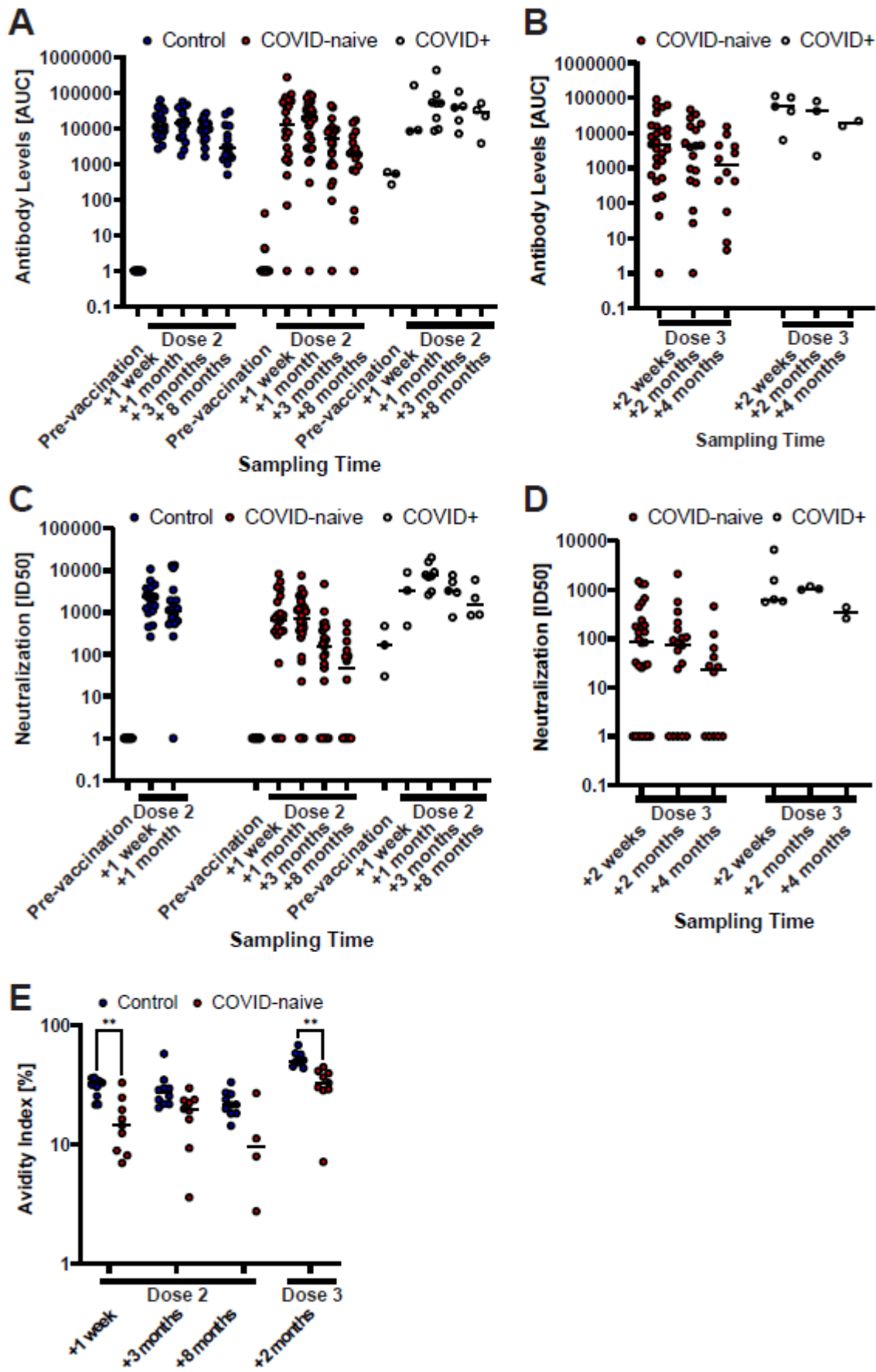
417 **Figure 1**



418

419 **Figure 1: Inclusion flowchart of study cohort.** Depicted are the number of vaccinated rituximab-
420 treated (RTX) multiple sclerosis (MS) patients participating in the study and the final study sample
421 after exclusion. The study sample is characterized further by the number of vaccine doses and COVID-
422 experienced participants.

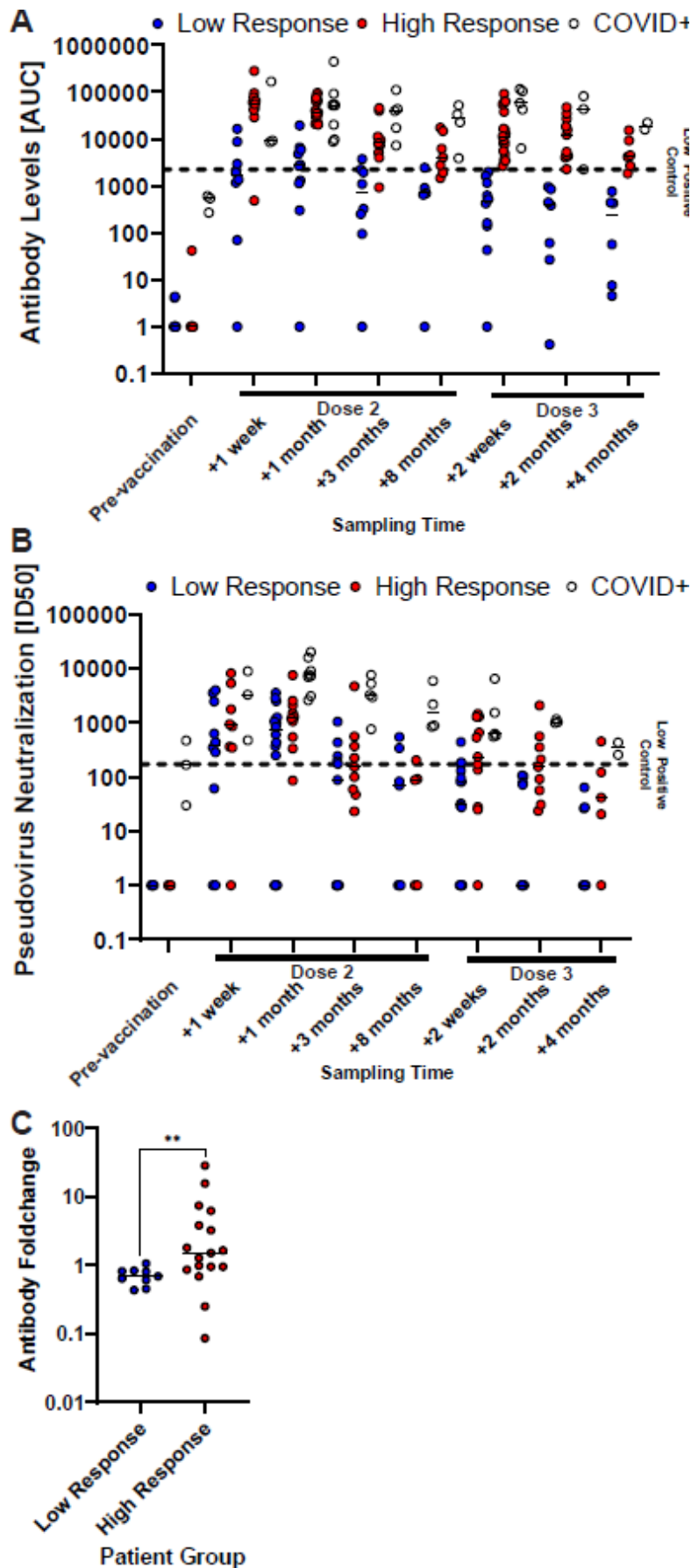
423 **Figure 2**



424

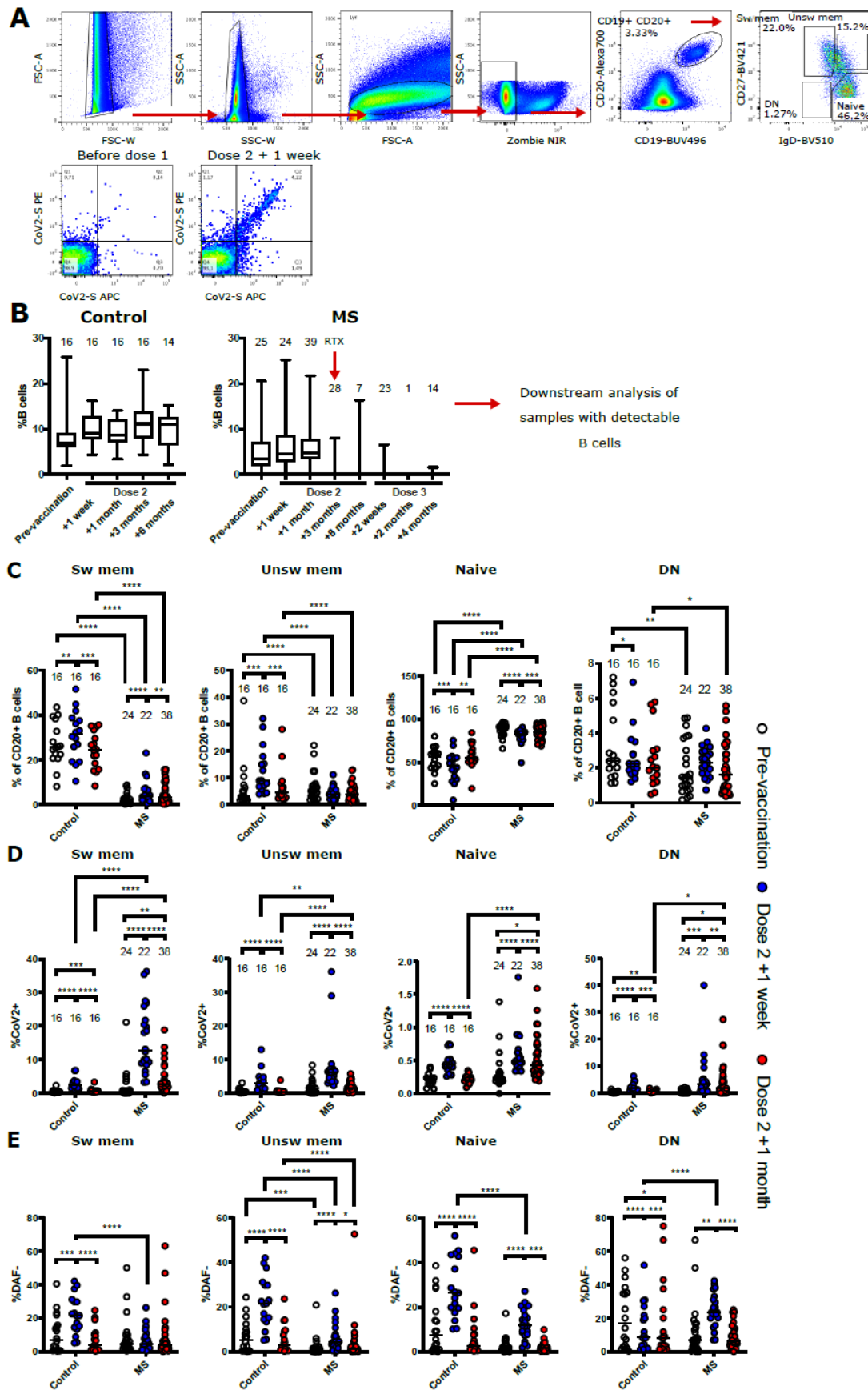
425 **Figure 2: Generally impaired humoral immune response in COVID-naïve multiple sclerosis (MS)**
426 **patients after vaccination.** Longitudinal SARS-CoV-2 spike-specific antibody levels after two (A) and
427 three (B) vaccine doses, and SARS-CoV-2-pseudotyped lentivirus neutralization capability after two (C)
428 and three (D) vaccine doses of the non-MS control group and patient groups, the latter differentiated
429 between patients that were infected with COVID-19 prior to vaccination (COVID+) and COVID-naïve
430 patients. Antibody levels are described as the area under the curve (AUC) of a patient serum dilution
431 series. Neutralization capability is described as the serum dilution required to reduce the viral
432 infection by 50% (ID50). The horizontal, dashed line displays the reference value of a low-neutralizing
433 control serum sample. Sample points, whose neutralizing capability or antibody levels were below
434 detection have been set to 1 for illustrative purposes. (E) Longitudinal antibody avidity of a subset (n
435 = 10) of the non-MS control and COVID-naïve patient groups. * p<0.05; ** p<0.01; *** p<0.001; ****
436 p<0.0001.

437 Figure 3



438 **Figure 3: COVID-naïve multiple sclerosis (MS) patients with high SARS-CoV-2 antibody levels after**
439 **the second vaccine dose showed a consistently high humoral immune response.** SARS-CoV-2 spike-
440 specific antibody levels (A) and SARS-CoV-2-pseudotyped lentivirus neutralization capability (B) of the
441 patient groups, differentiating between patients that were infected with COVID-19 prior to
442 vaccination (COVID+) and COVID naïve patients. COVID naïve patients were further grouped according
443 to if their antibody levels were higher (High Response) or lower (Low Response) than the low-
444 neutralizing control serum sample one week after the third vaccine dose. Antibody levels are
445 described as the area under the curve (AUC) of a patient serum dilution series. Neutralization
446 capability is described as the serum dilution required to reduce the viral infection by 50% (ID50). The
447 horizontal, dashed line displays the reference value of a low-neutralizing control serum sample.
448 Samples points, whose neutralizing capability or antibody levels were below detection have been set
449 to 1 for illustrative purposes. (C) Anti-S IgG level foldchange between two weeks after and the last
450 available time point (four to eight months) before the third vaccine dose of COVID-naïve MS patients.

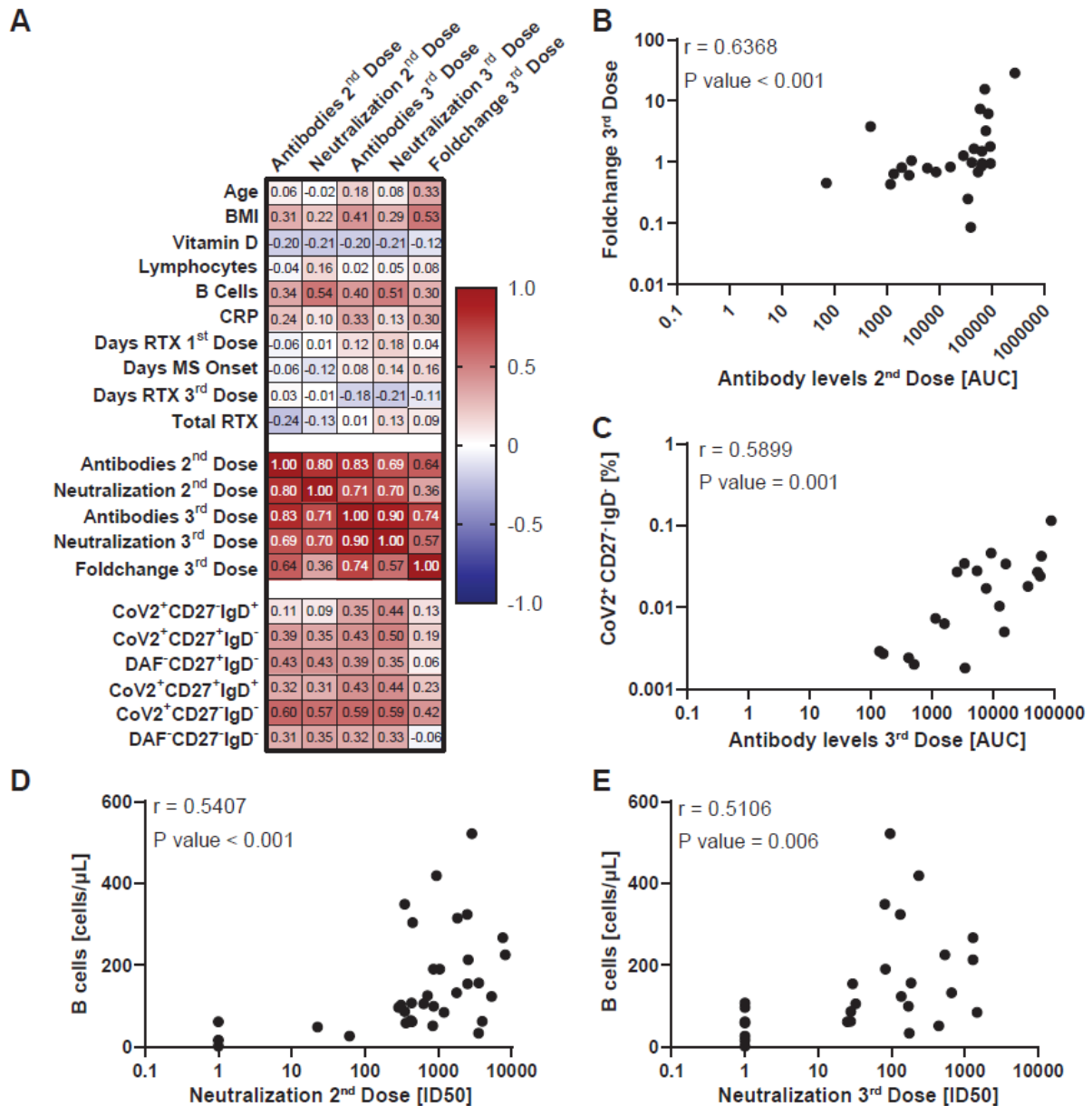
451 **Figure 4**



452 **Figure 4: Flow cytometric characterisation of B cells from non- multiple sclerosis (MS) controls and**
453 **MS patients.** (A) Representative gating strategy for the final identification of switched memory (sw
454 mem), unswitched memory (unsw mem), naïve, and double negative (DN) B cells. Definition of SARS-
455 CoV2-specific B cells. (B) Longitudinal frequencies of B cells in non-MS controls and patients. Number
456 of individuals are indicated above the respective box plots. Timepoint of re-initiated treatment with
457 rituximab (RTX) is indicated in the patient group. (C-E) B cell frequencies in non-MS controls and
458 patients before vaccination, one week and one month after the second vaccine dose. (C) Frequencies
459 of sw mem, unsw mem, naïve, and DN B cells. (D) Frequencies of SARS-CoV2 specific B cells within the
460 indicated subpopulations. (E) Frequencies of DAF- cells of each B cell subtype. * $p<0.05$; ** $p<0.01$;
461 *** $p<0.001$; **** $p<0.0001$.

462

463 **Figure 5**



464

465 **Figure 5: Correlation of vaccine response with demographic and clinical parameters in COVID-19**
 466 **naïve multiple sclerosis (MS) patients.** (A) Spearman correlation matrix between the SARS-CoV-2
 467 spike-specific antibody levels together (AUC) with pseudotyped lentivirus neutralization capability
 468 (ID50) and multiple experimental and clinical parameters. Corresponding complete correlation matrix
 469 and P values are displayed in figures S3 and S4, respectively. Chosen parameters are listed in
 470 supplemental Method 3. (B-E) Spearman correlation of SARS-CoV-2 spike-specific antibody levels one
 471 week after the second vaccine dose and foldchange of SARS-CoV-2 spike-specific antibody levels after
 472 and before third vaccine dose (B), SARS-CoV-2 spike-specific antibody levels one week after the third
 473 vaccine dose and SARS-CoV-2⁺CD27⁺IgD⁻ B cell levels (C), total B cell levels before the first vaccine dose

474 and SARS-CoV-2-pseudotyped lentivirus neutralization capability one week after the second (D) and
475 third dose (E). The analysis results are displayed in the upper left.

Methods

Supplemental Method 1. Blood sampling numbers and intervals.

In case of the rituximab-treated (RTX) multiple sclerosis (MS) group, blood samples were collected as depicted in supplemental Figure 1: from 24 individuals before the first vaccine dose, 23 at one week after the second, 40 at one month after the second, 28 at two to three months after the second, 20 at four to eight months after the second, 31 at one to two weeks after the third, 20 at one to two months after the third, and 14 at three to four months after the third. Two individuals, which had COVID-19 before vaccination, got only one vaccine dose. Their sampling timepoints after the first dose were defined as after second dose, in order to compare them with the remaining individuals. Regarding the non-MS control cohort, blood samples were collected from 19 individuals before the first vaccine dose, 19 at one week after the second, 19 at one month after the second, 17 at two to three months after the second, and 15 at four to eight months after the second.

For the avidity assay, blood samples for the control group were collected from 10 individuals at one week after the second vaccine dose, two to three months after the second, four to eight months after the second, and one to two months after the third. Samples for the RTX-MS group were collected from 10 individuals as a subgroup of the 43 individuals examined throughout the rest of the study. For this group, 10 samples were collected at one week after the second vaccine dose, two to three months after the second, one to two months after the third, and 5 samples at four to eight months after the second.

Supplemental Method 2. SARS-CoV-2-pseudotyped lentivirus production.

Approximately 19.5 million HEK 293T cells (CRL-3216 ATCC) were seeded per T175 flask in Dulbecco's Modified Eagle Medium (DMEM) (Thermo Scientific) + 10 % fetal bovine serum (FBS) + 1000 U/L Penicillin+Streptomycin (D10 medium) for SARS-CoV-2-pseudotyped lentivirus production and incubated at 37 °C and 5 % CO₂. On the next day, 109 µL of Fugene 6 (Promega) and 1100 µL of Opti-MEM (Thermo Scientific) per T175 flask was mixed in a sterile polystyrene tube and incubated for 5 min at room temperature (RT). 21.1 µg of pHR' CMV Luc (luciferase reporter gene), 21.1 µg of pCMV delta8.2 (lentivirus backbone), 0.37 µg of TMPRSS2 (this and all previous plasmids were provided by Nicole Doria-Rose), and 1.2 µg of pHDM SARS-CoV-2 Spike D614G C-terminal deletion plasmid DNA (provided by Jesse Bloom) was added per T175 flask to the previous mixture and incubated for 15 min at RT. Finally, the reagent-DNA mixture was added to the media in the T175 flask containing the 293T cells and the flask returned to the incubator.

On the subsequent day, the medium in the T175 flask was exchanged with 19 mL of fresh D10 medium per flask and the flask returned to the incubator. On the following day, the cell supernatant was harvested in 50 mL tubes and centrifuged at 210xg for 5 min and passed through a 0.45 µm PVDF sterile filter (Millipore). Finally, the supernatant was aliquoted in 1 mL and stored at -80 °C.

Supplemental Method 3. Parameters chosen for Spearman correlation.

AUC of SARS-CoV-2 spike-specific antibody levels one week after the second vaccine dose, ID50 SARS-CoV-2-pseudotyped lentivirus neutralization capability one week after the second vaccine dose, SARS-CoV-2 spike-specific antibody levels one week after the third vaccine dose, SARS-CoV-2-pseudotyped lentivirus neutralization capability one week after the third vaccine dose, and foldchange of SARS-CoV-2 spike-specific antibody levels after and before third vaccine dose, days since last RTX treatment before first vaccine dose, days since MS disease onset before first vaccine dose, days since last RTX treatment before third vaccine dose, total administered RTX amount since treatment start [mg], blood vitamin D concentration before first vaccine dose [nmol/L], blood total lymphocyte count before first vaccine dose [10^9 cells/L], blood C-reactive protein levels before first vaccine dose [mg/mL], blood total B cell count before first vaccine dose [cells/µL], age, Body Mass

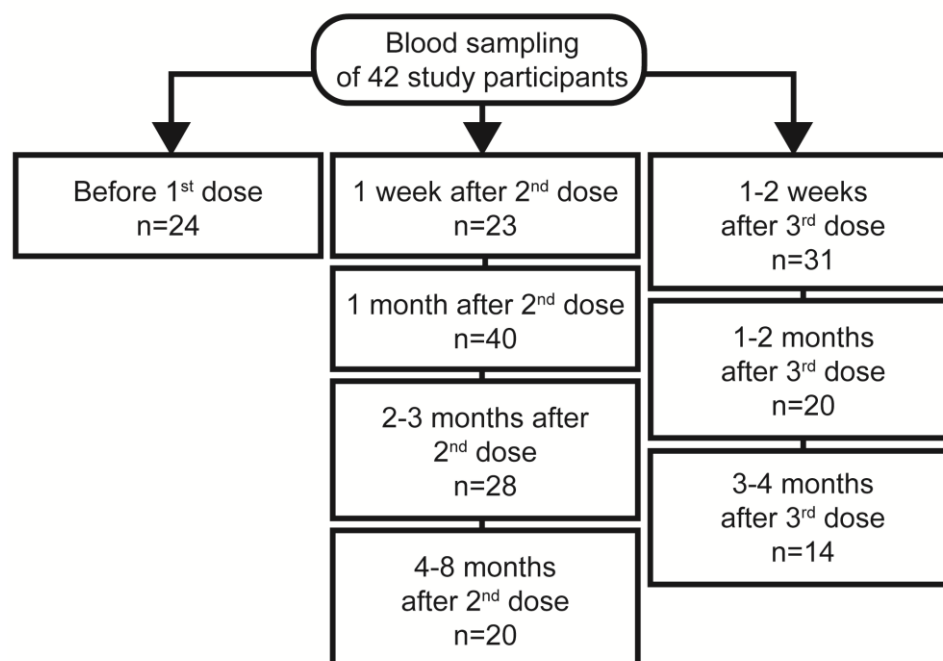
Index, and frequencies of B cell populations [%] one month after the second vaccine dose (CD27⁺IgD⁻, SARS-CoV-2⁺CD27⁺IgD⁻, CD27⁻IgD⁻, SARS-CoV-2⁺CD27⁻IgD⁻).

Tables

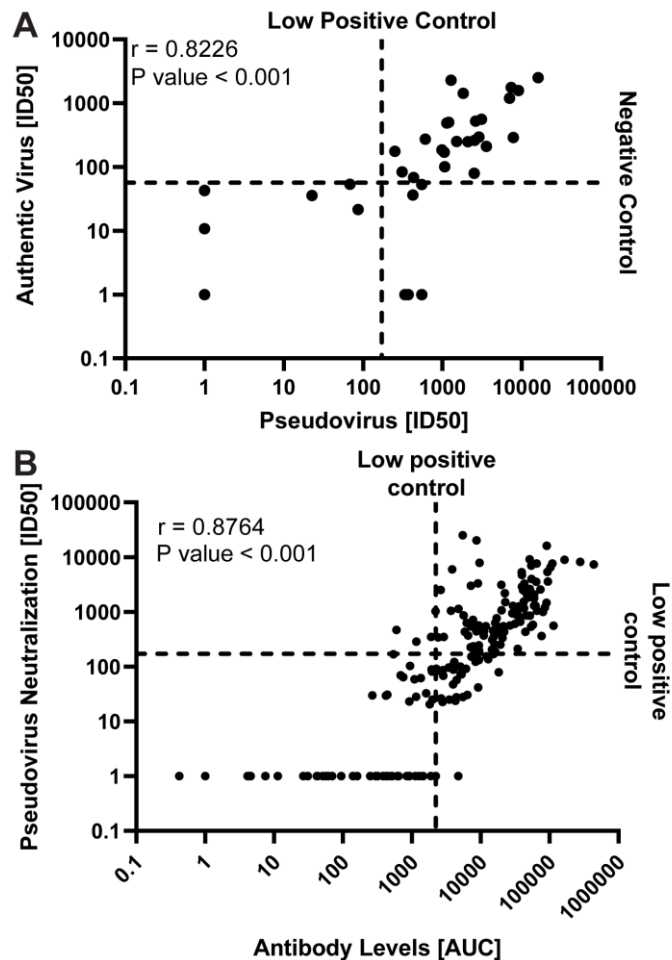
Supplemental Table 1. List of flow cytometric antibodies used.

Antigen	Fluorophore	Clone	Vendor
CD19	BUV496	SJ25C1	BD
CD20	AlexaFluor-700	2H7	Biolegend
CD27	BV421	MT271	BD
IgD	BV510	IA6-2	BD
DAF	PE-Cy7	JS11	Biolegend
CD3	BV510	SK7	Biolegend
CD4	BUV395	SK3	BD
CCR7	BV421	2-21-A	BD
CD45RA	BV786	HI100	BD
CD25	BV711	2A3	BD
DAF	APC	JS11	Biolegend

Figures

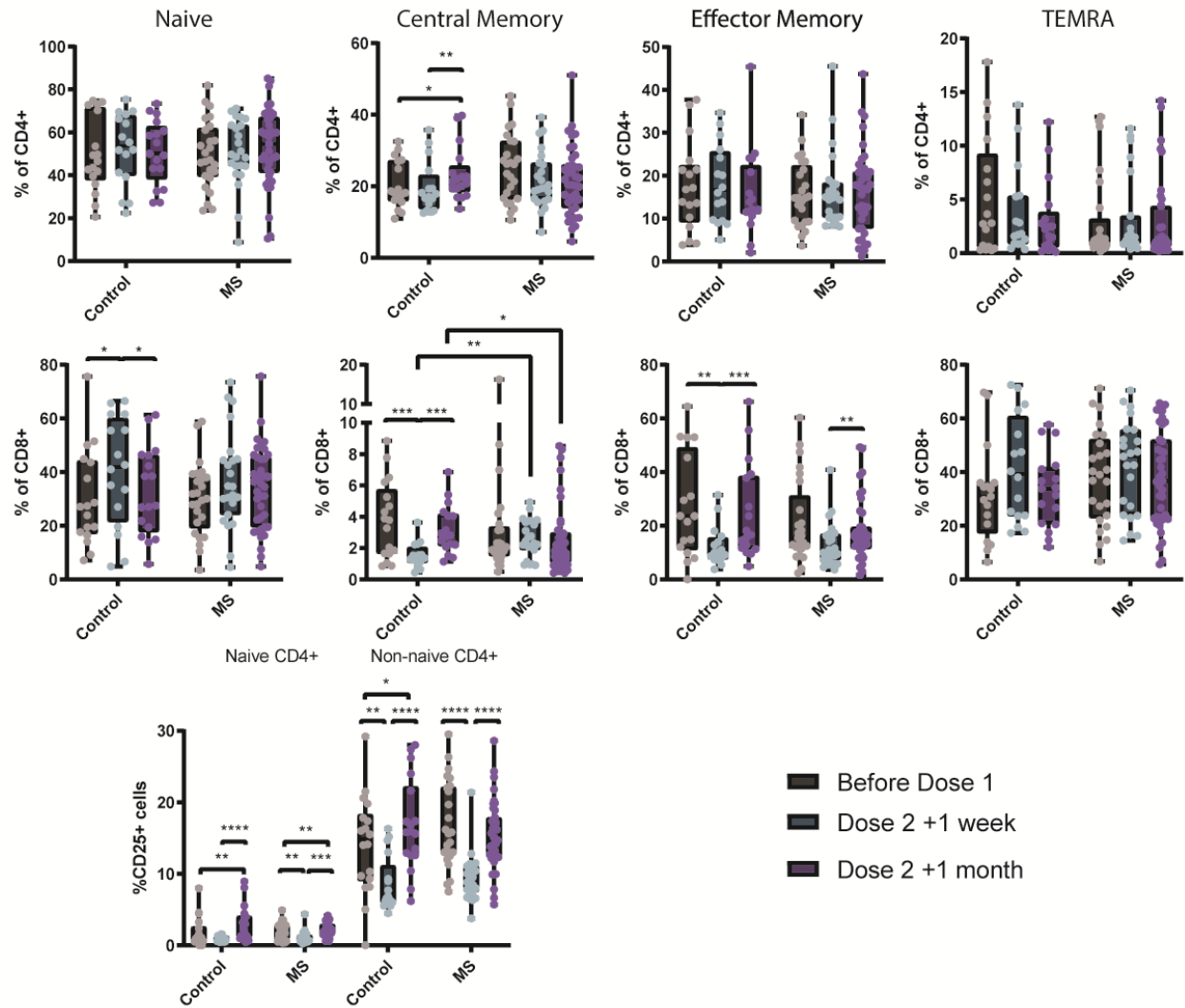


Supplemental Figure 1: Blood sample time points and sample sizes of rituximab (RTX)-treated multiple sclerosis (MS) patients during SARS-CoV-2 vaccination.



Supplemental Figure 2: Correlation of authentic and pseudotyped SARS-CoV-2 virus neutralization

Comparison of authentic and pseudotyped SARS-CoV-2 virus neutralization assay (A), as well as SARS-CoV-2 spike-specific antibody levels and pseudotyped virus neutralization capability (B) of MS patient samples. Sample points, whose neutralizing capability or antibody levels were below detection have been set to 1 for illustrative purposes. Statistical parameters in the upper left describe the results of a Spearman correlation analysis. (A) Plot of authentic SARS-CoV-2 virus against SARS-CoV-2-pseudotyped lentivirus neutralization capability, described as the serum dilution required to reduce the pseudovirus infection by 50% (ID50), for MS patient serum samples one month after the second vaccine dose. The vertical and horizontal lines display the reference values for a low neutralizing and negative control serum sample, respectively. (B) Plot of SARS-CoV-2 spike-specific antibody levels (AUC) against SARS-CoV-2-pseudotyped lentivirus neutralization capability (ID50) for MS patient samples. The vertical and horizontal lines display the reference value for a low neutralizing control serum sample.



Supplemental Figure 4: Complete correlation of multiple experimental and clinical parameters in COVID-19 naïve multiple sclerosis (MS) patients. (A) Spearman correlation matrix between multiple experimental and clinical parameters of COVID-19 naïve MS patients. (B) P values of the corresponding spearman correlation matrix. Matrix cells with a P value below 0.05 were depicted in blue. Chosen parameters are listed in the data analysis part of the materials and methods section.