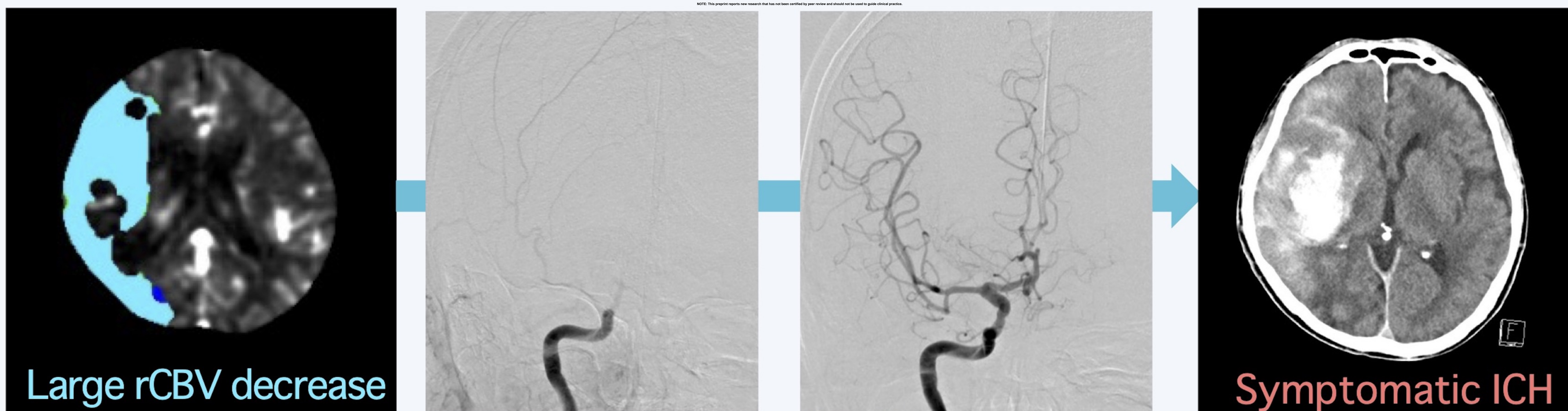
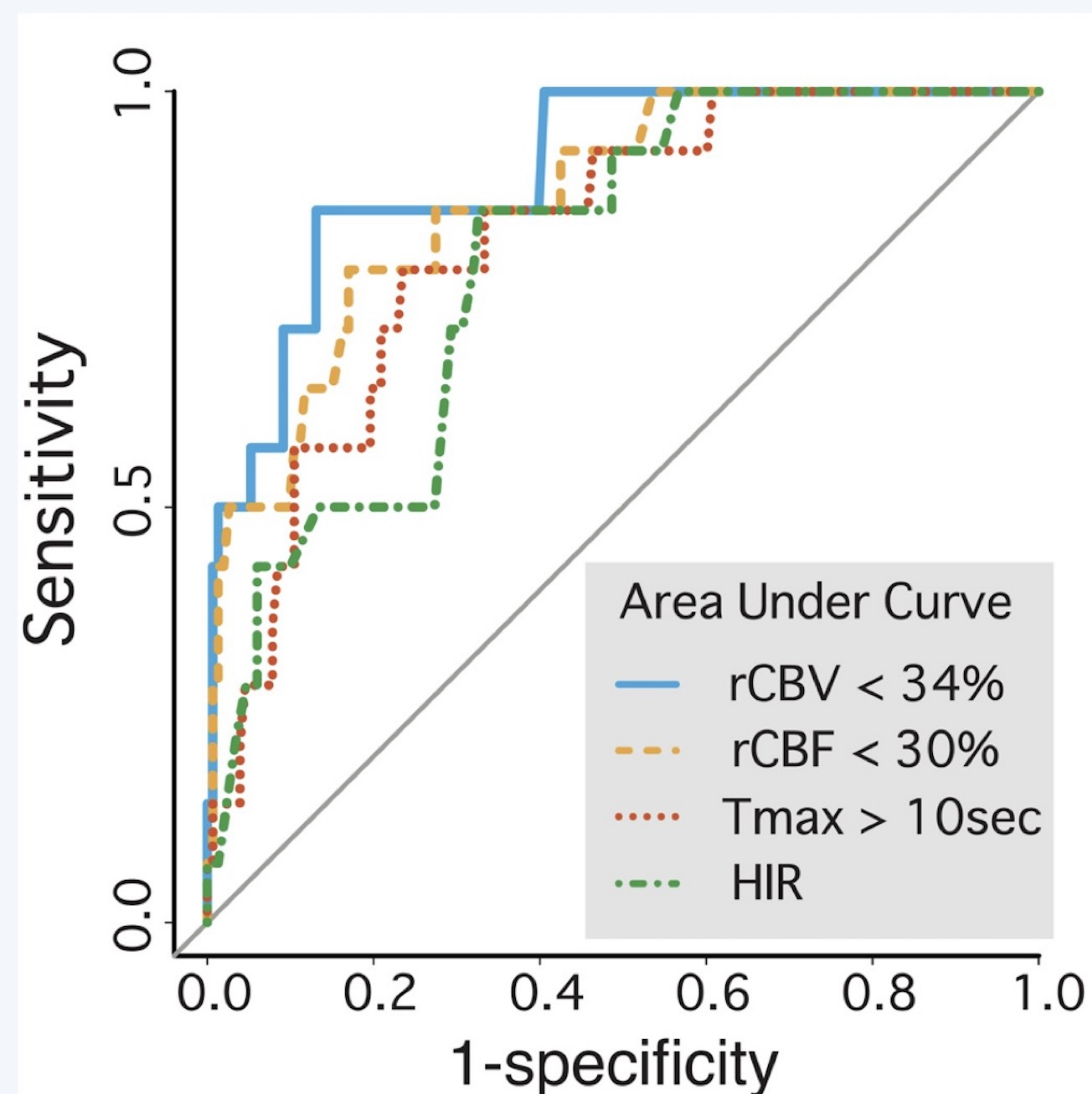


CTP parameters predictive of symptomatic ICH after mechanical thrombectomy

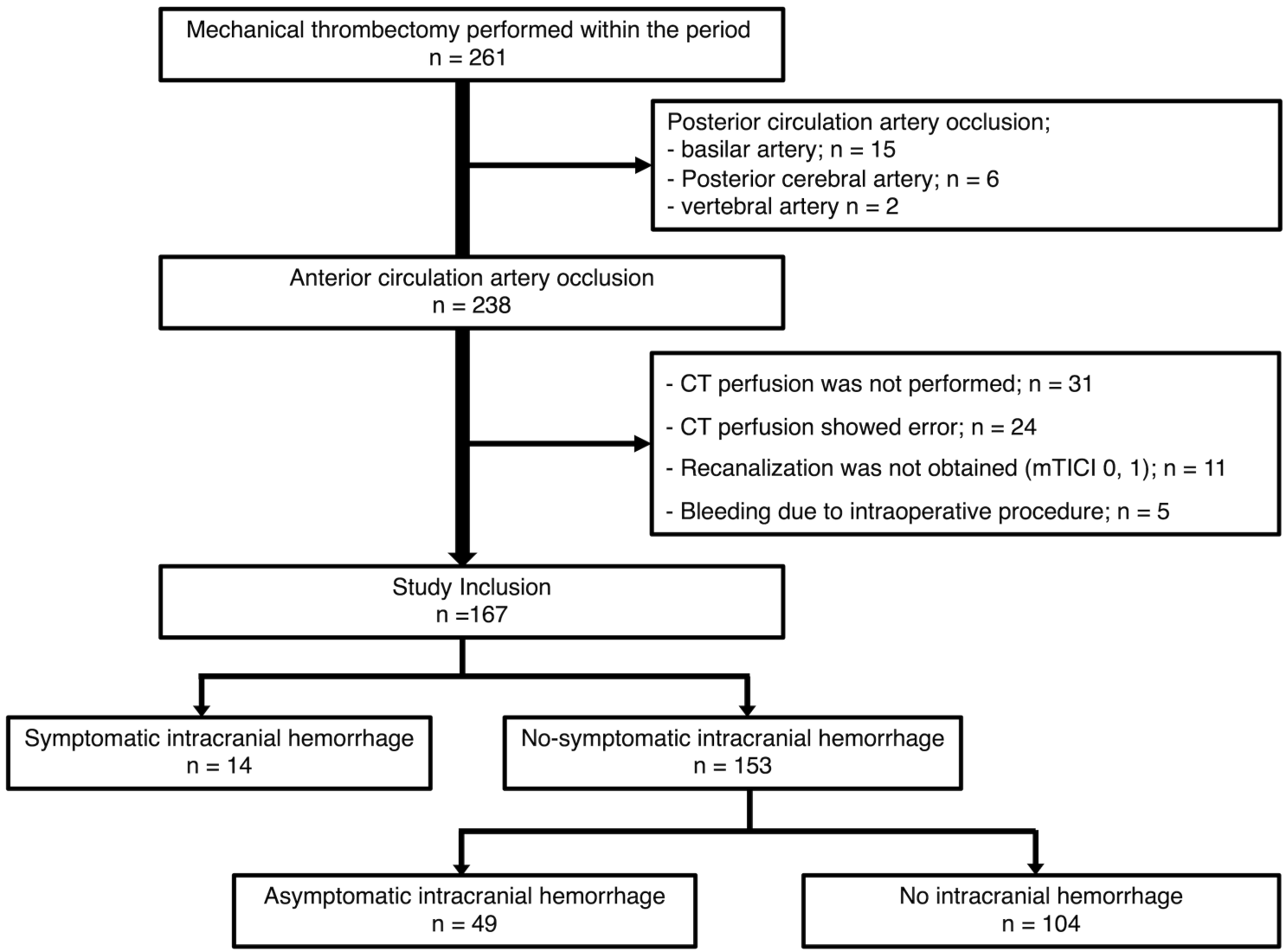


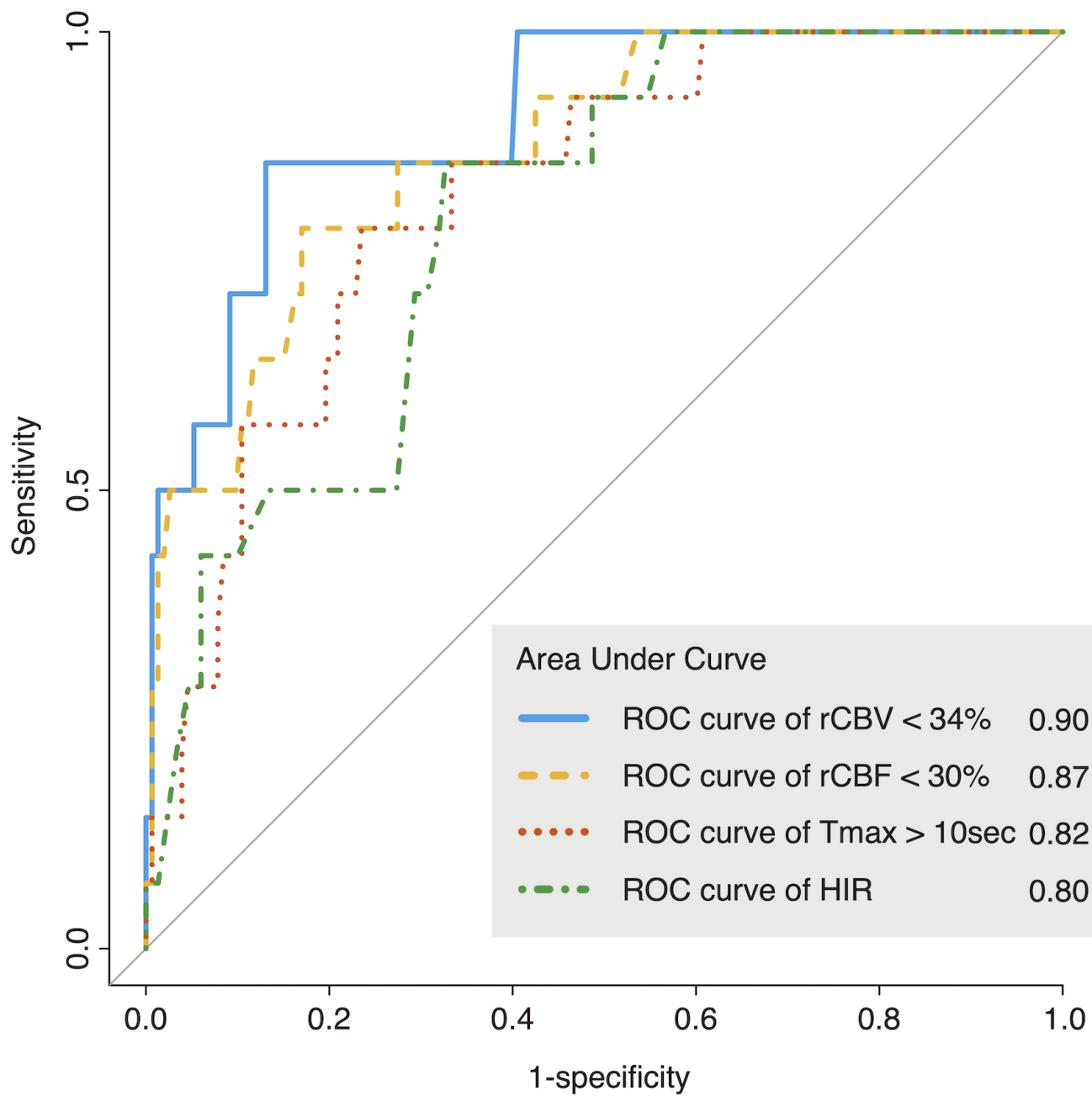
ROC prediction ability of symptomatic ICH based on each CTP parameter

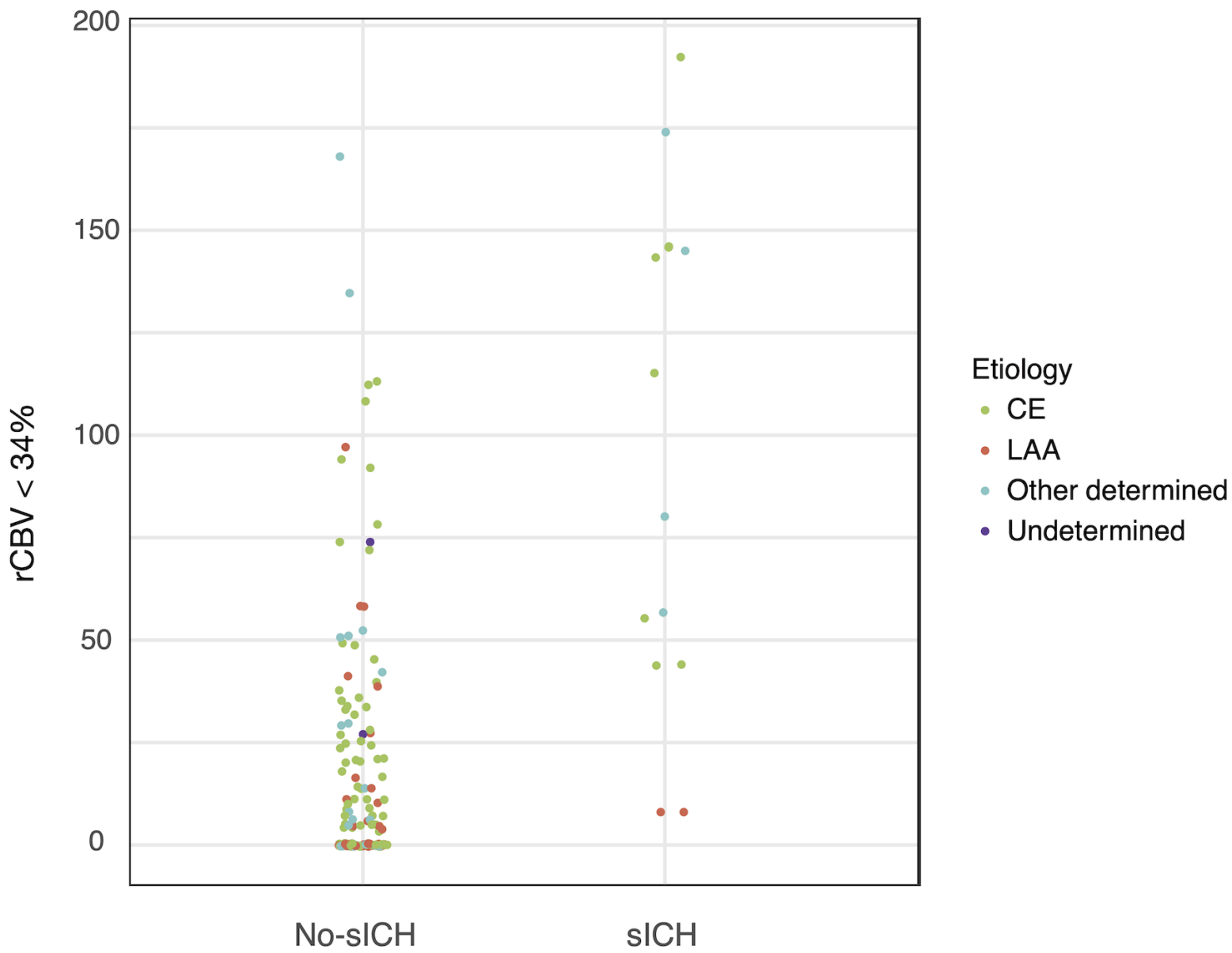


	AUC	Cutoff	Sensitivity	Specificity
rCBV <34 %	0.90	43ml	0.86	0.87
rCBF <30 %	0.87	44ml	0.78	0.83
Tmax >10sec	0.82	61ml	0.86	0.67
HIR (hypoperfusion index ratio)	0.79	0.5	0.86	0.67

rCBV is highly associated with symptomatic ICH after MT for cerebral large vessel occlusion







Computed tomography perfusion parameters predictive of symptomatic intracranial hemorrhage after mechanical thrombectomy in patients with cerebral large vessel occlusion

Soichiro Abe, MD^{1,2}, Manabu Inoue, MD, PhD³, Manabu Shirakawa, MD, PhD⁴, Kazutaka Uchida, MD, PhD^{1,4}, Kiyofumi Yamada, MD, PhD^{4,5}, Yoji Kuramoto, MD, PhD⁴, Satoshi Namitome, MD^{1,6}, Seigo Shindo, MD, PhD⁶, Fumihiro Sakakibara, MD, PhD⁴, Junichi Kouno, MD⁴, Kotaro Tatebayashi, MD, PhD⁴, Norito Kinjo, MD, PhD⁴, Shoichiro Tsuji, MD⁴, Shuichi Tanada, MD⁴, Mikiya Beppu, MD, PhD⁴, Hidetoshi Matsukawa, MD, PhD⁷, Masafumi Ihara, MD, PhD², Shinichi Yoshimura, MD, PhD^{1,4*}

Author affiliations:

1. Division of stroke, Hyogo Medical University, Hyogo.
2. Department of Neurology, National cerebral and cardiovascular center, Osaka
3. Department of Cardiovascular medicine, National cerebral and cardiovascular center, Osaka
4. Department of Neurosurgery, Hyogo Medical University, Hyogo
5. Department of Neurosurgery, National cerebral and cardiovascular center, Osaka
6. Department of Neurology, Japanese Red Cross Kumamoto Hospital, Kumamoto
7. Department of Neurology, Takaraduka City Hospital, Hyogo

Short title: Association between CT perfusion and HT

Correspondence to: Shinichi Yoshimura

Department of Neurosurgery, Hyogo Medical University, 1-1, Mukogawa, Nishinomiya,
Hyogo 663-8501, Japan

E-mail: hyogoneuro@yahoo.co.jp

Total word count: 2658

Abstract

Background

Hemorrhagic transformation (HT) after recanalization is a severe complication in patients with a large ischemic core due to cerebral large vessel occlusion. Risk assessment using perfusion imaging to predict hemorrhagic infarction has not been established. Thus, we aimed to investigate the association between perfusion imaging findings and HT in patients with acute cerebral large vessel occlusion who had undergone preoperative perfusion imaging evaluation and mechanical thrombectomy.

Methods

We enrolled consecutive patients who received mechanical thrombectomy (MT) after undergoing perfusion imaging for anterior large vessel occlusion from May 2019 to March 2022. The patients in whom recanalization was not achieved and who experienced procedure-related bleeding were excluded. We investigated the predictors of symptomatic intracranial hemorrhage (sICH) by exploring preoperative perfusion imaging parameters [relative cerebral blood flow, relative cerebral blood volume (rCBV), time of maximum concentration, hypoperfusion index ratio].

Results

Among the 167 patients (median age 79 years, 47% female) enrolled, 63 (38%) and 14 (8%) patients had any intracranial hemorrhage and sICH (sICH group), respectively. The sICH group had a shorter puncture-recanalization time than the non-sICH group (median [interquartile range (IQR)]; 43 [34–55] vs. 61 [37–88], $p = 0.046$), whereas the modified Rankin Scale at 90 days showed a worse prognosis (median [IQR]; 5 [5–6] vs 3 [1–4], $p < 0.01$). All perfusion imaging parameters were significantly predicting the sICH group in multiple logistic regression analysis. The value of rCBV was the parameter most strongly

associated with sICH in receiver operating characteristic curve analysis (area under the curve = 0.90, 95% confidence interval [0.83–0.98]; cutoff 43 ml; sensitivity, 86 %; specificity, 87%).

Conclusion

Among perfusion CT parameters, rCBV is highly associated with sICH after MT for cerebral large vessel occlusion. In patients with low rCBV regions, the indication of mechanical thrombectomy should be carefully considered for postoperative intracranial hemorrhage.

Keywords: symptomatic intracranial hemorrhage, large ischemic core, mechanical thrombectomy, CT perfusion

Clinical perspective

- Of the various parameters assessed via perfusion CT, the value of rCBV demonstrates a strong correlation with the occurrence of symptomatic intracranial hemorrhage following mechanical thrombectomy for cerebral anterior large vessel occlusion.
- When treating patients with regions of large low-rCBV, it is important to carefully determine the indication of mechanical due to the potential risk of postoperative intracranial hemorrhage.

Non-standard abbreviations and acronyms

ICH, intracranial hemorrhage; AUC, area under the curve; a-sICH, asymptomatic intracranial hemorrhage; CE, cardiac embolism; HT, hemorrhagic transformation; HIR, hypoperfusion

intensity ratio; IQR, interquartile range; LAA, large-artery atherosclerosis; NIHSS, National Institutes of Health Stroke Scale; MT, mechanical thrombectomy; mRS, modified Rankin Scale; mTICI, modified Thrombolysis in Cerebral Infarction; RCTs, randomized controlled trials; ROC, receiver operating characteristics; rCBF, relative cerebral blood flow; rCBV, relative cerebral blood volume; Tmax, time of maximum concentration; TOAST, Trial of Org 10172 in Acute Stroke Treatment; sICH, symptomatic intracranial hemorrhage.

Introduction

Mechanical thrombectomy (MT) for acute cerebral large vessel artery occlusion has been established in the last decade, and has some of the highest levels of evidence among therapies in most countries' guidelines^{1,2}. Two randomized controlled trials (RCTs) were conducted for patients with an unknown time of stroke onset, and it is recommended that the indication of MT be expanded according to tissue-based decision^{1,3,4}. Moreover, RESCUE-Japan LIMIT study, which is the RCT on the efficacy of MT for low Alberta Stroke Program Early CT Score, reported that functional outcome was improved in the group treated with MT, even in patients with large ischemic changes⁵. On the other hand, in the patients with a large ischemic core, the risk of hemorrhagic transformation (HT) is high after reperfusion therapy, which might worsen the prognosis⁶⁻⁸. Although the incidence of HT is reported to vary widely, ranging from 2% to 44%^{9,10,11}, in patients receiving reperfusion therapy including thrombolytic therapy and endovascular therapy, HT is found in two-fifths of these patients after MT^{12,13}. Therefore, clarifying the factors causing HT after reperfusion therapy is urgently needed. Factors that are previously reported to predict HT are thrombolytic therapy, younger age¹⁴, hyperglycemia¹⁵, low levels of coated platelet¹⁶, cardiac subtype¹⁷, acute hypertension¹⁸, and blood pressure variability¹⁹. However, the prediction of HT using perfusion imaging has not been established, and it is unknown which parameters can be utilized. Thus, we decided to retrospectively investigate the association between perfusion imaging findings and HT on patients with acute cerebral large vessel occlusion who underwent preoperative perfusion imaging evaluation and MT.

Methods

The data that support the findings of this study are available from the corresponding author upon reasonable request and after permission from the ethics committees. The

reporting of this study adheres to the standards outlined in the Strengthening the Reporting of Observational Studies in Epidemiology (STROBE) statement.

This single-center retrospective cohort study analyzed consecutive patients with large vessel occlusion who presented to our hospital between May 2019 and March 2022. We analyzed the patient's characteristics at admission, non-contrasted and contrasted CT, including perfusion imaging before reperfusion therapy, and intraoperative angiographic findings. We graded the ischemic core in the middle cerebral artery territory using Alberta Stroke Program Early Computed Tomographic Score (ASPECTS) on CT²⁰. Neurological findings were evaluated using National Institutes of Health Stroke Scale (NIHSS) at admission and discharge. The functional outcome was evaluated pre-stroke using the modified Rankin Scale (mRS) and at 3 months after stroke onset. Non-contrasted CT was performed at 36 hours (± 12 hours) after MT to evaluate the hemorrhagic changes. According to the European Cooperative Acute Stroke Study II (ECASS II), we identified the hemorrhagic changes as hemorrhagic infarction (HI) 1, HI 2, parenchymal hematoma (PH) 1, and PH 2²¹. The following patients were excluded from the analysis: 1) those who did not undergo CT perfusion; 2) with non-adequate perfusion imaging; 3) recanalization was not achieved after MT [modified Thrombolysis in Cerebral Infarction (mTICI) = 0, 1]; and 4) cerebral hemorrhage occurred due to an intraoperative procedure.

RAPID software (iSchemaView, Menlo Park, CA) was used to analyze perfusion imaging. We measured the following parameters: time of maximum concentration (Tmax) > 4 sec, Tmax > 6 sec, Tmax > 8 sec, and Tmax > 10 sec; relative cerebral blood flow (rCBF) < 20%, rCBF < 30%, rCBF < 34%, and rCBF < 38%, relative cerebral blood volume (rCBV) < 34%, rCBV < 38%, and rCBV < 42%²². The regions with rCBF < 30% were defined as an ischemic core. The region of difference in rCBF < 30 % and Tmax > 6 sec was defined as an

ischemic penumbral area²³. The ratio of Tmax > 6 sec to Tmax > 10 sec (Tmax6/Tmax10) was defined as the hypoperfusion intensity ratio (HIR)^{24,25}.

After CT perfusion, intravenous thrombolysis (at 0.6 mg/kg dose according to Japanese guidelines²⁶) was administered in the indicated patients. MT was performed using aspiration catheters and/or stent retrievers approved in Japan during the study period. If stenotic lesions remained, intracranial percutaneous transluminal angioplasty was performed as appropriate, and local intraarterial fibrinolysis was added for the distal lesions. All of these procedures were performed under the board certified neurointerventionist's decision. The mTICI scale was used as a measure of recanalization.²⁷ Additionally, each time course was recorded for stroke onset, visit time (door), puncture, and reperfusion time.

Non-contrasted head CT was performed immediately after surgery and at 36 hours (± 12 hours) after surgery to evaluate any hemorrhagic changes. For postoperative neurological findings and functional outcomes, the patients were evaluated for NIHSS and mRS at discharge. After discharge, mRS was evaluated at 90 days after stroke onset (mRS at 90 days) at the outpatient clinic. Patients who were unable to visit at the outpatient clinic were contacted via telephone-interview, and mRS at 90 days was evaluated.

We retrospectively assessed the incidence of symptomatic intracranial hemorrhage (sICH) at 36 hours after MT. sICH was defined as postoperative intracranial hemorrhage with worsening of NIHSS score 4 or higher²⁸. The incidence of asymptomatic intracranial hemorrhage (a-sICH), any intracranial hemorrhage (any ICH), including sICH and a-sICH at 36 (± 12 hours) after MT was also investigated, and we compared postoperative neurological and functional outcomes. At discharge, we diagnosed the etiology of infarction according to the Trial of Org 10172 in Acute Stroke Treatment (TOAST) criteria²⁹.

Patient background factors, and imaging and neurological findings were all retrospectively extracted from medical record information based on the Hyogo Medical University Study (ethical number 202105-103). The institutional review boards approved the opt-out method in place of written informed consent. Neurological evaluation and functional prognosis were obtained by the physician in charge from the patients or their families during hospitalization or at the outpatient clinics. Two board certified neurointerventionists (S.A. and M.S.) evaluated the patients for sICH. The hemorrhagic change was blindly assessed without perfusion imaging. The data supporting this study's findings can be accessed from the corresponding author upon reasonable request.

Statistical software used for the analysis was R ver. 4.1.3. Continuous variables are presented as the median and interquartile range (IQR), and categorical variables are presented as numbers and percentages. Continuous variables are tested for the differences in bivariate using Student's t-test or the Wilcoxon rank-sum test and nominal variables were tested for differences in bivariate using Fisher's exact analysis. Categorical variables are examined using the chi-square test. Patient background factors, neurological evaluation, and functional prognosis were compared between the non-sICH and sICH groups, and between the no-ICH, a-sICH, and s-ICH groups. The missing values are omitted from the analysis. Univariate and multivariate analyses (adjusted by age, intravenous thrombolytic therapy¹⁴, number of passes, and ASPECTS) were performed on cases with sICH and each perfusion imaging parameter to examine the association between CT perfusion parameter and sICH. Furthermore, receiver operating characteristics (ROC) curve analysis was performed to measure the sensitivity and specificity of each parameter of CT perfusion to sICH. The ROC analysis was used to obtain the Youden Index cutoff point of perfusion volume to discriminate sICH³⁰. For each ROC analysis, we compared the ROCs using the Bootstrap method to identify the parameters more

closely related to sICH³¹. We compared the sICH with clinical information in the group of patients who were assessed to be at low risk based on CT perfusion parameters.

Results

Among the 261 patients who underwent MT during the study period, we excluded 23 patients who had posterior circulation artery occlusion (basilar artery occlusion, 15 patients; posterior cerebral artery occlusion, 6 patients; vertebral artery occlusion 2 patients), 31 patients in whom perfusion imaging could not be performed, 24 patients in whom perfusion imaging was inaccurately imaged due to the motion artifact, venous injection failure, and severe heart failure, 11 patients in whom recanalization was not achieved (mTICI 0, and 1), and five patients in whom hemorrhagic changes occurred due to the intraoperative procedure (Figure 1). The final analysis included 167 patients (78 women [47.0%], median [IQR] age of 79 [71–83] years). The patient background characteristics are shown in Table 1. The median pre-stroke mRS was 0 [0–3], and 69 (41%) patients had received oral antiplatelet or anticoagulant agent before admission. Altogether, 103 patients (62%) had hypertension, 68 patients (41%) had hyperlipidemia, and 31 patients (19%) had diabetes mellitus. The number of patients with atrial fibrillation was 85 (51%). The perioperative time course was as follows: 181 [101–288] minutes for onset to door, 53 [40–81] minutes for door to puncture, and 59 [36–83] minutes for puncture to reperfusion. The TOAST classifications at discharge were large-artery atherosclerosis (LAA) in 40 (24%) patients, cardiac embolism (CE) in 93 (56%) patients, other determined embolisms in 32 (19%) patients, and undetermined causes in 2 (1%). Of the 167 patients, any ICH after procedure was observed in 63 patients (38%), and 14 (8%) had sICH. The puncture to reperfusion time was significantly shorter in the sICH group than the non-sICH group (median [IQR]; 43 [34–55] vs. 61 [37–88], $p = 0.046$),

nonetheless, the mRS at 3 months was significantly higher in the sICH group (median [IQR]; 5 [5–6] vs 3 [1–4], $p < 0.01$).

When comparing no-ICH, a-sICH, and sICH groups, the puncture-to-reperfusion time was longer and pre-stroke mRS was higher in the a-sICH group than in the other two groups, and mRS at 3 months was significantly higher in the sICH and a-sICH group than in no-ICH group (Supplemental Table 1).

The results of perfusion imaging evaluated by automated software are shown in Table 2. The parameter of Tmax, rCBF, rCBV, and HIR were all significantly associated with the presence of sICH after adjusting the models. In the ROC analysis, the area under the curve (AUC) of Tmax > 4 sec, Tmax > 6 sec, Tmax > 8 sec, Tmax > 10 sec, rCBF < 30%, rCBV < 34%, HIR were 0.70, 0.77, 0.80, 0.82, 0.87, 0.90, and 0.79, respectively (Figure 2, Supplemental Table 2). To determine the threshold, we compared each parameter and found that the AUC was significantly higher in rCBV < 34% than in rCBF < 30%, Tmax > 10 sec, and HIR ($p = 0.01, 0.041, \text{ and } 0.01$, respectively). The rCBV < 34% predicts sICH with a cutoff value of 43 ml with a sensitivity of 86% and specificity of 87% (Figure 2).

Supplemental Table 3 shows the univariate and multivariate logistic analyses between any ICH and CT perfusion parameters. After adjusting for age, intravenous thrombolytic therapy number of passes, and ASPECTS, most of parameters were correlated with any ICH other than Tmax > 4 sec and Tmax > 6 sec. The AUC of perfusion imaging for any ICH was 0.63 for Tmax > 10 sec, 0.70 for rCBF < 30%, and 0.72 for rCBV < 34%, all of which were lower than the AUC for sICH (Supplemental Table 4). Focusing on etiology, the value of Tmax > 10 sec and HIR were significantly larger in the CE cases (Supplemental Table 5). There were a few patients with sICH despite a low rCBV (Figure 3), and LAA was more common in the low rCBV group (2 (100.0%) vs 0 (0%)) (Supplemental Table 6).

Discussion

In this present study, we compared the incidence and association of HT and with the CT perfusion parameters just before MT in patients with cerebral large vessel occlusion. We have shown that the value of rCBF, rCBV, and Tmax delay were the risk factors of any ICH and sICH. Among these parameters, we have verified that rCBV is the strongest predictive factor for sICH after MT. Additionally, the patients with sICH despite the preserved rCBV were mostly diagnosed as LAA at discharge.

We compared the patients not only between the sICH and no-sICH group but also between any ICH, a-sICH and no ICH patients. Our results showed that the patients with a-sICH and sICH had significantly different background characteristics. Among the three groups, the a-sICH patients had higher pre-stroke mRS and longer procedural time. On the other hand, the sICH patients had shorter procedural time and non-significantly higher pre-stroke mRS. In other words, the patients with poor preoperative conditions were more likely to have a-sICH, and the factors were different from those causing sICH.

In previous reports, both rCBV and rCBF have been reported to be associated with HT; however, it is unclear which parameter is a stronger predictor^{32,33,34}. Additionally, the association of perfusion parameters with HT after MT has not yet been well investigated, although several radiographical predictors were reported to be associated with HT in AIS³⁵. Ueda et al reported the relationship between the risk of HT and reduced residual CBF after local intraarterial thrombolytic therapy³². However, recently, CBV was also reported to be a predictor of HT in acute ischemic stroke³⁶. CBV reflects the amount of blood volume in brain tissues, and areas of decreased CBV may have greater ischemic depth than areas of decreased CBF. Although CBF is more likely to correlate with DWI lesion than CBV²², CBV can also reflect cerebrovascular reversible capability^{37,38,39,40}; therefore, it may have a strong

correlation with HT. If the parameter value of CBV is high, the hemorrhagic complication may be indicated after successful recanalization. Yu et al. reported that the regional pial collateral flow predicts the occurrence of HT and correlates most closely with rCBV among the CT perfusion parameters⁴¹. Nevertheless, in the present study, rCBF is also a strong predictor of sICH, which is consistent with a previous report showing that the patients with a large ischemic core are at a high risk of HT. Patients with an infarct core of > 53 ml in CBF <30% lesion reportedly had poor outcomes, even within 3 hours from disease onset, they are defined as a malignant profile⁴². As in previous reports, both CBF and CBV are strong predictors of sICH; however, rCBV was found to be a stronger predictor in this study.

In our cohort, there were two patients of sICH despite a preserved CBV; both patients had LAA and the ratio of LAA was higher than that of the other group. We speculated three reasons for these pathophysiological differences. In case of LAA, chronic low perfusion is present^{43,44}; therefore, a hyper-perfusion phenomenon after MT occurs more frequently than CE. Second, dual antiplatelet therapy after MT is frequently performed in LAA patients, which may cause hemorrhagic changes. Third, blood pressure may be more strictly controlled when the stenotic lesion is observed after MT because such a cases are at risk for re-occlusion. However, due to the small number of patients, it is difficult to suggest an association between LAA and ICH. This point needs to be investigated in future studies with a larger number of patients.

There are several limitations in our study. First, this present study was a single-center and retrospective cohort study. However, in the patients with malignant profiles as large cores, recanalization is not recommended because of the risk for HT. Furthermore, only a few facilities have an automated perfusion analysis system in Japan. Therefore, a perfusion-related RCT is difficult to actually conduct. Second, the number of patients with adequate perfusion imaging was small in this population. CT perfusion was not performed in 31

patients mainly due to renal dysfunction, and it was not calculated accurately in 24 patients due to a low cardiac function, the problem of venous contrast route, and motion artifact. This can be a limitation of perfusion imaging itself. It may be necessary to change the setting of CT perfusion, such as increasing the post contrast time to reduce the error during future RCT. Finally, there were some cases of large ischemic core detected by non-contrasted CT, and we did not perform any reperfusion therapy to these cases; these cases were not enrolled in our cohort, and it is unclear whether reperfusion therapy could be harmful owing to hemorrhagic change in these patients.

In conclusion, the high value of rCBV < 34% was the most predictive parameter for sICH after MT. Stroke subtypes such as LAA was more frequently occurring sICH even not having an imaging malignant profile.

Acknowledgements

Dr. Daisuke Sakamoto, Dr. Shun Ono, Dr. Shuntaro Kuwahara, Dr. Taiki Chida, Dr. So Sawamura (Hyogo Medical University), and Dr. Yoichiro Nagao (Saiseikai Kumamoto Hospital) helped with data collection. Ms. Yuko Nagai, Ms. Yui Kurosaka, and Ms. Iori Matsunaga contributed to the secretarial work.

Sources of Funding

None.

Disclosures

Dr. Inoue received lecture fees from Bayer, Bristol-Myers Squibb, and Medico's Hirata. Dr. Shirakawa received lecture fees from Stryker, Medtronic, Terumo, and Johnson & Johnson Health Care Systems Inc. Dr. Uchida received lecture fees from Daiichi Sankyo, Medtronic,

and Stryker. Dr. Matsukawa received lecture fees from Daiichi Sankyo and consulting services fees from B. Braun. Dr. Yoshimura reported receiving personal fees from Boehringer Ingelheim, Daiichi Sankyo, Bayer, Termo, Medtronic, Kaneka Medics, Johnson & Johnson Health Care Systems Inc, Stryker, and BMS. The other authors report no conflicts. All other authors declared no conflicts of interest.

Supplemental Material

Supplemental Tables 1–6

STROBE checklist

References

1. Powers WJ, Rabinstein AA, Ackerson T, Adeoye OM, Bambakidis NC, Becker K, Biller J, Brown M, Demaerschalk BM, Hoh B, et al. Guidelines for the Early Management of Patients With Acute Ischemic Stroke: 2019 Update to the 2018 Guidelines for the Early Management of Acute Ischemic Stroke: A Guideline for Healthcare Professionals From the American Heart Association/American Stroke Association. *Stroke*. 2019;50:e344-e418. doi: 10.1161/STR.0000000000000211
2. Yamagami H, Hayakawa M, Inoue M, Iihara K, Ogasawara K, Toyoda K, Hasegawa Y, Ohata K, Shiokawa Y, Nozaki K, et al. Guidelines for Mechanical Thrombectomy in Japan, the Fourth Edition, March 2020: A Guideline from the Japan Stroke Society, the Japan Neurosurgical Society, and the Japanese Society for Neuroendovascular Therapy. *Neurol Med Chir (Tokyo)*. 2021;61:163-192. doi: 10.2176/nmc.nmc.st.2020-0357
3. Nogueira RG, Jadhav AP, Haussen DC, Bonafe A, Budzik RF, Bhuva P, Yavagal DR, Ribo M, Cognard C, Hanel RA, et al. Thrombectomy 6 to 24 Hours after Stroke with a Mismatch between Deficit and Infarct. *N Engl J Med*. 2018;378:11-21. doi: 10.1056/NEJMoa1706442
4. Albers GW, Marks MP, Kemp S, Christensen S, Tsai JP, Ortega-Gutierrez S, McTaggart RA, Torbey MT, Kim-Tenser M, Leslie-Mazwi T, et al. Thrombectomy for Stroke at 6 to 16 Hours with Selection by Perfusion Imaging. *N Engl J Med*. 2018;378:708-718. doi: 10.1056/NEJMoa1713973
5. Yoshimura S, Sakai N, Yamagami H, Uchida K, Beppu M, Toyoda K, Matsumaru Y, Matsumoto Y, Kimura K, Takeuchi M, et al. Endovascular Therapy for Acute Stroke with a Large Ischemic Region. *N Engl J Med*. 2022;386:1303-1313. doi: 10.1056/NEJMoa2118191

6. Cucchiara B, Kasner SE, Tanne D, Levine SR, Demchuk A, Messe SR, Sansing L, Lees KR, Lyden P, Investigators S. Factors associated with intracerebral hemorrhage after thrombolytic therapy for ischemic stroke: pooled analysis of placebo data from the Stroke-Acute Ischemic NXY Treatment (SAINT) I and SAINT II Trials. *Stroke*. 2009;40:3067-3072. doi: 10.1161/STROKEAHA.109.554386
7. Goyal M, Menon BK, van Zwam WH, Dippel DWJ, Mitchell PJ, Demchuk AM, Dávalos A, Majoie CBLM, van der Lugt A, de Miquel MA, et al. Endovascular thrombectomy after large-vessel ischaemic stroke: a meta-analysis of individual patient data from five randomised trials. *The Lancet*. 2016;387:1723-1731. doi: 10.1016/s0140-6736(16)00163-x
8. Bracard S, Ducrocq X, Mas JL, Soudant M, Oppenheim C, Moulin T, Guillemin F. Mechanical thrombectomy after intravenous alteplase versus alteplase alone after stroke (THRACE): a randomised controlled trial. *The Lancet Neurology*. 2016;15:1138-1147. doi: 10.1016/s1474-4422(16)30177-6
9. National Institute of Neurological D, Stroke rt PASSG. Tissue plasminogen activator for acute ischemic stroke. *N Engl J Med*. 1995;333:1581-1587. doi: 10.1056/NEJM199512143332401
10. Larrue V, von Kummer RR, Muller A, Bluhmki E. Risk factors for severe hemorrhagic transformation in ischemic stroke patients treated with recombinant tissue plasminogen activator: a secondary analysis of the European-Australasian Acute Stroke Study (ECASS II). *Stroke*. 2001;32:438-441. doi: 10.1161/01.str.32.2.438
11. Dzialowski I, Pexman JH, Barber PA, Demchuk AM, Buchan AM, Hill MD, Investigators C. Asymptomatic hemorrhage after thrombolysis may not be benign: prognosis by hemorrhage type in the Canadian alteplase for stroke effectiveness study registry. *Stroke*. 2007;38:75-79. doi: 10.1161/01.STR.0000251644.76546.62
12. Laredo C, Renu A, Llull L, Tudela R, Lopez-Rueda A, Urrea X, Macias NG, Rudilosso S, Obach V, Amaro S, et al. Elevated glucose is associated with hemorrhagic transformation after mechanical thrombectomy in acute ischemic stroke patients with severe pretreatment hypoperfusion. *Sci Rep*. 2020;10:10588. doi: 10.1038/s41598-020-67448-x
13. Jickling GC, Liu D, Stamova B, Ander BP, Zhan X, Lu A, Sharp FR. Hemorrhagic transformation after ischemic stroke in animals and humans. *J Cereb Blood Flow Metab*. 2014;34:185-199. doi: 10.1038/jcbfm.2013.203
14. Saver JL. Hemorrhage after thrombolytic therapy for stroke: the clinically relevant number needed to harm. *Stroke*. 2007;38:2279-2283. doi: 10.1161/STROKEAHA.107.487009
15. Broderick JP, Hagen T, Brott T, Tomsick T. Hyperglycemia and hemorrhagic transformation of cerebral infarcts. *Stroke*. 1995;26:484-487. doi: 10.1161/01.str.26.3.484
16. Prodan CI, Stoner JA, Cowan LD, Dale GL. Lower coated-platelet levels are associated with early hemorrhagic transformation in patients with non-lacunar brain infarction. *J Thromb Haemost*. 2010;8:1185-1190. doi: 10.1111/j.1538-7836.2010.03851.x
17. Okada Y, Yamaguchi T, Minematsu K, Miyashita T, Sawada T, Sadoshima S, Fujishima M, Omae T. Hemorrhagic transformation in cerebral embolism. *Stroke*. 1989;20:598-603. doi: 10.1161/01.str.20.5.598
18. Bowes MP, Zivin JA, Thomas GR, Thibodeaux H, Fagan SC. Acute hypertension, but not thrombolysis, increases the incidence and severity of hemorrhagic transformation

- following experimental stroke in rabbits. *Exp Neurol.* 1996;141:40-46. doi: 10.1006/exnr.1996.0137
19. Ko Y, Park JH, Yang MH, Ko SB, Han MK, Oh CW, Lee J, Lee J, Bae HJ. The significance of blood pressure variability for the development of hemorrhagic transformation in acute ischemic stroke. *Stroke.* 2010;41:2512-2518. doi: 10.1161/STROKEAHA.110.595561
 20. Pexman JH, Barber PA, Hill MD, Sevick RJ, Demchuk AM, Hudon ME, Hu WY, Buchan AM. Use of the Alberta Stroke Program Early CT Score (ASPECTS) for assessing CT scans in patients with acute stroke. *AJNR Am J Neuroradiol.* 2001;22:1534-1542.
 21. Hacke W, Kaste M, Fieschi C, von Kummer R, Davalos A, Meier D, Larrue V, Bluhmki E, Davis S, Donnan G, et al. Randomised double-blind placebo-controlled trial of thrombolytic therapy with intravenous alteplase in acute ischaemic stroke (ECASS II). Second European-Australasian Acute Stroke Study Investigators. *Lancet.* 1998;352:1245-1251. doi: 10.1016/s0140-6736(98)08020-9
 22. Campbell BC, Christensen S, Levi CR, Desmond PM, Donnan GA, Davis SM, Parsons MW. Cerebral blood flow is the optimal CT perfusion parameter for assessing infarct core. *Stroke.* 2011;42:3435-3440. doi: 10.1161/STROKEAHA.111.618355
 23. Zaro-Weber O, Moeller-Hartmann W, Heiss WD, Sobesky J. Maps of time to maximum and time to peak for mismatch definition in clinical stroke studies validated with positron emission tomography. *Stroke.* 2010;41:2817-2821. doi: 10.1161/STROKEAHA.110.594432
 24. Olivot JM, Mlynash M, Inoue M, Marks MP, Wheeler HM, Kemp S, Straka M, Zaharchuk G, Bammer R, Lansberg MG, et al. Hypoperfusion intensity ratio predicts infarct progression and functional outcome in the DEFUSE 2 Cohort. *Stroke.* 2014;45:1018-1023. doi: 10.1161/STROKEAHA.113.003857
 25. Guenego A, Marcellus DG, Martin BW, Christensen S, Albers GW, Lansberg MG, Marks MP, Wintermark M, Heit JJ. Hypoperfusion Intensity Ratio Is Correlated With Patient Eligibility for Thrombectomy. *Stroke.* 2019;50:917-922. doi: 10.1161/STROKEAHA.118.024134
 26. Toyoda K, Koga M, Iguchi Y, Itabashi R, Inoue M, Okada Y, Ogasawara K, Tsujino A, Hasegawa Y, Hatano T, et al. Guidelines for Intravenous Thrombolysis (Recombinant Tissue-type Plasminogen Activator), the Third Edition, March 2019: A Guideline from the Japan Stroke Society. *Neurol Med Chir (Tokyo).* 2019;59:449-491. doi: 10.2176/nmc.st.2019-0177
 27. Zaidat OO, Yoo AJ, Khatri P, Tomsick TA, von Kummer R, Saver JL, Marks MP, Prabhakaran S, Kallmes DF, Fitzsimmons BF, et al. Recommendations on angiographic revascularization grading standards for acute ischemic stroke: a consensus statement. *Stroke.* 2013;44:2650-2663. doi: 10.1161/STROKEAHA.113.001972
 28. Wahlgren N, Ahmed N, Dávalos A, Ford GA, Grond M, Hacke W, Hennerici MG, Kaste M, Kuelkens S, Larrue V, et al. Thrombolysis with alteplase for acute ischaemic stroke in the Safe Implementation of Thrombolysis in Stroke-Monitoring Study (SITS-MOST): an observational study. *The Lancet.* 2007;369:275-282. doi: 10.1016/s0140-6736(07)60149-4
 29. Adams HP, Jr., Bendixen BH, Kappelle LJ, Biller J, Love BB, Gordon DL, Marsh EE, 3rd. Classification of subtype of acute ischemic stroke. Definitions for use in a multicenter clinical trial. TOAST. Trial of Org 10172 in Acute Stroke Treatment. *Stroke.* 1993;24:35-41. doi: 10.1161/01.str.24.1.35

30. Youden WJ. Index for rating diagnostic tests. *Cancer*. 1950;3:32-35. doi: 10.1002/1097-0142(1950)3:1<32::aid-cncr2820030106>3.0.co;2-3
31. Chernick MR. *Bootstrap methods: a practitioner's guide*/por Michael R. Chernick. 1999.
32. Ueda T, Hatakeyama T, Kumon Y, Sakaki S, Uraoka T. Evaluation of risk of hemorrhagic transformation in local intra-arterial thrombolysis in acute ischemic stroke by initial SPECT. *Stroke*. 1994;25:298-303. doi: 10.1161/01.str.25.2.298
33. Jain AR, Jain M, Kanthala AR, Damania D, Stead LG, Wang HZ, Jahromi BS. Association of CT perfusion parameters with hemorrhagic transformation in acute ischemic stroke. *AJNR Am J Neuroradiol*. 2013;34:1895-1900. doi: 10.3174/ajnr.A3502
34. Parsons MW, Pepper EM, Bateman GA, Wang Y, Levi CR. Identification of the penumbra and infarct core on hyperacute noncontrast and perfusion CT. *Neurology*. 2007;68:730-736. doi: 10.1212/01.wnl.0000256366.86353.ff
35. Elsaid N, Mustafa W, Saied A. Radiological predictors of hemorrhagic transformation after acute ischemic stroke: An evidence-based analysis. *Neuroradiol J*. 2020;33:118-133. doi: 10.1177/1971400919900275
36. Alsop DC, Makovetskaya E, Kumar S, Selim M, Schlaug G. Markedly reduced apparent blood volume on bolus contrast magnetic resonance imaging as a predictor of hemorrhage after thrombolytic therapy for acute ischemic stroke. *Stroke*. 2005;36:746-750. doi: 10.1161/01.STR.0000158913.91058.93
37. Nariai T, Suzuki R, Hirakawa K, Maehara T, Ishii K, Senda M. Vascular reserve in chronic cerebral ischemia measured by the acetazolamide challenge test: comparison with positron emission tomography. *AJNR Am J Neuroradiol*. 1995;16:563-570.
38. Okudaira Y, Bandoh K, Arai H, Sato K. Evaluation of the acetazolamide test. Vasoreactivity and cerebral blood volume. *Stroke*. 1995;26:1234-1239. doi: 10.1161/01.str.26.7.1234
39. Kikuchi K, Murase K, Miki H, Kikuchi T, Sugawara Y, Mochizuki T, Ikezoe J, Ohue S. Measurement of cerebral hemodynamics with perfusion-weighted MR imaging: comparison with pre- and post-acetazolamide 133Xe-SPECT in occlusive carotid disease. *AJNR Am J Neuroradiol*. 2001;22:248-254.
40. Yamauchi H, Okazawa H, Kishibe Y, Sugimoto K, Takahashi M. Reduced blood flow response to acetazolamide reflects pre-existing vasodilation and decreased oxygen metabolism in major cerebral arterial occlusive disease. *Eur J Nucl Med Mol Imaging*. 2002;29:1349-1356. doi: 10.1007/s00259-002-0899-x
41. Yu X, Pan J, Zhao X, Hou Q, Liu B. Predicting hemorrhagic transformation after thrombectomy in acute ischemic stroke: a multimodal score of the regional pial collateral. *Neuroradiology*. 2022;64:493-502. doi: 10.1007/s00234-021-02795-8
42. Inoue M, Mlynash M, Straka M, Lansberg MG, Zaharchuk G, Bammer R, Albers GW. Patients with the malignant profile within 3 hours of symptom onset have very poor outcomes after intravenous tissue-type plasminogen activator therapy. *Stroke*. 2012;43:2494-2496. doi: 10.1161/STROKEAHA.112.653329
43. Tu HT, Campbell BC, Christensen S, Desmond PM, De Silva DA, Parsons MW, Churilov L, Lansberg MG, Mlynash M, Olivot JM, et al. Worse stroke outcome in atrial fibrillation is explained by more severe hypoperfusion, infarct growth, and hemorrhagic transformation. *Int J Stroke*. 2015;10:534-540. doi: 10.1111/ijss.12007
44. Inoue M, Yoshimoto T, Tanaka K, Koge J, Shiozawa M, Nishii T, Ohta Y, Fukuda T, Satow T, Kataoka H, et al. Mechanical Thrombectomy Up to 24 Hours in Large Vessel Occlusions and Infarct Velocity Assessment. *J Am Heart Assoc*. 2021;10:e022880. doi: 10.1161/JAHA.121.022880

Table 1. Patient characteristics at baseline; patients with symptomatic intracranial hemorrhage and no symptomatic intracranial hemorrhage.

	sICH (n = 14)	no sICH (n = 153)	p value
Age, years, median [IQR]	78 [71, 83]	79 [71, 84]	0.55
Male, n (%)	11 (78.6)	78 (51.0)	0.054
Intravenous thrombolytic therapy, n (%)	4 (28.6)	54 (35.3)	0.77
NIHSS at admission, median [IQR]	18 [15, 21]	17 [9, 23]	0.63
ASPECTS, median [IQR]	5 [4, 7]	8 [7, 9]	<0.001
Vascular risk factors			
Atrial fibrillation, n (%)	7 (50.0)	78 (51.0)	>0.99
Chronic heart failure, n (%)	4 (28.6)	19 (12.4)	0.11
Hypertension, n (%)	9 (64.3)	94 (61.4)	>0.99
Diabetes mellitus, n (%)	3 (21.4)	28 (18.3)	0.73
Dyslipidemia, n (%)	3 (21.4)	65 (42.5)	0.16
Etiology of stroke			0.68
CE, n (%)	8 (57.1)	85 (55.6)	
LAA, n (%)	2 (14.3)	38 (24.8)	
Other determined, n (%)	4 (28.6)	28 (18.3)	
Undetermined, n (%)	0 (0.0)	2 (1.3)	

Pre antithrombotic therapy			
antiplatelet, n (%)	4 (28.6)	31 (20.3)	0.50
anticoagulant, n (%)	4 (28.6)	34 (22.2)	0.53
antithrombotic, n (%)	7 (50.0)	62 (40.5)	0.58
Perioperative time course, minutes, median [IQR]			
Onset to door time	152 [93, 196]	184 [117, 334]	0.15
Door to puncture time	67 [40, 80]	52 [40, 76]	0.46
Puncture to recanalization time	43 [34, 55]	61 [37, 88]	0.046
Number of passes, median time	1 [1, 2]	2 [1, 3]	0.41
Hemorrhagic transformation classification			<0.001
None	0 (0)	107 (69.9)	
Hemorrhagic infarction 1	0 (0)	13 (8.5)	
Hemorrhagic infarction 2	0 (0)	15 (9.8)	
Parenchymal hematoma 1	0 (0)	14 (9.2)	
Parenchymal hematoma 2	14 (100)	4 (2.6)	
Pre-stroke mRS, median [IQR]	0 [0, 0]	0 [0, 3]	0.04
mRS after 3 months, median [IQR]	5 [5, 6]	3 [1, 4]	0.001

Abbreviations: ASPECTS, Alberta Stroke Program Early Computed Tomographic Score; CE, cardiac embolism; IQR, interquartile range; LAA, large artery atherosclerosis; mRS, modified Rankin scale; NIHSS, National Institutes of Health Stroke Scale; sICH, symptomatic intracranial hemorrhage.

Table 2. Multivariate logistic analysis of symptomatic and no symptomatic intracranial hemorrhage and CT perfusion parameters.

	sICH (n = 14)	no sICH (n = 153)	Univariate	Multivariate analysis			
			analysis p value	model 1* p value	model 2† p value	model 3‡ p value	model 4§ p value
Tmax > 4sec, ml	238 [174, 289]	163 [106, 224]	0.013	0.055	0.117	0.724	0.791
Tmax > 6sec, ml	148 [118, 201]	92 [42, 139]	0.001	0.004	0.015	0.082	0.131
Tmax > 8sec, ml	128 [84, 169]	51 [20, 99]	<0.001	<0.001	0.002	0.019	0.039
Tmax > 10sec, ml	109 [71, 134]	33 [6, 71]	<0.001	<0.001	<0.001	0.017	0.042
rCBF < 20%, ml	63 [22, 96]	0 [0, 9]	<0.001	<0.001	<0.001	0.001	0.002
rCBF < 30%, ml	85 [47, 141]	4 [0, 28]	<0.001	<0.001	<0.001	<0.001	0.001
rCBF < 34%, ml	93 [55, 152]	7 [0, 39]	<0.001	<0.001	<0.001	<0.001	0.001
rCBF < 38%, ml	102 [61, 162]	9 [0, 47]	<0.001	<0.001	<0.001	<0.001	<0.001
rCBV < 34%, ml	98 [47, 146]	4 [0, 25]	<0.001	<0.001	<0.001	<0.001	<0.001
rCBV < 38%, ml	102 [54, 153]	5 [0, 28]	<0.001	<0.001	<0.001	<0.001	<0.001
rCBV < 42%, ml	107 [61, 169]	5 [0, 33]	<0.001	<0.001	<0.001	<0.001	<0.001
HIR	0.6 [0.5, 0.8]	0.4 [0.1, 0.6]	<0.001	<0.001	0.001	0.009	0.019

Data are presented as median [IQR].

* adjusted by age and intravenous thrombolytic therapy.

† adjusted by age and number of passes

‡ adjusted by age and ASPECTS

§ adjusted by number of passes and ASPECTS

Abbreviations: ASPECTS, Alberta Stroke Program Early Computed Tomographic Score; rCBF, relative cerebral blood flow; rCBV, relative cerebral blood volume; sICH, symptomatic intracranial hemorrhage; HIR, hypoperfusion index ratio

Figure legends

Figure 1. Study flow chart

Flowchart of patient participation in the study.

Abbreviations: mTICI, modified Thrombolysis in Cerebral Infarction.

Figure 2. Receiver operating characteristic curve prediction ability of symptomatic intracranial hemorrhage based on $rCBV < 34\%$, $rCBF < 30\%$, $T_{max} > 10\text{sec}$ and hypoperfusion index ratio calculated by CT perfusion.

Abbreviations: AUC, area under curve; rCBF, relative cerebral blood flow; rCBV, relative cerebral blood volume; CI, confidence intervals; sICH, symptomatic intracranial hemorrhage; HIR, hypoperfusion index ratio.

Figure 3. Distribution of the value of $rCBV < 34\%$ by etiology with and without symptomatic intracranial hemorrhage.

Abbreviations: CE, cardiac embolism; LAA, large-artery atherosclerosis; rCBV, relative cerebral blood volume; sICH, symptomatic intracranial hemorrhage.