

1 **Non-invasive SARS-CoV-2 genome surveillance and its utility in**
2 **resource-poor settings during the Delta wave of the COVID-19**
3 **pandemic**

4

5 Authors: Krishna Khairnar^{1,2*} and Siddharth Singh Tomar^{1,2}

6 Author Affiliation: ¹Environmental Virology Cell (EVC), Council of Scientific and Industrial
7 Research-National Environmental Engineering Research Institute (CSIR-NEERI), Nagpur, India.

8 &

9 ²Academy of Scientific and Innovative Research (AcSIR), Ghaziabad, UP, India.

10 *Corresponding author: Correspondence to Krishna Khairnar e-mail: k_khairnar@neeri.res.in

11

12

13 **ABSTRACT**

14 Voluntary participation of the public in disease surveillance can be encouraged by deploying
15 user-friendly sample collection processes that can minimise the discomfort to the participants.
16 This study evaluated the suitability of saline gargle-based sample collection for genomic
17 surveillance of SARS-CoV-2, which included 589 SARS-CoV-2 positive samples collected from
18 Nagpur city in central India from March to December 2021. The SARS-CoV-2 positive samples
19 were subjected to whole genome sequencing (WGS) using the oxford nanopore technologies
20 next-generation sequencing platform. Out of 589 samples, 500 samples qualified for the WGS,
21 and the results revealed eight different clades of SARS-CoV-2 encompassing 37 different
22 Pango-lineage types. The mutation mapping analysis of the variants identified in this study
23 showed six mutations of interest and one mutation of concern E484K in the spike glycoprotein
24 region. Our findings indicate that non-invasive gargle-based genomic surveillance is scalable
25 and does not need significant changes to the existing workflow post-sample collection.

26

27

28

29

30

31

32

33

34 1. INTRODUCTION

35

36 Severe acute respiratory syndrome coronavirus 2 is an RNA virus that causes the coronavirus
37 disease of 2019 or COVID-19. The SARS-CoV-2 virus first appeared in Wuhan, China, in
38 December 2019, unleashing a pandemic that is still going strong today.[1,2] As of February 14,
39 2023, the number of people infected by the SARS-CoV-2 virus is more than 755 million, and the
40 total number of deaths is above 6.8 million [3]. These figures clearly show how harmful and
41 highly transmissible this virus is. The virus's genome significantly influences the pathogenicity of
42 the virus. The SARS-CoV-2 genome is approximately 30 kb long and encodes 26 proteins [4].
43 Any changes in the nucleotide sequences in the genome can result in mutations that can
44 change the amino acid encoded and, subsequently, the protein produced. This will result in the
45 formation of new virus variants [5]. The significant variants of concern identified till now are
46 Alpha, Beta, Gamma, Delta, and Omicron [6] The rate of mutation affects the transmissibility
47 and infectivity of the virus considerably. These adaptive mutations of the virus can lead to the
48 formation of new variants which may be resistant to therapy and vaccines, thus making the
49 control of the pandemic difficult. Therefore, timely diagnosis and genomic surveillance are
50 essential to monitoring potentially harmful viral variants worldwide. Wastewater surveillance is
51 being hailed as an indirect and non-invasive method for SARS-CoV-2 genome surveillance as it
52 covers a large area and does not require in-person sampling. Several reports showed that
53 wastewater surveillance gives an early warning of emerging cases in a given area [7,8,9].
54 Wastewater surveillance provides a preliminary picture of the disease spread by estimating the
55 presence or absence of the disease in a particular area but can not resolve the source from
56 where the disease originated.

57 Wastewater surveillance may be useful, especially in many regions that lack sufficient resources
58 for deploying large-scale molecular testing platforms for public health monitoring. An emerging
59 viral transmission in the population may be indicated if a wastewater sample shows the SARS-
60 CoV-2 virus in a previously reported low-prevalence area. The authorities may use this
61 information to issue warnings or take administrative measures. Hence, knowing the viral
62 presence in wastewater can give indicative information about the location/site of an initial
63 circulation, which can be resolved further by directing the resources to the location/site to trace
64 infected cases. However, there are concerns about the sensitivity and reliability of wastewater
65 surveillance methods, as wastewater is a highly diluted and complex system. Seasonal

66 variations affect the composition and concentration of wastewater, making it a very inconsistent
67 system to work on. Detecting viruses in the wastewater system depends on several aspects,
68 like the wastewater network, structure, capacity, virus-shedding profile, wastewater properties,
69 sampling strategy, methodologies, and detection limit [10]. As the virus is released into
70 wastewater, it travels through a long and complex wastewater network until it reaches the
71 location from where the sample is collected. In the underdeveloped and developing world, the
72 integrity of wastewater systems is questionable. The wastewater streams from industrial,
73 domestic, grey-water and stormwater drains are often mixed due to compromised channels that
74 are not well segregated [11]; such mixing may adversely affect the quality of viral detection. The
75 wastewater travel time is affected by various factors, including the branching and structure of
76 the wastewater network and the flow rate during the sampling period.

77 Considering the limitations of wastewater monitoring, the situation warrants an alternative
78 approach to ensure reliable genome surveillance in the post-pandemic scenario that can be
79 achieved by the voluntary participation of the public. The nasopharyngeal-oropharyngeal swab
80 (NPS-OPS) based molecular testing, and genome surveillance is the existing gold standard but
81 cause considerable discomfort to persons due to invasive sample collection [12]; also, improper
82 NPS-OPS sample collection due to an unskilled technician can lead to misleading results [13],
83 which poses a limitation in promoting voluntary participation of the public. A non-invasive and
84 patient-friendly sampling method could find more acceptance amongst the public for voluntary
85 participation during monitoring. Non-invasive sampling methods such as saliva and gargling
86 could be useful in post-pandemic surveillance. It is also important to note that saliva and gargle-
87 based sampling methods can efficiently recover the virus from the oropharynx and buccal area.
88 Still, the nasopharynx site remains unsampled in these methods, which may be a limitation.
89 Nevertheless, such non-invasive sampling methods hold the potential for large-scale monitoring.

90 Therefore, to increase sample collection throughput and reduce patient discomfort, the Council
91 of Scientific and Industrial Research-National Environmental Engineering Research Institute
92 (CSIR-NEERI) developed a non-invasive, patient-friendly saline gargle sample collection
93 method for diagnosing SARS-CoV-2. This method can also be deployed for sample collection of
94 other respiratory viruses. The saline gargle sample collection method was approved to be used
95 in India by the Indian Council of Medical Research (ICMR) [14]. The Drugs Controller General of
96 India (DCGI) approved the Industrial scaleup and kit manufacturing of the saline gargle method
97 [15].

98

99 The saline gargle method has several advantages over conventional swab-based sample
100 collection methods. This method is ideal for self-collection as it is non-invasive and does not
101 require trained healthcare professionals for sample collection. The saline-gargle kit includes a
102 tube containing 5 ml of phosphate-buffered saline solution. The user must gargle with this
103 solution for 15 seconds, followed by 15 seconds of rinsing in the mouth and then releasing the
104 wash in the tube with the help of a disposable collection funnel and sealing it with a screw-
105 capped cap. The saline gargle effectively rinses and collects the virus from the buccal cavity
106 and the oropharynx. The sample collected through this method is relatively free from
107 polymerase chain reaction (PCR) inhibitors which is the case with viral transport medium (VTM)
108 swab-based sampling techniques. NPS-OPS are uncomfortable for patients; during the sample
109 collection, the irritation may lead to sneezing and coughing reflexes which may risk direct
110 exposure to healthcare personnel and surrounding [12].

111
112 The saline gargle method also circumvents the need for the time-consuming and costly RNA
113 extraction procedure; the viral RNA from the sample can be isolated by using a one-step RNA
114 release buffer. The RNA release buffer is added to the collected saline gargle sample and
115 incubated at room temperature for 30 minutes, followed by heat inactivation at 98 degrees
116 Celsius for 6 minutes to isolate an RNA suitable for further use as a template for PCR and
117 Whole Genome Sequencing (WGS).

118
119 Voluntary participation of the public in disease surveillance can be encouraged by deploying
120 user-friendly sample collection processes that minimise the discomfort to the participants. The
121 simplicity and scalability of Gargle-based sample collection also make it an ideal candidate
122 suitable for post-pandemic disease surveillance. Although the quantitative reverse transcriptase
123 real-time PCR (qRT-PCR) is the gold standard for SARS-CoV-2 detection, the qRT-PCR can
124 not resolve between the variants of SARS-CoV-2. Therefore, the WGS-based genome
125 surveillance of SARS-CoV-2 is required for variant-level identification. Setting up sequencing-
126 based genomic surveillance in low-income nations can aid in the collection of accurate
127 surveillance data as well as help in long-term outbreak management. However, it concerns what
128 is practically possible in that specific region or environment. For WGS, the extracted RNA is
129 converted into cDNA and analysed using next-generation sequencing (NGS) techniques.
130 Therefore, the yield and quality of extracted RNA are crucial for getting quality sequencing
131 results. Our study evaluated the suitability of saline gargle-based sample collection for genomic
132 surveillance of SARS-CoV-2. This study included 589 SARS-CoV-2 positive samples collected

133 using the Gargle-based sample collection method from Nagpur city in central India from March
134 to December 2021. The study focused on the utility of a patient-friendly sample collection
135 method for remote, resource-poor, and undeveloped parts of the world to perform genome
136 surveillance of respiratory viruses like SARS-CoV-2. Also, the study gives projections for the
137 utility of deploying patient-friendly, fast, and economical sample collection strategies such as
138 saline gargling for post-pandemic surveillance.

139

140

141 **2. MATERIALS AND METHODS**

142 **2.1 Data collection**

143 The metadata of 589 SARS-CoV-2-positive patients from March to December 2021 was taken
144 from the Integrated Health Information Platform (IHIP) [16]. The metadata of SARS-CoV-2
145 positive cases includes patient details such as age, gender, qRT-PCR cycle threshold (Ct)
146 value, and SARS-CoV-2 variant information. The information on symptoms and vaccination
147 coverage of the patients was sought from the Indian council of medical research (ICMR)
148 COVID-19 data portal; 42.5% of patients reported being symptomatic, and 57.4% were found to
149 be asymptomatic. 13.4% of patients were vaccinated with Covaxin, 82.5% were vaccinated with
150 the Covishield vaccine, 0.7% with the Sputnik V vaccine and vaccine information was unknown
151 for 3.1% of the patients.

152

153 **2.2 Materials**

154 The SARS-CoV-2 viral RNA was extracted using an RNA release buffer containing Tris-EDTA
155 and Proteinase K. Applied Biosystems QuantStudio 3, and StepOnePlus qRT-PCR machines
156 were utilised for qRT-PCR, cDNA synthesis, PCR tiling, and rapid barcoding. Qubit 4
157 Fluorometer by Thermo Fisher Scientific was used to quantify nucleic acids for quality control
158 (QC) of DNA libraries for Oxford Nanopore Technology (ONT)-based WGS. SARS-CoV-2 WGS
159 was done on an Mk1C 6.3.9 and Mk1B ONT MinION sequencing platform.

160

161 **2.3 Sample collection and RNA extraction**

162 The saline gargle samples were collected as a part of a novel genome surveillance initiative
163 launched by the Nagpur Municipal Corporation (NMC) in collaboration with CSIR-NEERI,
164 Nagpur, for the city of Nagpur from March to December 2021. Nagpur is the third largest city in

165 the Indian state of Maharashtra and the fourteenth largest city in India by population [17]. 589
166 SARS-CoV-2 positive saline gargle samples were selected for the genome surveillance study.
167 Overall gender distribution in the sample set was 54.8% males and 45% females. In this study,
168 the percentage distribution of the cases within the age groups was 0.4% (0 to <2 years), 1.4%
169 (2 to <5 years), 4% (5 to <15 years), 59% (15 to <50 years), 23% (50 to <65 years), and 12% (\geq
170 65 years). The age distribution was according to the WHO Global Epidemiological Surveillance
171 Standards for Influenza [18]. The sample collection was carried out using a saline gargle
172 collection kit, and the viral RNA was isolated using an RNA release buffer. The standard
173 operating procedure developed by CSIR-NEERI for Saline gargle-based sample collection and
174 one-step RNA isolation for SARS-CoV-2 detection by RTPCR and WGS is available [19]. A
175 documentary on CSIR-NEERI's Saline Gargle-based SARS-CoV-2 RT-PCR detection is also
176 available [20]. The isolated RNA samples were used immediately or stored at -80°C till further
177 use.

178 179 **2.4 RT-PCR for detecting SARS-CoV-2**

180 qRT-PCR was performed for quantitative detection of SARS-CoV-2 using MBPCR255 Hi-PCR
181 COVID-19 Triplex Probe PCR Kit (HIMEDIA) or Meril SARS-CoV-2 kit in each sample. The
182 primer-probe sets in the kits specifically detect viral RNA from SARS-CoV-2. The samples with
183 a Ct value of ≤ 38 were considered RT-PCR positive.

184 185 **2.5 SARS-CoV-2 whole genome sequencing**

186 The isolated RNA samples of 589 SARS-CoV-2 positive samples were selected for SARS-CoV-
187 2 WGS. The cDNA synthesis was done using the TAKARA Prime Script RT reagent kit
188 (RR037A) [21]. The sequencing libraries were constructed by multiplex PCR tiling according to
189 the protocol of ONT [22]. The prepared cDNA libraries were sequenced using MinION Mk1C or
190 MinION Mk1B.

191

192

193

194 **2.6 Bioinformatic analysis**

195 The live base-calling was performed using the Guppyv22.10.7 base-calling algorithm integrated
196 into the MinION Mk1C sequencer [23]. The processed FASTQ reads from the MinION
197 sequencer were analysed using the bioinformatics platform COMMANDER developed by
198 Genotypic Technology Pvt. Ltd [24]. COMMANDER is a graphical user interface software
199 developed to ease bioinformatic analysis post-sequencing. The FASTA sequence and the
200 variant call performed by the COMMANDER pipeline were further confirmed by the web-based
201 Pangolin COVID-19 Lineage Assigner [25]. The metadata, including the FASTA sequence, was
202 submitted to the Global initiative on sharing Avian Influenza Data (GISAID) and the Indian
203 biological data centre (IBDC). The mutation mapping of SARS-CoV-2 variants was done using
204 the Outbreak.info web server [26]. Outbreak.info server calculates the prevalence of mutations
205 as a ratio of the number of sequences carrying a given set of mutations on a given day at a
206 specific place (or all locations) (x) divided by the total number of sequences on that day in that
207 location (n).

208

209

210

211 **3. RESULTS & DISCUSSION**

212

213 This study has attempted to evaluate the utility of the gargle-based sample collection method for
214 SARS-CoV-2 genome surveillance. Ct values of qRT-PCR are inversely proportional to the viral
215 load in the sample. The Ct value range of samples analysed in this study was from 10 to 38
216 (**Fig.1**). The gargle-based sample collection was able to detect the virus by RT-PCR in cases
217 with lesser viral load; an earlier study with 250 paired samples of saline-gargle and VTM-swab
218 from patients revealed that gargle sample was able to detect the virus in samples with lesser
219 viral load (data unpublished). The gargle-based sample collection also enabled the successful
220 WGS of the positive samples with lesser viral loads. Generally, for a reasonably good WGS
221 read, the Ct value of the positive sample must be ≤ 25 . However, the gargle-based genome

222 surveillance has enabled the WGS of positive samples even with a Ct value above 35, which
223 has a lesser viral load.

224

225 Of 589 samples, only 500 qualified for the SARS-CoV-2 WGS variant calling by enforcing the
226 criteria of $\geq 70\%$ genome coverage and sequencing coverage of $\geq 100X$. WGS result of the
227 SARS-CoV-2 positive samples revealed a diverse variant profile comprising 37 different Pango-
228 lineage types categorised into eight different clades of SARS-CoV-2 (**Fig 2**). The SARS-CoV-2
229 variants which had a percentage share of $\geq 1\%$ in the study were AY.112 (38.8%), B.1.617.2
230 (15.6%), B.1 (6.6%), AY.127(6.4%), B.1.617.1 (5.2%), AY.43 (5%), AY.122 (2.8%), AY.100
231 (2.4%), AY.120 (2%), AY.112.2 (1.8%), AY.102 (1.8%), AY.75 (1.8%), AY.39 (1.4%), AY.16
232 (1.2%), and AY.65 (1.2%). The eight clades, as per the next clade, had a respective share of
233 21J (68.4%), 21A (17.2%), 20A (6.8%), 21B (5.2%), 21B (1.8%), 21K (0.20%), 20B (0.20%) and
234 20I (0.20%) (**Fig 2**). Overall variant percentage share among the samples and variants showing
235 $< 1\%$ percentage share is classified as other variants represented in supplementary **FigureS1**.
236 21J (Delta) is a variant of concern (VOC) Delta. This clade has spread in Europe, the Americas,
237 Africa, and Oceania. 21J(Delta) carries all mutations of 21A along with mutation at position
238 G215C. Additionally, other amino-acid mutations at ORF1a:A1306S, ORF1b:V2930L,
239 ORF1a:T3255I, ORF1a:T3646A, ORF1b:A1918V, and ORF7b:T40I were reported in 21J clade.
240 Clade 21A was first detected in India and had spike mutations L452R and P681 impacting
241 antibody binding. 21A has some additional mutations in spike protein at positions T19R, R158G,
242 T478K and D950N.

243

244 In this study, variant AY.112 appeared as an overall dominating variant. It was also noted that
245 AY.112 consistently appeared with a percentage share of at least $> 15\%$ throughout the period
246 from March to December 2021. AY.112 showed a maximum prevalence (63.2%) in September.
247 An interesting trend was observed in this study concerning AY.112, which started emerging in
248 March and progressed to appear competitively till June with B.1.617.2 and completely replaced
249 B.1.617.2 in July. However, B.1.617.2 reemerged in August and continued to prevail till

250 December. Another variant, AY.127, which first emerged in August, continued to increase from
251 October to December, showing >27% percentage share in December. A detailed month-wise
252 variant distribution of variants and relative percentage share is summarised in **Figures 3a and**
253 **3b.**

254

255 Thirty-seven different variants were detected in the study, and these variants were then
256 subjected to Mutation mapping analysis using the outbreak.info web server. The results showed
257 Six mutations of interest (MOI), including K417N, L452R, S477N, N501Y, P681H, P681R, and
258 one mutation of concern (MOC) E484K in the spike glycoprotein region, as shown in **Figure 4.**
259 The MOI and MOC percentage prevalence of all variants identified in the study among the
260 GISAID sequences has been summarised in **Figure 5.** Briefly, the K417N mutation was found to
261 be 0.5-1 % MOI prevalence among the GISAID sequences of all samples except the BA.1
262 variant of Omicron lineage in which K417N mutation showed 99% of MOI prevalence; The
263 Mutation L452R appeared with 90-100% MOI prevalence in the majority of the variants
264 belonging to kappa and delta lineages, except in B.1 (5%), B.1.36 (0.5%), B.1.1.354 (7.7%),
265 BA.1 (0.5%) and B.1.1.7 (Alpha) (0.5%) MOI prevalence. The S477N mutation was found to be
266 0.5-0.8 % MOI prevalence across the studied variants except for the BA.1, where the mutation
267 S477N appeared with 88% of MOI prevalence. The N501Y mutation showed 0.5-4% MOI
268 prevalence in most of the studied variants except B.1.1.7 and BA.1, which showed 98% and
269 84% MOI prevalence, respectively. P681H showed 0.5-1% MOI prevalence among the majority
270 of variants and showed 99% MOI prevalence in B.1.1.7 and 98% MOI prevalence in BA.1.
271 However, mutation P681R appeared in the majority of variants from delta lineages with >95%
272 MOI prevalence interestingly P681R showed no prevalence among AY.122, AY.126, AY.29.1,
273 AY.33, B.1.36, and B.1.1.354, and a meagre prevalence of <0.5% among B.1.1.7, B.1, and
274 BA.1. The MOC E484K remained undetected in B.1.617.1, AY.101, AY.102, AY.111, AY.112.2,
275 AY.29.1, AY.39, AY.65, AY.88, AY.98, AY.16 and AY.13 and showed <0.5% prevalence among
276 the rest of the studied variants.

277

278 The SARS-CoV-2 variants having L452R mutation are reported to have a decreased
279 susceptibility to convalescent and vaccinated sera and mAbs. [27] According to genome-wide
280 phylogenetic analysis, acquiring the L452R mutation could be responsible for the emergence of
281 both Kappa and Delta variants. Global analysis of SARS-CoV-2 sequences showed that L452R
282 was present in various independently emerging SARS-CoV-2 B.1.617 variants [27].

283 The SARS-CoV-2 Delta variant becoming a globally dominant variant could also be attributed to
284 the P681R mutation leading to Delta's replacement of the Alpha variant during the pandemic.
285 Delta P681R mutation enhances the cleavage of the full-length spike to S1 and S2 subunits
286 while interacting with the ACE2 receptor, which could improve cell-surface-mediated virus entry
287 [28]. Studies demonstrated that the Delta variant exhibited improved infectivity and reduced
288 susceptibility to vaccine-induced neutralising antibodies compared to the wild-type Wuhan-Hu.
289 When tested invitro, the spike proteins of Wuhan-Hu (P681) and BA.2 (H681) pseudoviruses
290 showed enhanced cell fusion and syncytia formation, and Delta spike (P681R) demonstrated
291 improved fusogenic activity and syncytia formation capabilities. Live-viruses plaque formation
292 assays confirmed these findings and demonstrated that relative to the wild-type, Delta formed
293 more plaques [29].

294
295 Genomic surveillance for respiratory viruses should be a regular protocol for early detection of
296 any new outbreak, However, this is not the case; it can be observed that genomic surveillance
297 performed is concentrated in some parts of the world, while in other parts, no data is being
298 generated. Only 45 countries of the world, accounting for only 38%, perform high-quality
299 genomic surveillance, while 17 countries perform moderate levels of sequencing and 31
300 countries perform limited genomic surveillance. About 76 countries worldwide do not provide
301 any genomic sequencing data for surveillance [30,31]. In many underdeveloped or low-income
302 countries, the collection and transport of samples, lack of facilities, the overall cost of
303 sequencing, etc., can lead to such outcomes. To counter the emergence of novel viral variants
304 and proper outbreak surveillance, appropriate techniques for sample collection, sample
305 processing, and sequencing techniques suitable for undeveloped regions of the world are
306 required. Therefore, collecting, processing, and sequencing samples from even the most remote
307 geographic locations and rural communities is imperative. This study has projections for post-
308 pandemic surveillance by deploying patient-friendly, rapid, and economical sample collection
309 strategies. The type of sample used and the collection technique can also significantly impact
310 the sequencing results. The WHO lists NPS-OPS samples, bronchoalveolar lavage, sputum,
311 saliva, gargles, mouthwashes, etc., as samples with high viral RNA content and could
312 potentially be used for genomic surveillance [32]. Among these, NPS are the most commonly
313 used specimens for diagnosis and genomic surveillance; hence considered the gold standard
314 collection technique. After collection, these NPS-OPS swabs are placed in a VTM and sent for
315 RNA extraction, followed by screening RT-PCR. Collecting NPS-OPS samples requires
316 technical expertise, which may or may not be available elsewhere.

317 It is also not practical to deploy experts to remote locations because it would be technically
318 challenging to frequently collect sufficient samples for diagnosis and sequencing. Improper
319 sample collection is also a significant problem using NPS [13]. Patient non-cooperation due to
320 physical discomfort often makes it difficult for even experienced personnel to collect these
321 samples accurately. It is important to note that the primary function of VTM had been
322 transportation to ensure the viability and stability of the virus for the culture of viral samples.
323 However, we must consider the fact that very few VTM samples sent for testing and sequencing
324 are getting cultured. Thus, whether VTM is necessary for testing and genome sequencing
325 arises. The ability of gargle-based genome surveillance to yield quality WGS even in lower viral
326 load samples could be due to a lack of PCR inhibitors in the gargle medium. The phosphate-
327 buffered saline (PBS) holds lesser interfering PCR inhibitors.

328 On the other hand, the routine VTM used in the NPS-OPS-based sample collection is reported
329 to contain specific PCR inhibitors [30]. The antibiotics present in the VTM to inhibit bacterial
330 growth may degrade the bacterial cells and release intracellular enzymes such as proteases
331 and nucleases in the medium; these enzymes could adversely impact PCR kinetics by
332 compromising the nucleic acid template if the cold chain is broken while transportation [34].
333 Kirkland et al. (2020) showed that commercially produced VTM solutions negatively influence
334 the capacity to identify SARS-CoV-2 and Influenza virus RNA. A study on the RNA extracted
335 from samples collected using commercial VTMs revealed that VTM components interfere with
336 the PCR kinetics during PCR while amplifying viral RNA in these samples. This study used
337 Phosphate buffered saline (PBS) added with 0.5% gelatin as a reference VTM and compared
338 commercially available VTMs with it; the findings showed that the RNA was stable in the PBS-
339 Gelatin media for 48 hours at room temperature, while no RNA was detectable in commercial
340 VTMs after 48 hours at room temperature [35]. The transport of NPS-OPS in VTM must be done
341 under the cold chain. There is a looming risk of RNA degradation due to a break in the cold
342 chain while it is transported from resource-poor locations like remote or rural areas to distantly
343 located testing and sequencing facilities. The lack of infrastructure and technical expertise in the
344 rural and remote parts of the world can often lead to the loss of samples that could otherwise be
345 used for generating important surveillance data. Such shortfalls need to be addressed by
346 exploring alternatives.

347 The genomic surveillance process starts with sample collection, and ensuring a good quality
348 sample is crucial for successful genomic surveillance. Conventional sample collection methods
349 for respiratory viruses such as NPS-OPS, Bronchoalveolar lavage, and anterior nares swabs

350 are invasive techniques and, thus, discourage the voluntary participation of the public in
351 genomic surveillance. The saline gargle sample collection is non-invasive and patient-friendly,
352 which will be more acceptable to the public. Gargle-based sample collection is a self-collection
353 method and does not require any healthcare worker for sample collection; therefore, its
354 scalability in resource-poor settings is better than the conventional methods. For post-pandemic
355 monitoring, policymakers are focusing on employing waste-water genomic surveillance;
356 however, monitoring the outbreaks in remote and rural areas and areas not connected to any
357 wastewater network is not feasible for sustained genomic surveillance. The concept of
358 wastewater-based SARS-CoV-2 monitoring is highly biased towards an urban set-up, which
359 completely ignores the rural set-up. We believe that the non-invasive approaches like the saline
360 gargle method have an advantage over the wastewater surveillance method for post-pandemic
361 monitoring, especially in developing countries like India, where a very large proportion of
362 humanity (65%) still lives in rural areas [36] which are not connected to any wastewater system.
363 A large population in the urban area of India is also not connected to a wastewater system.
364 According to the 2011 Census of India, 38% of urban households, that is, 30 million homes, rely
365 on stand-alone septic tanks which are not connected to any wastewater network [37]. In a
366 situation like this, entirely relying on the wastewater-based surveillance technique may not be a
367 good proposition. It is important to reassess the utility of wastewater-based genome surveillance
368 and consider alternative approaches. Therefore, gargle-based genomic surveillance is scalable
369 and does not require significant deviations from the workflow post-sample collection, making it
370 suitable for post-pandemic surveillance applications. The advantage of the saline gargle
371 technique is the ease of sample collection and user-friendliness; patients can collect the
372 samples independently without requiring qualified technicians. The mouth rinses or gargle-
373 based sample collection method offers comparable results to the commonly used swab-VTM-
374 based sample collection method for SARS-CoV-2 detection [38,39,40]. SARS-CoV-2 is a
375 respiratory virus, so the gargle collection technique yields similar results to a throat swab [41].
376 The gargle collection technique covers a larger surface in the buccal area and the throat,
377 offering a better sample consortium. This non-invasive sample collection technique can be
378 particularly advantageous for underdeveloped or remote areas as a reliable sample collection
379 technique for public surveillance in post-pandemic scenarios, which can find more user
380 acceptance than the invasive swab-VTM sample collection method.

381
382
383

384
385
386
387
388
389
390
391
392
393
394
395
396
397
398
399
400
401
402
403
404
405
406
407
408
409
410
411
412
413
414
415
416
417

FIGURE LEGEND

Figure 1: Monthly Ct values of the target gene of SARS-CoV-2 for Gargle-based genome surveillance from March to December 2021

Figure2: Summary of variants and their corresponding clades found in the SARS-CoV-2 WGS of saline gargle samples from March to December 2021

Figure 3a: Monthly occurrence of SARS-CoV-2 major variants in gargle-based genomic surveillance from March to December 2021

Figure 3b: Percentage-wise monthly occurrence of SARS-CoV-2 major variants in gargle-based genomic surveillance from March to December 2021

Figure 4: Spike glycoprotein gene mutation mapping of epidemiologically significant SARS-CoV-2 variants identified in the study from March to December 2021.

Figure 5: Spike glycoprotein gene mutation of interest and mutation of concern percentage prevalence among the GISAID sequences for all variants identified in the study.

FigureS1: Overall share of SARS-CoV-2 variants identified by saline gargle-based WGS for SARS-CoV-2

418
419
420
421
422
423
424
425
426
427
428
429
430
431
432
433
434
435
436
437
438
439
440
441
442
443
444
445
446
447
448
449
450
451

CONFLICT OF INTERESTS

The authors declare no conflicts of interest.

ACKNOWLEDGMENTS

This work was supported and funded by CSIR-NEERI, Nagpur. Some graphics in the graphical abstract have been taken from Biorender. It is certified that the manuscript has been checked for plagiarism by the institute knowledge resource centre through iThenticate (anti-plagiarism software) KRC No. CSIR-NEERI/KRC/2023/FEB/EVC/2.

AUTHOR DECLARATIONS

I confirm all relevant ethical guidelines have been followed and any necessary IRB and/or ethics committee approvals have been obtained. The Institutional Ethics Committee (IEC) of the Council of Scientific and Industrial Research-National Environmental Engineering Research Institute (CSIR-NEERI), Nagpur, India, approved the research. I confirm that all necessary patient/participant consent has been obtained and the appropriate institutional forms have been archived and that any patient/participant/sample identifiers included were not known to anyone (e.g., hospital staff, patients or participants themselves) outside the research group so cannot be used to identify individuals.

452
453
454
455
456
457
458
459
460
461
462
463

464 REFERENCES

- 465 1. Zhu, N., Zhang, D., Wang, W., Li, X., Yang, B., Song, J., Zhao, X., Huang, B., Shi, W.,
466 Lu, R., Niu, P., Zhan, F., Ma, X., Wang, D., Xu, W., Wu, G., Gao, G. F., Tan, W., &
467 China Novel Coronavirus Investigating and Research Team (2020). A Novel Coronavirus
468 from Patients with Pneumonia in China, 2019. *The New England journal of medicine*,
469 382(8), 727–733. <https://doi.org/10.1056/NEJMoa2001017>
- 470 2. Cucinotta, D., & Vanelli, M. (2020). WHO Declares COVID-19 a Pandemic. *Acta Bio-*
471 *Medica*: Atenei Parmensis, 91(1), 157–160. <https://doi.org/10.23750/abm.v91i1.9397>
- 472 3. WHO Coronavirus (COVID-19) Dashboard. (n.d.). With Vaccination Data. Retrieved
473 January 9, 2023, from <https://covid19.who.int/>
- 474 4. Naqvi, A. A. T., Fatima, K., Mohammad, T., Fatima, U., Singh, I. K., Singh, A., Atif, S. M.,
475 Hariprasad, G., Hasan, G. M., & Hassan, M. I. (2020). Insights into SARS-CoV-2
476 genome, structure, evolution, pathogenesis and therapies: Structural genomics
477 approach. *Biochimica Et Biophysica Acta (BBA) - Molecular Basis of Disease*, 1866(10),
478 165878.
- 479 5. Harvey, W. T., Carabelli, A. M., Jackson, B., Gupta, R. K., Thomson, E. C., Harrison, E.
480 M., Ludden, C., Reeve, R., Rambaut, A., Peacock, S. J., & Robertson, D. L. (2021).
481 SARS-CoV-2 variants, spike mutations, and immune escape. *Nature Reviews*
482 *Microbiology*, 19(7), 409–424.
- 483 6. Tracking SARS-CoV-2 variants. (2022, October 27).
484 <https://www.who.int/activities/tracking-SARS-CoV-2-variants>

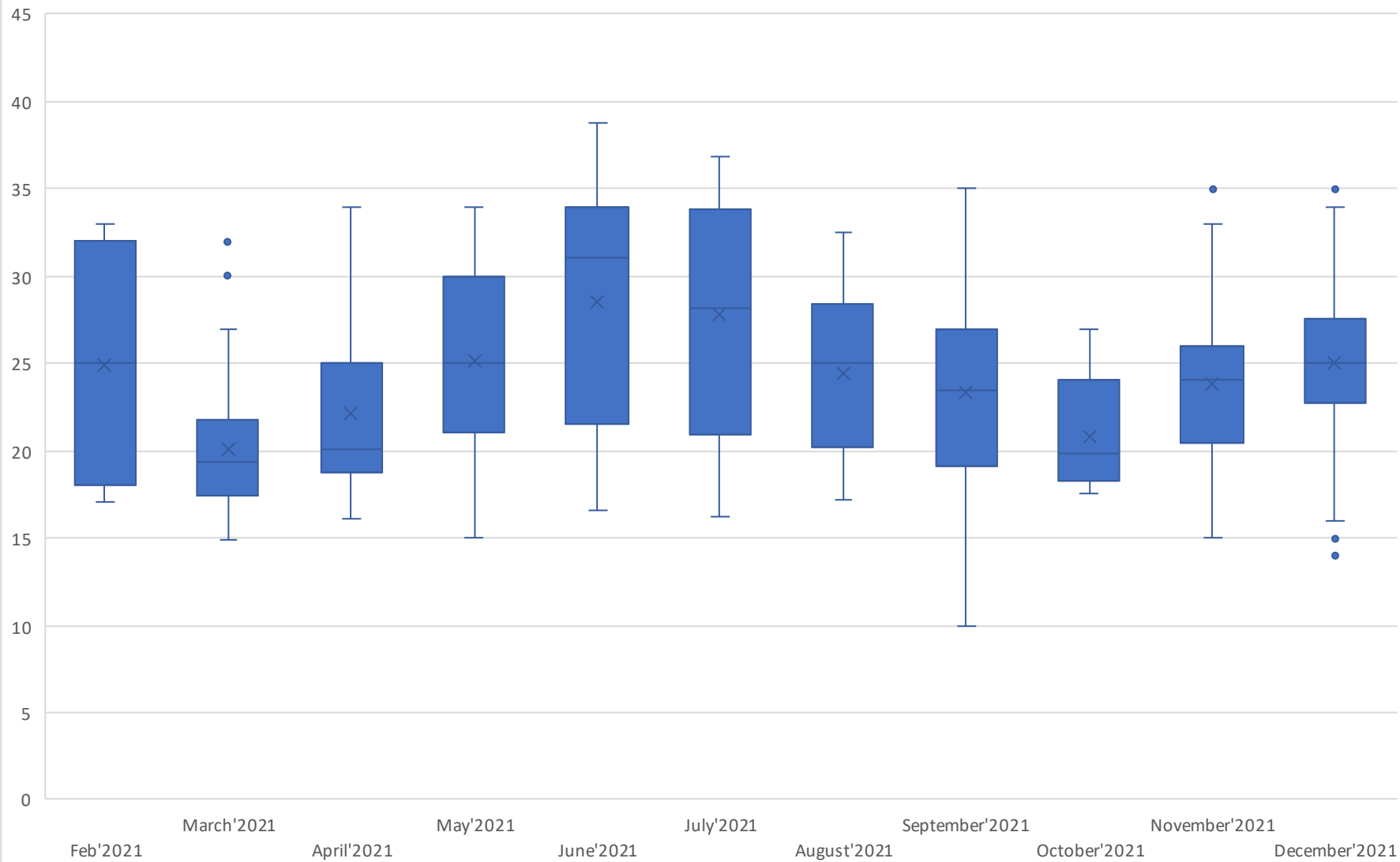
- 485 7. G. La Rosa, M. Iaconelli, P. Mancini, G. Bonanno Ferraro, C. Veneri, L. Bonadonna, L.
486 Lucentini, E. Suffredini First detection of SARS-CoV-2 in untreated wastewater in Italy.
487 Sci. Total Environ., 736 (2020), p. 139652,
488 <https://doi.org/10.1016/j.scitotenv.2020.139652>
- 489 8. A. Hata, H. Hara-Yamamura, Y. Meuchi, S. Imai, R. Honda. Detection of SARS-CoV-2 in
490 wastewater in Japan during a COVID-19 outbreak. Sci. Total Environ. (2020), p. 143578,
491 <https://doi.org/10.1016/j.scitotenv.2020.143578>
- 492 9. A. Nemudryi, A. Nemudraia, T. Wiegand, K. Surya, M. Buyukyoruk, C. Cicha, K.K.
493 Vanderwood, R. Wilkinson, B. Wiedenheft Temporal detection and phylogenetic
494 assessment of SARS-CoV-2 in municipal wastewater Cell Rep. Med., 1 (2020), p.
495 100098, <https://doi.org/10.1016/j.xcrm.2020.100098>
- 496 10. Yifan Zhu, Wakana Oishi, Chikako Maruo, Mayuko Saito, Rong Chen, Masaaki Kitajima,
497 Daisuke Sano, Early warning of COVID-19 via wastewater-based epidemiology:
498 potential and bottlenecks, Science of The Total Environment, Volume 767,2021,145124,
499 ISSN 0048-9697, <https://doi.org/10.1016/j.scitotenv.2021.145124>
- 500 11. Oleksandr Panasiuk, Annelie Hedström, Jiri Marsalek, Richard M. Ashley, Maria
501 Viklander, Contamination of stormwater by wastewater: A review of detection methods,
502 Journal of Environmental Management, Volume 152, 2015, Pages 241-250, ISSN 0301-
503 4797, <https://doi.org/10.1016/j.jenvman.2015.01.050>.
- 504 12. Wang, H., Liu, Q., Hu, J., Zhou, M., Yu, M. Q., Li, K. Y., Xu, D., Xiao, Y., Yang, J. Y., Lu,
505 Y. J., Wang, F., Yin, P., & Xu, S. Y. (2020). Nasopharyngeal Swabs Are More Sensitive
506 Than Oropharyngeal Swabs for COVID-19 Diagnosis and Monitoring the SARS-CoV-2
507 Load. Frontiers in medicine, 7, 334. <https://doi.org/10.3389/fmed.2020.00334>
- 508 13. Thomas S. Higgins, Arthur W. Wu, Jonathan Y. Ting, SARS-CoV-2 Nasopharyngeal
509 Swab Testing False-Negative Results From a Pervasive Anatomical Misconception,
510 JAMA Otolaryngology-Head & Neck Surgery November 2020 Volume 146; 993-994
- 511 14. Ministry of Science & Technology. PressReleasePage @ pib.gov.in. 2021.
512 <https://pib.gov.in/PressReleasePage.aspx?PRID=1722373> (accessed Oct 19, 2022)
- 513 15. Neeri's gargling test kit gets DCGI's nod. (2021, July 4). Times of India. Retrieved
514 February 14, 2023, from
515 https://www.google.com/amp/s/m.timesofindia.com/city/nagpur/neeris-gargling-test-kit-gets-dcgi-nod/amp_articles/84103217.cms
516

- 517 16. IHIP. Integrated Health Information Platform Integrated Disease Surveillance
518 Programme Ministry of Health and Family Welfare, Government of India @
519 ihip.nhp.gov.in. <https://ihip.nhp.gov.in/idsp/#/>.
- 520 17. Provisional Population Totals, Census of India 2011 Cities Having Population 1 Lakh
521 and above Provisional Population Totals, Census of India 2011 Cities Having Population
522 1 Lakh and Above.; 2011.
- 523 18. WHO. Global Epidemiological Surveillance Standards for Influenza.; 2013.
524 <https://www.who.int/publications/i/item/9789241506601> Accessed on February 7, 2023
- 525 19. CSIR-NEERI_ SARS-CoV-2 RT-PCR testing and WGS Protocol and facilities available
526 for SARS-CoV-2.pdf.
527 https://drive.google.com/file/d/1pMS_XBUwQ7QjCjwYscw6e0Ctw3Jjvsr0/view
- 528 20. Director CSIR-NEERI. (2021b, August 9). Saline Gargle RT PCR Innovation by CSIR
529 NEERI [Video]. YouTube. <https://www.youtube.com/watch?v=1OPZFIF4GpQ>
- 530 21. Takara bio inc. RR037A For Research Use PrimeScript™ RT Reagent Kit (Perfect
531 Real Time) Product Manual.
532 https://www.takarabio.com/documents/UserManual/RR037A_e.v2008Da.pdf.
- 533 22. Oxford Nanopore Technologies. PCR Tiling of SARS-CoV-2 Virus with Rapid Barcoding
534 and Midnight RT PCR Expansion (SQK-RBK110.96 and EXPMRT001). Vol 3.; 2021.
535 <https://nanoporetech.com/resource-centre/knowledge> Accessed on February 7, 2023,
- 536 23. Wick RR, Judd LM, Holt KE. Performance of neural network base-calling tools for Oxford
537 Nanopore sequencing. Genome Biol. 2019;1-10. <https://doi.org/10.1186/s13059-019-1727-y>
- 538
- 539 24. Commander, a command line free GUI-based sequencing data analysis tool developed
540 by Genotypic Technology, Bangalore India <https://www.genotypic.co.in/commander/>.
541 Accessed on February 7, 2023,
- 542 25. Toole AO, Scher E, Underwood A, et al. Assignment of epidemiological lineages in an
543 emerging pandemic using the pangolin tool. 2021;7(2):1-9.
544 <https://doi.org/10.1093/ve/veab064>
- 545 26. Outbreak.info SARS-COV-2 data explorer. outbreak.info. Retrieved March 22, 2023,
546 from <https://outbreak.info/>
- 547 27. Wilhelm, A., Toptan, T., Pallas, C., Wolf, T., Goetsch, U., Gottschalk, R., Vehreschild, M.
548 J. G. T., Ciesek, S., & Widera, M. (2021). Antibody-Mediated Neutralization of Authentic
549 SARS-CoV-2 B.1.617 Variants Harboring L452R and T478K/E484Q. Viruses, 13(9),
550 1693. <https://doi.org/10.3390/v13091693>

- 551 28. Liu, Y., Liu, J., Johnson, B. A., Xia, H., Ku, Z., Schindewolf, C., Widen, S. G., An, Z.,
552 Weaver, S. C., Menachery, V. D., Xie, X., & Shi, P. Y. (2022). Delta spike P681R
553 mutation enhances SARS-CoV-2 fitness over Alpha variant. *Cell reports*, 39(7), 110829.
554 <https://doi.org/10.1016/j.celrep.2022.110829>
- 555 29. Kuzmina, A., Atari, N., Ottolenghi, A., Korovin, D., Iass, I. C., Rosental, B., Rosenberg,
556 E., Mandelboim, M., & Taube, R. (2022). P681 mutations within the polybasic motif of
557 spike dictate fusogenicity and syncytia formation of SARS CoV-2 variants. *BioRxiv*,
558 2022.04.26.489630. <https://doi.org/10.1101/2022.04.26.489630>
- 559 30. Brito, A.F., Semenova, E., Dudas, G., *et al.* Global disparities in SARS-CoV-2 genomic
560 surveillance. *Nat Commun* 13, 7003 (2022). <https://doi.org/10.1038/s41467-022-33713-y>
- 561 31. Chen, Z., Azman, A.S., Chen, X. *et al.* Global landscape of SARS-CoV-2 genomic
562 surveillance and data sharing. *Nat Genet* 54, 499–507 (2022).
563 <https://doi.org/10.1038/s41588-022-01033-y>
- 564 32. Genomic sequencing of SARS-CoV-2: a guide to implementation for maximum impact
565 on public health. Geneva: World Health Organization; 2021. License: CC BY-NC-SA 3.0
566 IGO.
- 567 33. Schrader, C., Schielke, A., Ellerbroek, L., & Johne, R. (2012). PCR inhibitors -
568 occurrence, properties, and removal. *Journal of applied microbiology*, 113(5), 1014–
569 1026. <https://doi.org/10.1111/j.1365-2672.2012.05384.x>
- 570 34. Bickley, J., Short, J. K., McDowell, D. G., & Parkes, H. C. (1996). Polymerase chain
571 reaction (PCR) detection of *Listeria monocytogenes* in diluted milk and reversal of PCR
572 inhibition caused by calcium ions. *Letters in applied microbiology*, 22(2), 153–158.
573 <https://doi.org/10.1111/j.1472-765x.1996.tb01131.x>
- 574 35. Kirkland, P. D., & Frost, M. J. (2020). The impact of viral transport media on PCR assay
575 results for the detection of nucleic acid from SARS-CoV-2. *Pathology*, 52(7), 811–814.
576 <https://doi.org/10.1016/j.pathol.2020.09.013>
- 577 36. Rural population (% of total population) - India. data.worldbank.org. Retrieved
578 February28,2023,from
579 <https://data.worldbank.org/indicator/SP.RUR.TOTL.ZS?locations=IN>
- 580 37. Priyadarshini, S. (2021, May 21). India's sewage surveillance for SARS-CoV-2 going
581 down the drain. *Nature India; Nature Portfolio*. <https://doi.org/10.1038/nindia.2021.75>
- 582 38. Kandel, C. E., Young, M., Serbanescu, M. A., Powis, J. E., Bulir, D., Callahan, J., Katz,
583 K., McCready, J., Racher, H., Sheldrake, E., Quon, D., Vojdani, O. K., McGeer, A.,
584 Goneau, L. W., & Vermeiren, C. (2021). Detection of severe acute respiratory

- 585 coronavirus virus 2 (SARS-CoV-2) in outpatients: A multicenter comparison of self-
586 collected saline gargle, oral swab, and combined oral-anterior nasal swab to a provider
587 collected nasopharyngeal swab. *Infection control and hospital epidemiology*, 42(11),
588 1340–1344. <https://doi.org/10.1017/ice.2021.2>
- 589 39. Goldfarb, D. M., Tilley, P., Al-Rawahi, G. N., Srigley, J. A., Ford, G., Pedersen, H.,
590 Pabbi, A., Hannam-Clark, S., Charles, M., Dittrick, M., Gadkar, V. J., Pernica, J. M., &
591 Hoang, L. M. N. (2021). Self-Collected Saline Gargle Samples as an Alternative to
592 Health Care Worker-Collected Nasopharyngeal Swabs for COVID-19 Diagnosis in
593 Outpatients. *Journal of clinical microbiology*, 59(4), e02427-20.
594 <https://doi.org/10.1128/JCM.02427-20>
- 595 40. Saito, M., Adachi, E., Yamayoshi, S., Koga, M., Iwatsuki-Horimoto, K., Kawaoka, Y., &
596 Yotsuyanagi, H. (2020). Gargle Lavage as a Safe and Sensitive Alternative to Swab
597 Samples to Diagnose COVID-19: A Case Report in Japan. *Clinical infectious diseases: an official publication of the Infectious Diseases Society of America*, 71(15), 893–894.
598 <https://doi.org/10.1093/cid/ciaa377>
- 600 41. Bennett, S., Davidson, R. S., & Gunson, R. N. (2017). Comparison of gargle samples
601 and throat swab samples for the detection of respiratory pathogens. *Journal of virological methods*, 248, 83–86. <https://doi.org/10.1016/j.jviromet.2017.06.010>
602
603
604

Monthwise Ct values of target gene of SARS-CoV-2 for Gargle based genome surveillance



Saline Gargle SARS-CoV-2 Genome Surveillance

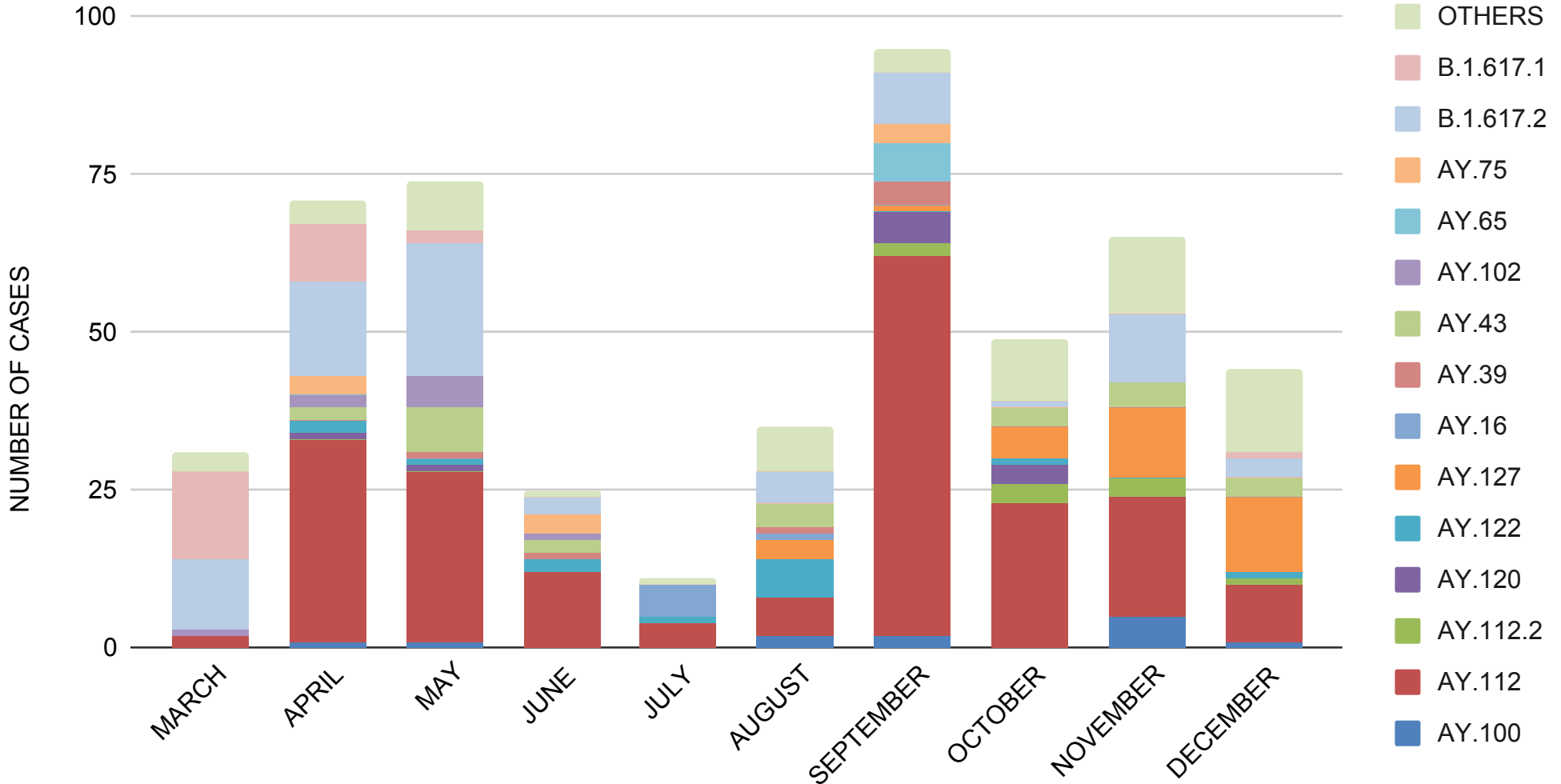
(March 2021 - December 2021)

Total SARS-CoV-2 WGS samples: 500

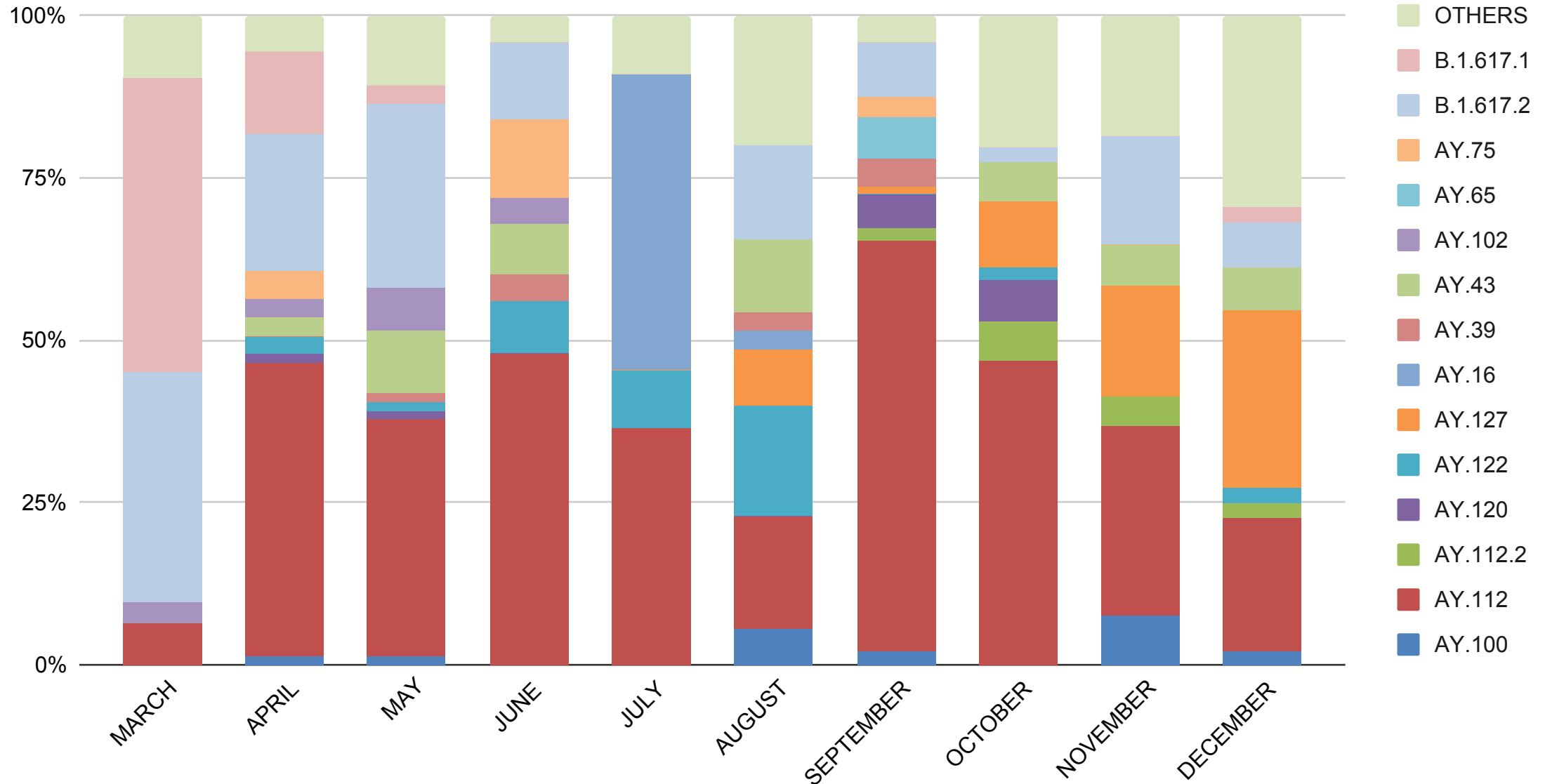
Pangolin- Lineage	Number of samples	Percentage share	Nextclade	WHO Comment
B.1.1.7	1	0.20	20I	Alpha
B.1.617.1	26	5.20	21B	Kappa
AY.100	12	2.40	21J	Delta
AY.101	2	0.40		
AY.102	9	1.80		
AY.105	1	0.20		
AY.107	1	0.20		
AY.111	2	0.40		
AY.112	194	38.80		
AY.112.2	9	1.80		
AY.120	10	2.00		
AY.122	14	2.80		
AY.126	1	0.20		
AY.127	32	6.40		
AY.129	3	0.60		
AY.29.1	1	0.20		
AY.33	1	0.20		
AY.36.1	1	0.20		
AY.39	7	1.40		
AY.39.1	1	0.20		
AY.4	1	0.20		
AY.43	25	5.00		
AY.44	3	0.60		
AY.45	1	0.20		
AY.65	6	1.20		
AY.88	1	0.20		
AY.98	1	0.20		
B	3	0.60		
AY.75	9	1.80	21I	
AY.54	1	0.20	21A	
AY.16	6	1.20		
AY.13	1	0.20		
B.1.617.2	78	15.60	20A	No Comments
B.1	33	6.60		
B.1.36	1	0.20		
B.1.1.354	1	0.20	20B	
BA.1	1	0.20	21K	Omicron
TOTAL	500	100		

medRxiv preprint doi: <https://doi.org/10.1101/2023.02.16.23286031>; this version posted March 27, 2023. The copyright holder for this preprint (which was not certified by peer review) is the author/funder, who has granted medRxiv a license to display the preprint in perpetuity. It is made available under a [CC-BY-ND 4.0 International license](https://creativecommons.org/licenses/by-nd/4.0/).

PERIODIC OCCURRENCE OF SARS-CoV-2 MAJOR VARIANTS IN GARGLE BASED GENOMIC SURVEILLANCE FROM MARCH - DECEMBER 2021



PERIODIC OCCURRENCE OF SARS-CoV-2 MAJOR VARIANTS IN GARGLE BASED GENOMIC SURVEILLANCE FROM MARCH - DECEMBER 2021 (PERCENT WISE)

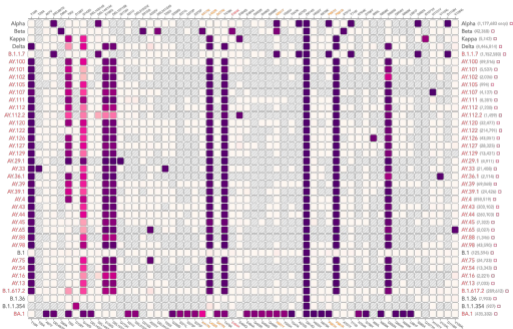


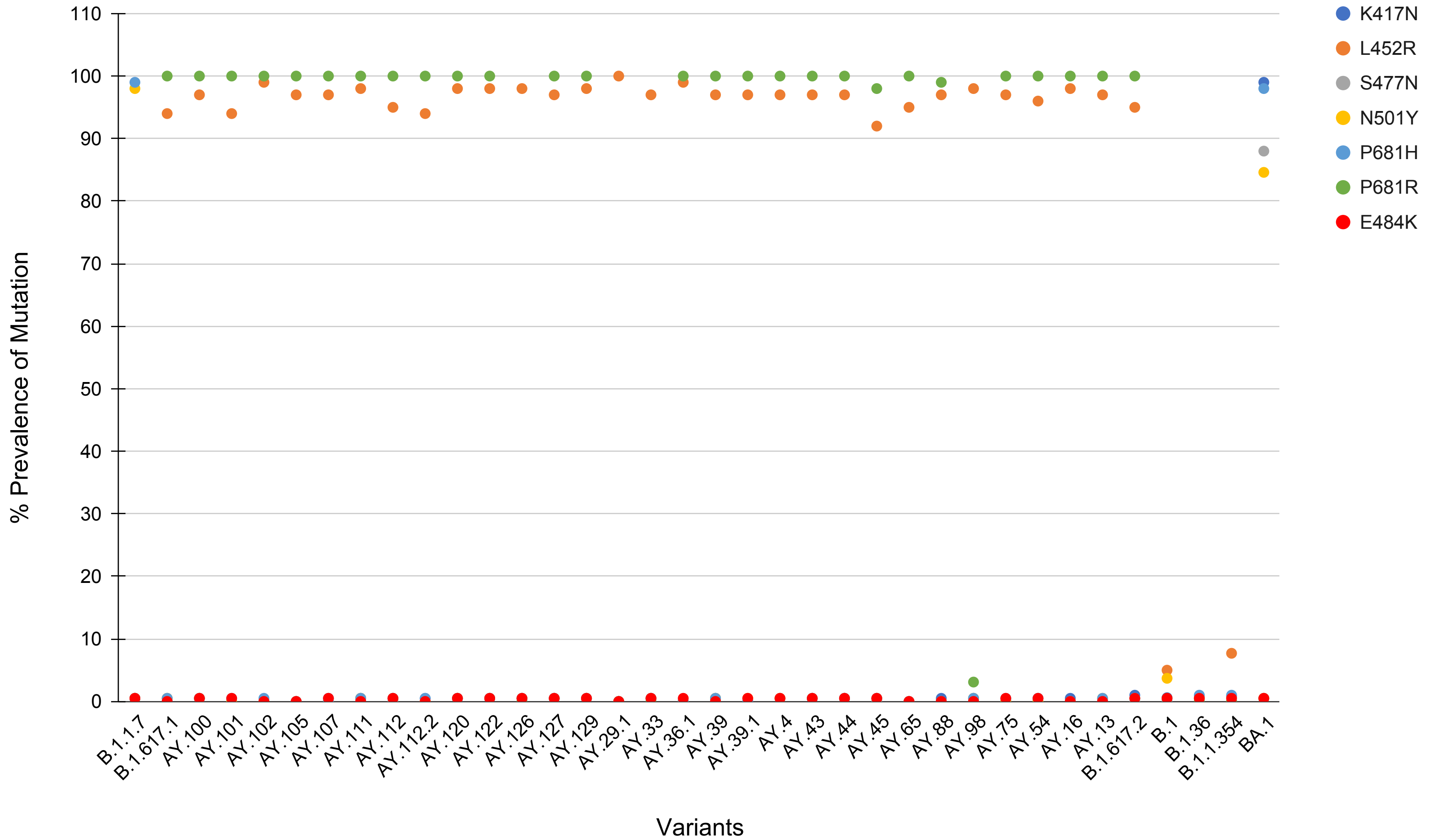
Mutation prevalence in lineage
0 100%

not detected

Variant /
Mutation of
Concern

Variant /
Mutation of
Interest





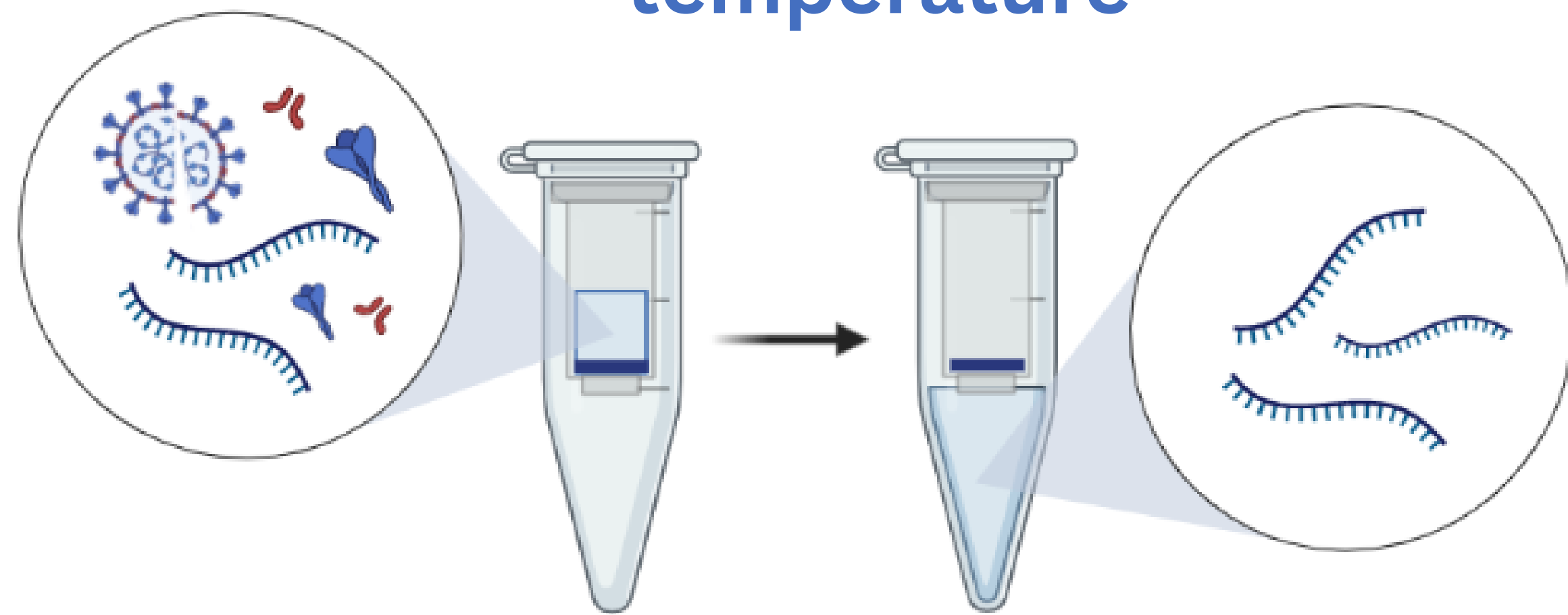
Saline Gargle Based SARS-CoV-2 Genomic Surveillance

1 Self-collected gargle sample

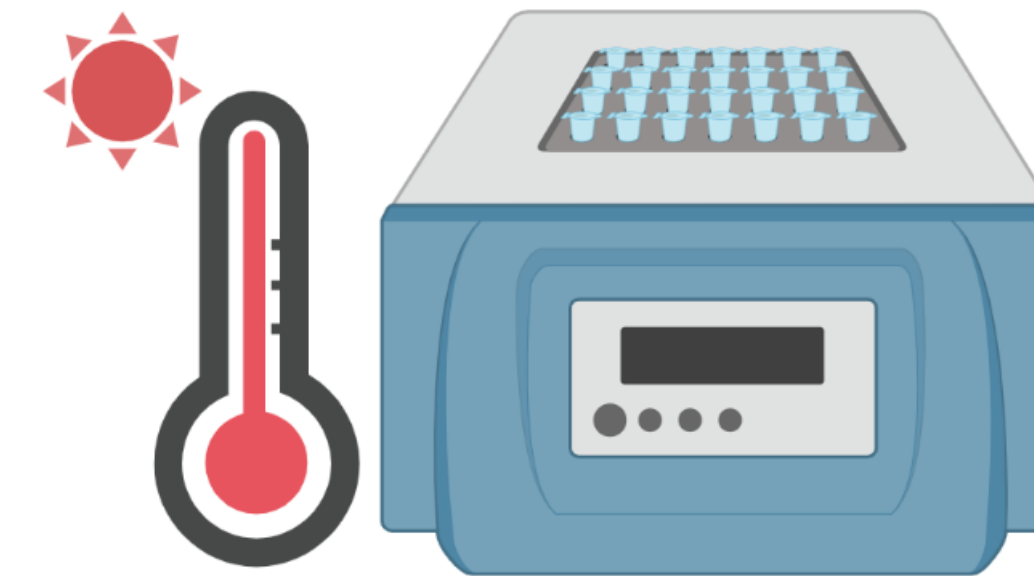


medRxiv preprint doi: <https://doi.org/10.1101/2023.02.16.23280971>; this version posted March 27, 2023. The copyright holder for this preprint (which was not certified by peer review) is the author/funder, who has granted medRxiv a license to display the preprint in perpetuity. It is made available under a CC-BY-ND 4.0 International license.

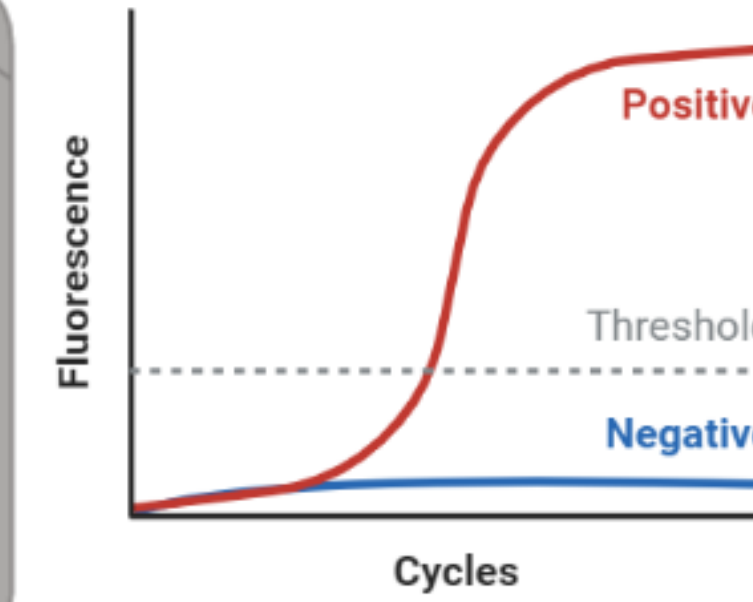
2 One-Step RNA Release 30 minutes at Room temperature



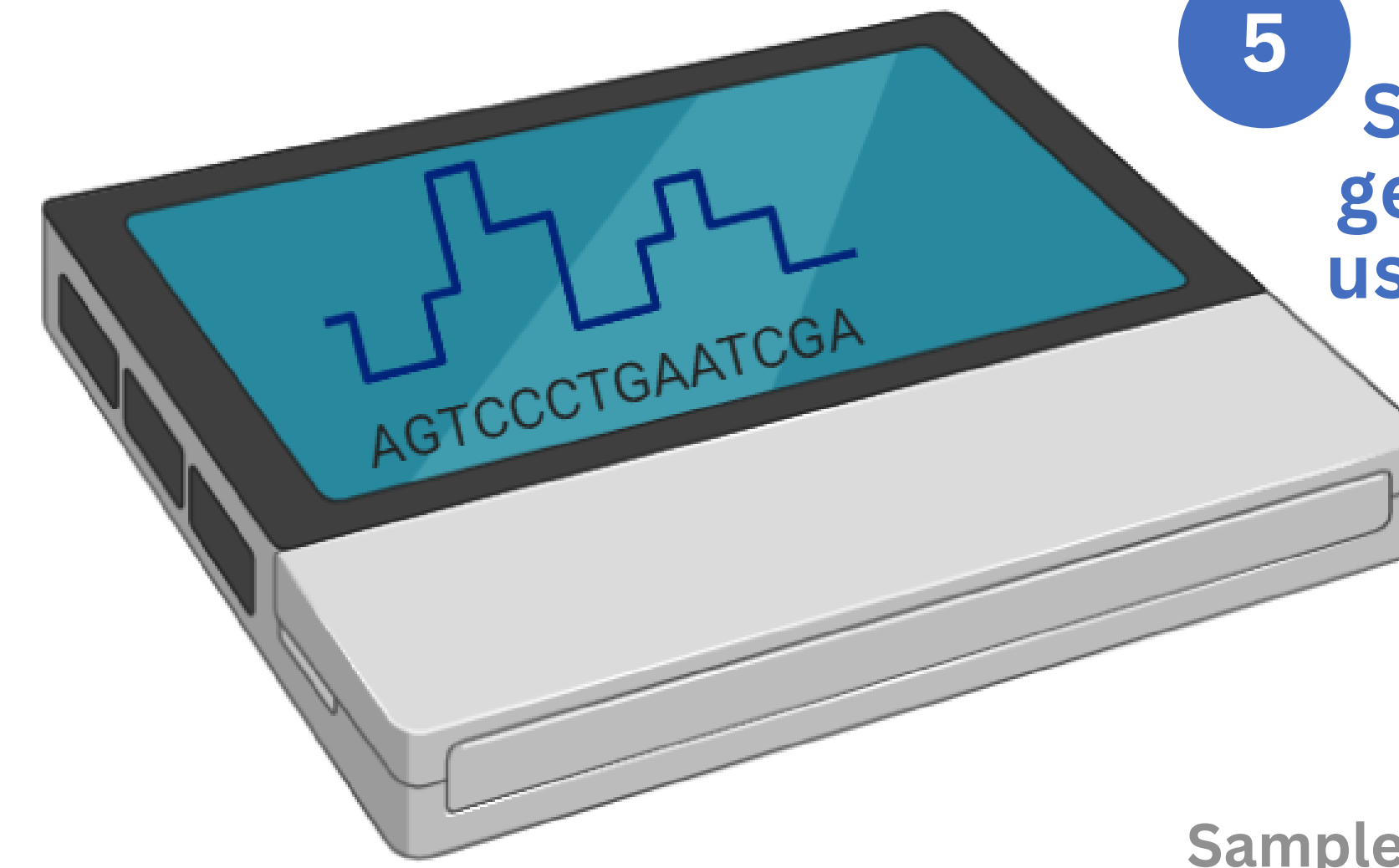
3 Heat inactivation at 95 degree Celsius for 6 minutes



4 Molecular testing using RTPCR



Samples with Ct value < 30 were selected for Whole Genome Sequencing



5 SARS-CoV-2 whole genome sequencing using NGS platforms

6 Data Analysis and Reporting

