

1 **Does early childhood BCG vaccination improve survival into adulthood in a**  
2 **population with a low tuberculosis prevalence? Quasi-experimental evidence**  
3 **on non-specific effects from 39 Swedish birth cohorts**

4  
5 Michaela Theilmann<sup>1,6</sup>

6 Pascal Geldsetzer<sup>2,3</sup>

7 Till Bärnighausen<sup>1,4,5</sup>

8 Nikkil Sudharsanan<sup>1,6\*</sup>

9

10

11 <sup>1</sup> Heidelberg Institute of Global Health, Faculty of Medicine and University Hospital,  
12 Heidelberg University, 69120 Heidelberg, Germany

13 <sup>2</sup> Division of Primary Care and Population Health, Stanford University, Stanford, CA 94305,  
14 United States

15 <sup>3</sup> Chan Zuckerberg Biohub, San Francisco, CA 94158, United States

16 <sup>4</sup> Harvard Center for Population and Development Studies, Cambridge, MA 02138, United  
17 States

18 <sup>5</sup> Africa Health Research Institute, 3935 KwaZulu-Natal, South Africa

19 <sup>6</sup> Professorship of Behavioral Science for Disease Prevention and Health Care and Institute  
20 for Advanced Study, Technical University of Munich, 80992 Munich, Germany

21

22 **Abstract**

23 The Bacillus Calmette–Guérin (BCG) vaccine for tuberculosis (TB) is widely used globally.  
24 Many high-income countries discontinued nationwide vaccination policies as the TB  
25 prevalence decreased. However, there is continued interest in whether the general childhood  
26 immunity boost conferred by the BCG vaccination impacts adult health and mortality in low-  
27 TB contexts (known as non-specific effects) and whether BCG vaccination should be continued  
28 as a population policy. While recent studies found evidence of an association between BCG  
29 vaccination and later-life survival, it is unclear whether these associations are causal or driven  
30 by unobserved characteristics of those who chose to voluntarily vaccinate. We use the abrupt  
31 discontinuation of mandatory BCG vaccination in Sweden in 1975 as a natural experiment to  
32 estimate the causal non-specific effect of the BCG vaccine on long-term cohort survival.  
33 Applying two complementary study designs, we find no evidence that survival to age 30 was  
34 affected by the discontinuation of childhood BCG vaccination. The results are consistent in the  
35 male and female subpopulations and are robust to several sensitivity and falsification tests.  
36 Overall, despite interest and prior correlational studies suggesting large non-specific effects,  
37 we do not find any population-level evidence for a non-specific effect of the BCG vaccine  
38 discontinuation on long-term survival in Sweden.

39

40 **Keywords:** Vaccines, non-specific effects, life-course, survival, causal inference

41

42

43

## 44 **Introduction**

45 Tuberculosis (TB) was a major cause of mortality in Europe in the 18<sup>th</sup> century and is estimated  
46 to have caused 1,000 deaths per 100,000 people (Murray, 2001). The Bacillus Calmette–Guérin  
47 (BCG) vaccine was developed in the 1910s to address the global TB burden and was  
48 administered to the first child in 1921 (Dara et al., 2014). BCG vaccination was then scaled up  
49 widely in the 1940s across Europe. It became the main government strategy for containing TB  
50 and many high-income countries (HIC) introduced national policies making BCG vaccination  
51 compulsory for children (Zwerling et al., 2011). As the incidence of TB declined to negligible  
52 levels, several HICs discontinued compulsory vaccinations. However, there has been continued  
53 and significant scientific interest in the *non-specific* effects of the BCG vaccine and whether it  
54 increases long-term survival beyond its effects on TB.

55 The proposed mechanism behind non-specific BCG effects is that early BCG  
56 vaccination improves general childhood immunity, which may confer a lasting health impact  
57 as individuals age (Cirovic et al., 2020; Dockrell & Smith, 2017). This hypothesis is consistent  
58 with life course theories in demography in population health that link early life conditions and  
59 events with later life morbidity and mortality (Case & Paxson, 2010; Cutler & Miller, 2005;  
60 Elo & Preston, 1992; Helgertz & Bengtsson, 2019; Masters, 2018; McEnry & Palloni, 2010;  
61 Palloni & Souza, 2013; van den Berg, Doblhammer-Reiter, & Christensen, 2011; Wen & Gu,  
62 2011; Zhao, Hessel, Simon Thomas, & Beckfield, 2021). Despite the growing scientific interest  
63 over the past two decades, especially among laboratory scientists studying cellular-level  
64 immune response to the vaccine, it is still inconclusive whether the early childhood  
65 improvement in immune response created by the BCG vaccine has a causal impact on health  
66 in later life (Dockrell & Smith, 2017; Goodridge et al., 2016).

67 There exists a small body of literature analysing the relationship between the BCG  
68 vaccine and morbidity and mortality among adults (Giamarellos-Bourboulis et al., 2020;

69 Kölmel et al., 2005; Lankes, Fought, Evens, Weisenburger, & Chiu, 2009; Pfahlberg et al.,  
70 2002; Rieckmann; Rieckmann, Villumsen, Jensen, et al., 2017; Rieckmann, Villumsen, Sørup,  
71 et al., 2017; Villumsen et al., 2009; Villumsen et al., 2013; Wardhana, Sultana, Mandang, &  
72 Jim, 2011). Indeed, a recent study suggested that children vaccinated with the BCG vaccine in  
73 Denmark had an 42% lower hazard of mortality in adulthood (Rieckmann, Villumsen, Sørup,  
74 et al., 2017). If this association was in fact evidence of a causal relationship, these results would  
75 have significant population policy implications and would suggest that re-introducing BCG  
76 vaccination in national vaccination plans, even in the absence of TB, may be a cost-effective  
77 and easy-to-implement way of improving long-term survival. However, these studies are either  
78 based on small non-representative samples, limited to specific health outcomes rather than an  
79 overall measure like all-cause mortality, and most fundamentally are based on study designs  
80 that suffer from confounding. Thus, it is unclear whether the association between BCG and  
81 later-life survival is due to the causal effect of improved childhood immunity from vaccination  
82 or reflects the unobserved characteristics of the families and children that opted for the vaccine.  
83 To our knowledge, there is no causal evidence on the non-specific effects of the vaccine on  
84 long-term survival at the population level.

85 In this paper, we address these three key limitations. First, rather than rely on small or  
86 potentially non-representative samples, we use population data on births and deaths in Sweden  
87 for birth cohorts born between 1950 and 1988. Second, rather than focus on specific health  
88 conditions, we examine the effects of BCG vaccination on cohort survival to age 30 based on  
89 all-cause mortality. Lastly, we employ two causal inference study designs – the Regression  
90 Discontinuity Design (RDD) and the multi-period Difference in Differences (DiD) model – to  
91 address the potential issues of confounding found in prior studies. In contrast to prior studies,  
92 we do not find that the BCG vaccine had non-specific effects on survival to age 30 in Sweden.  
93 This result is consistent across analysis approaches and robust to several sensitivity analyses

94 and alternate specifications. While BCG vaccination in the absence of TB might still be  
95 important for certain specific subpopulations, our results do not provide evidence in support of  
96 broad population policies to re-introduce BCG vaccination in HICs with a low burden of TB.

97

## 98 **Background**

### 99 **Epidemiology of Tuberculosis**

100 TB is an infectious disease caused by the mycobacterium tuberculosis bacterium that mostly  
101 affects the lungs but can also spread to other organs or the bones (Raviglione Mario C., 2018).  
102 TB is highly fatal if untreated but can be treated with a six-month antibiotic drug regimen. It is  
103 transmitted through the air (e.g. from talking or coughing) and is mainly observed among  
104 adults, males, and those that are immunocompromised (e.g. living with HIV), living with  
105 diabetes, undernourished, and those that use alcohol or tobacco (Lönnroth, Jaramillo, Williams,  
106 Dye, & Raviglione, 2009).

107         The mycobacterium tuberculosis has been around for thousands of years but  
108 tuberculosis prevalence increased to an epidemic level only in the 18<sup>th</sup> century, reaching an  
109 estimated death rate of 1,000 per 100,000 inhabitants in 1800 (Barberis, Bragazzi, Galluzzo, &  
110 Martini, 2017; Chisholm, Trauer, Curnoe, & Tanaka, 2016; Hershkovitz et al., 2015; Murray,  
111 2001). This dramatic increase in TB mortality is thought to be related to increasing urbanization  
112 and the close agglomeration of individuals in cities as well as poor living standards (Lönnroth  
113 et al., 2009). In the 19<sup>th</sup> century, the TB prevalence declined in high-income countries (Wilson,  
114 1990) While TB remains the second highest cause of death from infectious diseases globally,  
115 after COVID-19, in 2020, this burden is concentrated in low and middle-income countries,  
116 with high-income countries only accounting for 2% of all recorded TB cases (World Health  
117 Organization, 2021).

118

## 119 **Development and Introduction of the BCG Vaccine in Europe**

120 The BCG vaccine is a live vaccine and was introduced in the 1920s (Dara et al., 2014). Since  
121 then it has become one of the most widely used vaccines globally (Dara et al., 2014; Muhoza  
122 et al., 2021). Several strains of the BCG vaccine emerged from the original strain isolated by  
123 Albert Calmette and Camille Guérin in 1908 (Dara et al., 2014). There is conflicting evidence  
124 on the effectiveness of the vaccine and to date, it is poorly understood how the BCG vaccine  
125 affects the immune system and why there is such a wide variation in the body's immunological  
126 response (Dockrell & Smith, 2017). While evidence is mixed, it is generally believed that the  
127 BCG vaccine only protects against the development of active TB but not infection itself, and  
128 that the vaccine has the greatest benefits when administered after birth rather than to  
129 adolescents or adults (World Health Organization; Abubakar et al., 2013). The BCG vaccine  
130 is safe for healthy children but poses a threat to immunodeficient children, who can develop a  
131 disseminated BCG infection (World Health Organization, 2018). This fact is important for  
132 deciding which children should be given the BCG vaccination, a point which we will return to  
133 later on when discussing potential issues of confounding in prior research.

134 In Europe, the BCG vaccine was widely adopted in the 1940s (Dara et al., 2014). In the  
135 large majority of countries it was administered right after birth (Zwerling et al., 2011). While  
136 some countries, such as Sweden and Norway, made the BCG vaccination compulsory, other  
137 countries adopted policies that targeted high-risk groups only, such as healthcare workers or  
138 children of parents born in high-incidence countries. In the decades after the introduction of  
139 the BCG vaccine, the TB incidence continued to decrease dramatically in Western Europe and  
140 other high-income countries (Daniel, 2006). This decline led most of the countries where  
141 vaccination was compulsory to discontinue their policies (Böttiger, Romanus, Verdier, &  
142 Boman, 1982). In Sweden, for example, TB mortality decreased from around 22 per 100,000  
143 in 1950 to less than 4 per 100,000 in 1975 (Committee on Government Operations, United

144 States Congress Senate; Sakari Härö, 1994). In Norway, mortality attributable to TB was 29  
145 per 100,000 people in 1950 and decreased to 2 per 100,000 in 1975 (Central Bureau of Statistics  
146 Norway, 1961).<sup>1</sup> Importantly, it remains unclear how much the BCG vaccine contributed to the  
147 decline in TB prevalence, or whether this decline was mainly due to improved living standards  
148 and nutrition (Wilson, 1990).

149 In Sweden, the country we study here, compulsory vaccination of neonates was  
150 introduced in 1940 and then reversed in April 1975 because of the persistently low TB  
151 prevalence (The Public Health Agency of Sweden, 2020; Bergström, Mäkinen, & Romanus,  
152 2001; Zwerling et al., 2011). Thus, children born in 1976 were the first birth cohort in which  
153 no newborn received the routine BCG vaccine. This shift was abrupt: vaccine coverage  
154 dropped from 95% to 2% in the years following its discontinuation (Romanus, 2006). Coverage  
155 then gradually increased to 13.1% in the cohort born in 1989 and covered at-risk groups such  
156 as children born to parents from high TB incidence countries (Bergström et al., 2001). In  
157 Norway, BCG vaccinations became compulsory in 1947 for students leaving elementary  
158 school, usually at age 13 (Waalder, Galtung, & Mordal, 1971). Mass vaccination campaigns  
159 started in 1947 (Tverdak & Funnemark, 1988). However, unlike Sweden, mandatory  
160 vaccination in Norway remained until 2005, when the policy changed to a voluntary scheme,  
161 and again in 2009, when the vaccination recommendation was limited to at risk groups only  
162 (Norwegian Institute of Public Health, 2008; Norwegian Institute of Public Health, 2016). BCG  
163 vaccine coverage in Norway increased from 88.6% among adolescents aged 13 in 1959 to  
164 92.2% in 1973 and was above 97% since 1975 (Norwegian Institute of Public Health; Tverdak  
165 & Funnemark, 1988).

166

---

<sup>1</sup> To our knowledge, no data on the TB related mortality rate were available. Thus, we used the absolute numbers of TB cases and divided them by the population size in the respective year (Statistics Norway; The World Bank (2022))

## 167 **Non-Specific Effects of the BCG Vaccine**

168 Non-specific effects are health effects of a vaccine that are unrelated to the targeted disease.  
169 The first non-specific effects were reported on the vaccinia vaccine against smallpox, which  
170 also seemed to protect against measles and other infectious diseases (Mayr, 2004). These  
171 findings led to the assumption that other live vaccines, such as the BCG vaccine, might have  
172 positive non-specific effects (Higgins et al., 2016). It is not entirely clear through which  
173 channels the BCG vaccine could provide protection against other diseases. There is evidence  
174 that the BCG vaccine causes an adaption of the innate, or unspecific, immunity, which is the  
175 fraction of the immune system humans have from birth on and is, thus, not induced in response  
176 to specific diseases through infection or vaccination (Roberts, Alberts, Bruce, Johnson,  
177 Alexander, Lewis, Raff, & Walter, 2015). This trained immunity, i.e. the change in the innate  
178 immunity after BCG vaccination, is one of the potential channels for the BCG vaccine related  
179 non-specific effects (Moorlag, Arts, van Crevel, & Netea, 2019). This physiological  
180 mechanism is consistent with a broader body of evidence from demography and population  
181 health which finds a robust link between early childhood health and changes to the immune  
182 system and later life (Bonanni, 1999; Drummond, Chevat, & Lothgren, 2007; Karafillakis,  
183 Hassounah, & Atchison, 2015; Mercer, 1985; Michiels, Govaerts, Remmen, Vermeire, &  
184 Coenen, 2011). Today, the BCG vaccine is widely applied as a treatment for bladder cancer  
185 and research on its effectiveness in the treatment of other cancers is ongoing (Lamm & Morales,  
186 2021).

187

## 188 **Existing evidence of non-specific BCG effects**

189 There is a small number of studies, most of them observational, estimating non-specific effects  
190 of the BCG vaccine on child survival (Biering-Sørensen et al., 2018; Breiman et al., 2004;  
191 Castro, Pardo-Seco, & Martínón-Torres, 2015; Elguero, Simondon, Vaugelade, Marra, &



192 Simondon, 2005; Garly et al., 2003; Lehmann, Vail, Firth, Klerk, & Alpers, 2005; Nankabirwa,  
193 Tumwine, Mugaba, Tylleskär, & Sommerfelt, 2015; Roth et al., 2005; Schaltz-Buchholzer,  
194 Aaby, et al., 2021; Schaltz-Buchholzer, Kjær Sørensen, Benn, & Aaby, 2021; Steenhuis et al.,  
195 2008; Thysen et al., 2020; Vaugelade, Pinchinat, Guiella, Elguero, & Simondon, 2004). The  
196 majority of these studies was conducted in low- and middle-income countries and suggest a  
197 positive association between BCG vaccine and child survival. Evidence on the vaccine's non-  
198 specific effect on adult morbidity and mortality is also limited (Giamarellos-Bourboulis et al.,  
199 2020; Kölmel et al., 2005; Lankes et al., 2009; Pfahlberg et al., 2002; Rieckmann; Rieckmann,  
200 Villumsen, Jensen, et al., 2017; Rieckmann, Villumsen, Sørup, et al., 2017; Villumsen et al.,  
201 2009; Villumsen et al., 2013; Wardhana et al., 2011). All studies but one are based on small  
202 non-representative samples or are limited to specific health outcomes (Rieckmann, Villumsen,  
203 Sørup, et al., 2017). Most importantly, all studies except for one clinical trial do not sufficiently  
204 account for potential confounding and can thus only estimate associations but not establish  
205 causal relationships (Giamarellos-Bourboulis et al., 2020).

206 For example, Pfahlberg et al. (2002) study the relationship between BCG vaccination  
207 and malignant melanoma among 1,230 individuals from eleven health centers in seven  
208 European countries between 1994 and 1997. Using a case-control design, the authors compare  
209 those that did and did not receive the BCG vaccine and conclude that the BCG vaccine might  
210 reduce the risk of malignant melanoma. In contrast, Rieckmann et al. (2019) link data on 5,090  
211 adults from the Copenhagen School Health Records to the Danish Cancer Registry and find no  
212 association between BCG vaccination and malignant melanoma. Focusing on lymphoma and  
213 leukaemia, Villumsen et al. (2009) also use data from the Copenhagen School Health Records  
214 and find that individuals who had received the BCG vaccine had half the risk of developing  
215 lymphoma compared to those who had not. However, there was no difference in the risk of  
216 developing leukaemia.

217 Two observational studies analyse the association between BCG vaccination and adult  
218 survival. Kölmel et al. (2005) analysed the association of the vaccinia and BCG vaccines with  
219 survival among individuals with malignant melanoma in six European countries and Israel. The  
220 authors compared participants with the vaccine to those without and found no evidence of an  
221 association between the BCG vaccine and survival among individuals with malignant  
222 melanoma. The only study analysing the relationship between the BCG vaccination and long-  
223 term survival used the Copenhagen School Health Records Register used as part of the prior  
224 mentioned papers. Rieckmann et al. (2017) linked these data to the Civil Registration System  
225 and the Danish Register of Causes of Death databases, focusing on death by natural causes  
226 (excluding tuberculosis or smallpox). Comparing those that did receive the BCG vaccine to  
227 those that did not, they found that vaccinated individuals had approximately half the risk of  
228 dying from natural causes than unvaccinated individuals.

229 While some of these studies suggest that the BCG vaccine has non-specific effects on  
230 morbidity and mortality, none of the study designs can establish a causal relationship<sup>2</sup> because  
231 they do not sufficiently account for confounding due to factors such as the healthy vaccinee  
232 bias (Schaltz-Buchholzer, Kjær Sørensen, et al., 2021). The healthy vaccinee bias occurs if  
233 healthy children, and thus children with a higher overall probability of survival, are more likely  
234 to receive the vaccine than unhealthy children. The decision to not administer the vaccine can  
235 be based on concerns around side effects or because these parents have a lower health service  
236 uptake in general. Comparing vaccinated to unvaccinated individuals without considering  
237 systematic differences in characteristics that are correlated with the decision to vaccinate can  
238 result in an over- or underestimation of the vaccine's true non-specific effects. We address this  
239 knowledge gap by applying quasi-experimental methods that take advantage of the sudden

---

<sup>2</sup> Giamarellos-Bourboulis et al. (2020) conducted a clinical trial with 202 participants aged 65 years and older who either received the BCG vaccine or a placebo at hospital discharge. The trial showed that the short-term risk of infection was reduced among the treatment group. However, these results cannot be generalized to a broader population nor long-term survival.

240 discontinuation of compulsory vaccination to estimate the causal effect of BCG vaccination on  
241 survival into adulthood.

242

## 243 **Data and methods**

### 244 **Data**

245 We screened all available information on the BCG Atlas to identify countries that would be  
246 eligible for inclusion in our study (Zwerling et al., 2011). First, we identified all countries  
247 which had a change in vaccination policy, moving from compulsory to optional vaccination as  
248 potential natural experiments. Next, we screened the documentation provided on each of these  
249 countries in the Human Mortality Database (HMD) as of January 19, 2022 to identify which  
250 of these countries have available data for all years in our study period (University of California,  
251 Berkeley, and Max Planck Institute for Demographic Research). We identified six potential  
252 countries with a change in vaccination policy that also had data available in the HMD (Austria,  
253 Denmark, Finland, France, Great Britain, Norway, Sweden). We chose Sweden as most  
254 suitable for the following reasons: (1) there was a sharp discontinuation of compulsory  
255 vaccinations in 1975 and BCG vaccine coverage dropped from 95% before 1975 to 2% in the  
256 years following the discontinuation (Romanus, 2006); and (2) Sweden was the first country to  
257 abolish a nationwide policy and discontinue the BCG vaccine. Thus, Sweden allows for the  
258 maximum observation period in terms of survival into adulthood.

259 One of our study designs, the multi-period DiD, additionally requires selecting a control  
260 country that followed a similar survival trajectory prior to the discontinuation of BCG  
261 vaccination in Sweden but that did not discontinue vaccines at the same or similar time as  
262 Sweden. Based on this criterion, we selected Norway as the most suitable counterfactual

263 country for the DiD analyses.<sup>3</sup> For both Sweden and Norway, we accessed data on the number  
264 of births and age-specific death rates for each birth cohort born from 1846 to 1988 from the  
265 Human Mortality Database. To minimize confounding from the aftermath of World War II, we  
266 only included birth cohorts born in 1950 or later. Thus, our observation period covers cohorts  
267 born from 1950 to 1988, which allows us to study the impact of BCG vaccination on the cohort  
268 probability of survival to age 30 (for those born in the final 1988 birth cohort, we have data on  
269 their survival up to the year 2018, when cohort members turned 30).

270         Unfortunately, we were not able to use Swedish register data, which is commonly used  
271 in demographic analyses of the Swedish population, (Barclay & Kolk, 2018; Bucher-Koenen,  
272 Farbmacher, Guber, & Vikström, 2020; Cook, Fletcher, & Forgues, 2019; Helgertz  
273 & Bengtsson, 2019; Lazuka, 2019; Oudin Åström, Edvinsson, Hondula, Rocklöv, &  
274 Schumann, 2016) for the following two reasons: (1) our analysis requires survival data for  
275 cohorts born several years before the BCG discontinuation in 1975, but the Demographic Data  
276 Base only includes data from 1973 and later. (2) It is not currently possible to link the  
277 Demographic Data Base to BCG vaccination data.

278

## 279 **Data preparation**

280 Our outcome of interest is the probability of survival to age 30 in each birth cohort by country.  
281 Constructing this outcome requires information on the number of individuals that survived to  
282 age 30 in each cohort. The HMD data include cohort age-specific death rates but not the total  
283 number of deaths that occurred in a birth cohort by age. We, therefore, had to convert the age-

---

<sup>3</sup> If there were multiple potential counterfactual countries, we could have combined them using a synthetic control approach. This was our initial intention after identifying seven potential control countries: Austria, Finland, France, Great Britain, Japan, Norway, and Portugal. Based on initial synthetic control analyses, we proceeded with the multi-period DiD rather than the synthetic control approach as no country other than Norway had a pre-trend that resembled Sweden, and as such the synthetic control approach gave nearly 100% of the weight to Norway.

284 specific death rates to death counts. We did this through the following procedure. First, we  
285 converted the cohort age-specific mortality rates to the age-specific probabilities of survival  
286 using the standard life-table approach (Preston, Heuveline, & Guillot, 2001). Second, we  
287 generated a dataset with the number of observations equal to the number of births in a cohort.  
288 We then generated a variable for “alive at age 30” and used the cohort life table probability of  
289 survival from birth to age 30 to determine what share of this initial birth cohort survived to age  
290 30, and correspondingly assigned values to the “alive at age 30” variable. For example, if  
291 among the 115,414 births for the 1950 birth cohort, the cohort-life table probability of survival  
292 to age 30 was 90%, we would assign values of 1 for “alive at age 30” to  $(0.9 \times 111,414 = )$   
293 100,273 observations. This procedure was repeated for each birth cohort, resulting in a final  
294 dataset of 4,152,211 observations, which equals the total number of births in Sweden from  
295 1950 to 1988. We repeated this approach to generate individual-level datasets for Norway as  
296 well as separately for males and females in each country.

297

## 298 **Identification strategies**

299 We used two complementary quasi-experimental designs to assess the effect of the sharp BCG  
300 discontinuation in Sweden on cohort survival to age 30: the regression discontinuity design  
301 (RDD) and the multi-period difference in differences (DiD) approach. The RDD estimates the  
302 causal effect of an intervention or policy in situations where exposure to the intervention/policy  
303 is based on whether individuals fall on one side or another of some type of cut-off. This cut-  
304 off point is usually referred to as the “threshold” and the continuous variable on which the cut  
305 off is based is known as the “running variable.” For example, individuals may be eligible for  
306 free health care (the policy) based on whether their income (the running variable) is below the  
307 poverty line (the threshold). In such circumstances, the RDD design estimates the causal effect  
308 of the policy under the assumption that in the absence of the treatment, the relationship between

309 the running variable and an outcome would have evolved continuously. Heuristically, this can  
310 be expressed that those just below the threshold are, on average, identical in all characteristics  
311 to those just above the threshold. The only difference being that those above the threshold  
312 receive the treatment (in our study, this would be not receiving BCG vaccination). Importantly,  
313 the RDD estimates the local average treatment effect (LATE) at the threshold value.

314 For our analysis, we followed the continuity-based RDD approach described by  
315 Cattaneo et al. (2019). The first assumption of an RDD is that the probability of being treated  
316 changes discontinuously at the specified threshold. In our analysis, the running variable is year  
317 of birth and the threshold is 1976, the birth year of the first cohort for which the BCG vaccine  
318 was not mandatory anymore. There are no yearly data on BCG coverage for the years around  
319 the threshold. However, Romanus et al. (2006) report that BCG vaccine coverage dropped from  
320 95% to 2% in the five years following the discontinuation, which shows that the probability of  
321 receiving the BCG vaccine decreased sharply at the threshold. A second assumption is that the  
322 outcome would be continuous at the threshold in the absence of the treatment. In other words,  
323 there was no substantial change in the probability of survival to age 30 induced by an event  
324 other than the BCG vaccination discontinuation. To our knowledge, there have been no major  
325 shifts in policies nor national-level events, such as natural disasters, which could have affected  
326 the probability of survival of the cohorts born just before the discontinuation differently to  
327 those born just after. Finally, for the RDD approach to be valid, individuals should not  
328 systematically sort around the threshold with the aim to obtain or avoid the treatment. We  
329 assess this risk to be negligible in the context of our study as we consider it unlikely that parents  
330 accurately anticipated and based their family planning on the future BCG policy change. This  
331 is supported by the data, which shows no clustering of births neither above nor below the  
332 threshold (Figure S 1).

333 We followed the current best practice for RDD estimation (Cattaneo et al., 2019). This  
334 includes using a local linear model (to prevent overfitting the data), including triangular Kernel  
335 weights (to give more weight to observations closer to the threshold), and a data-driven  
336 approach for identifying the bandwidth around the threshold (to remove arbitrary bandwidth  
337 selection and potential manipulation of the bandwidth size by researchers) (Imbens &  
338 Kalyanaraman, 2012). For inference, we used robust bias-corrected standard errors and  
339 confidence intervals (Cattaneo et al., 2019). Our estimation model is:

$$340 \quad Y_i = \beta_0 + \beta_1 X_i + \beta_2 D_i + \beta_3 X_i D_i + \varepsilon_i$$

341 Here  $Y_i$  is the probability of survival to age 30 for new born  $i$ ,  $X_i$  is a continuous measure of  
342 year of birth (the running variable), and  $D_i$  is a binary indicator that takes the value 1 if a birth  
343 cohort was born after the discontinuation of mandatory BCG vaccination (Cunningham, 2021).  
344  $\beta_3$  is the causal effect of the discontinuation of the BCG vaccine on survival to age 30 for the  
345 cohort born in the threshold year, i.e. 1976.

346 While the RDD estimates the effect of the BCG discontinuation for the cohort born in  
347 the threshold year, it could be the case that the effect only emerges after several birth cohorts  
348 (for example if it took a few birth cohorts to fully discontinue the vaccine). Although it is  
349 unlikely, it could also be the case that another shock unrelated to BCG discontinuation occurred  
350 over the same period of the discontinuation. To investigate the effect of BCG vaccination in  
351 the case of these two scenarios, we conducted a multi-period DiD model (sometimes also  
352 referred to as leads and lags model) with Norway as the comparison country.

353 The multi-period DiD estimates the effect of the vaccine discontinuation by comparing  
354 the probability of survival in Sweden and Norway in each birth cohort accounting for temporal  
355 trends, i.e. the general positive trend in the probability of survival, as well as the baseline  
356 difference between the two countries. The central identifying assumption of the multi-period  
357 DiD is that in the absence of BCG discontinuation, the cohort probability of survival to age 30

358 in Sweden would follow the same trend as the cohort probability of survival to age 30 in  
359 Norway (the so-called parallel trends assumption). This assumption is commonly assessed by  
360 comparing the trends in the outcome variable in the pre-treatment period. While we formally  
361 assess this assumption later, the visual evidence presented in Figure 1 shows that among several  
362 potential comparison countries, the cohort mortality trends in Norway most closely mirrored  
363 those in Sweden. By estimating the effect of BCG discontinuation on survival for multiple birth  
364 cohorts born after the discontinuation – and not just the 1976 birth cohort as in the RDD - this  
365 approach reveals whether the effect wanes or intensifies over time or whether there is a lag in  
366 the effect and only cohorts born some years after the discontinuation are affected.

367 The multi-period DiD regression model is set up as follows:

$$368 \quad Y_{ct} = \beta_0 + \beta_1\mu_c + \beta_2\lambda_t + \beta_3\mu_c\lambda_t + \varepsilon_{ct}$$

369 with  $c$  indexing countries and  $t$  indexing years (Cunningham, 2021).  $\mu_c$  is a country fixed effect  
370 which accounts for the baseline difference in the probability of survival between the treatment  
371 (Sweden) and control (Norway) countries.  $\lambda_t$  is a vector of year fixed effects which account for  
372 the time trend common to both countries (1975, the year of the BCG vaccine discontinuation,  
373 is the reference year).  $\mu_t \lambda_t$  is a vector of the interaction between the country and year dummies  
374 and can be interpreted as the treatment effect for each of the birth cohorts. Importantly, the  
375 coefficients on the country-year interaction terms for cohorts born before 1975 provides a test  
376 of the parallel trends assumption (these coefficients should be close to 0). Lastly, rather than  
377 estimate treatment effects for each birth cohort born after the BCG discontinuation, we can also  
378 estimate a common treatment effect for all birth cohorts by interacting the country dummy with  
379 a post dummy (=1 for all cohorts born in or after the year of discontinuation) and including  
380 year fixed effects as individual dummy variables (Angrist & Pischke, 2008):

$$381 \quad Y_c = \beta_0 + \beta_1\mu_c + \beta_2\lambda_t + \beta_3\mu_c * Post + \beta_4Post + \varepsilon_{ct}$$

382



## 383 **Results**

384 The final data include one observation per person born from 1950 to 1988. For Sweden, this  
385 includes 4,152,211 people in total (2,137,830 men and 2,014,381 women), ranging from 91,780  
386 in the cohort born in 1983 to 123,354 in 1966. In Norway, 2,326,387 people were born in this  
387 period (1,196,500 men and 1,129,887 women), ranging from 49,937 in 1983 to 67,746 in 1969.  
388 Figure 2 shows the probability of survival to age 30 in Sweden for birth cohorts born between  
389 1950 to 1988. Survival to age 30 increased from 95.9% in the 1950 birth cohort to 98.6% in  
390 the 1988 birth cohort. Across all years, the probability of survival was higher among women  
391 than men. For example, in 1975 the probability of survival to age 30 was 98.6% among women  
392 and 97.7% among men. Despite this difference in the absolute level, survival in the female and  
393 male subpopulations followed a similar trend. Visually, we observe no evidence of an abrupt  
394 change in the probability of survival in the whole population when comparing the cohort born  
395 in the year of the BCG vaccine discontinuation (98.2% in 1975) and the first cohort for whom  
396 the vaccine was optional (98.2% in 1976). This smooth trend around 1975 is also present when  
397 separately looking at the male and female subpopulations.

398

## 399 **Regression Discontinuity results**

400 The RDD analysis confirms the results of the visual inspection: we do not find evidence of an  
401 effect of the BCG vaccination discontinuation on long-term survival in the birth cohort born in  
402 1976. We estimate a precise null effect (0.00 percentage points (pp) (95% CI -0.20 – 0.17)) on  
403 the probability of survival to age 30 at the point of BCG vaccination discontinuation (Table 1,  
404 Figure 3). As with the visual results, this finding was not driven by just males or females. We  
405 also find no evidence that BCG vaccine discontinuation affected the probability of survival to  
406 age 30 for among the male (0.05pp (-0.17 - 0.25)) or female (0.11pp (-0.46 – 0.15))  
407 subpopulations (Table 1, Figures S 2 and S 3).

408

### 409 **Multi-period difference in differences results**

410 While the RDD estimates potential non-specific effects for the cohort born in the year of the  
411 vaccine discontinuation, the DiD allows us to generate estimates for each birth cohort and, thus,  
412 yields the opportunity to detect lagged effects. The event-study plot in Figure 4 shows the  
413 difference in survival between birth cohorts born in Norway and Sweden for each cohort born  
414 before and after the BCG discontinuation. The coefficients are shown net of an overall level  
415 difference in survival between the two countries and a time trend. In support of the parallel  
416 trends assumption, we find that most point estimates in the pre-discontinuation period are not  
417 statistically different from zero (exact values are shown in Table S 1). This suggests that prior  
418 to the discontinuation of BCG vaccination in Sweden, both countries were following a parallel  
419 trend in cohort survival to age 30. The coefficients after the vertical line in 1975 capture any  
420 effect of BCG discontinuation on survival in Sweden. Similar to our RDD results, we find no  
421 evidence of differences in cohort survival to age 30 in the post-BCG-discontinuation period  
422 between individuals born in Sweden and Norway across most birth cohorts. For Swedish  
423 cohorts born after 1983, we see some evidence of lower survival to age 30; however, these  
424 differences are for cohorts born nearly 10 years after the discontinuation of BCG. For this  
425 reason, we consider it more likely that the negative point estimates for younger birth cohorts  
426 were caused by other changes at the population level that differed between Norway and Sweden  
427 at that time rather than being caused by the discontinuation of the BCG vaccine.

428 By splitting the results by birth cohort, the event-study results may result in  
429 underpowered estimates of the effect of BCG discontinuation. When pooling all data from the  
430 pre- and post-discontinuation periods, respectively, we find evidence of a very small negative  
431 effect of the BCG vaccine on the probability of survival to age 30 by -0.06pp (-0.11 – 0.00)  
432 (Table 2). While these results are statistically precise due to our large sample size (over six

433 million observations), the effects we estimate are extremely small in magnitude at less than a  
434 10th of a percentage point and thus of minimal policy significance. Further, based on the event-  
435 study plot, this minimal effect is likely driven by the lower survival among the 1983+ birth  
436 cohorts.

437 We find a similar set of conclusions when examining males and females separately.  
438 Among both the male and female population, there was no difference in the probability of  
439 survival for the cohorts born before the BCG vaccine discontinuation, indicating support for  
440 the parallel trend assumption. In the female subpopulation, there was also no difference in the  
441 probability of survival between Sweden and Norway after the vaccine discontinuation (net of  
442 the time and level trends). This visual finding is confirmed in the pooled analysis (0.00pp (-  
443 0.07 - 0.07)). In the male subpopulation, the results also suggest that there were no non-specific  
444 effects of the BCG vaccine on survival. However, as observed in the total population, cohorts  
445 born after 1983 in Sweden had a lower probability of survival in Sweden than in Norway.  
446 Furthermore, pooling all pre- and post-discontinuation birth cohorts reveals that the probability  
447 of survival decreased by 0.11pp (-0.19 – -0.02) among men.

448 It is likely that this result is driven by the youngest birth cohorts, which represent  
449 approximately one third of the post-discontinuation birth cohorts, but were born nearly 10 years  
450 after the vaccine discontinuation and thus the validity of the DiD assumption that any  
451 difference was due to the discontinuation alone for this group is questionable. To test this, we  
452 restricted our sample to the cohorts born within the MSE optimal bandwidth calculated in the  
453 RDD analysis, which was +/- six years in the male sample (Table 2). The results show that for  
454 the birth cohorts born within the MSE optimal bandwidth, there was no difference in the  
455 probability of survival between the total, male, and female populations in Sweden and Norway  
456 (Table 2).

457

## 458 **Sensitivity analyses**

459 We conducted several sensitivity analyses to test the robustness of our results. First, it could be  
460 the case that the rate of change of survival across cohorts depends on the absolute level of  
461 survival, and that this functional form affects our estimates. To investigate this, we plotted the  
462 log probability of survival and found that flattening of the cohort survival trends was not driven  
463 by the fact that the probability of survival approached 100% (Figure S 6). Second, the RDD  
464 estimates whether there was a sudden change in the level of the probability of survival after the  
465 BCG vaccine discontinuation. It could, however, also be the case that the discontinuation  
466 slowed down the rate of change in the increase of the probability of survival to age 30. To  
467 investigate this, we applied a Regression Kink Design (RKD). The RKD relies on the same  
468 assumptions as the RDD but is applied when there is not a discontinuity in the probability of  
469 being treated but in its first derivative, i.e. in the slope of the relationship between the treatment  
470 and the assignment variable. In the context of our analysis, this would be the case if the  
471 probability of receiving the vaccine was still high in 1975, the year of the discontinuation, and  
472 only gradually decreased in the following years. Another potential scenario could be that the  
473 probability of being vaccinated already declined before the official discontinuation. Rather than  
474 causing a shift in the probability of survival, the gradual discontinuation would cause a change  
475 in its slope. In the RKD analysis we also found no evidence of an effect of the BCG vaccine  
476 discontinuation on the rate of change in the probability of survival in the total and female  
477 populations (Table 3). Among men, we found evidence of a slight decrease in the rate of change  
478 (-0.10 (-0.24 – 0.00)) of mortality. However, although statistically precise, the magnitude of  
479 this decrease is extremely small and thus of limited policy significance. Third, to address this  
480 same issue and the fact that more individuals born in 1975 were born after the  
481 discontinuation,(Romanus, 1983) we set the cut-off to be one year earlier (1975 in the RDD  
482 and 1974 in the multi-period DiD), which produced consistent results with those of the main

483 analysis (Tables S 2 to S 4, Figures S 7 to S 9). Fourth, in the RDD analysis, the point estimate  
484 and inference might depend on the bandwidth within which the LATE is estimated. Increasing  
485 the bandwidth will reduce variance as more observations are included in the analysis. However,  
486 it increases the bias because these observations are less similar to each other than those closer  
487 to the cut-off. Decreasing the bandwidth would have the opposite effect and increase variance  
488 while reducing the bias. It was not possible to decrease the bandwidth due to the limited number  
489 of mass points in our analysis but increasing the bandwidth by one, two, and three years, did  
490 not change the results and all point estimates remained statistically insignificant (Table S 5).

491

## 492 **Discussion**

493 There is continued interest in the non-specific effect of the BCG vaccine and whether  
494 populations should be vaccinated even if there is a low burden of TB (Goodridge et al., 2016).  
495 If the BCG vaccine had non-specific effects and increased adult survival among the general  
496 population, it could be a simple and cost-effective intervention to improve population health.  
497 Mechanistically, such an effect seems plausible since the BCG vaccine is thought to improve  
498 general childhood immunity (Cirovic et al., 2020). Other studies focused on other early life  
499 conditions also find evidence of life course consequences to changes in early life immunity and  
500 health (Almond, Currie, & Duque, 2018; Almond & Mazumder, 2005). Using population data  
501 and two complementary quasi-experimental methods that take advantage of the sudden  
502 discontinuation of the mandatory BCG vaccination in Sweden, we find no evidence for non-  
503 specific effects of the BCG vaccine on the probability of survival to age 30. In other words, up  
504 to this age and at the population level, the BCG vaccine does not appear to have substantial  
505 protective effects on mortality from diseases other than TB. This result is robust to multiple  
506 sensitivity and robustness checks and remains valid when estimating the effect separately for  
507 the male and female subpopulations.

508 Our results are in stark contrast to a previous study from Copenhagen, Denmark, which  
509 found that BCG vaccination was associated with an approximately 50% lower probability of  
510 survival (Rieckmann, Villumsen, Sørup, et al., 2017). The differences between our studies are  
511 likely due to residual confounding. In particular, the authors compare children that did and did  
512 not receive the vaccination during a period in Denmark when BCG vaccination became  
513 voluntary. Thus, parents self-selected their children into vaccination, and it is likely that the  
514 decision to vaccinate is related to characteristics that also influence the probability of survival.  
515 Such factors could include parental knowledge about the health of their child (as mentioned  
516 previously, BCG vaccination can have strong side-effects for less healthy children) and the  
517 background and socioeconomic status of parents who decide to vaccinate their children  
518 compared to those that do not. The authors undertook several steps to adjust for such potential  
519 sources of confounding; however, there is still a likelihood that the results were driven by  
520 unobserved systematic differences between the vaccinated and unvaccinated that affect both  
521 the vaccination status and survival since vaccination status was related to a direct parental  
522 choice and not a mandatory law as in our study.

523 The potential for non-specific effects among some sub-populations raises the question  
524 of whether vaccinating an entire population would provide a cost-effective way of realizing all  
525 potential non-specific effects without having to target specific population groups. However,  
526 such an approach would come with trade-offs. First, the intensity of the non-specific effects  
527 will depend on when the vaccine is administered. For example, Giaramellos-Bourboulis et al.  
528 (2020) suggest that the BCG vaccine, if given just before hospital discharge, increases time to  
529 first infection among the elderly. This non-specific effect may not have materialized if the  
530 vaccine had been given during childhood because adaptations in the innate immune system are  
531 only transitory. Thus, to reap all non-specific benefits, the population would have to be  
532 revaccinated in regular intervals. Second, the BCG vaccine is cost-effective against TB under

533 standard thresholds. However, given the lack of a detectable population-level non-specific  
534 effect, it is unlikely to be cost-effective when the objective is to improve population survival  
535 in a setting like Sweden. Third, the BCG vaccine can have non-negligible side effects. While  
536 the most common side effects are mild and temporary (fever, headache, or soreness on the  
537 location where the vaccine was given), less common and more severe side effects are abscesses,  
538 bone inflammation, or disseminated TB (Raviglione Mario C., 2018). The latter is a particular  
539 risk for those who are immunocompromised. Taken together, while BCG vaccination may  
540 protect sub-populations, a broad population policy of continued vaccination is unlikely to meet  
541 conventional cost-effectiveness thresholds and comes with the risk of potentially serious side  
542 effects among individuals with a low expected benefit.

543         One important consideration is that our results are for Sweden, a country with a near  
544 negligible burden of TB and where infectious disease mortality, excluding deaths from Covid-  
545 19, is extremely low (The National Board of Health and Welfare, Sweden [Socialstyrelsen],  
546 2019). The lack of a strong relationship between early childhood BCG vaccination and adult  
547 mortality in this context is not necessarily evidence that changes to early life immunity do not  
548 affect adult mortality risk, but rather that such life-course effects may become less important  
549 as the general level of infectious mortality in a population decreases. BCG vaccination may  
550 have beneficial non-specific effects for individuals at elevated risk of mortality from infectious  
551 diseases, such as those in many low- and middle-income countries or for specific at-risk groups  
552 within low-TB countries. Evaluating the non-specific effects of BCG vaccination among such  
553 populations is an important area of future work.

554         A second important consideration with RDD analyses is that the effect estimate of a  
555 treatment or policy applies only to those within the bandwidth around the threshold point. In  
556 our case, the RDD estimates the effect of BCG discontinuation on the first birth cohort to not  
557 receive the vaccine. If the BCG vaccine protected against infectious diseases, in particular

558 during childhood as suggested by previous studies, there might be a time lag between the  
559 discontinuation of the vaccine and the realization of the non-specific effects as younger cohorts  
560 become exposed to larger shares of unvaccinated individuals (Biering-Sørensen et al., 2018;  
561 Giamarellos-Bourboulis et al., 2020). In this case, cohorts born after infectious diseases have  
562 crossed a critical prevalence threshold would be affected by the BCG discontinuation whereas  
563 those born during or just after the discontinuation would not. Another reason for lagged effects  
564 would be a gradual decrease in the BCG coverage over several birth cohorts rather than an  
565 abrupt change. However, both these scenarios would be captured in our multi-period DiD  
566 analysis. Therefore, the null results in both the RDD and the multi-period DiD suggest that  
567 there were no immediate nor lagged non-specific effects of the BCG vaccine.

568 Our study has several limitations and considerations. If an exogenous factor, which we  
569 did not account for in the analysis, caused a decline (increase) in the probability of survival at  
570 the same time as the discontinuation of BCG vaccination, it could have offset potential  
571 beneficial (harmful) non-specific effects of the BCG vaccine. To rule this out, we undertook  
572 several steps. First, in our sensitivity analysis, we varied the cut-off year. The conclusions of  
573 both quasi-experimental method analyses remain unaffected by this change. Second, we  
574 conducted an extensive search to identify potential large-scale changes in the health, economic,  
575 and political sectors in Sweden and Norway. We found no evidence of any changes in the living  
576 situation in both countries, which could have differentially affected survival at the population  
577 level in either of the countries. Another aspect to consider is that the vaccinia vaccine was  
578 discontinued in Sweden in 1976, i.e. shortly after the BCG vaccine (The Public Health Agency  
579 of Sweden, 2020). However, given the fact that the vaccinia vaccine was discontinued around  
580 the same time in Norway and we also find no statistically significant effect in the multi-period  
581 DiD analysis, we do not expect the vaccinia discontinuation to have biased our results  
582 (Norwegian Institute of Public Health, 2010). Because of data constraints, we only estimated



583 the effect of the BCG discontinuation on survival to age 30. Including older ages, in particular  
584 the elderly where infectious diseases are more detrimental, might yield additional insights. For  
585 the same data limitations, our analysis does not assess whether the BCG vaccine protects  
586 against COVID-19 because cohort death rates are only available up to 2018.

587 Our study finds that the BCG vaccination did not have non-specific effects on long-  
588 term survival in Sweden. Thus, our research suggests that re-introducing or continuing national  
589 mandatory BCG vaccination in countries with similar population mortality and morbidity  
590 profiles as Sweden is unlikely to lead to substantial or cost-effective improvements in  
591 population health.

592

593 **References**

- 594 Abubakar, I., Pimpin, L., Ariti, C., Beynon, R., Mangtani, P., Sterne, J. A. C. [J. A. C.], . . .  
595 Rodrigues, L. C. (2013). Systematic review and meta-analysis of the current evidence on the  
596 duration of protection by bacillus Calmette-Guérin vaccination against tuberculosis. *Health*  
597 *Technology Assessment (Winchester, England)*, 17(37), 1-372, v-vi.  
598 <https://doi.org/10.3310/hta17370>
- 599 Almond, D., Currie, J., & Duque, V. (2018). Childhood Circumstances and Adult Outcomes: Act II.  
600 *Journal of Economic Literature*, 56(4), 1360–1446. <https://doi.org/10.3386/w23017>
- 601 Almond, D., & Mazumder, B. (2005). The 1918 Influenza Pandemic and Subsequent Health Outcomes:  
602 An Analysis of SIPP Data. *The American Economic Review*, 95(2), 258–262.
- 603 Angrist, J. D., & Pischke, J.-S. (2008). *Mostly Harmless Econometrics: An Empiricist's Companion*.  
604 Princeton University Press.
- 605 Barberis, I., Bragazzi, N. L., Galluzzo, L., & Martini, M. (2017). The history of tuberculosis: from the  
606 first historical records to the isolation of Koch's bacillus. *J Prev Med Hyg*, 58(1), E9-E12.
- 607 Barclay, K. J., & Kolk, M. (2018). Birth Intervals and Health in Adulthood: A Comparison of Siblings  
608 Using Swedish Register Data. *Demography*, 55(3), 929–955. [https://doi.org/10.1007/s13524-018-](https://doi.org/10.1007/s13524-018-0673-8)  
609 [0673-8](https://doi.org/10.1007/s13524-018-0673-8)
- 610 Bergström, M., Mäkinen, M., & Romanus, V. [Victoria] (2001). *Vaccinationsstatistik från BVC:*  
611 *Rapporter insända januari 2000 och januari 2001 gällande barn födda 1997 och 1998*.
- 612 Biering-Sørensen, S., Jensen, K. J., Monterio, I., Ravn, H., Aaby, P., & Benn, C. S. [Christine Stabell]  
613 (2018). Rapid Protective Effects of Early BCG on Neonatal Mortality Among Low Birth Weight  
614 Boys: Observations From Randomized Trials. *The Journal of Infectious Diseases*, 217(5), 759–766.  
615 <https://doi.org/10.1093/infdis/jix612>
- 616 Bonanni, P. (1999). Demographic impact of vaccination: a review. *Vaccine*, 17, S120-S125.  
617 [https://doi.org/10.1016/S0264-410X\(99\)00306-0](https://doi.org/10.1016/S0264-410X(99)00306-0)
- 618 Böttiger, M., Romanus, V. [V.], Verdier, C. de, & Boman, G. (1982). Osteitis and other complications  
619 caused by generalized BCG-itis. Experiences in Sweden. *Acta Pædiatrica*, 71(3), 471–478.

- 620 Breiman, R. F., Streatfield, P. K., Phelan, M., Shifa, N., Rashid, M., & Yunus, M. (2004). Effect of  
621 infant immunisation on childhood mortality in rural Bangladesh: analysis of health and demographic  
622 surveillance data. *The Lancet*, 364(9452), 2204–2211. [https://doi.org/10.1016/S0140-](https://doi.org/10.1016/S0140-6736(04)17593-4)  
623 [6736\(04\)17593-4](https://doi.org/10.1016/S0140-6736(04)17593-4)
- 624 Bucher-Koenen, T., Farbmacher, H., Guber, R., & Vikström, J. (2020). Double Trouble: The Burden  
625 of Child-rearing and Working on Maternal Mortality. *Demography*, 57(2), 559–576.  
626 <https://doi.org/10.1007/s13524-020-00868-6>
- 627 Case, A., & Paxson, C. (2010). Causes and Consequences of Early Life Health. *Demography*, 47(1).  
628 <https://doi.org/10.3386/w15637>
- 629 Castro, M. J. de, Pardo-Seco, J., & Martín-Torres, F. (2015). Nonspecific (Heterologous) Protection  
630 of Neonatal BCG Vaccination Against Hospitalization Due to Respiratory Infection and Sepsis.  
631 *Clinical Infectious Diseases*, 60(11), 1611–1619. <https://doi.org/10.1093/cid/civ144>
- 632 Cattaneo, M. D., Idrobo, N., & Titiunik, R. (2019). *A practical introduction to regression discontinuity*  
633 *designs: Foundations*. Cambridge University Press.
- 634 Central Bureau of Statistics Norway (1961). *Trend of mortality and causes of death in Norway 1856–*  
635 *1955*. Oslo.
- 636 Chisholm, R. H., Trauer, J. M., Curnoe, D., & Tanaka, M. M. (2016). Controlled fire use in early  
637 humans might have triggered the evolutionary emergence of tuberculosis. *Proceedings of the*  
638 *National Academy of Sciences*, 113(32), 9051–9056.
- 639 Cirovic, B., Bree, L. C. J. de, Groh, L., Blok, B. A., Chan, J., van der Velden, W. J. F. M., . . .  
640 Schlitzer, A. (2020). Bcg Vaccination in Humans Elicits Trained Immunity via the Hematopoietic  
641 Progenitor Compartment. *Cell Host & Microbe*, 28(2), 322-334.e5.  
642 <https://doi.org/10.1016/j.chom.2020.05.014>
- 643 Committee on Government Operations, United States Congress Senate. *The status of world health in*  
644 *outline text and chart*.
- 645 Cook, C. J., Fletcher, J. M., & Forgues, A. (2019). Multigenerational Effects of Early-Life Health  
646 Shocks. *Demography*, 56(5), 1855–1874. <https://doi.org/10.1007/s13524-019-00804-3>

- 647 Cunningham, S. (2021). *Causal Inference*. Yale University Press.
- 648 Cutler, D., & Miller, G. (2005). The role of public health improvements in health advances: The  
649 twentieth-century United States. *Demography*, 42(1), 1–22. <https://doi.org/10.1353/dem.2005.0002>
- 650 Daniel, T. M. (2006). The history of tuberculosis. *Respiratory Medicine*, 100(11), 1862–1870.  
651 <https://doi.org/10.1016/j.rmed.2006.08.006>
- 652 Dara, M., Acosta, C. D., Rusovich, V., Zellweger, J. P., Centis, R., & Migliori, G. B. (2014). Bacille  
653 Calmette-Guérin vaccination: The current situation in Europe. *The European Respiratory Journal*,  
654 43(1), 24–35. <https://doi.org/10.1183/09031936.00113413>
- 655 Dockrell, H. M., & Smith, S. G. (2017). What Have We Learnt about BCG Vaccination in the Last 20  
656 Years? *Frontiers in Immunology*, 8. <https://doi.org/10.3389/fimmu.2017.01134>
- 657 Drummond, M., Chevat, C., & Lothgren, M. (2007). Do we fully understand the economic value of  
658 vaccines? *Vaccine*, 25(32), 5945–5957. <https://doi.org/10.1016/j.vaccine.2007.04.070>
- 659 Elguero, E. [Eric], Simondon, K. B., Vaugelade, J. [Jacques], Marra, A., & Simondon, F. [François]  
660 (2005). Non-specific effects of vaccination on child survival? A prospective study in Senegal.  
661 *Tropical Medicine & International Health*, 10(10), 956–960. [https://doi.org/10.1111/j.1365-  
662 3156.2005.01479.x](https://doi.org/10.1111/j.1365-3156.2005.01479.x)
- 663 Elo, I. T., & Preston, S. H. (1992). Effects of Early-Life Conditions on Adult Mortality: A Review.  
664 *Population Index*, 58(2), 186–212.
- 665 Garly, M.-L., Martins, C. L., Balé, C., Baldé, M. A., Hedegaard, K. L., Gustafson, P., . . . Aaby, P.  
666 (2003). BCG scar and positive tuberculin reaction associated with reduced child mortality in West  
667 Africa. *Vaccine*, 21(21-22), 2782–2790. [https://doi.org/10.1016/S0264-410X\(03\)00181-6](https://doi.org/10.1016/S0264-410X(03)00181-6)
- 668 Giamarellos-Bourboulis, E. J., Tsilika, M., Moorlag, S., Antonakos, N., Kotsaki, A., Domínguez-  
669 Andrés, J., . . . Netea, M. G. (2020). Activate: Randomized Clinical Trial of BCG Vaccination  
670 against Infection in the Elderly. *Cell*, 183(2), 315-323.e9. <https://doi.org/10.1016/j.cell.2020.08.051>

- 671 Goodridge, H. S., Ahmed, S. S., Curtis, N., Kollmann, T. R., Levy, O., Netea, M. G., . . . Wilson, C. B.  
672 (2016). Harnessing the beneficial heterologous effects of vaccination. *Nature Reviews Immunology*,  
673 16(6), 392–400. <https://doi.org/10.1038/nri.2016.43>
- 674 Helgertz, J., & Bengtsson, T. (2019). The Long-Lasting Influenza: The Impact of Fetal Stress During  
675 the 1918 Influenza Pandemic on Socioeconomic Attainment and Health in Sweden, 1968-2012.  
676 *Demography*, 56(4), 1389–1425. <https://doi.org/10.1007/s13524-019-00799-x>
- 677 Hershkovitz, I., Donoghue, H. D., Minnikin, D. E., May, H., Lee, O. Y.-C., Feldman, M., . . . Bar-  
678 Gal, G. K. (2015). Tuberculosis origin: The Neolithic scenario. *Tuberculosis (Edinburgh, Scotland)*,  
679 95 Suppl 1, S122-6. <https://doi.org/10.1016/j.tube.2015.02.021>
- 680 Higgins, J. P. T., Soares-Weiser, K., López-López, J. A., Kakourou, A., Chaplin, K.,  
681 Christensen, H., . . . Reingold, A. L. (2016). Association of BCG, DTP, and measles containing  
682 vaccines with childhood mortality: Systematic review. *BMJ (Clinical Research Ed.)*, 355, i5170.  
683 <https://doi.org/10.1136/bmj.i5170>
- 684 Imbens, G., & Kalyanaraman, K. (2012). Optimal Bandwidth Choice for the Regression Discontinuity  
685 Estimator. *The Review of Economic Studies*, 79(3), 933–959. <https://doi.org/10.1093/restud/rdr043>
- 686 Karafillakis, E., Hassounah, S., & Atchison, C. (2015). Effectiveness and impact of rotavirus vaccines  
687 in Europe, 2006-2014. *Vaccine*, 33(18), 2097–2107. <https://doi.org/10.1016/j.vaccine.2015.03.016>
- 688 Kölmel, K. F. [K. F.], Grange, J. M. [J. M.], Krone, B. [B.], Mastrangelo, G. [G.], Rossi, C. R.,  
689 Henz, B. M., . . . Pfahlberg, A. [A.] (2005). Prior immunisation of patients with malignant  
690 melanoma with vaccinia or BCG is associated with better survival. An European Organization for  
691 Research and Treatment of Cancer cohort study on 542 patients. *European Journal of Cancer*  
692 (*Oxford, England : 1990*), 41(1), 118–125. <https://doi.org/10.1016/j.ejca.2004.09.023>
- 693 Lamm, D. L., & Morales, A. (2021). A BCG success story: From prevention of tuberculosis to optimal  
694 bladder cancer treatment. *Vaccine*, 39(50), 7308–7318.  
695 <https://doi.org/10.1016/j.vaccine.2021.08.026>

- 696 Lankes, H. A., Fought, A. J., Evens, A. M., Weisenburger, D. D., & Chiu, B. C.-H. (2009).  
697 Vaccination history and risk of non-Hodgkin lymphoma: A population-based, case-control study.  
698 *Cancer Causes & Control : CCC*, 20(5), 517–523. <https://doi.org/10.1007/s10552-008-9259-x>
- 699 Lazuka, V. (2019). Early-Life Assets in Oldest-Old Age: Evidence From Primary Care Reform in Early  
700 Twentieth Century Sweden. *Demography*, 56(2), 679–706.
- 701 Lehmann, D., Vail, J., Firth, M. J., Klerk, N. H. de, & Alpers, M. P. (2005). Benefits of routine  
702 immunizations on childhood survival in Tari, Southern Highlands Province, Papua New Guinea.  
703 *International Journal of Epidemiology*, 34(1), 138–148. <https://doi.org/10.1093/ije/dyh262>
- 704 Lönnroth, K., Jaramillo, E., Williams, B. G., Dye, C., & Raviglione, M. (2009). Drivers of tuberculosis  
705 epidemics: The role of risk factors and social determinants. *Social Science & Medicine*, 68(12),  
706 2240–2246. <https://doi.org/10.1016/j.socscimed.2009.03.041>
- 707 Masters, R. K. (2018). Economic Conditions in Early Life and Circulatory Disease Mortality.  
708 *Population and Development Review*, 44(3), 519–553. <https://doi.org/10.1111/padr.12174>
- 709 Mayr, A. (2004) Taking Advantage of the Positive Side-Effects of Smallpox Vaccination. *Journal of*  
710 *Veterinary Medicine*, B51(5), 199-201
- 711 McEnry, M., & Palloni, A. (2010). Early life exposures and the occurrence and timing of heart disease  
712 among the older adult Puerto Rican population. *Demography*, 47(1), 23–43.
- 713 Mercer, A. J. (1985). Smallpox and Epidemiological-Demographic Change in Europe: The Role of  
714 Vaccination. *Population Studies*, 39(2), 287–307.
- 715 Michiels, B., Govaerts, F., Remmen, R., Vermeire, E., & Coenen, S. (2011). A systematic review of the  
716 evidence on the effectiveness and risks of inactivated influenza vaccines in different target groups.  
717 *Vaccine*, 29(49), 9159–9170. <https://doi.org/10.1016/j.vaccine.2011.08.008>
- 718 Moorlag, S. J., Arts, R. J. W., van Crevel, R., & Netea, M. G. (2019). Non-specific effects of BCG  
719 vaccine on viral infections. *Clinical Microbiology and Infection*, 25(12), 1473–1478.  
720 <https://doi.org/10.1016/j.cmi.2019.04.020>

- 721 Muhoza, P., Danowaro-Holliday, C., Diallo, M. D., Murphy, P., Sodha, S. V., Requejo, J. H., &  
722 Wallace, A. S. (2021). Routine Vaccination Coverage — Worldwide, 2020. *Morbidity and Mortality*  
723 *Weekly Report*, 70(43).
- 724 Murray, J. F. (2001). A thousand years of pulmonary medicine: Good news and bad. *The European*  
725 *Respiratory Journal*, 17(3), 558–565. <https://doi.org/10.1183/09031936.01.17305580>
- 726 Nankabirwa, V., Tumwine, J. K., Mugaba, P. M., Tylleskär, T., & Sommerfelt, H. (2015). Child  
727 survival and BCG vaccination: A community based prospective cohort study in Uganda. *BMC*  
728 *Public Health*, 15, 175. <https://doi.org/10.1186/s12889-015-1497-8>
- 729 The National Board of Health and Welfare, Sweden (2019). Statistikdatabas för dödsorsaker (Statistics  
730 database for causes of death). Retrieved from [https://sdb.socialstyrelsen.se/ef\\_dor/val.aspx](https://sdb.socialstyrelsen.se/ef_dor/val.aspx)
- 731 Norwegian Institute of Public Health. *Norge tuberkulinstatus 9. Klasse 1975-1999*.
- 732 Norwegian Institute of Public Health (2008). *Utredning om bruk av BCG-vaksine i Norge [Study on the*  
733 *use of BCG vaccine in Norway]*.
- 734 Norwegian Institute of Public Health (2010). The history of the Norwegian Institute of Public Health.  
735 Retrieved from [https://www.fhi.no/en/about/this-is-the-norwegian-institute-of-public-](https://www.fhi.no/en/about/this-is-the-norwegian-institute-of-public-health/history-of-the-norwegian-institute-/)  
736 [health/history-of-the-norwegian-institute-/](https://www.fhi.no/en/about/this-is-the-norwegian-institute-of-public-health/history-of-the-norwegian-institute-/)
- 737 Norwegian Institute of Public Health (2016). Tuberculosis (TB) in Norway - fact sheet. Retrieved from  
738 <https://www.fhi.no/en/id/infectious-diseases/TB/tuberculosis-tb-in-norway---fact-sh/>
- 739 Oudin Åström, D., Edvinsson, S., Hondula, D., Rocklöv, J., & Schumann, B. (2016). On the association  
740 between weather variability and total and cause-specific mortality before and during  
741 industrialization in Sweden. *Demographic Research*, 35, 991–1010.  
742 <https://doi.org/10.4054/DemRes.2016.35.33>
- 743 Palloni, A., & Souza, L. (2013). The Fragility of the future and the tug of the past: Longevity in Latin  
744 America and the Caribbean. *Demographic Research*, 29, 543–578.  
745 <https://doi.org/10.4054/DemRes.2013.29.21>



- 746 Pfahlberg, A. [Annette], Kölmel, K. F. [Klaus F.], Grange, J. M. [John M.], Mastrangelo, G.  
747 [Giuseppe], Krone, B. [Bernd], Botev, I. N. [Ivan N.], . . . Gefeller, O. [Olaf] (2002). Inverse  
748 association between melanoma and previous vaccinations against tuberculosis and smallpox: Results  
749 of the FEBIM study. *The Journal of Investigative Dermatology*, 119(3), 570–575.  
750 <https://doi.org/10.1046/j.1523-1747.2002.00643.x>
- 751 Preston, S. H., Heuveline, P., & Guillot, M. (2001). *Demography: measuring and modeling population*  
752 *processes*. Blackwell Publishing.
- 753 The Public Health Agency of Sweden (2020). Previous Swedish vaccination programmes. Retrieved  
754 from [https://www.folkhalsomyndigheten.se/the-public-health-agency-of-sweden/communicable-](https://www.folkhalsomyndigheten.se/the-public-health-agency-of-sweden/communicable-disease-control/vaccinations/previous-swedish-vaccination-programmes/)  
755 [disease-control/vaccinations/previous-swedish-vaccination-programmes/](https://www.folkhalsomyndigheten.se/the-public-health-agency-of-sweden/communicable-disease-control/vaccinations/previous-swedish-vaccination-programmes/)
- 756 Raviglione Mario C. (2018). Tuberculosis. In J. L. Jameson, A. S. Fauci, D. L. Kasper, S. L. Hauser,  
757 D. L. Longo, & J. Loscalzo (Eds.), *Harrison's Principles Of Internal Medicine* (20<sup>th</sup> ed.). McGraw-  
758 Hill Education.
- 759 Rieckmann, A., Meyle, K.D., Rod, N.H., Baker, J.L., Stabell Benn, C., Aaby, P., Sørup, S. (2019).  
760 Smallpox and BCG vaccination in childhood and cutaneous malignant melanoma in Danish adults  
761 followed from 18 to 49 years. *Vaccine*, 37(44), 6730–6736.
- 762 Rieckmann, A., Villumsen, M., Jensen, M. L., Ravn, H., Da Silva, Z. J., Sørup, S., . . . Aaby, P. (2017).  
763 The Effect of Smallpox and Bacillus Calmette-Guérin Vaccination on the Risk of Human  
764 Immunodeficiency Virus-1 Infection in Guinea-Bissau and Denmark. *Open Forum Infectious*  
765 *Diseases*, 4(3), ofx130.
- 766 Rieckmann, A., Villumsen, M., Sørup, S., Haugaard, L. K., Ravn, H., Roth, A., . . . Aaby, P. (2017).  
767 Vaccinations against smallpox and tuberculosis are associated with better long-term survival: A  
768 Danish case-cohort study 1971-2010. *International Journal of Epidemiology*, 46(2), 695–705.  
769 <https://doi.org/10.1093/ije/dyw120>
- 770 Roberts, K., Alberts, Bruce, Johnson, Alexander, Lewis, J., Raff, M., & Walter, P. (2015). *Molecular*  
771 *Biology of the Cell*. Taylor & Francis.



- 772 Romanus, V. [V.] (1983). Childhood tuberculosis in Sweden. An epidemiological study made six years  
773 after the cessation of general BCG vaccination of the newborn. Retrieved from  
774 <https://pubmed.ncbi.nlm.nih.gov/6604357/>
- 775 Romanus, V. [V.] (2006). *Selective BCG vaccination in a country with low incidence of tuberculosis*  
776 (Eurosurveillance No. 3).
- 777 Roth, A., Gustafson, P., Nhaga, A., Djana, Q., Poulsen, A., Garly, M.-L., . . . Aaby, P. (2005). Bcg  
778 vaccination scar associated with better childhood survival in Guinea-Bissau. *International Journal*  
779 *of Epidemiology*, 34(3), 540–547. <https://doi.org/10.1093/ije/dyh392>
- 780 Sakari Härö, A. (1994). Cohort approach in tuberculosis surveillance: comparison of the situation in  
781 Sweden and Finland. *Tubercle and Lung Disease*, 4(75), 271–282.
- 782 Schaltz-Buchholzer, F., Aaby, P., Monteiro, I., Camala, L., Faurholt Simonsen, S., Nørtoft  
783 Frankel, H., . . . Bjerregaard-Andersen, M. (2021). Immediate Bacille Calmette-Guérin Vaccination  
784 to Neonates Requiring Perinatal Treatment at the Maternity Ward in Guinea-Bissau: A Randomized  
785 Controlled Trial. *The Journal of Infectious Diseases*, 224(11), 1935–1944.  
786 <https://doi.org/10.1093/infdis/jiab220>
- 787 Schaltz-Buchholzer, F., Kjær Sørensen, M., Benn, C. S. [Christine Stabell], & Aaby, P. (2021). The  
788 introduction of BCG vaccination to neonates in Northern Sweden, 1927-31: Re-analysis of historical  
789 data to understand the lower mortality among BCG-vaccinated children. *Vaccine*. Advance online  
790 publication. <https://doi.org/10.1016/j.vaccine.2021.06.006>
- 791 Statistics Norway. Deaths, by sex, age and detailed cause of death (closed time series) 1969 - 2012.  
792 Retrieved from <https://www.ssb.no/en/statbank/table/08880/>
- 793 Steenhuis, T. J., van Aalderen, W. M. C., Bloksma, N., Nijkamp, F. P., van der Laag, J., van  
794 Loveren, H., . . . Hoekstra, M. O. (2008). Bacille-Calmette-Guerin vaccination and the development  
795 of allergic disease in children: A randomized, prospective, single-blind study. *Clinical and*  
796 *Experimental Allergy*, 38(1), 79–85. <https://doi.org/10.1111/j.1365-2222.2007.02859.x>
- 797 Thyssen, S. M., Benn, C. S. [Christine Stabell], Gomes, V. F., Rudolf, F., Wejse, C., Roth, A., . . .  
798 Fisker, A. (2020). Neonatal BCG vaccination and child survival in TB-exposed and TB-unexposed

- 799 children: A prospective cohort study. *BMJ Open*, 10(2), e035595. <https://doi.org/10.1136/bmjopen->  
800 [2019-035595](https://doi.org/10.1136/bmjopen-2019-035595)
- 801 Tverdak, A., & Funnemark, E. (1988). Protective effect of BCG vaccination in Norway 1956-73.  
802 *Tubercle*, 69, 119–123.
- 803 University of California, Berkeley, and Max Planck Institute for Demographic Research. The Human  
804 Mortality Database (HMD). Retrieved from [www.mortality.org](http://www.mortality.org)
- 805 Van den Berg, G. J., Doblhammer-Reiter, G., & Christensen, K. (2011). Being Born Under Adverse  
806 Economic Conditions Leads to a Higher Cardiovascular Mortality Rate Later in Life: Evidence  
807 Based on Individuals Born at Different Stages of the Business Cycle. *Demography*, 48(2), 507–530.
- 808 Vaugelade, J. [J.], Pinchinat, S., Guiella, G., Elguero, E. [E.], & Simondon, F. [F.] (2004). Non-specific  
809 effects of vaccination on child survival: Prospective cohort study in Burkina Faso. *BMJ (Clinical*  
810 *Research Ed.)*, 329(7478), 1309. <https://doi.org/10.1136/bmj.38261.496366.82>
- 811 Villumsen, M., Jess, T., Sørup, S., Ravn, H., Sturegård, E., Benn, C. S. [Christine Stabell], . . . Roth, A.  
812 (2013). Risk of inflammatory bowel disease following Bacille Calmette-Guérin and smallpox  
813 vaccination: A population-based Danish case-cohort study. *Inflammatory Bowel Diseases*, 19(8),  
814 1717–1724. <https://doi.org/10.1097/MIB.0b013e318281f34e>
- 815 Villumsen, M., Sørup, S., Jess, T., Ravn, H., Relander, T., Baker, J. L. [Jennifer L.], . . . Roth, A.  
816 (2009). Risk of lymphoma and leukaemia after bacille Calmette-Guérin and smallpox vaccination:  
817 A Danish case-cohort study. *Vaccine*, 27(49), 6950–6958.  
818 <https://doi.org/10.1016/j.vaccine.2009.08.103>
- 819 Waaler, H., Galtung, O., & Mordal, K. (1971). The risk of tuberculosis infection in Norway. *Bulletin of*  
820 *the International Union Against Tuberculosis and Lung Disease*, 45(45), 5–59.
- 821 Wardhana, D. E., Sultana, A., Mandang, V. V., & Jim, E. (2011). The efficacy of Bacillus Calmette-  
822 Guerin vaccinations for the prevention of acute upper respiratory tract infection in the elderly. *Acta*  
823 *Med Indones*, 43(3), 185–190.
- 824 Wen, M., & Gu, D. (2011). The Effects of Childhood, Adult, and Community Socioeconomic  
825 Conditions on Health and Mortality among Older Adults in China. *Demography*, 48(1), 153–181.

- 826 Wilson, L. G. (1990). The historical decline of tuberculosis in Europe and America: Its causes and  
827 significance. *Journal of the History of Medicine and Allied Sciences*, 45(3), 366–396.
- 828 The World Bank (2022, February 1). Population, total - Norway. Retrieved from  
829 <https://data.worldbank.org/indicator/SP.POP.TOTL?locations=NO>
- 830 World Health Organization. BCG vaccine. Retrieved from [https://www.who.int/teams/health-product-](https://www.who.int/teams/health-product-policy-and-standards/standards-and-specifications/vaccines-quality/bcg)  
831 [policy-and-standards/standards-and-specifications/vaccines-quality/bcg](https://www.who.int/teams/health-product-policy-and-standards/standards-and-specifications/vaccines-quality/bcg)
- 832 World Health Organization (2018). Bcg vaccine: Who position paper, February 2018 -  
833 Recommendations. *Vaccine*, 36(24), 3408–3410. <https://doi.org/10.1016/j.vaccine.2018.03.009>
- 834 World Health Organization (2021). Tuberculosis fact sheet. Retrieved from [https://www.who.int/news-](https://www.who.int/news-room/fact-sheets/detail/tuberculosis)  
835 [room/fact-sheets/detail/tuberculosis](https://www.who.int/news-room/fact-sheets/detail/tuberculosis)
- 836 Zhao, L., Hessel, P., Simon Thomas, J., & Beckfield, J. (2021). Inequality in Place: Effects of Exposure  
837 to Neighborhood-Level Economic Inequality on Mortality. *Demography*, 58(6), 2041–2063.  
838 <https://doi.org/10.1215/00703370-9463660>
- 839 Zwerling, A., Behr, M. A., Verma, A., Brewer, T. F., Menzies, D., & Pai, M. (2011). The BCG World  
840 Atlas: A database of global BCG vaccination policies and practices. *PLoS Medicine*, 8(3), 1-8.  
841 <https://doi.org/10.1371/journal.pmed.1001012>
- 842

843 **Table 1:** Regression Discontinuity Design estimation results for the effect of BCG vaccination  
844 discontinuation on the cohort probability of survival from birth to age 30 in Sweden.

	Total		Men		Women	
	below cut-off	above cut-off	below cut-off	above cut-off	below cut-off	above cut-off
Sample size	323,169	383,905	339,754	343,064	103,683	139,722
Bandwidth	3.95	3.95	6.09	6.09	2.87	2.87
Local average treatment effect (percentage points)						
Coefficient	0.00		0.05		-0.11	
95% CI	(-0.20 - 0.17)		(-0.17 - 0.25)		(-0.46 - 0.15)	
p-value	0.86		0.70		0.33	

845 *Note: We estimated the Regression Discontinuity Design model by fitting a local linear trend including triangular*  
846 *kernel weights, a data-driven bandwidth selection, and a regularization term. The derivation of the optimal*  
847 *bandwidth can result in a decimal. In line with Cattaneo et al. (2019), we used the floor of the decimal. The table*  
848 *displays the local average treatment effect for the birth cohort of 1976 and confidence intervals resulting from*  
849 *robust bias-corrected standard errors.*

850

851 **Table 2:** Pooled Difference in Difference estimates

		Total	Men	Women
all	country*post	-0.06	-0.11	0.00
observations		(-0.11 - 0.00)	(-0.19 - -0.02)	(-0.07 - 0.07)
		<i>0.04</i>	<i>0.02</i>	<i>0.91</i>
observations	country*post	0.05	-0.05	0.06
within MSE		(-0.06 - 0.16)	(-0.18 - 0.07)	(-0.1 - 0.23)
optimal		<i>0.39</i>	<i>0.40</i>	<i>0.44</i>
bandwidth				

852 *Note: We pooled data from all pre-discontinuation and post-discontinuation years respectively.*

853 *Regression models include year dummies. The table displays 95% confidence intervals in parenthesis*

854 *and p-values in italic. The MSE optimal bandwidth was six for the full population, six for the male*

855 *population, and two for the female population. The cut-off year was 1975.*

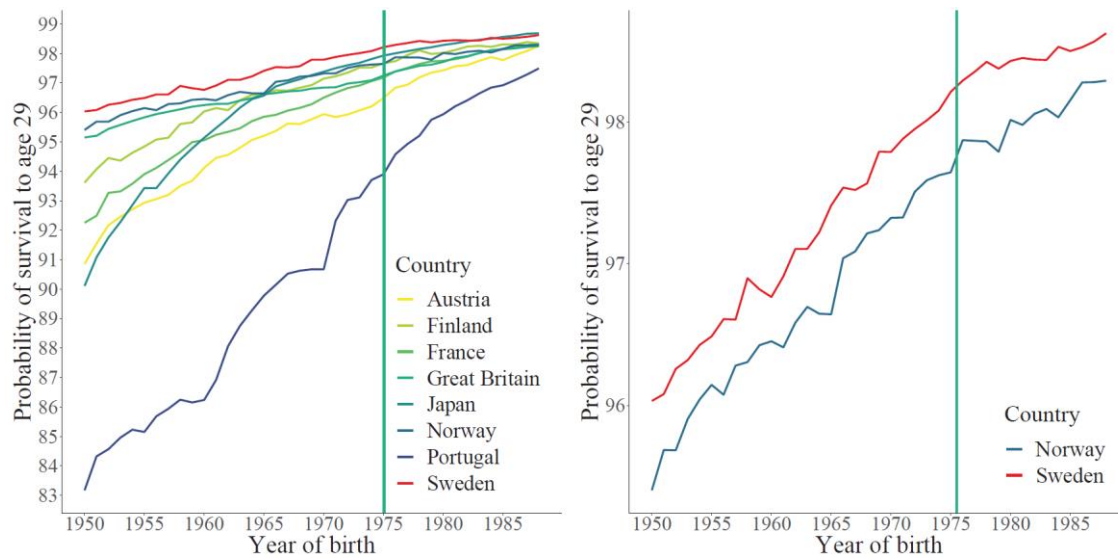
856

857 **Table 3:** Regression Kink Design estimation results

	Total		Men		Women	
	below cut-off	above cut-off	below cut-off	above cut-off	below cut-off	above cut-off
Sample size	323,169	383,905	339,754	343,064	103,683	139,722
Bandwidth	3.56	3.56	5.01	5.01	2.83	2.83
Local average treatment effect (percentage points)						
Coefficient	-0.06		-0.10		-0.01	
95% CI	(-0.20 - 0.07)		(-0.24 - 0.00)		(-0.31 - 0.03)	
p-value	0.35		0.05		0.78	

858 *Note: We estimated the Regression Kink Design model by fitting a local linear trend including triangular Kernel*  
859 *weights, a data-driven bandwidth selection, and a regularization term. The derivation of the optimal bandwidth*  
860 *can result in a decimal. In line with Cattaneo et al. (2019), we used the floor of the decimal. The table displays*  
861 *the local average treatment effect for the birth cohort of 1976 and confidence intervals resulting from robust bias-*  
862 *corrected standard errors.*

863

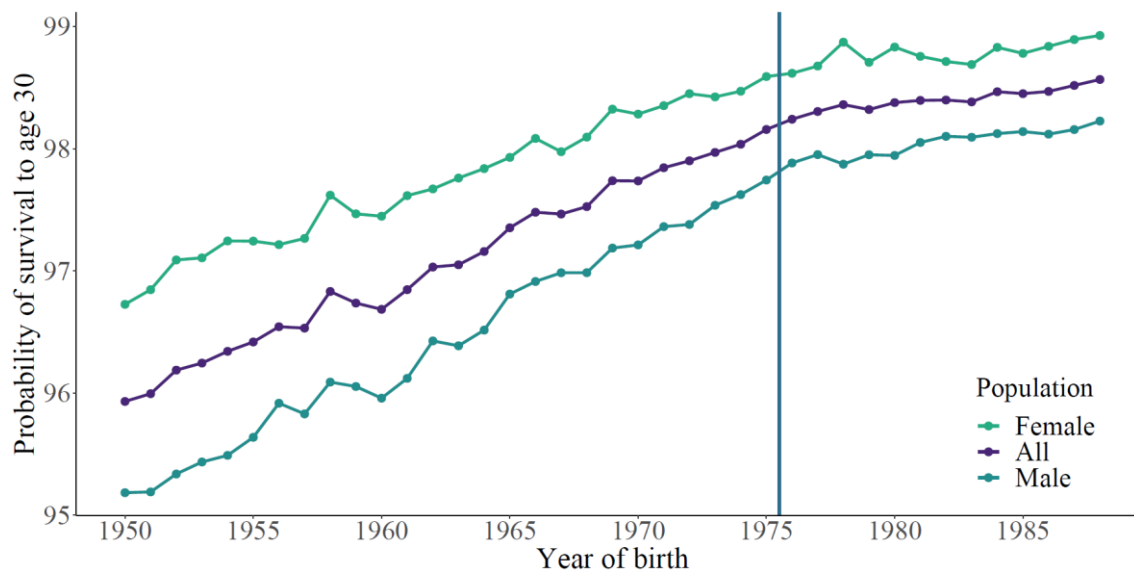


864

865 **Figure 1:** Probability of survival to age 29 in Sweden and potential control countries

866 *Note: We plotted the probability of survival to age 29, rather than 30, because data needed to construct*  
867 *survival to age 30 were not available for France and Great Britain. The vertical line divides the birth cohorts*  
868 *into those born before the vaccine discontinuation (1975 and earlier) and those born after.*

869



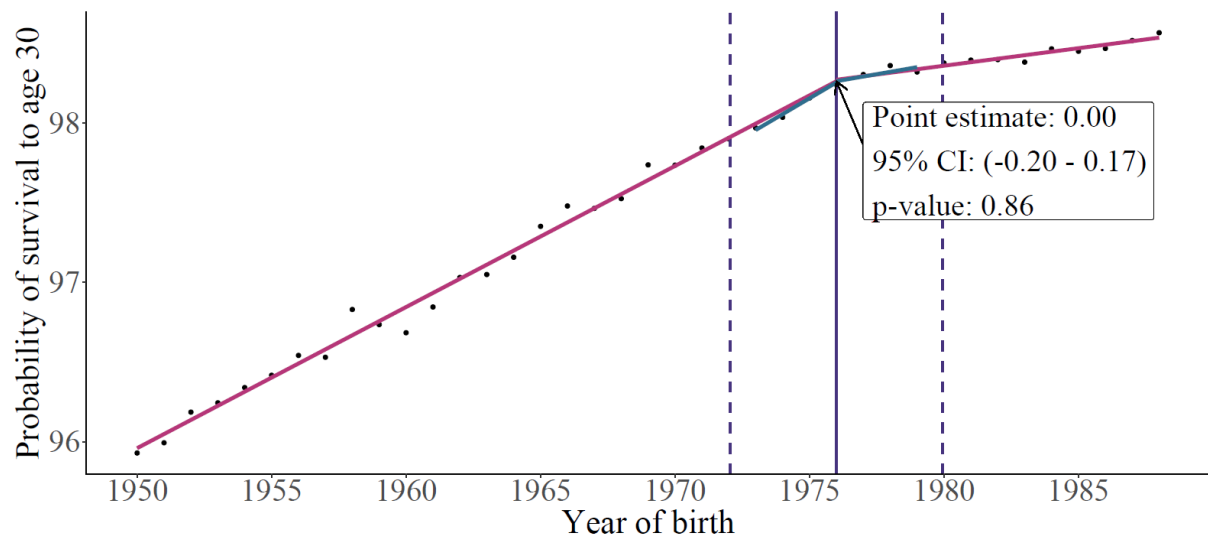
870

871 **Figure 2:** Cohort probability of survival from birth to age 30 in Sweden

872 *Note: The vertical line divides the birth cohorts into those in or born before the year of the vaccine discontinuation*  
873 *(1975 and earlier) and those born after.*

874





threshold: 1976  
MSE optimal bandwidth: +/- 3.95 years

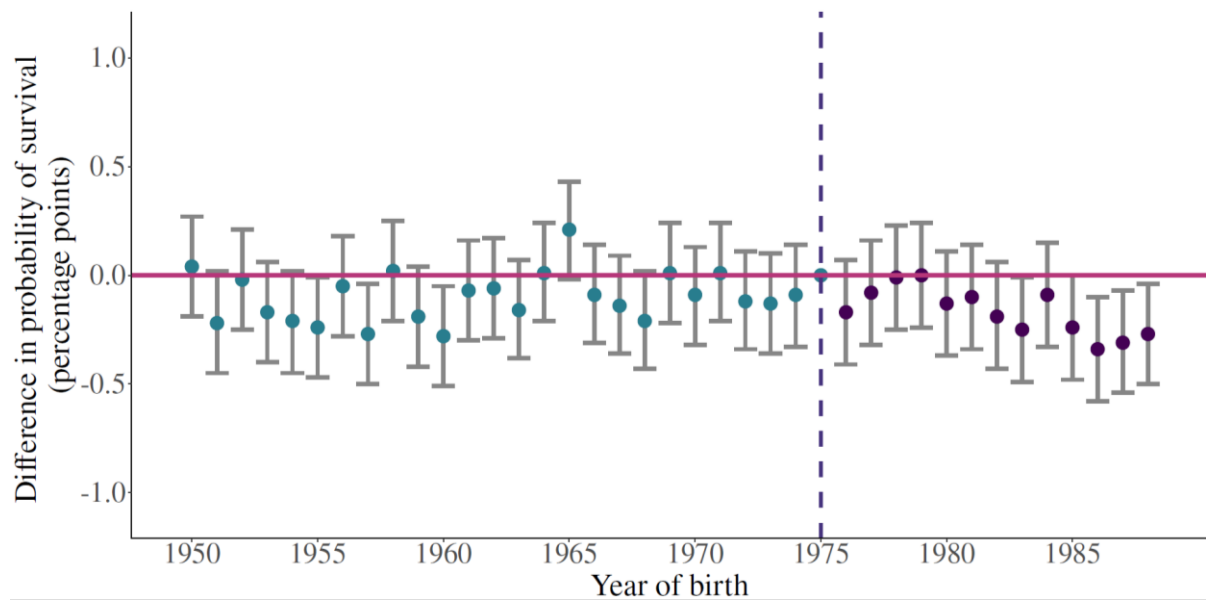
875

876 **Figure 3:** Non-specific effects of the BCG vaccine discontinuation on the cohort probability

877 of survival from birth to age 30 in Sweden

878 *Note: Pink lines represent linear trends fitted separately for cohorts born before and after vaccine*  
879 *discontinuation; blue lines are local linear trends fitted within the bandwidth and separately for cohorts born*  
880 *before and after vaccine discontinuation; dashed lines represent the bandwidth determined by the data; purple*  
881 *vertical line represents the year 1976, year of birth of the cohort from whom the local average treatment effect is*  
882 *estimated.*

883



884

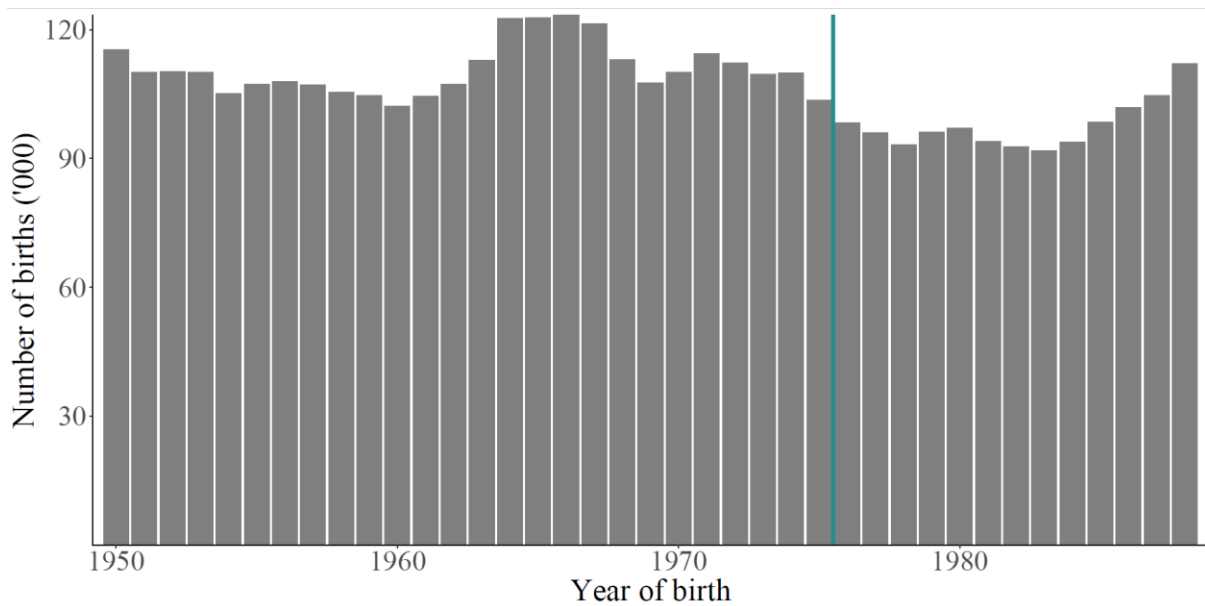
885 **Figure 4:** Event study plot displaying multi-period difference in differences results

886 *Note: Coefficients (with 95% confidence intervals) display the difference in the probability of survival between*  
887 *cohorts born in the respective year in Sweden and Norway net the secular time trend and fixed countries*  
888 *differences. The dashed vertical line marks the reference group, which is the cohort born in 1975.*

889

890 Supplementary Information for  
891 **Does early childhood BCG vaccination improve survival into adulthood in a**  
892 **population with a low tuberculosis prevalence? Quasi-experimental evidence**  
893 **on non-specific effects from 39 Swedish birth cohorts**  
894

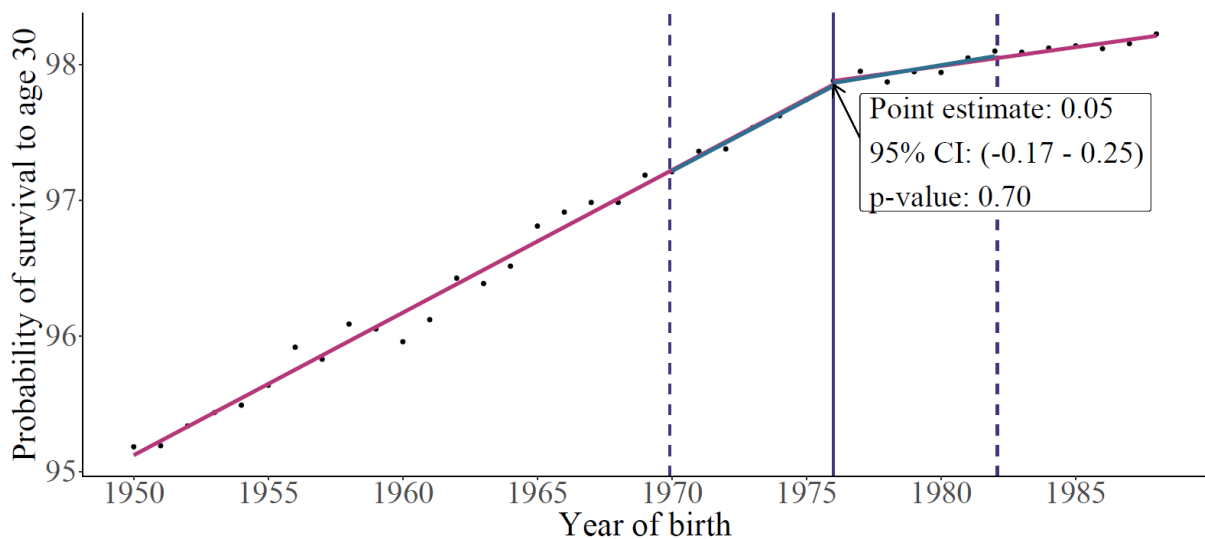
895 Figure S 1: Number of births (in thousands), years 1950 - 1988



896  
897 *Source: mortality.org*

898  
899

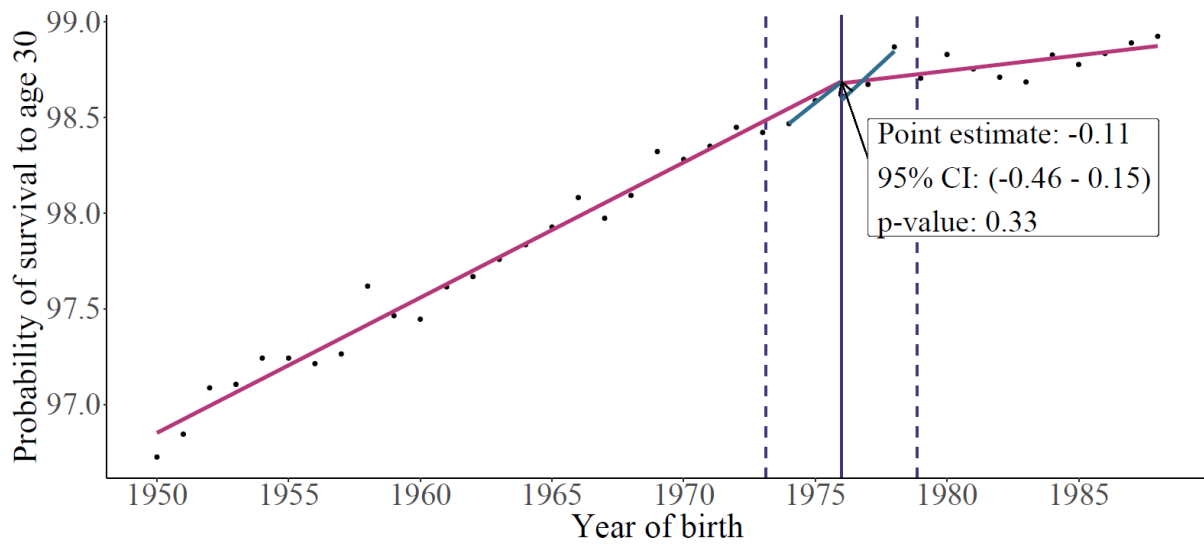
900 Figure S 2: RDD: Non-specific effects of the BCG vaccine on long-term survival, male  
901 population:



902 threshold: 1976  
903 MSE optimal bandwidth: +/- 6.09 years

904 *Note: Pink lines represent linear trends fitted separately for cohorts born before and after vaccine*  
905 *discontinuation; blue lines are local linear trends fitted within the bandwidth and separately for cohorts born*  
906 *before and after vaccine discontinuation; dashed lines represent the bandwidth determined by the data; purple*  
907 *vertical line represents the year 1976, year of birth of the cohort from whom the local average treatment effect*  
908 *is estimated.*

909 Figure S 3: RDD: Non-specific effects of the BCG vaccine on long-term survival, female  
910 population

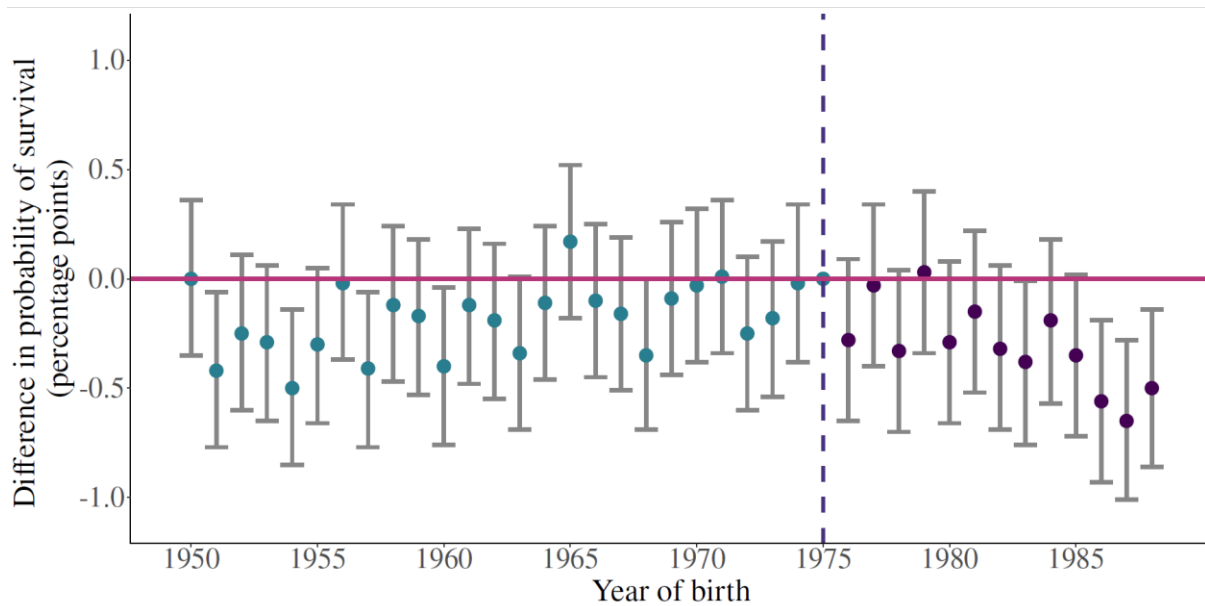


threshold: 1976  
MSE optimal bandwidth: +/- 2.87 years

911  
912 *Note: Pink lines represent linear trends fitted separately for cohorts born before and after vaccine*  
913 *discontinuation; blue lines are local linear trends fitted within the bandwidth and separately for cohorts born*  
914 *before and after vaccine discontinuation; dashed lines represent the bandwidth determined by the data; purple*  
915 *vertical line represents the year 1976, year of birth of the cohort from whom the local average treatment effect*  
916 *is estimated.*

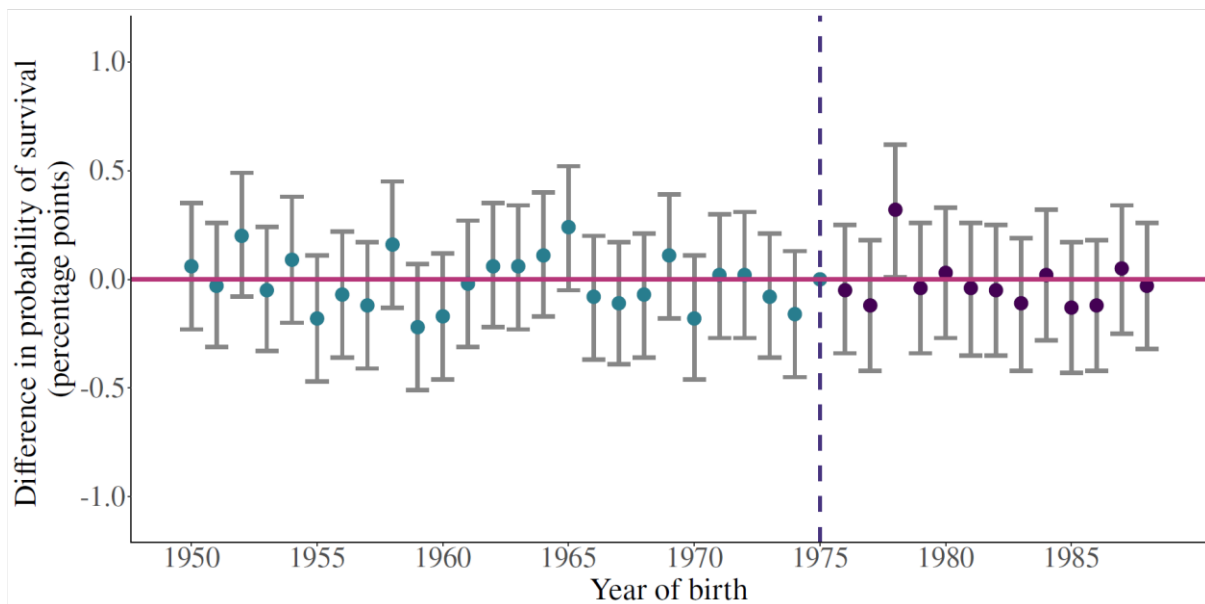
917

918 Figure S 4: Event study plot displaying multi-period difference in differences results, male  
919 population



920  
921 *Note: coefficients (with 95% confidence intervals) display the difference in the probability of survival between*  
922 *cohorts born in the respective year in Sweden and Norway net the secular time trend and fixed countries*  
923 *differences. The dashed vertical line marks the reference group, which is the cohort born in 1975.*

924  
925 Figure S 5: Event study plot displaying multi-period difference in differences results, female  
926 population

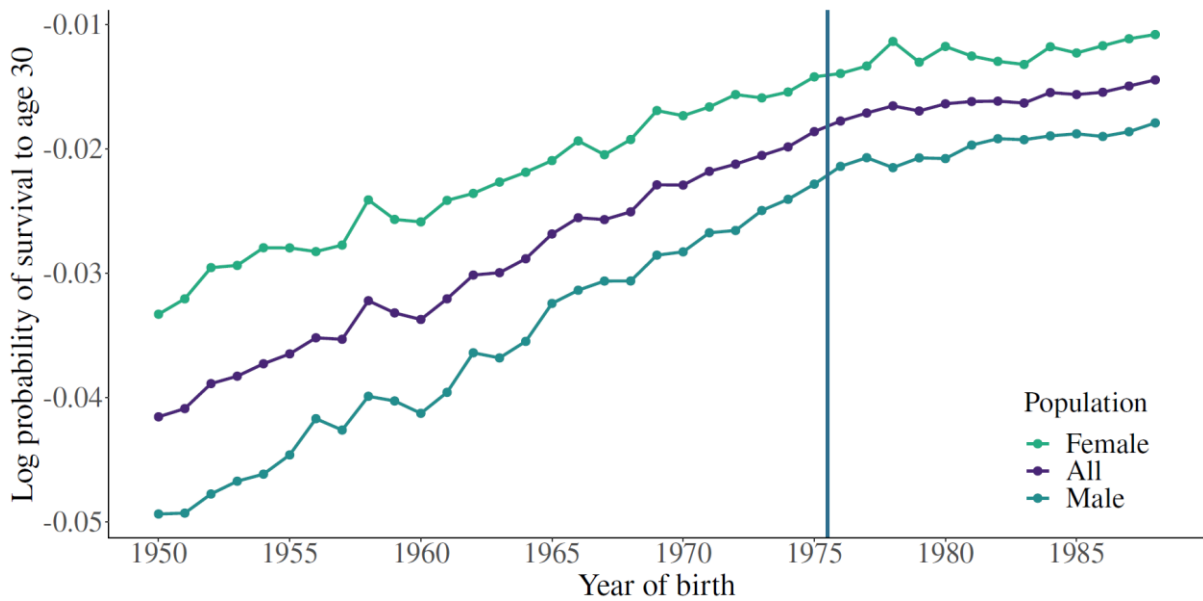


927  
928 *Note: coefficients (with 95% confidence intervals) display the difference in the probability of survival between*  
929 *cohorts born in the respective year in Sweden and Norway net the secular time trend and fixed countries*  
930 *differences. The dashed vertical line marks the reference group, which is the cohort born in 1975.*

931

932

933 Figure S 6: Log probability of survival to age 30 in Sweden



934

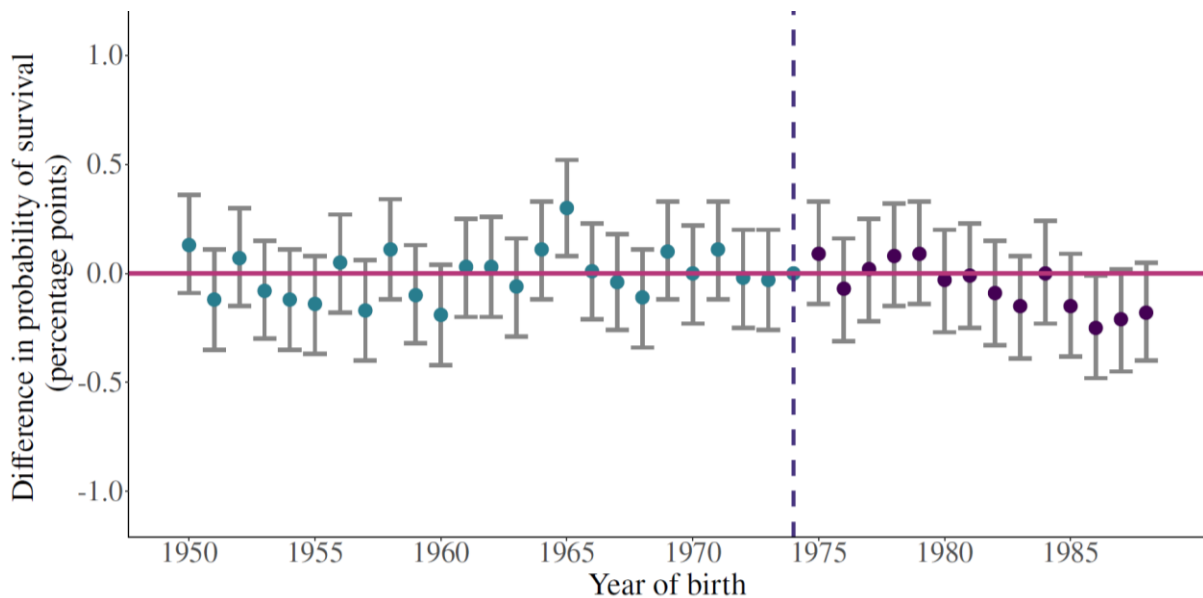
935 *Note: The vertical line divides the birth cohorts into those born before the vaccine discontinuation (1975*  
936 *and earlier) and those born after.*

937

938

939 Figure S 7: Event study plot displaying multi-period difference in differences results;

940 reference cohort: 1974

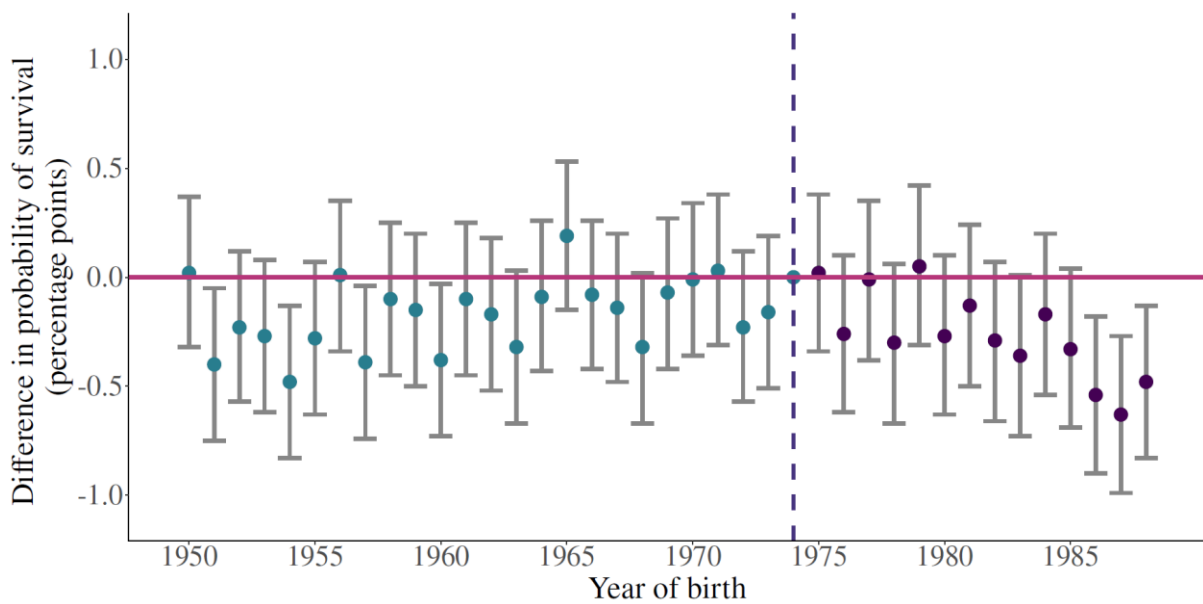


941

942 *Note: coefficients (with 95% confidence intervals) display the difference in the probability of survival between*  
943 *cohorts born in the respective year in Sweden and Norway net the secular time trend and fixed countries*  
944 *differences. The dashed vertical line marks the reference group, which is the cohort born in 1974.*

945

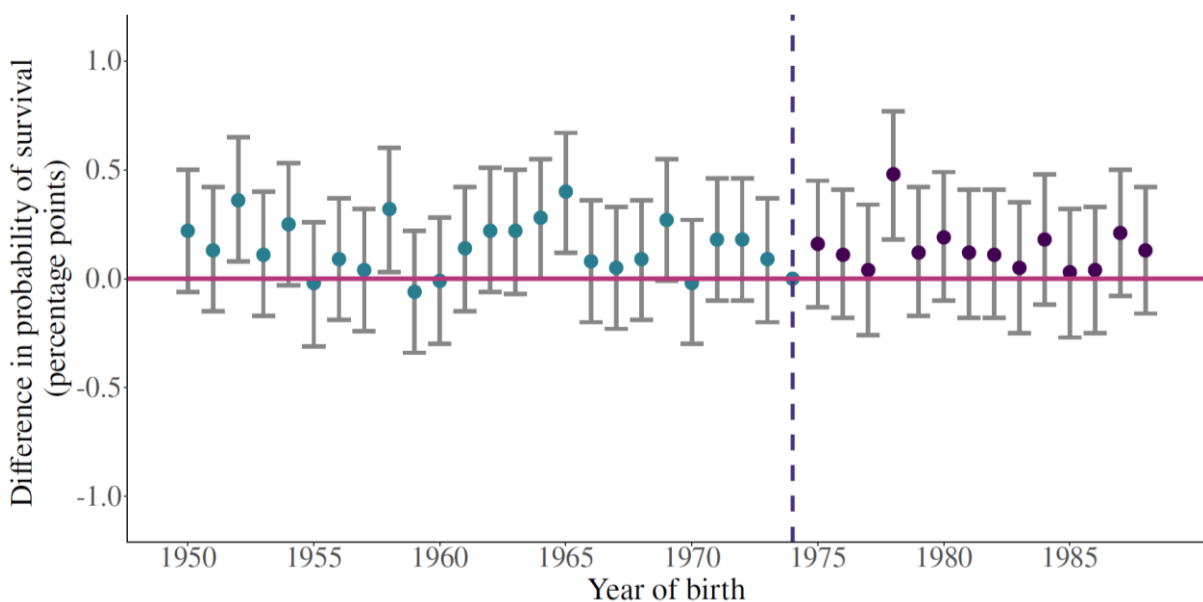
946 Figure S 8: Event study plot displaying multi-period difference in differences results, male  
947 population; reference cohort: 1974



948  
949 *Note: coefficients (with 95% confidence intervals) display the difference in the probability of survival between*  
950 *cohorts born in the respective year in Sweden and Norway net the secular time trend and fixed countries*  
951 *differences. The dashed vertical line marks the reference group, which is the cohort born in 1974.*

952  
953

954 Figure S 9: Event study plot displaying multi-period difference in differences results, female  
955 population; reference cohort: 1974



956  
957 *Note: coefficients (with 95% confidence intervals) display the difference in the probability of survival between*  
958 *cohorts born in the respective year in Sweden and Norway net the secular time trend and fixed countries*  
959 *differences. The dashed vertical line marks the reference group, which is the cohort born in 1974.*



960 Table S 1: Multi-period difference in differences estimation results

	<b>Total</b>	<b>Men</b>	<b>Women</b>
	coefficient (95% CI)	coefficient (95% CI)	coefficient (95% CI)
	<i>p-value</i>	<i>p-value</i>	<i>p-value</i>
<b>1975</b>	<i>Ref.</i>	<i>Ref.</i>	<i>Ref.</i>
<b>1950</b>	0.04 (-0.19 - 0.27) <i>0.74</i>	0 (-0.35 - 0.36) <i>0.98</i>	0.06 (-0.23 - 0.35) <i>0.68</i>
<b>1951</b>	-0.22 (-0.45 - 0.02) <i>0.07</i>	-0.42 (-0.77 - -0.06) <i>0.02</i>	-0.03 (-0.31 - 0.26) <i>0.86</i>
<b>1952</b>	-0.02 (-0.25 - 0.21) <i>0.85</i>	-0.25 (-0.6 - 0.11) <i>0.17</i>	0.2 (-0.08 - 0.49) <i>0.16</i>
<b>1953</b>	-0.17 (-0.4 - 0.06) <i>0.14</i>	-0.29 (-0.65 - 0.06) <i>0.11</i>	-0.05 (-0.33 - 0.24) <i>0.76</i>
<b>1954</b>	-0.21 (-0.45 - 0.02) <i>0.07</i>	-0.5 (-0.85 - -0.14) <i>0.01</i>	0.09 (-0.2 - 0.38) <i>0.54</i>
<b>1955</b>	-0.24 (-0.47 - -0.01) <i>0.04</i>	-0.3 (-0.66 - 0.05) <i>0.09</i>	-0.18 (-0.47 - 0.11) <i>0.22</i>
<b>1956</b>	-0.05 (-0.28 - 0.18) <i>0.68</i>	-0.02 (-0.37 - 0.34) <i>0.93</i>	-0.07 (-0.36 - 0.22) <i>0.63</i>
<b>1957</b>	-0.27 (-0.5 - -0.04) <i>0.02</i>	-0.41 (-0.77 - -0.06) <i>0.02</i>	-0.12 (-0.41 - 0.17) <i>0.41</i>
<b>1958</b>	0.02 (-0.21 - 0.25) <i>0.89</i>	-0.12 (-0.47 - 0.24) <i>0.52</i>	0.16 (-0.13 - 0.45) <i>0.28</i>
<b>1959</b>	-0.19 (-0.42 - 0.04) <i>0.11</i>	-0.17 (-0.53 - 0.18) <i>0.35</i>	-0.22 (-0.51 - 0.07) <i>0.14</i>
<b>1960</b>	-0.28 (-0.51 - -0.05) <i>0.02</i>	-0.4 (-0.76 - -0.04) <i>0.03</i>	-0.17 (-0.46 - 0.12) <i>0.25</i>
<b>1961</b>	-0.07 (-0.3 - 0.16) <i>0.57</i>	-0.12 (-0.48 - 0.23) <i>0.50</i>	-0.02 (-0.31 - 0.27) <i>0.88</i>
<b>1962</b>	-0.06 (-0.29 - 0.17) <i>0.59</i>	-0.19 (-0.55 - 0.16) <i>0.29</i>	0.06 (-0.22 - 0.35) <i>0.67</i>
<b>1963</b>	-0.16 (-0.38 - 0.07) <i>0.18</i>	-0.34 (-0.69 - 0.01) <i>0.06</i>	0.06 (-0.23 - 0.34) <i>0.70</i>

	<b>Total</b>	<b>Men</b>	<b>Women</b>
	coefficient (95% CI)	coefficient (95% CI)	coefficient (95% CI)
	<i>p-value</i>	<i>p-value</i>	<i>p-value</i>
<b>1964</b>	0.01 (-0.21 - 0.24) <i>0.92</i>	-0.11 (-0.46 - 0.24) <i>0.54</i>	0.11 (-0.17 - 0.4) <i>0.43</i>
<b>1965</b>	0.21 (-0.02 - 0.43) <i>0.07</i>	0.17 (-0.18 - 0.52) <i>0.34</i>	0.24 (-0.05 - 0.52) <i>0.10</i>
<b>1966</b>	-0.09 (-0.31 - 0.14) <i>0.46</i>	-0.1 (-0.45 - 0.25) <i>0.58</i>	-0.08 (-0.37 - 0.2) <i>0.56</i>
<b>1967</b>	-0.14 (-0.36 - 0.09) <i>0.24</i>	-0.16 (-0.51 - 0.19) <i>0.37</i>	-0.11 (-0.39 - 0.17) <i>0.44</i>
<b>1968</b>	-0.21 (-0.43 - 0.02) <i>0.07</i>	-0.35 (-0.69 - 0) <i>0.05</i>	-0.07 (-0.36 - 0.21) <i>0.60</i>
<b>1969</b>	0.01 (-0.22 - 0.24) <i>0.95</i>	-0.09 (-0.44 - 0.26) <i>0.61</i>	0.11 (-0.18 - 0.39) <i>0.45</i>
<b>1970</b>	-0.09 (-0.32 - 0.13) <i>0.42</i>	-0.03 (-0.38 - 0.32) <i>0.86</i>	-0.18 (-0.46 - 0.11) <i>0.23</i>
<b>1971</b>	0.01 (-0.21 - 0.24) <i>0.91</i>	0.01 (-0.34 - 0.36) <i>0.95</i>	0.02 (-0.27 - 0.3) <i>0.91</i>
<b>1972</b>	-0.12 (-0.34 - 0.11) <i>0.32</i>	-0.25 (-0.6 - 0.1) <i>0.17</i>	0.02 (-0.27 - 0.31) <i>0.89</i>
<b>1973</b>	-0.13 (-0.36 - 0.1) <i>0.29</i>	-0.18 (-0.54 - 0.17) <i>0.31</i>	-0.08 (-0.36 - 0.21) <i>0.61</i>
<b>1974</b>	-0.09 (-0.33 - 0.14) <i>0.42</i>	-0.02 (-0.38 - 0.34) <i>0.91</i>	-0.16 (-0.45 - 0.13) <i>0.28</i>
<b>1976</b>	-0.17 (-0.41 - 0.07) <i>0.17</i>	-0.28 (-0.65 - 0.09) <i>0.13</i>	-0.05 (-0.34 - 0.25) <i>0.76</i>
<b>1977</b>	-0.08 (-0.32 - 0.16) <i>0.53</i>	-0.03 (-0.4 - 0.34) <i>0.86</i>	-0.12 (-0.42 - 0.18) <i>0.43</i>
<b>1978</b>	-0.01 (-0.25 - 0.23) <i>0.92</i>	-0.33 (-0.7 - 0.04) <i>0.08</i>	0.32 (0.01 - 0.62) <i>0.04</i>
<b>1979</b>	0 (-0.24 - 0.24) <i>0.98</i>	0.03 (-0.34 - 0.4) <i>0.86</i>	-0.04 (-0.34 - 0.26) <i>0.80</i>
<b>1980</b>	-0.13 (-0.37 - 0.11) <i>0.30</i>	-0.29 (-0.66 - 0.08) <i>0.13</i>	0.03 (-0.27 - 0.33) <i>0.83</i>

	<b>Total</b>	<b>Men</b>	<b>Women</b>
	coefficient (95% CI)	coefficient (95% CI)	coefficient (95% CI)
	<i>p-value</i>	<i>p-value</i>	<i>p-value</i>
<b>1981</b>	-0.1 (-0.34 - 0.14) <i>0.40</i>	-0.15 (-0.52 - 0.22) <i>0.43</i>	-0.04 (-0.35 - 0.26) <i>0.77</i>
<b>1982</b>	-0.19 (-0.43 - 0.06) <i>0.13</i>	-0.32 (-0.69 - 0.06) <i>0.10</i>	-0.05 (-0.35 - 0.25) <i>0.76</i>
<b>1983</b>	-0.25 (-0.49 - -0.01) <i>0.04</i>	-0.38 (-0.76 - -0.01) <i>0.04</i>	-0.11 (-0.42 - 0.19) <i>0.47</i>
<b>1984</b>	-0.09 (-0.33 - 0.15) <i>0.46</i>	-0.19 (-0.57 - 0.18) <i>0.31</i>	0.02 (-0.28 - 0.32) <i>0.89</i>
<b>1985</b>	-0.24 (-0.48 - 0) <i>0.05</i>	-0.35 (-0.72 - 0.02) <i>0.07</i>	-0.13 (-0.43 - 0.17) <i>0.39</i>
<b>1986</b>	-0.34 (-0.58 - -0.1) <i>0.00</i>	-0.56 (-0.93 - -0.19) <i>0.00</i>	-0.12 (-0.42 - 0.18) <i>0.43</i>
<b>1987</b>	-0.31 (-0.54 - -0.07) <i>0.01</i>	-0.65 (-1.01 - -0.28) <i>0.00</i>	0.05 (-0.25 - 0.34) <i>0.75</i>
<b>1988</b>	-0.27 (-0.5 - -0.04) <i>0.02</i>	-0.5 (-0.86 - -0.14) <i>0.01</i>	-0.03 (-0.32 - 0.26) <i>0.85</i>

963 *Note: coefficients are the difference in the probability of survival between cohorts born in the respective*  
964 *year in Sweden and Norway net the secular time trend and fixed countries differences. The reference*  
965 *group is the cohort born in 1975, the year of the vaccine discontinuation.*

966

967

968 Table S 2: Regression Discontinuity Design estimation results, threshold year 1975

	Total		Men		Women	
	below	above	below	above	below	above
	cut-off	cut-off	cut-off	cut-off	cut-off	cut-off
Sample size	446,294	487,537	170,896	201,170	216,324	236,954
Bandwidth	4.03	4.03	3.37	3.37	4.79	4.79
Local average treatment effect (percentage points)						
Coefficient	0.06		0.02		0.09	
95% CI	(-0.13 - 0.23)		(-0.31 - 0.33)		(-0.1 - 0.3)	
p-value	0.59		0.97		0.33	

969 *Note: We estimated the Regression Discontinuity Design model by fitting a local linear trend including triangular*  
 970 *Kernel weights, a data-driven bandwidth selection, and a regularization term. The derivation of the optimal*  
 971 *bandwidth can result in a decimal. In line with Cattaneo et al. (2019), we used the floor of the decimal. The table*  
 972 *displays the local average treatment effect for the birth cohort of 1975 and confidence intervals resulting from*  
 973 *robust bias-corrected standard errors.*

974

975 Table S 3: Multi-period difference in differences estimation results, cut-off 1974

	<b>Total</b>	<b>Men</b>	<b>Women</b>
	coefficient (95% CI)	coefficient (95% CI)	coefficient (95% CI)
	<i>p-value</i>	<i>p-value</i>	<i>p-value</i>
<b>1974</b>	<i>Ref.</i>	<i>Ref.</i>	<i>Ref.</i>
<b>1950</b>	0.13 (-0.09 - 0.36) <i>0.25</i>	0.02 (-0.32 - 0.37) <i>0.89</i>	0.22 (-0.06 - 0.50) <i>0.13</i>
<b>1951</b>	-0.12 (-0.35 - 0.11) <i>0.30</i>	-0.4 (-0.75 - -0.05) <i>0.03</i>	0.13 (-0.15 - 0.42) <i>0.35</i>
<b>1952</b>	0.07 (-0.15 - 0.3) <i>0.53</i>	-0.23 (-0.57 - 0.12) <i>0.21</i>	0.36 (0.08 - 0.65) <i>0.01</i>
<b>1953</b>	-0.08 (-0.3 - 0.15) <i>0.50</i>	-0.27 (-0.62 - 0.08) <i>0.13</i>	0.11 (-0.17 - 0.4) <i>0.43</i>
<b>1954</b>	-0.12 (-0.35 - 0.11) <i>0.30</i>	-0.48 (-0.83 - -0.13) <i>0.01</i>	0.25 (-0.03 - 0.53) <i>0.09</i>
<b>1955</b>	-0.14 (-0.37 - 0.08) <i>0.21</i>	-0.28 (-0.63 - 0.07) <i>0.11</i>	-0.02 (-0.31 - 0.26) <i>0.88</i>
<b>1956</b>	0.05 (-0.18 - 0.27) <i>0.69</i>	0.01 (-0.34 - 0.35) <i>0.98</i>	0.09 (-0.19 - 0.37) <i>0.53</i>
<b>1957</b>	-0.17 (-0.4 - 0.06) <i>0.14</i>	-0.39 (-0.74 - -0.04) <i>0.03</i>	0.04 (-0.24 - 0.32) <i>0.79</i>
<b>1958</b>	0.11 (-0.12 - 0.34) <i>0.34</i>	-0.1 (-0.45 - 0.25) <i>0.59</i>	0.32 (0.03 - 0.6) <i>0.03</i>
<b>1959</b>	-0.1 (-0.32 - 0.13) <i>0.41</i>	-0.15 (-0.5 - 0.2) <i>0.40</i>	-0.06 (-0.34 - 0.22) <i>0.68</i>
<b>1960</b>	-0.19 (-0.42 - 0.04) <i>0.10</i>	-0.38 (-0.73 - -0.03) <i>0.04</i>	-0.01 (-0.3 - 0.28) <i>0.94</i>
<b>1961</b>	0.03 (-0.2 - 0.25) <i>0.81</i>	-0.1 (-0.45 - 0.25) <i>0.57</i>	0.14 (-0.15 - 0.42) <i>0.34</i>
<b>1962</b>	0.03 (-0.2 - 0.26) <i>0.79</i>	-0.17 (-0.52 - 0.18) <i>0.34</i>	0.22 (-0.06 - 0.51) <i>0.12</i>
<b>1963</b>	-0.06 (-0.29 - 0.16) <i>0.60</i>	-0.32 (-0.67 - 0.03) <i>0.07</i>	0.22 (-0.07 - 0.5) <i>0.13</i>

976

	<b>Total</b>	<b>Men</b>	<b>Women</b>
	coefficient (95% CI)	coefficient (95% CI)	coefficient (95% CI)
	<i>p-value</i>	<i>p-value</i>	<i>p-value</i>
<b>1964</b>	0.11 (-0.12 - 0.33) <i>0.35</i>	-0.09 (-0.43 - 0.26) <i>0.62</i>	0.28 (0 - 0.55) <i>0.05</i>
<b>1965</b>	0.3 (0.08 - 0.52) <i>0.01</i>	0.19 (-0.15 - 0.53) <i>0.28</i>	0.4 (0.12 - 0.67) <i>0.01</i>
<b>1966</b>	0.01 (-0.21 - 0.23) <i>0.94</i>	-0.08 (-0.42 - 0.26) <i>0.65</i>	0.08 (-0.2 - 0.36) <i>0.59</i>
<b>1967</b>	-0.04 (-0.26 - 0.18) <i>0.72</i>	-0.14 (-0.48 - 0.2) <i>0.42</i>	0.05 (-0.23 - 0.33) <i>0.73</i>
<b>1968</b>	-0.11 (-0.34 - 0.11) <i>0.32</i>	-0.32 (-0.67 - 0.02) <i>0.06</i>	0.09 (-0.19 - 0.36) <i>0.55</i>
<b>1969</b>	0.1 (-0.12 - 0.33) <i>0.37</i>	-0.07 (-0.42 - 0.27) <i>0.69</i>	0.27 (-0.01 - 0.55) <i>0.06</i>
<b>1970</b>	0 (-0.23 - 0.22) <i>1.00</i>	-0.01 (-0.36 - 0.34) <i>0.95</i>	-0.02 (-0.3 - 0.27) <i>0.91</i>
<b>1971</b>	0.11 (-0.12 - 0.33) <i>0.35</i>	0.03 (-0.31 - 0.38) <i>0.86</i>	0.18 (-0.1 - 0.46) <i>0.22</i>
<b>1972</b>	-0.02 (-0.25 - 0.2) <i>0.85</i>	-0.23 (-0.57 - 0.12) <i>0.20</i>	0.18 (-0.1 - 0.46) <i>0.21</i>
<b>1973</b>	-0.03 (-0.26 - 0.2) <i>0.79</i>	-0.16 (-0.51 - 0.19) <i>0.36</i>	0.09 (-0.2 - 0.37) <i>0.56</i>
<b>1975</b>	0.09 (-0.14 - 0.33) <i>0.42</i>	0.02 (-0.34 - 0.38) <i>0.91</i>	0.16 (-0.13 - 0.45) <i>0.28</i>
<b>1976</b>	-0.07 (-0.31 - 0.16) <i>0.54</i>	-0.26 (-0.62 - 0.1) <i>0.16</i>	0.11 (-0.18 - 0.41) <i>0.45</i>
<b>1977</b>	0.02 (-0.22 - 0.25) <i>0.89</i>	-0.01 (-0.38 - 0.35) <i>0.95</i>	0.04 (-0.26 - 0.34) <i>0.79</i>
<b>1978</b>	0.08 (-0.15 - 0.32) <i>0.50</i>	-0.3 (-0.67 - 0.06) <i>0.10</i>	0.48 (0.18 - 0.77) <i>0.00</i>
<b>1979</b>	0.09 (-0.14 - 0.33) <i>0.45</i>	0.05 (-0.31 - 0.42) <i>0.77</i>	0.12 (-0.17 - 0.42) <i>0.42</i>
<b>1980</b>	-0.03 (-0.27 - 0.2) <i>0.78</i>	-0.27 (-0.63 - 0.1) <i>0.15</i>	0.19 (-0.1 - 0.49) <i>0.20</i>

	<b>Total</b>	<b>Men</b>	<b>Women</b>
	coefficient (95% CI)	coefficient (95% CI)	coefficient (95% CI)
	<i>p-value</i>	<i>p-value</i>	<i>p-value</i>
<b>1981</b>	-0.01 (-0.25 - 0.23) <i>0.94</i>	-0.13 (-0.5 - 0.24) <i>0.49</i>	0.12 (-0.18 - 0.41) <i>0.44</i>
<b>1982</b>	-0.09 (-0.33 - 0.15) <i>0.45</i>	-0.29 (-0.66 - 0.07) <i>0.11</i>	0.11 (-0.18 - 0.41) <i>0.46</i>
<b>1983</b>	-0.15 (-0.39 - 0.08) <i>0.21</i>	-0.36 (-0.73 - 0.01) <i>0.05</i>	0.05 (-0.25 - 0.35) <i>0.75</i>
<b>1984</b>	0 (-0.23 - 0.24) <i>0.98</i>	-0.17 (-0.54 - 0.2) <i>0.36</i>	0.18 (-0.12 - 0.48) <i>0.23</i>
<b>1985</b>	-0.15 (-0.38 - 0.09) <i>0.23</i>	-0.33 (-0.69 - 0.04) <i>0.08</i>	0.03 (-0.27 - 0.32) <i>0.85</i>
<b>1986</b>	-0.25 (-0.48 - -0.01) <i>0.04</i>	-0.54 (-0.9 - -0.18) <i>0.00</i>	0.04 (-0.25 - 0.33) <i>0.79</i>
<b>1987</b>	-0.21 (-0.45 - 0.02) <i>0.07</i>	-0.63 (-0.99 - -0.27) <i>0.00</i>	0.21 (-0.08 - 0.5) <i>0.16</i>
<b>1988</b>	-0.18 (-0.4 - 0.05) <i>0.13</i>	-0.48 (-0.83 - -0.13) <i>0.01</i>	0.13 (-0.16 - 0.42) <i>0.37</i>

977 *Note: coefficients are the difference in the probability of survival between cohorts born in the respective*  
978 *year in Sweden and Norway net the secular time trend and fixed countries differences. As a robustness*  
979 *check, we defined the reference group to be the cohort born in 1974, the year before the vaccine*  
980 *discontinuation.*

981 Table S 4: Pooled Difference in Difference estimates, cut-off 1974

	Total	Male	Female
country*post	-0.05	-0.08	-0.02
	<i>(-0.11 - 0.00)</i>	<i>(-0.16 - 0.01)</i>	<i>(-0.09 - 0.05)</i>
	<i>0.05</i>	<i>0.07</i>	<i>0.56</i>

982 *Note: We pooled data from all pre-discontinuation and post-discontinuation years respectively.*

983 *Regression models include year dummies. The table displays 95% confidence intervals in parenthesis*

984 *and p-values in italic. The cut-off year was 1974.*

985

986



987 Table S 5: Regression Discontinuity Design estimation results with increasing bandwidth

<b>Total population (MSE: +/- 3.95 years)</b>						
	MSE optimal bandwidth + 1 year		MSE optimal bandwidth + 2 year		MSE optimal bandwidth + 3 year	
	below cut-off	above cut-off	below cut-off	above cut-off	below cut-off	above cut-off
	Sample size	435,442	480,969	549,926	575,034	660,076
Bandwidth	4.95	4.95	5.95	5.95	6.95	6.95
Local average treatment effect (percentage points)						
Coefficient	0.02		0.04		0.04	
95% CI	(-0.30 - 0.19)		(-0.23 - 0.16)		(-0.18 - 0.17)	
p-value	0.66		0.73		0.96	

<b>Male population (MSE: +/- 7.09 years)</b>						
	MSE optimal bandwidth + 1 year		MSE optimal bandwidth + 2 year		MSE optimal bandwidth + 3 year	
	below cut-off	above cut-off	below cut-off	above cut-off	below cut-off	above cut-off
	Sample size	395,382	390,377	453,503	438,717	516,031
Bandwidth	7.09	7.09	8.09	8.09	9.09	9.09
Local average treatment effect (percentage points)						
Coefficient	0.04		0.05		0.04	
95% CI	(-0.22 - 0.29)		(-0.20 - 0.26)		(-0.17 - 0.25)	
p-value	0.79		0.80		0.70	

988

989

<b>Female population</b> (MSE: +/- 3.87 years)						
	MSE optimal bandwidth + 1 year		MSE optimal bandwidth + 2 year		MSE optimal bandwidth + 3 year	
	below cut-off	above cut-off	below cut-off	above cut-off	below cut-off	above cut-off
Sample size	156935	186564	211304	233768	266714	279702
Bandwidth	3.87	3.87	4.87	4.87	5.87	5.87
Local average treatment effect (percentage points)						
Coefficient	-0.05		0.00		0.03	
95% CI	(-0.65 - 0.28)		(-0.49 - 0.14)		(-0.34 - 0.16)	
p-value	0.44		0.27		0.47	

990 *Note: We estimated the Regression Discontinuity Design model by fitting a local linear trend including triangular*  
991 *Kernel weights, a data-driven bandwidth selection, and a regularization term. The derivation of the optimal*  
992 *bandwidth can result in a decimal. In line with Cattaneo et al. (2019), we used the floor of the decimal. We*  
993 *increased the MSE optimal bandwidth by one, two, and three years respectively as a robustness check. The table*  
994 *displays the local average treatment effect for the birth cohort of 1976 and confidence intervals resulting from*  
995 *robust bias-corrected standard errors.*

996

997