

Title: Classification and Predictors of Right Ventricular Functional Recovery in Pulmonary Arterial Hypertension

Short running title: RV Functional Recovery in PAH

Franz P. Rischard^{*1}, Roberto J. Bernardo², Rebecca R. Vanderpool³, Deborah H. Kwon⁴, Tushar Acharya⁵, Margaret M Park⁴, Austin Katrynuik⁶, Michael Insel¹, Saad Kubba⁵, Roberto Badagliacca⁷, A Brett Larive⁸, Robert Naeije⁹, Joe G.N. Garcia⁶, Gerald J Beck⁸, Serpil C Erzurum¹⁰, Robert P Frantz¹¹, Paul M Hassoun¹², Anna R Hemnes¹³, Nicholas S Hill¹⁴, Evelyn M Horn¹⁵, Jane A Leopold¹⁶, Erika B. Rosenzweig¹⁷, W.H. Wilson Tang⁴, Jennifer D. Wilcox¹⁸

^{*}Dr. Rischard is both the first and lead author. Co-authors are then placed in order of contribution. If authors contributed equally, they are then listed alphabetically.

¹Division of Pulmonary, Allergy, Critical Care and Sleep Medicine, University of Arizona

²Division of Pulmonary, Critical Care and Sleep Medicine, University of Oklahoma Health Sciences Center, Oklahoma City, OK

³Division of Cardiovascular Medicine, The Ohio State University

⁴Department of Cardiovascular Medicine, Cleveland Clinic

⁵Division of Cardiology, University of Arizona, Tucson, AZ

⁶Department of Medicine, University of Arizona

⁷Department of Cardiovascular and Respiratory Science, Sapienza University of Rome, Rome, Italy

⁸Department of Quantitative Health Sciences, Cleveland Clinic

⁹Department of Pathophysiology, Free University of Brussels, Brussels, Belgium

¹⁰Lerner Research Institute, Cleveland Clinic

¹¹Department of Cardiovascular Medicine, Mayo Clinic

¹²Division of Pulmonary and Critical Care Medicine, Johns Hopkins University

¹³Division of Allergy, Pulmonary and Critical Care Medicine, Vanderbilt University Medical Center

¹⁴Division of Pulmonary, Critical Care, and Sleep Medicine, Tufts Medical Center

¹⁵Perkin Heart Failure Center, Division of Cardiology, Weill Cornell Medicine

¹⁶Division of Cardiovascular Medicine, Brigham and Women's Hospital, Harvard Medical School

¹⁷Department of Pediatrics and Medicine, Columbia University, Velos College of Physicians and Surgeons

¹⁸Department of Cardiovascular and Metabolic Sciences, Cleveland Clinic

Corresponding author:

Franz P. Rischard
Division of Pulmonary, Critical Care, Allergy, and Sleep Medicine
Division of Translational and Regenerative Medicine
1501 N. Campbell Ave.
Tucson, AZ 85724
Office: (520) 626-6380
frischard@deptofmed.arizona.edu

Sources of funding: The PVDOMICS study received grants U01 HL125218 (PI: E.B. Rosenzweig), U01 HL125205 (PI: R.P. Frantz), U01 HL125212 (PI: A.R. Hemnes), U01 HL125208 (PI: F.P. Rischard), U01 HL125175 (PI: P.M.Hassoun), U01 HL125215 (PI: J.A. Leopold), and U01 HL125177 (PI: G.J. Beck) and the Pulmonary Hypertension Association. The PAH cohort is a continuously enrolling (since 1/21) cohort at UA of treatment naïve patients. This registry/biorepository is funded directly by the UA.

Author Disclosures: Please see attached ICMJE disclosure forms.

Abstract

Background: Normative changes in right ventricular (RV) structure and function have not been characterized in the context of treatment-associated functional recovery (RVFnRec). The aim of this study is to assess the clinical relevance of a proposed RVFnRec definition.

Methods: We evaluated 63 incident patients with PAH by right heart catheterization and cardiac MRI (CMR) at diagnosis and CMR and invasive cardiopulmonary exercise (CPET) following treatment (~11 months). Sex, age, race/ethnicity matched healthy control subjects (n=62) with one-time CMR and non-invasive CPET were recruited from the PVDOMICS project. We examined therapeutic CMR changes relative to the evidence-based peak oxygen consumption ($VO_{2peak} > 15 \text{ mL/kg/min}$) to define RVFnRec by receiver operating curve analysis. Afterload was measured in the as mean pulmonary artery pressure, resistance, compliance, and elastance.

Results: A drop in RV end-diastolic volume of -15 mL best defined RVFnRec (AUC 0.87, $P=0.0001$) and neared upper 95% CI RVEDV of controls. 22/63 (35%) of subjects met this cutoff which was reinforced by freedom from clinical worsening, RVFnRec 1/21 (5%) versus no RVFnRec 17/42, 40%, (log rank $P=0.006$). A therapy-associated increase of 0.8 mL/mmHg in compliance had the best predictive value of RVFnRec (AUC 0.76, CI 0.64-0.88, $P=0.001$). RVFnRec subjects had greater increases in stroke volume, and cardiac output at exercise.

Conclusions: RVFnRec defined by RVEDV therapeutic decrease of -15mL predicts exercise capacity, freedom from clinical worsening, and nears normalization. A therapeutic improvement of compliance is superior to other measures of afterload in predicting RVFnRec. RVFnRec is also associated with increased RV output reserve at exercise.

Abstract word count: 250 (≤ 250)

Manuscript word count: 3769 (≤ 4000)

Figures and Tables: 9

References: 50 (≤ 50)

Key Words: pulmonary hypertension, right ventricular remodeling, right ventricular afterload, treatment effect

Supplement: This article has an online data supplement, which is accessible from this issue's table of content online.

Clinical Perspective:

What is new?

Right ventricular functional recovery (RVFnRec) represents a novel endpoint of therapeutic success in PAH. We define RVFnRec as treatment associated normative RV changes related to function (peak oxygen consumption). Normative RV imaging changes are compared to a well phenotyped age, sex, and race/ethnicity matched healthy control cohort from the PVDOMICS project. Previous studies have focused on RV ejection fraction improvements. However, we show that changes in RVEDV are perhaps more important in that improvements in LV function also occur. Lastly, RVFnRec is best predicted by improvements in pulmonary artery compliance versus pulmonary vascular resistance, a more often cited metric of RV afterload.

What are the clinical implications?

RVFnRec represents a potential non-invasive assessment of clinical improvement and therapeutic response. Clinicians with access to cardiac MRI can obtain a limited scan (i.e., ventricular volumes) before and after treatment. Future study should examine echocardiographic correlates of RVFnRec.

Abbreviations

ANOVA: analysis of variance

BNP: brain natriuretic peptide

Ca: pulmonary vascular compliance

CI: confidence interval

CMR: cardiac MRI

CTEPH: chronic thromboembolic pulmonary hypertension

EDV: end-diastolic volume

EF: ejection fraction

ERS/ESC: European Respiratory Society/European Society of Cardiology

ESV: end-systolic volume

Ea: effective pulmonary arterial elastance

LV: Left ventricle

PA: pulmonary artery

PAH: pulmonary arterial hypertension

PAP: pulmonary artery pressure

PCWP: pulmonary capillary wedge pressure

PVR: pulmonary vascular resistance

RAP: right atrial pressure

REVEAL: United States Registry to Evaluate Early and Long-Term PAH Disease Management

RV: right ventricle

RVFnRec: RV functional recovery

sRVP: systolic RV pressure

SV: stroke volume

PTE: thromboendarterectomy

WSPH: World Symposium of Pulmonary Hypertension

VO_{2peak}: peak oxygen consumption

1 **Introduction:**

2 Adaptation of the right ventricle (RV) to high afterload is the primary determinant
3 of a patient's symptoms and survival in PAH, making it a focus of research by expert
4 working groups^{1,2}. As afterload increases in PAH, the RV remodels with hypertrophy
5 resulting in adaptive maintenance of cardiac output. Eventually, maladaptive processes
6 occur such as myocardial interstitial fibrosis, detrimental myocyte intracellular and
7 molecular changes^{3,4}, and alterations in coronary flow⁵ leading to impaired systolic and
8 diastolic function. When RV afterload is acutely reversed, for example with lung
9 transplantation, there is often complete reversibility of these RV maladaptive changes⁶.
10 In the pre-combination therapy era, the magnitude of afterload lowering was not large
11 enough to appreciate substantial changes in RV structure⁷. However, combination
12 therapy results in significant improvements in afterload⁸ making RV “reverse remodeling”
13 a realistic therapeutic goal.

14 Reverse remodeling of the left ventricle (LV) is characterized by “normative”
15 (returning toward normal structure and function) changes. But, also the left ventricular,
16 cellular, and molecular processes associated with reverse remodeling have been well
17 described⁹. Relative to the LV, characterization of RV reverse remodeling is in its infancy.
18 Current definitions⁷ have relied upon the relationship to freedom from clinical worsening¹⁰
19 but moreover, they lack a substantive pathophysiological link of the consequences of
20 pulmonary vascular load on RV function. In the absence of longitudinal RV cellular and
21 molecular data, a formal definition of RV reverse remodeling is premature. However, RV
22 functional recovery (RVFnRec) can be characterized by therapeutically associated
23 “normative” imaging changes paired with peak exercise data (VO_{2peak}) indicative of the

1 RV stress response. To date, studies have not included a well-matched control group, so
2 characterization of “normative” change is unknown. In addition, most studies thus far
3 have used echocardiography to describe RVFnRec, whereas cardiac MRI (CMR) may be
4 more sensitive to treatment-related changes¹¹.

5 It is generally accepted that a large drop in afterload is required for RV reverse
6 remodeling (or RVFnRec), but the most affected parameter of afterload is unknown⁷.
7 Both steady (i.e., pulmonary vascular resistance, PVR) and pulsatile (i.e., pulmonary
8 arterial compliance, Ca) components are important contributors to afterload in the
9 pulmonary circulation¹². Effective pulmonary arterial elastance (Ea), a composite
10 measurement of total PVR and Ca, is also proposed as a more comprehensive way of
11 representing afterload¹³. Lastly, parameters obtained during exercise such as alpha (α)
12 distensibility, which describes the curvilinearity of the PA pressure-flow relationship, may
13 give us insight into pulmonary vascular reserve/recruitment and the state of the distal
14 vasculature¹⁴. No study has yet investigated these parameters longitudinally from PAH
15 diagnosis to determine their impact on reverse remodeling.

16 In the present study, we aim to systematically define RVFnRec by CMR in a
17 group of treatment naïve PAH patients relative to a $VO_{2\text{peak}}$ threshold and clinical
18 outcome. We evaluate the degree of normative RV therapeutic changes relative to
19 matched healthy controls. We further assess the best parameter of RV afterload for
20 predicting RVFnRec. Lastly, we examine if afterload and RV output reserve at exercise
21 add to our understanding of RVFnRec.

22 **Methods:**

23 ***Subjects***

1 Sixty-three incident treatment naive patients with World Symposium of PH (WSPH)
2 Group I PAH gave an informed consent to participate in the study, which was approved
3 by the institutional review board at the University of Arizona (IRB #1100000621). The
4 subjects enrolled as part of a prospective protocolized study which is open to all incident
5 patients (See **supplemental methods**). The diagnosis of PAH was established by
6 dedicated PAH providers with invasive confirmation by right heart catheterization based
7 on updated guidelines¹⁵. Patients were included if they had right heart catheterization
8 and CMR at baseline (pre-treatment) and invasive cardiopulmonary exercise testing
9 (iCPET) and CMR at > 6 months of follow-up. All patients were placed on PAH goal-
10 directed therapy per current guidelines at the time. See **supplemental methods** for
11 details on therapeutic strategy. Subjects were categorized by therapeutic strategy based
12 on the European Respiratory Society/European Society of Cardiology (ERS/ESC)
13 guidelines of 2015 at which goal-directed mono or sequential therapy was replaced by
14 up-front combination therapy¹⁶. We selected a cohort of patients all placed on parenteral
15 treprostinil (\pm oral therapy) to optimize the possibility of seeing large changes in afterload
16 (and thus, RVFnRec)¹⁷. Ninety-six healthy control subjects were recruited for the NHLBI
17 Redefining Pulmonary Hypertension through Pulmonary Vascular Disease Phenomics
18 (PVDOMICS)¹⁸. These subjects underwent extensive testing including CMR and non-
19 invasive CPET at a single time point. Sixty-two age, sex, and race/ethnicity matched
20 controls from across all clinical sites were used for this analysis with steering committee
21 approval. The United States Registry to Evaluate Early and Long-Term PAH Disease
22 Management (REVEAL) score 2.0 score¹⁹ was calculated and presented at baseline and
23 follow-up for the PAH subjects.

1 **Cardiac MRI**

2 All image analysis was performed using CVI42, Circle Cardiovascular Imaging®
3 by TA (at Arizona) and DK (at the PVDOMICS Core, the Cleveland Clinic), expert cardiac
4 MRI cardiologists with >10 years' experience in CMR. Fifty subjects with overlap (between
5 PVDOMICS and the UA registry) were analyzed by both TA and DK and used to assess
6 inter-reader variability in RV volumes (see **supplemental methods**). Cardiac MRI
7 imaging was performed as described previously²⁰. Briefly, standard volumetric
8 measurements were made from short axis cine projections for CMR. Contour smoothing
9 was done to include trabeculations in end-systole (ESV) and diastole (EDV). Stroke
10 volume (SV) was calculated as EDV – ESV and RVEF as [(SV/EDV) x 100]. Additional
11 methods are available in the online supplement.

12 **Right Heart Catheterization and Invasive Cardiopulmonary Exercise Testing**

13 After study inclusion, a pulmonary artery catheter was advanced via the antecubital
14 vein for measurements of pulmonary artery pressure (systolic, mean, and diastolic PAP),
15 RV pressure, right atrial pressure (RAP), wedged PAP (PCWP) and cardiac output (direct
16 Fick). PVR is calculated as mPAP-PCWP divided by direct Fick cardiac output (C.O.) and
17 expressed as WU (mmHg*min*L⁻¹) or mmHg*sec*mL⁻¹ where indicated. Ca was
18 calculated as stroke volume (SV) from direct Fick C.O. divided by PA pulse pressure and
19 expressed as mL*mmHg⁻¹. Effective pulmonary arterial elastance (Ea) was calculated as
20 sRVP/SV²¹ expressed as mmHg*mL⁻¹. Distensibility (α), expressed as % change in
21 vessel diameter/mmHg distending pressure, was calculated by methods previously
22 described^{14,22}. All stages of a single subject's mPAP, PCWP, and C.O. were used to

1 calculate a single α value. RC time, the product of PVR and Ca, was expressed as
2 seconds.

3 Our comprehensive resting and exercise catheterization protocol has been
4 previously published²³. Briefly, after obtaining supine resting measurements, the patient
5 was placed in full upright position with an electronic fluoroscopy chair. Fluoroscopy was
6 used to re-zero at left atrial level. A cycle ergometer was positioned below the patient.
7 The patient then proceeded with exercise at predetermined workload based on their level
8 of dyspnea²³ for steady-state two-minute stages until respiratory exchange ratio (RER)
9 ~ 1.1 . PAP, PCWP, RAP, arterial and venous O₂ content (CaO₂, CvO₂) were obtained
10 during the last 30 seconds of each stage. Metabolic cart analysis (Vyair Medical™,
11 Mettawa, IL) was used for simultaneous collection gas exchange and lung volume.
12 Hemodynamics presented were averaged over 3 respiratory cycles in accordance with
13 current guidelines at rest and exercise²⁴. The control patients underwent an identical
14 protocol in the non-invasive exercise lab (without a catheter in place).

15 **Definition of RV Functional Recovery**

16 Since exercise VO_{2peak} is physiologically meaningful (dependent on RV
17 function) and prognostic, the guideline²⁵ and evidence (clinical worsening) confirmed²⁶
18 cutoff of >15 mL/kg/min was chosen to identify potential CMR cutoffs indicative of
19 RVFnRec. Exercise data is presented only for the follow-up visit as many patients (N=55
20 without iCPET, N=8 with iCPET) were not exercised at baseline due to safety
21 considerations. We examined therapeutically associated change in RV size (RVESV and
22 EDV, % change RV volumes) and function (RVEF) relative to this VO_{2peak} cutoff at follow-
23 up. The Youden index was used to define the best cutoffs in RV volumes (absolute and

1 relative change from baseline) and RVEF (change from baseline). Receiver operating
2 characteristic (ROC) curves are used to display optimal cut-offs. Resulting RVFnRec
3 groups were then examined relative to freedom from clinical worsening. **Clinical**
4 **worsening** was defined as death, transplant, or hospitalization. Freedom from clinical
5 worsening was evaluated using Kaplan-Meier Plots and the log-rank test. A similar
6 procedure (Youden index and ROC analysis) was used to define the best cutoffs for
7 mPAP, Ca, PVR, Ea, and α at follow-up and change from baseline to follow-up for
8 predicting RVFnRec.

9 ***Statistical Analysis***

10 Continuous data are expressed as mean \pm standard deviation or median [25,75
11 percentile]. Categorical data are expressed as counts and percentages. The number of
12 PAH subjects was chosen based primarily on data availability given strict
13 inclusion/exclusion criteria. However, based on previously published data in prostacyclin
14 treated patients, we would expect 100% power to detect a mean difference of 7 ± 5.4 WU
15 PVR difference between RVFnRec and no RVFnRec groups (R.B. personal
16 communication, 9/25/22 based on ref.¹⁷. Kruskal-Wallis test for continuous and ordinal
17 variables or Fisher exact test for categorical variables were used to test baseline
18 differences. Normality was assessed with the Shapiro-Wilk test. Longitudinal differences
19 were evaluated with Wilcoxon signed-rank (within group) or repeated measures analysis
20 of variance (ANOVA)(between group). Variables were log-transformed in cases of non-
21 normal distribution. Linear or non-linear regression was conducted where appropriate
22 after testing assumptions. Binary logistic regression was done to assess the relationship
23 of treatment type with RVFnRec. Statistical analyses were performed using SPSS

1 software (version 28.0, IBM, Armonk, NY) and SigmaPlot (version 14.5, Systat®, San
2 Jose, CA). Statistical tests were 2-sided, and a p-value <0.05 was considered statistically
3 significant. P values and 95% CIs presented in this report have not been adjusted for
4 multiplicity, and therefore, inferences drawn from these statistics may not be reproducible.

5 **Results:**

6 **Patient Characteristics**

7 Sixty-three treatment naïve PAH and 62 control subjects were prospectively
8 enrolled. Subjects were predominantly female and PAH subjects were majority idiopathic
9 (**Table 1**). At enrollment, the subjects had very advanced PAH, characterized by low
10 cardiac index and significantly elevated afterload. CMR demonstrated nearly twice the
11 RVEDVI and depressed RVEF relative to controls. Therapeutic improvements in RVEF
12 were accompanied by improvements in 6-minute walk, PVR, pulmonary compliance,
13 cardiac output, and BNP (**Table 1**).

14 **Right Ventricular Functional Recovery**

15 As demonstrated in **Figure 1A-B**, VO_{2peak} was correlated with RVEDV and RVEF.
16 22/63 (35%) subjects had $VO_{2peak} > 15 \text{ mL/kg/min}$ with 20 (91% of the 22) having a change
17 in RVEDV and RVEF meeting the cutoff defined by the highest Youden index (0.74 at -
18 15mL and 0.51 at 4% change, respectively) while 2 (9%) met only one of these cutoffs.
19 Of the 41/63 (65%) of subjects with $VO_{2peak} \leq 15 \text{ mL/kg/min}$, 22 (54% of the 41) were below
20 both cutoffs, 15 (37%) had RVEF above the 4% change but below the RVEDV cutoff,
21 whereas 4 (9%) met both the RVEF and RVEDV cutoffs. ROC analysis (**Figure 1C**)
22 confirmed changes in RVEDV were superior to changes in RVEF in the prediction of
23 VO_{2peak} . Indexing RVEDV to BSA (RVEDVI) was not more predictive than RVEDV

1 (Youden 0.65 at -10.4 mL/m²). Change in RVESV and relative change in RVESV and
2 EDV were not more predictive than change in RVEDV (**Table E1**). All PAH subjects who
3 achieved the high VO_{2peak} cutoff demonstrated improvements in both RVESV and
4 RVEDV, whereas some subjects below the VO_{2peak} cutoff had improvements in RVESV
5 alone (**Figure E1**).

6 22/63 (35%) of subjects met criteria for RVFnRec using a drop of -15 mL in
7 RVEDV. Using this definition of RVFnRec, the average length of follow up was 50±28 and
8 38±25 months for the RVFnRec and no RVFnRec groups, respectively. All-cause
9 mortality was 1 (5%) and 10 (24%) and clinical worsening was 1 (5%) and 17 (41%) in
10 the RVFnRec and no RVFnRec groups, respectively. As shown in **Figure 1D**, this
11 definition of RVFnREc also resulted in a significant difference in time to clinical worsening,
12 P=0.006. There were significantly more subjects in the RVFnRec group treated with up-
13 front combination therapy versus the no RVFnRec group (50 versus 24%, P=0.01, **Table**
14 **2 and Figure E2**). Treatment approach differences were due in part to a difference
15 between groups in time of enrollment (RVFnRec median enrollment date 4/2017 [3/2014-
16 5/2021] versus no RVFnRec 5/2018 [11/2013-12/2021]). Up-front combination therapy
17 was associated with odds-ratio of 10.4 (CI 1.9-56.6, P=0.007) of RVFnRec relative to
18 goal-directed sequential therapy. There were significant improvements in 6-minute walk
19 distance, REVEAL 2.0, RV volumes and EF in the RVFnRec group by follow-up compared
20 to the no RVFnRec group (**Table 2 and 3**). Although both groups had an increase in
21 LVEDV, only the RVFnRec group had an improvement in LVEF (**Table 3**).

22 As shown in **Figure 2A**, only the RVFnRec group demonstrated a therapeutic
23 change in RVEDV that nears “normalization” of RVEDVI at the upper 95% confidence

1 interval (CI) of healthy controls (90 mL/m²). -15 mL decrease in RVEDV identifies most
2 of the patients included in this confidence interval. Although most of both the
3 RVFnRec(20/22, 91%) and no RVFnRec (32/41, 78%) groups met the SVI lower 95% CI
4 of controls (30 mL/m²), only the RVFnRec group neared the upper and lower 95% CI of
5 controls for RVEDVI (11/22, 50% versus 10/41, 24%, respectively) and RVEF (8/22, 35%)
6 versus 2/41, 5%, respectively) at follow-up (**Figure 2B**). Despite near normalization of
7 EDV and RVEF among the RVFnRec group, relative wall thickness (RV mass/volume)
8 remained approximately twice that of controls, RVFnRec 0.43±0.13 gm/mL versus control
9 0.21±0.05 gm/mL (**Figure 2C, Table 1 and 2**). **Table E2** compares RV volume and mass
10 in PAH and control subjects with previously published control reference values.

11 **RV Afterload Parameters Associated with RV Functional Recovery**

12 Patients with RVFnRec had larger absolute and relative (to baseline) drops in
13 mPAP, and Ca, as well as relative changes in PVR, versus the no RVFnRec group by
14 follow-up (**Table 4**). The absolute change in PVR and Ea and relative changes in Ea
15 were not significant (**Table 4**). A greater proportion of RVFnRec than no RVFnRec
16 subjects had moved to the “steep” portion of the PVR-Ca curve (**Figure 3A**) by follow-up.
17 9/63 (~14%) of PAH subjects had near normalization of PVR (~3WU) (**Figure 3A**). The
18 accuracy of the change in the absolute value, change in relative value (as % baseline),
19 and absolute value at follow-up were assessed as shown in **Figure 3B and E3A-B**. The
20 value giving the best AUC 0.76 (95% CI 0.64-0.88, P<0.0001) was change in Ca at a
21 cutoff of 0.8 mL/mmHg yielding a sensitivity of 85% and a specificity of 72% for RVFnRec.
22 Changes in mPAP, PVR, and Ca were associated with changes in RVEDV (**Figure 3 C-**
23 **E**) and RVEF (**Figure E3C-E**) with Ca being the most highly predictive.

1 **The Relationship of RV Functional Recovery to Exercise Afterload and RV Output** 2 **Reserve**

3 The RVFnRec subjects had higher $VO_{2\text{peak}}$ predicted, mPAP, cardiac output, and
4 stroke volume at exercise than did the no RVFnRec subjects at follow-up (**Figure 4 and**
5 **Table 5**). The $VO_{2\text{peak}}$ was much lower than matched controls, however. Ventilatory
6 efficiency index for carbon dioxide (V_e/VCO_2) was lower (better) in the RVFnRec group.
7 The mPAP-cardiac output relationship from rest to peak exercise, was similar in RVFnRec
8 versus the no RVFnRec group (**Figure 4B**). α distensibility was also similar between
9 RVFnRec and no RVFnRec groups (0.17 ± 0.15 versus 0.19 ± 0.3 %/mmHg, $P=NS$,
10 respectively) and much lower than predicted normal values of 1.4 (range 0.77-2.34)
11 %/mmHg¹⁴(**Figure 4D**). Using exercise afterload parameters did not improve the
12 accuracy of resting values at follow-up to predict RVFnRec (**Figure E4**).

13 **Discussion:**

14 This study is the first to demonstrate in treatment naïve PAH patients that 1) a -15
15 mL decrease in RVEDV is a useful CMR definition of RVFnRec associated with exercise
16 capacity ($VO_{2\text{peak}}$) and freedom from clinical worsening, 2) an increase in resting Ca of
17 0.8 mL/mmHg is superior to other afterload parameters in predicting RVFnRec, and 3)
18 RVFnRec is associated with high exercise RV output reserve.

19 Although therapeutic improvements in RV size and function add independently
20 prognostic information to well validated risk scores (such as REVEAL 2.0 and ERS risk
21 score) in PAH^{10,27}, the lack of a consensus definition of RV recovery hampers its use as
22 a therapeutic goal and a clinical trial endpoint. As normalization of RV size and function
23 would be an optimal goal, defining the limits of “normal” is challenging given reference

1 populations have varied by age, sex, race/ethnicity, body mass index, and
2 acquisition/reading methodology²⁸⁻³⁰. We have attempted to mitigate these challenges
3 by enrolling a control group matched for age, sex, and race/ethnicity. Although many of
4 our subjects met the CMR 95% confidence interval in the controls, normalization appears
5 to be an unrealistic definition of RVFnRec. However, complete normalization while a
6 laudable goal may be unnecessary for meaningful RV functional recovery. Unlike
7 definitions of RV reverse remodeling which rely on the absence of clinical worsening
8 alone¹⁰, we thought it important to examine RVFnRec by CMR cutoffs relating to clinical
9 improvement and exercise capacity. The VO_{2peak} chosen at 15 mL/kg/min is dependent
10 on cardiac output (RV functional reserve) in PAH²⁶ and is derived from guidelines²⁵ and
11 evidence²⁶. We confirmed the findings of others by showing changes in RVEDV are
12 related to freedom from clinical worsening in the RVFnRec group.

13 There is consensus that RVEF is consistently related to mortality¹ and therapeutic
14 improvements in RVEF are related to a drop in afterload^{10,31}. Studies enrolling subjects
15 on oral monotherapy or sequential therapy result in minimal afterload reduction. In these
16 studies, improvement in RVEF occurs by reductions in RVESV but with minimal change
17 in RVEDV^{27,31-33}. Early therapeutic changes in RVESV result from improvements in
18 afterload and RV diastolic function²⁰. But RV work efficiency does not improve (vis a vis
19 improved RV-PA coupling) until there is a drop in RVEDV with larger afterload reduction
20 (~7WU or >45% drop in PVR)³⁴. In fact, we demonstrate that a drop in both RVESV and
21 RVEDV are highly associated with an acceptable ($VO_{2peak} >15\text{mL/kg/min}$) exercise
22 capacity. We attempted to optimize the probability of large changes in afterload by
23 employing an aggressive therapeutic strategy based on parenteral prostacyclin^{7,17}. A

1 drop in RVEDV may signify a physiological shift from both heterometric (Frank-Starling)
2 and homeometric (contractility) adaptation to maintain stroke volume to a more
3 energetically optimized condition of homeometric adaptation alone³⁵. Although
4 improvements in RVEF from decreased RVESV represent a formidable short-term
5 therapeutic goal, the increased myocardial efficiency and reduced wall stress
6 accompanied by decreasing RVEDV should represent the ultimate long-term goal ³⁵.

7 Clinical observation indicates that biventricular maladaptive remodeling in PH is
8 reversible with rapid hemodynamic normalization such as lung transplantation⁶ and
9 pulmonary thomboendarterectomy (PTE) for chronic thromboembolic PH (CTEPH)³⁶.
10 Even RV fibrosis appears reversible in experimental PAH when afterload is gradually but
11 completely normalized³⁷. We have shown for the first time that biventricular normative
12 changes occur particularly in up-front prostacyclin with oral combination therapy resulting
13 in a significant and gradual drop in afterload. Only patients with RVFnRec demonstrated
14 large reductions in RV volume and improvements in RV and LVEF. Therefore, a reduction
15 in RVEDV may be requisite to an improvement in the LV maladaptive changes, such as
16 reduced LVEF³⁶, seen with PAH and CTEPH. Although RVEDV shows near
17 “normalization” relative to controls, normalization of RVEF and mass/volume was less
18 common. RV relative wall thickness (mass/volume) was maintained more than double
19 that of controls likely reflecting reduced but persistently high load. In this context, the
20 present definition of RVFnRec is near the prognostically significant cut-point of 0.47
21 gm/mL³⁸. The combination of RVFnRec and a high RV mass/volume appears
22 physiologically significant during exercise where these subjects can maintain higher

1 cardiac output and stroke volume (RV output reserve) as compared to those without
2 RVFnRec despite similar PAP^{39,40}.

3 As recently reviewed⁷, knowledge gaps exist on which afterload parameter
4 predicts RVFnRec. Although the pulmonary impedance spectrum is the gold standard of
5 afterload measurement, it requires simultaneous pressure and flow measurement in the
6 frequency domain making it difficult to measure and interpret¹². We have therefore chosen
7 a comprehensive list of frequently measured afterload parameters in clinical medicine.
8 Consistent with previously published data, we found that large changes in PVR (~>50%)
9 are necessary for RVFnRec¹⁰. However, pulmonary compliance was significantly more
10 predictive of RVFnRec than measures of steady load such as PVR and the composite
11 measure of load, Ea. Studies have demonstrated that compliance has a more consistent
12 relationship with outcome⁴¹⁻⁴³ and RV function^{44,45} than does PVR. Also, experimental
13⁴⁶ and clinical⁴⁷ evidence indicates that compliance plays a significant role in maintaining
14 optimal RV-PA coupling even at high PVR. Nevertheless, we found only a mild correlation
15 between all standard load parameters and RV function. This finding may indicate that
16 some afterload parameters not measured, like wave reflection⁴⁸, or load-independent
17 factors, like possible direct prostacyclin-mediated effects on the RV such as reduced
18 myocardial inflammation⁴⁹ or coronary microcirculatory effects⁵⁰, may play a role in
19 RVFnRec. It is possible that RVFnRec may represent a more comprehensive therapeutic
20 target, encompassing both load dependent and independent effects, than targeting load
21 (i.e., PVR) alone.

22 We found that resting therapeutic improvements in afterload dissipate quickly
23 during exercise as high PAP relative to cardiac output is seen even in subjects with

1 RVFnRec. Likely, the drop in load seen at rest is negated at exercise as less affected
2 pulmonary vessels meet maximal recruitment and distension as evidenced by very low α
3 distensibility and high mPAP-C.O. slope in both groups. This observation suggests that
4 pulmonary vascular remodeling is still likely advanced in RVFnRec despite such
5 significant improvements in resting measurements of afterload. The demands on the RV
6 by high afterload at exercise may explain why RVFnRec subjects maintain nearly twice
7 the relative RV wall thickness (mass/volume) to that of controls despite near normalization
8 of ventricular volume.

9 Our study has several limitations. It is a single center PAH cohort and therefore
10 the results require validation amongst a larger population and preferably multiple centers.
11 Validation is particularly important given that our ROC cutoff was assessed only at two
12 time points (baseline and follow-up) and therefore does not account for intrinsic variability
13 during the course of disease. For example, the RVEDV and Ca cutoffs may only be
14 applicable to subjects with advanced PAH. Also, our study assessed $VO_{2\text{peak}}$ only at
15 follow-up and not the change in VO_2 from diagnosis. However, the change in 6-minute
16 walk distance from baseline to follow-up confirms a substantial difference in functional
17 capacity between RVfnRec groups. Also, the feasibility of MRI is difficult at some centers
18 where echocardiography is preferable. Future studies should validate our findings
19 against echocardiographic metrics such as those recently proposed ⁷.

20 **Conclusions**

21 Our data suggest that defining RVFnRec as a therapeutic normative -15 mL drop
22 in RVEDV appears to be clinically useful. Among standard measures of afterload, an
23 increase in Ca of 0.8 mL/mmHg by follow-up best predicts RVFnRec although factors

- 1 outside afterload alone may be at play. We have shown that our definition of RVFnRec
- 2 corresponds with near normalization of RV volume, but relative wall thickness remains
- 3 high. The high relative wall thickness may be needed for output reserve in the face of
- 4 high afterload at exercise.

Acknowledgements: We would like to thank Andrew Swift (Department of Infection, Immunity and Cardiovascular Disease, University of Sheffield, Western Bank, Sheffield, UK) for sharing his CMR predicted reference equations with us. We would like to graciously acknowledge the assistance of the UAHD Biorepository at the University of Arizona. We would also like to acknowledge the many PH subjects of the UA registry/biorepository, the PVDOMICS study, and coordinators who have dedicated significant effort in the academic pursuit to further our field.

Author Contributions: F.P.R., R.B., D.H.K., T.A., W.W.T.: study design; F.P.R., M.I., S.K.: patient recruitment, care and follow-up; MRI core interpretation; A.K., M.M.P., T.A., D.H.K.: rest and exercise hemodynamic core interpretation; F.P.R., M.I., S.K., J.D.W., W.W.T. : data collection, maintenance, and analysis; R.J.B., F.P.R., R.P.F., P.M.H., A.R.H, E.M.H., J.A.L., E.B.: statistical analysis; F.P.R, A.B.L.: drafted the original manuscript; F.P.R., R.N., R.R.V., R.B., R.J.B., A.B.L., D.H.K, T.A., critical revision of the manuscript for important intellectual content; F.P.R., M.I., S.K., G.J.B., N.S.H., R.P.F., P.M.H., A.R.H., E.M.H., J.G.G., J.A.L., E.B., S.C.E : principal investigator, had access to the study data and takes full responsibility for the integrity and accuracy of the data.

Figure Legends

Figure 1. Defining right ventricular functional recovery. A change in RV end-diastolic volume (RVEDV) **(A)** and RV ejection fraction (RVEF) **(B)** from baseline to follow-up both correlated with peak oxygen consumption, $VO_{2\text{peak}}$, at follow-up. However, a change in RVEDV better discriminated high exercise capacity ($VO_{2\text{peak}} > 15\text{mL/kg/min}$) than did a change in RV ejection fraction (RVEF). Vertical solid lines indicate best Youden index of 0.72 at an RVEDV of -15mL or 0.51 for RVEF at +4%. Based on these cutoffs, the number of true positives (TP) and true (TN) and false (FN) negatives were similar in RVEDV and RVEF. However, the number of false positives

(FP) was higher for RVEF. **C)** Receiver operating characteristic (ROC) analysis predicting $VO_{2peak} > 15$ mL/kg/min shows a change in RVEDV of -15mL is more predictive than RVEF +4mL as well. **D)** Kaplan-Meier plot of RVFnRec and no RVFnRec by clinical worsening shows higher freedom from clinical worsening in the RVFnRec group.

Figure 2. Near normalization of right ventricular volume in functional recovery.

A) The treatment related change in RV end-diastolic volume (RVEDV) relative to RVEDV index at follow-up in the functional recovery (RVFnRec) and no RVFnRec subjects. Only RVFnRec subjects achieve a therapeutic change in RVEDV that nears normalization. **B)** RVEF and RVEDVI at follow-up in the RVFnRec, no RVFnRec, and healthy controls. Solid vertical line indicates the upper 95% CI and the dark horizontal line the lower 95% CI for RVEDV and RVEF in the control cohort, respectively. **C)** Treatment related changes in short (first column) and long (second column) axis cardiac MRI images at Baseline and Follow-up. Substantial, improvements in RV volume and ejection fraction are seen in the RVFnRec group. However, relative wall thickness (mass/volume) remained almost twice the healthy control value in both the RVFnRec and no RVFnRec groups.

Figure 3. Afterload changes predicting right ventricular functional recovery. **(A)** non-linear relationship between pulmonary vascular resistance (PVR) and compliance (Ca) at baseline and follow-up. Most RVFnRec subjects had moved to the steep portion of the curve by follow-up. Solid line indicates an upper normal PVR of <3 WU. **(B)** receiver operating curve analysis of longitudinal changes between baseline and follow-up in mean pulmonary artery pressure (mPAP), PVR, Ca, and effective pulmonary

elastance (E_a). Changes in Ca were the most closely related afterload parameter to changes in RV end-diastolic volume (RVEDV) (**C-E**). Vertical line indicates the highest (“best”) Youdin index cutoff for each afterload parameter.

Figure 4. The physiological significance of right ventricular functional recovery through exercise. Peak predicted oxygen consumption was higher in RVFnRec than no RVFnRec but both were well below normal matched controls (**A**). The linear pressure-flow relationship of RVFnRec subjects and no RVFnRec subjects was similar (**B**). The arrowheads represent peak and the tails resting mPAP/cardiac output. The thick arrow represents the median vector in each group. Despite similar mPAP/cardiac output, the cardiac output at peak was higher (**B**) and the change in stroke volume index (SVI) (**C**) was higher in RVFnRec than that of no RVFnRec subjects. Pulmonary vascular α distensibility was similar between groups (**D**). Taken together (**B-D**) these findings indicate similar RV afterload at exercise but improved RV output reserve in the RVFnRec cohort.

References

1. Leopold JA, Kawut SM, Aldred MA, Archer SL, Benza RL, Bristow MR, Brittain EL, Chesler N, DeMan FS, Erzurum SC, et al. Diagnosis and Treatment of Right Heart Failure in Pulmonary Vascular Diseases: A National Heart, Lung, and Blood Institute Workshop. *Circ Heart Fail*. 2021;14. doi: 10.1161/CIRCHEARTFAILURE.120.007975
2. Lahm T, Douglas IS, Archer SL, Bogaard HJ, Chesler NC, Haddad F, Hemnes AR, Kawut SM, Kline JA, Kolb TM, et al. Assessment of Right Ventricular

- Function in the Research Setting: Knowledge Gaps and Pathways Forward. An Official American Thoracic Society Research Statement. *Am J Respir Crit Care Med*. 2018;198:e15-e43. doi: 10.1164/rccm.201806-1160ST
3. Rain S, Bos Dda S, Handoko ML, Westerhof N, Stienen G, Ottenheijm C, Goebel M, Dorfmuller P, Guignabert C, Humbert M, et al. Protein changes contributing to right ventricular cardiomyocyte diastolic dysfunction in pulmonary arterial hypertension. *J Am Heart Assoc*. 2014;3:e000716. doi: 10.1161/JAHA.113.000716
 4. Hsu S, Kokkonen-Simon KM, Kirk JA, Kolb TM, Damico RL, Mathai SC, Mukherjee M, Shah AA, Wigley FM, Margulies KB, et al. Right Ventricular Myofilament Functional Differences in Humans With Systemic Sclerosis-Associated Versus Idiopathic Pulmonary Arterial Hypertension. *Circulation*. 2018;137:2360-2370. doi: 10.1161/CIRCULATIONAHA.117.033147
 5. van Wolferen SA, Marcus JT, Westerhof N, Spreeuwenberg MD, Marques KM, Bronzwaer JG, Henkens IR, Gan CT, Boonstra A, Postmus PE, et al. Right coronary artery flow impairment in patients with pulmonary hypertension. *Eur Heart J*. 2008;29:120-127. doi: 10.1093/eurheartj/ehm567
 6. Gorter TM, Verschuuren EAM, van Veldhuisen DJ, Hoendermis ES, Erasmus ME, Bogaard HJ, Vonk Noordegraaf A, Berger RMF, van Melle JP, Willems TP. Right ventricular recovery after bilateral lung transplantation for pulmonary arterial hypertensiondagger. *Interact Cardiovasc Thorac Surg*. 2017;24:890-897. doi: 10.1093/icvts/ivx025

7. Vizza CD, Lang IM, Badagliacca R, Benza RL, Rosenkranz S, White RJ, Adir Y, Andreassen AK, Balasubramanian V, Bartolome S, et al. Aggressive Afterload Lowering to Improve the RV: A New Target for Medical Therapy in PAH? *Am J Respir Crit Care Med*. 2021. doi: 10.1164/rccm.202109-2079PP
8. D'Alto M, Badagliacca R, Argiento P, Romeo E, Farro A, Papa S, Sarubbi B, Russo MG, Vizza CD, Golino P, et al. Risk Reduction and Right Heart Reverse Remodeling by Upfront Triple Combination Therapy in Pulmonary Arterial Hypertension. *Chest*. 2020;157:376-383. doi: 10.1016/j.chest.2019.09.009
9. Boulet J, Mehra MR. Left Ventricular Reverse Remodeling in Heart Failure: Remission to Recovery. *Structural Heart*. 2021;5:466-481. doi: 10.1080/24748706.2021.1954275
10. Badagliacca R, Poscia R, Pezzuto B, Papa S, Reali M, Pesce F, Manzi G, Gianfrilli D, Ciciarello F, Sciomer S, et al. Prognostic relevance of right heart reverse remodeling in idiopathic pulmonary arterial hypertension. *J Heart Lung Transplant*. 2017. doi: 10.1016/j.healun.2017.09.026
11. Spruijt OA, Di Pasqua MC, Bogaard HJ, van der Bruggen CE, Oosterveer F, Marcus JT, Vonk-Noordegraaf A, Handoko ML. Serial assessment of right ventricular systolic function in patients with precapillary pulmonary hypertension using simple echocardiographic parameters: A comparison with cardiac magnetic resonance imaging. *J Cardiol*. 2017;69:182-188. doi: 10.1016/j.jjcc.2016.02.019
12. Saouti N, Westerhof N, Postmus PE, Vonk-Noordegraaf A. The arterial load in pulmonary hypertension. *Eur Respir Rev*. 2010;19:197-203. doi: 10.1183/09059180.00002210

13. Kelly RP, Ting CT, Yang TM, Liu CP, Maughan WL, Chang MS, Kass DA.
Effective arterial elastance as index of arterial vascular load in humans.
Circulation. 1992;86:513-521. doi: 10.1161/01.cir.86.2.513
14. Lau EMT, Chemla D, Godinas L, Zhu K, Sitbon O, Savale L, Montani D, Jais X, Celermajer DS, Simonneau G, et al. Loss of Vascular Distensibility During Exercise Is an Early Hemodynamic Marker of Pulmonary Vascular Disease.
Chest. 2016;149:353-361. doi: 10.1378/chest.15-0125
15. Simonneau G, Montani D, Celermajer DS, Denton CP, Gatzoulis MA, Krowka M, Williams PG, Souza R. Haemodynamic definitions and updated clinical classification of pulmonary hypertension. *Eur Respir J*. 2019;53. doi: 10.1183/13993003.01913-2018
16. Galie N, Humbert M, Vachiery JL, Gibbs S, Lang I, Torbicki A, Simonneau G, Peacock A, Vonk Noordegraaf A, Beghetti M, et al. 2015 ESC/ERS Guidelines for the diagnosis and treatment of pulmonary hypertension: The Joint Task Force for the Diagnosis and Treatment of Pulmonary Hypertension of the European Society of Cardiology (ESC) and the European Respiratory Society (ERS): Endorsed by: Association for European Paediatric and Congenital Cardiology (AEPC), International Society for Heart and Lung Transplantation (ISHLT). *Eur Respir J*. 2015;46:903-975. doi: 10.1183/13993003.01032-2015
17. Badagliacca R, Papa S, Manzi G, Miotti C, Luongo F, Sciomer S, Cedrone N, Fedele F, Naeije R, Vizza CD. Usefulness of Adding Echocardiography of the Right Heart to Risk-Assessment Scores in Prostanoid-Treated Pulmonary Arterial

- Hypertension. *JACC Cardiovasc Imaging*. 2020;13:2054-2056. doi: 10.1016/j.jcmg.2020.04.005
18. Hemnes AR, Leopold JA, Radeva MK, Beck GJ, Abidov A, Aldred MA, Barnard J, Rosenzweig EB, Borlaug BA, Chung WK, et al. Clinical Characteristics and Transplant-Free Survival Across the Spectrum of Pulmonary Vascular Disease. *J Am Coll Cardiol*. 2022;80:697-718. doi: 10.1016/j.jacc.2022.05.038
 19. Benza RL, Gomberg-Maitland M, Elliott CG, Farber HW, Foreman AJ, Frost AE, McGoon MD, Pasta DJ, Selej M, Burger CD, et al. Predicting Survival in Patients With Pulmonary Arterial Hypertension: The REVEAL Risk Score Calculator 2.0 and Comparison With ESC/ERS-Based Risk Assessment Strategies. *Chest*. 2019;156:323-337. doi: 10.1016/j.chest.2019.02.004
 20. Vanderpool RR, Desai AA, Knapp SM, Simon MA, Abidov A, Yuan JX, Garcia JGN, Hansen LM, Knoper SR, Naeije R, et al. How prostacyclin therapy improves right ventricular function in pulmonary arterial hypertension. *Eur Respir J*. 2017;50. doi: 10.1183/13993003.00764-2017
 21. Tedford RJ, Hsu S, Kass DA. Letter by Tedford et al Regarding Article, "Effective Arterial Elastance in the Pulmonary Arterial Circulation: Derivation, Assumptions, and Clinical Applications". *Circ Heart Fail*. 2020;13:e007081. doi: 10.1161/CIRCHEARTFAILURE.120.007081
 22. Naeije R, Vanderpool R, Dhakal BP, Saggarr R, Saggarr R, Vachierey JL, Lewis GD. Exercise-induced pulmonary hypertension: physiological basis and methodological concerns. *Am J Respir Crit Care Med*. 2013;187:576-583. doi: 10.1164/rccm.201211-2090CI

23. Tang WHW, Wilcox JD, Jacob MS, Rosenzweig EB, Borlaug BA, Frantz RP, Hassoun PM, Hemnes AR, Hill NS, Horn EM, et al. Comprehensive Diagnostic Evaluation of Cardiovascular Physiology in Patients With Pulmonary Vascular Disease: Insights From the PVDOMICS Program. *Circ Heart Fail*. 2020;13:e006363. doi: 10.1161/CIRCHEARTFAILURE.119.006363
24. Kovacs G, Herve P, Barbera JA, Chaouat A, Chemla D, Condliffe R, Garcia G, Grunig E, Howard L, Humbert M, et al. An official European Respiratory Society statement: pulmonary haemodynamics during exercise. *Eur Respir J*. 2017;50. doi: 10.1183/13993003.00578-2017
25. Humbert M, Kovacs G, Hoeper MM, Badagliacca R, Berger RMF, Brida M, Carlsen J, Coats AJS, Escribano-Subias P, Ferrari P, et al. 2022 ESC/ERS Guidelines for the diagnosis and treatment of pulmonary hypertension. *Eur Heart J*. 2022. doi: 10.1093/eurheartj/ehac237
26. Badagliacca R, Papa S, Poscia R, Valli G, Pezzuto B, Manzi G, Torre R, Gianfrilli D, Sciomer S, Palange P, et al. The added value of cardiopulmonary exercise testing in the follow-up of pulmonary arterial hypertension. *J Heart Lung Transplant*. 2019;38:306-314. doi: 10.1016/j.healun.2018.11.015
27. Lewis RA, Johns CS, Cogliano M, Capener D, Tubman E, Elliot CA, Charalampopoulos A, Sabroe I, Thompson AAR, Billings CG, et al. Identification of Cardiac Magnetic Resonance Imaging Thresholds for Risk Stratification in Pulmonary Arterial Hypertension. *Am J Respir Crit Care Med*. 2020;201:458-468. doi: 10.1164/rccm.201909-1771OC

28. Kawut SM, Lima JA, Barr RG, Chahal H, Jain A, Tandri H, Praestgaard A, Bagiella E, Kizer JR, Johnson WC, et al. Sex and race differences in right ventricular structure and function: the multi-ethnic study of atherosclerosis-right ventricle study. *Circulation*. 2011;123:2542-2551. doi: 10.1161/CIRCULATIONAHA.110.985515
29. Kawel-Boehm N, Hetzel SJ, Ambale-Venkatesh B, Captur G, Francois CJ, Jerosch-Herold M, Salerno M, Teague SD, Valsangiacomo-Buechel E, van der Geest RJ, et al. Reference ranges ("normal values") for cardiovascular magnetic resonance (CMR) in adults and children: 2020 update. *J Cardiovasc Magn Reson*. 2020;22:87. doi: 10.1186/s12968-020-00683-3
30. Foppa M, Arora G, Gona P, Ashrafi A, Salton CJ, Yeon SB, Blease SJ, Levy D, O'Donnell CJ, Manning WJ, et al. Right Ventricular Volumes and Systolic Function by Cardiac Magnetic Resonance and the Impact of Sex, Age, and Obesity in a Longitudinally Followed Cohort Free of Pulmonary and Cardiovascular Disease. *Circulation: Cardiovascular Imaging*. 2016;9. doi: 10.1161/CIRCIMAGING.115.003810
31. van de Veerdonk MC, Huis In TVAE, Marcus JT, Westerhof N, Heymans MW, Bogaard HJ, Vonk-Noordegraaf A. Upfront combination therapy reduces right ventricular volumes in pulmonary arterial hypertension. *Eur Respir J*. 2017;49. doi: 10.1183/13993003.00007-2017
32. Peacock AJ, Crawley S, McLure L, Blyth KG, Vizza CD, Poscia R, Francone M, Iacucci I, Olschewski H, Kovacs G, et al. Changes in right ventricular function measured by cardiac magnetic resonance imaging in patients receiving

- pulmonary arterial hypertension-targeted therapy: the EURO-MR study. *Circ Cardiovasc Imaging*. 2014;7:107-114. doi: 10.1161/CIRCIMAGING.113.000629
33. Vonk Noordegraaf A, Channick R, Cottreel E, Kiely DG, Marcus JT, Martin N, Moiseeva O, Peacock A, Swift AJ, Tawakol A, et al. The REPAIR Study: Effects of Macitentan on RV Structure and Function in Pulmonary Arterial Hypertension. *JACC Cardiovasc Imaging*. 2022;15:240-253. doi: 10.1016/j.jcmg.2021.07.027
34. Vanderpool RR, Hunter KS, Insel M, Garcia JGN, Bedrick EJ, Tedford RJ, Rischard FP. The Right Ventricular-Pulmonary Arterial Coupling and Diastolic Function Response to Therapy in Pulmonary Arterial Hypertension. *Chest*. 2021. doi: 10.1016/j.chest.2021.09.040
35. Vonk Noordegraaf A, Westerhof BE, Westerhof N. The Relationship Between the Right Ventricle and its Load in Pulmonary Hypertension. *J Am Coll Cardiol*. 2017;69:236-243. doi: 10.1016/j.jacc.2016.10.047
36. Hardziyenka M, Campian ME, Reesink HJ, Surie S, Bouma BJ, Groenink M, Klemens CA, Beekman L, Remme CA, Bresser P, et al. Right ventricular failure following chronic pressure overload is associated with reduction in left ventricular mass: evidence for atrophic remodeling. *J Am Coll Cardiol*. 2011;57:921-928. doi: 10.1016/j.jacc.2010.08.648
37. Boehm M, Tian X, Mao Y, Ichimura K, Dufva MJ, Ali K, Dannewitz Prosseda S, Shi Y, Kuramoto K, Reddy S, et al. Delineating the molecular and histological events that govern right ventricular recovery using a novel mouse model of pulmonary artery de-banding. *Cardiovasc Res*. 2020;116:1700-1709. doi: 10.1093/cvr/cvz310

38. Badagliacca R, Poscia R, Pezzuto B, Nocioni M, Mezzapesa M, Francone M, Giannetta E, Papa S, Gambardella C, Sciomer S, et al. Right ventricular remodeling in idiopathic pulmonary arterial hypertension: adaptive versus maladaptive morphology. *J Heart Lung Transplant*. 2015;34:395-403. doi: 10.1016/j.healun.2014.11.002
39. Chaouat A, Sitbon O, Mercy M, Ponçot-Mongars R, Provencher S, Guillaumot A, Gomez E, Selton-Suty C, Malvestio P, Regent D. Prognostic value of exercise pulmonary haemodynamics in pulmonary arterial hypertension. *European Respiratory Journal*. 2014;44:704-713.
40. Grünig E, Tiede H, Enyimayew EO, Ehlken N, Seyfarth H-J, Bossone E, D'Andrea A, Naeije R, Olschewski H, Ulrich S. Assessment and prognostic relevance of right ventricular contractile reserve in patients with severe pulmonary hypertension. *Circulation*. 2013;128:2005-2015.
41. Thenappan T, Prins KW, Pritzker MR, Scandurra J, Volmers K, Weir EK. The Critical Role of Pulmonary Arterial Compliance in Pulmonary Hypertension. *Ann Am Thorac Soc*. 2016;13:276-284. doi: 10.1513/AnnalsATS.201509-599FR
42. Ghio S, D'Alto M, Badagliacca R, Vitulo P, Argiento P, Mule M, Tuzzolino F, Scelsi L, Romeo E, Raineri C, et al. Prognostic relevance of pulmonary arterial compliance after therapy initiation or escalation in patients with pulmonary arterial hypertension. *International journal of cardiology*. 2017;230:53-58. doi: 10.1016/j.ijcard.2016.12.099
43. Campo A, Mathai SC, Le Pavec J, Zaiman AL, Hummers LK, Boyce D, Houston T, Champion HC, Lechtzin N, Wigley FM, et al. Hemodynamic predictors of

- survival in scleroderma-related pulmonary arterial hypertension. *Am J Respir Crit Care Med*. 2010;182:252-260. doi: 10.1164/rccm.200912-1820OC
44. Stevens GR, Garcia-Alvarez A, Sahni S, Garcia MJ, Fuster V, Sanz J. RV dysfunction in pulmonary hypertension is independently related to pulmonary artery stiffness. *JACC Cardiovasc Imaging*. 2012;5:378-387. doi: 10.1016/j.jcmg.2011.11.020
45. Bellofiore A, Wang Z, Chesler NC. What does the time constant of the pulmonary circulation tell us about the progression of right ventricular dysfunction in pulmonary arterial hypertension? *Pulm Circ*. 2015;5:291-295. doi: 10.1086/680358
46. Fourie PR, Coetzee AR, Bolliger CT. Pulmonary artery compliance: its role in right ventricular-arterial coupling. *Cardiovasc Res*. 1992;26:839-844. doi: 10.1093/cvr/26.9.839
47. Bellofiore A, Dinges E, Naeije R, Mkrdichian H, Beussink-Nelson L, Bailey M, Cuttica MJ, Sweis R, Runo JR, Keevil JG, et al. Reduced haemodynamic coupling and exercise are associated with vascular stiffening in pulmonary arterial hypertension. *Heart*. 2017;103:421-427. doi: 10.1136/heartjnl-2016-309906
48. Oakland H, Joseph P, Naeije R, Elassal A, Cullinan M, Heerdt PM, Singh I. Arterial load and right ventricular-vascular coupling in pulmonary hypertension. *J Appl Physiol (1985)*. 2021;131:424-433. doi: 10.1152/jappphysiol.00204.2021
49. Dewachter C, Belhaj A, Rondelet B, Vercruyssen M, Schraufnagel DP, Remmelink M, Brimiouille S, Kerbaul F, Naeije R, Dewachter L. Myocardial

inflammation in experimental acute right ventricular failure: Effects of prostacyclin therapy. *J Heart Lung Transplant*. 2015;34:1334-1345. doi:

10.1016/j.healun.2015.05.004

50. Frump AL, Bonnet S, de Jesus Perez VA, Lahm T. Emerging role of angiogenesis in adaptive and maladaptive right ventricular remodeling in pulmonary hypertension. *Am J Physiol Lung Cell Mol Physiol*. 2018;314:L443-L460. doi: 10.1152/ajplung.00374.2017

		PAH (n=63)		Control (n=62)
		Baseline	Follow-up	
Age (years)		51.2±12.7		50.0±14.02
Sex (N/% Female)		51 (81)		49 (79)
BMI (kg/m ²)		31.0±8.3		27.3±5.3†
Race (N/% White)		57 (90)		61 (98)
Ethnicity (N/% Hispanic)		18 (28)		14 (23)
	6 Minute Walk Distance (M)	284[115,362]	355[204,434]*	547[479,600]†
	BNP (pg/dL)	503[127.5,852.5]	70[27,155]*	
Cardiac MRI	RVEDVI (mL/m ²)	110.1[92.2,136.1]	100.8[80.7,128.	69.8[59.2,78.8]†
	RVESVI (mL/m ²)	77.6[60,103.8]	63.6[51.9,85.1]*	29.9[23.8,36.1]†
	RVEF (%)	27.4±9.3	35.0±9.8*	57.12±7.29†
	RV Mass (gm/m ²)	46.1±15.2	45.0±22.8	10.8±3.4†
	RV Mass/EDV (gm/mL)	0.41±0.12	0.41±0.14	0.17±0.05
Hemodynamics	RAP (mmHg)	11±7	4±4*	
	mPAP (mmHg)	55.4±10.4	39.2±9.5*	
	PCWP (mmHg)	9.2±4.4	7.3±3.1*	
	Cardiac Index (L/min/m ²)	2.02±0.63	2.9±0.99*	
	PVR (WU)	11.8[9.45,15.9]	6.1[4.79,7.98]*	
	Compliance (mL/mmHg)	0.99[0.77,1.35]	1.74[1.30,2.33]*	
	PA Elastance (mmHg/mL)	1.52[1.19,1.99]	0.89[0.70,1.28]*	

Table 1. Demographics and clinical data, cardiac MRI, and resting hemodynamics by assessment time by PAH or control cohorts. Values are mean ± SD, median [P25,P75], or N (%). BMI, body mass index; CHD, congenital heart disease; CTD, connective tissue disease; HIV, human immunodeficiency virus; iPAH, idiopathic pulmonary arterial hypertension; PoPH, portopulmonary hypertension; BNP, brain natriuretic peptide; MRI, magnetic resonance imaging; RVESVI, right ventricular end-systolic volume index; RVEDVI, right ventricular end-diastolic volume index; RVEF, right ventricular ejection fraction; PAP, pulmonary artery pressure; PCWP, pulmonary capillary wedge pressure; RAP, right atrial pressure; PVR, pulmonary vascular resistance. P values calculated as follows: Kruskal-Wallis test for continuous and ordinal variables or Wilcoxon signed-rank non-parametric test for related samples, Fisher exact test for categorical variables. *Significant difference at level <0.05 within PAH follow-up versus baseline; † P<0.05 control versus follow-up 1 PAH.

		RVFnRec (n=22)		No RVFnRec (n=41)	
		Baseline	Follow-Up	Baseline	Follow-Up
Age (years)		54.1±9.4		49.7±14.0	
Sex (N/% Female)		19 (91)		32 (76)	
BMI (kg/m ²)		31.4±10.5		30.9±7.1	
WSPH Category, N (%)	CHD	1 (4.8)		1 (2.4)	
	CTD	4 (19.0)		11 (26.2)	
	Drug/Toxin	3 (14.3)		8 (19.0)	
	HIV	0 (0)		1 (2.4)	
	iPAH	12 (57.1)		20 (47.6)	
	PoPH	1 (4.8)		1 (2.4)	
Risk Scores, N (%)	REVEAL 2.0 Low Risk	1 (4.8)	20 (91.0)	7 (16.7)	20 (47.6)
	REVEAL 2.0 Intermediate Risk	7 (33.3)	2 (9.0)	12 (28.6)	11 (26.2)
	REVEAL 2.0 High Risk	13 (61.9)	0 (0)	23 (54.8)	11 (26.2)
	6 Minute Walk Distance (M)	267±117	412±101*†	252±129	274±141
	BNP (pg/dL)	343[134,706.0]	60[27,127]*	423[128,853]	76[28,177]*
Treatment, N (%)	Monotherapy TRE (prior to 2015)		9 (41)		12 (29.3)
	Sequential TRE + Oral (prior to 2015)		2 (9.1)†		19 (46.3)
	Up Front TRE + Oral (after 2015)		11 (50)†		10 (24.4)
Diuretics, N (%)	Loop Diuretics		6 (27.3)		12 (29.3)
	Loop + ADO Antagonist		2 (9.1)		2 (4.9)
	Loop + Metolazone		1 (4.5)		0 (0)
Hemodynamics	RAP (mmHg)	11±6	3.0±3.0*	11±7	5±4*†
	mPAP (mmHg)	56.5±11.4	34.7±8.4*	54.8±10	41.5±9.4*†
	PCWP (mmHg)	9.4±4.2	5.4±3.2	9.1±4.6	6.7±3.0
	Cardiac Index (L/min/m ²)	1.98±0.7	3.27±1.2*†	2.0±0.6	2.7±0.8*

Table 2. Demographics and clinical data, multiparametric risk score, and standard resting hemodynamics by assessment time by RV functional recovery (RVFnRec) or no RV functional recovery (No RVFnRec) cohorts. Values are mean ± SD, median [P25,P75], or N (%). ADO, aldosterone; BMI, body mass index; CHD, congenital heart disease; CTD, connective tissue disease; HIV, human immunodeficiency virus; iPAH, idiopathic pulmonary arterial hypertension; PoPH, portopulmonary hypertension; REVEAL, United States Registry to Evaluate Early and Long-Term PAH Disease Management; ERS, European Respiratory Society; BNP, brain natriuretic peptide; MRI, magnetic resonance imaging; RVESVI, right ventricular end-systolic volume index; RVEDVI, right ventricular end-diastolic volume index; RVEF, right ventricular ejection fraction; PAP, pulmonary artery pressure; PCWP, pulmonary capillary wedge pressure; RAP, right atrial pressure; PVR, pulmonary vascular resistance; TRE, treprostinil. P values calculated as follows: Kruskal-Wallis test for continuous and ordinal variables or Wilcoxon signed-rank non-parametric test for related samples (within cohort) or repeated measures ANOVA (between cohort), Fisher exact test for categorical variables. * P<0.05 versus baseline within RVFnRec or no RVFnRec cohort; † P<0.05 between cohorts.

	RVFnRec (n=22)				No RVFnRec (n=41)				P Value†	P Value‡
	Baseline	Follow-Up	Mean Change	Relative Change	Baseline	Follow-Up	Mean Change	Relative Change		
RVEDVI (mL/m²)	119.5[104.0,145.7]	92.3[75.5,102.7]*	-34.5±24.6	-25.5±14.1	105[87.5,131.8]	114.0[88.2,159.0]	8.7±26.5	9.0±26.8	<0.001	<0.001
RVESVI (mL/m²)	92.3[74.5,105.1]	35.5[31.0,40.0]*	-37.6±18.2	-39.6±13.3	71.2[57.4,84.9]	73.2[57.5,88.9]	1.6±25.1	6.2±37.7	<0.001	<0.001
RVEF (%)	26.6±6.7	43.0±7.4*	15.7±7.1	55.7±35.9	27.7±10.3	32.0±8.7	4.4±11.0	32.4±62.8	<0.001	0.12
RVMI (gm/m²)	44.6[34.1,55.1]	35.4[29.8,41.0]	-1.1±28.2	-2.1±41.0	50.0[29.4,60.5]	43.9[33.0,55.2]	-1.2±13.0	0.2±30.6	0.94	0.89
RV M/V (gm/mL)	0.4[0.3,0.52]	0.37[0.33,0.45]	0.1±0.1	22.0±33.7	0.42[0.3,0.6]	0.34[0.30,0.50]	-0.04±0.1	-7.2±22.8	0.06	0.07
RV SV/ESV	0.37±0.1	0.72±0.3*	0.34±0.2	98.0±66.8	0.41±0.2	0.5±0.2	0.1±0.2	51.4±93.9	<0.001	0.04
LVEDVI (mL/m²)	47.5[44.8,50.9]	66.3[51.5,75.9]*	10.7±16.9	28.6±44.3	49.0[39.5,58.5]	63.8[55.1,72.3]*	16.8±15.4	35.4±32.4	0.22	0.56
LVESVI (mL/m²)	25.0[17.1,32.9]	26.6[17.7,35.5]	1.7±9.9	12.6±46.0	22.0[15.3,28.7]	26.6[23.2,30.0]*	8.3±9.3	46.8±52.4	0.02	<0.001
LVEF (%)	54.0[46.2,61.3]	56.8[54.8,60.8]*	7.2±9.9	15.6±19.9	54.0[46.9,61.1]	57.1[53.3,60.8]	-1.3±11.5	-0.2±19.8	0.01	0.01
LVMI (gm/m²)	36.8±6.1	42.4±26.3	22.0±5.1	62.3±13.2	45.0±16.9	42.3±18.7	-3.5±19.8	1.1±52.0	0.12	0.15
TR volume (mL)	3.0[0,14.0]	7.0[0,21.8]	7.6±10.9		6.0[0,16]	5.0[0,16.0]	-0.8±16.4		0.4	
TR fraction (%)	0.0[0,24.6]	9.8[0,33.6]	10.1±18.5		5.0[0,32]	8.2[0,27.7]	-2.5±21.4		0.2	

Table 3. Longitudinal Cardiac MRI features of the RV functional recovery (RVFnRec) and no recovery (No RVFnRec) cohorts. Values are mean ± SD, median [P25,P75], or N (%). RVEDVI, right ventricular end-diastolic volume index; RVESVI, right ventricular end-systolic volume index; RVEF, right ventricular ejection; RVMI, right ventricular mass index; RV M/V, right ventricular mass/volume; RV SV/ESV, right ventricular stroke volume/end-systolic volume; LVEDVI, left ventricular end-diastolic volume index; LVESVI, left ventricular end-systolic volume index; LVEF, left ventricular ejection-fraction; LVMI, left ventricular mass index; TR volume, tricuspid regurgitant volume; TR fraction, tricuspid regurgitant volume fraction (relative to stroke volume) fraction. P values calculated as follows: Wilcoxon signed-rank non-parametric test for related samples (within cohort) or repeated measures ANOVA (between cohort). * within cohort change from baseline to follow-up; † p value for between cohort change baseline to follow-up; ‡ p-value for between group relative change (as % baseline value) baseline to follow-up.

	RVFnRec (n=22)				No RVFnRec (n=41)				P value†	P value‡
	Baseline	Follow-up	Mean Change	Relative Change (%)	Baseline	Follow-up	Mean Change	Relative Change (%)		
mPAP (mmHg)	55.6±11.8	34.7±8.4*	-20.9±12.0	-35.8±18.2	54.8±10.0	41.5±9.4*	-13.3±8.2	-23.6±13.8	0.004	0.004
PVR (WU)	11.2[9.1, 14.7]	5.1[3.7,7.0]*	-7.7±6.4	-53.2±21.4	12.7[9.5,16.1]	6.9[5.4,10]*	-5.3±5.4	-33.3±37.5	0.14	0.028
Compliance (mL/mmHg)	1.0[1.2,2.0]	2.1[1.7,2.7]*	1.4±0.9	174.8±146.9	1.0[0.8,1.4]	1.4[1.1,2.1]*	0.6±0.8	71.3±83.3	0.001	<0.001
PA Elastance (mmHg/mL)	1.5[1.2,2.0]	0.8[0.7,1.1]*	-7±0.6	-35.5±37.9	1.5[1.1,2.0]	0.9[0.8,1.3]*	0.7±0.9	-31.2±35.6	0.94	0.67

Table 4. Longitudinal parameters of afterload in the RV functional recovery (RVFnRec) and no recovery (No RVFnRec) cohorts. Values are mean ± SD, median [P25,P75], or N (%). mPAP, mean pulmonary artery pressure; PVR, pulmonary vascular resistance; PA, pulmonary artery. P values calculated as follows: Wilcoxon signed-rank non-parametric test for related samples (within cohort) or repeated measures ANOVA (between cohort). * within cohort change from baseline to follow-up; † p value for between cohort mean change baseline to follow-up; ‡ p-value for between group relative change (as % baseline value) baseline to follow-up.

	RVFnRec (n=22)	No RVFnRec (n=41)	Healthy Control (n=62)
RER	1.14±0.10	1.06±0.11	1.16±0.08†‡
Work, (Watts)	35[20,60]	20[10,40]	140[118,198]†‡
VO₂ (mL/kg/min)	15.1±3.2*	8.9±3.0	23.73±7.7†‡
VO₂_{predicted}	62±14*	39±12	100±26†‡
Heart Rate (bpm)	115[104.0,120.0]	110[98,121]	157.0[146.0,166.0]†‡
RAP (mmHg)	7±4*	11±7	
mPAP (mmHg)	62.5[50.0,69.0]	58.8[48.0,68.0]	
PCWP (mmHg)	10.6±4.9	10.8±4.1	
Cardiac Output (L/min)	9.9[7.8,12.9]*	8.3[6.0,10.3]	
PAO₂sat (%)	45±8	41±10	
PVR (WU)	5.2[3.1,6.6]	5.6[4.3,7.7]	
Compliance (mL/mmHg)	2.28±0.9	1.9±0.7	
Ve/VCO₂ at AT	37.0[35.0,41.0]*	42.0[39.0,48.2]	29.6[27.3,32.2]†‡
PetCO₂ at AT	31.1±3.8*	27.3±6.5	
O₂pulse	7.0[6.0,8.1]	6.1[5.3,7.1]	10.7[9.2,13.0]†‡
CaO₂ (mL/dL)	176.4±21.1	178.8±21.0	
CvO₂ (mL/dL)	87.3±18.4	79.6±17.0	
Ca-vO₂ (mL/dL)	90.4±18.1	87.9±30	
α distensibility (%/mmHg)	0.914[0.00,0.231]	0.130[0.268,0.290]	

Table 5. RV functional recovery (RVFnRec) and No RV functional recovery (No RVFnRec) cohorts peak invasive cardiopulmonary exercise at follow-up and healthy control non-invasive peak exercise variables. Values are mean ± SD, median [P25,P75]. P values calculated from the Kruskal-Wallis test. RER, respiratory exchange ratio; VO₂, peak oxygen consumption; RAP, right atrial pressure; mPAP, mean pulmonary artery pressure; PCWP, pulmonary capillary wedge pressure; PAO₂, pulmonary arterial oxygen saturation; PVR, pulmonary vascular resistance; Ve/VCO₂, minute ventilation/exhaled carbon dioxide; PetCO₂, end-tidal CO₂; O₂pulse, oxygen pulse (VO₂/heart rate), CaO₂, arterial oxygen content; CvO₂, pulmonary arterial oxygen content; Ca-vO₂, arterio-venous oxygen content difference; α distensibility, distensibility of the pulmonary arterial system (calculated at exercise). *P<0.05 for RVFnRec versus No RVFnRec; †=P<0.05 for Health Control versus RVFnRec; ‡P<0.05 for Healthy Control versus No RVFnRec.

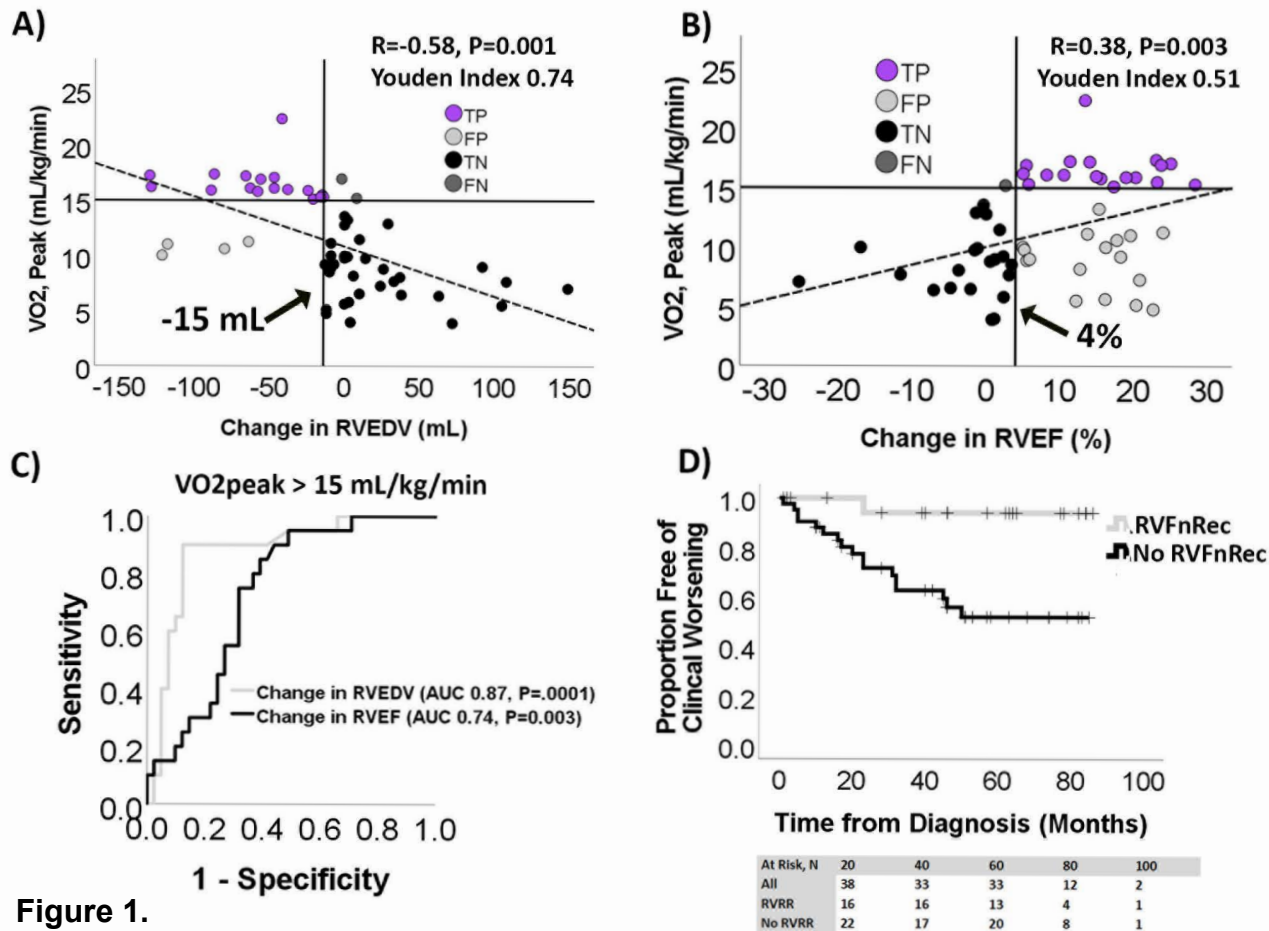


Figure 1.

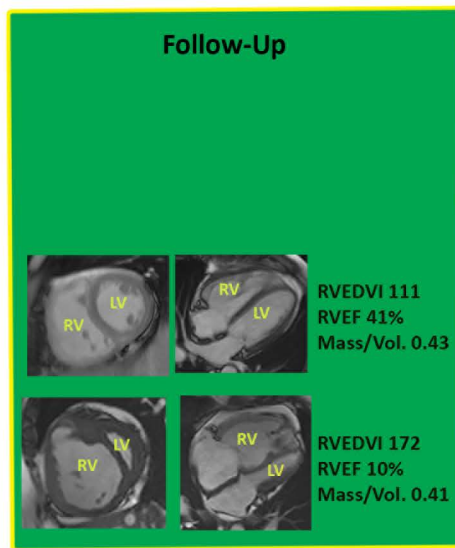
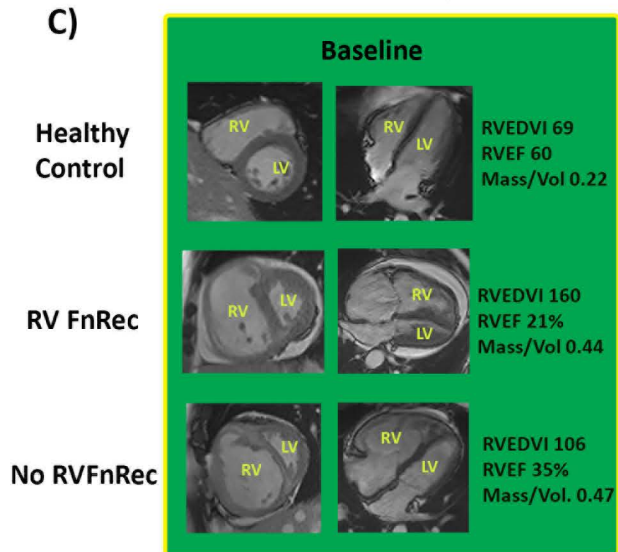
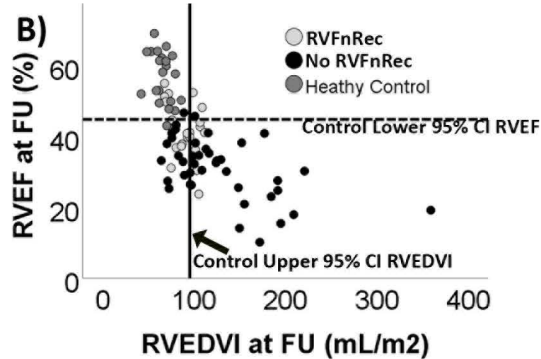
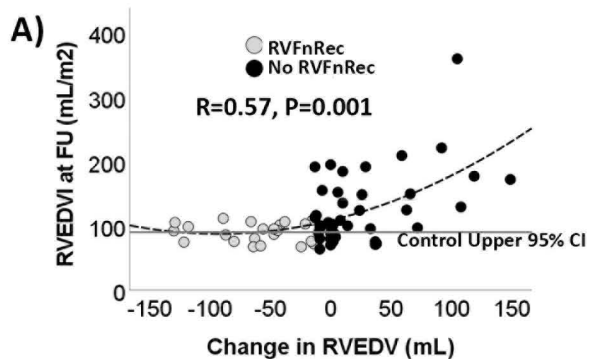


Figure 2

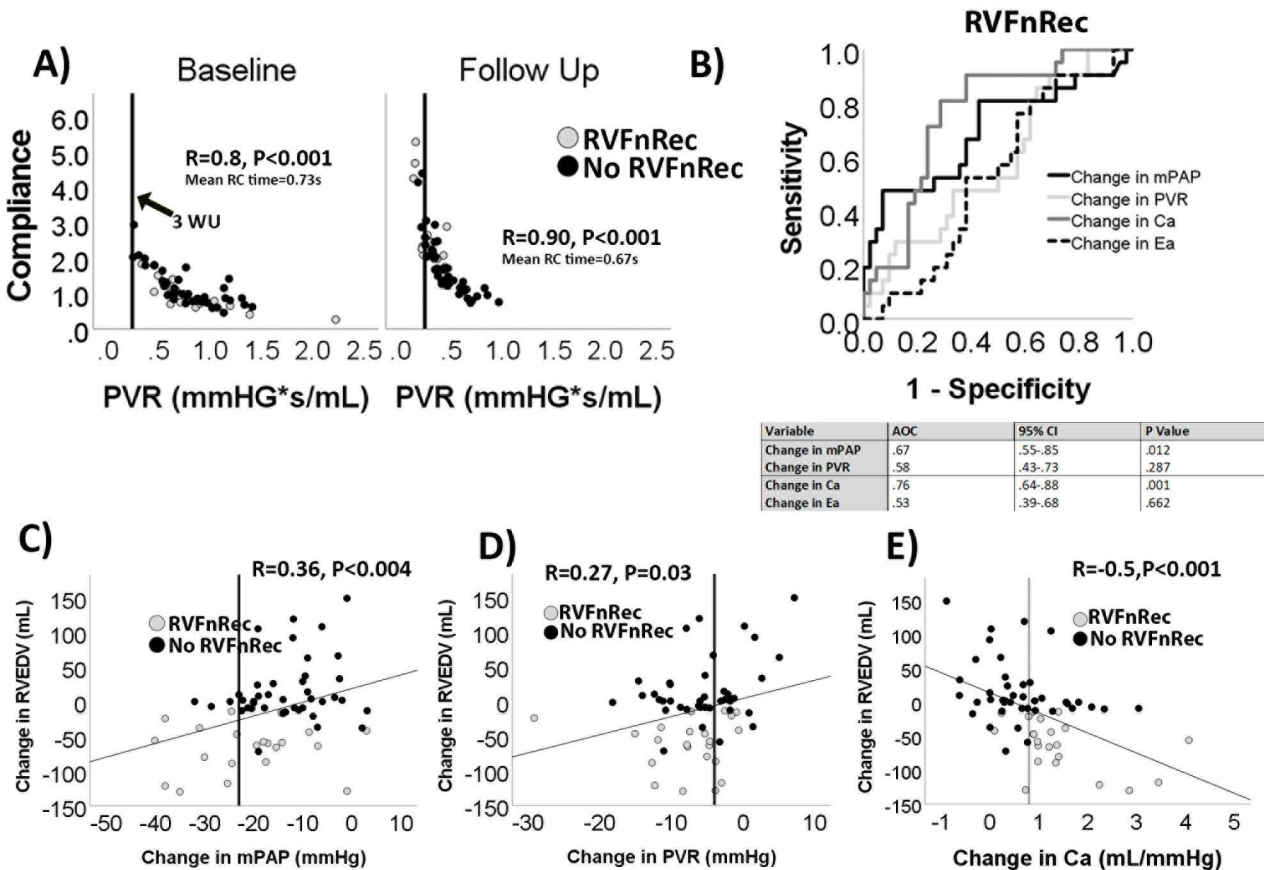


Figure 3

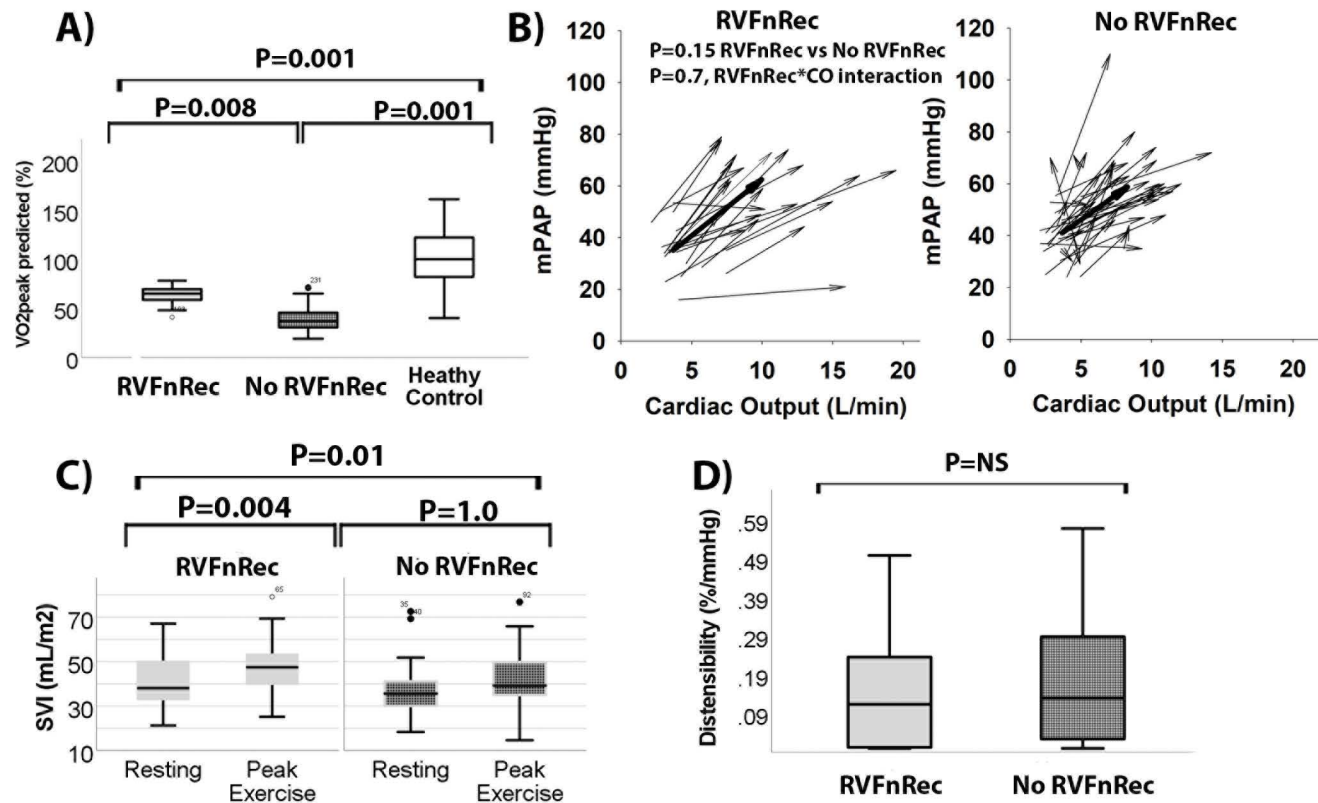


Figure 4