

Strong isolation by distance and evidence of population microstructure reflect ongoing *Plasmodium falciparum* transmission in Zanzibar

Sean V. Connelly¹, Nicholas F. Brazeau¹, Mwinyi Msellem², Billy E. Ngasala^{3,14}, Özkan Aydemir⁸, Varun Goel⁵, Karamoko Niaré⁴, David J. Giesbrecht⁴, Zachary R. Popkin-Hall⁷, Christopher M. Hennelly⁷, Zackary Park⁶, Ann M. Moormann⁸, John Michael Ong'echa⁹, Robert Verity¹⁰, Safia Mohammed¹¹, Shija J. Shija¹¹, Lwidiko E. Mhamilawa^{3,14}, Ulrika Morris¹², Andreas Mårtensson¹⁴, Jessica T. Lin⁶, Anders Björkman^{12,13}, Jonathan J. Juliano^{6,15,16*}, Jeffrey A. Bailey^{4*}

- 1: MD-PhD Program, University of North Carolina, Chapel Hill, NC 27599
- 2: Research Division, Ministry of Health, Zanzibar, Tanzania
- 3: Department of Parasitology and Medical Entomology, Muhimbili University of Health and Allied Sciences, Dar es Salaam, Tanzania
- 4: Department of Pathology and Laboratory Medicine, Brown University, Providence, RI, 02912 USA
- 5: Carolina Population Center, University of North Carolina, Chapel Hill, NC 27599
- 6: Division of Infectious Diseases, Department of Medicine, School of Medicine, University of North Carolina at Chapel Hill, Chapel Hill, NC, 27599 USA
- 7: Institute for Global Health and Infectious Diseases, School of Medicine, University of North Carolina at Chapel Hill, Chapel Hill, NC, 27599 USA
- 8: Department of Medicine, University of Massachusetts Chan Medical School, Worcester, MA
- 9: Center for Global Health Research, Kenyan Medical Research Institute, Kisumu, Kenya
- 10: MRC Centre for Global Infectious Disease Analysis, Imperial College, London
- 11: Zanzibar Malaria Elimination Program (ZAMEP), Zanzibar, Tanzania
- 12: Department of Microbiology, Tumor and Cell Biology, Karolinska Institutet, 17177 Stockholm, Sweden
- 13: Department of Global Public Health, Karolinska Institutet, Stockholm, Sweden.
- 14: Global Health and Migration Unit, Department of Women's and Children's Health, Uppsala University, Uppsala, Sweden
- 15: Department of Epidemiology, Gillings School of Global Public Health, University of North Carolina, Chapel Hill, 27599 USA
- 16: Curriculum in Genetics and Molecular Biology, University of North Carolina, Chapel Hill, NC 27599 USA

*: co-senior authors

Keywords: *Plasmodium falciparum*, malaria, population microstructure, Tanzania, Zanzibar, molecular inversion probes

37 ABSTRACT

38 The Zanzibar archipelago of Tanzania has become a low-transmission area for *Plasmodium falciparum*.
 39 Despite being considered an area of pre-elimination for years, achieving elimination has been difficult,
 40 likely due to a combination of imported infections from mainland Tanzania, and continued local
 41 transmission. To shed light on these sources of transmission, we applied highly multiplexed genotyping
 42 utilizing molecular inversion probes to characterize the genetic relatedness of 282 *P. falciparum* isolates
 43 collected across Zanzibar and in Bagamoyo District on the coastal mainland from 2016-2018. Overall,
 44 parasite populations on the coastal mainland and Zanzibar archipelago remain highly related. However,
 45 parasite isolates from Zanzibar exhibit population microstructure due to rapid decay of parasite
 46 relatedness over very short distances. This, along with highly related pairs within *shehias*, suggests
 47 ongoing low level local transmission. We also identified highly related parasites across *shehias* that reflect
 48 human mobility on the main island of Unguja and identified a cluster of highly related parasites, suggestive
 49 of an outbreak, in the Micheweni district on Pemba island. Parasites in asymptomatic infections
 50 demonstrated higher complexity of infection than those in symptomatic infections, but have similar core
 51 genomes. Our data support importation as a main source of genetic diversity and contribution to the
 52 parasite population on Zanzibar, but they also show local outbreak clusters where targeted interventions
 53 are essential to block local transmission. These results highlight the need for preventive measures against
 54 imported malaria and enhanced control measures in areas that remain receptive for malaria reemergence
 55 due to susceptible hosts and competent vectors.

56 INTRODUCTION

57 Malaria cases in Tanzania comprise 3% of globally reported cases, but transmission is heterogeneous,
 58 with the coastal mainland witnessing declining but substantial transmission of *Plasmodium falciparum*
 59 (Alegana et al., 2021; World Health Organization, 2022). On the other hand, the archipelago of Zanzibar is
 60 a pre-elimination setting, with low level seasonal transmission (Björkman et al., 2019). This is largely due
 61 to the routine implementation of a combination of effective control measures, including robust vector
 62 control and routine access to effective antimalarials (Björkman et al., 2019). Despite these efforts, malaria
 63 has been difficult to eliminate from the archipelago. There are several reasons this may be the case: (1)
 64 frequent importation of malaria from moderate or high transmission regions of mainland Tanzania and
 65 Kenya (Björkman et al., 2019; Le Menach et al., 2011; Lipner et al., 2011; Monroe et al., 2019; Morgan et
 66 al., 2020; Tatem et al., 2009); (2) ongoing local transmission due to residual vector capacity despite strong
 67 vector control (Björkman et al., 2019); and (3) a reservoir of asymptomatic infections (Björkman & Morris,
 68 2020; Björkman et al., 2019).

69
 70 Parasite genomics has the potential to help us better understand malaria epidemiology by uncovering
 71 population structure and gene flow, providing insight into changes in the parasite population including how
 72 parasites move between regions (Neafsey et al., 2021). Genomics has previously been used to study
 73 importation and transmission chains in other low transmission settings in Africa and elsewhere (H. H.
 74 Chang et al., 2019; Fola et al., 2023; Morgan et al., 2020; Patel et al., 2014; Roh et al., 2019; Sane et al.,
 75 2019). Previously, we had investigated the importation of malaria into Zanzibar from the mainland using
 76 whole genome sequencing, showing highly similar populations within the mainland and within the
 77 archipelago, but also identifying highly related parasite pairs between locations suggesting a role for
 78 importation (Morgan et al., 2020). However, this work lacked sufficient samples to assess transmission of
 79 parasites within Zanzibar. The larger and spatially rich sample set analyzed in this manuscript offers an
 80 opportunity for more refined analyses of transmission across Zanzibar and how parasites are related to
 81 those from coastal mainland.

82 A panel of molecular inversion probes (MIPs), a highly multiplexed genotyping assay, were designed in a
 83 previous study to target single nucleotide polymorphisms (SNPs) throughout the *P. falciparum* genome
 84 (Aydemir et al., 2018). We leveraged this assay to investigate the genetic epidemiology of parasites in the
 85 coastal mainland and Zanzibar utilizing 391 samples collected from cross-sectional surveys of both
 86 asymptomatic infections and symptomatic, uncomplicated malaria cases during 2016-2018. Specifically,
 87 we use identity by descent analyses to compare the genetic relatedness of mainland and Zanzibari
 88 parasites, and to investigate the geography/spatial relationships of genetically related parasites on the
 89 archipelago. We further characterize how the genetic complexity of infections differ by clinical status and
 90 describe patterns of antimalarial drug resistance polymorphisms in the parasite populations. In this low
 91 transmission setting, these analyses characterize fine-scale local parasite populations that contribute to
 92 continued transmission within the region, highlighting a key barrier to malaria elimination in the Zanzibar
 93 archipelago.

METHODS

Samples from coastal Tanzania (178) and Zanzibar (213) were previously sequenced through multiple studies (**Table 1, Supplemental Figure 1**). These samples include 213 dried blood spots (DBS) collected in Zanzibar between February 2016 and September 2017, coming from cross-sectional surveys of asymptomatic individuals ($n = 70$) and an *in vivo* efficacy study of artesunate-amodiaquine (ASAQ) with single low dose primaquine (SLDP) in pediatric uncomplicated malaria patients in the western and central districts of Unguja island and Micheweni District on Pemba island ($n = 143$) (Msellem et al., 2020). These samples were geolocalized to *shehias*, the lowest geographic governmental designation of land in Zanzibar, across its two main islands, Unguja and the northern region of Pemba (**Supplemental Figure 1**). Mainland Tanzania samples were collected in rural Bagamoyo District, where malaria transmission persists, and residents frequently travel to Dar es Salaam, the major port from where travelers depart for Zanzibar. Of the mainland Bagamoyo samples, 138 were whole blood collected from 2015-2017 as part of an *in vivo* efficacy study of artemether-lumefantrine (AL) in pediatric uncomplicated malaria patients (Topazian et al., 2022), and the remaining 40 samples were leukodepleted blood collected in 2018 from asymptomatic but RDT-positive children who participated in a study investigating the transmission of *P. falciparum* to colony reared mosquitos. This project leveraged molecular inversion probe (MIP) data from SRA including PRJNA926345, PRJNA454490, PRJNA545345, and PRJNA545347.

In order to place coastal Tanzanian and Zanzibari samples in the context of African *P. falciparum* population structure across multiple regions, MIP data from 147 whole blood samples collected in Ahero District, Kenya from the same parasite clearance study were used (Topazian et al., 2022) in conjunction with a subset of data from 2,537 samples genotyped for a study of the 2013 Demographic Health Survey of the Democratic Republic of the Congo which included samples from DRC, Ghana, Tanzania, Uganda and Zambia (Verity et al., 2020) (see **Supplemental Figure 2**).

Molecular Inversion Probe (MIP) Sequencing: Sequence data for the coastal Tanzanian and Zanzibari samples were generated in a similar fashion across studies. Chelex extracted DNA from DBS and Qiagen

Miniprep (Qiagen, Germantown, MD) extracted DNA from leukodepleted blood were used in MIP captures, which were then sequenced as previously described (Aydemir et al., 2018; Verity et al., 2020). Control mixtures of 4 strains of genomic DNA from *P. falciparum* laboratory lines were also sequenced as described previously (Verity et al., 2020). We utilized two MIP panels, one being a genome-wide single nucleotide polymorphism (SNP) MIP panel and the second being a panel with the known drug resistance markers in *Plasmodium falciparum* (Verity et al., 2020). These libraries were sequenced on Illumina Nextseq 500 instrument using 150bp paired end sequencing with dual indexing using Nextseq 500/550 Mid-output Kit v2.

129

130 MIP variant Calling and Filtering:

MIP sequencing data was processed using *MIPTools* (<https://github.com/bailey-lab/MIPTools>), which first merges reads and removes errors and Unique Molecular Identifier (UMI) redundancy with *MIPWrangler* (Aydemir, unpublished). For the genome-wide panel, variant calling was performed using *FreeBayes* within *MIPTools*, for a pooled continuous sample that was filtered for a minimum UMI depth of 10, a within sample allele frequency threshold of 0.01 and a minimum alternate read count of 2 to obtain 5174 variant SNP sites. Utilizing *bcftools* (version 1.15.1), the samples and loci were filtered to only the known targeted SNPs, requiring a minor allele frequency threshold of 0.01, a sample missingness threshold of 10% and loci missingness threshold of 15%. After filtering and subsetting to biallelic sites, 282 samples were left at 1270 loci. The final numbers of samples used for analysis by group are shown in **Table 1**. Sequencing coverage estimates for loci are shown in **Supplemental Figure 3**.

For the drug resistance panel, variant calling was performed as above, with additional *FreeBayes* parameters of a haplotype length of 3 and using the 30 best alleles at a given locus. Three aggregate amino acid summary tables were created with reference amino acid UMI counts, alternate amino acid UMI counts and the coverage depth for each variant, for a total of 309 samples at 2265 SNPs. We focused analysis on the following key known and putative drug resistance molecular marker genes and corresponding mutations: *P. falciparum* (*Pf*) chloroquine resistance transporter (*Pf*cr: C72S, M74I, N75E, K76T, T93S, H97Y, F145I, I218F, A220S, Q271E, N326S, M343L, C350R, G353V, I356T, R371I), *Pf*

multidrug resistance 1 (Pfmdr1: N86Y, Y184F, S1034C, N1042D, D1246Y), *Pf* dihydrofolate reductase (Pfdhfr: A16V, N51I, C59R, S108N, I164L), *Pf* dihydropteroate synthase (Pfdhps: S436A, S436F, A437G, K540E, A581G, A613T, A613S), *Pf* cytochrome *b* (Pfcytb: Y268N, Y268S, Y268C) and *Pf* kelch 13 (Pfk13: P441L, F446I, G449A, N458Y, C469F, C469Y, M476I, A481V, Y493H, R515K, P527H, N537I, N537D, G538V, R539T, I543T, P553L, R561H, V568G, P574L, C580Y, R622I, A675V) (World Health Organization, 2020). Prevalence was calculated separately in Zanzibar or mainland Tanzania for each polymorphism by the number of samples with alternative genotype calls for this polymorphism over the total number of samples genotyped and an exact 95% confidence interval using the Pearson-Klopper method was calculated for each prevalence.

157

158 Analysis of Population Relatedness and Structure

159 To investigate genetic relatedness of parasites across regions, identity by descent (IBD) estimates were
160 assessed using the within sample major alleles (coercing samples to monoclonal by calling the dominant
161 allele at each locus) and estimated utilizing a maximum likelihood approach using the *inbreeding_mle*
162 function from the *MIPanalyzer* package (Verity et al., 2020). This approach has previously been validated
163 as a conservative estimate of IBD (Verity et al., 2020). Next, Principal Component Analysis (PCA) was
164 performed to query the comparative genetic variation of the samples through utilizing the genome-wide
165 SNP panel. We pruned 51 samples that had a pairwise IBD of greater than 0.90 to one randomly selected
166 sample as a representative of the clonal population to avoid clonal structure from dominating the analysis.
167 Within-sample allele frequencies were calculated, with an imputation step replacing missing values with
168 the median per each locus, and PCA was performed using the *prcomp* function (Verity et al., 2020) (*R*
169 version 4.2.1).

170 To include geographic information with querying genetic variation, Discriminant Analysis of Principal
171 Components (DAPC) analysis was used (Jombart, 2008). Pseudohaplotypes were created by pruning the
172 genotype calls at all loci for each sample into a single haplotype, and redundant haplotypes were removed
173 (282 reduced to 272 with unique pseudohaplotypes). DAPC was conducted at the district level, and
174 samples from districts with less than five samples (272 samples to 270 samples in 6 districts) were

retained (**Supplemental Figure 4B**). For the main DAPC analysis (**Figure 1B**), highly related isolates were pruned to a single representative infection (272 reduced to 232) and then included districts with at least 5 samples (232 reduced to 228 samples in 5 districts). The DAPC was performed using the *adeigenet* package (Jombart, 2008) with the first 80 PCs based on the cross-validation function *xvalDapc*. To perform K-means clustering, a cluster K of 1 was assigned to the mainland samples while the *kmeans* package was used to find the optimal K to cluster the Zanzibar *shehias* by latitude and longitude. The K-means clustering experiment was used to cluster a continuous space of geographic coordinates in order to compare genetic relatedness in different regions. We selected K = 4 as the inflection point based on the elbow plot (**Supplemental Figure 5**) and based the number to obtain sufficient subsections of Zanzibar to compare genetic relatedness.

To investigate how genetic relatedness varies as distance between pairs increases, isolation by distance was performed across all of Zanzibar and within the islands of Unguja and Pemba. The greater circle (GC) distances between each *shehia* centroid were calculated (within *shehia* distances were equal to 0) to find the distance between each *shehia* in geographic space. Distances were then binned at increments reflecting the max GC distances between regions, which was smallest in Pemba at 12km and much larger for both Unguja (58km) and all of Zanzibar (135km). Within each binned group, mean IBD with 95% CIs are plotted. For graphing IBD connections at the between and within *shehia* level, an IBD threshold of 0.25 (half-siblings) or greater was used (**Figure 4, Supplemental Figure 6, Supplemental Figure 7**). In graphing IBD connections at larger distances between islands or between coastal mainland Tanzania and Zanzibar, a between IBD value of 0.125 (quarter-siblings) or greater was used (**Supplemental Figure 8, Supplemental Figure 9**). These plots were created utilizing *ggraph* in *R* with the nodes being samples and the edges being IBD estimates.

Complexity of Infection (COI), or the number of parasite clones in a given sample, was determined using *THE REAL McCOIL* (v2) categorical method (H.-H. Chang et al., 2017) and the 95% CI was calculated utilizing a nonparametric bootstrap. Fws statistic, which is used to compare the diversity within and between samples in a population, was calculated in *R* version 4.2.1 through the formula, $(1 - H_w)/H_p$, where H_w is the within-sample heterozygosity and H_p is the heterozygosity across the population, and

202 95% CIs were calculated utilizing a nonparametric bootstrap. The mean prevalence of antimalarial drug
203 resistance polymorphisms and 95% CIs were calculated using a nonparametric bootstrap method.

204 RESULTS

205 Zanzibari falciparum parasites were closely related to coastal mainland parasites but showed higher within
 206 than between population IBD and evidence of microstructure on the archipelago. To examine geographic
 207 relatedness, we first used principal component analysis (PCA). Zanzibari parasites are highly related to
 208 other parasites from East Africa and more distantly related to Central and West African isolates
 209 (**Supplemental Figure 2**). PCA analysis of 232 coastal Tanzanian and Zanzibari isolates, after pruning 51
 210 samples with an IBD of greater than 0.9 to one representative sample, demonstrates little population
 211 differentiation (**Figure 1A**).

212 However, after performing K-means clustering of *shehias* in Zanzibar and mainland Tanzania, parasites
 213 within each population show more highly related pairs within their respective clusters than between
 214 clusters (**Figure 2**). Comparisons of parasite pairs between Zanzibar and coastal Tanzania showed no
 215 pairs with an IBD greater than 0.20 (**Figure 2, Supplemental Figure 8**). Similarly, no pairs with an IBD of
 216 0.20 or greater were present in pairwise comparisons between Unguja and Pemba (**Supplemental Figure**
 217 **9**).

218 To further assess the differentiation within the parasite population in Zanzibar, we conducted Discriminant
 219 Analysis of Principal Components (DAPC) according to the districts of origin for each isolate. Parasites
 220 differentiated geographically, with less variation near the port of Zanzibar town and more differentiation in
 221 isolates collected in districts further from the port (**Figure 1B**). This underlying microstructure is also
 222 supported by classic isolation by distance analysis (**Figure 3, Supplemental Figure 10**). Isolation by
 223 distance analysis across all of Zanzibar and within Unguja showed rapid decay of relatedness over very
 224 short geographic distances (**Figure 3A and 3B**). Interestingly in Pemba, mean IBD remained at a similar
 225 relatively high level even at longer distances (**Figure 3C**).

226 Within Zanzibar, parasite clones are shared within and between shehias suggesting local outbreaks.
 227 Among the sample pairs in Zanzibar that are highly related (IBD of 0.25 or greater), we see different
 228 patterns of genetic relatedness suggesting common local and short distance transmission of clones and

occasional long distance transmission (**Figure 4**). In Unguja (**Figure 4A**), we see multiple identical or near identical parasite pairs shared over longer distances, suggesting longer distance gene flow, as well as multiple *shehias* containing highly related pairs. In Northern Pemba, there is one large cluster of highly related parasites shared within and between six *shehias* (**Figure 4B**). Network analysis (**Figure 4C**) for all sample pairs with an IBD of greater than 0.25 from these *shehias* illustrates this, with pairs linked by yellow lines showing the highest IBD. The largest network represents two highly related clusters (groups linked by yellow edges, mean IBD of 0.99) connected by a highly related intermediate (FMH42), suggesting that the clusters are related though parasites that have recombined while on the archipelago. FMH42 links the lower cluster with pairwise IBD of 0.65 and the upper cluster with a pairwise IBD of 0.27. These symptomatic isolates collected from February 2016 to September 2017 in northern Pemba likely derive from sustained transmission from a seeding event.

Network analysis of within *shehia* pairwise IBD sharing in Unguja again shows that there is close relatedness on this small geographic scale (**Supplemental Figure 6**). A cluster of four isolates in the Shakani *shehia* on Unguja island with pairwise IBDs of 0.99 likely reflects ongoing transmission within Shakani, with similar connections in Bambi and Dimani. Meanwhile, a few distant connections likely reflect the extent of human mobility on the island (**Figure 4A**). Similar within district networks on the mainland are shown in **Supplemental Figure 7**.

Compared to symptomatic infections, asymptomatic infections demonstrate greater genetic complexity, especially in coastal Tanzania. Asymptomatic infections were compared to roughly contemporaneously collected isolates from those presenting with acute, uncomplicated malaria. Asymptomatic infections demonstrated greater COI than symptomatic infections, on both the coastal mainland (mean COI 2.5 vs. 1.7, $p < 0.05$, Wilcoxon-Mann-Whitney test) and in Zanzibar (mean COI 2.2 vs. 1.7, $p = 0.05$, Wilcoxon-Mann-Whitney test) (**Figure 5A**). A similar pattern was seen when evaluating Fws, which measures the diversity within a sample compared to the population, with lower Fws in asymptomatic samples consistent with higher within host complexity, with a more pronounced difference on the mainland (**Figure 5B**). Despite these differences, parasites from asymptomatic and symptomatic infections tended to cluster

255 together in PCA analysis, suggesting their core genomes are genetically similar and do not vary based on
256 clinical status (**Figure 1A**).

257 *Drug resistance mutations did not vary between populations.* The prevalence of the drug resistance
258 genotypes were quite similar in Zanzibar and coastal Tanzania (**Table 2**). The frequencies of five
259 mutations associated with sulfadoxine/pyrimethamine resistance (Pfdhfr: N51I, C59R, S108N, Pfdhps:
260 A437G, K540E) were quite high with prevalences at or above 0.90. Pfcrt mutations associated with
261 chloroquine and amodiaquine resistance (M74I, N75E, K76T) were all present at approximately 0.05
262 prevalence (Djimé et al., 2001; Holmgren et al., 2006). For Pfmdr1, wild type N86 and D1246 were
263 dominant at 0.99 prevalence, which are associated with reduced susceptibility to lumefantrine (Sisowath
264 et al., 2005). No World Health Organization validated or candidate polymorphism in Pfk13 associated with
265 artemisinin resistance were found.

266

267 DISCUSSION

268 In this study, we leverage high-throughput targeted sequencing using molecular inversion probes (MIPs)
 269 to characterize the populations and the relationships of *P. falciparum* isolates in Zanzibar and coastal
 270 mainland Tanzania. The parasite populations appear to be highly related to each other (**Figure 1A**) when
 271 evaluated using SNPs in the core genome. Interestingly, within Zanzibar, structure could be observed,
 272 with parasites closer to the main ferry terminal in Zanzibar town clustered more closely with coastal
 273 mainland parasites (**Figure 1B, Supplemental Figure 1**) compared to parasites that were more
 274 geographically distant. This, in combination with the evidence of rapid decline of genetic relatedness with
 275 distance on the archipelago (**Figure 3**), is consistent with population microstructure within the island chain.
 276 This microstructure within the archipelago is supported by K-means clustering where Zanzibari isolates
 277 show higher within cluster than between cluster IBD (**Figure 2**). It is also consistent with isolates with
 278 higher IBD (**Figure 4A and B**) in Unguja and Pemba compared to a maximum IBD of 0.20 between
 279 Zanzibar and coastal mainland Tanzania (**Supplemental Figure 8**) or between Unguja and Pemba
 280 (**Supplemental Figure 9**). Parasite populations within the very low transmission region of Zanzibar may
 281 be more isolated than expected, allowing them to differentiate from each other. This may be indicative of
 282 very effective local malaria control, yet with continued micro-transmission remaining. Thus, directly
 283 targeting local malaria transmission, including the asymptomatic reservoir which contributes to sustained
 284 transmission (Barry et al., 2021; Sumner et al., 2021), may be an important focus for ultimately achieving
 285 malaria control in the archipelago (Björkman & Morris, 2020). Currently, a reactive case detection program
 286 within index case households is being implemented, but local transmission continues and further
 287 investigation into how best to control this is warranted (Mkali et al., 2023).

288 Despite the overall genetic similarity between archipelago populations, we did not find parasite pairs with
 289 high levels of IBD between the coastal mainland and Zanzibar, with the highest being 0.20. While this
 290 level still represents a significant amount of genetic sharing, similar to a cousin, the lack of higher levels
 291 does not allow us to identify specific importation events. This is largely due to the study design, which is

292 based on convenience sampling, the relatively low numbers of samples and lack of sampling from all
 293 mainland travel hubs (Bisanzio et al., 2023). Sampling was also denser in Unguja compared to Pemba.
 294 On the other hand, we see clear transmission of highly related parasites within each population (IBD >
 295 0.99). In Zanzibar, highly related parasites mainly occur at the range of 20-30km. These results are similar
 296 to our previous work using whole genome sequencing of isolates from Zanzibar and mainland Tanzania,
 297 showing increased within population IBD compared to between population IBD (Morgan et al., 2020). The
 298 network of highly related *P. falciparum* parasites from 6 *shehias* in North Pemba provides an excellent
 299 example of likely recent near clonal transmission, consistent with an outbreak (**Figure 4C**). A recent study
 300 investigating population structure in Zanzibar also found local population microstructure in Pemba
 301 (Holzschuh et al., 2023). Further, both studies found near-clonal parasites within the same district,
 302 Micheweni, and found population microstructure over Zanzibar. Overall, given the findings of
 303 microstructure with significant local sharing of highly related strains, these small clusters still potentially
 304 drive much of the malaria transmission that occurs within the archipelago through routine human
 305 movement or mosquito travel between locales (Huestis et al., 2019). Less frequent longer distance
 306 transmission events also occur, likely due to longer range human migration within the islands.

307 Asymptomatic parasitemia has been shown to be common in falciparum malaria around the globe and has
 308 been shown to have increasing importance in Zanzibar (Lindblade et al., 2013; Morris et al., 2015). What
 309 underlies the biology and prevalence of asymptomatic parasitemia in very low transmission settings where
 310 anti-parasite immunity is not expected to be prevalent remains unclear (Björkman & Morris, 2020). Similar
 311 to a few previous studies, we found that asymptomatic infections had a higher COI than symptomatic
 312 infections across both the coastal mainland and Zanzibar parasite populations (Collins et al., 2022;
 313 Kimenyi et al., 2022; Sarah-Matio et al., 2022). Other studies have found lower COI in severe vs. mild
 314 malaria cases (Robert et al., 1996) or no significant difference between COI based on clinical status
 315 (Conway et al., 1991; Earland et al., 2019; Kun et al., 1998; Lagnika et al., 2022; Tanabe et al., 2015). In
 316 Zambia, one study suggested that infections that cause asymptomatic infection may be genetically
 317 different than those that cause symptomatic infection (Searle et al., 2017). However, this study included

318 samples collected over different time periods and relied on a low-density genotyping assay which only
 319 investigated the diversity of 24 single nucleotide polymorphisms across the genome. Here, based on
 320 SNPs throughout the core genome, we did not see differential clustering of asymptomatic or symptomatic
 321 infections in Zanzibar or the mainland (**Figure 1A**), suggesting that these parasite populations remain
 322 similar when comparing clinical status. However, this genotyping approach does not address potential
 323 variation in the many hypervariable gene families that encode genes known to be associated with
 324 pathogenesis (e.g. *var*, *rifin* and *stevor* genes) and does not address differences in expression of genes
 325 associated with pathogenesis that may reflect differences in the populations. Investigation with other
 326 methods, such as long-read genome sequencing and transcriptional profiling, would be needed to address
 327 these differences.

328 While mutations for partial artemisinin resistance were not observed in K13, other antimalarial resistant
 329 mutations of concern were observed. Validated drug resistance mutations linked to
 330 sulfadoxine/pyrimethamine resistance (Pfdhfr-N51I, Pfdhfr-C59R, Pfdhfr-S108N, Pfdhps-A437G, Pfdhps-
 331 K540E) were found at high prevalence (**Table 2**). Prevalence of polymorphisms associated with
 332 amodiaquine resistance (Pfcr1-K76T, Pfmdr1-N86Y, Pfmdr1-Y184F, Pfmdr1-D1246Y) were seen at similar
 333 proportions as previous reports (Msellem et al., 2020). The wild-type Pfmdr1-N86 was dominant in both
 334 mainland and archipelago populations, concerning for reduced lumefantrine susceptibility. Although
 335 polymorphisms associated with artemisinin resistance did not appear in this population, continued
 336 surveillance is warranted given emergence of these mutations in East Africa and reports of rare resistance
 337 mutations on the coast consistent with spread of emerging Pfk13 mutations (Moser et al., 2021).

338 Overall, parasites between Zanzibar and coastal mainland Tanzania remain highly related, but population
 339 microstructure on the island reflects ongoing low level transmission in Zanzibar, partially driven by
 340 asymptomatic infections that potentially constitute a long-term reservoir. This is likely the result of the
 341 continued pressure on the population through the implementation of effective control measures. In this
 342 study, parasite genomics allows us to parse differences in parasite populations and reveals substructure
 343 in an area of low transmission intensity. A recent study identified “hotspot” *shehias*, defined as areas with

344 comparatively higher malaria transmission than other *shehias*, near the port of Zanzibar town and in
 345 northern Pemba (Bisanzio et al., 2023). These regions overlapped with *shehias* in this study with high
 346 levels of IBD, especially in northern Pemba (**Figure 4**). These areas of substructure represent parasites
 347 that differentiated in relative isolation and are thus important locales to target intervention to interrupt local
 348 transmission (Bousema et al., 2012). While a field cluster-randomized control trial in Kenya targeting these
 349 hotspots did not confer much reduction of malaria outside of the hotspot (Bousema et al., 2016), if areas
 350 are isolated pockets, which genetic differentiation can help determine, targeted interventions in these
 351 areas are likely needed, potentially through both mass drug administration and vector control (Morris et
 352 al., 2018; Okell et al., 2011). Such strategies and measures preventing imported malaria could accelerate
 353 progress towards zero malaria in Zanzibar.

354 **ETHICAL APPROVALS AND CONSENT TO PARTICIPATE**

355 This analysis was approved by the IRBs at the University of North Carolina at Chapel Hill (15-1989, 17-
356 0166, 18-1090), Muhimbili University of Health and Allied Sciences (MUHAS), Zanzibar Medical Research
357 Ethical Committee and the Regional Ethics Review Board, Stockholm, Sweden.

359 **COMPETING INTERESTS**

360 The authors have no competing interests to declare.

362 **ACKNOWLEDGEMENTS**

363 This research was funded by the National Institutes of Health, grants R01AI121558, R01AI137395,
364 R01AI155730, F30AI143172 and K24AI134990. Funding was also contributed from the Swedish
365 Research Council, Erling-Persson Family Foundation and the Yang Fund. RV acknowledges funding from
366 the MRC Centre for Global Infectious Disease Analysis (reference MR/R015600/1), jointly funded by the
367 UK Medical Research Council (MRC) and the UK Foreign, Commonwealth & Development Office (FCDO),
368 under the MRC/FCDO Concordat agreement and is also part of the EDCTP2 programme supported by the
369 European Union. RV also acknowledges funding by Community Jameel. We would like to thank the
370 communities and participants who took part in these studies. We would like to thank Abebe Fola for his
371 assistance.

373 **ORCID**

374 Sean V. Connelly: 0000-0002-7330-7340
375 Nicholas F. Brazeau: 0000-0003-3976-7965
376 Billy E. Ngasala: 0000-0001-9300-7719
377 Ozkan Aydemir: 0000-0002-3458-6527
378 Varun Goel: 0000-0002-2933-427X
379 Karamoko Niaré: 0000-0002-7406-9508
380 David J. Giesbrecht: 0000-0003-2498-4705

381 Zachary R. Popkin-Hall: 0000-0002-8308-5294

382 Christopher M. Hennelly: 0000-0001-5325-6753

383 Zackary Park: 0000-0002-4743-6624

384 Ann M. Moormann: 0000-0003-1113-2829

385 John Michael Ong'echa: 0000-0003-3928-6774

386 Robert Verity: 0000-0002-3902-8567

387 Ulrika Morris: 0000-0003-4734-5754

388 Jessica T. Lin: 0000-0002-4516-723X

389 Anders Björkman: 0000-0002-8882-130X

390 Jonathan J. Juliano: 0000-0002-0591-0850

391 Jeffrey A. Bailey: 0000-0002-6899-8204

392 DATA ACCESSIBILITY STATEMENT

393 Parasite sequence data is available through SRA (BioProject PRJNA926345). Code used for analysis is
394 available at: github.com/sconnelly007/TAN_MIP.

395

396 AUTHOR CONTRIBUTIONS

397 SVC, NB, VG and ZPH conducted analysis and wrote the manuscript. OA, DG, KN, CH and ZP assisted
398 with analysis and participated in manuscript preparation. BN, LEM, SA, SS, MM, UM, AM, and JMO ran
399 the studies in Tanzania and Kenya from which data is derived and participated in manuscript preparation.
400 AB, AM, RV, JTL, JAB and JJJ helped conceive the study, contributed to the experimental design, and
401 wrote the manuscript.

TABLES

Table 1. Blood samples from Zanzibar and coastal Tanzania.

Description	Location (District)	Dates	Clinical status†	Sample Size	Age Range (yr)	# in Genome Wide Analysis	# in Drug Resistance Analysis
Community cross-sectional surveys	Zanzibar (Multiple)	2016	A	70	2-70	21	52
<i>in vivo</i> efficacy study of artesunate-amodiaquine (ASAQ) with single low dose primaquine (SLDP) in pediatric uncomplicated malaria patients	Zanzibar (Multiple)	2017	S	143	2-60	117	134
Study of transmission of Plasmodium falciparum to colony reared mosquitos	Mainland (Bagamoyo)	2018	A	40	7-16	34	0
Parasite clearance study of artemether-lumefantrine (AL)	Mainland (Bagamoyo)	2018	S	138	2-11	110	123

†Asymptomatic (A) or Symptomatic (S).

407 **Table 2. Drug resistance polymorphism prevalence in Zanzibar and coastal mainland Tanzania.**

408

Mutation	Zanzibar			Mainland		
	Mutant Allele Prevalence†	CI‡	# Genotyped Samples§	Mutant Allele Prevalence†	CI‡	# Genotyped Samples§
Pfcr-M74I	0.054	0.026-0.098	184	0.000	0-0.034	106
Pfcr-N75E	0.054	0.026-0.098	184	0.000	0-0.034	106
Pfcr-K76T	0.054	0.026-0.098	184	0.000	0-0.034	106
Pfdhfr-A16V	0.000	0-0.021	173	0.000	0-0.032	112
Pfdhfr-N51I	0.977	0.943-0.994	177	0.964	0.911-0.99	112
Pfdhfr-C59R	0.971	0.934-0.991	174	0.945	0.884-0.98	109
Pfdhfr-S108N	1.000	0.98-1	179	1.000	0.965-1	104
Pfdhfr-S108T	0.000	0-0.02	179	0.000	0-0.035	104
Pfdhfr-I164L	0.000	0-0.02	184	0.000	0-0.037	98
Pfdhps-A437G	1.000	0.98-1	182	1.000	0.968-1	115
Pfdhps-K540E	0.955	0.913-0.98	178	0.964	0.91-0.99	111
Pfdhps-A581G	0.044	0.019-0.085	181	0.107	0.058-0.175	122
Pfk13-K189N	0.023	0.006-0.058	174	0.000	0-0.04	90
Pfk13-K189T	0.078	0.042-0.13	166	0.095	0.042-0.179	84
Pfmdr1-N86Y	0.011	0.001-0.04	180	0.008	0-0.044	124
Pfmdr1-Y184F	0.644	0.57-0.714	180	0.530	0.435-0.624	115
Pfmdr1-D1246Y	0.011	0.001-0.039	184	0.019	0.002-0.067	105
Pfmdr2-I492V	0.430	0.357-0.506	179	0.407	0.302-0.518	86

409 †Prevalence was calculated as described in the methods. 95% CI of these polymorphisms were
 410 calculated through the Pearson-Klopper method.

411 §The number of genotyped samples per loci is also shown for each polymorphism.

FIGURES

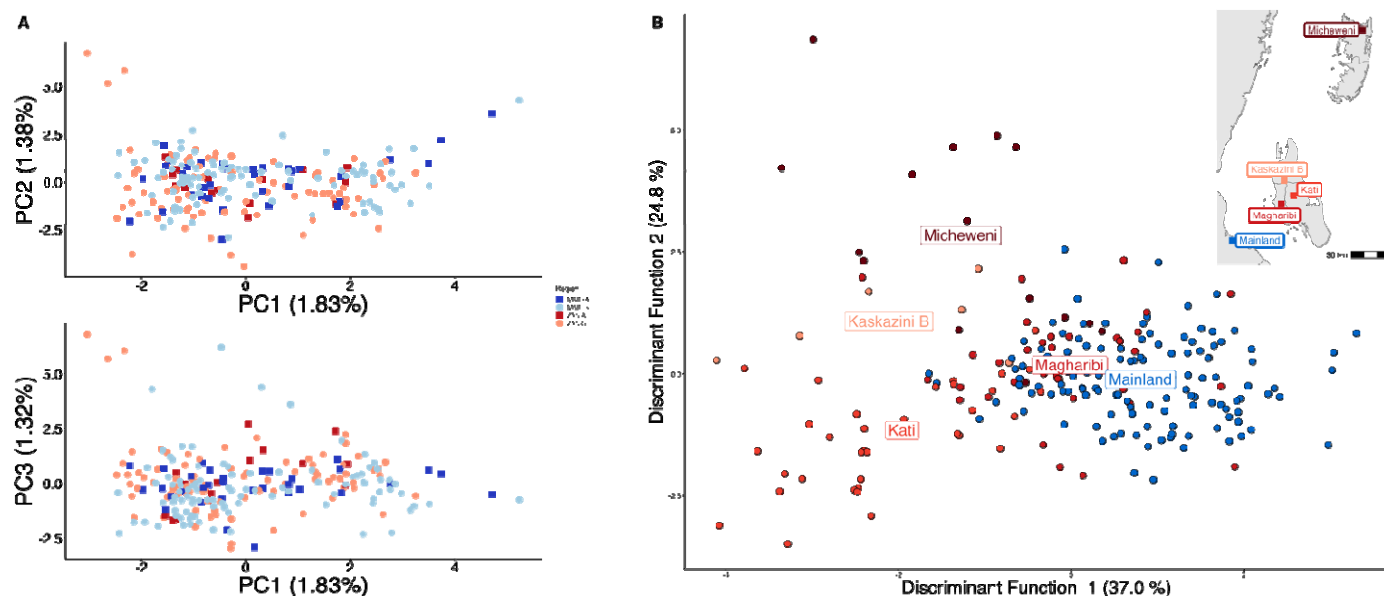
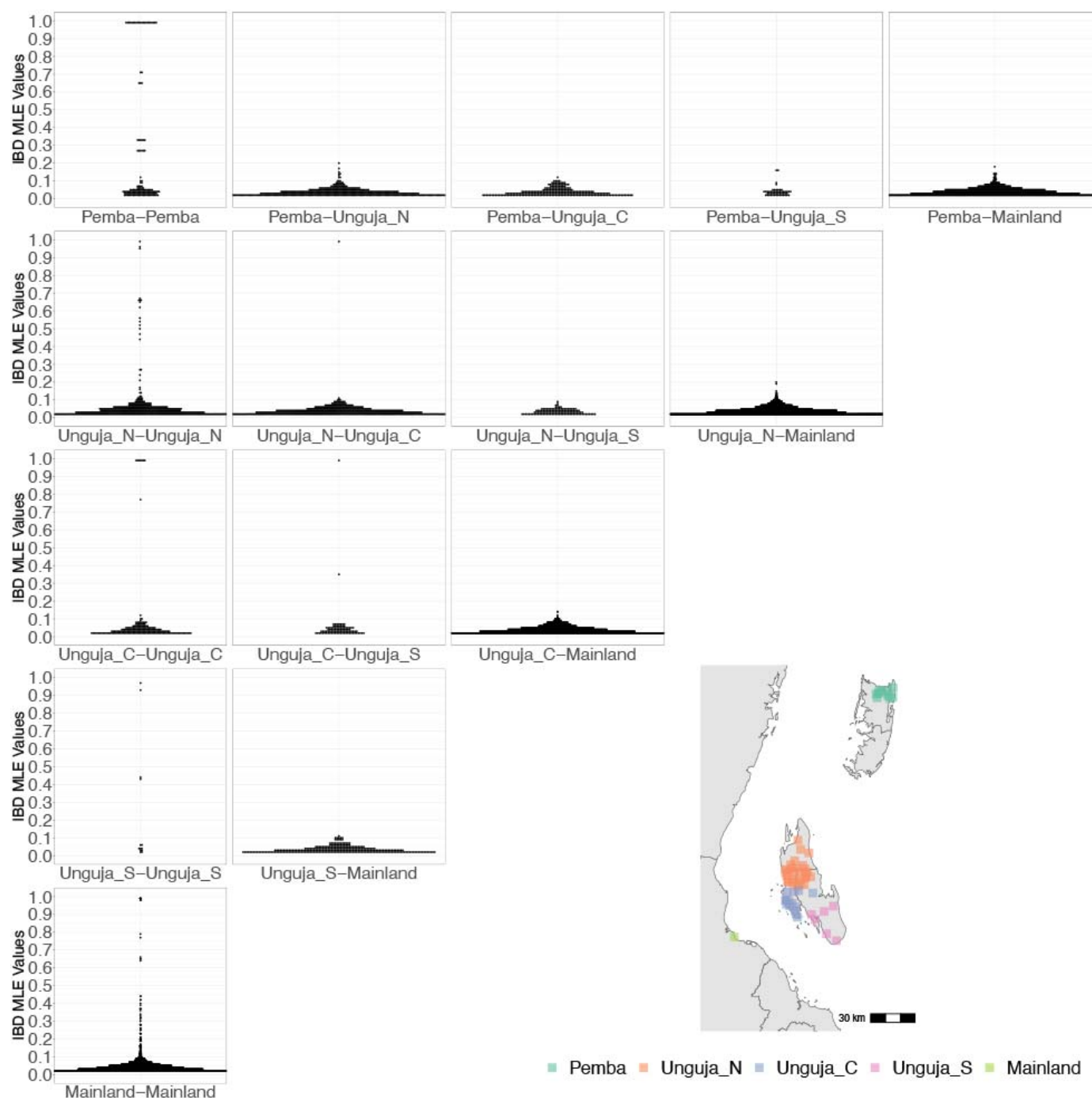


Figure 1. Parasites between Zanzibar and coastal mainland Tanzania are highly related but microstructure within Zanzibar is apparent. A) Principal Component Analysis (PCA) comparing parasites from symptomatic vs. asymptomatic patients from coastal Tanzania and Zanzibar. Clusters with an identity by descent (IBD) value of greater than 0.90 were limited to a single representative infection to prevent local-structure of highly related isolates within *shenhias* from driving clustering. **B)** A Discriminant Analysis of Principal Components (DAPC) was performed utilizing isolates with unique pseudohaplotypes, pruning highly related isolates to a single representative infection. Districts were included with at least 5 isolates remaining to have sufficient samples for the DAPC. For plotting the inset map, the district coordinates (e.g. Mainland, Kati, etc.) are calculated from the averages of the *shenhia* centroids within each district.

424



425

426 **Figure 2. Coastal Tanzania and Zanzibari parasites have more highly related pairs within their**
427 **given region than between regions.** K-means clustering of *shehia* coordinates was performed using
428 geographic coordinates all *shehias* present from the sample population to generate 5 clusters (colored
429 boxes). All *shehias* were included to assay pairwise IBD between differences throughout Zanzibar. K-
430 means cluster assignments were converted into interpretable geographic names Pemba, Unguja North
431 (Unguja_N), Unguja Central (Unguja_C), Unguja South (Unguja_S) and mainland Tanzania (Mainland).
432 Pairwise comparisons of within cluster IBD (column 1 of IBD distribution plots) and between cluster IBD
433 (column 2-5 of IBD distribution plots) was done for all clusters. All IBD values greater than 0 were plotted
434 for each comparison. In general, within cluster IBD had more pairwise comparisons containing high IBD

435 identity.

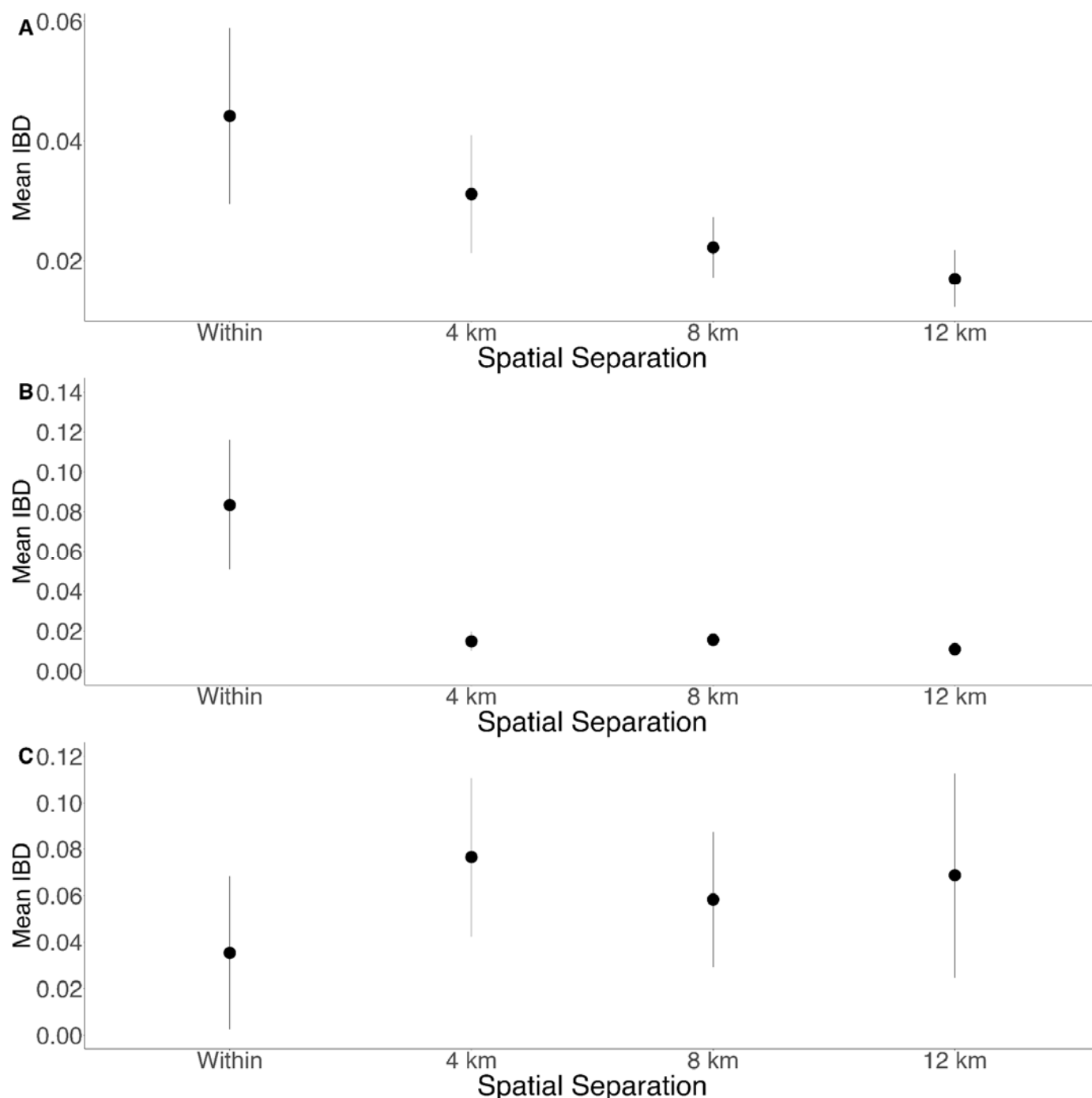


Figure 3. Isolation by distance is shown between all Zanzibari parasites (A), only Unguja parasites (B) and only Pemba parasites (C). Samples were analyzed based on geographic location, Zanzibar (N=136) (A), Unguja (N=105) (B) or Pemba (N=31) (C) and greater circle (GC) distances between pairs of parasite isolates were calculated based on *shehia* centroid coordinates. These distances were binned at 4km increments out to 12 km. IBD beyond 12km is shown in **Supplemental Figure 8**. The maximum GC distance for all of Zanzibar was 135km, 58km on Unguja and 12km on Pemba. The mean IBD and 95% CI is plotted for each bin.

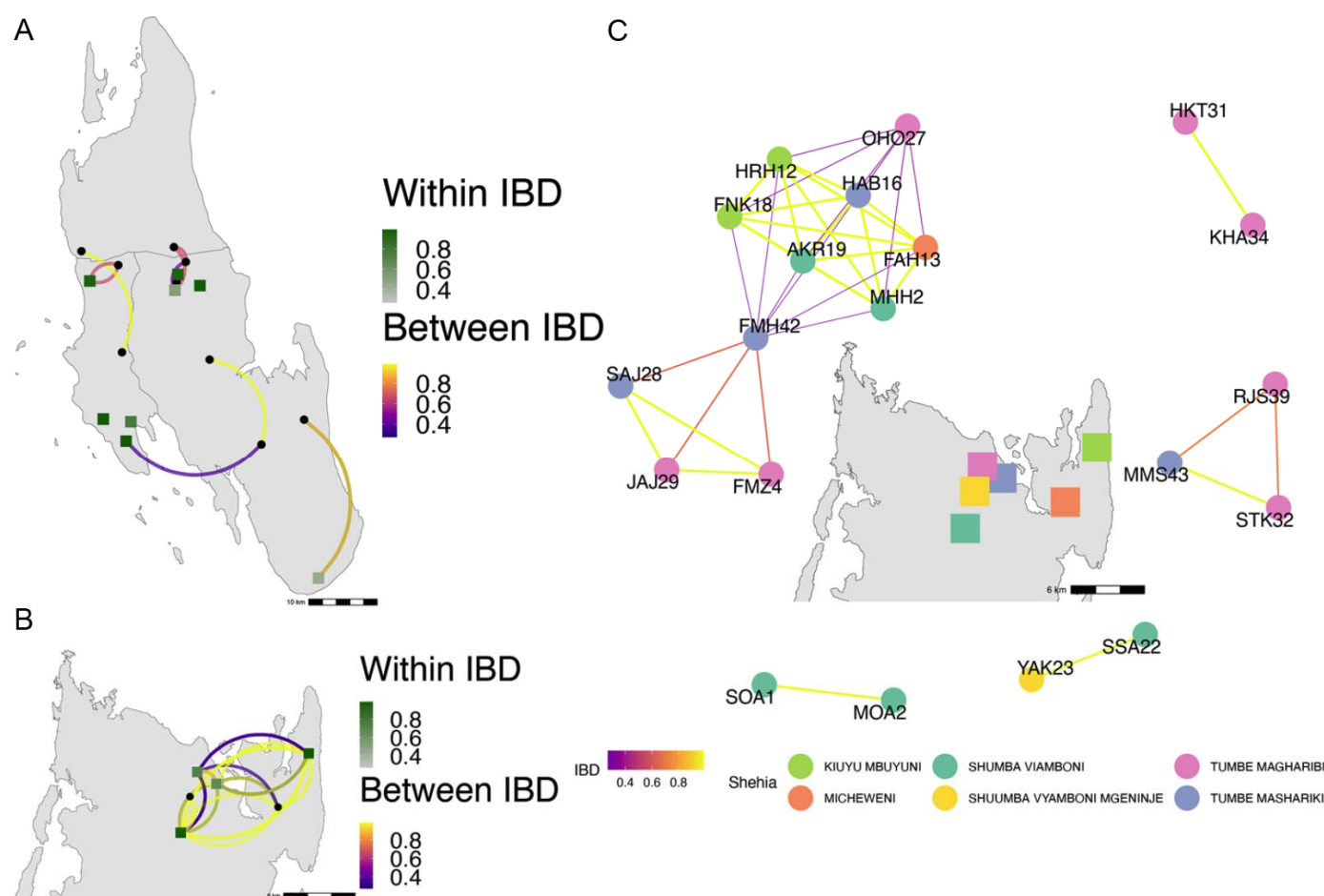


Figure 4. Highly related pairs span long distances across Zanzibar. Sample pairs were filtered to have IBD estimates of 0.25 or greater. Within *shehia* pairwise IBD estimates are shown within Unguja (**Panel A**) and Pemba (**Panel B**) as single points, with dark orange representing the greatest degree of IBD. *Shehias* labeled with black dots do not have within IBD estimates of .25 or greater. Between *shehia* IBD reflects pairs of parasites with IBD greater than or equal to 0.25, with the color of the connecting arc representing the degree of IBD and yellow representing maximal connectivity. **Panel C** shows the network of highly related pairs (IBD > 0.25) within and between the 6 northern Pemba *shehias* (note: Micheweni is a *shehia* in Micheweni district). Samples (nodes) are colored by *shehia* and IBD estimates (edges) are represented on a continuous scale with increasing width and yellow-shading indicating higher IBD.

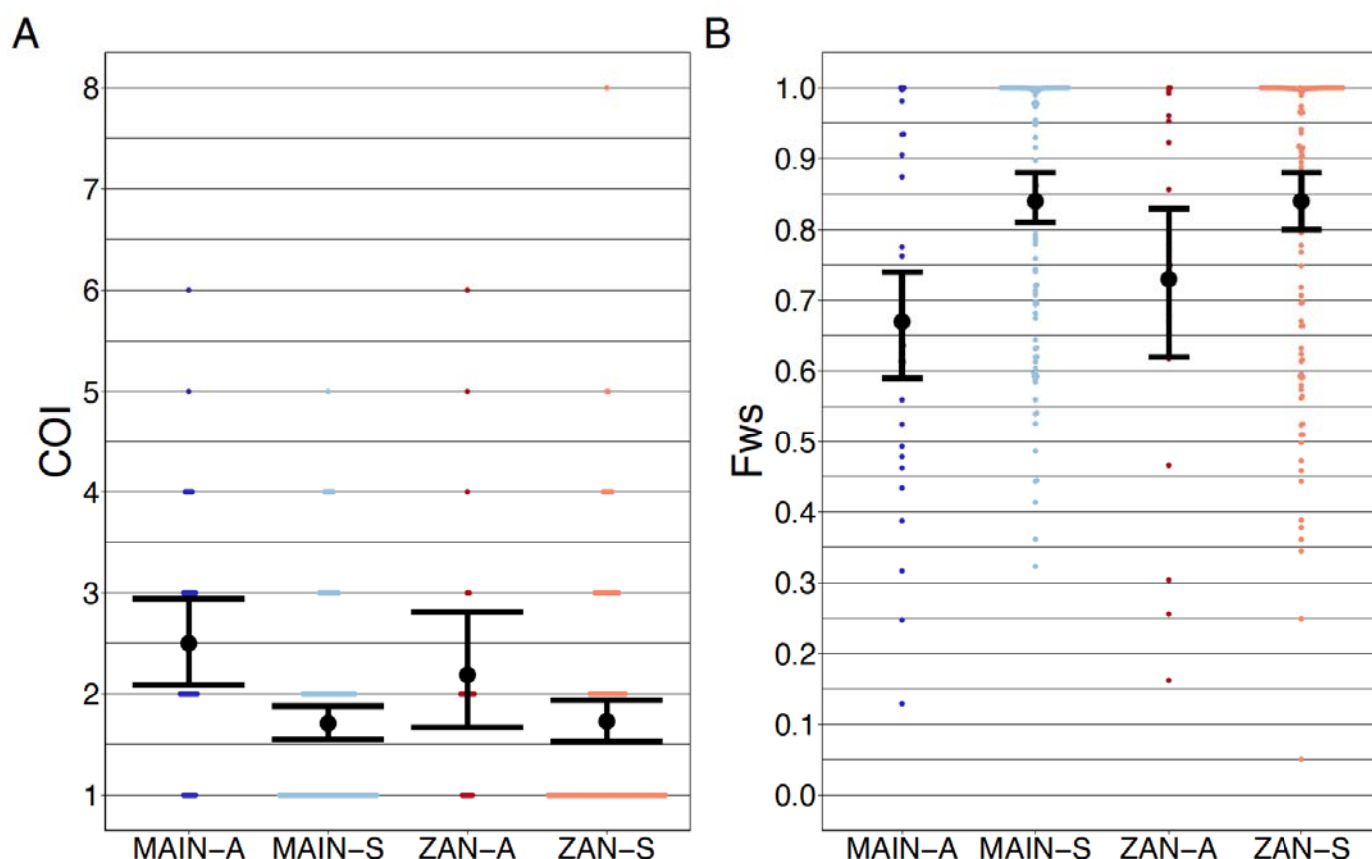


Figure 5. Complexity of infection (COI) and Fws metric shows a higher COI and lower Fws in asymptomatic than symptomatic infections in both mainland Tanzania and Zanzibar isolates. COI (A) was estimated by the REAL McCOIL's categorical method (H.-H. Chang et al., 2017). Mean COI for asymptomatic was greater than symptomatic infections for all regions (MAIN-A: 2.5 (2.1-2.9), MAIN-S: 1.7 (1.6-1.9), $p < 0.05$, Wilcoxon-Mann-Whitney test and ZAN-A: 2.2 (1.7-2.8), ZAN-S: 1.7 (1.5-1.9), $p = 0.05$, Wilcoxon-Mann-Whitney test). Fws (B) was estimated utilizing the formula, $(1 - H_w)/H_p$, where H_w is the within-sample heterozygosity and H_p is the heterozygosity across the population. Mean Fws was less in asymptomatic than symptomatic samples (MAIN-A: 0.67 (0.6-0.7), MAIN-S: 0.85 (0.8-0.9), $p < 0.05$, Wilcoxon-Mann-Whitney test and ZAN-A: 0.73 (0.6-0.8), ZAN-S: 0.84 (0.8-0.9), $p = 0.05$, Wilcoxon-Mann-Whitney test). A nonparametric bootstrap was applied to calculate the mean and 95% confidence interval (CI) from the COI and Fws values.

REFERENCES

- Alegana, V. A., Macharia, P. M., Muchiri, S., Mumo, E., Oyugi, E., Kamau, A., Chacky, F., Thawer, S., Molteni, F., Rutazanna, D., Maiteki-Sebuguzi, C., Gonahasa, S., Noor, A. M., & Snow, R. W. (2021). Plasmodium falciparum parasite prevalence in East Africa: Updating data for malaria stratification. *PLOS Global Public Health*, 1(12), e0000014.
- Aydemir, O., Janko, M., Hathaway, N. J., Verity, R., Mwandagaliwa, M. K., Tshefu, A. K., Tessema, S. K., Marsh, P. W., Tran, A., Reimonn, T., Ghani, A. C., Ghansah, A., Juliano, J. J., Greenhouse, B. R., Emch, M., Meshnick, S. R., & Bailey, J. A. (2018). Drug-Resistance and Population Structure of Plasmodium falciparum Across the Democratic Republic of Congo Using High-Throughput Molecular Inversion Probes. *The Journal of Infectious Diseases*, 218(6), 946–955.
- Barry, A., Bradley, J., Stone, W., Guelbeogo, M. W., Lanke, K., Ouedraogo, A., Soulama, I., Nébié, I., Serme, S. S., Grignard, L., Patterson, C., Wu, L., Briggs, J. J., Janson, O., Awandu, S. S., Ouedraogo, M., Tarama, C. W., Kargougou, D., Zongo, S., ... Bousema, T. (2021). Higher gametocyte production and mosquito infectivity in chronic compared to incident Plasmodium falciparum infections. *Nature Communications*, 12(1), 2443.
- Bisanzio, D., Lalji, S., Abbas, F. B., Ali, M. H., Hassan, W., Mkali, H. R., Al-Mafazy, A.-W., Joseph, J. J., Nyinondi, S., Kitojo, C., Serbantez, N., Reaves, E., Eckert, E., Ngondi, J. M., & Reithinger, R. (2023). Spatiotemporal dynamics of malaria in Zanzibar, 2015–2020. *BMJ Global Health*, 8(1), e009566.
- Björkman, A., & Morris, U. (2020). Why Asymptomatic Plasmodium falciparum Infections Are Common in Low-Transmission Settings. *Trends in Parasitology*, 36(11), 898–905.
- Björkman, A., Shakely, D., Ali, A. S., Morris, U., Mkali, H., Abbas, A. K., Al-Mafazy, A. W., Haji, K. A., Mcha, J., Omar, R., Cook, J., Elfving, K., Petzold, M., Sachs, M. C., Aydin-Schmidt, B., Drakeley, C., Msellem, M., & Martensson, A. (2019). From high to low malaria transmission in Zanzibar-challenges and opportunities to achieve elimination. *BMC Medicine*, 17(1), 14.
- Bousema, T., Griffin, J. T., Sauerwein, R. W., Smith, D. L., Churcher, T. S., Takken, W., Ghani, A., Drakeley, C., & Gosling, R. (2012). Hitting hotspots: spatial targeting of malaria for control and elimination. *PLoS Medicine*, 9(1), e1001165.
- Bousema, T., Stresman, G., Baidjoe, A. Y., Bradley, J., Knight, P., Stone, W., Osoti, V., Makori, E., Owaga, C., Odongo, W., China, P., Shagari, S., Doumbo, O. K., Sauerwein, R. W., Kariuki, S., Drakeley, C., Stevenson, J., & Cox, J. (2016). The impact of hotspot-targeted interventions on malaria transmission in Rachuonyo South District in the western Kenyan highlands: A cluster-randomized controlled trial. *PLoS Medicine*, 13(4), e1001993.
- Chang, H. H., Wesolowski, A., Sinha, I., Jacob, C. G., Mahmud, A., Uddin, D., Zaman, S. I., Hossain, M. A., Faiz, M. A., Ghose, A., Sayeed, A. A., Rahman, M. R., Islam, A., Karim, M. J., Rezwan, M. K., Shamsuzzaman, A. K. M., Jhora, S. T., Aktaruzzaman, M. M., Drury, E., ... Buckee, C. (2019). Mapping imported malaria in Bangladesh using parasite genetic and human mobility data. *ELife*, 8. <https://doi.org/10.7554/eLife.43481>
- Chang, H.-H., Worby, C. J., Yeka, A., Nankabirwa, J., Kanya, M. R., Staedke, S. G., Dorsey, G., Murphy, M., Neafsey, D. E., Jeffreys, A. E., Hubbart, C., Rockett, K. A., Amato, R., Kwiatkowski, D. P., Buckee, C. O., & Greenhouse, B. (2017). THE REAL McCOIL: A method for the concurrent estimation of the complexity of infection and SNP allele frequency for malaria parasites. *PLoS Computational Biology*, 13(1), e1005348.
- Collins, K. A., Ceesay, S., Drammeh, S., Jaiteh, F. K., Guery, M. A., Lanke, K., Grignard, L., Stone, W., Conway, D. J., D'Alessandro, U., Bousema, T., & Claessens, A. (2022). A Cohort Study on the Duration of Plasmodium falciparum Infections During the Dry Season in The Gambia. In *The Journal of Infectious Diseases* (Vol. 226, Issue 1, pp. 128–137). <https://doi.org/10.1093/infdis/jiac116>
- Conway, D. J., Greenwood, B. M., & McBride, J. S. (1991). The epidemiology of multiple-clone Plasmodium falciparum infections in Gambian patients. *Parasitology*, 103 Pt 1, 1–6.
- Djimé, A., Doumbo, O. K., Cortese, J. F., Kayentao, K., Doumbo, S., Diourte, Y., Coulibaly, D., Dicko, A., Su, X. Z., Nomura, T., Fidock, D. A., Wellems, T. E., & Plowe, C. V. (2001). A molecular marker for chloroquine-resistant falciparum malaria. *The New England Journal of Medicine*, 344(4), 257–263.

- Earland, D., Buchwald, A. G., Sixpence, A., Chimenya, M., Damson, M., Seydel, K. B., Mathanga, D. P., Taylor, T. E., & Laufer, M. K. (2019). Impact of Multiplicity of Plasmodium falciparum Infection on Clinical Disease in Malawi. *The American Journal of Tropical Medicine and Hygiene*, 101(2), 412–415.
- Fola, A. A., Moser, K. A., Aydemir, O., Hennelly, C., Kobayashi, T., Shields, T., Hamapumbu, H., Musonda, M., Katowa, B., Matoba, J., Stevenson, J. C., Norris, D. E., Thuma, P. E., Wesolowski, A., Moss, W. J., Bailey, J. A., Juliano, J. J., & Southern, Central Africa International Center of Excellence for Malaria Research (ICEMR). (2023). Temporal and spatial analysis of Plasmodium falciparum genomics reveals patterns of parasite connectivity in a low-transmission district in Southern Province, Zambia. *Malaria Journal*, 22(1), 208.
- Holmgren, G., Gil, J. P., Ferreira, P. M., Veiga, M. I., Obonyo, C. O., & Björkman, A. (2006). Amodiaquine resistant Plasmodium falciparum malaria in vivo is associated with selection of pfcr1 76T and pfmdr1 86Y. *Infection, Genetics and Evolution: Journal of Molecular Epidemiology and Evolutionary Genetics in Infectious Diseases*, 6(4), 309–314.
- Holzschuh, A., Lerch, A., Gerlovina, I., Fakih, B. S., Al-Mafazy, A.-W. H., Reaves, E. J., Ali, A., Abbas, F., Ali, M. H., Ali, M. A., Hetzel, M. W., Yukich, J., & Koepfli, C. (2023). Multiplexed ddPCR-amplicon sequencing reveals isolated Plasmodium falciparum populations amenable to local elimination in Zanzibar, Tanzania. *Nature Communications*, 14(1), 3699.
- Huestis, D. L., Dao, A., Diallo, M., Sanogo, Z. L., Samake, D., Yaro, A. S., Ousman, Y., Linton, Y. M., Krishna, A., Veru, L., Krajacich, B. J., Faiman, R., Florio, J., Chapman, J. W., Reynolds, D. R., Weetman, D., Mitchell, R., Donnelly, M. J., Talamas, E., ... Lehmann, T. (2019). Windborne long-distance migration of malaria mosquitoes in the Sahel. *Nature*, 574(7778), 404–408.
- Jombart, T. (2008). adegenet: a R package for the multivariate analysis of genetic markers. *Bioinformatics (Oxford, England)*, 24(11), 1403–1405.
- Kimenyi, K. M., Wamae, K., Ngoi, J. M., de Laurent, Z. R., Ndwiga, L., Oso, V., Obiero, G., Abdi, A. I., Bejon, P., & Ochola-Oyier, L. I. (2022). Maintenance of high temporal Plasmodium falciparum genetic diversity and complexity of infection in asymptomatic and symptomatic infections in Kilifi, Kenya from 2007 to 2018. *Malaria Journal*, 21(1), 192.
- Kun, J. F., Schmidt-Ott, R. J., Lehman, L. G., Lell, B., Luckner, D., Greve, B., Matousek, P., & Kremsner, P. G. (1998). Merozoite surface antigen 1 and 2 genotypes and rosetting of Plasmodium falciparum in severe and mild malaria in Lambaréné, Gabon. *Transactions of the Royal Society of Tropical Medicine and Hygiene*, 92(1), 110–114.
- Lagnika, H. O., Moussiliou, A., Agonhossou, R., Sovegnon, P., Djihinto, O. Y., Medjigbodo, A. A., Djossou, L., Amoah, L. E., Ogouyemi-Hounto, A., & Djogbenou, L. S. (2022). Plasmodium falciparum msp1 and msp2 genetic diversity in parasites isolated from symptomatic and asymptomatic malaria subjects in the South of Benin. *Parasitology Research*, 121(1), 167–175.
- Le Menach, A., Tatem, A. J., Cohen, J. M., Hay, S. I., Randell, H., Patil, A. P., & Smith, D. L. (2011). Travel risk, malaria importation and malaria transmission in Zanzibar. *Scientific Reports*, 1, 93.
- Lindblade, K. A., Steinhart, L., Samuels, A., Kachur, S. P., & Slutsker, L. (2013). The silent threat: asymptomatic parasitemia and malaria transmission. *Expert Review of Anti-Infective Therapy*, 11(6), 623–639.
- Lipner, E., Law, M., Barnett, E., Keystone, J., von Sonnenburg, F., Loutan, L., Prevots, D., Klion, A., & Nutman, T. (2011). Travel Patterns and Imported Plasmodium falciparum Rates among Zanzibar Residents. In *Hospitality and Health* (pp. 78–92). Apple Academic Press.
- Mkali, H. R., Lalji, S. M., Al-Mafazy, A.-W., Joseph, J. J., Mwaipape, O. S., Ali, A. S., Abbas, F. B., Ali, M. H., Hassan, W. S., Reaves, E. J., Kitojo, C., Serbantez, N., Kabula, B. I., Nyinondi, S. S., McKay, M., Cressman, G., Ngondi, J. M., & Reithinger, R. (2023). How Real-Time Case-Based Malaria Surveillance Helps Zanzibar Get a Step Closer to Malaria Elimination: Description of Operational Platform and Resources. *Global Health, Science and Practice*, 11(5). <https://doi.org/10.9745/GHSP-D-22-00522>
- Monroe, A., Mihayo, K., Okumu, F., Finda, M., Moore, S., Koenker, H., Lynch, M., Haji, K., Abbas, F., Ali, A., Greer, G., & Harvey, S. (2019). Human behaviour and residual malaria transmission in Zanzibar: findings from in-depth interviews and direct observation of community events. *Malaria*

- Journal, 18(1), 220.
- Morgan, A. P., Brazeau, N. F., Ngasala, B., Mhamilawa, L. E., Denton, M., Msellem, M., Morris, U., Filer, D. L., Aydemir, O., Bailey, J. A., Parr, J. B., Mårtensson, A., Bjorkman, A., & Juliano, J. J. (2020). *Falciparum malaria from coastal Tanzania and Zanzibar remains highly connected despite effective control efforts on the archipelago. Malaria Journal, 19(1), 47.*
- Morris, U., Msellem, M. I., Mkali, H., Islam, A., Aydin-Schmidt, B., Jovel, I., Shija, S. J., Khamis, M., Ali, S. M., Hodzic, L., Magnusson, E., Poirot, E., Bennett, A., Sachs, M. C., Tarning, J., Mårtensson, A., Ali, A. S., & Björkman, A. (2018). A cluster randomised controlled trial of two rounds of mass drug administration in Zanzibar, a malaria pre-elimination setting-high coverage and safety, but no significant impact on transmission. *BMC Medicine, 16(1), 215.*
- Morris, U., Xu, W., Msellem, M. I., Schwartz, A., Abass, A., Shakely, D., Cook, J., Bhattarai, A., Petzold, M., Greenhouse, B., Ali, A. S., Bjorkman, A., Froberg, G., & Martensson, A. (2015). Characterising temporal trends in asymptomatic Plasmodium infections and transporter polymorphisms during transition from high to low transmission in Zanzibar, 2005-2013. *Infection, Genetics and Evolution: Journal of Molecular Epidemiology and Evolutionary Genetics in Infectious Diseases, 33, 110–117.*
- Moser, K. A., Madebe, R. A., Aydemir, O., Chiduo, M. G., Mandara, C. I., Rumisha, S. F., Chaky, F., Denton, M., Marsh, P. W., Verity, R., Watson, O. J., Ngasala, B., Mkude, S., Molteni, F., Njau, R., Warsame, M., Mandike, R., Kabanywany, A. M., Mahende, M. K., ... Bailey, J. A. (2021). Describing the current status of Plasmodium falciparum population structure and drug resistance within mainland Tanzania using molecular inversion probes. *Molecular Ecology, 30(1), 100–113.*
- Msellem, M., Morris, U., Soe, A., Abbas, F. B., Ali, A.-W., Barnes, R., Frumento, P., Ali, A. S., Mårtensson, A., & Björkman, A. (2020). Increased sensitivity of Plasmodium falciparum to artesunate/amodiaquine despite 14 years as first-line malaria treatment, Zanzibar. *Emerging Infectious Diseases, 26(8), 1767–1777.*
- Neafsey, D. E., Taylor, A. R., & MacInnis, B. L. (2021). Advances and opportunities in malaria population genomics. *Nature Reviews. Genetics, 22(8), 502–517.*
- Okell, L. C., Griffin, J. T., Kleinschmidt, I., Hollingsworth, T. D., Churcher, T. S., White, M. J., Bousema, T., Drakeley, C. J., & Ghani, A. C. (2011). The potential contribution of mass treatment to the control of Plasmodium falciparum malaria. *PloS One, 6(5), e20179.*
- Patel, J. C., Taylor, S. M., Juliao, P. C., Parobek, C. M., Janko, M., Gonzalez, L. D., Ortiz, L., Padilla, N., Tshetu, A. K., Emch, M., Udhayakumar, V., Lindblade, K., & Meshnick, S. R. (2014). Genetic Evidence of Importation of Drug-Resistant Plasmodium falciparum to Guatemala from the Democratic Republic of the Congo. *Emerging Infectious Diseases, 20(6), 932–940.*
- Robert, F., Ntoumi, F., Angel, G., Candito, D., Rogier, C., Fandeur, T., Sarthou, J. L., & Mercereau-Puijalon, O. (1996). Extensive genetic diversity of Plasmodium falciparum isolates collected from patients with severe malaria in Dakar, Senegal. *Transactions of the Royal Society of Tropical Medicine and Hygiene, 90(6), 704–711.*
- Roh, M. E., Tessema, S. K., Murphy, M., Nhlathathi, N., Mkhonta, N., Vilakati, S., Ntshalintshali, N., Saini, M., Maphalala, G., Chen, A., & Others. (2019). High genetic diversity of Plasmodium falciparum in the low-transmission setting of the Kingdom of Eswatini. *The Journal of Infectious Diseases, 220(8), 1346–1354.*
- Sane, R., Talla, C., Diouf, B., Sarr, F. D., Diagne, N., Faye, J., Badiane, A., Sembène, P. M., Sokhna, C., Toure-Balde, A., & Niang, M. (2019). Low genetic diversity and complexity of submicroscopic Plasmodium falciparum infections among febrile patients in low transmission areas in Senegal. *PloS One, 14(4), e0215755.*
- Sarah-Matio, E. M., Guillochon, E., Nsango, S. E., Abate, L., Ngou, C. M., Bouopda, G. A., Feufack-Donfack, L. B., Bayibéki, A. N., Tchioffo Tsapi, M., Talman, A., Marin-Menendez, A., Ayong, L., Claessens, A., Lefèvre, T., Berry, A., & Morlais, I. (2022). Genetic Diversity of Plasmodium falciparum and Distribution of Antimalarial Drug Resistance Mutations in Symptomatic and Asymptomatic Infections. *Antimicrobial Agents and Chemotherapy, 66(8), e0018822.*
- Searle, K. M., Katowa, B., Kobayashi, T., Siame, M. N. S., Mharakurwa, S., Carpi, G., Norris, D. E., Stevenson, J. C., Thuma, P. E., Moss, W. J., & Southern Africa International Centers of Excellence for Malaria Research. (2017). Distinct parasite populations infect individuals identified through

625 passive and active case detection in a region of declining malaria transmission in southern
626 Zambia. *Malaria Journal*, 16(1), 154.

627 Sisowath, C., Strömberg, J., Mårtensson, A., Msellem, M., Obondo, C., Björkman, A., & Gil, J. P. (2005).
628 In vivo selection of *Plasmodium falciparum* pfmdr1 86N coding alleles by artemether-lumefantrine
629 (Coartem). *The Journal of Infectious Diseases*, 191(6), 1014–1017.

630 Sumner, K. M., Freedman, E., Abel, L., Obala, A., Pence, B. W., Wesolowski, A., Meshnick, S. R.,
631 Prudhomme-O'Meara, W., & Taylor, S. M. (2021). Genotyping cognate *Plasmodium falciparum* in
632 humans and mosquitoes to estimate onward transmission of asymptomatic infections. *Nature*
633 *Communications*, 12(1), 909.

634 Tanabe, K., Zollner, G., Vaughan, J. A., Sattabongkot, J., Khuntirat, B., Honma, H., Mita, T., Tsuboi, T., &
635 Coleman, R. (2015). *Plasmodium falciparum*: genetic diversity and complexity of infections in an
636 isolated village in western Thailand. *Parasitology International*, 64(3), 260–266.

637 Tatem, A. J., Qiu, Y., Smith, D. L., Sabot, O., Ali, A. S., & Moonen, B. (2009). The use of mobile phone
638 data for the estimation of the travel patterns and imported *Plasmodium falciparum* rates among
639 Zanzibar residents. *Malaria Journal*, 8, 287.

640 Topazian, H. M., Moser, K. A., Ngasala, B., Oluoch, P. O., Forconi, C. S., Mhamilawa, L. E., Aydemir, O.,
641 Kharabora, O., Deutsch-Feldman, M., Read, A. F., Denton, M., Lorenzo, A., Mideo, N., Ogutu, B.,
642 Moormann, A. M., Mårtensson, A., Odwar, B., Bailey, J. A., Akala, H., ... Juliano, J. J. (2022). Low
643 complexity of infection is associated with molecular persistence of *Plasmodium falciparum* in
644 Kenya and Tanzania. *Frontiers in Epidemiology*, 2. <https://doi.org/10.3389/fepid.2022.852237>

645 Verity, R., Aydemir, O., Brazeau, N. F., Watson, O. J., Hathaway, N. J., Mwandagalirwa, M. K., Marsh, P.
646 W., Thwai, K., Fulton, T., Denton, M., Morgan, A. P., Parr, J. B., Tumwebaze, P. K., Conrad, M.,
647 Rosenthal, P. J., Ishengoma, D. S., Ngondi, J., Gutman, J., Mulenga, M., ... Juliano, J. J. (2020).
648 The impact of antimalarial resistance on the genetic structure of *Plasmodium falciparum* in the
649 DRC. *Nature Communications*, 11(1), 2107.

650 World Health Organization. (2020). *Report on antimalarial drug efficacy, resistance and response: 10*
651 *years of surveillance (2010-2019)*. World Health Organization.

652 World Health Organization. (2022). *World malaria report 2022*. World Health Organization.