

Evolution of Life-Threatening COVID-19 as the SARS-CoV-2 Pandemic Has Progressed

Sudish C. Murthy, MD, PhD,¹ Ashley M. Lowry, MS,² Steven M. Gordon, MD,³
Eugene H. Blackstone, MD^{1,2}

¹ Heart, Vascular & Thoracic Institute, Department of Thoracic and Cardiovascular Surgery

² Lerner Research Institute, Department of Quantitative Health Sciences

³ Respiratory Institute, Department of Infectious Disease
Cleveland Clinic, Cleveland, Ohio, USA

Running title: Persistence of mortality from COVID-19

Funding: Cleveland Clinic Health System and Heart, Vascular & Thoracic Institute, Department of Thoracic and Cardiovascular Surgery

Conflict of Interest: None

Ethics: Cleveland Clinic Institutional Review Board approved data collection, with informed consent waived (IRB Record 136 under IRB 20-283, 4/27/2020).

Abstract

Rationale: As the SARS-CoV-2 pandemic progressed, hospital mortality among patients admitted with COVID-19 decreased; however, its mechanism remains unclear.

Objective: To determine underlying factors that might explain the declining observed mortality of hospitalized patients with COVID-19.

Methods: This observational study used a prospective COVID-19 clinical database compiled by a 15-hospital health system. Participants were persons testing positive for SARS-CoV-2 (n=185,636), among whom 26,872 were hospitalized for COVID-19 from 3/1/2020 to 6/1/2022.

Measurements: Endpoints were hospital and 60-day mortality assessed by randomForests-for-survival machine learning using patient demographics, medical history, symptoms, and admission laboratory test results.

Main Results: Mortality of patients hospitalized with COVID-19 fell from 11% in 3/2020 to 3.7% in 3/2022; 60-day mortality was 17% in 5/2020 and 4.7% in 5/2022. Advanced age was the most important predictor of mortality, followed by admission laboratory test results. Risk-adjusted 60-day mortality was 15% had all patients been admitted in 3/2020, minimally unchanged at 12% had they been admitted in 5/2022. Dissociation between observed and predicted mortality was largely explained by change in admission patient profile, particularly admission laboratory test results. Transition to intensive care occurred rapidly for those predicted to do poorly.

Conclusion: Mortality from COVID-19 requiring hospitalization has declined as the pandemic has evolved, but surprisingly persists for 60 days following admission. Demographics, medical history, and at-admission laboratory results continue to accurately predict mortality despite reduction of observed mortality and in spite of therapeutic advances. Importantly, rapid escalation of care can be predicted at admission using standardly obtained information. There has been a subtle but perceptible change in the at-risk population that explains these findings.

Author contributions: Dr. Murthy, Chair, Section of Thoracic Surgery, conceived the study, interpreted results of the data analyses, tables, and figures, comprehensively reviewed the literature for each draft of the manuscript, and drafted major portions of the manuscript. Ms. Lowry, senior statistician, performed data screening, cleaning, and the machine-learning analyses, prepared tables and figures, wrote a lengthy analysis report, much of it incorporated into Methods and Results, verified the interpretation of the analyses, and verified accuracy of the manuscript. Dr. Gordon, Chair of Infectious Disease, reviewed each draft of the manuscript, made extensive revisions and added references, reviewed the final draft, and suggested further edits. Dr. Blackstone, Director of Research, Cardiovascular Outcomes Registries and Research, participated with Ms. Lowry in screening and cleaning the data, made decisions about certain aspects of data analysis, drafted or revised with Dr. Murthy and Ms. Lowry the entire manuscript, selected figures and tables to include, and edited with Dr. Murthy the final manuscript.

Corresponding author

Sudish C. Murthy, MD, PhD
Department of Thoracic and Cardiovascular Surgery
Cleveland Clinic
9500 Euclid Avenue / Desk J4
Cleveland, OH 44915

Phone: (216) 444-5640

Email: murthys1@ccf.org

ABSTRACT

Rationale: As the SARS-CoV-2 pandemic progressed, hospital mortality among patients admitted with COVID-19 decreased; however, its mechanism remains unclear.

Objective: To determine underlying factors that might explain the declining observed mortality of hospitalized patients with COVID-19.

Methods: This observational study used a prospective COVID-19 clinical database compiled by a 15-hospital health system. Participants were persons testing positive for SARS-CoV-2 (n=185,636), among whom 26,872 were hospitalized for COVID-19 from 3/1/2020 to 6/1/2022.

Measurements: Endpoints were hospital and 60-day mortality assessed by randomForests-for-survival machine learning using patient demographics, medical history, symptoms, and admission laboratory test results.

Main Results: Mortality of patients hospitalized with COVID-19 fell from 11% in 3/2020 to 3.7% in 3/2022; 60-day mortality was 17% in 5/2020 and 4.7% in 5/2022. Advanced age was the most important predictor of mortality, followed by admission laboratory test results. Risk-adjusted 60-day mortality was 15% had all patients been admitted in 3/2020, minimally unchanged at 12% had they been admitted in 5/2022. Dissociation between observed and predicted mortality was largely explained by change in admission patient profile, particularly admission laboratory test results. Transition to intensive care occurred rapidly for those predicted to do poorly.

Conclusion: Mortality from COVID-19 requiring hospitalization has declined as the pandemic has evolved, but surprisingly, persists for 60 days following admission. Demographics, medical history, and at-admission laboratory results continue to

accurately predict mortality despite reduction of observed mortality and in spite of therapeutic advances. Importantly, rapid escalation of care can be predicted at admission using standardly obtained information. There has been a subtle but perceptible change in the at-risk population that explains these findings.

Key words: Mortality, risk factors, machine learning, Simpson's paradox

INTRODUCTION

Few anticipated that severe acute respiratory syndrome coronavirus 2 (SARS-CoV-2)¹ and its associated illness coronavirus disease 2019 (COVID-19)² would still be a major public health problem 3 years after its clinical detection in December 2019.³ Identifying its genetic sequence synchronous with its clinical emergence,⁴ coupled with past experience with members of this viral family,⁵ led many to believe that the disease would soon pass. Unfortunately, despite rapid dissemination of information regarding the unique clinical characteristics and modes of transmission, early adoption of public health measures,⁶ and fairly rapid understanding of pathogenesis of severe disease,⁷ a pandemic emerged, only partially abated by rapid manufacture of vaccines.⁸

Nearly 100 million persons have contracted SARS-CoV-2 in the United States, with more than 1 million related deaths,⁹ thus it is important to understand changes in clinical profiles and outcomes as the pandemic has evolved given the emerging variants, widespread but incomplete population vaccination, and availability of antiviral therapy during the early stage of infection.¹⁰ Specifically, because of the observed reduction in hospital mortality from COVID-19, we questioned the effect of SARS-CoV-2 variant evolution, dissemination of vaccines, and development of advanced therapeutics as important inflection points in the pandemic. Finally, as patients were followed after hospital discharge, we were surprised by the number who had died soon after discharge, leading us to wonder if we knew the true magnitude of the illness in terms of associated mortality beyond hospitalization needed to help us prepare for what lies ahead in these still uncertain times.

Therefore, our aim with this study was to understand the risk of mortality of patients admitted to our health system hospitals with COVID-19 as the pandemic progressed by answering the following questions: 1) How did patients hospitalized with COVID-19 differ from non-hospitalized persons testing positive for SARS-CoV-2? 2) What was the mortality of patients in-hospital and early after hospital discharge? 3) What were the predictors of mortality? 4) Could the observed decrease in hospital mortality within our hospital system from COVID-19 over time be explained by the factors we studied and methodology we employed? We limited our investigation to what was known about these patients at hospital admission – their initial encounter – ignoring events and therapies in their subsequent hospital course, to help clinicians marshal appropriate resources at first contact with ill patients.

PATIENTS AND METHODS

Patients and Data

From 3/1/2020 to 6/1/2022, 185,636 people tested positive for SARS-CoV-2 in the Cleveland Clinic Health System. Of these, 26,872 (15%) were admitted with COVID-19 to 1 of 14 of its 15 Northeast Ohio and Florida hospitals (Table 1 and Figure 1). Early in the pandemic, our System established a COVID-19 Registry, capturing data from our electronic health records via automated feeds¹¹ using standardized templates and manually by a study team. The Institutional Review Board (IRB) approved data collection with informed consent waived (IRB Record 136 under IRB 20-283, 4/27/2020).

Endpoints

The primary endpoint was all-cause mortality from date of hospital admission to 60 days or last date of follow-up if less than that for patients with incomplete follow-up. A secondary endpoint was admission to the intensive care unit (ICU). Discharged patients were followed at 2 weeks by a COVID home-monitoring program and subsequently by periodic telephone calls, use of MyChart (Epic Systems), and encounters recorded in the electronic medical record until January 1, 2022. Thereafter, Ohio patients were systematically followed for vital status using the state death registry, while Florida patients were less systematically followed. Yet 81% of patients discharged alive were followed at least 60 days after hospital admission (Figure E1). In-hospital events and discharge location are presented in Table E1.

Data Analysis

SAS v9.4 (SAS Institute, Cary, NC) and R v4.0.0 (R Foundation for Statistical Computing, Vienna, Austria) were used for data analysis. Profile of SARS-CoV-2–positive persons and of COVID-19 patients at hospital admission are depicted by temporal trends across the pandemic. Time-related mortality after hospital admission was estimated parametrically by a temporal decomposition method to derive the instantaneous risk of death (hazard function).¹²

Two machine-learning analyses of time-related mortality were performed. The first, a “pre–COVID-19” model, incorporated demographics, medical history, medications, and vaccination status before SARS-CoV-2 infection (34 variables, Appendices 1 and 2); the second, an “at-admission” model, incorporated all the pre–COVID-19 variables plus symptoms, results of routine laboratory tests at hospital

admission for COVID-19, and “variant-dominant” periods according to our Infectious Disease department (28 additional variables; Table 1, Appendices 1 and 2). For modeling, the R program randomForest-SRC was used, with missing data imputed on-the-fly.¹³ One thousand trees were grown with bootstrap samples of patients, and branch splits using a log-rank rule were based on a random subset of 6 or 8 variables, respectively, with a terminal node size of 15.

Predictive importance of variables was assessed by variable importance (VIMP), which hierarchically orders variables by magnitude of reduction of prediction error.¹⁴ Partial dependency plots were generated to visualize the relation of variables to outcome.¹⁵

To determine whether mortality of a patient admitted early in the pandemic differed from that had the same patient been admitted late in the series (virtual-twin analysis¹⁶), we incorporated date of hospital admission into random forest models. Sixty-day predicted mortality for each patient was then calculated as if that patient had been admitted on 3/1/2020 by substituting for actual date of admission this counterfactual date. This was repeated day-by-day to 6/1/2022 for the entire group of patients.

To investigate the difference between observed and predicted mortality, we performed a secondary analysis using all variables except date of admission. Then, probabilities of 60-day survival were predicted for each patient’s risk profile. These were aggregated into 7 risk categories to investigate change in risk profile across the pandemic and to characterize patients in each of these risk categories.

RESULTS

SARS-CoV-2–Positive and Hospitalized Individuals Across the Pandemic

People tested positive for SARS-CoV-2 in our Health System in waves, similar to the country as a whole, with multiple peaks and valleys and multiple viral variants (Figure 1A). The fraction of those hospitalized was 16% over the pandemic, but was higher early in the experience and again in the spring of 2021 and winter of 2022 (Figure 1B).

Average age of SARS-CoV-2–positive individuals decreased, then increased: from 65 years in 3/2020 to 55 in 5/2021 and 63 in 5/2022; average age of those hospitalized was 10 to 20 years older (Table 1 and Figure 2A). Early in the pandemic, more males than females were admitted, but this quickly approached 50:50 (Figure 2B), with slightly more females. Trends in race presented a complex pattern (Figures 2C and 2D), but with a higher proportion of Blacks hospitalized than non-hospitalized. More hospitalized patients than non-hospitalized ones were on medications for chronic diseases, commensurate with an older hospitalized population.

Symptoms among both SARS-CoV-2–positive and hospitalized patients changed substantially across the pandemic, with self-reported fever and cough progressively declining (Figures 3A and 3B). Hospitalized patients were more symptomatic than non-hospitalized individuals, particularly with dyspnea and gastrointestinal symptoms (Figures 3C and 3D).

Results of routine laboratory tests at hospital admission also fluctuated across the pandemic, somewhat synchronous with disease surges (Figure 4). In particular, C-reactive protein declined early in the experience and more so in patients admitted in 2022 (Figure 4D), as did hepatic function enzymes (Figure 4E).

Mortality Across the Pandemic

Observed hospital mortality fell from 11% in 3/2020 to 7.2% in 9/2020, 4.8% in 3/2021, 4.9% in 9/2021, and 3.7% in 3/2022 (Figure 5). However, mortality continued after hospital discharge: 9.9% at 30 days, 12% at 60 days, 13% at 90 days, 15% at 180 days, and 17% at 360 days (Figure 6). Instantaneous (unadjusted) risk of death peaked at 0.45%/day 9 days after hospital admission (Figure 6, inset), falling thereafter to reach 0.037%/day at 60 days, 4.0 times greater than an age-sex-race–matched U.S. population reference of 0.0093%/day. Actuarial mortality was highest for alpha variant B.1.1.7, lower for delta B.1 and omicron BA.1, and lowest for alpha-Q B.1.1 and omicron BA.2 (Figure 7A), although after risk adjustment, these differences were small (Figure 7B).

Predictors of 60-Day Mortality

Pre-COVID-19 Model: Older age was the most important predictor of mortality (Figures 8A and 8B), with an upward inflection beginning about age 50 years, followed by a rapid increase with each year of age (Figure E2). It eclipsed the importance of body size, race, and heart and chronic pulmonary diseases. Neither SARS-CoV-2 vaccination nor SARS-CoV-2 variant was importantly associated with mortality (Figures 8A, 8C, and 9, the latter showing the small fraction of hospitalized patients who had been vaccinated at least 2 weeks prior to hospital admission).

At-Admission Model: When the presenting symptoms and results of routine-admission laboratory tests were added to the pre-COVID-19 model (Figures 8C and 8D), older age remained the most important predictor of mortality (Figure E2), but its importance was somewhat blunted (Figures 2B, 2D, and E2). Rather, several laboratory values at

hospital admission emerged as important risk factors. Higher values of renal and liver dysfunction, greater systemic inflammatory response, abnormal hematologic values, and low albumin levels were associated with higher mortality (Figure 10).

Unchanging Risk Factors, But Changing Patient Profile, Lead to Changes in Mortality

Based on the at-admission model, 60-day predicted mortality from date of admission had all 26,872 patients been admitted in 3/2020 was 15%, in 5/2020 14%, in 11/2020 13%, in 5/2021 12%, in 11/2021 12%, and in 5/2022 12%, essentially unchanged over the pandemic (Figure 11). These small changes were far less than the observed actuarial trajectory of mortality: 17% in 5/2020, 14% in 11/2020, 5.2% in 5/2021, 12% in 11/2021, and 4.7% in 5/2022. Divergence of observed and risk-adjusted predicted mortality—a Simpson's Paradox¹⁷—was attributable both to changes across the pandemic in the profile of demographics and pre-COVID-19 conditions, but in particular to changes in the profile of patients' physiologic response to the disease as assessed by laboratory values at hospital admission (Figure 12A). Specifically, when coalesced into 7 predicted risk groups, progressively fewer highest risk patients were admitted over time, which contributed to the decline in observed mortality. Simultaneously, there was a mild reduction of the lowest risk patients, but expansion of patients with intermediate risk profiles, narrowing the risk profile of admitted patients across the pandemic.

Actuarial survival of patients in these 7 risk groups demonstrated a large separation, particularly among the 3 highest risk groups (predicted survival less than 80%) (Figure 12B). The highest risk groups were elderly patients, more often White,

with many comorbidities being treated medically, higher C-reactive protein, and elevated neutrophil counts but lower lymphocyte counts (Table 2). These same patients had the highest likelihood of being escalated to intensive care within 24 hours of admission (Figure 12C). In contrast, the lowest risk group (34% of hospitalized patients) had a median age 48, had few comorbidities and were taking few medications, and had few derangements of their at-admission laboratory profile.

DISCUSSION

Undoubtedly, mortality among patients hospitalized with COVID-19 is trending downward. Our longitudinal assessment of these patients, both singularly and as a population, has allowed us to gain unique perspectives as this pandemic has evolved. We have been able to predict rapid deterioration of certain hospitalized patients based on a single assessment performed at hospital admission and to discover a continued post-hospitalization mortality from the disease. In addition, we have gained some clarity on the effectiveness of public health efforts and how hospital-requiring COVID-19 has changed as vaccination, preadmission therapeutics, and variants have permeated the landscape. Moreover, we now have insight into what to expect in the future as this pandemic morphs into an endemic disease.

Principal Findings

There is decreasing observed 60-day mortality among patients hospitalized with COVID-19. Despite this, mortality for every risk profile based on routine admission assessment has decreased minimally. Thus, likelihood of mortality remains eminently predictable at hospital admission. Prediction accuracy is substantially refined by early physiologic response, as measured by routine admission laboratory tests, in addition to

patients' demographics and preexisting medical conditions, despite continued evolution of SARS-CoV-2 variants and an increasingly vaccinated population. Appearance of new SARS-CoV-2 variants, advancements in care, and introduction of therapeutics have had surprisingly minimal effects on 60-day mortality prediction for hospitalized patients.

Those predicted on hospital admission to do poorly demonstrate a rapid progression of illness, with transition to the ICU within the first 24 hours. Finally, although hospital mortality is the commonly quoted outcome metric for hospitalized patients, it underestimates the lethality of COVID-19, which continues to at least 60 days after hospital admission.

Findings in Context

Crude mortality of hospitalized patients decreased throughout the pandemic, but once simple characteristics of patients being admitted were taken into account, predicted mortality was unchanged from the beginning of the pandemic to this time, suggesting that it is the profile of hospitalized patients that has changed and created a Simpson's Paradox.¹⁷ We clearly demonstrate the continuous change of the at-risk population and have defined 7 risk groups that remained evident throughout the pandemic, although their constituents have fluctuated in number across the pandemic. These categories predict not only mortality but the escalation of care once patients are hospitalized.

It is becoming clear that despite emergence of SARS-CoV-2 variants and declining effectiveness of the initial vaccine platforms to generate vaccine-induced immunity, protection against hospital admission, and consequently COVID-related death, has remained surprisingly robust during evolution of the illness.¹⁸ Prevention of severe illness requiring hospitalization in the vaccinated cohort, as well as presumed

slowly developing herd immunity in the general population and early treatment and mitigation of infection,¹⁹ are presumably censoring many otherwise high-risk patients from the cohort we are studying and contributing to the Simpson's Paradox that is observed. Unfortunately, it is these same high-risk individuals with the greatest observed waning protection afforded by vaccination²⁰ who still serve as the substrate for our study and continue to be identified by our model.

The at-admission risk model we generated uses simple, standard demographic data, medical history, vaccination status, symptoms, and routine admission laboratory data, yet impressively predicts outcome of hospitalized patients. Severity of subsequent disease can be fairly crudely estimated by symptom-complex (such as respiratory rate, oxygen saturation, blood pressure, heart rate, temperature, alertness), limited laboratory analysis (blood urea nitrogen, C-reactive protein), and demographics (age, sex), as several other models have demonstrated.²¹⁻²³

Some of these models require a 24-hour period of assessment to become informed, which compromises their utility. Of these variables, routine hematologic and serum chemistry data are critical. During the "incubation" period, and perhaps in the early phase of the disease, hematologic constituents seem relatively unperturbed.²⁴ In patients whose disease progresses to hospitalization, there is a profound derangement of serum chemistries and increase of inflammatory mediators and cytokines that give rise to a severe inflammatory response syndrome.^{25,26}

The genesis of life-threatening illness seems to be the induction of multiple interleukins, macrophage proinflammatory proteins and tumor necrosis factor-alpha, thrombosis and endothelial dysfunction, and platelet activation among innumerable other

identified homeostatic derangements.²⁷ At some transition point, which we suspect is just prior to hospital admission, individuals begin to declare their fate, as predicted by at-admission demographics, comorbidity, and laboratory values. Lymphopenia and neutrophilia are important predictors of severe disease, with decreased lymphocyte count at admission being associated with ICU destination, and higher neutrophil count identified as a risk factor for death.²⁸⁻³⁰ Moreover, increased levels of inflammatory markers at admission, such as C-reactive protein, procalcitonin, lactate dehydrogenase, and ferritin, seem to portend a more ominous prognosis.^{24,28,31,32} Many of these variables have been similarly shown to predict poor outcome in our study and serve as reliable biomarkers of mortality to be used in risk calculators.

Although it is comforting that fewer patients are progressing to life-threatening illness, it remains concerning that mortality of a patient admitted in 3/2020 and predicted to be at high risk is essentially no different from that predicted for the same patient tomorrow. We are surprised by what we have found, given the types of resources we can marshal and the clinical strength of our hospital system. We can only speculate that we are starting late in the race to combat this disease. We are seeing many patients coming to the hospital already in extremis—dyspneic, lethargic, or dehydrated—and receiving rapidly escalating care soon after their arrival, suggesting severe disease at admission. It has been suggested that although viremia peaks within the first week of infection, peak host primary immunologic response may not be evident for perhaps as long as a week later.³³

Appreciating that most patients will seek emergency room care only when the intensity of disease has progressed to severe illness, it could be anticipated that

interventions targeting reducing viral load may not be effective if the viremia is no longer driving the disease process.^{34,35} Recommendations for convalescent plasma administration for COVID-19 focus on early use³⁶ and are consistent with early intervention being more favorable than later for similar therapeutics. Consequently, it is not surprising that anti-inflammatories such as corticosteroids, targeted toward the disease component presumably driving hospital outcome, have become a central and critically important intervention for hospitalized patients.^{27,28}

We postulate that the late risk of mortality after discharge is related to the initial COVID-19 disease and represents persisting disease and debility post-discharge or transfer as opposed to post-acute COVID-19 sequelae.³⁷ This elevated risk above that expected in the U.S. population even beyond 60 days³⁸ suggests the chronic and insidious nature of late COVID-19 mortality and may be part of post-COVID-19 conditions.^{39,40}

Finally, it is interesting that vaccination status did not protect patients from mortality once hospitalized. We are confident that vaccination has reduced hospital readmissions for COVID-19 and favorably contributes to the decreasing trend of severely ill patients. It has been speculated that host immune evasion in vaccinated patients is promoted by viral mutations occurring outside the spike coding region and that this is one mechanism of the apparent dissociation of vaccination status and outcome in those culled by hospital admission who populate this study.⁴¹ Unfortunately, vaccination as a variable is extraordinarily confounded by its timing, number of boosters received, and vaccine platform. None of this information was captured in our data set. This limits the appreciation of the contribution of vaccinations as the pandemic evolved.

Limitations

This is a study of the COVID-19 experience in a single hospital system and is not necessarily generalizable nationwide. It focuses on patients hospitalized with severe or life-threatening COVID-19. Granular information, however, about the decision to admit a given patient is not available. Data elements recorded in the COVID-19 Registry reflect health-system decisions made at the beginning of the pandemic and were not modified to include potentially important variables such as certain presentation variables and laboratory tests such as ferritin, lactate dehydrogenase, coagulation factors, and patient-specific SARS-CoV-2 variant information. Because of lags in data entry into the COVID-19 Registry, risk factors currently identified as important in this study are not available in real time for clinical decision-making.

We restricted our analyses to the earliest available clinical information to enable generation of useful models that could predict mortality and direct allocation of resources. Thus, we did not consider additional hospital events, such as mechanical ventilation or extracorporeal membrane oxygenation. The study was conducted in real time during the pandemic, amid changing variants,⁴² changing thoughts about respiratory support, experimentation with therapeutics, and a variety of clinical trials. Consequently, care of patients across the pandemic has been difficult to standardize.

Conclusions and Relevance

The evolution of the pandemic as addressed by us and others²³ strongly suggests that COVID-19 remains lethal, albeit for a declining at-risk group of the general population. Observed mortality of patients hospitalized with COVID-19 appears to be decreasing over time, corroborating this. That there appear to be fewer patients who manifest

severe disease in response to exposure and infection suggests that something has changed to favorably affect disease outcome. Clearly, dissemination of vaccination programs and herd immunity are at play, and there may be a change in viral virulence with development of variants that has led to a smaller fraction of the general population presenting with advanced disease. Early use of antiviral agents may sufficiently blunt the disease, and fewer people now need to seek advanced medical attention.

It is unlikely that we are done with COVID-19. Unfortunately, there is likely an underreporting of COVID-19–related mortality when only in-hospital outcomes are examined, as we find that risk of death persists well after hospital discharge. With continued emergence of variants having possibly different virulence, interval outcomes assessment is critical. The surprisingly nimble adaptability of the virus, and seemingly unchanging fate of those who develop severe hospital-requiring COVID-19, mandate that continued individual and public health efforts remain in place.

ACKNOWLEDGMENTS

The authors thank Alex Milinovich and Greg Strnad for management of the COVID-19 Registry, Ben Kramer for data verification, Beth Lieber for statistical programming, Leslie Jelinski for reference management, Brian Kohlbacher for graphic design expertise, and Tess Parry for editorial assistance.

REFERENCES

1. Coronaviridae Study Group of the International Committee on Taxonomy of Viruses. The species Severe acute respiratory syndrome-related coronavirus: classifying 2019-nCoV and naming it SARS-CoV-2. *Nat Microbiol.* 2020;5:536-44.
2. World Health Organization. Naming the coronavirus disease (COVID-19) and the virus that causes it. [https://www.who.int/emergencies/diseases/novel-coronavirus-2019/technical-guidance/naming-the-coronavirus-disease-\(covid-2019\)-and-the-virus-that-causes-it](https://www.who.int/emergencies/diseases/novel-coronavirus-2019/technical-guidance/naming-the-coronavirus-disease-(covid-2019)-and-the-virus-that-causes-it).
3. Wuhan Municipal Health Commission Report of clustering pneumonia of unknown etiology in Wuhan City. Published December 31, 2019. Accessed January 31, 2020. <http://wjw.wuhan.gov.cn/front/web/showDetail/2019123108989> and <https://www.who.int/emergencies/disease-outbreak-news/item/2020-DON229>.
4. Novel 2019 coronavirus genome. <http://viro-logical.org/t/novel-2019-coronavirus-genome/319>; Wuhan-Hu-1, GenBank accession No. MN908947.
5. Ciotti M, Angeletti S, Minieri M, Giovannetti M, Benvenuto D, Pascarella S, et al. COVID-19 outbreak: an overview. *Chemotherapy.* 2019;64:215-23.
6. Zhang S, Diao MY, Duan L, Lin Z, Chen D. The novel coronavirus (SARS-CoV-2) infections in China: prevention, control and challenges. *Intensive Care Med.* 2020;46:591-3.
7. Zhao JY, Yan JY, Qu JM. Interpretations of "Diagnosis and treatment protocol for novel coronavirus pneumonia (trial version 7)." *Chin Med J (Engl).* 2020;133:1347-9.

8. Corbett KS, Edwards D, Leist SR, Abiona OM, Boyoglu-Barnum S, Gillespie RA, et al. SARS-CoV-2 mRNA vaccine development enabled by prototype pathogen preparedness. *bioRxiv*. 2020.06.11.145920.
9. Centers for Disease Control and Prevention. COVID Data Tracker. <https://covid.cdc.gov/covid-data-tracker/#datatracker-home>.
10. Mahase E. Covid-19: Pfizer's paxlovid is 89% effective in patients at risk of serious illness, company reports. *BMJ*. 2021;375:n2713.
11. Milinovich A, Kattan MW. Extracting and utilizing electronic health data from Epic for research. *Ann Transl Med*. 2018;6:42.
12. Blackstone EH, Naftel DC, Turner ME, Jr. The decomposition of time-varying hazard into phases, each incorporating a separate stream of concomitant information. *J Am Stat Assoc*. 1986;81:615-24.
13. Ishwaran H, Kogalar UB. Fast Unified Random Forests for Survival, Regression, and Classification (RF-SRC). <https://cran.r-project.org/package=randomForestSRC>. R package version 2.12.1, September 5, 2021
14. Ishwaran H. Variable importance in binary regression trees and forests. *Electron J Statist*. 2007;1:519-37.
15. Friedman JH. Greedy function approximation: a gradient boosting machine. *Ann Statist*. 2000;29:1189-232.
16. Foster JC, Taylor JM, Ruberg SJ. Subgroup identification from randomized clinical trial data. *Stat Med*. 2011;30:2867-80.

17. Simpson EH. The interpretation of interaction in contingency tables. *J R Stat Soc Series B: Stat Methodol.* 1951;13:238-41.
18. Thompson MG, Stenehjem E, Grannis S, Ball SW, Naleway AL, Ong TC, et al. Effectiveness of Covid-19 vaccines in ambulatory and inpatient care settings. *N Engl J Med.* 2021;385:1355-71.
19. Pitre T, Van Alstine R, Chick G, Leung G, Mikhail D, Cusano E, et al. Antiviral drug treatment for nonsevere COVID-19: a systematic review and network meta-analysis. *CMAJ.* 2022;194:E969-E80.
20. Andrews N, Tessier E, Stowe J, Gower C, Kirsebom F, Simmons R, et al. Duration of protection against mild and severe disease by Covid-19 vaccines. *N Engl J Med.* 2022;386:340-50.
21. Long B, Carius BM, Chavez S, Liang SY, Brady WJ, Koyfman A, et al. Clinical update on COVID-19 for the emergency clinician: presentation and evaluation. *Am. J. Emerg. Med.* 2022;54:46-57.
22. Haimovich AD, Ravindra NG, Stoytchev S, Young HP, Wilson FP, van Dijk D, et al. Development and validation of the quick COVID-19 severity index: a prognostic tool for early clinical decompensation. *Ann Emerg Med.* 2020;76:442-53.
23. Gupta RK, Marks M, Samuels THA, Luintel A, Rampling T, Chowdhury H, et al. Systematic evaluation and external validation of 22 prognostic models among hospitalised adults with COVID-19: an observational cohort study. *Eur Respir J.* 2020;56.

24. Terpos E, Ntanasis-Stathopoulos I, Elalamy I, Kastritis E, Sergentanis TN, Politou M, et al. Hematological findings and complications of COVID-19. *Am J Hematol.* 2020;95:834-47.
25. Li T, Lu H, Zhang W. Clinical observation and management of COVID-19 patients. *Emerg Microbes Infect.* 2020;9:687-90.
26. Zhu N, Zhang D, Wang W, Li X, Yang B, Song J, et al. A novel coronavirus from patients with pneumonia in China, 2019. *N Engl J Med.* 2020;382:727-33.
27. Moore JB, June CH. Cytokine release syndrome in severe COVID-19. *Science.* 2020;368:473-4.
28. Wu C, Chen X, Cai Y, Xia J, Zhou X, Xu S, et al. Risk factors associated with acute respiratory distress syndrome and death in patients with coronavirus disease 2019 pneumonia in Wuhan, China *JAMA Intern Med.* 2020;180:934-43 [published correction appears on p. 1031].
29. Huang C, Wang Y, Li X, Ren L, Zhao J, Hu Y, et al. Clinical features of patients infected with 2019 novel coronavirus in Wuhan, China. *Lancet.* 2020;395:497-506.
30. Wang D, Hu B, Hu C, Zhu F, Liu X, Zhang J, et al. Clinical characteristics of 138 hospitalized patients with 2019 novel coronavirus-infected pneumonia in Wuhan, China. *JAMA.* 2020;323:1061-9.
31. Lippi G, Plebani M. Procalcitonin in patients with severe coronavirus disease 2019 (COVID-19): A meta-analysis. *Clin Chim Acta.* 2020;505:190-1.

32. Zhou F, Yu T, Du R, Fan G, Liu Y, Liu Z, et al. Clinical course and risk factors for mortality of adult inpatients with COVID-19 in Wuhan, China: a retrospective cohort study. *Lancet*. 2020;395:1054-62.
33. Gavriatopoulou M, Ntanasis-Stathopoulos I, Korompoki E, Fotiou D, Migkou M, Tzanninis IG, et al. Emerging treatment strategies for COVID-19 infection. *Clin Exp Med*. 2021;21:167-79.
34. Salazar E, Perez KK, Ashraf M, Chen J, Castillo B, Christensen PA, et al. Treatment of coronavirus disease 2019 (COVID-19) patients with convalescent plasma. *Am J Pathol*. 2020;190:1680-90.
35. Casadevall A, Pirofski LA. The convalescent sera option for containing COVID-19. *J Clin Invest*. 2020;130:1545-8.
36. Alemany A, Millat-Martinez P, Corbacho-Monne M, Malchair P, Ouchi D, Ruiz-Comellas A, et al. High-titre methylene blue-treated convalescent plasma as an early treatment for outpatients with COVID-19: a randomised, placebo-controlled trial. *Lancet Respir Med*. 2022;10:278-88.
37. Su Y, Yuan D, Chen DG. Multiple early factors anticipate post-acute COVID-19 sequelae [published online January 25, 2022]. *Cell*. 2022 <https://doi.org/10.1016/j.cell.2022.01.014>.
38. Bergman J, Ballin M, Nordstrom A, Nordstrom P. Risk factors for COVID-19 diagnosis, hospitalization, and subsequent all-cause mortality in Sweden: a nationwide study. *Eur J Epidemiol*. 2021;36:287-98.
39. Fumagalli C, Zocchi C, Tasseti L, Silverii MV, Amato C, Livi L, et al. Factors associated with persistence of symptoms 1 year after COVID-19: a longitudinal,

- prospective phone-based interview follow-up cohort study [published online December 7, 2021]. *Eur J Intern Med*. doi:10.1016/j.ejim.2021.11.018.
- 40.** Sahanic S, Tymoszuk P, Ausserhofer D, Rass V, Pizzini A, Nordmeyer G, et al. Phenotyping of acute and persistent COVID-19 features in the outpatient setting: exploratory analysis of an international cross-sectional online survey [published online November 26, 2021]. *Clin Infect Dis*. doi:10.1093/cid/ciab978.
- 41.** Thorne LG, Bouhaddou M, Reuschl AK, Zuliani-Alvarez L, Polacco B, Pelin A, et al. Evolution of enhanced innate immune evasion by SARS-CoV-2. *Nature*. 2022;602:487-95. Erratum in: *Nature*. 2022;604:E14.
- 42.** Shrestha NK, Burke PC, Nowacki AS, Terpeluk P, Gordon SM. Necessity of COVID-19 vaccination in persons who have already had COVID-19 [published online January 13, 2022]. *Clin Infect Dis*. doi:10.1093/cid/ciac022.

FIGURE LEGENDS

Figure 1: Trends in **A)** number of persons testing positive for SARS-CoV-2 from March 2020 to June 2022 (blue line and symbols) and number hospitalized for severe and life-threatening COVID-19 (red line and symbols), and **B)** percentage of persons testing positive for SARS-CoV-2 who were hospitalized. Each symbol represents a 1-week average. Vertical lines represent epochs of dominant SARS-CoV-2 variants:

- Pre-4/1/21: Alpha B.1.1.7
- 4/1/2021 to 7/1/21: Alpha Q
- 7/1/21 to 12/1/21: Delta B.1.617.2 and AY
- 12/1/21 to 2/1/22: Omicron BA.1
- 2/1/22 to 3/21/22: BA.1.1
- 3/21/22 to 5/21/22: Omicron BA.2
- 5/21/22 to 6/1/22: BA2.12.1

Figure 2: Trends in demographics. Symbols are 1-week averages. In panels *A* and *B*, blue symbols refer to persons testing positive for SARS-CoV-2 (SARS-CoV-2 +), and red symbols refer to patients admitted with COVID-19. **A)** Mean age. **B)** Proportion female. **C)** Race of persons testing positive for SARS-CoV-2. Key: White (Blue); Black (Black); Asian (Red); Multiracial/Other (Green). **D)** Race of persons hospitalized with COVID-19 (color key as in panel *C*).

Figure 3: Trends in symptoms of persons testing positive for SARS-CoV-2 (SARS-CoV-2 +, blue symbols) and of patients hospitalized for severe or life-threatening COVID-19

(red symbols). Symbols are 1-week averages. **A)** Fever. **B)** Cough. **C)** Dyspnea. **D)** Gastrointestinal symptoms. Format as in Figure 2, panels *A* and *B*.

Figure 4: Temporal trends in physiologic response to SARS-CoV-2 at hospital admission for COVID-19. Symbols are 1-week averages. **A)** Blood urea nitrogen. **B)** Creatinine. **C)** Red cell distribution width. **D)** C-reactive protein. **E)** Aspartate aminotransferase. **F)** Albumin.

Figure 5: Weekly hospital mortality of patients admitted with COVID-19. Symbols depict actual mortality, and solid line is a loess (locally weighted scatterplot) smoother.

Figure 6: Time-related mortality of patients hospitalized with COVID-19. Each circle represents a death; vertical bars are 68% confidence limits (equivalent to ± 1 standard error), and solid line enclosed within a 68% confidence band represents parametric estimates from which the instantaneous risk of mortality (inset) was derived. Number of patients remaining at risk at various intervals is shown beneath horizontal axis. Dash-dot-dash line represents mortality of an age-sex-race-matched U.S. population. Note that the early hazard extends out to at least 60 days.

Figure 7: Mortality after hospital admission for COVID-19 according to SARS-CoV-2 variant. **A)** Unadjusted Kaplan-Meier estimates with 68% confidence limits (bars) equivalent to ± 1 standard error, representing each variant (see key). **B)** Partial

dependency plot of mortality according to SARS-CoV-2 variant from at-admission model.

Key:

- Black: Pre-4/1/21: Alpha B.1.1.7; n = 11,483 (43%)
- Red: 4/1/2021 to 7/1/21: Alpha Q; n = 1,560 (5.8%)
- Orange: 7/1/21 to 12/1/21: Delta B.1.617.2 and AY; n = 5,280 (20%)
- Blue: 12/1/21 to 2/1/22: Omicron BA.1; n = 6,601 (25%)
- Green: 2/1/22 to 3/21/22: BA.1.1; n = 785 (2.9%)
- Purple: 3/21/22 to 5/21/22: Omicron BA.2; n = 878 (3.3%)
- Brown: 5/21/22-6/1/22: BA2.12.1; n = 285 (1.1%)

Figure 8: Variable importance (VIMP) for models of mortality. **A)** VIMP for pre-COVID-19 model of mortality (error=0.25). Key to variable names along vertical axis is provided in Appendices 1 and 2. **B)** Partial dependence plot of predicted 60-day mortality with respect to both age and date of hospital admission, based on pre-COVID-19 random forest analysis shown in panel A. “Days” refers to hospital admission date expressed as number of days since March 1, 2020. **C)** VIMP for at-admission model of mortality (error=0.18). Notice that after age, the most important variables are admission laboratory values reflecting physiologic response to SARS-CoV-2. **D)** Partial dependence plot of predicted 60-day mortality with respect to both age and date of hospital admission, based on at-admission random forest analysis shown in panel C.

Figure 9: Percent of hospitalized patients vaccinated against SARS-CoV-2. Note that persons vaccinated within 2 weeks of hospital admission with COVID-19 were not considered fully vaccinated for this analysis.

Figure 10: Partial dependency plots of predicted 60-day mortality according to routine laboratory findings at hospital admission for COVID-19. **A)** Blood urea nitrogen. **B)** Aspartate transaminase. **C)** C-reactive protein. **D)** Red blood cell distribution width. **E)** Albumin.

Figure 11: Actuarial and simulated 60-day mortality of patients hospitalized with COVID-19 across the pandemic. Black symbols represent observed 60-day unadjusted actuarial mortality for patients admitted each month, and black line is a loess (locally weighted scatterplot) smoother. Red and blue curves represent simulated 60-day mortality if all hospitalized patients across the pandemic were admitted on the same date from 3/1/2020 to 6/1/2022, according to pre-COVID-19 (red curve) and at-admission (blue curve) mortality models. Vertical lines denote approximate epochs of SARS-CoV-2 variants.

- Pre-4/1/21: Alpha B.1.1.7
- 4/1/2021 to 7/1/21: Alpha Q
- 7/1/21 to 12/1/21: Delta B.1.617.2 and AY
- 12/1/21 to 2/1/22: Omicron BA.1
- 2/1/22 to 3/21/22: BA.1.1
- 3/21/22 to 5/21/22: Omicron BA.2
- 5/21/22 to 6/1/22: BA2.12.1

Figure 12: Distribution of 7 risk profiles of patients with COVID-19 across date of hospital admission and observed survival for each profile. **A,** Predicted 60-day survival using the at-admission model for mortality for profiles 1-7 are as follows: (1) $\geq 95\%$, (2) 90% to $<95\%$, (3) 85% to $<90\%$, (4) 80% to $<85\%$, (5) 70% to $<80\%$, (6) 60% to $<70\%$,

(7) <60%. Note particularly the gradual reduction in percentage of hospital admissions of the highest risk patients (pink and purple) and increase in number of patients in lower risk categories. **B**, Observed mortality stratified by predicted risk profile. **C**, Observed escalation of care to intensive care unit (ICU). In panels *B* and *C*, each symbol represents an event estimated by the Kaplan-Meier method, and vertical bars are 68% confidence intervals equivalent to ± 1 standard error.

Table 1. Characteristics and physiologic response to SARS-CoV-2 of persons testing positive and those admitted to Cleveland Clinic Health System hospitals with COVID-19

Variable	SARS-CoV-2 Positive (N=185,636)		COVID-19 Admitted (N=26,872)	
	n ^a	No. (%) or Mean ± SD	n ^a	No. (%) or Mean ± SD
<i>Demographics</i>				
Age (y)	185,503	45±22	26,870	62±19
Male	185,426	80,245 (43)	26,870	13,234 (49)
Race/Ethnicity	173,776		26,377	
White		127,313 (73)		17,058 (65)
Black		35,803 (21)		7,876 (30)
Asian		2,411 (1.4)		256 (0.97)
Mixed race or other		8,249 (4.7)		1,187 (4.5)
Hispanic	169,605	12,371 (7.3)	26,427	1,844 (7.0)
Body mass index (kg/m ²)	128,306	30±8.4	24,983	31±8.9
<i>Vaccination history</i>				
COVID-19	185,636	5,356 (2.9)	26,857	5,350 (20)
Influenza	185,634	95,927 (52)	26,870	14,085 (52)
Pneumococcal polysaccharide	185,634	43,325 (23)	26,870	9,347 (35)
<i>Presenting symptoms</i>				
Cough	171,061	80,353 (47)	25,330	12,540 (50)
Sputum production	169,959	12,254 (7.2)	25,188	4,343 (17)
Dyspnea	170,773	37,734 (22)	25,335	12,462 (49)
Flu-like symptoms	169,419	55,868 (33)	25,050	7,755 (31)
Fever	170,935	48,985 (29)	25,335	8,459 (33)

Gastrointestinal	170,102	36,593 (22)	25,204	10,661 (42)
Vomiting	170,250	21,467 (13)	25,253	5,256 (21)
Loss of appetite	169,840	13,239 (7.8)	25,149	5,645 (22)
Diarrhea	170,392	11,117 (6.5)	25,241	3,868 (15)
Home medications				
Steroid	181,428	21,410 (12)	26,872	6,586 (25)
NSAID	181,428	23,044 (13)	26,872	4,887 (18)
ACE inhibitor	181,428	12,457 (6.9)	26,872	3,860 (17)
ARB	181,428	9,329 (5.1)	26,872	2,987 (11)
Melatonin	181,428	3,857 (2.1)	26,872	2,181 (8.1)
Beta blocker	181,428	3,378 (1.9)	26,872	1,807 (6.7)
Comorbidity				
Diabetes			26,872	8,054 (30)
Other immunosuppressive disease			26,872	5,786 (22)
Coronary artery disease			26,872	4,836 (18)
Heart failure			26,872	4,708 (18)
Cancer			26,872	4,721 (18)
Chronic obstructive pulmonary disease / emphysema			26,872	3,889 (14)
Connective tissue disease			26,872	1,063 (4.0)
Transplant			26,872	714 (2.7)
Inflammatory bowel disease			26,872	539 (2.0)
Multiple sclerosis			26,872	285 (1.1)
Variant	185,636		26,872	
Pre-4/1/21: Alpha B.1.1.7		75,369 (41)		11,483 (43)
4/1/2021-6/30/21: Alpha Q		6,270 (3.4)		1,560 (5.8)
7/1/21-11/30/21: Delta B.1.617.2 and AY		36,080 (19)		5,280 (20)

11/1/21-1/31/22: Omicron BA.1	54,969 (30)	6,601 (25)
2/1/22-3/20/22 BA.1.1	3,176 (1.7)	785 (2.9)
3/21/22-5/20/22: Omicron BA.2	7,461 (4.0)	878 (3.3)
5/21/22-6/1/22 BA2.12.1	2,311 (1.2)	285 (1.1)

Laboratory findings at hospital admission

C-reactive protein (mg•L ⁻¹) ^b	18,185	1.2/5.6/15
White blood cell count (10 ⁹ •L ⁻¹) ^b	24,644	4.2/6.8/11
Neutrophil count (10 ⁹ •L ⁻¹) ^b	22,583	2.7/4.8/8.9
Lymphocyte count (10 ⁹ •L ⁻¹) ^b	22,736	0.51/0.97/1.8
Red blood cell count (10 ¹² •L ⁻¹)	26,482	4.4±0.79
Red cell distribution width (%)	24,429	14±2.2
Hemoglobin (g•dL ⁻¹)	24,519	13±2.3
Platelet count (10 ⁹ •L ⁻¹)	24,632	226±98
Creatinine (mg•dL ⁻¹) ^b	24,175	0.68/1.0/1.8
Blood urea nitrogen (mg•dL ⁻¹) ^b	24,310	10/17/37
Albumin (g•dL ⁻¹) ^b	23,600	3.2/3.8/4.2
Bilirubin (mg•dL ⁻¹) ^b	22,898	0.30/0.50/0.90
Alanine aminotransferase (IU•L ⁻¹) ^b	23,174	12/23/52
Aspartate aminotransferase (IU•L ⁻¹) ^b	23,220	18/31/66
Alkaline phosphatase (IU•L ⁻¹) ^b	23,473	56/80/124
Potassium (mmol•L ⁻¹) ^b	22,107	3.5/4.0/4.6
Chloride (mEq•L ⁻¹)	24,313	100±5.6
D-dimer (ng•mL ⁻¹) ^b	14,866	390/890/2,780

a. Patients with data available.

b. 15th/50th/85th percentiles, consistent with describing distribution using mean ± SD.

Key: ACE, angiotension-converting enzyme; ARB, angiotensin receptor blocker; NSAID, nonsteroidal anti-inflammatory drug; SD, standard deviation.

Table 2. Profile of hospitalized patients according to 7 predicted 60-day survival categories by at-admission model: (1) $\geq 95\%$, (2) 90% to $<95\%$, (3) 85% to $<90\%$, (4) 80% to $<85\%$, (5) 70% to $<80\%$, (6) 60% to $<70\%$, and (7) $<60\%$ (see Figure 11, A). Blue and salmon shaded columns highlight contrasting patient characteristics between lowest and highest risk groups.

Variable	$\geq 95\%$		90% to $<95\%$		85% to $<90\%$		80% to $<85\%$		70% to $<80\%$		60% to $<70\%$		$<60\%$	
	n ^a	No. (%) or 15 th /50 th /85 th Percentiles	n ^a	No. (%) or 15 th /50 th /85 th Percentiles	n ^a	No. (%) or 15 th /50 th /85 th Percentiles	n ^a	No. (%) or 15 th /50 th /85 th Percentiles	n ^a	No. (%) or 15 th /50 th /85 th Percentiles	n ^a	No. (%) or 15 th /50 th /85 th Percentiles	n ^a	No. (%) or 15 th /50 th /85 th Percentiles
Demographics														
Age (y)	9027	28/48/62	5729	48/64/76	3877	58/71/83	2798	63/76/87	2845	65/78/89	1379	65/78/90	1215	70/82/91
Female	9027	5085(56)	5729	2856(50)	3877	1899(49)	2798	1354(48)	2845	1280(45)	1379	613(44)	1215	549(45)
Race/Ethnicity	8821		5609		3828		2752		2800		1362		1205	
White		5174(59)		3624(65)		2558(67)		1878(68)		1988(71)		989(73)		847(70)
Black		3003(34)		1668(30)		1094(29)		763(28)		711(25)		331(24)		306(25)
Asian		97(1.1)		58(1.0)		32(0.84)		23(0.84)		25(0.89)		8(0.59)		13(1.1)
Mixed/Other		547(6.2)		259(4.6)		144(3.8)		88(3.2)		76(2.7)		34(2.5)		39(3.2)
Hispanic	8869	662(7.5)	5631	470(8.3)	3817	258(6.8)	2754	179(6.5)	2796	177(6.3)	1360	52(3.8)	1200	46(3.8)
BMI (kg·m ⁻²)	8217	24/31/41	5336	24/30/39	3640	23/29/38	2643	22/28/36	2698	22/27/35	1302	21/27/35	1147	20/26/34
Vaccination history														
COVID-19	9021	1260(14)	5725	1149(20)	3875	981(25)	2798	650(23)	2845	723(25)	1378	351(25)	1215	236(19)
Influenza	9026	3932(44)	5730	2982(52)	3877	2282(59)	2798	1688(60)	2845	1691(59)	1379	819(59)	1215	691(57)
Pneumococcal	9027	1425(16)	5730	2059(36)	3876	1815(47)	2798	1408(50)	2845	1386(49)	1379	682(49)	1215	572(47)
Presenting symptoms														
Cough	8547	4523(53)	5404	2843(53)	3619	1790(49)	2623	1200(46)	2655	1168(44)	1305	575(44)	1177	441(37)
Fever	8545	3246(38)	5405	1911(35)	3620	1144(32)	2623	777(30)	2656	729(27)	1309	350(27)	1177	302(26)
Fatigue	8508	4258(50)	5370	3091(58)	3595	2175(61)	2606	1601(61)	2643	1622(61)	1299	742(57)	1167	629(54)
Sputum production	8498	1431(17)	5367	973(18)	3604	683(19)	2612	489(19)	2640	402(15)	1296	210(16)	1171	155(13)
Flu-like symptoms	8476	3348(39)	5359	1792(33)	3584	1076(30)	2591	640(25)	2616	508(19)	1282	232(18)	1142	159(14)
Dyspnea	8538	3832(45)	5409	2696(50)	3621	1889(52)	2627	1301(50)	2655	1368(52)	1308	690(53)	1177	686(58)
Diarrhea	8519	1292(15)	5387	882(16)	3602	639(18)	2614	399(15)	2647	370(14)	1301	160(12)	1171	126(11)
Loss of appetite	8489	1720(20)	5367	1212(23)	3586	884(25)	2609	653(25)	2638	634(24)	1296	294(23)	1164	248(21)

Vomiting	8520	2080(24)	5388	1144(21)	3607	769(21)	2618	485(19)	2648	414(16)	1298	193(15)	1174	171(15)
Home medications														
Steroid	9027	1653(18)	5731	1430(25)	3877	1082(28)	2798	758(27)	2845	850(30)	1379	422(31)	1215	391(32)
NSAID	9027	2141(24)	5731	1144(20)	3877	564(15)	2798	374(13)	2845	347(12)	1379	161(12)	1215	156(13)
ACE inhibitor	9027	799(8.9)	5731	955(17)	3877	674(17)	2798	554(20)	2845	472(17)	1379	233(17)	1215	173(14)
ARB	9027	543(6.0)	5731	697(12)	3877	569(15)	2798	450(16)	2845	426(15)	1379	172(12)	1215	130(11)
Melatonin	9027	252(2.8)	5731	379(6.6)	3877	375(9.7)	2798	325(12)	2845	402(14)	1379	224(16)	1215	224(18)
Beta blocker	9027	126(1.4)	5731	363(6.3)	3877	382(9.9)	2798	328(12)	2845	333(12)	1379	157(11)	1215	118(9.7)
Comorbidity														
Diabetes	9027	1585(18)	5731	1850(32)	3877	1466(38)	2798	1056(38)	2845	1119(39)	1379	540(39)	1215	438(36)
Other immunosuppressive disease	9027	458(5.1)	5731	1099(19)	3877	1129(29)	2798	964(34)	2845	1063(37)	1379	557(40)	1215	516(42)
Coronary artery disease	9027	376(4.2)	5731	895(16)	3877	1002(26)	2798	830(30)	2845	874(31)	1379	454(33)	1215	405(33)
Heart failure	9027	239(2.6)	5731	794(14)	3877	962(25)	2798	808(29)	2845	941(33)	1379	492(36)	1215	472(39)
Cancer	9027	446(4.9)	5731	863(15)	3877	916(24)	2798	781(28)	2845	897(32)	1379	439(32)	1215	379(31)
Chronic obstructive pulmonary disease	9027	474(5.3)	5731	803(14)	3877	758(20)	2798	610(22)	2845	632(22)	1379	346(25)	1215	266(22)
Connective tissue disease	9027	180(2.0)	5731	234(4.1)	3877	231(6.0)	2798	146(5.2)	2845	130(4.6)	1379	72(5.2)	1215	70(5.8)
Transplant	9027	29(0.32)	5731	169(2.9)	3877	182(4.7)	2798	135(4.8)	2845	117(4.1)	1379	52(3.8)	1215	30(2.5)
Inflammatory bowel disease	9027	149(1.7)	5731	118(2.1)	3877	87(2.2)	2798	58(2.1)	2845	69(2.4)	1379	35(2.5)	1215	23(1.9)
Multiple sclerosis	9027	105(1.2)	5731	72(1.3)	3877	43(1.1)	2798	18(0.64)	2845	25(0.88)	1379	9(0.65)	1215	13(1.1)
Variant	9027		5731		3877		2798		2845		1379		1215	
Pre-4/1/21: Alpha B.1.1.7		3504(39)		2484(43)		1629(42)		1312(47)		1290(45)		629(46)		635(52)
4/1/2021-7/1/21: Alpha Q		621(6.9)		400(7.0)		207(5.3)		129(4.6)		128(4.5)		48(3.5)		27(2.2)
7/1/21-12/1/21: Delta B.1.617.2 and AY		2026(22)		1090(19)		730(19)		480(17)		511(18)		259(19)		184(15)
12/1/21-2/1/22: Omicron BA.1		2248(25)		1341(23)		997(26)		667(24)		673(24)		352(26)		323(27)
2/1/22-3/21/22: BA.1.1		251(2.8)		167(2.9)		111(2.9)		85(3)		108(3.8)		42(3.0)		21(1.7)

3/21/22-5/21/22: Omicron BA.2	285(3.2)		190(3.3)		154(4.0)		99(3.5)		95(3.3)		37(2.7)		18(1.5)	
5/21/22-6/1/22: BA.2.12.1	92(1)		59(1.0)		49(1.3)		26(0.93)		40(1.4)		12(0.87)		7(0.58)	
Laboratory findings at hospital admission														
C-reactive protein (mg•L ⁻¹)	5888	0.80/4.1/11	3726	1.1/4.9/14	2712	1.3/5.8/15	1845	1.7/6.6/16	1924	2.1/7.8/18	1077	2.8/8.5/19	1013	4.3/12/23
White blood cell count (10 ⁹ •L ⁻¹)	8762	4.3/6.6/10	4899	4.1/6.5/11	3505	4.0/6.7/11	2423	4.0/6.8/11	2487	4.2/7.4/13	1353	4.4/7.8/15	1215	4.8/9.5/18
Neutrophil count (10 ⁹ •L ⁻¹)	7775	2.5/4.4/7.5	4526	2.6/4.6/8.2	3305	2.6/4.9/8.8	2268	2.7/5.0/9.1	2290	2.9/5.5/10	1266	3.1/6.3/12	1153	3.7/7.7/14
Lymphocyte count (10 ⁹ •L ⁻¹)	7778	0.68/1.2/2.1	4561	0.56/0.97/1.7	3321	0.48/0.87/1.6	2280	0.44/0.83/1.5	2338	0.42/0.81/1.6	1285	0.38/0.73/1.4	1173	0.35/0.73/1.7
Red blood cell count (10 ¹² •L ⁻¹)	8927	4.1/4.6/5.2	5557	3.8/4.5/5.2	3831	3.5/4.3/5.0	2759	3.2/4.1/4.9	2818	3.1/4.1/5.0	1377	3.0/4.0/5.0	1213	2.9/4.0/5.1
Red blood cell distribution width (%)	8634	12/13/15	4872	12/14/16	3497	12/14/16	2414	13/14/17	2477	13/15/17	1342	13/15/18	1193	14/16/19
Hemoglobin (g•dL ⁻¹)	8730	12/14/15	4877	11/13/15	3486	10/13/15	2401	9.4/12/15	2467	9.2/12/15	1344	9/12/15	1214	8.6/12/15
Platelet count (10 ⁹ •L ⁻¹)	8753	162/229/325	4898	143/207/308	3505	128/199/311	2422	123/192/303	2487	116/190/309	1352	111/187/318	1215	100/181/312
Creatinine (mg•dL ⁻¹)	8439	0.62/0.83/1.1	4816	0.69/0.98/1.6	3487	0.75/1.1/2.1	2402	0.78/1.3/2.5	2470	0.83/1.4/2.9	1347	0.84/1.5/3.1	1214	0.99/1.8/3.9
Blood urea nitrogen (mg•dL ⁻¹)	8490	8/12/17	4837	11/17/27	3506	13/21/38	2421	14/26/47	2487	16/29/56	1354	18/32/63	1215	23/44/80
Albumin (g•dL ⁻¹)	8175	3.6/4.0/4.4	4693	3.4/3.8/4.2	3419	3.2/3.7/4.1	2352	3.1/3.6/4.1	2419	2.9/3.5/4.0	1330	2.8/3.4/3.9	1212	2.6/3.2/3.8
Bilirubin (mg•dL ⁻¹)	7865	0.20/0.40/0.70	4577	0.30/0.50/0.80	3326	0.30/0.50/0.90	2286	0.30/0.50/0.90	2348	0.30/0.50/1.0	1301	0.30/0.50/1.1	1195	0.30/0.60/1.4
Alanine aminotransferase (IU•L ⁻¹)	8089	13/25/54	4624	12/22/50	3348	11/20/45	2294	11/21/48	2345	12/22/54	1294	11/24/56	1180	13/27/76
Aspartate aminotransferase (IU•L ⁻¹)	8050	18/29/57	4640	18/30/59	3371	18/30/59	2301	18/33/67	2371	19/36/77	1299	21/40/87	1188	25/51/132
Alkaline phosphatase (IU•L ⁻¹)	8141	55/76/114	4679	56/79/117	3403	56/79/121	2337	55/81/129	2396	56.6/84/142	1317	58/86/156	1200	64/95/177
Potassium (mmol•L ⁻¹)	7365	3.4/3.9/4.3	4417	3.5/4.0/4.5	3271	3.5/4.1/4.7	2271	3.6/4.1/4.8	2338	3.6/4.2/4.9	1274	3.6/4.2/4.9	1171	3.6/4.4/5.2
Chloride (mEq•L ⁻¹)	8491	96/100/104	4838	94/99/104	3506	94/99/104	2423	94/100/105	2487	94/100/106	1354	94/100/107	1214	94/101/112
D-dimer (ng•mL ⁻¹)	5124	320/610/1390	3113	390/840/2210	2150	450/1060/3130	1435	490/1180/3670	1447	580/1370/4480	821	603/1510/5380	776	810/2260/8320

Outcomes	Lowest risk group (blue)		Other risk groups										Highest risk group (salmon)	
Hospitalization (days after 3/1/2020)	3262	130/279/405	2954	153/292/406	1954	162/288/384	1517	155/289/368	1872	173/289/363	870	147/283/350	898	120/281/330
Length of stay	8947	2/4/8	5639	3/5/11	3800	3/6/12	2722	3/7/15	2719	4/8/17	1313	4/10/20	1171	4/9/17
Hospital death	8932	0(0)	5636	15(0.27)	3791	46(1.2)	2715	98(3.6)	2708	318(12)	1273	409(32)	1126	617(55)
Predicted 60-day survival	9027	0.96/0.98/0.99	5731	0.91/0.93/0.94	3877	0.86/0.88/0.89	2798	0.81/0.83/0.84	2845	0.72/0.76/0.79	1379	0.62/0.66/0.69	1215	0.43/0.53/0.58

Note: Lowest risk group is highlighted in blue and highest risk group in salmon, illustrating their contrasting demographics, medical history, symptoms, and admission laboratory profile.

a. Patients with data available.

Key: *ACE*, angiotension-converting enzyme; *ARB*, angiotensin receptor blocker; *BMI*, body mass index; *NSAID*, nonsteroidal anti-inflammatory drug; *SD*, standard deviation.

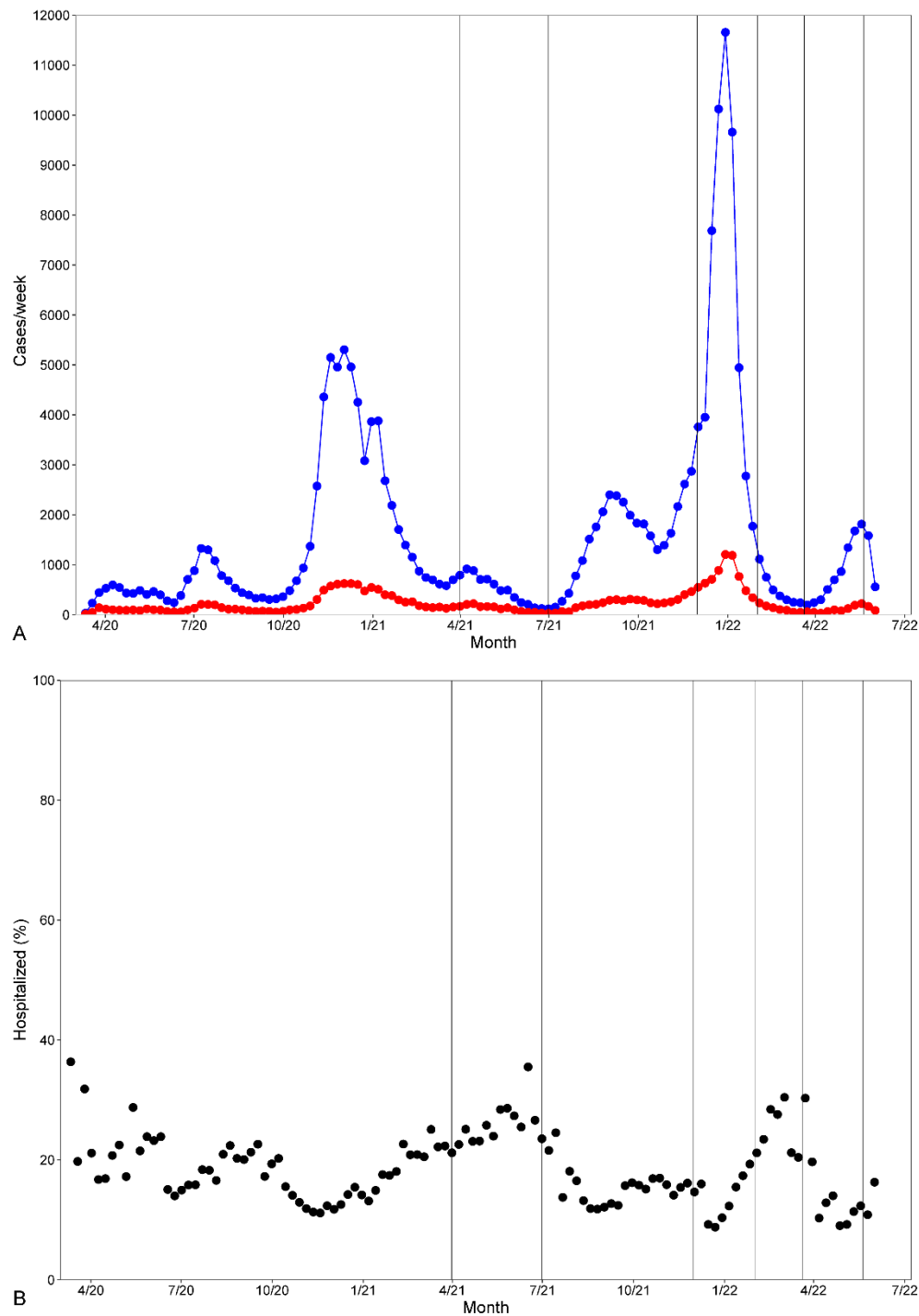


Figure 1: Trends in **A)** number of persons testing positive for SARS-CoV-2 from March 2020 to June 2022 (blue line and symbols) and number hospitalized for severe and life-threatening COVID-19 (red line and symbols), and **B)** percentage of persons testing

positive for SARS-CoV-2 who were hospitalized. Each symbol represents a 1-week average. Vertical lines represent epochs of dominant SARS-CoV-2 variants:

- Pre-4/1/21: Alpha B.1.1.7
- 4/1/2021 to 7/1/21: Alpha Q
- 7/1/21 to 12/1/21: Delta B.1.617.2 and AY
- 12/1/21 to 2/1/22: Omicron BA.1
- 2/1/22 to 3/21/22: BA.1.1
- 3/21/22 to 5/21/22: Omicron BA.2
- 5/21/22 to 6/1/22: BA2.12.1

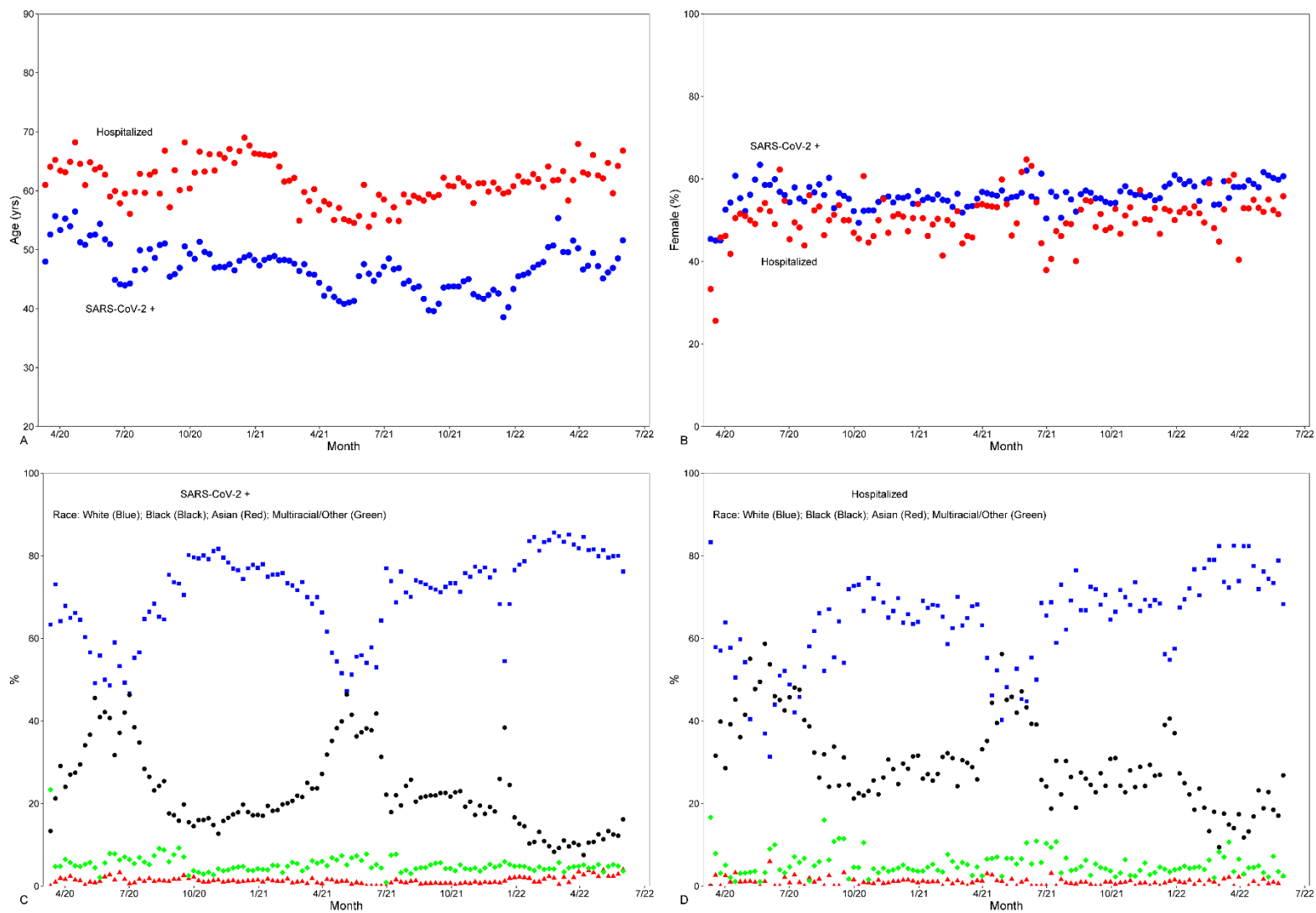


Figure 2: Trends in demographics. Symbols are 1-week averages. In panels *A* and *B*, blue symbols refer to persons testing positive for SARS-CoV-2 (SARS-CoV-2 +), and red symbols refer to patients admitted with COVID-19. **A)** Mean age. **B)**

Proportion female. **C)** Race of persons testing positive for SARS-CoV-2. Key: White (Blue); Black (Black); Asian (Red); Multiracial/Other (Green). **D)** Race of persons hospitalized with COVID-19 (color key as in panel C).

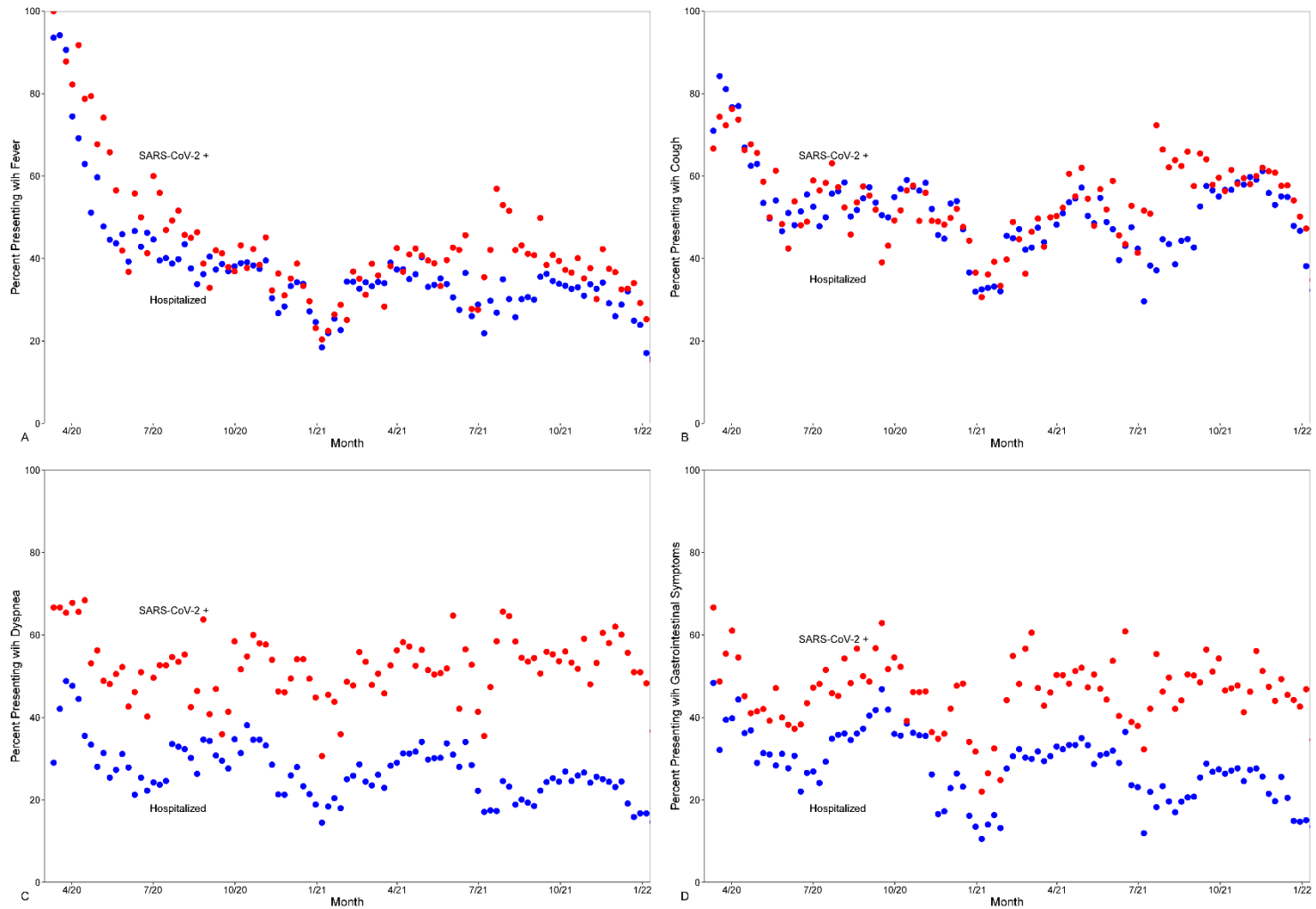


Figure 3: Trends in symptoms of persons testing positive for SARS-CoV-2 (SARS-CoV-2 +, blue symbols) and of patients hospitalized for severe or life-threatening COVID-19 (red symbols). Symbols are 1-week averages. **A)** Fever. **B)** Cough. **C)** Dyspnea. **D)** Gastrointestinal symptoms. Format as in Figure 2, panels A and B.

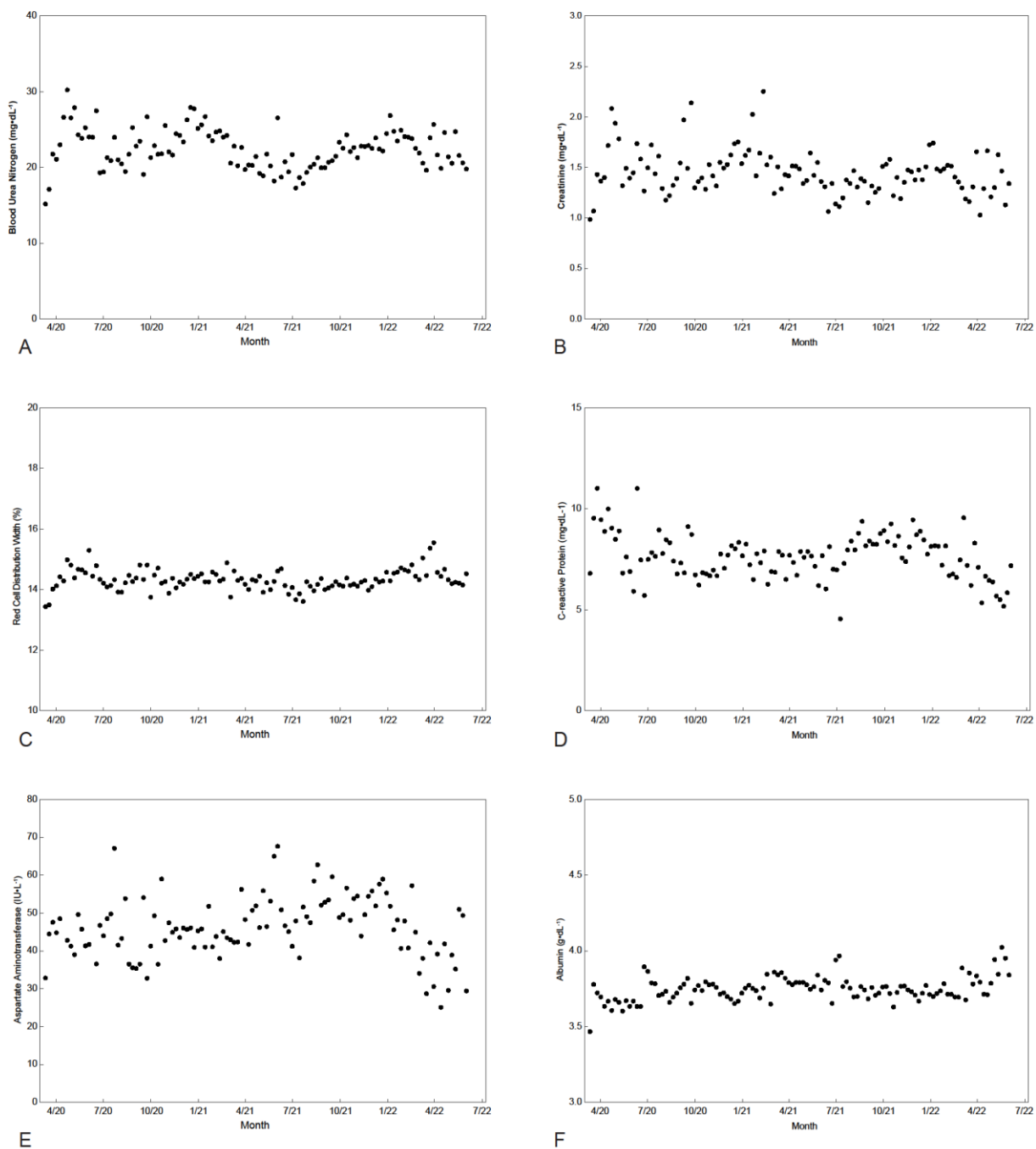


Figure 4: Temporal trends in physiologic response to SARS-CoV-2 at hospital admission for COVID-19. Symbols are 1-week averages. **A)** Blood urea nitrogen. **B)** Creatinine. **C)** Red cell distribution width. **D)** C-reactive protein. **E)** Aspartate aminotransferase. **F)** Albumin.

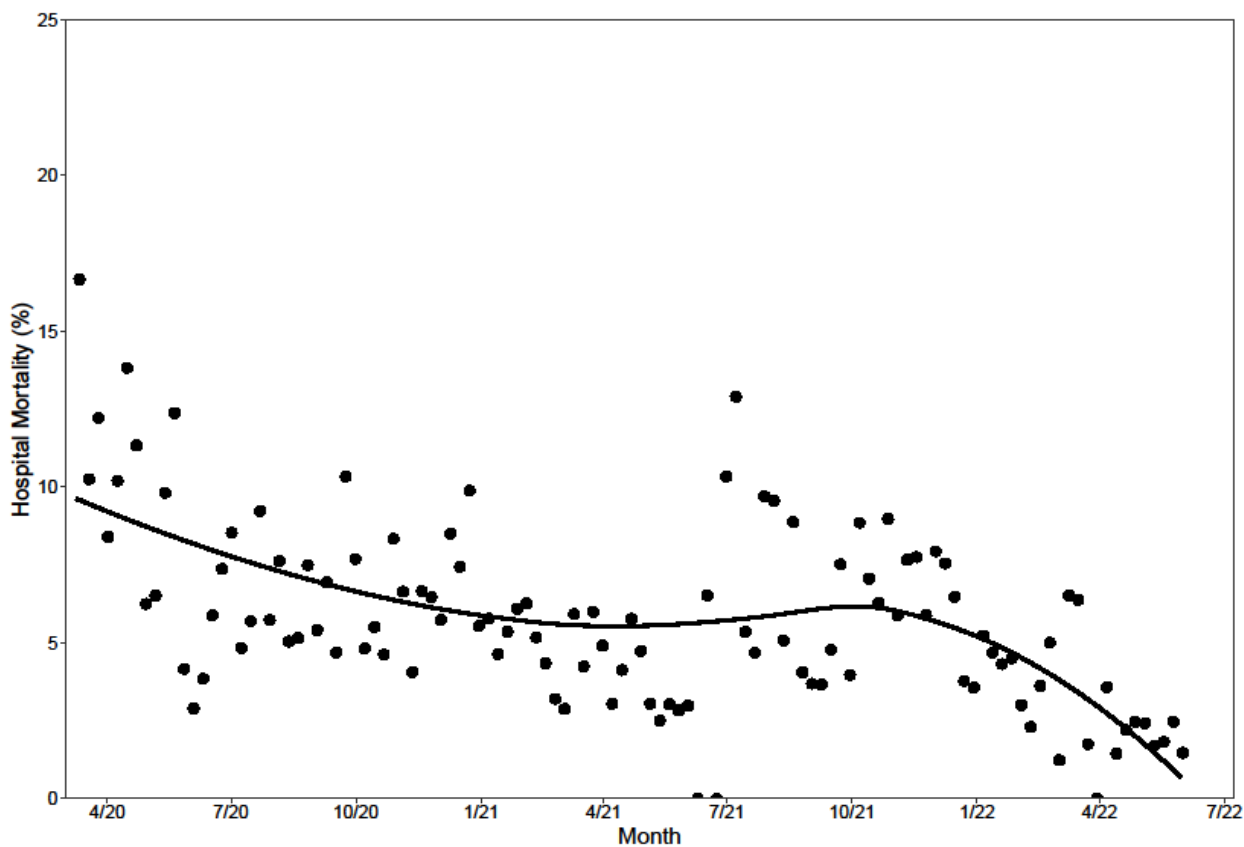


Figure 5: Weekly hospital mortality of patients admitted with COVID-19. Symbols depict actual mortality, and solid line is a loess (locally weighted scatterplot) smoother.

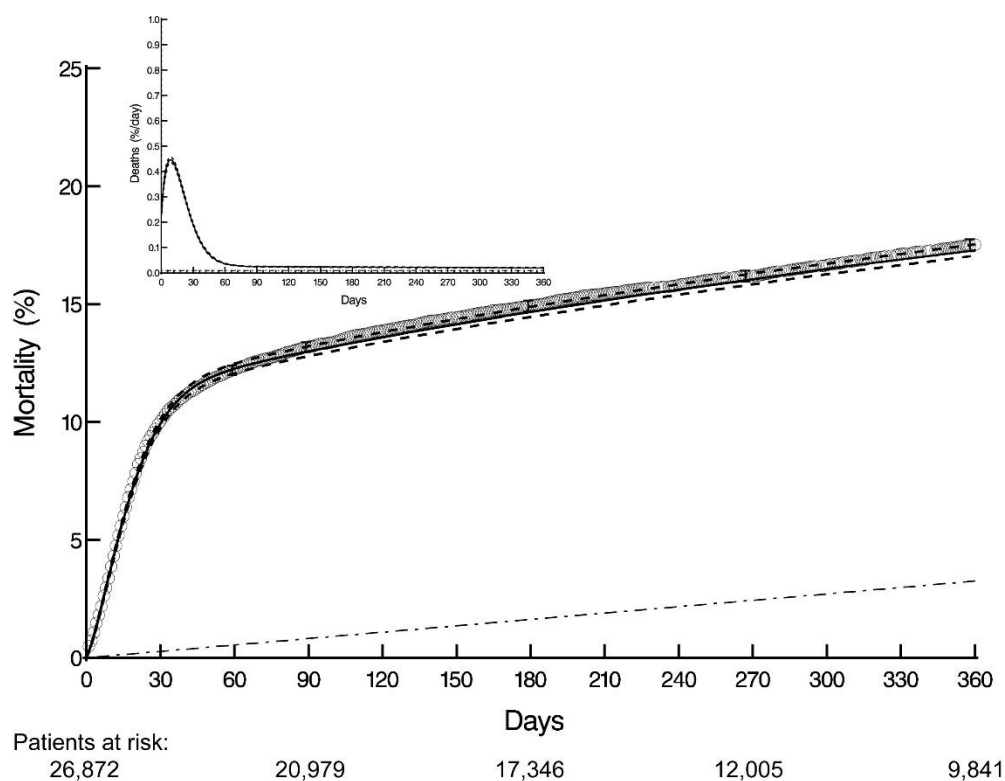


Figure 6: Time-related mortality of patients hospitalized with COVID-19. Each circle represents a death; vertical bars are 68% confidence limits (equivalent to ± 1 standard error), and solid line enclosed within a 68% confidence band represents parametric estimates from which the instantaneous risk of mortality (inset) was derived. Number of patients remaining at risk at various intervals is shown beneath horizontal axis. Dash-dot-dash line represents mortality of an age-sex-race-matched U.S. population. Note that the early hazard extends out to at least 60 days.

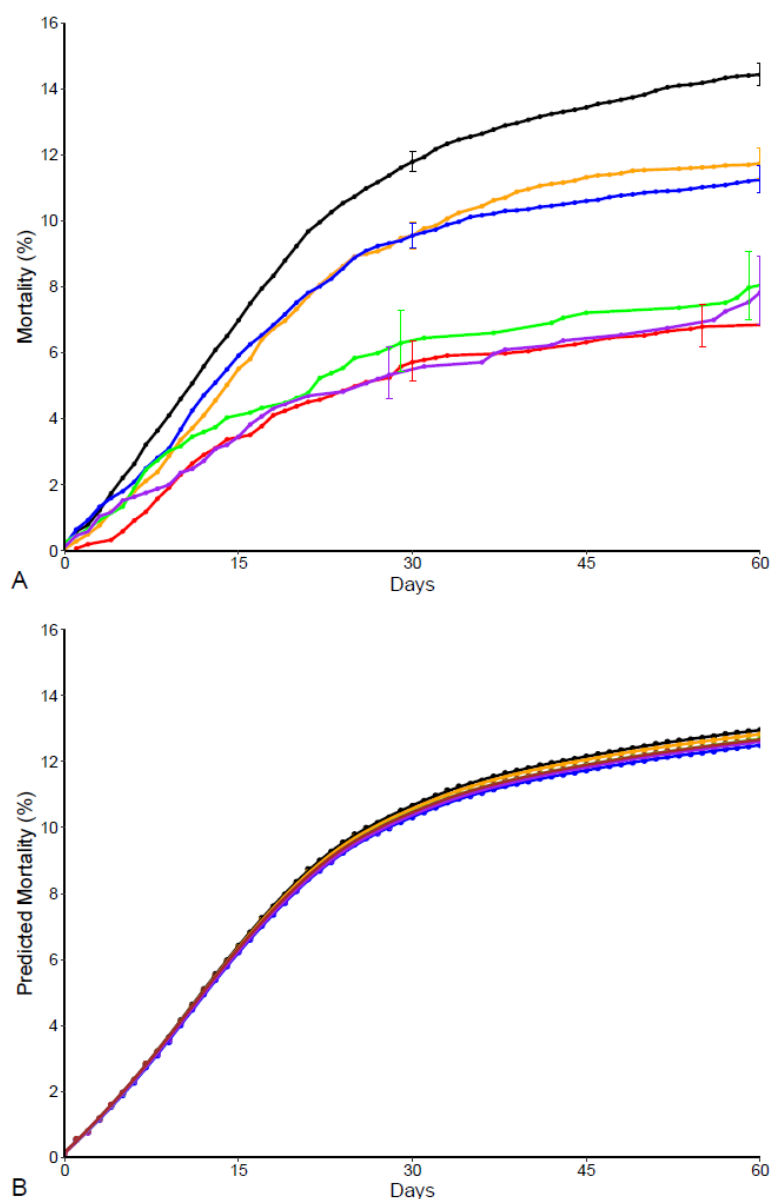
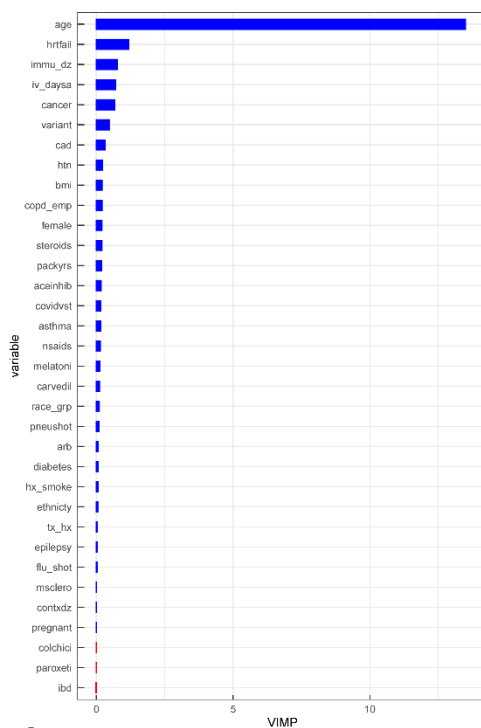


Figure 7: Mortality after hospital admission for COVID-19 according to SARS-CoV-2 variant. **A)** Unadjusted Kaplan-Meier estimates with 68% confidence limits (bars) equivalent to ± 1 standard error, representing each variant (see key). **B)** Partial dependency plot of mortality according to SARS-CoV-2 variant from at-admission model.

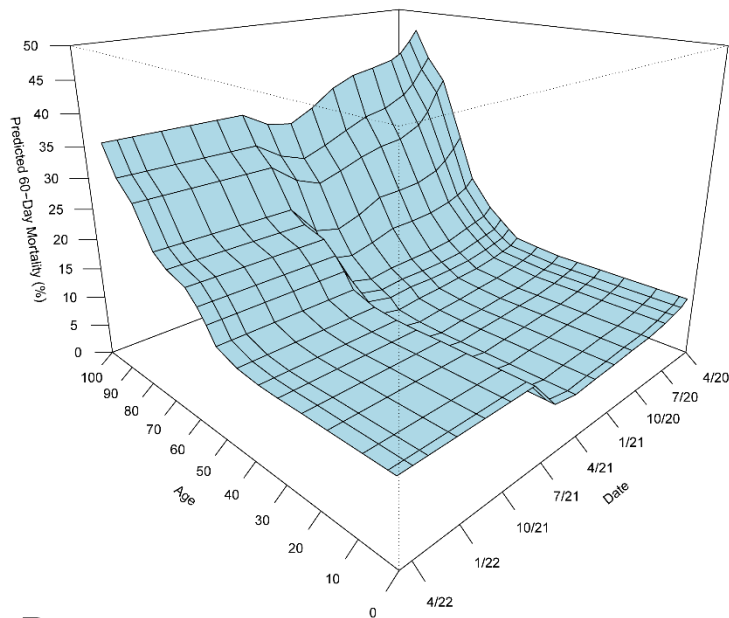
Key:

- Black: Pre-4/1/21: Alpha B.1.1.7; n = 11,483 (43%)
- Red: 4/1/2021 to 7/1/21: Alpha Q; n = 1,560 (5.8%)
- Orange: 7/1/21 to 12/1/21: Delta B.1.617.2 and AY; n = 5,280 (20%)
- Blue: 12/1/21 to 2/1/22: Omicron BA.1; n = 6,601 (25%)

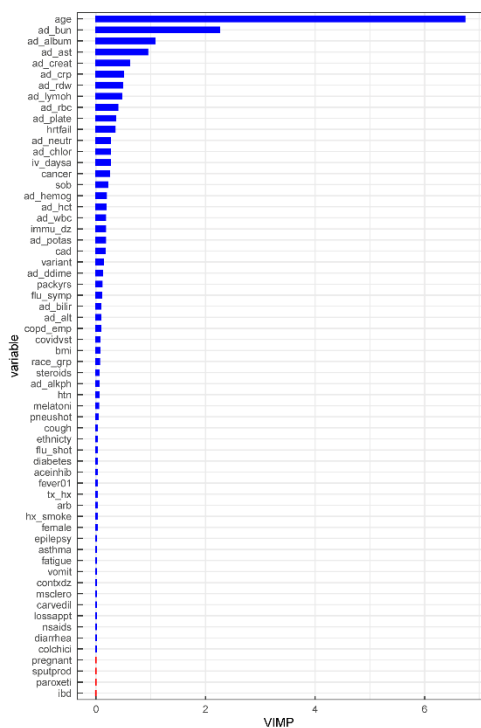
- Green: 2/1/22 to 3/21/22: BA.1.1; n = 785 (2.9%)
- Purple: 3/21/22 to 5/21/22: Omicron BA.2; n = 878 (3.3%)
- Brown: 5/21/22-6/1/22: BA2.12.1; n = 285 (1.1%)



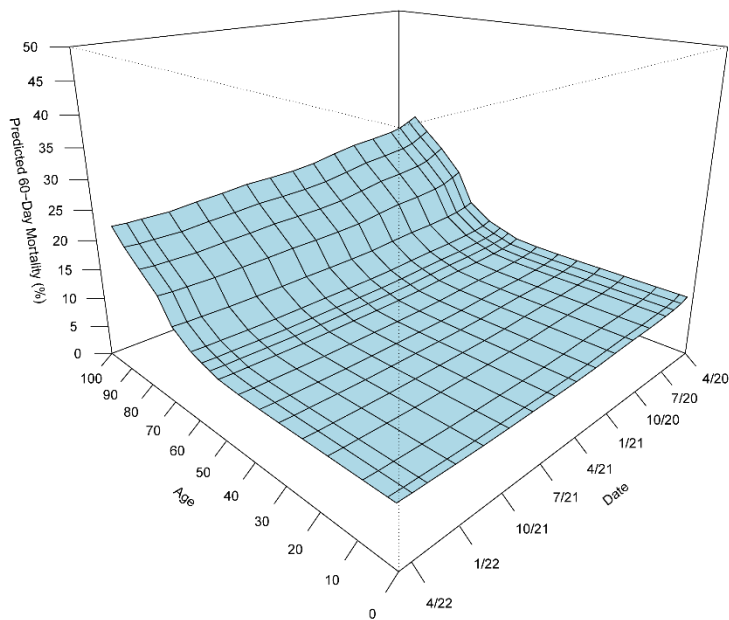
A



B



C



D

Figure 8: Variable importance (VIMP) for models of mortality. **A)** VIMP for pre-COVID-19 model of mortality (error=0.25). Key to variable names along vertical axis is provided in Appendices 1 and 2. **B)** Partial dependence plot of predicted 60-day mortality with respect

to both age and date of hospital admission, based on pre-COVID-19 random forest analysis shown in panel A. “Days” refers to hospital admission date expressed as number of days since March 1, 2020. **C)** VIMP for at-admission model of mortality (error=0.18). Notice that after age, the most important variables are admission laboratory values reflecting physiologic response to SARS-CoV-2. **D)** Partial dependence plot of predicted 60-day mortality with respect to both age and date of hospital admission, based on at-admission random forest analysis shown in panel C.

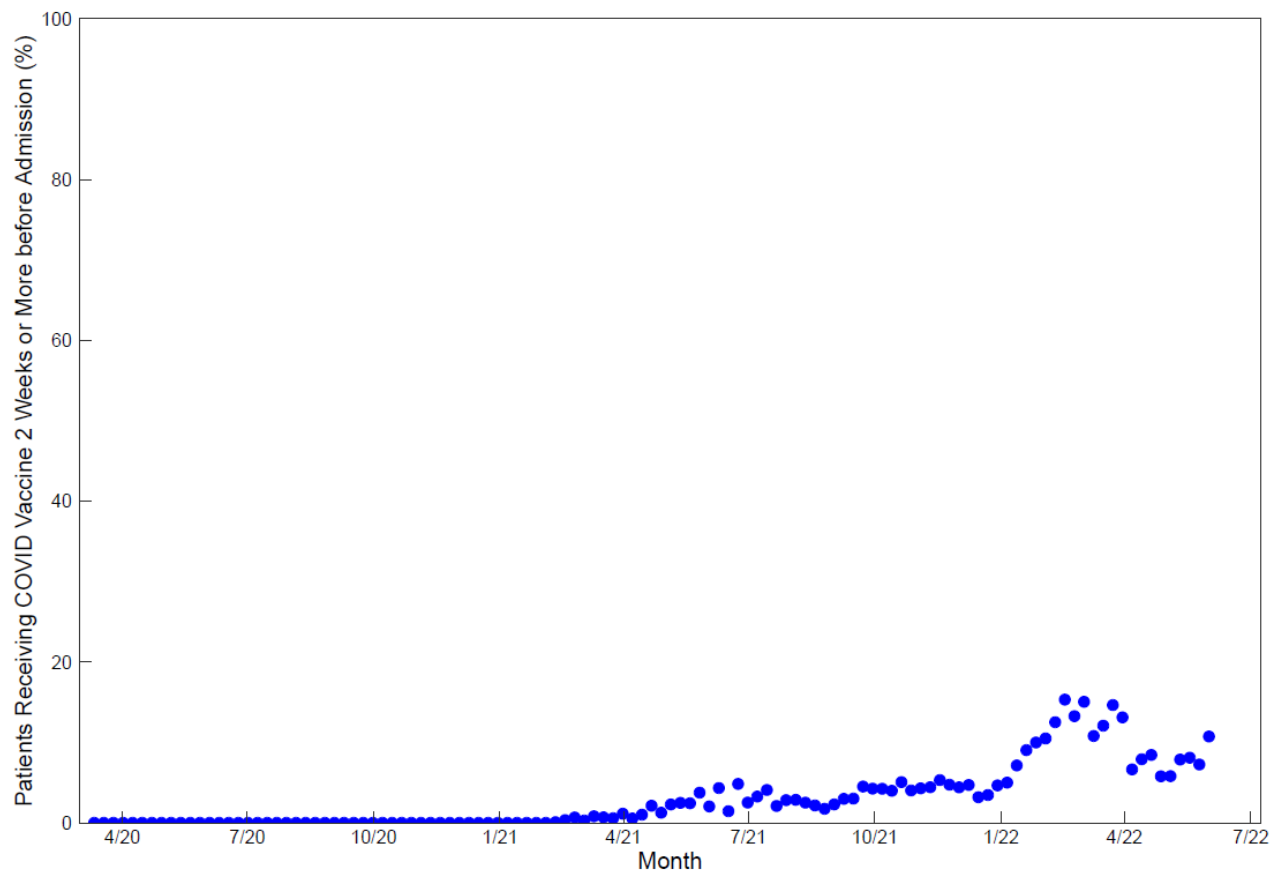


Figure 9: Percent of hospitalized patients vaccinated against SARS-CoV-2. Note that persons vaccinated within 2 weeks of hospital admission with COVID-19 were not considered fully vaccinated for this analysis.

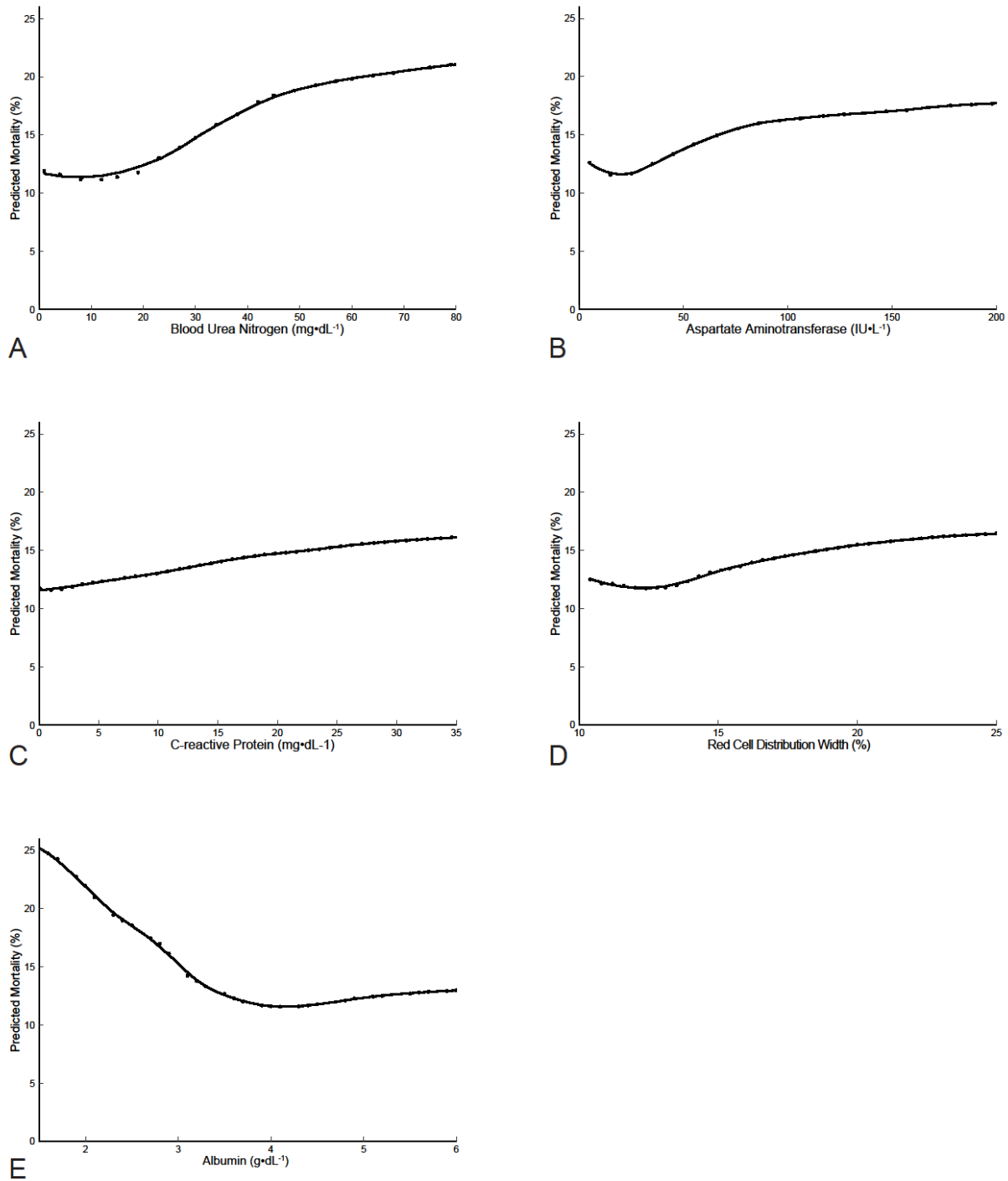


Figure 10: Partial dependency plots of predicted 60-day mortality according to routine laboratory findings at hospital admission for COVID-19. **A)** Blood urea nitrogen. **B)** Aspartate transaminase. **C)** C-reactive protein. **D)** Red blood cell distribution width. **E)** Albumin.

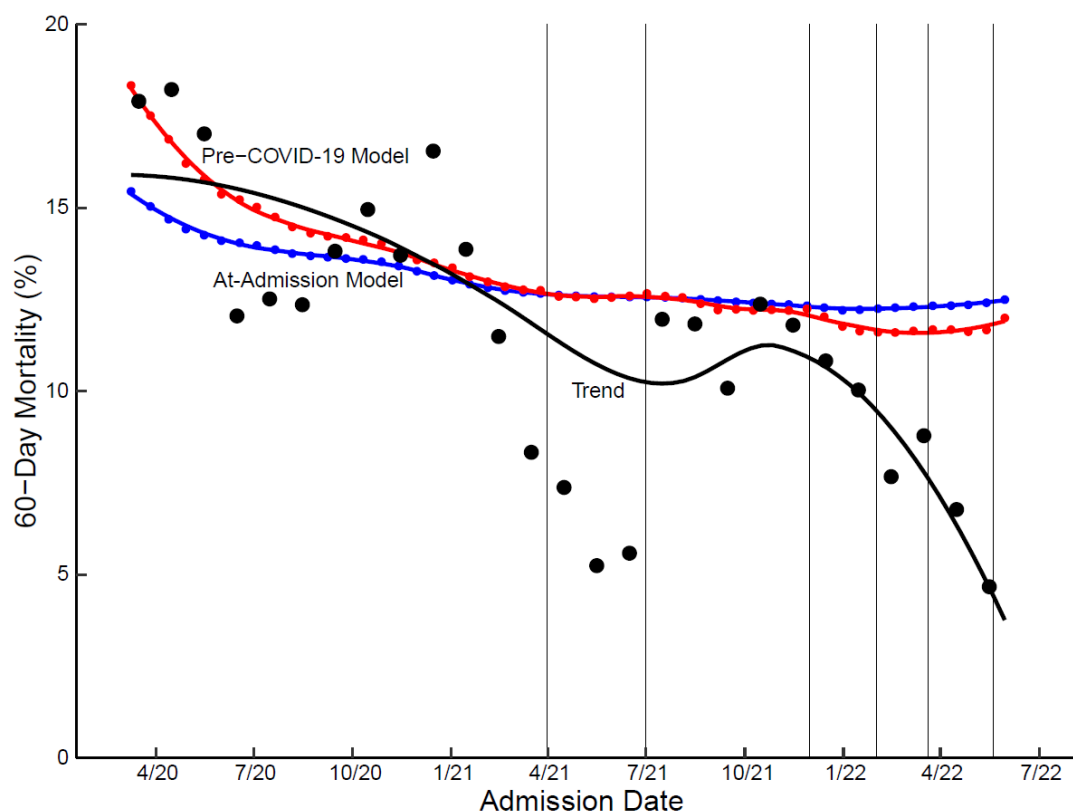


Figure 11: Actuarial and simulated 60-day mortality of patients hospitalized with COVID-19 across the pandemic. Black symbols represent observed 60-day unadjusted actuarial mortality for patients admitted each month, and black line is a loess (locally weighted scatterplot) smoother. Red and blue curves represent simulated 60-day mortality if all hospitalized patients across the pandemic were admitted on the same date from 3/1/2020 to 6/1/2022, according to pre-COVID-19 (red curve) and at-admission (blue curve) mortality models. Vertical lines denote approximate epochs of SARS-CoV-2 variants.

- Pre-4/1/21: Alpha B.1.1.7
- 4/1/2021 to 7/1/21: Alpha Q
- 7/1/21 to 12/1/21: Delta B.1.617.2 and AY
- 12/1/21 to 2/1/22: Omicron BA.1
- 2/1/22 to 3/21/22: BA.1.1
- 3/21/22 to 5/21/22: Omicron BA.2
- 5/21/22 to 6/1/22: BA2.12.1

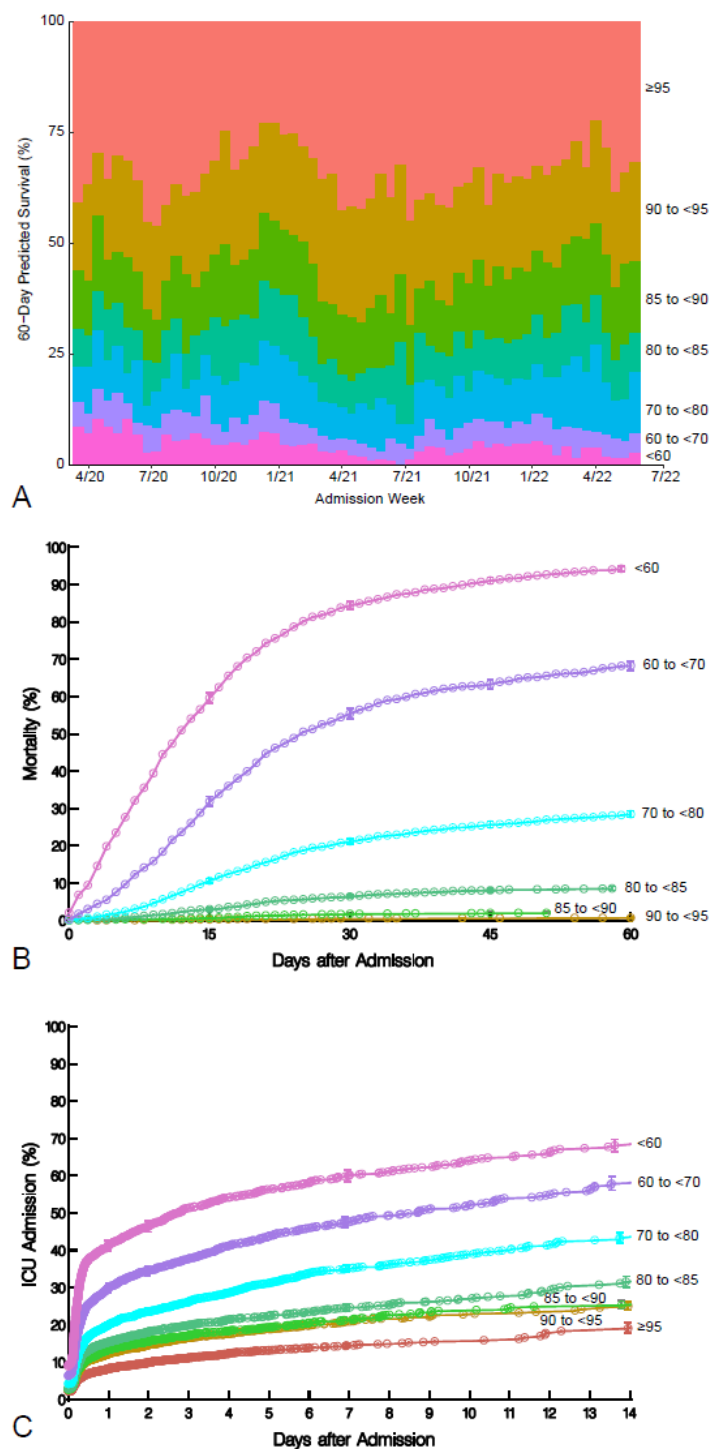


Figure 12: Distribution of 7 risk profiles of patients with COVID-19 across date of hospital admission and observed survival for each profile. **A)** Predicted 60-day survival using the at-admission model for mortality for profiles 1-7 are as follows: (1) $\geq 95\%$, (2) 90% to $<95\%$, (3) 85% to $<90\%$, (4) 80% to $<85\%$, (5) 70% to $<80\%$, (6) 60% to $<70\%$, (7) $<60\%$. Note

particularly the gradual reduction in percentage of hospital admissions of the highest risk patients (pink and purple) and increase in number of patients in lower risk categories.

B) Observed mortality stratified by predicted risk profile. **C)** Observed escalation of care to intensive care unit (ICU). In panels *B* and *C*, each symbol represents an event estimated by the Kaplan-Meier method, and vertical bars are 68% confidence intervals equivalent to ± 1 standard error.

Appendix 1: Variables considered in analyses, with short names in parentheses, as seen on variable importance graphs (Figures 8A and 8C)

Pre-COVID-19 Patient Characteristics

Demographics

Age (y) (age), sex (female), race (Black, White, Asian, mixed/other) (race_grp), Hispanic ethnicity (ethnicity), body mass index ($\text{kg}\cdot\text{m}^{-2}$) (bmi)

Comorbidities

Smoking history (hx_smoke), pack-years of smoking (packyrs), chronic obstructive pulmonary disease, emphysema (copd_emp), chronic asthma (asthma), heart failure (hrtfail), coronary artery disease (cad), hypertension (htn), diabetes (diabetes), cancer (cancer), musculoskeletal disease (msclero), prior transplant (tx_hx), connective tissue disease (contxdz), inflammatory bowel disease (ibd), epilepsy (epilepsy), immune compromised (immu_dz), pregnant (pregnant)

Treatments and Medications

Has had a seasonal influenza vaccination (flu_shot), has had a pneumococcal pneumonia immunization (pneushot), pre-COVID-19 medications (nonsteroidal anti-inflammatory drug (nsaids), steroid (steroids), beta-blocker for hypertension (carvedil), angiotension-converting enzyme inhibitor (aceinhib), angiotensin receptor blocker (arb), selective serotonin reuptake inhibitor (paroxeti), melatonin (melatoni), colchicine (colchici)

Hospital Admission Variables

Date of hospital admission (as count of days since 3/1/2020) (iv_daysa)

SARS-CoV-2 Variant

Pre-4/1/21: Alpha B.1.1.7; 4/1/2021 to 7/1/21: Alpha Q; 7/1/21 to 12/1/21: Delta B.1.617.2 and AY; 1/1/21 to 2/1/22: Omicron BA.1; 2/1/22 to 3/21/22: BA.1.1; 3/21/22 to 5/21/22: Omicron BA.2; 5/21/22 to 6/15/22: BA2.12.1

Symptoms and Laboratory Values at Hospital Admission

Symptoms (cough (cough), fatigue (fatigue), dyspnea (sob), diarrhea (diarrhea), loss of appetite (lossappt), vomiting (vomit), fever (fever01), sputum production (sputprod), flu-like symptoms (flu_symp), C-reactive protein ($\text{mg}\cdot\text{L}^{-1}$) (ad_crp), white blood cell count ($10^9\cdot\text{L}^{-1}$) (ad_wbc), neutrophil count ($10^9\cdot\text{L}^{-1}$) (ad_neutr), lymphocyte count ($10^9\cdot\text{L}^{-1}$) (ad_lymoh), red blood cell count ($10^{12}\cdot\text{L}^{-1}$) (ad_rbc), red blood cell distribution width (%) (ad_rdw), platelet count ($10^9\cdot\text{L}^{-1}$) (ad_plate), hemoglobin ($\text{g}\cdot\text{dL}^{-1}$) (ad_hemog), hematocrit (%) (ad_hct), creatinine ($\text{mg}\cdot\text{dL}^{-1}$) (ad_creat), blood urea nitrogen ($\text{mg}\cdot\text{dL}^{-1}$) (ad_bun), albumin ($\text{g}\cdot\text{dL}^{-1}$) (ad_album), bilirubin ($\text{mg}\cdot\text{dL}^{-1}$) (ad_bilir), alanine aminotransferase ($\text{IU}\cdot\text{L}^{-1}$) (ad_alt), aspartate aminotransferase ($\text{IU}\cdot\text{L}^{-1}$) (ad_ast), alkaline phosphatase ($\text{IU}\cdot\text{L}^{-1}$) (ad_alkph), potassium ($\text{mmol}\cdot\text{L}^{-1}$) (ad_potas), chloride ($\text{mEq}\cdot\text{L}^{-1}$) (ad_chlor), d-dimer ($\text{ng}\cdot\text{mL}^{-1}$) (ad_ddime)

Appendix 2: Alphabetic list of short names of variables considered in multivariable analyses and plots of variable importance

aceinhib	Angiotension-converting enzyme inhibitor
ad_album	Albumin (g•dL ⁻¹)
ad_alkph	Alkaline phosphatase (IU•L ⁻¹)
ad_alt	Alanine aminotransferase (IU•L ⁻¹)
ad_ast	Aspartate aminotransferase (IU•L ⁻¹)
ad_bilir	Bilirubin (mg•dL ⁻¹)
ad_bun	Blood urea nitrogen (mg•dL ⁻¹)
ad_chlor	Chloride (mEq•L ⁻¹)
ad_creat	Creatinine (mg•dL ⁻¹)
ad_crp	C-reactive protein (mg•L ⁻¹)
ad_ddime	D-dimer (ng•mL ⁻¹)
ad_hemog	Hemoglobin (g•dL ⁻¹)
ad_hct	Hematocrit (%)
ad_lymoh	Lymphocyte count (10 ⁹ •L ⁻¹)
ad_neutr	Neutrophil count (10 ⁹ •L ⁻¹)
ad_plate	Platelet count (10 ⁹ •L ⁻¹)
ad_potas	Potassium (mmol•L ⁻¹)
ad_rbc	Red blood cell count (10 ¹² •L ⁻¹)
ad_rdw	Red blood cell distribution width (%)
ad_wbc	White blood cell count (10 ⁹ •L ⁻¹)
age	Age (y)
arb	Angiotensin receptor blocker
asthma	Chronic asthma
bmi	Body mass index (kg•m ⁻²)
cad	Coronary artery disease
cancer	Cancer
carvedil	Beta-blocker for hypertension
colchici	Colchicine
contxdz	Connective tissue disease
copd_emp	Chronic obstructive pulmonary disease, emphysema
cough	Cough
diabetes	Diabetes
diarrhea	Diarrhea
epilepsy	Epilepsy
ethnicity	Hispanic ethnicity
fatigue	Fatigue
female	Sex
fever01	Fever
flu_shot	Has had a seasonal influenza vaccination
flu_symp	Flu-like symptoms
hrtfail	Heart failure
htn	Hypertension
hx_smoke	Smoking history
ibd	Inflammatory bowel disease
immu_dz	Immune compromised
iv_daysa	Date of hospital admission (as count of days since 3/1/2020)
lossappt	Loss of appetite
melatoni	Melatonin
msclero	Musculoskeletal disease

nsaids	Current medications: nonsteroidal anti-inflammatory drug (nsaids)
packyrs	Pack-years of smoking
paroxeti	Selective serotonin reuptake inhibitor
pneushot	Has had a pneumococcal pneumonia immunization
pregnant	Pregnant
race_grp	Race (Black, White, Asian, mixed/other)
steroids	Current medications: steroid
sob	Dyspnea
sputprod	Sputum production
tx_hx	Prior transplant
variant	Pre-4/1/21: Alpha B.1.1.7 4/1/2021 to 7/1/21: Alpha Q 7/1/21 to 12/1.21: Delta B.1.617.2 and AY 12/1/21 to 2/1/22: Omicron BA.1 2/1/22 to 3/21/22: BA.1.1 3/21/22 to 5/21/22: Omicron BA.2 5/21/22 to 6/1/22: BA2.12.1
vomit	Vomiting