

Genotype and Clinical Characteristics of Patients with Wolfram Syndrome and WFS1-related Disorders

1 **Evan M. Lee^{1,3}, Megha Verma^{1,6}, Nila Palaniappan^{1,7}, Emiko M. Pope^{1,8}, Sammie Lee^{1,9},**
2 **Lindsey Blacher¹, Pooja Neerumalla¹, William An¹, Toko Campbell¹, Cris Brown¹, Stacy**
3 **Hurst¹, Bess Marshall⁴, Tamara Hershey⁵, Virginia Nunes^{10, 11s}, Miguel López de Heredia¹²,**
4 **and Fumihiko Urano^{1,2}**

5 ¹Department of Medicine, Division of Endocrinology, Metabolism, and Lipid Research, Washington
6 University School of Medicine, 660 South Euclid Avenue, St. Louis, MO 63110, USA

7 ²Department of Pathology and Immunology, Washington University School of Medicine, 660 South
8 Euclid Avenue, St. Louis, MO 63110, USA

9 ³Medical Scientist Training Program, Washington University School of Medicine, St. Louis, MO
10 63110, USA

11 ⁴Department of Pediatrics, Washington University School of Medicine, 660 South Euclid Avenue, St.
12 Louis, MO 63110, USA

13 ⁵Departments of Psychiatry and Radiology, Washington University School of Medicine, 660 South
14 Euclid Avenue, St. Louis, MO 63110, USA

15 ⁶Saint Louis University School of Medicine, Saint Louis, MO, USA

16 ⁷University of Missouri Kansas City, Kansas City, MO, USA

17 ⁸Massachusetts Institute of Technology, Cambridge, MA, USA

18 ⁹Cornell University, Ithaca, NY, USA

19 ¹⁰Molecular Genetics Laboratory. Genes, Disease and Therapy Program IDIBELL, l'Hospitalet de
20 Llobregat, Barcelona, Spain

21 ¹¹Genetics Unit. Physiological Sciences Department. Health Sciences and Medicine Faculty.
22 University of Barcelona, l'Hospitalet de Llobregat, Barcelona, Spain

23 ¹²Centre for Biomedical Network Research on Rare Diseases (CIBERER), Instituto de Salud Carlos
24 III, Madrid, Spain

25

26 *** Correspondence:**

27 Fumihiko Urano, MD, PhD

28 urano@wustl.edu

29 **Keywords: Wolfram syndrome, WFS1-related disorders, diabetes mellitus, optic atrophy,**
30 **hearing loss, diabetes insipidus.**

31

32 **Abstract**

33 Objective: Wolfram syndrome (WFS) is an autosomal recessive disorder associated with juvenile-
34 onset diabetes mellitus, optic atrophy, diabetes insipidus, and sensorineural hearing loss. We sought
35 to elucidate the relationship between genotypic and phenotypic presentations of Wolfram syndrome
36 which would assist clinicians in classifying the severity and prognosis of Wolfram syndrome more
37 accurately.

38 Approach: Patient data from the Washington University International Registry and Clinical Study for
39 Wolfram Syndrome and patient case reports were analyzed to select for patients with two recessive
40 mutations in the WFS1 gene. Mutations were classified as being either nonsense/frameshift variants
41 or missense/in-frame insertion/deletion variants and statistical analysis was performed using unpaired
42 and paired t-tests and one- and two-way ANOVA with Tukey's or Dunnett's tests.

43 Results: A greater number of genotype variants correlated with earlier onset and a more severe
44 presentation of Wolfram syndrome. Secondly, non-sense and frameshift variants had more severe
45 phenotypic presentations than missense variants, as evidenced by optic atrophy emerging
46 significantly earlier in patients with 2 nonsense/frameshift alleles compared with 0 missense
47 transmembrane variants. In addition, the number of transmembrane in-frame variants demonstrated a
48 statistically significant dose-effect on age of onset of diabetes mellitus and optic atrophy.

49 Summary / Conclusions: The results contribute to our current understanding of the genotype-
50 phenotype relationship of Wolfram syndrome, suggesting that alterations in coding sequences result
51 in significant changes in the presentation and severity of Wolfram. The impact of these findings is
52 significant, as the results will aid clinicians in predicting more accurate prognoses and pave the way
53 for personalized treatments for Wolfram syndrome.

54

55 **1 Introduction**

56 Wolfram syndrome (WFS) is an autosomal recessive disorder associated with juvenile-onset diabetes
57 mellitus, optic atrophy, diabetes insipidus, and sensorineural hearing loss [1]. Diagnosis of Wolfram
58 syndrome is usually ascertained due to the occurrence of early onset type 1 diabetes mellitus with
59 optic atrophy, which occur in the first decade of life [1; 2]. Additionally, central diabetes insipidus
60 and sensorineural deafness occur in the second decade, dilated renal outflow tracts occur in the third
61 decade, and neurological symptoms appear in the fourth decade [1]. Patients can also develop a wide
62 range of symptoms including, bladder and bowel dysfunction, temperature regulation defects, gait
63 ataxia, balance deficits, and loss of sense of taste and smell [1; 3; 4]. WFS symptoms have a
64 detrimental impact on patients' quality of life and daily functioning [3; 4]. The life span of patients is
65 expected to be around 30–40 years of age due to respiratory failure caused by brainstem atrophy [1;
66 2]. The prevalence of the disorder is estimated to be present in 1 in 100,000 in North America and 1
67 in 770,000 in the UK [1; 5].

68 Two causative genes, *WFS1* and *CISD* genes have been implicated in the development of Wolfram
69 syndrome. *WFS1* encodes for wolframin, an endoplasmic reticulum (ER) membrane glycoprotein,
70 which plays a role in Ca²⁺ homeostasis and regulates the ER stress response [6]. Mutations in
71 wolframin lead to ER and mitochondrial dysfunction which cause apoptosis and cell death [3]. *CISD*
72 encodes for an ER intermembrane small protein (ERIS) which plays a role in Ca²⁺ homeostasis and
73 mitochondrial function [3; 7]. Mutations in *CISD* were initially described in Jordanian patients with
74 unique phenotypic presentations such as bleeding tendency, defective platelet aggregation with
75 collagen, and peptic ulcer disease [8].

76 Additionally, pathogenic variants in *WFS1* can cause the development of *WFS1*-related disorders
77 involving sensorineural low frequency hearing loss, hearing loss and optic atrophy, cataracts, and an

78 autosomal dominant syndrome characterized by neonatal diabetes, congenital cataracts, sensorineural
79 deafness, hypotonia, intellectual disability, and development delay [9]. Dominant WFS1 variants
80 potentiate ER stress and result in pathophysiology that is distinct and less severe than patients with
81 recessive Wolfram syndrome [9].

82 The autosomal recessive syndrome has been characterized widely in literature and a variety of
83 pathogenic variants and polymorphisms have been reported to date. In the *WFS1* variants present in
84 the literature, alterations in coding sequences have identified changes including deletions, insertions,
85 nonsense and missense mutations [10]. Associations between genotype and phenotype characteristics
86 can suggest the role that gene alterations play in the variability of clinical phenotypes. We sought to
87 elucidate the relationship between genotypic and phenotypic presentations of Wolfram syndrome.
88 Additional information about genotype and phenotype correlations would allow clinicians to classify
89 the severity of Wolfram syndrome more accurately. This could aid in predicting more accurate
90 prognoses and pave the way for personalized treatments for Wolfram syndrome.

91 The advantages to discovering genotype and phenotype correlations are highlighted in the case of
92 another autosomal recessive disorder, cystic fibrosis. Typing the genotype-phenotype relationship for
93 cystic fibrosis is important as pathogenic variants can alter the expression and function of *CFTR* via
94 multiple mechanisms [11; 12; 13]. Additionally, the diverse clinical consequences of cystic fibrosis
95 can be attributed to modifier genes and the environment in combination with pathogenic variants [11;
96 14; 15]. As such, accurate classification of *CFTR* variants, as well as causative Wolfram variants, is
97 essential in optimizing the treatment of individuals [11].

98 In this study, we aim to classify the range of severity of clinical presentations of autosomal recessive
99 Wolfram syndrome. We classify genetic variants by age of onset, type of genetic variant, and
100 location of variant to identify associations with disease severity. Due to the rare prevalence of

101 Wolfram syndrome, there is fragmented data regarding the correlation between genotype and
102 phenotype presentations. To address this, we compiled patient data from the Washington University
103 International Wolfram Syndrome and *WFSI* Related Disorders Registry and patient data from
104 published case reports compiled in a systematic review by Heredia et al [2]. We performed meta-
105 analysis on these data and found significant correlations between pathogenic variant characteristics
106 and disease severity.

107

108 **2 Materials and Methods**

109 **2.1 Patients**

110 Subjects, and their parents or legal guardians, as appropriate, provided written, informed consent
111 before participating in this study, which was approved by the Human Research Protection Office at
112 Washington University School of Medicine in St. Louis, MO (IRB ID #201107067).

113 Patient data from the Washington University International Registry and Clinical Study for Wolfram
114 Syndrome and patient case reports highlighted in Heredia et al were analyzed to select for patients
115 with two recessive variants in the *WFSI* gene [2]. Patients were excluded if they lacked genetic
116 information for either of their *WFSI* allele variants. Additionally, records were excluded if they did
117 not have a numerical age of onset for their respective clinical phenotype (diabetes insipidus, optic
118 atrophy, diabetes insipidus, hearing loss). Pathogenic variants were then classified as being either
119 nonsense/frameshift variants or missense/in-frame insertion and deletion variants. The average age of
120 onset was calculated for each clinical phenotype based on the number of nonsense/frameshift alleles.
121 For patients with either 0 or 1 nonsense/frameshift variant, their other variant was classified as
122 transmembrane or not based on whether the amino acid position was in one of the transmembrane
123 domains provided on UniProt, and age of onset was noted.

124 **2.2 Statistical Analysis**

125 Statistical analysis was performed by unpaired and paired t tests and one- and two-way ANOVA with
126 Tukey's or Dunnett's tests. Statistical tests are specified in figure legends. Error bars on all graphs
127 represent a 95% CI. $P < 0.05$ was considered statistically significant. Data are shown as means \pm
128 SEM unless otherwise noted.

129

130 **3 Results**

131 **3.1 Onset Age of Clinical Manifestations of Wolfram Syndrome**

132 Average age of onset of clinical manifestations for the combined patient cohort was calculated for
133 each of diabetes mellitus, optic atrophy, diabetes insipidus, and hearing loss (Figure 1). The mean
134 age of onset was 7.5 years (95% Confidence Interval 6.8-8.1 years) for diabetes mellitus, followed by
135 12.9 years (12.0-13.8 years) for optic atrophy, 14.1 years (12.9-15.3 years) for diabetes insipidus, and
136 15.3 years (14.0-16.5 years) for hearing loss. The ages of onset are similar to but slightly lower than
137 those in a similar cohort study of 67 Japanese patients with Wolfram Syndrome, which found median
138 age of onsets to be 8.7 years, 15.8 years, 17.2 years, and 16.4 years for diabetes mellitus, optic
139 atrophy, diabetes insipidus, and hearing loss respectively [25].

140 **3.2 Nonsense/Frameshift *WFS1* Alleles Exhibit a Dose-Dependent Response on Disease**
141 **Severity**

142 For each clinical manifestation of Wolfram Syndrome, patients who had information on both alleles
143 as well as numerical age of onset data were further classified based on whether they had zero, one, or
144 two nonsense/frameshift (NSFS) variant alleles. While diabetes insipidus and hearing loss showed no
145 association of onset age with the number of NSFS variants, both diabetes mellitus and optic atrophy
146 demonstrated a dose-effect of number of NSFS variants with respect to age of onset (Figure 2A).
147 Both diabetes mellitus and optic atrophy emerged earliest in patients with 2 NSFS alleles, followed
148 by patients with 1 NSFS allele, followed by patients with 0 NSFS alleles and only in-frame variants.
149 Diabetes mellitus emerged significantly earlier in patients with 2 NSFS alleles compared with both 0
150 and 1 NSFS alleles, and correspondingly emerged at a mean age of 5.3 years, 7.7 years, and 9.8 years
151 for 2, 1, and 0 NSFS alleles. Optic atrophy emerged significantly earlier in patients with 2 NSFS
152 alleles compared with both 0 and 1 NSFS alleles, and correspondingly emerged at a mean age of 10.6

153 years, 13.7 years, and 15.1 years for 2, 1, and 0 NSFS alleles. One outlier to this finding is
154 emphasized in an exceptional case of typical wolfram syndrome. This patient has a phenotypical
155 clinical diagnosis of typical Wolfram Syndrome with the development of diabetes mellitus at age 5
156 and optic atrophy at age 8. However, we could only detect a frameshift pathogenic variant in one
157 allele with a corresponding normal allele. Since we could not detect two pathogenic variant alleles,
158 we hypothesized the normal allele was not expressed. This prompted us to look at the expression
159 levels of wild-type and mutated alleles by next-generation sequencing using RNA extracted from
160 induced pluripotent stem cells (iPSC) derived from this patient. Results showed no expression of the
161 wild-type allele, suggesting that there is suppression or methylation in the gene regulatory region of
162 the normal allele. There was not a statistically significant difference in the age of onset between
163 patients with 0 NSFS alleles and 1 NSFS allele for either diabetes mellitus or optic atrophy. The
164 mean onset, confidence intervals, number of patients in each category, and multiple-test-corrected q-
165 values are shown in Table 1.

166 No statistically significant differences were observed in age of onset between male and female
167 patients, either within the above number of NSFS variant categories or for the cohort overall (Figure
168 2B).

169 **3.3 Missense *WFS1* Variants in Transmembrane Domains Are Associated with Earlier Onset** 170 **of Disease**

171 For missense and in-frame insertion and deletion variants, amino acid position information was
172 matched against the predicted transmembrane domain annotations from UniProt. These variants were
173 then clarified as transmembrane (TM) or non-transmembrane (NTM). For each clinical
174 manifestation, the subset of patients previously defined with a) 0 NSFS alleles and consequently two
175 in-frame variants and b) 1 NSFS allele and 1 in-frame variant were then further classified by whether

176 their in-frame variant was TM or NTM. Average age of onset for each clinical manifestation was
177 compared by the number of TM alleles (Figure 3A). Patients with two in-frame variants (0 NSFS
178 variants) showed a similar effect of the number of transmembrane variants as seen with the number
179 of NSFS alleles, with the number of in-frame variants which were transmembrane demonstrating a
180 statistically significant dose-effect on age of onset of DM and OA. Diabetes mellitus emerged
181 significantly earlier in patients with 2 TM variants in 2 missense/in-frame variants compared with
182 both 0 and 1 NSFS variants, and correspondingly emerged at a mean age of 6.3 years, 9.0 years, and
183 13.5 years for 2, 1, and 0 TM variants. Optic atrophy emerged significantly earlier in patients with 2
184 NSFS alleles compared with patients that had 2 missense/in-frame variants with 0 TM variants.
185 There was no statistically significant difference in the age of onset between patients with 2 NSFS
186 alleles and 1 TM variant for optic atrophy. Optic atrophy correspondingly emerged at a mean age of
187 10.7 years, 14.4 years, and 19.3 years for 2, 1, and 0 NSFS alleles. The mean onset, confidence
188 intervals, number of patients in each category, and p values are shown in Table 2.

189 In patients with one in-frame variant and one nonsense/frameshift variant, an in-frame variant in a
190 TM position had statistically significant earlier onset of diabetes mellitus but none of the other
191 clinical manifestations (Figure 3B).

192

193 4 Discussion

194 In the setting of Wolfram syndrome, we sought to explore the associations between genotype and
195 phenotype characteristics to speculate the role that gene alterations can play in the variability of
196 clinical phenotypes. It was found that both diabetes mellitus and optic atrophy demonstrated a dose-
197 effect of number of NSFS variants with respect to age of onset. In addition, the number of
198 transmembrane in-frame variants demonstrated a statistically significant dose-effect on age of onset
199 of DM and OA.

200 These results highlight principles that are important in understanding the genotype-phenotype
201 relationship in Wolfram syndrome. Firstly, it is suggested that a greater number of variants correlates
202 with earlier onset and a more severe presentation of Wolfram. The relationship between variant
203 characteristics and disease severity has been explored previously with the discovery of the
204 Arg558Cys mutation in Ashkenazi Jew individuals which is associated with a milder, late-onset
205 phenotype of Wolfram syndrome including early onset diabetes and reduced penetrance for optic
206 atrophy [16; 17].

207 Secondly, it is suggested that non-sense and frameshift mutations have more severe phenotypic
208 presentations than missense mutations, as evidenced by optic atrophy emerging significantly earlier
209 in patients with 2 NSFS alleles compared with 0 missense TM variants. A similar phenomenon is
210 highlighted in the case of another autosomal recessive disorder, cystic fibrosis. Literature on
211 genotype-phenotype correlations in cystic fibrosis predicts milder phenotypes and better prognosis
212 associated with A455E, a missense mutation, compared to $\Delta F508$, a deletion mutation [18].

213 Additionally, it is suggested that if missense mutations are present in the transmembrane domain,
214 there is predicted to be an earlier age of onset for the traits of DM and OA. Possible explanations for
215 this include missense mutations in the TM domain making protein misfolding and aggregation more

216 likely. Pelizaeus–Merzbacher disease is an early-onset leukodystrophy caused by frameshift and
217 missense mutations of the PLP1 gene. Mutations can lead to protein misfolding and retention of PLP
218 and DM20 (proteins in the TM domain) in the ER, supporting the conjecture that Wolfram mutations
219 in the TM domain contribute to protein misfolding and aggregation [19].

220 Lastly, there are no differences observed in the age of onset of DM and OA between male and female
221 patients. This finding is surprising as the pathophysiology of Wolfram syndrome involves ER stress
222 and estrogen has been shown to mitigate ER stress [20]. Additionally, in *WFSI* knockout mice, males
223 have been shown to present with more severe phenotypes than females [21]. These findings raise the
224 possibility that female patients would present with milder manifestations of Wolfram syndrome;
225 however, this hypothesis was not supported by our data.

226 The impact of these findings is significant as the results offer contribution to our current
227 understanding of the genotype-phenotype relationship of Wolfram syndrome. These results highlight
228 that alterations in coding sequences result in significant changes in the presentation and severity of
229 Wolfram.

230 A possible direction to explore these findings would be to study the relationship between variants and
231 Wolfram United Rating Scale (WURS) disease severity scores [22]. Additionally, integrating these
232 results into the current understanding of Wolfram could allow clinicians to explore the possibility of
233 individualized treatments for Wolfram. The implications of this would include improved clinical care
234 for Wolfram patients, with the possibility of missense variants warranting different treatment
235 approaches than frameshift or non-sense variants. It would also allow patients and parents to plan for
236 future outcomes of the disease. Research studies exploring the expressivity of different Wolfram
237 causing gene variants should be undertaken. Due to Wolfram syndrome being caused by numerous

238 different combinations of variants, it has been challenging to aggregate data to determine patterns in
239 expressivity.

240 Additional directions for research include exploring the correlation between levels of biomarkers and
241 severity of disease. Biomarkers for neurodegeneration, such as neurofilament light chain and myelin
242 basic protein, and inflammatory cytokine levels have been shown to be elevated in patients with
243 Wolfram [23; 24]. The use of functional assays could be helpful in this regard to further explore the
244 role of these biomarkers in the pathogenesis of Wolfram. Establishing a correlation between
245 biomarker levels and phenotype severity will aid in the prediction of clinical outcomes and disease
246 progression in patients with Wolfram syndrome [23].

247 Although correlations between genotype and phenotype presentations for Wolfram syndrome have
248 been posed in this paper, further research is needed to confirm these conjectures.

249

250 **Figure Legends**

251 **Figure 1. Mean age of onset of clinical manifestations of Wolfram Syndrome.** Diabetes
252 mellitus, optic atrophy, diabetes insipidus, and hearing loss emerged respectively at mean
253 ages of 7.5, 12.9, 14.1, and 15.3 years.

254
255 **Figure 2. Analysis of genotype-phenotype correlations for number of**
256 **nonsense/frameshift variants.** Age of onset of different clinical manifestations by
257 number of nonsense/frameshift variants vs in-frame missense or insertion/deletion
258 variants for the entire dataset (A) and split by patient sex (B). NSFS2: two
259 nonsense/frameshift variants (n=65-129). NSFS1: one nonsense/frameshift variant (n=39-
260 87). IF: no nonsense/frameshift variants (n=47-111). *, $P<0.05$; **, $P<0.01$; ***,
261 $P<0.001$; n.s., no significance. P-values were assigned using Wilcoxon's Rank Sum Test
262 with multiple test correction applied via the Bonferroni method.

263
264 **Figure 3. Analysis of genotype-phenotype correlations for in-frame variants by**
265 **transmembrane/non-transmembrane domain.** Age of onset of different clinical
266 manifestations by number of in-frame variants (either missense or in-frame
267 insertion/deletion) in transmembrane domains for patients with two in-frame variants (A)
268 and patients with one in-frame variant (B). 2TM: Two transmembrane variants (n=24-42).
269 1TM: One transmembrane variant (n=7-24). NTM: No transmembrane variants (n=16-
270 45). *, $P<0.05$; **, $P<0.01$; n.s., no significance. P-values were assigned using
271 Wilcoxon's Rank Sum Test with multiple test correction applied via the Bonferroni
272 method.

273

274 **Conflict of Interest**

275 FU is an inventor of three patents related to the treatment of Wolfram syndrome, US 9,891,231
276 SOLUBLE MANF IN PANCREATIC BETA CELL DISORDERS and US 10,441,574 and US
277 10,695,324 TREATMENT FOR WOLFRAM SYNDROME AND OTHER ER STRESS
278 DISORDERS. FU is a Founder and President of CURE4WOLFRAM, INC. JRM is a consultant for
279 Sana Biotechnology.

280 **Author Contributions**

281 EL, MLDH, and FU conceived the experimental design. NP, EP, SL, LB, PN, WA, CB, SH, MV,
282 VN, MLDH, and FU collected information from patients and databases. EL performed data analysis.
283 MV, EL, and FU wrote the manuscript. All authors edited and reviewed the manuscript.

284 **Funding**

285 This work was partly supported by the grants from the National Institutes of Health (NIH)/NIDDK
286 (DK112921, DK020579, DK132090), NIH/ National Center for Advancing Translational Sciences
287 (NCATS) (TR002065, TR000448), and philanthropic supports from the Silberman Fund, the Ellie
288 White Foundation for the Rare Genetic Disorders, the Snow Foundation, the Unravel Wolfram
289 Syndrome Fund, the Stowe Fund, the Eye Hope Foundation, the Feiock Fund, Associazione Gentian
290 - Sindrome di Wolfram Italia, Alianza de Familias Afectadas por el Sindrome Wolfram Spain,
291 Wolfram syndrome UK, and Association Syndrome de Wolfram France to F. Urano. Research
292 reported in this publication was also supported, in part, by the Washington University Institute of
293 Clinical and Translational Sciences grant UL1TR002345 from the NIH/NCATS. The content is
294 solely the responsibility of the authors and does not necessarily represent the official view of the
295 NIH. We thank all the members of the Washington University Wolfram Syndrome Study and
296 Research Clinic for their support (<https://wolframsyndrome.wustl.edu>) and all the participants in the
297 Wolfram syndrome International Registry and Clinical Study, Research Clinic, and Clinical Trials for
298 their time and efforts.

299 **Acknowledgments**

300 We thank all the members of the Washington University Wolfram Syndrome Study and Research
301 Clinic for their support (<https://wolframsyndrome.wustl.edu>) and all the participants in the Wolfram
302 syndrome International Registry and Clinical Study, Research Clinic, and Clinical Trials for their
303 time and efforts.

304 **Data Availability Statement**

305 The original contributions presented in the study are included in the article/Supplementary Material.
306 Further inquiries can be directed to the corresponding author.

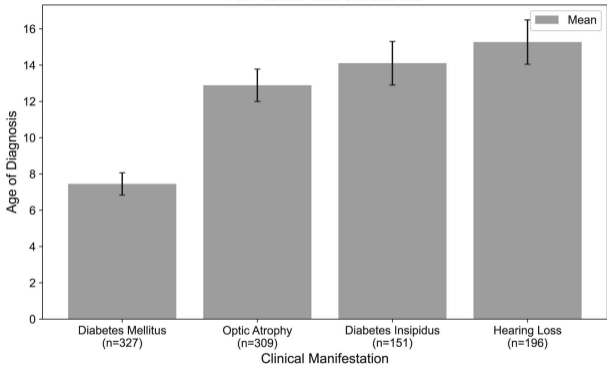
307

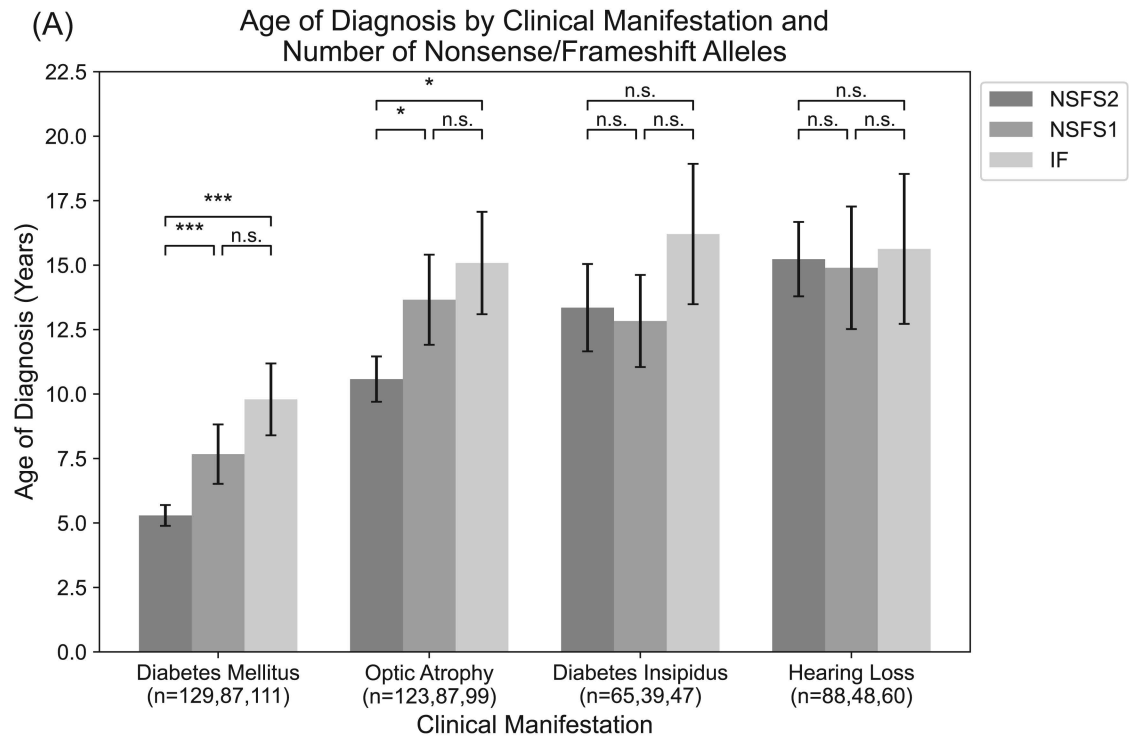
- 308 [1] T.G. Barrett, S.E. Bunday, and A.F. Macleod, Neurodegeneration and diabetes: UK nationwide
309 study of Wolfram (DIDMOAD) syndrome. *The Lancet* 346 (1995) 1458-1463.
- 310 [2] M.L. de Heredia, R. Cleries, and V. Nunes, Genotypic classification of patients with Wolfram
311 syndrome: insights into the natural history of the disease and correlation with phenotype.
312 *Genet Med* 15 (2013) 497-506.
- 313 [3] A. Samara, R. Rahn, O. Neyman, K.Y. Park, A. Samara, B. Marshall, J. Dougherty, and T.
314 Hershey, Developmental hypomyelination in Wolfram syndrome: new insights from
315 neuroimaging and gene expression analyses. *Orphanet J Rare Dis* 14 (2019) 279.
- 316 [4] T. Doty, E.R. Foster, B. Marshall, S. Ranck, and T. Hershey, The effects of disease-related
317 symptoms on daily function in Wolfram Syndrome. *Transl Sci Rare Dis* 2 (2017) 89-100.
- 318 [5] F.C. Fraser, and T. Gunn, Diabetes mellitus, diabetes insipidus, and optic atrophy. An autosomal
319 recessive syndrome? *J Med Genet* 14 (1977) 190-3.
- 320 [6] D. Takei, H. Ishihara, S. Yamaguchi, T. Yamada, A. Tamura, H. Katagiri, Y. Maruyama, and Y.
321 Oka, WFS1 protein modulates the free Ca(2+) concentration in the endoplasmic reticulum.
322 *FEBS Lett* 580 (2006) 5635-40.
- 323 [7] Z.Q. Shen, Y.L. Huang, Y.C. Teng, T.W. Wang, C.H. Kao, C.H. Yeh, and T.F. Tsai, CISD2
324 maintains cellular homeostasis. *Biochim Biophys Acta Mol Cell Res* 1868 (2021) 118954.
- 325 [8] S. Amr, C. Heisey, M. Zhang, X.J. Xia, K.H. Shows, K. Ajlouni, A. Pandya, L.S. Satin, H. El-
326 Shanti, and R. Shiang, A homozygous mutation in a novel zinc-finger protein, ERIS, is
327 responsible for Wolfram syndrome 2. *Am J Hum Genet* 81 (2007) 673-83.
- 328 [9] E. De Franco, S.E. Flanagan, T. Yagi, D. Abreu, J. Mahadevan, M.B. Johnson, G. Jones, F.
329 Acosta, M. Mulaudzi, N. Lek, V. Oh, O. Petz, R. Caswell, S. Ellard, F. Urano, and A.T.
330 Hattersley, Dominant ER Stress-Inducing WFS1 Mutations Underlie a Genetic Syndrome of
331 Neonatal/Infancy-Onset Diabetes, Congenital Sensorineural Deafness, and Congenital
332 Cataracts. *Diabetes* 66 (2017) 2044-2053.
- 333 [10] F. Khanim, J. Kirk, F. Latif, and T.G. Barrett, WFS1/wolframin mutations, Wolfram syndrome,
334 and associated diseases. *Human Mutation* 17 (2001) 357-367.
- 335 [11] S. Noel, N. Serval, A. Hatton, A. Golec, M. Rodrat, D.R.S. Ng, H. Li, I. Pranke, A. Hinzpeter,
336 A. Edelman, D.N. Sheppard, and I. Sermet-Gaudelus, Correlating genotype with phenotype
337 using CFTR-mediated whole-cell Cl⁻ currents in human nasal epithelial cells. *The Journal of*
338 *Physiology* 600 (2022) 1515-1531.
- 339 [12] Y. Wang, J.A. Wrennall, Z. Cai, H. Li, and D.N. Sheppard, Understanding how cystic fibrosis
340 mutations disrupt CFTR function: from single molecules to animal models. *Int J Biochem*
341 *Cell Biol* 52 (2014) 47-57.
- 342 [13] G. Veit, R.G. Avramescu, A.N. Chiang, S.A. Houck, Z. Cai, K.W. Peters, J.S. Hong, H.B.
343 Pollard, W.B. Guggino, W.E. Balch, W.R. Skach, G.R. Cutting, R.A. Frizzell, D.N.
344 Sheppard, D.M. Cyr, E.J. Sorscher, J.L. Brodsky, and G.L. Lukacs, From CFTR biology
345 toward combinatorial pharmacotherapy: expanded classification of cystic fibrosis mutations.
346 *Mol Biol Cell* 27 (2016) 424-33.
- 347 [14] G.R. Cutting, Cystic fibrosis genetics: from molecular understanding to clinical application. *Nat*
348 *Rev Genet* 16 (2015) 45-56.
- 349 [15] M. Claustres, C. Thèze, M. des Georges, D. Baux, E. Girodon, T. Bienvenu, M.P. Audrezet, I.
350 Dugueperoux, C. Férec, G. Lalau, A. Pagin, A. Kitzis, V. Thoreau, V. Gaston, E. Bieth, M.C.

- 351 Malinge, M.P. Reboul, P. Fergelot, L. Lemonnier, C. Mekki, P. Fanen, A. Bergougnoux, S.
352 Sasorith, C. Raynal, and C. Bareil, CFTR-France, a national relational patient database for
353 sharing genetic and phenotypic data associated with rare CFTR variants. *Hum Mutat* 38
354 (2017) 1297-1315.
- 355 [16] V. Bansal, B.O. Boehm, and A. Darvasi, Identification of a missense variant in the WFS1 gene
356 that causes a mild form of Wolfram syndrome and is associated with risk for type 2 diabetes
357 in Ashkenazi Jewish individuals. *Diabetologia* 61 (2018) 2180-2188.
- 358 [17] A. Wilf-Yarkoni, O. Shor, A. Fellner, M.A. Hellmann, E. Pras, H. Yonath, S. Shkedi-Rafid, L.
359 Basel-Salmon, L. Bazak, R. Eliahou, L. Greenbaum, H. Stiebel-Kalish, F. Benninger, and Y.
360 Goldberg, Mild Phenotype of Wolfram Syndrome Associated With a Common Pathogenic
361 Variant Is Predicted by a Structural Model of Wolframin. *Neurol Genet* 7 (2021) e578.
- 362 [18] K.H. Gan, H.J. Veeze, A.M. van den Ouweland, D.J. Halley, H. Scheffer, A. van der Hout, S.E.
363 Overbeek, J.C. de Jongste, W. Bakker, and H.G. Heijerman, A cystic fibrosis mutation
364 associated with mild lung disease. *N Engl J Med* 333 (1995) 95-9.
- 365 [19] A.S. Dhaunchak, D.R. Colman, and K.A. Nave, Misalignment of PLP/DM20 transmembrane
366 domains determines protein misfolding in Pelizaeus-Merzbacher disease. *J Neurosci* 31
367 (2011) 14961-71.
- 368 [20] B. Xu, C. Allard, A.I. Alvarez-Mercado, T. Fuselier, J.H. Kim, L.A. Coons, S.C. Hewitt, F.
369 Urano, K.S. Korach, E.R. Levin, P. Arvan, Z.E. Floyd, and F. Mauvais-Jarvis, Estrogens
370 Promote Misfolded Proinsulin Degradation to Protect Insulin Production and Delay Diabetes.
371 *Cell reports* 24 (2018) 181-196.
- 372 [21] D. Abreu, R. Asada, J.M.P. Revilla, Z. Lavagnino, K. Kries, D.W. Piston, and F. Urano,
373 Wolfram syndrome 1 gene regulates pathways maintaining beta-cell health and survival.
374 *Laboratory investigation; a journal of technical methods and pathology* 100 (2020) 849-862.
- 375 [22] C. Nguyen, E.R. Foster, A.R. Paciorkowski, A. Viehoyer, C. Considine, A. Bondurant, B.A.
376 Marshall, and T. Hershey, Reliability and validity of the Wolfram Unified Rating Scale
377 (WURS). *Orphanet J Rare Dis* 7 (2012) 89.
- 378 [23] S.A. Eisenstein, R.S. Boodram, C.L. Sutphen, H.M. Lugar, B.A. Gordon, B.A. Marshall, F.
379 Urano, A.M. Fagan, and T. Hershey, Plasma Neurofilament Light Chain Levels Are Elevated
380 in Children and Young Adults With Wolfram Syndrome. *Front Neurosci* 16 (2022) 795317.
- 381 [24] D. Abreu, S.I. Stone, T.S. Pearson, R.C. Bucelli, A.N. Simpson, S. Hurst, C.M. Brown, K.
382 Kries, C. Onwumere, H. Gu, J. Hoekel, L. Tychsen, G.P. Van Stavern, N.H. White, B.A.
383 Marshall, T. Hershey, and F. Urano, A phase Ib/IIa clinical trial of dantrolene sodium in
384 patients with Wolfram syndrome. *JCI Insight* 6 (2021).
- 385 [25] K. Matsunaga, K. Tanabe, H. Inoue, S. Okuya, Y. Ohata, M. Akiyama, A. Toguchi, Y. Kora, N.
386 Okayama, Y. Yamada, Y. Wada, S. Amemiya, S. Sugihara, Y. Nakao, Y. Oka, Y. Tanizawa,
387 Wolfram Syndrome in the Japanese Population; Molecular Analysis of WFS1 Gene and
388 Characterization of Clinical Features. *PLOS ONE* (2014).

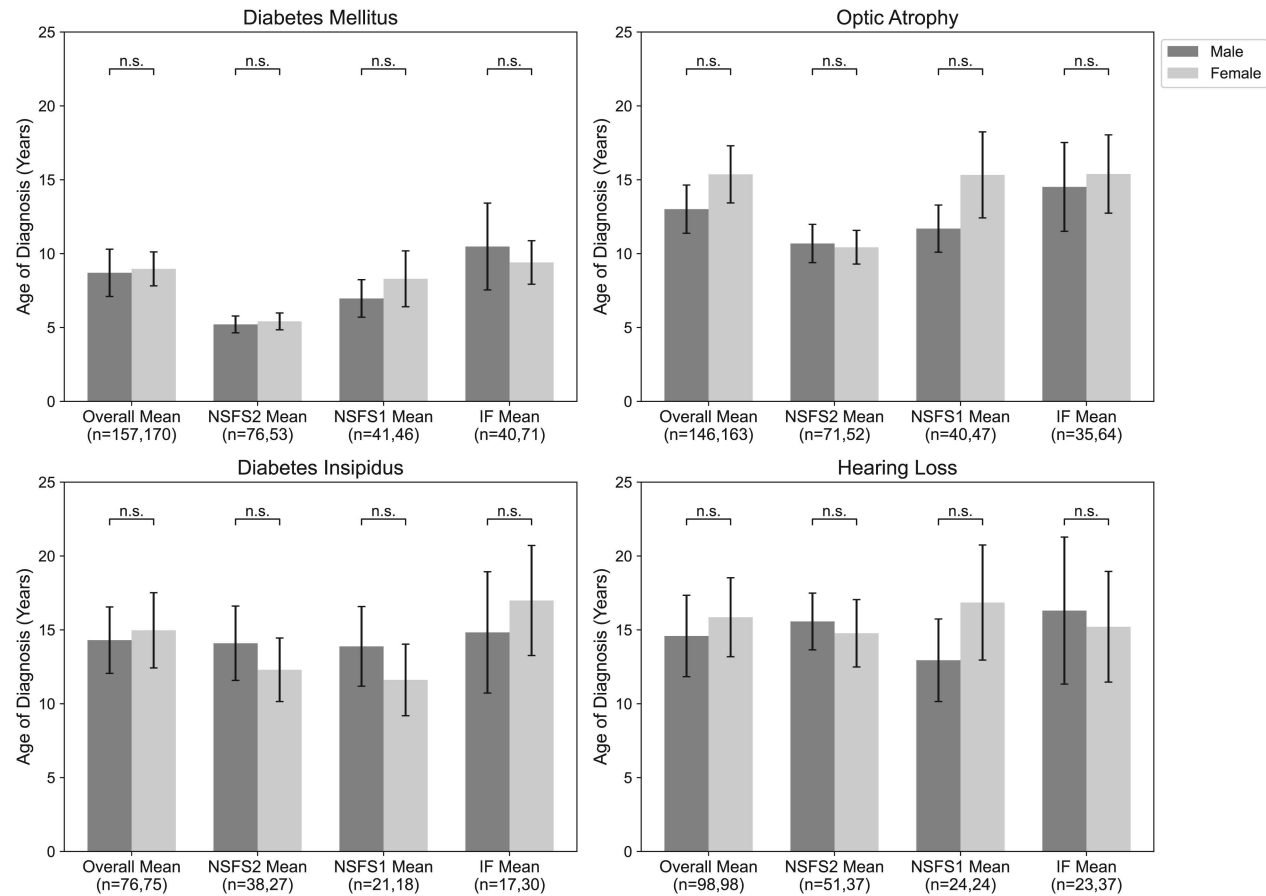
389

Age of Diagnosis by Clinical Manifestation
All Patients with Onset Data



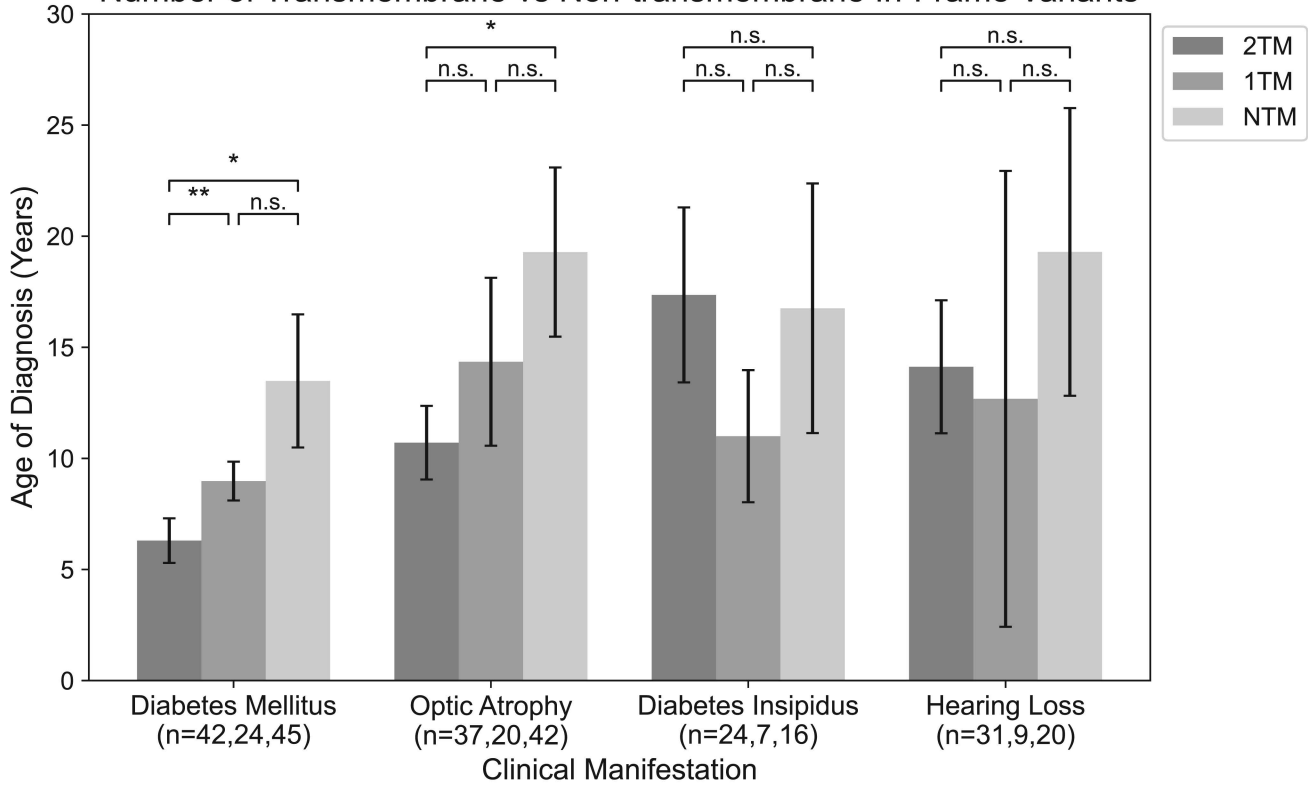


(B) Age of Onset by Sex for Clinical Manifestations of Wolfram Syndrome

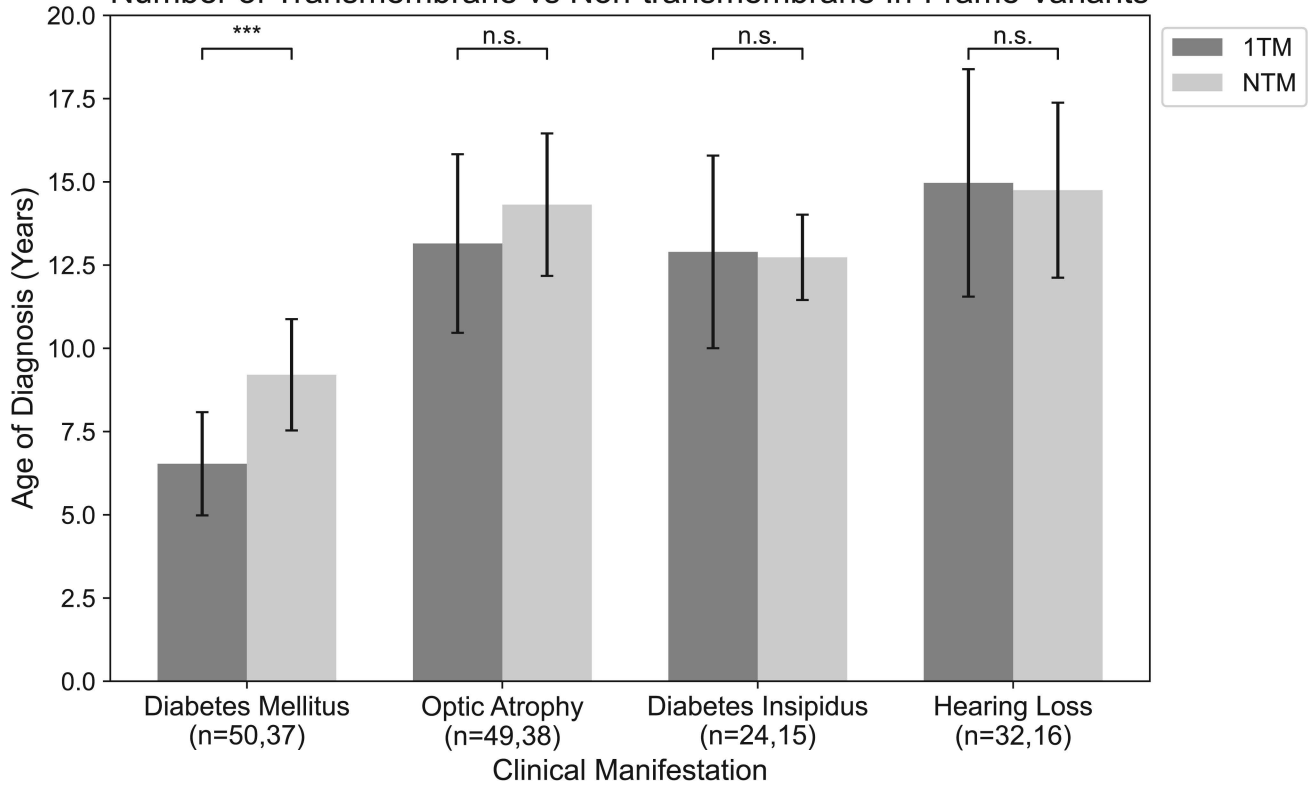


(A)

Age of Diagnosis in Patients with Two In-Frame Variants,
Number of Transmembrane vs Non-transmembrane In-Frame Variants

**(B)**

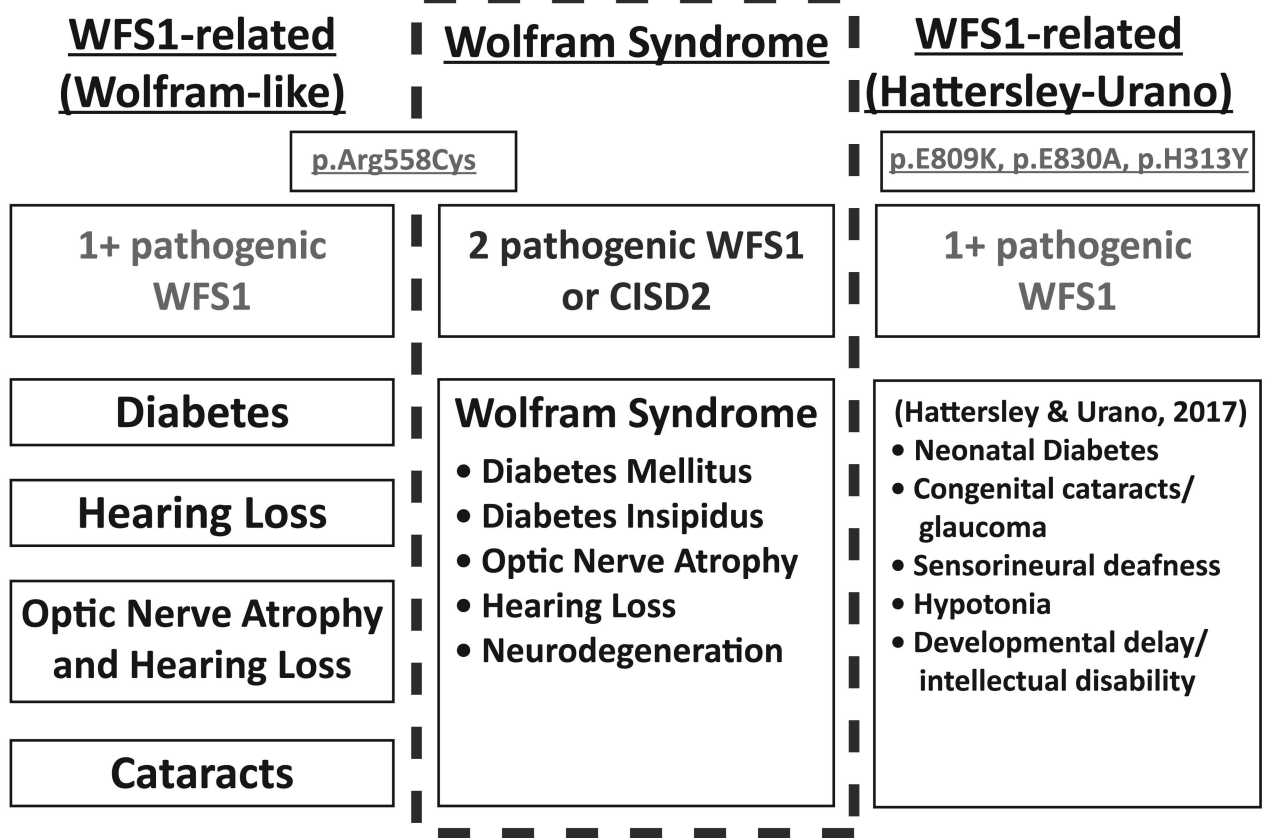
Age of Diagnosis in Patients with One In-Frame Variant,
Number of Transmembrane vs Non-transmembrane In-Frame Variants



Wolfram syndrome and WFS1-related disorders

less severe

more severe



(B)

Wolfram syndrome (2 pathogenic WFS1 or CISD2)

less severe

more severe

later symptom onset

earlier symptom onset

