

# Large-scale empirical identification of candidate comparators for pharmacoepidemiological studies

Justin Bohn<sup>1</sup>  
James P. Gilbert<sup>1</sup>  
Christopher Knoll<sup>1</sup>  
David M. Kern<sup>1</sup>  
Patrick B. Ryan<sup>1</sup>

<sup>1</sup> Global Epidemiology Organization  
Janssen Research and Development, LLC, Titusville, NJ, USA

Correspondence to:

Justin Bohn  
1125 Trenton-Harbourton Road  
Titusville, NJ, USA, 08560  
[jbohn2@its.jnj.com](mailto:jbohn2@its.jnj.com)  
+1 (857) 772-2015

Total word count	4,098
Abstract word count	250
Figures	4
Tables	3
References	39 in main text 60 in literature review supplement
Supplementary information	2 documents 1 spreadsheet

Keywords (MeSH):

D017891	Pharmacoepidemiology
D015331	Cohort Studies
D011358	Product Surveillance, Postmarketing
D015982	Bias
D015986	Confounding Factors, Epidemiologic
D000067575	Administrative Claims, Healthcare

## 1 **ABSTRACT**

### 2 **Objectives**

3       The new user cohort design has emerged as a best practice for the estimation of drug effects  
4 from observational data. However, despite its advantages, this design requires the selection and  
5 evaluation of comparators for appropriateness, a process which can be challenging. In this paper, we  
6 introduce an empirical approach to rank candidate comparators in terms of their similarity to a target  
7 drug in high-dimensional covariate space.

### 8 **Methods**

9       We generated new user cohorts for each RxNorm ingredient in five administrative claims  
10 databases, then extracted aggregated pre-treatment covariate data for each cohort across five clinically  
11 oriented domains. We formed all pairs of cohorts with  $\geq 1,000$  patients and computed a scalar similarity  
12 score, defined as the average of cosine similarities computed within each domain, for each pair. Ranked  
13 lists of candidate comparators were then generated for each cohort.

### 14 **Results**

15       Across up to 1,350 cohorts forming 922,761 comparisons, drugs that were more similar in the  
16 ATC hierarchy had higher cohort similarity scores. The most similar candidate comparators for each of  
17 six example drugs corresponded to alternative treatments used in the target drug's indication(s), and  
18 choosing the top-ranked comparator for randomly selected drugs tended to produce balance on a  
19 majority of covariates. This approach also ranked highly those comparators chosen in high quality  
20 published new user cohort design studies.

### 21 **Conclusion**

22       Empirical comparator recommendations may serve as a useful aid to investigators and could  
23 ultimately enable the automated generation of new user cohort design-derived evidence, a process that  
24 has previously been limited to self-controlled designs.

## 1 KEY POINTS

2 Empirical comparator recommendations based on similarity to a target cohort’s covariate profile can aid  
3 investigators in study design and align with subject matter knowledge and published literature.

4

## 5 1 INTRODUCTION

6 Pharmacoepidemiologic studies routinely employ cohort designs to estimate the effect of a drug  
7 treatment on an outcome using observational data. While many variations on the cohort design exist,  
8 the new user (NU, sometimes called *incident* new user or *initiator*) design[1,2]has emerged over the  
9 past two decades as a best practice. This design, which is intended to emulate a randomized trial in its  
10 well-defined, exposure-based timescale, involves identifying cohorts of patients at the time of initiation  
11 of one of two drugs: a target drug and a comparator. Patients are then followed for the occurrence of  
12 the study outcome and the incidence is compared between groups, usually with adjustment for  
13 confounding factors. The NU design can be further divided based on whether an *active* comparator (i.e.,  
14 an alternative treatment for the indication of interest) or an *inactive* comparator (i.e., something not  
15 used for the indication of interest and which is believed to be unrelated to the outcome of interest) is  
16 chosen[3]. The primary advantage to this approach is the mitigation of biases known to impact  
17 comparisons against nonuser – i.e., unexposed or untreated – groups. In particular, healthy user bias,  
18 healthy adherer bias, and immortal time bias may all be reduced by the adoption of an NU design, with  
19 particular reductions in confounding by indication expected if an active comparator is chosen[4,5]

20 However, while the NU design has many advantages, it requires the study designer to select an  
21 appropriate comparator, and the process of identifying and determining comparator adequacy can be  
22 challenging. The ideal comparator group represents a counterfactual outcome experience determined

1 by the research question of interest. This question may concern whether the incidence of an outcome in  
2 the presence of the target exposure is different than what would have occurred if some other exposure  
3 were substituted for the target, or alternatively whether that incidence differs from what would have  
4 occurred if the target exposure were simply removed. In the former case, which is termed comparative  
5 effectiveness or safety research, investigators have historically selected comparators on the basis of  
6 perceived clinical equipoise and empirical feasibility. In the latter case, which is common in the drug  
7 safety surveillance context, the use of a comparator otherwise thought to be wholly unrelated to the  
8 study outcome has been recommended[6–9], and a theoretical framework for its choice developed[10].  
9 While the counterfactual represented by the comparator thus varies according to the research context,  
10 a common goal is to identify a comparator with a similar patient composition in terms of demographics  
11 and relevant medical characteristics to the target. While several sets of recommendations[11] have  
12 emerged to guide investigators in the comparator selection process, it remains at least partially  
13 subjective and difficult to scale in a context with many target drugs. With thousands of drugs available  
14 on the market, each of which could theoretically be a viable comparator for another, the selection of  
15 comparators for all drugs is thus a large task, encompassing nearly one million target-comparator  
16 possibilities.

17 In this paper, we present an empirical approach for ranking potential comparator cohorts for  
18 pharmacoepidemiologic studies based on their similarity in high-dimensional covariate space. We  
19 propose a method to compute a scalar similarity score, the *cohort similarity score*, for all pairwise  
20 combinations of all active drug ingredients and rank candidate comparators for any given target drug  
21 based on this composite score. The cohort similarity score is based on the average of cosine similarity  
22 scores[12] computed within five separate covariate domains intended to emulate clinical thinking  
23 surrounding a treatment decision. These domains are demographics, medical history, prior medications,  
24 presentation, and visit context. We evaluate rankings based on the cohort similarity score in the context

1 of existing drug classification schemes and assess whether they produce pairs of cohorts comprised of  
2 similar patient populations, based on having high proportions of covariates already in balance.

3 Throughout, we focus on six example drugs from three therapeutic areas: anticoagulation  
4 (warfarin and apixaban), rheumatoid arthritis (methotrexate and adalimumab), and multiple sclerosis  
5 (glatiramer and ocrelizumab). We demonstrate that this method produces ranked lists of comparators  
6 which broadly align with subject-matter knowledge, and which are already posited as good comparators  
7 in the literature or registered studies. Further, we propose that this approach may be of use both as a  
8 tool for researchers designing pharmacoepidemiologic studies and as a part of an eventual analytic  
9 pipeline to automate the evidence generation process. We provide the full suite of results in an  
10 interactive web application ([data.ohdsi.org/ComparatorSelectionExplorer](https://data.ohdsi.org/ComparatorSelectionExplorer)), which can be used to identify  
11 and diagnose potential comparators for a given target cohort, and the code necessary for others to  
12 implement our approach in their own data (<https://github.com/OHDSI/ComparatorSelectionExplorer>).

## 13 **2 METHODS**

### 14 **2.1 Data Sources**

15 We utilized data from five sources of insurance claims: Merative™ MarketScan® Commercial  
16 Claims and Encounters (CCAE), Merative™ MarketScan® Multi-State Medicaid (MDCD), Merative™  
17 MarketScan® Medicare Supplemental (MDCR); Japan Medical Data Center (JMDC); and Optum© De-  
18 Identified Clinformatics© Data Mart. All data were mapped to the Observational Medical Outcomes  
19 Partnership Common Data Model[13] (OMOP CDM). Episodes of continuous exposure to individual  
20 RxNorm drug ingredients were inferred from pharmacy claims[14]. International Classification of  
21 Diseases (ICD) diagnosis codes were mapped to the Systematized Nomenclature of Medicine Clinical  
22 Terms (SNOMED-CT).

## 1    **2.2 Cohort Definitions**

2            Prior to computing similarity scores, it was necessary to create cohorts for each active drug  
3 ingredient to be evaluated as either a target or comparator. As such, in each data source, we defined  
4 cohorts of new users for each RxNorm ingredient. While there are over 10,000 ingredient concepts in  
5 the RxNorm vocabulary, only a minority are used in medical practice and the number varies according to  
6 local usage patterns in each data source. To enter a given ingredient-specific cohort, patients were  
7 required to have 365 days of continuous observation in the database prior to the first observed  
8 exposure to that ingredient, which served as their index date. Patients were allowed to enter a given  
9 cohort only once, but there was no restriction on the number of distinct cohorts they could enter. In  
10 order to ensure robust estimation of covariate prevalence, we restricted analysis to cohorts with at least  
11 1,000 patients.

## 12    **2.3 Extraction of Covariate Data**

13            Within each cohort, covariate data was extracted in five domains intended to capture the clinical  
14 thinking surrounding a treatment decision. These domains were:

- 15            • **Demographics:** one covariate for female sex, one for male sex, and one covariate for each  
16 decade of age
- 17            • **Medical history:** one covariate for each SNOMED condition observed in the period from the  
18 start of patient observation to 31 days before the index date
- 19            • **Presentation:** one covariate for each SNOMED condition observed in the period from 30 days  
20 before the index date to the index date
- 21            • **Prior medications:** one covariate for each RxNorm ingredient with exposure start at least 30  
22 days prior to the index date and exposure end on or before the index date

1       • **Visit context:** one covariate for the presence of an inpatient visit in the 30 days prior to the  
2           index date, and one for the presence of an emergency department visit in the same period  
3       Information on the prevalence of each covariate in each cohort was stored in a separate table in the  
4       database from which it was extracted and used for the computation of similarity metrics. All covariates  
5       with prevalence < 1% were excluded to avoid distortion of similarity scores by extremely low prevalence  
6       estimates.

## 7       **2.4 Computation of Similarity Scores**

8           Within each database, we formed all possible pairs of cohorts and computed similarity scores  
9       for each pair. We calculated the cosine similarity[12], the dot product of two vectors containing the  
10      target and comparator cohorts' covariate prevalences divided by the product of their lengths, between  
11      the two cohorts, separately for each covariate domain, and then averaged across the five domains to get  
12      the final similarity score, hereafter called the *cohort similarity score*. While other measures of  
13      multivariable similarity/distance such as the average absolute standardized difference and the  
14      Mahalanobis distance were available, the computational efficiency of the cosine similarity made it an  
15      attractive choice for our large-scale evaluation. A cohort similarity score of 1 will occur if all covariates  
16      are the same between two cohorts, while a score of 0 indicates that the cohorts have no agreement  
17      across the covariates. We then used these scores to generate ranked lists of comparators for each  
18      cohort, with scores closer to 1 indicating stronger comparator alignment.

19           Under the assumption that cohorts with known clinical or mechanistic relationships should have  
20      higher similarity than those without such relationships, we used the Anatomical Therapeutic Chemical  
21      (ATC) classification system[15] to compare the distribution of cohort similarity scores for cohort pairs  
22      with relationships at different levels of the hierarchy. Cohort pairs were divided according to the most

1 granular ATC level at which they co-occurred, if any. Pairs that co-occurred in a class at ATC level 5 were  
2 excluded from this analysis as this level is commonly used for individual drug products or combinations.

3 For a random subset of 100 cohorts within each data source, we also attempted to validate our  
4 ranked lists with a more familiar pharmacoepidemiological metric of covariate similarity, the  
5 standardized mean difference (SMD)[16]. For each of the randomly selected target drugs, we identified  
6 their top comparator based on the cohort similarity score, calculated SMDs for all covariates present  
7 within the cohort pair and reported the proportion of covariates in various degrees of imbalance based  
8 on recommended cutoffs for absolute SMD of 0.1, 0.2, 0.5, and 0.8 [17,18]. We then repeated this  
9 process for the comparator ranked 500<sup>th</sup>. All code for cohort generation, covariate extraction, similarity  
10 calculation, and for our web application is publicly available at  
11 <https://github.com/OHDSI/ComparatorSelectionExplorer>.

## 12 **2.5 Review of NU Design Studies Published in High-Quality Journals**

13 We also searched the literature to identify high-quality observational studies employing NU  
14 designs and compared their comparator choices to our empirical estimates of similarity. We limited our  
15 search to papers published in the following journals between January 2021 and May 2023: *Science*,  
16 *Nature*, *The New England Journal of Medicine*, *JAMA*, *JAMA Internal Medicine*, *JAMA Surgery*, *JAMA*  
17 *Psychiatry*, *JAMA Cardiology*, *JAMA Pediatrics*, *JAMA Neurology*, *The Lancet*, *BMJ*, *Diabetes Care*,  
18 *Hypertension*, *Journal of the American College of Cardiology*, *Pharmacoepidemiology and Drug Safety*,  
19 *Drug Safety*, *Annals of Internal Medicine*, *The Lancet Digital Health*, *The Lancet Infectious diseases*, *The*  
20 *Lancet Diabetes & Endocrinology*, *The Lancet Neurology*, *The Lancet Oncology*, *The Lancet Respiratory*  
21 *Medicine*, *The Lancet Psychiatry*, and *The Lancet Global Health*. Full details on the search parameters  
22 used and the results of the review can be found in the supplementary material. As some of the  
23 identified studies defined target/comparator cohorts at the drug *class* level, we additionally generated



1 new-user cohorts for each Anatomical Therapeutic Chemical (ATC) level 4 class and re-ran our similarity  
2 pipeline with these cohorts included.

### 3 **3 RESULTS**

4 Between 1,729 and 2,409 RxNorm ingredient-level new-user cohorts were generated per data  
5 source. Of these, between 988 and 1,359 cohorts had at least 1,000 patients (Table 1). The mean  
6 number of covariates with prevalence  $\geq 1\%$  extracted per cohort was 934.5 - 1,479.9 overall, 65.4- 120.0  
7 in the “Presentation” domain, 336.9- 1,016.4 in the “Medical History” domain, and 293.0 - 486.2 in the  
8 “Prior Medications” domain. The number of demographic and visit context covariates was roughly  
9 constant by design.

10 Between 487,578 and 922,761 pairs of cohorts with at least 1,000 patients were formed per  
11 data source. Among these, similarity was lowest in the “Presentation” domain (mean cosine similarity  
12 0.213 to 0.490, depending on data source) and highest in the “Visit context” domain (mean cosine  
13 similarity 0.869 to 1.000, depending on data source). Between 90% and 95% of target cohorts with at  
14 least 1,000 patients had a comparator with an average cohort similarity score of  $\geq 0.950$ . Among the six  
15 example drugs, the distribution of cohort similarity scores was consistently left-skewed, with most  
16 comparators lying between 0.7 and 0.9 (Figure 1). Similarity was lowest among pairs of cohorts that did  
17 not occur together in any ATC classes and tended to increase among pairs of cohorts that co-occurred  
18 within higher-level ATC classes (Figure 2).

19 The top five comparators for each of the six example drugs, by average rank across data sources  
20 (Table 2) and within data sources (Table 3) consistently corresponded to alternative treatments for each  
21 drug’s indication(s). For example, the top five comparators for glatiramer (interferon beta-1a, interferon  
22 beta-1b, dimethyl fumarate, fingolimod, and natalizumab) are all other disease-modifying therapies for  
23 multiple sclerosis[19], and those ranked sixth through tenth (teriflunomide, dalfampridine, ocrelizumab,

1 corticotropin, and modafinil) are either disease modifying therapies or are used to treat symptoms of  
2 MS or MS relapse. Ranked comparator lists for these example drugs varied according to data source  
3 (Figure 1, Figure 3 panel A), with the highest degree of correlation between CCAE, MDCD, and Optum.  
4 An example of between-data source heterogeneity is shown in Figure 3 panel B where, among 627  
5 candidate comparators for warfarin observed in both CCAE and JMDC, rivaroxaban is identified as highly  
6 similar to warfarin in both data sources, whereas xylitol and vitamin A appear much more similar to  
7 warfarin in JMDC than in CCAE, while the reverse is true for hydralazine.

8  
9 Among the 100 target drugs randomly selected within each data source and their top  
10 comparators, most covariates were well balanced. When the comparator ranked 500<sup>th</sup> was chosen  
11 instead, the proportion of imbalanced covariates was higher (Figure 4). The average proportion of  
12 covariates with  $|SMD| \leq 0.1$  was between 72% and 84% for the top comparator versus between 28%  
13 and 45% for the comparator ranked 500<sup>th</sup>.

14 Our literature search returned 60 studies, of which 24 employed an NU design. 56 distinct  
15 target-comparator pairs were identified, of which 23 could be mapped directly to RxNorm ingredients or  
16 ATC level 4 classes. Nine such pairs were comparisons among anticoagulants, and five were among  
17 antidepressants. Among these 20 pairs, the comparator selected by the authors was in the top 5% of  
18 computed similarity for its target in at least one of our data sources in 96% of cases, and in 91% of cases  
19 it was ranked among the top 10. Some pairs with notably low computed similarity were apixaban vs.  
20 warfarin (cohort similarity score 0.879, rank 136 in CCAE), beta blocking agents vs. aldosterone  
21 antagonists (cohort similarity score 0.757, rank 359 in CCAE), and topiramate vs. lamotrigine (cohort  
22 similarity score 0.846, rank 167 in CCAE). See supplementary file for similarity scores from reviewed  
23 literature.

## 1 **4 DISCUSSION**

2 Over the past two decades, the NU cohort design has emerged as a best practice for the  
3 estimation of drug effects from observational data. However, the implementation of this design may be  
4 hampered by the difficulty of selecting an appropriate comparator for the target drug of interest, either  
5 because there are many potential alternatives to the target drug, or because the true target of inference  
6 is in fact a contrast between the target drug and its absence. The development of empirical comparator  
7 recommendations can aid investigator decision-making, simplifying the process of comparator selection  
8 and improving the quality of pharmacoepidemiological research and the speed of postmarketing  
9 surveillance. Ultimately, these approaches may even enable the automation of evidence generation  
10 using the NU design, something that was previously possible only with self-controlled designs[20,21]  
11 and temporal scans[22,23].

12 We demonstrated a method for ranking potential comparators based on similarity in high-  
13 dimensional covariate space. We showed that most target cohorts of reasonable size possessed at least  
14 one potential comparator with a high degree of similarity and that cohorts that were more related in the  
15 ATC hierarchy also had higher cohort similarity scores. For a random sample of 100 cohorts within each  
16 data source, we also showed that selecting the top-most similar comparator identified a cohort with  
17 balance on the majority of covariates before any adjustment took place.

18 We additionally demonstrated that, for six target cohorts from a diverse set of therapeutic  
19 areas, the top-ranked comparators aligned well with subject-matter knowledge. That is, all were used in  
20 the treatment of at least one of the target cohorts' indications. Indeed, many of these top-ranked  
21 comparators are found to be in use in head-to-head safety or effectiveness comparisons with the target  
22 cohort in the literature or in public registries of clinical and observational studies. For example, head-to-  
23 head studies exist comparing apixaban and its top comparator rivaroxaban[24,25], adalimumab and its

1 top comparator certolizumab[26,27], and ocrelizumab and its top comparator teriflunomide[28]. This  
2 was also borne out in our formal literature review, which demonstrated that NU studies published in  
3 high quality journals tended to select comparators that our method also ranked highly. While this is  
4 reassuring, it should also be noted that the correlation in comparator rankings across data sources was  
5 not consistently high (Figure 3). This may indicate that a given comparator is not uniquely fit-for-purpose  
6 across all data sources, suggesting that investigators take care to select a comparator using information  
7 from a source that at least resembles their intended analytic context.

8 This study complements a large body of work on drug similarity from the bioinformatics  
9 community, including attempts to define similarity based on chemical structure, gene expression[29],  
10 genome-wide associations[30], co-occurrence of drugs with condition terms in the literature[31],  
11 individual patient data[32], and a combination of these. However, our work is unique in its focus on the  
12 use of similarity indices for comparator selection rather than for identification of novel associations, and  
13 for its clinically oriented approach to covariate data extraction. The empirical comparator  
14 recommendations provided here have several advantages. First, they can reduce subjectivity, both in  
15 terms of which drugs may serve as candidate comparators for a given target drug and which covariates  
16 should be used to determine empirical feasibility. While comparator choice should be guided by subject-  
17 matter knowledge[33], no investigator is omniscient and thus the availability of empirical  
18 recommendations may promote more informed decisions and could potentially enable less biased  
19 comparisons. Additionally, empirical recommendations may reveal previously unknown comparators  
20 that are not necessarily alternative treatments for any of the target drug's indications. They thus hold  
21 promise for the identification of appropriate inactive comparators/negative control exposures,  
22 ultimately allowing for cohort studies that emulate user versus non-user comparisons within the NU  
23 framework. Additionally, these recommendations have been assessed across multiple large data sources  
24 comprising diverse populations within and outside the United States. They have been observed,

1 consistently across these data sources, to label drugs that are more closely related in the ATC hierarchy  
2 as more similar, to produce balance on a majority of covariates when the most similar comparator is  
3 chosen, and to identify top comparators that align with subject-matter knowledge and high quality  
4 published research. Finally, the approach presented here provides a standardized framework for  
5 comparator ranking which can be readily implemented by investigators. This standardization can  
6 improve reproducibility and scalability and ultimately lowers the burden on domain expertise for the  
7 investigator.

8         In an era of rapid advancement in deep learning methods, the simplicity of our approach may  
9 appear to be a limitation. For example, emerging research on large language models (LLMs) [34] may  
10 suggest their potential utility as a source of comparator recommendations, and much has been written  
11 on the utility of various similarity-based deep learning approaches to predict drug-drug and drug-target  
12 interactions. Unfortunately, the lack of a reference corpus explicitly identifying “good” and “bad”  
13 comparators prevents us from trialing these methods here. And while we look forward to future  
14 assessments of their utility, LLM approaches provide little empirical insight as to the origin of their  
15 responses, can suffer from hallucinations, and are naturally biased towards pre-existing information,  
16 including non-refereed online context, reducing their utility in identifying negative control exposures or  
17 previously unused but otherwise suitable comparators.

18         Compared to traditional approaches, a limitation of the approach introduced here is that the  
19 cohort similarity score is based on the *marginal* distributions of covariates in two cohorts and as such is  
20 only a proxy for full covariate similarity. In contrast, propensity scores methods have the advantage of  
21 providing metrics (e.g., the c-statistic or the preference score[35]) that reflect the similarity in *joint*  
22 covariate distributions across cohorts. Furthermore, such methods can be used to adjust for observed  
23 dissimilarity when it occurs. However, unlike many propensity score models, which only incorporate a  
24 small number of covariates, the cohort similarity score dynamically defines a large set of covariates

1 based on all available data elements. It should be noted that this data-adaptive approach has been  
2 incorporated into some propensity score methods like the high-dimensional propensity score (hdPS)  
3 [36] and, more recently, the large-scale propensity score (LSPS)[37]. However, the cohort similarity score  
4 remains the only approach that is scalable to millions of candidate target-comparator combinations,  
5 whereas PS models—particularly those using high-dimensional covariate data—can be computationally  
6 expensive, making them infeasible for screening large numbers of candidate comparators. For example,  
7 on an Amazon EC2 instance running Windows Server 2019 with a 2.2 GHz processor and 64 GB RAM and  
8 accessing data stored in a Redshift database, our entire pipeline (including generating cohorts,  
9 extracting covariate data, and computing cohort similarity scores for all drugs) took between 33 and 172  
10 minutes per database, whereas an LSPS pipeline (including generating cohorts, extracting covariate data,  
11 and fitting models) took between 3 and 40 hours *for a single target-comparator pair*. The cohort  
12 similarity score may therefore be best suited as a tool to narrow the comparator search space before  
13 techniques like hdPS/LSPS are employed. It should also be noted that, like PS methods and assessments  
14 of standardized differences in covariates, our approach only addresses half of the confounding picture.  
15 That is, it summarizes covariate imbalance without addressing covariates' associations with study  
16 outcomes. And while investigators must keep this limitation in mind, they can address it *post-hoc* by  
17 searching our web application to identify the degree of balance on important risk factors for their study  
18 outcome of interest.

19         There are several factors that may limit the usefulness of the comparator recommendations  
20 provided here. Because this analysis was limited to cohorts of new users of individual RxNorm  
21 ingredients, comparator recommendations for ingredients that are used differently depending on dose,  
22 form, or route of administration may be less coherent than recommendations for ingredients which are  
23 used more consistently regardless of these factors. The same limitation may apply to ingredients that  
24 are used in combination preparations or which possess multiple, possibly unrelated, indications.

1 However, this can be ameliorated by running the entire analytic pipeline in the subset of the population  
2 with a specific indication of interest. A demonstration of this for the target spironolactone, which is used  
3 both in the treatment of acne and heart failure, showed that such restriction both reduces the  
4 comparator search space and improves the coherence of recommendations (see supplementary  
5 material for details). While such restriction is not feasible at the scale of all indications, it may be  
6 attractive to investigators whose work routinely focuses on a small set of indications. Additionally, the  
7 assessment of these recommendations was limited by the lack of an objective metric for defining  
8 comparator “appropriateness”. While we sought to benchmark appropriateness based on comparator  
9 location in the ATC hierarchy and appearance in published literature or registered studies, future work  
10 might attempt to go further by demonstrating that the use of empirical comparator recommendations  
11 can lead to less biased treatment effect estimates than traditional methods of comparator selection.

12 Finally, it should be clearly stated that empirical comparator recommendations are not a  
13 replacement for critical thinking in study design and analysis. Investigators may wish to use them as a  
14 “first pass” to identify and evaluate candidate comparators, after which more careful consideration and  
15 detailed analysis can determine true feasibility. Crucially, investigators must remain aware that  
16 covariate adjustment is almost invariably required regardless of the quality of the comparator chosen.  
17 Similarity between a target drug and comparator is also no guarantee that any remaining covariate  
18 imbalance can be successfully adjusted via established methods like restriction or propensity score  
19 adjustment. And, conversely, low similarity relative to other recommendations is not a guarantee that  
20 successful adjustment is impossible.

21 Our work leaves open many exciting opportunities for further exploration of empirical  
22 comparator recommendations. Among these are additional approaches to validation, including a  
23 comparison against more computationally expensive techniques like assessing propensity score overlap.  
24 Future work might also explore the utility of adding sources of metadata on known or suspected drug-

1 outcome relationships, such as the OHDSI Common Evidence Model[38,39], in order to improve the  
2 ease of identifying inactive comparators/negative control exposures.

## 3 **5 CONCLUSION**

4 We have developed and evaluated a method for recommending comparators that yields  
5 promising results and which may be of use to investigators wishing to conduct NU studies of drug safety  
6 and effectiveness. An open-source tool set is available for those wishing to identify candidate  
7 comparators using their own data, and the full suite of results, including comparator rankings for  
8 thousands of drugs across multiple data sources, is available to the public. We hope these tools and the  
9 results presented here will accelerate and improve the quality of future pharmacoepidemiologic  
10 research.

11

## 12 **REFERENCES**

- 13 1. Ray WA. Evaluating medication effects outside of clinical trials: new-user designs. *Am J Epidemiol.*  
14 2003;158:915–20.
- 15 2. Johnson ES, Bartman BA, Briesacher BA, Fleming NS, Gerhard T, Kornegay CJ, et al. The incident user  
16 design in comparative effectiveness research. *Pharmacoepidemiol Drug Saf.* 2013;
- 17 3. D’Arcy M, Stürmer T, Lund JL. The importance and implications of comparator selection in  
18 pharmacoepidemiologic research. *Curr Epidemiol Rep.* 2018;5:272–83.
- 19 4. Lund JL, Richardson DB, Stürmer T. The Active Comparator, New User Study Design in  
20 Pharmacoepidemiology: Historical Foundations and Contemporary Application. *Curr Epidemiol Rep.*  
21 2015;2:221–8.
- 22 5. Sendor R, Stürmer T. Core concepts in pharmacoepidemiology: Confounding by indication and the  
23 role of active comparators. *Pharmacoepidemiol Drug Saf.* 2022;31:261–9.
- 24 6. Lipsitch M, Tchetgen Tchetgen E, Cohen T. Negative Controls: A Tool for Detecting Confounding and  
25 Bias in Observational Studies. *Epidemiology.* 2010;21:383–8.
- 26 7. Dusetzina SB, Brookhart MA, Maciejewski ML. Control Outcomes and Exposures for Improving  
27 Internal Validity of Nonrandomized Studies. *Health Serv Res.* 2015;50:1432–51.



- 1 8. Setoguchi S, Glynn RJ, Avorn J, Mogun H, Schneeweiss S. Statins and the Risk of Lung, Breast, and  
2 Colorectal Cancer in the Elderly. *Circulation*. 2007;115:27–33.
- 3 9. Solomon DH, Avorn J, Stürmer T, Glynn RJ, Mogun H, Schneeweiss S. Cardiovascular outcomes in new  
4 users of coxibs and nonsteroidal antiinflammatory drugs: High-risk subgroups and time course of risk.  
5 *Arthritis Rheum*. 2006;54:1378–89.
- 6 10. Huitfeldt A, Hernan MA, Kalager M, Robins JM. Comparative Effectiveness Research Using  
7 Observational Data: Active Comparators to Emulate Target Trials with Inactive Comparators. *EGEMs*  
8 *Gener Evid Methods Improve Patient Outcomes*. 2016;4:20.
- 9 11. Setoguchi S, Gerhard T. Chapter 5: Comparator Selection. In: Velentgas P, Dreyer NA, Nourjah, P,  
10 Smith, SR, Torchia MM, editors. *Dev Protoc Obs Comp Eff Res Users Guide* [Internet]. Rockville (MD):  
11 Agency for Healthcare Research and Quality (US); 2013. Available from:  
12 <https://www.ncbi.nlm.nih.gov/books/NBK126184/>
- 13 12. Tan P-N, Steinbach M, Kumar V. Chapter 8. *Introd Data Min*. 1st ed. Boston: Pearson Addison  
14 Wesley; 2006. p. 500.
- 15 13. Overhage JM, Ryan PB, Reich CG, Hartzema AG, Stang PE. Validation of a common data model for  
16 active safety surveillance research. *J Am Med Inform Assoc JAMIA*. 2012;19:54–60.
- 17 14. OMOP CDM v5.4 [Internet]. [cited 2022 Nov 28]. Available from:  
18 [http://ohdsi.github.io/CommonDataModel/cdm54.html#Standardized\\_Derived\\_Elements](http://ohdsi.github.io/CommonDataModel/cdm54.html#Standardized_Derived_Elements)
- 19 15. WHOCC - Structure and principles [Internet]. [cited 2022 Nov 24]. Available from:  
20 [https://www.whocc.no/atc/structure\\_and\\_principles/](https://www.whocc.no/atc/structure_and_principles/)
- 21 16. Austin PC. Balance diagnostics for comparing the distribution of baseline covariates between  
22 treatment groups in propensity-score matched samples. *Stat Med*. 2009;28:3083–107.
- 23 17. Normand S-LT, Landrum MB, Guadagnoli E, Ayanian JZ, Ryan TJ, Cleary PD, et al. Validating  
24 recommendations for coronary angiography following acute myocardial infarction in the elderly: A  
25 matched analysis using propensity scores. *J Clin Epidemiol*. 2001;12.
- 26 18. Cohen J. *Statistical power analysis for the behavioral sciences*. 2nd ed. Hillsdale, N.J.: L. Erlbaum  
27 Associates; 1988.
- 28 19. Hauser SL, Cree BAC. Treatment of Multiple Sclerosis: A Review. *Am J Med*. 2020;133:1380-1390.e2.
- 29 20. Kulldorff M, Dashevsky I, Avery TR, Chan AK, Davis RL, Graham D, et al. Drug safety data mining with  
30 a tree-based scan statistic: TREE-BASED SCAN STATISTIC DATA MINING METHOD. *Pharmacoepidemiol*  
31 *Drug Saf*. 2013;22:517–23.
- 32 21. Wang SV, Maro JC, Baro E, Izem R, Dashevsky I, Rogers JR, et al. Data Mining for Adverse Drug Events  
33 With a Propensity Score-matched Tree-based Scan Statistic. *Epidemiology*. 2018;29:895–903.
- 34 22. Norén GN, Hopstadius J, Bate A, Star K, Edwards IR. Temporal pattern discovery in longitudinal  
35 electronic patient records. *Data Min Knowl Discov*. 2010;20:361–87.

- 1 23. Lavalley M, Yu T, Evans L, Van Hemelrijck M, Bosco C, Golozar A, et al. Evaluating the performance of  
2 temporal pattern discovery: new application using statins and rhabdomyolysis in OMOP databases. *BMC*  
3 *Med Inform Decis Mak.* 2022;22:31.
- 4 24. Boehringer Ingelheim. Safety and Effectiveness Study Comparing Dabigatran, Rivaroxaban &  
5 Apixaban in Non-valvular Atrial Fibrillation Patients Enrolled in the US Department of Defense Military  
6 Health System [Internet]. *clinicaltrials.gov*; 2019 Feb. Report No.: NCT03026556. Available from:  
7 <https://clinicaltrials.gov/ct2/show/NCT03026556>
- 8 25. Lip GYH, Keshishian A, Kamble S, Pan X, Mardekian J, Horblyuk R, et al. Real-world comparison of  
9 major bleeding risk among non-valvular atrial fibrillation patients initiated on apixaban, dabigatran,  
10 rivaroxaban, or warfarin: A propensity score matched analysis. *Thromb Haemost.* 2016;116:975–86.
- 11 26. Smolen JS, Burmester G-R, Combe B, Curtis JR, Hall S, Haraoui B, et al. Head-to-head comparison of  
12 certolizumab pegol versus adalimumab in rheumatoid arthritis: 2-year efficacy and safety results from  
13 the randomised EXXELERATE study. *The Lancet.* 2016;388:2763–74.
- 14 27. UCB Pharma SA. A Multicenter, Single-blind, Randomized Parallel-group Study to Assess the Short-  
15 and Long-term Efficacy of Certolizumab Pegol Plus Methotrexate Compared to Adalimumab Plus  
16 Methotrexate in Subjects With Moderate to Severe Rheumatoid Arthritis Responding Inadequately to  
17 Methotrexate [Internet]. *clinicaltrials.gov*; 2018 Jul. Report No.: NCT01500278. Available from:  
18 <https://clinicaltrials.gov/ct2/show/NCT01500278>
- 19 28. Dirks P, Zingler V, Leemhuis J, Berthold H, Hieke-Schulz S, Wormser D, et al. Design of a non-  
20 interventional post-marketing study to assess the long-term safety and effectiveness of ocrelizumab in  
21 German real world multiple sclerosis cohorts – the CONFIDENCE study protocol. *BMC Neurol.*  
22 2020;20:95.
- 23 29. Brown AS, Kong SW, Kohane IS, Patel CJ. ksRepo: a generalized platform for computational drug  
24 repositioning. *BMC Bioinformatics.* 2016;17:78.
- 25 30. Grover MP, Ballouz S, Mohanasundaram KA, George RA, H Sherman CD, Crowley TM, et al.  
26 Identification of novel therapeutics for complex diseases from genome-wide association data. *BMC Med*  
27 *Genomics.* 2014;7:S8.
- 28 31. Brown AS, Patel CJ. MeSHDD: Literature-based drug-drug similarity for drug repositioning. *J Am Med*  
29 *Inform Assoc.* 2017;24:614–8.
- 30 32. Zeng X, Jia Z, He Z, Chen W, Lu X, Duan H, et al. Measure clinical drug–drug similarity using Electronic  
31 Medical Records. *Int J Med Inf.* 2019;124:97–103.
- 32 33. Greenland S, Neutra R. Control of confounding in the assessment of medical technology. *Int J*  
33 *Epidemiol.* 1980;9:361–7.
- 34 34. Singhal K, Azizi S, Tu T, Mahdavi SS, Wei J, Chung HW, et al. Large language models encode clinical  
35 knowledge. *Nature.* 2023;620:172–80.
- 36 35. Walker A, Patrick, Lauer, Hornbrook, Marin, Platt, et al. A tool for assessing the feasibility of  
37 comparative effectiveness research. *Comp Eff Res.* 2013;11.

- 1 36. Schneeweiss S, Rassen JA, Glynn RJ, Avorn J, Mogun H, Brookhart MA. High-dimensional Propensity  
2 Score Adjustment in Studies of Treatment Effects Using Health Care Claims Data. *Epidemiology*.  
3 2009;20:512–22.
- 4 37. Zhang L, Wang Y, Schuemie MJ, Blei DM, Hripcsak G. Adjusting for indirectly measured confounding  
5 using large-scale propensity score. *J Biomed Inform*. 2022;134:104204.
- 6 38. Voss EA, Boyce RD, Ryan PB, van der Lei J, Rijnbeek PR, Schuemie MJ. Accuracy of an automated  
7 knowledge base for identifying drug adverse reactions. *J Biomed Inform*. 2017;66:72–81.
- 8 39. Home · OHDSI/CommonEvidenceModel Wiki [Internet]. GitHub. [cited 2022 Nov 25]. Available from:  
9 <https://github.com/OHDSI/CommonEvidenceModel>

10

1 **TABLES**

2

3 *Table 1: Summary of cohorts generated, and covariates extracted, by data source and covariate domain*

	CCAЕ	MDCD	MDCR	JMDC	Optum
<b>Total number of cohorts generated</b>					
<i>Overall</i>	2,243	2,158	2,065	1,729	2,273
<i>With at least 1,000 patients</i>	1,359	1,112	988	1,082	1,332
<b>Mean (SD) number of covariates with prevalence <math>\geq 1\%</math> extracted per cohort with <math>\geq 1,000</math> patients</b>					
<i>All</i>	1,030.6 (324.65)	1,479.9 (432.59)	1,287.7 (279.28)	934.5 (186.76)	1,422.0 (441.61)
<i>Demographics</i>	7.8 (1.12)	9.6 (1.52)	6.2 (0.57)	8.9 (1.23)	9.3 (1.64)
<i>Medical history</i>	662.3 (234.73)	1,016.4 (319.43)	852.1 (207.44)	336.9 (74.25)	957.3 (309.51)
<i>Presentation</i>	65.4 (49.17)	120.0 (63.71)	88.3 (47.32)	101.5 (36.33)	119.2 (85.42)
<i>Prior medications</i>	293.0 (58.56)	331.9 (67.89)	339.1 (39.66)	486.2 (83.36)	334.3 (64.94)
<i>Visit context</i>	1.8 (0.36)	1.9 (0.25)	1.9 (0.08)	1.0 (0.00)	1.8 (0.34)
<b>Number of pairs of cohorts with <math>\geq 1,000</math> patients</b>	922,761	617,716	487,578	584,821	886,446
<b>Mean (SD) similarity score among pairs of cohorts with <math>\geq 1,000</math> patients</b>					
<i>Cohort similarity score</i>	0.721 (0.099)	0.774 (0.106)	0.847 (0.060)	0.793 (0.090)	0.743 (0.120)
<i>Demographics cosine similarity</i>	0.852 (0.139)	0.846 (0.128)	0.945 (0.075)	0.857 (0.134)	0.841 (0.147)
<i>Medical history cosine similarity</i>	0.781 (0.137)	0.798 (0.137)	0.913 (0.059)	0.879 (0.092)	0.798 (0.141)
<i>Presentation cosine similarity</i>	0.213 (0.173)	0.401 (0.216)	0.490 (0.190)	0.377 (0.189)	0.349 (0.212)
<i>Prior medications cosine similarity</i>	0.882 (0.085)	0.872 (0.090)	0.931 (0.059)	0.917 (0.071)	0.859 (0.108)
<i>Visit context cosine similarity</i>	0.875 (0.150)	0.955 (0.066)	0.957 (0.069)	1.000 (0.000)	0.869 (0.160)
<b>Number (%) of target cohorts with at least one comparator with cohort similarity score of:</b>					
<i>At least 0.900</i>	1,294 (95.2%)	1,094 (98.4%)	981 (99.3%)	1,067 (98.6%)	1,294 (97.1%)
<i>At least 0.950</i>	1,087 (80.0%)	961 (86.4%)	924 (93.5%)	1,024 (94.6%)	1,118 (83.9%)

4 CCAE: Merative™ MarketScan® Commercial Claims and Encounters; MDCD: Merative™ MarketScan® Multi-State Medicaid; MDCR: Merative™  
5 MarketScan® Medicare Supplemental; JMDC: Japan Medical Data Center; Optum: Optum© De-Identified Clinformatics© Data Mart. Cohort  
6 similarity score is average of domain-specific cosine similarities.

1 *Table 2: Top five comparators for six example drugs, according to average rank across five data sources.*

Rank	warfarin	apixaban	methotrexate	adalimumab	glatiramer	ocrelizumab
1	digoxin (4.6, 0.960, 5)	rivaroxaban (1.0, 0.977, 5)	sulfasalazine (1.2, 0.978, 5)	certolizumab pegol (2.2, 0.974, 4)	interferon beta-1a (1.3, 0.993, 3)	teriflunomide (1.0, 0.980, 2)
2	rivaroxaban (6.2, 0.968, 5)	diltiazem (7.0, 0.955, 5)	leflunomide (2.5, 0.970, 4)	sulfasalazine (3.4, 0.960, 5)	interferon beta-1b (1.5, 0.993, 2)	dimethyl fumarate (2.3, 0.969, 3)
3	diltiazem (6.4, 0.959, 5)	amiodarone (9.6, 0.953, 5)	etanercept (3.4, 0.966, 5)	infliximab (4.0, 0.958, 5)	dimethyl fumarate (3.3, 0.991, 3)	natalizumab (3.0, 0.967, 3)
4	carvedilol (9.0, 0.952, 5)	flecainide (14.2, 0.952, 5)	adalimumab (4.6, 0.953, 5)	methotrexate (4.2, 0.953, 5)	fingolimod (3.3, 0.989, 3)	fingolimod (3.7, 0.965, 3)
5	amiodarone (10.2, 0.953, 5)	torsemide (14.4, 0.947, 5)	certolizumab pegol (6.5, 0.953, 4)	leflunomide (6.0, 0.945, 4)	natalizumab (4.3, 0.988, 3)	dalfampridine (4.0, 0.967, 2)

2 Restricted to comparators occurring in at least two data sources. Entries are given as comparator name (average rank across data sources, mean  
3 cohort similarity score, number of data sources with information on comparison).

4

5

6 *Table 3: Top five comparators for six example drugs according to cohort similarity score, by data source.*

Example Drug	Data Source	Comparator #1	Comparator #2	Comparator #3	Comparator #4	Comparator #5
warfarin	CCAE	fondaparinux (0.970)	rivaroxaban (0.959)	dalteparin (0.957)	enoxaparin (0.932)	digoxin (0.915)
warfarin	MDCD	diltiazem (0.973)	carvedilol (0.970)	dabigatran etexilate (0.970)	rivaroxaban (0.968)	captopril (0.968)
warfarin	MDCR	diltiazem (0.975)	digoxin (0.972)	rivaroxaban (0.971)	amiodarone (0.971)	sotalol (0.970)
warfarin	Optum	rivaroxaban (0.970)	dabigatran etexilate (0.967)	captopril (0.967)	diltiazem (0.966)	digoxin (0.965)
warfarin	JMDC	protamines (0.988)	dexmedetomidine (0.986)	norepinephrine (0.985)	dobutamine (0.983)	digoxin (0.982)

Example Drug	Data Source	Comparator #1	Comparator #2	Comparator #3	Comparator #4	Comparator #5
apixaban	CCAЕ	rivaroxaban (0.956)	protamine sulfate (USP) (0.951)	digoxin antibodies Fab fragments (0.940)	diltiazem (0.940)	hydralazine (0.935)
apixaban	MDCD	rivaroxaban (0.985)	toremide (0.967)	diltiazem (0.967)	bumetanide (0.966)	carvedilol (0.964)
apixaban	MDCR	rivaroxaban (0.974)	diltiazem (0.952)	hydralazine (0.952)	enoxaparin (0.952)	protamine sulfate (USP) (0.951)
apixaban	Optum	rivaroxaban (0.973)	digoxin antibodies Fab fragments (0.972)	amiodarone (0.971)	diltiazem (0.968)	toremide (0.966)
apixaban	JMDC	rivaroxaban (0.998)	dabigatran etexilate (0.990)	digoxin (0.988)	edoxaban (0.985)	flecainide (0.985)
methotrexate	CCAЕ	sulfasalazine (0.972)	leflunomide (0.970)	etanercept (0.969)	hydroxychloroquine (0.956)	adalimumab (0.955)
methotrexate	MDCD	sulfasalazine (0.961)	etanercept (0.960)	hydroxychloroquine (0.955)	adalimumab (0.954)	leflunomide (0.950)
methotrexate	MDCR	leflunomide (0.984)	sulfasalazine (0.984)	hydroxychloroquine (0.981)	adalimumab (0.980)	etanercept (0.979)
methotrexate	Optum	sulfasalazine (0.983)	leflunomide (0.976)	hydroxychloroquine (0.974)	etanercept (0.958)	adalimumab (0.955)
methotrexate	JMDC	sulfasalazine (0.988)	tocilizumab (0.968)	etanercept (0.966)	golimumab (0.962)	adalimumab (0.922)
adalimumab	CCAЕ	certolizumab pegol (0.973)	etanercept (0.962)	sulfasalazine (0.957)	methotrexate (0.955)	infliximab (0.948)
adalimumab	MDCD	sulfasalazine (0.970)	certolizumab pegol (0.970)	etanercept (0.960)	methotrexate (0.954)	infliximab (0.942)
adalimumab	MDCR	etanercept (0.990)	leflunomide (0.983)	infliximab (0.982)	methotrexate (0.980)	certolizumab pegol (0.978)
adalimumab	Optum	certolizumab pegol (0.973)	etanercept (0.960)	sulfasalazine (0.959)	methotrexate (0.955)	golimumab (0.948)
adalimumab	JMDC	infliximab (0.982)	azathioprine (0.963)	golimumab (0.956)	sulfasalazine (0.939)	methotrexate (0.922)
glatiramer	CCAЕ	interferon beta-1a (0.994)	interferon beta-1b (0.993)	fingolimod (0.992)	natalizumab (0.992)	dimethyl fumarate (0.991)

Example Drug	Data Source	Comparator #1	Comparator #2	Comparator #3	Comparator #4	Comparator #5
glatiramer	MDCD	interferon beta-1a (0.994)	dimethyl fumarate (0.992)	fingolimod (0.987)	natalizumab (0.986)	ocrelizumab (0.962)
glatiramer	Optum	interferon beta-1b (0.992)	interferon beta-1a (0.991)	dimethyl fumarate (0.989)	fingolimod (0.989)	natalizumab (0.987)
ocrelizumab	CCAE	teriflunomide (0.981)	dimethyl fumarate (0.974)	fingolimod (0.969)	natalizumab (0.968)	peginterferon beta-1a (0.965)
ocrelizumab	MDCD	natalizumab (0.977)	dimethyl fumarate (0.975)	fingolimod (0.974)	glatiramer (0.962)	interferon beta-1a (0.953)
ocrelizumab	Optum	teriflunomide (0.979)	dalfampridine (0.971)	dimethyl fumarate (0.960)	natalizumab (0.957)	fingolimod (0.952)

1 Entries are given as comparator name (cohort similarity score). Note that glatiramer and ocrelizumab did not meet the 1,000 patient sample size  
2 cutoff in MDCR or JMDC and thus results are not present for these data sources.

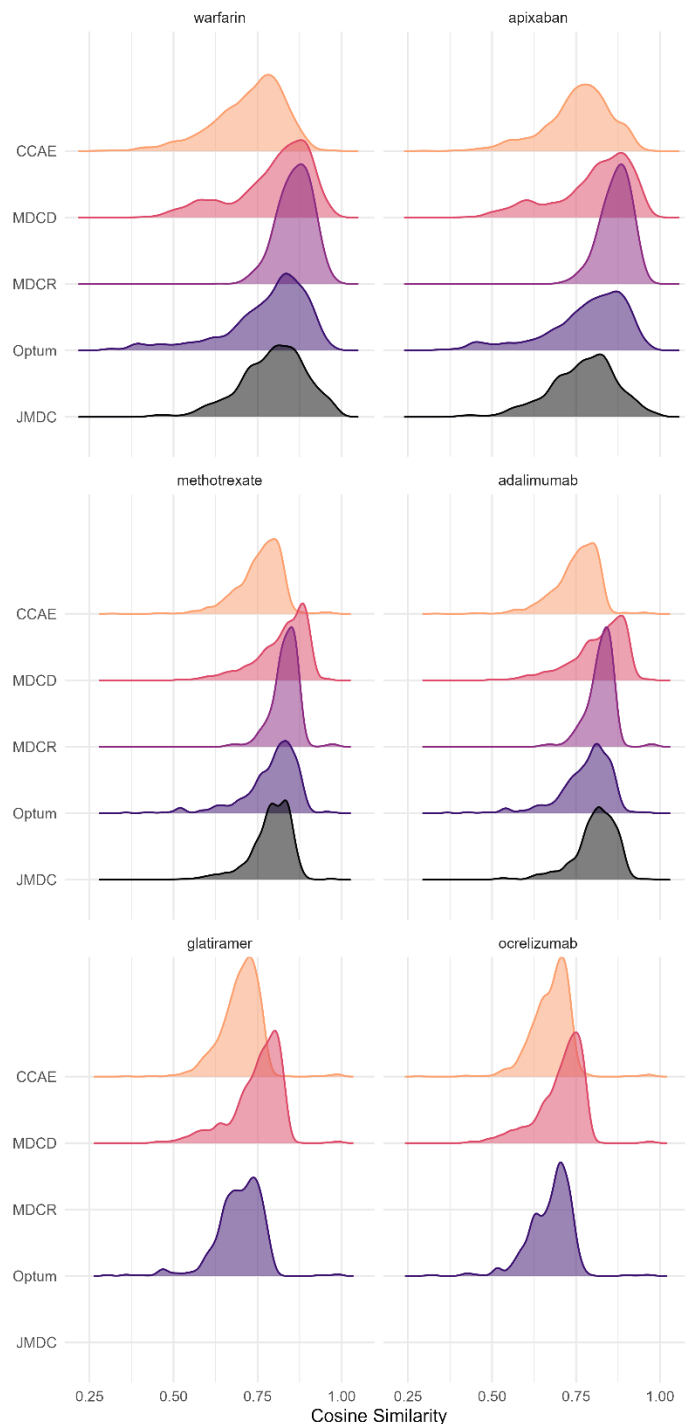
3

Empirical comparator identification for pharmacoepidemiological studies

1

2 **FIGURES**

3 *Figure 1: Distribution of average cosine similarity scores computed across all available candidate comparators for six example*  
4 *drugs, by data source. Note that glatiramer and ocrelizumab did not meet the 1,000 patient sample size cutoff in MDCR or JMDC*  
5 *and thus results are not present for these data sources. The number of available comparators ranged from 988-1,359,*  
6 *depending on data source.*

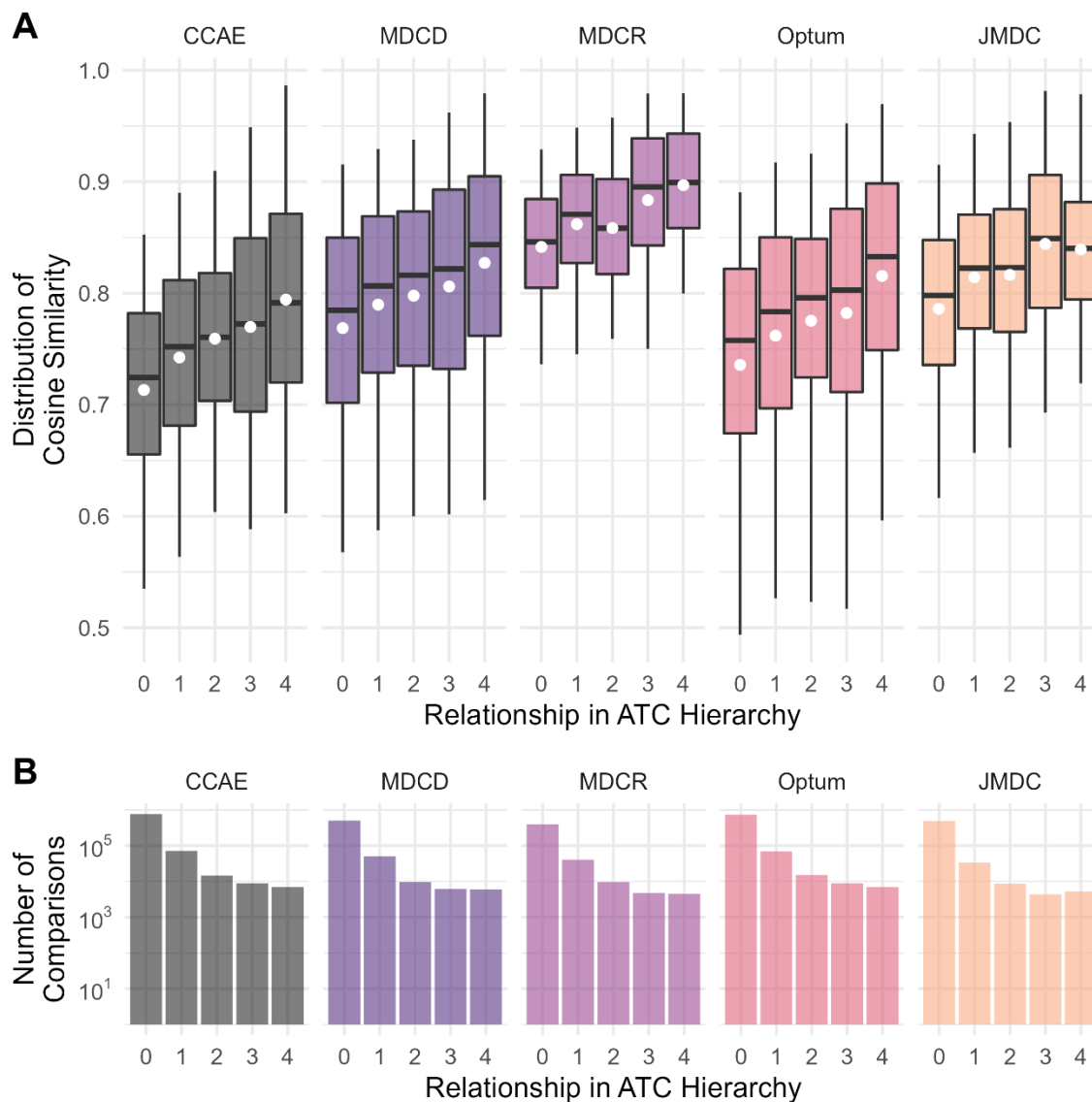


7



Empirical comparator identification for pharmacoepidemiological studies

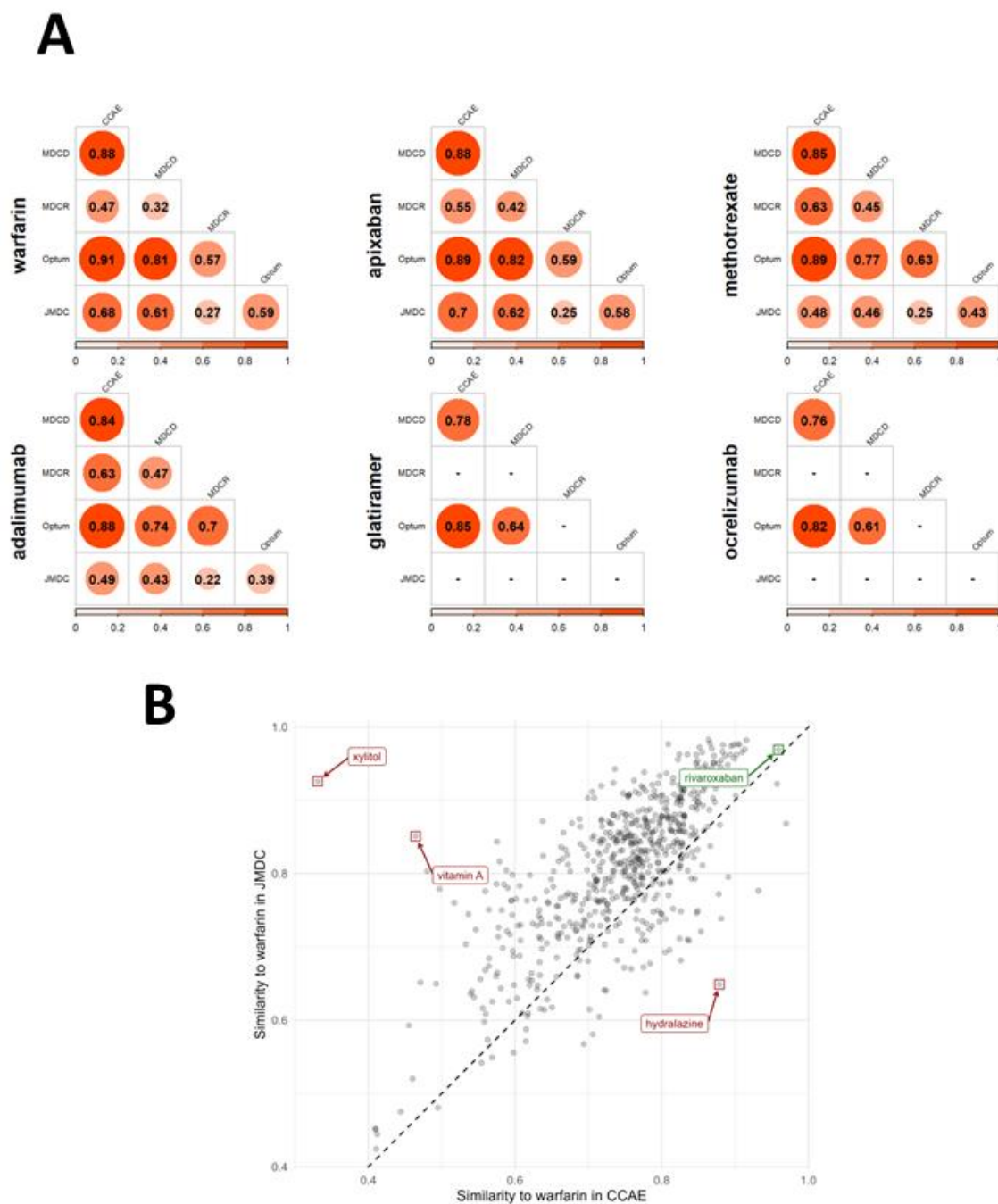
1  
2 *Figure 2: Distribution of cohort similarity scores (panel A) and number of comparisons (panel B), by relatedness in ATC hierarchy*  
3 *and data source. All target-comparator pairs were stratified by the distance between the two drugs in the ATC hierarchy ("4",*  
4 *indicating that both drugs are in same low-level class, through "0", indicating that the drugs do not share any common drug*  
5 *class ancestry). Cohort pairs in which the target and comparator are both members of an ATC level 5 class are omitted as these*  
6 *classes are frequently used for individual drugs or combination products. Whiskers are truncated at 10<sup>th</sup> and 90<sup>th</sup> percentiles.*  
7 *White circles indicate mean values.*



8

Empirical comparator identification for pharmacoepidemiological studies

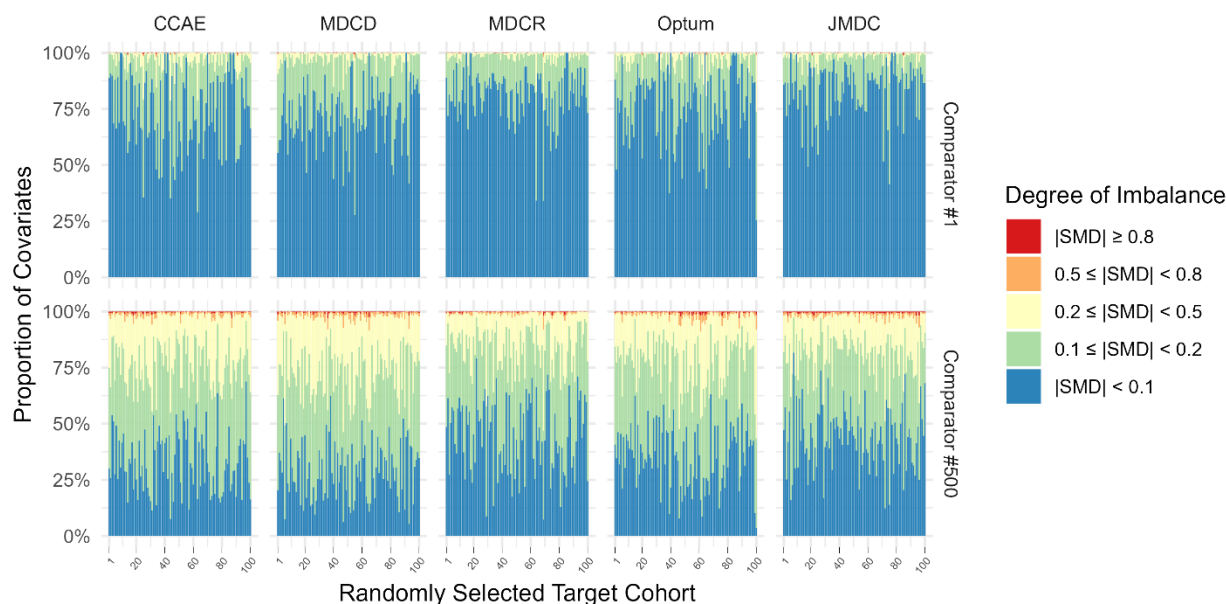
- 1 Figure 3: Pairwise rank correlations in cohort similarity scores between data sources for six example drugs (A) and cosine
- 2 similarity scores among 627 candidate comparators for warfarin observed in both CCAE and JMDC (B).



3

## Empirical comparator identification for pharmacoepidemiological studies

1 *Figure 4: Proportion of covariates at various levels of imbalance according to standardized mean difference (SMD) among 100*  
2 *randomly-selected target cohorts and their comparators ranked 1<sup>st</sup> and 500<sup>th</sup>, by data source.*



3

4

## 5 **DECLARATIONS**

### 6 **Funding**

7 This work was funded by Janssen Research and Development, a subsidiary of Johnson & Johnson. All  
8 authors are employees of Janssen Research and Development.

### 9 **Conflicts of interest**

10 The authors declare no competing interests.

### 11 **Data availability**

12 The full suite of results described here is available as an interactive web application  
13 ([data.ohdsi.org/ComparatorSelectionExplorer](https://data.ohdsi.org/ComparatorSelectionExplorer)), which can be used to identify and diagnose potential  
14 comparators for a given target cohort. Note that this application undergoes periodic updates, including  
15 the updating of existing data sources to newer versions, the addition of new data sources, and the  
16 modification of existing functionality. As such, some results derived from the application may differ from  
17 those presented here.

### 18 **Code availability**

19 All code necessary to run the analytic pipeline described here and to generate the web application is  
20 available via GitHub (<https://github.com/OHDSI/ComparatorSelectionExplorer>).

## 1 Author contributions

Author	Affiliation	Email Address	ORCID	Contributions
Justin Bohn	Janssen Research & Development, Titusville, NJ	<a href="mailto:Jbohn2@its.jnj.com">Jbohn2@its.jnj.com</a>	0000-0003-4430-798X	Designed the analysis, performed the analysis, conducted literature review, drafted the manuscript
James P. Gilbert	Janssen Research & Development, Titusville, NJ	<a href="mailto:Jgilber2@its.jnj.com">Jgilber2@its.jnj.com</a>	0000-0003-2294-3459	Designed the analysis, performed the analysis, reviewed and contributed to the manuscript
Christopher Knoll	Janssen Research & Development, Titusville, NJ	<a href="mailto:Cknoll1@its.jnj.com">Cknoll1@its.jnj.com</a>		Designed the analysis, reviewed and contributed to the manuscript
David M. Kern	Janssen Research & Development, Titusville, NJ	<a href="mailto:Dkern2@its.jnj.com">Dkern2@its.jnj.com</a>	0000-0001-5417-3925	Designed the analysis, reviewed and contributed to the manuscript
Patrick B. Ryan	Janssen Research & Development, Titusville, NJ	<a href="mailto:Prayan4@its.jnj.com">Prayan4@its.jnj.com</a>		Designed the analysis, conducted literature review, reviewed and contributed to the manuscript

2