

# 1 Pancreatic cancer symptom trajectories from Danish 2 registry data and free text in electronic health records

3  
4 Jessica Xin Hjaltelin\*<sup>1</sup>, Sif Ingibergsdóttir Novitski\*<sup>1</sup>, Isabella Friis Jørgensen<sup>1</sup>, Julia Sidenius  
5 Johansen<sup>2</sup>, Inna M Chen<sup>2</sup>, Troels Siggaard<sup>1</sup>, Siri Vulpius<sup>1</sup>, Lars Juhl Jensen<sup>1</sup>, Søren Brunak<sup>1,3</sup>

6  
7 <sup>1</sup> Novo Nordisk Foundation Center for Protein Research, Faculty of Health and Medical Sciences, University of  
8 Copenhagen, Denmark, Blegdamsvej 3B, 2200 Copenhagen N, Denmark

9 <sup>2</sup> Department of Oncology, Copenhagen University Hospital - Herlev and Gentofte, Borgmester Ib Juuls Vej 1,  
10 2730 Herlev, Denmark

11 <sup>3</sup> Copenhagen University Hospital, Rigshospitalet, Blegdamsvej 9, 2100 Copenhagen Ø, Denmark

12  
13 \* joint first authors: [jessica.hu@cpr.ku.dk](mailto:jessica.hu@cpr.ku.dk), [sif.novitski@cpr.ku.dk](mailto:sif.novitski@cpr.ku.dk)

14 Corresponding author: [soren.brunak@cpr.ku.dk](mailto:soren.brunak@cpr.ku.dk)

## 16 Abstract

17  
18 Pancreatic cancer is one of the deadliest cancer types with poor treatment options. Better detection  
19 of early symptoms and relevant disease correlations could improve pancreatic cancer prognosis. In  
20 this retrospective study, we used symptom and disease codes (ICD-10) from the Danish National  
21 Patient Registry (NPR) encompassing 8.1 million patients from 1977 to 2018, of whom 22,727 were  
22 diagnosed with pancreatic cancer. To complement and compare these diagnosis codes with deeper  
23 clinical data, we used a text mining approach to extract symptoms from free text clinical notes in  
24 electronic health records (4,418 pancreatic cancer patients and 44,180 controls). We used both data  
25 sources to generate and compare symptom disease trajectories to uncover temporal patterns of  
26 symptoms prior to pancreatic cancer diagnosis for the same patients. We show that the text mining  
27 of the clinical notes was able to capture richer statistically significant symptom patterns, in particular  
28 general pain, abdominal pain, and liver-related conditions. We also detected haemorrhages (p-value  
29 =  $4.80 \cdot 10^{-08}$ ) and headache (p-value =  $2.12 \cdot 10^{-06}$ ) to be linked as early symptoms of pancreatic  
30 cancer. Chaining symptoms together in trajectories identified patients with jaundice conditions  
31 having higher median survival (>90 days) compared to patients following trajectories that included  
32 haemorrhage, oedema or anaemia ( $\leq 90$  days). Additionally, we discovered a group of cardiovascular  
33 patients that developed pancreatic cancer with a lower median survival ( $\leq 90$  days). These results  
34 provide an overview of two types of pancreatic cancer symptom trajectories. The two approaches  
35 and data types complement each other to provide a fuller picture of the early risk factors for  
36 pancreatic cancer.

39

## 40 Introduction

41

42 Pancreatic cancer has been predicted to become the second leading cause of cancer deaths,  
43 surpassing breast, colorectal, and prostate cancer(Rahib et al. 2021). It has few and generic  
44 symptoms resulting in late diagnosis(Kim and Ahuja 2015; Chari et al. 2015) and poor prognosis with  
45 a 5-year survival rate of 11%("American Cancer Society" 2020). Hence, improved knowledge of  
46 symptoms and diseases occurring early is of high importance to treat this cancer type at a curable  
47 stage and provide better prognosis and guide screening programs for pancreatic cancer(Risch et al.  
48 2015). If the cancer is detected at an early stage, where surgical removal of the tumor is possible,  
49 the survival rate increases to 42%("American Cancer Society" 2020).

50

51 Symptoms of pancreatic cancer are often mistaken for signs of less severe illnesses and overlooked  
52 in clinical practice. Some of the most frequent symptoms linked to pancreatic cancer are weight loss,  
53 abdominal pain, and anorexia(Hidalgo 2010). Others include upper abdominal pain, cholestasis,  
54 nausea(Hidalgo 2010), and dark urine and thirst(Liao et al. 2021). Cholestatic symptoms are more  
55 commonly found when the tumor is located in the head of the pancreas(De La Cruz, Young, and  
56 Ruffin 2014)(Porta et al. 2005). New-onset diabetes has additionally been found to co-occur with  
57 pancreatic cancer when accompanied by weight loss(Yuan et al. 2020),(Hart et al.  
58 2011),(Bruenderman and Martin 2015).

59

60 National or regional disease registries hold longitudinal data on disease development. The registries  
61 in the Nordic countries are of high quality and among the oldest covering treatment in one-payer  
62 health care systems(Laugesen et al. 2021). The National Danish Patient Registry (NPR) contains  
63 hospital diagnoses since 1977 and allows for large data-driven studies to detect temporal disease  
64 progression patterns relevant in the context of stratified medicine(Jensen et al. 2014; Siggaaard et al.  
65 2020). A recent example was the characterization of multimorbidity correlations across cancer types  
66 in 0.7 million patients(Hu et al. 2019). However, much of the deeper phenotypic patient information  
67 resides within the free text of the electronic health records (EHRs)(Soguero-Ruiz et al. 2016;  
68 Delespierre et al. 2017). A small-scale study using 4,080 mixed types of cancers attempted to build  
69 more general "event trajectories" using a text mining and a pooled analysis-approach (Jensen et al.  
70 2017). A prospective study investigating initial symptoms and diagnostic interval (time from onset to  
71 diagnosis) for known pancreatic cancer symptoms found no difference between pancreatic cancer  
72 and patients suspected of having pancreatic cancer(Walter et al. 2016). It is also suggested that  
73 symptoms appear sporadically, adding to the complex nature of the disease manifestation(Evans et  
74 al. 2014). Other studies used primary care EHRs to detect pancreatic cancer symptoms and found  
75 jaundice(Stapley et al. 2012), back pain, lethargy, and new-onset diabetes to be linked to pancreatic  
76 cancer(Keane et al. 2014). These studies detected pancreatic cancer symptoms using a single-disease  
77 approach, not considering the temporal ordering of symptoms or diseases.

78

79 In this paper, we present a large-scale study to investigate pancreatic cancer symptoms  
80 longitudinally. We cover all symptoms included in the International Classification of Disease (ICD-10)

81 terminology symptom chapter 18. Additionally, we also include in the text mining vocabulary other  
82 known or suggested pancreatic cancer symptoms. We generate and compare disease and symptom  
83 trajectories using registry data and clinical notes in EHRs to characterize the temporal ordering of  
84 symptoms across data sources.  
85

## 86 Results

87

### 88 Extracting patient-level data from the Danish National Patient Registry and free text electronic 89 health records

90

91 The Danish National Patient Registry (NPR) data spans the period 1977 to 2018, while the electronic  
92 health records (EHRs) used here are from the 2006 to 2016 time-interval. The NPR includes  
93 8,110,702 patients where 22,727 patients are diagnosed with pancreatic cancer (**Table 1**). A subset  
94 of 4,418 of these pancreatic cancer patients is included in the EHRs. Almost as many females as  
95 males are identified with pancreatic cancer both in NPR and the EHRs (**Table 1**).  
96

**Table 1. Data set and patient characteristics**

Data set	The National health Registry (NPR)	The free text clinical notes
Year span	1977-2018	2006-2016
N pancreatic cancer patients	22,727	4,418
N controls	8.1M	44,180
Female	11,326 (49.8%)	2,138 (48.4%)
Male	11,401 (50.2%)	2,280 (51.6%)
Mean age at diagnosis (female/male)	73/70	72/70
Counts age at diagnosis		
<40	232	33
40-50	914	161
50-60	2,998	520
60-70	6,165	1,355
70-80	7,564	1,492
>80	4,854	857

97

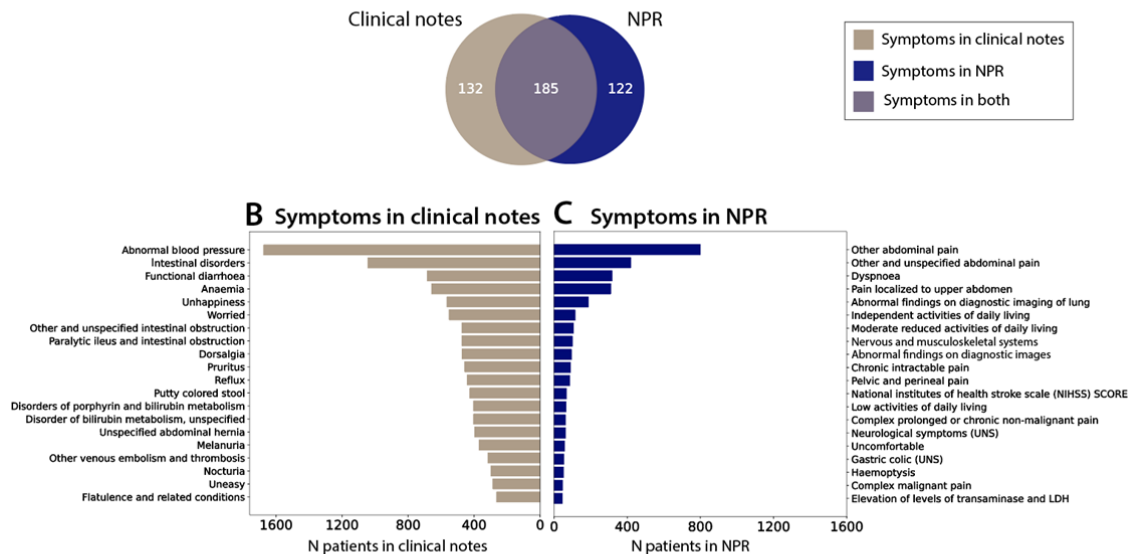
98

99 We limited the pancreatic cancer patient symptom history in the NPR and clinical notes to five years  
100 prior to the diagnosis. The text-based approach was able to identify 132 unique symptoms in the  
101 clinical notes, not registered in NPR (**Fig. 1A**). The most frequent symptoms exclusively found in the

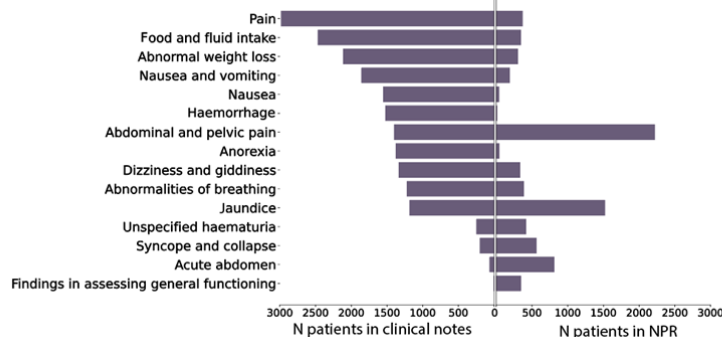
102 clinical notes were abnormal blood pressure, anaemias, and conditions related to the intestine (**Fig.**  
103 **1B**). Within abnormal blood pressure, 1,656 patients had hypertension and 75 patients had low  
104 blood pressure. In addition, emotional states like unhappiness and worries were also found (**Fig. 1B**).  
105 NPR contained 122 ICD-10 symptoms not found by text mining (**Fig. 1A**). Frequent symptoms  
106 exclusively identified in the NPR data comprise abdominal pain, dyspnea, pain localized to the upper  
107 abdomen, and abnormal findings on medical images (**Fig. 1C**). Despite the clinical notes data set  
108 having much fewer pancreatic cancer patients (4,418 versus 22,727 in NPR), we found a significantly  
109 higher number of symptoms in these. In NPR and free text clinical notes, 185 symptoms were  
110 identified that occurred in both sources (**Fig. 1A**). Of these 185 symptoms, the top 10 most frequent  
111 symptoms from the free text clinical notes and the NPR were compared (**Fig. 1D**). Both sources  
112 agreed on six symptoms as being among the top 10 most frequent symptoms for pancreatic cancer  
113 patients. These six symptoms were jaundice, abnormalities of breathing, dizziness and giddiness,  
114 abdominal and pelvic pain, symptoms and signs concerning food and fluid intake, and pain. From the  
115 hierarchical structure of the ICD-10 chapters, different levels of coding detail can be retrieved. In the  
116 symptom group "symptom and signs concerning food and fluid intake", the majority of patients  
117 represent the subgroups "abnormal weight loss" (R63.4) and anorexia (R63.0). Nausea, vomiting,  
118 anorexia, and haemorrhage were frequent symptoms in the free-text clinical notes but have low  
119 occurrences in NPR. On the contrary, acute abdomen was frequent in NPR but barely found in the  
120 clinical notes (**Fig. 1D**).

121

### A Symptom variety in registry data versus clinical text



### D Symptoms shared in both



122

123

124

125

126

127

128

129

130

131

132

133

134

135

136

137

138

**Fig. 1. Comparison of pancreatic cancer symptoms in the Danish National Patient Registry (NPR) and electronic health records (EHRs).** (A) Symptoms previous to the pancreatic cancer diagnosis identified in NPR ( $N_{NPR}=122$ ), by text mining of clinical notes from EHRs ( $N_{notes}=132$ ) or in both data sources ( $N_{both}=185$ ). (B) The top 20 most frequent symptoms that are only found in the clinical notes. (C) The top 20 most frequent symptoms only found in NPR. (D) The top 15 most frequent symptoms from the clinical notes and NPR, from the list of 185 overlapping symptoms. Some symptom names have been shortened for overview (see Supplementary Table S1).

### Text mining validation

In total, 4,418 out of 4,418 (94%) of the pancreatic cancer patients in clinical notes have at least one symptom identified by text mining. A control group of 44,180 patients was generated by matching age and sex. From these, 38,503 patients (87%) had a match for at least one symptom. The performance of the text mining was validated using a test corpus comprising a random extraction of

139 200 clinical notes from 200 different patients. In these notes, a total of 807 symptoms were  
140 manually annotated and the text mining method was able to identify 675 correctly and 132  
141 symptoms were not found. This yielded a sensitivity score of 83.4%. A specificity score of 99.8% was  
142 obtained since the majority of clinical notes comprise non-symptom words describing the patient's  
143 contact with the hospital. Symptoms incorrectly matched to the dictionary constitute a total of 53  
144 words.

145

#### 146 **Pancreatic cancer trajectories from NPR**

147

148 Longitudinal disease trajectories were generated for the pancreatic cancer patients, where  
149 significant directional diagnosis pairs were joined to represent patients that traverse a complete  
150 disease path. The width of the trajectories illustrates the size of a patient group that moves through  
151 a particular path and a patient can follow multiple paths. The ICD-10 disease codes from NPR were  
152 used to generate disease trajectories (**Fig. 2A, Supplementary Table S2**). ICD-10 chapters, which are  
153 associated with pancreatic cancer, are abdominal diseases, cardiovascular diseases, diseases relating  
154 to the ears and mastoid process, endocrine, nutritional and metabolic diseases, and the symptom  
155 chapter. Most of the codes from the symptoms chapter appear after the diagnosis of pancreatic  
156 cancer, except for abdominal and pelvic pain (**Fig. 2A**). This symptom is part of six different  
157 trajectories comprising 1,363 patients. One of the trajectory groups is formed by cardiovascular  
158 diseases (1,720 patients) including angina pectoris and acute myocardial infarction that traverse to  
159 angina pectoris, chronic ischemic heart disease, type 2 diabetes or heart failure and afterwards into  
160 malignant neoplasm of the pancreas. The patients following these trajectories have the shortest  
161 survival (median survival  $\leq 90$  days) compared to the patients following the other trajectories. Other  
162 disease trajectories that show short survival are the cataract trajectory and the gonarthrosis-  
163 hypertension trajectory, comprising 321 and 332 patients, respectively. The rest of the trajectories  
164 has median survival above  $>90$  days and includes for example type 2 diabetes (780 patients) or  
165 abdominal pain (1,363 patients) before pancreatic cancer. Survival in months for the patients  
166 following a disease trajectory is shown in **Supplementary Fig. S1B**.

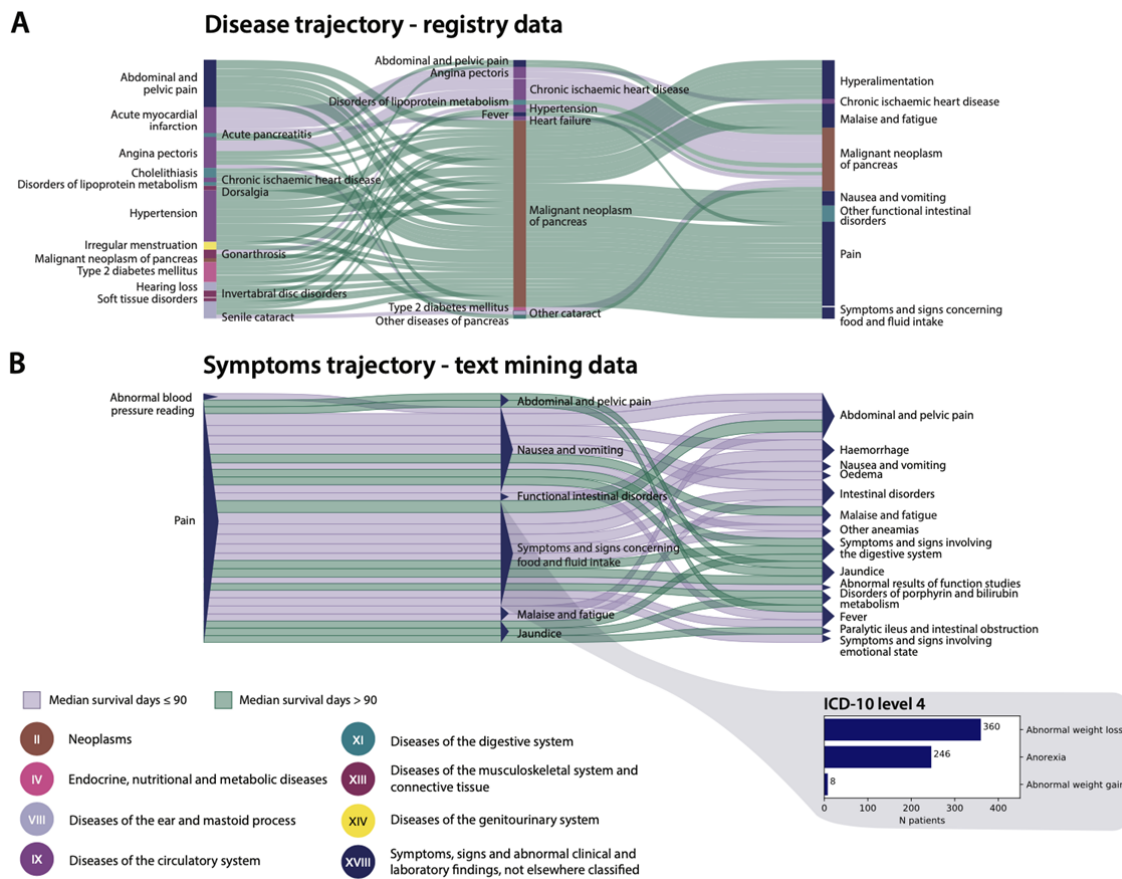
167

168

169

170

171



172  
173  
174  
175  
176  
177  
178  
179  
180  
181  
182  
183  
184

**Fig. 2. Disease and symptoms trajectories before and after pancreatic cancer diagnosis. (A)** The registry disease trajectories consist of significant disease pairs with a Relative Risk (RR)  $> 1$  (Supplementary Table S1). Each trajectory has a minimum of 300 patients. **(B)** Symptom trajectories from clinical notes consisting of significant disease pairs with RR  $> 1$  (Supplementary Table S3). Each trajectory has a minimum of 100 patients. The width of the trajectories indicates visually the actual number of patients. The purple-colored trajectories represent patient groups with median survival  $\leq 90$  days. The green-colored trajectories represent patient groups with median survival  $> 90$  days. Disease and symptoms in the trajectories are colored by the ICD-10 chapters. Some symptoms names have been shortened for overview.

### 185 Pancreatic cancer trajectories from clinical notes

186  
187  
188  
189  
190  
191  
192  
193  
194  
195

The symptom trajectories were generated for the pancreatic cancer patients with available clinical notes 5-years prior to the diagnosis (**Fig. 2B**). All trajectories shown are significant in terms of direction with at least 100 patients following the complete path of three symptoms. A patient can follow several symptom paths. The majority of the trajectories begin with pain including 1,085 patients. From the pain symptom, a large group traverse into symptoms and signs concerning food and fluid intake (N=614). Of these 614 patients, 360 have abnormal weight loss, 246 have anorexia, and eight have abnormal weight gain. Several trajectories were also identified with pain that traverse into symptoms of nausea and vomiting or jaundice. At the end of the three symptom trajectories, 376 patients end up with abdominal pain, 272 patients with haemorrhage, 261 with

196 functional intestinal disorders, and 222 with jaundice. All the patients following trajectories that end  
197 up with haemorrhage, oedema, and anemia have short survival (median survival  $\leq 90$  days) opposed  
198 to for example disorders of porphyrin and bilirubin metabolism and jaundice (median survival  $> 90$   
199 days). See **Supplementary Table S3** for trajectory details. The survival of the patients following the  
200 symptom trajectories are presented in **Supplementary Fig. S1A**.

201

202

### 203 **Temporality of symptoms from clinical notes**

204

205 The distribution of symptoms registered over time can be seen for the 20 most frequent symptoms  
206 that occur significantly more often in the pancreatic cancer patients opposed to the control group  
207 (**Fig. 3**). The distribution is over a five-year period previous to the pancreatic cancer diagnosis. If a  
208 symptom is registered multiple times in one hospital encounter it is included once. Otherwise, all  
209 occurrences of a symptom during the five-year period are included for a patient. Some of the most  
210 frequent symptoms identified are symptoms related to pain, weight loss, and jaundice. Additionally,  
211 haemorrhage (p-value =  $4.80 \cdot 10^{-08}$ ) and headache (p-value =  $2.12 \cdot 10^{-06}$ ) were frequent and significant  
212 among pancreatic cancer patients. **Supplementary Table S4** shows the number of patients and all p-  
213 values relating to these symptoms.

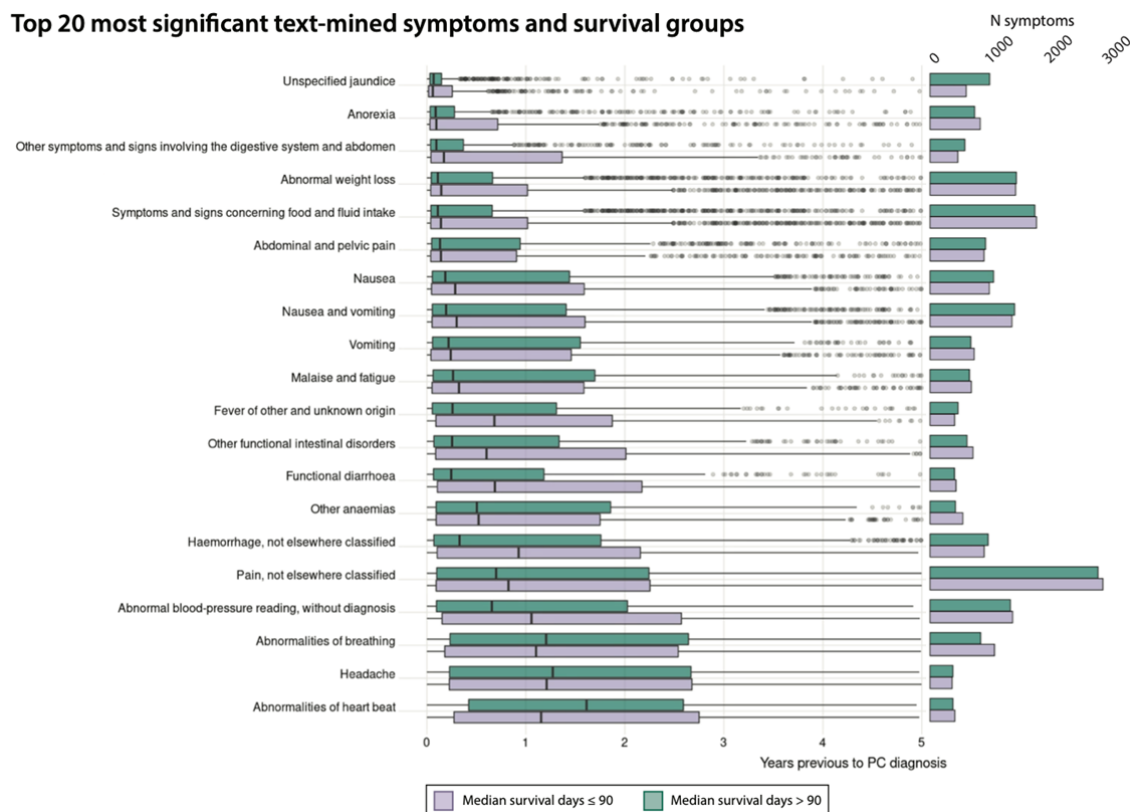
214

215 Symptoms such as jaundice, anorexia, weight loss, and abdominal conditions were observed only  
216 closer to the pancreatic cancer diagnosis and the median of these appear within 6 months before  
217 pancreatic cancer diagnosis. The more general symptoms such as pain, abnormalities of breathing,  
218 abnormal blood pressure, abnormalities of heart beat, and headache have a median higher than 6  
219 months before diagnosis. Most of the symptoms can be identified earlier in the clinical notes for  
220 patients with short survival ( $\leq 90$  days) opposed to patients with longer survival ( $> 90$  days).

221



### Top 20 most significant text-mined symptoms and survival groups



222  
223  
224  
225  
226  
227  
228  
229  
230

**Fig. 3. Top 20 most frequent text mined symptoms from the clinical notes five years previous to pancreatic cancer diagnosis.** The top 20 most common and significant ( $P < 0.05$ ) symptoms in the text mined clinical notes are shown with survival information and time to pancreatic cancer diagnosis (Supplementary Table S4 and S5). The symptoms are extracted over a five-year period up to the time of pancreatic cancer (PC) diagnosis. If a symptom is noted more than once in one hospital encounter, the symptom is counted once. The purple bars indicate patients with survival  $\leq 90$  days and the green bars indicate patients with a survival  $> 90$  days. Symptom names may have been shortened for overview (see Supplementary Table S1).

## 231 Discussion

232  
233  
234  
235  
236  
237  
238  
239  
240  
241  
242  
243  
244

This study uncovered statistically significant disease and symptom trajectories prior to pancreatic cancer that may be further assessed as early risk factors for pancreatic cancer for screening purposes. We complemented pancreatic cancer symptoms from hospital diagnosis codes with symptoms extracted by a text mining approach using free text in EHRs. From this, we discovered that symptoms were more abundant in the EHRs opposed to the NPR. The high variation in symptom frequency between the two sources was astonishing since the clinical notes were only available on a subset of the pancreatic cancer patients (4,418 out of 22,727). For example, more than 2,000 patients out of 4,418 had weight loss according to the free text clinical notes but in the registry, it was less than 500 patients out of 22,727. On the contrary, there were symptoms identified in the NPR that were not identified in the clinical notes which could be explained by the higher number of cases over a larger period of time in the NPR data set.

245 The most common pancreatic cancer symptoms such as abdominal pain and weight loss (Porta et al.  
246 2005) as well as jaundice(Walter et al. 2016) were detected in both the registry and the text mining  
247 approach. Another study found that 21% of pancreatic cancer patients had dyspnoea(Krech and  
248 Walsh 1991), which agrees with our findings in relation to abnormalities of breathing. However, we  
249 discovered that haemorrhage and headache were frequent and significant in this cohort which is  
250 usually not described as a typical symptom of pancreatic cancer. In the clinical notes, more than a  
251 third of the patients had haemorrhages and the incidence is reported to be only 3%-12% for  
252 advanced cancers(Harris and Noble 2009). Additionally, gastrointestinal bleeding has been found to  
253 occur rarely among pancreatic cancer patients(Lee et al. 1994; Richardson and Baldeo 2016).  
254 Headache has been found to occur in 11% of advanced cancer patients which fits roughly with our  
255 results(Walsh, Donnelly, and Rybicki 2000), but is usually not described in relation to pancreatic  
256 cancer. Treatments or other comorbidities are entities that could be considered in relation to these  
257 findings to check if it is caused by the cancer, external source or by other confounders.

258  
259 We found that for patients with short survival ( $\leq 90$  days), symptoms could be tracked further back in  
260 the clinical notes, where patients with longer survival showed symptoms appearing closer to  
261 diagnosis. This could indicate that the pancreatic cancer had metastasized further in the patients  
262 with short survival. Short survival is commonly defined in oncology studies as death within 90  
263 days(Sgouros and Maraveyas 2008). Using this threshold could be a strict choice to distinguish  
264 patient groups and it is important to interpret survival of each patient group exactly.

265  
266 Tables S2 and S3 provide an overview of all the trajectories identified in our study including how  
267 many patients follow them and the median survival of each trajectory group. Symptom trajectories  
268 with a shorter median survival ( $\leq 90$  days) included anaemia, haemorrhages, and oedema which is  
269 related to advanced cancers(Caro et al. 2001), (Pereira and Phan 2004), (Tai et al. 2016). Jaundice  
270 was coupled to higher survival ( $>90$  days), since in the case of pancreatic cancer, it contributes as a  
271 clearer cancer symptom compared to the other more generic pancreatic cancer symptoms(Strasberg  
272 et al. 2014). Another study found the diagnostic interval to be shorter for jaundice compared to for  
273 example weight loss for pancreatic cancer patients(Walter et al. 2016), (Gobbi et al. 2013). It could  
274 therefore indicate a faster diagnosis but not necessarily a longer survival. We additionally identified  
275 patients with heart diseases and a lower survival that developed pancreatic cancer and it has been  
276 suggested that thromboembolic events could play a role in pancreatic cancer(Bergqvist et al. 2006)  
277 (Bertero et al. 2018). Cardiovascular diseases have been indicated as a risk factor for certain  
278 cancers(Lau et al. 2021), and contrariwise it is discussed if cancer should be included in  
279 cardiovascular risk prediction tools(Blaes and Shenoy 2019). Though the aim in our study was to  
280 identify patient groups that follow specific symptom trajectories there seem to be no prominent  
281 groups that stand out. All patients begin with general symptoms such as pain or abnormal blood  
282 pressure and afterwards more cancer specific symptoms such as weight loss, nausea, and jaundice  
283 appear.

284  
285 One limitation of this study is that our data is strictly hospital contacts, which may result in a set of  
286 identified symptoms and diagnoses occurring not at the earliest disease stage. By including data  
287 from general practitioners, future studies could potentially identify even earlier symptom patterns  
288 prior to pancreatic cancer. Causal patterns reflected from trajectories can be difficult to interpret for

289 example if an event serves as an actual cause or is the result of confounders(Jensen et al. 2014).  
290 Confounders could for example be medication or other risk factors that are not accounted for in the  
291 analyses. In this type of trajectory study, we can only assess the association between diseases, but  
292 actual causal relationships will need to be validated in future studies. Furthermore, the available  
293 period for the clinical notes (2006-2016) was shorter compared to the NPR (1977-2018). A direct  
294 comparison between the two data sources can be challenging, since registry terms are not  
295 necessarily written as in the free text clinical notes. One example is acute abdomen, which describes  
296 a condition with severe abdominal pain that demands immediate medical attention. A clinical note  
297 might contain text that the patient was admitted with severe stomach pain but register it as the ICD-  
298 10 code “R10.0 - Acute abdomen” in NPR which essentially would mean the same. Also, information  
299 bias may exist in the coding procedure within NPR and it might not always be trivial to code the  
300 correct symptom or diagnosis(Schmidt et al. 2015), (Lyng, Sandegaard, and Rebolj 2011). From our  
301 study, we show that the inclusion of symptoms text mined from clinical notes largely complemented  
302 ICD-coded symptoms from the patient registry.

303  
304 This study showed that deep phenotypical information stored in registry data and free text EHRs can  
305 be useful for detecting temporal patterns. The sequence of events that leads up till the pancreatic  
306 cancer diagnosis supports that symptoms may appear in a messy and complex order. Patients start  
307 experiencing general and unspecific symptoms, which then become more specific and severe as the  
308 cancer advances. The methodology presented here can be used for external data sets and may,  
309 when validated, serve as a clinical tool to stratify patient groups so the correct option of patient care  
310 can be offered at a personalized level.

311

312

313

## 314 **Methods**

315

### 316 **Study design**

317

318 The health data used was from the Danish NPR and from clinical notes. For the generation of the  
319 trajectories, we used disease codes from the hierarchical International Classification of Diseases  
320 (ICD) system. ICD version 10 codes at level 3 were used for this study. The case cohort of pancreatic  
321 cancer patients were defined based on the pancreatic cancer code C25. If patients were registered  
322 with another cancer type before pancreatic cancer, they were not included as cases.

323

### 324 **Patient cohorts**

325

326 From the Danish NPR, all hospital encounters in Denmark during the period 1977 to 2018 were used  
327 in our analyses, comprising 235,648,697 encounters for 8,172,661 patients. The ICD-10 Chapter 18  
328 (Symptoms, signs and abnormal clinical and laboratory findings, not elsewhere classified) was used  
329 as vocabularies for extraction of symptoms from both NPR and the clinical notes. The EHR data  
330 comprising clinical notes included 1,906,769 patients from the Capital Region of Denmark and

331 Region Zealand from the period of 2006 to 2016 with a total of 7,831,920 unique clinical notes. A  
332 clinical note contains information regarding a hospital encounter for a patient such as the reason for  
333 admission, findings, symptoms, operations, and treatments. Only patients with at least one clinical  
334 note within a five-year time interval before diagnosis were included. A control group was sampled  
335 for the patients having clinical notes using the same age and sex distribution with 10 control patients  
336 per pancreatic cancer patient and the same filtering criteria.  
337 The registries could be linked through the Central Personal Register (CPR) number, which all Danish  
338 citizens possess.

339

#### 340 **Preprocessing of patient cohorts**

341

342 Status codes 01 and 90 have been included in the analysis, excluding the rest of the status codes to  
343 make sure only active residents in Denmark (01) and inactive dead (90) are a part of the cohort.  
344 Furthermore, diagnosis types H and M (referral and temporary diagnosis) were excluded from the  
345 data for the extraction of disease and symptom frequencies and for the construction of trajectories.  
346 This was to ensure that the analysis is based on the main biologically relevant diagnoses in NPR.

347

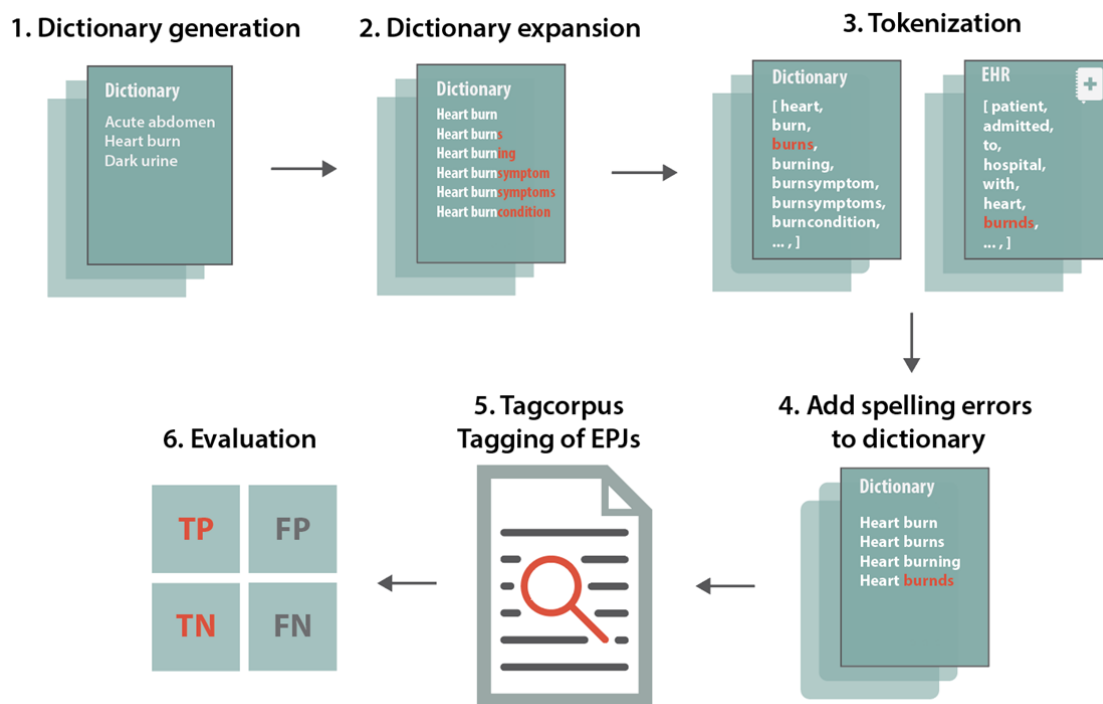
#### 348 **Text mining clinical notes**

349

350 A dictionary was constructed by including all symptoms from the ICD-10 symptom chapter 18.  
351 Known pancreatic cancer symptoms that were not already a part of chapter 18, were added to the  
352 vocabulary. The final symptom dictionary consisted of 691 symptoms. The symptoms were initially  
353 written in their singular forms and afterwards suffixes were added to ensure different variants of a  
354 symptom such as plural forms. Other word endings like “condition” or “symptom” were also added  
355 since these are sometimes put behind a symptom in Danish (**Fig. 4**). Afterwards, the extended  
356 dictionary and the clinical notes from the patients and the control group were tokenized. The unique  
357 tokens from each were then compared to extract spelling errors on words longer or equal to five  
358 characters. In order to extract words with spelling errors, the tokens from the dictionary were fuzzy  
359 matched against the tokens from the clinical notes using the Python package fuzzysearch(Einat  
360 2020).

361

362



363  
364  
365  
366  
367  
368  
369  
370  
371  
372  
373  
374  
375  
376  
377  
378  
379  
380  
381  
382  
383  
384  
385  
386  
387  
388

**Fig. 4. Text mining pipeline.** A dictionary was generated with symptoms and expanded with word endings to capture multiple forms of the same symptom. Afterwards, the dictionary and the corpus (clinical notes) were tokenized in order to extract spelling errors. The spelling errors were then added to the dictionary. Finally, the program tagcorpus (Pafilis et al. 2013) was used to tag the symptoms in the corpus. The text mining performance was then evaluated.

The metric to measure similarities was Levenshtein's distance. In this case, a maximum value of distance between two words was set to 1 to allow for either one substitution, one deletion or one addition of a character to the word. When the fuzzy matching was complete, all outcomes were further assessed and rechecked so that wrong matches could be removed.

After the extraction of variations for the synonyms, the program Tagcorpus(Pafilis et al. 2013) was used to tag the corpus (the clinical notes) for the pancreatic cancer patients and the control patients. It is a fast program written in C++, which for example is able to process thousands of PubMed abstracts per second((Pafilis and Jensen 2016), (L. J. Jensen 2016),(Pafilis et al. 2013)). A post-processing step was applied that removed sentences with negations and mentioning of other persons than the patient(Eriksson et al. 2014). This ensures that whenever there is a negation word in a sentence the word will not be tagged. For example, not, never, and no are a part of the negation dictionary. From the other person's filter, the symptom will not be tagged if a sentence contains for example mother, brother etc. since it might relate to another person and not to the patient in question. The evaluation of the text mining was done using a confusion matrix of 200 randomly selected clinical notes. These were checked manually for incorrectly and correctly matched symptoms. Afterwards, the metrics sensitivity and specificity were calculated. The sensitivity is defined as

389 
$$= \frac{\text{TP}}{\text{TP} + \text{FN}} \quad (1)$$

390 where TP are the true positives and FN the false negatives. The sensitivity describes the fraction of  
391 correctly matched symptoms opposed to all symptoms. Specificity is the fraction of correctly  
392 matched words that are not symptoms opposed to all the non-symptom words in the clinical notes  
393 and is defined by

394  
395 
$$= \frac{\text{TN}}{\text{TN} + \text{FP}} \quad (2)$$

396

397

### 398 **Generating pancreas cancer trajectories**

399

400 We calculated significant disease trajectories for the population of pancreatic cancer patients using  
401 the methodology from Jensen *et al.* (A. B. Jensen *et al.* 2014). Here, the Relative Risk (RR) was  
402 calculated (Eq. 3) for the strength of an association between two diseases in the exposed group  
403 compared to a comparison group. The exposed group was matched with the same age and sex group  
404 as the comparison group and seasonal changes were accounted for by taking samples from the  
405 comparison group disease discharge to have the same week as the disease 1 (D1) discharge in the  
406 exposed group. The count for the exposed group is denoted  $C_{\text{exposed}}$  and the corresponding  $i$ 'th  
407 comparison group as  $C_i$  where  $i \in \{1, \dots, N\}$  and  $N$  is the number of comparison groups.

408

409

410 
$$= \frac{C_{\text{exposed}}}{\sum_i C_i} \quad (3)$$

411

412 P-values for the RR were calculated using binomial tests, where the average probability of sampling a  
413 control patient with D2 was compared with  $C_{\text{exposed}}$ . Afterwards, the diagnosis pairs (D1, D2) were  
414 tested for directionality with binomial tests to decide if the direction is significant for the significant  
415 disease pairs found. The patients having the direction (D1 → D2) or the other direction (D2 → D1)  
416 were counted. Patients having D1 and D2 at the same time were also counted and the total count  
417 constitutes  $N$  samples with 50 % probability of having either one of the directions. The p-values were  
418 afterwards Bonferroni corrected.

419

420 To find significant text mined symptoms, we sampled 10 control patients for every pancreatic cancer  
421 case patient. The 44,418 control patients were stratified based on sex, birth year and age at  
422 diagnosis. We ensured that the control patients were diagnosed with another disease at the same  
423 age as the cases and extracted their clinical notes five years previous to that diagnosis. This was  
424 done to make sure the notes for the control and the case group originated at a similar time period  
425 during their lifetime and up to a diagnosis.

426

427 For the construction of the symptom trajectories the RR was calculated using the counts for the co-  
428 occurrence of all possible symptom pair (See **Table 2**) and the  $\chi^2$  was used to test the significance of  
429 the co-occurrence.

430

**Table 2. Relative risk for symptoms pair**

Relative Risk	$C_{\text{Exposed}}$	$C_i$
$S_1 S_2$	N patients in $C_{\text{Exposed}}$ with $S_1$ and $S_2$	N patients in $C_i$ with $S_1$ and $S_2$
Not $S_1 S_2$	N patients in $C_{\text{Exposed}}$ without $S_1$ and $S_2$	N patients in $C_i$ without $S_1$ and $S_2$

431  
432  
433  
434  
435  
436  
437  
438  
439  
440  
441

Subsequently, each symptom pair, with  $RR > 1$  and a significant p-value  $< 0.05$ , was tested for directionality and Bonferroni-corrected using the method from Jensen *et al.* (A. B. Jensen *et al.* 2014). For the text mined symptoms, the day of admission was used as the time registered for the symptom, since capturing the symptom as early as possible is crucial for the purpose of this study.

## 442 **Approvals**

443 The work was approved as a registry study that does not require ethical permissions in Denmark as  
444 well as patient consent. Access to the data was approved by the Danish Data Protection Agency (ref:  
445 514-0255/18-3000, 514-0254/18-3000, SUND-2016-50), the Danish Health Data Authority (ref:  
446 FSEID-00003724 and FSEID-00003092), and the Danish Patient Safety Authority (3-3013-1731/1/).

## 447 **Data availability**

448 Permission to access the person-sensitive data used for this study can be obtained through the  
449 Danish Data Protection Agency, the Danish Health Authority, and the Danish Health regions (Capital  
450 Region and Region Zealand). As the raw electronic patient records and registry information are  
451 individual-level data they are person sensitive and cannot be made publicly available but only  
452 analyzed in closed, secure environments. In the paper we have only provided diagnosis and co-  
453 occurrence information when grouped to at least five patients. All patient information published  
454 here is non-person-sensitive summary level data and have been shared in the Supplementary  
455 materials.

## 456 **Code availability**

457 The methodology and the data analysis have been carried out using Python software (version 3.8)  
458 and R version 3.6. The code for the text mining method is available at  
459 <https://github.com/larsjuhljensen/tagger>. The key algorithm for creation of disease trajectories  
460 have been described in details in the published studies Jensen *et al.* (Jensen et al. 2014) and *Siggaard*  
461 *et al.* (Siggaard et al. 2020).

## 462 **Acknowledgements**

463 We would like to acknowledge funding from the Novo Nordisk Foundation (grant agreements  
464 NNF14CC0001 and NNF17OC0027594), the Braindrugs (R279-2018-1145) as well as the Danish  
465 Innovation Fund (5184-00102B).

## 466 **Author contributions**

467  
468 J.X.H. and SB conceptualized the study design and supervised the project. J.X.H. and S.I.N. ran the  
469 analyses together and wrote the manuscript draft together. T.S. helped run the text mining analysis.  
470 I.F.J. contributed in the decision making of the analysis and S.V. validated the text mining and  
471 translated the ICD-10 symptom chapter. J.S.J. and I.M.C. contributed to clinical expertise on  
472 pancreatic cancer oncology in Denmark. SB edited the draft version that was approved by all  
473 authors.

## 474 **Competing interests**

475



476 S.B. reports ownerships in Intomics A/S (now acquired by ZS Inc.), Hoba Therapeutics Aps, Novo  
477 Nordisk A/S, Lundbeck A/S, ALK-Abello A/S and managing board memberships in Proscion A/S and  
478 Intomics A/S outside the submitted work. I.M.C. reported receiving research funding and  
479 hotel/airfare reimbursement to attend global health meetings from Roche, BMS, Celgene, Genis, and  
480 an advisory relationship with Amgen and AstraZeneca. L.J.J. reports ownerships in Amgen Inc,  
481 AstraZeneca PLC and Novo Nordisk A/S. All other authors declare no competing interests.

## 482 References

- 483 "American Cancer Society." 2020. *Cancer Facts & Figures 2020*. Atlanta, Ga: American Cancer  
484 Society.
- 485 Bergqvist, David, Karin Wåhlander, Henry Eriksson, Nils Sternby, and Mats Ögren. 2006. "Trousseau's  
486 Syndrome – What Is the Evidence?" *Thrombosis and Haemostasis*.  
487 <https://doi.org/10.1160/th05-10-0694>.
- 488 Bertero, Edoardo, Marco Canepa, Christoph Maack, and Pietro Ameri. 2018. "Linking Heart Failure to  
489 Cancer: Background Evidence and Research Perspectives." *Circulation* 138 (7): 735–42.
- 490 Blaes, Anne H., and Chetan Shenoy. 2019. "Is It Time to Include Cancer in Cardiovascular Risk  
491 Prediction Tools?" *The Lancet*.
- 492 Bruenderman, Elizabeth, and Robert C. G. Martin 2nd. 2015. "A Cost Analysis of a Pancreatic Cancer  
493 Screening Protocol in High-Risk Populations." *American Journal of Surgery* 210 (3): 409–16.
- 494 Caro, J. Jaime, J. Jaime Caro, Maribel Salas, Alexandra Ward, and Glenwood Goss. 2001. "Anemia as  
495 an Independent Prognostic Factor for Survival in Patients with Cancer." *Cancer*.  
496 [https://doi.org/10.1002/1097-0142\(20010615\)91:12<2214::aid-cnrc1251>3.0.co;2-p](https://doi.org/10.1002/1097-0142(20010615)91:12<2214::aid-cnrc1251>3.0.co;2-p).
- 497 Chari, Suresh T., Kimberly Kelly, Michael A. Hollingsworth, Sarah P. Thayer, David A. Ahlquist, Dana K.  
498 Andersen, Surinder K. Batra, et al. 2015. "Early Detection of Sporadic Pancreatic Cancer:  
499 Summative Review." *Pancreas* 44 (5): 693–712.
- 500 De La Cruz, Maria Syl D., Alisa P. Young, and Mack T. Ruffin. 2014. "Diagnosis and Management of  
501 Pancreatic Cancer." *American Family Physician* 89 (8): 626–32.
- 502 Delespierre, T., P. Denormandie, A. Bar-Hen, and L. Jossier. 2017. "Empirical Advances with Text  
503 Mining of Electronic Health Records." *BMC Medical Informatics and Decision Making* 17 (1):  
504 127.
- 505 Einat, Tal. 2020. "Fuzzysearch." *GitHub Repository*, June. <https://github.com/taleinat/fuzzysearch>.
- 506 Eriksson, Robert, Thomas Werge, Lars Juhl Jensen, and Søren Brunak. 2014. "Dose-Specific Adverse  
507 Drug Reaction Identification in Electronic Patient Records: Temporal Data Mining in an Inpatient  
508 Psychiatric Population." *Drug Safety*. <https://doi.org/10.1007/s40264-014-0145-z>.
- 509 Evans, Julie, Alison Chapple, Helen Salisbury, Pippa Corrie, and Sue Ziebland. 2014. "'It Can't Be Very  
510 Important Because It Comes and Goes'--Patients' Accounts of Intermittent Symptoms Preceding  
511 a Pancreatic Cancer Diagnosis: A Qualitative Study." *BMJ Open* 4 (2): e004215.
- 512 Gobbi, Paolo G., Manuela Bergonzi, Mario Comelli, Lara Villano, Donatella Pozzoli, Alessandro Vanoli,  
513 and Paolo Dionigi. 2013. "The Prognostic Role of Time to Diagnosis and Presenting Symptoms in  
514 Patients with Pancreatic Cancer." *Cancer Epidemiology* 37 (2): 186–90.
- 515 Harris, Dylan G., and Simon I. R. Noble. 2009. "Management of Terminal Hemorrhage in Patients  
516 With Advanced Cancer: A Systematic Literature Review." *Journal of Pain and Symptom  
517 Management*. <https://doi.org/10.1016/j.jpainsymman.2009.04.027>.
- 518 Hart, Phil A., Pratima Kamada, Kari G. Rabe, Sunil Srinivasan, Ananda Basu, Gaurav Aggarwal, and  
519 Suresh T. Chari. 2011. "Weight Loss Precedes Cancer-Specific Symptoms in Pancreatic Cancer-  
520 Associated Diabetes Mellitus." *Pancreas* 40 (5): 768–72.
- 521 Hidalgo, Manuel. 2010. "Pancreatic Cancer." *The New England Journal of Medicine* 362 (17): 1605–  
522 17.

- 523 Hu, Jessica X., Marie Helleberg, Anders B. Jensen, Søren Brunak, and Jens Lundgren. 2019. "A Large-  
524 Cohort, Longitudinal Study Determines Precancer Disease Routes across Different Cancer  
525 Types." *Cancer Research* 79 (4): 864–72.
- 526 Jensen, Anders Boeck, Pope L. Moseley, Tudor I. Oprea, Sabrina Gade Ellesøe, Robert Eriksson,  
527 Henriette Schmock, Peter Bjødstrup Jensen, Lars Juhl Jensen, and Søren Brunak. 2014.  
528 "Temporal Disease Trajectories Condensed from Population-Wide Registry Data Covering 6.2  
529 Million Patients." *Nature Communications* 5 (June): 4022.
- 530 Jensen, Kasper, Cristina Soguero-Ruiz, Karl Oyvind Mikalsen, Rolv-Ole Lindsetmo, Irene  
531 Kouskoumvekaki, Mark Girolami, Stein Olav Skrovseth, and Knut Magne Augestad. 2017.  
532 "Analysis of Free Text in Electronic Health Records for Identification of Cancer Patient  
533 Trajectories." *Scientific Reports* 7 (April): 46226.
- 534 Jensen, Lars Juhl. 2016. "One Tagger, Many Uses: Illustrating the Power of Ontologies in Dictionary-  
535 Based Named Entity Recognition." <https://doi.org/10.1101/067132>.
- 536 Keane, M. G., L. Horsfall, G. Rait, and S. P. Pereira. 2014. "A Case-Control Study Comparing the  
537 Incidence of Early Symptoms in Pancreatic and Biliary Tract Cancer." *BMJ Open* 4 (11): e005720.
- 538 Kim, Victoria M., and Nita Ahuja. 2015. "Early Detection of Pancreatic Cancer." *Chinese Journal of  
539 Cancer Research = Chung-Kuo Yen Cheng Yen Chiu* 27 (4): 321–31.
- 540 Krech, R. L., and D. Walsh. 1991. "Symptoms of Pancreatic Cancer." *Journal of Pain and Symptom  
541 Management* 6 (6): 360–67.
- 542 Lau, Emily S., Samantha M. Paniagua, Elizabeth Liu, Manol Jovani, Shawn X. Li, Katherine Takvorian,  
543 Navin Suthahar, et al. 2021. "Cardiovascular Risk Factors Are Associated with Future Cancer."  
544 *JACC. CardioOncology* 3 (1): 48–58.
- 545 Laugesen, Kristina, Jonas F. Ludvigsson, Morten Schmidt, Mika Gissler, Unnur Anna Valdimarsdottir,  
546 Astrid Lunde, and Henrik Toft Sørensen. 2021. "Nordic Health Registry-Based Research: A  
547 Review of Health Care Systems and Key Registries." *Clinical Epidemiology* 13 (July): 533–54.
- 548 Lynge, Elsebeth, Jakob Lynge Sandegaard, and Matejka Rebolj. 2011. "The Danish National Patient  
549 Register." *Scandinavian Journal of Public Health* 39 (7 Suppl): 30–33.
- 550 Pafilis, Evangelos, Sune P. Frankild, Lucia Fanini, Sarah Faulwetter, Christina Pavloudi, Aikaterini  
551 Vasileiadou, Christos Arvanitidis, and Lars Juhl Jensen. 2013. "The SPECIES and ORGANISMS  
552 Resources for Fast and Accurate Identification of Taxonomic Names in Text." *PloS One* 8 (6):  
553 e65390.
- 554 Pafilis, Evangelos, and Lars Juhl Jensen. 2016. "Real-Time Tagging of Biomedical Entities."  
555 <https://doi.org/10.1101/078469>.
- 556 Pereira, Jose, and Tien Phan. 2004. "Management of Bleeding in Patients with Advanced Cancer."  
557 *The Oncologist*. <https://doi.org/10.1634/theoncologist.9-5-561>.
- 558 Porta, Miquel, Xavier Fabregat, Núria Malats, Luisa Guarner, Alfredo Carrato, Ana de Miguel, Laura  
559 Ruiz, et al. 2005. "Exocrine Pancreatic Cancer: Symptoms at Presentation and Their Relation to  
560 Tumour Site and Stage." *Clinical & Translational Oncology: Official Publication of the Federation  
561 of Spanish Oncology Societies and of the National Cancer Institute of Mexico* 7 (5): 189–97.
- 562 Rahib, Lola, Mackenzie R. Wehner, Lynn M. Matrisian, and Kevin T. Neale. 2021. "Estimated  
563 Projection of US Cancer Incidence and Death to 2040." *JAMA Network Open* 4 (4): e214708.
- 564 Risch, H. A., H. Yu, L. Lu, and M. S. Kidd. 2015. "Detectable Symptomatology Preceding the Diagnosis  
565 of Pancreatic Cancer and Absolute Risk of Pancreatic Cancer Diagnosis." *American Journal of  
566 Epidemiology*. <https://doi.org/10.1093/aje/kwv026>.
- 567 Schmidt, Morten, Sigrun Alba Johannesdottir Schmidt, Jakob Lynge Sandegaard, Vera Ehrenstein,  
568 Lars Pedersen, and Henrik Toft Sørensen. 2015. "The Danish National Patient Registry: A Review  
569 of Content, Data Quality, and Research Potential." *Clinical Epidemiology* 7 (November): 449–90.
- 570 Sgouros, Joseph, and Anthony Maraveyas. 2008. "Excess Premature (3-Month) Mortality in  
571 Advanced Pancreatic Cancer Could Be Related to Fatal Vascular Thromboembolic Events. A  
572 Hypothesis Based on a Systematic Review of Phase III Chemotherapy Studies in Advanced  
573 Pancreatic Cancer." *Acta Oncologica* 47 (3): 337–46.

- 574 Siggaard, Troels, Roc Reguant, Isabella F. Jørgensen, Amalie D. Haue, Mette Lademann, Alejandro  
575 Aguayo-Orozco, Jessica X. Hjaltelin, Anders Boeck Jensen, Karina Banasik, and Søren Brunak.  
576 2020. "Disease Trajectory Browser for Exploring Temporal, Population-Wide Disease  
577 Progression Patterns in 7.2 Million Danish Patients." *Nature Communications* 11 (1): 4952.  
578 Soguero-Ruiz, Cristina, Kristian Hindberg, Inmaculada Mora-Jiménez, José Luis Rojo-Álvarez, Stein  
579 Olav Skrøvseth, Fred Godtliebsen, Kim Mortensen, et al. 2016. "Predicting Colorectal Surgical  
580 Complications Using Heterogeneous Clinical Data and Kernel Methods." *Journal of Biomedical  
581 Informatics*. <https://doi.org/10.1016/j.jbi.2016.03.008>.  
582 Stapley, S., T. J. Peters, R. D. Neal, P. W. Rose, F. M. Walter, and W. Hamilton. 2012. "The Risk of  
583 Pancreatic Cancer in Symptomatic Patients in Primary Care: A Large Case-Control Study Using  
584 Electronic Records." *British Journal of Cancer* 106 (12): 1940–44.  
585 Tai, Shu-Yu, Chung-Yin Lee, Chien-Yi Wu, Hui-Ya Hsieh, Joh-Jong Huang, Chia-Tsuan Huang, and  
586 Chen-Yu Chien. 2016. "Symptom Severity of Patients with Advanced Cancer in Palliative Care  
587 Unit: Longitudinal Assessments of Symptoms Improvement." *BMC Palliative Care* 15 (March):  
588 32.  
589 Walsh, D., S. Donnelly, and L. Rybicki. 2000. "The Symptoms of Advanced Cancer: Relationship to  
590 Age, Gender, and Performance Status in 1,000 Patients." *Supportive Care in Cancer: Official  
591 Journal of the Multinational Association of Supportive Care in Cancer* 8 (3): 175–79.  
592 Walter, Fiona M., Katie Mills, Silvia C. Mendonça, Gary A. Abel, Bristi Basu, Nick Carroll, Sue Ballard,  
593 et al. 2016. "Symptoms and Patient Factors Associated with Diagnostic Intervals for Pancreatic  
594 Cancer (SYMPTOM Pancreatic Study): A Prospective Cohort Study." *The Lancet.  
595 Gastroenterology & Hepatology* 1 (4): 298–306.  
596 Yuan, Chen, Ana Babic, Natalia Khalaf, Jonathan A. Nowak, Lauren K. Brais, Douglas A. Rubinson,  
597 Kimmie Ng, et al. 2020. "Diabetes, Weight Change, and Pancreatic Cancer Risk." *JAMA Oncology*  
598 6 (10): e202948. Bruenderman, E., & Martin, R. C. G. (2015). A cost analysis of a pancreatic  
599 cancer screening protocol in high-risk populations. *The American Journal of Surgery*, 210(3),  
600 409–416. <https://doi.org/10.1016/J.AMJSURG.2014.11.017>

601  
602  
603  
604  
605  
606  
607  
608  
609  
610

611 **Supplementary Tables**

612

613

614 **Supplementary Table S1**

615

616 Complete names of ICD-10 codes that has been shortened for overview

617

Abbreviation	Complete name
Nervous and musculoskeletal systems	Other and unspecified symptoms and signs involving the nervous and musculoskeletal systems
Abnormal findings on diagnostic images	Abnormal findings on diagnostic images of other body structures
Disorders of lipoprotein metabolism	Disorders of lipoprotein metabolism and other lipidaemias
Hypertension	Essential primary hypertension
Irregular menstruation	Excessive, frequent and irregular menstruation
Hearing loss	Other hearing loss
Digestive system and abdomen	Systems and signs involving digestive system and abdomen
Fever	Fever of other and unknown origin
Hyperalimantation	Other hyperalimantation
Pain	Pain, not elsewhere classified
Intestinal disorders	Other functional intestinal disorders
Oedema	Oedema, not elsewhere classified
Anaemia	Other anaemias
Jaundice	Unspecified jaundice
Paralytic ileus and intestinal obstruction	Paralytic ileus and intestinal obstruction without hernia
Haemorrhage	Haemorrhage, not elsewhere classified
Intestinal disorders	Other functional intestinal disorders
Abnormal blood pressure	Abnormal blood-pressure reading, without diagnosis
Soft tissue disorders	Other soft tissue disorders, not elsewhere classified
Elevation of levels of transaminase and LDH	Elevation of levels of transaminase and lactic acid dehydrogenase (LDH)
Food and fluid intake	Symptoms and signs concerning food and fluid intake

618

619 **Supplementary Table S2**

620

621 Disease trajectories listing the number of patients following each trajectory and the

622 median survival in days for each group.

623

Trajectories	Number of patients	Median survival (days)
C25_R50_R52	330	395
E11_C25_R11	311	161
E11_C25_R52	607	156
E11_C25_R53	379	177
E11_C25_R67	442	159,5
E78_C25_R52	389	158,5
H25_C25_R52	448	116
H25_C25_R53	304	110
H25_C25_R67	378	110,5
H25_H26_C25	321	66
H91_C25_R52	394	136
H91_C25_R67	301	130
I10_C25_K59	558	156
I10_C25_R11	645	156
I10_C25_R52	1073	156
I10_C25_R53	737	161
I10_C25_R63	484	160
I10_C25_R67	831	146,5
I20_C25_R52	441	161
I20_C25_R67	312	140,5
I20_E11_C25	302	84
I20_E78_C25	413	91,5
I20_I25_C25	888	73
I20_R10_C25	301	92
I21_I20_C25	599	73
I21_I20_I25	373	78
I21_I25_C25	909	65
I21_I50_C25	363	48
I25_C25_R52	372	133
K80_C25_R52	458	187
K80_C25_R67	322	190
K85_K86_C25	340	96,5
M17_C25_R52	348	189
M17_I10_C25	332	68
M51_C25_R52	320	182

M51_I10_C25	301	91,5
M54_C25_R52	353	170
M79_C25_R52	306	187
N92_C25_R52	394	185
N92_R10_C25	304	102
R10_C25_K59	530	156
R10_C25_R11	600	176
R10_C25_R52	1029	174
R10_C25_R53	656	177
R10_C25_R63	438	196
R10_C25_R67	738	169

624

625

626 **Supplementary Table S3**

627

628 Symptom trajectories listing the number of patients following each trajectory and  
 629 the median survival in days for each group. The table lists all symptom trajectories  
 630 found with a minimum of 50 patients.

631

Symptom 1	Symptom 2	Symptom 3	Number of patients	Median survival (days)
Abnormal blood-pressure reading, without diagnosis	Nausea and vomiting	Other anaemias	57	93
Pain, not elsewhere classified	Nausea and vomiting	Other anaemias	102	71
Symptoms and signs concerning food and fluid intake	Nausea and vomiting	Other anaemias	56	57
Pain, not elsewhere classified	Other anaemias	Unspecified jaundice	60	93
Abnormal blood-pressure reading, without diagnosis	Symptoms and signs concerning food and fluid intake	Other anaemias	57	87
Abnormalities of breathing	Symptoms and signs concerning food and fluid intake	Other anaemias	57	41
Dizziness and giddiness	Symptoms and signs concerning food and fluid intake	Other anaemias	51	66
Pain, not elsewhere classified	Symptoms and signs concerning food and fluid intake	Other anaemias	112	63
Oedema, not elsewhere classified	Symptoms and signs concerning food and fluid intake	Other anaemias	53	58

Pain, not elsewhere classified	Abdominal and pelvic pain	Disorders of porphyrin and bilirubin metabolism	70	135
Abnormal blood-pressure reading, without diagnosis	Nausea and vomiting	Disorders of porphyrin and bilirubin metabolism	54	124
Pain, not elsewhere classified	Nausea and vomiting	Disorders of porphyrin and bilirubin metabolism	94	118
Abnormal blood-pressure reading, without diagnosis	Unspecified jaundice	Disorders of porphyrin and bilirubin metabolism	63	152
Abnormalities of breathing	Unspecified jaundice	Disorders of porphyrin and bilirubin metabolism	52	76
Nausea and vomiting	Unspecified jaundice	Disorders of porphyrin and bilirubin metabolism	65	99
Pain, not elsewhere classified	Unspecified jaundice	Disorders of porphyrin and bilirubin metabolism	115	121
Symptoms and signs concerning food and fluid intake	Unspecified jaundice	Disorders of porphyrin and bilirubin metabolism	62	85
Pain, not elsewhere classified	Other symptoms and signs involving the digestive system and abdomen	Disorders of porphyrin and bilirubin metabolism	57	79
Pain, not elsewhere classified	Malaise and fatigue	Disorders of porphyrin and bilirubin metabolism	55	119
Abnormal blood-pressure reading, without diagnosis	Symptoms and signs concerning food and fluid intake	Disorders of porphyrin and bilirubin metabolism	53	148
Pain, not elsewhere classified	Symptoms and signs concerning food and fluid intake	Disorders of porphyrin and bilirubin metabolism	104	131
Pain, not elsewhere classified	Nausea and vomiting	Unspecified abdominal hernia	68	53
Pain, not elsewhere classified	Abdominal and pelvic pain	Paralytic ileus and intestinal obstruction without hernia	74	78
Pain, not elsewhere classified	Nausea and vomiting	Paralytic ileus and intestinal obstruction without hernia	81	131
Abnormal blood-pressure reading, without diagnosis	Unspecified jaundice	Paralytic ileus and intestinal obstruction without hernia	63	137
Abnormalities of breathing	Unspecified jaundice	Paralytic ileus and intestinal obstruction without hernia	53	62
Nausea and vomiting	Unspecified jaundice	Paralytic ileus and intestinal obstruction without hernia	55	107
Pain, not elsewhere classified	Unspecified jaundice	Paralytic ileus and intestinal obstruction without hernia	105	98
Symptoms and signs concerning food and fluid intake	Unspecified jaundice	Paralytic ileus and intestinal obstruction without hernia	58	85
Pain, not elsewhere classified	Other symptoms and signs involving the digestive system and abdomen	Paralytic ileus and intestinal obstruction without hernia	60	99
Pain, not elsewhere classified	Malaise and fatigue	Paralytic ileus and intestinal obstruction without hernia	57	62
Pain, not elsewhere classified	Symptoms and signs concerning food and fluid intake	Paralytic ileus and intestinal obstruction without hernia	93	118

Abnormal blood-pressure reading, without diagnosis	Other functional intestinal disorders	Abdominal and pelvic pain	73	66
Nausea and vomiting	Other functional intestinal disorders	Abdominal and pelvic pain	76	88
Pain, not elsewhere classified	Other functional intestinal disorders	Abdominal and pelvic pain	122	89
Symptoms and signs concerning food and fluid intake	Other functional intestinal disorders	Abdominal and pelvic pain	70	53
Abnormal blood-pressure reading, without diagnosis	Nausea and vomiting	Other functional intestinal disorders	83	84
Pain, not elsewhere classified	Nausea and vomiting	Other functional intestinal disorders	155	84
Symptoms and signs concerning food and fluid intake	Nausea and vomiting	Other functional intestinal disorders	76	55
Nausea and vomiting	Other functional intestinal disorders	Unspecified jaundice	61	115
Pain, not elsewhere classified	Other functional intestinal disorders	Unspecified jaundice	87	89
Abnormal blood-pressure reading, without diagnosis	Other functional intestinal disorders	Other symptoms and signs involving the digestive system and abdomen	52	71
Nausea and vomiting	Other functional intestinal disorders	Other symptoms and signs involving the digestive system and abdomen	52	71
Pain, not elsewhere classified	Other functional intestinal disorders	Other symptoms and signs involving the digestive system and abdomen	82	71
Symptoms and signs concerning food and fluid intake	Other functional intestinal disorders	Other symptoms and signs involving the digestive system and abdomen	52	66
Abnormal blood-pressure reading, without diagnosis	Malaise and fatigue	Other functional intestinal disorders	76	93
Nausea and vomiting	Malaise and fatigue	Other functional intestinal disorders	58	88
Pain, not elsewhere classified	Malaise and fatigue	Other functional intestinal disorders	108	86
Symptoms and signs concerning food and fluid intake	Malaise and fatigue	Other functional intestinal disorders	58	48
Abnormal blood-pressure reading, without diagnosis	Symptoms and signs concerning food and fluid intake	Other functional intestinal disorders	86	68
Abnormalities of breathing	Symptoms and signs concerning food and fluid intake	Other functional intestinal disorders	73	42
Dizziness and giddiness	Symptoms and signs concerning food and fluid intake	Other functional intestinal disorders	82	59
Pain, not elsewhere classified	Symptoms and signs concerning food and fluid intake	Other functional intestinal disorders	151	65



Oedema, not elsewhere classified	Symptoms and signs concerning food and fluid intake	Other functional intestinal disorders	66	52
Pain, not elsewhere classified	Other functional intestinal disorders	Abnormal results of function studies	59	103
Pain, not elsewhere classified	Abdominal and pelvic pain	Pruritus	52	112
Pain, not elsewhere classified	Nausea and vomiting	Pruritus	55	194
Pain, not elsewhere classified	Unspecified jaundice	Pruritus	72	187
Pain, not elsewhere classified	Symptoms and signs concerning food and fluid intake	Pruritus	77	193
Abnormal blood-pressure reading, without diagnosis	Nausea and vomiting	Abdominal and pelvic pain	100	86
Pain, not elsewhere classified	Nausea and vomiting	Abdominal and pelvic pain	185	88
Symptoms and signs concerning food and fluid intake	Nausea and vomiting	Abdominal and pelvic pain	99	80
Pain, not elsewhere classified	Abdominal and pelvic pain	Flatulence and related conditions	54	87
Nausea and vomiting	Abdominal and pelvic pain	Unspecified jaundice	54	94
Pain, not elsewhere classified	Abdominal and pelvic pain	Unspecified jaundice	103	132
Pain, not elsewhere classified	Abdominal and pelvic pain	Ascites	70	32
Pain, not elsewhere classified	Other symptoms and signs involving the digestive system and abdomen	Abdominal and pelvic pain	80	104
Nausea and vomiting	Abdominal and pelvic pain	Fever of other and unknown origin	65	104
Pain, not elsewhere classified	Abdominal and pelvic pain	Fever of other and unknown origin	106	95
Symptoms and signs concerning food and fluid intake	Abdominal and pelvic pain	Fever of other and unknown origin	61	88
Abnormal blood-pressure reading, without diagnosis	Malaise and fatigue	Abdominal and pelvic pain	80	112
Nausea and vomiting	Malaise and fatigue	Abdominal and pelvic pain	60	57
Pain, not elsewhere classified	Malaise and fatigue	Abdominal and pelvic pain	123	88
Haemorrhage, not elsewhere classified	Malaise and fatigue	Abdominal and pelvic pain	60	84
Symptoms and signs concerning food and fluid intake	Malaise and fatigue	Abdominal and pelvic pain	60	80
Nausea and vomiting	Haemorrhage, not elsewhere classified	Abdominal and pelvic pain	77	52
Symptoms and signs concerning food and fluid intake	Haemorrhage, not elsewhere classified	Abdominal and pelvic pain	64	87

intake				
Nausea and vomiting	Oedema, not elsewhere classified	Abdominal and pelvic pain	68	63
Abnormal blood-pressure reading, without diagnosis	Symptoms and signs concerning food and fluid intake	Abdominal and pelvic pain	84	79
Cough	Symptoms and signs concerning food and fluid intake	Abdominal and pelvic pain	67	59
Abnormalities of breathing	Symptoms and signs concerning food and fluid intake	Abdominal and pelvic pain	82	61
Dizziness and giddiness	Symptoms and signs concerning food and fluid intake	Abdominal and pelvic pain	85	68
Pain, not elsewhere classified	Symptoms and signs concerning food and fluid intake	Abdominal and pelvic pain	184	93
Oedema, not elsewhere classified	Symptoms and signs concerning food and fluid intake	Abdominal and pelvic pain	60	47
Pain, not elsewhere classified	Abdominal and pelvic pain	Abnormal results of function studies	68	143
Pain, not elsewhere classified	Nausea and vomiting	Flatulence and related conditions	53	78
Abnormal blood-pressure reading, without diagnosis	Nausea and vomiting	Unspecified jaundice	66	118
Pain, not elsewhere classified	Nausea and vomiting	Unspecified jaundice	124	116
Symptoms and signs concerning food and fluid intake	Nausea and vomiting	Unspecified jaundice	53	63
Pain, not elsewhere classified	Nausea and vomiting	Ascites	63	36
Abnormal blood-pressure reading, without diagnosis	Nausea and vomiting	Other symptoms and signs involving the digestive system and abdomen	71	92
Pain, not elsewhere classified	Nausea and vomiting	Other symptoms and signs involving the digestive system and abdomen	117	91
Symptoms and signs concerning food and fluid intake	Nausea and vomiting	Other symptoms and signs involving the digestive system and abdomen	63	93
Abnormal blood-pressure reading, without diagnosis	Nausea and vomiting	Fever of other and unknown origin	72	105
Pain, not elsewhere classified	Nausea and vomiting	Fever of other and unknown origin	123	83
Symptoms and signs concerning food and fluid intake	Nausea and vomiting	Fever of other and unknown origin	68	61
Abnormal blood-pressure reading, without diagnosis	Nausea and vomiting	Malaise and fatigue	72	128

Pain, not elsewhere classified	Nausea and vomiting	Malaise and fatigue	133	118
Symptoms and signs concerning food and fluid intake	Nausea and vomiting	Malaise and fatigue	57	63
Abnormal blood-pressure reading, without diagnosis	Nausea and vomiting	Haemorrhage, not elsewhere classified	76	76
Pain, not elsewhere classified	Nausea and vomiting	Haemorrhage, not elsewhere classified	157	77
Symptoms and signs concerning food and fluid intake	Nausea and vomiting	Haemorrhage, not elsewhere classified	85	57
Abnormal blood-pressure reading, without diagnosis	Nausea and vomiting	Oedema, not elsewhere classified	77	115
Pain, not elsewhere classified	Nausea and vomiting	Oedema, not elsewhere classified	131	89
Symptoms and signs concerning food and fluid intake	Nausea and vomiting	Oedema, not elsewhere classified	68	83
Abnormal blood-pressure reading, without diagnosis	Symptoms and signs concerning food and fluid intake	Nausea and vomiting	79	80
Abnormalities of breathing	Symptoms and signs concerning food and fluid intake	Nausea and vomiting	71	65
Dizziness and giddiness	Symptoms and signs concerning food and fluid intake	Nausea and vomiting	63	70
Pain, not elsewhere classified	Symptoms and signs concerning food and fluid intake	Nausea and vomiting	157	85
Oedema, not elsewhere classified	Symptoms and signs concerning food and fluid intake	Nausea and vomiting	62	59
Pain, not elsewhere classified	Nausea and vomiting	Abnormal results of function studies	80	110
Other functional intestinal disorders	Unspecified jaundice	Other symptoms and signs involving the digestive system and abdomen	53	90
Abnormal blood-pressure reading, without diagnosis	Unspecified jaundice	Other symptoms and signs involving the digestive system and abdomen	59	136
Abnormalities of breathing	Unspecified jaundice	Other symptoms and signs involving the digestive system and abdomen	56	110
Abdominal and pelvic pain	Unspecified jaundice	Other symptoms and signs involving the digestive system and abdomen	59	109
Nausea and vomiting	Unspecified jaundice	Other symptoms and signs involving the digestive system and abdomen	88	117
Dizziness and giddiness	Unspecified jaundice	Other symptoms and signs involving the digestive system	67	90

		and abdomen		
Pain, not elsewhere classified	Unspecified jaundice	Other symptoms and signs involving the digestive system and abdomen	112	117
Oedema, not elsewhere classified	Unspecified jaundice	Other symptoms and signs involving the digestive system and abdomen	51	108
Symptoms and signs concerning food and fluid intake	Unspecified jaundice	Other symptoms and signs involving the digestive system and abdomen	96	125
Pain, not elsewhere classified	Unspecified jaundice	Fever of other and unknown origin	72	126
Abnormal blood-pressure reading, without diagnosis	Malaise and fatigue	Unspecified jaundice	57	125
Pain, not elsewhere classified	Malaise and fatigue	Unspecified jaundice	87	104
Nausea and vomiting	Haemorrhage, not elsewhere classified	Unspecified jaundice	60	93
Symptoms and signs concerning food and fluid intake	Haemorrhage, not elsewhere classified	Unspecified jaundice	52	166
Abnormal blood-pressure reading, without diagnosis	Symptoms and signs concerning food and fluid intake	Unspecified jaundice	66	134
Cough	Symptoms and signs concerning food and fluid intake	Unspecified jaundice	56	98
Abnormalities of breathing	Symptoms and signs concerning food and fluid intake	Unspecified jaundice	72	81
Dizziness and giddiness	Symptoms and signs concerning food and fluid intake	Unspecified jaundice	58	85
Pain, not elsewhere classified	Symptoms and signs concerning food and fluid intake	Unspecified jaundice	130	130
Oedema, not elsewhere classified	Symptoms and signs concerning food and fluid intake	Unspecified jaundice	61	79
Pain, not elsewhere classified	Unspecified jaundice	Abnormal results of function studies	63	110
Pain, not elsewhere classified	Symptoms and signs concerning food and fluid intake	Ascites	71	36
Pain, not elsewhere classified	Other symptoms and signs involving the digestive system and abdomen	Fever of other and unknown origin	58	103
Abnormal blood-pressure reading, without diagnosis	Malaise and fatigue	Other symptoms and signs involving the digestive system and abdomen	63	111
Pain, not elsewhere classified	Malaise and fatigue	Other symptoms and signs involving the digestive system	87	107

		and abdomen		
Symptoms and signs concerning food and fluid intake	Malaise and fatigue	Other symptoms and signs involving the digestive system and abdomen	57	96
Abnormal blood-pressure reading, without diagnosis	Symptoms and signs concerning food and fluid intake	Other symptoms and signs involving the digestive system and abdomen	73	106
Abnormalities of breathing	Symptoms and signs concerning food and fluid intake	Other symptoms and signs involving the digestive system and abdomen	68	101
Dizziness and giddiness	Symptoms and signs concerning food and fluid intake	Other symptoms and signs involving the digestive system and abdomen	63	93
Pain, not elsewhere classified	Symptoms and signs concerning food and fluid intake	Other symptoms and signs involving the digestive system and abdomen	127	113
Oedema, not elsewhere classified	Symptoms and signs concerning food and fluid intake	Other symptoms and signs involving the digestive system and abdomen	53	61
Abnormal blood-pressure reading, without diagnosis	Symptoms and signs concerning food and fluid intake	Symptoms and signs involving emotional state	76	80
Cough	Symptoms and signs concerning food and fluid intake	Symptoms and signs involving emotional state	54	44
Abnormalities of breathing	Symptoms and signs concerning food and fluid intake	Symptoms and signs involving emotional state	61	58
Dizziness and giddiness	Symptoms and signs concerning food and fluid intake	Symptoms and signs involving emotional state	62	69
Pain, not elsewhere classified	Symptoms and signs concerning food and fluid intake	Symptoms and signs involving emotional state	127	77
Oedema, not elsewhere classified	Symptoms and signs concerning food and fluid intake	Symptoms and signs involving emotional state	53	48
Abnormal blood-pressure reading, without diagnosis	Symptoms and signs concerning food and fluid intake	Fever of other and unknown origin	55	96
Abnormalities of breathing	Symptoms and signs concerning food and fluid intake	Fever of other and unknown origin	56	75
Dizziness and giddiness	Symptoms and signs concerning food and fluid intake	Fever of other and unknown origin	54	66
Pain, not elsewhere classified	Symptoms and signs concerning food and fluid intake	Fever of other and unknown origin	118	80
Nausea and vomiting	Haemorrhage, not elsewhere classified	Malaise and fatigue	68	76
Symptoms and signs	Haemorrhage, not elsewhere	Malaise and fatigue	54	66

concerning food and fluid intake	classified			
Abnormal blood-pressure reading, without diagnosis	Symptoms and signs concerning food and fluid intake	Malaise and fatigue	80	52
Cough	Symptoms and signs concerning food and fluid intake	Malaise and fatigue	58	64
Abnormalities of breathing	Symptoms and signs concerning food and fluid intake	Malaise and fatigue	70	55
Dizziness and giddiness	Symptoms and signs concerning food and fluid intake	Malaise and fatigue	63	58
Pain, not elsewhere classified	Symptoms and signs concerning food and fluid intake	Malaise and fatigue	143	68
Oedema, not elsewhere classified	Symptoms and signs concerning food and fluid intake	Malaise and fatigue	56	45
Pain, not elsewhere classified	Malaise and fatigue	Abnormal results of function studies	65	88
Abnormal blood-pressure reading, without diagnosis	Symptoms and signs concerning food and fluid intake	Haemorrhage, not elsewhere classified	90	94
Cough	Symptoms and signs concerning food and fluid intake	Haemorrhage, not elsewhere classified	67	43
Abnormalities of breathing	Symptoms and signs concerning food and fluid intake	Haemorrhage, not elsewhere classified	89	89
Dizziness and giddiness	Symptoms and signs concerning food and fluid intake	Haemorrhage, not elsewhere classified	81	58
Pain, not elsewhere classified	Symptoms and signs concerning food and fluid intake	Haemorrhage, not elsewhere classified	177	89
Oedema, not elsewhere classified	Symptoms and signs concerning food and fluid intake	Haemorrhage, not elsewhere classified	70	40
Nausea and vomiting	Oedema, not elsewhere classified	Symptoms and signs concerning food and fluid intake	59	97
Pain, not elsewhere classified	Symptoms and signs concerning food and fluid intake	Other abnormal findings in urine	57	180
Abnormalities of breathing	Symptoms and signs concerning food and fluid intake	Abnormal results of function studies	53	78
Pain, not elsewhere classified	Symptoms and signs concerning food and fluid intake	Abnormal results of function studies	100	85

633

634 **Supplementary Table S4**

635

Symptom	Number of patients	P-value
Jaundice	1184	$0.00 \cdot 10^{00}$
Anorexia	1374	$0.00 \cdot 10^{00}$
Digestive system and abdomen	1033	$1.44 \cdot 10^{-146}$
Abnormal weight loss	2111	$0.00 \cdot 10^{00}$
Food and fluid intake	2468	$0.00 \cdot 10^{00}$
Abdominal and pelvic pain	1400	$1.54 \cdot 10^{-250}$
Nausea	1551	$4.32 \cdot 10^{-91}$
Nausea and vomiting	1858	$9.21 \cdot 10^{-93}$
Vomiting	1085	$1.06 \cdot 10^{-44}$
Malaise and fatigue	1171	$2.73 \cdot 10^{-29}$
Fever	796	$1.45 \cdot 10^{-20}$
Intestinal disorders	1045	$1.63 \cdot 10^{-24}$
Functional diarrhoea	685	$2.47 \cdot 10^{-16}$
Other anaemias	658	$4.44 \cdot 10^{-09}$
Haemorrhage	1520	$4.80 \cdot 10^{-08}$
Pain	2982	$2.21 \cdot 10^{-15}$
Abnormal blood-pressure	1677	$7.28 \cdot 10^{-03}$
Abnormalities of breathing	1221	$1.90 \cdot 10^{-04}$
Headache	619	$2.12 \cdot 10^{-06}$

Abnormalities of heart beat	641	$1.33 \cdot 10^{-07}$
-----------------------------	-----	-----------------------

636

637 **Table caption:** The 20 most frequent symptoms found by text mining clinical notes. Significance is  
638 tested by a  $\chi^2$  test statistics.

639

640

641

642

643

644

645

646

647

648

649

650

651

652

653

654

655

656

657

658

659

660

661

662

663

664

665

666

667

668

669

670

671

672

673

674

675

676

677



678

679 **Supplementary Table S5**

680

<b>Disease name</b>	<b>Survival group</b>	<b>Number of symptoms</b>
Abdominal and pelvic pain	Less than 90d	918
Abdominal and pelvic pain	More than 90d	944
Abnormal blood-pressure reading, without diagnosis	Less than 90d	1405
Abnormal blood-pressure reading, without diagnosis	More than 90d	1365
Abnormal weight loss	Less than 90d	1454
Abnormal weight loss	More than 90d	1467
Abnormalities of breathing	Less than 90d	1096
Abnormalities of breathing	More than 90d	861
Abnormalities of heart beat	Less than 90d	422
Abnormalities of heart beat	More than 90d	389
Anorexia	Less than 90d	854
Anorexia	More than 90d	758
Fever of other and unknown origin	Less than 90d	419
Fever of other and unknown origin	More than 90d	476
Functional diarrhoea	Less than 90d	442
Functional diarrhoea	More than 90d	417
Haemorrhage, not elsewhere classified	Less than 90d	920
Haemorrhage, not elsewhere classified	More than 90d	988
Headache	Less than 90d	375
Headache	More than 90d	388
Malaise and fatigue	Less than 90d	702
Malaise and fatigue	More than 90d	670
Nausea	Less than 90d	1008
Nausea	More than 90d	1081
Nausea and vomiting	Less than 90d	1391
Nausea and vomiting	More than 90d	1437
Other anaemias	Less than 90d	557
Other anaemias	More than 90d	432
Other functional intestinal disorders	Less than 90d	730
Other functional intestinal disorders	More than 90d	629
Other symptoms and signs involving the digestive system and abdomen	Less than 90d	473
Other symptoms and signs involving the digestive system and abdomen	More than 90d	592

Pain, not elsewhere classified	Less than 90d	<del>681</del> 687
Pain, not elsewhere classified	More than 90d	<del>2854</del> 2854
Symptoms and signs concerning food and fluid intake		683
	Less than 90d	<del>684</del> 1809
Symptoms and signs concerning food and fluid intake		685
	More than 90d	<del>686</del> 1781
Unspecified jaundice	Less than 90d	<del>687</del> 614
Unspecified jaundice	More than 90d	<del>1013</del> 1013
Vomiting	Less than 90d	752
Vomiting	More than 90d	693

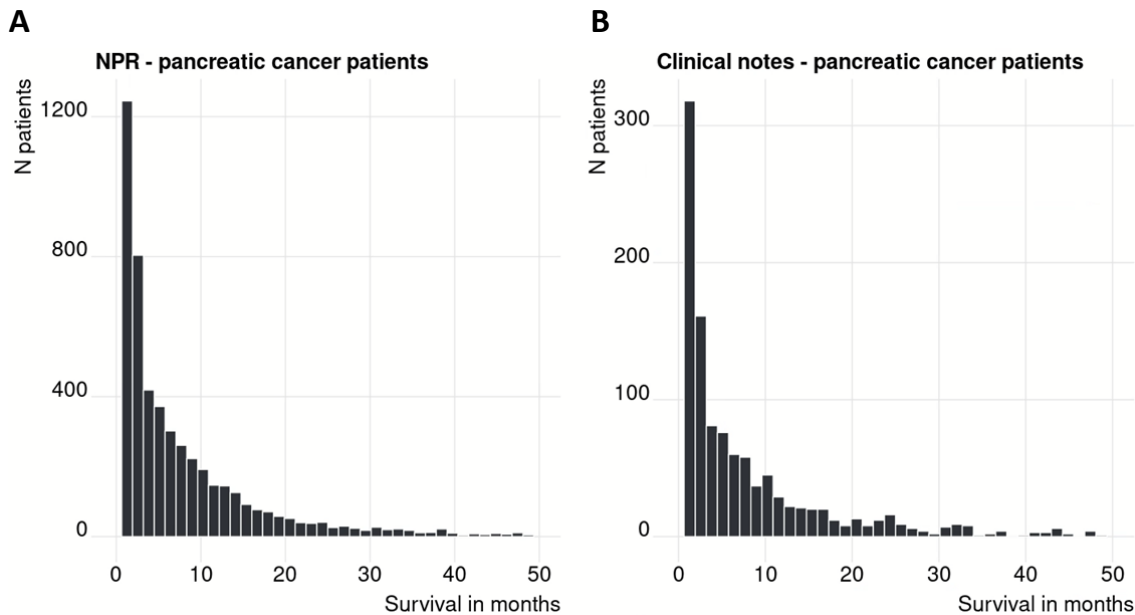
689 **Supplementary Figure**

690

691 **Supplementary Figure S1**

692

693



694

695 **Figure S1.** (A) Survival in months for patients in the registry disease trajectories.

696 (B) Survival in months for patients in the text mining symptom trajectories. The

697 pancreatic cancer patient cohort from is a subset of the pancreatic cancer patient

698 cohort in A.

699

700