

**Mortality by cause of death in Brazil:
effects of the COVID-19 pandemic and
contribution to changes in life expectancy at birth.**

Fernando Fernandes, Demography Department, Cedeplar, Universidade Federal de Minas Gerais, Belo Horizonte, MG 31270-901, Brazil.

Cássio M. Turra, Demography Department, Cedeplar, Universidade Federal de Minas Gerais, Belo Horizonte, MG 31270-901, Brazil.

Giovanny V. A. França, Secretariat of Health Surveillance, Brazilian Ministry of Health, Setor de Rádio e Televisão Norte (SRTV) 701, Via W5 Norte, Edifício PO700. Brasília, Distrito Federal, 70719-040, Brazil.

Marcia C. Castro, Department of Global Health and Population, Harvard TH Chan School of Public Health, Boston, MA 02115, USA.

Abstract

We investigate the consequences of the COVID-19 pandemic on other underlying causes of death in Brazil in 2020 and 2021. We estimate monthly age-standardized mortality rates for 2010-2021 and decompose those time series into three additive components: trend, seasonality, and remainder. Given the long-term trend and historical seasonal fluctuations, we assume that any impact from the pandemic will be left on the remainder. We also decompose the contributions of COVID-19 deaths (direct effect) and those from other causes (indirect effects) to the annual change in life expectancy at birth (e_0) from 2017 to 2021. Broadly, the remainder mirrors the trajectory of pandemic waves. The impact of the COVID-19 pandemic on other causes of death was not limited to increases but also decreases. The direct effects of the pandemic reduced e_0 by 1.89 years between 2019 and 2020 and 1.77 between 2020 and 2021. Indirect effects increased e_0 by 0.44 between 2019 and 2020 and had virtually no impact on e_0 between 2020 and 2021. Whether trajectories in mortality rates and annual gains in e_0 will quickly return to pre-pandemic levels depends on governmental actions to mitigate the consequences of the COVID-19 pandemic.

Keywords

Life expectancy at birth; COVID-19 mortality; time series decomposition; life expectancy decomposition, indirect effects of COVID-19 mortality.

Introduction

The death toll of the COVID-19 pandemic is overwhelming. In Brazil, the country with the second-highest worldwide deaths, COVID-19 directly claimed about 638,000 lives between January 1, 2020, and December 31, 2022 – 9.5% of the global deaths (Brasil, 2022a, 2022b; World Health Organization, 2023). Since 1990, the Brazilian federal and local governments have implemented and expanded a unified, decentralized, and free public health care system (Sistema Único de Saúde – SUS) (Castro et al., 2019). Nevertheless, the absence of federal government action led to unequal and uncoordinated state and local government responses to the COVID-19 pandemic (Ventura et al., 2021). Combined with socioeconomic inequalities, these responses resulted in an unequal social and spatial burden of COVID-19 deaths (Castro, Kim, et al., 2021; Rocha et al., 2021).

However, the mortality burden of the COVID-19 pandemic is not limited to the deaths directly attributed to COVID-19 but also the indirect effects on other underlying causes of death (Castro et al., 2022). Indirect effects could manifest in different and contradictory ways. Specific comorbidities or conditions increase the risk of dying from COVID-19, such as cancer (Venkatesulu et al., 2021), cardiovascular and cerebrovascular diseases (Thakur et al., 2021), diabetes (Castro, Gurzenda, Macário, et al., 2021; Dorjee et al., 2020), hypertension (Dorjee et al., 2020), mental and behavioral disorders (Fond et al., 2021), obesity (Yang et al., 2021), pregnancy (Zambrano et al., 2020), pulmonary diseases (Dorjee et al., 2020), and renal system diseases (Dorjee et al., 2020; Thakur et al., 2021). Therefore, COVID-19 deaths may decrease the mortality from these causes, a phenomenon known as “mortality displacement” (Zeger et al., 1999). Inversely, post-Covid syndrome (known as long Covid) (Mantovani et al., 2022) has contributed to increases in mortality from cancer, cardiovascular, and respiratory diseases (Uusküla et al., 2022). Also, disruptions in the healthcare system during the pandemic, healthcare system access bias, or declining demand for healthcare from fear of contracting COVID-19 increased mortality from causes amenable to primary care (e.g., diabetes, leukemia, maternal deaths) (Bigoni et al., 2022; Dey & Davidson, 2021; Griffin, 2021; Lai et al., 2020). Finally, indirect effects on external causes are also uncertain. For example, COVID-19 lockdowns reduced traffic volume, the number of road traffic accidents, and the number of

transport accident deaths. Nevertheless, some countries observed the opposite due to increased risky driving behaviors (Yasin et al., 2021).

Assessments of the impact of the COVID-19 pandemic on mortality include estimates of years of life lost (YLL), excess deaths, and changes in life expectancy at birth (e_0) and at other specific ages (e.g., 65 years). Some of these studies explore the direct (COVID-19 deaths) and indirect (non-COVID-19 deaths) mortality impacts of the COVID-19 pandemic according to different dimensions, including age, sex, race and ethnicity, socioeconomic status, regional distribution, and mortality causes (Ackley et al., 2022; Andrasfay & Goldman, 2021; Arias et al., 2021, 2022; Brant et al., 2020; Castro et al., 2022; Castro, Gurzenda, Turra, et al., 2021; Chan et al., 2021; Cronin & Evans, 2021; Guimarães et al., 2022; Iuliano et al., 2021; Jardim et al., 2022; Kelly et al., 2021; Kontopantelis et al., 2021; Lima et al., 2021; Marinho et al., 2020; Sanmarchi et al., 2021; Santos et al., 2021; Stokes et al., 2021; World Health Organization, 2022). These assessments show that along with specific mortality causes, the COVID-19 pandemic may result in decreasing indirect mortality for particular populations (e.g., economically privileged) and countries (e.g., Belgium, Canada, Costa Rica, and France). Besides socioeconomic inequalities and unequal responses to the COVID-19 pandemic, indirect or direct mortality impacts of COVID-19 may be explained by differences in health systems, COVID-19 testing, the ability to work from home, and shelter-in-place policies, and corroborate that detailed analyses by mortality causes are essential.

Here, we extend early analyses by measuring the impacts of the COVID-19 pandemic on the profile of all other causes of death in Brazil in 2020 and 2021. We have two primary goals. First, we use time series decomposition to describe changes in age-standardized mortality rates from 14 groups of causes other than COVID-19. Second, as the COVID-19 pandemic affected mortality from other causes, we measure the contribution of these 14 groups of causes of death to the annual changes in e_0 from 2017 to 2021. Recognizing the spatial heterogeneity of the pandemic in Brazil (Castro, Kim, et al., 2021) and the distinct mortality pattern by age and for males and females, we detail the analyses by region, major age groups, and sex.

Materials and Methods

Population Data

We use mid-year population (July 1st) estimates and projections from the Brazilian Institute of Geography and Statistics (IBGE), from 2010 to 2022, for the five Brazilian regions (North, Northeast, Midwest, Southeast, and South), by five-year age groups (0-4 to 90+), and sex (male and female) (IBGE, 2018). We apply cubic splines (Forsythe et al., 1977; Zeileis & Grothendieck, 2005) to these mid-year populations to estimate 144 mid-month populations (i.e., from January 15, 2010, to December 15, 2021) by region, five-year age groups, and sex. We compute the mid-month population totals for regions and sex by tallying their respective categories (Appendices, Figure S1).

Mortality Data

We use death registers from the Mortality Information System (SIM) of the Brazilian Ministry of Health from January 1st, 2010, to December 31st, 2021, comprising 15,847,407 records (Brasil, 2022a, 2022b). We exclude records with missing information on sex (n=7,289), age (n=38,645), or indicating COVID-19 as the cause of death but with the date of death before the year 2020 (n=6). Since the exclusion criteria overlap, the final database consists of 15,804,832 records. For each Brazilian region, we classify deaths by month, five-year age groups (0-4 to 90+), sex, and 14 groups of causes of death: diabetes mellitus; digestive system; heart and stroke; hypertension and hypertensive renal; ill-defined and unknown; influenza, pneumonia, chronic and other lower respiratory; kidney and urinary system; malignant neoplasms; mental and behavioral disorders; obesity; pregnancy, childbirth, and puerperium; septicemia; remaining causes; and COVID-19 (Appendices, Table S1).

COVID-19 Deaths

In the first months of 2020, without specific guidelines, Medical Doctors in Brazil categorized most COVID-19 deaths using the International Classification of Diseases (ICD-10) code U04.9, severe acute respiratory syndrome (SARS). In April 2020, the World Health Organization (WHO) published guidelines for the certification and classification of COVID-19 infection as a cause of death (World Health Organization, 2020), including two new ICD-10 codes: U07.1 – COVID-19 virus identified – and U07.2 – COVID-19 virus not identified. In April 2020, the

Brazilian Ministry of Health determined using ICD-10 code B34.2 for COVID-19 deaths. Prior COVID-19 deaths categorized as U04.9, U07.1, or U07.2 should be corrected to B34.2 (Brasil, 2020, 2021a, 2021b). The SIM database contains 9,278 records for 2021, with U04.9, U07.1, or U07.2 as the cause of death. Consequently, we classify all death registers with the underlying cause of death equal to B34.2, U04.9, U07.1, or U07.2 as COVID-19 deaths.

Decomposition of Monthly Time Series of Standardized Mortality Rates

After estimating the mid-month population and obtaining the mortality data, we calculated 144-month (t) (i.e., from January 2010 to December 2021) time series mortality rates (m_t) by region (Brazil and the five regions), major age groups (0-4, 5-19, 20-64, and 65+), sex (male and female), and groups of causes of death. Each of the 672 distinct time series combines the six geographical dimensions, four major age groups, two categories of sex, and 14 groups of causes of death. To keep the region-age-sex-cause specific m_t additive within each region (i.e., they add to the region's mid-month crude death rate), we use the mid-month population for both sexes in each region and age group as denominators. We also annualize the mid-month population (i.e., adjust by a factor of 30/365). Then, we use the total population for Brazil on July 1st, 2021, as the standard to estimate the corresponding 144-month time series of standardized (age-adjusted) mortality rates (m_t^s).

We use the Seasonal-Trend Decomposition based on Loess (STL) method (Cleveland et al., 1990) to decompose each 144-month m_t^s time series into three additive components: trend (T_t^s), reflecting long-term changes, seasonal (S_t^s), capturing intra-year fluctuations, and the remainder (R_t^s), which echoes fluctuations in the data not explained by the first two components.

$$m_t^s = T_t^s + S_t^s + R_t^s$$

One advantage of the STL method is that it is robust to outliers (Cleveland et al., 1990), which is essential to our proposition that any mortality impacts of the COVID-19 pandemic will reflect neither on the trend nor on the seasonal components but the remainder. We specify the trend window as the total number of observations (144 months) to ensure that the trend

will be as smooth as possible and reflect only long-term variations in m_t^S . Another advantage of the STL method is that it allows the seasonal component to change over time (Cleveland et al., 1990), i.e., the seasonal component values for each month are not fixed. Here, we assume the season is a yearly cycle (12 months) (Rau, 2007). For COVID-19, we assume that the trend and seasonal components are equal to zero. Because both the STL method and the mortality rates are additive, within each geographical dimension, we compute the trend, seasonal and remainder totals for age groups, sex, and causes of death by adding their respective categories.

Decomposition of Changes in Life Expectancy at Birth by Causes of Death.

From the mid-year population on July 1st and annual mortality data, we build annual life tables from 2017 to 2021 by region, five-year age groups (0-4 to 90+), and sex. From the same data, we also estimate annual mortality rates ($m_{x,n}^t$) by region, five-year age groups (0-4 to 90+), sex, and groups of causes of death. To compute region-age-sex-cause specific additive decompositions (i.e., the region-age-sex-cause contributions to the changes in life expectancy at birth add to the region total change), the denominators of each region-age-sex-cause specific mortality rates are the mid-year population for both sexes in each region and age group.

We then decompose the contribution of each group of the cause of death to the annual changes in total life expectancy at birth (e_0) (i.e., 2017-2018, ..., 2020-2021). We use an approach proposed by Murthy (Approach III) (Murthy, 2005), extending a method initially introduced by Pollard (Pollard, 1982). The benefit of Murthy's approach is that it leads to minimum interaction effects between mortality changes at different ages. The contribution (main effects) of each age group x to $x + n$ to the total difference in life expectancy at birth between periods t and $t + 1$ is estimated by

$$[m_{x,n}^t - m_{x,n}^{t+1}] \cdot \left[\frac{n}{2} \left[\left(\frac{l_x^t \cdot e_x^t + l_{x+n}^t \cdot e_{x+n}^t}{2} \right) + \left(\frac{l_x^{t+1} \cdot e_x^{t+1} + l_{x+n}^{t+1} \cdot e_{x+n}^{t+1}}{2} \right) \right] \right],$$

the contribution of the open age group ($x +$) is given by

$$[m_{x+}^t - m_{x+}^{t+1}] \cdot \left[\frac{1}{2} \left[\left(\frac{l_x^{t+1} \cdot e_x^{t+1}}{m_{x+}^t} \right) + \left(\frac{l_x^t \cdot e_x^t}{m_{x+}^{t+1}} \right) \right] \right],$$

and the interaction effects for all age groups are estimated via

$$[m_{x,n}^t - m_{x,n}^{t+1}] \cdot \left(\frac{l_x^t \cdot e_x^{t+1} + l_x^{t+1} \cdot e_x^t}{2} \right),$$

where $m_{x,n}^t$ is the region-age-sex-cause specific death rate in age group x to $x + n$, l_x^t is the number of people alive at age x , and e_x^t is the life expectancy at age x . Murthy (Murthy, 2005) argues that using approximate discrete equations to Pollard's continuous method, the decomposed totals could not precisely match the observed period changes in e_0 . Yet, our estimates have minor differences constricted to around 0.5%.

Results

We use mortality records from the Ministry of Health in Brazil to obtain a time series of deaths by cause between January 1st, 2010, and December 31st, 2021 (144 months). To comprehensively assess time trends, we estimate monthly age-standardized mortality rates for Brazil and its regions (North, Northeast, Midwest, Southeast, and South) by major age groups (0-4, 5-19, 20-64, 65+), sex, and 14 groups of underlying causes of death (Materials and Methods). The reader is cautioned that the scales of the panels included in our figures are different to uncover variations from each cause of death.

After the onset of the COVID-19 pandemic, monthly age-standardized mortality rates for all other groups of causes of death changed their temporal trajectories (Figure 1). Mortality rates for pregnancy, childbirth and puerperium, diabetes mellitus, and hypertension and hypertensive renal diseases increased following the pattern of the two major pandemic waves in Brazil in 2020 and 2021. Rates for mental and behavioral disorders reverted their trend of decline. Besides, the typical fluctuations in rates of influenza, pneumonia, and chronic and other lower respiratory diseases were not observed anymore. Also, deaths from

heart and stroke decreased on average by 500 per year between 2017 and 2019, then fell by 15,000 in 2020 and increased by 15,000 in 2021 (Appendices, Tables S2 and S3). The pattern of those changes was not uniform across regions (Appendices, Figure S4).

To better evaluate the effect of the COVID-19 pandemic on other causes of death, we decompose each standardized mortality rate time series into three additive components: trend, seasonality, and the remainder (Materials and Methods). Given the long-term trend and historical seasonal fluctuations (i.e., signal) in standardized mortality rates, we assume that any impact from the pandemic (i.e., noise) will be left on the remainder component.

Figure 2 shows the remainder of the decomposition of standardized mortality rates for Brazil and both sexes (the trend and seasonal components are presented in Appendices, Figures S2 and S3, respectively). The pattern of the remainder component in 2020 and 2021 mirrors the two major pandemic waves, except for obesity and mental and behavioral disorders. However, the direction (increase or decline) and the magnitude of the change by pandemic wave varied by cause of death. Notable increases are observed for causes related to pregnancy, childbirth and puerperium, obesity, mental and behavioral disorders, diabetes mellitus, hypertension and hypertensive renal, and ill-defined and unknown causes. By contrast, groups of causes related to the digestive system, kidney and urinary system, malignant neoplasms, heart and stroke, influenza, pneumonia, chronic and other lower respiratory diseases, and remaining causes declined. Malignant neoplasms, influenza, pneumonia, chronic, and other lower respiratory diseases were uniformly affected by both COVID-19 pandemic waves.

There are noteworthy regional differences in the levels and patterns of the pandemic impacts. Figure 3 shows the remainder of the decomposition of standardized mortality rates for each region and sex (Appendices, Figures S5 and S6 show the trend and seasonal components, respectively). Increases in the remainder for septicemia were substantial in the Midwest region in 2021, while the North region had the most significant increase in obesity. The Northeast, followed by the Southeast, had considerable increases in the remainder for mental and behavioral disorders. The most sizeable increases in pregnancy, childbirth, and

puerperium were in the North, Midwest, and South regions. The remainder for diabetes mellitus, hypertension, and hypertensive renal increased substantially in the North and Northeast regions. For ill-defined and unknown causes, the North had the highest remainder increases.

Considering males and females (Appendices, Figure S7), the most striking difference in the remainder component (Figure 4) is for mental and behavioral disorders, which was negligible for women but high throughout the pandemic for men. For all other causes, the levels and patterns by gender were roughly similar (Appendices, Figures S8 and S9 show the trend and seasonal components, respectively).

Concerning the major age groups 20-64 and 65+ (Appendices, Figures S10 to S13), the marked difference in the remainder component (Appendices, Figure S13) is for mental and behavioral disorders, which was three times higher for 20-64. For septicemia, digestive system, and remaining causes, the remainder component presented an inverted direction of change, positive for 20-64 and negative for 65+. For all other causes, except for obesity, the age group 65+ showed a more significant change in levels than 20-64.

Given the different ways the COVID-19 pandemic affected causes of death, we decompose the contributions of COVID-19 deaths (direct effect) and the other groups of causes (indirect effects) to the annual change in the observed life expectancy at birth (e_0) in Brazil from 2017 to 2021 (Materials and Methods). During 2020 and 2021, the COVID-19 pandemic reduced e_0 in Brazil by 3.23 years, 1.44 in 2020, and 1.79 in 2021 (Appendices, Table S4). Direct effects reduced e_0 by 1.89 years in 2020 and 1.77 in 2021. Indirect effects increased e_0 by 0.44 in 2020 and had virtually no impact on e_0 in 2021 (0.01 years).

Regarding specific causes of death, our findings are consistent with the change in the pattern of the remainder component (Figure 5). Causes of death with significant increases in the remainder (i.e., obesity; pregnancy, childbirth, and puerperium; mental and behavioral disorders; diabetes mellitus, hypertension, and hypertensive renal disease; and ill-defined and unknown) contributed to reducing e_0 by 0.27 years in 2020 and 0.05 years in 2021. Causes of death with decreases in the remainder (i.e., digestive system; kidney and urinary system;

malignant neoplasms; heart and stroke; influenza, pneumonia, chronic and other lower respiratory diseases; and remaining causes) increased e_0 by 0.69 years in 2020 and 0.06 years in 2021. Septicemia, which had mixed impacts from the pandemic, increased e_0 by 0.02 in 2020 and decreased e_0 by 0.03 in 2021.

Concerning regions and sex (Figure 6 and Appendices, Table S5), the largest declines in e_0 in 2020 and 2021, respectively, occurred in the North (2.79 years) and South (3.32 years) regions. In both cases, the impact was higher for males. Combining 2020 and 2021, the highest reduction in e_0 from the COVID-19 pandemic was in the Midwest (4.30 years, 1.85 in 2020, 2.46 in 2021) and the lowest in the Northeast (2.42 years, 1.87 in 2020, 0.54 in 2021). Direct effects reduced e_0 the most in the Midwest (4.62 years, 2.21 in 2020, 2.41 in 2021) and the least in the Northeast (2.60 years, 1.84 in 2020, 0.77 in 2021). On the contrary, in 2020 and 2021 combined, the indirect effects of the COVID-19 pandemic increased e_0 in all regions. Indirect effects increased e_0 in 2020 in the Midwest, Southeast, and South, and 2021 in the North and Northeast. Indirect effects increased e_0 the most in the South in 2020 (0.94 years) but contributed to the largest reduction in e_0 in the same region in 2021 (0.50 years).

Considering regions and specific causes of death (Appendices, Table S5), the most relevant increases from indirect effects in e_0 came from influenza, pneumonia, chronic and other lower respiratory diseases in all regions except in the North in 2020 and the South in 2021, malignant neoplasms in all regions in 2020 and 2021, heart and stroke in all regions in 2020, and remaining causes in the North, Southeast, and South in 2020. By contrast, sharp decreases from indirect effects in e_0 came from hypertension and hypertensive renal and diabetes mellitus in all regions in 2020, ill-defined and unknown in all regions except in the Midwest and the South in 2020 and the North in 2021, influenza, pneumonia, chronic and other lower respiratory diseases in the North in 2020, remaining causes in the Northeast in 2020 and the North in 2021, and heart and stroke in the South in 2021.

There are also different contributions to changes in e_0 by major age groups (Figure 7 and Appendices, Table S6). Except for a few regions, changes in mortality caused by influenza, pneumonia, chronic and other lower respiratory diseases (ages 65+), remaining causes (ages

65+ in 2020), heart and stroke (ages 20-64 and 65+ in 2020), and malignant neoplasms (ages 20-64 and 65+) increased life expectancy at birth. Conversely, relevant decreases from indirect effects in e_0 came from remaining causes (ages 20-64), ill-defined and unknown causes of death (ages 20-64 and 65+), hypertension and hypertensive renal diseases, and diabetes mellitus (ages 20-64 and 65+ in 2020).

Discussion

This study aimed to examine the impact of the COVID-19 pandemic on other causes of death in Brazil in 2020 and 2021. Our results show that consequences were distinct in direction and magnitude when detailed by causes of death, age groups, sex, and geographical regions. Broadly, the remainder component of the time series of mortality rates from groups of causes of death mirrors the pattern of the two major pandemic waves. However, the impact of the COVID-19 pandemic on other causes of death was not limited to increases but decreases as well. As a result, the direct effects of the COVID-19 pandemic in Brazil reduced e_0 by 1.89 years between 2019 and 2020 and 1.77 between 2020 and 2021. Indirect effects increased e_0 by 0.44 between 2019 and 2020 and had virtually no impact on e_0 between 2020 and 2021.

The main strength of this study is the comprehensive analysis of mortality by underlying causes of death, sex, and region, using Brazil's most complete dataset of mortality records. The limitations are mostly related to the classification of the cause of death. It is possible that the misclassification of COVID-19 deaths (Gill & DeJoseph, 2020; Moghadas & Galvani, 2021) resulted in an overestimation of our results for specific causes of death. Additionally, misclassifying other causes and underreporting of deaths could have happened differently by sex and region. However, the Brazilian Ministry of Health's April 2020 guidelines for proper ICD-10 categorization of COVID-19 deaths (Brasil, 2020, 2021a, 2021b) (Materials and Methods) have minimized this problem. Also, underreporting of deaths in Brazil is low (around 1.5%) (IBGE, 2022), and ill-defined and unknown deaths have remained unchanged since 2019 (about 5%).

On the one hand, some of our findings support previous studies which show that the COVID-19 pandemic may increase the mortality of other causes of death (Arias et al., 2021, 2022;

Brant et al., 2020; Guimarães et al., 2022; Jardim et al., 2022; Kontopantelis et al., 2021; Santos et al., 2021; Stokes et al., 2021). This is consistent with the idea that disruptions in the healthcare system caused by the COVID-19 pandemic (Bigoni et al., 2022; Dey & Davidson, 2021; Griffin, 2021; Lai et al., 2020) increased the mortality from causes amenable to primary care (Nolte & McKee, 2004). On the other hand, our results also corroborate earlier studies that reveal that the COVID-19 pandemic may also decrease the mortality of other causes of death, such as heart and stroke (Brant et al., 2020; Jardim et al., 2022; Santos et al., 2021), influenza, pneumonia, chronic and other lower respiratory diseases (Arias et al., 2021, 2022; Guimarães et al., 2022; Kontopantelis et al., 2021; Santos et al., 2021), malignant neoplasms (Arias et al., 2021, 2022; Jardim et al., 2022), as well the digestive system, kidney, and urinary system. This is consistent with competing risks (Chiang, 1991; Yashin et al., 1986) and corroborates earlier studies that associated specific morbidities or conditions with increased risk of dying from COVID-19 (Castro, Gurzenda, Macário, et al., 2021; Dorjee et al., 2020; Fond et al., 2021; Thakur et al., 2021; Venkatesulu et al., 2021; Yang et al., 2021; Zambrano et al., 2020). Therefore, our analysis suggests that mortality replacement did happen in Brazil during the COVID-19 pandemic.

We cannot rule out the possibility that the misclassification of causes of death could explain some of the differences. The North or Northeast regions had the most significant increases or decreases of the time series remainders. These regions are marked by striking inequalities and have some of the worst socioeconomic, health outcomes, and health infrastructure and access indicators (IBGE, 2021; Rocha et al., 2021). Restricted availability of resources, physicians, and intensive care unit beds are major limiting factors (Rocha et al., 2021). They also contributed to the speed of the spread of COVID-19 and adverse mortality outcomes (Castro, Kim, et al., 2021).

Regarding e_0 , our results show the largest declines for the North and Northeast regions in 2020, while in 2021, the Midwest and South regions had the leading reductions, corroborating earlier findings (Castro, Gurzenda, Turra, et al., 2021). These results reflect the regional spread of COVID-19, with a widespread late transmission in the South and Midwest (Castro, Kim, et al., 2021). Most of the decline resulted from the direct effects of COVID-19.

Therefore, it is expected that as the mortality burden of the pandemic subsides, e_0 will progressively return to its pre-pandemic temporal trajectory.

The United Nations Population Estimates and Projections 2022 assumes Brazil will return to pre-pandemic levels in 2023 (United Nations, 2022). Here, two issues are important to consider regarding the extent to which the future pace of gains in e_0 will be like pre-pandemic levels and with the same regional gradient. First, several studies show that patients who recovered from COVID-19 have a higher mortality risk than those who have not contracted the disease (Al-Aly et al., 2022; Uusküla et al., 2022; Xie et al., 2022). There is no systematic and nationwide information on long COVID-19 in Brazil. As of July 2022, 33.8 million people have recovered from COVID-19 (likely an underestimated number due to limited testing in the early months of the pandemic and the lack of a reporting system for self-testing), and therefore a non-negligible number could potentially suffer premature mortality. Second, extreme poverty in Brazil has increased from 4.67% to 5.74% between 2019 and 2021 (Figueiredo, 2022). It is estimated that in 2014-2016 1.9% of the total population (3.9 million) faced severe food insecurity; in 2019-2021, this number increased to 7.3% (15.4 million) (FAO et al., 2022). This scenario could also affect health outcomes and result in higher morbidity and mortality among children and adults.

Considering the impacts of the COVID-19 pandemic on mortality patterns in Brazil and the current scenario of increased poverty, the timely implementation and the characteristics of government programs aimed to promote equity and guarantee a minimum income for families' subsistence will be critical to putting the country on a path to return to pre-pandemic mortality levels. Those programs are essential to mitigate the consequences of the pandemic.

References

- Ackley, C. A., Lundberg, D. J., Ma, L., Elo, I. T., Preston, S. H., & Stokes, A. C. (2022). County-level estimates of excess mortality associated with COVID-19 in the United States. *SSM - Population Health*, 17, 101021. <https://doi.org/10.1016/j.ssmph.2021.101021>
- Al-Aly, Z., Bowe, B., & Xie, Y. (2022). Long COVID after breakthrough SARS-CoV-2 infection. *Nature Medicine*, 28(7), 1461–1467. <https://doi.org/10.1038/s41591-022-01840-0>
- Andrasfay, T., & Goldman, N. (2021). Reductions in 2020 US life expectancy due to COVID-19 and the disproportionate impact on the Black and Latino populations. *Proceedings of the National Academy of Sciences*, 118(5), e2014746118. <https://doi.org/10.1073/pnas.2014746118>
- Arias, E., Betzaida, T.-V., Ahmad, F., & Kochanek, K. (2021). Provisional Life Expectancy Estimates for 2020 (No. 015; Vital Statistics Rapid Release). National Center for Health Statistics (U.S.). <https://doi.org/10.15620/cdc:107201>
- Arias, E., Tejada-Vera, B., Kochanek, K., & Ahmad, F. (2022). Provisional life expectancy estimates for 2021. National Center for Health Statistics (U.S.). <https://doi.org/10.15620/cdc:118999>
- Bigoni, A., Malik, A. M., Tasca, R., Carrera, M. B. M., Schiesari, L. M. C., Gambardella, D. D., & Massuda, A. (2022). Brazil's health system functionality amidst of the COVID-19 pandemic: An analysis of resilience. *The Lancet Regional Health - Americas*, 10, 100222. <https://doi.org/10.1016/j.lana.2022.100222>
- Brant, L. C. C., Nascimento, B. R., Teixeira, R. A., Lopes, M. A. C. Q., Malta, D. C., Oliveira, G. M. M., & Ribeiro, A. L. P. (2020). Excess of cardiovascular deaths during the COVID-19 pandemic in Brazilian capital cities. *Heart*, 106(24), 1898–1905. <https://doi.org/10.1136/heartjnl-2020-317663>
- Brasil. (2020). Orientações para a codificação das causas de morte no contexto da COVID-19. <https://www.gov.br/saude/pt-br/centrais-de-conteudo/publicacoes/estudos-e-notas-informativas/2020/nota-informativa-declara-o-obito-pdf/view>
- Brasil. (2021a). Orientações sobre causas de mortes no contexto da COVID-19: Respostas às perguntas mais frequentes. https://bvsmms.saude.gov.br/bvs/publicacoes/orientacoes_causas_mortes_covid-19_perguntas.pdf
- Brasil. (2021b). Orientações sobre novos códigos de emergência para as causas de morte relacionadas a condições que ocorrem no contexto da COVID-19.

https://bvsmms.saude.gov.br/bvs/publicacoes/orientacoes_codigos_emergencia_morte_covid-19.pdf

Brasil. (2022a). Sistema de Informação sobre Mortalidade—SIM - 1979 a 2020. openDataSUS. <https://opendatasus.saude.gov.br/dataset/sim-1979-2019>

Brasil. (2022b). Sistema de Informação sobre Mortalidade—SIM - Base de Registros de 2021—Preliminar. openDataSUS. <https://opendatasus.saude.gov.br/dataset/sim-2020-2021>

Castro, M. C., Gurzenda, S., Macário, E. M., & França, G. V. A. (2021). Characteristics, outcomes and risk factors for mortality of 522167 patients hospitalised with COVID-19 in Brazil: A retrospective cohort study. *BMJ Open*, 11(5), e049089. <https://doi.org/10.1136/bmjopen-2021-049089>

Castro, M. C., Gurzenda, S., Turra, C. M., Kim, S., Andrasfay, T., & Goldman, N. (2021). Reduction in life expectancy in Brazil after COVID-19. *Nature Medicine*. <https://doi.org/10.1038/s41591-021-01437-z>

Castro, M. C., Gurzenda, S., Turra, C. M., Kim, S., Andrasfay, T., & Goldman, N. (2022). Covid-19 is not an independent cause of death [Preprint]. *Public and Global Health*. <https://doi.org/10.1101/2022.06.01.22275878>

Castro, M. C., Kim, S., Barberia, L., Ribeiro, A. F., Gurzenda, S., Ribeiro, K. B., Abbott, E., Blossom, J., Rache, B., & Singer, B. H. (2021). Spatiotemporal pattern of COVID-19 spread in Brazil. *Science*, 372(6544), 821–826. <https://doi.org/10.1126/science.abh1558>

Castro, M. C., Massuda, A., Almeida, G., Menezes-Filho, N. A., Andrade, M. V., de Souza Noronha, K. V. M., Rocha, R., Macinko, J., Hone, T., Tasca, R., Giovanella, L., Malik, A. M., Werneck, H., Fachini, L. A., & Atun, R. (2019). Brazil's unified health system: The first 30 years and prospects for the future. *The Lancet*, 394(10195), 345–356. [https://doi.org/10.1016/S0140-6736\(19\)31243-7](https://doi.org/10.1016/S0140-6736(19)31243-7)

Chan, E. Y. S., Cheng, D., & Martin, J. (2021). Impact of COVID-19 on excess mortality, life expectancy, and years of life lost in the United States. *PLOS ONE*, 16(9), e0256835. <https://doi.org/10.1371/journal.pone.0256835>

Chiang, C. L. (1991). Competing Risks in Mortality Analysis. *Annual Review of Public Health*, 12(1), 281–307. <https://doi.org/10.1146/annurev.pu.12.050191.001433>

Cleveland, R. B., Cleveland, W. S., McRae, J. E., & Terpenning, I. (1990). STL: A seasonal-trend decomposition. *Journal of Official Statistics*, 6(1), 3–73.

Cronin, C. J., & Evans, W. N. (2021). Excess mortality from COVID and non-COVID causes in minority populations. *Proceedings of the National Academy of Sciences*, 118(39), e2101386118. <https://doi.org/10.1073/pnas.2101386118>

- Dey, S., & Davidson, J. (2021). The Determinants of Non-COVID-19 Excess Deaths During the COVID-19 Pandemic: A Cross-country Panel Study. *Studies in Microeconomics*, 9(2), 196–226. <https://doi.org/10.1177/23210222211046412>
- Dorjee, K., Kim, H., Bonomo, E., & Dolma, R. (2020). Prevalence and predictors of death and severe disease in patients hospitalized due to COVID-19: A comprehensive systematic review and meta-analysis of 77 studies and 38,000 patients. *PLOS ONE*, 15(12), e0243191. <https://doi.org/10.1371/journal.pone.0243191>
- FAO, IFAD, UNICEF, WFP, & WHO. (2022). The state of food security and nutrition in the world: 2022. Repurposing food and agricultural policies to make healthy diets more affordable. <https://doi.org/10.4060/cc0639en>
- Figueiredo, E. A. de. (2022). O Efeito da covid-19 sobre os indicadores de pobreza brasileiros e as políticas de mitigação: Uma discussão inicial (Nota da Presidência No. 7; p. 11). Instituto de Pesquisa Econômica Aplicada (Ipea). http://repositorio.ipea.gov.br/bitstream/11058/11228/1/n_07_O_Efeito_da_Covid_19.pdf
- Fond, G., Nemani, K., Etchecopar-Etchart, D., Loundou, A., Goff, D. C., Lee, S. W., Lancon, C., Auquier, P., Baumstarck, K., Llorca, P.-M., Yon, D. K., & Boyer, L. (2021). Association Between Mental Health Disorders and Mortality Among Patients With COVID-19 in 7 Countries: A Systematic Review and Meta-analysis. *JAMA Psychiatry*, 78(11), 1208–1217. <https://doi.org/10.1001/jamapsychiatry.2021.2274>
- Forsythe, G. E., Malcolm, M. A., & Moler, C. B. (1977). *Computer methods for mathematical computations*. Prentice-Hall.
- Gill, J. R., & DeJoseph, M. E. (2020). The Importance of Proper Death Certification During the COVID-19 Pandemic. *JAMA*, 324(1), 27–28. <https://doi.org/10.1001/jama.2020.9536>
- Griffin, S. (2021). Covid-19: High level of non-covid deaths may reflect health system pressures. *BMJ*, n44. <https://doi.org/10.1136/bmj.n44>
- Guimarães, R. M., Oliveira, M. P. R. P. B. de, & Dutra, V. G. P. (2022). Excess mortality according to group of causes in the first year of the COVID-19 pandemic in Brazil. *Revista Brasileira de Epidemiologia*, 25, e220029. <https://doi.org/10.1590/1980-549720220029>
- IBGE. (2018). *Projeções da população: Brasil e unidades da federação - revisão 2018 (2nd ed.)*. IBGE, Coordenação de População e Indicadores Sociais. <https://www.ibge.gov.br/estatisticas/sociais/populacao/9109-projecao-da-populacao.html?=&t=resultados>
- IBGE. (2021). *Síntese de indicadores sociais: Uma análise das condições de vida da população brasileira—2021*. IBGE, Coordenação de População e Indicadores Sociais.

- IBGE. (2022). Estudo complementar à aplicação da técnica de captura-recaptura: Estimativas desagregadas dos totais de nascidos vivos e óbitos: 2016-2019. IBGE, Coordenação de População e Indicadores Sociais. <https://biblioteca.ibge.gov.br/visualizacao/livros/liv101927.pdf>
- Iuliano, A. D., Chang, H. H., Patel, N. N., Threlkel, R., Kniss, K., Reich, J., Steele, M., Hall, A. J., Fry, A. M., & Reed, C. (2021). Estimating Under-recognized COVID-19 Deaths, United States, March 2020-May 2021 using an Excess Mortality Modelling Approach. *The Lancet Regional Health - Americas*, 100019. <https://doi.org/10.1016/j.lana.2021.100019>
- Jardim, B. C., Migowski, A., Corrêa, F. de M., & Silva, G. A. e. (2022). Covid-19 no Brasil em 2020: Impacto nas mortes por câncer e doenças cardiovasculares. *Revista de Saúde Pública*, 56, 22–22. <https://doi.org/10.11606/s1518-8787.2022056004040>
- Kelly, G., Petti, S., & Noah, N. (2021). Covid-19, non-Covid-19 and excess mortality rates not comparable across countries. *Epidemiology & Infection*, 149, e176. <https://doi.org/10.1017/S0950268821001850>
- Kontopantelis, E., Mamas, M. A., Webb, R. T., Castro, A., Rutter, M. K., Gale, C. P., Ashcroft, D. M., Pierce, M., Abel, K. M., Price, G., Faivre-Finn, C., Van Spall, H. G. C., Graham, M. M., Morciano, M., Martin, G. P., & Doran, T. (2021). Excess deaths from COVID-19 and other causes by region, neighbourhood deprivation level and place of death during the first 30 weeks of the pandemic in England and Wales: A retrospective registry study. *The Lancet Regional Health - Europe*, 7, 100144. <https://doi.org/10.1016/j.lanepe.2021.100144>
- Lai, A. G., Pasea, L., Banerjee, A., Hall, G., Denaxas, S., Chang, W. H., Katsoulis, M., Williams, B., Pillay, D., Noursadeghi, M., Linch, D., Hughes, D., Forster, M. D., Turnbull, C., Fitzpatrick, N. K., Boyd, K., Foster, G. R., Enver, T., Nafilyan, V., ... Hemingway, H. (2020). Estimated impact of the COVID-19 pandemic on cancer services and excess 1-year mortality in people with cancer and multimorbidity: Near real-time data on cancer care, cancer deaths and a population-based cohort study. *BMJ Open*, 10(11), e043828. <https://doi.org/10.1136/bmjopen-2020-043828>
- Lima, E. E. C., Vilela, E. A., Peralta, A., Rocha, M., Queiroz, B. L., Gonzaga, M. R., Piscocoya-Díaz, M., Martinez-Folgar, K., García-Guerrero, V. M., & Freire, F. H. M. A. (2021). Investigating regional excess mortality during 2020 COVID-19 pandemic in selected Latin American countries. *Genus*, 77(1), 30. <https://doi.org/10.1186/s41118-021-00139-1>
- Mantovani, A., Morrone, M. C., Patrono, C., Santoro, M. G., Schiaffino, S., Remuzzi, G., & Bussolati, G. (2022). Long Covid: Where we stand and challenges ahead. *Cell Death & Differentiation*, 29(10), Article 10. <https://doi.org/10.1038/s41418-022-01052-6>

- Marinho, F., Torrens, A., Teixeira, R., França, E., Nogales, A. M., Xavier, D., & Fujiwara, T. (2020). Excess Mortality in Brazil: Detailed Description of Trends in Mortality During the COVID-19 Pandemic (p. 30) [Technical Note]. Vital Strategies.
- Moghadas, S. M., & Galvani, A. P. (2021). The unrecognized death toll of COVID-19 in the United States. *The Lancet Regional Health - Americas*, 100033. <https://doi.org/10.1016/j.lana.2021.100033>
- Murthy, P. K. (2005). A comparison of different methods for decomposition of changes in expectation of life at birth and differentials in life expectancy at birth. *Demographic Research*, 12, 141–172. <https://doi.org/10.4054/DemRes.2005.12.7>
- Nolte, E., & McKee, M. (2004). Does health care save lives? Avoidable mortality revisited. Nuffield Trust.
- Pollard, J. H. (1982). The expectation of life and its relationship to mortality. *Journal of the Institute of Actuaries*, 109(02), 225–240. <https://doi.org/10.1017/S0020268100036258>
- Rau, R. (2007). Seasonality in human mortality: A demographic approach. Springer. https://www.demogr.mpg.de/en/publications_databases_6118/publications_1904/monographs/seasonality_in_human_mortality_a_demographic_approach_2493/
- Rocha, R., Atun, R., Massuda, A., Rache, B., Spinola, P., Nunes, L., Lago, M., & Castro, M. C. (2021). Effect of socioeconomic inequalities and vulnerabilities on health-system preparedness and response to COVID-19 in Brazil: A comprehensive analysis. *The Lancet Global Health*, 9(6), e782–e792. [https://doi.org/10.1016/S2214-109X\(21\)00081-4](https://doi.org/10.1016/S2214-109X(21)00081-4)
- Sanmarchi, F., Golinelli, D., Lenzi, J., Esposito, F., Capodici, A., Reno, C., & Gibertoni, D. (2021). Exploring the gap between excess mortality and covid-19 deaths in 67 countries. *JAMA Network Open*, 4(7), e2117359. <https://doi.org/10.1001/jamanetworkopen.2021.17359>
- Santos, A. M. dos, Souza, B. F. de, Carvalho, C. A. de, Campos, M. A. G., Oliveira, B. L. C. A. de, Diniz, E. M., Branco, M. dos R. F. C., Queiroz, R. C. de S., Carvalho, V. A. de, Araújo, W. R. M., & Silva, A. A. M. da. (2021). Excess deaths from all causes and by COVID-19 in Brazil in 2020. *Revista de Saúde Pública*, 55, 71. <https://doi.org/10.11606/s1518-8787.2021055004137>
- Stokes, A. C., Lundberg, D. J., Elo, I. T., Hempstead, K., Bor, J., & Preston, S. H. (2021). COVID-19 and excess mortality in the United States: A county-level analysis. *PLOS Medicine*, 18(5), e1003571. <https://doi.org/10.1371/journal.pmed.1003571>
- Thakur, B., Dubey, P., Benitez, J., Torres, J. P., Reddy, S., Shokar, N., Aung, K., Mukherjee, D., & Dwivedi, A. K. (2021). A systematic review and meta-analysis of geographic differences

- in comorbidities and associated severity and mortality among individuals with COVID-19. *Scientific Reports*, 11(1), 8562. <https://doi.org/10.1038/s41598-021-88130-w>
- United Nations. (2022). *World population prospects 2022: Online edition*. United Nations, Department of Economic and Social Affairs, Population Division. <https://population.un.org/wpp/>
- Uusküla, A., Jürgenson, T., Pisarev, H., Kolde, R., Meister, T., Tisler, A., Suija, K., Kalda, R., Piirsoo, M., & Fischer, K. (2022). Long-term mortality following SARS-CoV-2 infection: A national cohort study from Estonia. *The Lancet Regional Health - Europe*, 100394. <https://doi.org/10.1016/j.lanepe.2022.100394>
- Venkatesulu, B. P., Chandrasekar, V. T., Girdhar, P., Advani, P., Sharma, A., Elumalai, T., Hsieh, C. E., Elghazawy, H. I., Verma, V., & Krishnan, S. (2021). A systematic review and meta-analysis of cancer patients affected by a novel coronavirus. *JNCI Cancer Spectrum*, 5(2), pkaa102. <https://doi.org/10.1093/jncics/pkaa102>
- Ventura, D., Aith, F., & Reis, R. (2021). Crimes against humanity in Brazil's covid-19 response-a lesson to us all. *BMJ*, 375, n2625. <https://doi.org/10.1136/bmj.n2625>
- World Health Organization. (2020). *International guidelines for certification and classification (coding) of COVID-19 as cause of death: Based on ICD - International Statistical Classification of Diseases*. World Health Organization. https://cdn.who.int/media/docs/default-source/classification/icd/covid-19/guidelines-cause-of-death-covid-19-20200420-en.pdf?sfvrsn=35fdd864_2&download=true
- World Health Organization. (2022, May). *Global excess deaths associated with COVID-19, January 2020—December 2021*. <https://www.who.int/data/stories/global-excess-deaths-associated-with-covid-19-january-2020-december-2021>
- World Health Organization. (2023, January 4). *COVID-19 Weekly Epidemiological Update 124*. <https://www.who.int/publications/m/item/weekly-epidemiological-update-on-covid-19---4-january-2023>
- Xie, Y., Xu, E., Bowe, B., & Al-Aly, Z. (2022). Long-term cardiovascular outcomes of COVID-19. *Nature Medicine*, 28(3), 583–590. <https://doi.org/10.1038/s41591-022-01689-3>
- Yang, J., Hu, J., & Zhu, C. (2021). Obesity aggravates COVID-19: A systematic review and meta-analysis. *Journal of Medical Virology*, 93(1), 257–261. <https://doi.org/10.1002/jmv.26237>
- Yashin, Anatolil., Manton, KennethG., & Stallard, E. (1986). Dependent competing risks: A stochastic process model. *Journal of Mathematical Biology*, 24(2). <https://doi.org/10.1007/BF00275995>

Yasin, Y. J., Grivna, M., & Abu-Zidan, F. M. (2021). Global impact of COVID-19 pandemic on road traffic collisions. *World Journal of Emergency Surgery*, 16(1), 51. <https://doi.org/10.1186/s13017-021-00395-8>

Zambrano, L. D., Ellington, S., Strid, P., Galang, R. R., Oduyebo, T., Tong, V. T., Woodworth, K. R., Nahabedian, J. F., Azziz-Baumgartner, E., Gilboa, S. M., Meaney-Delman, D., CDC COVID-19 Response Pregnancy and Infant Linked Outcomes Team, CDC COVID-19 Response Pregnancy and Infant Linked Outcomes Team, Akosa, A., Bennett, C., Burkel, V., Chang, D., Delaney, A., Fox, C., ... Zapata, L. (2020). Update: Characteristics of Symptomatic Women of Reproductive Age with Laboratory-Confirmed SARS-CoV-2 Infection by Pregnancy Status — United States, January 22–October 3, 2020. *MMWR. Morbidity and Mortality Weekly Report*, 69(44), 1641–1647. <https://doi.org/10.15585/mmwr.mm6944e3>

Zeger, S. L., Dominici, F., & Samet, J. (1999). Harvesting-resistant estimates of air pollution effects on mortality. *Epidemiology*, 10(2), 171–175.

Zeileis, A., & Grothendieck, G. (2005). zoo: S3 infrastructure for regular and irregular time series. *Journal of Statistical Software*, 14(6), 1–27. <https://doi.org/10.18637/jss.v014.i06>

Figures

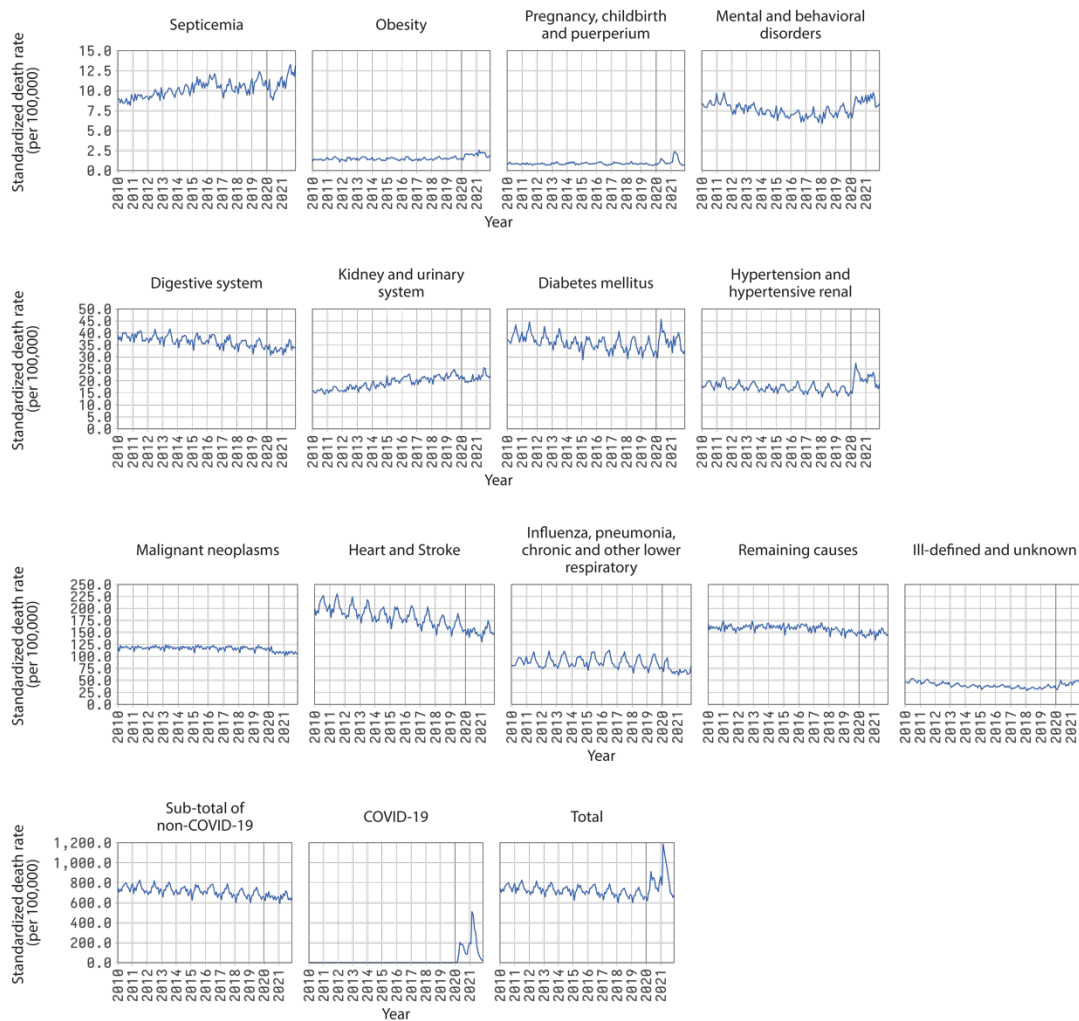


Figure 1. Time series of monthly standardized death rates by groups of causes of death, Brazil, 2010-2021. The reader is cautioned that the vertical scales of the panels are different to uncover variations from each cause of death.

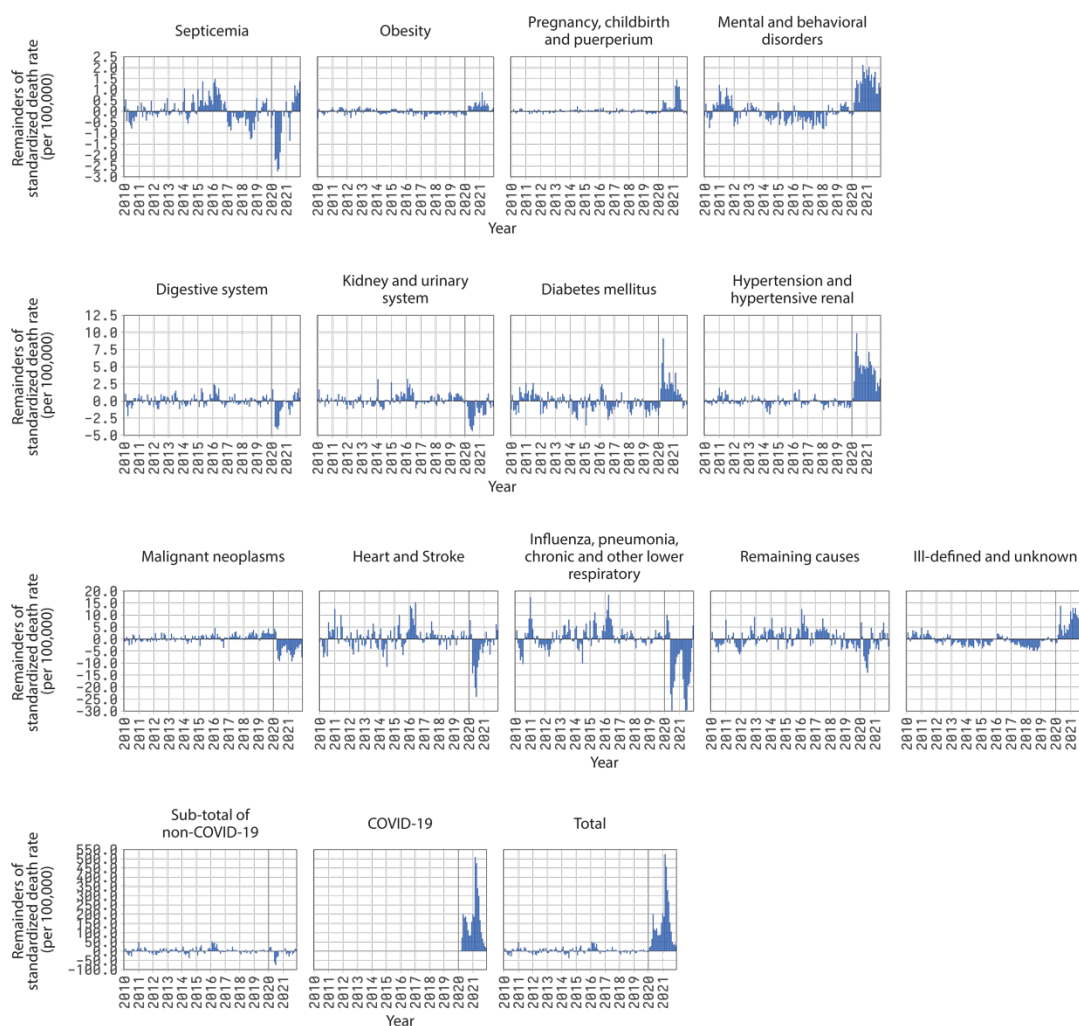


Figure 2. Remainder component of the decomposition of time series of monthly standardized death rates by groups of causes of death, Brazil, 2010-2021. Each graph shows the sum of the remainder obtained for each major age group. The graph for “Total” is the sum of the remainder component for each group of causes of death. The reader is cautioned that the vertical scales of the panels are different to uncover variations from each cause of death.



Figure 3. Remainder component of the decomposition of time series of monthly standardized death rates by groups of cause of death and regions, Brazil, 2020-2021. Each graph shows the sum of the remainder obtained for each major age group. The graphs for “Total” are the sum of the remainder component for each group of causes of death. The reader is cautioned that the vertical scales of the panels are different to uncover variations from each cause of death.

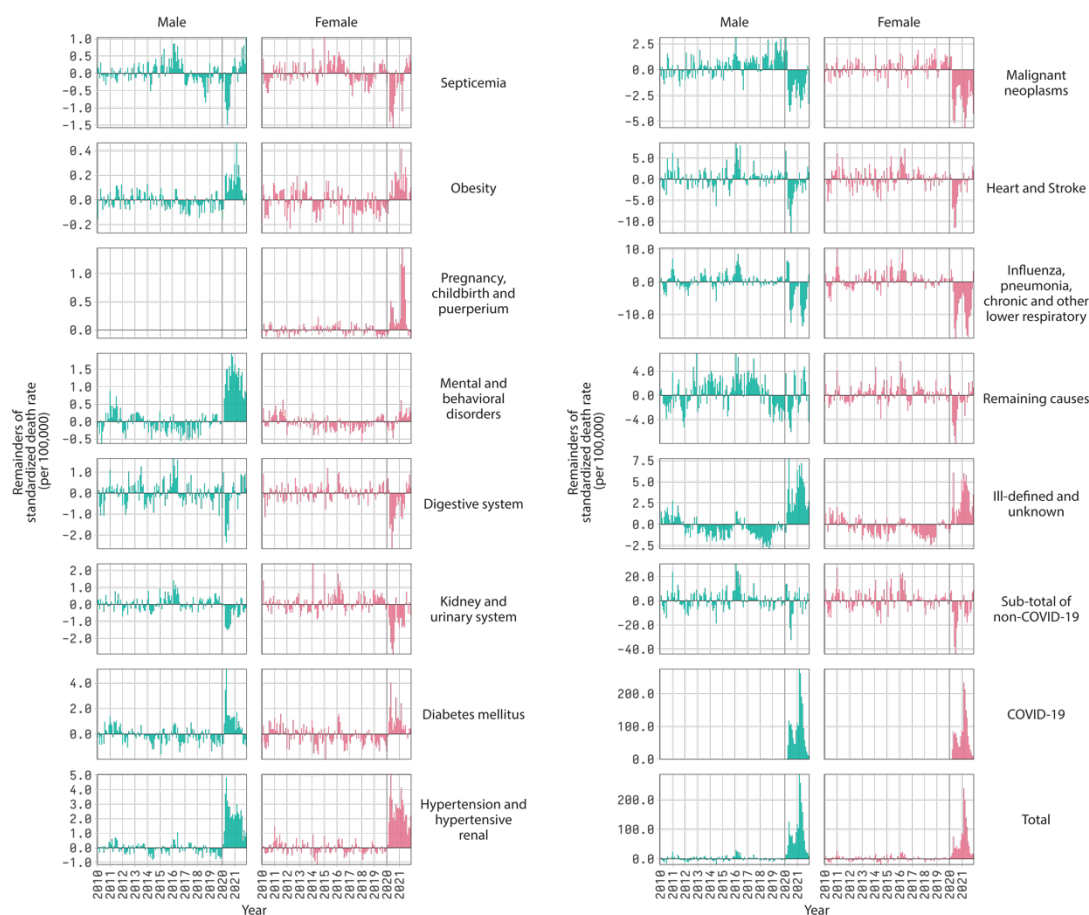


Figure 4. Remainder component of the decomposition of time series of monthly standardized death rates by groups of causes of death and sex, Brazil, 2020-2021. Each graph shows the sum of the remainder obtained for each major age group. The graphs for “Total” are the sum of the remainder component for each group of causes of death. The reader is cautioned that the vertical scales of the panels are different to uncover variations from each cause of death.

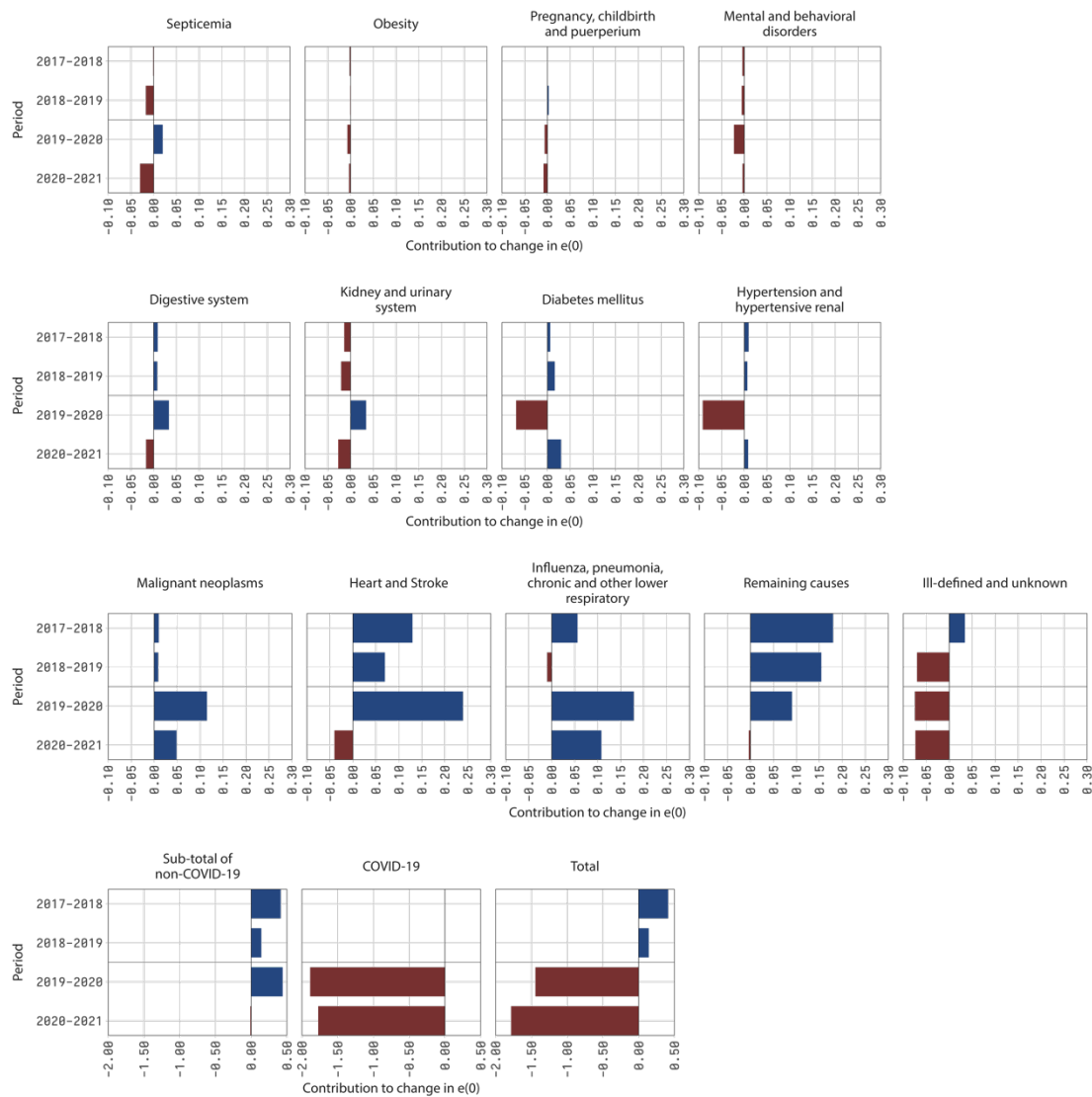


Figure 5. Contribution of groups of causes of death to the change in life expectancy at birth (e_0), Brazil, 2017-2021. The graph for “Total” is the sum of the contribution of each cause of death. The reader is cautioned that the horizontal scales of the panels are different to uncover variations from each cause of death.

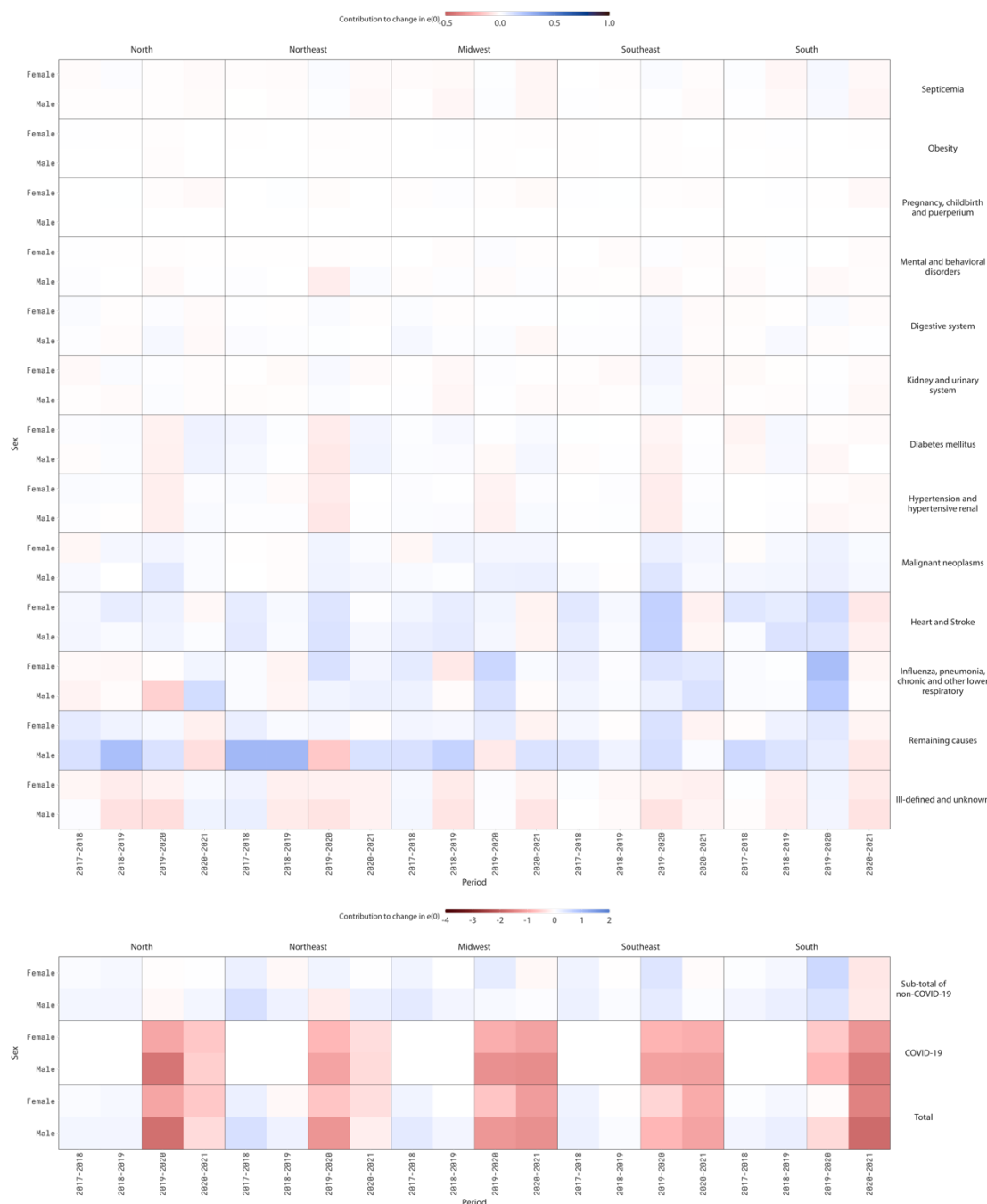


Figure 6. Contribution of groups of causes of death to the change in life expectancy at birth (e_0) by region and sex, Brazil. The values for “Total” are the sum of the contribution of each cause of death. The reader is cautioned that the color scales of the panels are different to uncover variations from each cause of death.



Figure 7. Contribution of groups of causes of death to the change in life expectancy at birth (e_0) by region and major age groups, Brazil. The values for “Total” are the sum of the contribution of each cause of death. The reader is cautioned that the color scales of the panels are different to uncover variations from each cause of death.

Appendices

Table S1. Groups of underlying causes of death by their ICD-10 codes (World Health Organization, 2020)

Group of underlying cause of death	ICD-10 code
Septicemia	○ Septicemia (A40-A41) (Heron, 2021)
Obesity	○ Obesity and other hyperalimentation (E65-E68)
Pregnancy, childbirth, and puerperium	○ Pregnancy, childbirth, and puerperium (O00-O99) (Heron, 2021)
Mental and behavioral disorders	○ Mental and behavioral disorders (F00-F99)
Digestive system	○ Diseases of the digestive system (K00-K93) ○ Symptoms and signs involving the digestive system and abdomen (R10-R19)
Kidney and urinary system	○ Nephritis, nephrotic syndrome, and nephrosis (N00-N07, N17-N19, N25-N27) (Heron, 2021) ○ Infections of the kidney (N10-N12, N13.6, N15.1) (Heron, 2021) ○ Other diseases of the urinary system (N30, N31, N32, N34, N35, N36, N39) ○ Symptoms and signs involving the urinary system (R30-R39)
Diabetes mellitus	○ Diabetes mellitus (E10-E14) (Heron, 2021)
Hypertension and hypertensive renal	○ Essential hypertension and hypertensive renal disease (I10, I12, I15) (Heron, 2021)
Malignant neoplasms	○ Malignant neoplasms (C00-C97) (Heron, 2021)
Heart and Stroke	○ Diseases of the heart (I00-I09, I11, I13, I20-I51) (Heron, 2021) ○ Cerebrovascular diseases (I60-I69) (Heron, 2021) ○ Atherosclerosis (I70) (Heron, 2021) ○ Aortic aneurysm and dissection (I71) (Heron, 2021)
Influenza, pneumonia, chronic and other lower respiratory	○ Influenza and pneumonia (J09-J18) (Heron, 2021) ○ Chronic lower respiratory diseases (J40-J47) (Heron, 2021) ○ Acute bronchitis and bronchiolitis (J20-J21) (Heron, 2021) ○ Other acute lower respiratory infections (J22) (Heron, 2021) ○ Lung diseases due to external agents (J60-J70) ○ Other respiratory diseases principally affecting the interstitium (J80-J84) ○ Suppurative and necrotic conditions of the lower respiratory tract (J85-J86) ○ Other diseases of pleura (J90-J94) ○ Other diseases of the respiratory system (J95-J99) ○ Asphyxia (R090) ○ Respiratory arrest (R092)
Remaining causes	○ All remaining ICD-10 codes
Ill-defined and unknown	○ Ill-defined and unknown causes of mortality (R95-R99) ○ General symptoms and signs (R50-R69)
COVID-19	○ Brazil's Minister of Health codes for COVID-19: (B342, U071, U072) (Brasil, 2020, 2021a, 2021b) ○ Severe acute respiratory syndrome [SARS] (U04)

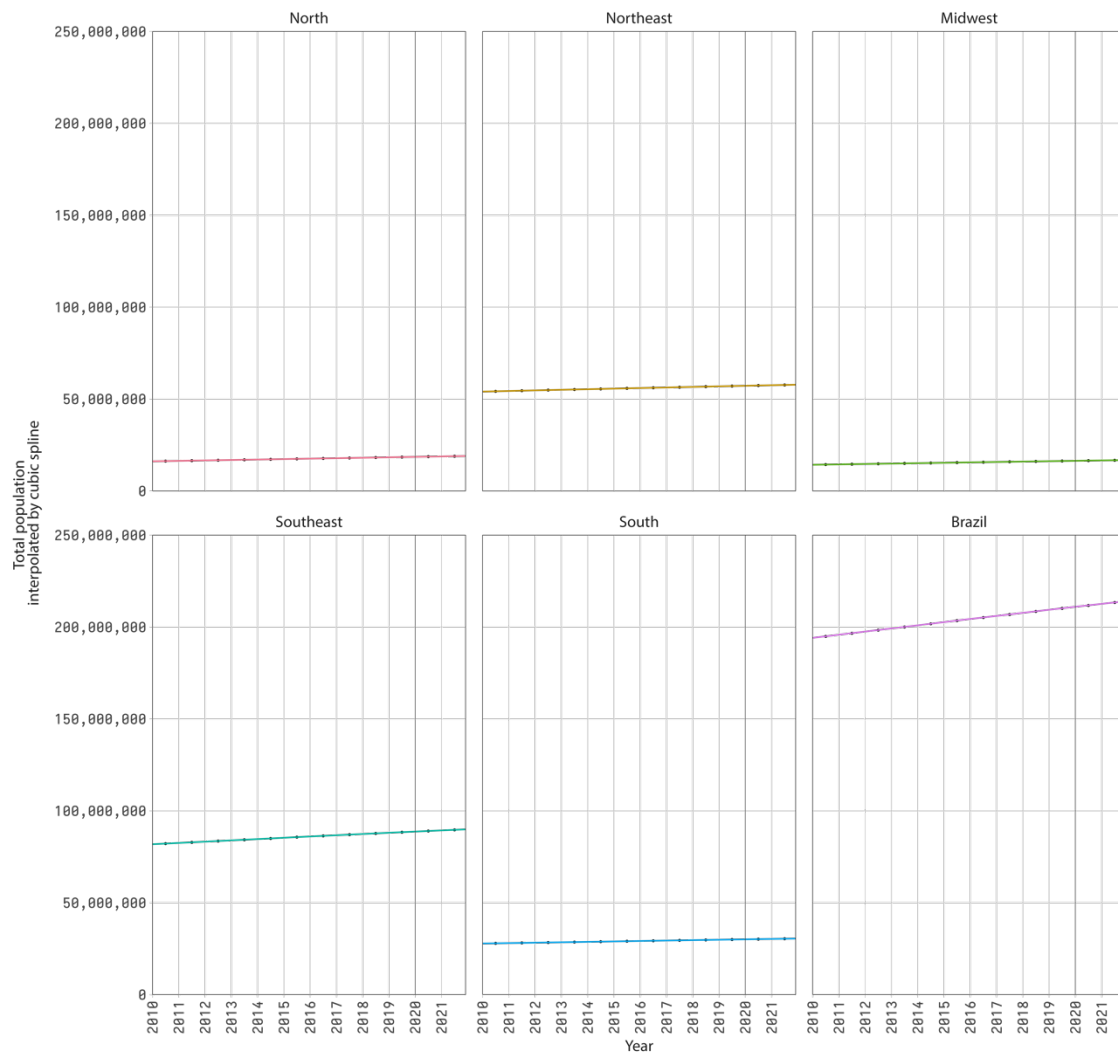


Figure S1. Total mid-month population (lines) from interpolating mid-year estimates and projections (dots) using cubic splines, January 15th, 2010-December 15th, 2021. The graph for “Brazil” is the sum of the population for each region.

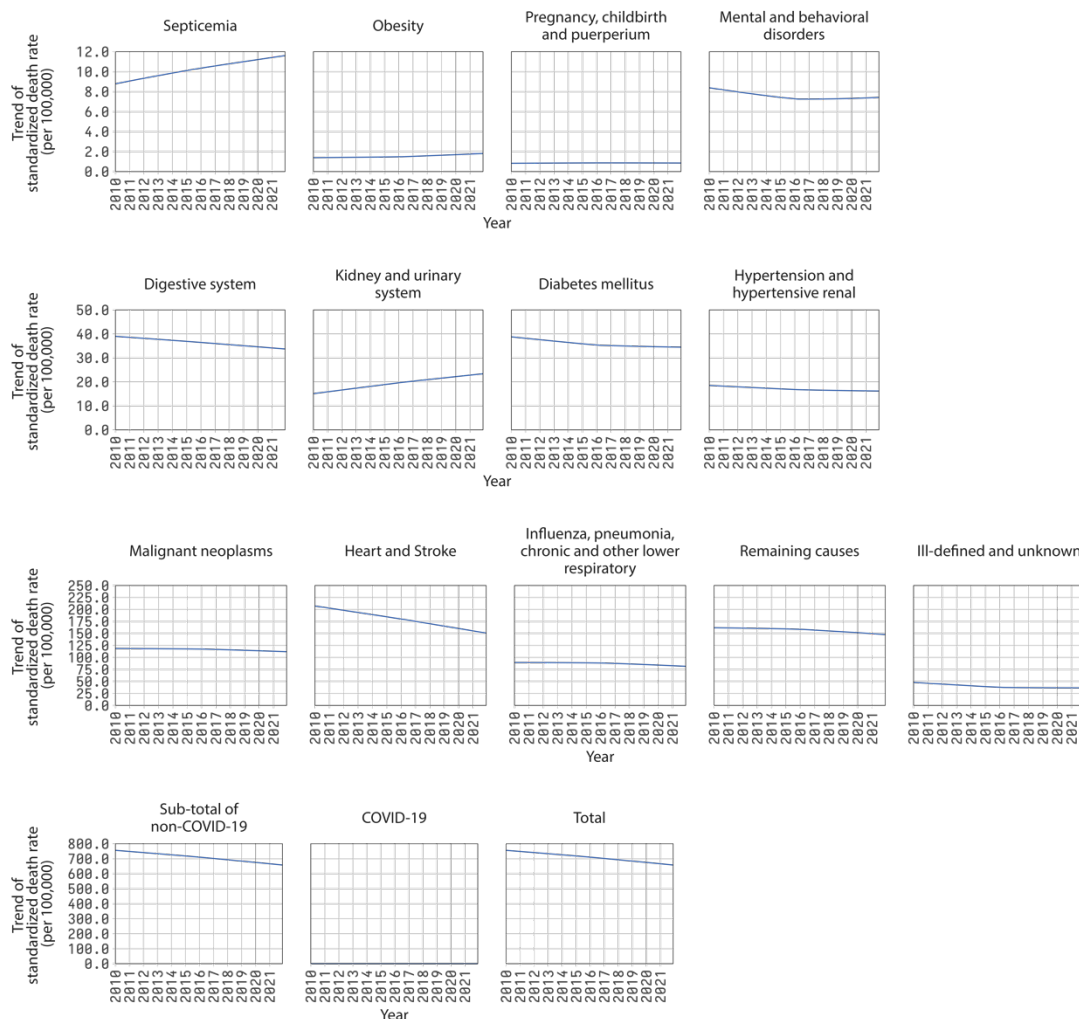


Figure S2. Trend component of the decomposition of time series of monthly standardized death rates by groups of causes of death, Brazil, 2010-2021. Each graph shows the sum of the trend obtained for each major age group. The graph for “Total” is the sum of the trend component for each group of causes of death. The reader is cautioned that the vertical scales of the panels are different to uncover variations from each cause of death.

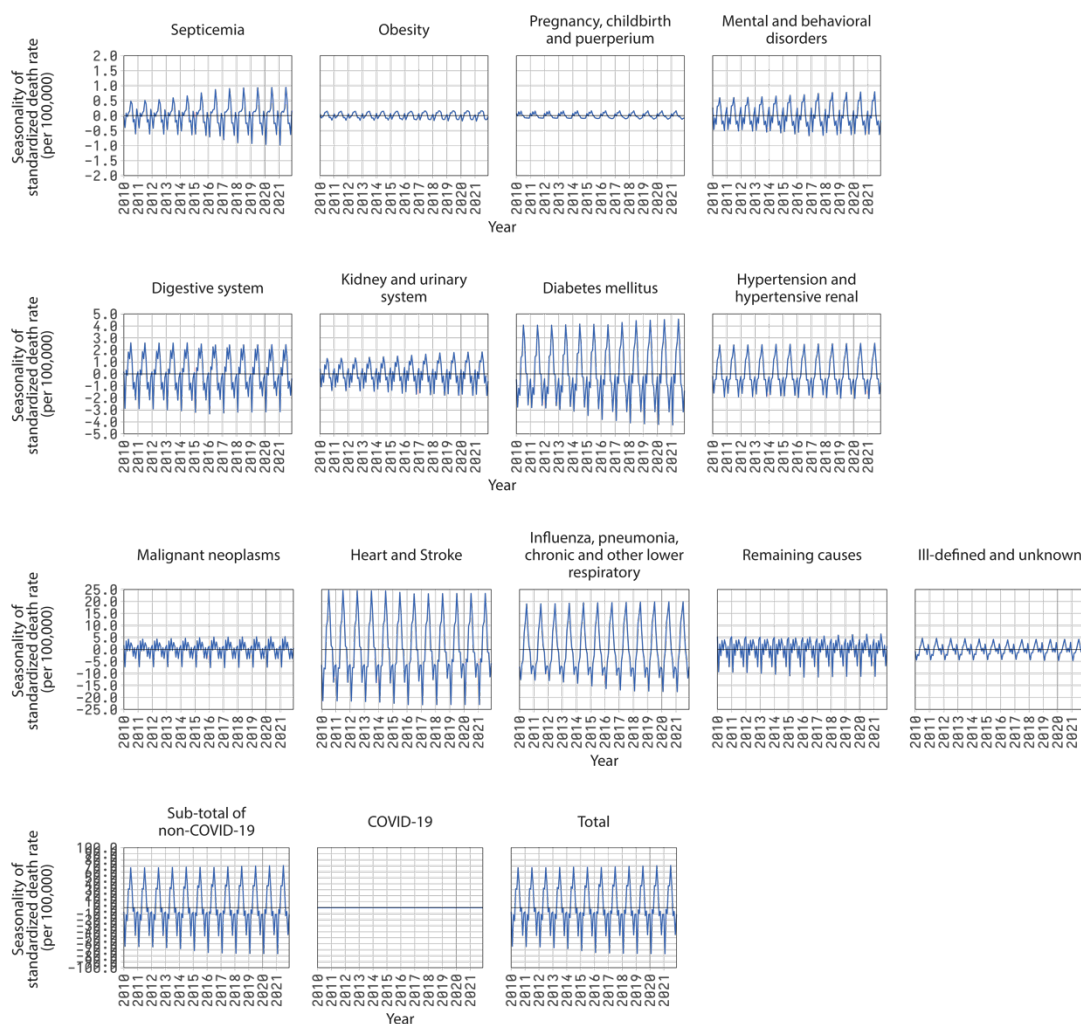


Figure S3. Seasonality component of the decomposition of time series of monthly standardized death rates by groups of causes of death, Brazil, 2010-2021. Each graph shows the sum of the seasonality obtained for each major age group. The graph for “Total” is the sum of the seasonality component for each group of causes of death. The reader is cautioned that the vertical scales of the panels are different to uncover variations from each cause of death.

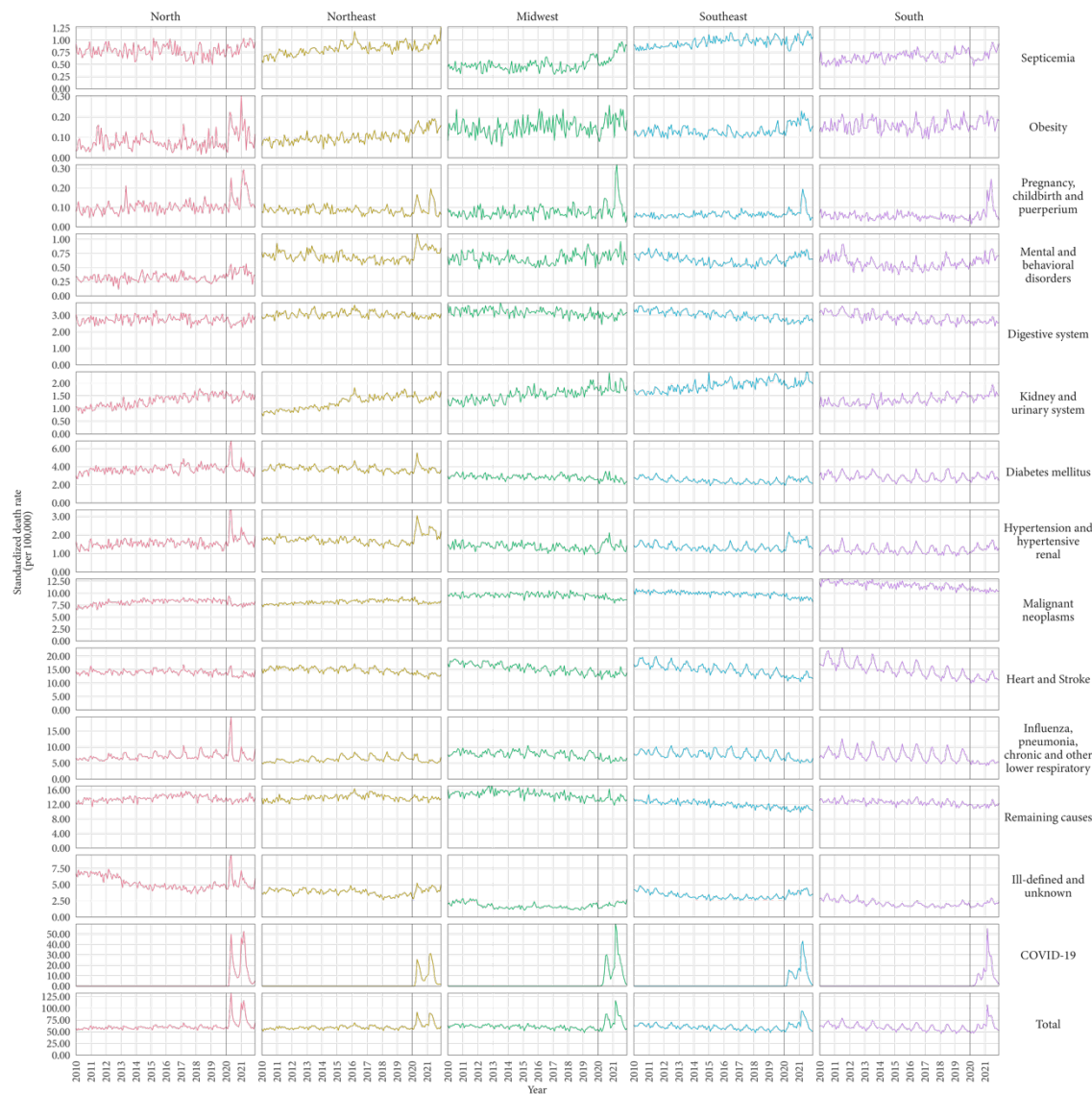


Figure S4. Time series of monthly standardized death rates by groups of cause of death and regions, Brazil, 2010-2021. The reader is cautioned that the vertical scales of the panels are different to uncover variations from each cause of death.

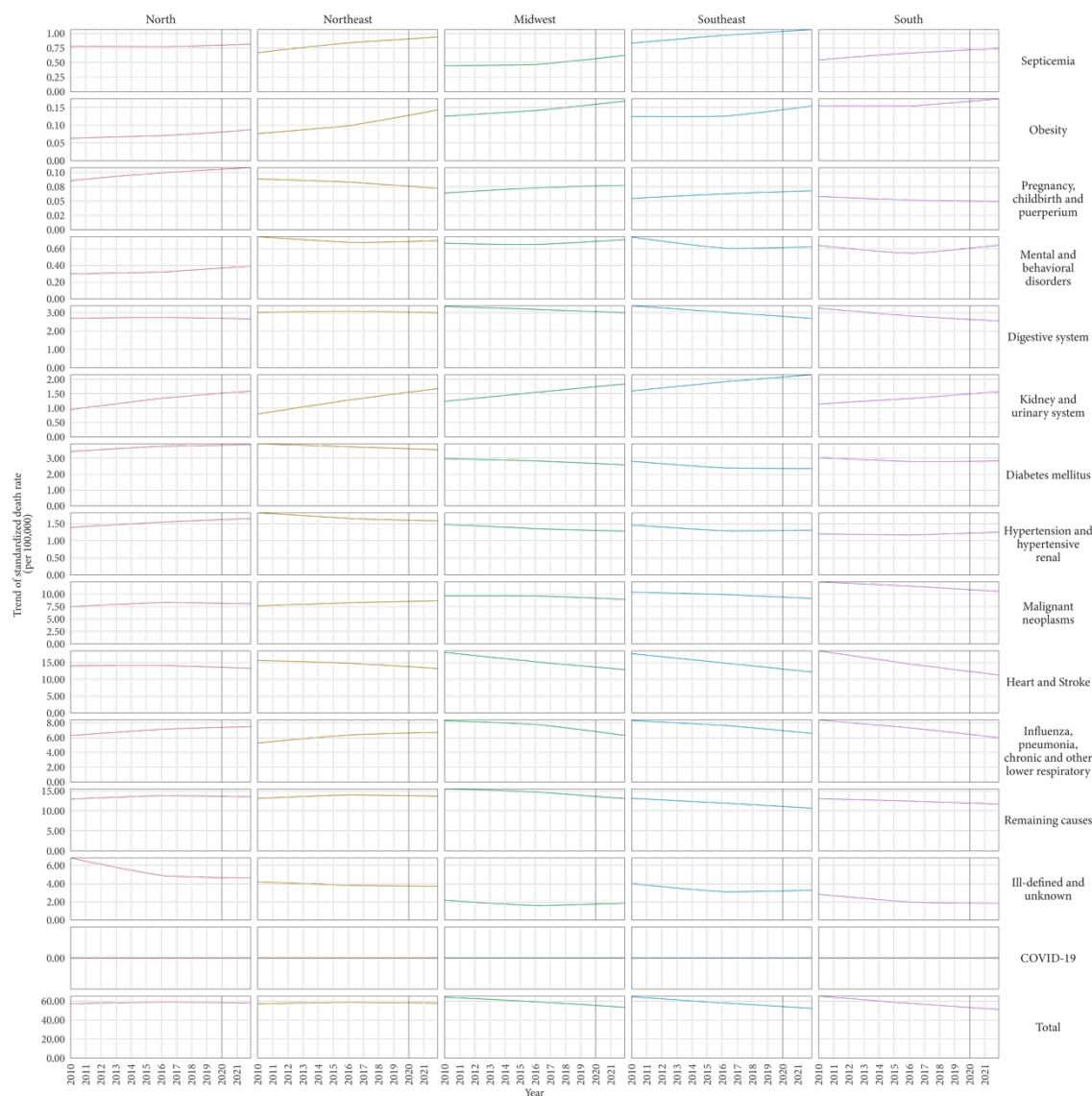


Figure S5. Trend component of the decomposition of time series of monthly standardized death rates by groups of cause of death and regions, Brazil, 2020-2021. Each graph shows the sum of the trend obtained for each major age group. The graphs for “Total” are the sum of the trend component for each group of causes of death. The reader is cautioned that the vertical scales of the panels are different to uncover variations from each cause of death.

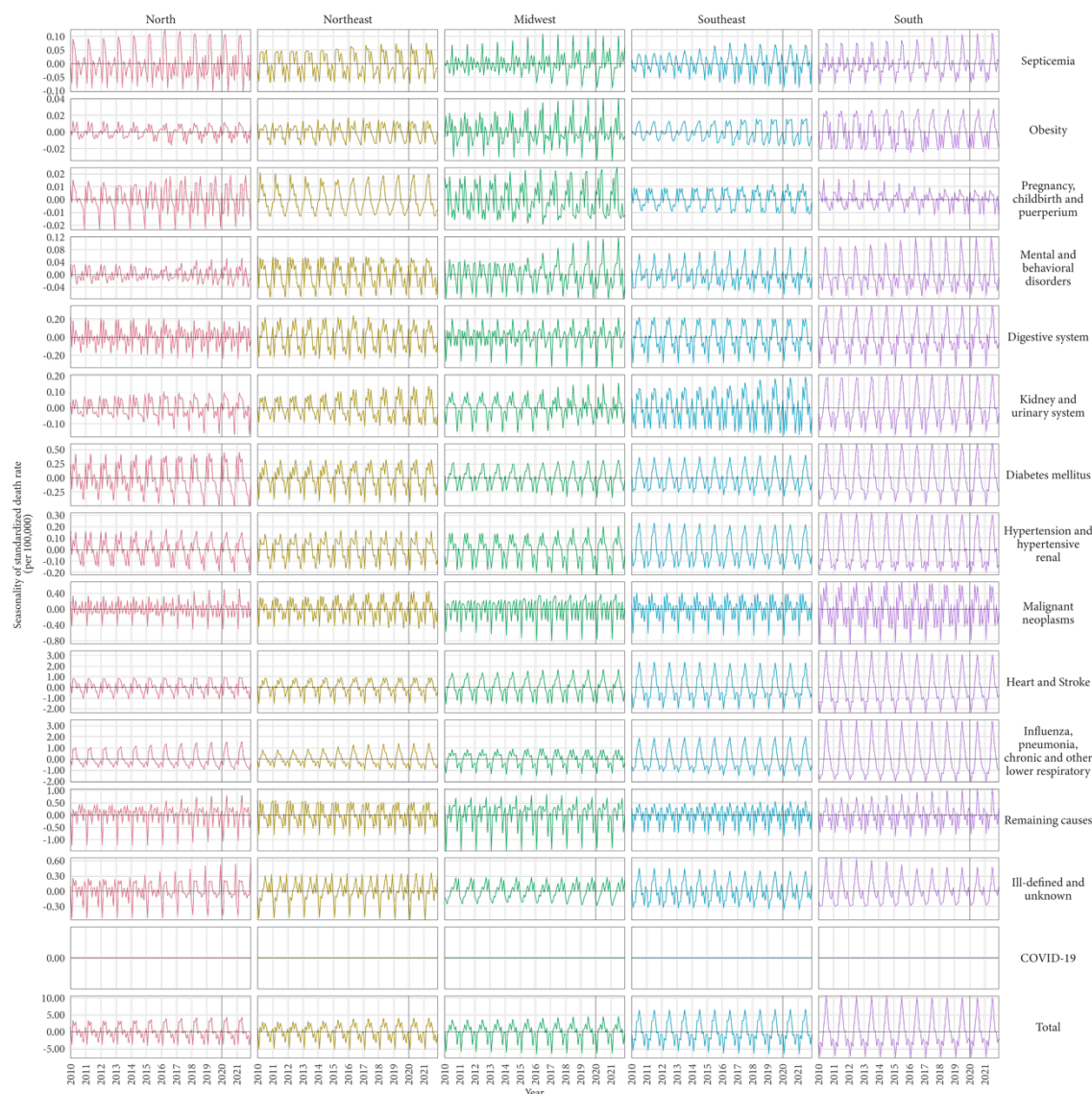


Figure S6. Seasonality component of the decomposition of time series of monthly standardized death rates by groups of cause of death and regions, Brazil, 2020-2021. Each graph shows the sum of the seasonality obtained for each major age group. The graphs for “Total” are the sum of the seasonality component for each group of causes of death. The reader is cautioned that the vertical scales of the panels are different to uncover variations from each cause of death.

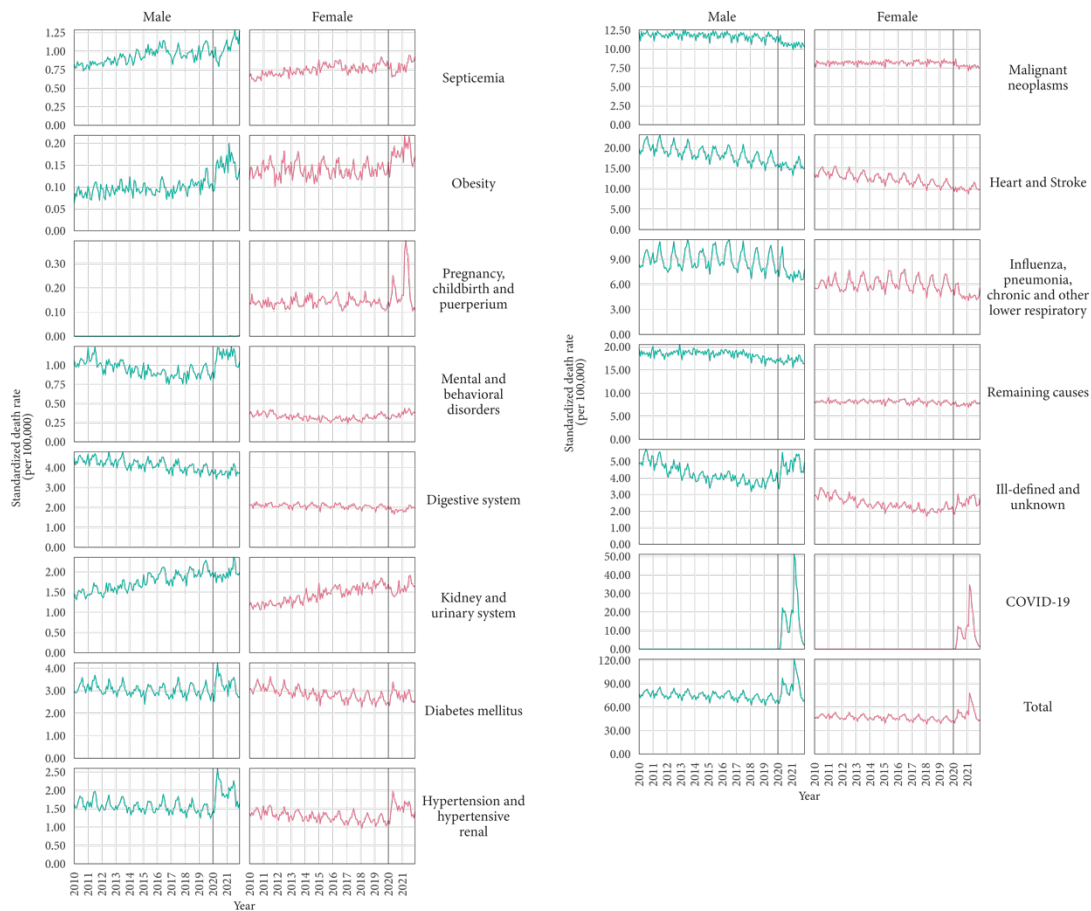


Figure S7. Time series of monthly standardized death rates in Brazil by groups of causes of death and sex, Brazil, 2010-2021. The reader is cautioned that the vertical scales of the panels are different to uncover variations from each cause of death.

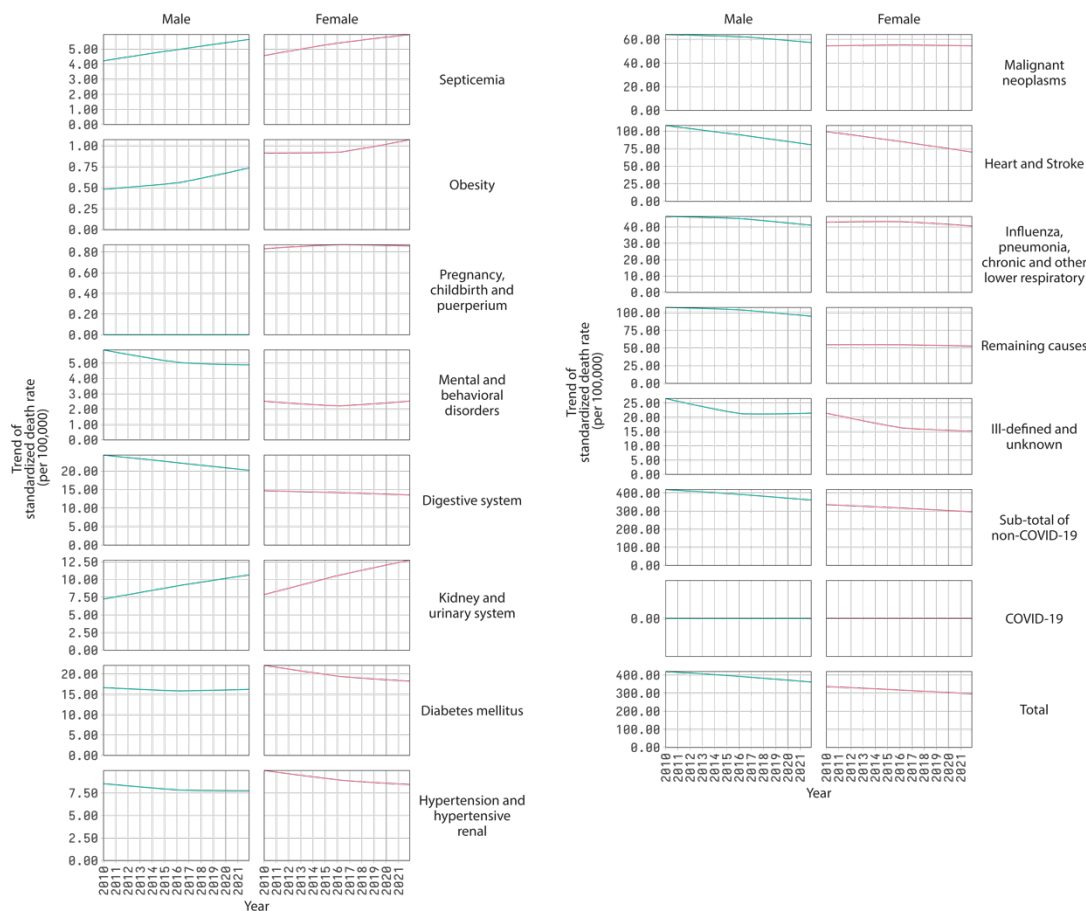


Figure S8. Trend component of the decomposition of time series of monthly standardized death rates by groups of cause of death and sex, Brazil, 2020-2021. Each graph shows the sum of the trend obtained for each major age group. The graphs for “Total” are the sum of the trend component for each group of causes of death. The reader is cautioned that the vertical scales of the panels are different to uncover variations from each cause of death.

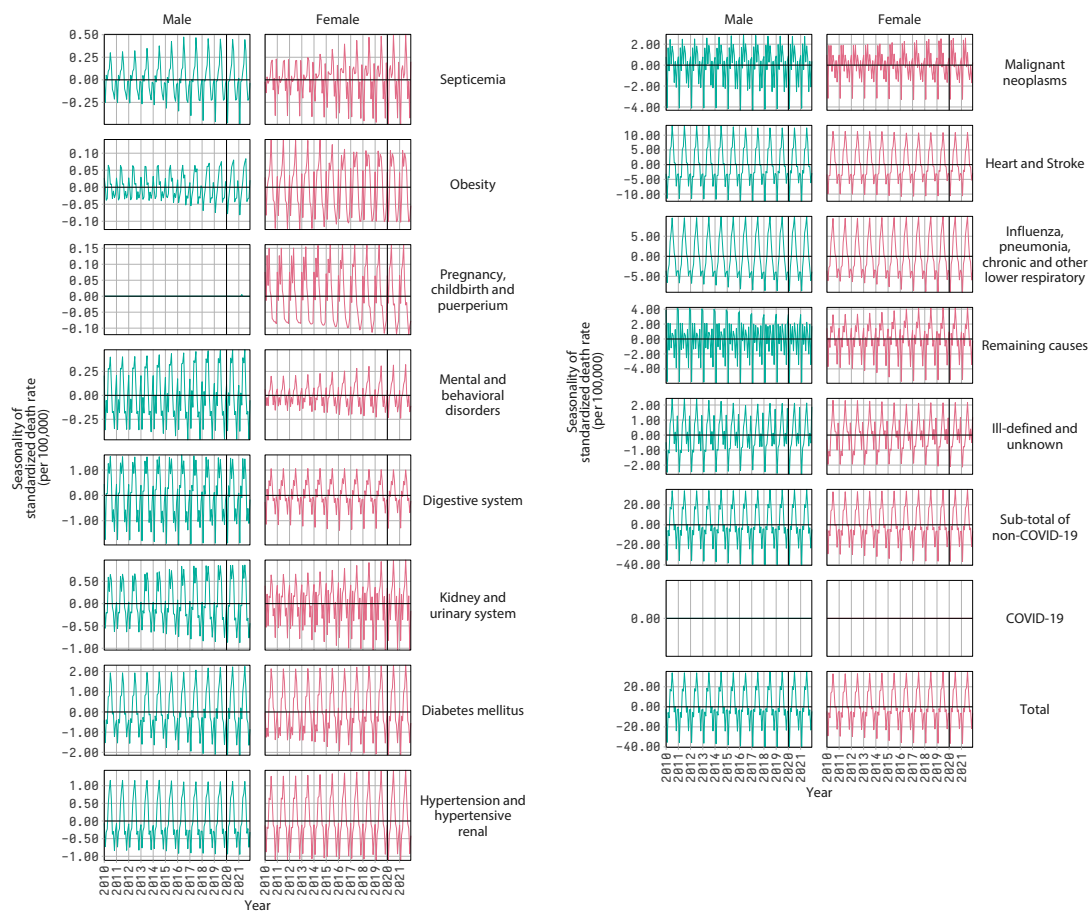


Figure S9. Seasonality component of the decomposition of time series of monthly standardized death rates by groups of cause of death and sex, Brazil, 2020-2021. Each graph shows the sum of the seasonality obtained for each major age group. The graphs for “Total” are the sum of the seasonality component for each group of causes of death. The reader is cautioned that the vertical scales of the panels are different to uncover variations from each cause of death.

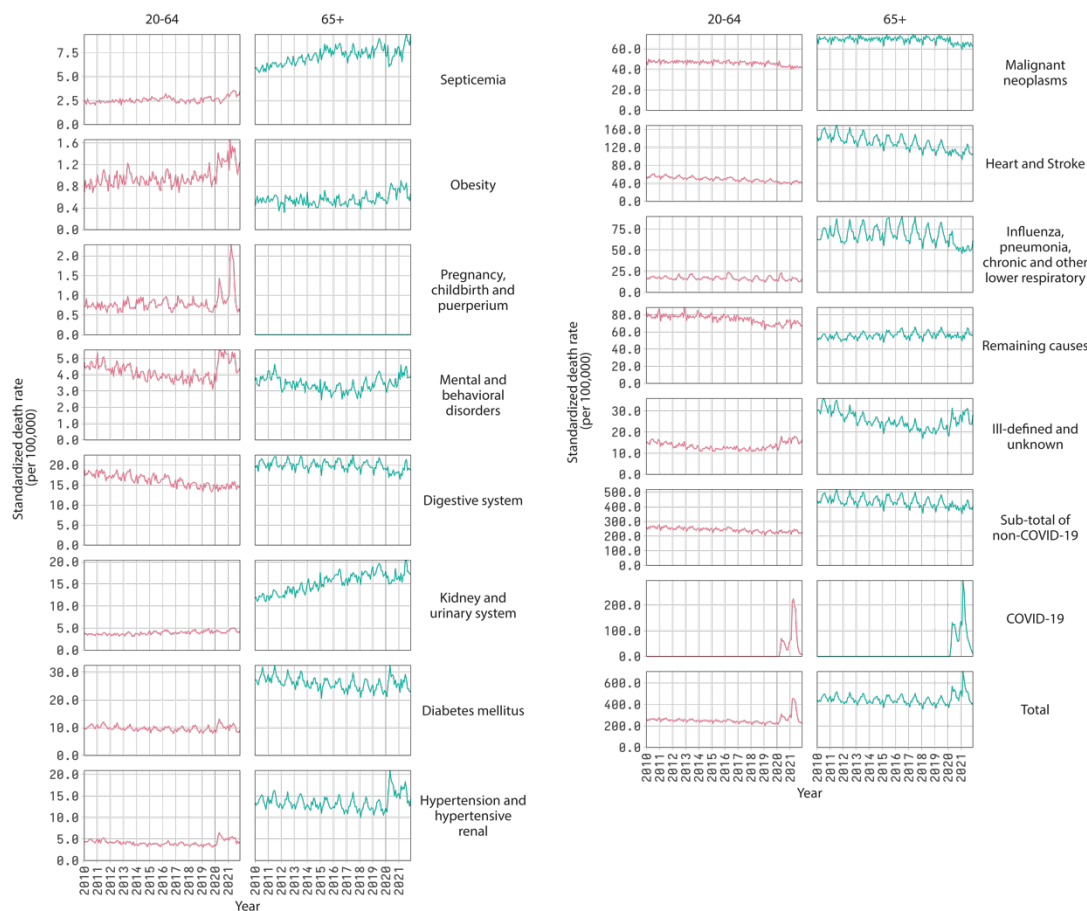


Figure S10. Time series of monthly standardized death rates in Brazil by groups of causes of death and major age groups 20-64 and 65+, Brazil, 2010-2021. The reader is cautioned that the vertical scales of the panels are different to uncover variations from each cause of death.

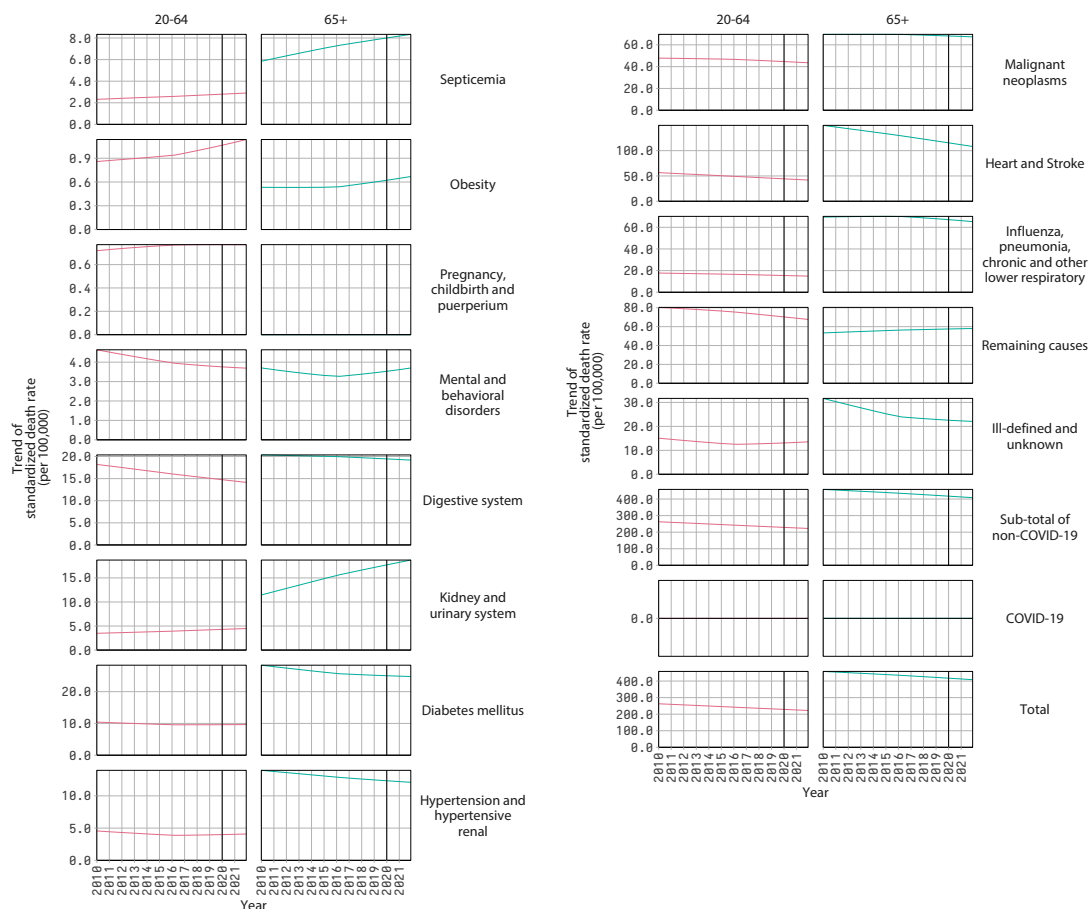


Figure S11. Trend component of the decomposition of time series of monthly standardized death rates by groups of cause of death and major age groups 20-64 and 65+, Brazil, 2020-2021. The graphs for “Total” are the sum of the trend component for each group of causes of death. The reader is cautioned that the vertical scales of the panels are different to uncover variations from each cause of death.

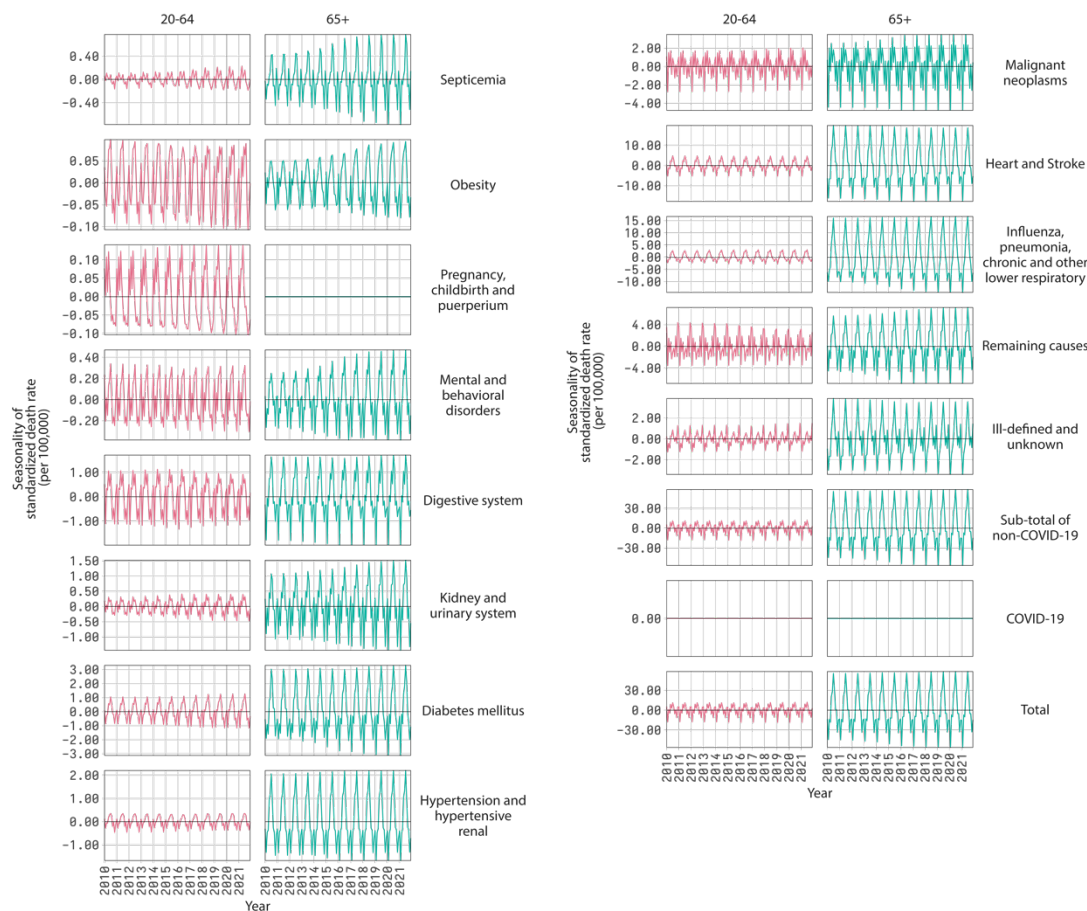


Figure S12. Seasonality component of the decomposition of time series of monthly standardized death rates by groups of cause of death and major age groups 20-64 and 65+, Brazil, 2020-2021. The graphs for “Total” are the sum of the seasonality component for each group of causes of death. The reader is cautioned that the vertical scales of the panels are different to uncover variations from each cause of death.

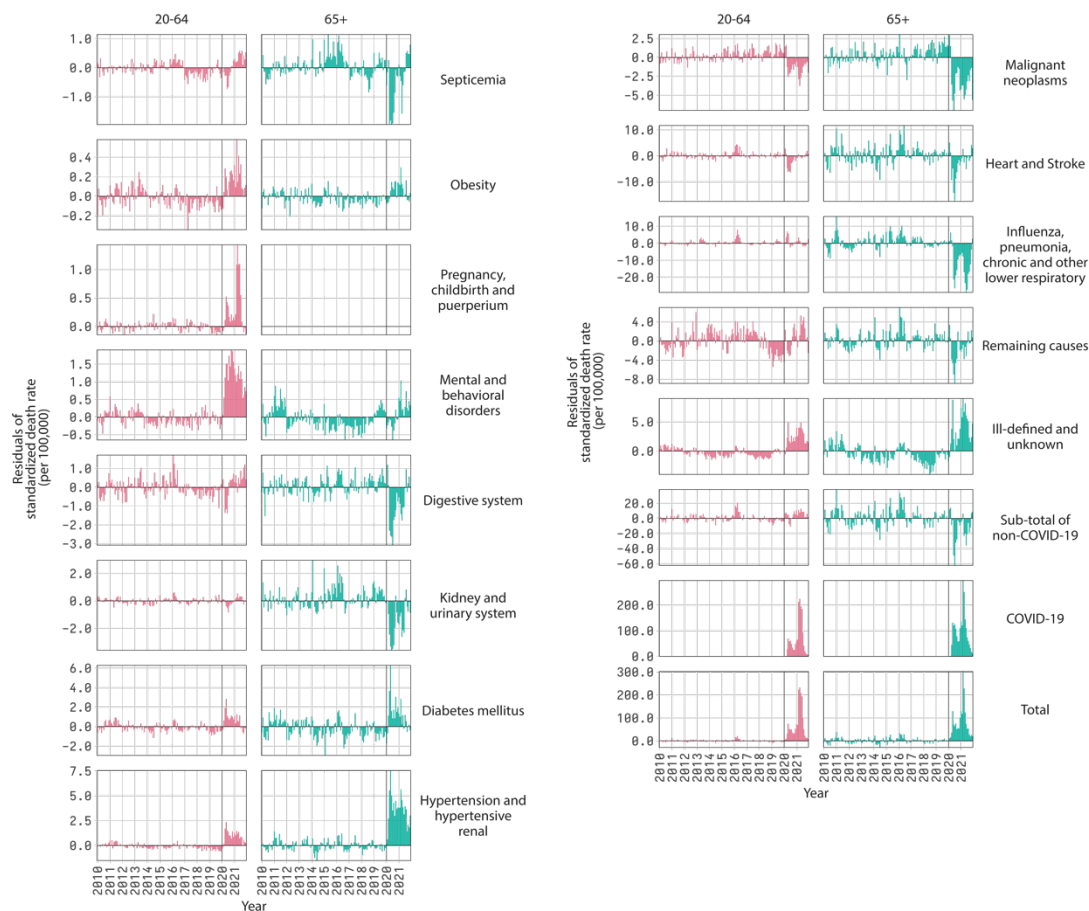


Figure S13. Remainder component of the decomposition of time series of monthly standardized death rates by groups of cause of death and major age groups 20-64 and 65+, Brazil, 2020-2021. The graphs for “Total” are the sum of the remainder component for each group of causes of death. The reader is cautioned that the vertical scales of the panels are different to uncover variations from each cause of death.

Table S2. Absolute total number of deaths by major groups of causes of death and year, Brazil, 2010-2021

Group of cause of death	Year											
	2010	2011	2012	2013	2014	2015	2016	2017	2018	2019	2020	2021
Septicemia	12,955	14,048	14,871	15,717	16,829	18,577	19,843	18,830	19,586	22,097	20,644	25,036
Obesity	2,106	2,396	2,372	2,606	2,430	2,661	2,701	2,686	2,951	3,108	3,882	4,341
Pregnancy, childbirth, and puerperium	1,727	1,680	1,646	1,787	1,889	1,896	1,813	1,874	1,862	1,659	2,147	2,792
Mental and behavioral disorders	12,713	13,696	12,611	13,018	12,443	12,536	12,655	12,845	13,684	14,757	17,153	18,577
Digestive system	58,316	59,994	60,745	62,244	63,046	64,597	66,508	66,515	67,775	69,023	67,315	71,580
Kidney and urinary system	22,272	23,862	25,443	27,129	29,804	33,635	36,302	37,350	40,274	44,017	41,494	46,799
Diabetes mellitus	54,855	57,853	56,739	57,995	57,849	59,627	61,387	63,475	65,092	65,718	75,704	74,480
Hypertension and hypertensive renal	25,762	27,153	26,520	27,568	26,990	28,252	29,454	30,152	30,373	30,824	42,566	43,005
Malignant neoplasms	175,599	180,927	187,776	193,111	198,246	205,938	211,301	217,661	223,715	230,088	224,799	225,465
Heart and Stroke	293,061	299,953	298,689	303,617	304,663	312,325	323,223	319,429	317,593	321,600	305,602	321,047
Influenza, pneumonia, chronic and other lower respiratory	125,166	132,294	132,857	143,151	144,567	154,991	163,590	160,544	160,174	167,083	153,884	143,724
Remaining causes	276,917	281,828	289,705	294,143	300,758	301,656	309,679	313,556	307,219	303,744	303,601	313,316
Ill-defined and unknown	71,282	70,412	67,129	64,199	63,458	63,828	67,830	64,475	63,298	71,817	82,679	94,727
Sub-total of non-COVID-19	1,132,731	1,166,096	1,177,103	1,206,285	1,222,972	1,260,519	1,306,286	1,309,392	1,313,596	1,345,535	1,341,470	1,384,889
COVID-19	-	-	-	-	-	-	-	-	-	-	212,671	425,287
Total	1,132,731	1,166,096	1,177,103	1,206,285	1,222,972	1,260,519	1,306,286	1,309,392	1,313,596	1,345,535	1,554,141	1,810,176

Table S3. Change in the absolute total number of deaths compared to previous year by major groups of causes of death and period, Brazil, 2010-2021

Group of cause of death	Period											Average 2017-2016 to 2019-2018
	2011-2010	2012-2011	2013-2012	2014-2013	2015-2014	2016-2015	2017-2016	2018-2017	2019-2018	2020-2019	2021-2020	
Septicemia	1,093	823	846	1,112	1,748	1,266	-1,013	756	2,511	-1,453	4,392	751
Obesity	290	-24	234	-176	231	40	-15	265	157	774	459	136
Pregnancy, childbirth, and puerperium	-47	-34	141	102	7	-83	61	-12	-203	488	645	-51
Mental and behavioral disorders	983	-1,085	407	-575	93	119	190	839	1,073	2,396	1,424	701
Digestive system	1,678	751	1,499	802	1,551	1,911	7	1,260	1,248	-1,708	4,265	838
Kidney and urinary system	1,590	1,581	1,686	2,675	3,831	2,667	1,048	2,924	3,743	-2,523	5,305	2,572
Diabetes mellitus	2,998	-1,114	1,256	-146	1,778	1,760	2,088	1,617	626	9,986	-1,224	1,444
Hypertension and hypertensive renal	1,391	-633	1,048	-578	1,262	1,202	698	221	451	11,742	439	457
Malignant neoplasms	5,328	6,849	5,335	5,135	7,692	5,363	6,360	6,054	6,373	-5,289	666	6,262
Heart and Stroke	6,892	-1,264	4,928	1,046	7,662	10,898	-3,794	-1,836	4,007	-15,998	15,445	-541
Influenza, pneumonia, chronic and other lower respiratory	7,128	563	10,294	1,416	10,424	8,599	-3,046	-370	6,909	-13,199	-10,160	1,164
Remaining causes	4,911	7,877	4,438	6,615	898	8,023	3,877	-6,337	-3,475	-143	9,715	-1,978
Ill-defined and unknown	-870	-3,283	-2,930	-741	370	4,002	-3,355	-1,177	8,519	10,862	12,048	1,329
Sub-total of non- COVID-19	33,365	11,007	29,182	16,687	37,547	45,767	3,106	4,204	31,939	-4,065	43,419	33,365
COVID-19	-	-	-	-	-	-	-	-	-	-	212,616	-
Total	33,365	11,007	29,182	16,687	37,547	45,767	3,106	4,204	31,939	-4,065	256,035	13,083

Table S4. Absolute contribution of groups of causes of death to annual changes in the life expectancy at birth (e_0) in Brazil, 2017-2020.

Groups of causes of death	Period			
	2017-2018	2018-2019	2019-2020	2020-2021
Septicemia	-0.001	-0.017	0.020	-0.030
Obesity	-0.002	-0.001	-0.007	-0.003
Pregnancy, childbirth, and puerperium	0.000	0.003	-0.006	-0.009
Mental and behavioral disorders	-0.004	-0.006	-0.023	-0.004
Digestive system	0.009	0.008	0.034	-0.017
Kidney and urinary system	-0.014	-0.021	0.034	-0.027
Diabetes mellitus	0.006	0.016	-0.069	0.030
Hypertension and hypertensive renal	0.010	0.007	-0.092	0.008
Malignant neoplasms	0.010	0.009	0.115	0.049
Heart and Stroke	0.130	0.070	0.240	-0.040
Influenza, pneumonia, chronic and other lower respiratory	0.056	-0.010	0.179	0.108
Remaining causes	0.179	0.154	0.091	-0.004
Ill-defined and unknown	0.034	-0.070	-0.075	-0.074
Sub-total of non-COVID-19	0.413	0.142	0.440	-0.013
COVID-19	0.000	0.000	-1.885	-1.773
Total	0.413	0.142	-1.444	-1.785

Table S6. Absolute contribution of groups of causes of death to change in life expectancy at birth (e_0), by major age groups and region, Brazil, 2017-2021

Major group of cause of death	2017-2018							2018-2019						2019-2020						2020-2021					
	North	NE	Mid-west	South-east	South	Brazil		North	North-east	Mid-west	South-east	South	Brazil	North	North-east	Mid-west	South-east	South	Brazil	North	North-east	Mid-west	South-east	South	Brazil
Septicemia	0-4	0.002	-0.002	-0.005	0.001	-0.001	0.000	0.007	-0.002	-0.001	0.001	0.002	0.001	-0.004	0.005	0.004	0.002	-0.001	0.002	-0.001	-0.002	-0.002	0.000	-0.001	-0.001
	5-19	-0.002	-0.001	-0.002	0.000	0.002	0.000	0.002	0.000	0.001	0.000	-0.002	0.000	0.000	0.000	0.001	0.001	0.003	0.001	-0.002	0.001	-0.002	-0.001	-0.002	-0.001
	20-64	-0.009	-0.002	-0.005	0.001	0.006	0.000	0.001	-0.005	-0.011	-0.004	-0.013	-0.006	-0.005	0.003	-0.001	-0.001	0.011	0.002	-0.010	-0.015	-0.017	-0.010	-0.014	-0.013
	65+	-0.006	-0.004	-0.003	0.002	0.005	0.000	-0.007	-0.013	-0.028	-0.006	-0.027	-0.012	-0.002	0.014	0.010	0.015	0.033	0.016	-0.014	-0.015	-0.031	-0.010	-0.028	-0.016
	Total	-0.016	-0.010	-0.015	0.004	0.012	-0.001	0.003	-0.020	-0.039	-0.009	-0.039	-0.017	-0.011	0.021	0.014	0.017	0.045	0.020	-0.026	-0.031	-0.051	-0.022	-0.046	-0.030
Obesity	0-4	0.000	0.000	0.000	0.000	0.000	0.000	0.000	0.000	0.000	0.000	0.000	0.000	0.000	0.000	0.000	0.000	0.000	0.000	0.000	0.000	0.000	0.000	0.000	
	5-19	0.000	0.000	0.000	0.000	0.000	0.000	0.000	0.000	0.000	0.000	0.000	0.000	0.000	0.000	0.000	0.000	0.000	0.000	0.000	0.000	0.000	0.000	0.000	
	20-64	0.001	-0.001	0.000	-0.002	-0.001	-0.001	0.000	0.000	0.003	-0.001	-0.004	-0.001	-0.010	-0.004	-0.004	-0.007	0.001	-0.005	0.001	-0.005	-0.004	-0.002	-0.001	-0.003
	65+	0.003	0.000	0.003	-0.001	-0.004	-0.001	-0.002	-0.001	0.000	-0.001	0.004	0.000	-0.002	-0.002	-0.002	-0.001	-0.002	-0.002	-0.001	0.000	-0.001	-0.001	-0.001	-0.001
	Total	0.003	-0.001	0.002	-0.003	-0.005	-0.002	-0.003	-0.001	0.004	-0.002	0.000	-0.001	-0.012	-0.007	-0.006	-0.009	-0.002	-0.007	0.001	-0.006	-0.005	-0.003	-0.002	-0.003
Pregnancy, childbirth and puerperium	0-4	0.000	0.000	0.000	0.000	0.000	0.000	0.000	0.000	0.000	0.000	0.000	0.000	0.000	0.000	0.000	0.000	0.000	0.000	-0.001	-0.001	0.000	0.000	0.000	
	5-19	-0.004	-0.001	0.000	0.000	0.000	-0.001	0.003	0.001	0.000	0.000	0.000	0.001	-0.001	0.001	0.002	0.000	0.001	0.000	0.001	0.000	-0.003	0.000	-0.002	-0.001
	20-64	0.005	0.000	-0.005	0.002	0.000	0.001	-0.001	0.004	0.006	0.002	0.001	0.002	-0.008	-0.010	-0.008	-0.005	-0.003	-0.007	-0.016	0.000	-0.012	-0.007	-0.018	-0.008
	65+	0.000	0.000	0.000	0.000	0.000	0.000	0.000	0.000	0.000	0.000	0.000	0.000	0.000	0.000	0.000	0.000	0.000	0.000	0.000	0.000	0.000	0.000	0.000	0.000
	Total	0.001	-0.001	-0.005	0.002	-0.001	0.000	0.002	0.005	0.006	0.002	0.002	0.003	-0.009	-0.009	-0.006	-0.005	-0.002	-0.006	-0.015	-0.001	-0.015	-0.007	-0.019	-0.009
Mental and behavioral disorders	0-4	-0.001	0.000	0.000	0.000	0.000	0.000	0.001	0.000	0.000	0.000	0.000	0.000	0.000	0.000	0.000	0.000	0.000	0.000	0.000	0.000	0.000	0.000	0.000	
	5-19	0.000	0.000	0.000	0.000	-0.001	0.000	0.000	0.000	0.001	0.000	0.001	0.000	0.000	-0.001	0.000	0.000	-0.001	-0.001	0.000	0.000	0.000	0.000	0.001	0.000
	20-64	0.007	0.005	-0.005	-0.003	-0.008	-0.001	0.001	0.007	0.009	-0.001	0.007	0.003	-0.011	-0.048	-0.022	-0.022	-0.020	-0.027	0.002	0.017	0.012	0.001	-0.006	0.005
	65+	0.005	-0.001	-0.003	-0.003	-0.011	-0.003	-0.004	-0.008	-0.013	-0.013	0.000	-0.009	-0.012	-0.005	0.022	0.011	0.004	0.005	-0.001	-0.004	-0.011	-0.011	-0.014	-0.009
	Total	0.011	0.004	-0.008	-0.005	-0.020	-0.004	-0.003	-0.002	-0.003	-0.014	0.009	-0.006	-0.023	-0.054	-0.001	-0.011	-0.016	-0.023	0.001	0.013	0.001	-0.010	-0.019	-0.004
Digestive system	0-4	-0.002	-0.002	0.000	0.000	-0.002	-0.001	-0.001	0.000	-0.004	-0.002	0.002	-0.001	-0.003	0.002	0.003	0.003	-0.001	0.001	0.002	0.001	-0.001	0.000	0.000	0.001
	5-19	0.001	0.000	0.001	0.000	-0.002	0.000	-0.003	0.000	-0.003	0.000	0.001	0.000	0.000	0.002	0.007	0.002	0.001	0.002	0.001	-0.002	-0.004	-0.001	0.001	-0.001
	20-64	0.017	0.014	0.023	0.011	0.002	0.011	-0.004	0.007	0.008	0.009	0.006	0.007	0.010	-0.004	-0.012	0.012	-0.012	0.002	-0.010	0.001	-0.009	-0.009	-0.007	-0.006
	65+	0.005	0.003	0.014	-0.003	-0.013	-0.001	-0.007	-0.003	0.000	0.003	0.010	0.002	0.028	0.019	0.017	0.036	0.021	0.028	-0.023	-0.005	-0.004	-0.014	-0.003	-0.010
	Total	0.022	0.015	0.038	0.008	-0.016	0.009	-0.015	0.004	0.001	0.011	0.018	0.008	0.035	0.020	0.015	0.054	0.010	0.034	-0.030	-0.006	-0.017	-0.024	-0.008	-0.017
Kidney and urinary system	0-4	-0.005	0.000	-0.003	0.001	-0.002	-0.001	0.003	0.000	0.002	0.000	0.002	0.001	-0.001	0.001	0.003	0.000	0.000	0.000	0.000	0.001	-0.002	0.000	0.000	0.000
	5-19	0.001	0.003	0.002	-0.001	0.000	0.001	-0.001	0.000	-0.001	0.001	-0.001	0.000	0.000	0.001	-0.001	0.001	0.001	0.000	0.002	0.000	0.001	0.000	0.000	0.000
	20-64	-0.009	-0.005	0.000	-0.001	-0.001	-0.003	0.001	-0.005	-0.007	-0.004	-0.002	-0.004	0.003	0.005	0.002	0.005	-0.004	0.003	-0.018	-0.001	-0.014	-0.011	-0.009	-0.009
	65+	-0.010	-0.009	0.003	-0.013	-0.017	-0.012	-0.002	-0.016	-0.037	-0.018	-0.010	-0.017	0.016	0.025	0.007	0.044	0.013	0.030	0.000	-0.013	-0.001	-0.025	-0.025	-0.019
	Total	-0.023	-0.011	0.001	-0.014	-0.020	-0.014	0.001	-0.021	-0.044	-0.022	-0.012	-0.021	0.017	0.031	0.011	0.049	0.011	0.034	-0.016	-0.014	-0.015	-0.036	-0.034	-0.027
Diabetes mellitus	0-4	0.000	0.000	-0.001	0.000	0.000	0.000	0.000	0.000	0.000	0.000	0.000	0.000	0.000	0.000	0.000	0.000	0.000	0.000	-0.001	0.000	0.000	0.000	-0.001	0.000
	5-19	0.000	0.000	0.000	0.000	-0.001	0.000	0.001	0.000	0.001	0.000	0.000	-0.001	0.000	-0.001	0.000	0.000	0.000	-0.001	0.001	0.001	-0.001	0.000	0.000	0.000
	20-64	-0.024	0.014	0.001	-0.004	-0.010	-0.002	0.021	0.013	0.012	0.002	0.017	0.009	-0.019	-0.050	-0.011	-0.029	-0.022	-0.031	0.029	0.023	0.015	0.008	0.002	0.013
	65+	0.025	0.046	0.019	-0.002	-0.041	0.008	0.003	-0.001	0.023	0.000	0.033	0.007	-0.056	-0.062	-0.004	-0.035	-0.009	-0.037	0.062	0.049	0.030	0.001	-0.016	0.017
	Total	0.001	0.060	0.019	-0.007	-0.052	0.006	0.025	0.011	0.036	0.003	0.050	0.016	-0.076	-0.112	-0.016	-0.065	-0.030	-0.069	0.089	0.074	0.045	0.008	-0.015	0.030
Hypertension and hypertensive renal	0-4	0.000	0.000	0.000	0.000	0.000	0.000	0.000	0.000	0.000	0.000	0.000	0.000	0.000	0.000	0.000	0.000	0.000	0.000	0.000	0.000	0.000	0.000	0.000	0.000
	5-19	0.000	0.000	-0.001	0.000	0.000	0.000	0.000	0.000	0.001	0.000	0.000	0.000	0.000	0.000	0.000	0.000	0.000	0.000	-0.001	0.000	0.000	0.000	0.000	0.000
	20-64	-0.001	0.007	0.006	0.001	0.009	0.004	0.004	-0.001	0.007	0.004	0.001	0.003	-0.020	-0.036	-0.019	-0.033	-0.017	-0.029	0.001	0.000	0.008	0.004	-0.003	0.002
	65+	0.021	0.012	0.015	0.002	-0.008	0.005	0.004	-0.005	0.007	0.007	0.010	0.004	-0.070	-0.082	-0.049	-0.066	-0.015	-0.062	0.025	0.003	0.021	0.013	-0.028	0.006
	Total	0.019	0.020	0.021	0.003	0.001	0.010	0.008	-0.007	0.015	0.011	0.011	0.007	-0.090	-0.118	-0.068	-0.099	-0.031	-0.092	0.026	0.004	0.029	0.017	-0.032	0.008
Malignant neoplasms	0-4	0.000	0.001	0.001	0.000	0.001	0.000	0.000	0.001	0.006	0.001	-0.001	0.001	0.002	0.001	0.001	0.002	0.001	0.001	0.000	0.000	-0.005	-0.003	-0.002	-0.002
	5-19	-0.004	0.001	-0.003	-0.001	-0.002	-0.001	-0.003	-0.001	0.001	-0.001	-0.002	-0.001	0.002	0.004	0.001	0.002	0.011	0.004	0.000	-0.003	0.003	0.000	-0.004	-0.001
	20-64	-0.013	-0.002	0.018	0.019	0.017	0.011	0.037	0.006	0.004	-0.004	0.033	0.008	0.039	0.022	0.051	0.060	0.029	0.044	0.005	0.015	0.030	0.031	0.032	0.025
	65+	0.014	-0.001	-0.020	0.002	0.004	0.000	-0.007	-0.024	0.037	0.002	0.029	0.001	0.067	0.054	0.030	0.081	0.059	0.066	0.021	0.031	0.058	0.024	0.017	0.026
	Total	-0.003	-0.002	-0.005	0.019	0.019	0.010	0.028	-0.017	0.048	-0.002	0.059	0.009	0.110	0.082	0.083	0.144	0.100	0.115	0.027	0.042	0.085	0.053	0.044	0.049

Table S6 (cont.). Absolute contribution of groups of causes of death to change in life expectancy at birth (e_0), by major age groups and region, Brazil, 2017-2021

Major group of cause of death		2017-2018						2018-2019						2019-2020						2020-2021					
		North	NE	Mid-west	South-east	South	Brazil	North	North-east	Mid-west	South-east	South	Brazil	North	North-east	Mid-west	South-east	South	Brazil	North	North-east	Mid-west	South-east	South	Brazil
Heart and Stroke	0-4	-0.002	-0.001	0.005	0.000	0.001	0.000	0.000	0.000	-0.001	0.001	-0.001	0.000	0.002	0.003	0.001	0.003	0.003	0.003	0.002	-0.001	-0.002	-0.002	-0.002	-0.001
	5-19	0.005	0.002	-0.001	0.002	0.000	0.002	-0.003	-0.002	0.005	0.000	0.000	0.000	0.002	0.005	-0.006	-0.001	0.002	0.001	-0.003	-0.003	-0.001	0.002	0.001	-0.001
	20-64	0.055	0.024	0.013	0.027	0.023	0.026	-0.017	0.018	0.066	0.014	0.039	0.021	0.049	0.086	0.012	0.103	0.033	0.078	-0.023	-0.006	-0.056	-0.023	-0.037	-0.023
	65+	0.000	0.115	0.075	0.117	0.075	0.101	0.099	0.022	0.064	0.028	0.131	0.049	0.033	0.098	0.057	0.221	0.175	0.157	0.017	0.045	-0.006	-0.041	-0.065	-0.015
	Total	0.058	0.140	0.092	0.146	0.100	0.130	0.080	0.038	0.134	0.043	0.168	0.070	0.087	0.193	0.064	0.326	0.214	0.240	-0.007	0.034	-0.065	-0.063	-0.104	-0.040
Influenza, pneumonia, chronic and other lower respiratory	0-4	-0.002	-0.009	-0.006	-0.005	-0.003	-0.006	-0.023	-0.002	0.001	0.002	0.000	-0.002	0.055	0.033	0.030	0.031	0.023	0.033	-0.005	-0.001	-0.009	-0.007	-0.007	-0.005
	5-19	-0.006	0.000	0.002	0.003	-0.003	0.000	0.001	-0.002	-0.005	0.000	0.002	-0.001	0.011	0.005	0.008	0.002	0.003	0.005	-0.004	0.004	-0.003	0.004	0.002	0.002
	20-64	-0.013	-0.008	-0.009	-0.005	0.002	-0.005	-0.008	-0.009	-0.017	0.011	-0.014	-0.001	-0.097	-0.005	0.034	-0.025	0.070	-0.006	0.035	0.006	-0.034	0.053	-0.031	0.020
	65+	-0.029	0.045	0.133	0.095	0.035	0.067	-0.003	-0.046	-0.051	0.013	0.028	-0.006	-0.101	0.114	0.176	0.137	0.327	0.147	0.133	0.076	0.051	0.131	0.000	0.092
	Total	-0.049	0.029	0.120	0.088	0.030	0.056	-0.032	-0.059	-0.073	0.025	0.015	-0.010	-0.132	0.146	0.247	0.146	0.424	0.179	0.159	0.086	0.006	0.180	-0.037	0.108
Remaining causes	0-4	0.008	0.028	0.007	0.018	0.034	0.021	0.046	0.045	0.027	0.002	0.011	0.023	0.053	0.061	0.067	0.086	0.077	0.073	-0.029	0.019	-0.011	0.025	0.014	0.013
	5-19	0.017	0.065	0.044	0.024	0.048	0.040	0.037	0.076	0.045	0.026	0.015	0.042	0.035	-0.017	0.004	0.034	0.039	0.017	0.011	0.038	0.037	0.021	-0.016	0.022
	20-64	0.102	0.176	0.085	0.066	0.129	0.109	0.207	0.207	0.107	0.036	0.076	0.110	0.043	-0.180	-0.077	0.027	-0.022	-0.044	-0.083	0.057	0.019	-0.026	-0.055	-0.011
	65+	0.050	0.047	0.005	0.015	-0.085	0.010	-0.013	-0.050	0.006	-0.026	0.041	-0.021	-0.002	0.015	0.017	0.072	0.049	0.045	-0.028	-0.016	0.023	-0.037	-0.038	-0.027
	Total	0.177	0.316	0.141	0.122	0.126	0.180	0.277	0.278	0.185	0.038	0.143	0.154	0.130	-0.120	0.011	0.219	0.143	0.090	-0.129	0.099	0.067	-0.017	-0.095	-0.004
Ill-defined and unknown	0-4	-0.003	0.001	0.000	0.004	0.000	0.001	-0.007	-0.004	-0.006	-0.001	-0.007	-0.004	0.009	0.003	-0.003	0.006	0.012	0.006	0.000	-0.002	-0.006	-0.002	-0.009	-0.003
	5-19	0.006	0.000	0.003	0.002	0.000	0.002	-0.007	-0.001	-0.007	-0.004	-0.003	-0.004	0.005	-0.001	0.003	0.001	0.003	0.001	-0.001	0.000	-0.008	0.005	-0.004	0.000
	20-64	-0.012	0.017	0.022	-0.004	-0.004	0.003	-0.045	-0.035	-0.058	-0.017	-0.042	-0.030	-0.043	-0.055	0.016	-0.068	0.019	-0.043	0.022	-0.030	-0.062	-0.024	-0.049	-0.029
	65+	-0.007	0.081	0.030	0.007	0.000	0.028	-0.075	-0.057	-0.056	-0.011	-0.034	-0.033	-0.096	-0.060	0.000	-0.049	0.040	-0.039	0.045	-0.038	-0.032	-0.052	-0.071	-0.042
	Total	-0.016	0.099	0.056	0.009	-0.004	0.034	-0.133	-0.096	-0.127	-0.033	-0.085	-0.070	-0.125	-0.113	0.016	-0.111	0.075	-0.075	0.066	-0.071	-0.108	-0.073	-0.133	-0.074
Sub-total of non-COVID-19	0-4	-0.004	0.016	-0.002	0.018	0.028	0.015	0.027	0.038	0.024	0.005	0.007	0.019	0.113	0.110	0.105	0.132	0.114	0.119	-0.032	0.015	-0.039	0.011	-0.008	0.000
	5-19	0.015	0.070	0.043	0.029	0.041	0.043	0.028	0.072	0.038	0.021	0.010	0.037	0.052	-0.002	0.018	0.042	0.065	0.030	0.004	0.035	0.022	0.029	-0.024	0.021
	20-64	0.104	0.239	0.145	0.106	0.163	0.152	0.197	0.206	0.130	0.048	0.106	0.122	-0.068	-0.274	-0.040	0.017	0.065	-0.063	-0.065	0.061	-0.123	-0.014	-0.196	-0.036
	65+	0.071	0.334	0.270	0.218	-0.061	0.203	-0.014	-0.203	-0.049	-0.022	0.216	-0.036	-0.196	0.127	0.281	0.467	0.695	0.354	0.238	0.112	0.097	-0.021	-0.272	0.003
	Total	0.186	0.659	0.457	0.372	0.171	0.413	0.238	0.113	0.142	0.051	0.339	0.142	-0.099	-0.039	0.364	0.657	0.940	0.441	0.145	0.223	-0.043	0.004	-0.500	-0.012
COVID-19	0-4	0.000	0.000	0.000	0.000	0.000	0.000	0.000	0.000	0.000	0.000	0.000	0.000	-0.026	-0.017	-0.007	-0.006	-0.003	-0.011	0.004	-0.007	-0.003	-0.003	-0.006	-0.004
	5-19	0.000	0.000	0.000	0.000	0.000	0.000	0.000	0.000	0.000	0.000	0.000	0.000	-0.019	-0.015	-0.009	-0.009	-0.007	-0.012	0.002	-0.003	-0.007	-0.007	-0.015	-0.006
	20-64	0.000	0.000	0.000	0.000	0.000	0.000	0.000	0.000	0.000	0.000	0.000	0.000	-0.962	-0.685	-0.836	-0.706	-0.475	-0.695	-0.844	-0.622	-1.630	-1.344	-1.763	-1.203
	65+	0.000	0.000	0.000	0.000	0.000	0.000	0.000	0.000	0.000	0.000	0.000	0.000	-1.680	-1.119	-1.359	-1.192	-0.903	-1.168	-0.300	-0.133	-0.772	-0.647	-1.039	-0.560
	Total	0.000	0.000	0.000	0.000	0.000	0.000	0.000	0.000	0.000	0.000	0.000	0.000	-2.687	-1.836	-2.211	-1.914	-1.388	-1.885	-1.137	-0.765	-2.412	-2.001	-2.823	-1.773
Total	0-4	-0.004	0.016	-0.002	0.018	0.028	0.015	0.027	0.038	0.024	0.005	0.007	0.019	0.088	0.093	0.098	0.126	0.112	0.108	-0.027	0.008	-0.042	0.008	-0.014	-0.003
	5-19	0.015	0.070	0.043	0.029	0.041	0.043	0.028	0.072	0.038	0.021	0.010	0.037	0.033	-0.017	0.009	0.032	0.059	0.019	0.006	0.032	0.015	0.022	-0.039	0.015
	20-64	0.104	0.239	0.145	0.106	0.163	0.152	0.197	0.206	0.130	0.048	0.106	0.122	-1.030	-0.959	-0.875	-0.689	-0.411	-0.758	-0.909	-0.562	-1.752	-1.358	-1.959	-1.239
	65+	0.071	0.334	0.270	0.218	-0.061	0.203	-0.014	-0.203	-0.049	-0.022	0.216	-0.036	-1.877	-0.992	-1.079	-0.725	-0.208	-0.814	-0.062	-0.020	-0.675	-0.669	-1.311	-0.557
	Total	0.186	0.659	0.457	0.372	0.171	0.413	0.238	0.113	0.142	0.051	0.339	0.142	-2.786	-1.875	-1.847	-1.256	-0.448	-1.445	-0.992	-0.542	-2.455	-1.997	-3.323	-1.785

Appendices' References

- Brasil. (2020). *Orientações para a codificação das causas de morte no contexto da COVID-19*.
<https://www.gov.br/saude/pt-br/centrais-de-conteudo/publicacoes/estudos-e-notas-informativas/2020/nota-informativa-declara-o-obito-pdf/view>
- Brasil. (2021a). *Orientações sobre causas de mortes no contexto da COVID-19: Respostas às perguntas mais frequentes*.
https://bvsmms.saude.gov.br/bvs/publicacoes/orientacoes_causas_mortes_covid-19_perguntas.pdf
- Brasil. (2021b). *Orientações sobre novos códigos de emergência para as causas de morte relacionadas a condições que ocorrem no contexto da COVID-19*.
https://bvsmms.saude.gov.br/bvs/publicacoes/orientacoes_codigos_emergencia_morte_covid-19.pdf
- Heron, M. (2021). *Deaths: Leading causes for 2019* (v. 70, no. 9; National Vital Statistics Reports). National Center for Health Statistics (U.S.). Division of Vital Statistics.
<https://doi.org/10.15620/cdc:107021>
- World Health Organization. (2020). *International guidelines for certification and classification (coding) of COVID-19 as cause of death: Based on ICD - International Statistical Classification of Diseases*. World Health Organization.
https://cdn.who.int/media/docs/default-source/classification/icd/covid-19/guidelines-cause-of-death-covid-19-20200420-en.pdf?sfvrsn=35fdd864_2&download=true