

1 **APRI score is not predictive of post-surgical outcomes in cholangiocarcinoma patients**

2

3 Faaq N Aslam¹, Tristan A Loveday¹, Pedro Luiz Serrano Uson Junior^{2,3}, Mark Truty⁷, Rory
4 Smoot⁷, Tanios Bekaii-Saab², Daniel Ahn², Mohamad Bassam Sonbol², Christina Wu², Chee-
5 Chee Stucky⁵, Hani Babiker⁴, Mitesh J Borad^{2,6,8}

6 ¹ Alix School of Medicine, Mayo Clinic, Scottsdale, AZ, USA.

7 ² Division of Hematology and Oncology, Mayo Clinic, Scottsdale, AZ, USA.

8 ³ Center for Personalized Medicine, Hospital Israelita Albert Einstein, São Paulo, SP, Brazil.

9 ⁴ Division of Hematology and Oncology, Mayo Clinic, Jacksonville, FL, USA.

10 ⁵ Department of Surgery, Mayo Clinic, Phoenix, AZ, USA.

11 ⁶ Center for Individualized Medicine, Mayo Clinic, Rochester, MN, USA.

12 ⁷ Department of Surgery, Mayo Clinic, Rochester, MN.

13 ⁸ Mayo Clinic Cancer Center, 5777 E Mayo Blvd, Phoenix, AZ, USA.

14

15 No Financial Support and Conflict of Interest Disclosure

16

17 Correspondence: Address to Mitesh J Borad MD, Division of Hematology and Oncology,
18 Department of Medicine, Mayo Clinic, 13400 E Shea Blvd. Scottsdale, AZ 85259.
19 (borad.mitesh@mayo.edu)

20

21

22

23

24 **Abstract**

25 Objective: To assess the utility of aminotransferase-platelet ratio index (APRI) score in
26 prognosticating post-surgical outcomes in cholangiocarcinoma patients.

27 Methods: 152 cholangiocarcinoma patients at the Mayo Clinic that underwent surgical resection
28 were retrospectively analyzed. Statistical analyses were done to determine the relationship
29 between APRI score and demographic factors, laboratory values, pathological features, and
30 outcomes data.

31 Results: No relationship between APRI score and demographic factors was identified. There was
32 a correlation between APRI score and ALT, albumin, and bilirubin, but the remaining laboratory
33 parameters showed no correlation. APRI score did not prove to be useful as a prognostic tool as
34 it did not correlate with tumor pathology features and did not correlate with post-surgical
35 recurrence and mortality.

36 Conclusion: We found that APRI score was not a prognostic tool for post-surgical outcomes in
37 cholangiocarcinoma patients.

38

39

40

41

42

43

44 **Introduction**

45 Cholangiocarcinoma is the second most common primary liver cancer. Tumors can arise
46 at different sites (intrahepatic, extrahepatic, perihilar), from different cells of origin, and are
47 genomically and histologically heterogeneous.^{1, 2} The pathogenesis of cholangiocarcinoma is felt
48 to largely be driven by chronic inflammation, and cholestasis which subsequently results in
49 cellular proliferation, genetic and epigenetic changes, and eventually carcinoma.³ Conditions that
50 increase inflammation like hepatitis B, hepatitis C, liver cirrhosis, primary sclerosing cholangitis
51 (PSC), non-alcoholic fatty liver disease (NAFLD), non-alcoholic steatohepatitis (NASH) and
52 liver flukes are well known risk factors for cholangiocarcinoma.^{2, 4-6}

53 As with many malignancies, treatment options for cholangiocarcinoma include surgical
54 resection, chemotherapy, targeted therapies, immunotherapy, and radiation therapy, with
55 surgery/transplant being the only curative option.^{2, 4} However, surgical resection outcomes still
56 leave much to be desired. Five-year survival rates remain around 20-40%.^{2, 4, 7-9} Liver transplant
57 is only an option with selected cases of perihilar disease or early intrahepatic disease and can
58 achieve five-year survival rates of around 65-70%.^{2, 4} Factors that are related to 5-year
59 mortality/survival include lymph node status, margins status, histological grade, vascular
60 invasion, and tumor size.^{2, 5, 7, 8} However, these prognostic indicators are only known after
61 surgical resection. Unfortunately, although the utility of CEA and CA19-9 levels have been
62 studied, studies have yielded mixed results and there are no definitive pre-operative prognostic
63 implications.^{5, 10} A reliable pre-surgical prognostic indicator for post-resection outcomes could
64 be extremely valuable in surgical decision making and post-operative prognostic guidance for
65 these patients.

66 Given that the underlying disease processes of cholangiocarcinoma are related to chronic
67 inflammation of the liver and biliary tree, indicators of liver inflammation and fibrosis could be
68 useful in assessing cholangiocarcinoma outcomes.³ The APRI score, calculated as the ratio of
69 serum AST to platelet count, has shown to be a useful marker for liver fibrosis.¹¹ It was first
70 implemented as a simple, non-invasive indicator of liver fibrosis and cirrhosis in chronic
71 hepatitis C patients.¹² However, its utility has subsequently expanded beyond hepatitis C
72 patients.¹¹ For example, as a result of its utility as a useful marker for fibrosis, APRI scores have
73 shown to correlate with post-surgical liver failure and mortality in patients undergoing resection
74 for hepatocellular carcinoma (HCC) and for mixed HCC-cholangiocarcinoma tumors.¹³ Given
75 these findings, we hypothesized that APRI score could potentially be a useful marker for
76 measuring disease severity and prognosticating disease in cholangiocarcinoma patients.
77 Therefore, we performed a retrospective analysis of 152 cholangiocarcinoma patients at the
78 Mayo Clinic who underwent surgical resection to determine whether an array of patient and
79 tumor characteristics correlated with APRI score and whether pre-operative APRI scores could
80 be used to predict post-surgical outcomes in cholangiocarcinoma patients.

81 **Methods**

82 *Data Collection*

83 This study entailed a retrospective analysis of 152 patients at the Mayo Clinic who had
84 cholangiocarcinoma and underwent surgical resection between 2010 and 2020. Patient
85 demographic data, laboratory parameters prior to surgery, tumor pathology, and outcome data
86 were obtained. Demographic data included date of age, sex, race, tumor type, and fibrosis
87 etiology. Laboratory data included CA19-9, albumin, bilirubin, international normalized ratio

88 (INR), alkaline phosphatase, alanine aminotransferase (ALT), aspartate aminotransferase (AST),
89 and Platelet Count. Child Pugh and APRI scores were calculated using the laboratory parameters
90 listed and clinical data for ascites and encephalopathy for Child Pugh score. Pathology data
91 included tumor size, status of vascular and/or perineural invasion, tumor grade, tumor stage,
92 tumor margin status, and margin width. Outcome data included recurrence status, time to
93 recurrence, vital status, and survival from time of surgery. The data was subsequently analyzed
94 to determine if there was a relationship between APRI score and the demographic, laboratory,
95 pathology, and outcome data, respectively. Approval from the Mayo Clinic institutional review
96 board was obtained prior to data collection for this study.

97 *Data Analysis*

98 The data was analyzed using the SciPy stats package and figures were generated using
99 the Matplotlib package for Python.^{14, 15} To determine the relationship between quantitative
100 laboratory, pathology, and outcome data, datapoints for each measure and the associated APRI
101 score were plotted on a scatter plot. Then, using the SciPy stats package, the Pearson correlation
102 coefficient, p-value (with $p < 0.05$ being considered as statistically significant), line of best fit,
103 and slope were determined.

104 For qualitative demographic and pathology data, box plots were generated to illustrate
105 how APRI score varied in each category. Then, depending on the number of variables, a 2-
106 sample t-test or a one-way ANOVA test were done using the SciPy package to determine
107 whether APRI score is significantly different among the different variables ($p < 0.05$ being
108 statistically significant).

109 During the analysis, if certain data was not available for a particular patient, that patient
110 was excluded from that specific group analysis. For example, if tumor grade was unavailable for
111 a patient, that patient was not included when analyzing the relationship between tumor grade and
112 APRI score. However, that patient was still included in the analysis of the remaining variables.
113 Also, outliers were excluded from the analysis in of the laboratory parameters alkaline
114 phosphatase, bilirubin, CA19-9, and INR with 5 times above the median being considered an
115 outlier for alkaline phosphatase, CA19-9, and INR and 30 times above the median being
116 considered an outlier for bilirubin. This led to exclusion of 5 values for alkaline phosphatase, 1
117 value for bilirubin, 16 values for CA19-9, and 1 value for INR.

118 **Results**

119 *Demographic Data and APRI Score*

120 In this study, the association between APRI score and age, sex, race, tumor type, and
121 fibrosis etiology were determined. When looking at age, APRI score decreased at a rate of 0.01
122 with each additional year in age ($r = -0.19$, $p = 0.02$) (**Figure 1A**). However, given the small rate
123 of change, this relationship between APRI score and age is not clinically significant.

124 When looking at sex, there was no relationship between sex and APRI score. The median
125 APRI score for males was 0.41 and for females was 0.38 with a 2-sample t test p-value of 0.16
126 (**Figure 1B**) (**Table 1**). There was also no relationship between race and APRI score. The
127 median APRI score for white patients was 0.40, for African American patients was 0.43, for
128 Asian patients was 0.20, for Hispanic patients was 0.90, and patients in the other category was -
129 0.29 with an ANOVA-test p-value of 0.81 (**Figure 1C**) (**Table 1**). It should be noted however

130 that most of the patients in our study were white, and as such broader conclusions regarding
131 impact of race on APRI score are not feasible from this dataset.

132 When looking at tumor type, 140 out of the 152 patients analyzed had intrahepatic
133 cholangiocarcinoma and had a median APRI score of 0.38 (**Figure 1D**) (**Table1**). The remaining
134 tumor types had no more than 3 patients in each category and thus meaningful conclusions could
135 not be made regarding how tumor type affects APRI score. Regarding fibrosis etiology, the 20
136 patients with inflammatory bowel disease (ulcerative colitis or Crohn's disease) or primary
137 sclerosing cholangitis had a higher APRI score, with a median APRI score of 0.65, when
138 compared to patients with other or no underlying etiologies. When looking at the remaining
139 etiologies, the 14 patients with hepatitis (alcoholic, nonalcoholic, or viral) or steatosis had a
140 median APRI score of 0.51, the 5 patients with liver cirrhosis or focal nodular hyperplasia had a
141 median APRI score of 0.27, and the 12 patients with other causes of fibrosis had a median APRI
142 score of 0.37 (**Figure 1E**) (**Table 1**). Most patients analyzed (100 out of 152) had no underlying
143 fibrosis etiology and these patients had a median APRI score of 0.38.

144 *Laboratory Data and APRI Score*

145 The relationship between APRI score and laboratory parameters including albumin,
146 bilirubin, ALT, alkaline phosphatase, CA19-9, and INR were also determined.

147 After excluding outliers, when assessing the 144 patients with a recorded albumin level,
148 the APRI score decreased at a rate of 0.35 for every 1 unit increase in Albumin ($r = -0.35$, $p <$
149 0.01) (**Figure 2A**). Among the 145 patients with a recorded bilirubin level, APRI score went up
150 by 0.13 for every 1 unit increase in bilirubin ($r = 0.23$, $p = 0.01$) (**Figure 2B**). For the 129
151 patients with a recorded ALT, we found that APRI score went up by 0.1 for every 10 unit

152 increase in ALT ($r = 0.47$, $p < 0.01$) (**Figure 2C**). Among the 145 patients with a recorded
153 alkaline phosphatase level, there was a 0.18 increase in APRI score for every 100 unit increase in
154 alkaline phosphatase ($r = 0.41$, $p < 0.01$).

155 A total of 134 patients had a recorded CA19-9 level from which 16 outliers were
156 excluded. From the remaining patients, CA19-9 did not correlate with APRI score in patients (m
157 < 0.01 , $r = 0.01$, $p = 0.90$). Similarly, there was no significant relationship between APRI score
158 and INR among the 148 patients with a recorded INR ($m = 0.17$, $r = 0.06$, $p = 0.46$) (**Figure 2D**
159 **and 2E**).

160 We also analyzed the relationship between APRI score with AST and platelet count. As
161 would be expected, there was a strong correlation between AST and APRI ($m = 0.013$, $r = 0.77$,
162 $p < 0.01$) and platelet count and APRI ($m = -0.002$, $r = -0.46$, $p < 0.01$) (**Figure 2F and 2G**).
163 These findings provide internal confirmation for validity of the APRI score given that platelet
164 count and AST are components of APRI score determination.

165 *Tumor Pathology and APRI Score*

166 The relationship between APRI score and tumor grade, N stage, T stage, presence of
167 vascular invasion, presence of perineural invasion, tumor size, margin status, and margin width
168 were also assessed.

169 When looking at tumor grade, the median APRI score for patients with grade G1 or G2
170 was 0.36 and for those G3 or G4 was 0.40 with a 2-sample t-test $p = 0.86$, meaning there was no
171 relationship between APRI score and grade (**Figure 3A**). Regarding T stage, T3 and T4 had a
172 slightly higher median APRI score of 0.52 when compared to the median APRI score for T1 and
173 T2, which was 0.38 (2 sample t-test $p = 0.01$) (**Table 2**) (**Figure 3B**). However, only 19 patients

174 in the cohort had either T3 or T4 stage compared to the 122 patients with either a T1 or T2 stage.
175 Thus, a larger sample size for T3 and T4 stage would be needed to make more definitive
176 conclusions about the relationship between T stage and APRI score. For N stage, the patient
177 cohort consisted of tumors with either NX, N0 or N1. The median APRI score for NX was 0.36,
178 for N0 was 0.38, and for N1 was 0.40 (one-way ANOVA $p = 0.94$) (**Figure 3C**).

179 APRI score also did not have a relationship with vascular invasion and perineural
180 invasion. The median APRI score for patients with vascular invasion was 0.44 and for those
181 without vascular invasion was 0.36 (2-sample t-test $p = 0.59$) (**Figure 3D**). Similarly, the median
182 APRI score for patients with perineural invasion was 0.47 and for those without it was 0.36 (2-
183 sample t-test $p = 0.14$) (**Figure 3E**). There was also no relationship between margin status and
184 APRI score. 126 out of the 152 patients with a margin status of R0 had a median APRI score of
185 0.37 and the 18 patients with a margin status of R1 had an APRI score of 0.53 (2 sample t-test p
186 $= 0.17$). The remaining 8 patients did not have a reported margin status.

187 Pathological tumor size and margin width were also not related to APRI score. Pathology
188 size with a $m = -0.01$, $r = 0.12$, and $p = 0.61$ when correlated with APRI score (**Figure 4A**).
189 Similarly, margin width with a $m = 0.01$, $r = 0.12$, $p = 0.16$ when correlated with APRI score
190 (**Figure 4B**).

191 *Post-Surgical Outcomes and APRI Score*

192 Post-surgical outcomes that were analyzed included post-surgical recurrence and post-
193 surgical death. The corresponding APRI scores were subsequently used to assess whether there is
194 a relationship with these outcomes.

195 When looking at tumor recurrence, the median APRI score for patients with recurrent
196 disease within 5 years was 0.39 and the median APRI score for those without recurrence was
197 0.38 (2-sample t-test $p = 0.22$) (**Figure 5A**). Among patients with recurrent disease, there was no
198 correlation between days to recurrence and APRI score ($m < 0.01$, $r = 0.05$, $p = 0.67$) (**Figure**
199 **5B**).

200 When looking at deceased status, the median APRI score for patients deceased within 5
201 years of surgery was 0.39 and the median APRI score for patients who were not deceased was
202 also 0.39 (2-sample t-test $p = 0.39$) (**Figure 5C**). Among patients who were deceased, there was
203 no correlation between days to death and APRI score ($m < -0.01$, $r = -0.04$, $p = 0.80$) (**Figure**
204 **5D**).

205 **Discussion**

206 Given that one of the most common drivers of cholangiocarcinoma pathogenesis is
207 chronic inflammation of the liver and biliary tree, we hypothesized that a marker of liver fibrosis,
208 such as the APRI score, could have been a useful marker for prognosticating post-surgical
209 outcomes.³ However, the results of our study illustrate this to not be the case.

210 In our analysis, we found no relationship between an array of demographic factors
211 including age, sex, race, tumor type and APRI score. However, this may be due to the lack of
212 diversity in our patient cohort. This is especially true for races as most of the patients in our
213 study were white. However, when looking at underlying fibrosis etiologies, patients with IBD or
214 PSC had a higher APRI score when compared to other etiologies. This is likely because IBD and
215 PSC are inflammatory processes leading to increased liver fibrosis and thus a higher APRI score.
216 However, it should be noted that only 26 out of the 152 patient we analyzed had an IBD or PSC

217 and so no meaningful conclusions can be made due to the limited sample size. We did find a
218 relationship between laboratory parameters including ALT, bilirubin, and alkaline phosphatase
219 and APRI score. However, although these findings may suggest a relationship between APRI
220 score and liver function/inflammation, it does not make the case for its use as a prognostic tool in
221 cholangiocarcinoma patients.

222 We ascertained that APRI score did not correlate with tumor pathology and post-surgical
223 outcomes. We found no relationship between APRI score and tumor grade, stage, presence of
224 vascular invasion, and presence of perineural invasion—all characteristics that have shown to be
225 related to patient outcomes.^{2, 5, 7, 8} Moreover, we also found that APRI score was not related to
226 post-surgical disease recurrence nor mortality. There can be several reasons for this discrepancy.
227 Although chronic inflammation is thought to be a potential underlying driver of the development
228 of cholangiocarcinoma, it may not be the sole driver of disease.^{3, 16} Other factors, like genetic,
229 epigenetic, and aberrant signaling pathways may play a larger role disease pathogenesis
230 compared to chronic inflammation.¹⁶ Thus, if chronic inflammation is not the primary driver of
231 disease, then measures like APRI score would not be effective in prognosticating disease, as we
232 have noted in our study.

233 However, this understanding of the pathogenesis of cholangiocarcinoma does not rule out
234 the utility of APRI score in other settings as has been shown in prior studies. Rather, APRI score
235 may still be useful in patients with underlying inflammatory etiologies of cholangiocarcinoma,
236 like PSC, hepatitis virus, and liver cirrhosis, especially given that we found IBD and PSC
237 patients to have higher APRI scores when compared to other groups in our cohort. Moreover,
238 this has also been found to be the case in studies looking at the utility of APRI score in
239 prognosticating hepatocellular carcinoma.¹⁷ A study conducted by Mai et al showed that a

240 combination of aminotransferase-platelet ratio index (APRI) and albumin-bilirubin (ALBI)
241 scores correlated with post-surgical liver failure in patients with hepatitis B virus related
242 hepatocellular carcinoma.¹⁷ This would make sense given that APRI score has shown to be a
243 marker for liver fibrosis and since HBV mediated HCC is largely driven by inflammation, more
244 severe fibrosis should relate to worse outcomes.

245 Epidemiologic factors also play a role when assessing the utility of APRI score. In Asian
246 countries, like China and South Korea, inflammatory etiologies of cholangiocarcinoma are more
247 prevalent due to the higher incidence of liver flukes, parasites, and HBV/HCV.¹⁶ On the other
248 hand, in Western countries, the prevalence of these inflammatory etiologies is much lower.¹⁶
249 Since our study was conducted among patients in the United States, APRI score did not prove
250 useful as a prognostic tool as most patients did not have underlying inflammatory etiologies.
251 However, if the utility of APRI score was assessed among patients in high-risk regions where
252 inflammatory etiologies are more common, then APRI score may have proven useful.

253 Our study did have some limitations. This study was a retrospective analysis and
254 therefore is associated with weaknesses related to such studies. This study was a single center
255 study and as such population bias and referral bias would be factors that would be associated
256 with this effort. Moreover, although we were able to discern underlying etiologies of disease in
257 some patients, most patients in our cohort had no identifiable underlying etiology of their
258 cholangiocarcinoma as the etiology of many cases are multifactorial and not readily discernable.
259 Thus, we were unable to make meaningful conclusions regarding the relationship of APRI score
260 on outcomes among the different subgroups of etiologies for cholangiocarcinoma in this study.
261 Future studies could look at the utility of APRI score in prognosticating disease in patients
262 within these subgroups.

263 **Conclusion**

264 In conclusion, we found that APRI score was not useful to prognosticate post-surgical
265 outcomes in cholangiocarcinoma. These findings were contrary to our initial hypothesis that
266 chronic inflammation could be a key driver of outcomes in cholangiocarcinoma pathogenesis.³
267 However, these findings suggest that the pathogenesis of cholangiocarcinoma cannot be
268 explained by chronic inflammation alone. Rather, a combination of factors like genetic,
269 epigenetic, and epidemiological factors may all influence the pathogenesis of disease.¹⁶

270

271 **References**

- 272 **1.** Rizvi S, Gores GJ. Pathogenesis, diagnosis, and management of cholangiocarcinoma.
273 *Gastroenterology*. 2013;145:1215-1229.
- 274 **2.** Rizvi S, Khan SA, Hallemeier CL, Kelley RK, Gores GJ. Cholangiocarcinoma - evolving
275 concepts and therapeutic strategies. *Nat Rev Clin Oncol*. 2018;15:95-111.
- 276 **3.** Labib PL, Goodchild G, Pereira SP. Molecular Pathogenesis of Cholangiocarcinoma.
277 *BMC Cancer*. 2019;19:185.
- 278 **4.** Doherty B, Nambudiri VE, Palmer WC. Update on the Diagnosis and Treatment of
279 Cholangiocarcinoma. *Curr Gastroenterol Rep*. 2017;19:2.
- 280 **5.** Razumilava N, Gores GJ. Cholangiocarcinoma. *Lancet*. 2014;383:2168-2179.
- 281 **6.** Hui CK, Yuen MF, Tso WK, Ng IO, Chan AO, Lai CL. Cholangiocarcinoma in liver
282 cirrhosis. *J Gastroenterol Hepatol*. 2003;18:337-341.
- 283 **7.** Cillo U, Fondevila C, Donadon M, et al. Surgery for cholangiocarcinoma. *Liver Int*.
284 2019;39 Suppl 1:143-155.
- 285 **8.** Morise Z, Sugioka A, Tokoro T, et al. Surgery and chemotherapy for intrahepatic
286 cholangiocarcinoma. *World J Hepatol*. 2010;2:58-64.
- 287 **9.** Jarnagin WR, Shoup M. Surgical management of cholangiocarcinoma. *Semin Liver Dis*.
288 2004;24:189-199.

- 289 **10.** Paik KY, Jung JC, Heo JS, Choi SH, Choi DW, Kim YI. What prognostic factors are
290 important for resected intrahepatic cholangiocarcinoma? *J Gastroenterol Hepatol.*
291 2008;23:766-770.
- 292 **11.** Leroy V, Hilleret MN, Sturm N, et al. Prospective comparison of six non-invasive scores
293 for the diagnosis of liver fibrosis in chronic hepatitis C. *J Hepatol.* 2007;46:775-782.
- 294 **12.** Wai CT, Greenson JK, Fontana RJ, et al. A simple noninvasive index can predict both
295 significant fibrosis and cirrhosis in patients with chronic hepatitis C. *Hepatology.*
296 2003;38:518-526.
- 297 **13.** Zhang F, Hu KS, Lu SX, et al. Prognostic significance of preoperative systemic immune-
298 inflammation index in combined hepatocellular-cholangiocarcinoma. *Cancer Biomark.*
299 2021;31:211-225.
- 300 **14.** Virtanen P, Gommers R, Oliphant TE, et al. SciPy 1.0: fundamental algorithms for
301 scientific computing in Python. *Nat Methods.* 2020;17:261-272.
- 302 **15.** Hunter JD. Matplotlib: A 2D graphics environment. *Computing in science & engineering.*
303 2007;9:90-95.
- 304 **16.** Rodrigues PM, Olaizola P, Paiva NA, et al. Pathogenesis of Cholangiocarcinoma. *Annu*
305 *Rev Pathol.* 2021;16:433-463.
- 306 **17.** Mai RY, Wang YY, Bai T, et al. Combination Of ALBI And APRI To Predict Post-
307 Hepatectomy Liver Failure After Liver Resection For HBV-Related HCC Patients.
308 *Cancer Manag Res.* 2019;11:8799-8806.

309

310 **Tables and Figures**

311 **Table 1: Sex, Race, Tumor Type, Fibrosis Etiology, and relationship to APRI score**

312 **Table 2: Tumor pathology and relationship to APRI score**

313 **Table 3: Post-surgical outcomes and relationship to APRI score**

314 **Figure 1: Clinical Characteristics and correlation with APRI score**

315 **Figure 2: Laboratory Values and correlation with APRI Score**

316 **Figure 3: Tumor Grade, Stage, Vascular Invasion, and Perineural Invasion related to**
317 **APRI Score**

318 **Figure 4: Pathology Size and Margin Width related to APRI Score**

319 **Figure 5: Post-resection Tumor Recurrence, Death, and APRI Score**

320 **Table 1: Sex, Race, Tumor Type, Fibrosis Etiology, and relationship to APRI score**

Demographic		Mean APRI	Median APRI	95% Confidence Interval	Statistical Test (2 sample t-test or ANOVA)
Sex	Male (n = 70)	0.64	0.41	0.50-0.78	2 sample t-test p = 0.16
	Female (n = 81)	0.52	0.38	0.41-0.62	
Race	White (n= 138)	0.58	0.39	0.49-0.67	ANOVA p = 0.81
	African American (n = 2)	0.20	0.20	0.18-0.22	
	Asian (n = 4)	0.42	0.43	0.20-0.65	
	Hispanic (n = 1)	0.87	0.87	-	
	Other (n=6)	0.57	0.29	-0.006-1.147	
Tumor Type	Intrahepatic n = 140	0.52	0.38	0.44-0.59	ANOVA p = 0.16
	Extrahepatic n = 1	2.32	2.32	-	
	Perihilar n = 8	1.11	1.03	0.54-1.70	
	Not Specified n = 3	1.24	0.47	-0.12-2.59	
Fibrosis Etiologies	Chron's, Ulcerative Colitis, and PSC n = 20 (confirm)	0.83	0.65	0.54-1.12	ANOVA p = 0.04
	Hepatitis (alcoholic, nonalcoholic, and viral)/Steatosis n = 14	0.71	0.51	0.41-1.01	
	Liver Cirrhosis and Focal Nodular	0.48	0.27	0.22-0.74	

Hyperplasia n = 5				
Other* n = 12	0.75	0.37	0.23-1.27	
No Etiology Identified n = 100	0.48	0.38	0.40-0.56	

321

322 **Legend: *Other: includes Chronic Inflammation, Hemochromatosis, iron overload, radiation, biliary impairment, pancreatic**
323 **pathologies, cholecystitis, alpha-1-antitrypsin, CREST, Ehrlichiosis.**

324

325

326

327

328

329

330

331

332 **Table 2: Tumor pathology and relationship to APRI score**

Tumor Pathology Metric		Mean APRI	Median APRI	95% Interval	Confidence	Statistical Test (2 sample t-test or ANOVA)
Grade	G1+G2 (n = 94)	0.51	0.36	0.41-0.60		2 sample t-test p = 0.86
	G3+G4 (n = 47)	0.59	0.40	0.43-0.75		
T Stage	T1+T2 (n = 122)	0.51	0.38	0.43-0.59		2 sample t-test p = 0.01
	T3+T4 (n = 19)	0.82	0.52	0.49-1.15		
N Stage	NX (n = 27)	0.54	0.36	0.32-0.75		ANOVA p = 0.94
	N0 (n = 78)	0.56	0.38	0.44-0.68		
	N1 (n=37)	0.53	0.40	0.40-0.66		
Vascular Invasion	Yes (n = 40)	0.58	0.44	0.44-0.71		2 sample t-test p = 0.59
	No (n = 106)	0.53	0.36	0.43-0.63		
Perineural Invasion	Yes (n = 30)	0.68	0.47	0.47-0.88		2 sample t-test p = 0.14
	No (n = 89)	0.50	0.36	0.40-0.60		
Margin Status	R0 n = 126	0.52	0.37	0.43-0.60		R0 vs R1 2 sample t-test p = 0.17
	R1 n = 18	0.70	0.53	0.42-0.98		
	Not Specified	1.15	1.08	0.68-1.63		

n = 8

333 **Table 3: Post-surgical outcomes and relationship to APRI score**

Post-Resection Status		Mean APRI	Median APRI	95% Confidence Interval	2 sample t-test
5-year Recurrence	Yes (n = 73)	0.52	0.39	0.43-0.61	p = 0.22
	No (n = 68)	0.63	0.38	0.48-0.79	
5-year Mortality	Yes (n = 54)	0.54	0.39	0.43-0.64	p = 0.39
	No (n = 92)	0.61	0.39	0.48-0.73	

334

335

336

337

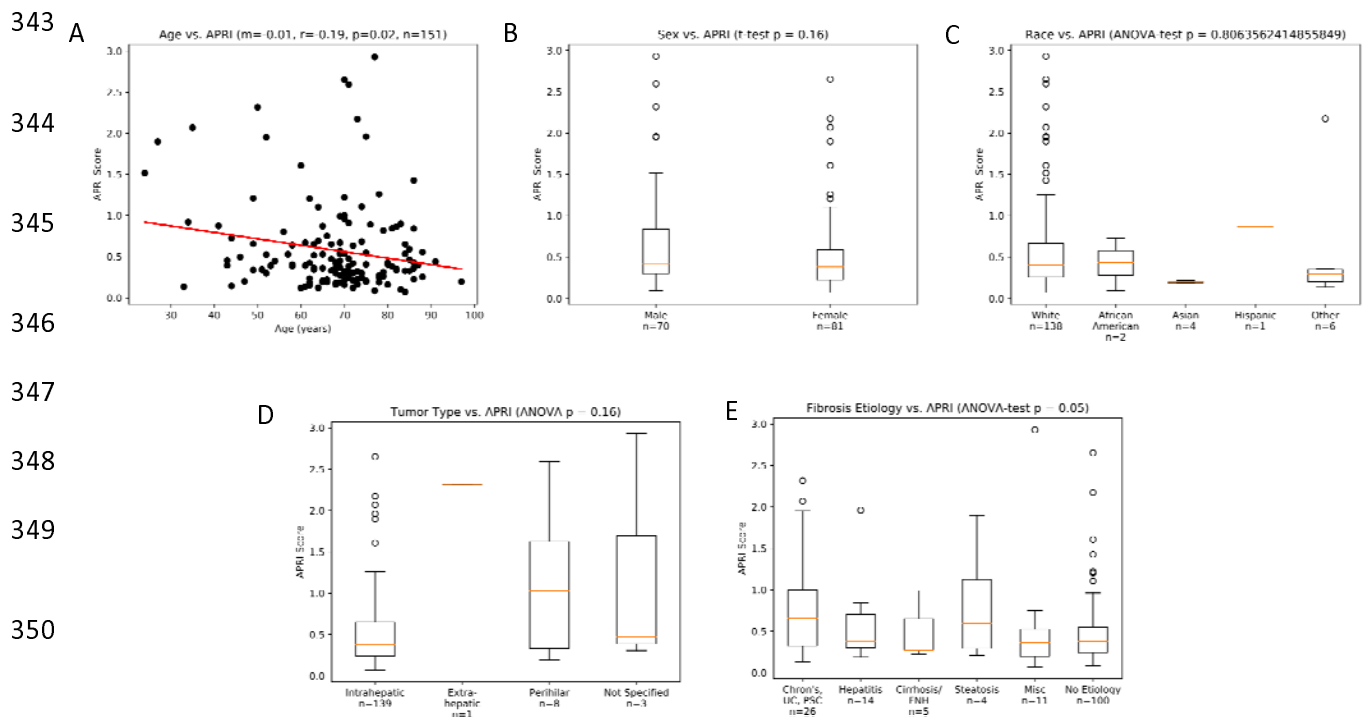
338

339

340

341

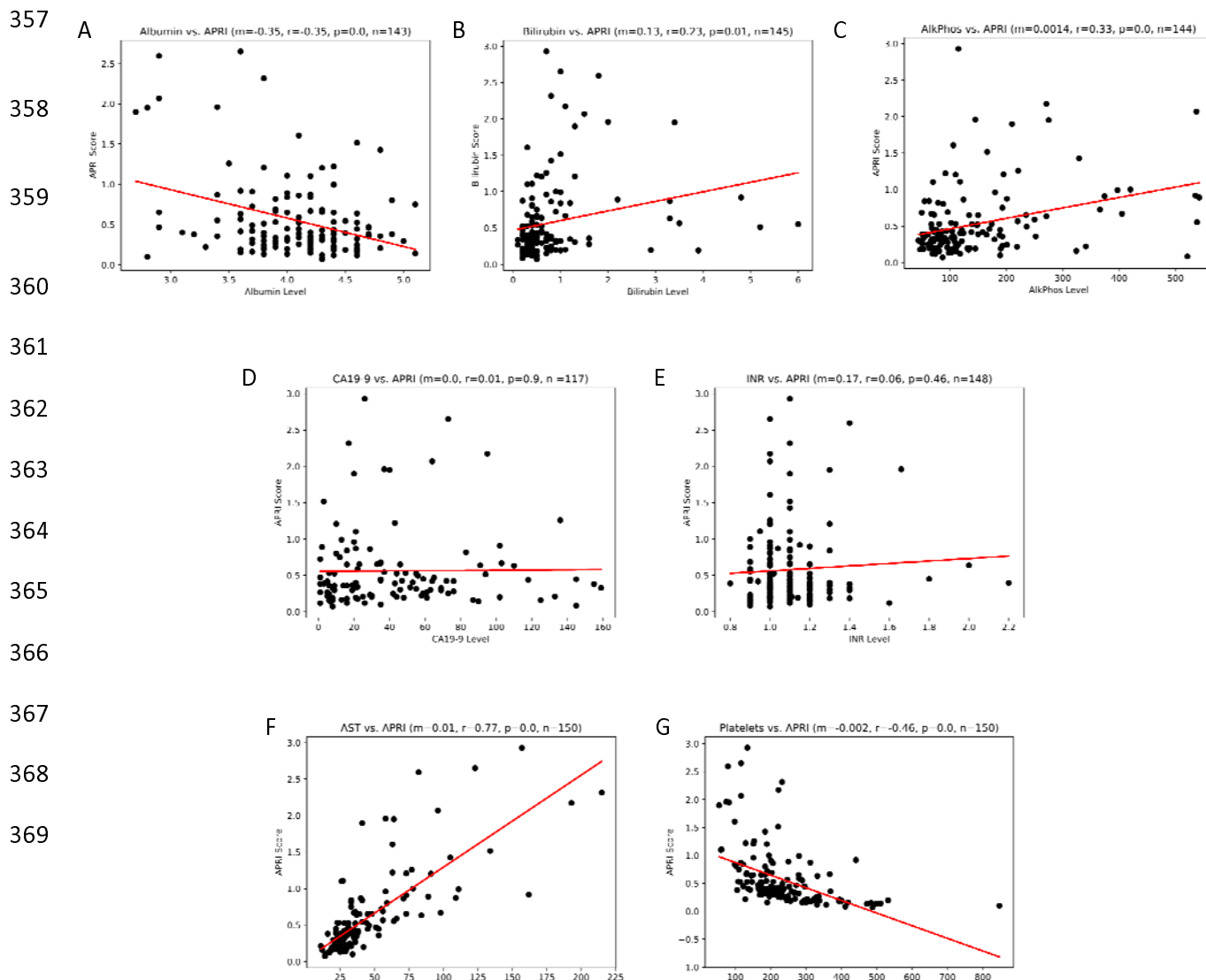
342 **Figure 1: Clinical Characteristics and correlation with APRI score**



352 **Figure 1: Legend: (A) Scatter plot with line of best fit illustrating relationship between Age and APRI Score. (B) Boxplot**
 353 **illustrating variations in APRI score between sex (males vs. females). (C) Boxplot illustrating variations in APRI score in**

354 relation to Race. (D) Boxplot illustrating variations in APRI score among various tumor types. (E) Boxplot illustrating
355 variation in APRI score among various fibrosis etiologies.

356 **Figure 2: Laboratory Values and correlation with APRI Score**



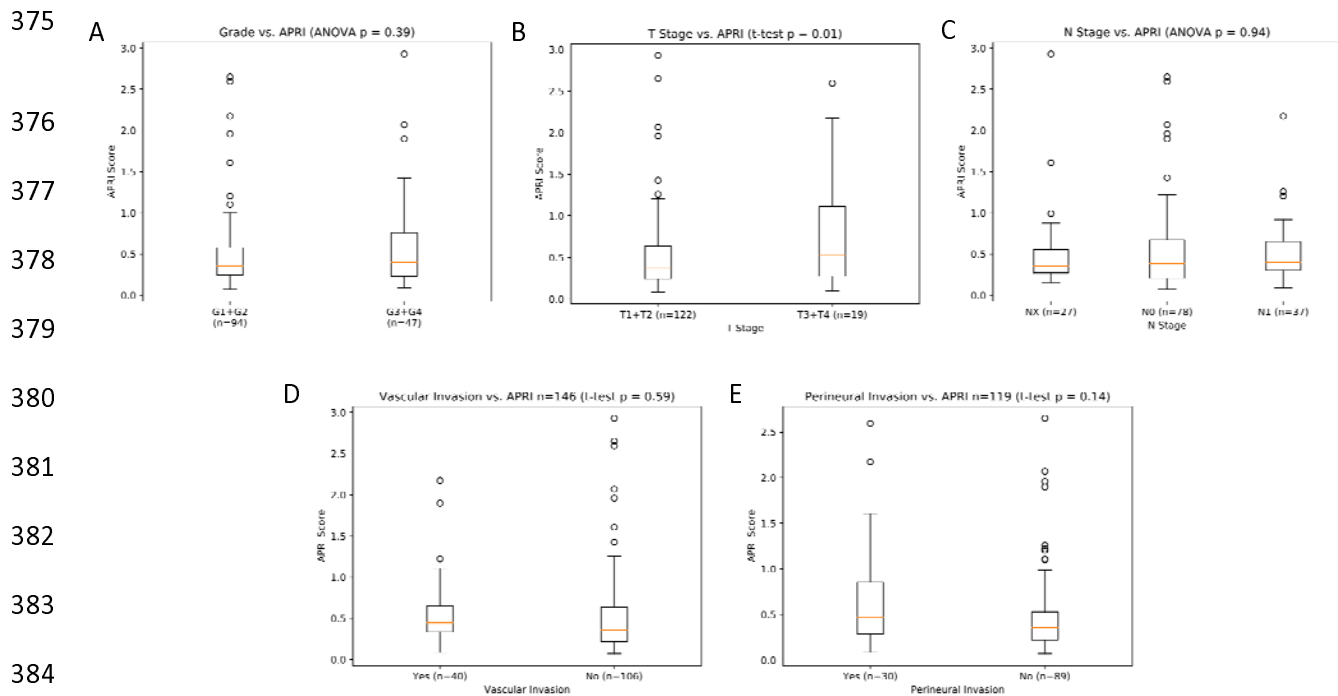
370

371

372 **Figure 2. Legend: (A) Albumin. (B) Bilirubin. (C) Alkaline Phosphatase. (D) CA19-9 (E) INR. (F) AST. (G) Platelet count.**

373

374 **Figure 3: Tumor Grade, Stage, Vascular Invasion, and Perineural Invasion related to APRI Score**



375

376

377

378

379

380

381

382

383

384

385

386 **Figure 3. Legend: (A) Grade. (B) T Stage. (C) N Stage. (D) Vascular Invasion. (E) Perineural Invasion.**

387

388 **Figure 4: Pathology Size and Margin Width related to APRI Score**

389

390

391

392

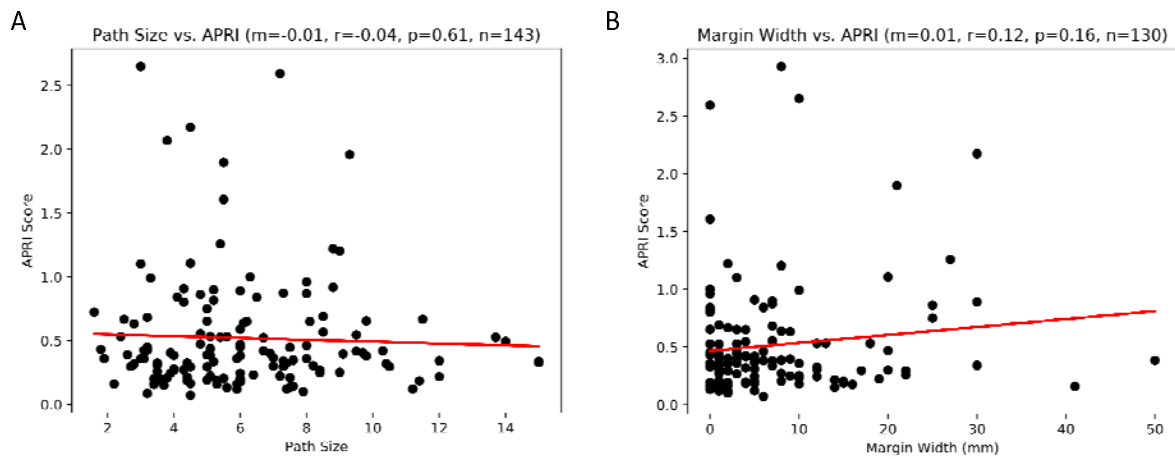
393

394

395

396

397



398 **Figure 4. Legend: (A) Pathology Size. (B) Margin Width.**

399

400

401

402

403 **Figure 5: Post-resection Tumor Recurrence, Death, and APRI Score**

404

405

406

407

408

409

410

411

412

413

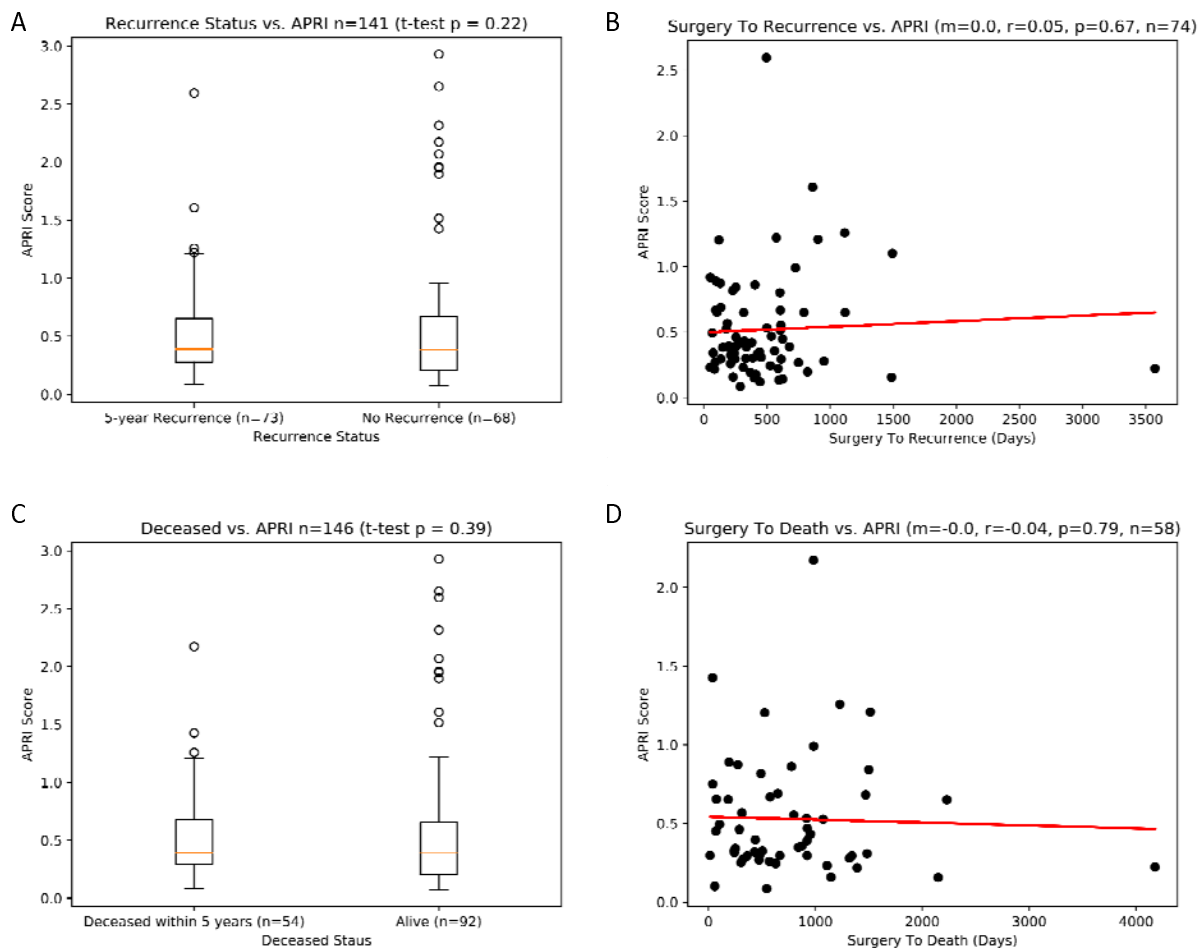
414

415

416

417

418



419 **Figure 5. Legend: (A) Recurrence Status. (B) Days to Recurrence. (C) Deceased Status. (D) Days to Death**