

# 1 **Iron metabolism disorders of patients with chronic** 2 **paracoccidioidomycosis**

3

4

5 Eliana da Costa Alvarenga de Brito<sup>1</sup>; Igor Valadares Siqueira<sup>2</sup>; James Venturini<sup>1</sup>; Vinícius

6 Lopes Teodoro Félix<sup>2</sup>; Alana Oswaldina Gavioli Meira dos Santos<sup>3</sup>; Rinaldo Poncio

7 Mendes<sup>1,4</sup>; Simone Schneider Weber<sup>1,5</sup>; Anamaria Mello Miranda Paniago<sup>1,3\*</sup>

8

9

10 <sup>1</sup> Graduate Program in Infectious and Parasitic Diseases. Faculty of Medicine. Federal  
11 University of Mato Grosso do Sul. Campo Grande, Mato Grosso do Sul, Brazil.

12 <sup>2</sup> Scientific initiation CNPq, Faculty of Medicine. Federal University of Mato Grosso do Sul,  
13 Campo Grande, Mato Grosso do Sul, Brazil.

14 <sup>3</sup> Graduate Program in Health and Development of the Central West Region. Federal  
15 University of Mato Grosso do Sul, Campo Grande, Mato Grosso do Sul, Brazil.

16 <sup>4</sup> Department of Tropical Diseases, Botucatu Medical School, Universidade Estadual Paulista  
17 (UNESP), Botucatu, São Paulo, Brazil

18 <sup>5</sup> Faculty of Pharmaceutical Sciences, Food and Nutrition. Federal University of Mato Grosso  
19 do Sul. Campo Grande, Mato Grosso do Sul, Brazil.

20

21 **\* Corresponding author**

22 E-mail: [anamaria.paniago@ufms.br](mailto:anamaria.paniago@ufms.br) (AMMP)

23

## 24 **Abstract**

25 Paracoccidioidomycosis (PCM) is caused by *Paracoccidioides* spp.; during infection, some  
26 host mechanisms limit the availability of iron, thereby reducing its reproduction. However,  
27 *Paracoccidioides* spp. can evade the immune defense and, even under limited iron  
28 conditions, use this mineral for growth and dissemination. This study evaluated the iron  
29 metabolism of 39 patients who were diagnosed with chronic PCM between 2013 and 2021.  
30 The forms of iron before treatment and at the time of clinical cure were evaluated based on  
31 the following: serum ferritin levels (storage iron); total iron-binding capacity (TIBC) and  
32 transferrin saturation (TSAT) level (transport iron); red blood cell (RBC), hemoglobin (Hb),  
33 hematocrit (HCT), and soluble transferrin receptor (sTfR) levels; and sTfR/log ferritin ratio  
34 (functional iron). The mean age of the patients was 54.5 years ( $\pm 6.7$  years). Most patients  
35 were men (97.4%), rural workers (92.1%), and smokers (84.6%); most had moderate disease  
36 severity (66.7%). Before treatment, the median values of all evaluated parameters were  
37 within or just slightly outside the normal range of values. However, it is possible to infer that  
38 PCM interferes with functional and storage iron because improvements in these parameters  
39 after treatment as well as associations with disease severity were observed. Furthermore,  
40 moderate correlations were observed between C-reactive protein and the Hb ( $r=-0.500$ ;  
41  $p=0.002$ ), RBC ( $r=-0.461$ ;  $p=0.005$ ), HCT ( $r=-0.514$ ;  $p=0.001$ ), and iron levels ( $r=-0.491$ ;  
42  $p=0.002$ ). PCM interferes with iron metabolism by transforming functional iron to storage  
43 iron, as revealed by anemia, low iron levels with normal TSAT levels, normal TIBC, normal  
44 sTfR levels, normal sTfR/log ferritin ratios, and normal or slightly increased ferritin levels.  
45 PCM can lead to anemia of inflammation, which can be differentiated from iron deficiency  
46 anemia by a careful investigation of the iron form parameters.

47

48 **Keywords:** anemia of inflammation; iron; iron metabolism; paracoccidioidomycosis;

49 *Paracoccidioides* spp.

50

51

52

53

## 54 **Introduction**

55           Paracoccidioidomycosis (PCM), which is a systemic mycosis endemic to Latin  
56 America, is caused by dimorphic fungi, *Paracoccidioides* spp. Infection occurs through the  
57 inhalation of infective conidia that are present in the soil; these conidia settle in the lungs and  
58 can spread to the lymphatic and hematogenous pathways and other organs. Brazil is the main  
59 endemic area for PCM, which is considered the eighth leading cause of mortality associated  
60 with chronic infectious diseases in the country [1]. Chronic or adult PCM, which is observed  
61 in those older than age 30 years, is the most frequent form of this disease, and it  
62 predominantly affects the lungs and mucous membranes of the upper digestive tract and  
63 airways [2].

64           Similar to other fungal diseases, certain factors are determinants of PCM, such as the  
65 inoculum size, pathogenicity, fungus virulence, defense system integrity, and genetic factors  
66 [3]. The host organism uses strategies or barriers that prevent fungal diseases, such as  
67 inhibiting vital fungal functions by blocking iron uptake; this is because iron is an essential  
68 mineral for the proliferation of many pathogens, including *Paracoccidioides* spp. [4] .

69           Iron is an essential component of hemoglobin (Hb), myoglobin, and several enzymes,  
70 and it has a fundamental role in oxygen transport and electron transfer. Additionally, it acts  
71 as a cofactor in many enzymatic processes, including DNA synthesis [5-7] .

72           Maintaining control of iron homeostasis is essential in host-pathogen interactions  
73 because both compete for this micronutrient. During infection, some host immune  
74 mechanisms limit the availability of iron to invading microorganisms, thereby reducing their  
75 proliferation [8]. However, many microorganisms, such as *Paracoccidioides* spp., can evade  
76 the immune defense; even under limited iron conditions, they can use this mineral for growth

77 and dissemination [9]. Therefore, alterations in hematological parameters and iron  
78 metabolism can be observed during PCM infection [10].

79 In the human body, iron is distributed in different interconnected forms to enable  
80 homeostasis. These forms of iron (storage iron, transport iron, and functional iron) can be  
81 evaluated separately using laboratory tests, many of which are available and accessible  
82 during routine laboratory testing. These tests can assess any disturbances in iron metabolism  
83 and the affected iron form [11]. Generally, when there is an iron deficit, these forms are  
84 sequentially affected. First, there is a decrease in the storage iron levels, followed by a  
85 deficiency in the transport iron level and a reduction in the functional iron level [12,13].

86 The host-parasite interaction and consequent inflammatory response lead to changes  
87 in iron metabolism dynamics. These changes can be observed in some patients with PCM  
88 [14], which is a chronic systemic inflammatory disease requiring long-term treatment.  
89 Understanding the frequency and intensity of iron metabolism disturbances in patients with  
90 chronic PCM will help improve therapeutic management. Therefore, we analyzed the iron  
91 metabolism and different iron forms of patients with chronic PCM before treatment and at  
92 the time of clinical cure.

93

## 94 **Materials and Methods**

### 95 **Ethical aspects**

96 This study was approved by the Human Research Ethics Committee of the Federal  
97 University of Mato Grosso do Sul (CAAE number 62726016.2.0000.0021). All participants  
98 provided written informed consent.

99

## 100 **Location, period, and design of the study**

101           This study was performed between 2013 and 2021 at the outpatient clinic for systemic  
102 mycoses of the Infectious and Parasitic Diseases Unit of the University Hospital Maria  
103 Aparecida Pedrossian at the Federal University of Mato Grosso do Sul, which is a reference  
104 center for infectious diseases, in Campo Grande, Mato Grosso do Sul, Brazil. This analytical  
105 study involving prospective data evaluated iron metabolism parameters of patients with  
106 chronic PCM before treatment and at the time of clinical cure.

107

## 108 **Patients**

### 109 **Inclusion and exclusion criteria**

110           Male and female individuals who were diagnosed with chronic PCM between  
111 September 2013 and February 2021 were included. Patients with chronic PCM who died  
112 and/or did not undergo laboratory tests at admission, such as serum iron and blood count  
113 (hemogram [HMG] test) tests, were excluded, as were patients diagnosed with human  
114 immunodeficiency virus, tuberculosis, and/or neoplasia.

### 115 **Case definition**

116           Confirmed cases of PCM were those presenting with suggestive clinical  
117 manifestations, typical yeast forms of *Paracoccidioides* spp. visualized by mycological,  
118 culture, or direct histopathological tests, and/or serum-specific antibodies detected using the  
119 double agar gel immunodiffusion test.

120

## 121 **Demographic and clinical variables**

122 Demographic, clinical, and laboratory data were retrieved from a prospective  
123 database. They comprised complete routine medical data obtained at the time of diagnosis  
124 and during follow-up of the disease. Demographic data, such as sex, age, occupational  
125 history, smoking, and clinical disease severity, were collected before treatment.

126 Chronic PCM was subdivided into mild, moderate, and severe cases. Mild cases  
127 included body mass index (BMI) reduction  $<5\%$  of the usual BMI and the involvement of  
128 one or a few organs without functional changes. Severe cases comprised three or more of the  
129 following criteria: BMI reduction  $\geq 10\%$  of the usual BMI; severe pulmonary impairment;  
130 involvement of other organs, such as the adrenal glands, central nervous system, and bones;  
131 enlargement of multiple lymph node chains (superficial or deep chains with pseudotumors  
132 [ $>2.0$  cm in diameter] with or without suppuration); and high-titer antibodies. Moderate cases  
133 were defined as intermediate cases that were worse than mild cases but not as serious as  
134 severe cases [2].

135

## 136 **Laboratory analysis**

137 Blood samples were obtained during the routine medical examination at the time of  
138 diagnosis and during follow-up. Laboratory data and complementary laboratory test data  
139 were obtained at two stages of routine outpatient follow-up: before treatment and at the time  
140 of clinical cure (disappearance of signs and symptoms) [2]. To investigate the iron  
141 metabolism of patients with chronic PCM, different forms of iron were evaluated.

142 **Storage iron**: Storage iron is iron stored in the body. Serum ferritin levels were analyzed  
143 using an electrochemiluminescence immunoassay (Roche).

144 **Transport iron**: Transport iron is iron that circulates in the body. The total iron-binding  
145 capacity (TIBC) was measured using a colorimetric assay (Roche) and the transferrin  
146 saturation (TSAT) level, which was calculated as [TSAT = serum iron/TIBC × (100)]; the  
147 result was expressed as a percentage (%).

148 **Functional iron**: Functional iron is related to erythrocyte synthesis and erythropoiesis.  
149 Therefore, to evaluate functional iron, the blood count (HMG test) was evaluated to measure  
150 the Hb level, red blood cell (RBC), level mean corpuscular volume, and mean Hb  
151 concentration (MHC) (XN 3000 series hematology equipment; Sysmex Corporation, Kobe,  
152 Japan). Serum iron was determined using a colorimetric assay (Roche). The soluble  
153 transferrin receptor (sTfR) level was determined using an enzyme-linked immunosorbent  
154 assay (human sTfR ELISA Kit; Elabscience). This test is not routinely performed; therefore,  
155 serum stored in the PCM biobank was used.

156 The inflammatory process was assessed according to the high-sensitivity serum C-  
157 reactive protein (CRP) level measured using immunoturbidimetry. All analyzed parameters  
158 and values considered normal by the manufacturer are listed in **Table 1**.

159



160 **Table 1. Iron parameters and reference values provided by the manufacturer.**

<b>Parameters</b>	<b>Reference values</b>
<b>Storage iron</b>	
Serum ferritin	Males: 30-400 ng/mL Females: 13-150 ng/mL
<b>Transport iron</b>	
Transferrin saturation	30%-50%
Total iron-binding capacity	250-410 µg/dL
<b>Functional iron</b>	
Total erythrocyte count (red blood cells)	4.5-5.9 million/mm <sup>3</sup>
Hemoglobin	13.5-17 g/dL
Hematocrit	41%-53%
Mean corpuscular volume	82 fL
Mean hemoglobin concentration	25-34 pg
Serum iron	61-157 µg/dL
Soluble transferrin receptor	16.79-172.63 ng/mL
<b>Inflammatory process</b>	
C-reactive protein	0-5.0 mg/L

## 162 **Statistical analysis**

163           The statistical data analysis was performed using Jamovi software (version 1.6) for  
164 Windows [15]. Data are presented as the mean  $\pm$  standard deviation (SD) or median with the  
165 first quartile (Q1) and third quartile (Q3). Comparisons between values before treatment and  
166 at the time of clinical cure were performed using Student's t test or the Wilcoxon signed rank  
167 test. The Pearson correlation coefficient I was used to determine the relationship between  
168 variables; values  $\leq 0.29$ , between 0.30 and 0.49, and between 0.50 and 1.0 were considered  
169 weak, moderate, and strong correlations, respectively.

170           McNemar's test was performed to assess the associations between qualitative  
171 variables. The Shapiro-Wilk test was performed to determine whether the variables were  
172 normally distributed.

173           A proportion test and one-sample test were performed to analyze the categorical and  
174 numerical variables, respectively. For all tests,  $p \leq 0.05$  was considered significant.

175

## 176 **Results**

177           A total of 88 patients were diagnosed with chronic PCM during the study period. Of  
178 these, 35 patients were excluded according to the criteria and 39 patients participated in the  
179 study (**Fig 1**). The mean age of these patients was 54.5 years (SD, 6.70 years); 38 (97.4%)  
180 were men and 35 (92.1%) were rural workers. Thirty-three (84.6%) individuals were smokers  
181 at the time of diagnosis. Regarding disease severity, 66.7% of the patients had moderate  
182 disease, 20.5% had severe disease, and 12.8% had mild disease (**Table 2**).

183

184 **Fig 1. Flowchart of the selection of participants with chronic paracoccidioidomycosis**  
185 **(PCM) from 2013 to 2021.**

186 HIV, human immunodeficiency virus.

187

188 **Table 2. Baseline demographic, clinical, and lifestyle data of 39 patients with chronic**  
 189 **paracoccidioidomycosis.**

<b>Variables</b>	<b>n (%) or mean (SD)</b>	<b>95% CI</b>		<b>p</b>
<b>Sex</b>				<0.001
Male	38 (97.4)	86.5	99.9	
Female	1 (2.6)	0.06	13.5	
<b>Age (in years)*</b>	54.5 (6.70)	52.3	56.6	<0.001†
<b>Rural workers (n = 38)</b>				<0.001
Previous/current	35 (92.1)	78.6	98.3	
Never	3 (7.9)	1.6	21.4	
<b>Cigarette smoking</b>				<0.001
Current	33 (84.6)	69.5	94.1	
Previous	4 (10.3)	2.9	24.2	
Never	2 (5.1)	0.6	17.3	
<b>Severity</b>				<0.001
Moderate	26 (66.7)	49.8	80.9	
Severe	8 (20.5)	9.3	36.5	

Mild	5 (12.8)	4.3	27.4
<b>Initial treatment</b>			0.002
Itraconazole	29 (74.4)	57.9	87.0
CMX	10 (25.6)	13.0	42.1

190 \*Mean. CI, confidence interval; CMX, cotrimoxazole or trimethoprim/sulfamethoxazole;

191 SD, standard deviation. Proportion test:  $\chi^2$  goodness of fit. †One-sample t test.

192

### 193 **Storage iron**

194       Nine (26.5%) patients had increased ferritin levels and two (5.8%) patients had lower  
195 than normal ferritin levels before treatment (evaluated before treatment: n = 34 patients). An  
196 analysis of patients who were evaluated at both time points (before treatment and at the time  
197 of clinical cure: n = 28 patients) showed that the number of individuals with high ferritin  
198 levels decreased (21.4% before treatment vs. 17.9% at the time of clinical cure; p = 0.008).  
199 An analysis of the median values showed that those at the time of clinical cure were reduced  
200 compared to those before treatment (p = 0.017) (**Fig 2**).

201

202

203 **Fig 2. Comparison of median serum ferritin values before treatment (BT) and at the**  
204 **time of clinical cure (CC) of patients with chronic paracoccidioidomycosis.**

205 Q1, first quartile; Q3, third quartile. Wilcoxon signed rank test.

206

### 207 **Transport iron**

208 Transport iron was evaluated according to the TSAT level and TIBC. Of the 39  
209 patients evaluated before treatment, 27 (69.2%) had TSAT levels <30% and 8 (20.5%) had  
210 TSAT levels <16%. At the time of clinical cure, the number of patients with TSAT levels  
211 <30% (n = 12; 42.9%) did not decrease (before treatment vs. clinical cure: n = 28; p = 0.071).  
212 Similarly, an analysis of the median TSAT values showed no statistical differences between  
213 those before treatment and those at the time of clinical cure (**Table 3**).

214 The TIBC analysis showed that 22 (56.4%) individuals had lower than normal values  
215 before treatment (n = 39). At the time of clinical cure, the number of individuals with TIBC  
216 lower than the reference value had not decreased (n = 10; 35.7%; p = 0.439). An analysis of  
217 the mean values before treatment showed that the TIBC was slightly lower than normal, and  
218 that it had not increased at the time of clinical cure (**Table 3**).

219

220 **Table 3. Comparison of mean or median values of the transport iron parameters before**  
221 **treatment and at the time of clinical cure of 30 patients with chronic**  
222 **paracoccidioidomycosis.**

Variables	Before Treatment		Clinical Cure		p
	Mean or	SD or	Mean or	SD or	
	Median	Q1-Q3	Median	Q1-Q3	
TSAT (%)	26	18.0 -36.8	32.5	24.3-40.0	0.076
TIBC (µg/dL)	245	100.9	265	85.7	0.398

223 Q1, first quartile; Q3, third quartile; SD, standard deviation; TIBC, total iron-binding  
224 capacity; TSAT, transferrin saturation. The Wilcoxon signed rank test and paired Student's t  
225 test were performed.

226

## 227 **Functional iron**

228 The HMG test was performed to evaluate the Hb, RBC, and HCT levels, mean  
229 corpuscular volume, and mean corpuscular Hb level to assess functional iron. Additionally,  
230 to complement this evaluation, the serum iron and sTfR values and sTfR/log ferritin ratio  
231 were calculated.

232 The HMG test results before treatment (n = 39) showed that 36% (n = 14) of  
233 individuals had reduced Hb, RBC, and HCT levels. Anemia was considered when the Hb  
234 level was <13.5 g/dL. It was noted that 46.1% (n = 18) of patients had anemia; among these  
235 patients, 72% (n = 13) had normocytic and normochromic anemia. The mean Hb level among  
236 the 18 patients with anemia was 11.2 g/dL (SD, 1.21 g/dL).

237            During the healing process of these patients, the anemia frequency and HCT levels  
238 were significantly reduced (**Table 4**). These improvements with treatment were also  
239 observed when evaluating the mean values, which were significantly increased at the time of  
240 clinical cure compared to those before treatment (**Table 5**).

241            Before treatment, more than half of the patients (n =22; 56.4%) had lower than normal  
242 serum iron levels; however, at the time of clinical cure, the percentage of patients with lower  
243 than normal serum iron levels was significantly reduced (**Table 4**). It was also noted that the  
244 mean values of these patients increased significantly with the use of antifungal treatment  
245 (**Table 5**). The sTfR levels and sTfR/log ferritin ratios before treatment and at the time of  
246 clinical cure were not significantly different (**Table 5**).



248 **Table 4. Changes in functional iron parameters at the time of clinical cure compared to**  
249 **those before treatment of 35 patients with chronic paracoccidioidomycosis.**

<b>Variables</b>	<b>Before Treatment</b>	<b>Clinical Cure</b>	<b>p</b>
	<b>n (%)</b>	<b>n (%)</b>	
Anemia	14 (40.0)	6 (17.1)	0.011
Reduced RBCs	16 (45.7)	11 (31.4)	0.132
Reduced HCT	18 (51.4)	11 (31.4)	0.035
Reduced iron*	15 (51.7)	4 (12.5)	<0.001

\*Iron evaluation of 32 patients. The McNemar test was performed. HMG: hemogram; RBCs, red blood cells (total erythrocyte count); HCT, hematocrit.

250

251

252 **Table 5. Comparison of functional iron parameter values before treatment and at the**  
 253 **time of clinical cure of patients with chronic paracoccidioidomycosis.**

Variables	Before Treatment			Clinical Cure			p
	n	Mean or Median	SD or Q1-Q3	n	Mean or Median	SD or Q1-Q3	
Hb	35	13.1	2.2	35	14.5	1.8	<0.001
RBCs	35	4.5	0.6	35	4.8	0.6	0.002
HCT	35	39.9	6.1	35	43.6	5.2	<0.001
MCV	35	89.0	5.7	35	91.0	5.3	0.093
MCH	35	29.3	2.3	35	30.4	2.2	0.008
Iron	32	64.0	37.0-88.5	32	85.5	69.0-109.0	0.004
sTfR	18	21.5	17.4-7.6	18	16.2	6.3-20.2	0.099
sTfR/logFerr	11	8.1	2.8	11	7.6	3.9	0.660

254 SD, standard deviation; Q1, first interquartile; Q3, third interquartile; Hb, hemoglobin;  
 255 RBCs, red blood cells (total erythrocyte count); HCT, hematocrit; MCV, mean corpuscular  
 256 volume; MCH, mean hemoglobin concentration; sTfR, soluble transferrin receptor; sTfR/log  
 257 Ferr index, soluble transferrin receptor index/ferritin logarithm. The Wilcoxon signed rank  
 258 test and paired Student's t test were performed.

## 259 **Inflammatory process**

260 More than half of the patients (n = 20; 62.5%) had values higher than the normal  
261 range before treatment (n = 32). At the time of clinical cure, the percentage of patients with  
262 values outside the normal range had not decreased significantly (n = 7; 21.9%; p = 0.225).  
263 However, an analysis of the median values of each disease stage showed a significant  
264 reduction in the values at the time of clinical cure compared to those before treatment (**Fig**  
265 **3**).

266

267 **Fig 3. Boxplot of the inflammatory process evaluation involving CRP during different**  
268 **stages of PCM.**

269 Q1, first quartile; Q3, third quartile; BT, before treatment; CC, clinical cure. Wilcoxon signed  
270 rank test.

271

272 Weak to moderate indirect correlations between CRP levels during active disease  
273 (before treatment) and the TIBC (r = -0.405; p = 0.014), Hb level (r = -0.500; p = 0.002),  
274 RBC level (r = -0.461; p = 0.005), HCT level (r = -0.514; p = 0.001), and iron level (r = -  
275 0.491; p = 0.002) were observed (**Fig 4**). At the time of clinical cure, no correlations were  
276 observed between the CRP levels and these variables.

277

278 **Fig 4. Pearson's correlations of C-reactive protein (CRP) with variables used to**  
279 **evaluate the iron forms of patients with chronic paracoccidioidomycosis before**  
280 **treatment (n = 36 patients).**

281 (a) CRP with the total iron-binding capacity (TIBC). (b) CRP with hemoglobin (Hb). (c) CRP  
282 with red blood cells (RBCs; total erythrocyte count). (d) CRP with hematocrit (HCT).

283 An analysis of the stored iron and functional iron parameters before treatment showed  
284 a significant difference between values associated with severe and mild/moderate disease  
285 cases as well as CRP levels (**Table 6**).

286

287 **Table 6. Analysis of iron parameters and CRP levels according to disease severity of**  
288 **patients with chronic paracoccidioidomycosis before treatment.**

Variables	Severe (n = 08)	Mild or Moderate (n = 31)	p
	Mean (SD) or Median [Q1-Q3]	Mean (SD) or Median [Q1-Q3]	
<b>Storage iron</b>			
Ferritin	448 [308-514]	199 [90.4-290]	0.007
<b>Transport iron</b>			
TSAT	18 [14.3-22.8]	27 [18-38.2]	0.051
TIBC	215 [191-245]	241 [201-310]	0.258
<b>Functional iron</b>			
RBCs	4.05 (0.81)	4.60 (0.57)	0.031
Hb	11.8 (3.1)	13.5 (1.8)	0.050
HCT	35.8 (8.8)	41.0 (4.8)	0.029
Iron	40.4 (14.5)	68.1 (35.5)	0.039
<b>CRP</b>	51.7 [40.8-71.4]	7.06 [2.90-20.1]	<0.001

289 Q1, first quartile; Q3, third quartile; TSAT, transferrin saturation; TIBC, total iron-binding  
290 capacity; RBC, red blood cells (total erythrocyte count); Hb, hemoglobin; HCT, hematocrit;  
291 CRP, C-reactive protein. The Mann-Whitney U test and independent Student's t test were  
292 performed.

293

294

## 295 **Discussion**

296 The acquisition of iron by microorganisms is an important virulence mechanism [16],  
297 and it has been reported with *Paracoccidioides* spp. [9, 17]. Additionally, human organisms

298 actively control intracellular and systemic iron levels in a way that can contain infection  
299 and/or microbial persistence. Therefore, this study compared iron metabolism parameters  
300 before treatment and at the time of clinical cure, analyzed them based on PCM severity, and  
301 correlated them with the intensity of the inflammatory process in patients with chronic PCM.

302 The demographic and clinical characteristics of the patients corresponded to those  
303 reported by other case series studies of chronic PCM that involved mostly male patients who  
304 were older than age 40 years, smokers, rural workers, and had moderate PCM [18-22].  
305 Therefore, this sample is representative of the population of PCM patients and allows the  
306 generalization of our results.

307 The storage iron evaluated during this study had higher median serum ferritin levels  
308 before treatment, but they were within the normal range. Although ferritin exists in large  
309 amounts in the liver and spleen, only a small amount is detected in the circulation. However,  
310 serum quantification is a common and non-invasive method that provides an accurate  
311 measurement of storage iron [23]. However, the increase in serum ferritin may be related not  
312 only to increased storage iron but also to inflammatory activity. Because serum ferritin is an  
313 acute-phase protein in inflammatory and infectious processes and in cancer, the production  
314 of apoferritin is increased because of the stimulation of interleukins (ILs) such as IL-1 and  
315 IL-6 [24]. Increases in these ILs have been observed in patients with PCM [25].

316 During this study, serum ferritin levels were increased in some patients; however, the  
317 median values were within the normal range before treatment. At the time of clinical cure,  
318 these median values were significantly decreased, suggesting the interference of PCM with  
319 this parameter. Additionally, severe cases were associated with higher ferritin levels,  
320 probably because of the production of IL-6 caused by fungal infection. A previous study by  
321 our group reported similar results [14].

322 To assess the transport iron, we evaluated the TIBC, TSAT level, and serum  
323 iron/TIBC ratio. Before treatment, the patients in this study had median values that were  
324 slightly lower than normal, indicating a non-significant transport iron deficit. Additionally,  
325 antifungal therapy did not affect these parameters. A weak negative correlation was observed  
326 between the TIBC and CRP level, but no correlation was observed between the TSAT and  
327 CRP levels. The TIBC is an indirect measure of circulating transferrin, which can be reduced  
328 during inflammatory processes [11]. Therefore, with chronic PCM, the transport iron  
329 parameters are less affected than the storage iron and functional iron parameters.

330 A TSAT level <16% is considered indicative of iron deficiency with erythropoiesis;  
331 however, the use of this value for this parameter has limitations because both iron levels and  
332 the TIBC are lower with inflammatory processes [12, 23]. During our study, TSAT values  
333 <16% were found in 8 (20.5%) patients before treatment. However, only one of them had  
334 confirmed iron deficiency anemia, which is characterized by low Hb, ferritin, and TSAT  
335 levels [26]. A study of the effect of PCM treatment on iron metabolism showed that specific  
336 treatment quickly leads to a return to normal values or improvement in iron metabolism, as  
337 described with the TIBC, which was lower and normalized soon before antifungal treatment  
338 [27].

339 In clinical practice, the HMG test results and serum iron level are the first indicators  
340 of a change in the iron status. Although our study showed that the parameter values were  
341 slightly or not altered before treatment, it was possible to infer that PCM interferes with  
342 functional iron because these values improved after treatment and were associated with PCM  
343 severity. Additionally, a moderate correlation was observed between Hb, RBC, HCT, iron,  
344 and CRP levels. Furthermore, similar to our results, tuberculosis patients with active disease  
345 had lower mean values of these variables [28].

346           Approximately 65% of the total body iron in circulation in humans is linked to Hb  
347 [7], and reduced Hb with chronic infectious diseases is attributable to the limitation of  
348 erythropoiesis caused by regulators such as IL-1 and tumor necrosis factor- $\alpha$  [29]. Hb is a  
349 source of iron for *Paracoccidioides* spp., which removes iron by hemolytic activity and  
350 internalizes protoporphyrin rings through receptor-mediated pathways [30]. Other fungi are  
351 also capable of removing iron from Hb, such as *Candida albicans*, through a similar  
352 mechanism [31].

353           During infection, competition between the pathogen and host for iron uptake involves  
354 strategic mechanisms. Therefore, in response to infection, human organisms activate the  
355 immune system, thus inducing changes in circulating iron and leading to iron storage in  
356 macrophages and decreased absorption of iron from the diet by enterocytes [32].  
357 Furthermore, several inflammatory cytokines are released by immune system cells, and they  
358 contribute to alterations in iron metabolism [33]. Despite the host-generated deprivation of  
359 iron, all fungi, including *Paracoccidioides* spp., have specific mechanisms for iron uptake  
360 through the production of molecules with high affinity for iron, siderophores, iron uptake  
361 pathways through reductive iron assimilation, or even Hb receptors [9, 34, 35]. Therefore, an  
362 inflammatory response associated with infection alters the availability of circulating iron,  
363 thus increasing its intracellular storage and leading to hypoferrremia and iron-restricted  
364 erythropoiesis, as observed during our study, because these changes can contribute to anemia  
365 of inflammation [36].

366           The sTfR level is a good indicator of the iron status in the absence of systemic  
367 influences; therefore, we analyzed sTfR levels before treatment and at the time of clinical  
368 cure. Our results showed that the median values before treatment were normal and did not  
369 decrease after treatment, suggesting that the body iron is normal; however, it is distributed



370 from functional iron to storage iron. A high sTfR level can indicate iron deficiency [37, 38].  
371 During the storage iron reduction phase, the sTfR level does not change. However, when  
372 there is a decrease in functional iron, the synthesis of the transferrin receptor is stimulated;  
373 consequently, the sTfR level increases. This parameter is mainly recommended for  
374 differentiating iron deficiency anemia from inflammation anemia/chronic disease anemia  
375 because the value is increased with iron deficiency anemia but normal with inflammation  
376 anemia [39-41]. Studies of pulmonary tuberculosis patients suggested that high sTfR levels  
377 in patients with anemia indicate probable iron deficiency and recommended that the sTfR  
378 concentration of patients with anemia and an infectious/inflammatory process should be  
379 examined [28].

380 Another good indicator of iron deficiency with differential anemia is the sTfR/log  
381 ferritin ratio [42]. During our study, the sTfR/log ferritin ratio as well as sTfR level were  
382 normal before treatment and did not significantly change after treatment, reinforcing the  
383 belief that anemia with chronic PCM is inflammation anemia.

384 This study presents some limitations. The number of patients is apparently low.  
385 However, our Service receives about 15 new cases every year and most of the patients do not  
386 undergo the follow-up after clinical improvement, becoming difficult the pairing of some  
387 variables – before treatment and after clinical cure.

388 In conclusion, PCM interferes with iron metabolism by shifting functional iron to  
389 storage iron, as revealed by anemia and low iron levels, with normal TSAT and sTfR levels,  
390 normal TIBC, and normal sTfR/log ferritin ratio. Normal or slightly increased ferritin levels,  
391 which are characteristic of inflammatory anemia, were observed. However, it should be noted  
392 that a few patients had iron deficiency anemia. Therefore, a careful investigation of the iron  
393 parameters is important to the clinical management of PCM.

394

## 395 **References**

- 396 1. Coutinho ZF, Silva D da, Lazéra M, Petri V, Oliveira RM de, Sabroza PC, et al.  
397 [Paracoccidioidomycosis mortality in Brazil (1980-1995)]. *Cad Saude Pública*.  
398 2002;18(5):1441–54.
- 399 2. Mendes RP, Cavalcante R de S, Marques SA, Marques MEA, Venturini J, Sylvestre TF,  
400 et al. Paracoccidioidomycosis: Current Perspectives from Brazil. *TOMicroJ*.  
401 2017;11(1):224–82.
- 402 3. Benard G. Pathogenesis and Classification of Paracoccidioidomycosis: New Insights From  
403 Old Good Stuff. *Open Forum Infect Dis*. 2021;8(3):624.
- 404 4. Bailão EFLC, Lima P de S, Silva-Bailão MG, Bailão AM, Fernandes G da R, Kosman  
405 DJ, et al. *Paracoccidioides* spp. ferrous and ferric iron assimilation pathways. *Front*  
406 *Microbiol*. 2015;6. doi: 10.3389/fmicb.2015.00821.
- 407 5. DuBois S, Kearney DJ. Iron-Deficiency Anemia and Helicobacter pylori Infection: A  
408 Review of the Evidence. *Am J Gastroenterology*. 2005;100(2):453–9.
- 409 6. Zhang C. Essential functions of iron-requiring proteins in DNA replication, repair and cell  
410 cycle control. *Protein Cell*. 2014;5:750–760. doi:10.1007/s13238-014-0083-7.
- 411 7. Gupta C P. Role of iron (Fe) in body. *IOSR Journal of Applied Chemistry*. 2014;7(11):  
412 38-46.
- 413 8. Appelberg R. Macrophage nutritive antimicrobial mechanisms. *J Leukoc Biol*.  
414 2006;79(6):1117–28.
- 415 9. Silva-Bailão MG, Bailão EFLC, Lechner BE, Gauthier GM, Lindner H, Bailão AM, et al.  
416 Hydroxamate Production as a High Affinity Iron Acquisition Mechanism in

- 417 *Paracoccidioides* spp. Roop RM, organizador. PLoS ONE. 2014;9(8):e105805.
- 418 10. Ozaki KS, Munhoz Júnior S, Pinheiro EK, Tadano T, Fontes CJF. [The diagnosis of  
419 severe disseminated paracoccidioidomycosis in a bone marrow aspirate: a case report]. Rev  
420 Soc Bras Med Trop. 1996;29(4):363–6.
- 421 11. Wians FH, Urban JE, Keffer JH, Kroft SH. Discriminating Between Iron Deficiency  
422 Anemia and Anemia of Chronic Disease Using Traditional Indices of Iron Status vs  
423 Transferrin Receptor Concentration. Am J Clin Pathol. 2001;115(1):112–8.
- 424 12. Cook JD. Clinical evaluation of iron deficiency. Semin Hematol. 1982;19(1):6–18.
- 425 13. Cook J. Diagnosis and management of iron-deficiency anaemia. Best Pract Res Clin  
426 Haematol. 2005;18(2):319–32.
- 427 14. de Oliveira Custódio JM, Enokida IM, Gonçalves DA, Leone de Oliveira SM do V,  
428 Venturini J, Carvalho LR, et al. Dynamics of plasma micronutrient concentrations and their  
429 correlation with serum proteins and thyroid hormones in patients with  
430 paracoccidioidomycosis. Vicente CR, organizador. PLoS ONE. 2019;14(12):e0226609.
- 431 15. The jamovi project. Jamovi. 2021. Available in: <https://www.jamovi.org>.
- 432 16. Nevitt T. War-Fe-re: iron at the core of fungal virulence and host immunity. Biometals.  
433 2011;24(3):547–58.
- 434 17. Parente AFA, Bailão AM, Borges CL, Parente JA, Magalhães AD, Ricart CAO, et al.  
435 Proteomic analysis reveals that iron availability alters the metabolic status of the pathogenic  
436 fungus *Paracoccidioides brasiliensis*. PLoS One. 2011;6(7):e22810.
- 437 18. Fabris LR, Andrade ÚV, Santos AFD, Marques AP da C, Oliveira SM do VL de, Mendes  
438 RP, et al. Decreasing prevalence of the acute/subacute clinical form of  
439 paracoccidioidomycosis in Mato Grosso do Sul State, Brazil. Rev Inst Med trop S Paulo.  
440 2014;56(2):121–5.

- 441 19. Queiroz-Telles F, Escuissato DL. Pulmonary paracoccidioidomycosis. *Semin Respir Crit*  
442 *Care Med.* 2011;32(6):764–74.
- 443 20. Matos WB de, Santos GMC dos, Silva VEB da, Gonçalves E da G do R, Silva AR da.  
444 Paracoccidioidomycosis in the state of Maranhão, Brazil: geographical and clinical aspects.  
445 *Rev Soc Bras Med Trop.* 2012;45(3):385–9.
- 446 21. Peçanha PM, Batista Ferreira ME, Massaroni Peçanha MA, Schmidt EB, Lamas de  
447 Araújo M, Zanotti RL, et al. Paracoccidioidomycosis: Epidemiological and Clinical Aspects  
448 in 546 Cases Studied in the State of Espírito Santo, Brazil. *Am J Trop Med Hyg.*  
449 2017;97(3):836–44.
- 450 22. dos Santos WA, da Silva BM, Passos ED, Zandonade E, Falqueto A. [Association  
451 between smoking and paracoccidioidomycosis: a case-control study in the State of Espírito  
452 Santo, Brazil]. *Cad Saude Publica.* 2003;19(1):245–53.
- 453 23. Cook JD, Baynes RD, Skikne BS. Iron deficiency and the measurement of iron status.  
454 *Nutr Res Rev.* 1992;5(1):198–202.
- 455 24. Baynes RD. Assessment of iron status. *Clinical Biochemistry.* 1996; 29 (3): 209–15.
- 456 25. Leal AMO, Magalhães PKR, Martinez R, Moreira AC. Adrenocortical hormones and  
457 interleukin patterns in paracoccidioidomycosis. *J Infect Dis.* 2003;187(1):124–7.
- 458 26. Camaschella C, Nai A, Silvestri L. Iron metabolism and iron disorders revisited in the  
459 hepcidin era. *Haematologica.* 2020;105(2):260–72.
- 460 27. Martinez R, Fiorillo AM. [Effect of treatment of South American blastomycosis  
461 (paracoccidioidomycosis) on parameters of iron metabolism]. *Rev Inst Med Trop Sao Paulo.*  
462 1978;20(4):190–4.
- 463 28. Ratnaningsih T, Sukirto NW, Wahyuningsih AT. Soluble Transferrin Receptor (sTfR)  
464 Identifies Iron Deficiency Anemia (IDA) in Pulmonary Tuberculosis Patients. *Acta Med*

- 465 Indones. 2020;52(4):334–43.
- 466 29. Means RT. Advances in the anemia of chronic disease. *Int J Hematol.* 1999;70(1):7–12.
- 467 30. Bailão EFLC, Parente JA, Pigosso LL, Castro KP de, Fonseca FL, Silva-Bailão MG, et  
468 al. Hemoglobin Uptake by *Paracoccidioides* spp. Is Receptor-Mediated. Vinetz JM,  
469 organizador. *PLoS Negl Trop Dis.* 2014;8(5):e2856.
- 470 31. Kuznets G, Vigonsky E, Weissman Z, Lalli D, Gildor T, Kauffman SJ, et al. A relay  
471 network of extracellular heme-binding proteins drives *C. albicans* iron acquisition from  
472 hemoglobin. *PLoS Pathog.* 2014;10(10):e1004407.
- 473 32. Muckenthaler MU, Rivella S, Hentze MW, Galy B. A Red Carpet for Iron Metabolism.  
474 *Cell.* 2017;168(3):344–61.
- 475 33. Symeonidis AS. The role of iron and iron chelators in zygomycosis. *Clin Microbiol*  
476 *Infect.* 2009;15 Suppl 5:26–32.
- 477 34. Stanford FA, Voigt K. Iron Assimilation during Emerging Infections Caused by  
478 Opportunistic Fungi with emphasis on Mucorales and the Development of Antifungal  
479 Resistance. *Genes (Basel).* 2020;11(11):e1296.
- 480 35. Misslinger M, Hortschansky P, Brakhage AA, Haas H. Fungal iron homeostasis with a  
481 focus on *Aspergillus fumigatus*. *Biochim Biophys Acta Mol Cell Res.* 2021;1868(1):118885.
- 482 36. Weiss G, Ganz T, Goodnough LT. Anemia of inflammation. *Blood.* 2019;133(1):40–50.
- 483 37. Baillie FJ, Morrison AE, Fergus I. Soluble transferrin receptor: a discriminating assay for  
484 iron deficiency. *Clin Lab Haematol.* 2003;25(6):353–7.
- 485 38. Punnonen K, Irjala K, Rajamäki A. Iron-deficiency anemia is associated with high  
486 concentrations of transferrin receptor in serum. *Clin Chem.* 1994;40(5):774–6.
- 487 39. Worwood M. Serum transferrin receptor assays and their application. *Ann Clin Biochem.*  
488 2002;39(3):221–30.

489 40. Peng YY, Uprichard J. Ferritin and iron studies in anaemia and chronic disease. *Ann Clin*  
490 *Biochem.* 2017;54(1):43–8.

491 41. Infusino I, Braga F, Dolci A, Panteghini M. Soluble transferrin receptor (sTfR) and  
492 sTfR/log ferritin index for the diagnosis of iron-deficiency anemia. A meta-analysis. *Am J*  
493 *Clin Pathol.* 2012;138(5):642–9.

494 42. Skikne BS, Punnonen K, Caldron PH, Bennett MT, Rehu M, Gasior GH, et al. Improved  
495 differential diagnosis of anemia of chronic disease and iron deficiency anemia: A prospective  
496 multicenter evaluation of soluble transferrin receptor and the sTfR/log ferritin index. *Am J*  
497 *Hematol.* 2011;86(11):923–7.

498

## 499 **Supporting information**

500 **S1 Dataset. Dataset containing variables of the study.**

501

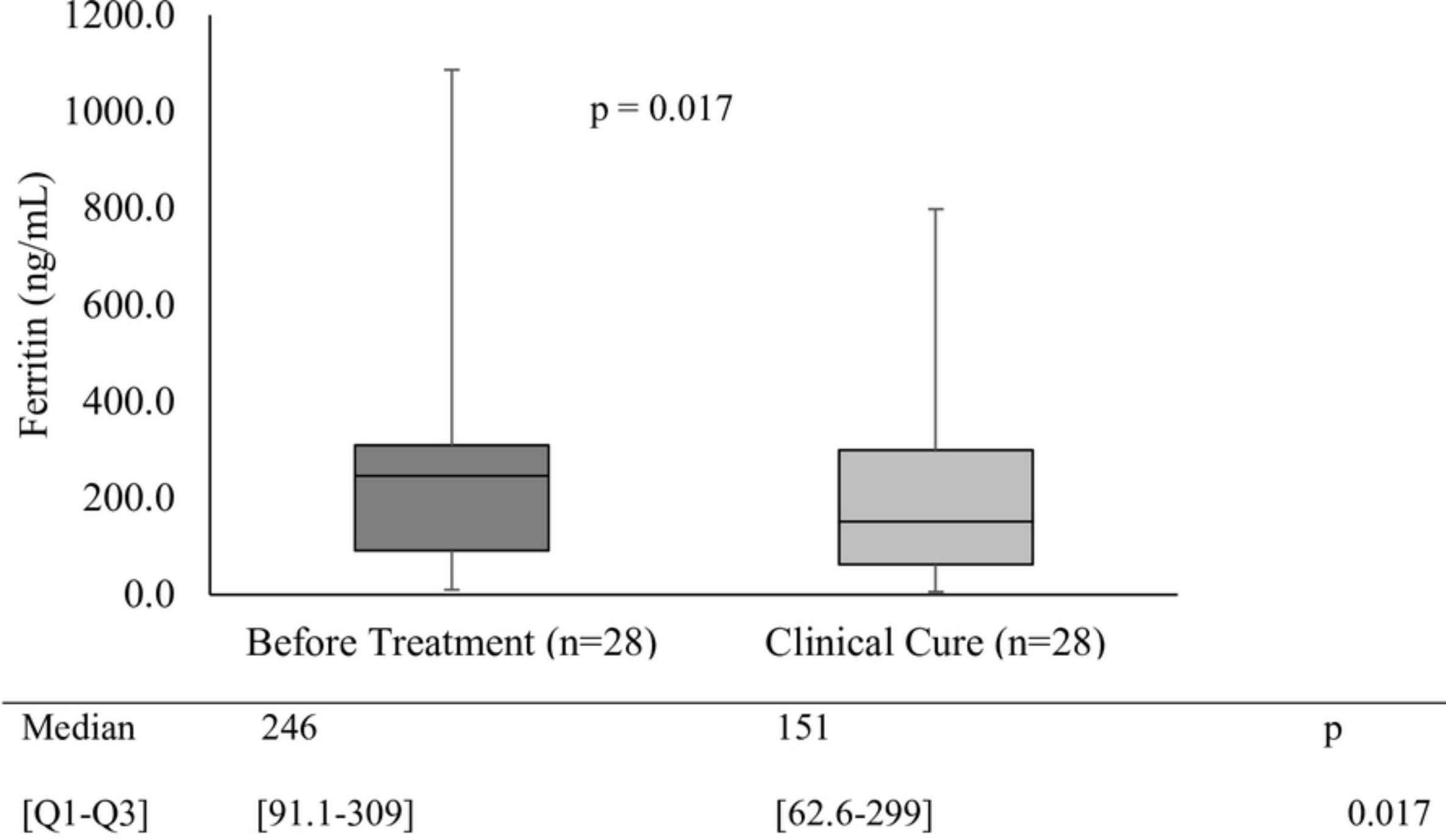
Chronic PCM patients, n = 88

**Excluded, n = 49**

- Without all examination results at the time of diagnosis (n = 35)
- Tuberculosis and/or HIV (n = 10)
- Death (n = 2)
- Neoplasm (n = 2)

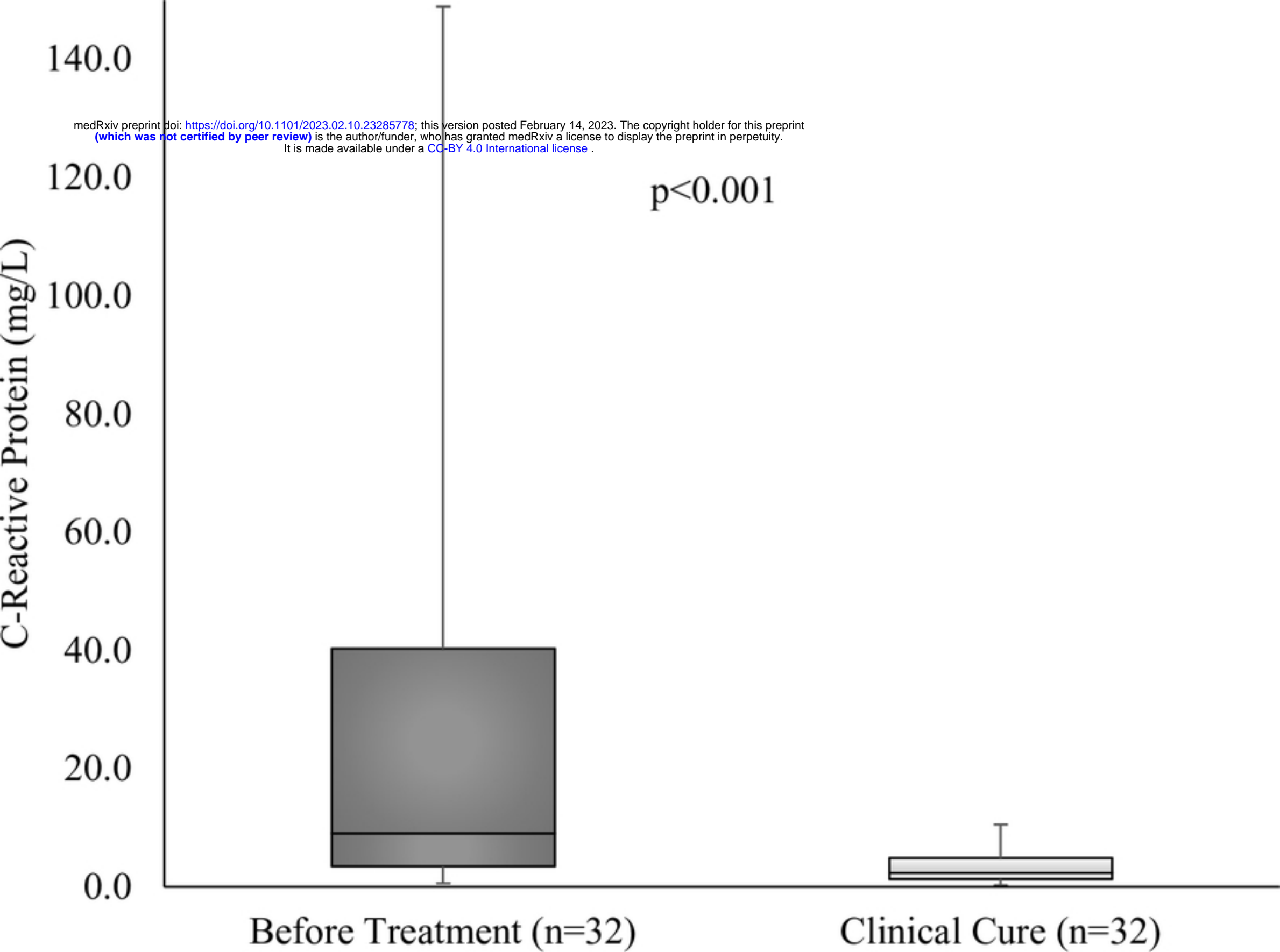
Enrolled PCM patients, n = 39

Figure



Figure

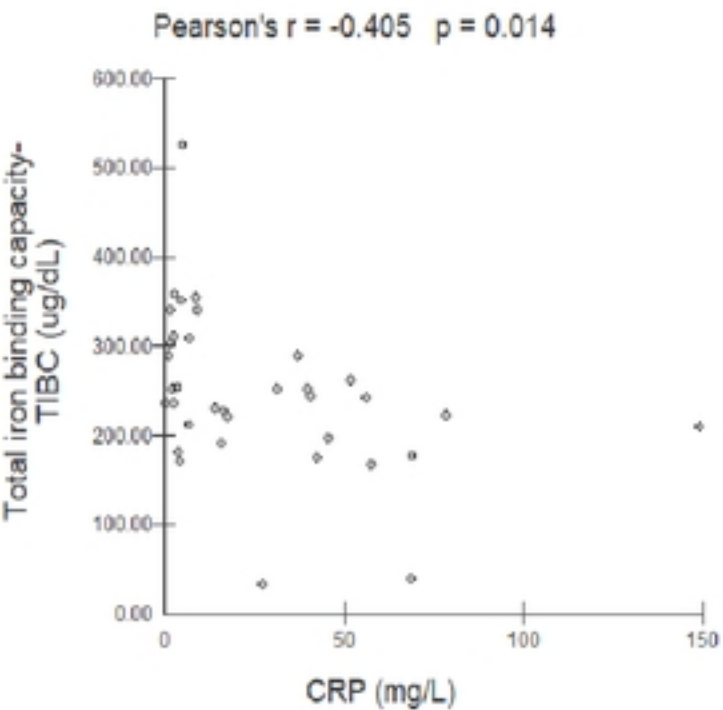




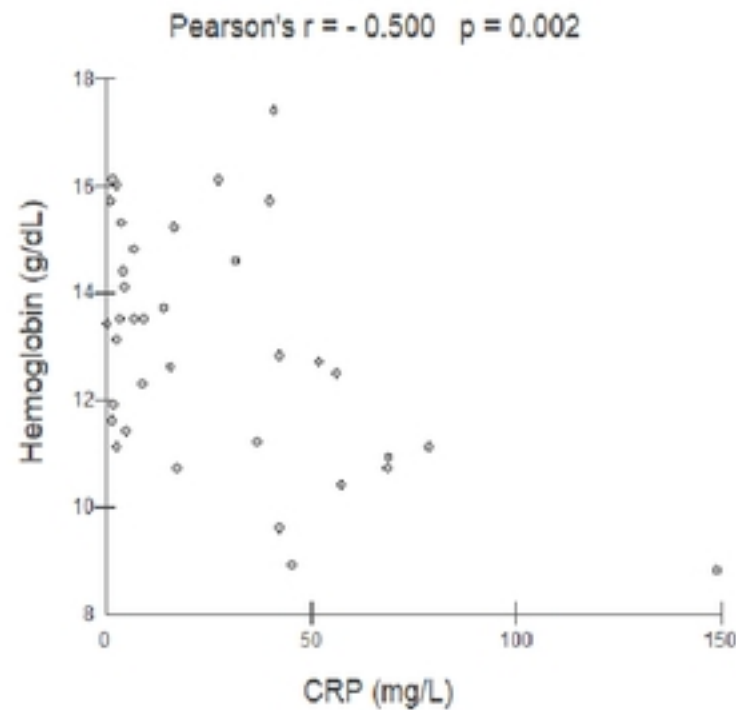
Median	9.1	2.40	p
[Q1-Q3]	[3.50-40.30]	[1.30-4.93]	<0.001

Figure

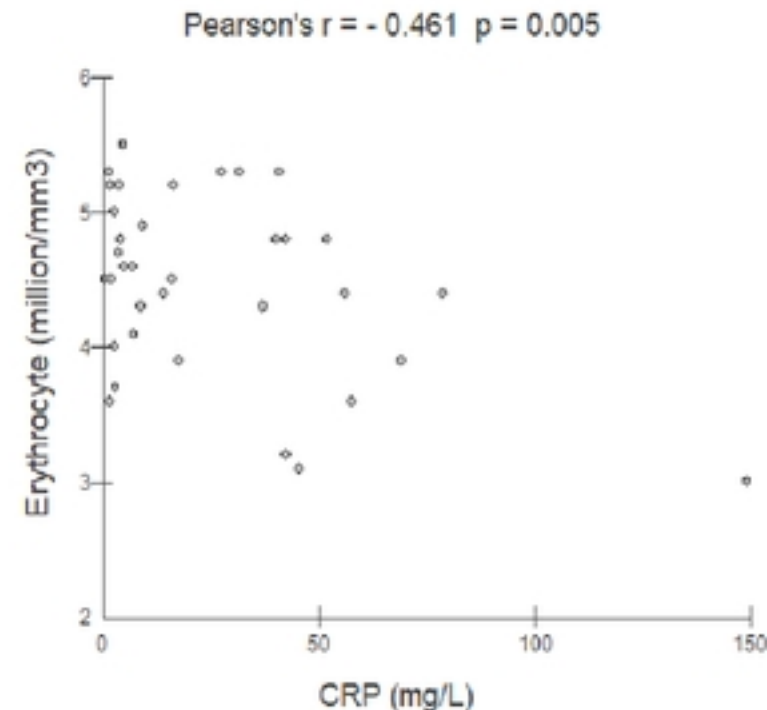
a) TIBC



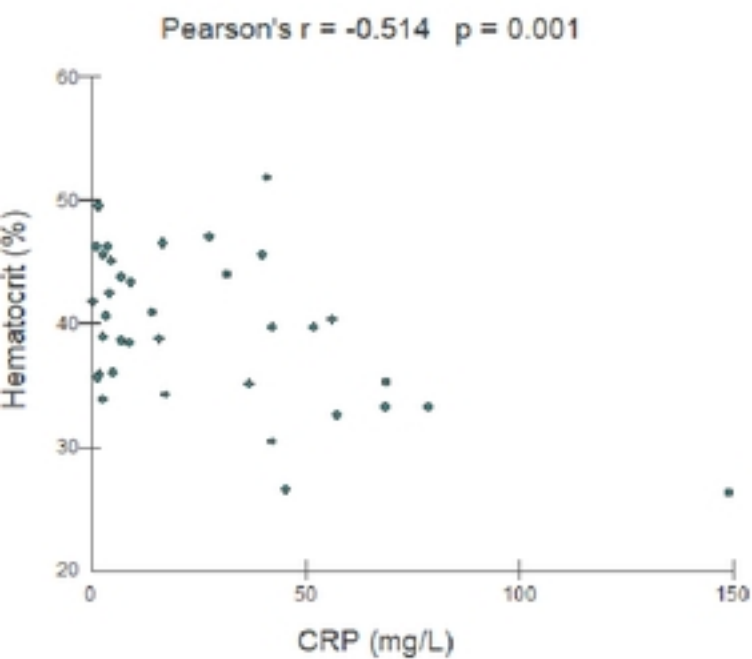
b) Hb



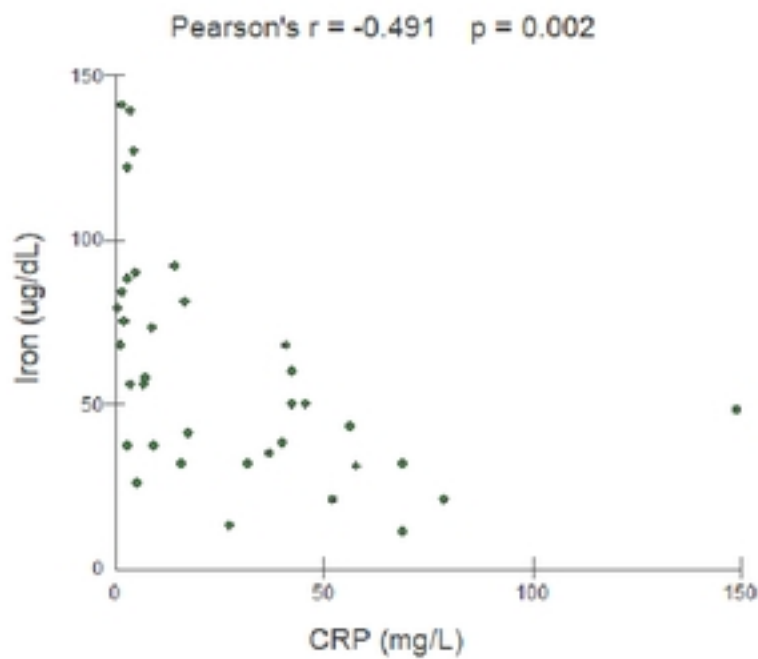
c) RBC



d) HCT



e) Iron



Figure