

Modelling mpox vaccination and behavior

1 **Modelling the impact of vaccination and sexual behavior change on reported cases of mpox** 2 **in Washington D.C.**

3 Patrick A. Clay^{a,*}, Jason M. Asher^b, Neal Carnes^c, Casey E. Copen^a, Kevin P. Delaney^c, Daniel
4 C. Payne^d, Emily D. Pollock^a, Jonathan Mermin^f, Yoshinori Nakazawa^e, William Still^g, Anil T.
5 Mangla^g, Ian H. Spicknall^a

6
7 ^a Division of STD Prevention, National Center for HIV, Viral Hepatitis, STD, and TB
8 Prevention, Centers for Disease Control and Prevention, 1600 Clifton Rd., Atlanta, Georgia,
9 USA.

10 ^b Center for Forecasting and Outbreak Analytics, Office of the Director, Centers for Disease
11 Control and Prevention, 1600 Clifton Rd., Atlanta, Georgia, USA.

12 ^c Division of HIV Prevention, National Center for HIV, Viral Hepatitis, STD, and TB
13 Prevention, Centers for Disease Control and Prevention, 1600 Clifton Rd., Atlanta, Georgia,
14 USA.

15 ^d Division of Foodborne, Waterborne & Environmental Diseases, National Center for Emerging
16 & Zoonotic Infectious Diseases, Centers for Disease Control and Prevention, 1600 Clifton Rd.,
17 Atlanta, Georgia, USA.

18 ^e Division of High Consequence Pathogens & Pathology, National Center for Emerging &
19 Zoonotic Infectious Diseases, Centers for Disease Control and Prevention, 1600 Clifton Rd.,
20 Atlanta, Georgia, USA.

21 ^f Office of the Director, National Center for HIV, Viral Hepatitis, STD, and TB Prevention,
22 Centers for Disease Control and Prevention, 1600 Clifton Rd., Atlanta, Georgia, USA.

23 ^g DC Department of Health, 899 North Capitol St NE, Washington, DC 20002, USA

24 *Corresponding Author, ruq9@cdc.gov, 713-443-4845

25

26 **Abstract**

27 **Background:** The 2022 mpox outbreak infected over 30,000 people in the United States.

28 Infections were commonly associated with sexual contact between men. Interventions included

29 vaccination and reductions in sexual partnerships. We estimated the averted infections

30 attributable to each intervention using mathematical modeling.

Modelling mpox vaccination and behavior

31 **Methods:** We fit a dynamic network transmission model to mpox cases reported by the District
32 of Columbia through January 2023. We incorporated vaccine administration data and reported
33 reductions in sexual partnerships among gay, bisexual, or other men who have sex with men
34 (MSM). Model output consisted of predicted cases over time with or without vaccination and/or
35 behavior change.

36 **Results:** We estimated initial case reductions were due to behavior change. Vaccination alone
37 averted 64% [IQR:57%-72%] and behavior change alone averted 21% [IQR:11%-29%] of cases.
38 Vaccination and behavior change together averted 80% [IQR:74%-85%] of cases. In the absence
39 of vaccination, behavior change reduced cumulative cases but also prolonged the outbreak.

40 **Conclusions:** Initial case declines were likely caused by behavior change, but vaccination averted
41 more cases overall. Overall, this indicates that encouraging individuals to protect themselves was
42 vital in the early outbreak, but that combination with a robust vaccination program was
43 ultimately required for control.

44

45 **Keywords:** Mpox, Monkeypox, Outbreak, Modelling, Vaccination, MSM, Washington D.C.,

46 Poxvirus

Modelling mpox vaccination and behavior

47 **Introduction**

48 Since May 2022, over 30,000 cases of mpox have been reported to the Centers for
49 Disease Control and Prevention (CDC). The majority of infections have been among gay,
50 bisexual, and other men who have sex with men (MSM) and have been associated with sexual
51 contact^{1,2}. Incidence decreased by >80% from a peak of 440 daily cases in mid-August to 70 in
52 mid-October and fewer than 4 daily cases nationally as of January 2023³. In response to the
53 mpox outbreak, CDC and other public health authorities recommended sexual behavioral change
54 and after the JYNNEOS™ (Modified Vaccinia Ankara vaccine, Bavarian Nordic) mpox vaccine
55 became increasingly available, preventive vaccination. In early June, CDC developed messaging
56 for individuals seeking to reduce their chances of acquiring mpox (updated on August 5)⁴. CDC
57 additionally worked with partner organizations, media, and digital apps to communicate this
58 information to MSM, the most affected population². Later surveys reported that 50% of MSM
59 who engaged in one-time sexual encounters had reduced their frequency of these encounters
60 since the beginning of the mpox outbreak⁵. In addition to behavioral interventions, JYNNEOS™
61 vaccine became available from the Strategic National Stockpile for post-exposure prophylaxis
62 shortly after the first confirmed case of mpox on May 17^{th6,7}, and for pre-exposure prophylaxis
63 for impacted communities in late June.

64 Understanding the relative effects of sexual behavior change and vaccine-induced
65 immunity on mpox cases can inform public health efforts for this and future outbreaks. A
66 previous study suggested that mpox outbreaks in the United States and other countries could
67 have ended due to infection-driven herd immunity alone, but did not incorporate the potential
68 role of behavioral change or vaccination in outbreak trajectory⁸. We used data from Washington,
69 DC, and a dynamic network model of sexually transmitted infection (STI) transmission to

Modelling mpox vaccination and behavior

70 estimate the relative effects of behavior change and vaccination on the outbreak, and the
71 theoretical impact if vaccines had been more fully available earlier in the outbreak.

72

73 **Methods**

74 *Model Overview*

75 We adapted a previously published dynamic network model of STI transmission in
76 MSM^{9,10} to mpox transmission¹¹ and added behavioral change and vaccination. The contact
77 structure of the network is based on surveys of MSM recruited through websites⁹ or at Lesbian,
78 Gay, Bisexual, Transgender, Queer, and other gender and sexual minorities (LGBTQ+) serving
79 establishments in Atlanta, Georgia¹². Participants were asked whether they had a “main” partner
80 (defined as an enduring sexual partner who took priority over others), how many “casual”
81 partners they had (defined as enduring sexual partners other than “main” partners), and how
82 many one-time sexual contacts they had had in the past three months. Based on survey results,
83 individuals in the model have a set probability of having 0 or 1 main partners with a mean
84 relationship duration of 477 days, and 0-2 casual partners with a mean relationship duration of
85 166 days. Additionally, individuals in the model are assigned to 1 of 6 sexual activity groups,
86 depending on their probability per day of engaging in one-time sexual partnerships, with activity
87 group 1 representing the lowest sexual activity level (never engaging in one-time partnerships)
88 and activity group 6 representing the highest sexual activity level (29% chance of engaging in
89 one-time partnership per day). Individuals have a probability of forming one-time partnerships
90 during each model timestep based on their activity group and their number of main and casual

Modelling mpox vaccination and behavior

91 partnerships (Table S1). Individuals choose partners based on age and preferred sexual position
92 during intercourse (purely insertive, purely receptive, or versatile).

93 Individuals in the model can exist in the following states: susceptible to infection (S),
94 infected but pre-symptomatic and non-infectious (E), pre-symptomatic and infectious (P),
95 symptomatic and infectious (I), recovered and resistant (R), and vaccinated with one ($V1$) or 2
96 ($V2$) doses of JYNNEOS. We assume that symptom onset lowers the probability of an
97 individual engaging in one-time sexual contact, modeled as individuals temporarily moving to
98 one lower sexual activity level. We further assume that symptoms reduce the probability of
99 sexual contact with main and casual partners by half. At each timestep, the probability that an
100 infectious individual will infect a susceptible partner is the product of the probability of sexual
101 contact per timestep in each relationship type and the probability of infection per sexual contact
102 (μ). Upon infection, an individual enters the E state, after which they have a probability per
103 timestep of entering the P and then I and R states. Individuals have a probability of seeking
104 medical attention upon symptom onset (ρ); we assume those who seek care become aware of
105 their infectious status, and so do not engage in one-time or casual sexual partnerships until they
106 recover. We assume that individuals who learn their infection status also decrease contact with
107 their main partners such that they have a 10% chance of infecting their main partner over the
108 duration of the infection, reflecting prior estimates of household transmission¹³. Infected
109 individuals who seek medical care are reported as diagnosed cases, hereafter referred to as *cases*.

110 Our model represents an outbreak in a single well-connected population, and thus best
111 represents outbreak dynamics within a single city, rather than at the national scale. We
112 parameterized the model to represent the mpox outbreak in Washington D.C., which reported its
113 final case on Nov. 22, 2022. Thus, we set the population size to be 37,400, roughly equal to the

Modelling mpox vaccination and behavior

114 population of MSM in Washington D.C.¹⁴. We additionally ran our analysis for a population size
115 of 20,000, as not all MSM may be in the relevant sexual mixing pool (Fig. S4), and found that
116 our qualitative results do not change. The model begins with 5 newly infectious individuals
117 randomly selected from the 8,976 individuals in activity groups 5 and 6 on May 21st. This
118 produced a median of 5 cumulative cases in the model on June 6th, matching D.C. data. The
119 length of time between symptom onset and medical attention seeking is derived from the average
120 time between symptom onset and orthopoxvirus test reported by Washington D.C. (Fig. S3).

121 *Vaccination*

122 As input for our model, we took first and second doses administered in Washington D.C.
123 through December 10, at which time vaccination rates had dropped from an approximate
124 maximum of 4,500 doses given per week to fewer than 100 doses given per week. Pre-exposure
125 vaccination for MSM began the week of June 26th and peaked the week of July 31st for first
126 doses, and peaked the week of August 28th for second doses (Table S2). As vaccines were
127 originally offered primarily to MSM with multiple recent sexual partners¹⁵, we model vaccine
128 distribution as limited to only the top two sexual activity groups for the first four weeks of
129 vaccination, as limited to the top four sexual activity groups for the next four weeks of
130 vaccination, and as limited to any individuals with a non-zero probability of engaging in one-
131 time sexual contacts for the rest of the time period. In our model, we vaccinate susceptible (S)
132 and pre-symptomatic (E, P) individuals. Individuals who receive the vaccine while in the E or P
133 class are not prevented from becoming infectious. For second dose vaccination, we randomly
134 draw individuals from the pool of those who have received their first dose at least four weeks in
135 the past. We assume that the vaccine has no efficacy for two weeks after the first dose, at which
136 time efficacy jumps to 37%, and that efficacy increases again to 69% two weeks after the second

Modelling mpox vaccination and behavior

137 dose based on U.S. data¹⁶, though we run a sensitivity analysis based on an 85% first dose
138 efficacy based on data from Israel¹⁷ (Fig. S8). In the case of breakthrough infections, individuals
139 enter the pre-symptomatic (E) class and prior vaccination has no further effect on subsequent
140 contagiousness or pathogenicity. We assume that some reported vaccinations are administered to
141 non-msm or non-resident commuters rather than the modeled population. Thus, we fit the total
142 proportion of reported vaccines given to the modeled population to case data, as described
143 below.

144 *Behavior Change*

145 Individuals may change sexual behavior in response to perceived risk level¹⁸. In our
146 model, we assume that MSM reduced their probability of one-time sexual contacts per day by a
147 time-varying relative percentage. For tractability, we assume all individuals reduce their
148 probability of one-time contact by the same relative amount, resulting in the largest reduction in
149 sexual partner numbers among high-activity individuals. To measure risk perception, we
150 identified LGBTQ+ focused communities on the social media discussion site Reddit
151 (“subreddits”) that contained multiple discussions about mpox. We used the number of posts and
152 comments in these subreddits containing the terms “monkeypox”, “mpox”, or “mpx” over time
153 (hereafter “Reddit activity”) as a proxy for risk perception (appendix). The relative reduction in
154 sexual activity per day in our model was set equal to relative Reddit activity. We fit maximum
155 reductions in sexual activity to case data (described below).

156 *Modelling Process*

157 We fit five parameters to D.C. case data: the probability of transmission per contact (μ),
158 the average length of the pre-symptomatic infectious period (l), the number of individuals

Modelling mpox vaccination and behavior

159 infected with mpox virus at Capital Pride Parade/Festival, occurring on June 11-12 (ϵ), the
160 maximum percent reduction in probability of one-time sexual contact per day in response to the
161 mpox outbreak (ω), and the proportion of reported vaccine doses given to the modeled
162 population (θ) (see appendix for details). We additionally fit our model to case data assuming no
163 interventions to test the likelihood that the outbreak ended due to infection-driven herd immunity
164 alone.

165 We then estimated what proportion of cases have been averted by either behavior change
166 or vaccination. We ran the model with no vaccination and no behavior change. This represents a
167 scenario in which no interventions had taken place. We then compare the cumulative cases in
168 this model until May 21st 2023 with cases in models where we include behavior change, include
169 vaccination, or include both interventions. Differences in cumulative cases between intervention
170 scenarios and the no intervention scenario represent cases averted by these interventions. We
171 additionally estimated cumulative cases if vaccinations had been rolled out 28 days earlier or
172 later, and if available vaccine doses were increased or decreased by 50% (behavior change was
173 included in this sensitivity analysis). For each intervention scenario, we calculated median and
174 interquartile ranges for cumulative case data over time for 120 model runs.

175 **Results** (currently 978/3,265 words. 3,500 allowed total)

176 Fitting the model with vaccination and behavior change to cumulative case data from
177 Washington D.C., we find that an 87.5% probability of transmission per sex act (μ), a pre-
178 symptomatic infectious period (l) lasting 4 days, 40 individuals infected at D.C. Pride (ω), a
179 40% maximum reduction in probability of one-time sexual contacts in response to the mpox
180 outbreak (ϵ), and 100% of reported vaccines being administered to the modeled population (θ)

Modelling mpox vaccination and behavior

181 generates the best fit between model output and empirical data (Figure 1A). This indicates that
182 mpox virus is highly transmissible, and that MSM substantially adjusted their behavior to reduce
183 onward transmission of mpox virus. While it is implausible that 100% of reported vaccine doses
184 were administered to resident MSM in D.C. rather than healthcare workers and non-resident
185 MSM, a fit θ value of 100% indicates that a negligible amount of reported vaccine doses were
186 administered to non-modelled populations (see Fig. S5 for proportion population vaccinated over
187 time). We found a relatively low likelihood that the outbreak ended due to infection-driven herd
188 immunity alone (Fig. 1, A vs. B).

189 Cumulative Cases

190 We estimated that initial reductions in mpox cases were due to behavioral change. The
191 trajectory of the “behavior change only” model matches the “vaccine and behavior” model until
192 September for cumulative cases, indicating that until this point, reductions in case reports were
193 due primarily to behavior change (Figure 2A). The “vaccine only” scenario, on the other hand,
194 closely matched the “no intervention” scenario until September for cumulative cases, indicating
195 that behavior change altered the epidemic trajectory before vaccination. Behavior change has an
196 earlier impact on cases than vaccination for two reasons. First, we find that Reddit activity, and
197 thus behavior change, began when cases first appeared in D.C. (Fig. S1), whereas vaccine supply
198 did not reach more than 400 doses per week until July. Second, reductions in sexual partnerships
199 immediately reduce transmission, whereas we assume no protection from vaccination until 14
200 days after the first dose.

201 We estimated that one year into the outbreak, vaccination will have prevented more cases
202 than behavior change. We estimated that by May 21st 2023, we would have 2,700 [IQR 2,550 –
203 2,950] cumulative case reports in the absence of both interventions. The model estimated that

Modelling mpox vaccination and behavior

204 behavior change alone would have prevented 21% [IQR 11% - 29%] of cases, vaccination alone
205 would have prevented 64% [IQR 57% - 72%] of cases, and both interventions together will have
206 prevented 80% [IQR 74% - 85%] (Fig. 2A).

207 In our model, behavior change helped vaccination avert more infections by allowing
208 more individuals to remain free of infection and therefore be vaccinated. The model estimates
209 that with behavior change, 91% of individuals with the highest frequency of one-time sexual
210 partnerships who were able/willing to be vaccinated were vaccinated, while without behavior
211 change only 84% of these individuals were vaccinated. These estimates indicate that individuals
212 with a high frequency of engaging in one-time partnerships were more likely to contract mpox
213 virus before they had a chance to be vaccinated, and by delaying transmission, behavior change
214 allowed for additional high-activity individuals to be vaccinated (Fig. S6).

215 Infection Prevalence

216 Our analyses suggest that the outbreak will only end within a year with vaccination (Fig.
217 2B). After 1 year, we would have 77 [IQR 48 - 119] prevalent infections (defined as the number
218 of infectious individuals on a given day) in the absence of any intervention. We estimated that
219 vaccination would lower prevalent infections to 2 [IQR 0 - 4] , or 0 [IQR 0 - 2] when paired
220 with behavior change. Alternatively, behavior change alone would increase prevalent infection to
221 180 [IQR 116 - 292] one year into the outbreak. Behavior change can increase prevalence late in
222 the outbreak because unlike vaccination, behavior change does not provide long-term protection.
223 Vaccination replaces infection-driven herd immunity with vaccine-driven herd immunity,
224 whereas behavior change only delays herd immunity. Thus, one year into the outbreak, more
225 individuals are resistant to infection in the “no intervention” scenario” than in the “behavior
226 change only” scenario, resulting in higher transmission, and thus infection prevalence. If

Modelling mpox vaccination and behavior

227 vaccinations were not available, individuals may have reduced their sexual activity for longer
228 periods of time than we observed. However, behavior change alone cannot end the outbreak
229 within a year even when we extend the period of maximum behavior change by an additional
230 two months (Fig. S7).

231 Varying Vaccine Administration

232 The number and timing of vaccine allocations varied between jurisdictions, and there is
233 uncertainty around vaccine efficacy. We estimated how changes in availability and timing could
234 have impacted cases. We estimated that by one year into the outbreak, moving the initiation of
235 vaccination earlier by 28 days would have decreased cumulative cases by 31% [IQR 46% -
236 13%], and moving the vaccination timeline later by 28 days would have increased cumulative
237 cases by 29% [IQR 1% - 68%] (Fig. 3A). Increasing available vaccine doses by 50% would have
238 decreased cumulative cases by 12% [IQR -23% - 33%], and decreasing doses by 50% would
239 have increased cumulative cases by 52% [IQR 15% - 87%] (Fig. 3A). (Fig. 3B). Thus, for the
240 parameter space explored, distributing vaccines earlier would linearly decrease cases, whereas
241 increasing available vaccine doses would have diminishing returns.

242 **Discussion** (currently 876/3,265 words. 3,500 allowed total)

243 We estimated the relative importance of vaccination and reductions in one-time sexual
244 partnerships among MSM for averting mpox cases. We found that the majority of averted cases
245 through October were averted by behavior change, but that vaccination began having an effect in
246 September, was key to ending the outbreak in Washington D.C., and averted more cases overall.
247 These results have several implications for the current mpox outbreak and for future outbreaks of
248 sexually associated infections. First, national vaccine distribution is logistically time-consuming,

Modelling mpox vaccination and behavior

249 and vaccines are not immediately effective. Thus, behavioral interventions can temporarily slow
250 transmission, protecting communities from infection before vaccination takes effect. Partnering
251 with affected communities is key to effective communication on behavioral interventions¹⁹.
252 During this outbreak, MSM, community-based organizations, digital and traditional media, and
253 the public health community worked together in disseminating public health messaging and
254 expanding vaccination^{20–22}. The enthusiasm of MSM to protect themselves and the health of their
255 communities²³ highlights the effectiveness of public health efforts that manifest collaborations
256 between affected communities and public health. Second, without vaccine administration,
257 temporary behavioral interventions can reduce, but not eliminate, infection prevalence. This
258 means that regions with low vaccine uptake might benefit from a focus on increasing vaccine
259 administration even if cases are decreasing, and that behavior change alone is unlikely to
260 successfully control future mpox outbreaks. Third, at early stages of an outbreak, administering
261 vaccines sooner will provide substantial benefit in preventing cases over time and potentially
262 have more impact than delayed administration of broader vaccination efforts that might lead to
263 higher overall vaccine coverage.

264 Consistent with the current mpox outbreak, our model indicated that a combination of
265 vaccination and behavior change would end the outbreak within a year. This may not be the case
266 if (a) vaccines do not reach certain segments of the population, and (b) individuals who do not or
267 cannot access vaccination preferentially partner with one another. We assumed in our model that
268 only age and sexual positioning determines who individuals choose to partner with, and that
269 neither of these factors influenced vaccination or treatment seeking. However, MSM partner with
270 same-race individuals roughly 90% of the time¹², and initial administration of the mpox vaccine
271 was lower in Black individuals than in other racial groups⁵. Thus, mpox transmission might

Modelling mpox vaccination and behavior

272 persist at a low but steady level in certain populations, mirroring our “behavior change only”
273 scenario (Figure 2B), if vaccine equity is not improved.

274 Our results suggest that the outbreak ended in D.C. in large part due to vaccination and
275 behavior change, rather than ending solely due to infection-driven herd immunity, shown to be a
276 possibility in recent work⁸. Specifically, we find that without vaccination and behavior change,
277 model fits that match the rapid early increase in cases overestimate the final number of cases,
278 and model fits that match the final number of cases underestimate the initial growth of the
279 epidemic. Possible differences in conclusions from these studies may arise from assumptions
280 about the natural history of mpox (e.g. per-act transmission probability is assumed to be within
281 the range of household transmission in¹³, much lower than our fitted parameter), or differences in
282 the underlying sexual network.

283 *Limitations*

284 The sexual network used here was primarily parameterized by surveys distributed in
285 Atlanta in 2010¹². The sexual networks of other cities may differ from that in Atlanta due to
286 differences in demography, socioeconomic status, or cultural beliefs. Further, sexual networks in
287 MSM may have changed in the last ten years due to increased prevalence of HIV pre-exposure
288 prophylaxis and internet-based dating applications^{24,25}. Thus, collecting new, regionally
289 dispersed data on sexual networks of MSM and other populations experiencing high rates of
290 sexually associated infections would improve modelling capabilities in future outbreaks. Another
291 assumption we made is that sexual networks in D.C. are separate from neighboring jurisdictions.
292 In reality, transmission in the network would be influenced by individuals traveling in and out of
293 D.C., or by individuals who work in D.C. but live elsewhere.

Modelling mpox vaccination and behavior

294 Although substantial changes in sexual behavior by MSM in response to mpox have been
295 documented⁵, we were unable to directly measure changes in one-time partnership behavior
296 among MSM. Despite this, the initial decline in daily case reports was likely due to behavior
297 changes among MSM because all parameter sets that fit the initial exponential increase in cases
298 predicted that cases would have continued to sharply rise throughout the fall of 2022 unless we
299 invoke behavior change. Our behavior analysis is further limited as we were only able to collect
300 behavior proxies at the national, rather than regional level. However, it may be that MSM
301 responded to national cases and news coverage, similar to how general interest in mpox (by
302 Google search proxies) responded to national rather than local events. If the sexual activity levels
303 of MSM respond to national rather than local events, then we expect that behavior change will
304 have had a different impact on outbreaks in different cities, depending on the relative timing of
305 the outbreak and national perception of mpox risk.

306 *Conclusions*

307 This study indicates synergistic effects of sexual behavior change and vaccination in
308 controlling the mpox outbreak. By changing their behavior gay, bisexual, and other men who
309 have sex with men reduced transmission before vaccines were widely available, and those
310 reductions in sexual behavior continue to protect individuals who are not vaccinated. We
311 estimated that vaccination in turn will more effectively reduce infections later in the outbreak by
312 providing long-term protection. The synergies observed when combining behavioral harm
313 reduction and vaccination serve as a reminder for those administering mpox vaccination to use
314 this clinical encounter to reinforce the importance of behavioral harm reduction strategies in a
315 culturally appropriate way⁴.

316 **Acknowledgements**

Modelling mpox vaccination and behavior

317 The findings and conclusions in this report are those of the authors and do not necessarily
318 represent the views of the Centers for Disease Control and Prevention or the National Cancer
319 Institute.

320 **Author Contributions**

321 Manuscript concept was designed by PAC, IHS, JM, YN. Model was designed by PAC,
322 IHS, and EDP. JMA advised on model structure. NC, CEC, and KPD, provided input on
323 modeling of behavior. DCP provided input on modeling of vaccination. WS and ATM provided
324 epidemiological data from D.C. Manuscript was primarily written by PAC, with input from all
325 authors.

326 **Citations**

- 327 1. 2022 U.S. Map & Case Count | Monkeypox | Poxvirus | CDC.
328 <https://www.cdc.gov/poxvirus/monkeypox/response/2022/us-map.html>.
- 329 2. Philpott, D. *et al.* Epidemiologic and Clinical Characteristics of Monkeypox Cases —
330 United States, May 17–July 22, 2022. *MMWR. Morb. Mortal. Wkly. Rep.* **71**, 1018–1022
331 (2022).
- 332 3. U.S. Monkeypox Case Trends Reported to CDC | Monkeypox | Poxvirus | CDC.
333 <https://www.cdc.gov/poxvirus/monkeypox/response/2022/mpx-trends.html>.
- 334 4. Safer Sex, Social Gatherings, and Monkeypox | Monkeypox | Poxvirus | CDC.
335 <https://www.cdc.gov/poxvirus/monkeypox/prevention/sexual-health.html>.
- 336 5. Delaney, K. P. *et al.* Strategies Adopted by Gay, Bisexual, and Other Men Who Have Sex
337 with Men to Prevent Monkeypox virus Transmission — United States, August 2022.
338 *MMWR. Morb. Mortal. Wkly. Rep.* **71**, (2022).
- 339 6. Minhaj, F. S. *et al.* Monkeypox Outbreak — Nine States, May 2022. *Morb. Mortal. Wkly.*
340 *Rep.* **71**, 764 (2022).
- 341 7. Kriss, J. L. *et al.* Receipt of First and Second Doses of JYNNEOS Vaccine for Prevention
342 of Monkeypox — United States, May 22–October 10, 2022. *MMWR. Morb. Mortal. Wkly.*
343 *Rep.* **71**, (2022).
- 344 8. Endo, A. *et al.* Heavy-tailed sexual contact networks and monkeypox epidemiology in the
345 global outbreak, 2022. *Science (80-.).* **378**, (2022).
- 346 9. Weiss, K. M. *et al.* Egocentric sexual networks of men who have sex with men in the

Modelling mpox vaccination and behavior

- 347 United States: Results from the ARTnet study. *Epidemics* **30**, 100386 (2020).
- 348 10. Jenness, S. M. *et al.* Impact of the Centers for Disease Control’s HIV Preexposure
349 Prophylaxis Guidelines for Men Who Have Sex With Men in the United States. *J. Infect.*
350 *Dis.* **214**, 1800–1807 (2016).
- 351 11. Spicknall, I. H. *et al.* Modeling the impact of sexual networks in the transmission of
352 Monkeypox virus among gay, bisexual, and other men who have sex with men — United
353 States, 2022. vol. 71 (2022).
- 354 12. Hernández-Romieu, A. C. *et al.* Heterogeneity of HIV prevalence among the sexual
355 networks of Black and White MSM in Atlanta: illuminating a mechanism for increased
356 HIV risk for young Black MSM. *Sex. Transm. Dis.* **42**, 505 (2015).
- 357 13. Beer, E. M. & Bhargavi Rao, V. A systematic review of the epidemiology of human
358 monkeypox outbreaks and implications for outbreak strategy. *PLoS Negl. Trop. Dis.* **13**,
359 e0007791 (2019).
- 360 14. Grey, J. A. *et al.* Estimating the Population Sizes of Men Who Have Sex With Men in US
361 States and Counties Using Data From the American Community Survey. *JMIR Public*
362 *Heal. Surveill* 2016;2(1)e14 <https://publichealth.jmir.org/2016/1/e14> **2**, e5365 (2016).
- 363 15. FACT SHEET: Biden-Harris Administration’s Monkeypox Outbreak Response | The
364 White House. [https://www.whitehouse.gov/briefing-room/statements-](https://www.whitehouse.gov/briefing-room/statements-releases/2022/06/28/fact-sheet-biden-harris-administrations-monkeypox-outbreak-response/)
365 [releases/2022/06/28/fact-sheet-biden-harris-administrations-monkeypox-outbreak-](https://www.whitehouse.gov/briefing-room/statements-releases/2022/06/28/fact-sheet-biden-harris-administrations-monkeypox-outbreak-response/)
366 [response/](https://www.whitehouse.gov/briefing-room/statements-releases/2022/06/28/fact-sheet-biden-harris-administrations-monkeypox-outbreak-response/).
- 367 16. Preliminary JYNNEOS Vaccine Effectiveness Estimates Against Medically Attended
368 Mpox Disease in the U.S., August 15, 2022 – October 29, 2022 | Mpox | Poxvirus | CDC.
369 [https://www.cdc.gov/poxvirus/monkeypox/cases-data/mpx-JYENNOS-vaccine-](https://www.cdc.gov/poxvirus/monkeypox/cases-data/mpx-JYENNOS-vaccine-effectiveness.html)
370 [effectiveness.html](https://www.cdc.gov/poxvirus/monkeypox/cases-data/mpx-JYENNOS-vaccine-effectiveness.html).
- 371 17. Sagy, Y. W. *et al.* Real-world effectiveness of a single dose of mpox vaccine in males.
372 *Nat. Med.* 2023 1–1 (2023) doi:10.1038/s41591-023-02229-3.
- 373 18. Eaton, L. A. & Kalichman, S. C. Risk compensation in HIV prevention: Implications for
374 vaccines, microbicides, and other biomedical HIV prevention technologies. *Curr.*
375 *HIV/AIDS Reports* 2007 44 **4**, 165–172 (2007).
- 376 19. CDC’s Response to the 2022 Monkeypox Outbreak | Monkeypox | Poxvirus | CDC.
377 <https://www.cdc.gov/poxvirus/monkeypox/about/cdc-response.html>.
- 378 20. Gonsalves, G. S., Mayer, K. & Beyrer, C. Déjà vu All Over Again? Emergent
379 Monkeypox, Delayed Responses, and Stigmatized Populations. *J. Urban Heal.* 2022 994
380 **99**, 603–606 (2022).
- 381 21. Soelaeman, R. H. *et al.* Characteristics of JYNNEOS Vaccine Recipients Before and
382 During a Large Multiday LGBTQIA+ Festival — Louisiana, August 9–September 5,
383 2022. *MMWR. Morb. Mortal. Wkly. Rep.* **71**, 1379–1381 (2022).
- 384 22. Millman, A. J. *et al.* A Health Equity Approach for Implementation of JYNNEOS
385 Vaccination at Large, Community-Based LGBTQIA+ Events — Georgia, August 27–

Modelling mpox vaccination and behavior

- 386 September 5, 2022. *MMWR. Morb. Mortal. Wkly. Rep.* **71**, 1382–1883 (2022).
- 387 23. McNaghten, A. D. *et al.* COVID-19 Vaccination Coverage and Vaccine Confidence by
388 Sexual Orientation and Gender Identity — United States, August 29–October 30, 2021.
389 *Morb. Mortal. Wkly. Rep.* **71**, 171 (2022).
- 390 24. Paz-Bailey, G. *et al.* Trends in Internet Use Among Men Who Have Sex With Men in the
391 United States. *J. Acquir. Immune Defic. Syndr.* **75**, S288 (2017).
- 392 25. Wu, H. *et al.* Uptake of HIV Preexposure Prophylaxis Among Commercially Insured
393 Persons—United States, 2010–2014. *Clin. Infect. Dis.* **64**, 144–149 (2017).
- 394 26. Loosier, P. S. *et al.* Reddit on PrEP: Posts About Pre-exposure Prophylaxis for HIV from
395 Reddit Users, 2014–2019. *AIDS Behav.* **26**, 1084–1094 (2022).

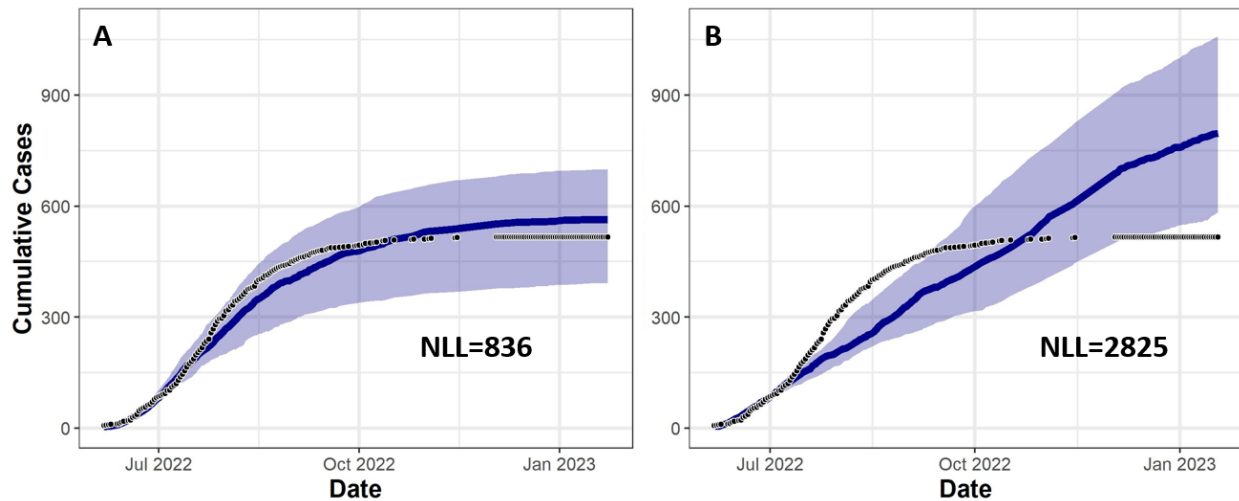
396

397

Modelling mpox vaccination and behavior

398 **Figures**

399



400

401 Figure 1: Model output fit to cumulative cases from Washington D.C. Y-axis shows cumulative

402 cases, over date on the X-axis. Black dots represent cumulative case reports from Washington

403 D.C., while the blue line represents median cumulative cases over 120 model runs for the best

404 fitting parameter set, and the blue band represents the interquartile range, when (A) we fit all

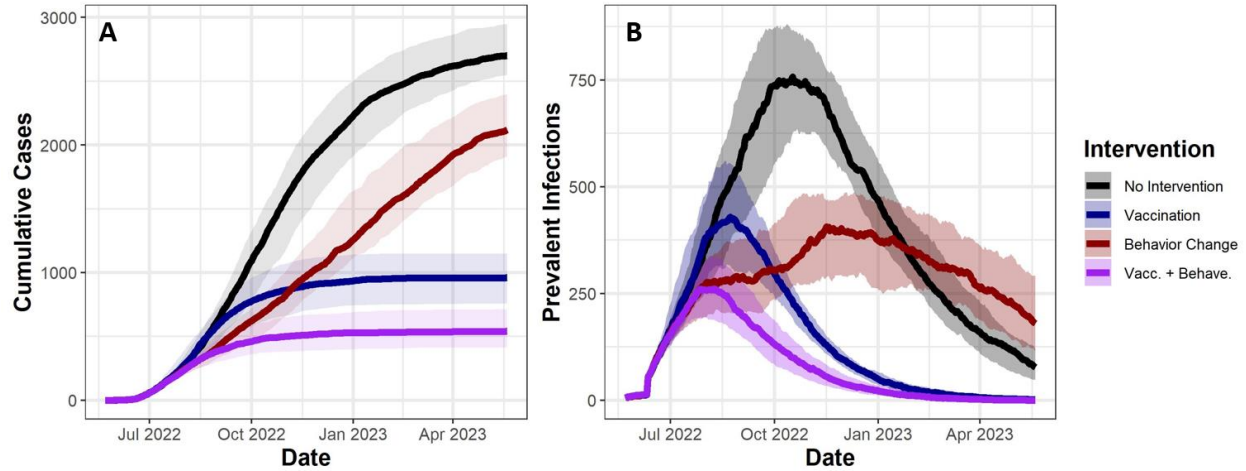
405 parameters, including effectiveness of interventions, and (B) we assume no intervention

406 effectiveness. NLL indicates negative log likelihood, with lower values indicating a higher

407 likelihood.

408

Modelling mpox vaccination and behavior

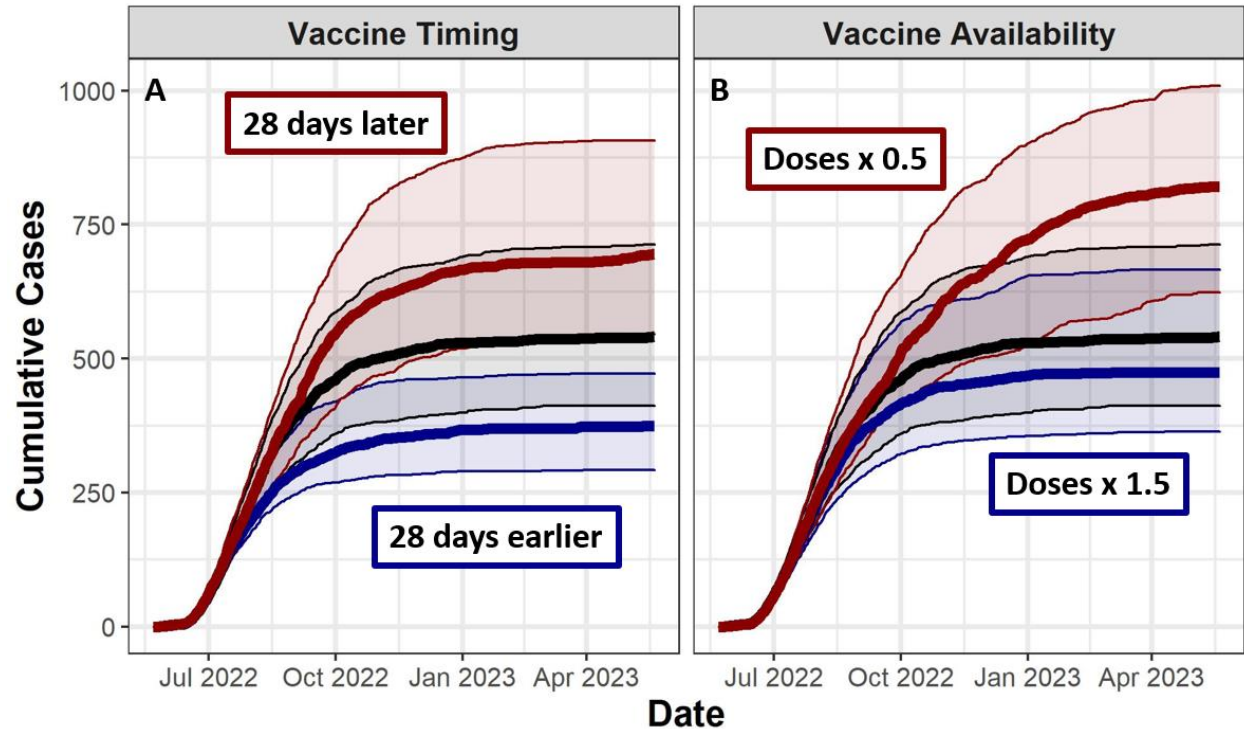


409

410 **Figure 2:** Vaccination and behavior change both reduce estimated cumulative cases and
411 prevalent infections. (A) Y-axis shows model estimates of cumulative cases (i.e. individuals who
412 are diagnosed with mpox), over time on the X-axis from May 21st 2022 to May 21st 2023. (B) Y-
413 axis shows prevalent infections, over time on the X-axis. Solid lines indicate median values from
414 120 simulations, while transparent bands represent interquartile ranges. Colors indicate
415 intervention combinations.

416

Modelling mpox vaccination and behavior



417

418 **Figure 3:** Changing number of administered doses and timing of vaccine administration can
419 influence case reports. (A) Y-axis shows model estimates of cumulative case counts, over time
420 on the X-axis from May 21st, 2022 to May 21st, 2023. Solid lines indicate median values from
421 120 simulations, while transparent bands outlined by thin lines represent interquartile ranges.
422 Black lines show model results based on actual vaccine administration and a maximum vaccine
423 efficacy of 90%, while red and blue lines represent more pessimistic and more optimistic
424 scenarios, respectively. All scenarios shown here include behavior change.