

Title: Association of Healthy Dietary Patterns and Cardiorespiratory Fitness in the Community

Authors: Michael Y. Mi¹, Priya Gajjar², Maura E. Walker^{3,4}, Patricia Miller⁵, Vanessa Xanthakis^{3,5,6}, Venkatesh L. Murthy⁷, Martin G. Larson^{5,6}, Ramachandran S. Vasani^{2,3,6,8}, Ravi V. Shah⁹, Gregory D. Lewis¹⁰, Matthew Naylor^{2,3,6}

Affiliations:

1. Division of Cardiovascular Medicine, Department of Medicine, Beth Israel Deaconess Medical Center, Boston, MA.
2. Section of Cardiovascular Medicine, Department of Medicine, Boston University School of Medicine, Boston, MA.
3. Section of Preventive Medicine and Epidemiology, Department of Medicine, Boston University School of Medicine, Boston, MA.
4. Department of Health Sciences, Sargent College of Health and Rehabilitation Sciences, Boston University, Boston, MA.
5. Department of Biostatistics, Boston University School of Public Health, Boston, MA.
6. Framingham Heart Study, Framingham, MA.
7. Division of Cardiovascular Medicine, Department of Medicine, and Frankel Cardiovascular Center, University of Michigan, Ann Arbor, MI.
8. University of Texas School of Public Health San Antonio, and Departments of Medicine and Population Health Sciences, University of Texas Health Science Center, San Antonio, TX.
9. Vanderbilt Translational and Clinical Research Center, Cardiology Division, Vanderbilt University Medical Center, Nashville, TN.
10. Cardiology Division and Pulmonary Critical Care Unit, Department of Medicine, Massachusetts General Hospital, Boston, MA.

Disclaimer: The contents of this work are solely the responsibility of the authors and do not necessarily represent the official views of the National Institutes of Health.

Corresponding Author:

Matthew Naylor, MD, MPH
Boston University School of Medicine
72 E Concord Street, Suite L-516
Boston, MA 02118
E-mail: mnaylor@bu.edu
Telephone: 617-638-8771

Word count: 5,899 (body and references)

1 **Abstract**

2 Aims: To evaluate the associations of dietary indices and quantitative CRF measures in a large,
3 community-based sample harnessing metabolomic profiling to interrogate shared biology.

4 Methods: Framingham Heart Study (FHS) participants underwent maximum effort
5 cardiopulmonary exercise tests for CRF quantification (via peak VO_2) and completed semi-
6 quantitative FFQs. Dietary quality was assessed by the Alternative Healthy Eating Index (AHEI)
7 and Mediterranean-style Diet Score (MDS), and fasting blood concentrations of 201 metabolites
8 were quantified.

9 Results: In 2380 FHS participants (54 ± 9 years, 54% female, BMI 28 ± 5 kg/m^2), 1-SD higher
10 AHEI and MDS were associated with 5.1% (1.2 ml/kg/min, $p < 0.0001$) and 4.4% (1.0 ml/kg/min,
11 $p < 0.0001$) greater peak VO_2 in linear models adjusted for age, sex, total energy intake,
12 cardiovascular risk factors, and physical activity. In participants with metabolite profiling
13 (N=1154), 24 metabolites were concordantly associated with both dietary indices and peak VO_2
14 in multivariable-adjusted linear models (FDR < 5%). These metabolites included C6 and C7
15 carnitines, C16:0 ceramide, and dimethylguanidino valeric acid, which were higher with lower
16 CRF and poorer dietary quality and are known markers of insulin resistance and cardiovascular
17 risk. Conversely, C38:7 phosphatidylcholine plasmalogen and C38:7 and C40:7
18 phosphatidylethanolamine plasmalogens were associated with higher CRF and favorable dietary
19 quality and may link to lower cardiometabolic risk.

20 Conclusion: Higher diet quality is associated with greater CRF cross-sectionally in a middle-
21 aged community-dwelling sample, and metabolites highlight potential shared favorable effects
22 on health.

- 1 **Keywords:** Framingham Heart Study; Alternative Healthy Eating Index; Mediterranean diet;
- 2 cardiorespiratory fitness; oxygen uptake; metabolomics
- 3

4 **Introduction**

5 Cardiorespiratory fitness (CRF) is an integrative measure of physiological reserve
6 capacity and metabolic health that is closely linked with cardiovascular outcomes [1]. While an
7 individual's CRF may be partially determined by standard cardiovascular disease (CVD) risk
8 factors, there remains a large amount of interindividual variability in CRF that is not well
9 understood [2]. Lifestyle factors are also likely to contribute to CRF and may present easily
10 modifiable avenues for improving CRF [3]. Healthy dietary patterns are an important component
11 of cardiovascular health [4], but it remains uncertain whether they are also related to CRF.
12 Indeed, while putative mechanisms linking a healthy diet and improved fitness have been
13 proposed to include anti-inflammatory effects or increased availability of antioxidants, these
14 mechanisms are incompletely elucidated [5].

15 Although association of diet with CRF has been previously reported, prior studies relied
16 primarily on treadmill exercise time as a surrogate for peak CRF, focused on specific (often
17 younger) populations, and used varying dietary assessments that focused on specific food types
18 rather than standardized and integrated indices of evidence-based healthy patterns of eating [5–
19 14]. Furthermore, few studies have examined the association of macronutrient intake with fitness
20 in population-based cohorts. One observational study of well-educated White adults presenting
21 for preventive cardiac evaluation suggested that lower fat and higher carbohydrate intake as
22 percentages of total energy were associated with higher fitness [13]. Whether such a relation
23 holds in community-dwelling individuals consuming more contemporary diets requires further
24 investigation.

25 To address these knowledge gaps, we related indices of healthy dietary patterns in
26 community-dwelling individuals from the Framingham Heart Study (FHS) with maximum effort

27 cardiopulmonary exercise test (CPET) measures including peak VO₂ (the “gold standard”
28 assessment of CRF) and complementary CRF measures. We then further explored the relations
29 between healthy dietary patterns and peak VO₂ by comparing their joint associations with >200
30 circulating blood metabolites. Our overarching objective was to quantify the cross-sectional
31 relation of healthy dietary patterns with CRF measures and to gain insight into potential
32 mechanisms through metabolite profiling. We hypothesized that healthier patterns of eating
33 would associate with greater CRF and that metabolites associated with dietary quality and CRF
34 would highlight potential pathways linking diet and CRF.

35

36 **Methods**

37 *Study sample*

38 Descriptions of recruitment and enrollment of the FHS Generation Three, Omni
39 Generation Two, and New Offspring cohorts are reported [15,16]. Briefly, these cohorts were
40 recruited together and attended their first and second study visits in 2002 to 2005 and 2008 to
41 2011, respectively. Of the 3521 study participants attending the third study visit (2016 to 2019),
42 3117 participants underwent maximum effort CPET and 2494 of these individuals also
43 completed semi-quantitative FFQs. We excluded individuals with missing CPET measures
44 (N=18), inadequate volitional effort (peak RER <1.05; N=105), and missing covariate
45 information (N=9), resulting in a final analytical sample of 2380 individuals (**Supplementary**
46 **Figure 1**). From this subsample, targeted metabolomics profiling by liquid chromatography-
47 mass spectrometry (LC-MS) was performed on peripheral blood drawn after ≥8 hours of fasting
48 in 1154 individuals (**Supplementary Figure 1**). Protocols were approved by the Institutional

49 Review Boards at Boston University Medical Campus and Massachusetts General Hospital and
50 all participants provided written informed consent.

51 *Covariate assessment*

52 We included the following covariates in our analysis: sex, age, total energy intake, BMI,
53 smoking status, total cholesterol, HDL, systolic blood pressure (SBP), self-reported use of anti-
54 hypertensive medication, diabetes, and physical activity index (PAI). Total energy intake was
55 calculated as described below from FFQ. We classified smoking status as never, former, or
56 current (within the last year). Diabetes was assessed as fasting blood glucose ≥ 126 mg/dL, non-
57 fasting blood glucose ≥ 200 mg/dL, or use of glucose lowering medications. PAI was calculated
58 based on a weighted estimate of total oxygen consumption from questionnaires of typical daily
59 activities. For sensitivity analysis, we substituted PAI with objectively measured sedentary time
60 and amount of moderate-vigorous physical activity (MVPA) as measured by accelerometers
61 worn for up to eight days, as described previously [3].

62 *Dietary patterns*

63 Dietary intake was assessed using the Harvard semi-quantitative FFQ, which quantifies
64 intake during the last year of 126 dietary items ranging from never or less than once per month to
65 ≥ 6 servings/day. The FFQ has demonstrated good reproducibility and validity compared to a
66 one-week dietary record [17]. We excluded FFQs with >12 blank items or with improbable
67 estimated daily energy intake, defined as <600 or ≥ 4000 kcal/day for females and <600 or ≥ 4200
68 kcal/day for males. For each participant, macronutrient intake was estimated by summing
69 frequency of consumption multiplied by nutrient composition for the specific serving size of all
70 food items on the FFQ [18]. Total energy intake was estimated based on 4 kcal/g for

71 carbohydrates and proteins and 9 kcal/g for fats, and percent macronutrient intake was calculated
72 by dividing each component's energy contribution by the total energy.

73 We calculated indices of adherence to two dietary patterns, the Alternative Health Eating
74 Index (AHEI) and the Mediterranean-style Diet Score (MDS), both of which are associated with
75 CVD outcomes [19,20]. The AHEI assigns a score of 0 to 10 for each of the 11 dietary
76 components and, thus, has a total range of 0 to 110 with higher scores indicating greater
77 adherence [19]. The AHEI components include a higher intake of vegetables, fruits, whole
78 grains, nuts/legumes, omega-3 fatty acids, PUFA, and a lower intake of sugar-sweetened
79 beverages/fruit juice, red/processed meat, trans fatty acids, sodium, and sex-specific moderate
80 alcohol use (**Supplementary Table 1**). To calculate the MDS score, we assigned cohort- and
81 sex-specific quartile scores (score of 0 for the lowest quartile and 3 for the highest quartile) to
82 each of eight components: vegetables, fruits, whole grains, nuts, legumes, red meat (scored in
83 reverse), fish, and the ratio of MUFA to SFA, and a single score for sex-specific moderate
84 alcohol use [21]. The MDS ranged from 0 to 25 with higher scores indicating greater similarity
85 to a Mediterranean-style diet (**Supplementary Table 1**).

86 *Cardiopulmonary exercise testing*

87 Details of the CPET protocol and data collection have been described [3,22]. All
88 participants exercised on the same cycle ergometer (Lode, Groningen, Netherlands) with breath-
89 by-breath gas exchange values measured by the same metabolic cart (MedGraphics, St. Paul,
90 MN). The assessment included at least 3 minutes of resting gas exchange measures, followed by
91 3 minutes of unloaded exercise, and then incremental ramp exercise on one of two (15 or 25
92 W/min) ramp protocols [3]. Peak $\dot{V}O_2$ was assessed as the highest 30-second median during the
93 final minute of exercise. The following gas exchange and exercise variables were included:

94 resting absolute VO_2 , resting relative VO_2 (absolute VO_2 divided by body weight), peak absolute
95 VO_2 , peak relative VO_2 , percent predicted peak absolute VO_2 by the Wasserman equation,
96 resting RER, peak RER, resting HR, peak HR, percent predicted peak HR by the Tanaka
97 formula, VO_2 /work relationship, and ventilatory efficiency (minute ventilation per 1 L/min of
98 carbon dioxide expiration, assessed as V_E/V_{CO_2} nadir) [23].

99 *Metabolite profiling*

100 Fasting plasma samples were collected, immediately centrifuged, and stored at -80°C
101 without freeze-thaw cycles before assaying. Targeted measurement of polar metabolites was
102 performed on a Nexera X2 UHPLC (Shimadzu Corporation, Kyoto, Japan) liquid chromatograph
103 coupled to a Q Exactive hybrid quadrupole Orbitrap mass spectrometer (Thermo Fisher
104 Scientific, Waltham, MA) with samples injected on a 150x2 mm, 3- μm Atlantis hydrophilic
105 interaction liquid chromatography (HILIC) column (Waters Corporation, Milford, MA) [22].
106 Peak integration was performed using TraceFinder (Thermo Fisher Scientific) and identified a
107 broad selection of metabolites based on reference samples. These metabolite classes included
108 amino acids, amino acid metabolites, acylcarnitines, purines, pyrimidines, glycerophospholipids,
109 and sphingolipids.

110 *Statistical analysis*

111 Peak VO_2 (absolute and relative) were natural log transformed for improved normality
112 and CPET measures and dietary indices were standardized to mean=0, SD=1 to facilitate
113 comparison and interpretation. Metabolite levels were inverse rank-normalized for analysis and
114 missing (below detection limit) metabolite values were imputed to half of the lowest detected
115 values [22].

116 We evaluated the cross-sectional associations of dietary indices (AHEI and MDS;
117 independent variables) with CPET fitness measures (dependent variables) using multivariable
118 linear regression. First, we adjusted for age, sex, and total energy intake (model 1). In model 2,
119 we additionally adjusted for BMI, smoking status, total cholesterol, HDL, SBP, hypertension
120 medication use, diabetes, and PAI. We tested for effect modification by age (<54 years [median
121 age] vs. ≥ 54 years), sex, and BMI (<25, 25–30, or ≥ 30 kg/m²) on the associations between
122 dietary patterns and key CPET variables (peak relative VO₂, resting relative VO₂, and percent
123 predicted peak VO₂) using multiplicative interaction terms. In secondary analyses, we used the
124 same multivariable linear regression models above to relate deciles of the percent daily energy
125 intake from protein, fat, and carbohydrate with CPET fitness measures. A Benjamini-Hochberg
126 false discovery rate (FDR) of 5% was used to determine statistical significance within each
127 CPET variable and diet index analysis.

128 We conducted sensitivity analyses for the main associations of AHEI and MDS with
129 CPET variables by substituting objective measures of sedentary time and MVPA for PAI in the
130 analytic subset with available accelerometry data. We also examined the interrelationship
131 between resting HR and peak VO₂ by adjusting each model for the other measure. We evaluated
132 for non-linearity and threshold effects for the relations of the dietary indices with log-
133 transformed relative peak VO₂ by constructing generalized additive models that applied a smooth
134 function to allow the AHEI or MDS scores to have non-linear relations with log-transformed
135 peak VO₂; models were adjusted for age, sex, total energy intake, BMI, smoking status, total
136 cholesterol, HDL, SBP, hypertension medication use, diabetes, and PAI. Model fits of the linear
137 and general additive models were compared using ANOVA.

138 Transformed metabolite levels were then separately related to each of AHEI, MDS, and
139 relative peak VO_2 using multivariable linear regression. Models were first adjusted for age, sex,
140 total energy intake, and BMI, and then we additionally adjusted for smoking status, total
141 cholesterol, HDL, SBP, hypertension medication use, diabetes, and PAI. An FDR of 5% was
142 used to determine statistical significance separately for associations of metabolites with AHEI,
143 MDS, and peak VO_2 . We then identified metabolites significantly associated with AHEI or MDS
144 total scores and relative peak VO_2 . We related these significant metabolites to individual
145 components of AHEI and MDS using multivariable regression, adjusted for age, sex, total energy
146 intake, BMI, smoking status, cholesterol, HDL, SBP, hypertension medication use, diabetes, and
147 PAI. Again, an FDR of 5% was used to determine statistical significance separately for
148 associations of metabolites with each dietary pattern component. Analyses were performed in R
149 4.0.3 (R Foundation for Statistical Computing, Vienna, Austria).

150

151 **Results**

152 *Sample characteristics*

153 Characteristics of the main study sample and the subsample with available metabolite
154 measures are shown in **Table 1**. Participants had a mean age of 54 ± 9 years, BMI of 28.0 ± 5.3
155 kg/m^2 , and peak VO_2 of 23.3 ± 6.9 ml/kg/min ($91 \pm 20\%$ predicted), and 54% were female. The
156 mean total energy intake was 1849 kcal/day for females and 2039 kcal/day for males. Across the
157 cohort, overall energy intake comprised of approximately 44% carbohydrates, 36% fats, and
158 17% proteins. Mean AHEI and MDS scores were 66.7 ± 13.0 and 12.4 ± 4.7 respectively, which
159 are largely consistent with ranges reported in other community-based studies [19,24–26].
160 Spearman correlation between AHEI and MDS was 0.72. Characteristics of the analytic

161 subsample with metabolite profiling performed were similar to the main sample with a higher
162 proportion of White participants.

163 *Relations of dietary quality assessment with fitness measures*

164 We related two different dietary quality indices (AHEI and MDS) with exercise response
165 measures reflecting distinct physiologies. In models adjusted for age, sex, and total energy
166 intake, higher dietary quality (both higher AHEI and MDS) was associated with higher resting
167 VO_2 and with global CRF as measured by peak VO_2 (absolute, relative, and percent predicted).
168 Dietary quality was also related to multi-dimensional exercise measures reflecting favorable
169 autonomic function (higher peak HR and lower resting HR), greater oxygen uptake kinetics
170 during exercise (VO_2/work), and favorable central cardiac and pulmonary vascular function
171 (lower $V_E/V\text{CO}_2$; **Supplementary Table 2**). With further adjustment for clinical risk factors and
172 potential confounders, we observed attenuation of the relations with resting VO_2 , but
173 associations with exercise measures remained robust (**Table 2**) with broad consistency across the
174 two dietary indices. In the multivariable adjusted models, a 1-SD higher AHEI and MDS were
175 associated with 5.1% (4.2% to 5.9%) and 4.4% (3.5% to 5.3%) greater peak relative VO_2 ,
176 respectively (which translates to 1.2 and 1.0 ml/kg/min at the sample mean of 23.3 ml/kg/min).
177 We verified the linearity of these associations with general additive models, and no threshold
178 effects were observed (ANOVA $p > 0.05$ comparing linear to general additive models; **Figure 1**).

179 In sensitivity analyses, we substituted objectively measured physical activity and
180 sedentary time (available in a subset of $N=1777$ individuals) for the questionnaire based PAI as
181 adjustment variables, with minimal changes observed (**Supplementary Table 3**). To further
182 explore whether the relation of a lower resting HR may be partially explained by higher fitness
183 levels, we included both measures in models (**Supplementary Table 4**). Adjustment for peak

184 relative VO₂ attenuated the effect size of dietary quality's relations with resting HR, but they
185 remained significant in the main model. Adjustment for resting HR had minimal influence on the
186 effect size of the relations between dietary quality and peak VO₂.

187 Next, we tested for effect modification by age, sex, or BMI on the relation of dietary
188 quality and peak VO₂ using multiplicative interaction terms. We observed a statistically
189 significant interaction of age with both scores for the association with percent predicted peak
190 VO₂, such that the effect estimate was higher in individuals younger than the median age of 54
191 years (**Supplementary Table 5**). There was no evidence of effect modification by sex or BMI.

192 Finally, we evaluated whether macronutrient components may be related to fitness
193 measures. Consistent with known physiology and prior studies [27], we observed higher
194 carbohydrate intake to be associated with a higher resting RER (**Supplementary Table 6**).
195 Additionally, we observed that after controlling for total daily energy intake, a one decile higher
196 percent energy intake from carbohydrates was associated with lower peak VO₂, whereas a higher
197 percent energy intake from fat was associated with higher peak VO₂.

198 *Shared associations of diet and fitness measures with the circulating metabolome*

199 To evaluate the joint relations of dietary patterns and higher CRF with blood metabolites,
200 we evaluated linear models adjusted for clinical risk factors. In multivariable adjusted models, 83
201 metabolites were associated with AHEI, 81 with MDS, and 53 with peak relative VO₂ (FDR
202 <5% for all; **Supplementary Table 7**). Of significant metabolite associations, 67 were shared
203 between the two dietary patterns, 32 were shared between AHEI and peak relative VO₂, 24 were
204 shared between MDS and peak relative VO₂, and 24 were common to all three (**Supplementary**
205 **Figure 2**). Directions of associations of metabolites with favorable dietary quality and with
206 higher peak VO₂ were consistent (**Figure 2**).

207 **Table 3** summarizes the 24 metabolites associated with both dietary patterns and peak
208 relative VO₂. These include metabolites previously implicated in cardiometabolic health and
209 fitness as well as novel metabolites with less well-elucidated roles in fitness. Many metabolites
210 have established associations with cardiometabolic disease such as C6 and C7 carnitines, C16:0
211 ceramide, and dimethylguanidino valeric acid (DMGV), whose higher levels are linked to higher
212 risks of diabetes and/or CVD [28–30] and associated with lower CRF and poorer dietary quality
213 in our cohort. Conversely, higher C38:7 phosphatidylcholine (PC) plasmalogen and C38:7 and
214 C40:7 phosphatidylethanolamine (PE) plasmalogen levels were associated with higher CRF and
215 better dietary quality; as a group, plasmalogens are hypothesized to have antioxidant properties
216 and negatively associated with metabolic diseases [31].

217 We then further explored the relations of metabolites with individual components of each
218 dietary index (**Figure 3**). Some of the strongest metabolite associations with individual food
219 groups included glycerophospholipids such as C40:7 and C38:7 PE plasmalogens, C38:7 PC
220 plasmalogen, C22:6 lysophosphatidylcholine (LPC), C20:5 LPC, and C38:4 PE, which were
221 positively associated with fish and omega-3 fatty acid intake, consistent with prior work [32,33].
222 These findings further support the validity of our dietary assessments by demonstrating relations
223 with biochemical signatures of their intake.

224

225 **Discussion**

226 Here, we provide a comprehensive examination of the associations of healthy dietary
227 patterns with fitness measures in a large, community-based sample and quantify a broad
228 circulating metabolome to explore joint associations of diet and fitness. Two readily applicable
229 healthy dietary patterns were associated with CRF in our study with broad consistency across

230 age, sex, and BMI category. Specifically, a 1-SD higher AHEI or MDS was associated with a
231 $\approx 5\%$ greater peak VO_2 (1.2 ml/kg/min at the sample mean); a magnitude similar to that observed
232 for taking ≈ 4000 more steps per day in our previous work [3]. Adherence to healthy dietary
233 patterns was also associated with multi-dimensional fitness measures reflecting distinct
234 physiologies including autonomic function (rest and exercise HR), central cardiac and pulmonary
235 vascular function (V_E/VCO_2) [23], and oxygen uptake kinetics (VO_2/work). By merging
236 metabolite associations with dietary indices and CRF, we observed broad directional consistency
237 between metabolite relations with favorable dietary quality and CRF, highlighted metabolites
238 previously implicated in cardiometabolic disease, and identified novel metabolites that may link
239 the shared biology of diet and fitness.

240 Prior studies have demonstrated associations of dietary components with fitness, but have
241 primarily focused on specific populations (e.g., extremes of age) [6–10], estimated measures of
242 fitness [5,6,11–14], or specific dietary components [6,10,12,13]. Our study adds to the literature
243 by directly addressing some of the limitations of prior investigations on dietary patterns and
244 fitness. First, the use of CPET enabled quantification of peak VO_2 for objective assessment of
245 fitness and ensured that an adequate (i.e., diagnostic) level of volitional effort was provided by
246 all participants (via the RER). By using comprehensive CPET, we were also able to measure the
247 association of diet with different physiological components of fitness. For example, we observed
248 the expected relation of higher carbohydrate intake with resting RER [27], which served as a
249 positive control and supported the accuracy of our dietary indices. The relations of dietary
250 quality with measures of autonomic (HR responses) and central cardiac/pulmonary vascular
251 function (VE/VCO_2) with exercise may also indicate that dietary quality has broader salutary
252 effects beyond fuel substrate utilization on various organ systems.

253 Second, our large community-based sample enabled assessment of the relations between
254 dietary quality and fitness throughout a broad age range and how they varied across sex, age, and
255 BMI. We observed consistent associations (i.e., lack of effect modification) across sex and BMI
256 categories, but there was a significant interaction between age and dietary quality scores on the
257 association with percent predicted peak VO_2 , suggesting a higher effect size in younger
258 individuals. This finding is consistent with prior studies that have often demonstrated
259 associations between dietary and fitness in younger cohorts [6,9,10].

260 Third, we captured dietary patterns with a widely used FFQ and two healthy dietary
261 indices designed to reflect the best contemporary evidence for healthy eating [19,20]. Both the
262 AHEI and MDS have been robustly associated with lower risk of cardiovascular and all-cause
263 mortality and other health outcomes [19,20,34,35], and their components/scores are readily
264 translatable to individuals or for use in intervention studies. Furthermore, the use of dietary
265 patterns captures synergies between food sources and better reflects how individuals typically
266 eat. We observed that as percentages of total energy consumed, increased carbohydrate intake
267 and decreased fat intake were associated with lower peak VO_2 . At the extremes, a very low-
268 carbohydrate or ketogenic diet has been popularized for enhancing aerobic performance based on
269 the theory that ketones may be more optimal fuel sources; however, the data for ketogenic diet
270 improving peak VO_2 in athletes are mixed [36]. A low-fat (<30% total energy intake) diet has
271 been historically recommended for population health [37], but studies have increasingly shown
272 that the quality and source of dietary fats and carbohydrates matter, leading to a focus on dietary
273 patterns in recent guidelines [38]. In contrast to our findings, another observational study showed
274 that lower fat intake was associated with higher CRF, but men in the study with high fitness also
275 consumed less SFA (10.0% vs. 11.8% of total energy intake) and MUFA (12.6% vs. 14.5%) and

276 a similar amount of PUFA (7.4% vs. 7.4%) compared to those with low fitness [13]. This
277 discordance highlights the importance of food sources when considering macronutrient intake.

278 These epidemiological observations highlight the need for further investigation of
279 potential mechanisms linking diet and CRF. To begin to address this gap, we explored potential
280 shared biological processes by leveraging metabolite profiling. We identified 24 metabolites that
281 were significantly associated with peak VO_2 , AHEI, and MDS after adjustment for physical
282 activity and standard CVD risk factors. A particular strength of metabolomic interrogation in
283 dietary research is that some metabolites may provide objective measures of the consumption of
284 specific food items or the host-diet interaction. Indeed, several of our findings have been
285 identified by prior studies to be associated with healthy dietary patterns [24,25,39–43]. Among
286 our significant metabolites, those with previously reported positive associations with AHEI and
287 MDS included lipid species such as C22:6 LPC, C38:7 PC plasmalogen, and C38:7 and C40:7
288 PE plasmalogens, which were all positively associated with greater fish intake. This finding is
289 biochemically consistent with DHA being the fatty acid side chain in C22:6 LPC. Although our
290 metabolomics platform did not precisely determine the fatty acid side chain composition of
291 C38:7 PC plasmalogen, and C38:7 and C40:7 PE plasmalogens, DHA is likely one of their side
292 chains based on their most plausible molecular structures. Omega-3 fatty acids are known to
293 have favorable health benefits, and plasmalogens are hypothesized to have antioxidant properties
294 and are inversely correlated with metabolic diseases [31]. It remains unclear whether these
295 metabolites have benefits on CRF themselves versus being markers of omega-3 fatty acid intake.
296 In small placebo-controlled pilot studies of athletes and sedentary adults, supplementation with
297 DHA and EHA improved submaximal exercise HR, submaximal VO_2 , and/or peak VO_2 [44–46],
298 and in rat models, dietary omega-3 fatty acids reduced myocardial oxygen consumption while

299 maintaining external work [47]. Potential mechanisms include increased altered mitochondrial
300 membrane composition and mitochondrial biogenesis [48,49].

301 Metabolites with known inverse associations with AHEI and MDS included C6 and C7
302 carnitines, C18:1 sphingomyelin (SM), and C16:0 ceramide, which were also positively
303 associated with intake of red meat, trans fatty acid, and SFA. Medium chain carnitines such as
304 C6 and C7 carnitines are positively associated with obesity, type 2 diabetes, and CVD [28,50],
305 and shorter chain sphingomyelins are positively associated with incident diabetes [51].
306 Ceramides have been recently identified as markers of incident CVD [29]; in mouse models,
307 elevated C16:0 ceramide led to insulin resistance, and decreased C16:0 ceramide protected
308 against diet-induced obesity [52]. Consequently, these metabolites are possibly linked to poor
309 CRF through their relation with insulin resistance, which has been hypothesized to induce
310 mitochondrial dysfunction [53] and may contribute to exercise intolerance.

311 In addition to the above known diet-related metabolites, we identified several metabolites
312 displaying novel associations with dietary patterns and peak VO_2 . One notable example is N-
313 monomethyl-arginine (NMMA), which inhibits nitric oxide synthase and causes increased
314 vascular resistance [54]. Given this mechanism, its positive association with peak relative VO_2
315 was surprising and may reflect improved autoregulation of blood pressure in those with higher
316 CRF whereas those with chronically increased vascular resistance may have suppressed NMMA
317 levels. In a randomized cross-over study of 10 healthy volunteers, the administration of L-
318 NMMA increased resting blood pressure but did not change peripheral vascular resistance or
319 cardiac output during or after exercise [55], and in a population study of African Americans,
320 higher NMMA was associated with decreased risk of incident coronary artery disease [56]. Also
321 related to the nitric oxide pathway, we observed significant positive associations of AHEI, MDS,

322 and peak relative VO_2 with N-acetyl-ornithine, which is an intermediate metabolite for arginine
323 synthesis.

324 Overall, our analysis of metabolite associations with CRF and diet also implicated several
325 metabolites with previously reported associations with cardiometabolic diseases. For example,
326 higher cinnamoylglycine was associated with healthy dietary patterns and better CRF and was
327 reported to be associated with decreased diabetes risk and improved insulin resistance [57]. By
328 contrast, higher DMGV was associated with poorer dietary patterns and lower CRF and has been
329 linked to poor metabolic health [58]. Given that CRF reflects underlying metabolic health,
330 further studies are needed to determine whether the above metabolites are merely markers of
331 dysmetabolism or whether they may have functional roles during exercise.

332 Our study provides a comprehensive assessment of the cross-sectional association
333 between dietary quality and CRF in a large community-dwelling sample and uses shared
334 associations with the circulating metabolome to infer potential biological mechanisms.
335 Nevertheless, there are several limitations of the current investigation that warrant consideration.
336 Despite adjustment for several potential confounders, we cannot exclude the possibility of
337 residual confounding in this cross-sectional analysis. Future interventional studies are necessary
338 to clarify whether the associations between diet and CRF are indeed causal. Moreover, how
339 dietary choices at different time intervals prior to exercise (e.g., immediately before, in the days
340 before, or in the weeks/months before) might influence CRF remains uncertain and would
341 require prospective trials. Dietary quality assessment relied on self-recall and therefore may have
342 limitations in regards to validity and reproducibility. While we do have several positive controls
343 in our study that attest to the accuracy of the dietary information collected (e.g., peak RER and
344 carbohydrate association, individual metabolites reflecting known food sources), the possibility

345 for the measurement error of dietary quality cannot be excluded. Finally, despite the inclusion of
346 the multi-ethnic Omni cohort, our study sample mostly consisted of White individuals eating
347 American-style diets; the generalizability to other racial and ethnic groups is, therefore,
348 unknown.

349 In conclusion, we showed in a large, community-dwelling cohort that a healthy diet is
350 strongly associated with CRF and other physiologically relevant exercise responses. We
351 identified several metabolites that shared associations with healthy patterns of eating and peak
352 VO_2 , and many of these metabolites are known markers of cardiometabolic health. These
353 findings provide a foundation for future work investigating whether dietary interventions that
354 improve CRF may also impact long-term metabolic health.

355

356 **Funding:** The Framingham Heart Study is supported by the National Heart, Lung, and Blood
357 Institute at the National Institutes of Health (contracts N01-HC-25195, HHSN268201500001I,
358 and 75N92019D00031). M.Y.M. is supported by the National Institutes of Health (grant number
359 T32-HL007208). M.E.W. is supported in part by the American Heart Association (grant number
360 20CDA35310237), the Doris Duke Charitable Foundation (grant number 2021261), and the
361 National Center for Advancing Translational Sciences at the National Institutes of Health
362 through BU-CTSI (grant number 1UL1TR001430). R.S.V. was supported in part by the Evans
363 Medical Foundation and the Jay and Louis Coffman Endowment from the Department of
364 Medicine, Boston University School of Medicine. R.V.S. is supported by the National Institutes
365 of Health (grant number R01-HL136685). G.D.L. is supported by National Institutes of Health
366 (grant number R01-HL131029) and American Heart Association (grant number
367 15GPSGC24800006). M.N. is supported by National Institutes of Health (grant number K23-
368 HL138260, R01-HL156975) and by a Career Investment Award from the Department of
369 Medicine, Boston University School of Medicine.

370

371 **Conflict of Interest:** V.L.M. owns stock in Amgen, General Electric, and Cardinal Health. He
372 has received speaking honoraria from, serves as a scientific advisor for, and owns stock options
373 in Ionetix. He has received research funding and speaking honoraria from Siemens Medical
374 Imaging. He has served as a scientific advisor for Curium and has received expert witness fees
375 from Jubilant Draximage. He has received a speaking honorarium from 2Quart Medical. He has
376 received non-financial research support from INVIA Medical Imaging Solutions. In the past 12
377 months, R.V.S. has served as a consultant for Myokardia, Best Doctors, Amgen, and
378 Cytokinetics. R.V.S. is a co-inventor on a patent for ex-RNAs signatures of cardiac remodeling.

379 The spouse of R.V.S. works for UpToDate (Wolters Kluwer). G.D.L. has research funding from
380 Amgen, Cytokinetics, Applied Therapeutics, AstraZeneca, and Sonivie in relation to projects and
381 clinical trials investigating exercise capacity that are distinct from this work. He has served as a
382 scientific advisor for Pfizer, Merck, Boehringer-Ingelheim, Novartis, American Regent, Relypsa,
383 Cycleron, Cytokinetics, and Amgen and receives royalties from UpToDate for scientific content
384 authorship related to exercise physiology. M.N. has received speaking honoraria from
385 Cytokinetics.

386

387 **Author Contributions:** M.Y.M., P.G., M.E.W., V.L.M., R.S.V., R.V.S., G.D.L., and M.N.
388 designed research. M.E.W., P.M., V.X., R.S.V., R.V.S., G.D.L., and M.N. conducted research.
389 M.Y.M., P.G., M.E.W., V.L.M., M.G.L., R.S.V., R.V.S., G.D.L., and M.N. analyzed data.
390 M.Y.M., P.G., and M.N. wrote paper. M.N. had primary responsibility for final content. All
391 authors have read and approved the final manuscript.

392

393 **References**

- 394 1. Kodama S, Saito K, Tanaka S et al. Cardiorespiratory fitness as a quantitative predictor of all-
395 cause mortality and cardiovascular events in healthy men and women: a meta-analysis. *JAMA*
396 2009;301:2024–35.
- 397 2. Harber MP, Kaminsky LA, Arena R et al. Impact of Cardiorespiratory Fitness on All-Cause
398 and Disease-Specific Mortality: Advances Since 2009. *Prog Cardiovasc Dis* 2017;60:11–20.
- 399 3. Naylor M, Chernofsky A, Spartano NL et al. Physical activity and fitness in the community:
400 the Framingham Heart Study. *Eur Heart J* 2021;42:4565–75.
- 401 4. Lloyd-Jones DM, Allen NB, Anderson CAM et al. Life’s Essential 8: Updating and Enhancing
402 the American Heart Association’s Construct of Cardiovascular Health: A Presidential Advisory
403 From the American Heart Association. *Circulation* 2022:101161CIR0000000000001078.
- 404 5. Seong M, Kim Y, Park S et al. Association Between Diet Quality and Cardiorespiratory
405 Fitness in Korean Adults: The 2014-2015 National Fitness Award Project. *Nutrients*
406 2020;12:E3226.
- 407 6. Howe AS, Skidmore PML, Parnell WR et al. Cardiorespiratory fitness is positively associated
408 with a healthy dietary pattern in New Zealand adolescents. *Public Health Nutr* 2016;19:1279–87.
- 409 7. Chan R, Yau F, Yu B et al. The Role of Dietary Patterns in the Contribution of
410 Cardiorespiratory Fitness in Community-Dwelling Older Chinese Adults in Hong Kong. *J Am*
411 *Med Dir Assoc* 2019;20:558–63.
- 412 8. Bibiloni MDM, Julibert A, Argelich E et al. Western and Mediterranean Dietary Patterns and
413 Physical Activity and Fitness among Spanish Older Adults. *Nutrients* 2017;9:E704.
- 414 9. Santi-Cano MJ, Novalbos-Ruiz JP, Bernal-Jiménez MÁ et al. Association of Adherence to
415 Specific Mediterranean Diet Components and Cardiorespiratory Fitness in Young Adults.
416 *Nutrients* 2020;12:E776.
- 417 10. Tambalis KD, Panagiotakos DB, Psarra G et al. Association of cardiorespiratory fitness
418 levels with dietary habits and lifestyle factors in schoolchildren. *Appl Physiol Nutr Metab*
419 2019;44:539–45.
- 420 11. Shikany JM, Jacobs DR, Lewis CE et al. Associations between food groups, dietary patterns,
421 and cardiorespiratory fitness in the Coronary Artery Risk Development in Young Adults study.
422 *Am J Clin Nutr* 2013;98:1402–9.
- 423 12. Cuenca-García M, Ortega FB, Huybrechts I et al. Cardiorespiratory fitness and dietary intake
424 in European adolescents: the Healthy Lifestyle in Europe by Nutrition in Adolescence study. *Br J*
425 *Nutr* 2012;107:1850–9.
- 426 13. Brodney S, Mcpherson RS, Carpenter RS et al. Nutrient intake of physically fit and unfit men
427 and women. *Med Sci Sports Exerc* 2001;33:459–67.

- 428 14. Cuenca-García M, Artero EG, Sui X et al. Dietary indices, cardiovascular risk factors and
429 mortality in middle-aged adults: findings from the Aerobics Center Longitudinal Study. *Ann*
430 *Epidemiol* 2014;24:297-303.e2.
- 431 15. Splansky GL, Corey D, Yang Q et al. The Third Generation Cohort of the National Heart,
432 Lung, and Blood Institute's Framingham Heart Study: design, recruitment, and initial
433 examination. *Am J Epidemiol* 2007;165:1328–35.
- 434 16. Abraham TM, Massaro JM, Hoffmann U et al. Metabolic characterization of adults with
435 binge eating in the general population: the Framingham Heart Study. *Obesity (Silver Spring)*
436 2014;22:2441–9.
- 437 17. Feskanich D, Rimm EB, Giovannucci EL et al. Reproducibility and validity of food intake
438 measurements from a semiquantitative food frequency questionnaire. *J Am Diet Assoc*
439 1993;93:790–6.
- 440 18. Rimm EB, Giovannucci EL, Stampfer MJ et al. Reproducibility and validity of an expanded
441 self-administered semiquantitative food frequency questionnaire among male health
442 professionals. *Am J Epidemiol* 1992;135:1114–26; discussion 1127-1136.
- 443 19. Chiuve SE, Fung TT, Rimm EB et al. Alternative dietary indices both strongly predict risk of
444 chronic disease. *J Nutr* 2012;142:1009–18.
- 445 20. Fung TT, Rexrode KM, Mantzoros CS et al. Mediterranean diet and incidence of and
446 mortality from coronary heart disease and stroke in women. *Circulation* 2009;119:1093–100.
- 447 21. Ma J, Hennein R, Liu C et al. Improved Diet Quality Associates With Reduction in Liver Fat,
448 Particularly in Individuals With High Genetic Risk Scores for Nonalcoholic Fatty Liver Disease.
449 *Gastroenterology* 2018;155:107–17.
- 450 22. Naylor M, Shah RV, Miller PE et al. Metabolic Architecture of Acute Exercise Response in
451 Middle-Aged Adults in the Community. *Circulation* 2020;142:1905–24.
- 452 23. Naylor M, Xanthakis V, Tanguay M et al. Clinical and Hemodynamic Associations and
453 Prognostic Implications of Ventilatory Efficiency in Patients With Preserved Left Ventricular
454 Systolic Function. *Circ Heart Fail* 2020;13:e006729.
- 455 24. Walker ME, Song RJ, Xu X et al. Proteomic and Metabolomic Correlates of Healthy Dietary
456 Patterns: The Framingham Heart Study. *Nutrients* 2020;12:E1476.
- 457 25. McCullough ML, Maliniak ML, Stevens VL et al. Metabolomic markers of healthy dietary
458 patterns in US postmenopausal women. *Am J Clin Nutr* 2019;109:1439–51.
- 459 26. Hu EA, Steffen LM, Coresh J et al. Adherence to the Healthy Eating Index-2015 and Other
460 Dietary Patterns May Reduce Risk of Cardiovascular Disease, Cardiovascular Mortality, and
461 All-Cause Mortality. *J Nutr* 2020;150:312–21.

- 462 27. Maunder E, Bradley HE, Deane CS et al. Effects of short-term graded dietary carbohydrate
463 intake on intramuscular and whole body metabolism during moderate-intensity exercise. *Journal*
464 *of Applied Physiology* 2021;131:376–87.
- 465 28. Mihalik SJ, Goodpaster BH, Kelley DE et al. Increased Levels of Plasma Acylcarnitines in
466 Obesity and Type 2 Diabetes and Identification of a Marker of Glucolipotoxicity. *Obesity (Silver*
467 *Spring)* 2010;18:1695–700.
- 468 29. Wang DD, Toledo E, Hruby A et al. Plasma Ceramides, Mediterranean Diet, and Incident
469 Cardiovascular Disease in the PREDIMED Trial (Prevención con Dieta Mediterránea).
470 *Circulation* 2017;135:2028–40.
- 471 30. Ottosson F, Ericson U, Almgren P et al. Dimethylguanidino Valerate: A Lifestyle-Related
472 Metabolite Associated With Future Coronary Artery Disease and Cardiovascular Mortality. *J Am*
473 *Heart Assoc* 2019;8:e012846.
- 474 31. Braverman NE, Moser AB. Functions of plasmalogen lipids in health and disease. *Biochim*
475 *Biophys Acta* 2012;1822:1442–52.
- 476 32. Mazzilli KM, McClain KM, Lipworth L et al. Identification of 102 Correlations between
477 Serum Metabolites and Habitual Diet in a Metabolomics Study of the Prostate, Lung, Colorectal,
478 and Ovarian Cancer Trial. *J Nutr* 2020;150:694–703.
- 479 33. Ottestad I, Hassani S, Borge GI et al. Fish oil supplementation alters the plasma lipidomic
480 profile and increases long-chain PUFAs of phospholipids and triglycerides in healthy subjects.
481 *PLoS One* 2012;7:e42550.
- 482 34. Patel YR, Robbins JM, Gaziano JM et al. Mediterranean, DASH, and Alternate Healthy
483 Eating Index Dietary Patterns and Risk of Death in the Physicians’ Health Study. *Nutrients*
484 2021;13:1893.
- 485 35. Morze J, Danielewicz A, Hoffmann G et al. Diet Quality as Assessed by the Healthy Eating
486 Index, Alternate Healthy Eating Index, Dietary Approaches to Stop Hypertension Score, and
487 Health Outcomes: A Second Update of a Systematic Review and Meta-Analysis of Cohort
488 Studies. *J Acad Nutr Diet* 2020;120:1998-2031.e15.
- 489 36. Bailey CP, Hennessy E. A review of the ketogenic diet for endurance athletes: performance
490 enhancer or placebo effect? *Journal of the International Society of Sports Nutrition* 2020;17:33.
- 491 37. U.S. Department of Agriculture and U.S. Department of Health and Human Services.
492 *Nutrition and Your Health: Dietary Guidelines for Americans*. 4th ed. Washington, DC:
493 Government Printing Office, 1995.
- 494 38. U.S. Department of Agriculture and U.S. Department of Health and Human Services. *Dietary*
495 *Guidelines for Americans, 2020-2025*. 9th Edition. 2020.
- 496 39. Li J, Guasch-Ferré M, Chung W et al. The Mediterranean diet, plasma metabolome, and
497 cardiovascular disease risk. *Eur Heart J* 2020;41:2645–56.

- 498 40. Playdon MC, Moore SC, Derkach A et al. Identifying biomarkers of dietary patterns by using
499 metabolomics. *Am J Clin Nutr* 2017;105:450–65.
- 500 41. Bagheri M, Willett W, Townsend MK et al. A lipid-related metabolomic pattern of diet
501 quality. *Am J Clin Nutr* 2020;112:1613–30.
- 502 42. Kim H, Hu EA, E Wong K et al. Serum Metabolites Associated with Healthy Diets in
503 African Americans and European Americans. *J Nutr* 2021;151:40–9.
- 504 43. Rebholz CM, Lichtenstein AH, Zheng Z et al. Serum untargeted metabolomic profile of the
505 Dietary Approaches to Stop Hypertension (DASH) dietary pattern. *Am J Clin Nutr*
506 2018;108:243–55.
- 507 44. Thielecke F, Blannin A. Omega-3 Fatty Acids for Sport Performance-Are They Equally
508 Beneficial for Athletes and Amateurs? A Narrative Review. *Nutrients* 2020;12:E3712.
- 509 45. Haghavan S, Keshavarz SA, Mazaheri R et al. Effect of Omega-3 PUFAs Supplementation
510 with Lifestyle Modification on Anthropometric Indices and Vo2 max in Overweight Women.
511 *Arch Iran Med* 2016;19:342–7.
- 512 46. Peoples GE, McLennan PL, Howe PRC et al. Fish oil reduces heart rate and oxygen
513 consumption during exercise. *J Cardiovasc Pharmacol* 2008;52:540–7.
- 514 47. Pepe S, McLennan PL. Cardiac membrane fatty acid composition modulates myocardial
515 oxygen consumption and postischemic recovery of contractile function. *Circulation*
516 2002;105:2303–8.
- 517 48. Pepe S, Tsuchiya N, Lakatta EG et al. PUFA and aging modulate cardiac mitochondrial
518 membrane lipid composition and Ca²⁺ activation of PDH. *Am J Physiol* 1999;276:H149-158.
- 519 49. Laiglesia LM, Lorente-Cebrián S, Prieto-Hontoria PL et al. Eicosapentaenoic acid promotes
520 mitochondrial biogenesis and beige-like features in subcutaneous adipocytes from overweight
521 subjects. *J Nutr Biochem* 2016;37:76–82.
- 522 50. Zhao S, Liu M-L, Huang B et al. Acetylcarnitine Is Associated With Cardiovascular Disease
523 Risk in Type 2 Diabetes Mellitus. *Front Endocrinol (Lausanne)* 2021;12:806819.
- 524 51. Chew WS, Torta F, Ji S et al. Large-scale lipidomics identifies associations between plasma
525 sphingolipids and T2DM incidence. *JCI Insight* 2019;5:126925.
- 526 52. Hla T, Kolesnick R. C16:0-ceramide signals insulin resistance. *Cell Metab* 2014;20:703–5.
- 527 53. Shulman GI. Ectopic fat in insulin resistance, dyslipidemia, and cardiometabolic disease. *N*
528 *Engl J Med* 2014;371:1131–41.
- 529 54. Moncada S, Higgs A. The L-arginine-nitric oxide pathway. *N Engl J Med* 1993;329:2002–
530 12.

- 531 55. O’Gallagher K, Shabeeh H, Munir S et al. Effects of Inhibition of Nitric Oxide Synthase on
532 Muscular Arteries During Exercise: Nitric Oxide Does Not Contribute to Vasodilation During
533 Exercise or in Recovery. *J Am Heart Assoc* 2020;9:e013849.
- 534 56. Cruz DE, Tahir UA, Hu J et al. Metabolomic Analysis of Coronary Heart Disease in an
535 African American Cohort From the Jackson Heart Study. *JAMA Cardiol* 2021, DOI:
536 10.1001/jamacardio.2021.4925.
- 537 57. Adisakwattana S. Cinnamic Acid and Its Derivatives: Mechanisms for Prevention and
538 Management of Diabetes and Its Complications. *Nutrients* 2017;9:E163.
- 539 58. O’Sullivan JF, Morningstar JE, Yang Q et al. Dimethylguanidino valeric acid is a marker of
540 liver fat and predicts diabetes. *J Clin Invest* 2017;127:4394–402.
- 541

Figure Legends

Figure 1: Scatterplots of peak oxygen uptake (VO_2) vs. Alternative Healthy Eating Index

(AHEI) in Panel A and Mediterranean-style Diet Score (MDS) in Panel B stratified by sex and overlaid with fitted curves from general additive models and their 95% confidence bounds.

Models were adjusted for age, sex, total energy intake, BMI, smoking status, total cholesterol, HDL, systolic blood pressure, hypertension medication use, diabetes, and physical activity index.

Figure 2: The beta coefficients were plotted for each metabolite in relation to peak oxygen

uptake (VO_2) (y-axis) and dietary indices scores (x-axis) in linear models adjusted for age, sex, total energy intake, BMI, smoking status, total cholesterol, HDL, systolic blood pressure,

hypertension medication use, diabetes, and physical activity index. Panel A shows results for

Alternative Healthy Eating Index, and Panel B shows results for Mediterranean-style Diet Score.

Point sizes reflect the average $-\log_{10}$ p-values for associations between VO_2 and the respective dietary index. Labeled metabolites have significant associations with respective dietary index

and VO_2 after false discovery rate adjustment. DMGV, dimethylguanidino valeric acid; GABA, gamma-aminobutyric acid; NMMA, LPC, lysophosphatidylcholine; LPE,

lysophosphatidylethanolamine; N-monomethyl-arginine; PC, phosphatidylcholine; PE,

phosphatidylethanolamine; SM, sphingomyelin. For acyl group nomenclature, the number after

C denotes the number of carbon atoms, and the number after the colon denotes the number of double bonds.

Figure 3: Heat maps of the estimated regression coefficients from models relating metabolites

that were significantly related to peak oxygen uptake (VO_2) and Alternative Healthy Eating

Index (AHEI) and Mediterranean-style Diet Score (MDS) to dietary index components are

displayed. Linear regression models adjusted for age, sex, total energy intake, BMI, smoking

status, total cholesterol, HDL, hypertension medication use, diabetes, and physical activity index.

HILIC, hydrophilic interaction liquid chromatography; NMMA, N-monomethyl-arginine;

GABA, gamma-aminobutyric acid; DMGV, dimethylguanidino valeric acid; PE,

phosphatidylethanolamine; PC, phosphatidylcholine; LPC, lysophosphatidylcholine; LPE,

lysophosphatidylethanolamine; SM, sphingomyelin; EPA, eicosapentaenoic acid; DHA,

docosahexaenoic acid; MUFA, monounsaturated fatty acid; SFA, saturated fatty acid. For acyl

group nomenclature, the number after C denotes the number of carbon atoms, and the number

after the colon denotes the number of double bonds.

Table 1: Sample characteristics

Variable	Main sample (N = 2380)	Subsample with metabolite profiling performed (N = 1154)
Age, years	54±9	54±8
Women	1286 (54%)	624 (54%)
Non-White Race	198 (8%)	12 (1%)
Body Mass Index, kg/m ²	28.0±5.3	27.6±5.2
Resting Systolic Blood Pressure, mmHg	119±14	119±14
Total Cholesterol, mg/dL	190.1±35.9	190.4±33.6
HDL, mg/dL	60.6±19.3	61.6±19.3
Physical Activity Index, METs/day	34±5	34±6
Smoking Status		
Never	1504 (63%)	735 (64%)
Former	742 (31%)	372 (32%)
Current	134 (6%)	47 (4%)
Hypertension Medication Use	505 (21%)	225 (20%)
Diabetes	180 (7.6%)	75 (6.5%)
Alternative Healthy Eating Index (0 to 110)	66.7±13.0	66.8±12.9
Mediterranean-style Diet Score (0 to 25)	12.4±4.7	12.4±4.7
Total Daily Energy Intake, kcal	1936±644	1959±627
Energy from Carbohydrates, %	44±8	44±8
Energy from Proteins, %	17±3	17±3
Energy from Fats, %	36±7	36±7
Resting Absolute VO ₂ , mL/min	280.6±68.9	278.6±67.2
Resting Relative VO ₂ , mL/kg/min	3.5±0.6	3.5±0.6
Peak Absolute VO ₂ , mL/min	1861.8±638.2	1894.7±656.4
Peak Relative VO ₂ , mL/kg/min	23.3±6.9	23.9±7.2
Percent Predicted Peak VO ₂ , %	91.3±20.4	92.5±20.5
Resting Respiratory Exchange Ratio	0.89±0.08	0.88±0.07
Peak Respiratory Exchange Ratio	1.22±0.09	1.22±0.09
Resting HR, beats/min	72±12	72±12
Peak HR, beats/min	152±19	153±19
Percent Predicted Peak HR	89.2±10.1	89.8±10.1
VO ₂ /work, mL/W/min	8.9±1.0	9.1±0.9
V _E /VCO ₂ nadir	27.0±2.8	26.9±2.8

Numbers expressed as mean \pm SD or n (%). Peak VO_2 is predicted based on the Wasserman equation. Peak heart rate was predicted using the Tanaka formula. MET, metabolic equivalent of task.

Table 2: Cross sectional associations of dietary patterns and cardiopulmonary exercise testing variables

CPET Variables	Alternative Healthy Eating Index (N = 2380)			Mediterranean-style Diet Score (N = 2380)		
	Coefficient	SE	FDR p	Coefficient	SE	FDR p
Resting Absolute VO ₂	0.005	0.014	0.78	0.016	0.014	0.31
Resting Relative VO ₂	0.005	0.019	0.80	0.020	0.019	0.31
Peak Absolute VO ₂	0.147	0.013	<0.0001	0.127	0.014	<0.0001
Peak Relative VO ₂	0.170	0.014	<0.0001	0.148	0.015	<0.0001
Percent Predicted Peak VO ₂	0.212	0.020	<0.0001	0.183	0.021	<0.0001
Resting RER	-0.029	0.022	0.23	-0.017	0.023	0.44
Peak RER	-0.032	0.021	0.17	-0.036	0.022	0.13
Resting HR	-0.131	0.021	<0.0001	-0.115	0.022	<0.0001
Peak HR	0.055	0.018	0.0046	0.069	0.019	0.0004
Percent Predicted Peak HR	0.060	0.020	0.0049	0.077	0.021	0.0004
VO ₂ /work	0.142	0.020	<0.0001	0.113	0.020	<0.0001
V _E /VCO ₂ nadir	-0.089	0.020	<0.0001	-0.064	0.020	0.0026

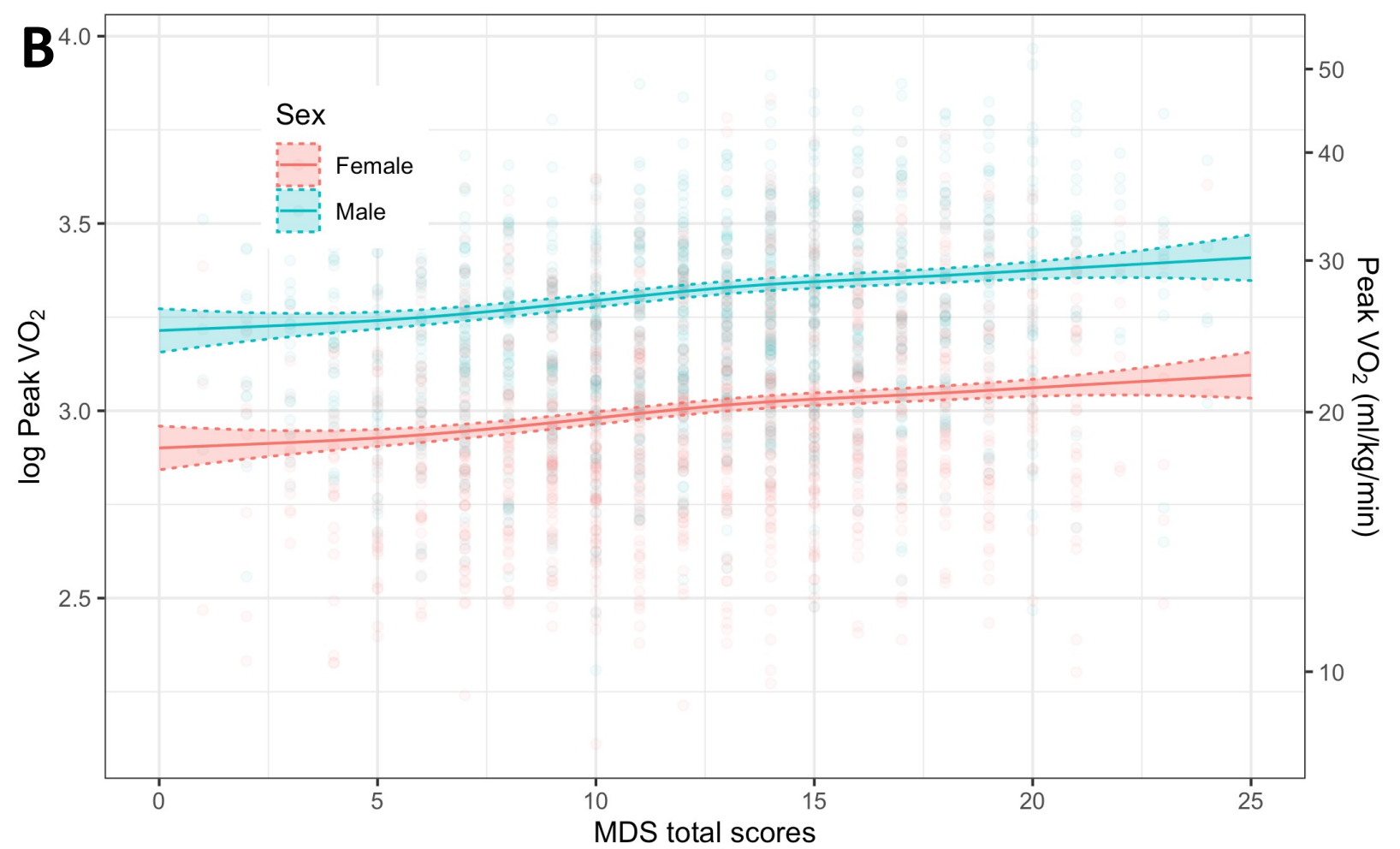
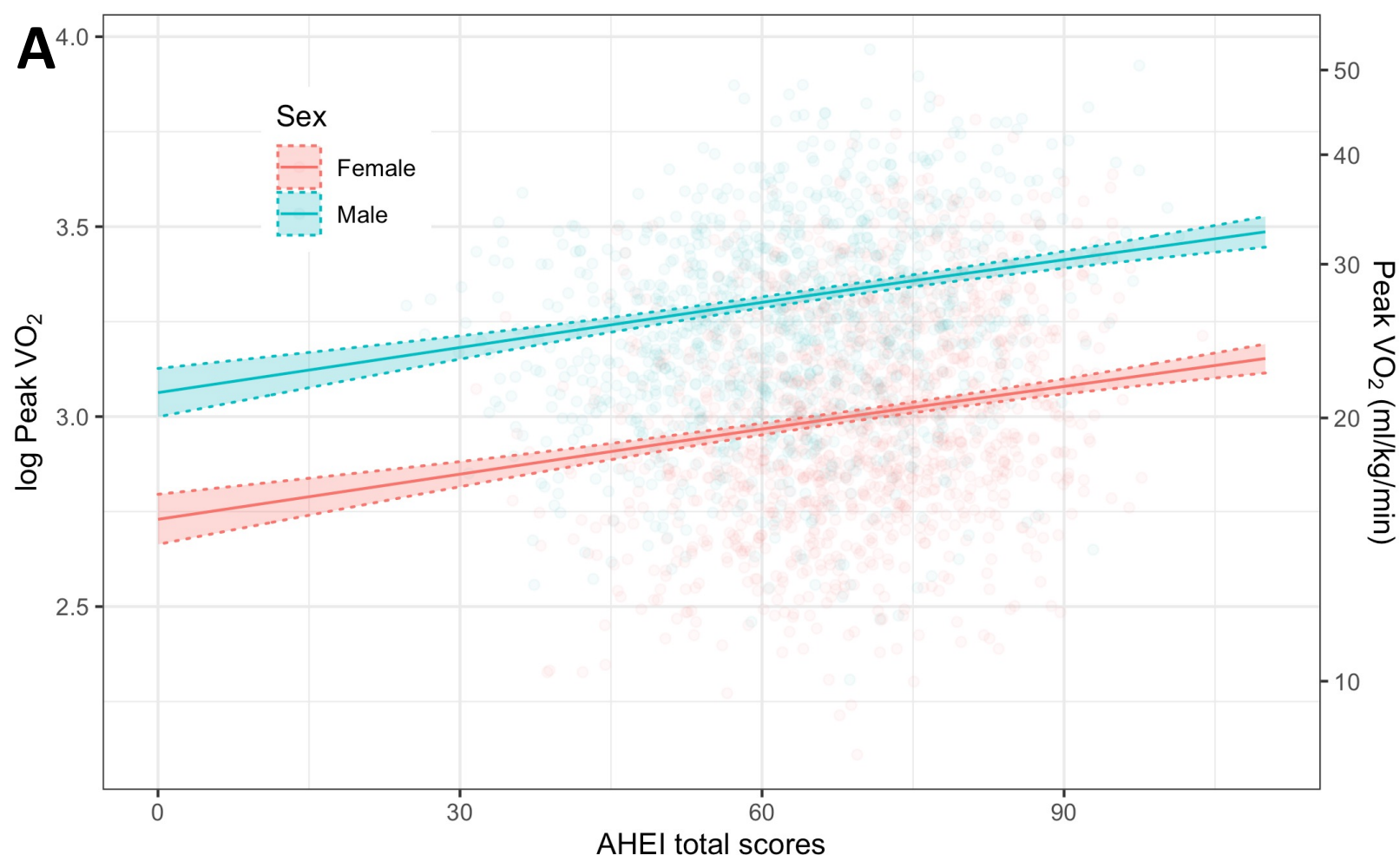
Absolute and relative VO₂ at rest and peak were log transformed. Coefficients represent change in CPET variables per one SD increase in dietary scores. Models were adjusted for age, sex, total energy intake, BMI, smoking status, cholesterol, HDL, systolic blood pressure, hypertension medication use, and physical activity index. P-values were adjusted for false discovery rate using the Benjamini-Hochberg method separately for each dietary pattern. CPET, cardiopulmonary exercise testing; FDR, false discovery rate; HR, heart rate; RER, respiratory exchange ratio.

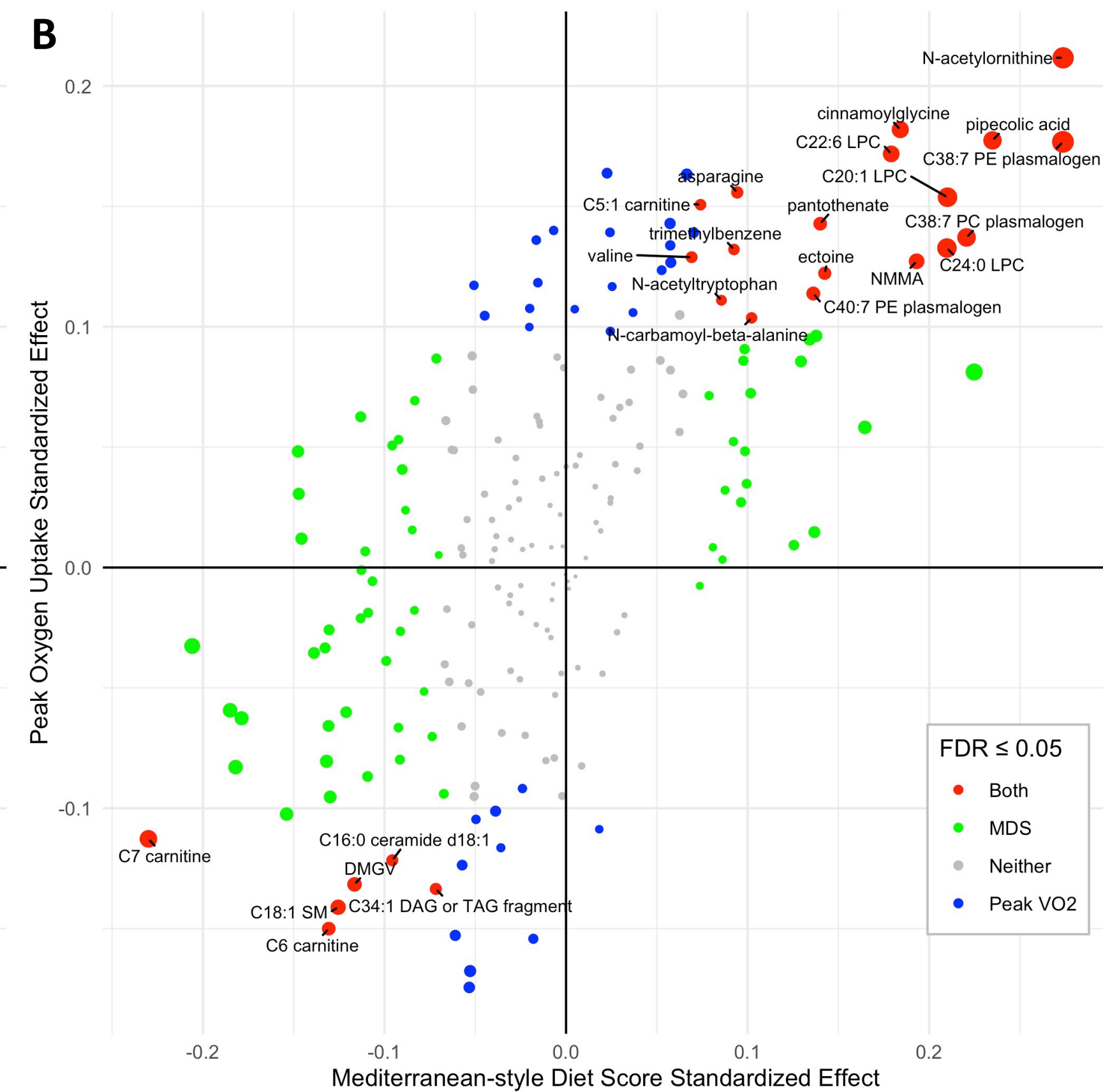
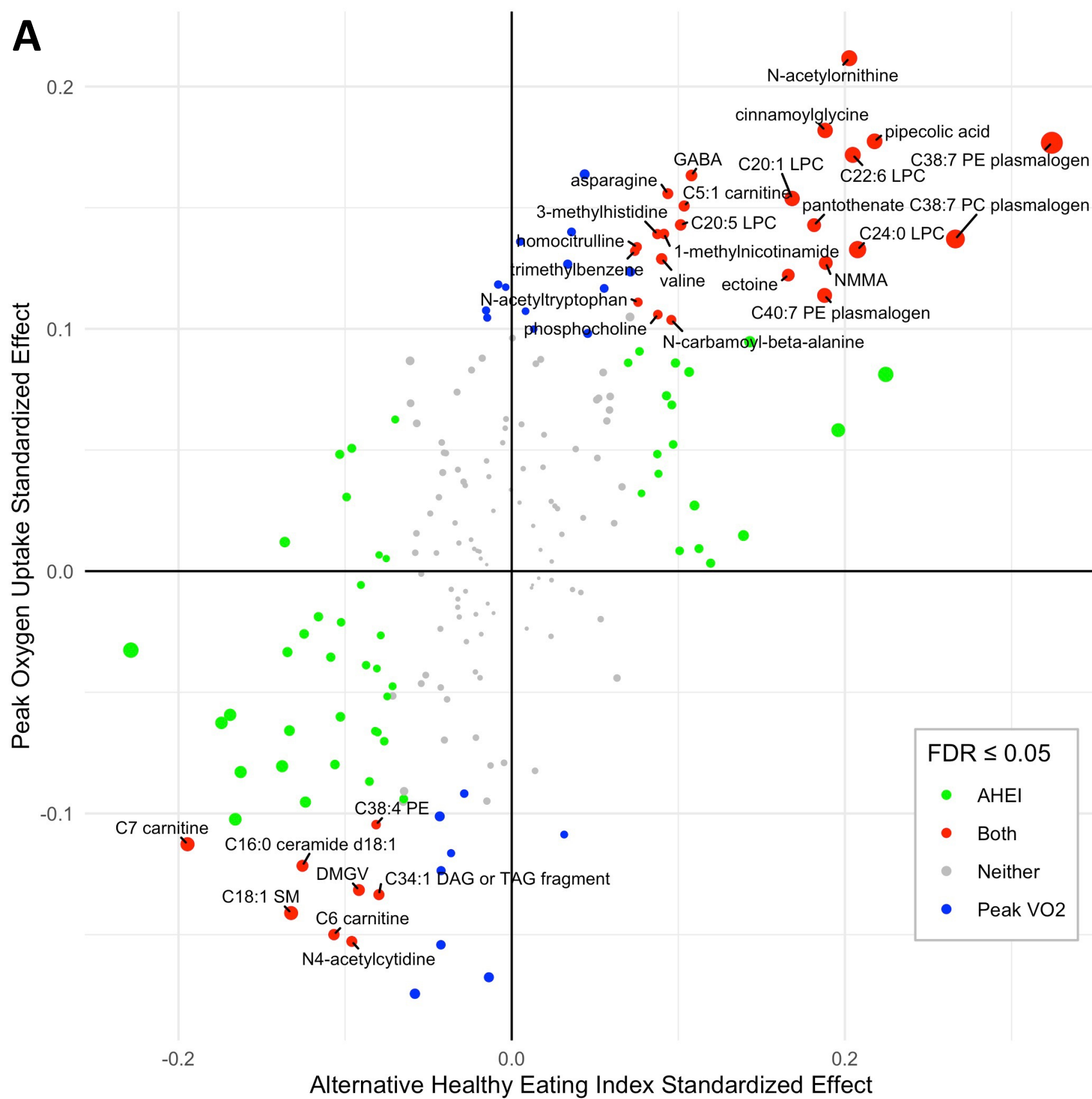
Table 3: Summary of metabolites associated with dietary patterns and peak relative VO₂

Metabolite Class	Metabolites	AHEI/MDS	VO ₂	Diet and Biological Relationships
Glycerolipids	C34:1 DAG or TAG fragment	↓	↓	Intermediates of fatty acid metabolism, DAGs are found in small quantities (< 10%) in various seed oils [59], and ingestion has been associated with decreased weight, waist circumference, and serum triglyceride [59]
Glycerophosphocholines	C20:1 LPC	↑	↑	LPCs produced by cleavage of PCs by phospholipase A2, and saturated and shorter LPCs are pro-inflammatory whereas unsaturated and longer LPCs are anti-inflammatory [60,61]. C22:6 LPC associated with lower risk of type 2 diabetes. C22:6 LPC positively associated with AHEI and MDS [24], fish intake [32], and vegetable intake [62], and it increases with fish oil supplementation [33]. C24:0 LPC is inversely associated with diet high in meat and fast food [62].
	C22:6 LPC	↑	↑	
	C24:0 LPC	↑	↑	
Glycerophosphocholines	C38:7 PC Plasmalogen	↑	↑	Phospholipids found in neuronal and cardiac cell membranes. Exhibit antioxidant properties and inversely associated with obesity, diabetes, metabolic syndrome [31]; C38:7 PC and C38:7 PE plasmalogens are positively associated with MDS and fish intake [32,39]. Ether C38:7 PE and ether C40:7 PE increases with fish oil supplementation [33].
Glycerophosphoethanolamines	C38:7 PE Plasmalogen C40:7 PE Plasmalogen	↑	↑	
Ceramides	C16:0 Ceramide d18:1	↓	↓	Associated with incident CVD [29], and inversely associated with DASH diet [43]; Elevated level leads to insulin resistance, and lower levels protect from obesity in mouse models [52].
Sphingomyelins	C18:1 SM	↓	↓	Higher levels associated with diabetes [51]; inversely associated with AHEI, MDS, DASH diet, and fish intake [24,25,43]
Fatty esters	C5:1 Carnitine	↑	↑	Short chain acylcarnitine associated positively with insulin sensitivity [63]
	C6 Carnitine C7 Carnitine	↓	↓	Medium chain acylcarnitines associated with obesity, type 2 diabetes [28], and CVD [50]; inversely associated with MDS [39]
Benzenes	Trimethylbenzene	↑	↑	Used as industrial solvents and has three isomers, some of which are found naturally in plants [64]
Pyrimidines	Ectoine	↑	↑	Produced by various bacteria species, binds water molecules, and an osmoprotectant [65]; positively associated with chicken intake [32]
Amino acids, peptides, and derivatives	Asparagine	↑	↑	Non-essential amino acid, associated with decreased cardiovascular and all-cause mortality [66,67]
	Cinnamoyl-glycine	↑	↑	Conjugate of cinnamic acid and glycine and associated with decreased risk of diabetes [68]; cinnamic acid is synthesized in plants, commonly found in cinnamon, and derivatives of cinnamic acid

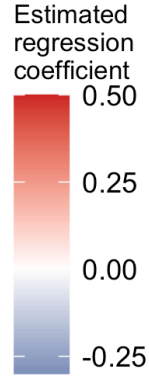
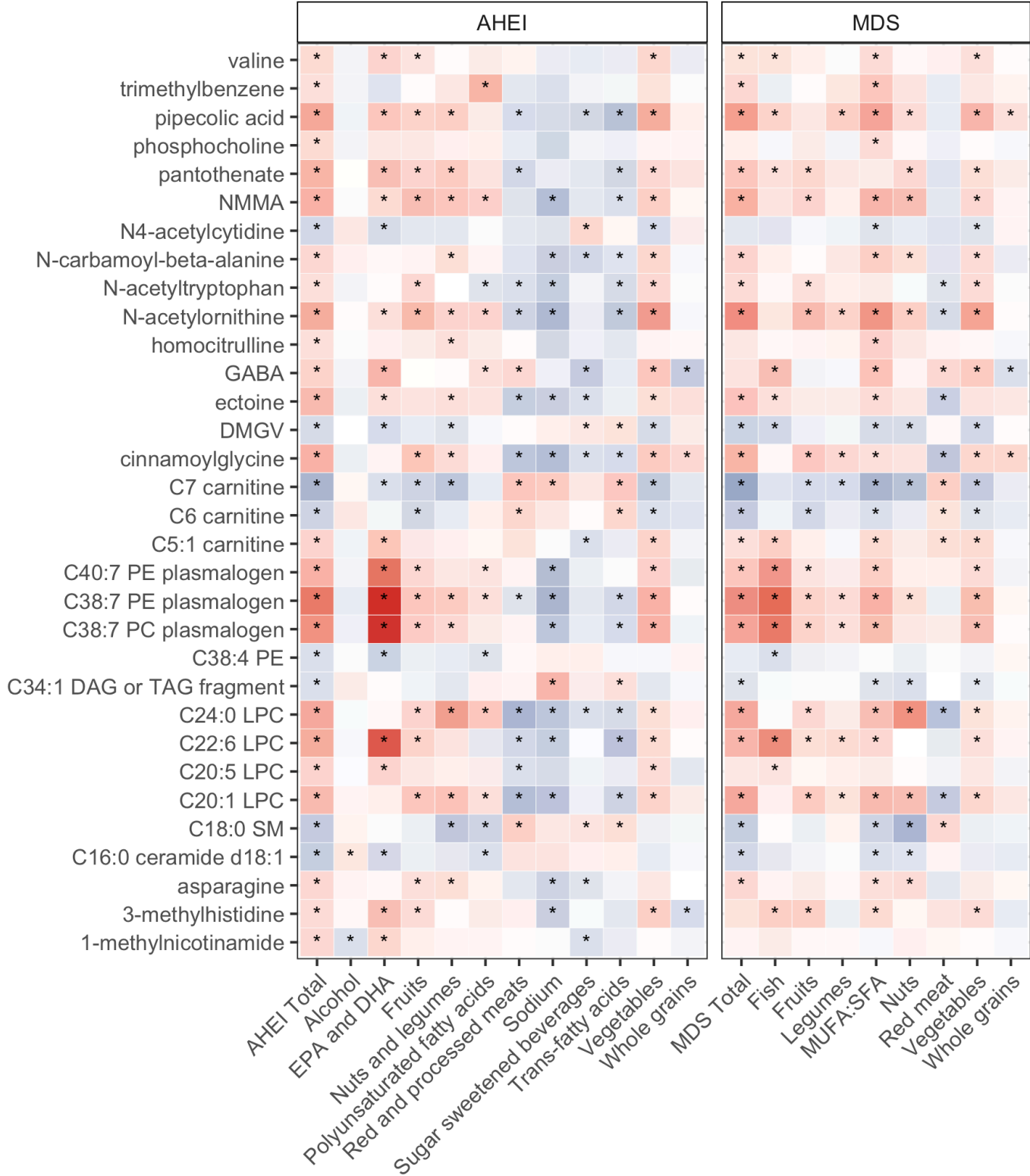
				linked with improved glucose homeostasis and insulin resistance [57].
	N-monomethyl-arginine (Targinine)	↑	↑	Methylated form of arginine, inhibitor of nitric oxide synthase, and potent vasoconstrictor [54]; associated with decreased risk of incident coronary heart disease in African Americans [56].
	N-acetyl-ornithine	↑	↑	Intermediate metabolite in the biosynthesis of arginine; positively associated with tea intake, DASH diet, vegetable intake, and AHEI [32,40,43]
	N-acetyl-tryptophan	↑	↑	Inhibitor of cytochrome c release and the binding of substance P to neurokinin 1 receptor with potential downstream neuroprotective effects [69]
	Pantothenate (Vitamin B ₅)	↑	↑	Component of coenzyme A synthesis, essential for fatty acid metabolism; positively associated with MDS [24]
	Pipecolic acid	↑	↑	Intermediate metabolite in the metabolism of lysine to 2-aminoadipic acid, which is associated with increased risk of incident diabetes [70]; elevated in peroxisome diseases, reported to have an inhibitory effect on the central nervous system [71]; positively associated with MDS and DASH diet [39,43]
	Valine	↑	↑	A branched chain amino acid, related to increased risk of incident diabetes and insulin resistance [72,73]; metabolized to beta-amino-isobutyric acid, which induces brown adipocyte specific gene expression [74]
Carboximidic acids	N-carbamoyl-beta-alanine (Ureidopropionic acid)	↑	↑	Intermediate metabolite of uracil catabolism to beta-alanine
Keto acids	Dimethyl-guanidino valeric acid (DMGV)	↓	↓	Associated with incident diabetes, nonalcoholic fatty liver disease, coronary artery disease, and cardiovascular mortality [30,58]; positively associated with sugar-sweetened beverage intake and inversely associated with vegetable intake [30]

AHEI, Alternative Healthy Eating Index; DAG, diacylglycerol; DASH, Dietary Approaches to Stop Hypertension; LPC, lysophosphatidylcholine; MDS, Mediterranean-style Diet Score; PC, phosphatidylcholine; PE, phosphatidylethanolamine; TAG, triacylglycerol. Number after C denotes carbon atoms in acyl side chains and number after colon denotes number of double bonds. References 59 to 74 are included in the Supplementary Material.





HILIC metabolites



Components