

1 **Identification of circulating apolipoprotein M as a new determinant of insulin sensitivity**
2 **and relationship with adiponectin**

3

4 Laurie Frances¹, Mikaël Croyal^{2,3,4}, Jean-Bernard Ruidavets⁵, Marie Maraninchi⁶, Guillaume Combes¹,
5 Jérémy Raffin⁷, Philippe de Souto Barreto^{5,7}, Jean Ferrières^{5,8}, Ellen E. Blaak⁹, Bertrand Perret¹, Cédric
6 Moro¹, René Valéro⁶, Laurent O. Martinez^{1, *}, Nathalie Viguerie^{1, *}

7

8 ¹ Institut des Maladies Métaboliques et Cardiovasculaires, I2MC, Université de Toulouse, INSERM,
9 Université Toulouse III - Paul Sabatier (UPS), UMR1297, 31432 Toulouse, France

10 ² Nantes Université, CHU Nantes, CNRS, INSERM, BioCore, US16, SFR Bonamy, 44000 Nantes, France

11 ³ CRNH-Ouest Mass Spectrometry Core Facility, 44000 Nantes, France

12 ⁴ Nantes Université, CHU Nantes, CNRS, INSERM, l'Institut du Thorax, 44000 Nantes, France

13 ⁵ CERPOP UMR 1295, University of Toulouse III, Inserm, UPS, 31000 Toulouse, France

14 ⁶ Aix Marseille Université, APHM, INSERM, INRAe, C2VN, Department of Nutrition, Metabolic
15 Diseases and Endocrinology, University Hospital La Conception, 13385 Marseille, France

16 ⁷ Gérontopôle de Toulouse, Institut du Vieillissement, Centre Hospitalo-Universitaire de Toulouse,
17 31000 Toulouse, France

18 ⁸ Department of Cardiology, Toulouse Rangueil University Hospital, Toulouse University School of
19 Medicine, Toulouse, France

20 ⁹ Department of Human Biology, NUTRIM, School of Nutrition and Translational Research in
21 Metabolism, Maastricht University Medical Centre+(MUMC+), Maastricht, The Netherlands

22 * These authors contributed equally to this work.

23

24 **Contact info :**

25 Laurent Martinez, LiMitAging team, INSERM, UMR 1297, 1 Avenue du Pr. Jean Poulhès, BP 84225,
26 31432 Toulouse, France. Tel: +33531224147. ORCID ID: 0000-0002-0985-3152 Email:
27 laurent.martinez@inserm.fr

28 Nathalie Viguerie, MetaDiab team, Inserm, UMR 1297, 1 Avenue du Pr. Jean Poulhès, BP 84225,
29 31432 Toulouse, France. Tel: +33561325631. ORCID ID: 0000-0002-1730-9915 Email :
30 nathalie.viguerie@inserm.fr

31

32 **Trial registration:** NCT01277068, registered 13 January 2011; NCT02332434, registered 5 January
33 2015; and NCT00390637, registered 20 October 2006.

34

35 **Competing interests**

36 The authors have no conflicts of interest to declare.

37

38

39

40

41 **Abstract**

42 **Background.** Adiponectin and apolipoprotein M (apoM) are adipokines indicatives of healthy adipose
43 tissue and down-regulated with obesity. We compared circulating apoM with adiponectin regarding
44 their relationship with metabolic parameters and insulin sensitivity and examined their gene
45 expression patterns in adipocytes and in the adipose tissue.

46 **Methods.** Circulating apoM and adiponectin were examined in 169 men with overweight in a cross-
47 sectional study, and 13 patients with obesity during a surgery-induced slimming program.
48 Correlations with clinical parameters including the insulin resistance index (HOMA-IR) were analyzed.
49 Multiple regression analyses were performed on HOMA-IR. The *APOM* and *ADIPOQ* gene expression
50 were measured in the adipose tissue from 267 individuals with obesity and a human adipocyte cell
51 line.

52 **Results.** Participants with type 2 diabetes had lower circulating adiponectin and apoM, while apoM
53 was higher in individuals with dyslipidemia. Similar to adiponectin, apoM showed negative
54 associations with HOMA-IR and hs-CRP ($r > -0.2$), and positive correlations with HDL markers (HDL-C
55 and apoA-I, $r > 0.3$). Unlike adiponectin, apoM was positively associated with LDL markers (LDL-C and
56 apoB100, $r < 0.20$) and negatively correlated with insulin and age ($r > -0.2$). The apoM was the sole
57 negative determinant of HOMA-IR in multiple regression models, while adiponectin not contributing
58 significantly. After surgery, the change in HOMA-IR was negatively associated with the change in
59 circulating apoM ($r = -0.71$), but not with the change in adiponectin. The *APOM* and *ADIPOQ* gene
60 expression positively correlated in adipose tissue ($r > 0.44$) as well as in adipocytes ($r > 0.81$). In
61 adipocytes, *APOM* was downregulated by inflammatory factors and upregulated by adiponectin.

62 **Conclusions.** The apoM rises as a new partner of adiponectin regarding insulin sensitivity. At the
63 adipose tissue level, the adiponectin may be supported by apoM to promote a healthy adipose
64 tissue.

65

66 **Introduction**

67 Obesity is a global concern as excessive body fat is linked to metabolic syndrome, type 2 diabetes
68 (T2D), and cardiovascular diseases [1]. Adipose tissue (AT) produces various factors, including
69 numerous adipokines with local and broad systemic effects on whole-body homeostasis [2].

70 Most adipokines are secreted at higher levels with increasing fat and play a detrimental role in the
71 development of metabolic disorders associated with obesity [2]. Conversely, few adipokines, like
72 adiponectin, are inversely associated with body fat [2]. Adiponectin is an adipose-specific protein,
73 encoded by *ADIPOQ*, which blood concentration decreases with obesity, metabolic syndrome, or T2D
74 [3]. Adiponectin possesses anti-inflammatory, anti-diabetic, anti-atherogenic, and cardioprotective
75 properties [4].

76 Recently, apolipoprotein M (apoM), predominantly produced by the liver and kidney, was found
77 to be secreted by adipocytes [5]. Gene expression of *APOM* in AT is lower in individuals with high
78 body fat, metabolic syndrome, or insulin resistance (IR) compared to lean healthy individuals [5].
79 Accordingly, blood levels of apoM are reduced in obesity, metabolic syndrome, and T2D [6-8].
80 Overall, apoM is an adipokine that exhibits a similar expression profile in AT and in the circulation to
81 that of adiponectin [9]. Therefore, we hypothesized that both adiponectin and apoM could similarly
82 predict changes in insulin sensitivity.

83 In this study, we conducted a comparative analysis of these two beneficial adipokines concerning
84 obesity-related disorders, with a particular focus on glucose homeostasis. We investigated whether
85 their blood concentrations were associated with lipid and glucose homeostasis parameters, and

86 whether they could contribute to insulin sensitivity. Furthermore, we explored the relationship
87 between apoM and adiponectin at the level of the adipocyte.

88

89 **Methods**

90 ***Study participants***

91 The studies, referred as cohorts A, B and C, were conducted in accordance with the ethical
92 principles of the Declaration of Helsinki. Before any procedure, all participants received oral
93 information and signed a written informed consent form before they participated in any of the study
94 procedures. Figure S1 illustrates the participants' flowchart.

95 **Cohort A:** The protocol received approval from the local ethics committee (CCPPRB,
96 Toulouse/Sud-Ouest, file #1-99-48, Feb 2000). The biological sample collection was registered as DC-
97 2008-463 #1 to the Ministry of Research and to the Regional Health authority. Cohort A consisted of
98 male participants selected from the Genetique et ENvironnement en Europe du Sud (GENES) cross-
99 sectional case-control study. In this ancillary analysis, the patients with coronary artery disease (CAD)
100 (referred to as cases) were age-matched to individuals without CAD (controls), and apoM was
101 quantified using a multiplex liquid chromatography-tandem mass spectrometry (LC-MS/MS) method
102 [10]. Subjects with missing data for fasting serum insulin and adiponectin levels were excluded,
103 resulting in a final sample of 169 participants (mean age 60.6 years [SD, 8.1]), comprising 102
104 controls and 67 cases. Detailed procedures have been reported previously [11]. Anthropometric
105 measurements, including fat mass assessment using Bioimpedance, and clinical variables were
106 recorded. Venous blood was sampled after an overnight fast. Standardized interviews, conducted by
107 a single physician, gathered information on environmental characteristics, medical history, and
108 cardiometabolic risk factors. Alcohol consumption was calculated as the sum of different types of
109 drinks. Physical activity was assessed using a standardized questionnaire and categorized into two
110 levels: "high" if physical activity was performed for ≥ 20 min twice a week, or "low" if physical activity
111 was performed for < 20 min once a week or less. Dyslipidemia was defined as treatment with drugs

112 or fasting serum total cholesterol ≥ 2.50 g/L as described in [12]. Hypertension was defined as
113 treatment with drugs or systolic blood pressure ≥ 140 mmHg or diastolic blood pressure ≥ 90 mmHg.
114 T2D was defined as treatment with drugs or fasting blood glucose ≥ 7.0 mmol/L.

115 **Cohort B:** The approval was received by the Research Ethics Board of Aix-Marseille University
116 (NCT01277068 and NCT02332434). Cohort B comprised 13 individuals with obesity of both sexes
117 (77% women) with a mean age of 37.6 years [SD, 9.1], who underwent sleeve gastrectomy at the
118 General and Endocrine Surgery Department of La Conception Hospital (Marseille, France), as
119 previously described [13]. The clinical evaluation and laboratory tests were conducted at the
120 Nutrition Department of La Conception Hospital. Patients were examined one month before
121 (baseline) and one year after gastric sleeve surgery to reach steady weight loss. Each visit included
122 measuring anthropometric parameters and blood sampling after an overnight fast [13].

123 **Cohort C:** This study is part of the Diet, Obesity, and Genes (DiOGenes) trial, which involved
124 individuals with overweight or obesity recruited between 2005 and 2007 in 8 European countries
125 [14]. The protocol received approval from the ethical boards of each of the 8 centers (NCT00390637).
126 For the present study, a subgroup of 267 individuals (95 men and 172 women) with a mean age of
127 42.7 years [SD, 6.4] was selected. Anthropometric measurements, blood sampling and subcutaneous
128 abdominal AT needle biopsies were performed after an overnight fast. Clinical measures and
129 subcutaneous abdominal AT samples were analysed at baseline (before any intervention), as
130 described in [15].

131

132 ***Biochemical analyses***

133 Fasting blood glucose, triglycerides (TG), cholesterol, high-density lipoprotein-cholesterol (HDL-C),
134 γ -glutamyltransferase (γ -GT), and high-sensitivity C-reactive protein (hs-CRP) were assayed with
135 enzymatic reagents on an automated analyzer (Hitachi 912 and Cobas® Analyzer, Roche Diagnostics).
136 Low-density lipoprotein-cholesterol (LDL-C) was calculated using the Friedewald formula. The
137 estimated glomerular filtration rate (eGFR) was calculated using the Chronic Kidney Disease

138 Epidemiology Collaboration (CKD-EPI) equation. Insulin concentration was measured by
139 electrochemiluminescence immunoassay (Advia Centaur, Siemens Healthineers, cohort A and Cobas®
140 Analyzer, Roche Diagnostics, cohort B). IR was assessed using the Homeostasis Model Assessment of
141 Insulin Resistance (HOMA-IR) index, calculated as [fasting glucose (mM) x fasting insulin
142 (mU/L)/22.5]. Adiponectin serum levels were measured using a specific enzyme-linked
143 immunosorbent assay kit (Quantikine® Human Adiponectin, R&D Systems). Apolipoprotein A-I (apoA-
144 I), apolipoprotein B100 (apoB100), and apolipoprotein C-III (apoC-III) were determined by
145 immunoturbidimetric assay on an automated analyzer (Cobas® Analyzer, Roche Diagnostics, Cohort
146 A) and by immunonephelometric assay (Roche Diagnostics) using a BN ProSpec analyzer (Siemens
147 Healthineers). ApoM was measured by the LC-MS/MS method, as described previously [13].

148

149 **Cell culture**

150 Cells were incubated at 37°C in a humidified atmosphere containing 5% CO₂. Human multipotent
151 adipose-derived stem cells (hMADS) were cultivated as described in [5]. Briefly, hMADS cells were
152 differentiated for 13 days in 50/50 DMEM 1g/L glucose (Sigma-Aldrich) and Ham's F-12 (Lonza)
153 medium, with 125 nM transferrin, 10 nM insulin, 0.2 nM triiodothyronine, 100 µM 3-isobutyl-1-
154 methylxanthine (IBMX), 1 µM dexamethasone (Sigma-Aldrich), and 100 nM rosiglitazone (Cayman).
155 ThP-1 monocytes were cultured in RPMI-1640 medium containing 10% FBS, 1 mM sodium pyruvate,
156 50 µM 2-mercaptoethanol (Invitrogen), and 36 mM glucose (Sigma-Aldrich). For differentiation into
157 M0 macrophages, the cells were seeded in a serum-free, 2-mercaptoethanol-free RPMI medium
158 containing 100 nM 12-phorbol-13-myristate acetate (Sigma-Aldrich) for 48h. Macrophages were then
159 polarized for 3 days, inducing the M2-like anti-inflammatory phenotype with 20 ng/mL IL-4 (Sigma-
160 Aldrich) or the M1-like pro-inflammatory phenotype with 2 ng/mL Escherichia coli lipopolysaccharide
161 and 10 ng/mL IFN γ (Sigma-Aldrich).

162

163 **Cell treatment**

164 After 10 days of differentiation, the hMADS cells were treated with recombinant globular
165 adiponectin (PeproTech), or CRP (Merck Millipore) or exposed to 50/50 conditioned media from M1-
166 like or M2-like polarized ThP-1 for 72 hours. The cells were transduced with AAVs vectors (serotype
167 8) encoding either apoM or mCherry (designed and produced by the Vectorology platform of the
168 Cancerology Research Center of Toulouse, Inserm UMR1037) for 72 hours, as described in [16].
169 Subsequently, cells were lysed using RLT buffer (Qiagen) containing 1% 2-mercaptoethanol (Sigma-
170 Aldrich), flash frozen and stored at -80°C.

171

172 **Gene expression**

173 RNA was extracted using a Rneasy mini kit (Qiagen) following manufacturer's instructions. Total
174 RNA was reverse transcribed using Superscript II reverse transcriptase (Invitrogen). Real-time PCR
175 was performed using Taqman probes or SyberGreen primers assays with a QuantStudio 5 Real-Time
176 PCR system (Applied Biosystems). For the AT samples, expression of *APOM* (Hs00219533_m1) or
177 *ADIPOQ* (Hs00605917_m1) data were normalized to *PUM1* (Hs00472881_m1). For the hMADS cells,
178 expression of *APOM* or *ADIPOQ* (forward GCAGAGATGGCACCCCTG, reverse
179 GGTTCACCGATGTCTCCCTTA) were normalized to *LRP10* (Hs01047362_m1).

180

181 **Statistical analyses**

182 The categorical parameters are expressed as numbers (%) and the quantitative parameters as
183 means \pm the standard deviation (SD). Shapiro–Wilks test was used to examine the normality of
184 distribution of residuals and Levene's test to determine the homogeneity of the variances. When
185 comparing cases to controls or baseline versus after surgery, the mean values of the quantitative
186 variables were analyzed by Student's *t*-test. When the basic assumptions of Student's *t*-test were not
187 satisfied, the data were logarithmically transformed or subjected to a Wilcoxon–Mann–Whitney test.
188 Associations of apoM, adiponectin, and HOMA-IR with anthropometric parameters, biological
189 markers, and environmental factors were tested using Spearman's rank correlations with *P*-value

190 adjustment using false discovery rate. For regression analyses of HOMA-IR, a backward stepwise
191 selection was used. The F-statistics for a variable to stay in the model had to be significant at $P <$
192 0.10. Variables were maintained in the model when the F-statistic was significant at $P < 0.05$. For
193 each quantitative variable, regression analyses were performed with polynomial models to look for
194 possible nonlinear relationships with dependent variables. Lack of multicollinearity was assessed by
195 examining the variance inflation factors in the final models.

196

197 **Results**

198 *Circulating adiponectin versus apoM relationship with cardiometabolic status*

199 The clinical and biological characteristics of cohort A are presented in Table S1. Cohort A
200 comprised overweight men (BMI, 26.7 kg/m², [SD, 3.5]), of who 39.6% were patients with CAD
201 (cases).

202 Compared with the control participants, the CAD patients had less physical activity and were
203 diagnosed or treated more often for hypertension, dyslipidemia, or T2D, with a larger proportion
204 suffering from T2D (25.4% versus 6.9% in the controls). The body fat mass percentage and waist
205 circumference were also higher in cases than in the controls. Among the biological markers, the
206 levels of total cholesterol and LDL-C were lower in cases, probably reflecting the effects of lipid-
207 lowering drugs in patients. However, individuals with CAD displayed higher levels of TG, hs-CRP, and
208 γ -GT. HDL markers (HDL-C and apoA-I) were lower. Finally, the cases exhibited higher HOMA-IR and
209 lower adiponectin levels than the control participants, while the apoM levels were similar between
210 the two groups.

211 Blood levels of apoM and adiponectin were then considered according to other disease
212 conditions, including T2D, dyslipidemia, and hypertension (Table S2). Adiponectin and apoM levels
213 were lower in participants diagnosed or treated for T2D. Unlike adiponectin, apoM levels were lower
214 in participants with hypertension, while they were higher in subjects with dyslipidemia than in the
215 individuals without these conditions. These observations were weakened when only the treatment

216 conditions were considered (Table S3), except for adiponectin, for which the levels were lower in
217 participants treated for dyslipidemia and T2D.

218

219 ***Circulating apoM is a negative determinant of insulin resistance***

220 Correlations between circulating levels of apoM and biological and clinical parameters relative to
221 cardiovascular and T2D risk factors were investigated in the entire study population (cohort A). These
222 correlations were compared with equivalent correlation for adiponectin and HOMA-IR (Table 1).

223 The blood level of apoM did not show any significant correlation with that of adiponectin.
224 However, similar to adiponectin, apoM exhibited a negative association with hs-CRP ($r=-0.28$) and
225 HOMA-IR ($r=-0.29$), while it was positively associated with HDL markers ($r=0.32$, for both HDL-C and
226 apoA-I). Unlike adiponectin, apoM did not correlate with TG, but it was positively associated with
227 total cholesterol ($r=0.36$), LDL markers (LDL-C and apoB100, $r=0.27$; and $r=0.20$, respectively), and
228 apoC-III ($r=0.19$). No association was observed between apoM and cardiac functions (systolic blood
229 pressure, heart rate), or environmental factors (smoking, physical activity), except for a positive
230 correlation between apoM and alcohol consumption ($r=0.19$). Of note, apoM was negatively
231 associated with fat mass ($r=-0.26$) and age ($r=-0.28$).

232 In addition to the expected negative correlations with apoM and adiponectin, HOMA-IR displayed
233 negative correlations with HDL markers (apoA-I and HDL-C) and physical activity and positive
234 correlations with adiposity markers (BMI, fat mass, and waist circumference), TG, apoC-III, hs-CRP,
235 and γ -GT (Table1).

236 To further identify the determinants of IR among these variables associated with HOMA-IR, we
237 conducted a multiple regression analysis with HOMA-IR as the dependent variable. The model
238 included apoM and adiponectin as potent explanatory variables, along with BMI, waist
239 circumference, physical activity, TG, HDL-C, hs-CRP, γ -GT, apoC-III, apoB100, T2D, dyslipidemia,
240 hypertension, and case-control status. This model explained 39% of the variability in HOMA-IR and
241 revealed that diabetes status and four variables were determinants of HOMA-IR variability, which

242 included apoM but not adiponectin (Table 2). Among the identified determinants, waist
243 circumference and γ -GT showed the strongest positive associations with HOMA-IR, explaining 13.6%
244 and 9.6% of the variability, respectively. In contrast, apoM displayed an inverse association,
245 accounting for 5.6% of the variability in HOMA-IR. Notably, no significant interaction between apoM
246 and case-control status was observed ($P=0.58$). Furthermore, even after removing apoM from the set
247 of variables at entry, adiponectin still did not contribute to the variability of HOMA-IR (data not
248 shown).

249

250 ***Increased circulating apoM is closely related to insulin resistance relief after sleeve gastrectomy***

251 To further study the association between apoM and IR, we examined the changes in circulating
252 apoM after sleeve gastrectomy in patients with obesity and analyzed their correlation with the
253 improvement in HOMA-IR. Anthropometric and biochemical characteristics of these patients at
254 baseline (*i.e.*, before gastric sleeve surgery) and one year after surgery are presented in Table S4.
255 One year after surgery, all individuals showed a decrease in adiposity markers (BMI, fat mass, and
256 waist circumference) and displayed an improved lipid profile, including reduced atherogenic lipids
257 (TG and LDL-C) and increased HDL markers (HDL-C and apoA-I). Additionally, there was a significant
258 decrease in HOMA-IR (from 4.26, [SD, 1.49] to 1.39, [SD, 0.69]) and an increase in adiponectin levels
259 (from 5.54 $\mu\text{g/L}$, [SD, 1.61] to 10.47 $\mu\text{g/L}$ [SD, 4.07]). Circulating levels of apoM were not significantly
260 changed (Table S4); however, we found a strong inverse relationship between the changes in HOMA-
261 IR and changes in circulating apoM ($r=-0.71$), while no significant association was observed with
262 changes in adiponectin (Figure 2). Of note, there was a trend of a positive correlation between
263 changes in circulating apoM and changes in adiponectin ($r=0.57$, $P=0.08$, not shown).

264

265 ***Positive association between ADIPOQ and APOM mRNA level in AT***

266 We compared the gene expression of adiponectin and apoM in human subcutaneous AT from
267 individuals with overweight or obesity (cohort C, Figure 2A and Table S5). *ADIPOQ* gene expression in

268 AT was higher than *APOM* gene expression and both were positively correlated (Figure 2A, $r=0.441$).
269 Additionally, HOMA-IR negatively correlated with AT expression of *ADIPOQ* ($r=0.147$, Figure 2B), and
270 *APOM* gene expression in AT ($r=-0.1226$, Figure 2C).

271

272 ***Inflammatory factors downregulate ADIPOQ and APOM expression in adipocytes***

273 Due to the close association of IR with AT inflammation, we aimed to mimic the impact of
274 inflammatory conditions on *ADIPOQ* and *APOM* expression in adipocytes. We treated hMADS
275 adipocytes with conditioned media from pro-inflammatory M1-like or anti-inflammatory M2-like
276 polarized ThP-1 macrophages. The former media led to down-regulation of both *ADIPOQ* and *APOM*
277 gene expressions (Figure 3A). A strong correlation between *ADIPOQ* and *APOM* gene expression was
278 observed in these adipocytes ($r=0.91$, Figure 3B). Similarly, a treatment with CRP also downregulated
279 the expression of *ADIPOQ* and *APOM* genes in hMADS cells (Figure 3C), while the positive correlation
280 between *ADIPOQ* and *APOM* mRNA levels persisted under this condition ($r=0.82$, Figure 3D).

281

282 ***Adiponectin promotes APOM expression in adipocytes***

283 Adipocytes express specific adiponectin receptors, whereas apoM lacks known specific receptor.
284 To further investigate the relationship between the two adipokines, we examined the effect of
285 adiponectin on *APOM* gene expression. Treating hMADS adipocytes with increasing concentrations of
286 adiponectin resulted in a dose dependent increase in *APOM* expression, with a mean 1.6-fold [SD,
287 0.9] rise at 1 μ M adiponectin (Figure 4).

288

289 **Discussion**

290 Here, we explored the relationship between the circulating concentrations of two beneficial
291 adipokines, namely adiponectin and apoM, and cardiometabolic parameters in high-risk populations.
292 We also examined the relationship between the two adipokines at the adipose level.

293 Firstly, despite the strong correlation of *APOM* and *ADIPOQ* gene expression in adipocytes and AT,
294 the apoM concentration did not correlate with that of adiponectin, as a hallmark of their distinct
295 tissue origin. While their respective circulating levels were lower in participants with T2D, their level
296 may still reflect distinct cardiometabolic states.

297 As anticipated, our study validated previously reported associations between blood levels of
298 adiponectin and lipids [17, 18]. Adiponectin displayed an inverse correlation with TG and a positive
299 association with HDL markers such as HDL-C and apoA-I. In contrast, the circulating apoM level was
300 not associated with plasma TG but displayed a positive correlation with both anti-atherogenic HDL
301 (HDL-C, apoA-I) and atherogenic LDL (LDL-C, apoB100) markers. This association of apoM with both
302 HDL and LDL markers has been reported previously [6, 19] and is likely due to the fact that apoM is
303 transported by both HDL and LDL rather than having a specific role in lipoprotein metabolism [19].
304 However, it is important to note that apoM is predominantly transported by HDL, and a recent report
305 has shown that low plasma apoM is independently associated with heart failure [20]. This suggest
306 that apoM may play a role in some HDL cardioprotective functions [9].

307 An expected reduced level of adiponectin was found in patients with CAD [17]. In humans, the
308 *ADIPOQ* gene, located on chromosome 3q27, contains polymorphisms that influence the level and
309 activity of adiponectin, SNP 276 (G>T) and I164T. The former is associated with obesity, IR, and T2D
310 [21], while the latter is a missense mutation associated with metabolic syndrome and CAD [22]. There
311 is consistent evidence of an inverse relationship between plasma adiponectin and metabolic
312 syndrome, low-grade inflammation, T2D, and cardiovascular risk [23-25]. Of note, circulating
313 adiponectin has paradoxically been associated with increased all-cause and cardiovascular mortality
314 [26, 27]. Adiponectin resistance in vessels might be a clue to explain this unexpected outcome on the
315 prognostic value of circulating adiponectin [27].

316 ApoM concentration was found to be higher in participants with dyslipidemia, consistent with
317 previous studies [8]. This observation aligns with the previously mentioned positive association of
318 apoM with LDL-C. Interestingly, the relationship between apoM and dyslipidemia status was no

319 longer observed when only the treated patients (the majority of whom were on statin treatment)
320 were considered among the subjects with dyslipidemia. This is consistent with the effect of statins in
321 lowering apoM levels [6]. Additionally, apoM levels were lower in subjects with hypertension, in
322 accordance with its role in reducing blood pressure in hypertensive mice [28].

323 Similarly to *APOM* expression in AT [5] and consistent with previous reports [18, 20], circulating
324 apoM was found to be negatively associated with body fat and hs-CRP level, a biomarker of systemic
325 inflammation. Additionally, our *in vitro* studies on adipocytes indicate that conditions mimicking an
326 inflammatory context, including treatments with conditioned media from pro-inflammatory
327 macrophages or CRP, down-regulate *APOM* gene expression. This is in line with our previous study
328 reporting a negative effect of TNF α on *APOM* gene expression in adipocytes [5]. This suggests that a
329 low circulating apoM may serve as a potential marker of systemic inflammation and dysfunctional
330 AT.

331 While adiponectin is a key adipokine in preventing metabolic syndrome and associated
332 pathologies, much less is known about apoM, especially regarding its expression in adipocytes. ApoM
333 is distributed in various tissues, with primary expression in hepatocytes and proximal tubular kidney
334 cells, and to a lesser extent in endothelial cells and adipocytes [9, 29]. The human *APOM* gene is
335 located on chromosome 6p21.33. There is evidence that T-778C polymorphism in the proximal
336 promoter region of the *APOM* gene confers susceptibility to the development of T2D [30]. Another
337 variant, rs1266078, resulted in an 11% lower circulating apoM, but no association was found with the
338 risk of T2D [31]. Similar to adiponectin, we found a lower level of apoM in participants with T2D and
339 an inverse association with IR. Surprisingly, in a multiple linear regression model, the apoM level in
340 cohort A was the only negative determinant of HOMA-IR, independently of coronary status, while
341 adiponectin did not contribute to the variability of HOMA-IR. This indicates that in men with
342 overweight, blood apoM has a stronger association to HOMA-IR than circulating adiponectin.

343 To investigate the relationship between these two adipokines and IR, we examined whether
344 weight-reduction surgery in patients with obesity (cohort B) could influence the levels of apoM and

345 its association with IR. As reported elsewhere, patients with obesity (cohort B, baseline) exhibited
346 lower circulating levels of adiponectin [32] and apoM [33] compared to individuals with overweight
347 (cohort A), consistent with the previously mentioned negative association of plasma adiponectin and
348 apoM with fat mass. Bariatric surgery offers an efficient approach for managing obesity, with various
349 surgical procedures available [34]. Among these, sleeve gastrectomy accounts for 55.4% of all
350 bariatric surgeries thanks to its minimal invasiveness [35] and has been shown to resolve IR and T2D
351 [36]. In our study, one year after sleeve gastrectomy, all patients exhibited a HOMA-IR below 2.5 and
352 a two-fold increase in adiponectin concentration. The minor increase (+13%) in apoM levels did not
353 reach statistical significance ($P > 0.1$). Circulating apoM has been reported to be filtered then taken
354 up from urine by tubular kidney cells *via* the megalin receptor [37]. Given that people with class 3
355 obesity ($BMI > 40 \text{ kg/m}^2$) often present kidney disease that could be alleviated after sleeve
356 gastrectomy, one might expect an increase in plasma apoM levels associated with improved renal
357 function. However, the patients of Cohort B had mild CKD as measured by eGFR, and no significant
358 change in eGFR was found, in line with a recent report [38]. Conversely, improvement in insulin
359 sensitivity following surgery was strongly associated with increase in circulating apoM. This reciprocal
360 correlation between apoM and HOMA-IR suggests that increased circulating apoM could improve
361 glucose homeostasis by reducing IR. This provides additional evidence that, in complement to
362 adiponectin, apoM may be an additional beneficial factor of glycaemic control.

363 Next, we examined the relationship between adiponectin and apoM at the AT level. For the first
364 time, we reported here a strong positive correlation between *ADIPOQ* and *APOM* gene expression in
365 human AT and adipocytes, independently of the inflammatory context. Interestingly, adiponectin
366 was found to promote the expression of *APOM* in adipocytes. Although further studies are needed to
367 identify the pathways regulating apoM expression and secretion in adipocytes, our observations
368 suggest a positive feedback loop between adiponectin and apoM that controls local AT inflammation
369 and might help prevent insulin sensitivity decline. Considering the importance of AT inflammation in

370 systemic IR [4], our study suggests that the adipose apoM might play a noticeable role in maintaining
371 a healthy AT environment and promoting systemic insulin sensitivity, alongside with adiponectin.

372 Several limitations of this study warrant mention. Firstly, we focused solely on one form of
373 circulating adiponectin. Considering that the high molecular weight isoform is considered as the
374 active form [32], further investigations to explore isoform specificity would be necessary. Secondly,
375 additional studies are required to determine if AT is a significant site of apoM production and to
376 understand the mechanism through which apoM may contribute to preventing IR.

377 In conclusion, the present study examined for the first time the relative contributions of
378 adiponectin and apoM regarding insulin sensitivity. We found a close relationship between adipose
379 apoM and adiponectin, and that plasma apoM, but not adiponectin, was a negative explanatory
380 variable of HOMA-IR, independently of coronary status. The stronger relationship of insulin
381 sensitivity with apoM rather than adiponectin was unexpected. This establishes apoM as a novel
382 factor associated to insulin sensitivity.

383

384 **Acknowledgments**

385 We are grateful to all individuals participating in this study. This research was funded by the Region
386 Occitanie Pyrénées-Méditerranée (GRAINE HEPATOCARE, Reference number: no. 19014226), Inserm,
387 Toulouse 3 University, and grants from Société Française de Nutrition. L.F. was supported by a Ph.D.
388 fellowship from Region Occitanie Pyrénées-Méditerranée and Inserm.

389

390 **Author Contributions**

391 Conceptualization, L.O.M. and N.V.; methodology, L.O.M., L.F., G.C., J.F., B.P., E.E.B, R.V., M.C., and
392 N.V.; formal analysis, J.B.R. and M.M.; data curation, L.F., J.B.R., J.R., and M.C.; draft preparation,
393 L.O.M. and N.V.; review and editing, L.F., J.B.R., M.M., G.C., J.R, P.S.R., J.F.; B.P.; C.M.; R.V.; M.C.,
394 E.E.B, L.O.M, and N.V.; supervision, L.O.M. and N.V.; funding acquisition, L.O.M. and N.V..

395

396 **Competing Interests**

397 The authors have no conflicts of interest to declare.

398

399 **Data Availability**

400 The datasets are available from the corresponding authors on reasonable request.

401

402 **References**

403

404 1. Longo M, Zatterale F, Naderi J, Parrillo L, Formisano P, Raciti GA *et al.* Adipose Tissue Dysfunction
405 as Determinant of Obesity-Associated Metabolic Complications. *International journal of*
406 *molecular sciences* 2019; **20**(9).

407

408 2. Scheja L, Heeren J. The endocrine function of adipose tissues in health and cardiometabolic
409 disease. *Nature reviews. Endocrinology* 2019; **15**(9): 507-524.

410

411 3. Maeda N, Funahashi T, Matsuzawa Y, Shimomura I. Adiponectin, a unique adipocyte-derived factor
412 beyond hormones. *Atherosclerosis* 2020; **292**: 1-9.

413

414 4. Li X, Zhang D, Vatner DF, Goedeke L, Hirabara SM, Zhang Y *et al.* Mechanisms by which adiponectin
415 reverses high fat diet-induced insulin resistance in mice. *Proceedings of the National*
416 *Academy of Sciences of the United States of America* 2020; **117**(51): 32584-32593.

417

418 5. Sramkova V, Berend S, Siklova M, Caspar-Bauguil S, Carayol J, Bonnel S *et al.* Apolipoprotein M: a
419 novel adipokine decreasing with obesity and upregulated by calorie restriction. *The American*
420 *journal of clinical nutrition* 2019; **109**(6): 1499-1510.

421

422 6. Kappelle PJ, Ahnstrom J, Dikkeschei BD, de Vries R, Sluiter WJ, Wolffenbuttel BH *et al.* Plasma
423 apolipoprotein M responses to statin and fibrate administration in type 2 diabetes mellitus.
424 *Atherosclerosis* 2010; **213**(1): 247-250.

425

426 7. Li T, Yang L, Zhao S, Zhang S. Correlation Between Apolipoprotein M and Inflammatory Factors in
427 Obese Patients. *Medical science monitor : international medical journal of experimental and*
428 *clinical research* 2018; **24**: 5698-5703.

429

430 8. Zhang P, Gao J, Pu C, Feng G, Wang L, Huang L *et al.* Effects of hyperlipidaemia on plasma
431 apolipoprotein M levels in patients with type 2 diabetes mellitus: an independent case-
432 control study. *Lipids in health and disease* 2016; **15**(1): 158.

433

434 9. Tavernier G, Caspar-Bauguil S, Viguerie N. Apolipoprotein M: new connections with diet, adipose
435 tissue and metabolic syndrome. *Current opinion in lipidology* 2020; **31**(1): 8-14.

436

437 10. Genoux A, Duparc T, Ruidavets JB, Ingueneau C, Najib S, Ferrieres J *et al.* A reference
438 measurement of circulating ATPase inhibitory factor 1 (IF1) in humans by LC-MS/MS:
439 Comparison with conventional ELISA. *Talanta* 2020; **219**: 121300.

440

441 11. Genoux A, Ruidavets JB, Ferrieres J, Combes G, Lichtenstein L, Pons V *et al.* Serum IF1
442 concentration is independently associated to HDL levels and to coronary heart disease: the
443 GENES study. *Journal of lipid research* 2013; **54**(9): 2550-2558.

444

- 445 12. Roeykens J, Rogers R, Meeusen R, Magnus L, Borms J, de Meirleir K. Validity and reliability in a
446 Flemish population of the WHO-MONICA Optional Study of Physical Activity Questionnaire.
447 *Med Sci Sports Exerc* 1998; **30**(7): 1071-1075.
- 448
- 449 13. Poirier J, Cloteau C, Aguesse A, Billot X, Thevenot E, Krempf M *et al.* Bariatric Surgery Improves
450 the Atherogenic Profile of Circulating Methylarginines in Obese Patients: Results from a Pilot
451 Study. *Metabolites* 2021; **11**(11).
- 452
- 453 14. Larsen TM, Dalskov SM, van Baak M, Jebb SA, Papadaki A, Pfeiffer AF *et al.* Diets with high or low
454 protein content and glycemic index for weight-loss maintenance. *The New England journal of*
455 *medicine* 2010; **363**(22): 2102-2113.
- 456
- 457 15. Bolton J, Montastier E, Carayol J, Bonnel S, Mir L, Marques MA *et al.* Molecular Biomarkers for
458 Weight Control in Obese Individuals Subjected to a Multiphase Dietary Intervention. *The*
459 *Journal of clinical endocrinology and metabolism* 2017; **102**(8): 2751-2761.
- 460
- 461 16. Jimenez V, Munoz S, Casana E, Mallol C, Elias I, Jambrina C *et al.* In vivo adeno-associated viral
462 vector-mediated genetic engineering of white and brown adipose tissue in adult mice.
463 *Diabetes* 2013; **62**(12): 4012-4022.
- 464
- 465 17. Hascoet S, Elbaz M, Bongard V, Bouisset F, Verdier C, Vindis C *et al.* Adiponectin and long-term
466 mortality in coronary artery disease participants and controls. *Arteriosclerosis, thrombosis,*
467 *and vascular biology* 2013; **33**(1): e19-29.
- 468
- 469 18. Schulze MB, Rimm EB, Shai I, Rifai N, Hu FB. Relationship between adiponectin and glycemic
470 control, blood lipids, and inflammatory markers in men with type 2 diabetes. *Diabetes care*
471 2004; **27**(7): 1680-1687.
- 472
- 473 19. Christoffersen C, Benn M, Christensen PM, Gordts P, Roebroek AJM, Frikke-Schmidt R *et al.* The
474 plasma concentration of HDL-associated apoM is influenced by LDL receptor-mediated
475 clearance of apoB-containing particles. *Journal of lipid research* 2012; **53**(10): 2198-2204.
- 476
- 477 20. Chirinos JA, Zhao L, Jia Y, Frej C, Adamo L, Mann D *et al.* Reduced Apolipoprotein M and Adverse
478 Outcomes Across the Spectrum of Human Heart Failure. *Circulation* 2020; **141**(18): 1463-
479 1476.
- 480
- 481 21. Vasseur F, Helbecque N, Dina C, Lobbens S, Delannoy V, Gaget S *et al.* Single-nucleotide
482 polymorphism haplotypes in the both proximal promoter and exon 3 of the APM1 gene
483 modulate adipocyte-secreted adiponectin hormone levels and contribute to the genetic risk
484 for type 2 diabetes in French Caucasians. *Hum Mol Genet* 2002; **11**(21): 2607-2614.
- 485
- 486 22. Ohashi K, Ouchi N, Kihara S, Funahashi T, Nakamura T, Sumitsuji S *et al.* Adiponectin I164T
487 mutation is associated with the metabolic syndrome and coronary artery disease. *Journal of*
488 *the American College of Cardiology* 2004; **43**(7): 1195-1200.

489

- 490 23. Duncan BB, Schmidt MI, Pankow JS, Bang H, Couper D, Ballantyne CM *et al.* Adiponectin and the
491 development of type 2 diabetes: the atherosclerosis risk in communities study. *Diabetes*
492 2004; **53**(9): 2473-2478.
- 493
494 24. Mojiminiyi OA, Abdella NA, Al Arouj M, Ben Nakhi A. Adiponectin, insulin resistance and clinical
495 expression of the metabolic syndrome in patients with Type 2 diabetes. *Int J Obes (Lond)*
496 2007; **31**(2): 213-220.
- 497
498 25. Okamoto Y, Kihara S, Funahashi T, Matsuzawa Y, Libby P. Adiponectin: a key adipocytokine in
499 metabolic syndrome. *Clin Sci (Lond)* 2006; **110**(3): 267-278.
- 500
501 26. Beatty AL, Zhang MH, Ku IA, Na B, Schiller NB, Whooley MA. Adiponectin is associated with
502 increased mortality and heart failure in patients with stable ischemic heart disease: data
503 from the Heart and Soul Study. *Atherosclerosis* 2012; **220**(2): 587-592.
- 504
505 27. Wang Y, Ma XL, Lau WB. Cardiovascular Adiponectin Resistance: The Critical Role of Adiponectin
506 Receptor Modification. *Trends in endocrinology and metabolism: TEM* 2017; **28**(7): 519-530.
- 507
508 28. Swendeman SL, Xiong Y, Cantalupo A, Yuan H, Burg N, Hisano Y *et al.* An engineered S1P
509 chaperone attenuates hypertension and ischemic injury. *Science signaling* 2017; **10**(492).
- 510
511 29. Bisgaard LS, Christoffersen C. Apolipoprotein M/sphingosine-1-phosphate: novel effects on lipids,
512 inflammation and kidney biology. *Current opinion in lipidology* 2019; **30**(3): 212-217.
- 513
514 30. Niu N, Zhu X, Liu Y, Du T, Wang X, Chen D *et al.* Single nucleotide polymorphisms in the proximal
515 promoter region of apolipoprotein M gene (apoM) confer the susceptibility to development
516 of type 2 diabetes in Han Chinese. *Diabetes/metabolism research and reviews* 2007; **23**(1):
517 21-25.
- 518
519 31. Liu D, Pan JM, Pei X, Li JS. Interaction Between Apolipoprotein M Gene Single-Nucleotide
520 Polymorphisms and Obesity and its Effect on Type 2 Diabetes Mellitus Susceptibility.
521 *Scientific reports* 2020; **10**(1): 7859.
- 522
523 32. Wang ZV, Scherer PE. Adiponectin, the past two decades. *Journal of molecular cell biology* 2016;
524 **8**(2): 93-100.
- 525
526 33. Ooi EM, Watts GF, Chan DC, Nielsen LB, Plomgaard P, Dahlback B *et al.* Association of
527 apolipoprotein M with high-density lipoprotein kinetics in overweight-obese men.
528 *Atherosclerosis* 2010; **210**(1): 326-330.
- 529
530 34. Breen DM, Rasmussen BA, Kokorovic A, Wang R, Cheung GW, Lam TK. Jejunal nutrient sensing is
531 required for duodenal-jejunal bypass surgery to rapidly lower glucose concentrations in
532 uncontrolled diabetes. *Nature medicine* 2012; **18**(6): 950-955.
- 533

- 534 35. Angrisani L, Santonicola A, Iovino P, Ramos A, Shikora S, Kow L. Bariatric Surgery Survey 2018:
535 Similarities and Disparities Among the 5 IFSO Chapters. *Obes Surg* 2021; **31**(5): 1937-1948.
- 536
- 537 36. Salman AA, Salman MA, Marie MA, Rabiee A, Helmy MY, Tourky MS *et al.* Factors associated with
538 resolution of type-2 diabetes mellitus after sleeve gastrectomy in obese adults. *Scientific*
539 *reports* 2021; **11**(1): 6002.
- 540
- 541 37. Bisgaard LS, Christoffersen C. The apoM/S1P Complex-A Mediator in Kidney Biology and Disease?
542 *Front Med (Lausanne)* 2021; **8**: 754490.
- 543
- 544 38. Kassam AF, Taylor ME, Morris MC, Watkins BM, Thompson JR, Schauer DP *et al.* The impact of
545 sleeve gastrectomy on renal function in patients with chronic kidney disease varies with
546 severity of renal insufficiency. *Surg Obes Relat Dis* 2020; **16**(5): 607-613.
- 547
- 548

Table 1. Spearman correlation coefficients of adiponectin, apoM and HOMA-IR with anthropometric parameters, biological markers and environmental factors in cohort A

	Adiponectin (µg/mL)	ApoM (mg/L)	HOMA-IR
Adiponectin	1	–	–
ApoM	-0.01 (-0.17;0.14)	1	–
HOMA-IR	-0.19 (-0.33;-0.04)*	-0.29 (-0.42;-0.14)***	1
Insulin	-0.17 (-0.32;-0.02)	-0.31 (-0.44;-0.161)***	–
Glucose	-0.06 (-0.21;0.09)	-0.085 (-0.234;0.068)	–
BMI	-0.21 (-0.35;-0.06)*	-0.05 (-0.20;0.10)	0.43 (0.30;0.55)***
Waist circumference	-0.25 (-0.38;-0.10)**	-0.11 (-0.29;0.04)	0.49 (0.36;0.60)***
Fat mass percent	-0.09 (-0.25;0.07)	-0.26 (-0.40;-0.10)**	0.42 (0.28;0.54)***
Triglycerides	-0.30 (-0.43;-0.15)***	-0.01 (-0.16;0.15)	0.41 (0.28;0.53)***
Total cholesterol	0.13 (-0.03;0.27)	0.36 (0.22;0.48)***	-0.05 (-0.20;0.10)
LDL-C	0.09 (0.07;0.23)	0.27 (0.12;0.40)**	-0.05 (-0.20;0.10)
HDL-C	0.41 (0.27;0.53)***	0.32 (0.18;0.45)***	-0.34 (-0.47;-0.20)***
ApoA-I	0.34 (0.19;0.46)***	0.32 (0.17;0.45)***	-0.26 (-0.40;-0.11)***
ApoB100	-0.06 (-0.21;0.09)	0.20 (0.04;0.34)**	0.14 (-0.01;0.29)
ApoC-III	0.06 (-0.03;0.21)	0.19 (0.04;0.34)*	0.28 (0.13;0.41)***
hs-CRP	-0.22 (-0.36;-0.07)*	-0.28 (-0.42;-0.13)***	0.30 (0.15;0.43)***
γ-GT	-0.14 (-0.29;0.01)	-0.04 (-0.19;0.11)	0.41 (0.27;0.53)***
Age	0.09 (-0.06;0.24)	-0.25 (-0.38;-0.11)**	0.08 (-0.07;0.23)
Alcohol	-0.01 (-0.16;0.14)	0.19 (0.04;0.34)*	-0.03 (-0.18;0.12)
Smoking	0.04 (-0.11;0.19)	0.02 (-0.13;0.17)	0.05 (-0.11;0.20)
Physical activity	0.05 (-0.10;0.20)	0.01 (-0.15;0.16)	-0.26 (-0.39;-0.11)***
Systolic blood pressure	-0.03 (-0.18;0.13)	-0.12 (-0.27;0.03)	0.07 (-0.08;0.22)
Diastolic blood pressure	-0.03 (-0.18;0.12)	0.03 (-0.12;0.19)	0.07 (-0.08;0.22)
Resting heart rate	0.11 (-0.06;0.25)	-0.15 (-0.29;0.01)	0.23 (0.08;0.37)**

549 **Tables**

550 Spearman rank correlation (95% confidence interval), n=169.

551 *FDR<0.05, ** FDR <0.01, *** FDR <0.001. FDR < 0.05 are indicated in bold.

552 ApoA-I: apolipoprotein A-I; ApoB-100: apolipoprotein B100; ApoC-III: apolipoprotein C-III; BMI, body mass index;

553 FDR, false discovery rate; hs-CRP, high-sensitivity C-reactive protein; γ-GT, gamma glutamyl transferase; HDL-C,

554 high-density lipoprotein-cholesterol; HOMA-IR: Homeostasis Model Assessment of Insulin Resistance; LDL-C, low-
555 density lipoprotein-cholesterol.
556

Table 2. Multiple linear regression analysis on HOMA-IR in cohort A

	R ² =39			
	β estimate	SE	P-value	% ^b
ApoM	-0.133	0.045	0.0035	5.6
Waist circumference ^a	0.177	0.046	0.0002	13.6
γ -GT ^a	0.181	0.046	0.0001	9.6
ApoC-III ^a	1.421	0.044	0.0016	4.5
Diabetes	0.353	0.132	0.0084	2.8

557 Variables at entry: Adiponectin, apoC-III, apoB-100, apoM, BMI, γ -GT, hs-CRP, HDL-C, physical activity,
558 triglycerides, waist circumference, diabetes (fasting blood glucose ≥ 7.0 mmol/L or treatment vs. no),
559 dyslipidemia (total cholesterol ≥ 2.50 g/L or treatment), hypertension (systolic blood pressure ≥ 140 mmHg or
560 diastolic blood pressure ≥ 90 mmHg or treatment) and case-control status. Continuous variables were
561 standardised. β estimates were given for one standard deviation variation.

562 ^aLog-transformed data; ^bPercentage of variance explained.

563 ApoB-100: apolipoprotein B100; ApoC-III: apolipoprotein C-III; ApoM: apolipoprotein M; BMI: body mass
564 index; γ -GT: gamma-glutamyltransferase; HDL-C: high-density lipoprotein cholesterol; hs-CRP: high-sensitivity
565 C-Reactive Protein; HOMA-IR, Homeostasis Model Assessment of Insulin Resistance; LDL-C: low-density
566 lipoprotein cholesterol.

567

568 **Figure Legends**

569

570 **Figure 1. Changes in circulating apoM and adiponectin relationship with improvement of insulin**
571 **sensitivity after bariatric surgery.** Sera from 11 obese individuals (cohort B) were tested for apoM
572 (panel A) and adiponectin (panel B) levels before and one year after sleeve gastrectomy. Changes in
573 adipokine concentrations were correlated to the changes in the Homeostasis Model Assessment of
574 Insulin Resistance (HOMA-IR) index. Data are expressed as percentage change from baseline. Linear
575 correlation coefficients and *P*-values are displayed in each graph. The dotted lines represent 95%
576 confidence intervals.

577

578 **Figure 2. *ADIPOQ* and *APOM* gene expression in adipose tissue from overweight and obese**
579 **individuals.** *ADIPOQ* and *APOM* mRNA levels were measured in subcutaneous adipose tissue of 267
580 men and women with overweight or obesity (cohort C). Linear regression analysis of *ADIPOQ* and
581 *APOM* gene expression (panel A). Linear regression of *APOM* (panel B) and *ADIPOQ* (panel C) gene
582 expression to HOMA-IR. Linear correlation coefficient and *P*-value are presented. Dotted lines
583 represent 95% confidence interval.

584

585 **Figure 3. Inflammatory factors downregulate *ADIPOQ* and *APOM* gene expression in adipocytes.**
586 Effect of conditioned media from non-polarized, M2-like polarized or M1-like polarized ThP-1 cells on
587 *ADIPOQ* gene expression in hMADS adipocytes (panel A). Association between *ADIPOQ* and *APOM*
588 gene expression in hMADS adipocytes treated for 48 h with conditioned media from non-polarized
589 (grey dots), M2-like polarized (black dots) or M1-like polarized (white dots) ThP-1 cells (panel B).
590 *ADIPOQ* and *APOM* gene expression in hMADS adipocytes after C-reactive protein treatment for 48 h
591 (panel C). Association between *ADIPOQ* and *APOM* gene expression in hMADS adipocytes treated for
592 48 h with C-reactive protein (panel D). Results are presented as mean \pm SD of 3 independent
593 experiments (panels A and C). Linear correlation coefficients and *P*-values are displayed in each

594 graph. The dotted lines represent 95% confidence intervals (panels B and D). Data were analysed by
595 Kruskal-Wallis test (panels A and C). * $P < 0.05$. ** $P < 0.01$.

596

597 **Figure 4. Adiponectin upregulates *APOM* gene expression in adipocytes.**

598 *APOM* mRNA level upon 48 h of globular adiponectin treatment in hMADS adipocytes. Results are
599 presented as mean \pm SD of 3 independent experiments. Data were analysed by Kruskal-Wallis test.

600 * $P < 0.05$. ** $P < 0.01$.

Figure 1

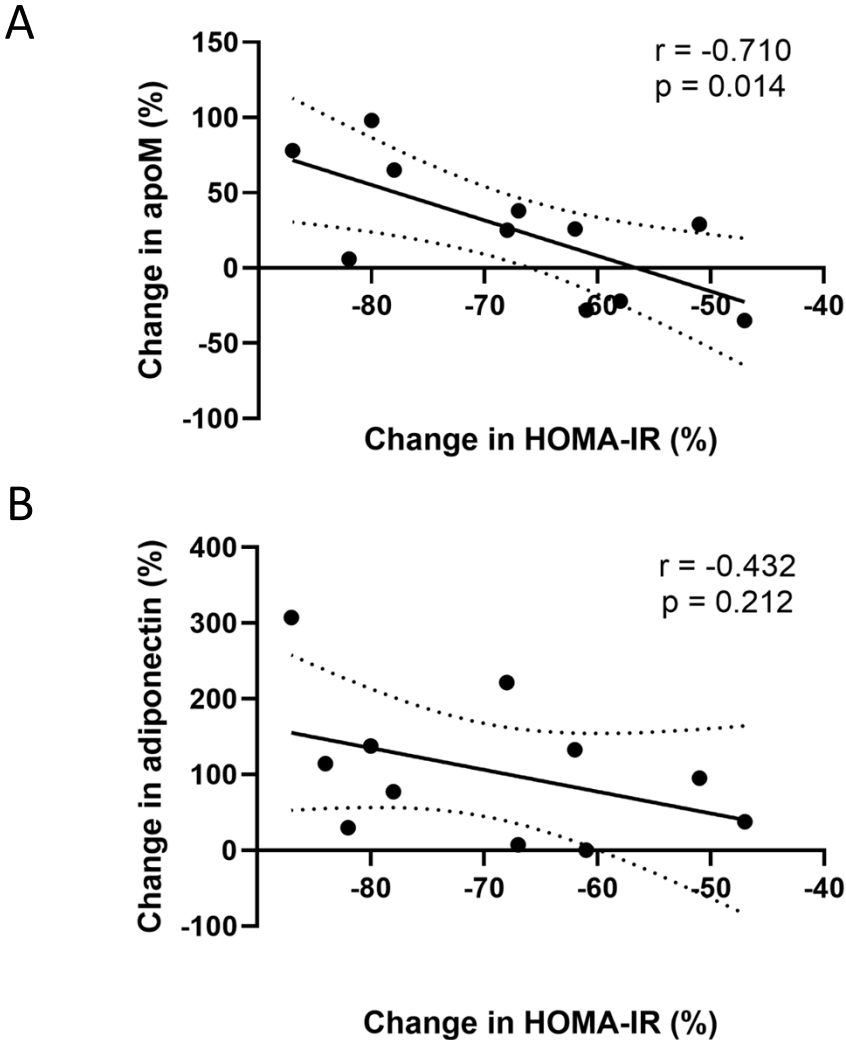
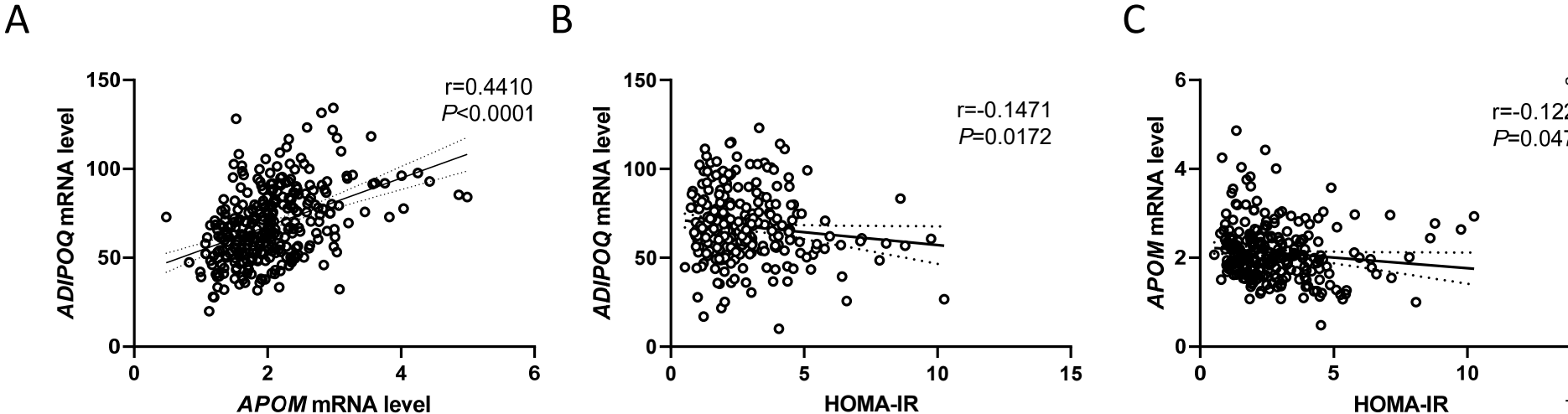


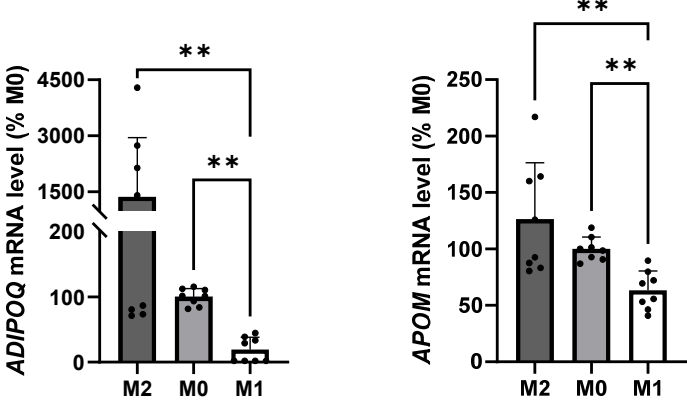
Figure 2



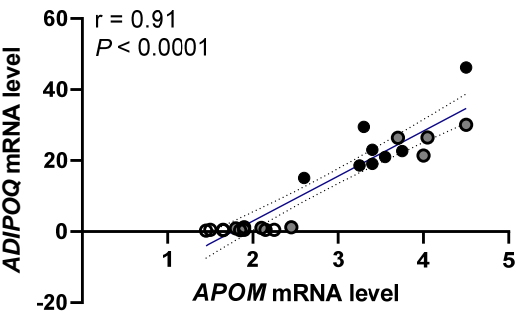
medRxiv preprint doi: <https://doi.org/10.1101/2023.02.09.23285709>; this version posted December 4, 2023. The copyright holder for this preprint (which was not certified by peer review) is the author/funder, who has granted medRxiv a license to display the preprint in perpetuity. All rights reserved. No reuse allowed without permission.

Figure 3

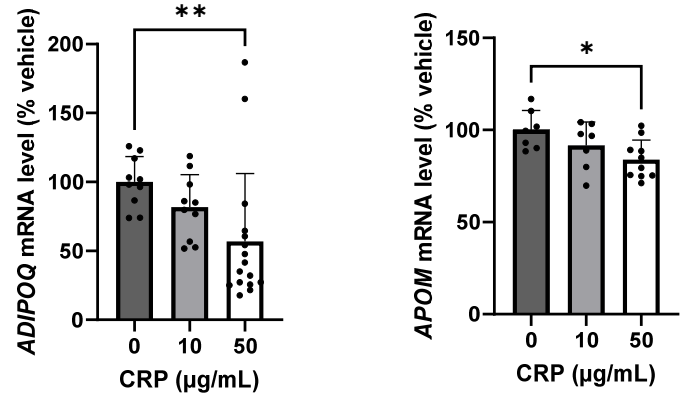
A



B



C



D

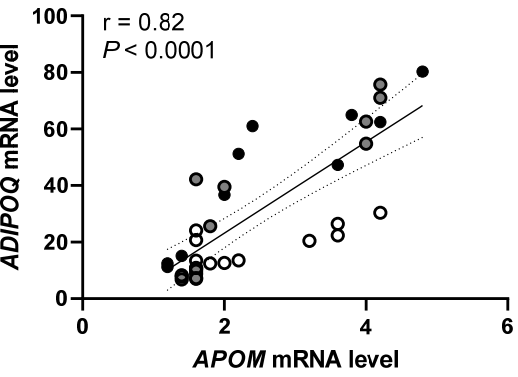


Figure 4

