

Clinical severity prediction of COVID-19 admitted patients in Spain: SEMI and REDISSEC cohorts

Mario Martínez-García^{1*}, Susana García-Gutierrez², Lasai Barreñada Taleb¹, Rubén Armañanzas^{4,5}, Inaki Inza³, Jose A. Lozano^{1, 3}

¹Basque Center for Applied Mathematics, BCAM, Bilbao, Spain

²Galdakao Hospital, Osakidetza, Basque Country, Spain

³University of the Basque Country UPV/EHU, Computer Science Faculty, San Sebastián, Spain

⁴Institute of Data Science and Artificial Intelligence, Universidad de Navarra, Pamplona, Spain

⁵Tecnun School of Engineering, Universidad de Navarra, San Sebastián, Spain

Abstract

This report addresses, from a machine learning perspective, a multi-class classification problem to predict the first deterioration level of a COVID-19 positive patient at the time of hospital admission. Socio-demographic features, laboratory tests and other measures are taken into account to learn the models. Our output is divided into 4 categories ranging from healthy patients, followed by patients requiring some form of ventilation (divided in 2 categories) and finally patients expected to die. The study is conducted thanks to data provided by *Sociedad Española de Medicina Interna* (SEMI) and *Red de Investigación en Servicios de Salud de Enfermedades Crónicas* (REDISSEC). Results show that logistic regression is the best method for identifying patients with clinical deterioration.

Keywords: *Deterioration; COVID-19; Multi-class; SEMI; REDISSEC*

1. Introduction

The mortality predictive models for COVID-19 are too generic for the evolution that the pandemic has undergone. Therefore, physicians are demanding for specific models capable of predicting a patient's prognosis. One way to address this issue is by classifying patient deterioration into various levels according to the type of ventilation required, or even death. This report focused on developing a multi-class classifier capable to predict the first deterioration level of a COVID-19 positive patient admitted to the hospital. As inclusion criteria, all patients admitted with a positive PCR between seven days before admission and two days after admission are considered in the study. Knowing the available features at the time of admission (socio-demographic features, laboratory tests, comorbidities, symptoms...) the objective is to learn a model able to accurately predict the deterioration level:

0. No deterioration
1. Ventimask (VMK), Optiflow (OPT), Non-Invasive Ventilation (NIV)
2. Invasive Ventilation (IV), Intensive Care Unit (ICU)
3. Death

*Corresponding author. E-mail address: mmartinez@bcamath.org

NOTE: This preprint reports new research that has not been certified by peer review and should not be used to guide clinical practice.

The type of prognosis associated with each patient corresponds to the first deterioration state that the patient acquires after hospital admission. The proposed outcome aligns closely with the WHO Clinical Progression Scale [6]. Deterioration problem in patients with COVID-19 is widely known and several publications have been produced addressing this issue. Gupta [3] developed a high-impact work focusing on a model to predict the risk of clinical deterioration in acute COVID-19 cases. Furthermore, other clinical deterioration models have been developed with Spanish data cohorts [2].

2. Data pre-processing

Two datasets are used for learning our classifiers: One from *Sociedad Española de Medicina Interna* (SEMI) and another from *Red de Investigación en Servicios de Salud de Enfermedades Crónicas* (REDISSEC). Owing to the fact that both datasets do not collect the same features, different models for each dataset are learned.

Both sets of data are pre-processed individually. We start by analyzing the distribution of values. Those features with unexpected distributions are studied in detail, contrasting information about their range and establishing valid ranges for collected data. All those features with a coherent distribution did not undergo any range modification. In addition to socio-demographic and laboratory features, three new features are created: basal treatment, comorbidities and symptoms. Each of them indicates the number of basal treatments, comorbidities and the patient's symptoms prior to admission. Note that an insightful quantitative analysis of the features for each dataset is reported in *Appendix A*.

Finally, two filters are applied to treat missing values, one filter on the features and another on the patients [1, 4].

- Feature filter. Blood tests, demographic and clinical features with more than 30% of missing values are removed from the study.
- Patient filter. Patients with three or more missing values in the features are removed for further analysis.

Remaining missing values are afterwards imputed by unsupervised similarity [5]. Specifically, a five nearest-neighbours method with Euclidean distance is used to impute the data.

3. Data analysis

After data pre-processing, a brief analysis of the data is reported. In Table 1, the number of patients and features of each dataset is shown. SEMI dataset collects a larger number of patients and features than REDISSEC. Furthermore, both datasets are unbalanced with more non-deteriorated (class 0) than deteriorated patients (union of classes 1, 2 and 3).

Table 1. General characteristics of deterioration datasets

Dataset	Patients	Features	Classes			
			0	1	2	3
SEMI	14950	36	10399	2274	634	1643
REDISSEC	2566	27	1783	460	144	179

3.1. SEMI dataset

SEMI data can be classified into the different waves recorded in Spain during the pandemic (see Table 2). It should be noted that the wave division has been made taking into account both

the trend of our data and the true wave divisions in Spain. Therefore, it is possible that the dates do not coincide exactly with the Spanish trend.

Table 2. COVID-19 waves' distribution on SEMI dataset.

Wave	Duration	Patients	Classes			
			0	1	2	3
1 st	Beginning - 15 June 2020	11008	7657	1569	528	1254
2 nd	16 June 2020 - 30 November 2020	2697	1953	404	78	262
3 rd	1 December 2020 - 28 February 2020	1184	749	287	26	122
4 th	28 February 2020 - 04 March 2021	61	40	14	2	5
Total	Beginning - 04 March 2021	14950	10399	2274	634	1643

Figure 1 reports the distribution of positive COVID-19 patients by date of admission. The waves can perfectly be identified. Accordingly, the vast majority of patients corresponds to the most chaotic period of the pandemic, the first wave. In this stage, ventilation mechanisms were in demand and in short supply, leading to the use of one type or another depending on availability. Hence, in addition to the difficulties of a multi-class classification problem, we must add the uncertainty of the type of deterioration present during the chaotic early period of the pandemic.

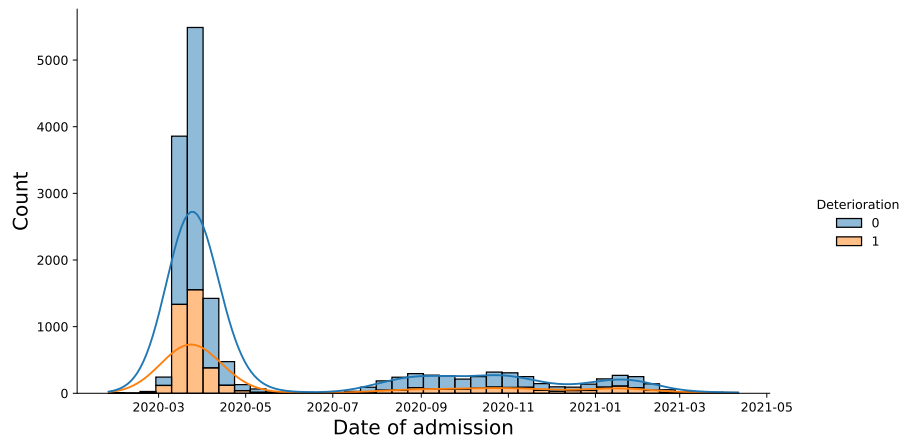


Figure 1. Distribution of SEMI patients by date of admission. Blue color shows the quantity of non-deteriorated patients and orange shows the patients with any type of deterioration. The associated lines report the estimated density function for deteriorated (orange) and non-deteriorated (blue) patients.

3.2. REDISSEC dataset

REDISSEC dataset is divided into different regions: Andalusia, Canary Islands, Catalonia and Basque Country regions (see Table 3). The most predominant region is Basque Country with more than half of the data. Canary Islands' data highlights for the exclusive presence of patients with high degree of deterioration.

Table 3. Regions distribution on REDISSEC dataset.

Region	Patients	Classes			
		0	1	2	3
Basque Country	1770	1295	320	44	111
Catalonia	503	342	81	36	44
Andalusia	246	146	42	34	24
Canary Islands	47	-	17	30	-
Total	2566	1783	460	144	179

Figure 2 shows the distribution of positive COVID-19 patients by date of admission. As expected, when looking at the graph's trend we can see how the fluctuations in patient numbers are related to the different waves of the pandemic. The graph clearly shows that the patients collected by REDISSEC correspond to the first two waves in Spain.

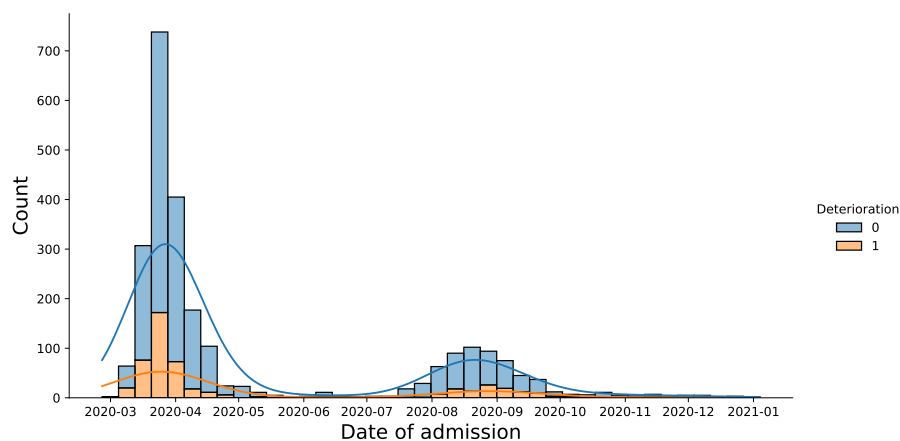


Figure 2. Distribution of REDISSEC patients by date of admission. In blue appears the quantity of non-deteriorated patients and in orange patients with any type of deterioration. The associated lines report the density function for deteriorated (orange) and non-deteriorated (blue) patients.

4. Design and development aspects

A multi-class machine learning model capable of establishing a prognosis for a COVID-19 positive patient admitted to hospital is not straightforward to develop. First of all, both datasets are unbalanced, most of the patients do not show any deterioration. This unbalanced degree in the output complicates the accurate learning of classifiers. To solve the problem, two different supervised learning methods for multi-class problems are proposed. Furthermore, a more complex ensemble classifier is developed in order to improve the multi-class classification problem.

4.1. Supervised learning methods

Despite of having tested the performance of a large set of methods, only two of them are considered as relevant to be included in the report.

- **Logistic Regression.** This traditional method, widely used and known by physicians, is our first option to build the classifier. Due to its interpretability and popularity, it is essential include this method within our study. To adapt the Logistic Regression into the multi-class classification problem, the one-versus-rest (OVR) technique is implemented. This strategy splits a multi-class classification into one binary classification problem per class. Predictions are made by choosing the most confident class. Furthermore, the unbalance between the classes is internally rectified by adjusting the weights of the instances.
- **XGBClassifier.** Currently, XGBoost algorithms are one of the most widely used methods owing to its ease of implementation and good performance. Moreover, due to its ability to deal with multi-class datasets, it is taken into consideration for our deterioration problem.

4.2. Ensemble Classifier

The multi-class problem is difficult for any classifier. Therefore, an ensemble method is proposed to attempt a more accurate classification. The ensemble method is divided into two parts.

1. First level. Binary classification to differentiate between deteriorated and non-deteriorated patients. In this step, non-deteriorated predicted patients retain its category and patients predicted as deteriorated move to the next step.

2. Second Level. Multi-class classification to classify deteriorated patients in one of its three possible classes: class 1 (VMK, OPT, NIV), class 2 (IV, ICU), class 3 (Death).

Once the structure of our ensemble classifier is known, we need to determine the classification algorithms for the two established levels. Two different ensemble classifiers are proposed:

- **Double LR.** Two Logistic Regression models are chosen. A Logistic Regression with a correction for the unbalance problem is placed at the first level of the classifier to differentiate between deteriorated and non-deteriorated patients. The second Logistic Regression with a correction for the unbalance problem and the OVR technique is proposed for the multi-class classification (second level).
- **XGB+LR.** XGBoost is chosen for the first level to determine if the patient presents deterioration. For the second level a Logistic Regression (unbalance correction and OVR technique) to extract the type of deterioration.

5. Results

The results are reported separately. On the one hand, those corresponding to SEMI, and on the other hand those corresponding to REDISSEC. In each of them, the performance of the models on the complete dataset is studied by conducting a 5-fold cross-validation repeated 10 times. In addition, SEMI dataset is trained in different waves and evaluated in subsequent waves. However, with REDISSEC dataset, we do not focus on waves but on regions. Different models are trained in the regions of the Basque Country and Catalonia, and evaluated in the remaining regions.

It should be noted that the features of each dataset are normalized before the implementation of any model and default hyperparameter values are used in each classifier. As we are dealing with a multi-class and unbalanced problem, the accuracy and recall (sensitivity) of each of the classes is presented as key metrics for each method. For a multi-class classification problem, the accuracy does not reflect the real behaviour of the model, so recalls are necessary to assess the performance of our models. A brief definition of the metrics is shown in Table 4.

Table 4. Brief definition of the used metrics.

Metric	Description
Accuracy (Acc)	Fraction of correct predictions
Recall 0 (R_0)	Number of patients with no deterioration that the model correctly matches, divided by the total number of patients with real no deterioration.
Recall 1 (R_1)	Number of patients with type 1 deterioration that the model correctly matches, divided by the total number of patients with real type 1 deterioration.
Recall 2 (R_2)	Number of patients with type 2 deterioration that the model correctly matches, divided by the total number of patients with real type 2 deterioration.
Recall 3 (R_3)	Number of patients with type 3 deterioration that the model correctly matches, divided by the total number of patients with real type 3 deterioration.
Recall Det. (R_D)	Number of patients with deterioration (type 1, 2 or 3) that the model correctly matches, divided by the total number of patients with real deterioration (type 1, 2 or 3).

5.1. SEMI dataset

5.1.1. Complete set of data

The complete set of data provided by SEMI is considered. Models developed in SEMI dataset are reported in Table 5. In spite that the accuracy of the models is not high in any case, it should be noted that we are dealing with a difficult 4-class classification problem. Logistic Regression is the model with highest R_D . Thus, the model shows high predictive ability in the identification the patients with any type of deterioration. The model with the best accuracy and also best R_0 is the XGBoost Classifier. This model behaves correctly in the detection of non-deteriorated patients.

Table 5. Results for SEMI dataset. Complete set of data.

Metric	Model			
	Logistic Regression	XGBoost	Double LR	XGB+LR
Acc	0.6070±0.0007	0.7311±0.0015	0.6584±0.0010	0.7111±0.0013
R_0	0.6793±0.0010	0.9350±0.0015	0.7585±0.0009	0.8867±0.0011
R_1	0.2667±0.0035	0.2234±0.0047	0.2965±0.0033	0.1999±0.0031
R_2	0.4380±0.0062	0.0754±0.0086	0.3219±0.0080	0.2562±0.0085
R_3	0.6855±0.0031	0.3958±0.0058	0.6562±0.0020	0.4827±0.0055
R_D	0.7532±0.0015	0.3979±0.0040	0.6931±0.0012	0.5045±0.0042

The central classes, levels 1 and 2 of deterioration, are the ones that show the highest error in our models. One of the possible causes is the low number of patients for these classes.

The ensemble classifiers provide a different approach to the previous classifiers. The Double LR maintains the structure of traditional Logistic Regression and increases the result of R_0 . This is due to the worsening of the recalls related to deterioration levels (1, 2, 3). The model composed by an XGBoost classifier and a Logistic Regression achieves a slightly lower accuracy and R_0 than the XGBoost model. However, an increase in the recalls of the rest of the classes is reported with respect to the XGBoost model. Owing to the balanced recalls, XGB+LR is more consistent than XGBoost Classifier.

5.1.2. Train and test with different waves

As data of different waves is available, two different models are studied to evaluate their behaviour in the following phases of the pandemic. Firstly, we train on the first wave and evaluate on the remaining waves. Then, we train with the second wave and evaluate with the data of the subsequent waves. The results are shown in Table 8.

Table 6. Results for SEMI dataset. Waves study.

Train	Test	Metric	Model			
			Logistic Regression	XGBoost	Double LR	XGB+LR
1 st	2 nd , 3 rd , 4 th	Acc	0.582	0.729	0.647	0.700
		R_0	0.637	0.933	0.736	0.878
		R_1	0.268	0.188	0.295	0.188
		R_2	0.386	0.094	0.283	0.245
		R_3	0.810	0.442	0.748	0.498
		R_D	0.774	0.368	0.689	0.456
		Acc	0.543	0.689	0.594	0.658
2 nd	3 rd , 4 th	R_0	0.565	0.913	0.643	0.835
		R_1	0.445	0.315	0.328	0.342
		R_2	0.357	0.000	0.285	0.107
		R_3	0.685	0.307	0.645	0.433
		R_D	0.811	0.381	0.730	0.521

Both models follow a similar trend as described with the complete dataset (See Table 5). The Logistic Regression model provides a high R_D , and XGBoost does the same with R_0 . By training with the first wave and validating with the remaining waves, better results are obtained compared to the model trained with the second wave. The different sizes in the training set and the differences between waves may be some of the causes.

Note that SHAP values of the Logistic Regression model trained on the first wave and evaluated on the remaining waves are shown in Figure 3 of Appendix B.

5.2. REDISSEC dataset

5.2.1. Complete set of data

As with SEMI dataset, we start by using the entire dataset to evaluate the performance of different methods. The four models described in Section 3 are implemented and results are reported in Table 7.

Table 7. Results for REDISSEC dataset. Complete set of data.

Metric	Model			
	Logistic Regression	XGBoost	Double LR	LR+XGB
Acc	0.5877±0.0021	0.7055±0.0050	0.6252±0.0027	0.6805±0.0034
R_0	0.6626±0.0027	0.9245±0.0035	0.7396±0.0020	0.8676±0.0046
R_1	0.3486±0.0089	0.2489±0.0135	0.2958±0.0078	0.1998±0.0085
R_2	0.3235±0.0231	0.1484±0.0213	0.2648±0.0163	0.2616±0.0213
R_3	0.6681±0.0179	0.1760±0.0140	0.6237±0.0141	0.3889±0.0227
R_D	0.7563±0.0031	0.3541±0.0083	0.6760±0.0036	0.4752±0.0123

REDISSEC data follows a similar trend to SEMI. The best accuracy and R_0 is obtained with the XGBoost Classifier. This model stands out for having a very high success in predicting non-deteriorate patients. Logistic Regression achieves the best values in recalls related to deterioration levels (1, 2 and 3). In addition, R_D highlights for its good behaviour in predicting patients with deterioration. Double LR and LR+XGB provide alternative solutions to XGBoost and Logistic Regression. However, none of them shows outstanding results.

5.3. REDISSEC dataset by regions.

REDISSEC dataset provides information from four regions of Spain: Canary Islands, Andalucia, Basque Country and Catalonia. Therefore, instead of doing a study segmented on waves, we have decided to focus on the behaviour of different regions. So, the subset associated with the Canary Islands is not used in this study due to its small amount of data. In addition, the training of the models is conducted with both regions that contain the largest number of patients: Basque Country and Catalonia. Thus, considering the regions of the Basque Country, Catalonia and Andalucia, we train on one of the first two regions and evaluate separately on the other two. The results of the four proposed classification models are reported in Tables 8 & 9.

In general terms, the models trained with the Basque Country data perform better when evaluated in Catalonia than in Andalucia. The evaluation in Catalonia shows a robust R_3 and R_D in the Logistic Regression. This indicates that the model trained with Basque patients has a high predictive ability for Catalan patients with deterioration (type 1, 2 or 3) and even more for those who die (type 3). In addition, the XGBoost shows a high R_0 as the model in the previous section. The model evaluated in Andalucia achieves lower levels of accuracy. Despite of this, the value of R_D in the Logistic Regression and R_0 in the XGBoost stand out.

Table 8. Regions study in REDISSEC dataset. Training with Basque Country data.

Train	Test	Metric	Model			
			Logistic Regression	XGBoost	Double LR	XGB+LR
Bas. Country	Catalonia	Acc	0.546	0.700	0.564	0.682
		R_0	0.593	0.956	0.646	0.903
		R_1	0.345	0.098	0.271	0.062
		R_2	0.138	0.000	0.138	0.111
		R_3	0.886	0.386	0.818	0.568
		R_D	0.770	0.229	0.745	0.397
Bas. Country	Andalucia	Acc	0.394	0.548	0.434	0.565
		R_0	0.479	0.842	0.500	0.787
		R_1	0.309	0.238	0.309	0.214
		R_2	0.058	0.000	0.117	0.088
		R_3	0.500	0.083	0.708	0.500
		R_D	0.770	0.400	0.690	0.500

Note that SHAP values of the Logistic Regression model trained on the Basque Country and evaluated on Catalonia are shown in Figure 4 of *Appendix B*.

Table 9. Regions study in REDISSEC dataset. Training with Catalan data.

Train	Test	Metric	Model			
			Logistic Regression	XGBoost	Double LR	XGB+LR
Catalonia	Bas. Country	Acc	0.498	0.705	0.546	0.666
		R_0	0.486	0.875	0.576	0.796
		R_1	0.637	0.287	0.540	0.384
		R_2	0.113	0.045	0.023	0.023
		R_3	0.387	0.180	0.423	0.225
		R_D	0.844	0.393	0.779	0.555
Catalonia	Andalucia	Acc	0.313	0.565	0.349	0.512
		R_0	0.246	0.794	0.301	0.650
		R_1	0.523	0.262	0.404	0.309
		R_2	0.147	0.147	0.147	0.147
		R_3	0.583	0.291	0.833	0.541
		R_D	0.900	0.430	0.860	0.600

When training the algorithms with the Catalan data a similar trend occurs. The accuracy of the model evaluated in Andalucia is much lower than the one evaluated in the Basque Country. The evaluation in the Basque Country leads to remarkable results in R_D metric for the Logistic Regression and R_0 of the XGBoost. Despite the low accuracy of the model evaluated in Andalucia, a better R_D of the logistic model is obtained than in any of the three previous models. Moreover, as in previous models, the R_0 value of the XGBoost continues to be remarkable and the solid performance of R_3 for the Double LR is surprising.

6. Conclusions

The designed multi-class classification problem is not trivial. In addition to the 4 different classes presented, we have to deal with unbalanced datasets. In spite of this, models with solid scores for specific scenarios are achieved.

The SEMI dataset has been trained on the full dataset, the first and the second wave. Although it is observed that the performance of the model trained on the first wave is better, the results do not differ from those of the second wave. With respect to REDISSEC dataset, we have chosen

to train the models on the regions of the Basque Country and Catalonia. It is noteworthy that different results are obtained when evaluating in different regions.

Four supervised learning methods have been applied in each database: Logistic Regression, XGBoost, Double LR and XGB+LR. The performance of R_D metric in Logistic Regression and R_0 score in XGBoost are competitive.

From my point of view, the most suitable model to implement in hospitals would be the one that shows the highest recall (sensitivity) on deteriorated patients. That is, the model that reduces the number of patients predicted as non-deteriorated but who actually have some deterioration. Logistic Regression because of its high R_D fulfils this condition in all cases. Although it is more complicated to differentiate among deterioration of types 1, 2 and 3, at least we know that our model performs properly in identifying any type of deterioration.

Acknowledgements. This research is supported by the Basque Government through the BERC 2022-2025 program, IT1504-22 and Basque Modeling Task Force (BMTF) project, and by the Ministry of Science and Innovation: BCAM Severo Ochoa accreditation CEX2021-001142-S / MICIN / AEI / 10.13039/501100011033 and PID2019-104966GB-I00. The research is developed thanks to data provided by *Sociedad Española de Medicina Interna (SEMI)* and *Red de Investigación en Servicios de Salud de Enfermedades Crónicas (REDISSEC)* groups.

References

- [1] Armañanzas, R., Díaz, A., Martínez-García, M., Mazuelas, S.: Derivation of a Cost-Sensitive COVID-19 Mortality Risk Indicator Using a Multistart Framework pp. 2179–2186 (2021). <https://doi.org/10.1109/BIBM52615.2021.9669288>
- [2] García-Gutiérrez, S., Esteban-Aizpiri, C., Lafuente, I., Barrio, I., Quiros, R., Quintana, J.M., Uranga, A., García-Gutiérrez, S., Quintana, J.M., Orive, M., Gonzalez, N., Anton, A., Villanueva, A., Muñoz, C., Legarreta, M.J., Quirós, R., Yandiola, P.P.E., Egurrola, M., Aramburu, A., Artaraz, A., Chasco, L., Bronte, O., García, P., Jodar, A., Fernandez, V., Esteban, C., Mas, N., Pulido, E., Bengoetxea, I., Martínez, A.E., Bilbao, A., Gorostiza, I., Arriaga, I., Zapiarain, J.P., Parraza, N., Iriberrí, M., Zalacain, R., Ruiz, L.A., Serrano, L., Couto, A., Ateka, O., Cano, A., Ibarra, M.O., Millan, E., Bacigalupe, M., Letona, J., Arcelay, A., Berraondo, I., Castells, X., Posso, M., Perestelo, L., Acosta, G.P., González, C.M., Redondo, M., Padilla, M., Muñoz, A., de Madariaga, R.S., Group, C.R.W.: Machine learning-based model for prediction of clinical deterioration in hospitalized patients by covid 19. *Scientific Reports* **12**(1), 7097 (2022). <https://doi.org/10.1038/s41598-022-09771-z>
- [3] Gupta, R.K., Harrison, E.M., Ho, A., Docherty, A.B., Knight, S.R.: Development and validation of the ISARIC 4C Deterioration model for adults hospitalised with COVID-19: a prospective cohort study. *The Lancet. Respiratory Medicine*. **9**(4), 349–359 (2021). [https://doi.org/10.1016/S2213-2600\(20\)30559-2](https://doi.org/10.1016/S2213-2600(20)30559-2)
- [4] Martínez-García, M., García-Gutierrez, S., Armañanzas, R., Díaz, A., Inza, I., Lozano, J.A.: Learning a Battery of COVID-19 Mortality Prediction Models by Multi-objective Optimization pp. 332–342 (2022). https://doi.org/10.1007/978-3-031-09342-5_32
- [5] Troyanskaya, O., Cantor, M., Sherlock, G., Brown, P.: Missing value estimation methods for DNA microarrays. *Bioinformatics* **17**(6), 520–525 (06 2001). <https://doi.org/10.1093/bioinformatics/17.6.520>
- [6] WHO Working Group on the Clinical Characterisation and Management of COVID-19 infection: A minimal common outcome measure set for COVID-19 clinical research. *Lancet Infect Dis* 2020; 20: e192-97

A. Appendix. Quantitative analysis of the features.

Table 10. Descriptive statistics for SEMI dataset features.

	mean	std	min	25%	50%	75%	max
edad	66.98	15.93	0.01	56.08	68.75	79.20	104.93
sexo	0.42	0.49	0.00	0.00	0.00	1.00	1.00
aboh	0.05	0.21	0.00	0.00	0.00	0.00	1.00
depend	0.22	0.55	0.00	0.00	0.00	0.00	2.00
confus	0.11	0.31	0.00	0.00	0.00	0.00	1.00
taquipn	0.34	0.47	0.00	0.00	0.00	1.00	1.00
tas	129.24	21.06	50.00	115.00	128.00	142.00	250.00
tad	74.30	13.05	6.00	66.00	74.00	82.00	180.00
frcar	88.25	17.08	32.00	76.00	87.00	100.00	180.00
temp	37.01	0.96	35.00	36.30	36.90	37.70	41.00
crep	0.56	0.50	0.00	0.00	1.00	1.00	1.00
spo2	93.05	5.78	40.00	91.00	94.00	97.00	100.00
hb	13.65	1.89	3.70	12.60	13.80	14.90	20.00
plaq	205548.69	89605.46	1000.00	148000.00	190000.00	245000.00	1420000.00
leuin	7199.21	4870.57	11.00	4740.00	6260.00	8480.00	90000.00
eosin	17.19	32.28	0.00	0.00	0.00	20.00	150.00
linfin	1137.82	2327.32	0.00	670.00	910.00	1270.00	98970.00
neutin	5346.99	3056.64	0.00	3230.00	4600.00	6700.00	20000.00
monin	487.42	446.43	0.00	300.00	400.00	600.00	9999.00
pcrin	90.36	87.72	0.00	23.40	66.00	131.60	1000.00
creain	1.11	0.87	0.01	0.74	0.91	1.17	15.00
urea	47.51	34.76	10.00	28.00	38.00	54.00	500.00
ldh	372.86	203.85	3.00	252.00	325.00	435.00	5435.00
lsldh	266.74	77.98	24.00	225.00	246.00	250.00	950.00
got	47.32	58.37	0.00	27.00	37.00	52.00	3641.00
gpt	41.71	64.90	1.00	19.00	30.00	47.00	4130.00
bilin	0.66	1.16	0.00	0.40	0.50	0.70	47.00
soser	137.36	4.59	105.00	135.00	137.00	140.00	176.00
poser	4.12	0.56	1.60	3.80	4.10	4.40	8.90
glubas	130.77	59.48	15.00	100.00	115.00	140.00	1100.00
aptt	30.75	9.71	0.00	27.06	29.80	32.60	200.00
dimerd	1653.46	5227.27	0.00	388.00	670.00	1209.95	137012.00
comor	2.25	1.50	0.00	1.00	2.00	4.00	4.00
ttobasal	1.50	1.27	0.00	0.00	2.00	3.00	3.00
sintomas	3.23	1.00	0.00	3.00	4.00	4.00	4.00
ractorax	1.14	0.61	0.00	1.00	1.00	1.00	3.00

Table 11. Descriptive statistics for REDISSEC dataset features.

	mean	std	min	25%	50%	75%	max
Sexo Mujer	0.43	0.49	0.00	0.00	0.00	1.00	1.00
edad	65.85	16.63	0.13	54.68	66.78	79.07	102.19
Sin hogar Yes	0.01	0.07	0.00	0.00	0.00	0.00	1.00
Sat O2	93.71	6.19	23.00	93.00	95.00	96.49	101.00
FC	85.12	15.96	30.00	74.00	84.00	94.00	169.00
glucosa	128.66	55.78	18.00	99.00	112.00	134.00	619.00
creatinina	1.10	0.78	0.20	0.76	0.92	1.15	12.01
GPT	37.04	37.68	0.00	18.00	27.00	43.00	605.00
sodio	137.78	4.40	114.00	135.00	138.00	140.00	178.00
potasio	4.20	2.48	1.79	3.80	4.10	4.45	127.00
DimeroD	1721.01	4020.45	0.10	468.00	770.00	1400.14	57907.00
LDH	309.92	140.93	4.25	227.85	281.00	359.00	2645.00
PCR	71.01	77.00	0.00	12.70	46.33	102.83	468.10
hemoglobina	13.57	1.90	4.16	12.40	13.80	14.90	18.80
Hematocrito	41.51	5.64	12.30	38.20	41.90	45.27	82.40
Plaquetas	207.46	85.39	2.33	149.00	190.00	251.00	562.00
leucocitos	7.11	3.40	0.12	4.89	6.33	8.50	37.05
Neutrofilos	5.38	3.18	0.00	3.30	4.56	6.58	32.52
Linfocitos	1.16	0.78	0.00	0.72	1.02	1.40	13.30
Bilirrubina	0.58	0.37	0.00	0.36	0.50	0.69	4.78
Monocitos	0.53	0.32	0.00	0.34	0.47	0.66	4.00
TAS	129.07	19.85	68.00	116.00	128.00	140.00	220.00
TAD	75.19	12.21	28.00	67.00	75.00	82.30	128.00
temperatura	37.09	0.94	34.20	36.40	37.00	37.70	40.30
sintomas	2.63	0.70	0.00	2.00	3.00	3.00	3.00
comorbilidades	0.75	1.00	0.00	0.00	0.00	1.00	3.00
tto basal	1.57	1.29	0.00	0.00	2.00	3.00	3.00

B. Appendix. SHAP values.

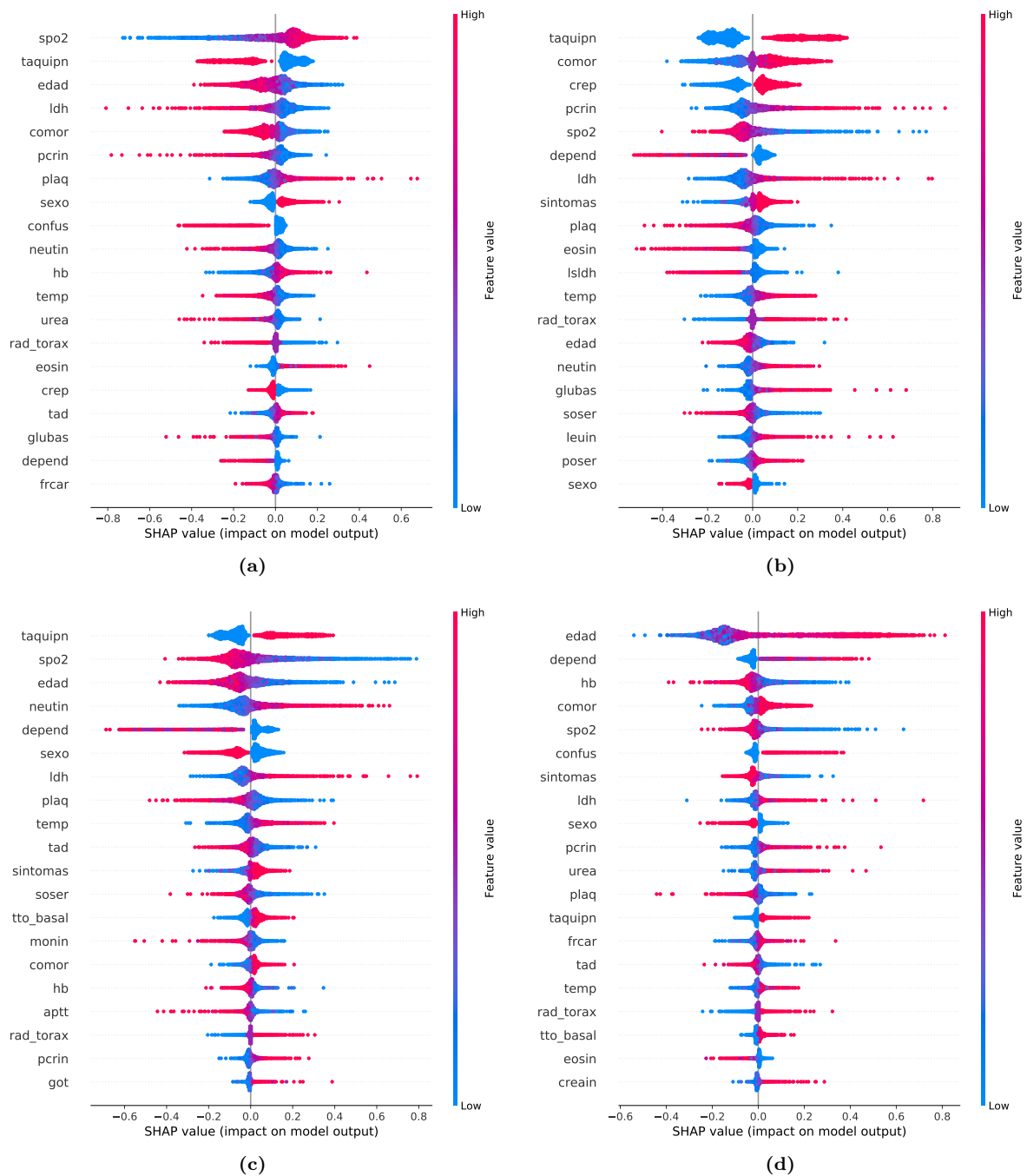


Figure 3. SHAP values for the Logistic Regression trained with the first wave of SEMI dataset and evaluated with the remaining waves. One graph for each of the classes is plotted. (a) Class 0 vs Rest. (b) Class 1 vs Rest. (c) Class 2 vs Rest. (d) Class 3 vs Rest.

B APPENDIX. SHAP VALUES.

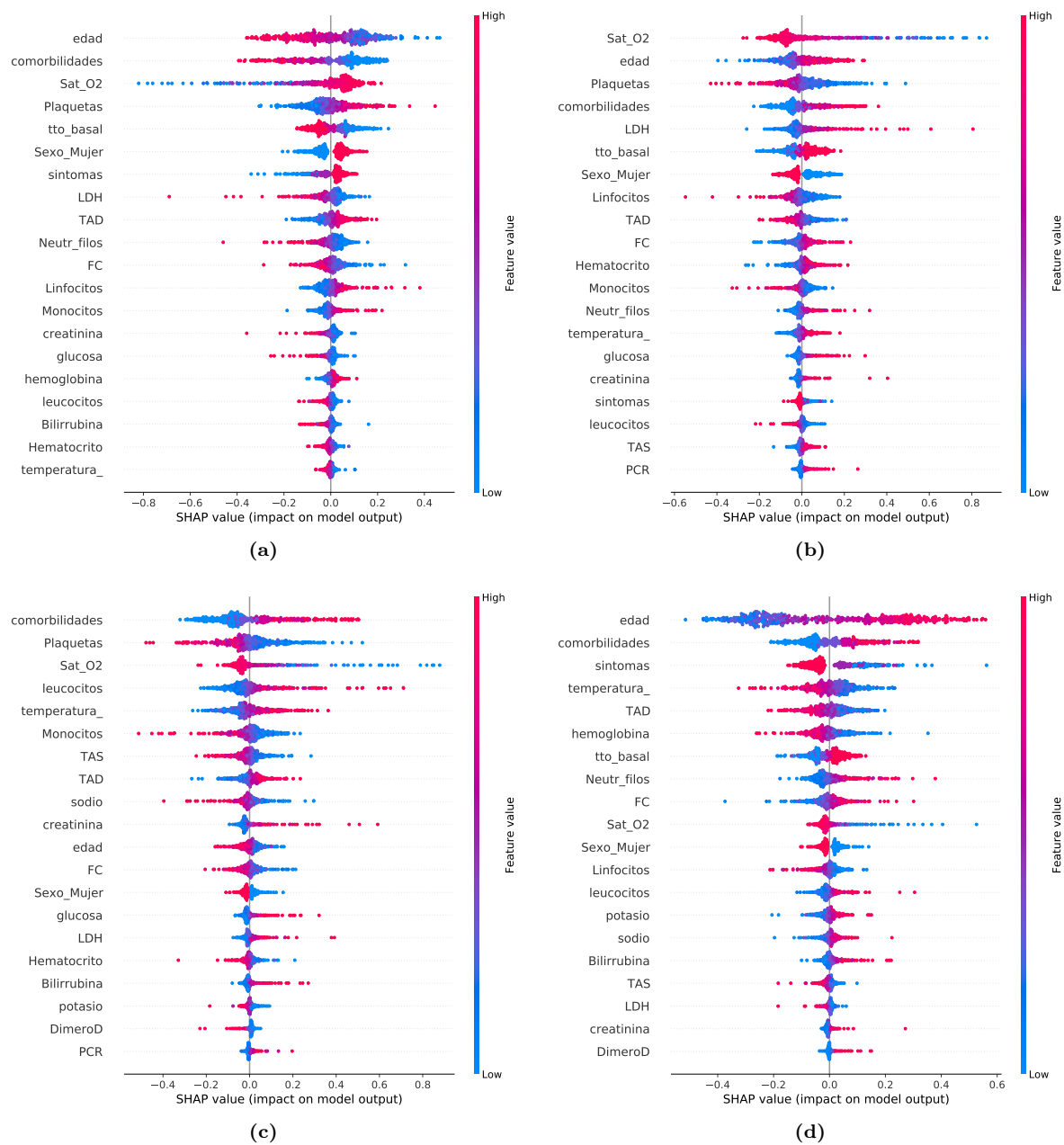


Figure 4. SHAP values for the Logistic Regression trained with the Basque Country and evaluated with Catalonia (REDISSEC). One graph for each of the classes is plotted. (a) Class 0 vs Rest. (b) Class 1 vs Rest. (c) Class 2 vs Rest. (d) Class 3 vs Rest.