

1 **Quantification of impact of COVID-19 pandemic on cancer screening programmes -a case**
2 **study from Argentina, Bangladesh, Colombia, Morocco, Sri Lanka and Thailand**

3 **Eric Lucas¹, Raul Murillo², Silvina Arrossi³, Martin Bárcena⁴, Youssef Chami⁵, Ashrafun**
4 **Nessa⁶, Suraj Perera⁷, J Padmaka Silva⁸, Suleeporn Sangrajrang⁹, Richard Muwonge¹,**
5 **Partha Basu^{1*}**

6 ¹ Early Detection, Prevention and Infections Branch, International Agency for Research on
7 Cancer, Lyon, France

8 ² Centro Javerinao de Oncología - Hospital Universitario San Ignacio, Bogotá, Colombia

9 ³ Investigadora CEDES/CONICET, Argentina

10 ⁴ Instituto Provincial del Cáncer, Jujuy, Argentina

11 ⁵ Foundation Lalla Salma Cancer prevention and treatment, Rabat, Morocco

12 ⁶ Department of Gynaecological Oncology, Bangabandhu Sheikh Mujib Medical University,
13 Bangladesh

14 ⁷ National Cancer Control Programme, Ministry of Health, Sri Lanka

15 ⁸ Family Health Bureau, Ministry of Health, Sri Lanka

16 ⁹ National Cancer Institute, Department of Medical Services, Ministry of Public Health,
17 Bangkok, Thailand

18

19 ***Corresponding Author**

20 Partha Basu MD, PhD

21 Head, Early Detection, Prevention & Infections Branch

22 International Agency for Research on Cancer (WHO)

23 25 avenue Tony Garnier, 69007 Lyon, France

24 Tel: +33 764485370

25 E-mail address: basup@iarc.who.int

26 Abstract

27 It is quite well-documented that the COVID-19 pandemic disrupted cancer screening services in
28 all countries, irrespective of their resources and healthcare settings. While quantitative estimates
29 on reduction in volume of screening tests or diagnostic evaluation are readily available from the
30 high-income countries, very little data is available from the low- and middle-income countries
31 (LMICs). From the CanScreen5 global cancer screening data repository we identified six LMICs
32 through purposive sampling based on the availability of cancer screening data at least for the
33 years 2019 and 2020. These countries represented different human development index (HDI)
34 categories and were from Asia (Bangladesh and Thailand), Africa (Morocco) and Latin America
35 (Argentina and Colombia). The reduction in the volume of tests in 2020 compared to the
36 previous years ranged from 14.1% in Bangladesh to 72.9% in Argentina (regional programme)
37 for cervical screening, from 14.1% in Bangladesh to 52.2% in Morocco for breast cancer
38 screening and 30.7% in Thailand for colorectal cancer screening. Number of colposcopies was
39 reduced in 2020 compared to previous year by 88.9% in Argentina, 38.2% in Colombia, 27.4%
40 in Bangladesh and 52.3% in Morocco. The reduction in detection rates of CIN 2 or worse lesions
41 ranged from 20.7% in Morocco to 45.4% in Argentina. Reduction of breast cancer detection by
42 19.2% was reported from Morocco. No association of the impact of pandemic could be seen with
43 HDI categories. Quantifying the impact of service disruptions in screening and diagnostic tests
44 will allow the programmes to strategize how to ramp up services to clear the backlogs in
45 screening and more crucially in further evaluation of screen-positives. The data can be used to
46 estimate the impact on stage distribution and avoidable mortality from these common cancers.

47 **Keywords:** COVID-19; cancer screening; breast; cervix; colorectal; impact; low- and middle-
48 income countries

49 Introduction

50 Breakout of the coronavirus pandemic in 2019 with the emergence of the SARS-Cov-2 virus
51 severely impacted the ability of countries to address and respond to the growing burden of
52 cancers. Mitigation measures such as lockdowns, social distancing norms, travel restrictions etc.
53 along with closure of non-emergency health services disrupted cancer care and imposed access
54 delays (*WHO, 2020a*). The impact of the COVID-19 pandemic on cancer screening,
55 symptomatic diagnosis of cancer, referral pathways and cancer management has been well-
56 documented in high-resourced countries (*Jones et al, 2020*). In the United States of America, a
57 significant drop in the volume of screening for breast cancer (94%), colon cancer (86%) and
58 cervical cancer (94%) was reported between January 2020, and April 2020 (*Epic Health
59 Research Network, 2020*). However, such quantitative estimates are rarely available from outside
60 of North America, Australia, or Europe.

61 A cross sectional survey was conducted in 2020 by the International Agency for Research on
62 Cancer (IARC), France to assess the impact of COVID-19 pandemic on cancer screening
63 programs in 17 countries (*Villain et al., 2021*). Though the survey documented country
64 experiences with programme suspensions, changes in health priorities and curtailment of follow
65 up visits, it was too early to generate any quantitative estimate on their impact on screening and
66 downstream processes. In the present manuscript we have reported impact of the COVID-19
67 pandemic on existing cancer screening programmes in selected low- and middle-income
68 countries (LMICs) based on comparison of volume of screening and further assessment of
69 screen-positives, before and during the pandemic. Sampling of the countries/programmes was
70 purposive, based on their ability to share cancer screening performance data covering the years
71 before and during the pandemic. We included countries belonging to different categories of

72 human development index (HDI) in our purposive sampling of LMICs to document if impact of
73 the pandemic was different among them.

74 **Methods**

75 The IARC-led project ‘Cancer Screening in Five Continents (CanScre5)’ is a global repository
76 of information on cancer screening programmes, which has collected cancer screening
77 information and data from 84 countries (including LMICs) till date (*Basu et al., 2019*). LMICs
78 reported to be collecting screening performance data on yearly basis were selected out of the
79 participating countries. Among these, we invited focal points of cancer screening programmes
80 from two very high HDI category LMICs (Argentina and Thailand; HDI between 0.8 and 1.0 in
81 2020), two high HDI category LMICs (Colombia and Sri Lanka; HDI between 0.7 and 0.79 in
82 2020) and two medium HDI category LMICs (Bangladesh and Morocco; HDI between 0.55 and
83 0.69). The cancer screening programme focal points from these countries also informed us that
84 they had data available at least for the years 2019 (pre-pandemic) and 2020 (during the
85 pandemic). None of the programmes from low HDI countries participating in CanScreen5
86 project had quantitative data that could be shared with us.

87 The focal point(s) from each country shared available data on number screened, and number
88 further assessed disaggregated by months or quarters for the years 2019 and 2020 to allow direct
89 comparison. All the countries except Thailand reported for cervical screening programmes. Data
90 was obtained from breast cancer screening programmes in Bangladesh, Colombia, Morocco and
91 Sri Lanka. Colorectal cancer screening programme data was reported from Thailand only. All the
92 countries except Argentina submitted national data. Colombia submitted national data obtained
93 only from two insurance companies representing 23.8% of the total population. Cancer screening

94 data from Morocco was disaggregated by regions and not by months. The qualitative information
95 on the screening protocol and programme organization was collected from the CanScreen5
96 website (*Basu et al., 2019*).

97 For each country we have summarized the protocol and organization of the cancer screening
98 programme, screening performance for the years 2019 and 2020, and evolution of covid-19
99 burden based on data available at the WHO COVID-19 dashboard (*WHO, 2020b*). Due to the
100 diversity of protocol, screening tests, referral pathway adopted by the countries and the different
101 information systems used, the data across the countries are not directly comparable. Hence, we
102 have presented the outcomes as case studies from the six target countries.

103 The CanScreen5 project was reviewed by IARC Ethic Committee and was approved for
104 collection of programme information and aggregate data on an ongoing basis.

105 **Results**

106 *Case study 1: Argentina (very high HDI category) (Jujuy province)*

107 Argentina is a federal country divided into 24 provinces. Though the National Ministry of Health
108 provides broad regulatory framework and guidelines, the health programmes are administered at
109 provincial level (*Arrossi et al., 2021*). The National Program on Cervical Cancer Prevention
110 (NPCCP) was relaunched in 2008 targeting women between 25 and 65 years of age (*Arrossi et*
111 *al., 2015*). HPV testing was introduced in Jujuy through the Jujuy Demonstration project, led by
112 the National Program on Cervical Cancer Prevention. HPV-testing is offered to women aged 30
113 years and older who attend the public health system. Cytology is used as the triage test (*Arrossi*

114 *et al.*, 2019). The cervical screening coverage in Argentina was reported to exceed 70% of the
115 eligible population (ICO/IARC, 2021a; WHO, 2021a).

116 Community transmission of SARS-Cov-2 in Argentina was officially declared on 3 March 2020.
117 As of 25 January 2023, total 10.0 million confirmed cases of COVID-19 and 130,394 deaths
118 (0.35% of population) were reported (WHO, 2020c). Health authorities enforced first national
119 lockdown between 20 March and 26 April 2020. However, partial lockdowns for local
120 containment of disease were implemented until 30 August 2020. However, by September-
121 October 2020 Jujuy became one of the Argentinean provinces with highest cumulative infection
122 and mortality rates. During this acute phase of disease spread governmental measures focused
123 mainly on preventing the collapse of the health system. By August-September, 93% of Jujuy
124 intensive care beds were occupied with COVID-19 cases. Interruptions in provision of primary
125 health care and problems to access drugs were reported (Bernasconi *et al.*, 2021)

126 In the JuJuy province, total number of women screened with either cytology or HPV test in a
127 year dropped by 72.9% in 2020 from a total of 58,343 women screened in the year 2019 (Table
128 1). The impact was most severe during the lockdown period and its immediate aftermath with
129 highest reduction of 96.4% being reported in the month of August 2020. With lifting of sanitary
130 restrictions, a gradual improvement of the number of women screened per month was observed
131 only during the year end (Figure 1a). The recovery was slow due to the persistent high burden of
132 COVID cases.

133 Number of colposcopies performed on the screen-positive women in 2020 was also drastically
134 reduced by 88.9% (Table 1). The overall proportion of screened women undergoing colposcopy
135 in 2019 was 6.4% with the proportion remaining similar across the months. The proportion was

136 reduced to only 2.6% in 2020, highlighting the large number of screen positive women missing
137 their further assessment and possible treatment. Due to smaller number of women being screened
138 and smaller proportion of screen-positive women being assessed with colposcopy in 2020, there
139 was 45.4% reduction in the number of cervical intraepithelial neoplasia 2 or worse disease (CIN
140 2+) being detected, and 42.5% excisional treatment being done in the same year compared to
141 2019.

142 *Case study 2: Colombia (very high HDI category)*

143 Colombia introduced cervical and breast cancer screening programmes in the year 2000. The
144 screening protocol was revised in 2018. Though the updated protocol recommended screening of
145 women between 25 to 29 years with cytology every 3 years and 5-yearly HPV test followed by
146 cytology triage for women between 30 to 65 years, cytology was still the most commonly
147 available screening test in 2019-20. Eligible participants are invited for cervical screening using
148 the population lists maintained with general practitioners, primary health centers or insurance
149 companies (*IARC, 2023a*). National participation to the cervical cancer screening programme is
150 around 70% (*ICO/IARC, 2021b; WHO, 2021b*).

151 Breast cancer screening is performed with clinical breast examination (CBE) for women aged 40
152 to 49 years, and with mammography for women aged 50 to 69 years. Only those women not
153 screened in a particular round are sent a written invitation.

154 First case of COVID-19 was detected on 6 March 2020 in Colombia. As of 25 January 2023,
155 there have been 6.3 million confirmed cases of COVID-19 with 142,385 deaths reported (0.65%
156 of population) (*WHO, 2020d*). Health authorities imposed the initial lockdown from 24 March to

157 1 September 2020 throughout the country. Containment and other restrictions continued in
158 several regions even after the lockdown was withdrawn.

159 Overall, a 46.3% reduction in the number of women screened with cervical cytology was
160 observed in 2020 compared to 546,756 women screened in 2019 (Table 2a). The drop was most
161 significant during the prolonged lockdown period with a slow recovery after that (figure 1b).

162 The number of colposcopies performed in 2020 was 38.2% less compared to the same in 2019.
163 During the initial lockdown period the drop exceeded 70%. The proportion of the screened
164 women undergoing colposcopy in 2020 (2.9%) was similar to that in 2019 (2.5%) or 2018 (3.1%;
165 data not shown in the table) and remained almost constant across the months. The reduction in
166 the number of colposcopies was essentially because of a smaller number of women being
167 screened during pandemic and not due to too many screen-positive women missing their further
168 assessment.

169 The number of screening mammography performed in 2020 was 35.2% lower than the 96,940
170 examinations performed in 2019 (Table 2b). Highest reduction was observed immediately after
171 the announcement of lockdown (85.8% in April). The volume of screening per month regained
172 the pre-pandemic level almost immediately after withdrawal of lockdown. The total number of
173 breast biopsies performed in 2020 was only 9.2% lower than that observed in 2019, since the
174 programme could rapidly catch up with the missing biopsies during the lockdown. Proportion of
175 biopsies among the total number of women undergoing mammography remained the same in
176 2020 (4.1%) as compared to 2019 (2.9%) and 2018 (2.7%; data not shown in table), signifying
177 that the rate of further assessment of screen-positives was maintained even during the pandemic
178 months.

179 *Case study 3: Sri Lanka (high HDI category)*

180 Sri Lankan ministry of health introduced breast and cervical cancer screening programmes in the
181 years 1996 and 1998 respectively. For both breast and cervical cancer screening, women are
182 invited through population registers to undergo screening at the age of 35 and a repeat screen at
183 the age 45 (10 years later). Breast cancer screening is carried out using CBE, while Pap-smear test
184 is used for cervical cancer screening. National screening coverage for cervical cancer is around
185 29.3% (*IARC, 2023b*). Provincial governments are responsible to carry out screening at Well
186 Woman Clinics and send data to the national authorities through an electronic data management
187 system (eRHMIS).

188 First case of COVID-19 was detected in the country on 27 January 2020. Till 25 January 2023,
189 1.5 million confirmed cases of COVID-19 and 16,826 deaths were reported (0.04% of the
190 population) (*WHO, 2020e*). Health authorities imposed nationwide lockdown for a brief period
191 between 20 March and 24 March 2020. Partial lockdowns continued in high-prevalence zones.

192 Compared to 160,938 women screened with cytology in 2019, there was an overall 20.5%
193 reduction in 2020 (Table 3a). Maximum reduction of 97% was documented in March 2020. The
194 screening activities recovered quickly but went down again towards the year end as the number
195 of COVID-19 cases surged (Figure 1c). The number of CIN2+ detected in 2020 was 35.6%
196 lower than that in 2019 with some reduction in detection rate in 2020 (0.7% of the screened
197 women) compared to 2019 (0.9%) and 2018 (1.0%; data not shown in table).

198 The pattern of changes in breast cancer screening volume in 2020 mimicked changes in cervical
199 screening volume in the same year with a short-lasting but significant drop after the national
200 lockdown (Table 3b). The number went down again at the year-end due to surge in number of

201 COVID-19 cases. Information on further assessment of the screen positive women was not
202 available.

203 *Case study 4: Thailand (High HDI category)*

204 The Ministry of Public Health in cooperation with the National Health Security Office
205 introduced breast, cervical and colorectal cancer screening programmes in the years 2014, 2005,
206 and 2018 respectively. Breast cancer screening is performed with CBE. Women between 30 to
207 60 years of age undergo pap-smear in urban settings or VIA test in rural settings every 5 years
208 (IARC, 2023c). HPV test was introduced in 2020 to replace cytology progressively. National
209 cervical screening coverage was estimated to be around 67% in 2020 (ICO/IARC, 2021c;
210 Ploysawang *et al.*, 2021; WHO, 2021c). Colorectal cancer screening is based on the faecal
211 immunochemical test (FIT) targeting men and women between 50 to 70 years every 2 years.

212 Thailand was the first country to report a case outside China on 13 January 2020. As of 25
213 January 2023, 4.7 million confirmed cases of COVID-19 and 33,836 deaths were reported
214 (0.07% of the population) (WHO, 2020f). Health authorities enforced lockdown between 22
215 March and 30 April 2020.

216 Data was obtained from colorectal cancer screening programme only. Compared to 832,394
217 individuals screened in 2019 for colorectal cancer there was an overall 30.7% drop in 2020.
218 (Table 4) The programme managed to screen much higher number of individuals during
219 September to December 2020 compared to same months in the year 2019 as more effort was
220 given to scale up screening in the rural areas where the prevalence of COVID was less compared
221 to the urban areas.

222 *Case study 5: Bangladesh (medium HDI category)*

223 Bangladesh scaled up the opportunistic breast and cervical cancer screening programmes with
224 revised protocols and policies in 2016. For breast cancer screening, CBE is performed on women
225 attending various health facilities starting at 30 years of age. Visual inspection after application
226 of acetic acid (VIA) is the cervical screening test offered to women aged between 30 to 60 years
227 every 5 years (*IARC, 2023d*). The screen positive women are referred for colposcopy at
228 designated centers here treatment is performed based on colposcopic suspicion of high-grade
229 lesions. A customized version of DHIS2 (a free and open-source software platform to collect
230 aggregate and individual-level data) is used to collect data at district and national level, which
231 permitted the analysis of COVID-19 (*Basu et al, 2021a*). However, information on further
232 assessment of the CBE-positive women was lacking as the information system is yet to be
233 extended to the centers where the women are referred for triple assessment. Till December 2022,
234 4.2 million were screened with VIA and 3.8 million women screened with CBE once in a
235 lifetime in the programme. Estimated national coverage of the cervical and breast cancer
236 screening programme of the highly populous country still remains remains very low, around 5%
237 only (*IARC, 2023e; ICO/IARC, 2021d*).

238 The first known case of COVID-19 was confirmed on 8 March 2020. By 25 January 2023 there
239 have been 2.0 million confirmed cases of COVID-19 with 29,441 deaths reported (0.02% of the
240 population) (*WHO, 2020g*). The Government enforced a national lockdown from 26 March to 30
241 May 2020.

242 The cervical screening performance data presented in Table 5a shows a significantly higher
243 number of women being screened in the pre-pandemic months of 2020 due to introduction of a

244 system of invitation by community health workers (CHWs) at least in selected districts (figure
245 1d). Enlistment of the eligible women in the DHIS2 software supported this initiative. A
246 significant reduction in the number of women being screened per month was observed during the
247 lockdown and its immediate aftermath. The number of women screened per month quickly
248 recovered and exceeded the previous year due to certain positive steps taken by the programme
249 to continue with the screening activities (e.g., ramping up screening in the rural areas less
250 affected by COVID-19 and enforcing strict mitigation measures at the screening clinics).

251 Colposcopy data could be collected only from the largest colposcopy referral center situated in
252 the capital city of Dhaka. The number of colposcopies performed in 2020 was 27.4% less
253 compared to that in 2019 with a maximum reduction of 74.8% being observed during the
254 lockdown months. Number of CIN 2+ detected in 2020 showed an overall decrease of 33.3%.

255 The number of women being screened for breast cancer per month in 2019 and 2020 closely
256 mimicked those for cervical cancer possibly because same women were subjected to both the
257 tests (Table 5b). A 14.2% drop in overall number of women undergoing CBE was reported in
258 2020 compared to 2019 with the reduction being highest during the lockdown and a few months
259 post-lockdown. Lower CBE-positivity reported in 2020 compared to 2019 could be incidental as
260 no definite pattern (no association with volume of screening, COVID-19 induced restrictions)
261 was observed.

262 *Case study 6: Morocco (Medium HDI category)*

263 Ministry of Health of Morocco introduced breast and cervical cancer screening programme in the
264 year 2010, which was gradually scaled up across all provinces. As per the breast cancer
265 screening protocol updated in 2011, asymptomatic women aged from 40 to 69 years attending

266 the PHCs are offered CBE every 2 years. VIA test is offered to women aged between 30 to 49
267 years every 3 years at the PHCs for cervical screening. The programme is opportunistic and
268 supported by highly visible mass media campaigns (e.g., celebration of breast cancer awareness
269 month throughout the month of October each year). Screen-positive women are referred to
270 dedicated cancer diagnosis centres for further evaluation (*IARC, 2023f*). National screening
271 coverage estimation for breast cancer is around 56.1% and for cervical cancer around 27.3% in
272 the year 2019 (*IARC, 2019*).

273 The first case of COVID-19 was detected on 2 March 2020 in Morocco. As of 25 January 2023,
274 there have been 1.2 million confirmed cases of COVID-19 with 16,296 deaths reported (0.02%
275 of the population) (*WHO, 2020h*). Health authorities imposed a nationwide lockdown between
276 20 March and 15 June 2020. Quarantines, partial lockdowns and other restrictions continued
277 even after that.

278 Almost all the regions of the country registered a significant drop in the volume of cervical
279 screening in 2020 compared to the previous year resulting a new 55.2% reduction in the number
280 of women screened in 2020 (Table 6a). The drop in screening activities was more in the urban
281 provinces (e.g., 68.2% in Rabat, 61.6% in Fès/Meknès, and 58.5% in Grand Casablanca/Settat)
282 compared to the semi-urban ones. The number of colposcopies performed in 2020 was 52.2%
283 less compared to the number of colposcopies in 2019. However, the proportion of screened
284 women undergoing colposcopy remained same in 2020 (2.8%) as compared to 2019 (2.6%) and
285 2018 (2.1%; data not shown on in table). By cascade effect, the number of CIN2+ detected in
286 2020 was reduced by 20.7%.

287 The volume of breast cancer screening in 2020 (N=766,702) reduced to almost half of that in
288 2019 (N=1,515,604) with a higher impact registered in the urban provinces. A significant drop in
289 further assessment was documented in 2020, with a decrease in number of mammography by
290 37.9% compared to the previous year (Table 6b). There was a 19.2% reduction in the number of
291 breast cancers detected in 2020 compared to 2019. Breast cancer detection rate remained
292 unchanged (1/1000 women screened in 2019 and 1.4/1000 women screened in 2020) indicating
293 that the programme could provide appropriate further assessment services for the screen positive
294 women.

295 **Discussion**

296 Breast, cervical and colorectal cancer screening programmes achieving high coverage of the
297 eligible population, as well as providing timely and high-quality diagnostic follow-up services
298 can save significant number of lives. Despite all the complexities associated with implementation
299 of such programmes and their high resource implications, many LMICs have heavily invested in
300 rolling out cancer screening at population levels with varying amount of success. The COVID-19
301 outbreak forced most health systems to halt or slow down ‘non-urgent’ services to reassign staff
302 for COVID-19 related work and reduce footfalls to the health facilities. Unfortunately, cancer
303 screening has been included among such ‘non-urgent’ services in most countries (*WHO, 2020i*).
304 The consequent reduction in cancer screening test volumes would result in substantial rise in
305 avoidable cancer deaths (*Maringe et al, 2020*). Overwhelming of health systems due to the
306 pandemic and associated detrimental consequences for the wider health and well-being of the
307 population are likely to affect the countries with limited resources even worse than the high-
308 income countries. However, little effort has been made to quantify the impact of the pandemic on
309 cancer screening activities in the LMICs. This critical knowledge gap is generally ascribed to the

310 absence of a system of collecting performance data on a regular basis to monitor the screening
311 programmes in these countries.

312 Through CanScreen5 project of IARC we could have access to cancer screening performance
313 data from selected LMICs. HDI has been observed to have a positive correlation with infection
314 rate and COVID-19 mortality rate, primarily due to better quality of data available from
315 countries with high HDI (*Liu et al, 2020; Mirahmadizadeh et al, 2022*). Population aging and
316 higher prevalence of co-morbidities are also responsible for the positive correlation. We
317 categorized the LMICs by HDI to investigate any relationship between HDI and impact of the
318 pandemic on screening performance. The high HDI countries having better healthcare systems
319 are expected to have more resilient screening programmes. However, if MoHs interrupted
320 preventive health services, then the possibility of continuing the screening is not related to the
321 resilience of screening programs. Programs and health services had to obey national and
322 provincial regulations in order to guarantee COVID services and also keep the health workforce
323 available for the emergency.

324 In an ongoing and stable cancer screening programme the monthly or yearly volume of screening
325 tests usually remains similar between consecutive years, as has been demonstrated by the
326 comparison of cervical screening data between 2018 and 2019 in the countries included in our
327 study (Figure 1). The drop in the number of monthly or yearly screening volumes reported in our
328 study for 2020 provides a reliable estimate of the number of individuals that missed screening
329 due to the pandemic. Irrespective of the HDI category, every country observed the biggest drop
330 in screening during the lockdown. In almost all countries the first lockdown declared in 2020
331 was invariably at a short notice and was highly disruptive to routine healthcare. The health
332 systems didn't get enough time and opportunities to reorganize non-emergency services like

333 cancer screening. The screen-eligible individuals were very much hesitant to visit health
334 facilities due the fear of getting infected. As the lockdowns were withdrawn and the health
335 systems adopted several measures to get adjusted to the new situation, the volume of screening in
336 most of the programmes gradually returned back to the pre-pandemic level, as demonstrated in
337 our study. Nonetheless, during the intervening period thousands of individuals have missed their
338 screening, which will have a significant impact on cancer mortality in due course. What is more
339 worrying is our observation that many of the screen-positive individuals in some of the countries
340 missed their further assessment and as a result there were fewer detection of precancers and
341 cancers among them.

342 In addition to the impact of screening coverage, the speed of recovery may have different impact
343 by type of cancer. For cervical and colorectal cancers, the aim is to detect precancerous lesions,
344 thus giving more time to catch up unscreened populations without major impact on incidence,
345 whereas screening for breast cancer is aimed at detection of invasive disease and a detrimental
346 effect on screening coverage with slow recovery would have a greater impact on breast cancer
347 mortality.

348 The reduction in the test volumes in 2020 compared to previous year observed in the LMICs was
349 quite comparable to that observed in high income countries (e.g., cancer screening test volumes
350 were reduced by 40% overall in 2020 in cancer screening programmes in Ontario, Canada)
351 (*Walker et al, 2021*). Some of the LMIC programmes demonstrated remarkable resilience by
352 catching up with the unscreened eligible individuals, at least partially, within a short period of
353 time. This included both high HDI countries (e.g., breast cancer screening in Colombia,
354 colorectal cancer screening in Thailand) and medium HDI countries (e.g., breast and cervical
355 cancer screening in Bangladesh). In addition to creating ‘safe’ facilities for the screen-eligible

356 individuals, Bangladesh and Thailand expanded the screening activities to the rural and hard-to-
357 reach areas where the COVID-19 prevalence was not high due to low population density (*Basu*
358 *et al, 2021a*). Despite experiencing a significant drop in the volume of screening in 2020, the
359 breast and cervical screening programmes in Colombia and Morocco managed to ensure further
360 assessment of the screen positive women essentially by strengthening the referral pathways (e.g.,
361 having dedicated cancer diagnostic clinics outside the routine health facilities for the screen-
362 positive women to attend).

363 Cancer screening and further assessment of screen positive individuals were significantly
364 impacted by the pandemic induced service discontinuation, containments and travel restrictions
365 by all programmes irrespective of their settings. Such disruptions may happen in future as well,
366 due to not only natural calamities but also political turmoil. Since all countries are trying to
367 ‘build back’ their health systems better, attention should be given to make them more resilient
368 and equipped to prevent, diagnose and provide care for non-communicable diseases including
369 cancer. Unlike COVID-19, cancer is a pandemic that is going to stay and likely to get worse with
370 time. By introducing pragmatic protocols for screening (e.g., less frequent screening with more
371 sensitive tests, self-collection of samples preferably at home), further assessment (e.g., molecular
372 tests to triage self-collected samples) and treatment (e.g., screen and treat for cervical
373 precancers), and use of technologies like telemedicine for consultation or mobile application for
374 delivery of test results the programmes can reduce the necessity for the screen eligible
375 individuals to visit health facilities too frequently (*Basu et al, 2021b*). Learning lessons from
376 each other is crucial.

377 We have produced the rarely available quantitative data on the change in screening volumes
378 during COVID pandemic in selected LMICs. Modelers may use the data to estimate the

379 additional number of cases that would be detected in advanced stage or excess deaths that are
380 expected, as has been done in several high-income countries (*Castanon et al., 2020; Yong et al,*
381 *2021*). Our study has several limitations. Many of the programmes could not provide data across
382 the screening continuum (screening, further assessment, detection of disease and treatment),
383 which precluded a complete assessment of the pandemic impact. This was essentially because
384 most LMIC programmes do not have an effective health information system to collect data
385 across screening pathways for programme monitoring and quality assurance. There may be
386 several reasons that may decrease or increase the volume of screening in a particular year and
387 could have impacted our estimates of COVID-19 impact. The number of individuals being
388 screened is usually high with the launch of a new programme or initiation of a new round of
389 screening. This happened with the colorectal cancer screening programme in Thailand in our
390 study as they initiated a new round in 2020. In a regularly screened population, the number of
391 individuals screened may come down during the end of a particular screening round. However,
392 this was not the case in any of the programmes included in our study.

393 To conclude, our analysis demonstrates the profound impact of COVID-19 pandemic on cancer
394 screening services irrespective of HDI category of the countries. It is important for all
395 programmes to strategize how to ramp up services to clear the backlogs in screening and more
396 crucially in further evaluation of screen-positives. Having a robust information system to collect
397 cancer screening data is imperative to monitor screening-related service volumes and backlogs.
398 Well-coordinated, decisive, and collective actions remain critical to make screening programmes
399 more equitable and resilient in the face of natural and geo-political calamities.

400 **Competing interests:** None

401 **Funding:** None.

402 **Author contributions:** PB conceptualized the study. EL, RMuw analyzed the data. RMur, SA,
403 MB, YC, AN, SP, PS and SS provided data collection. PB and EL manuscript drafting, and
404 revision. All authors read and approved the final manuscript.

405 **Data availability:** All data generated or analysed during this study are included in the
406 manuscript.

407 **Disclaimer:** Where authors are identified as personnel of the International Agency for Research
408 on Cancer / World Health Organization, the authors alone are responsible for the views
409 expressed in this article and they do not necessarily represent the decisions, policy or views of
410 the International Agency for Research on Cancer / World Health Organization.

411 **References**

412 Arrossi S, Thouyaret L, Laudi R, Marín O, Ramírez J, Paolino M, Herrero R, Campanera A.
413 2015. Implementation of HPV-testing for cervical cancer screening in programmatic
414 contexts: The Jujuy demonstration project in Argentina. *Int J Cancer* **137**:1709-18. doi:
415 [10.1002/ijc.29530](https://doi.org/10.1002/ijc.29530). PMID: 25807897.

416 Arrossi S, Paolino M, Laudi R, Gago J, Campanera A, Marín O, Falcón C, Serra V, Herrero R,
417 Thouyaret L. 2019. Programmatic human papillomavirus testing in cervical cancer
418 prevention in the Jujuy Demonstration Project in Argentina: a population-based, before-
419 and-after retrospective cohort study. *Lancet Glob Health* **7**:e772-e783. doi:
420 [10.1016/S2214-109X\(19\)30048-8](https://doi.org/10.1016/S2214-109X(19)30048-8). PMID: 31097279.

- 421 Arrossi S, Paolino M, Laudi R, Thouyaret L. 2021. Changing the paradigm of cervical cancer
422 prevention through introduction of HPV-testing: evaluation of the implementation
423 process of the Jujuy Demonstration Project in Argentina. *Ecancermedicalscience*
424 **15**:1199. doi: [10.3332/ecancer.2021.1199](https://doi.org/10.3332/ecancer.2021.1199). PMID: 33889208
- 425 Basu P, Lucas E, Carvalho AL, Sauvaget C, Muwonge R, Herrero R, Sankaranarayanan R.
426 2019. Cancer Screening in Five Continents. Lyon, France: International Agency for
427 Research on Cancer. Available online: <https://canscreen5.iarc.fr> Date accessed
428 25/01/2023
- 429 Basu P, Lucas E, Zhang L, Muwonge R, Murillo R, Nessa A. 2021a. Leveraging vertical
430 COVID-19 investments to improve monitoring of cancer screening programme - A case
431 study from Bangladesh. *Prev Med* **151**:106624. doi: [10.1016/j.ypmed.2021.106624](https://doi.org/10.1016/j.ypmed.2021.106624).
432 PMID: 34023359
- 433 Basu P, Alhomoud S, Taghavi K, Carvalho AL, Lucas E, Baussano I. 2021b. Cancer Screening
434 in the Coronavirus Pandemic Era: Adjusting to a New Situation. *JCO Glob Oncol.* **7**:416-
435 424. doi: [10.1200/GO.21.00033](https://doi.org/10.1200/GO.21.00033). PMID: 33784177.
- 436 Bernasconi M, Romero MA, Golovanevsky L 2021. Mapping of local public policies in Jujuy
437 in the context of pandemic. *Trabajo y Sociedad* **22**:203-230.
- 438 Castanon A, Matejka RM, Pesola F, Sasieni P. 2020. The impact of COVID-19 on disruption to
439 cervical screening in England on excess diagnoses. *medRxiv*. doi: [10.1038/s41416-021-](https://doi.org/10.1038/s41416-021-01275-3)
440 [01275-3](https://doi.org/10.1038/s41416-021-01275-3)
- 441 Epic Health Research Network. 2020. Preventive cancer screenings during COVID-19
442 pandemic. Published 2020. Available online: <https://ehrn.org/wp->

443 [content/uploads/Preventive-Cancer-Screenings-during-COVID-19-Pandemic.pdf](#) Date
444 [accessed 25/01/2023](#)

445 IARC. 2019. Breast and Cervical Cancer Screening Program of Morocco. International Agency
446 for Research on Cancer (IARC) in collaboration with Ministry of Health, Kingdom of
447 Morocco and the Lalla Salma Foundation for Cancer Prevention and Treatment,
448 Morocco. Breast and Cervical Cancer Screening Program of Morocco: Status of
449 implementation, organization and performance. Available from:
450 <https://screening.iarc.fr/doc/MorrocoScreeningReport2019.pdf> Date accessed 25/01/2023

451 IARC. 2023a. Cancer Screening in Five Continents – Colombia country profile. Lyon, France:
452 International Agency for Research on Cancer. Available online:
453 <https://canscreen5.iarc.fr/?page=countryfactsheetbreast&q=COL> Date accessed
454 25/01/2023

455 IARC. 2023b. Cancer Screening in Five Continents – Sri Lanka country profile. Lyon, France:
456 International Agency for Research on Cancer. Available online:
457 <https://canscreen5.iarc.fr/?page=countryfactsheetcervix&q=LKA> Date accessed
458 25/01/2023

459 IARC. 2023c. Cancer Screening in Five Continents – Thailand country profile. Lyon, France:
460 International Agency for Research on Cancer. Available online:
461 <https://canscreen5.iarc.fr/?page=countryfactsheet&q=THA> Date accessed 25/01/2023

462 IARC. 2023d Cancer Screening in Five Continents – Bangladesh country profile. Lyon, France:
463 International Agency for Research on Cancer. Available online:

464 <https://canscreen5.iarc.fr/?page=countryfactsheetbreast&q=BGD> Date accessed
465 25/01/2023

466 IARC. 2023e Cancer Screening in Five Continents – Bangladesh country profile. Lyon, France:
467 International Agency for Research on Cancer. Available online:
468 [https://cdn.who.int/media/docs/default-source/country-profiles/cervical-cancer/cervical-](https://cdn.who.int/media/docs/default-source/country-profiles/cervical-cancer/cervical-cancer-bgd-2021-country-profile-en.pdf?sfvrsn=5749d0ab_35&download=true)
469 [cancer-bgd-2021-country-profile-en.pdf?sfvrsn=5749d0ab_35&download=true](https://cdn.who.int/media/docs/default-source/country-profiles/cervical-cancer/cervical-cancer-bgd-2021-country-profile-en.pdf?sfvrsn=5749d0ab_35&download=true) Date
470 accessed 25/01/2023

471 IARC. 2023f. Cancer Screening in Five Continents – Morocco country profile. Lyon, France:
472 International Agency for Research on Cancer. Available online:
473 <https://canscreen5.iarc.fr/?page=countryfactsheetcrc&q=MAR> Date accessed 25/01/2023

474 ICO/IARC. 2021a. ICO/IARC Information Centre on HPV and Cancer. Argentina Human
475 Papillomavirus and Related Cancers, Fact Sheet 2021. Available online:
476 https://hpvcentre.net/statistics/reports/ARG_FS.pdf?t=1661326717239 Date accessed
477 25/01/2023

478 ICO/IARC. 2021b. ICO/IARC Information Centre on HPV and Cancer. Colombia Human
479 Papillomavirus and Related Cancers, Fact Sheet 2021. Available online:
480 https://hpvcentre.net/statistics/reports/COL_FS.pdf?t=1661332364051 Date accessed
481 25/01/2023

482 ICO/IARC. 2021c. ICO/IARC Information Centre on HPV and Cancer. Thailand Human
483 Papillomavirus and Related Cancers, Fact Sheet 2021. Available online:
484 https://hpvcentre.net/statistics/reports/THA_FS.pdf?t=1661340960544 Date accessed
485 25/01/2023

- 486 ICO/IARC. 2021d. ICO/IARC Information Centre on HPV and Cancer. Bangladesh Human
487 Papillomavirus and Related Cancers, Fact Sheet 2021. Available
488 online:https://hpvcentre.net/statistics/reports/BGD_FS.pdf?t=1661333484494
- 489 Jones D, Neal RD, Duffy SRG, Scott SE, Whitaker KL, Brain K. 2020. Impact of the COVID-
490 19 pandemic on the symptomatic diagnosis of cancer: the view from primary care. *Lancet*
491 *Oncol* **21**:748-750. doi: [10.1016/S1470-2045\(20\)30242-4](https://doi.org/10.1016/S1470-2045(20)30242-4). PMID: 32359404
- 492 Liu K, He M, Zhuang Z, He D, Li H. 2020. Unexpected positive correlation between human
493 development index and risk of infections and deaths of COVID-19 in Italy. *One Health*.
494 **10**:100174. doi: [10.1016/j.onehlt.2020.100174](https://doi.org/10.1016/j.onehlt.2020.100174). PMID: 33015305
- 495 Maringe C, Spicer J, Morris M, Purushotham A, Nolte E, Sullivan R, Rachet B, Aggarwal A.
496 2020. The impact of the COVID-19 pandemic on cancer deaths due to delays in diagnosis
497 in England, UK: a national, population-based, modelling study. *Lancet Oncol*. **21**:1023-
498 1034. doi: [10.1016/S1470-2045\(20\)30388-0](https://doi.org/10.1016/S1470-2045(20)30388-0). PMID: 32702310
- 499 Mirahmadizadeh A, Ghelichi-Ghojogh M, Vali M, Jokari K, Ghaem H, Hemmati A, Jafari F,
500 Dehghani SS, Hassani AH, Jafari A, Rezaei F. 2022. Correlation between human
501 development index and its components with COVID-19 indices: a global level ecologic
502 study. *BMC Public Health*. **22**:1549. doi: [10.1186/s12889-022-13698-5](https://doi.org/10.1186/s12889-022-13698-5). PMID:
503 35971079
- 504 Ploysawang P, Rojanamatin J, Prapakorn S, Jamsri P, Pangmuang P, Seeda K, Sangrajrang S.
505 2021. National Cervical Cancer Screening in Thailand. *Asian Pac J Cancer Prev* **22**:25-
506 30. doi: [10.31557/APJCP.2021.22.1.25](https://doi.org/10.31557/APJCP.2021.22.1.25). PMID: 33507675

- 507 Villain P, Carvalho AL, Lucas E, Mosquera I, Zhang L, Muwonge R, Selmouni F, Sauvaget C,
508 Basu P; IARC COVID-19 Impact Study Group. 2021. Cross-sectional survey of the
509 impact of the COVID-19 pandemic on cancer screening programs in selected low- and
510 middle-income countries: Study from the IARC COVID-19 impact study group. *Int J*
511 *Cancer* **149**:97-107. doi: [10.1002/ijc.33500](https://doi.org/10.1002/ijc.33500). PMID: 33533501
- 512 Walker MJ, Meggetto O, Gao J, Espino-Hernández G, Jembere N, Bravo CA, Rey M, Aslam
513 U, Sheppard AJ, Lofters AK, Tammemägi MC, Timmouth J, Kupets R, Chiarelli AM,
514 Rabeneck L. 2021. Measuring the impact of the COVID-19 pandemic on organized
515 cancer screening and diagnostic follow-up care in Ontario, Canada: A provincial,
516 population-based study. *Prev Med.* **151**:106586. doi: [10.1016/j.ypmed.2021.106586](https://doi.org/10.1016/j.ypmed.2021.106586).
517 PMID: 34217413
- 518 WHO. 2020a. The impact of the COVID-19 pandemic on noncommunicable disease resources
519 and services: results of a rapid assessment. World Health Organization. Available online:
520 <https://apps.who.int/iris/handle/10665/334136> Date accessed 25/01/2023
- 521 WHO. 2020b. WHO COVID-19 Dashboard. Geneva: World Health Organization. Available
522 online: <https://covid19.who.int> Date accessed 25/01/2023
- 523 WHO. 2020c. WHO COVID-19 Dashboard - Argentina. Geneva: World Health Organization.
524 Available online: <https://covid19.who.int/region/amro/country/ar> Date accessed
525 [25/01/2023](https://covid19.who.int/region/amro/country/ar)
- 526 WHO. 2020d. WHO COVID-19 Dashboard - Colombia. Geneva: World Health Organization.
527 Available online: <https://covid19.who.int/region/amro/country/co> Date accessed
528 25/01/2023

529 WHO. 2020e. WHO COVID-19 Dashboard – Sri Lanka. Geneva: World Health Organization.

530 Available online: <https://covid19.who.int/region/searo/country/lk> Date accessed

531 25/01/2023

532 WHO. 2020f. WHO COVID-19 Dashboard – Thailand. Geneva: World Health Organization.

533 Available online: <https://covid19.who.int/region/searo/country/th> Date accessed

534 [25/01/2023](https://covid19.who.int/region/searo/country/th)

535 WHO. 2020g. WHO COVID-19 Dashboard – Bangladesh. Geneva: World Health

536 Organization. Available online: <https://covid19.who.int/region/searo/country/bd>

537 WHO. 2020h. WHO COVID-19 Dashboard – Morocco. Geneva: World Health Organization.

538 Available online: <https://covid19.who.int/region/emro/country/ma> Date accessed

539 25/01/2023

540 WHO. 2020i. COVID-19 significantly impacts health services for noncommunicable diseases.

541 World Health Organization. Available online: [https://www.who.int/news-room/detail/](https://www.who.int/news-room/detail/01-06-2020-covid-19-significantly-impacts-health-services-for-noncommunicable-diseases)

542 [01-06-2020-covid-19-significantly-impacts-health-services-for-noncommunicable-](https://www.who.int/news-room/detail/01-06-2020-covid-19-significantly-impacts-health-services-for-noncommunicable-diseases)

543 [diseases](https://www.who.int/news-room/detail/01-06-2020-covid-19-significantly-impacts-health-services-for-noncommunicable-diseases) Date accessed 25/01/2023

544 WHO. 2021a. World Health Organization – Argentina Cervical Cancer Country Profiles.

545 Available online: [https://cdn.who.int/media/docs/default-source/country-profiles/cervical-](https://cdn.who.int/media/docs/default-source/country-profiles/cervical-cancer/cervical-cancer-arg-2021-country-profile-en.pdf?sfvrsn=b95861f5_43&download=true)

546 [cancer/cervical-cancer-arg-2021-country-profile-](https://cdn.who.int/media/docs/default-source/country-profiles/cervical-cancer/cervical-cancer-arg-2021-country-profile-en.pdf?sfvrsn=b95861f5_43&download=true)

547 [en.pdf?sfvrsn=b95861f5_43&download=true](https://cdn.who.int/media/docs/default-source/country-profiles/cervical-cancer/cervical-cancer-arg-2021-country-profile-en.pdf?sfvrsn=b95861f5_43&download=true) Date accessed 25/01/2023

548 WHO. 2021b. World Health Organization – Colombia Cervical Cancer Country Profiles.

549 Available online: [https://cdn.who.int/media/docs/default-source/country-profiles/cervical-](https://cdn.who.int/media/docs/default-source/country-profiles/cervical-cancer/cervical-cancer-col-2021-country-profile-en.pdf?sfvrsn=b95861f5_43&download=true)

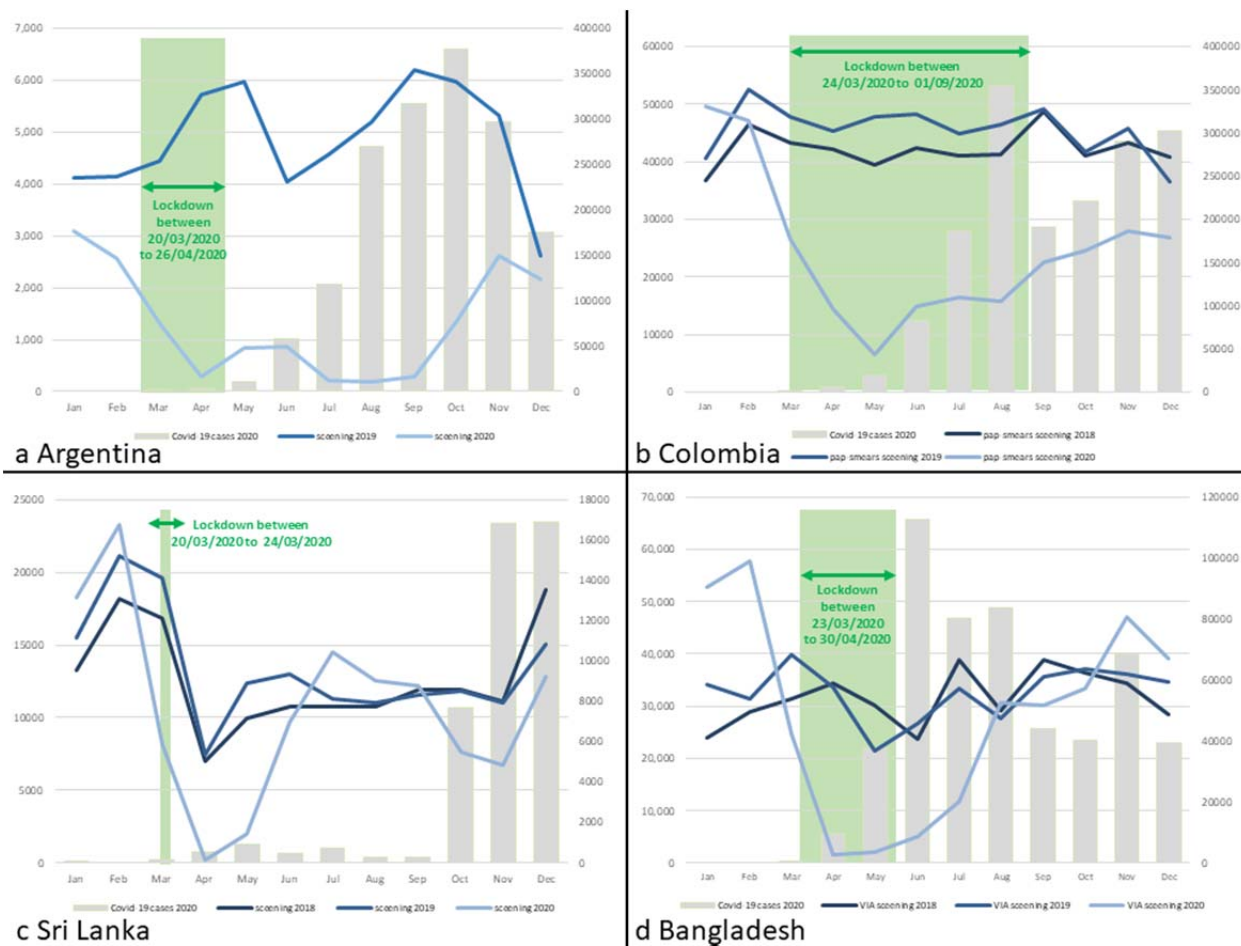
550 [cancer/cervical-cancer-col-2021-country-profile-](#)
551 [en.pdf?sfvrsn=de4ba607_38&download=true](#) Date accessed 25/01/2023

552 WHO. 2021c. World Health Organization – Thailand Cervical Cancer Country Profiles.
553 Available online: [https://cdn.who.int/media/docs/default-source/country-profiles/cervical-](https://cdn.who.int/media/docs/default-source/country-profiles/cervical-cancer/cervical-cancer-tha-2021-country-profile-en.pdf?sfvrsn=46b9bf49_38&download=true)
554 [cancer/cervical-cancer-tha-2021-country-profile-](#)
555 [en.pdf?sfvrsn=46b9bf49_38&download=true](#) Date accessed 25/01/2023

556 Yong JH, Mainprize JG, Yaffe MJ, Ruan Y, Poirier AE, Coldman A, Nadeau C, Iragorri N,
557 Hilsden RJ, Brenner DR. 2021. The impact of episodic screening interruption: COVID-
558 19 and population-based cancer screening in Canada. *J Med Screen*. **28**:100-107. doi:
559 [10.1177/0969141320974711](https://doi.org/10.1177/0969141320974711). PMID: 33241760

560

561 Figure 1: Number of women screened for cervical cancer in Argentina (a), Colombia (b), Sri Lanka (c) and Bangladesh (d) by months in selected years; the bars show the number of COVID-19 cases detected by months in 2020; the green bar shows the lockdown period.



564

565

566

567 **Table 1: Monthly change in number of women undergoing screening, colposcopy and/or treatment, and high-grade CIN detected in the**
 568 **cervical cancer screening programme in Jujuy province, Argentina during 2019 and 2020**

Year of screening	Month of screening												Total
	Jan	Feb	Mar	Apr	May	Jun	Jul	Aug	Sep	Oct	Nov	Dec	
<i>Number of women screened (with cytology or HPV test)</i>													
2019 - n	4,128	4,140	4,457	5,726	5,969	4,036	4,579	5,200	6,205	5,973	5,319	2,611	58,343
2020 - n	3,102	2,577	1,312	291	840	875	214	189	295	1,351	2,608	2,169	15,823
Change - %*	-24.9	-37.8	-70.6	-94.9	-85.9	-78.3	-95.3	-96.4	-95.2	-77.4	-51.0	-16.9	-72.9
<i>Number of women undergoing colposcopy</i>													
2019 - n	234	272	322	374	314	240	208	378	433	356	318	305	3,754
2020 - n	62	49	37	37	60	43	13	11	18	20	20	45	415
Change - %*	-73.5	-82.0	-88.5	-90.1	-80.9	-82.1	-93.8	-97.1	-95.8	-94.4	-93.7	-85.2	-88.9
<i>Number of women detected with CIN 2 or worse lesions</i>													
2019 - n	23	34	28	41	27	29	18	42	45	30	51	31	399
2020 - n	35	26	15	19	24	21	8	8	10	15	13	24	218
Change - %*	+52.2	-23.5	-46.4	-53.7	-11.1	-27.6	-55.6	-81.0	-77.8	-50.0	-74.5	-22.6	-45.4
<i>Number of LLETZ or Conization performed</i>													
2019 - n	9	12	13	30	25	16	16	18	18	18	24	20	219
2020 - n	18	10	8	4	19	14	5	4	8	9	18	9	126
Change - %*	+100.0	-16.7	-38.5	-86.7	-24.0	-12.5	-68.8	-77.8	-55.6	-50.0	-25.0	-55.0	-42.5

* Change is calculated as (numbers in 2020 - numbers in 2019) / (numbers in 2019) x 100; HPV: human papilloma virus; CIN: cervical intraepithelial neoplasia; LLETZ: large loop excision of the transformation zone

569

570

571 **Table 2a: Monthly change in number of women undergoing cytology screening and colposcopy in the national cervical cancer screening**
 572 **programme in Colombia during 2019 and 2020**

Year of screening	Month of screening												Total
	Jan	Feb	Mar	Apr	May	Jun	Jul	Aug	Sep	Oct	Nov	Dec	
<i>Number of women screened (with cytology)</i>													
2019 - n	40,561	52,636	47,734	45,274	47,878	48,200	44,987	46,379	49,125	41,662	45,783	36,537	546,756
2020 - n	49,680	47,205	26,564	14,510	6,652	14,911	16,482	15,712	22,567	24,593	27,911	26,878	293,665
Change - %*	+22.5	-10.3	-44.3	-68.0	-86.1	-69.1	-63.4	-66.1	-54.1	-41.0	-39.0	-26.4	-46.3
<i>Number of women undergoing colposcopy</i>													
2019 - n	1,614	1,450	1,222	1,237	1,249	998	1,120	1,182	1,086	1,114	1,030	495	13,797
2020 - n	1,235	1,165	897	350	485	579	623	684	631	656	697	528	8,530
Change - %*	-23.4	-19.7	-26.6	-71.7	-61.2	-42.0	-44.4	-42.1	-41.9	-41.1	-32.3	+6.7	-38.2

* Change is calculated as (numbers in 2020 - numbers in 2019) / (numbers in 2019) x 100

573

574 **Table 2b: Monthly change in number of women undergoing mammography screening and biopsies taken in the national breast cancer**
 575 **screening programme in Colombia during 2019 and 2020**

Year of screening	Month of screening												Total
	Jan	Feb	Mar	Apr	May	Jun	Jul	Aug	Sep	Oct	Nov	Dec	
<i>Number of women screened (with mammography)</i>													
2019 - n	9,406	9,050	7,955	8,880	8,908	7,966	8,174	8,880	8,647	7,779	6,849	4,446	96,940
2020 - n	7,837	9,818	6,855	1,259	2,269	3,196	3,483	3,739	5,125	6,341	7,189	5,731	62,842
Change - %*	-16.7	8.5	-13.8	-85.8	-74.5	-59.9	-57.4	-57.9	-40.7	-18.5	+5.0	+28.9	-35.2
<i>Number of women from whom biopsies were taken</i>													
2019 - n	184	311	255	203	287	228	213	223	226	253	257	194	2,834
2020 - n	211	302	273	98	136	148	201	207	208	264	270	256	2,574
Change - %*	+14.7	-2.9	-7.1	-51.7	-52.6	-35.1	-5.6	-7.2	-8.0	+4.3	+5.0	+32.0	-9.2

* Change is calculated as (numbers in 2020 - numbers in 2019) / (numbers in 2019) x 100

576 **Table 3a: Monthly change in number of women undergoing cytology screening and high-grade CIN detected in the national cervical cancer**
 577 **screening programme in Sri Lanka during 2019 and 2020**

Year of screening	Month of screening												Total
	Jan	Feb	Mar	Apr	May	Jun	Jul	Aug	Sep	Oct	Nov	Dec	
<i>Number of women screened (with cytology)</i>													
2019 - n	15,470	21,135	19,656	7,467	12,352	13,038	11,309	11,055	11,590	11,797	11,044	15,025	160,938
2020 - n	18,293	23,313	8,149	222	1,947	9,650	14,519	12,543	12,153	7,658	6,748	12,812	128,007
Change - %*	+18.2	+10.3	-58.5	-97.0	-84.2	-26.0	28.4	+13.5	+4.9	-35.1	-38.9	-14.7	-20.5
<i>Number of women detected with CIN 2 or worse lesions</i>													
2019 - n	28	10	9	2	6	10	11	16	13	13	7	24	149
2020 - n	8	10	6	0	2	11	13	6	9	11	12	8	96
Change - %*	-71.4	0.0	-33.3	-100.0	-66.7	+10.0	18.2	-62.5	-30.8	-15.4	+71.4	-66.7	-35.6

* Change is calculated as (numbers in 2020 - numbers in 2019) / (numbers in 2019) x 100; CIN: cervical intraepithelial neoplasia

578

579

580 **Table 3b: Monthly change in number of women undergoing CBE screening in the national cervical cancer screening programme in Sri Lanka**
 581 **during 2019 and 2020**

Year of screening	Month of screening												Total
	Jan	Feb	Mar	Apr	May	Jun	Jul	Aug	Sep	Oct	Nov	Dec	
<i>Number of women screened (with CBE)</i>													
2019 - n	19,972	27,150	26,329	10,288	16,643	17,778	17,947	15,890	16,884	17,667	16,207	20,253	223,008
2020 - n	22,637	28,509	13,254	356	2,303	12,271	17,982	15,563	15,966	10,057	8,558	16,431	163,887
Change - %*	+13.3	+5.0	-49.7	-96.5	-86.2	-31.0	+0.2	-2.1	-5.4	-43.1	-47.2	-18.9	-26.5

* Change is calculated as (numbers in 2020 - numbers in 2019) / (numbers in 2019) x 100; CBE: clinical breast examination

582

583

584 **Table 4: Monthly change in number of women undergoing screening with FIT in the national colorectal cancer screening programme in**
 585 **Thailand during 2019 and 2020**

Year of screening	Month of screening												Total
	Jan	Feb	Mar	Apr	May	Jun	Jul	Aug	Sep	Oct	Nov	Dec	
<i>Number of women screened (with FIT)</i>													
2019 - n	33,860	47,449	65,192	80,255	144,943	185,289	120,682	88,974	15,365	10,108	17,909	22,368	832,394
2020 - n	27,076	33,731	62,283	23,556	38,778	88,622	93,219	70,560	61,219	24,049	22,549	31,608	577,250
Change - %*	-20.0	-28.9	-4.5	-70.6	-73.2	-52.2	-22.8	-20.7	+298.4	+137.9	+25.9	+41.3	-30.7

* Change is calculated as (numbers in 2020 - numbers in 2019) / (numbers in 2019) x 100; FIT: fecal immunochemical test

586

587

588 **Table 5a: Change in number of women undergoing VIA screening and colposcopy, and high-grade CIN detected in the national cervical cancer**
 589 **screening programme in Bangladesh during 2019 and 2020**

Year of screening	Month of screening												Total
	Jan	Feb	Mar	Apr	May	Jun	Jul	Aug	Sep	Oct	Nov	Dec	
<i>Number of women screened (with VIA)</i>													
2019 - n	34,132	31,448	39,775	33,559	21,434	26,694	33,366	27,597	35,636	37,019	36,208	34,663	391,531
2020 - n	52,873	57,759	24,600	1,719	2,097	5,078	11,740	30,644	30,250	33,466	47,093	39,088	336,407
Change - %*	+54.9	+83.7	-38.2	-94.9	-90.2	-81.0	-64.8	+11.0	-15.1%	-9.6	+30.1	+12.8	-14.1
<i>Number of women undergoing Colposcopy (data given for each quarter)**</i>													
2019 - n		429				342				494			1265
2020 - n		440				86				393			919
Change - %*		+2.6				-74.8				-20.4			-27.4
<i>Number of women detected with CIN 2 or worse lesions (data given for each quarter)**</i>													
2019 - n		106				62				75			243
2020 - n		56				38				68			162
Change - %*		-47.2				-38.7				-9.3			-33.3

* Change is calculated as (numbers in 2020 - numbers in 2019) / (numbers in 2019) x 100; ** Data presented are from the colposcopy clinic of the main hospital in Dhaka, Bangladesh; VIA: visual inspection with acetic acid; CIN: cervical intraepithelial neoplasia

590

591

592 **Table 5b: Change in number of women undergoing CBE and CBE positivity in the national breast cancer screening programme in Bangladesh**
 593 **during 2019 and 2020**

Year of screening	Month of screening												Total
	Jan	Feb	Mar	Apr	May	Jun	Jul	Aug	Sep	Oct	Nov	Dec	
<i>Number of women screened (with CBE)</i>													
2019 - n	33,358	30,164	37,190	33,657	22,077	26,389	33,354	27,678	36,059	37,227	35,866	34,789	387,808
2020 - n	51,313	57,271	24,508	1,716	2,046	5,022	11,712	30,540	29,991	33,336	46,609	38,717	332,781
Change - %*	+53.8	+89.9	-34.1	-94.9	-90.7	-81.0	-64.9	+10.3	-16.8	-10.5	+30.0	+11.3	-14.2
<i>Number and percentage of women who tested positive on CBE</i>													
2019 - n	997	506	465	666	1,048	1,333	1,202	875	856	1,012	879	770	10,609
(%)	(3.0)	(1.7)	(1.3)	(2.0)	(4.7)	(5.1)	(3.6)	(3.2)	(2.4)	(2.7)	(2.5)	(2.2)	(2.7)
2020 - n	594	778	234	37	63	99	114	158	382	272	950	367	4,048
(%)	(1.2)	(1.4)	(1.0)	(2.2)	(3.1)	(2.0)	(1.0)	(0.5)	(1.3)	(0.8)	(2.0)	(0.9)	(1.2)

* Change is calculated as (numbers in 2020 - numbers in 2019) / (numbers in 2019) x 100; CBE: clinical breast examination

594

595

596 **Table 6a: Site-specific change in number of women undergoing VIA screening and/or colposcopy, and high-grade CIN detected in the national**
 597 **cervical cancer screening programme in Morocco during 2019 and 2020**

Year of screening	Screening site											Total
	Tanger Tetouan Al Hoceima	Fès Meknès	Rabat Salé Kénitra	Béni Mellal Khénifra	Grand Casablanca Settat	Marrakech Safi	Drâa Tafilalet	Souss Massa	Guelmim Oued Noun	Laayoune Sakia El Hamra	Eddakhla Oued Eddahab	
Number of women screened (with VIA)												
2019 - n	10,965	115,348	45,904	15,777	72,186	46,113	8,457	22,723	2,521	1,180	30	341,204
2020 - n	4,988	44,301	14,596	17,838	29,952	20,324	4,387	13,350	2,437	824	0	152,997
Change - %*	-54.5	-61.6	-68.2	13.1	-58.5	-55.9	-48.1	-41.2	-3.3	-30.2	-100.0	-55.2
Number of women undergoing colposcopy												
2019 - n	899	2,954	1,520	832	1,479	340	244	726				8,994
2020 - n	303	1,375	865	913	409	105	80	251				4,301
Change - %*	-66.3	-53.5	-43.1	9.7	-72.3	-69.1	-67.2	-65.4				-52.2
Number of women detected with CIN 2 or worse lesions												
2019 - n	39	43	26	20	35	2	4	15				184
2020 - n	19	34	18	43	14	0	4	14				146
Change - %*	-51.3	-20.9	-30.8	115.0	-60.0	-100.0	0.0	-6.7				-20.7

* Change is calculated as (numbers in 2020 - numbers in 2019) / (numbers in 2019) x 100; VIA: visual inspection with acetic acid; CIN: cervical intraepithelial neoplasia

598

599

600 **Table 6b: Site-specific change in number of women undergoing CBE screening and/or mammography investigations, and breast cancers**
 601 **detected in the national breast cancer screening programme in Morocco during 2019 and 2020**

Year of screening	Screening site												Total
	Tanger Tetouan Al Hoceima	Oriental	Fès Meknès	Rabat Salé Kénitra	Béni Mellal Khénifra	Grand Casablanca Settat	Marrakech Safi	Drâa Tafilalet	Souss Massa	Guelmim Oued Noun	Laayoune Sakia El Hamra	Eddakhla Oued Eddahab	
Number of women screened (with CBE)													
2019 - n	113,755	99,230	269,517	210,892	158,305	249,501	190,757	45,150	150,947	18,569	8,826	155	1,515,604
2020 - n	60,170	76,848	99,917	81,357	101,285	117,061	99,441	23,521	85,295	13,648	8,047	112	766,702
Change - %*	-47.1	-22.6	-62.9	-61.4	-36.0	-53.1	-47.9	-47.9	-43.5	-26.5	-8.8	-27.7	-49.4
Number and percentage of women who tested positive on CBE													
2019 - n	3,908	805	4,956	2,888	2,102	2,572	1,543	632	2,324				21,730
(%)	(3.4)	(0.8)	(1.8)	(1.4)	(1.3)	(1.0)	(0.8)	(1.4)	(1.5)				(1.4)
2020 - n	2,807	418	3,265	1,563	1,674	1,354	976	316	1,244				13,617
(%)	(4.7)	(0.5)	(3.3)	(1.9)	(1.7)	(1.2)	(1.0)	(1.3)	(1.5)				(1.8)
Number undergoing mammography investigations among CBE positive women													
2019 - n	1,772	403	3,506	2,037	1,378	2,489	845	470	1,311				14,211
2020 - n	1,381	269	2,267	982	709	1,334	652	294	936				8,824
Change - %*	-22.1	-33.3	-35.3	-51.8	-48.5	-46.4	-22.8	-37.4	-28.6				-37.9
Number of women detected with breast cancers													
2019 - n	249	82	346	186	65	204	79	49	115				1,375
2020 - n	213	16	271	174	65	125	91	30	127				1,112
Change - %*	-14.5	-80.5	-21.7	-6.5	0.0	-38.7	15.2	-38.8	10.4				-19.1

* Change is calculated as (numbers in 2020 - numbers in 2019) / (numbers in 2019) x 100; CBE: clinical breast examination

602

603

604

605