

Age-specific case data reveal varying dengue transmission intensity in US states and territories

Sarah Kada¹ *, Gabriela Paz-Bailey¹, Laura Adams¹ & Michael A. Johansson¹

¹ US Center for Disease Control and Prevention (CDC), Dengue Branch, San Juan, Puerto Rico.

* Corresponding author

E-mail: sarahkada@yahoo.fr (SK)

Number of words: 4341

Abstract

Dengue viruses (DENV) are endemic in the US territories of Puerto Rico, American Samoa, and the US Virgin Islands, with focal outbreaks also reported in the states of Florida and Hawaii. However, little is known about the intensity of dengue virus transmission over time and how dengue viruses have shaped the level of immunity in these populations, despite the importance of understanding how and why levels of immunity against dengue may change over time. These changes need to be considered when responding to future outbreaks and enacting dengue management strategies, such as guiding vaccine deployment. We used catalytic models fitted to case surveillance data stratified by age from the ArboNET national arboviral surveillance system to reconstruct the history of recent dengue virus transmission in Puerto Rico, American Samoa, US Virgin Islands, Florida, Hawaii, and Guam. We

NOTE: This preprint reports new research that has not been certified by peer review and should not be used to guide clinical practice.
estimated average annual transmission intensity (i.e., force of infection) of DENV

26 between 2010 and 2019 and the level of seroprevalence by age group in each
27 population. We compared models and found that treating all reported cases as
28 secondary infections generally fit the surveillance data better than models
29 considering cases as primary infections. Using the secondary case model, we found
30 that force of infection was highly heterogeneous between jurisdictions and over time
31 within jurisdictions, ranging from 0.00003 (95% CI: 0.00002–0.0004) in Florida to
32 0.08 (95% CI: 0.044–0.14) in American Samoa during the 2010–2019 period. For
33 early 2020, we estimated that seropositivity in 10 year-olds ranged from 0.09%
34 (0.02%–0.54%) in Florida to 56.3% (43.7%–69.3%) in American Samoa. In the
35 absence of serological data, age-specific case notification data collected through
36 routine surveillance combined with mathematical modeling are powerful tools to
37 monitor arbovirus circulation, estimate the level of population immunity, and design
38 dengue management strategies.

39 **Author Summary**

40 Viruses transmitted by *Aedes* mosquitoes are a substantial public health burden
41 globally. In the US, the increasing number of outbreaks in recent decades and the
42 co-circulation of the four dengue viruses present a risk of experiencing sequential
43 infections, which can result in more severe disease. However, reported cases only
44 represent a proportion of all infections, so the intensity of dengue circulation in US
45 jurisdictions and the level of population immunity are largely unknown. Combining
46 dengue surveillance data stratified by age with mathematical models enables direct
47 estimation of transmission intensity and previous exposure. We found that dengue
48 virus transmission intensity was highest in American Samoa and Puerto Rico. The

49 US Virgin Islands also showed patterns of endemic transmission, while Hawaii and
50 Guam present more sporadic outbreak profiles. These estimates can help improve
51 risk assessment in these locations and guide interventions to the populations who
52 most need them.

53 **Introduction**

54 Dengue viruses (DENV) re-emerged in the Americas beginning in the 1970s, with the
55 viruses rapidly expanding their range and associated burden of dengue infections [1–
56 3]. However, this expansion has not been uniform. The four antigenically distinct
57 dengue virus serotypes (DENV-1 to DENV-4) emerged at different times with affected
58 areas experiencing different levels of transmission intensity, from sporadic outbreaks
59 to hyperendemic, year-round circulation [4–6].

60 The varied history of DENV transmission in the Americas directly shapes the current
61 risk. Infection with one serotype generally provides long-term immunity to that
62 serotype and short-term immunity to all serotypes. Secondary exposure to a different
63 serotype from the primary infection has been associated with increased risk of severe
64 dengue [7]. Population immunity is therefore modulated by the circulation of the four
65 serotypes and the intensity of transmission of those viruses.

66 As population immunity and transmission intensity are intrinsically linked, it is
67 challenging to estimate either of those components directly. Existing immunity can be
68 partially measured with age-specific serological surveys, but these are logistically and
69 financially challenging to implement, provide only a snapshot of previous exposure,
70 and differentiating specific serotypes and the sequence of prior serotype exposures is
71 very difficult. Transmission intensity can be characterized as the force of infection
72 (FOI), the per capita rate at which susceptible individuals become infected by an
73 infectious disease. A class of models called catalytic models can estimate the FOI,
74 providing a measure of changes in exposure to diseases. However, direct estimation
75 of the FOI is also challenging because population susceptibility is generally not

76 known, many dengue infections are inapparent or unreported, and the proportion of
77 individuals experiencing inapparent disease is dependent on prior infection [8–11].
78 Estimating the FOI therefore requires accounting for both underreporting and
79 historical transmission intensity.

80 To help meet this challenge, age-stratified case data collected through passive
81 surveillance can be used to gather insight into both existing immunity and
82 transmission intensity [12]. Due to every age group having different exposure
83 periods, incidence across each age group each year reflects both the age-group
84 specific immunity and the yearly transmission intensity, enabling estimation of yearly
85 transmission intensity for both current and past years [13]. Catalytic models that use
86 age-specific case data can thus provide valuable insights into the dynamics of
87 arboviruses [12,14,15] by quantifying infection burden in settings where
88 seroprevalence data are unavailable or unrepresentative of the population.

89 Here, we analyze reported dengue case data from six US jurisdictions with outbreaks
90 reported since dengue became a nationally reportable disease in 2010: Puerto Rico,
91 American Samoa, US Virgin Islands, Florida, Hawaii and Guam. These locations
92 represent diverse historical trends in reported case data, from long-term hyper-
93 endemicity in Puerto Rico to no reported dengue in decades prior to an outbreak in
94 2019 in Guam (Figure 1). Building on previous work by Rodriguez-Barraquer et al.
95 [12], we developed a generalized model that accounts for variability in transmission
96 intensity and reporting over time and estimates the FOI and age-specific immunity
97 over time. Accounting for yearly variability in FOI and reporting provides critical
98 insights into dengue epidemiology in a wide variety of settings, from hyperendemic to
99 sporadic outbreaks, and can be used to better assess dengue burden in the US and

100 other settings, contribute to epidemic risk assessment, and guide implementation and
101 evaluation of control strategies such as vaccination.

102 **Methods**

103 **Data sources**

104 Dengue became a nationally notifiable disease in January 2010 and we analyzed
105 confirmed and probable dengue cases reported to ArboNET for the years 2010–2019
106 for six jurisdictions: Puerto Rico, American Samoa, US Virgin Islands, Hawaii, Florida
107 and Guam. Texas was excluded due to low case counts. ArboNET includes
108 information about place of likely acquisition (locally acquired or travel-associated) and
109 disease severity. We analyzed locally acquired cases only, except Florida, where we
110 analyzed both categories. For all locations, we combined severe and non-severe
111 cases. In Puerto Rico, where the highest number of severe cases was reported, we
112 also analyzed severe cases (including dengue hemorrhagic fever and dengue shock
113 syndrome [16,17]) on their own. Age distribution data for each population was
114 obtained from the 2010 census data provided by the United States Census Bureau
115 (census.gov), except for Florida, Hawaii and Puerto Rico where in addition to the
116 2010 census data, population estimates were available for years 2011–2019. The
117 ArboNET surveillance data is available to researchers upon request.

118 **Estimating the force of infection**

119 We used a Bayesian catalytic model extending one developed by Rodriguez-
120 Barraquer et al., [12] to estimate the time-dependent force of infection (FOI(t)) of all
121 circulating serotypes and derive age-specific seroprevalence estimates. Building on
122 the original model, we (i) added random effects for both reporting and FOI
123 probabilities to allow a long-term mean with yearly variability for each of these
124 components. We also (ii) implemented separate models for different reporting
125 possibilities (cases reported are primary DENV infections, secondary infections or a
126 combination of both) and (iii) accounted for potential infections in infants that appear
127 more like secondary infections due to possible maternal antibody transfer. Finally, we
128 (iv) generated a full suite of retrospective FOI estimates (prior to 2010, i.e., when
129 ArboNET data became available).

130 **Reporting probability.** Many DENV infections are mild or asymptomatic, and do not
131 result in a visit to a clinic or being reported as a case [8,9,18]. Building on previous
132 estimates, we set a prior for the probability of reporting a case using a logit-normal
133 distribution (mean = -2.2, $\beta = 0.7$) for the long-term mean, which translates into a
134 mean value of approximately 10% with a 97.5% bound of 30%. Multiple factors may
135 lead to year-to-year fluctuation of reporting probabilities; the presence of other
136 arboviruses infections may influence dengue reporting and testing, and, during
137 epidemic years, doctors may be more likely to recognize and test dengue cases [19–
138 22]. To allow some variability in reporting probabilities, we let it vary between years
139 and partitioned the variance of the reporting prior between uncertainty in the mean
140 and uncertainty in year-to-year variability (see S1).

141 The probability of identifying and reporting dengue cases is also dependent on case
142 severity. In one cohort study, the proportion of inapparent versus symptomatic case
143 was similar between primary and secondary cases, with age, year, and time interval
144 between consecutive infections more likely to affect symptomatic status [23].
145 Additionally, laboratory confirmation generally relies on virological testing that cannot
146 differentiate primary and secondary infections, so the proportion of cases reported to
147 ArboNET that are primary or secondary is not known. We therefore compared three
148 different models considering either that all reported cases are secondary infections
149 (Model S), that reported cases are a combination of primary and secondary infections
150 (Model PS), and that all reported cases are primary infections (Model P, see
151 Supporting information S1).

152 Severe dengue cases, which are predominantly secondary infections, are also
153 reported to ArboNET. Because substantial numbers of severe cases were reported in
154 Puerto Rico during the study time period, we performed a secondary analysis for
155 Puerto Rico limiting the included cases to severe dengue only. While severe cases
156 are more likely to be reported than non-severe cases, severe cases represent only a
157 small proportion of secondary infections. In previous cohort studies, the estimated
158 probability of a secondary infection resulting in a reported severe case was lower
159 than the reporting probability of a secondary infection resulting in any reported
160 dengue case (dengue fever or severe dengue), below 5% (less than 1% [23] and 3%
161 [24]). Based on those studies, we used a lower prior for the reporting of severe
162 cases, setting a mean of 1% of all primary or secondary (depending on the model)
163 infections being reported as severe cases and a 97.5% bound of 5%.

164 **FOI.** The FOI is likely to vary over time depending on the circulating dengue
165 serotypes, serotype introduction or re-introduction, and population immunity, but few
166 catalytic models account for this fluctuation [25]. Similar to the reporting probabilities
167 (described above), we use a logit-normal prior for long-term average FOI and
168 partitioned the prior variance between uncertainty in the mean and uncertainty in the
169 year-to-year variability. We estimated a specific FOI prior for each location, using the
170 average age of infection, life expectancy, and the mean reporting prior (see
171 Supporting information S1, Table S1).

172 **Infant cases.** The presence of maternal antibodies may interfere and potentially
173 predispose some infants to more severe disease, such that infant infections may be
174 more severe and more likely to be reported than expected for a true primary infection
175 [26]. To account for this, we added a proportion parameter, α , that sets the initial
176 previous exposure for infants to a proportion of the FOI in the previous year rather
177 than zero (see S1, Figure S13).

178 **Model comparison**

179 Models were compared using leave-one-out (loo) Pareto smoothed importance
180 sampling [27]. Lower loo scores indicate better cross-validation model fit. We also
181 collected yearly log-likelihood estimates to assess how our S, P and PS models fit to
182 the reported case data. For each parameter we extracted the posterior medians and
183 95% Bayesian credible intervals (hereafter 95% CI). Models were run using Bayesian
184 Markov Chain Monte Carlo sampling with a No-U-Turn sampler using the RStan
185 package [28] in R (version 4.1.2, [29]). Detailed information on the methods used can
186 be found in Supporting Information S1.

187 **Results**

188 Dengue circulation was highly heterogeneous during 2010–2019 across the six
189 jurisdictions (Figure 1). The age distribution of cases also varied markedly, with the
190 most commonly reported age group being 10–14 years in the US Virgin Islands and
191 Guam to 60–64 years for locally acquired cases in Florida (Figure 2). If all age groups
192 had the same risk of infection, the age distribution of cases would mirror the
193 population age distribution, e.g., the largest age group is more likely to have the
194 highest number of reported cases. However, immunity from prior infection, especially
195 in endemic areas, shifts the age of cases to predominantly younger age groups (e.g.,
196 Puerto Rico, American Samoa).

197 We fitted models to each time series of age-specific case data under three different
198 assumptions: (i) that all reported cases are primary infections (Model P), (ii) that all
199 reported cases are secondary infections (Model S), and (iii) that reported cases
200 include both primary and secondary cases (Model PS). In Hawaii and Guam, Model
201 P and Model PS had significantly lower loo error than Model S (Figure 3). The fit of
202 Model S was only significantly better for local cases in Florida (i.e., excluding travel-
203 associated cases) though also had lower mean error for the US Virgin Islands and
204 severe cases in Puerto Rico.

205 Comparing the different models across years, age groups and locations, we found
206 mixed evidence about relative fit. For Puerto Rico, log likelihoods indicated that
207 Model S tended to have a better fit in years with more reported cases and sometimes
208 a worse fit in years and age groups with fewer reported cases (S1, Figures S5-S6).
209 Model S also appeared to fit the distribution of cases across younger age groups

210 more accurately across most jurisdictions (S1, Figures S7 to S13). Models P and PS
211 both tend to estimate that a larger number of cases should be reported in the
212 youngest age group (0-4 years old). Model S qualitatively better matches the distinct
213 pattern of dengue cases in children across endemic areas. Because of this distinct
214 advantage and the finding that fit for Model S was only inferior for Hawaii and Guam
215 (where there was the least evidence of sustained transmission) (S1, Figures S7 to
216 S13), we used Model S for subsequent analyses.

217 Of the six locations analyzed, Puerto Rico had the second highest long-term mean
218 estimated FOI, an estimated 1.1% (95% CI: 0.9–1.3%) per year with substantial year-
219 to-year variation including higher FOI estimates in the early 1990s and 2000s (prior to
220 the dataset analyzed here, Figure 4). The estimated probability of a secondary
221 infection resulting in a reported dengue case was 2.1% (95% CI: 1.4–3.3%). The
222 estimated probability of a secondary infection resulting in a reported severe dengue
223 case was 0.1% (95% CI: 0.1–0.3%). Reporting was estimated to be slightly higher in
224 years when more cases were reported (Figure 5). For 2019, we estimated
225 seroprevalence in 5-year-old children to be 10.1% (95% CI: 6.1–16.9%), increasing
226 to 94.5% (95% CI: 92–96.2%) by age 35 (Figure 2A). FOI and seroprevalence
227 estimates using only severe cases were similar to those using all cases in Puerto
228 Rico, although we observe a lower seroprevalence for 2019 in younger age groups
229 and higher in older age groups (Figure 6).

230 While no cases were reported in American Samoa between 2010 and 2016, the
231 model estimated low reporting in 2010–2016 (Figure 5) and high uncertainty for FOI
232 prior to 2010 with the highest long-term average FOI of all locations at 1.4% (95% CI:
233 1.1–1.8%, Figure 4). The high estimated FOI in 2017–2018 translated to an

234 estimated 2019 seroprevalence in 2019 for 5-year-olds of 46.5% (95% CI: 33.2–
235 61.6%, Figure 2B). Thus, the age structure of cases in 2017-2018, indicates that
236 while this was a large outbreak, there was likely dengue transmission both in 2010-
237 2016 and in preceding years. The FOI estimate for American Samoa was higher than
238 the estimate for Puerto Rico, with similar estimated adult seroprevalence (91.9%,
239 95% CI: 84.8–95.7% for 35-year-olds, Figure 2B).

240 The US Virgin Islands had lower estimated long term average FOI (0.5%, 95% CI:
241 0.3–0.7%, Figure 4) and more stable estimated reporting (Figure 5). With a low FOI
242 in recent years, the 5-year-old estimated seroprevalence for 2019 was low (5.1%,
243 95% CI: 2.3–11%, Figure 2C) but cumulative exposure in adults was still high, with
244 35-year-old estimated seroprevalence for 2019 of 86.1% (95% CI: 72.7–94.1%,
245 Figure 2C).

246 Hawaii reported two outbreaks (2011 and 2014–2015) and Guam reported one
247 (2019) during the study period (Figure 1) and both had less distinct age-specific case
248 patterns (Figure 2D, 2F). The estimates for reporting largely reflected the reporting
249 prior (Figure 4), indicating that there was little information between the case numbers
250 and case age data to distinguish differences in reporting versus FOI. Nonetheless,
251 long-term average FOI estimates were low for both jurisdictions (Hawaii: 0.001%,
252 95% CI: 0.0003–0.004%; Guam: 0.003%, 95% CI: 0.0008–0.013%; Figure 4), with
253 significant increases in the years when the outbreaks were reported. The 2019
254 seroprevalence estimates were low for all age groups in both locations: 6.3% (95%
255 CI: 3.9–12.3%, Figure 2D) and 2.6% (95% CI: 0.8–8.9%, Figure 2F) for 35-year-olds
256 in Hawaii and Guam, respectively.

257 Florida was unique in that 90.5% of cases had reported travel histories. To assess
258 local transmission within the state, we therefore only analyzed cases without reported
259 travel (Figure 2E). Local dengue cases were reported in multiple years and had a
260 distinctly different age profile for cases compared to other locations, with no reported
261 cases in younger age groups and many among adults, which resulted in the largest
262 uncertainty for seroprevalence estimates, especially for older age groups (Figure 2E).
263 Considering all cases, the uncertainty for estimated seroprevalence in 35-year-olds
264 was very high, with a 95% CI of 3.5% to 98.1%. Among local cases only, uncertainty
265 was still high, but indicated more confidence in lower seroprevalence for younger
266 adults, 9.6% (95% CI: 2.0–28.1%) for 35-year-olds. This lower seroprevalence
267 estimate for local cases indicates a relatively low historical transmission intensity
268 locally, implying that many imported secondary cases likely also had their primary
269 infections outside of Florida. The long-term mean FOI for Florida considering only
270 local cases was 0.001% (95% CI: 0.0002–0.008%). Similar to Hawaii and Guam,
271 there was insufficient information to further resolve the probability of reporting a case
272 and the estimated reporting probabilities resembled the prior.

273 Across the six locations, estimated long-term average FOI was highest for American
274 Samoa and Puerto Rico, followed by the US Virgin Islands, with much lower
275 estimates for Hawaii and Guam. We also assessed the average yearly FOI estimates
276 for each location and found that for the higher FOI locations (Puerto Rico, American
277 Samoa, and US Virgin Islands), the yearly average was lower for the period which
278 included surveillance data (2010–2019) compared to estimates for time periods prior

279 to 2010, for which ArboNET data are not available. In contrast, the estimated FOI for
280 the 2010–2019 period were higher than the historical period for Hawaii and Guam.

281 **Discussion**

282 Passive surveillance is the most common approach for dengue surveillance globally
283 [30–32]. While passive surveillance can be highly effective for monitoring longitudinal
284 changes in incidence, insight into disease burden is challenging as care seeking
285 behavior, access to care, case definitions, reporting, and resources can differ
286 substantially over time and across jurisdictions. Differences in these components can
287 mean that actual increases, decreases, or jurisdictional differences in dengue burden
288 are difficult to disentangle from reporting dynamics. The importance of understanding
289 dengue burden beyond reported incidence has grown in recent years, with the
290 advent of dengue vaccines which can be used to reduce the burden, but also require
291 consideration of levels of preexisting population immunity for effective deployment
292 [33]. Here, we extended a previously developed Bayesian model to leverage the age
293 distribution among cases reported via passive surveillance in the US to estimate
294 yearly DENV force of infection, yearly reporting probabilities, and seroprevalence for
295 six jurisdictions with very different histories of reported dengue incidence.

296 Across the six jurisdictions, the estimated dengue burden was highly heterogeneous
297 and FOI estimates did not appear to be higher over time, except in Hawaii and Guam.
298 We found evidence of high long-term transmission intensity in Puerto Rico, American
299 Samoa, and US Virgin Islands (FOI and high seroprevalence in adults), despite
300 different histories of dengue in each location. Hawaii, Florida, and Guam also differed
301 in the frequency and magnitude of reported outbreaks, but all had considerably lower
302 long-term FOIs.

303 The higher estimated FOI in Puerto Rico, American Samoa, and US Virgin Islands
304 reflect different dynamics. Puerto Rico has consistently reported dengue cases for at
305 least three decades ([34,35], timeline by [6]), while dengue reporting in American
306 Samoa and the US Virgin Islands is more sporadic. Outbreaks have been reported in
307 American Samoa in the 1970s, 1990s, 2000s, and 2017–2018 [36–38] and in the US
308 Virgin Islands in the 1990s, 2000s, and in 2012–2013 [6,39]. Here, we found that
309 despite these different apparent dynamics, the estimated long-term FOI and
310 seroprevalence in these locations were similar, with a high likelihood that individuals
311 experienced a secondary infection by the time they reached 10 years old (point
312 estimates between 42% and 59%). Three seroprevalence studies support these
313 findings. First, a study in the municipality of Patillas in the southeastern part of Puerto
314 Rico [40] found a 42.5% seroprevalence in 10–11 year-olds in 2007–2008. For 10-
315 year-olds, we estimated a seroprevalence of 57.2% (95% CI: 45.3–69.6%) in 2010 —
316 the earliest estimate available for our study — in Puerto Rico. A 2010 seroprevalence
317 study in American Samoa found a seroprevalence of 95.6% (95% CI 93.9–96.8%) for
318 18–87 year-olds, with slightly lower estimates for 18–25 year-olds (89.1%, 95% CI:
319 84.0–92.6%) [41]. For the same age groups and year, using only passive surveillance
320 data, we estimated seroprevalence of 95.9% (95% CI: 86.9–98.5%) and 86.9% (95%
321 CI: 63.6–95.6%) for these respective age groups. More recently, CDC’s updated
322 traveler risk classifications re-categorized US Virgin Islands from
323 “Sporadic/Uncertain” to “Frequent/Continuous” [42]. Additionally, a cross-sectional
324 seroprevalence study conducted in US Virgin Island schools in April 2022 estimated
325 a seroprevalence of 42% (95% CI: 26–60%) and 54% (95% CI: 18–89%) among 10
326 and 13 year-olds respectively [43], while our model estimated a seroprevalence of

327 34% (95% CI: 18–54%) and 41% (95% CI: 26–61%) in 7 and 13 year-olds for 2019,
328 3 years prior. No major outbreak has been reported in the US Virgin Islands between
329 2019 and 2022. The high level of immunity found in the US Virgin Islands with our
330 model confirms that dengue transmission intensity in this territory is likely higher than
331 previously suspected.

332 In Hawaii, low FOI and seroprevalence estimates are consistent with several possible
333 histories: small intermittent outbreaks, rare large epidemics, or continuous low
334 intensity transmission. No autochthonous cases had been reported in Hawaii
335 between 1944 and 2001, but recent outbreaks were reported in 2001–2002 [44],
336 2011, and 2015–2016 [45]. Given some reporting issues during these outbreaks (see
337 [46]), the seroprevalence profile in Hawaii should be interpreted with caution.

338 Although the results here do not differentiate between the possible histories, they do
339 indicate that substantial and sustained undetected transmission in recent decades is
340 highly unlikely. Further serological data collection could help decipher between these
341 hypotheses.

342 In Florida, we found a low FOI and a low level of immunity, suggesting low circulation
343 of the virus. Frequent introductions of dengue viruses by travelers result in frequent
344 opportunities for local transmission, so FOI estimates likely reflect both this relatively
345 high introduction risk and limited local transmission. The travel and migration history
346 of Florida residents may also contribute to a higher seroprevalence among older
347 individuals than what would be expected from local transmission alone. This could
348 explain the higher case numbers in older adults, high uncertainty in seroprevalence
349 estimates for those adults, and the better fit of the secondary case model to the
350 Florida data. More detailed data on histories of travel and dengue exposure could

351 potentially provide more resolution on historical patterns of transmission in Florida as
352 compared to exposures acquired elsewhere that impact the patterns of dengue seen
353 in Florida today.

354 Our FOI and seroprevalence estimates in Guam were lower than for the other US
355 territories with comparable environmental conditions. According to our model, primary
356 infections, or a combination of primary and secondary infections dominated the 2019
357 outbreak in Guam, which is consistent with other studies that found no evidence of
358 endemic circulation in Guam since World War II [38,47,48], potentially due to
359 successful vector control strategies limiting dengue transmission on this territory [47].

360 Our model estimated time-varying reporting probabilities for all jurisdictions and found
361 important variations across locations and years. In locations with lower long-term FOI
362 estimates, there was little information in the case data to update the broad prior
363 assumption for reporting probabilities of approximately 10–30%. However, for
364 locations with higher long-term FOI, reporting was generally below 10% and showed
365 substantial year-to-year variability. Other recent work indicates the possibility of
366 similar variation between years [20,22] and particularly between epidemic and non-
367 epidemic years [21], a pattern which we also found in the data and models analyzed
368 here. These findings indicate the likely importance of accounting for variability in
369 reporting probabilities over time.

370 We compared models accounting for reported cases as primary, secondary, or a
371 combination of both primary and secondary infections, finding mixed evidence of fit
372 across jurisdictions. For Florida, the secondary case model clearly fit better by leave-
373 one-out metrics, while it was worse than the other models for Hawaii and Guam

374 (Figure 3). However, detailed examination of fitted model estimates and log-
375 likelihoods revealed that models for secondary infections provided better qualitative
376 fits to the age profiles of cases in locations with higher seroprevalence and for years
377 and age groups with higher incidence. Thus, despite equivocal out-of-sample
378 performance, we found that the secondary-only model is likely preferable in locations
379 with high FOI or with high seroprevalence that may have been acquired elsewhere
380 (Florida), while the primary or combined models may perform better in low FOI
381 settings with limited previous exposure. For reporting, this finding implies that most
382 cases reported in Puerto Rico, American Samoa, US Virgin Islands and Florida are
383 secondary infections and the majority of reported cases in Hawaii and Guam are
384 likely primary infections. This confirms that in endemic settings primary infections are
385 largely unreported, but also suggests this pattern is slightly different in locations with
386 more sporadic transmission. This spatial and temporal variation in reporting is likely
387 to be a more general phenomenon.

388 While we were able to identify clear differences in transmission intensity across
389 locations, this analysis provides limited insight into why those differences exist.
390 Different levels of mobility and interactions with mosquitos between individuals within
391 and between households likely lead to some differences. Environmental variables
392 (e.g., temperature and rainfall) also impact the mosquito population and may drive
393 differences in transmission intensity [49,50]. Furthermore, we accounted for previous
394 infections as a condition for reporting and a condition for the force of infection.
395 However, we did not consider how heterotypic and homologous immunity to different
396 serotypes (or other flaviviruses) may substantially impact these dynamics.

397 Some limitations are worth noting. First, ArboNET includes dengue data since 2010
398 but in some jurisdictions few cases have been reported in this period, meaning that
399 for some jurisdictions the models rely on relatively few data. While fitting the data in a
400 Bayesian framework with informative priors reduces the possibility of misleading
401 conclusions, it also means that high uncertainty remains around some important
402 parameters (e.g., reporting in some jurisdictions). Heterogeneity in dengue exposure
403 and disease across age and gender may result in both age-specific FOI and age-
404 specific reporting probabilities. Neither of these possibilities are captured in our
405 model implementation and would be difficult to assess without informative priors for
406 that age-specific variation. In early model development, we found that to account for
407 time-variable reporting and FOI, we needed to have informative priors for both
408 components. Another possible area for advancing this type of model would be to
409 further differentiate reporting probabilities for primary and secondary infections (see
410 [14]). With informative priors, this could potentially provide further resolution on
411 location specific differences in transmission where reported cases may be dominated
412 by primary infections, secondary infections, or a mix.

413 Our study shows that analyzing age-specific case notification data with catalytic
414 models can provide invaluable insight into dengue virus transmission dynamics
415 beyond simple case counts, including estimates of transmission intensity over time
416 and of evolving population-level exposure (as an ongoing proxy for seroprevalence).
417 These components can help identify where interventions such as dengue vaccines
418 should be prioritized in the US and elsewhere or what populations may be at higher
419 risk of secondary infections and therefore severe disease. These models may

420 provide an important tool for assessing and monitoring dengue transmission risk in
421 many locations where age-specific surveillance data already exist.

422 **Acknowledgments**

423 This work was supported in part by an appointment to S.K. to the Research
424 Participation Program at the Centers for Disease Control and Prevention,
425 administered by the Oak Ridge Institute for Science and Education through an
426 interagency agreement between the US Department of Energy and CDC. Authors
427 would like to thank Aidsa Rivera for support over dataset requests.

428 **Disclaimer**

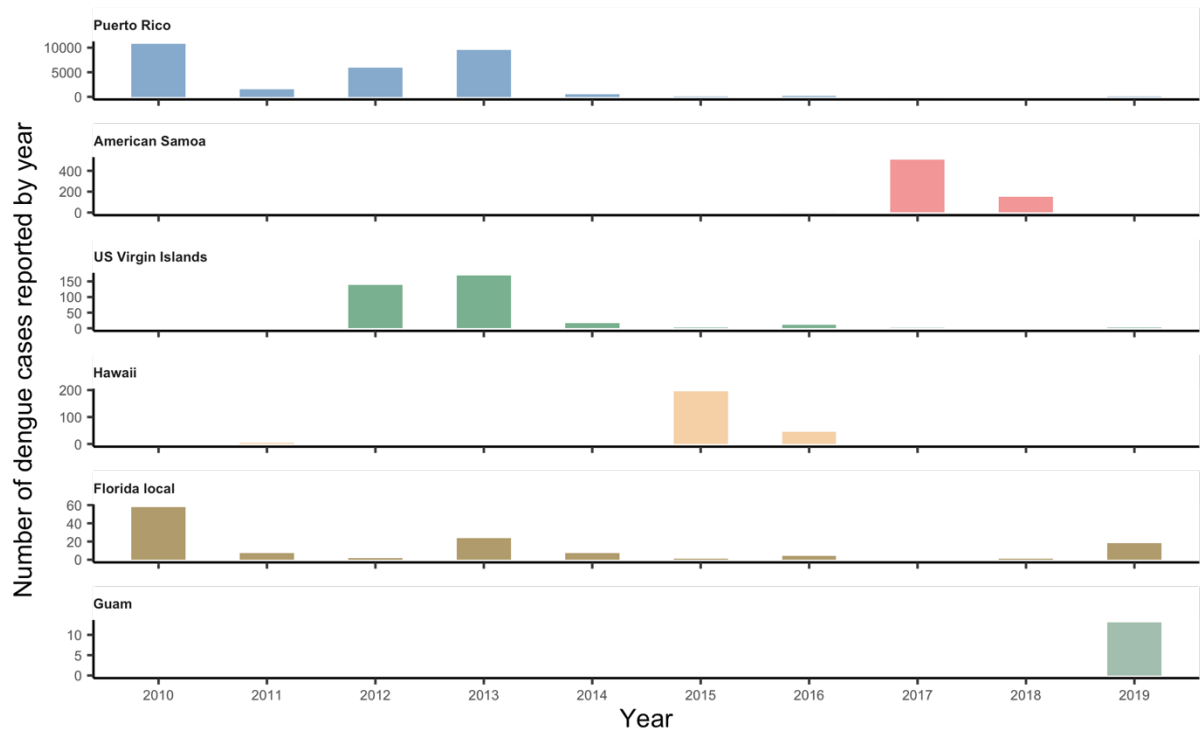
429 The findings and conclusions in this report are those of the authors and do not
430 necessarily represent the official position of the Centers for Disease Control and
431 Prevention.

432 **Code availability**

433 Code to reproduce our analyses is available on GitHub
434 at <https://github.com/sarahkada/dengue-catalytic-model>.

435

436



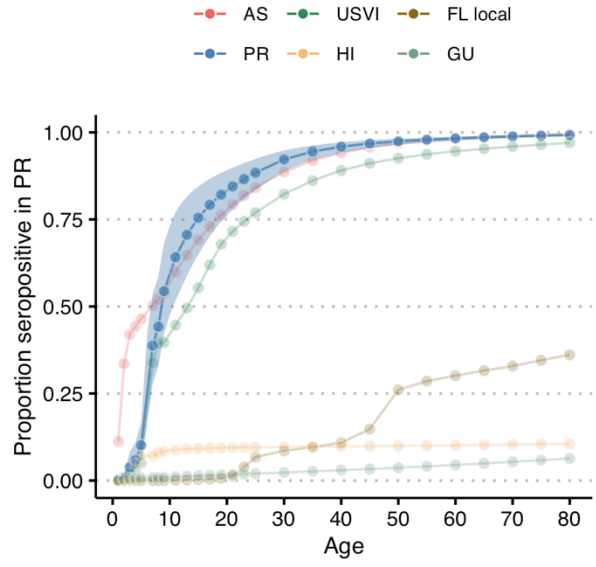
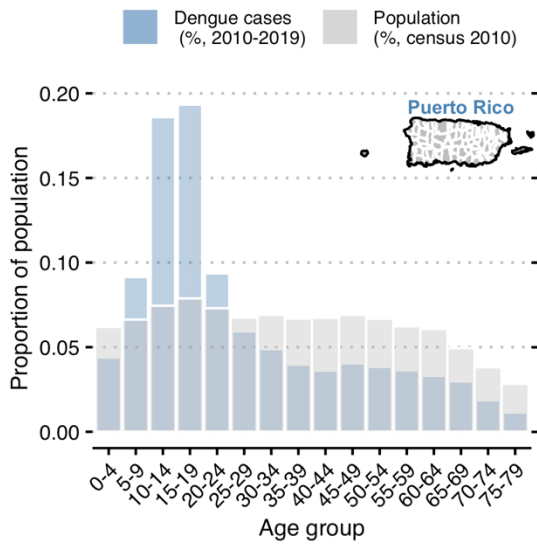
437

438 **Figure 1. Confirmed and probable dengue cases reported to ArboNET by state**
 439 **or territory, 2010–2019.** Included cases had no travel history and met laboratory
 440 criteria for diagnosis. Different y-axis scales were used for each jurisdiction.

441

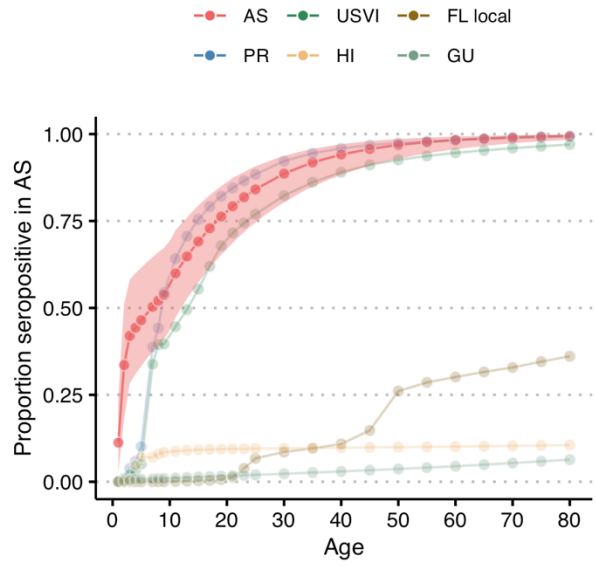
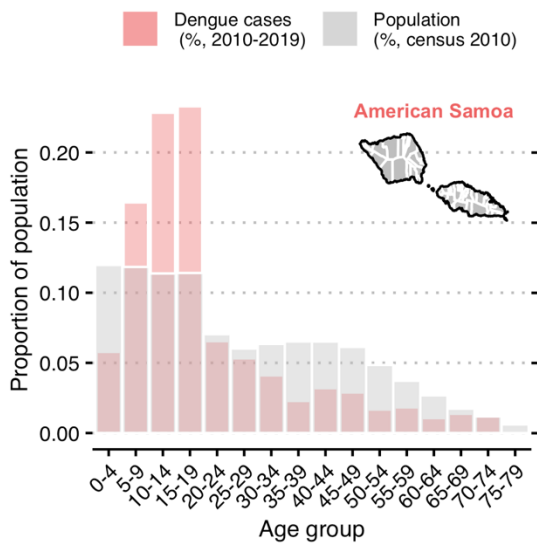
442

A



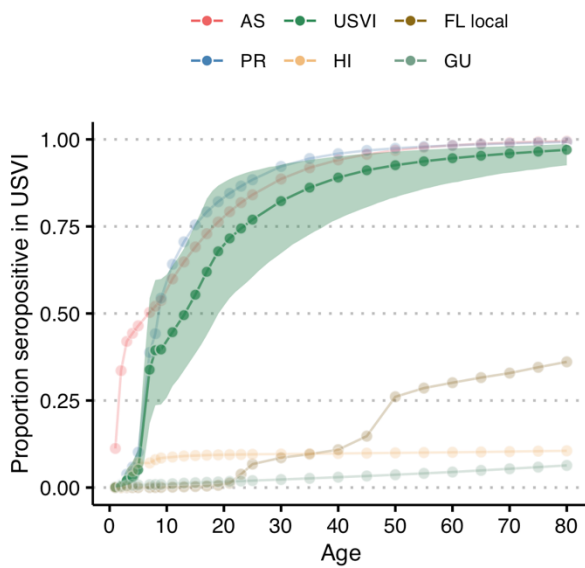
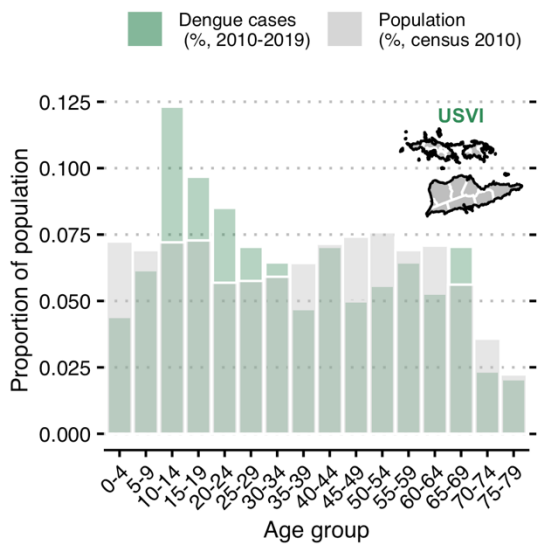
443

B



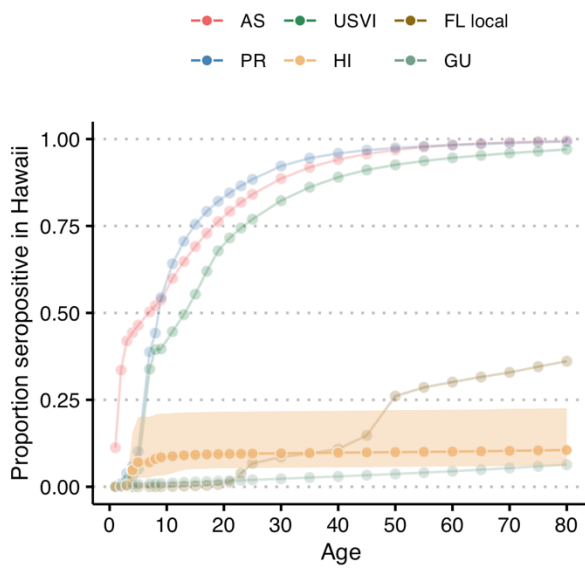
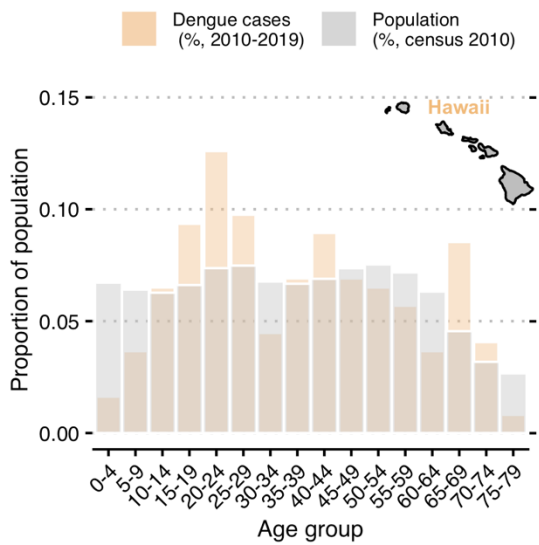
444

C

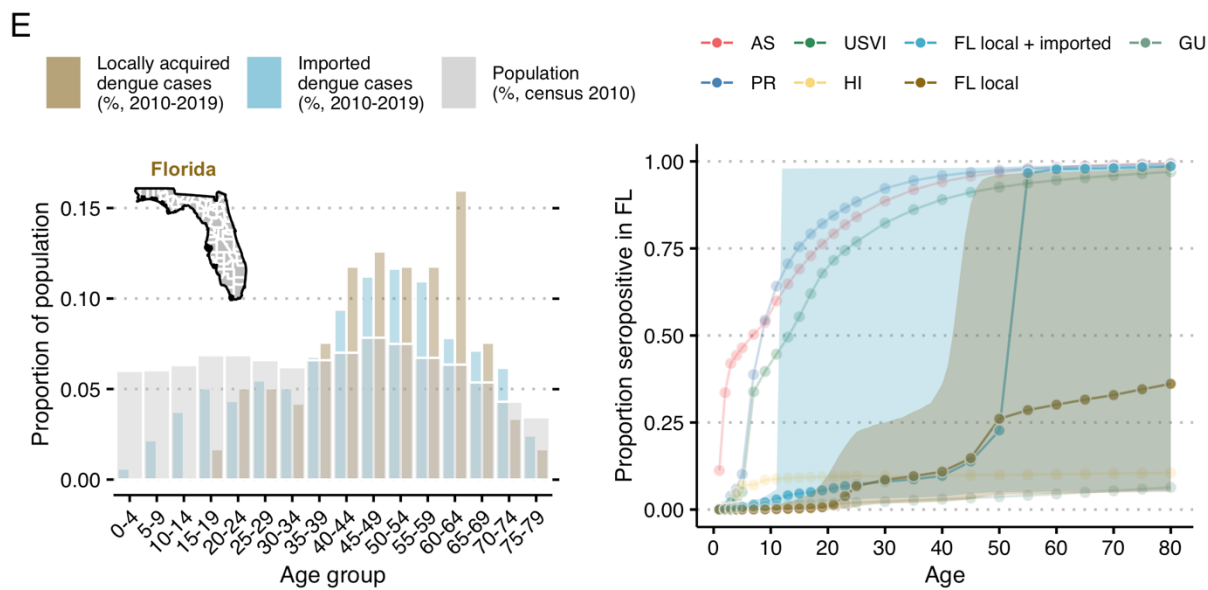


445

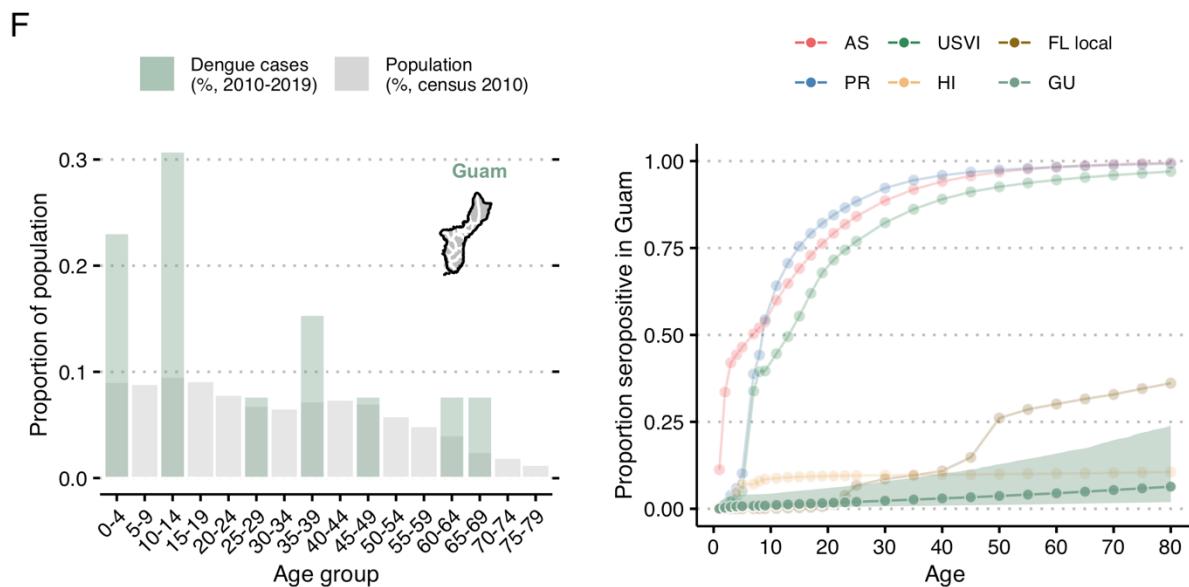
D



446



447



448

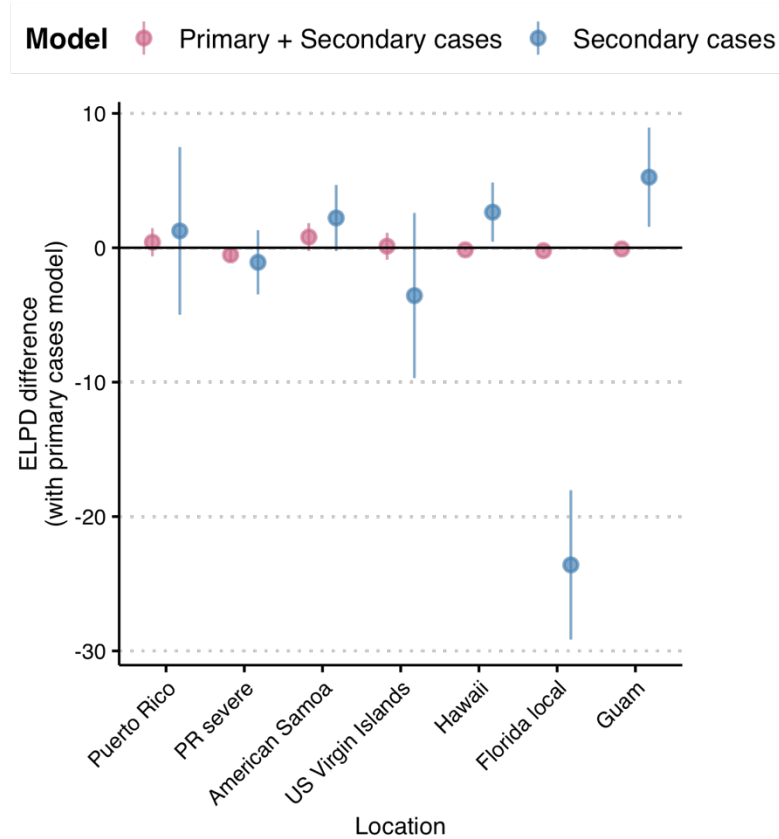
449

450 **Figure 2. Age distribution of reported dengue cases and 2019 seroprevalence**
 451 **estimates by age group for each US state and territory assessed.** Age
 452 distribution of all locally reported, confirmed and probable dengue cases in Puerto
 453 Rico (PR, A), American Samoa (AS, B), US Virgin Islands (USVI, C), Hawaii (HI, D),
 454 Florida (FL, E) and Guam (GU, F) in 2010–2019 (colored bar) and age distribution of
 455 the population in these respective territories (grey bars, 2010 census) (left panel) and
 456 age distribution of 2019 seroprevalence estimate obtained from the fit of model S

457 (reported cases are secondary infections only), with corresponding 95% confidence
 458 intervals (shaded area, right panel). Florida (E) contains the additional
 459 seroprevalence estimates from all cases (imported and local). Detailed tables on
 460 years with reported dengue cases are available in S1. Y-axis scale on the left panels
 461 differ for each location.

462

463



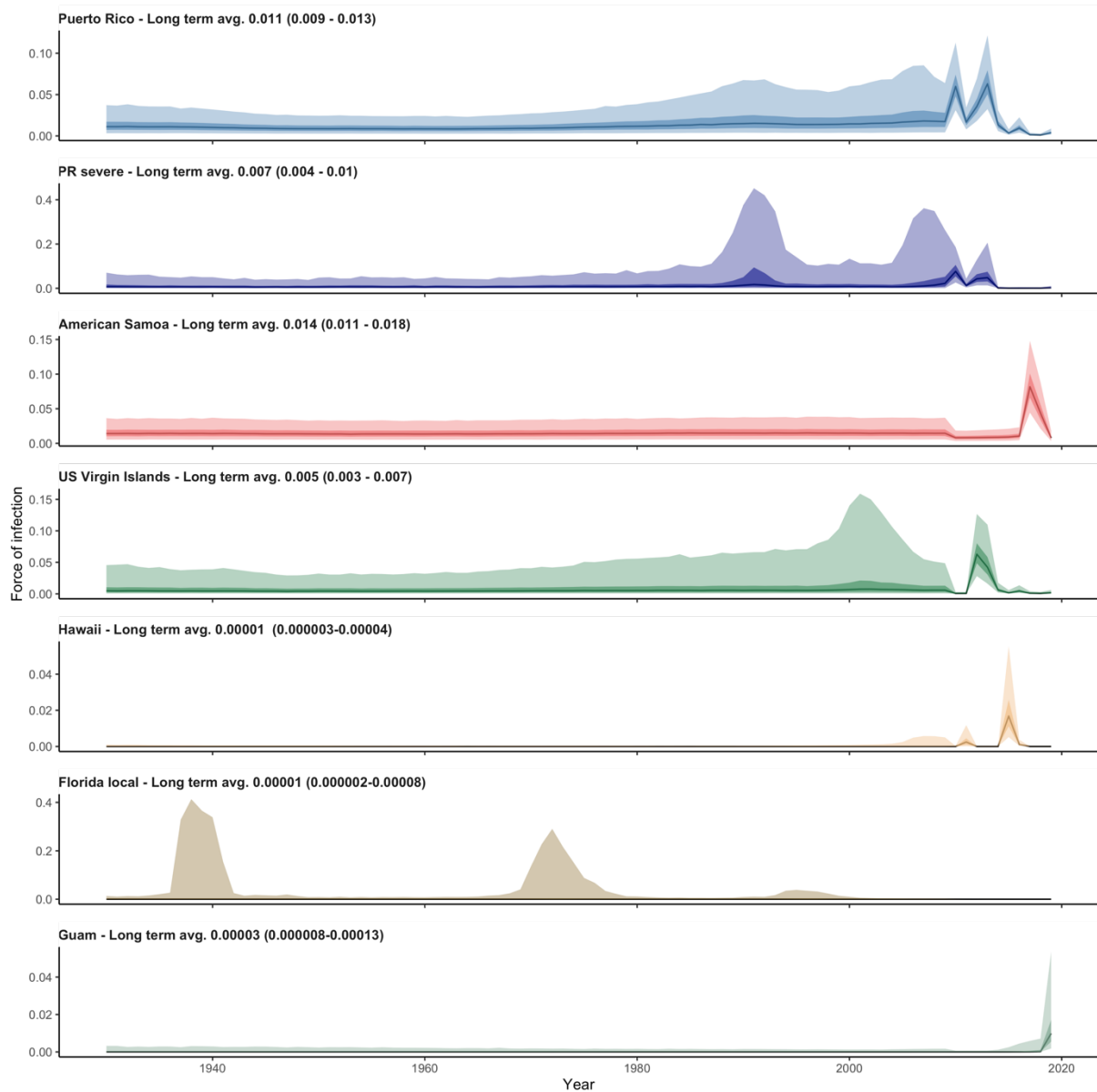
464

465 **Figure 3. Leave-one-out cross validation model comparison using the**
 466 **estimated difference in ELPD (expected log pointwise predictive probabilities).**

467 ELPD is a measure of out-of-sample predictive accuracy, as estimated by the
 468 Bayesian leave-one-out cross validation (LOO). We compared model P (cases as
 469 primary) to models PS and S (primary and secondary cases and secondary cases
 470 only). Models under the horizontal bar at 0 fit the data better than model P
 471 (reference). Vertical bars represent the corresponding standard error of the difference
 472 in ELPD.

473

474

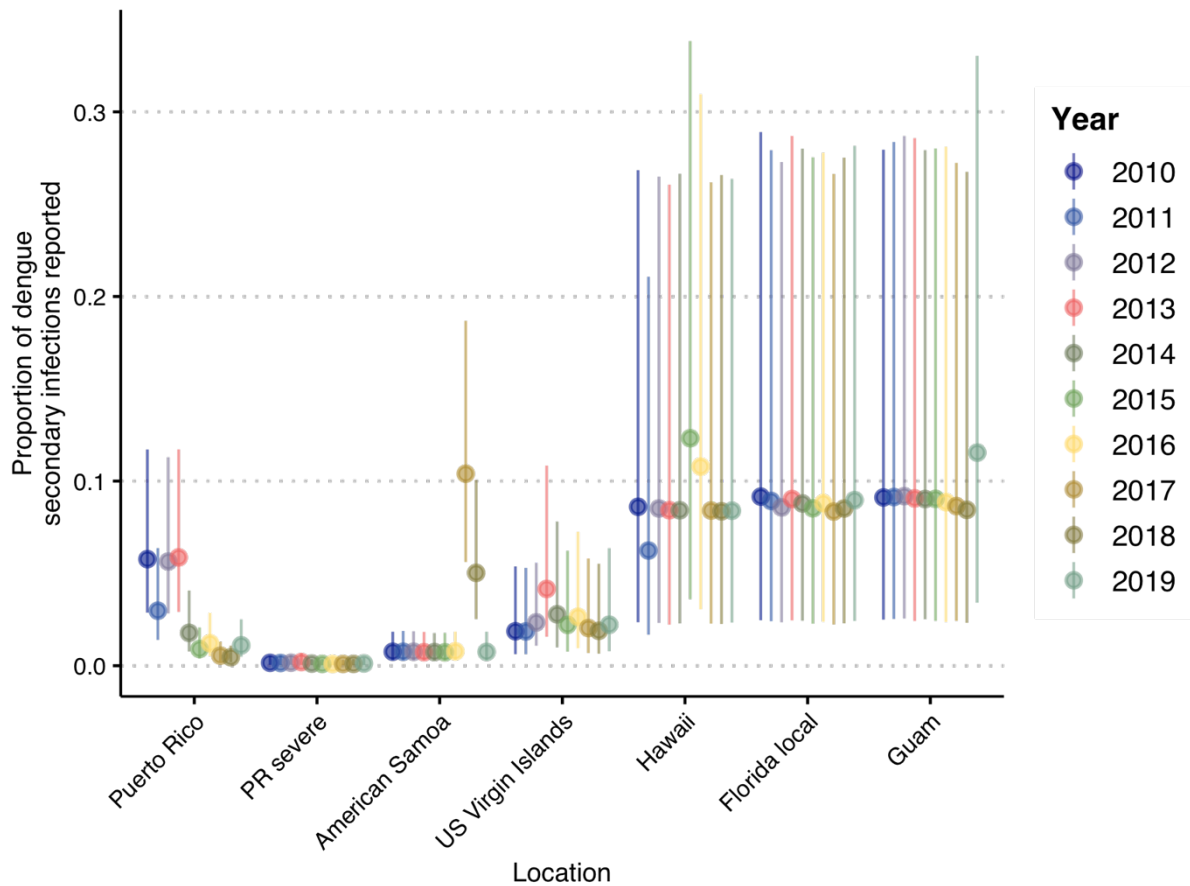


475

476

477 **Figure 4. Time-varying estimates of the force of infection (FOI) in Puerto Rico**
 478 **(all cases) and severe cases only (PR severe), American Samoa, US Virgin**
 479 **Islands, Hawaii, Florida local cases and Guam in 2010–2019 from our model S**
 480 **(cases as secondary infections).** The numbers in the upper left-hand corner of
 481 each panel shows long term FOI estimates for each location. Dark and light shaded
 482 areas represent respectively, 50% and 95% confidence intervals. Different y-axis
 483 scales were used for each jurisdiction.

484

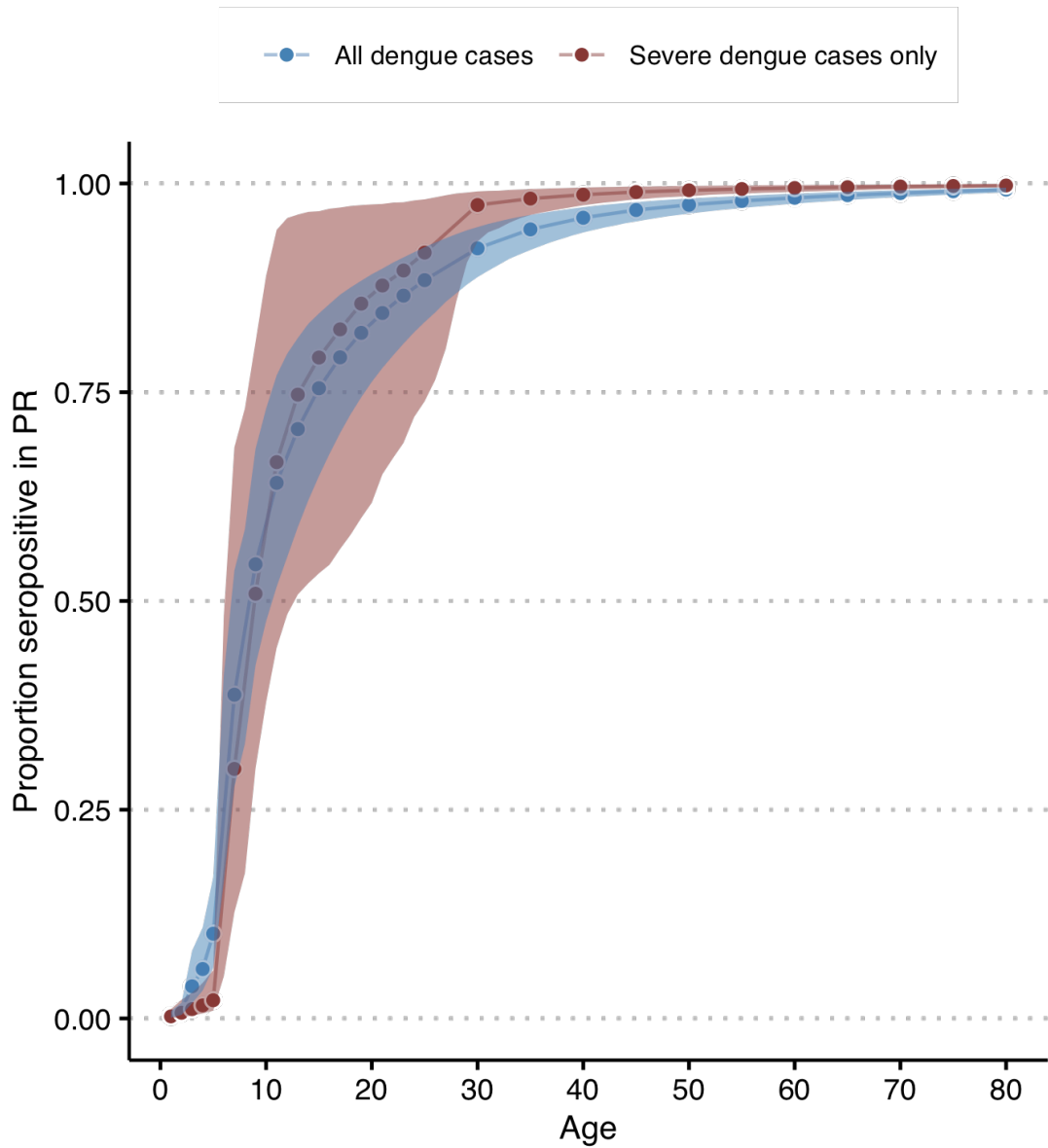


485

486

487 **Figure 5. Estimates of the yearly probability of reporting cases in Puerto Rico**
 488 **(all cases) and severe cases only (PR severe), American Samoa, US Virgin**
 489 **Islands, Hawaii, Florida and Guam in 2010–2019 from our S model (cases are**
 490 **considered secondary infections). Vertical bars represent 95% confidence**
 491 **intervals. For the severe cases, it is the proportion of all secondary infections that are**
 492 **both severe and reported.**

493



494

495

496

497 **Figure 6. Age-specific seropositivity estimates for 2019 in Puerto Rico using all**
 498 **dengue cases and severe dengue cases only.** Derived from model S where
 499 reported cases are secondary infections only. Shaded areas represent 95%
 500 confidence intervals.

501

502 **Supporting information Captions**

503 **S1 Figure. Prior distribution of the reporting hyperprior.** Dashed lines represent
504 median prior value, at 10%.

505 **S2 Figure. Age distribution of reported severe and non-severe dengue cases**
506 **(colored bars) in Puerto Rico from 2010 to 2019.** The grey bars represent the age
507 distribution of the population (US census, 2010).

508 **S3 Figure. Yearly age distribution of dengue reported cases in Puerto Rico (A),**
509 **American Samoa (B), US Virgin Islands (USVI, C), Hawaii (D), Florida (E), and**
510 **Guam (F).** Scales may be adjusted for years with fewer dengue cases reported.

511 **S4 Figure. Yearly age distribution of locally-acquired and imported dengue**
512 **reported cases in Florida.** Scales are adjusted for years with fewer dengue cases
513 reported.

514 **S5 Figure. Comparison of log likelihood samples by age group and years of**
515 **models 1-3 using Puerto Rico data. Comparison of log likelihood samples by**
516 **age group and years of models Primary, Primary & Secondary, and Secondary**
517 **using Puerto Rico data.** Models' log-likelihood values may overlap. The log
518 likelihood value in a model is a measure of goodness of fit. The higher the value (i.e.,
519 closer to 0), the better.

520 **S6 Figure. Heatmap comparison between models Primary, Primary and**
521 **Secondary, and Secondary of log likelihood median samples and cases by age**
522 **group and years using Puerto Rico data.** The log likelihood value in a model is a
523 measure of goodness of fit. Here, models with log likelihood values closest to 0 were
524 plotted.

525 **S7 Figure. Reported cases model fit (all cases and severe cases only) by age**
526 **group in Puerto Rico from 2010 to 2019.** Points represent cases reported to
527 ArboNET while lines represent model fit to Primary, Primary & Secondary, and
528 Secondary models. Shaded areas represent the best model 95% CIs.
529

530 **S8 Figure. Reported severe cases model fit (severe cases only) by age group in**
531 **Puerto Rico from 2010 to 2019.** Points represent cases reported to ArboNET while
532 lines represent model fit to Primary, Primary & Secondary, and Secondary models.
533 Shaded areas represent the best model 95% CIs.

534 **S9 Figure. Reported cases model fit by age group in American Samoa from**
535 **2010 to 2019.** Points represent cases reported to ArboNET while lines represent
536 model fit to Primary, Primary & Secondary, and Secondary models.
537 Shaded areas represent the best model 95% CIs.

538 **S10 Figure. Reported cases model fit by age group in US Virgin Islands from**
539 **2010 to 2019.** Points represent cases reported to ArboNET while lines represent
540 model fit to Primary, Primary & Secondary, and Secondary models.
541 Shaded areas represent the best model 95% CIs.

542 **S11 Figure. Reported cases model fit by age group in Hawaii from 2010 to 2019.**
543 Points represent cases reported to ArboNET while lines represent model fit to

544 Primary, Primary & Secondary, and Secondary models. Shaded areas represent the
545 best model 95% CIs.

546 **S12 Figure. Reported cases model fit by age group in Florida from 2010 to**
547 **2019.** Points represent cases reported to ArboNET while lines represent model fit to
548 Primary, Primary & Secondary, and Secondary models. Shaded areas represent the
549 best model 95% CIs.

550 **S13 Figure. Reported cases model fit by age group in Guam from 2010 to 2019.**
551 Points represent cases reported to ArboNET while lines represent model fit to
552 Primary, Primary & Secondary, and Secondary models. Shaded areas represent the
553 best model 95% CIs.

554 **S14 Alpha parameter posterior estimates with 95%CI (vertical bars) in Puerto**
555 **Rico, Puerto Rico severe (using severe cases only), American Samoa, US**
556 **Virgin Islands, Hawaii, Florida and Guam.**

557 **Table S1: Force of infection estimates in Puerto Rico, American Samoa, US**
558 **Virgin Islands, Hawaii, Florida and Guam from 2010 to 2019.** Median and 95%
559 Bayesian credible intervals.

560

561 **References**

562

- 563 1. Brady OJ, Hay SI. The global expansion of dengue: how *Aedes aegypti* mosquitoes
564 enabled the first pandemic arbovirus. *Annual Review of Entomology*. 2020;65: 191–208.
565 doi:10.1146/annurev-ento-011019-024918
- 566 2. Monath TP. Dengue: the risk to developed and developing countries. *Proc Natl Acad*
567 *Sci U S A*. 1994;91: 2395–2400.
- 568 3. Messina JP, Brady OJ, Golding N, Kraemer MUG, Wint GRW, Ray SE, et al. The
569 current and future global distribution and population at risk of dengue. *Nature Microbiology*.
570 2019;4: 1508–1515. doi:10.1038/s41564-019-0476-8
- 571 4. Brady OJ, Gething PW, Bhatt S, Messina JP, Brownstein JS, Hoen AG, et al. Refining
572 the global spatial limits of dengue virus transmission by evidence-based consensus. *PLoS*
573 *Negl Trop Dis*. 2012;6: 1–15. doi:10.1371/journal.pntd.0001760
- 574 5. Allicock OM, Lemey P, Tatem AJ, Pybus OG, Bennett SN, Mueller BA, et al.
575 Phylogeography and population dynamics of dengue viruses in the Americas. *Molecular*
576 *biology and evolution*. 2012;29: 1533–1543. doi:10.1093/molbev/msr320
- 577 6. Añez G, Rios M. Dengue in the United States of America: a worsening scenario?
578 *BioMed Research International*. 2013. p. 13.
- 579 7. Katzelnick LC, Bos S, Harris E. Protective and enhancing interactions among dengue
580 viruses 1-4 and Zika virus. *Current Opinion in Virology*. 2020;43: 59–70.
581 doi:https://doi.org/10.1016/j.coviro.2020.08.006
- 582 8. Endy TP, Anderson KB, Nisalak A, Yoon I-K, Green S, Rothman AL, et al.
583 Determinants of inapparent and symptomatic dengue infection in a prospective study of
584 primary school children in Kamphaeng Phet, Thailand. *PLoS Negl Trop Dis*. 2011;5: e975.
- 585 9. Yoon I-K, Rothman AL, Tannitisupawong D, Srikiatkachorn A, Jarman RG, Aldstadt
586 J, et al. Underrecognized mildly symptomatic viremic dengue virus infections in rural Thai
587 schools and villages. *J Infect Dis*. 2012;206: 389–398. doi:10.1093/infdis/jis357

- 588 10. Grange L, Simon-Lorieri E, Sakuntabhai A, Gresh L, Paul R, Harris E.
589 Epidemiological risk factors associated with high global frequency of inapparent dengue virus
590 infections. *Front Immunol.* 2014;5. Available:
591 <https://www.frontiersin.org/articles/10.3389/fimmu.2014.00280>
- 592 11. Clapham HE, Cummings DAT, Johansson MA. Immune status alters the probability of
593 apparent illness due to dengue virus infection: Evidence from a pooled analysis across
594 multiple cohort and cluster studies. *PLoS Negl Trop Dis.* 2017;11: e0005926.
595 doi:doi:10.1371/journal.pntd.0005926
- 596 12. Rodriguez-Barraquer I, Salje H, Cummings DA. Opportunities for improved
597 surveillance and control of dengue from age-specific case data. *eLife.* 2019;8: e45474.
598 doi:10.7554/eLife.45474
- 599 13. Muench H. *Catalytic models in epidemiology.* Cambridge (MA): Harvard University
600 Press; 1959. doi:<https://doi.org/10.4159/harvard.9780674428928>
- 601 14. Imai N, Dorigatti I, Cauchemez S, Ferguson NM. Estimating Dengue Transmission
602 Intensity from Case-Notification Data from Multiple Countries. *PLoS Negl Trop Dis.*
603 2016;10: e0004833. doi:10.1371/journal.pntd.0004833
- 604 15. O’Driscoll M, Imai N, Ferguson NM, Hadinegoro SR, Satari HI, Tam CC, et al.
605 Spatiotemporal variability in dengue transmission intensity in Jakarta, Indonesia. *PLoS Negl*
606 *Trop Dis.* 2020;14: e0008102-.
- 607 16. CDC NNDSS. Dengue virus infections 2015 case definition. 2015 [cited 30 May
608 2022]. Available: <https://ndc.services.cdc.gov/case-definitions/dengue-virus-infections-2015/>
- 609 17. CDC NNDSS. Dengue virus infections 2010 case definition. 2010 [cited 30 Nov
610 2022]. Available: <https://ndc.services.cdc.gov/case-definitions/dengue-virus-infections-2010/>
- 611 18. Burke DS, Nisalak A, Johnson DE, Scott R. A prospective study of dengue infections
612 in Bangkok. *Am J Trop Med Hyg.* 1988;38: 172–180.
- 613 19. Shankar MB, Rodríguez-Acosta RL, Sharp TM, Tomashek KM, Margolis HS, Meltzer
614 MI. Estimating dengue under-reporting in Puerto Rico using a multiplier model. *PLoS Negl*
615 *Trop Dis.* 2018;12: e0006650.
- 616 20. Carabali M, Jaramillo-Ramirez GI, Rivera VA, Mina Possu N-J, Restrepo BN, Zinszer
617 K. Assessing the reporting of dengue, chikungunya and Zika to the national surveillance
618 system in Colombia from 2014–2017: a capture-recapture analysis accounting for
619 misclassification of arboviral diagnostics. *PLoS Negl Trop Dis.* 2021;15: e0009014.
- 620 21. Vong S, Goyet S, Ly S, Ngan C, Huy R, Duong V, et al. Under-recognition and
621 reporting of dengue in Cambodia: a capture–recapture analysis of the National Dengue
622 Surveillance System. *Epidemiol Infect.* 2012;140: 491–499.
623 doi:10.1017/S0950268811001191
- 624 22. Silva MM, Rodrigues MS, Paploski IA, Kikuti M, Kasper AM, Cruz JS, et al.
625 Accuracy of dengue reporting by national surveillance system, Brazil. *Emerging infectious*
626 *diseases.* 2016;22: 336.
- 627 23. Montoya M, Gresh L, Mercado JC, Williams KL, Vargas MJ, Gutierrez G, et al.
628 Symptomatic versus inapparent outcome in repeat dengue virus infections is influenced by the
629 time interval between infections and study year. *PLoS Negl Trop Dis.* 2013;7: e2357.
630 doi:10.1371/journal.pntd.0002357
- 631 24. Halstead SB. *Immunological parameters of togavirus disease syndromes.* Academic
632 Press New York; 1980.
- 633 25. Reiner RC, Stoddard ST, Forshey BM, King AA, Ellis AM, Lloyd AL, et al. Time-
634 varying, serotype-specific force of infection of dengue virus. *Proc Natl Acad Sci U S A.*
635 2014;111: E2694–E2702.
- 636 26. Hens N, Aerts M, Faes C, Shkedy Z, Lejeune O, Van Damme P, et al. Seventy-five
637 years of estimating the force of infection from current status data. *Epidemiol Infect.* 2010;138:

- 638 802–812.
- 639 27. Vehtari A, Gelman A, Gabry J. Practical Bayesian model evaluation using leave-one-
640 out cross-validation and WAIC. *Statistics and Computing*. 2017;27: 1413–1432.
641 doi:10.1007/s11222-016-9696-4
- 642 28. Stan Development Team. RStan: the R interface to Stan. 2020. Available: [http://mc-](http://mc-stan.org/)
643 [stan.org/](http://mc-stan.org/)
- 644 29. R Core Team. R: A Language and Environment for Statistical Computing. Vienna,
645 Austria: R Foundation for Statistical Computing; 2020. Available: <https://www.R-project.org/>
- 646 30. PAHO. Dengue and dengue hemorrhagic fever in the Americas. 1997 [cited 19 May
647 2022]. Available: [https://www.paho.org/en/documents/dengue-and-dengue-hemorrhagic-](https://www.paho.org/en/documents/dengue-and-dengue-hemorrhagic-fever-americas-guidelines-prevention-and-control-1997)
648 [fever-americas-guidelines-prevention-and-control-1997](https://www.paho.org/en/documents/dengue-and-dengue-hemorrhagic-fever-americas-guidelines-prevention-and-control-1997)
- 649 31. Runge-Ranzinger S, Horstick O, Marx M, Kroeger A. What does dengue disease
650 surveillance contribute to predicting and detecting outbreaks and describing trends? *Trop Med*
651 *Int Health*. 2008;13: 1022–1041.
- 652 32. Beatty ME, Stone A, Fitzsimons DW, Hanna JN, Lam SK, Vong S, et al. Best
653 practices in dengue surveillance: a report from the Asia-Pacific and Americas Dengue
654 Prevention Boards. *PLoS Negl Trop Dis*. 2010;4: e890. doi:10.1371/journal.pntd.0000890
- 655 33. World Health Organisation. Dengue vaccine: WHO position paper, September 2018 -
656 Recommendations. *Vaccine*. 2019;37: 4848–4849.
- 657 34. Dietz V, Gubler DJ, Ortiz S, Kuno G, Casta-Vélez A, Sather GE, et al. The 1986
658 dengue and dengue hemorrhagic fever epidemic in Puerto Rico: epidemiologic and clinical
659 observations. *P R Health Sci J*. 1996;15: 201–210.
- 660 35. Rigau-Pérez JG, Vorndam AV, Clark GG. The dengue and dengue hemorrhagic fever
661 epidemic in Puerto Rico, 1994-1995. *Am J Trop Med Hyg*. 2001;64: 67–74.
- 662 36. Cotter CJ, Tufa AJ, Johnson S, Matai'a M, Sciulli R, Ryff KR, et al. Outbreak of
663 Dengue Virus Type 2 - American Samoa, November 2016-October 2018. *MMWR*. 2018;67:
664 1319–1322. doi:10.15585/mmwr.mm6747a5
- 665 37. Arima Y, Matsui T. Epidemiologic update of dengue in the Western Pacific Region,
666 2010. *Western Pac Surveill Response J*. 2011;2: 4–8. doi:10.5365/WPSAR.2011.2.2.005
- 667 38. Kiedrzyński T, Soutares Y, Stewart T. Dengue in the Pacific: an updated story. *Pacific*
668 *Health Dialog*. 1998;5: 129–136.
- 669 39. Mohammed H, Ramos M, Armstrong J, Muñoz-Jordán J, Arnold-Lewis KO, Ayala A,
670 et al. An outbreak of dengue fever in St. Croix (US Virgin Islands), 2005. *PLoS One*. 2010;5:
671 e13729.
- 672 40. Argüello DF, Tomashek KM, Quiñones L, Beltran M, Acosta L, Santiago LM, et al.
673 Incidence of dengue virus infection in school-aged children in Puerto Rico: a prospective
674 seroepidemiologic study. *Am J Trop Med Hyg*. 2015;92: 486–491. doi:10.4269/ajtmh.14-
675 0231
- 676 41. Duncombe J, Lau C, Weinstein P, Aaskov J, Rourke M, Grant R, et al. Seroprevalence
677 of dengue in American Samoa, 2010. *Emerg Infect Dis*. 2013;19: 324–326.
678 doi:10.3201/eid1902.120464
- 679 42. Jentes ES, Lash RR, Johansson MA, Sharp TM, Henry R, Brady OJ, et al. Evidence-
680 based risk assessment and communication: a new global dengue-risk map for travellers and
681 clinicians. *Journal of travel medicine*. 2016;23: taw062.
- 682 43. Mac VV, Wong JM, Volkman HR, Perez-Padilla J, Wakeman B, Delorey M, et al.
683 Seroprevalence of previous dengue virus infection among children aged 8–13 Years —
684 U.S. Jentes. Virgin Islands, April–May 2022. *MMWR*. : Forthcoming.
- 685 44. Effler PV, Pang L, Kitsutani P, Vorndam V, Nakata M, Ayers T, et al. Dengue fever,
686 Hawaii, 2001-2002. *Emerg Infect Dis*. 2005;11: 742–749. doi:10.3201/eid1105.041063
- 687 45. Lew RJ, Tsai W-Y, Wang W-K. Dengue outbreaks in Hawai'i After WWII - A

688 Review of Public Health Response and Scientific Literature. *Hawai'i Journal of Medicine &*
689 *Public Health*. 2018;77: 315–318.

690 46. Adalja AA, Sell TK, Bouri N, Franco C. Lessons learned during dengue outbreaks in
691 the United States, 2001-2011. *Emerging infectious diseases*. 2012;18: 608–614.
692 doi:10.3201/eid1804.110968

693 47. Lambrechts L, Scott TW, Gubler DJ. Consequences of the expanding global
694 distribution of *Aedes albopictus* for dengue virus transmission. *PLoS Negl Trop Dis*. 2010;4:
695 e646. doi:doi:10.1371/journal.pntd.0000646

696 48. Feldstein LR, Brownstein JS, Brady OJ, Hay SI, Johansson MA. Dengue on islands: a
697 Bayesian approach to understanding the global ecology of dengue viruses. *Trans R Soc Trop*
698 *Med Hyg*. 2015;109: 303–312. doi:10.1093/trstmh/trv012

699 49. Johansson MA, Dominici F, Glass GE. Local and global effects of climate on dengue
700 transmission in Puerto Rico. *PLoS Negl Trop Dis*. 2009;3: e382.

701 50. Mordecai EA, Cohen JM, Evans MV, Gudapati P, Johnson LR, Lippi CA, et al.
702 Detecting the impact of temperature on transmission of Zika, dengue, and chikungunya using
703 mechanistic models. *PLoS Negl Trop Dis*. 2017;11: e0005568-.
704 doi:doi:10.1371/journal.pntd.0005568
705